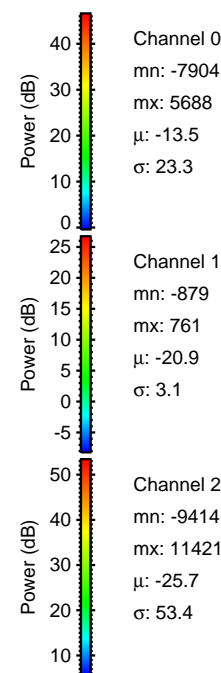
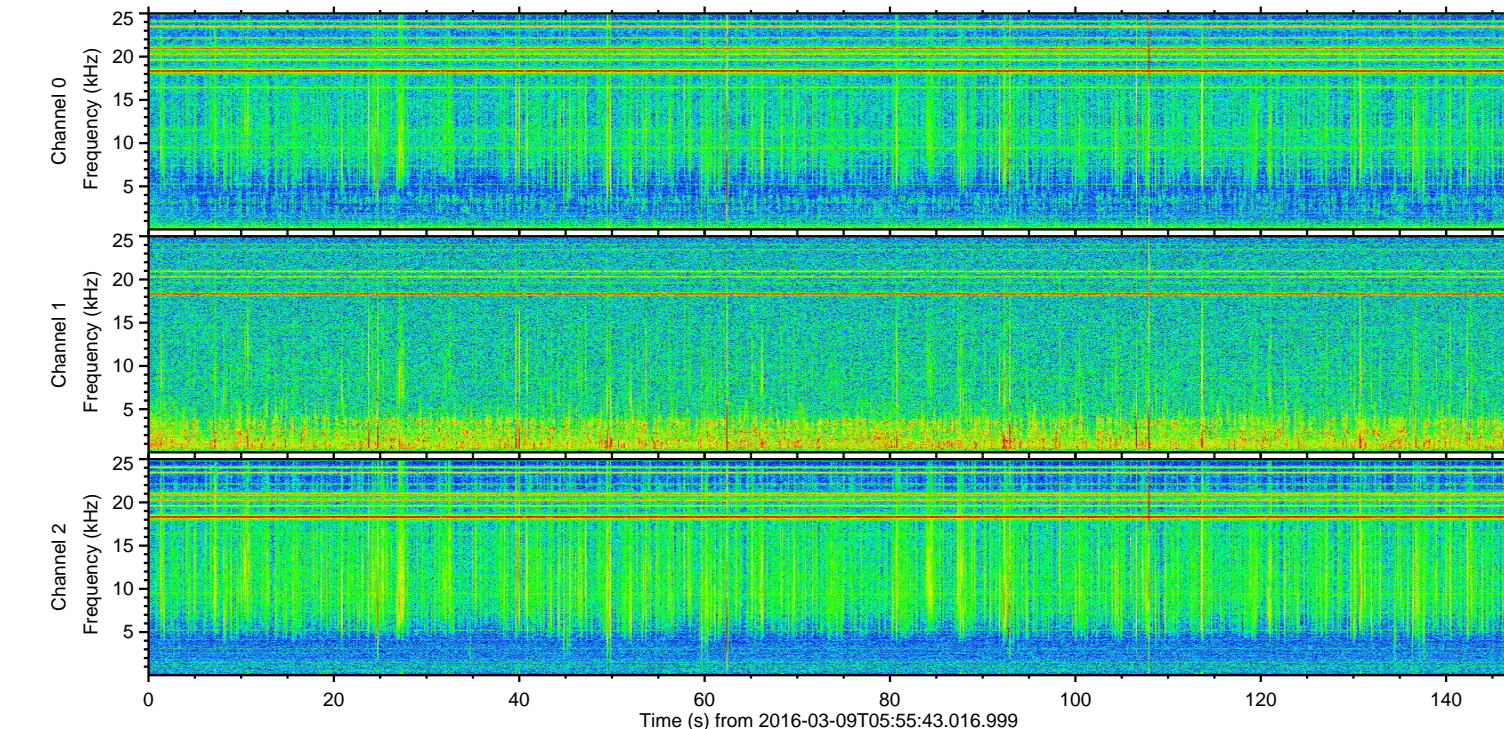
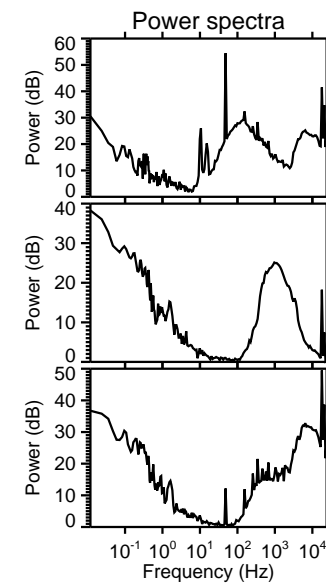
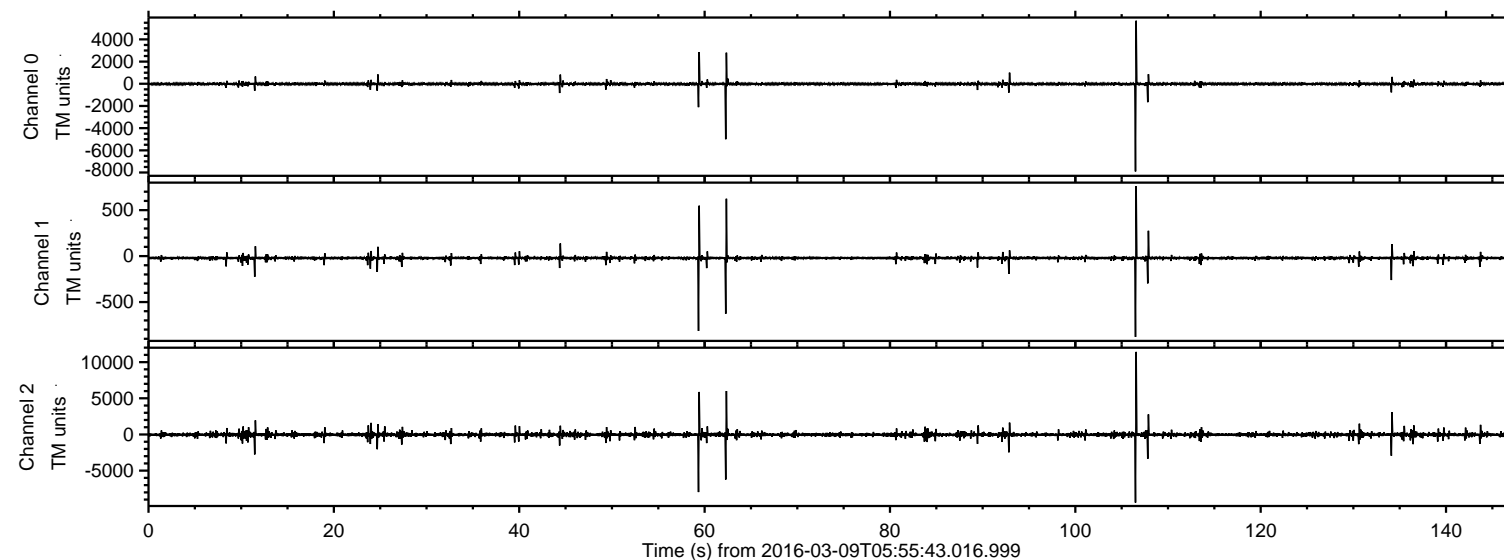


# ELMAVAN 3D WAVEFORMS (Measured data sampled at 50 kHz) 51000 packets of 144 samples from 2016-03-09T05:55:43.016.999.

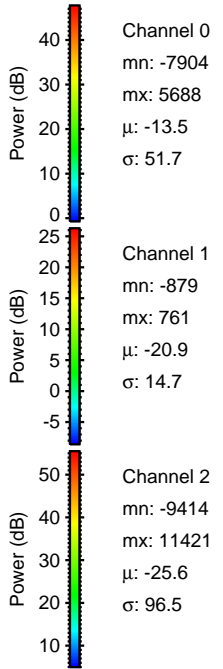
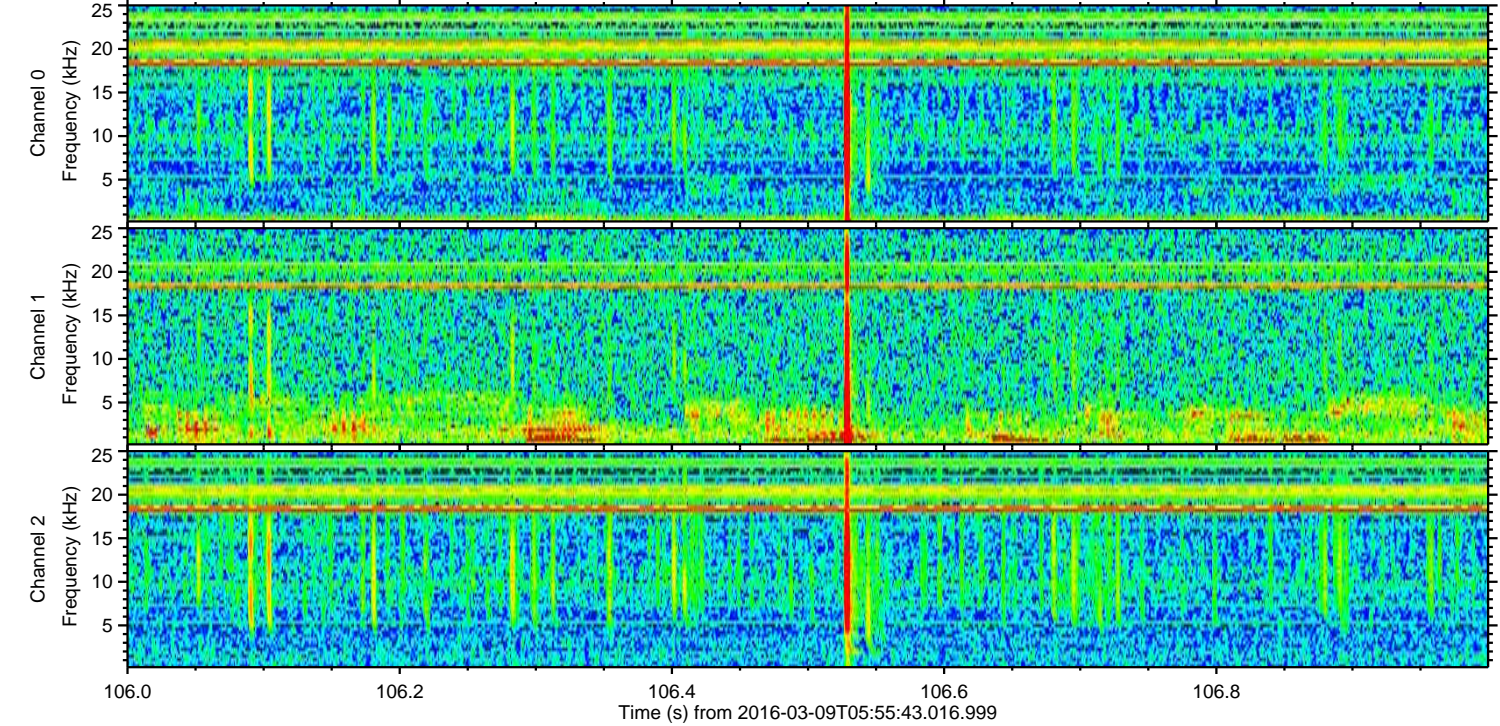
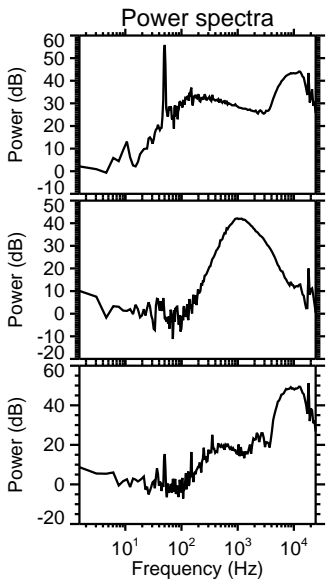
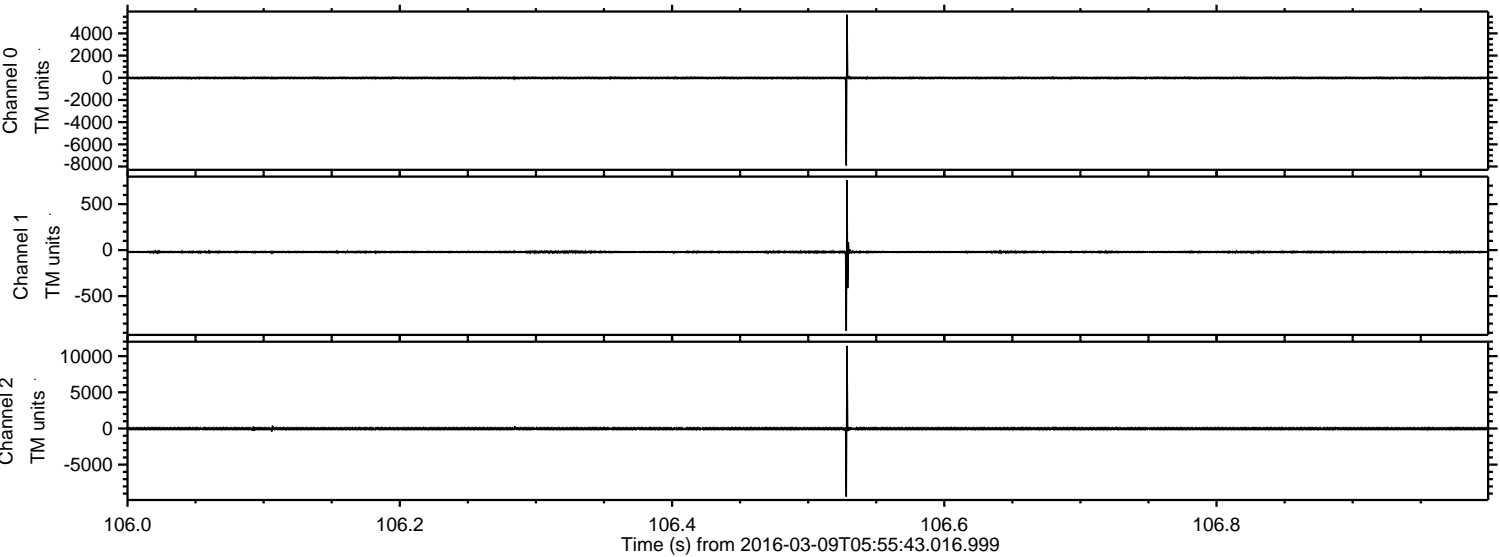
Processed Tue Apr 19 06:19:04 2016 by ELM ver.2012-10-06 from 001\_\_elm20160309\_055542\_\_dat00.bin





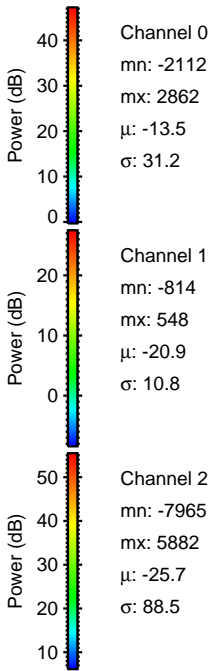
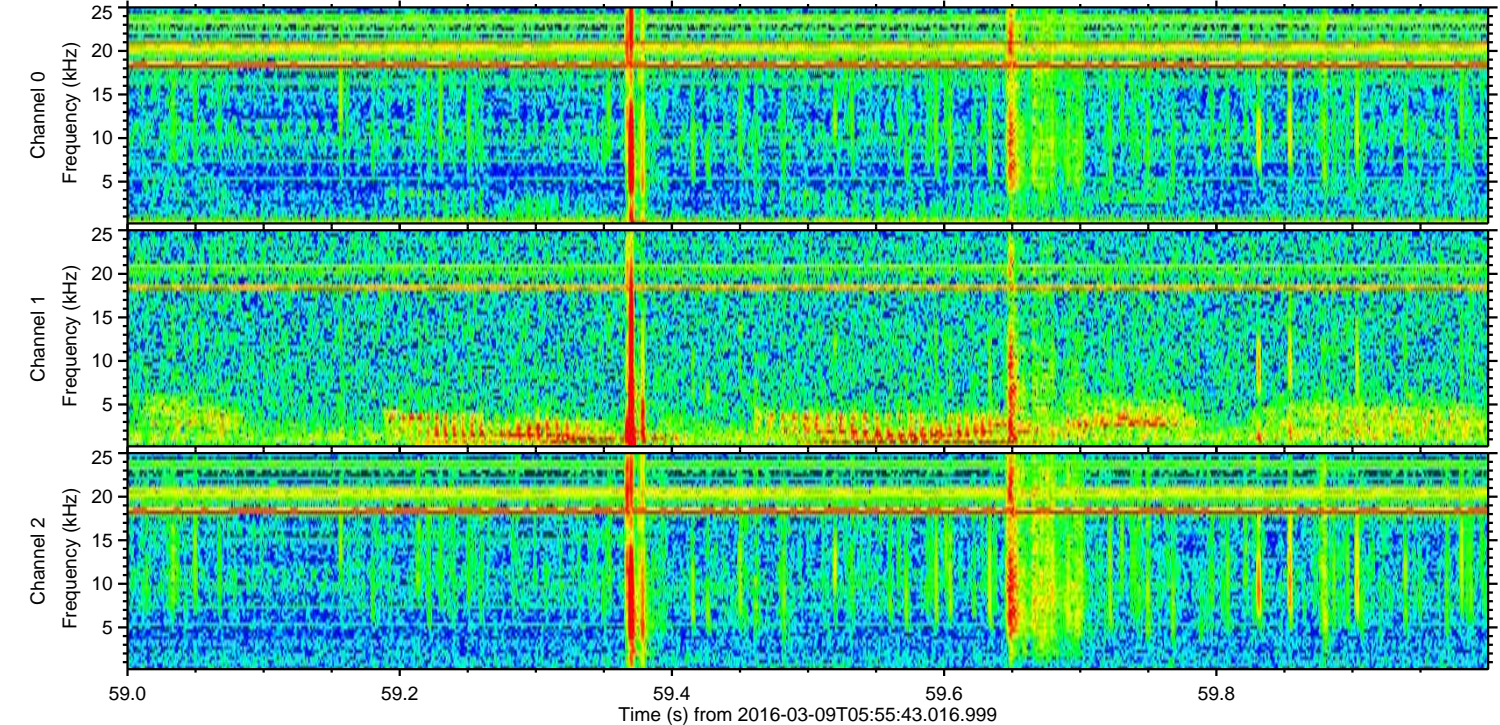
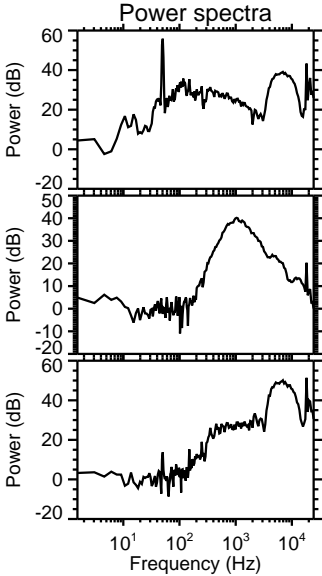
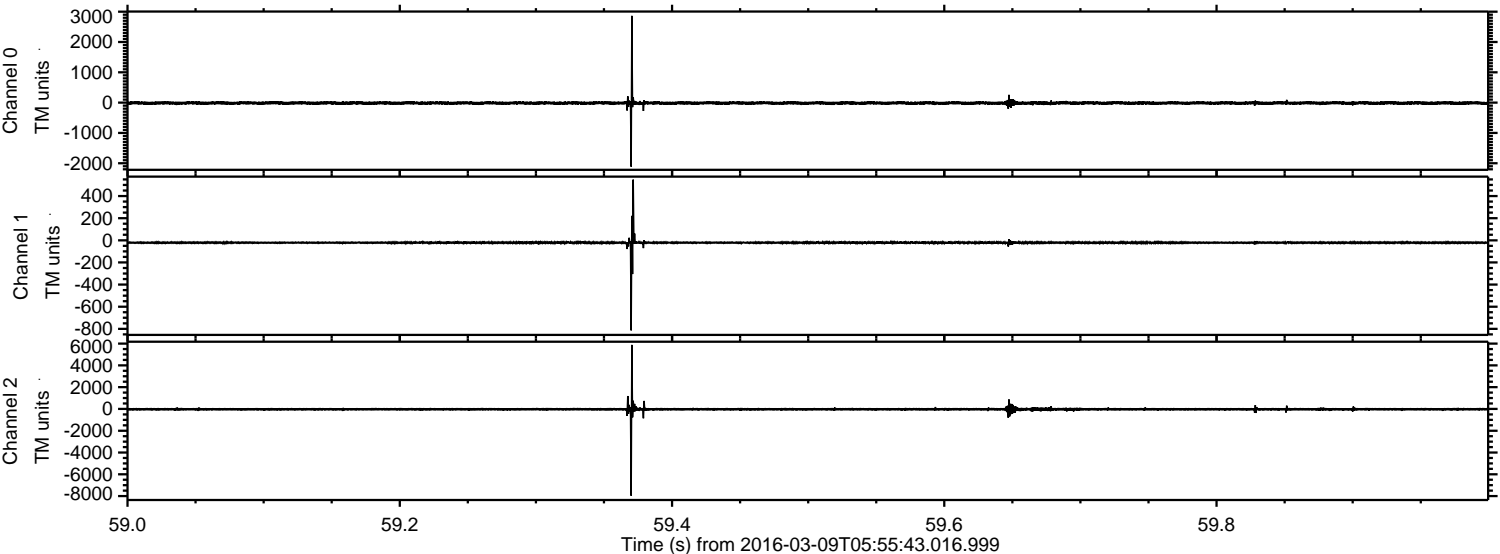
ELMAVAN 3D WAVEFORMS (Measured data sampled at 50 kHz) 51000 packets of 144 samples from 2016-03-09T05:55:43.016.999. Part 107/147

Processed Tue Apr 19 06:19:15 2016 by ELM ver.2012-10-06 from 001\_\_elm20160309\_055542\_\_dat00.bin



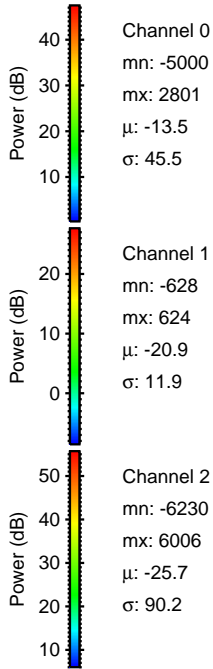
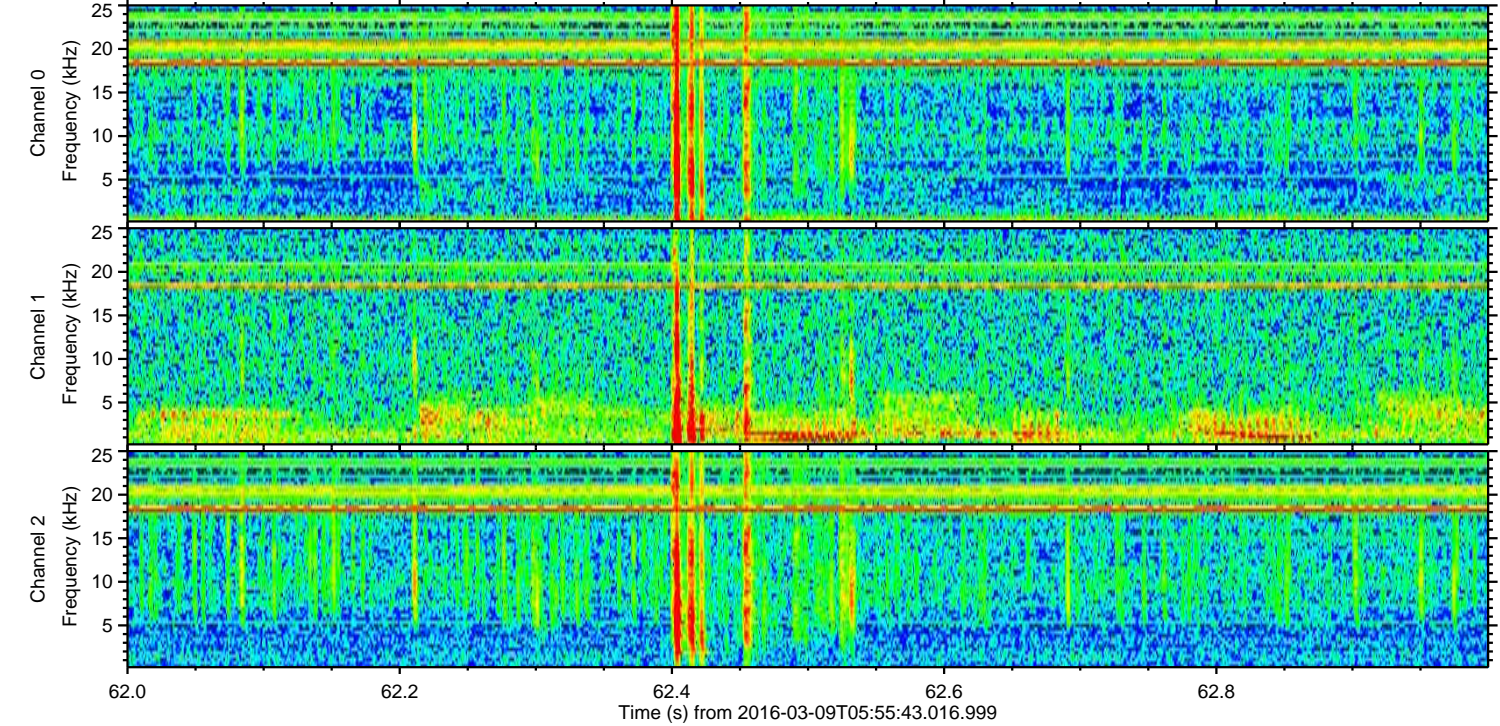
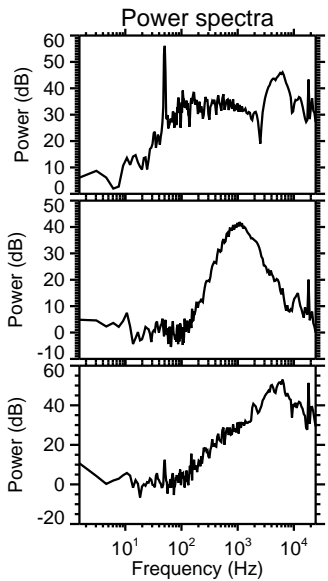
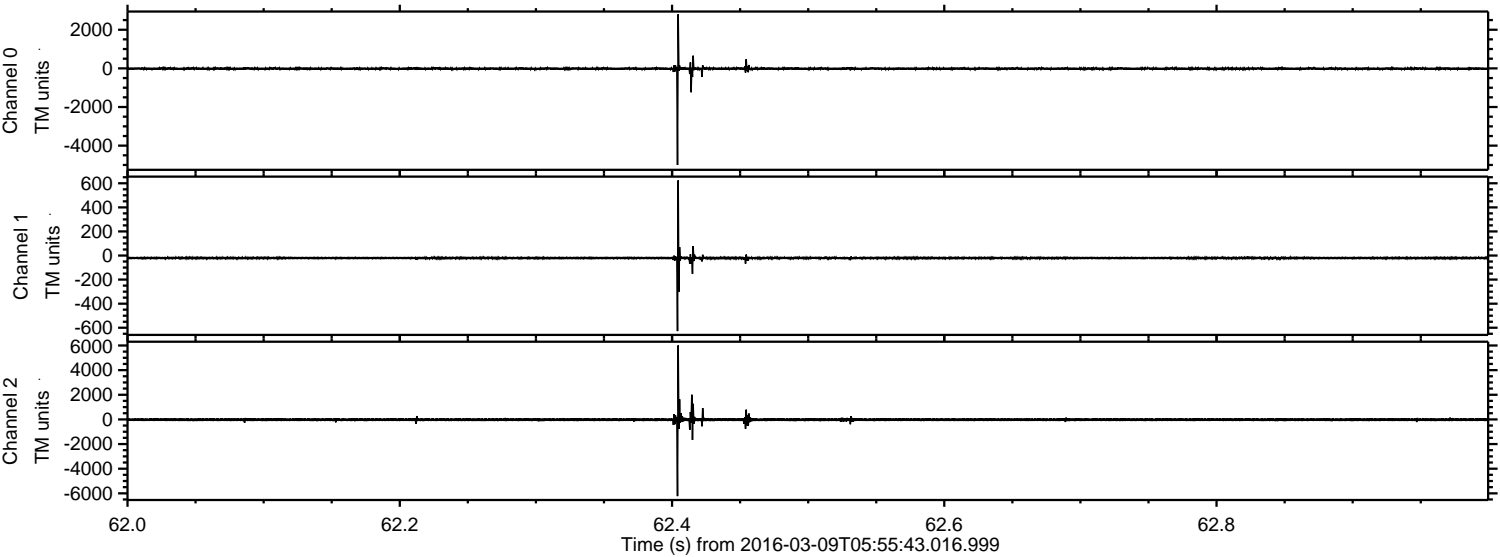


Processed Tue Apr 19 06:19:16 2016 by ELM ver.2012-10-06 from 001\_\_elm20160309\_055542\_\_dat00.bin





Processed Tue Apr 19 06:19:17 2016 by ELM ver.2012-10-06 from 001\_\_elm20160309\_055542\_\_dat00.bin



Channel 0  
mn: -5000  
mx: 2801  
 $\mu$ : -13.5  
 $\sigma$ : 45.5

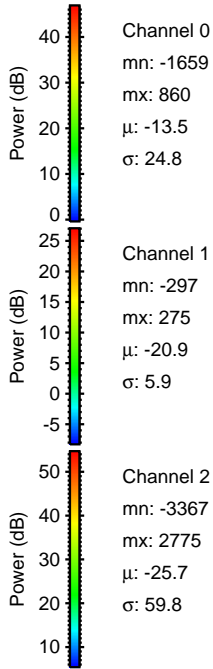
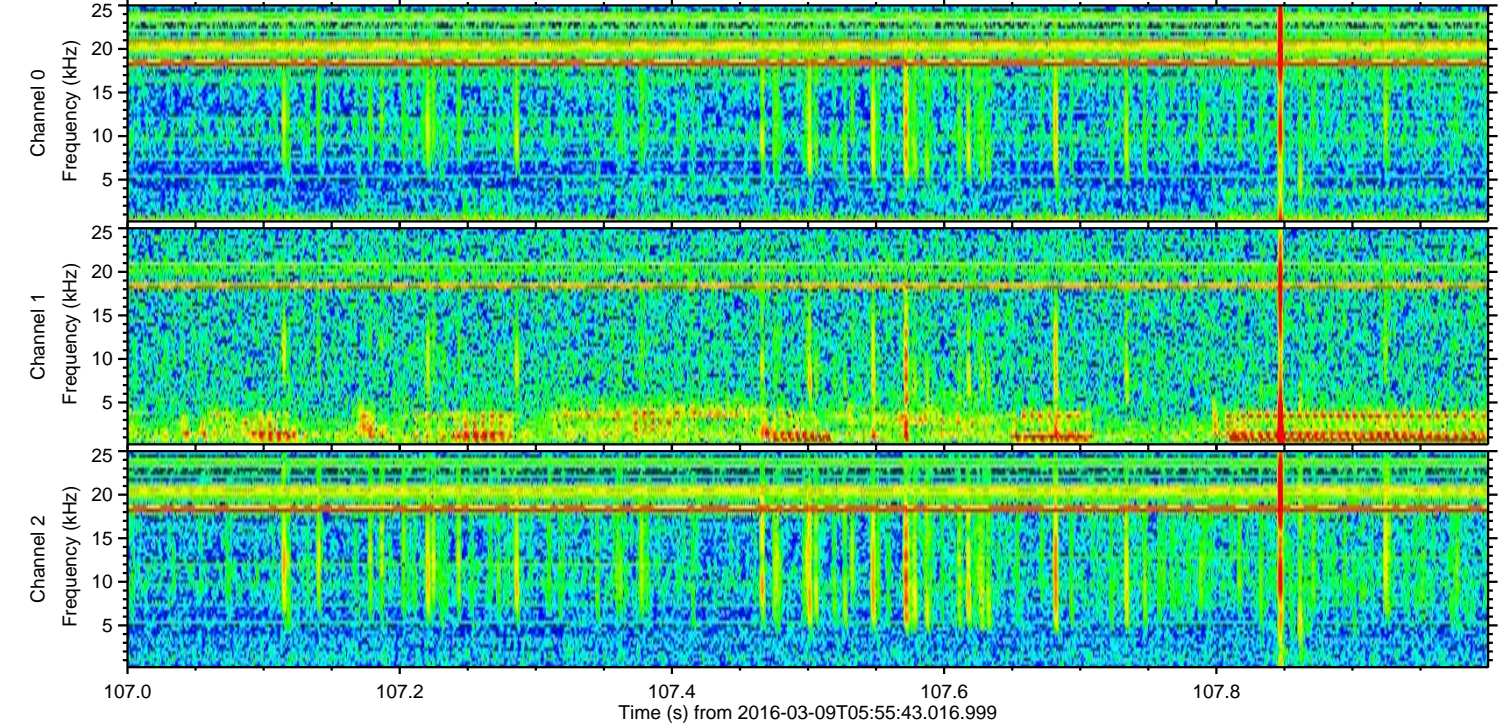
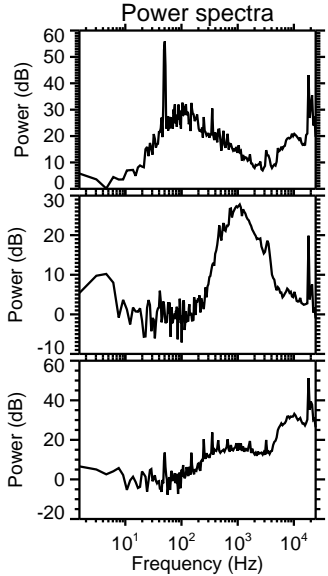
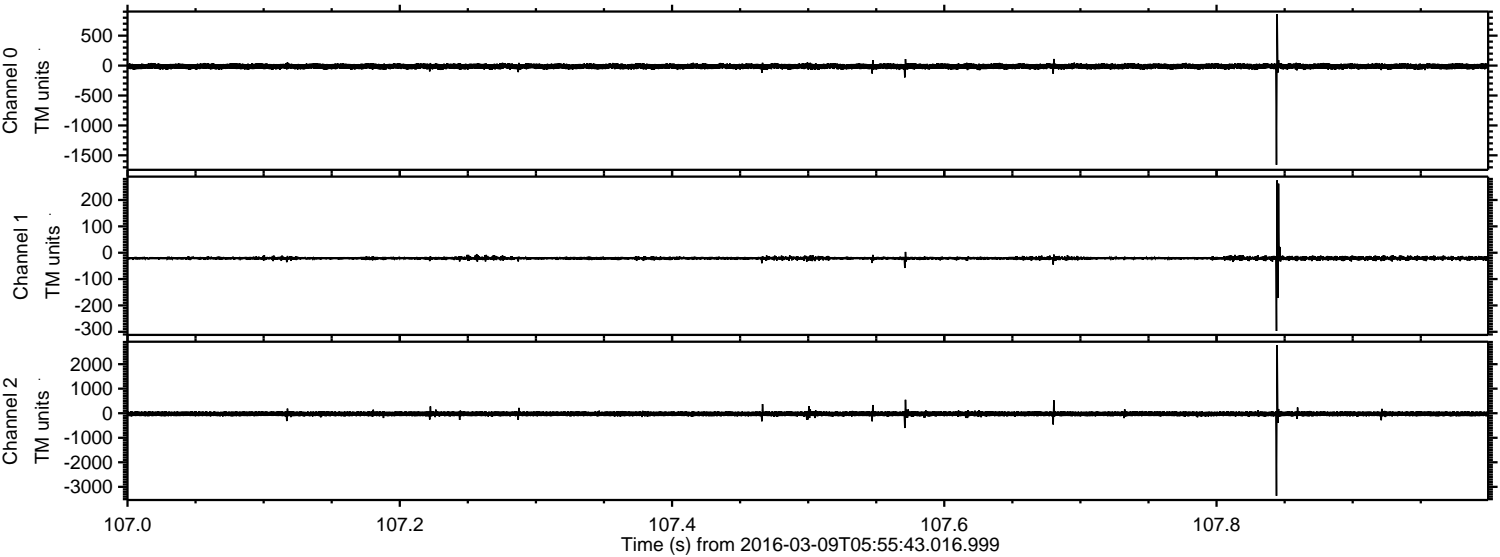
Channel 1  
mn: -628  
mx: 624  
 $\mu$ : -20.9  
 $\sigma$ : 11.9

Channel 2  
mn: -6230  
mx: 6006  
 $\mu$ : -25.7  
 $\sigma$ : 90.2



ELMAVAN 3D WAVEFORMS (Measured data sampled at 50 kHz) 51000 packets of 144 samples from 2016-03-09T05:55:43.016.999. Part 108/147

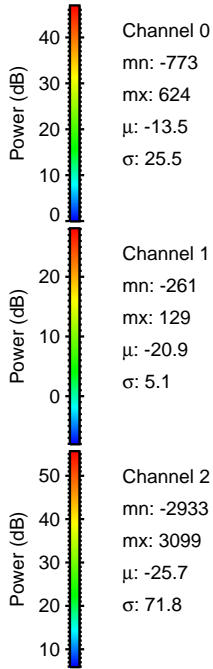
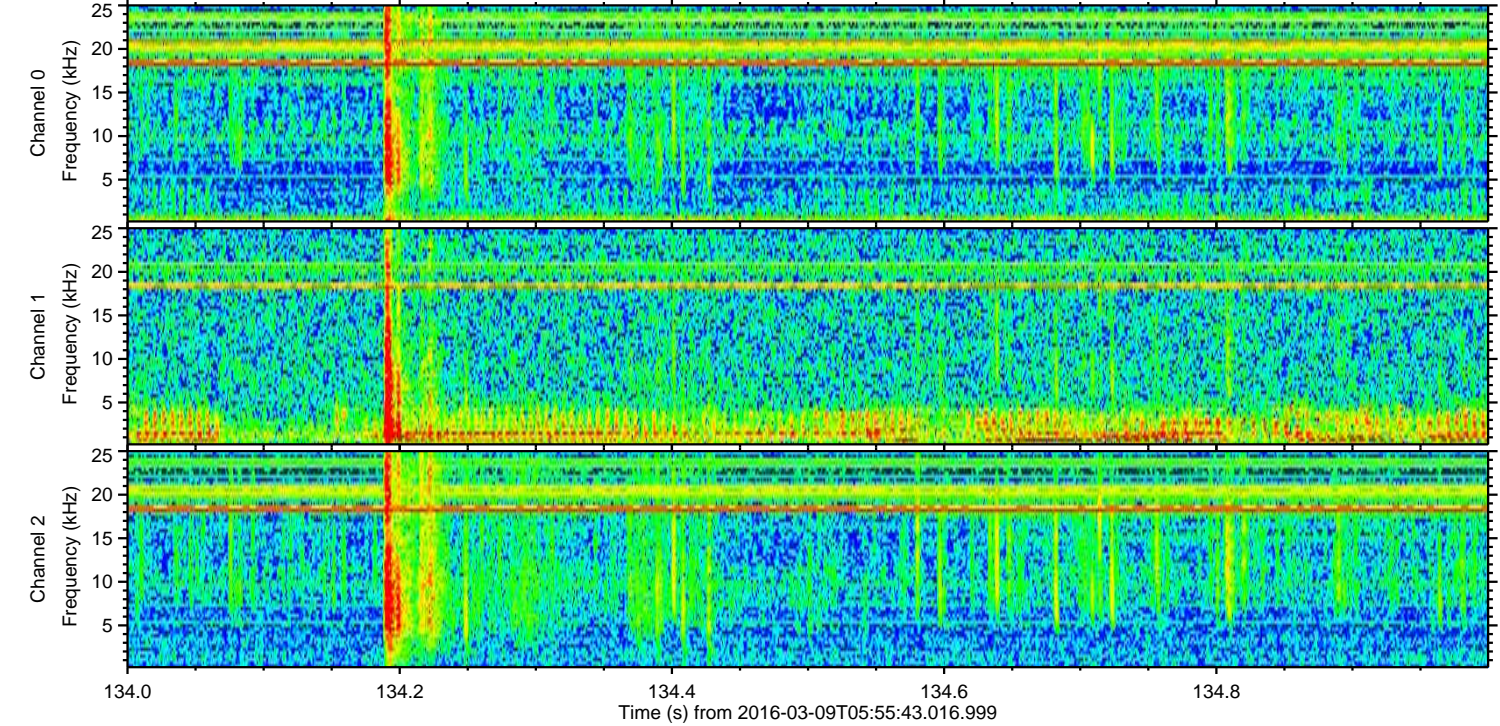
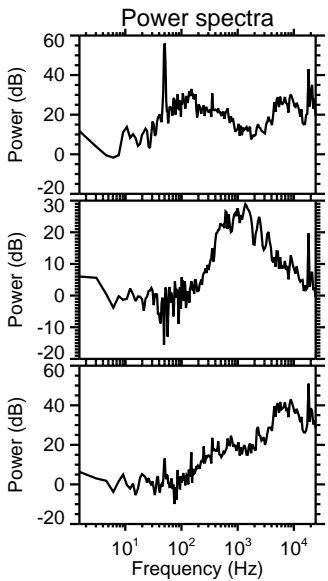
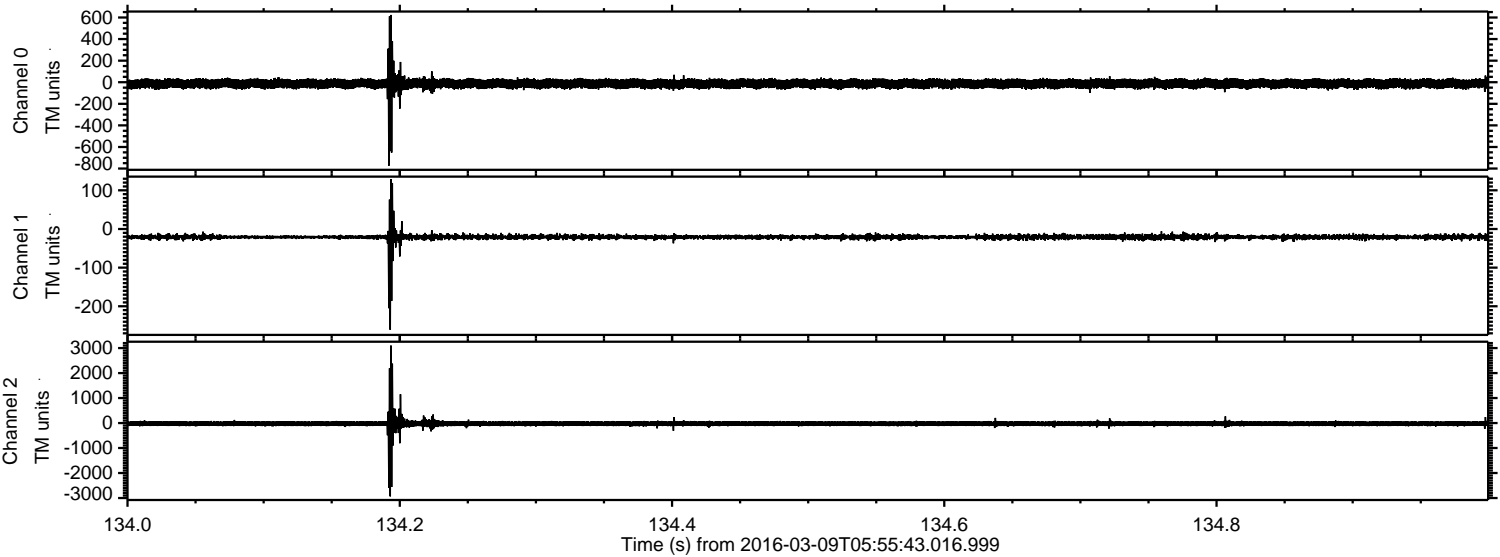
Processed Tue Apr 19 06:19:18 2016 by ELM ver.2012-10-06 from 001\_\_elm20160309\_055542\_\_dat00.bin





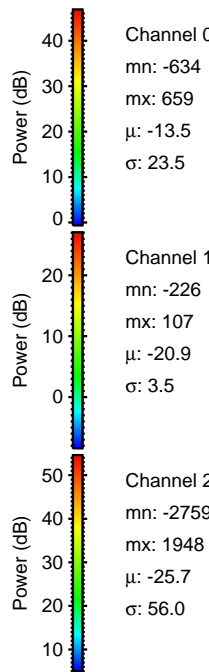
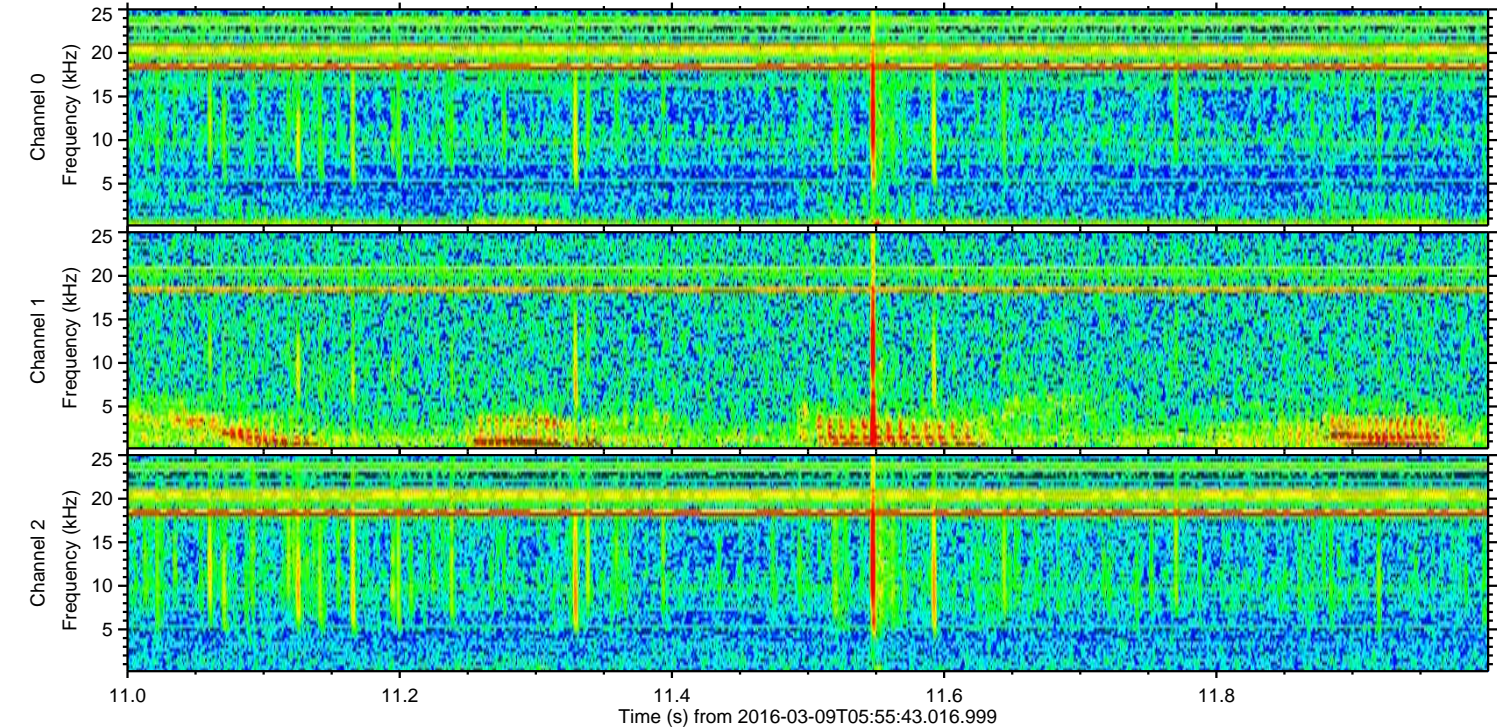
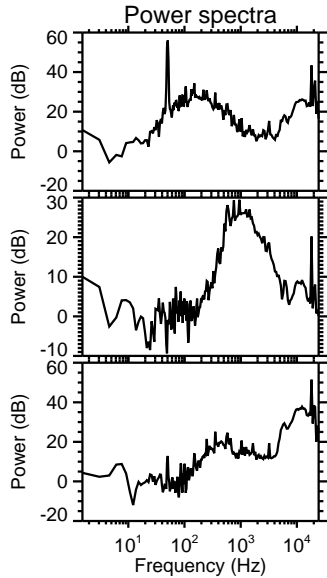
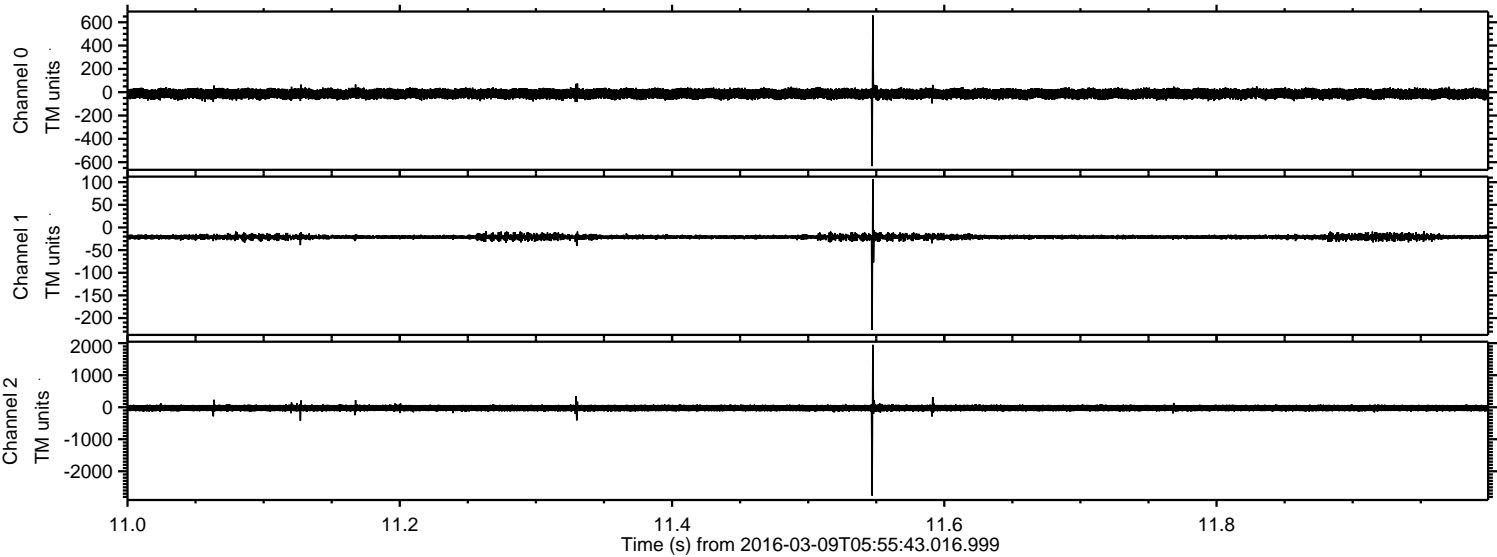
ELMAVAN 3D WAVEFORMS (Measured data sampled at 50 kHz) 51000 packets of 144 samples from 2016-03-09T05:55:43.016.999. Part 135/147

Processed Tue Apr 19 06:19:19 2016 by ELM ver.2012-10-06 from 001\_\_elm20160309\_055542\_\_dat00.bin





Processed Tue Apr 19 06:19:20 2016 by ELM ver.2012-10-06 from 001\_\_elm20160309\_055542\_\_dat00.bin



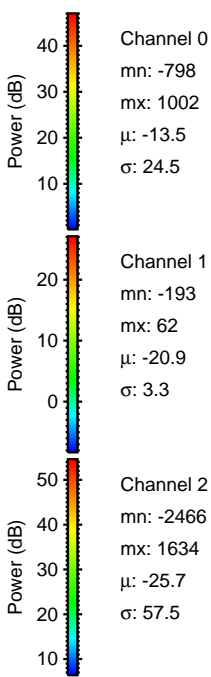
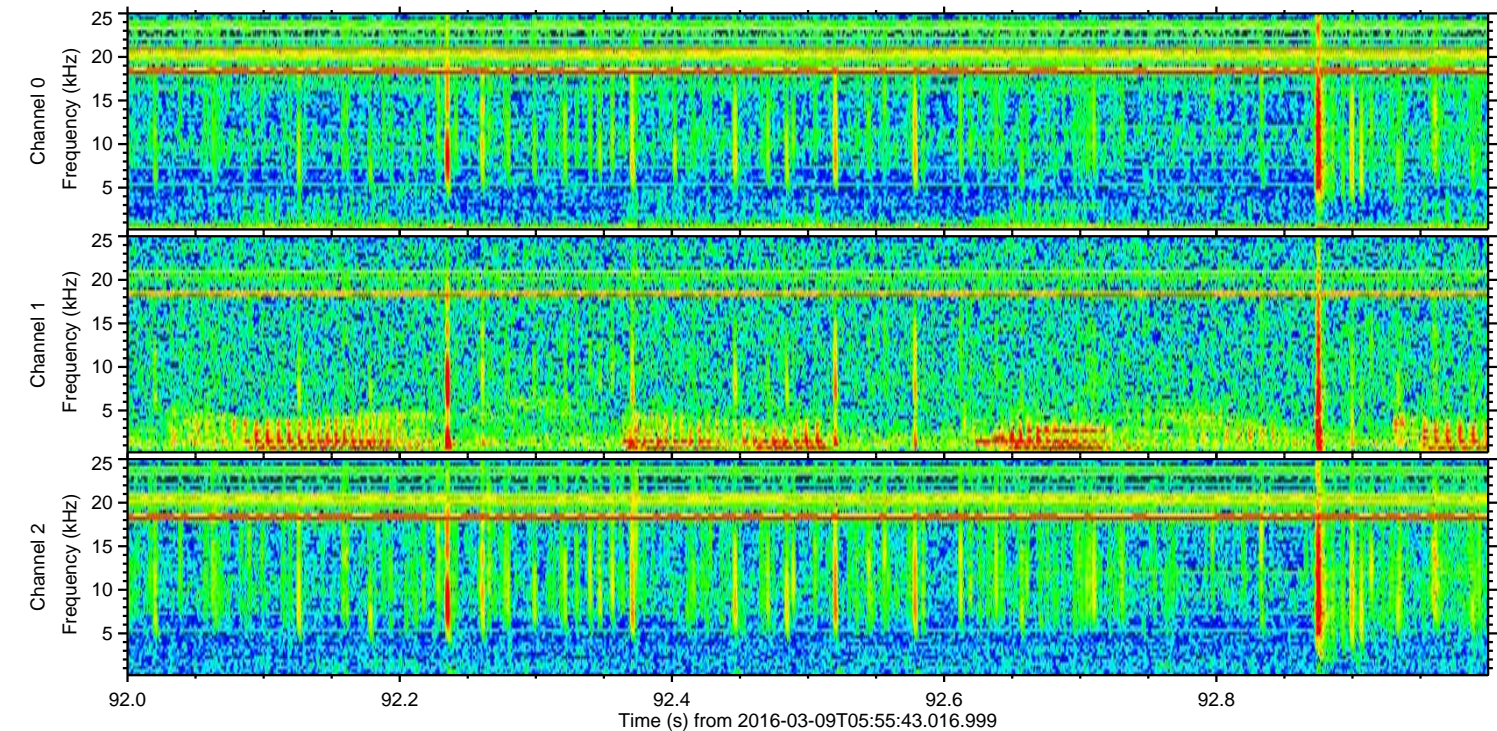
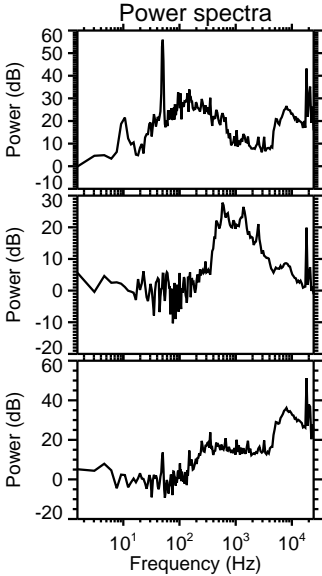
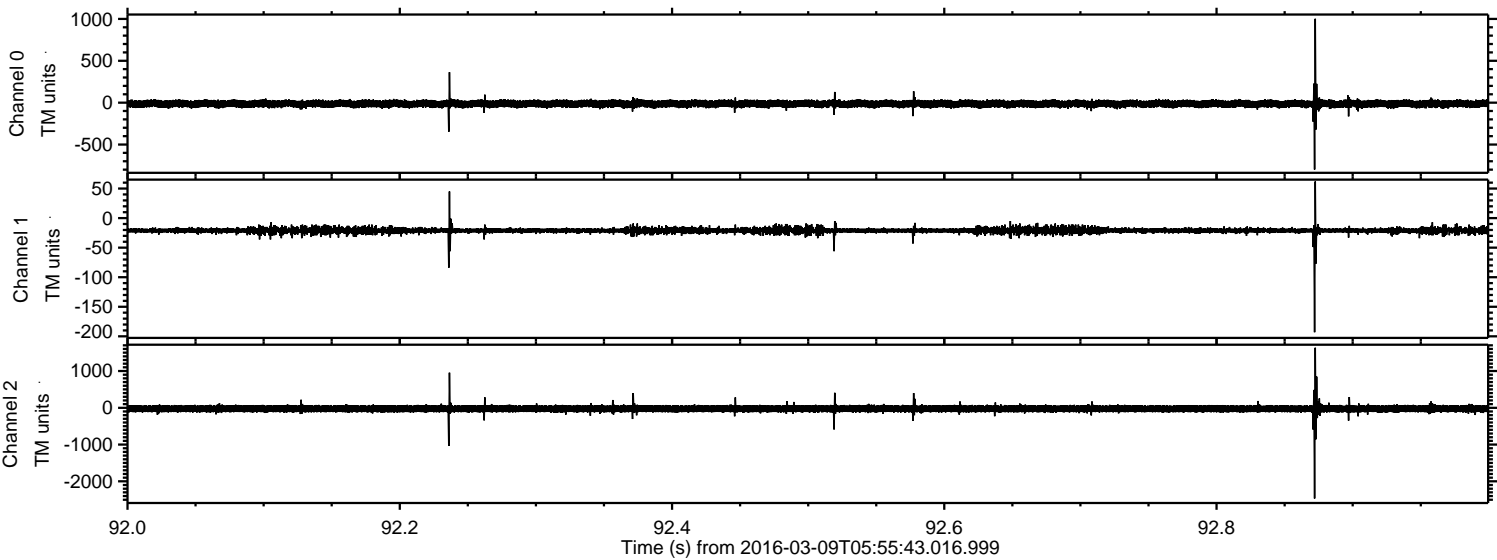
Channel 0  
mn: -634  
mx: 659  
 $\mu$ : -13.5  
 $\sigma$ : 23.5

Channel 1  
mn: -226  
mx: 107  
 $\mu$ : -20.9  
 $\sigma$ : 3.5

Channel 2  
mn: -2759  
mx: 1948  
 $\mu$ : -25.7  
 $\sigma$ : 56.0

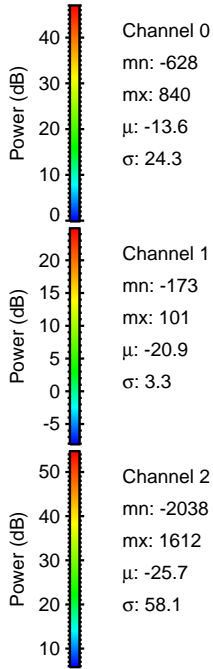
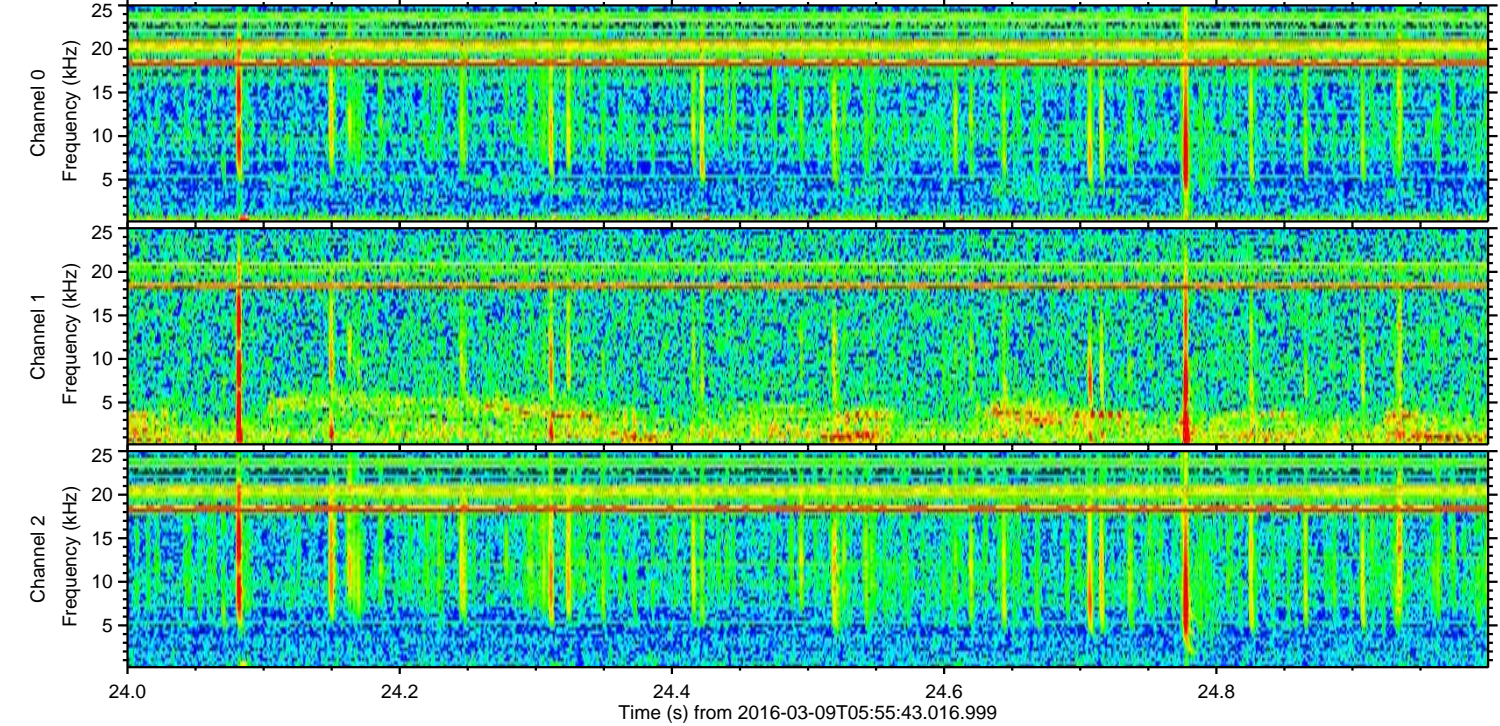
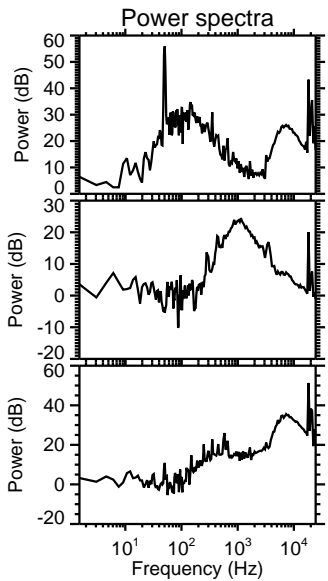
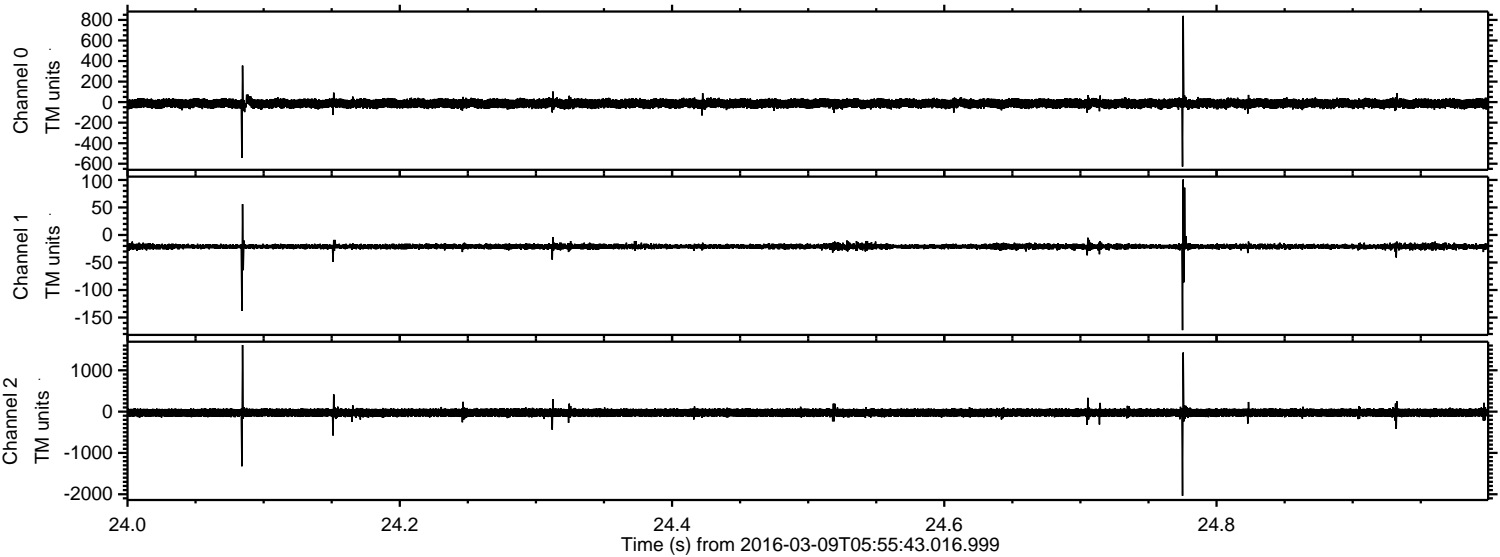


Processed Tue Apr 19 06:19:21 2016 by ELM ver.2012-10-06 from 001\_\_elm20160309\_055542\_\_dat00.bin



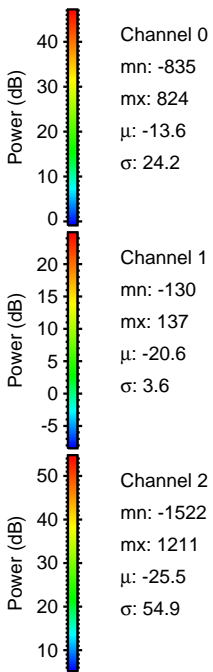
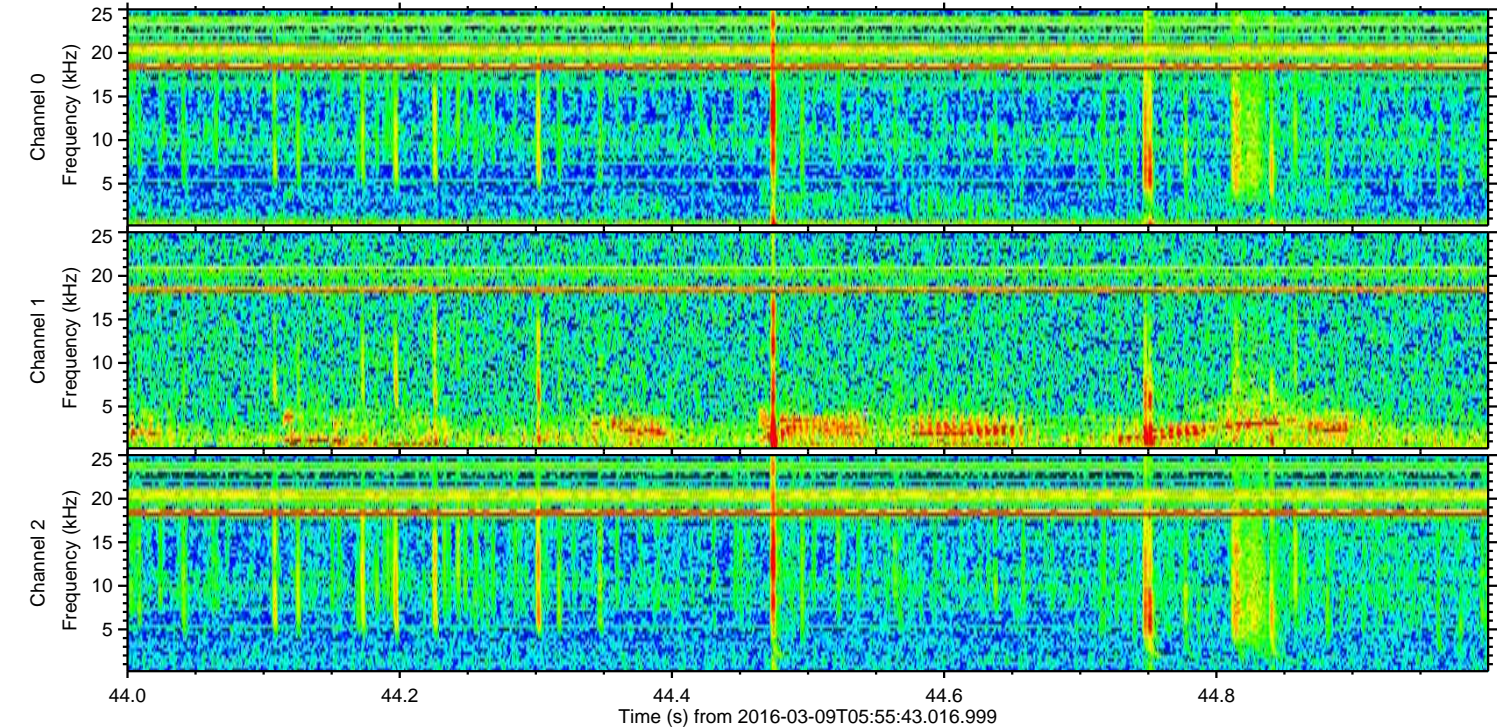
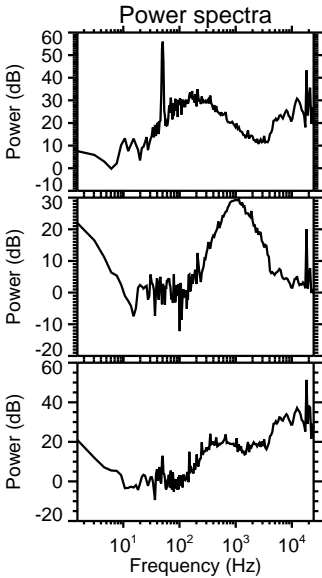
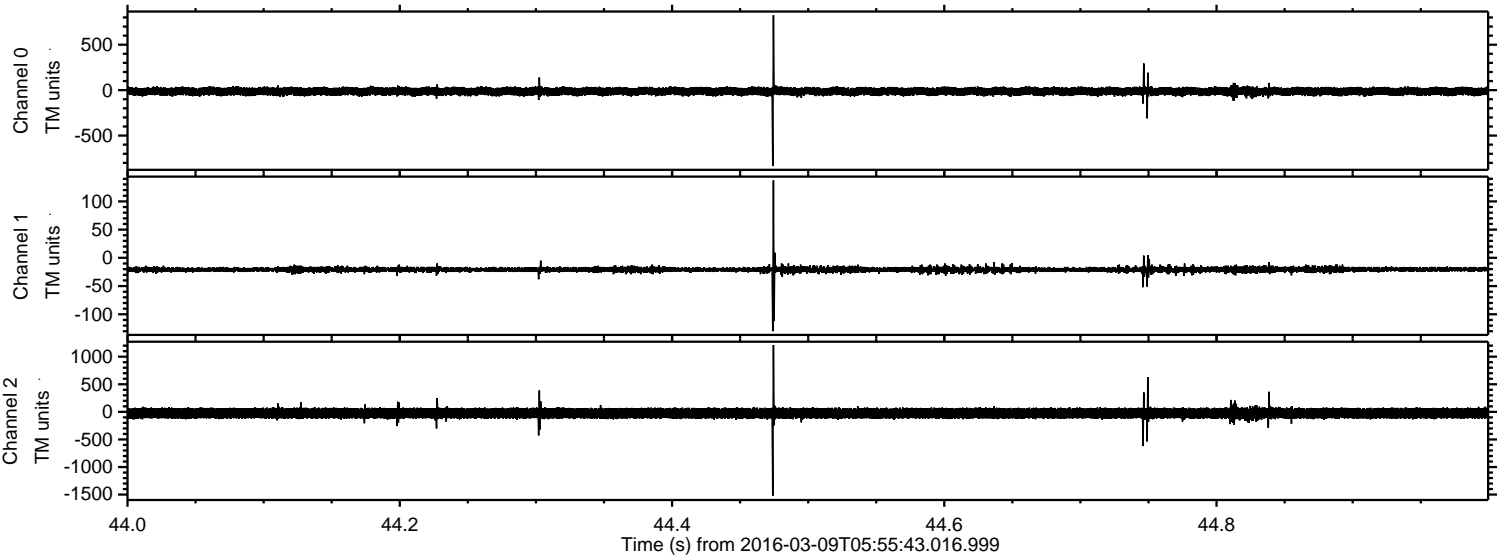


Processed Tue Apr 19 06:19:22 2016 by ELM ver.2012-10-06 from 001\_\_elm20160309\_055542\_\_dat00.bin





Processed Tue Apr 19 06:19:23 2016 by ELM ver.2012-10-06 from 001\_\_elm20160309\_055542\_\_dat00.bin





Processed Tue Apr 19 06:19:24 2016 by ELM ver.2012-10-06 from 001\_\_elm20160309\_055542\_\_dat00.bin

