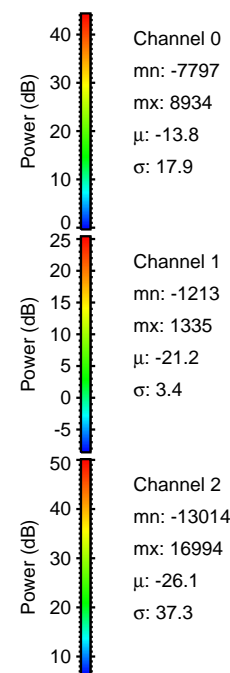
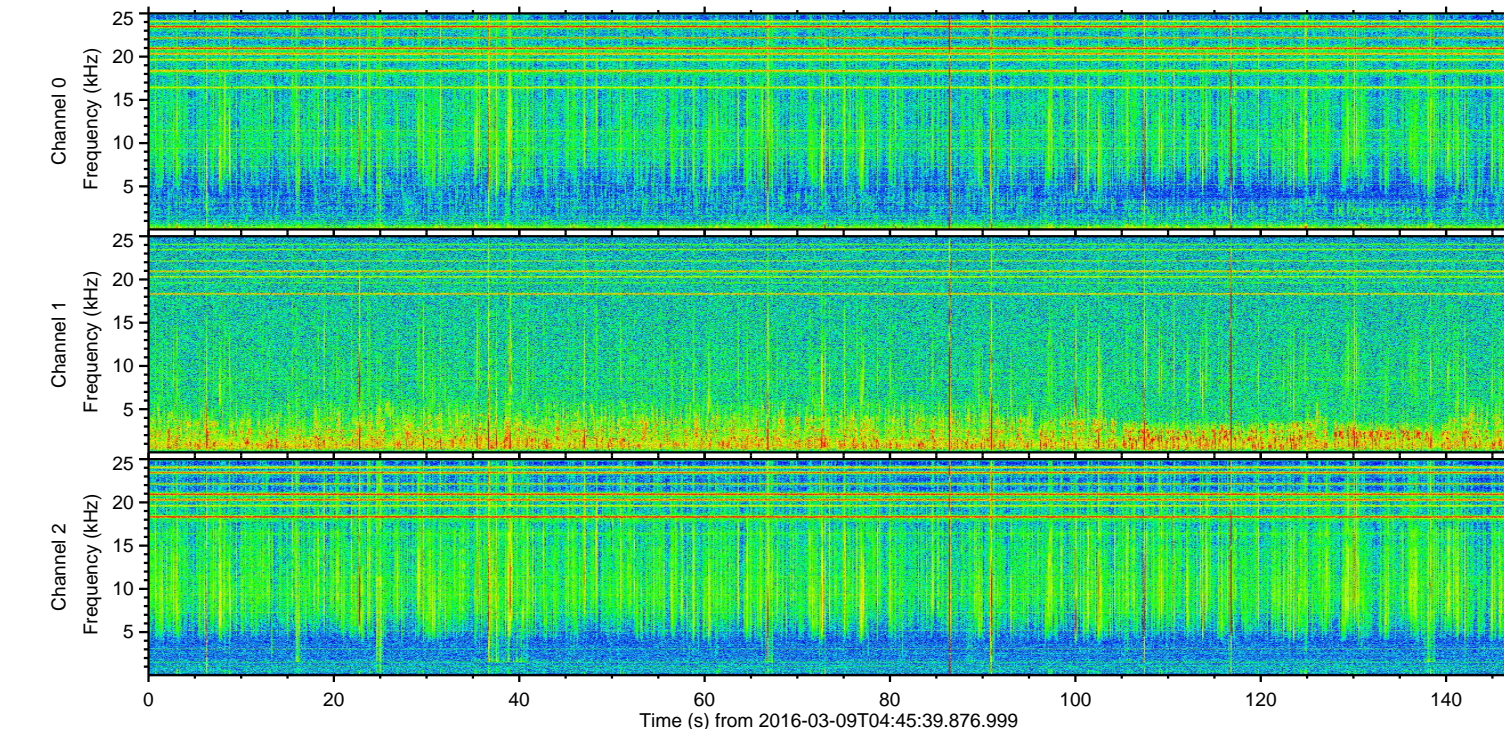
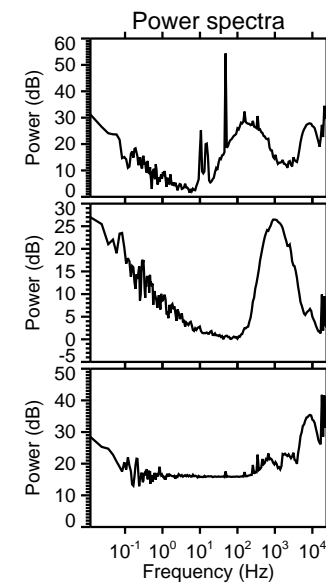
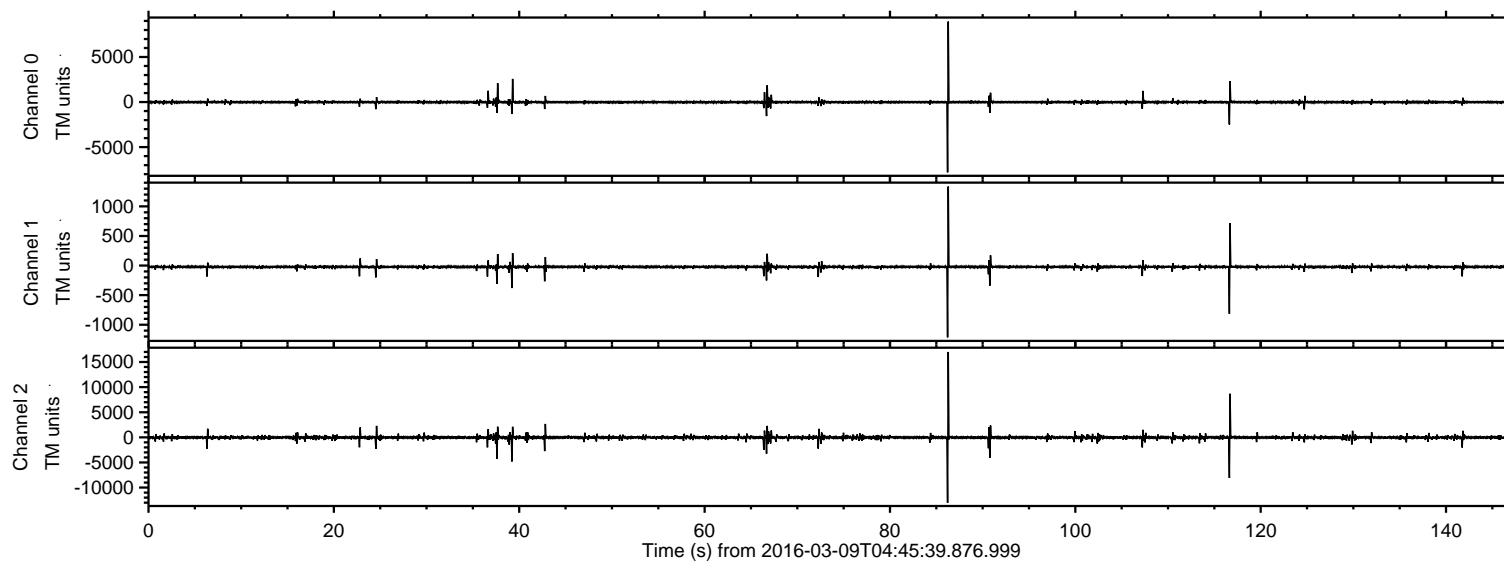
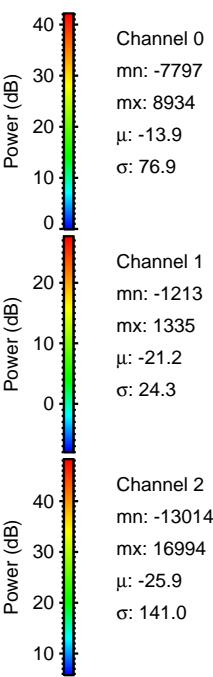
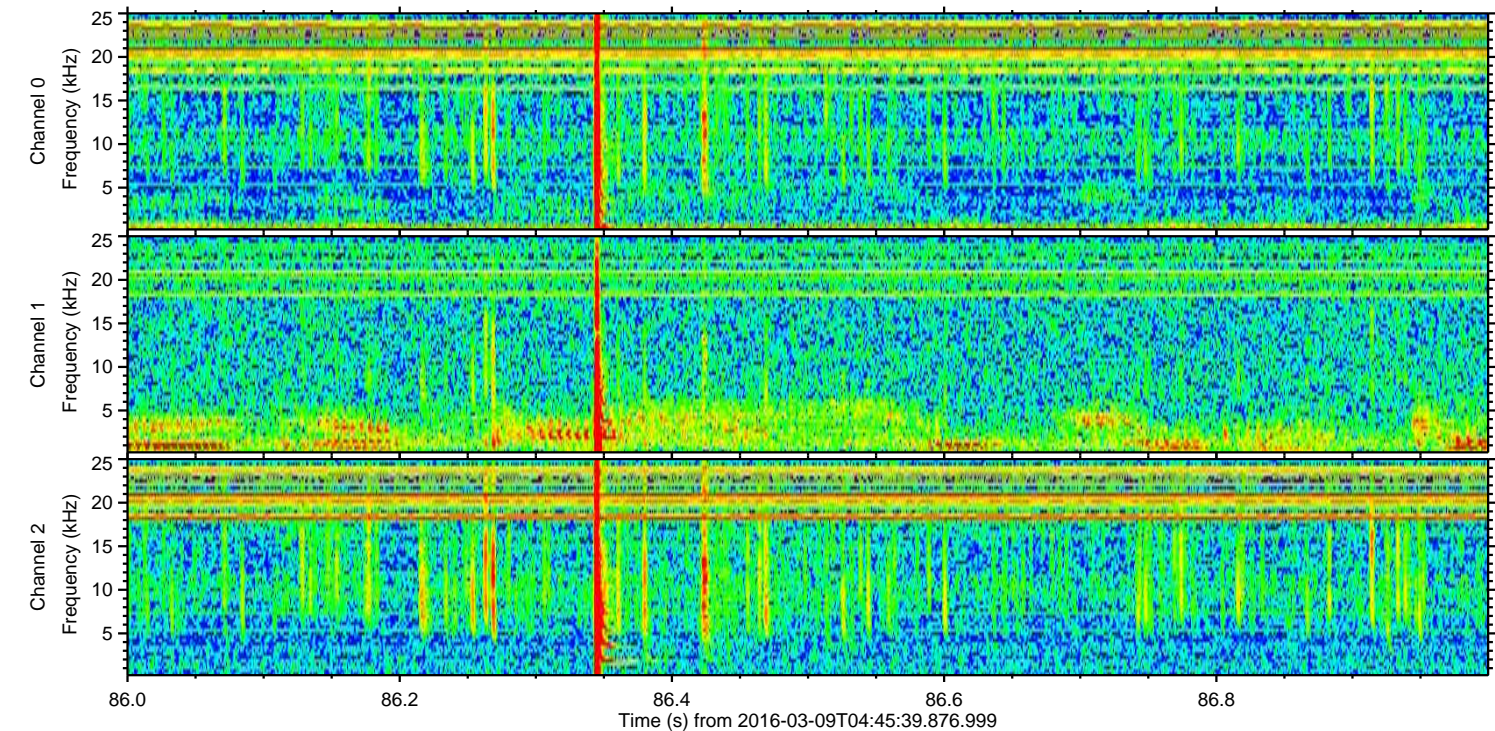
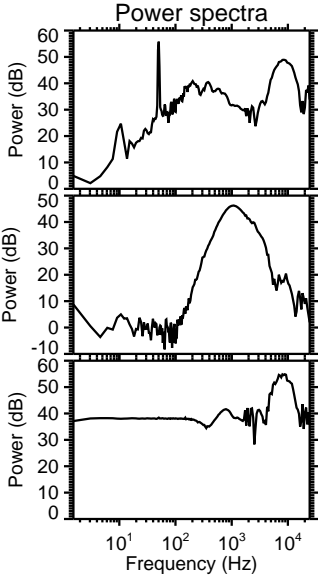
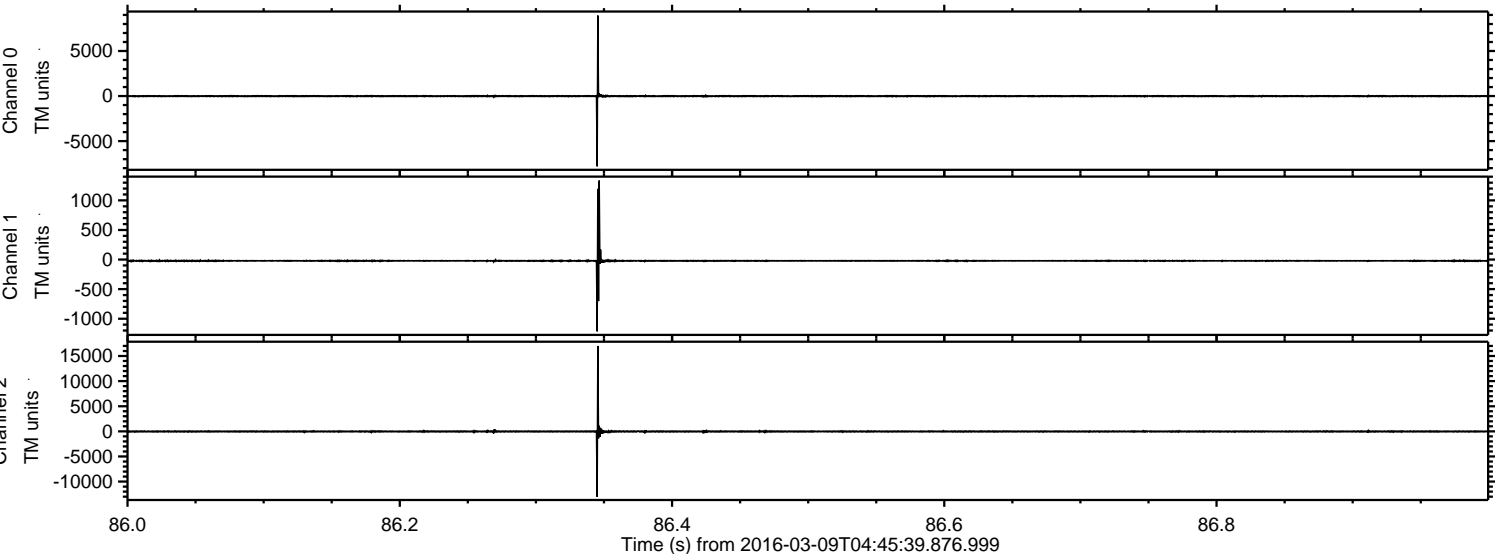


ELMAVAN 3D WAVEFORMS (Measured data sampled at 50 kHz) 51000 packets of 144 samples from 2016-03-09T04:45:39.876.999.

Processed Tue Apr 19 06:04:57 2016 by ELM ver.2012-10-06 from 001__elm20160309_044538__dat00.bin



Processed Tue Apr 19 06:05:09 2016 by ELM ver.2012-10-06 from 001__elm20160309_044538__dat00.bin



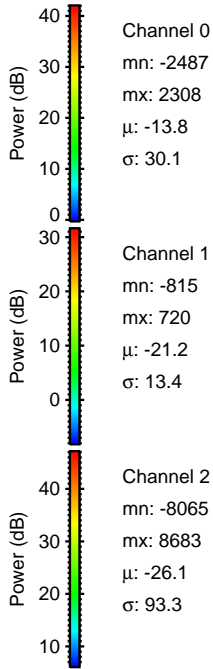
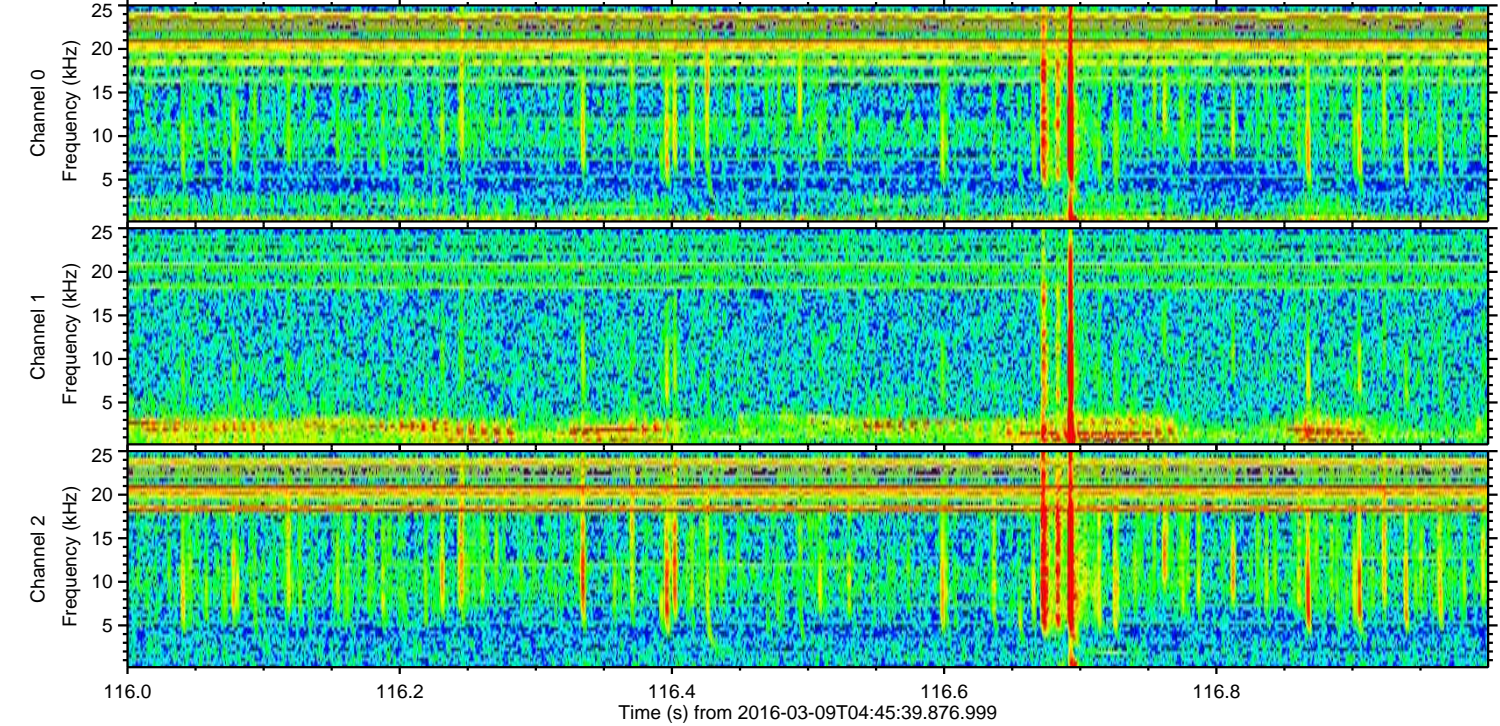
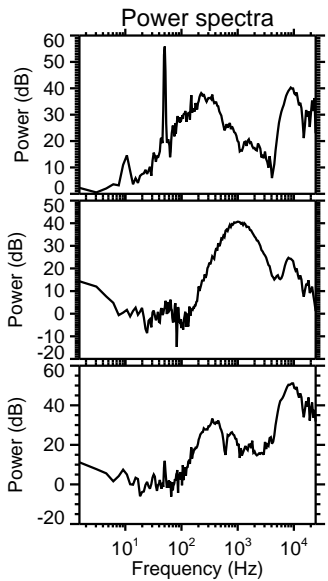
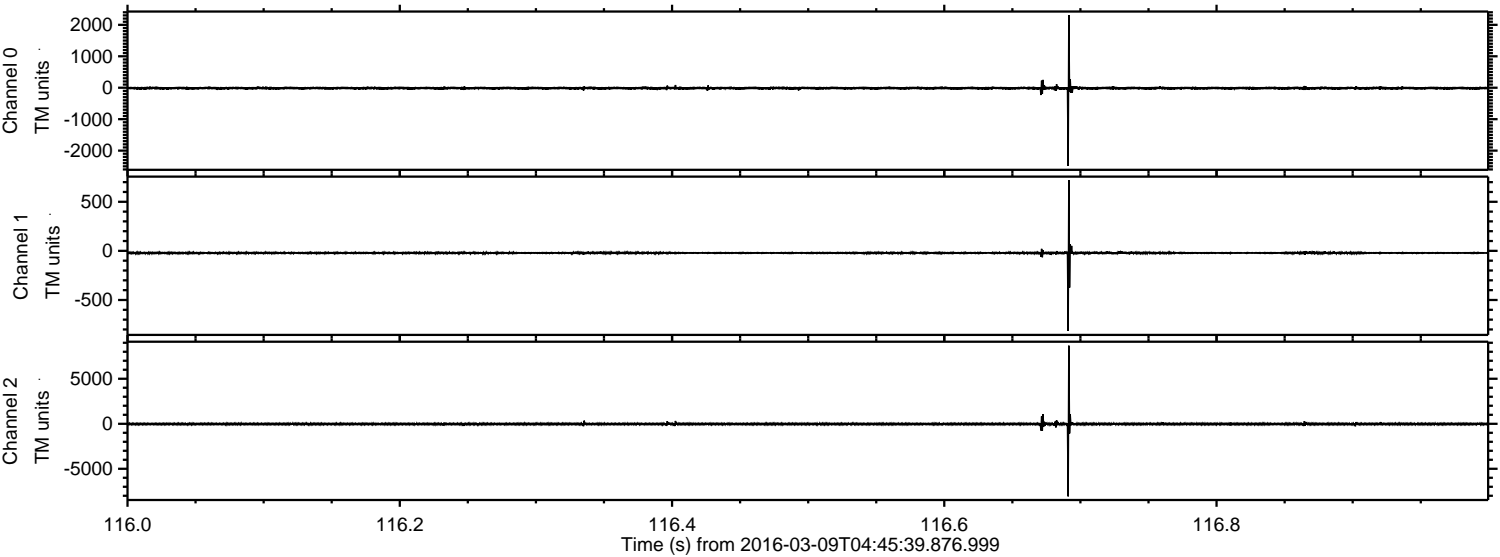
Channel 0
mn: -7797
mx: 8934
 μ : -13.9
 σ : 76.9

Channel 1
mn: -1213
mx: 1335
 μ : -21.2
 σ : 24.3

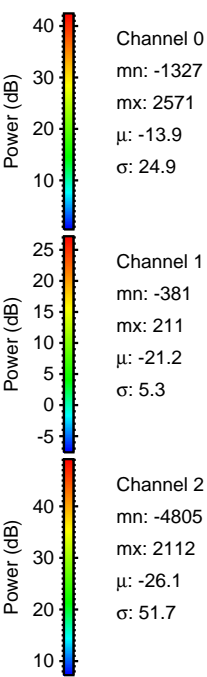
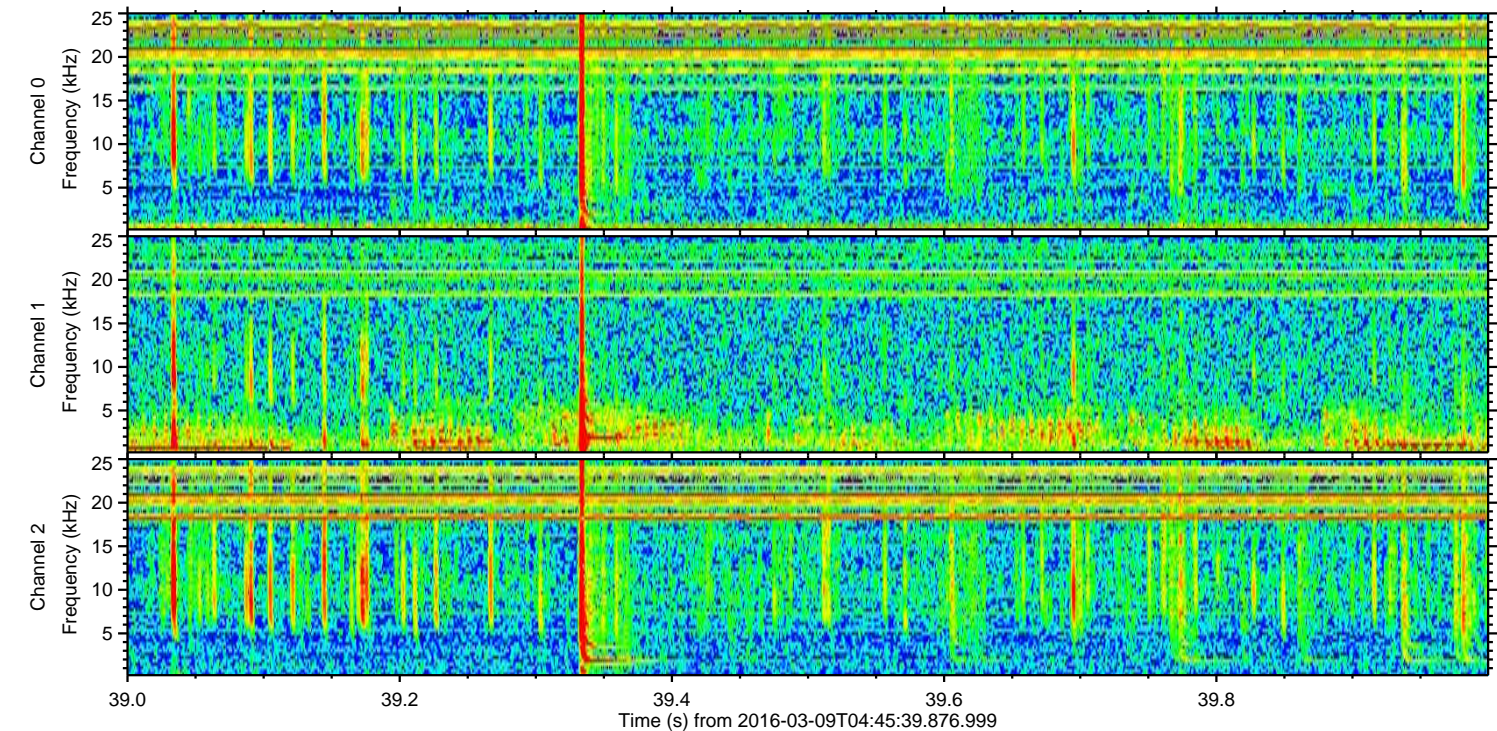
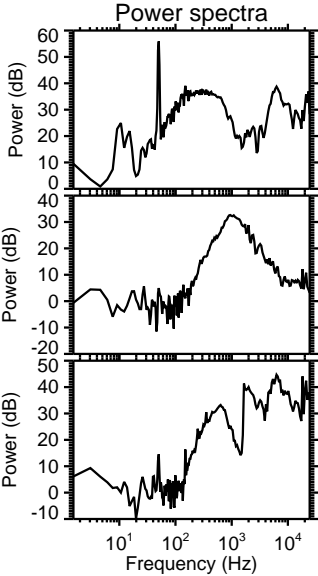
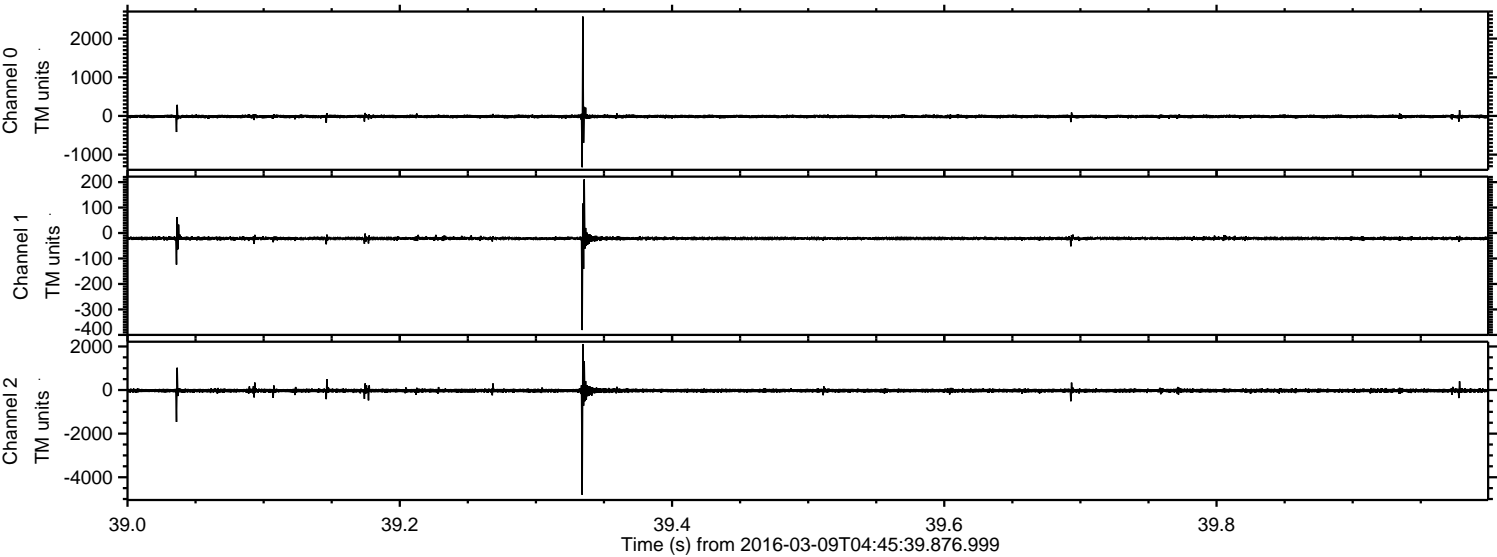
Channel 2
mn: -13014
mx: 16994
 μ : -25.9
 σ : 141.0

ELMAVAN 3D WAVEFORMS (Measured data sampled at 50 kHz) 51000 packets of 144 samples from 2016-03-09T04:45:39.876.999. Part 117/147

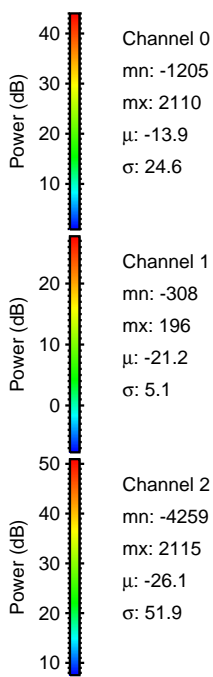
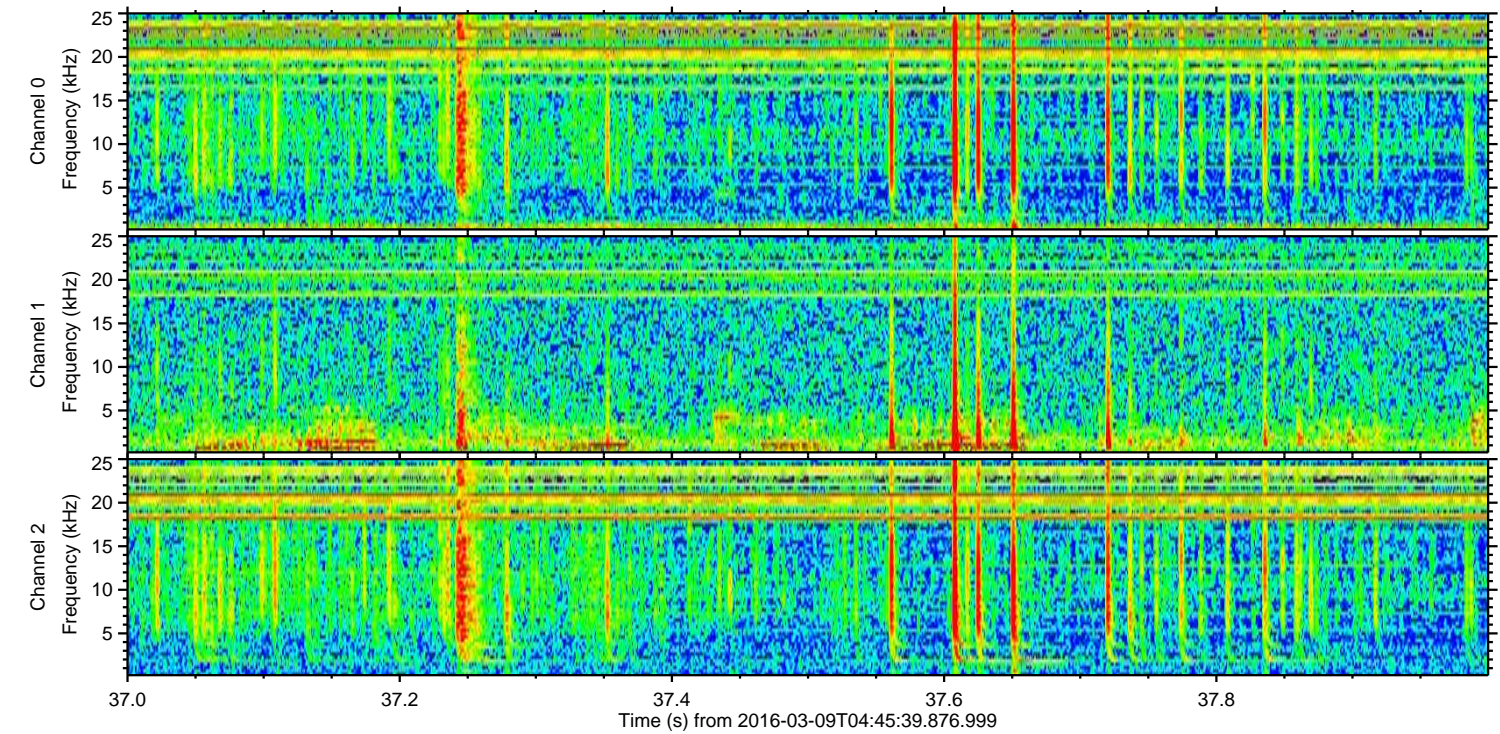
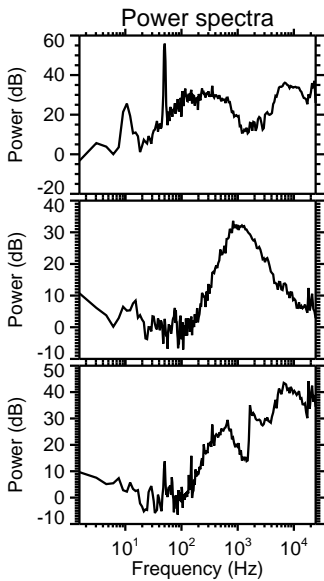
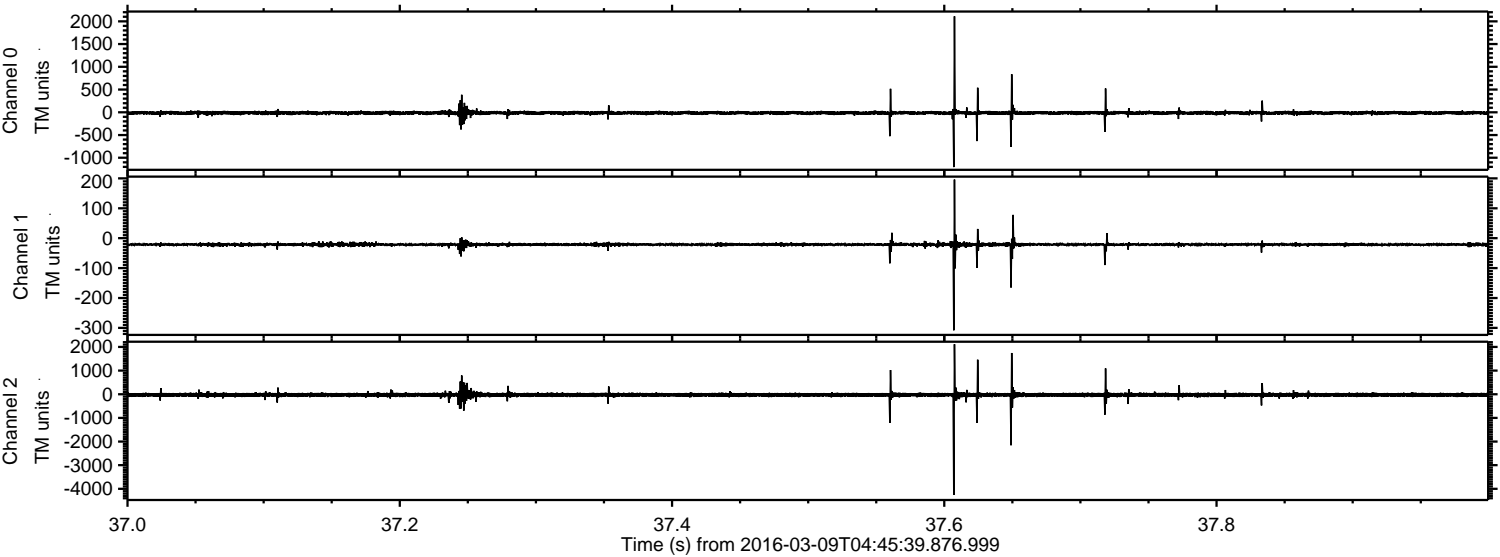
Processed Tue Apr 19 06:05:09 2016 by ELM ver.2012-10-06 from 001__elm20160309_044538__dat00.bin



Processed Tue Apr 19 06:05:10 2016 by ELM ver.2012-10-06 from 001__elm20160309_044538__dat00.bin

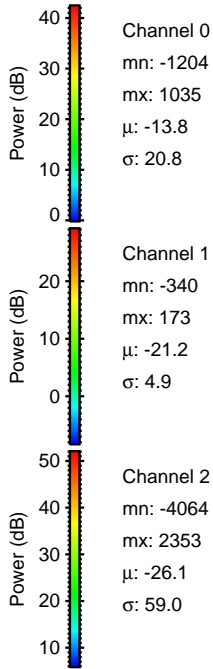
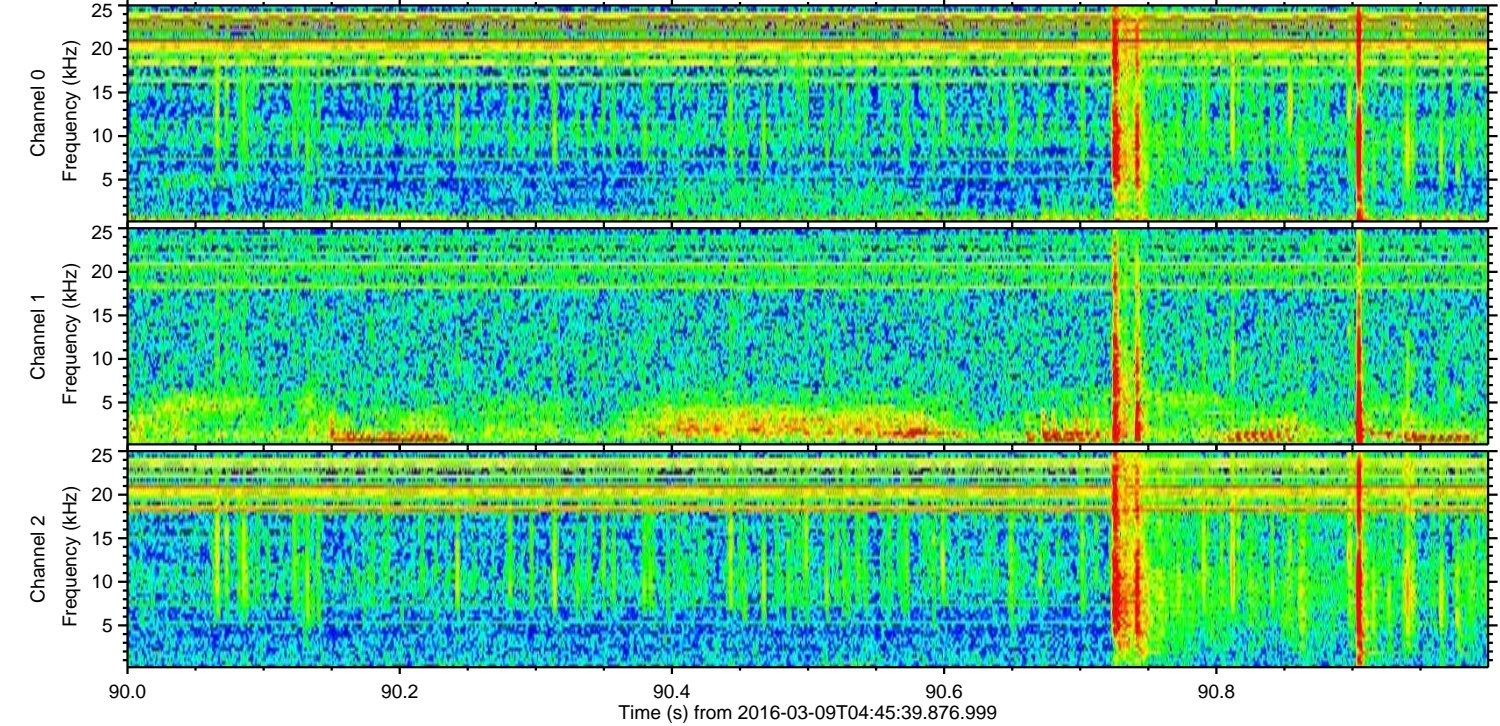
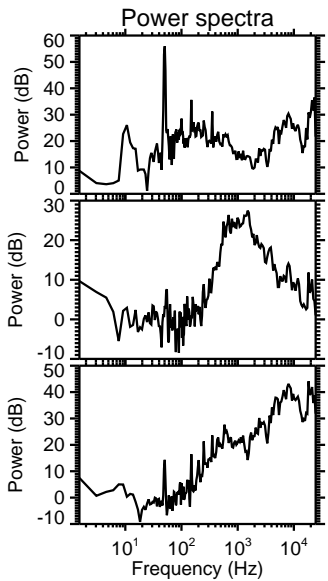
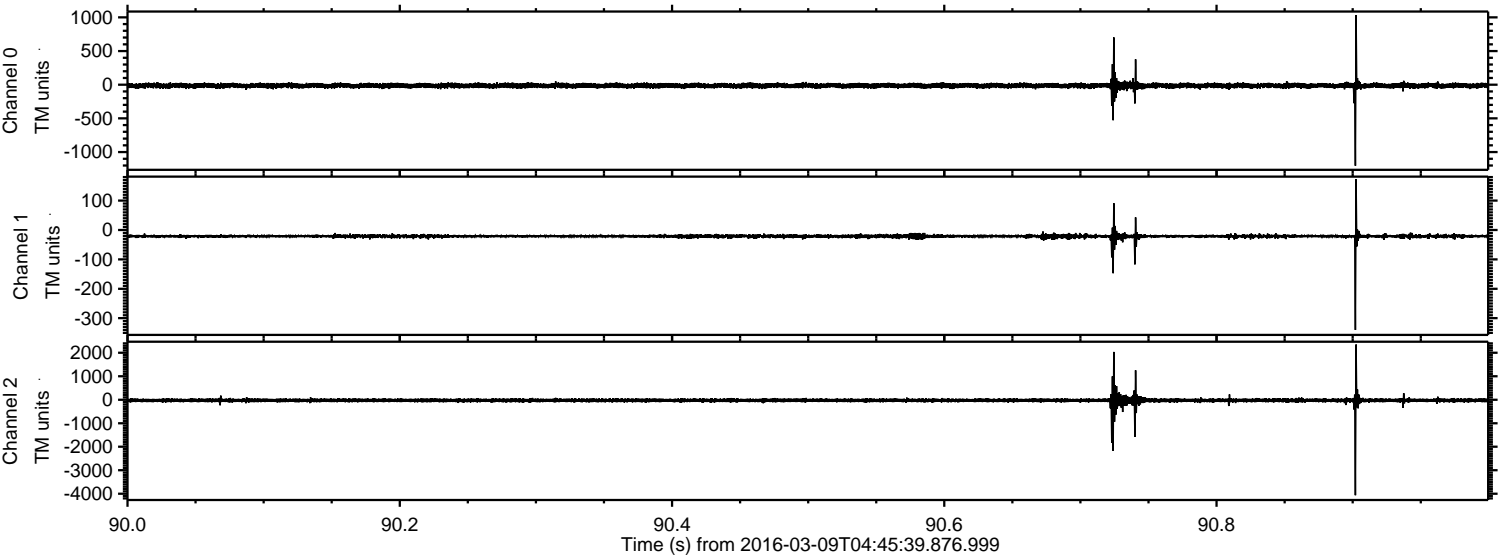


Processed Tue Apr 19 06:05:11 2016 by ELM ver.2012-10-06 from 001__elm20160309_044538__dat00.bin

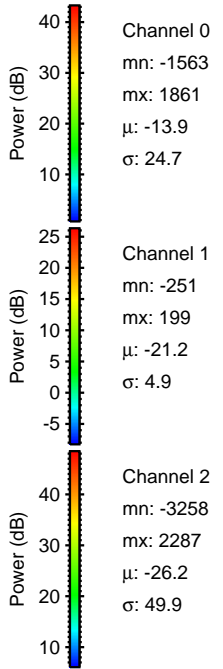
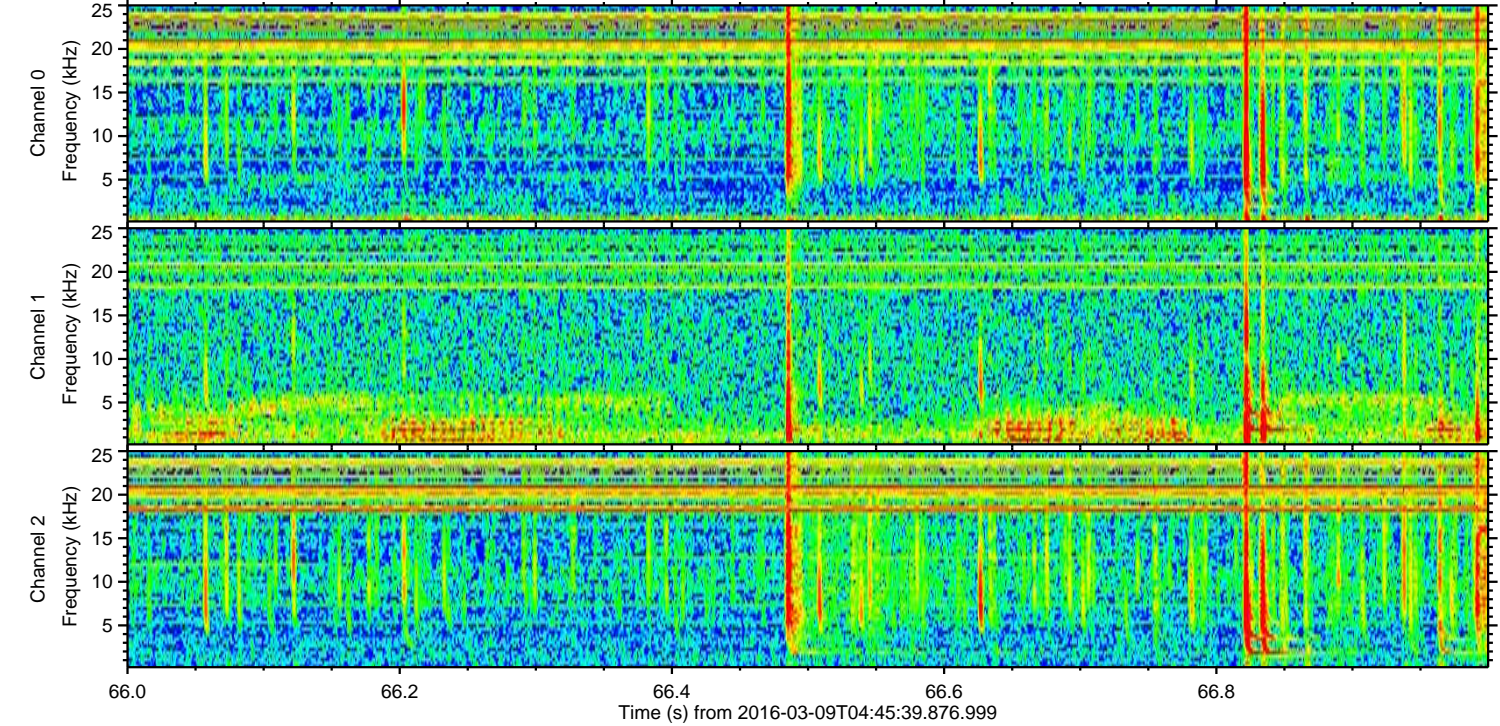
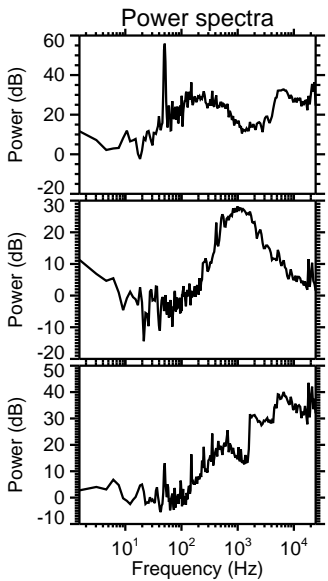
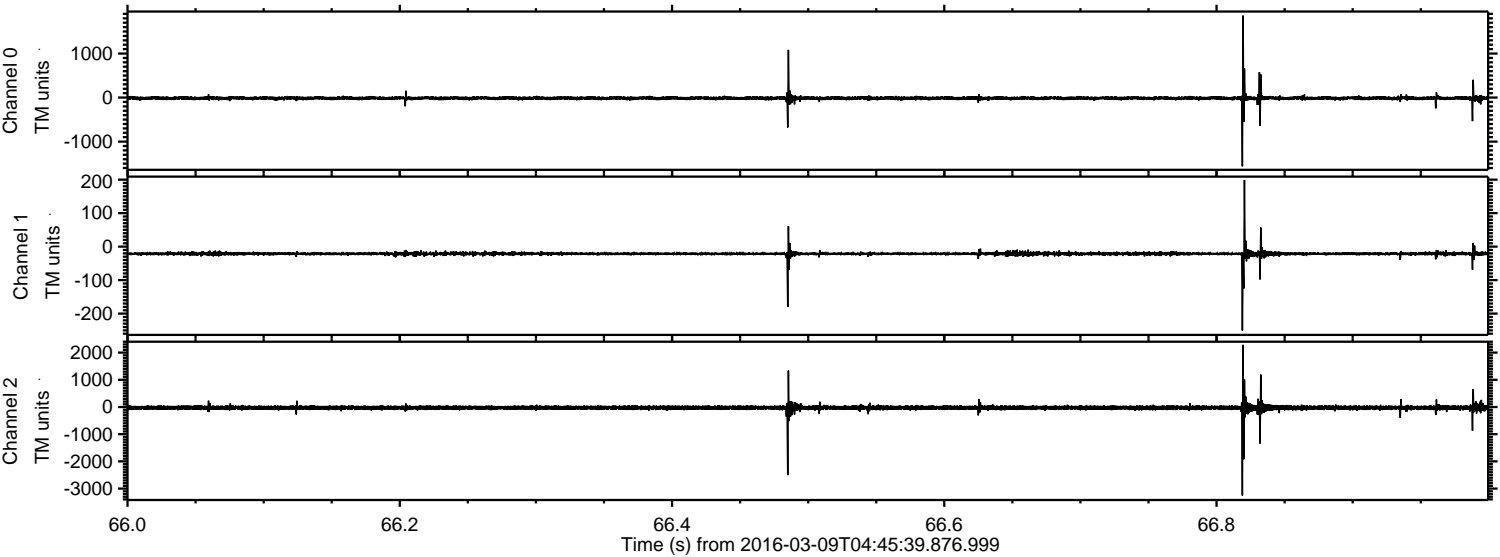


ELMAVAN 3D WAVEFORMS (Measured data sampled at 50 kHz) 51000 packets of 144 samples from 2016-03-09T04:45:39.876.999. Part 91/147

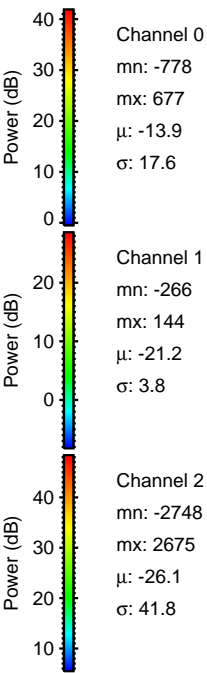
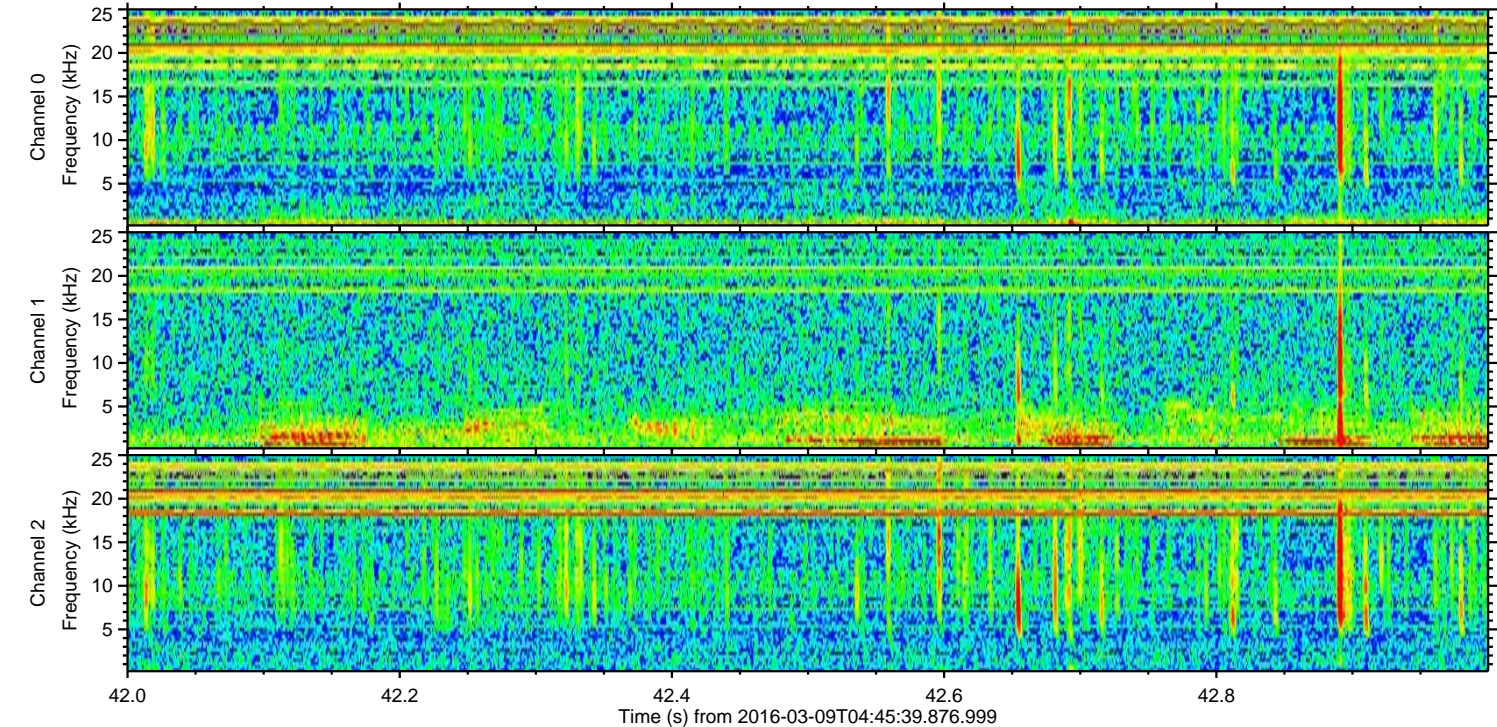
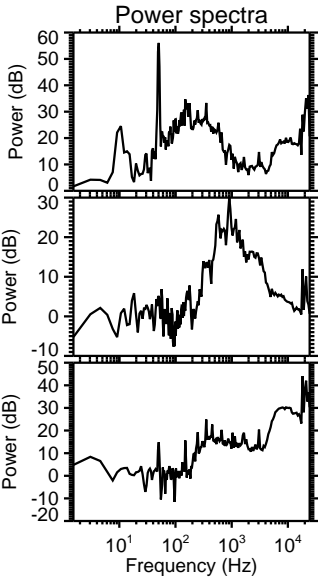
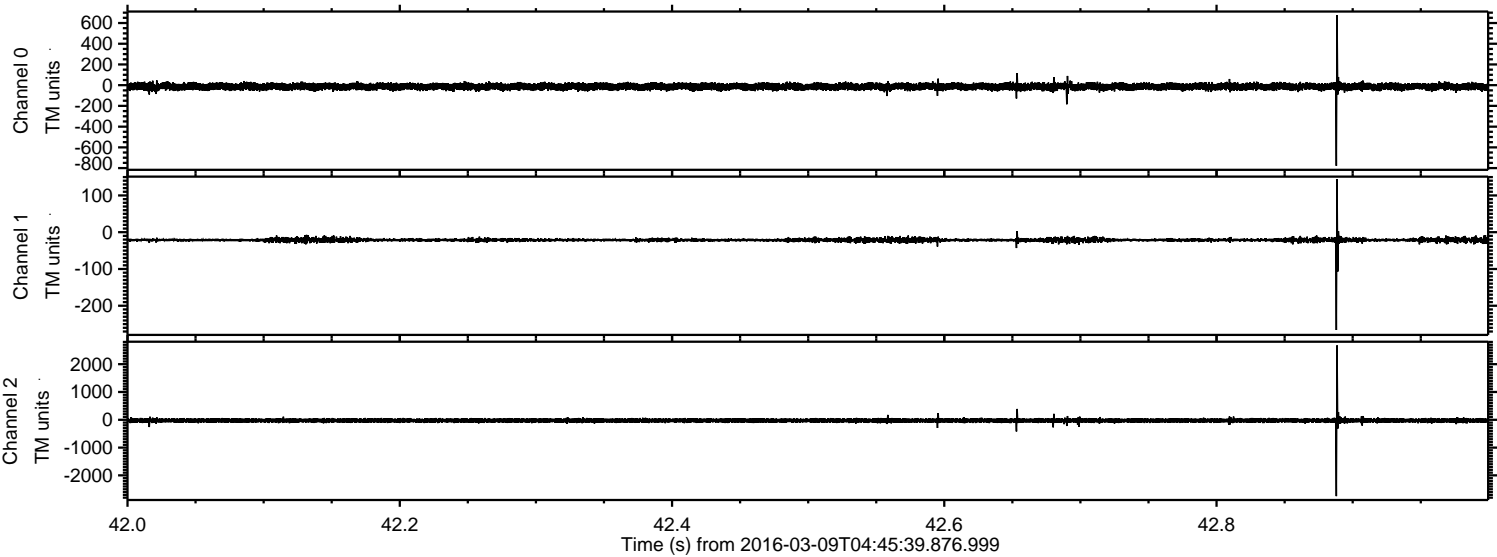
Processed Tue Apr 19 06:05:12 2016 by ELM ver.2012-10-06 from 001__elm20160309_044538__dat00.bin



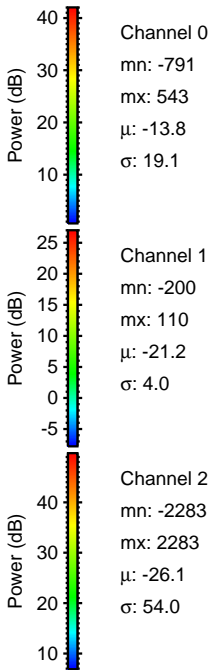
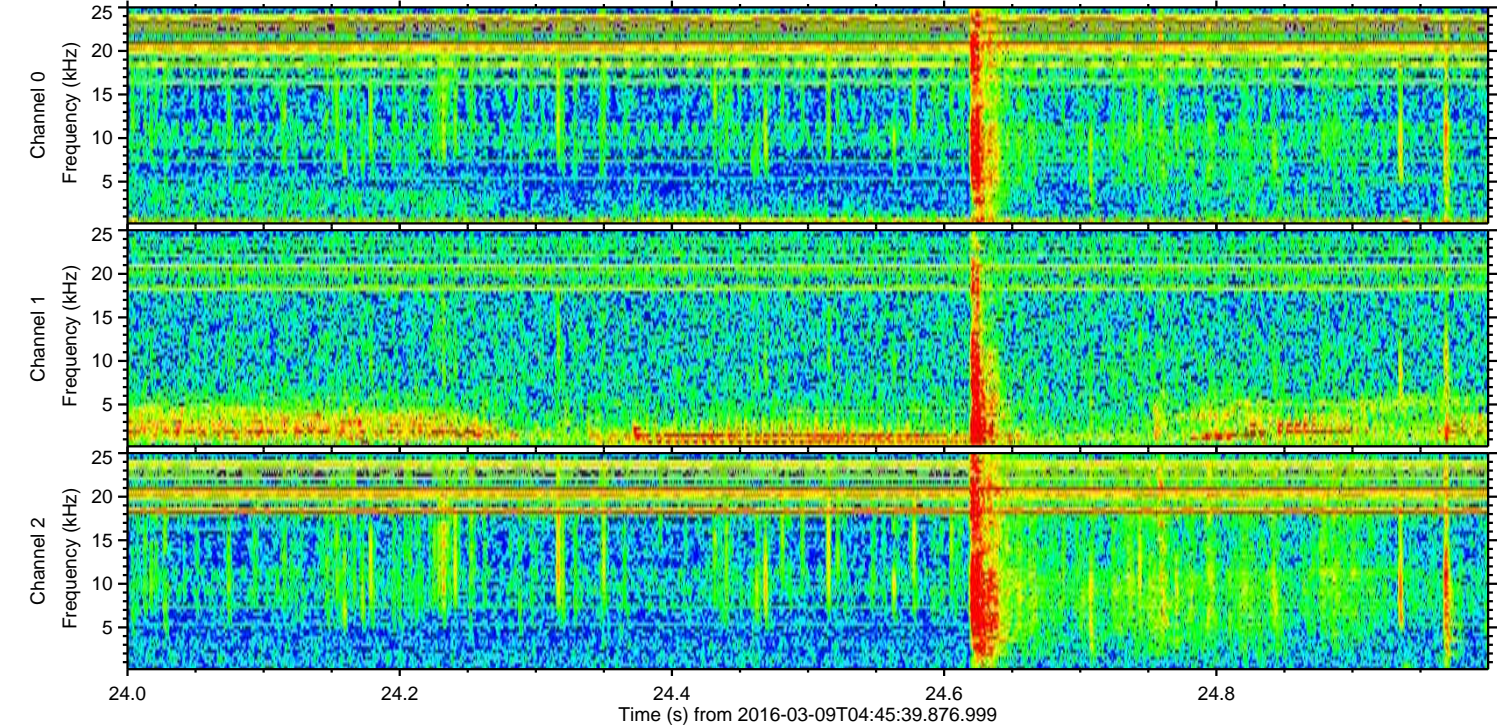
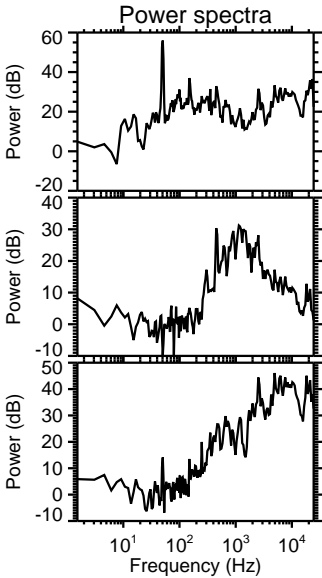
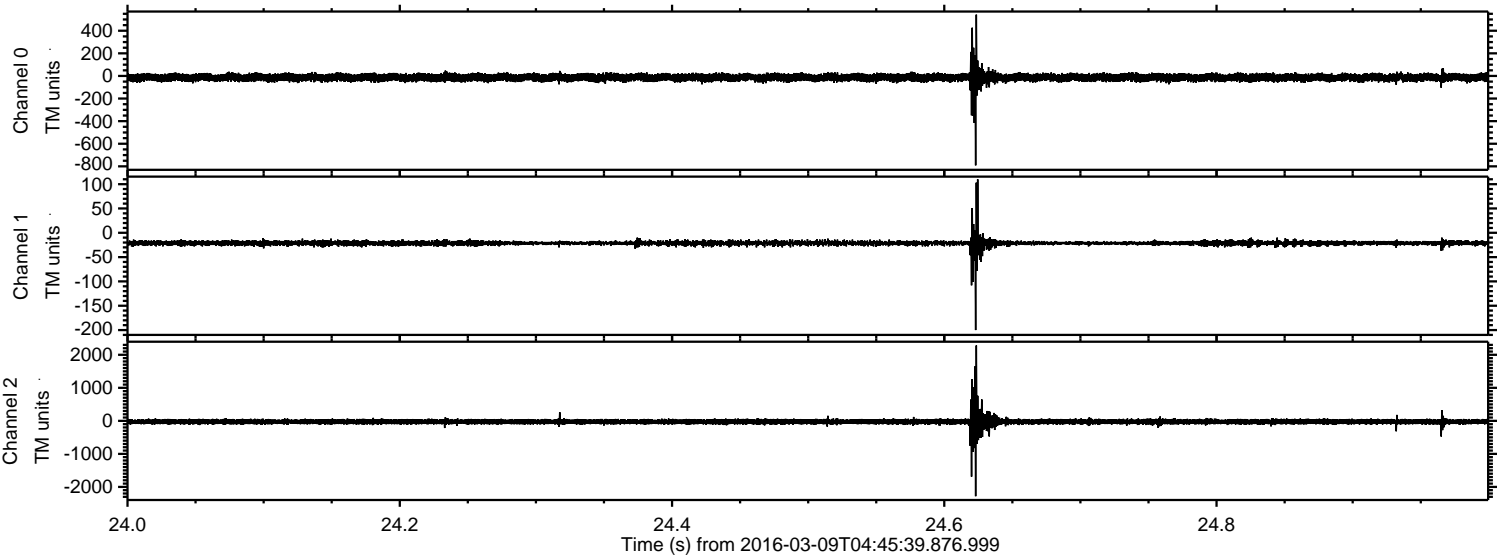
Processed Tue Apr 19 06:05:13 2016 by ELM ver.2012-10-06 from 001__elm20160309_044538__dat00.bin



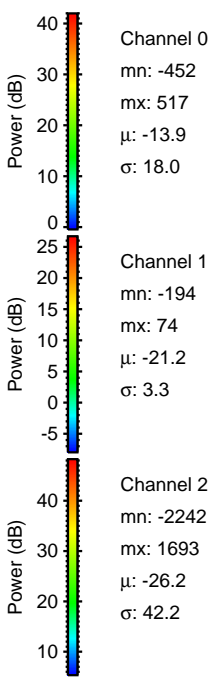
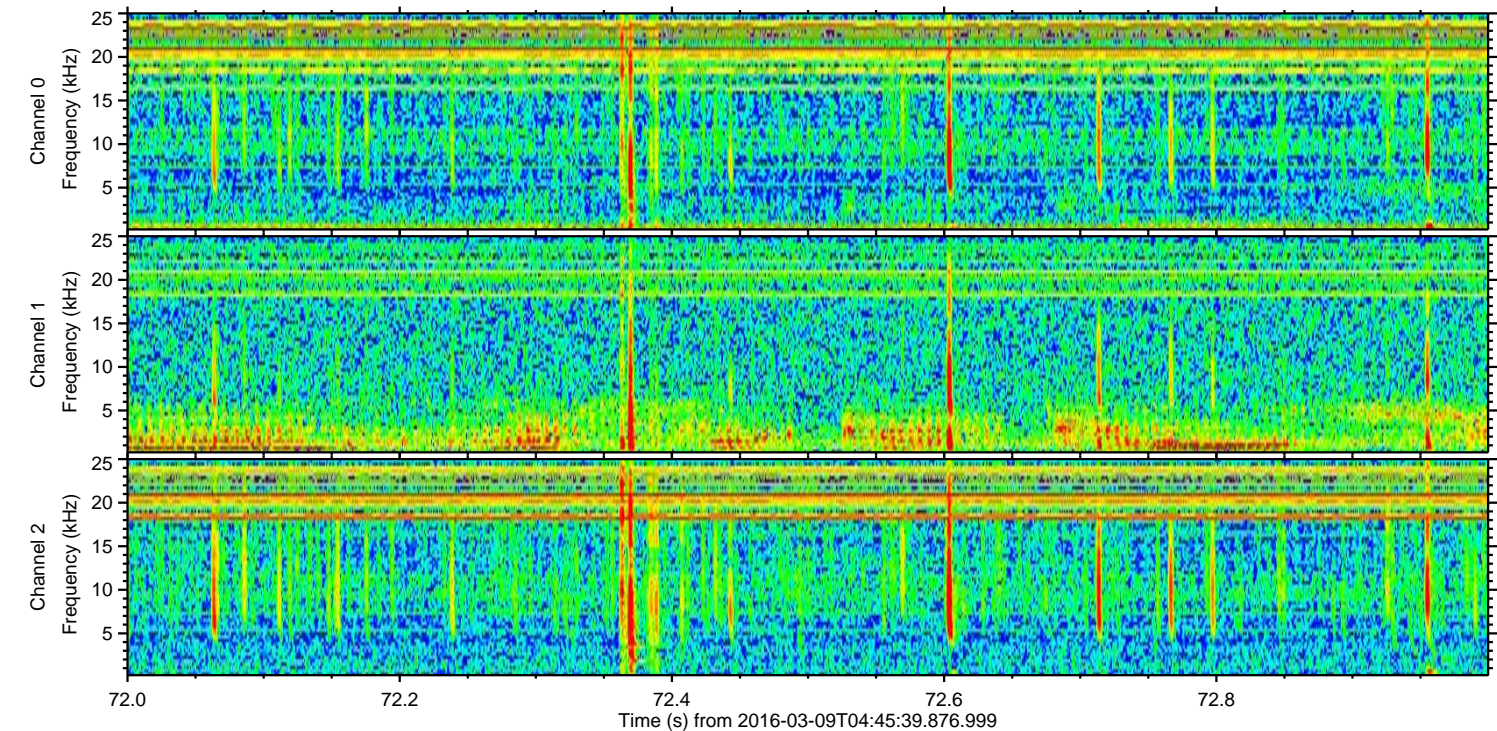
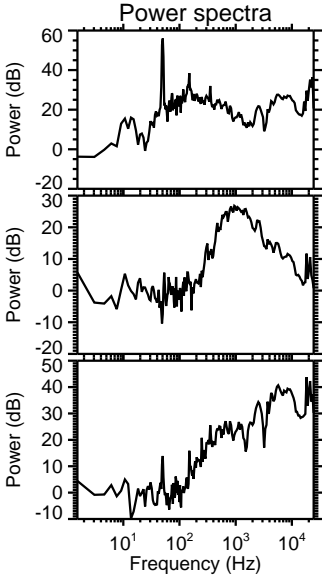
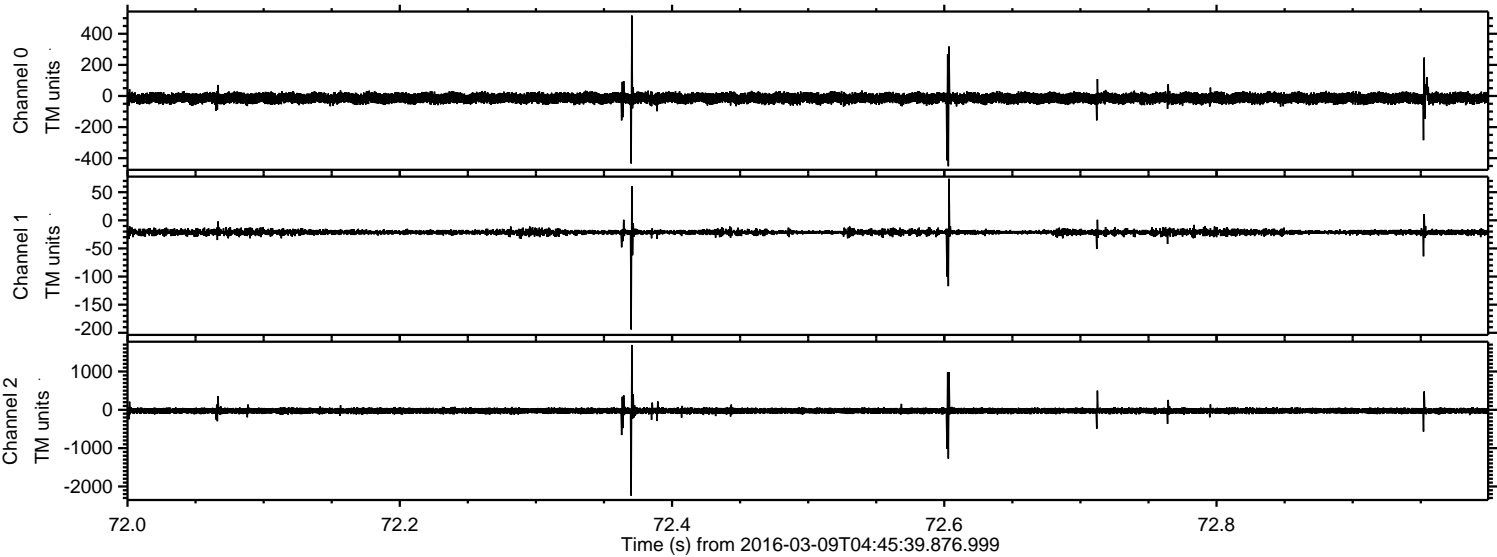
Processed Tue Apr 19 06:05:14 2016 by ELM ver.2012-10-06 from 001__elm20160309_044538__dat00.bin



Processed Tue Apr 19 06:05:15 2016 by ELM ver.2012-10-06 from 001__elm20160309_044538__dat00.bin



Processed Tue Apr 19 06:05:16 2016 by ELM ver.2012-10-06 from 001__elm20160309_044538__dat00.bin



Processed Tue Apr 19 06:05:17 2016 by ELM ver.2012-10-06 from 001__elm20160309_044538__dat00.bin

