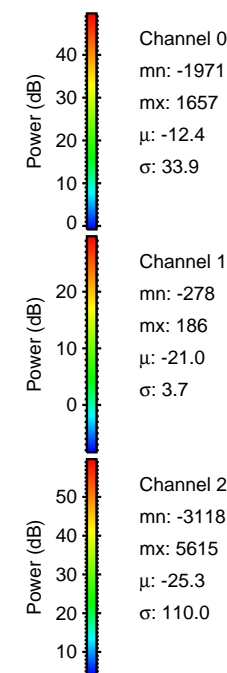
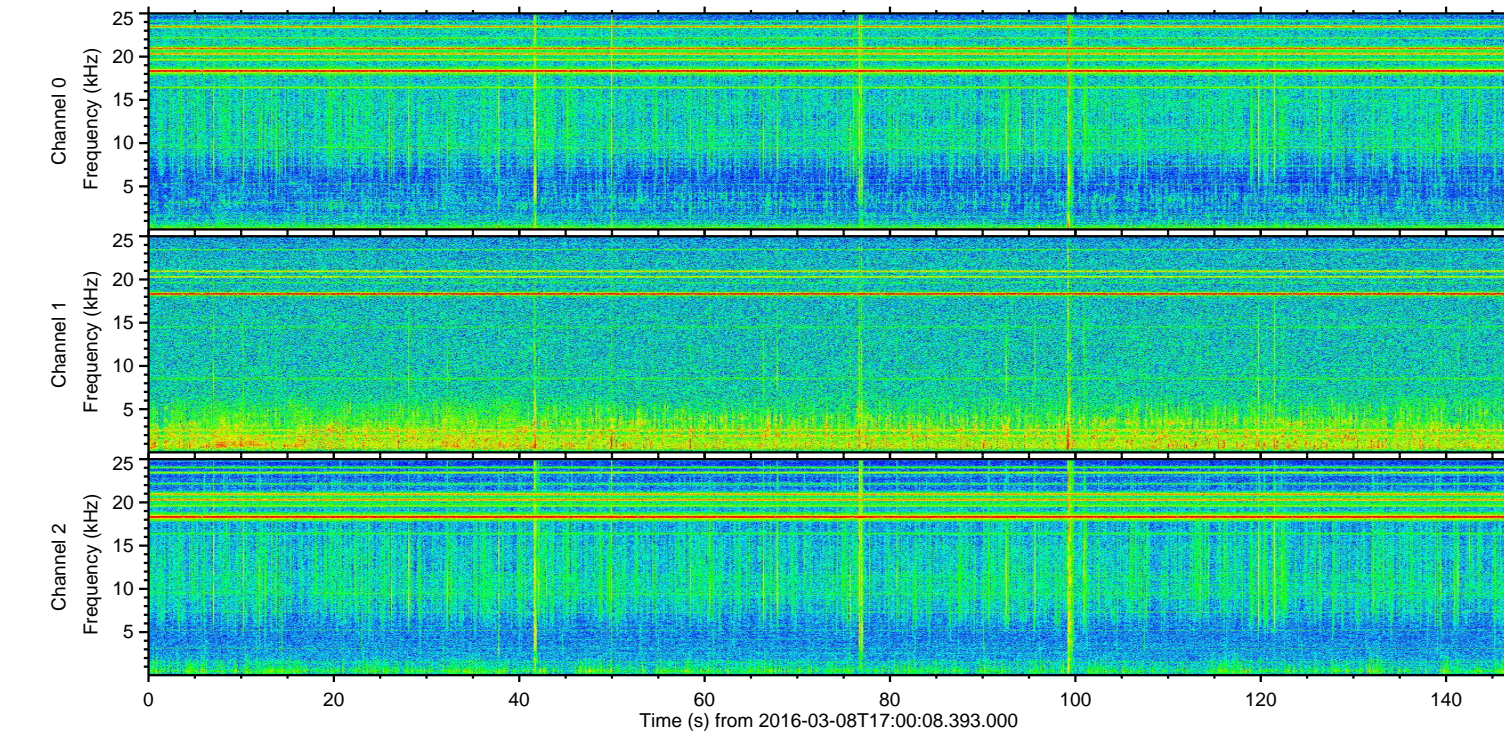
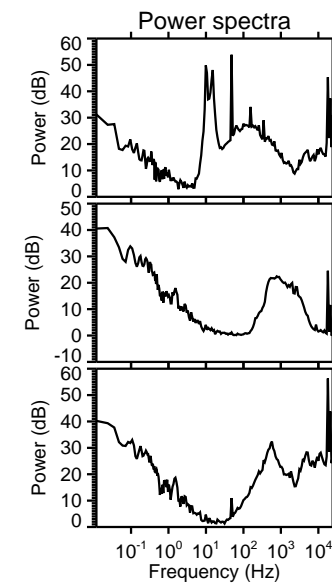
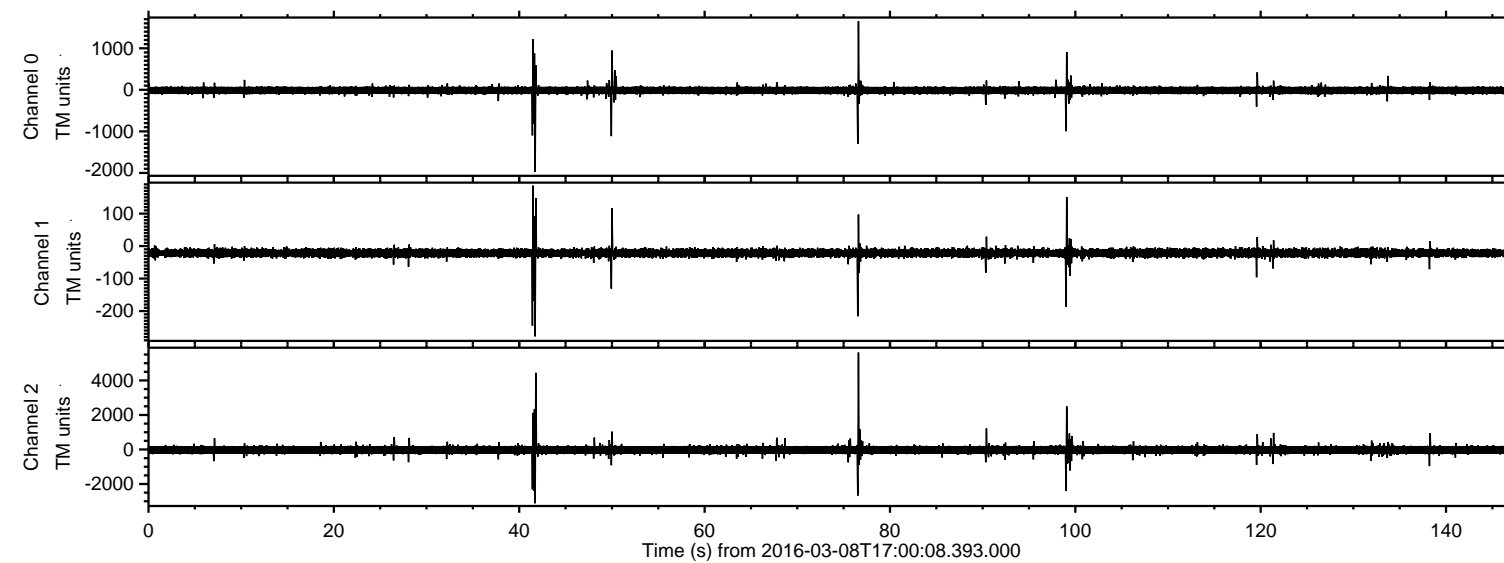
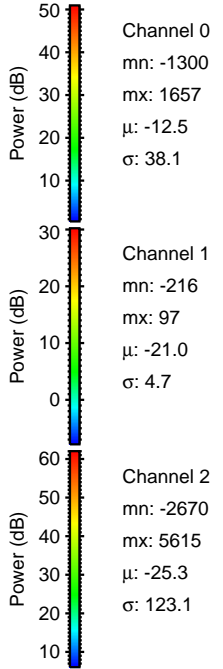
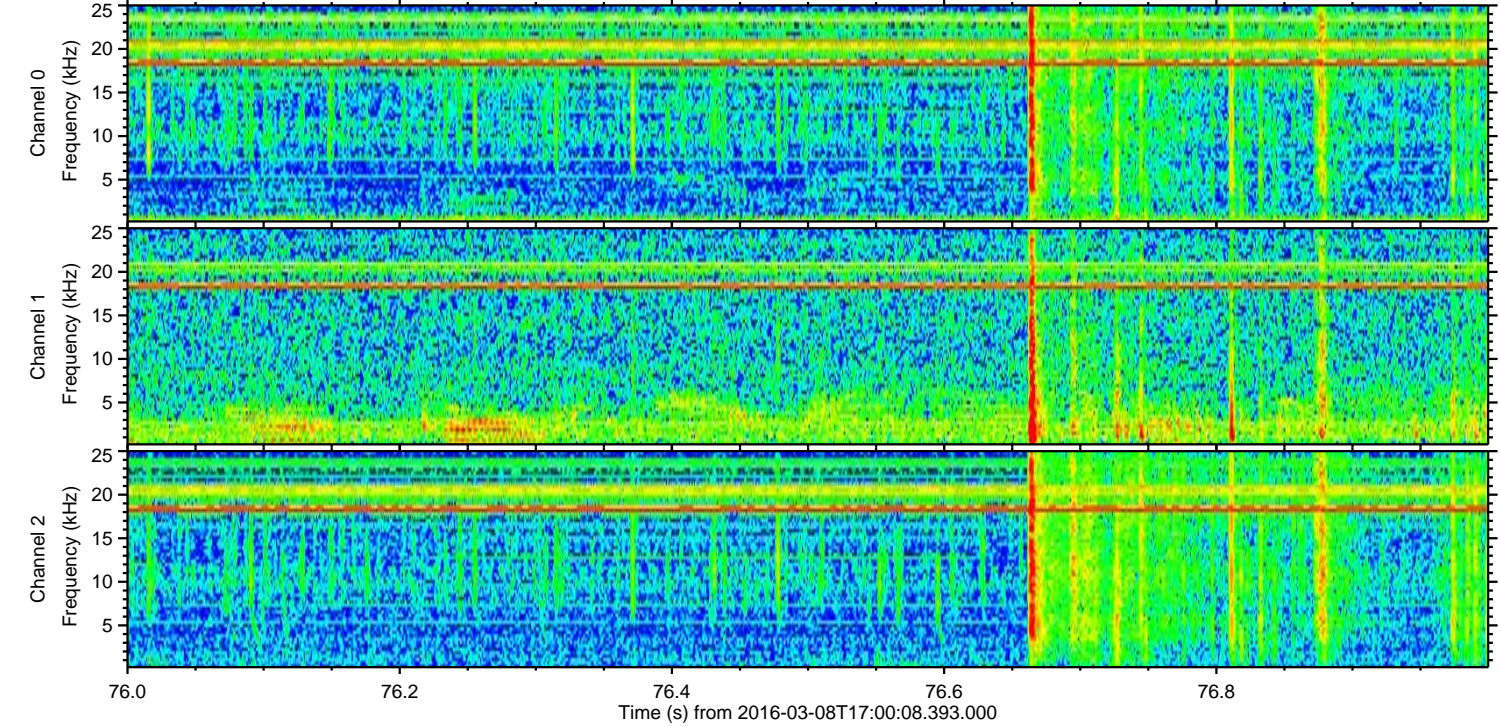
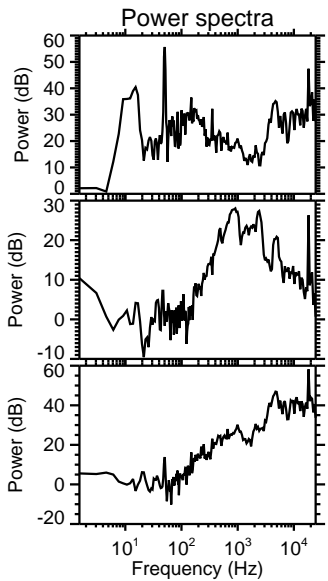
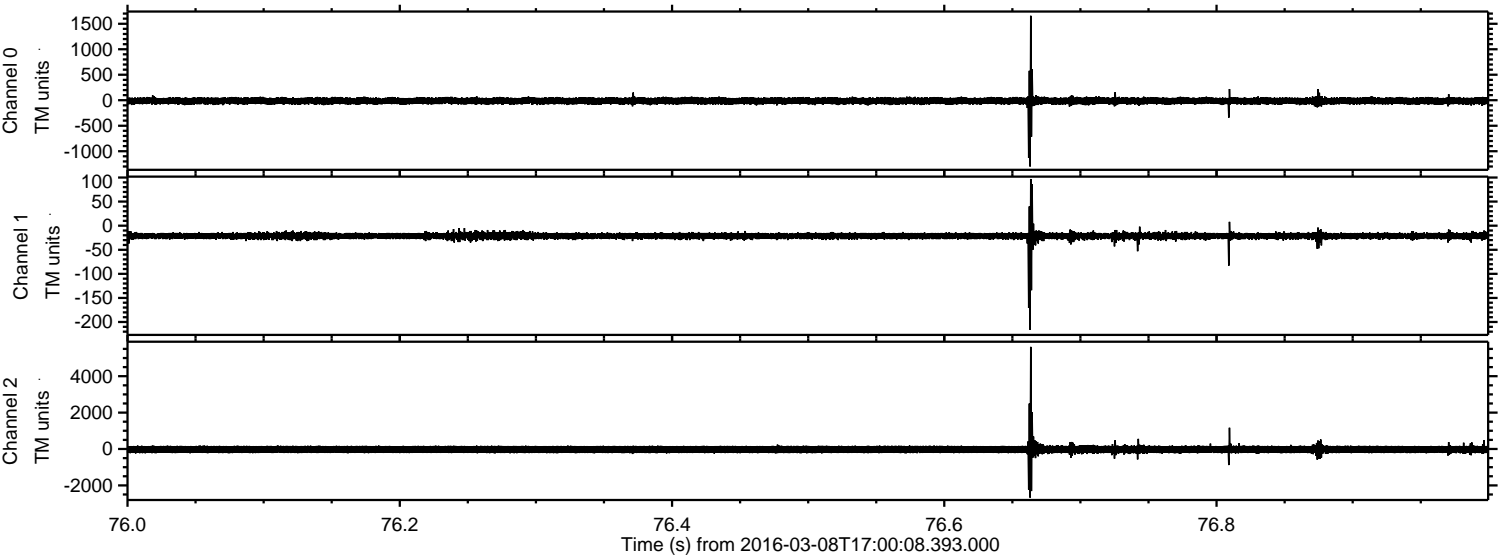


ELMAVAN 3D WAVEFORMS (Measured data sampled at 50 kHz) 51000 packets of 144 samples from 2016-03-08T17:00:08.393.000.

Processed Tue Apr 19 03:42:05 2016 by ELM ver.2012-10-06 from 001__elm20160308_170007__dat00.bin



Processed Tue Apr 19 03:42:17 2016 by ELM ver.2012-10-06 from 001__elm20160308_170007__dat00.bin

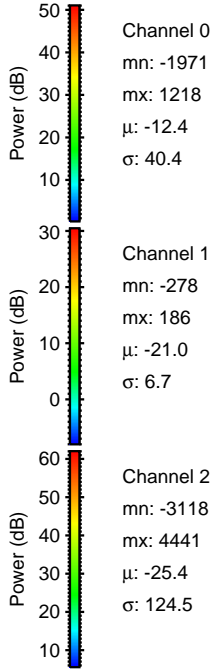
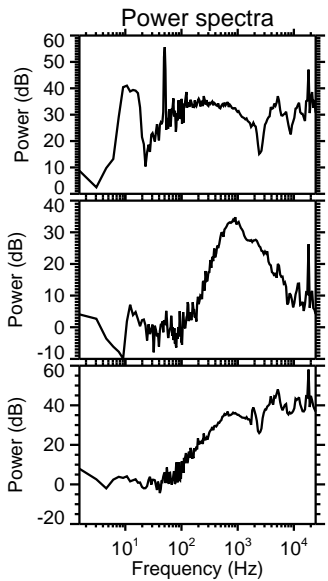
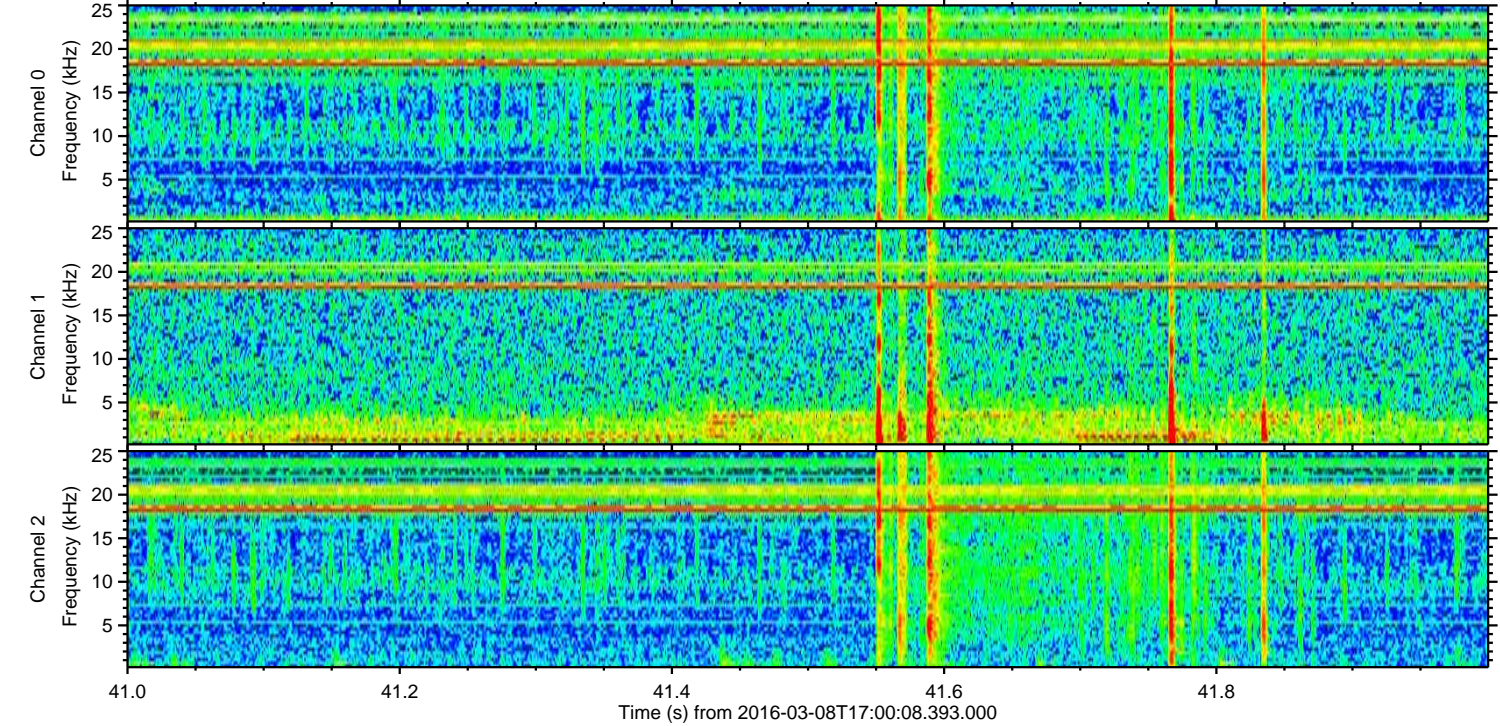
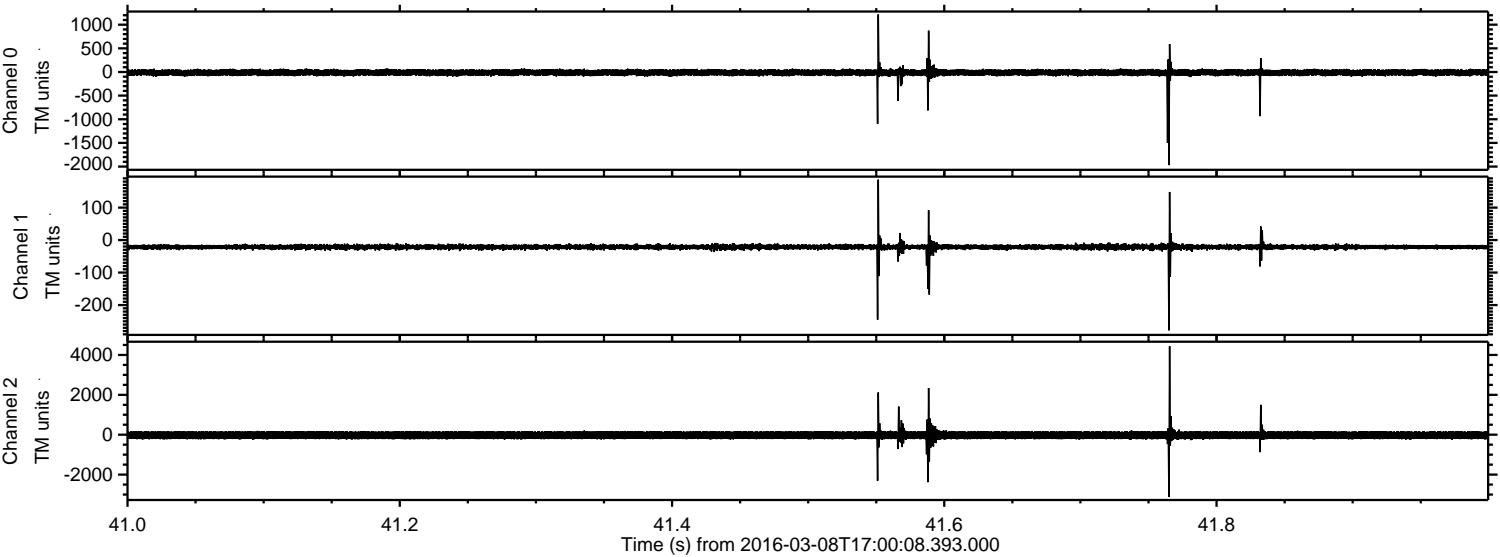


Channel 0
mn: -1300
mx: 1657
 μ : -12.5
 σ : 38.1

Channel 1
mn: -216
mx: 97
 μ : -21.0
 σ : 4.7

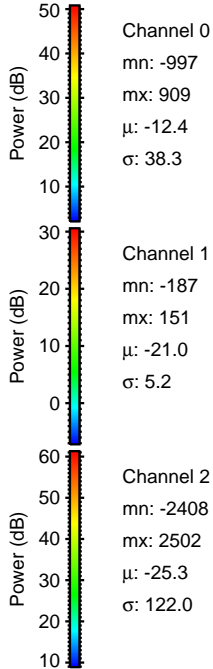
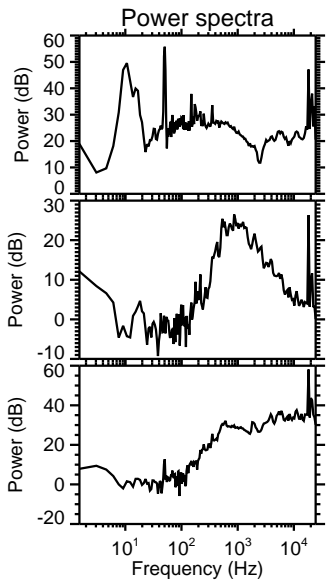
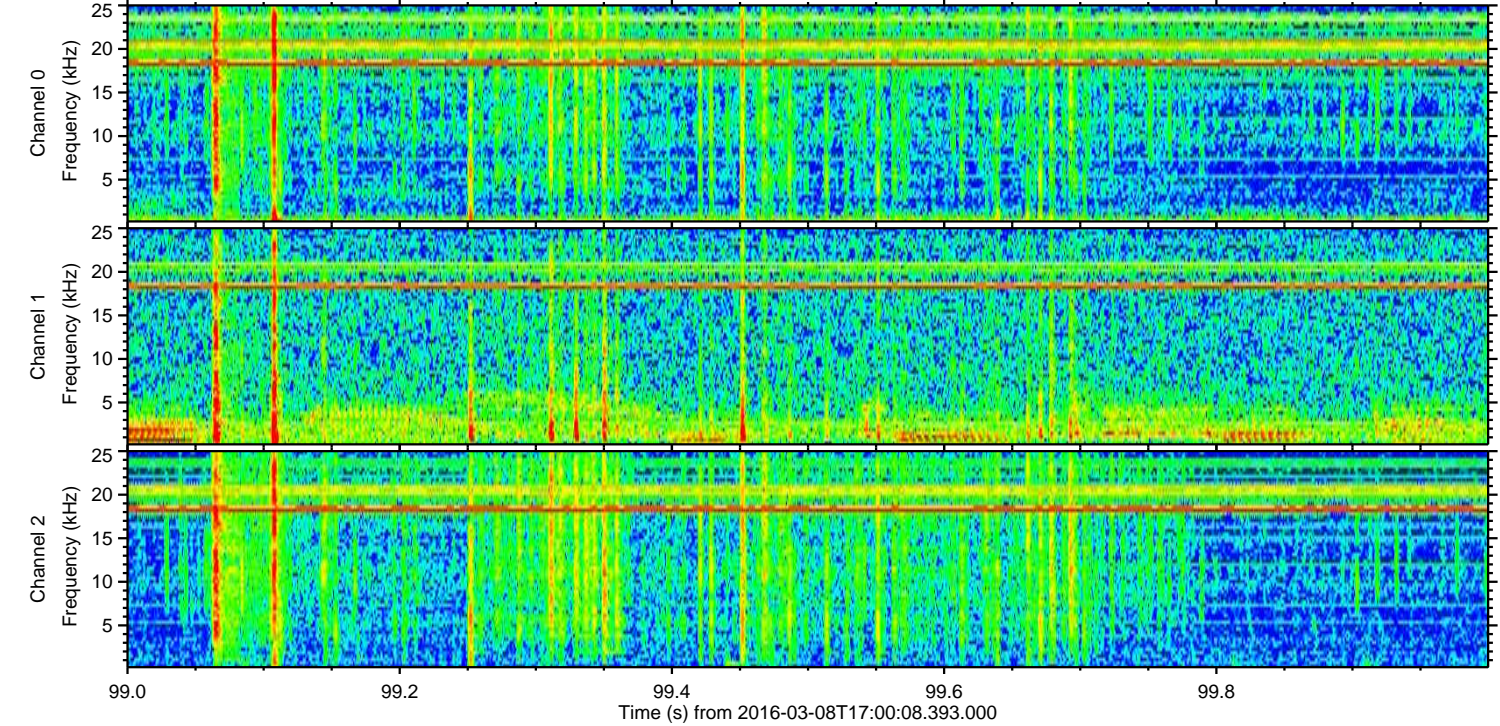
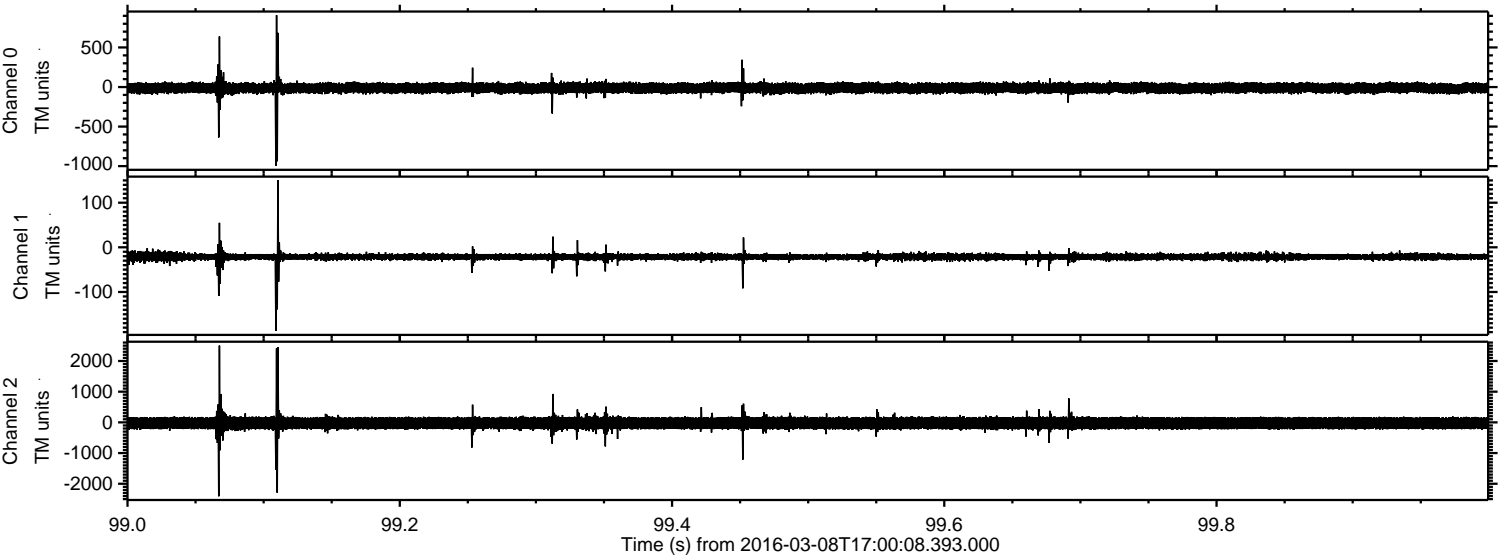
Channel 2
mn: -2670
mx: 5615
 μ : -25.3
 σ : 123.1

Processed Tue Apr 19 03:42:18 2016 by ELM ver.2012-10-06 from 001__elm20160308_170007__dat00.bin

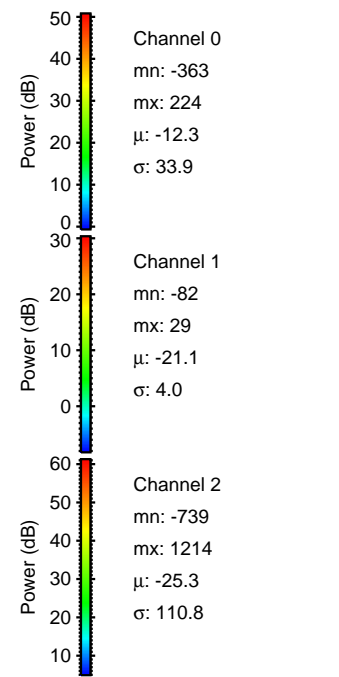
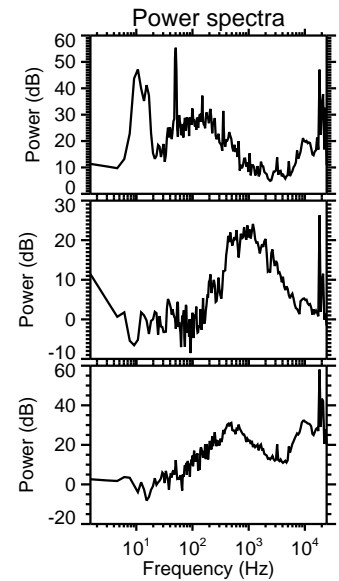
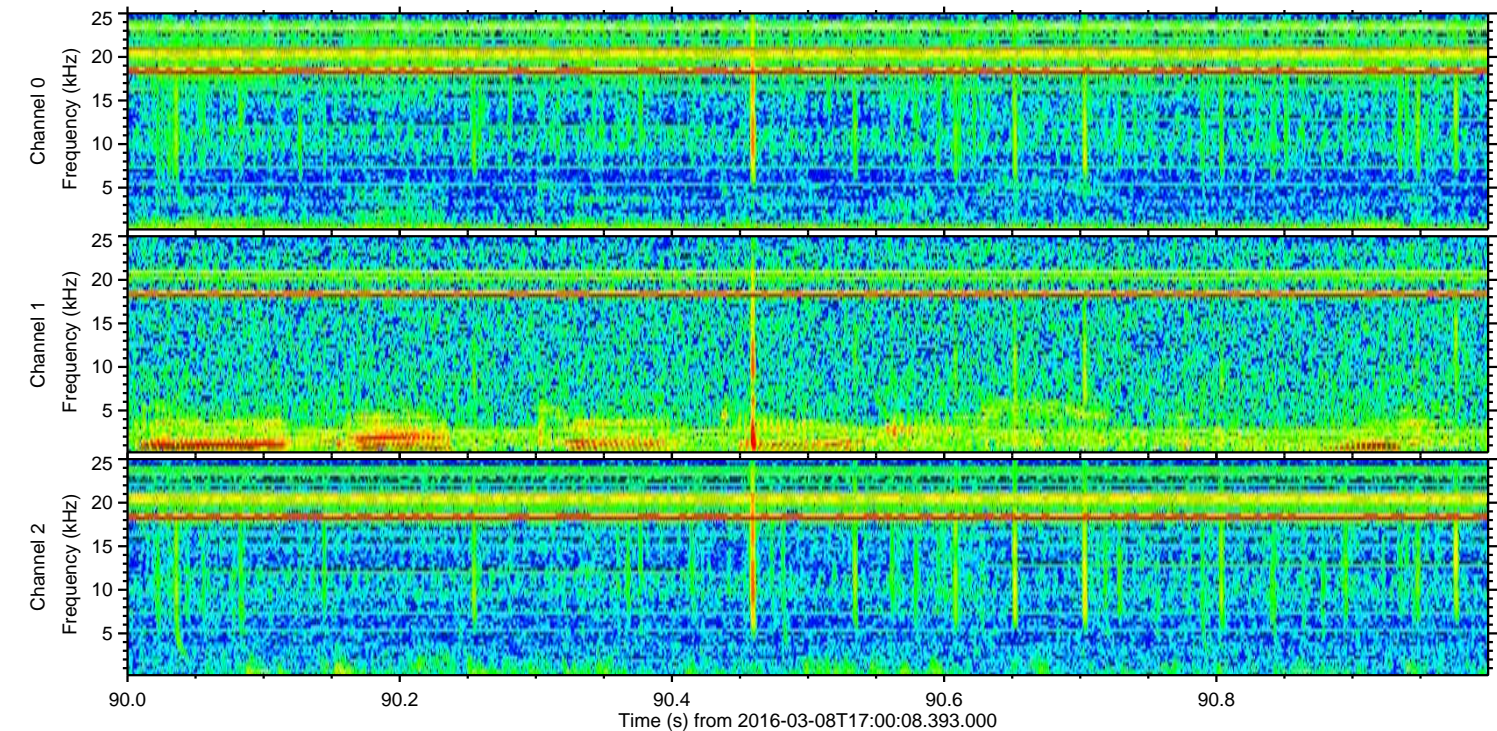
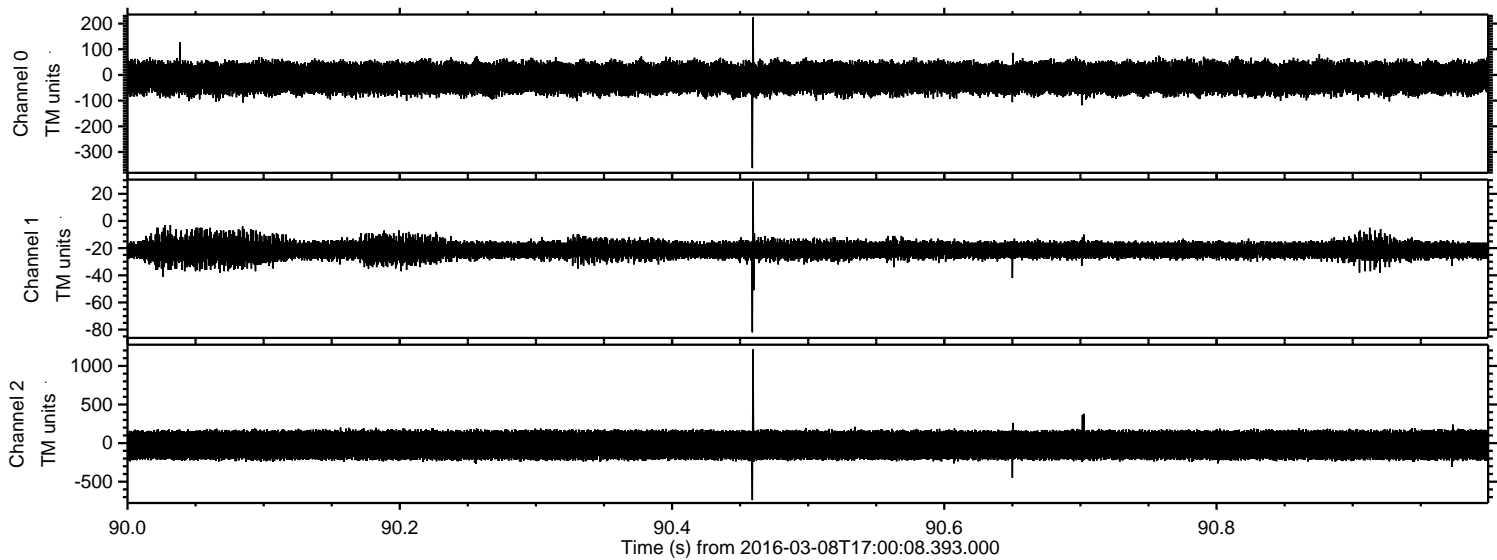


ELMAVAN 3D WAVEFORMS (Measured data sampled at 50 kHz) 51000 packets of 144 samples from 2016-03-08T17:00:08.393.000. Part 100/147

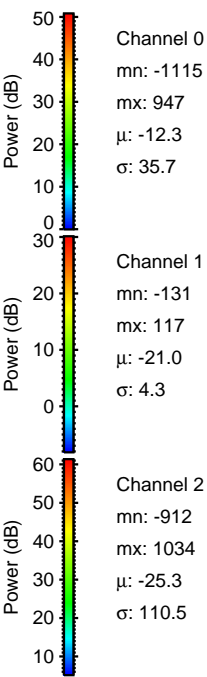
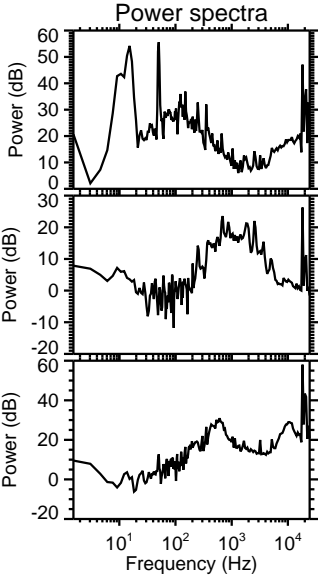
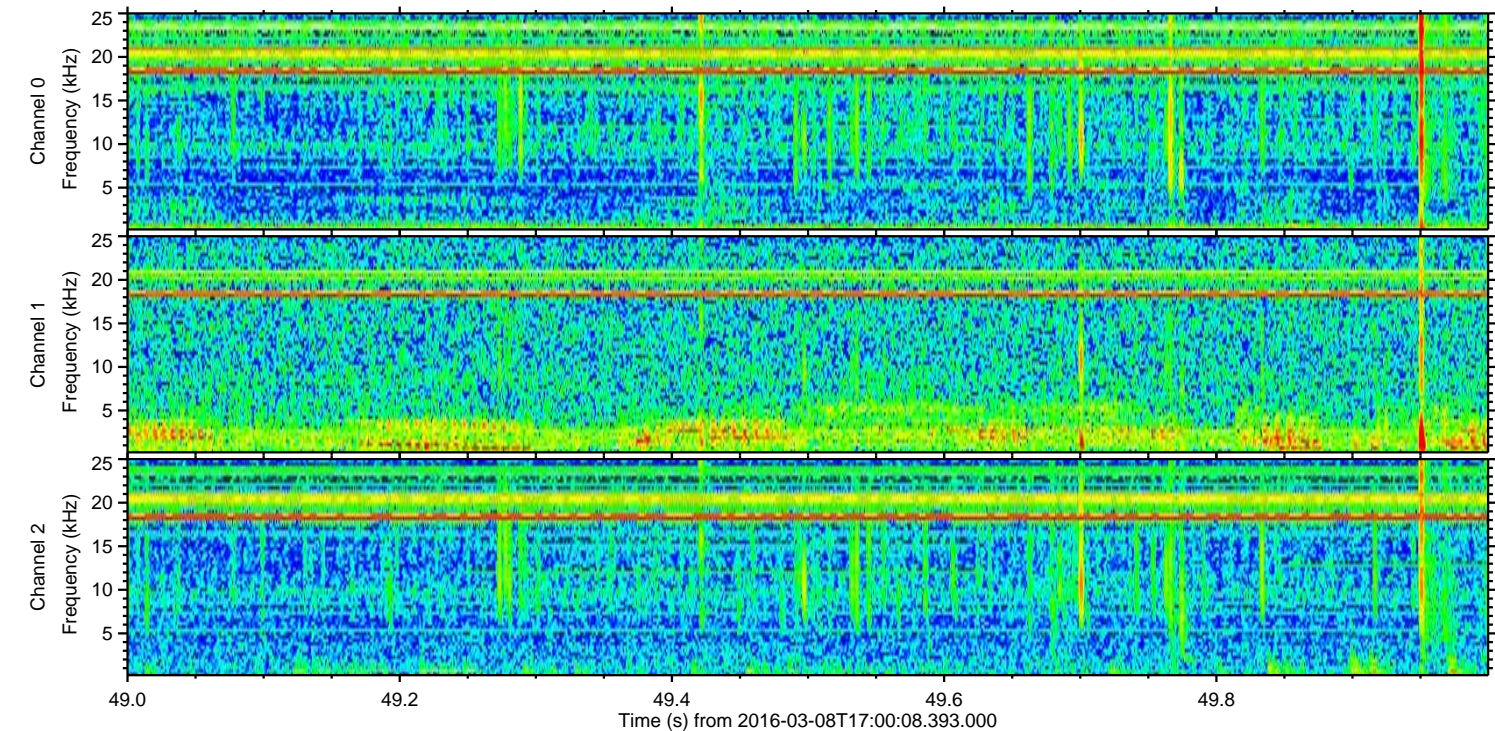
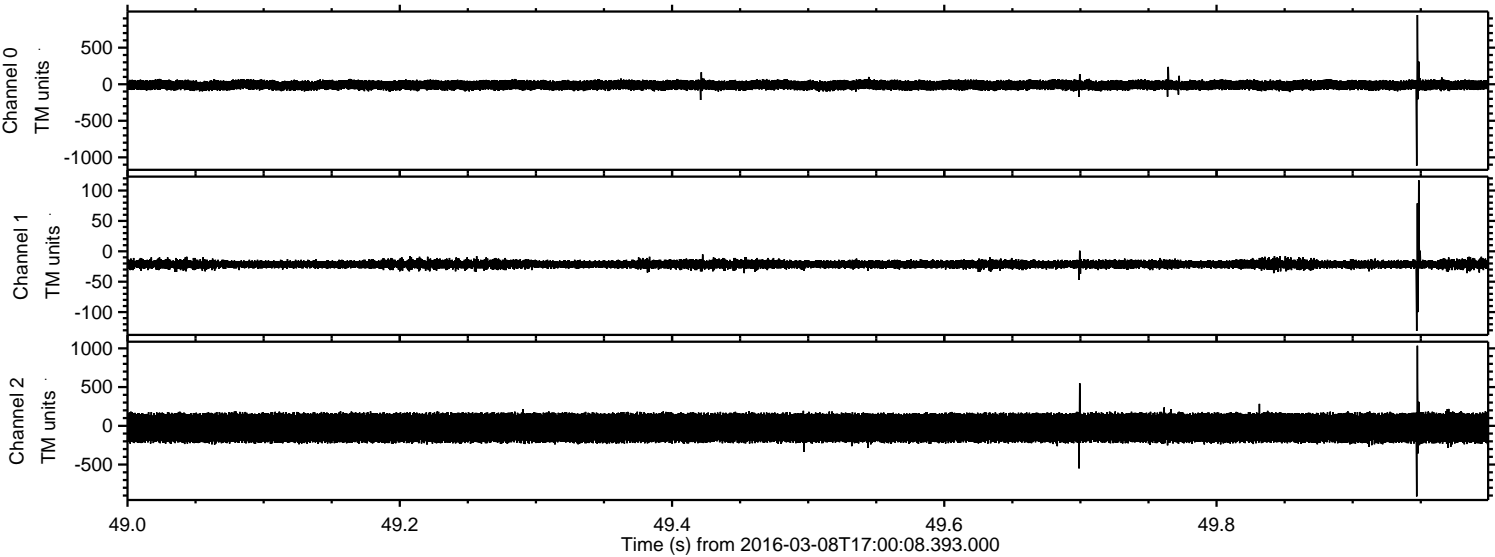
Processed Tue Apr 19 03:42:19 2016 by ELM ver.2012-10-06 from 001__elm20160308_170007__dat00.bin



Processed Tue Apr 19 03:42:20 2016 by ELM ver.2012-10-06 from 001__elm20160308_170007__dat00.bin

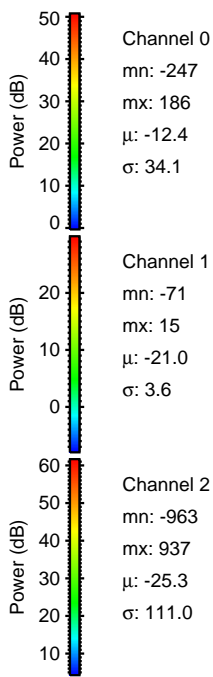
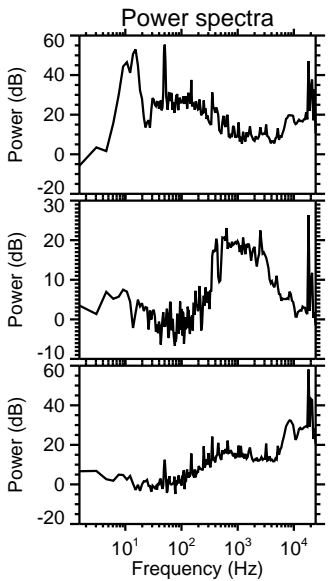
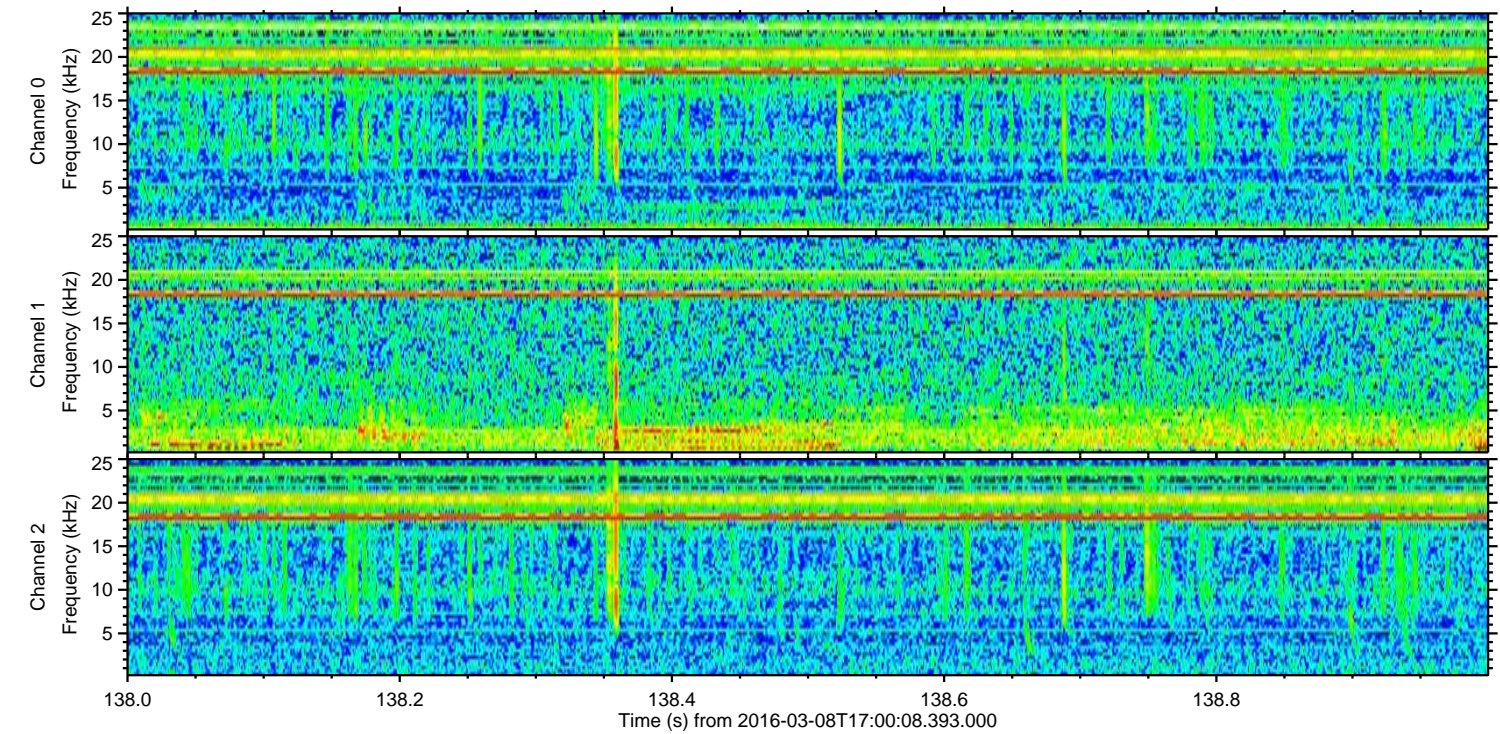
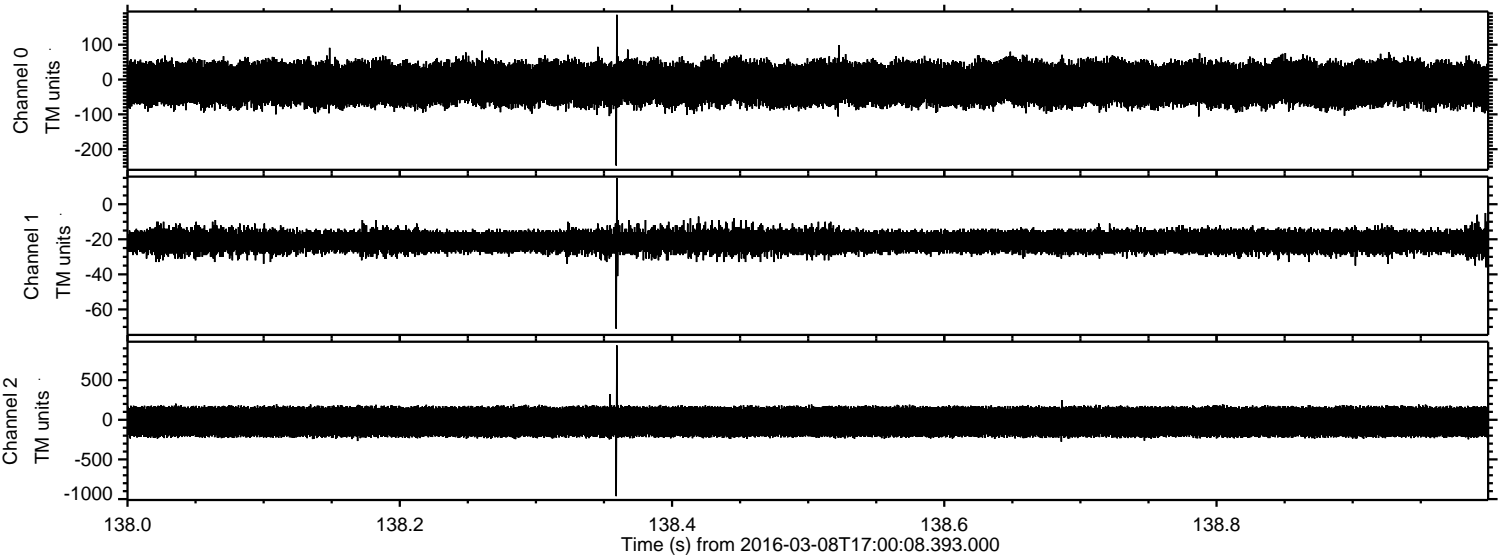


Processed Tue Apr 19 03:42:21 2016 by ELM ver.2012-10-06 from 001__elm20160308_170007__dat00.bin

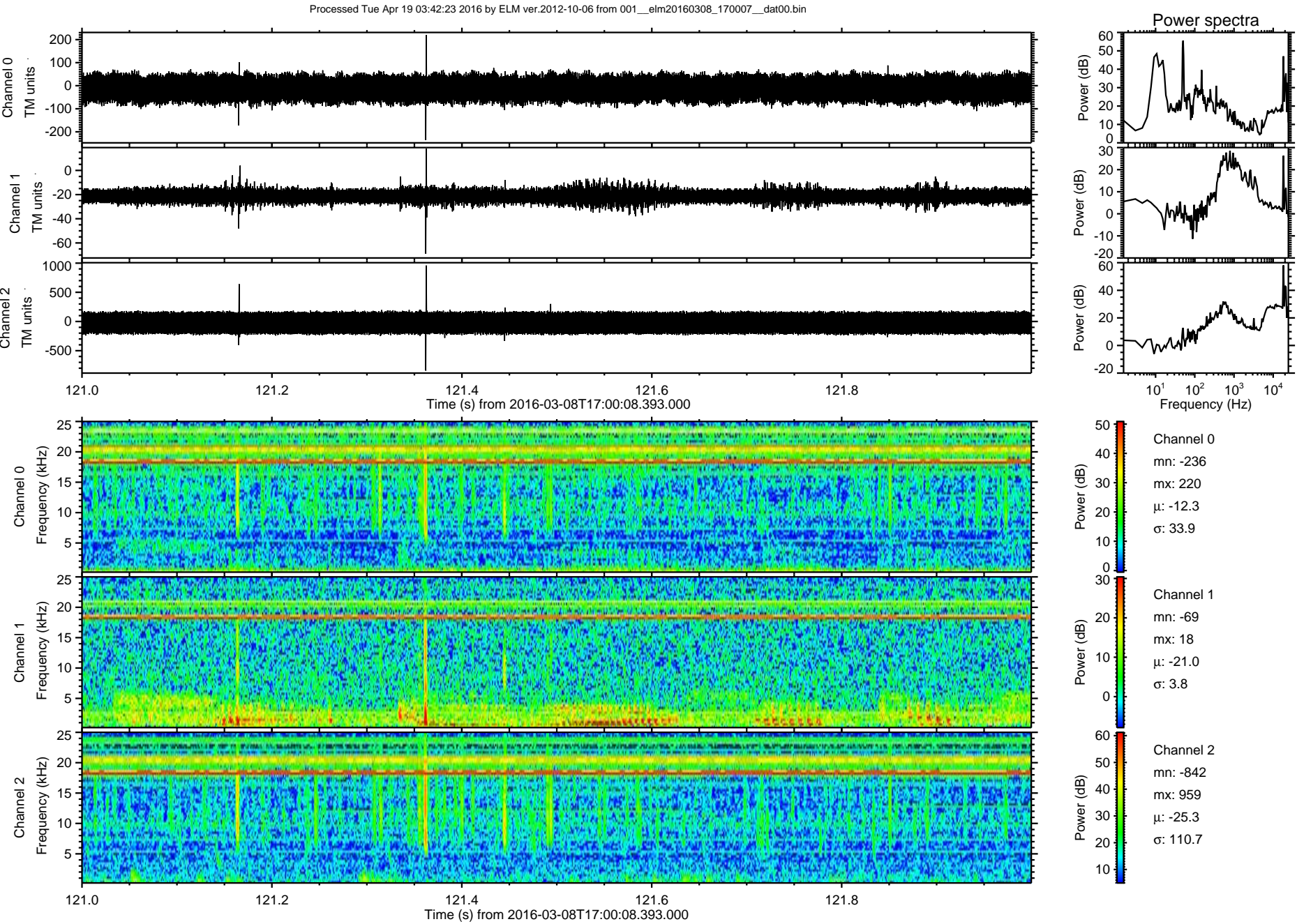


ELMAVAN 3D WAVEFORMS (Measured data sampled at 50 kHz) 51000 packets of 144 samples from 2016-03-08T17:00:08.393.000. Part 139/147

Processed Tue Apr 19 03:42:22 2016 by ELM ver.2012-10-06 from 001__elm20160308_170007__dat00.bin

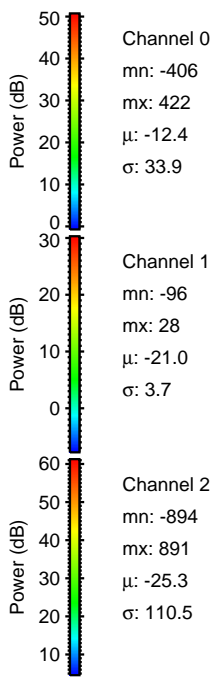
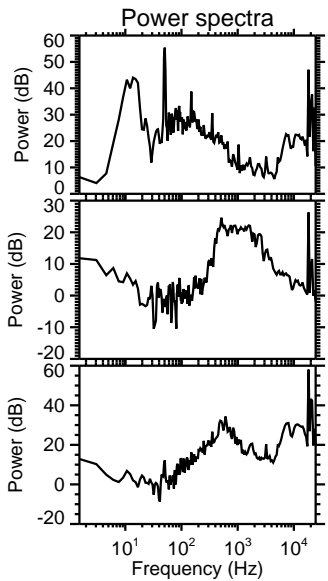
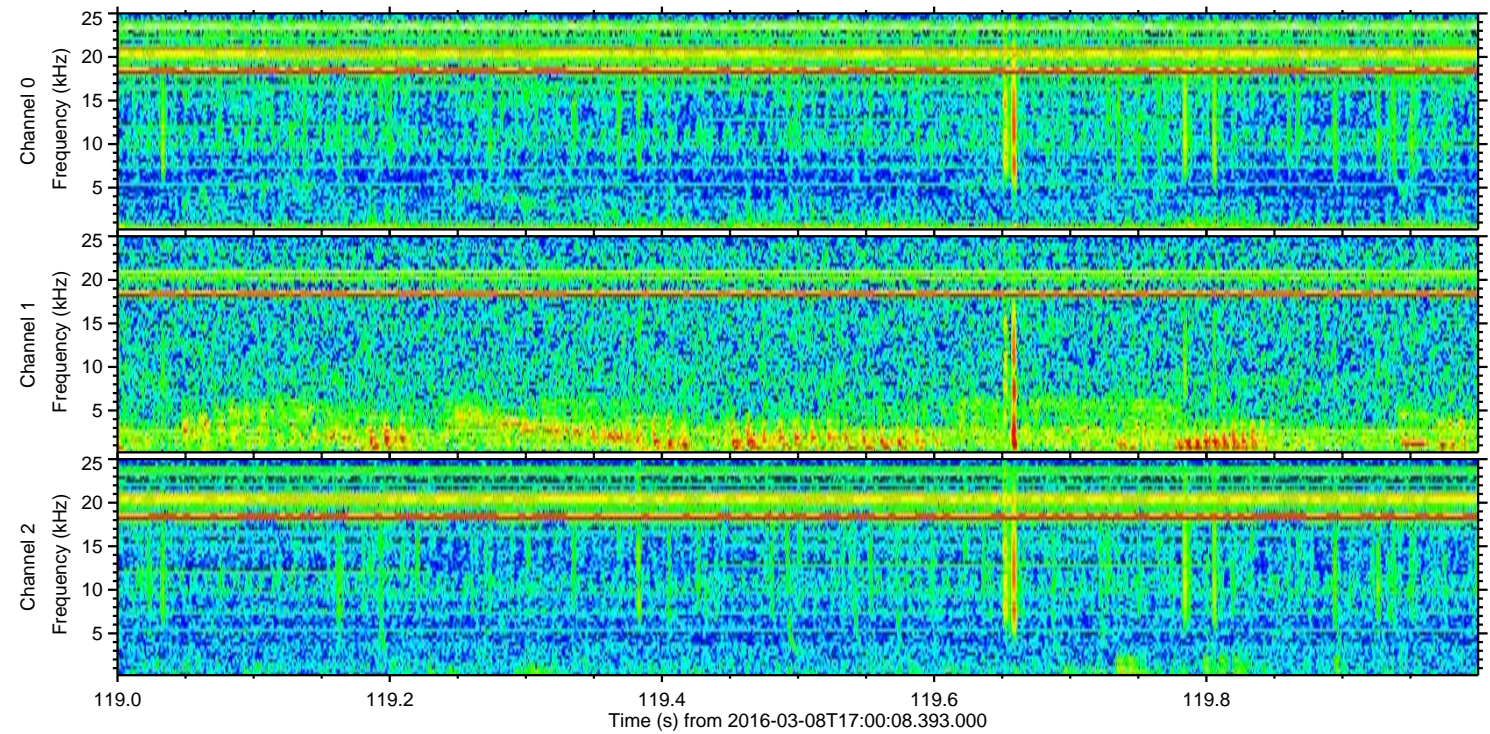
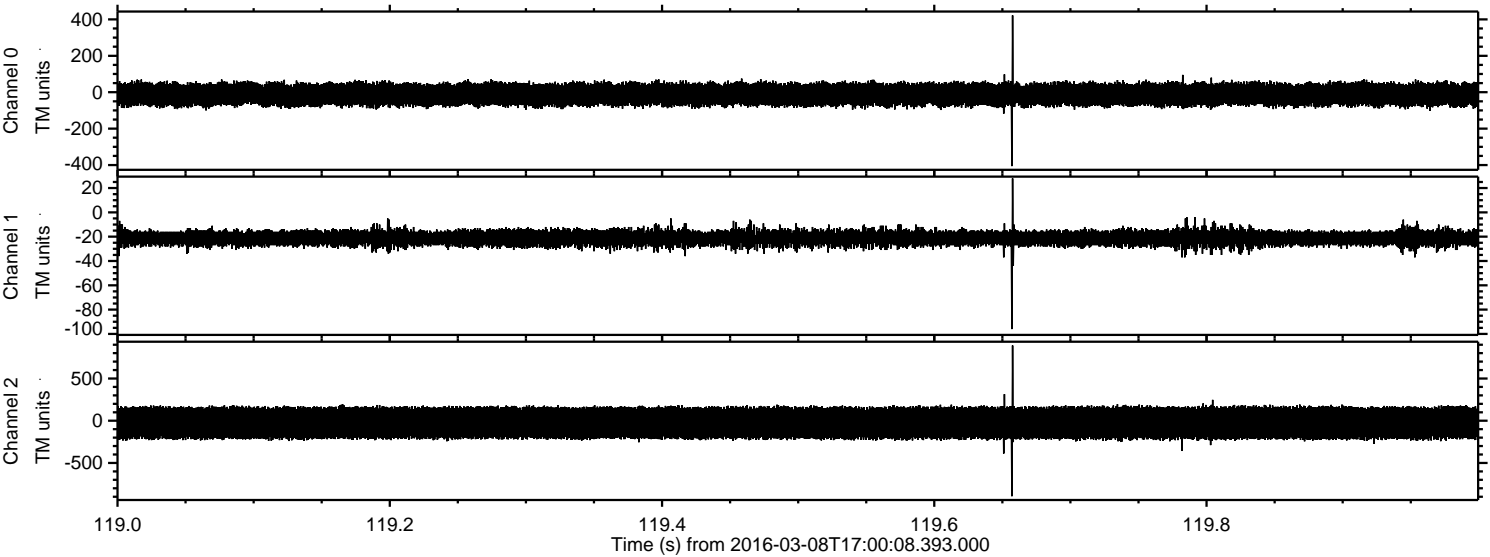


ELMAVAN 3D WAVEFORMS (Measured data sampled at 50 kHz) 51000 packets of 144 samples from 2016-03-08T17:00:08.393.000. Part 122/147



ELMAVAN 3D WAVEFORMS (Measured data sampled at 50 kHz) 51000 packets of 144 samples from 2016-03-08T17:00:08.393.000. Part 120/147

Processed Tue Apr 19 03:42:24 2016 by ELM ver.2012-10-06 from 001__elm20160308_170007__dat00.bin

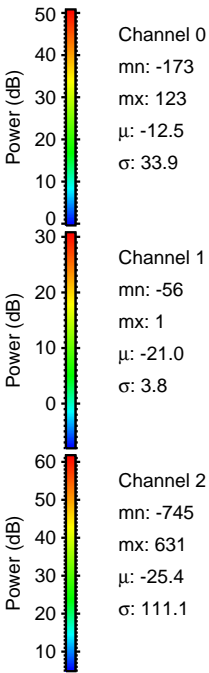
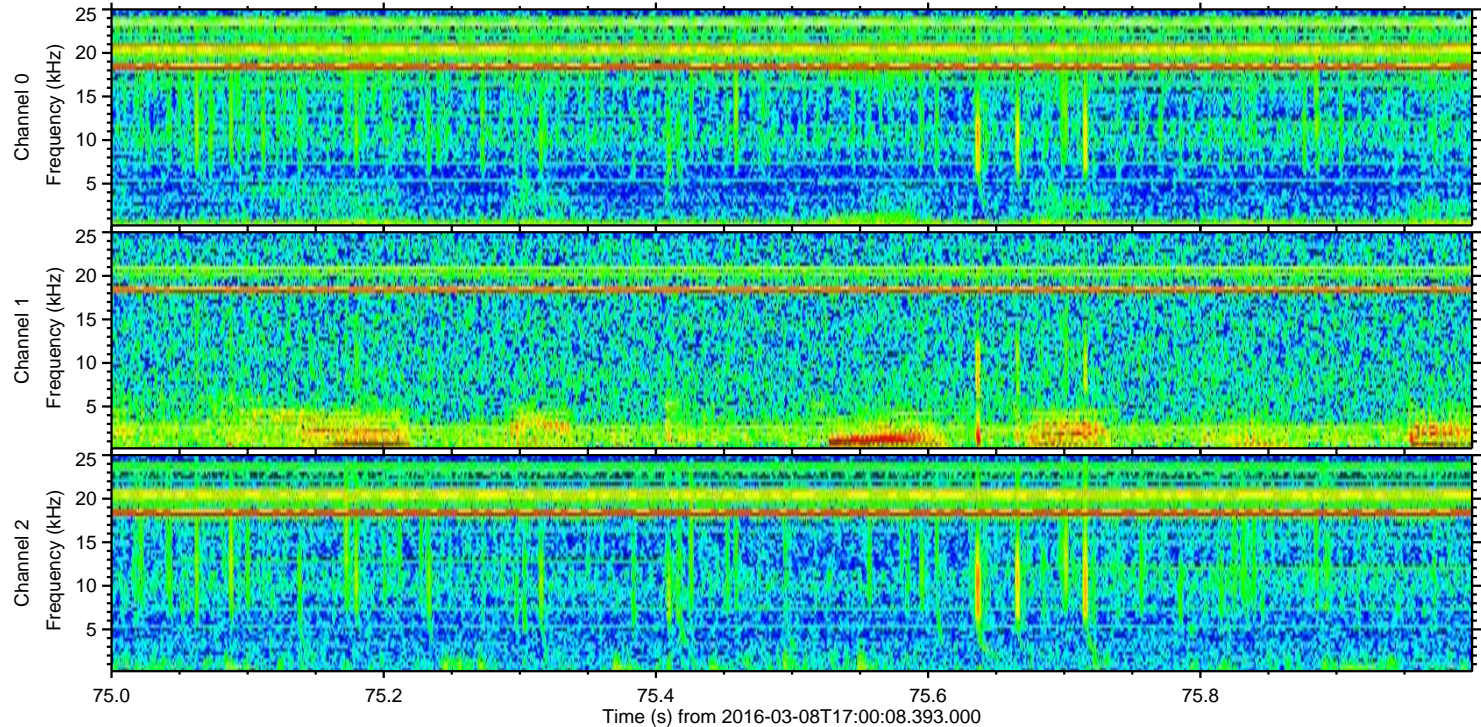
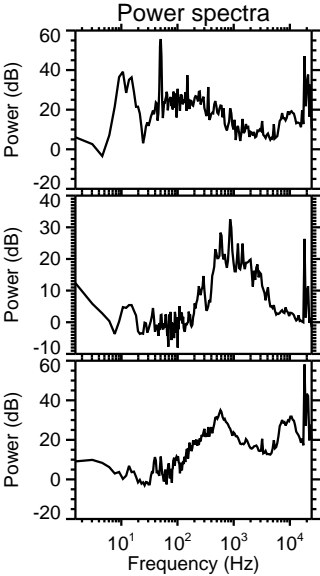
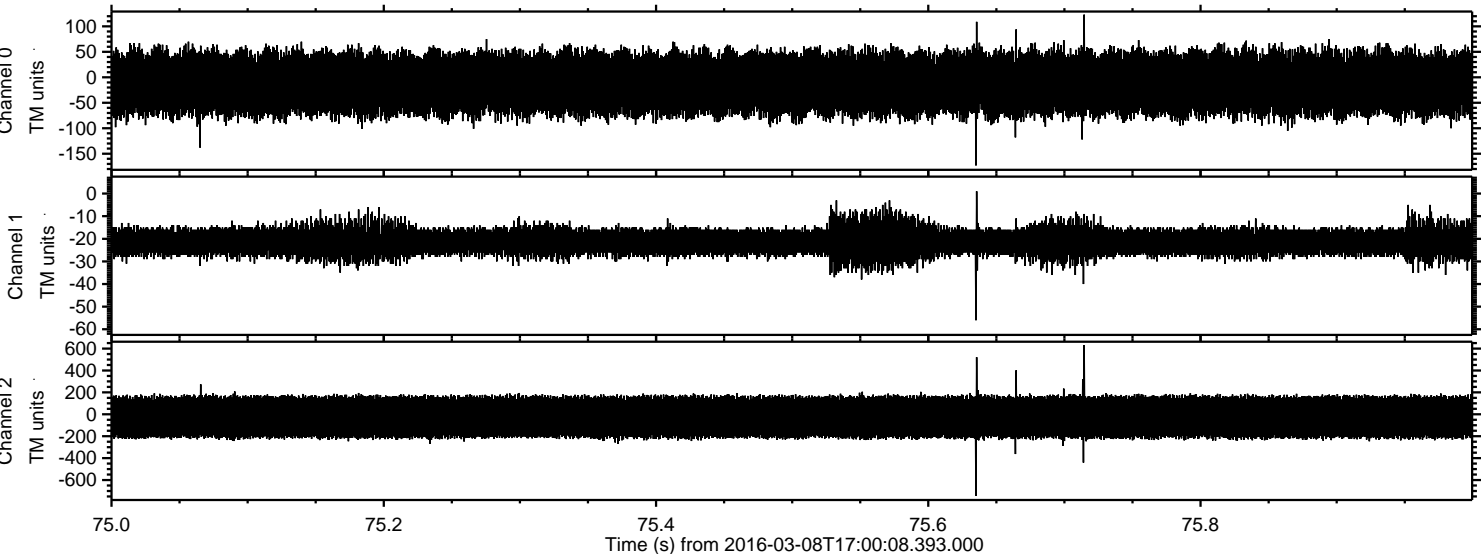


Channel 0
mn: -406
mx: 422
 μ : -12.4
 σ : 33.9

Channel 1
mn: -96
mx: 28
 μ : -21.0
 σ : 3.7

Channel 2
mn: -894
mx: 891
 μ : -25.3
 σ : 110.5

Processed Tue Apr 19 03:42:25 2016 by ELM ver.2012-10-06 from 001__elm20160308_170007__dat00.bin



Processed Tue Apr 19 03:42:26 2016 by ELM ver.2012-10-06 from 001__elm20160308_170007__dat00.bin

