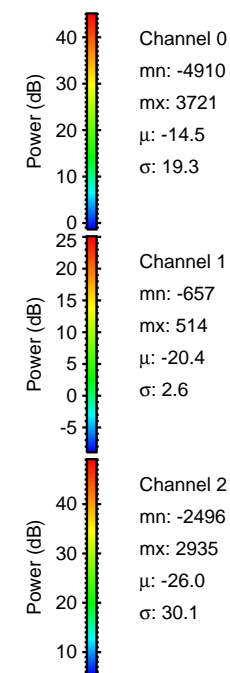
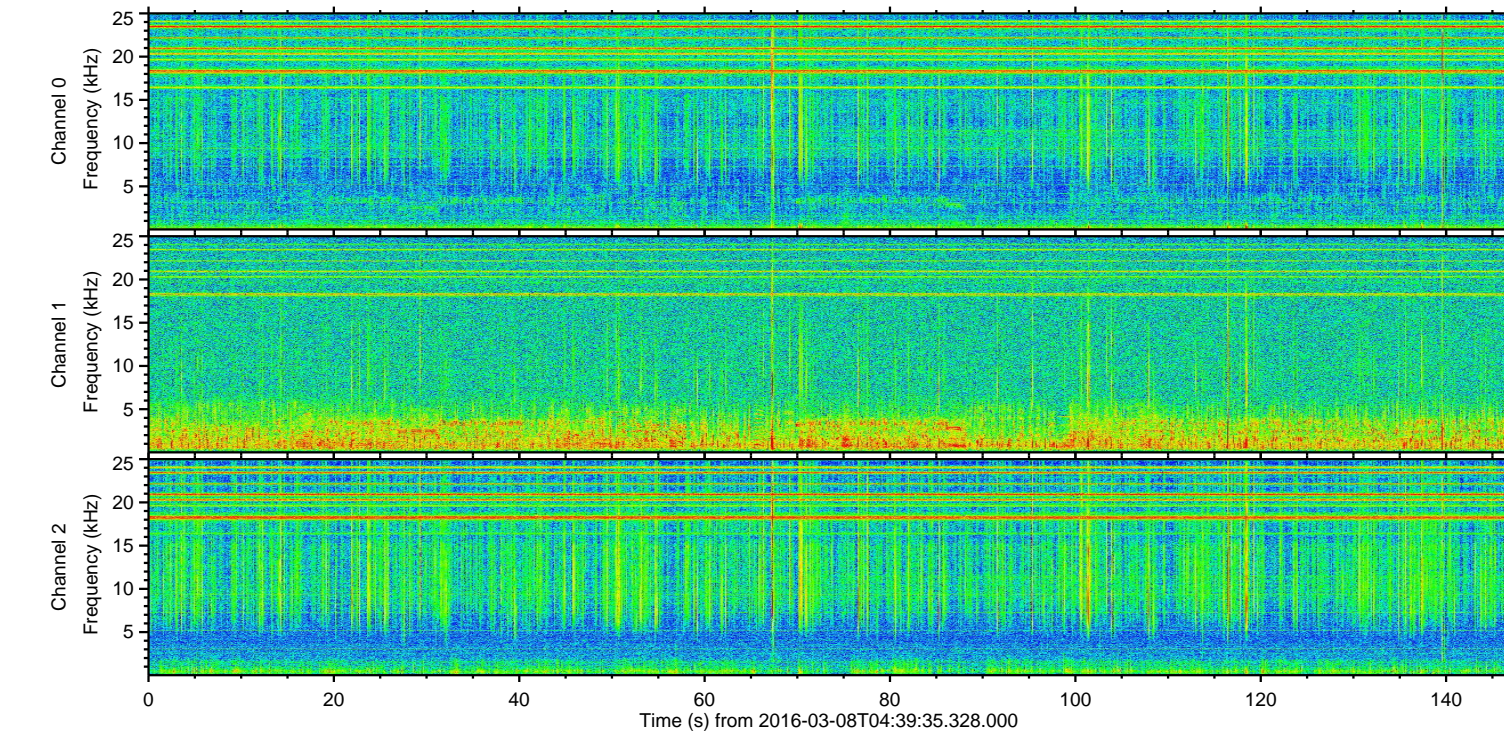
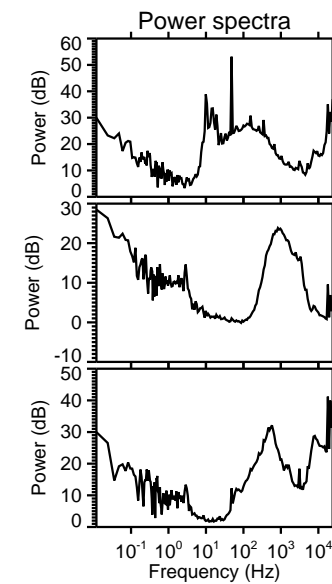
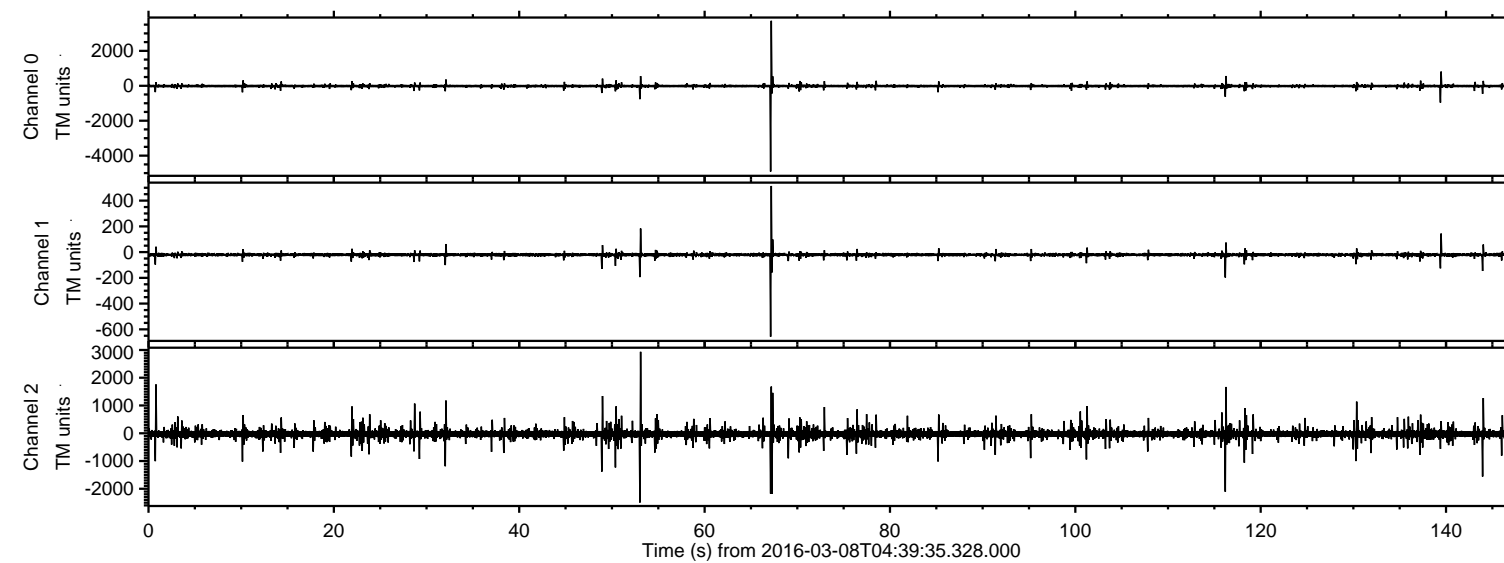


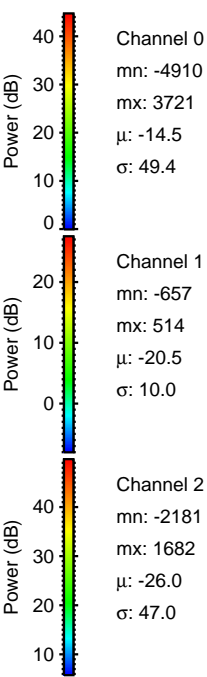
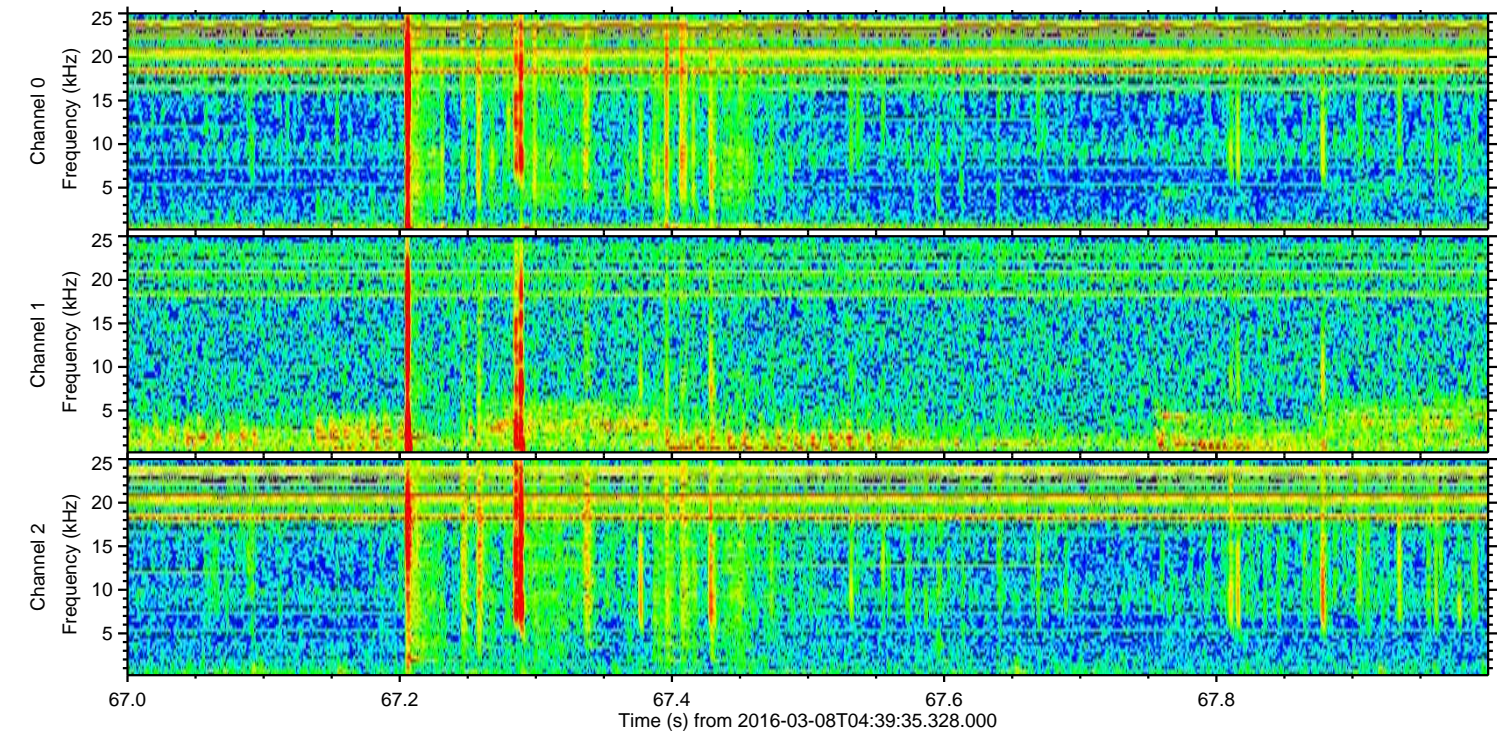
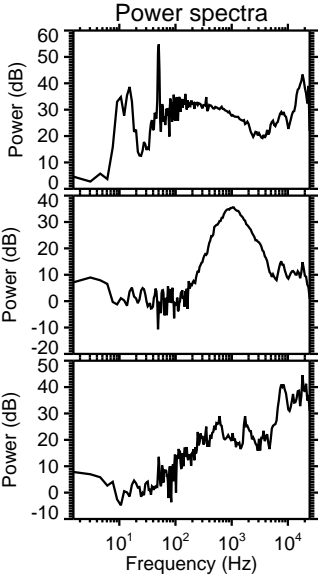
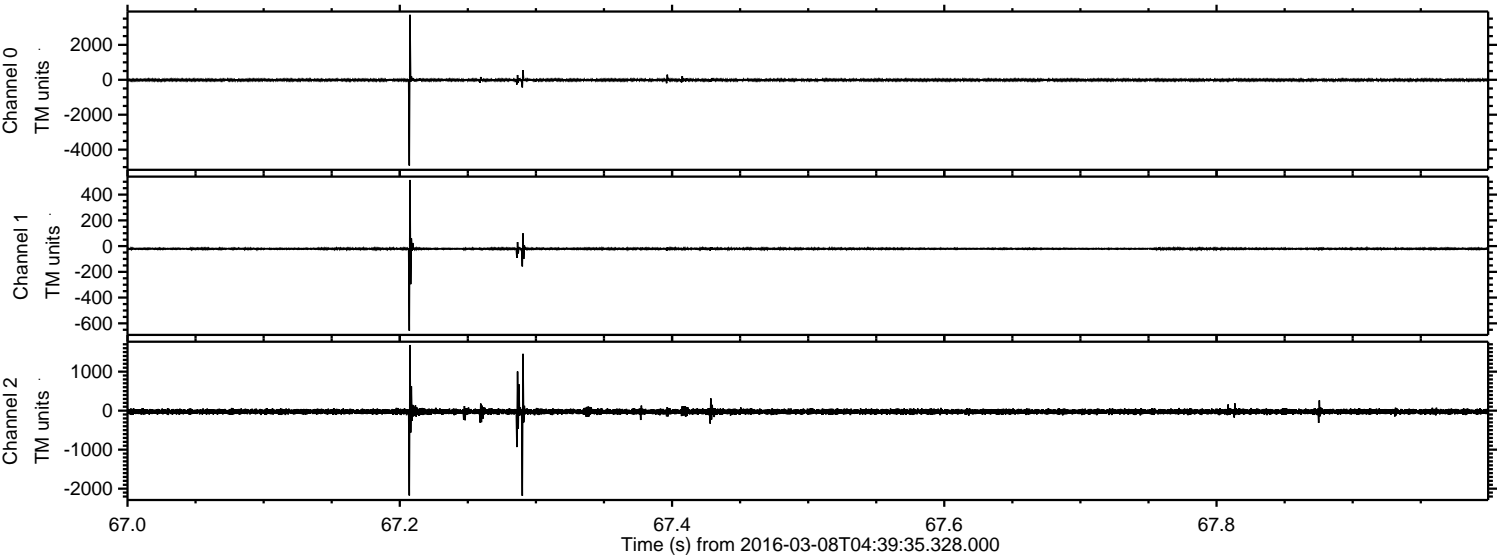
ELMAVAN 3D WAVEFORMS (Measured data sampled at 50 kHz) 51000 packets of 144 samples from 2016-03-08T04:39:35.328.000.

Processed Tue Apr 19 01:10:09 2016 by ELM ver.2012-10-06 from 001__elm20160308_043934__dat00.bin



ELMAVAN 3D WAVEFORMS (Measured data sampled at 50 kHz) 51000 packets of 144 samples from 2016-03-08T04:39:35.328.000. Part 68/147

Processed Tue Apr 19 01:10:21 2016 by ELM ver.2012-10-06 from 001__elm20160308_043934__dat00.bin

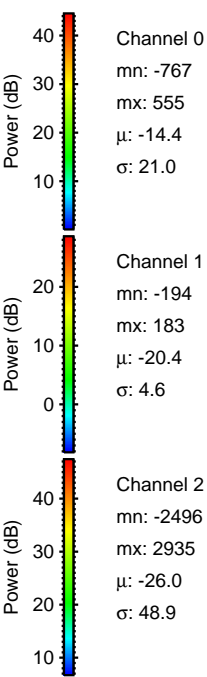
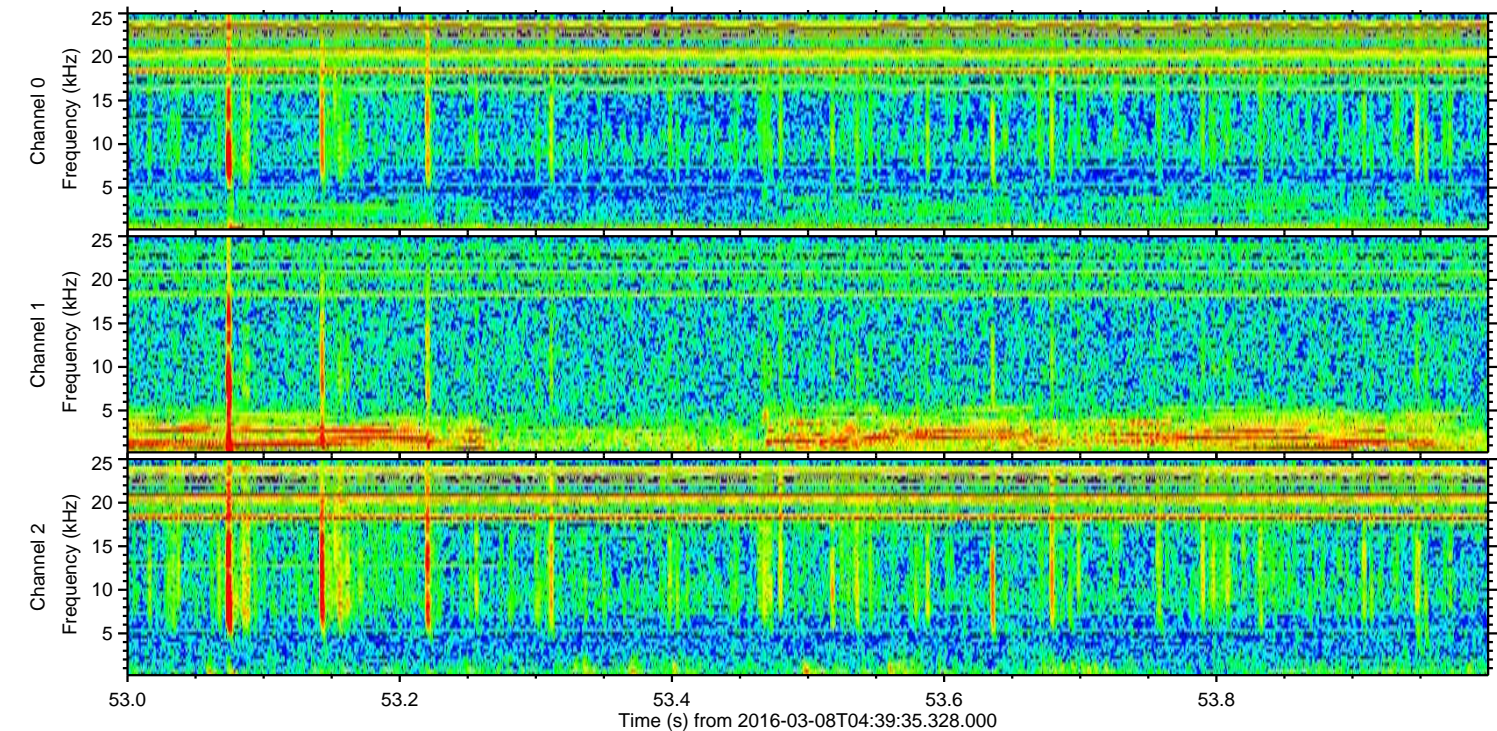
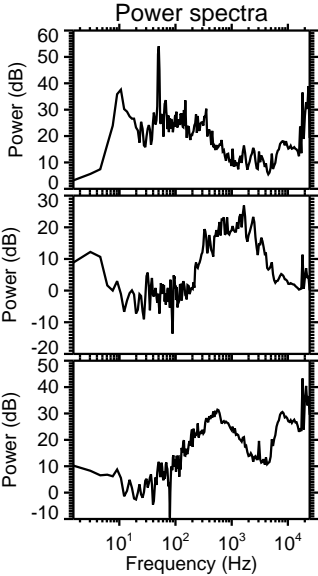
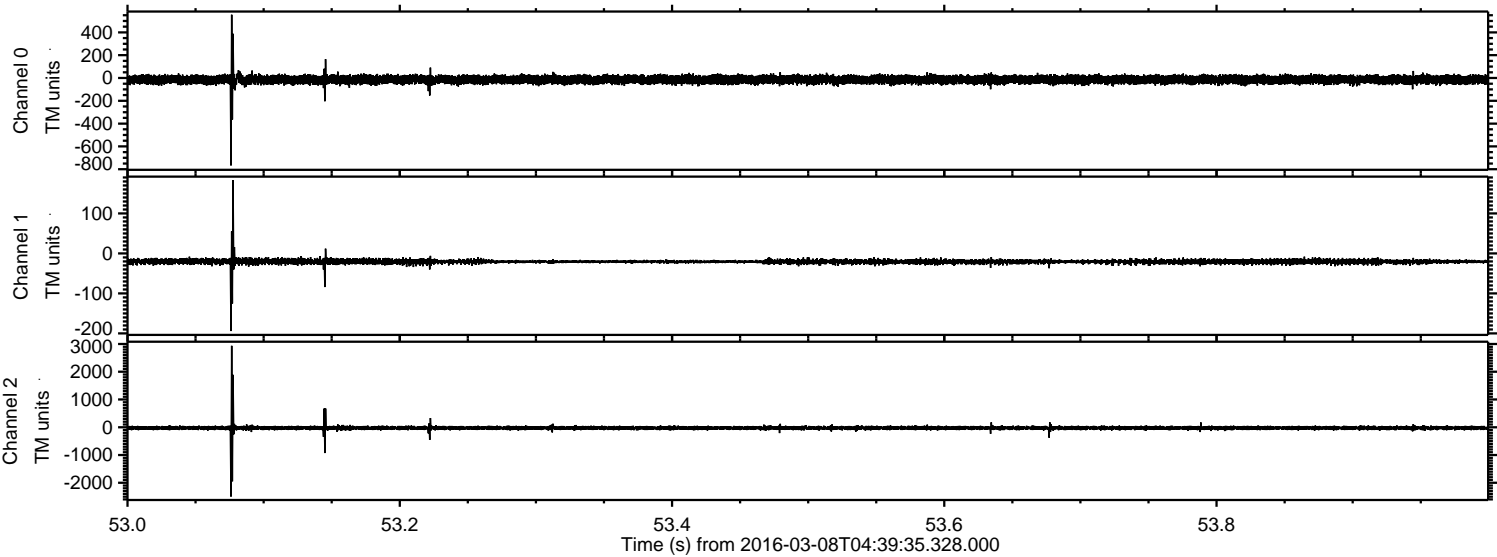


Channel 0
mn: -4910
mx: 3721
 μ : -14.5
 σ : 49.4

Channel 1
mn: -657
mx: 514
 μ : -20.5
 σ : 10.0

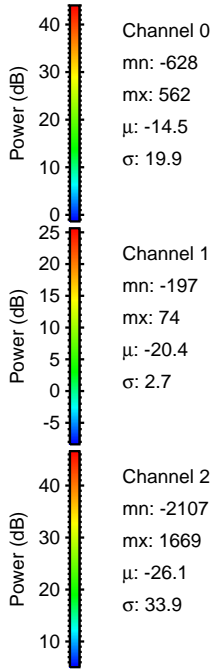
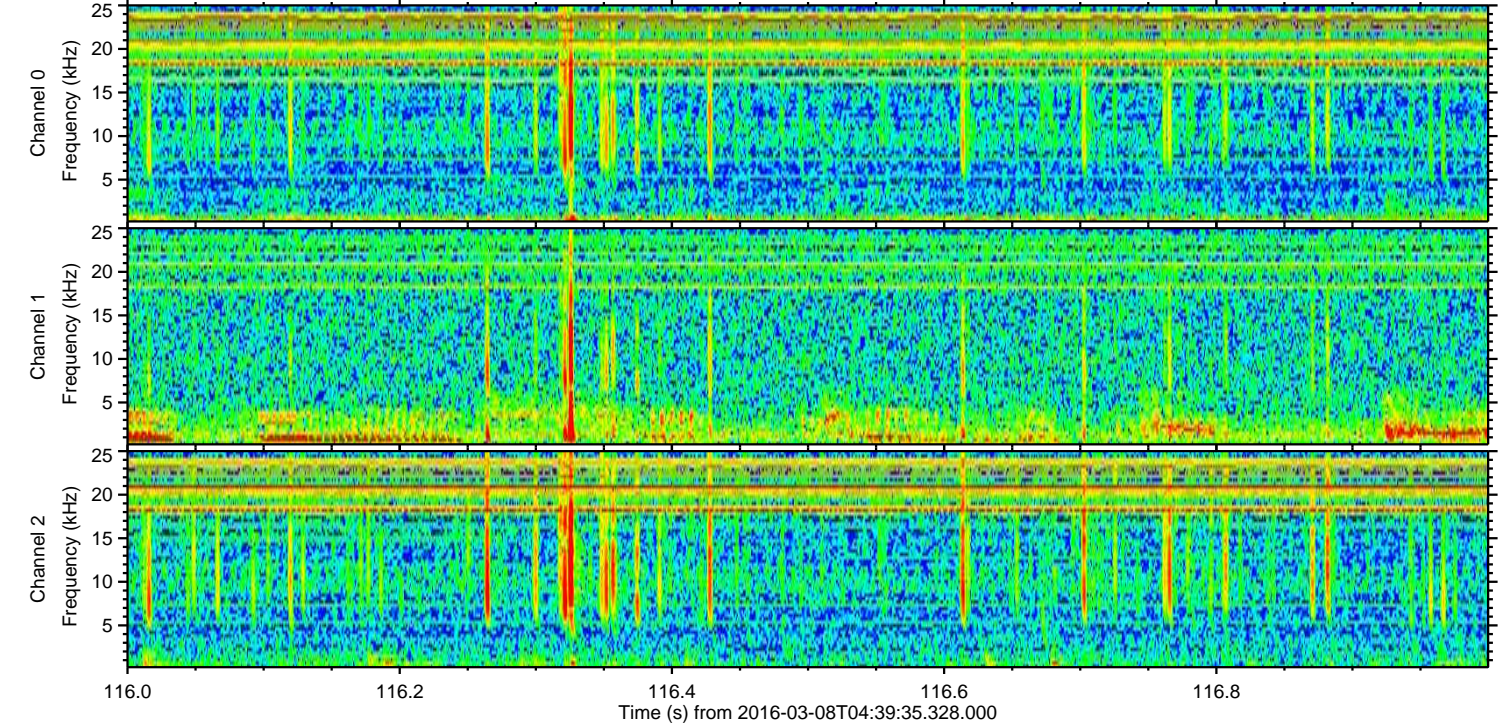
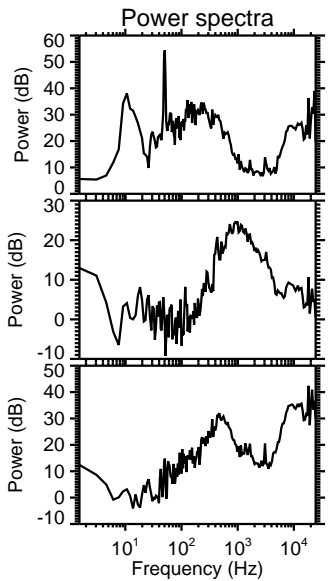
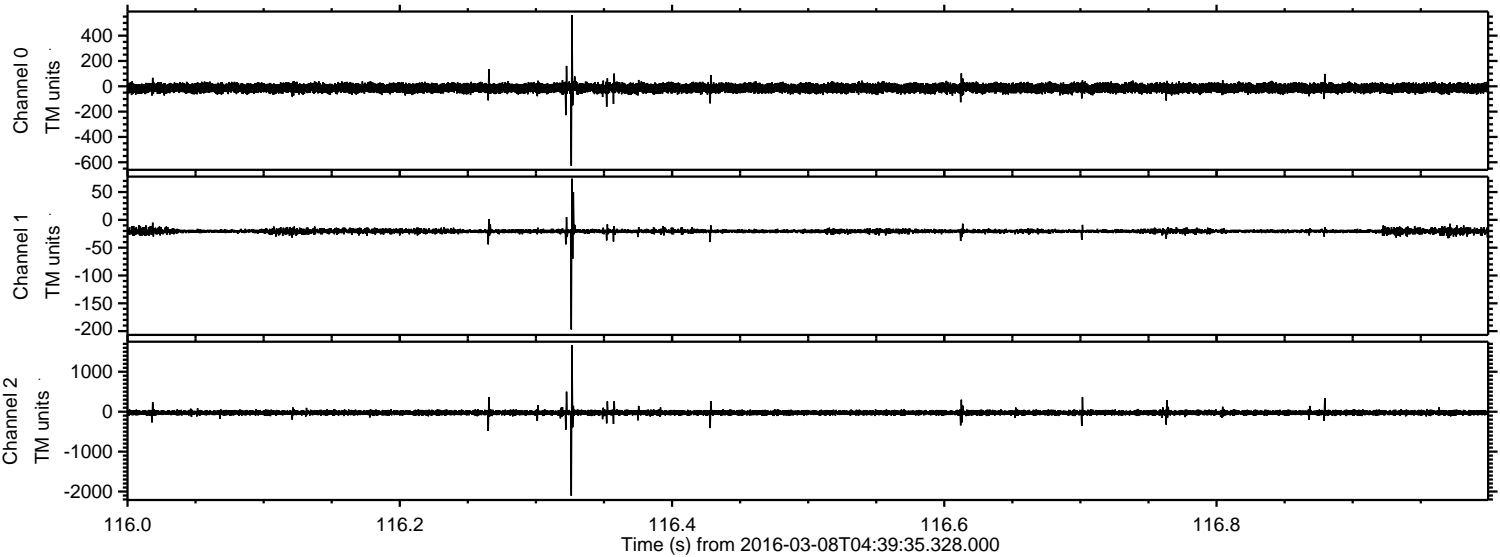
Channel 2
mn: -2181
mx: 1682
 μ : -26.0
 σ : 47.0

Processed Tue Apr 19 01:10:22 2016 by ELM ver.2012-10-06 from 001__elm20160308_043934__dat00.bin



ELMAVAN 3D WAVEFORMS (Measured data sampled at 50 kHz) 51000 packets of 144 samples from 2016-03-08T04:39:35.328.000. Part 117/147

Processed Tue Apr 19 01:10:23 2016 by ELM ver.2012-10-06 from 001__elm20160308_043934__dat00.bin



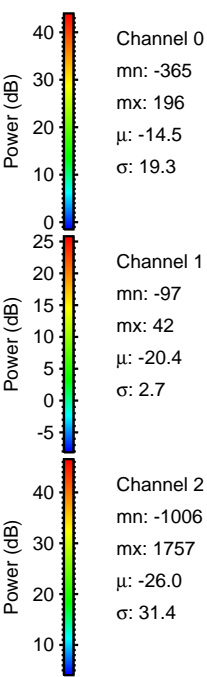
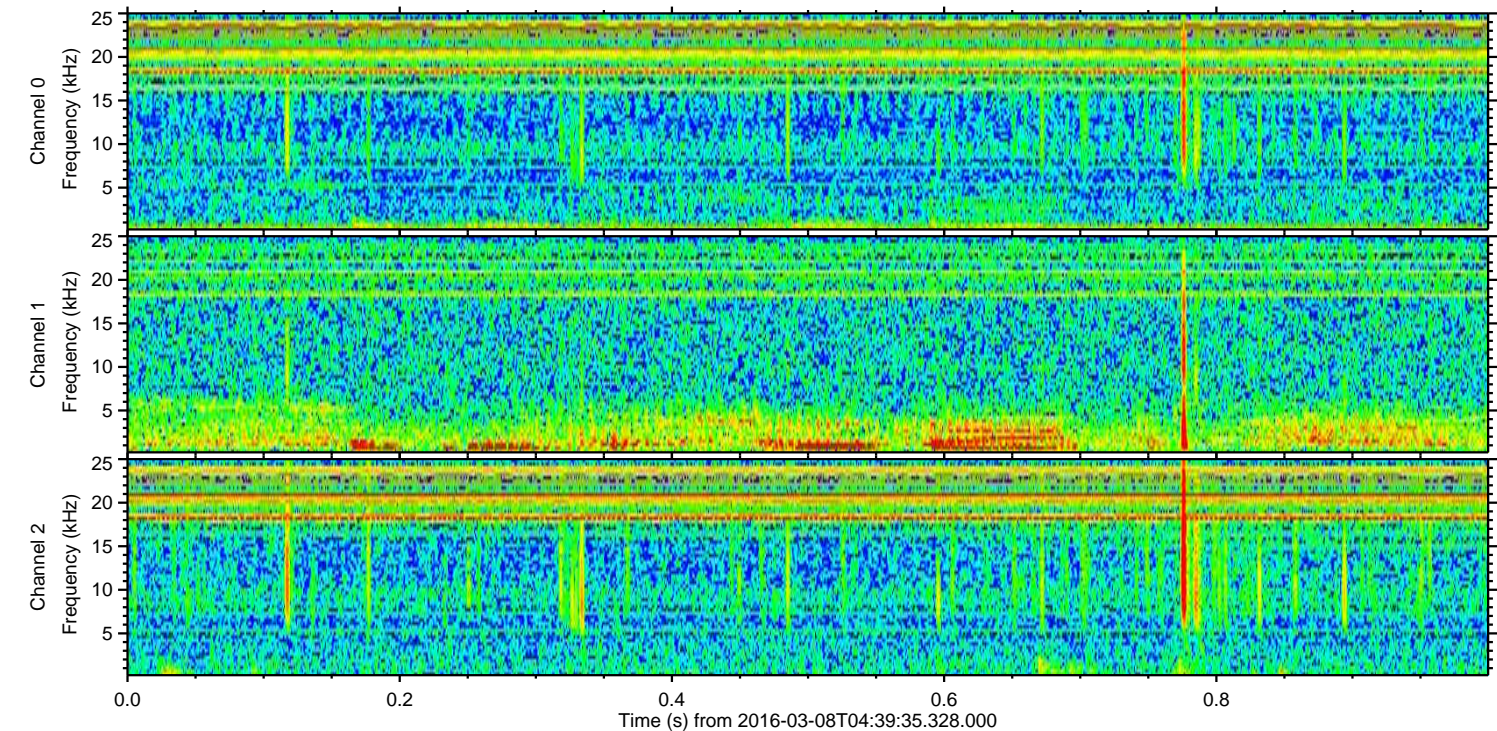
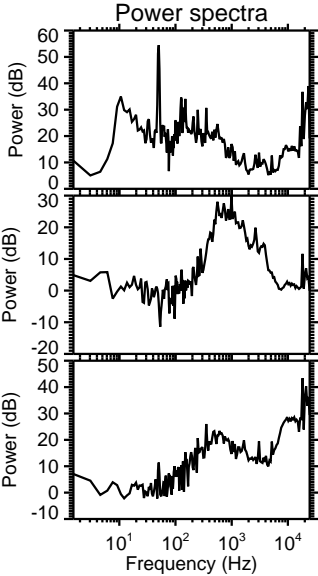
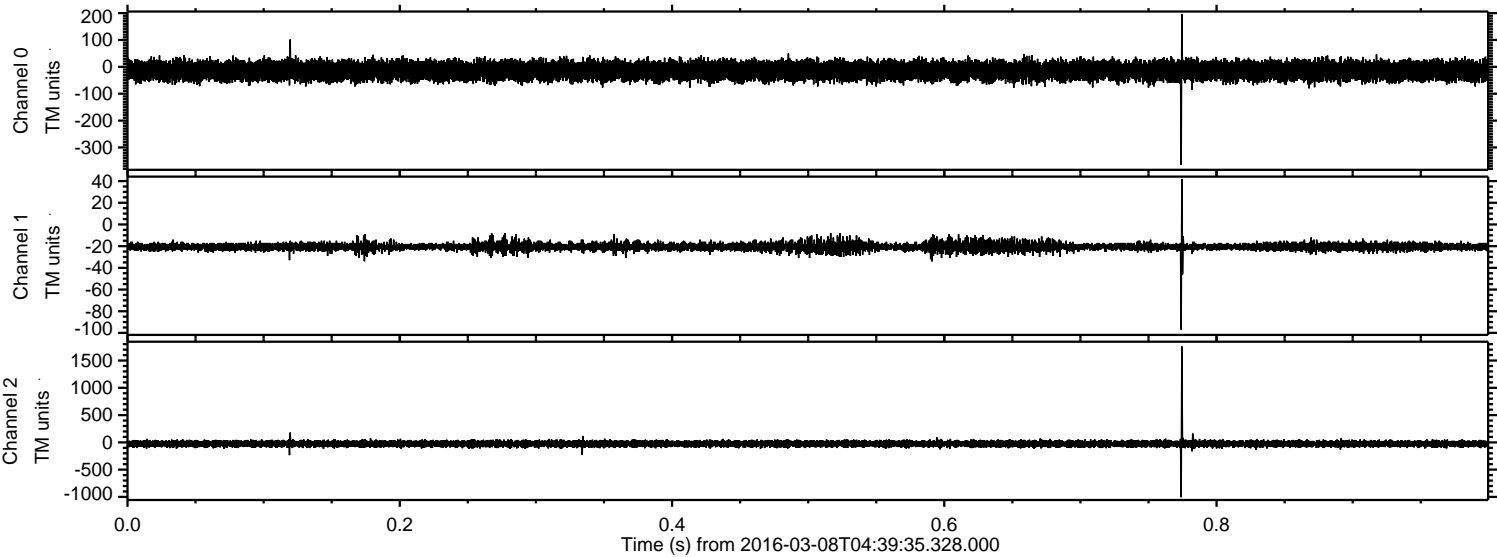
Channel 0
mn: -628
mx: 562
 μ : -14.5
 σ : 19.9

Channel 1
mn: -197
mx: 74
 μ : -20.4
 σ : 2.7

Channel 2
mn: -2107
mx: 1669
 μ : -26.1
 σ : 33.9

ELMAVAN 3D WAVEFORMS (Measured data sampled at 50 kHz) 51000 packets of 144 samples from 2016-03-08T04:39:35.328.000. Part 1/147

Processed Tue Apr 19 01:10:24 2016 by ELM ver.2012-10-06 from 001__elm20160308_043934__dat00.bin



Power spectra

Channel 0

mn: -365
mx: 196
 μ : -14.5
 σ : 19.3

Channel 1

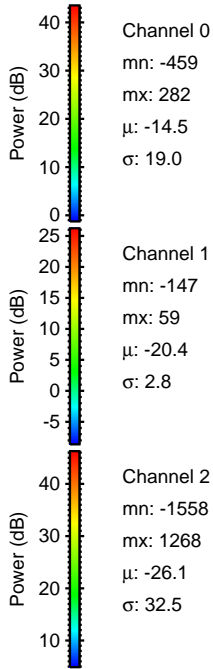
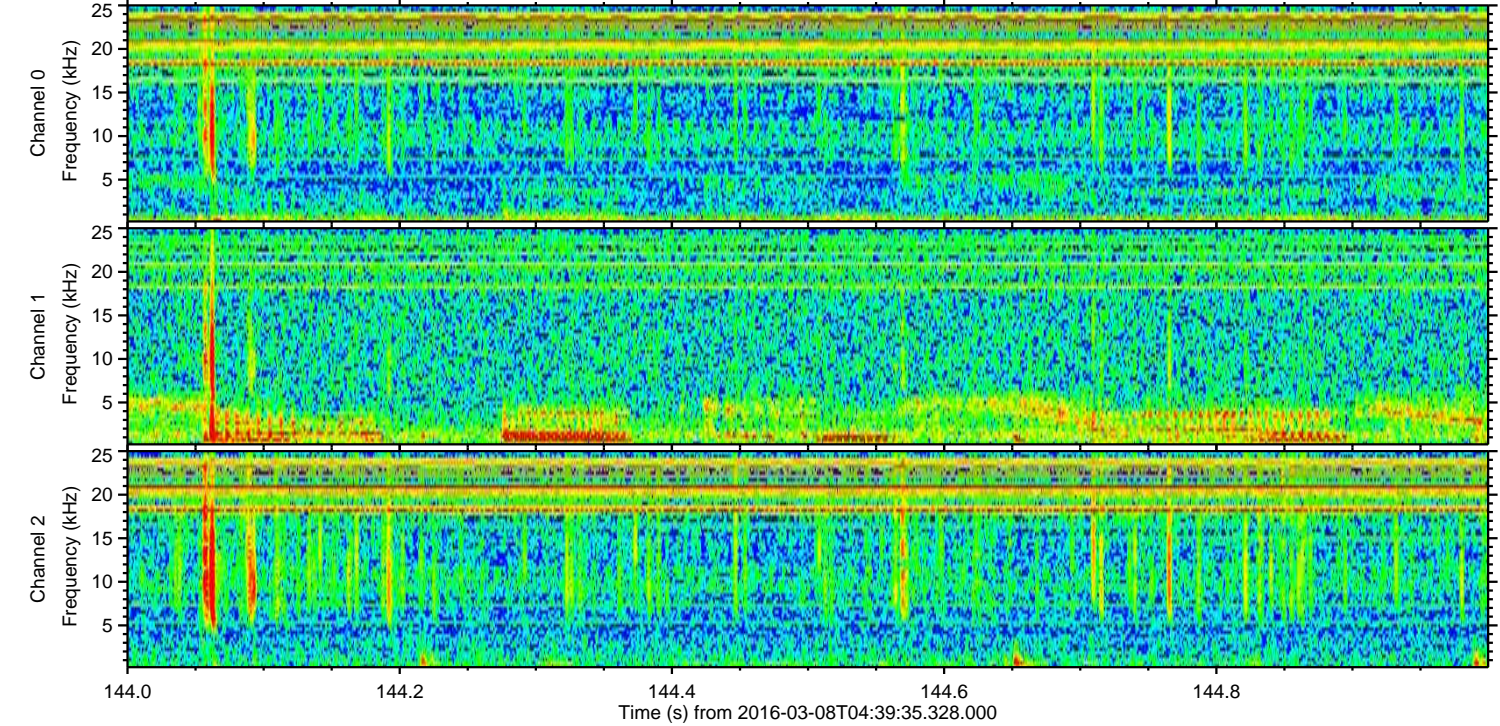
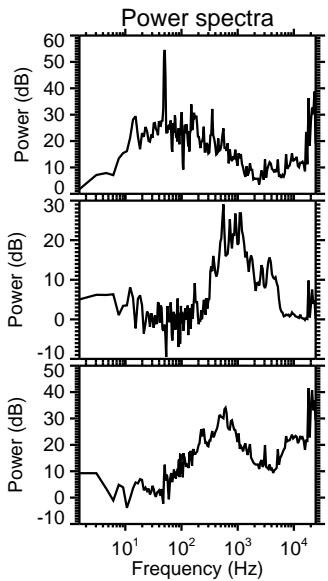
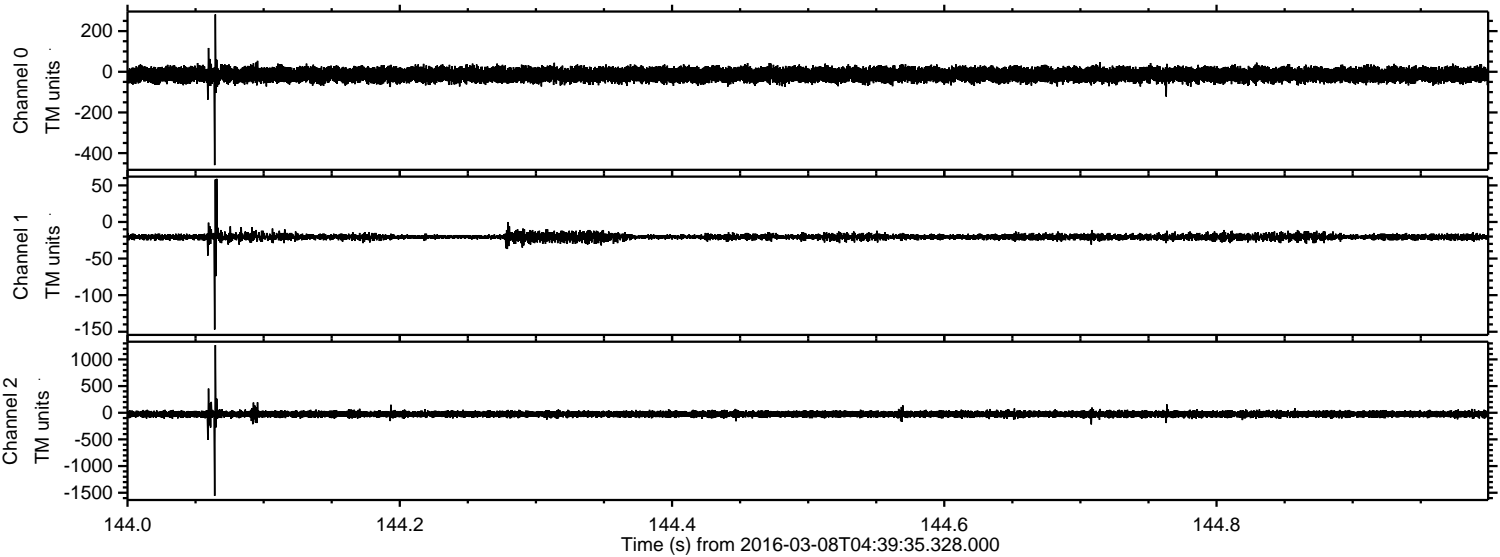
mn: -97
mx: 42
 μ : -20.4
 σ : 2.7

Channel 2

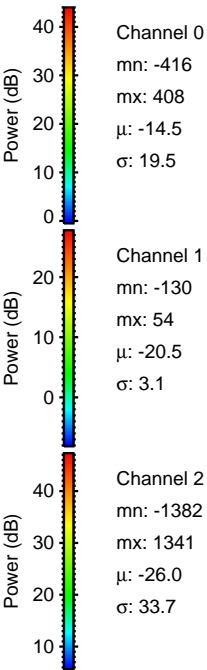
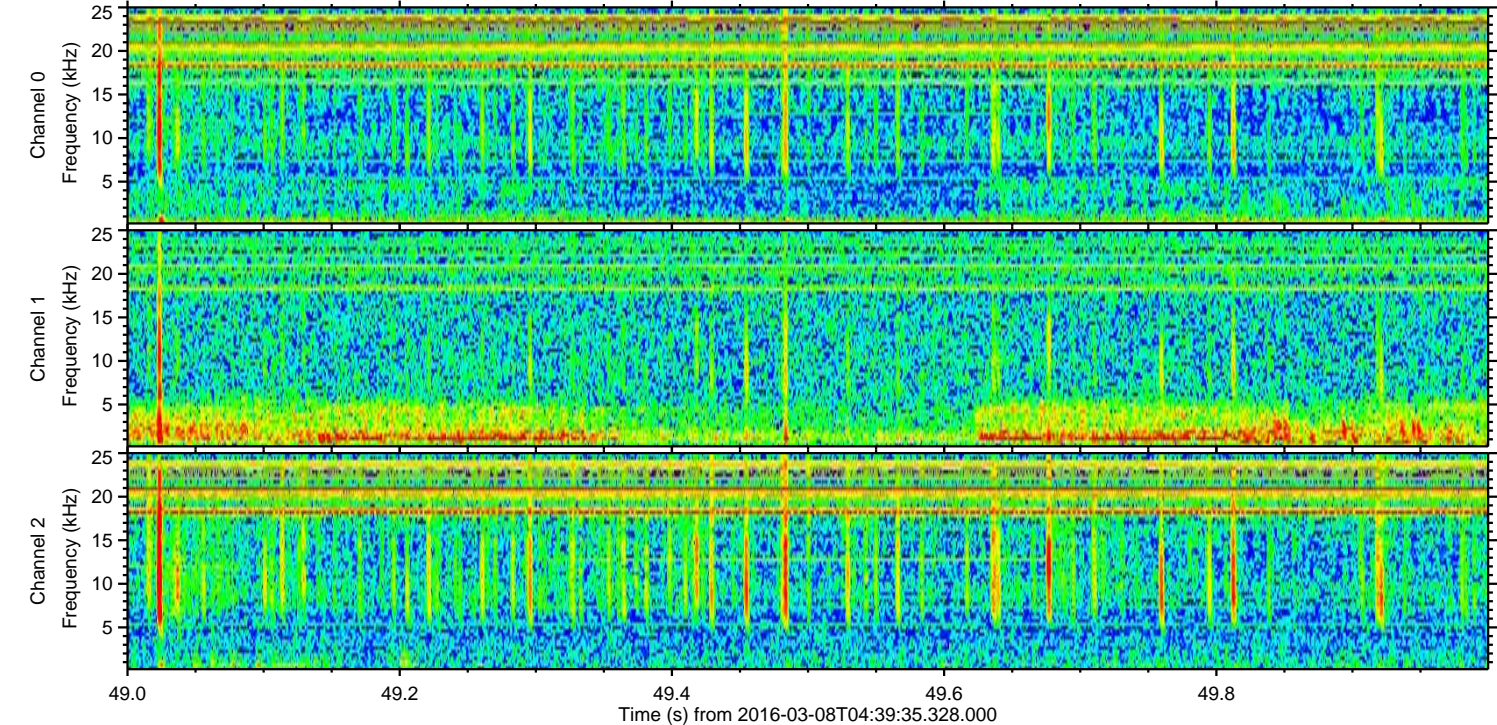
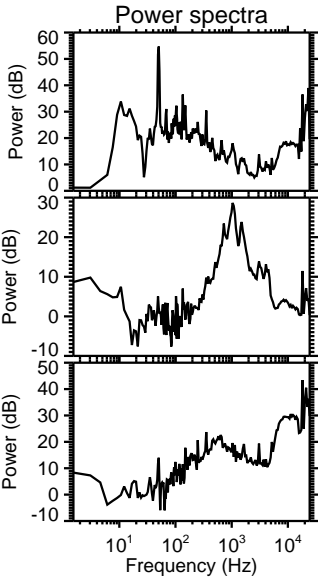
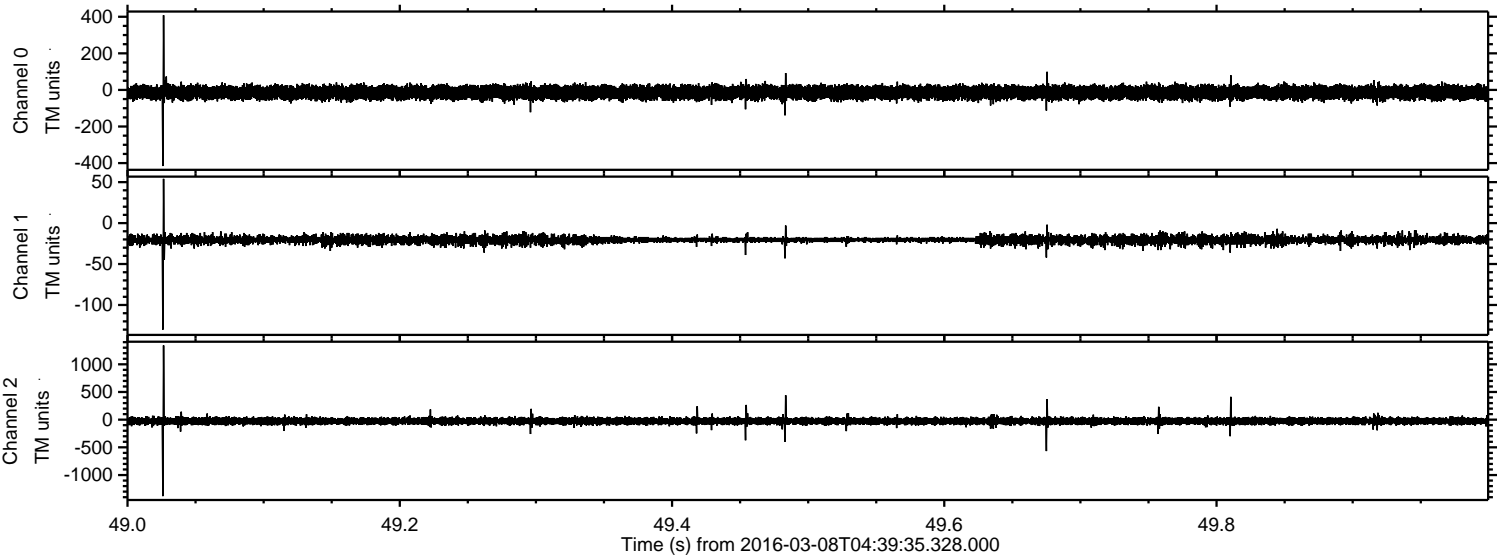
mn: -1006
mx: 1757
 μ : -26.0
 σ : 31.4

ELMAVAN 3D WAVEFORMS (Measured data sampled at 50 kHz) 51000 packets of 144 samples from 2016-03-08T04:39:35.328.000. Part 145/147

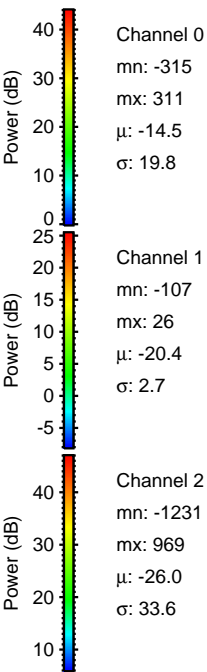
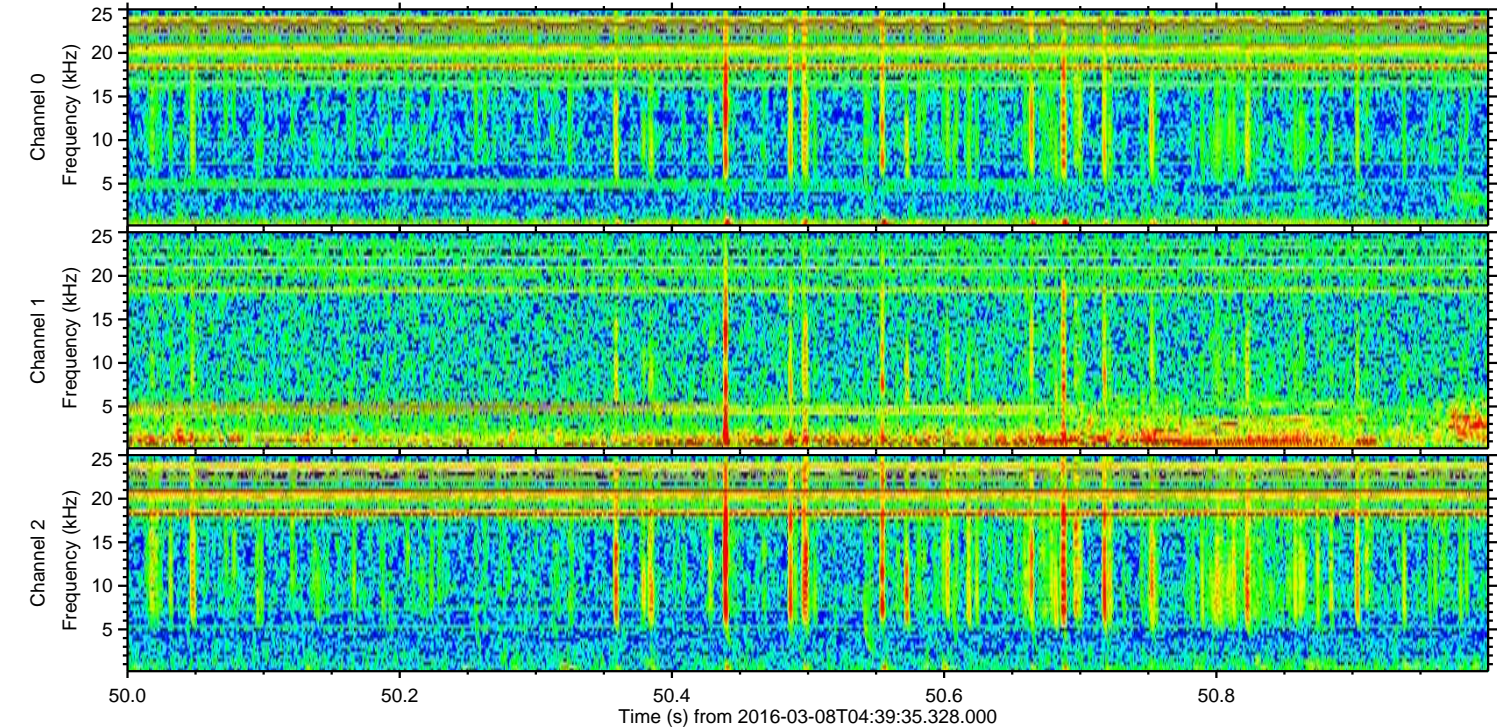
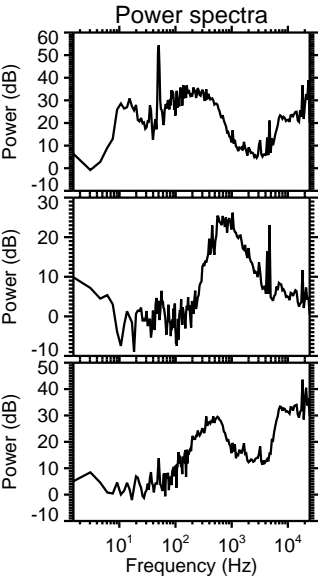
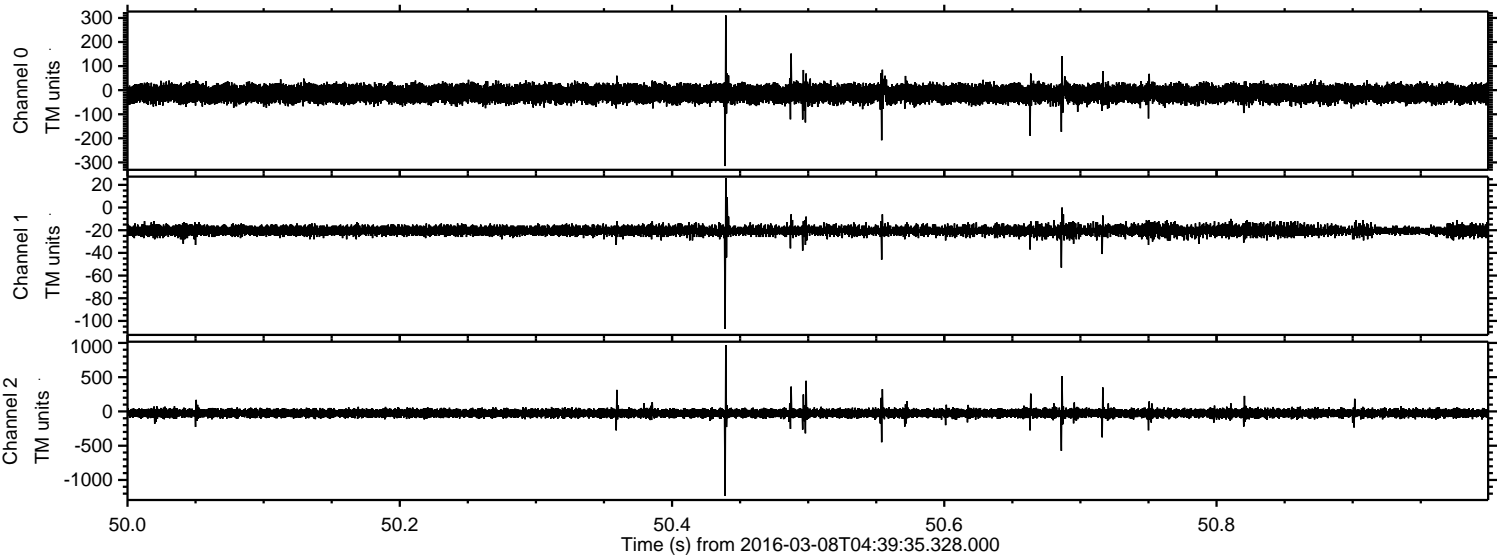
Processed Tue Apr 19 01:10:24 2016 by ELM ver.2012-10-06 from 001__elm20160308_043934__dat00.bin



Processed Tue Apr 19 01:10:25 2016 by ELM ver.2012-10-06 from 001__elm20160308_043934__dat00.bin

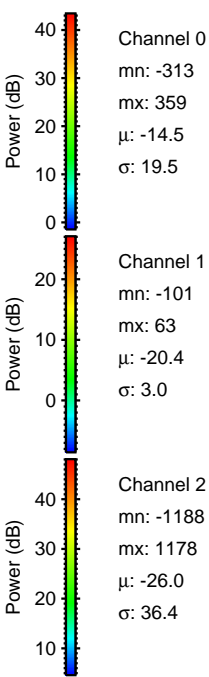
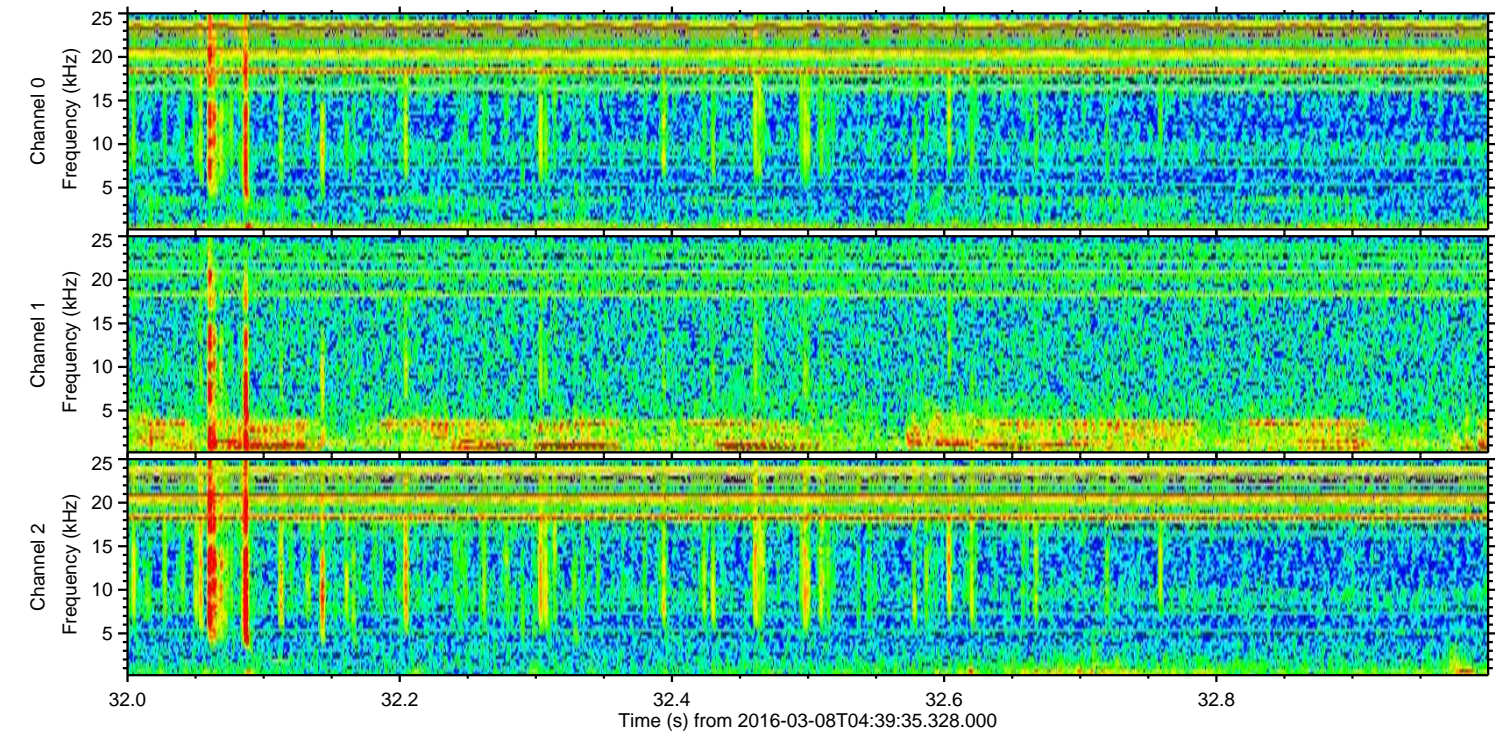
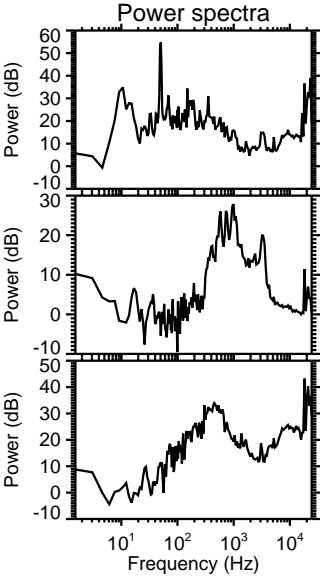
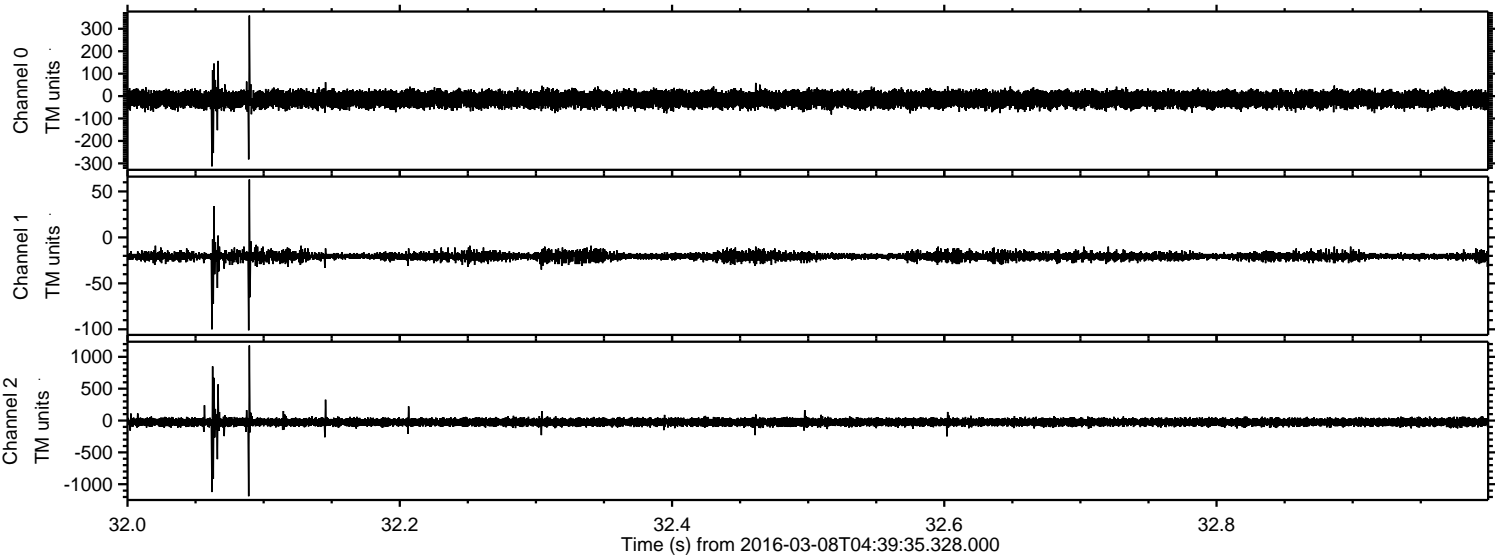


Processed Tue Apr 19 01:10:26 2016 by ELM ver.2012-10-06 from 001__elm20160308_043934__dat00.bin



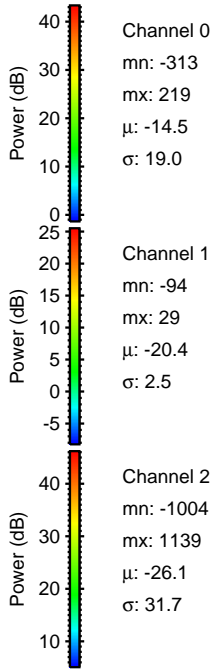
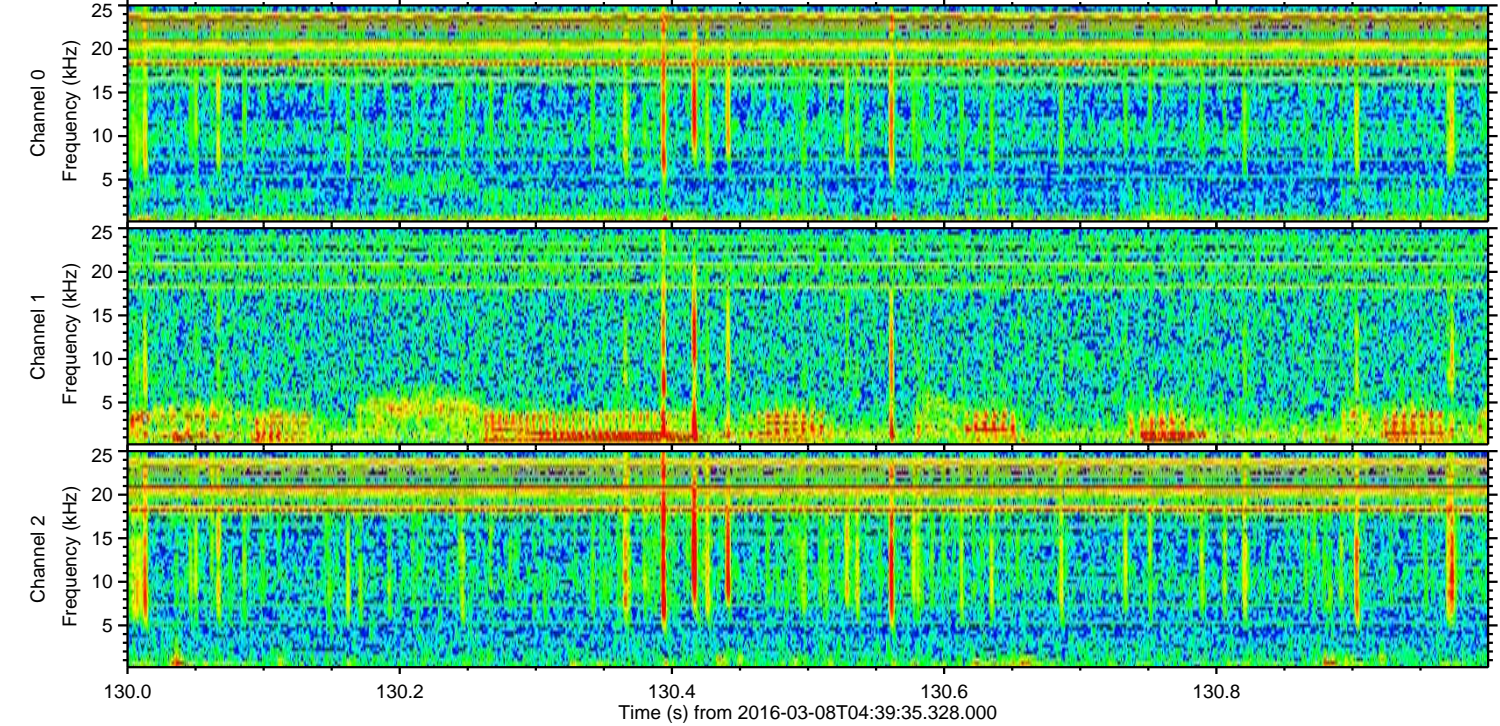
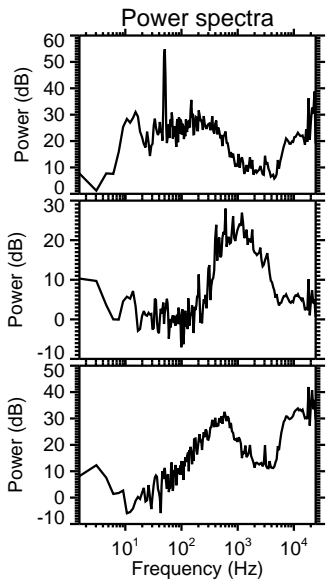
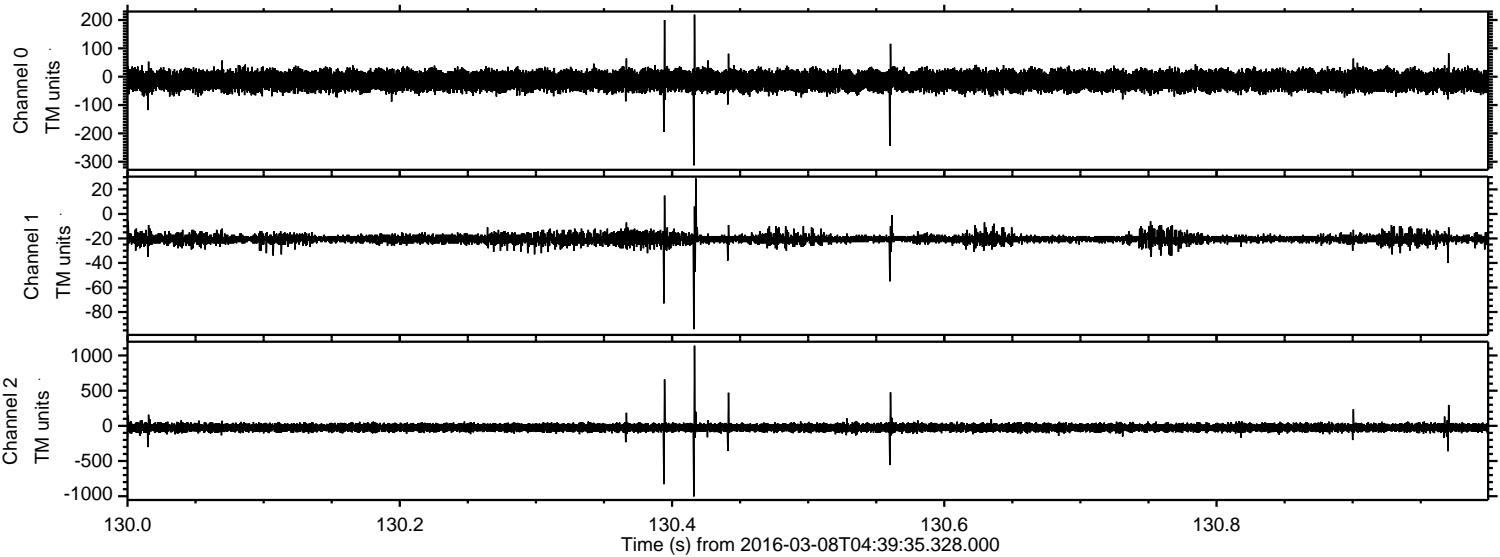
ELMAVAN 3D WAVEFORMS (Measured data sampled at 50 kHz) 51000 packets of 144 samples from 2016-03-08T04:39:35.328.000. Part 33/147

Processed Tue Apr 19 01:10:27 2016 by ELM ver.2012-10-06 from 001__elm20160308_043934__dat00.bin



ELMAVAN 3D WAVEFORMS (Measured data sampled at 50 kHz) 51000 packets of 144 samples from 2016-03-08T04:39:35.328.000. Part 131/147

Processed Tue Apr 19 01:10:28 2016 by ELM ver.2012-10-06 from 001__elm20160308_043934__dat00.bin



Processed Tue Apr 19 01:10:29 2016 by ELM ver.2012-10-06 from 001__elm20160308_043934__dat00.bin

