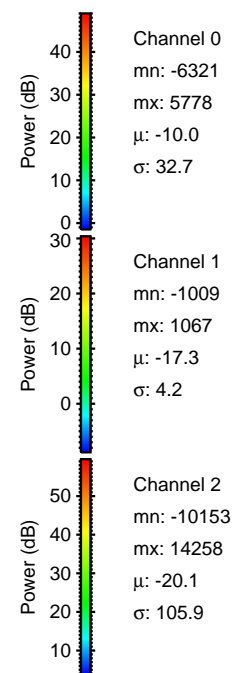
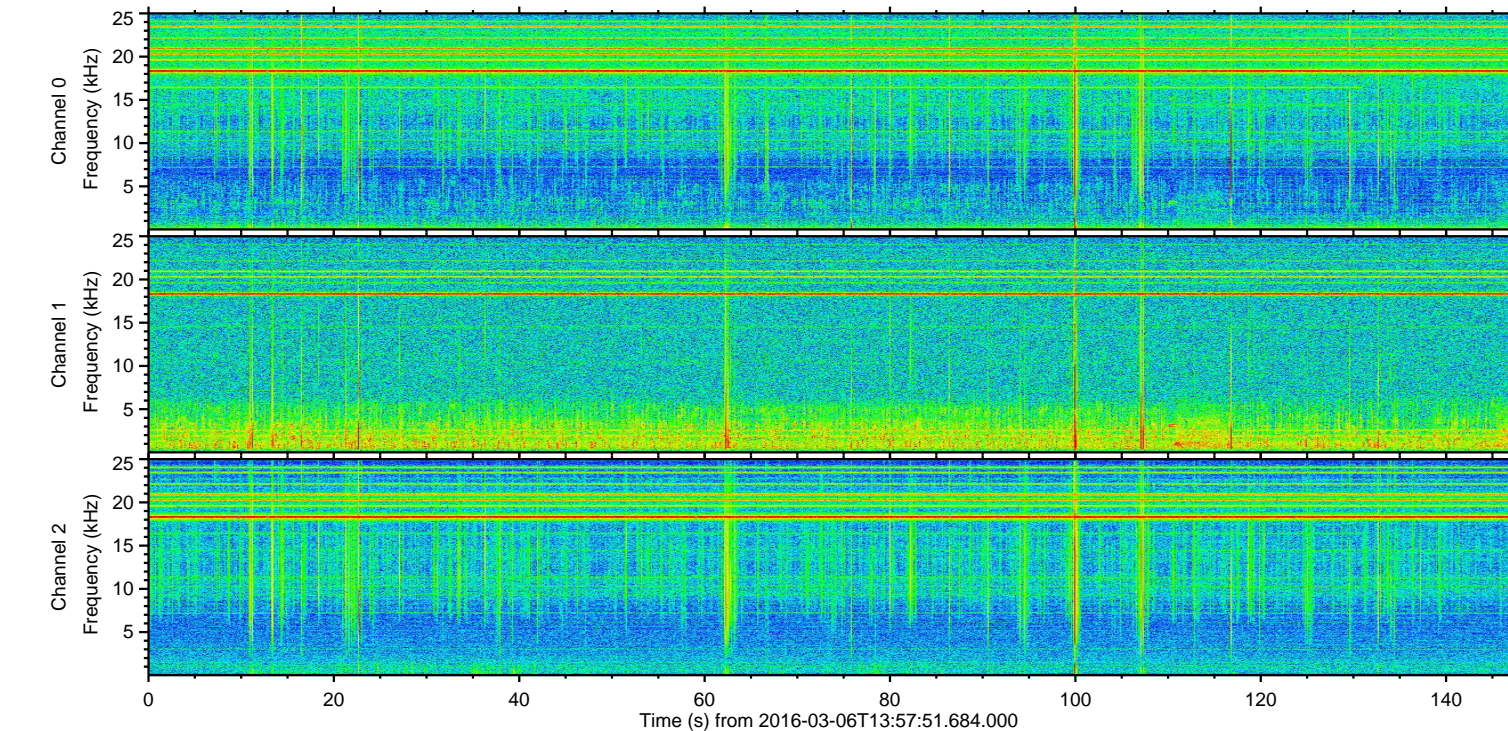
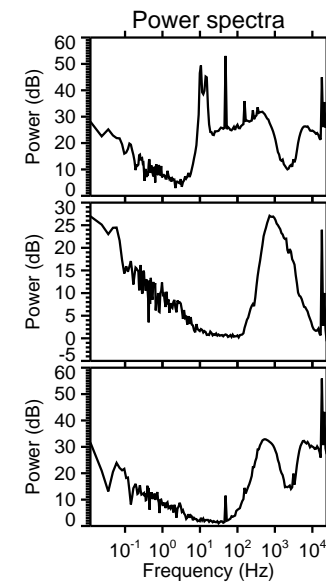
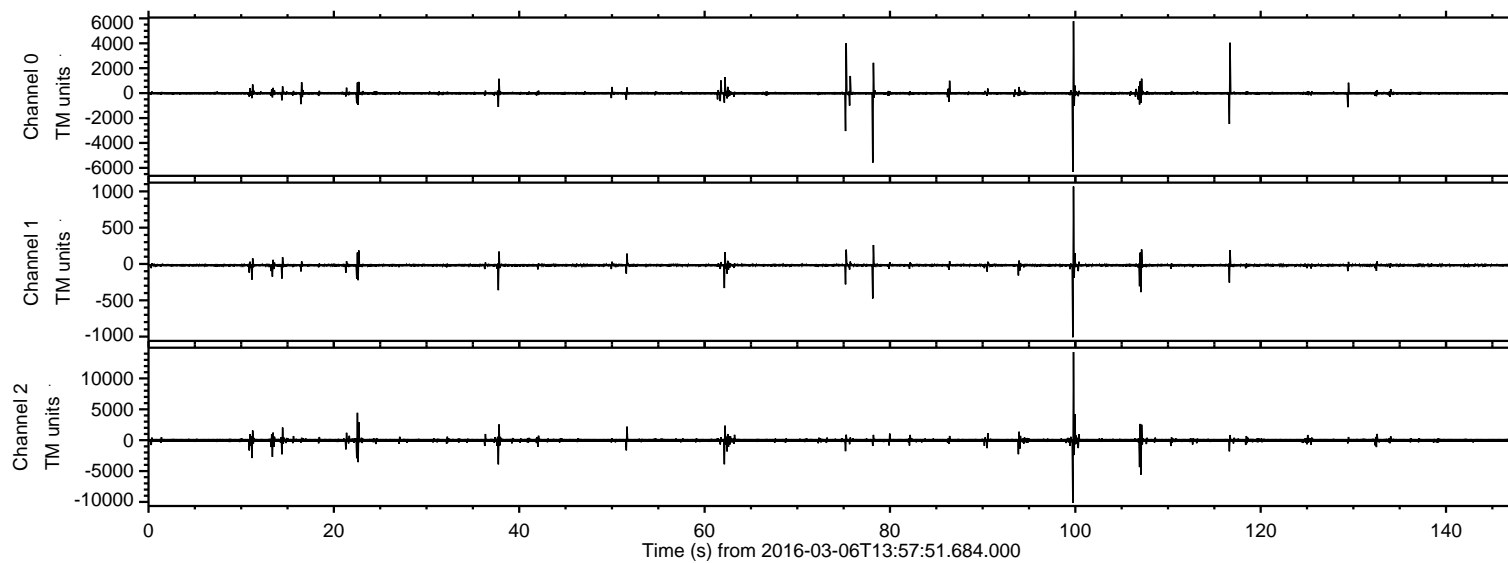


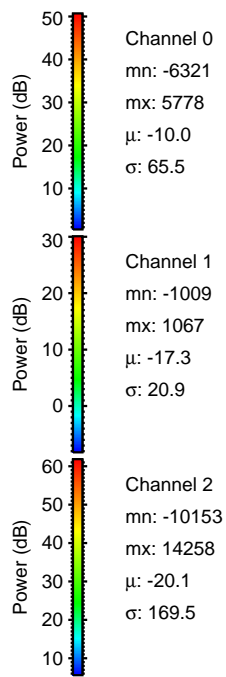
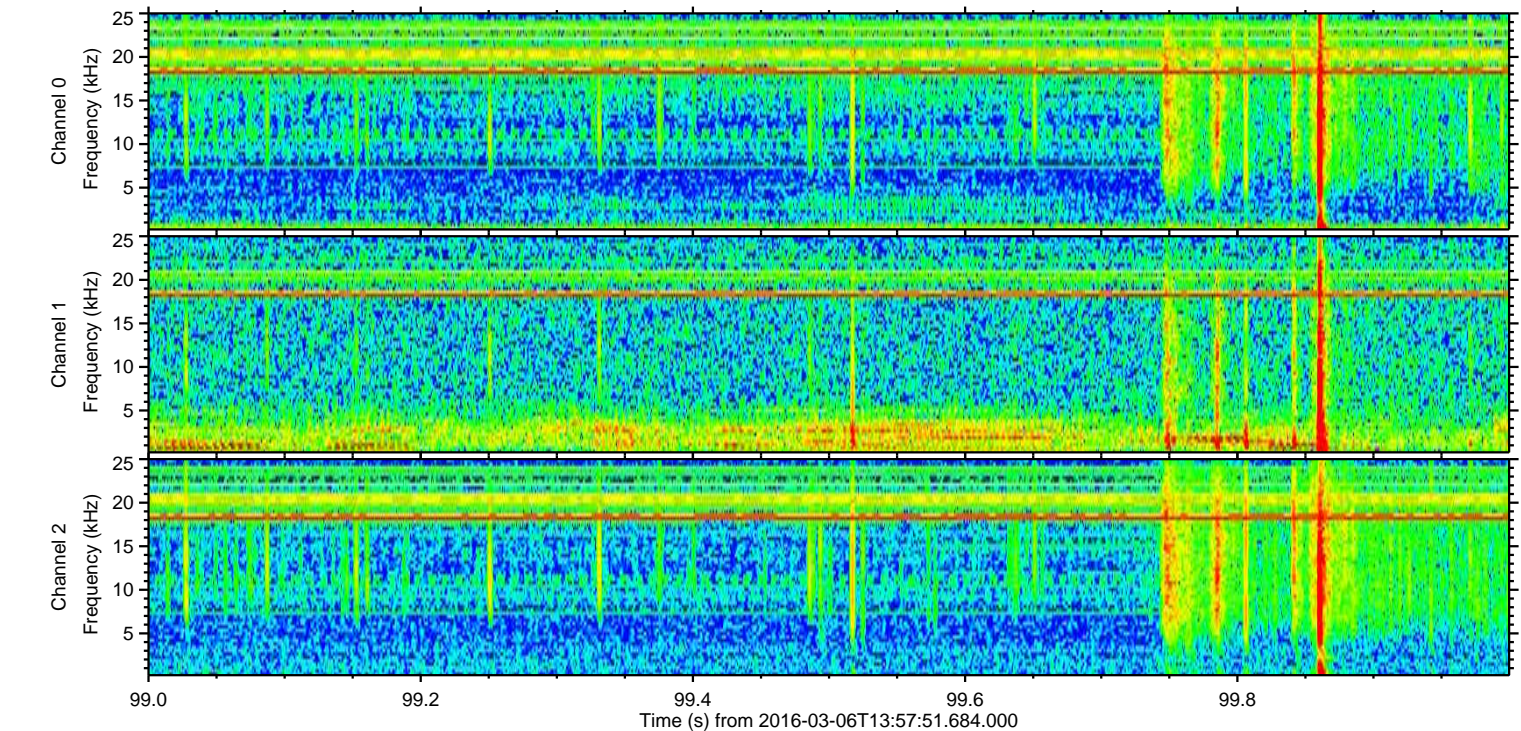
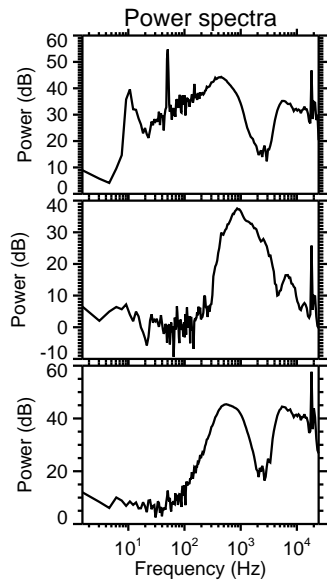
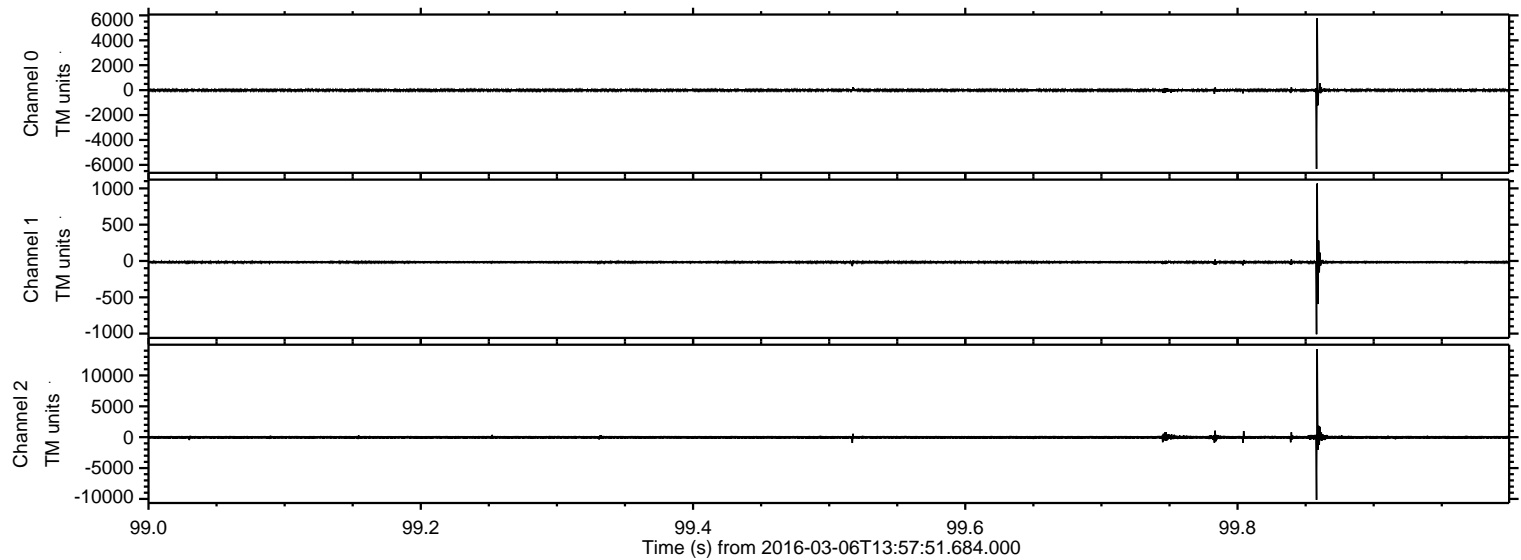
ELMAVAN 3D WAVEFORMS (Measured data sampled at 50 kHz) 51000 packets of 144 samples from 2016-03-06T13:57:51.684.000.

Processed Mon Apr 18 17:17:40 2016 by ELM ver.2012-10-06 from 001__elm20160306_135750__dat00.bin

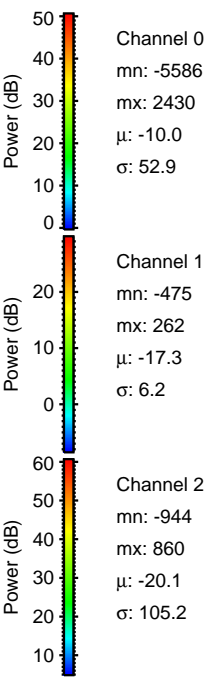
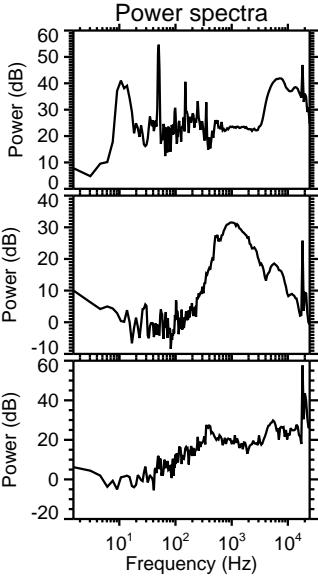
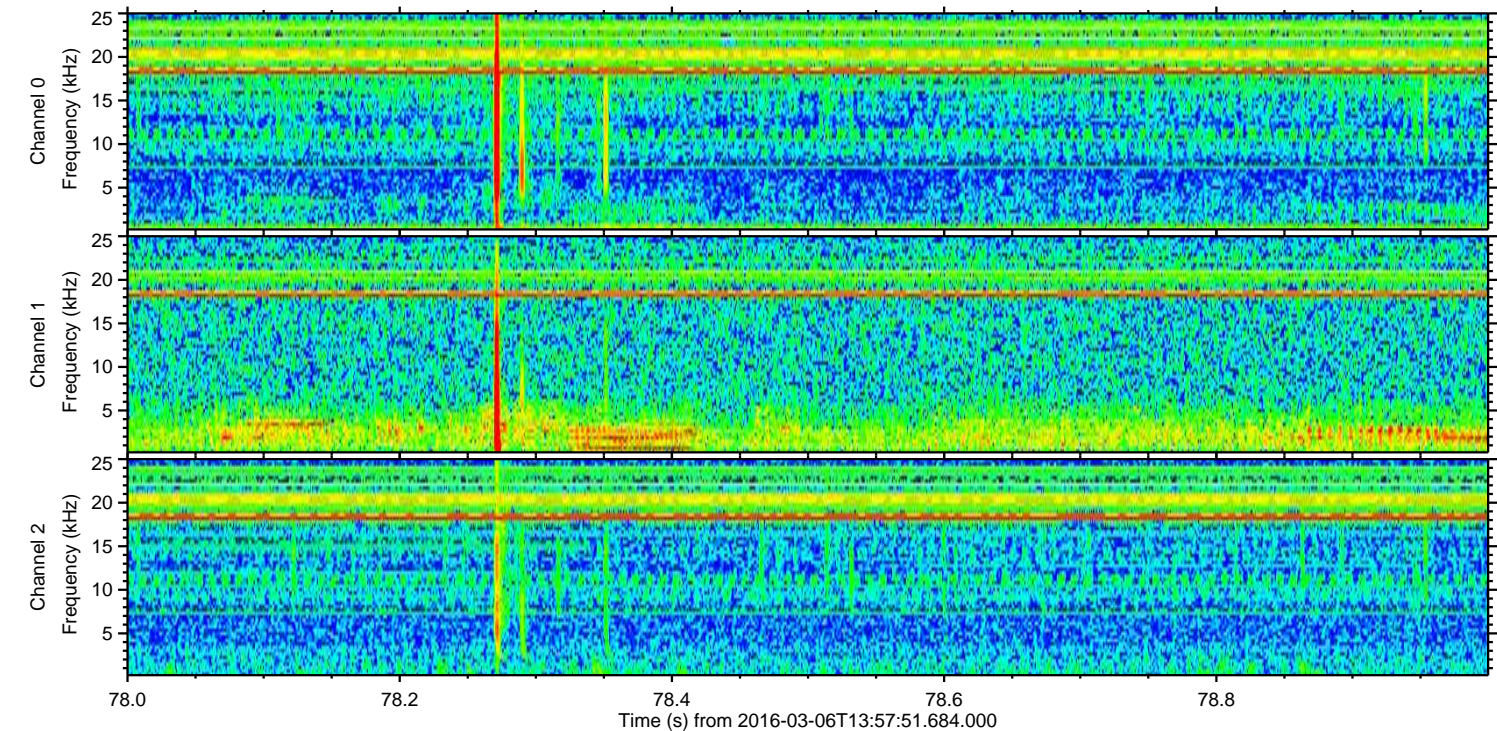
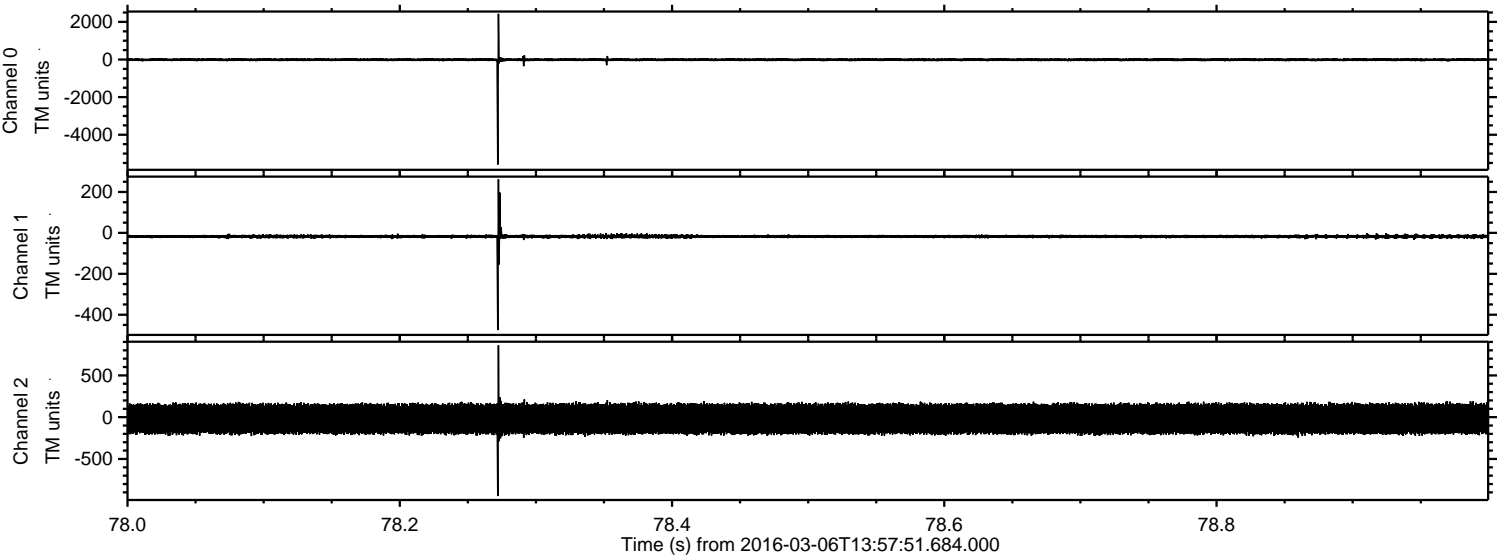


ELMAVAN 3D WAVEFORMS (Measured data sampled at 50 kHz) 51000 packets of 144 samples from 2016-03-06T13:57:51.684.000. Part 100/147

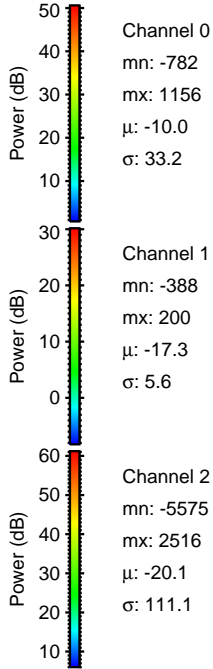
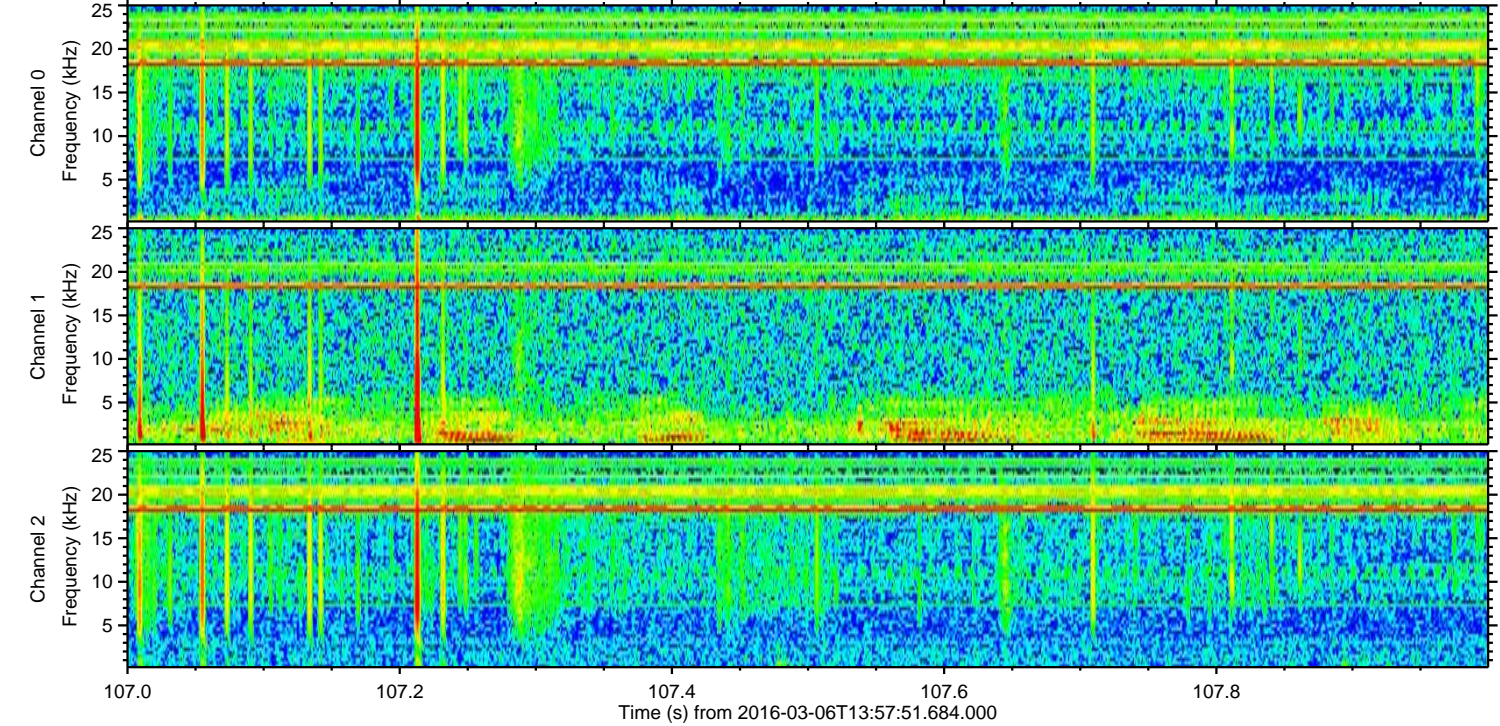
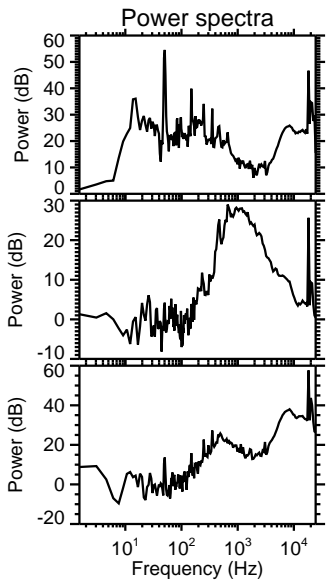
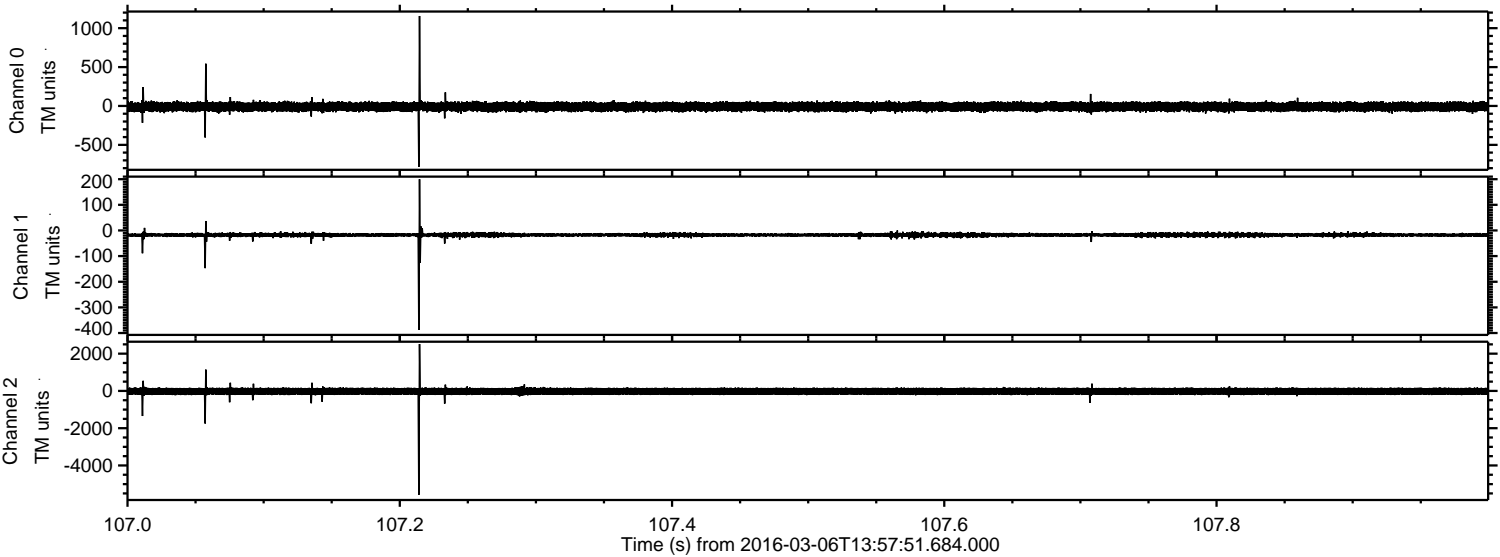
Processed Mon Apr 18 17:17:52 2016 by ELM ver.2012-10-06 from 001__elm20160306_135750__dat00.bin



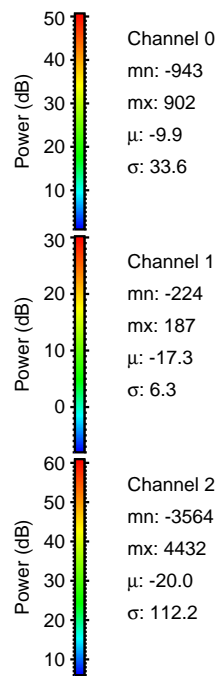
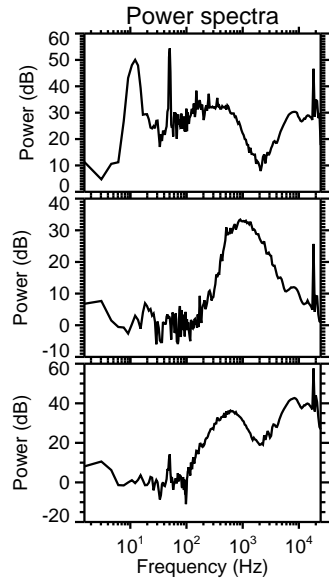
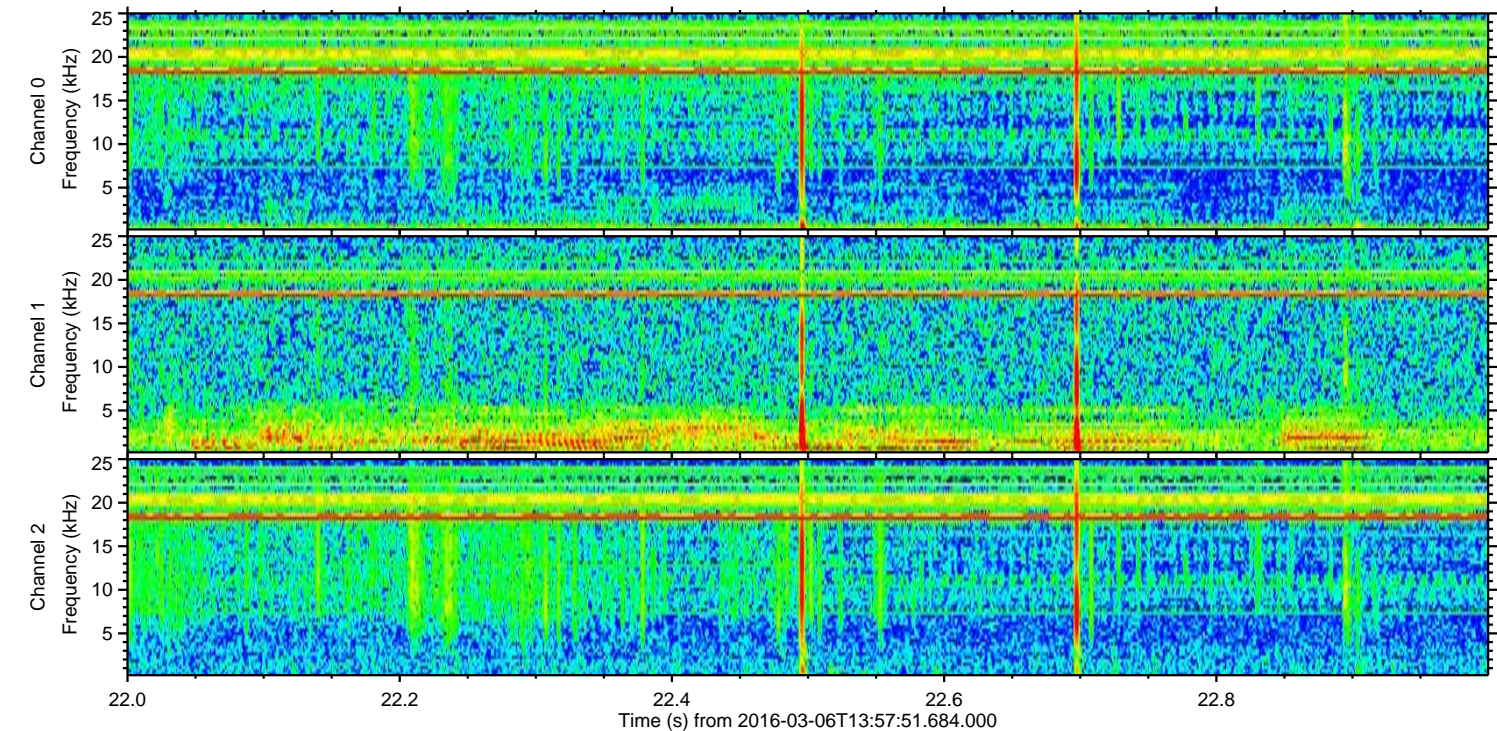
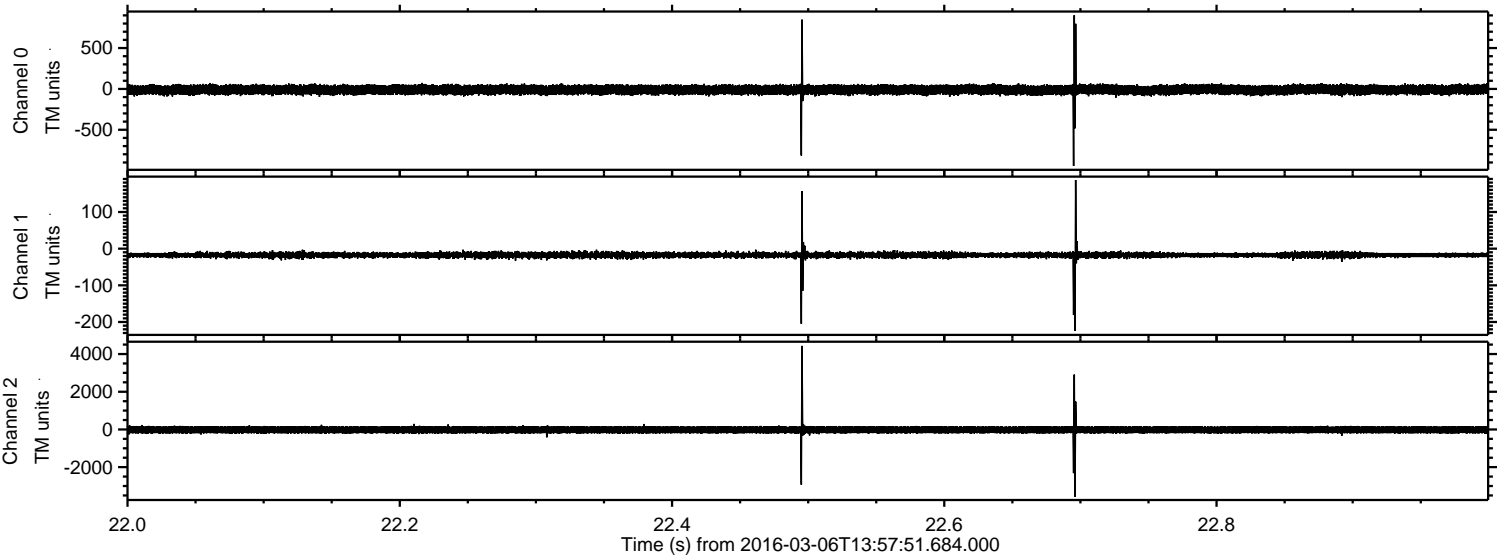
Processed Mon Apr 18 17:17:52 2016 by ELM ver.2012-10-06 from 001__elm20160306_135750__dat00.bin



Processed Mon Apr 18 17:17:53 2016 by ELM ver.2012-10-06 from 001__elm20160306_135750__dat00.bin

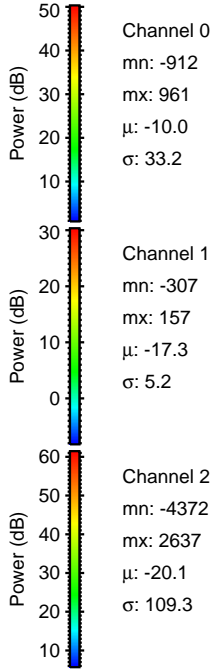
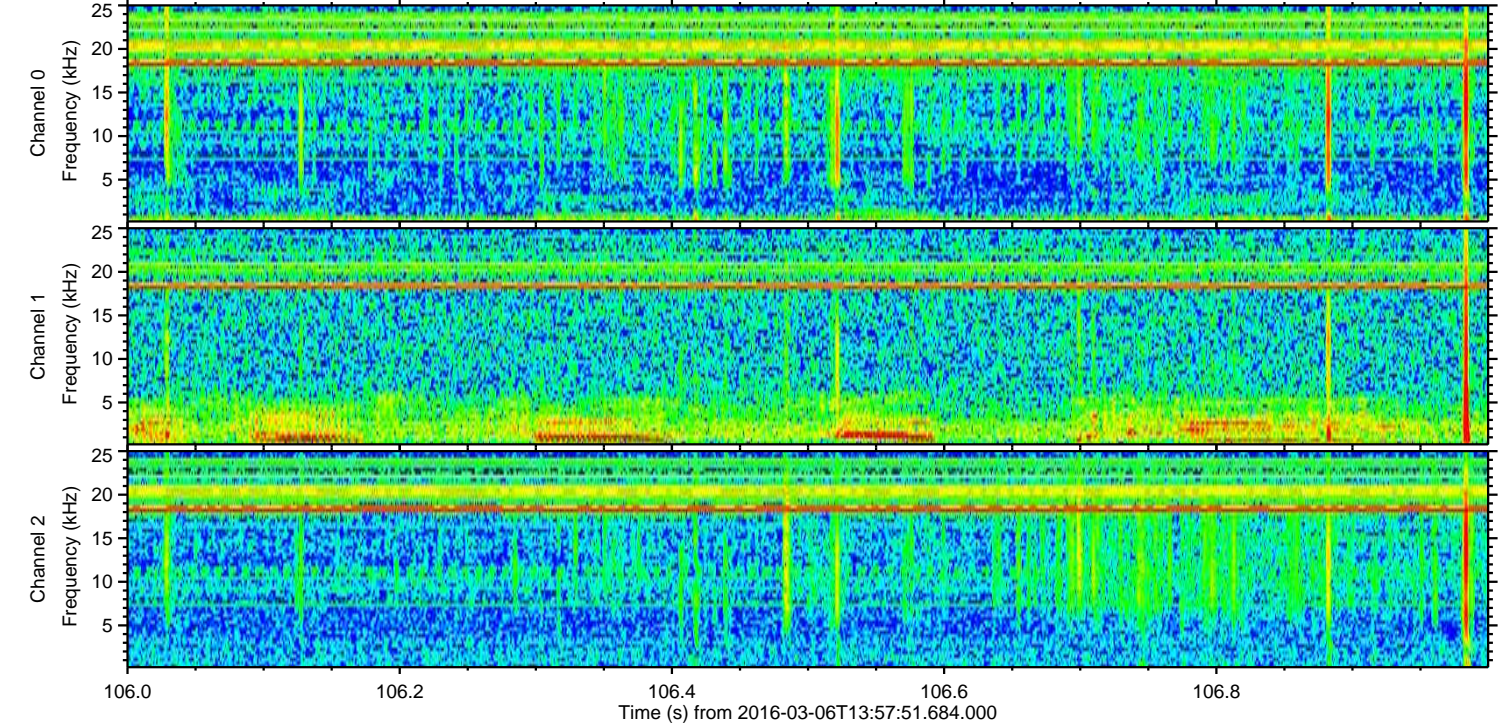
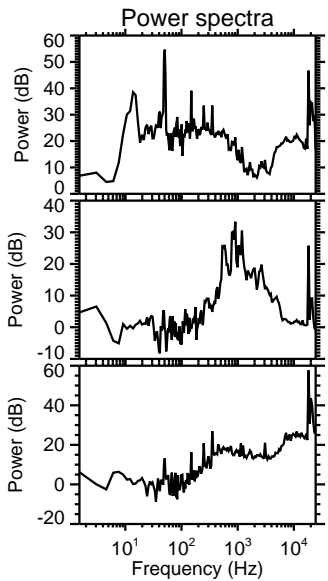
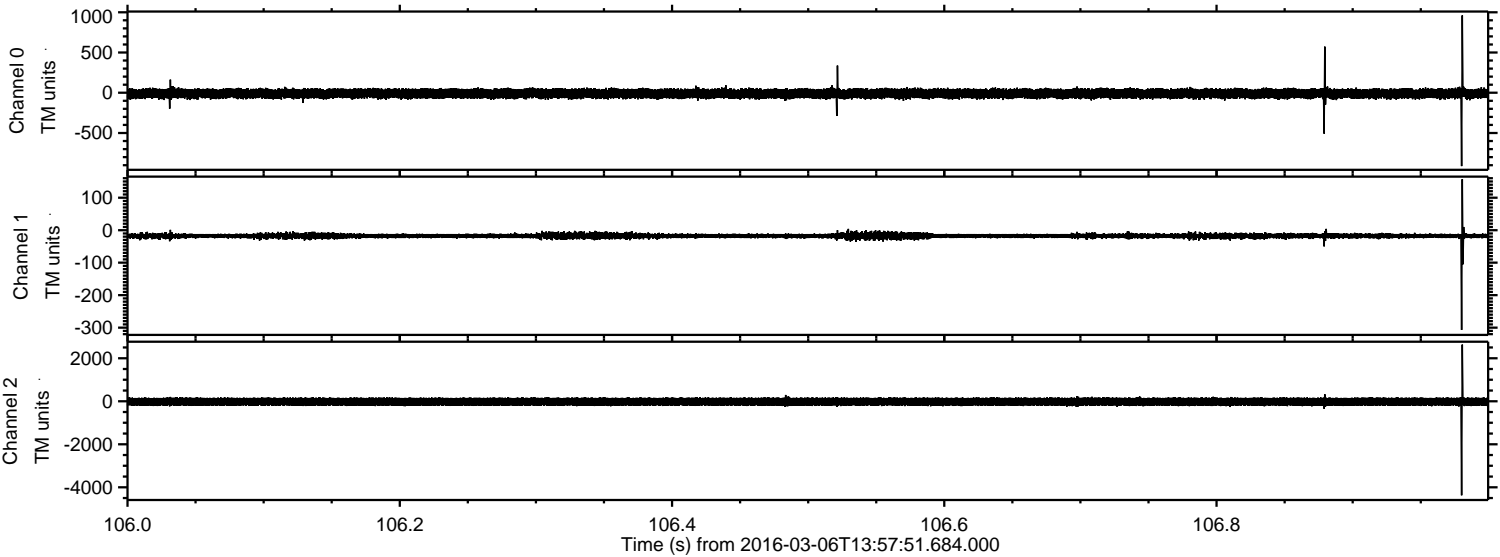


Processed Mon Apr 18 17:17:54 2016 by ELM ver.2012-10-06 from 001__elm20160306_135750__dat00.bin



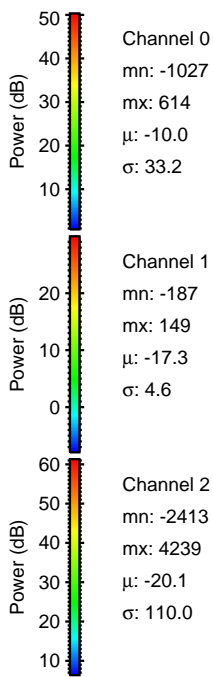
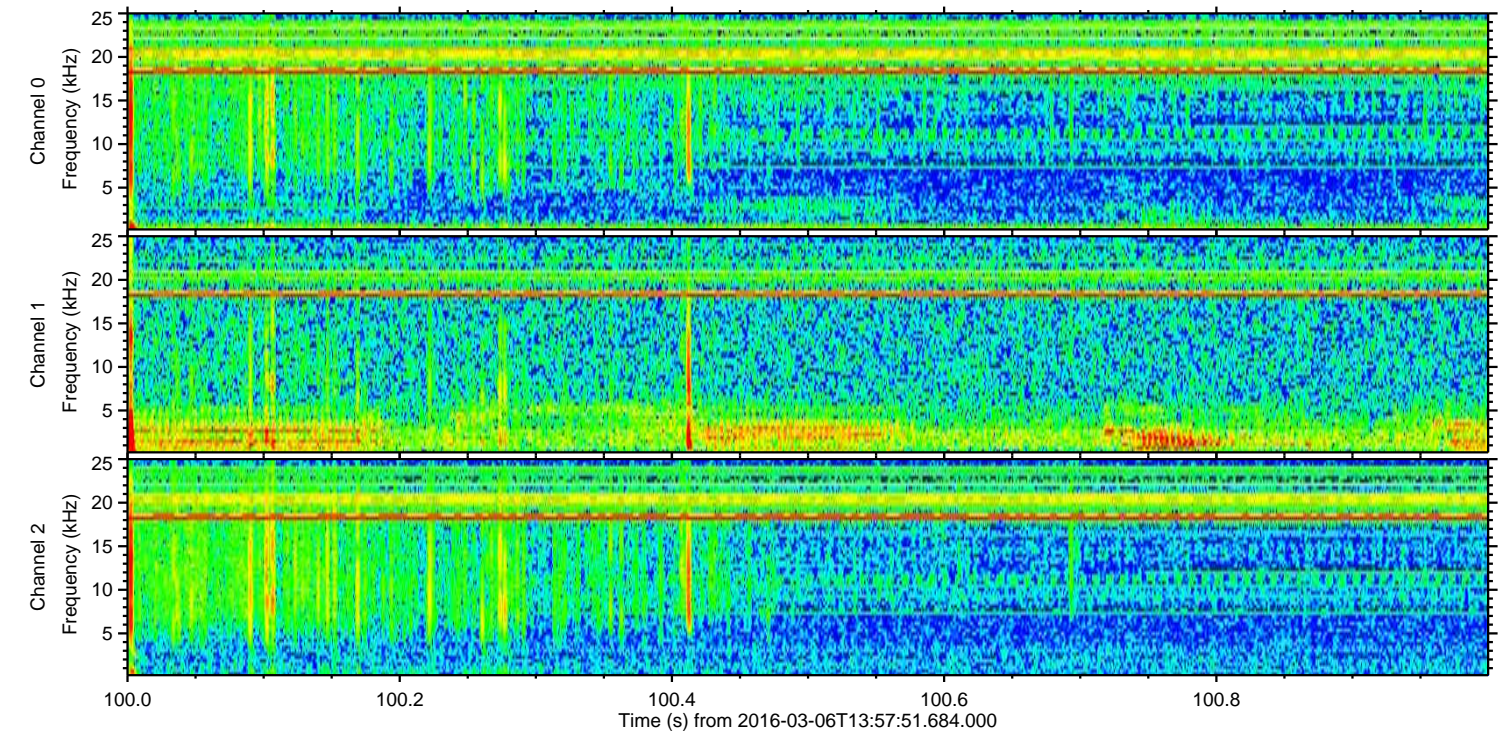
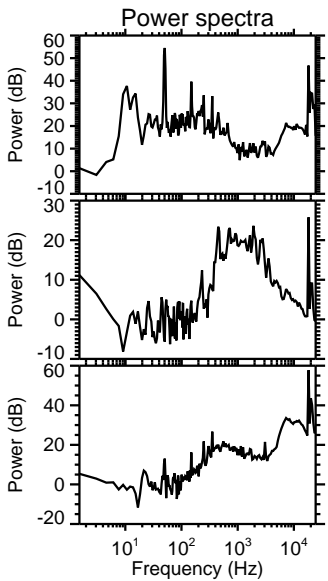
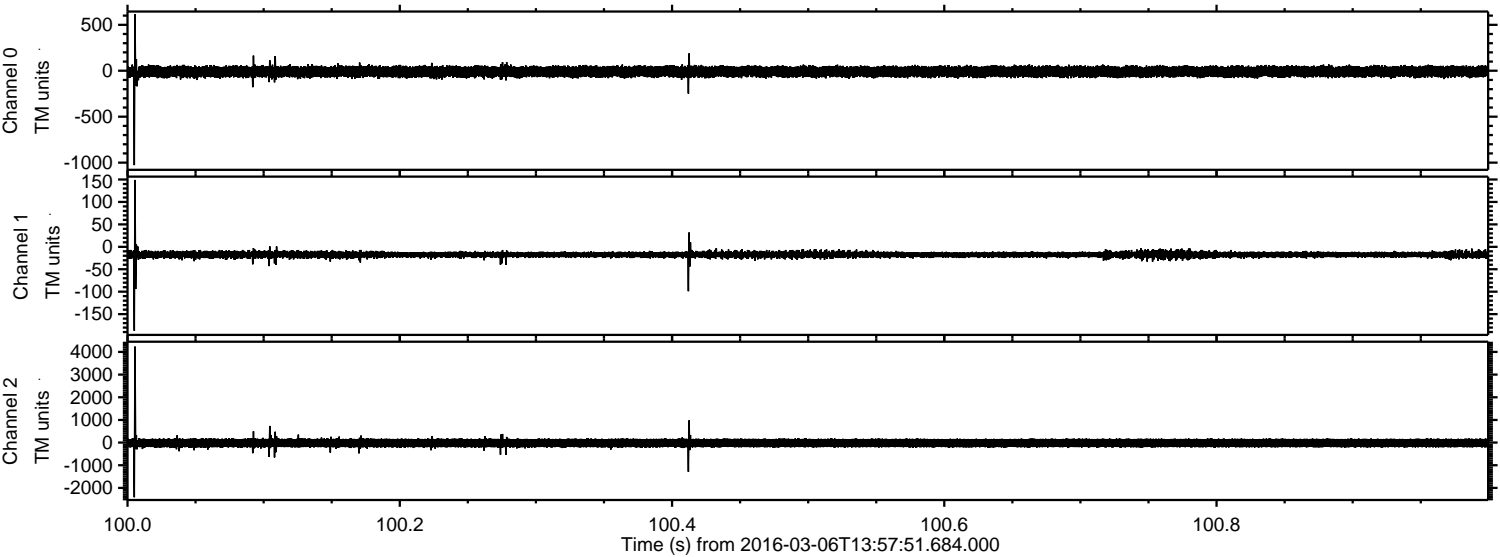
ELMAVAN 3D WAVEFORMS (Measured data sampled at 50 kHz) 51000 packets of 144 samples from 2016-03-06T13:57:51.684.000. Part 107/147

Processed Mon Apr 18 17:17:55 2016 by ELM ver.2012-10-06 from 001__elm20160306_135750__dat00.bin



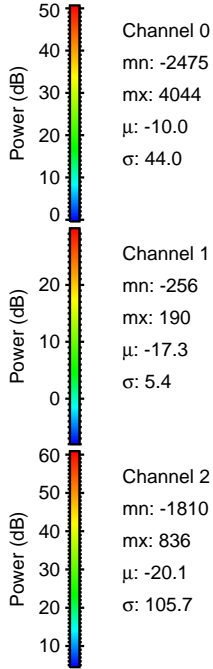
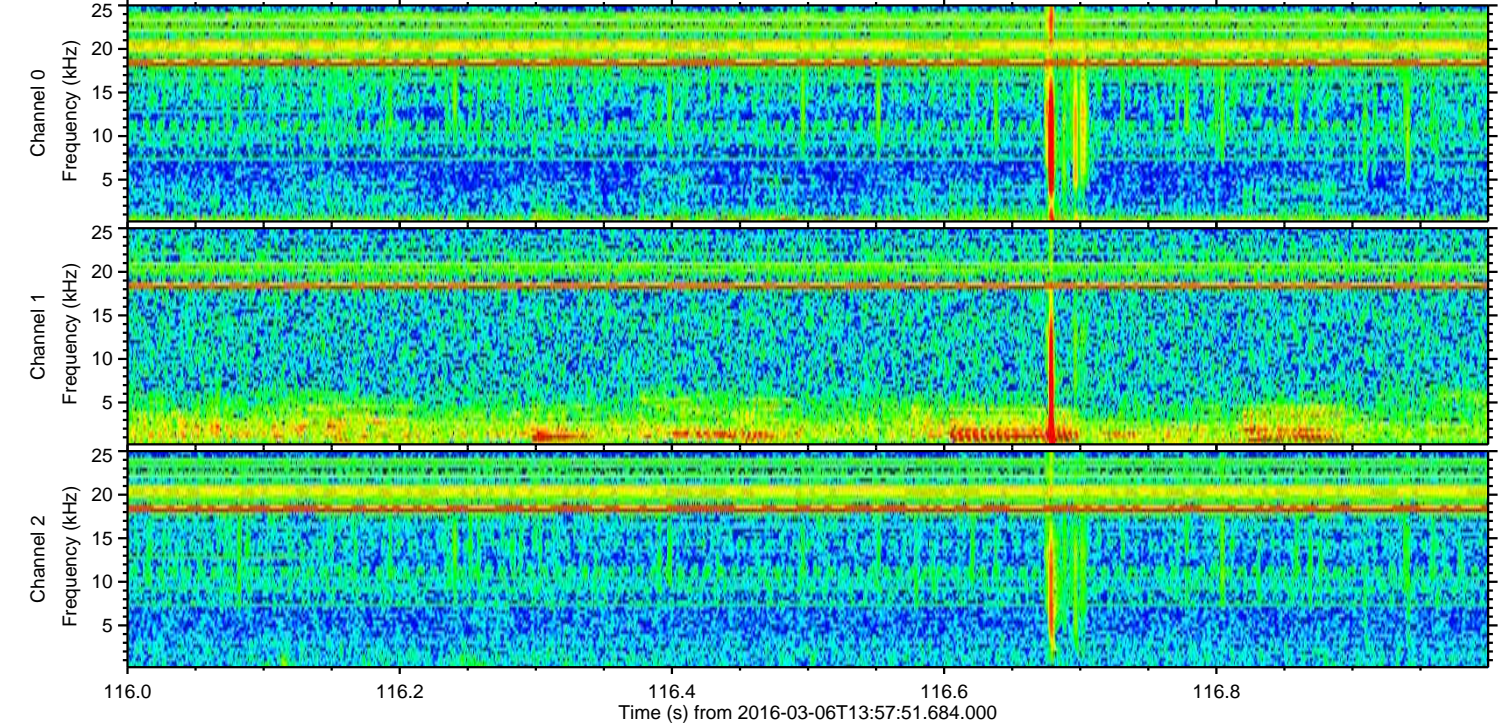
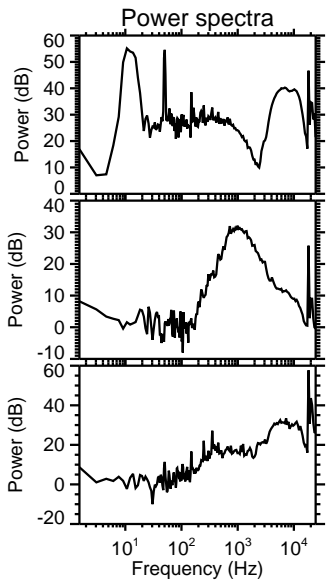
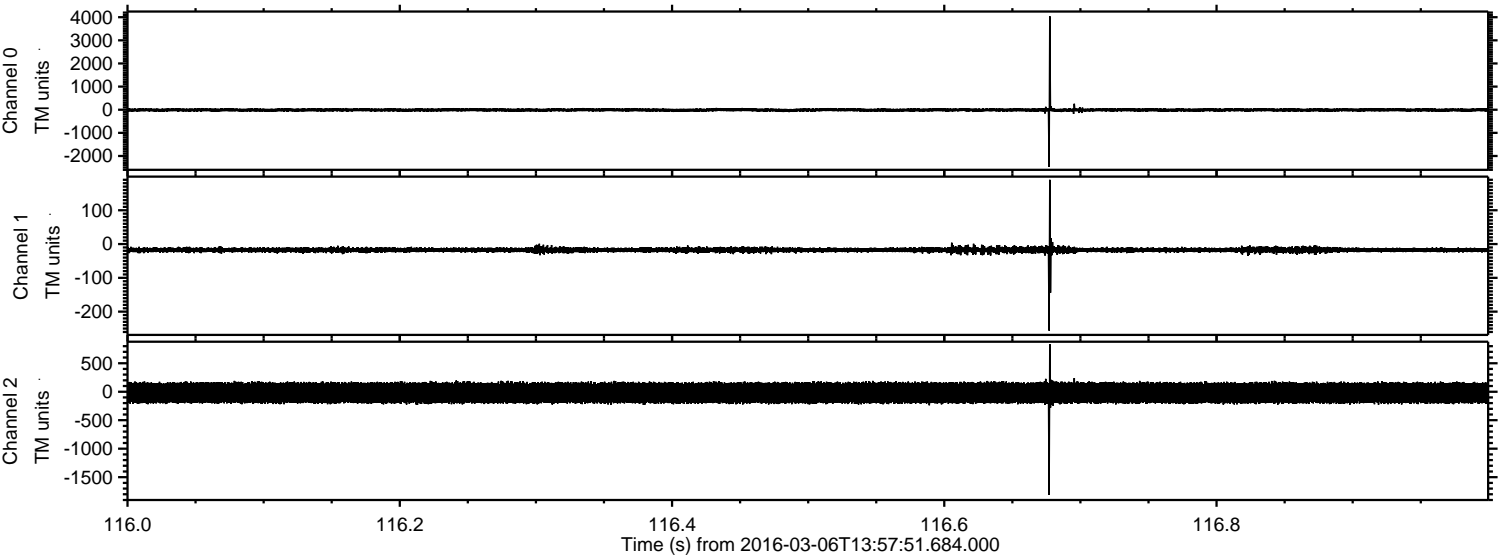
ELMAVAN 3D WAVEFORMS (Measured data sampled at 50 kHz) 51000 packets of 144 samples from 2016-03-06T13:57:51.684.000. Part 101/147

Processed Mon Apr 18 17:17:56 2016 by ELM ver.2012-10-06 from 001__elm20160306_135750__dat00.bin

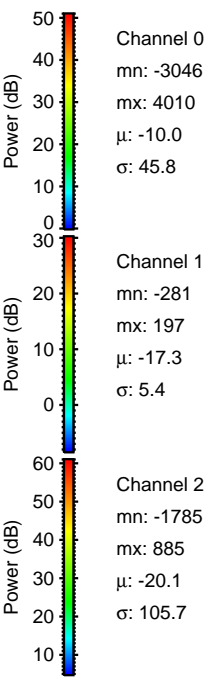
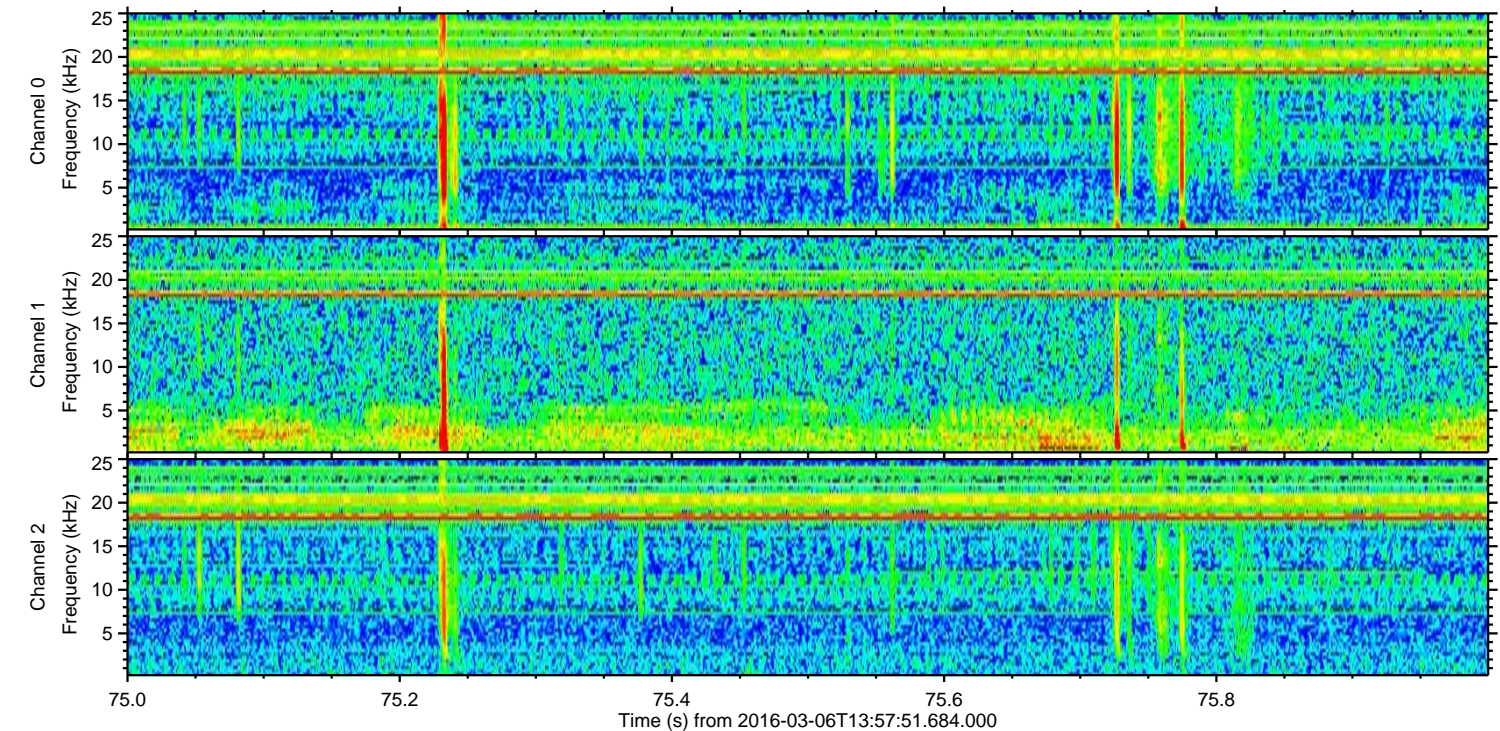
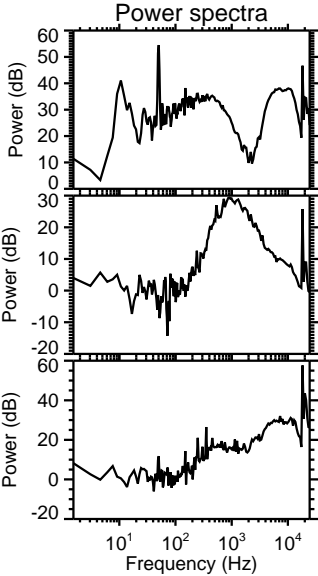
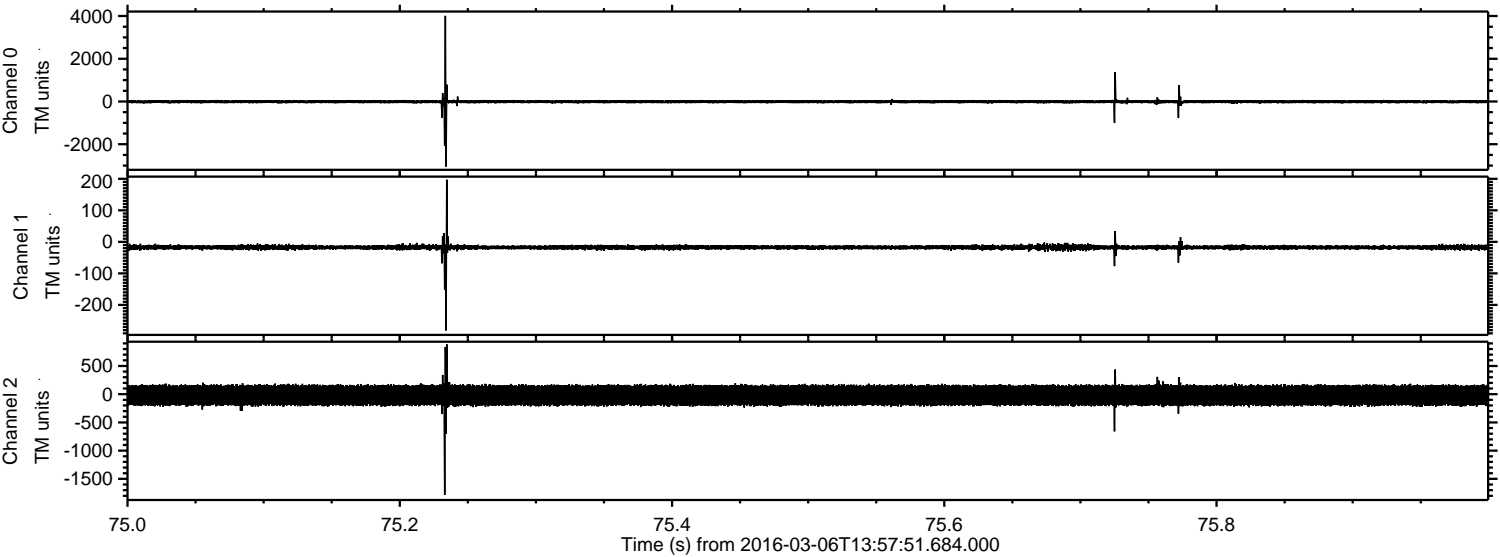


ELMAVAN 3D WAVEFORMS (Measured data sampled at 50 kHz) 51000 packets of 144 samples from 2016-03-06T13:57:51.684.000. Part 117/147

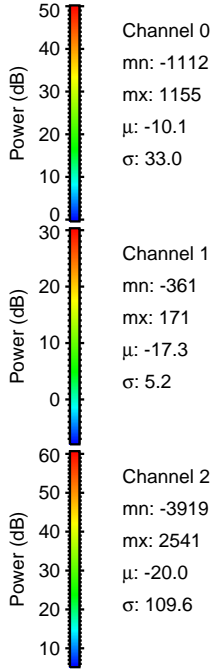
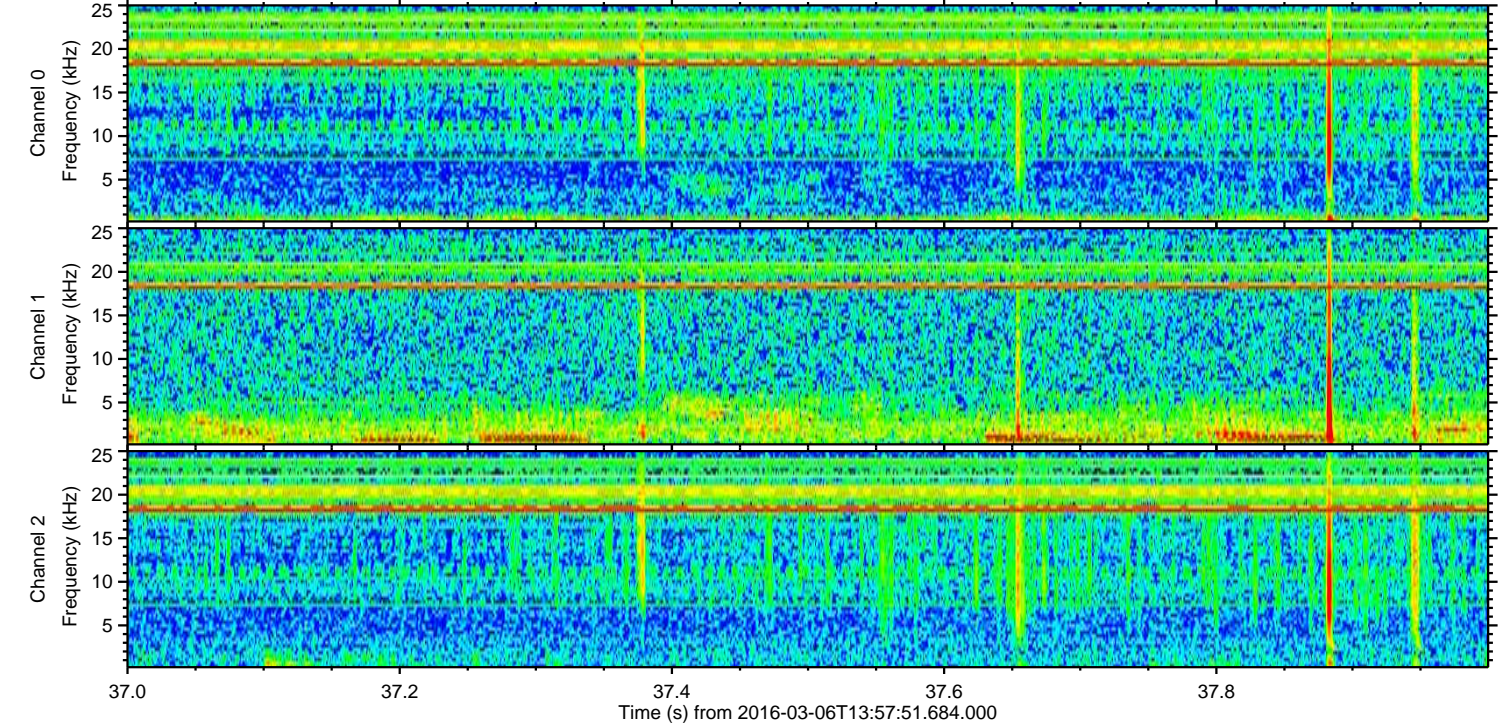
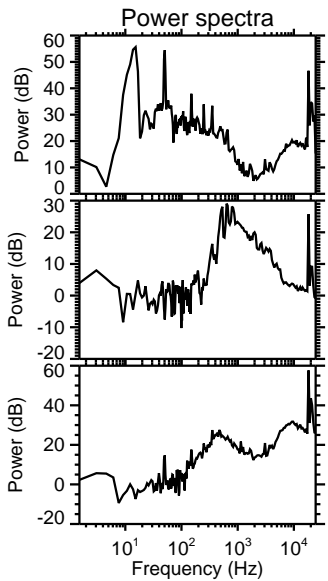
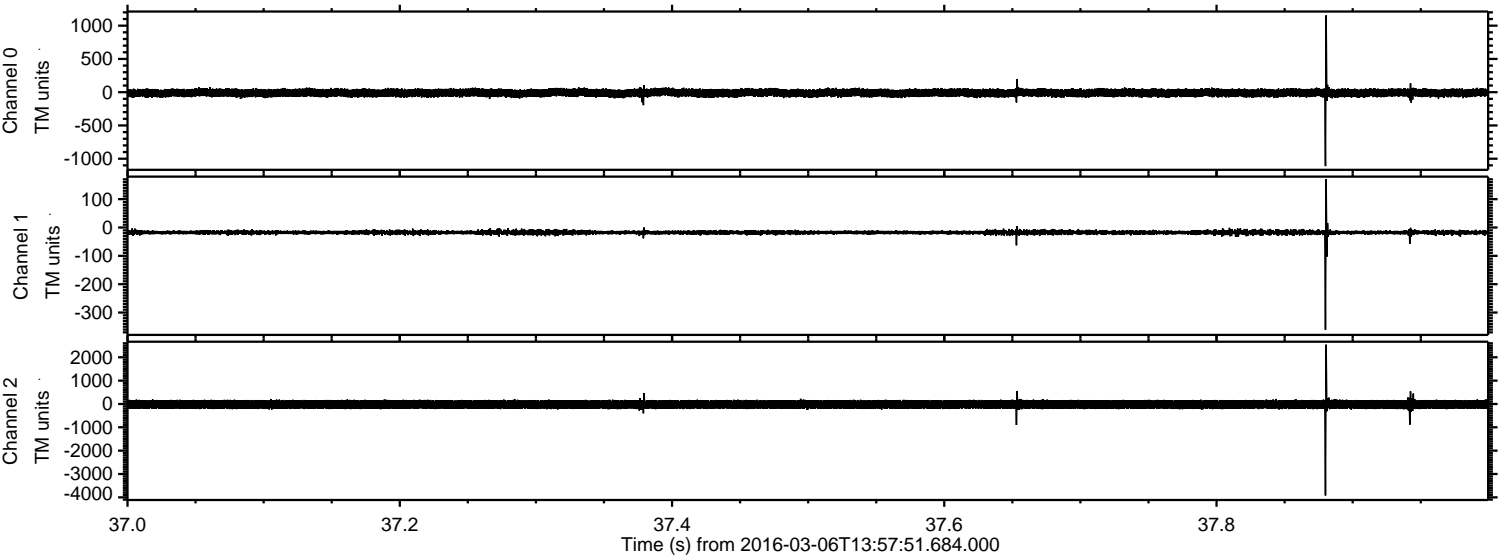
Processed Mon Apr 18 17:17:57 2016 by ELM ver.2012-10-06 from 001__elm20160306_135750__dat00.bin



Processed Mon Apr 18 17:17:58 2016 by ELM ver.2012-10-06 from 001__elm20160306_135750__dat00.bin



Processed Mon Apr 18 17:17:59 2016 by ELM ver.2012-10-06 from 001__elm20160306_135750__dat00.bin



Channel 0
mn: -1112
mx: 1155
 μ : -10.1
 σ : 33.0

Channel 1
mn: -361
mx: 171
 μ : -17.3
 σ : 5.2

Channel 2
mn: -3919
mx: 2541
 μ : -20.0
 σ : 109.6

Processed Mon Apr 18 17:18:00 2016 by ELM ver.2012-10-06 from 001__elm20160306_135750__dat00.bin

