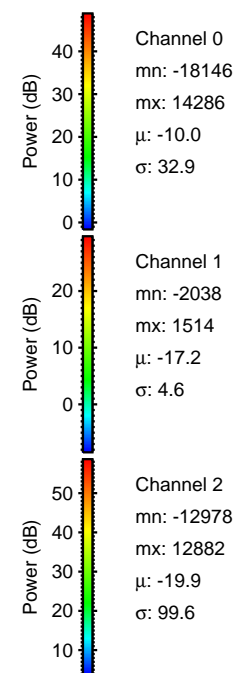
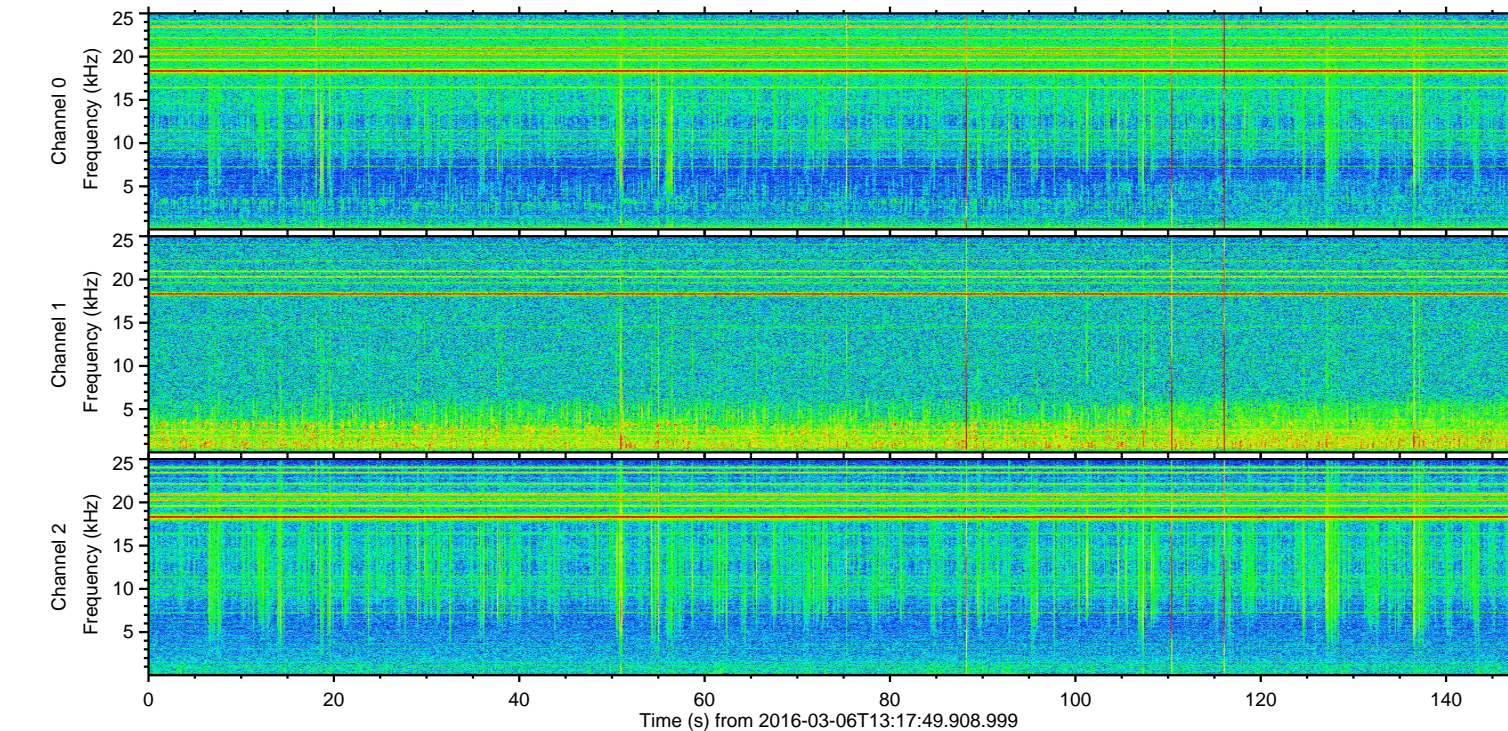
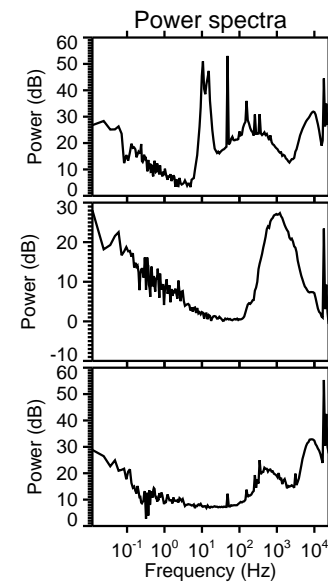
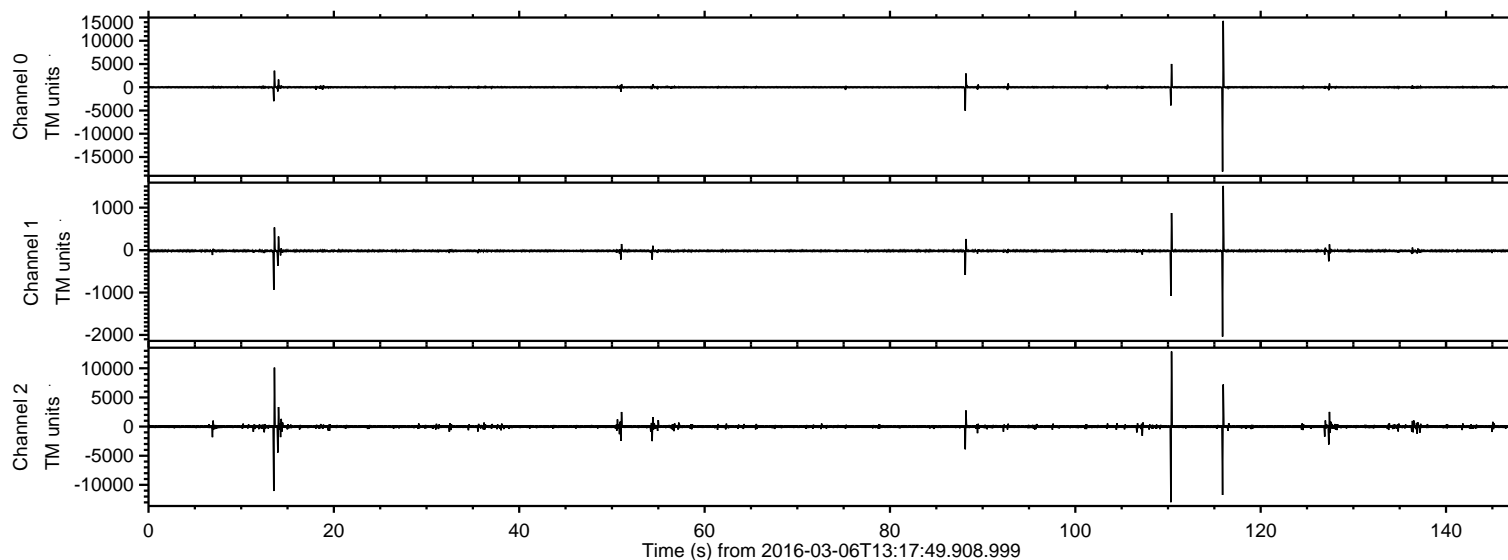


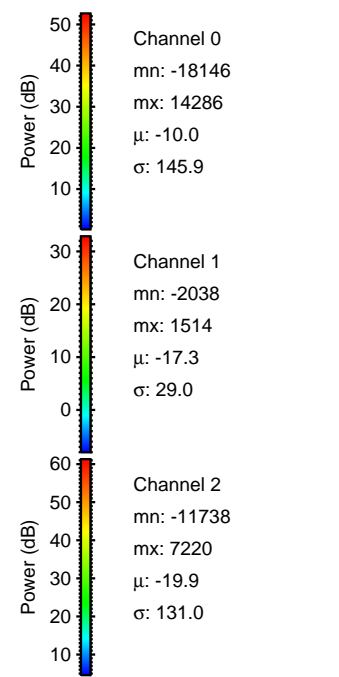
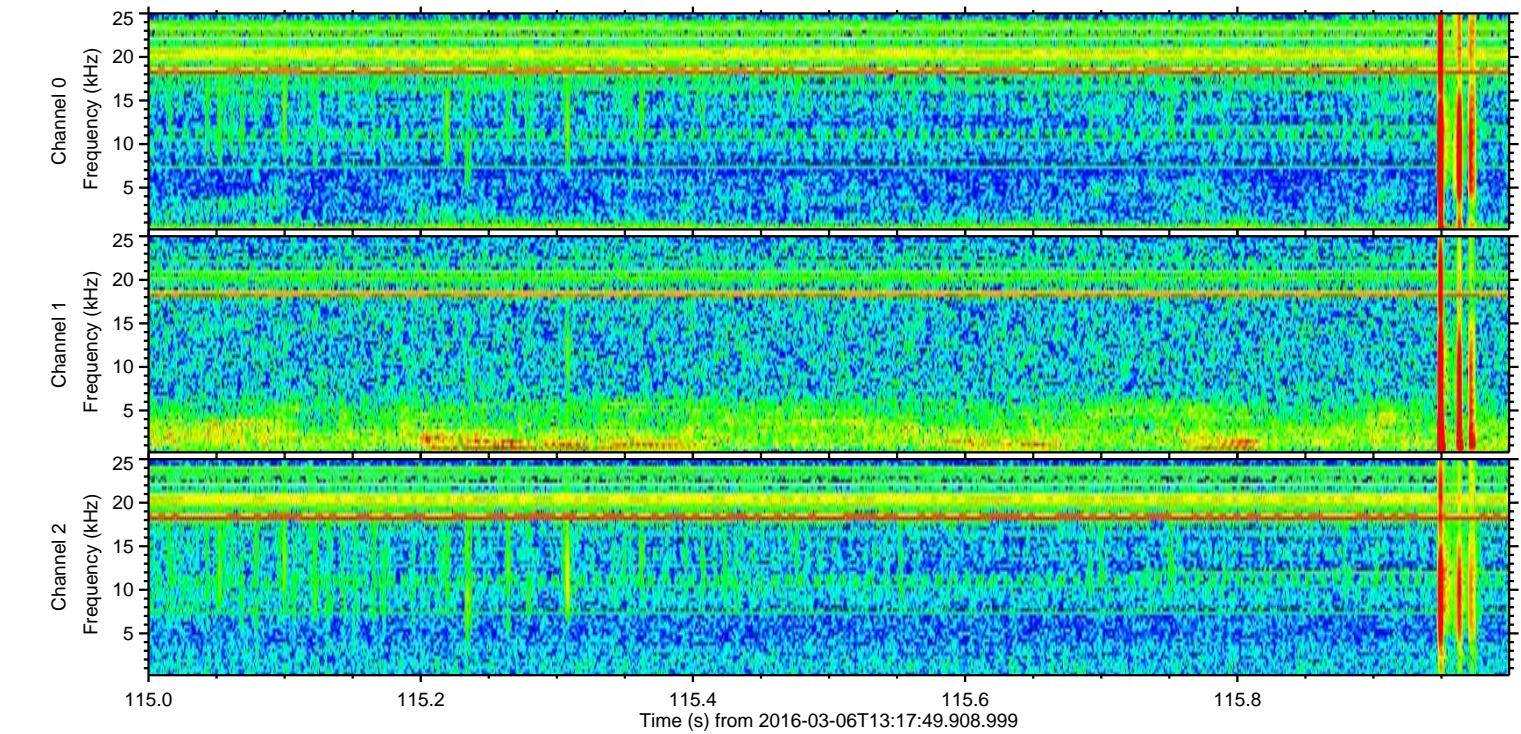
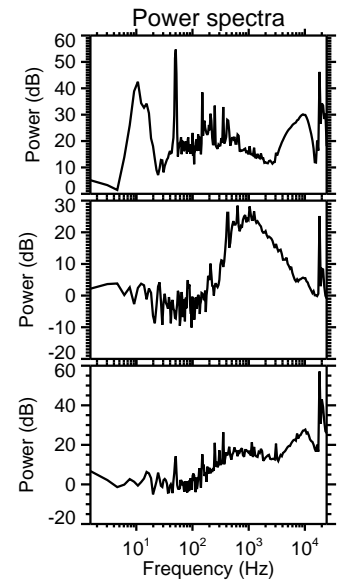
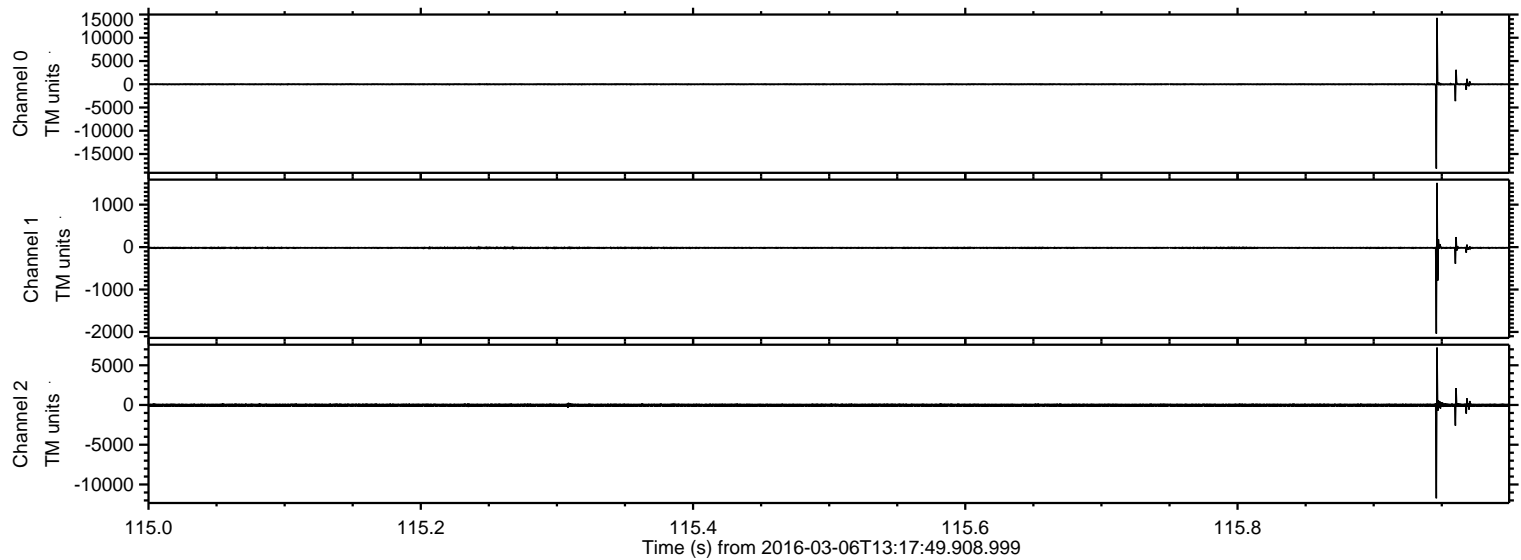
ELMAVAN 3D WAVEFORMS (Measured data sampled at 50 kHz) 51000 packets of 144 samples from 2016-03-06T13:17:49.908.999.

Processed Mon Apr 18 17:09:31 2016 by ELM ver.2012-10-06 from 001__elm20160306_131748__dat00.bin



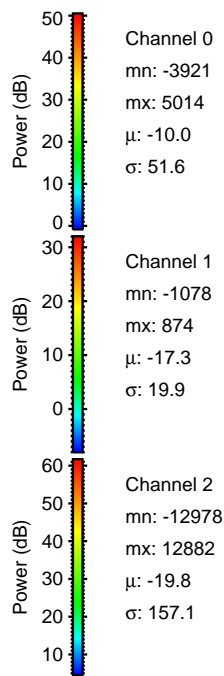
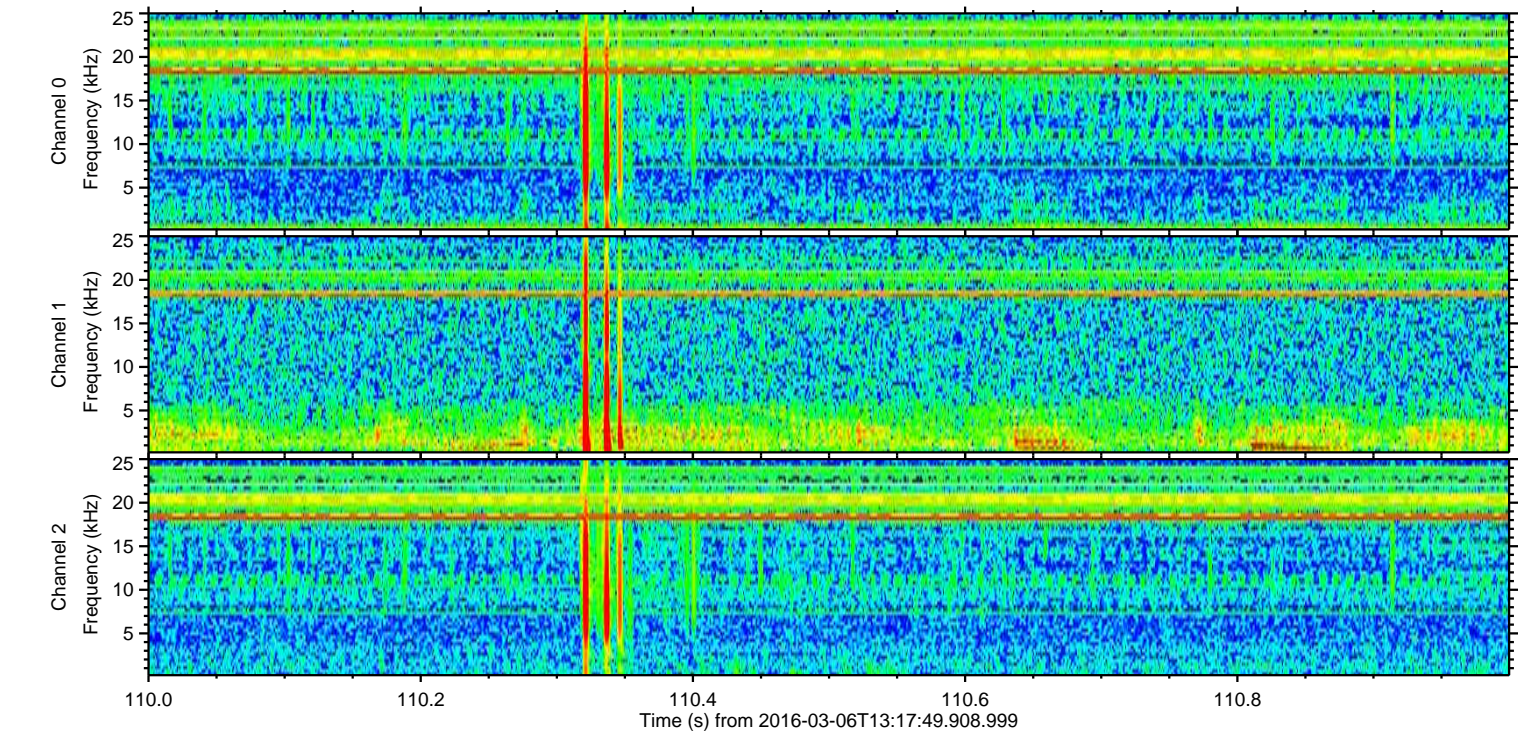
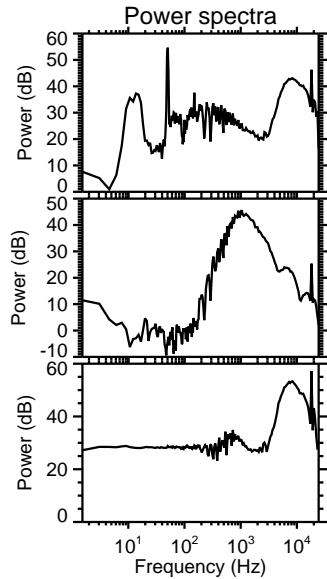
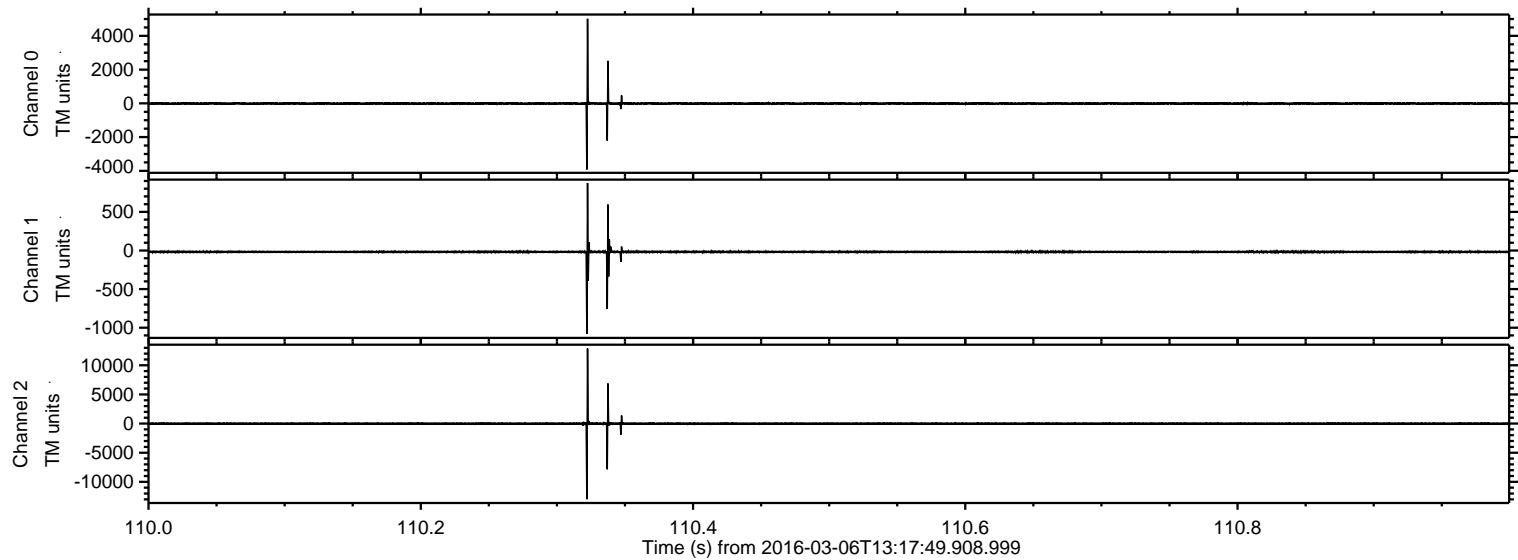
ELMAVAN 3D WAVEFORMS (Measured data sampled at 50 kHz) 51000 packets of 144 samples from 2016-03-06T13:17:49.908.999. Part 116/147

Processed Mon Apr 18 17:09:43 2016 by ELM ver.2012-10-06 from 001__elm20160306_131748__dat00.bin

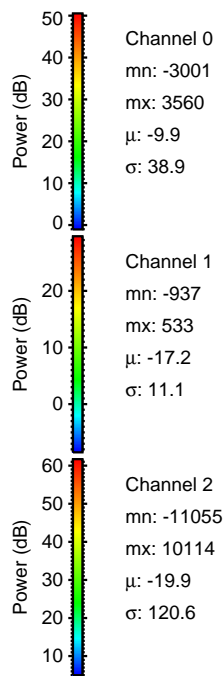
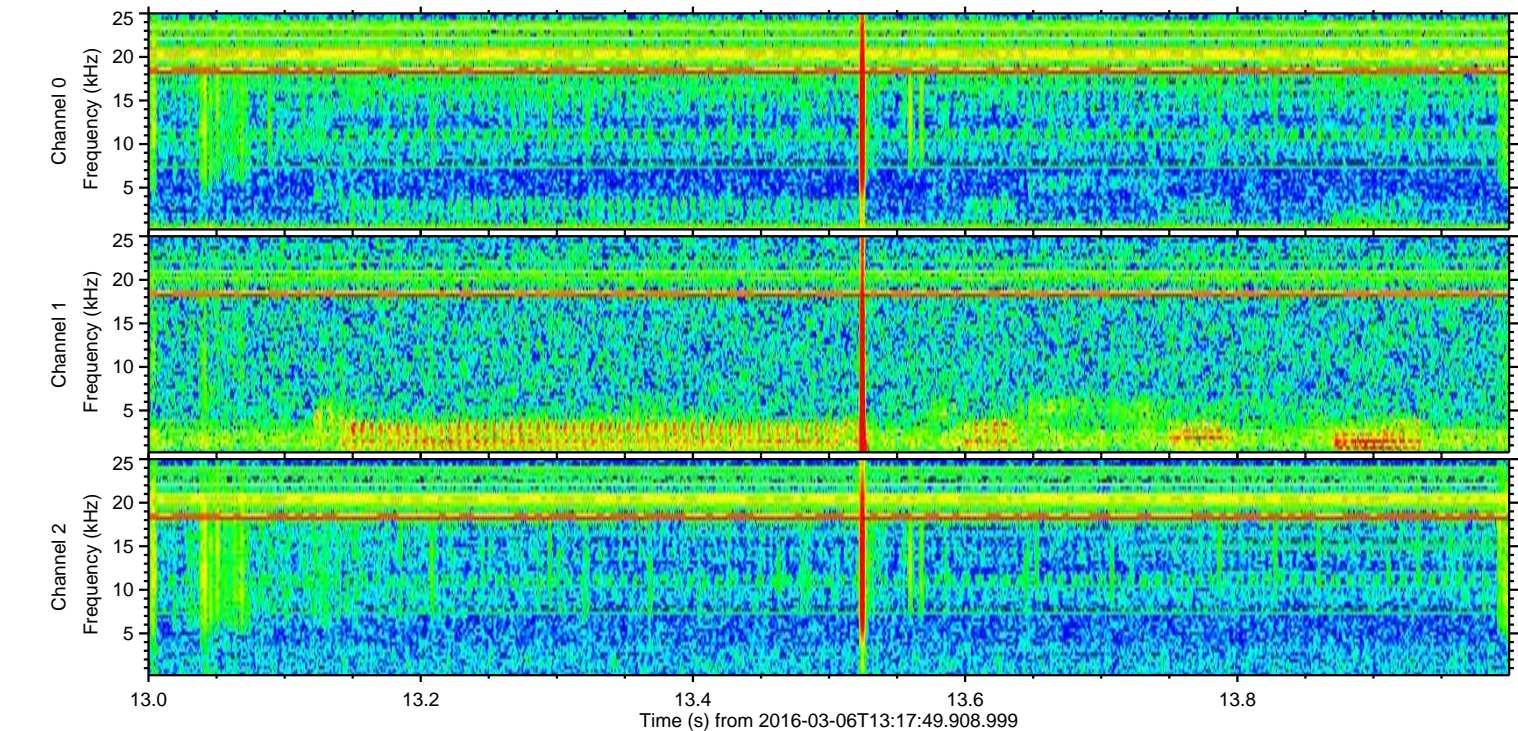
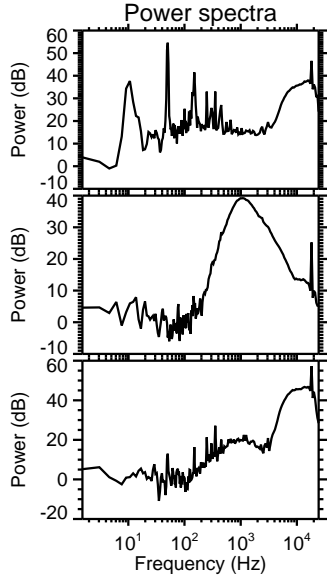
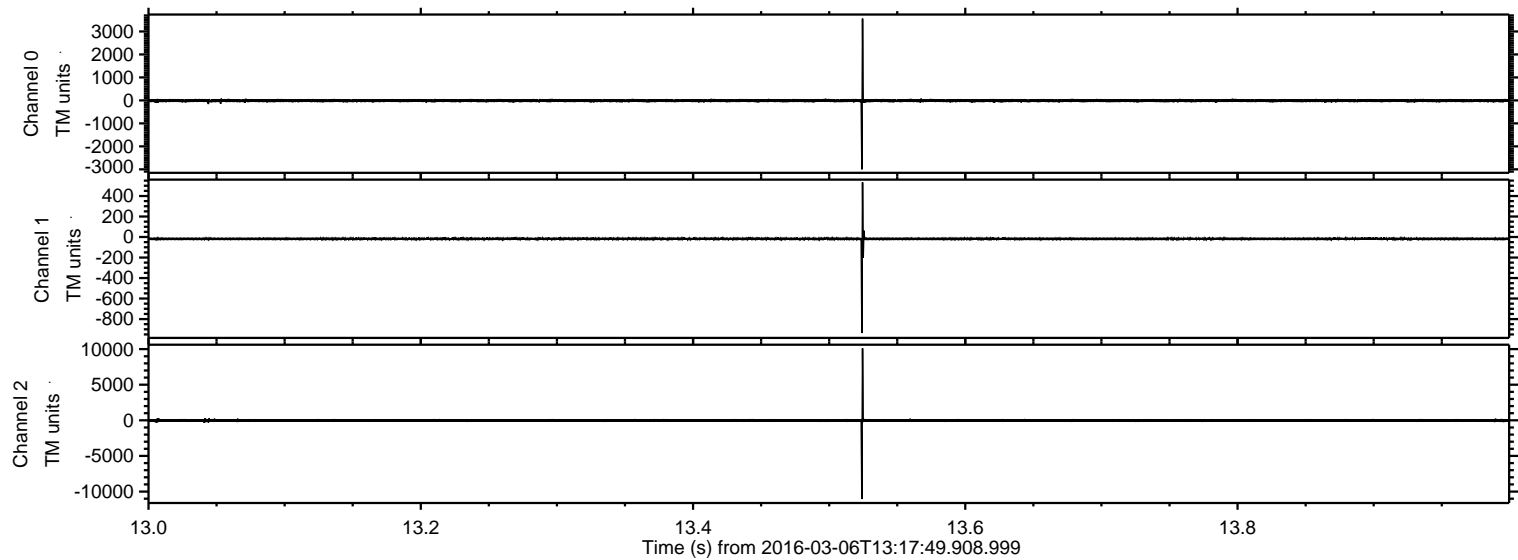


ELMAVAN 3D WAVEFORMS (Measured data sampled at 50 kHz) 51000 packets of 144 samples from 2016-03-06T13:17:49.908.999. Part 111/147

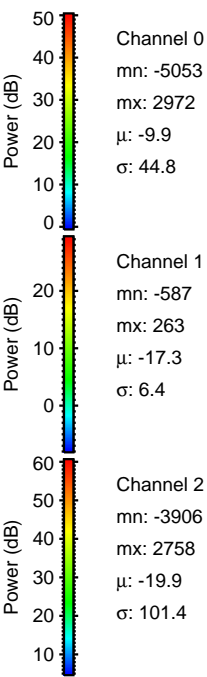
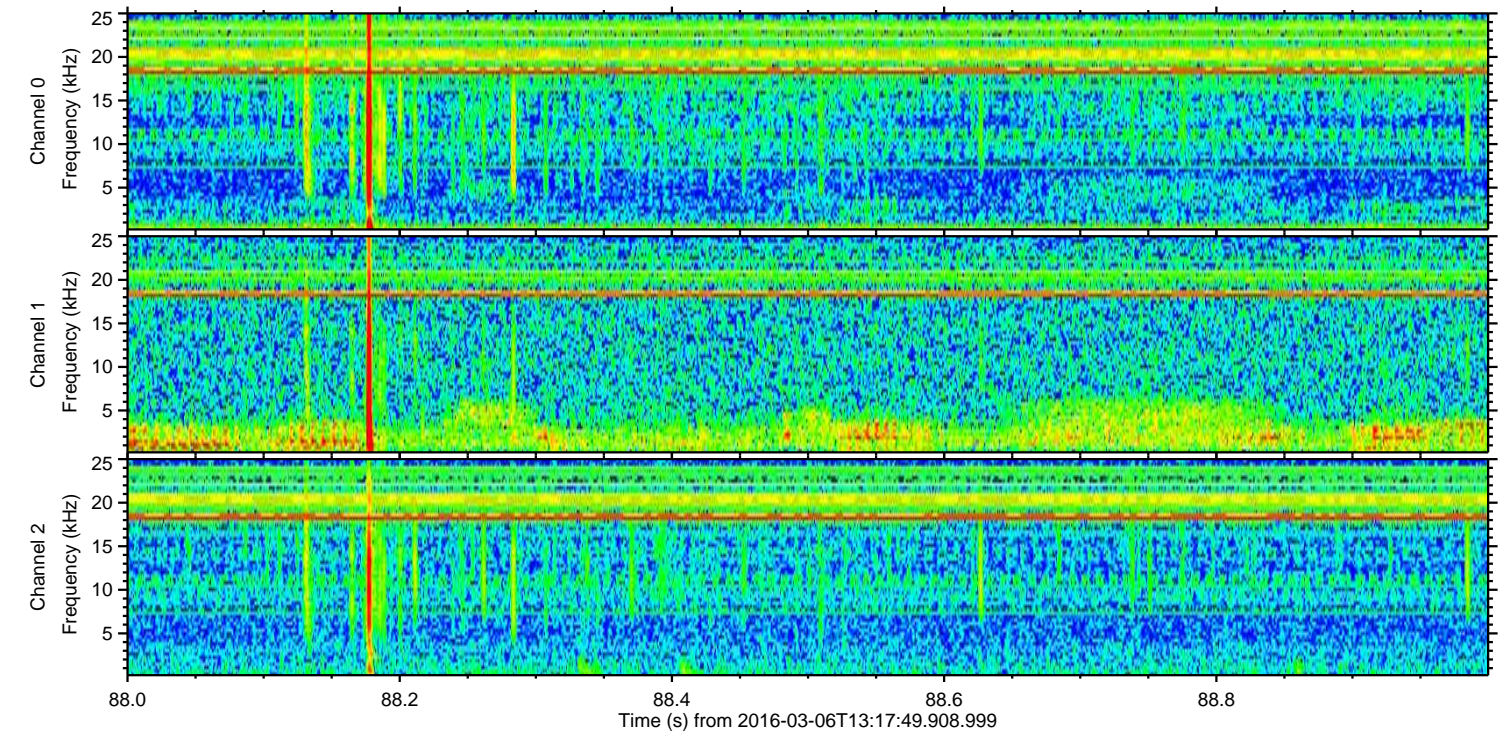
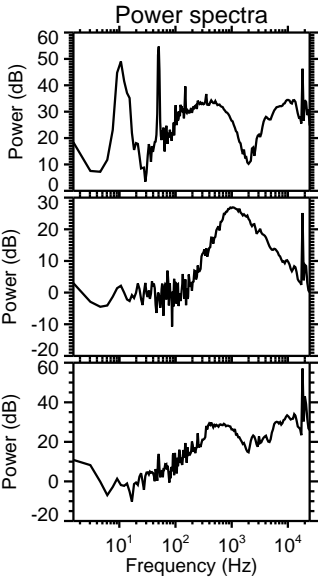
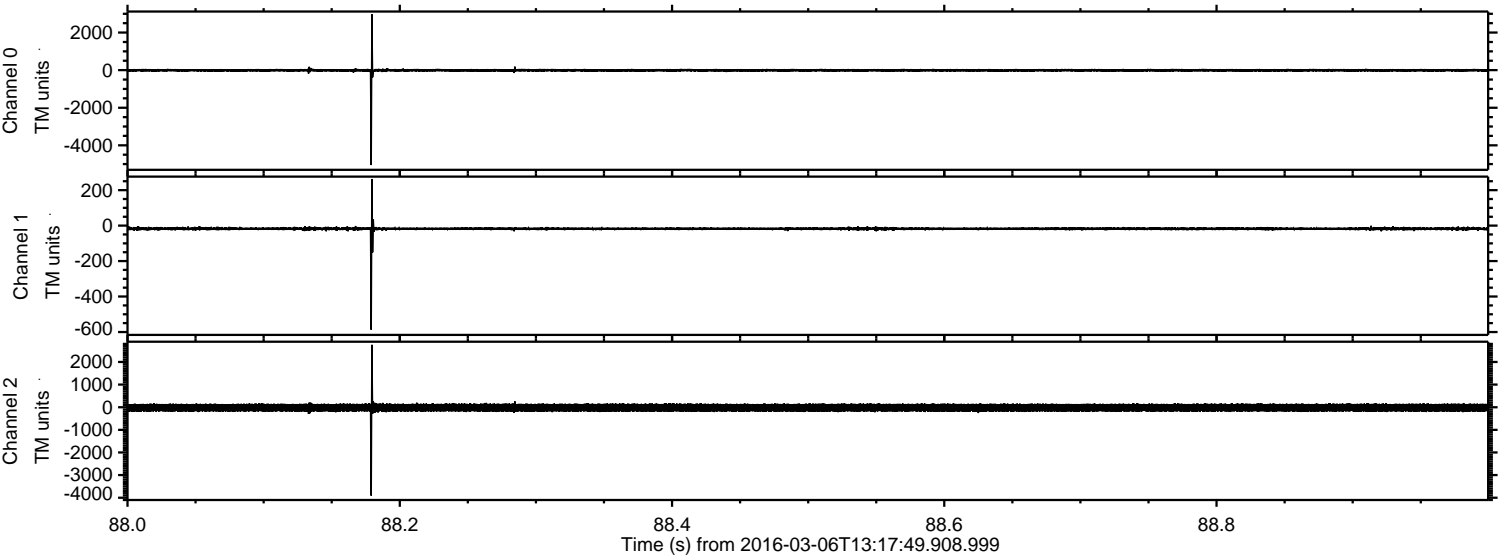
Processed Mon Apr 18 17:09:44 2016 by ELM ver.2012-10-06 from 001__elm20160306_131748__dat00.bin



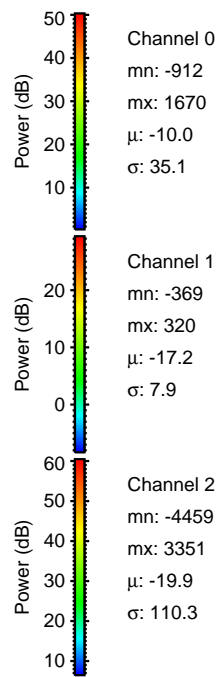
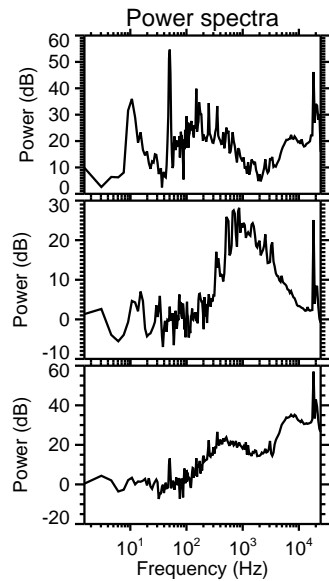
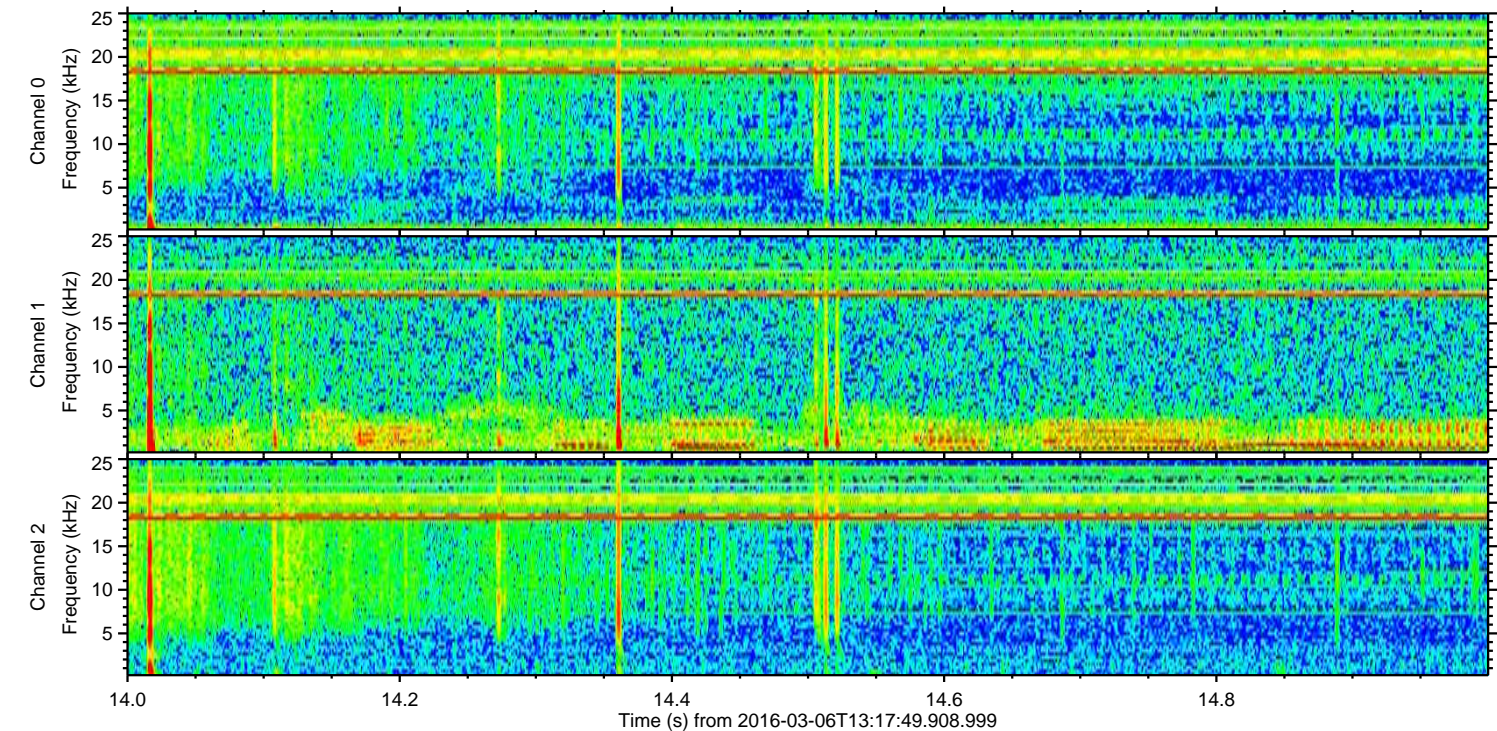
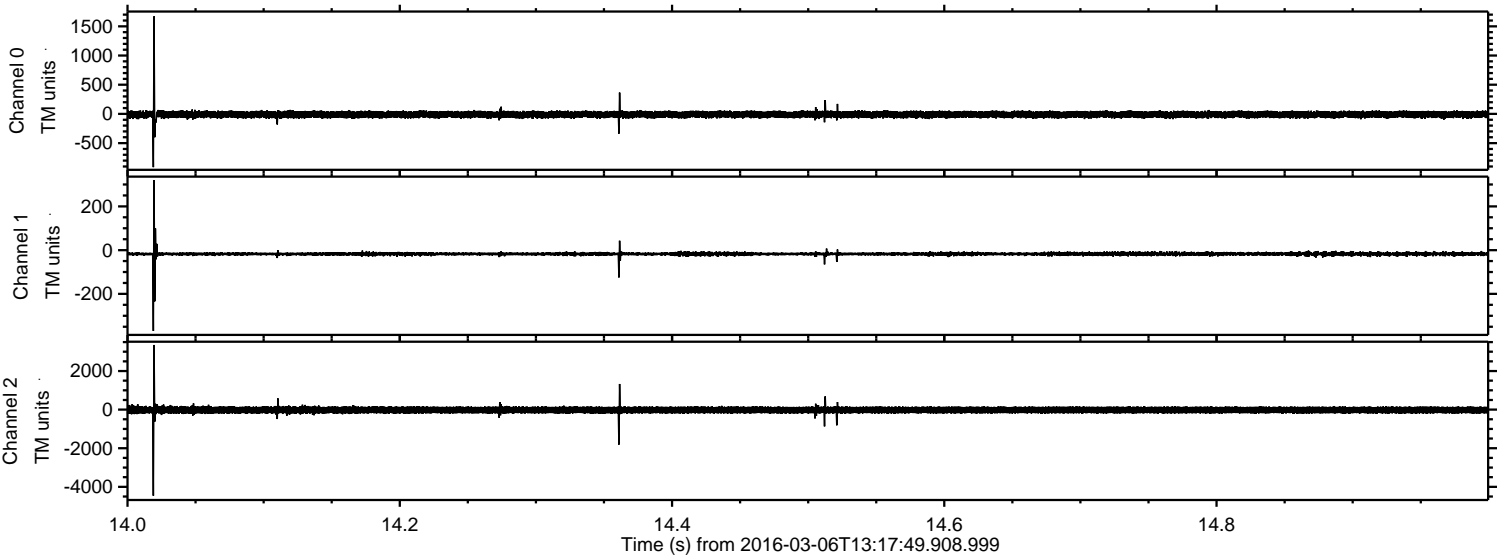
Processed Mon Apr 18 17:09:45 2016 by ELM ver.2012-10-06 from 001__elm20160306_131748__dat00.bin



Processed Mon Apr 18 17:09:46 2016 by ELM ver.2012-10-06 from 001__elm20160306_131748__dat00.bin

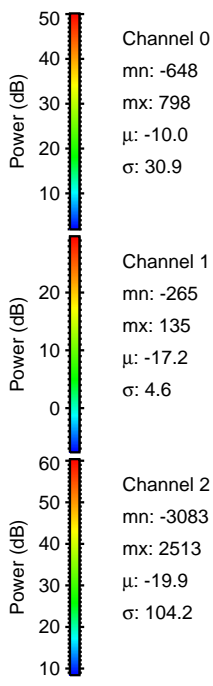
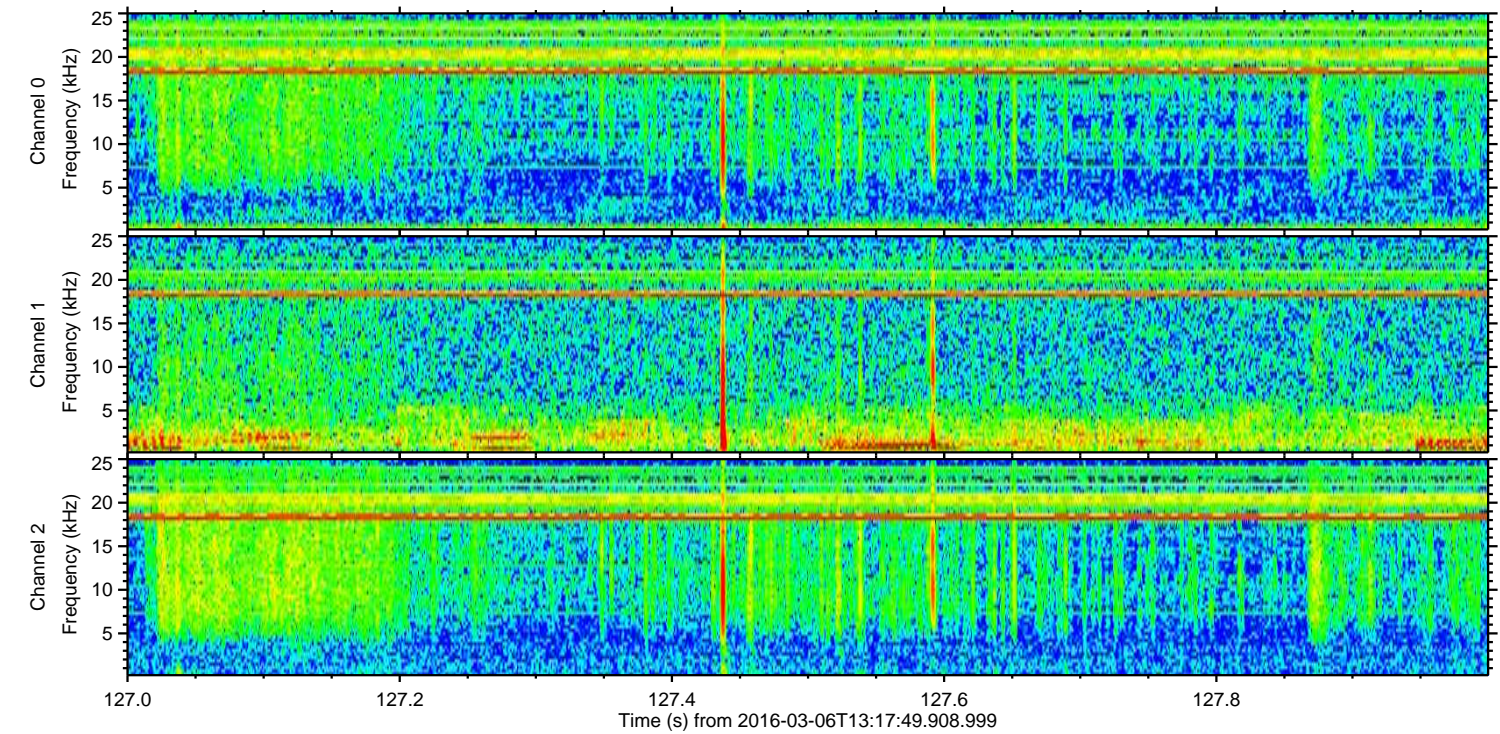
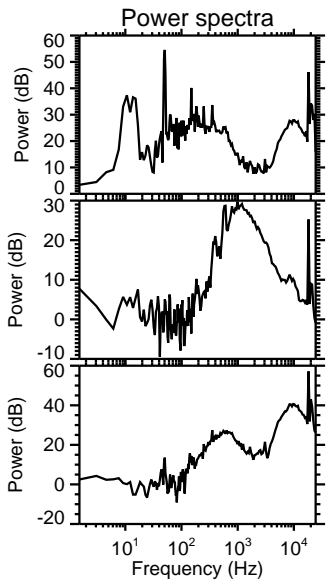
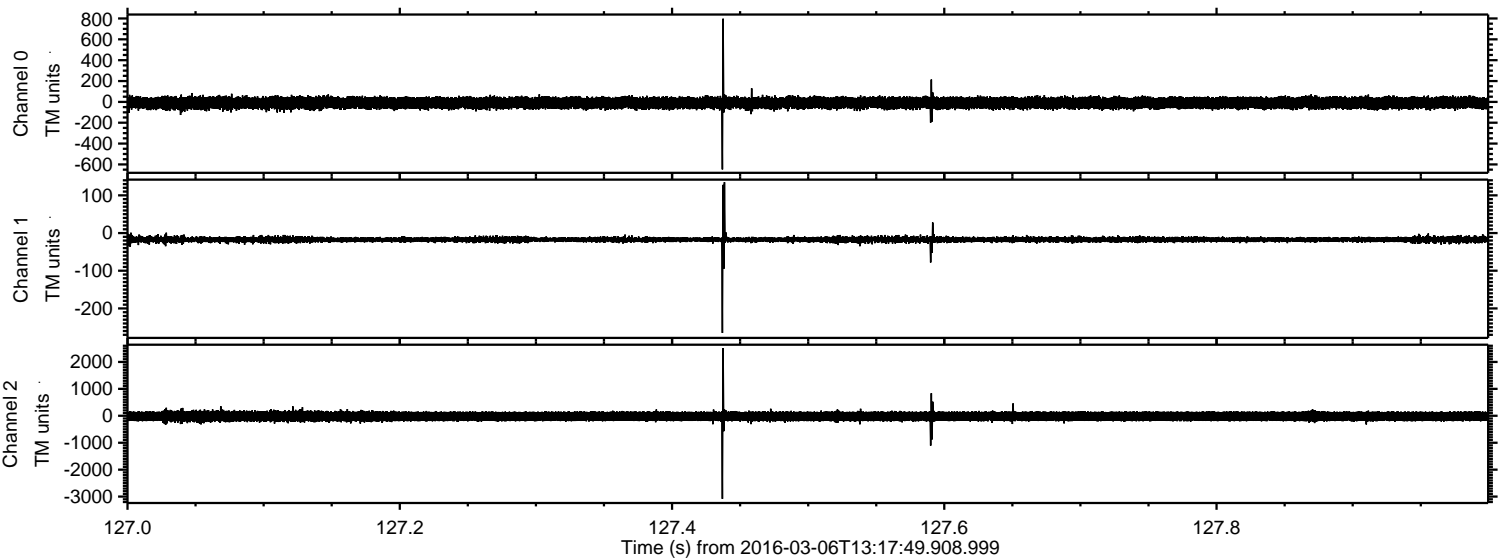


Processed Mon Apr 18 17:09:47 2016 by ELM ver.2012-10-06 from 001__elm20160306_131748__dat00.bin

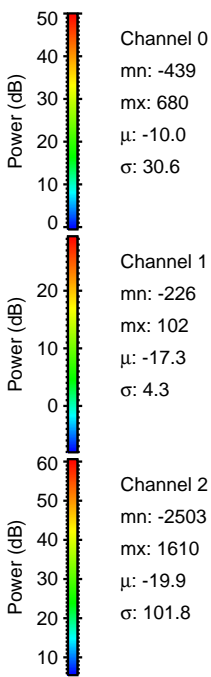
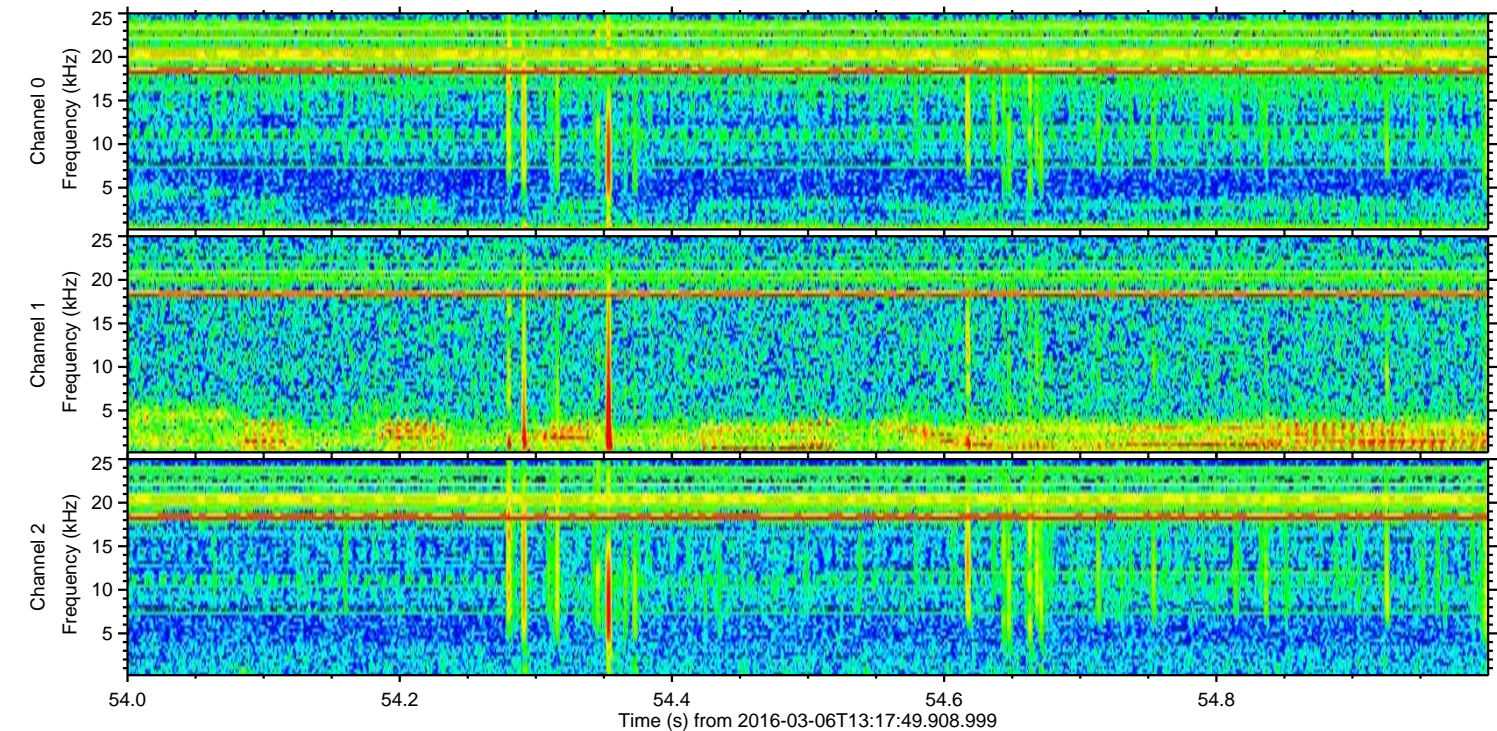
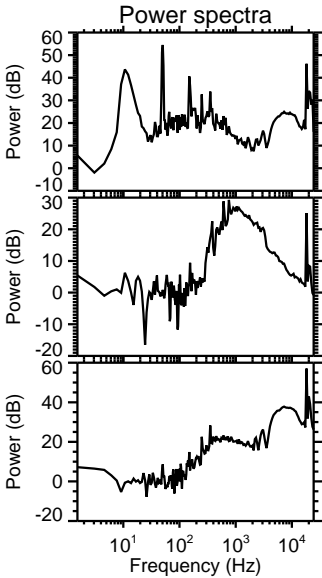
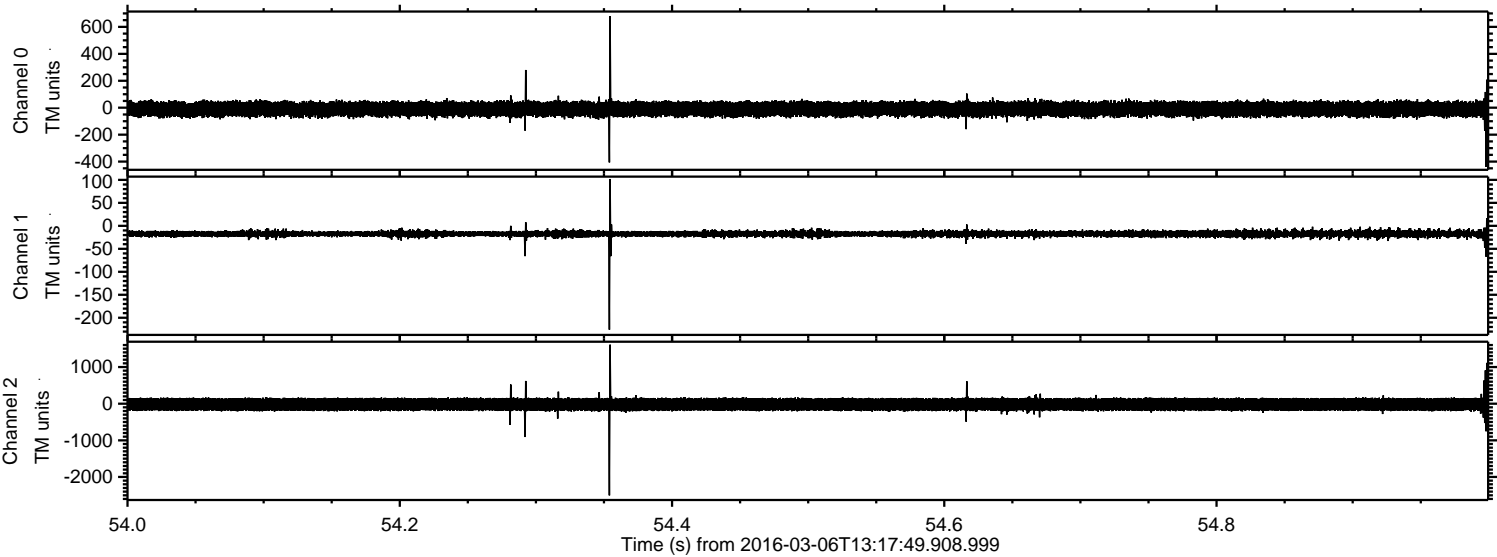


ELMAVAN 3D WAVEFORMS (Measured data sampled at 50 kHz) 51000 packets of 144 samples from 2016-03-06T13:17:49.908.999. Part 128/147

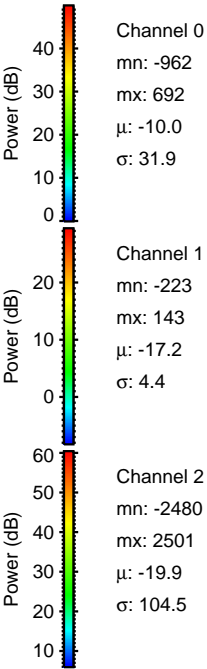
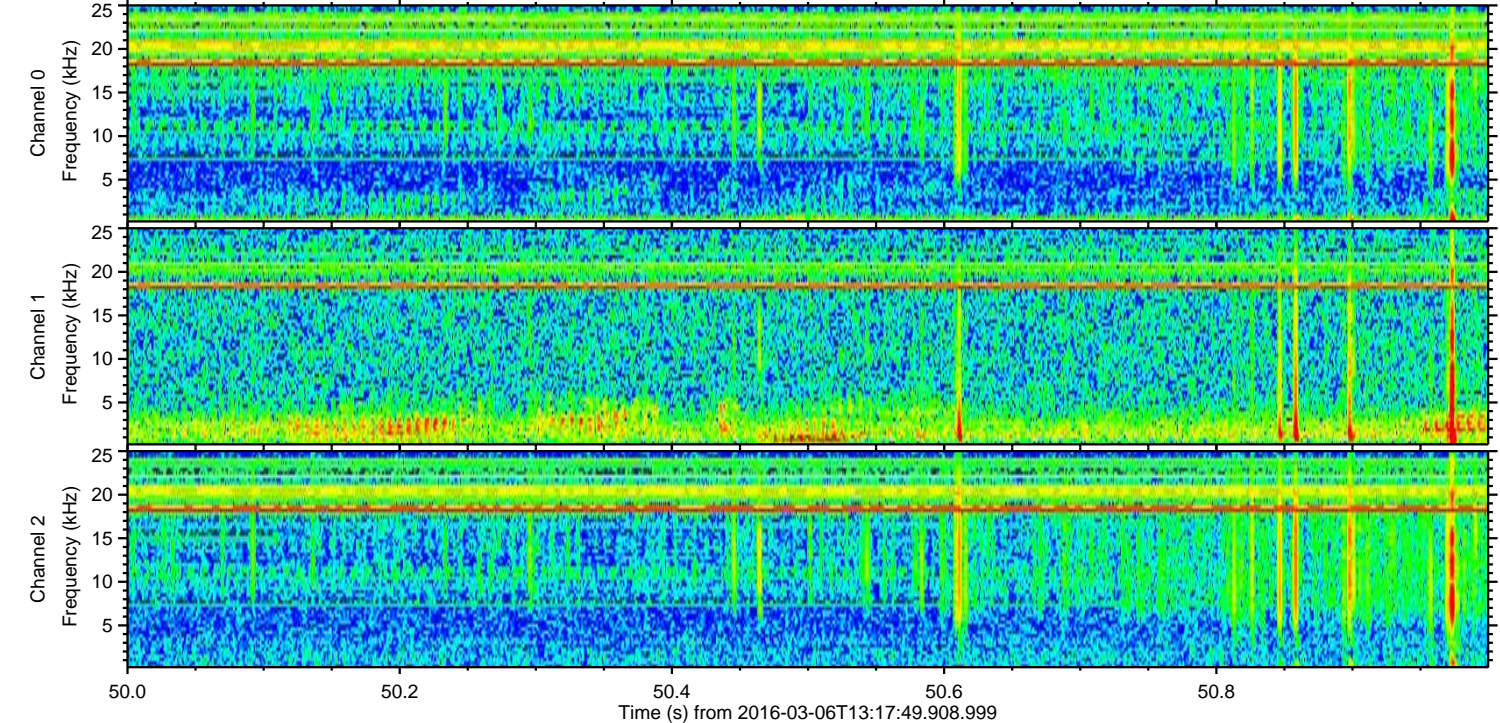
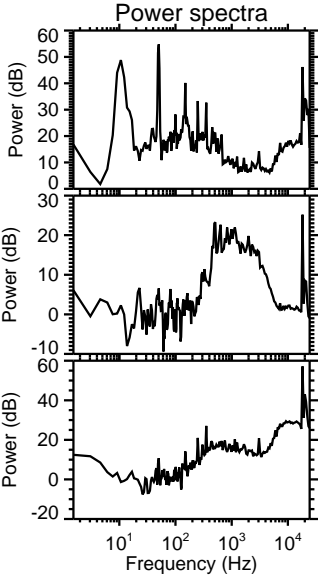
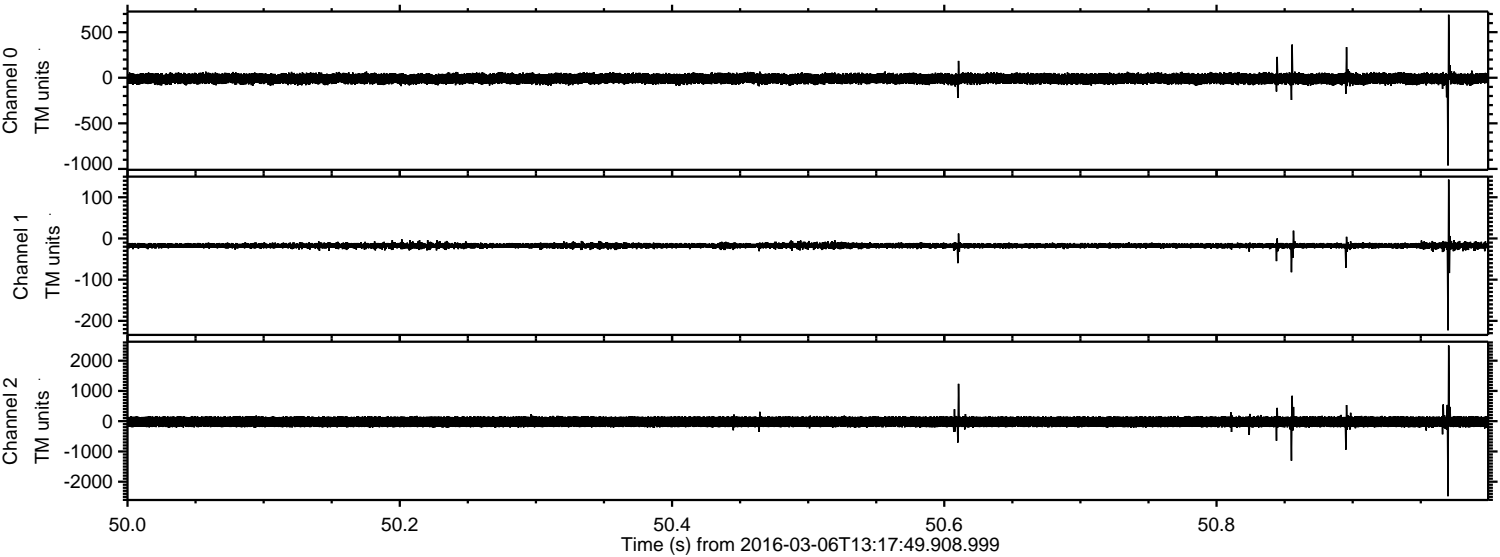
Processed Mon Apr 18 17:09:48 2016 by ELM ver.2012-10-06 from 001__elm20160306_131748__dat00.bin



Processed Mon Apr 18 17:09:49 2016 by ELM ver.2012-10-06 from 001__elm20160306_131748__dat00.bin



Processed Mon Apr 18 17:09:50 2016 by ELM ver.2012-10-06 from 001__elm20160306_131748__dat00.bin

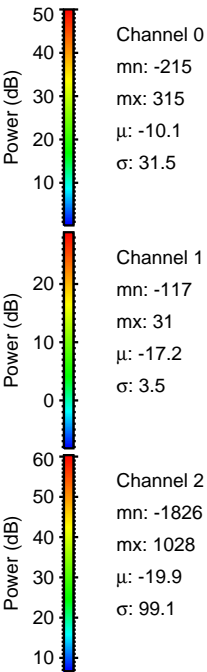
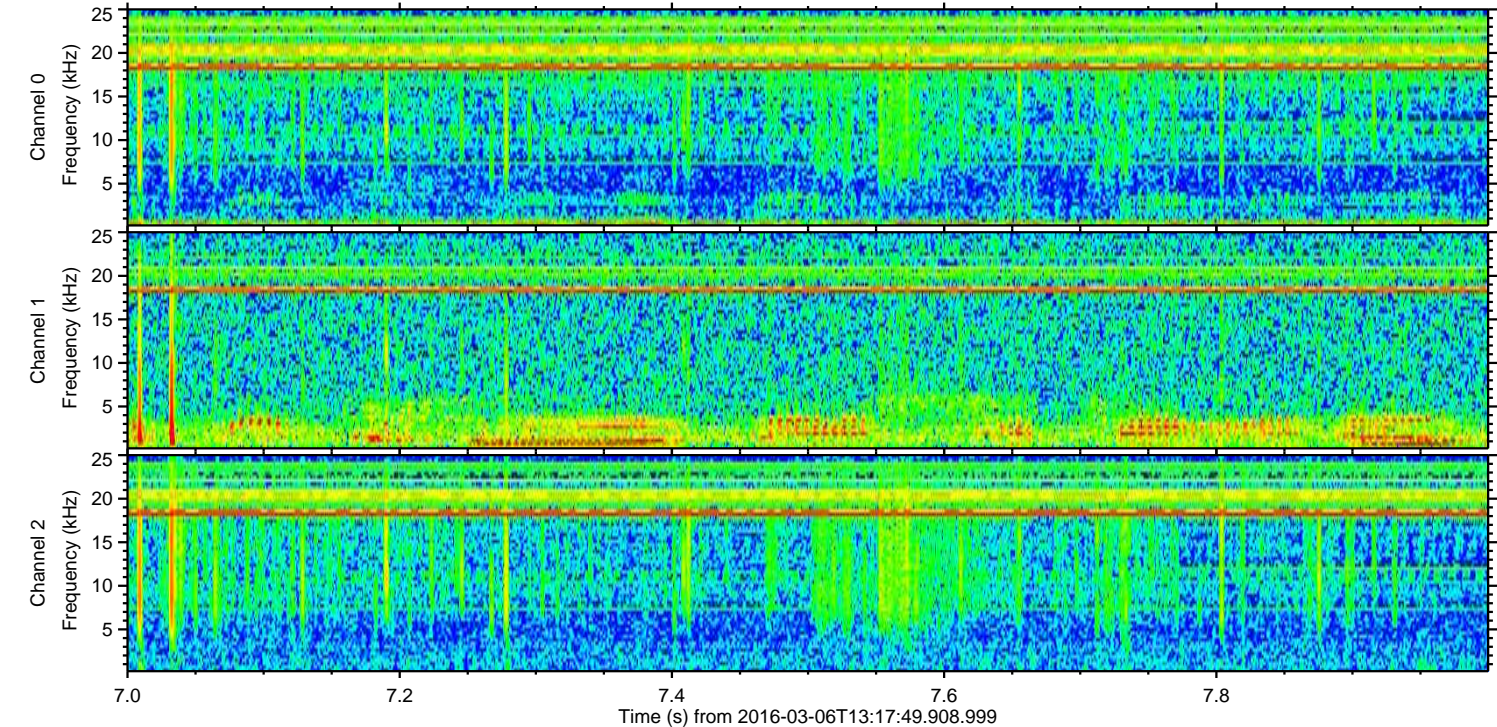
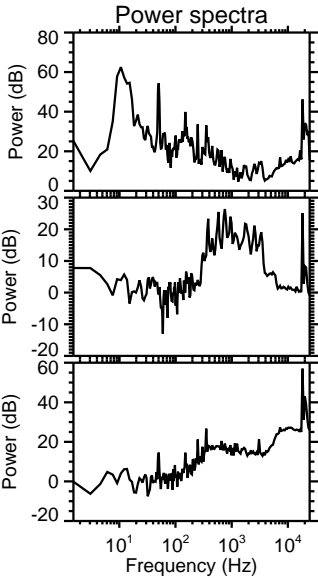
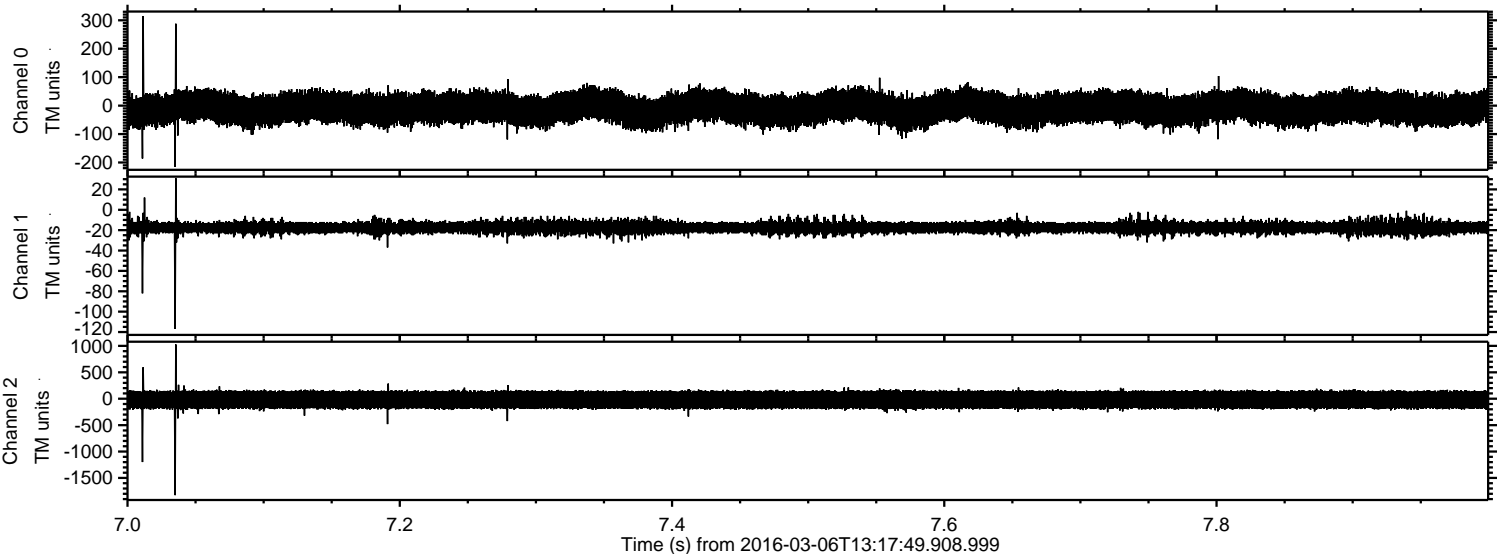


Channel 0
mn: -962
mx: 692
 μ : -10.0
 σ : 31.9

Channel 1
mn: -223
mx: 143
 μ : -17.2
 σ : 4.4

Channel 2
mn: -2480
mx: 2501
 μ : -19.9
 σ : 104.5

Processed Mon Apr 18 17:09:51 2016 by ELM ver.2012-10-06 from 001__elm20160306_131748__dat00.bin



Processed Mon Apr 18 17:09:51 2016 by ELM ver.2012-10-06 from 001__elm20160306_131748__dat00.bin

