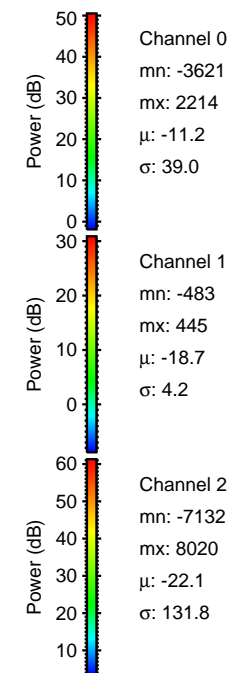
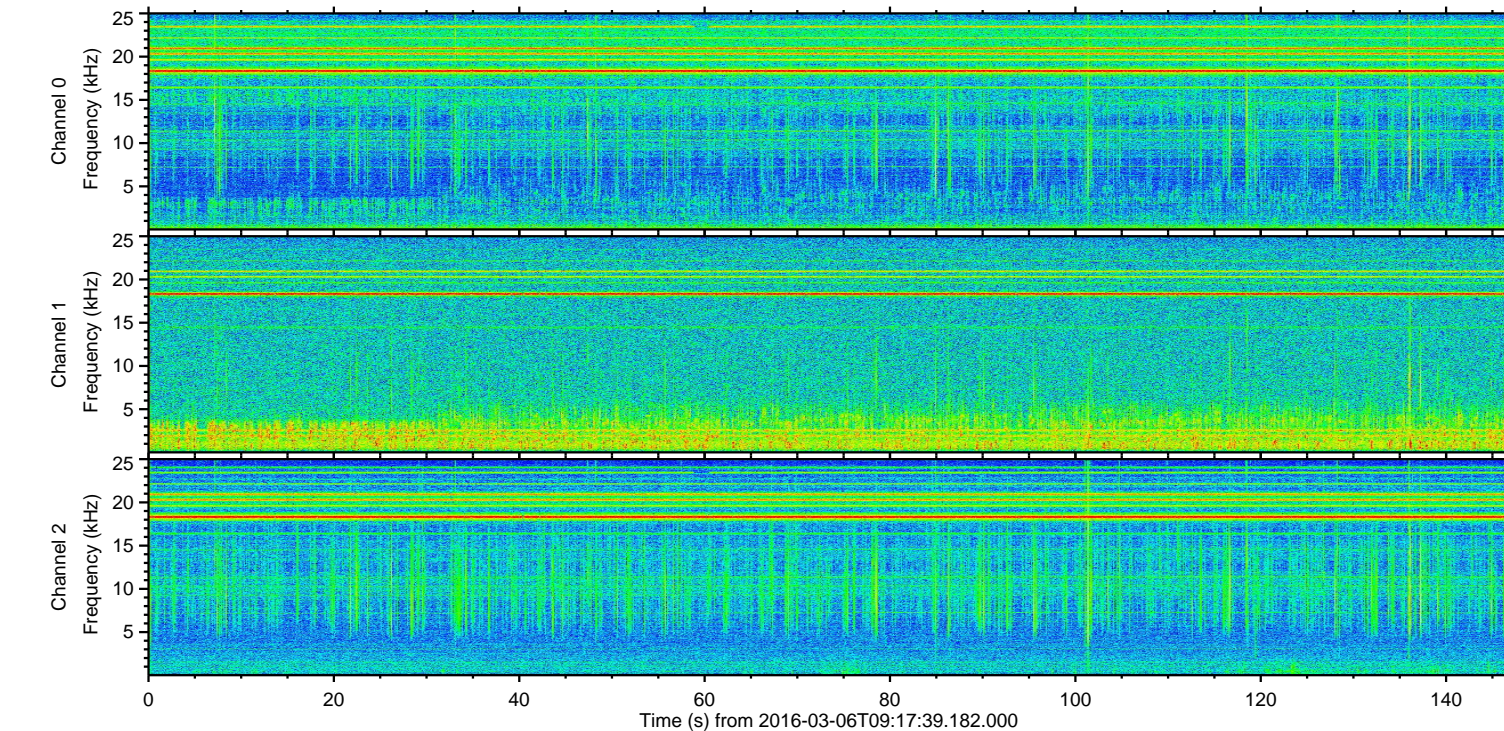
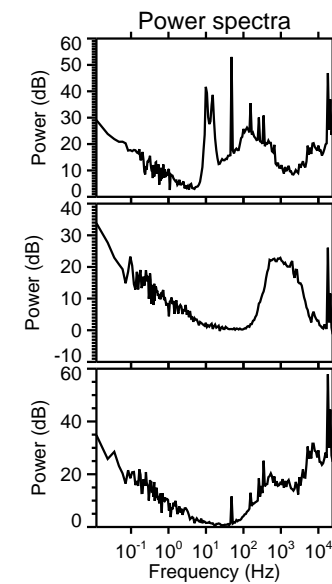
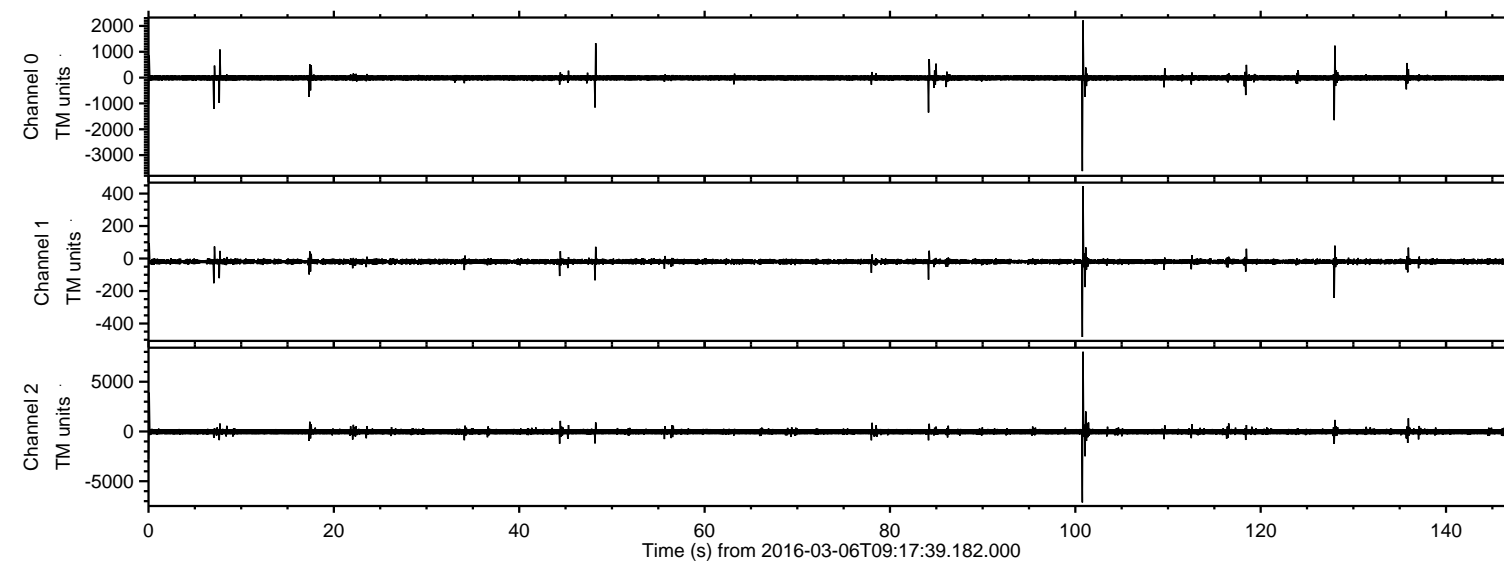


# ELMAVAN 3D WAVEFORMS (Measured data sampled at 50 kHz) 51000 packets of 144 samples from 2016-03-06T09:17:39.182.000.

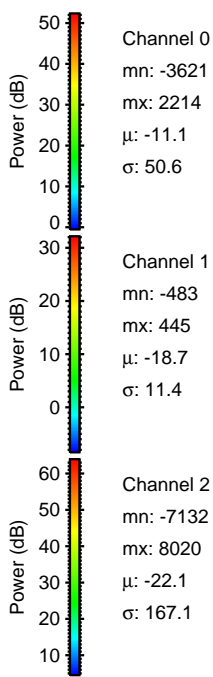
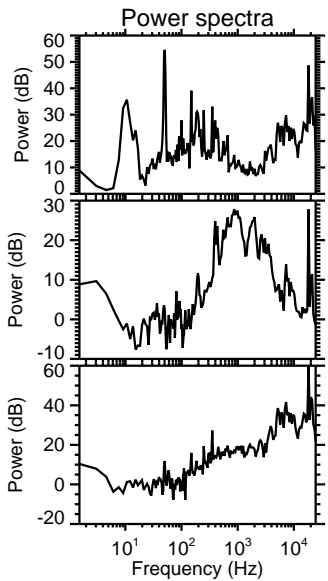
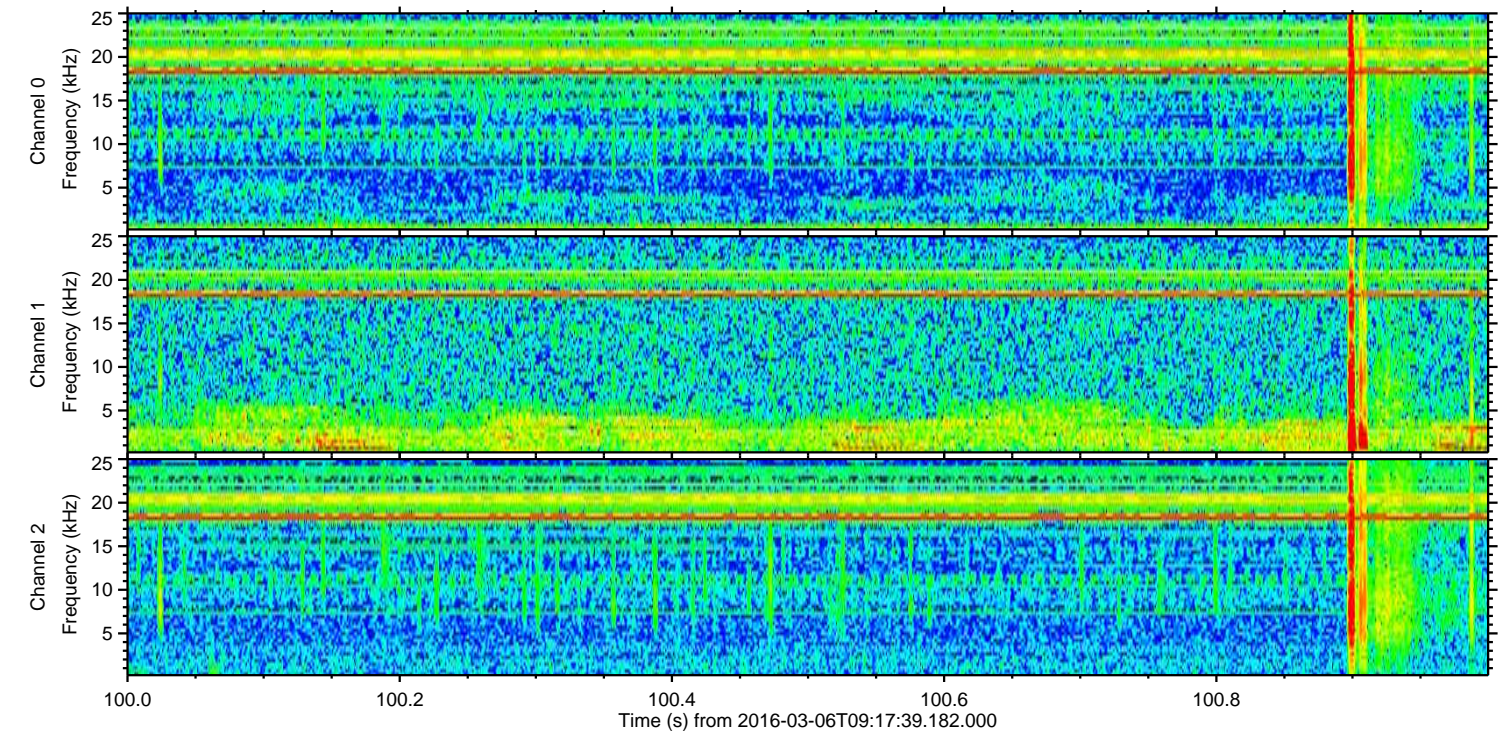
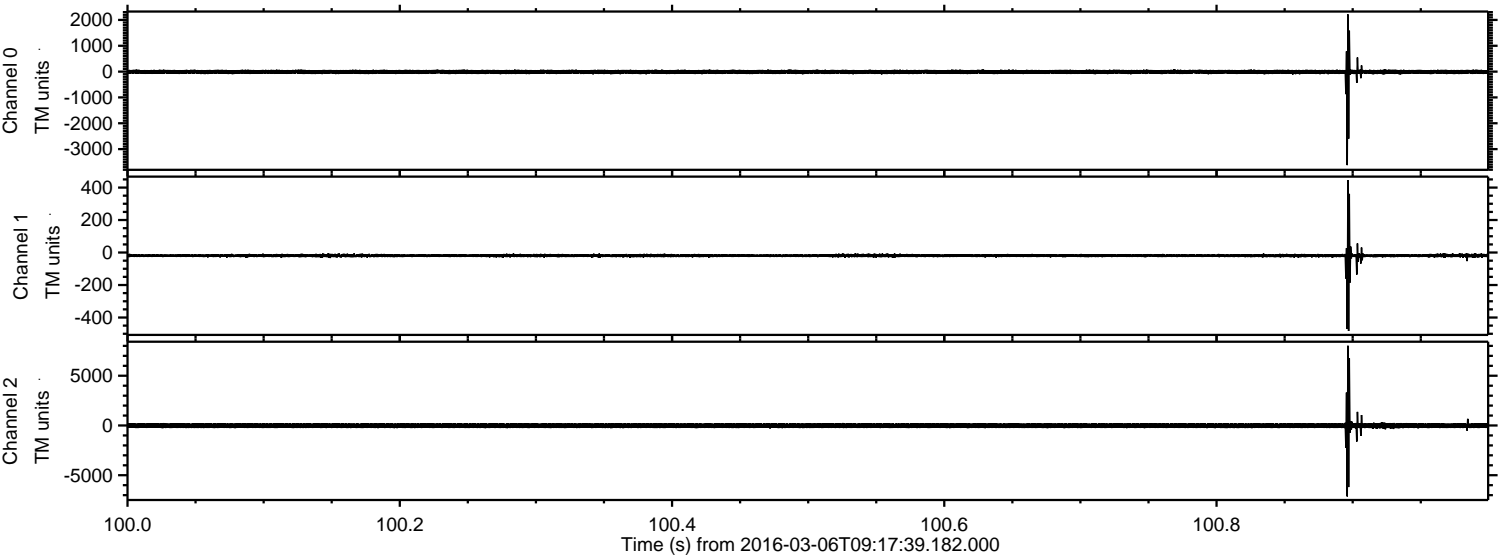
Processed Mon Apr 18 16:20:38 2016 by ELM ver.2012-10-06 from 001\_\_elm20160306\_091738\_\_dat00.bin





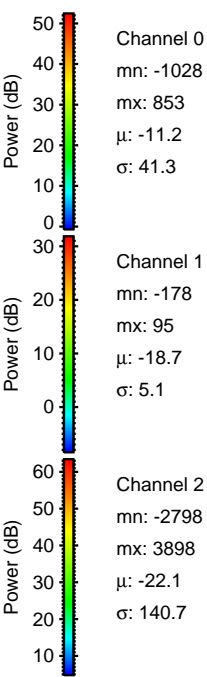
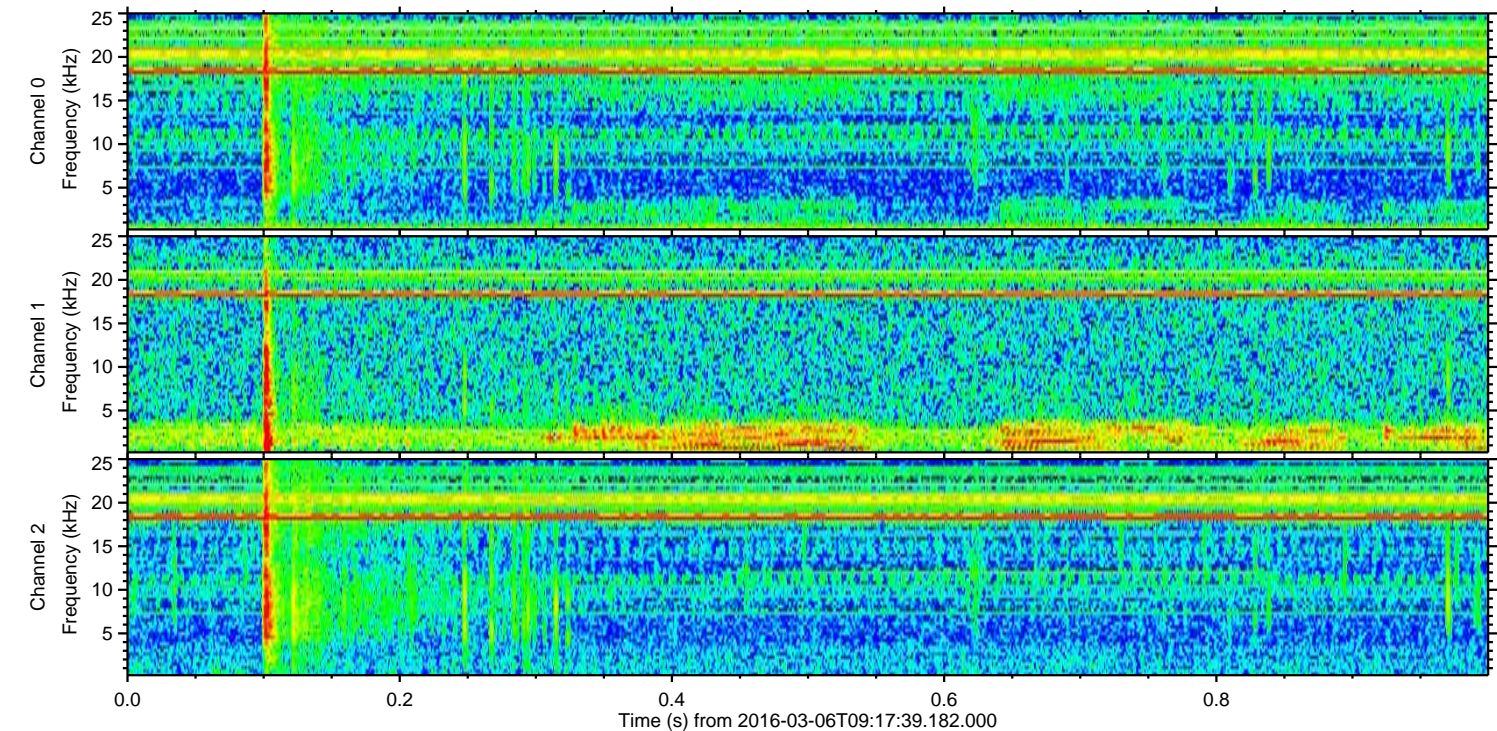
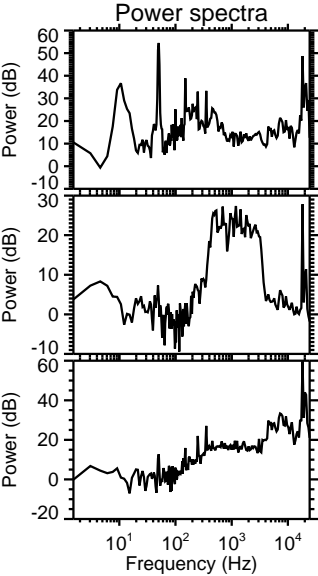
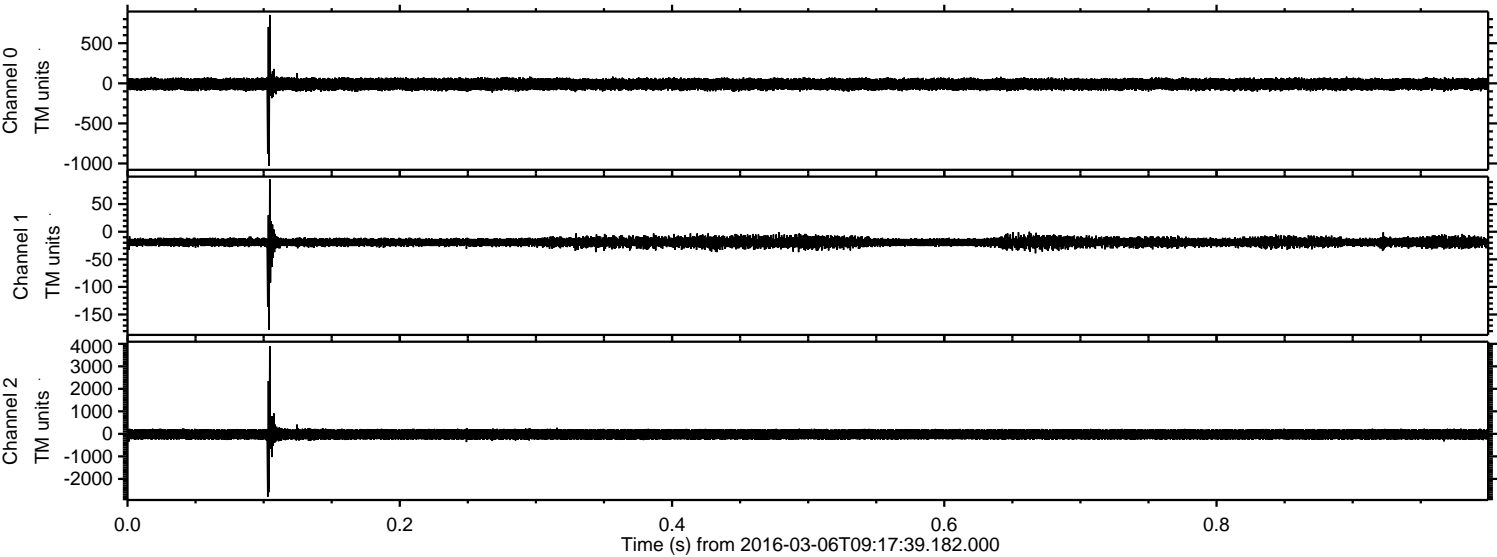
ELMAVAN 3D WAVEFORMS (Measured data sampled at 50 kHz) 51000 packets of 144 samples from 2016-03-06T09:17:39.182.000. Part 101/147

Processed Mon Apr 18 16:20:50 2016 by ELM ver.2012-10-06 from 001\_\_elm20160306\_091738\_\_dat00.bin





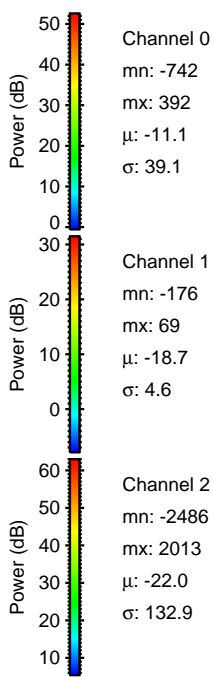
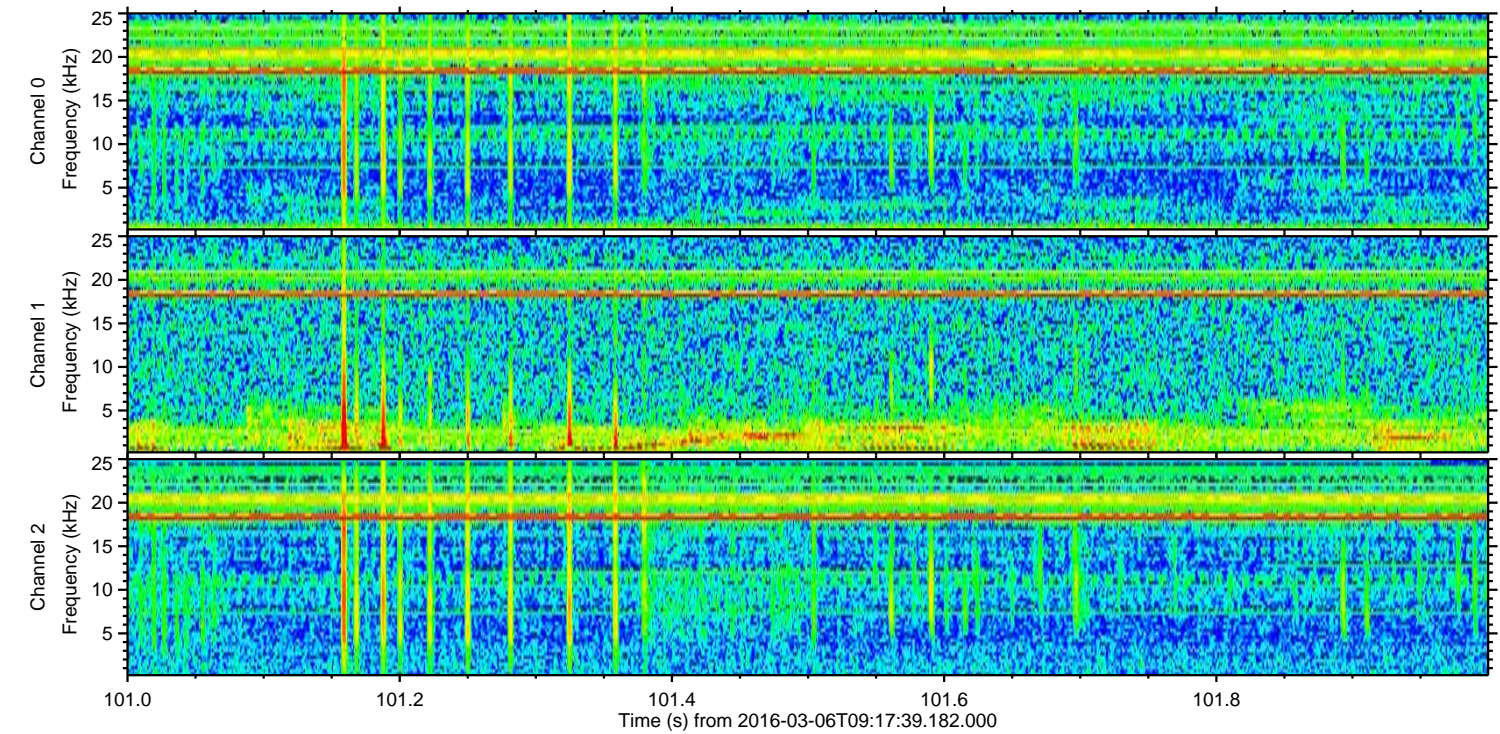
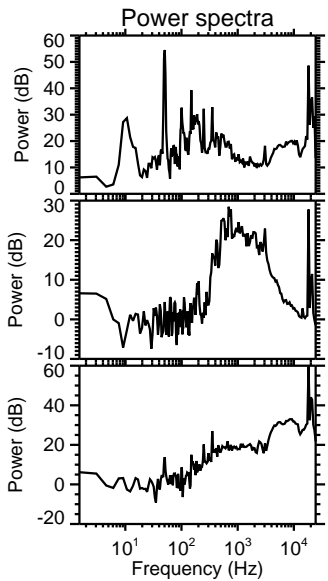
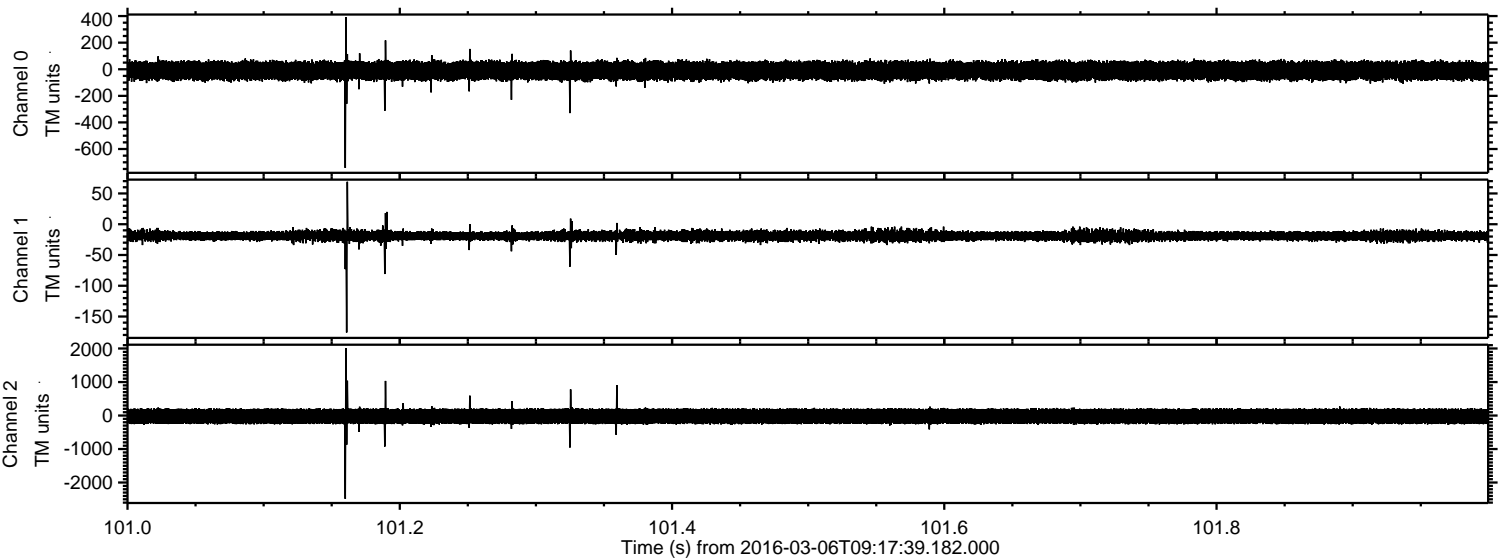
Processed Mon Apr 18 16:20:51 2016 by ELM ver.2012-10-06 from 001\_\_elm20160306\_091738\_\_dat00.bin





ELMAVAN 3D WAVEFORMS (Measured data sampled at 50 kHz) 51000 packets of 144 samples from 2016-03-06T09:17:39.182.000. Part 102/147

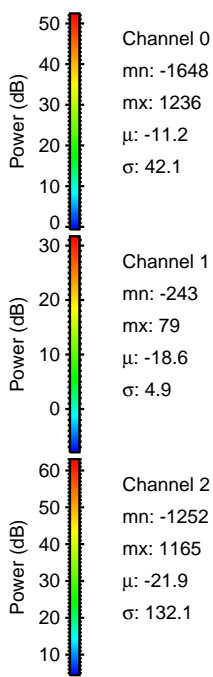
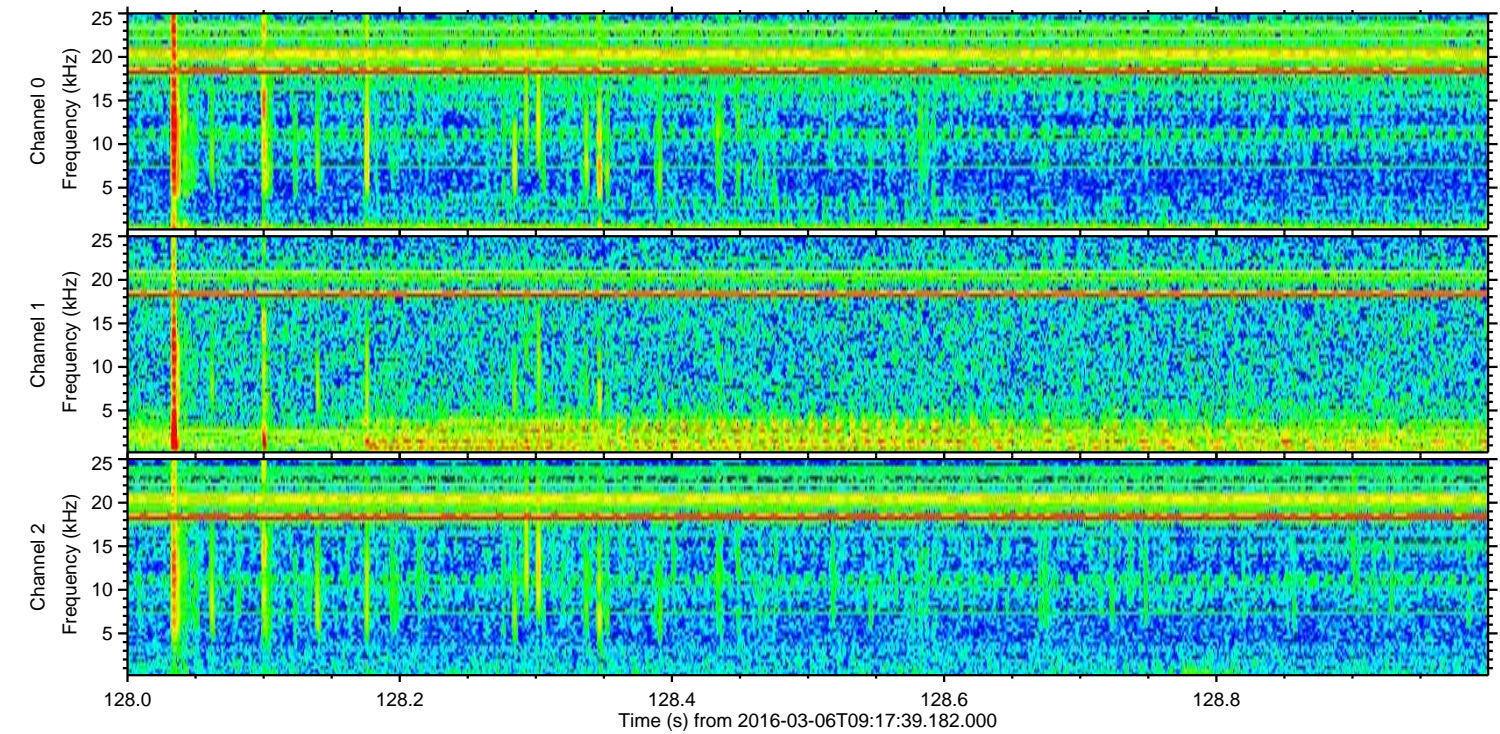
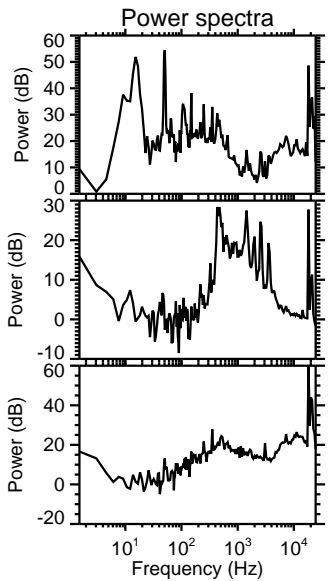
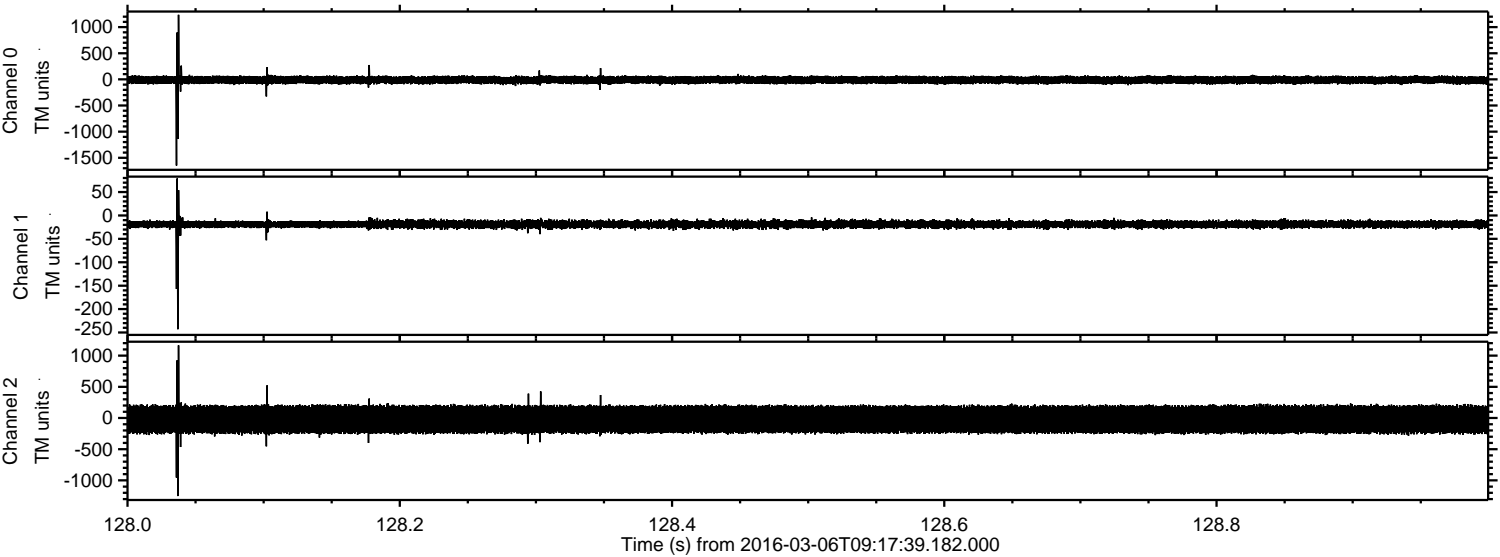
Processed Mon Apr 18 16:20:52 2016 by ELM ver.2012-10-06 from 001\_\_elm20160306\_091738\_\_dat00.bin





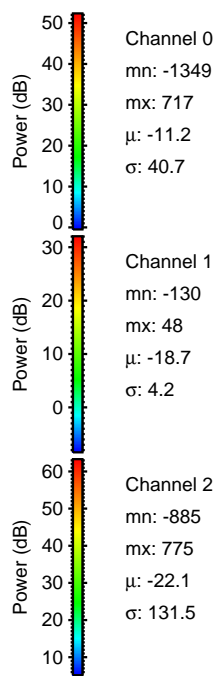
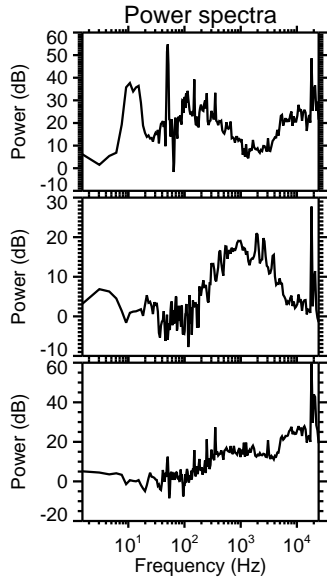
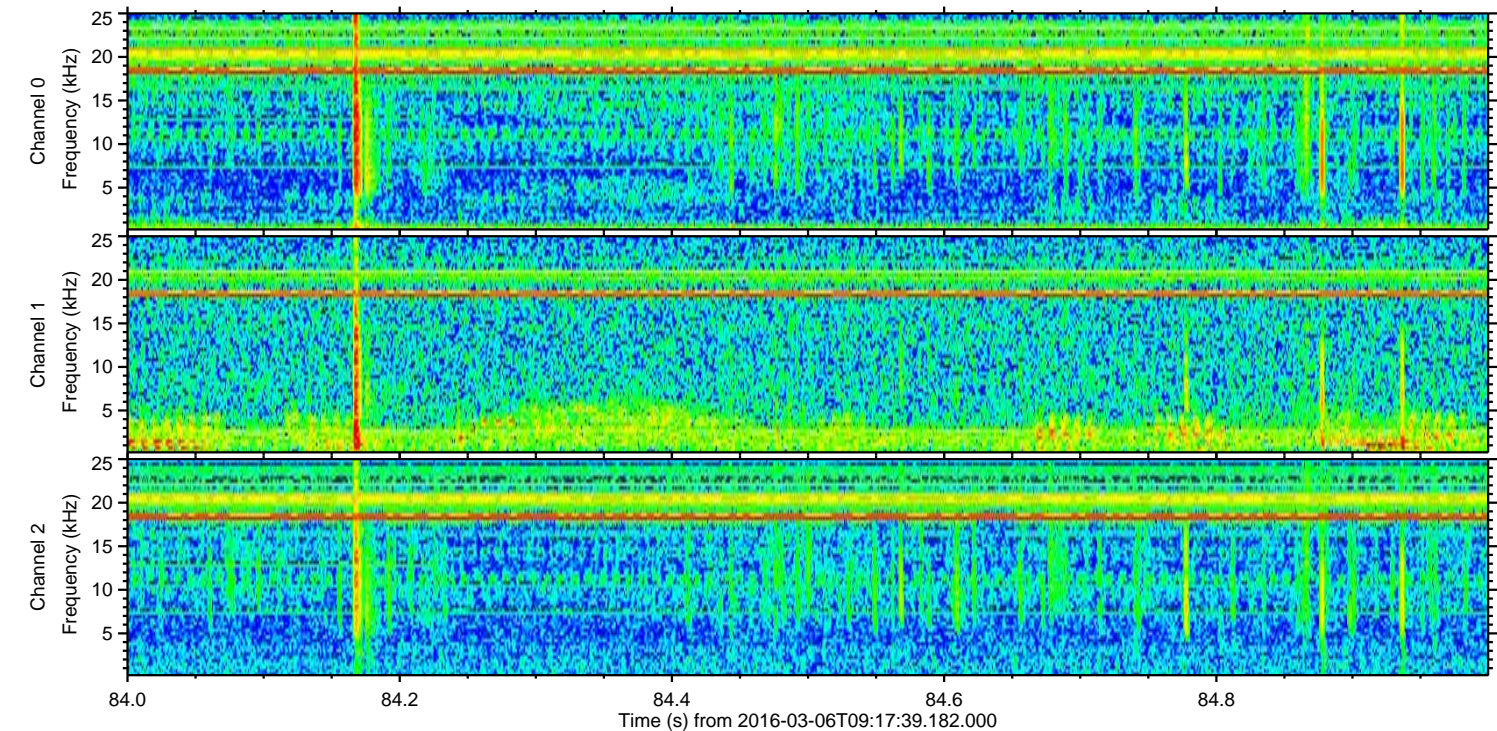
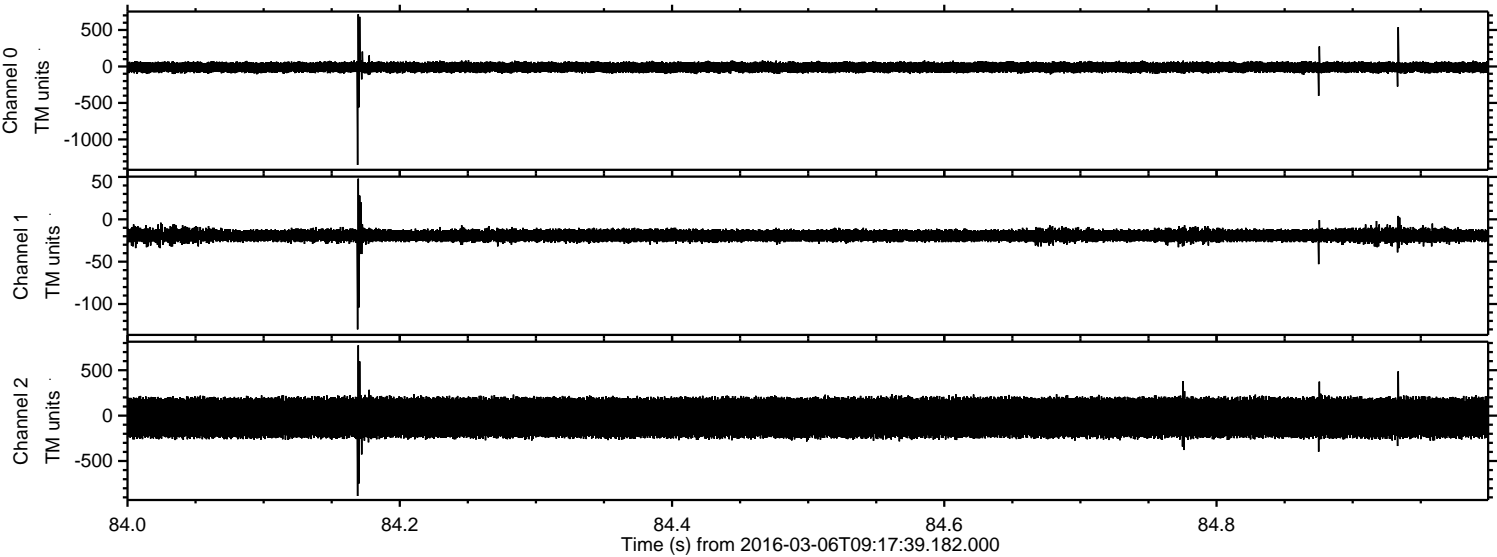
ELMAVAN 3D WAVEFORMS (Measured data sampled at 50 kHz) 51000 packets of 144 samples from 2016-03-06T09:17:39.182.000. Part 129/147

Processed Mon Apr 18 16:20:53 2016 by ELM ver.2012-10-06 from 001\_\_elm20160306\_091738\_\_dat00.bin



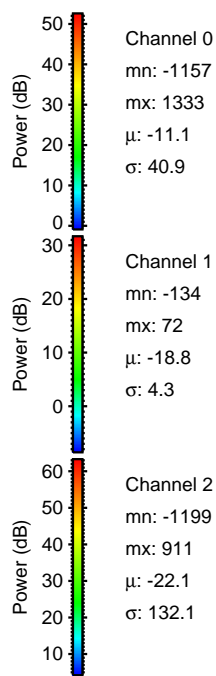
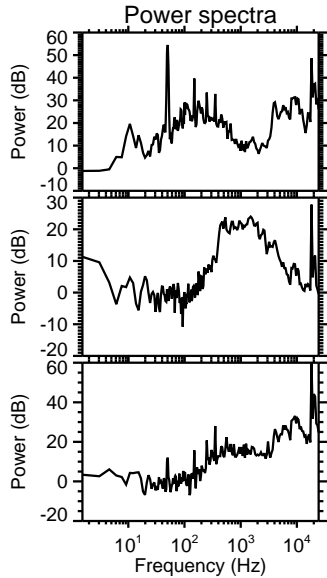
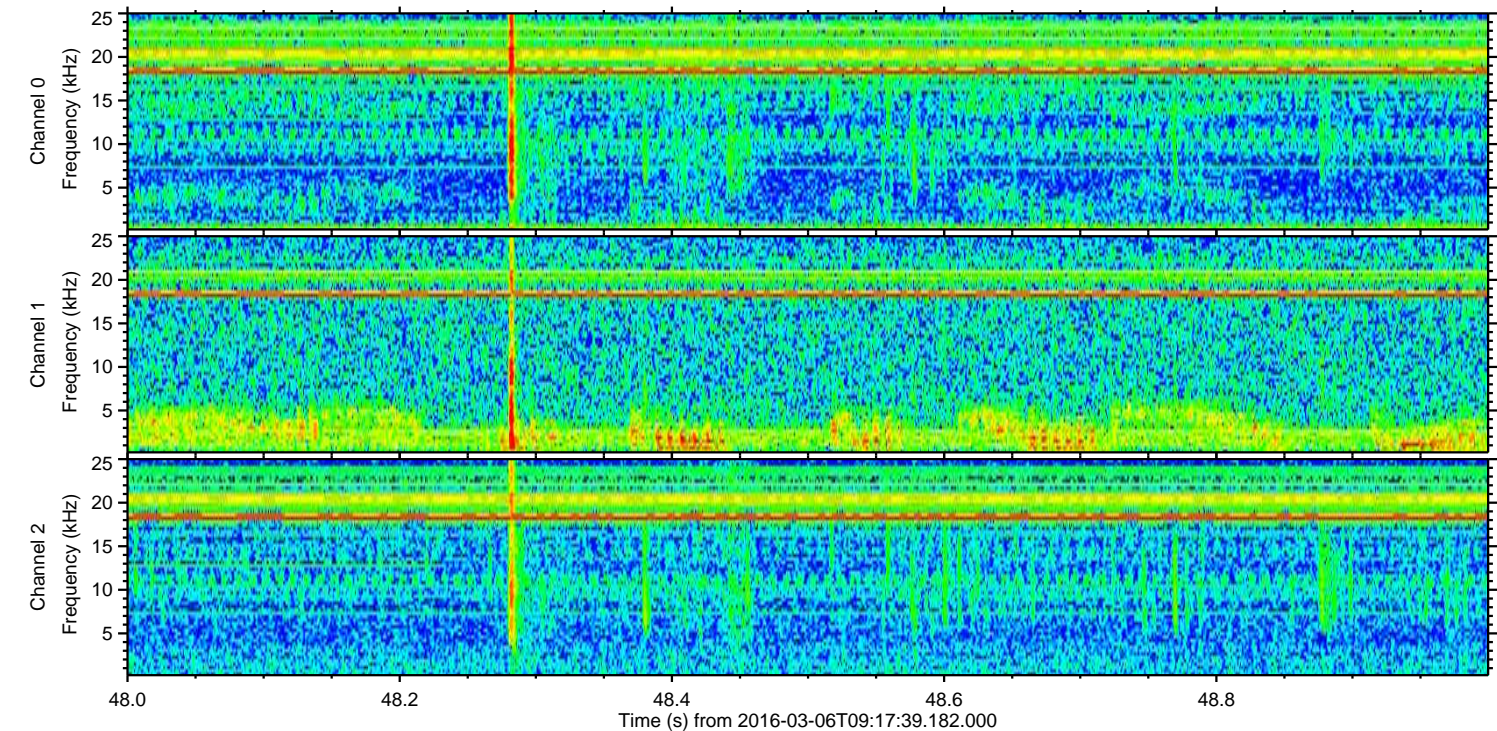
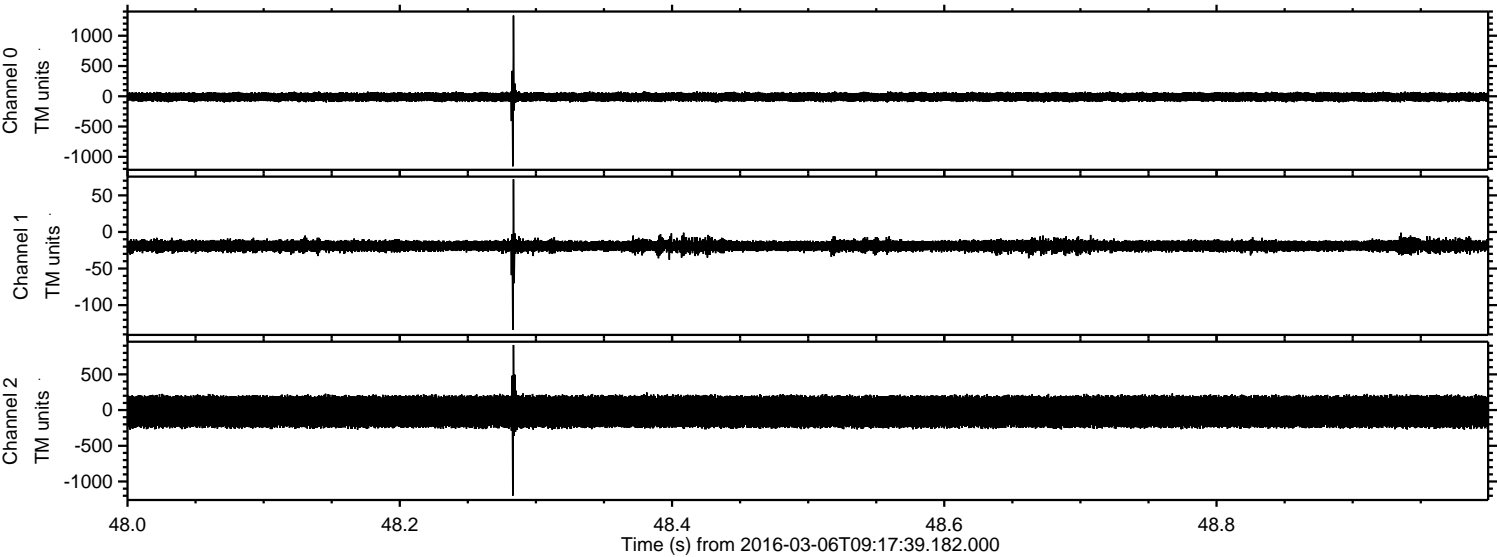


Processed Mon Apr 18 16:20:54 2016 by ELM ver.2012-10-06 from 001\_\_elm20160306\_091738\_\_dat00.bin





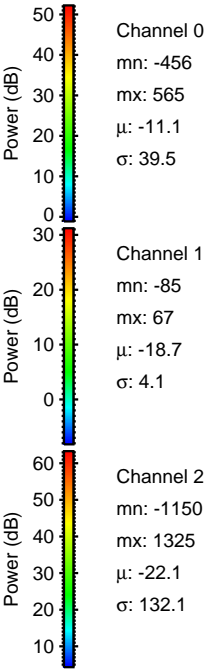
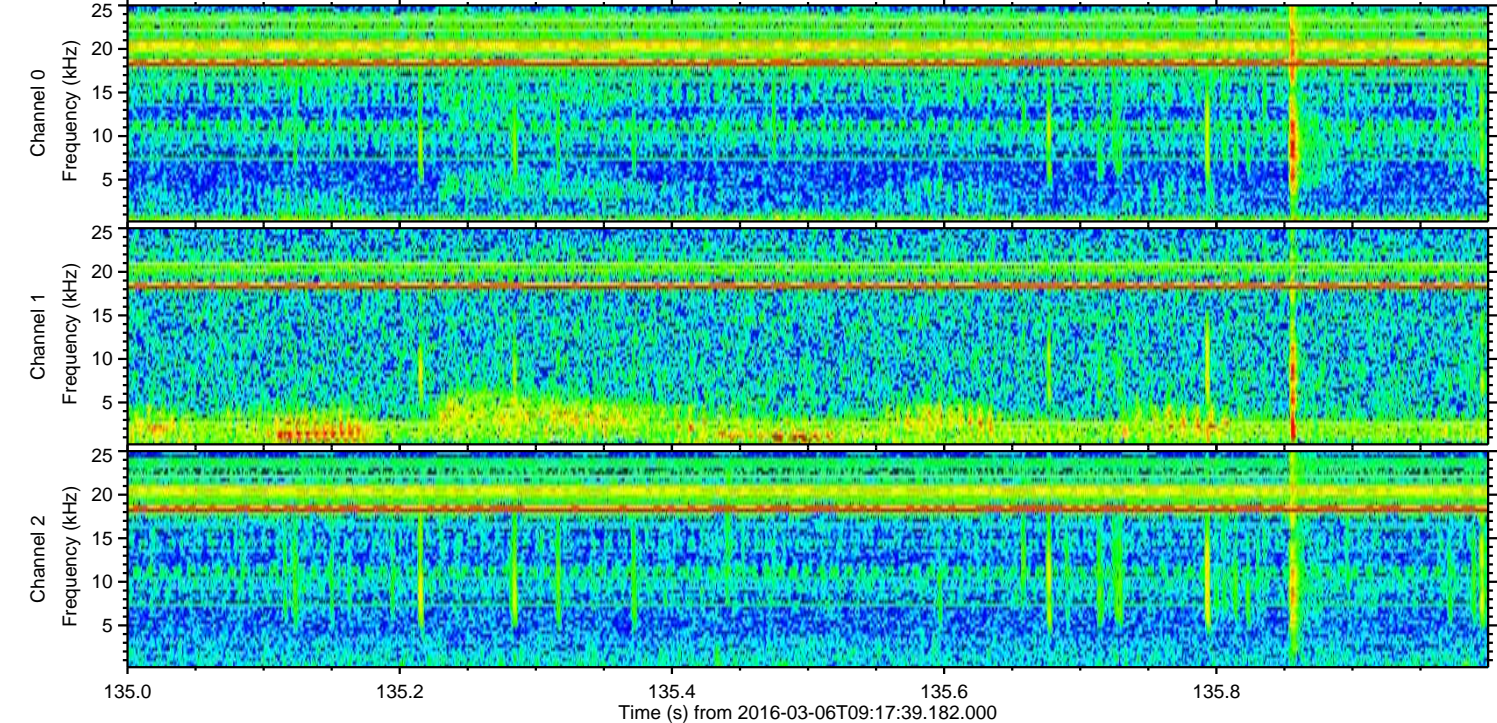
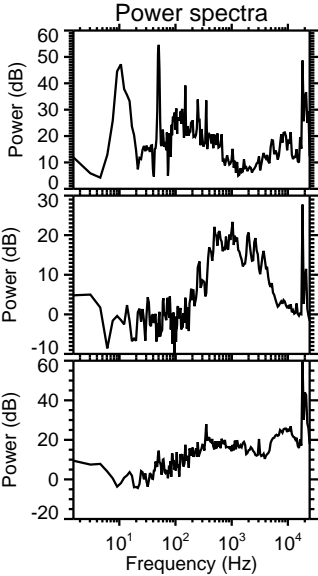
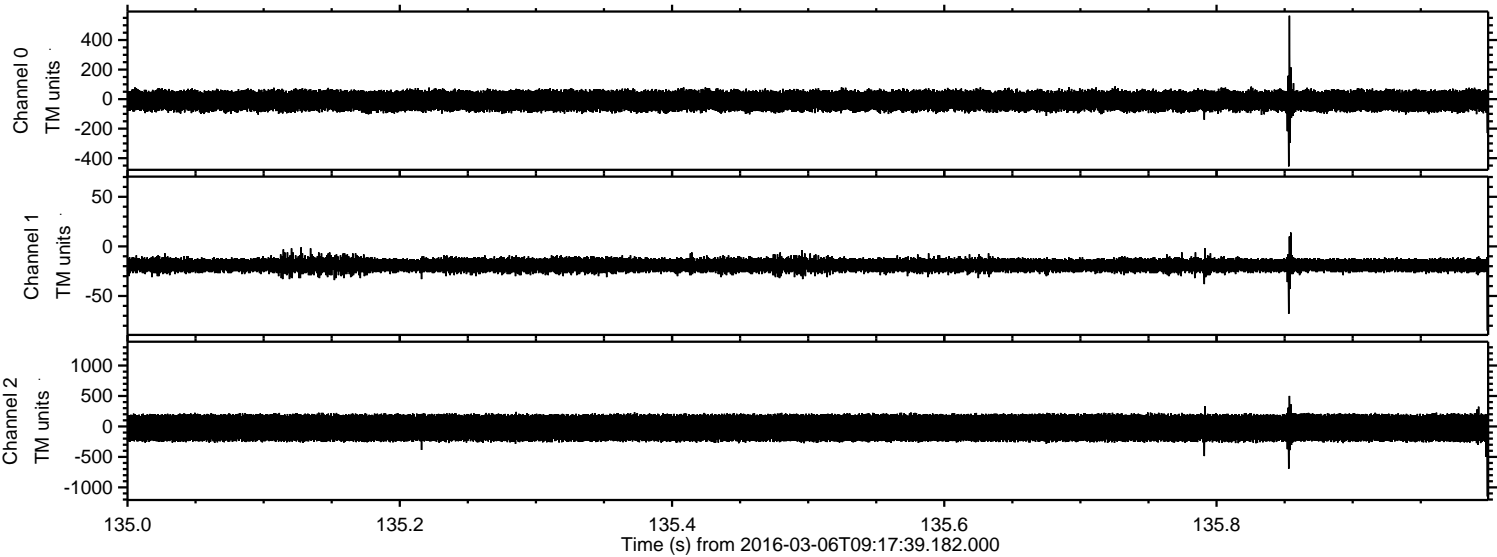
Processed Mon Apr 18 16:20:55 2016 by ELM ver.2012-10-06 from 001\_\_elm20160306\_091738\_\_dat00.bin





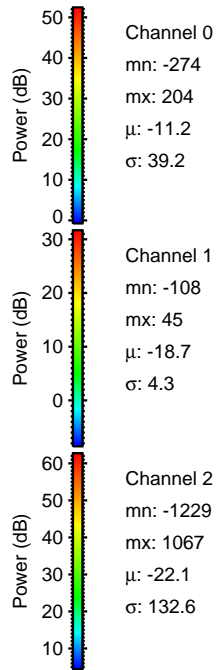
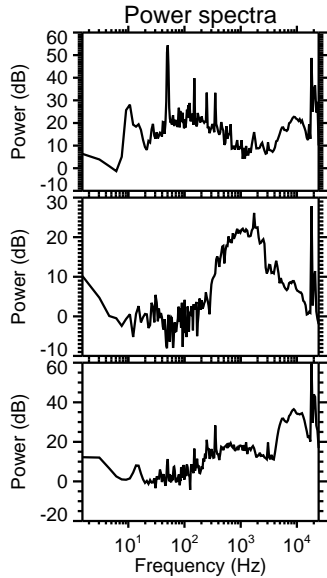
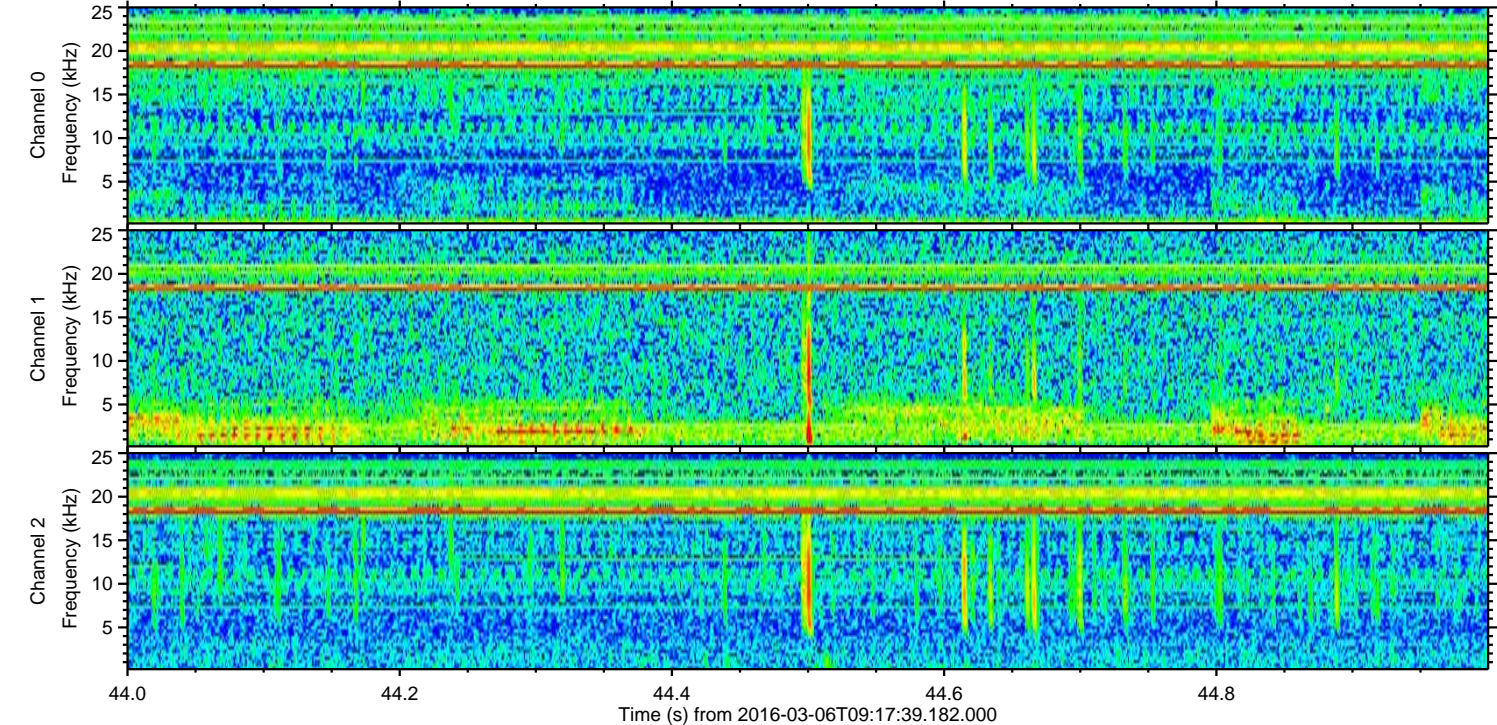
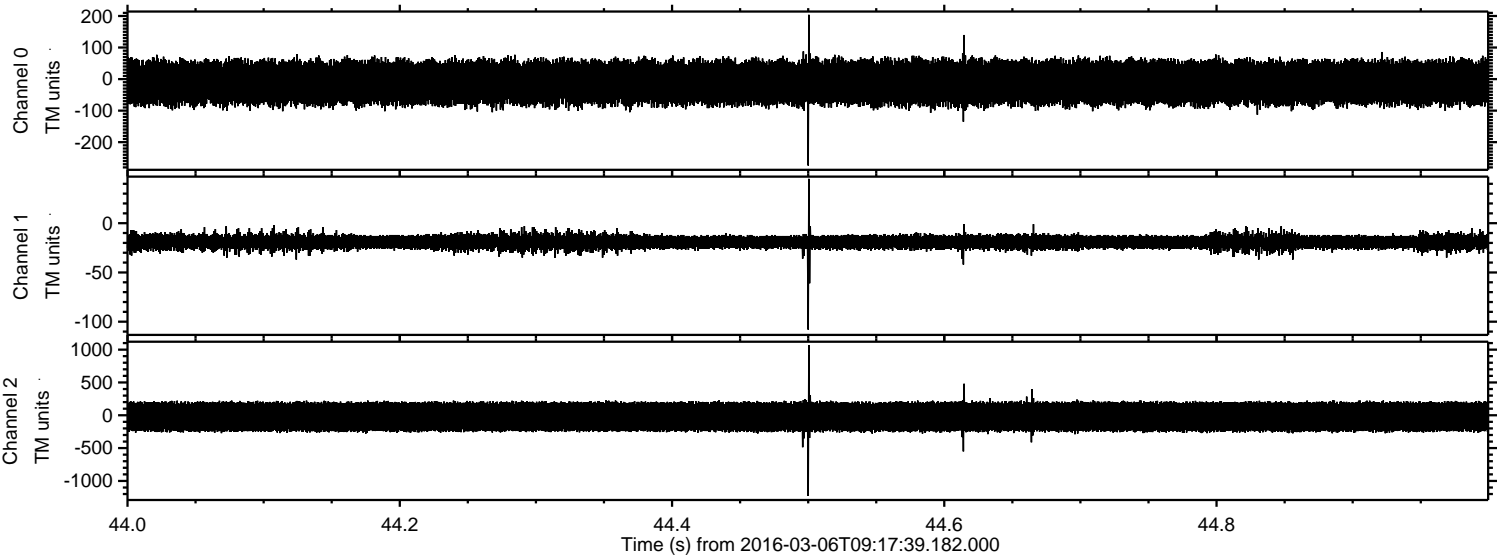
ELMAVAN 3D WAVEFORMS (Measured data sampled at 50 kHz) 51000 packets of 144 samples from 2016-03-06T09:17:39.182.000. Part 136/147

Processed Mon Apr 18 16:20:56 2016 by ELM ver.2012-10-06 from 001\_\_elm20160306\_091738\_\_dat00.bin



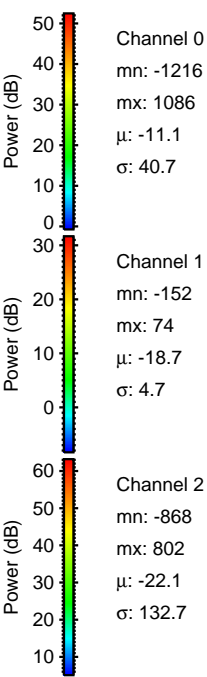
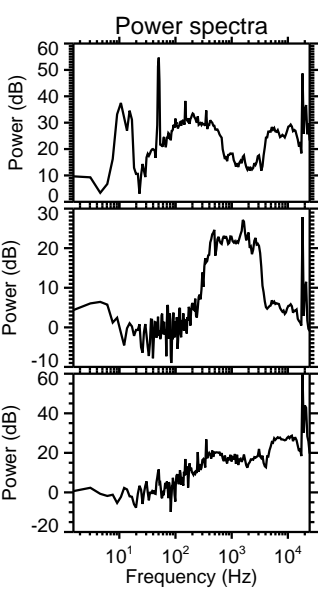
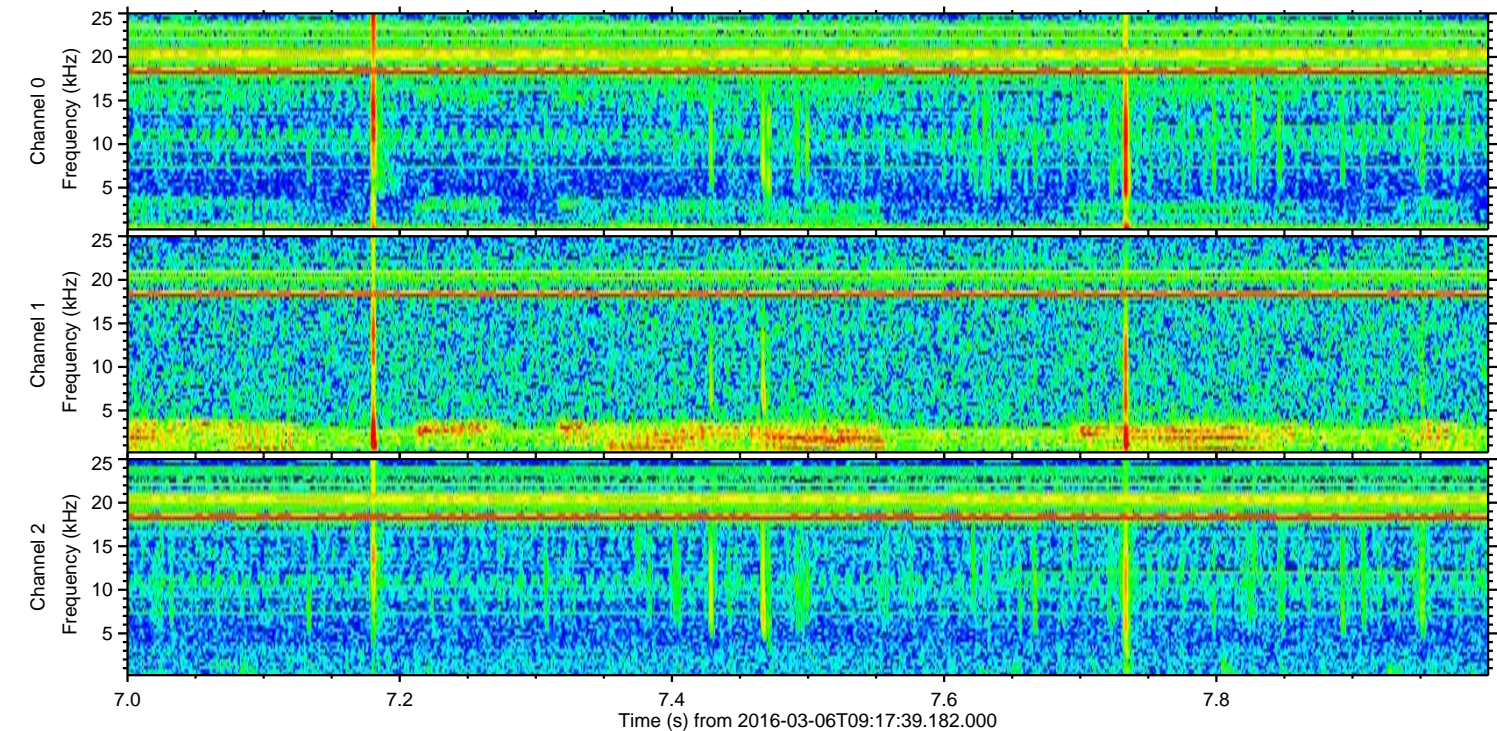
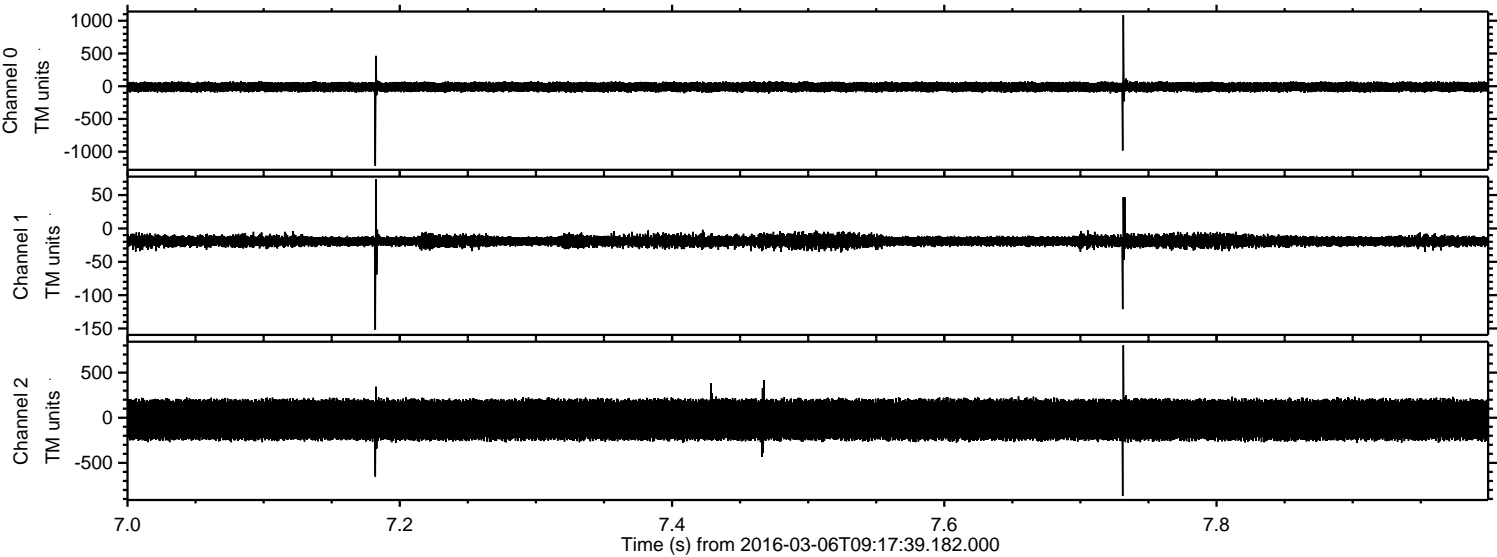


Processed Mon Apr 18 16:20:57 2016 by ELM ver.2012-10-06 from 001\_\_elm20160306\_091738\_\_dat00.bin





Processed Mon Apr 18 16:20:58 2016 by ELM ver.2012-10-06 from 001\_\_elm20160306\_091738\_\_dat00.bin



Channel 0  
mn: -1216  
mx: 1086  
 $\mu$ : -11.1  
 $\sigma$ : 40.7

Channel 1  
mn: -152  
mx: 74  
 $\mu$ : -18.7  
 $\sigma$ : 4.7

Channel 2  
mn: -868  
mx: 802  
 $\mu$ : -22.1  
 $\sigma$ : 132.7



Processed Mon Apr 18 16:20:59 2016 by ELM ver.2012-10-06 from 001\_\_elm20160306\_091738\_\_dat00.bin

