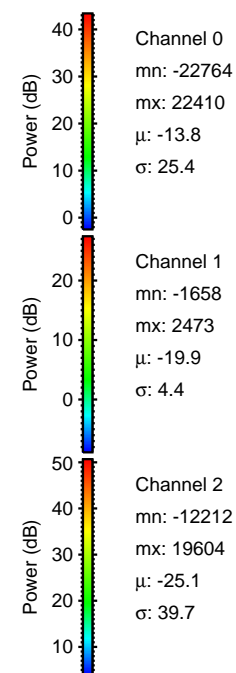
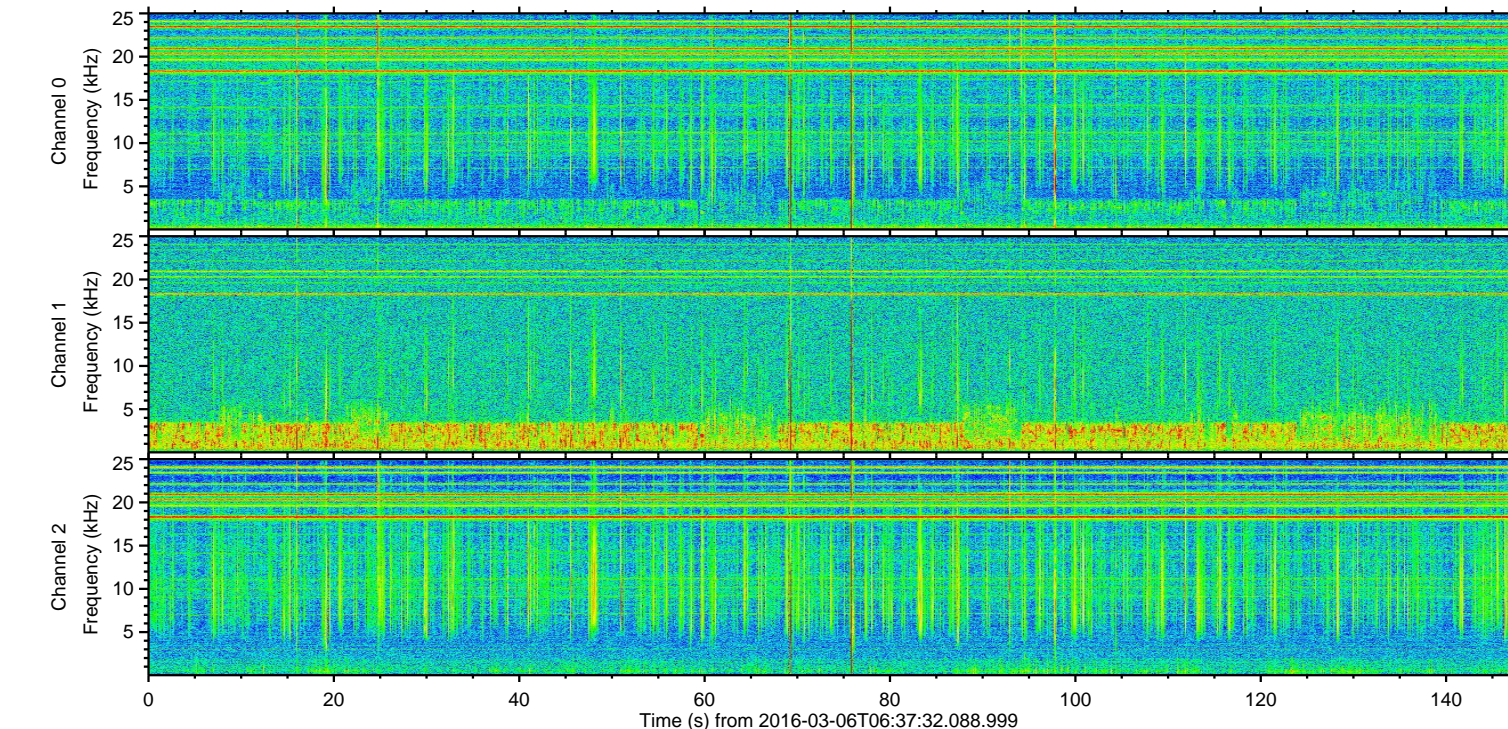
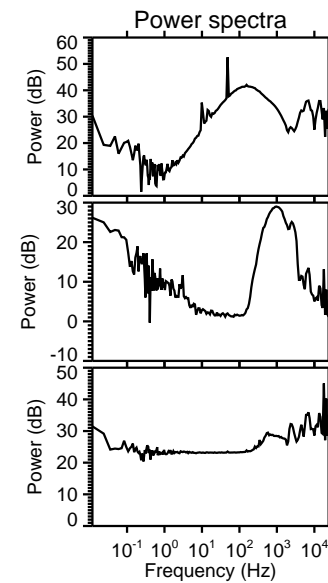
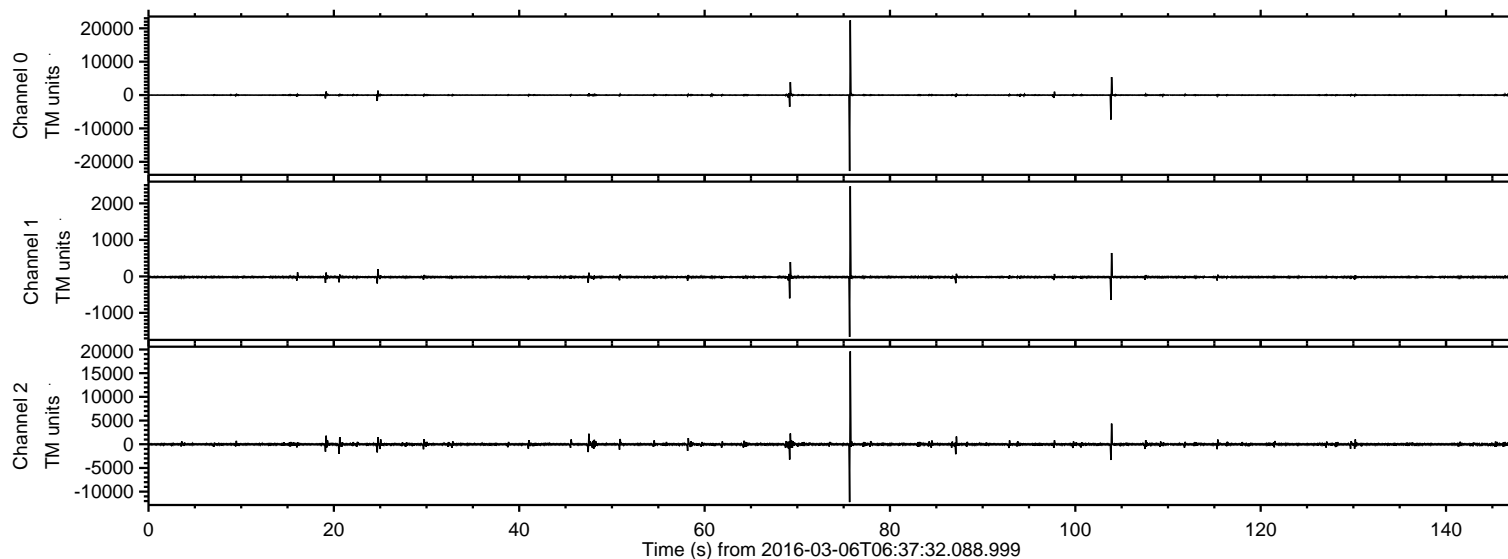
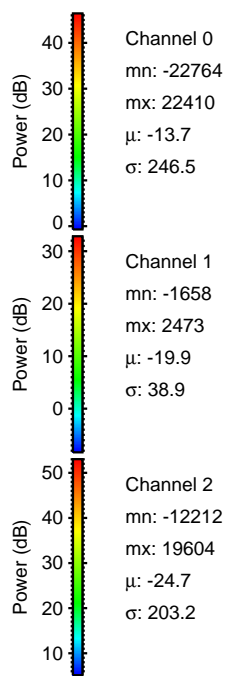
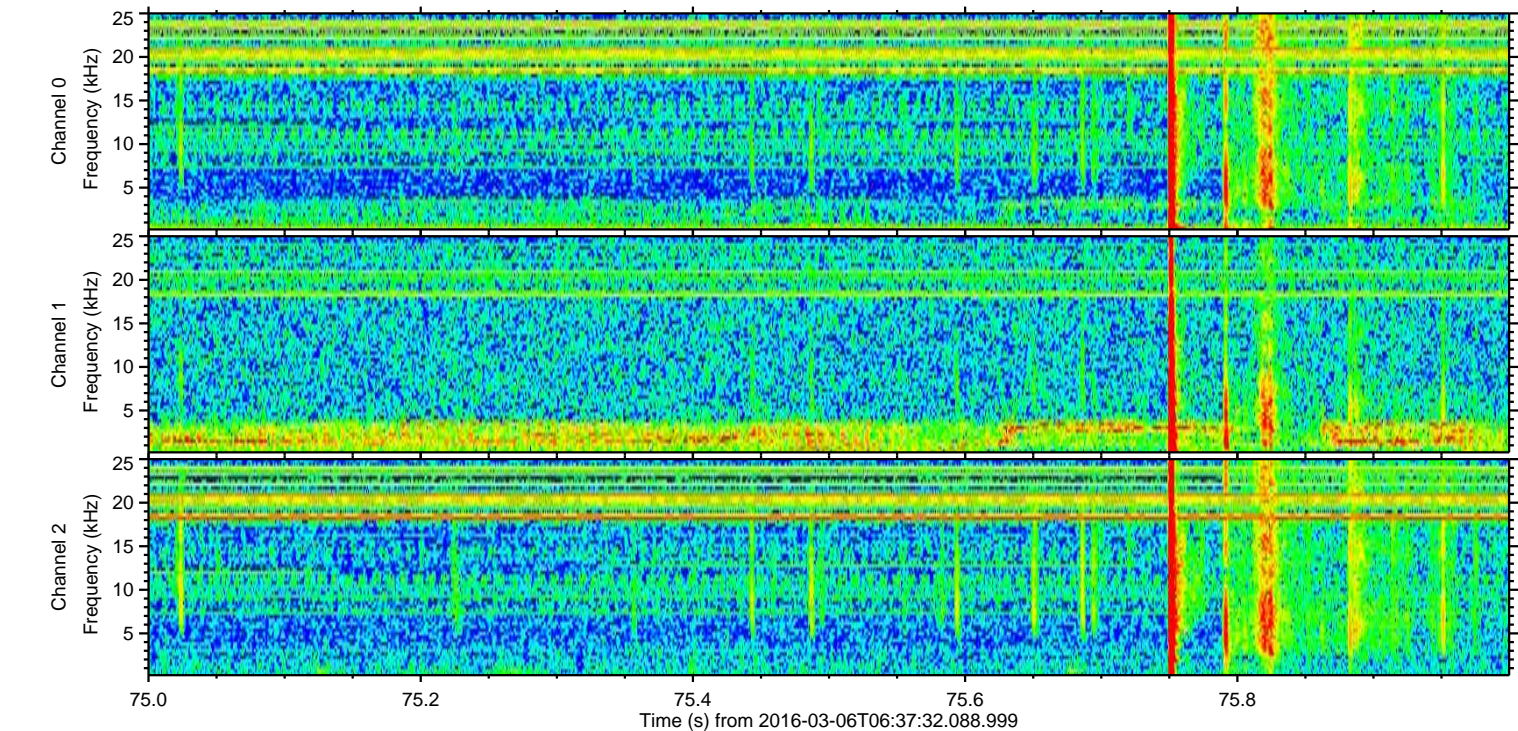
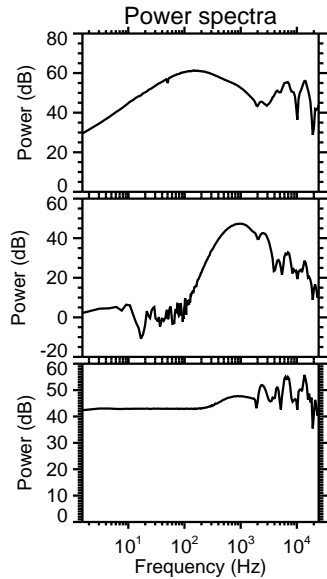
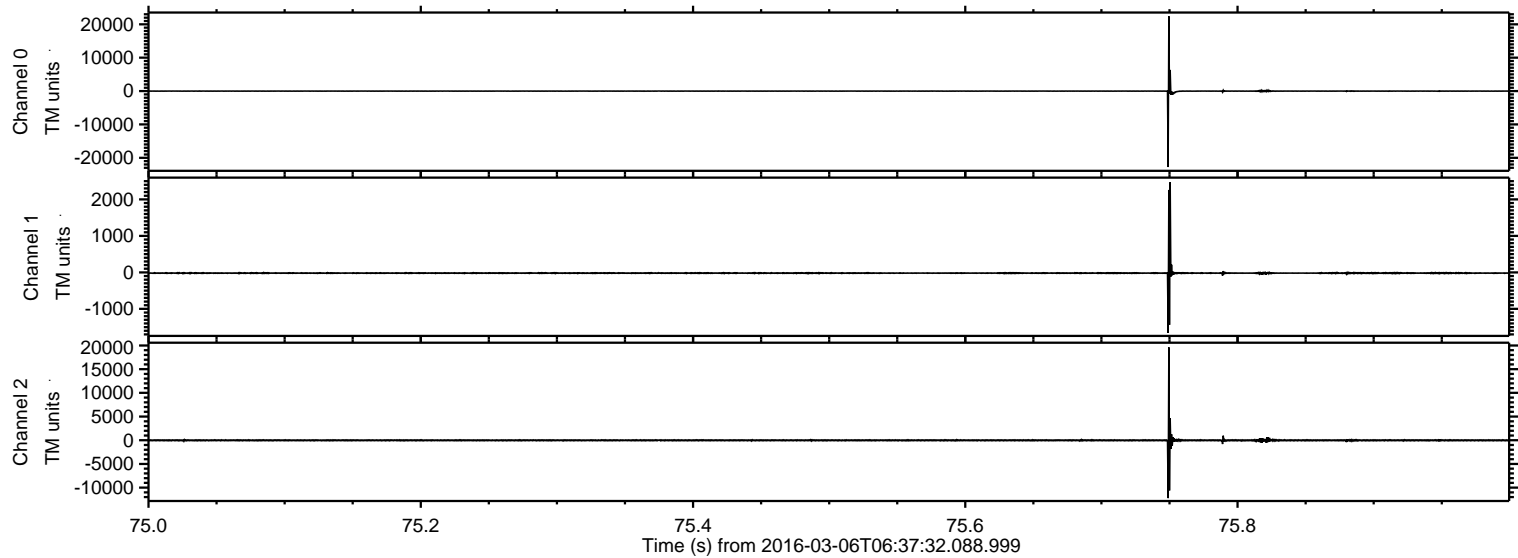


ELMAVAN 3D WAVEFORMS (Measured data sampled at 50 kHz) 51000 packets of 144 samples from 2016-03-06T06:37:32.088.999.

Processed Mon Apr 18 15:48:04 2016 by ELM ver.2012-10-06 from 001__elm20160306_063731__dat00.bin

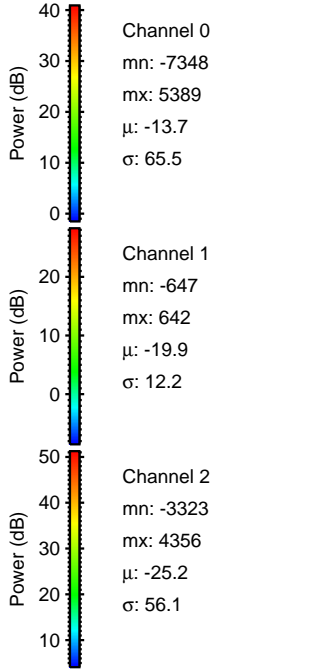
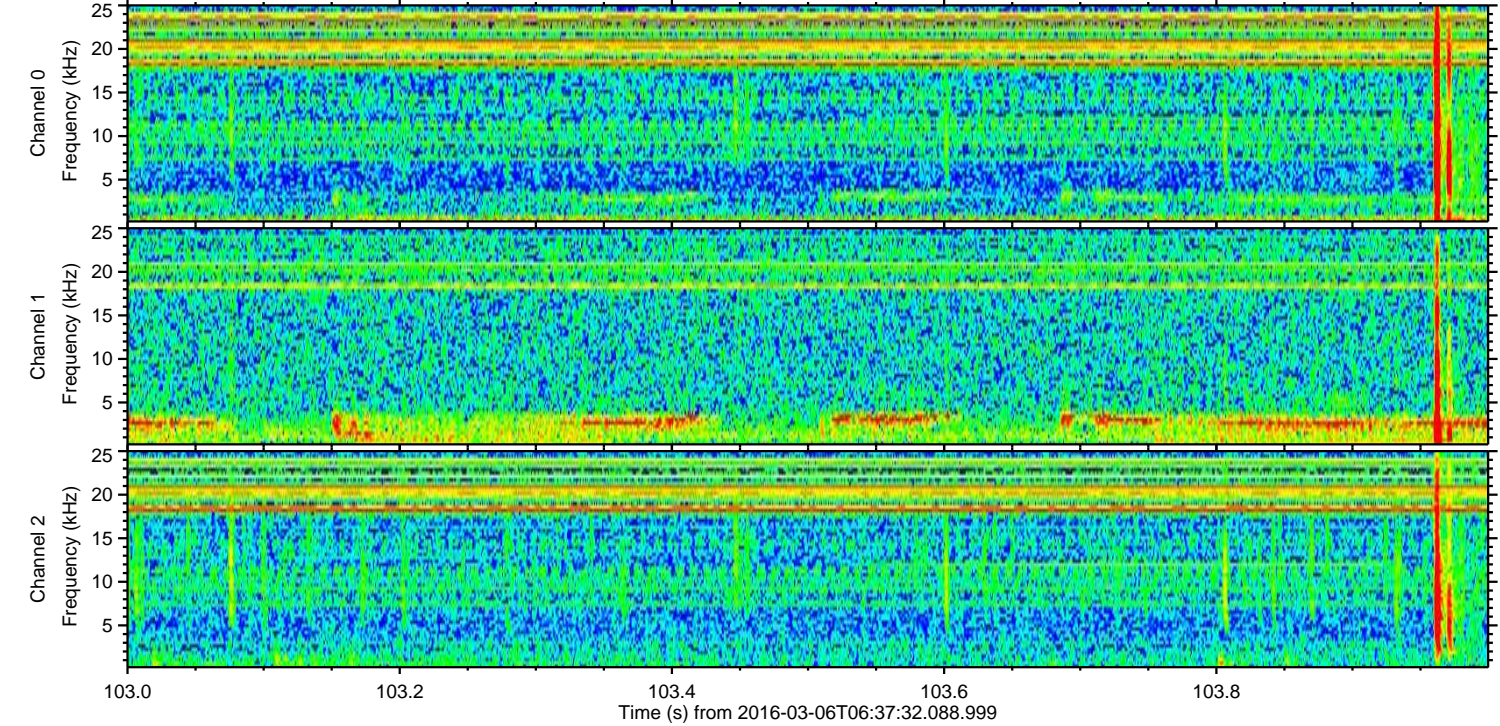
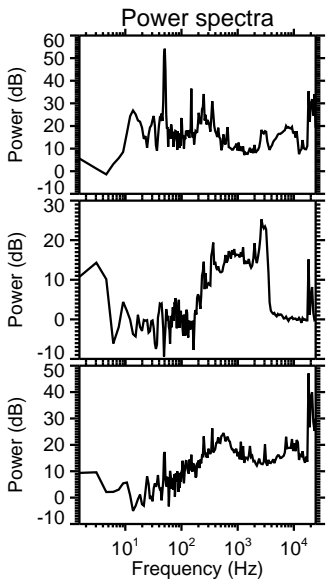
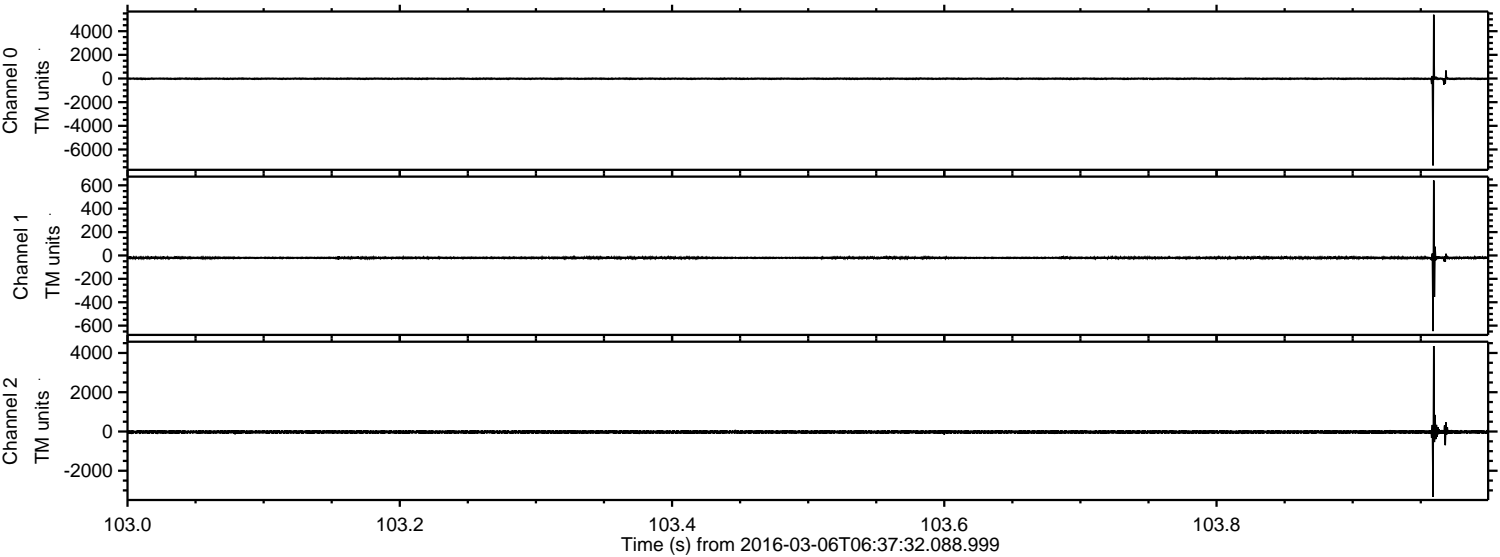


Processed Mon Apr 18 15:48:16 2016 by ELM ver.2012-10-06 from 001__elm20160306_063731__dat00.bin

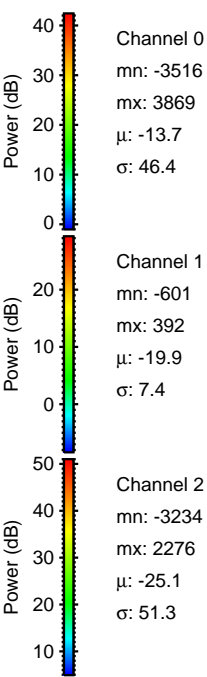
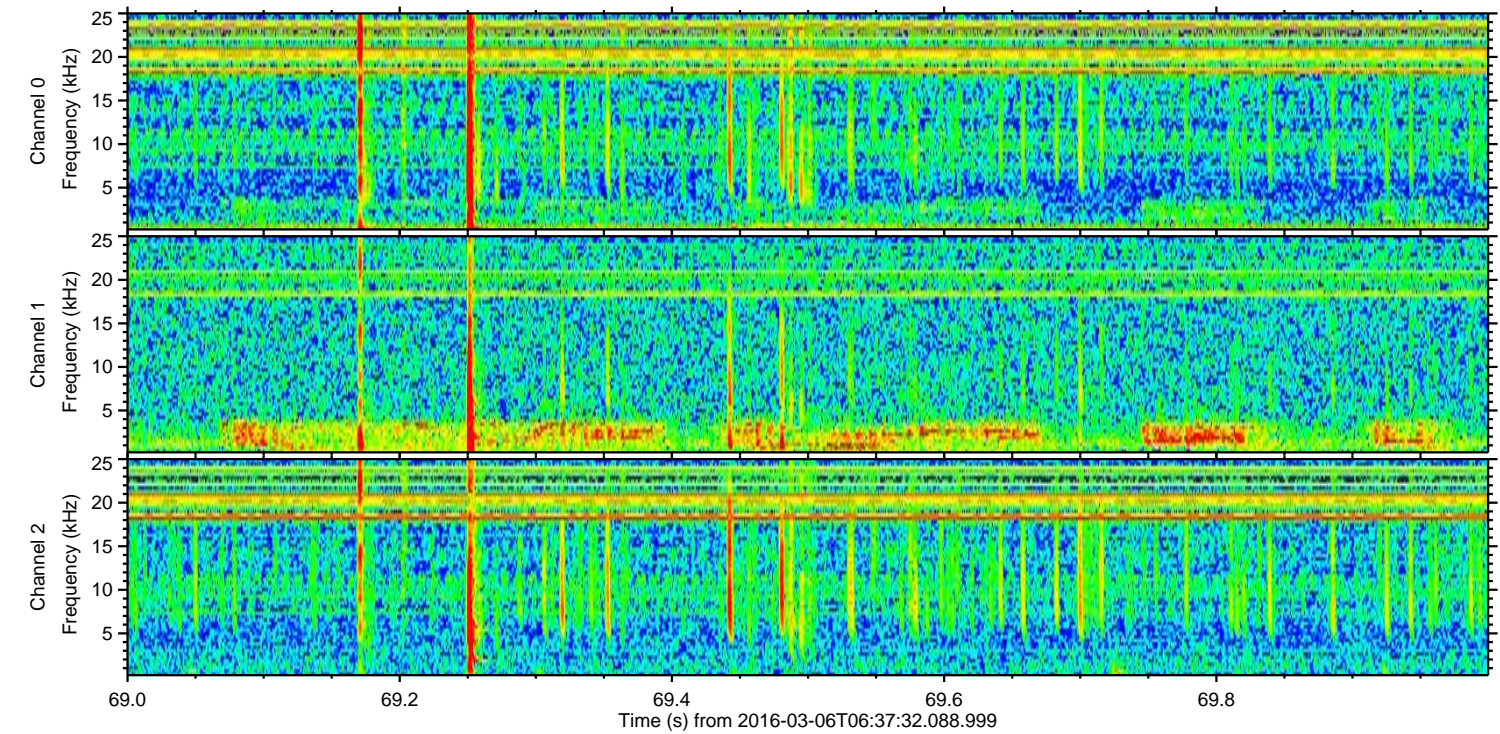
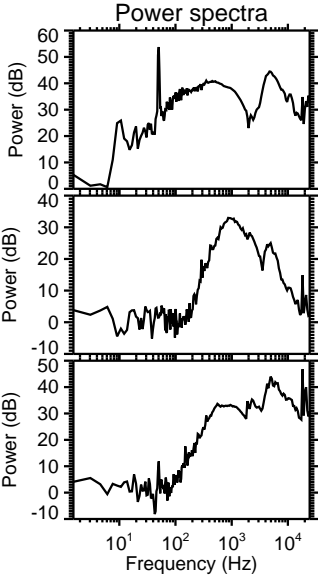
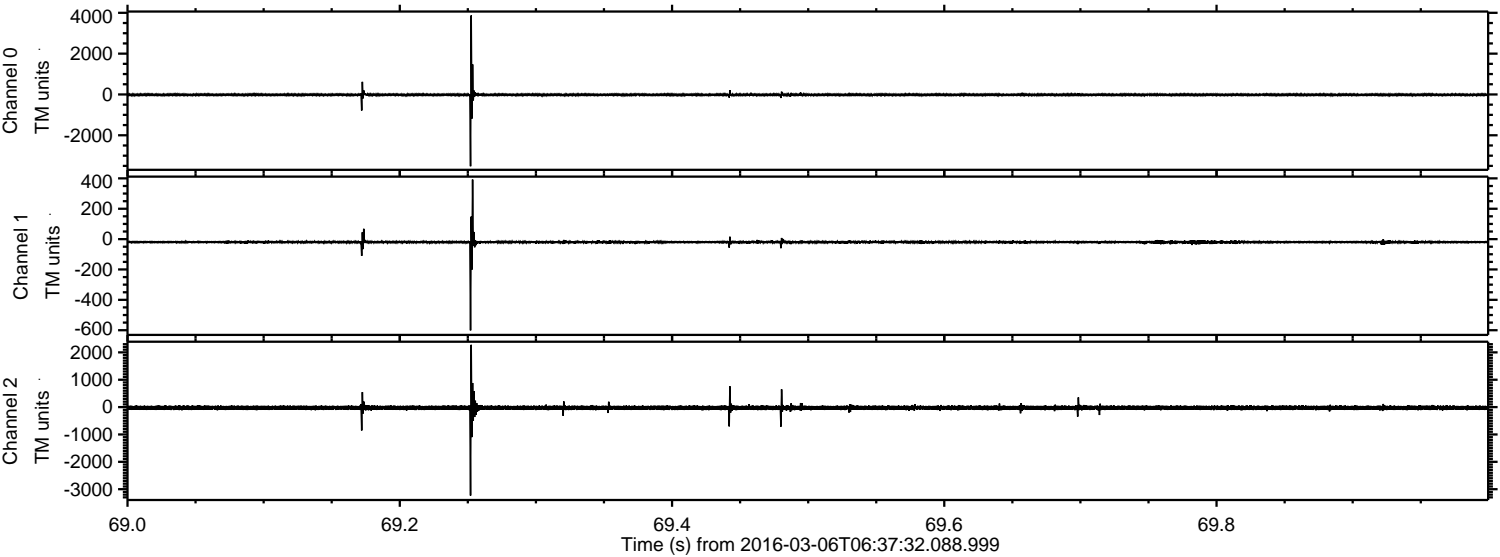


ELMAVAN 3D WAVEFORMS (Measured data sampled at 50 kHz) 51000 packets of 144 samples from 2016-03-06T06:37:32.088.999. Part 104/147

Processed Mon Apr 18 15:48:17 2016 by ELM ver.2012-10-06 from 001__elm20160306_063731__dat00.bin

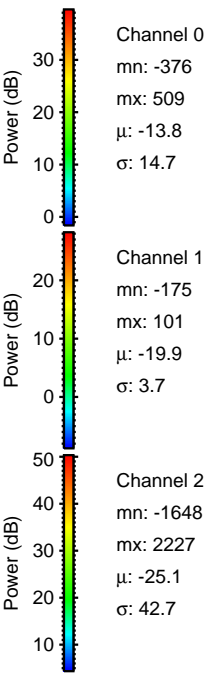
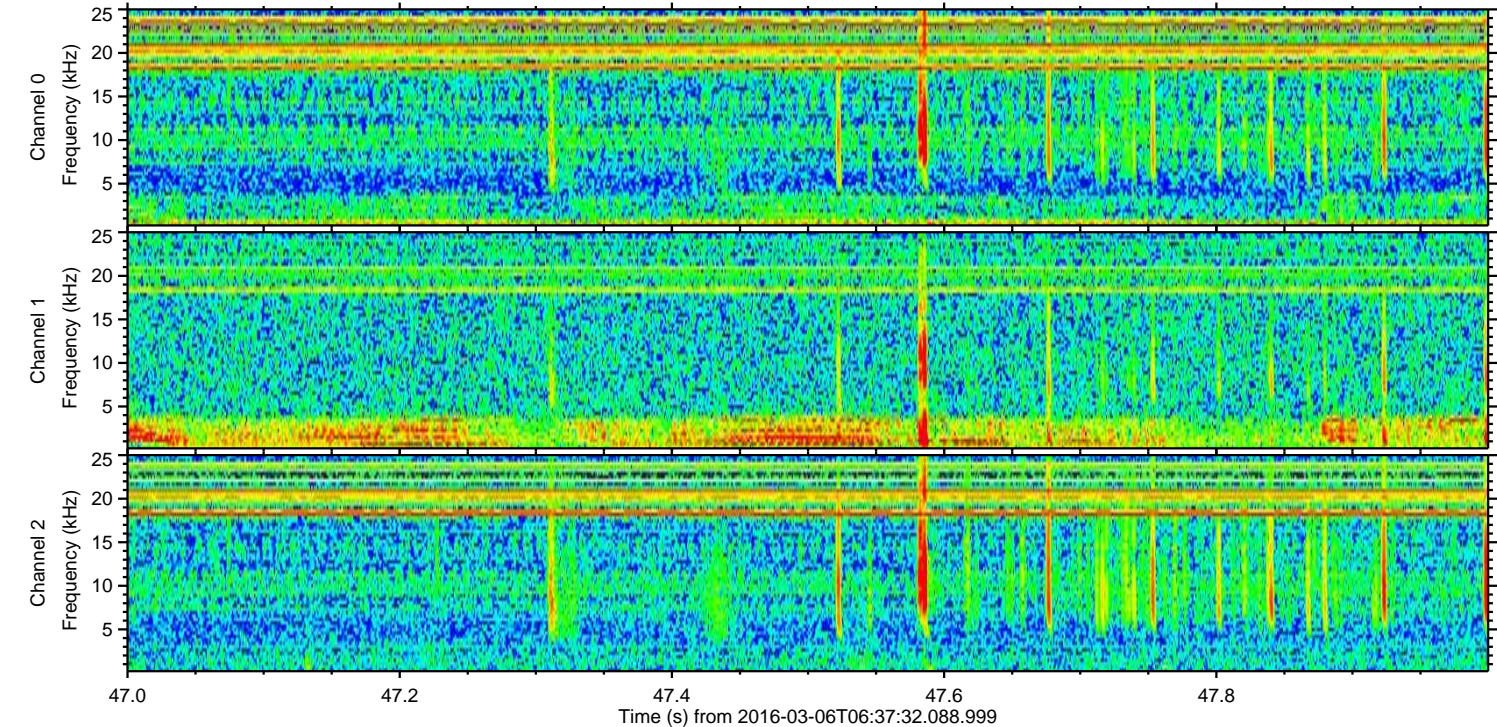
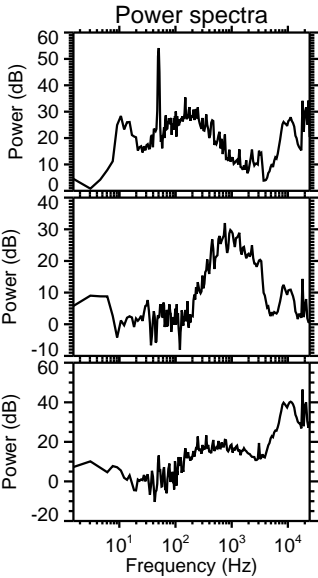
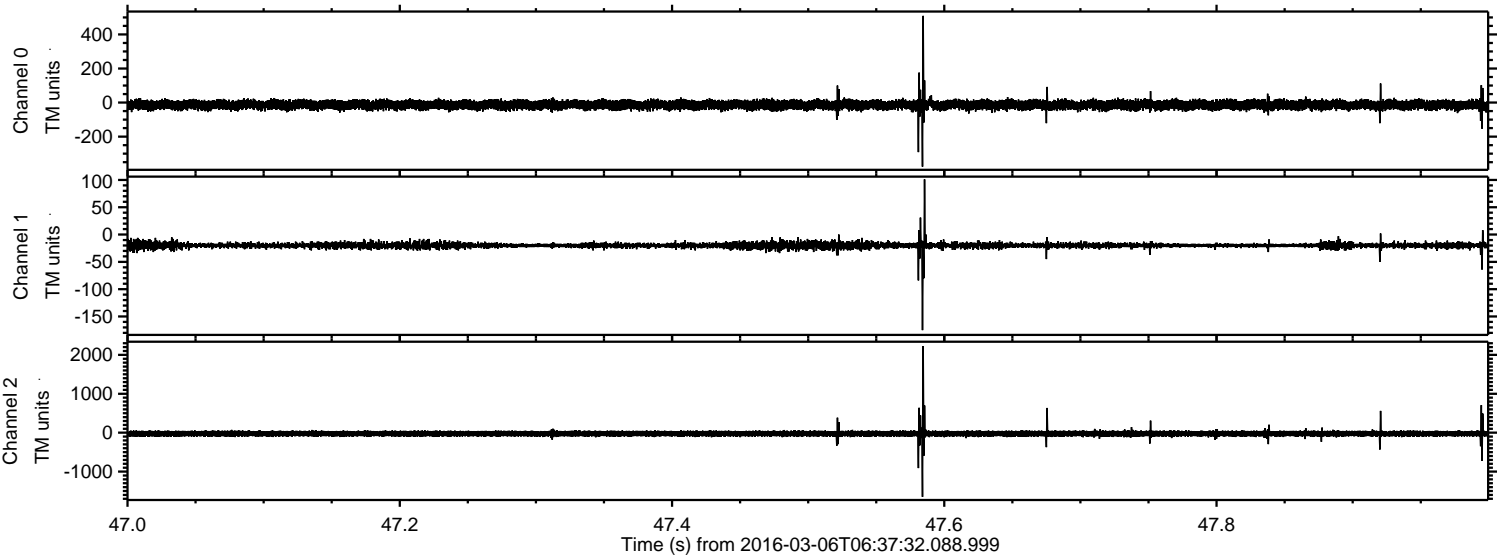


Processed Mon Apr 18 15:48:18 2016 by ELM ver.2012-10-06 from 001__elm20160306_063731__dat00.bin

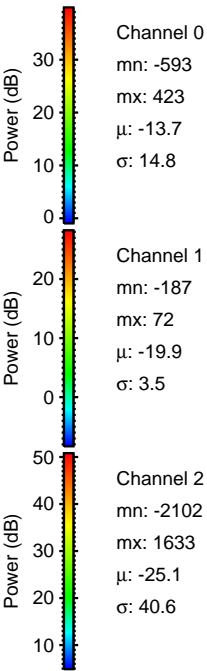
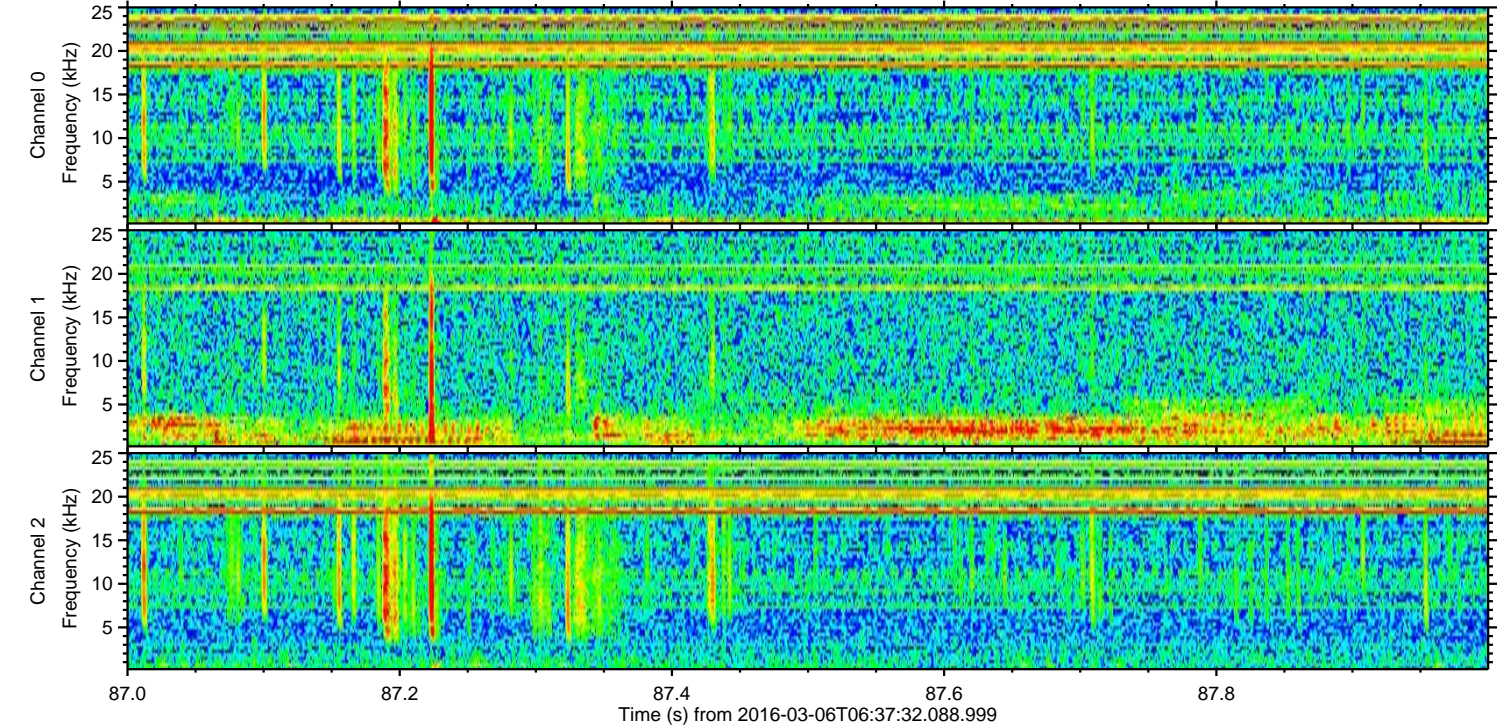
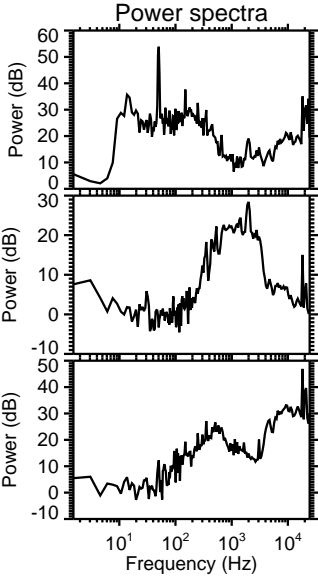
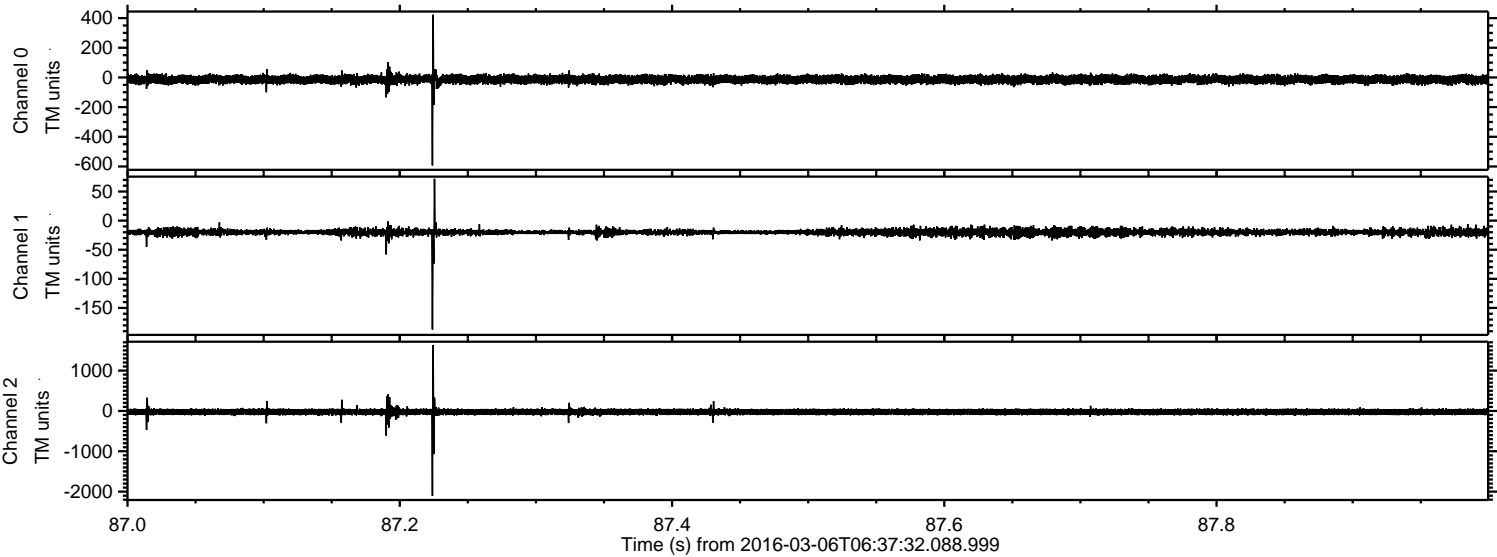


ELMAVAN 3D WAVEFORMS (Measured data sampled at 50 kHz) 51000 packets of 144 samples from 2016-03-06T06:37:32.088.999. Part 48/147

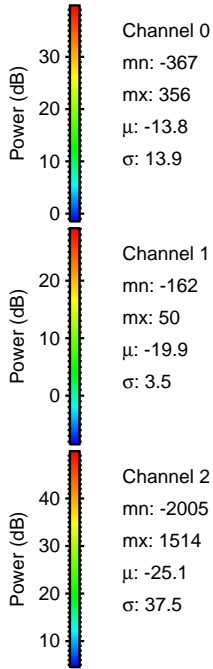
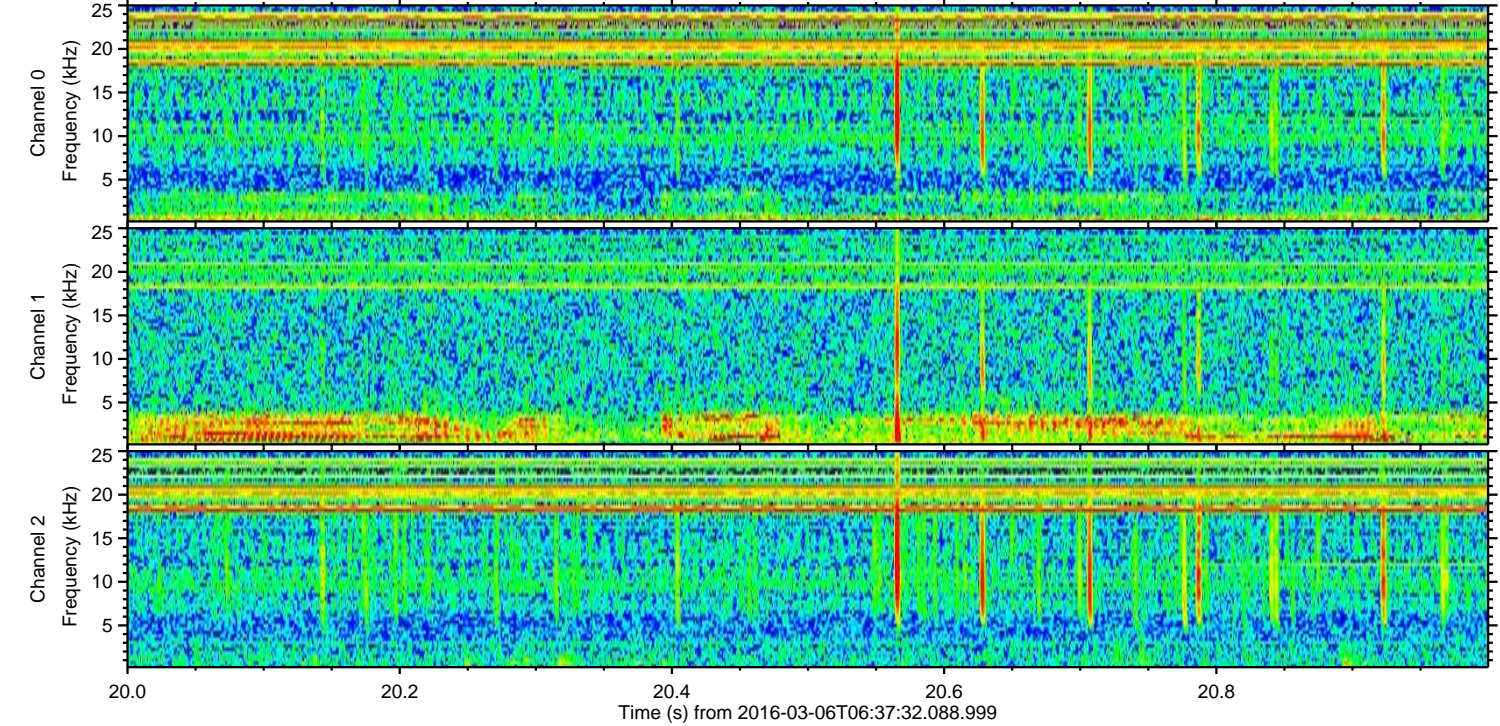
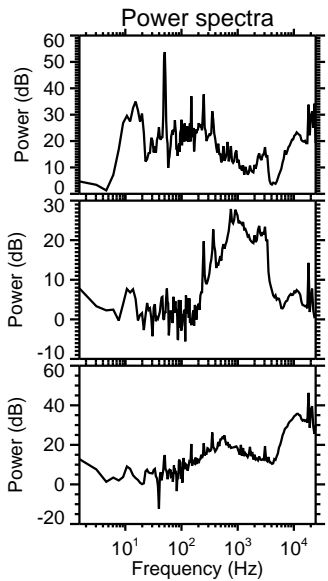
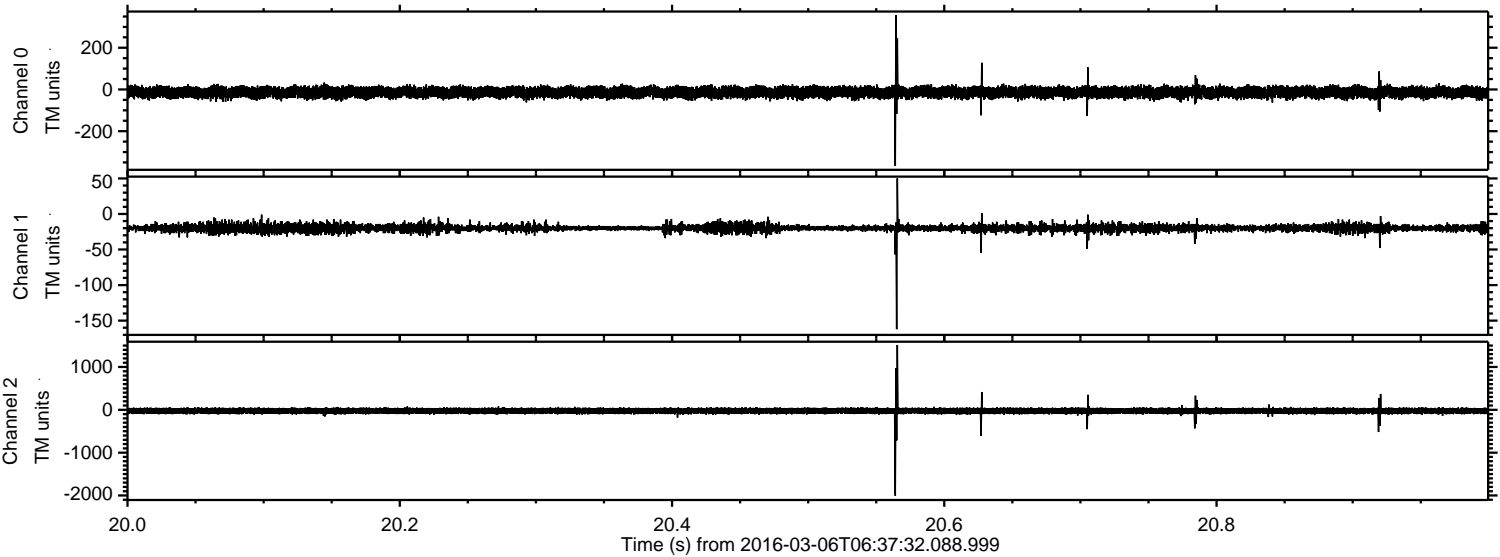
Processed Mon Apr 18 15:48:19 2016 by ELM ver.2012-10-06 from 001__elm20160306_063731__dat00.bin



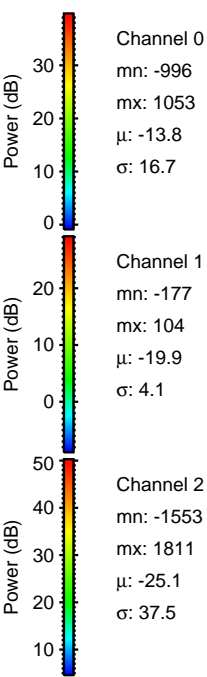
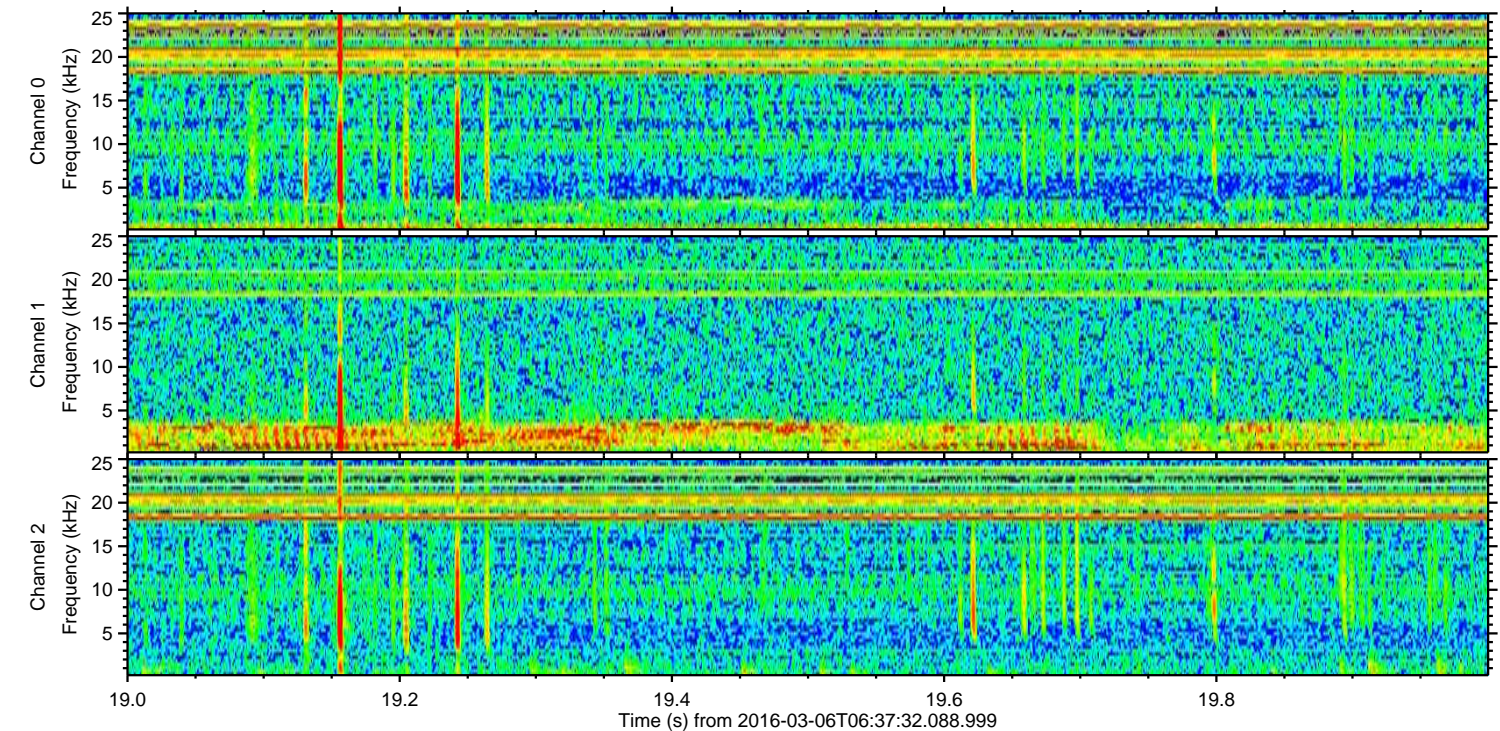
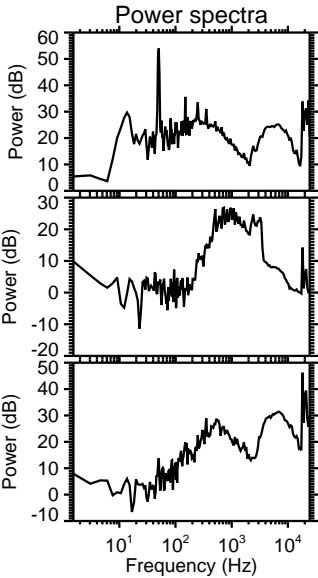
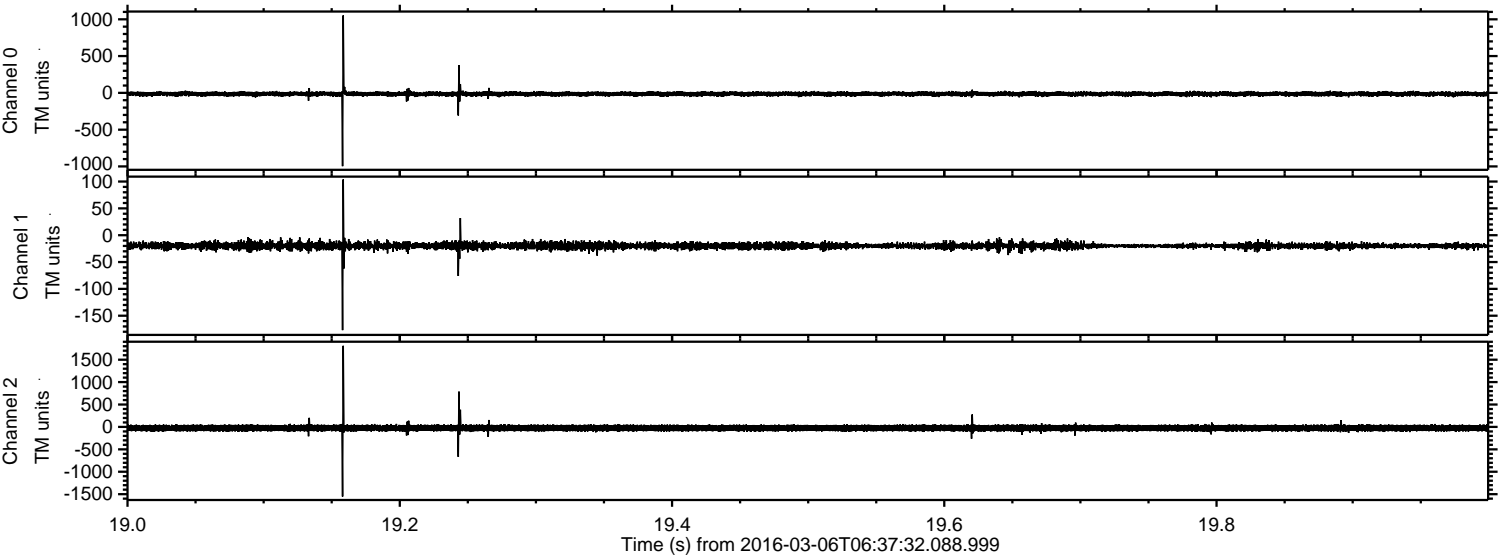
Processed Mon Apr 18 15:48:19 2016 by ELM ver.2012-10-06 from 001__elm20160306_063731__dat00.bin



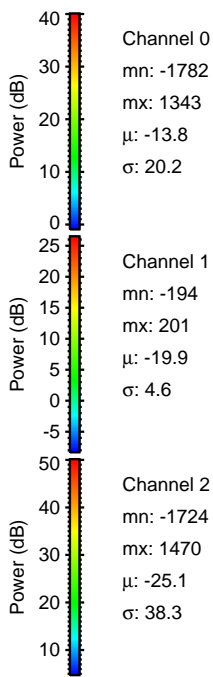
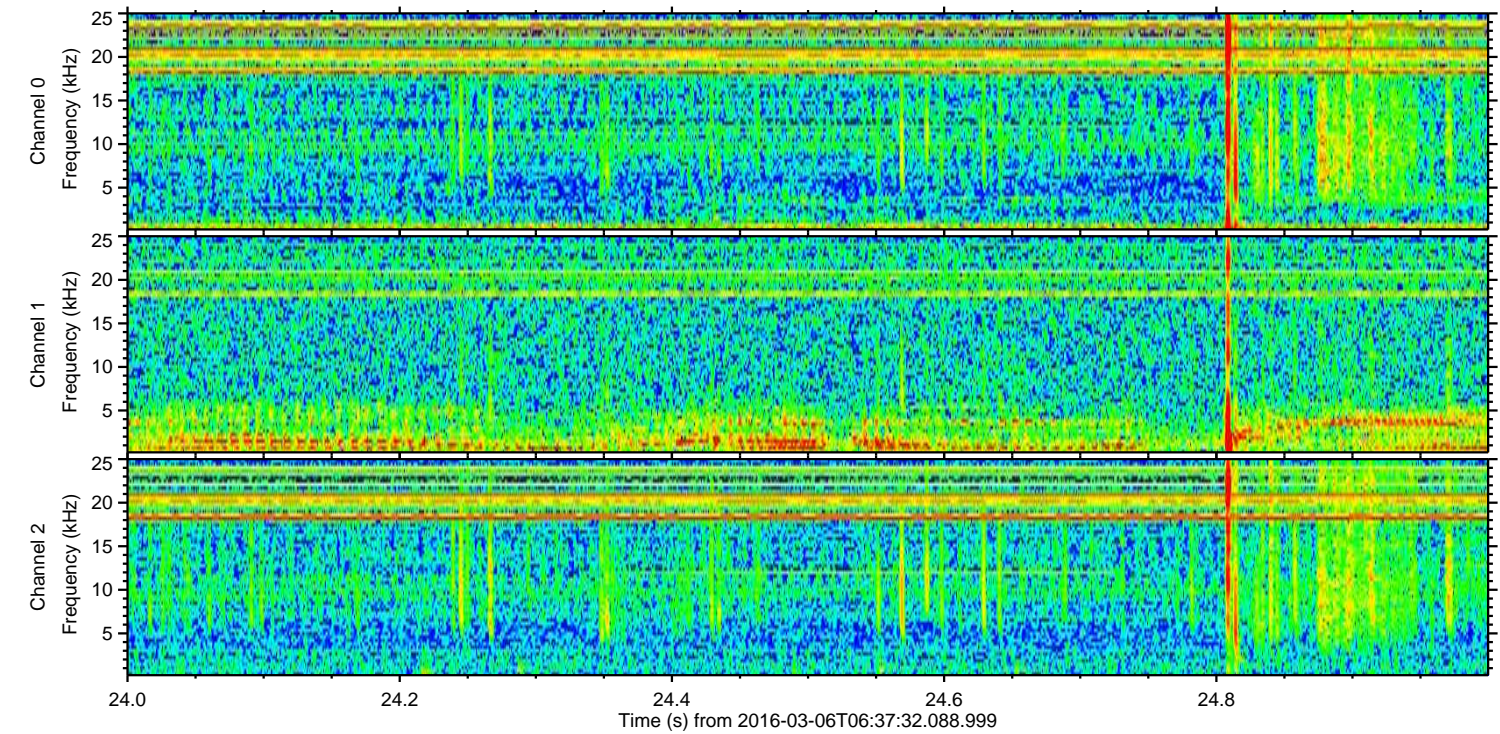
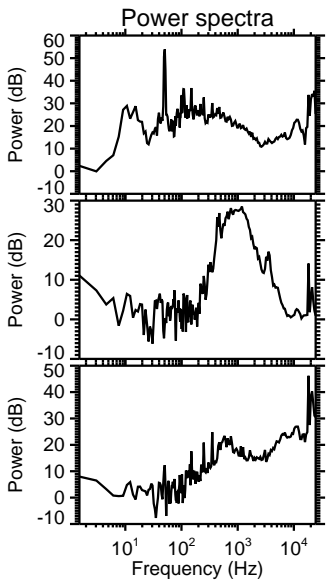
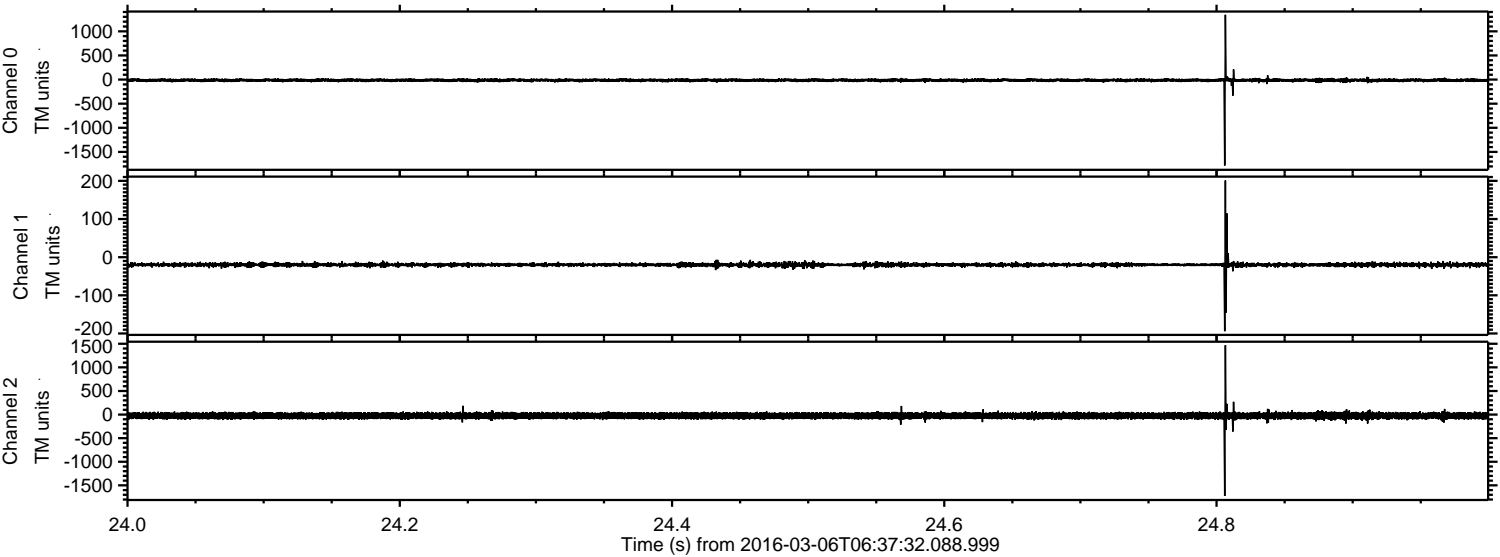
Processed Mon Apr 18 15:48:20 2016 by ELM ver.2012-10-06 from 001__elm20160306_063731__dat00.bin



Processed Mon Apr 18 15:48:21 2016 by ELM ver.2012-10-06 from 001__elm20160306_063731__dat00.bin



Processed Mon Apr 18 15:48:22 2016 by ELM ver.2012-10-06 from 001__elm20160306_063731__dat00.bin

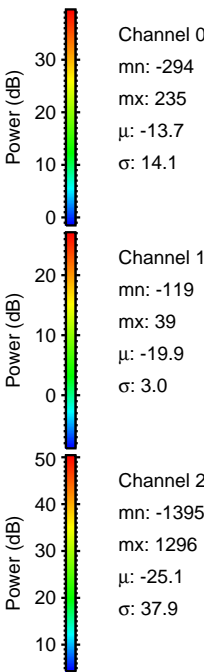
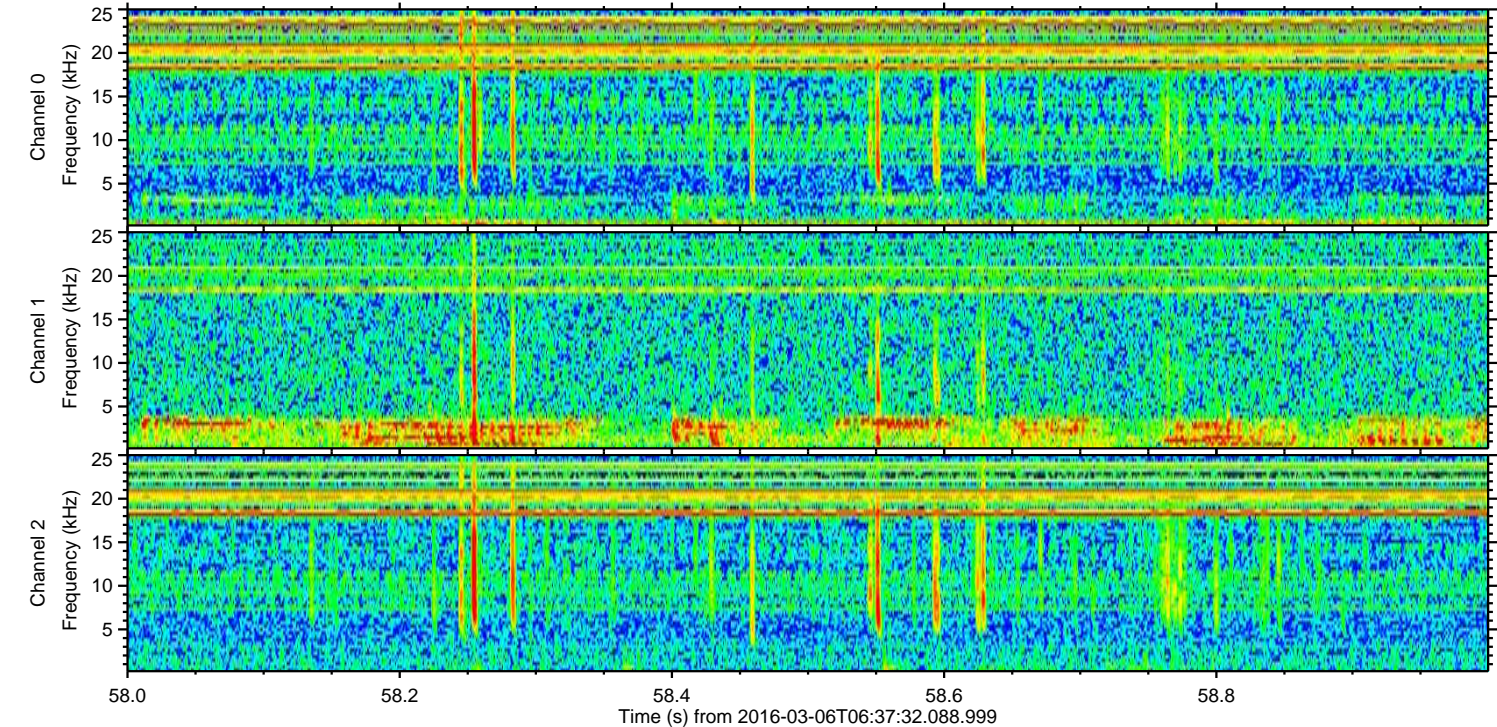
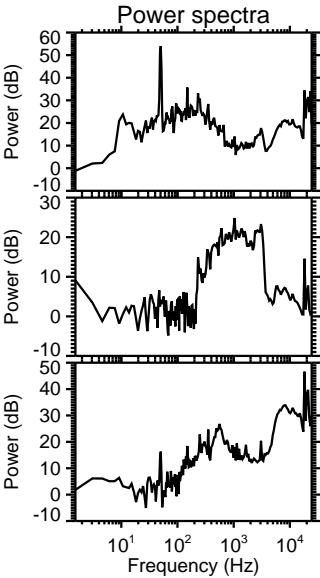
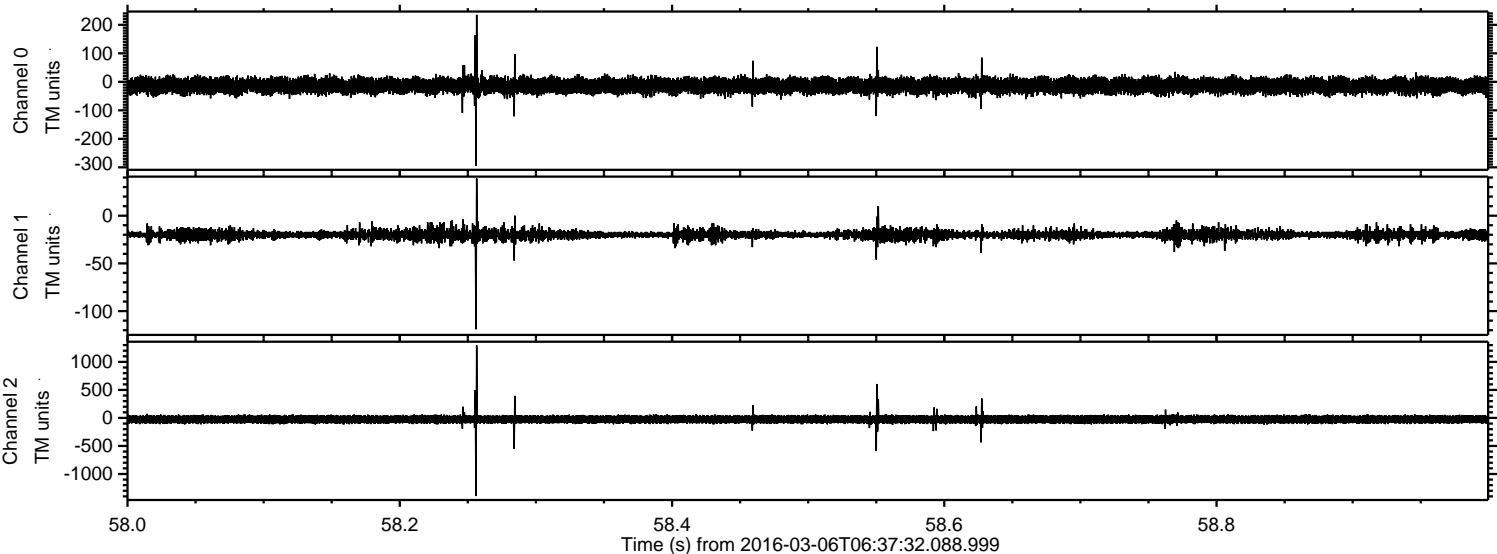


Channel 0
mn: -1782
mx: 1343
 μ : -13.8
 σ : 20.2

Channel 1
mn: -194
mx: 201
 μ : -19.9
 σ : 4.6

Channel 2
mn: -1724
mx: 1470
 μ : -25.1
 σ : 38.3

Processed Mon Apr 18 15:48:23 2016 by ELM ver.2012-10-06 from 001__elm20160306_063731__dat00.bin



Processed Mon Apr 18 15:48:24 2016 by ELM ver.2012-10-06 from 001__elm20160306_063731__dat00.bin

