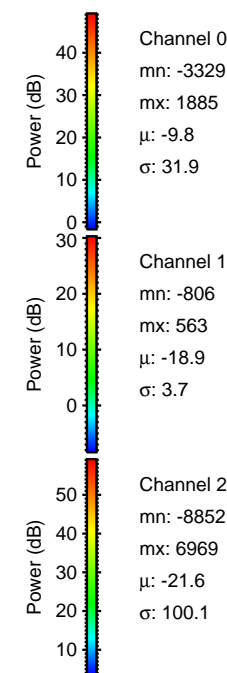
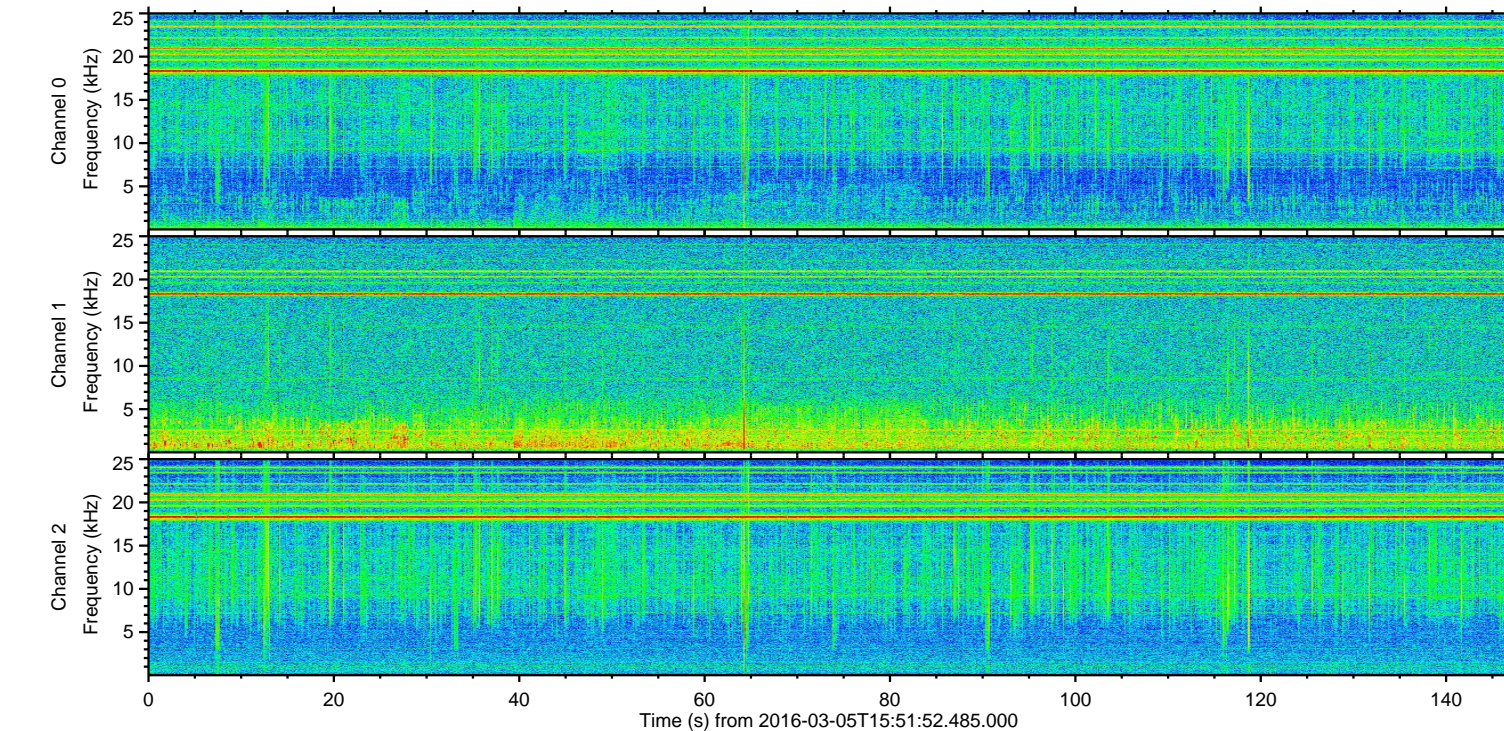
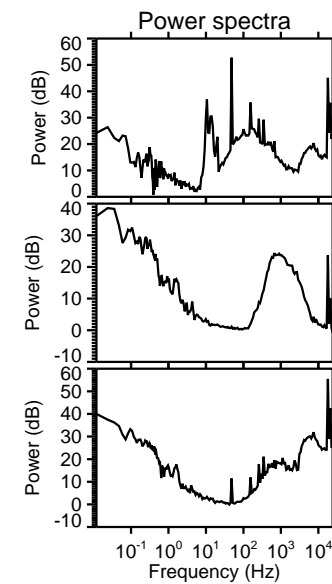
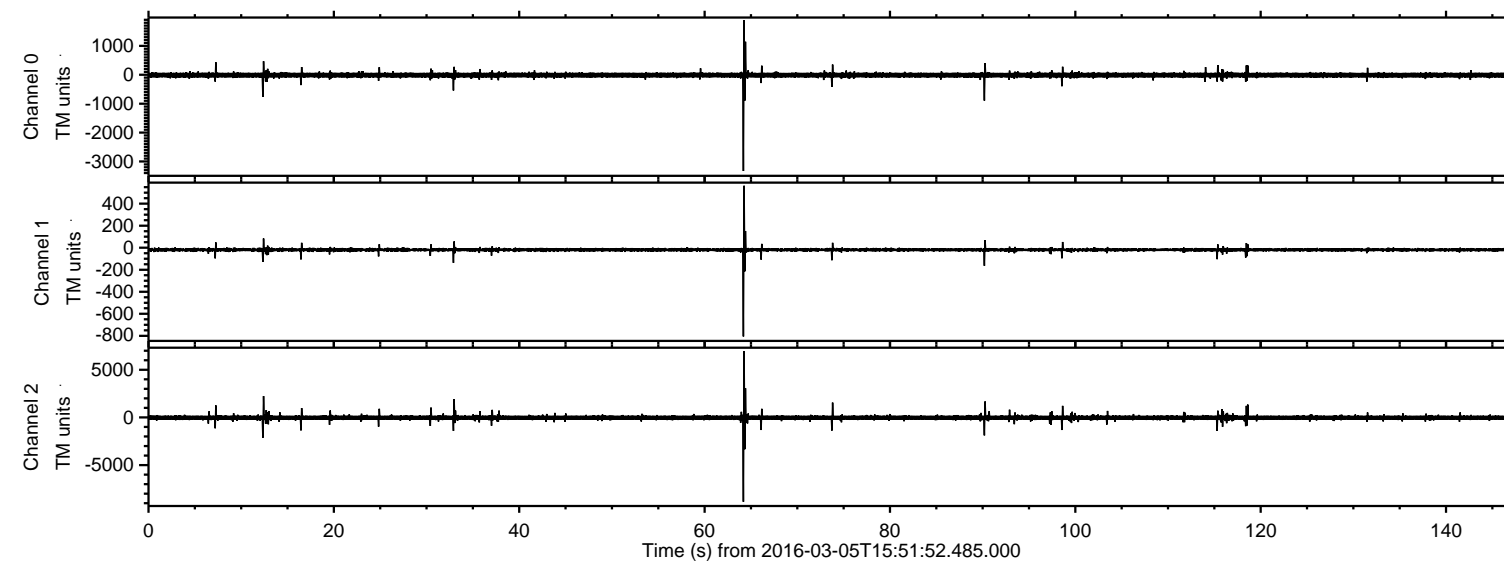
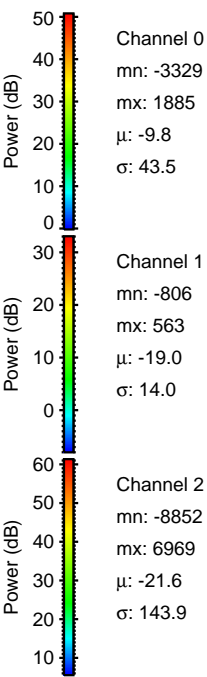
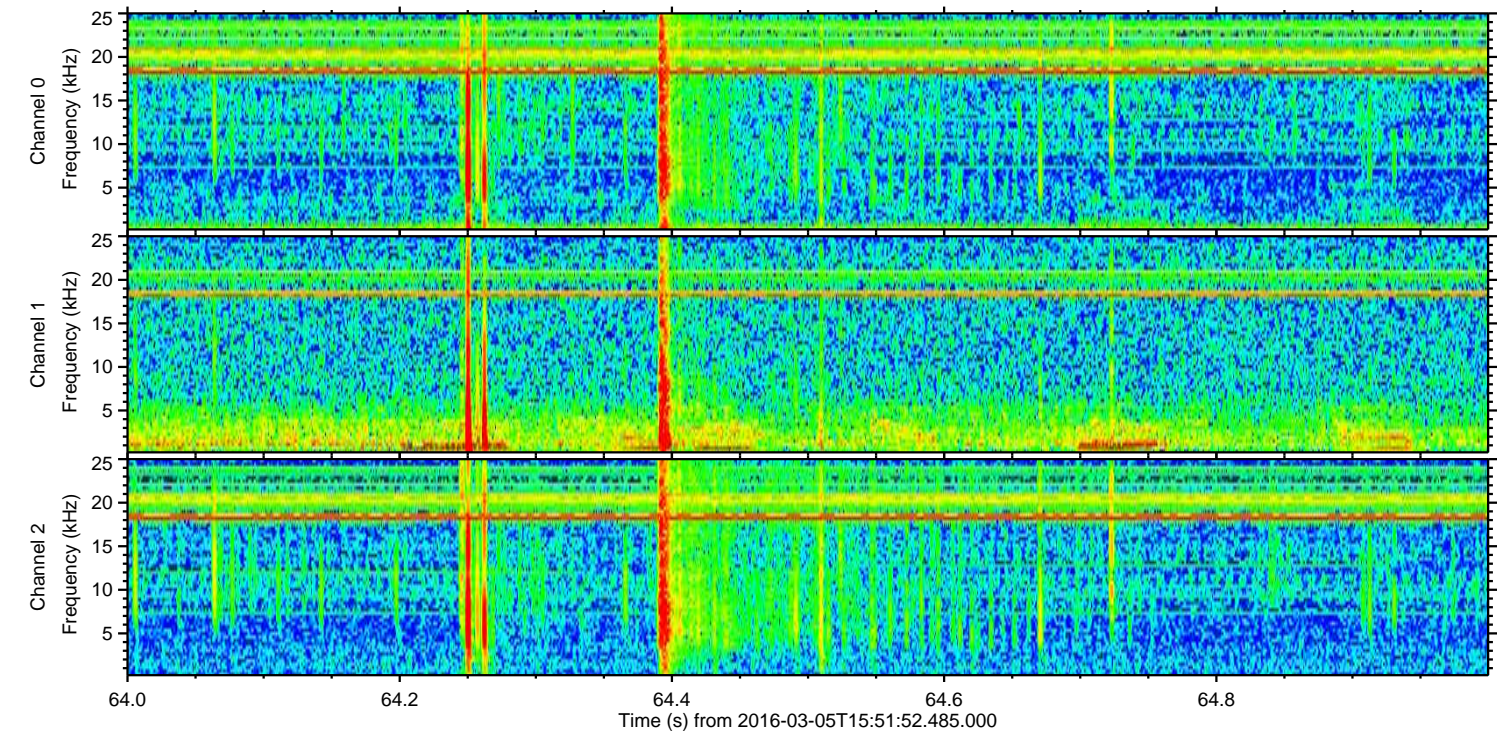
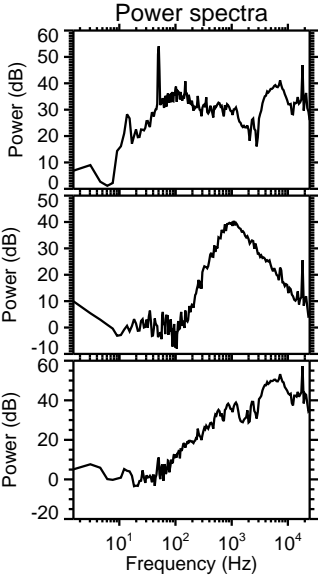
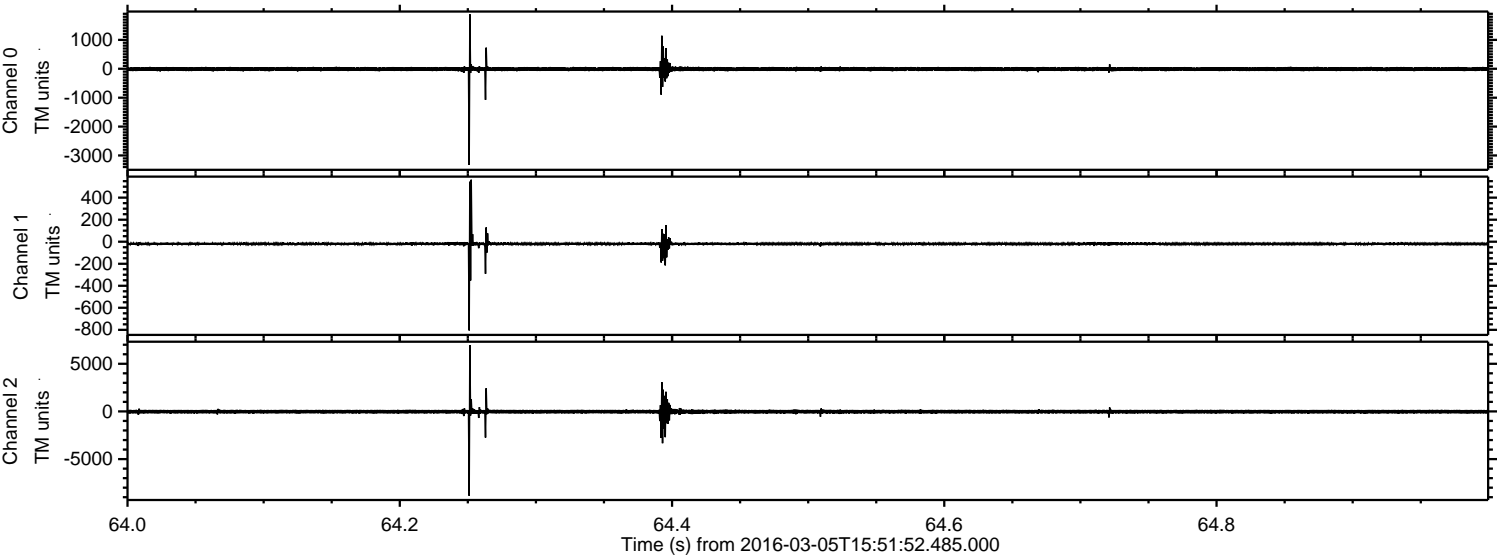


ELMAVAN 3D WAVEFORMS (Measured data sampled at 50 kHz) 51000 packets of 144 samples from 2016-03-05T15:51:52.485.000.

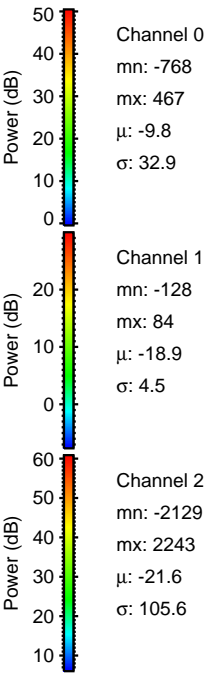
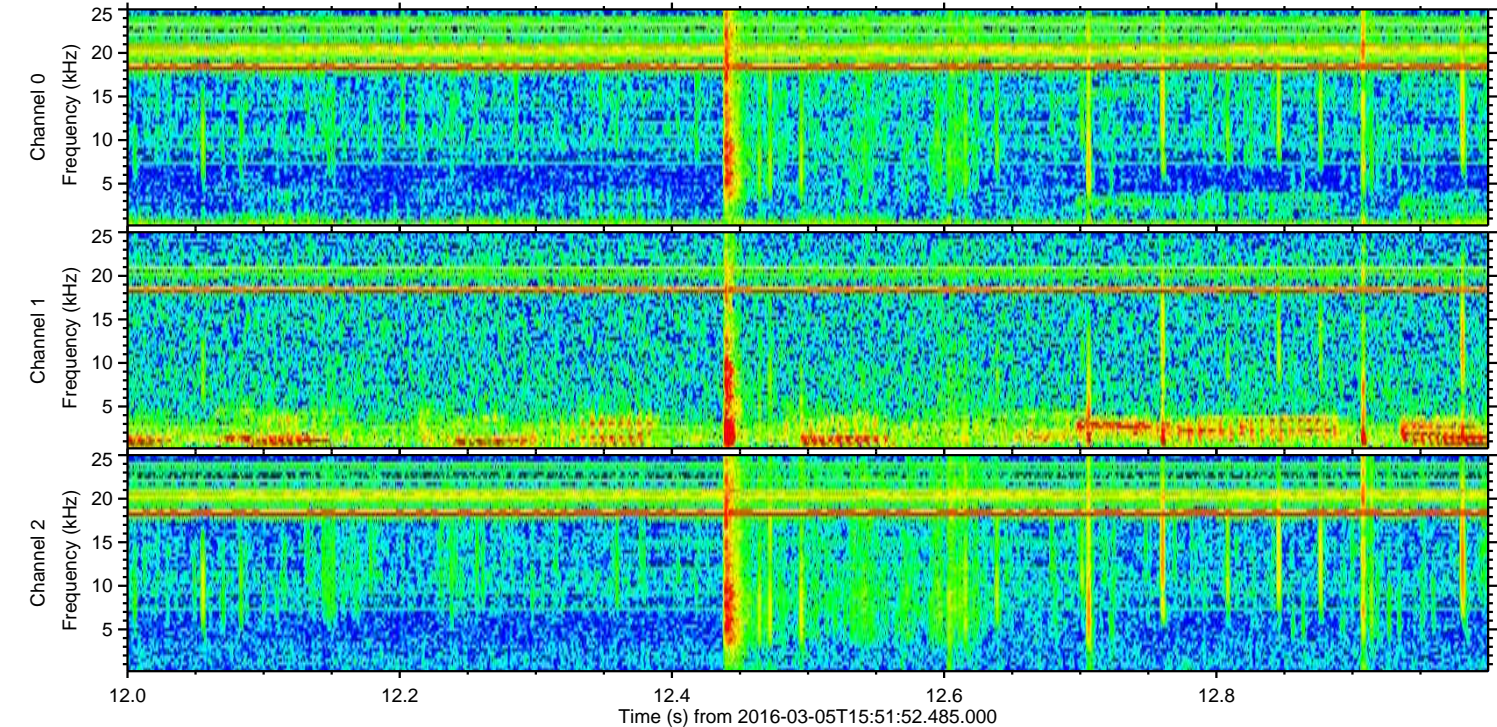
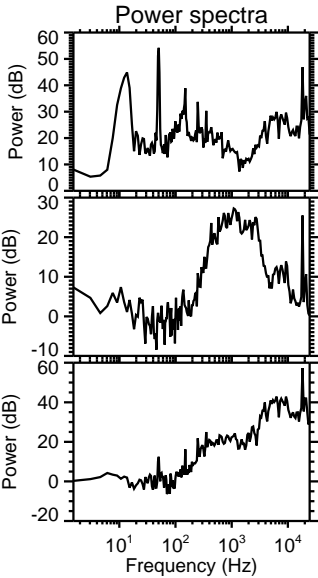
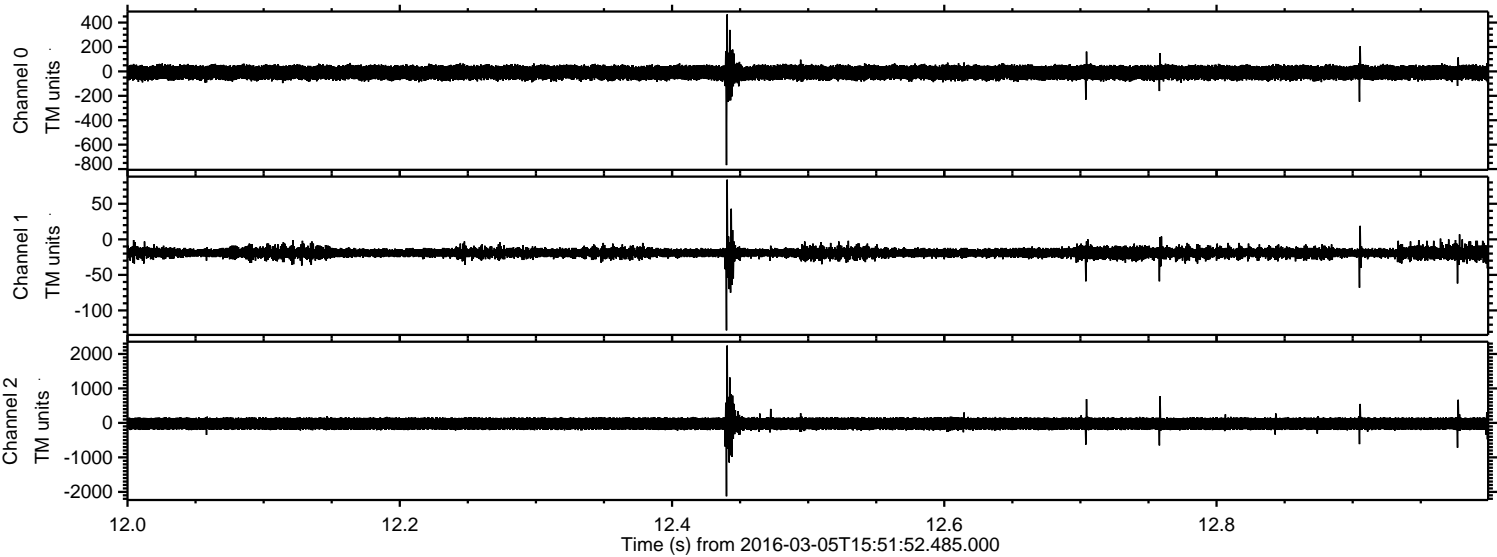
Processed Mon Apr 18 12:48:12 2016 by ELM ver.2012-10-06 from 001__elm20160305_155151__dat00.bin



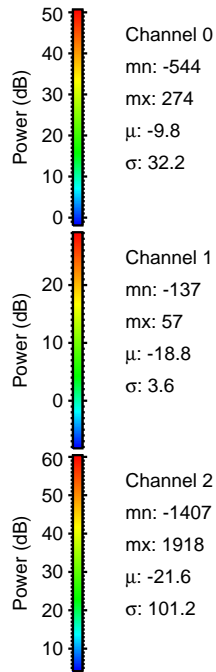
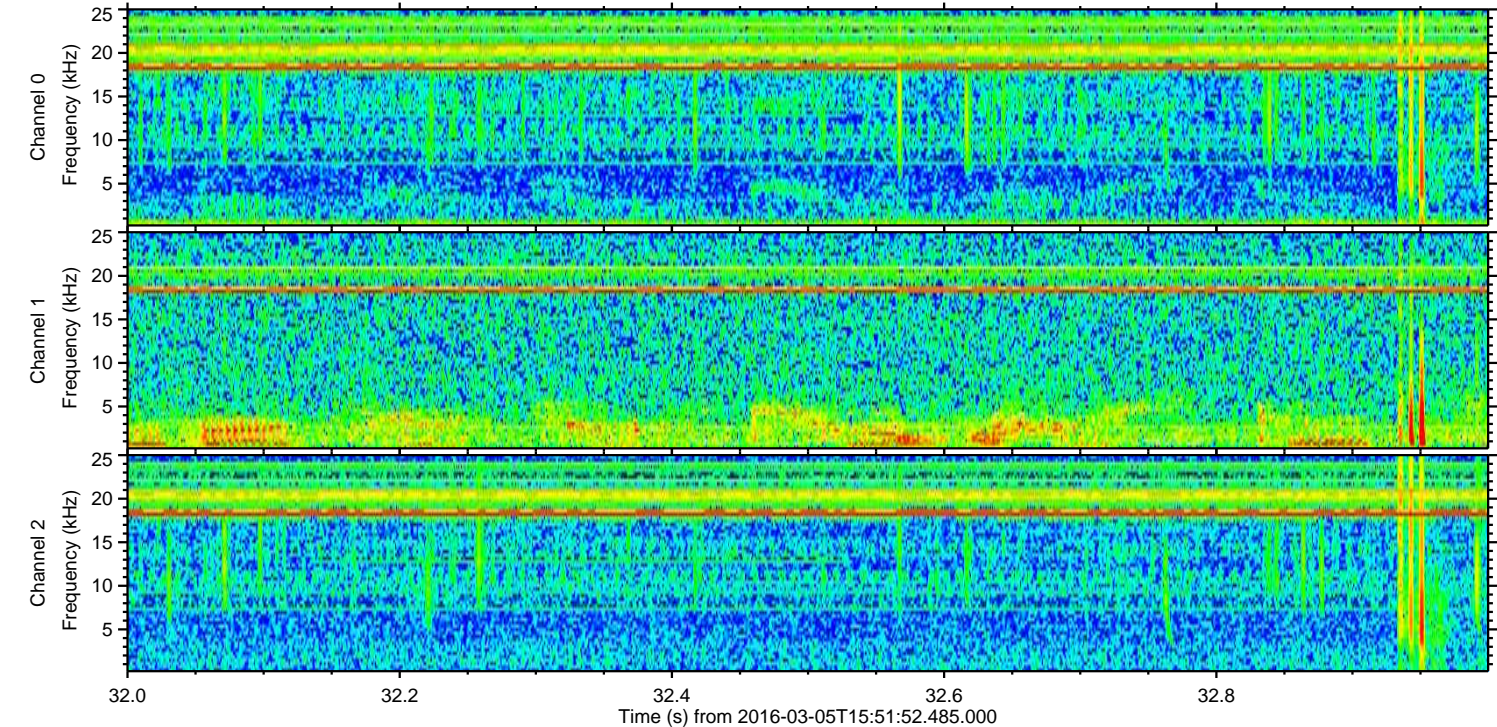
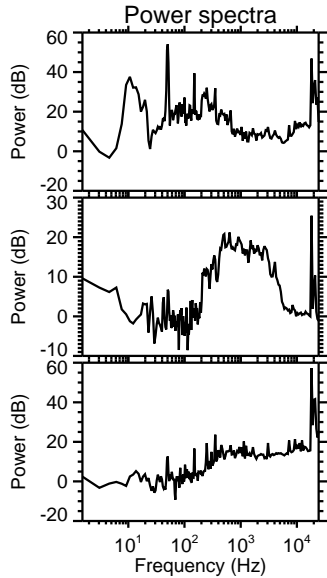
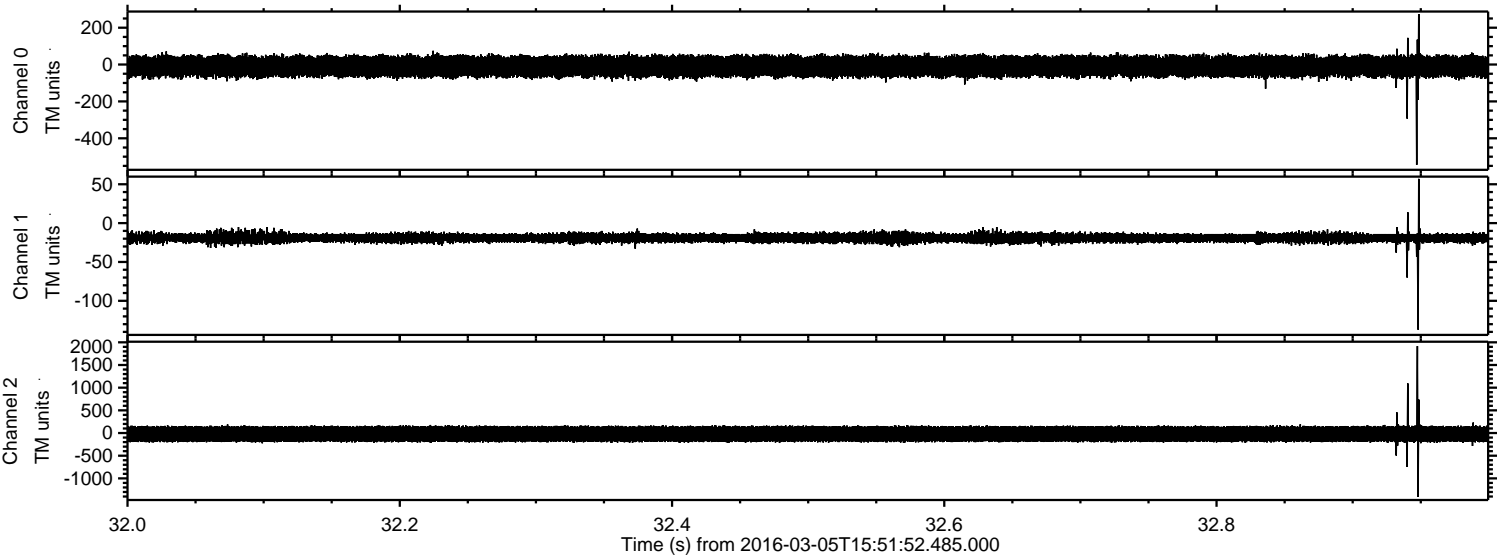
Processed Mon Apr 18 12:48:23 2016 by ELM ver.2012-10-06 from 001__elm20160305_155151__dat00.bin



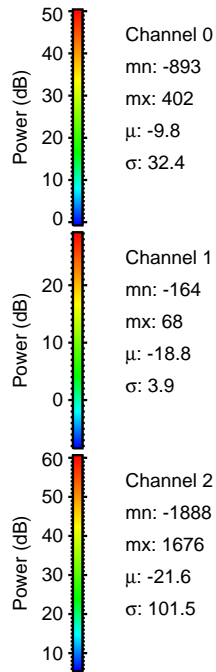
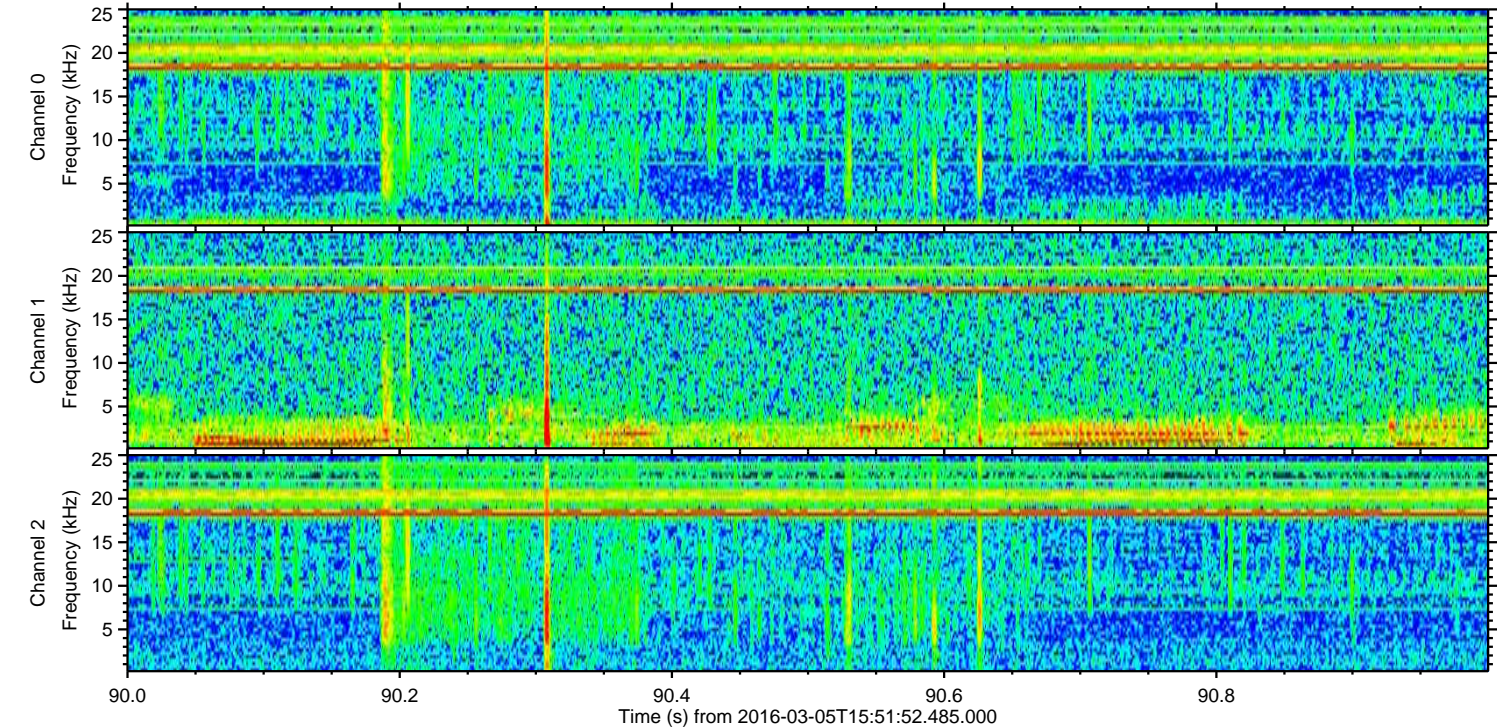
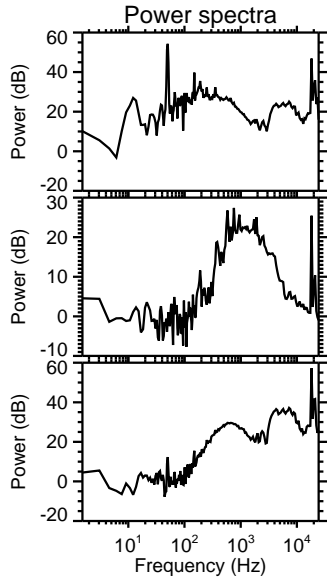
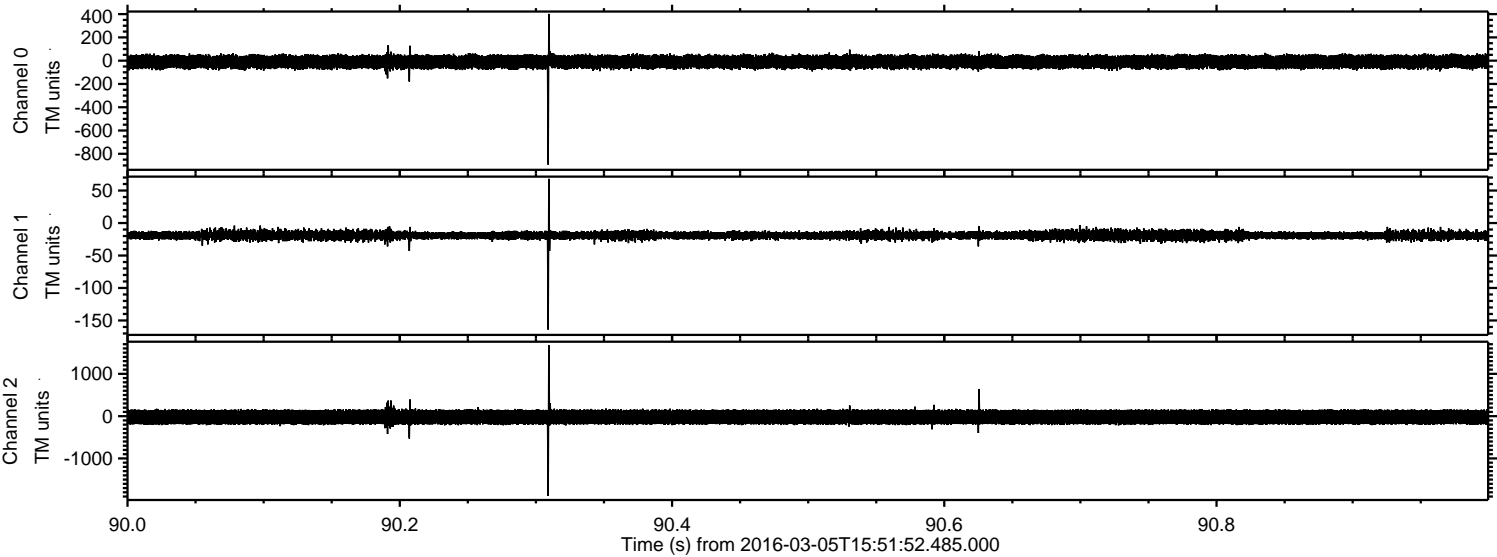
Processed Mon Apr 18 12:48:24 2016 by ELM ver.2012-10-06 from 001__elm20160305_155151__dat00.bin



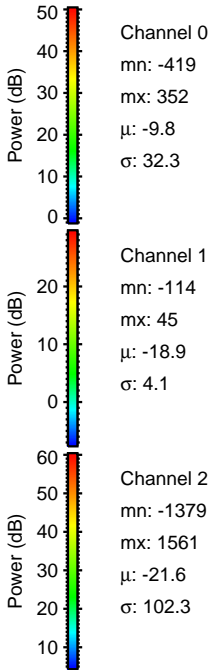
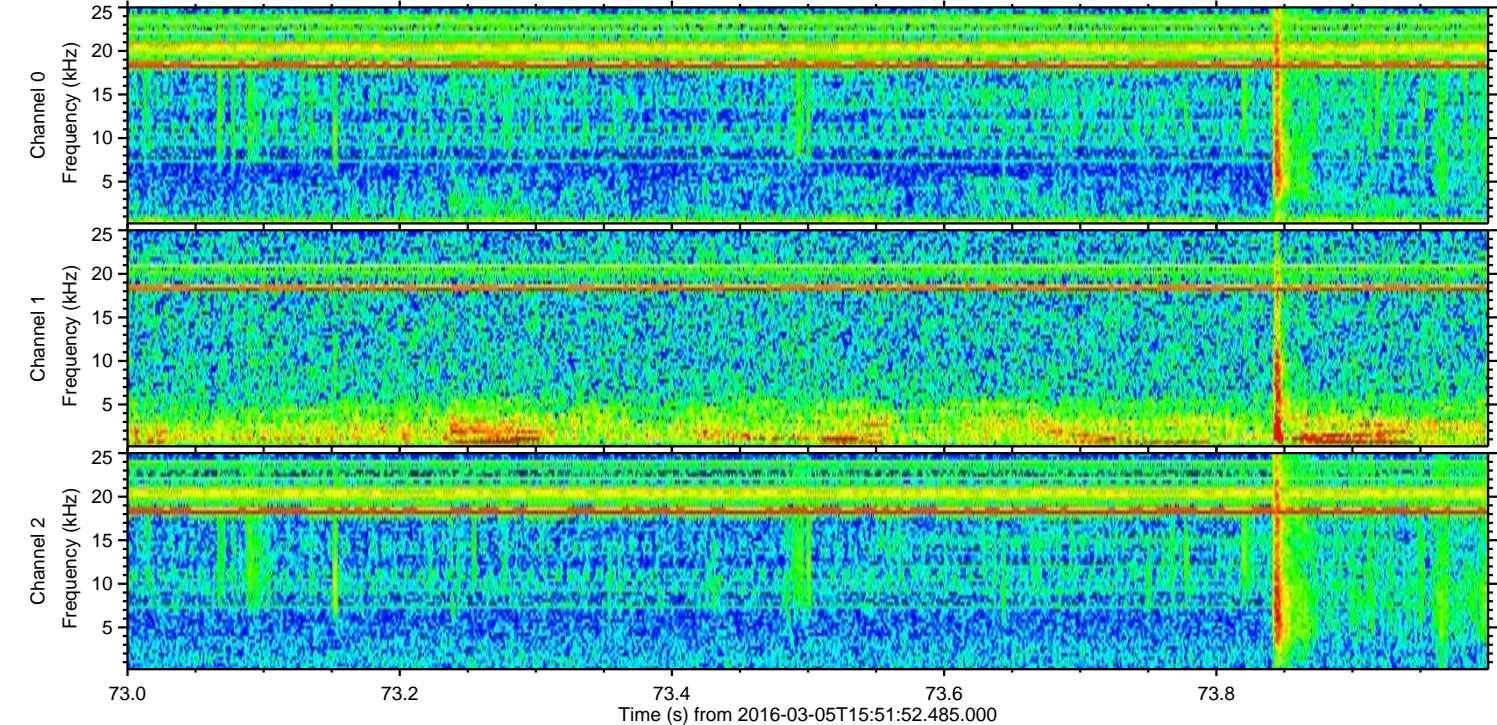
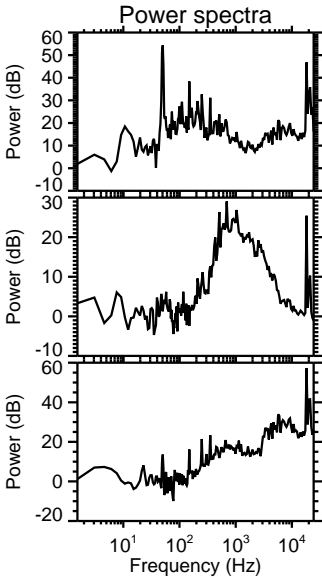
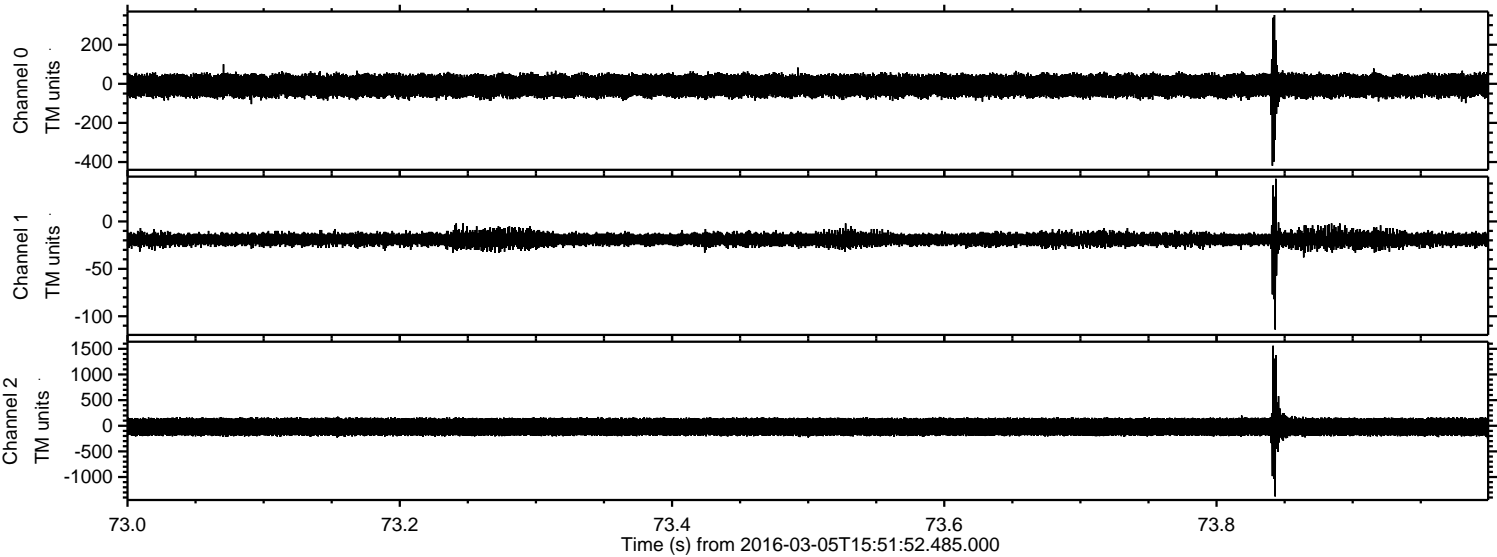
Processed Mon Apr 18 12:48:25 2016 by ELM ver.2012-10-06 from 001__elm20160305_155151__dat00.bin



Processed Mon Apr 18 12:48:26 2016 by ELM ver.2012-10-06 from 001__elm20160305_155151__dat00.bin

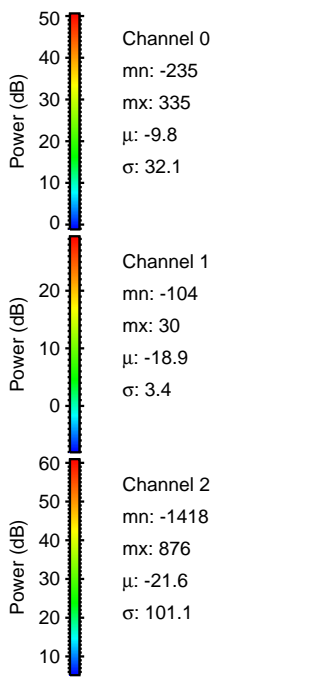
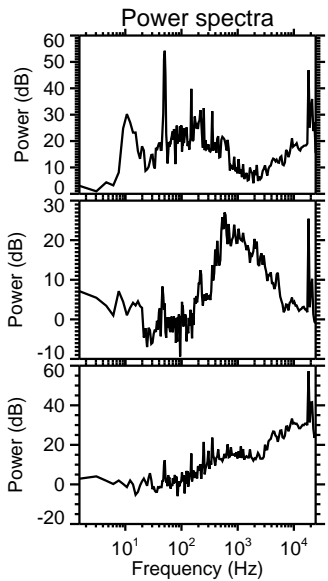
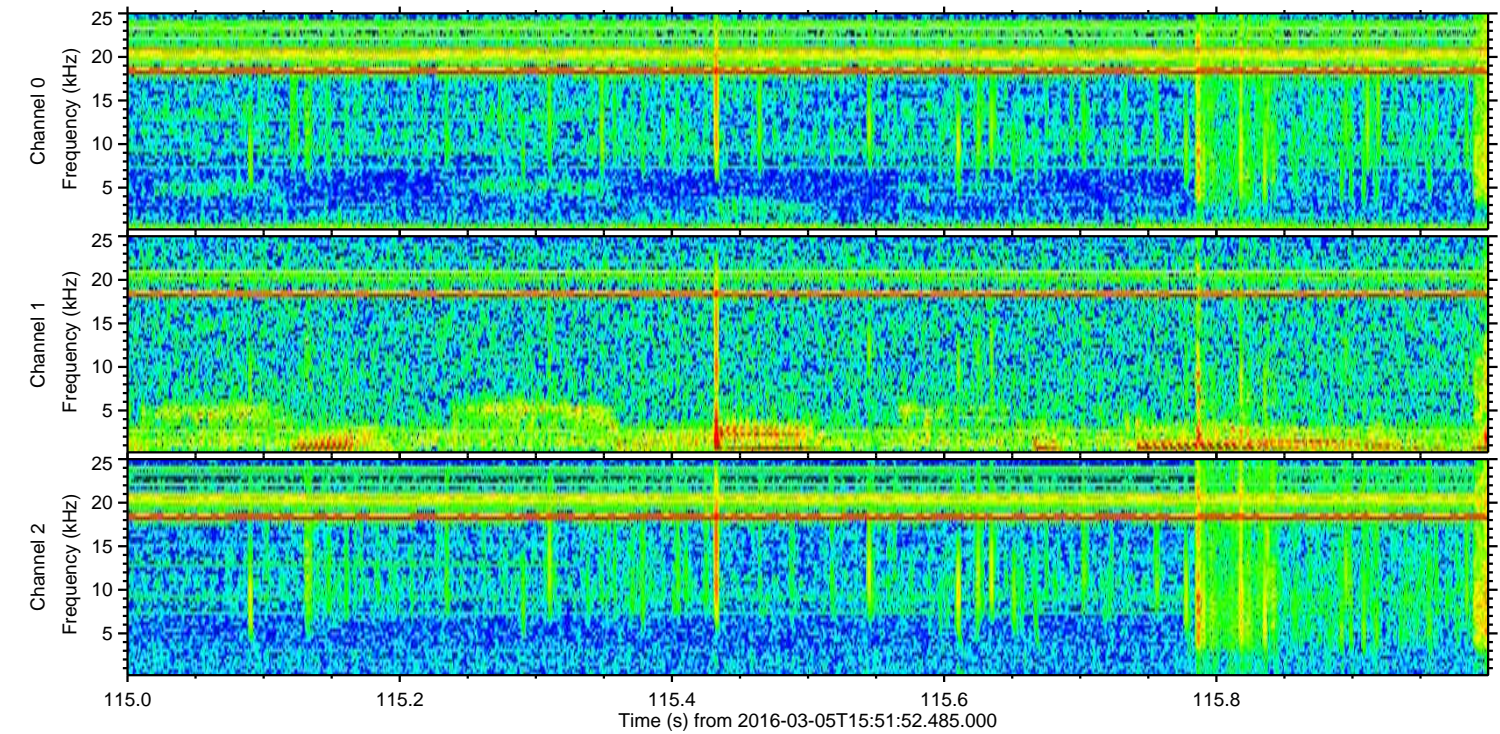
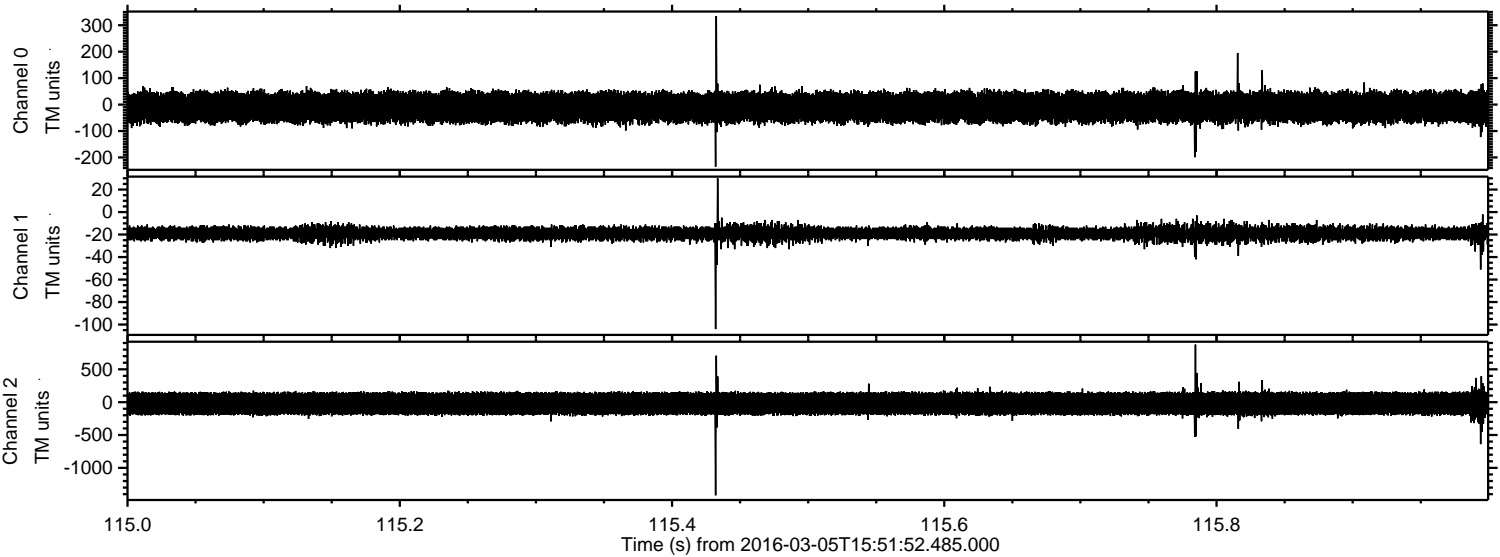


Processed Mon Apr 18 12:48:27 2016 by ELM ver.2012-10-06 from 001__elm20160305_155151__dat00.bin

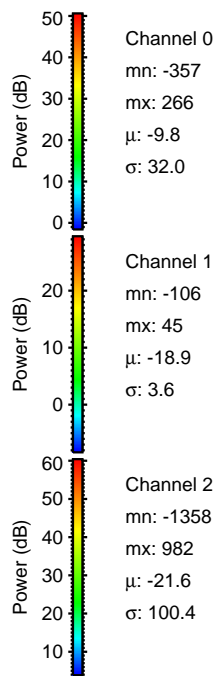
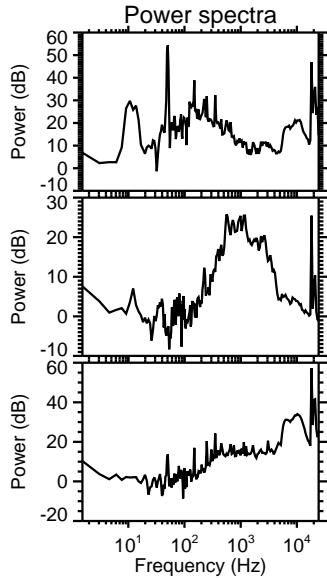
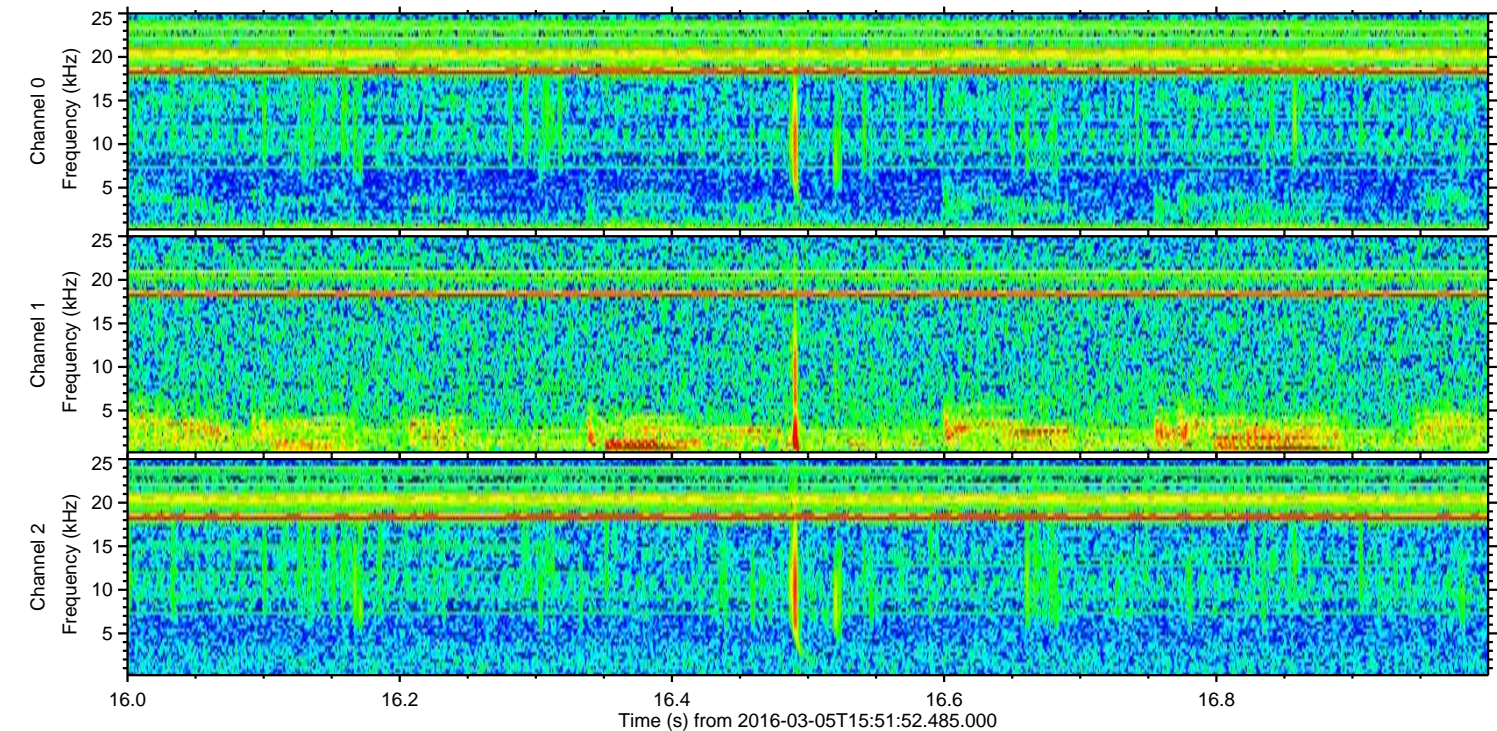
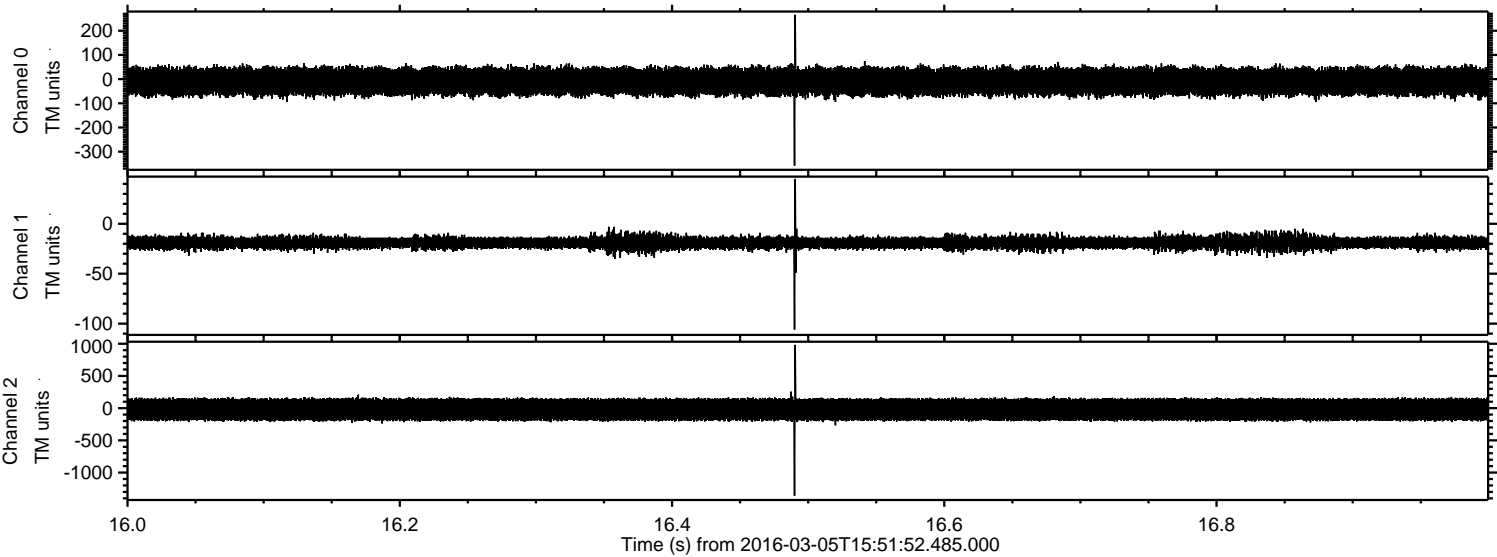


ELMAVAN 3D WAVEFORMS (Measured data sampled at 50 kHz) 51000 packets of 144 samples from 2016-03-05T15:51:52.485.000. Part 116/147

Processed Mon Apr 18 12:48:28 2016 by ELM ver.2012-10-06 from 001__elm20160305_155151__dat00.bin



Processed Mon Apr 18 12:48:29 2016 by ELM ver.2012-10-06 from 001__elm20160305_155151__dat00.bin



Power spectra

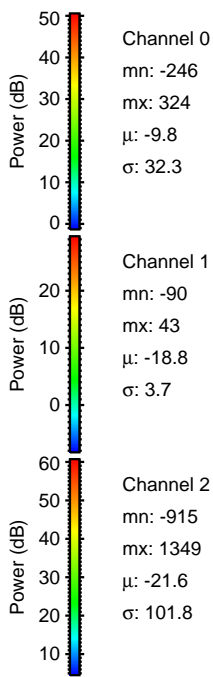
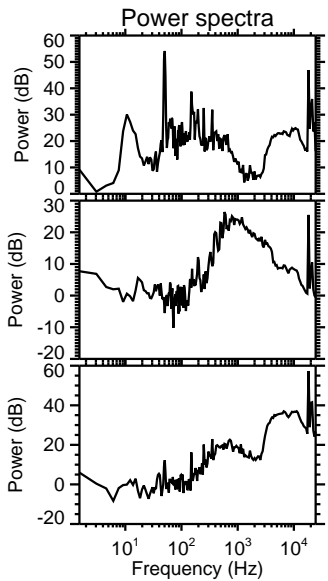
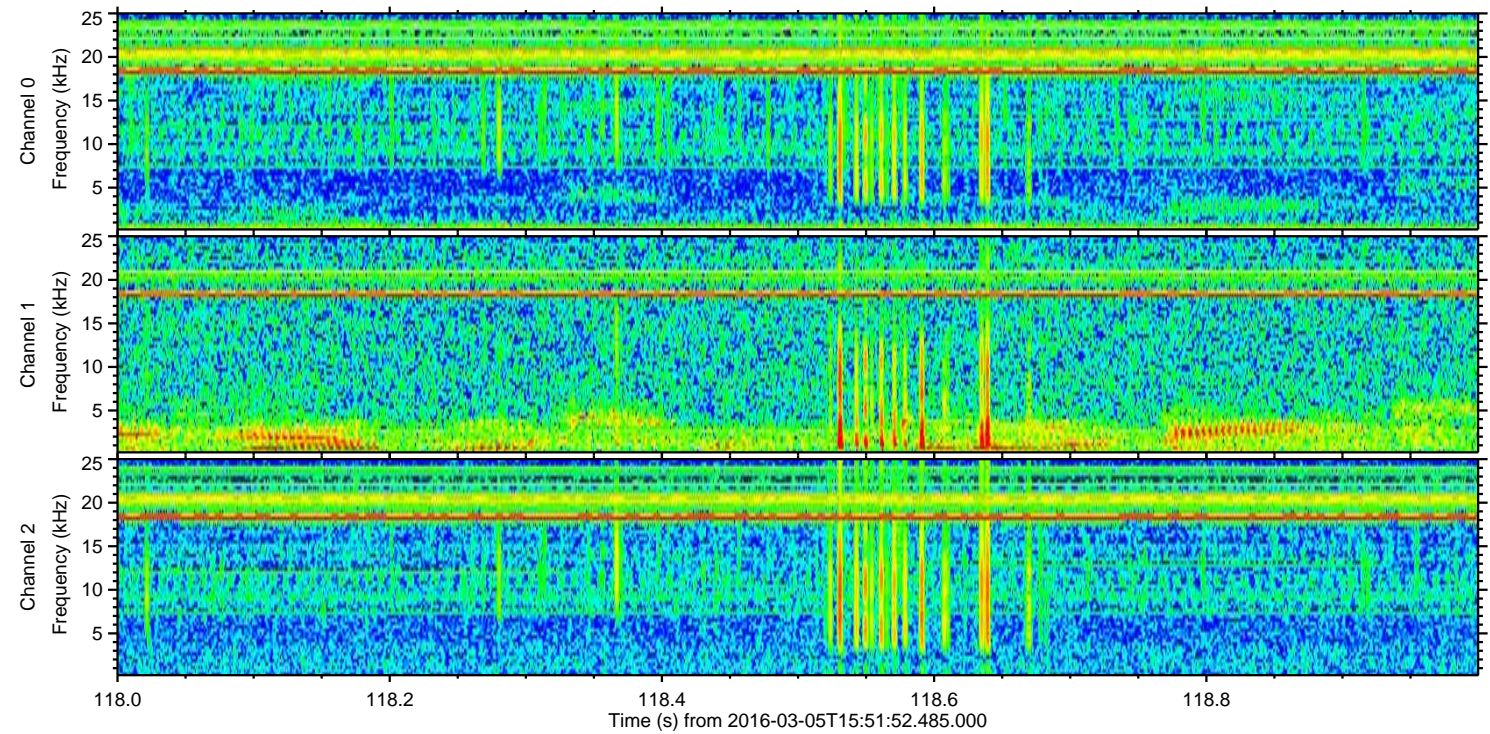
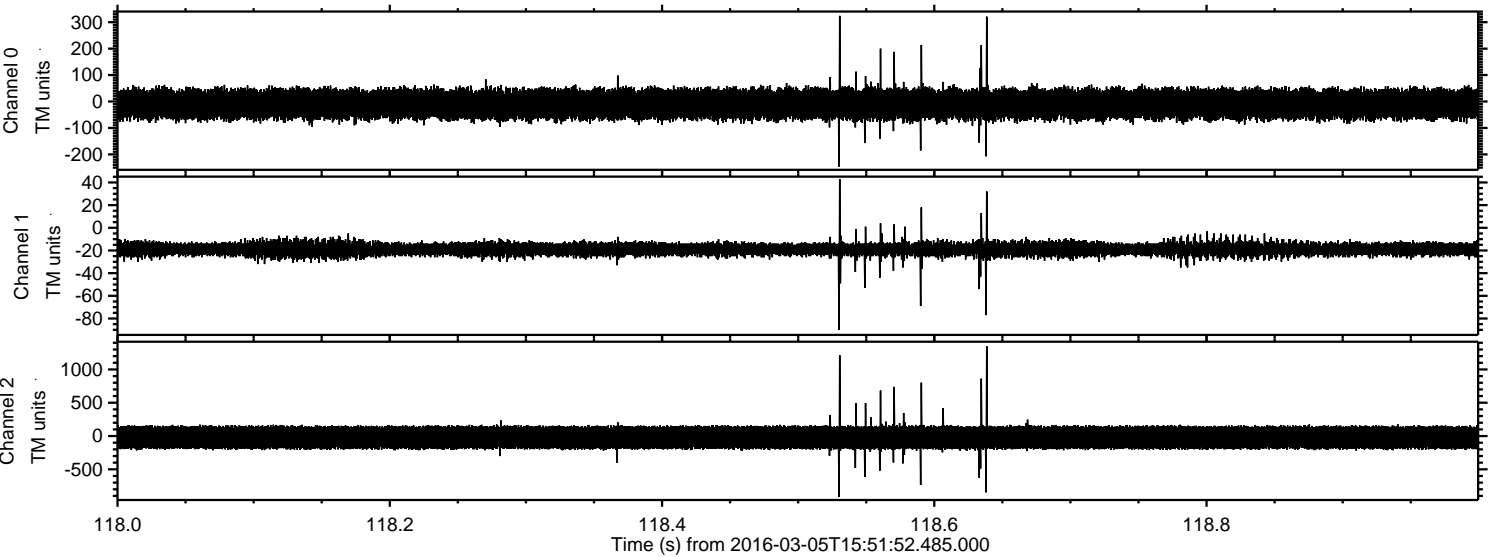
Channel 0
mn: -357
mx: 266
 μ : -9.8
 σ : 32.0

Channel 1
mn: -106
mx: 45
 μ : -18.9
 σ : 3.6

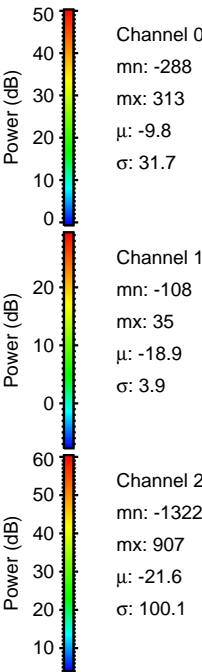
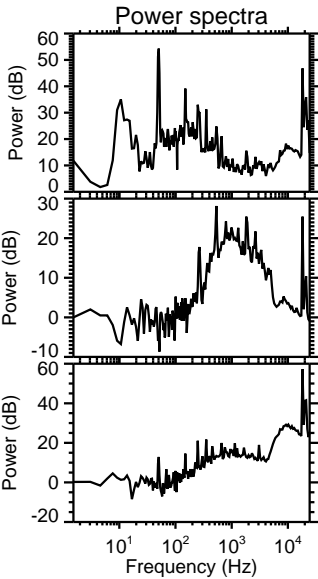
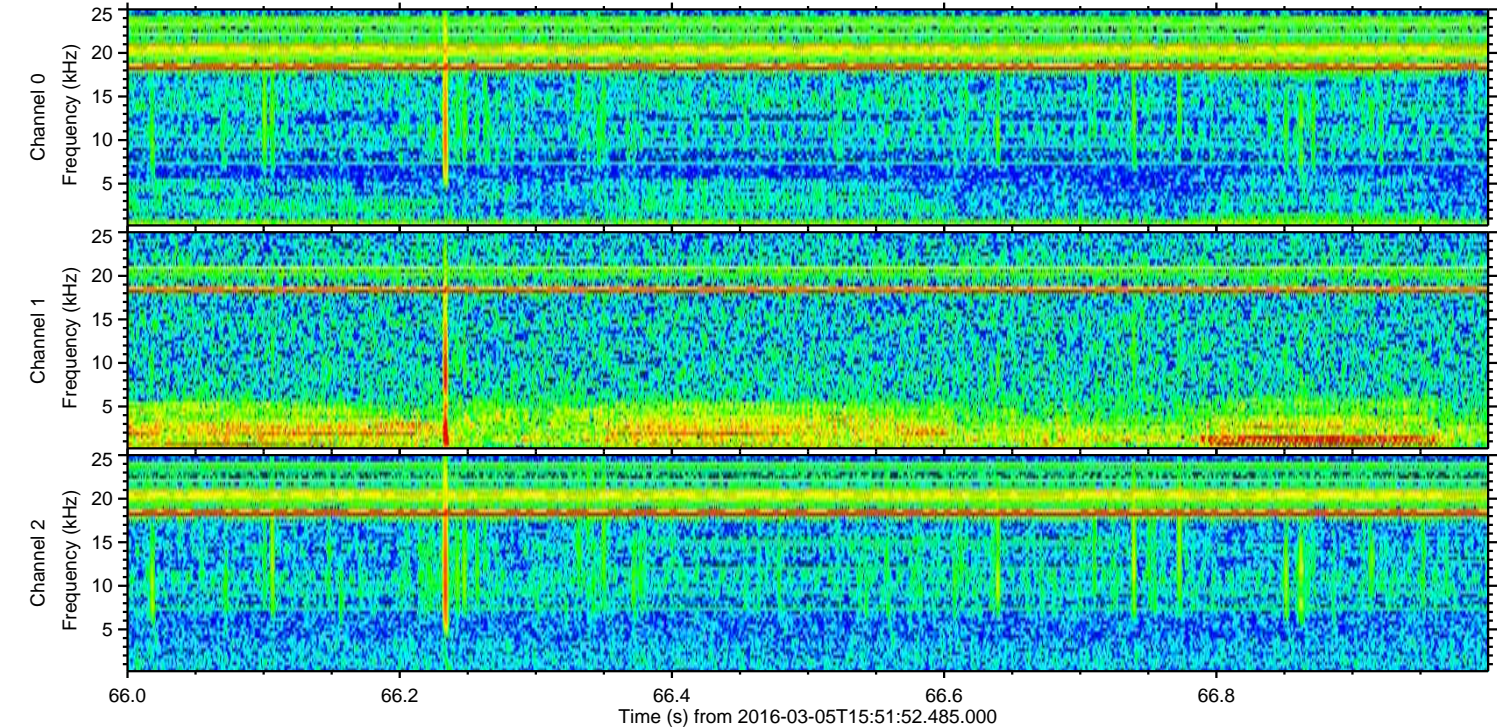
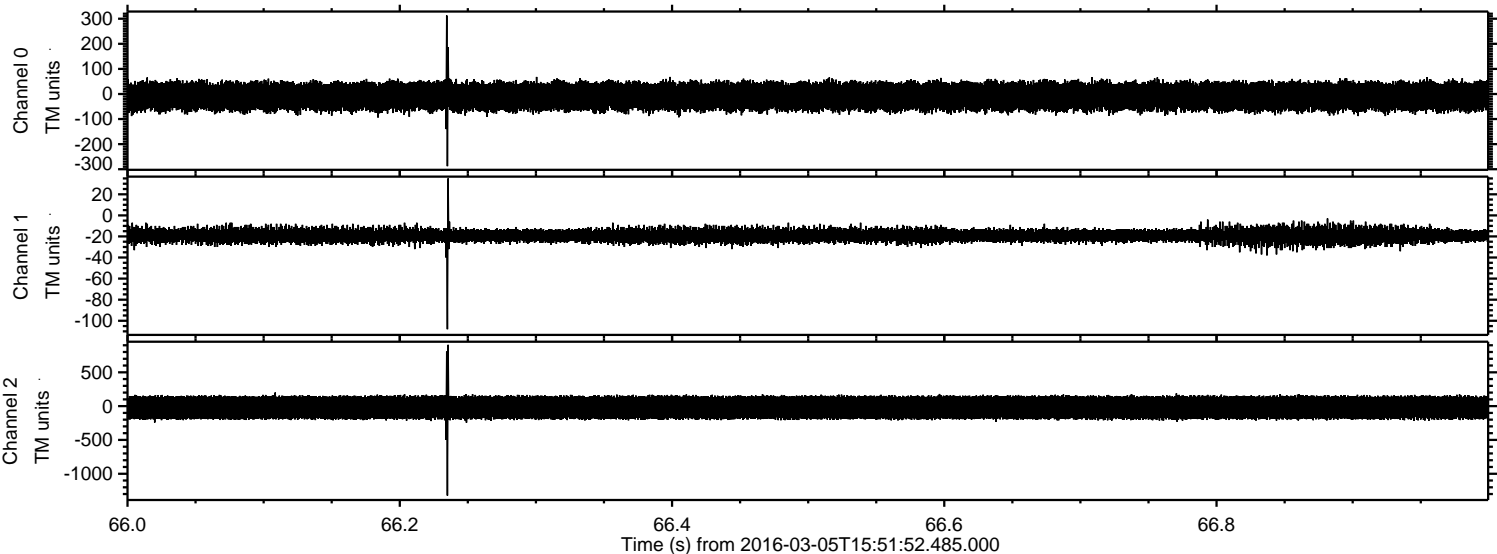
Channel 2
mn: -1358
mx: 982
 μ : -21.6
 σ : 100.4

ELMAVAN 3D WAVEFORMS (Measured data sampled at 50 kHz) 51000 packets of 144 samples from 2016-03-05T15:51:52.485.000. Part 119/147

Processed Mon Apr 18 12:48:30 2016 by ELM ver.2012-10-06 from 001__elm20160305_155151__dat00.bin



Processed Mon Apr 18 12:48:31 2016 by ELM ver.2012-10-06 from 001__elm20160305_155151__dat00.bin



Channel 0
mn: -288
mx: 313
 μ : -9.8
 σ : 31.7

Channel 1
mn: -108
mx: 35
 μ : -18.9
 σ : 3.9

Channel 2
mn: -1322
mx: 907
 μ : -21.6
 σ : 100.1

Processed Mon Apr 18 12:48:32 2016 by ELM ver.2012-10-06 from 001__elm20160305_155151__dat00.bin

