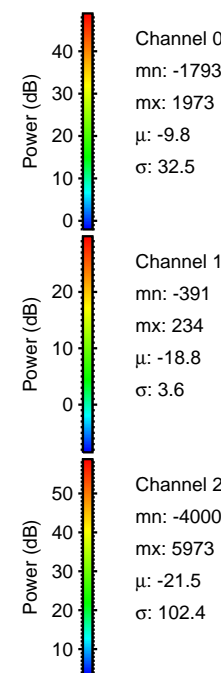
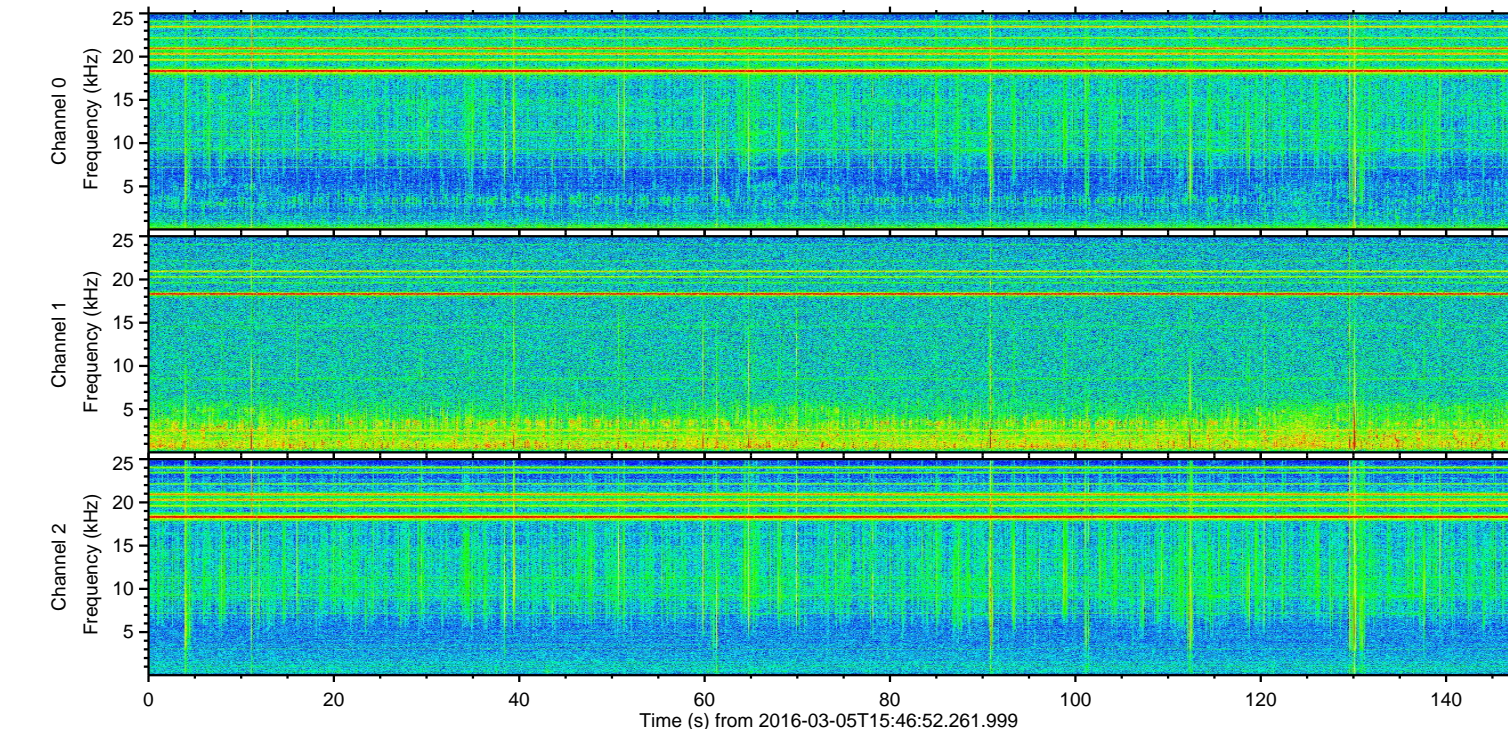
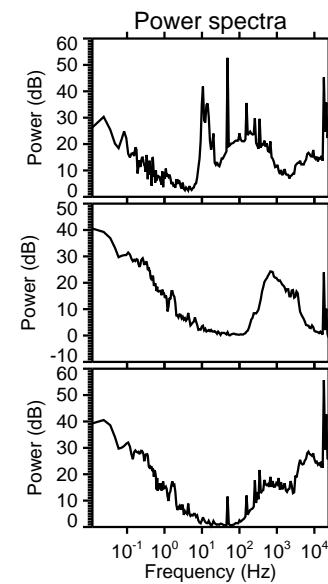
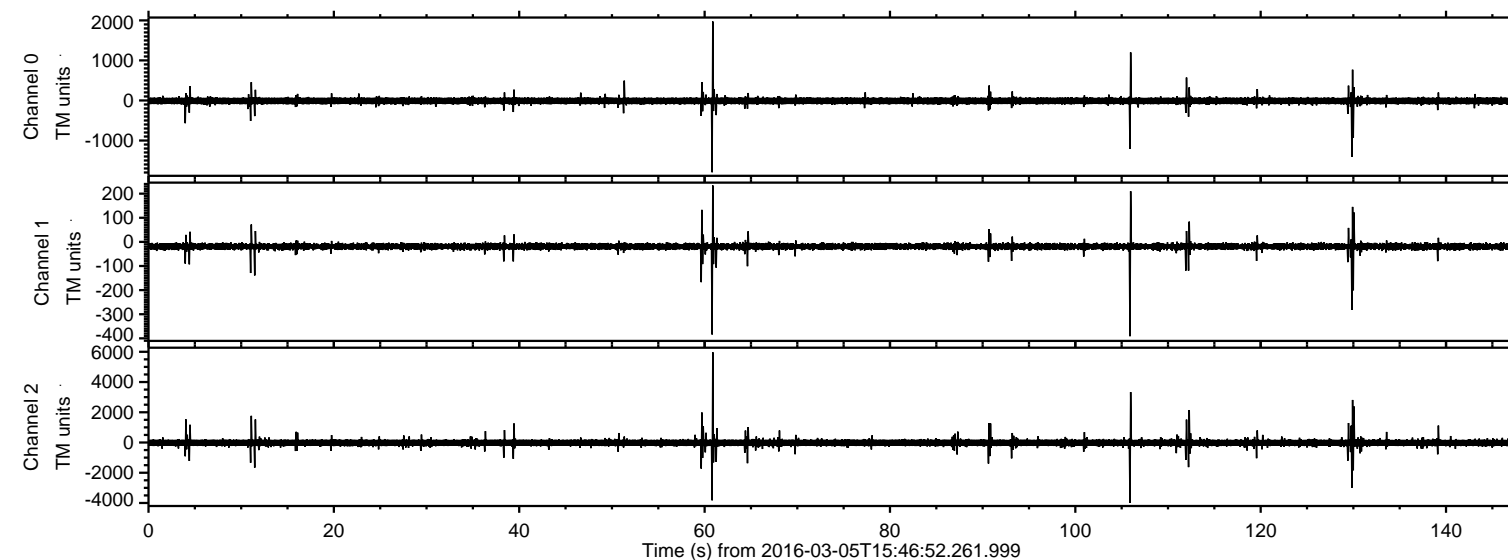
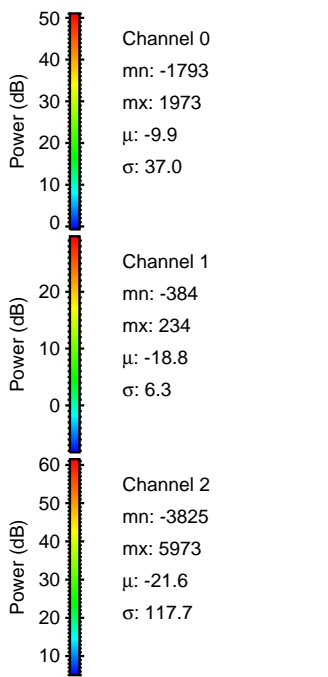
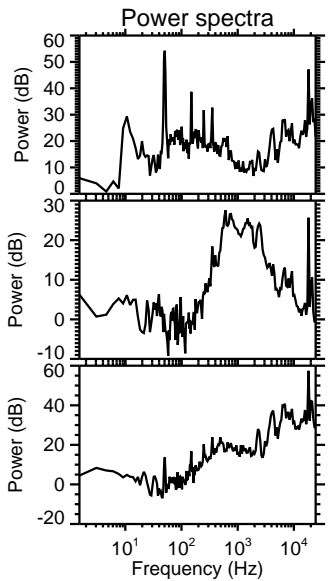
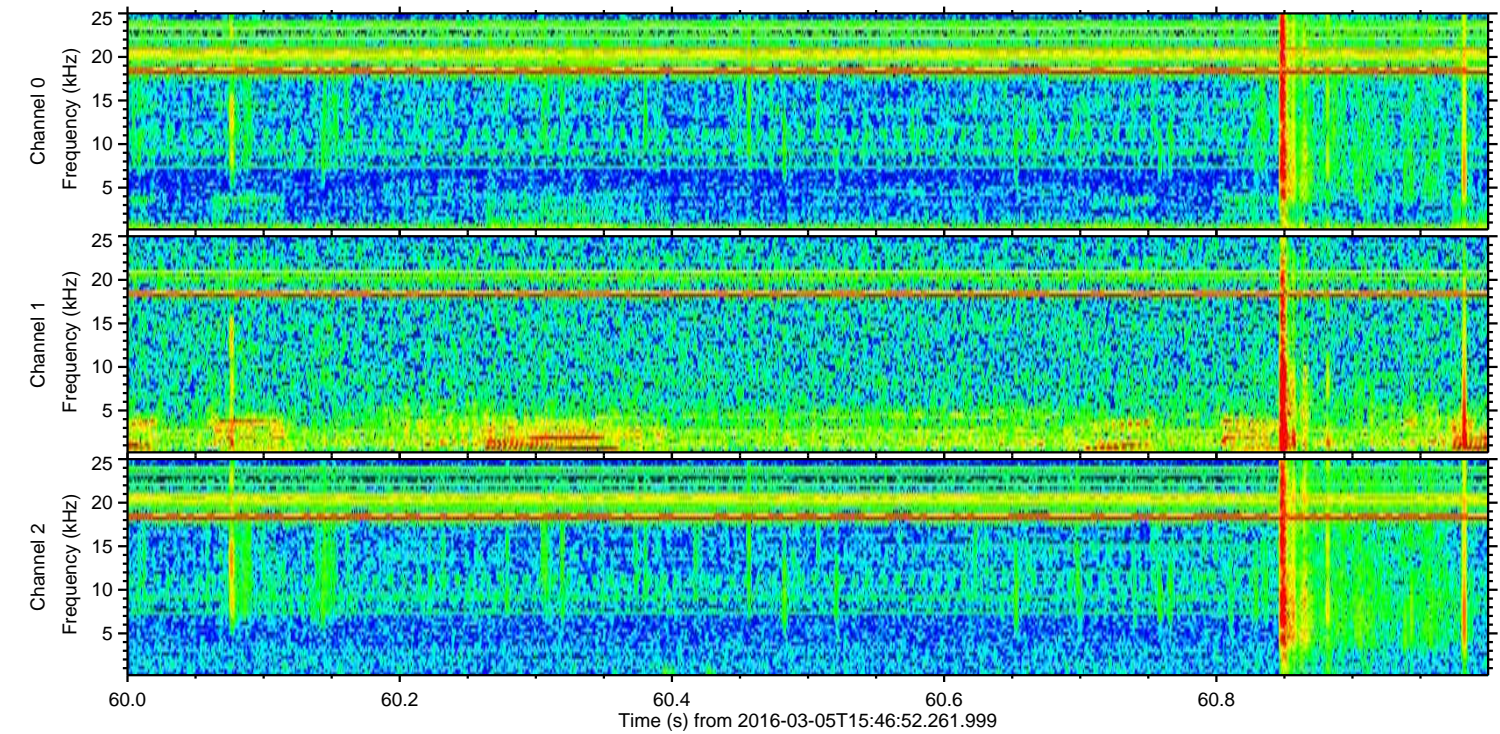
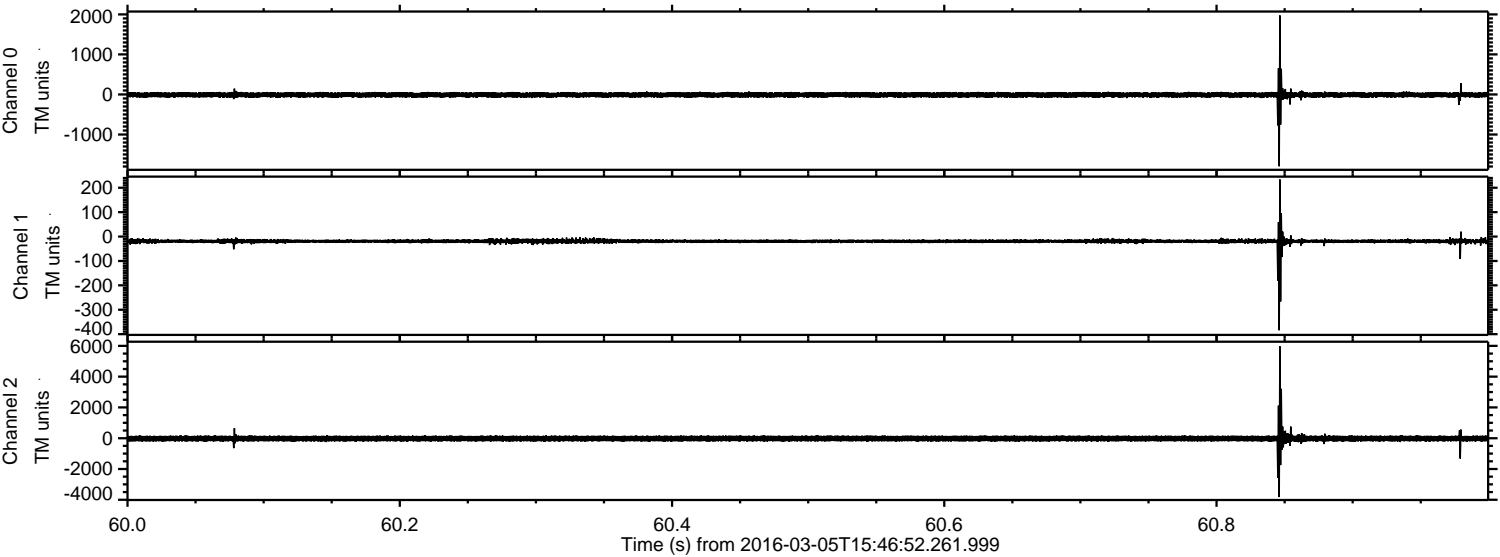


ELMAVAN 3D WAVEFORMS (Measured data sampled at 50 kHz) 51000 packets of 144 samples from 2016-03-05T15:46:52.261.999.

Processed Mon Apr 18 12:47:11 2016 by ELM ver.2012-10-06 from 001__elm20160305_154651__dat00.bin

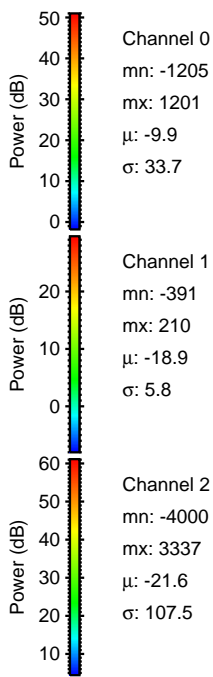
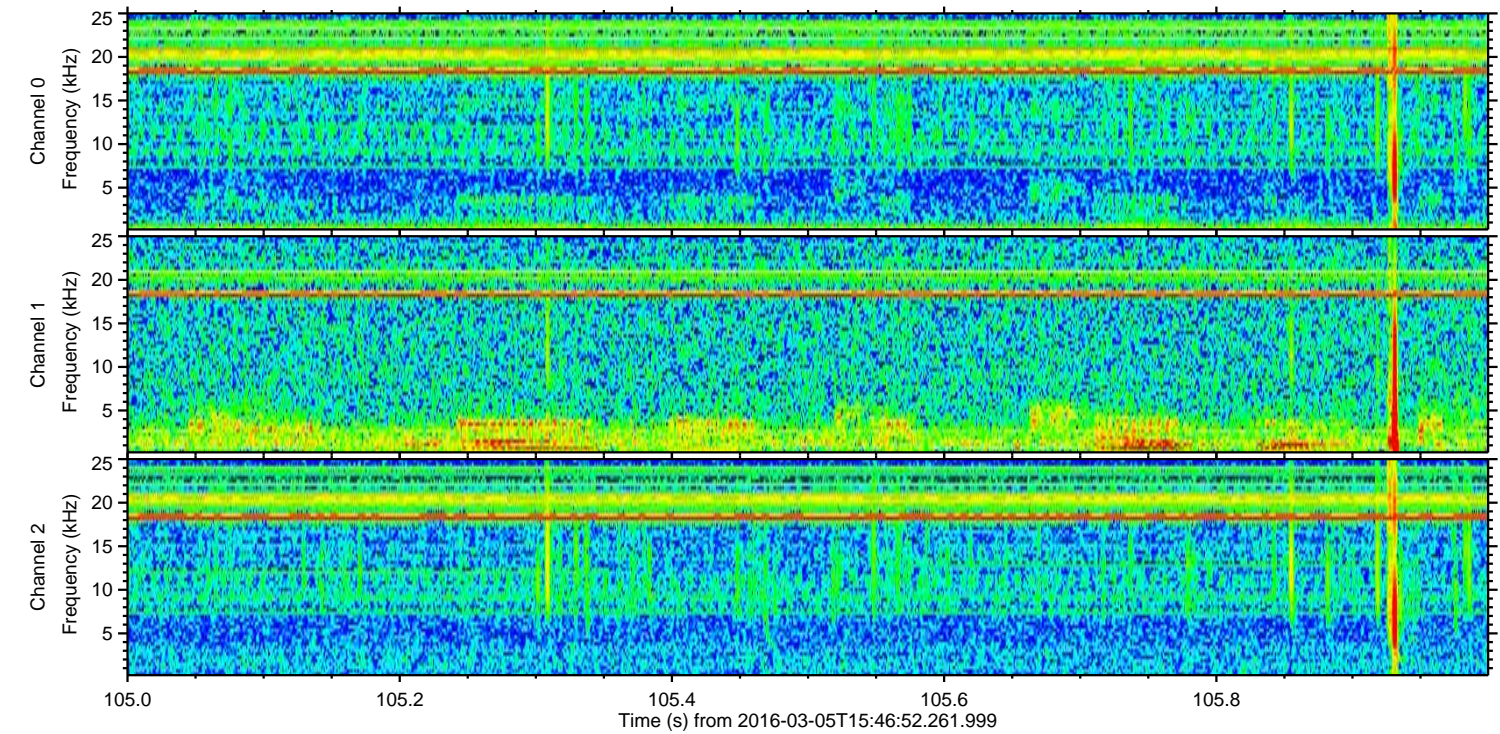
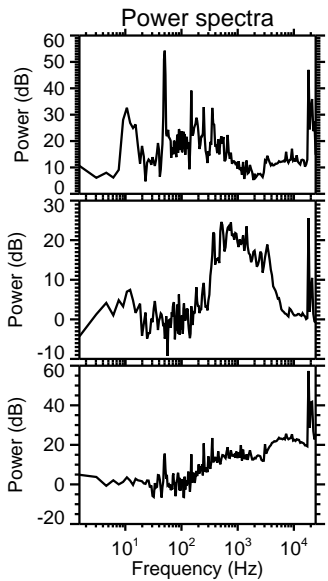
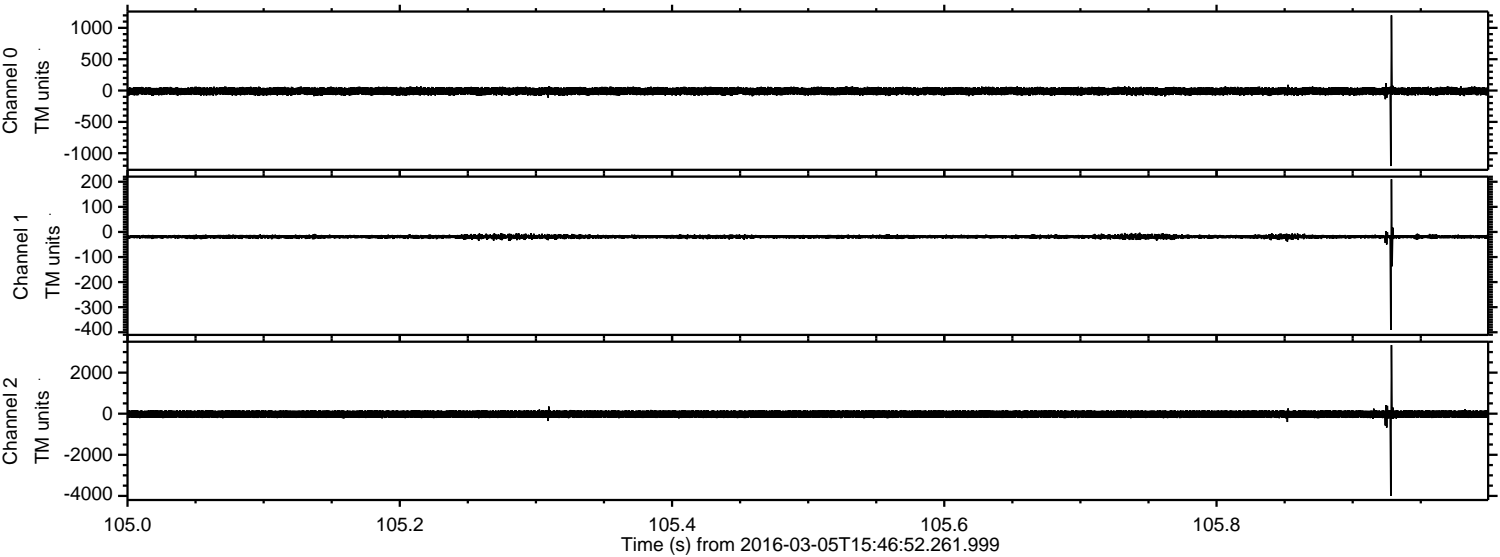


Processed Mon Apr 18 12:47:23 2016 by ELM ver.2012-10-06 from 001__elm20160305_154651__dat00.bin



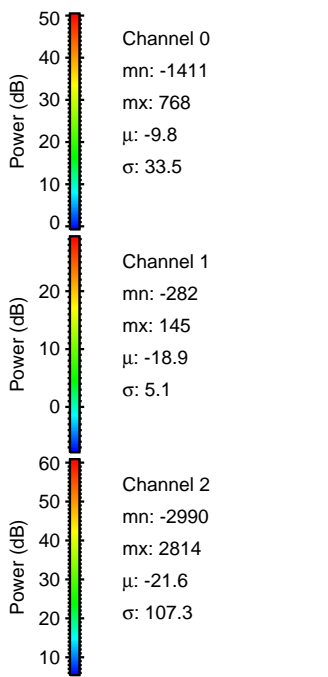
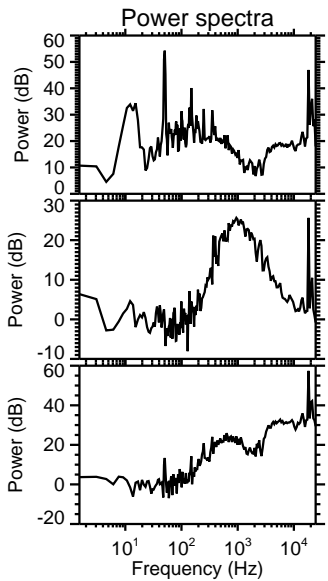
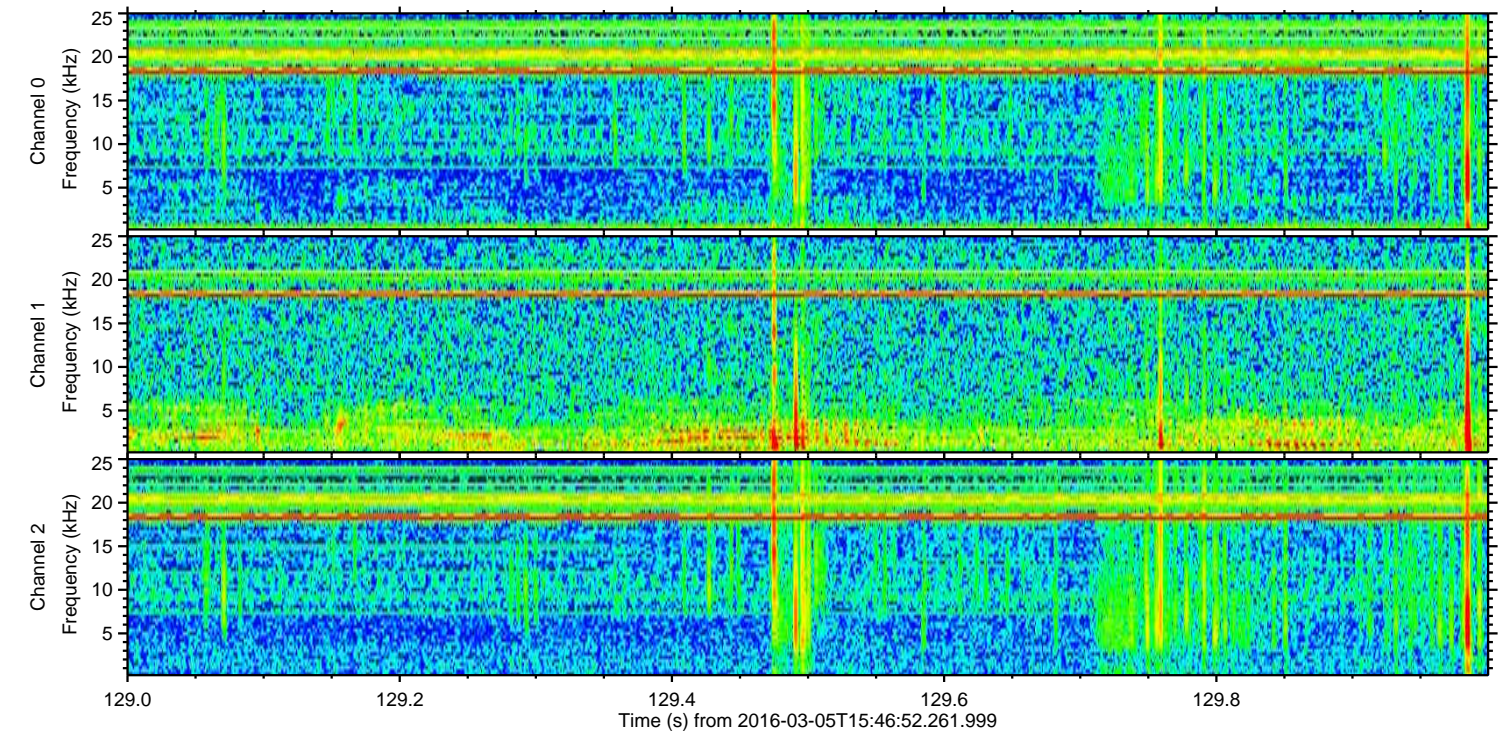
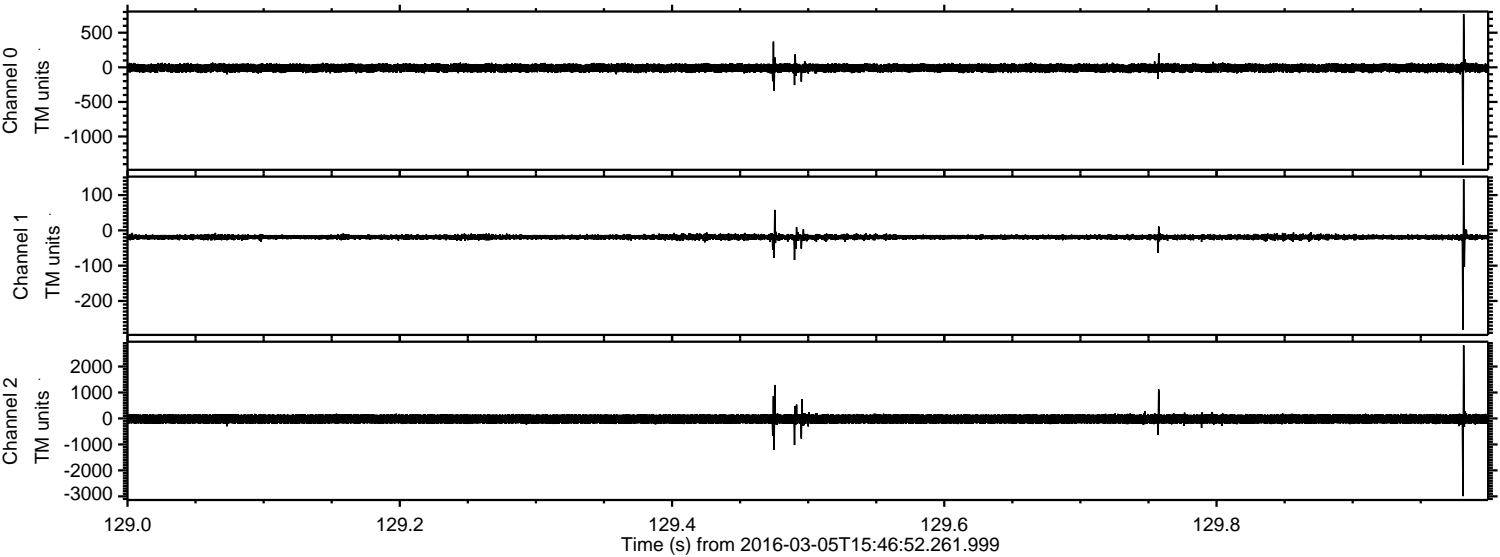
ELMAVAN 3D WAVEFORMS (Measured data sampled at 50 kHz) 51000 packets of 144 samples from 2016-03-05T15:46:52.261.999. Part 106/147

Processed Mon Apr 18 12:47:24 2016 by ELM ver.2012-10-06 from 001__elm20160305_154651__dat00.bin



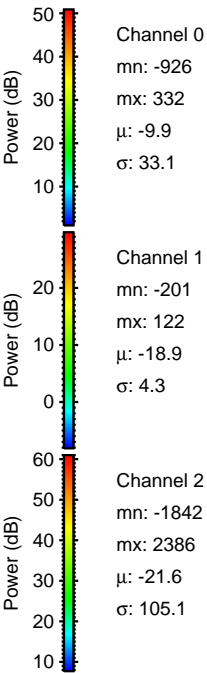
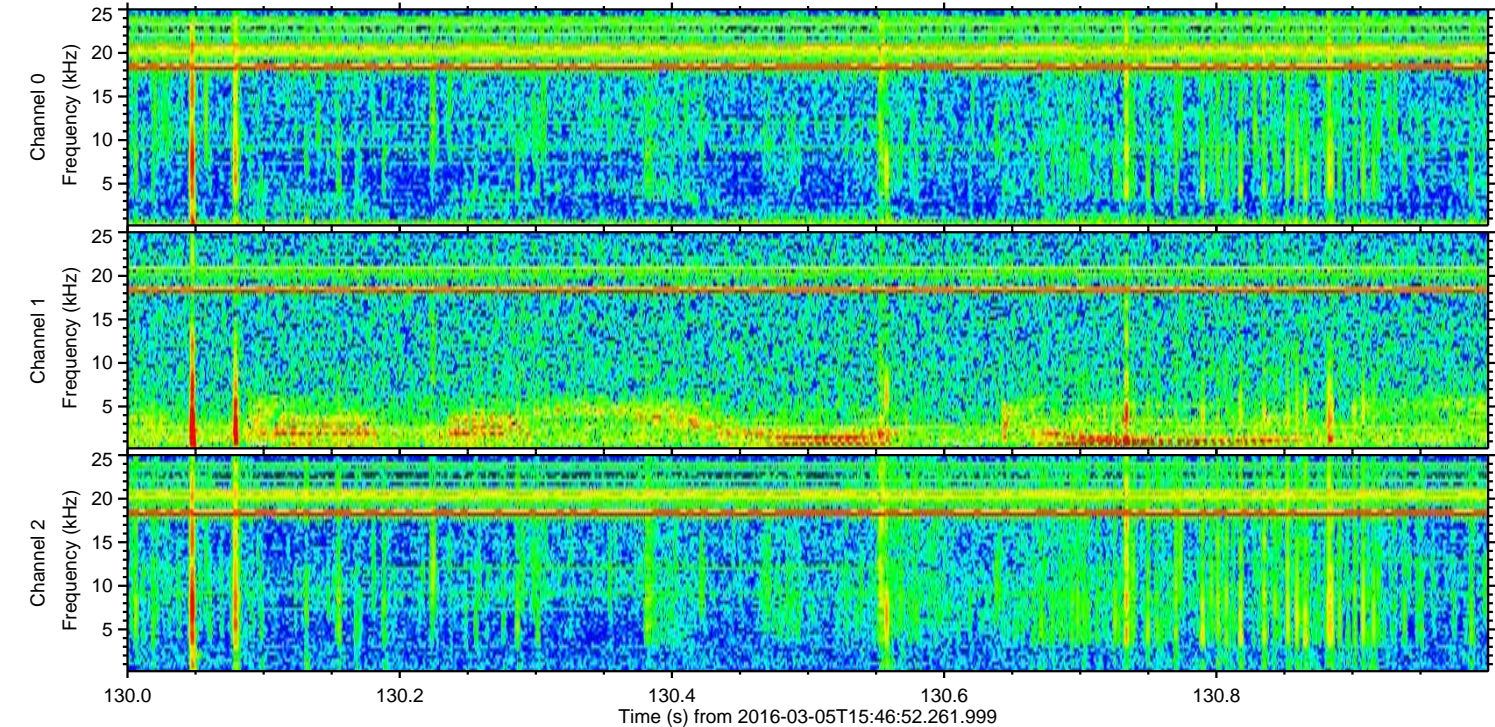
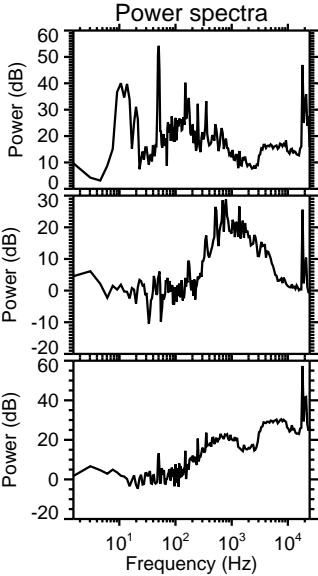
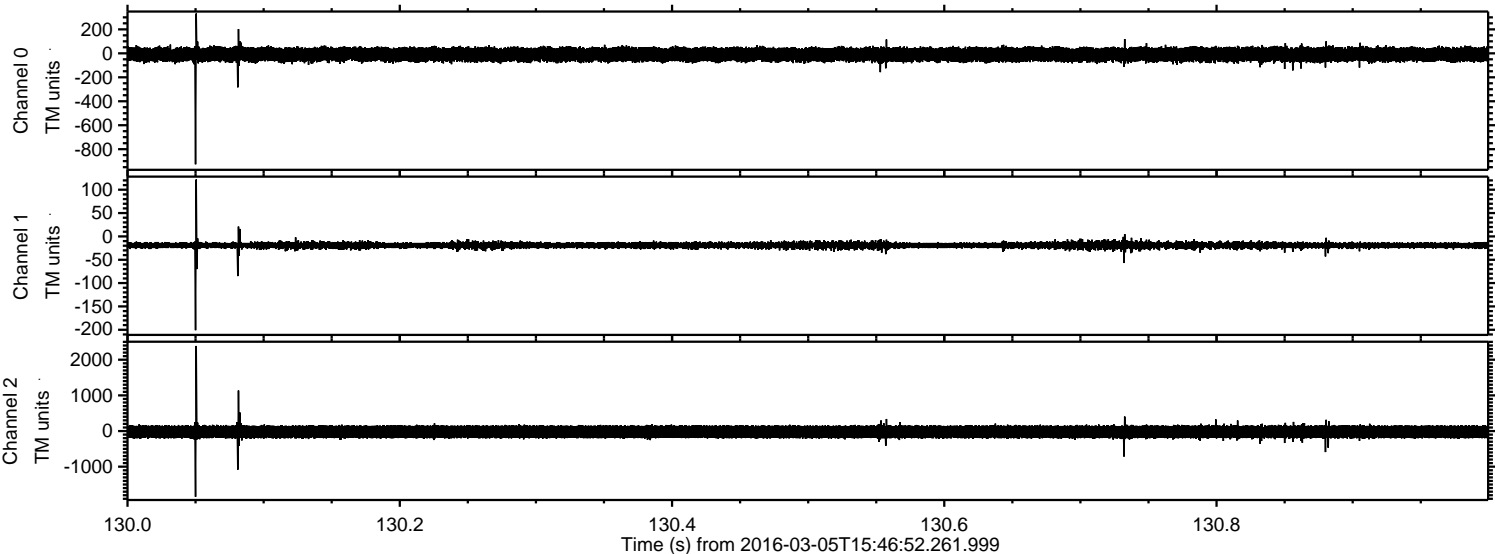
ELMAVAN 3D WAVEFORMS (Measured data sampled at 50 kHz) 51000 packets of 144 samples from 2016-03-05T15:46:52.261.999. Part 130/147

Processed Mon Apr 18 12:47:25 2016 by ELM ver.2012-10-06 from 001__elm20160305_154651__dat00.bin



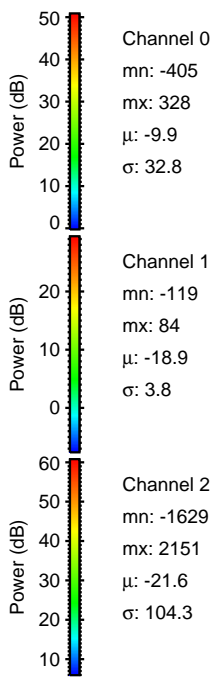
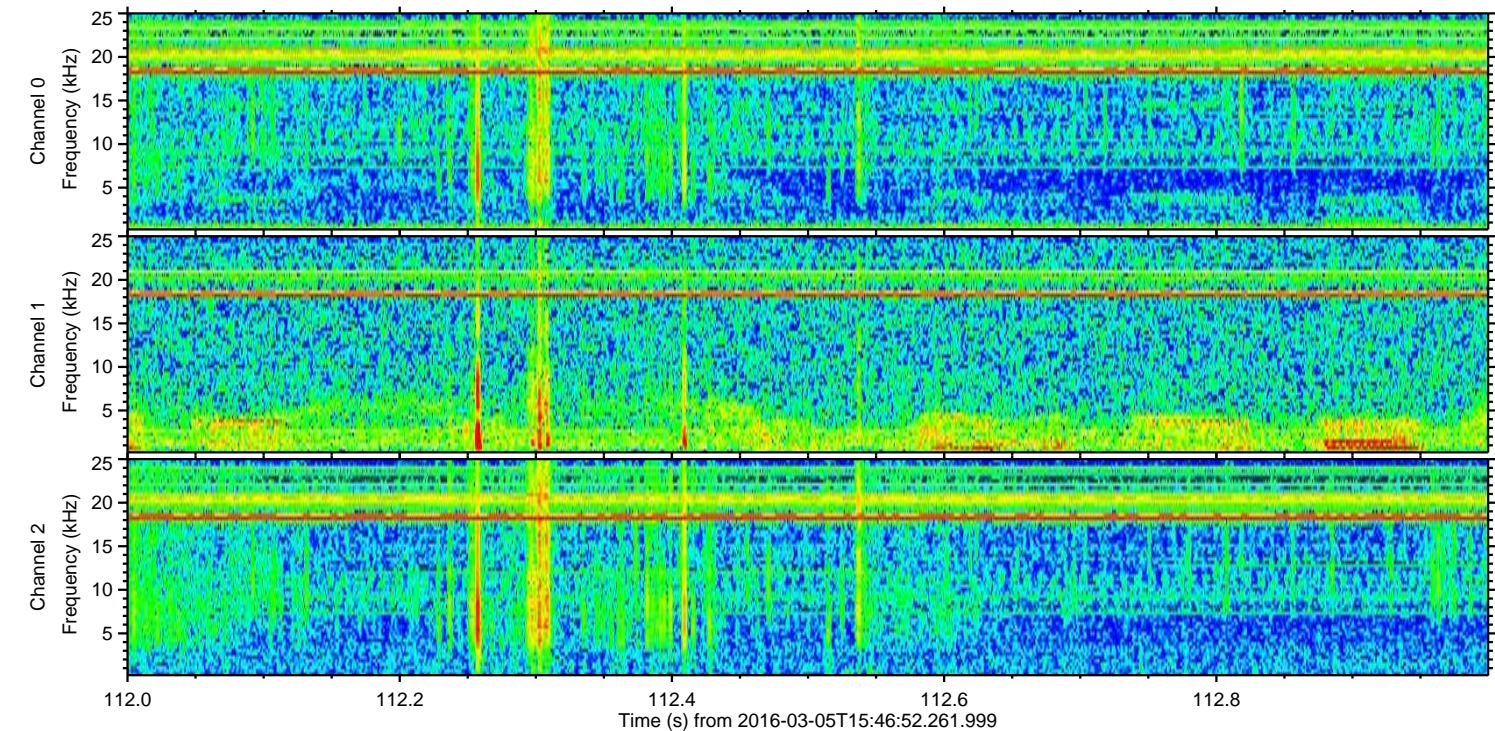
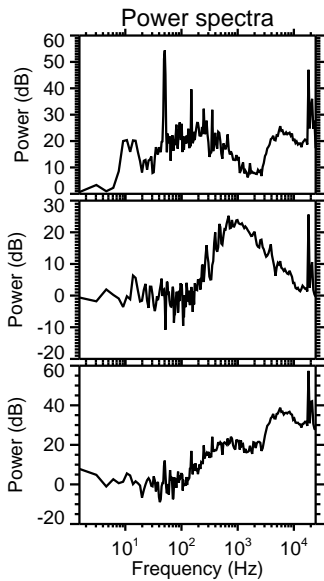
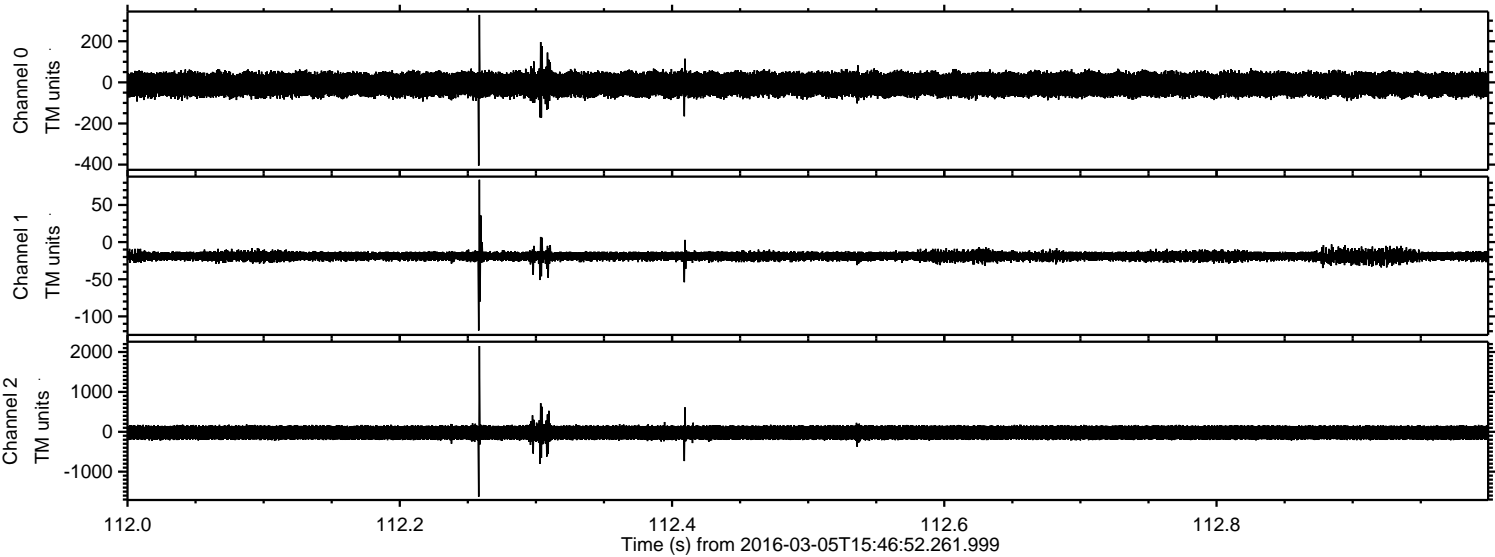
ELMAVAN 3D WAVEFORMS (Measured data sampled at 50 kHz) 51000 packets of 144 samples from 2016-03-05T15:46:52.261.999. Part 131/147

Processed Mon Apr 18 12:47:26 2016 by ELM ver.2012-10-06 from 001__elm20160305_154651__dat00.bin

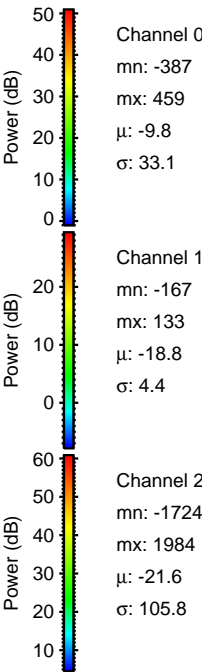
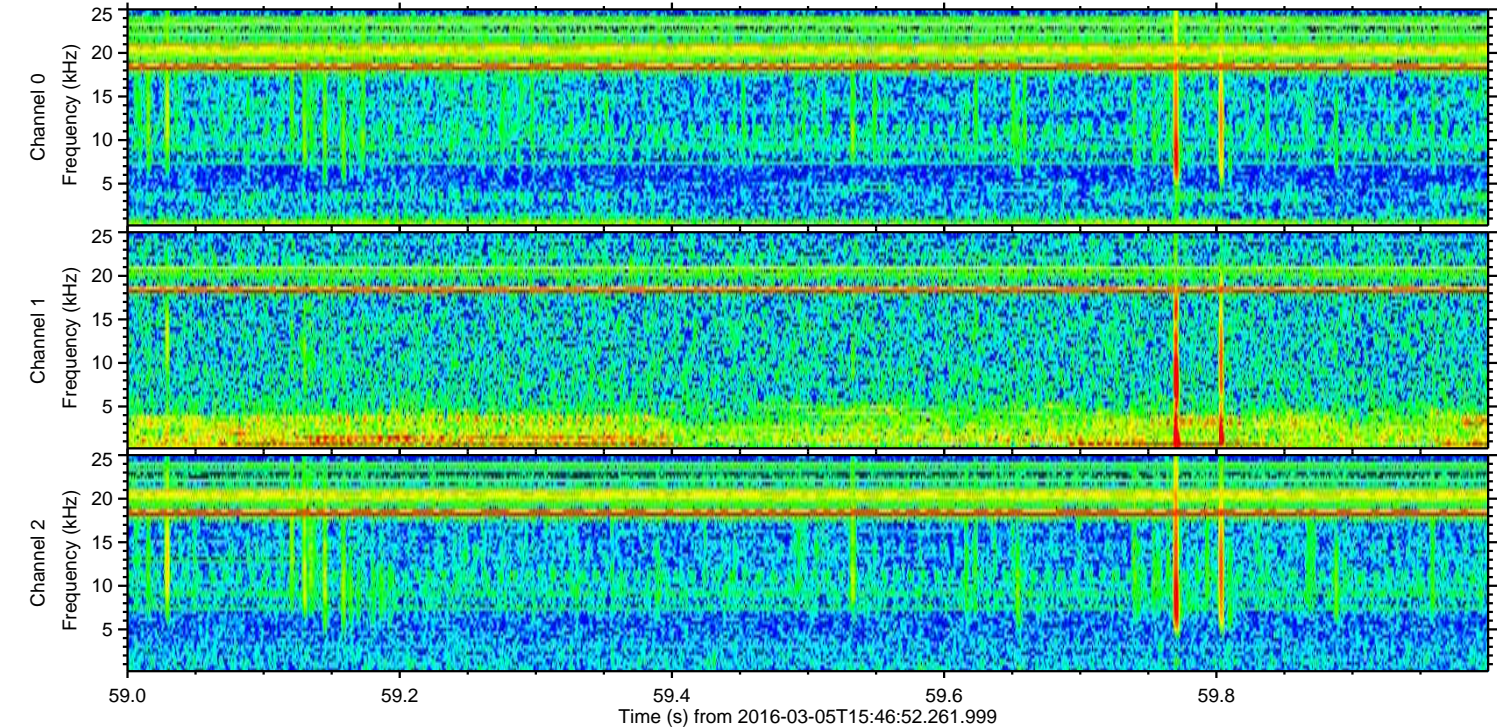
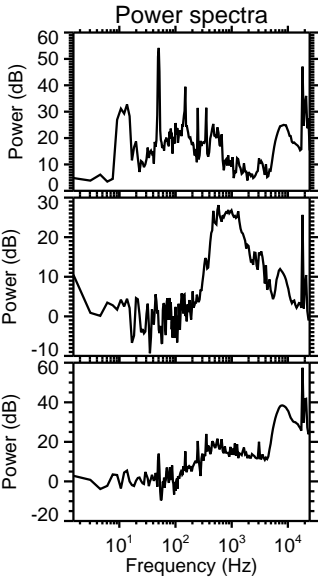
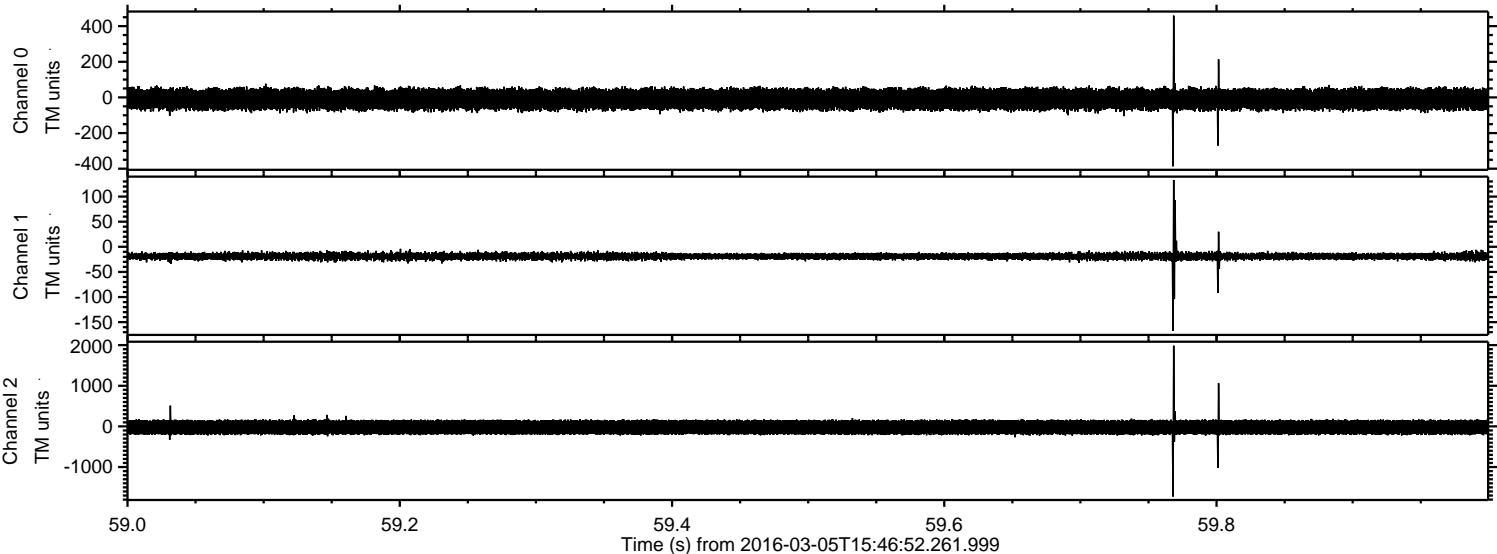


ELMAVAN 3D WAVEFORMS (Measured data sampled at 50 kHz) 51000 packets of 144 samples from 2016-03-05T15:46:52.261.999. Part 113/147

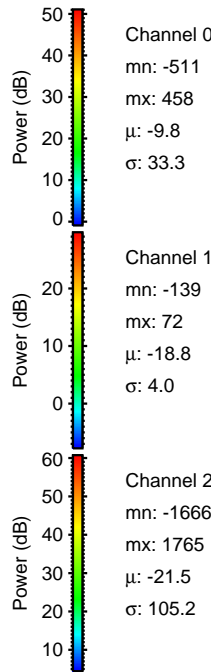
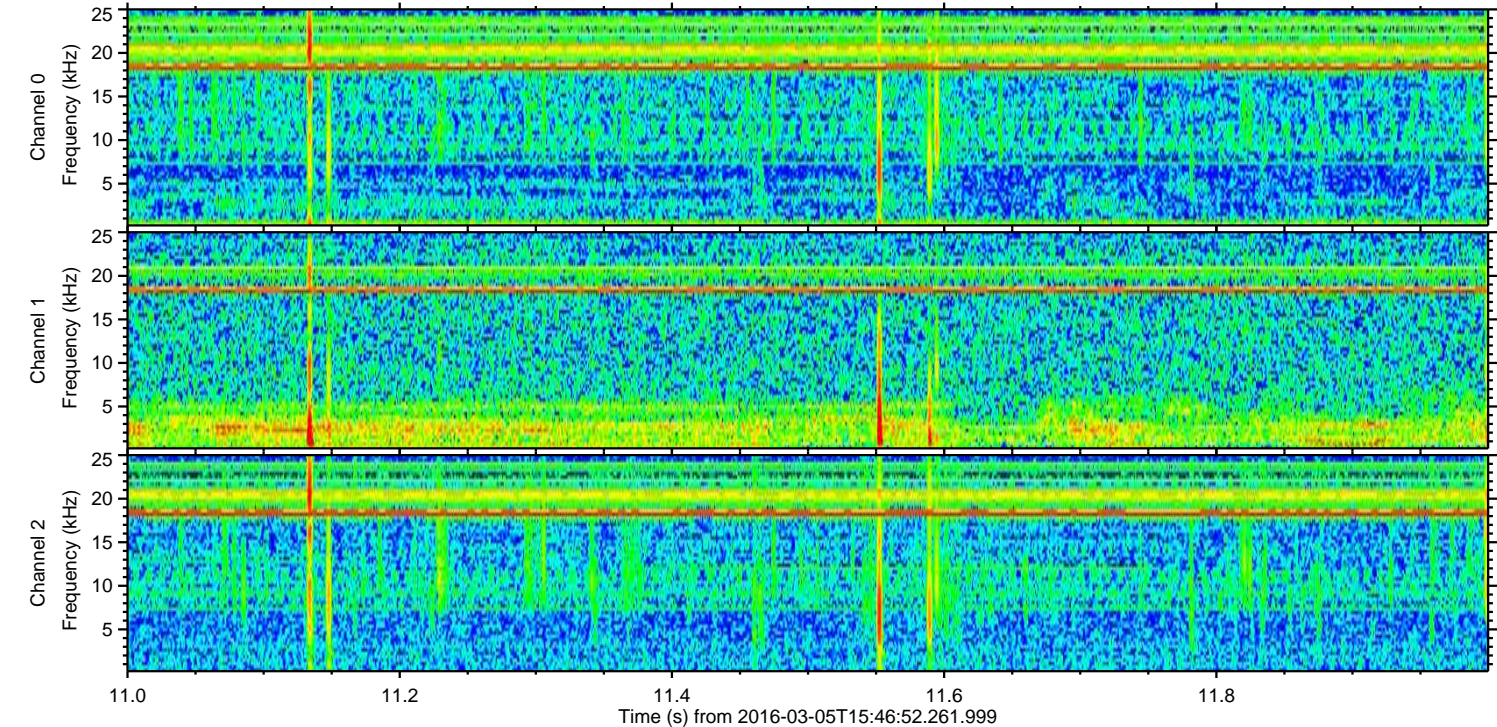
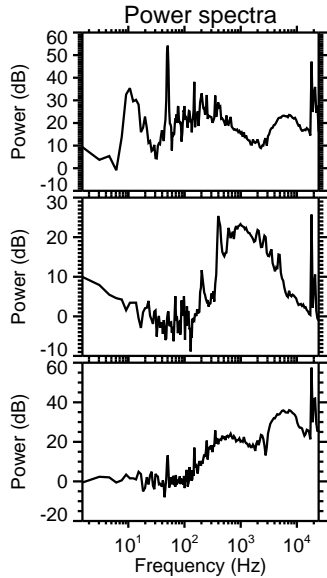
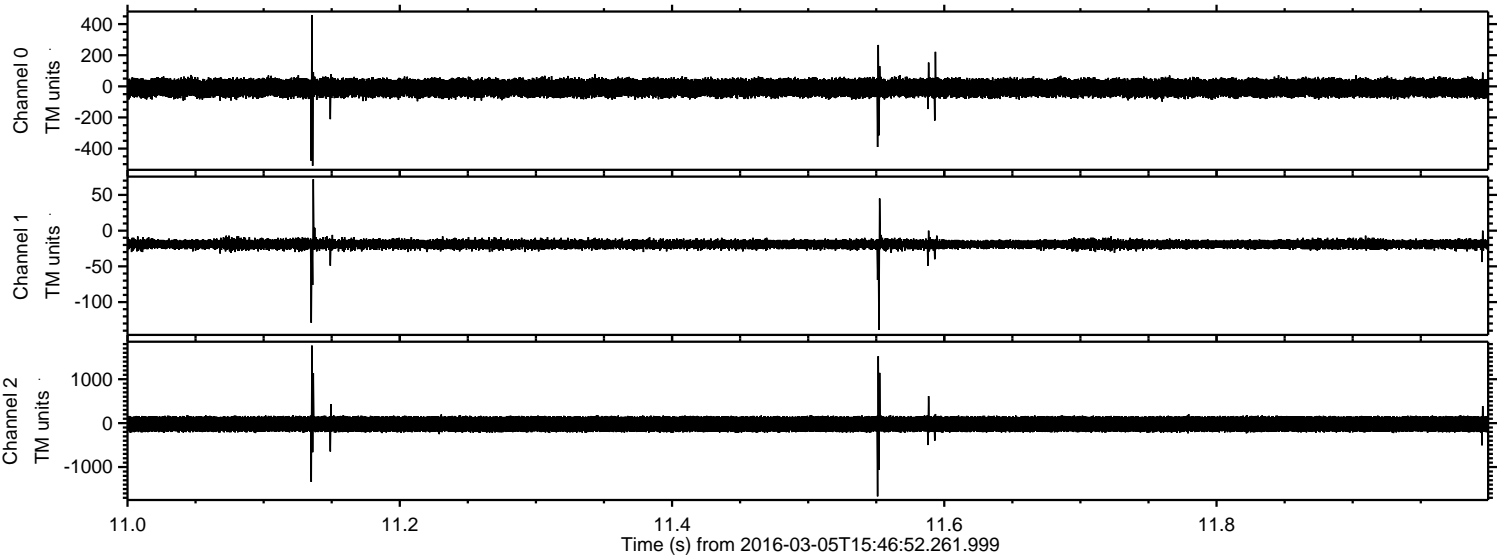
Processed Mon Apr 18 12:47:27 2016 by ELM ver.2012-10-06 from 001__elm20160305_154651__dat00.bin



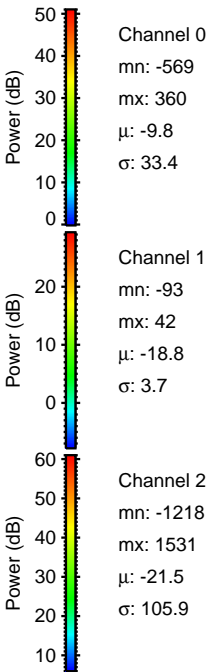
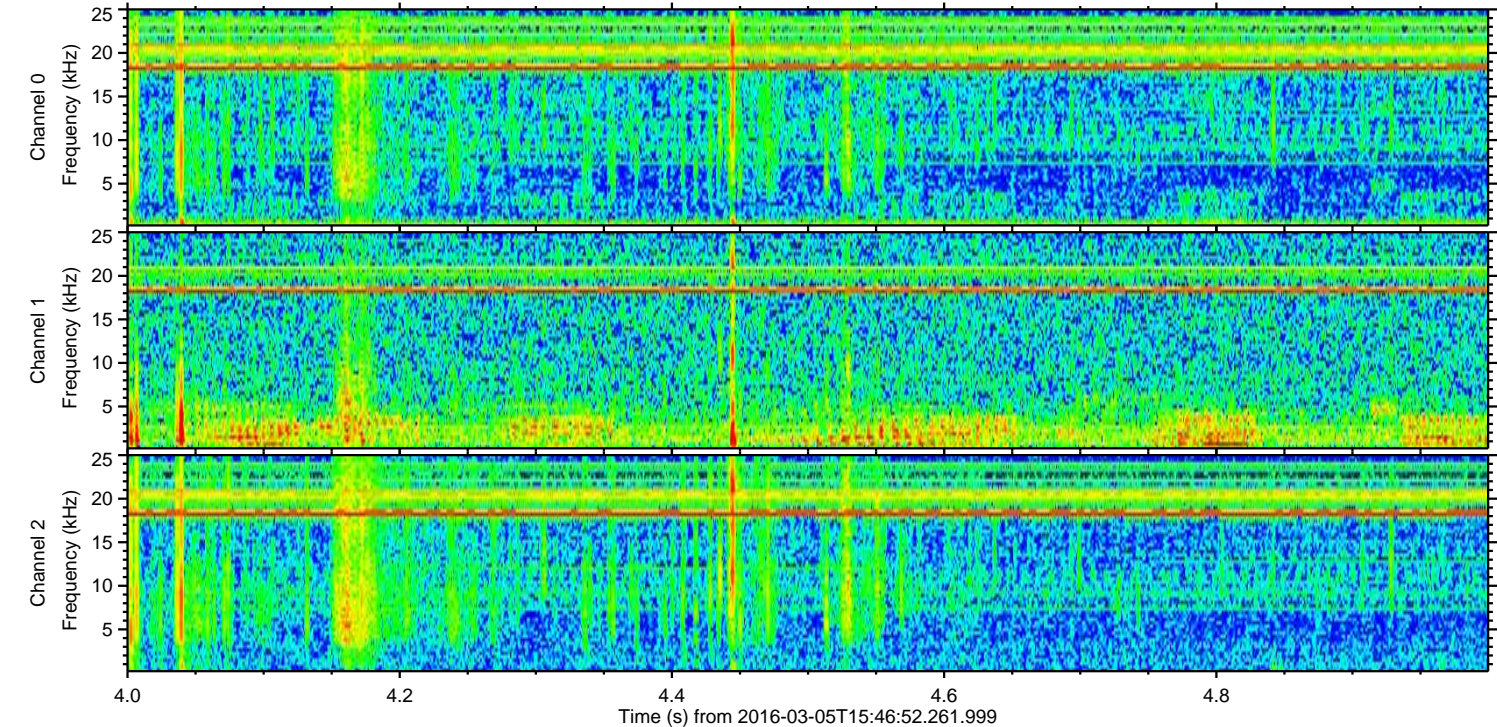
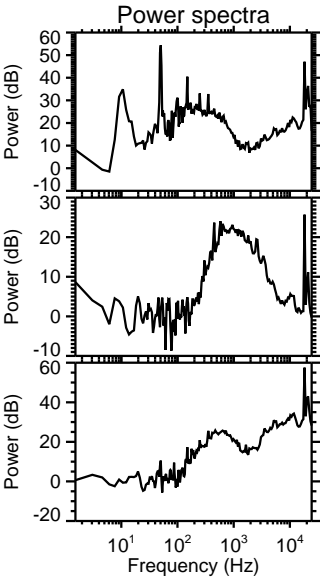
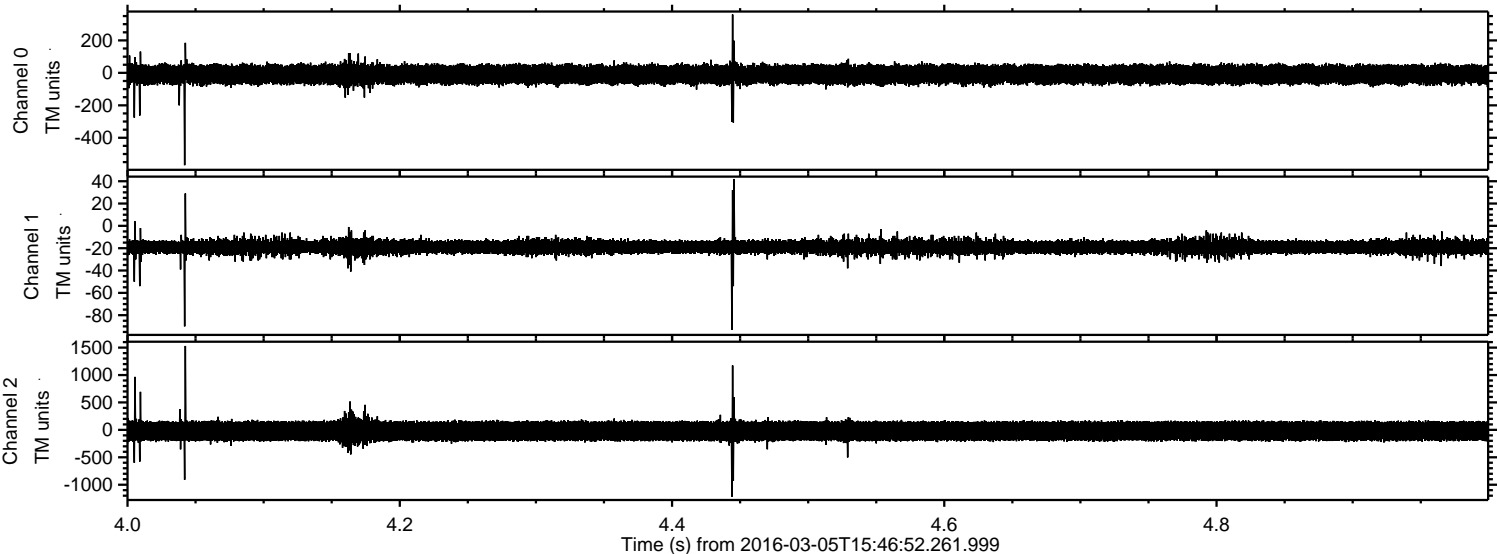
Processed Mon Apr 18 12:47:28 2016 by ELM ver.2012-10-06 from 001__elm20160305_154651__dat00.bin



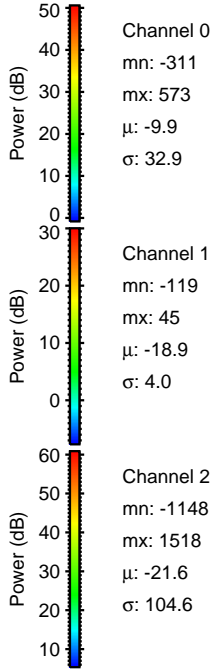
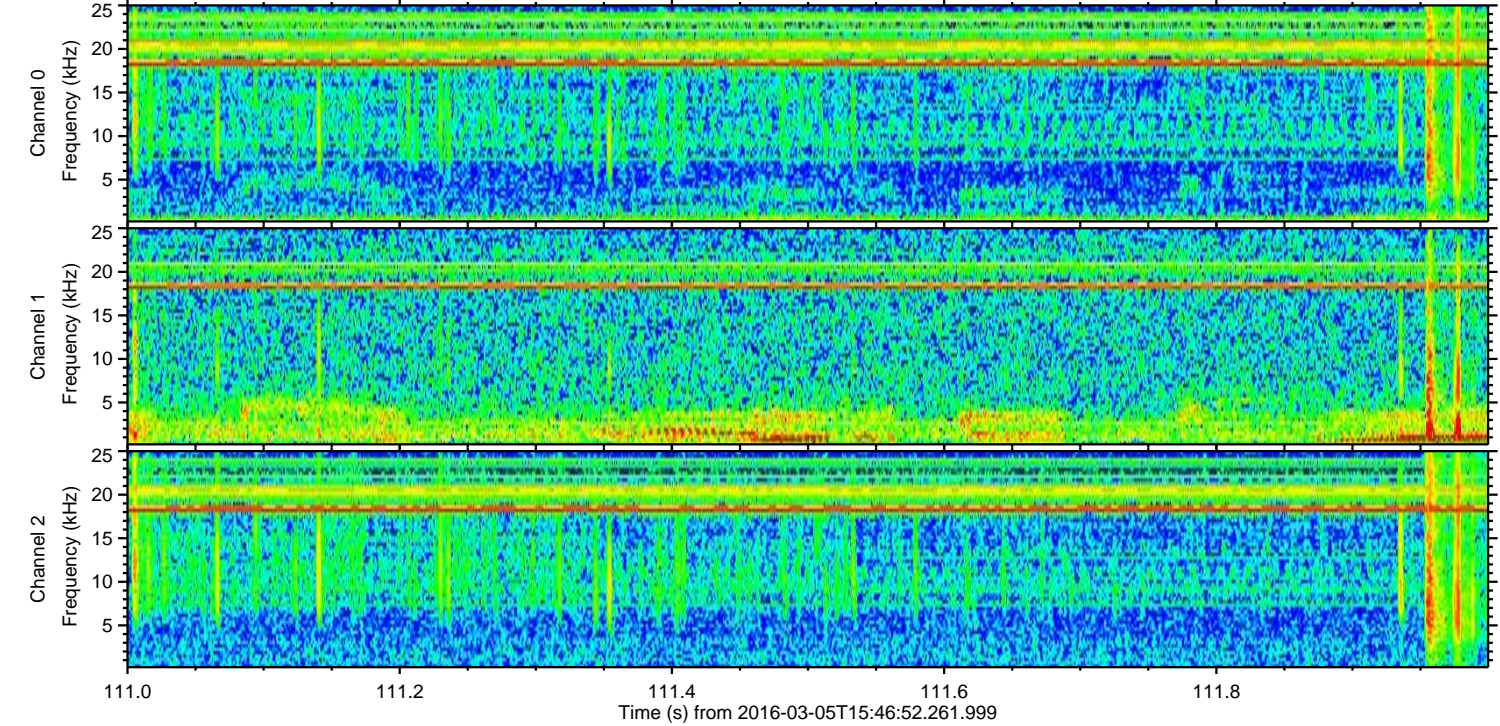
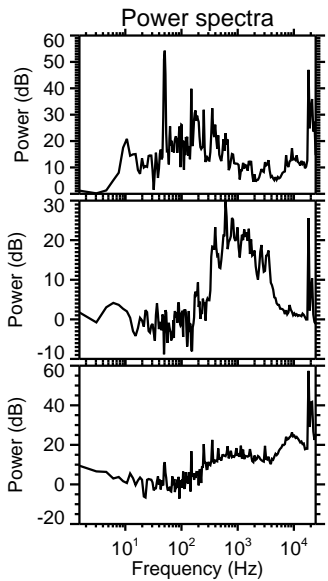
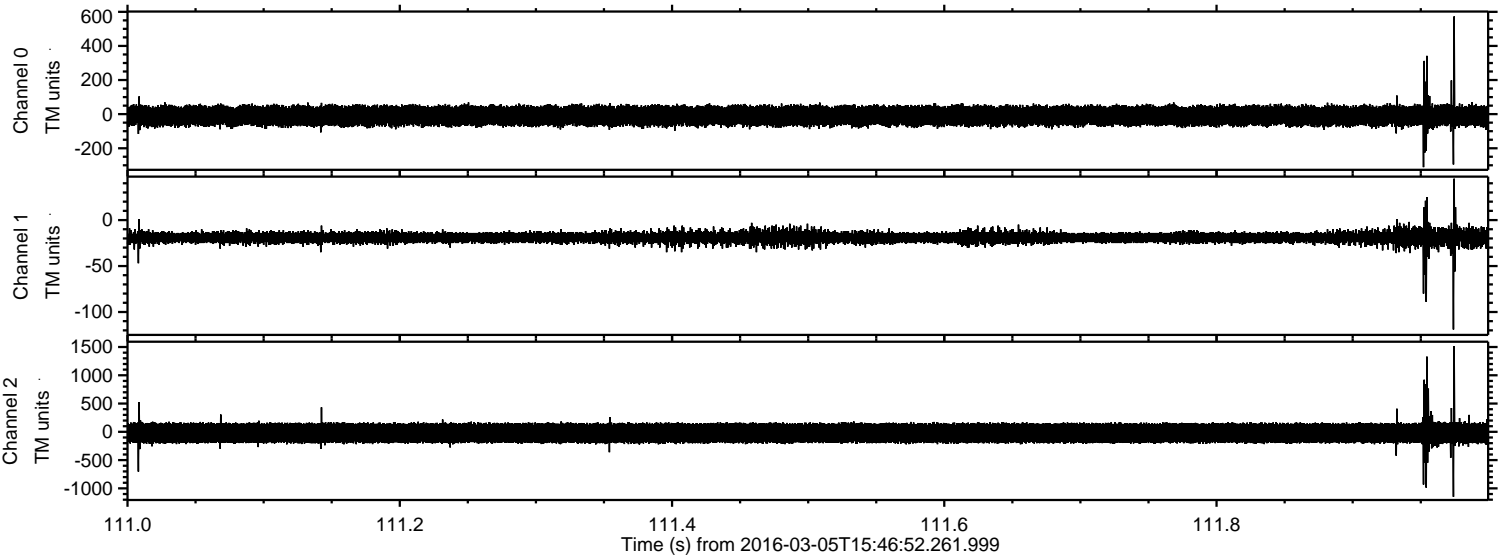
Processed Mon Apr 18 12:47:28 2016 by ELM ver.2012-10-06 from 001__elm20160305_154651__dat00.bin



Processed Mon Apr 18 12:47:29 2016 by ELM ver.2012-10-06 from 001__elm20160305_154651__dat00.bin



Processed Mon Apr 18 12:47:30 2016 by ELM ver.2012-10-06 from 001__elm20160305_154651__dat00.bin



Channel 0
mn: -311
mx: 573
 μ : -9.9
 σ : 32.9

Channel 1
mn: -119
mx: 45
 μ : -18.9
 σ : 4.0

Channel 2
mn: -1148
mx: 1518
 μ : -21.6
 σ : 104.6

Processed Mon Apr 18 12:47:31 2016 by ELM ver.2012-10-06 from 001__elm20160305_154651__dat00.bin

