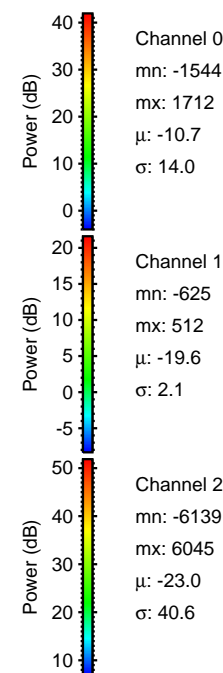
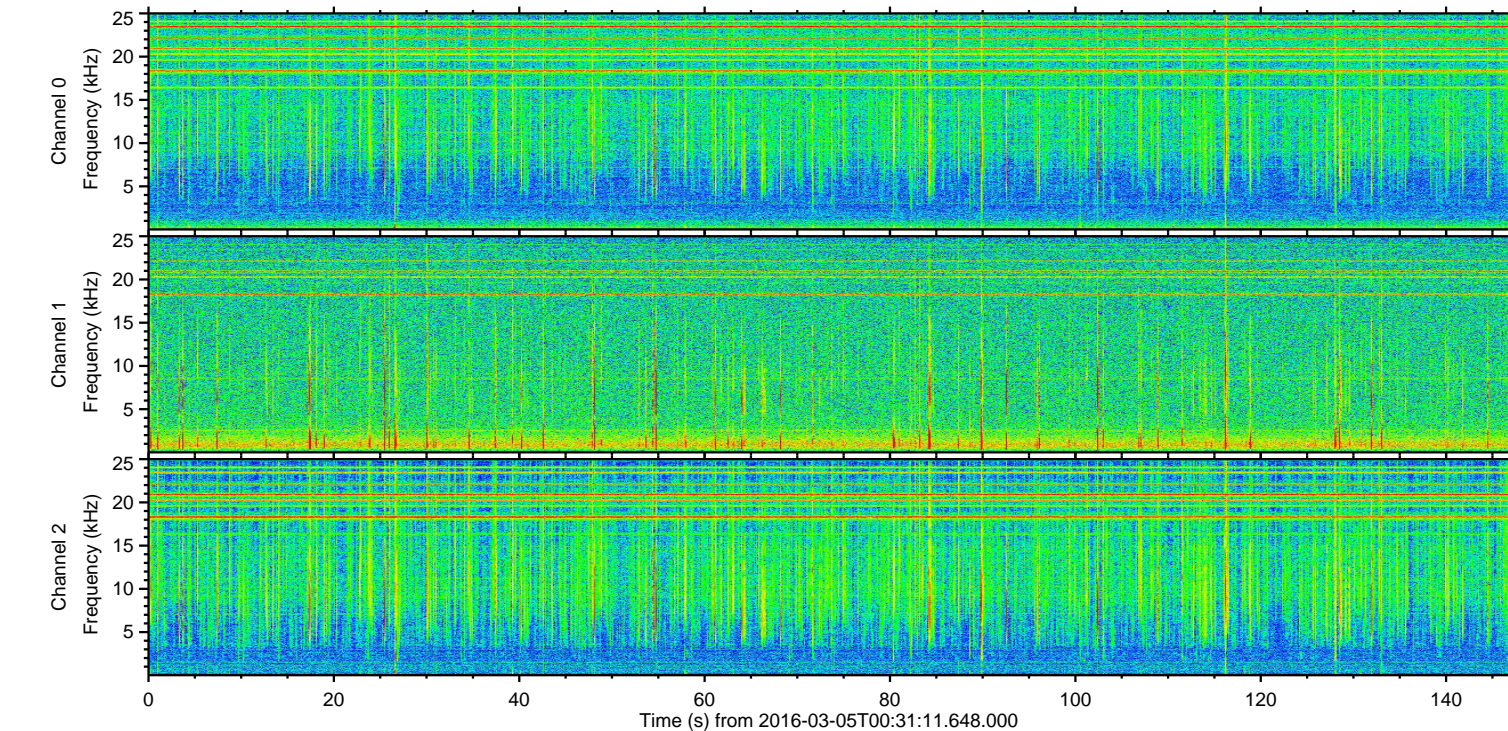
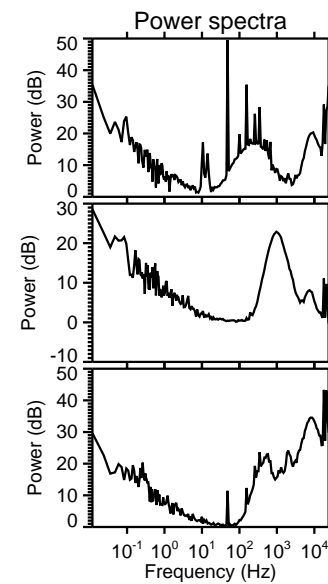
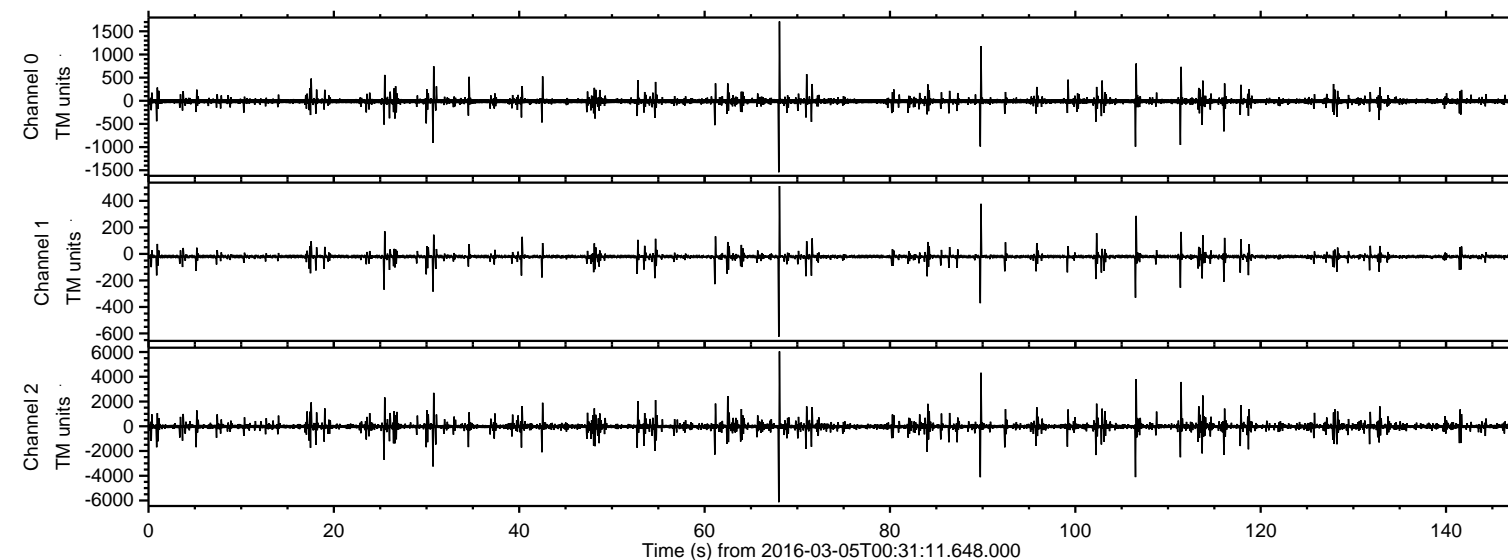
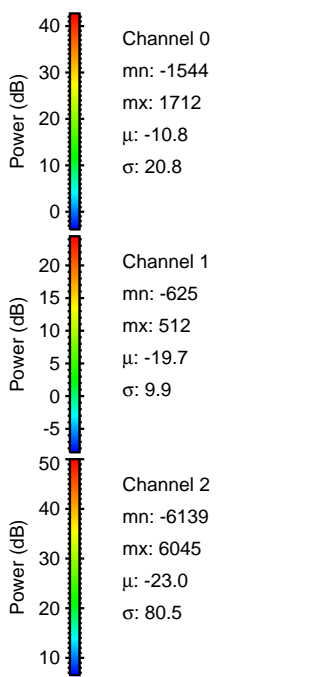
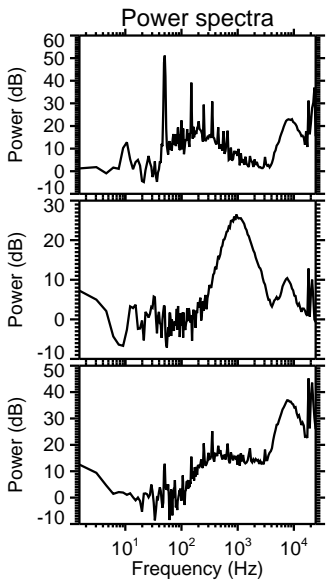
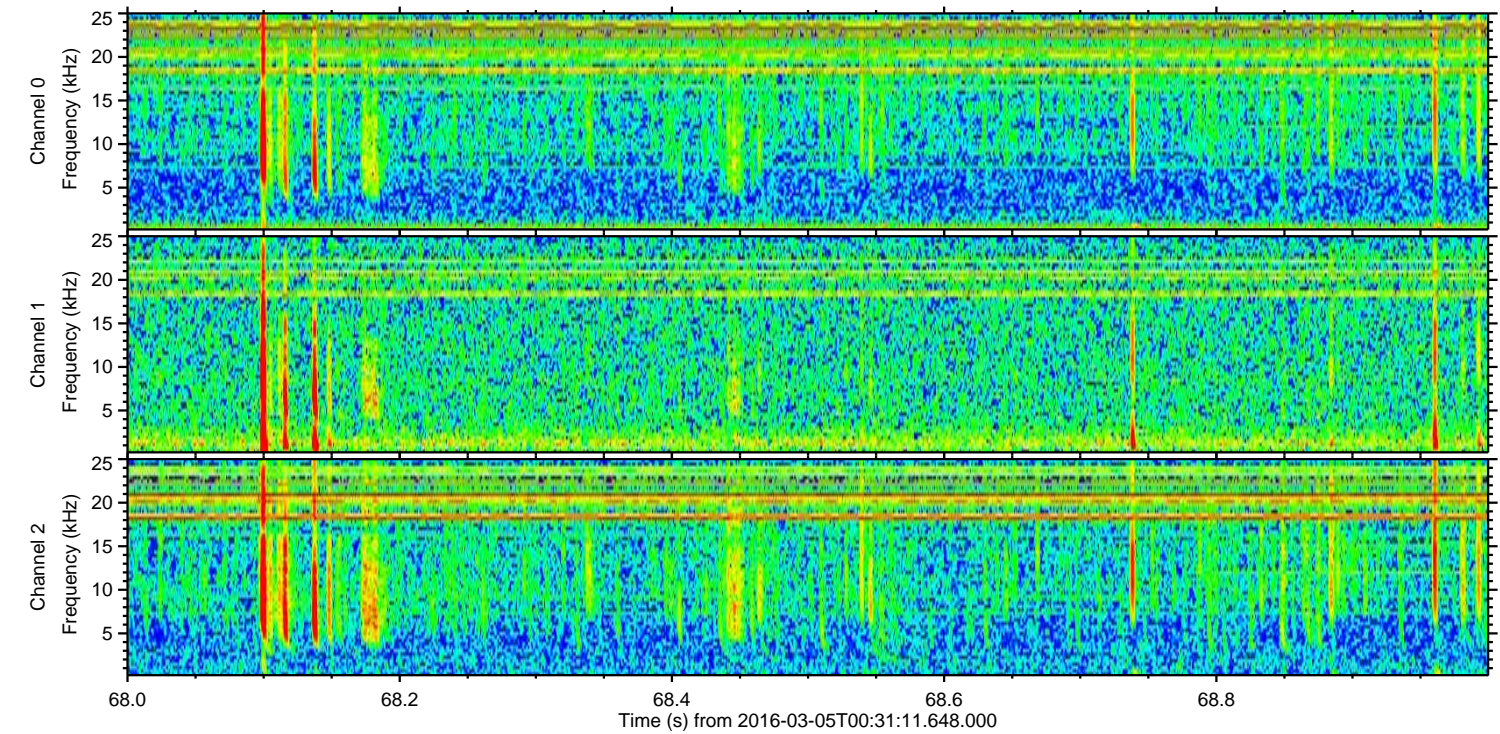
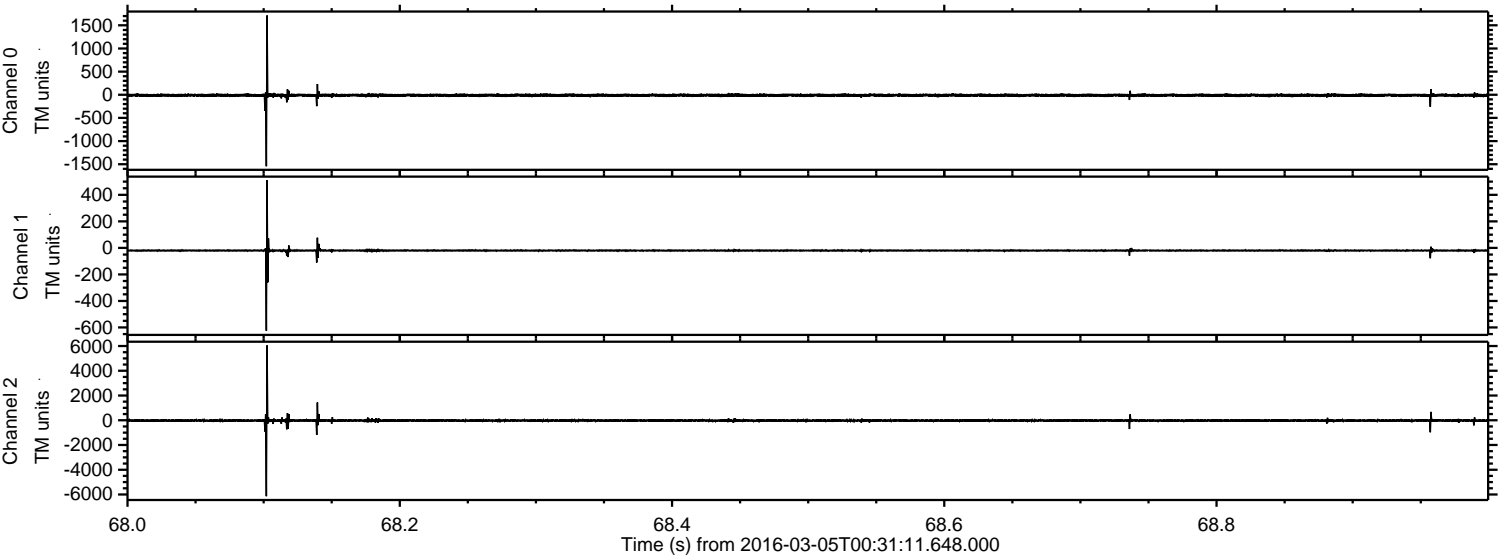


ELMAVAN 3D WAVEFORMS (Measured data sampled at 50 kHz) 51000 packets of 144 samples from 2016-03-05T00:31:11.648.000.

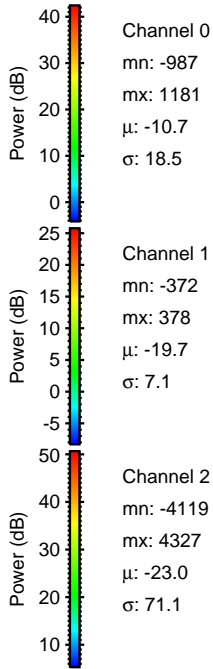
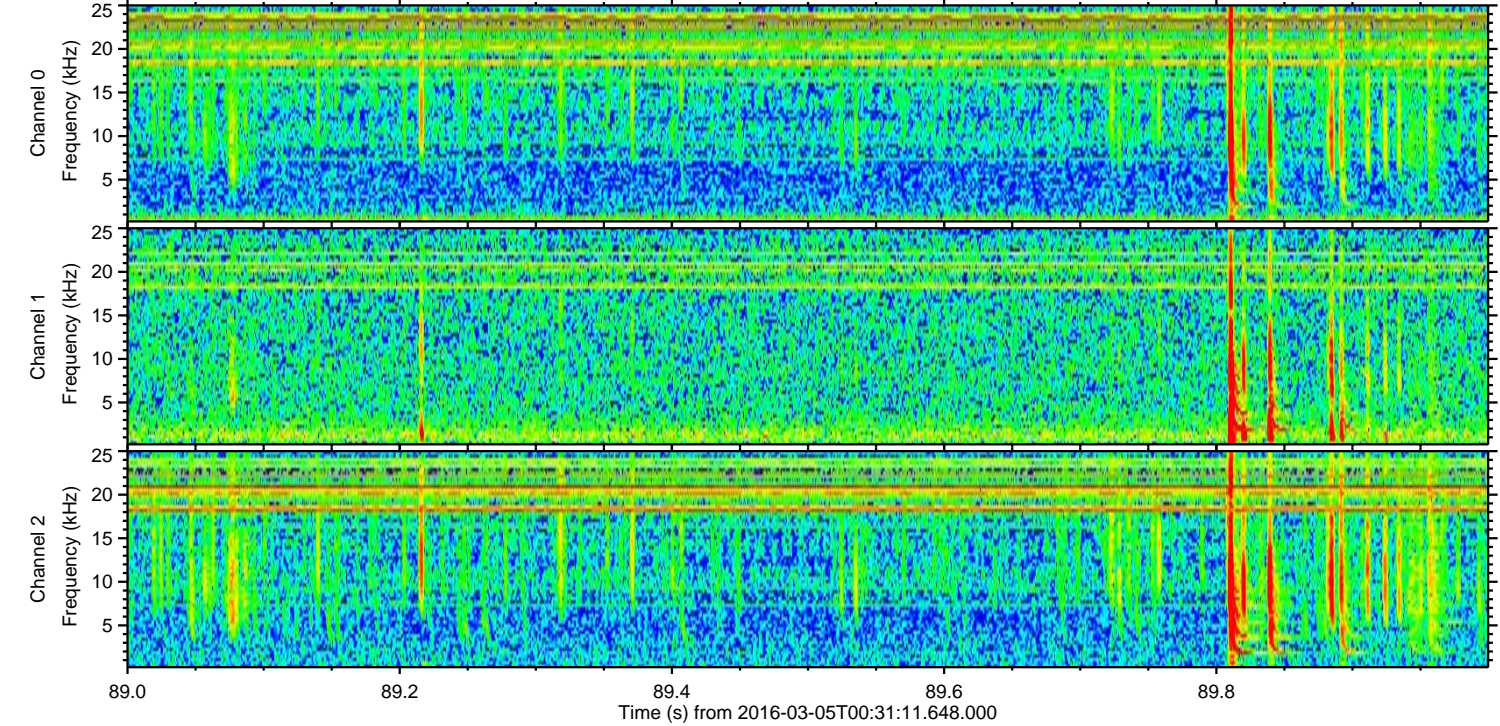
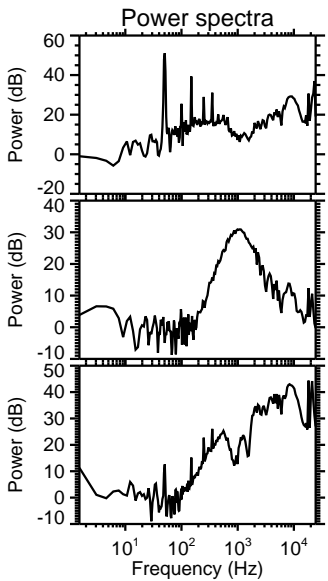
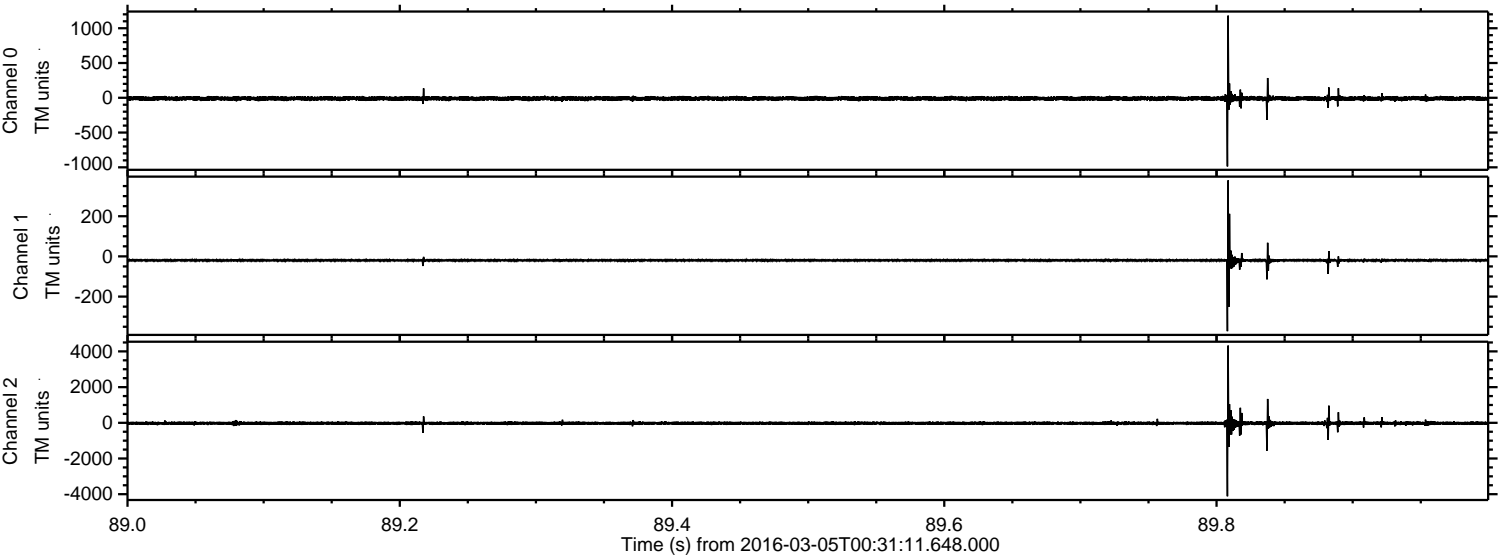
Processed Mon Apr 18 09:40:01 2016 by ELM ver.2012-10-06 from 001__elm20160305_003110__dat00.bin



Processed Mon Apr 18 09:40:13 2016 by ELM ver.2012-10-06 from 001__elm20160305_003110__dat00.bin

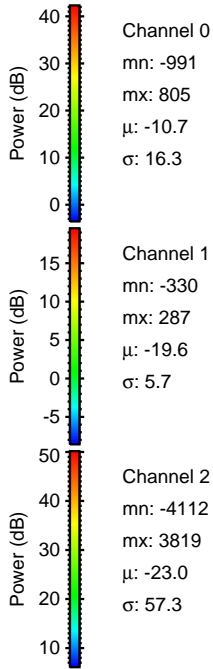
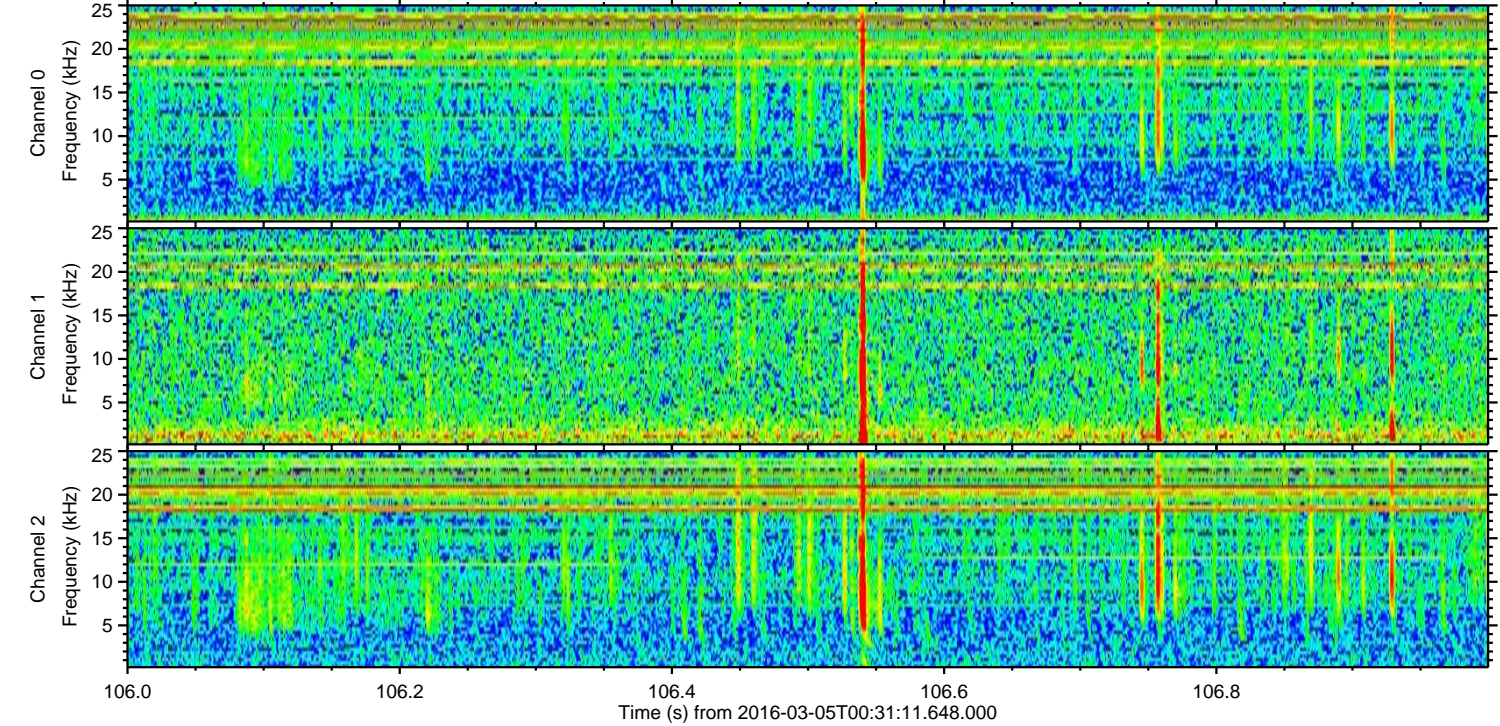
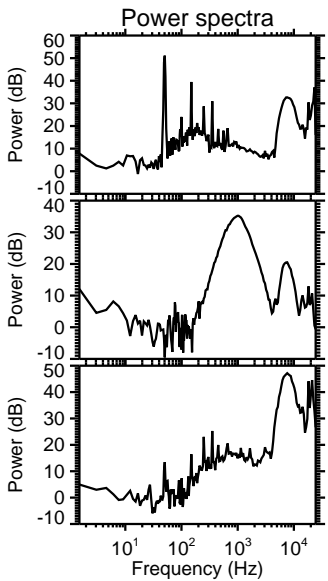
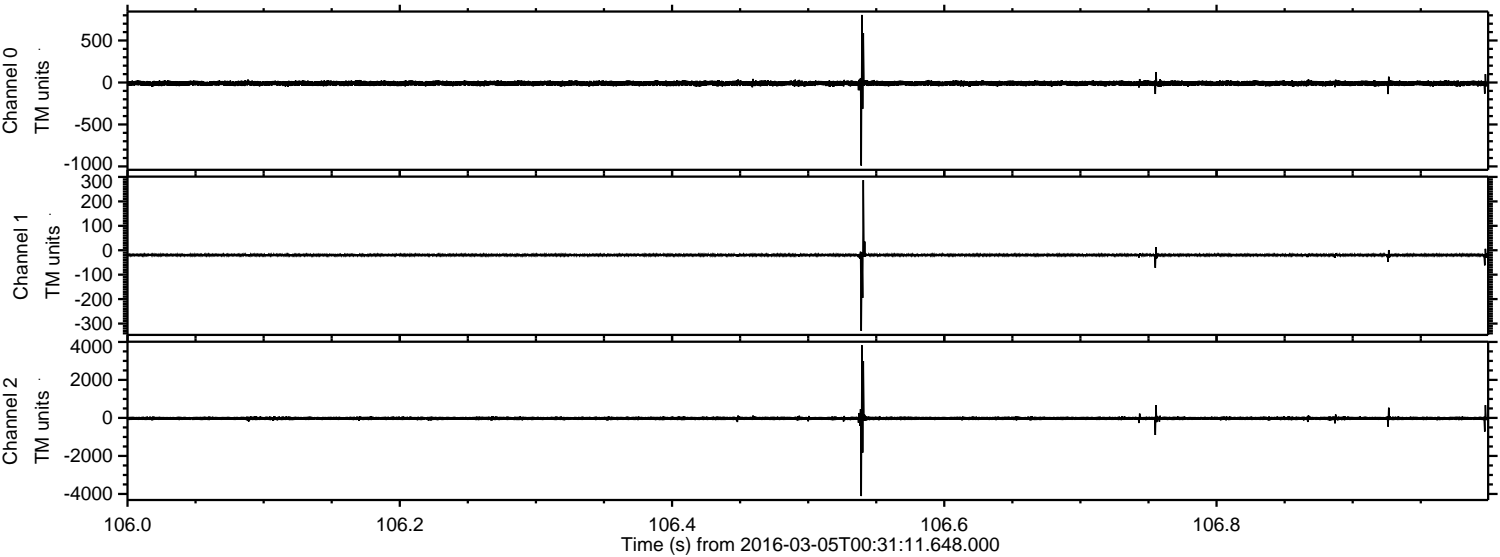


Processed Mon Apr 18 09:40:14 2016 by ELM ver.2012-10-06 from 001__elm20160305_003110__dat00.bin



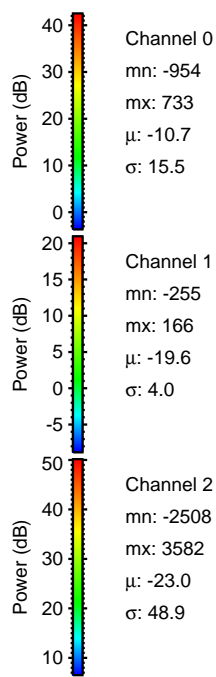
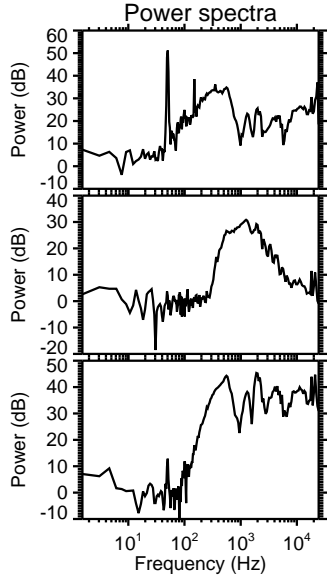
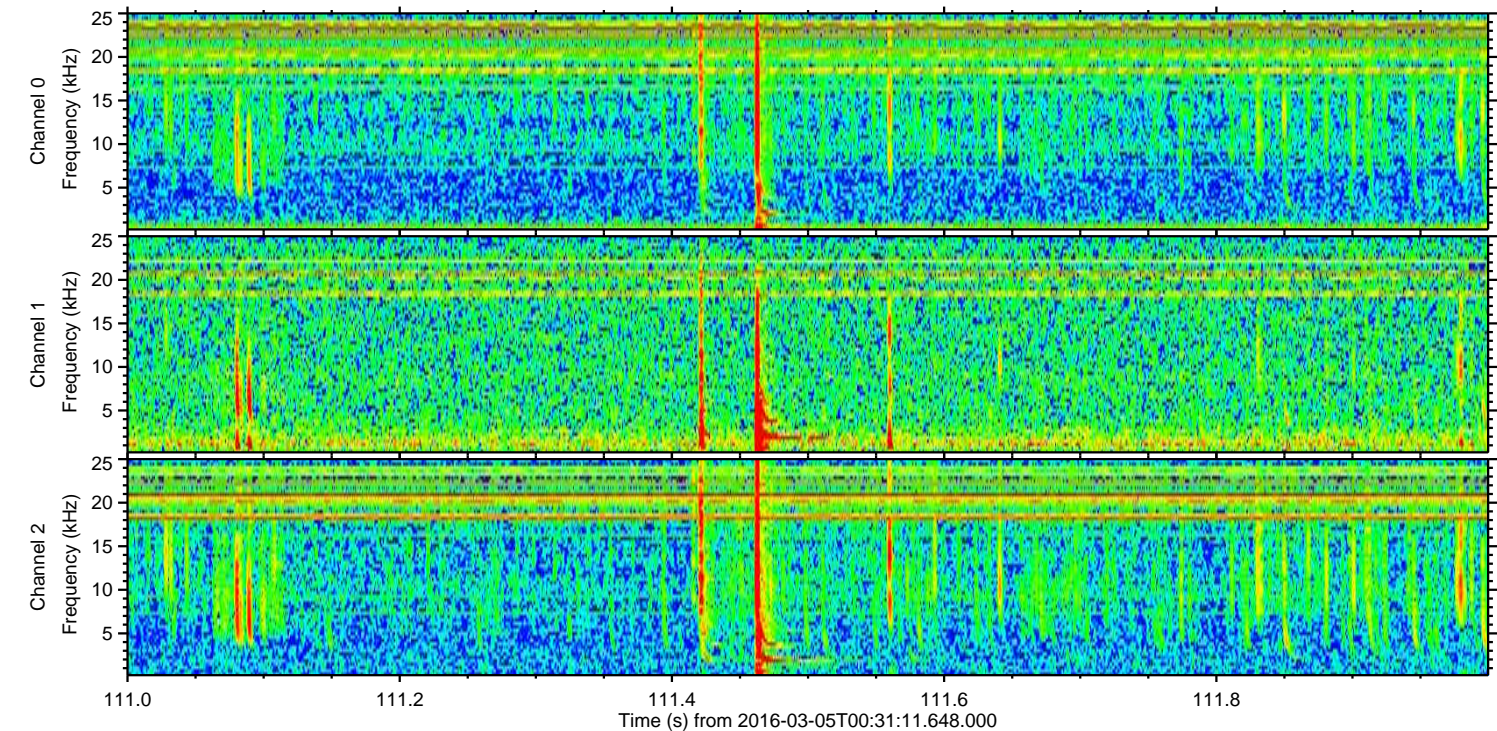
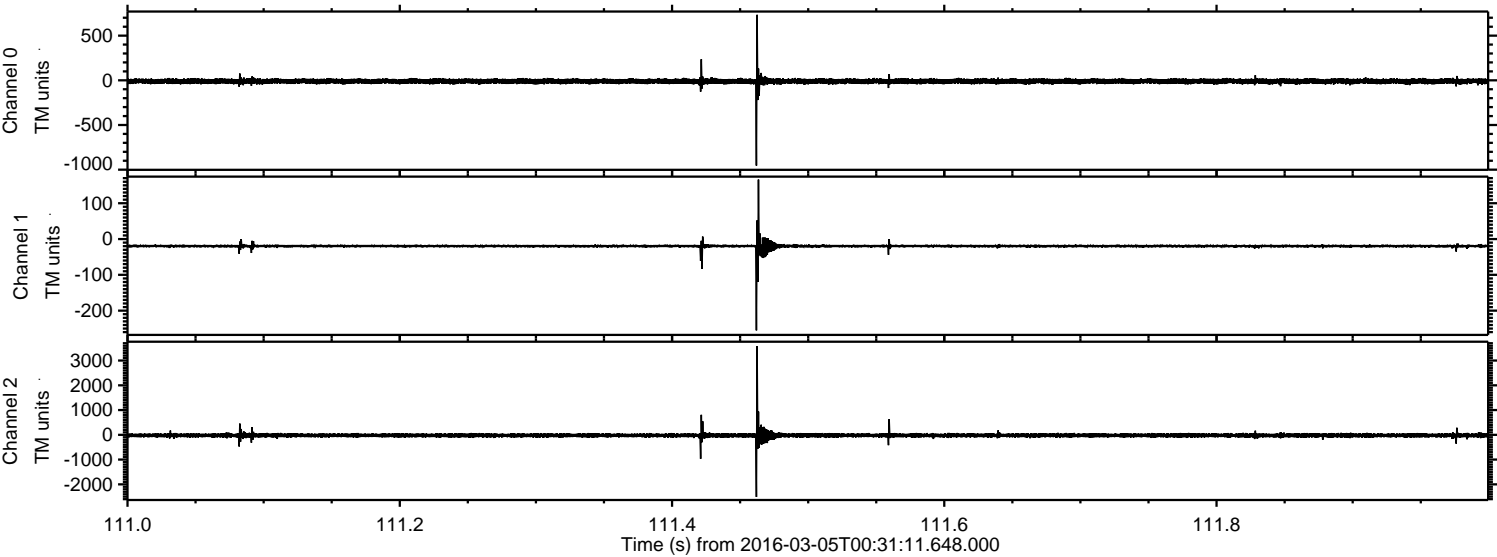
ELMAVAN 3D WAVEFORMS (Measured data sampled at 50 kHz) 51000 packets of 144 samples from 2016-03-05T00:31:11.648.000. Part 107/147

Processed Mon Apr 18 09:40:15 2016 by ELM ver.2012-10-06 from 001__elm20160305_003110__dat00.bin

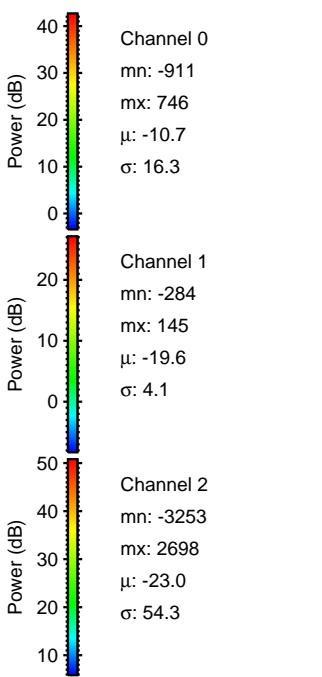
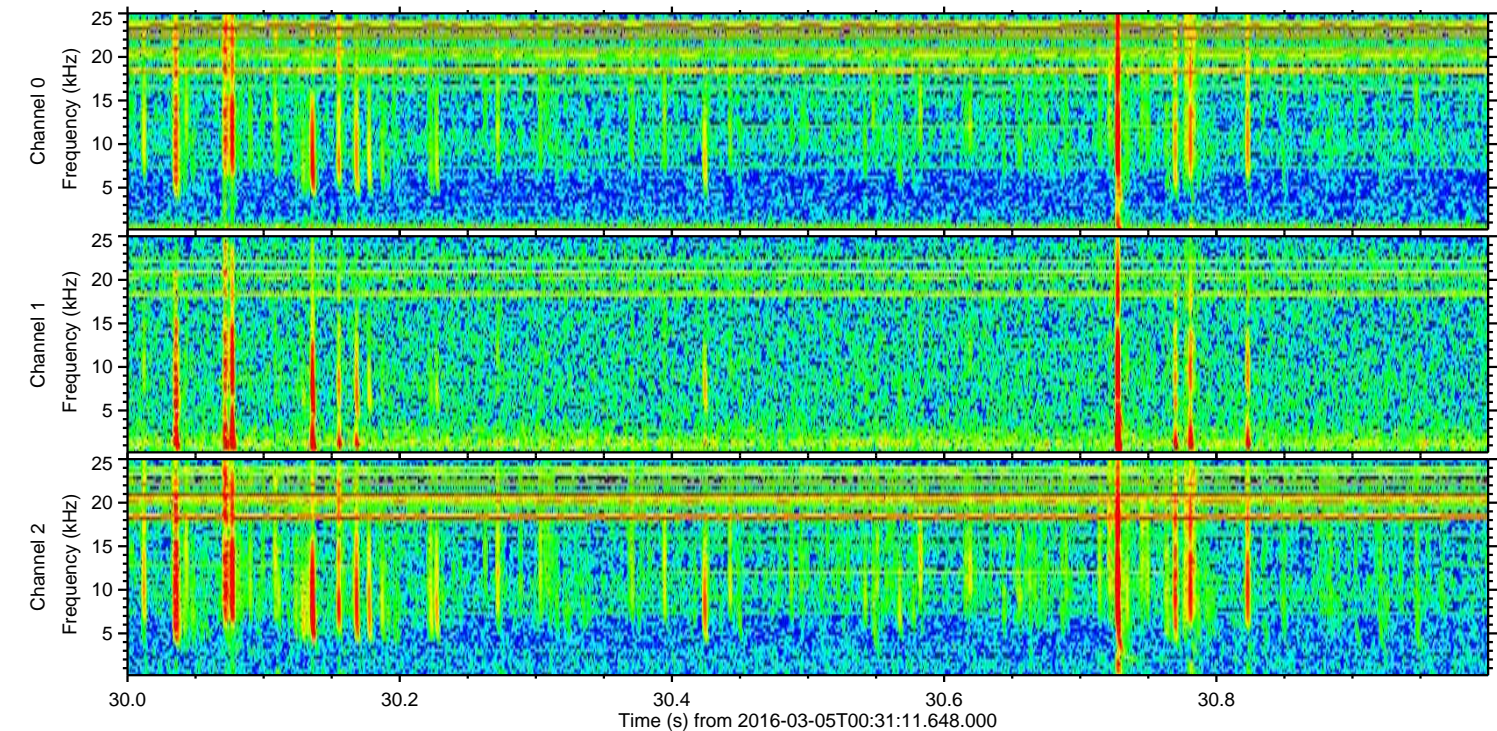
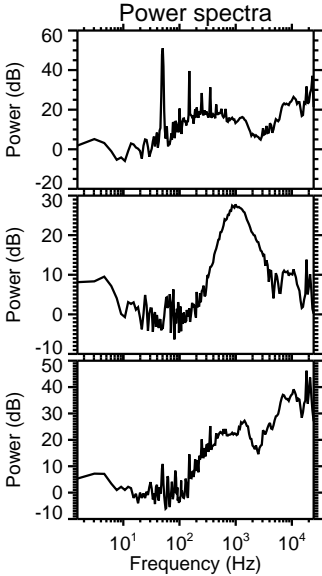
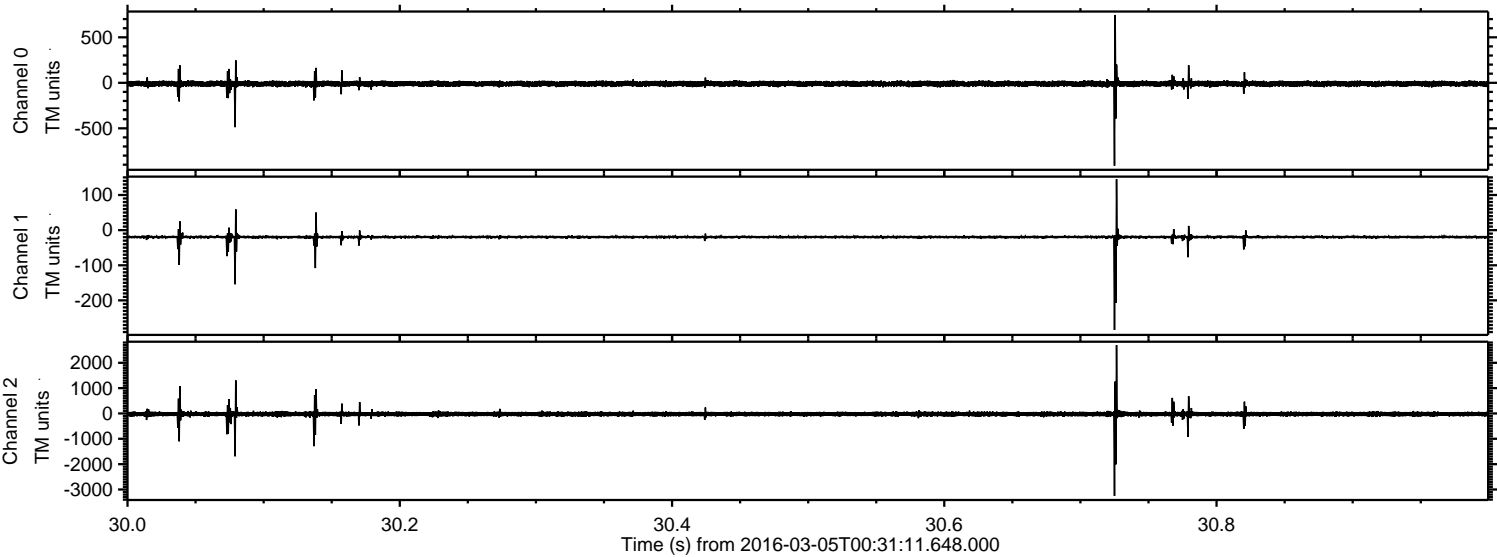


ELMAVAN 3D WAVEFORMS (Measured data sampled at 50 kHz) 51000 packets of 144 samples from 2016-03-05T00:31:11.648.000. Part 112/147

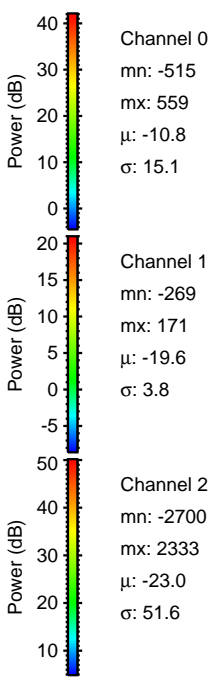
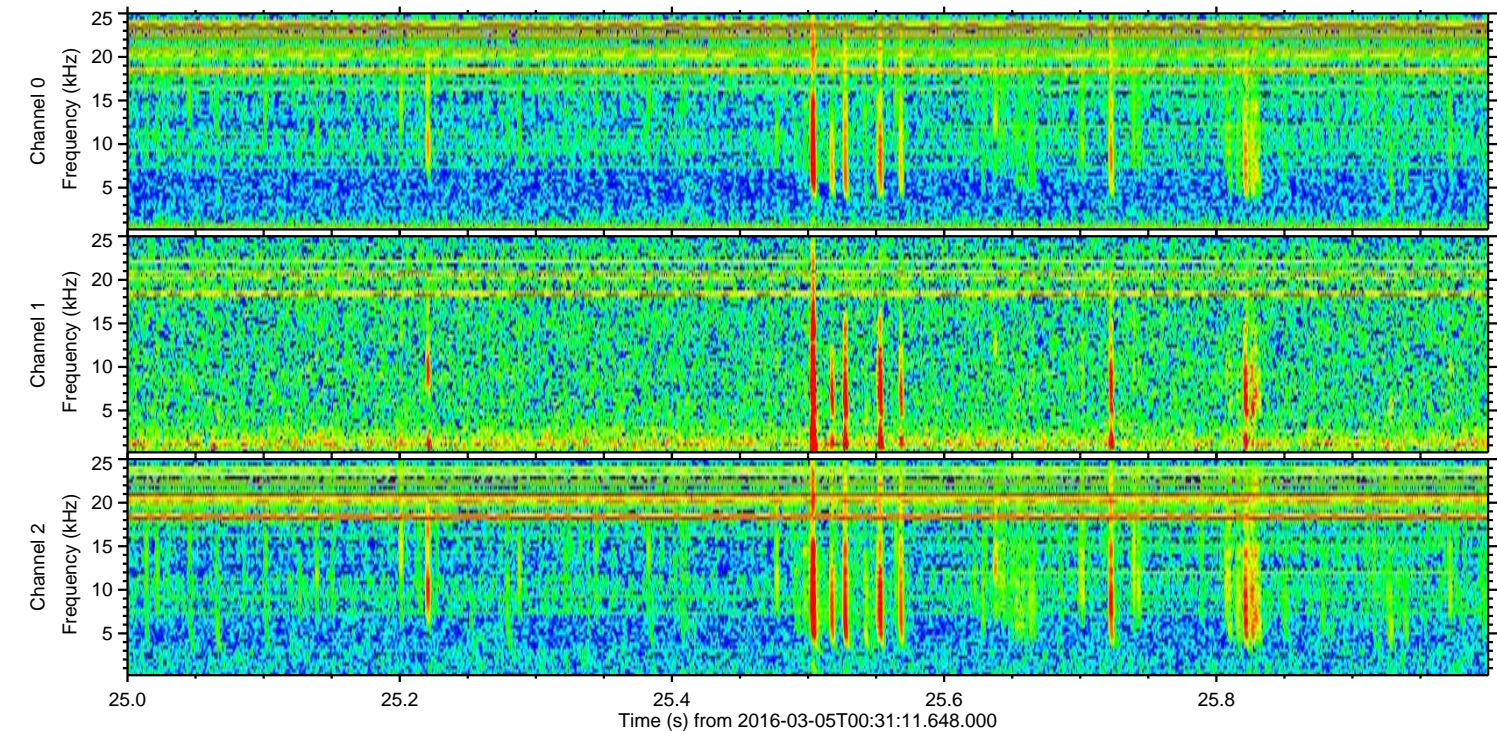
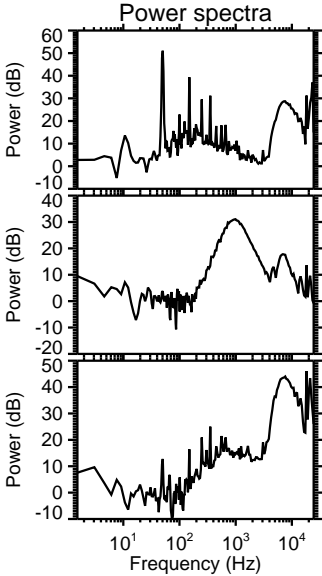
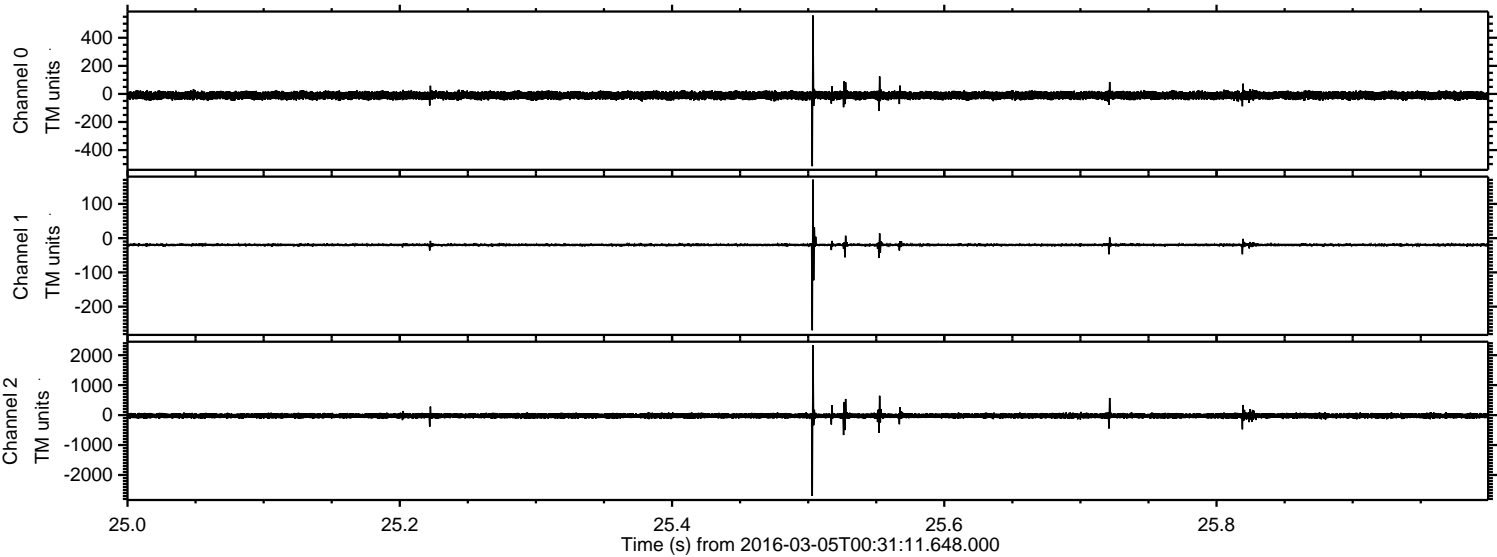
Processed Mon Apr 18 09:40:16 2016 by ELM ver.2012-10-06 from 001__elm20160305_0031110__dat00.bin



Processed Mon Apr 18 09:40:17 2016 by ELM ver.2012-10-06 from 001__elm20160305_003110__dat00.bin

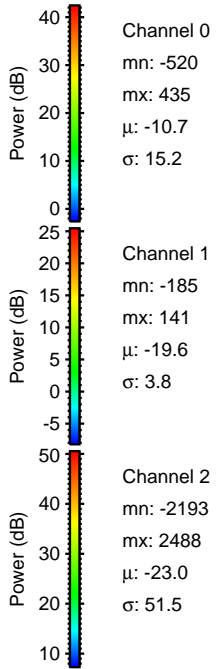
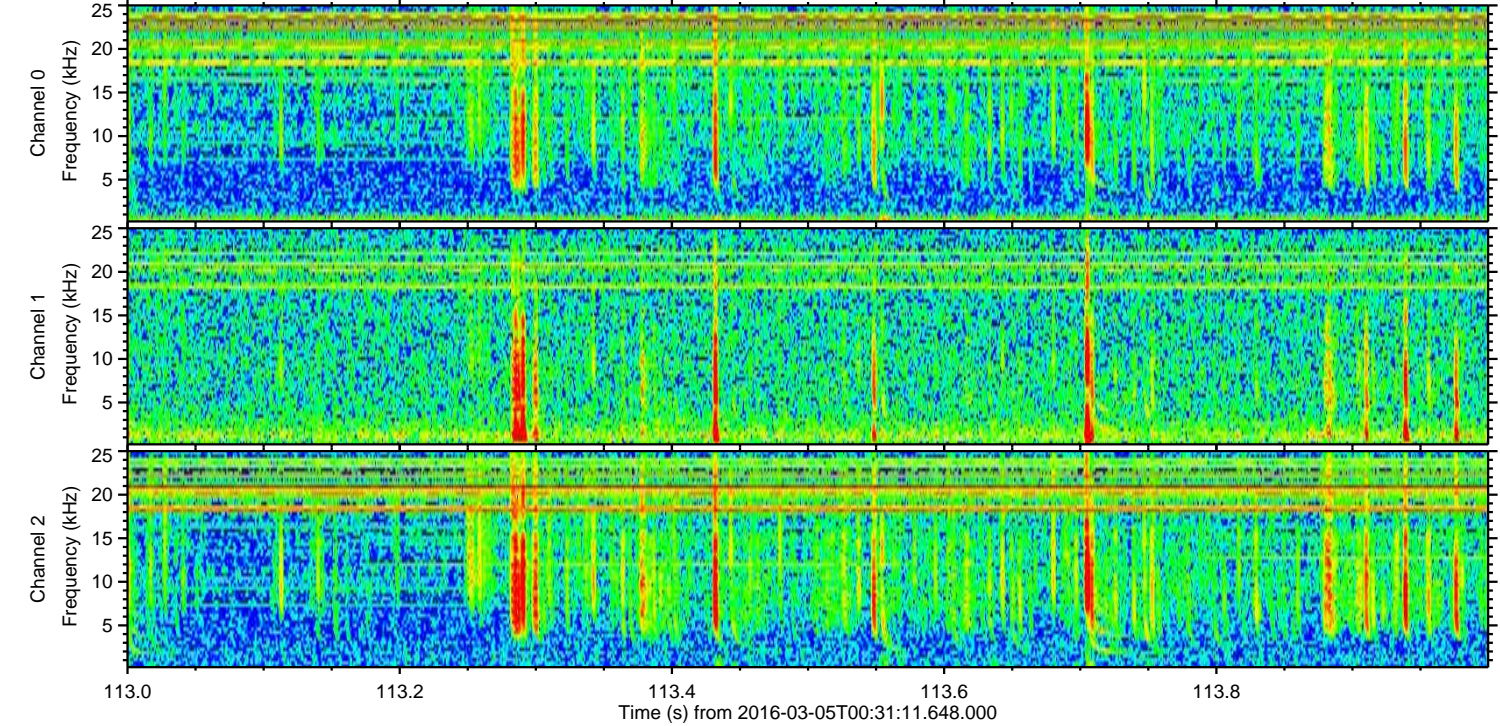
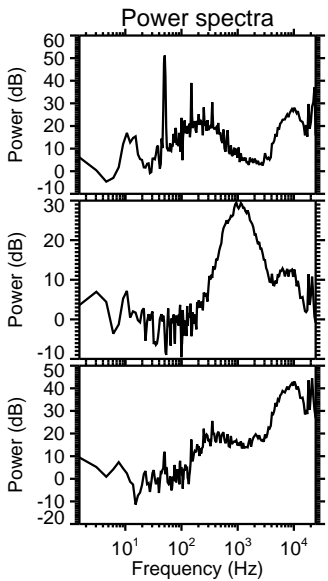
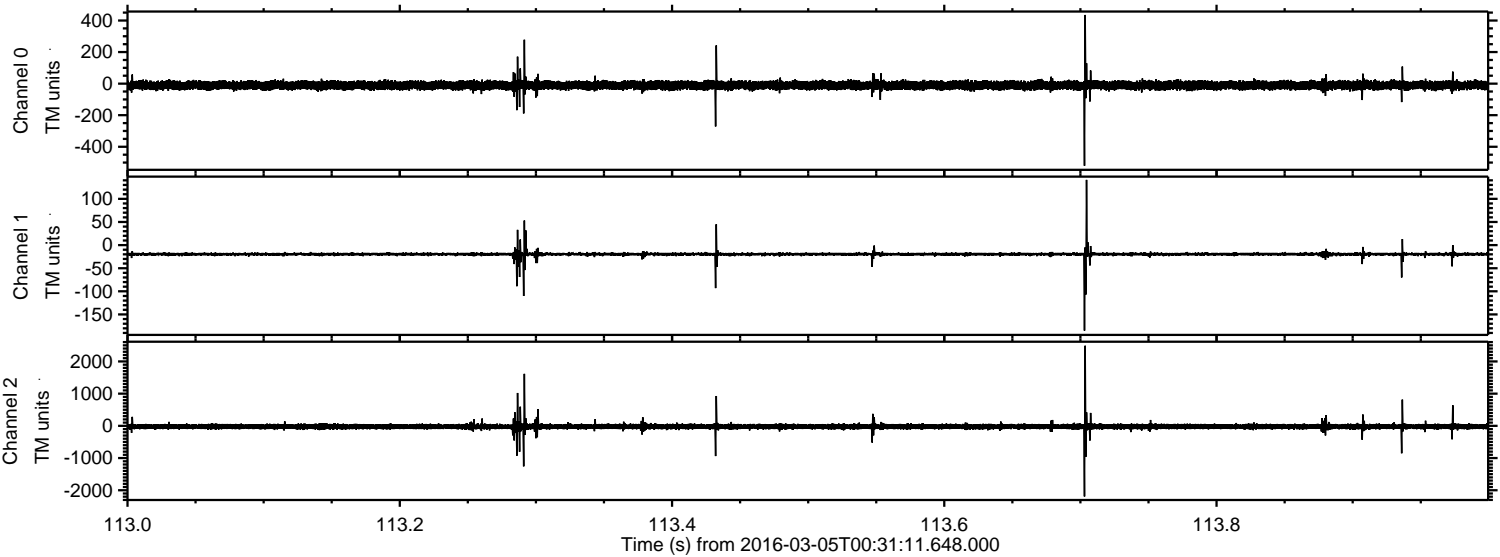


Processed Mon Apr 18 09:40:18 2016 by ELM ver.2012-10-06 from 001__elm20160305_003110__dat00.bin

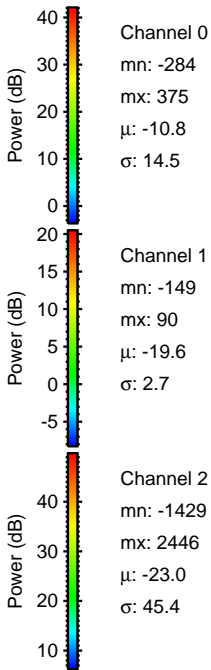
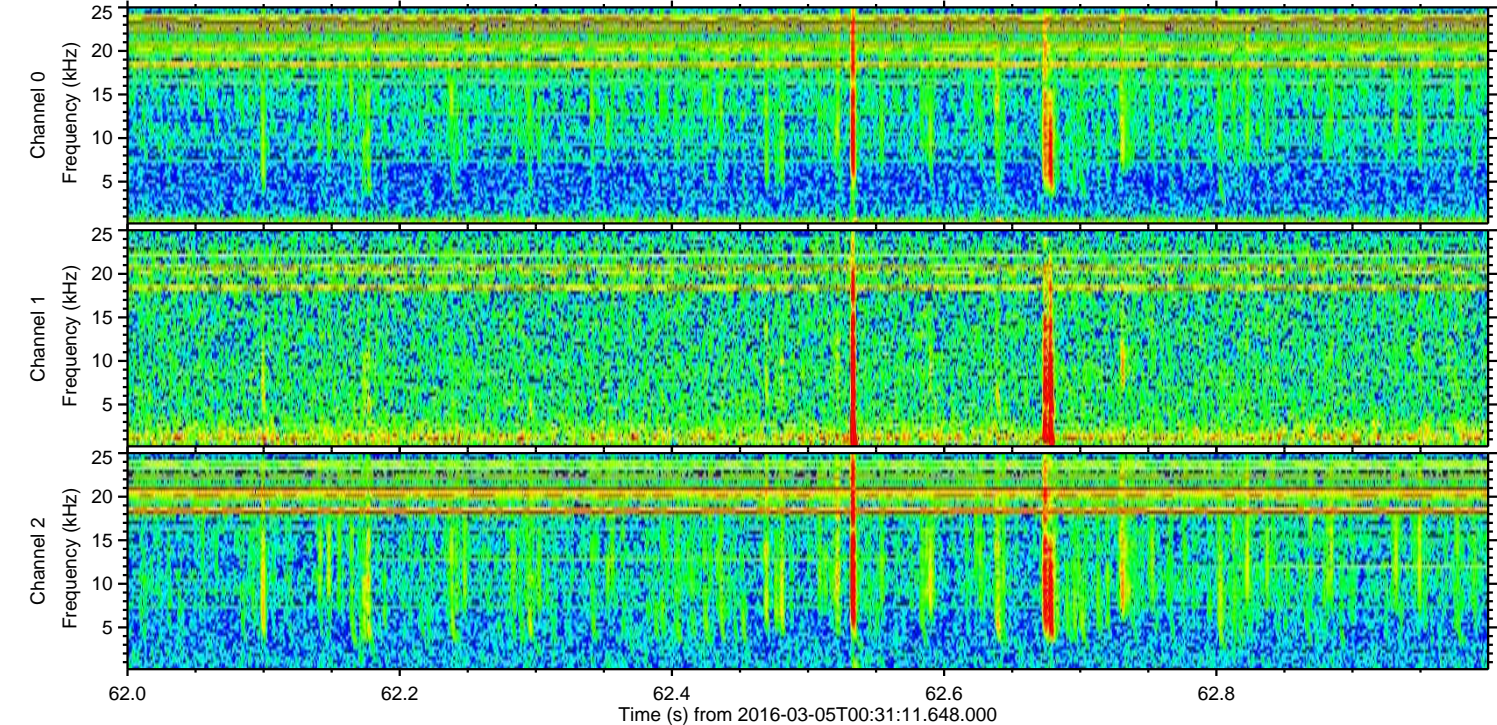
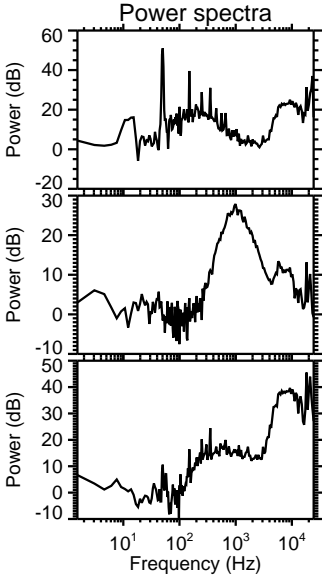
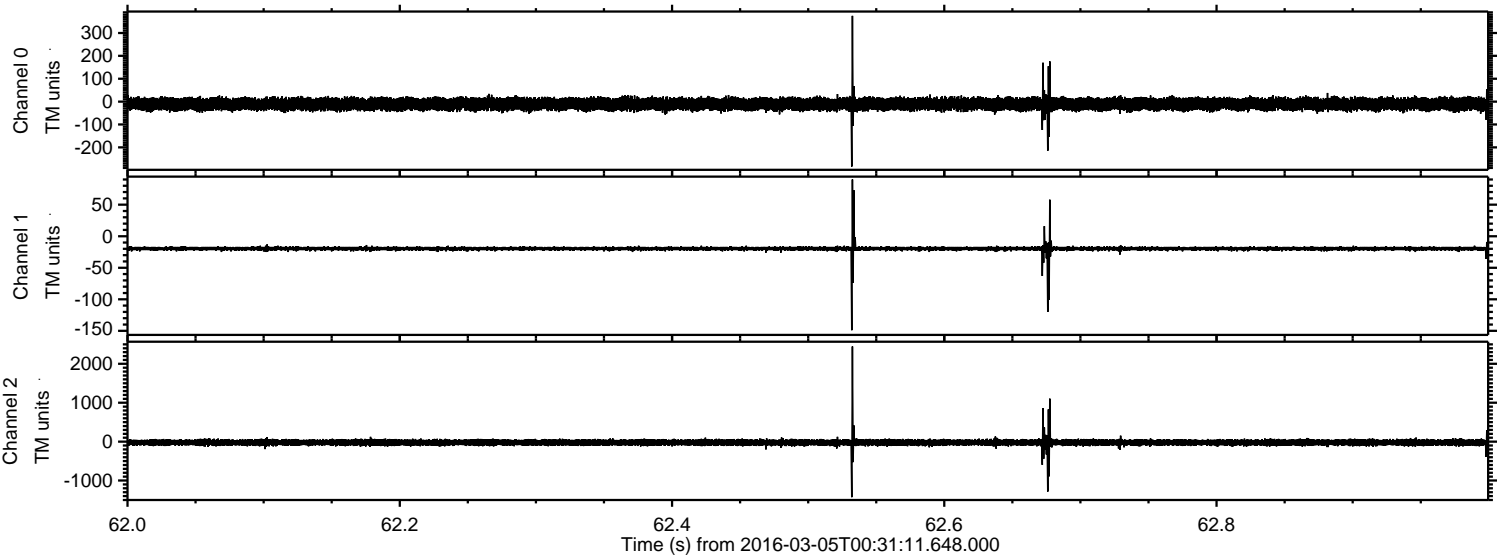


ELMAVAN 3D WAVEFORMS (Measured data sampled at 50 kHz) 51000 packets of 144 samples from 2016-03-05T00:31:11.648.000. Part 114/147

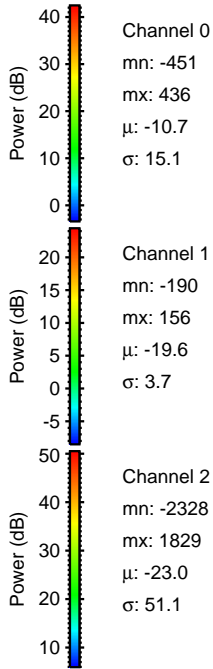
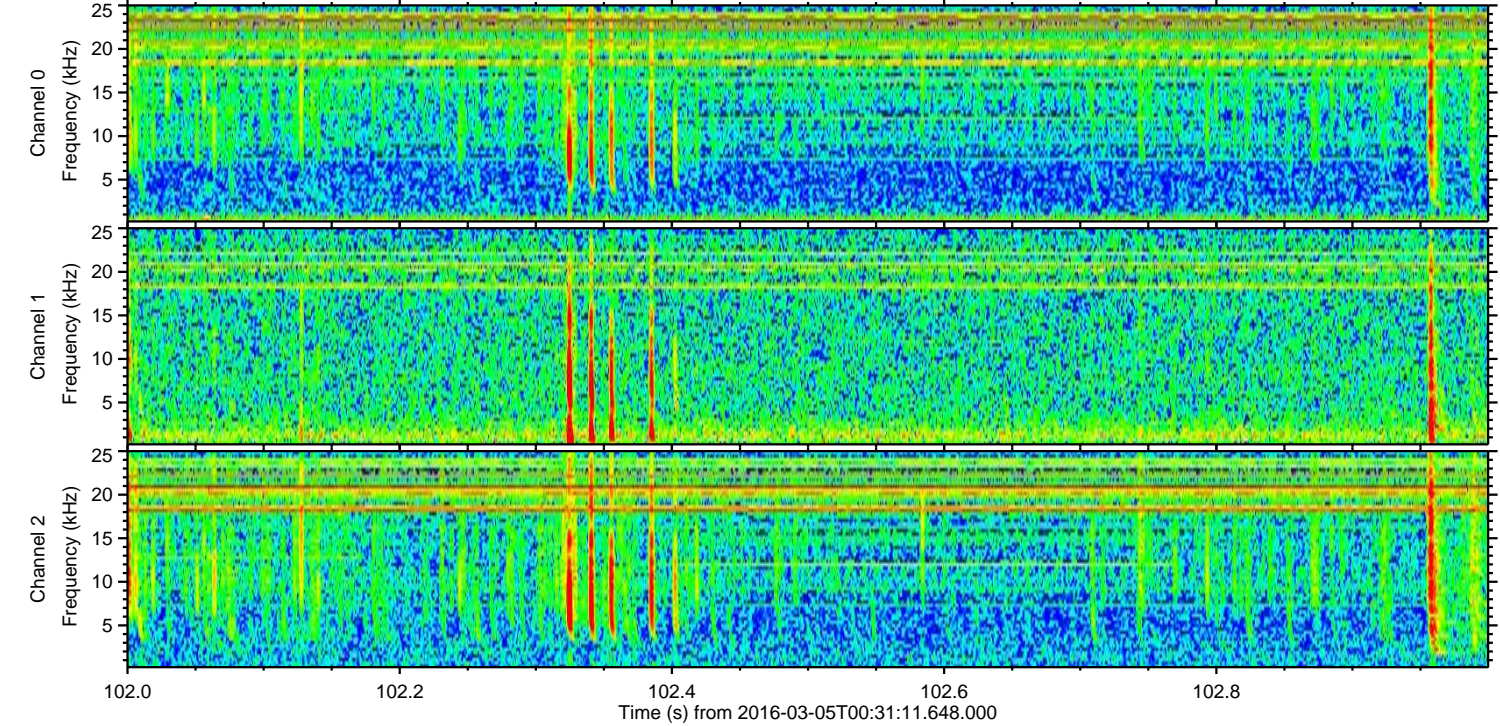
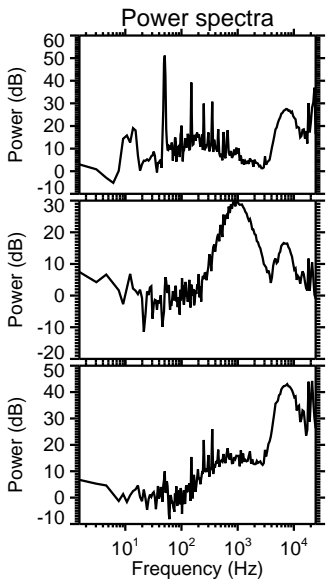
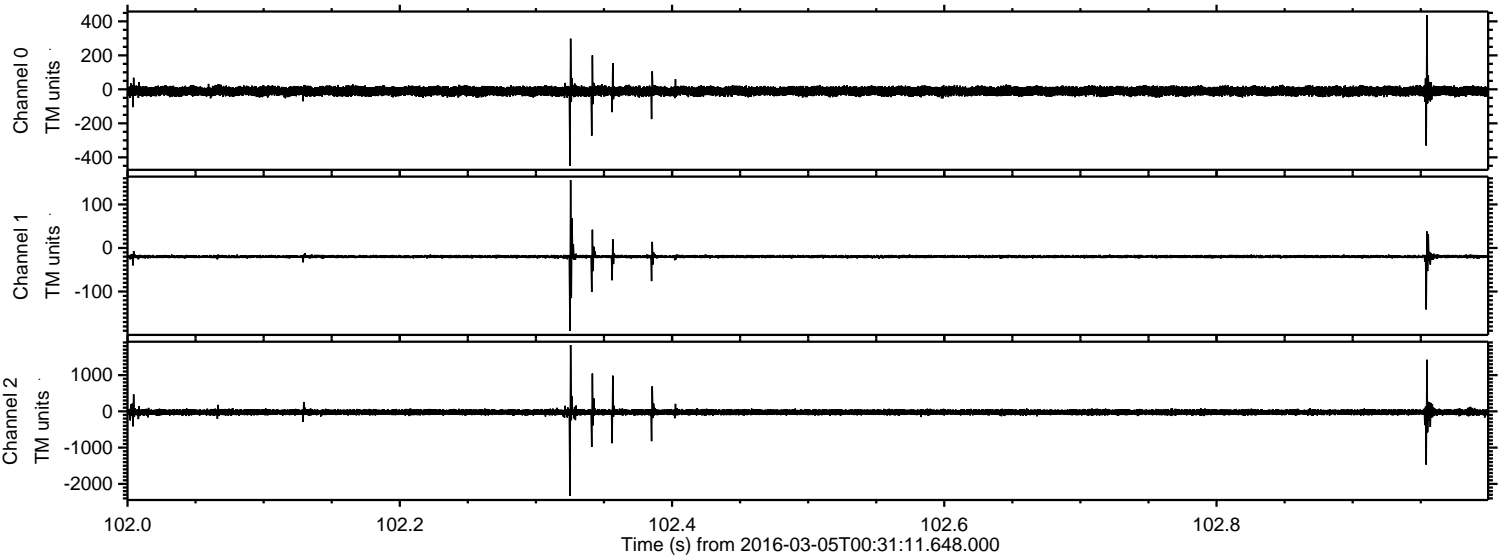
Processed Mon Apr 18 09:40:19 2016 by ELM ver.2012-10-06 from 001__elm20160305_003110__dat00.bin



Processed Mon Apr 18 09:40:20 2016 by ELM ver.2012-10-06 from 001__elm20160305_003110__dat00.bin



Processed Mon Apr 18 09:40:20 2016 by ELM ver.2012-10-06 from 001__elm20160305_003110__dat00.bin



Channel 0
mn: -451
mx: 436
 μ : -10.7
 σ : 15.1

Channel 1
mn: -190
mx: 156
 μ : -19.6
 σ : 3.7

Channel 2
mn: -2328
mx: 1829
 μ : -23.0
 σ : 51.1

Processed Mon Apr 18 09:40:21 2016 by ELM ver.2012-10-06 from 001__elm20160305_003110__dat00.bin

