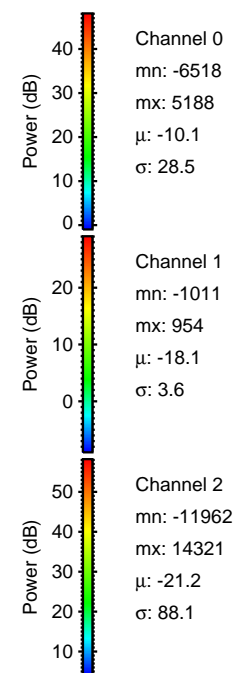
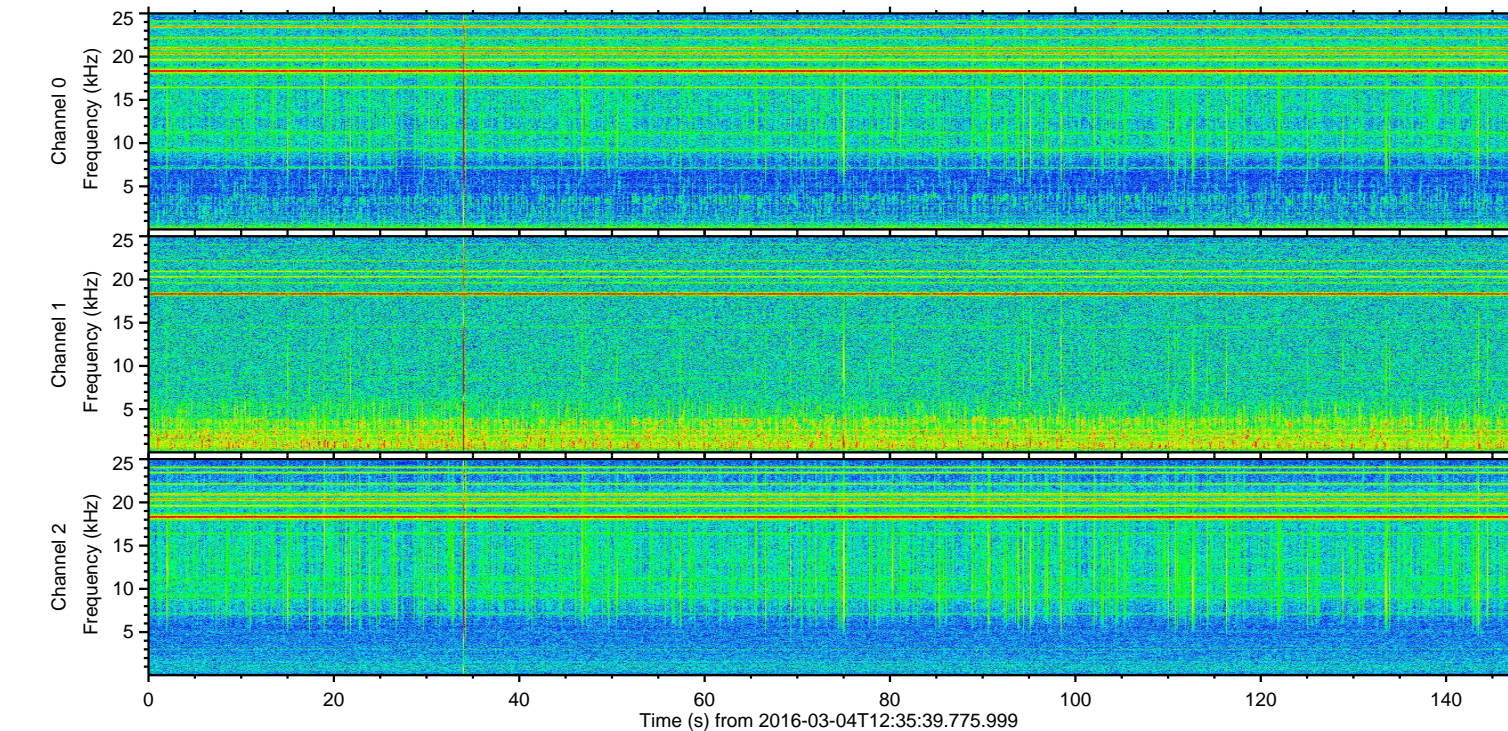
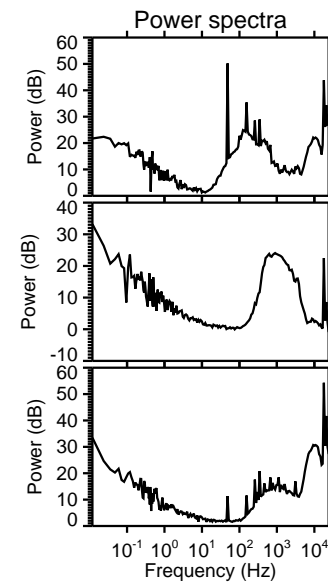
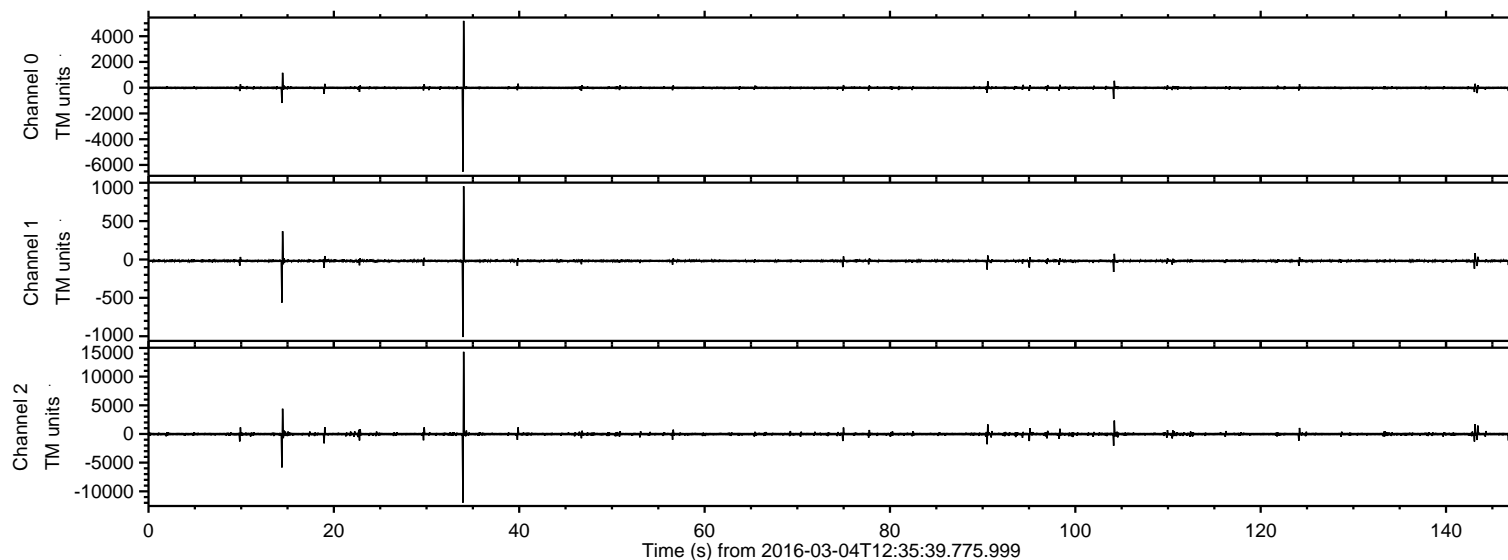
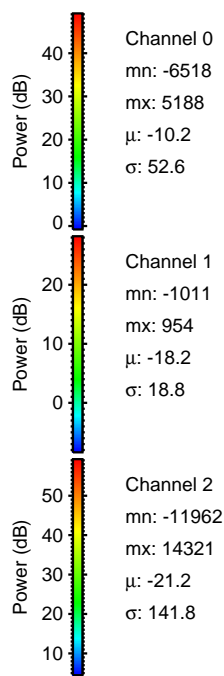
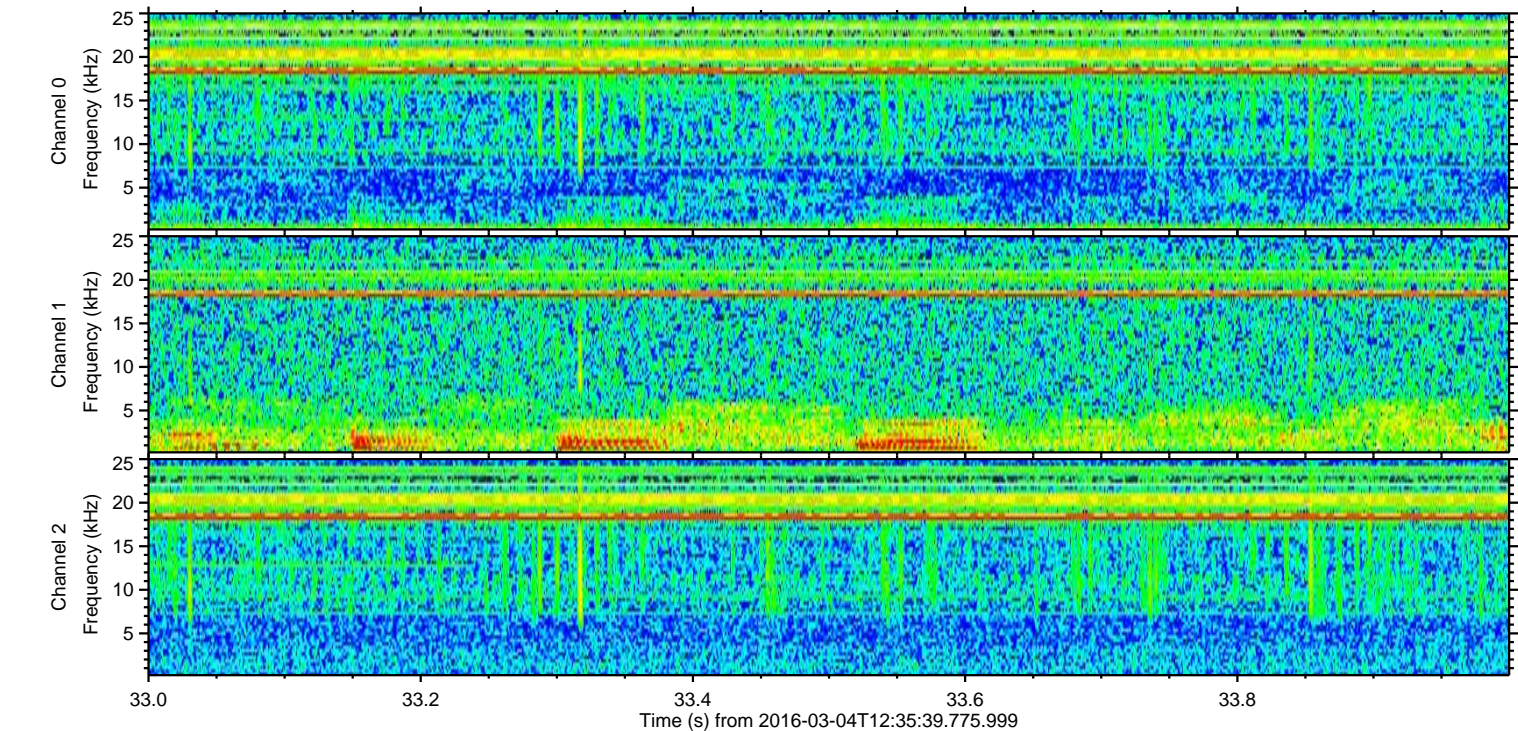
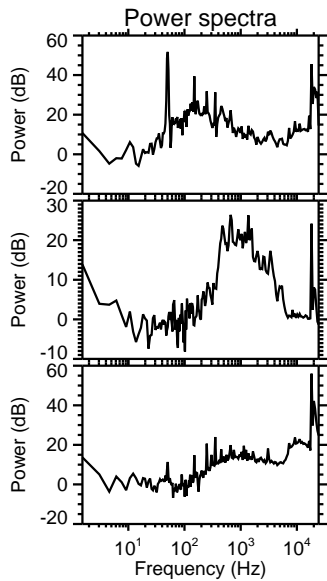
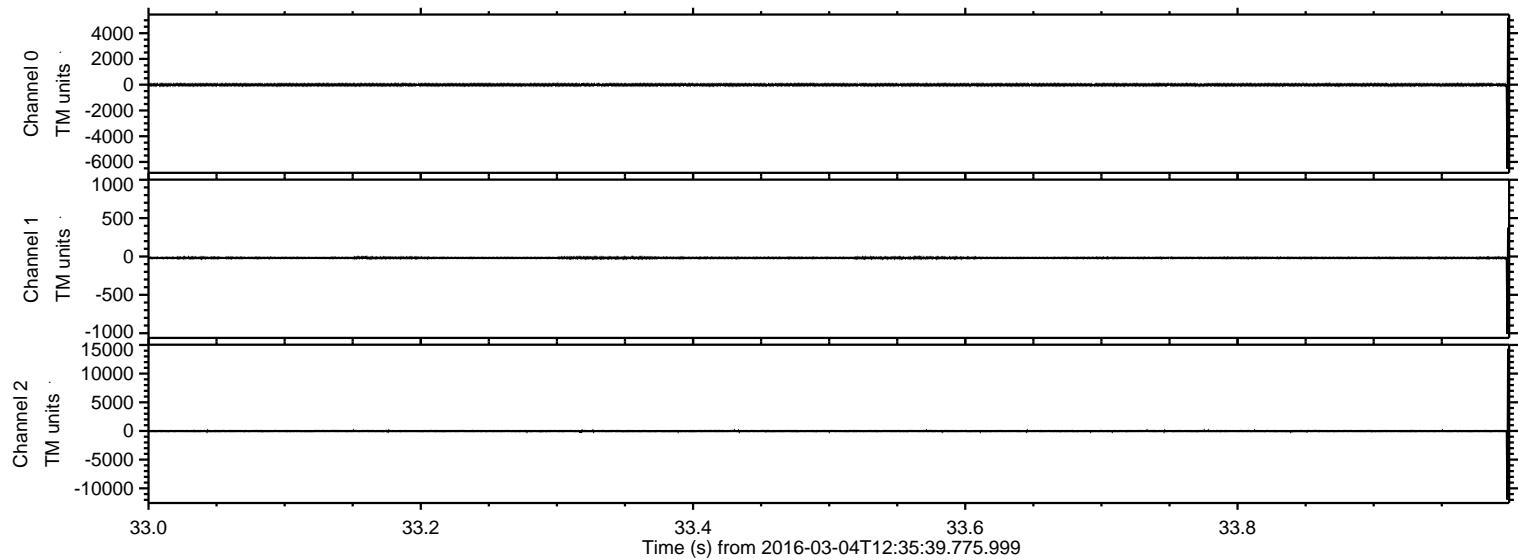


ELMAVAN 3D WAVEFORMS (Measured data sampled at 50 kHz) 51000 packets of 144 samples from 2016-03-04T12:35:39.775.999.

Processed Mon Apr 18 07:14:42 2016 by ELM ver.2012-10-06 from 001__elm20160304_123538__dat00.bin

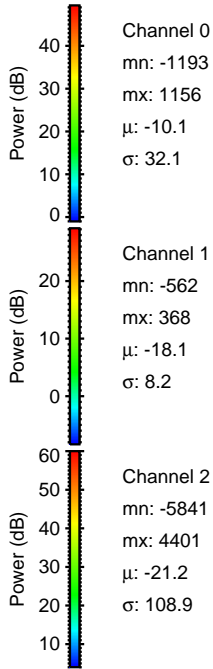
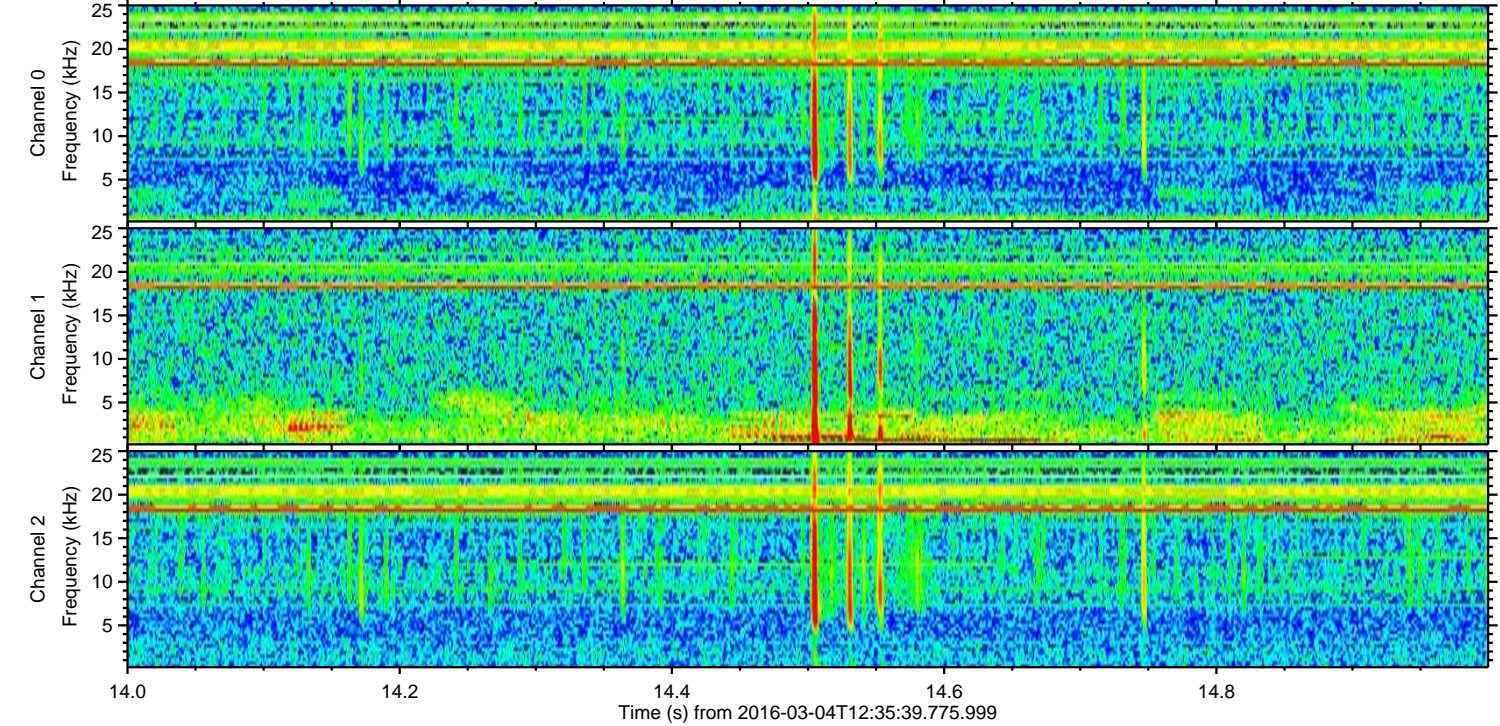
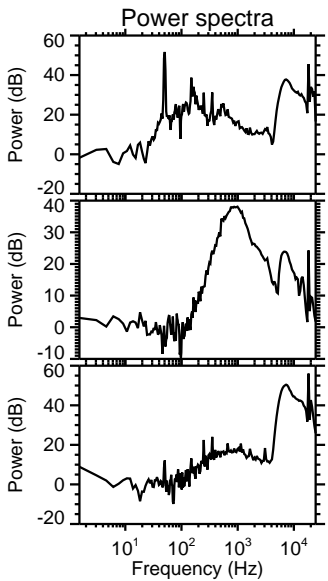
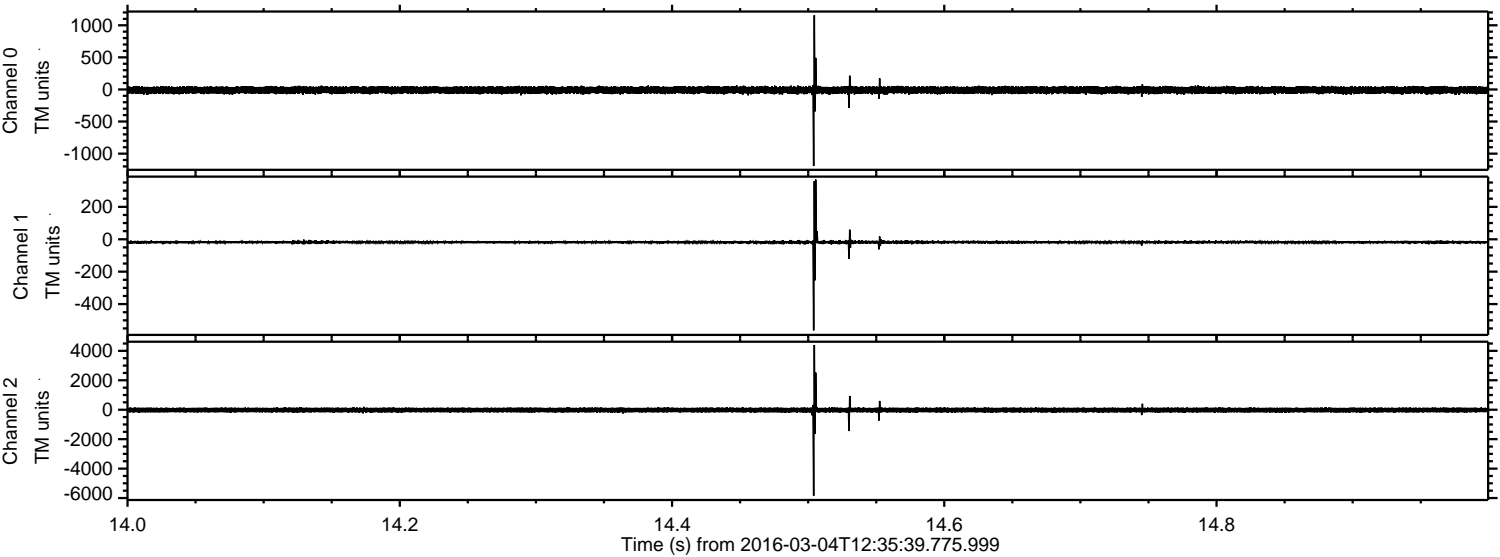


Processed Mon Apr 18 07:14:54 2016 by ELM ver.2012-10-06 from 001__elm20160304_123538__dat00.bin

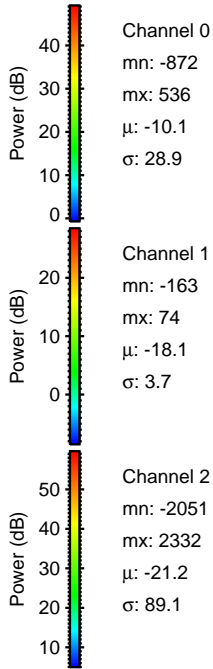
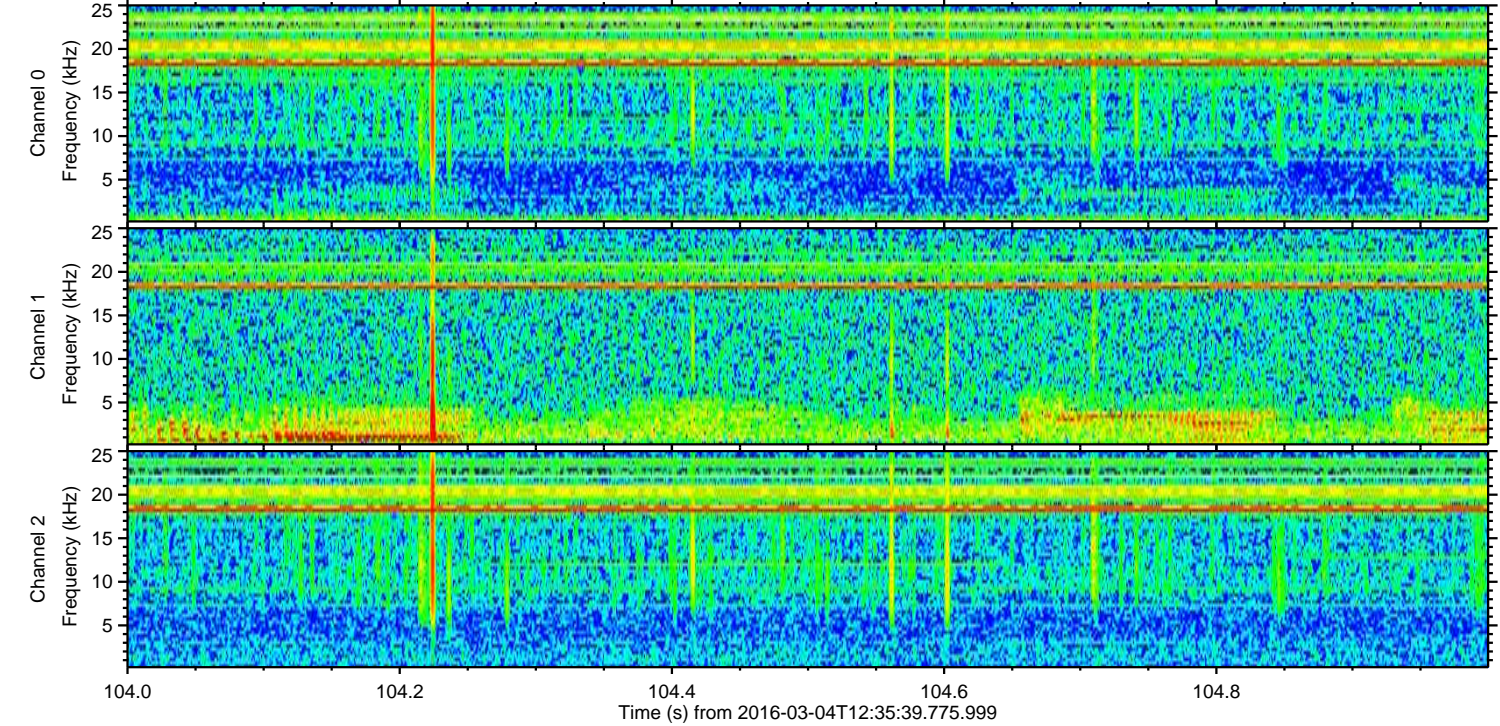
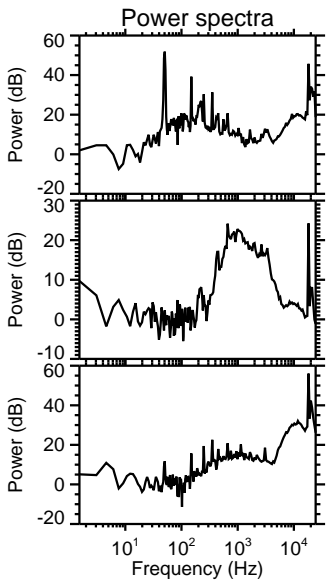
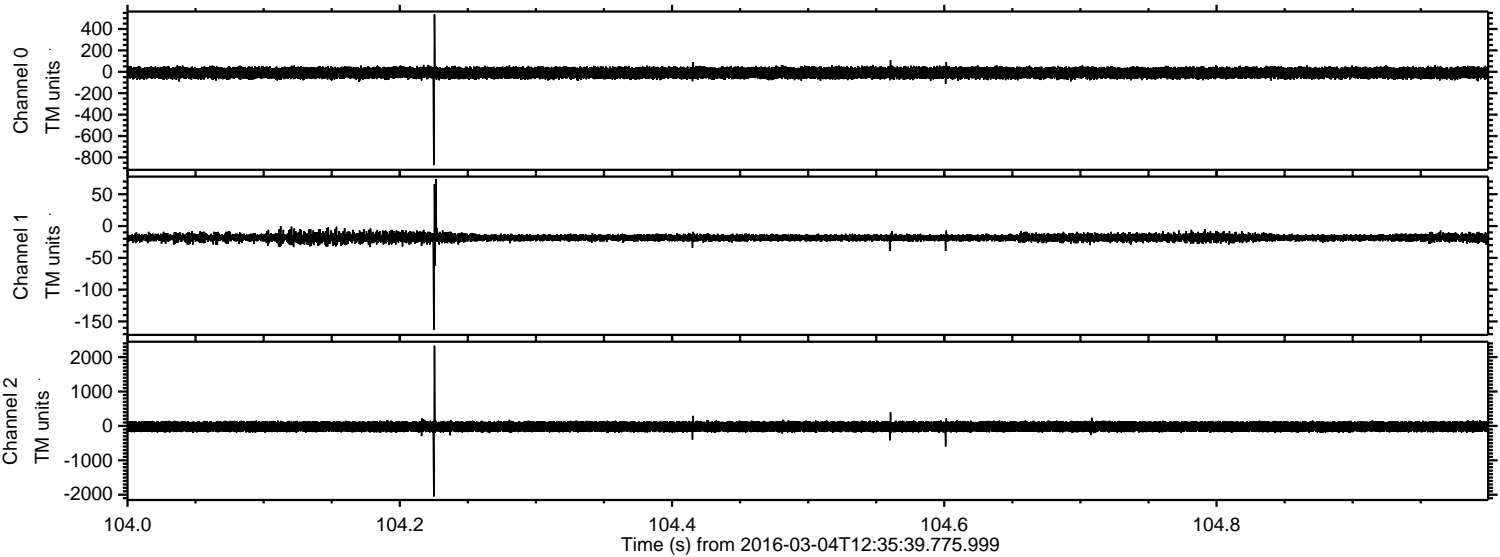


ELMAVAN 3D WAVEFORMS (Measured data sampled at 50 kHz) 51000 packets of 144 samples from 2016-03-04T12:35:39.775.999. Part 15/147

Processed Mon Apr 18 07:14:54 2016 by ELM ver.2012-10-06 from 001__elm20160304_123538__dat00.bin



Processed Mon Apr 18 07:14:55 2016 by ELM ver.2012-10-06 from 001__elm20160304_123538__dat00.bin

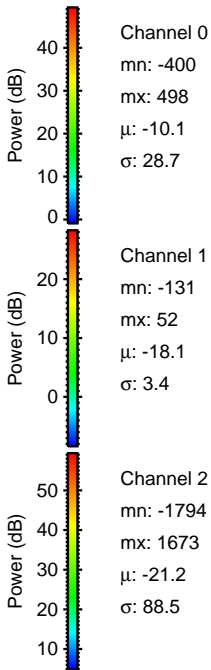
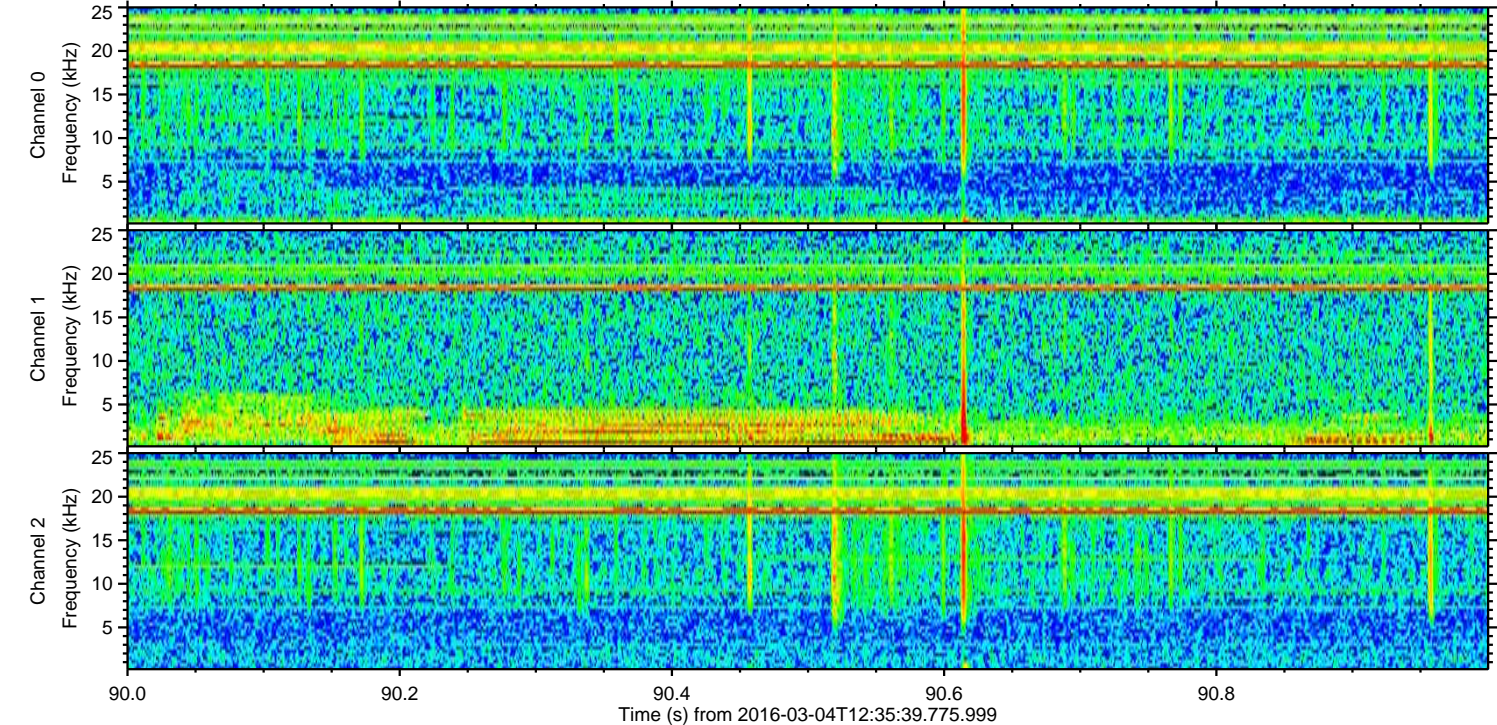
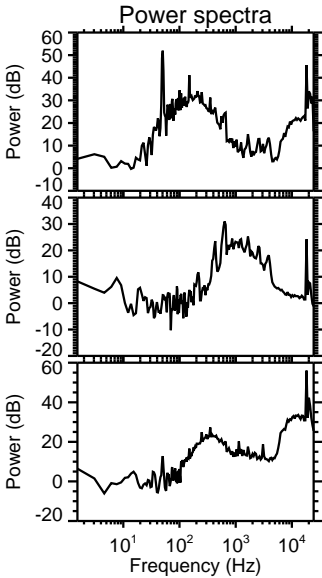
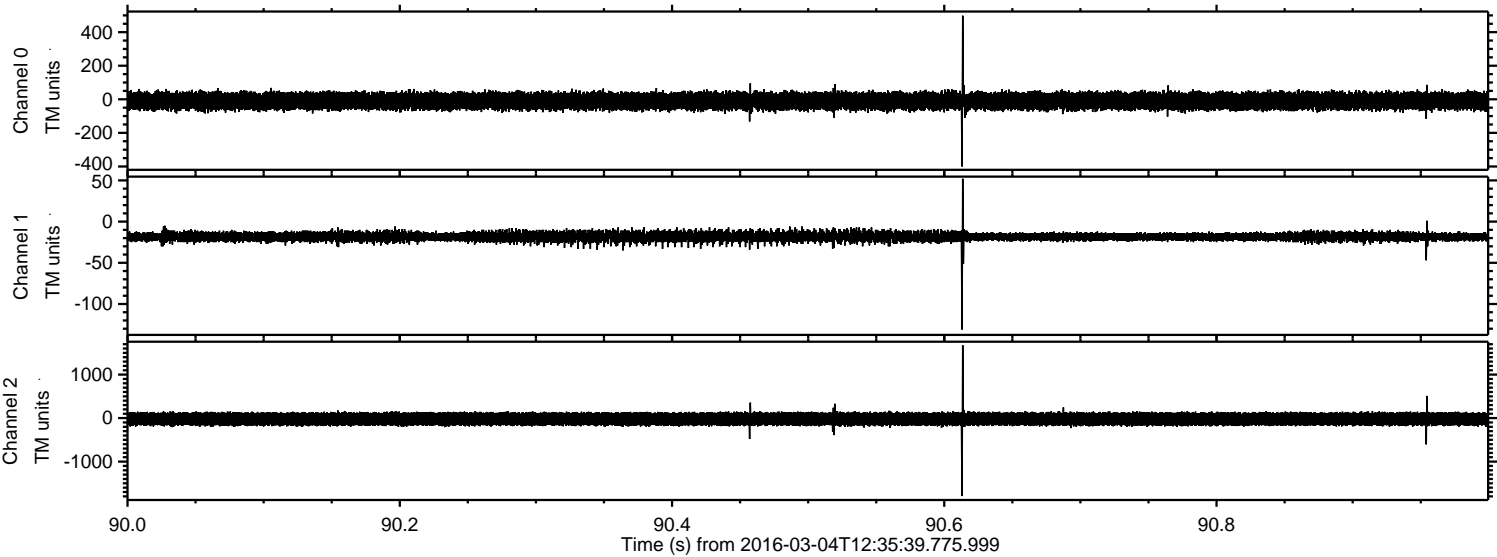


Channel 0
mn: -872
mx: 536
 μ : -10.1
 σ : 28.9

Channel 1
mn: -163
mx: 74
 μ : -18.1
 σ : 3.7

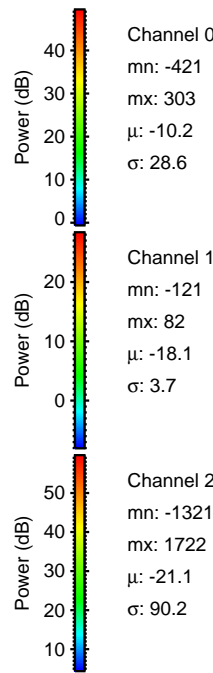
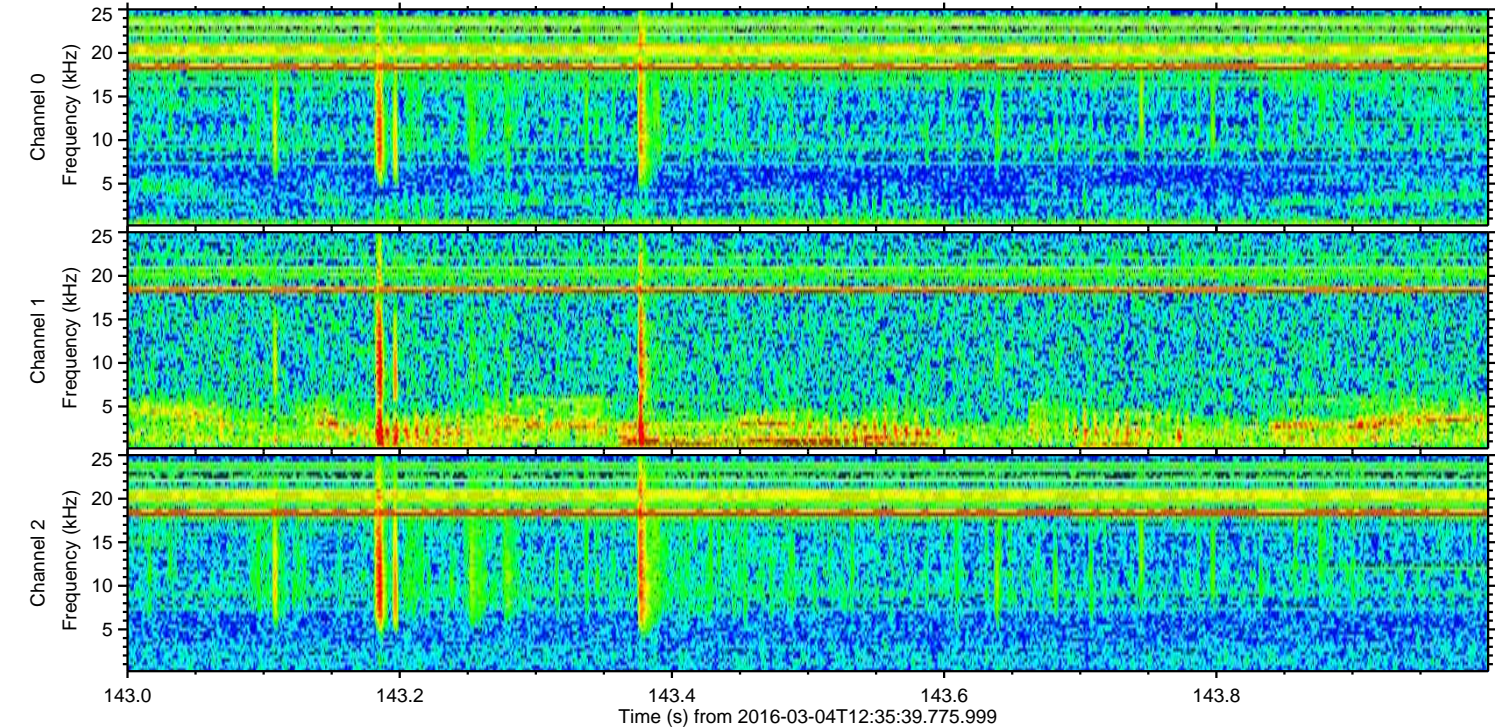
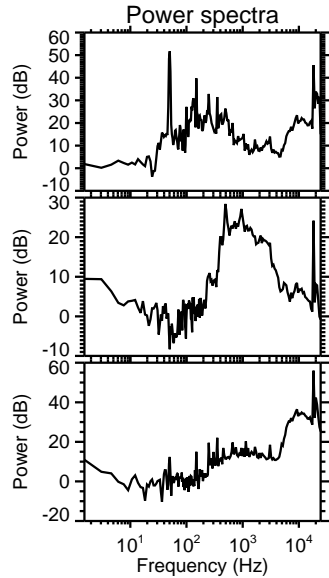
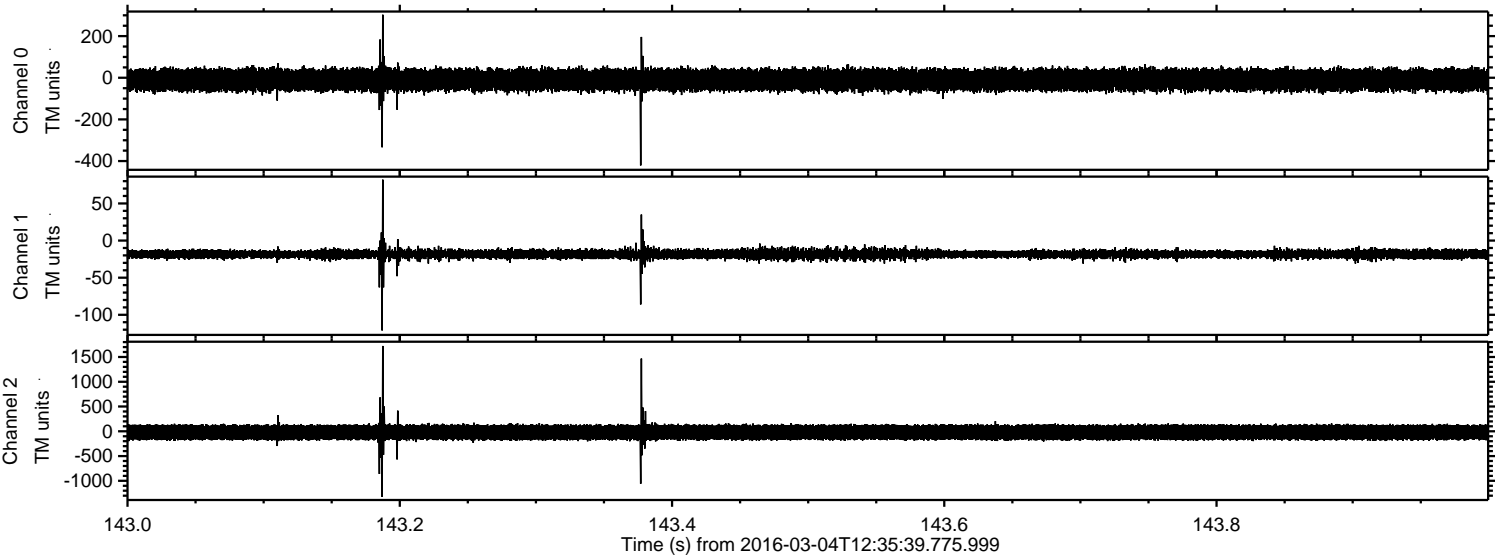
Channel 2
mn: -2051
mx: 2332
 μ : -21.2
 σ : 89.1

Processed Mon Apr 18 07:14:56 2016 by ELM ver.2012-10-06 from 001__elm20160304_123538__dat00.bin

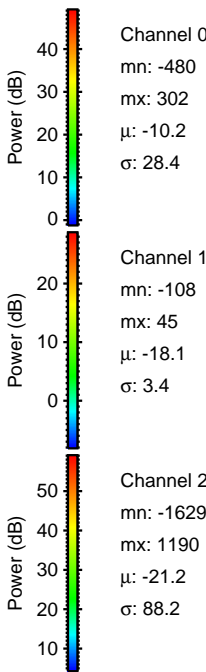
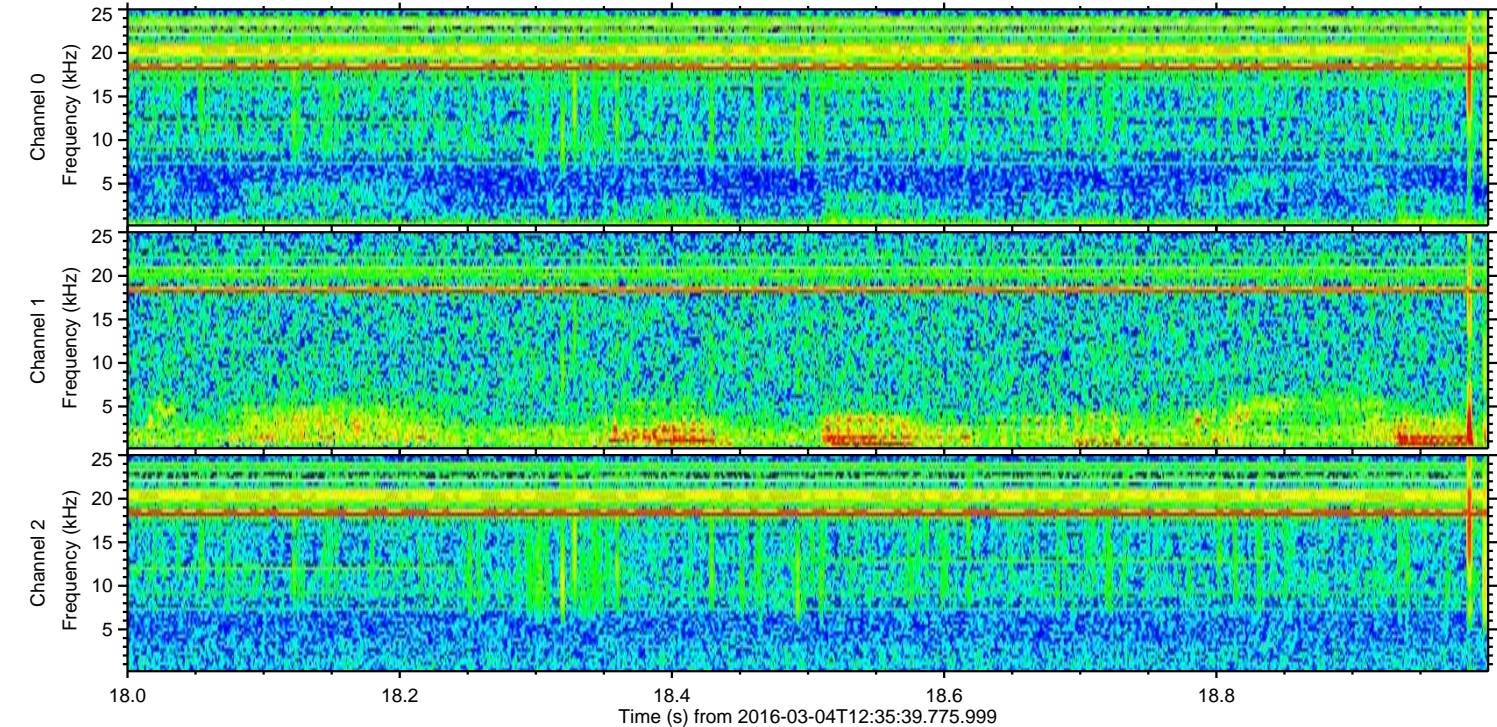
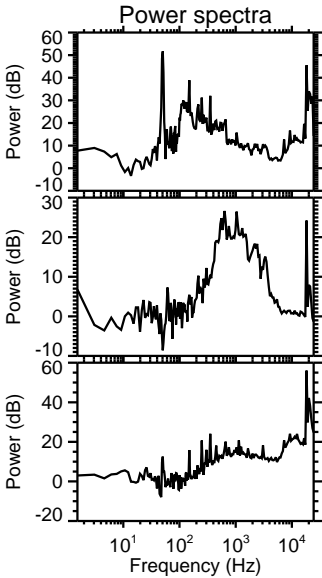
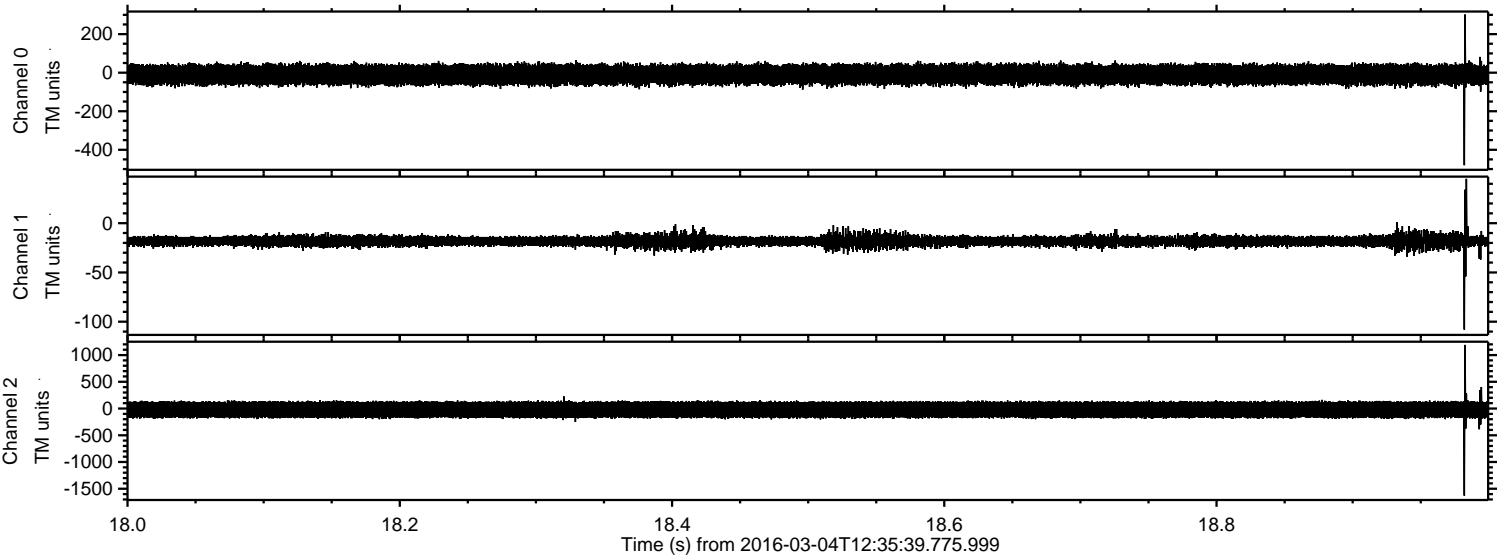


ELMAVAN 3D WAVEFORMS (Measured data sampled at 50 kHz) 51000 packets of 144 samples from 2016-03-04T12:35:39.775.999. Part 144/147

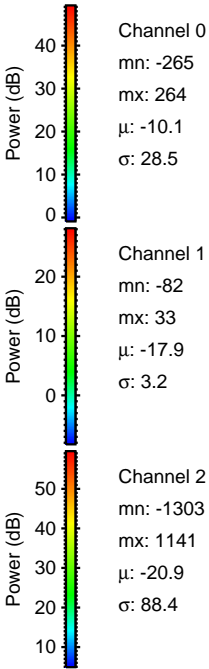
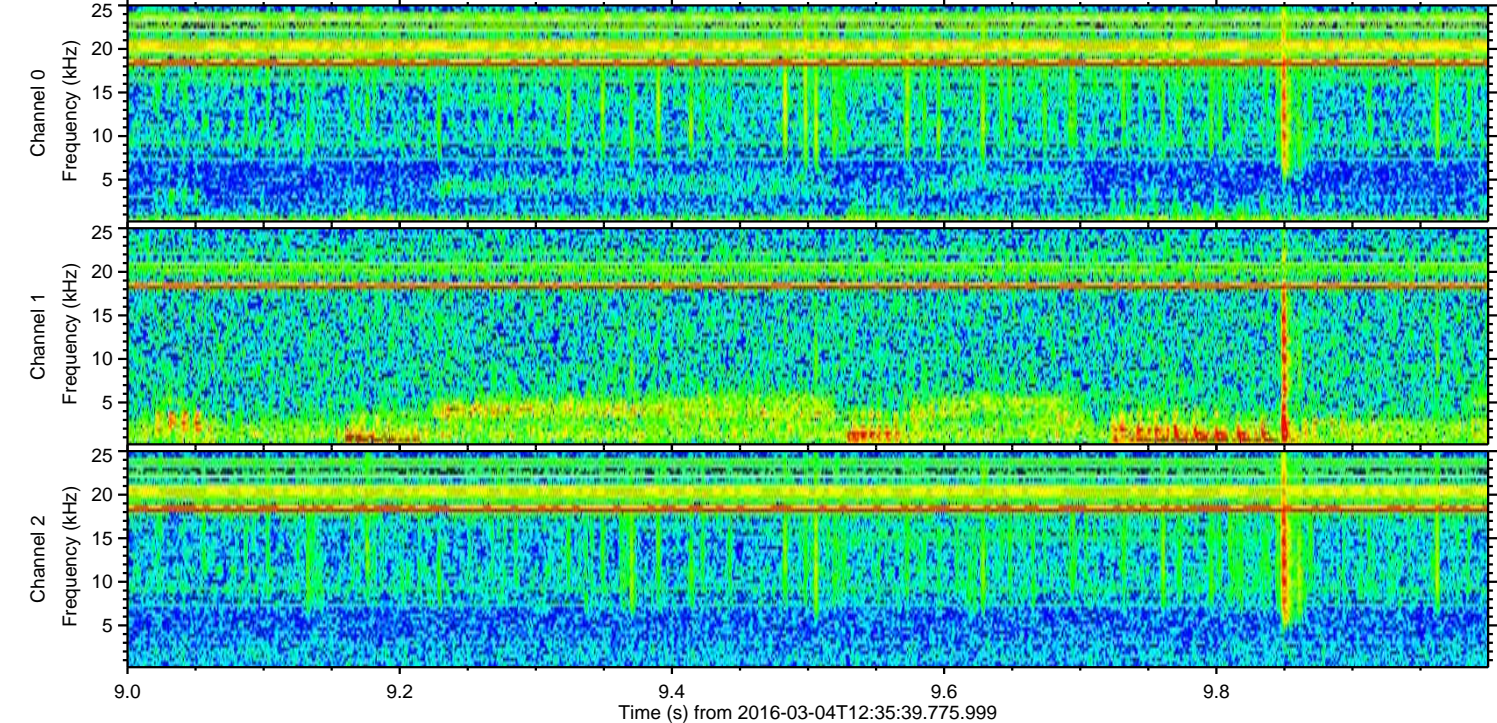
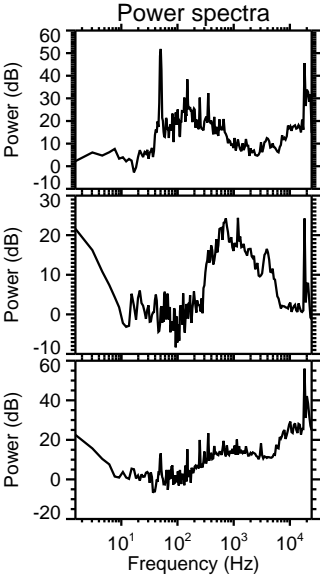
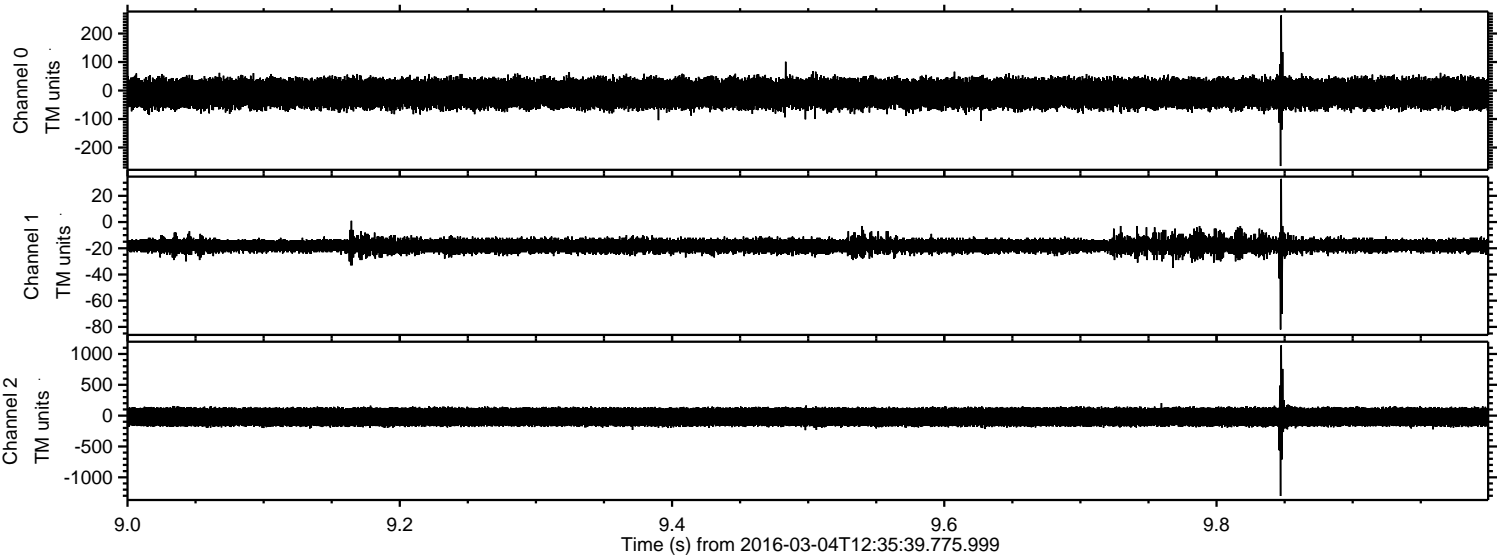
Processed Mon Apr 18 07:14:57 2016 by ELM ver.2012-10-06 from 001__elm20160304_123538__dat00.bin



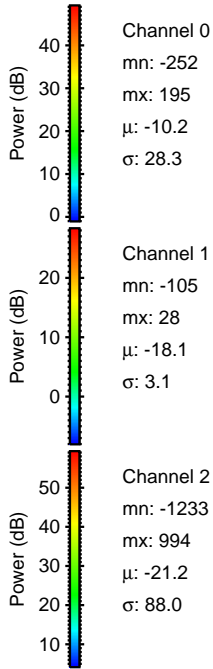
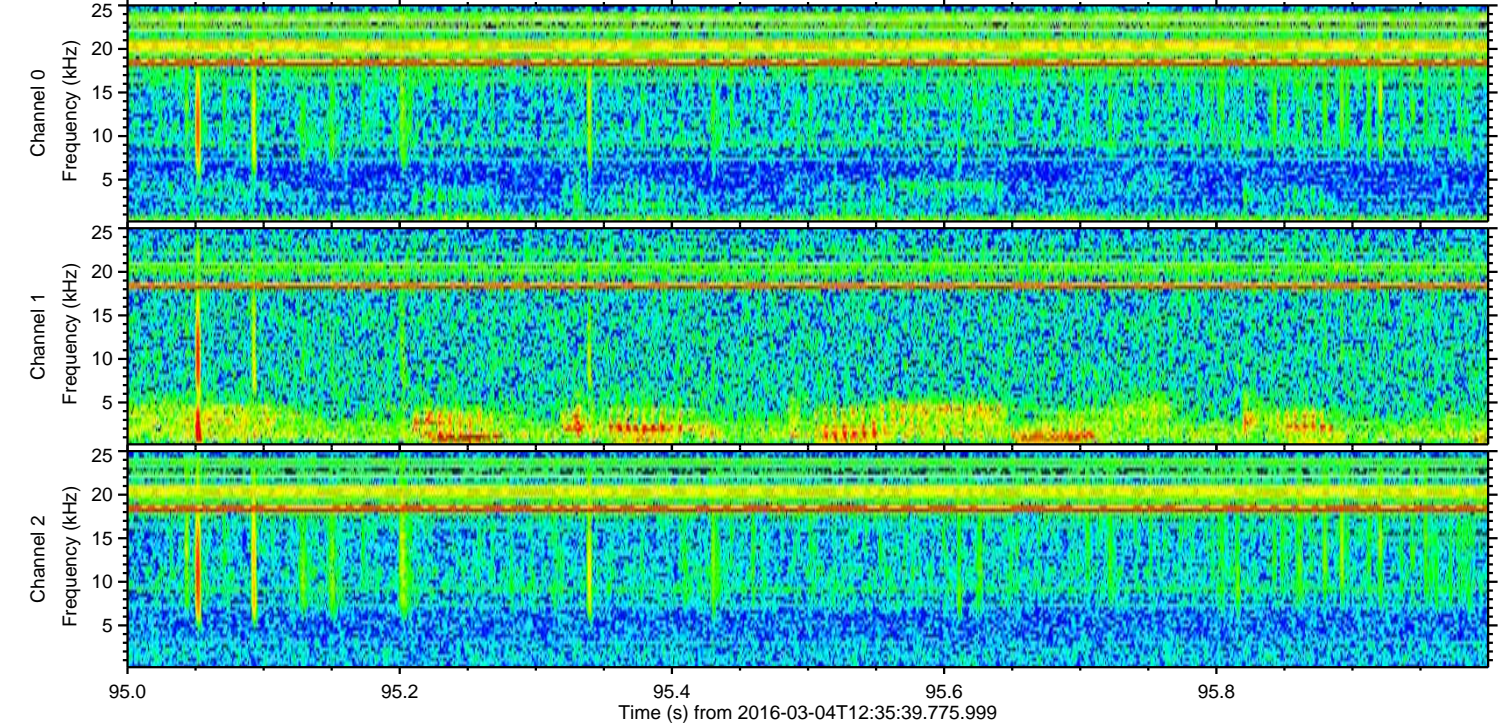
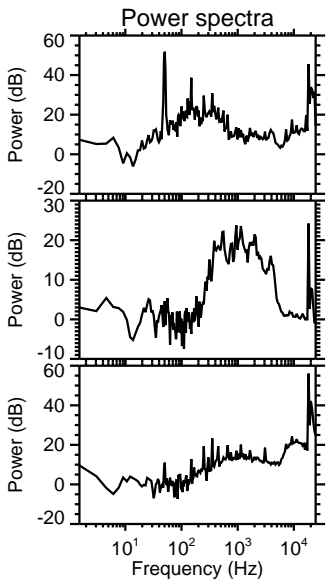
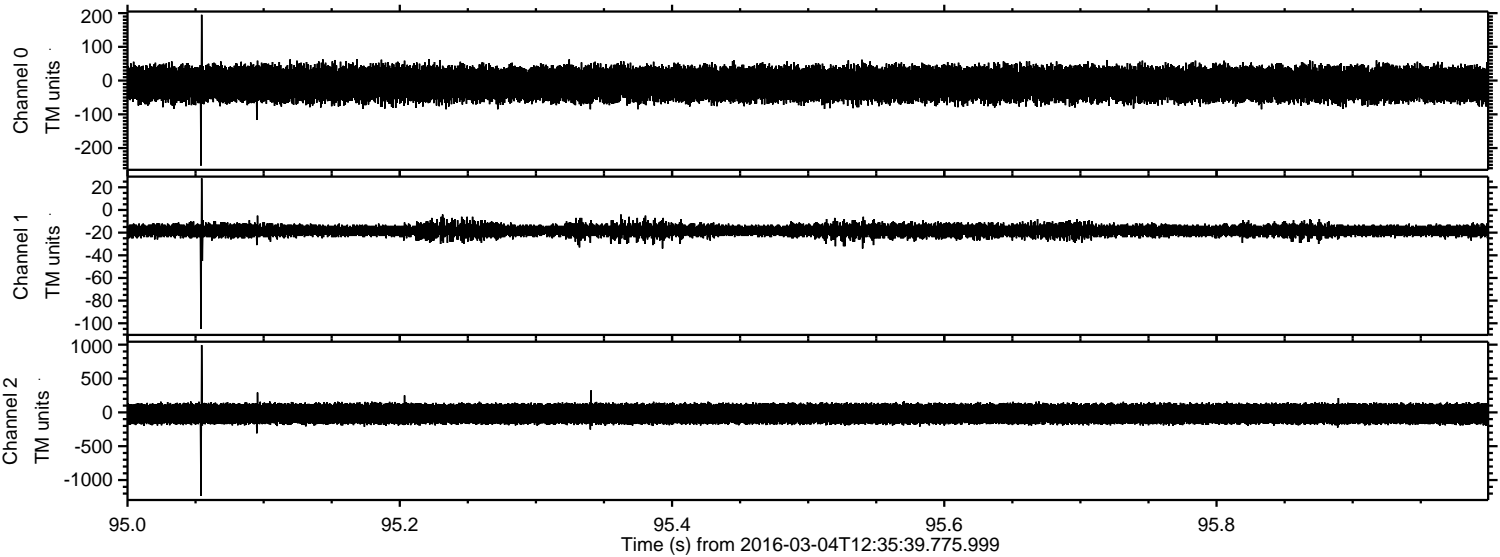
Processed Mon Apr 18 07:14:58 2016 by ELM ver.2012-10-06 from 001__elm20160304_123538__dat00.bin



Processed Mon Apr 18 07:14:59 2016 by ELM ver.2012-10-06 from 001__elm20160304_123538__dat00.bin



Processed Mon Apr 18 07:15:00 2016 by ELM ver.2012-10-06 from 001__elm20160304_123538__dat00.bin

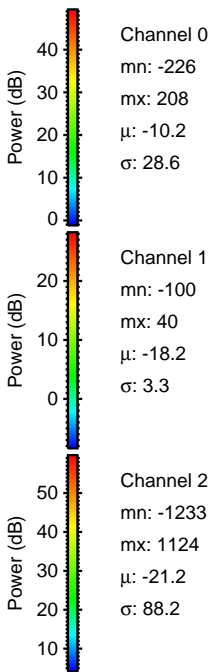
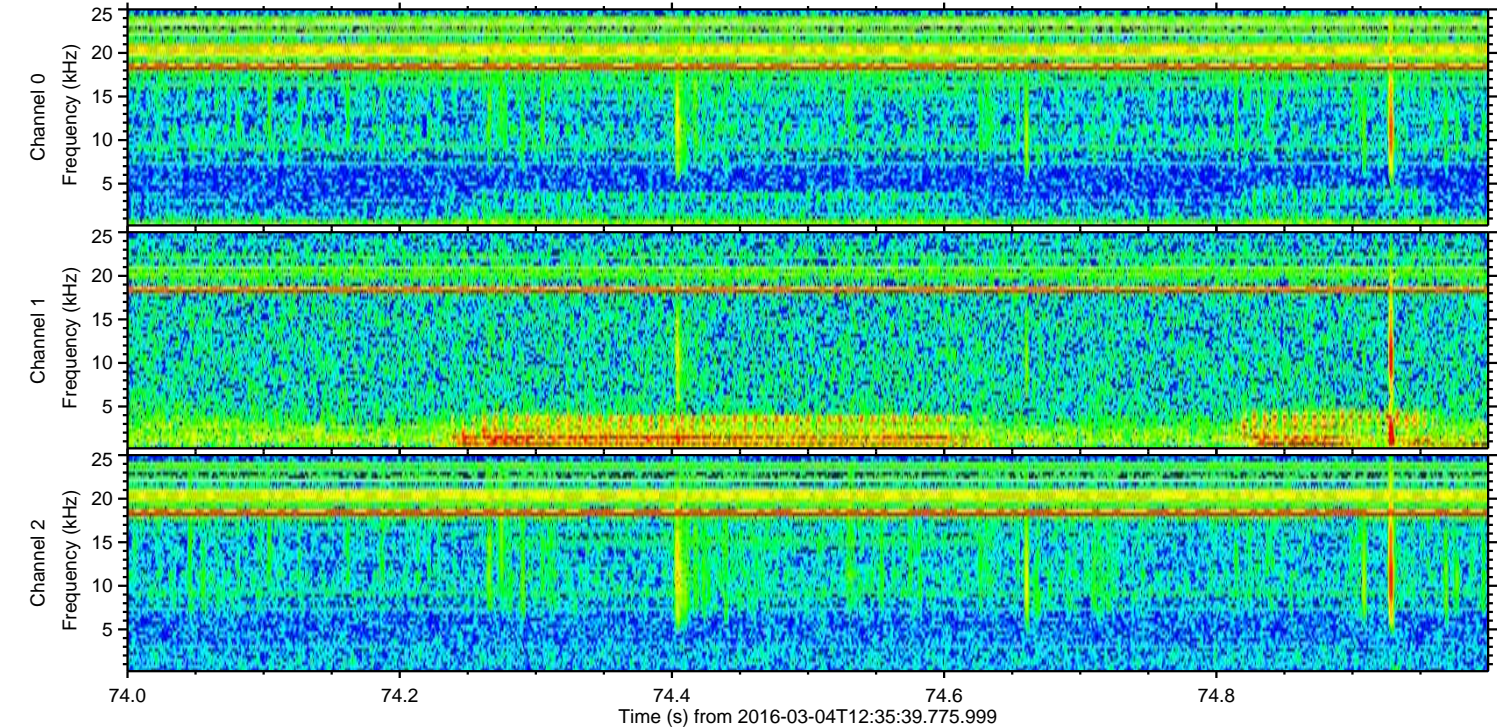
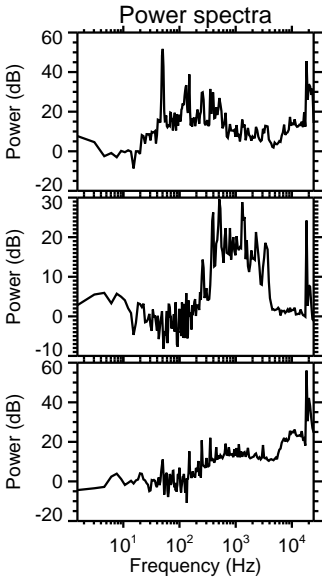
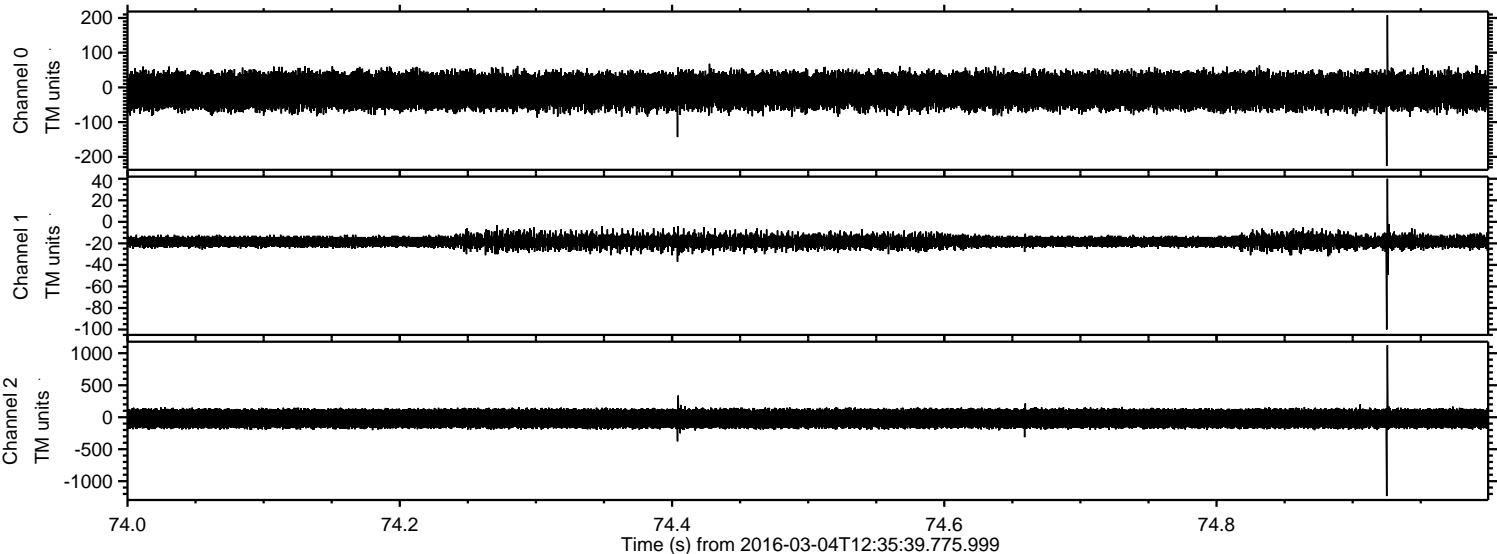


Channel 0
mn: -252
mx: 195
 μ : -10.2
 σ : 28.3

Channel 1
mn: -105
mx: 28
 μ : -18.1
 σ : 3.1

Channel 2
mn: -1233
mx: 994
 μ : -21.2
 σ : 88.0

Processed Mon Apr 18 07:15:01 2016 by ELM ver.2012-10-06 from 001__elm20160304_123538__dat00.bin



Processed Mon Apr 18 07:15:02 2016 by ELM ver.2012-10-06 from 001__elm20160304_123538__dat00.bin

