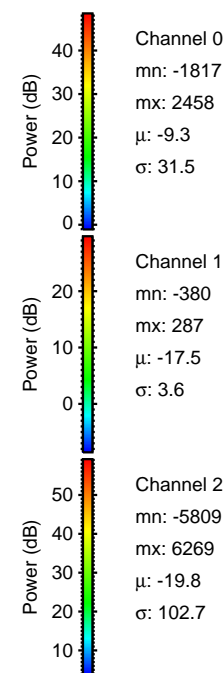
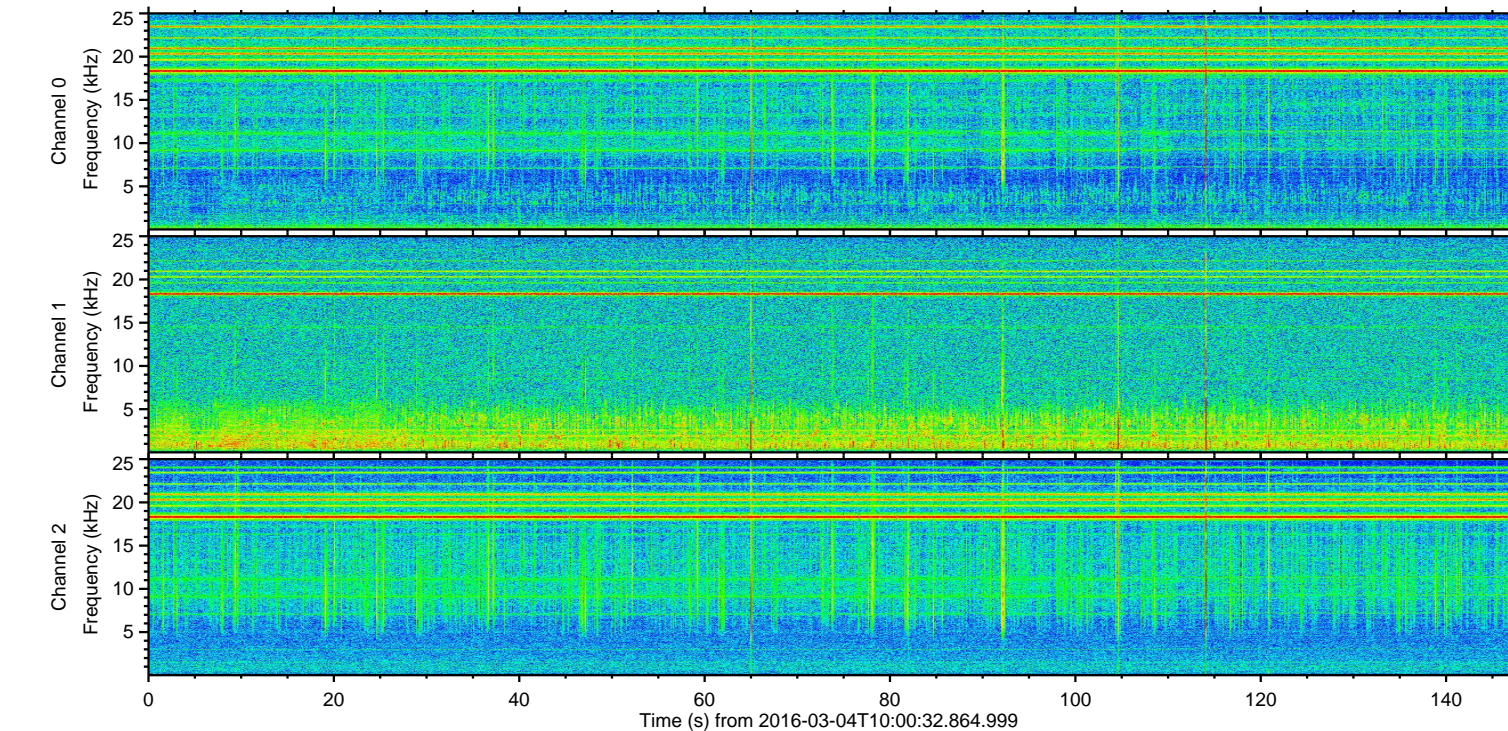
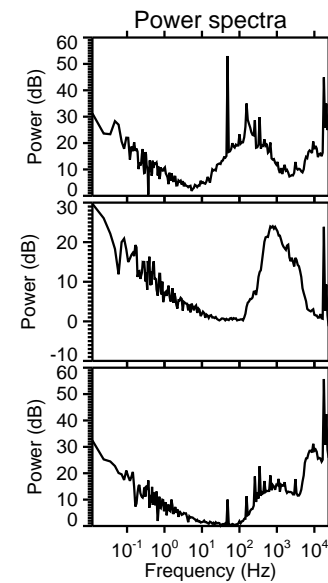
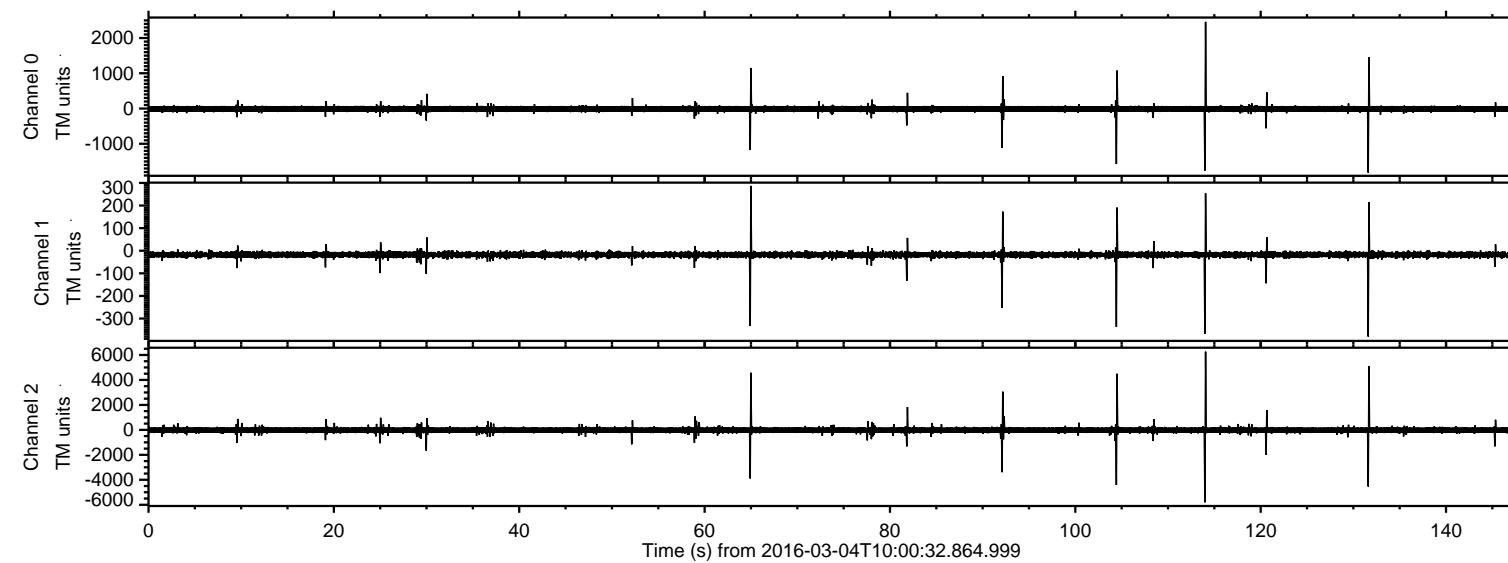


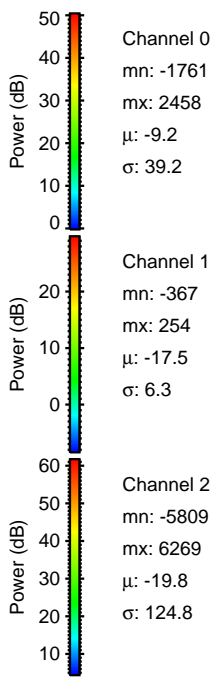
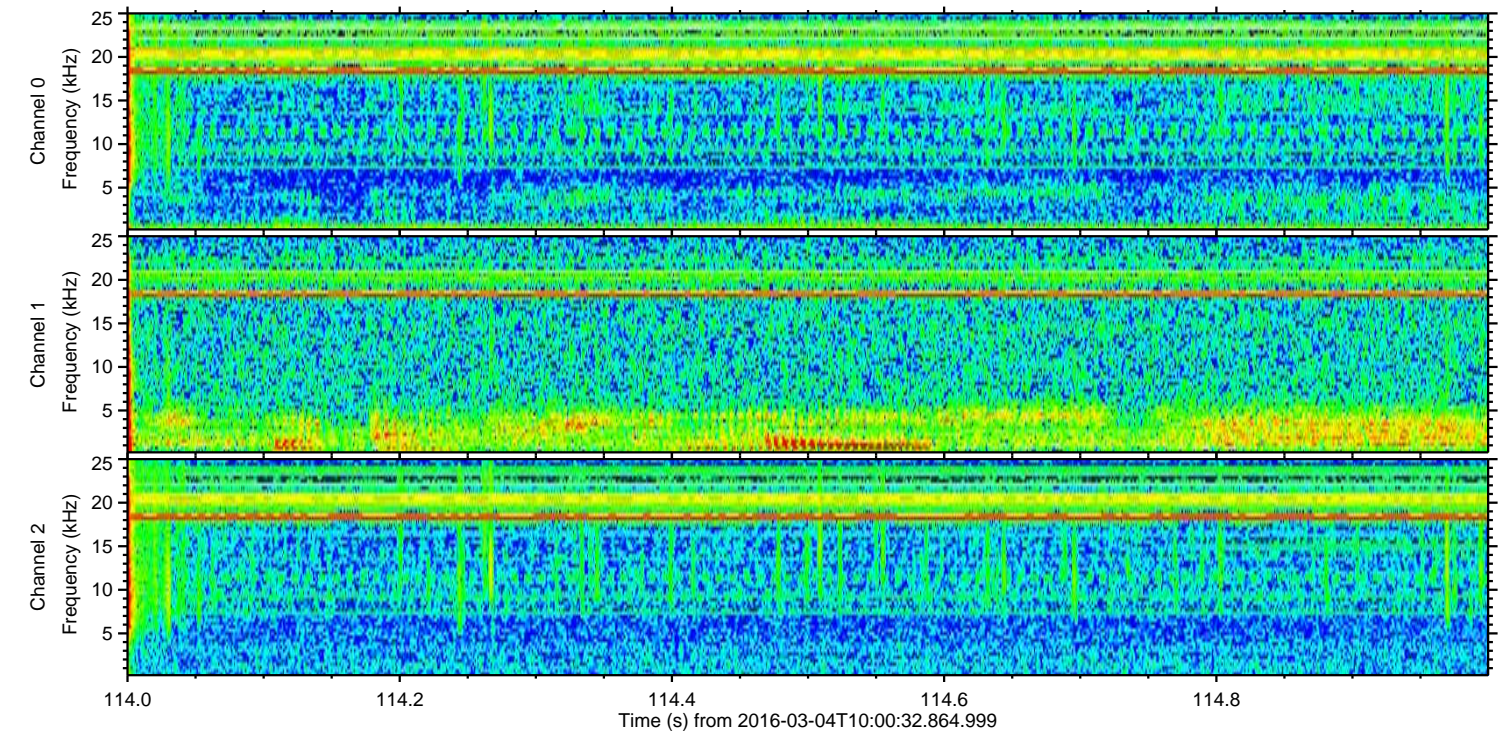
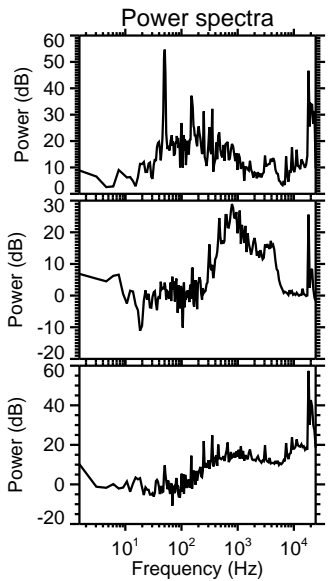
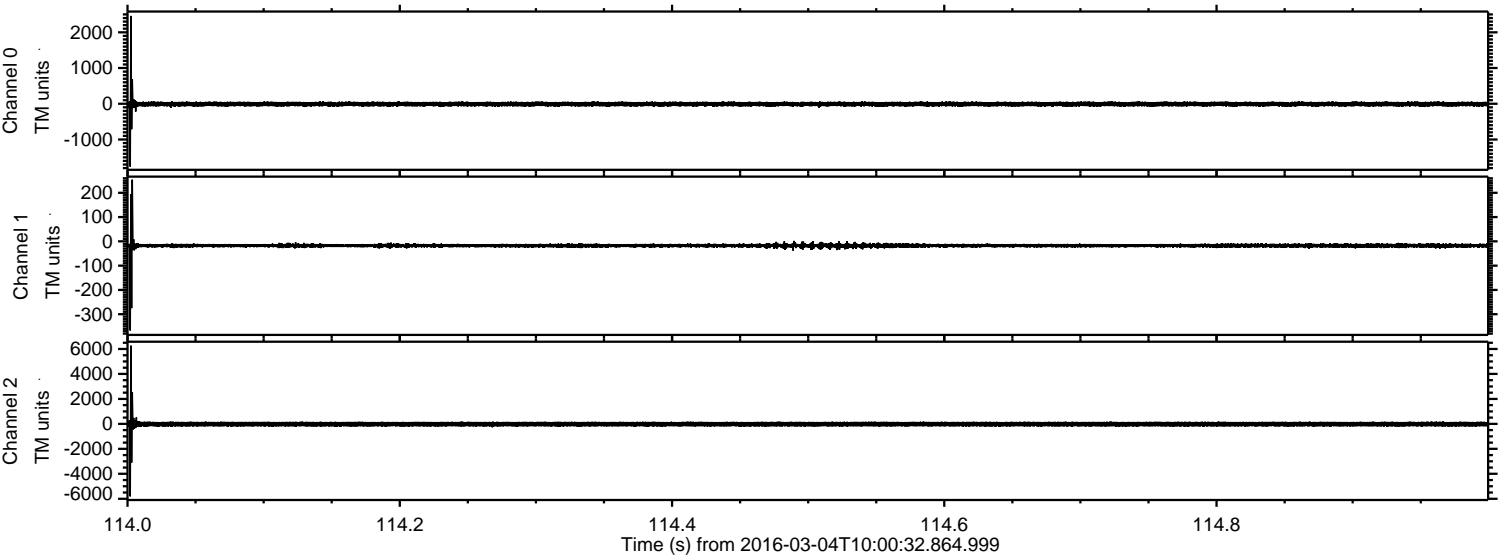
ELMAVAN 3D WAVEFORMS (Measured data sampled at 50 kHz) 51000 packets of 144 samples from 2016-03-04T10:00:32.864.999.

Processed Mon Apr 18 06:43:15 2016 by ELM ver.2012-10-06 from 001__elm20160304_100031__dat00.bin



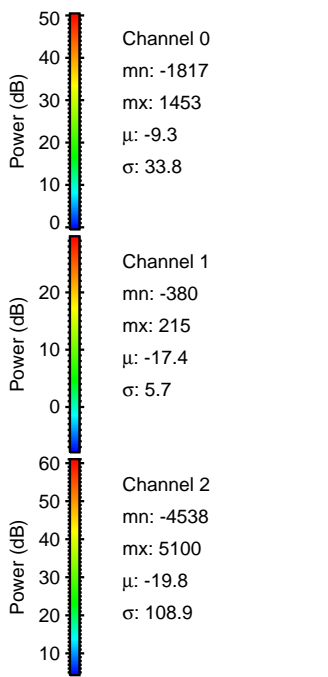
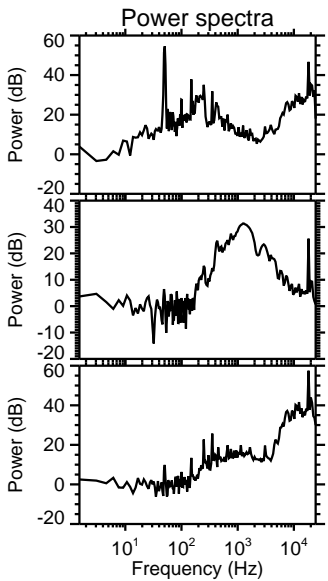
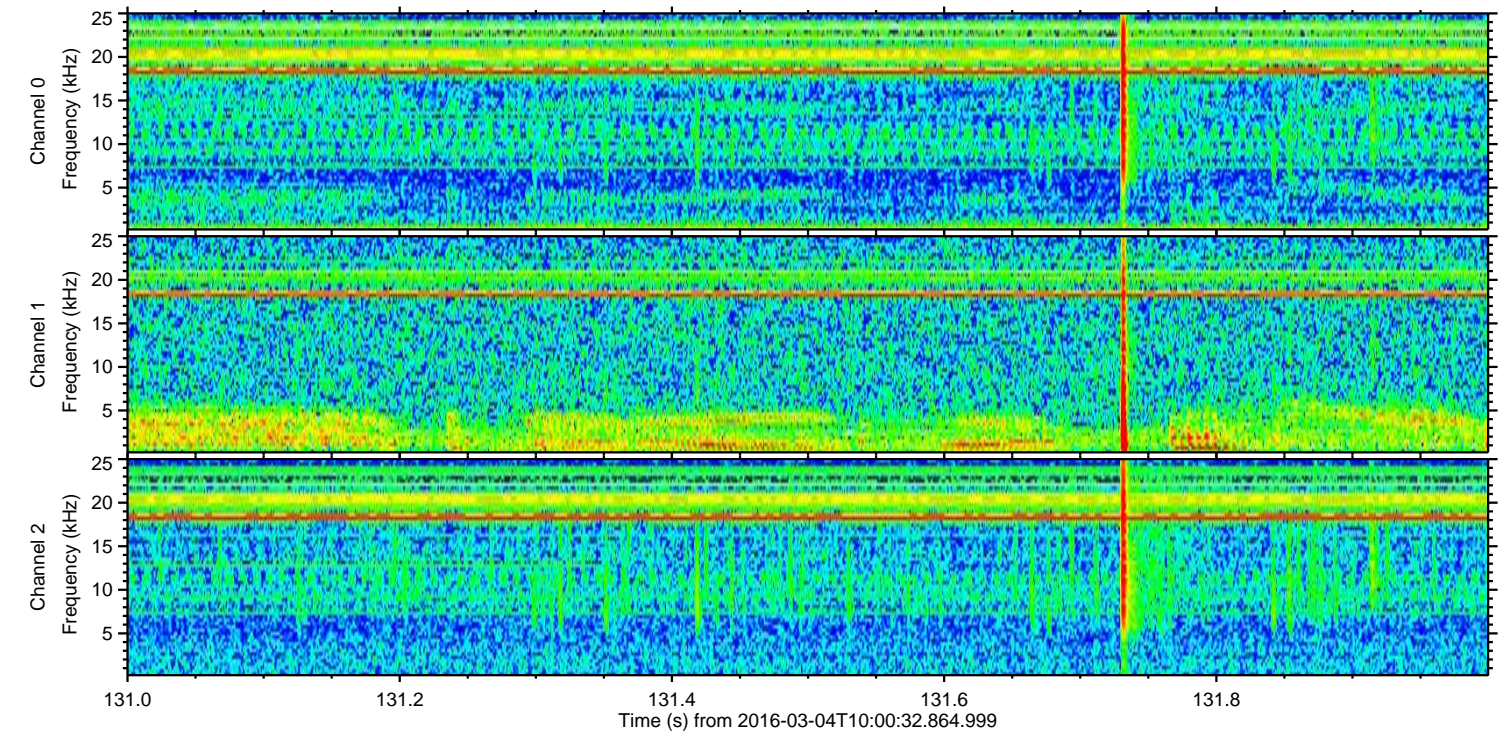
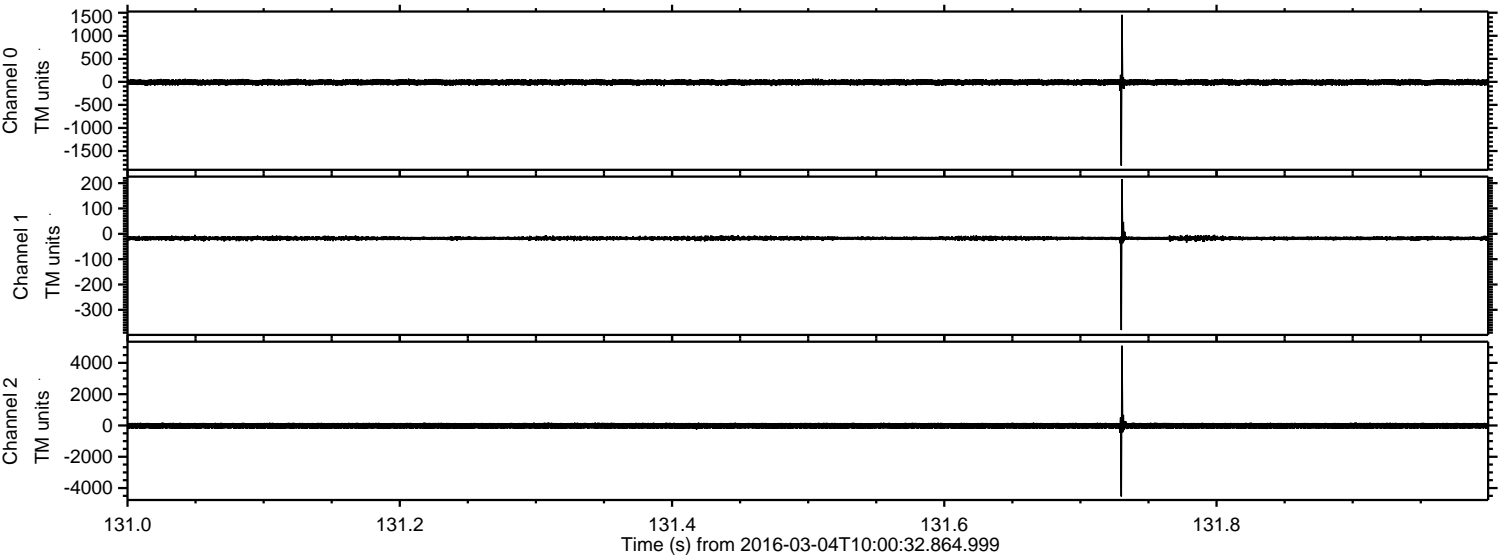
ELMAVAN 3D WAVEFORMS (Measured data sampled at 50 kHz) 51000 packets of 144 samples from 2016-03-04T10:00:32.864.999. Part 115/147

Processed Mon Apr 18 06:43:27 2016 by ELM ver.2012-10-06 from 001__elm20160304_100031__dat00.bin



ELMAVAN 3D WAVEFORMS (Measured data sampled at 50 kHz) 51000 packets of 144 samples from 2016-03-04T10:00:32.864.999. Part 132/147

Processed Mon Apr 18 06:43:28 2016 by ELM ver.2012-10-06 from 001__elm20160304_100031__dat00.bin

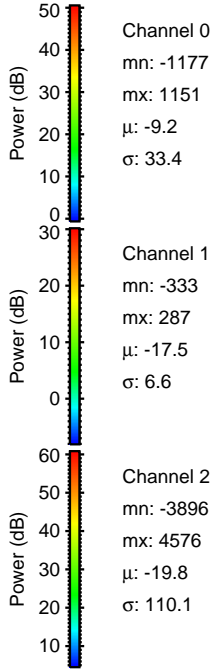
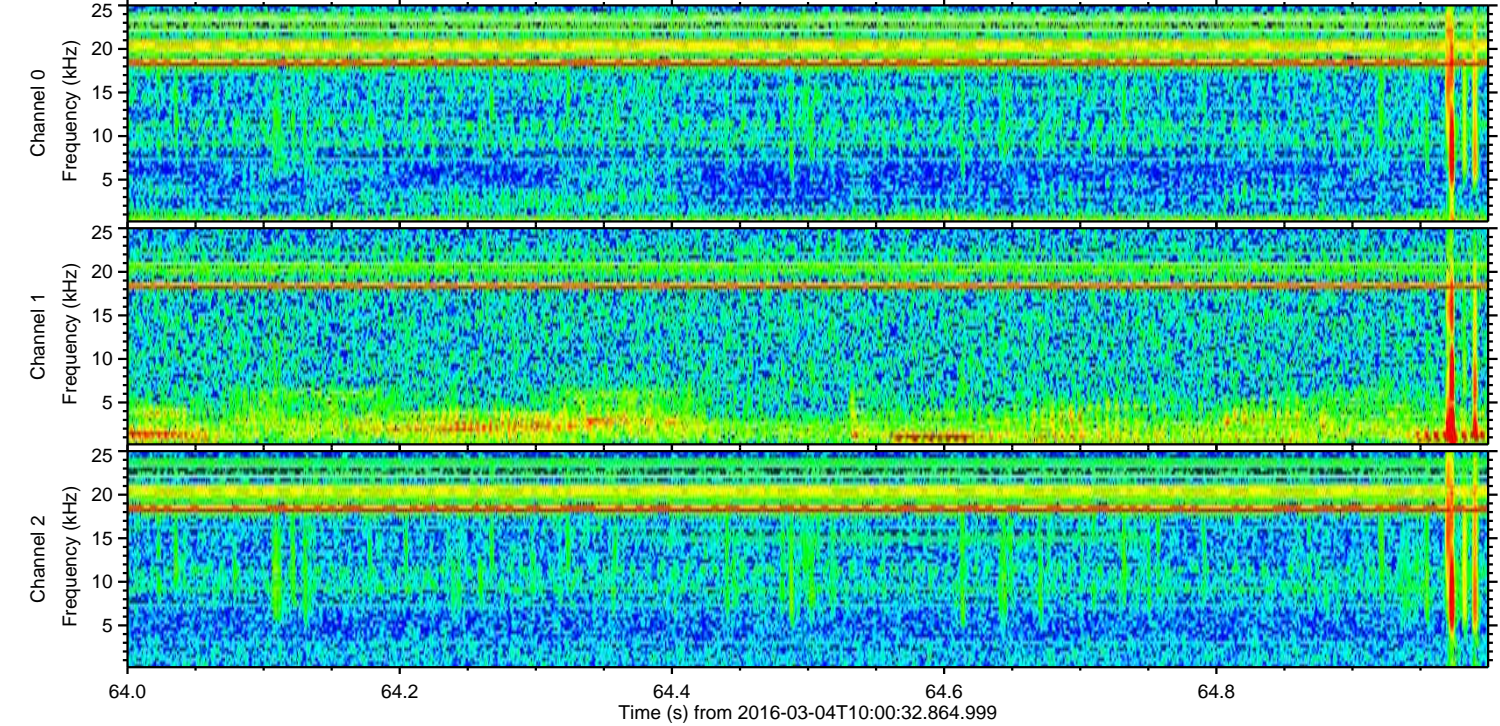
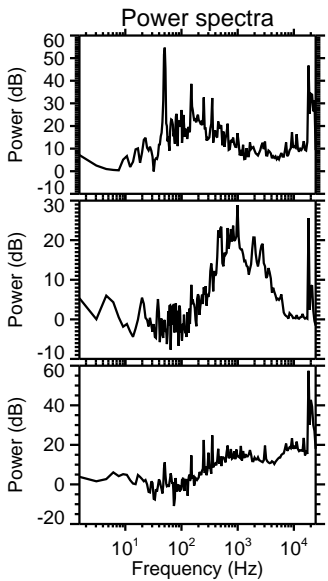
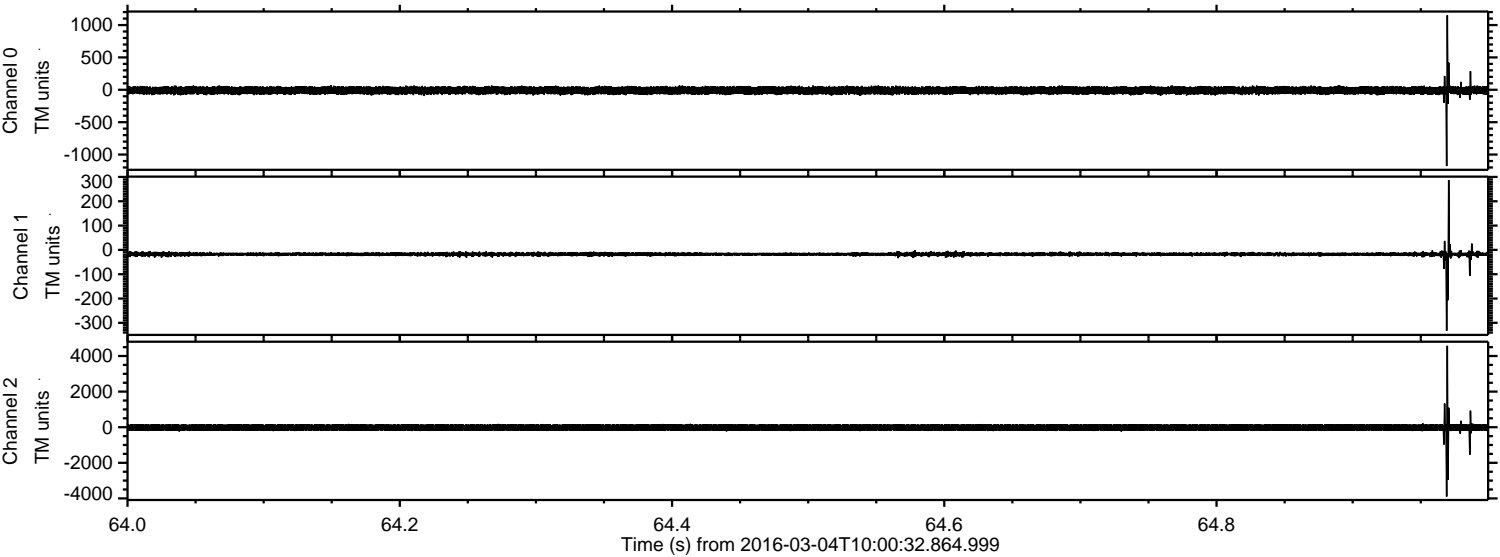


Channel 0
mn: -1817
mx: 1453
 μ : -9.3
 σ : 33.8

Channel 1
mn: -380
mx: 215
 μ : -17.4
 σ : 5.7

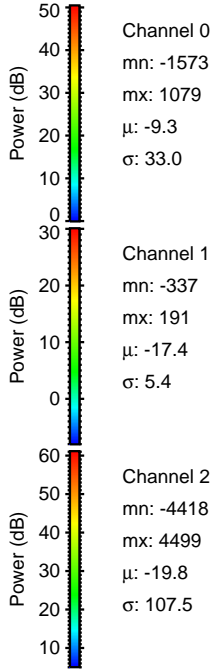
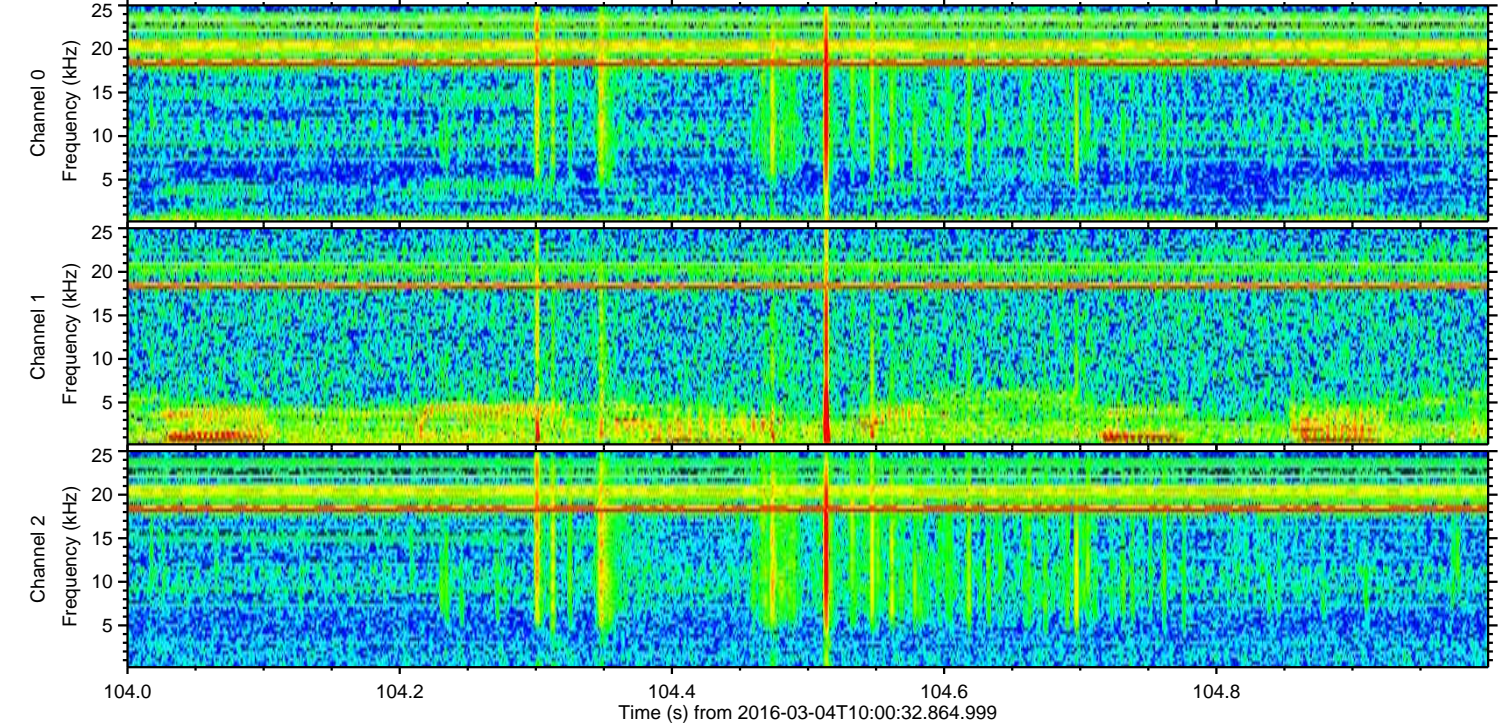
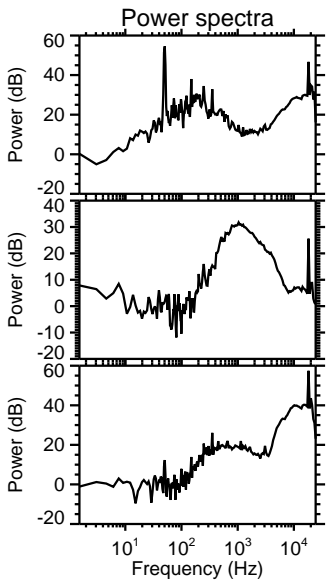
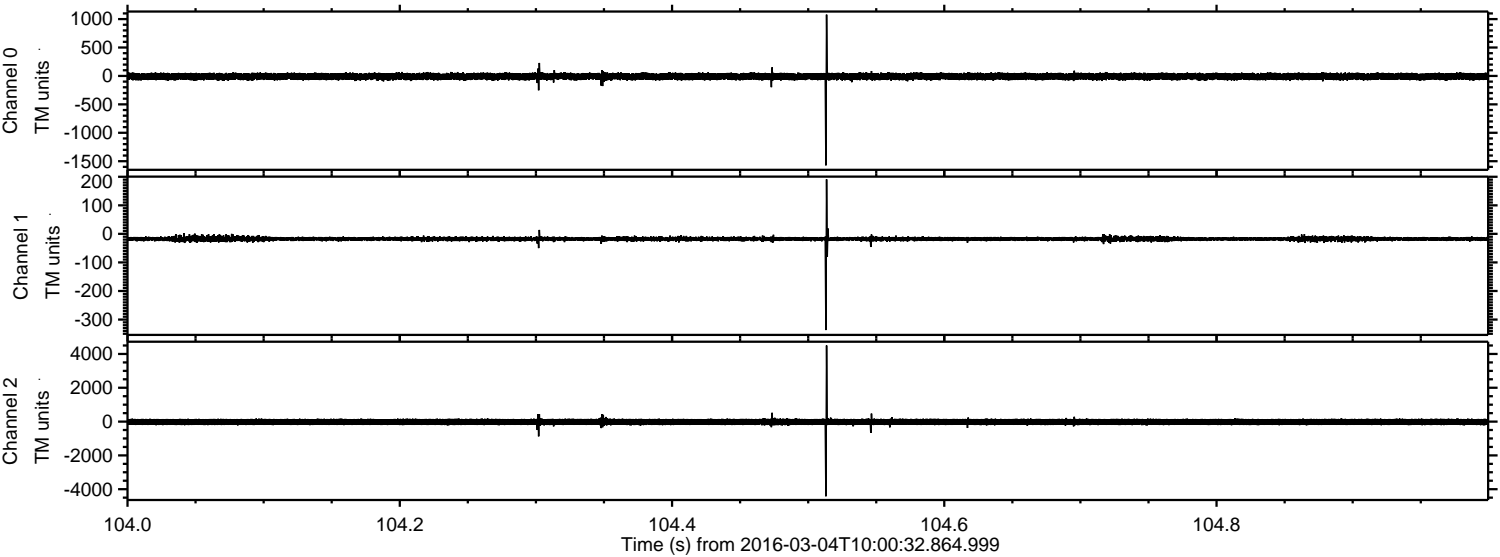
Channel 2
mn: -4538
mx: 5100
 μ : -19.8
 σ : 108.9

Processed Mon Apr 18 06:43:29 2016 by ELM ver.2012-10-06 from 001__elm20160304_100031__dat00.bin

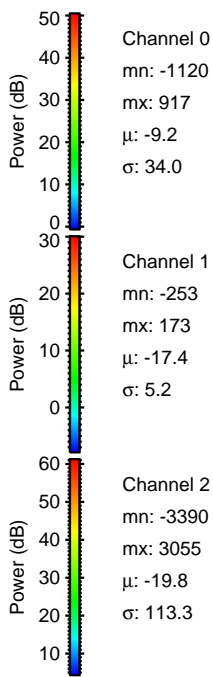
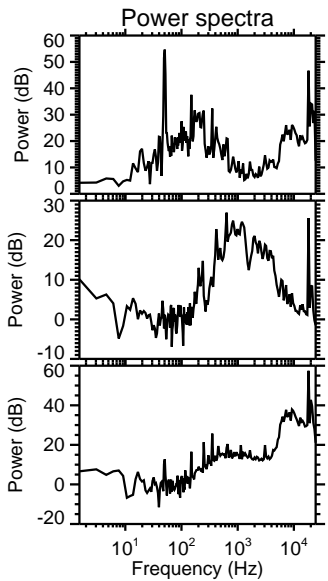
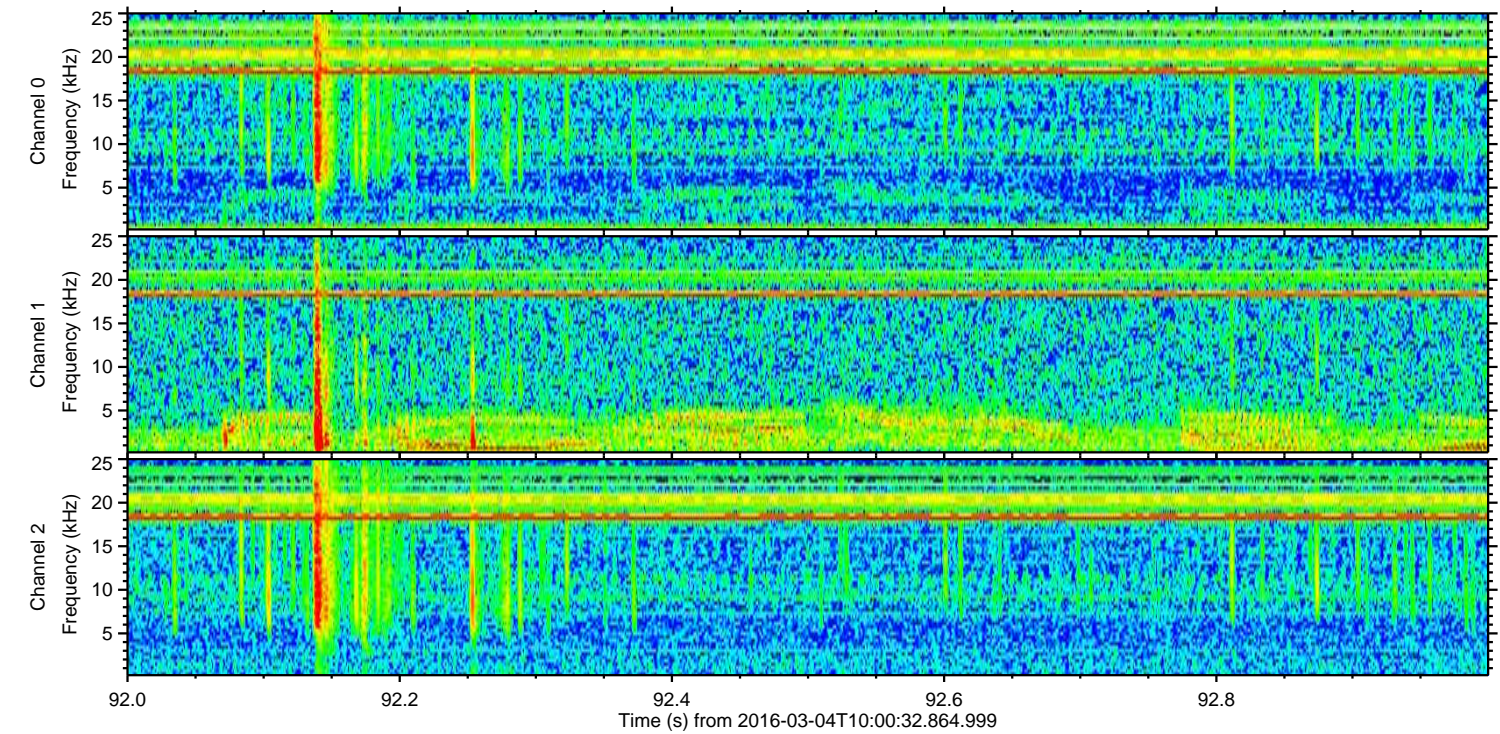
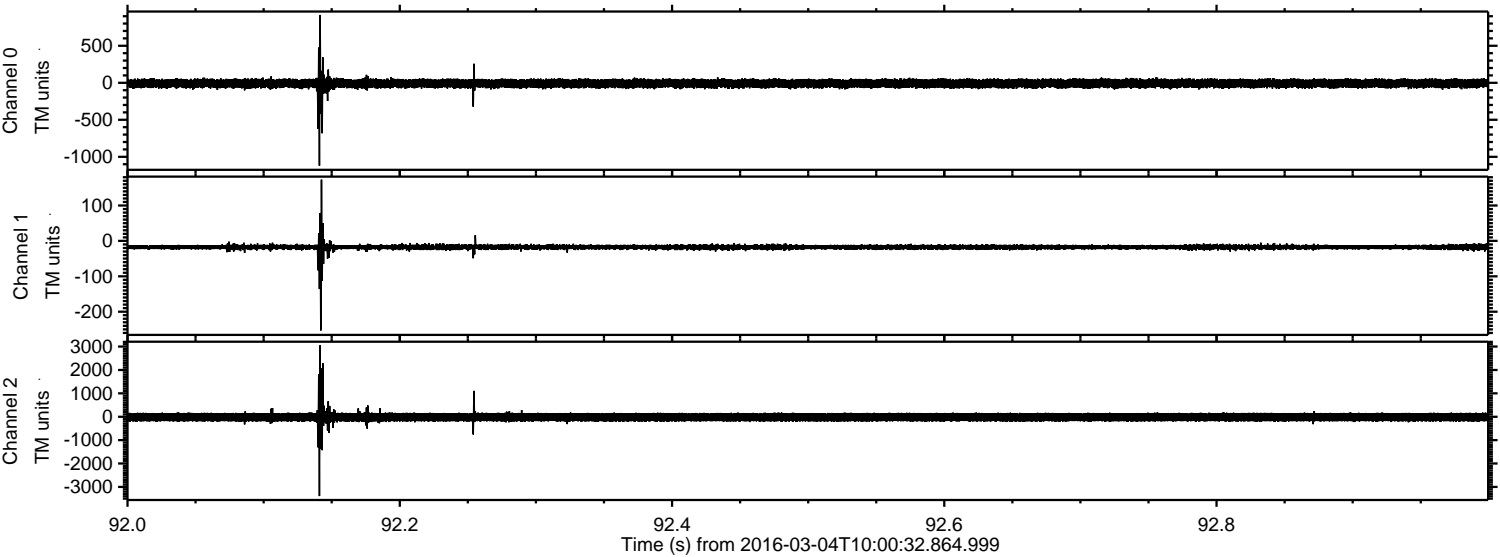


ELMAVAN 3D WAVEFORMS (Measured data sampled at 50 kHz) 51000 packets of 144 samples from 2016-03-04T10:00:32.864.999. Part 105/147

Processed Mon Apr 18 06:43:30 2016 by ELM ver.2012-10-06 from 001__elm20160304_100031__dat00.bin

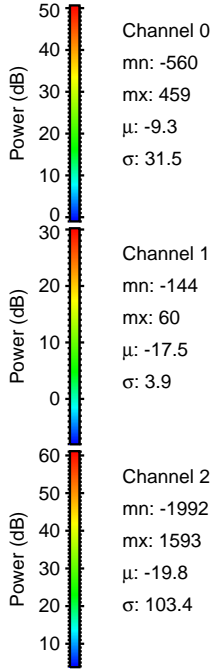
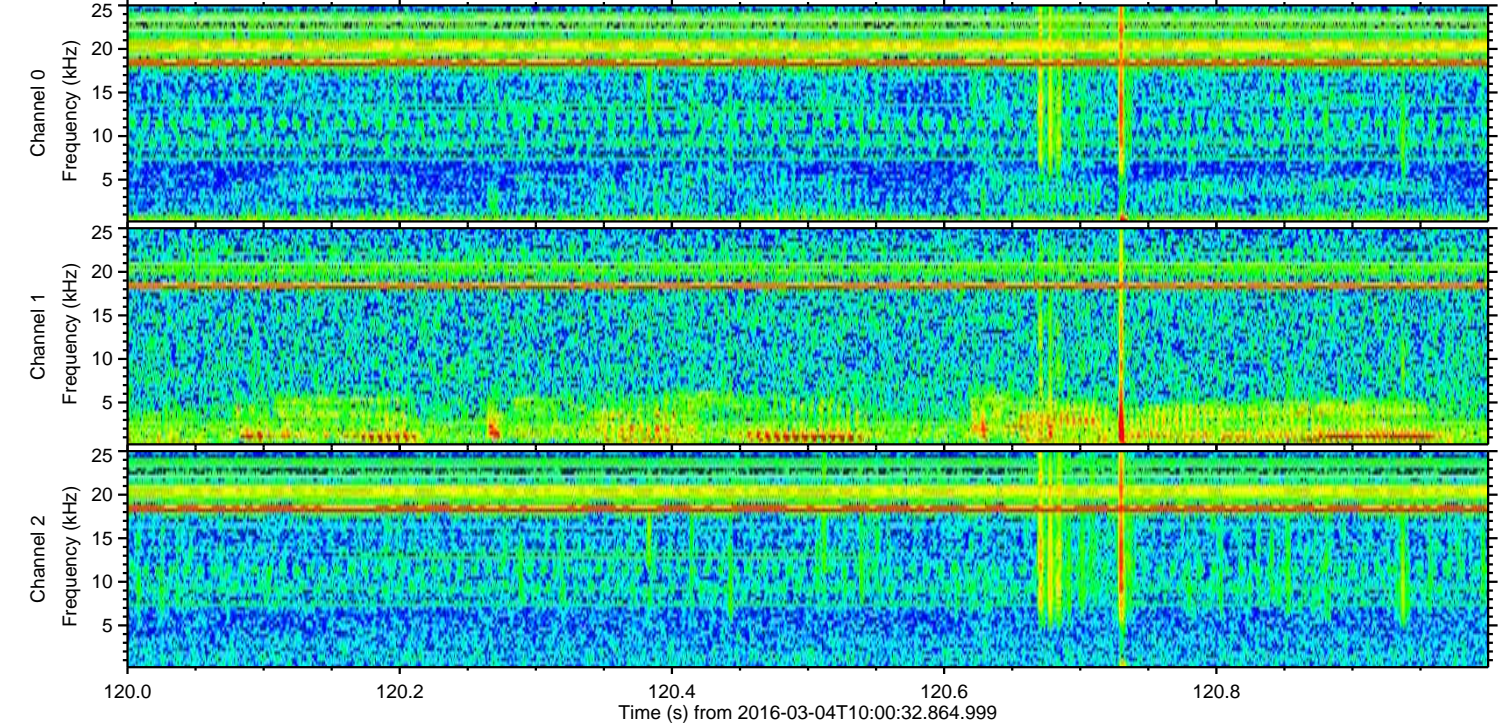
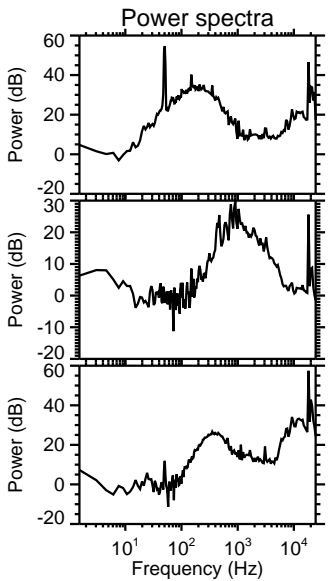
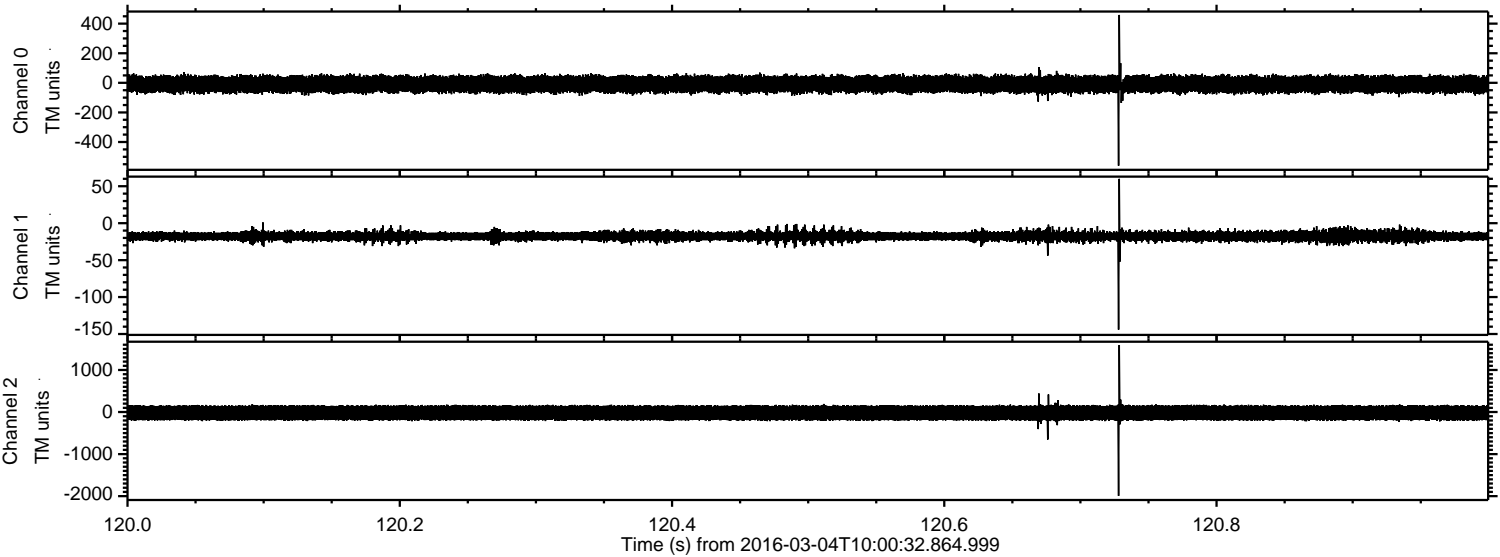


Processed Mon Apr 18 06:43:31 2016 by ELM ver.2012-10-06 from 001__elm20160304_100031__dat00.bin

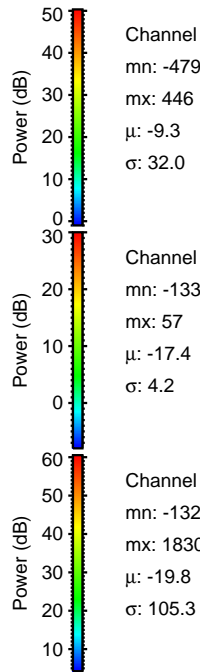
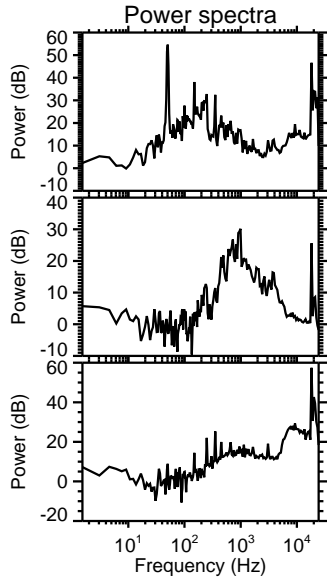
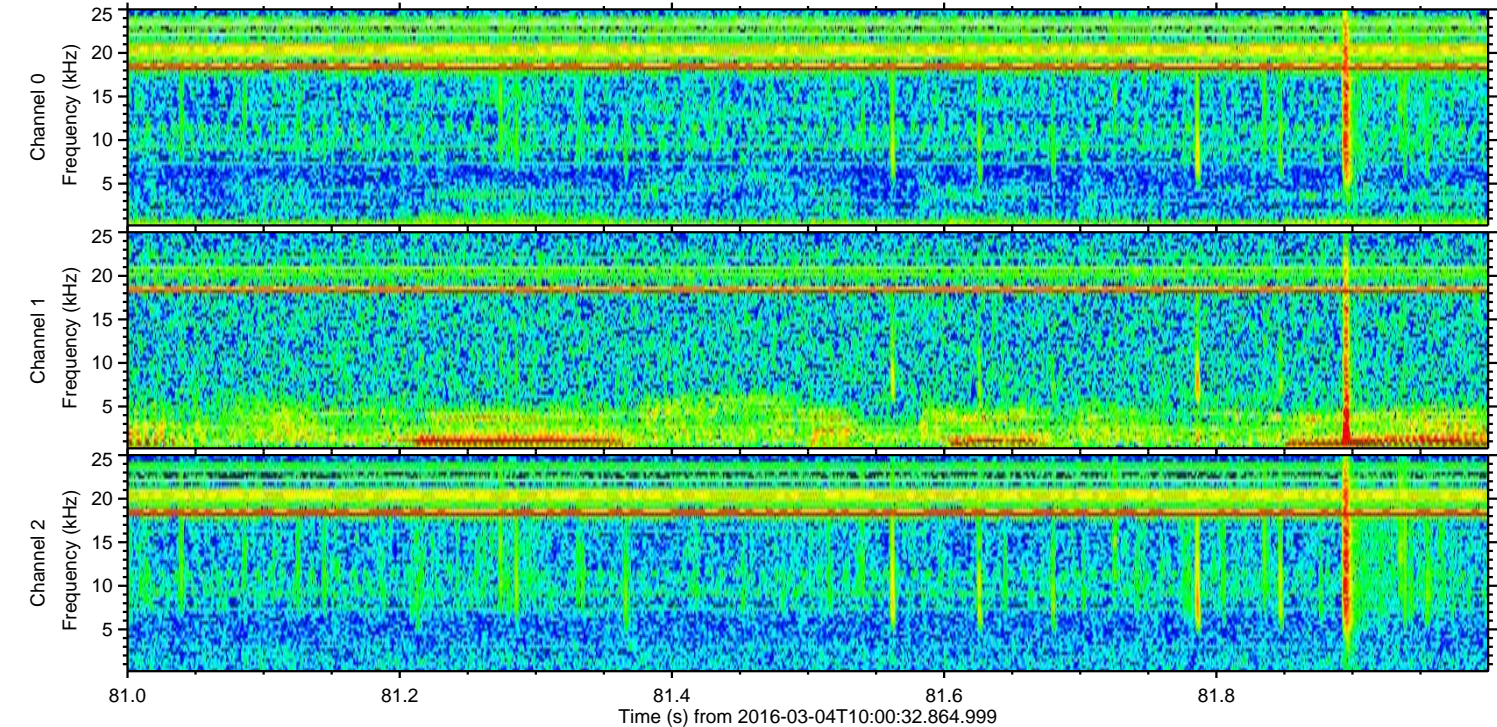
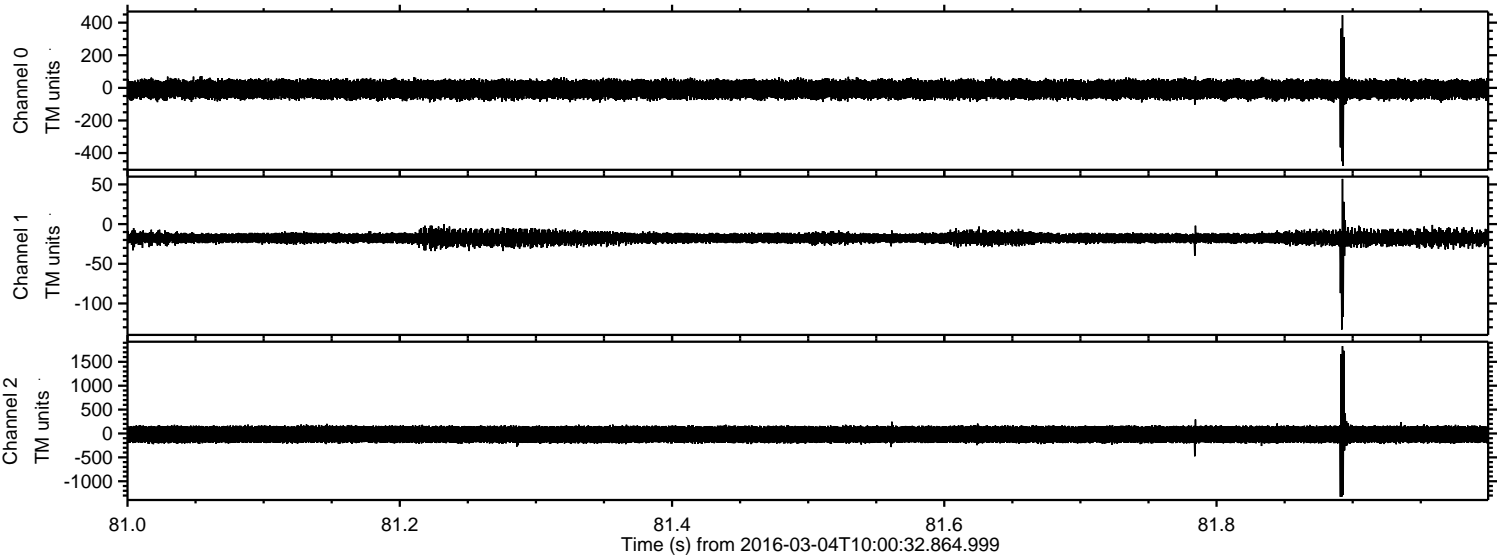


ELMAVAN 3D WAVEFORMS (Measured data sampled at 50 kHz) 51000 packets of 144 samples from 2016-03-04T10:00:32.864.999. Part 121/147

Processed Mon Apr 18 06:43:31 2016 by ELM ver.2012-10-06 from 001__elm20160304_100031__dat00.bin



Processed Mon Apr 18 06:43:32 2016 by ELM ver.2012-10-06 from 001__elm20160304_100031__dat00.bin

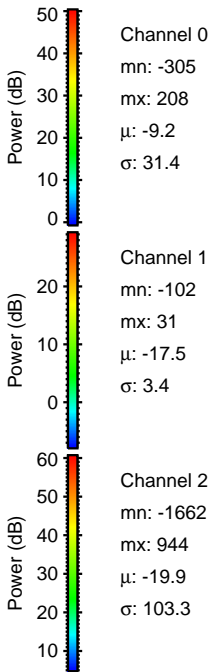
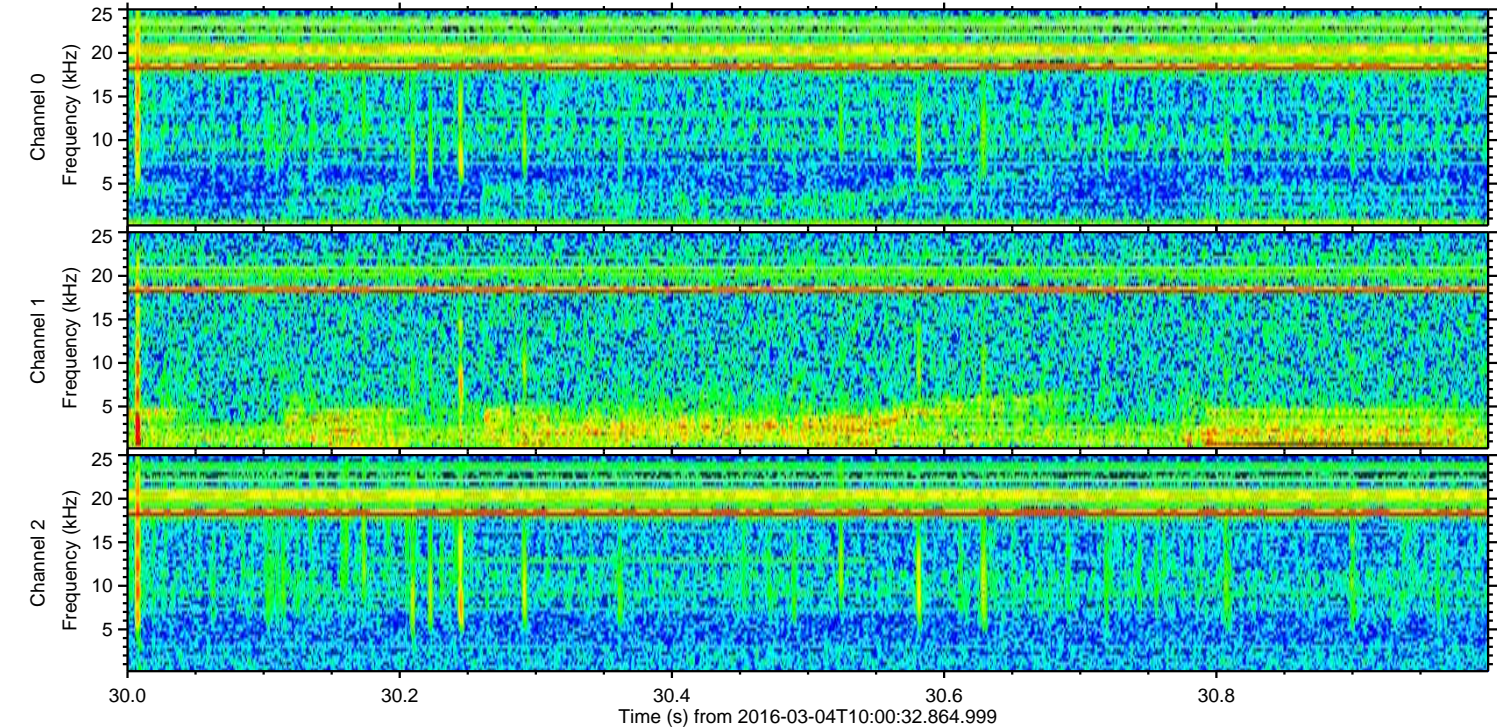
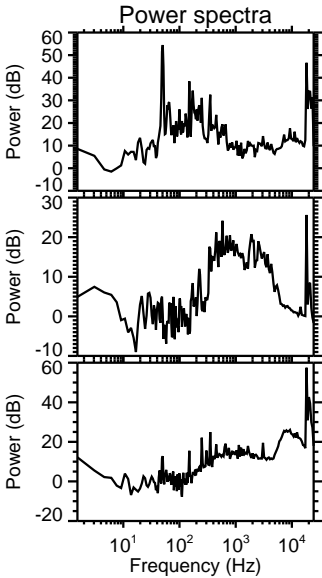
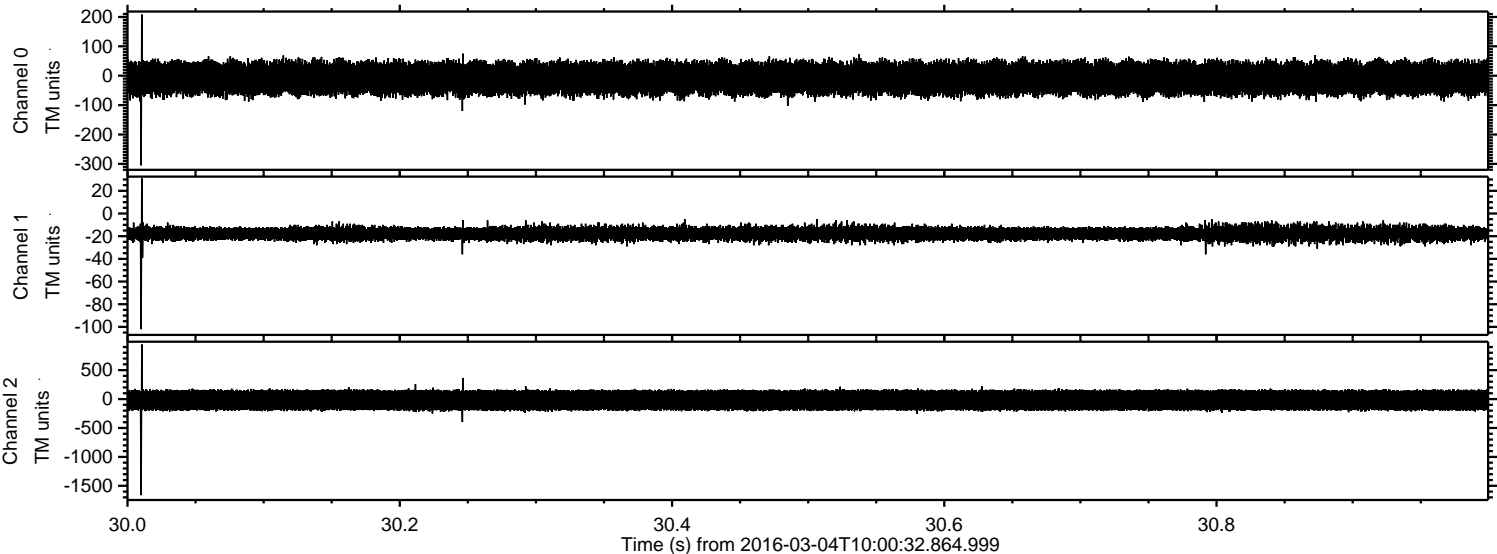


Channel 0
mn: -479
mx: 446
 μ : -9.3
 σ : 32.0

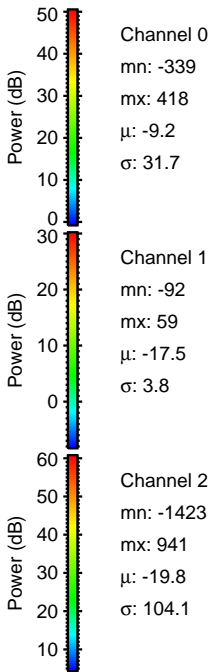
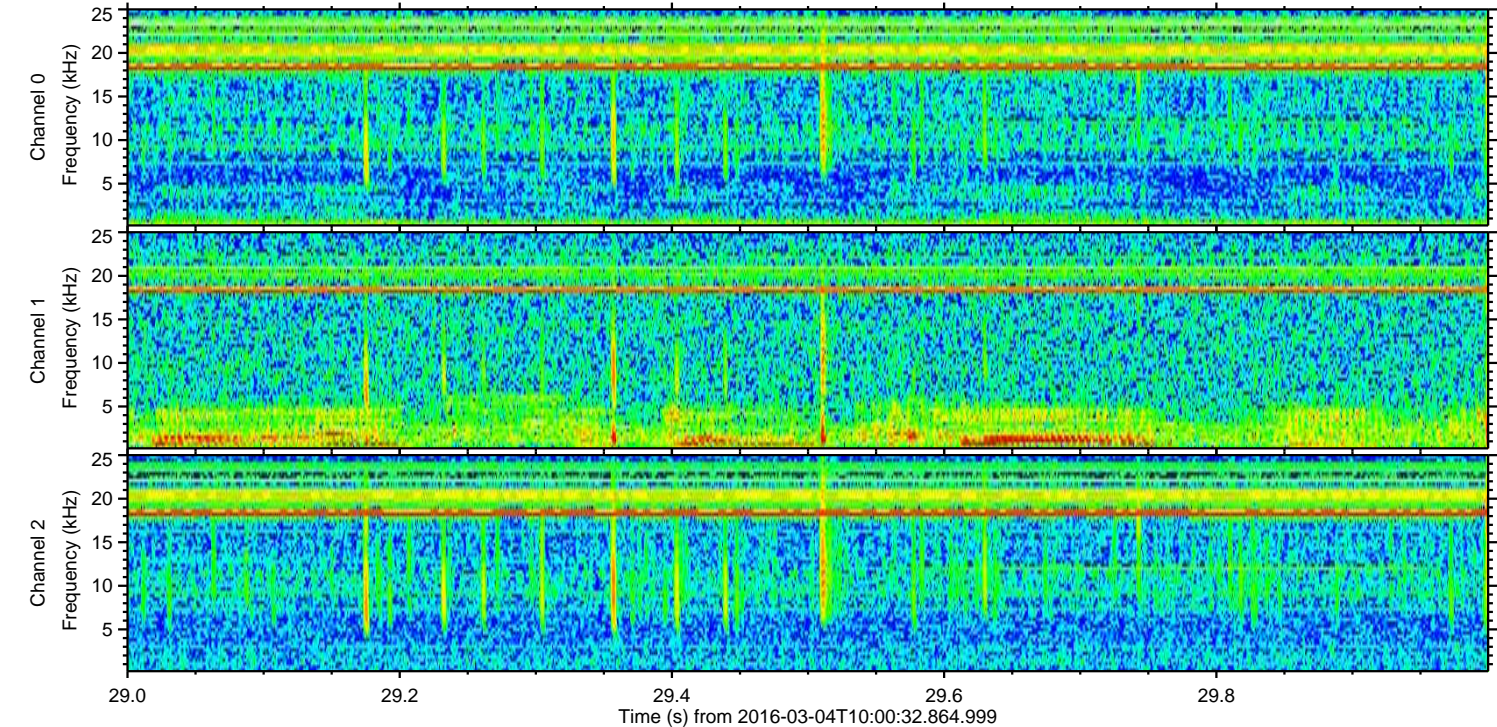
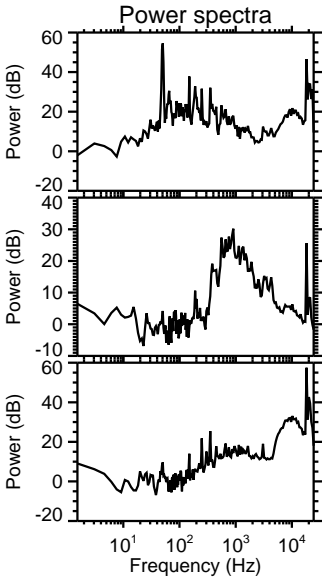
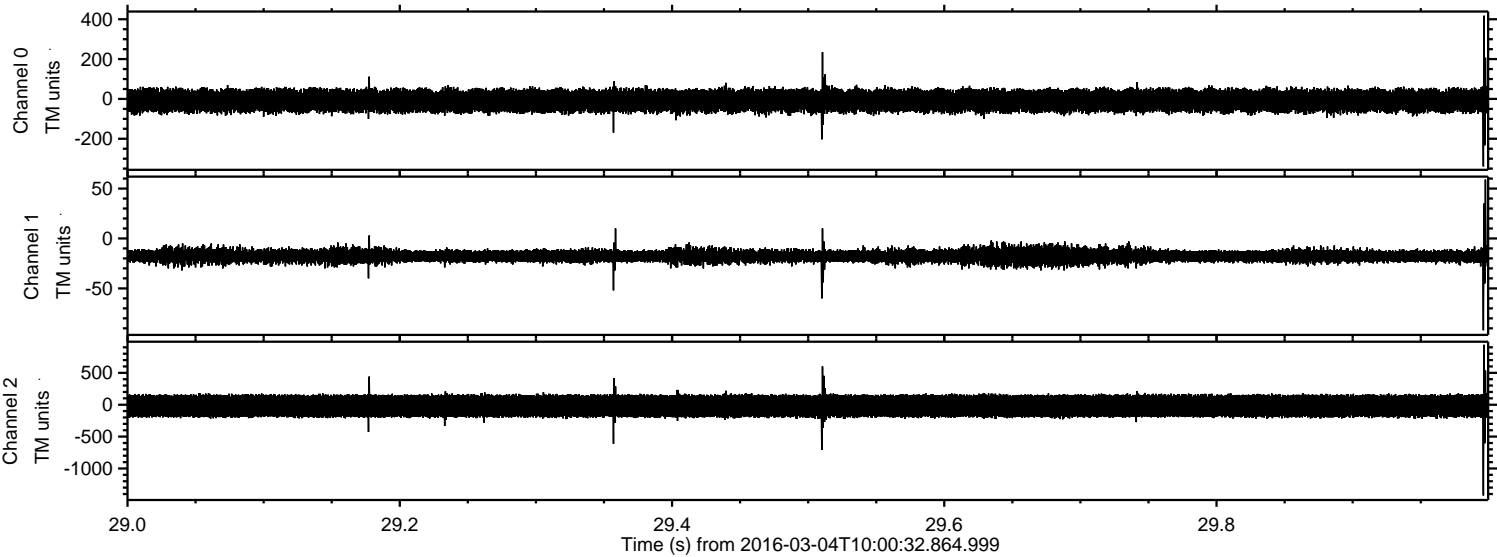
Channel 1
mn: -133
mx: 57
 μ : -17.4
 σ : 4.2

Channel 2
mn: -1327
mx: 1830
 μ : -19.8
 σ : 105.3

Processed Mon Apr 18 06:43:33 2016 by ELM ver.2012-10-06 from 001__elm20160304_100031__dat00.bin



Processed Mon Apr 18 06:43:34 2016 by ELM ver.2012-10-06 from 001__elm20160304_100031__dat00.bin



Processed Mon Apr 18 06:43:35 2016 by ELM ver.2012-10-06 from 001__elm20160304_100031__dat00.bin

