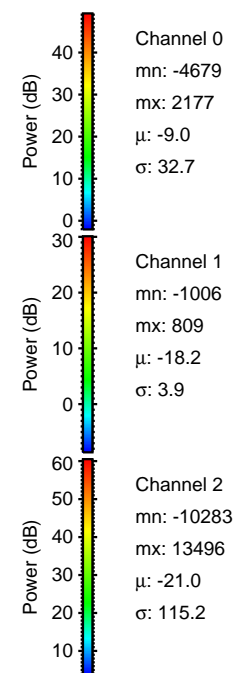
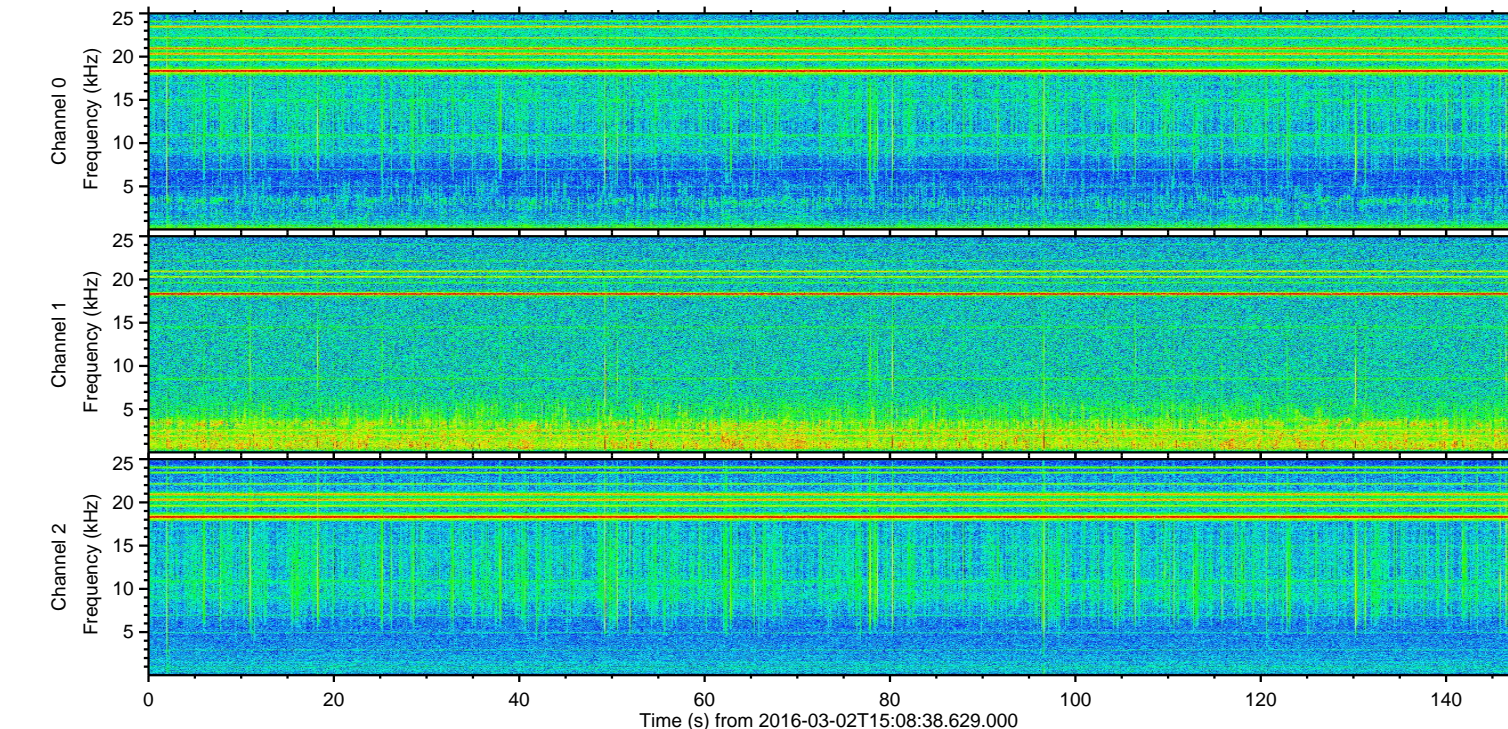
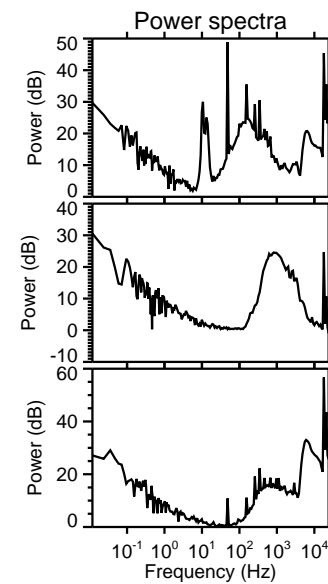
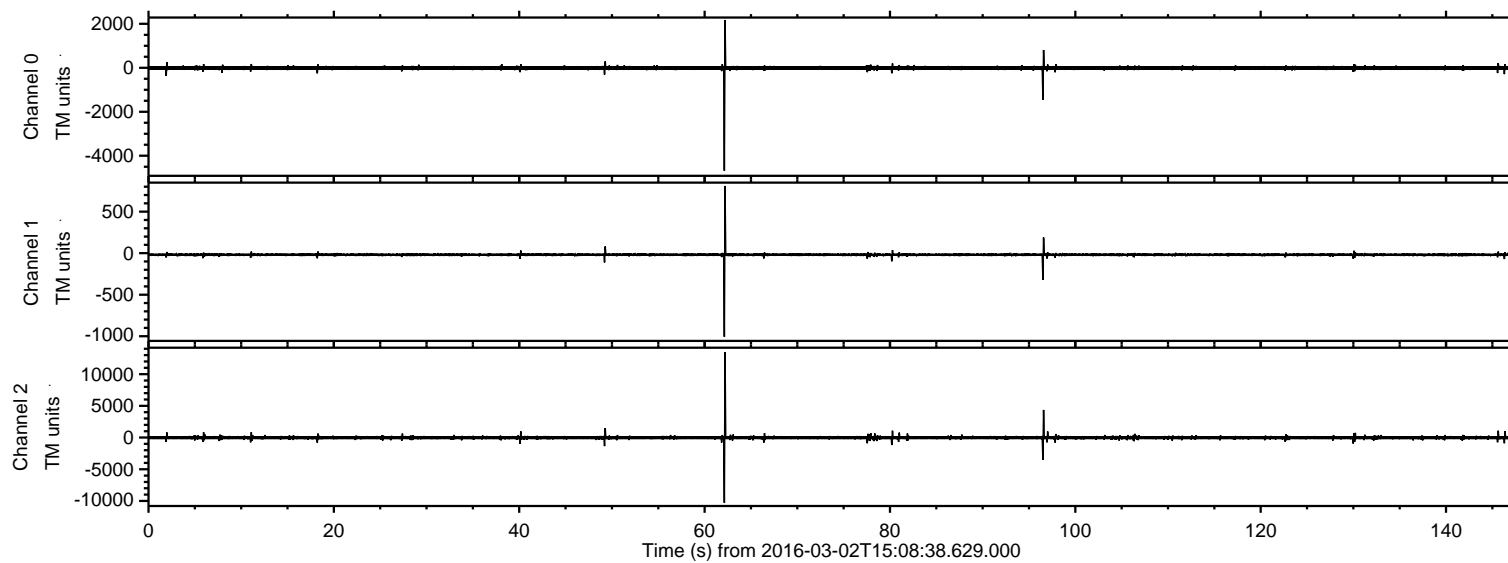


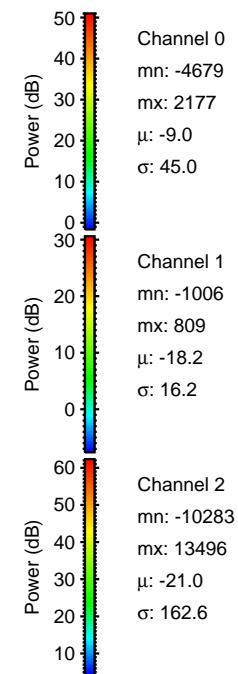
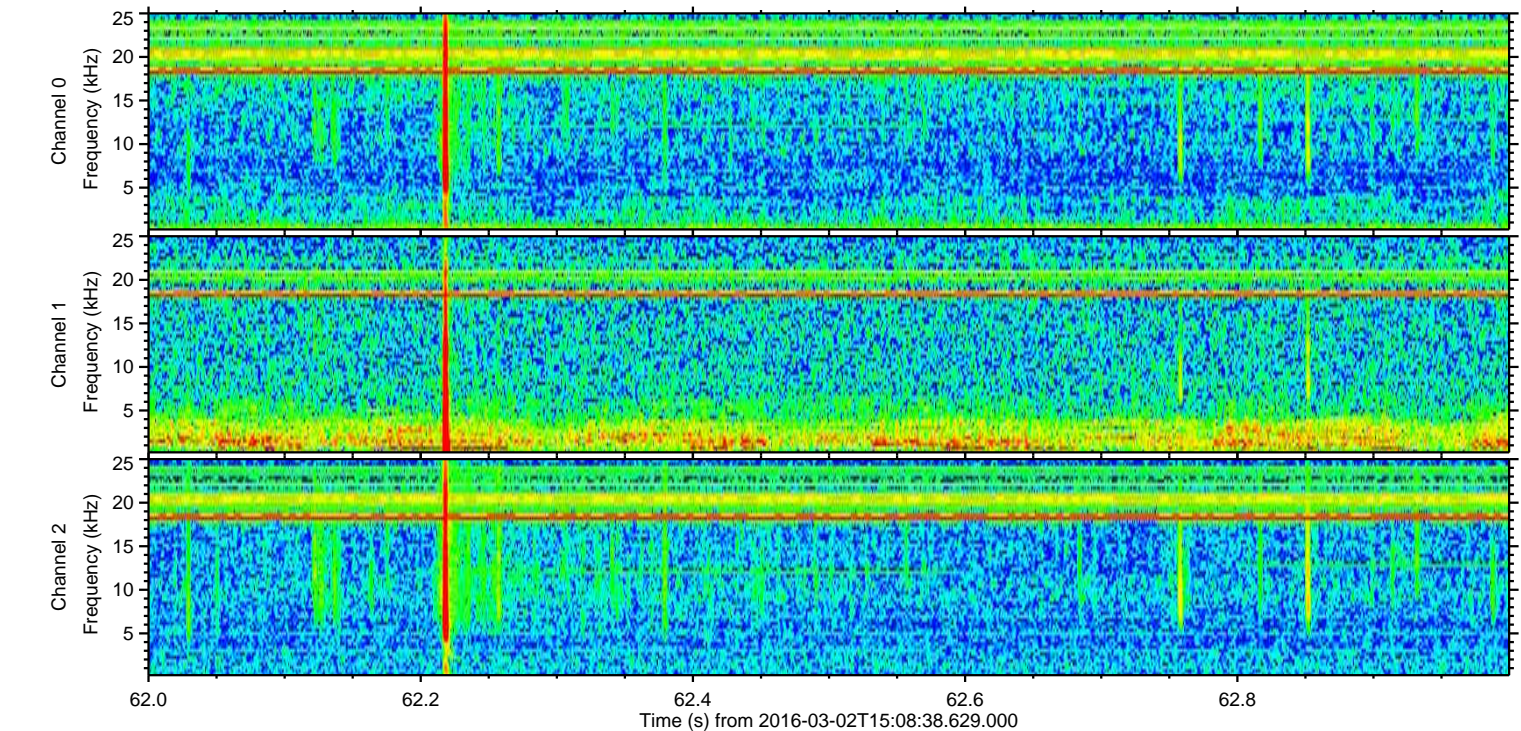
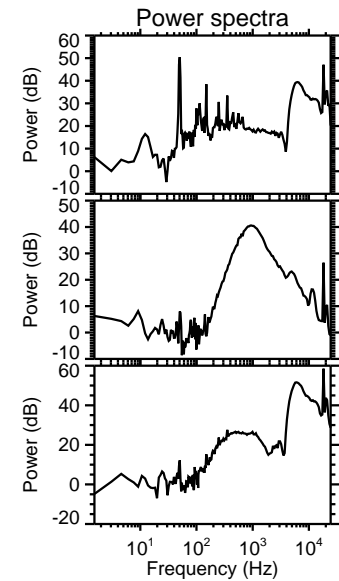
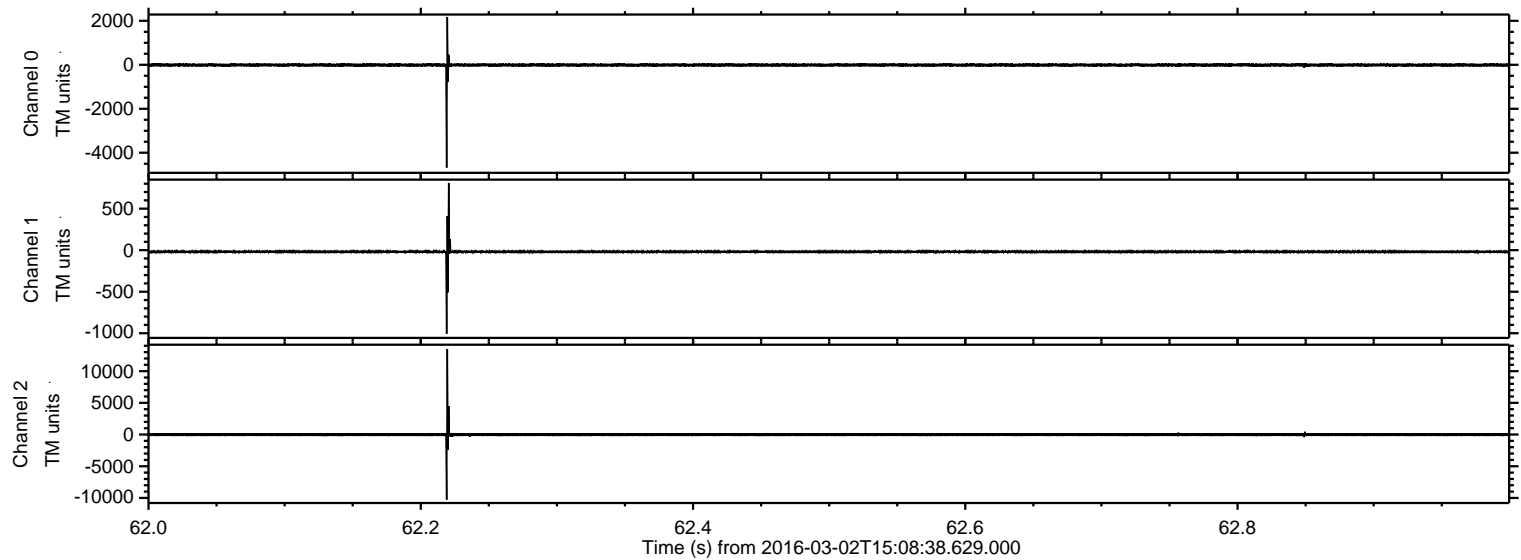
# ELMAVAN 3D WAVEFORMS (Measured data sampled at 50 kHz) 51000 packets of 144 samples from 2016-03-02T15:08:38.629.000.

Processed Sun Apr 17 21:59:18 2016 by ELM ver.2012-10-06 from 001\_\_elm20160302\_150837\_\_dat00.bin



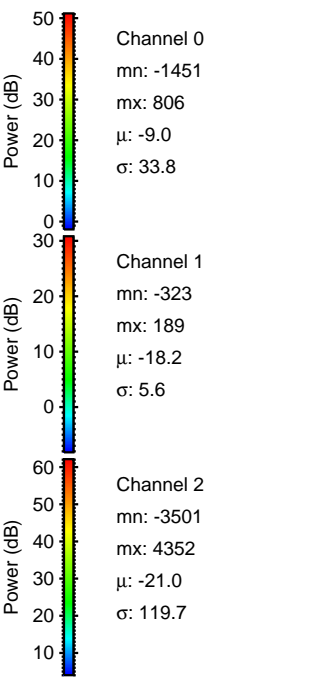
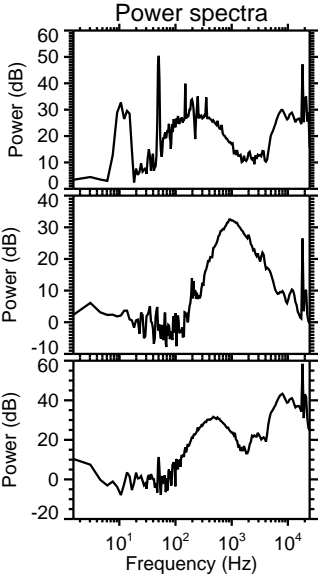
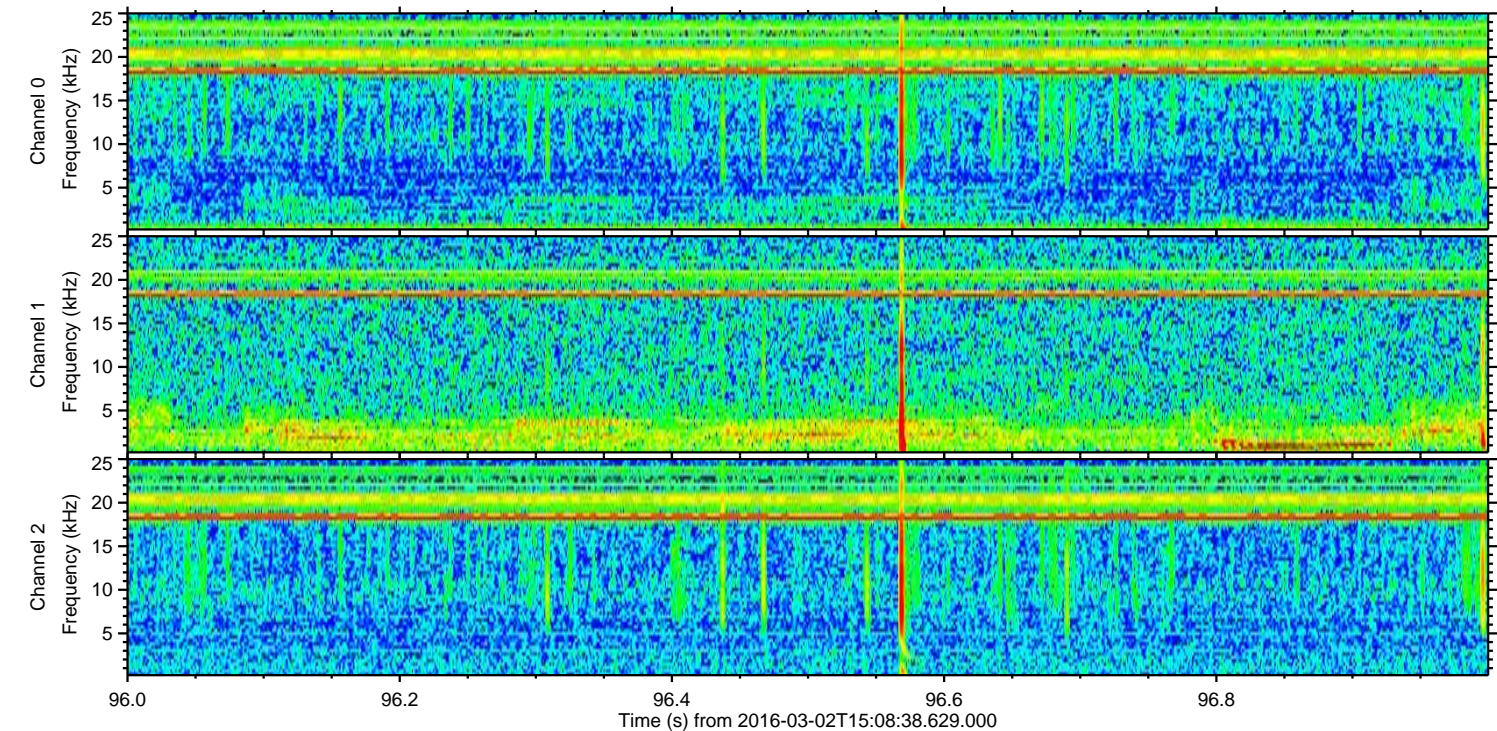
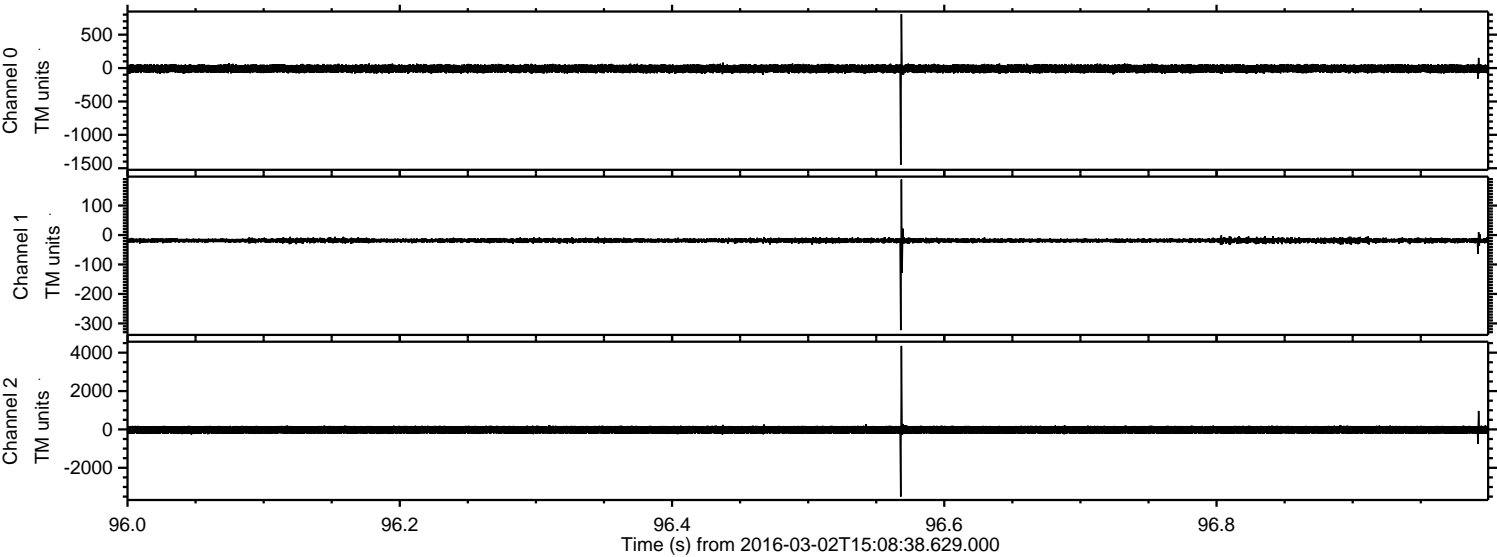


Processed Sun Apr 17 21:59:29 2016 by ELM ver.2012-10-06 from 001\_\_elm20160302\_150837\_\_dat00.bin



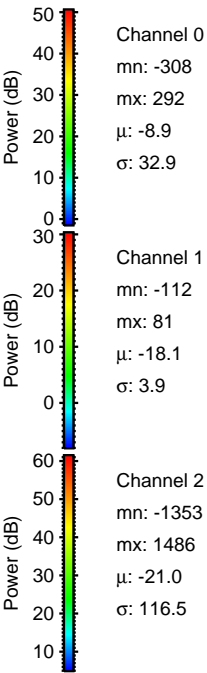
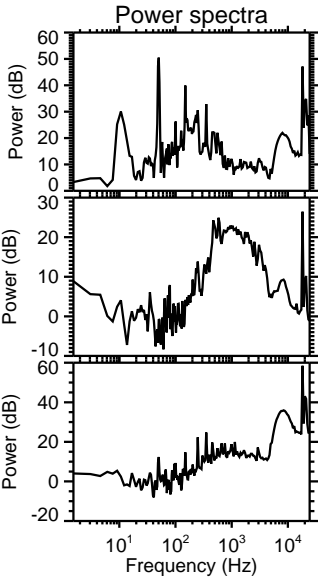
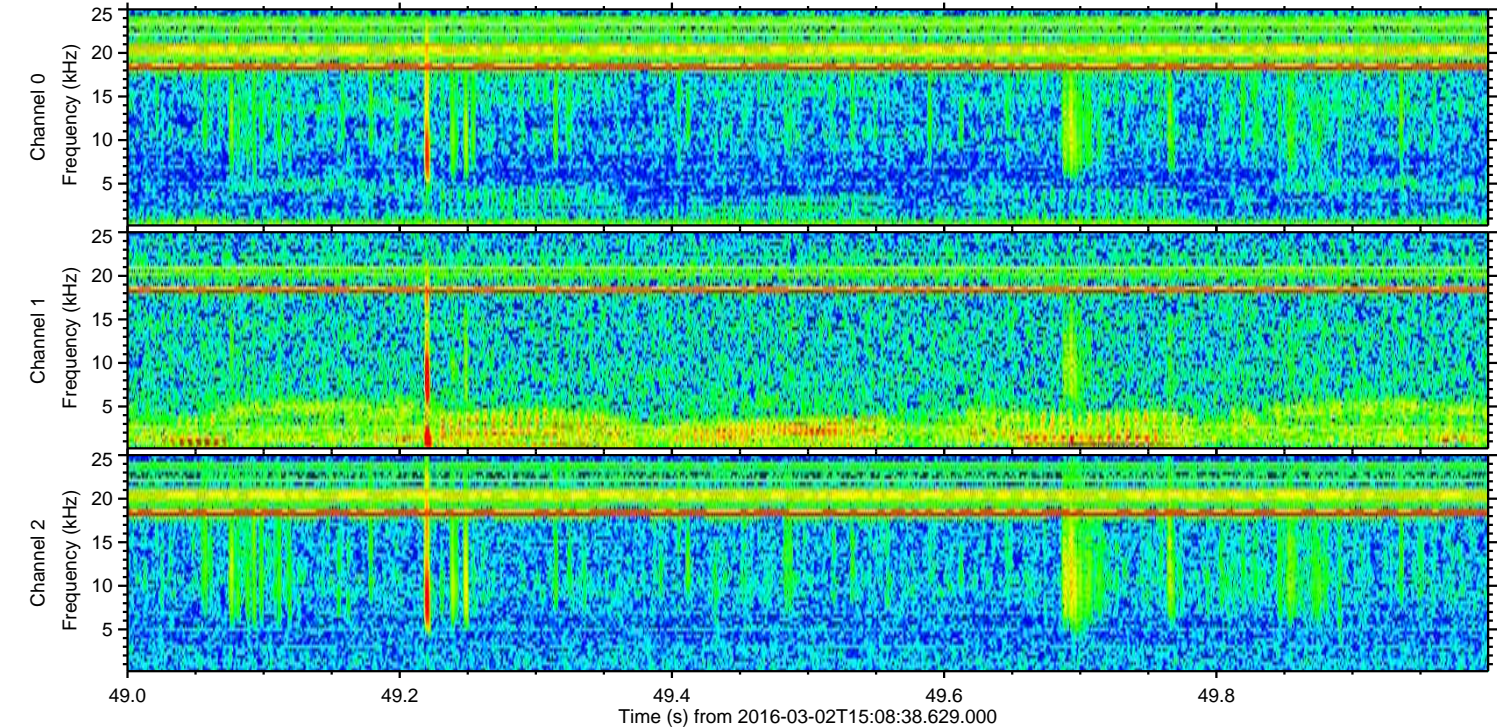
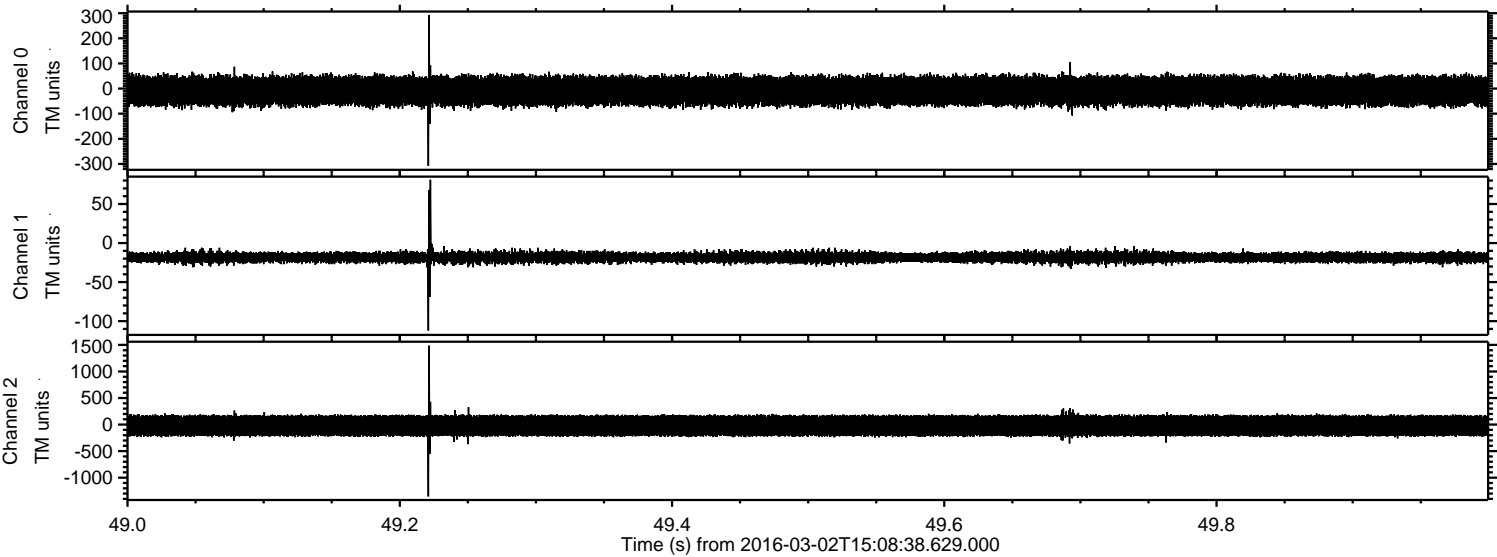


Processed Sun Apr 17 21:59:30 2016 by ELM ver.2012-10-06 from 001\_\_elm20160302\_150837\_\_dat00.bin



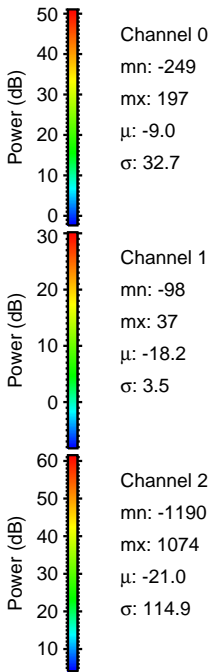
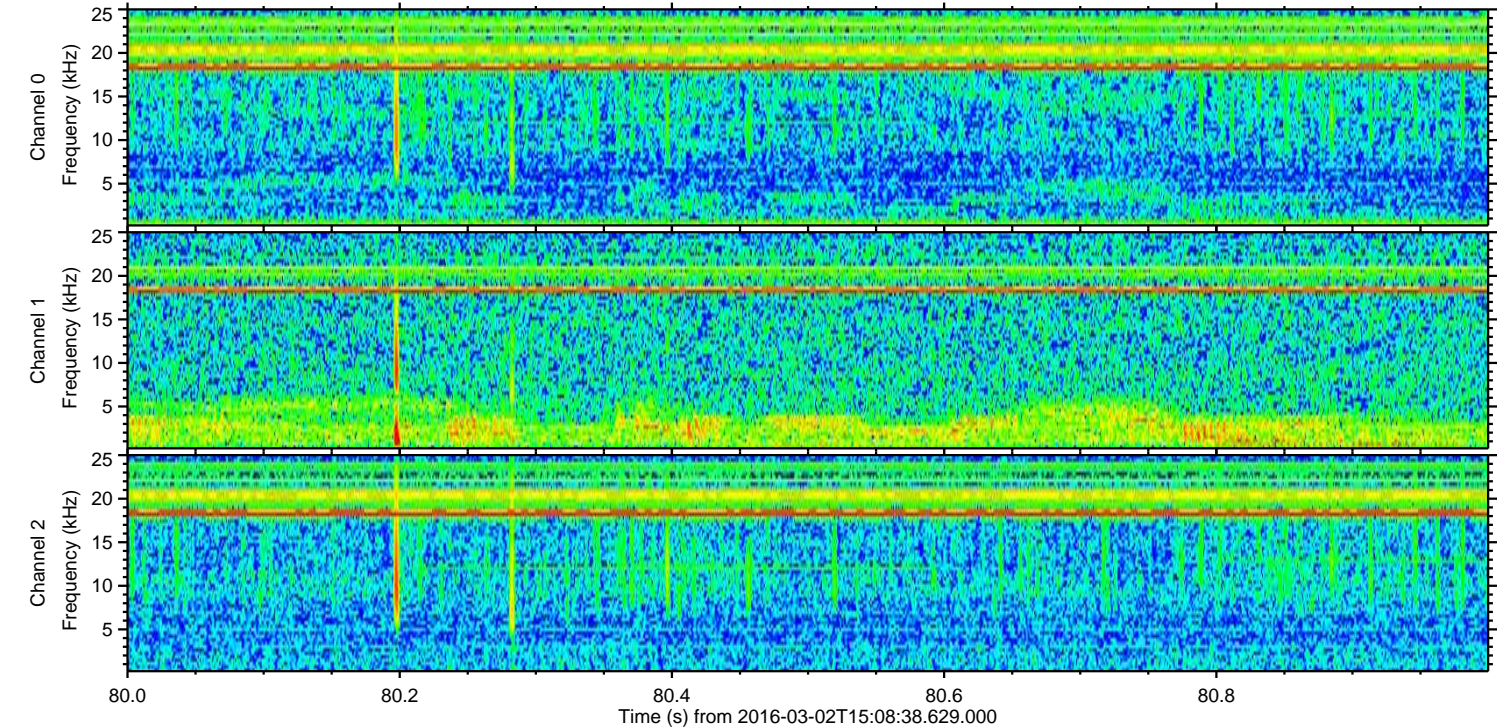
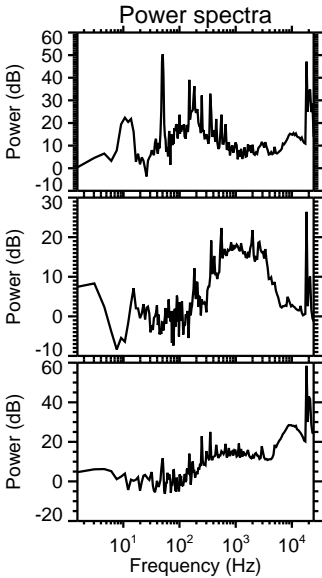
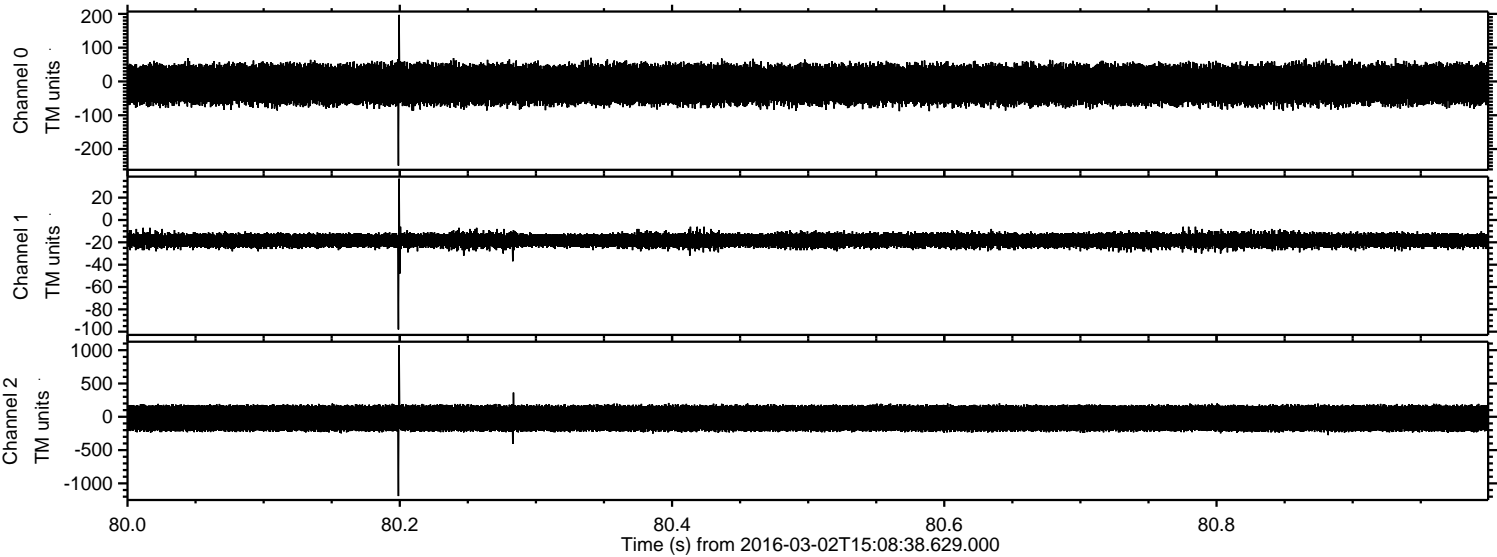


Processed Sun Apr 17 21:59:31 2016 by ELM ver.2012-10-06 from 001\_\_elm20160302\_150837\_\_dat00.bin





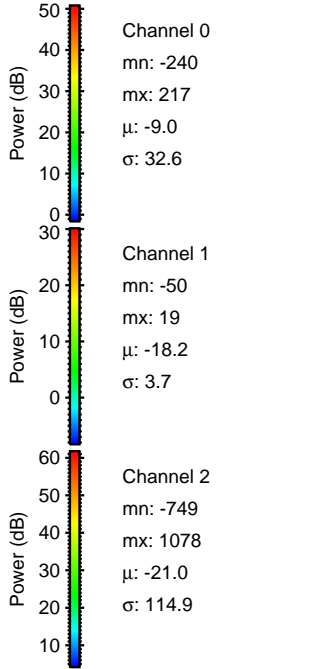
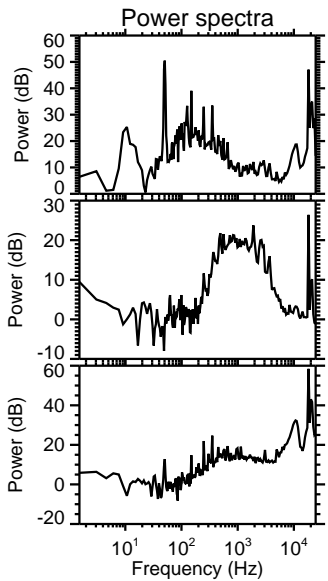
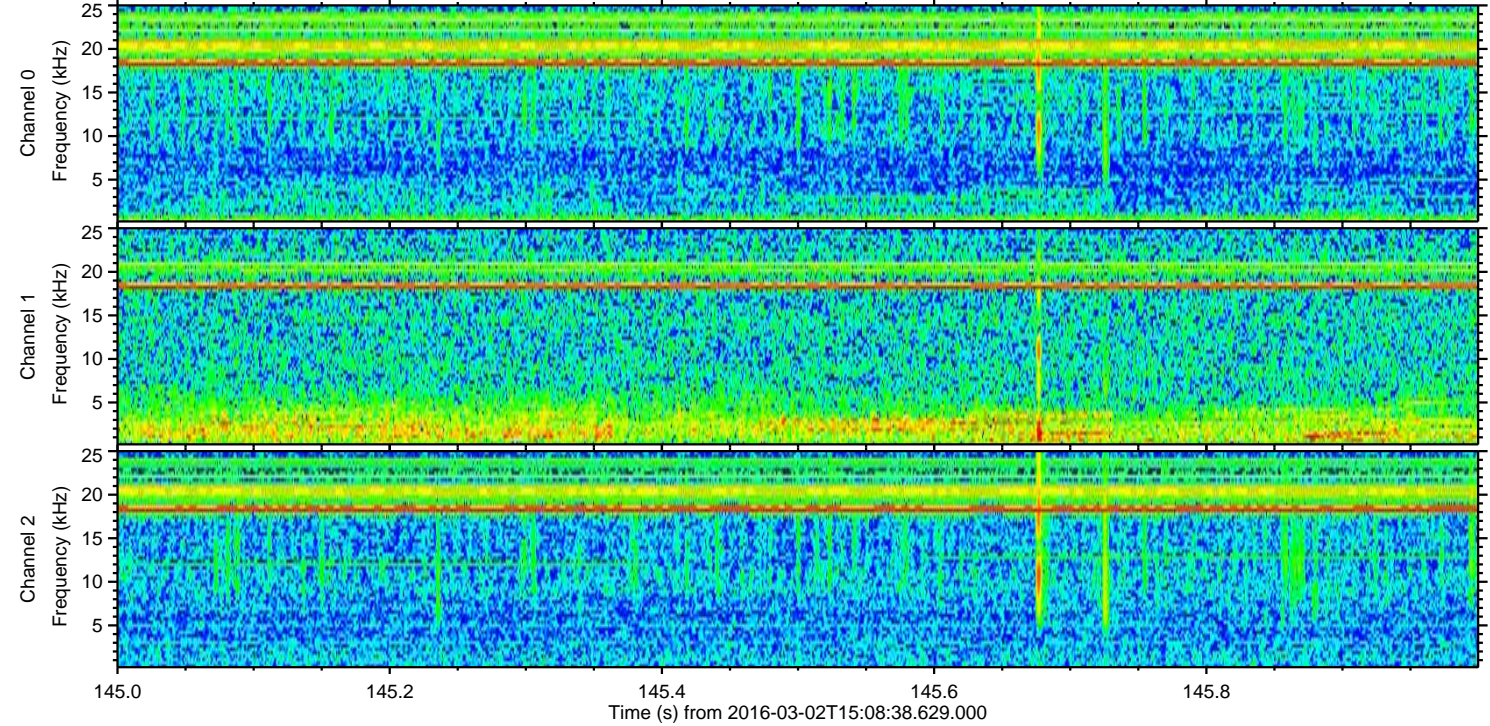
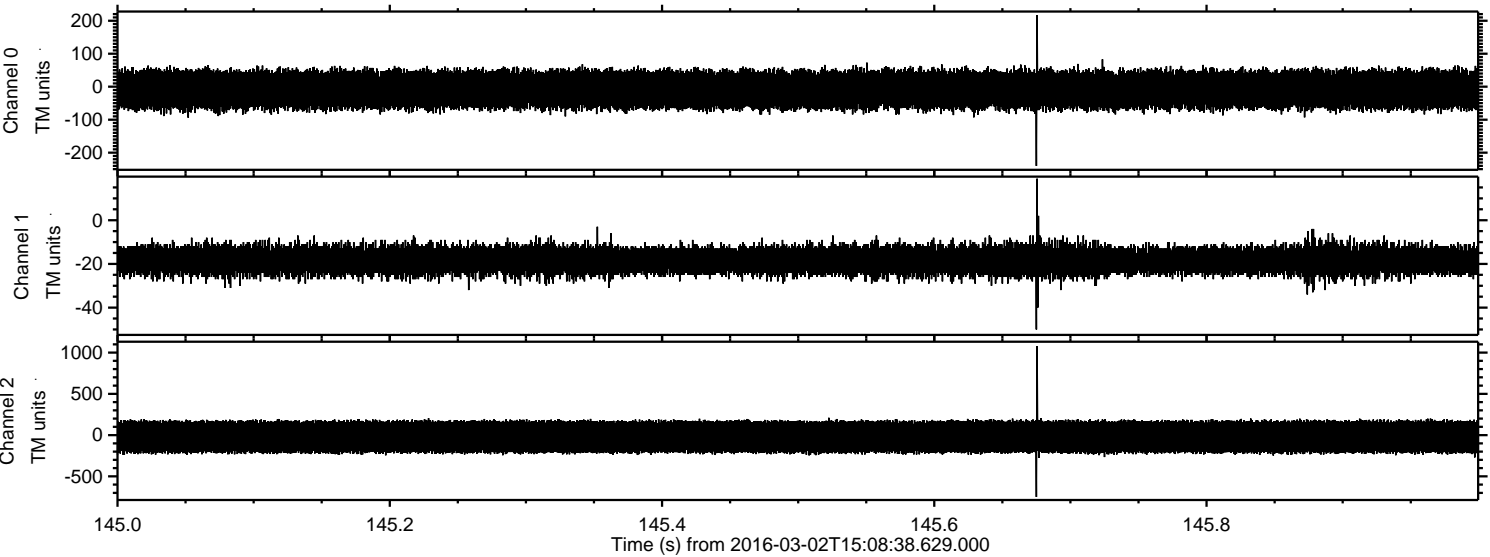
Processed Sun Apr 17 21:59:32 2016 by ELM ver.2012-10-06 from 001\_\_elm20160302\_150837\_\_dat00.bin





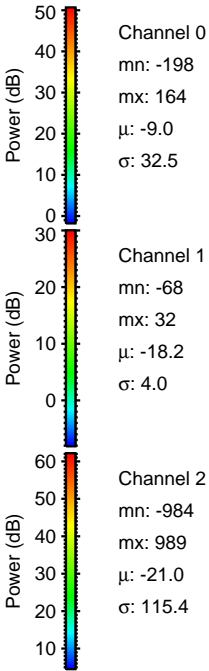
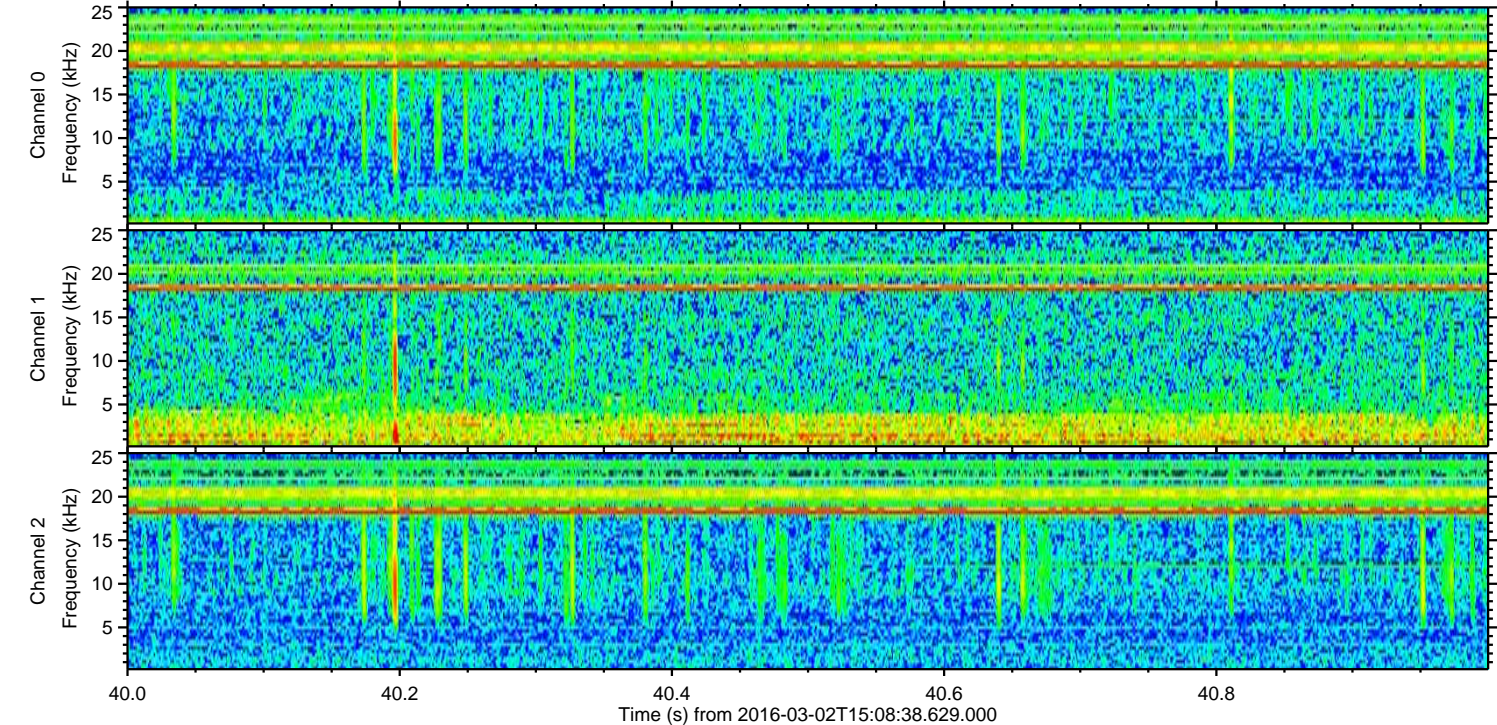
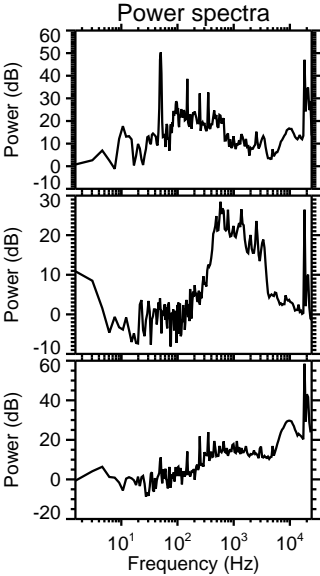
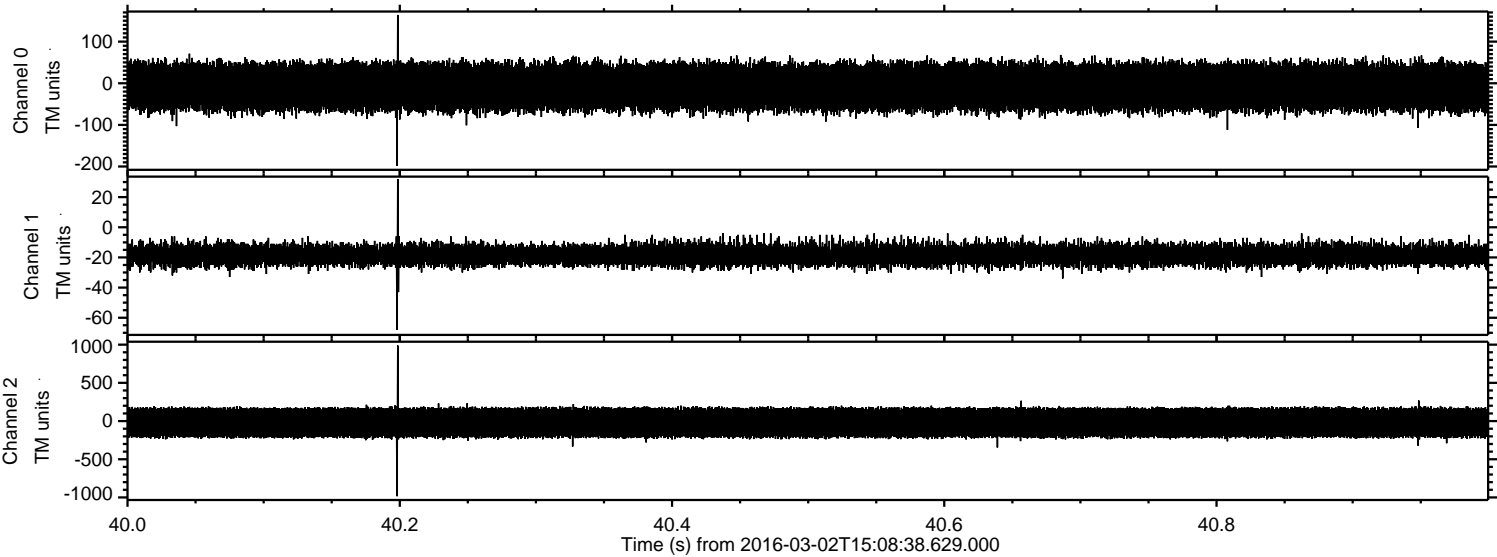
ELMAVAN 3D WAVEFORMS (Measured data sampled at 50 kHz) 51000 packets of 144 samples from 2016-03-02T15:08:38.629.000. Part 146/147

Processed Sun Apr 17 21:59:33 2016 by ELM ver.2012-10-06 from 001\_\_elm20160302\_150837\_\_dat00.bin





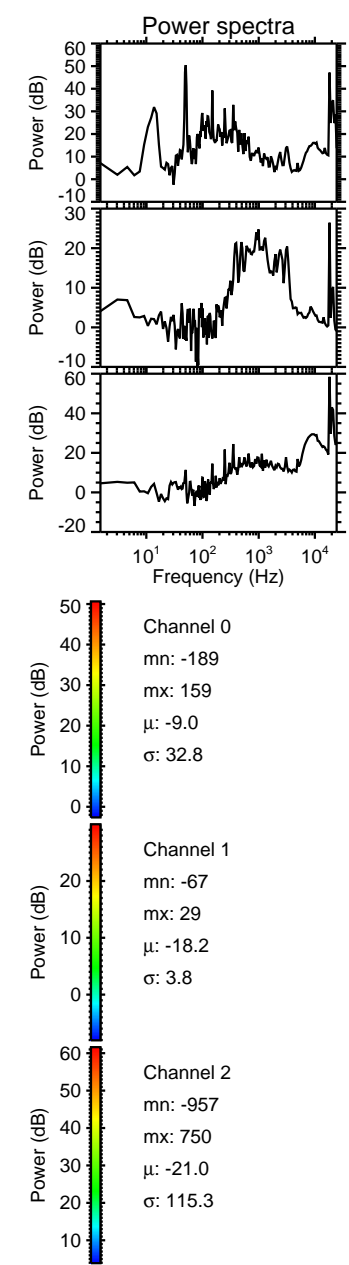
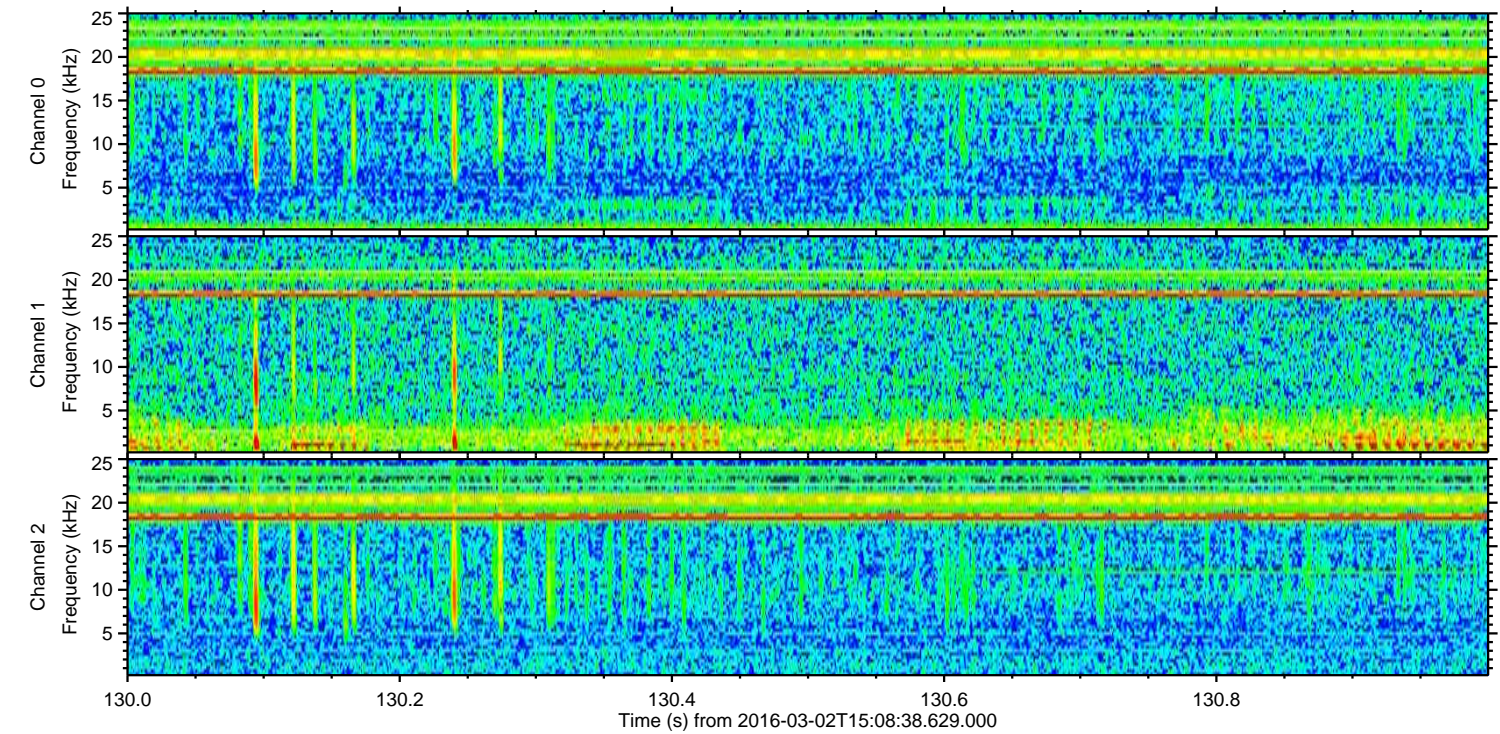
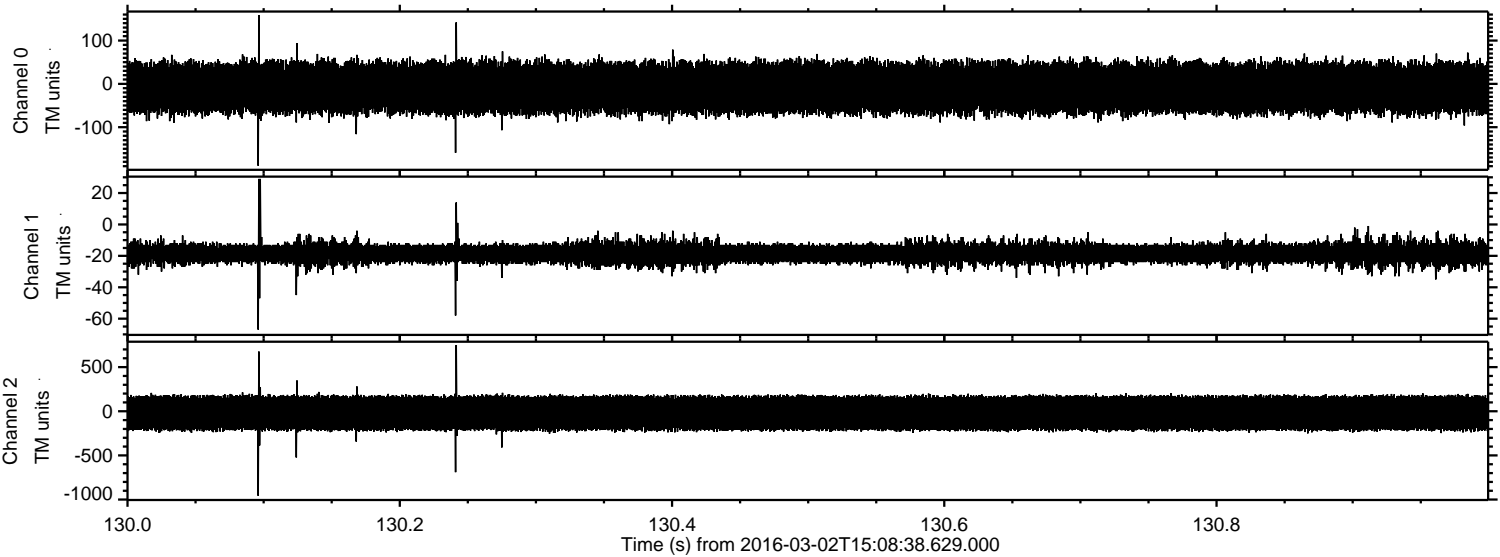
Processed Sun Apr 17 21:59:34 2016 by ELM ver.2012-10-06 from 001\_\_elm20160302\_150837\_\_dat00.bin





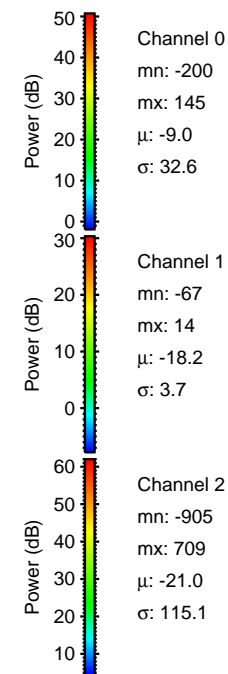
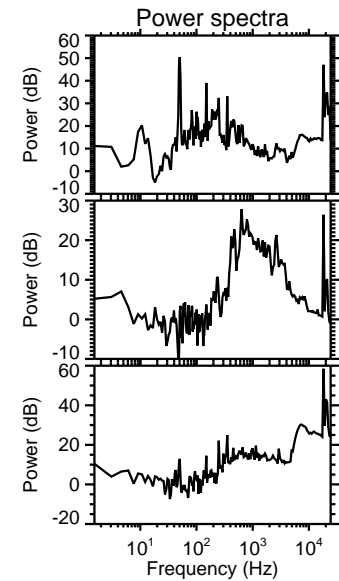
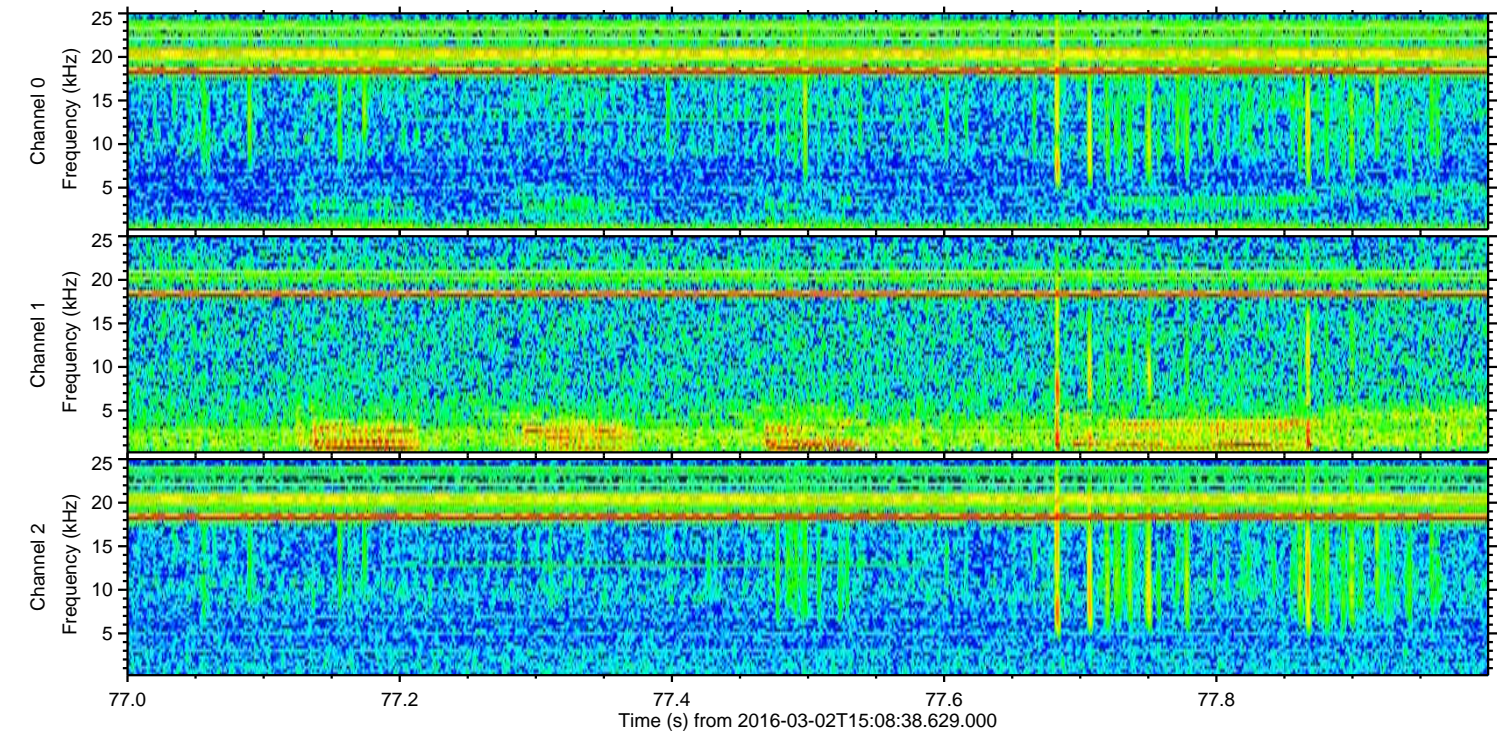
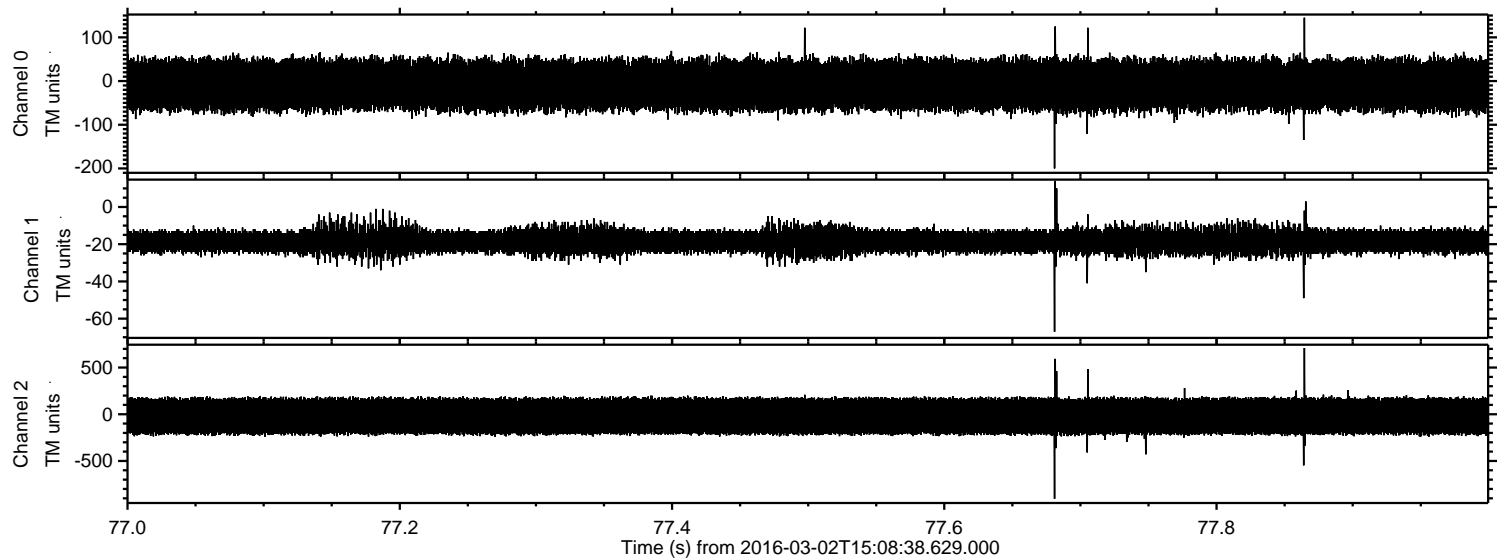
ELMAVAN 3D WAVEFORMS (Measured data sampled at 50 kHz) 51000 packets of 144 samples from 2016-03-02T15:08:38.629.000. Part 131/147

Processed Sun Apr 17 21:59:35 2016 by ELM ver.2012-10-06 from 001\_\_elm20160302\_150837\_\_dat00.bin





Processed Sun Apr 17 21:59:36 2016 by ELM ver.2012-10-06 from 001\_\_elm20160302\_150837\_\_dat00.bin



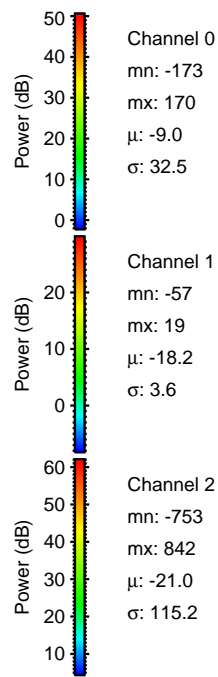
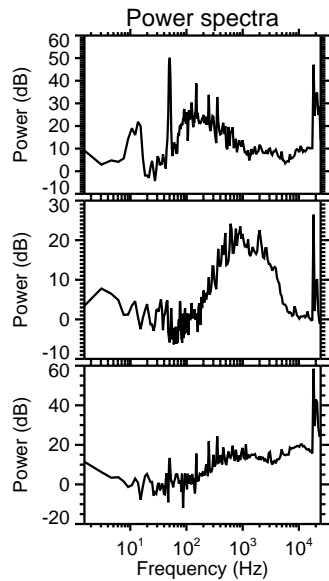
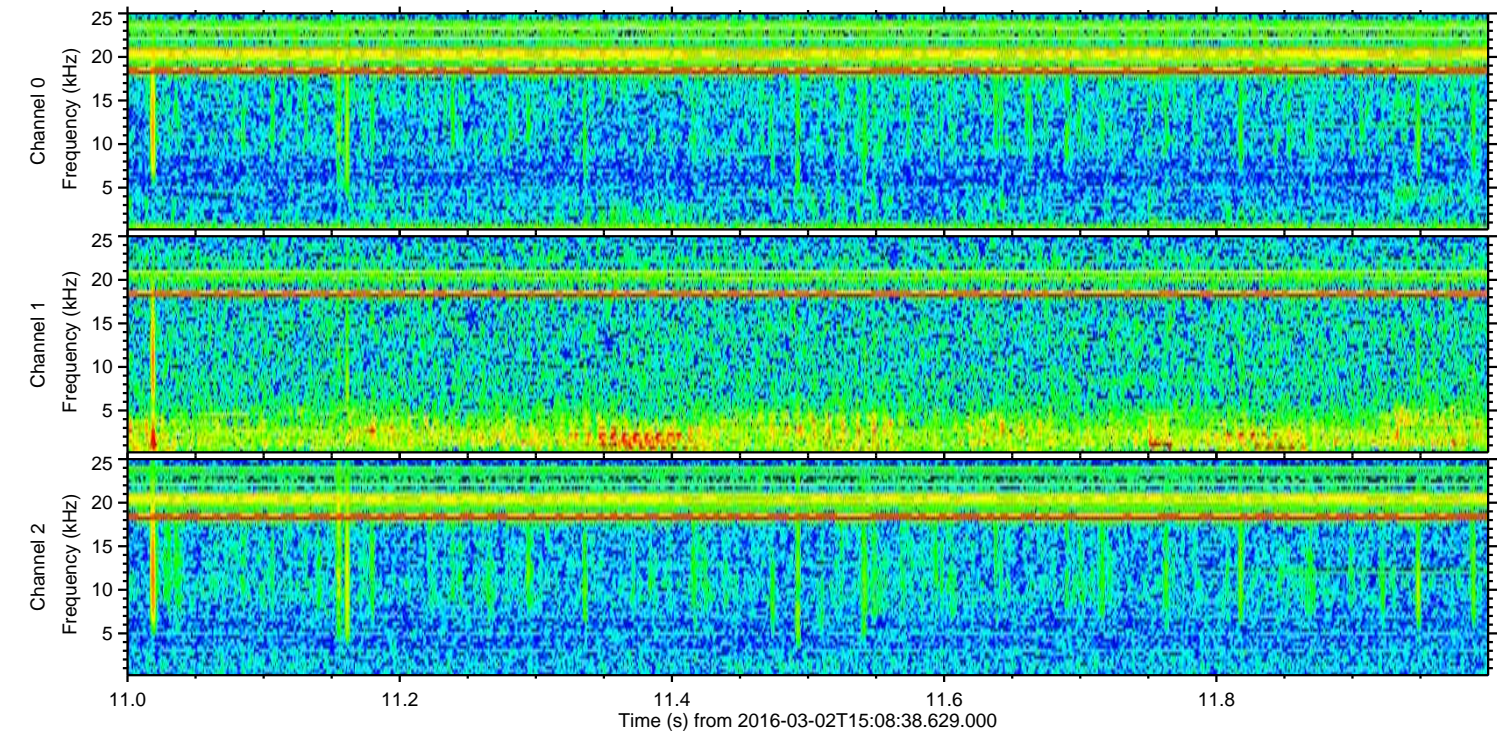
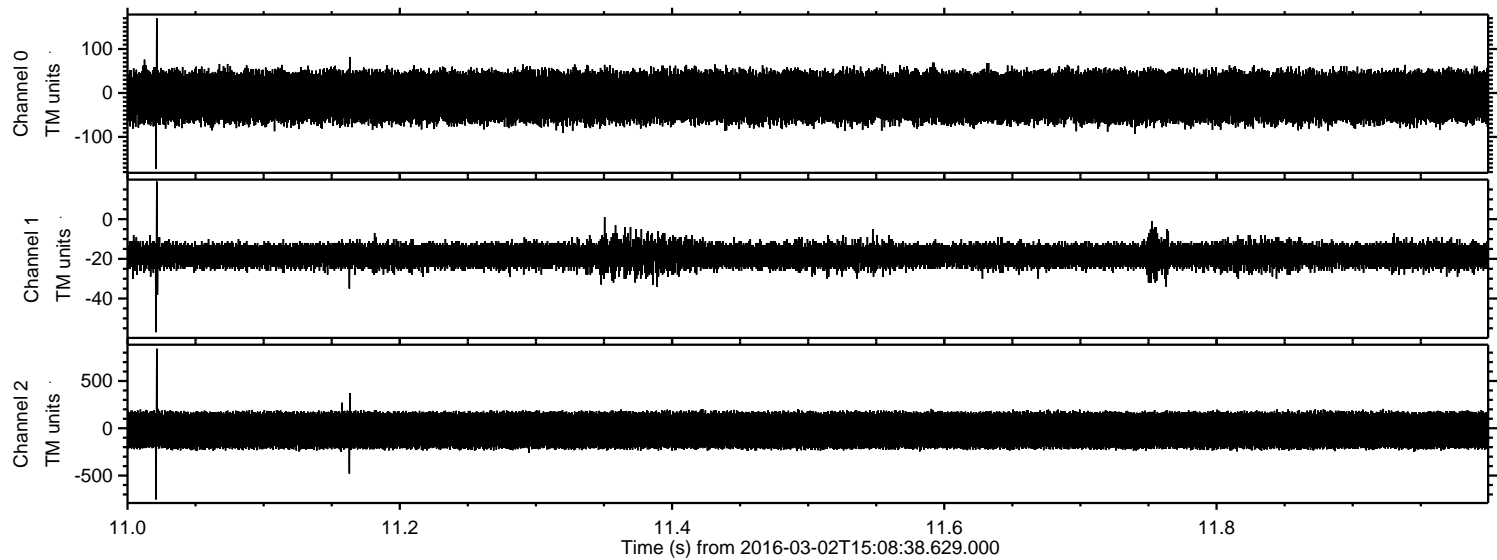
Channel 0  
mn: -200  
mx: 145  
 $\mu$ : -9.0  
 $\sigma$ : 32.6

Channel 1  
mn: -67  
mx: 14  
 $\mu$ : -18.2  
 $\sigma$ : 3.7

Channel 2  
mn: -905  
mx: 709  
 $\mu$ : -21.0  
 $\sigma$ : 115.1



Processed Sun Apr 17 21:59:37 2016 by ELM ver.2012-10-06 from 001\_\_elm20160302\_150837\_\_dat00.bin





Processed Sun Apr 17 21:59:38 2016 by ELM ver.2012-10-06 from 001\_\_elm20160302\_150837\_\_dat00.bin

