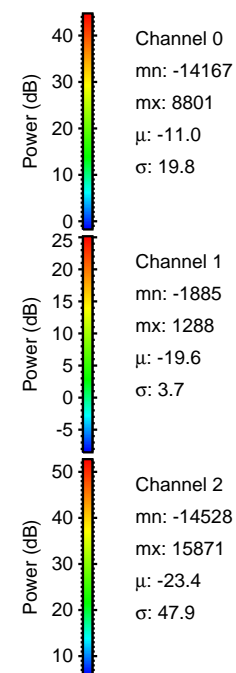
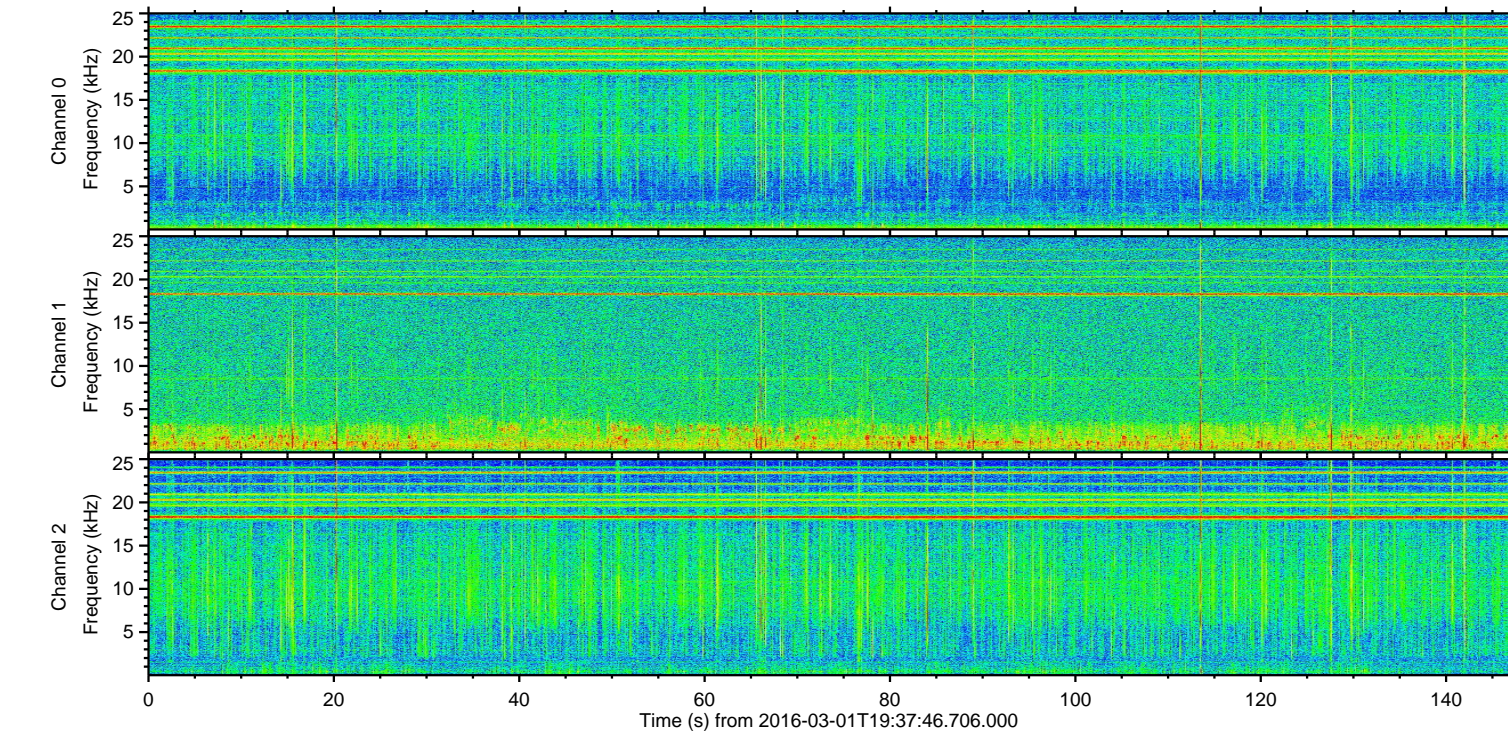
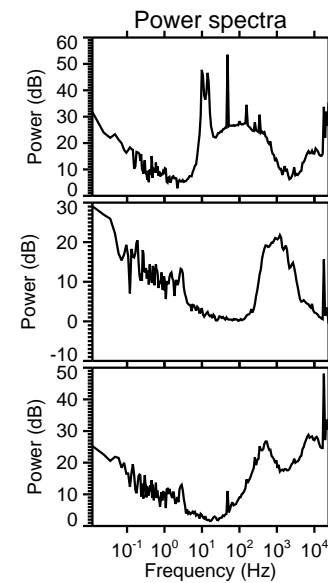
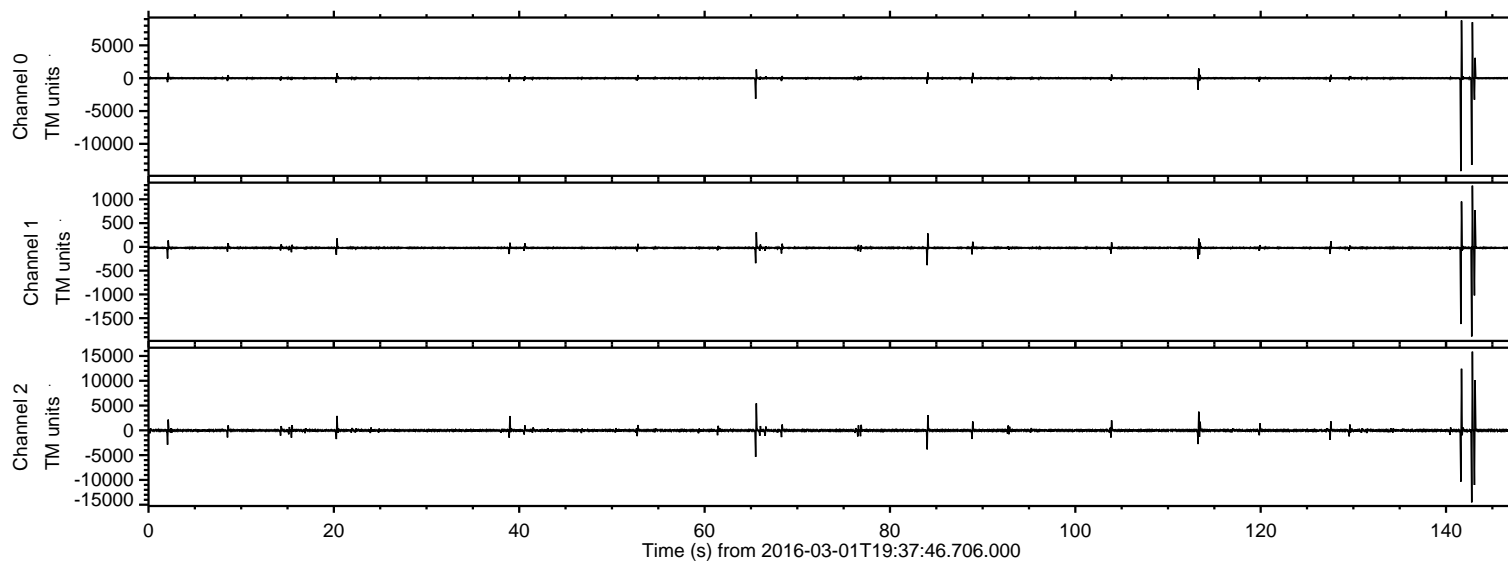


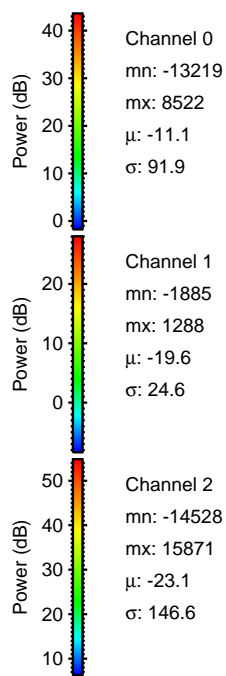
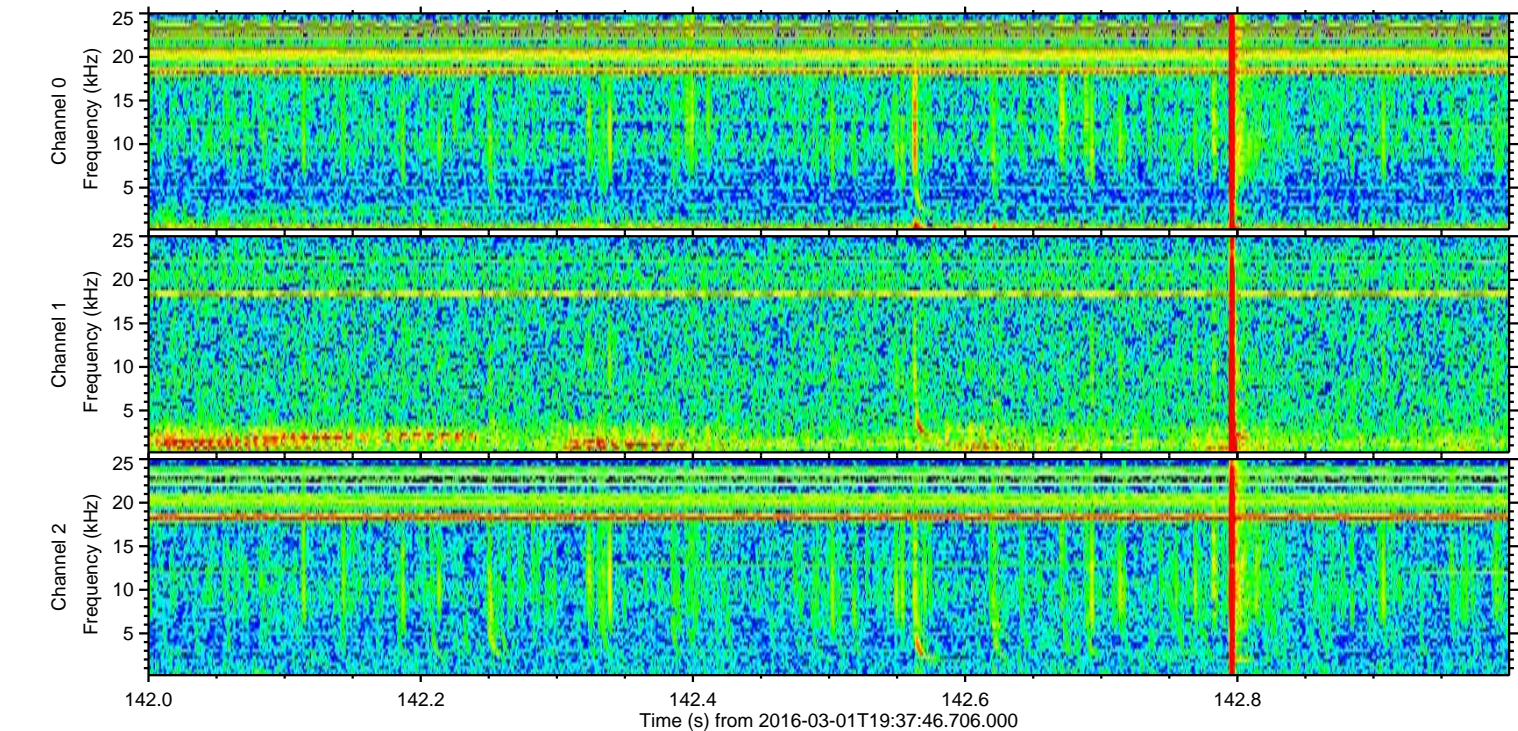
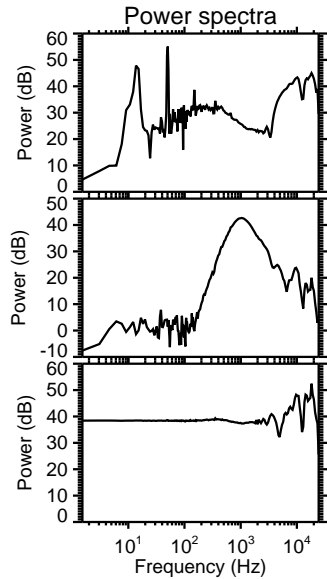
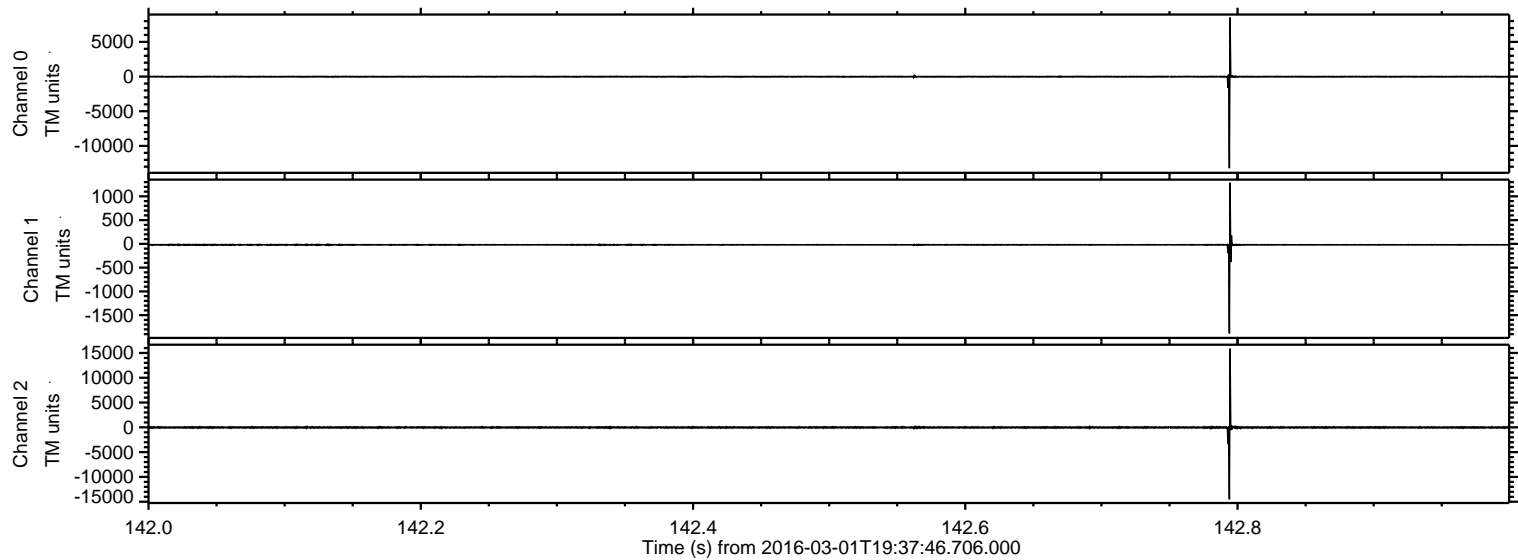
ELMAVAN 3D WAVEFORMS (Measured data sampled at 50 kHz) 51000 packets of 144 samples from 2016-03-01T19:37:46.706.000.

Processed Sun Apr 17 17:58:17 2016 by ELM ver.2012-10-06 from 001__elm20160301_193745__dat00.bin



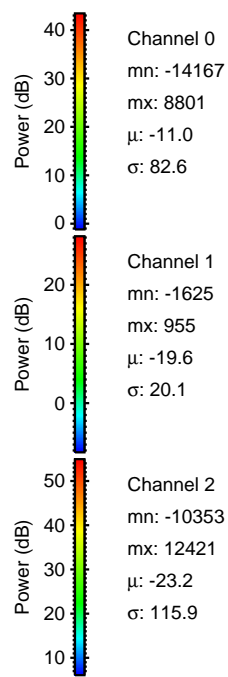
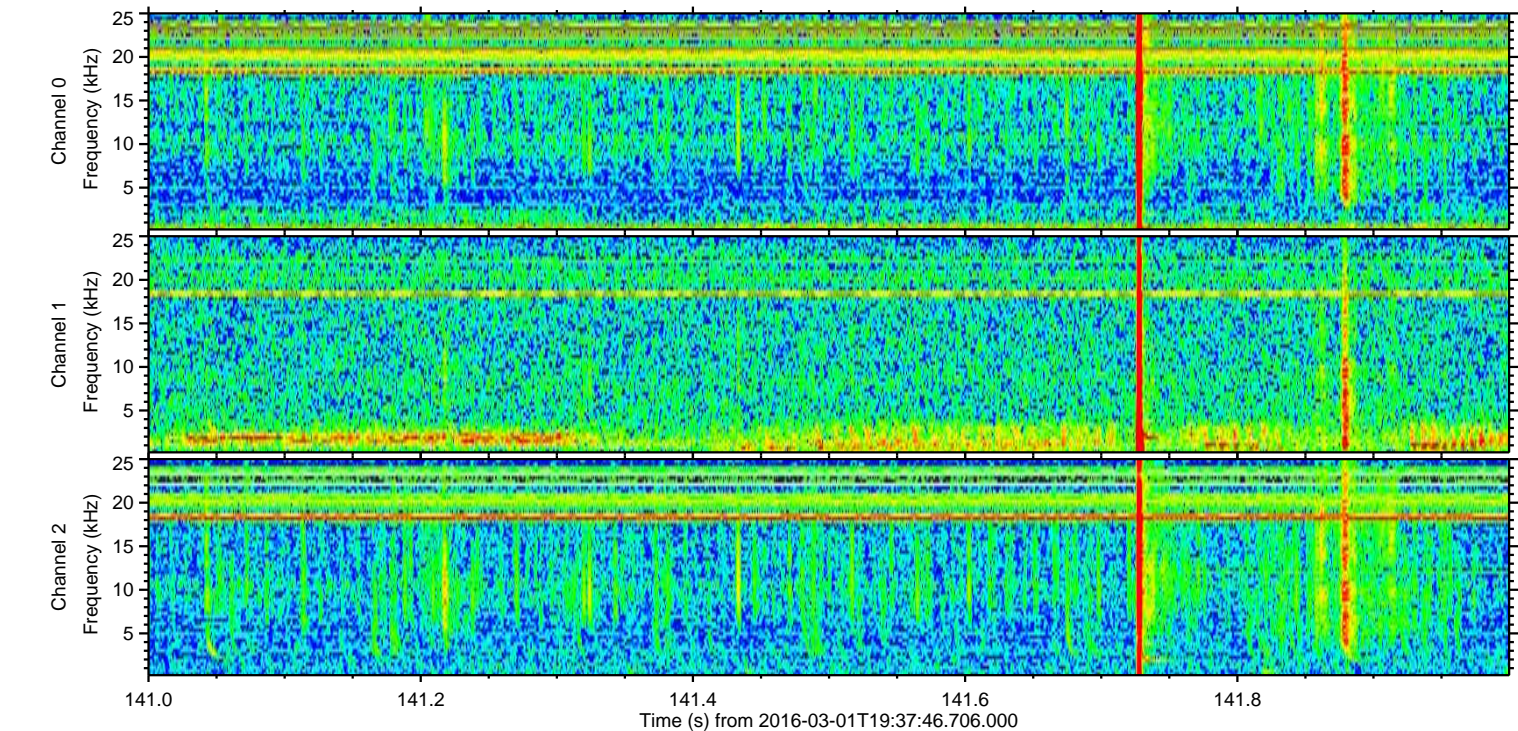
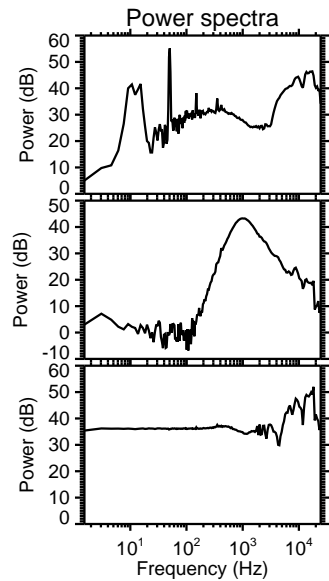
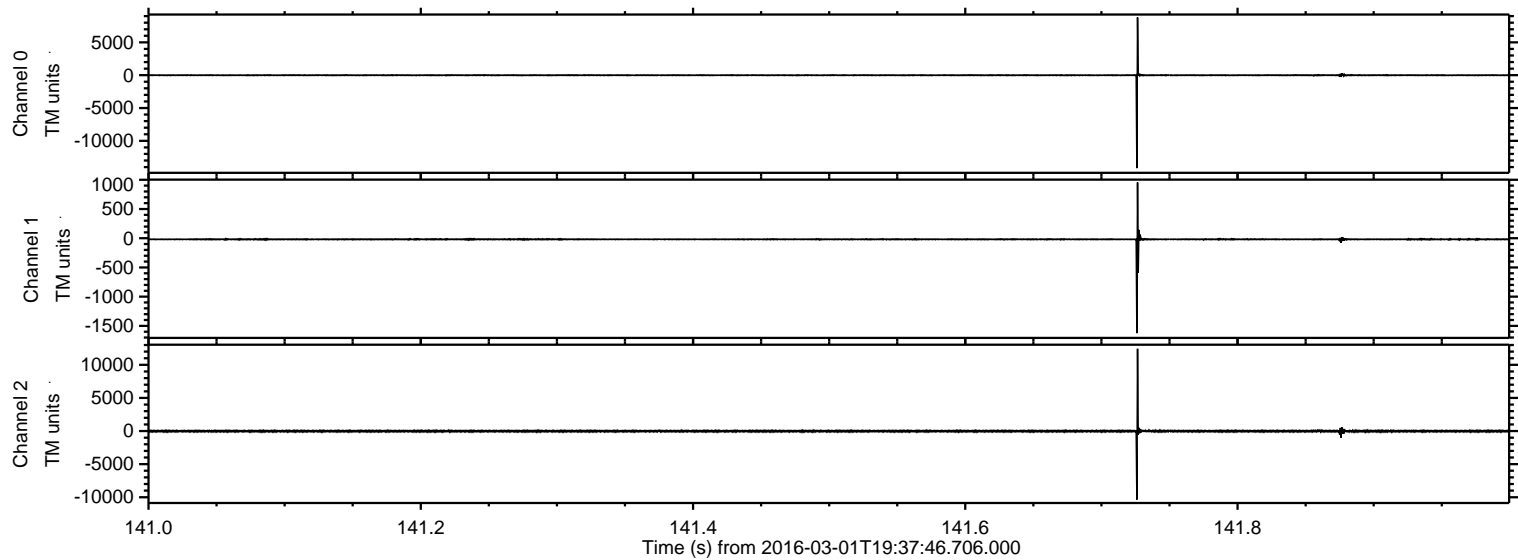
ELMAVAN 3D WAVEFORMS (Measured data sampled at 50 kHz) 51000 packets of 144 samples from 2016-03-01T19:37:46.706.000. Part 143/147

Processed Sun Apr 17 17:58:29 2016 by ELM ver.2012-10-06 from 001__elm20160301_193745__dat00.bin



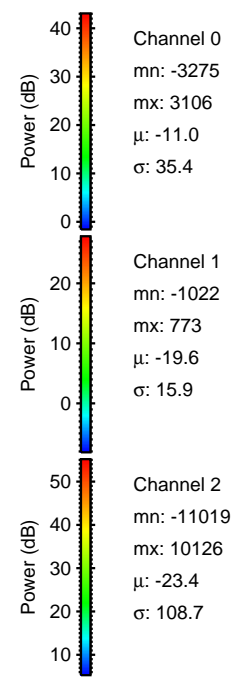
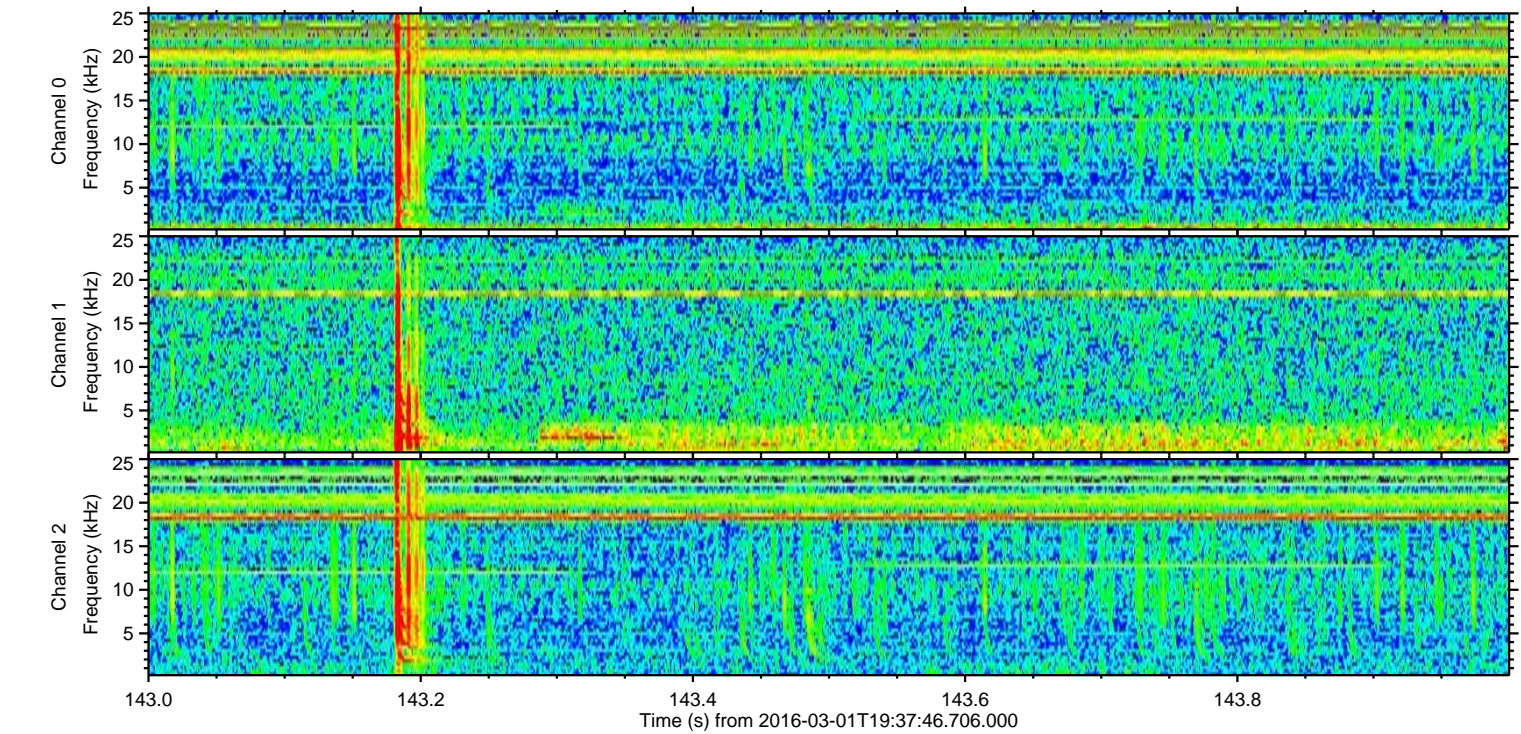
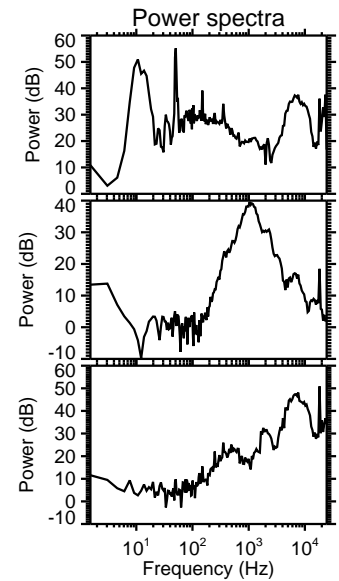
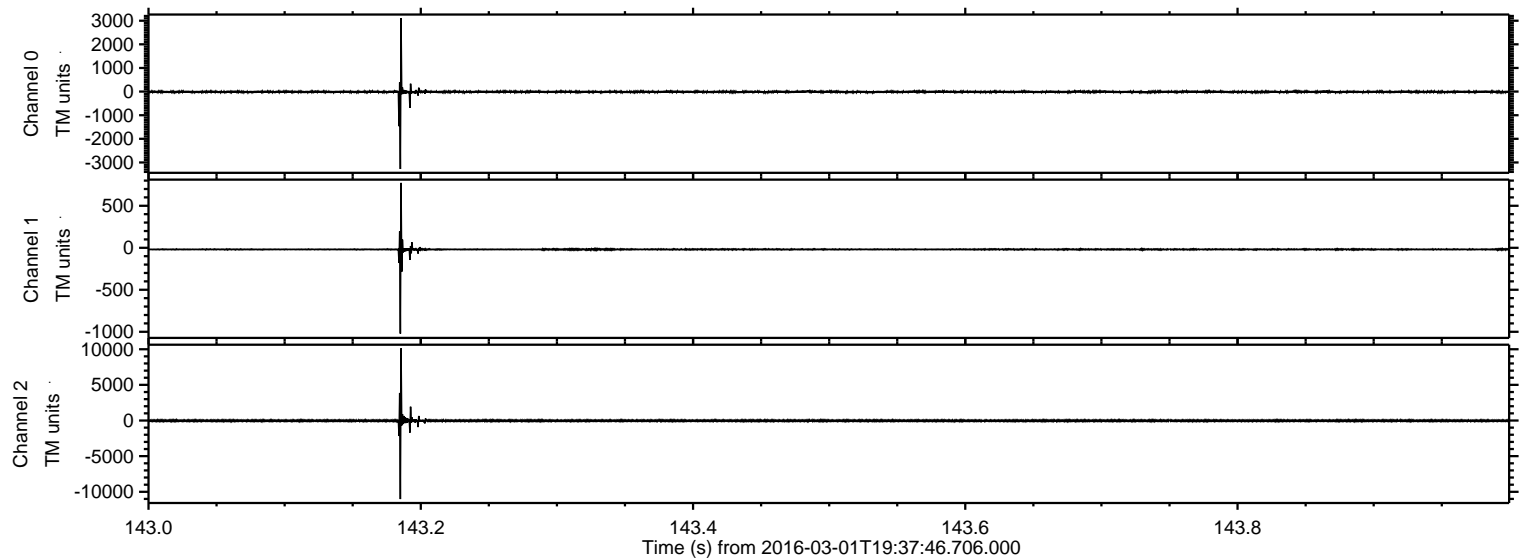
ELMAVAN 3D WAVEFORMS (Measured data sampled at 50 kHz) 51000 packets of 144 samples from 2016-03-01T19:37:46.706.000. Part 142/147

Processed Sun Apr 17 17:58:30 2016 by ELM ver.2012-10-06 from 001__elm20160301_193745__dat00.bin

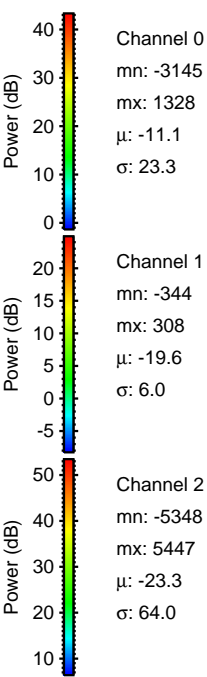
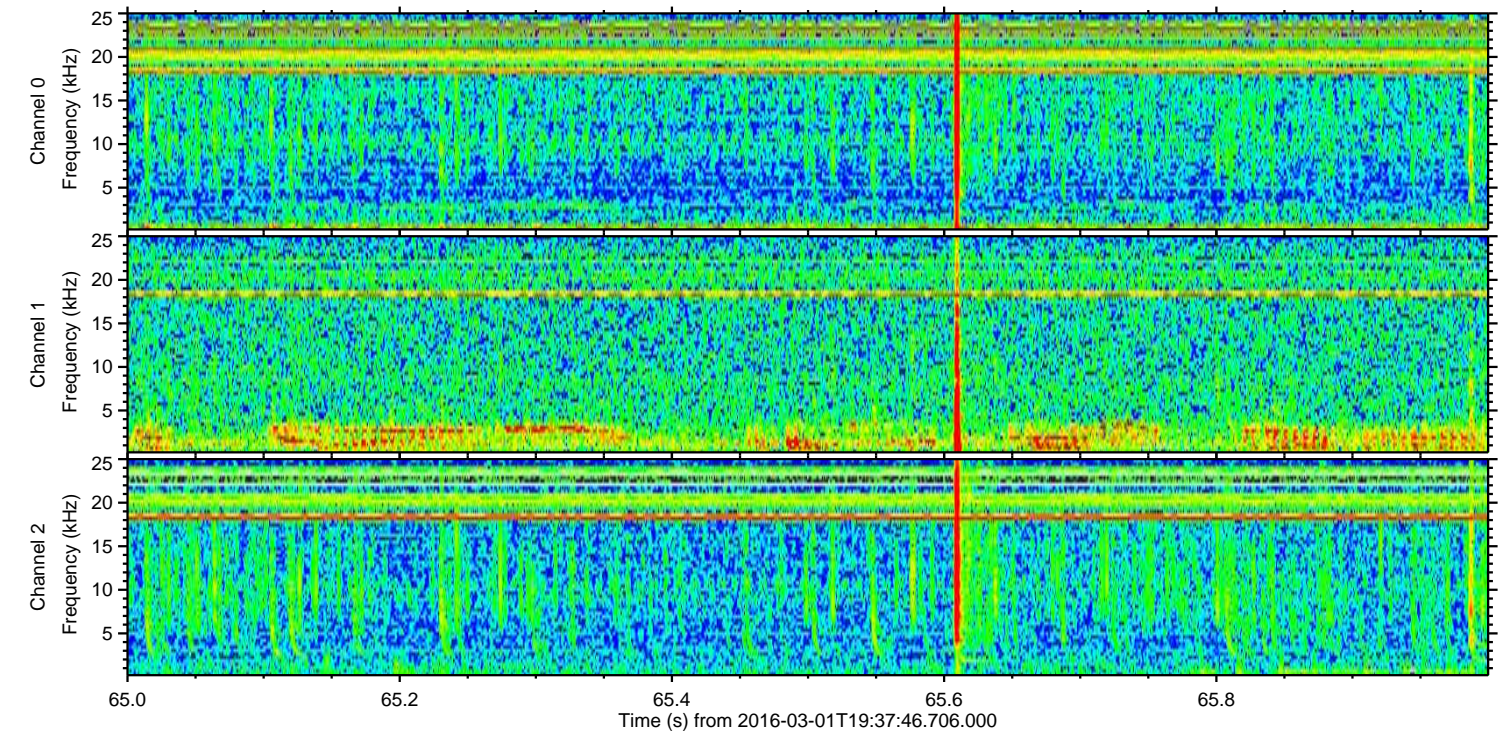
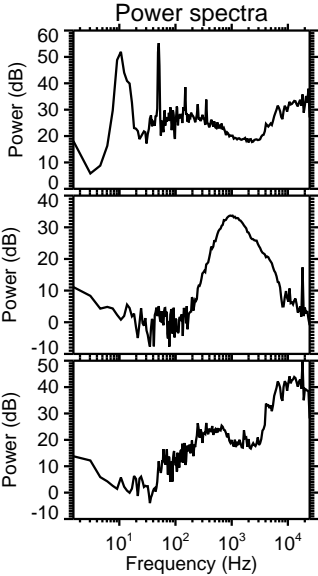
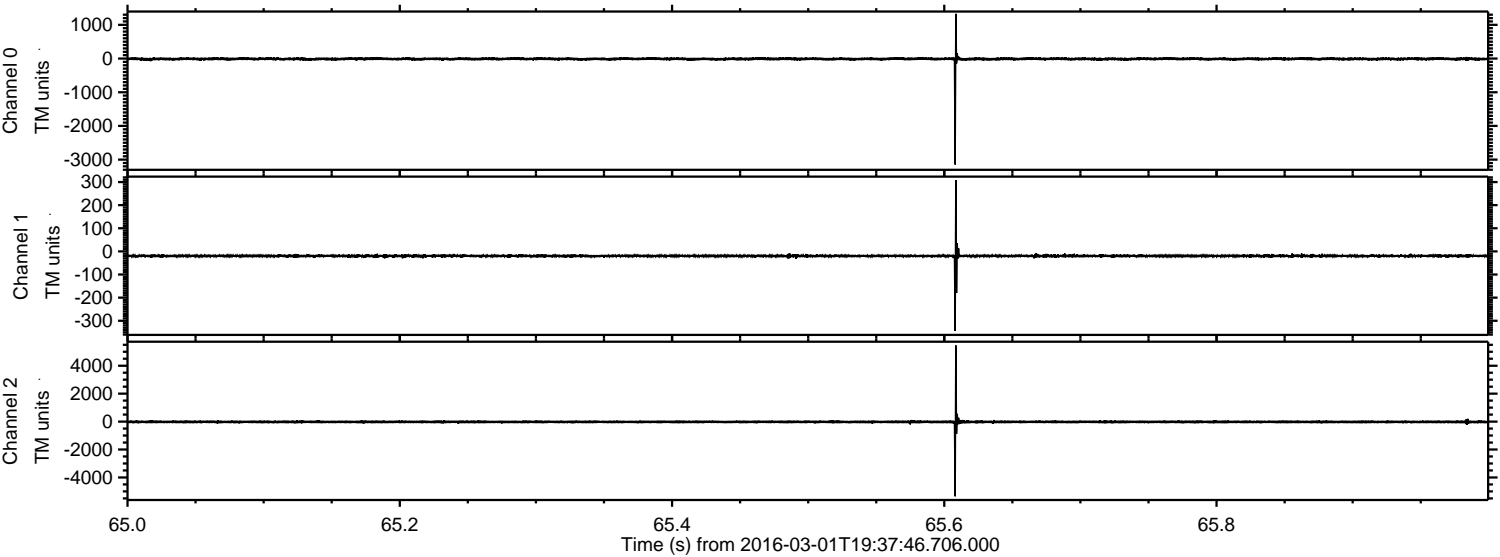


ELMAVAN 3D WAVEFORMS (Measured data sampled at 50 kHz) 51000 packets of 144 samples from 2016-03-01T19:37:46.706.000. Part 144/147

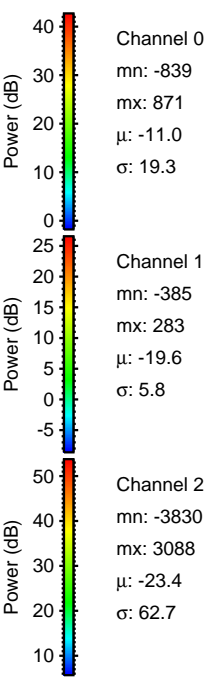
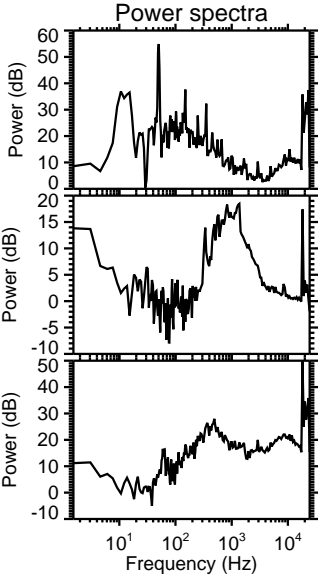
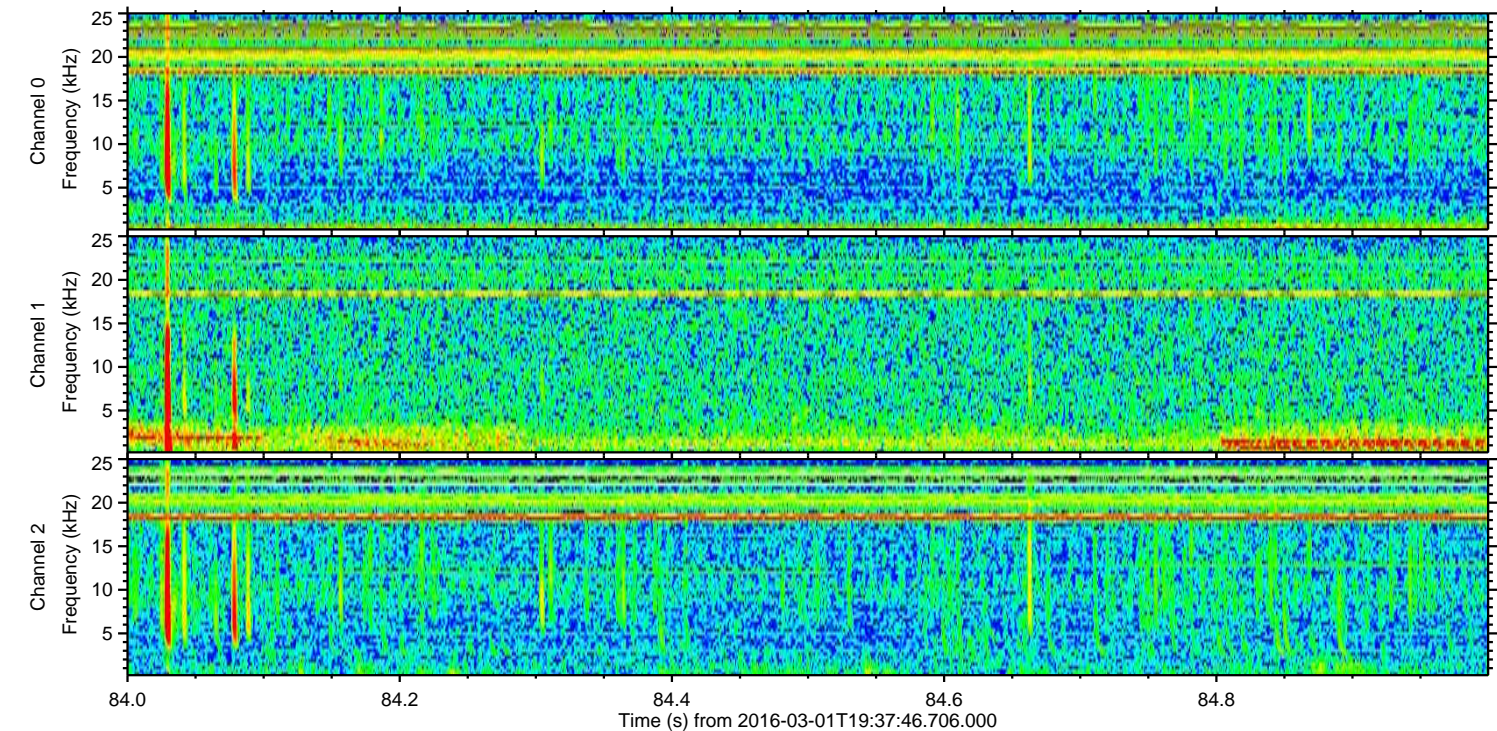
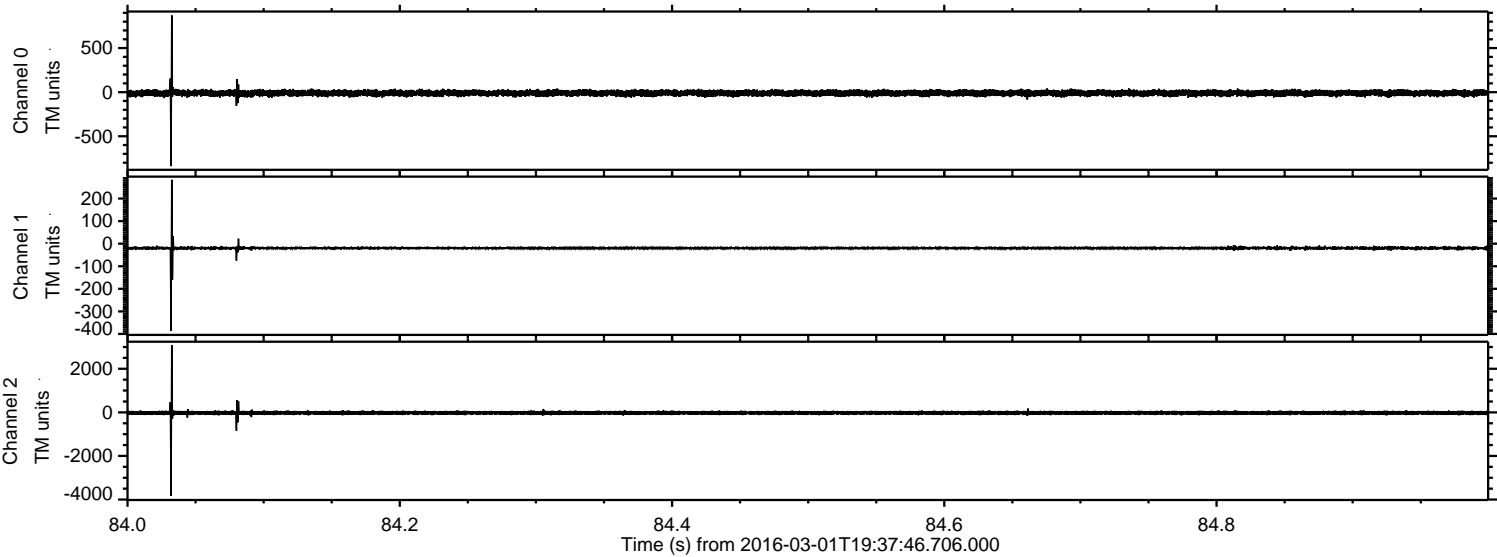
Processed Sun Apr 17 17:58:31 2016 by ELM ver.2012-10-06 from 001__elm20160301_193745__dat00.bin



Processed Sun Apr 17 17:58:32 2016 by ELM ver.2012-10-06 from 001__elm20160301_193745__dat00.bin

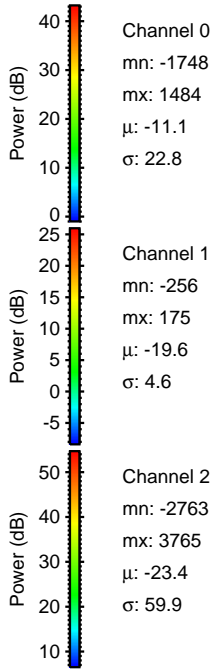
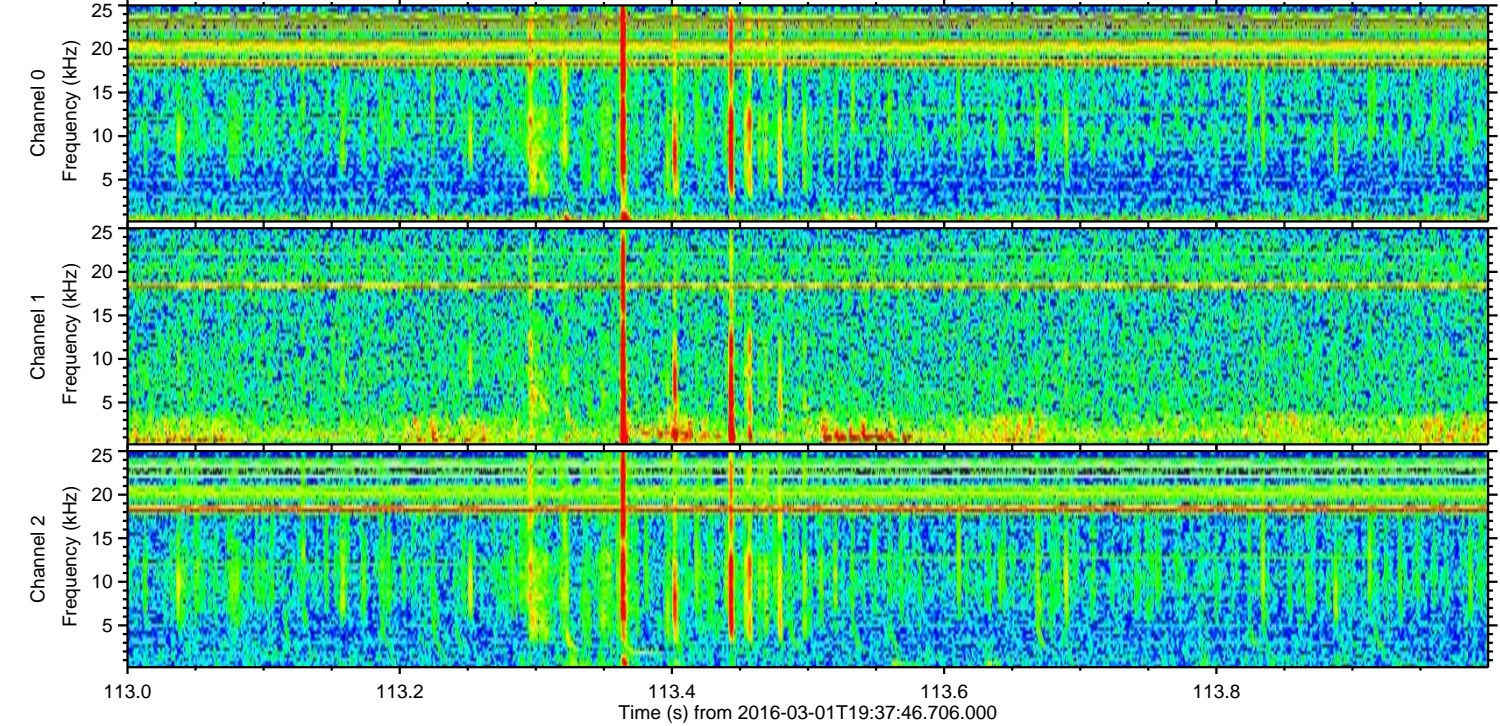
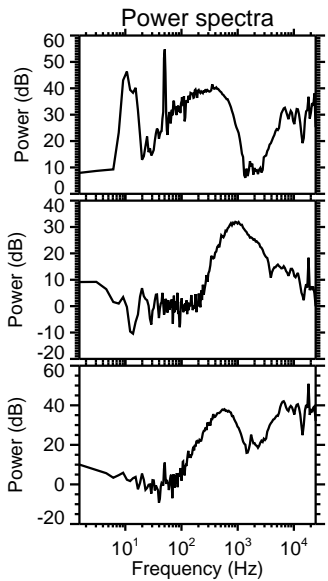
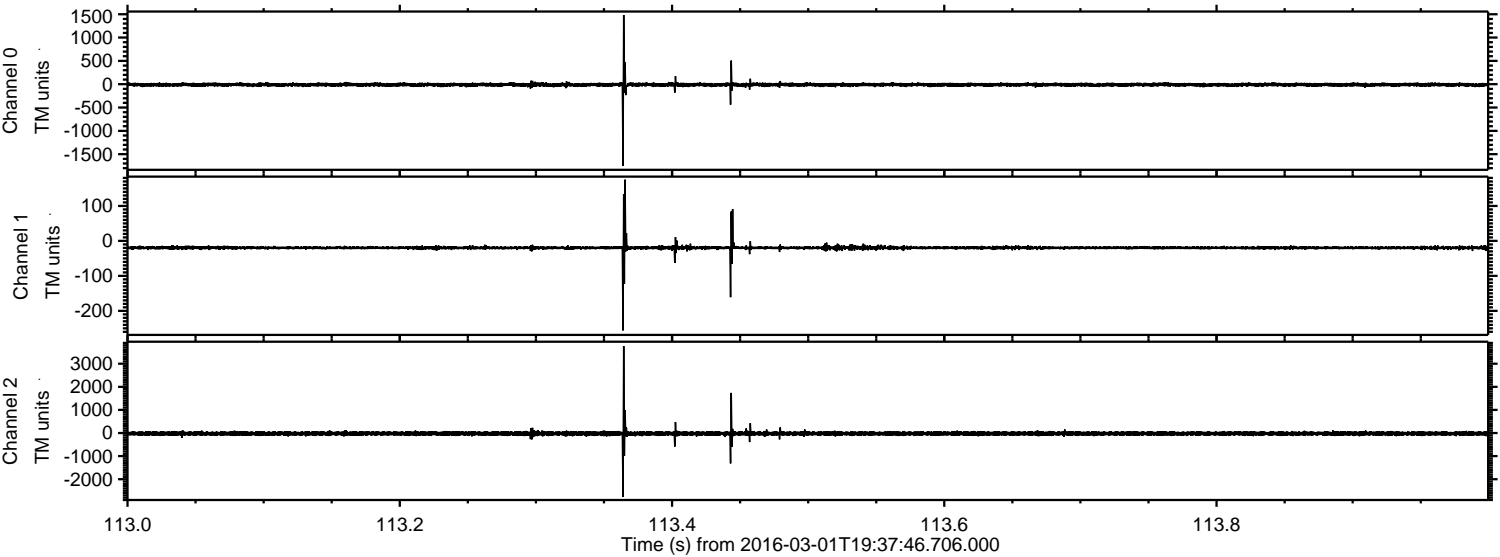


Processed Sun Apr 17 17:58:33 2016 by ELM ver.2012-10-06 from 001__elm20160301_193745__dat00.bin



ELMAVAN 3D WAVEFORMS (Measured data sampled at 50 kHz) 51000 packets of 144 samples from 2016-03-01T19:37:46.706.000. Part 114/147

Processed Sun Apr 17 17:58:34 2016 by ELM ver.2012-10-06 from 001__elm20160301_193745__dat00.bin

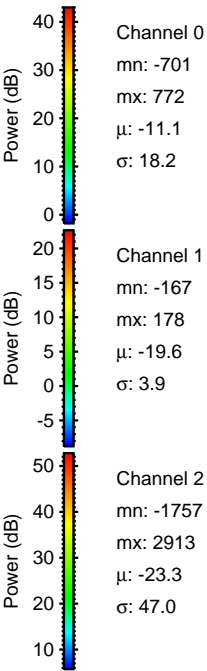
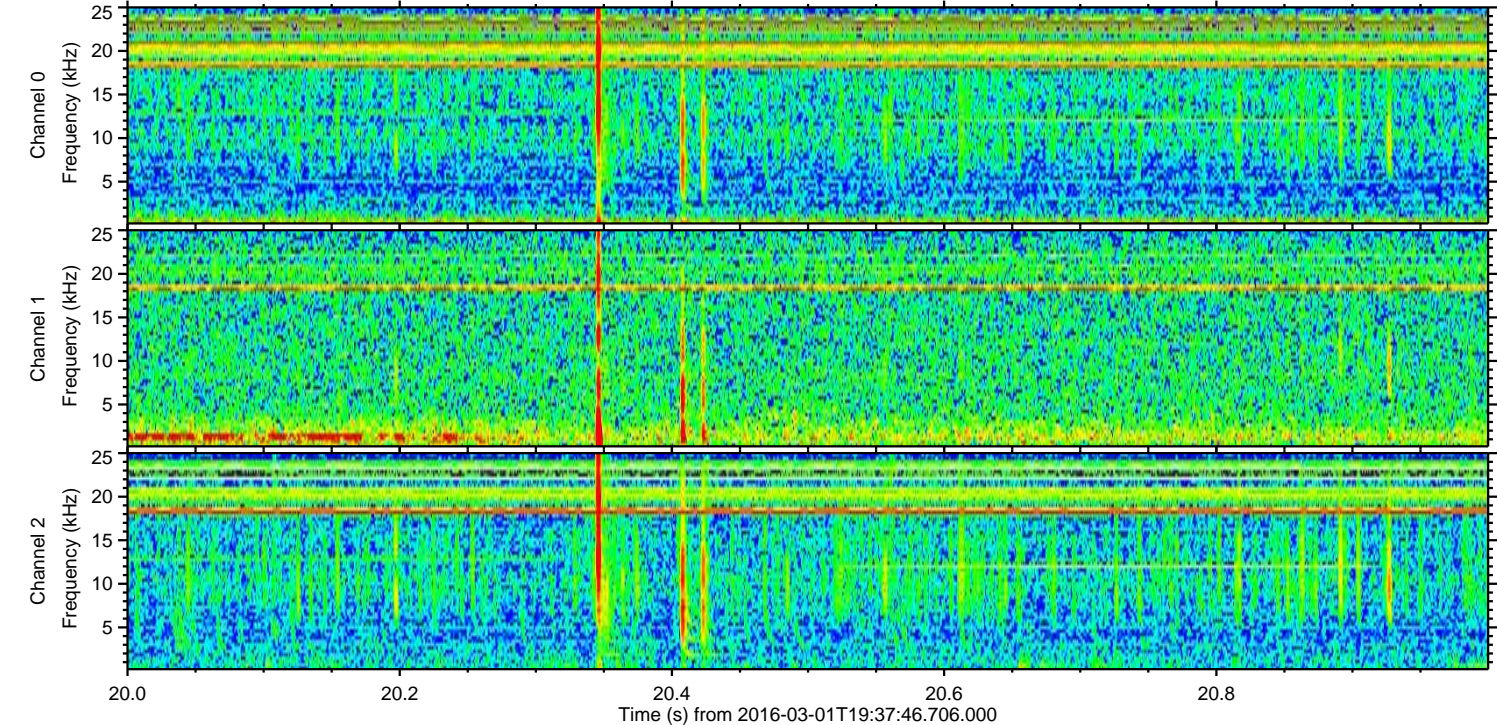
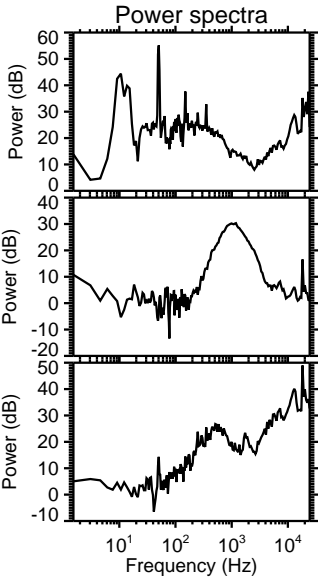
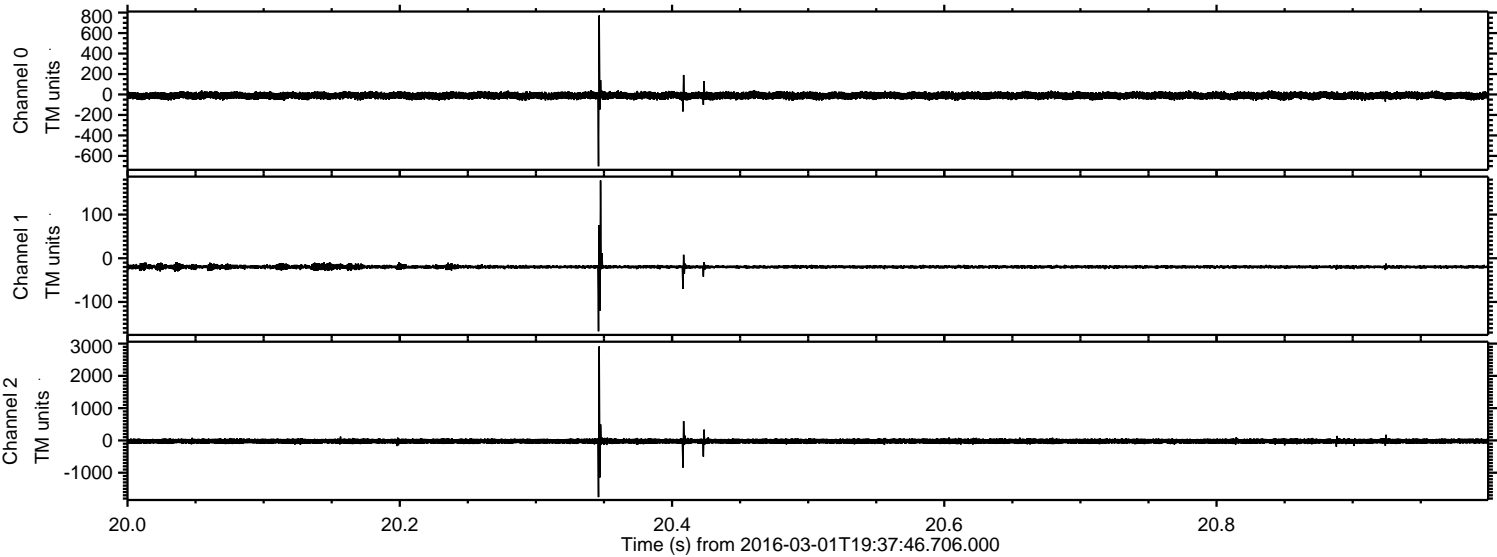


Channel 0
mn: -1748
mx: 1484
 μ : -11.1
 σ : 22.8

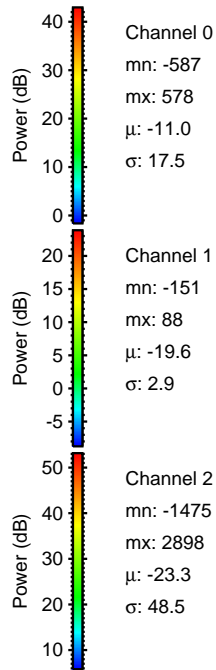
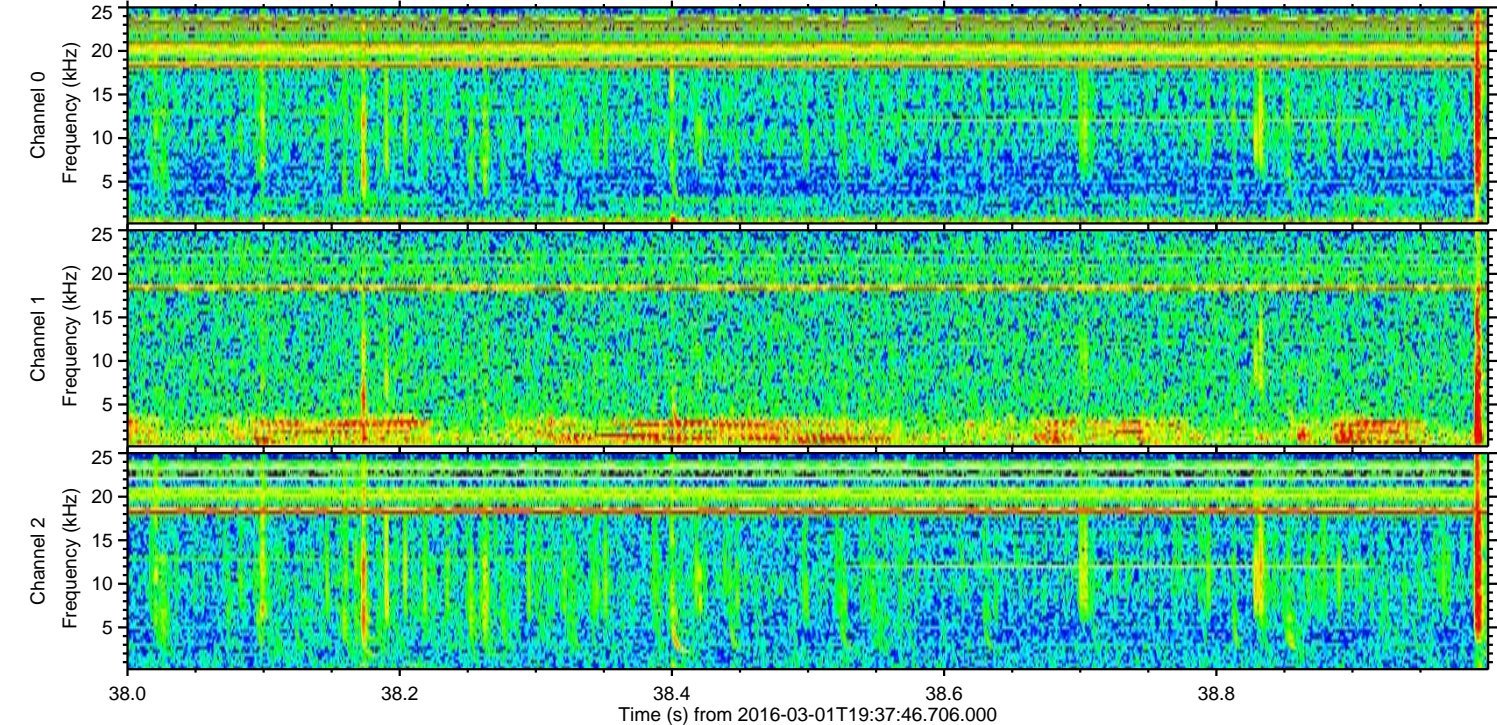
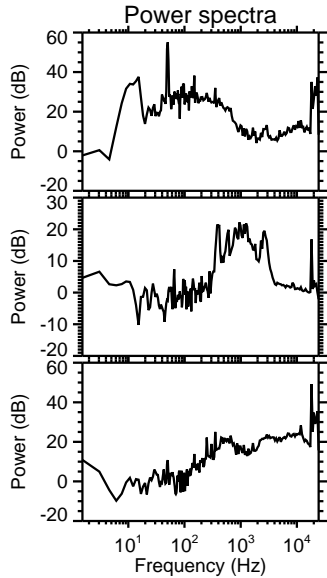
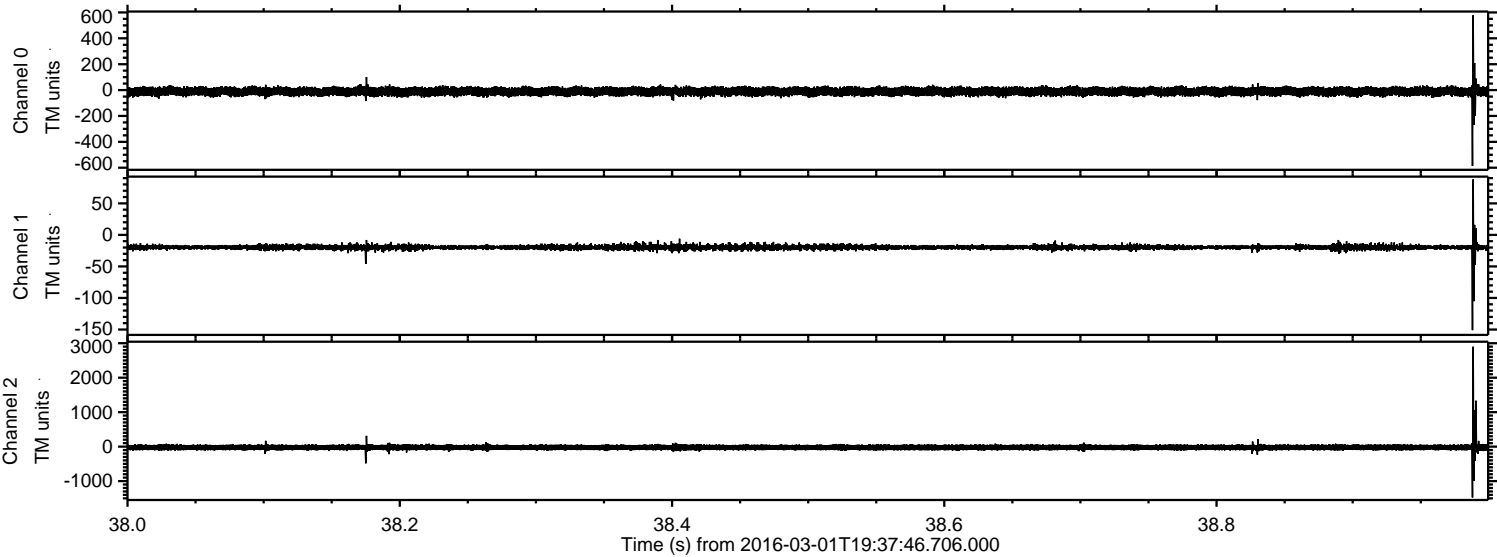
Channel 1
mn: -256
mx: 175
 μ : -19.6
 σ : 4.6

Channel 2
mn: -2763
mx: 3765
 μ : -23.4
 σ : 59.9

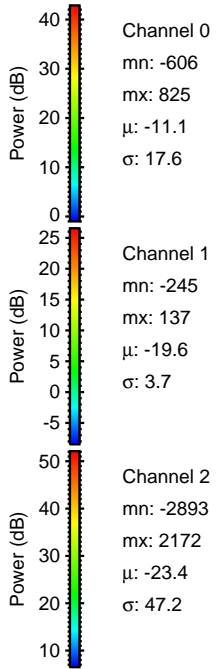
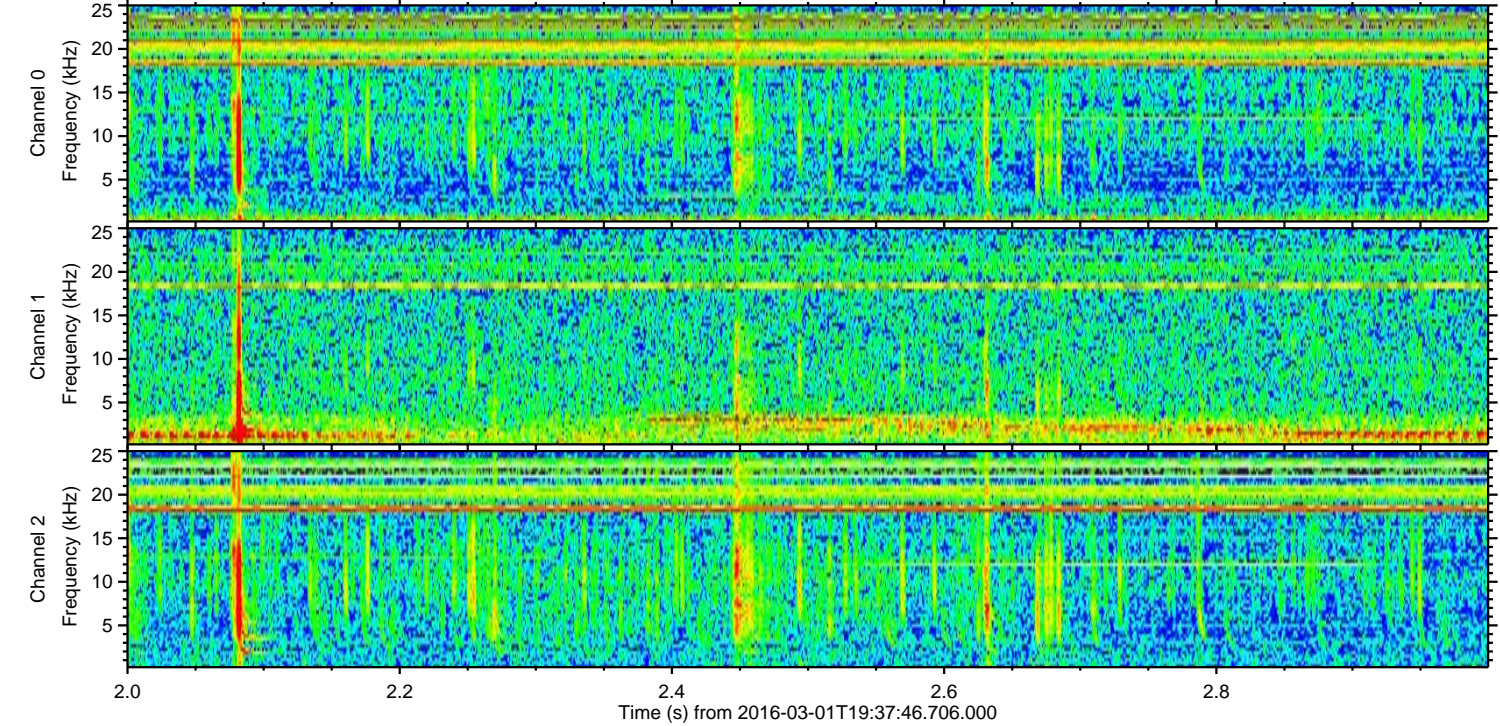
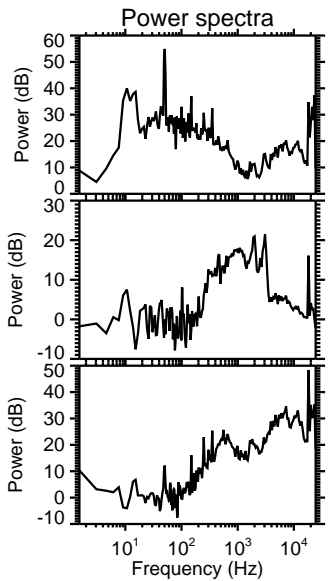
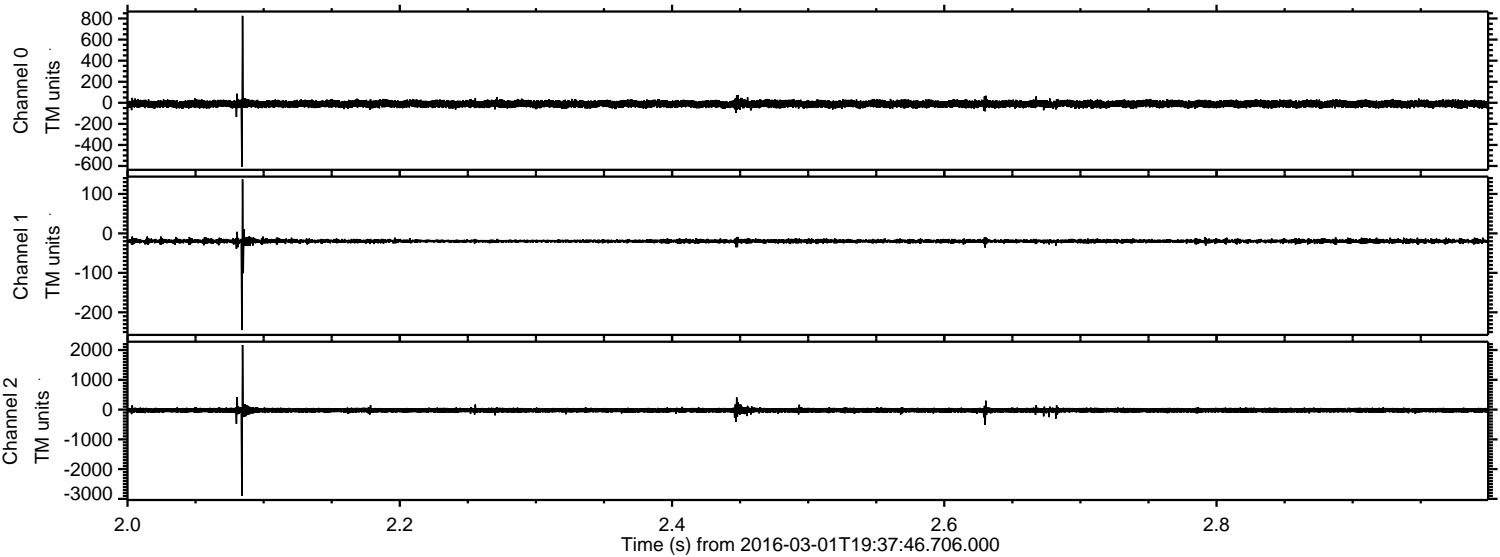
Processed Sun Apr 17 17:58:35 2016 by ELM ver.2012-10-06 from 001__elm20160301_193745__dat00.bin



Processed Sun Apr 17 17:58:36 2016 by ELM ver.2012-10-06 from 001__elm20160301_193745__dat00.bin



Processed Sun Apr 17 17:58:37 2016 by ELM ver.2012-10-06 from 001__elm20160301_193745__dat00.bin



Channel 0
mn: -606
mx: 825
 μ : -11.1
 σ : 17.6

Channel 1
mn: -245
mx: 137
 μ : -19.6
 σ : 3.7

Channel 2
mn: -2893
mx: 2172
 μ : -23.4
 σ : 47.2

Processed Sun Apr 17 17:58:38 2016 by ELM ver.2012-10-06 from 001__elm20160301_193745__dat00.bin

