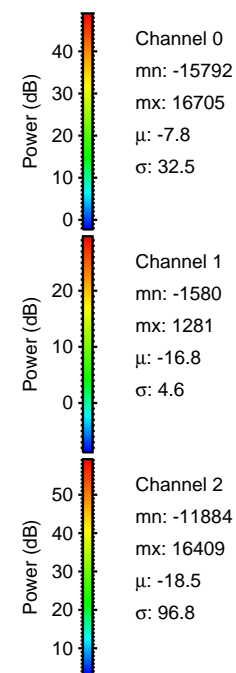
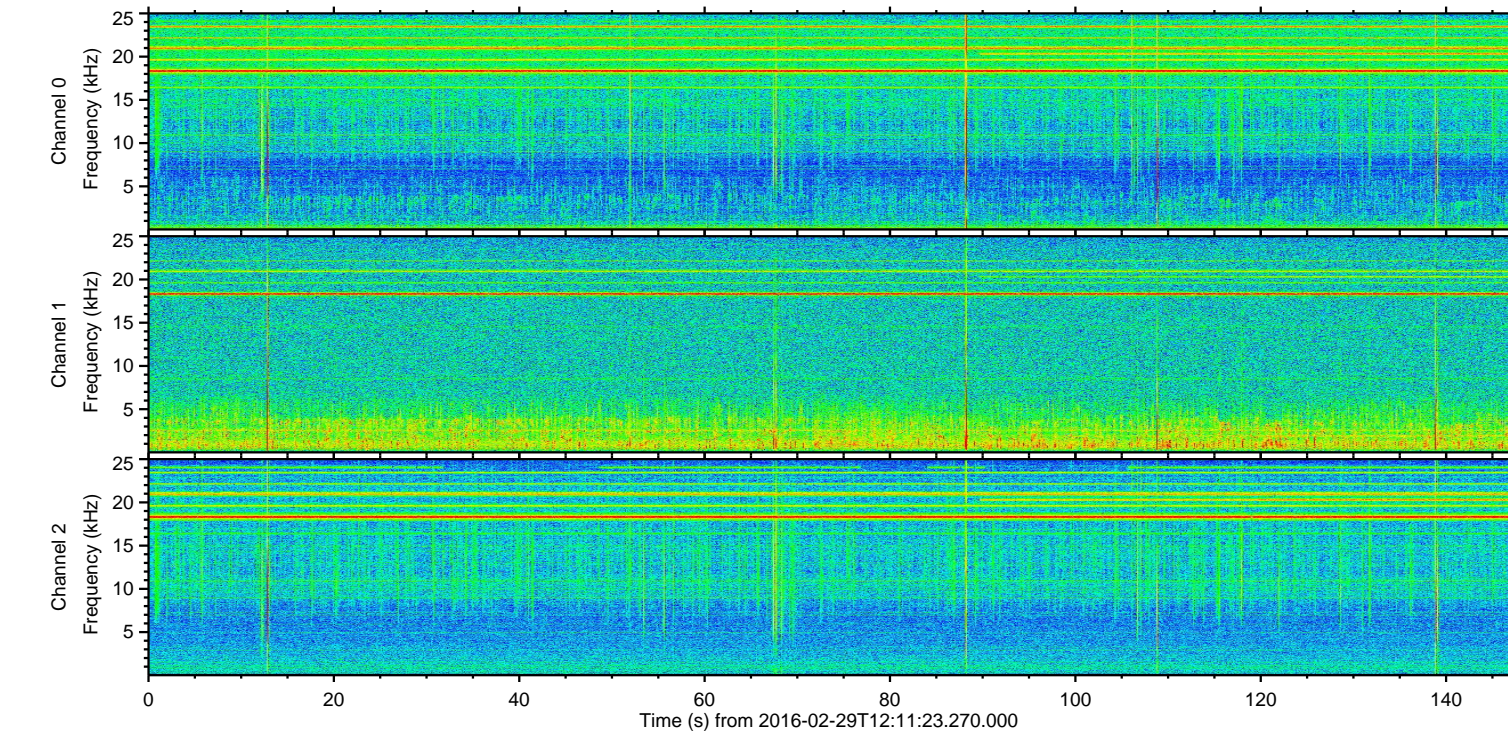
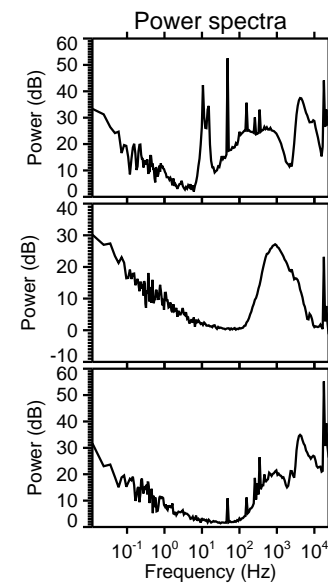
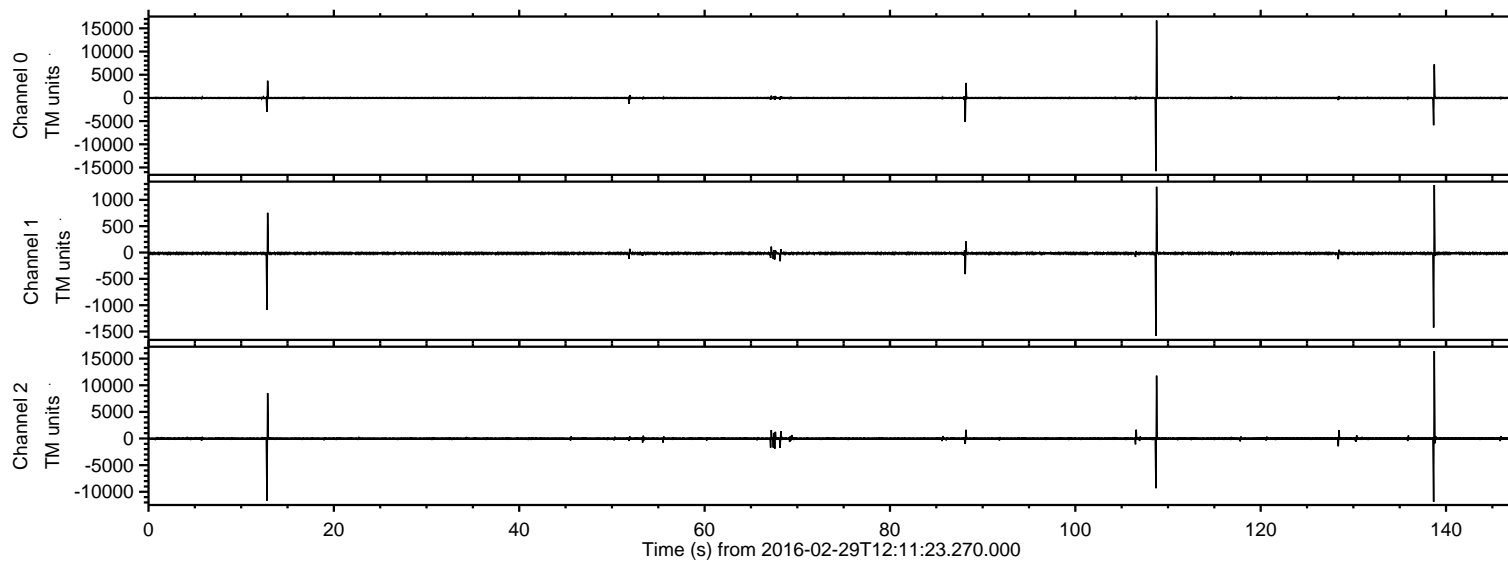
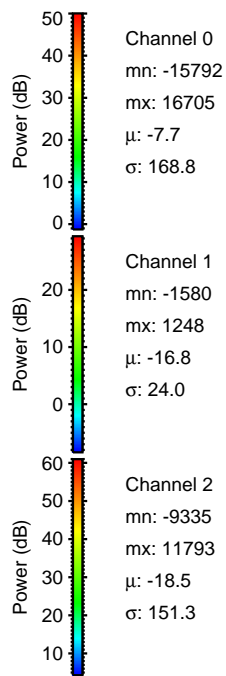
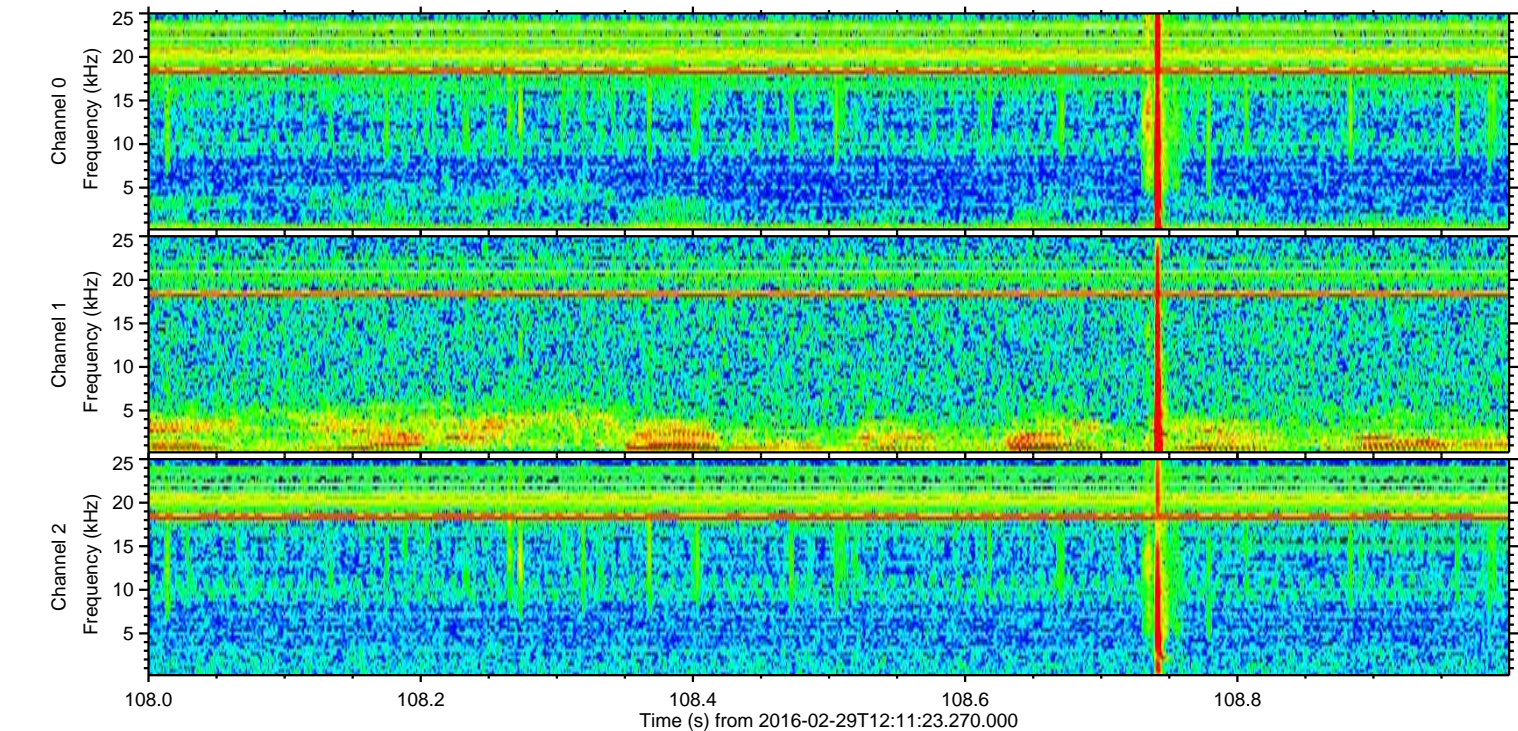
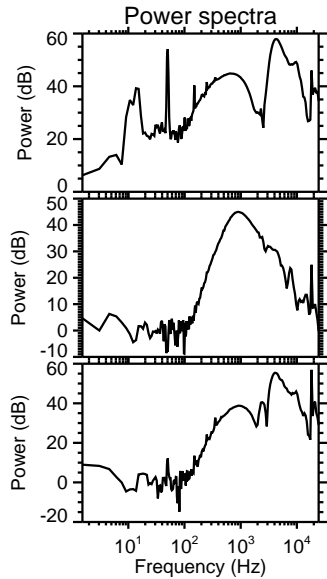
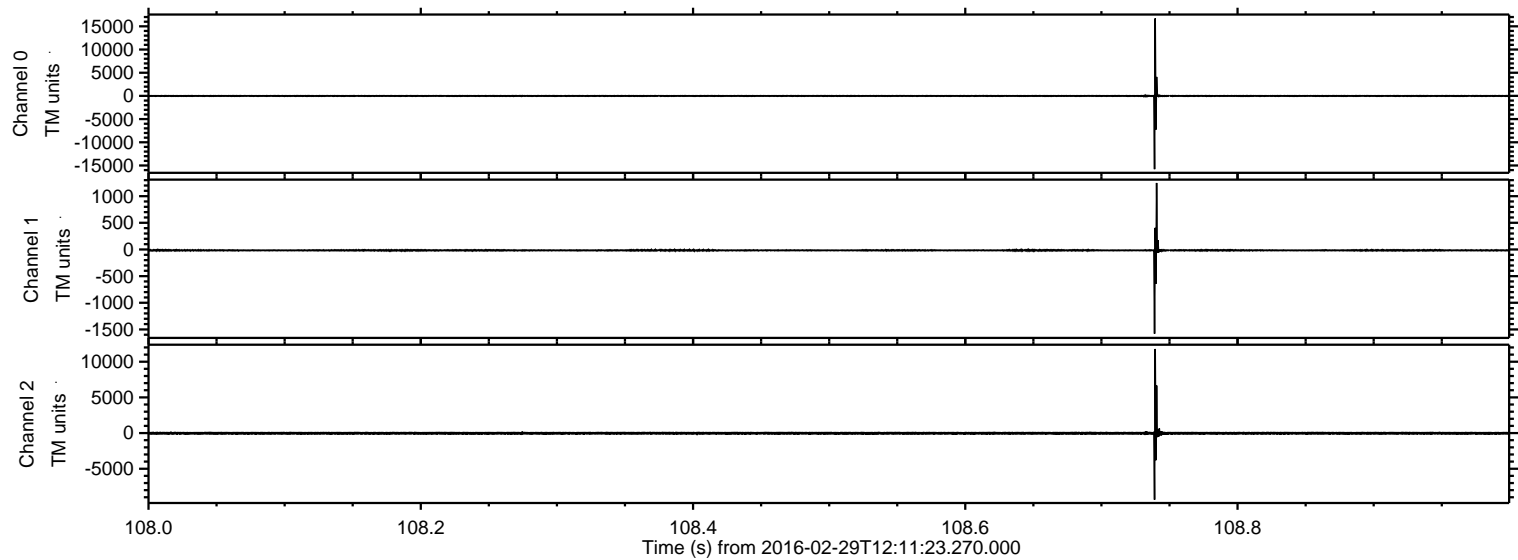


ELMAVAN 3D WAVEFORMS (Measured data sampled at 50 kHz) 51000 packets of 144 samples from 2016-02-29T12:11:23.270.000.

Processed Sun Apr 17 11:30:49 2016 by ELM ver.2012-10-06 from 001__elm20160229_121122__dat00.bin

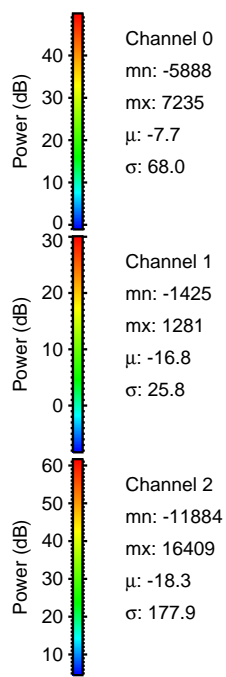
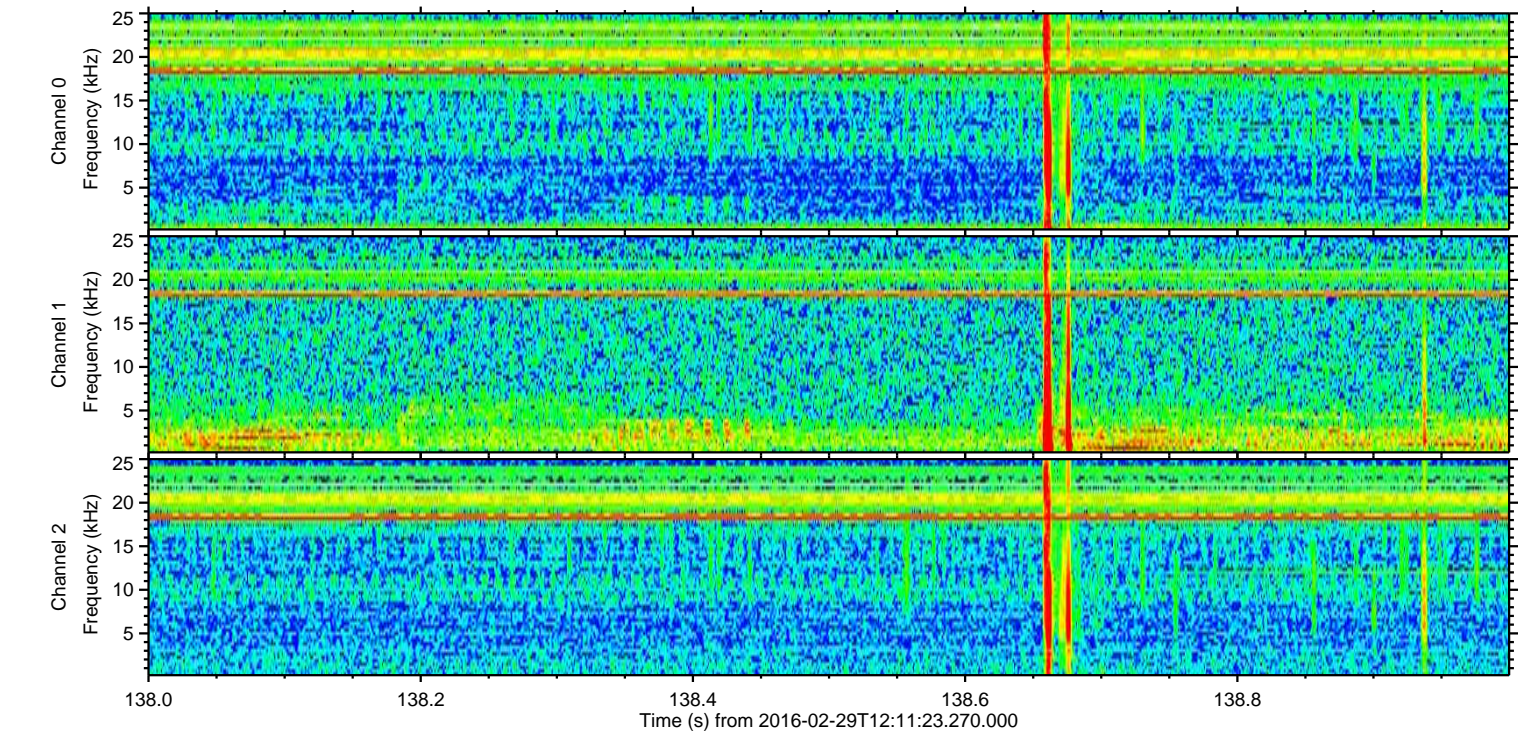
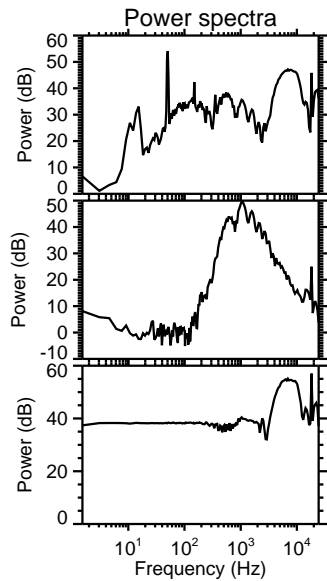
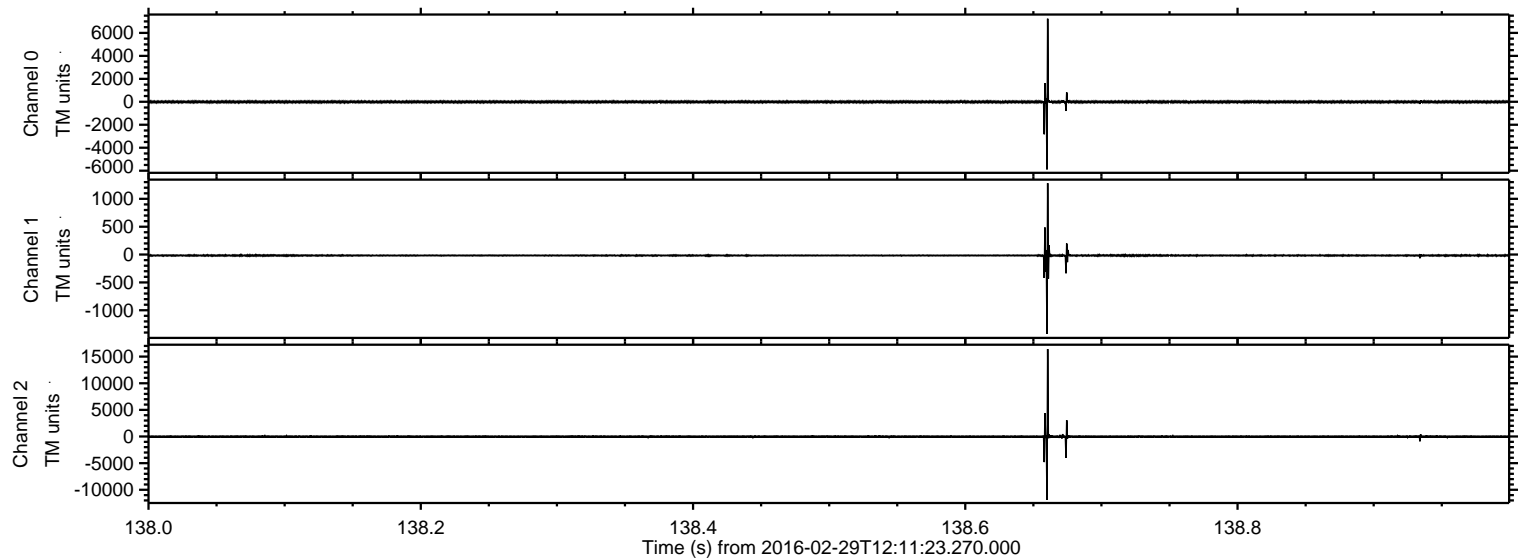


Processed Sun Apr 17 11:31:01 2016 by ELM ver.2012-10-06 from 001__elm20160229_121122__dat00.bin



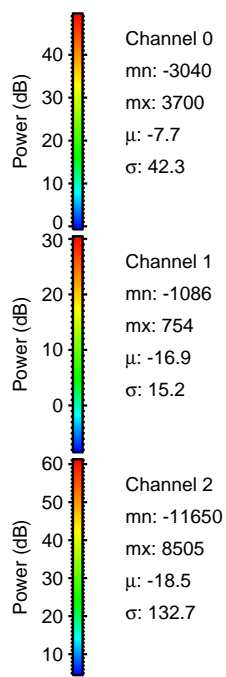
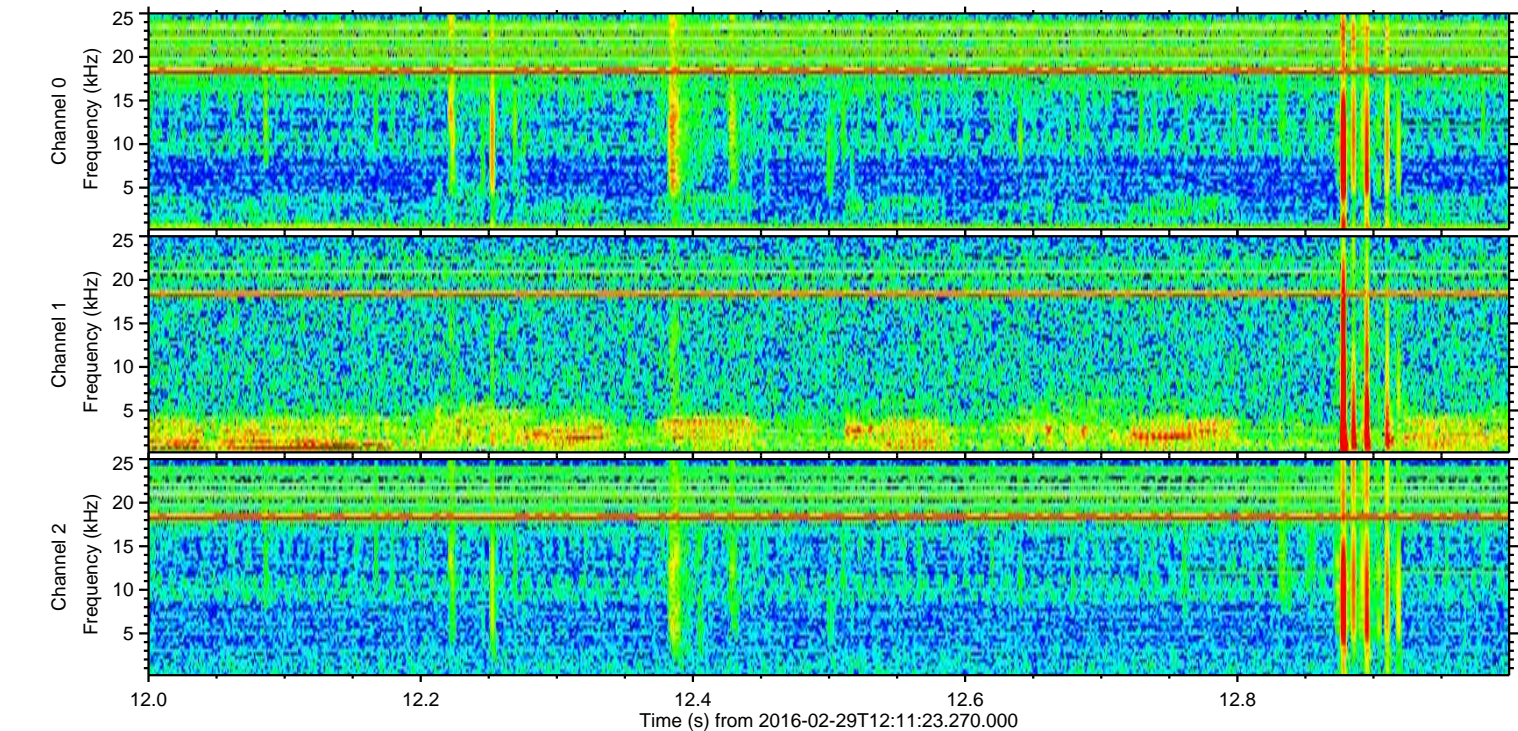
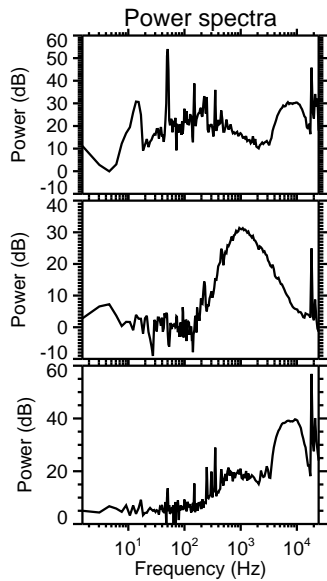
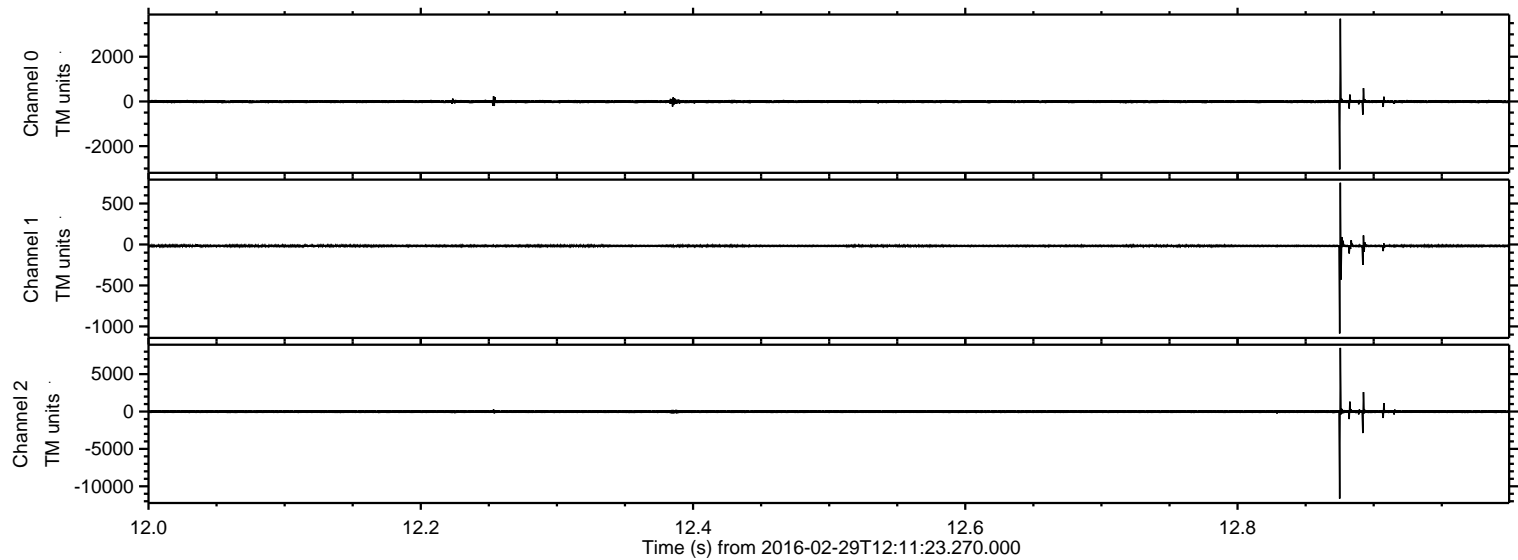
ELMAVAN 3D WAVEFORMS (Measured data sampled at 50 kHz) 51000 packets of 144 samples from 2016-02-29T12:11:23.270.000. Part 139/147

Processed Sun Apr 17 11:31:02 2016 by ELM ver.2012-10-06 from 001__elm20160229_121122__dat00.bin

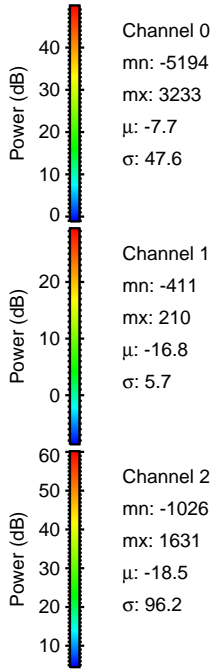
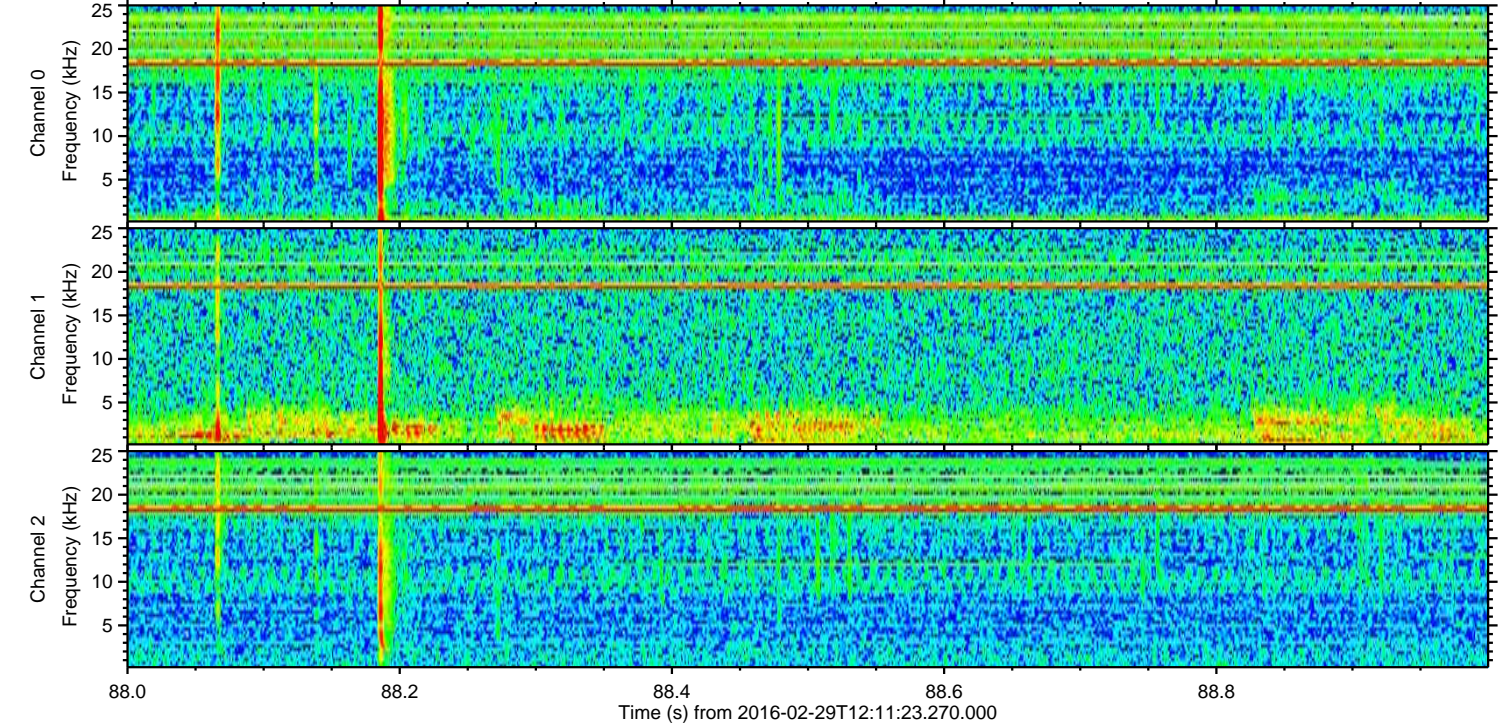
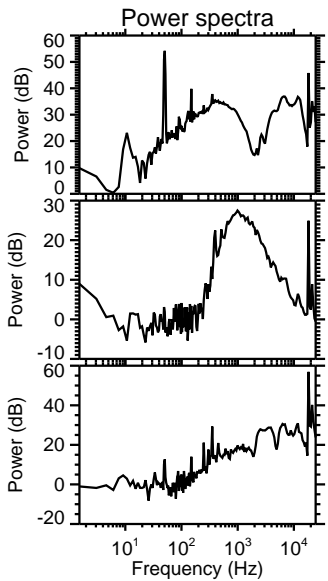
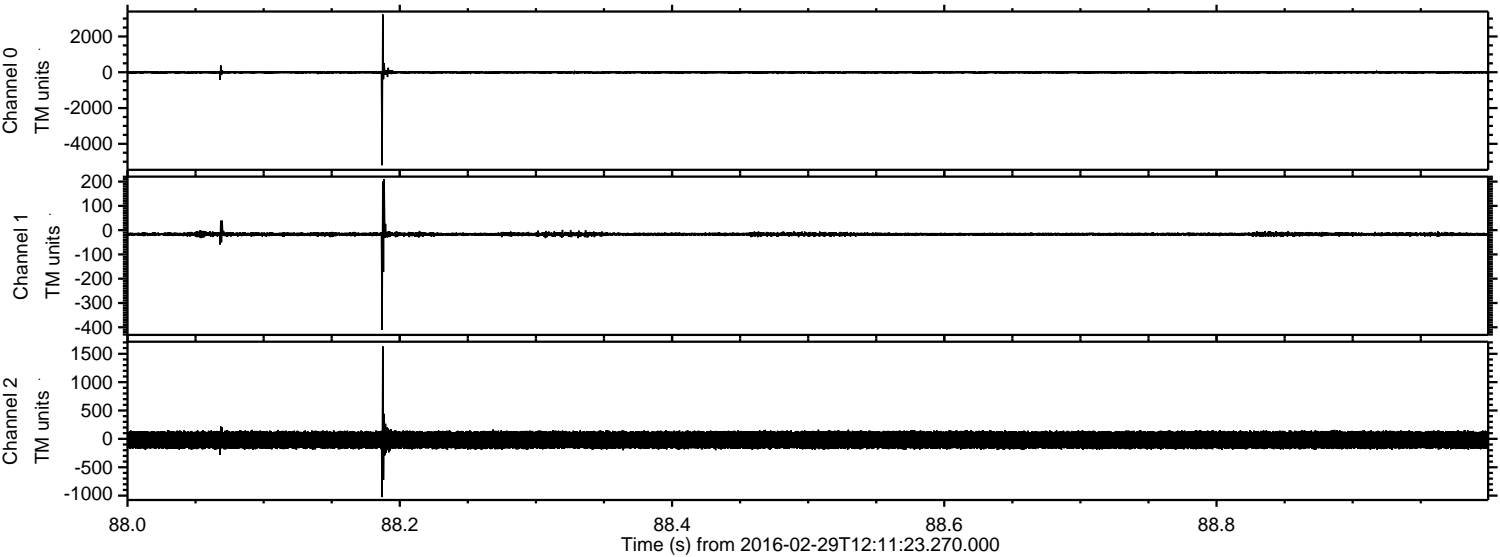


ELMAVAN 3D WAVEFORMS (Measured data sampled at 50 kHz) 51000 packets of 144 samples from 2016-02-29T12:11:23.270.000. Part 13/147

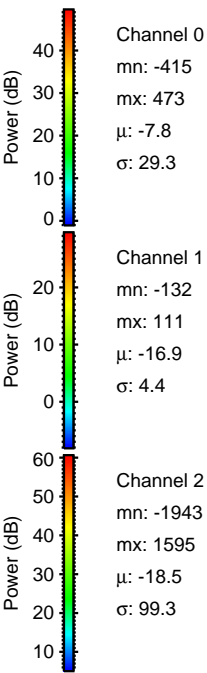
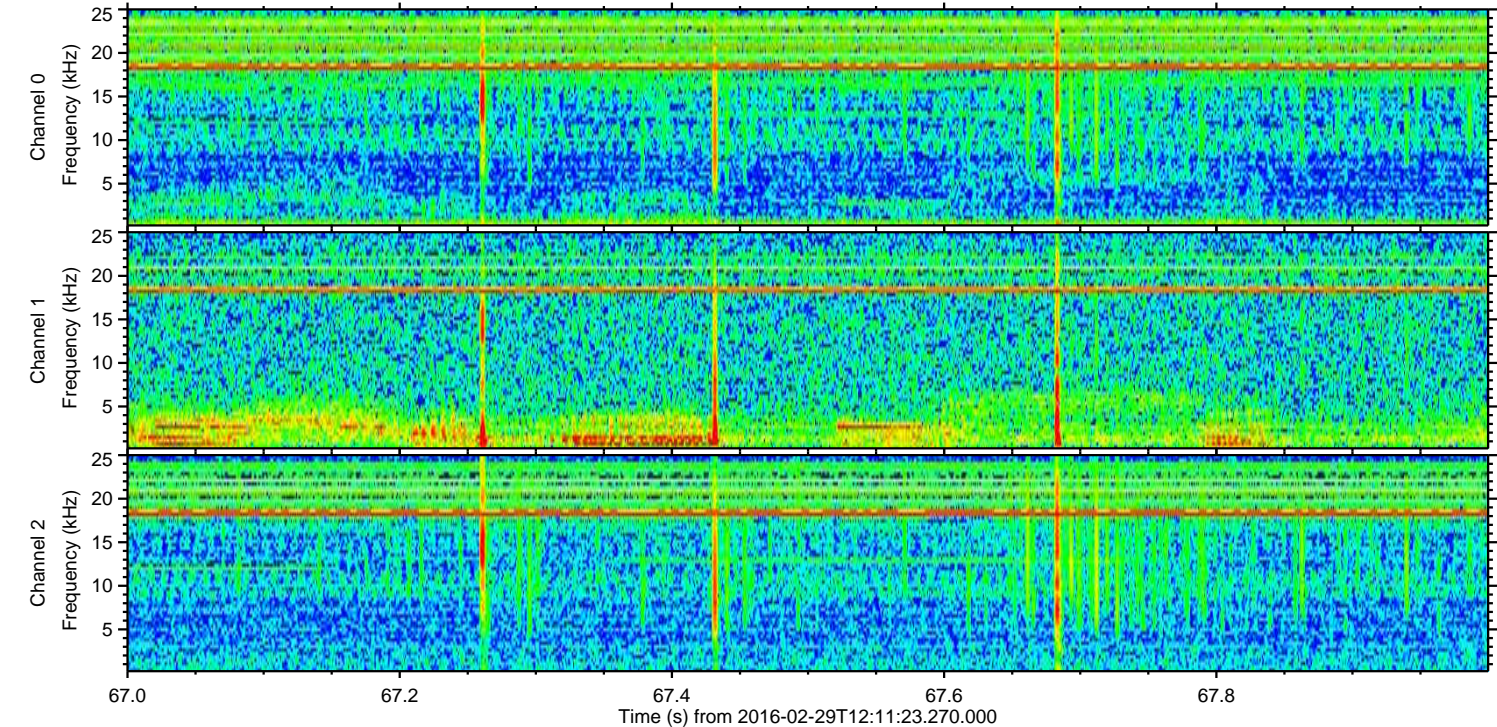
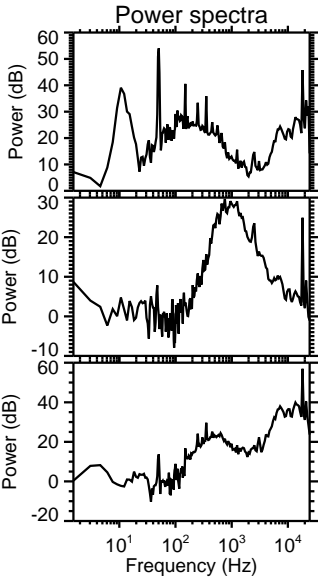
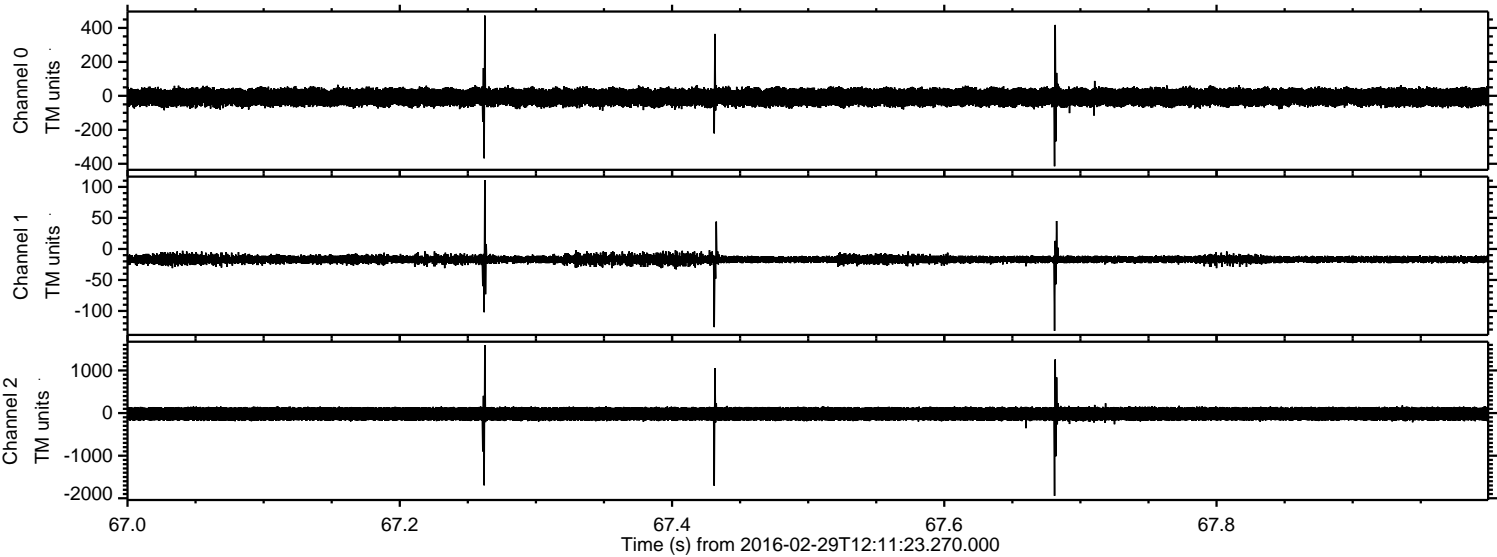
Processed Sun Apr 17 11:31:03 2016 by ELM ver.2012-10-06 from 001__elm20160229_121122__dat00.bin



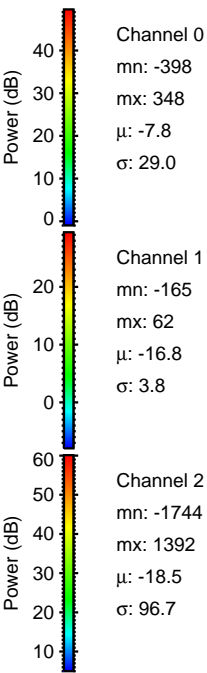
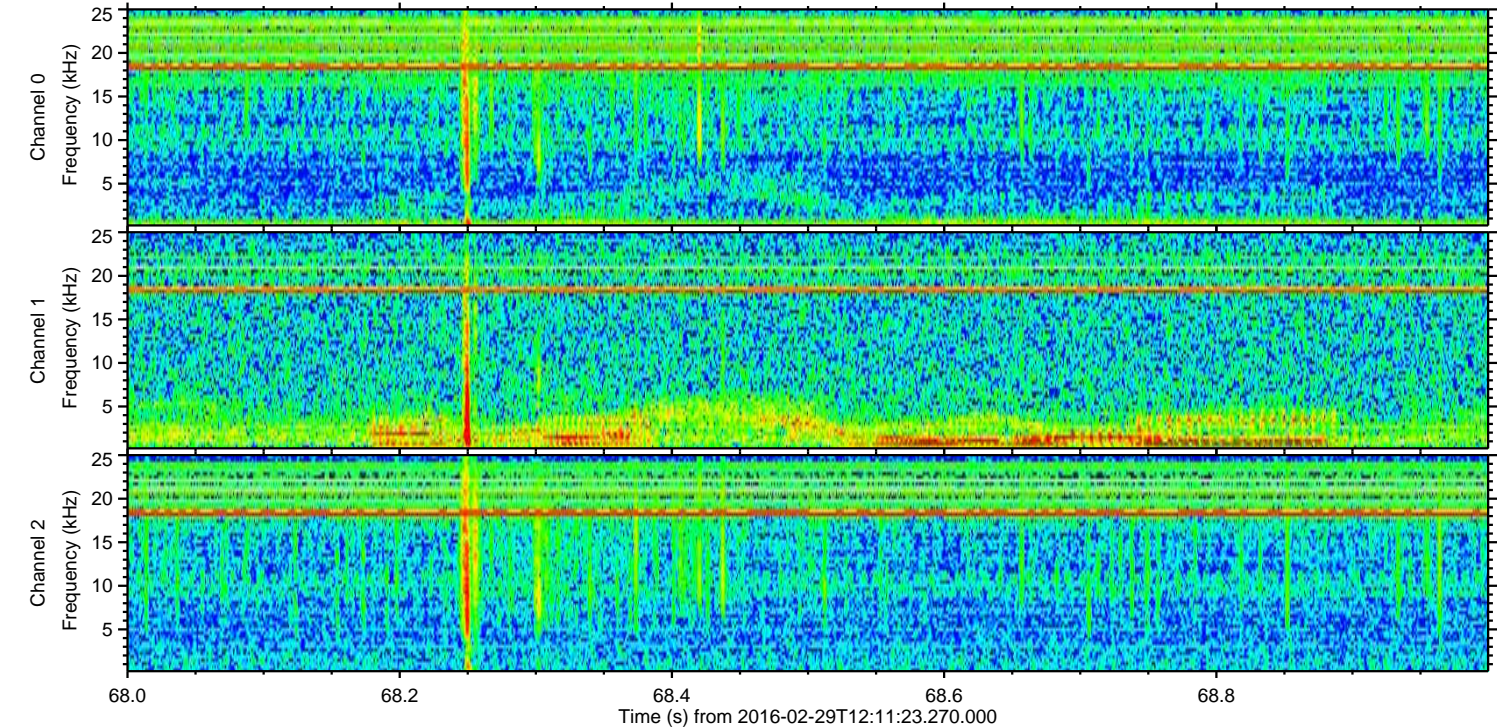
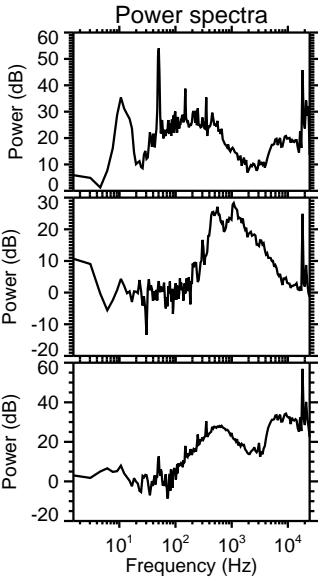
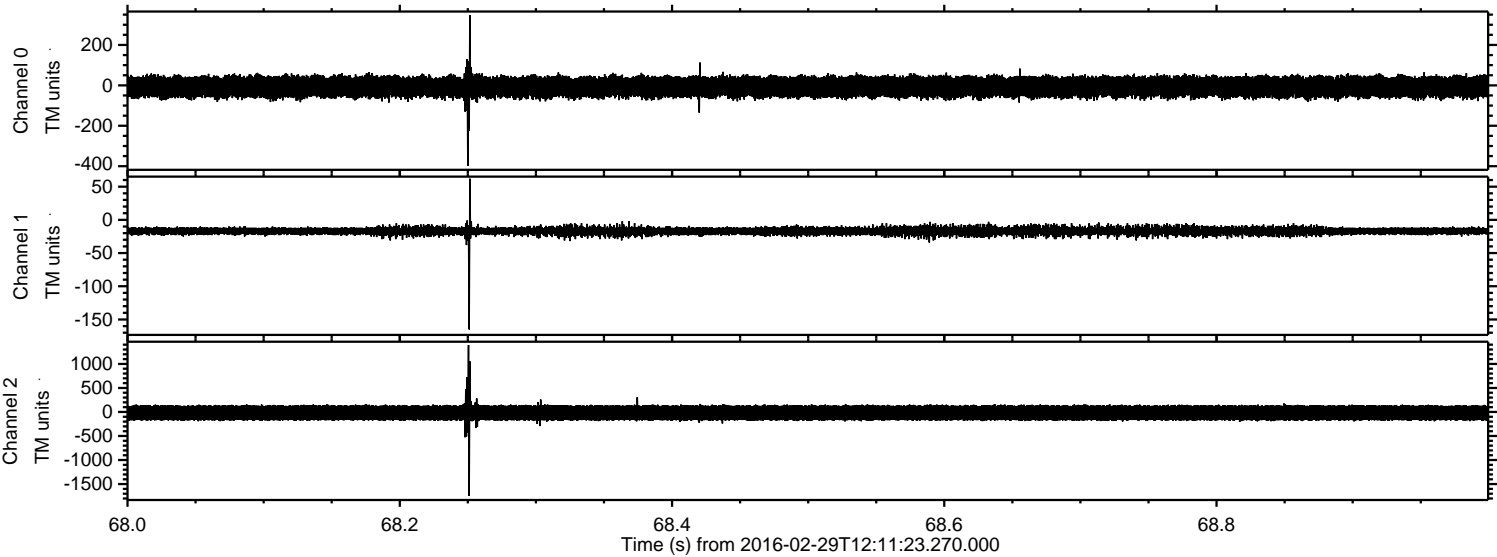
Processed Sun Apr 17 11:31:04 2016 by ELM ver.2012-10-06 from 001__elm20160229_121122__dat00.bin



Processed Sun Apr 17 11:31:05 2016 by ELM ver.2012-10-06 from 001__elm20160229_121122__dat00.bin

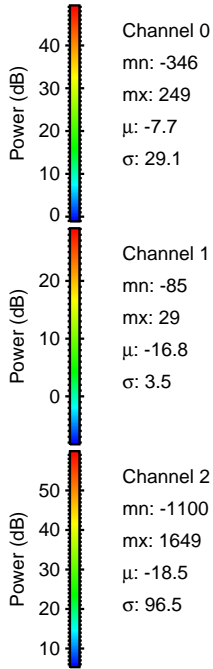
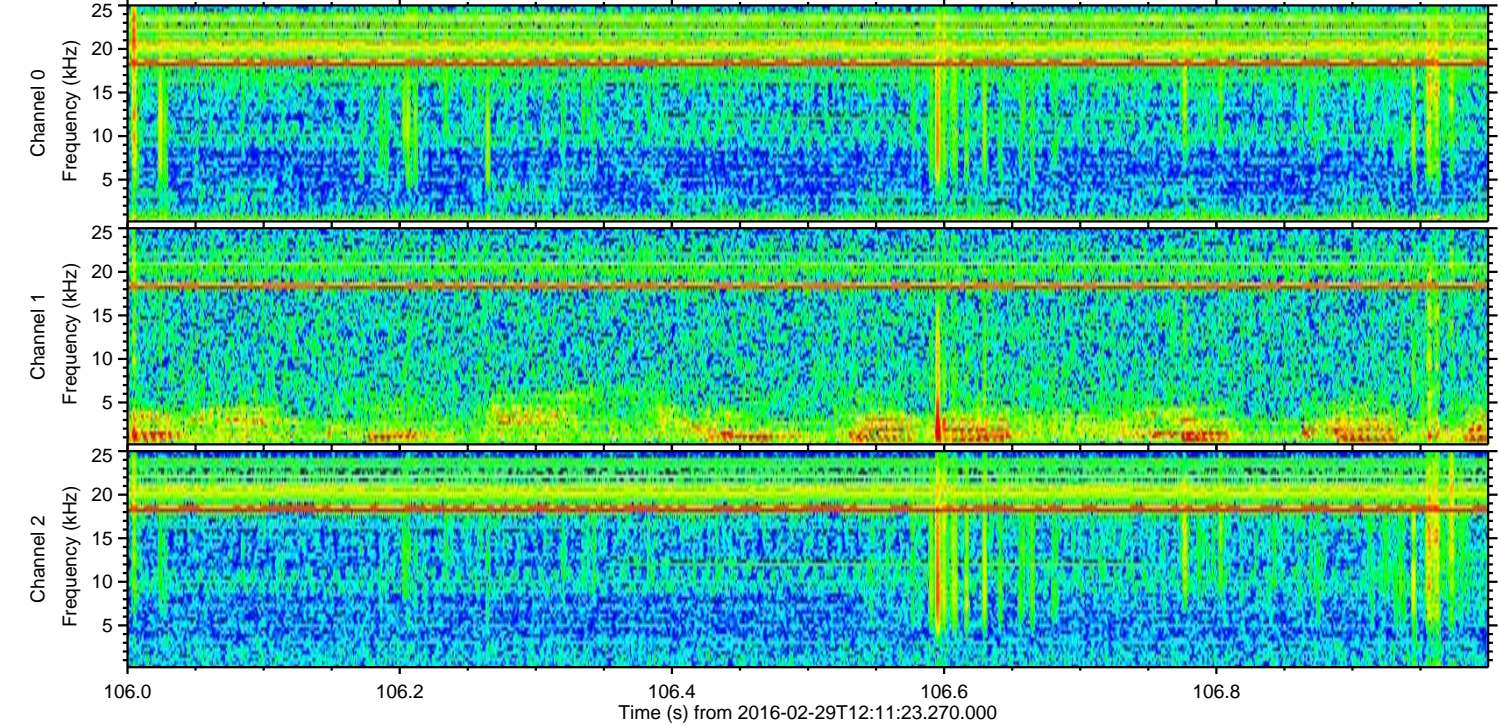
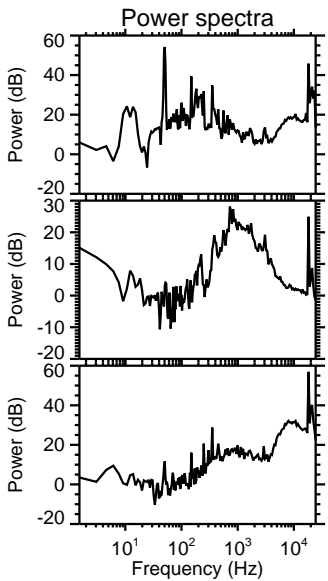
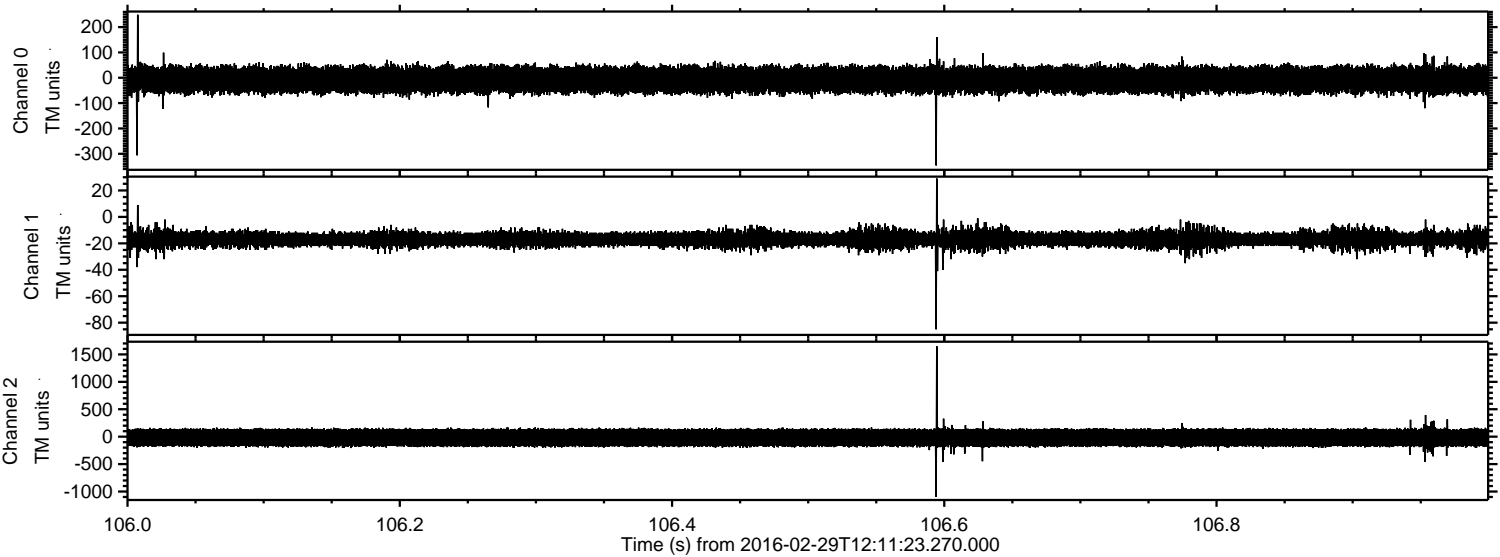


Processed Sun Apr 17 11:31:06 2016 by ELM ver.2012-10-06 from 001__elm20160229_121122__dat00.bin



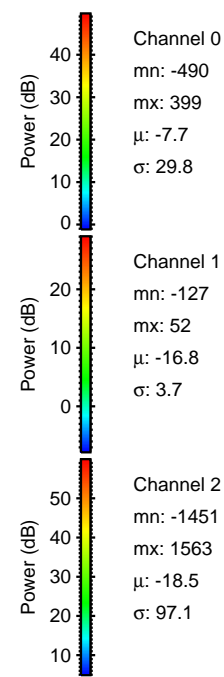
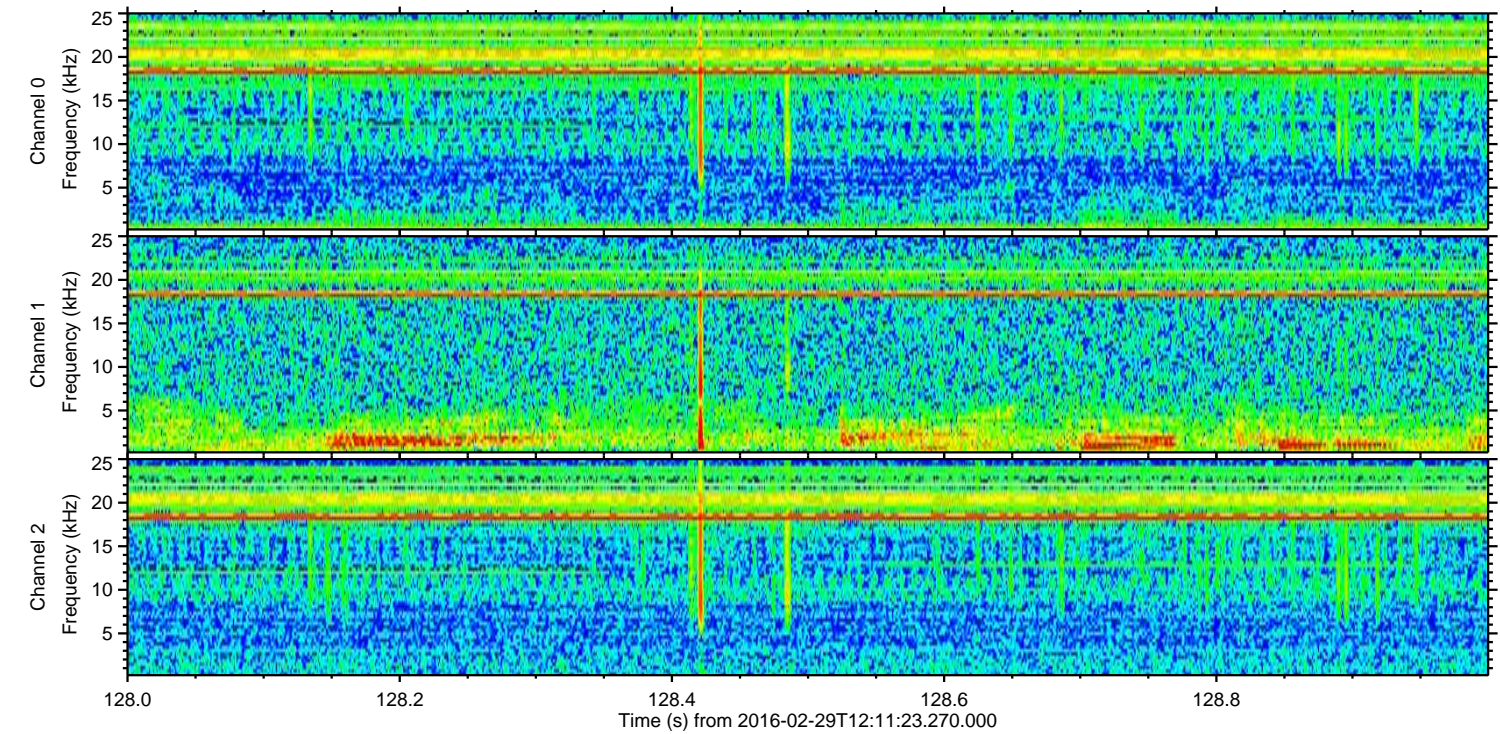
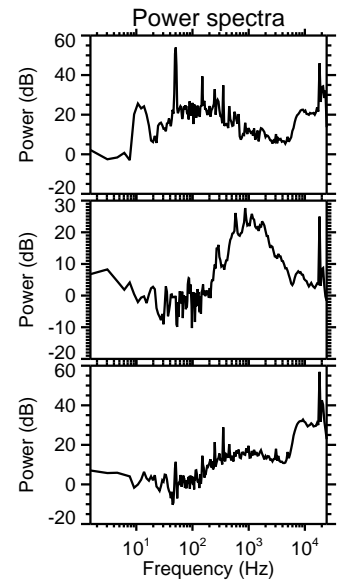
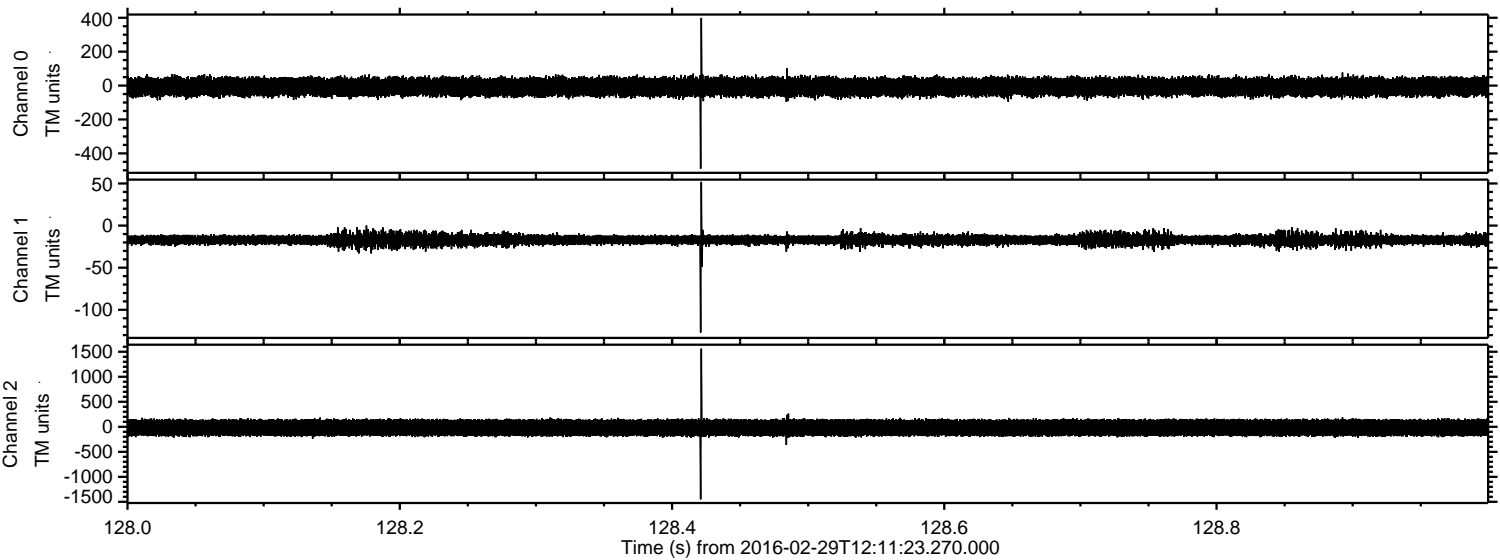
ELMAVAN 3D WAVEFORMS (Measured data sampled at 50 kHz) 51000 packets of 144 samples from 2016-02-29T12:11:23.270.000. Part 107/147

Processed Sun Apr 17 11:31:07 2016 by ELM ver.2012-10-06 from 001__elm20160229_121122__dat00.bin



ELMAVAN 3D WAVEFORMS (Measured data sampled at 50 kHz) 51000 packets of 144 samples from 2016-02-29T12:11:23.270.000. Part 129/147

Processed Sun Apr 17 11:31:08 2016 by ELM ver.2012-10-06 from 001__elm20160229_121122__dat00.bin

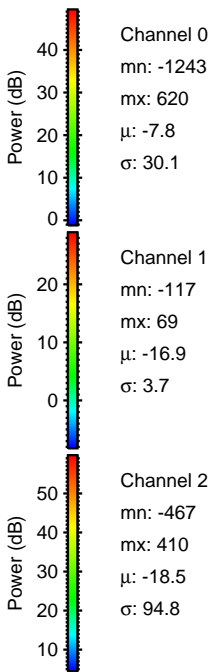
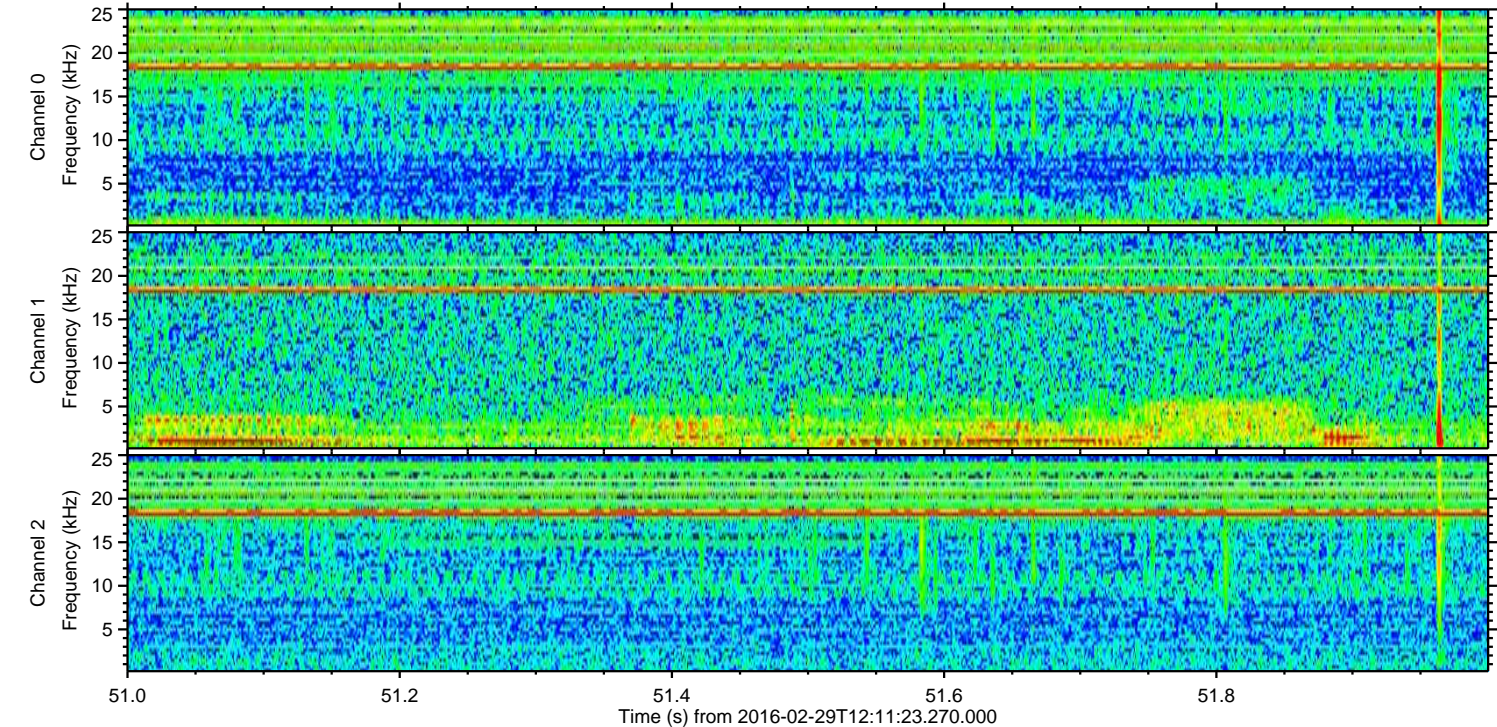
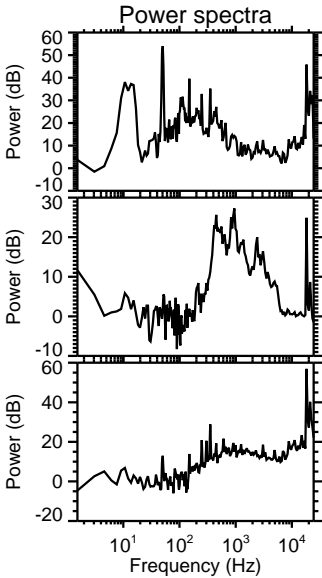
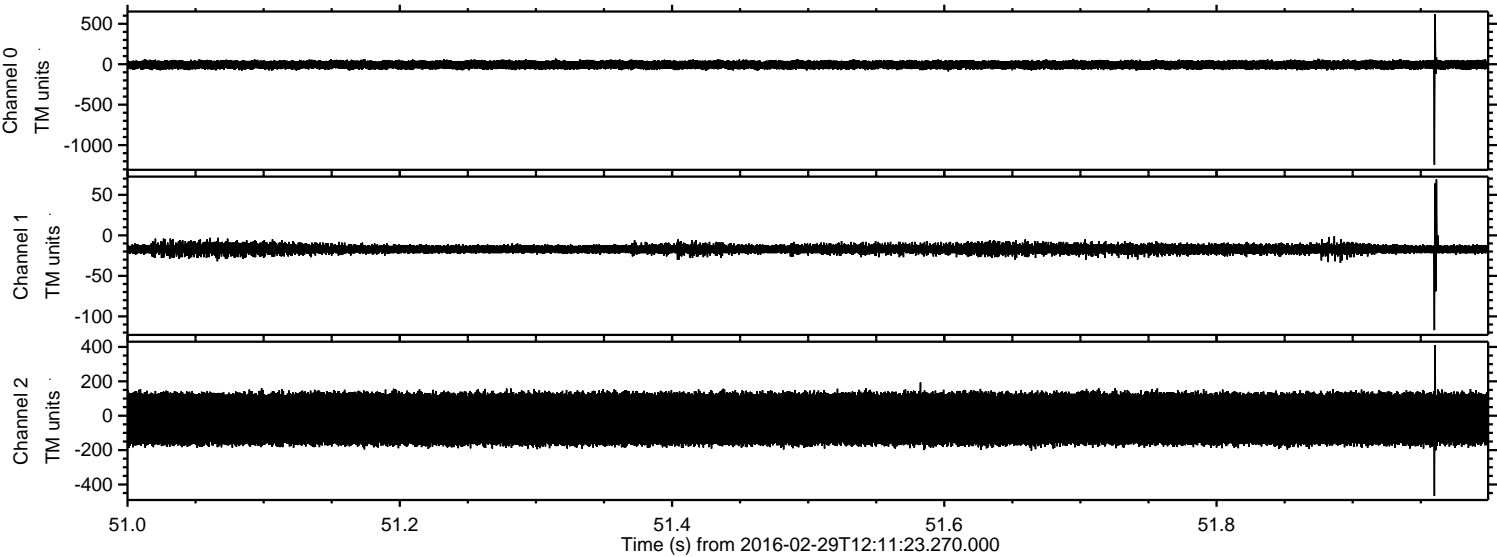


Channel 0
mn: -490
mx: 399
 μ : -7.7
 σ : 29.8

Channel 1
mn: -127
mx: 52
 μ : -16.8
 σ : 3.7

Channel 2
mn: -1451
mx: 1563
 μ : -18.5
 σ : 97.1

Processed Sun Apr 17 11:31:09 2016 by ELM ver.2012-10-06 from 001__elm20160229_121122__dat00.bin



Processed Sun Apr 17 11:31:10 2016 by ELM ver.2012-10-06 from 001__elm20160229_121122__dat00.bin

