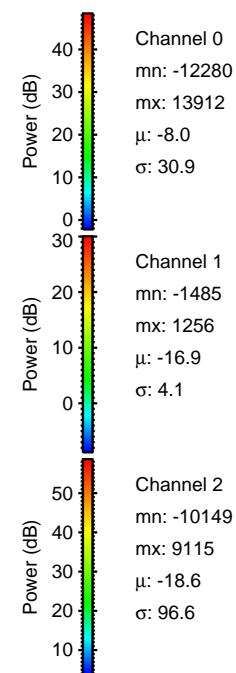
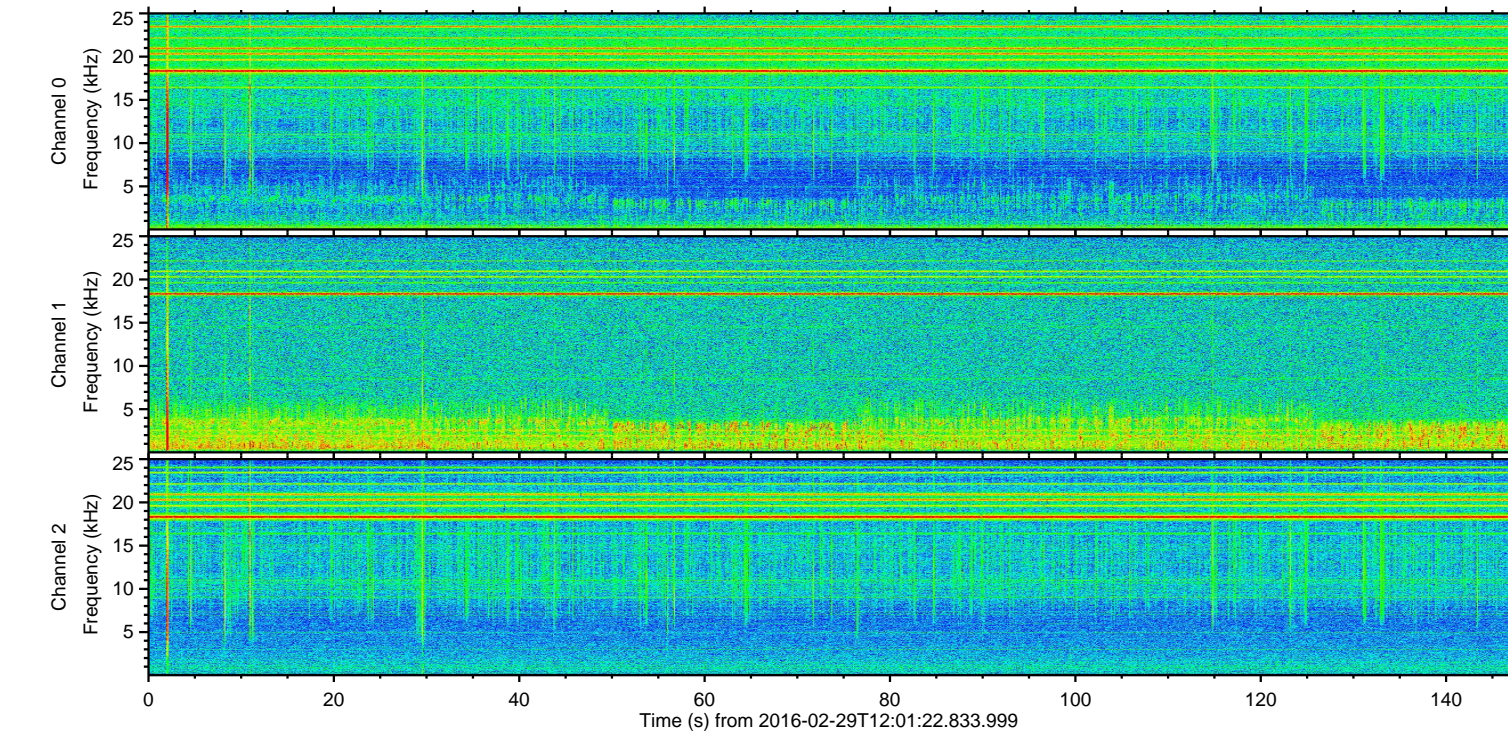
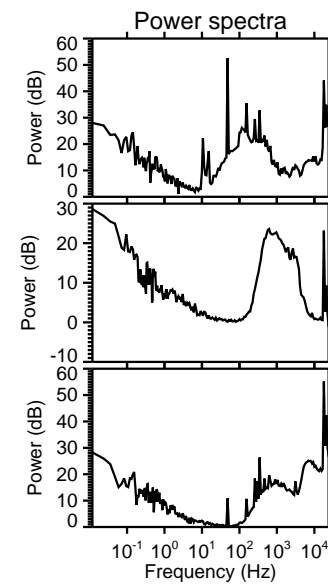
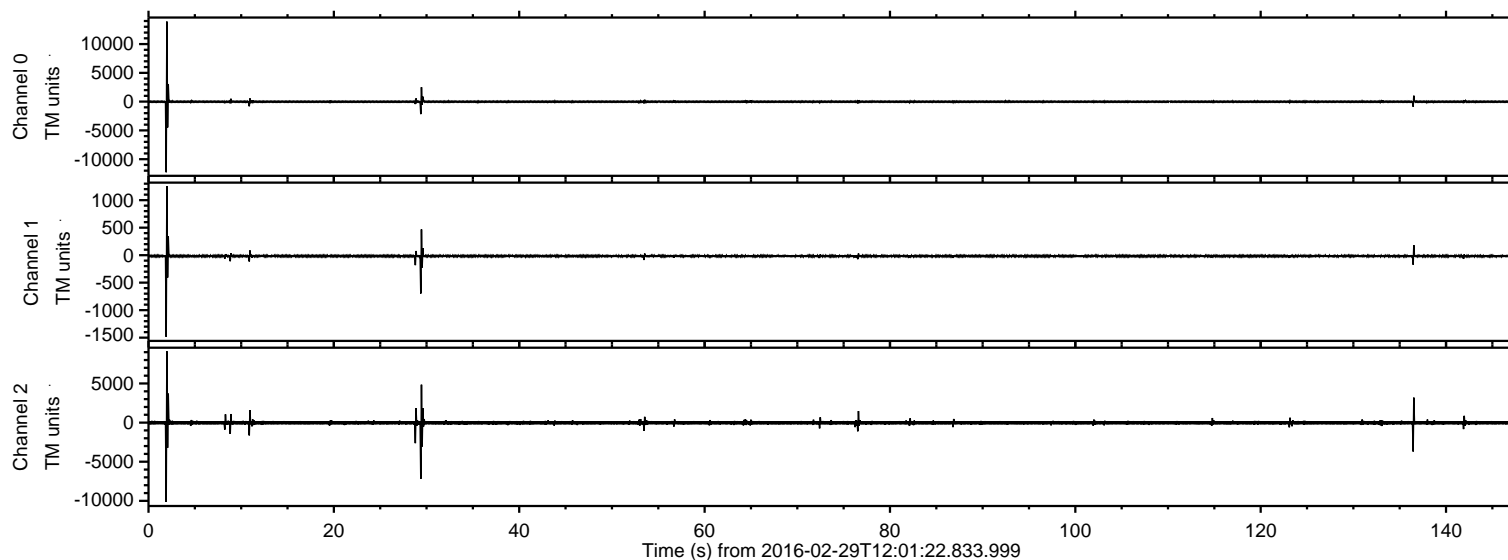
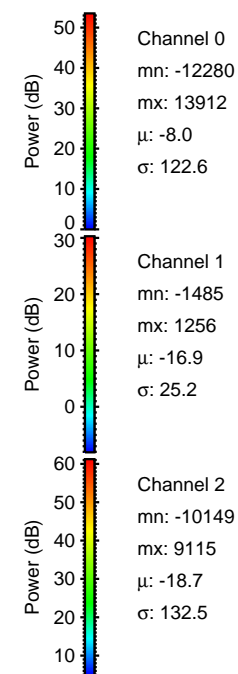
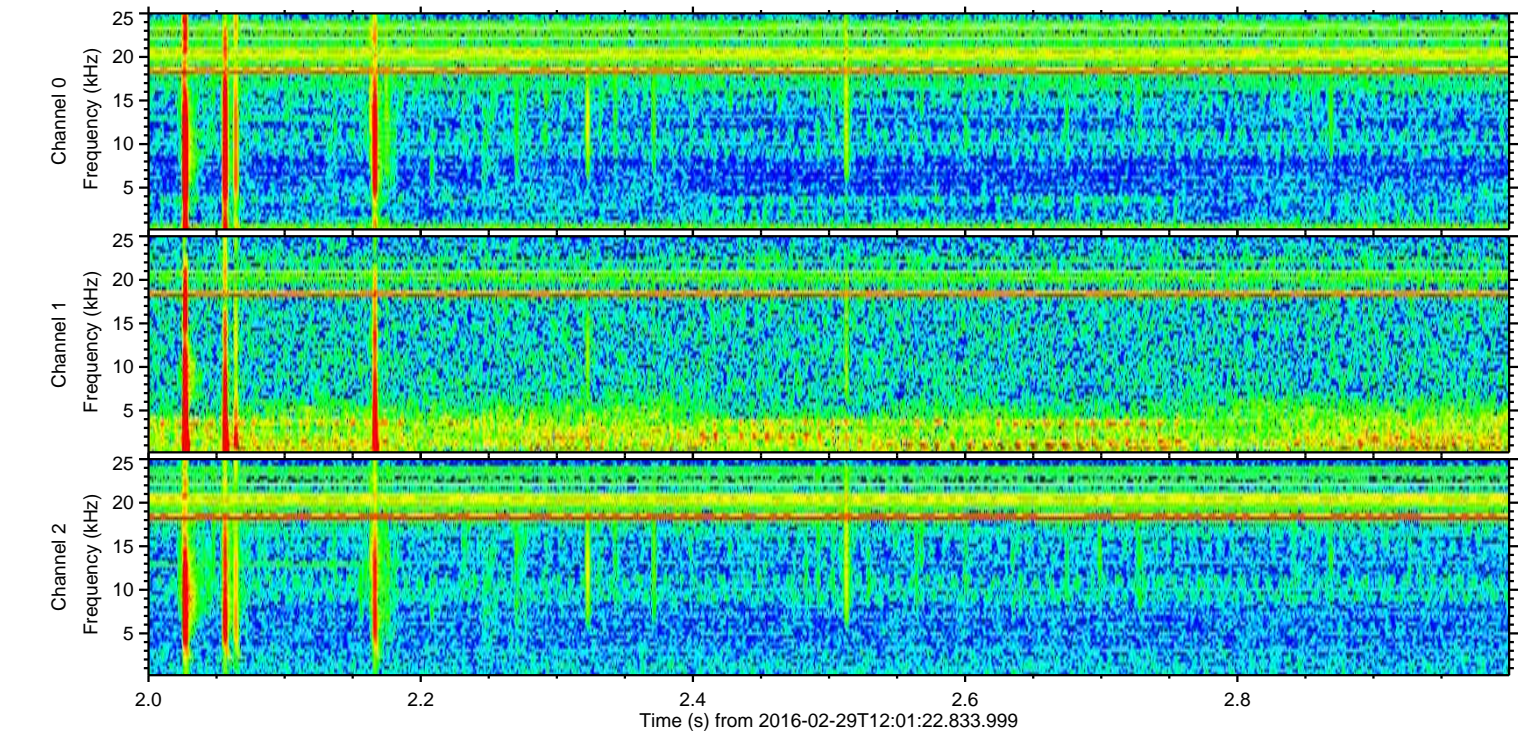
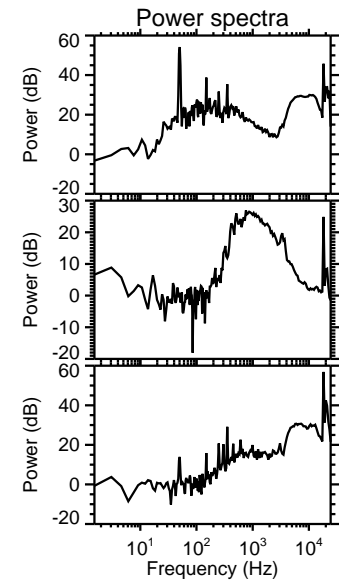
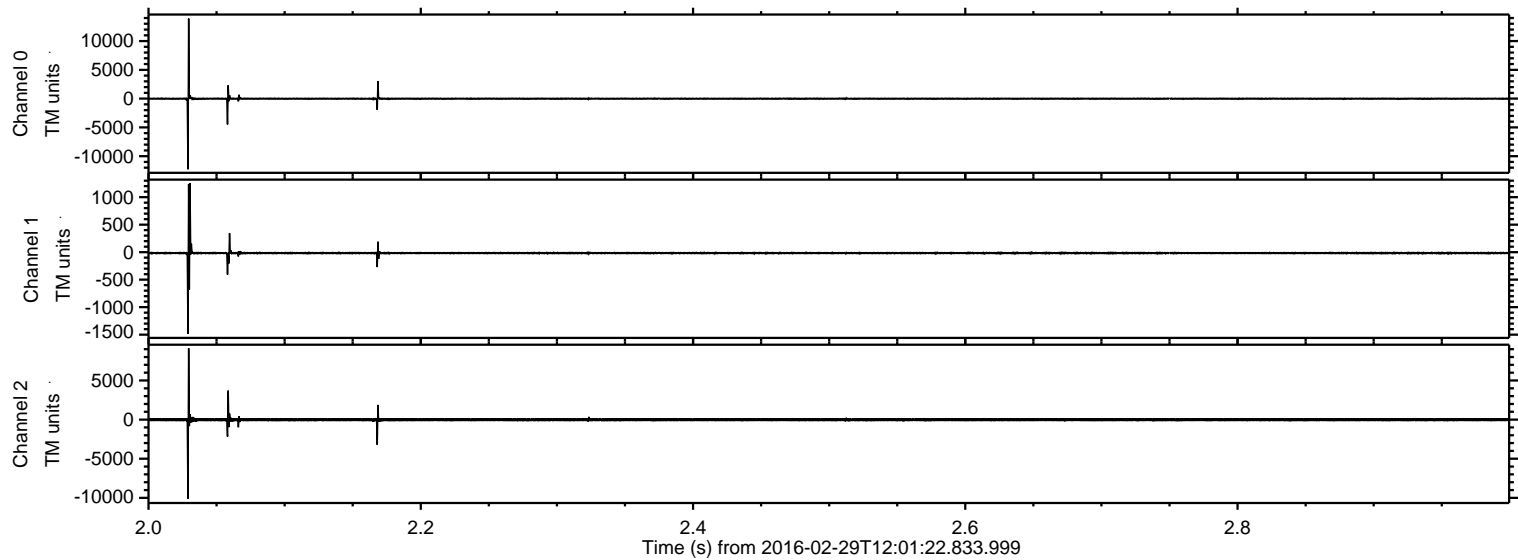


ELMAVAN 3D WAVEFORMS (Measured data sampled at 50 kHz) 51000 packets of 144 samples from 2016-02-29T12:01:22.833.999.

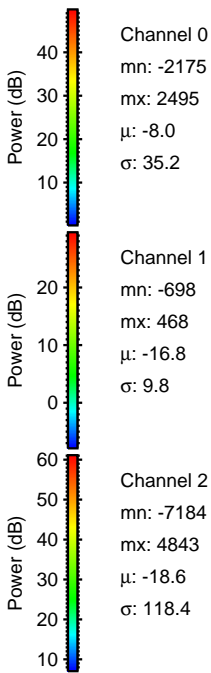
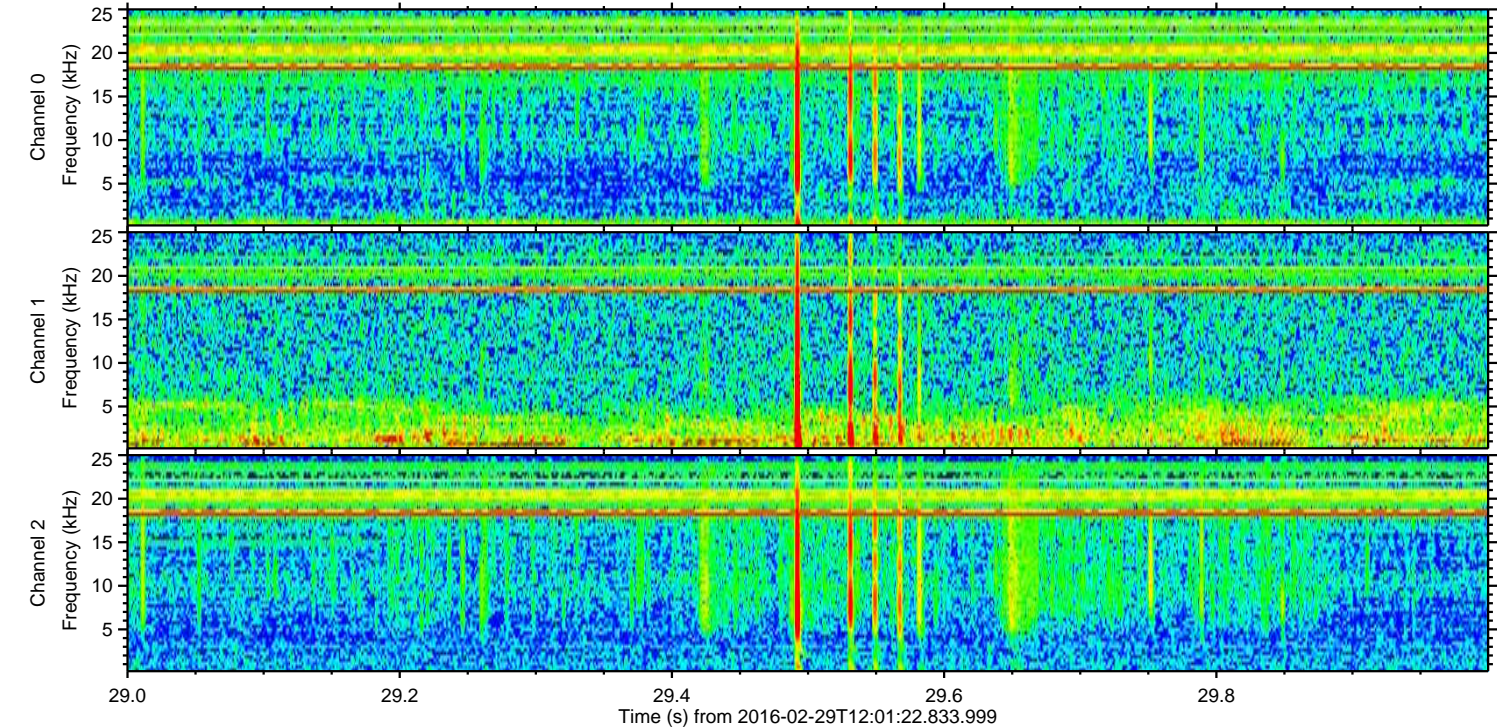
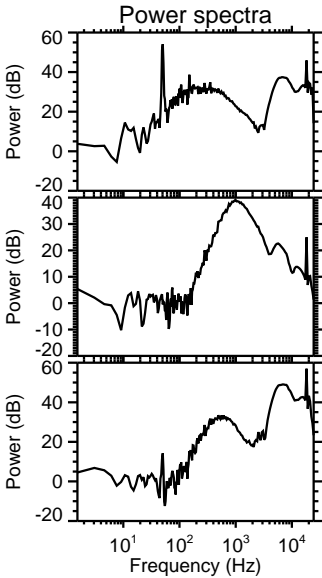
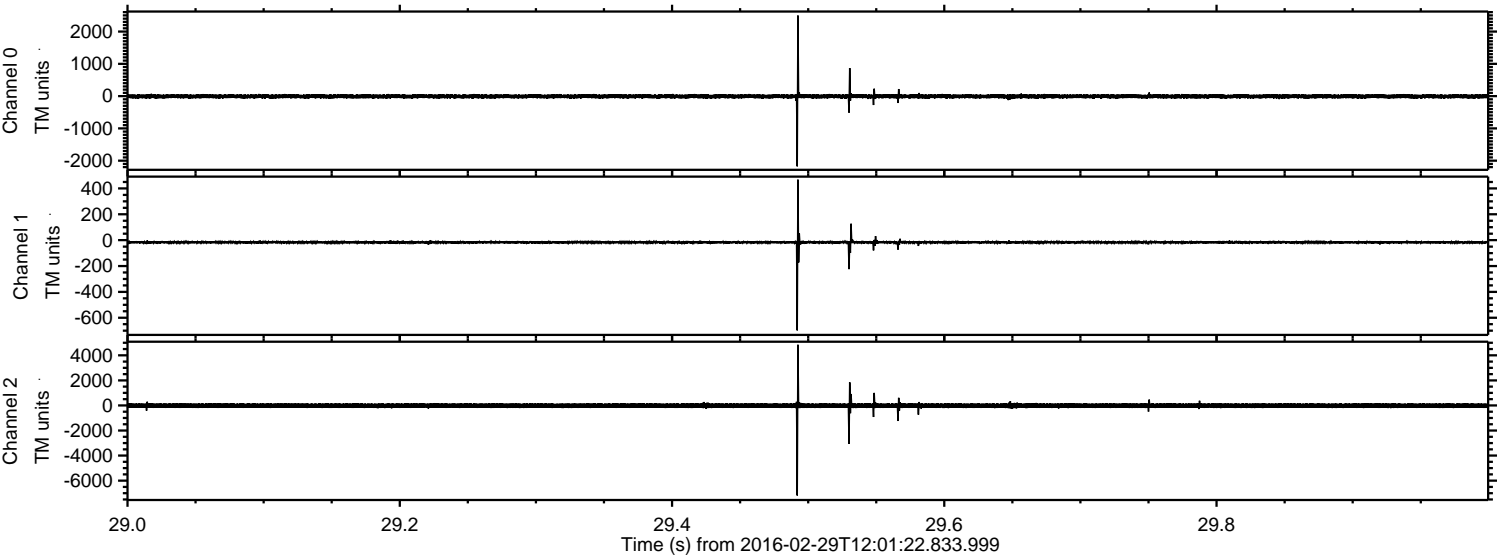
Processed Sun Apr 17 11:28:46 2016 by ELM ver.2012-10-06 from 001__elm20160229_120121__dat00.bin



Processed Sun Apr 17 11:28:58 2016 by ELM ver.2012-10-06 from 001__elm20160229_120121__dat00.bin

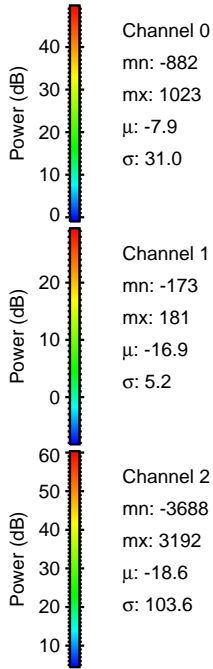
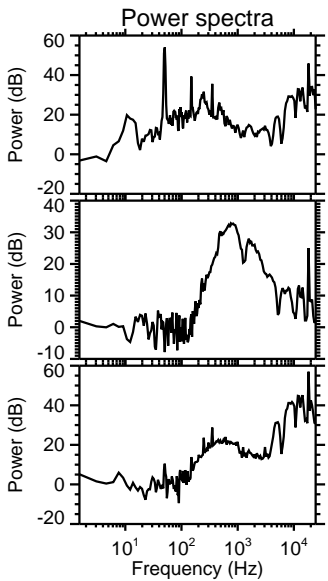
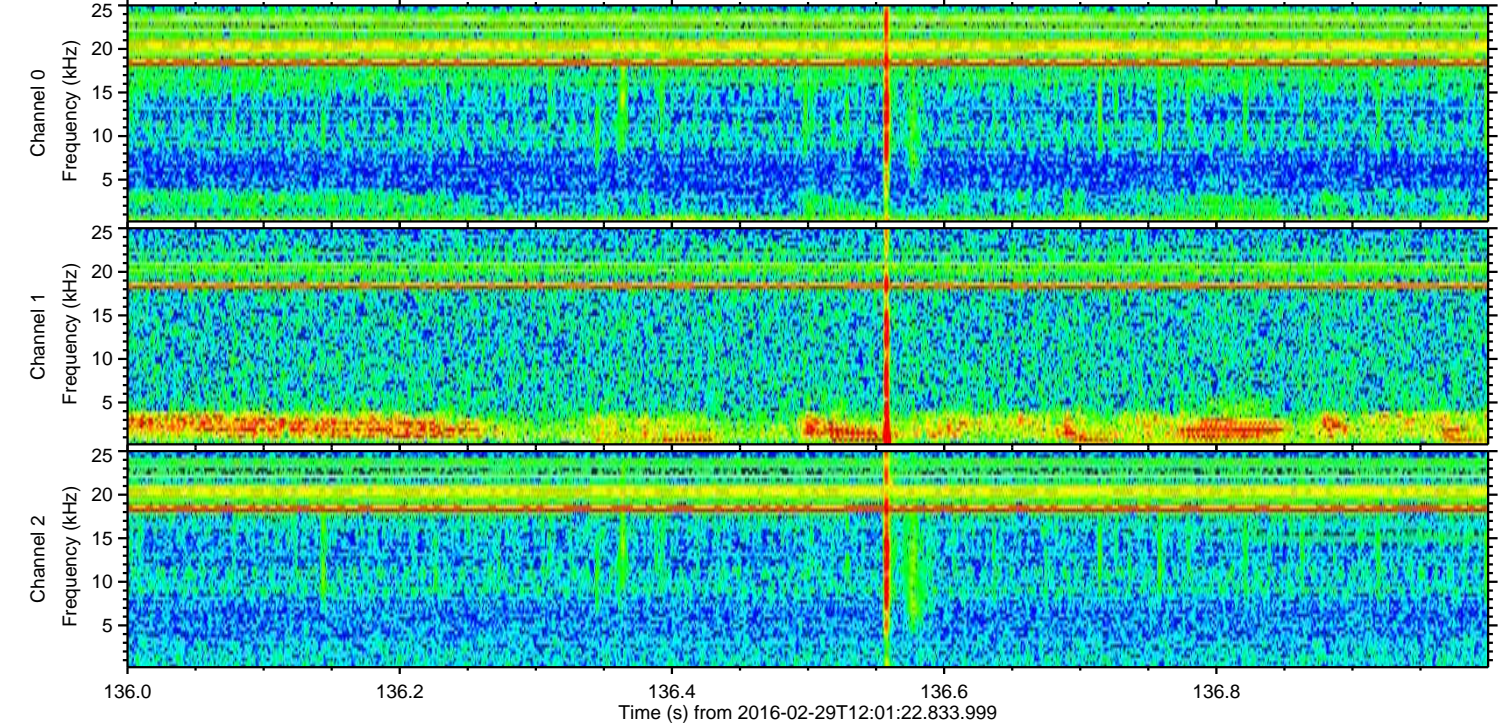
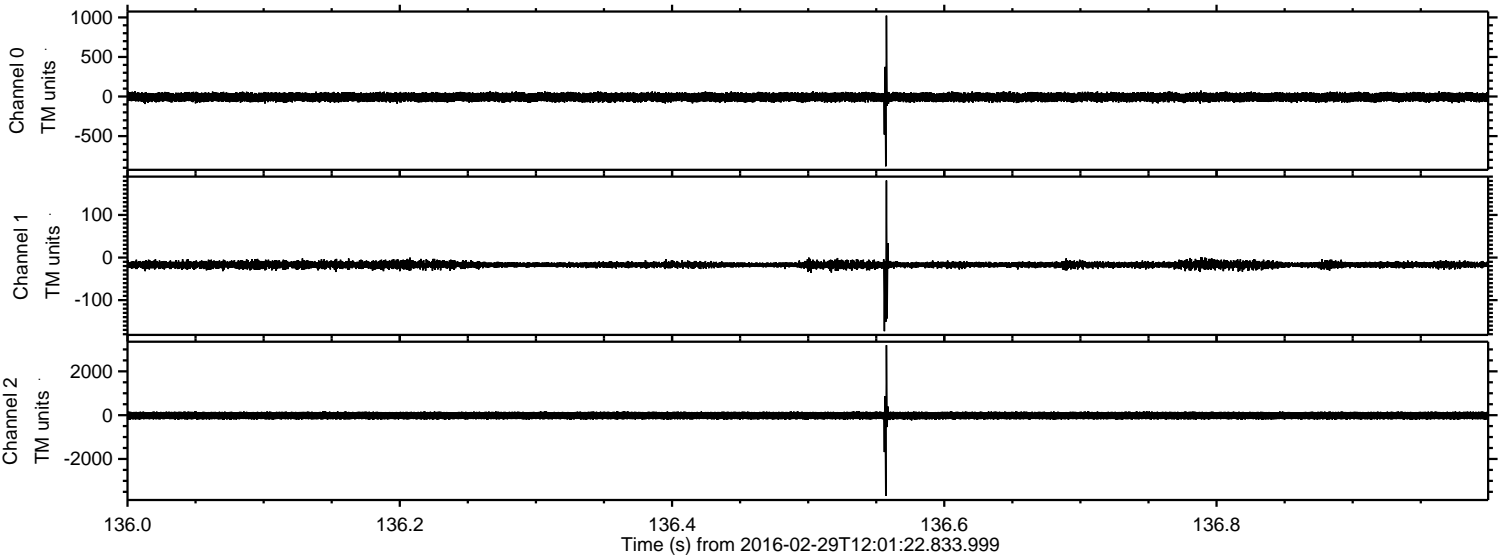


Processed Sun Apr 17 11:28:59 2016 by ELM ver.2012-10-06 from 001__elm20160229_120121__dat00.bin

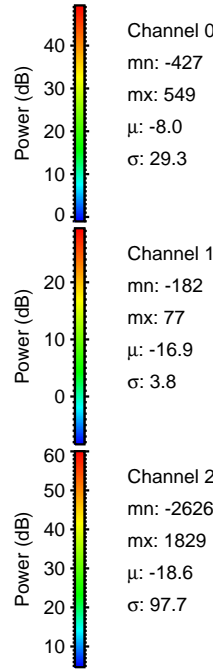
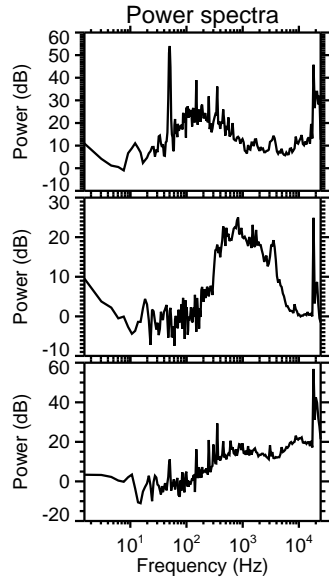
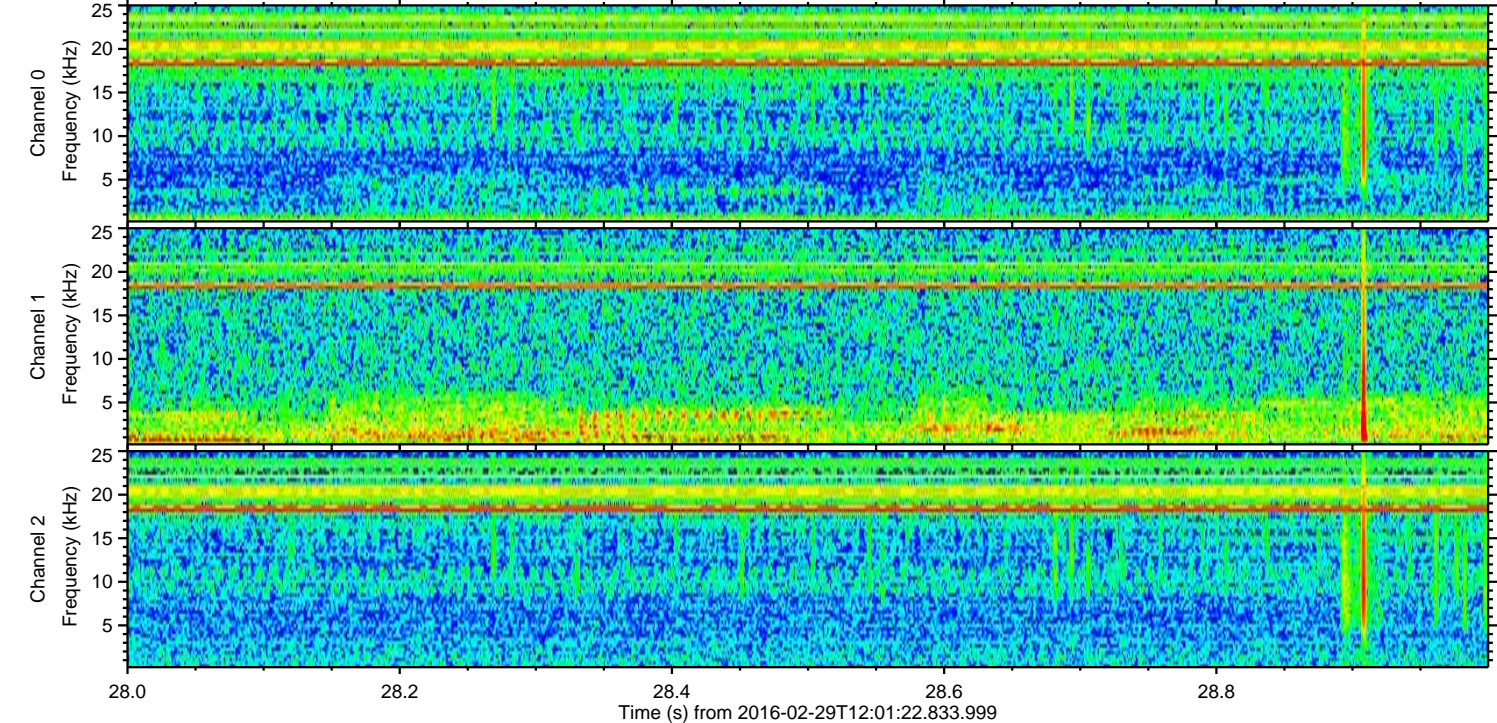
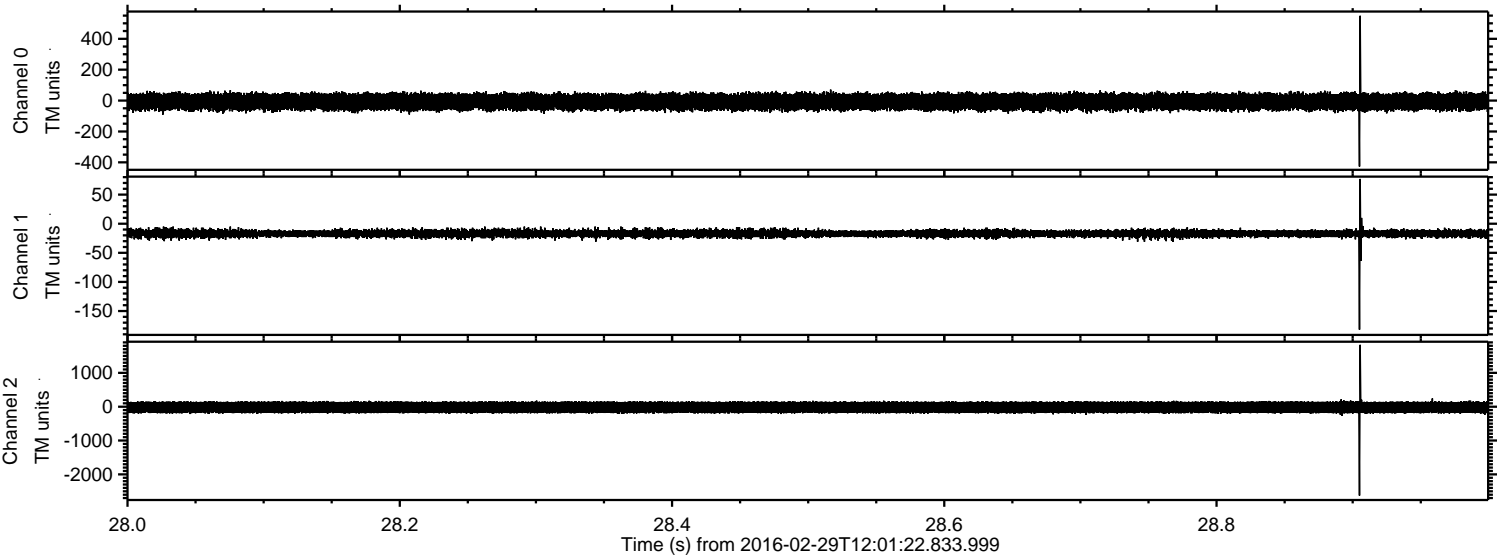


ELMAVAN 3D WAVEFORMS (Measured data sampled at 50 kHz) 51000 packets of 144 samples from 2016-02-29T12:01:22.833.999. Part 137/147

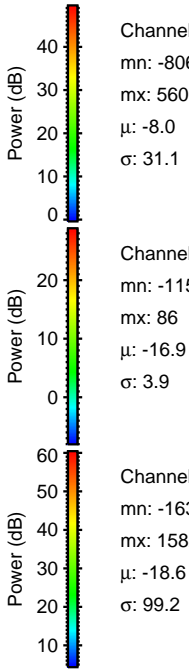
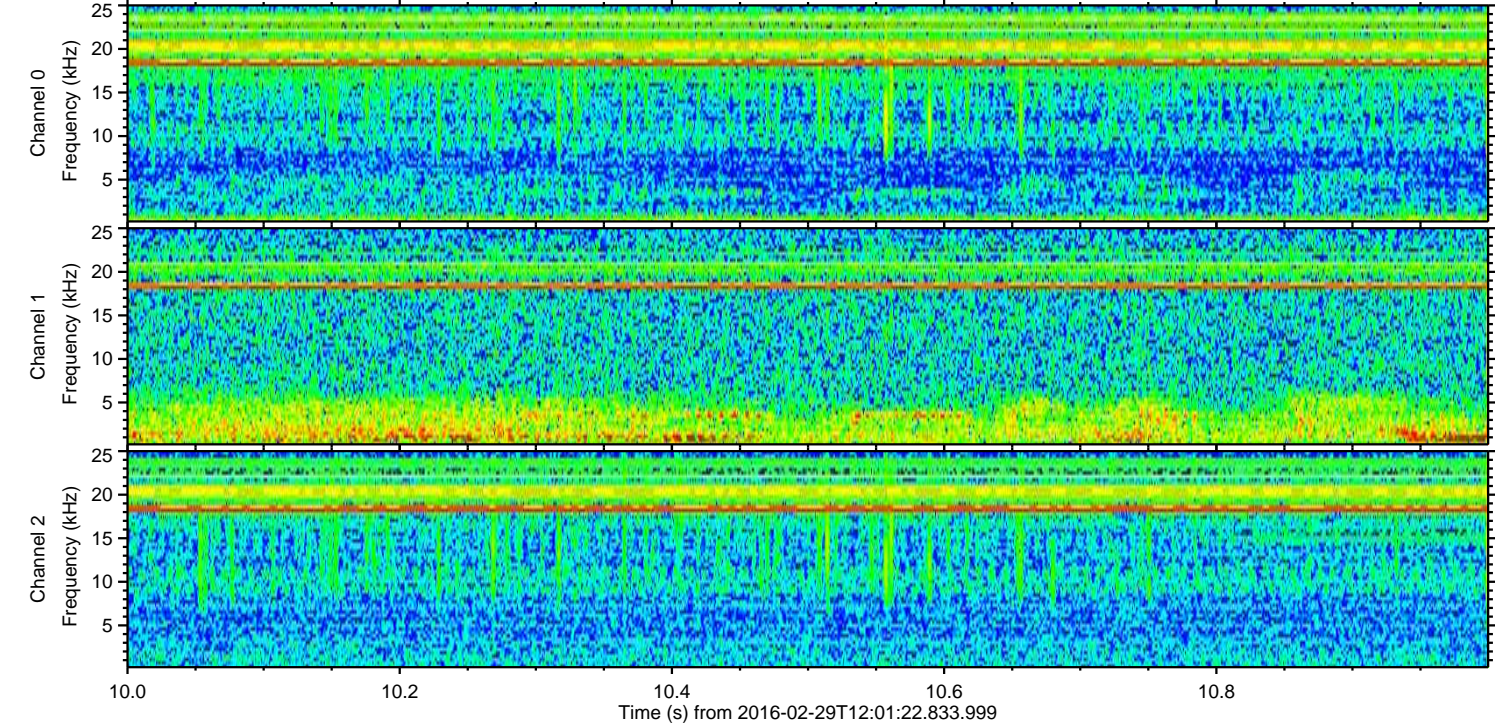
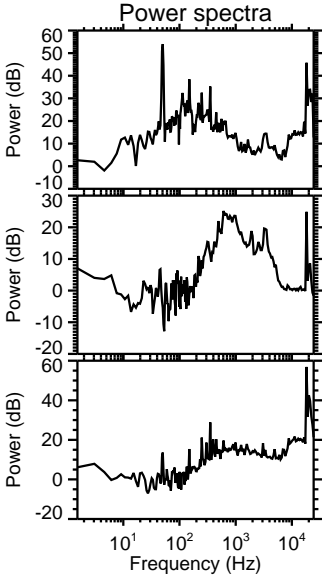
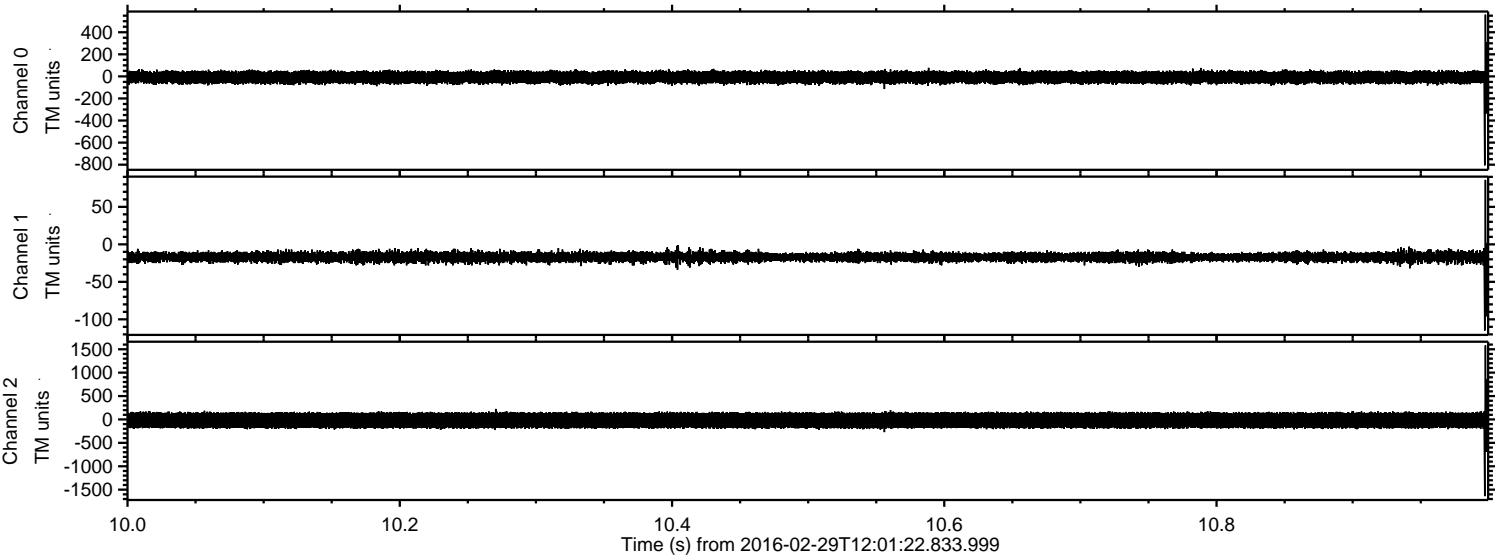
Processed Sun Apr 17 11:29:00 2016 by ELM ver.2012-10-06 from 001__elm20160229_120121__dat00.bin



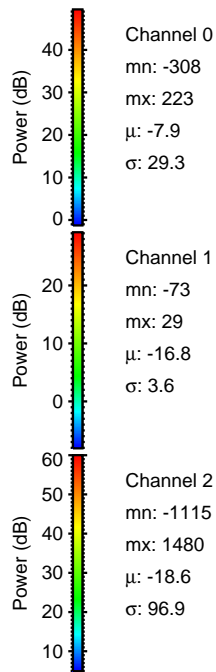
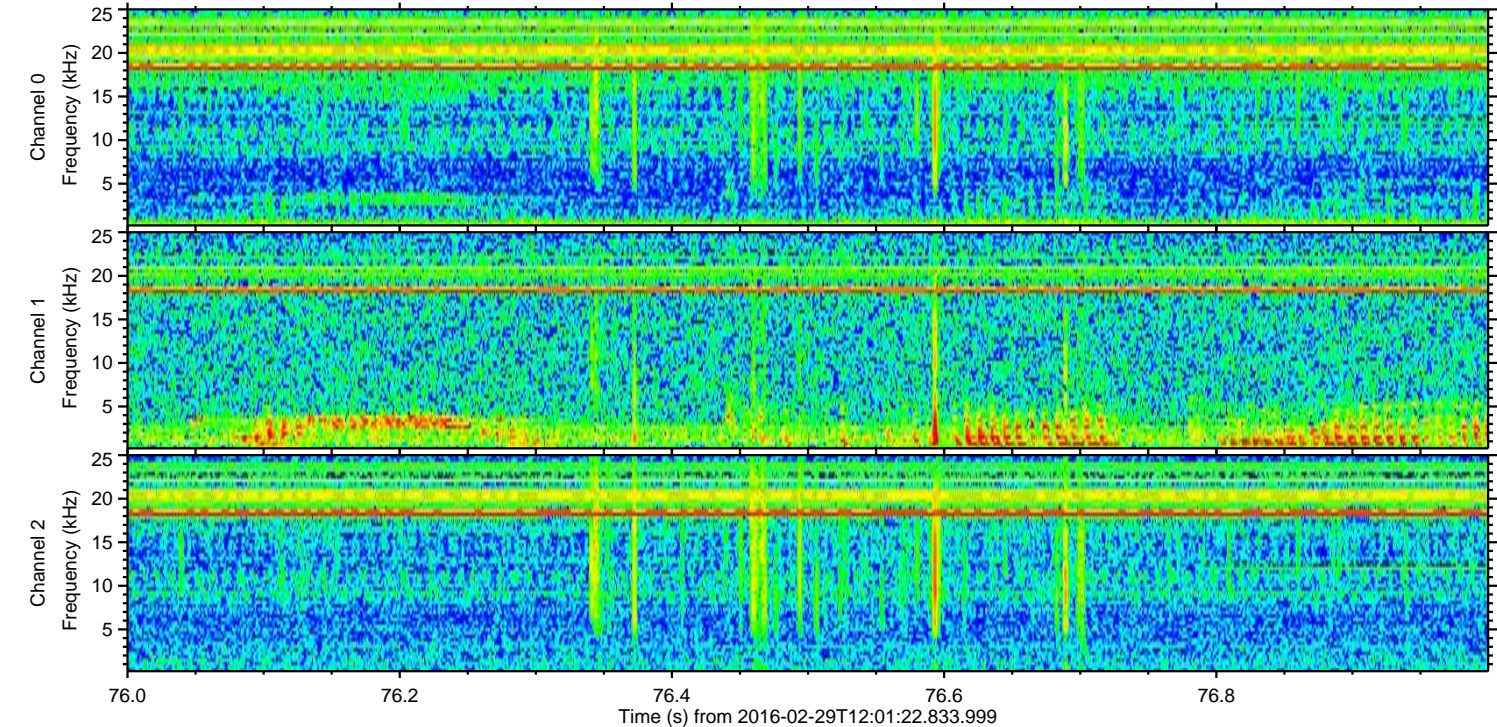
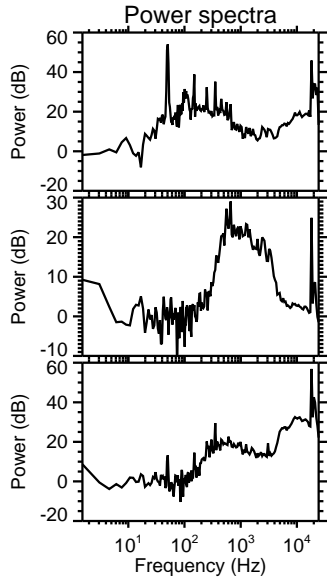
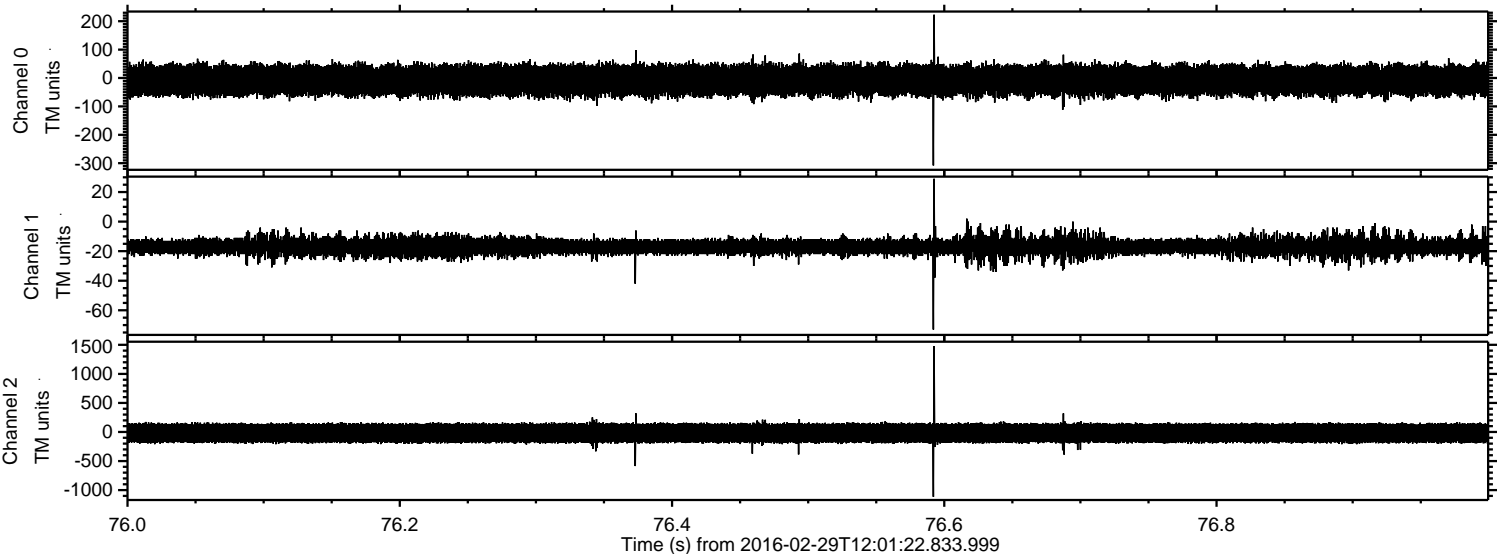
Processed Sun Apr 17 11:29:01 2016 by ELM ver.2012-10-06 from 001__elm20160229_120121__dat00.bin



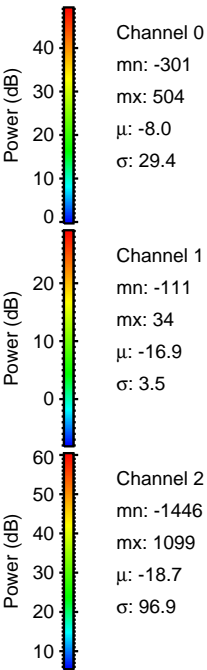
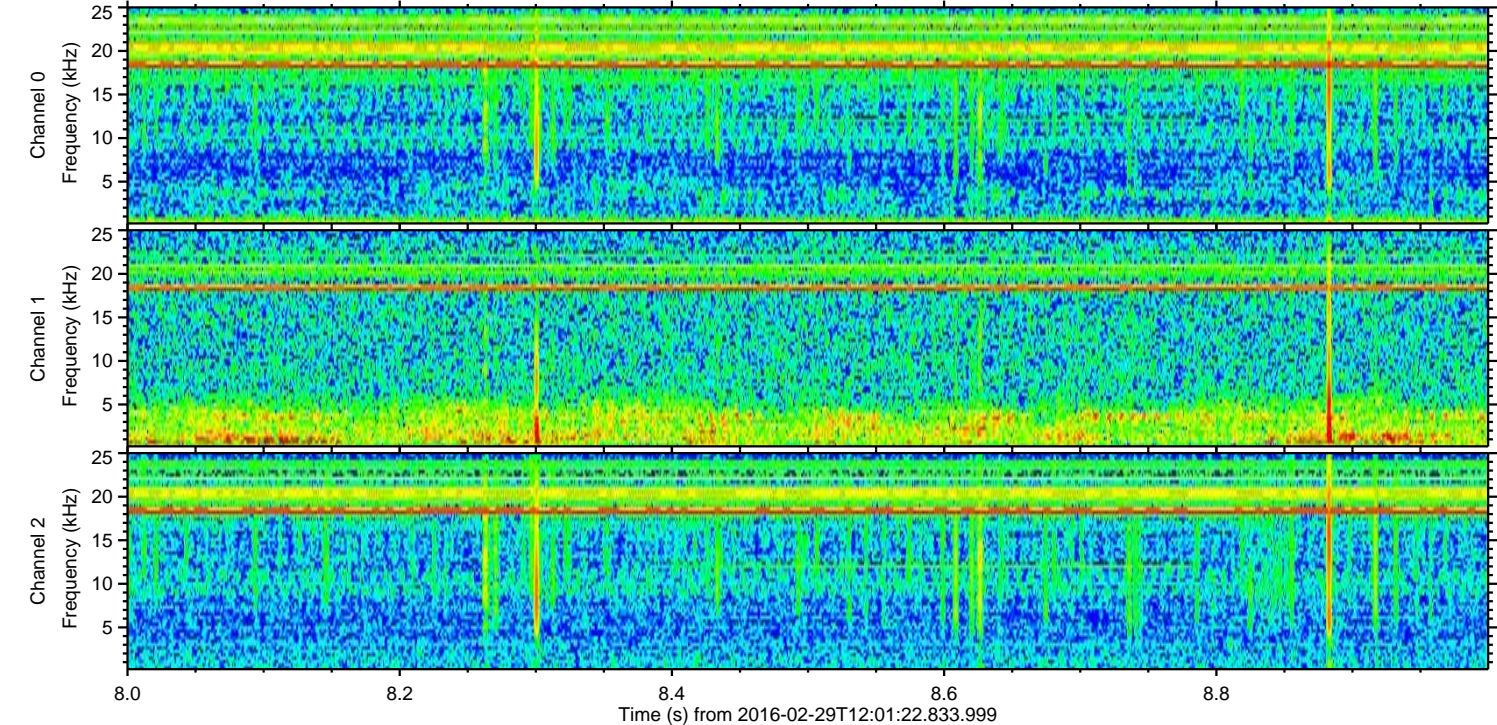
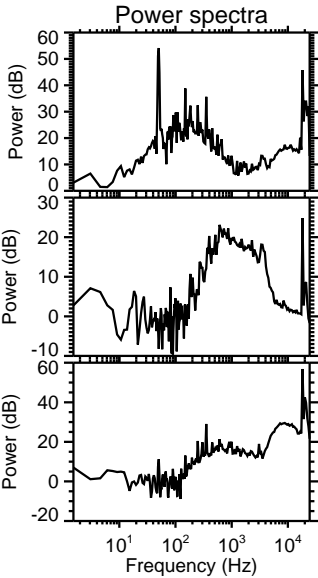
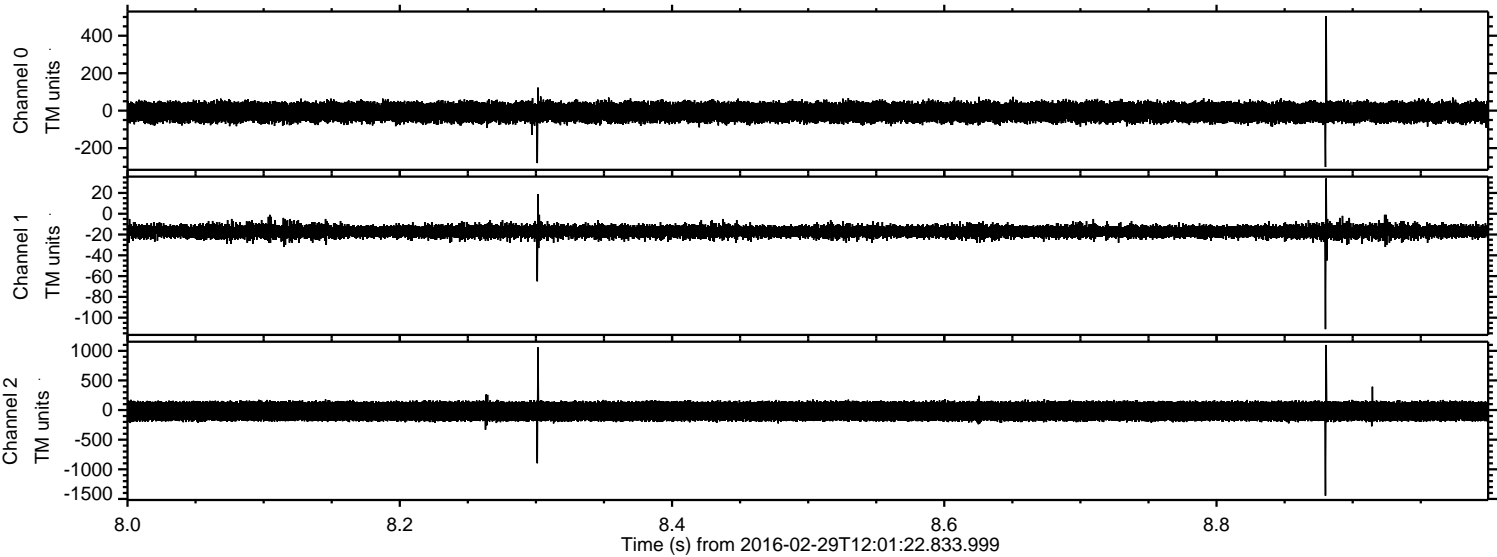
Processed Sun Apr 17 11:29:01 2016 by ELM ver.2012-10-06 from 001__elm20160229_120121__dat00.bin



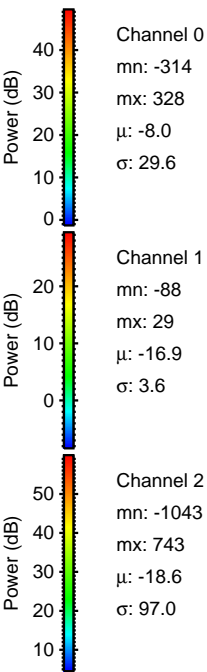
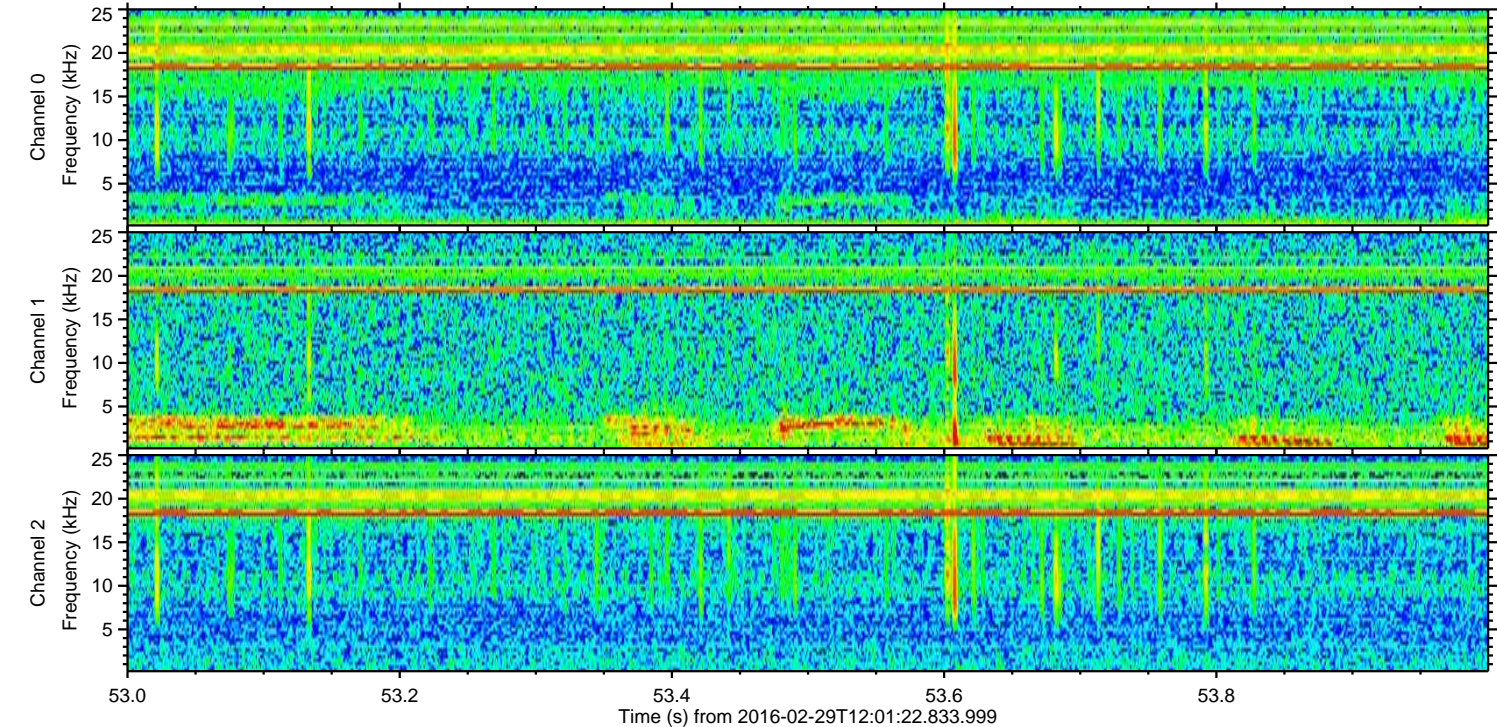
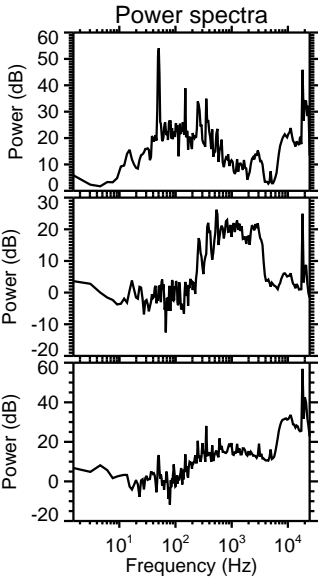
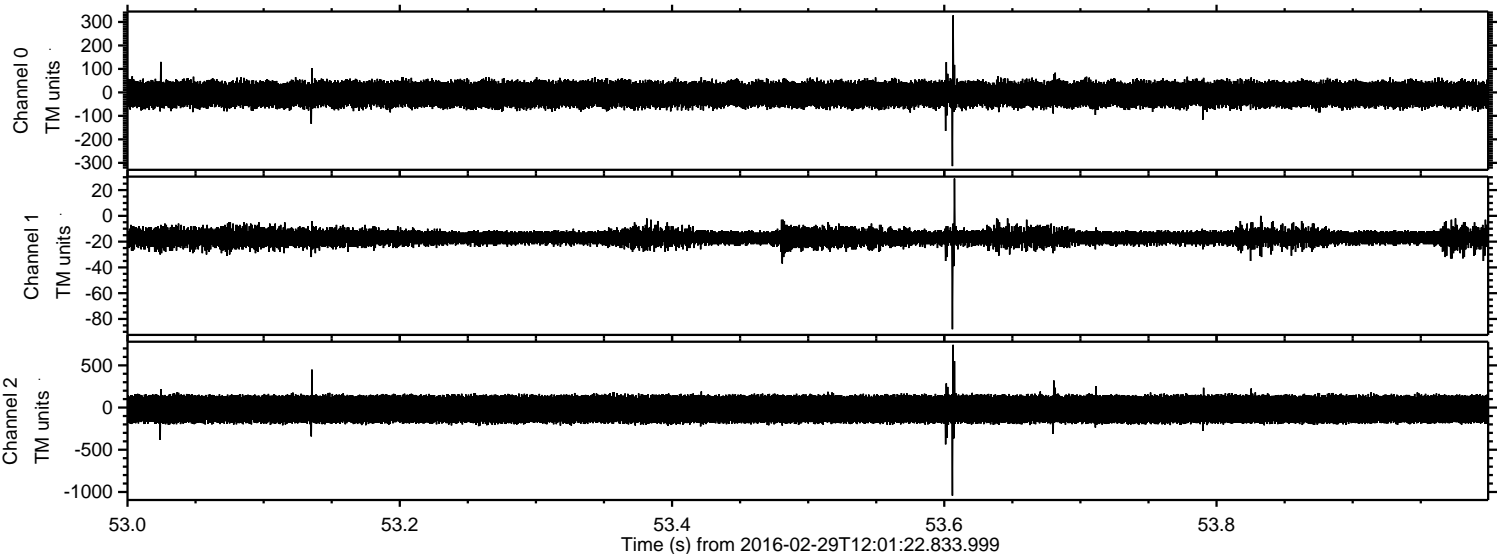
Processed Sun Apr 17 11:29:02 2016 by ELM ver.2012-10-06 from 001__elm20160229_120121__dat00.bin



Processed Sun Apr 17 11:29:03 2016 by ELM ver.2012-10-06 from 001__elm20160229_120121__dat00.bin

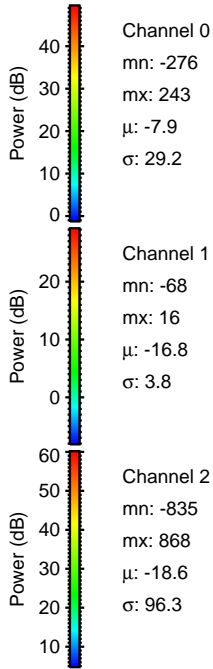
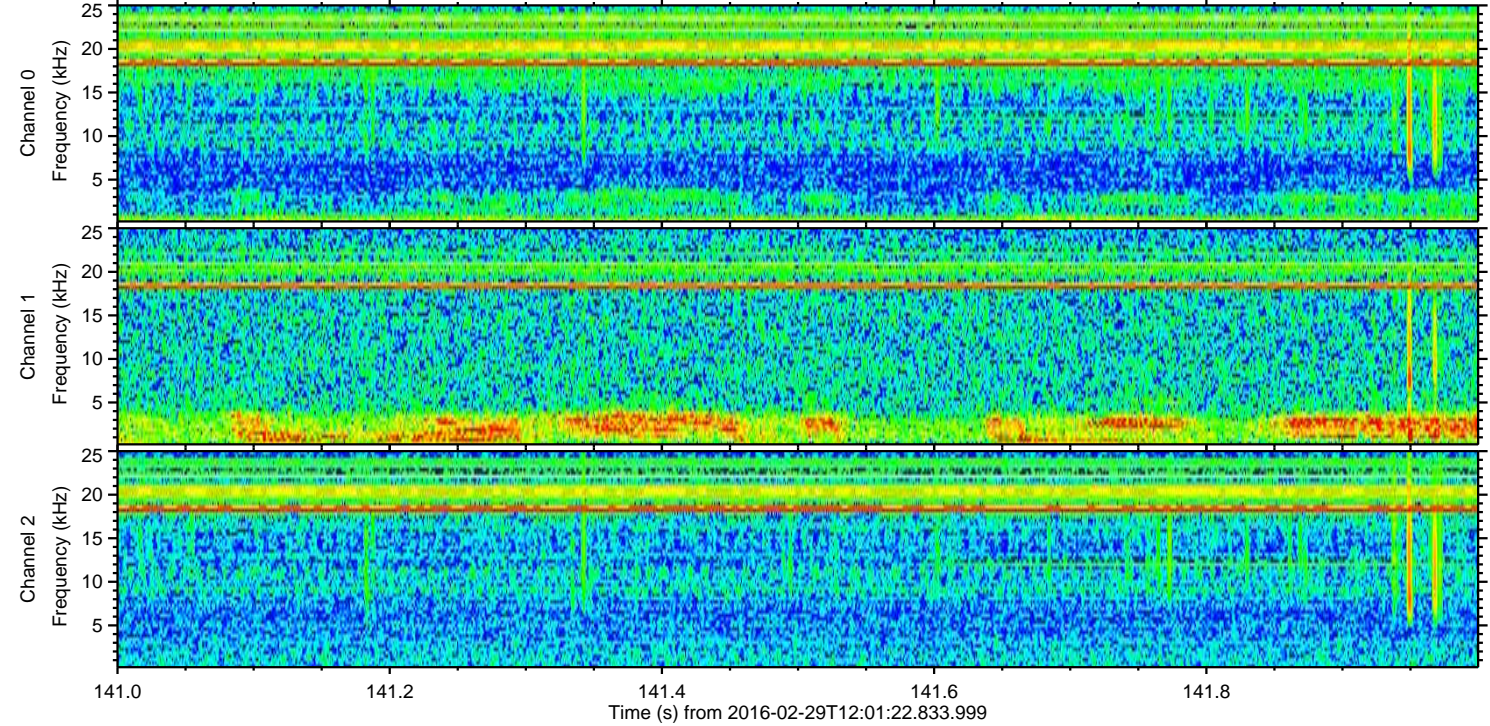
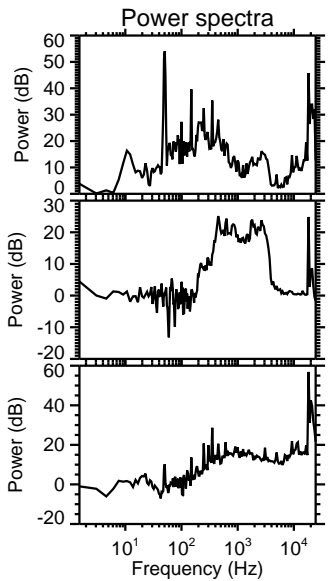
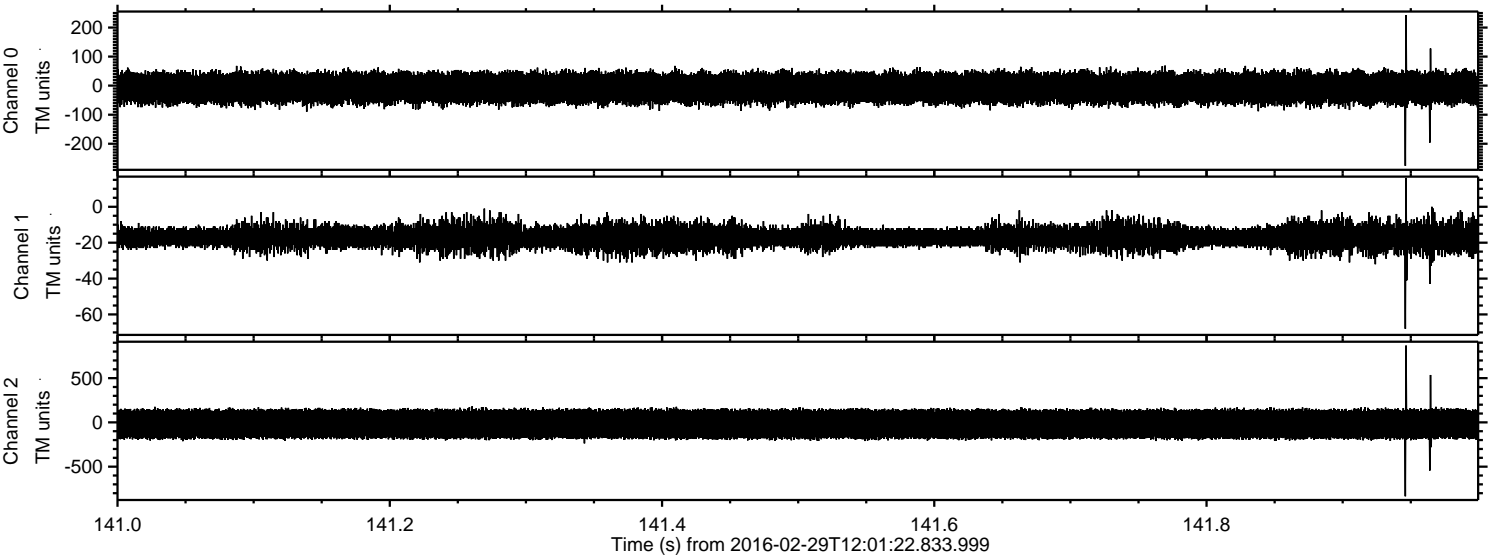


Processed Sun Apr 17 11:29:04 2016 by ELM ver.2012-10-06 from 001__elm20160229_120121__dat00.bin



ELMAVAN 3D WAVEFORMS (Measured data sampled at 50 kHz) 51000 packets of 144 samples from 2016-02-29T12:01:22.833.999. Part 142/147

Processed Sun Apr 17 11:29:05 2016 by ELM ver.2012-10-06 from 001__elm20160229_120121__dat00.bin



Channel 0
mn: -276
mx: 243
 μ : -7.9
 σ : 29.2

Channel 1
mn: -68
mx: 16
 μ : -16.8
 σ : 3.8

Channel 2
mn: -835
mx: 868
 μ : -18.6
 σ : 96.3

Processed Sun Apr 17 11:29:06 2016 by ELM ver.2012-10-06 from 001__elm20160229_120121__dat00.bin

