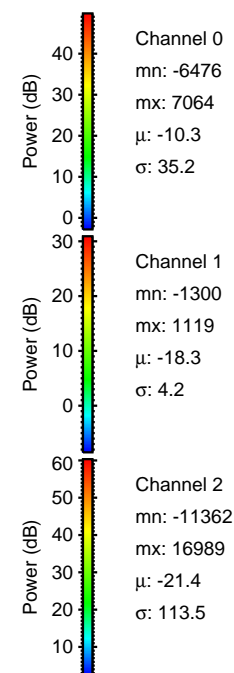
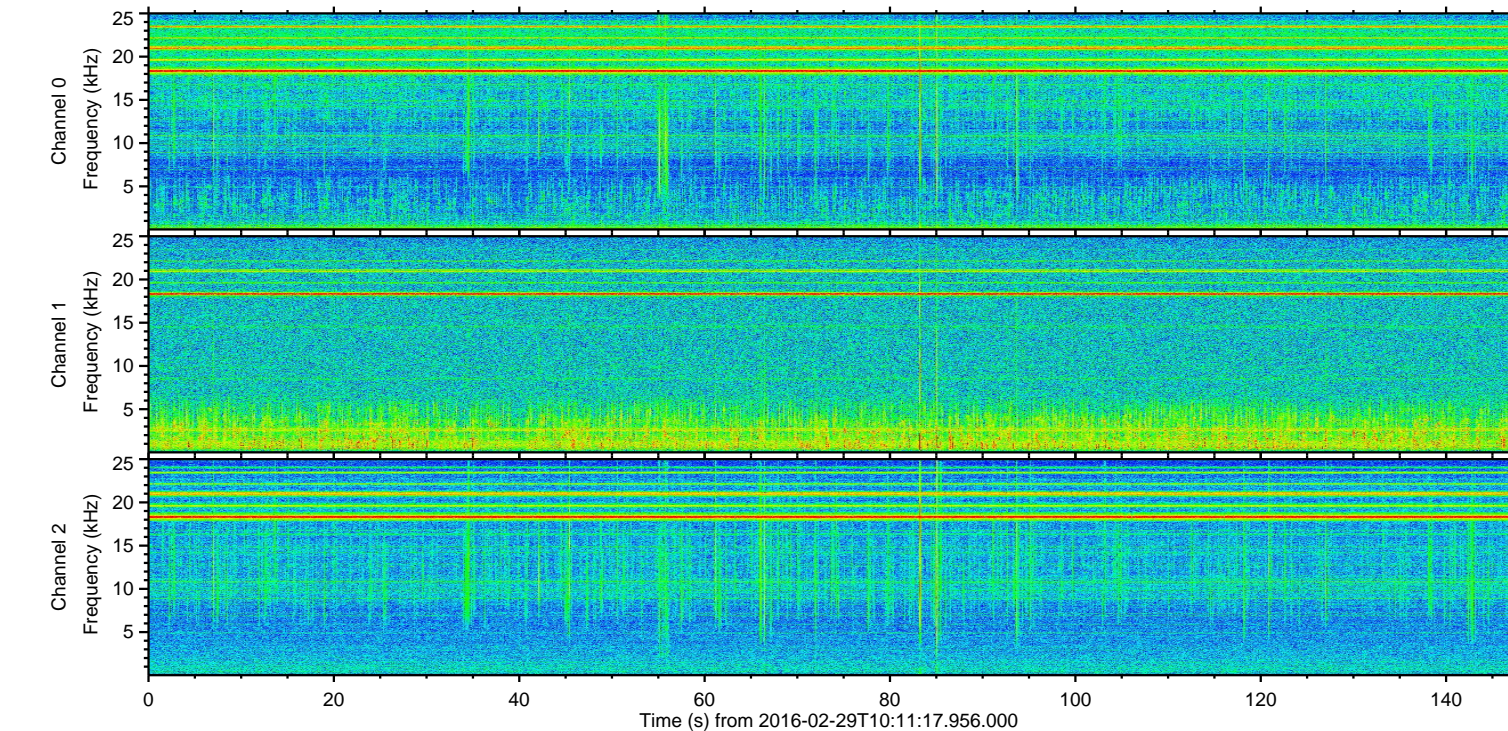
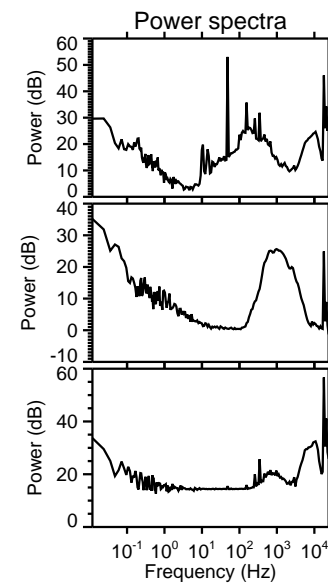
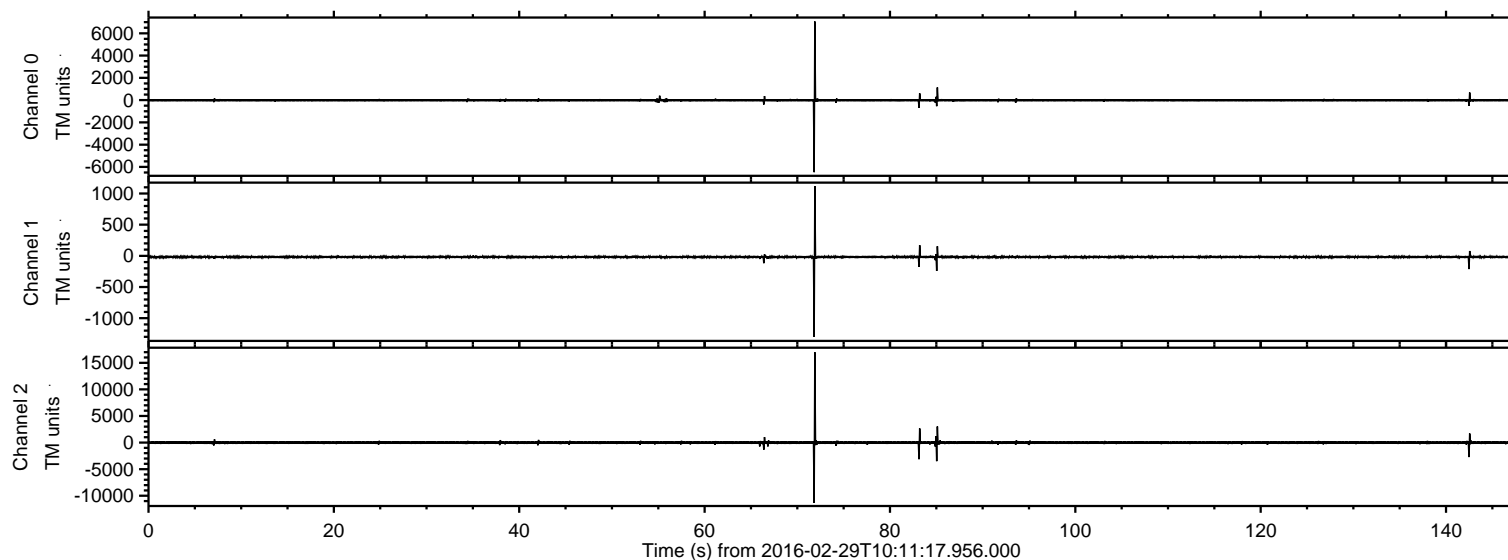


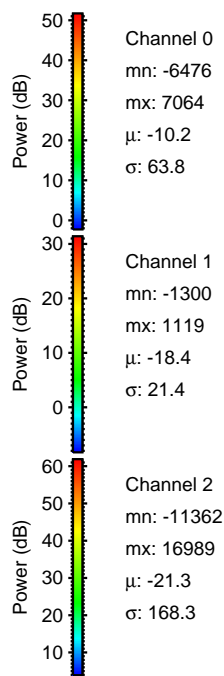
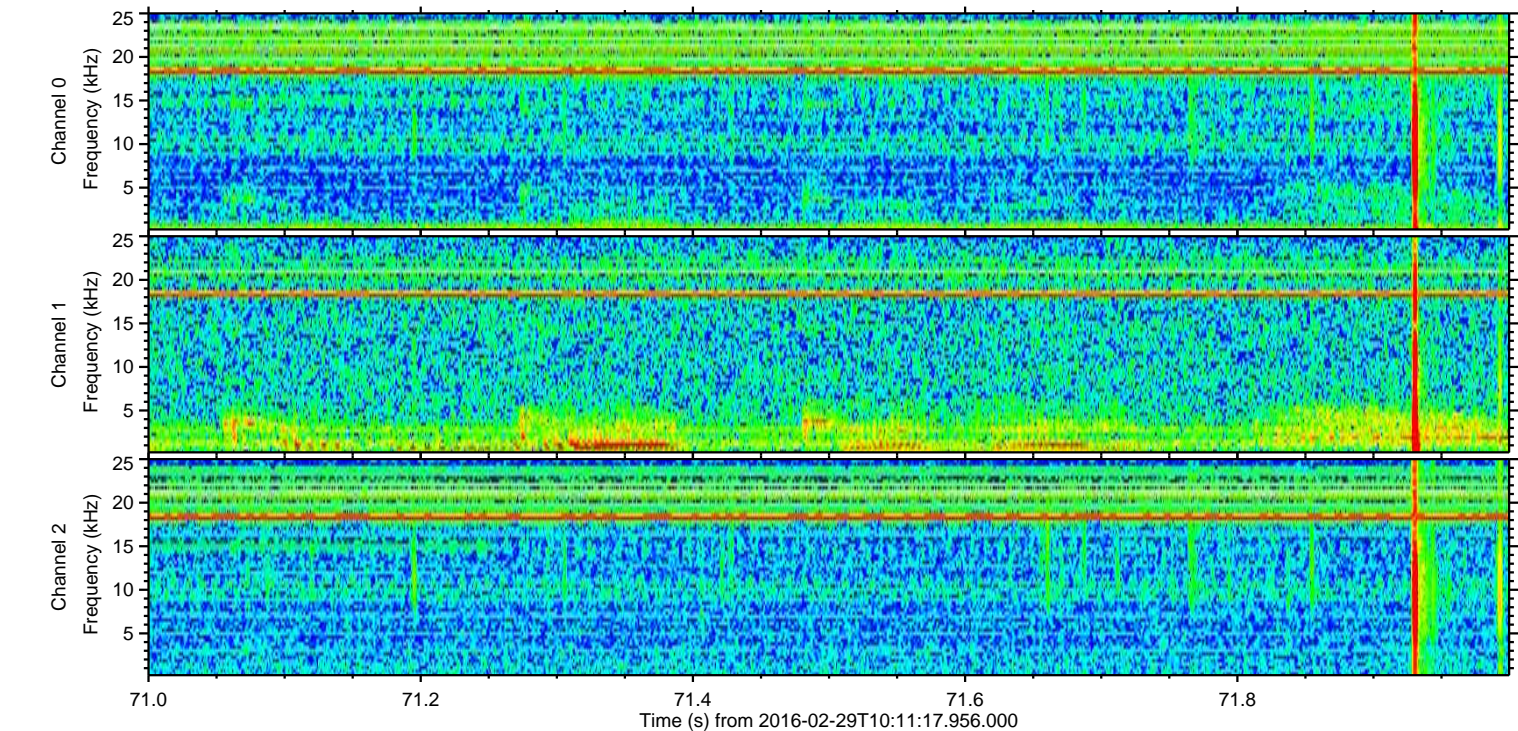
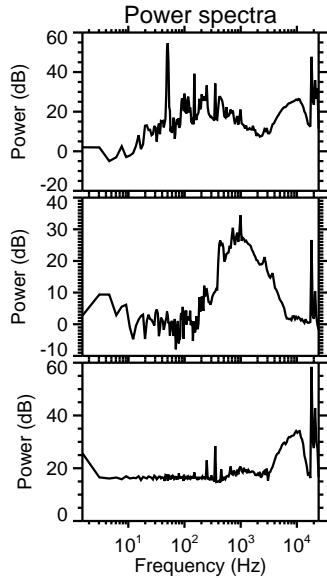
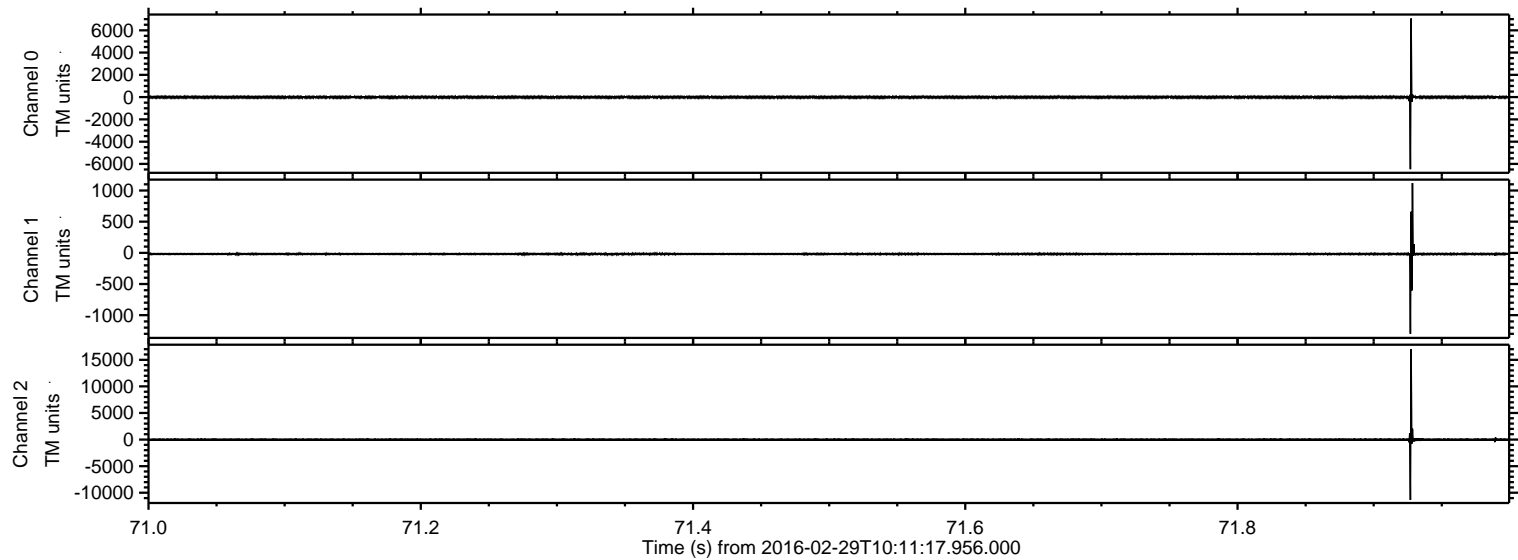
# ELMAVAN 3D WAVEFORMS (Measured data sampled at 50 kHz) 51000 packets of 144 samples from 2016-02-29T10:11:17.956.000.

Processed Sun Apr 17 11:06:11 2016 by ELM ver.2012-10-06 from 001\_\_elm20160229\_101116\_\_dat00.bin



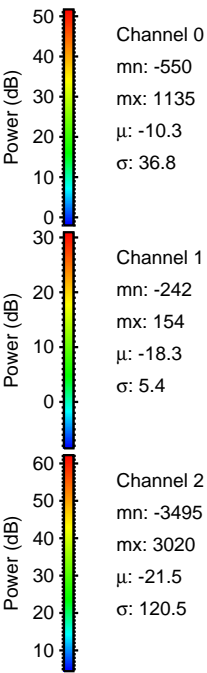
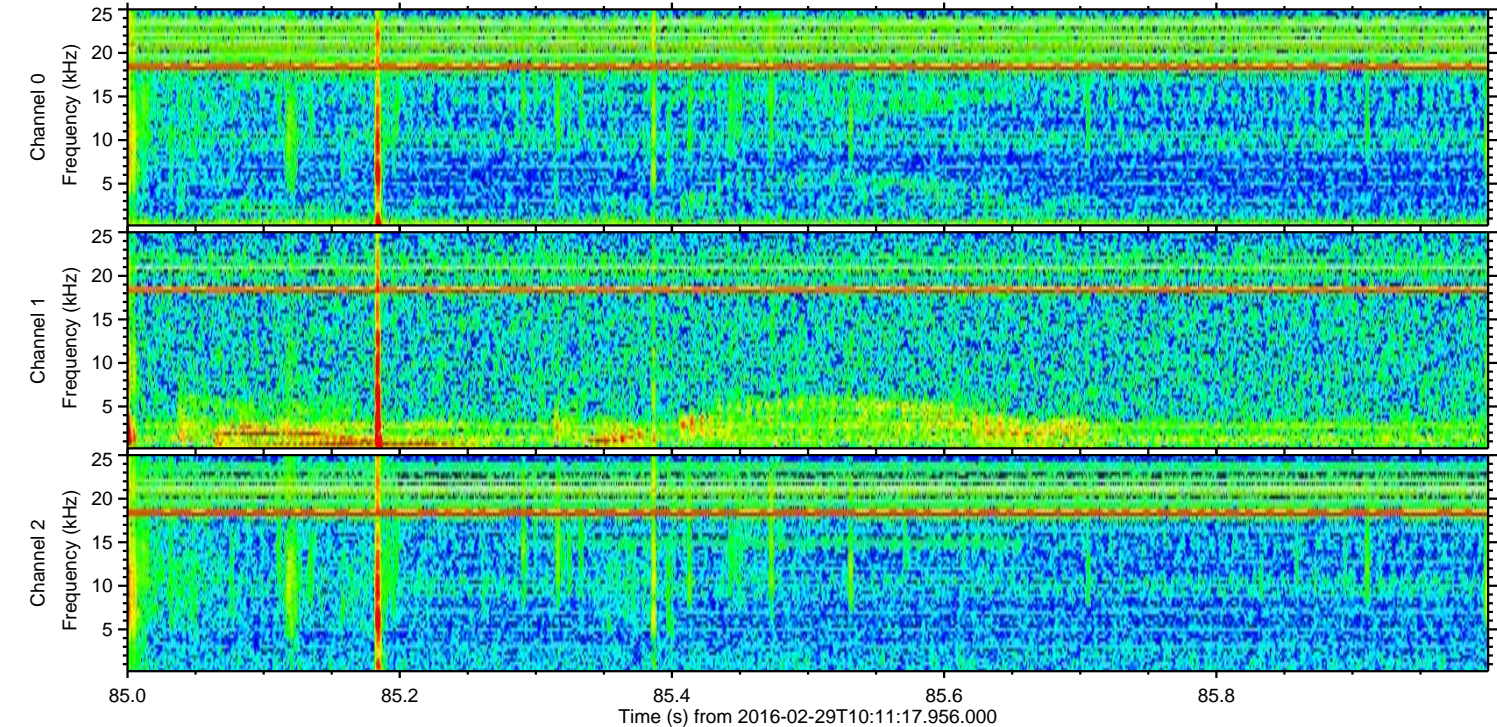
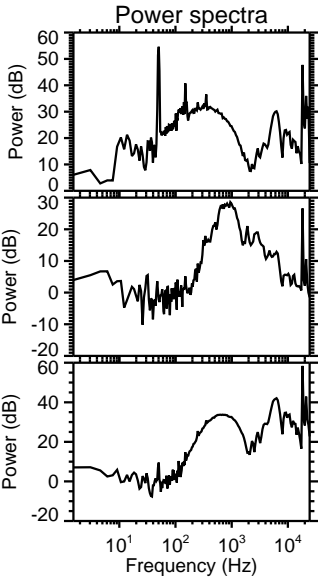
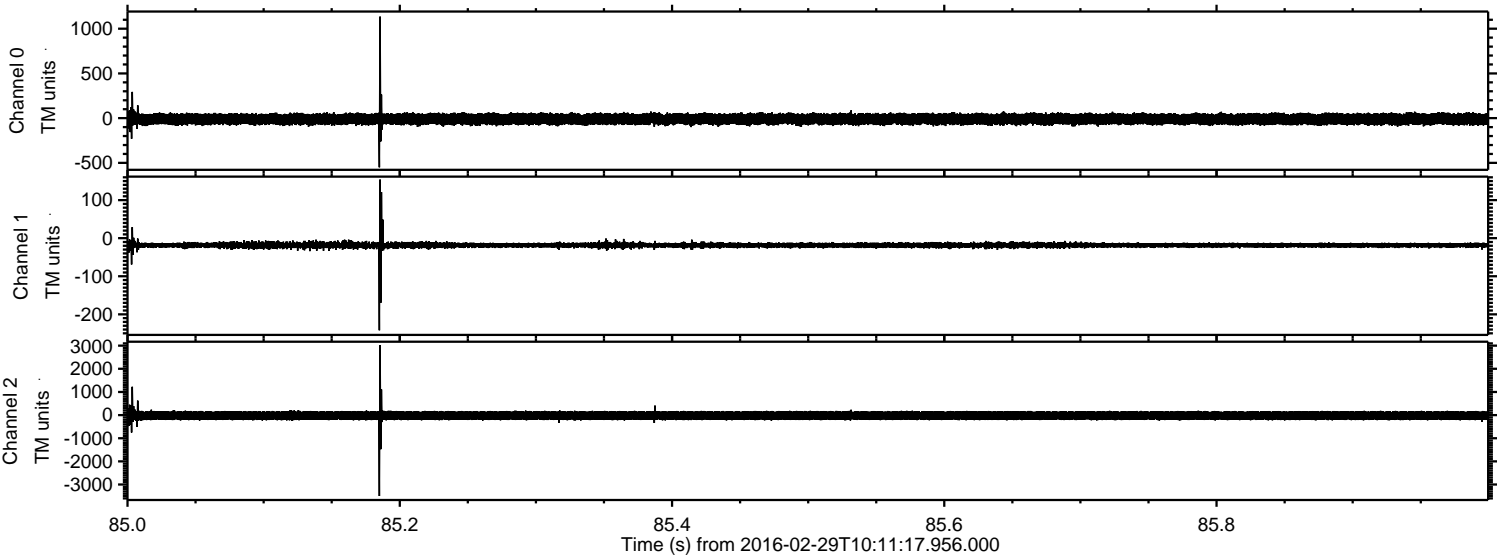


Processed Sun Apr 17 11:06:23 2016 by ELM ver.2012-10-06 from 001\_\_elm20160229\_101116\_\_dat00.bin





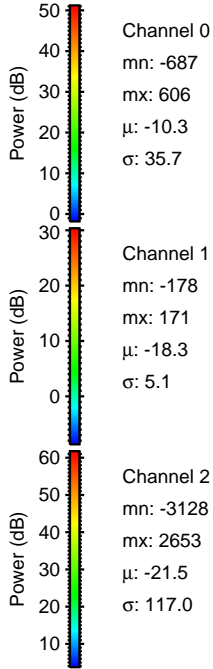
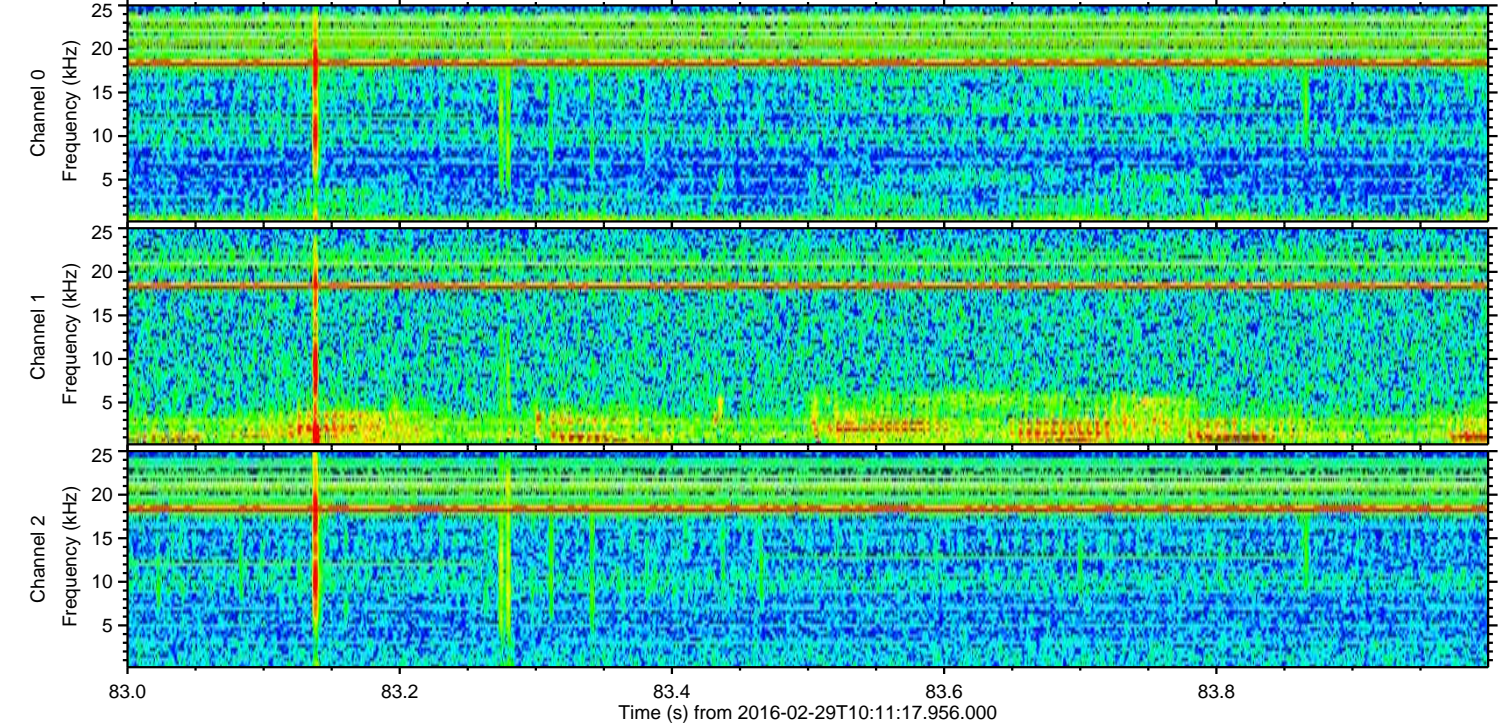
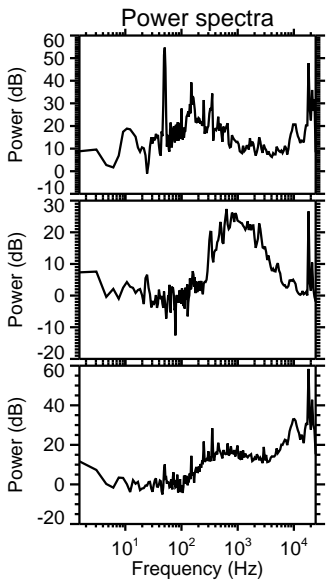
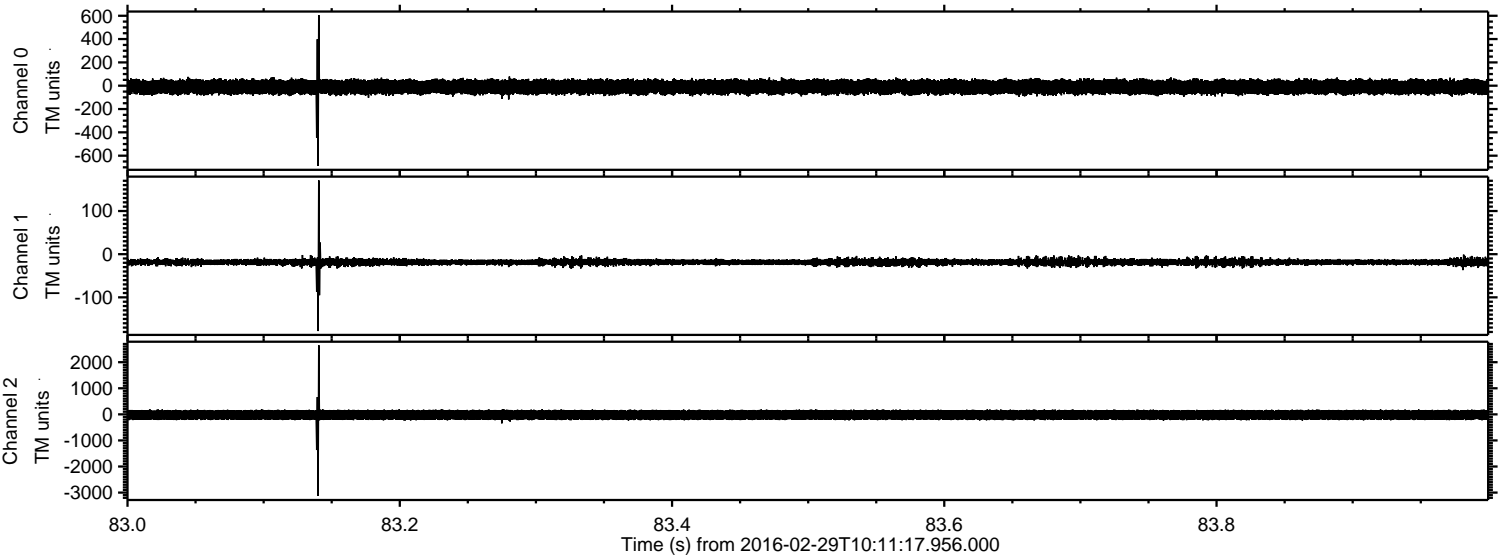
Processed Sun Apr 17 11:06:23 2016 by ELM ver.2012-10-06 from 001\_\_elm20160229\_101116\_\_dat00.bin





ELMAVAN 3D WAVEFORMS (Measured data sampled at 50 kHz) 51000 packets of 144 samples from 2016-02-29T10:11:17.956.000. Part 84/147

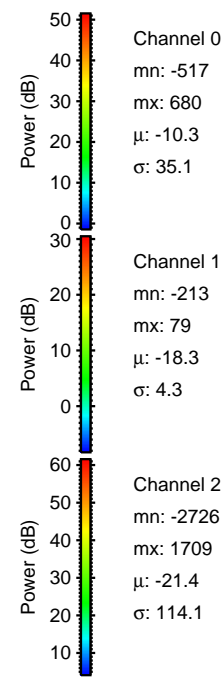
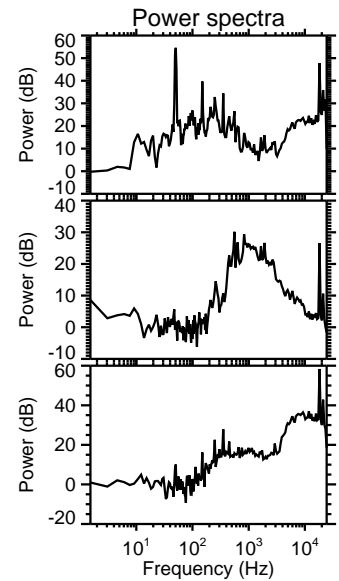
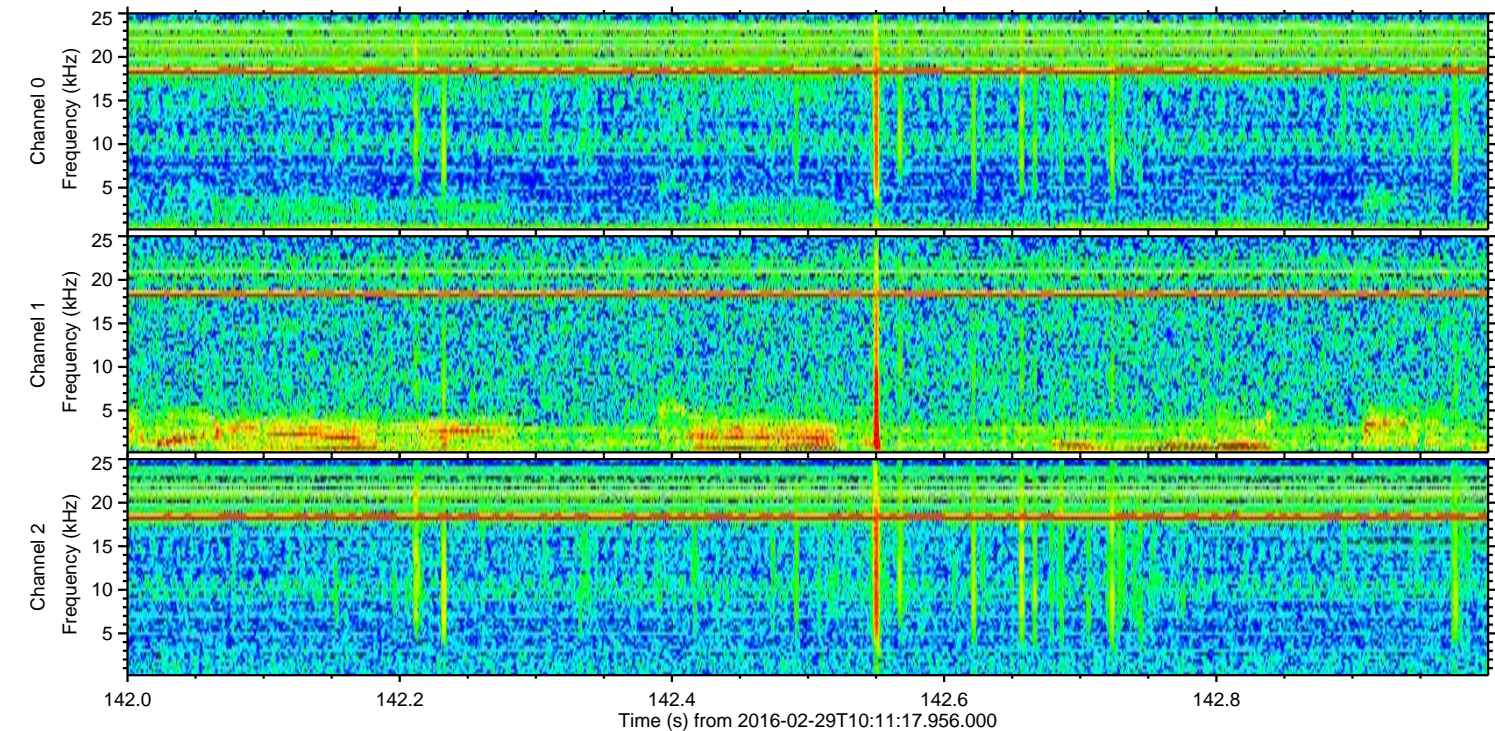
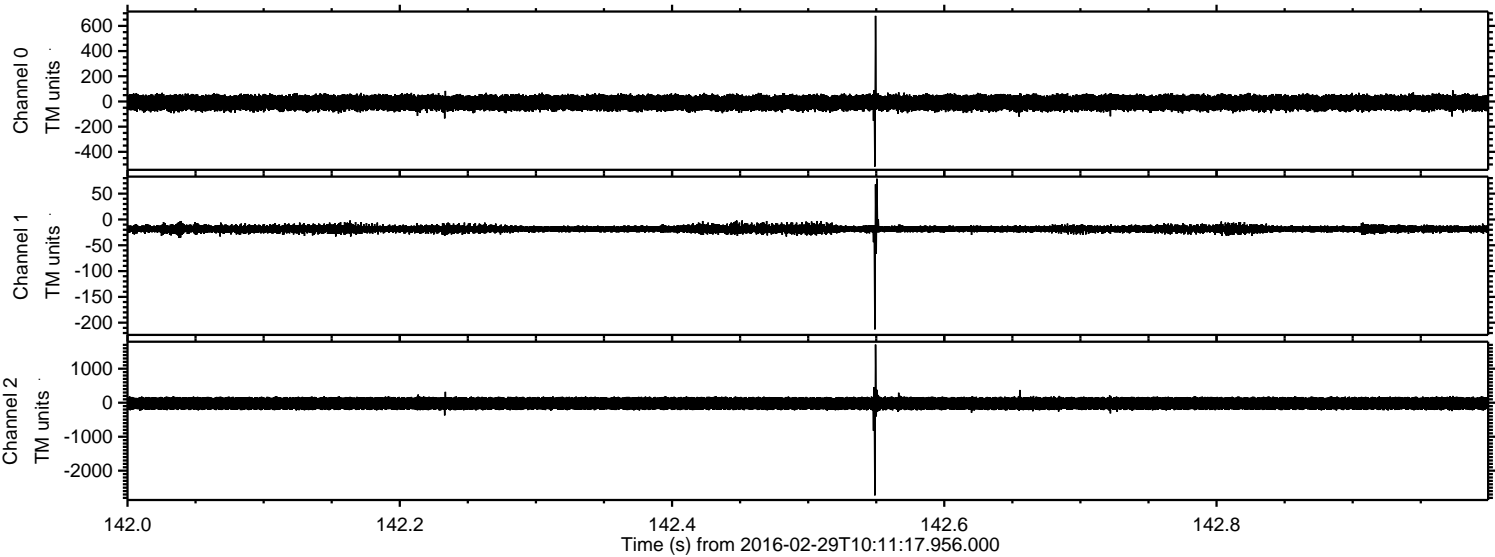
Processed Sun Apr 17 11:06:24 2016 by ELM ver.2012-10-06 from 001\_\_elm20160229\_101116\_\_dat00.bin





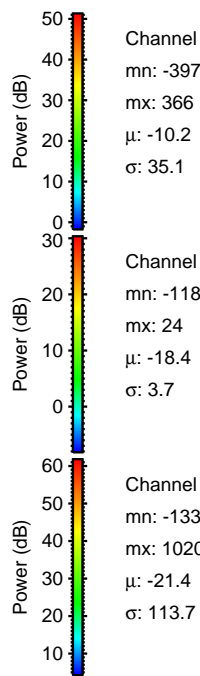
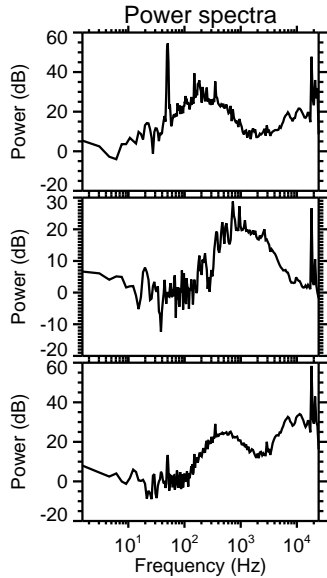
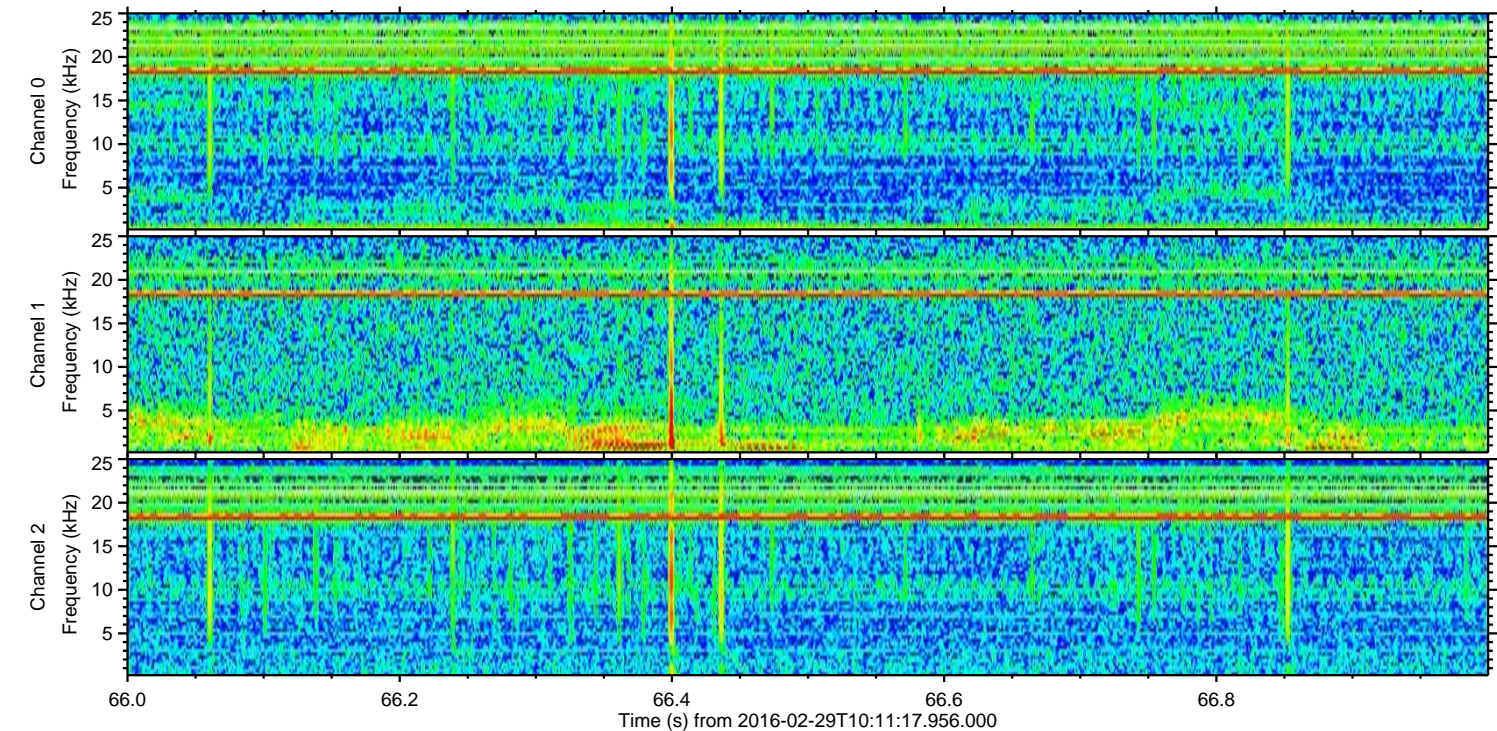
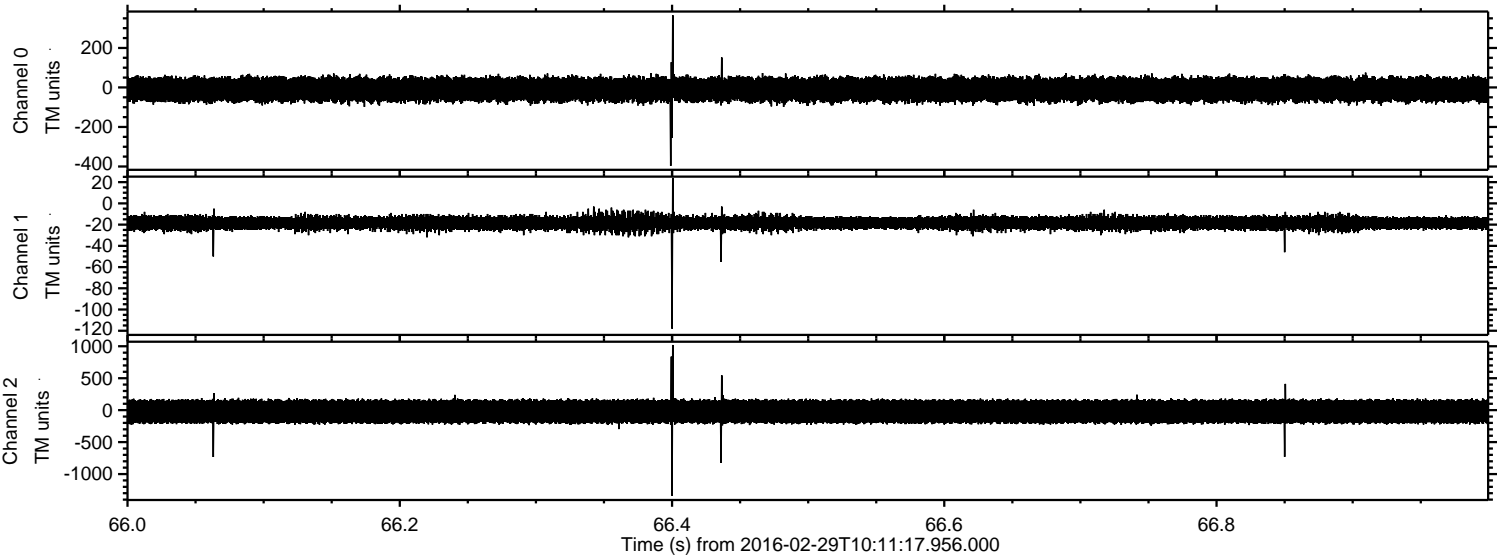
ELMAVAN 3D WAVEFORMS (Measured data sampled at 50 kHz) 51000 packets of 144 samples from 2016-02-29T10:11:17.956.000. Part 143/147

Processed Sun Apr 17 11:06:25 2016 by ELM ver.2012-10-06 from 001\_\_elm20160229\_101116\_\_dat00.bin





Processed Sun Apr 17 11:06:26 2016 by ELM ver.2012-10-06 from 001\_\_elm20160229\_101116\_\_dat00.bin



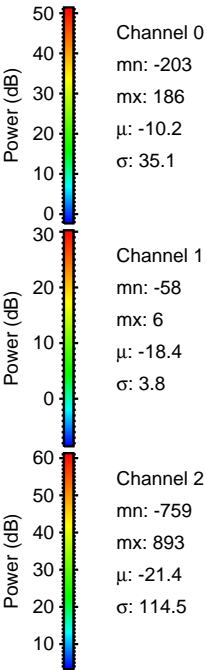
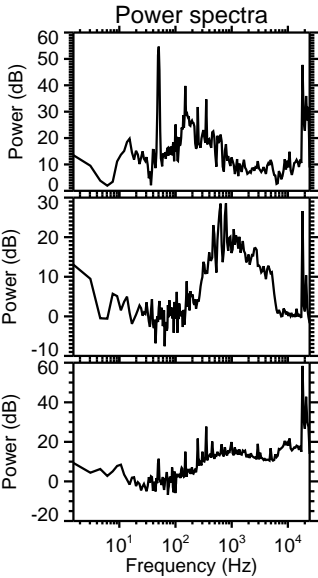
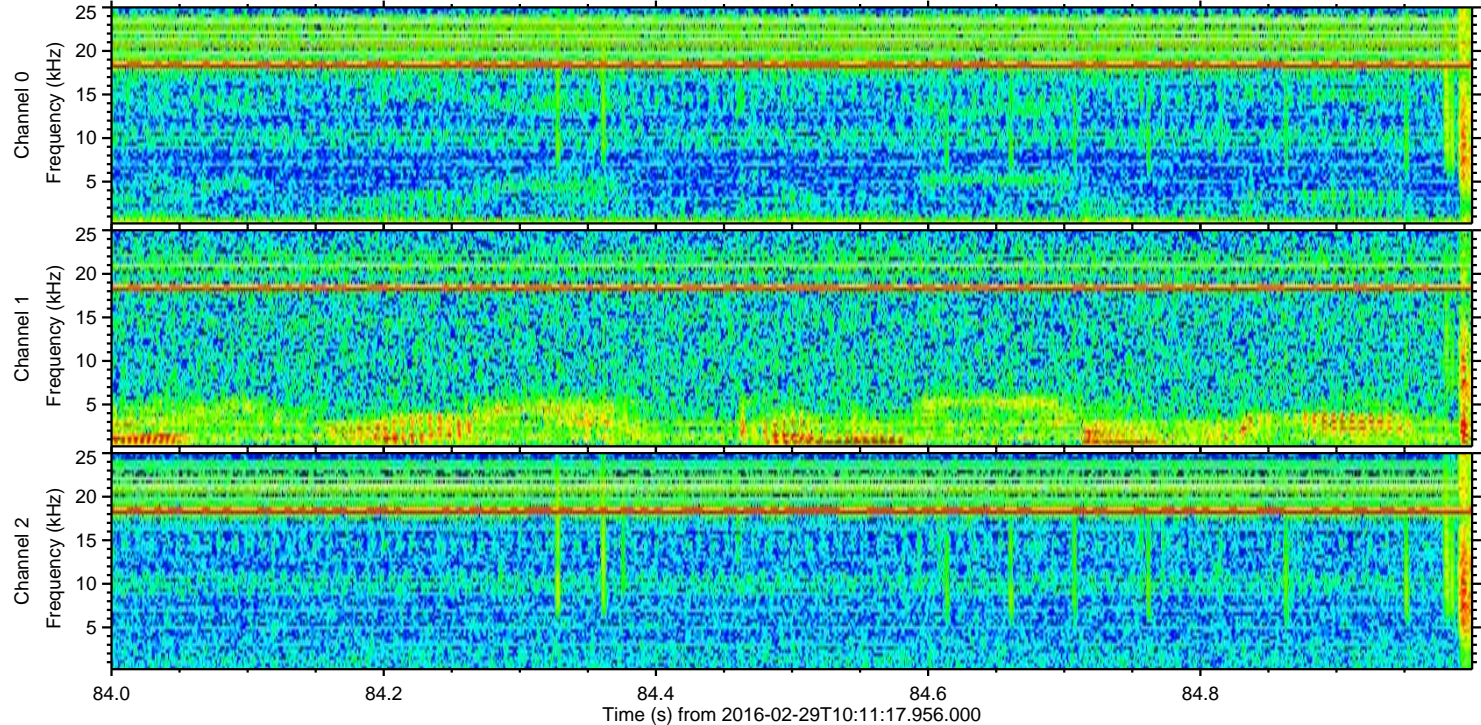
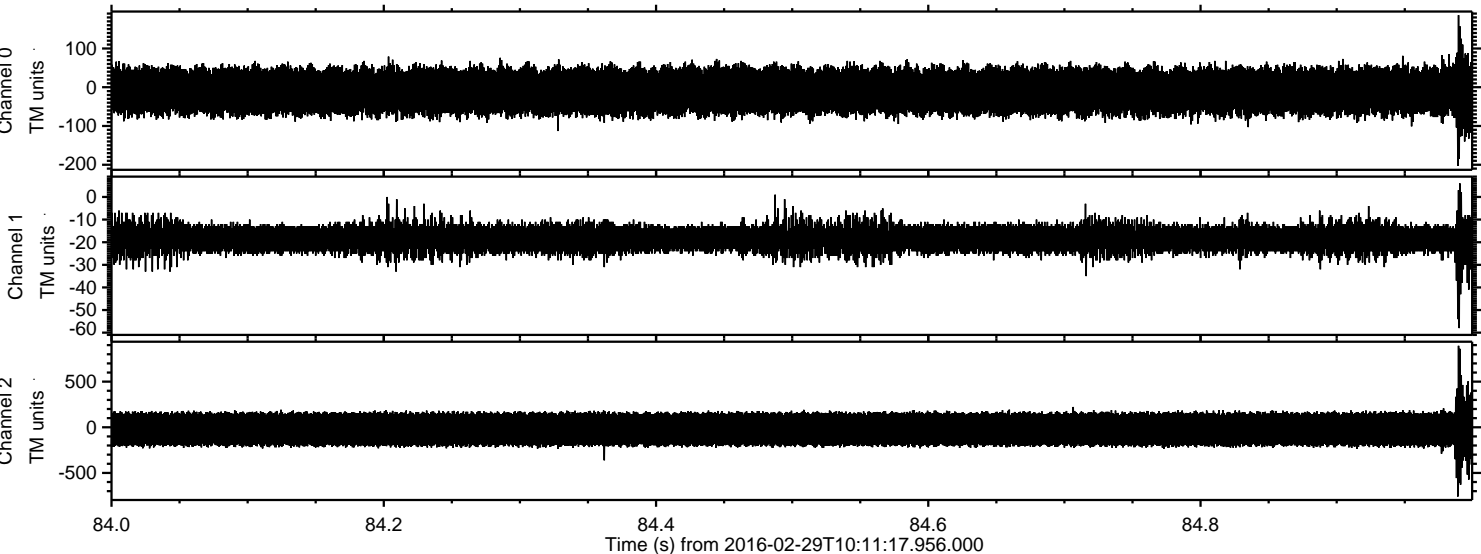
Channel 0  
mn: -397  
mx: 366  
 $\mu$ : -10.2  
 $\sigma$ : 35.1

Channel 1  
mn: -118  
mx: 24  
 $\mu$ : -18.4  
 $\sigma$ : 3.7

Channel 2  
mn: -1339  
mx: 1020  
 $\mu$ : -21.4  
 $\sigma$ : 113.7

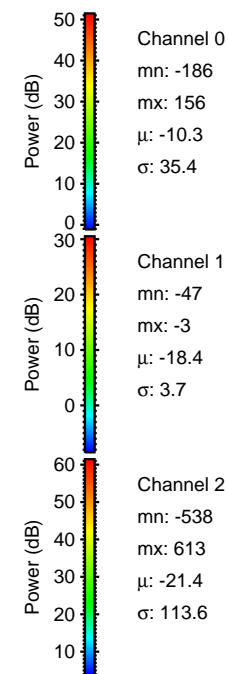
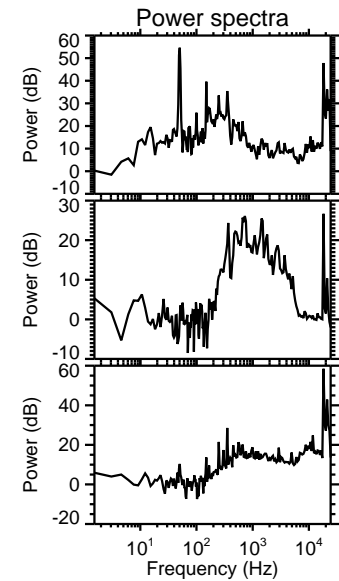
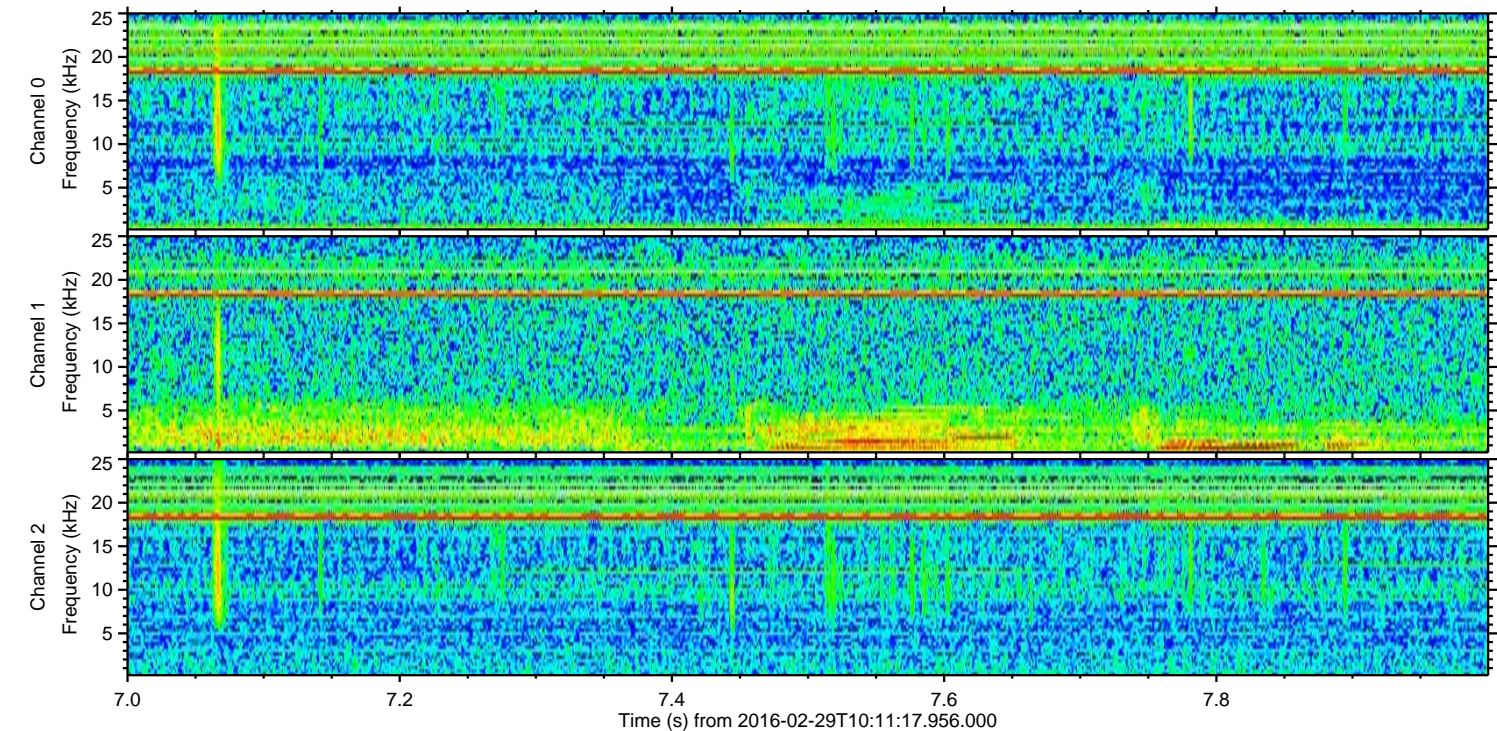
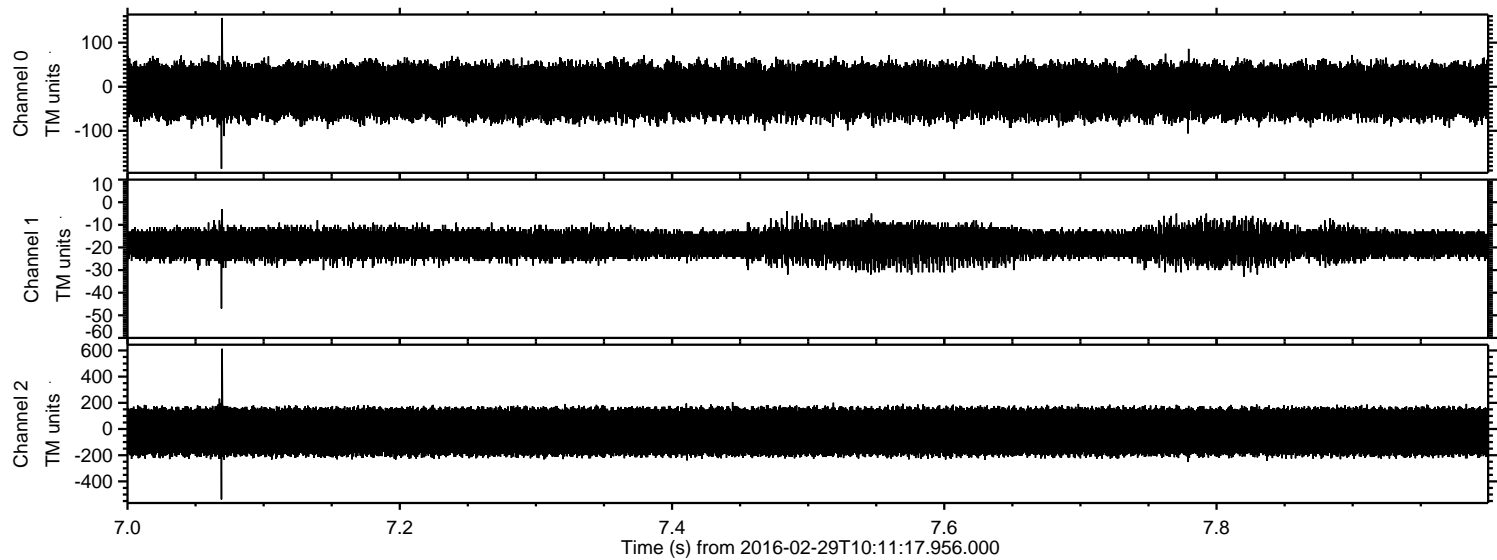


Processed Sun Apr 17 11:06:27 2016 by ELM ver.2012-10-06 from 001\_\_elm20160229\_101116\_\_dat00.bin



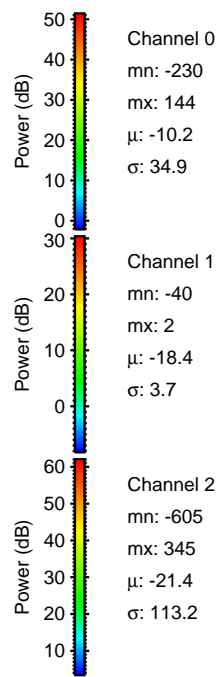
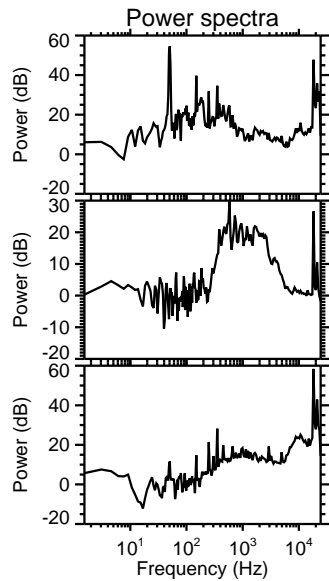
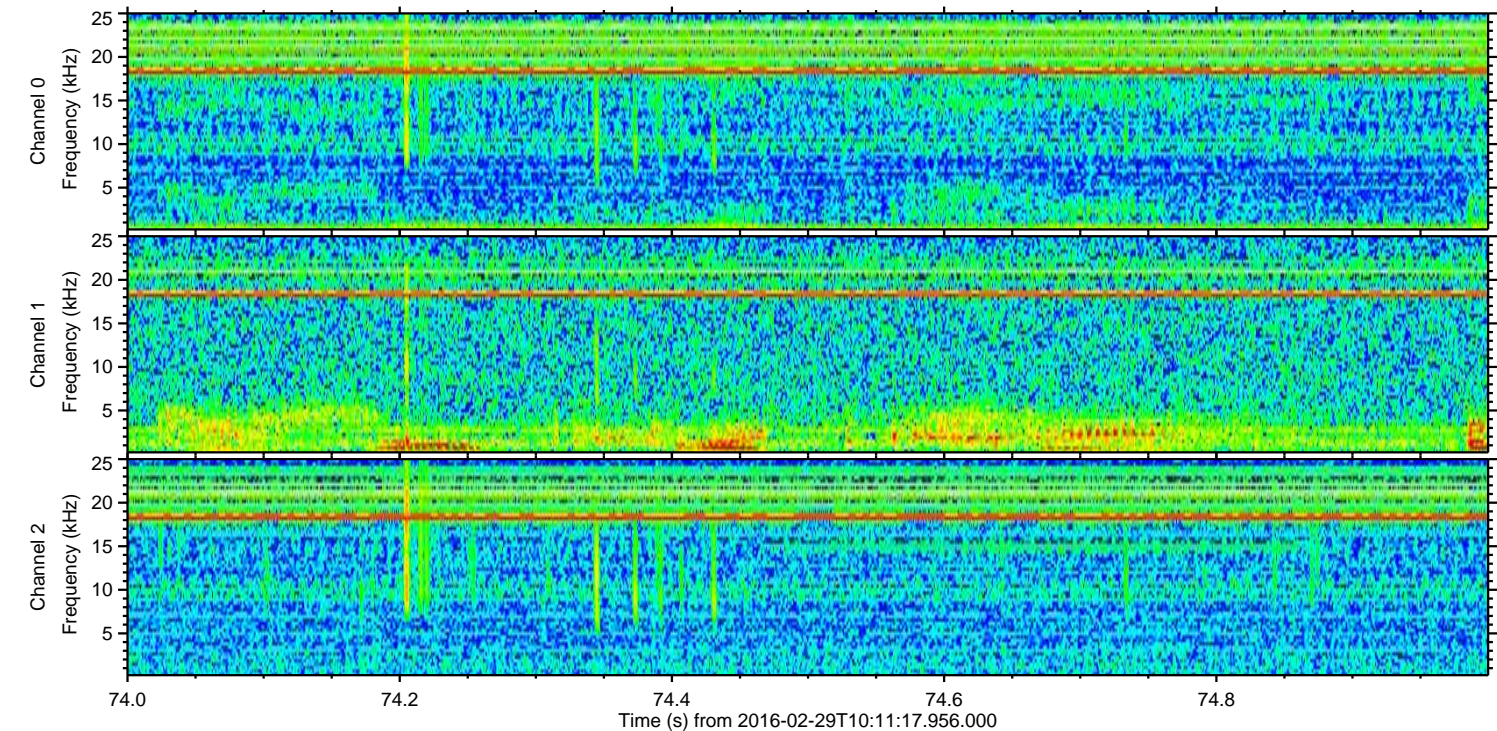
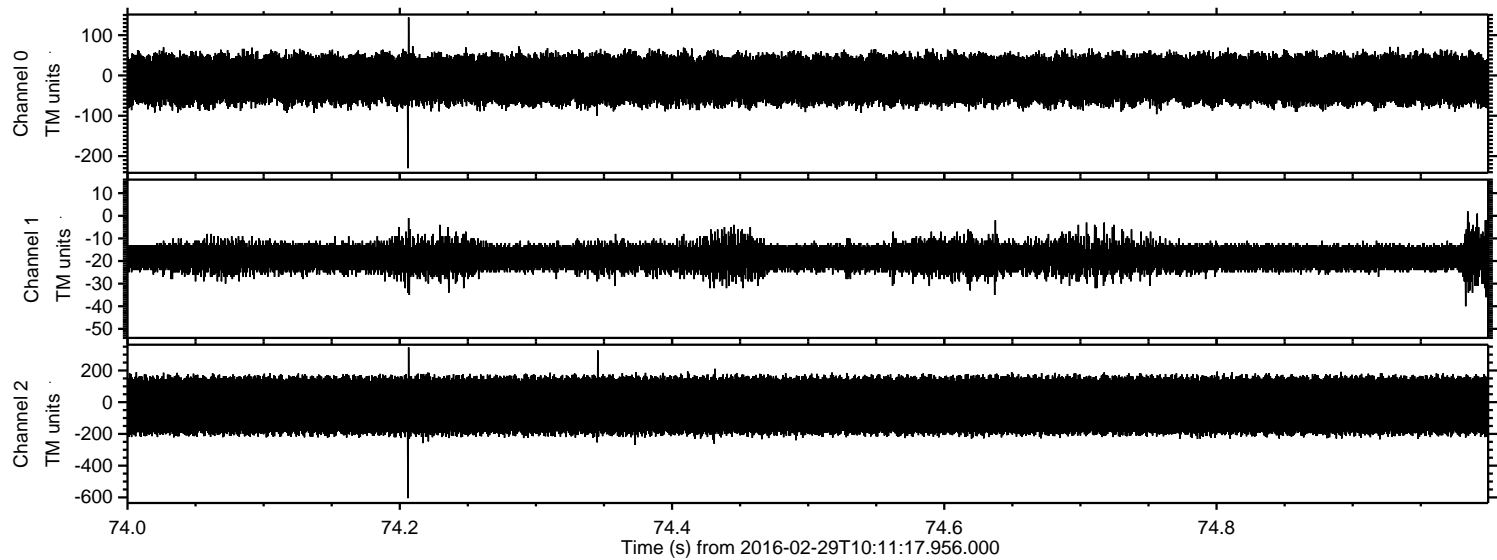


Processed Sun Apr 17 11:06:28 2016 by ELM ver.2012-10-06 from 001\_\_elm20160229\_101116\_\_dat00.bin



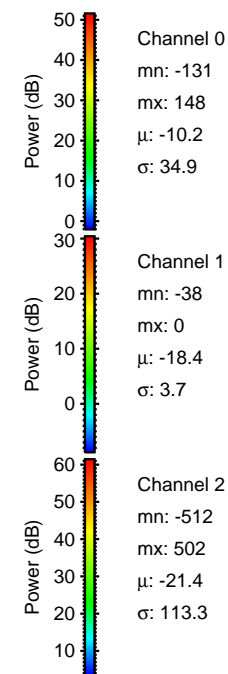
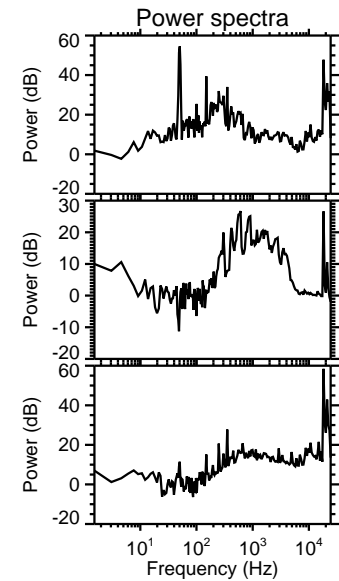
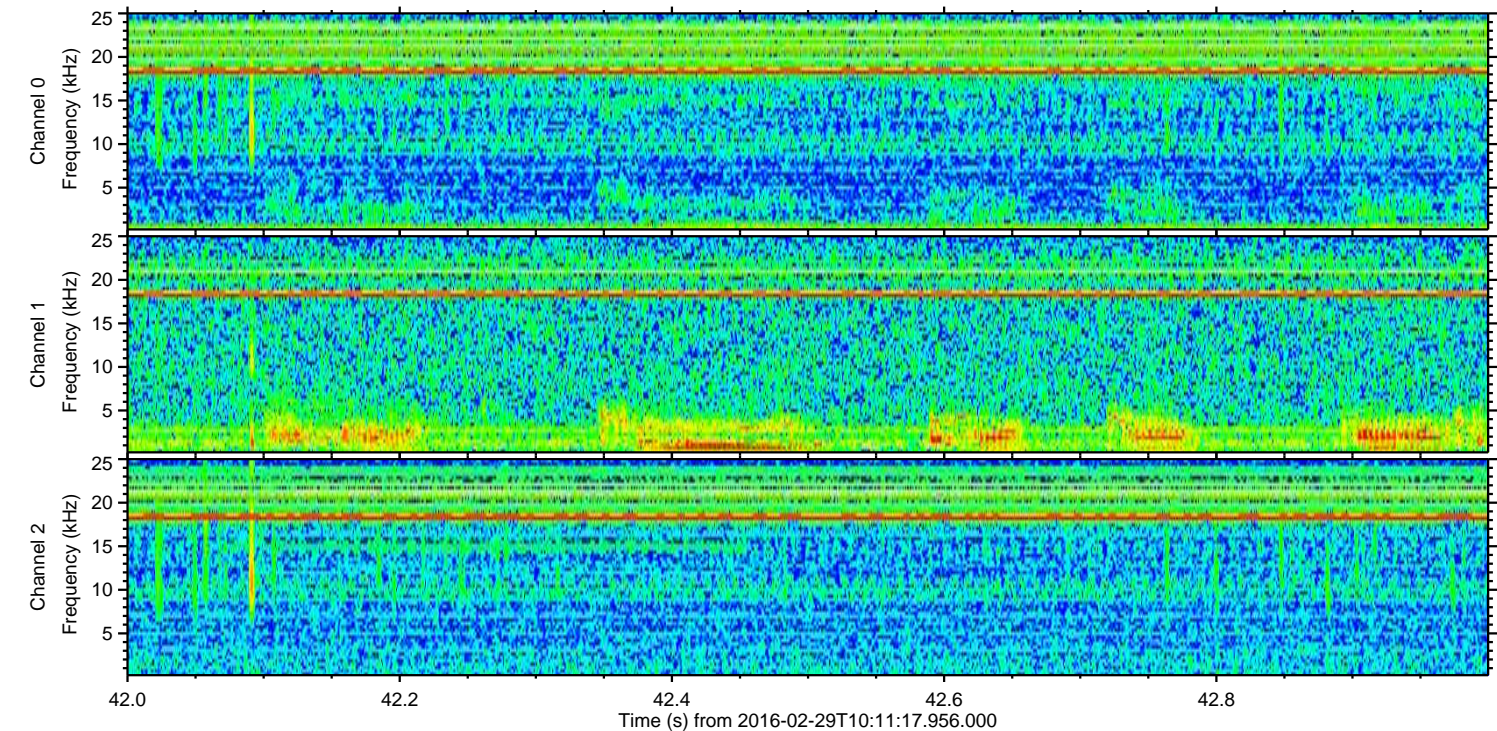
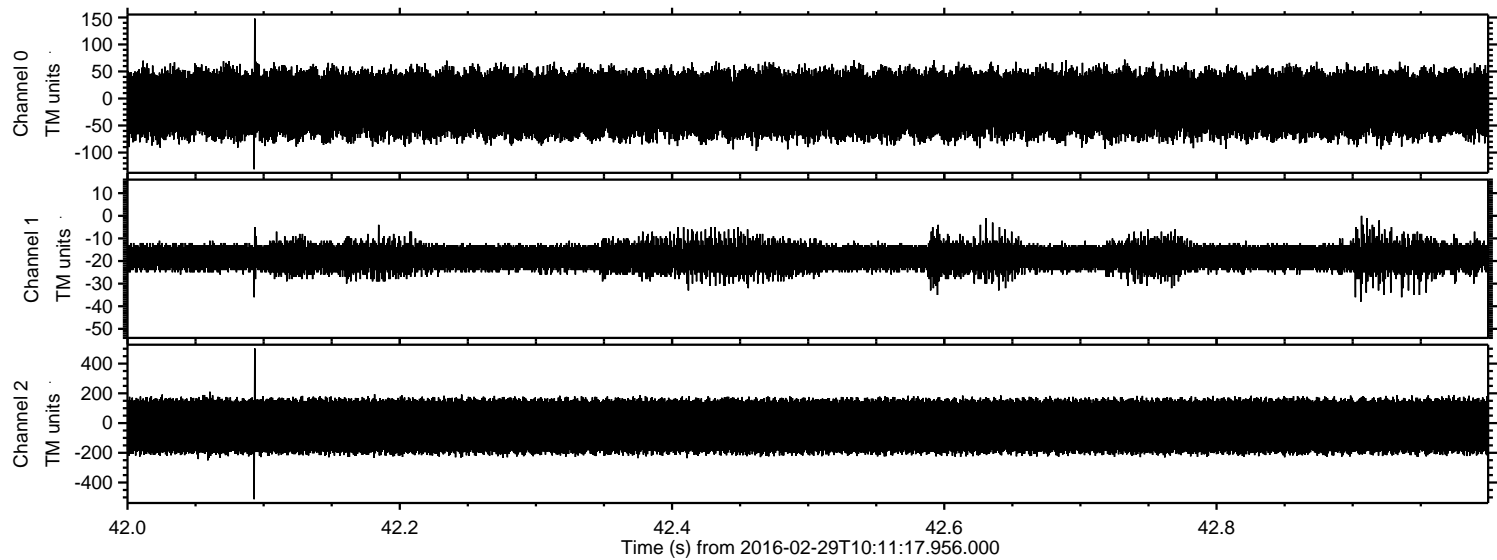


Processed Sun Apr 17 11:06:29 2016 by ELM ver.2012-10-06 from 001\_\_elm20160229\_101116\_\_dat00.bin





Processed Sun Apr 17 11:06:30 2016 by ELM ver.2012-10-06 from 001\_\_elm20160229\_101116\_\_dat00.bin





Processed Sun Apr 17 11:06:31 2016 by ELM ver.2012-10-06 from 001\_\_elm20160229\_101116\_\_dat00.bin

