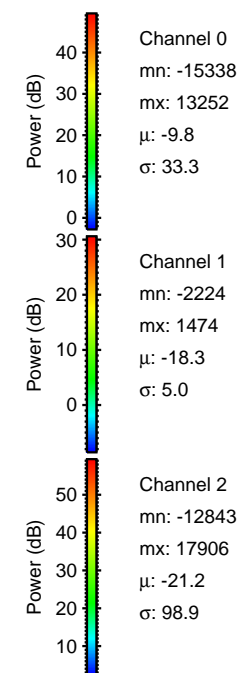
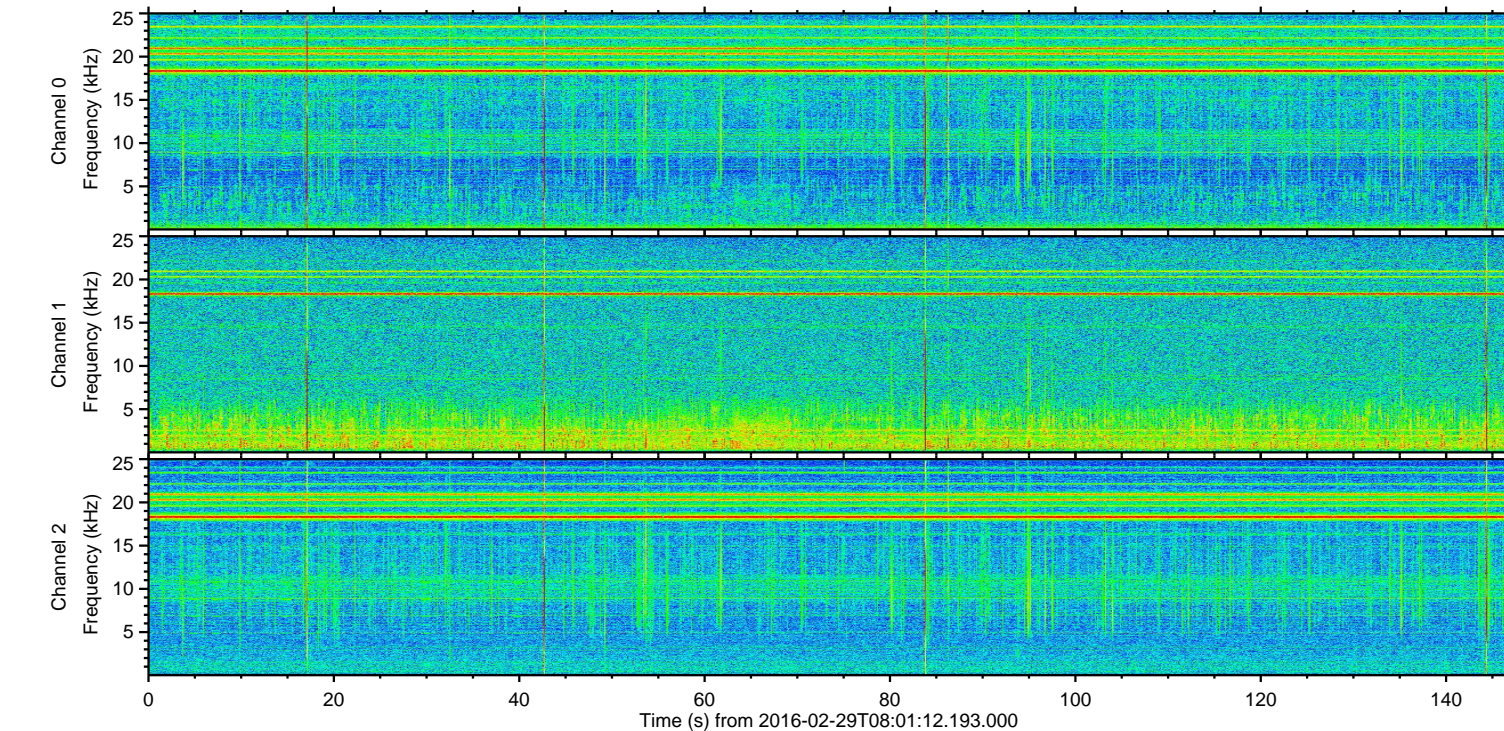
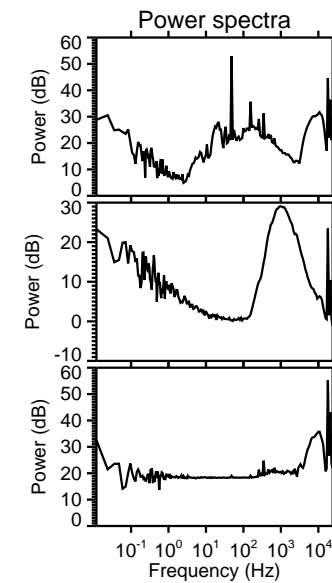
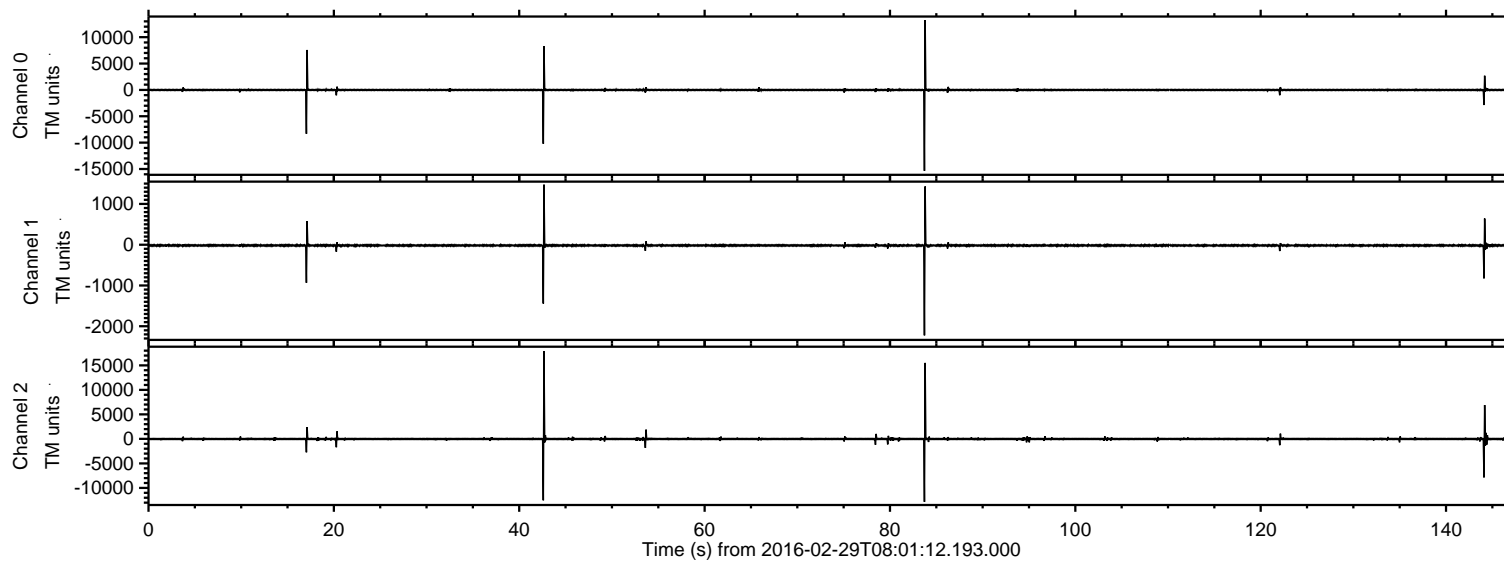
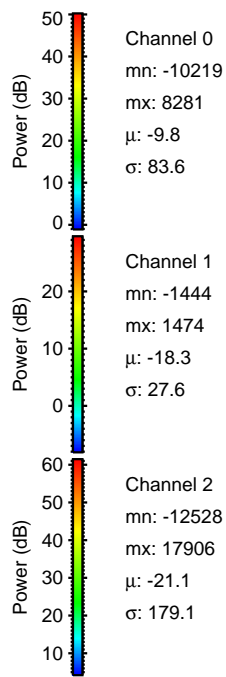
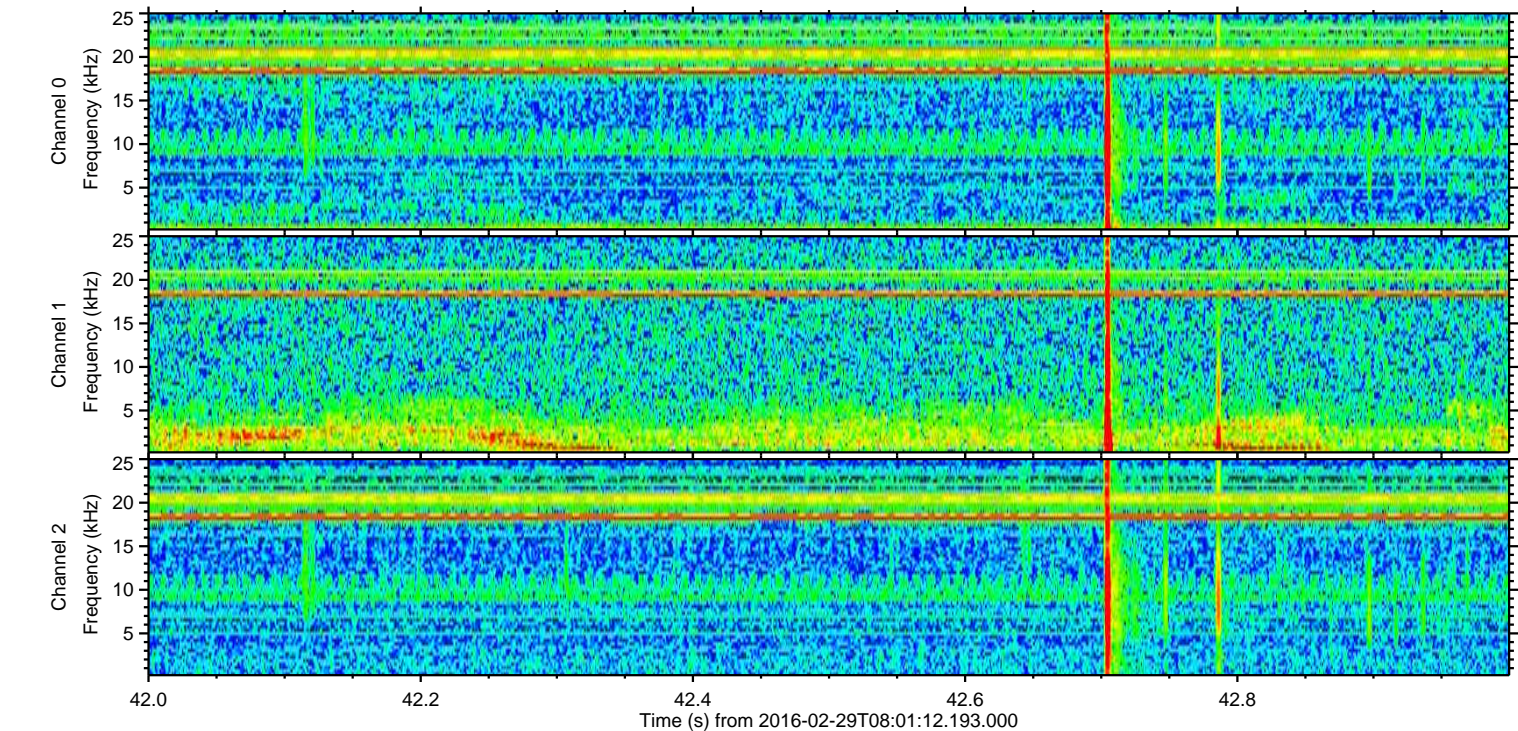
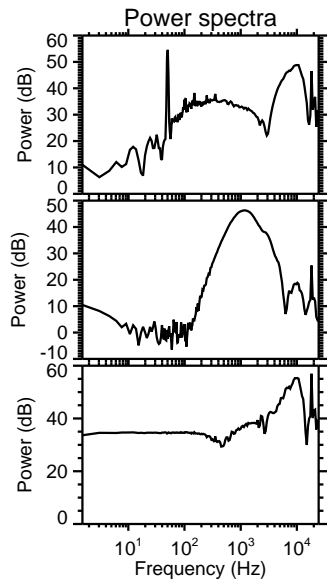
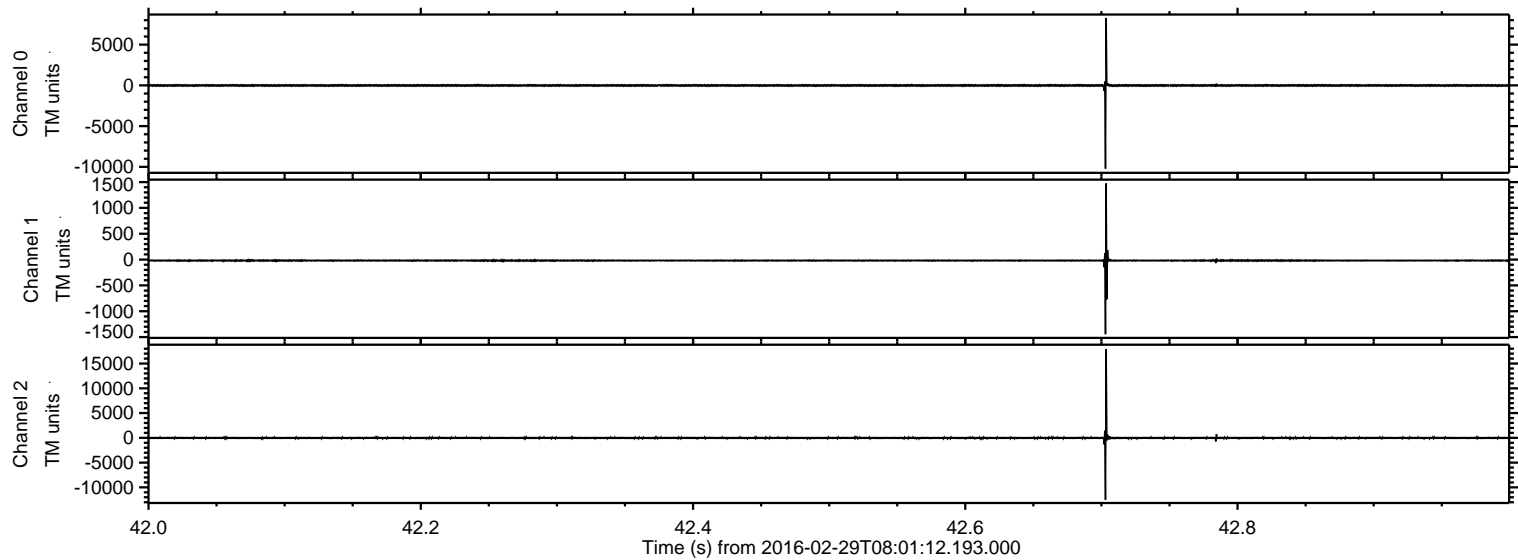


ELMAVAN 3D WAVEFORMS (Measured data sampled at 50 kHz) 51000 packets of 144 samples from 2016-02-29T08:01:12.193.000.

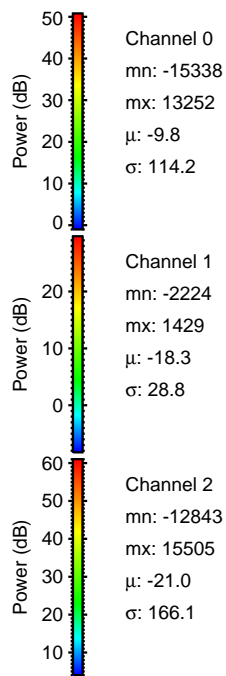
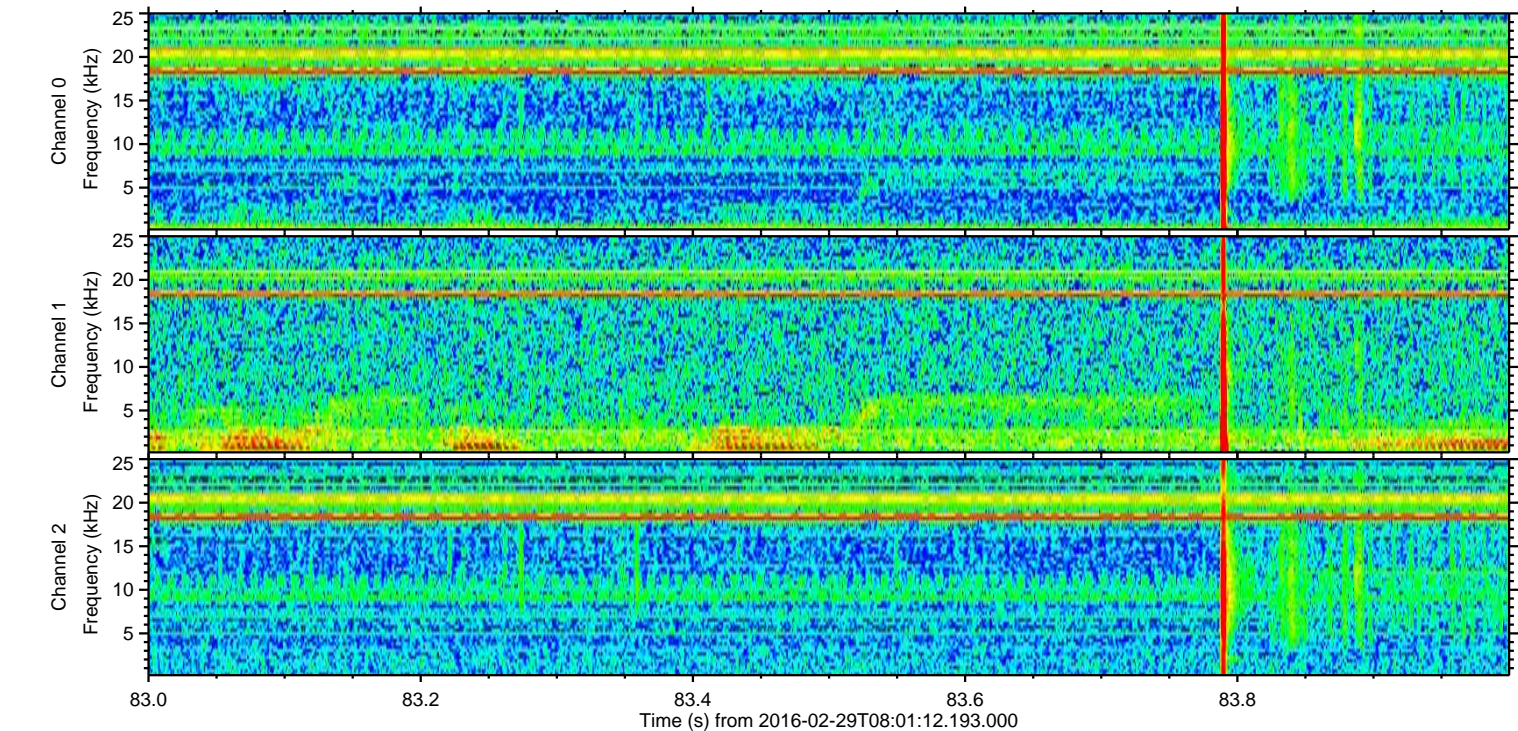
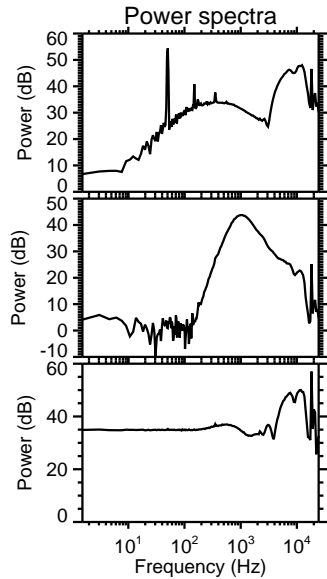
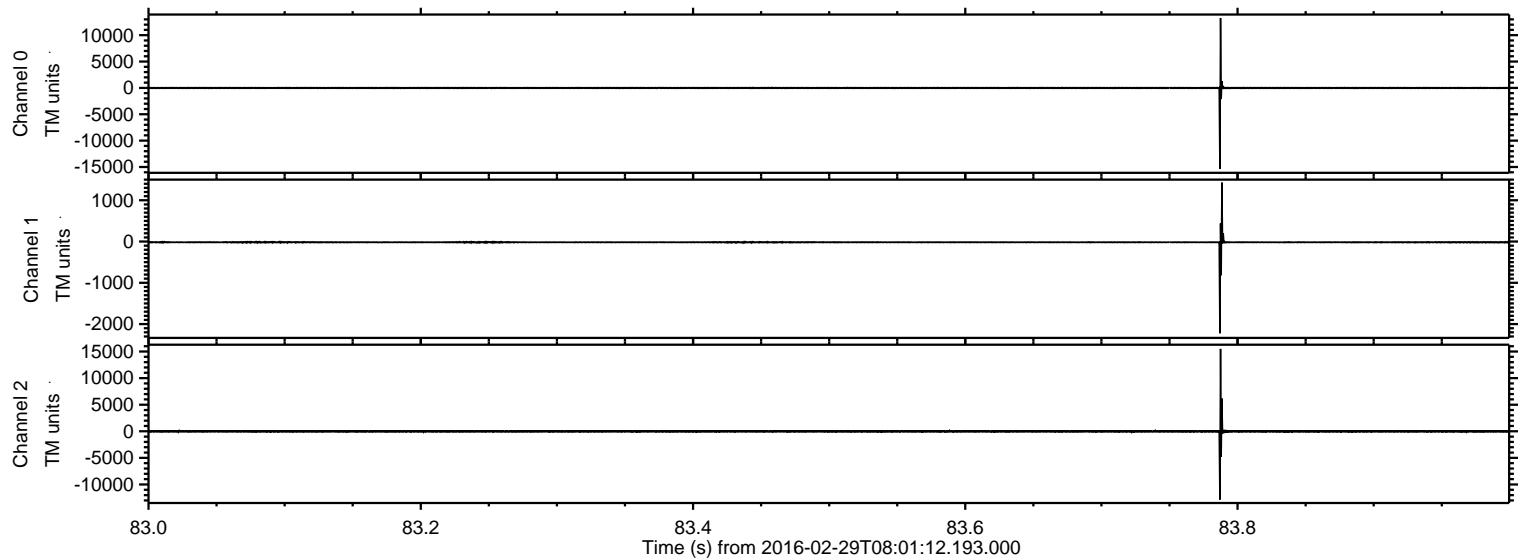
Processed Sun Apr 17 10:39:21 2016 by ELM ver.2012-10-06 from 001__elm20160229_080111__dat00.bin



Processed Sun Apr 17 10:39:33 2016 by ELM ver.2012-10-06 from 001__elm20160229_080111__dat00.bin

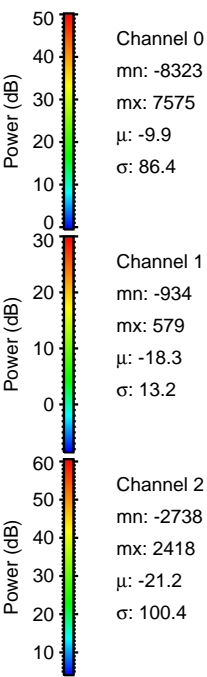
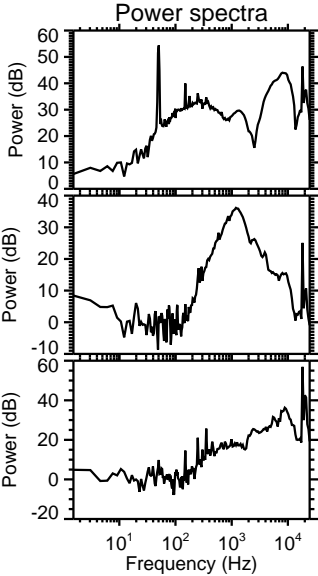
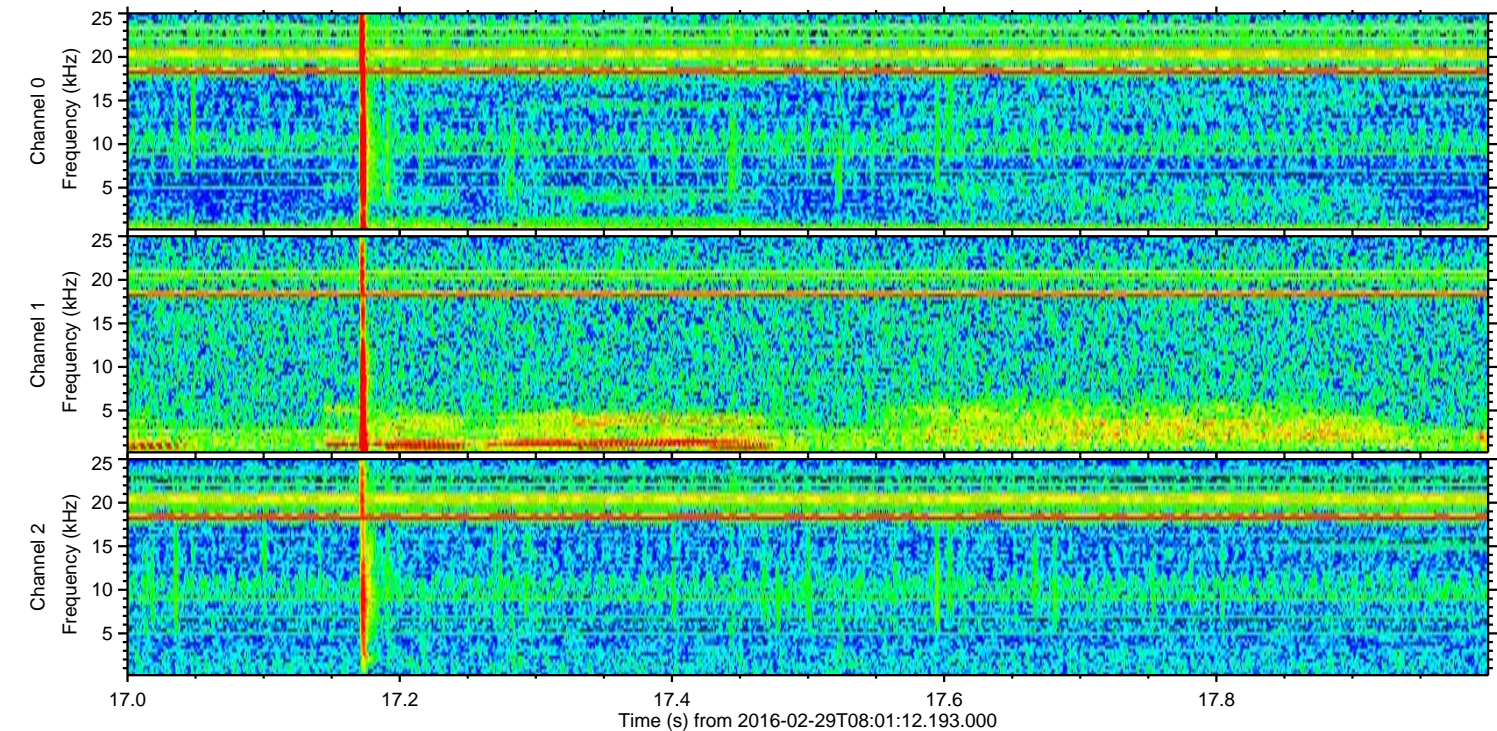
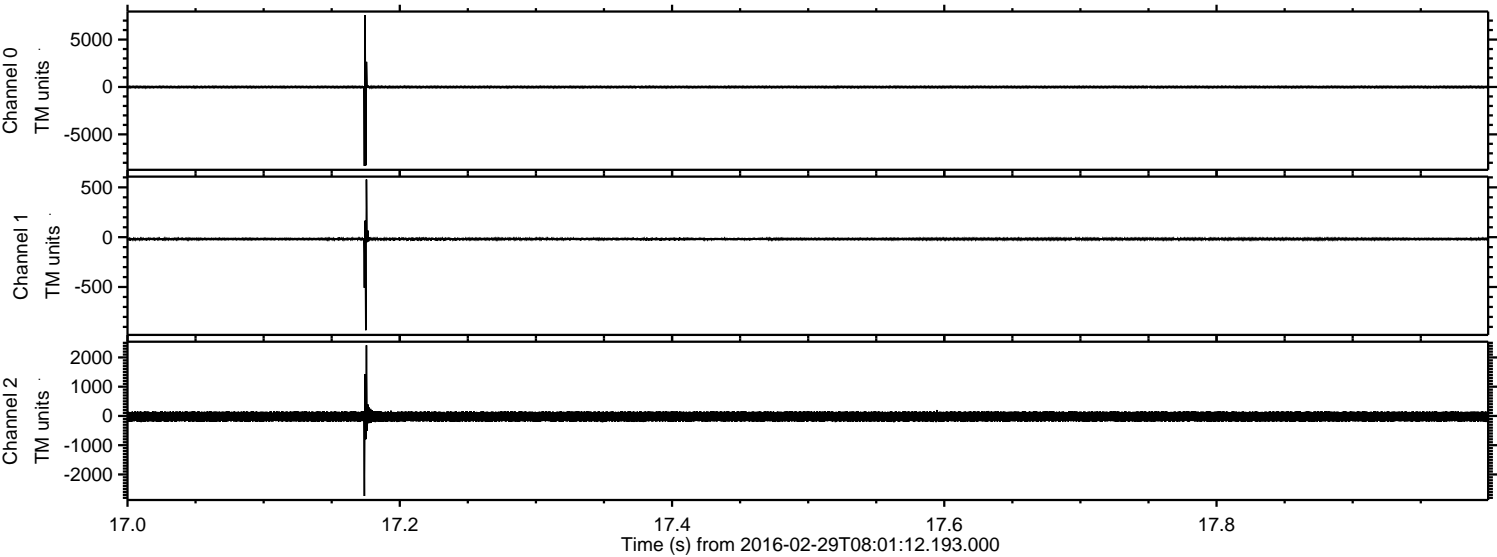


Processed Sun Apr 17 10:39:34 2016 by ELM ver.2012-10-06 from 001__elm20160229_080111__dat00.bin



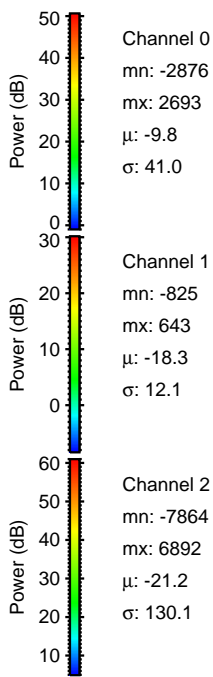
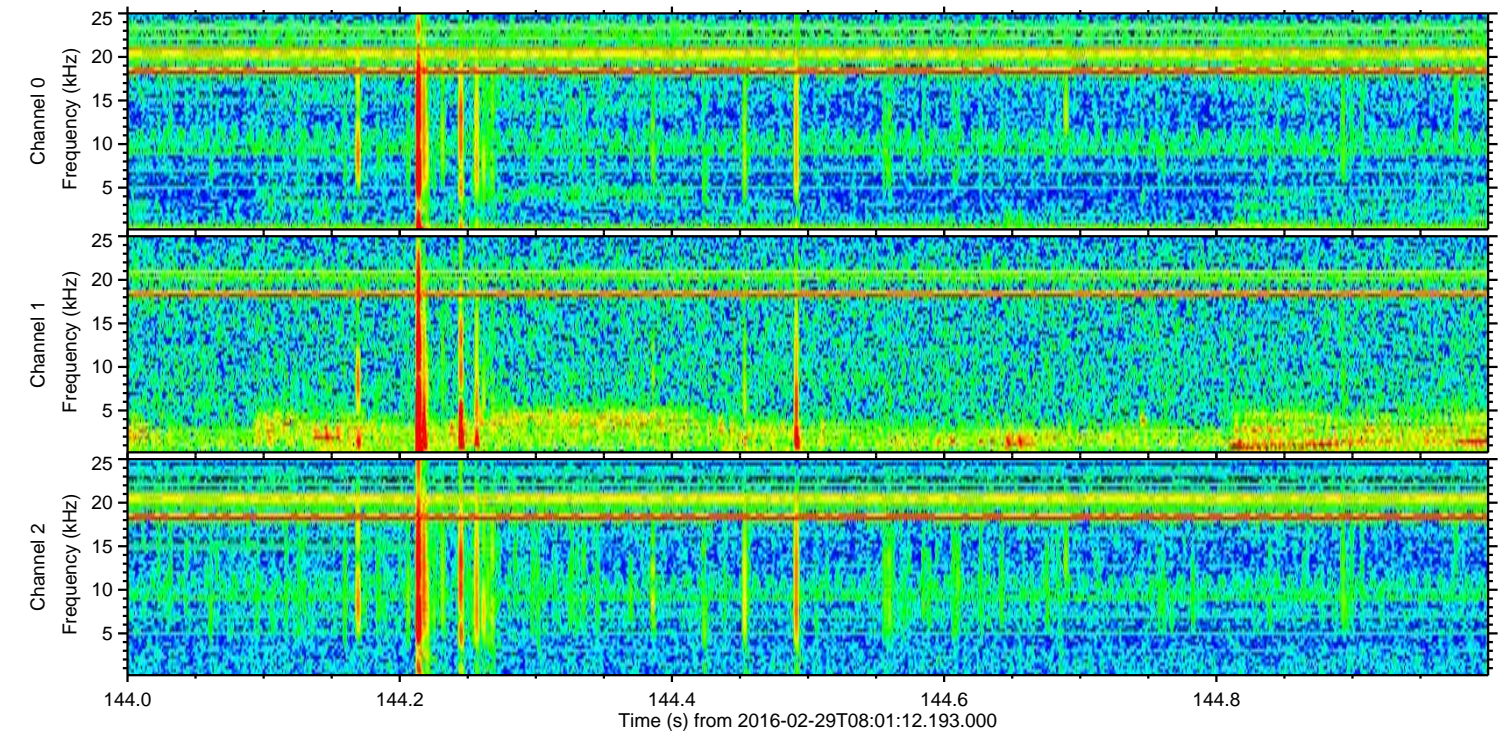
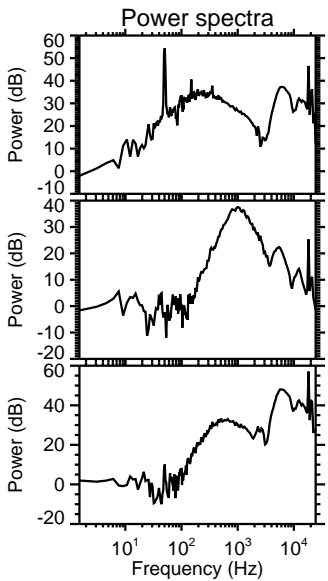
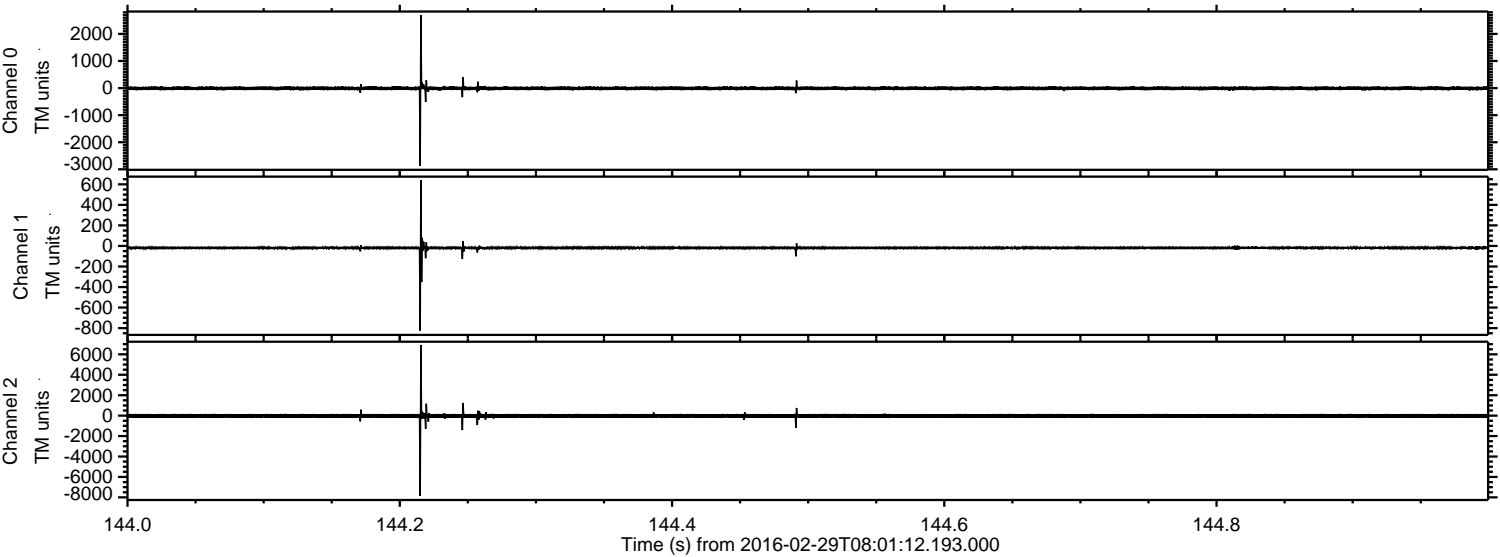
ELMAVAN 3D WAVEFORMS (Measured data sampled at 50 kHz) 51000 packets of 144 samples from 2016-02-29T08:01:12.193.000. Part 18/147

Processed Sun Apr 17 10:39:35 2016 by ELM ver.2012-10-06 from 001__elm20160229_080111__dat00.bin

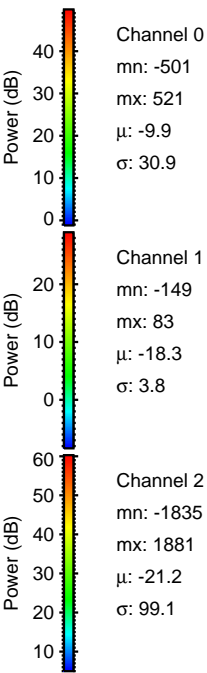
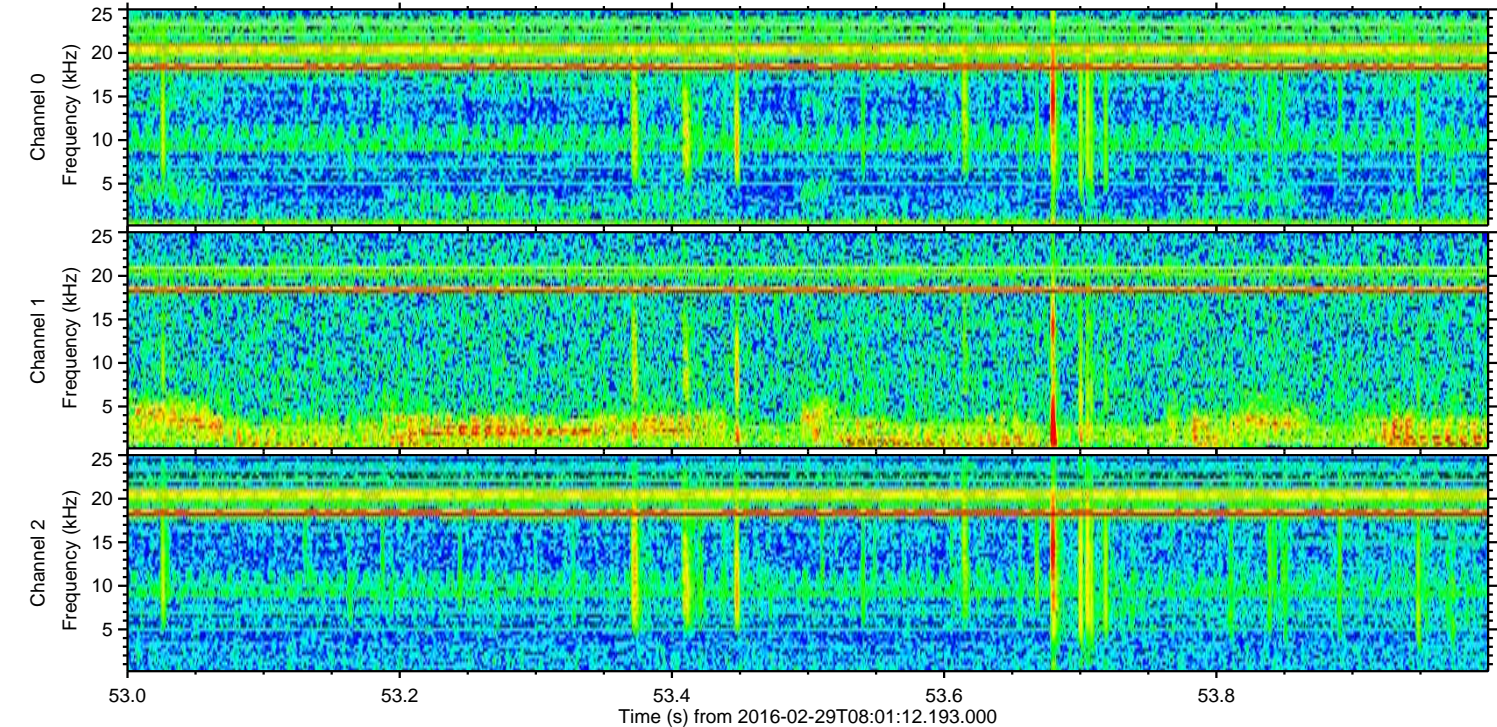
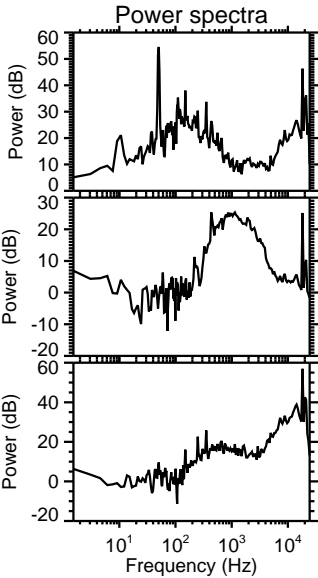
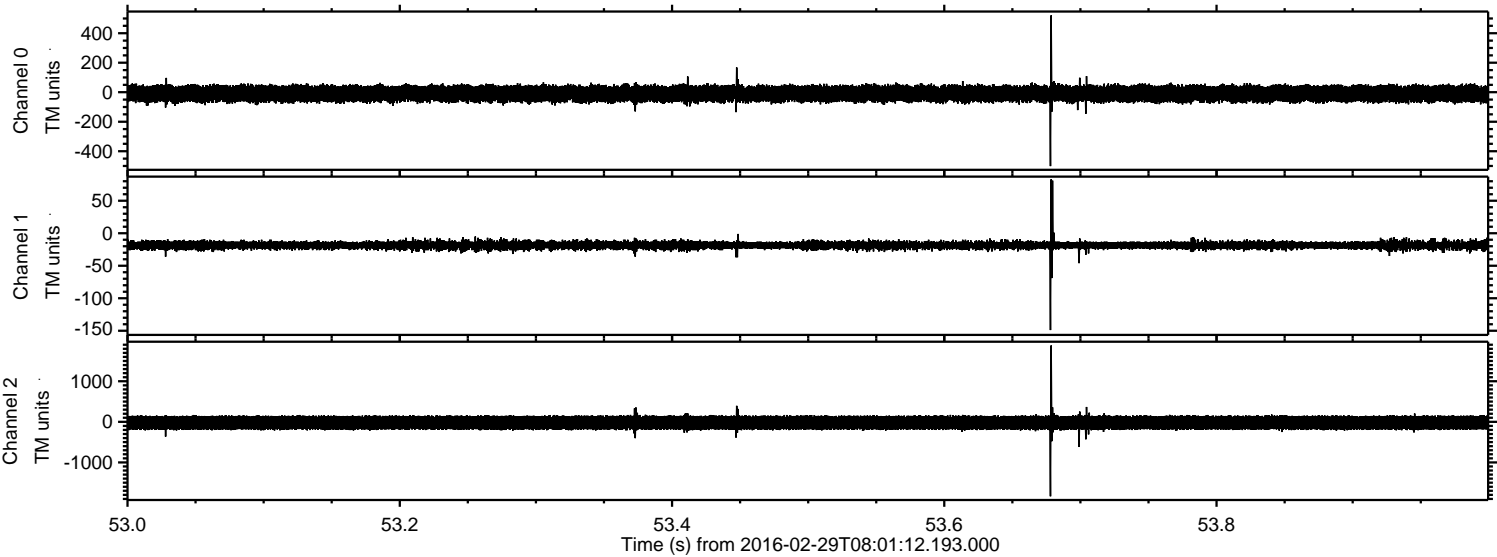


ELMAVAN 3D WAVEFORMS (Measured data sampled at 50 kHz) 51000 packets of 144 samples from 2016-02-29T08:01:12.193.000. Part 145/147

Processed Sun Apr 17 10:39:36 2016 by ELM ver.2012-10-06 from 001__elm20160229_080111__dat00.bin

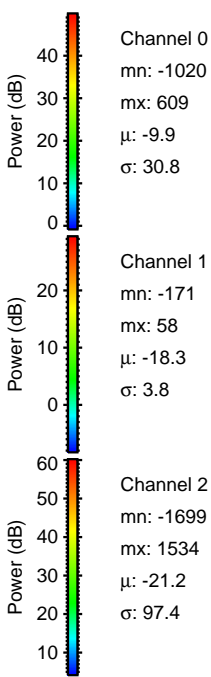
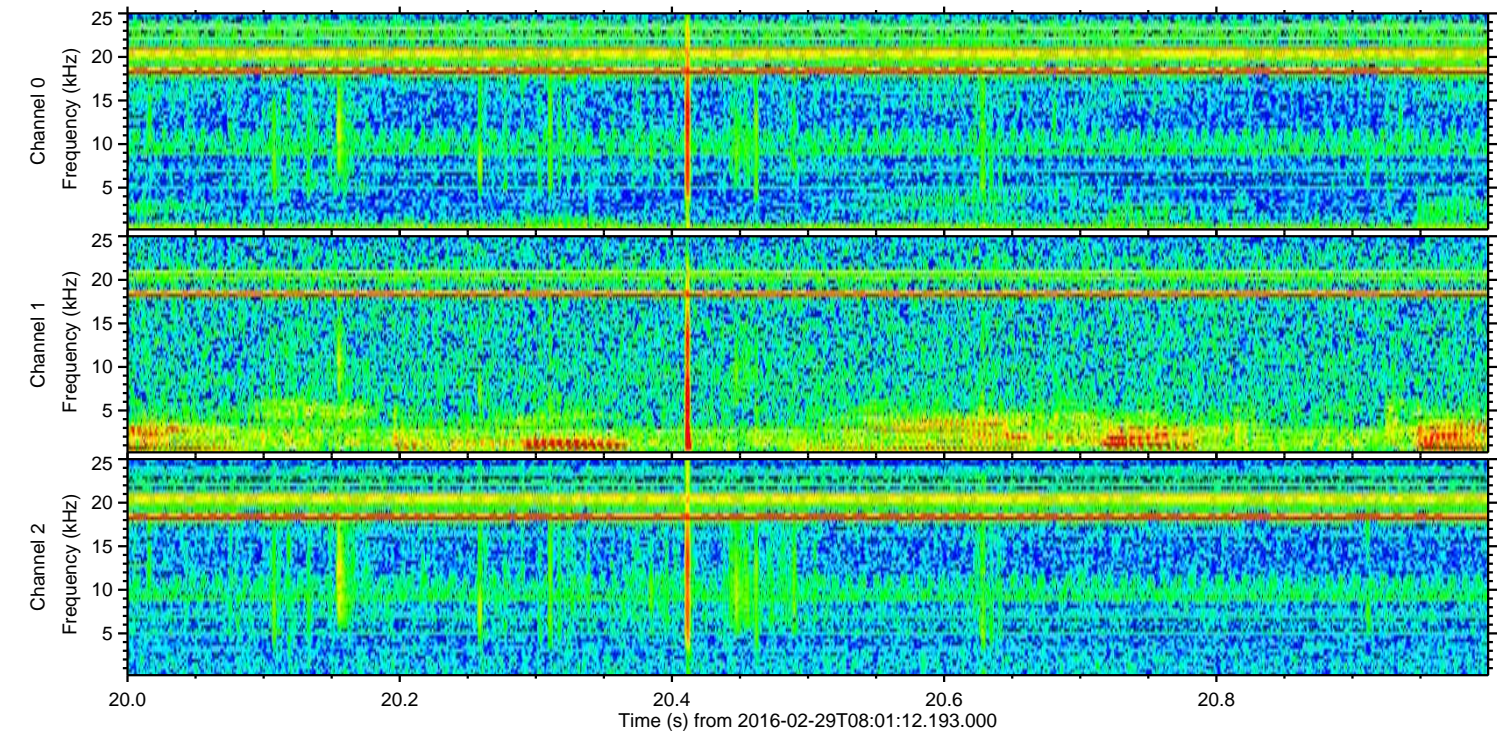
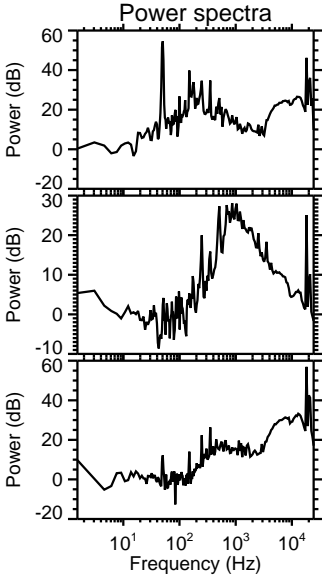
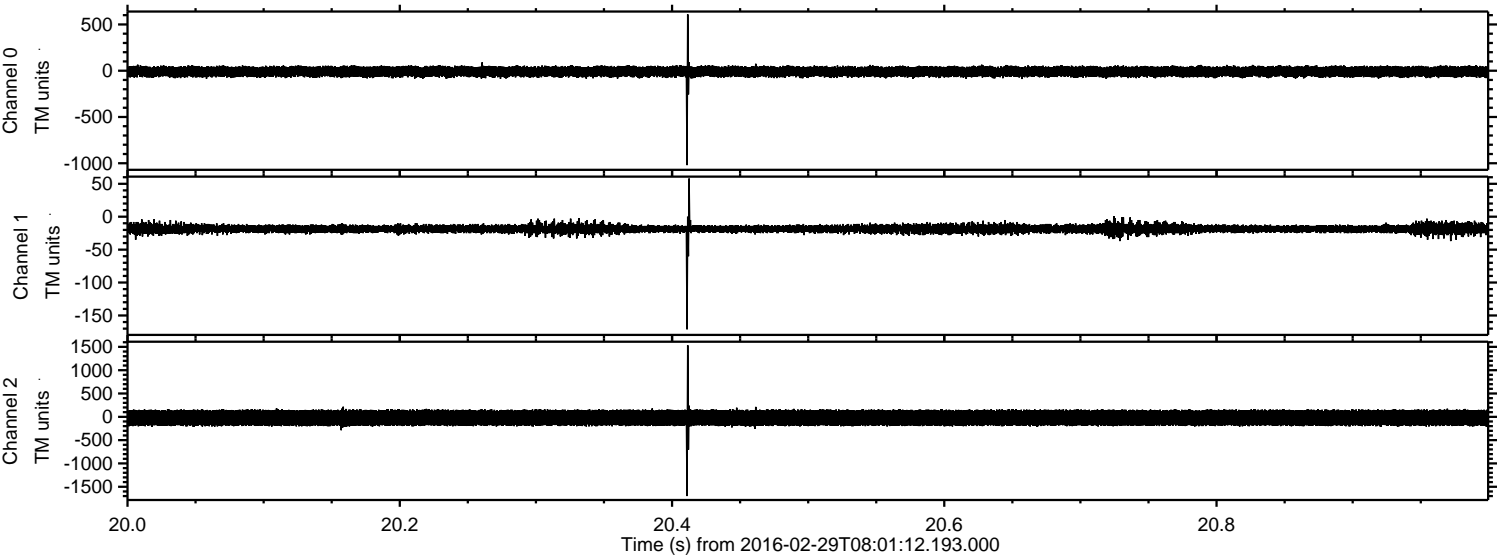


Processed Sun Apr 17 10:39:37 2016 by ELM ver.2012-10-06 from 001__elm20160229_080111__dat00.bin



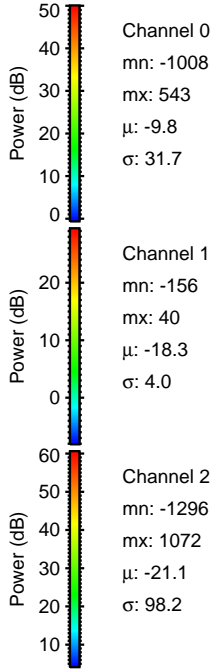
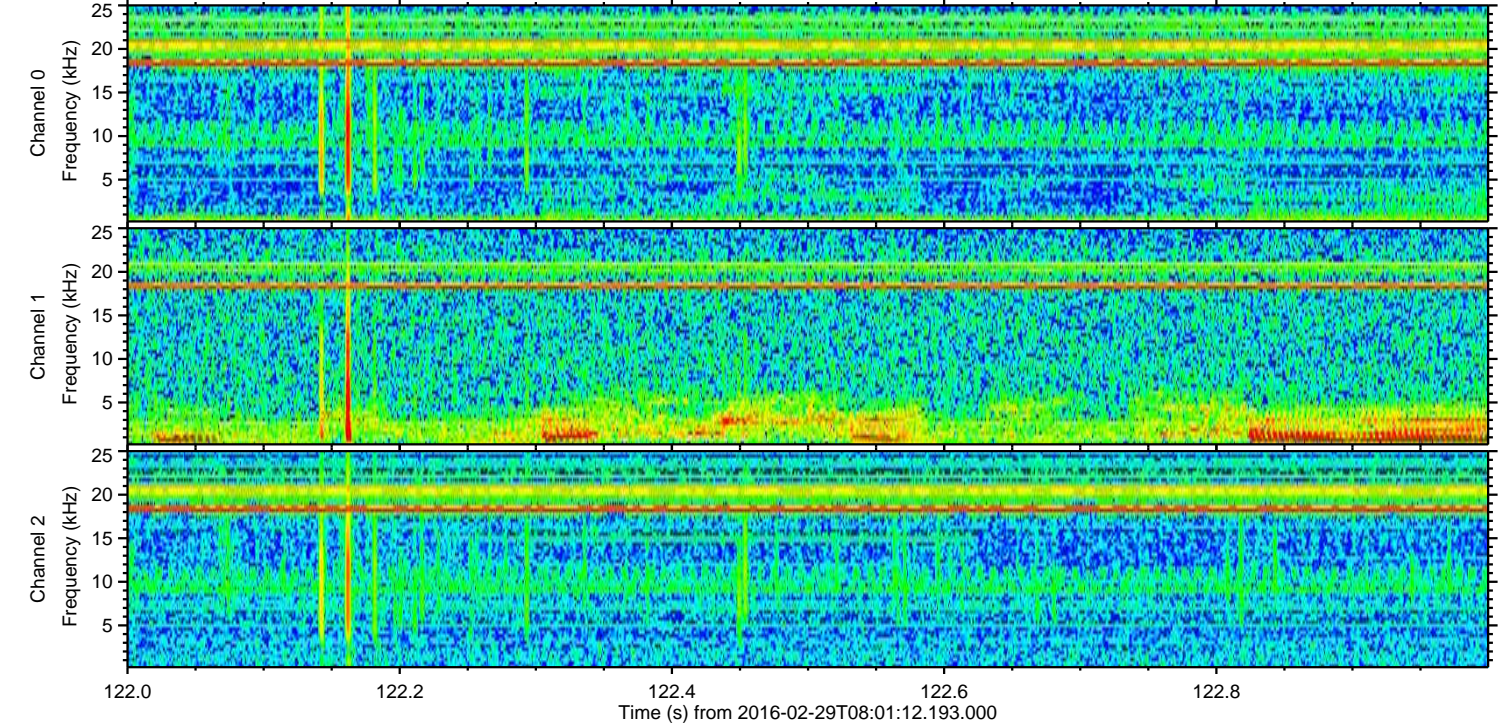
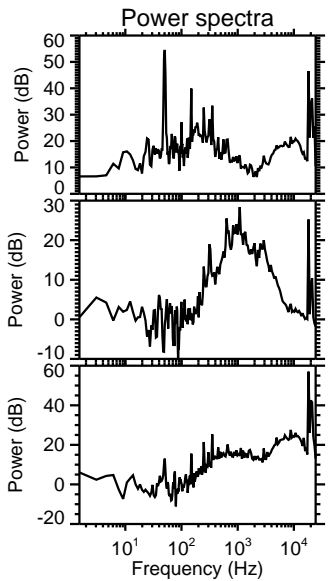
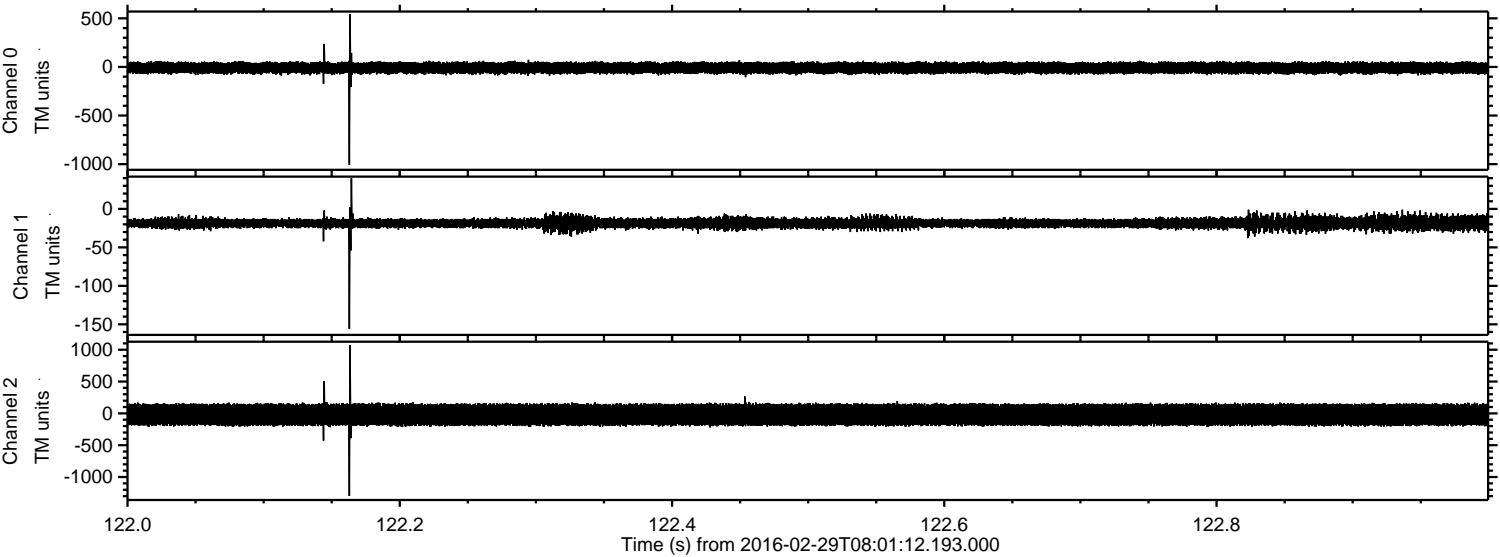
ELMAVAN 3D WAVEFORMS (Measured data sampled at 50 kHz) 51000 packets of 144 samples from 2016-02-29T08:01:12.193.000. Part 21/147

Processed Sun Apr 17 10:39:38 2016 by ELM ver.2012-10-06 from 001__elm20160229_080111__dat00.bin

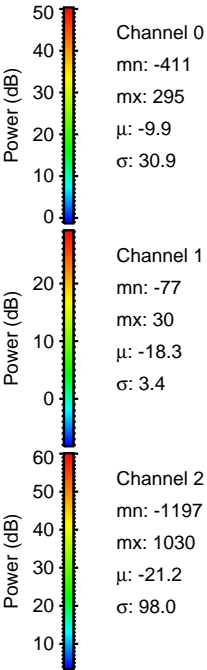
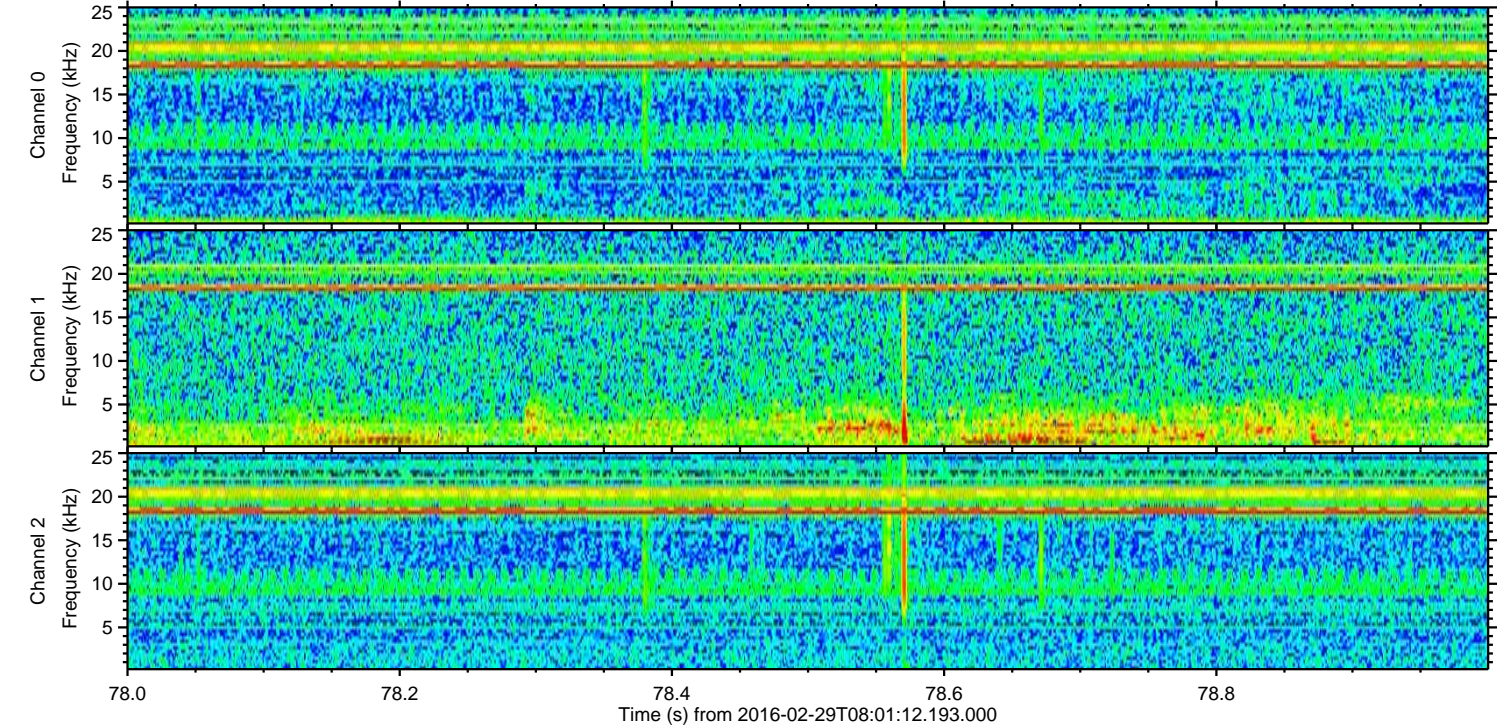
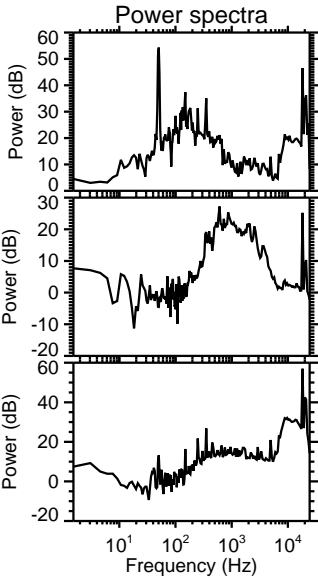
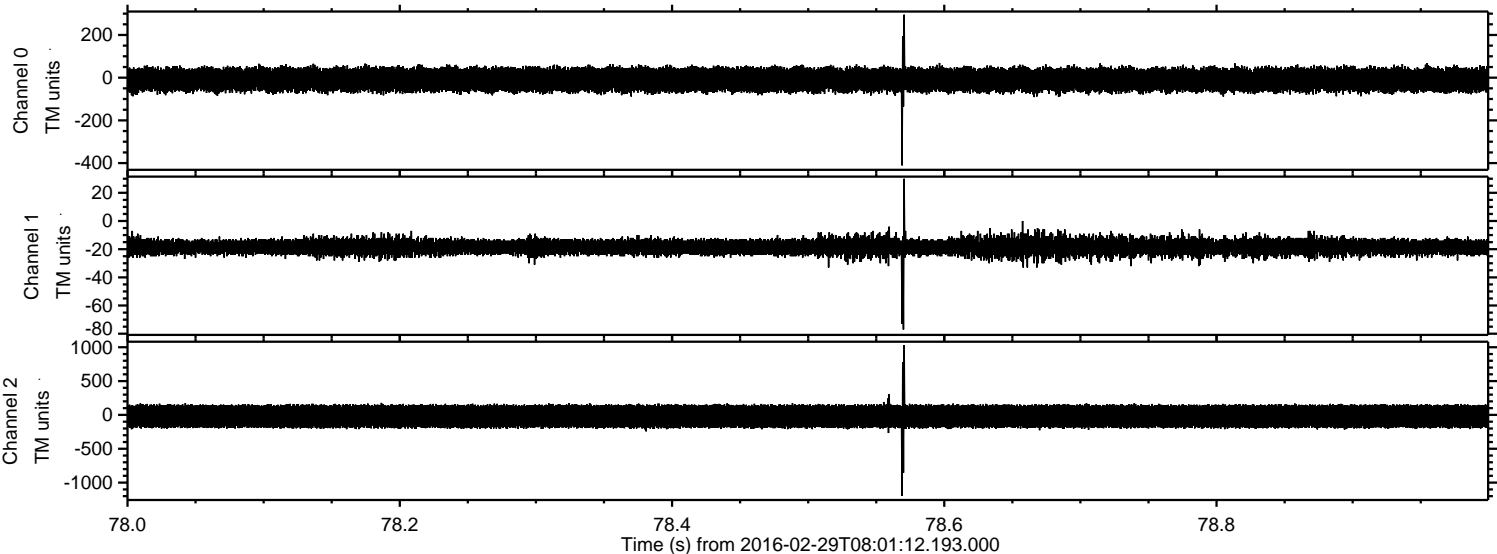


ELMAVAN 3D WAVEFORMS (Measured data sampled at 50 kHz) 51000 packets of 144 samples from 2016-02-29T08:01:12.193.000. Part 123/147

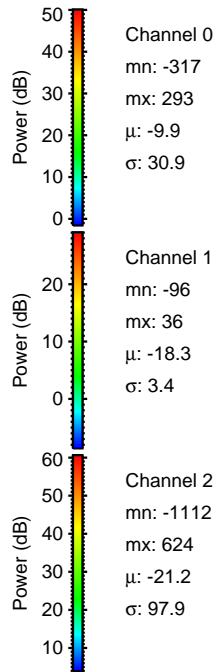
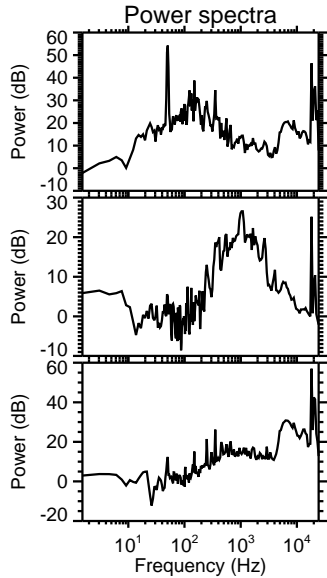
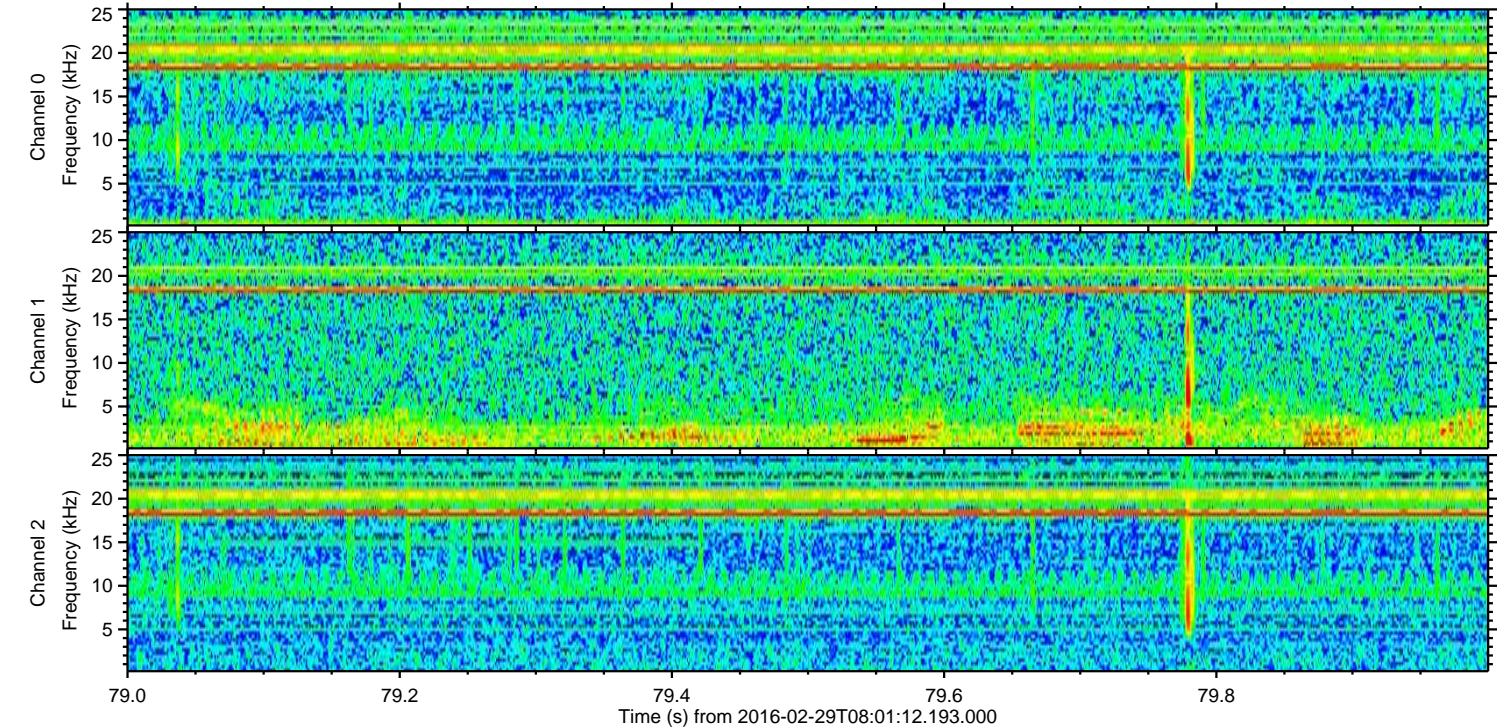
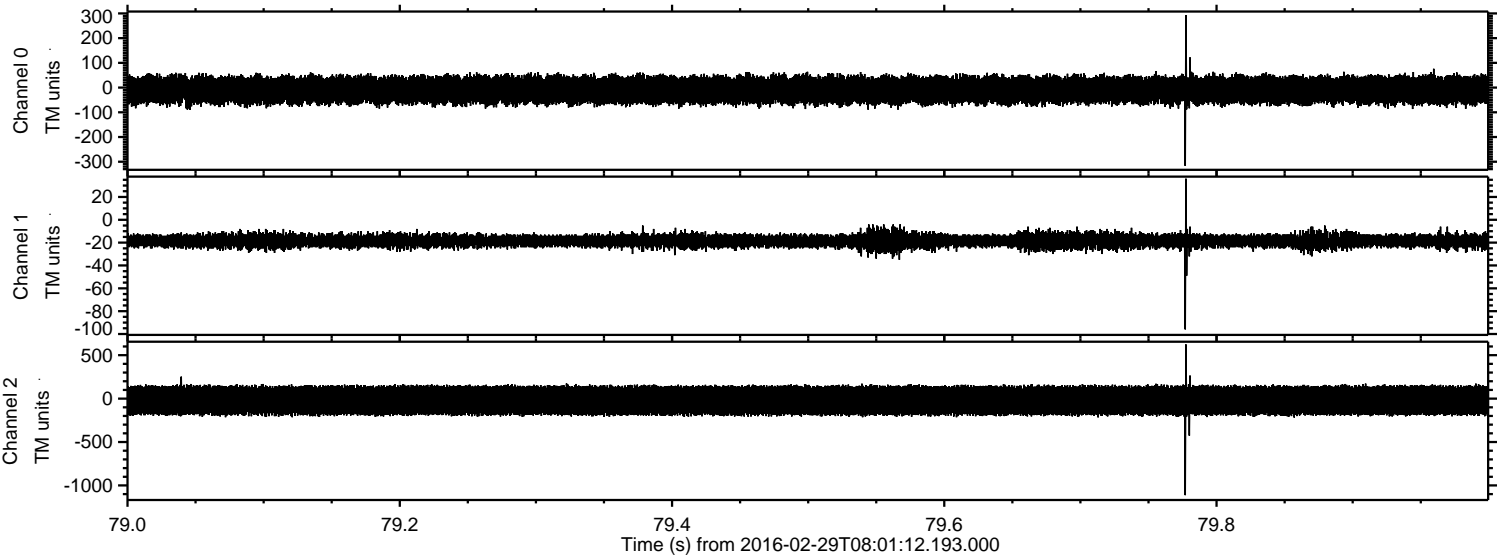
Processed Sun Apr 17 10:39:39 2016 by ELM ver.2012-10-06 from 001__elm20160229_080111__dat00.bin



Processed Sun Apr 17 10:39:40 2016 by ELM ver.2012-10-06 from 001__elm20160229_080111__dat00.bin



Processed Sun Apr 17 10:39:41 2016 by ELM ver.2012-10-06 from 001__elm20160229_080111__dat00.bin



Channel 0
mn: -317
mx: 293
 μ : -9.9
 σ : 30.9

Channel 1
mn: -96
mx: 36
 μ : -18.3
 σ : 3.4

Channel 2
mn: -1112
mx: 624
 μ : -21.2
 σ : 97.9

Processed Sun Apr 17 10:39:42 2016 by ELM ver.2012-10-06 from 001__elm20160229_080111__dat00.bin

