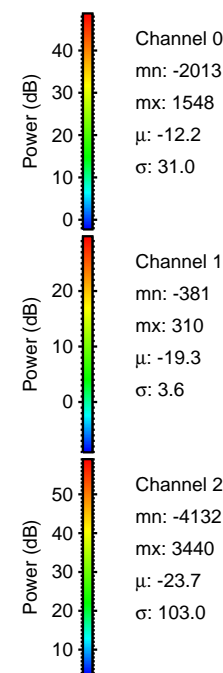
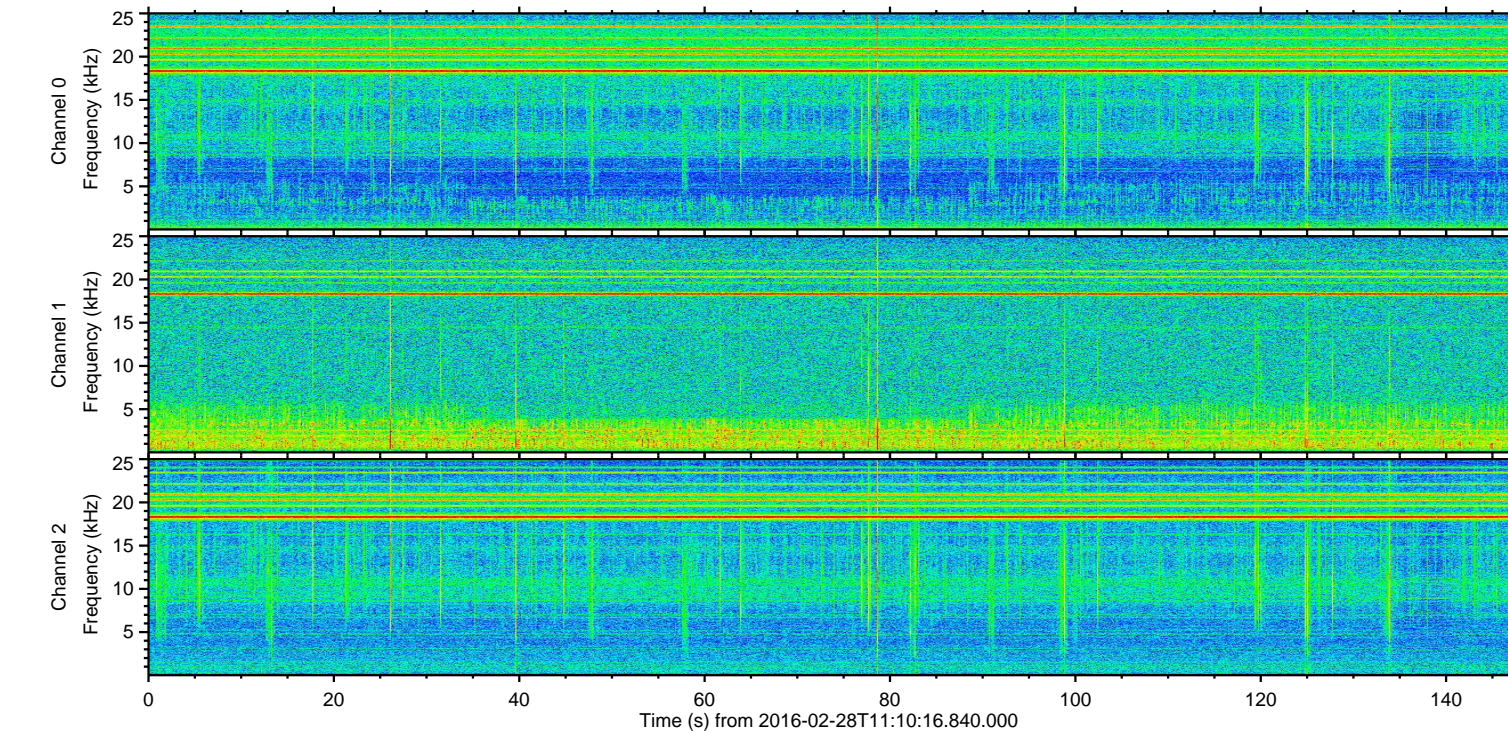
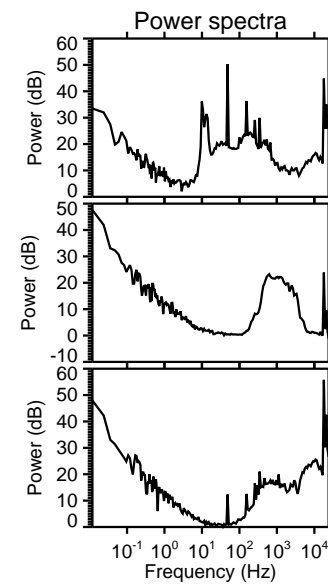
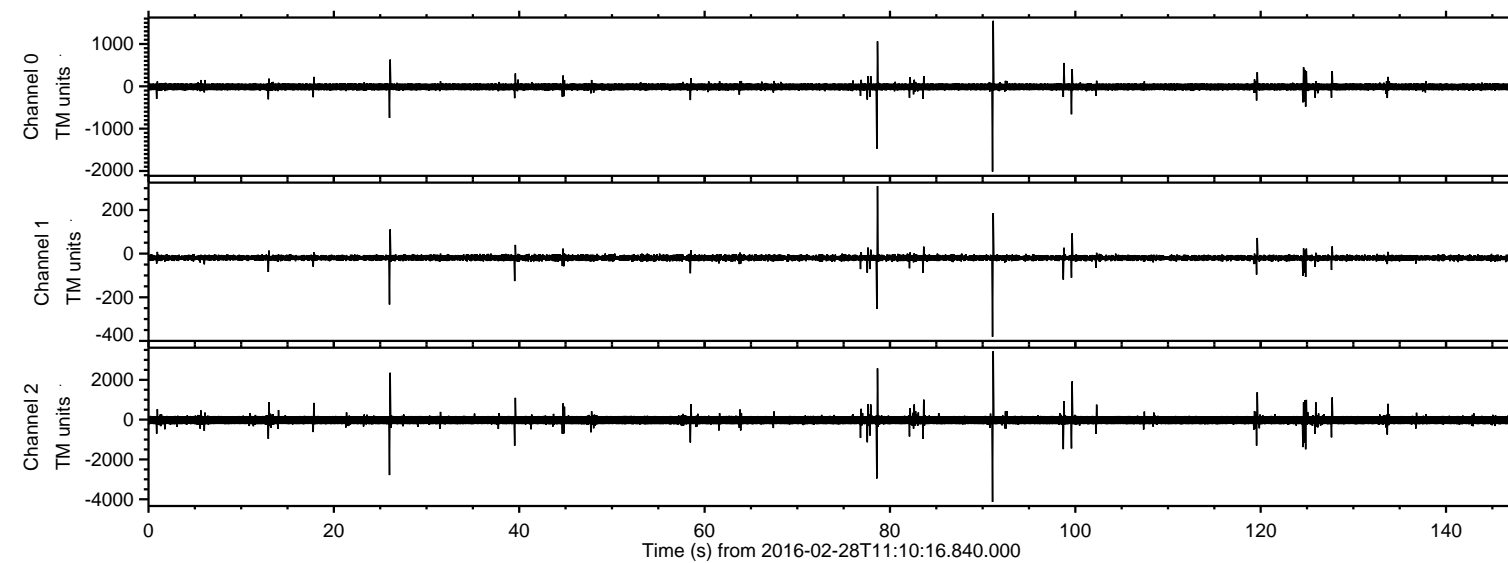


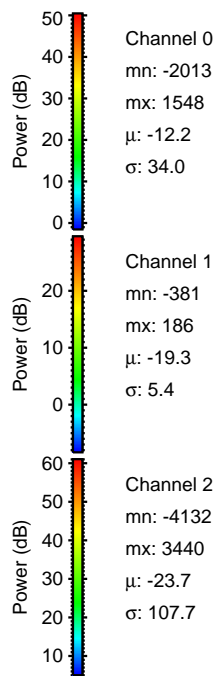
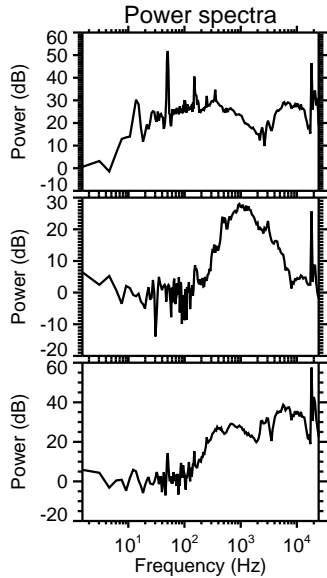
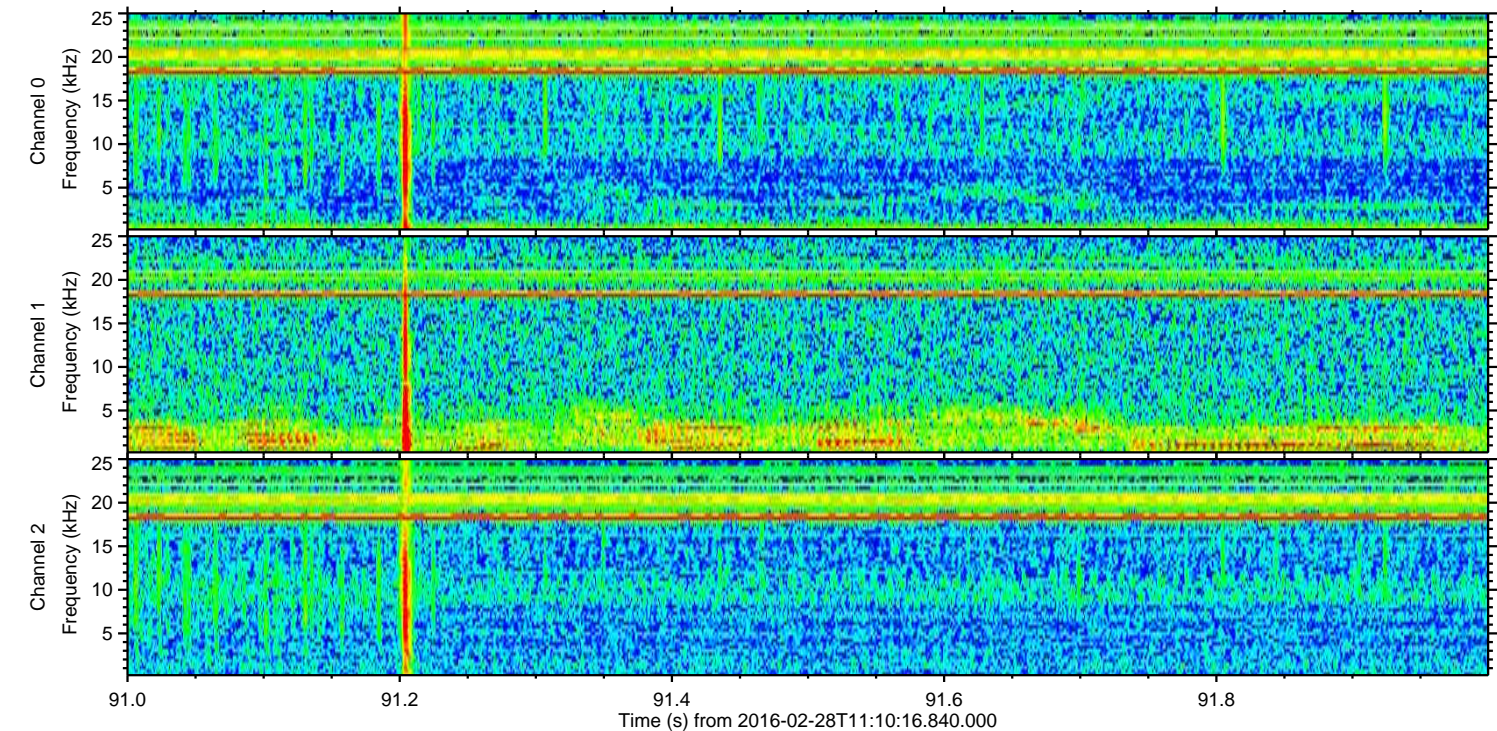
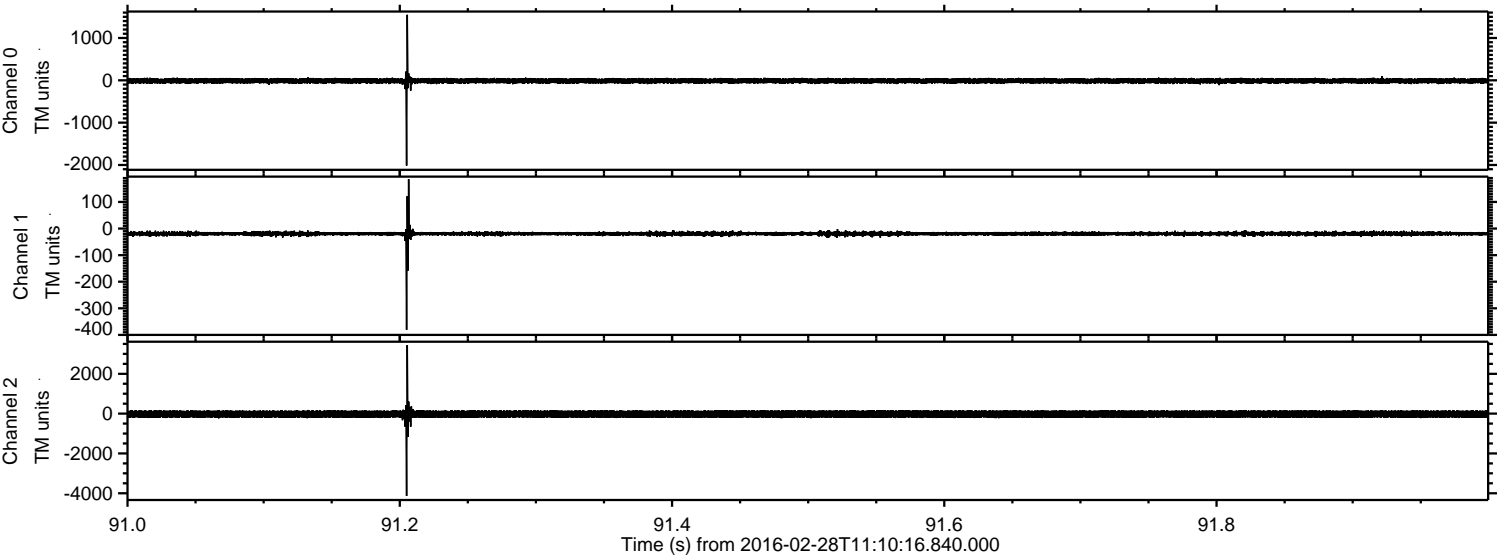
# ELMAVAN 3D WAVEFORMS (Measured data sampled at 50 kHz) 51000 packets of 144 samples from 2016-02-28T11:10:16.840.000.

Processed Sun Apr 17 06:22:01 2016 by ELM ver.2012-10-06 from 001\_\_elm20160228\_111015\_\_dat00.bin



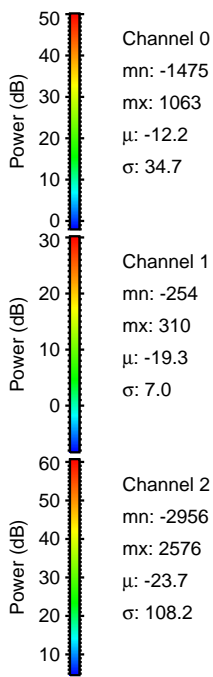
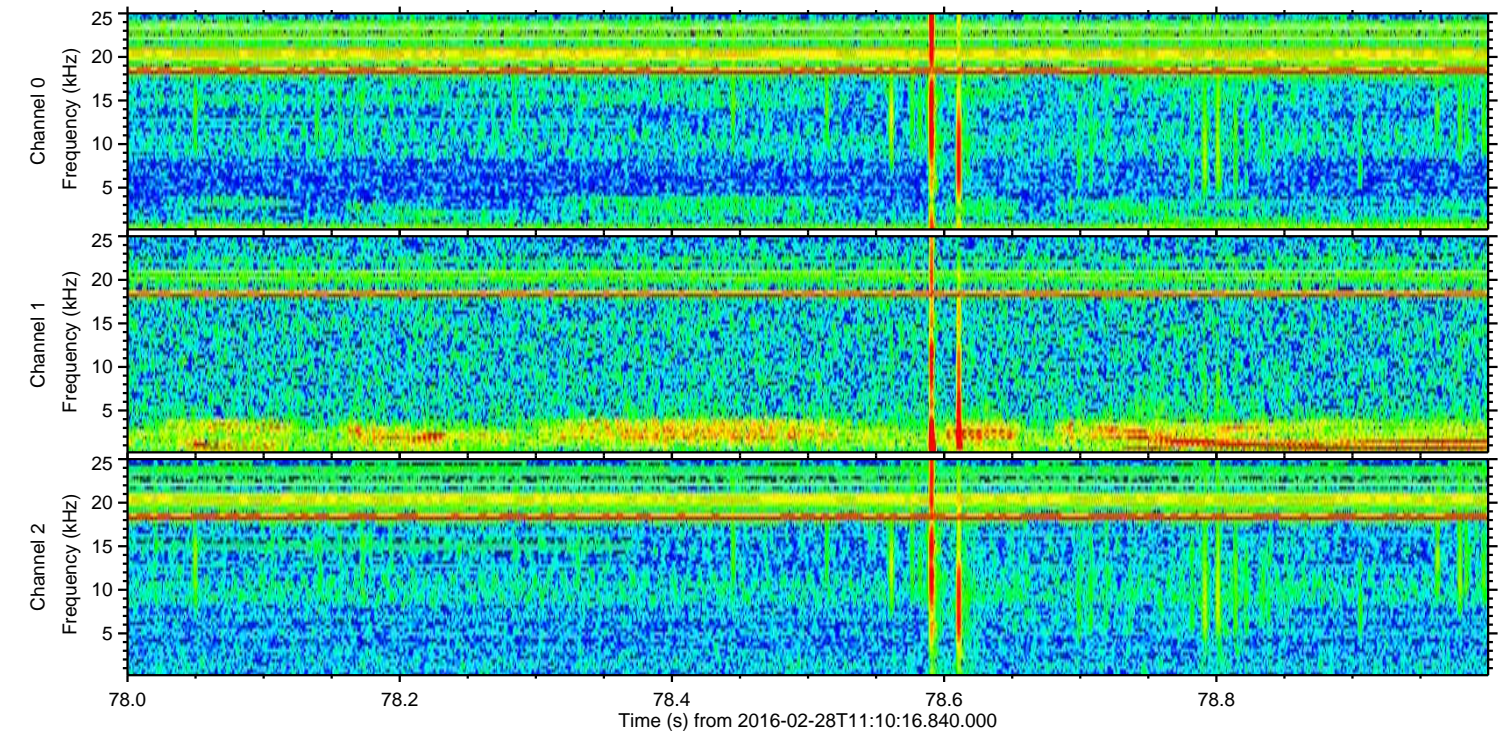
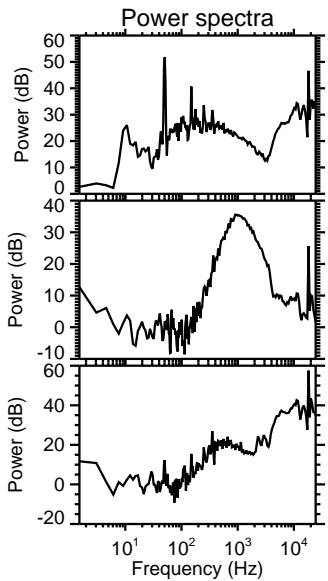
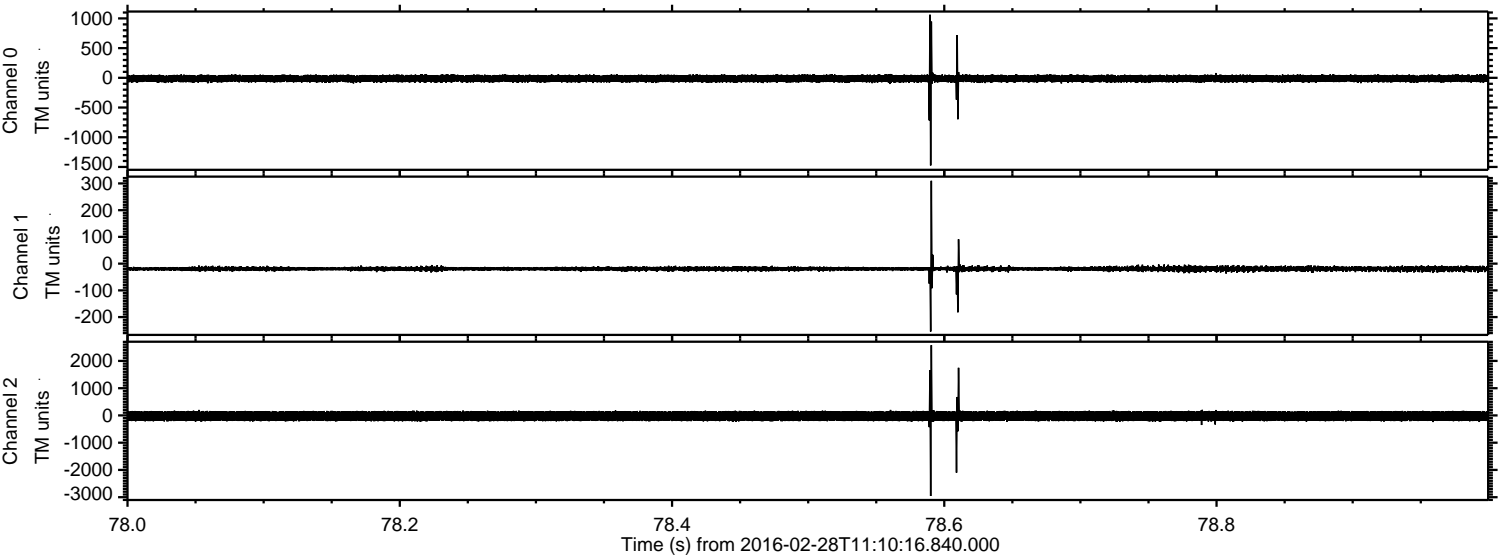


Processed Sun Apr 17 06:22:12 2016 by ELM ver.2012-10-06 from 001\_\_elm20160228\_111015\_\_dat00.bin



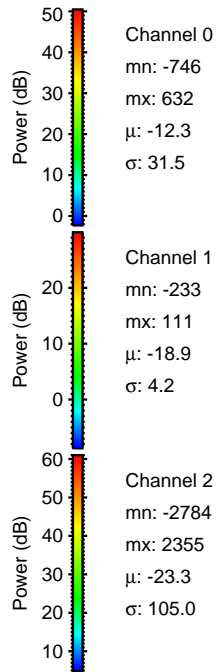
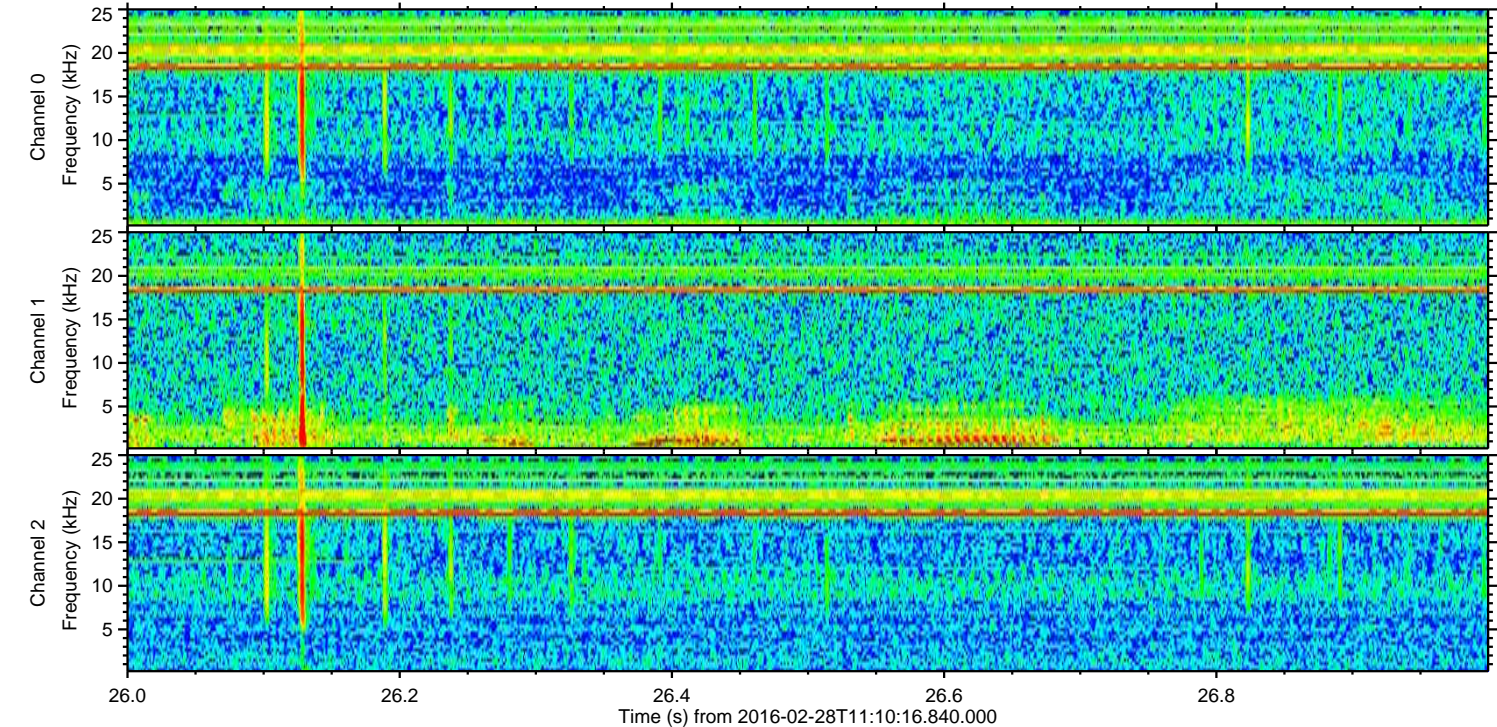
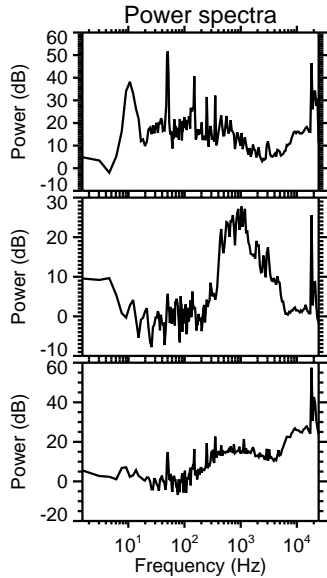
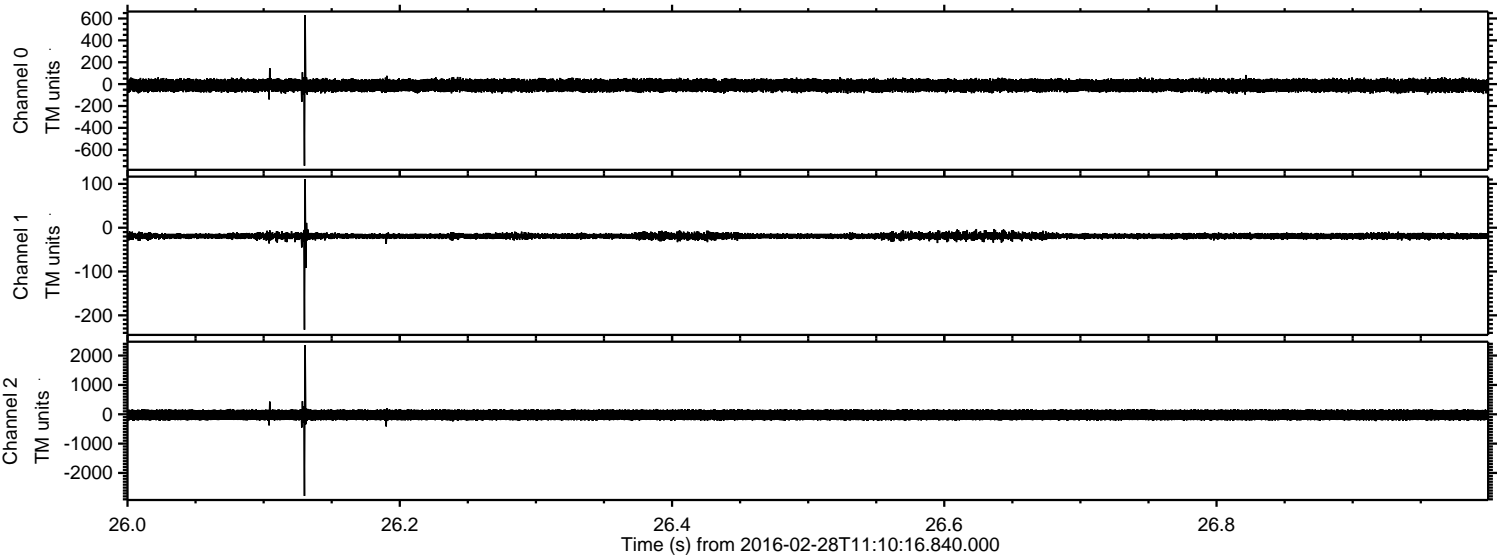


Processed Sun Apr 17 06:22:13 2016 by ELM ver.2012-10-06 from 001\_\_elm20160228\_111015\_\_dat00.bin





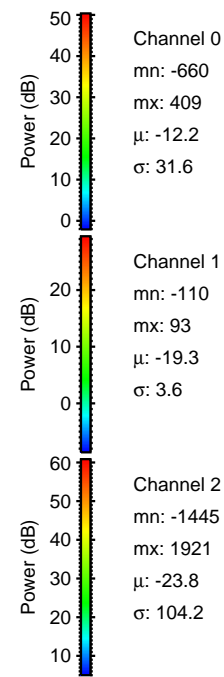
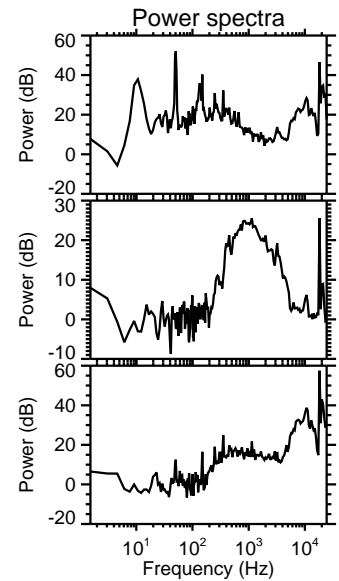
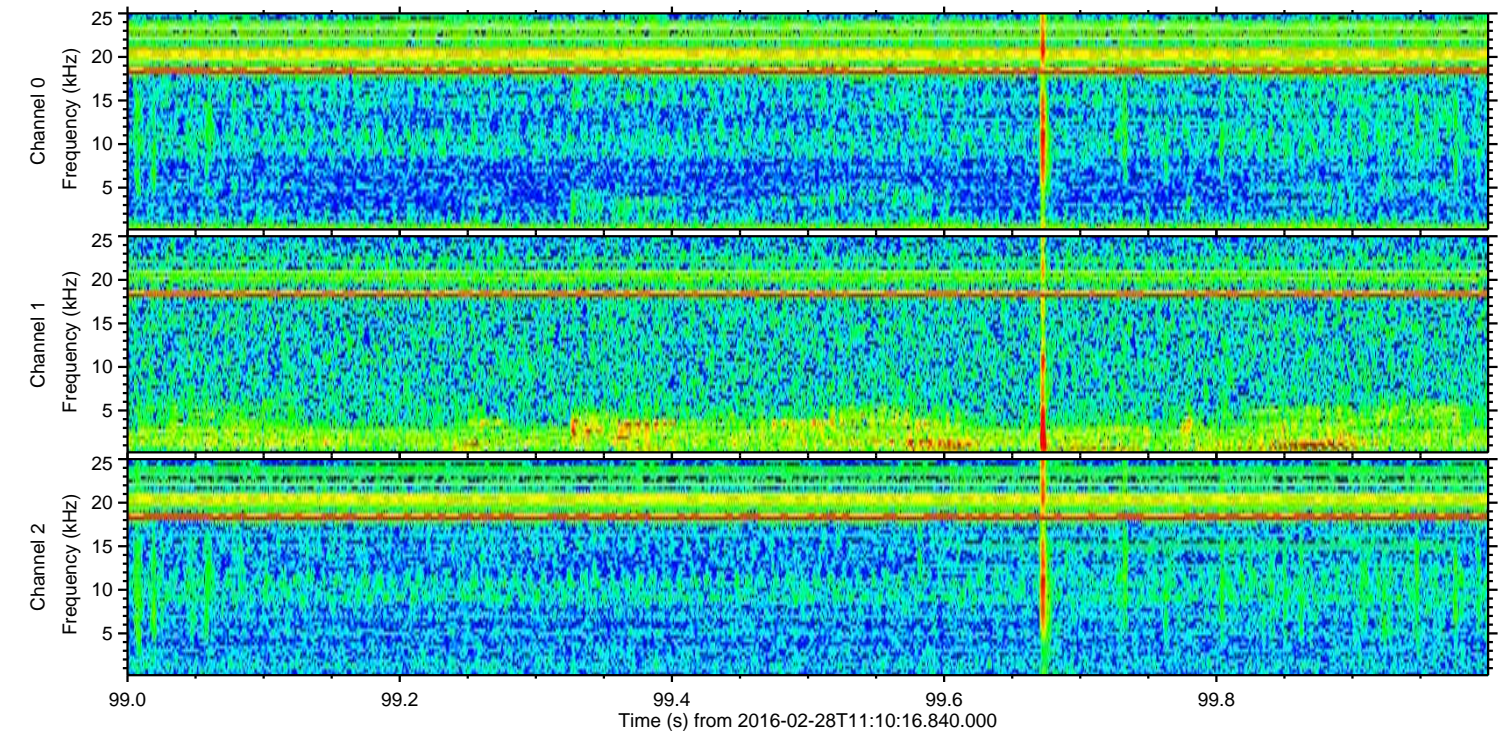
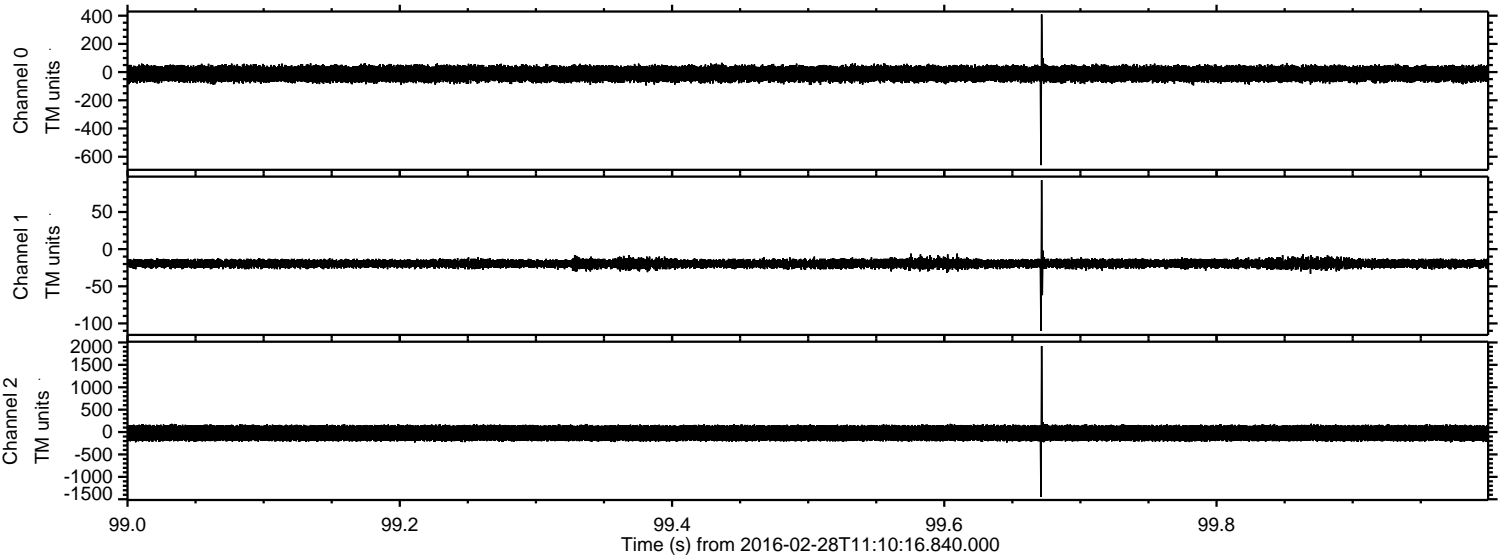
Processed Sun Apr 17 06:22:14 2016 by ELM ver.2012-10-06 from 001\_\_elm20160228\_111015\_\_dat00.bin





ELMAVAN 3D WAVEFORMS (Measured data sampled at 50 kHz) 51000 packets of 144 samples from 2016-02-28T11:10:16.840.000. Part 100/147

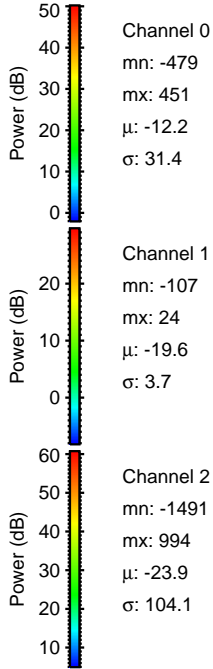
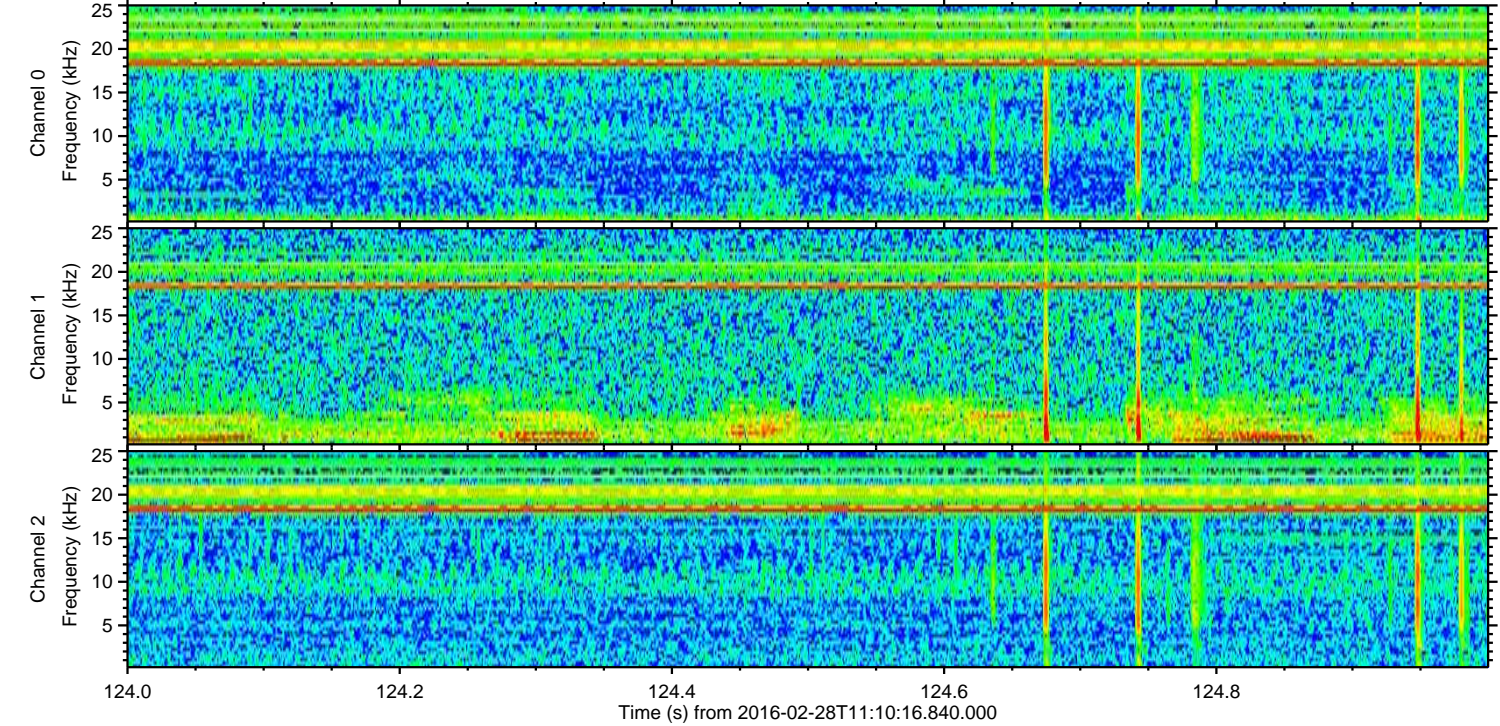
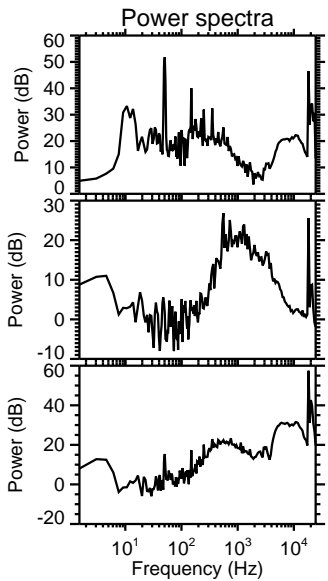
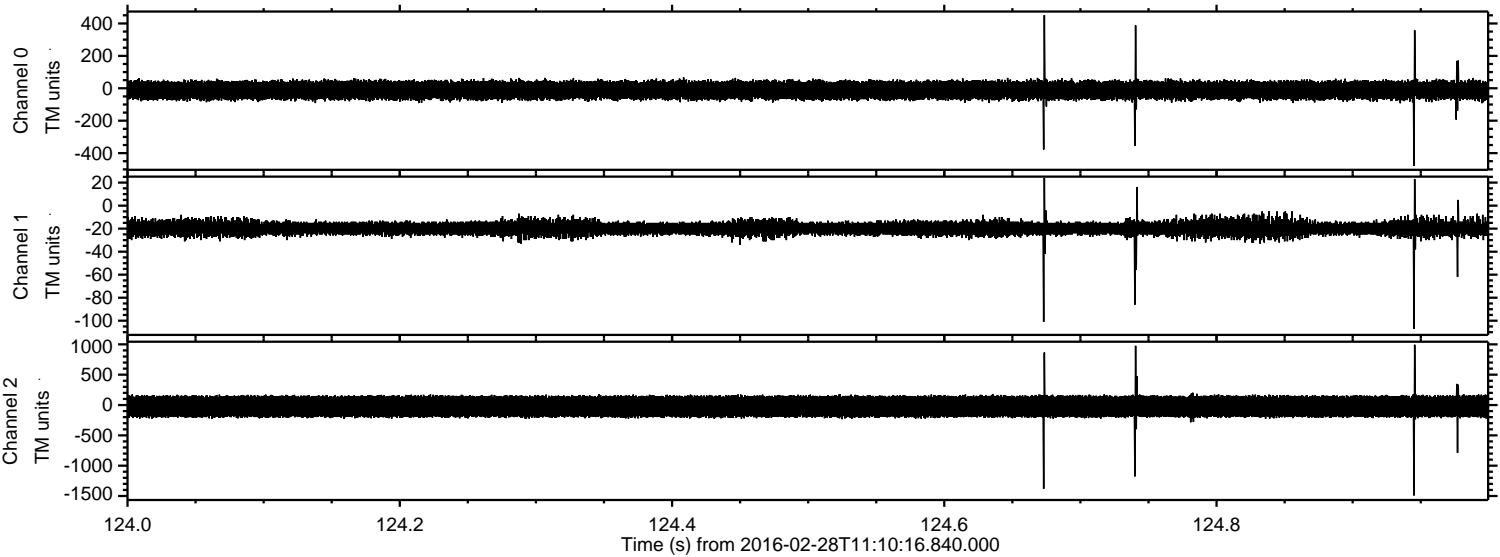
Processed Sun Apr 17 06:22:15 2016 by ELM ver.2012-10-06 from 001\_\_elm20160228\_111015\_\_dat00.bin





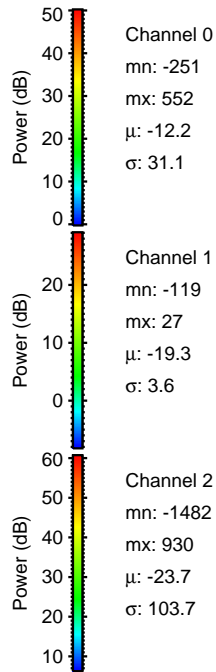
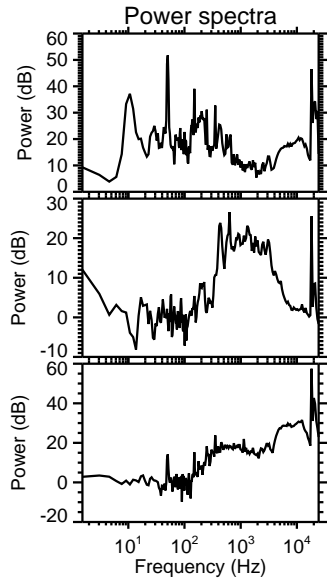
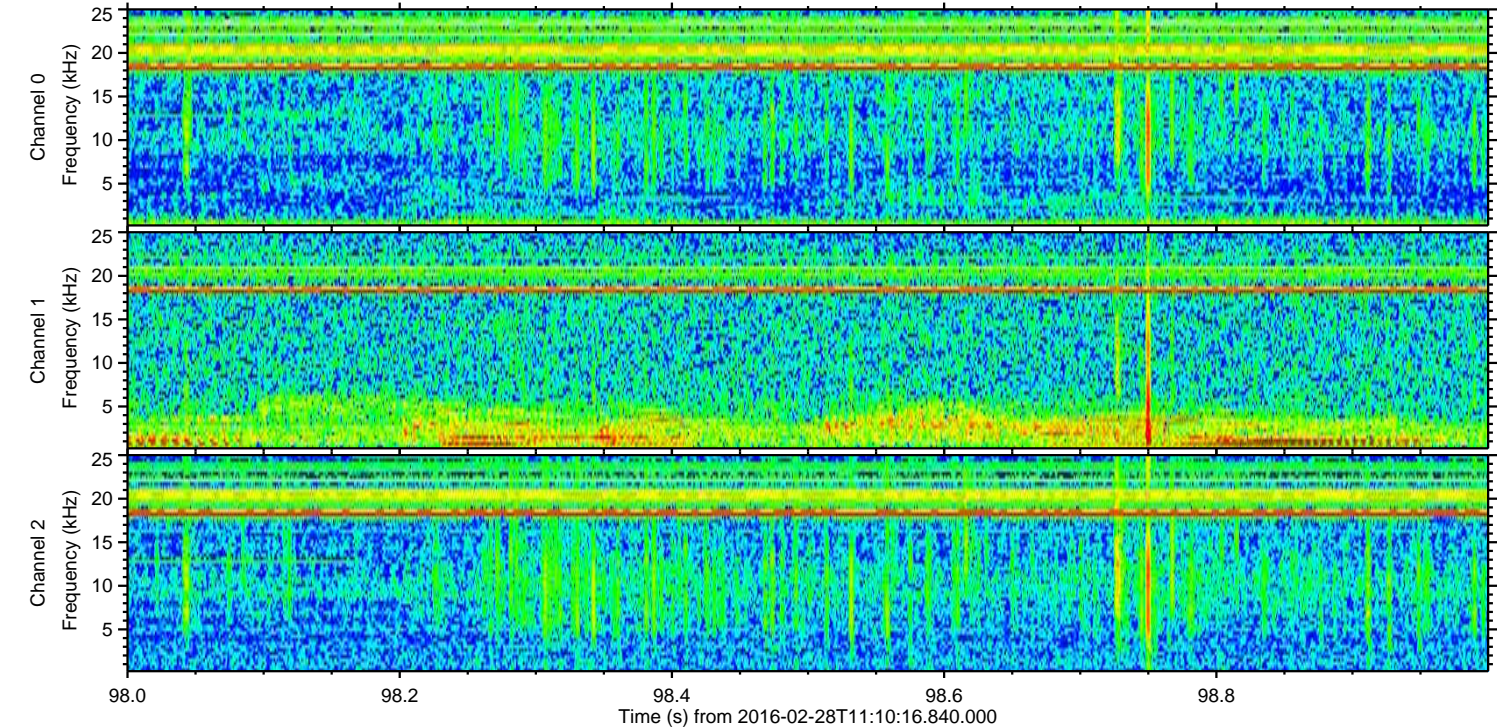
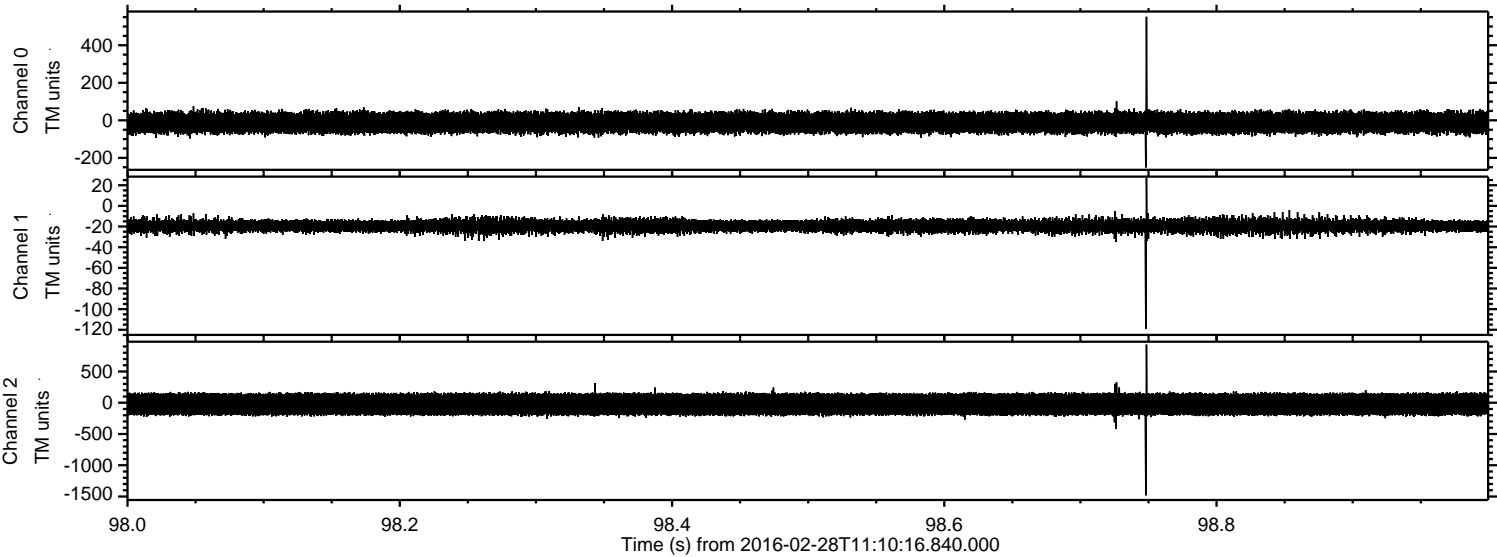
ELMAVAN 3D WAVEFORMS (Measured data sampled at 50 kHz) 51000 packets of 144 samples from 2016-02-28T11:10:16.840.000. Part 125/147

Processed Sun Apr 17 06:22:16 2016 by ELM ver.2012-10-06 from 001\_\_elm20160228\_111015\_\_dat00.bin





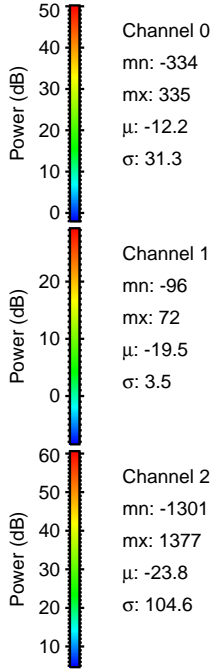
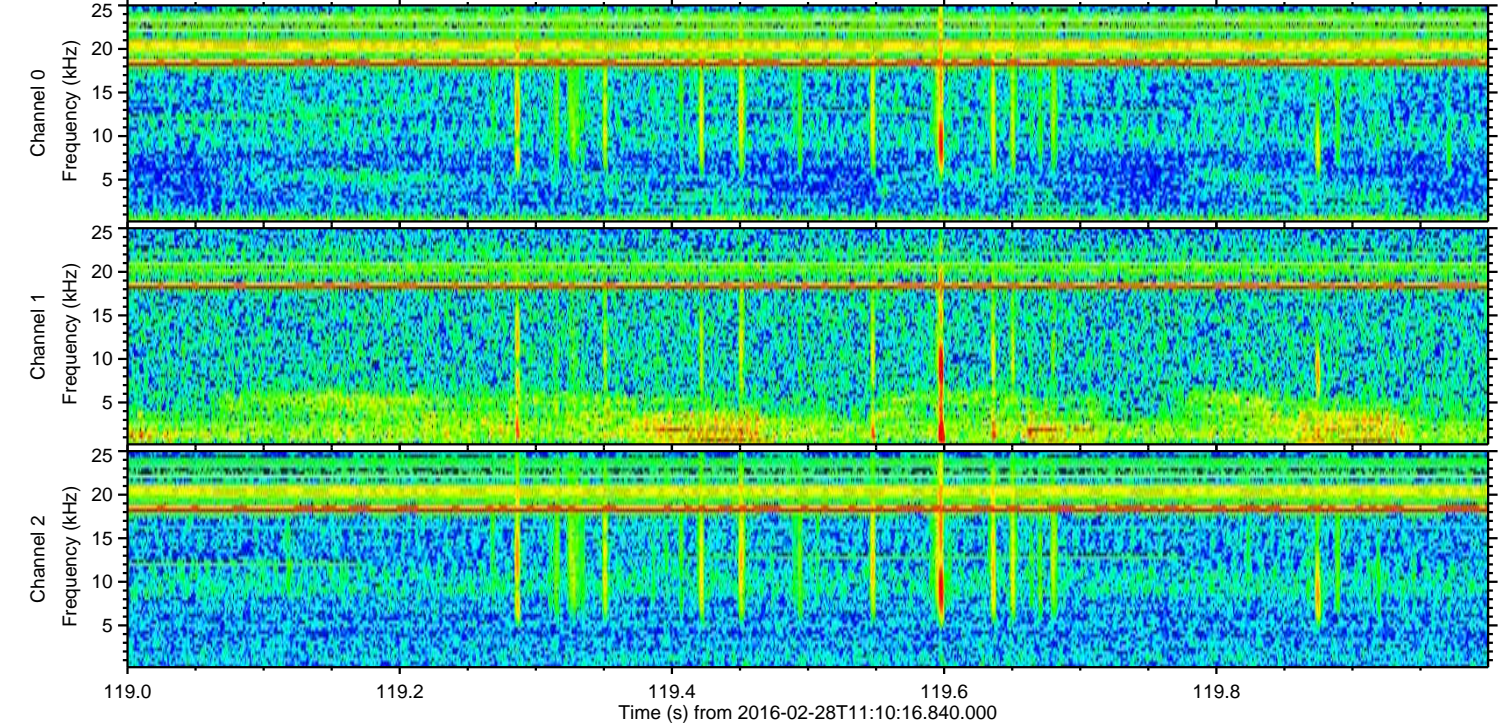
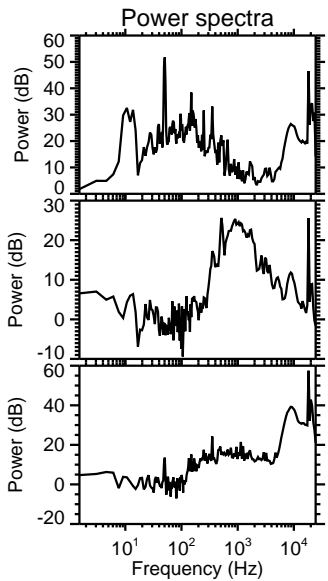
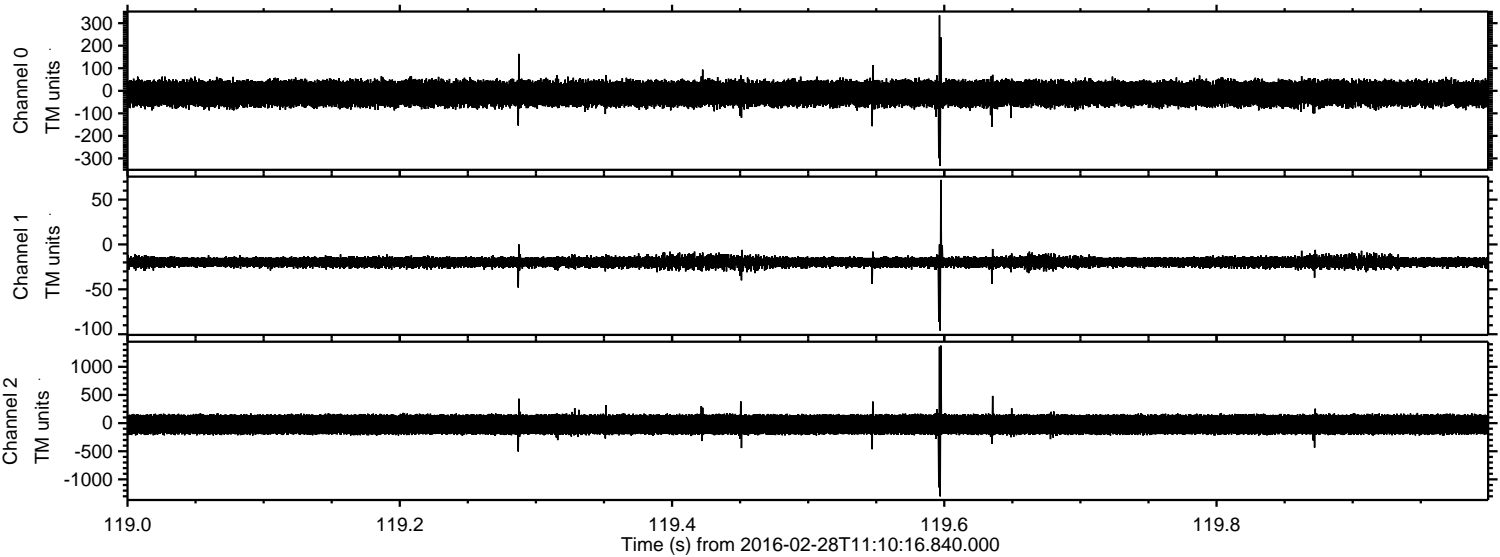
Processed Sun Apr 17 06:22:17 2016 by ELM ver.2012-10-06 from 001\_\_elm20160228\_111015\_\_dat00.bin





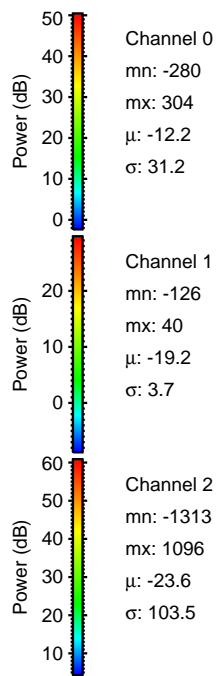
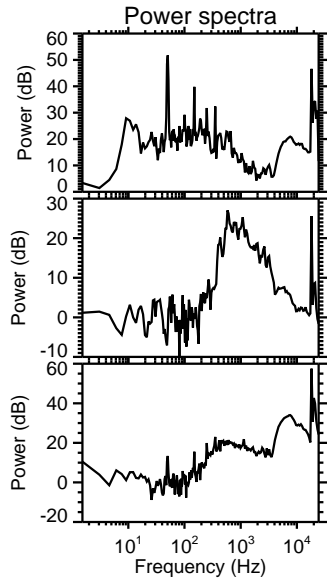
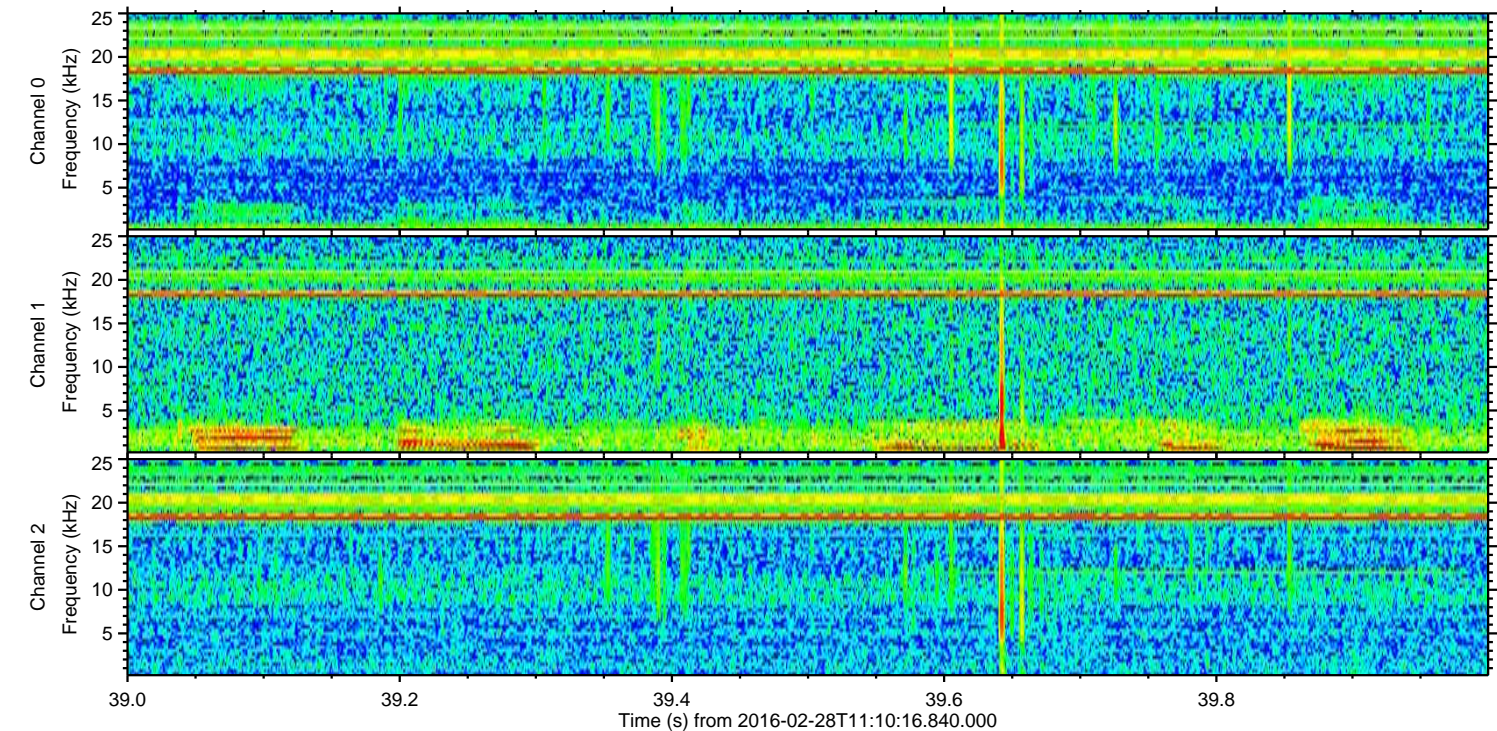
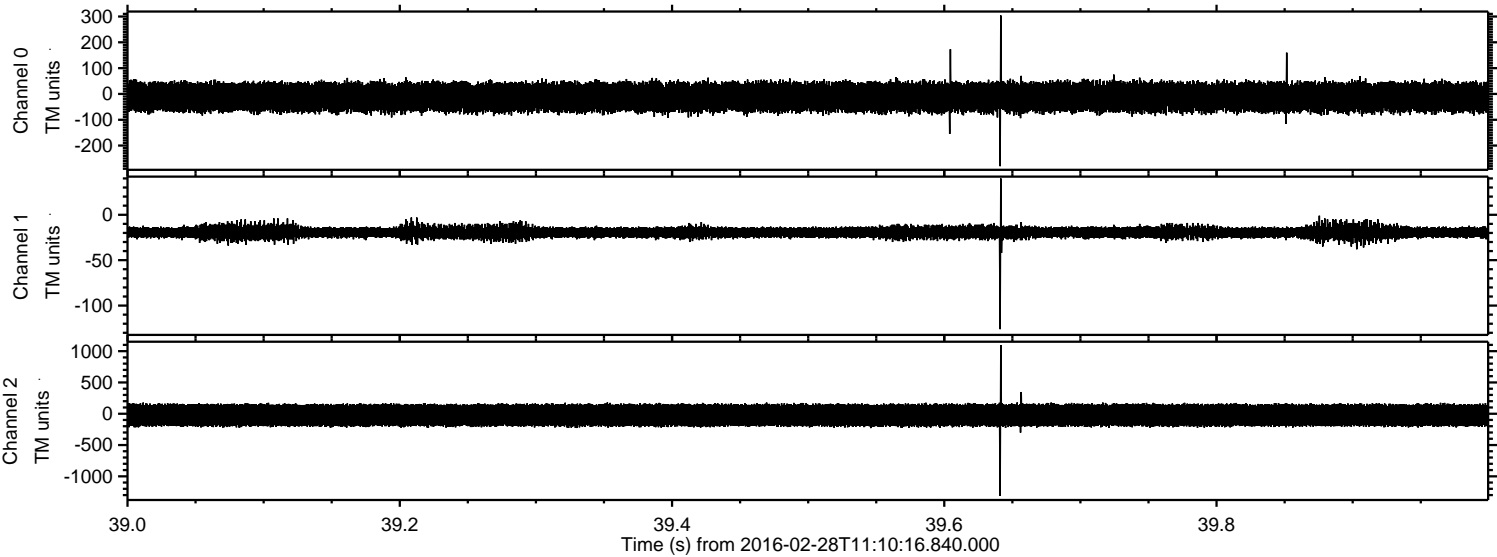
ELMAVAN 3D WAVEFORMS (Measured data sampled at 50 kHz) 51000 packets of 144 samples from 2016-02-28T11:10:16.840.000. Part 120/147

Processed Sun Apr 17 06:22:18 2016 by ELM ver.2012-10-06 from 001\_\_elm20160228\_111015\_\_dat00.bin



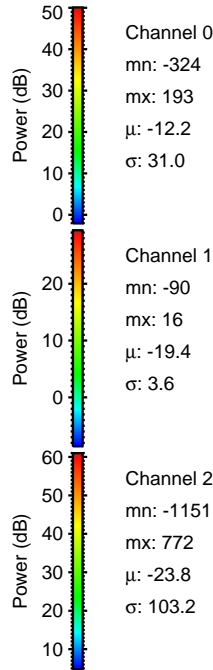
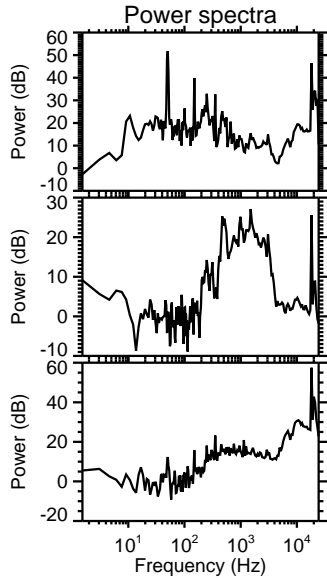
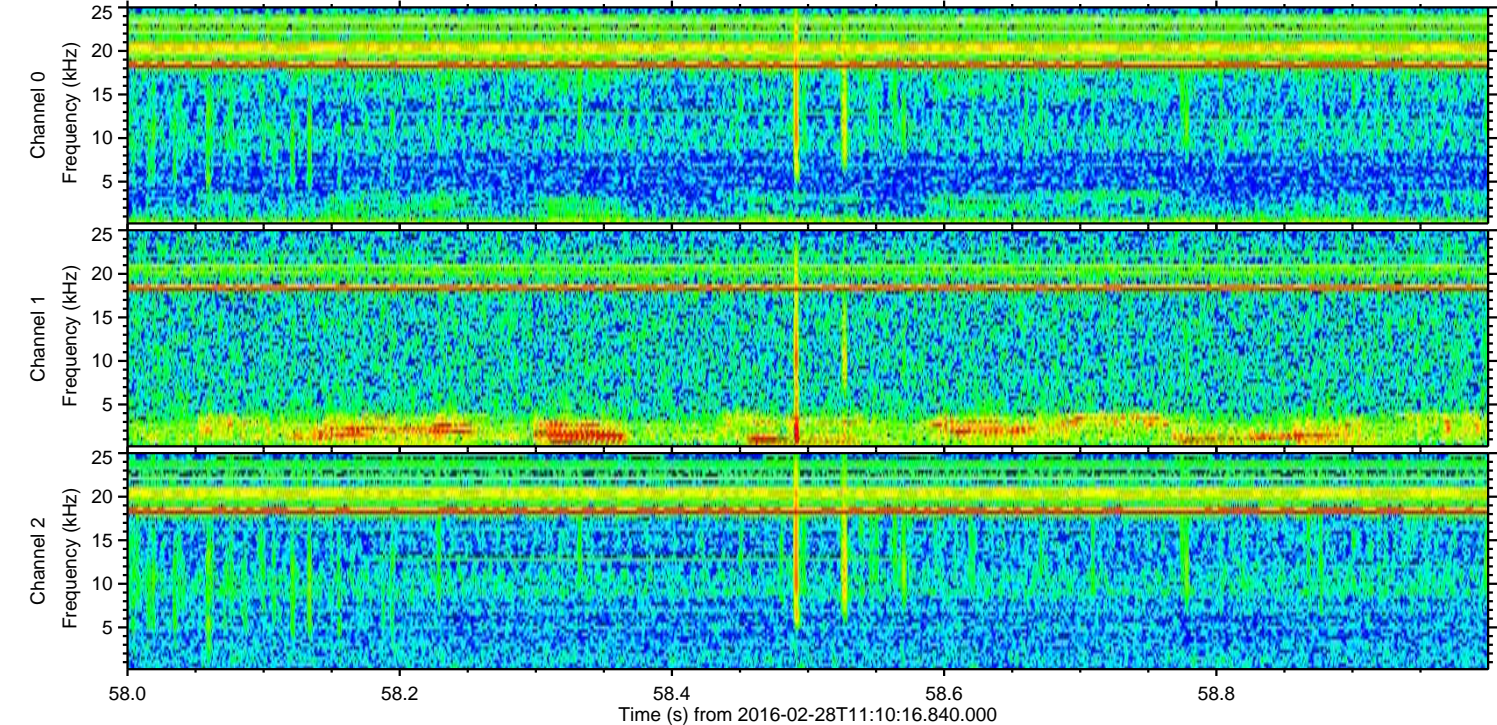
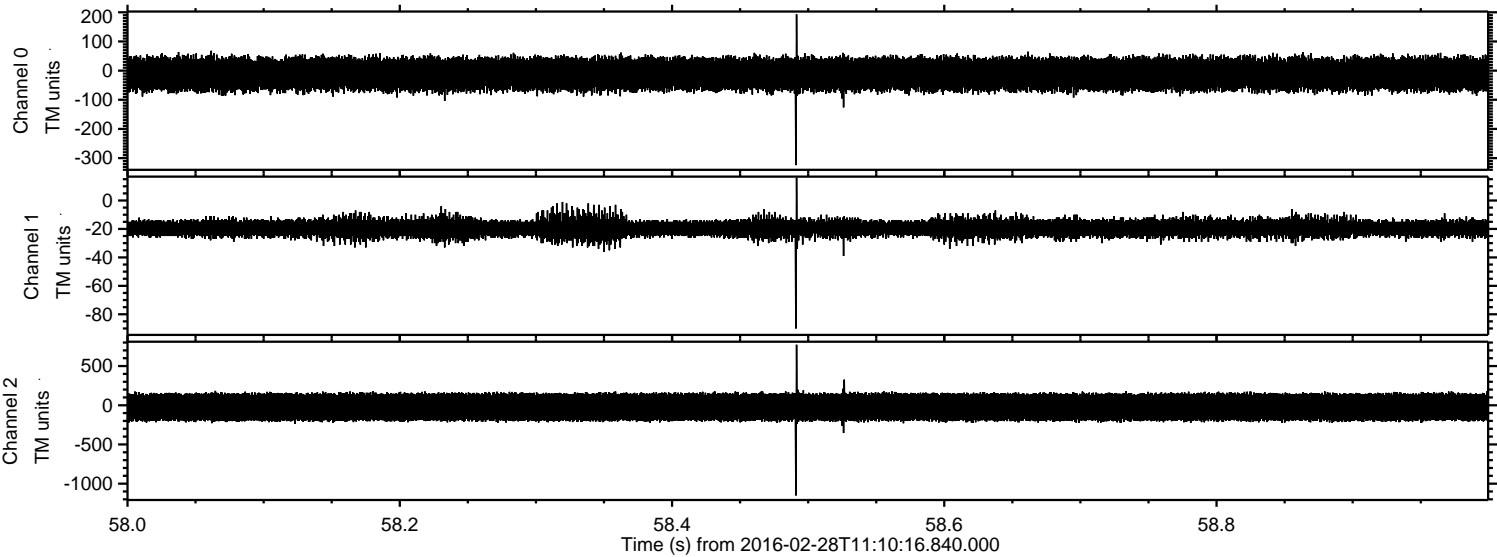


Processed Sun Apr 17 06:22:19 2016 by ELM ver.2012-10-06 from 001\_\_elm20160228\_111015\_\_dat00.bin





Processed Sun Apr 17 06:22:20 2016 by ELM ver.2012-10-06 from 001\_\_elm20160228\_111015\_\_dat00.bin



Channel 0  
mn: -324  
mx: 193  
 $\mu$ : -12.2  
 $\sigma$ : 31.0

Channel 1  
mn: -90  
mx: 16  
 $\mu$ : -19.4  
 $\sigma$ : 3.6

Channel 2  
mn: -1151  
mx: 772  
 $\mu$ : -23.8  
 $\sigma$ : 103.2



Processed Sun Apr 17 06:22:21 2016 by ELM ver.2012-10-06 from 001\_\_elm20160228\_111015\_\_dat00.bin

