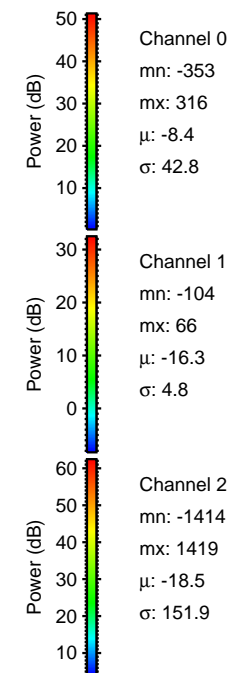
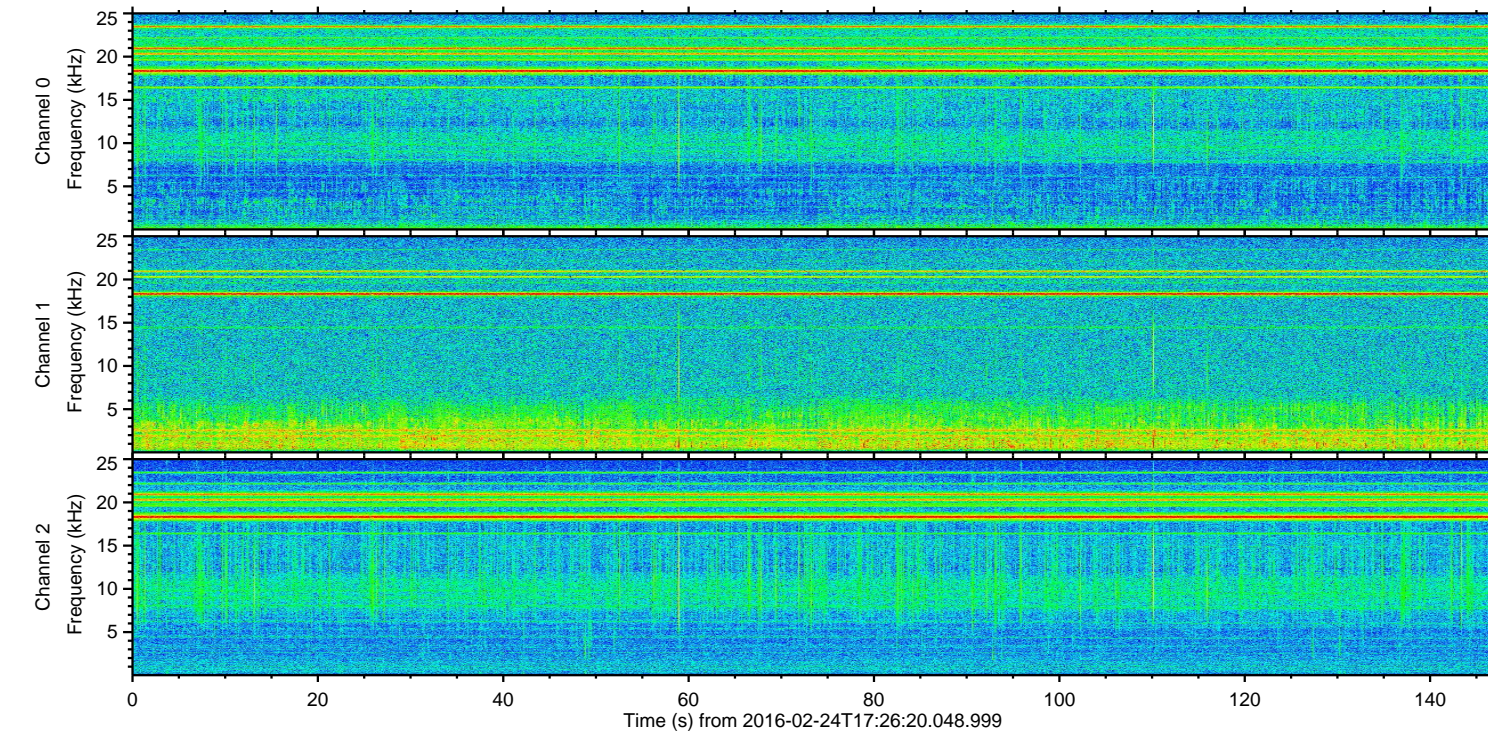
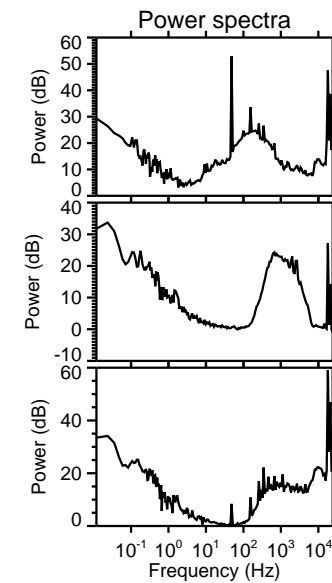
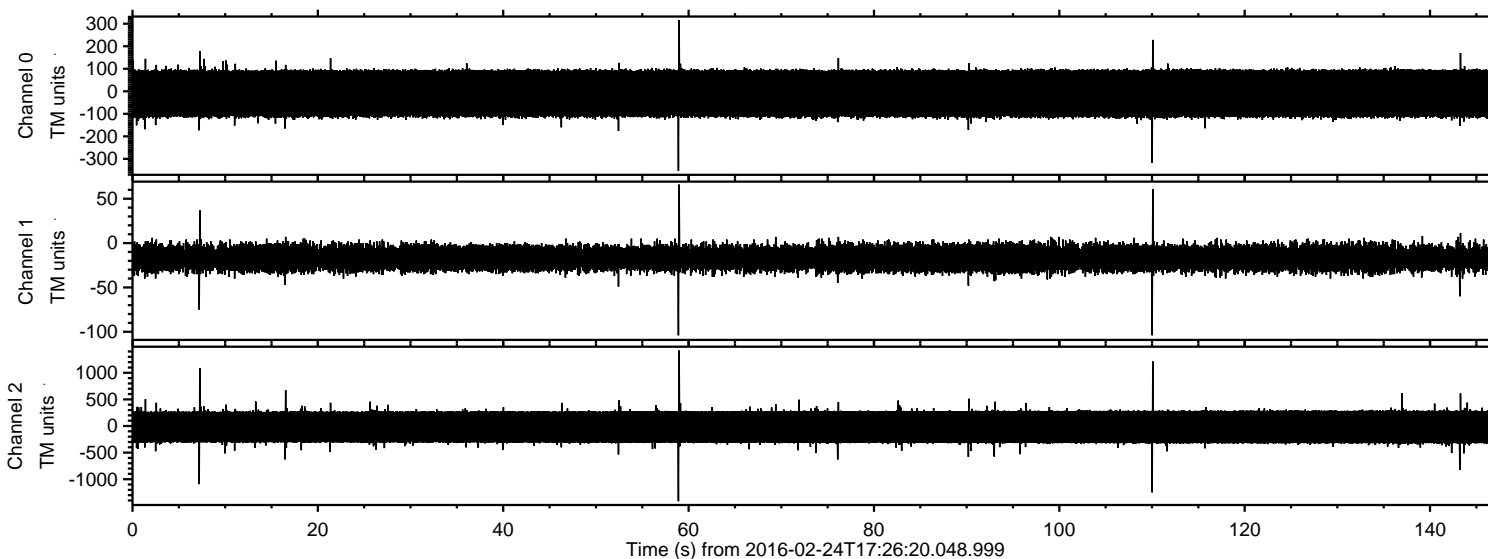
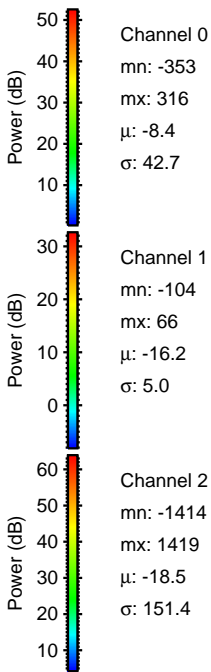
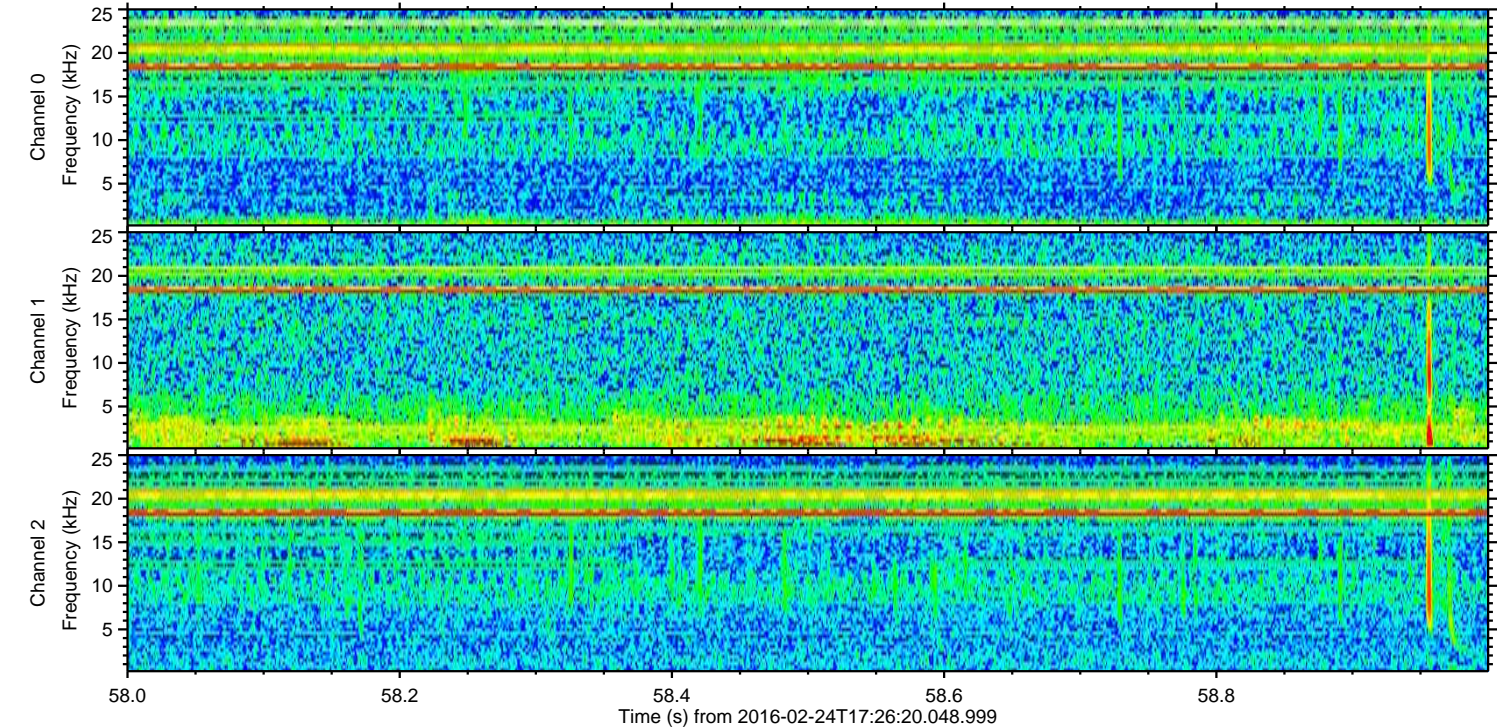
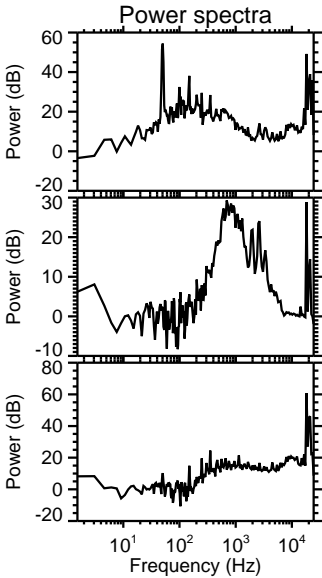
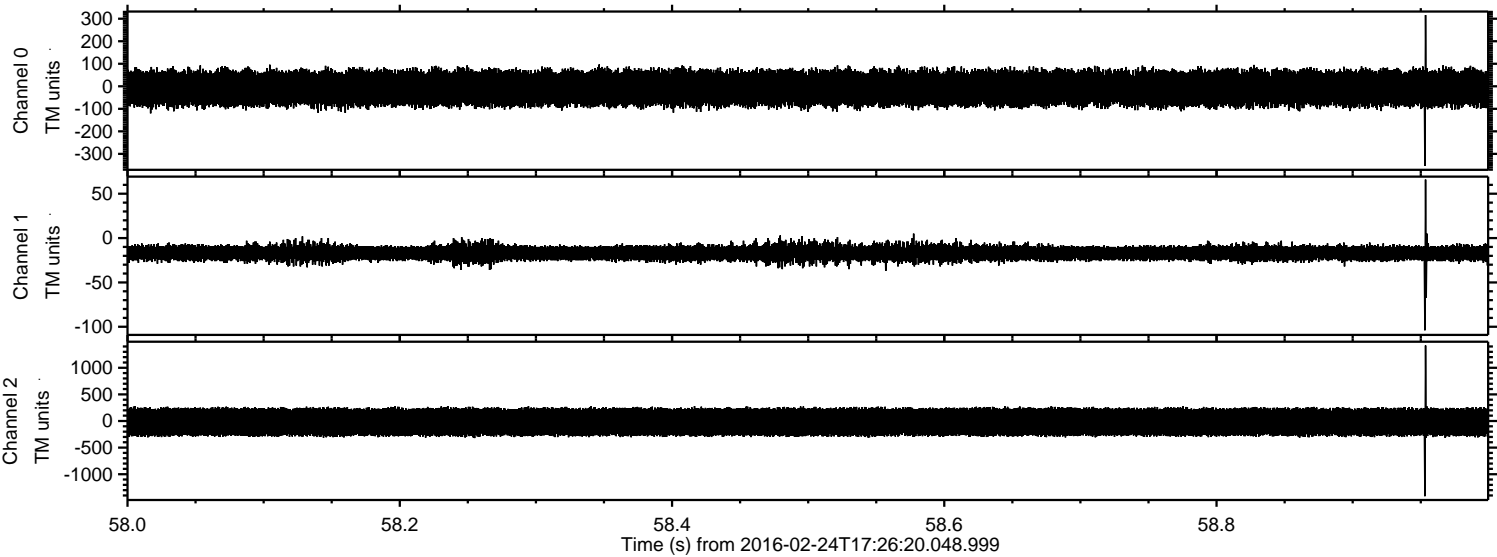


ELMAVAN 3D WAVEFORMS (Measured data sampled at 50 kHz) 51000 packets of 144 samples from 2016-02-24T17:26:20.048.999.

Processed Sat Apr 16 12:01:25 2016 by ELM ver.2012-10-06 from 001__elm20160224_172619__dat00.bin

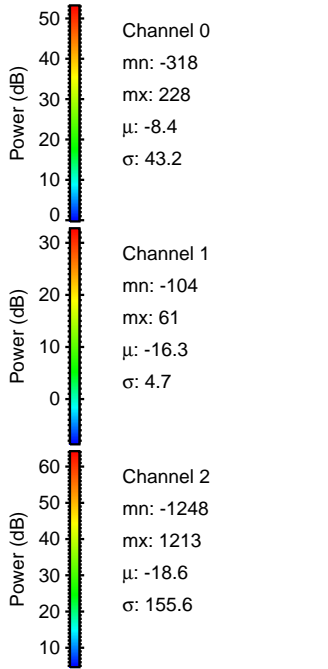
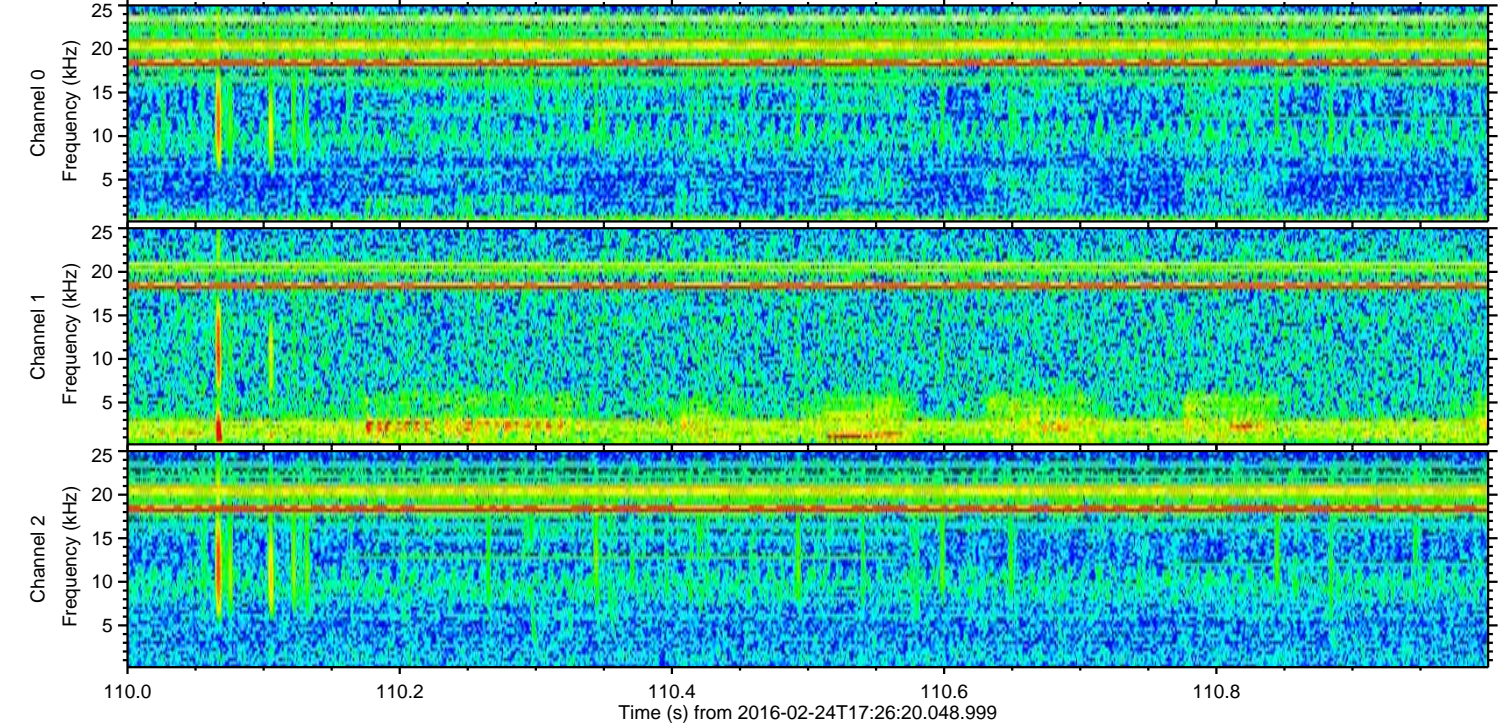
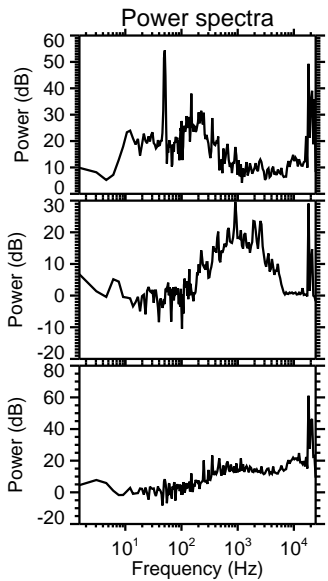
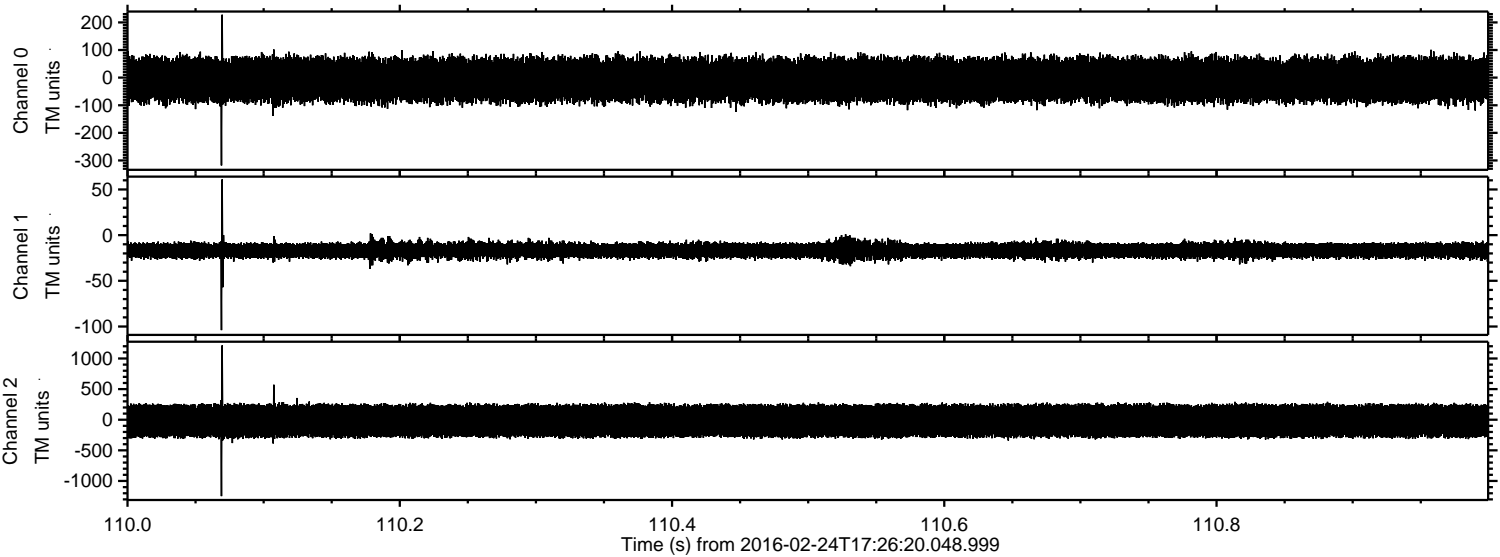


Processed Sat Apr 16 12:01:38 2016 by ELM ver.2012-10-06 from 001__elm20160224_172619__dat00.bin

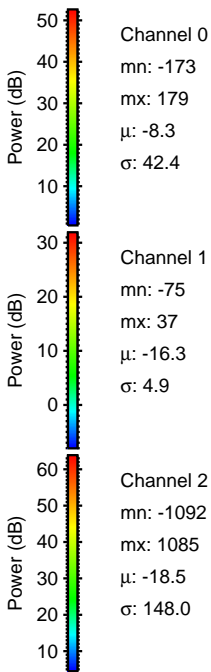
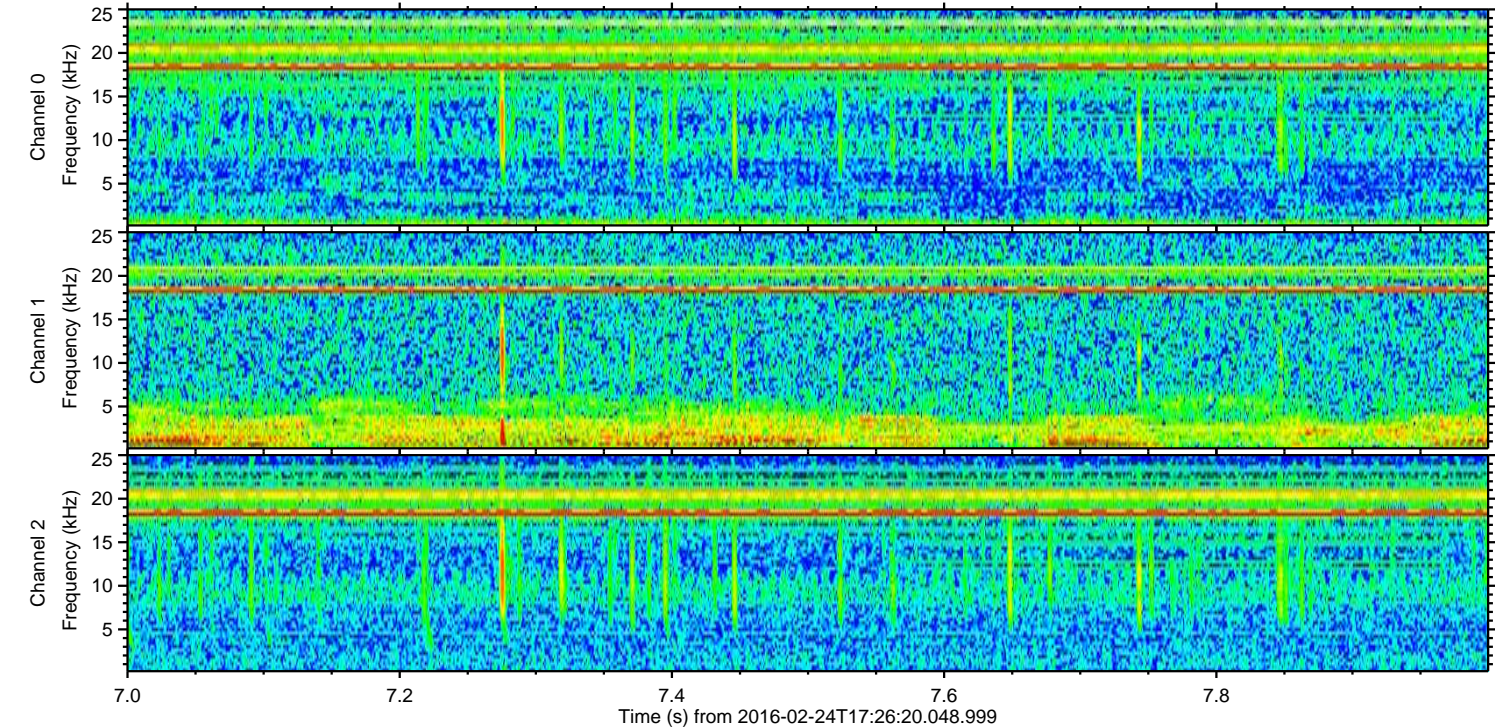
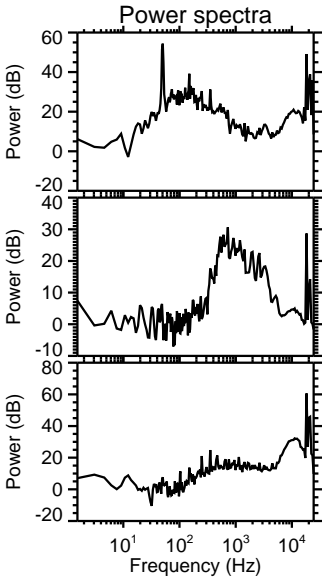
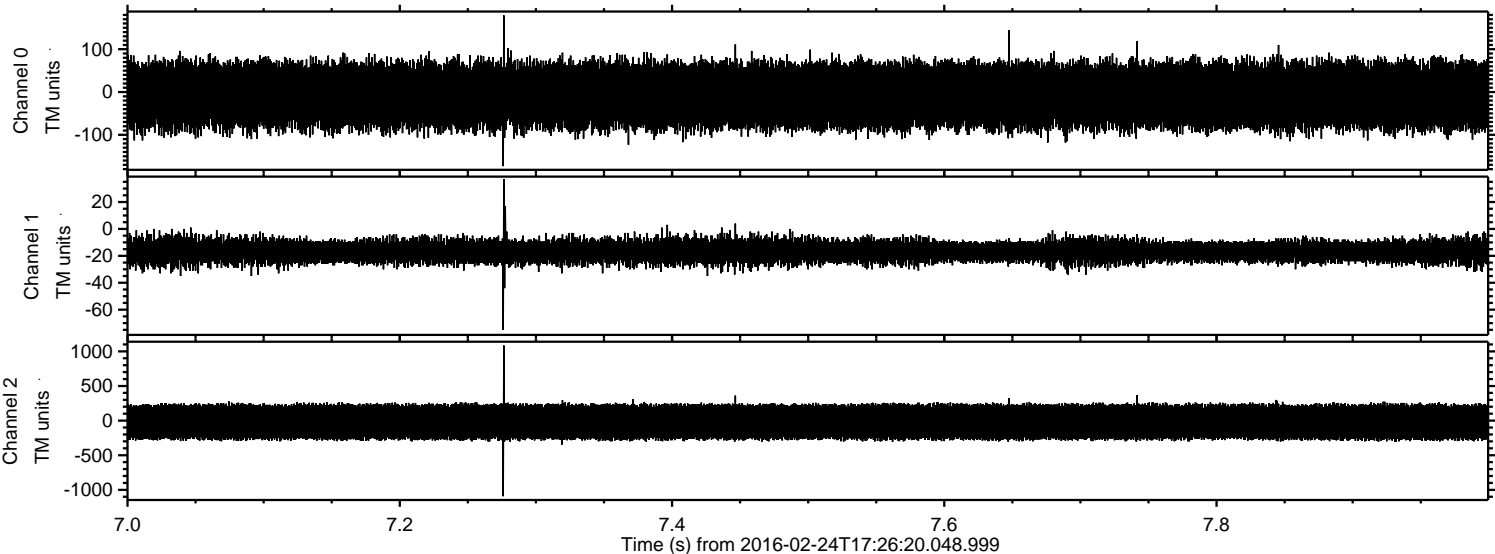


ELMAVAN 3D WAVEFORMS (Measured data sampled at 50 kHz) 51000 packets of 144 samples from 2016-02-24T17:26:20.048.999. Part 111/147

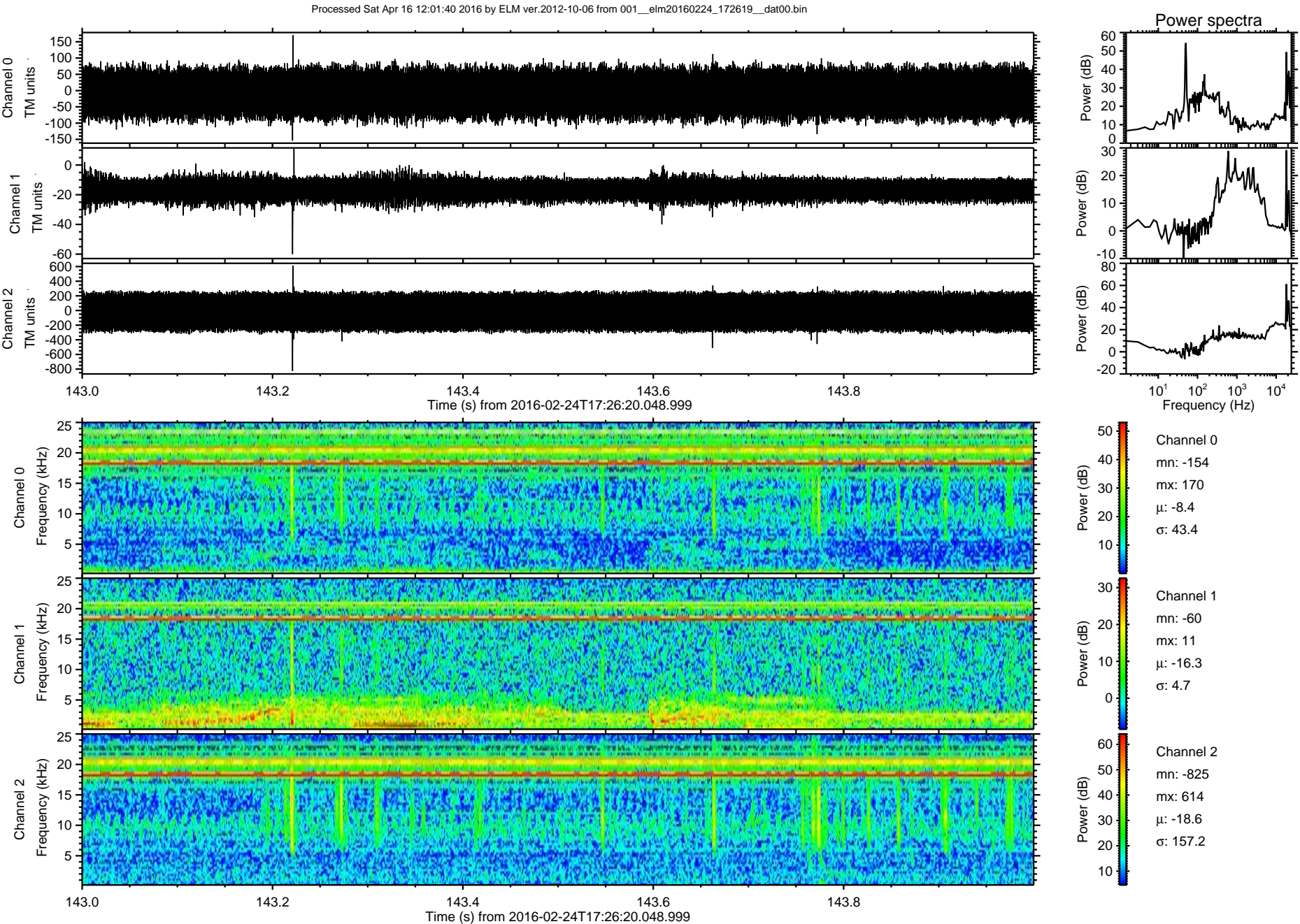
Processed Sat Apr 16 12:01:39 2016 by ELM ver.2012-10-06 from 001__elm20160224_172619__dat00.bin



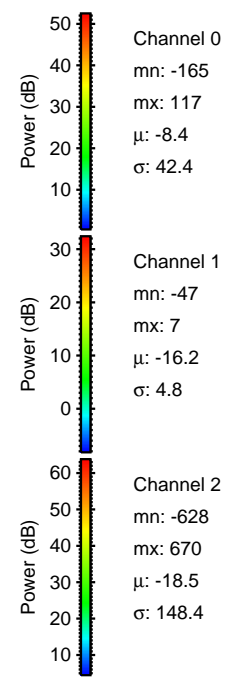
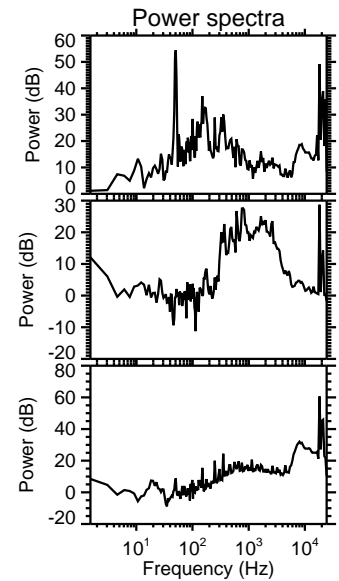
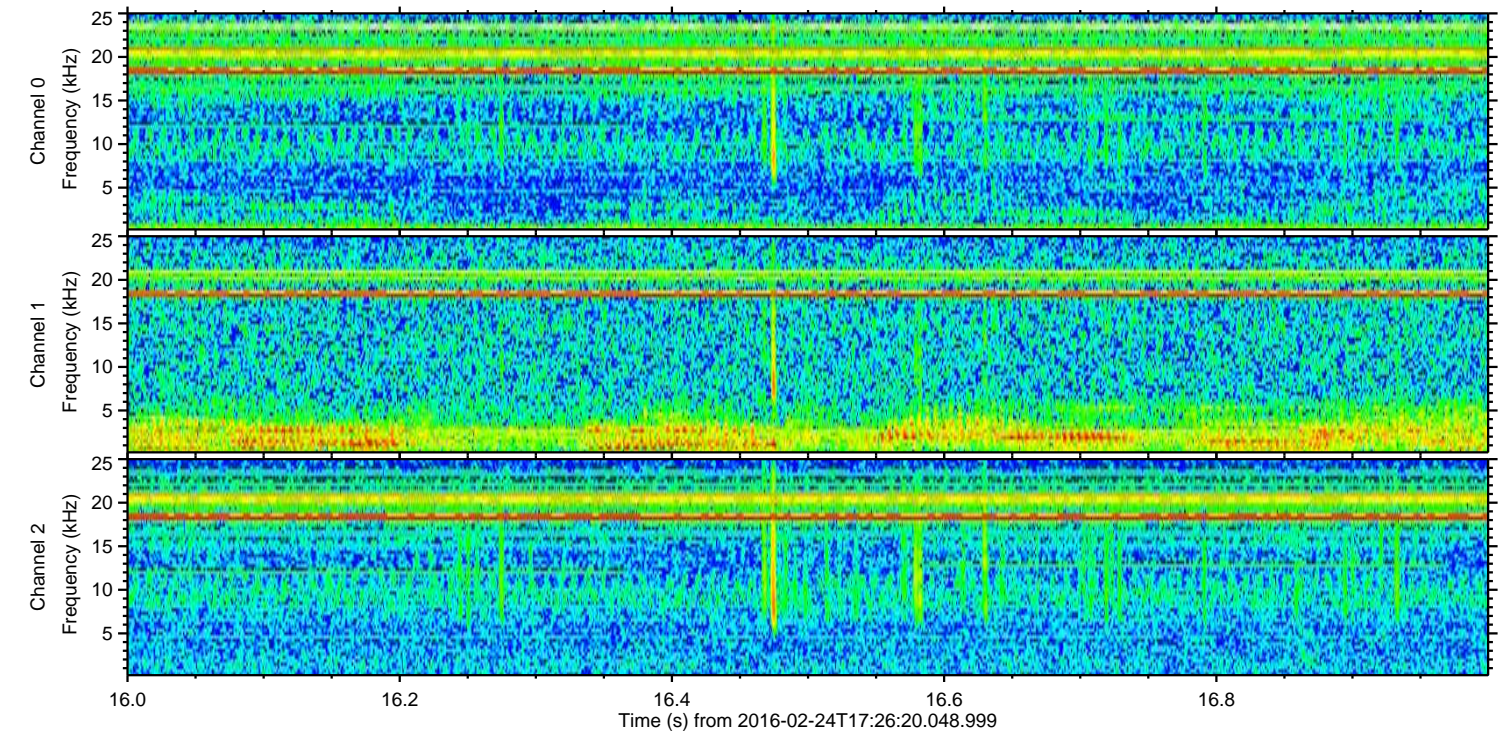
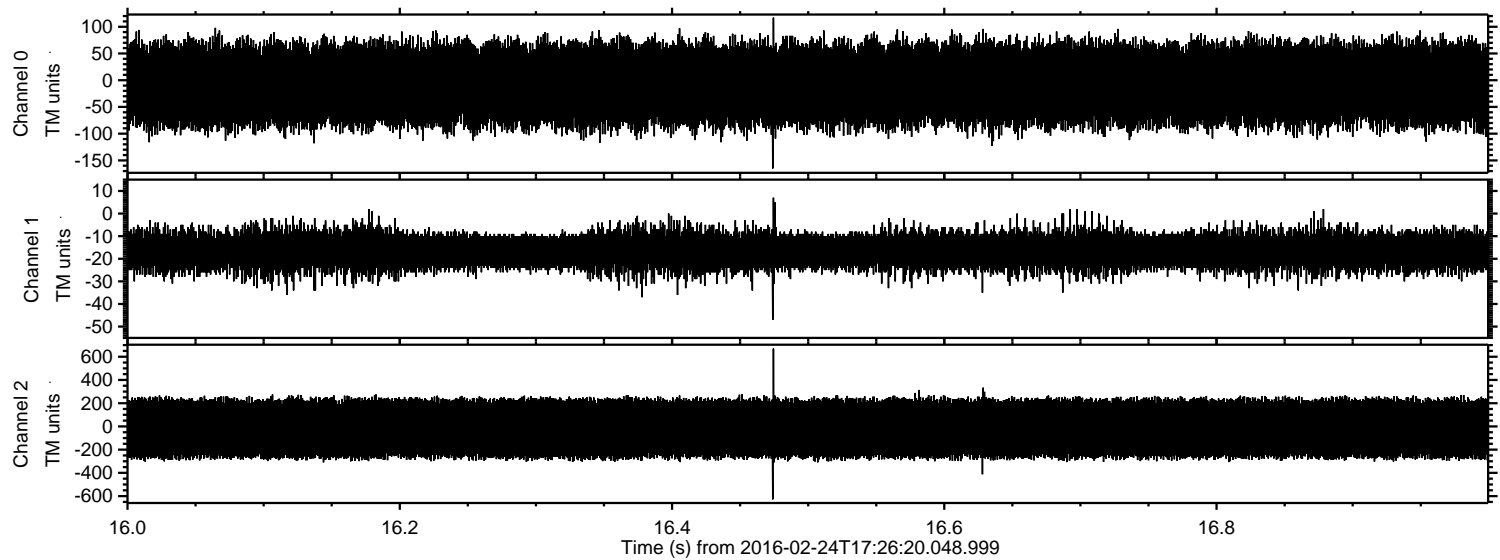
Processed Sat Apr 16 12:01:40 2016 by ELM ver.2012-10-06 from 001__elm20160224_172619__dat00.bin



ELMAVAN 3D WAVEFORMS (Measured data sampled at 50 kHz) 51000 packets of 144 samples from 2016-02-24T17:26:20.048.999. Part 144/147



Processed Sat Apr 16 12:01:41 2016 by ELM ver.2012-10-06 from 001__elm20160224_172619__dat00.bin



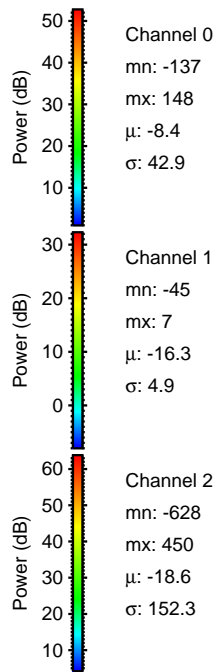
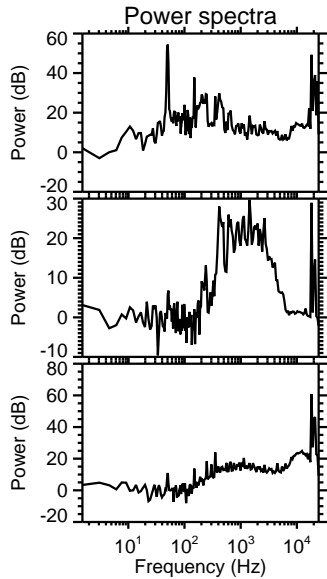
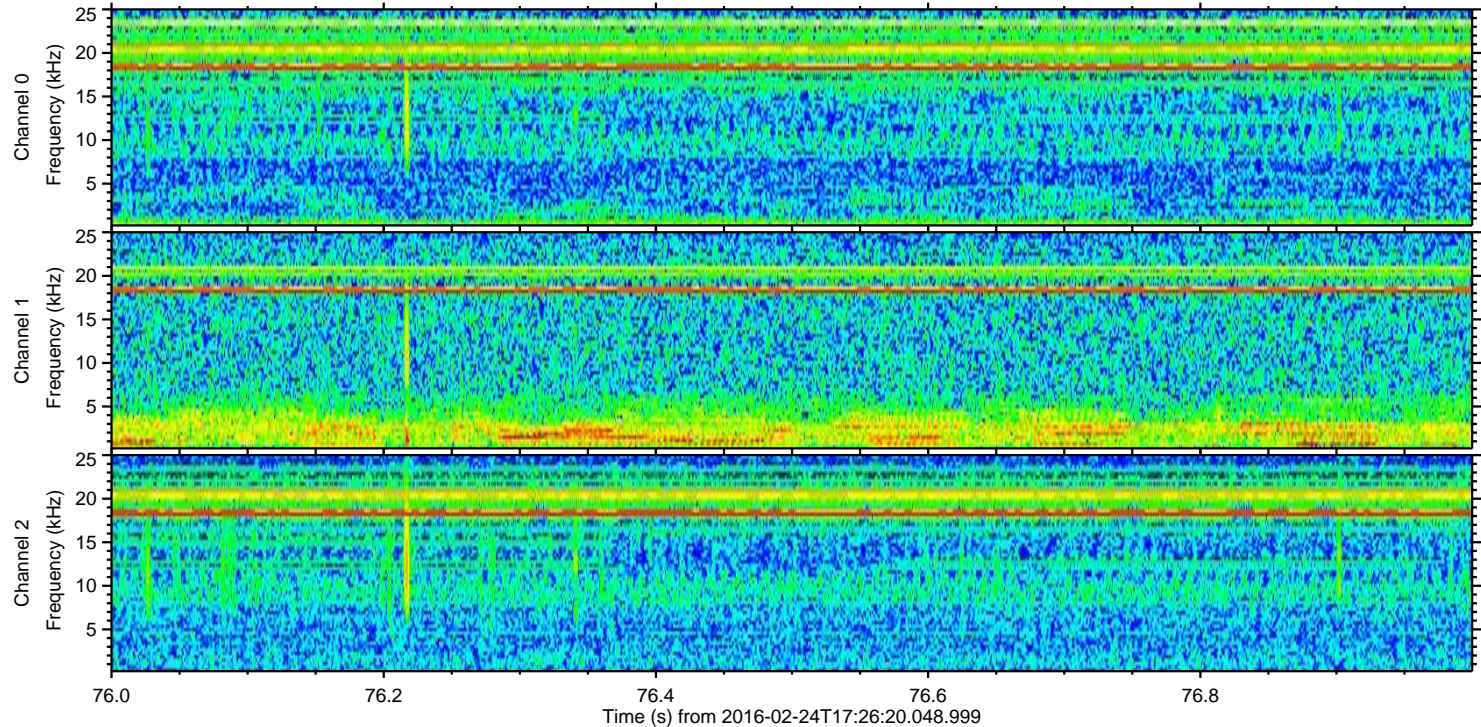
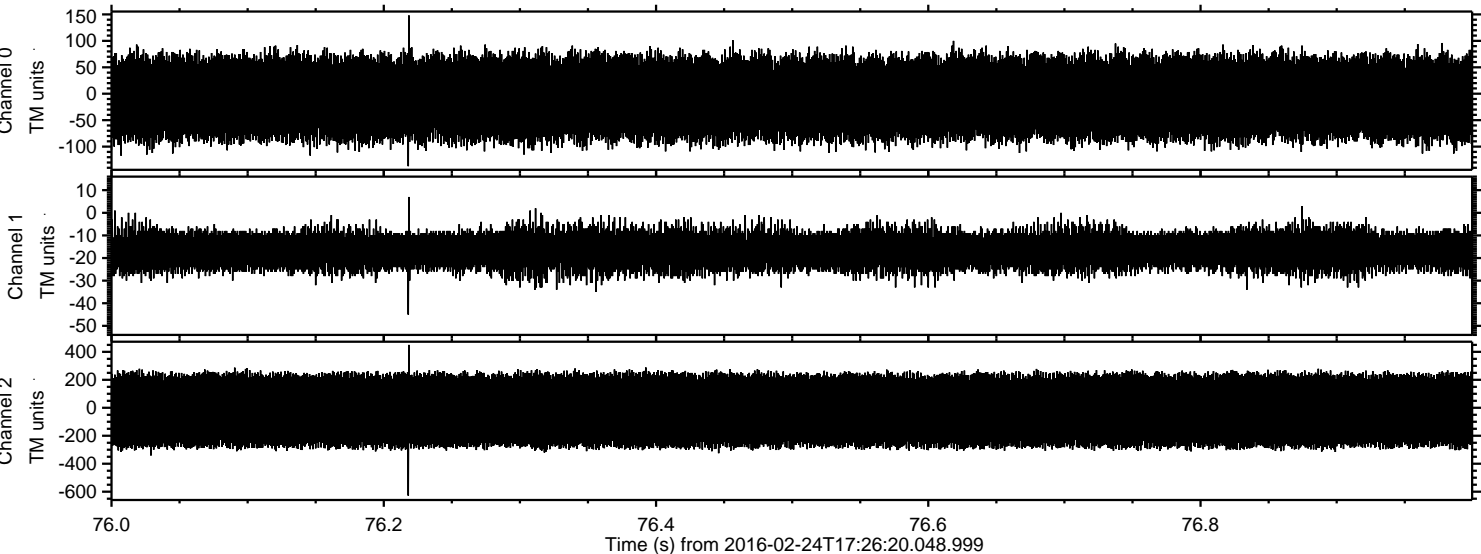
Channel 0
mn: -165
mx: 117
 μ : -8.4
 σ : 42.4

Channel 1
mn: -47
mx: 7
 μ : -16.2
 σ : 4.8

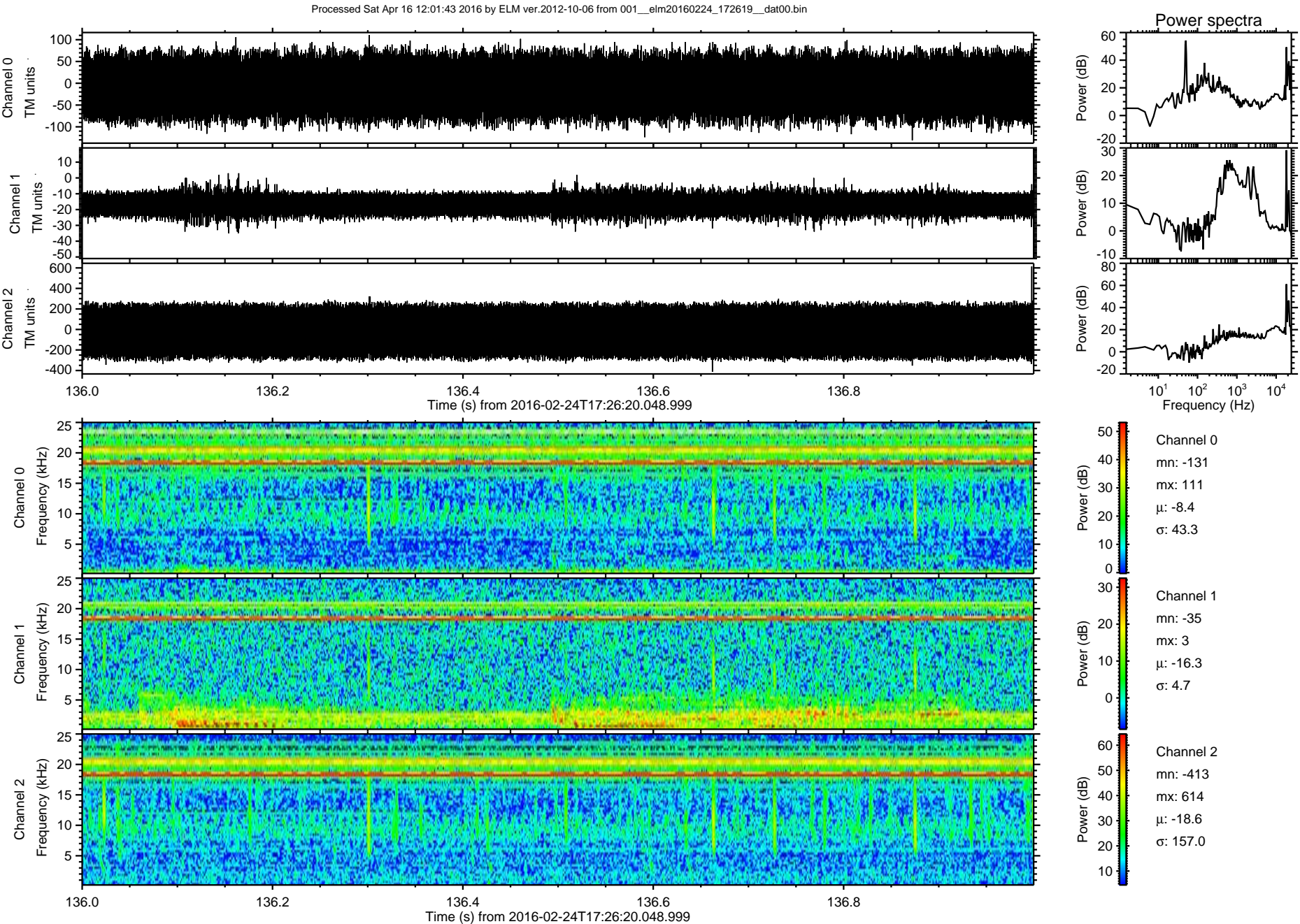
Channel 2
mn: -628
mx: 670
 μ : -18.5
 σ : 148.4

ELMAVAN 3D WAVEFORMS (Measured data sampled at 50 kHz) 51000 packets of 144 samples from 2016-02-24T17:26:20.048.999. Part 77/147

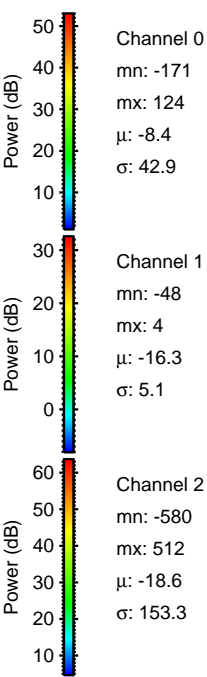
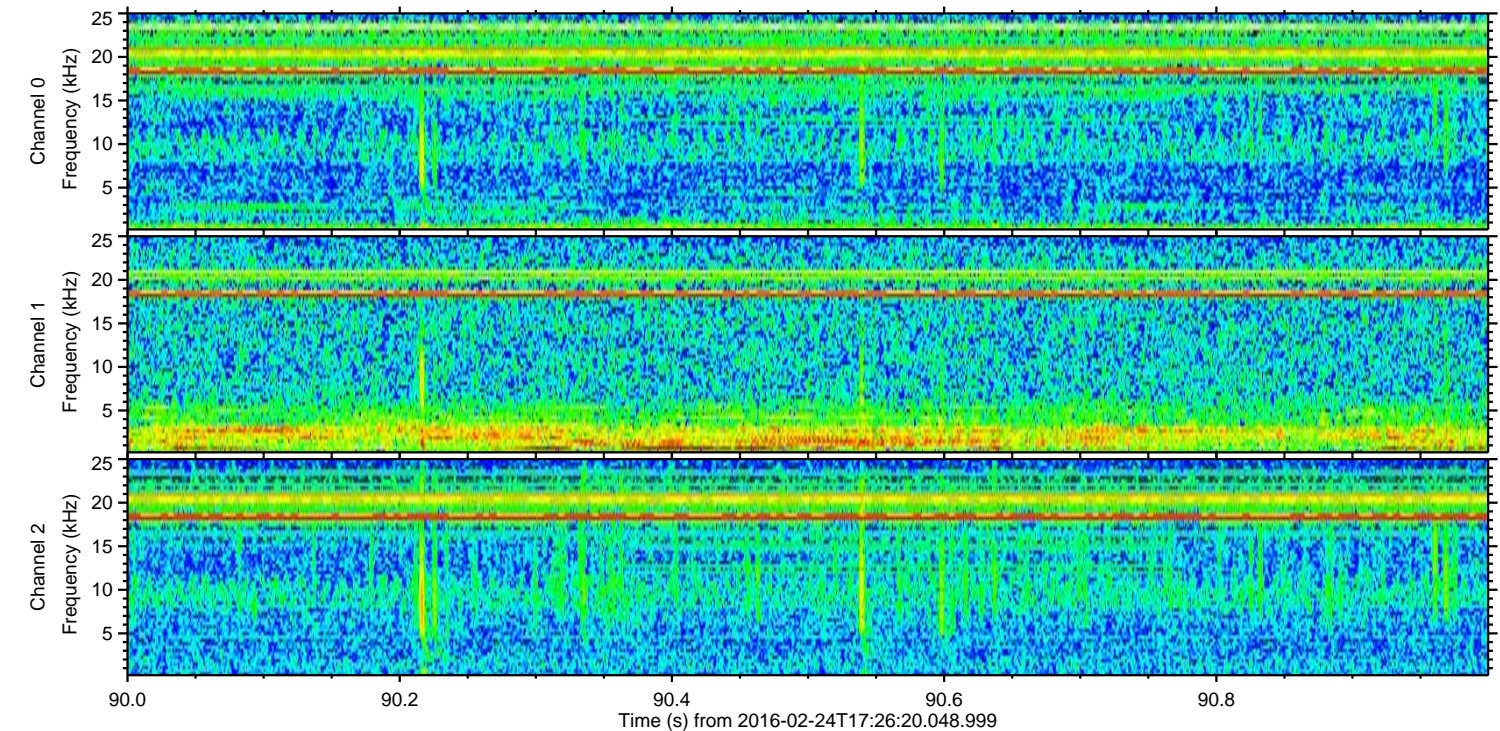
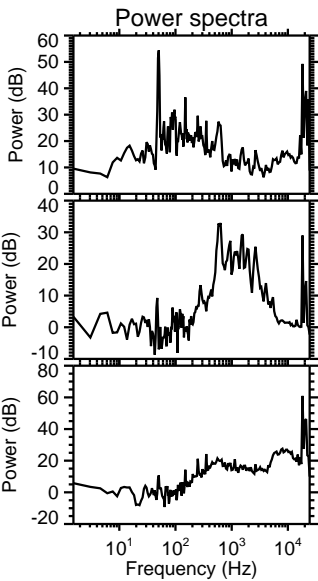
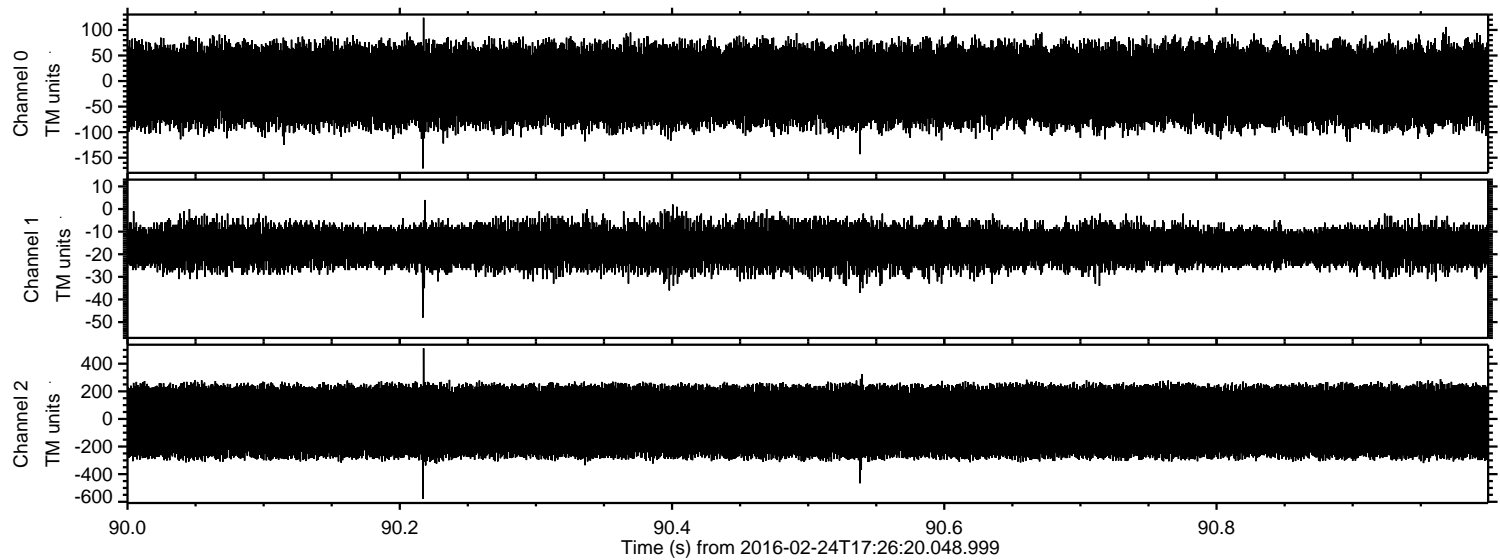
Processed Sat Apr 16 12:01:42 2016 by ELM ver.2012-10-06 from 001__elm20160224_172619__dat00.bin



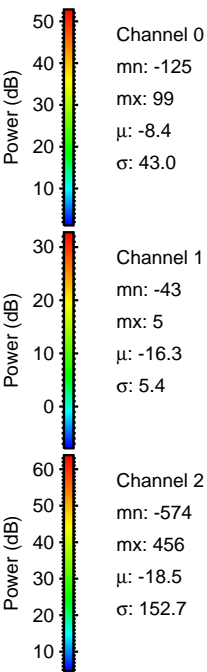
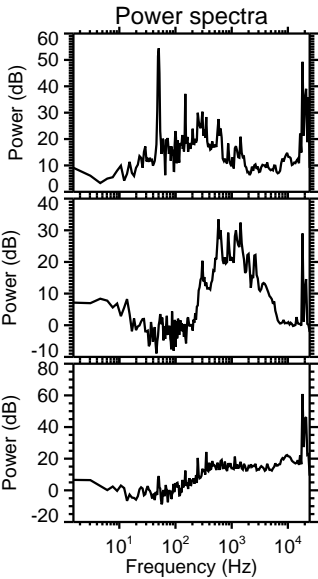
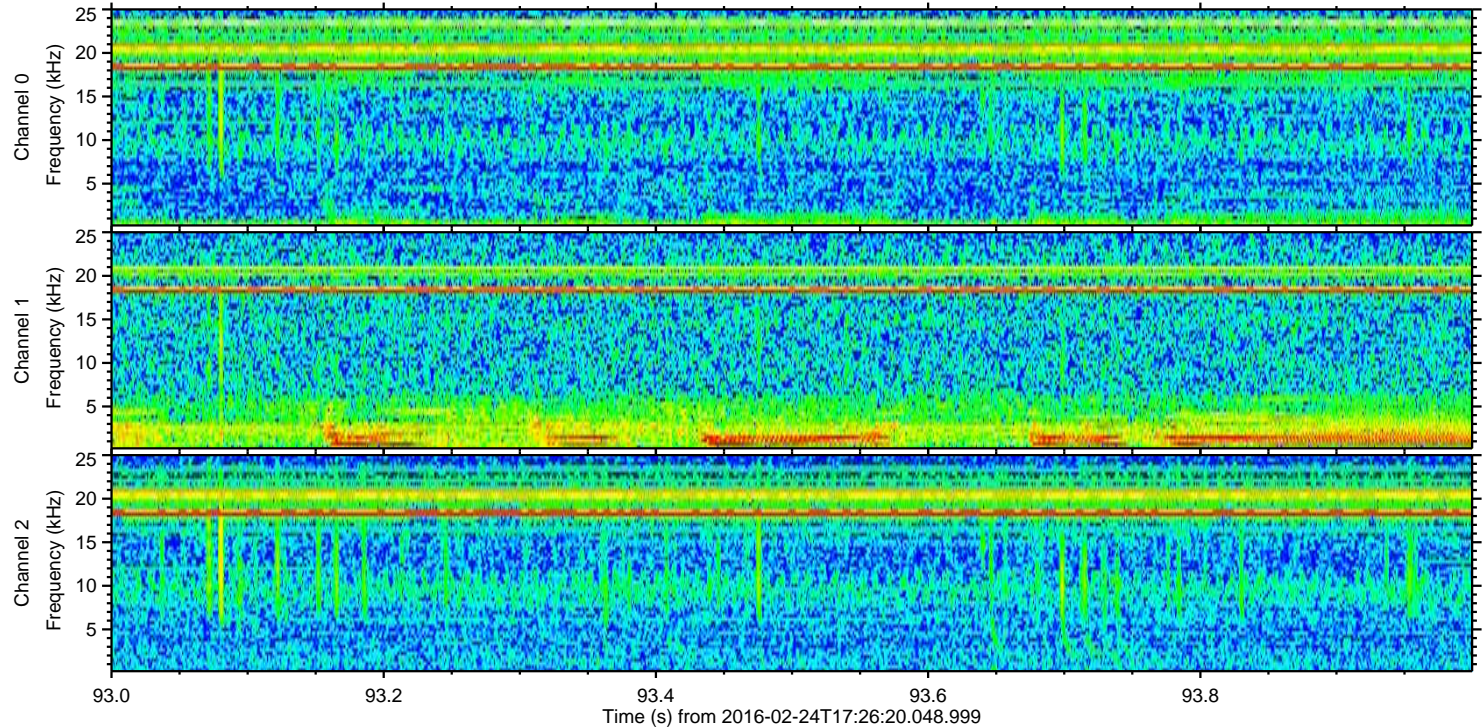
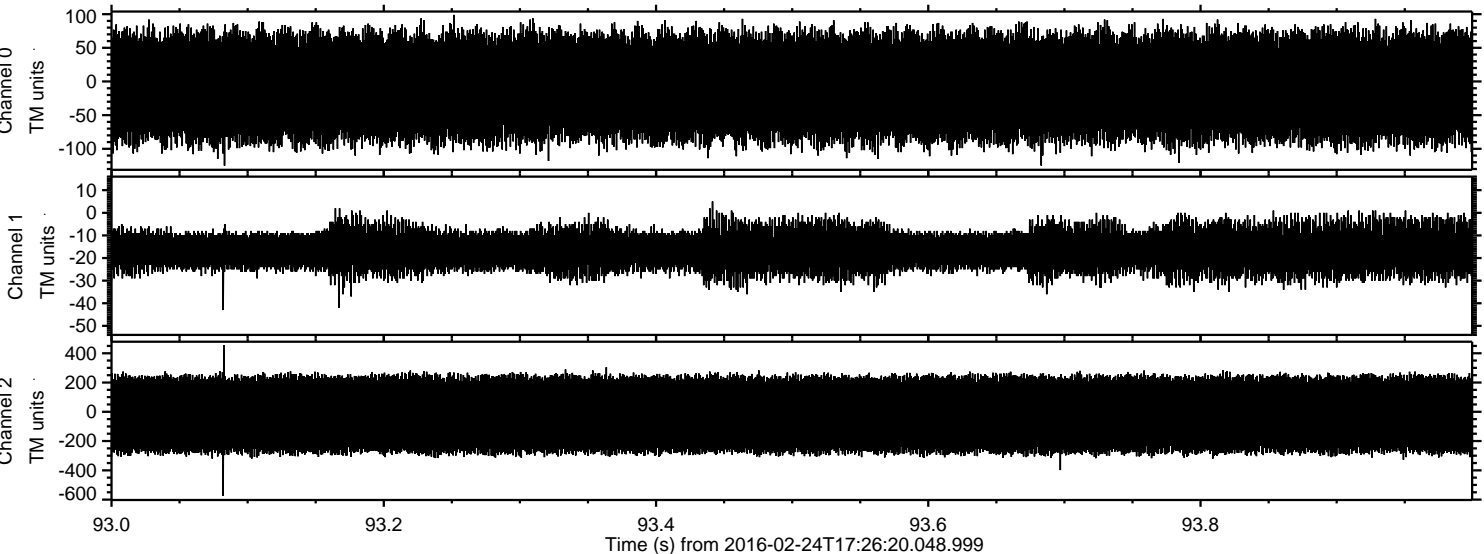
ELMAVAN 3D WAVEFORMS (Measured data sampled at 50 kHz) 51000 packets of 144 samples from 2016-02-24T17:26:20.048.999. Part 137/147



Processed Sat Apr 16 12:01:44 2016 by ELM ver.2012-10-06 from 001__elm20160224_172619__dat00.bin



Processed Sat Apr 16 12:01:45 2016 by ELM ver.2012-10-06 from 001__elm20160224_172619__dat00.bin



Processed Sat Apr 16 12:01:46 2016 by ELM ver.2012-10-06 from 001__elm20160224_172619__dat00.bin

