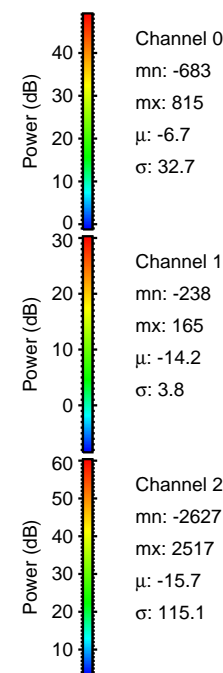
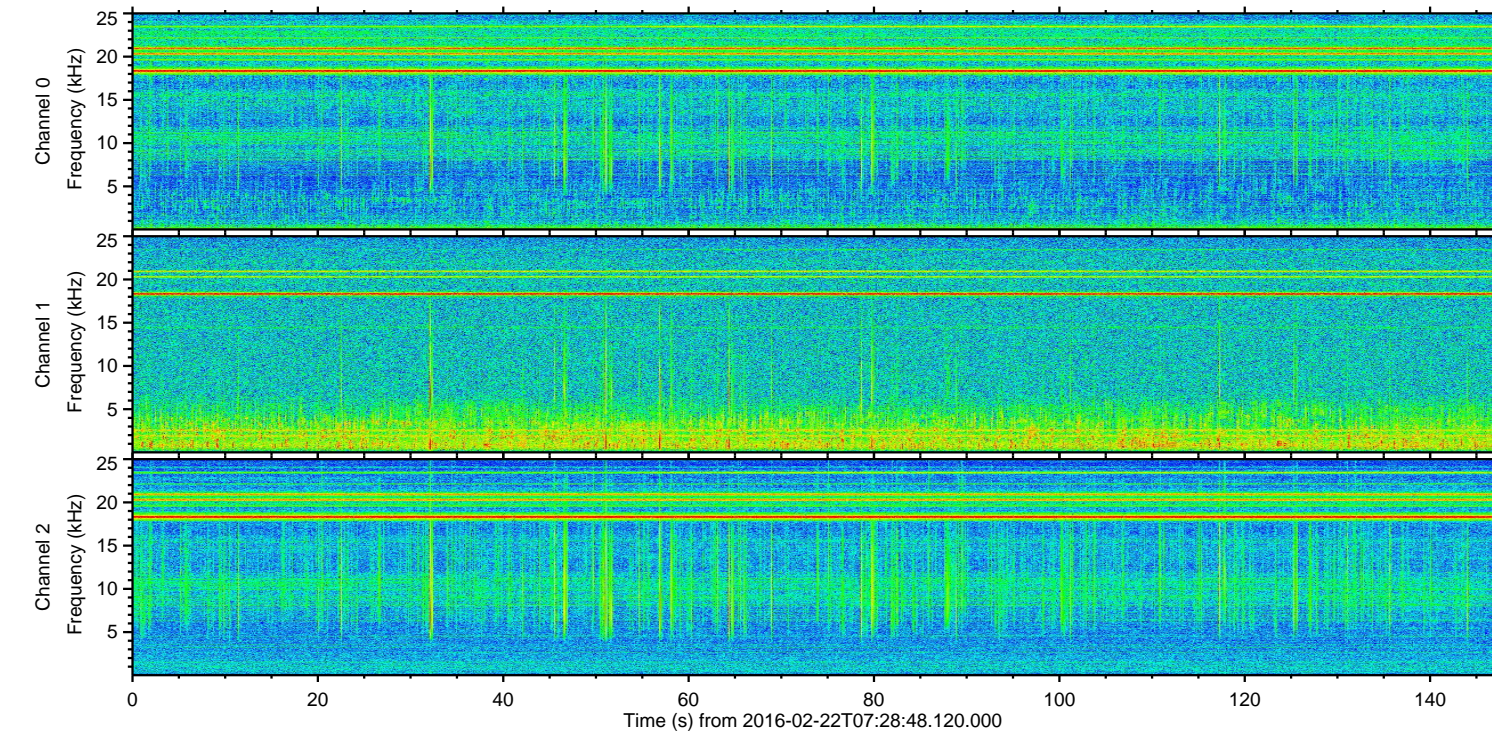
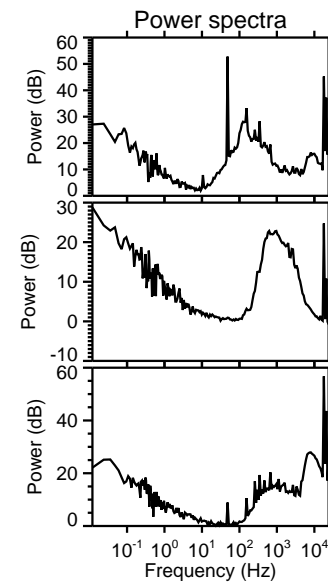
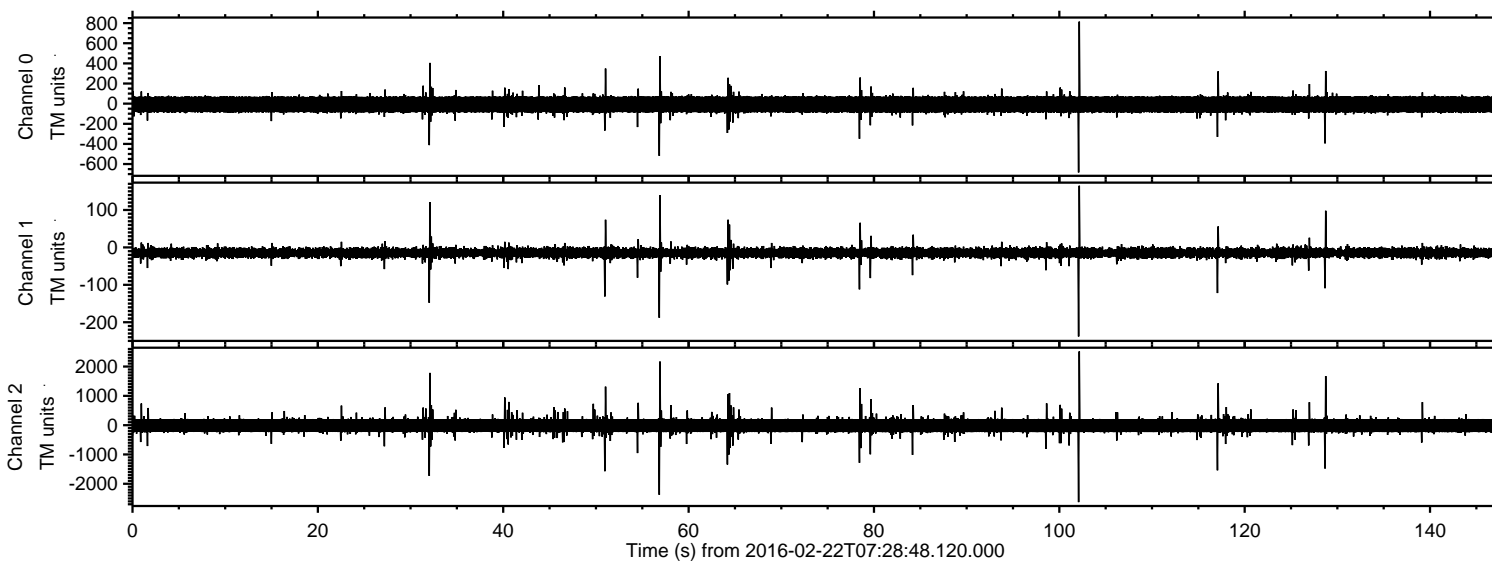


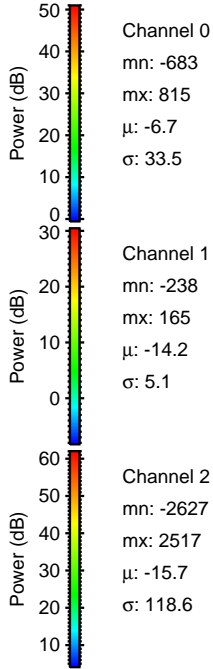
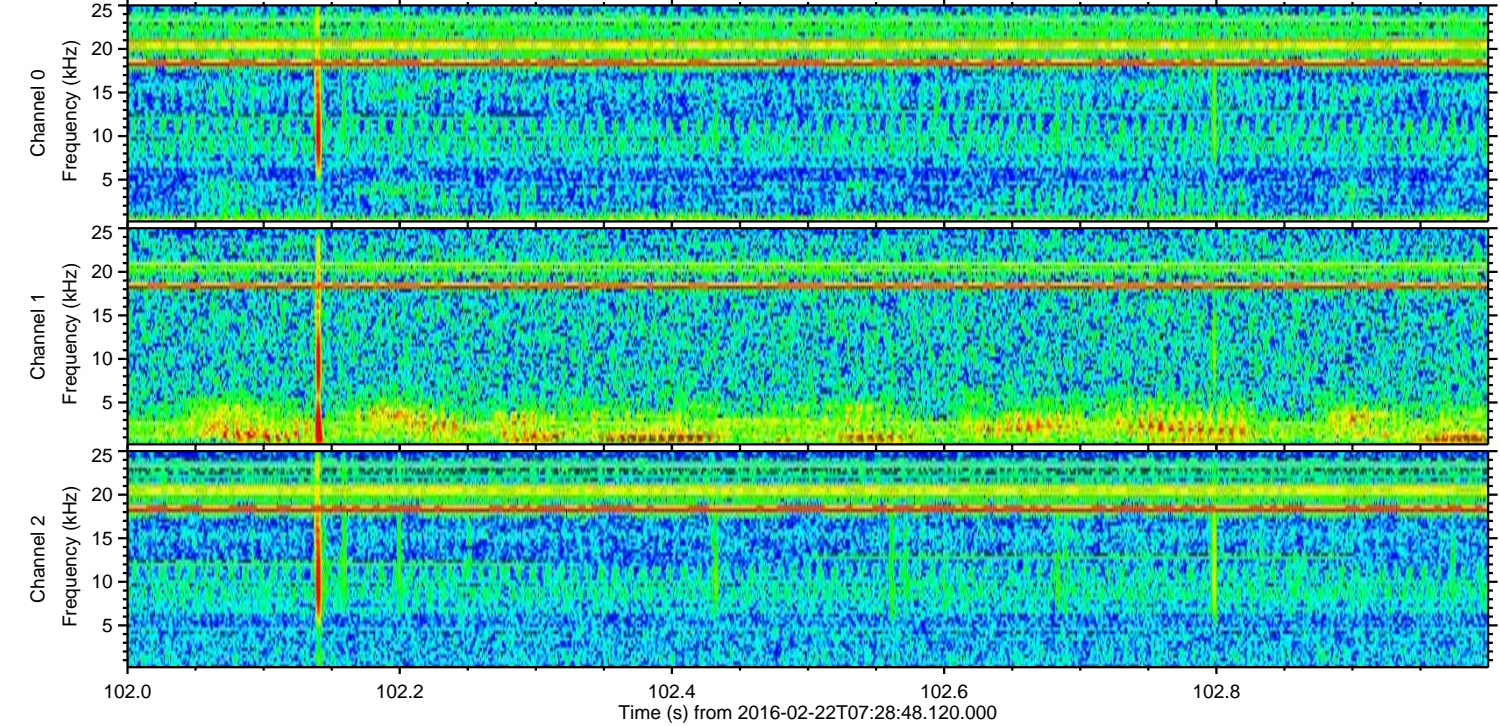
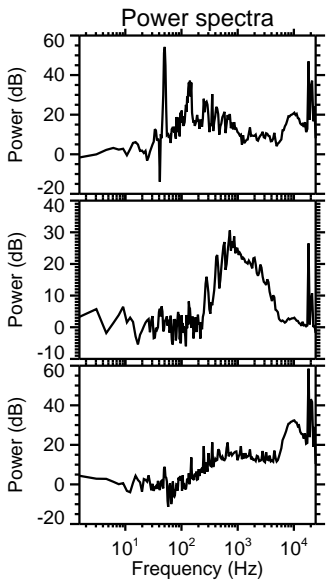
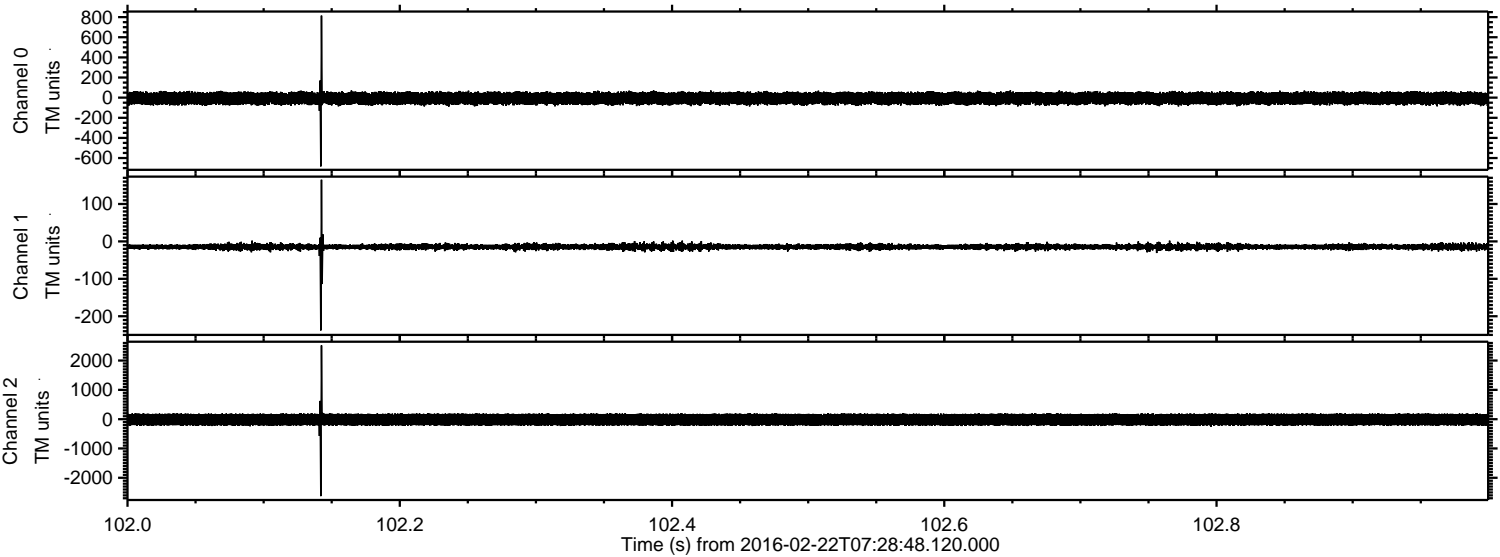
ELMAVAN 3D WAVEFORMS (Measured data sampled at 50 kHz) 51000 packets of 144 samples from 2016-02-22T07:28:48.120.000.

Processed Sat Apr 16 00:28:48 2016 by ELM ver.2012-10-06 from 001__elm20160222_072847__dat00.bin

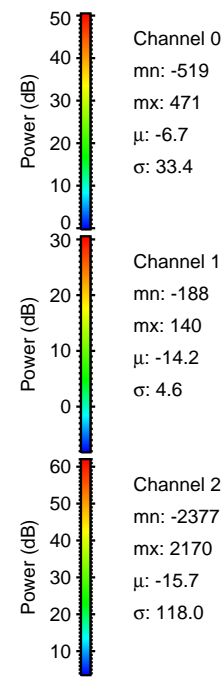
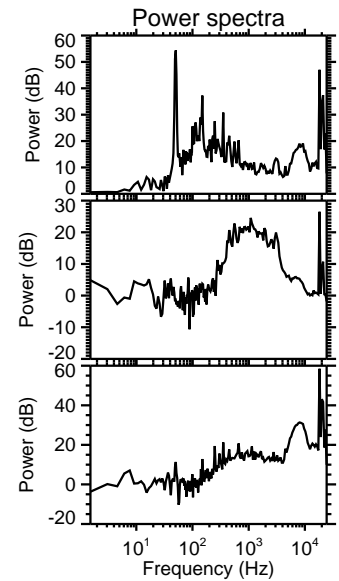
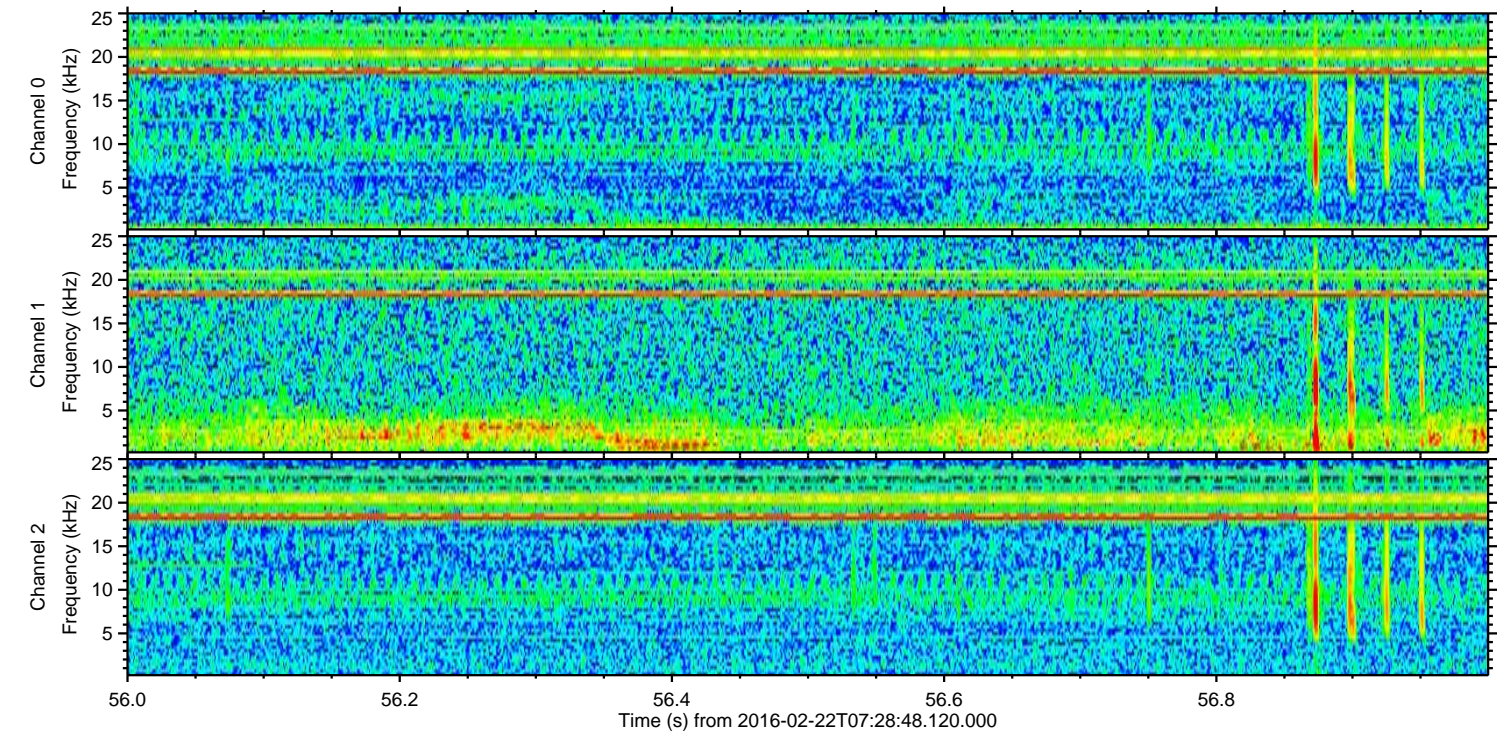
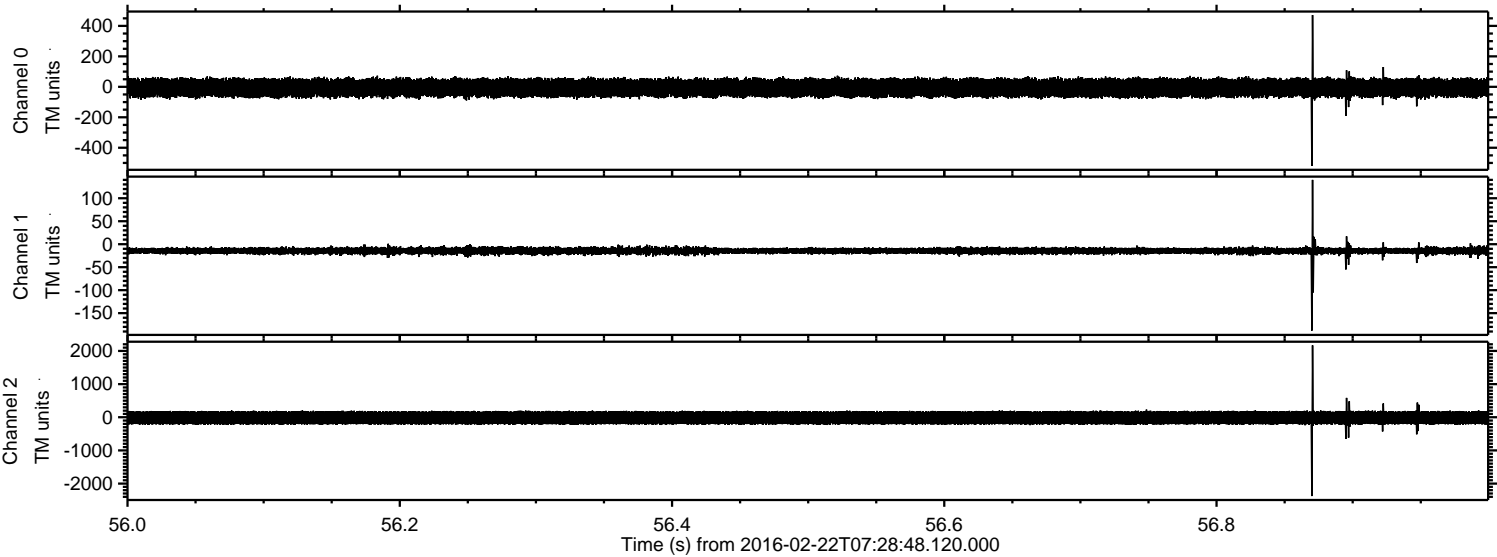


ELMAVAN 3D WAVEFORMS (Measured data sampled at 50 kHz) 51000 packets of 144 samples from 2016-02-22T07:28:48.120.000. Part 103/147

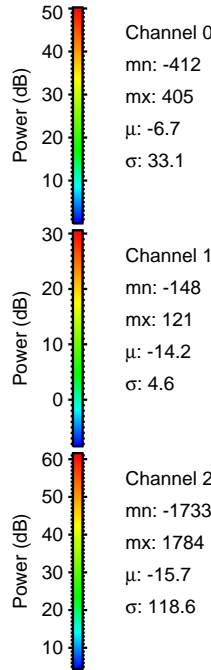
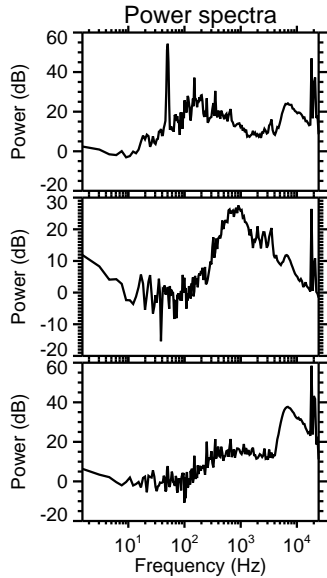
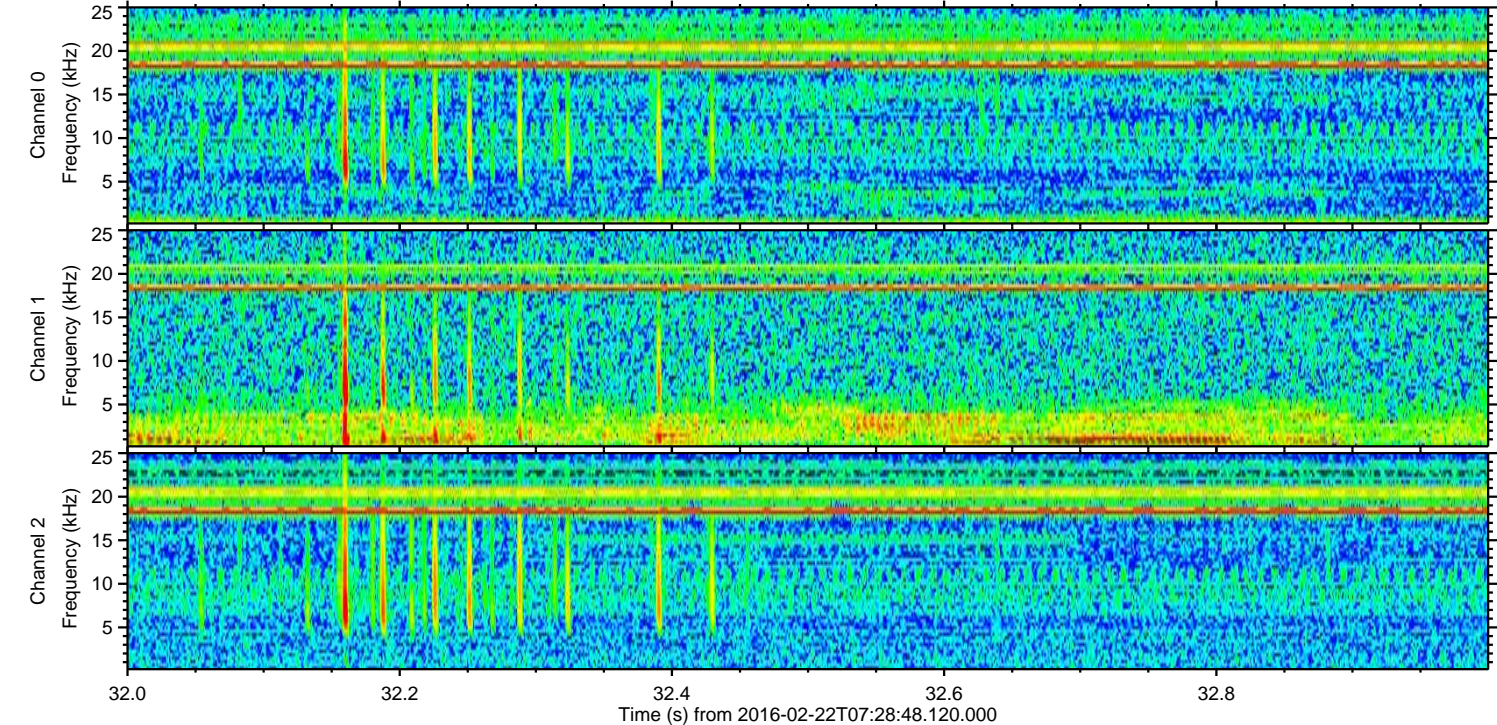
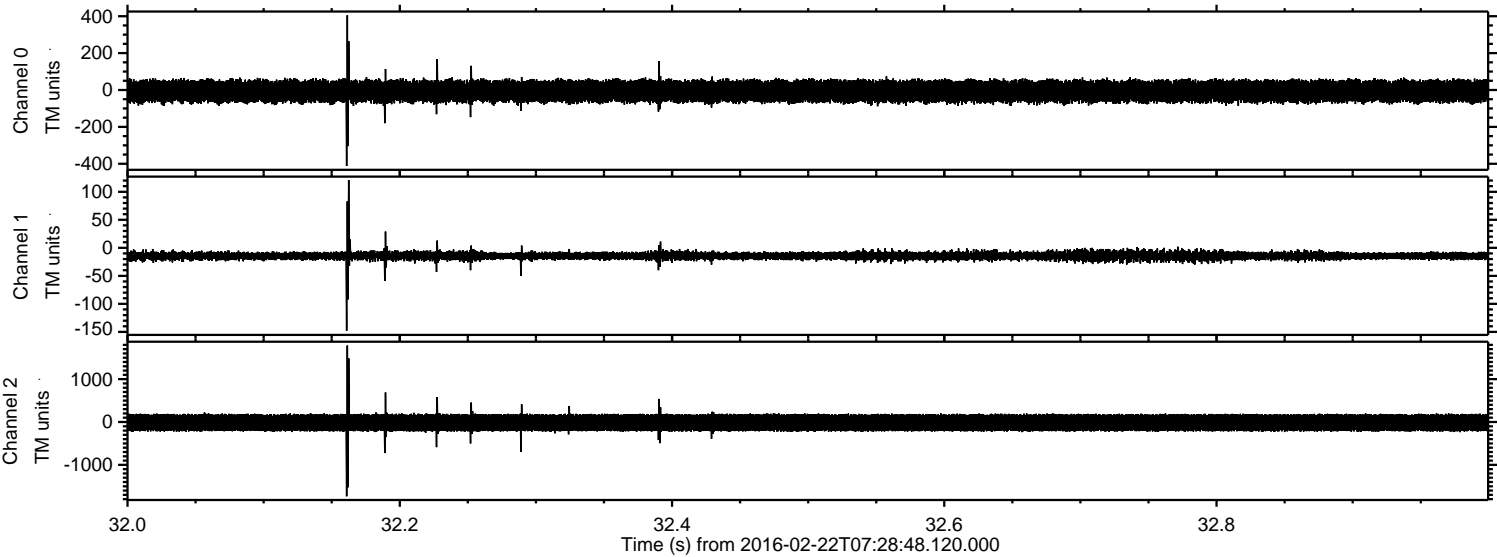
Processed Sat Apr 16 00:29:01 2016 by ELM ver.2012-10-06 from 001__elm20160222_072847__dat00.bin



Processed Sat Apr 16 00:29:01 2016 by ELM ver.2012-10-06 from 001__elm20160222_072847__dat00.bin

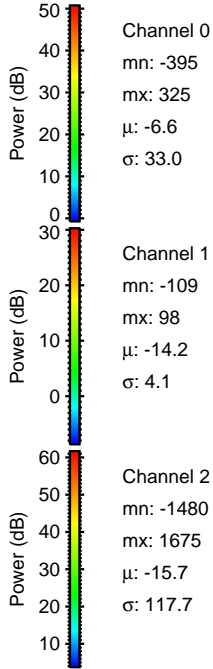
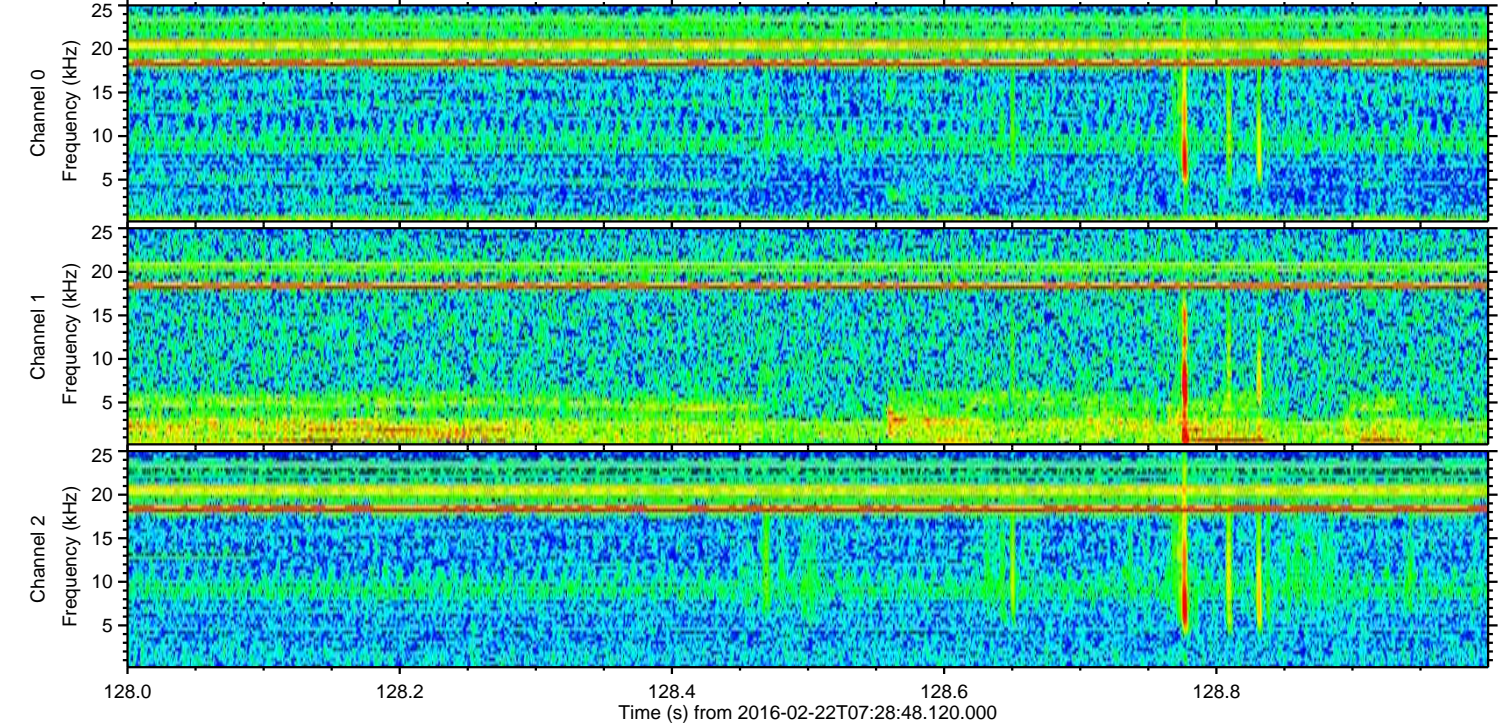
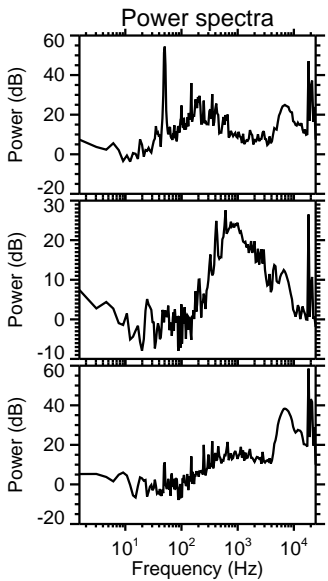
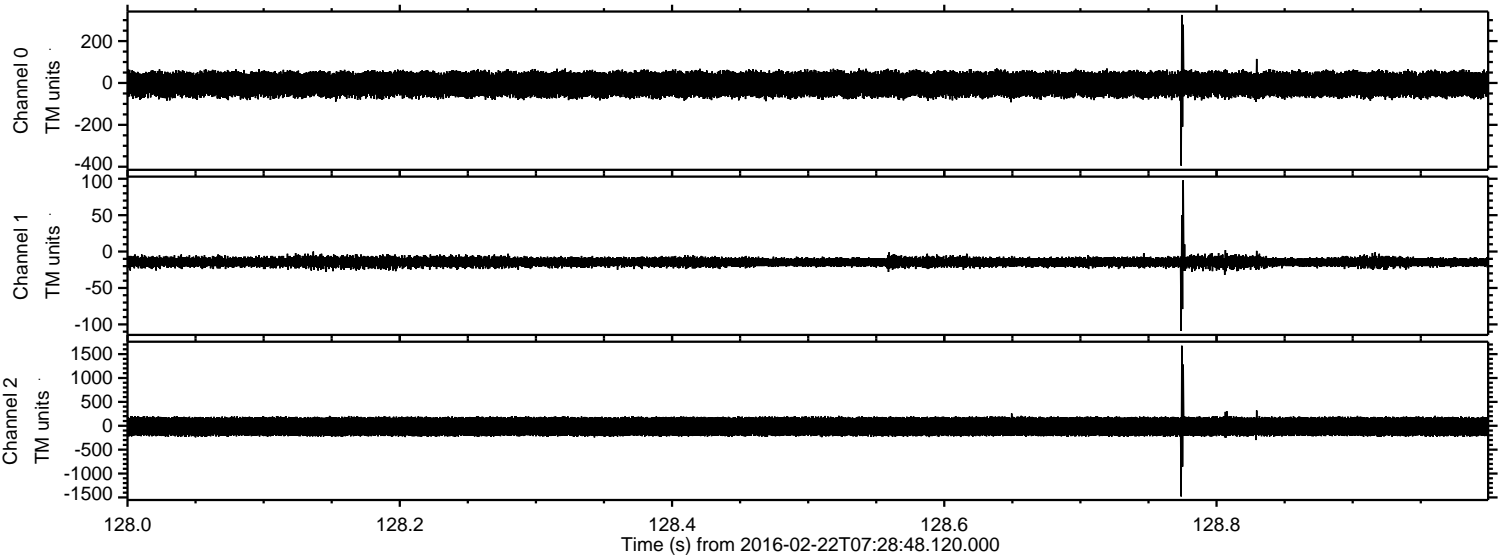


Processed Sat Apr 16 00:29:02 2016 by ELM ver.2012-10-06 from 001__elm20160222_072847__dat00.bin

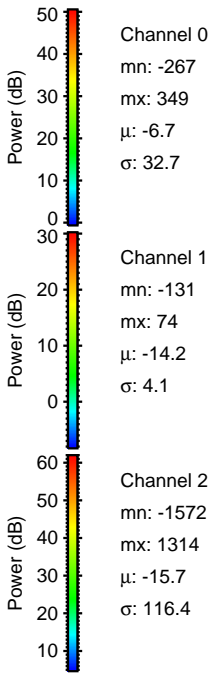
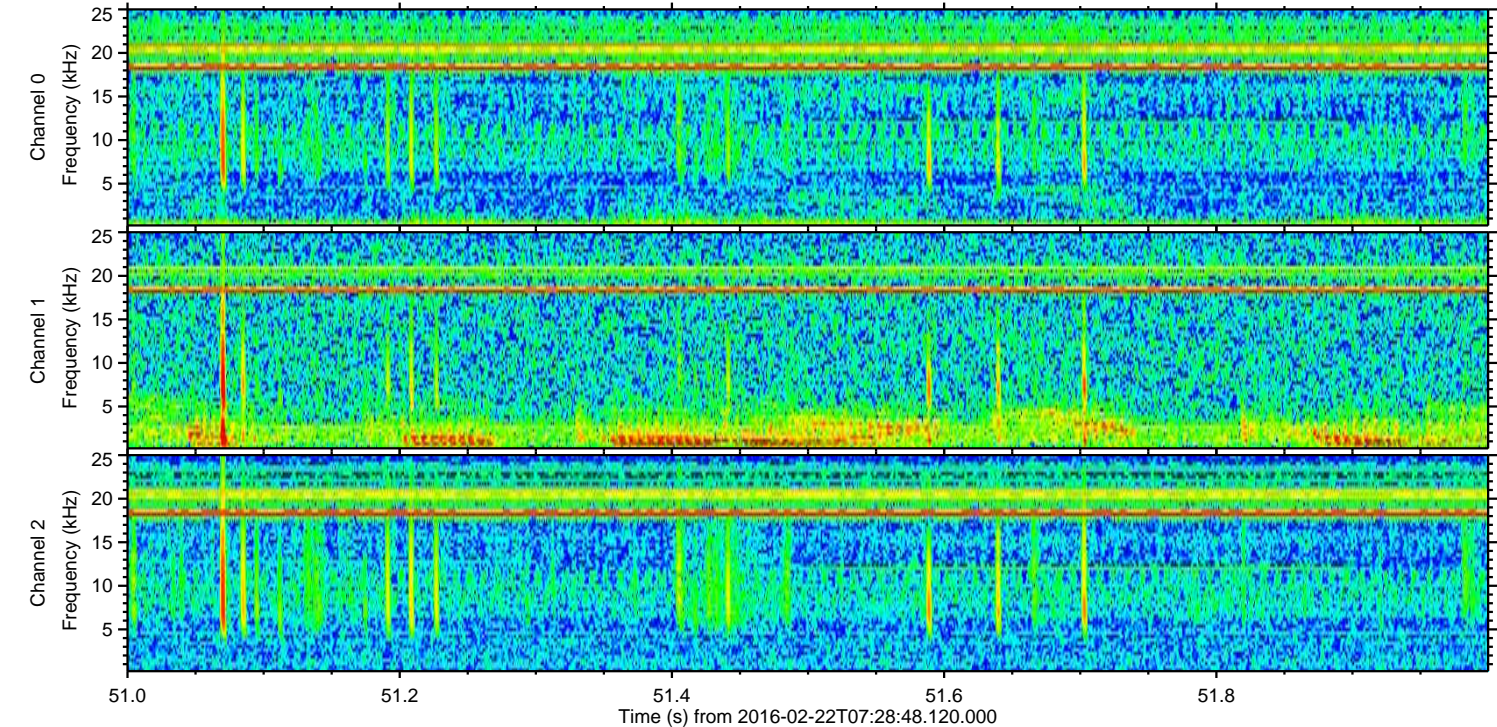
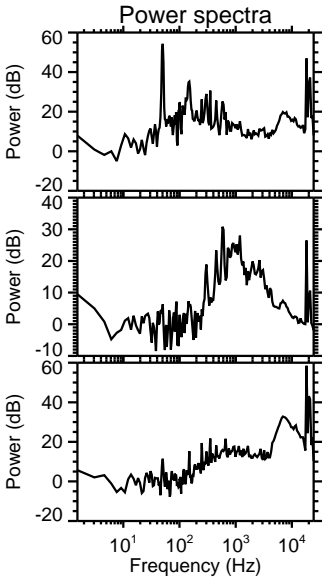
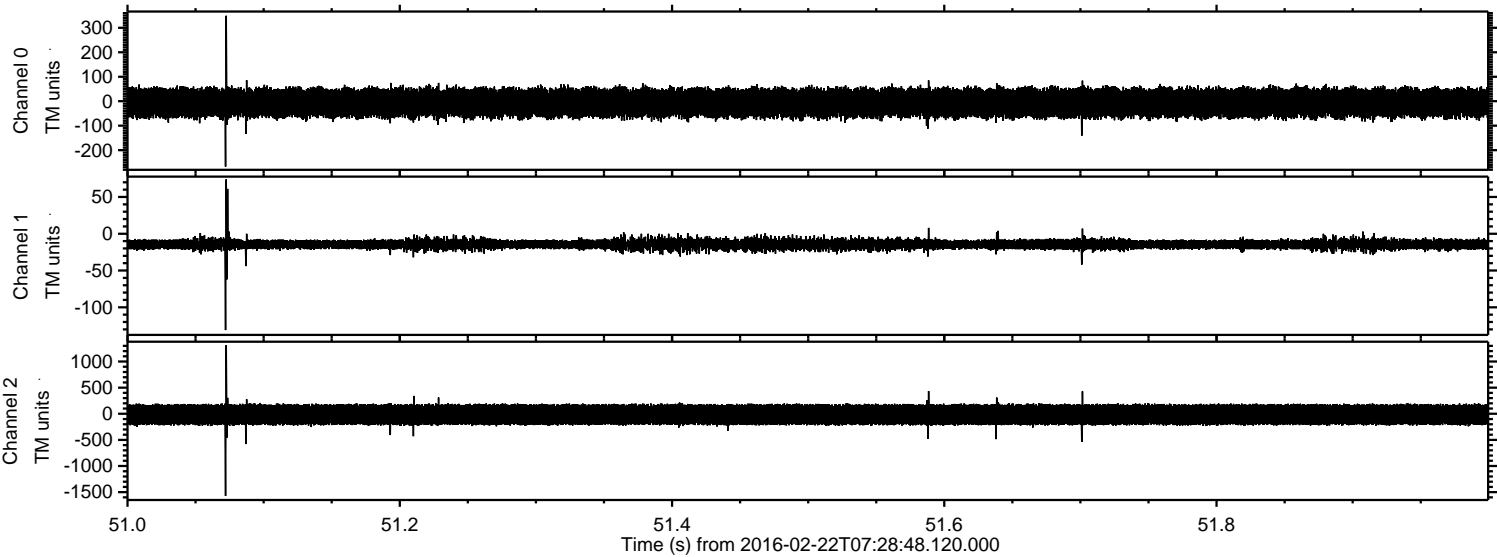


ELMAVAN 3D WAVEFORMS (Measured data sampled at 50 kHz) 51000 packets of 144 samples from 2016-02-22T07:28:48.120.000. Part 129/147

Processed Sat Apr 16 00:29:03 2016 by ELM ver.2012-10-06 from 001__elm20160222_072847__dat00.bin

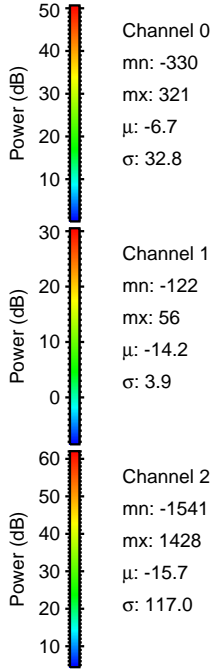
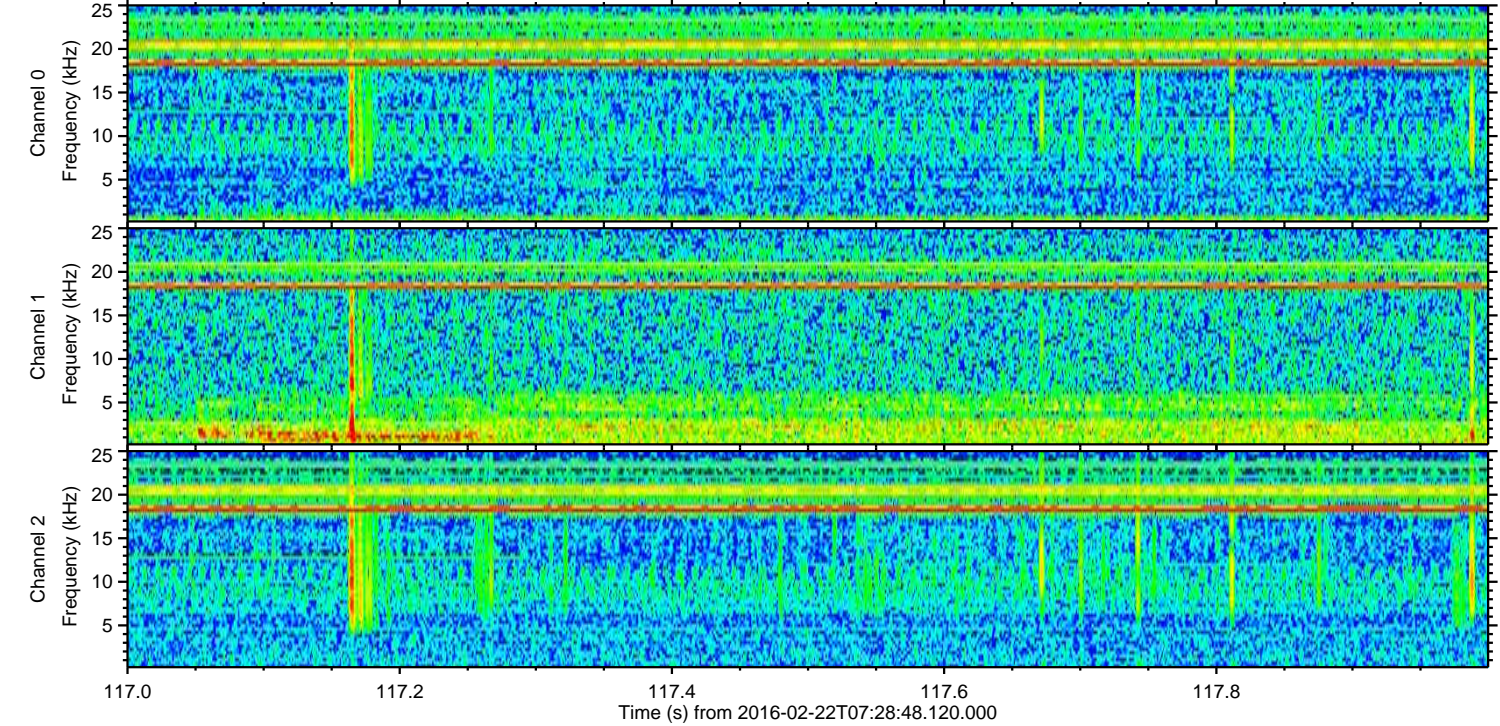
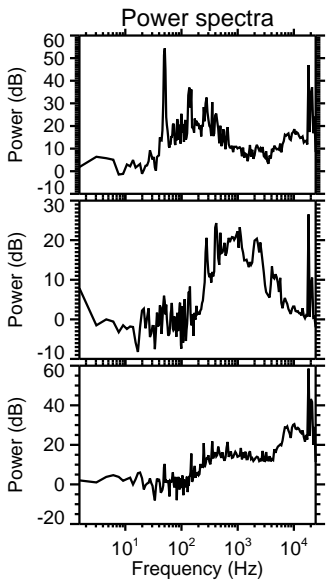
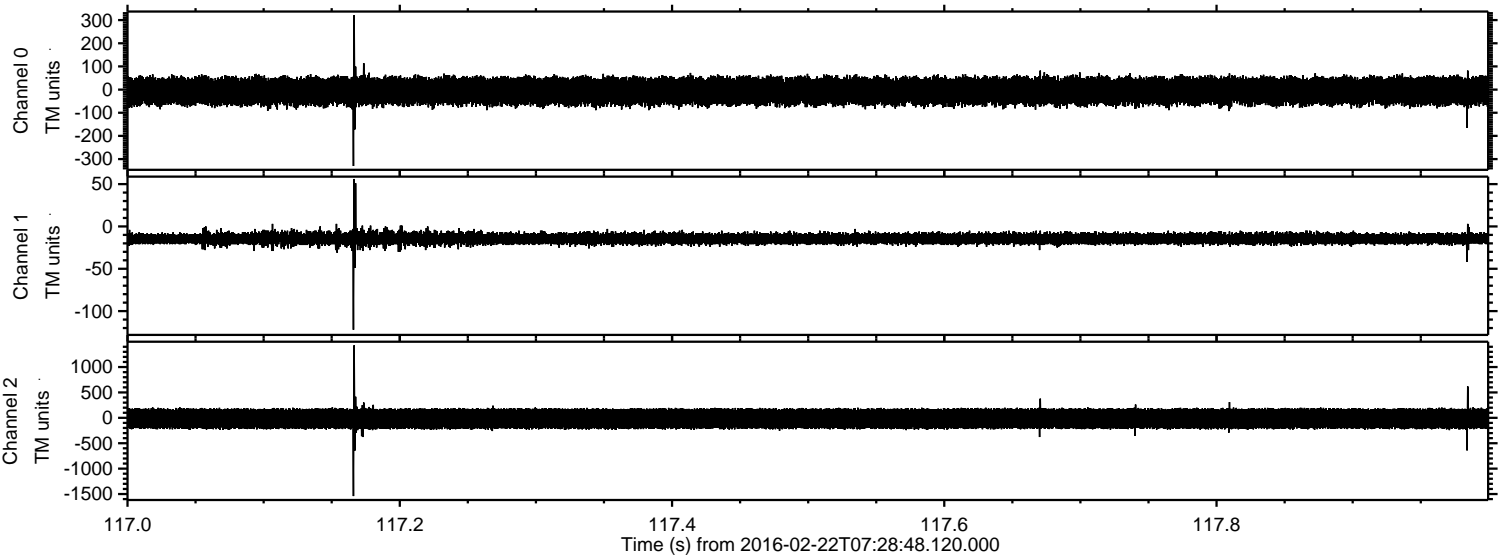


Processed Sat Apr 16 00:29:04 2016 by ELM ver.2012-10-06 from 001__elm20160222_072847__dat00.bin

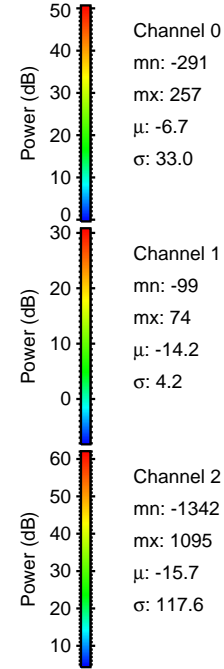
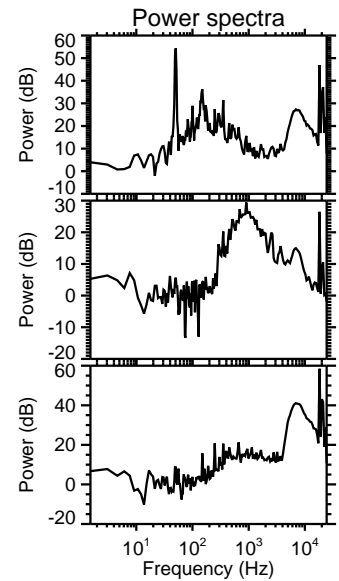
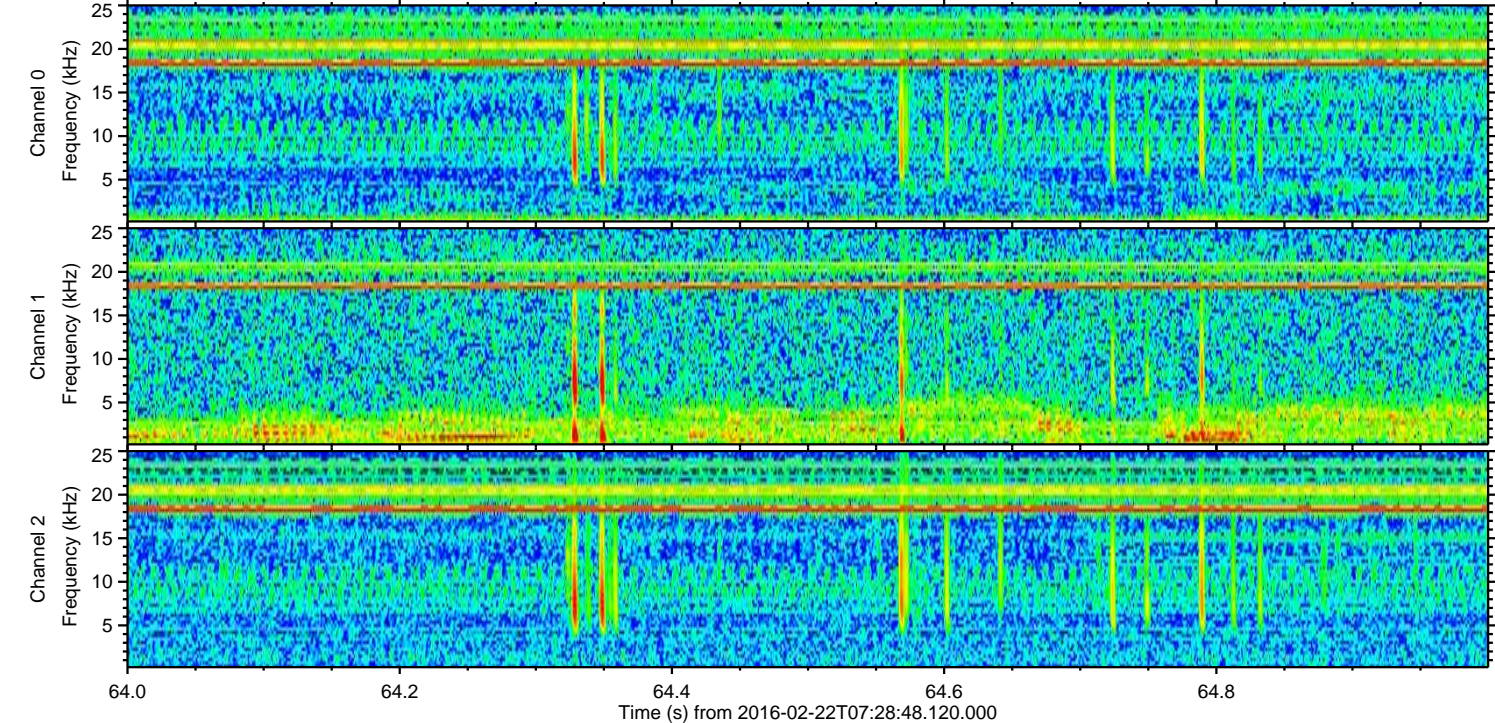
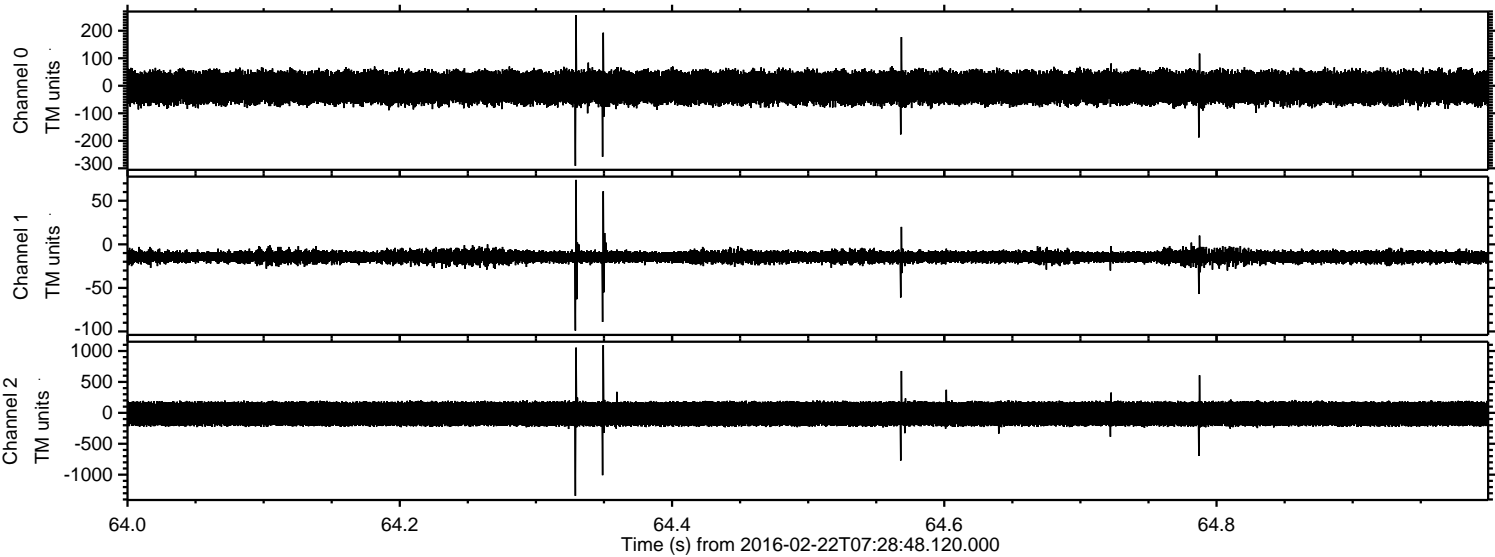


ELMAVAN 3D WAVEFORMS (Measured data sampled at 50 kHz) 51000 packets of 144 samples from 2016-02-22T07:28:48.120.000. Part 118/147

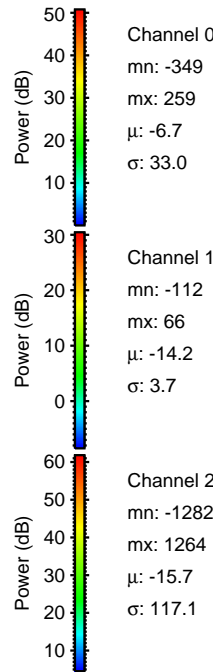
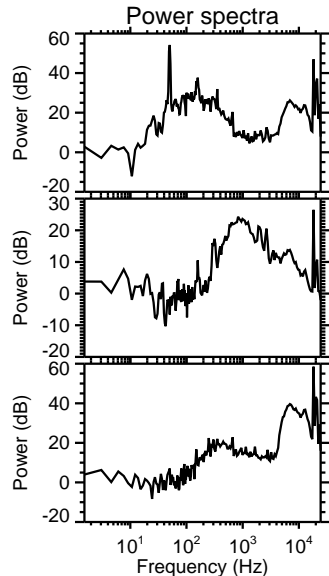
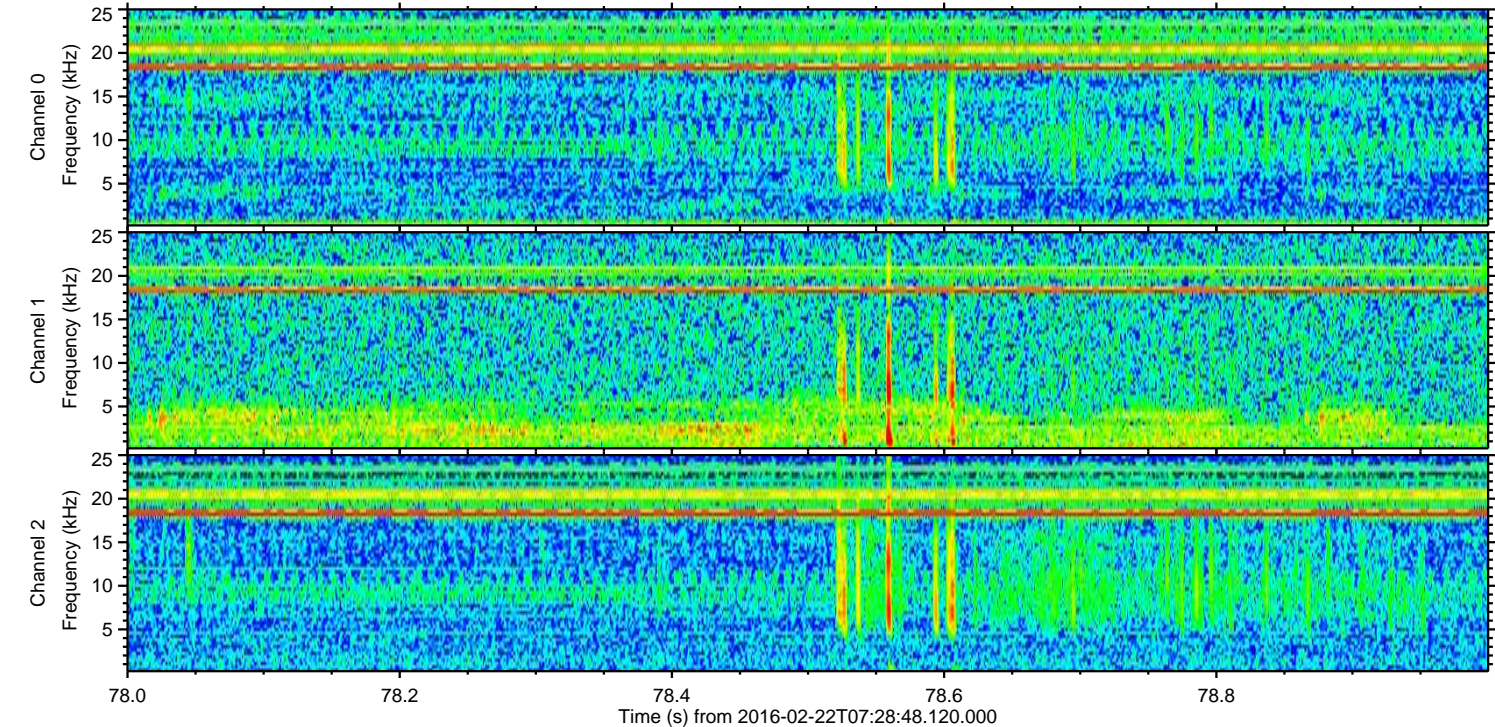
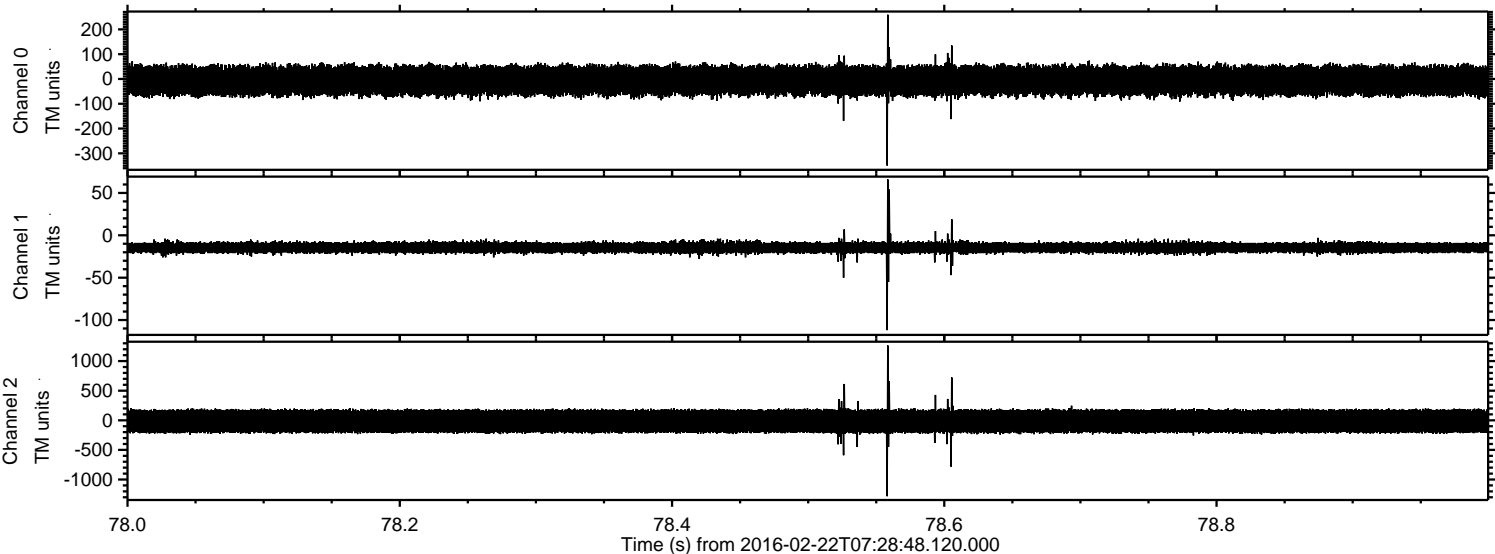
Processed Sat Apr 16 00:29:05 2016 by ELM ver.2012-10-06 from 001__elm20160222_072847__dat00.bin



Processed Sat Apr 16 00:29:06 2016 by ELM ver.2012-10-06 from 001__elm20160222_072847__dat00.bin



Processed Sat Apr 16 00:29:07 2016 by ELM ver.2012-10-06 from 001__elm20160222_072847__dat00.bin

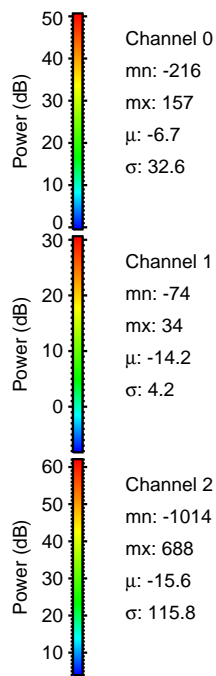
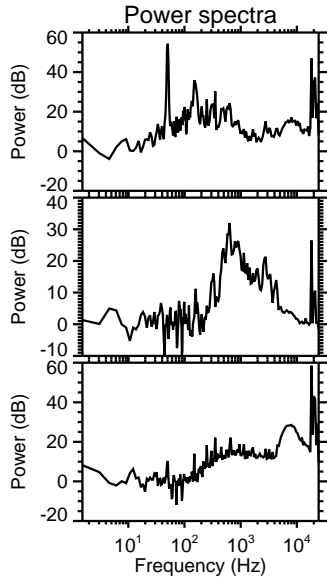
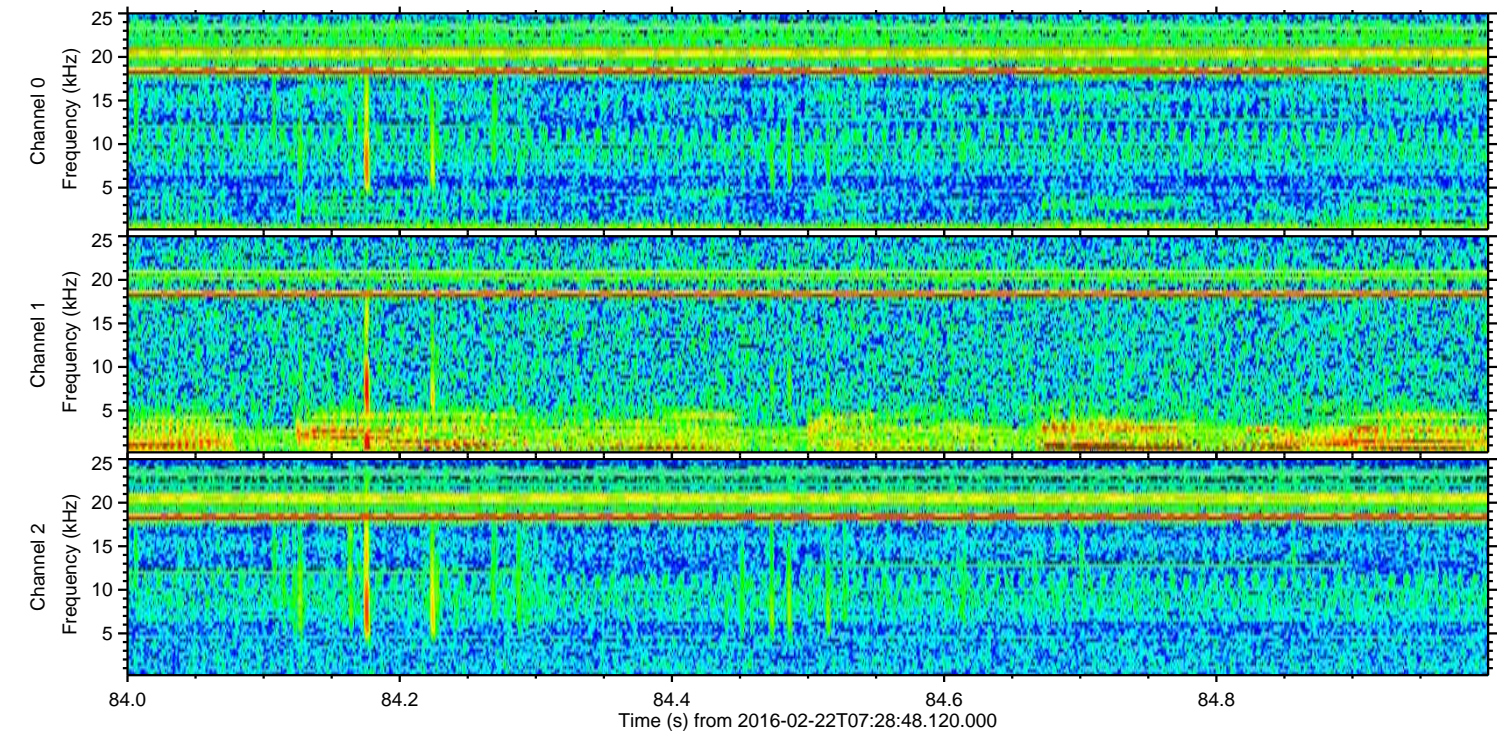
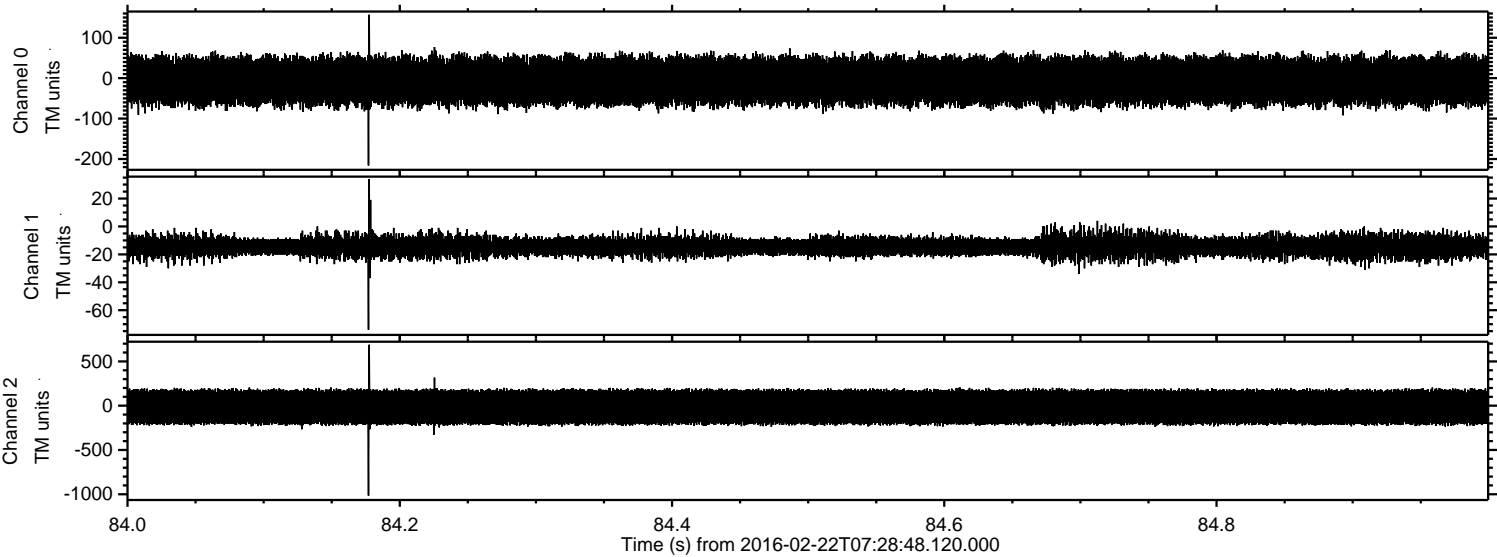


Channel 0
mn: -349
mx: 259
 μ : -6.7
 σ : 33.0

Channel 1
mn: -112
mx: 66
 μ : -14.2
 σ : 3.7

Channel 2
mn: -1282
mx: 1264
 μ : -15.7
 σ : 117.1

Processed Sat Apr 16 00:29:08 2016 by ELM ver.2012-10-06 from 001__elm20160222_072847__dat00.bin



Processed Sat Apr 16 00:29:09 2016 by ELM ver.2012-10-06 from 001__elm20160222_072847__dat00.bin

