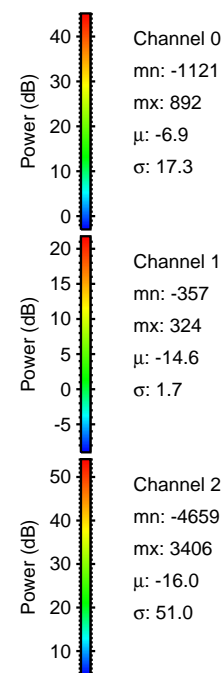
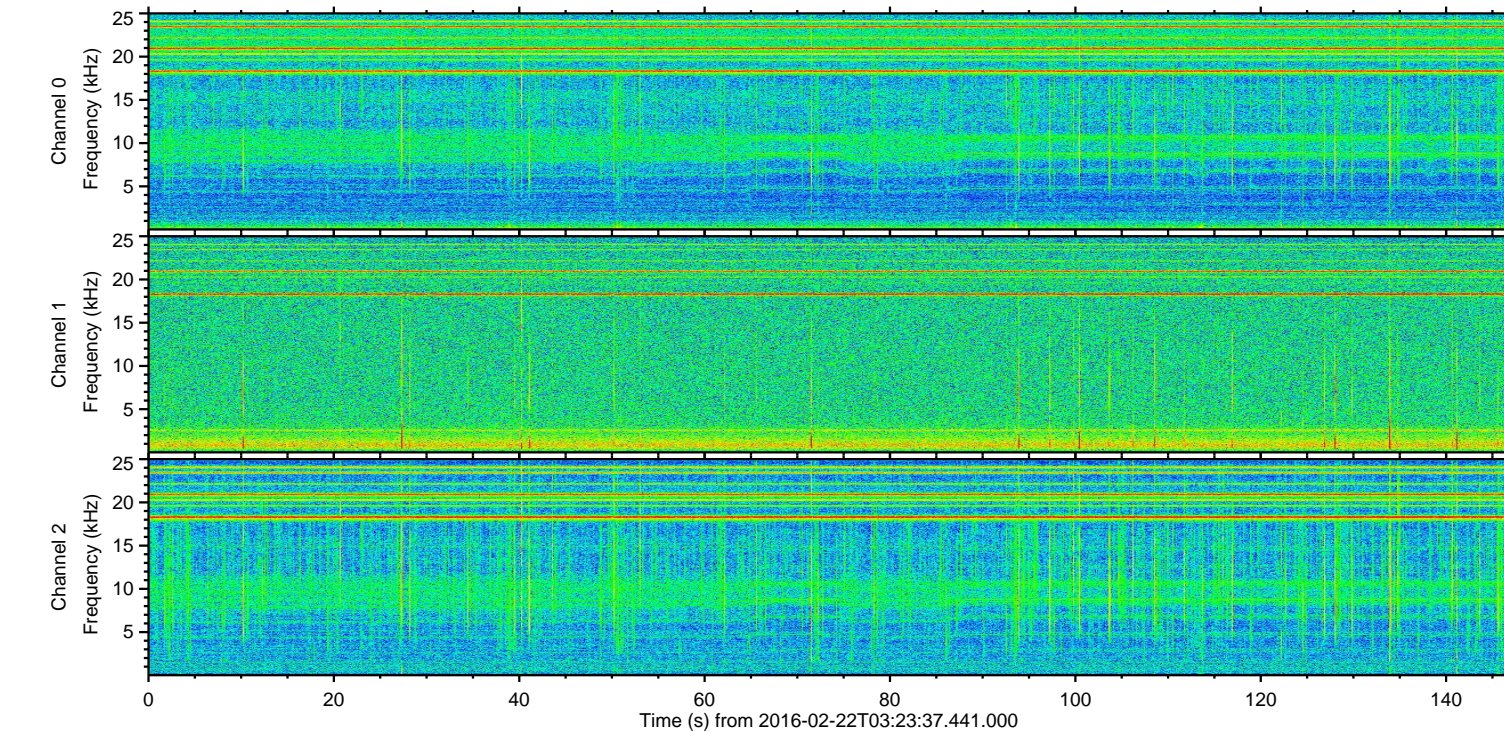
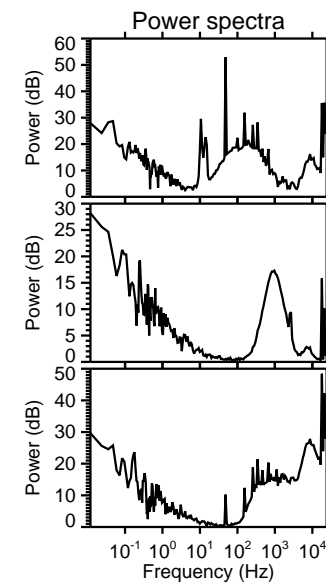
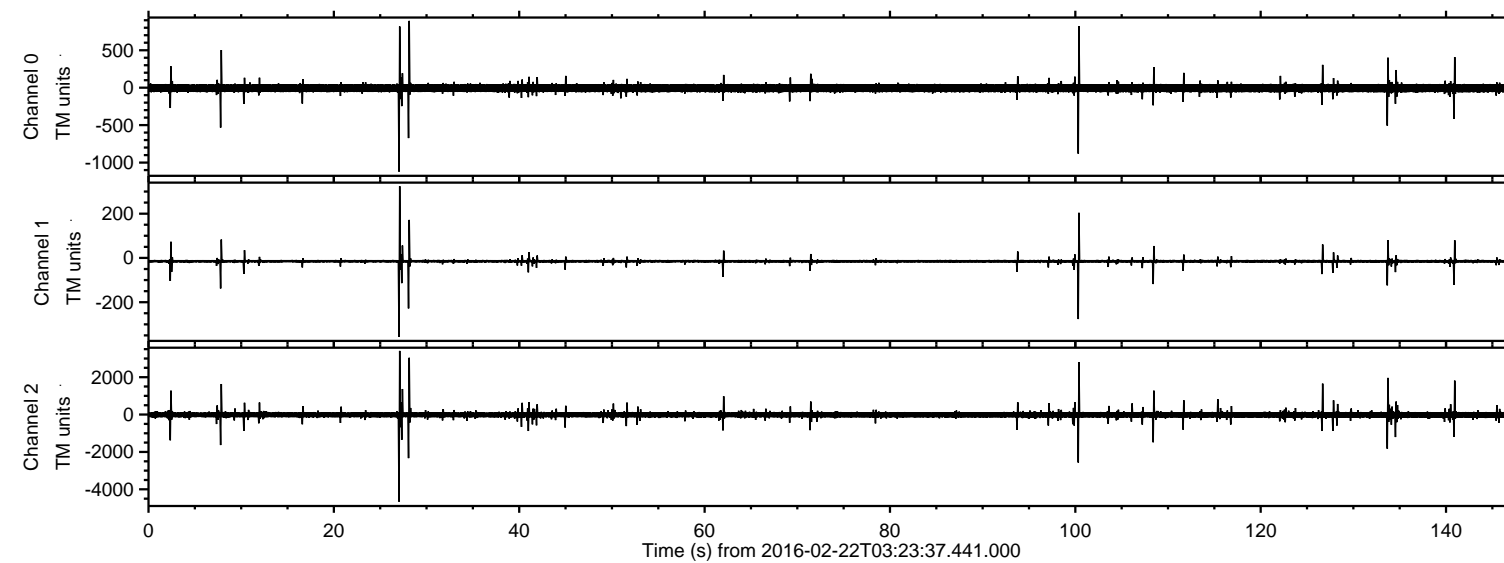


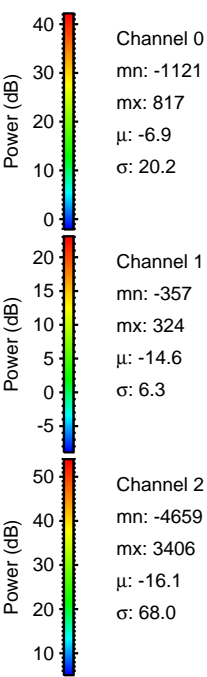
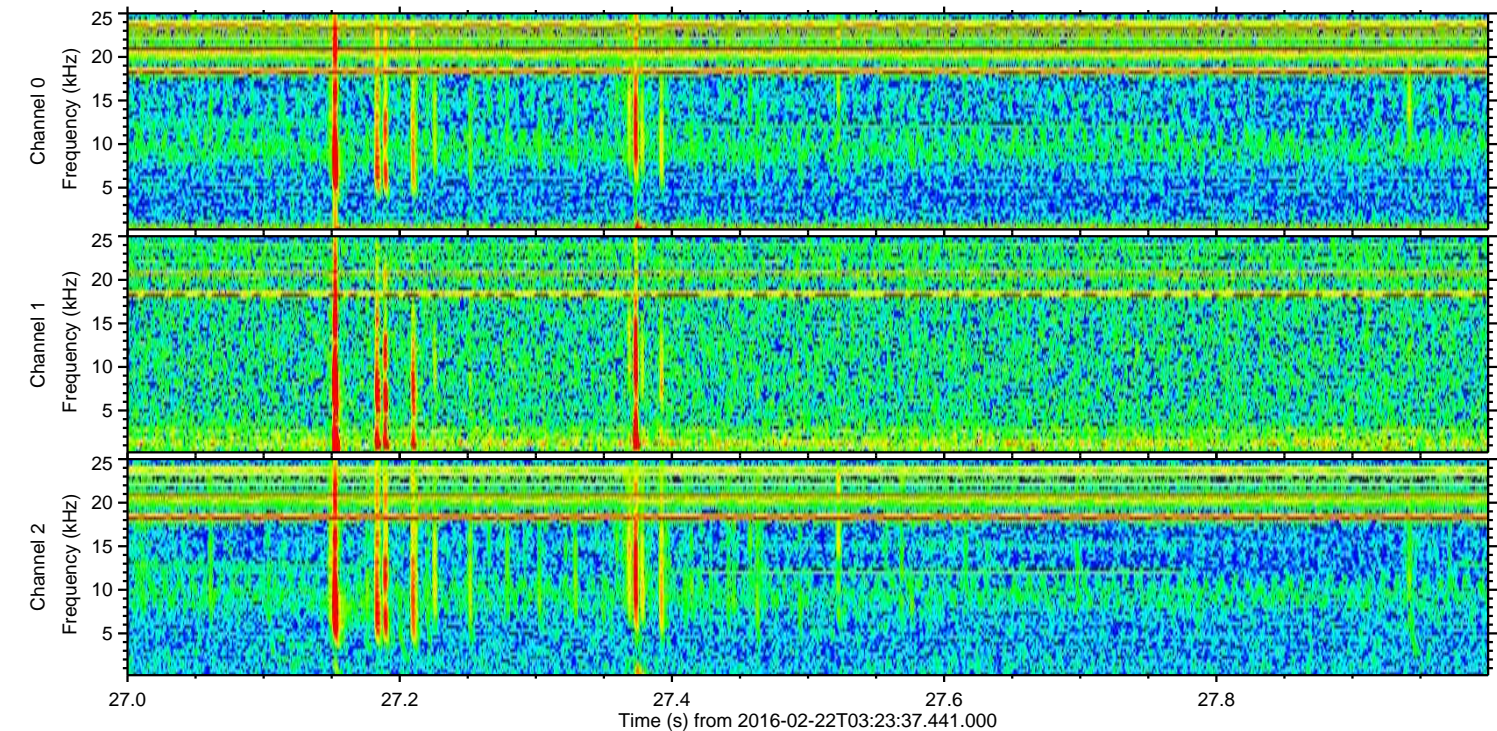
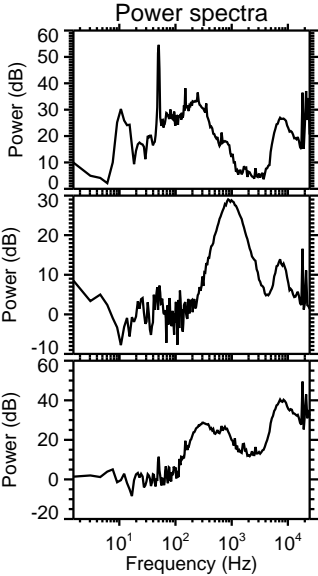
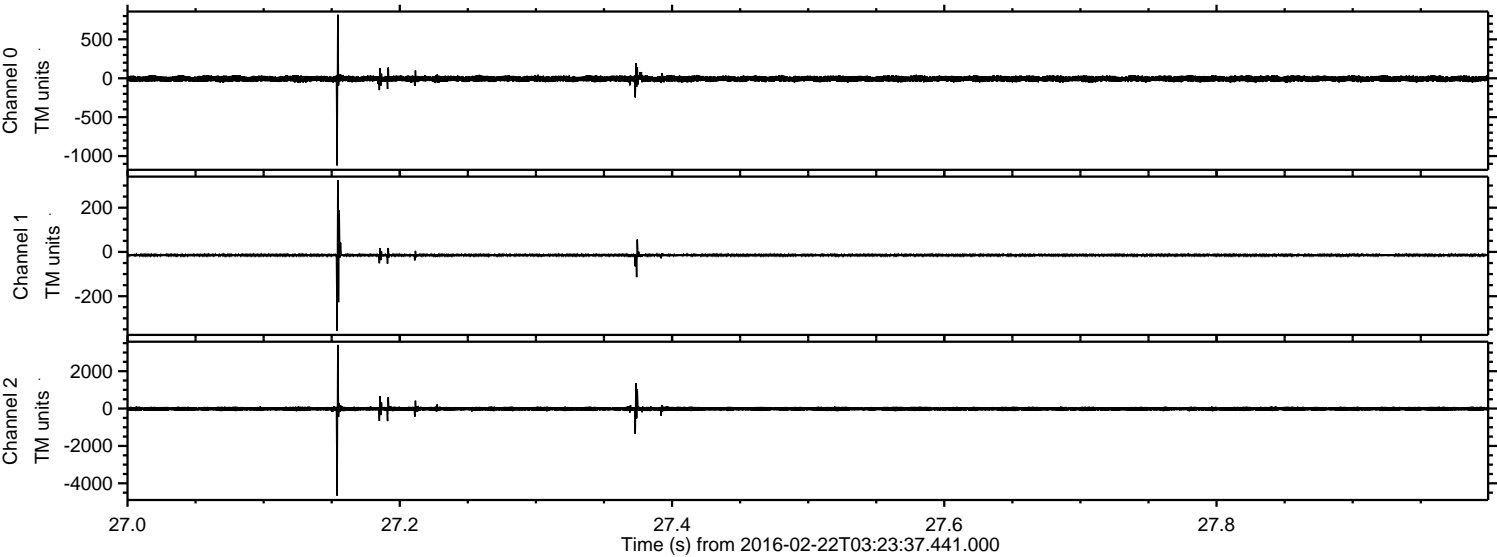
# ELMAVAN 3D WAVEFORMS (Measured data sampled at 50 kHz) 51000 packets of 144 samples from 2016-02-22T03:23:37.441.000.

Processed Fri Apr 15 23:39:57 2016 by ELM ver.2012-10-06 from 001\_\_elm20160222\_032336\_\_dat00.bin



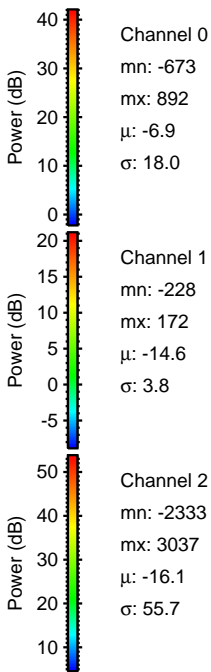
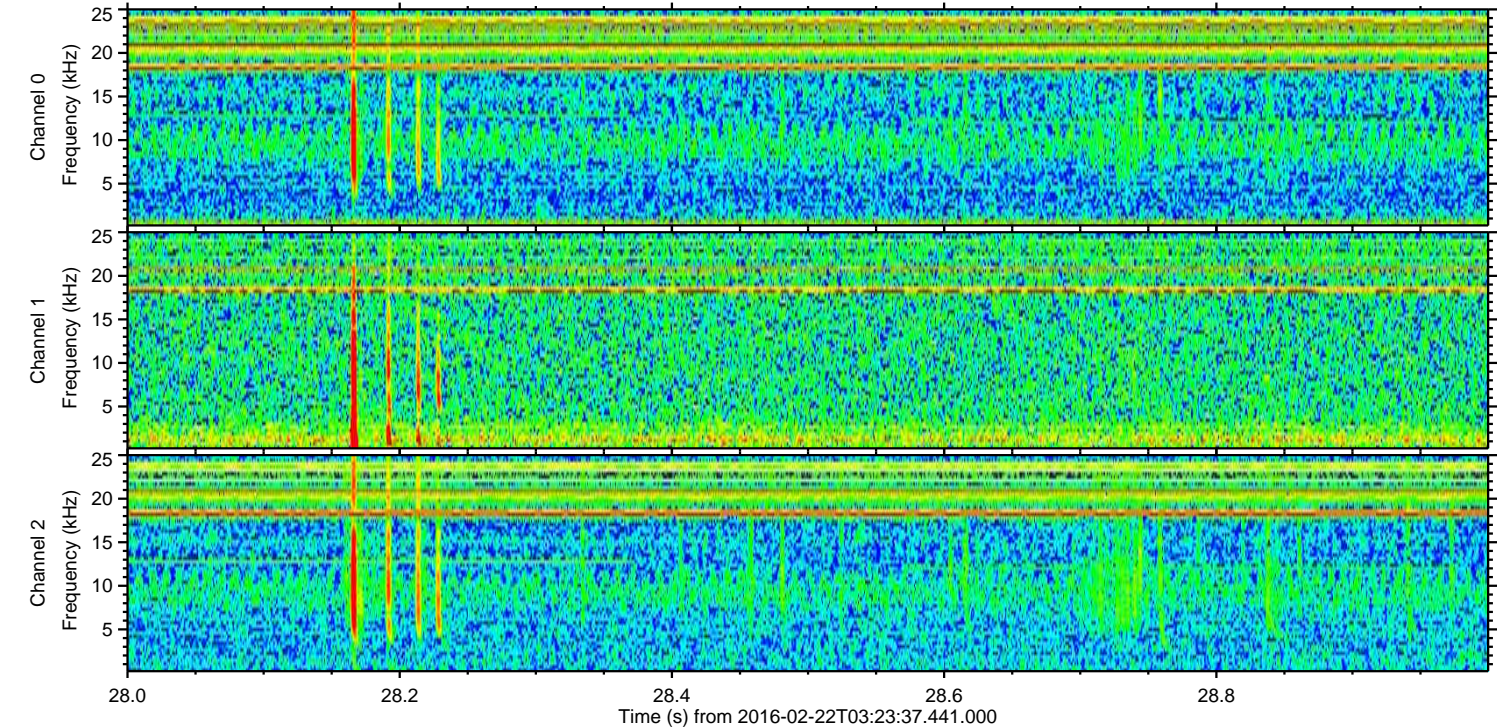
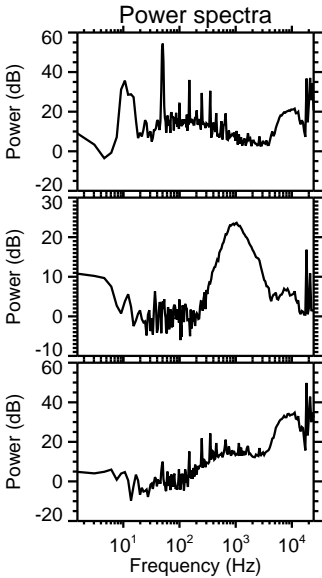
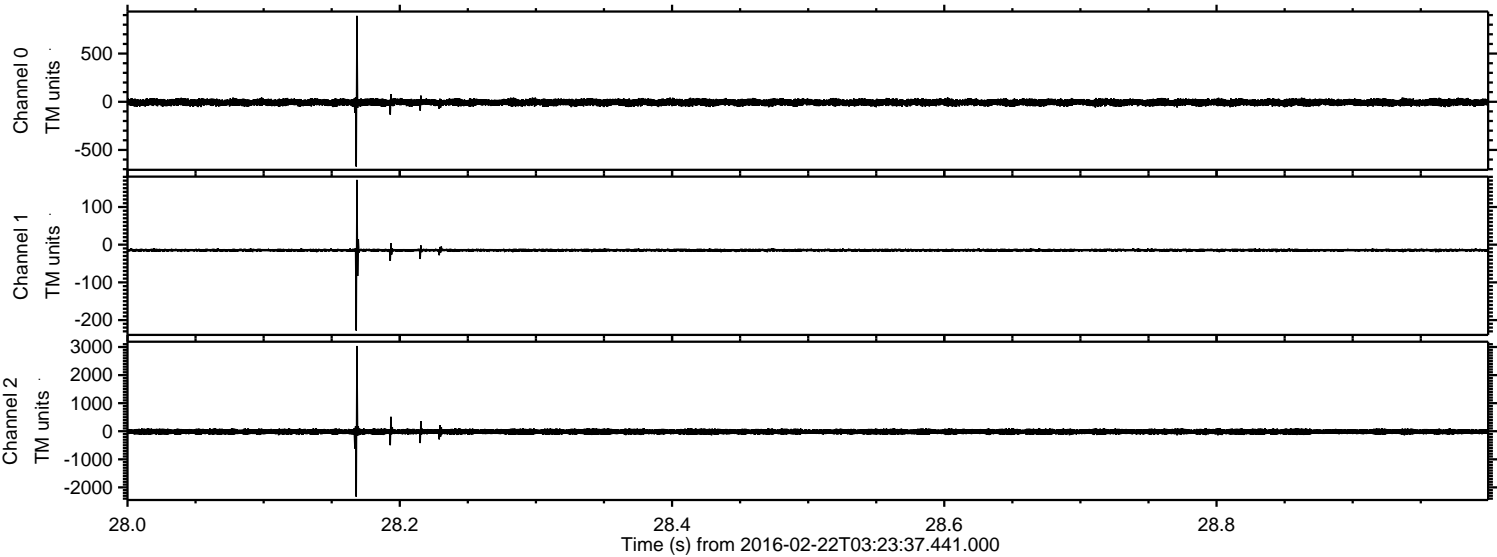


Processed Fri Apr 15 23:40:09 2016 by ELM ver.2012-10-06 from 001\_\_elm20160222\_032336\_\_dat00.bin





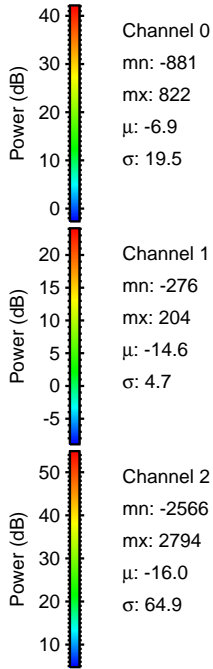
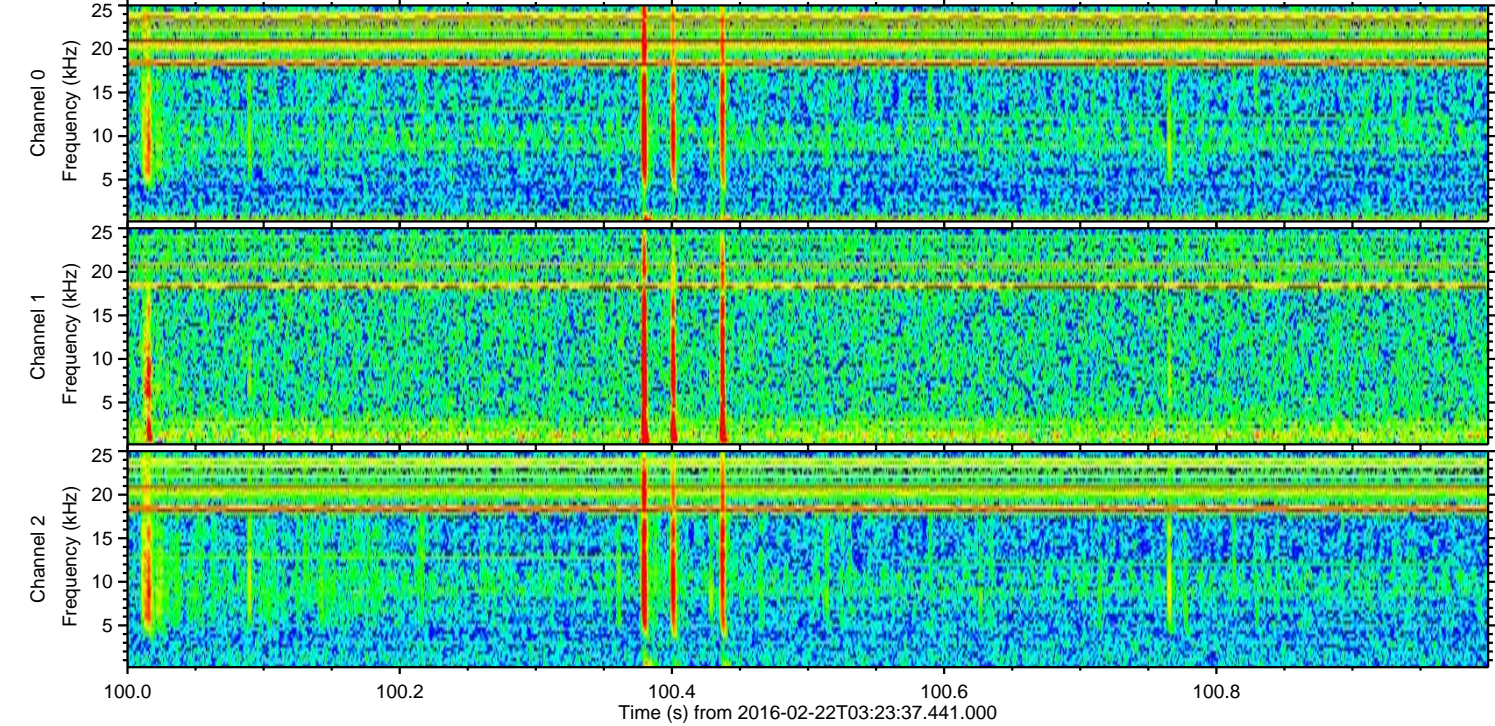
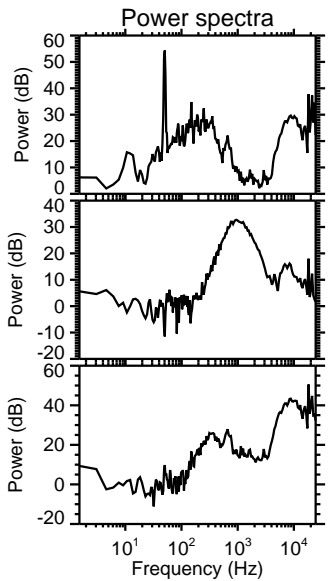
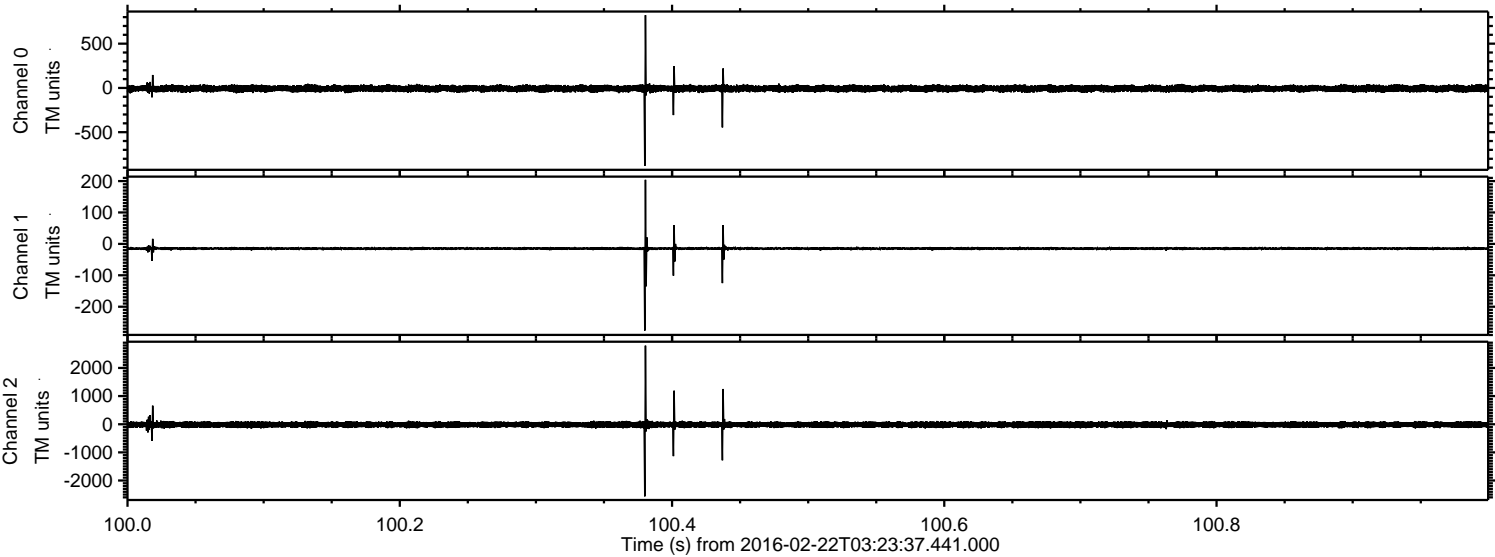
Processed Fri Apr 15 23:40:10 2016 by ELM ver.2012-10-06 from 001\_\_elm20160222\_032336\_\_dat00.bin





ELMAVAN 3D WAVEFORMS (Measured data sampled at 50 kHz) 51000 packets of 144 samples from 2016-02-22T03:23:37.441.000. Part 101/147

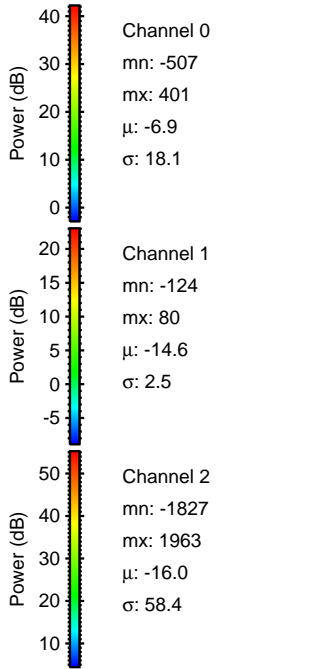
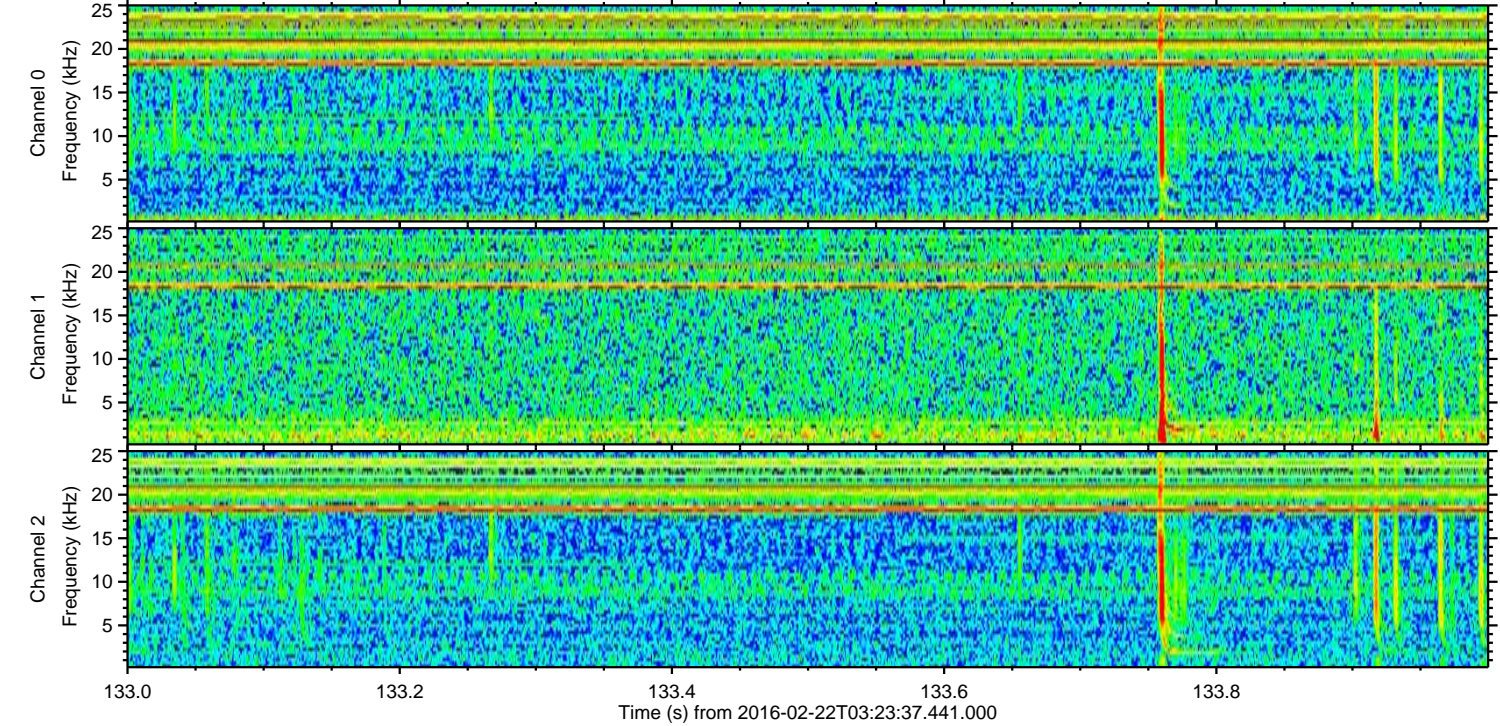
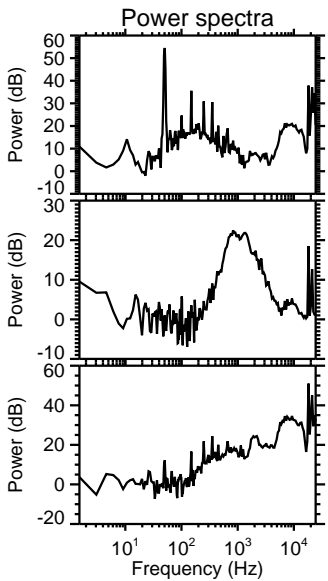
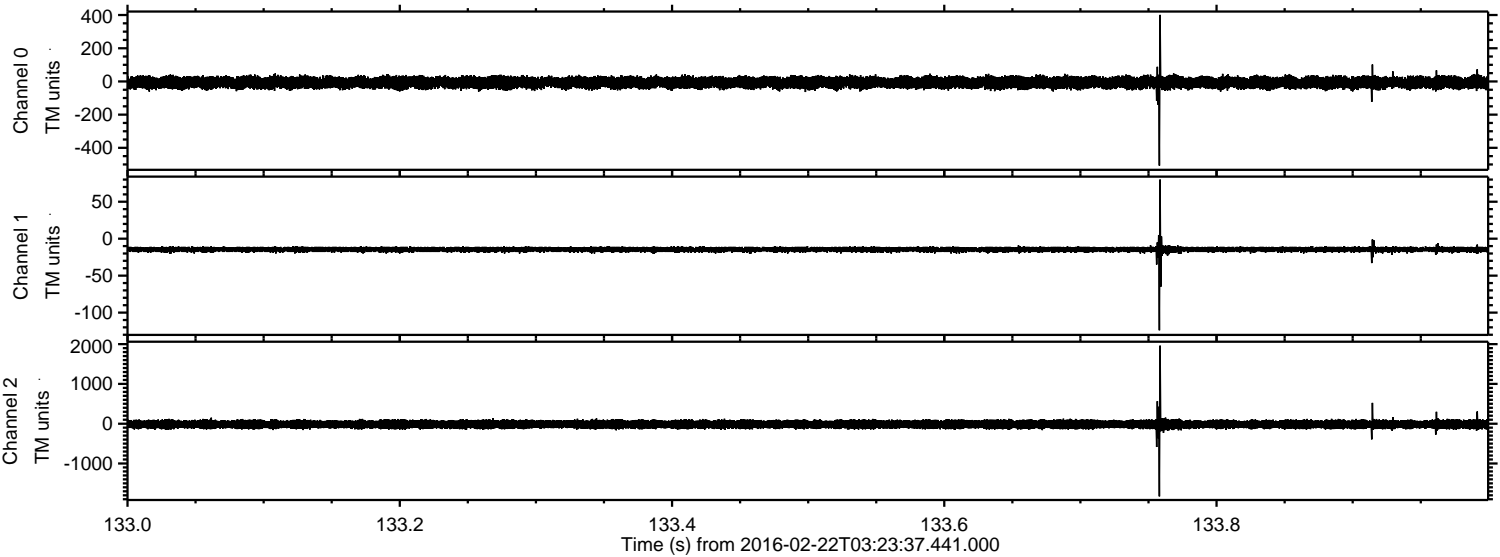
Processed Fri Apr 15 23:40:11 2016 by ELM ver.2012-10-06 from 001\_\_elm20160222\_032336\_\_dat00.bin





ELMAVAN 3D WAVEFORMS (Measured data sampled at 50 kHz) 51000 packets of 144 samples from 2016-02-22T03:23:37.441.000. Part 134/147

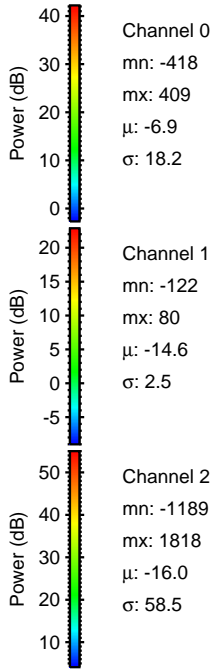
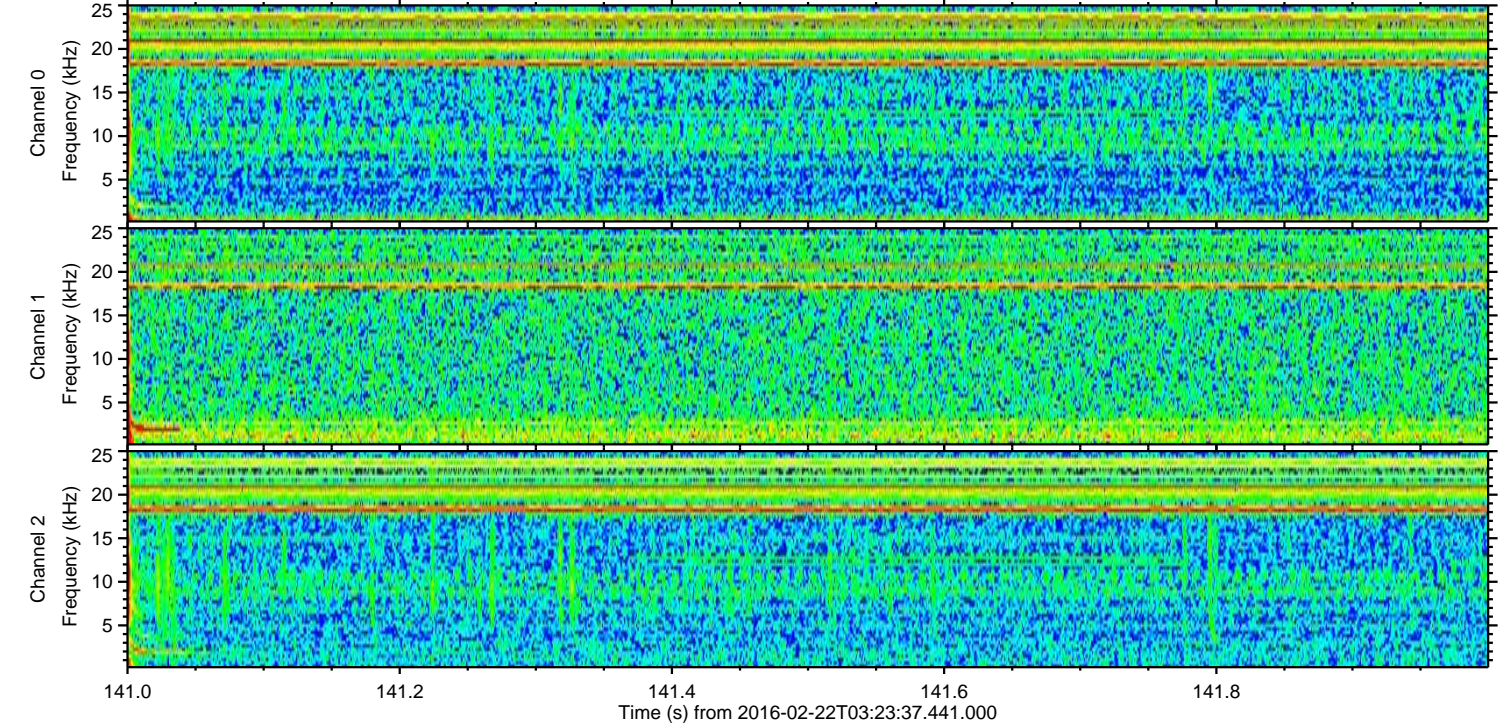
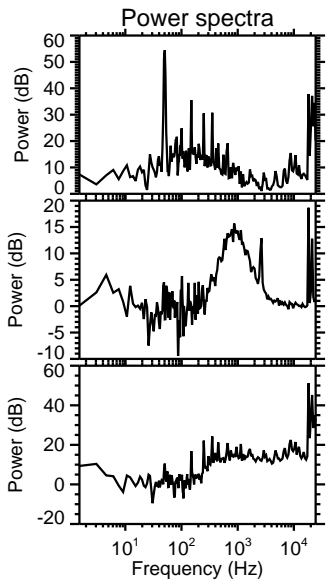
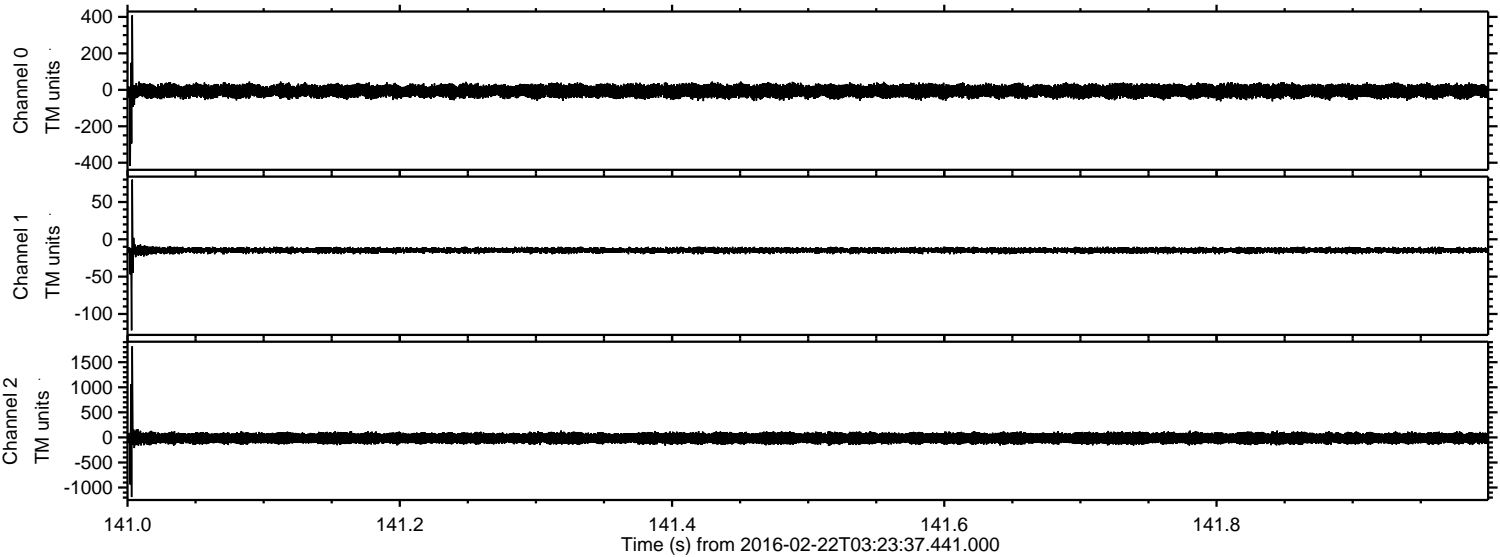
Processed Fri Apr 15 23:40:12 2016 by ELM ver.2012-10-06 from 001\_\_elm20160222\_032336\_\_dat00.bin





ELMAVAN 3D WAVEFORMS (Measured data sampled at 50 kHz) 51000 packets of 144 samples from 2016-02-22T03:23:37.441.000. Part 142/147

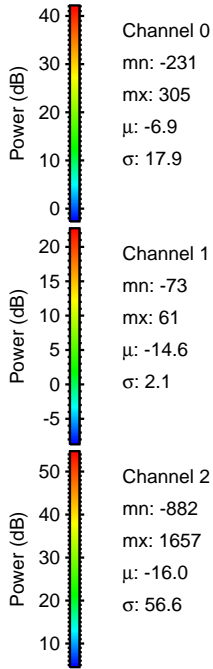
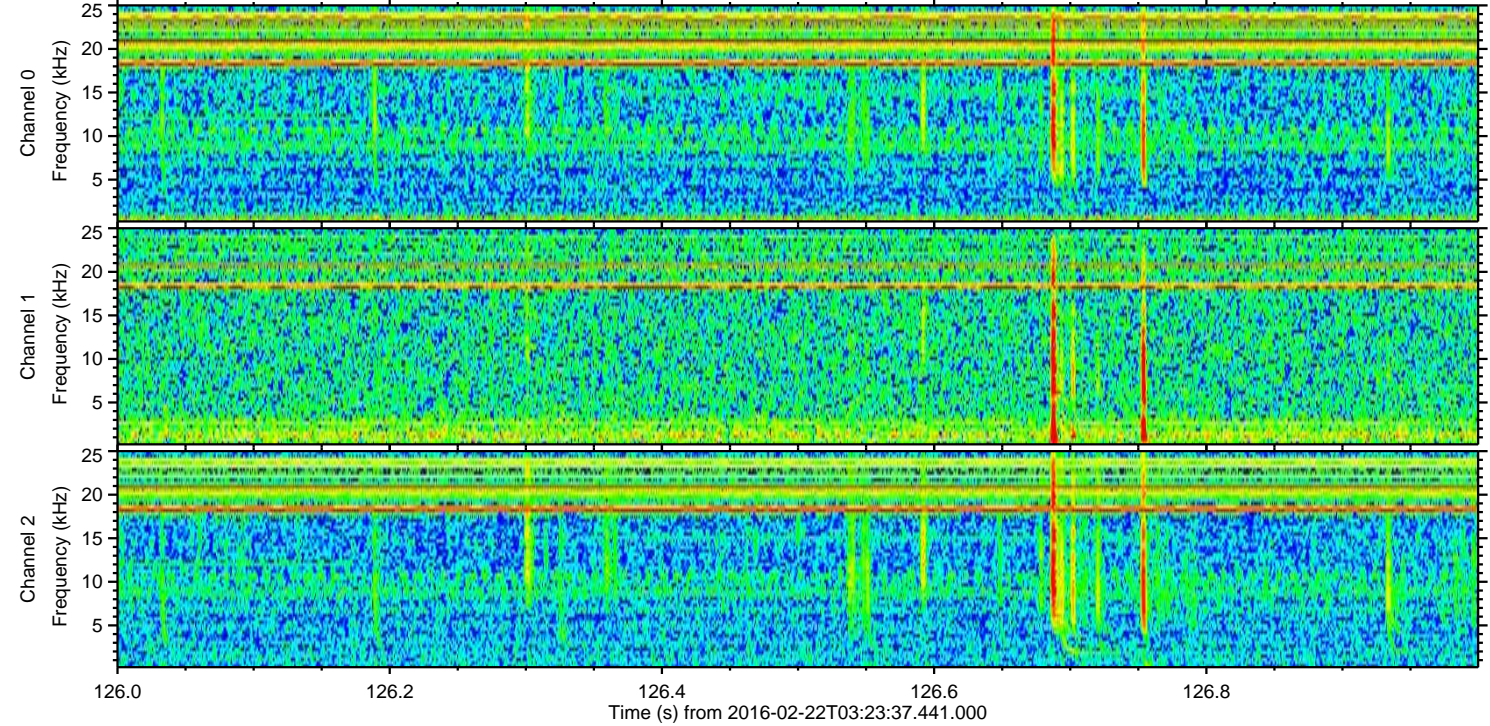
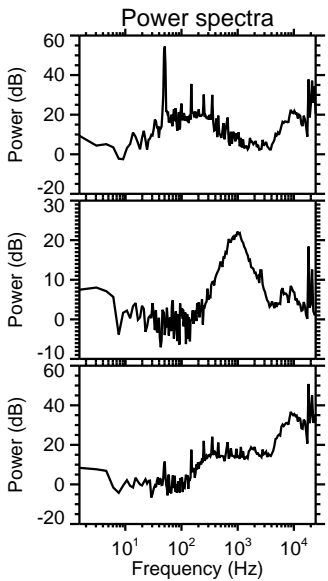
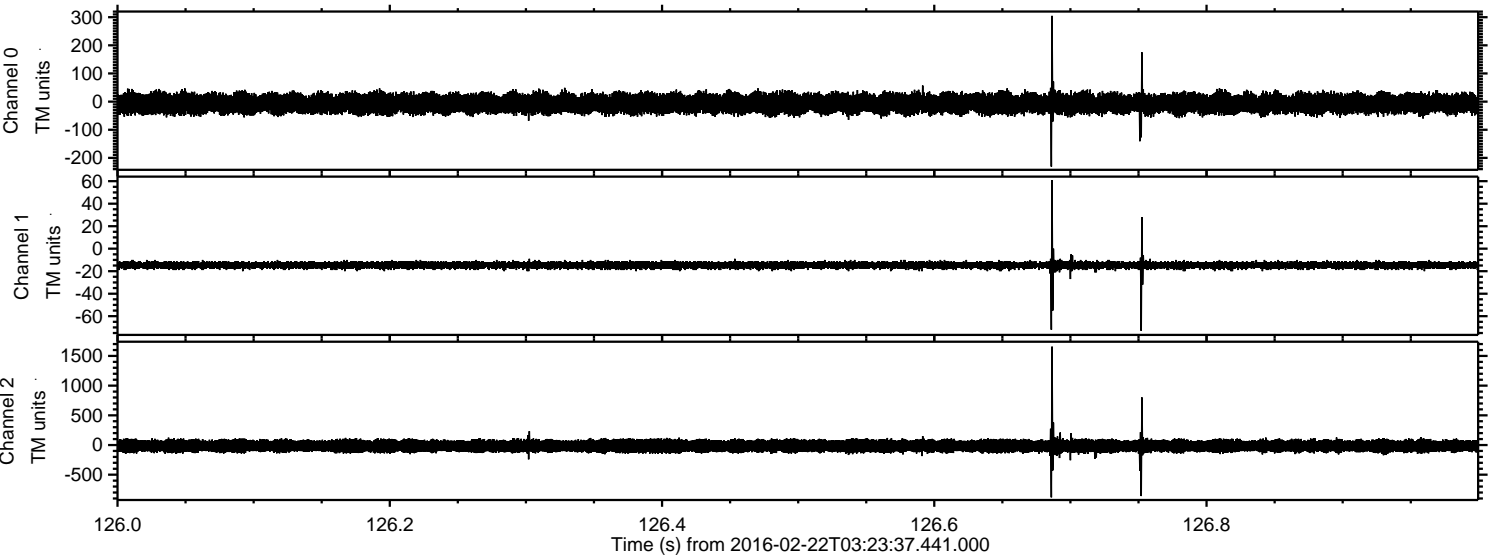
Processed Fri Apr 15 23:40:13 2016 by ELM ver.2012-10-06 from 001\_\_elm20160222\_032336\_\_dat00.bin





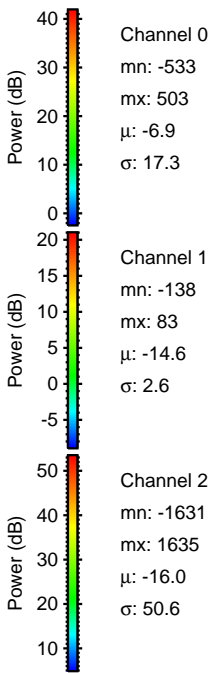
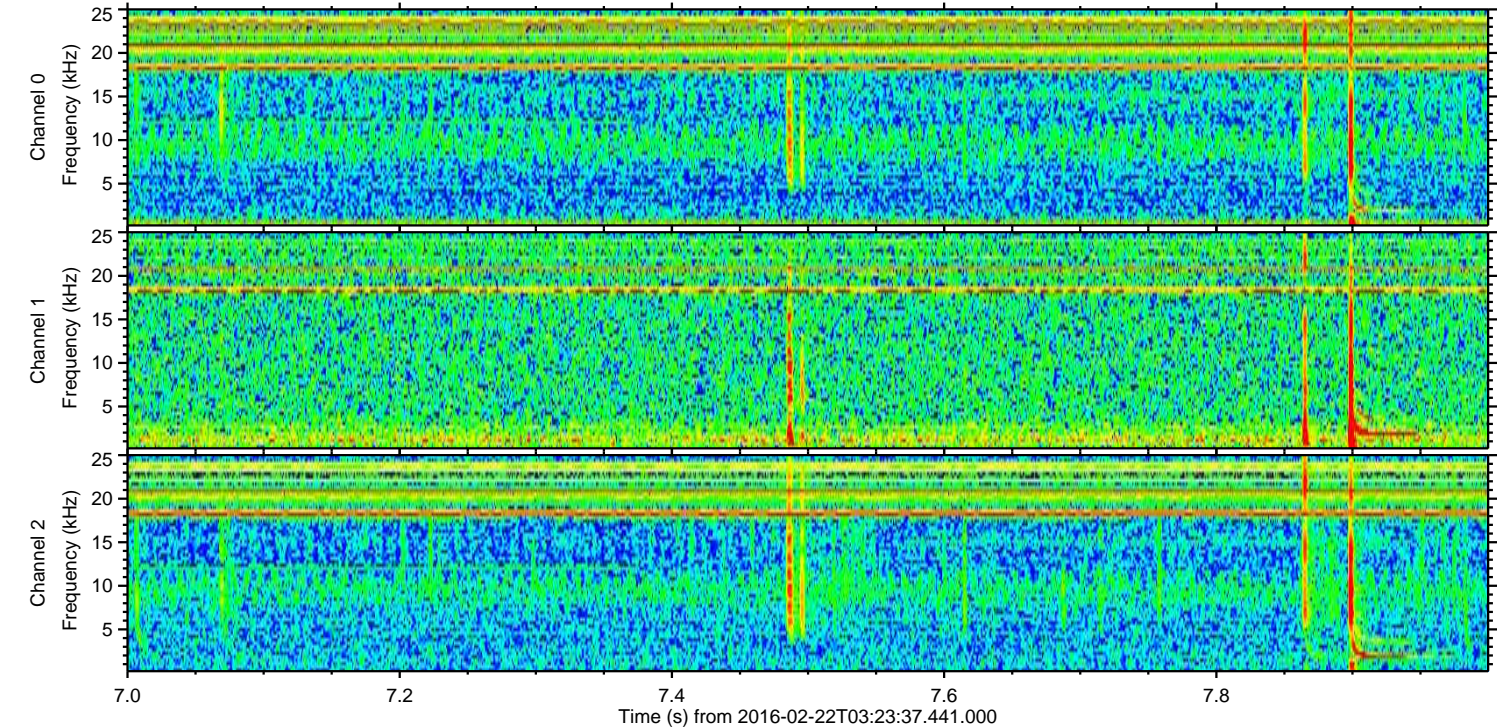
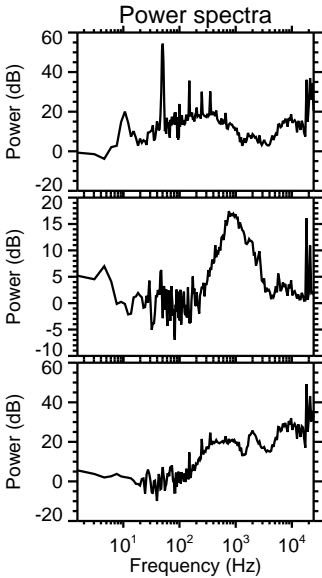
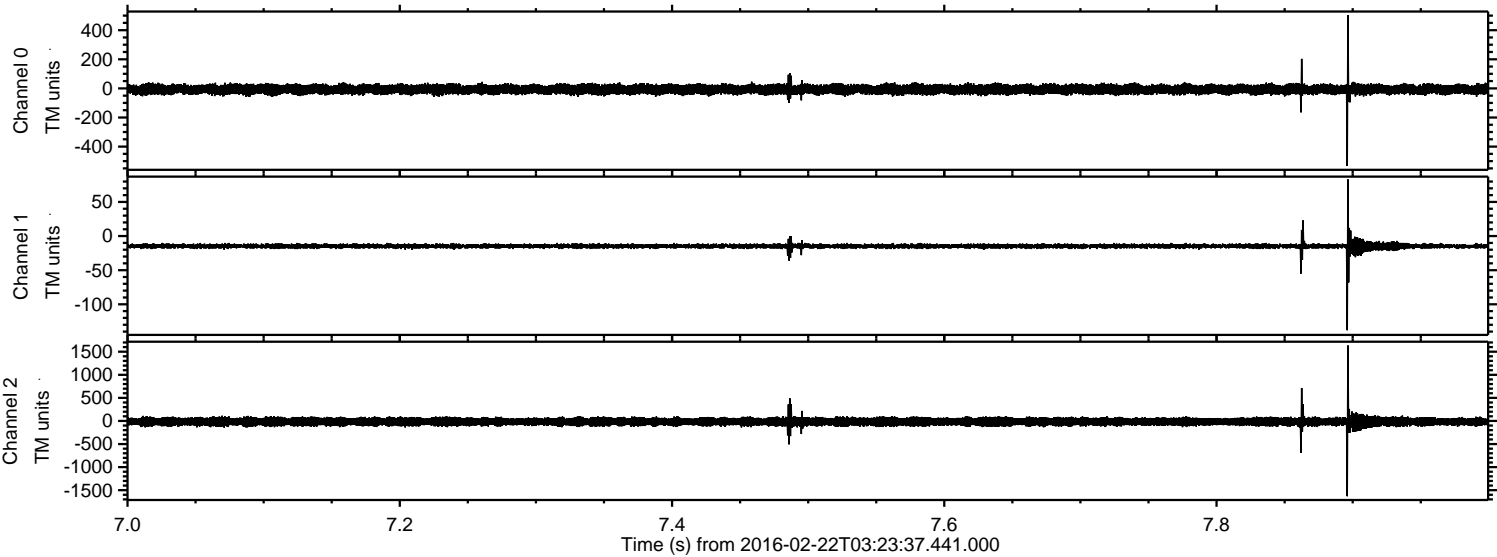
ELMAVAN 3D WAVEFORMS (Measured data sampled at 50 kHz) 51000 packets of 144 samples from 2016-02-22T03:23:37.441.000. Part 127/147

Processed Fri Apr 15 23:40:14 2016 by ELM ver.2012-10-06 from 001\_\_elm20160222\_032336\_\_dat00.bin



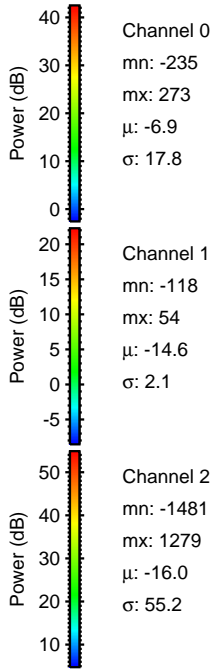
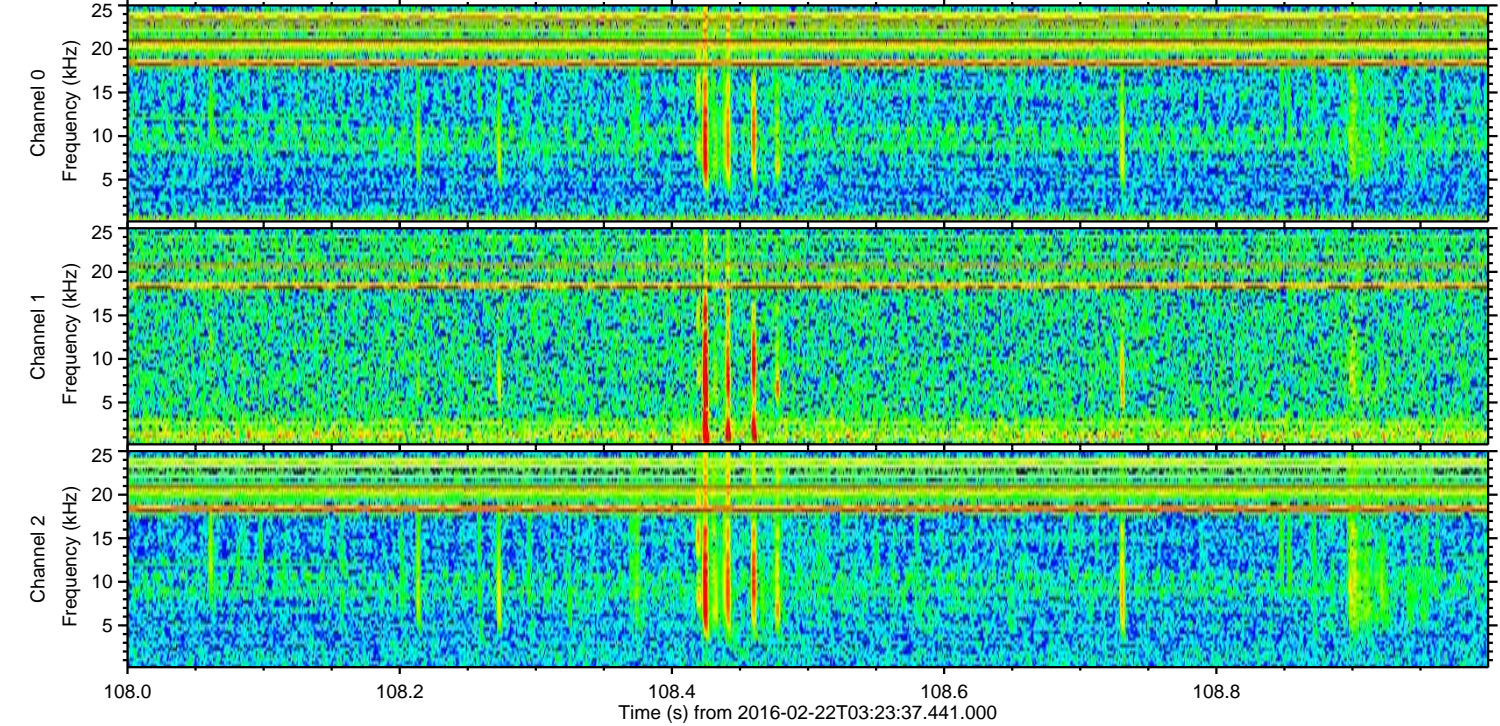
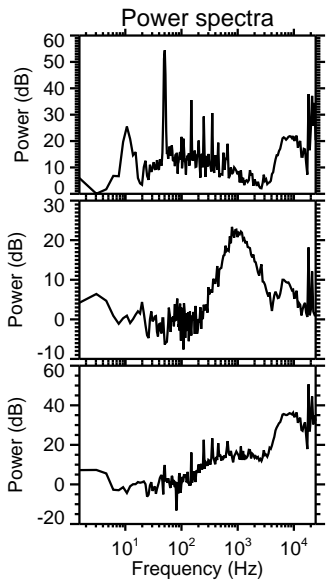
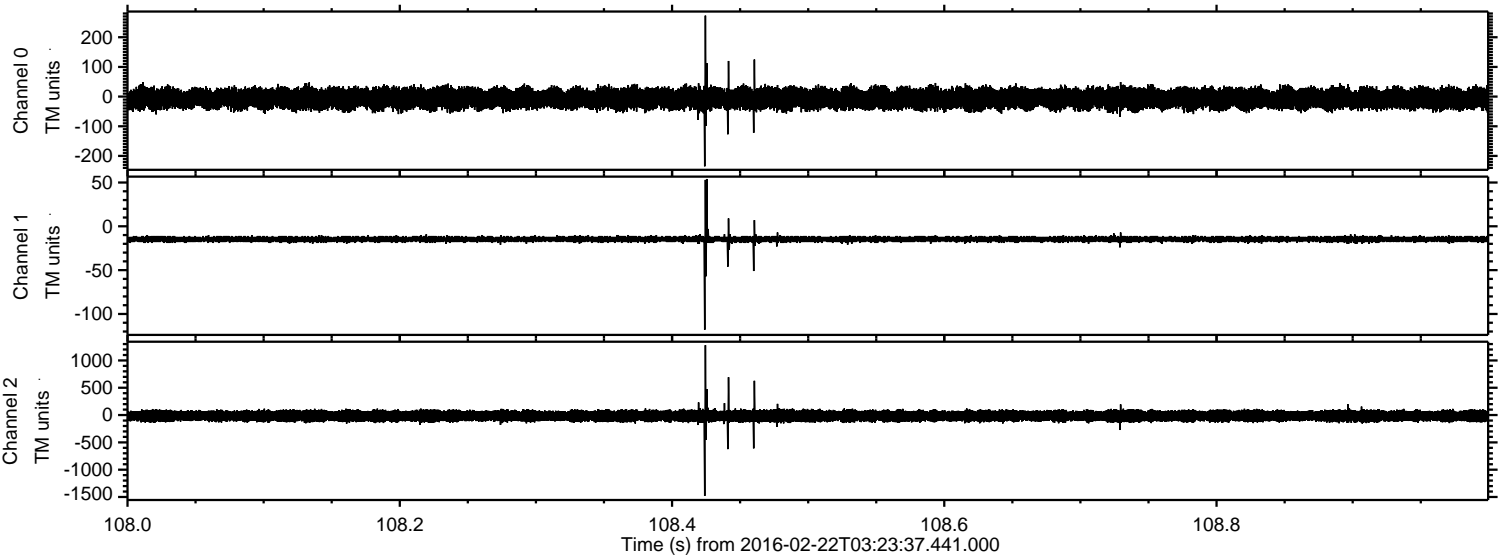


Processed Fri Apr 15 23:40:15 2016 by ELM ver.2012-10-06 from 001\_\_elm20160222\_032336\_\_dat00.bin



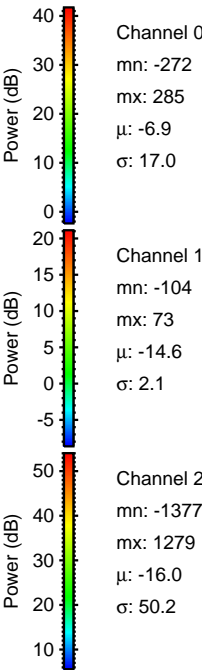
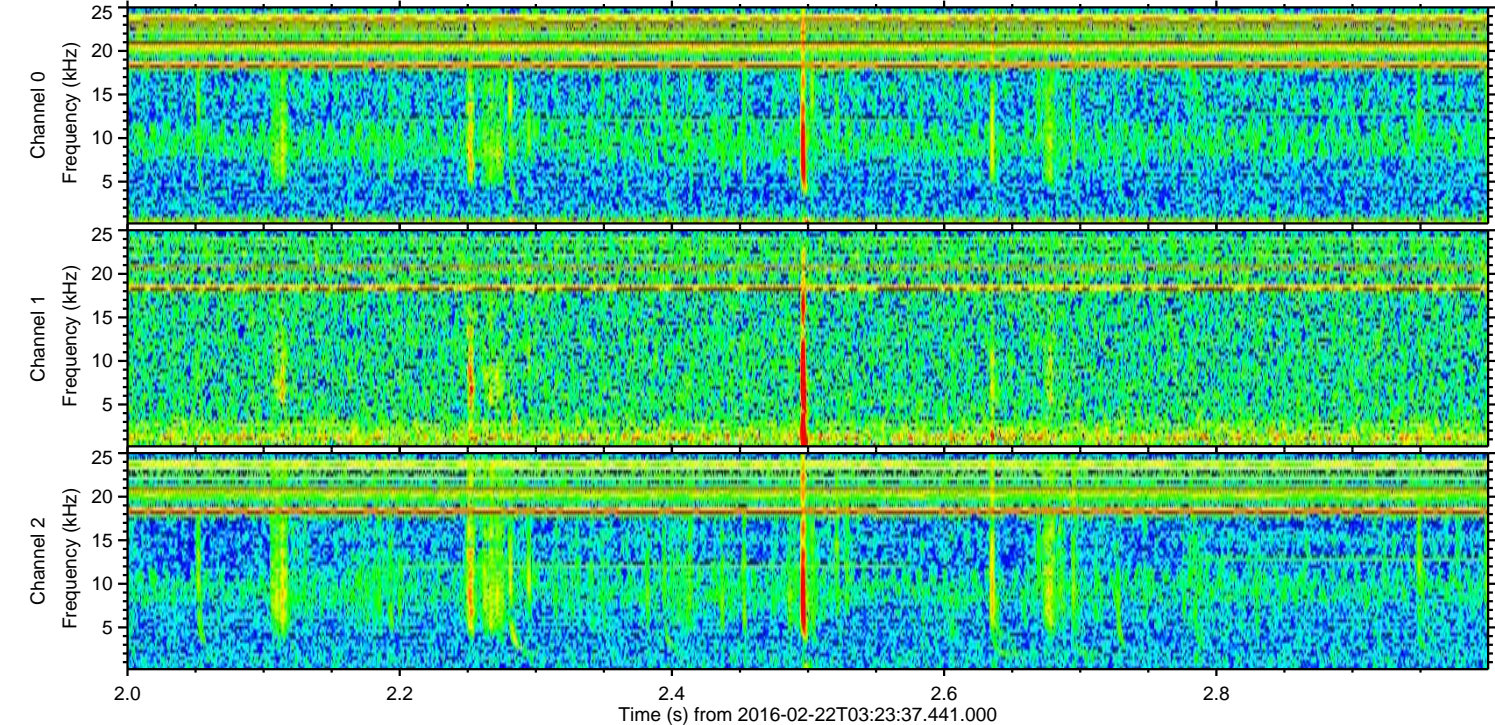
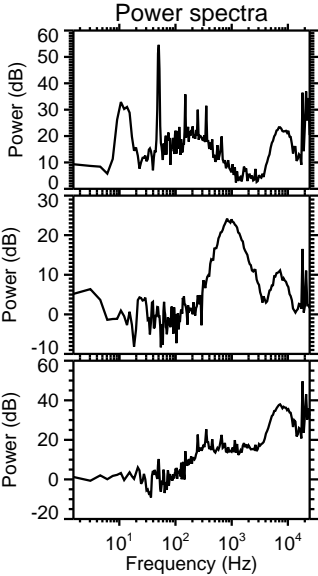
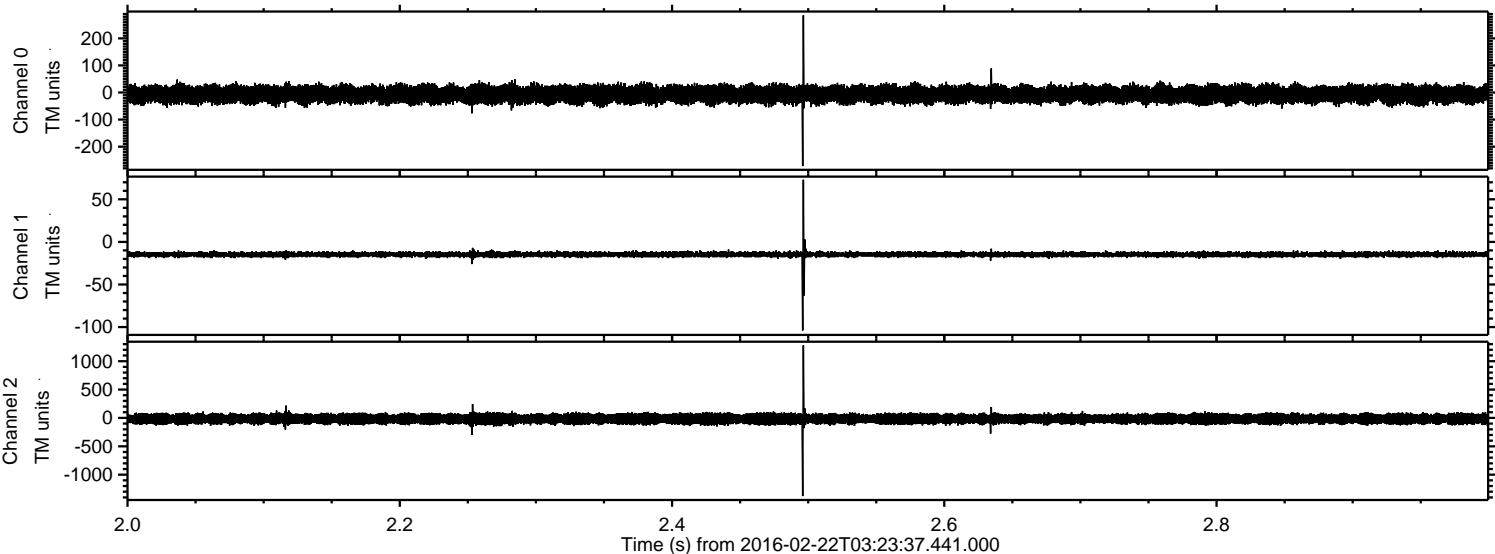


Processed Fri Apr 15 23:40:16 2016 by ELM ver.2012-10-06 from 001\_\_elm20160222\_032336\_\_dat00.bin





Processed Fri Apr 15 23:40:17 2016 by ELM ver.2012-10-06 from 001\_\_elm20160222\_032336\_\_dat00.bin



Channel 0  
mn: -272  
mx: 285  
 $\mu$ : -6.9  
 $\sigma$ : 17.0

Channel 1  
mn: -104  
mx: 73  
 $\mu$ : -14.6  
 $\sigma$ : 2.1

Channel 2  
mn: -1377  
mx: 1279  
 $\mu$ : -16.0  
 $\sigma$ : 50.2



Processed Fri Apr 15 23:40:18 2016 by ELM ver.2012-10-06 from 001\_\_elm20160222\_032336\_\_dat00.bin

