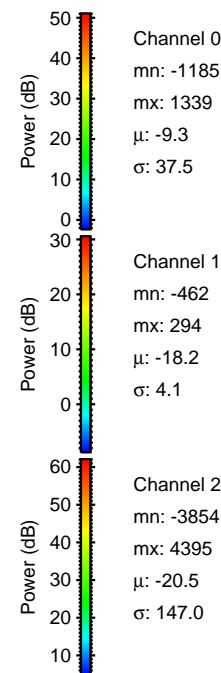
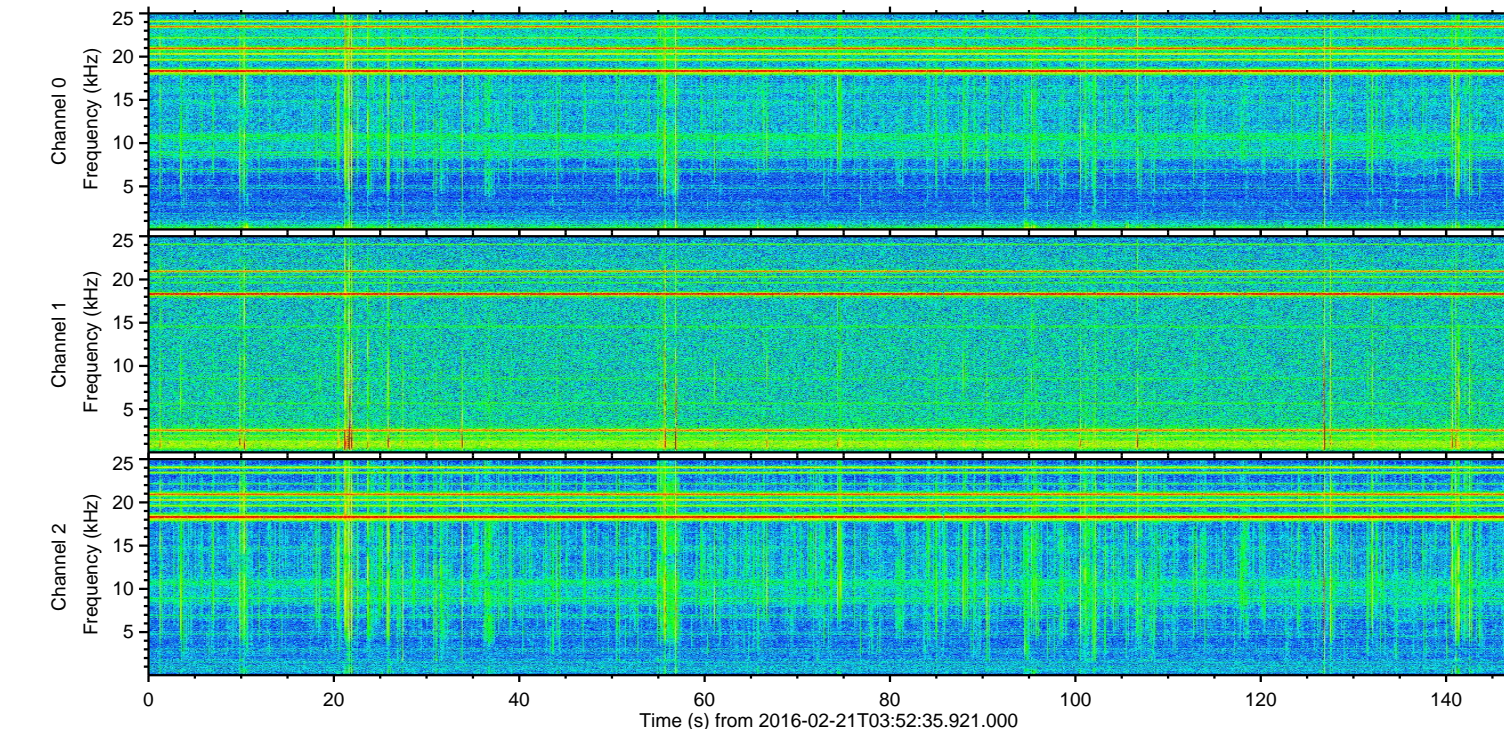
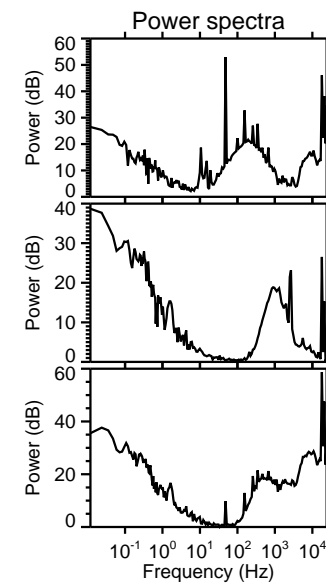
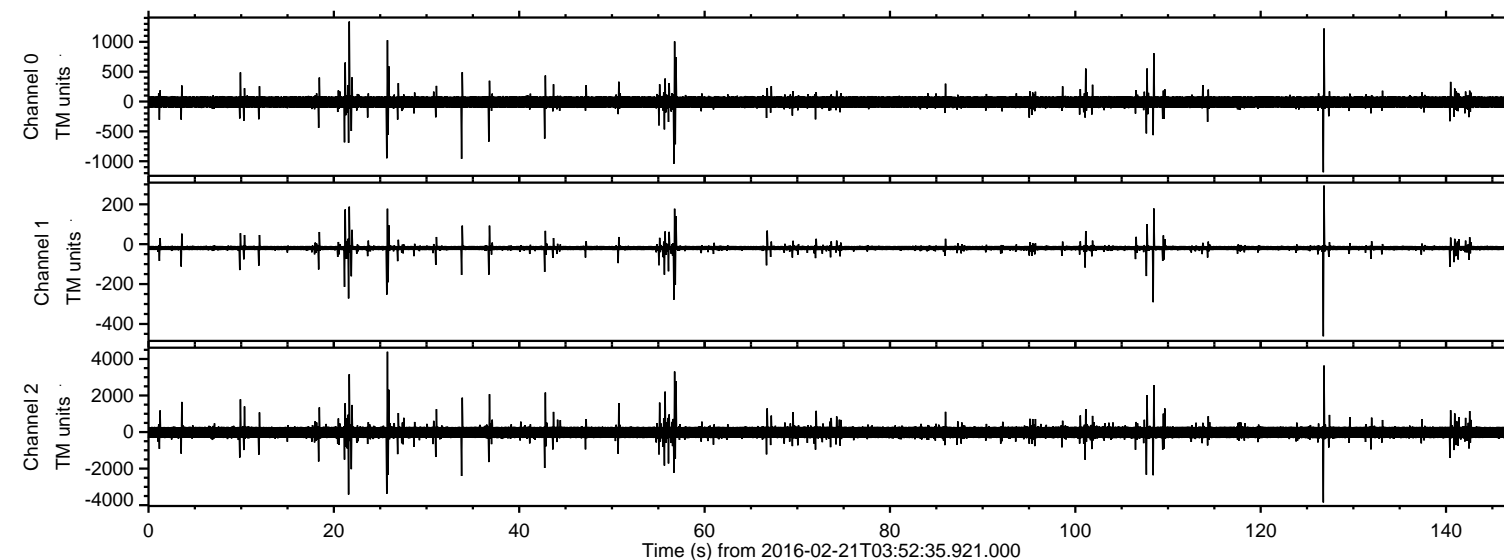
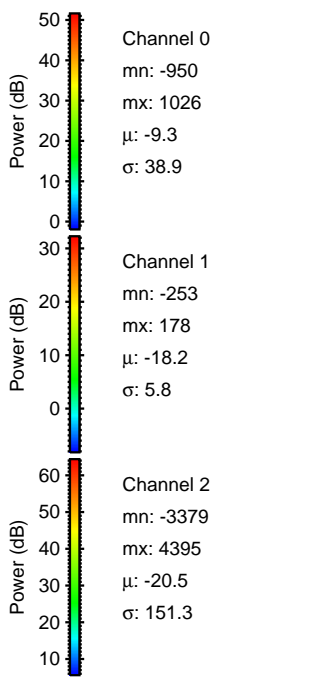
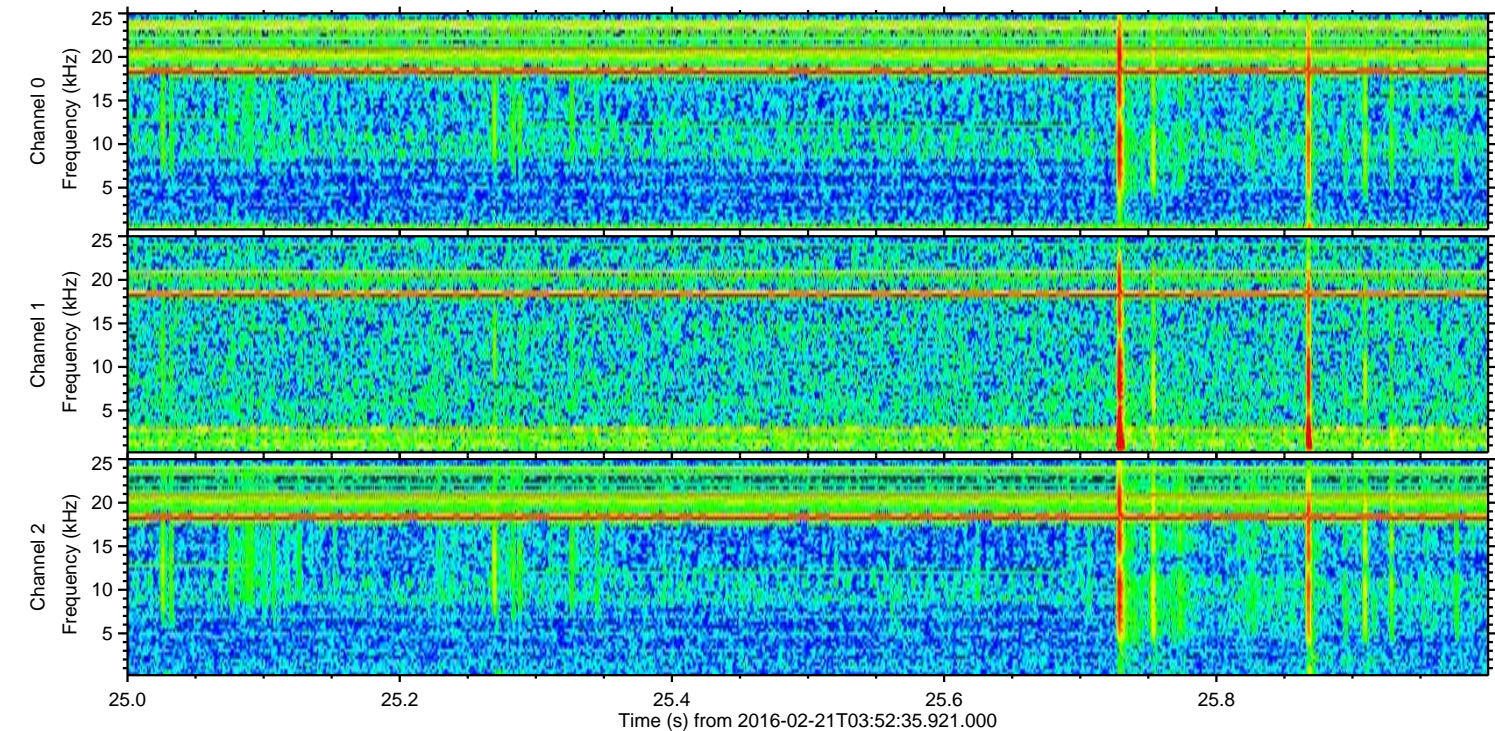
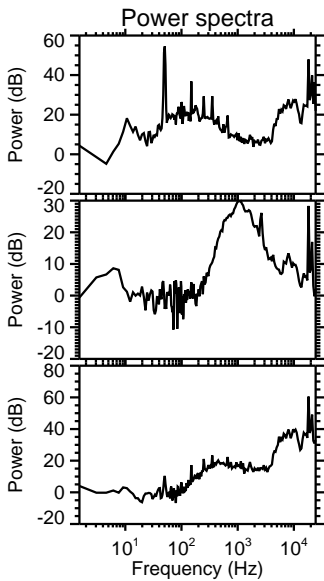
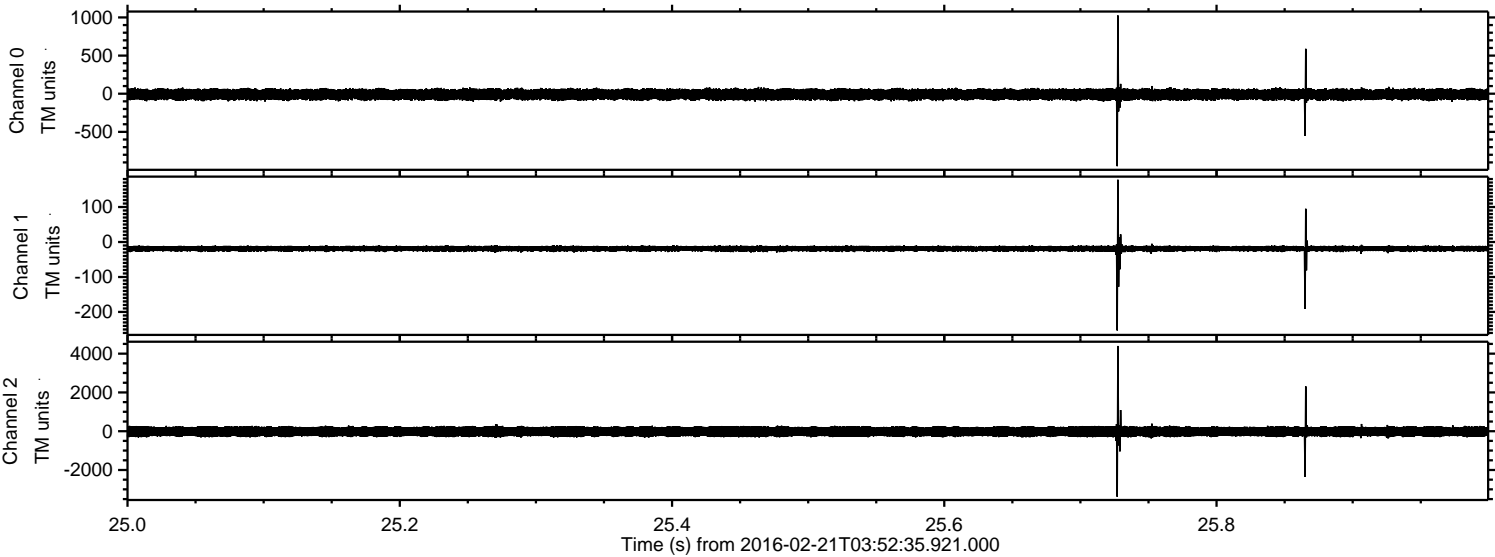


ELMAVAN 3D WAVEFORMS (Measured data sampled at 50 kHz) 51000 packets of 144 samples from 2016-02-21T03:52:35.921.000.

Processed Tue Apr 12 03:07:13 2016 by ELM ver.2012-10-06 from 001__elm20160221_035234__dat00.bin

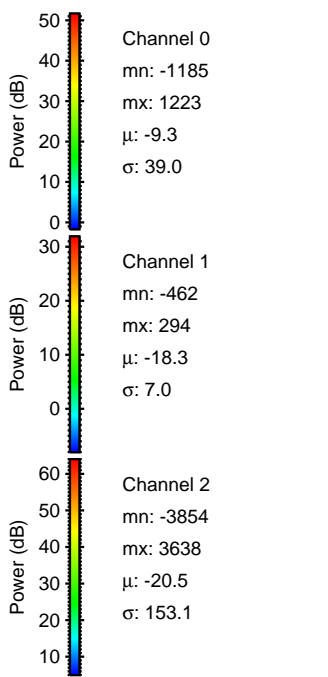
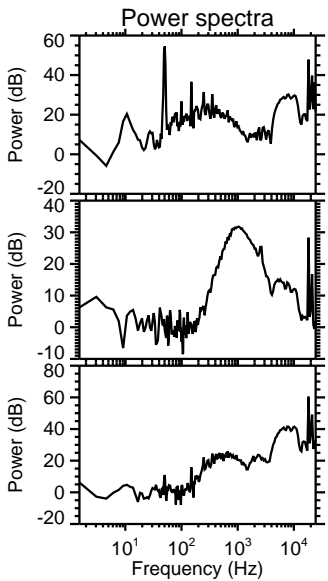
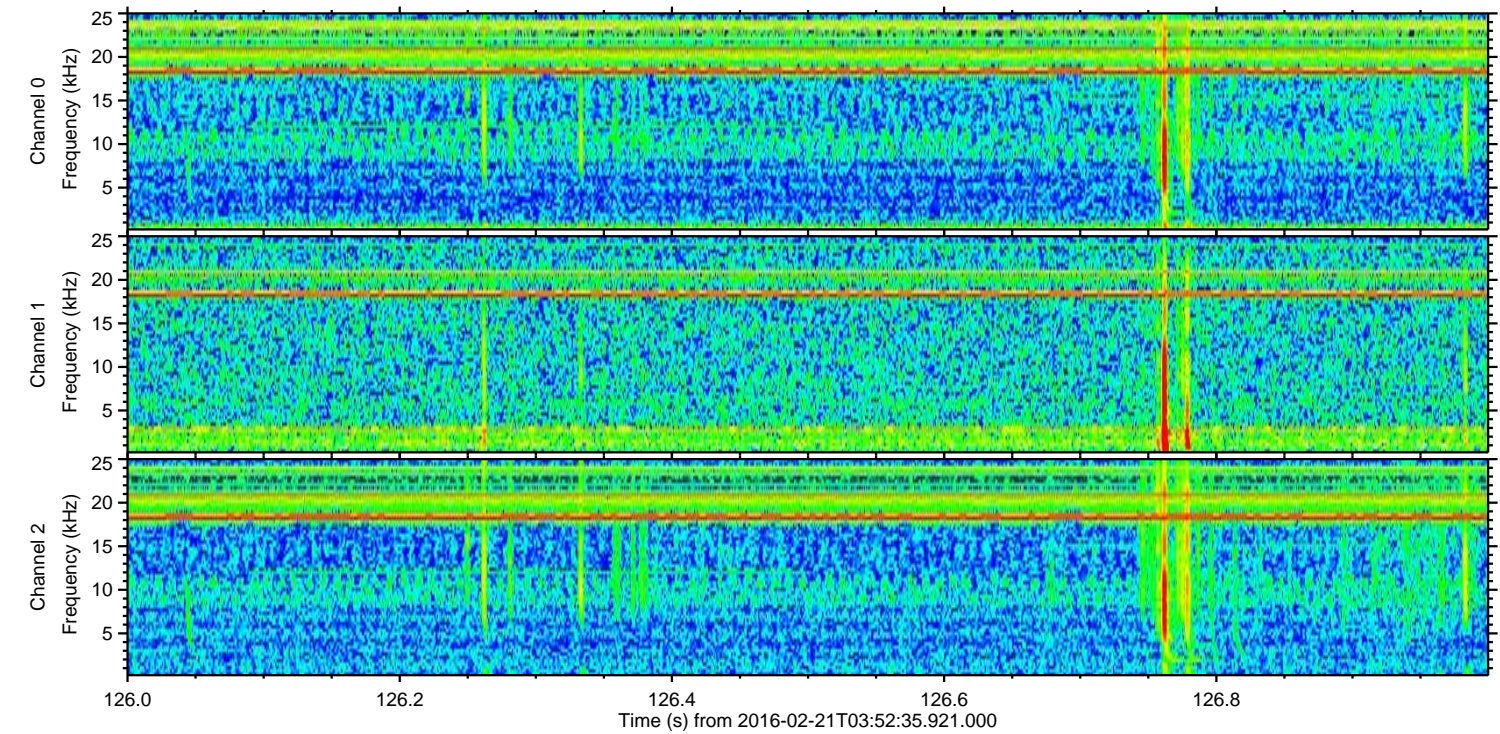
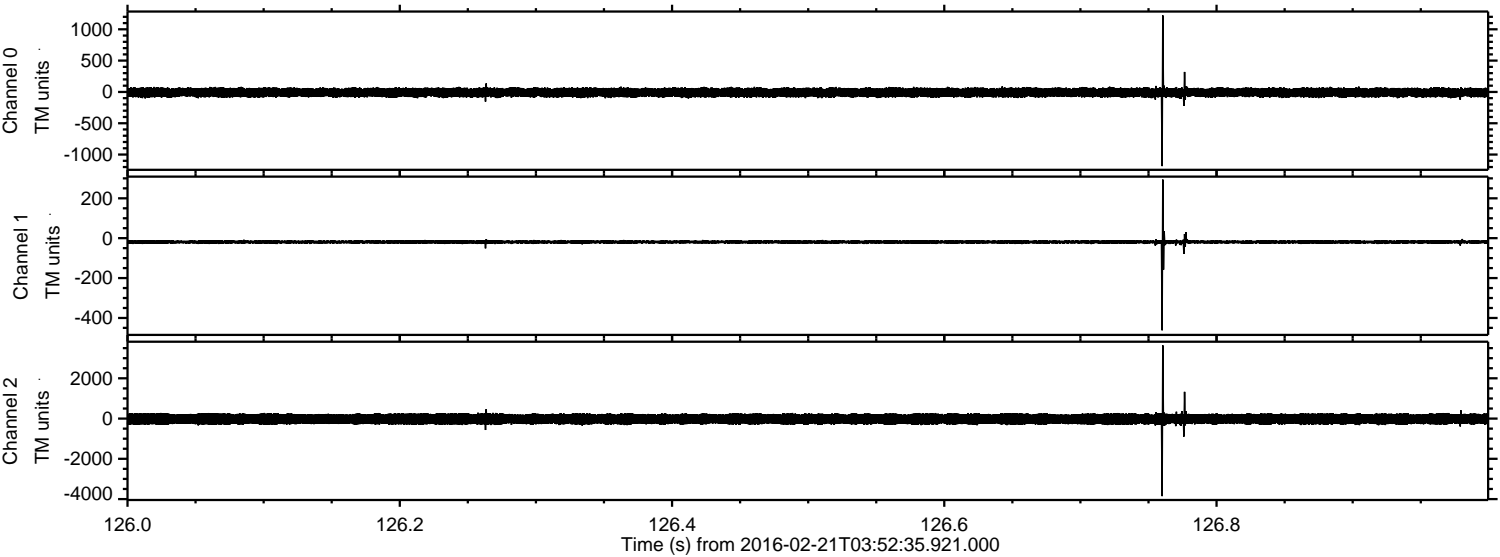


Processed Tue Apr 12 03:07:25 2016 by ELM ver.2012-10-06 from 001__elm20160221_035234__dat00.bin

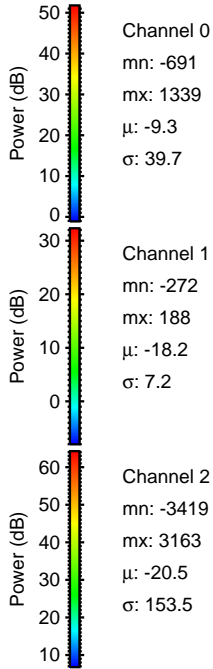
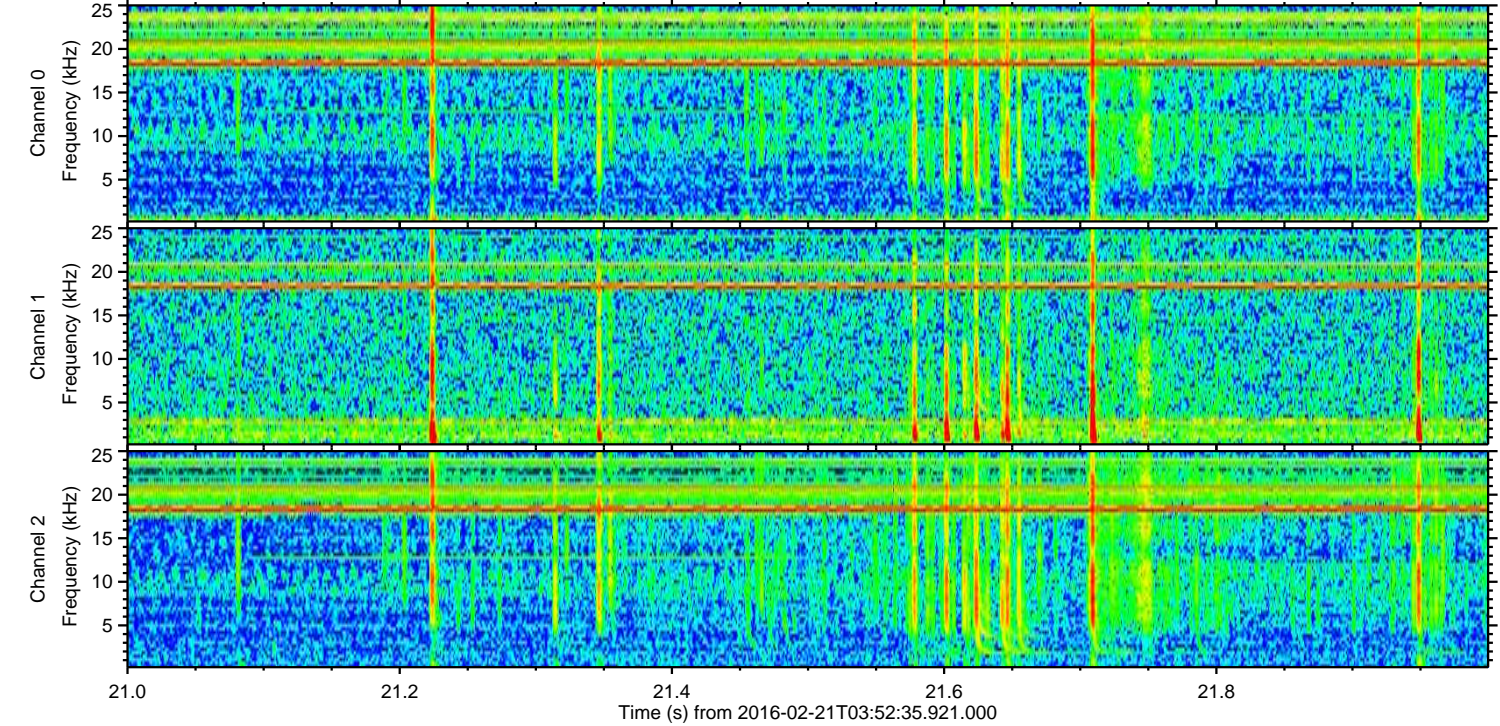
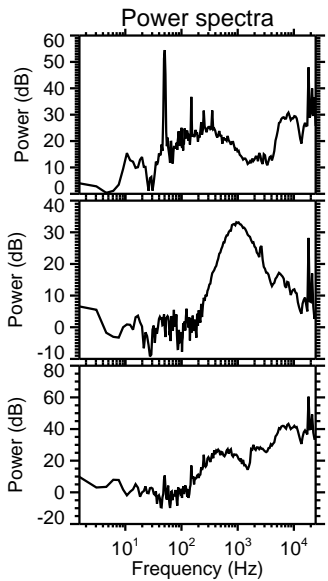
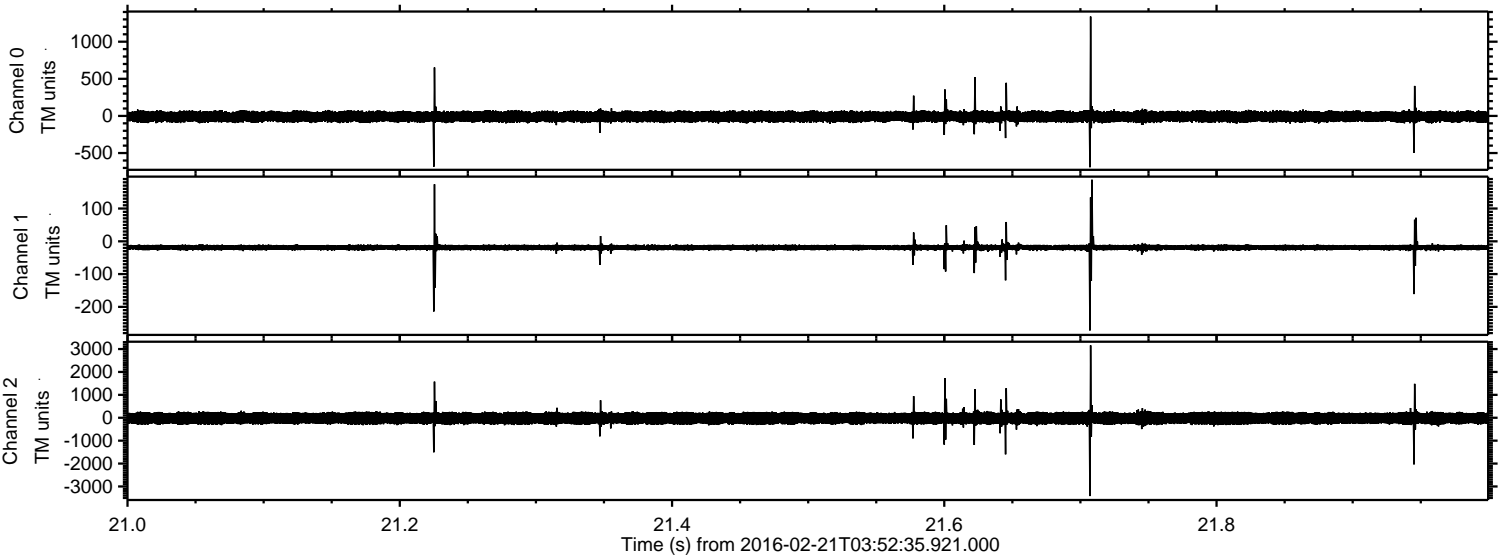


ELMAVAN 3D WAVEFORMS (Measured data sampled at 50 kHz) 51000 packets of 144 samples from 2016-02-21T03:52:35.921.000. Part 127/147

Processed Tue Apr 12 03:07:26 2016 by ELM ver.2012-10-06 from 001__elm20160221_035234__dat00.bin

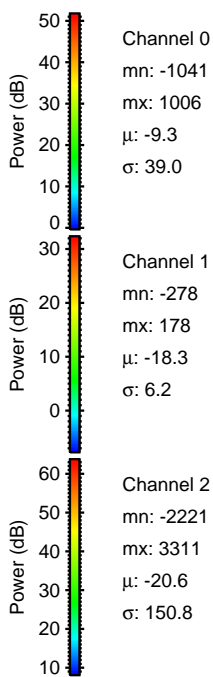
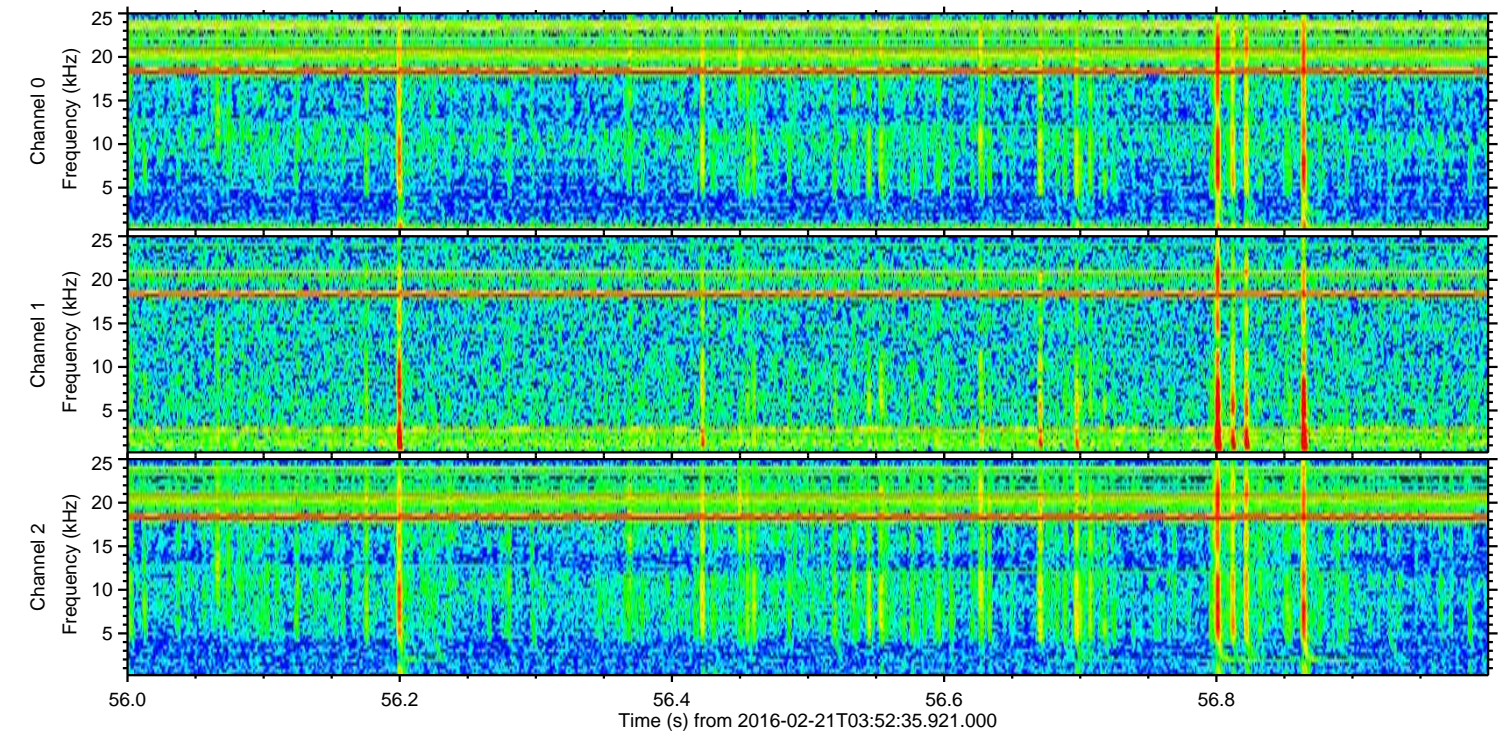
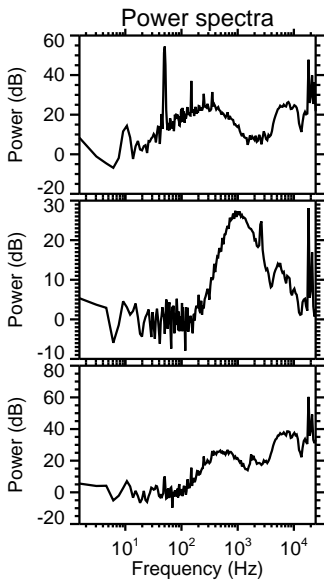
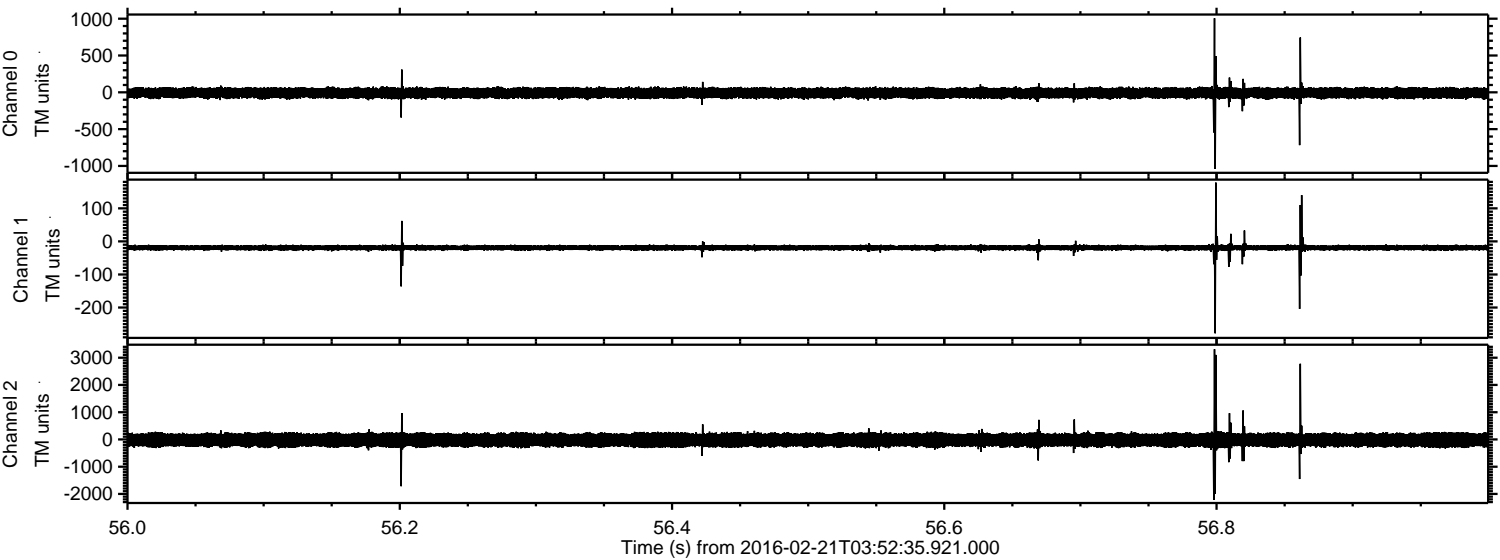


Processed Tue Apr 12 03:07:27 2016 by ELM ver.2012-10-06 from 001__elm20160221_035234__dat00.bin

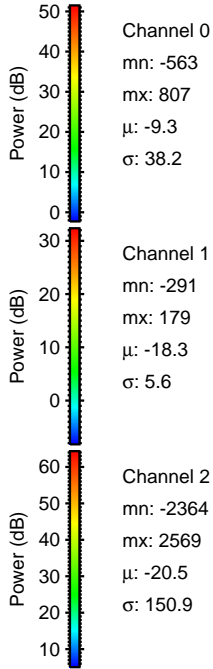
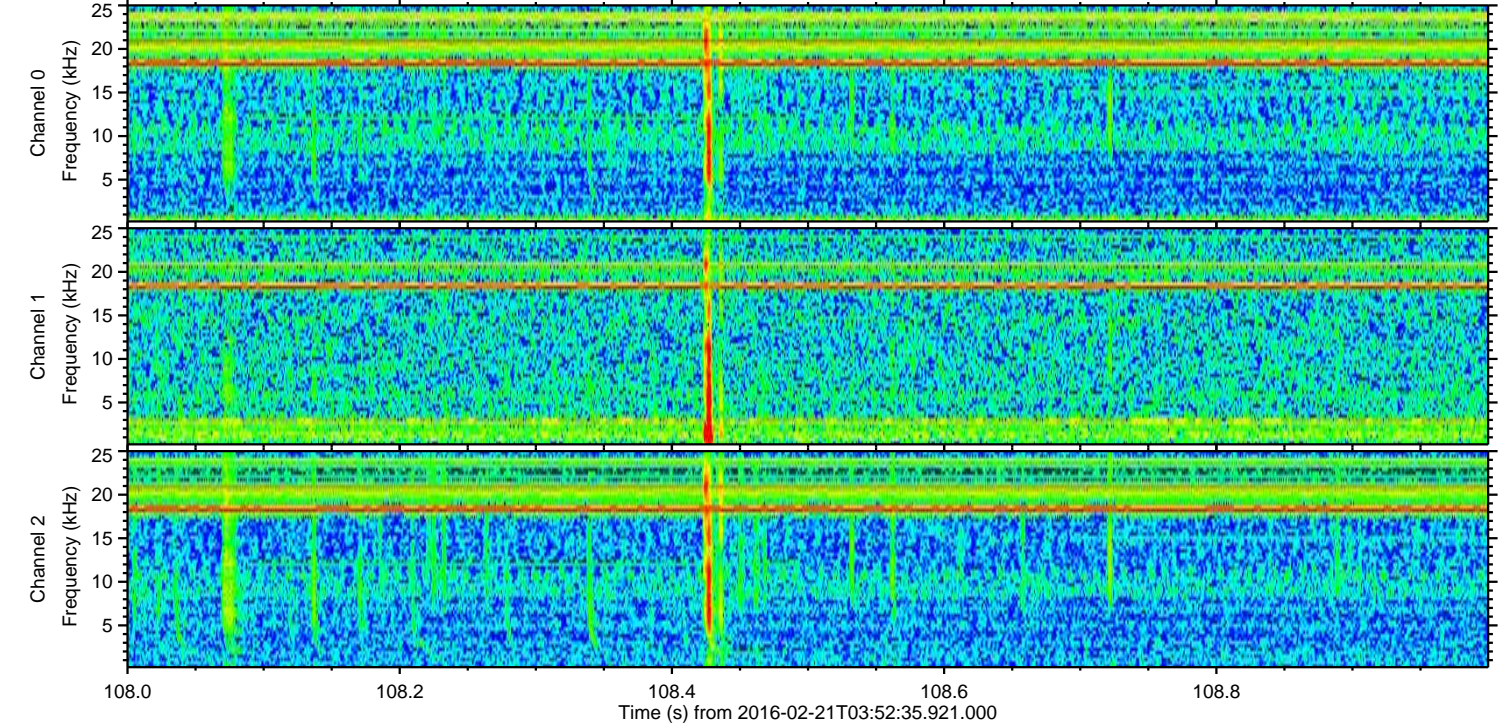
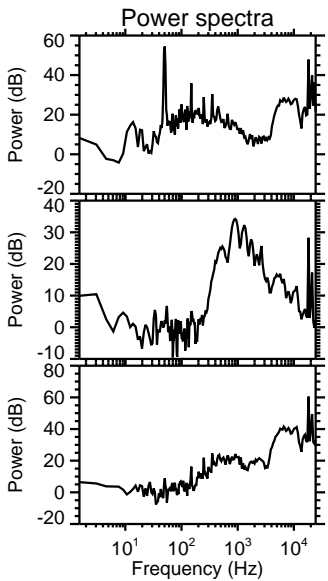
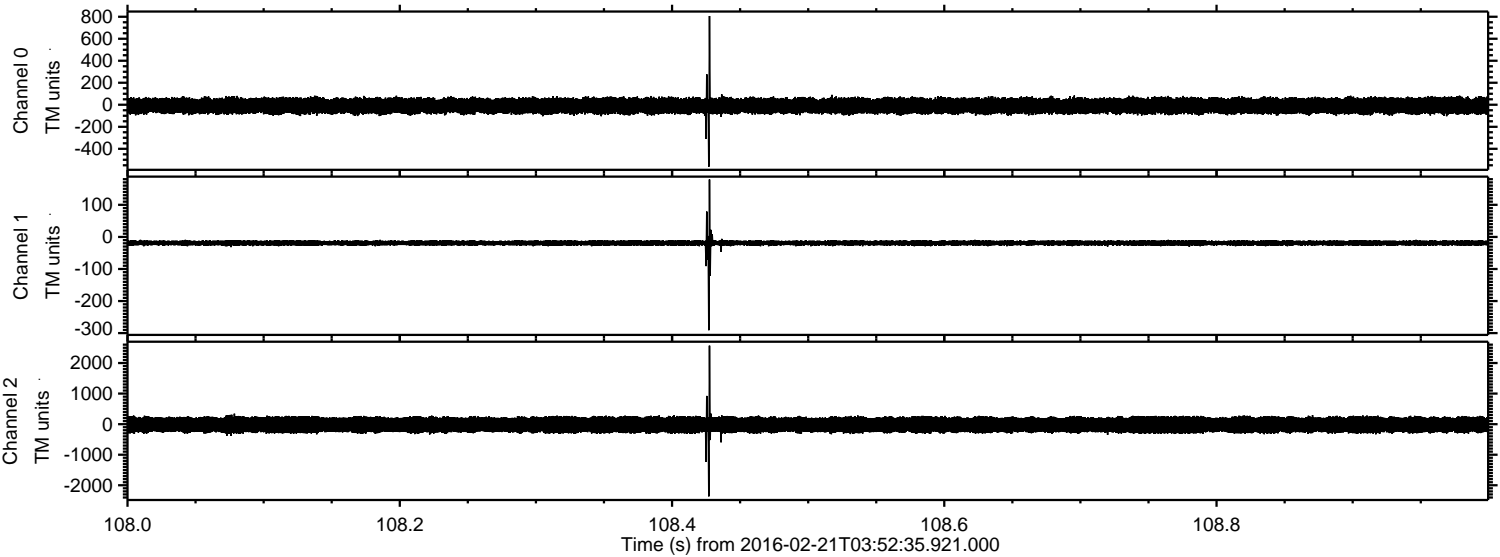


ELMAVAN 3D WAVEFORMS (Measured data sampled at 50 kHz) 51000 packets of 144 samples from 2016-02-21T03:52:35.921.000. Part 57/147

Processed Tue Apr 12 03:07:28 2016 by ELM ver.2012-10-06 from 001__elm20160221_035234__dat00.bin

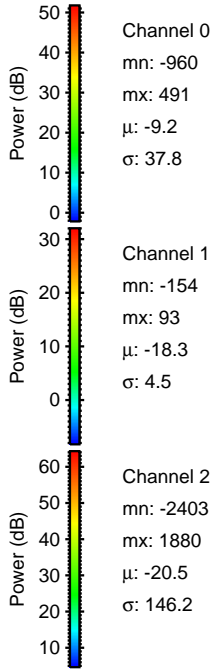
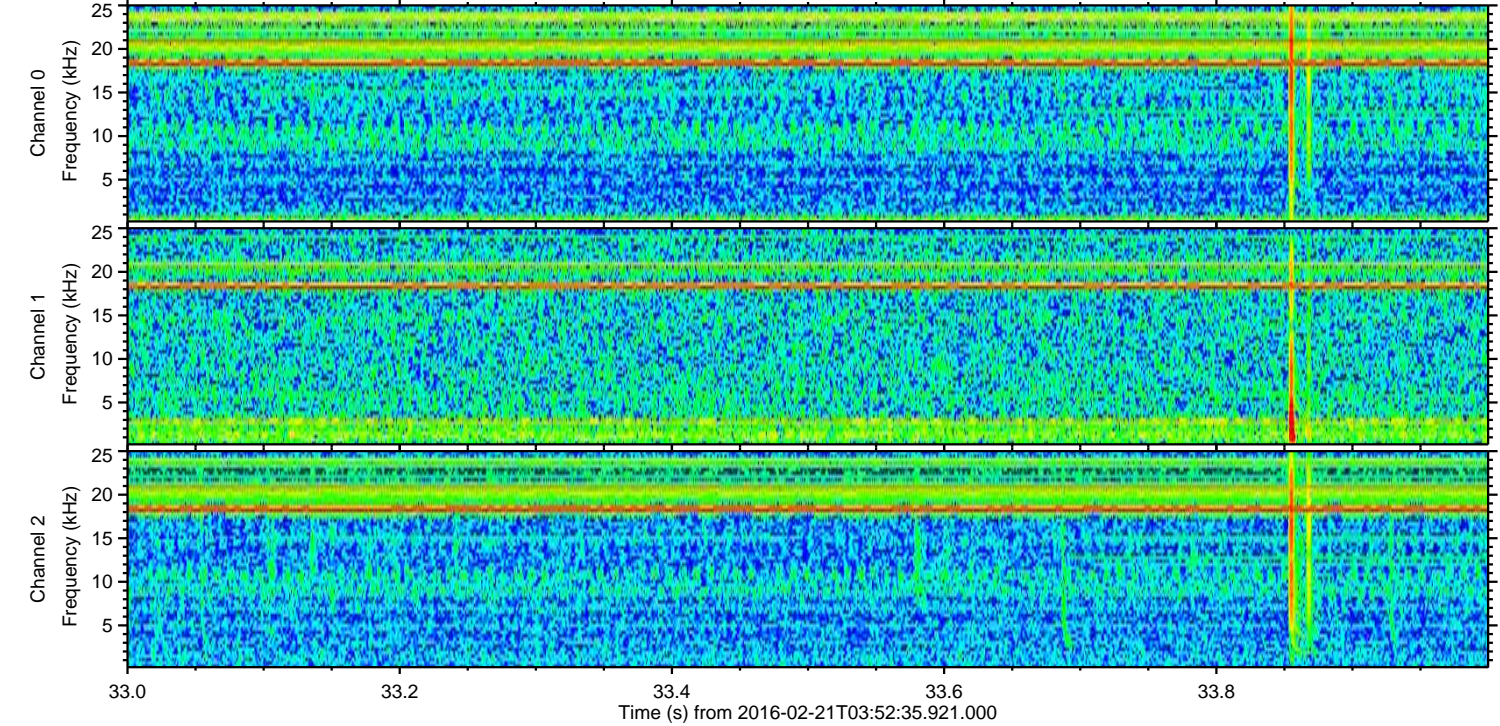
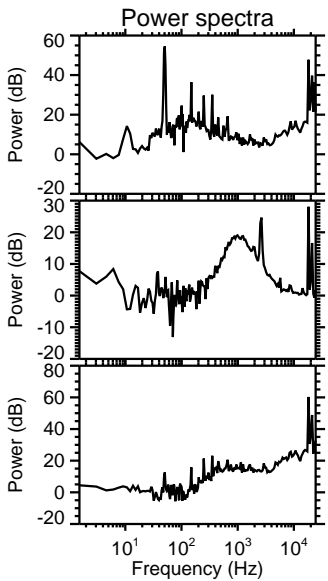
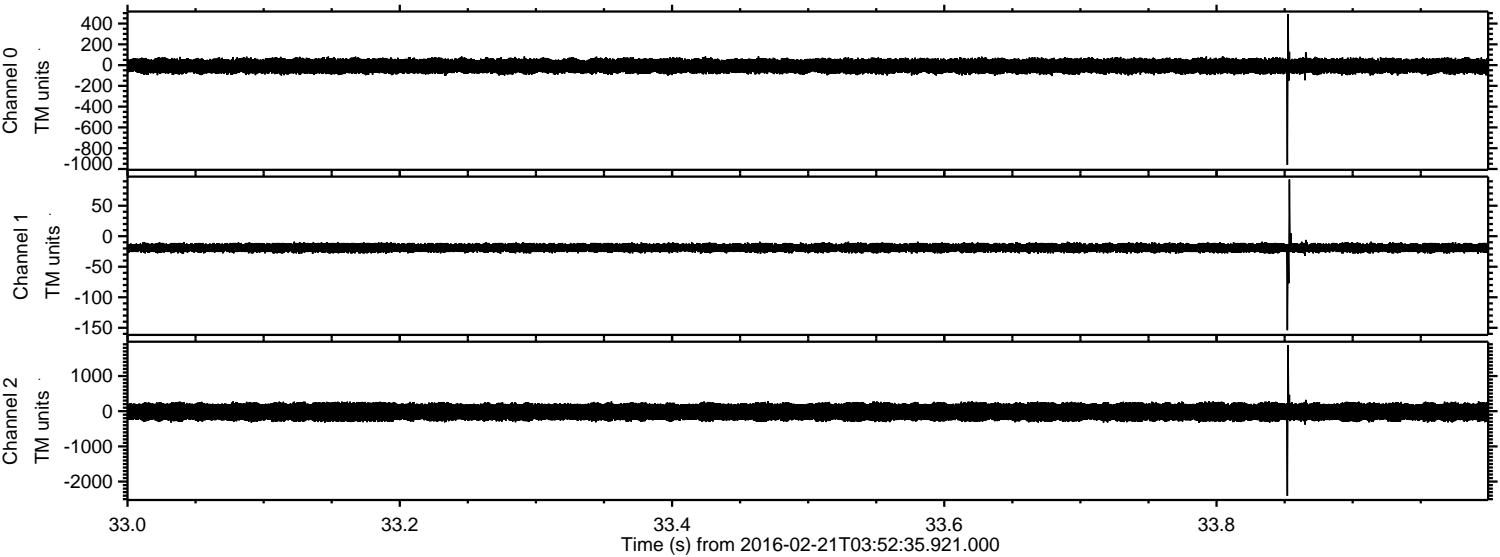


Processed Tue Apr 12 03:07:29 2016 by ELM ver.2012-10-06 from 001__elm20160221_035234__dat00.bin

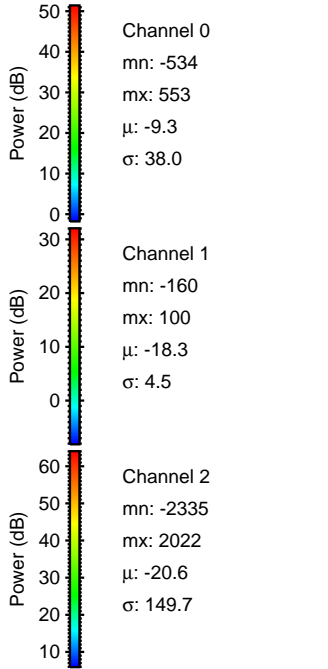
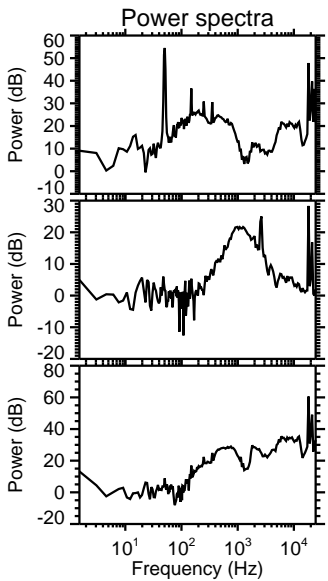
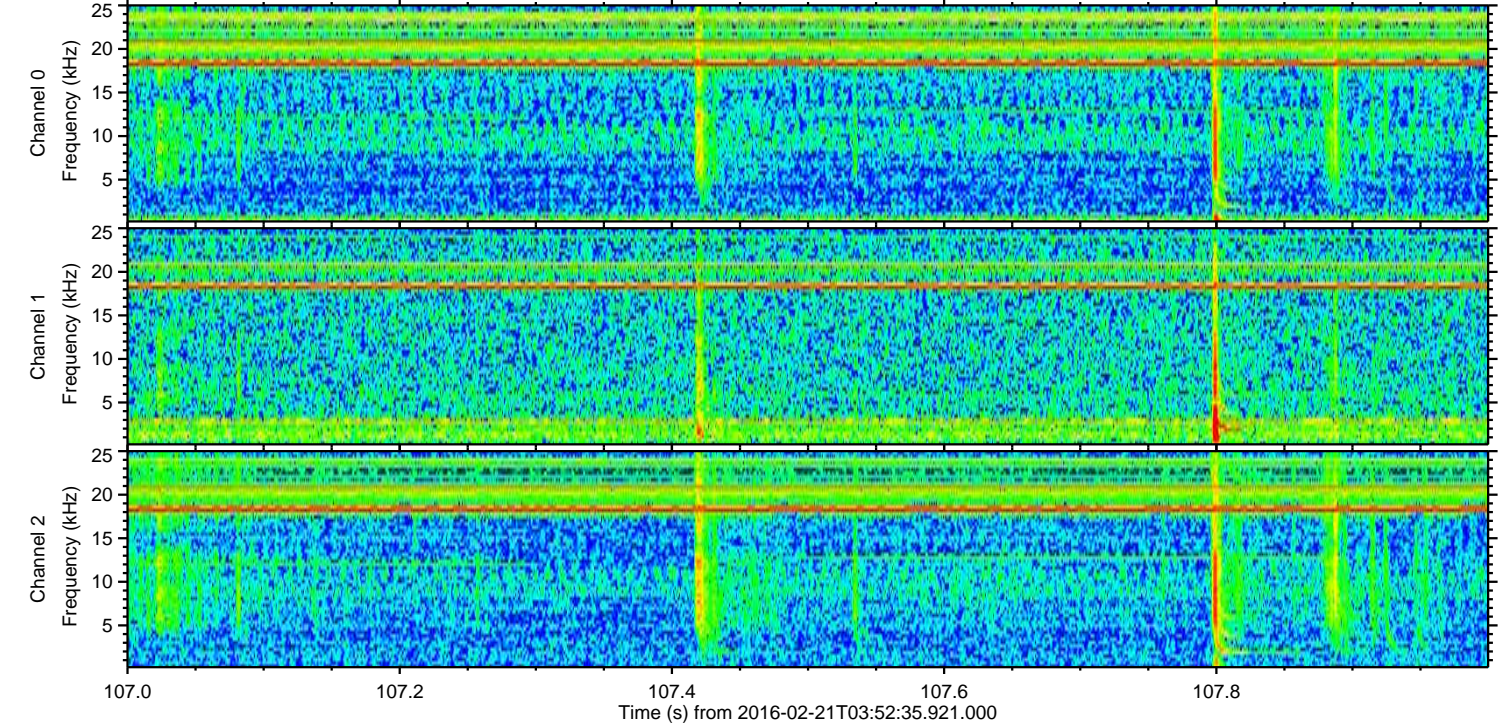
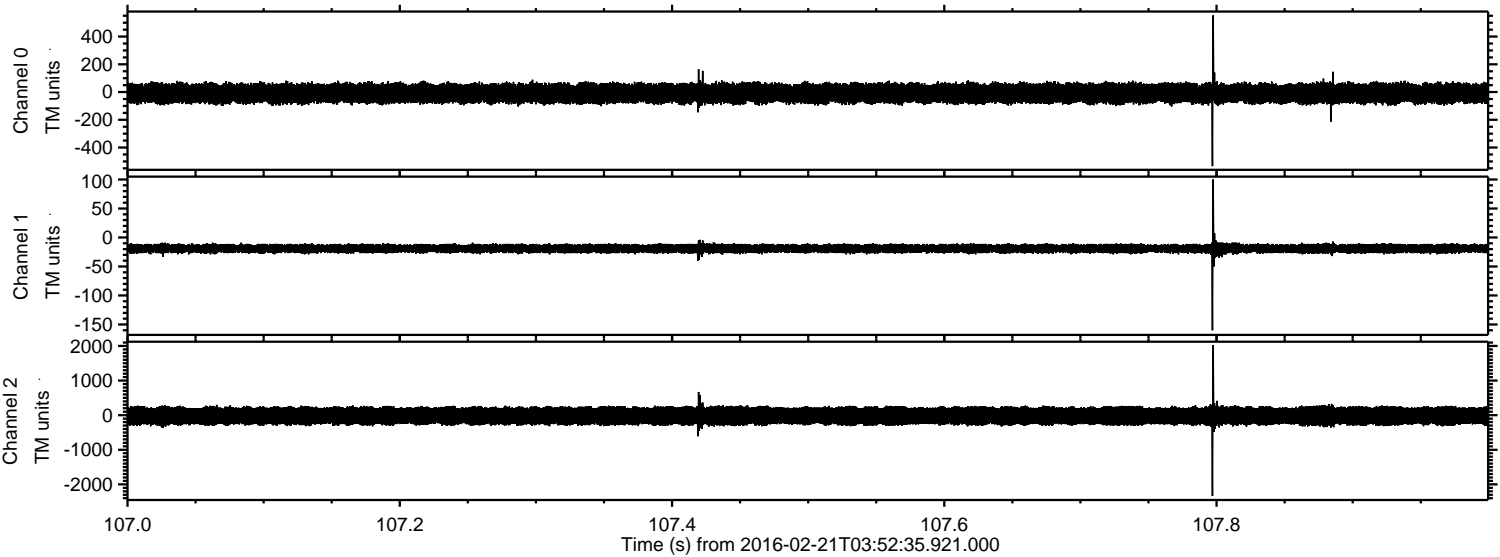


ELMAVAN 3D WAVEFORMS (Measured data sampled at 50 kHz) 51000 packets of 144 samples from 2016-02-21T03:52:35.921.000. Part 34/147

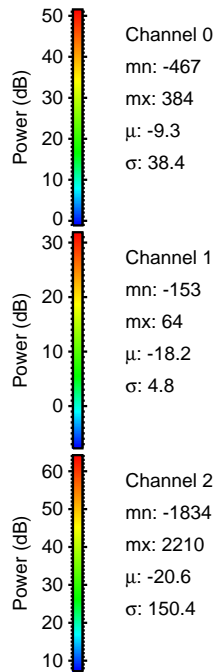
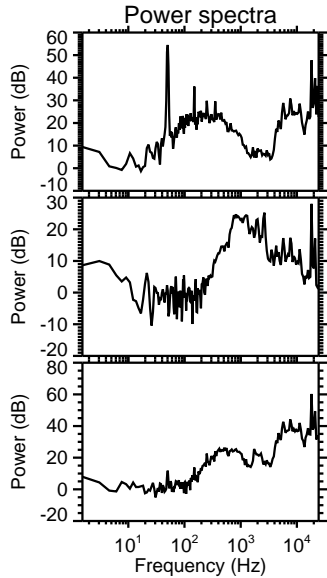
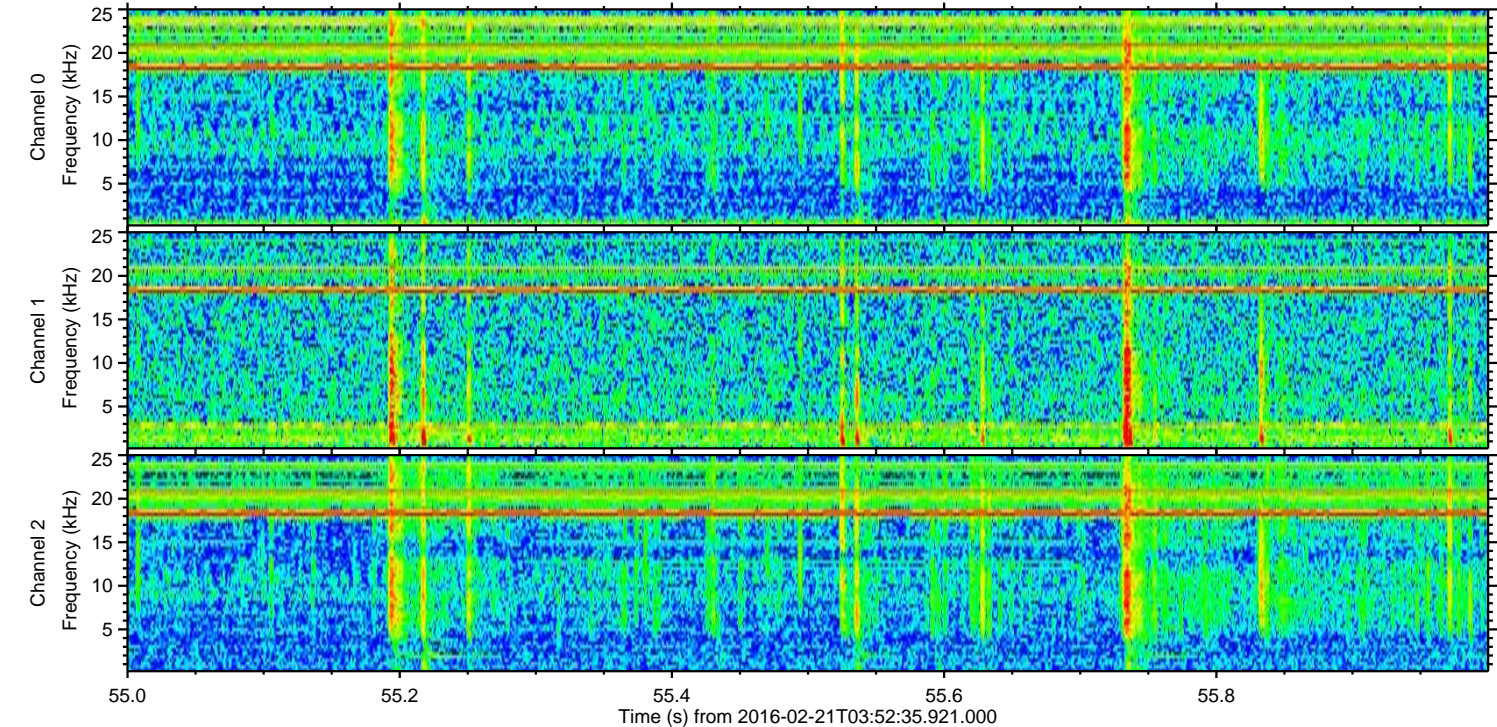
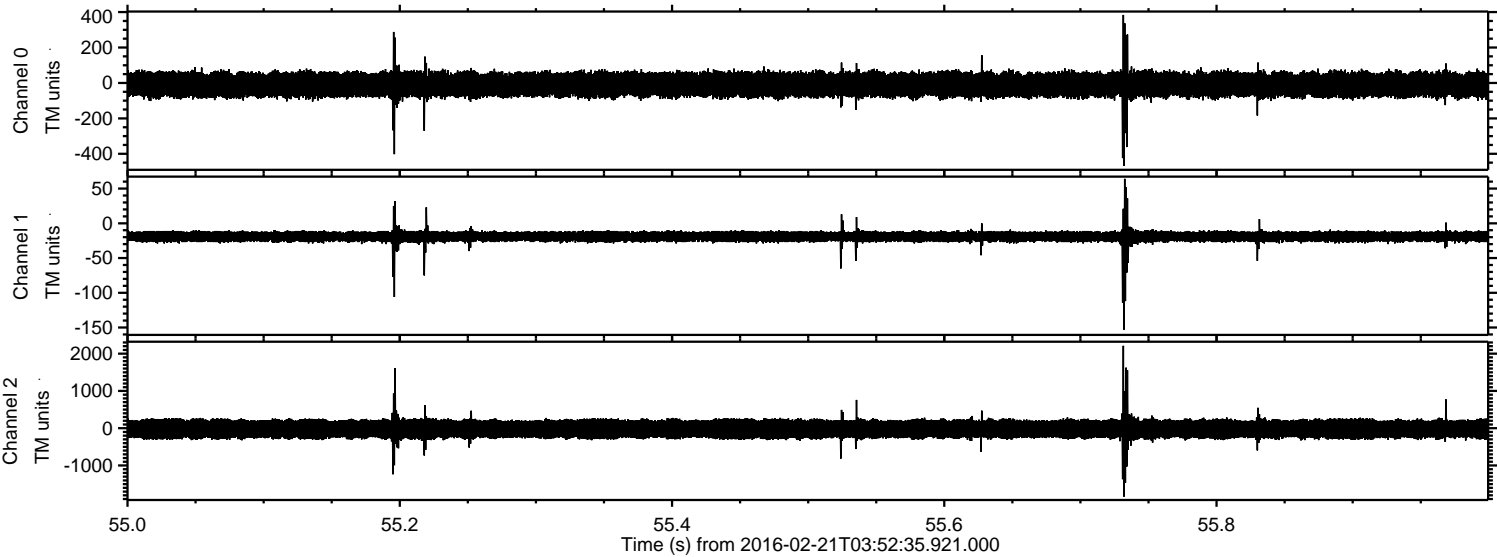
Processed Tue Apr 12 03:07:30 2016 by ELM ver.2012-10-06 from 001__elm20160221_035234__dat00.bin



Processed Tue Apr 12 03:07:31 2016 by ELM ver.2012-10-06 from 001__elm20160221_035234__dat00.bin



Processed Tue Apr 12 03:07:31 2016 by ELM ver.2012-10-06 from 001__elm20160221_035234__dat00.bin

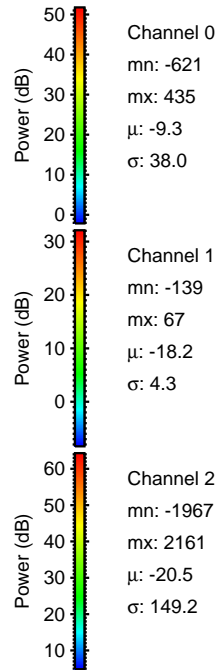
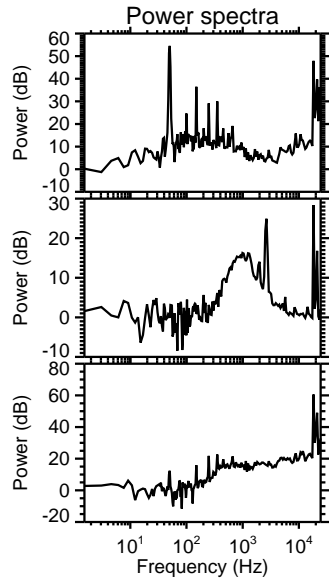
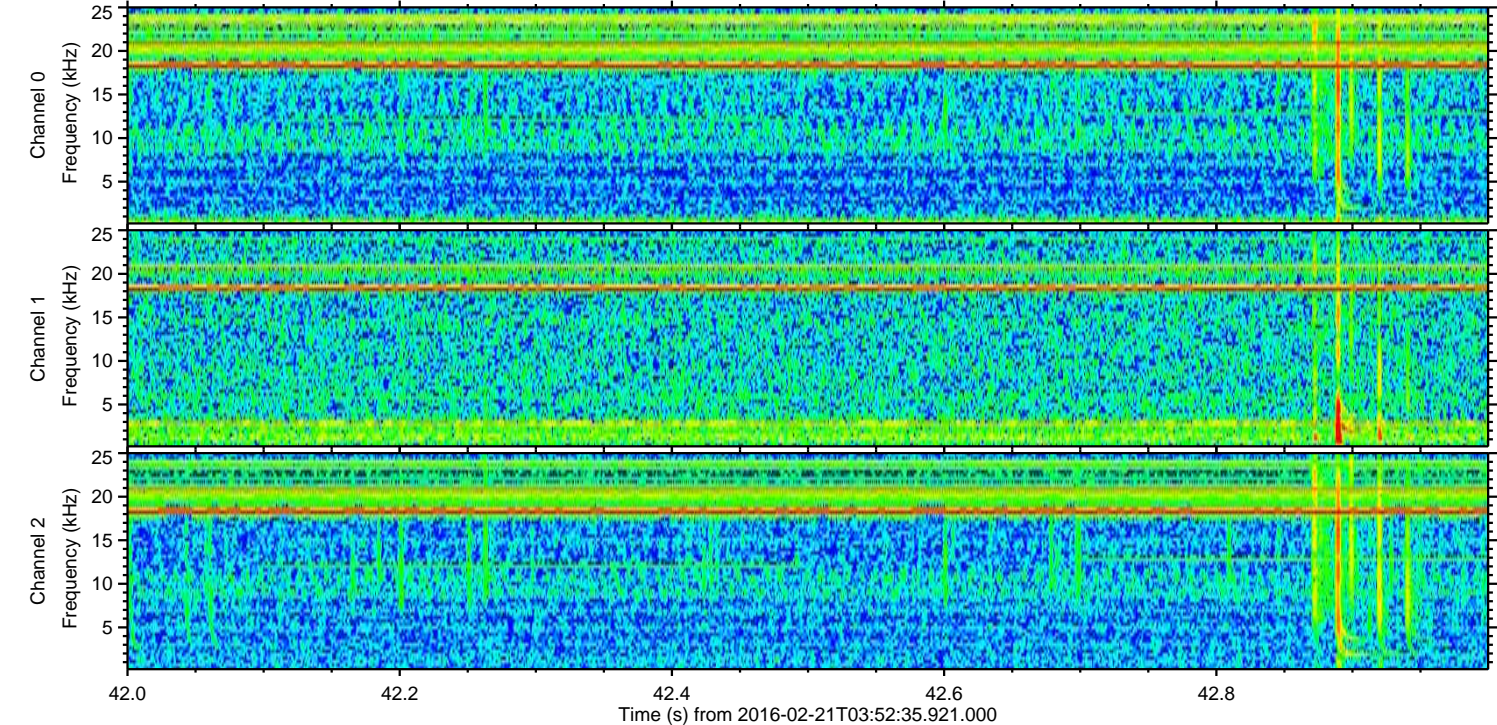
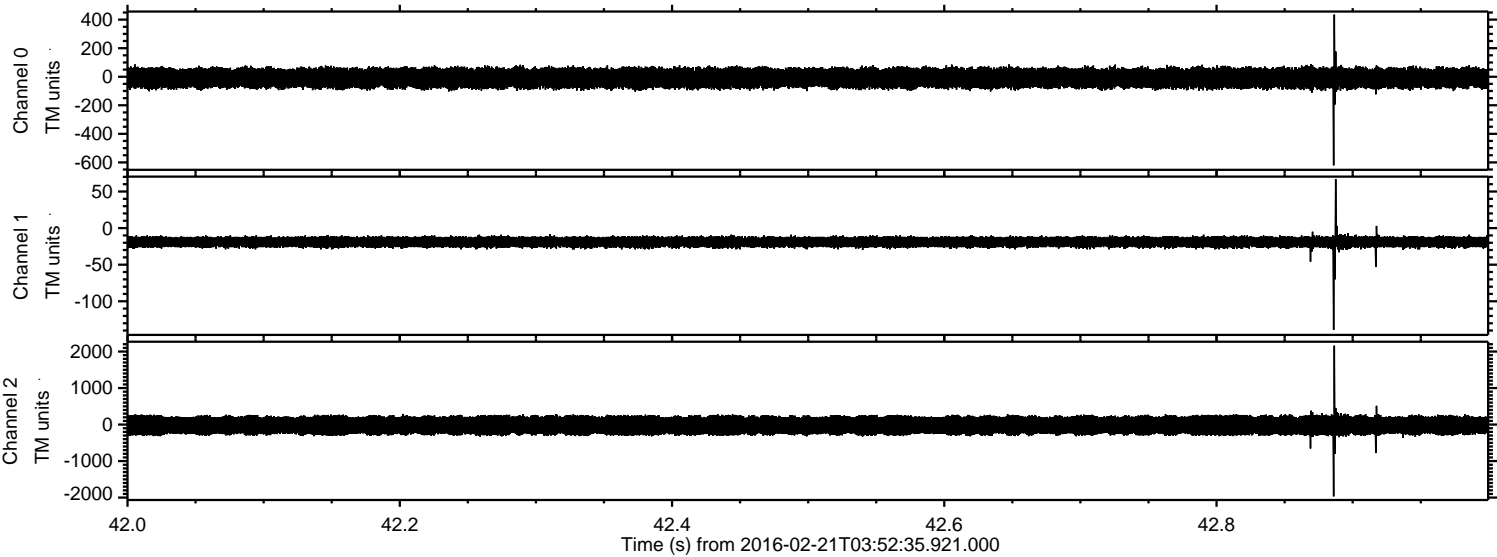


Channel 0
mn: -467
mx: 384
 μ : -9.3
 σ : 38.4

Channel 1
mn: -153
mx: 64
 μ : -18.2
 σ : 4.8

Channel 2
mn: -1834
mx: 2210
 μ : -20.6
 σ : 150.4

Processed Tue Apr 12 03:07:32 2016 by ELM ver.2012-10-06 from 001__elm20160221_035234__dat00.bin



Channel 0
mn: -621
mx: 435
 μ : -9.3
 σ : 38.0

Channel 1
mn: -139
mx: 67
 μ : -18.2
 σ : 4.3

Channel 2
mn: -1967
mx: 2161
 μ : -20.5
 σ : 149.2

Processed Tue Apr 12 03:07:33 2016 by ELM ver.2012-10-06 from 001__elm20160221_035234__dat00.bin

