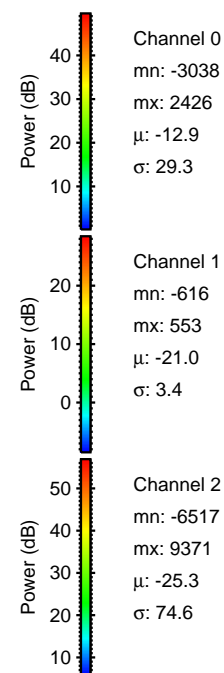
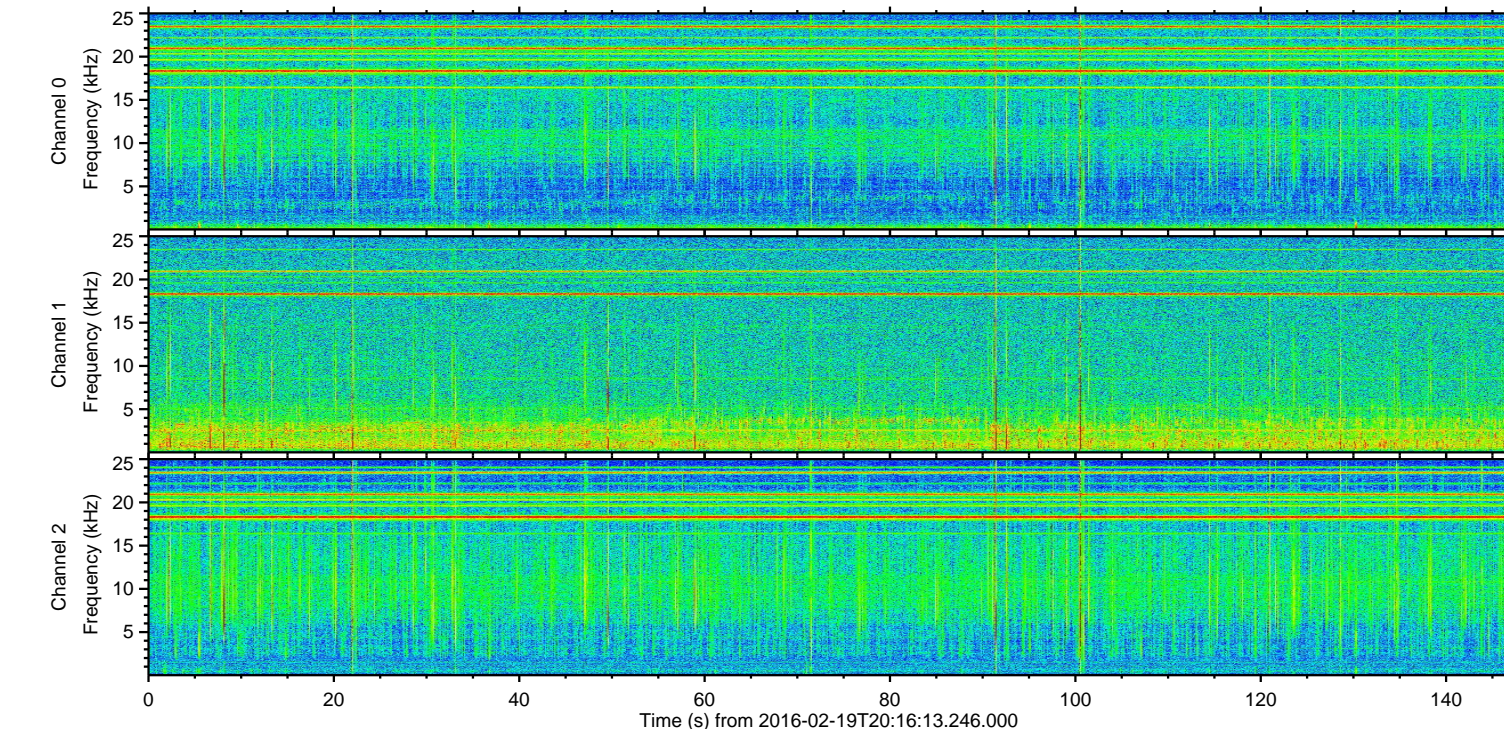
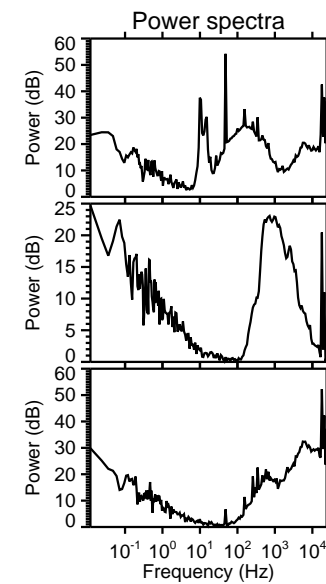
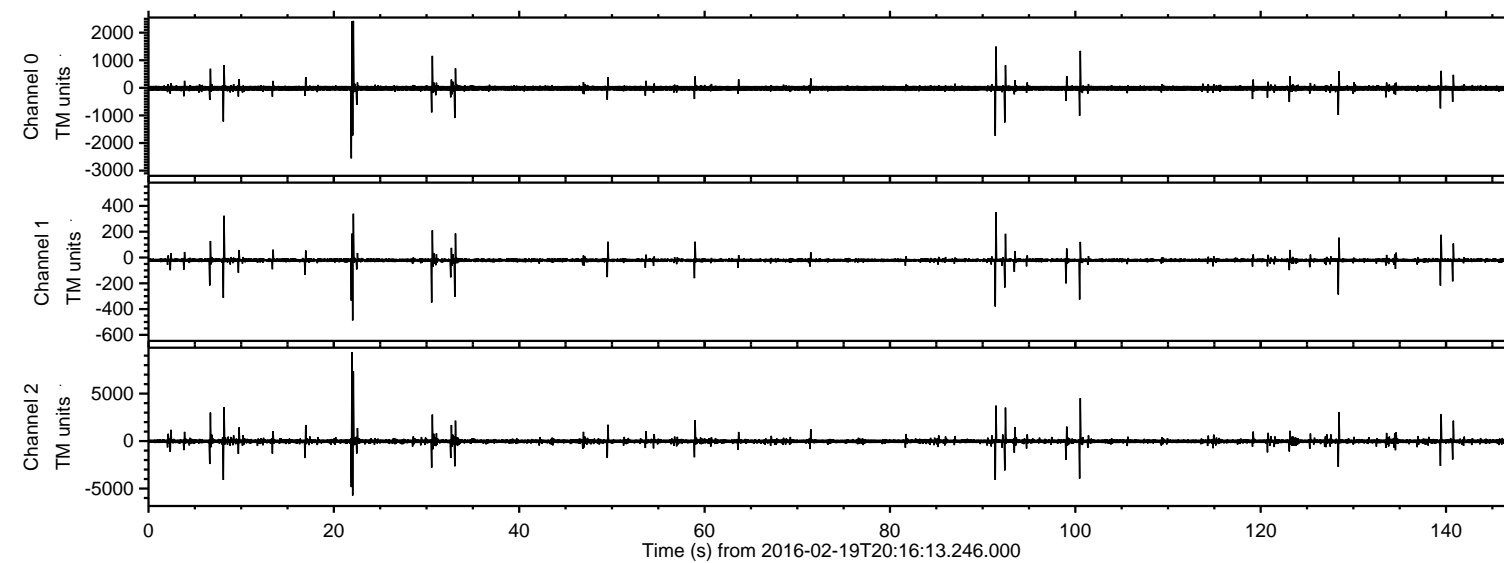
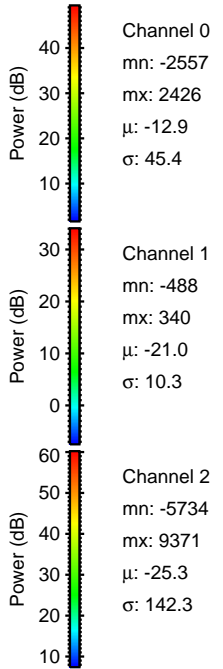
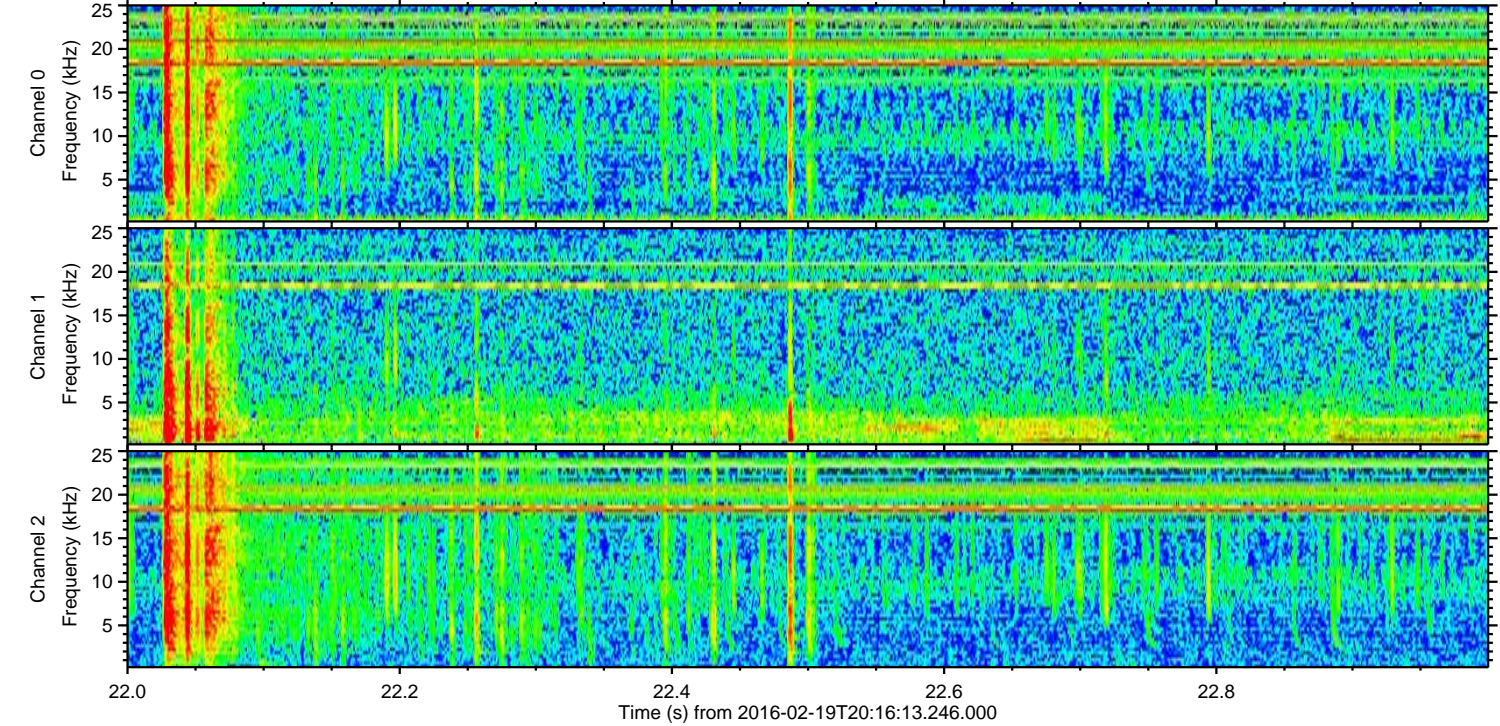
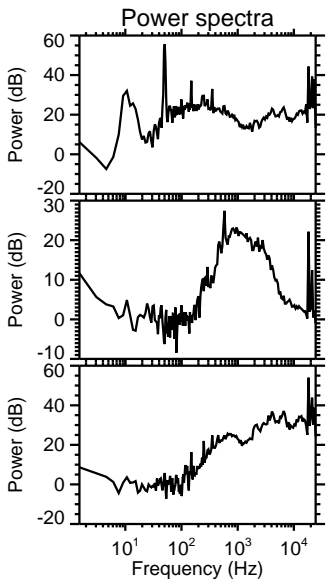
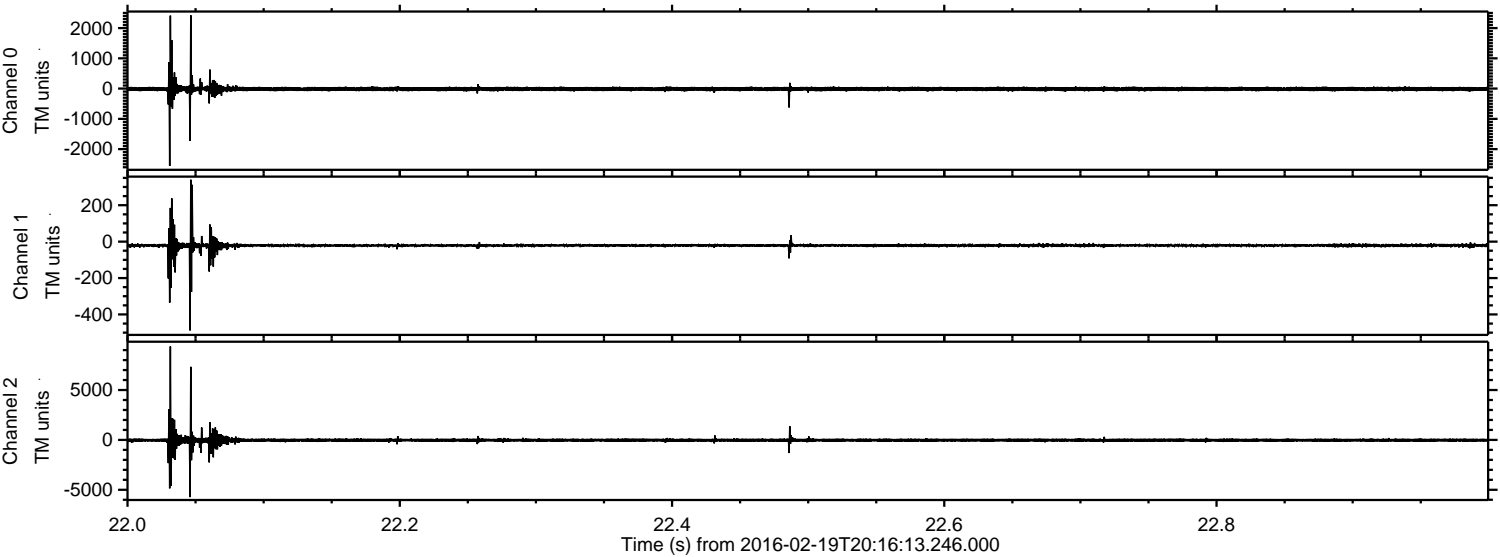


ELMAVAN 3D WAVEFORMS (Measured data sampled at 50 kHz) 51000 packets of 144 samples from 2016-02-19T20:16:13.246.000.

Processed Mon Apr 11 20:38:40 2016 by ELM ver.2012-10-06 from 001__elm20160219_201612__dat00.bin

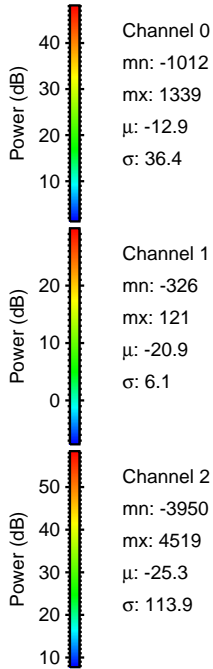
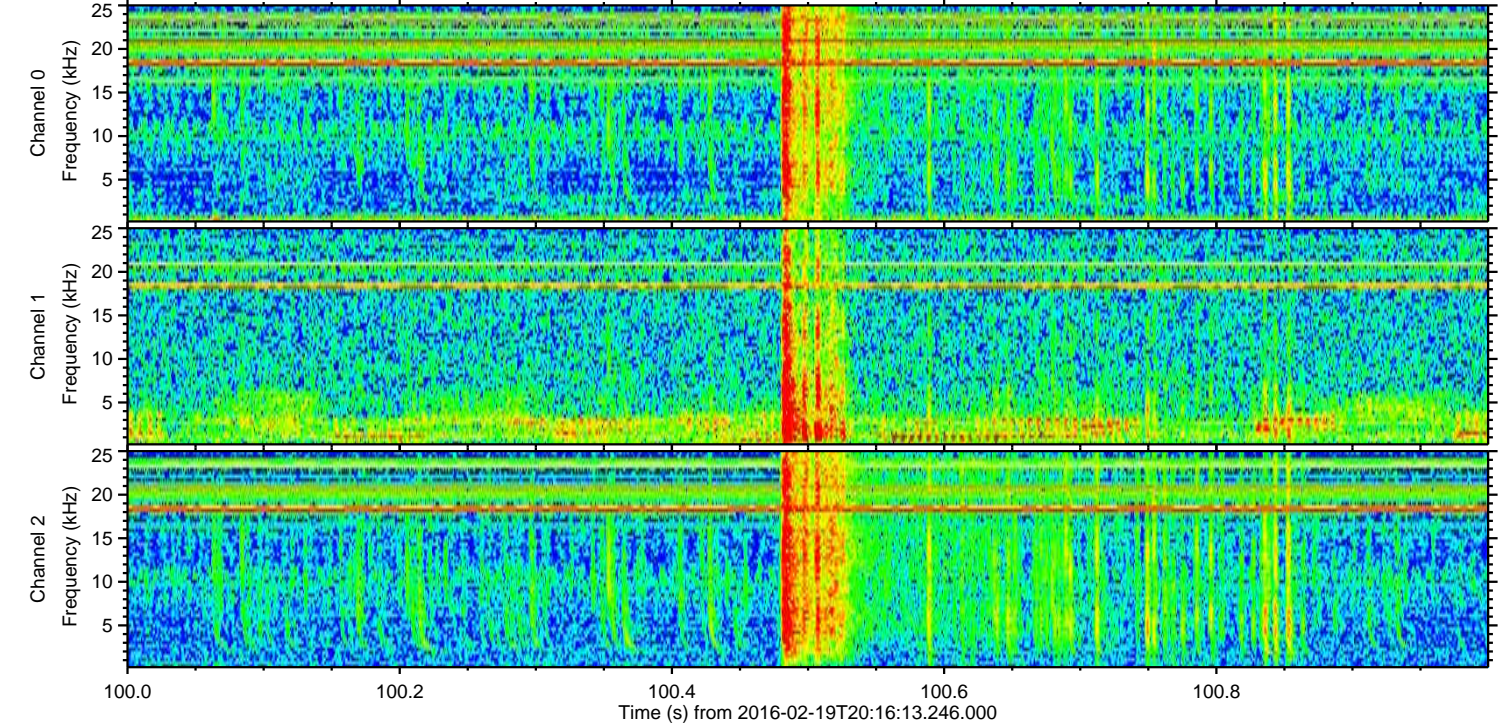
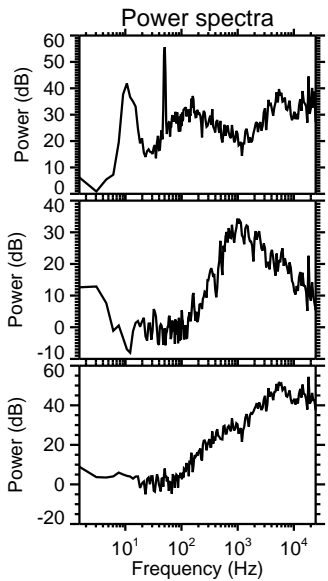
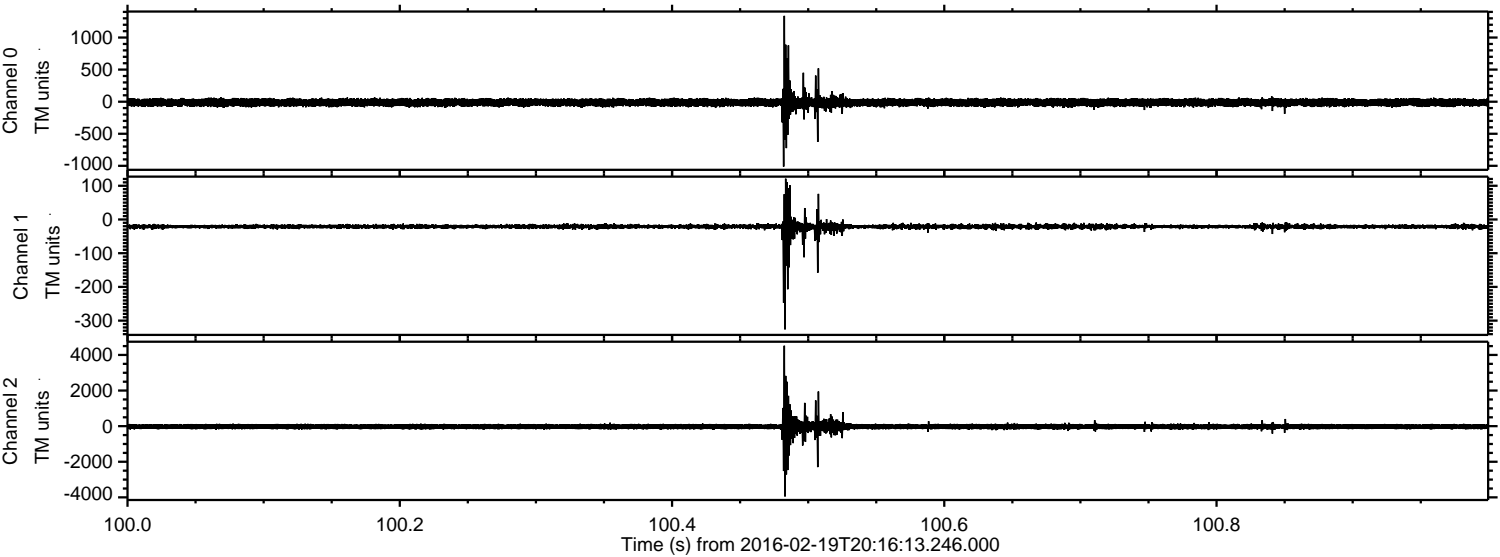


Processed Mon Apr 11 20:38:52 2016 by ELM ver.2012-10-06 from 001__elm20160219_201612__dat00.bin

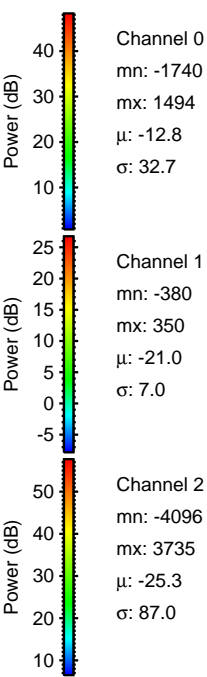
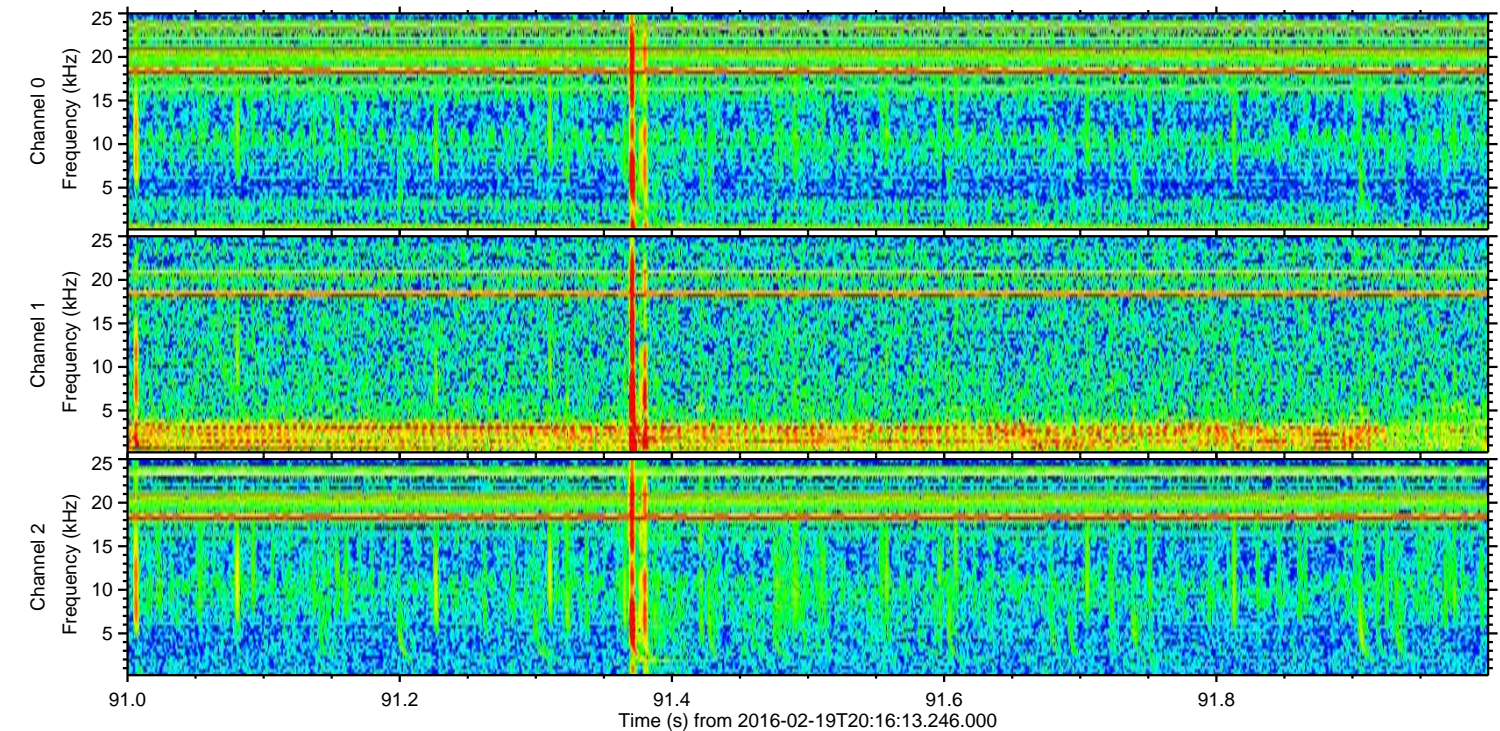
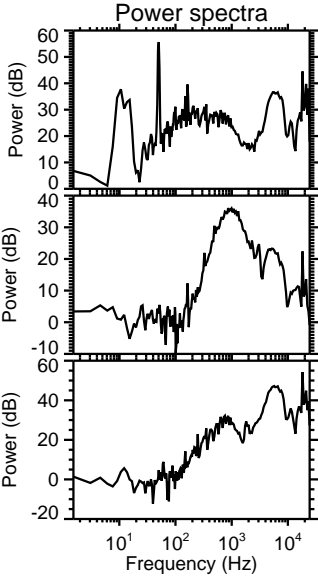
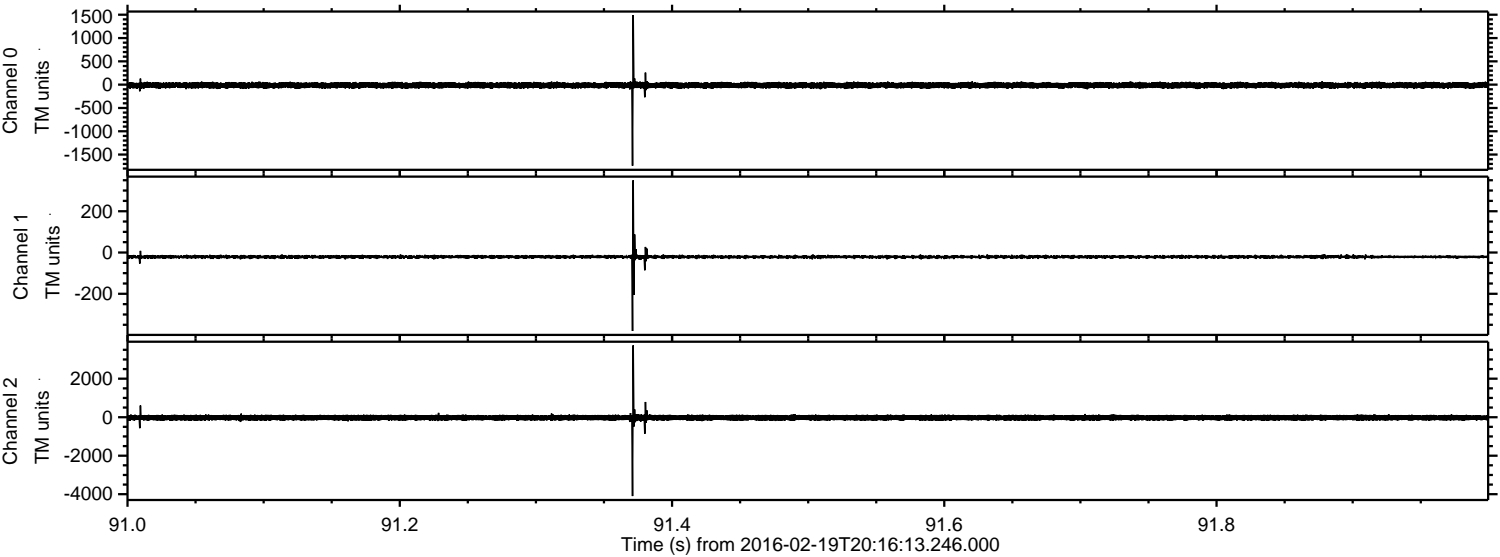


ELMAVAN 3D WAVEFORMS (Measured data sampled at 50 kHz) 51000 packets of 144 samples from 2016-02-19T20:16:13.246.000. Part 101/147

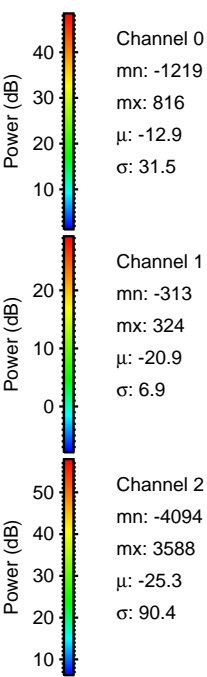
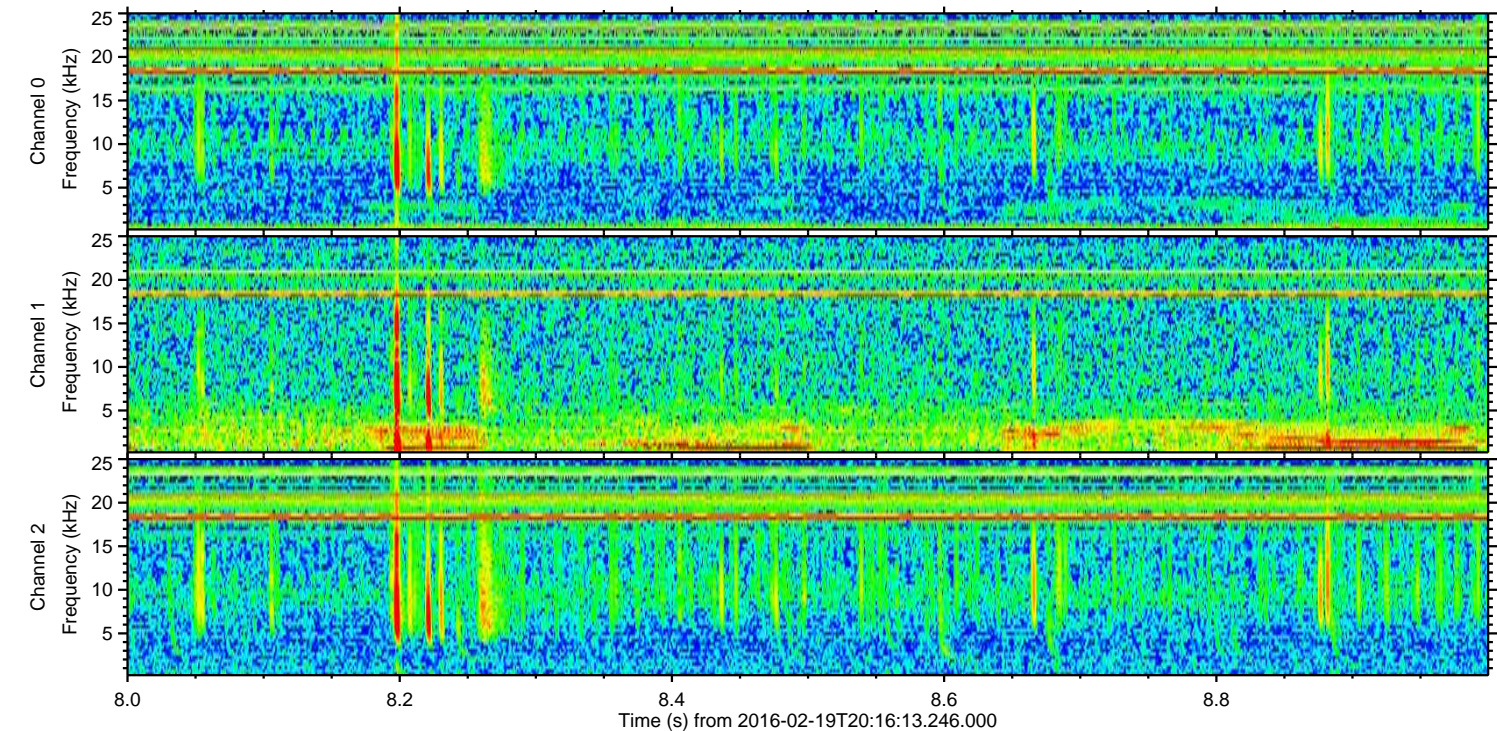
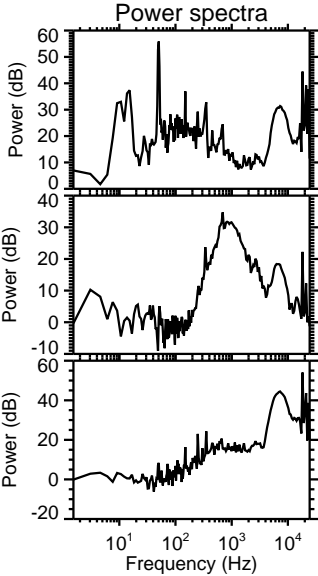
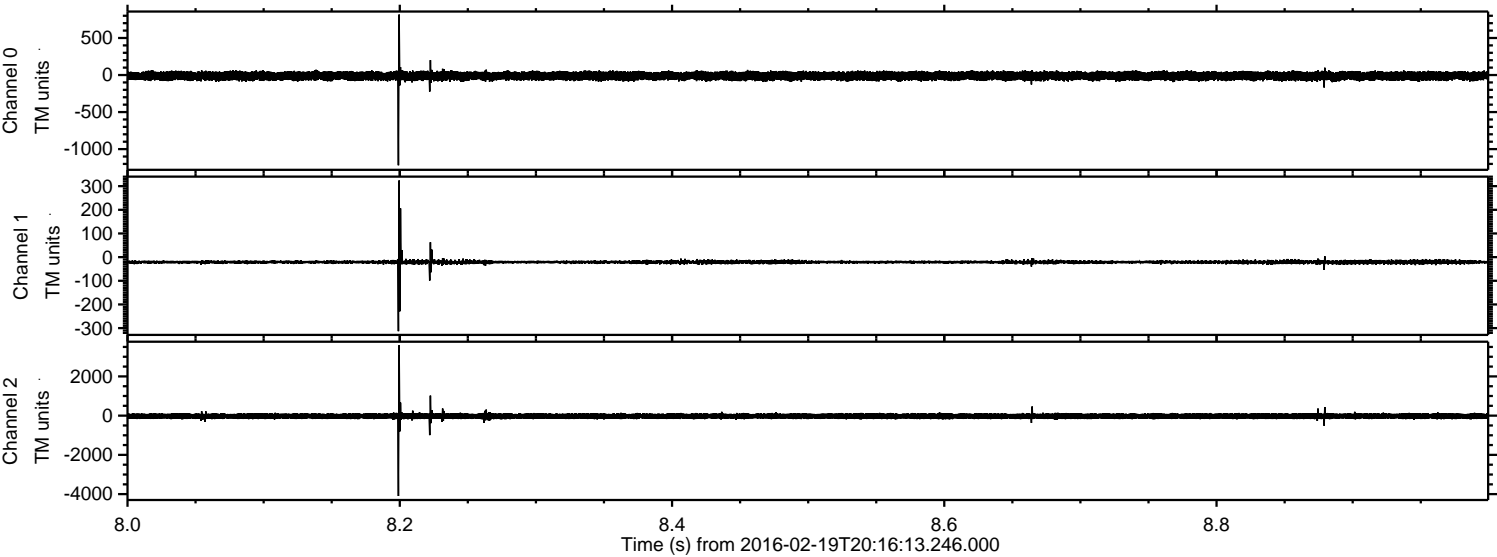
Processed Mon Apr 11 20:38:53 2016 by ELM ver.2012-10-06 from 001__elm20160219_201612__dat00.bin



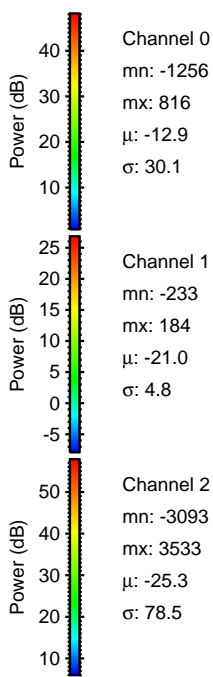
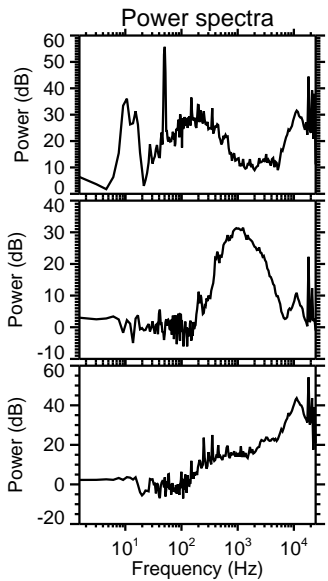
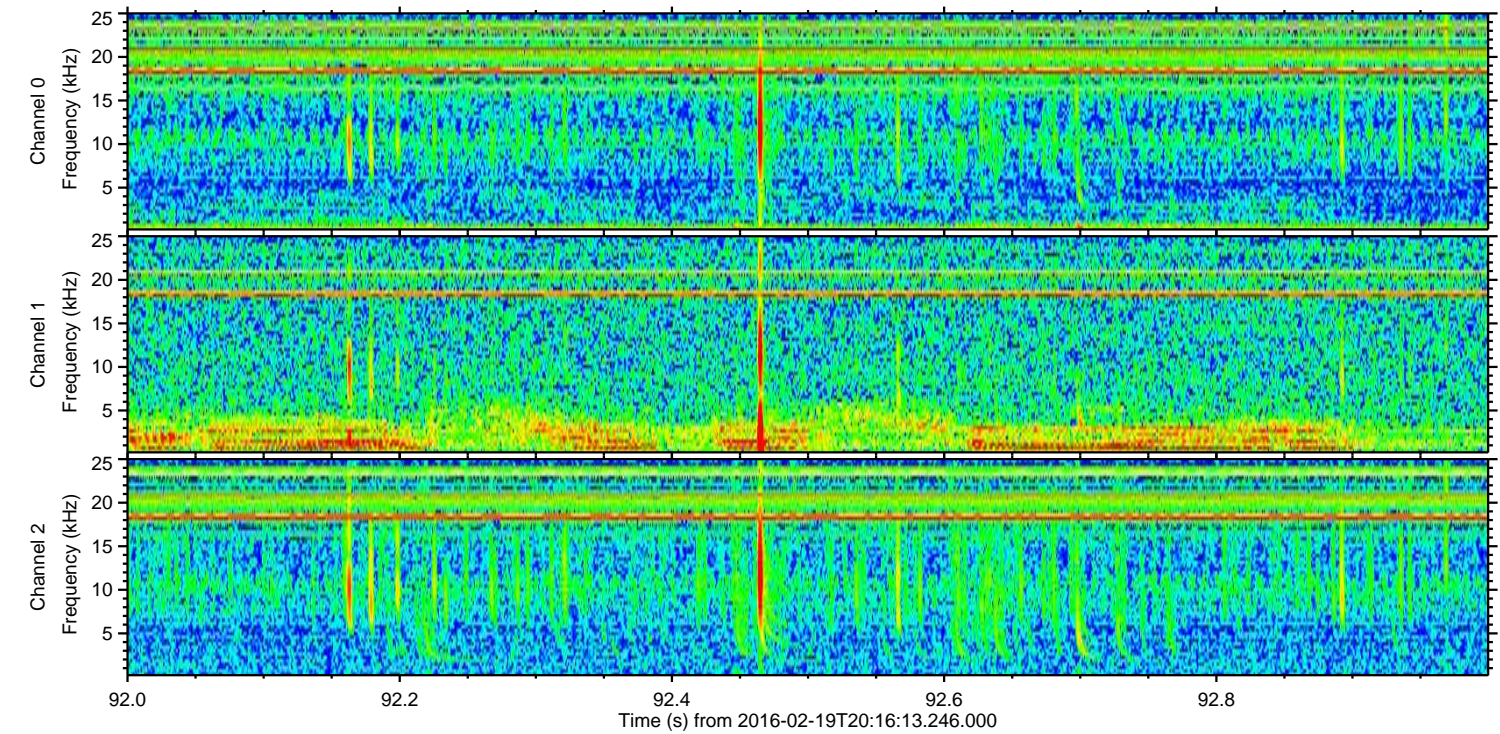
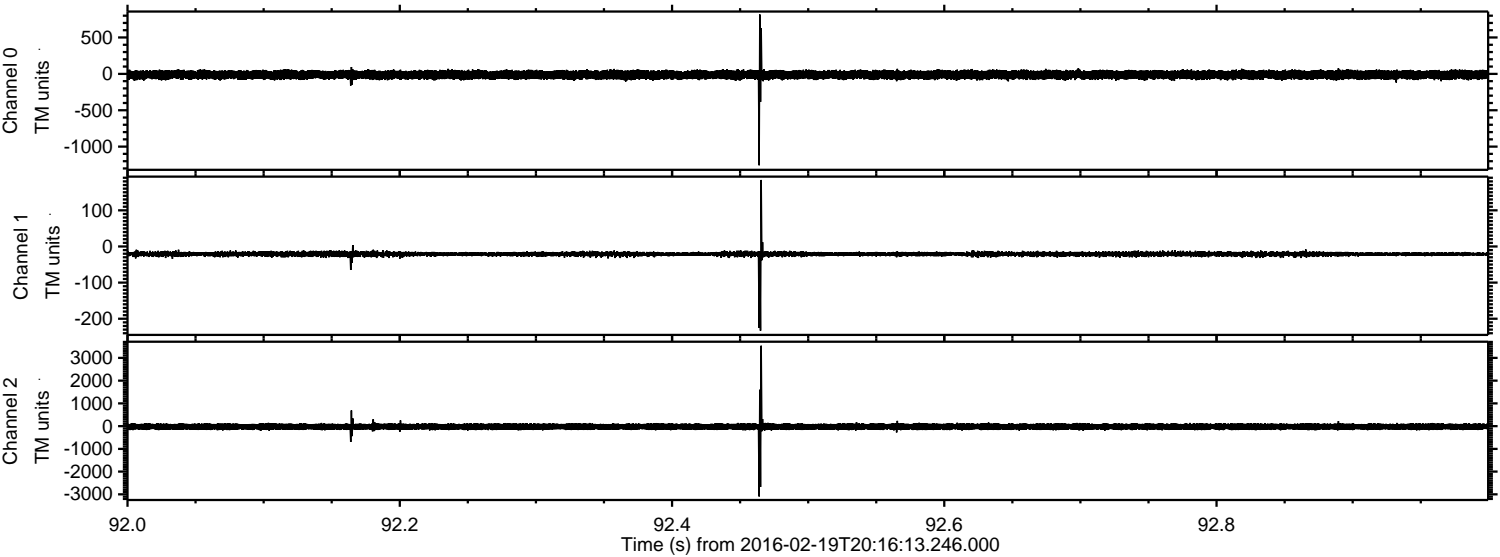
Processed Mon Apr 11 20:38:54 2016 by ELM ver.2012-10-06 from 001__elm20160219_201612__dat00.bin



Processed Mon Apr 11 20:38:54 2016 by ELM ver.2012-10-06 from 001__elm20160219_201612__dat00.bin

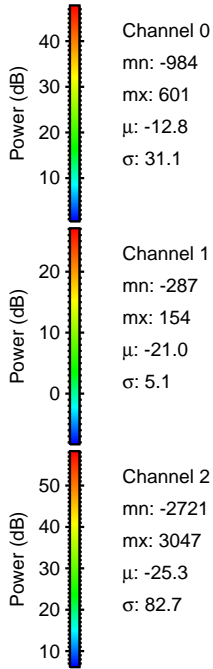
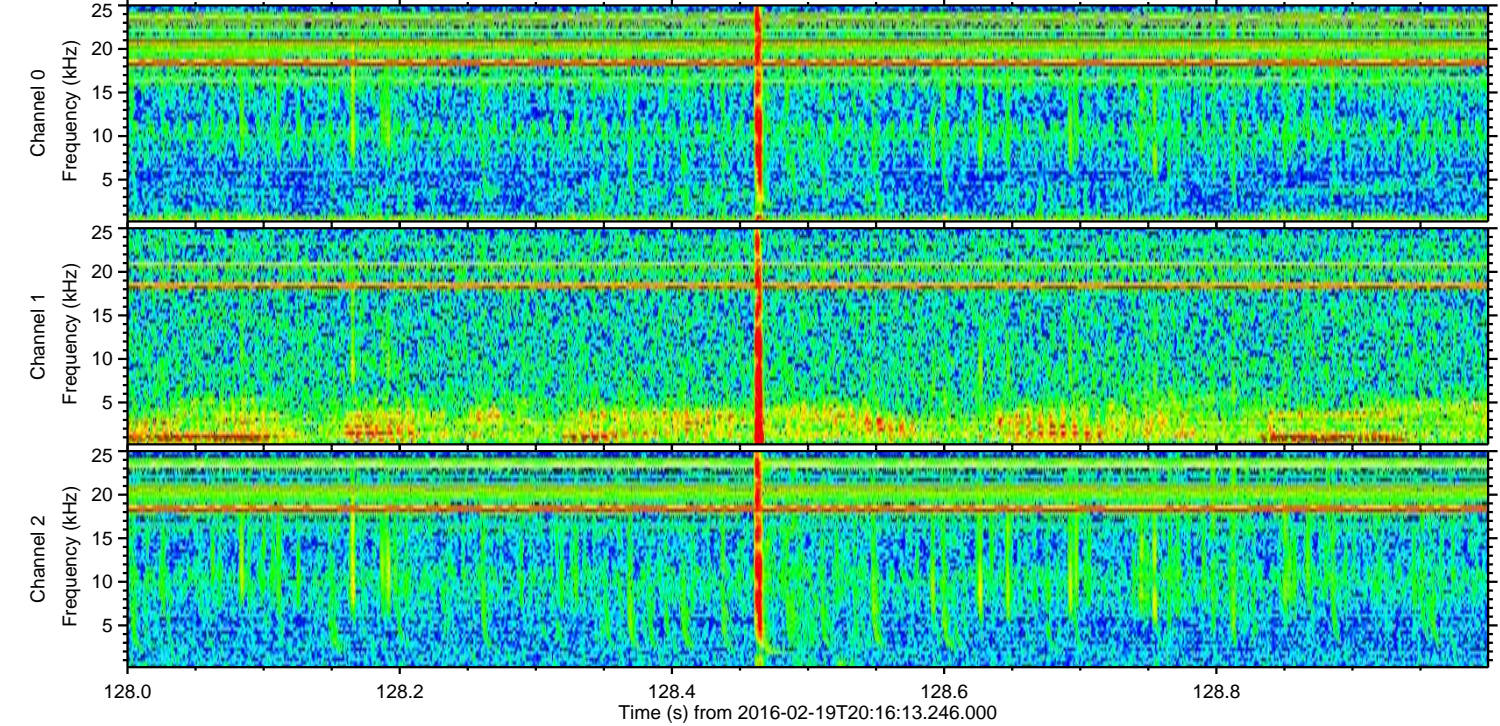
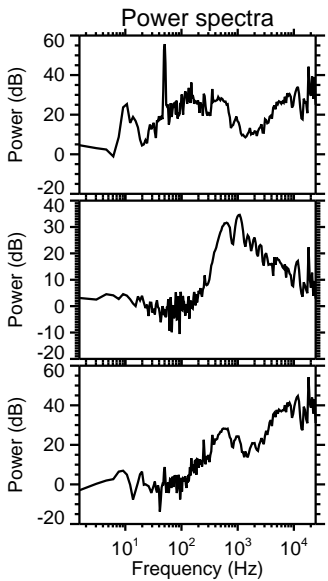
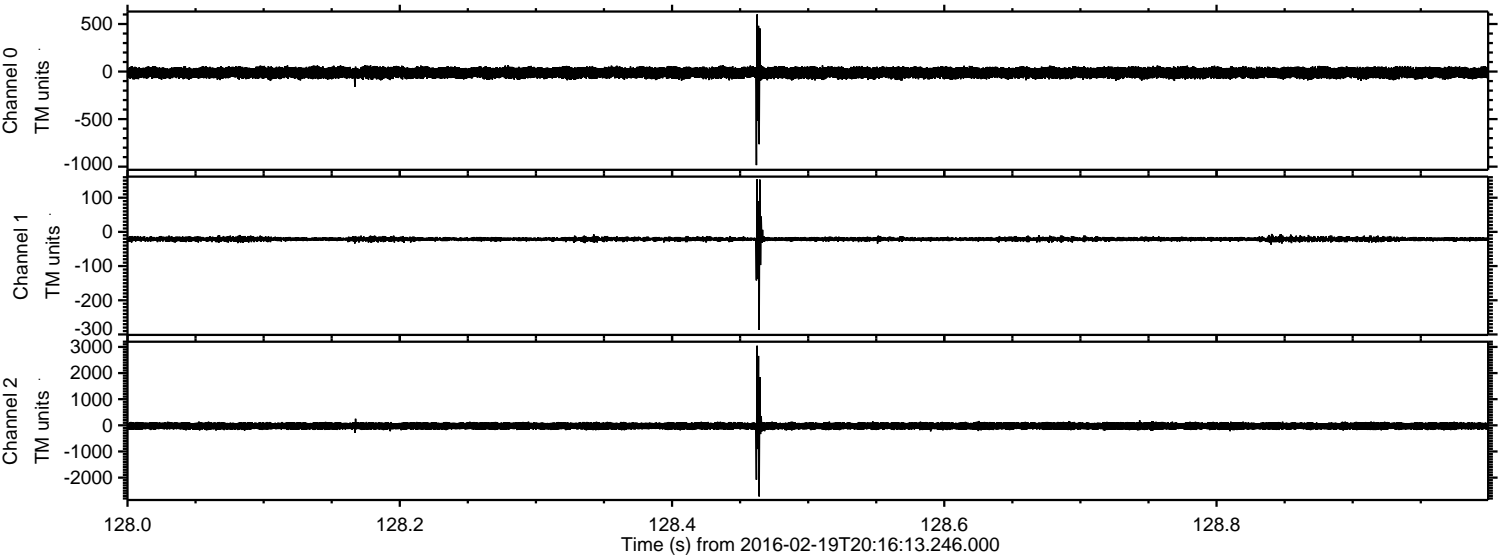


Processed Mon Apr 11 20:38:55 2016 by ELM ver.2012-10-06 from 001__elm20160219_201612__dat00.bin

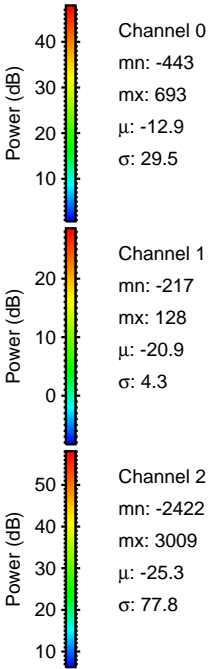
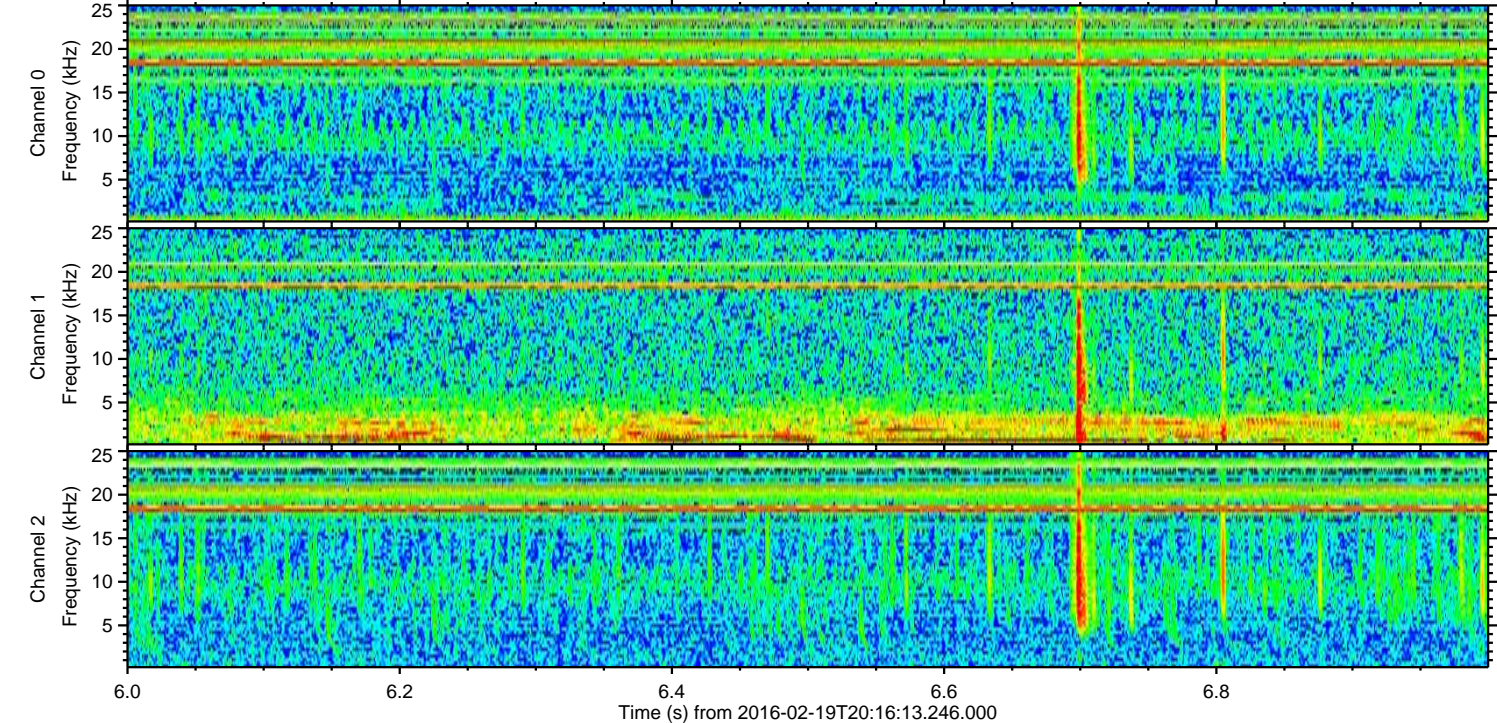
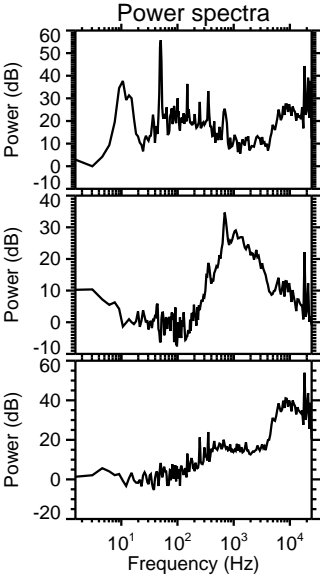
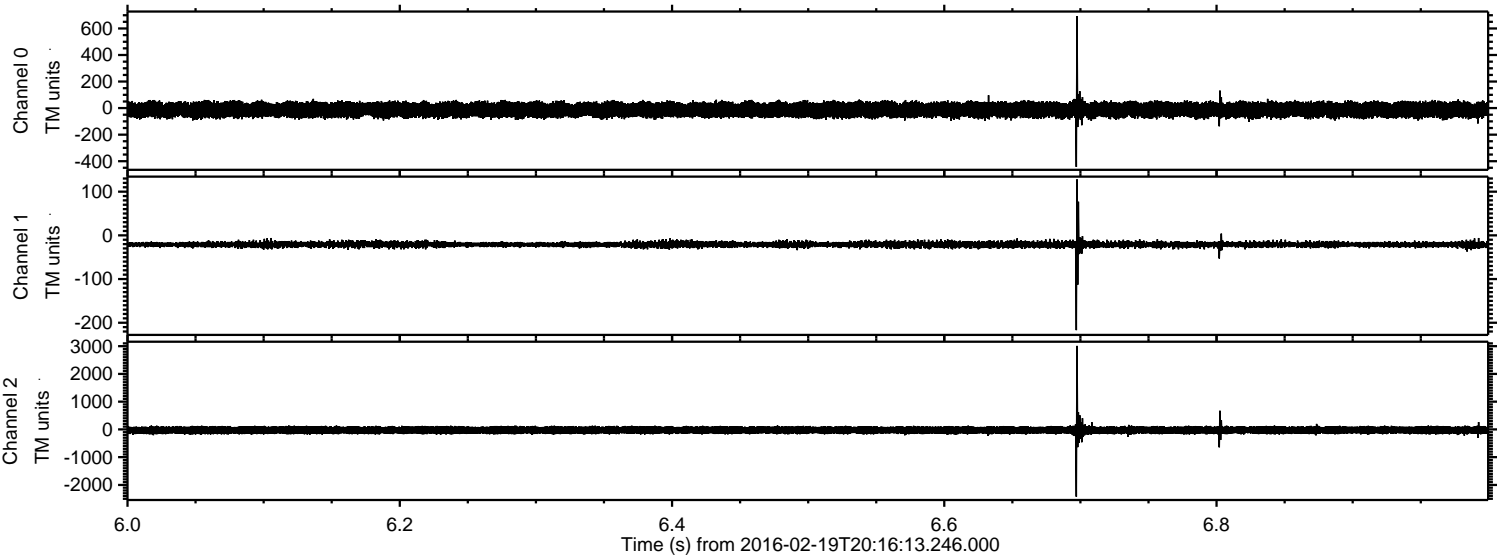


ELMAVAN 3D WAVEFORMS (Measured data sampled at 50 kHz) 51000 packets of 144 samples from 2016-02-19T20:16:13.246.000. Part 129/147

Processed Mon Apr 11 20:38:56 2016 by ELM ver.2012-10-06 from 001__elm20160219_201612__dat00.bin

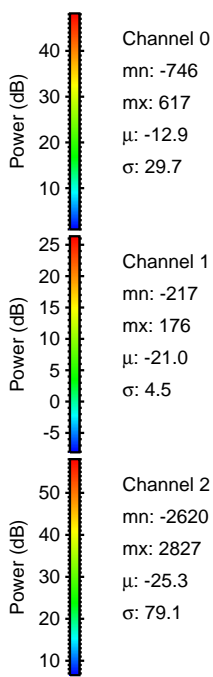
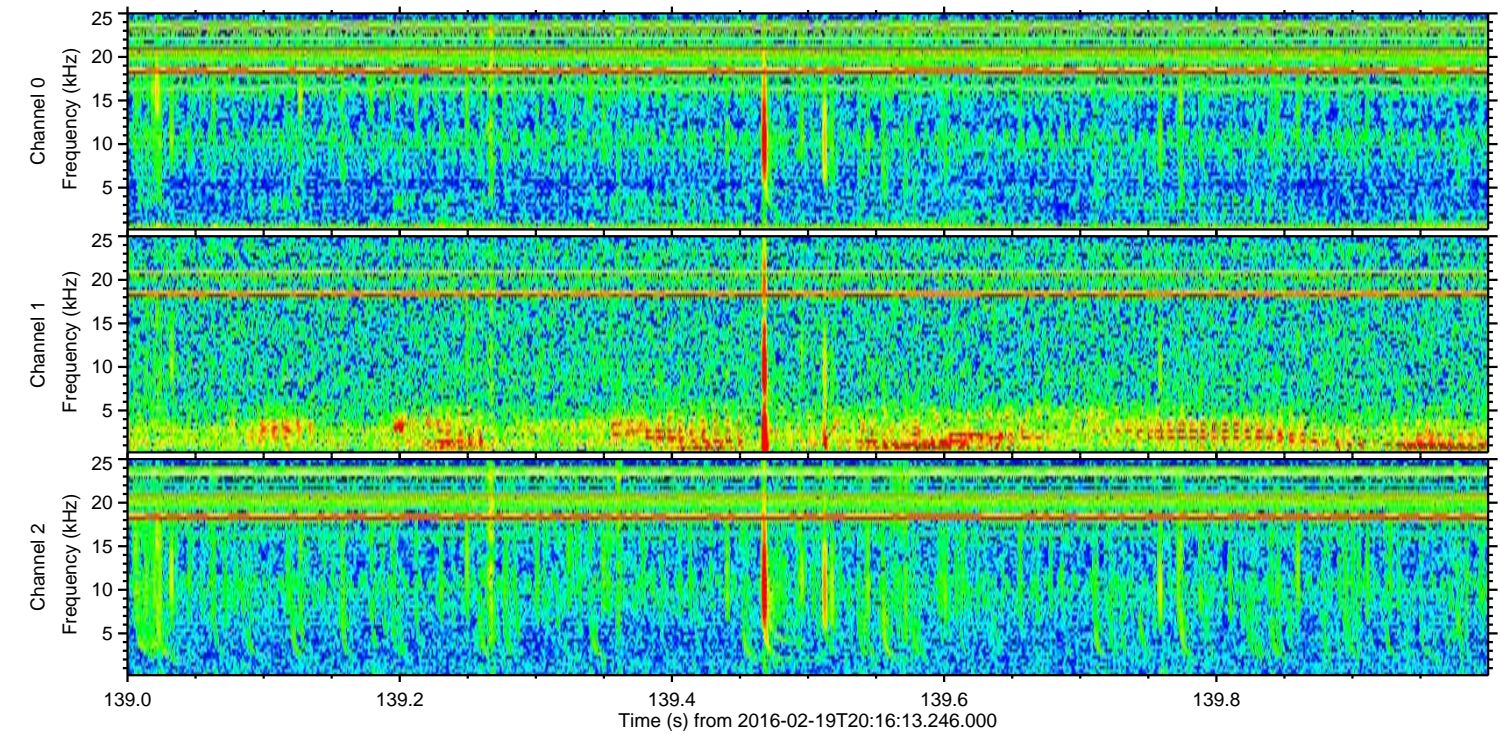
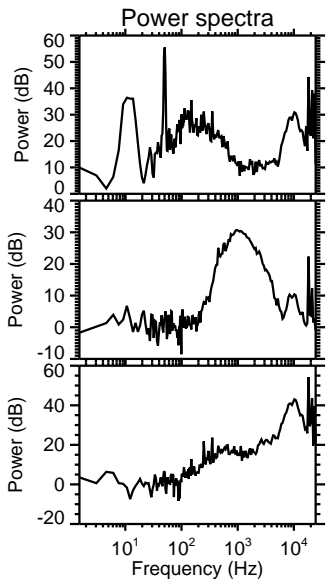
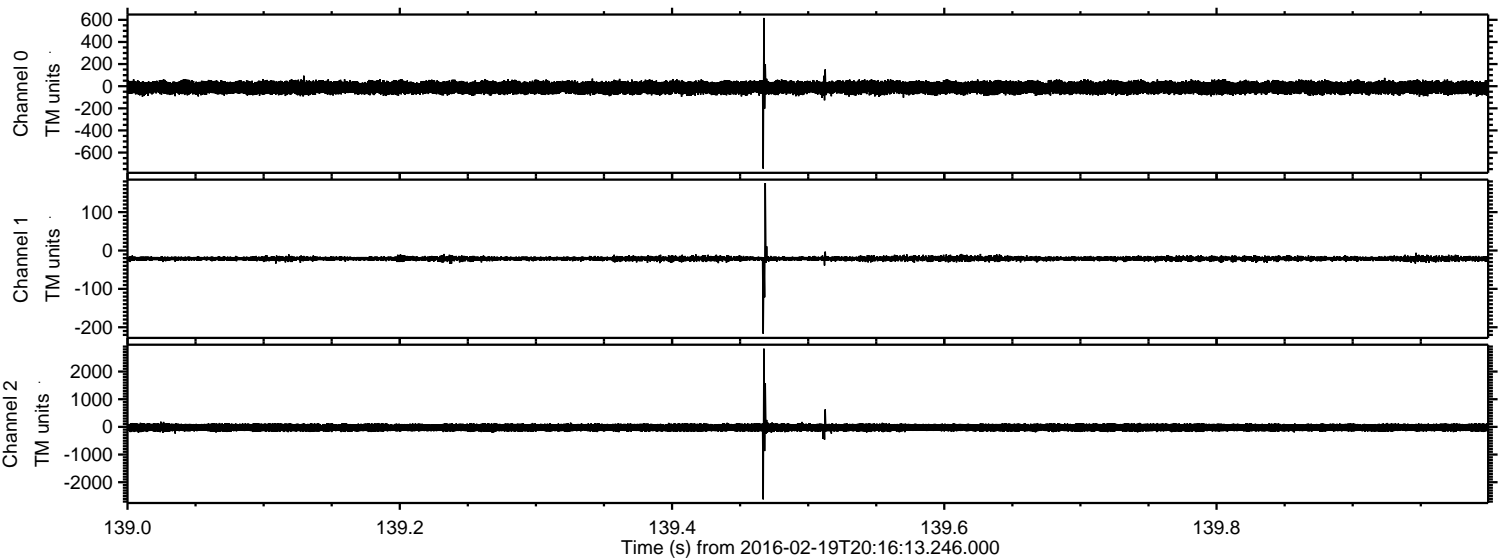


Processed Mon Apr 11 20:38:57 2016 by ELM ver.2012-10-06 from 001__elm20160219_201612__dat00.bin



ELMAVAN 3D WAVEFORMS (Measured data sampled at 50 kHz) 51000 packets of 144 samples from 2016-02-19T20:16:13.246.000. Part 140/147

Processed Mon Apr 11 20:38:58 2016 by ELM ver.2012-10-06 from 001__elm20160219_201612__dat00.bin

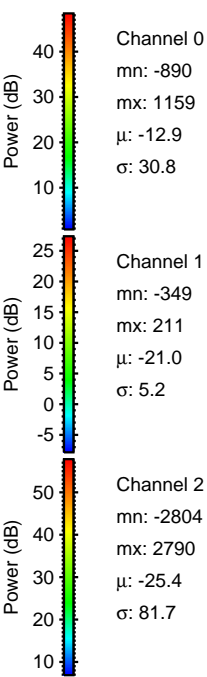
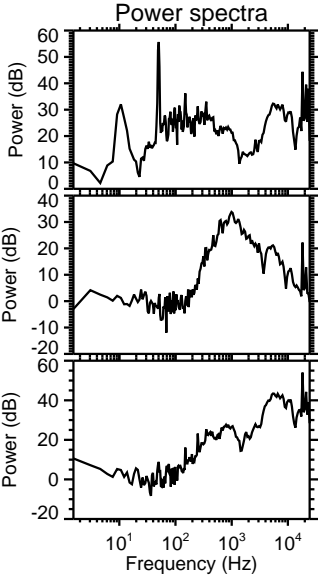
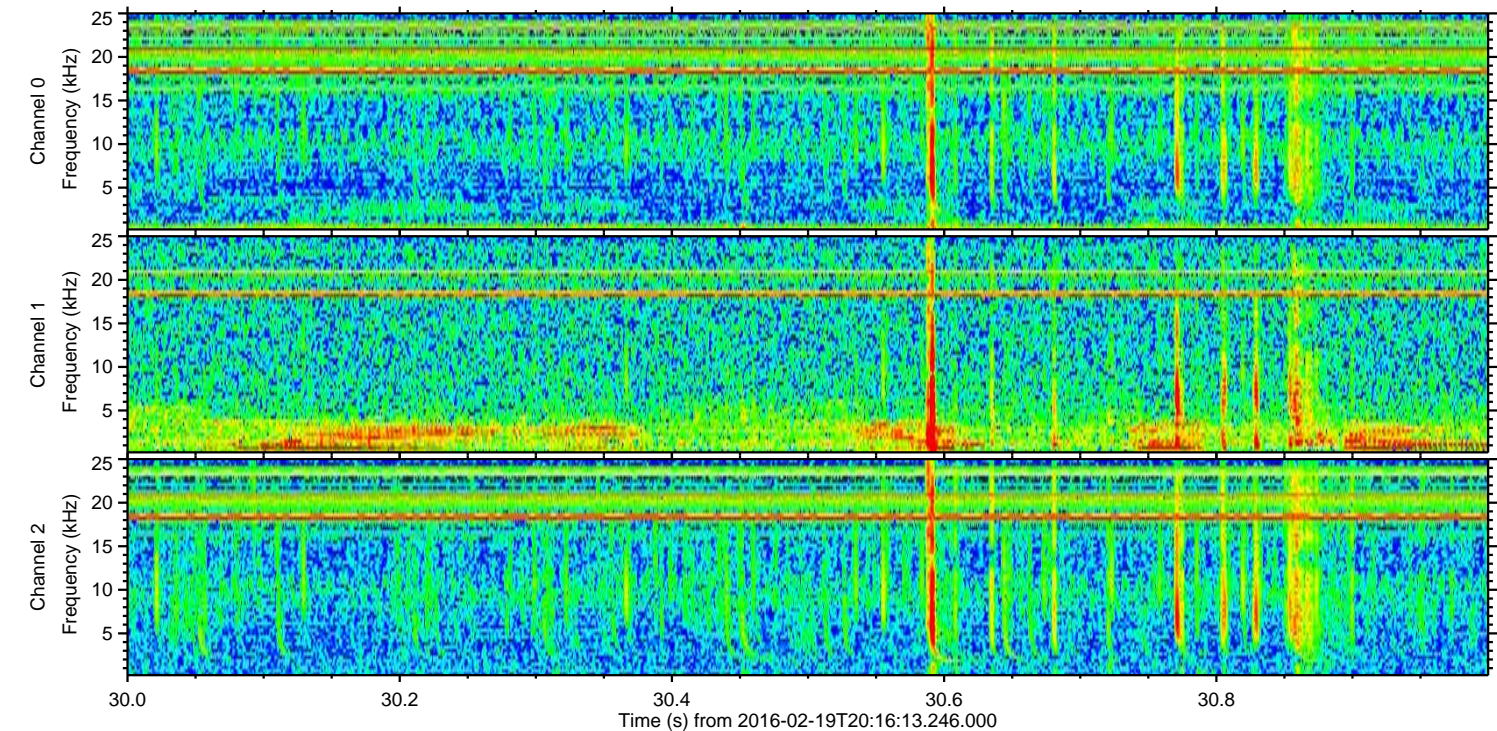
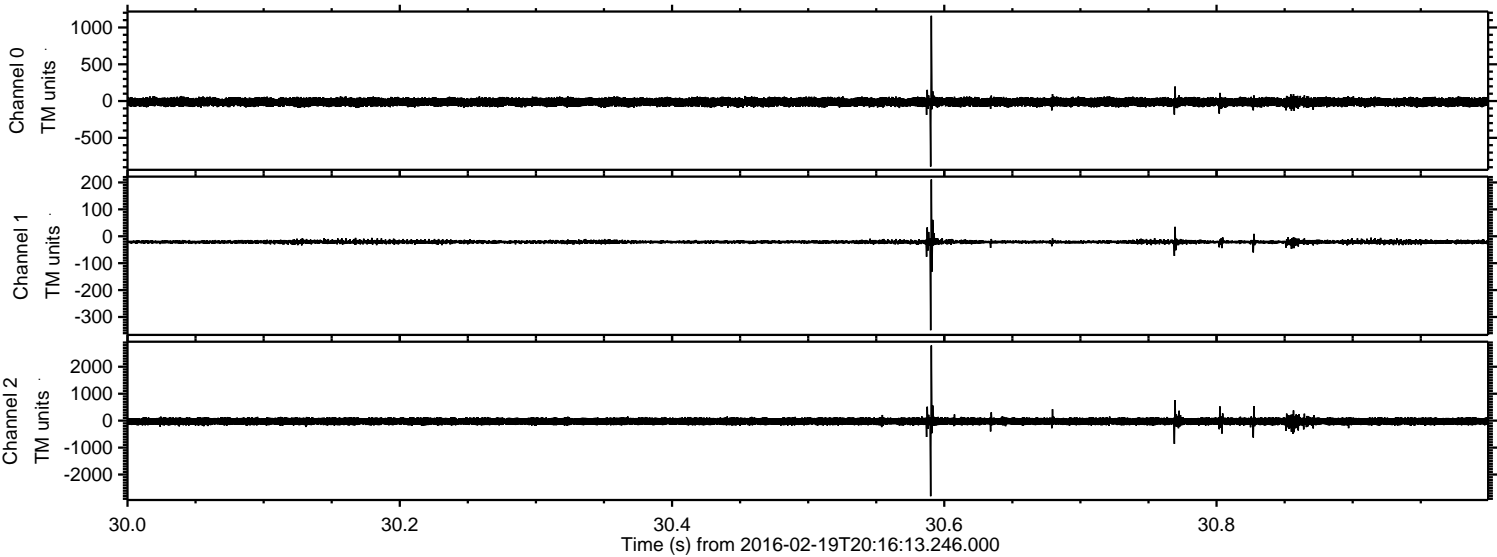


Channel 0
mn: -746
mx: 617
 μ : -12.9
 σ : 29.7

Channel 1
mn: -217
mx: 176
 μ : -21.0
 σ : 4.5

Channel 2
mn: -2620
mx: 2827
 μ : -25.3
 σ : 79.1

Processed Mon Apr 11 20:38:59 2016 by ELM ver.2012-10-06 from 001__elm20160219_201612__dat00.bin



Processed Mon Apr 11 20:39:00 2016 by ELM ver.2012-10-06 from 001__elm20160219_201612__dat00.bin

