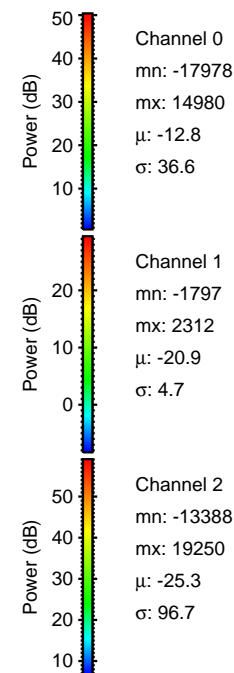
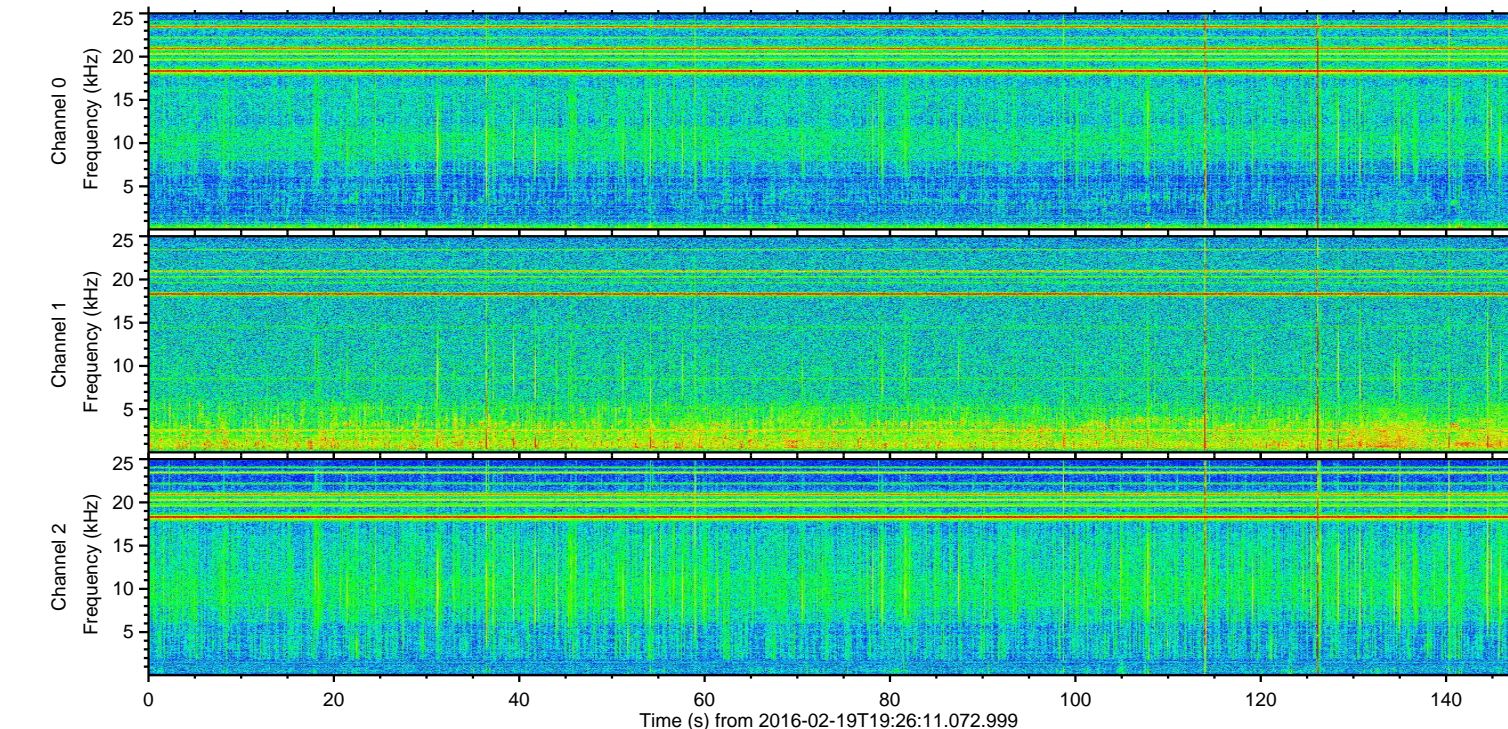
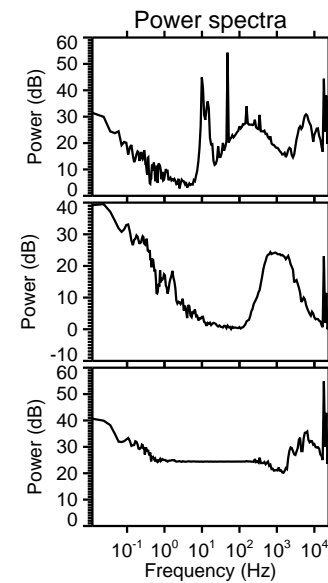
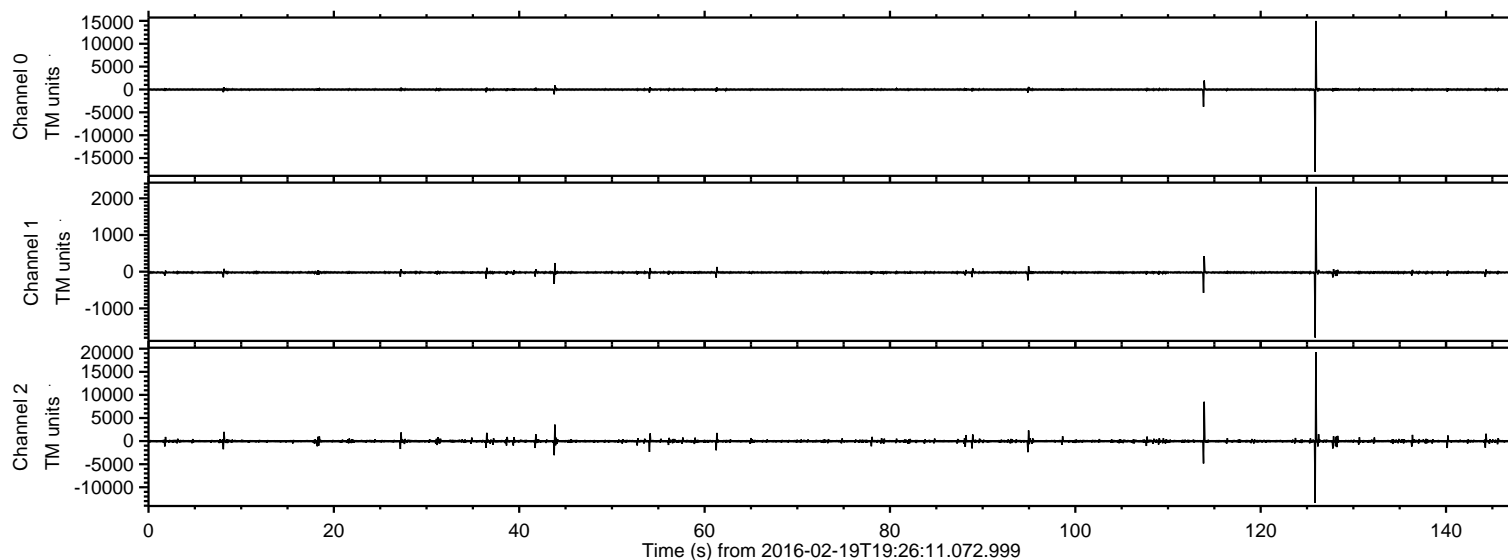


# ELMAVAN 3D WAVEFORMS (Measured data sampled at 50 kHz) 51000 packets of 144 samples from 2016-02-19T19:26:11.072.999.

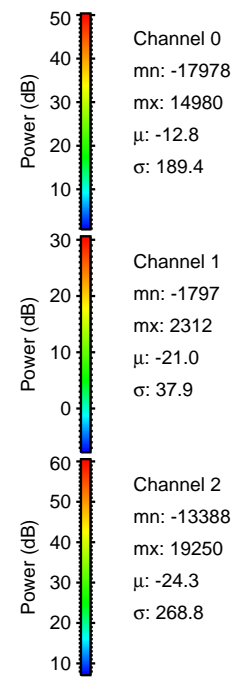
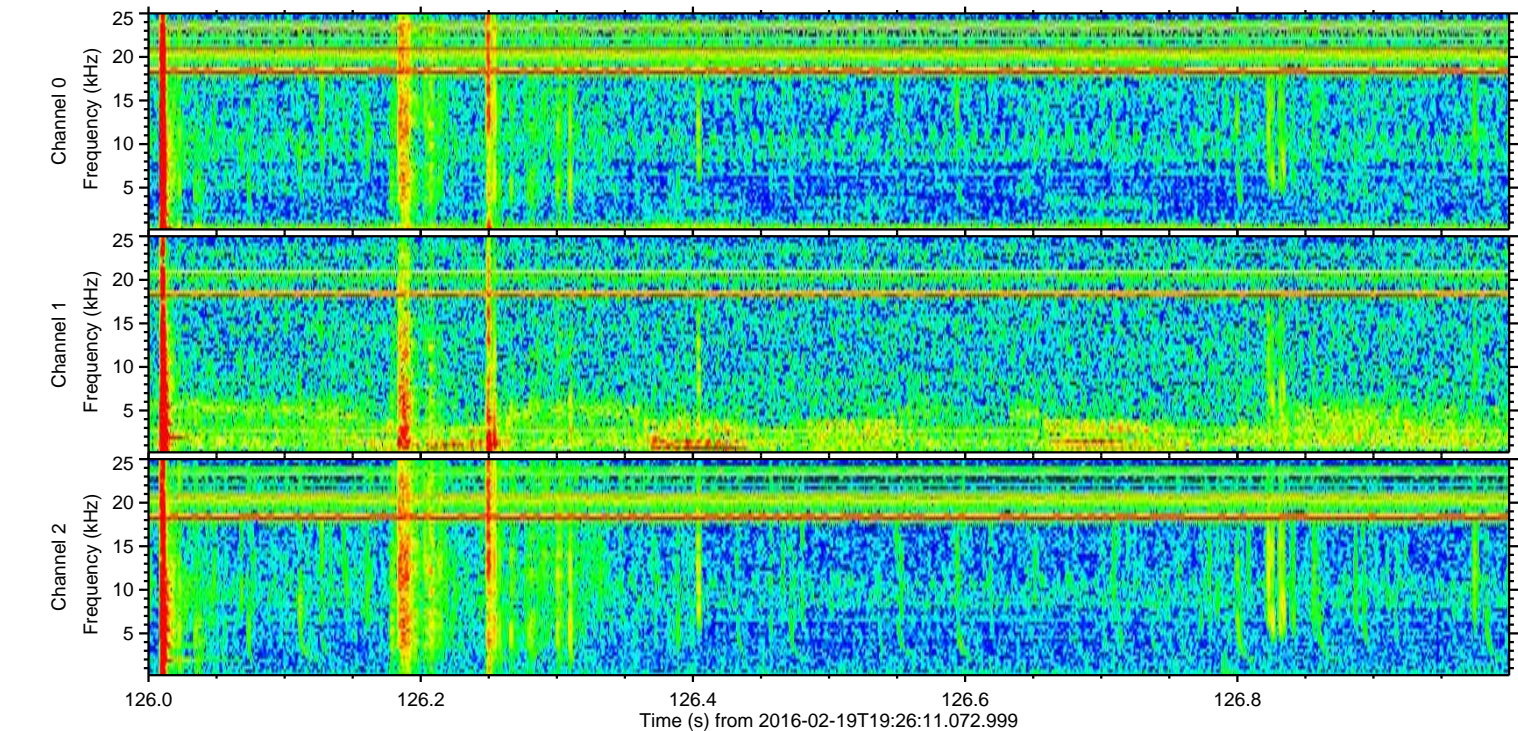
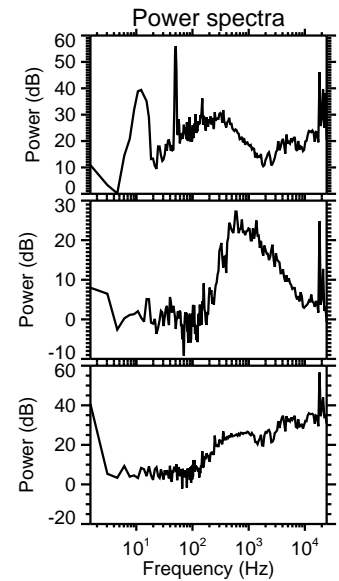
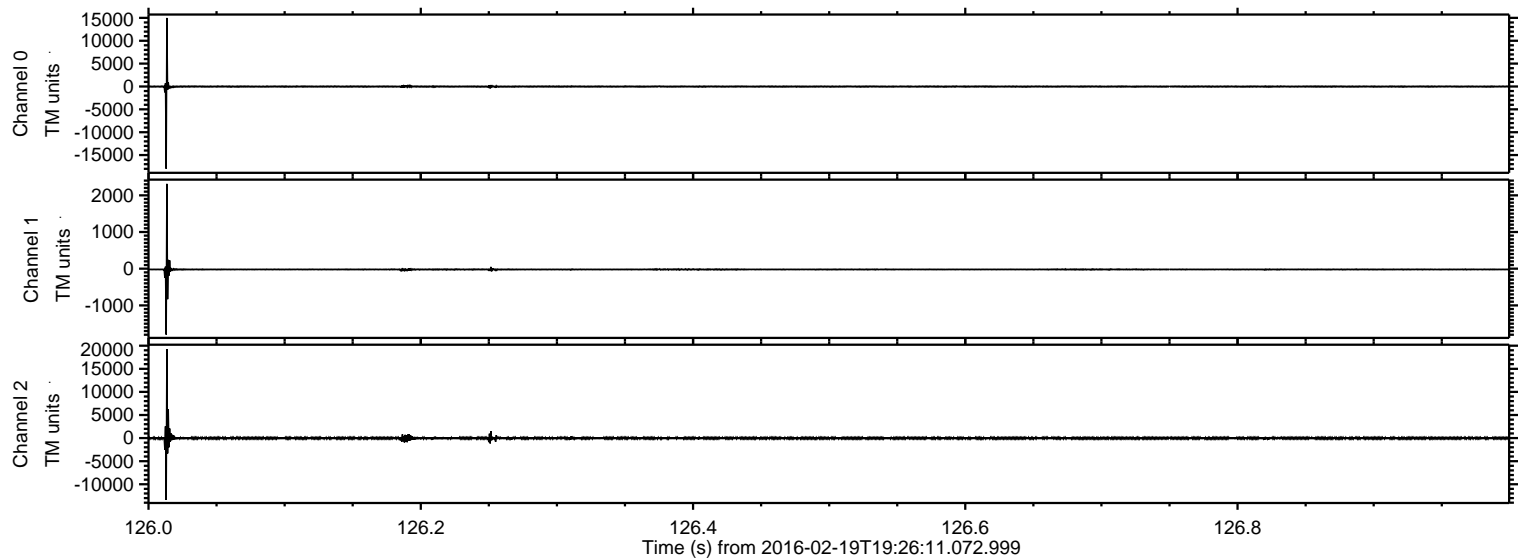
Processed Mon Apr 11 20:28:34 2016 by ELM ver.2012-10-06 from 001\_\_elm20160219\_192610\_\_dat00.bin





ELMAVAN 3D WAVEFORMS (Measured data sampled at 50 kHz) 51000 packets of 144 samples from 2016-02-19T19:26:11.072.999. Part 127/147

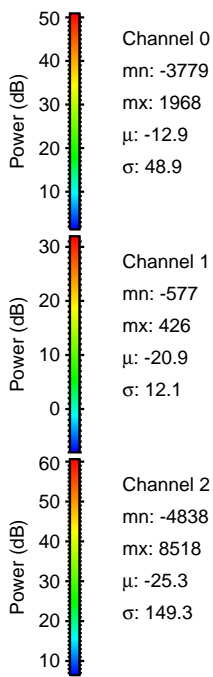
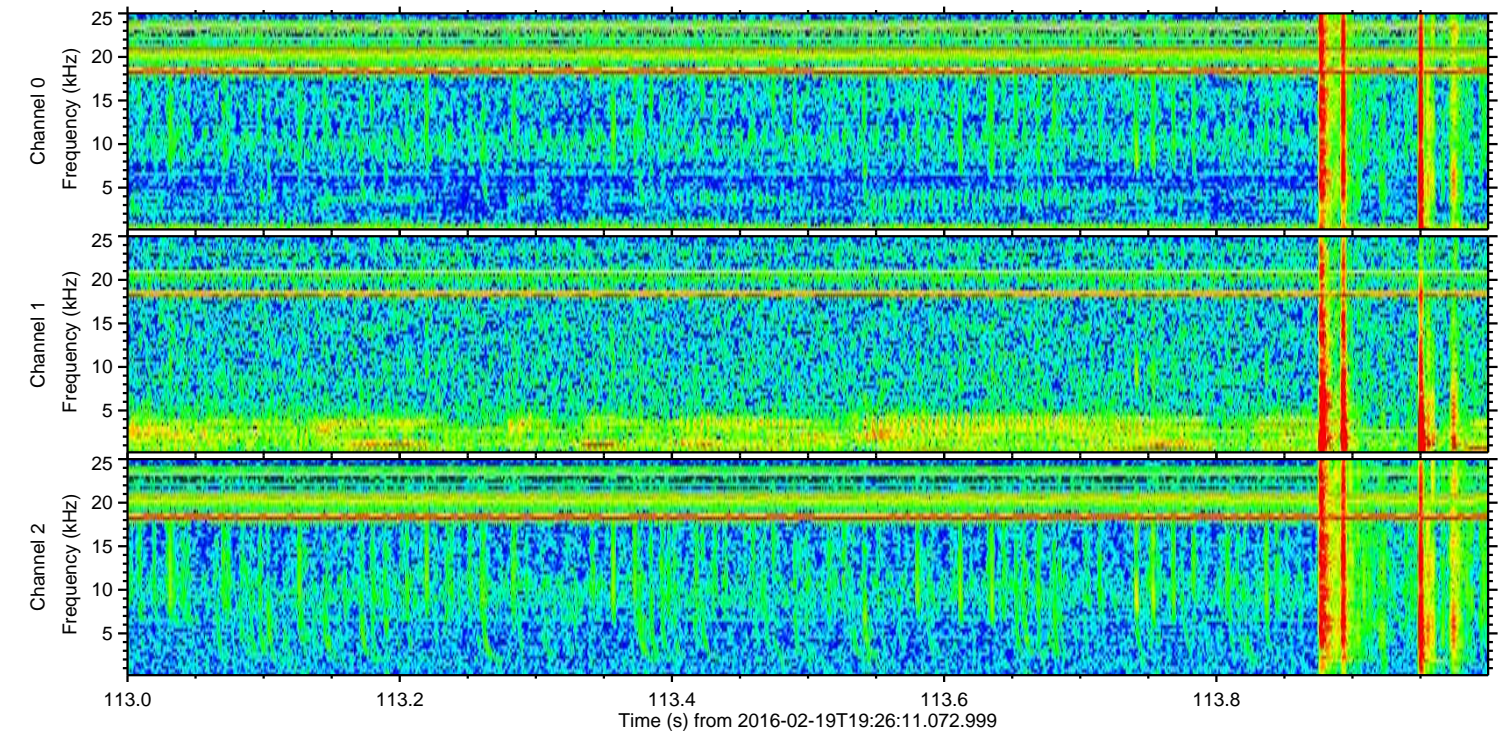
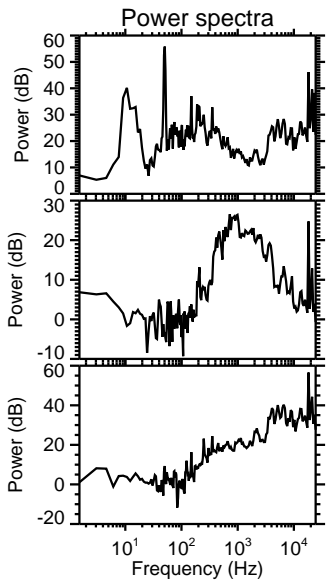
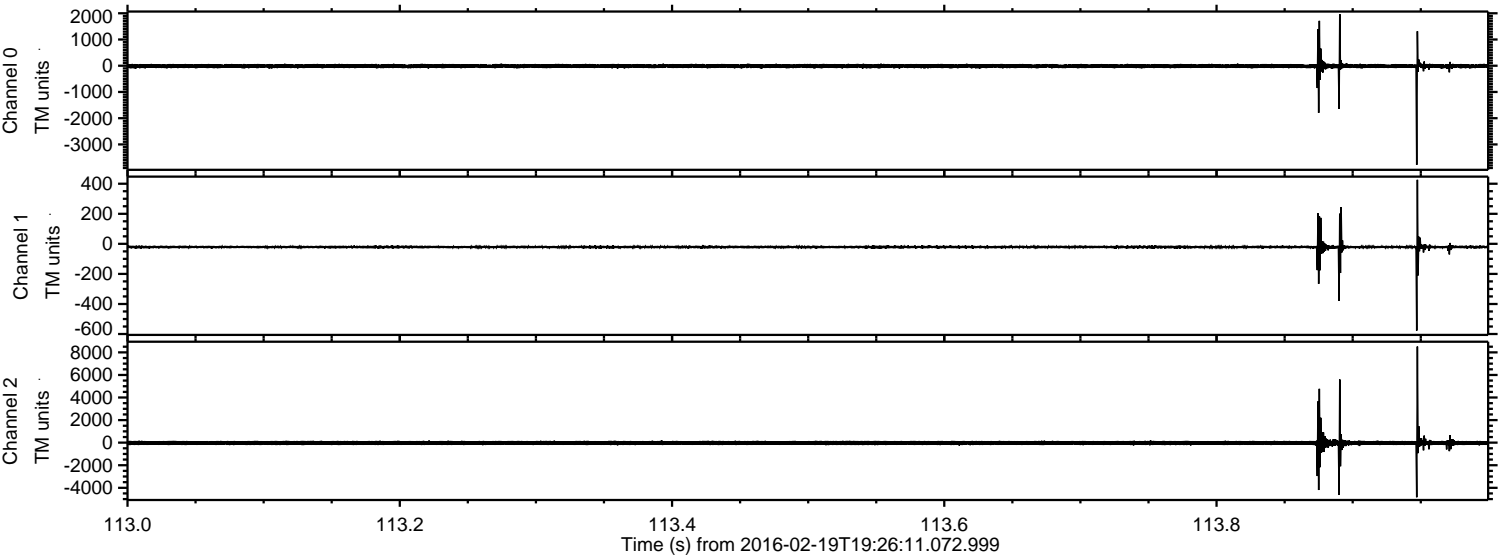
Processed Mon Apr 11 20:28:46 2016 by ELM ver.2012-10-06 from 001\_\_elm20160219\_192610\_\_dat00.bin





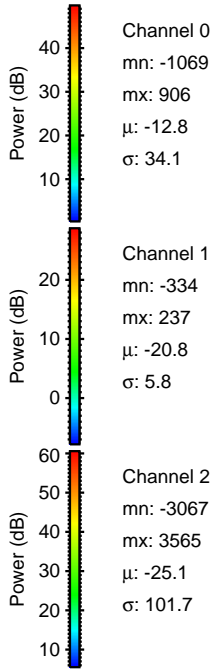
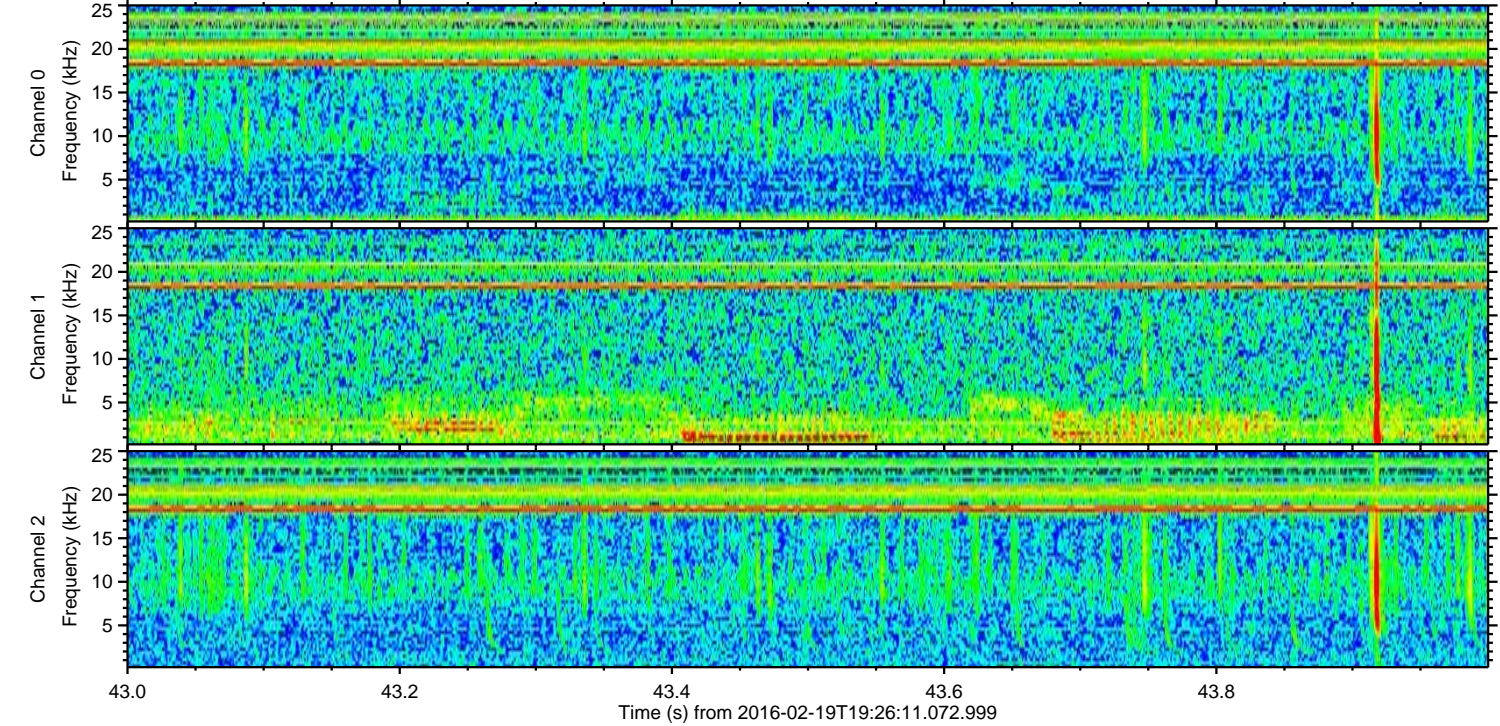
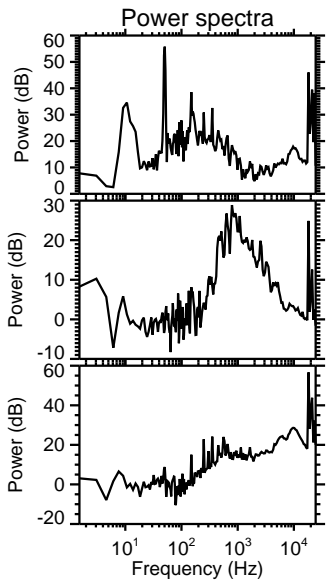
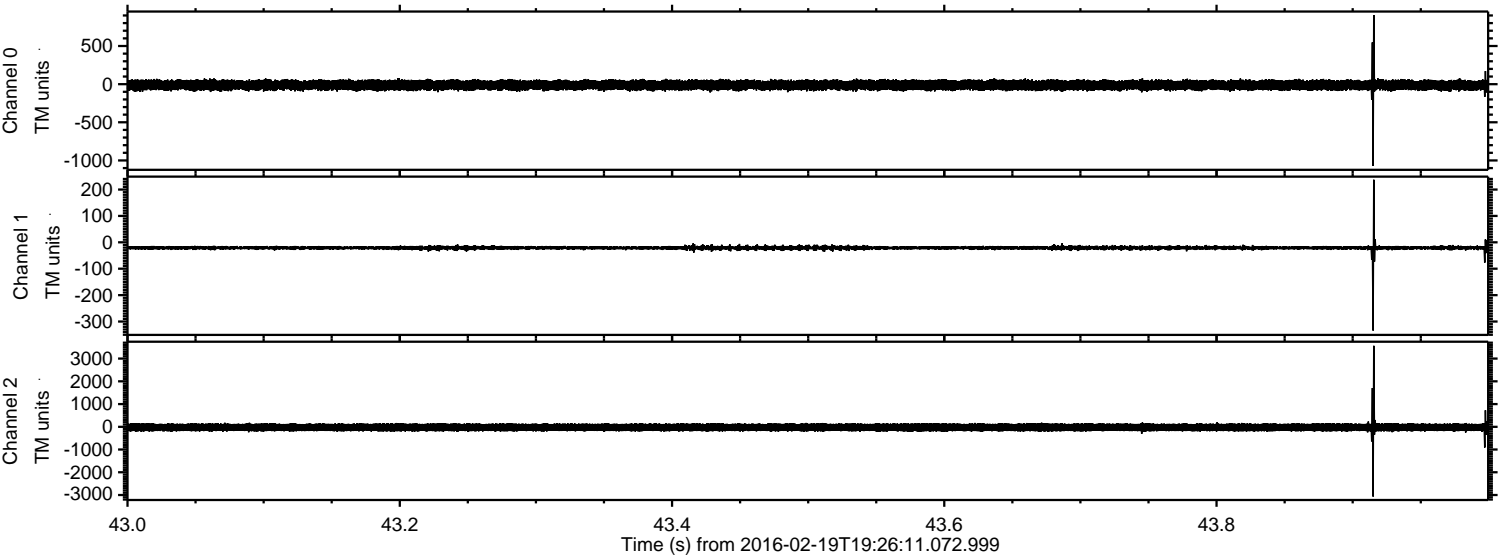
ELMAVAN 3D WAVEFORMS (Measured data sampled at 50 kHz) 51000 packets of 144 samples from 2016-02-19T19:26:11.072.999. Part 114/147

Processed Mon Apr 11 20:28:47 2016 by ELM ver.2012-10-06 from 001\_\_elm20160219\_192610\_\_dat00.bin



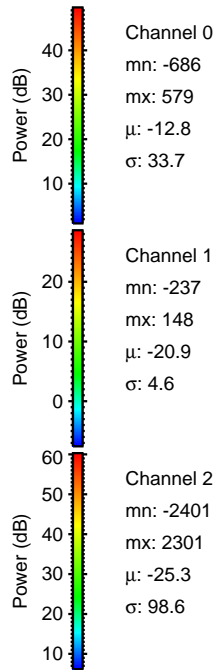
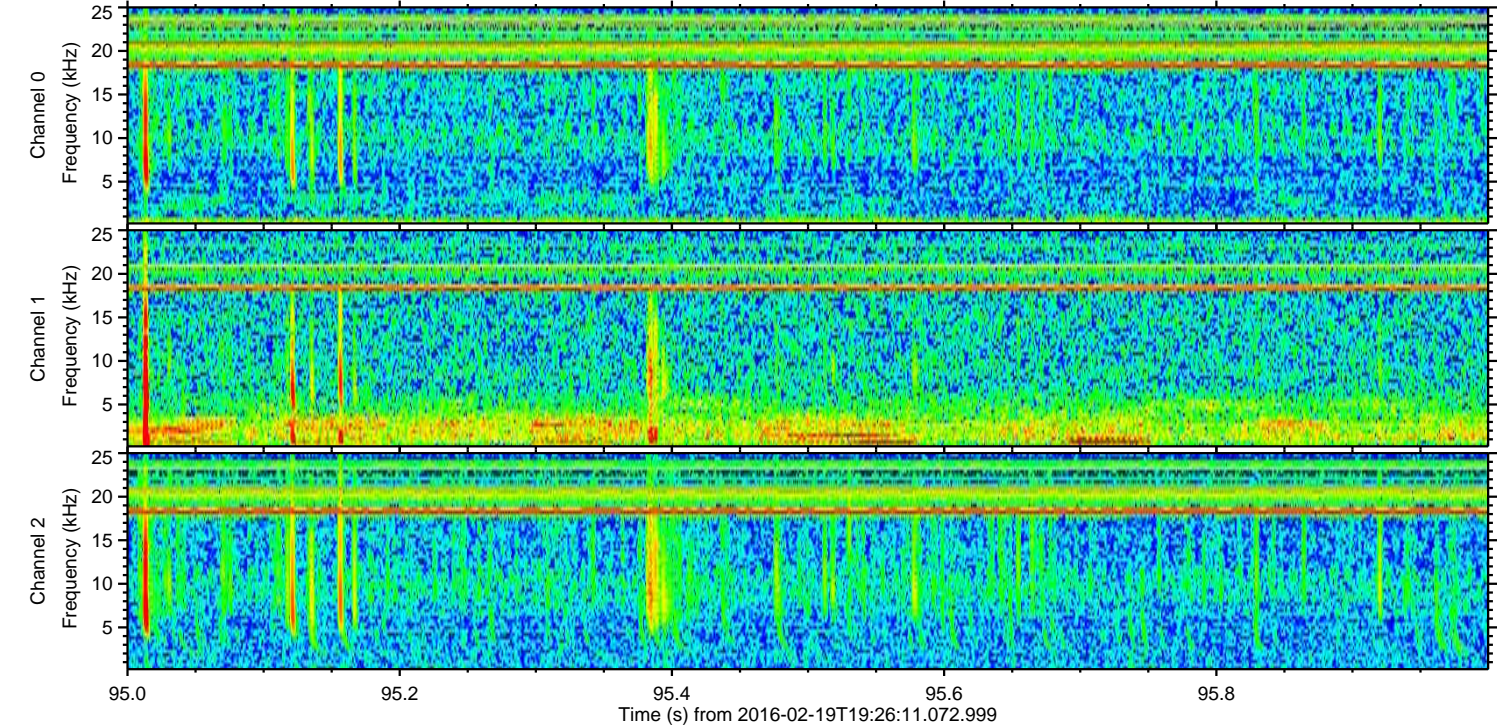
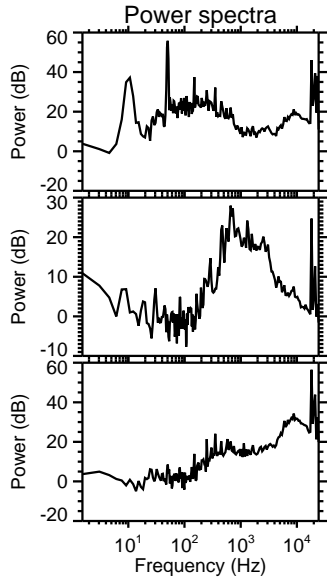
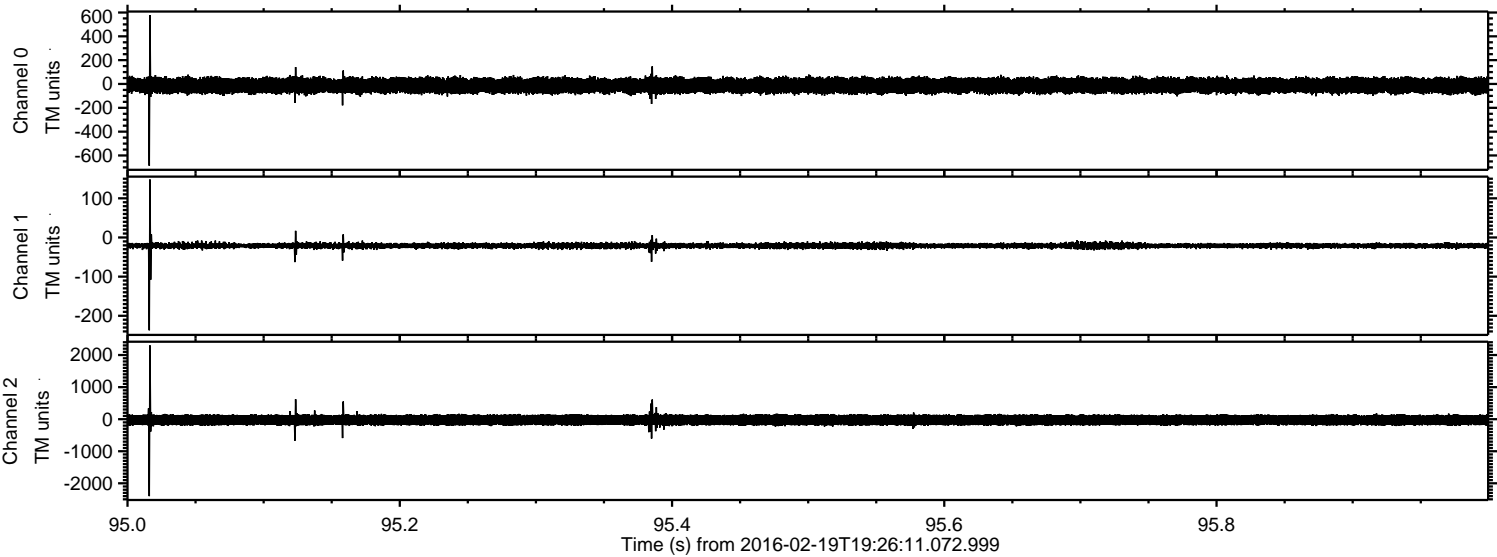


Processed Mon Apr 11 20:28:47 2016 by ELM ver.2012-10-06 from 001\_\_elm20160219\_192610\_\_dat00.bin



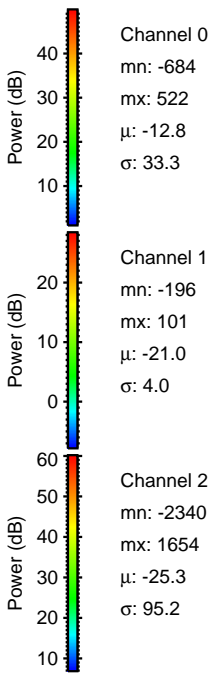
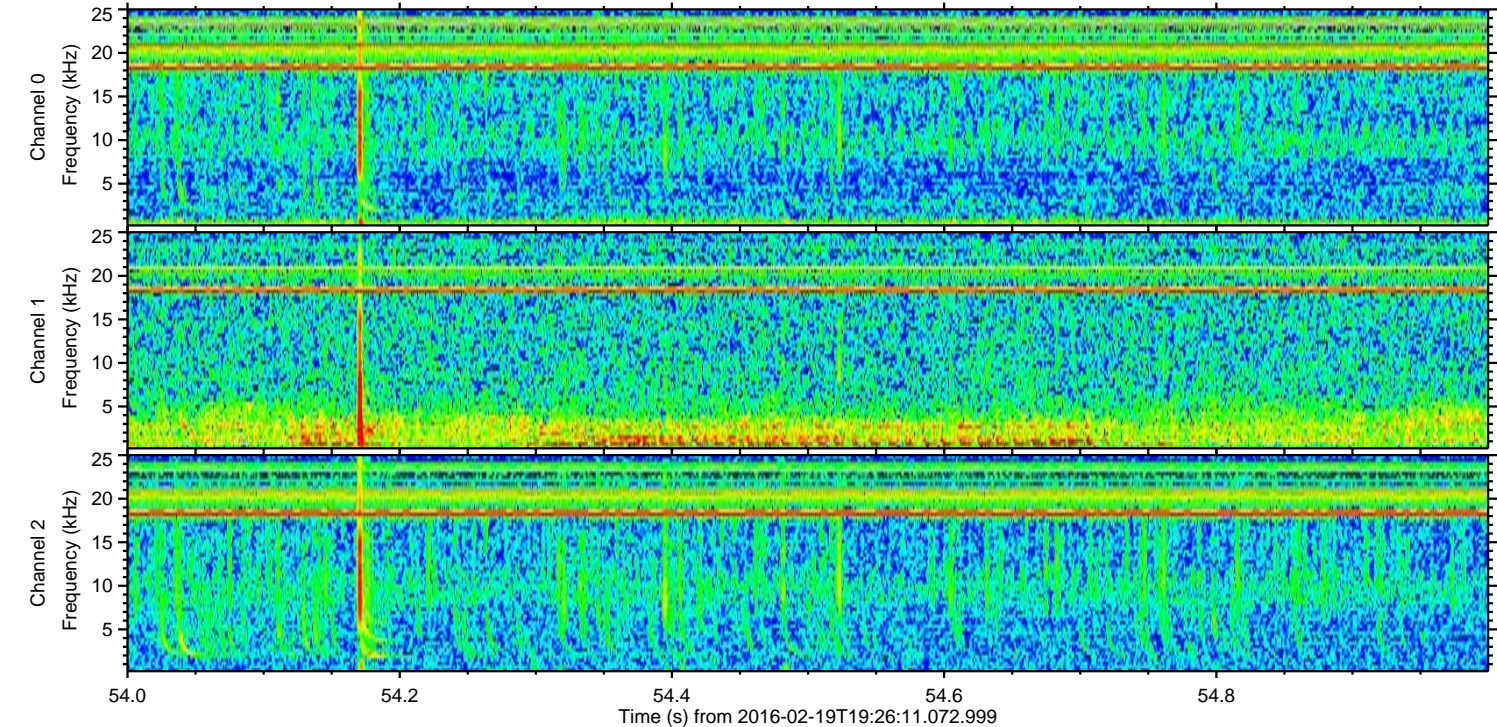
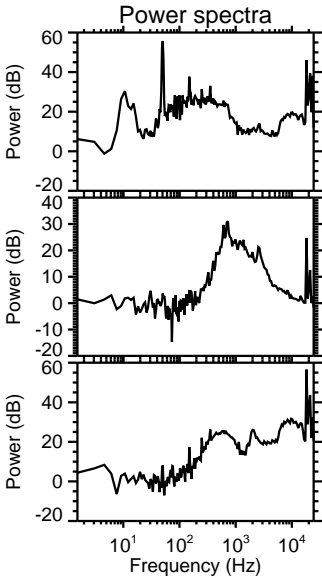
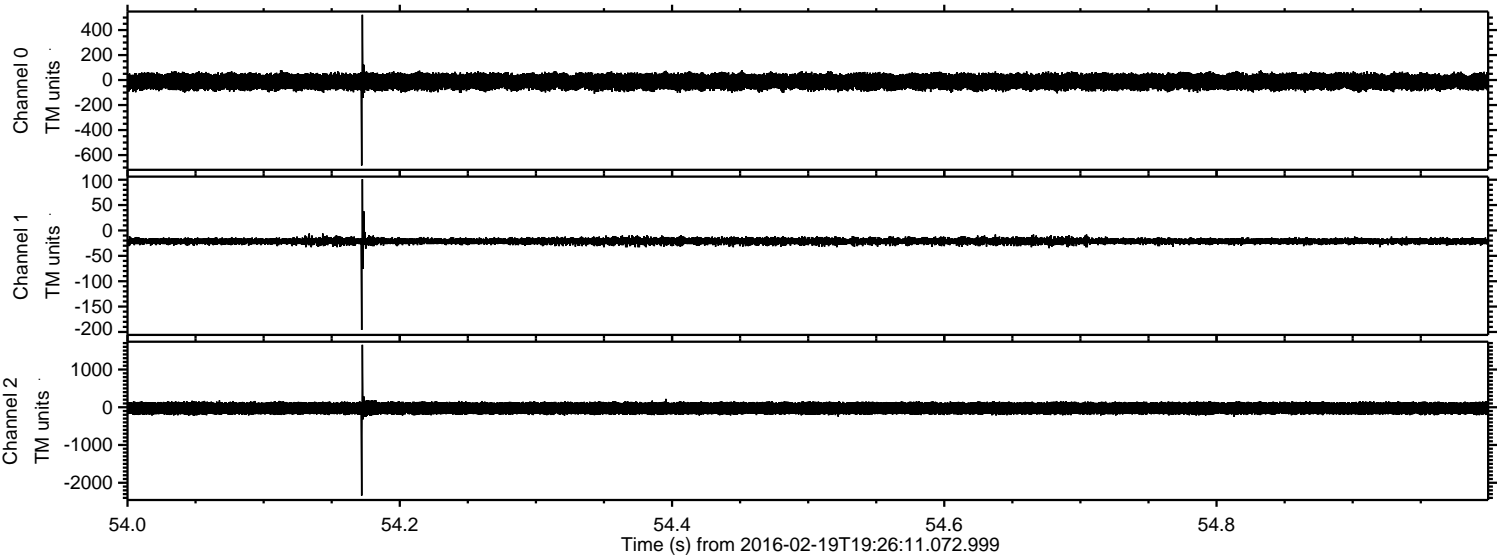


Processed Mon Apr 11 20:28:48 2016 by ELM ver.2012-10-06 from 001\_\_elm20160219\_192610\_\_dat00.bin



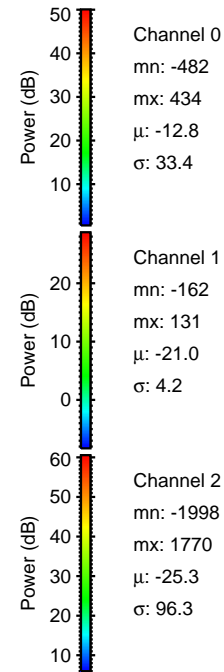
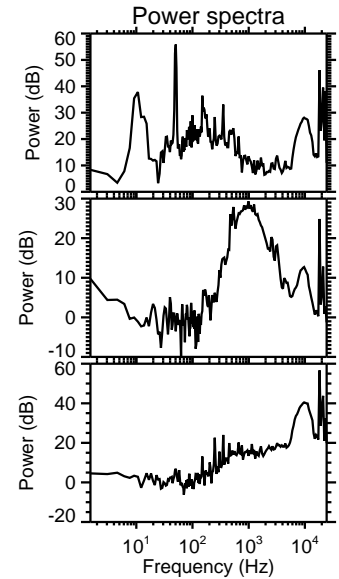
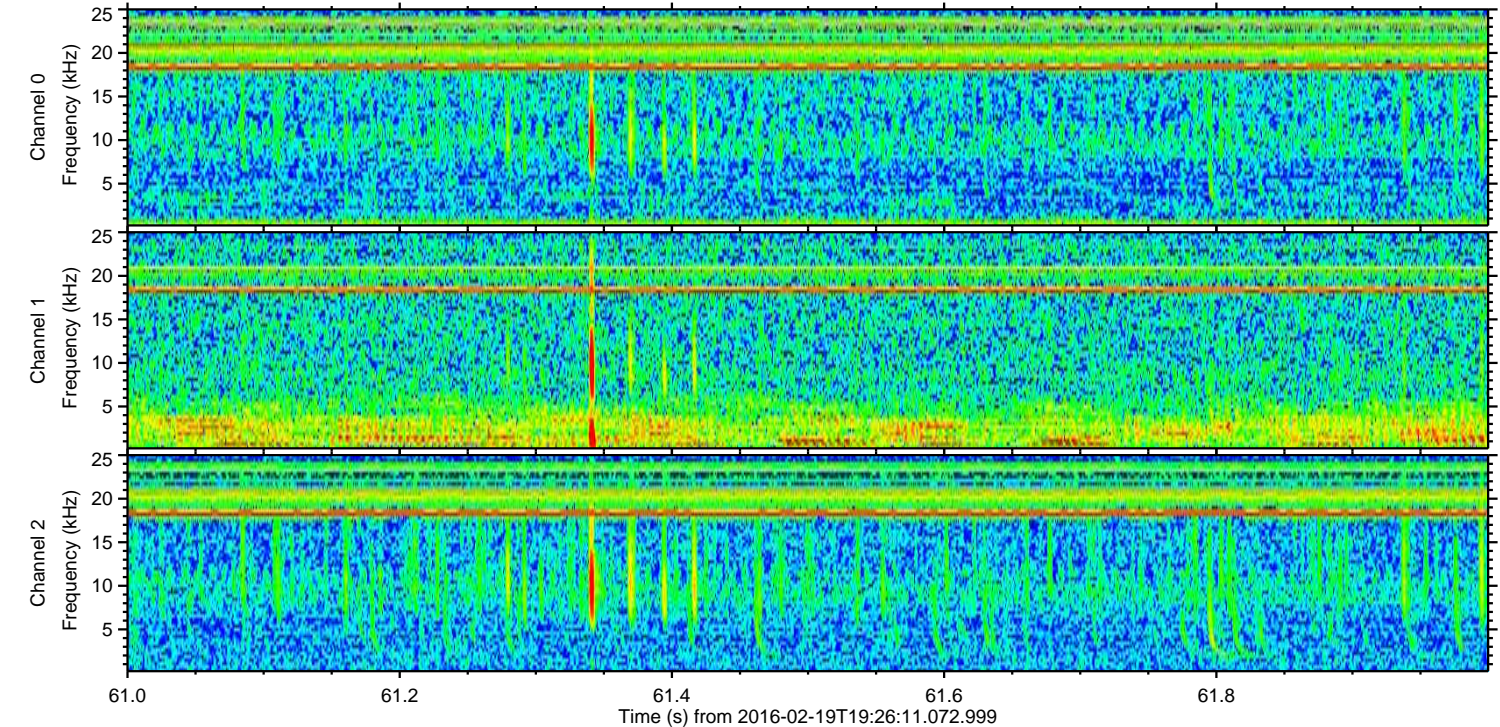
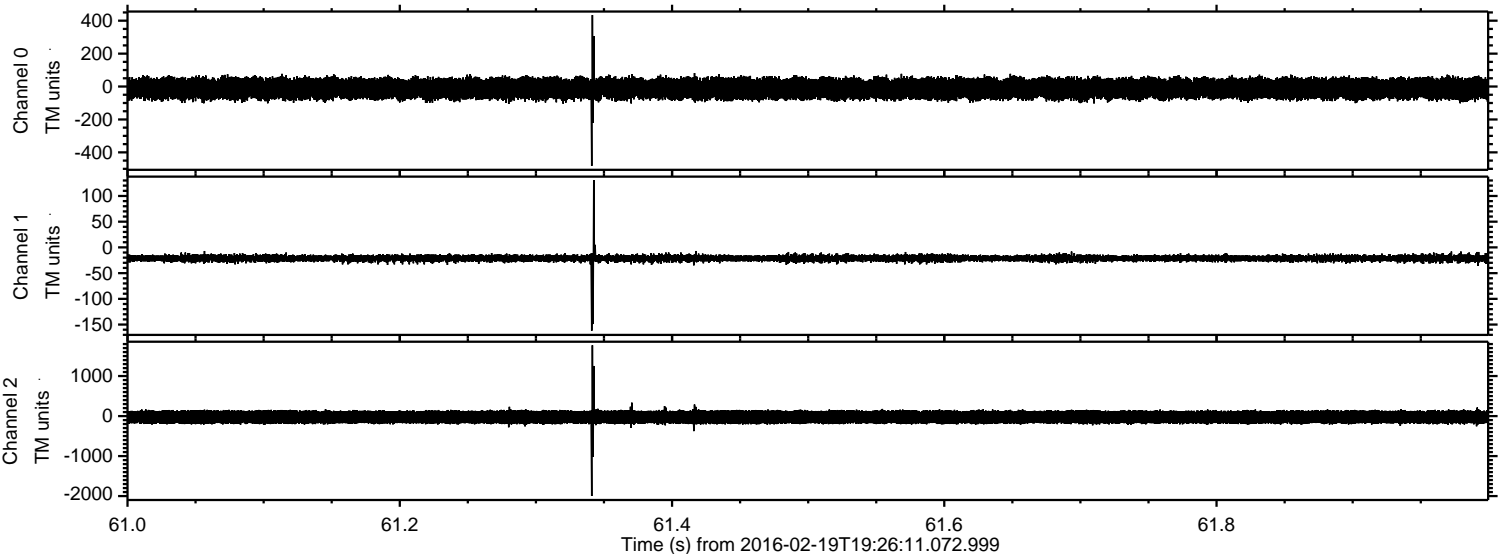


Processed Mon Apr 11 20:28:49 2016 by ELM ver.2012-10-06 from 001\_\_elm20160219\_192610\_\_dat00.bin





Processed Mon Apr 11 20:28:50 2016 by ELM ver.2012-10-06 from 001\_\_elm20160219\_192610\_\_dat00.bin



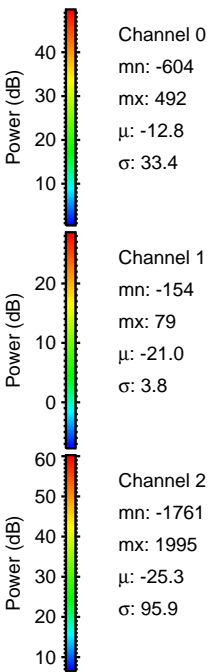
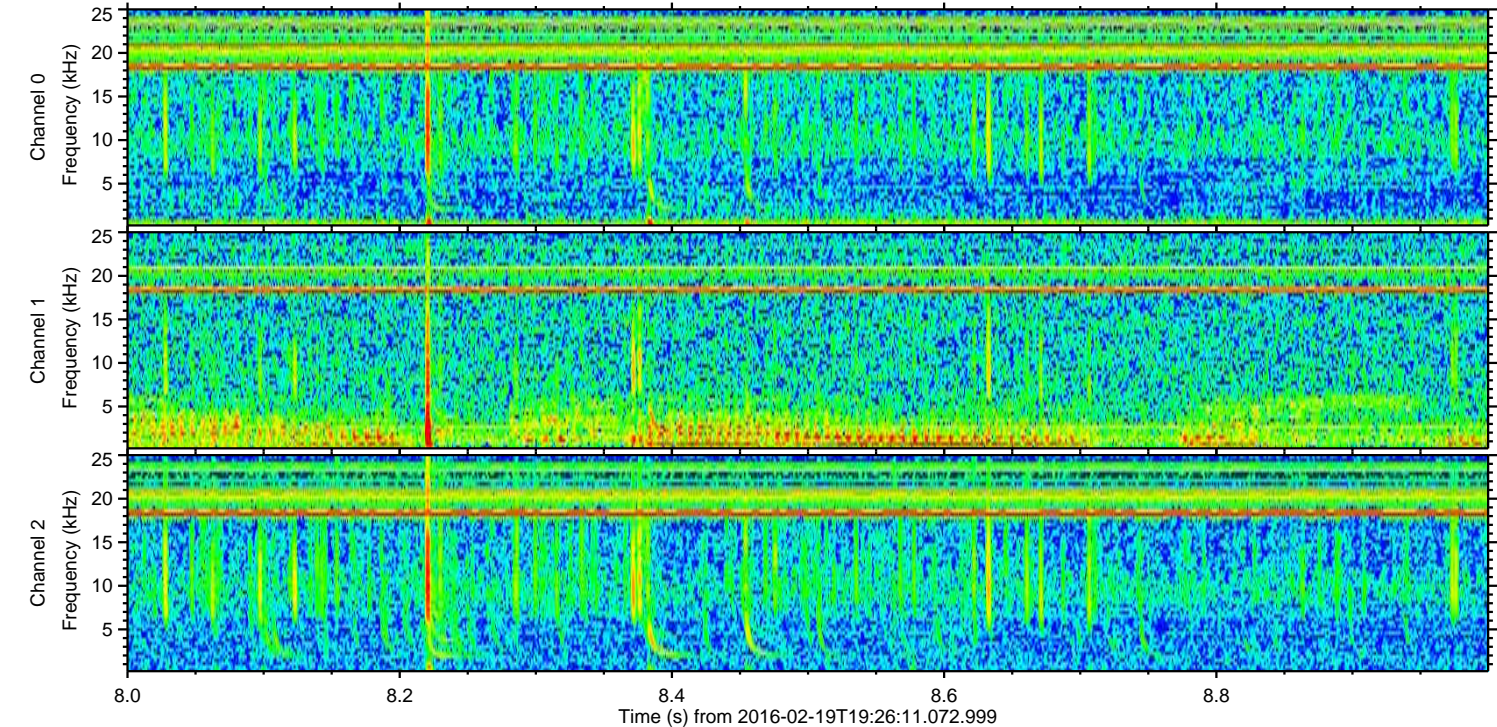
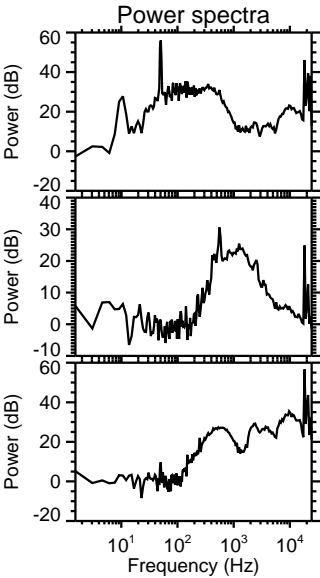
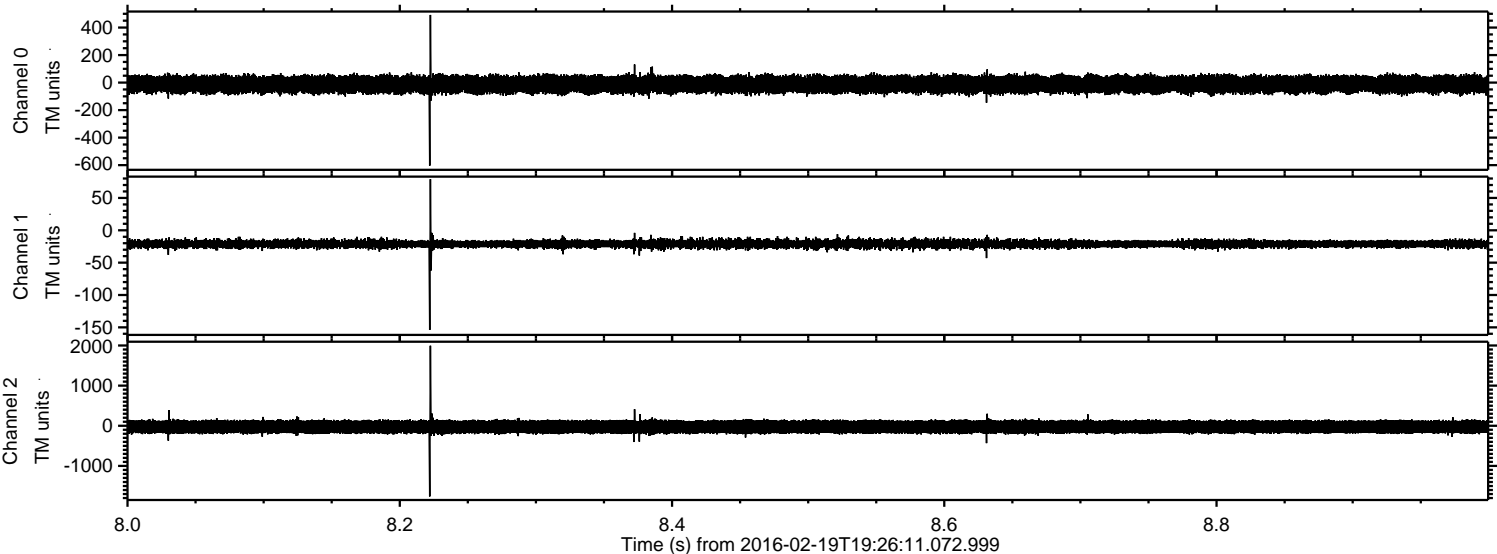
Channel 0  
mn: -482  
mx: 434  
 $\mu$ : -12.8  
 $\sigma$ : 33.4

Channel 1  
mn: -162  
mx: 131  
 $\mu$ : -21.0  
 $\sigma$ : 4.2

Channel 2  
mn: -1998  
mx: 1770  
 $\mu$ : -25.3  
 $\sigma$ : 96.3

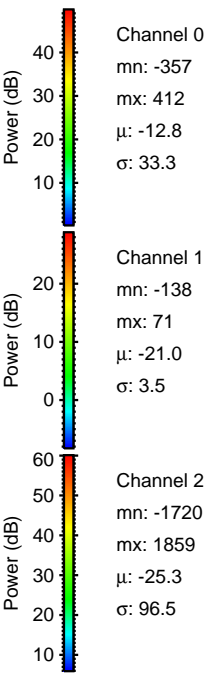
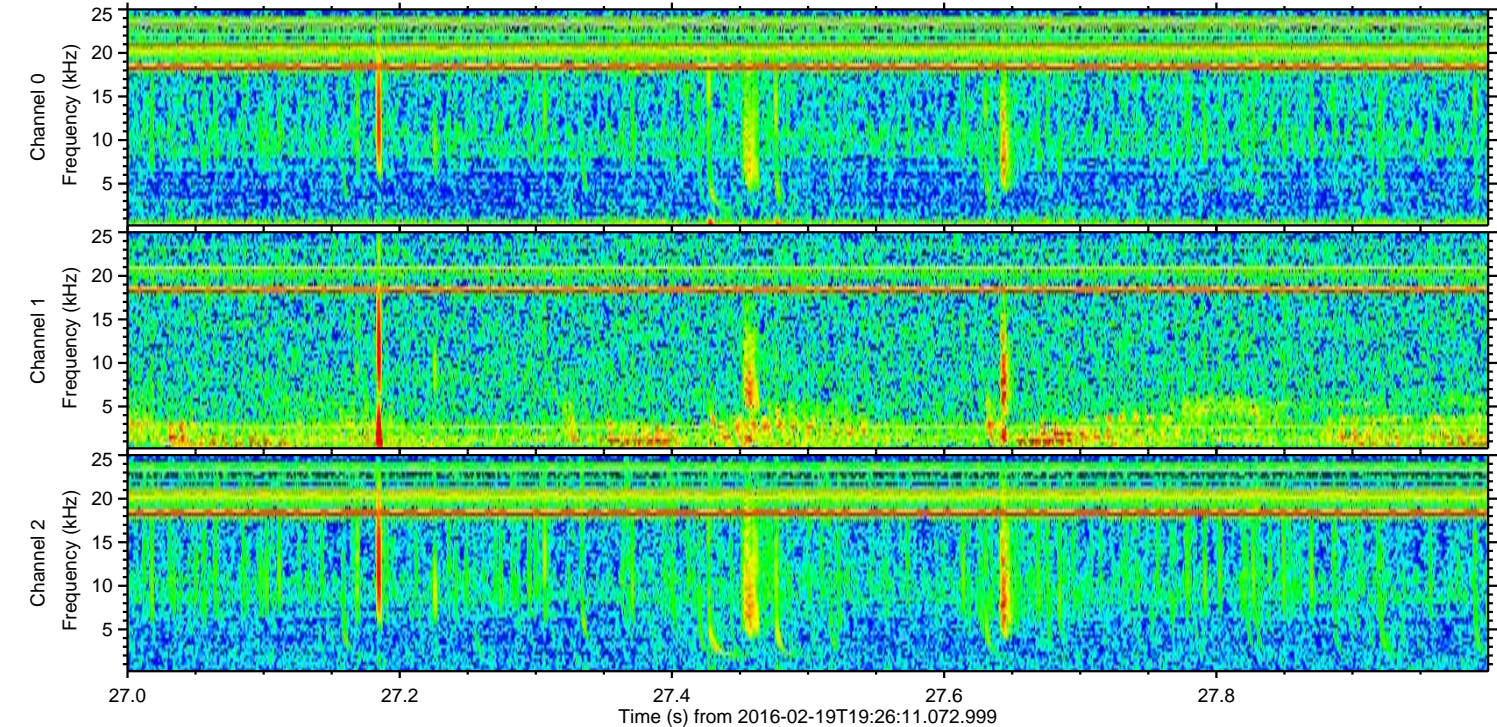
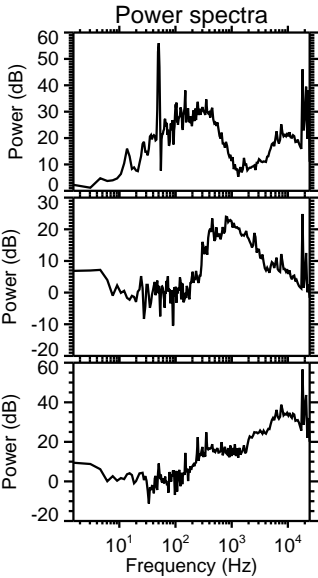
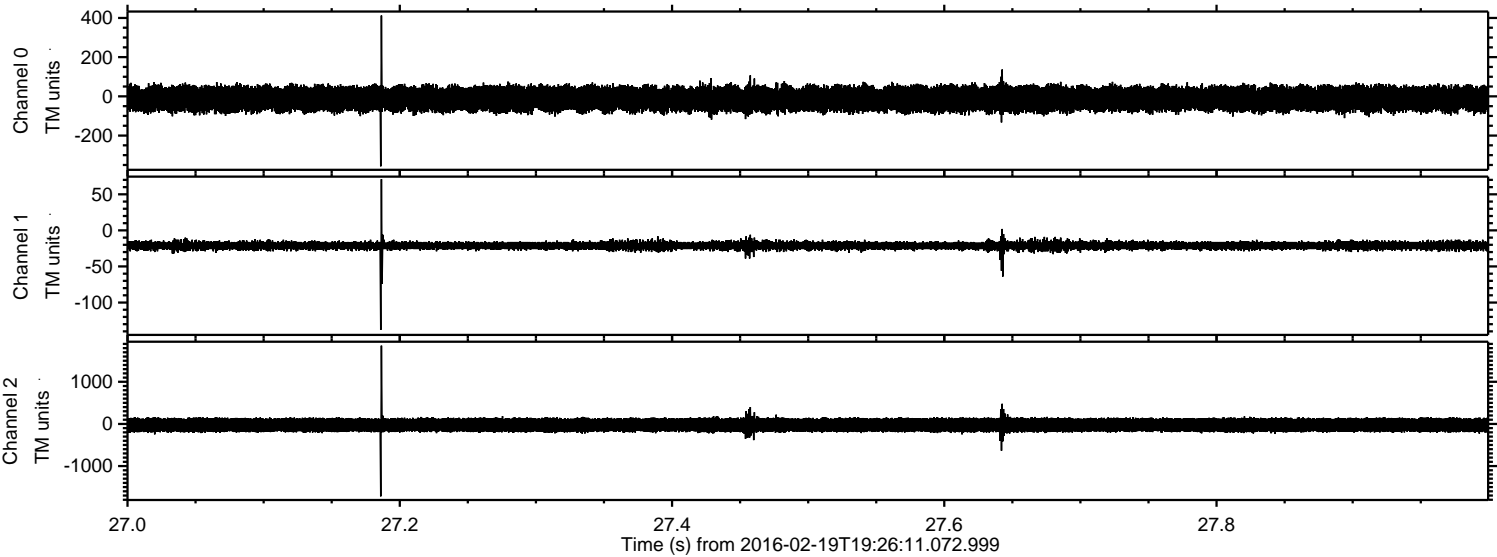


Processed Mon Apr 11 20:28:51 2016 by ELM ver.2012-10-06 from 001\_\_elm20160219\_192610\_\_dat00.bin



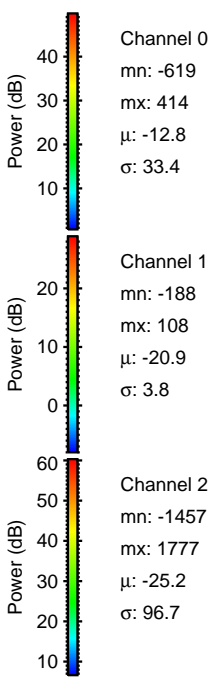
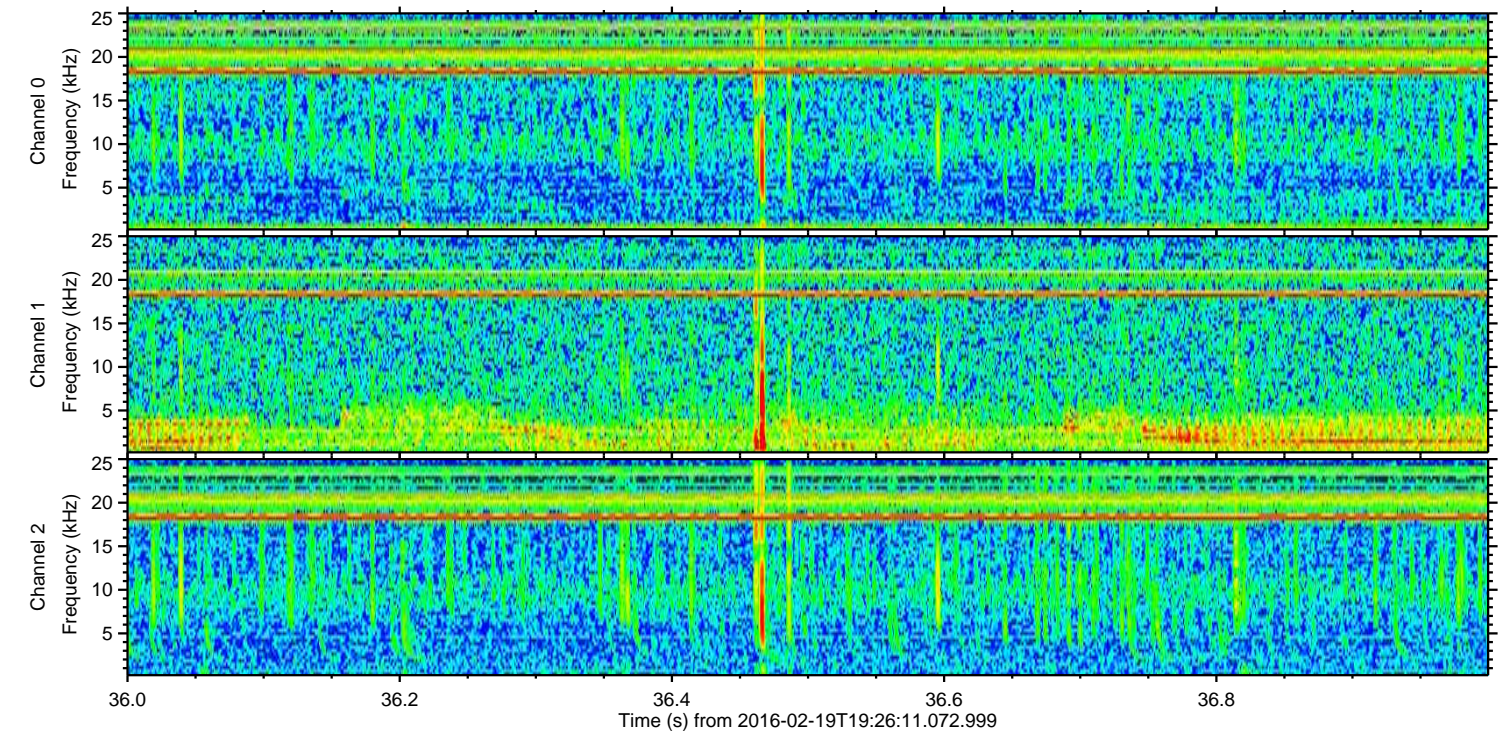
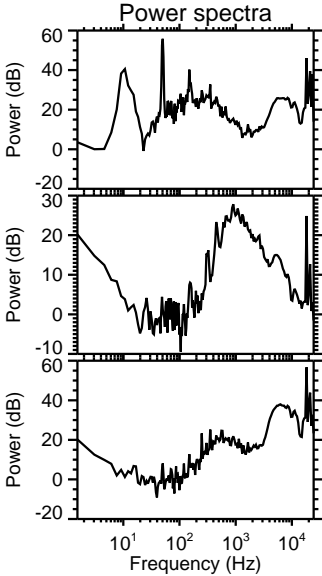
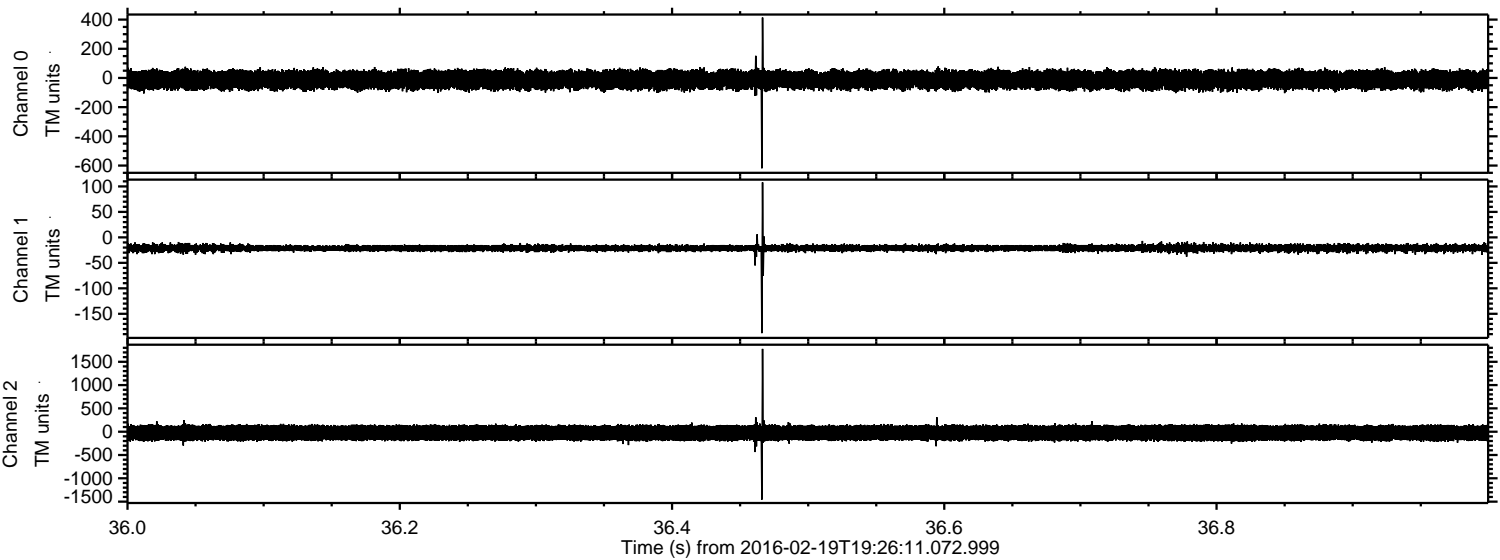


Processed Mon Apr 11 20:28:52 2016 by ELM ver.2012-10-06 from 001\_\_elm20160219\_192610\_\_dat00.bin





Processed Mon Apr 11 20:28:53 2016 by ELM ver.2012-10-06 from 001\_\_elm20160219\_192610\_\_dat00.bin





Processed Mon Apr 11 20:28:54 2016 by ELM ver.2012-10-06 from 001\_\_elm20160219\_192610\_\_dat00.bin

