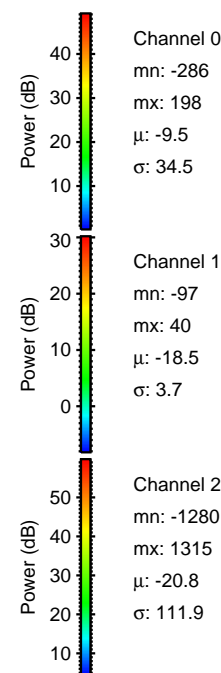
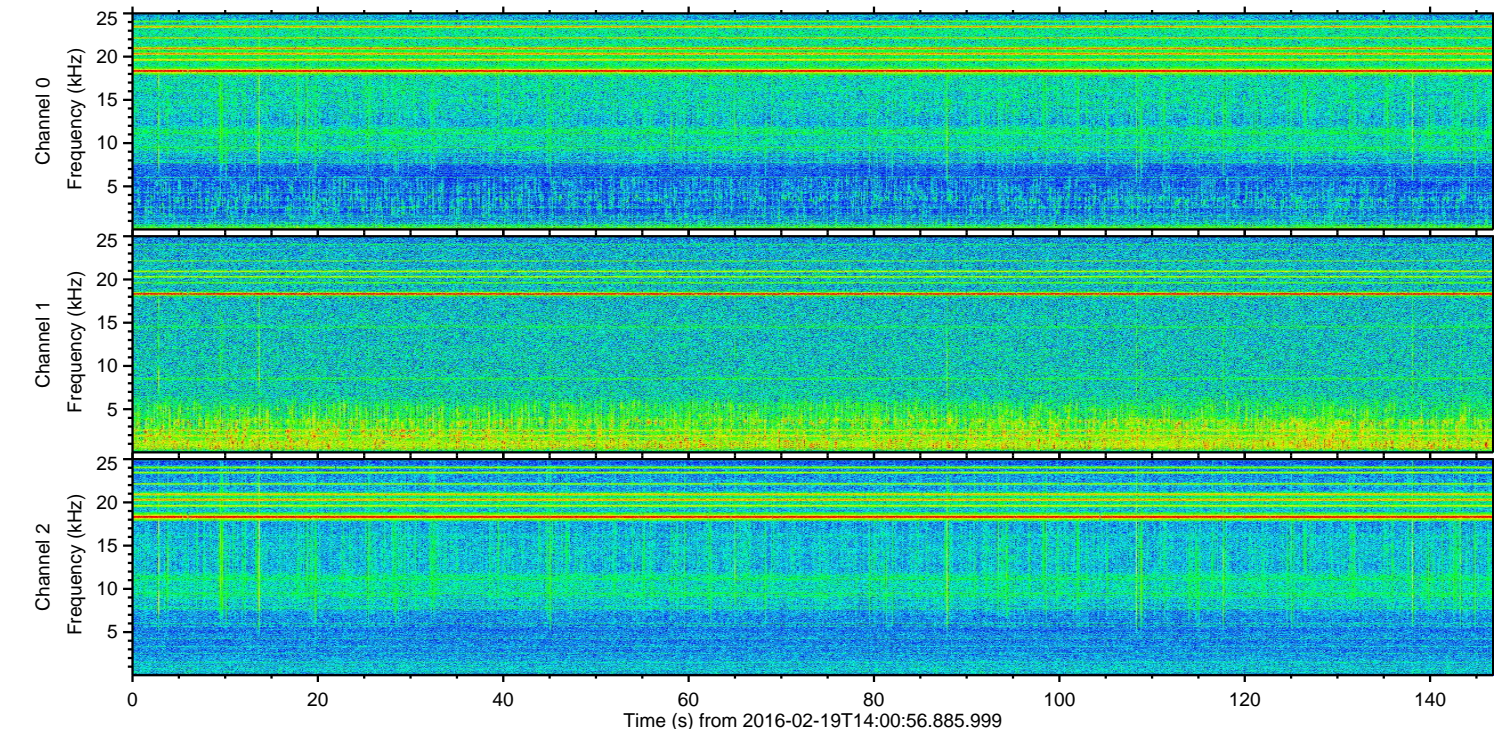
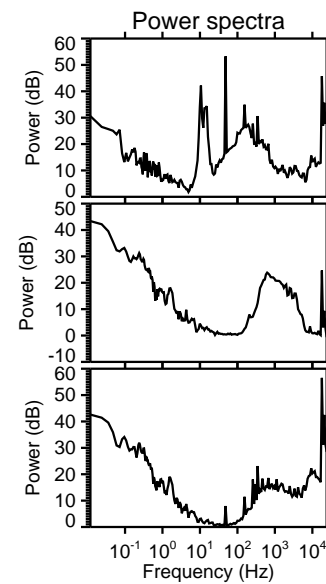
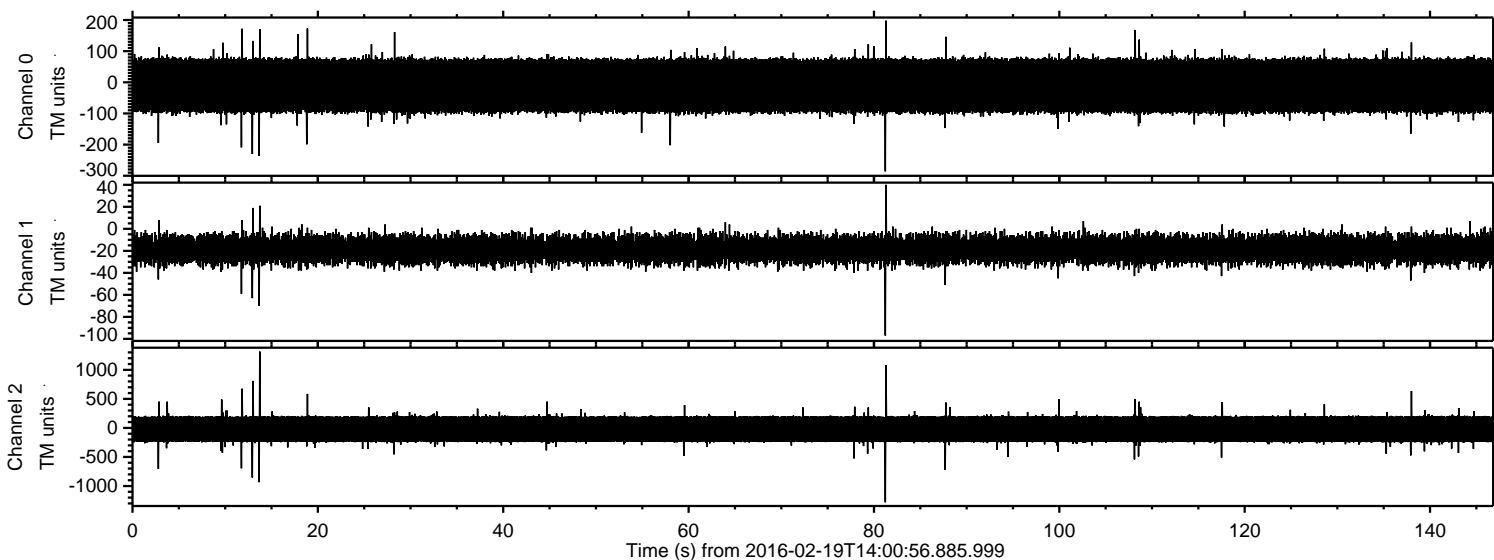


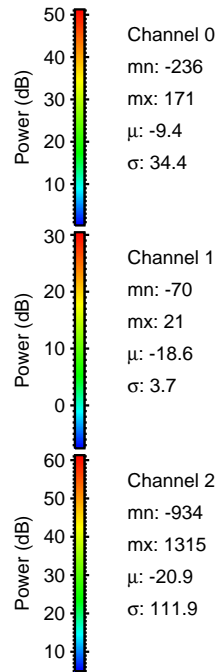
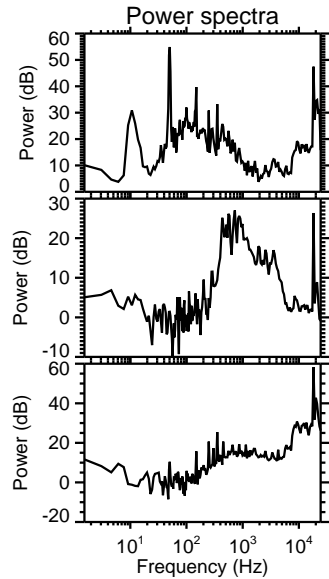
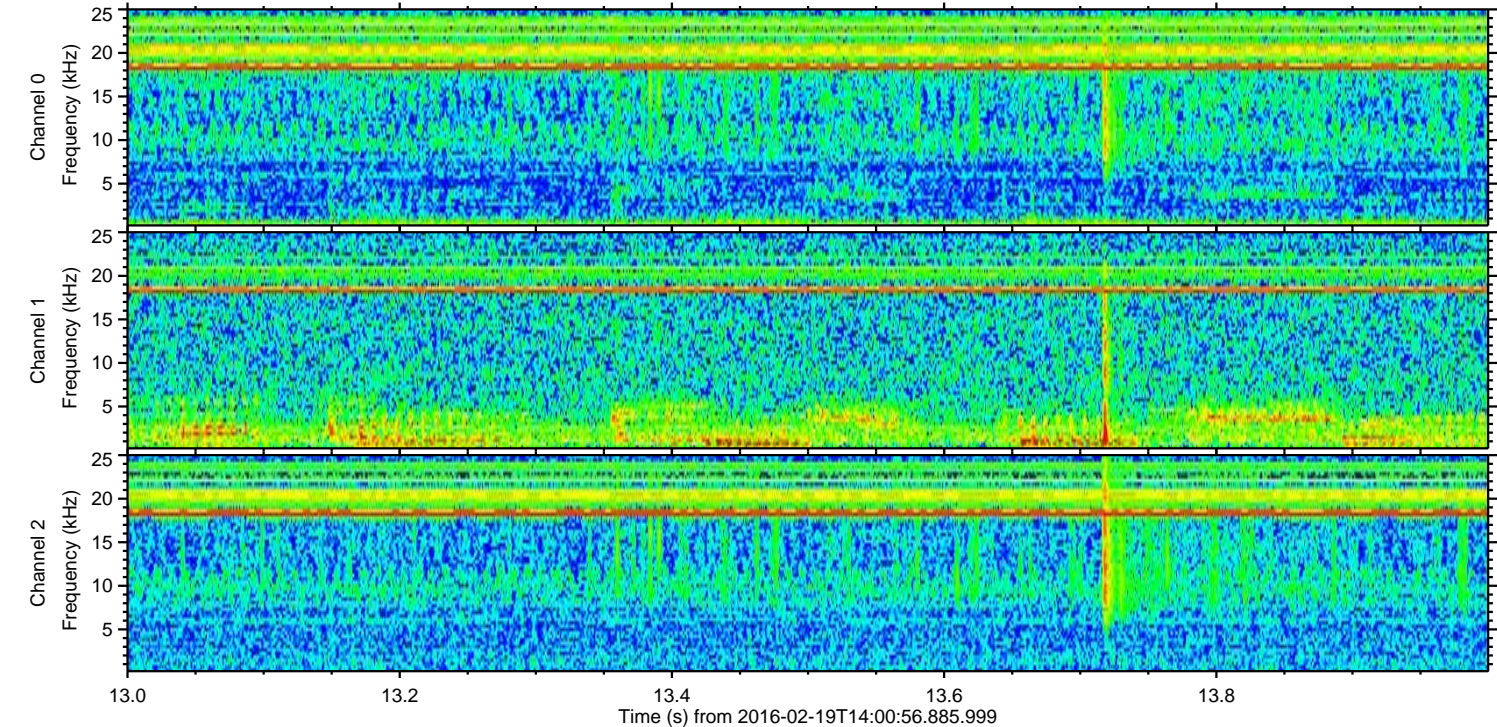
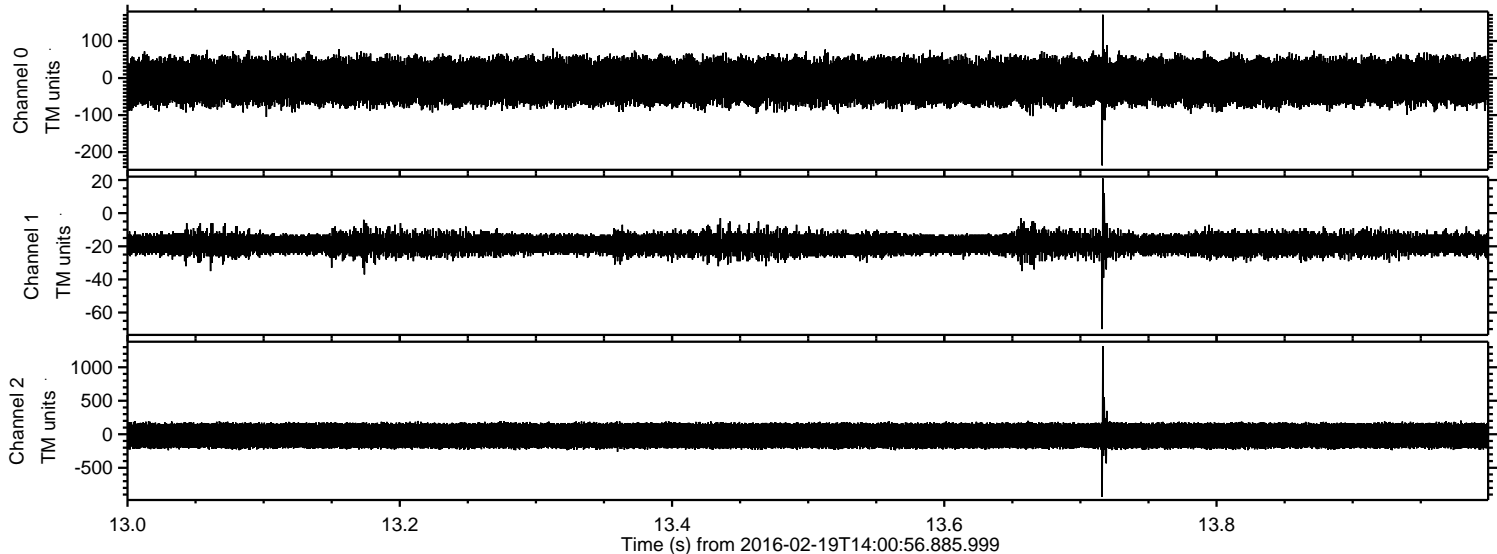
# ELMAVAN 3D WAVEFORMS (Measured data sampled at 50 kHz) 51000 packets of 144 samples from 2016-02-19T14:00:56.885.999.

Processed Mon Apr 11 19:22:54 2016 by ELM ver.2012-10-06 from 001\_\_elm20160219\_140055\_\_dat00.bin



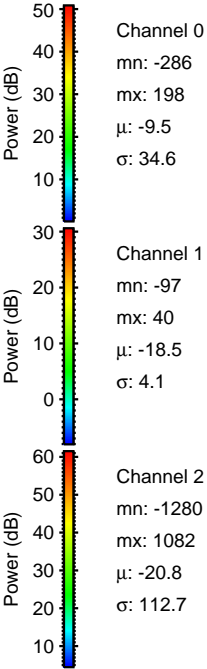
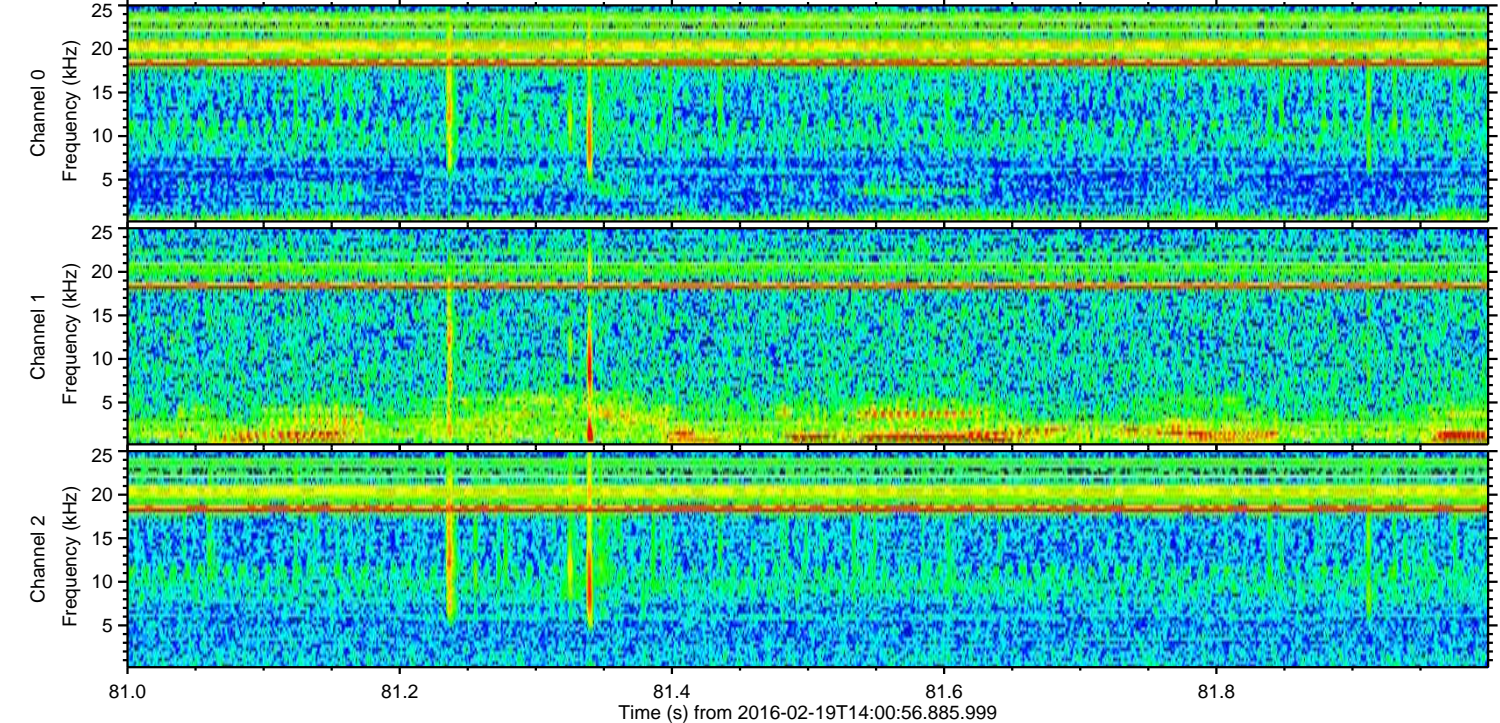
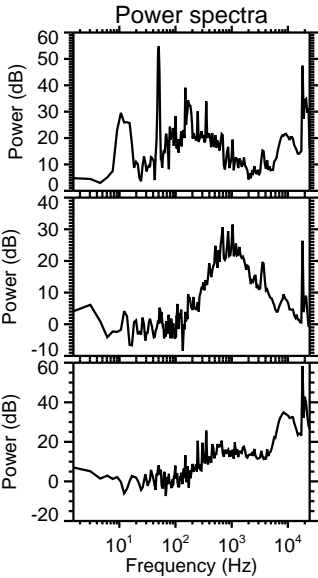
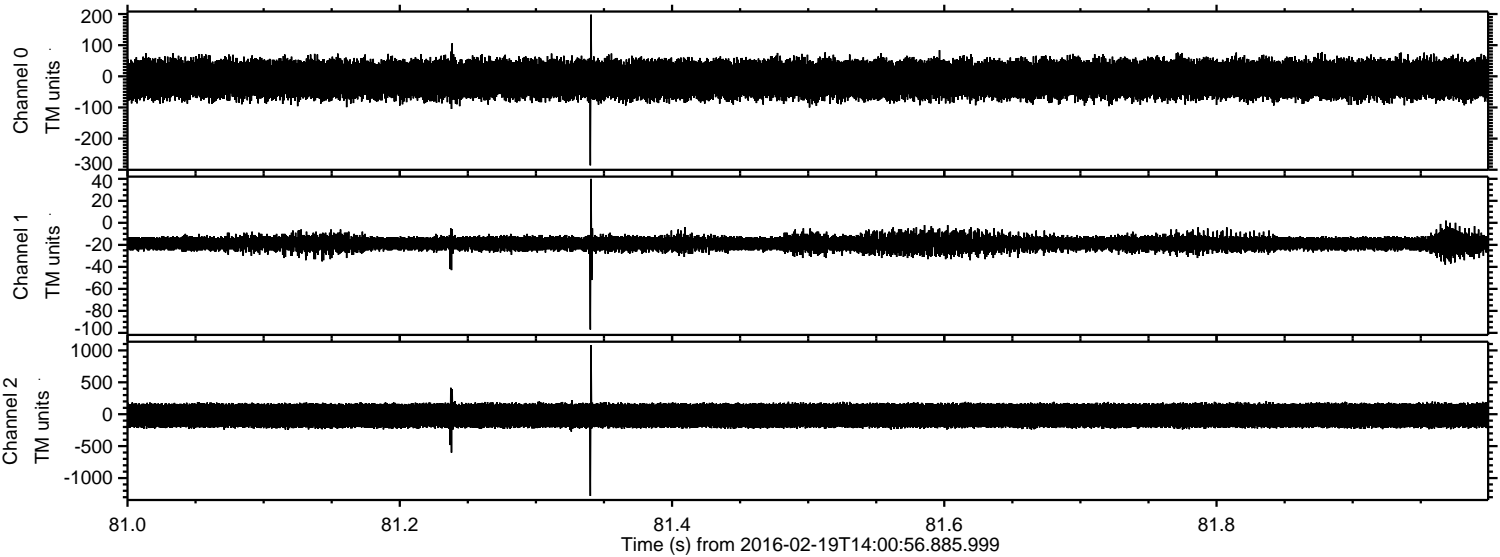


Processed Mon Apr 11 19:23:06 2016 by ELM ver.2012-10-06 from 001\_\_elm20160219\_140055\_\_dat00.bin



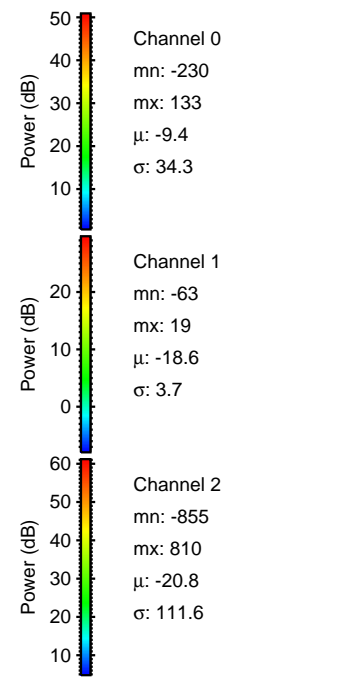
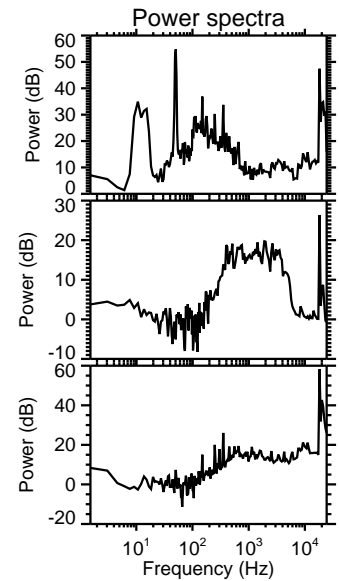
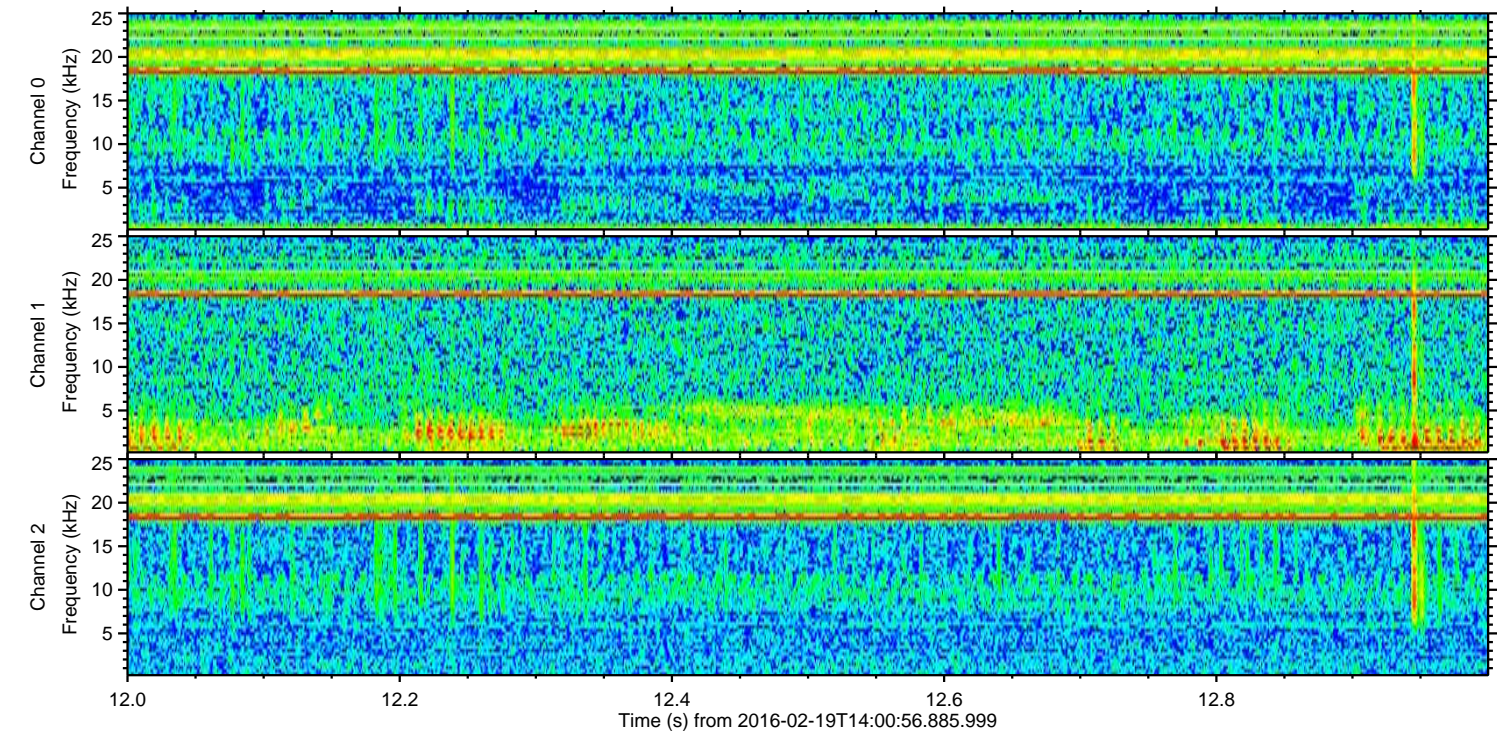
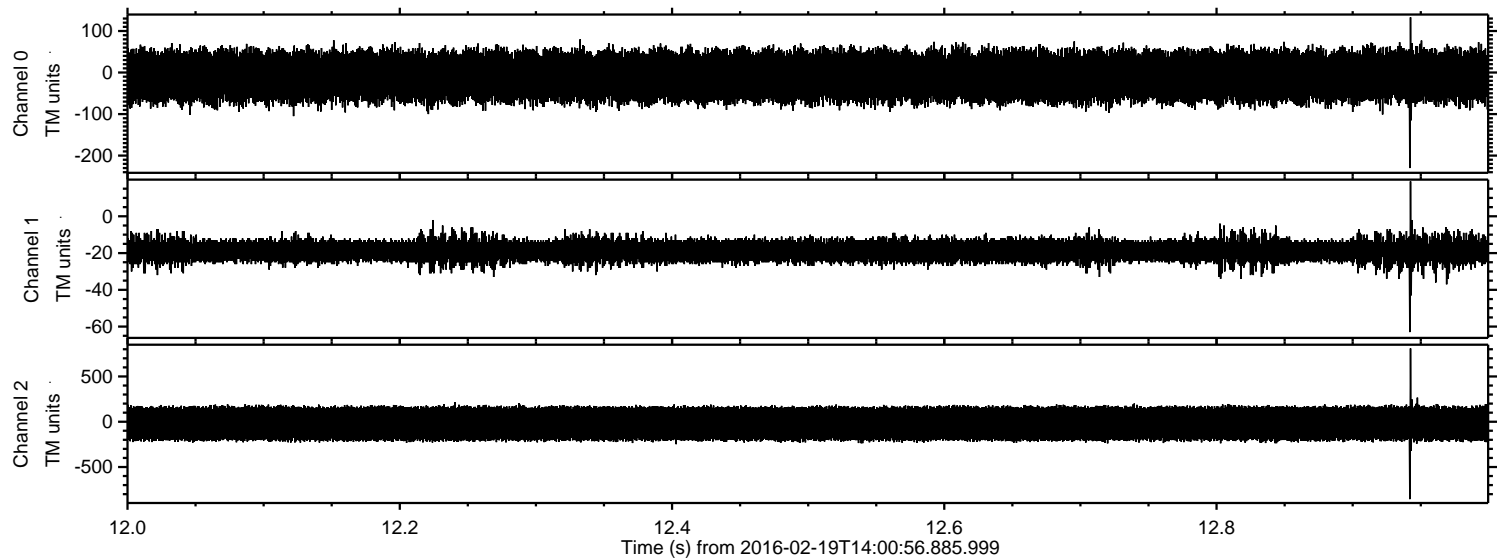


Processed Mon Apr 11 19:23:07 2016 by ELM ver.2012-10-06 from 001\_\_elm20160219\_140055\_\_dat00.bin



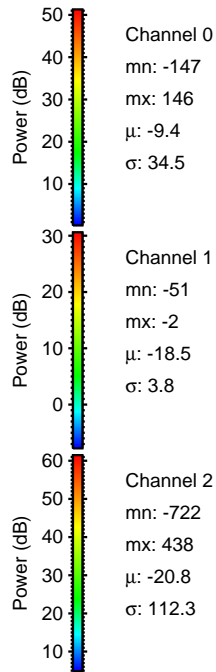
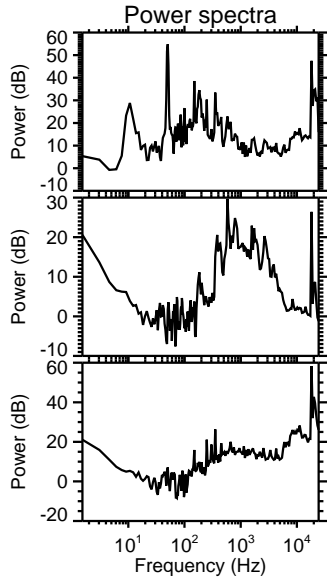
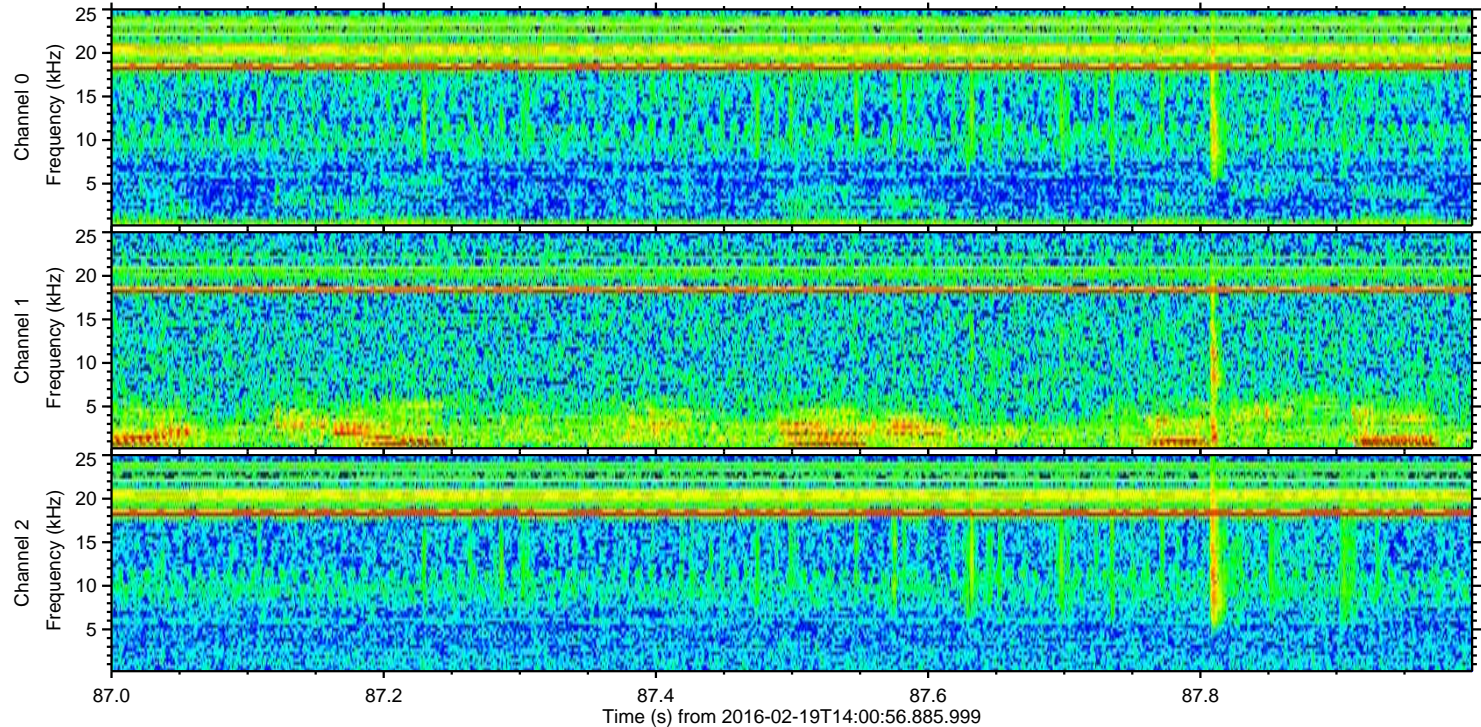
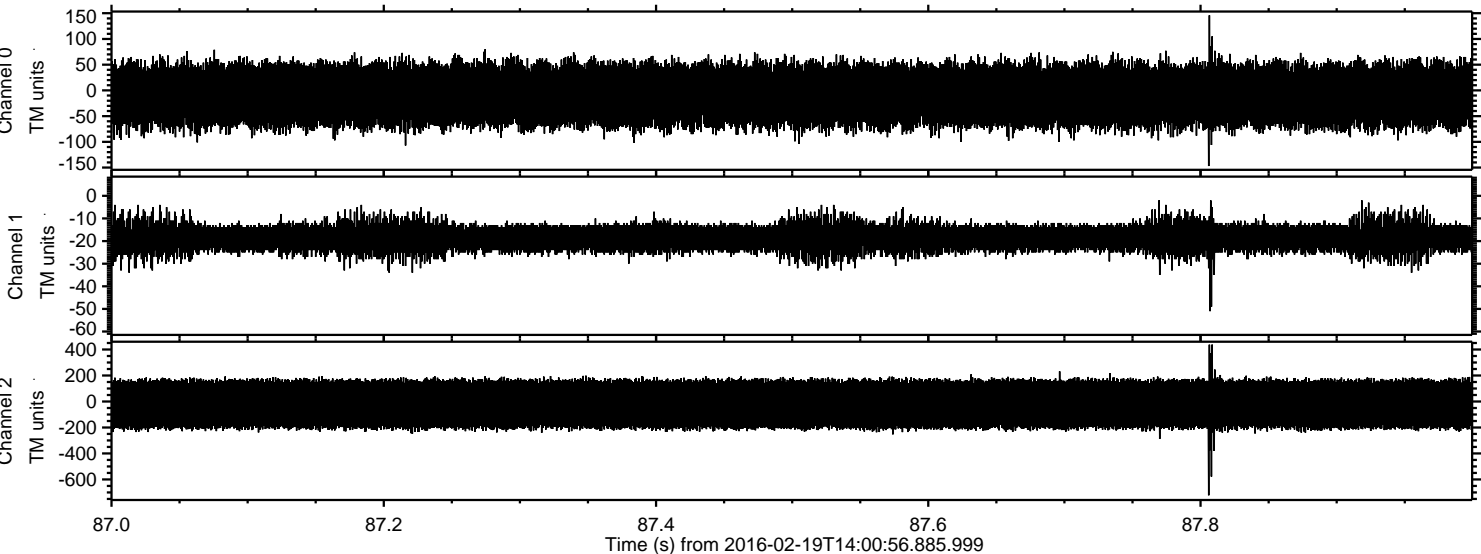


Processed Mon Apr 11 19:23:08 2016 by ELM ver.2012-10-06 from 001\_\_elm20160219\_140055\_\_dat00.bin





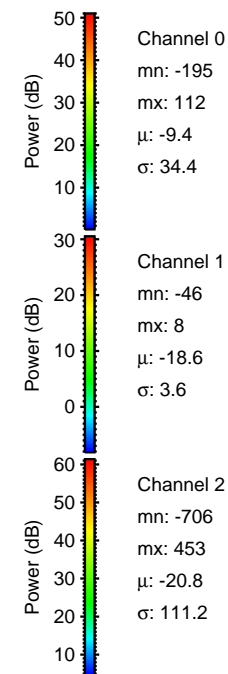
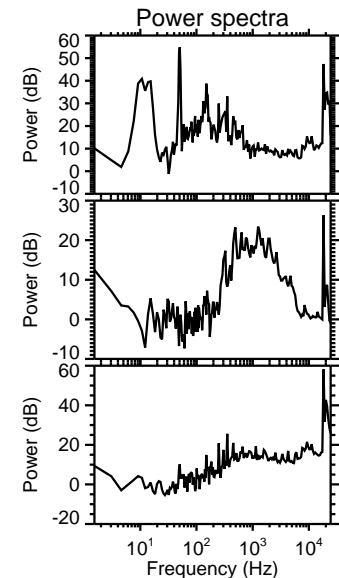
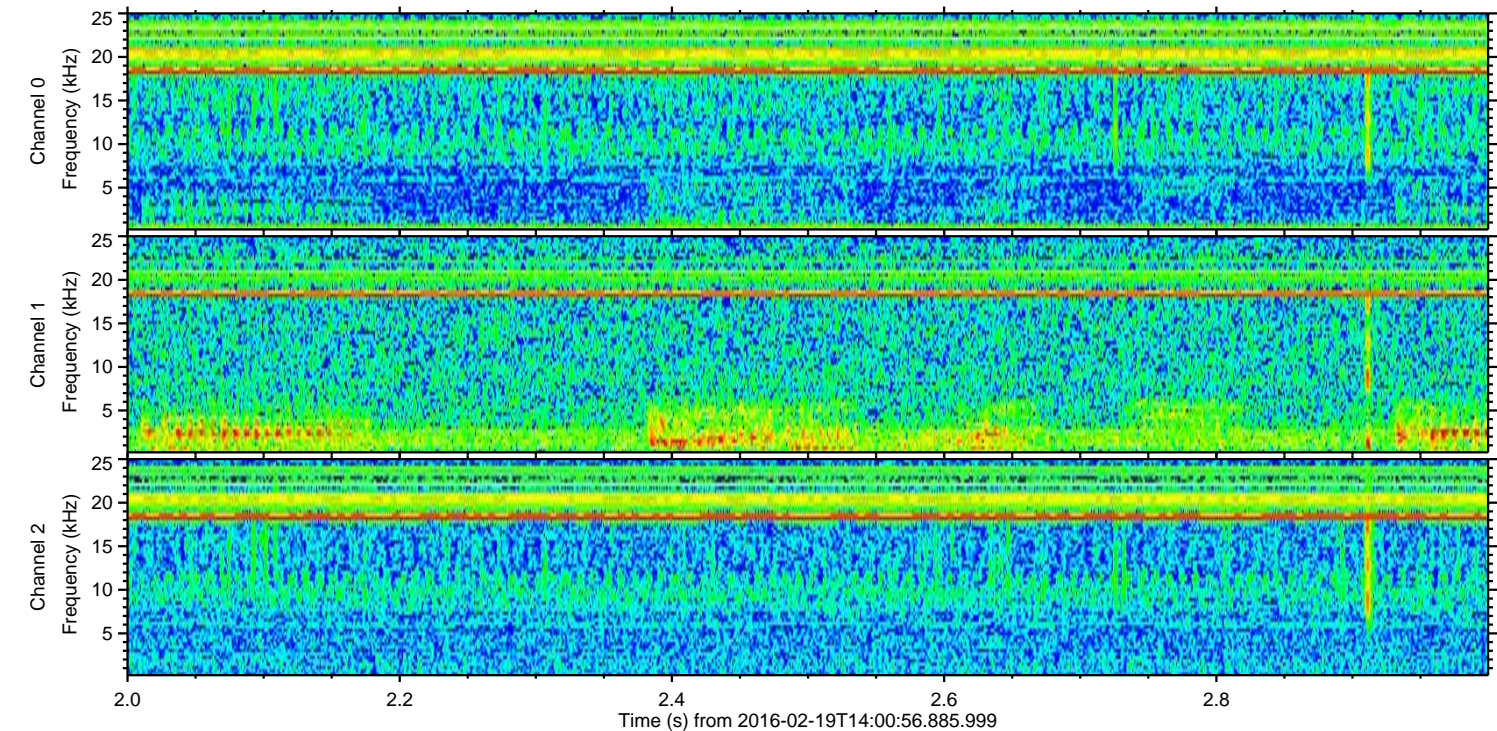
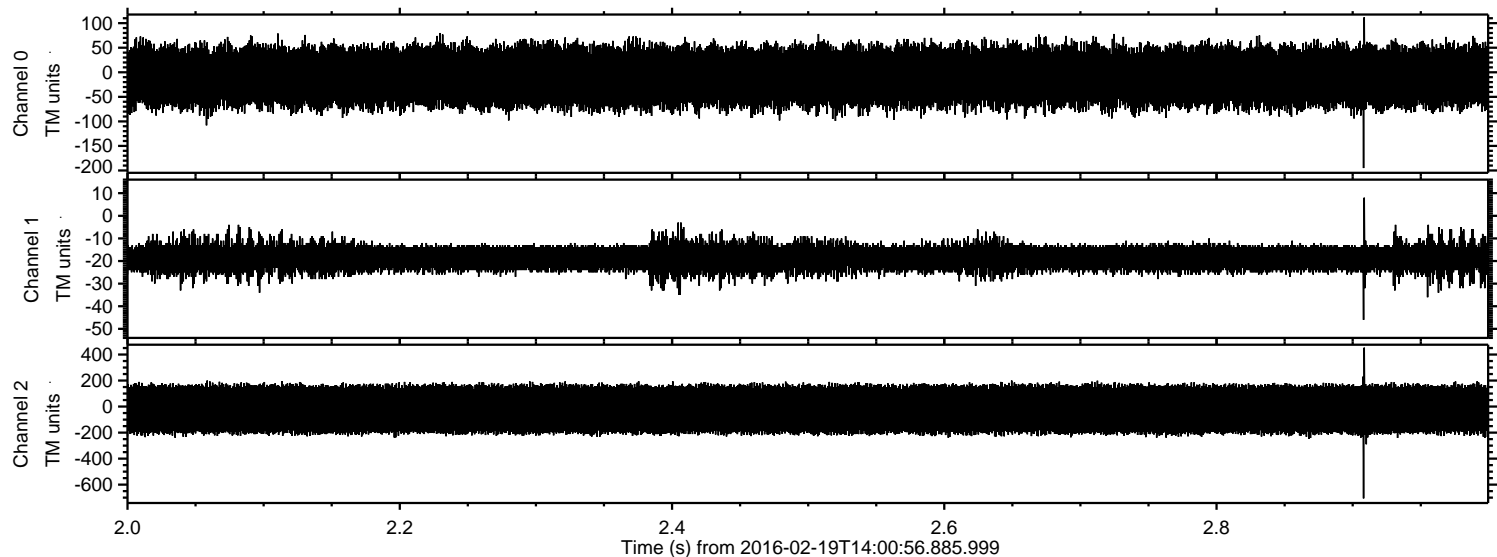
Processed Mon Apr 11 19:23:09 2016 by ELM ver.2012-10-06 from 001\_\_elm20160219\_140055\_\_dat00.bin





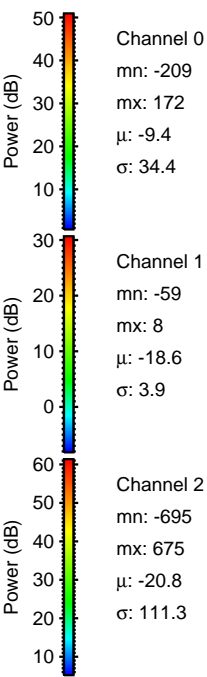
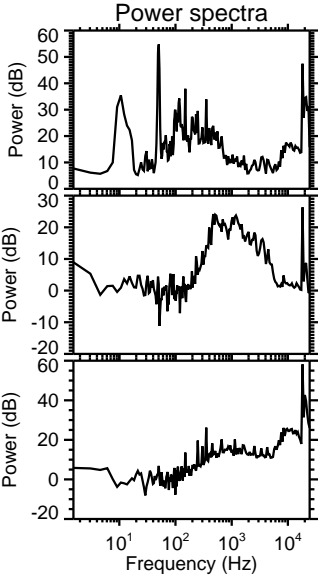
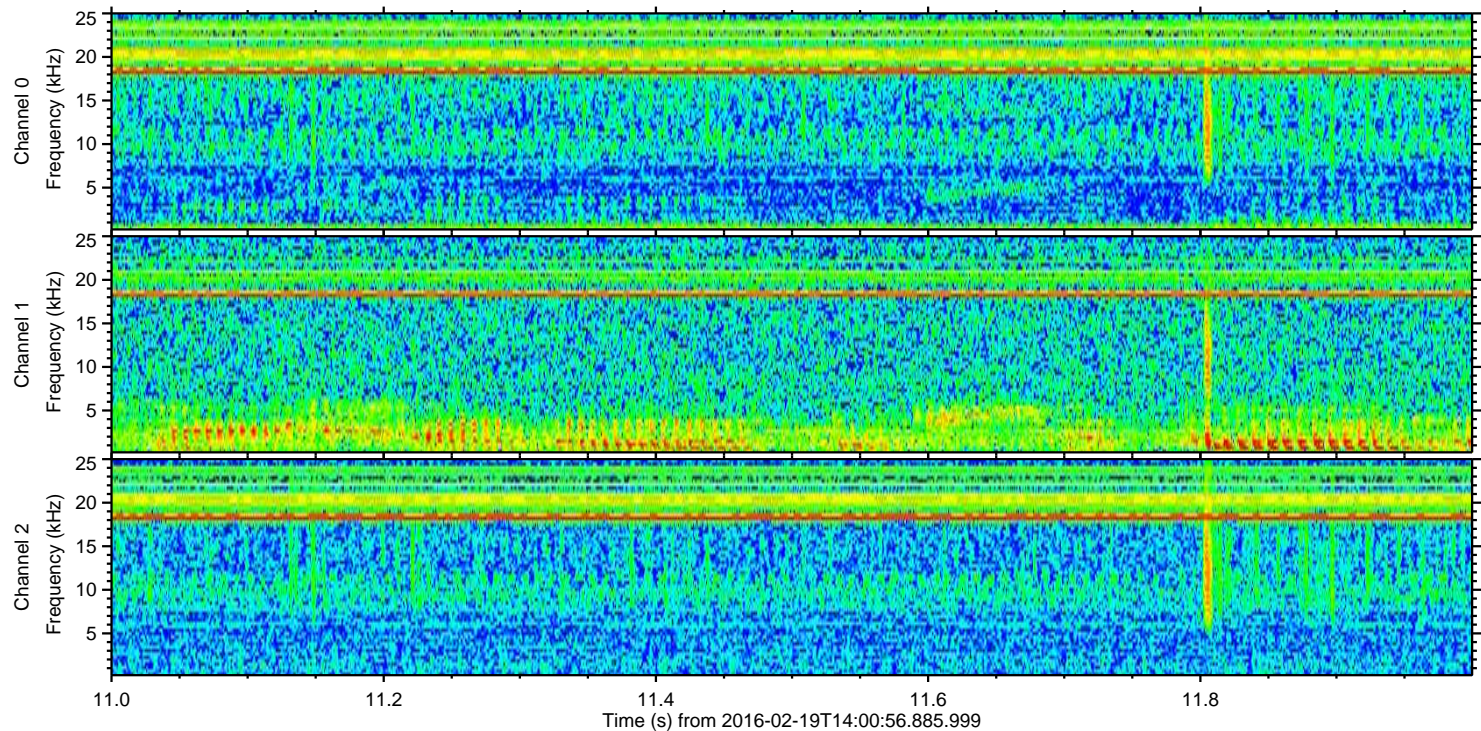
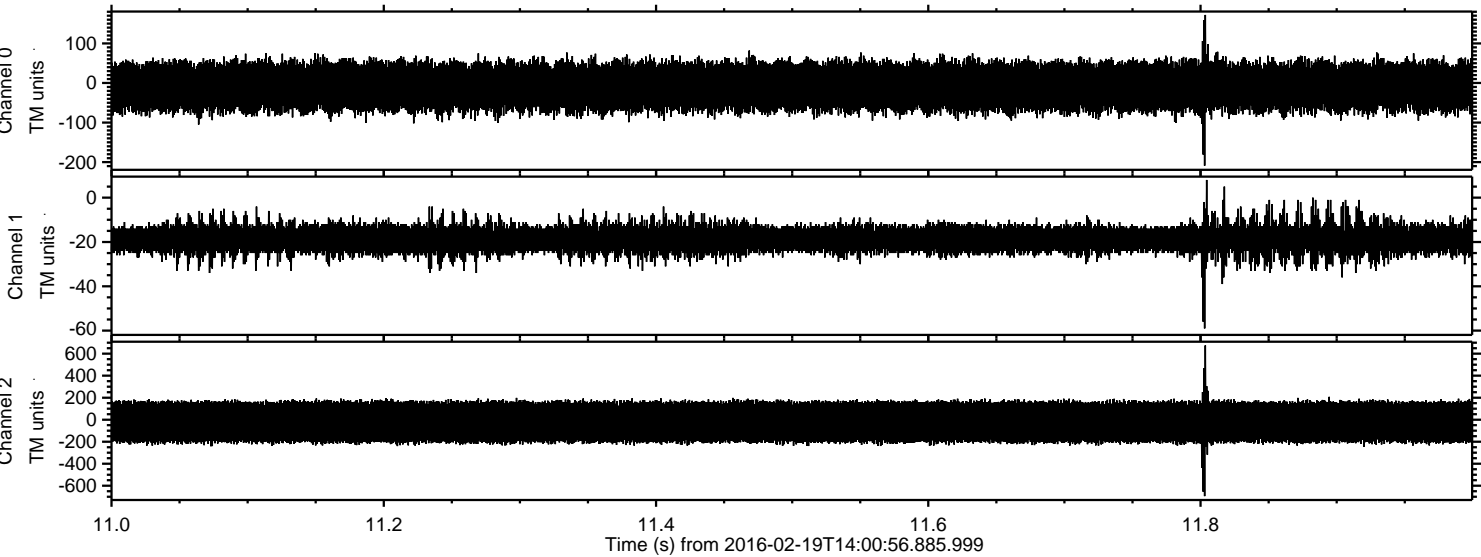
ELMAVAN 3D WAVEFORMS (Measured data sampled at 50 kHz) 51000 packets of 144 samples from 2016-02-19T14:00:56.885.999. Part 3/147

Processed Mon Apr 11 19:23:10 2016 by ELM ver.2012-10-06 from 001\_\_elm20160219\_140055\_\_dat00.bin





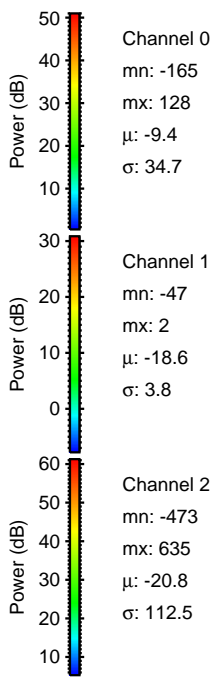
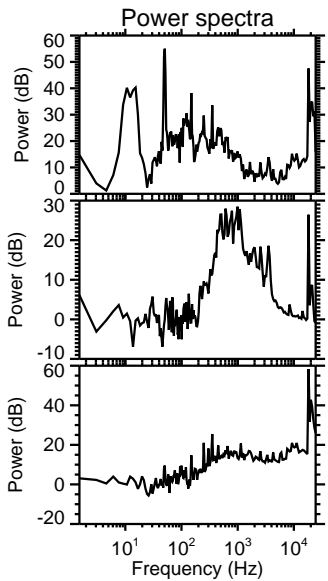
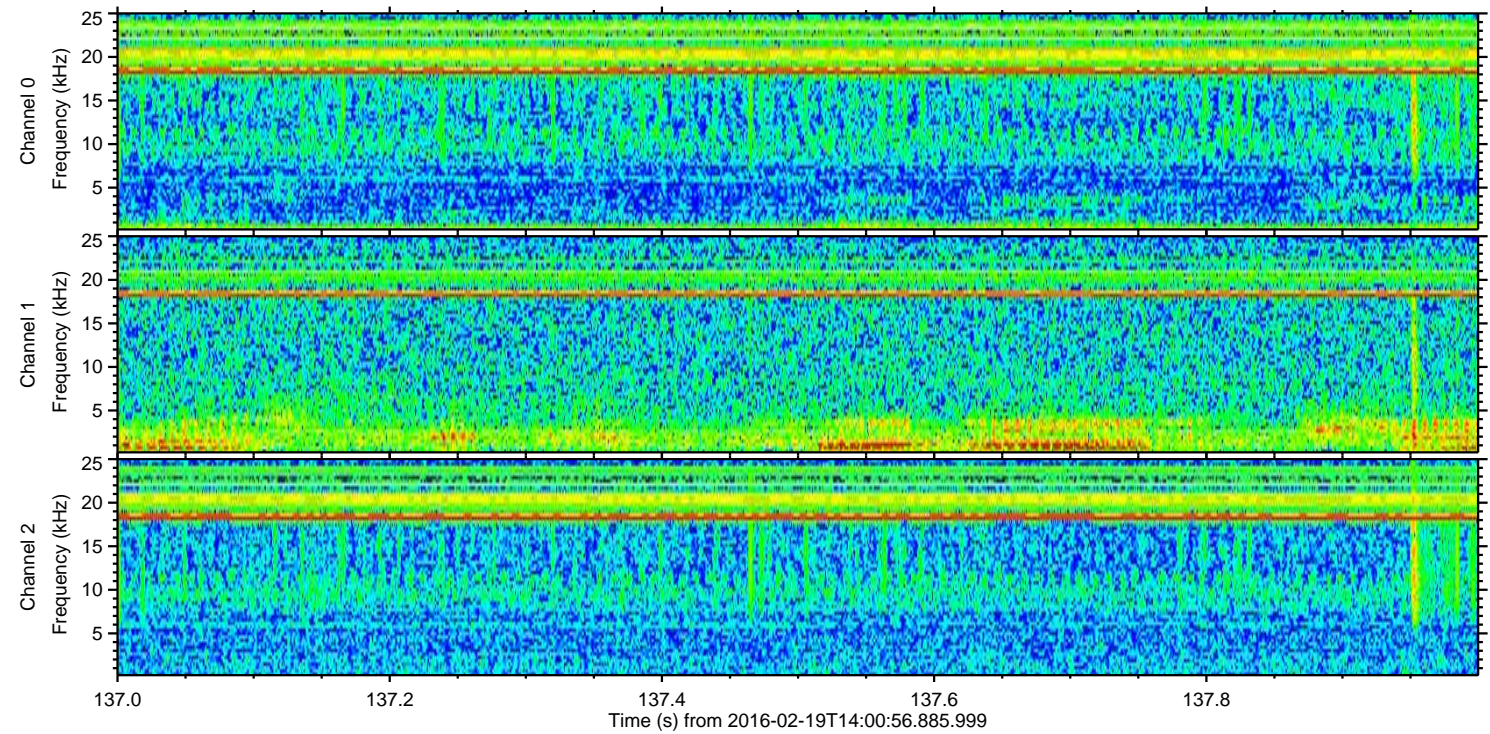
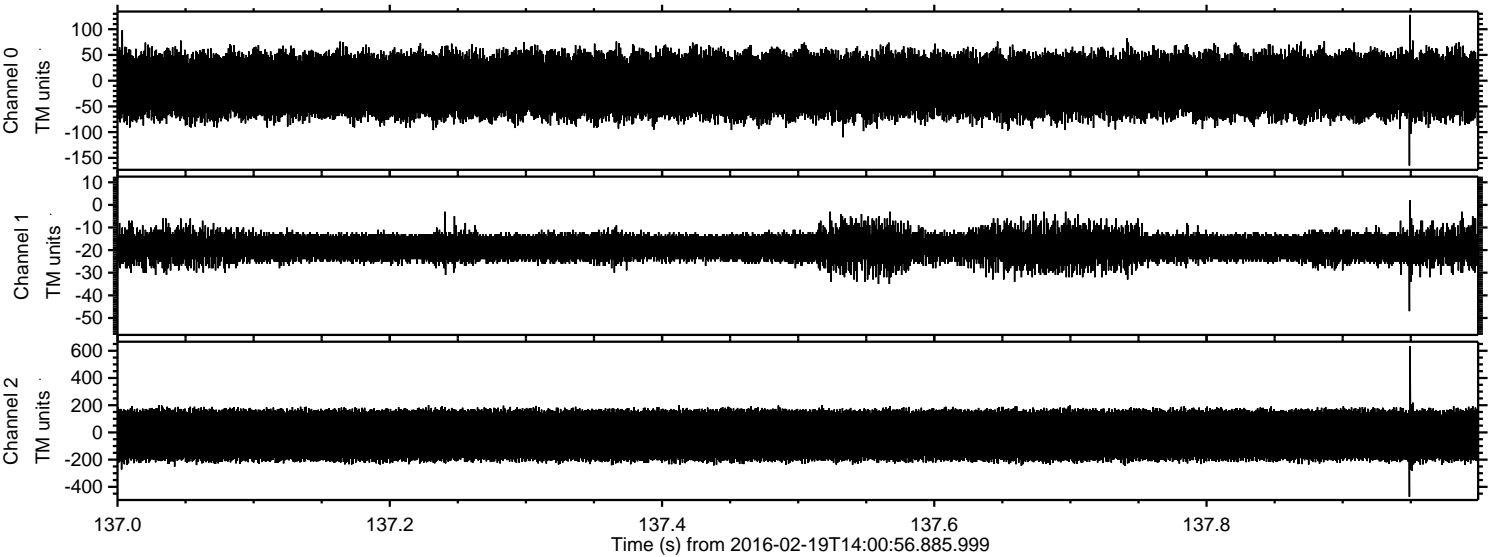
Processed Mon Apr 11 19:23:11 2016 by ELM ver.2012-10-06 from 001\_\_elm20160219\_140055\_\_dat00.bin





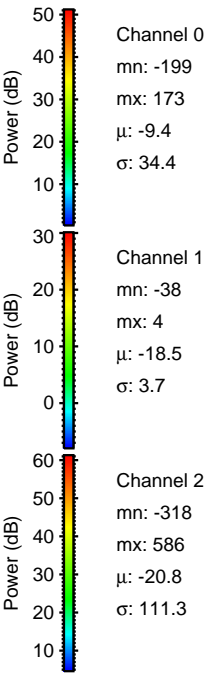
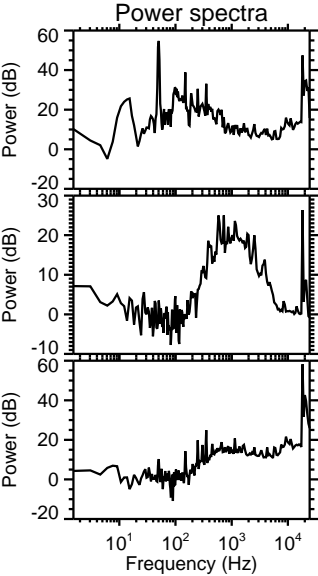
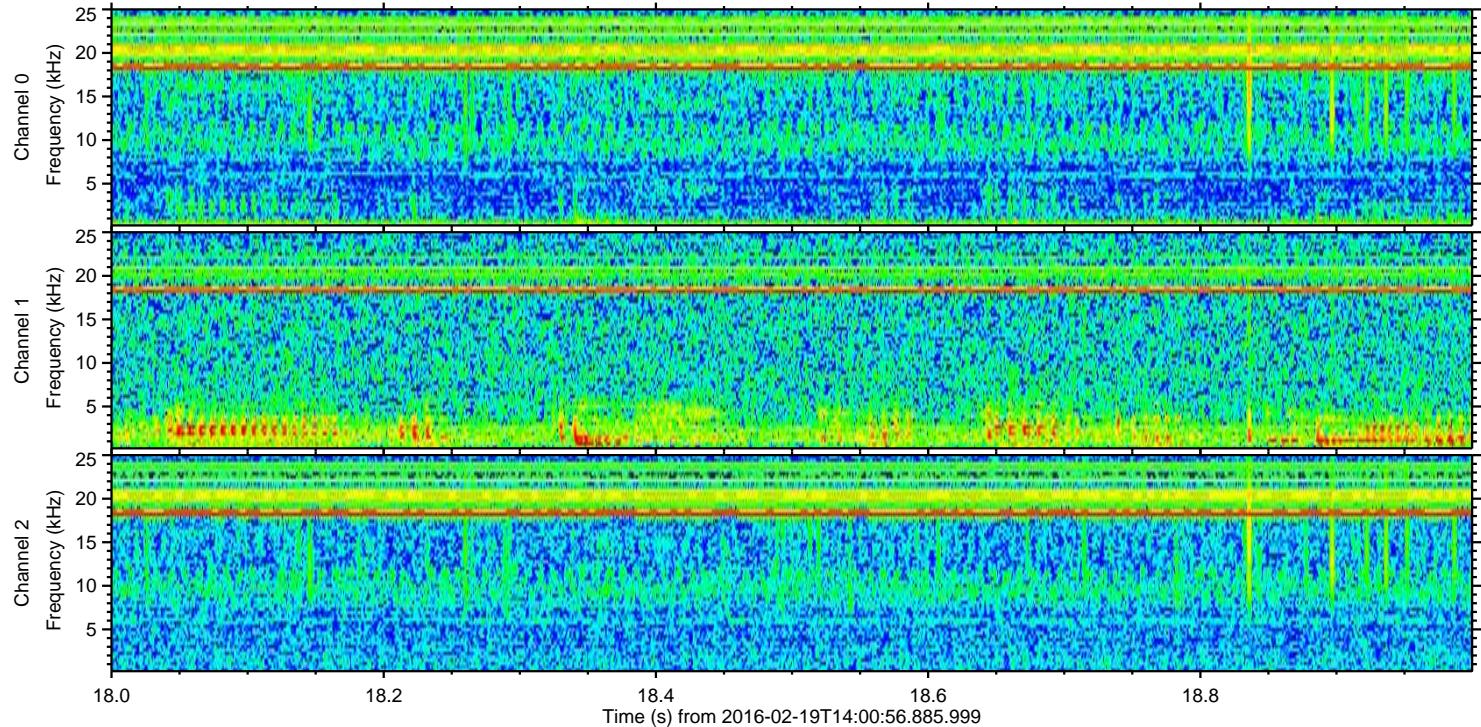
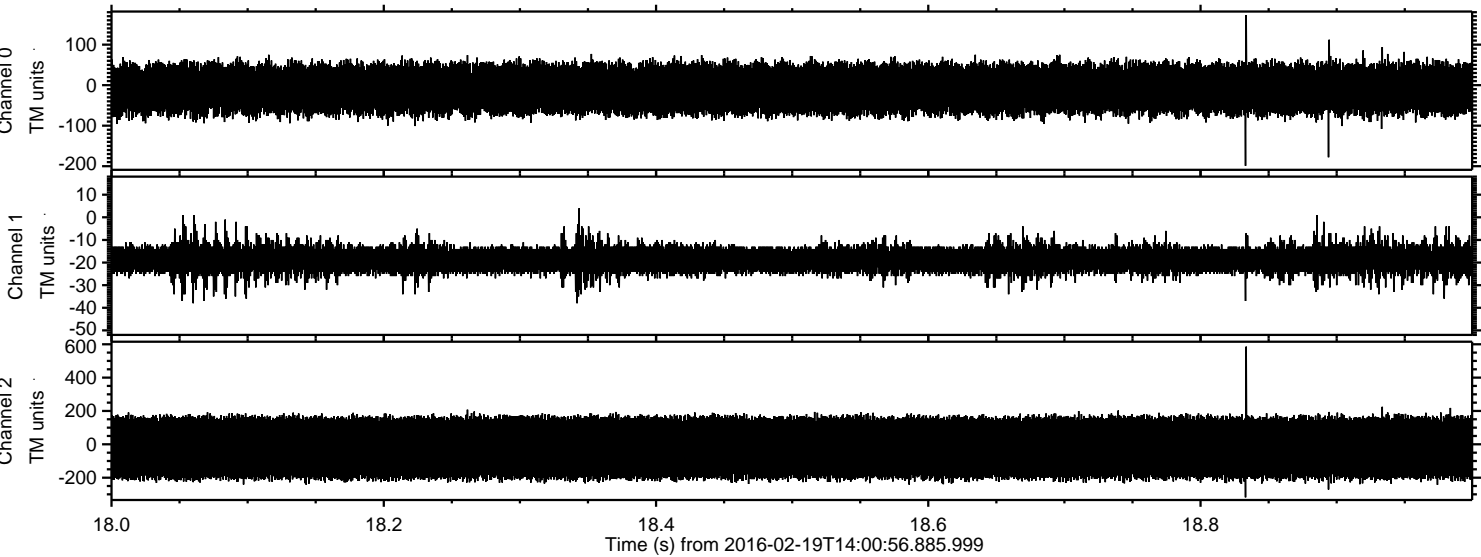
ELMAVAN 3D WAVEFORMS (Measured data sampled at 50 kHz) 51000 packets of 144 samples from 2016-02-19T14:00:56.885.999. Part 138/147

Processed Mon Apr 11 19:23:12 2016 by ELM ver.2012-10-06 from 001\_\_elm20160219\_140055\_\_dat00.bin





Processed Mon Apr 11 19:23:12 2016 by ELM ver.2012-10-06 from 001\_\_elm20160219\_140055\_\_dat00.bin



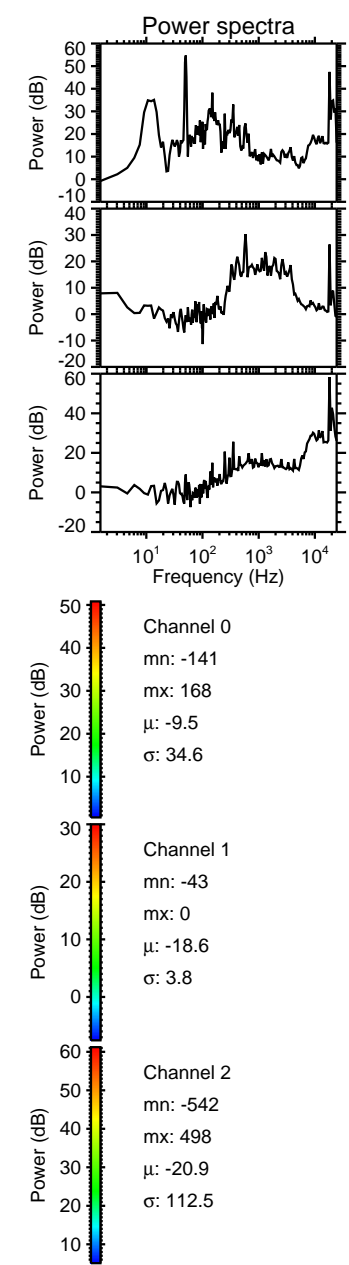
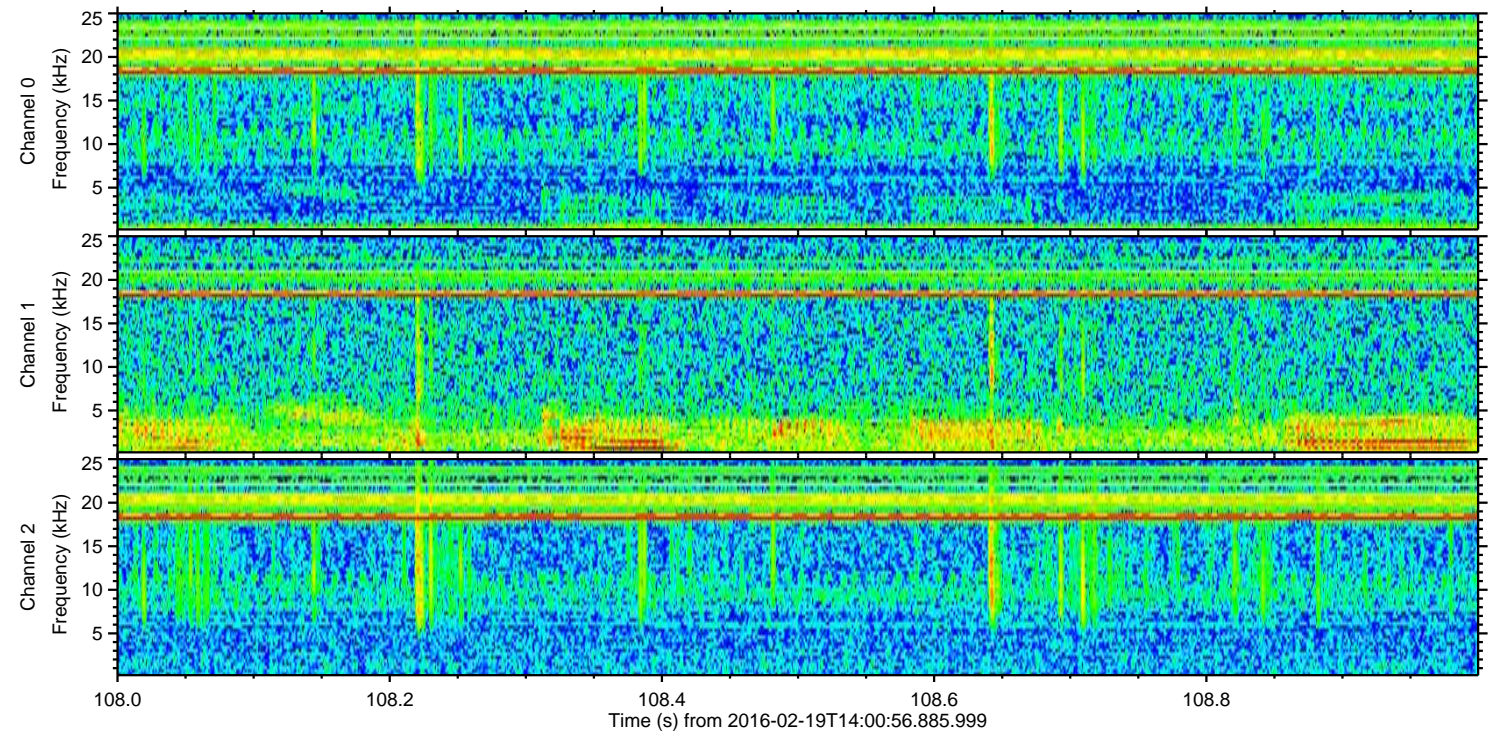
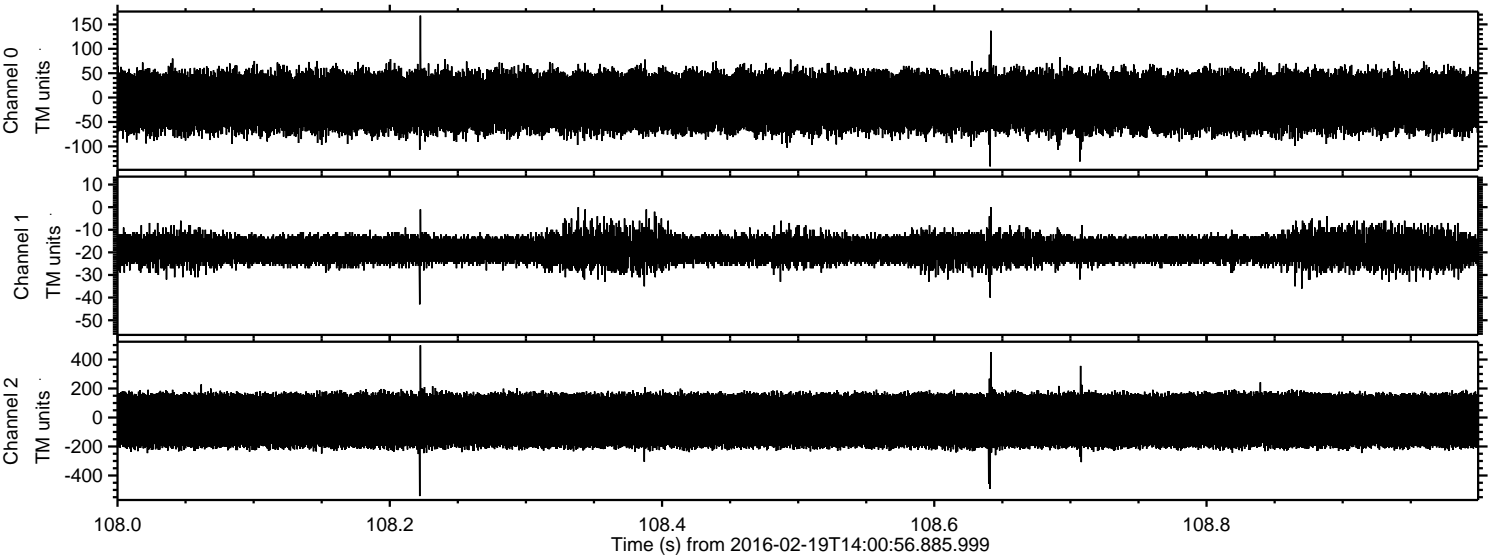
Channel 0  
mn: -199  
mx: 173  
 $\mu$ : -9.4  
 $\sigma$ : 34.4

Channel 1  
mn: -38  
mx: 4  
 $\mu$ : -18.5  
 $\sigma$ : 3.7

Channel 2  
mn: -318  
mx: 586  
 $\mu$ : -20.8  
 $\sigma$ : 111.3



Processed Mon Apr 11 19:23:13 2016 by ELM ver.2012-10-06 from 001\_\_elm20160219\_140055\_\_dat00.bin





Processed Mon Apr 11 19:23:14 2016 by ELM ver.2012-10-06 from 001\_\_elm20160219\_140055\_\_dat00.bin

