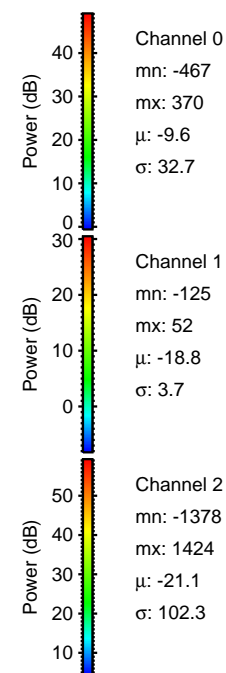
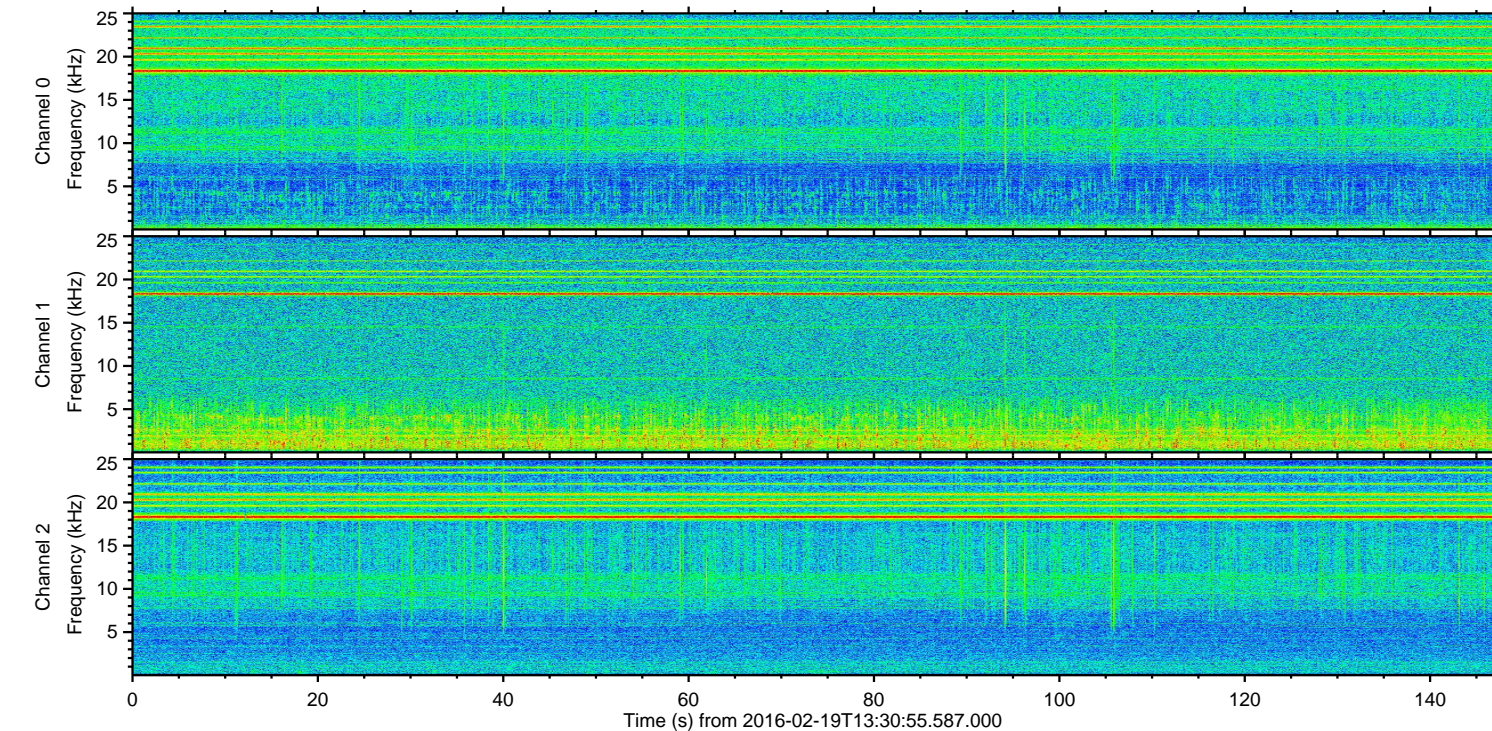
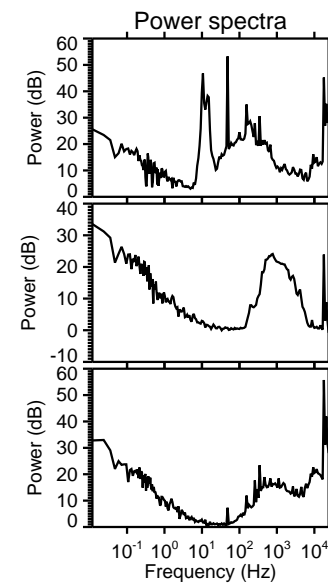
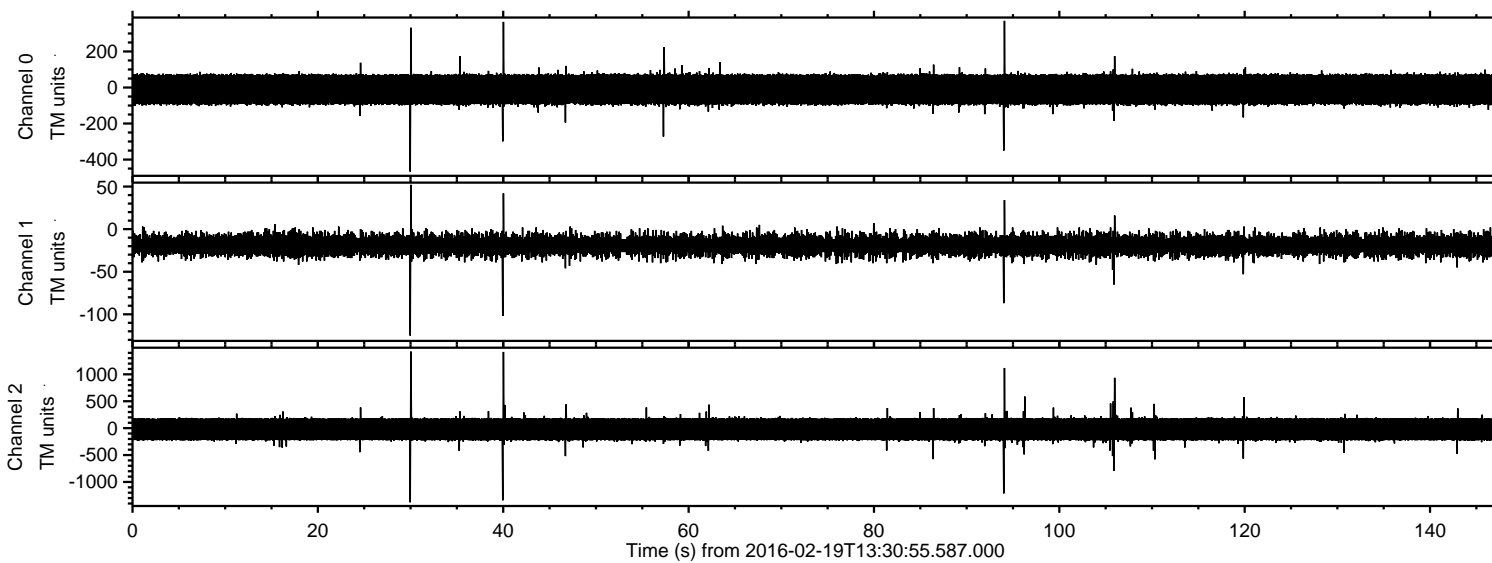
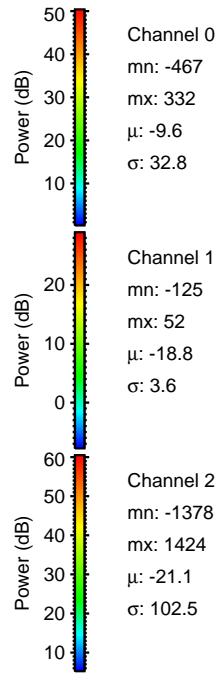
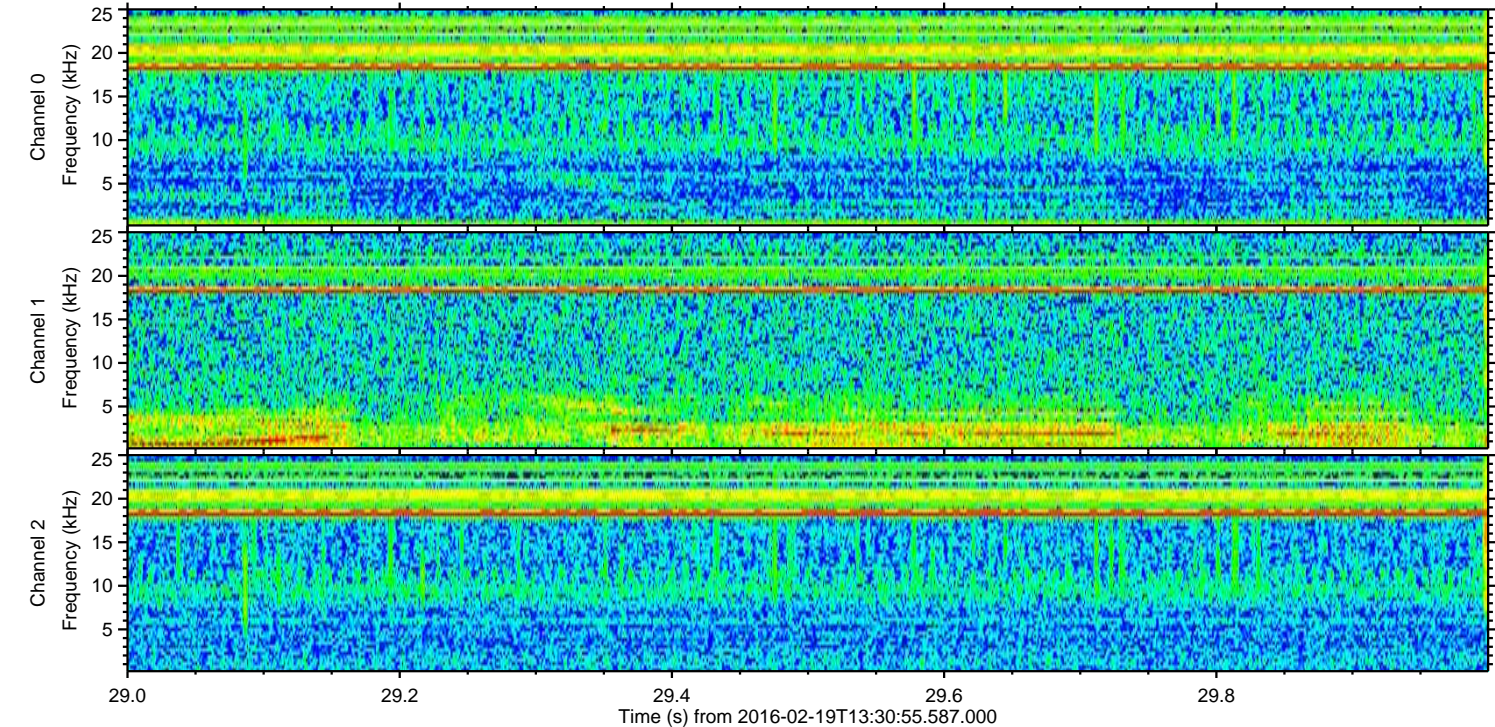
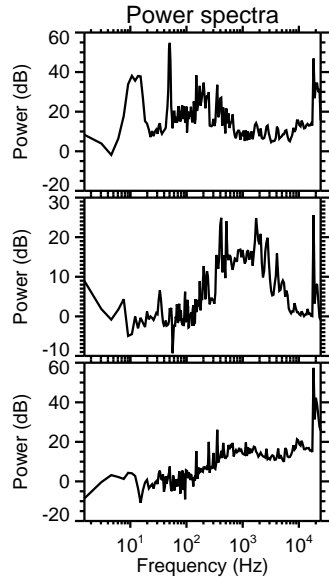
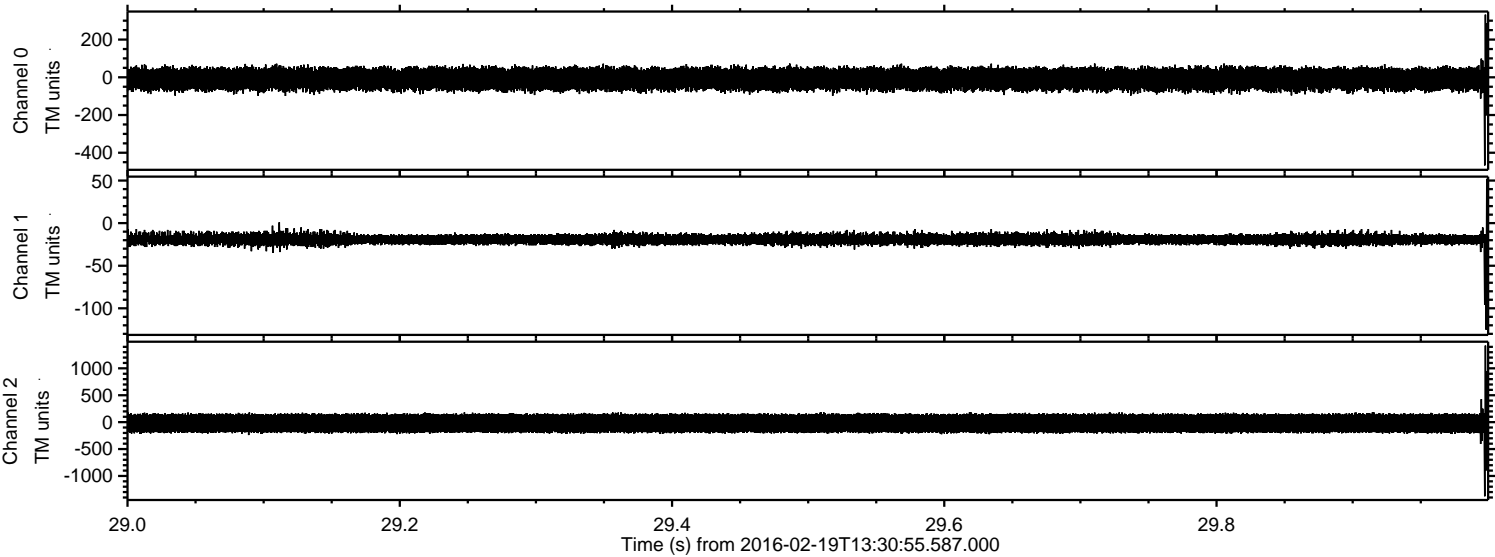


ELMAVAN 3D WAVEFORMS (Measured data sampled at 50 kHz) 51000 packets of 144 samples from 2016-02-19T13:30:55.587.000.

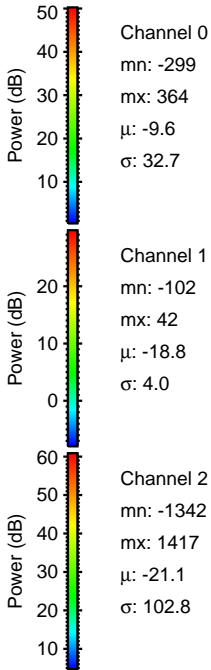
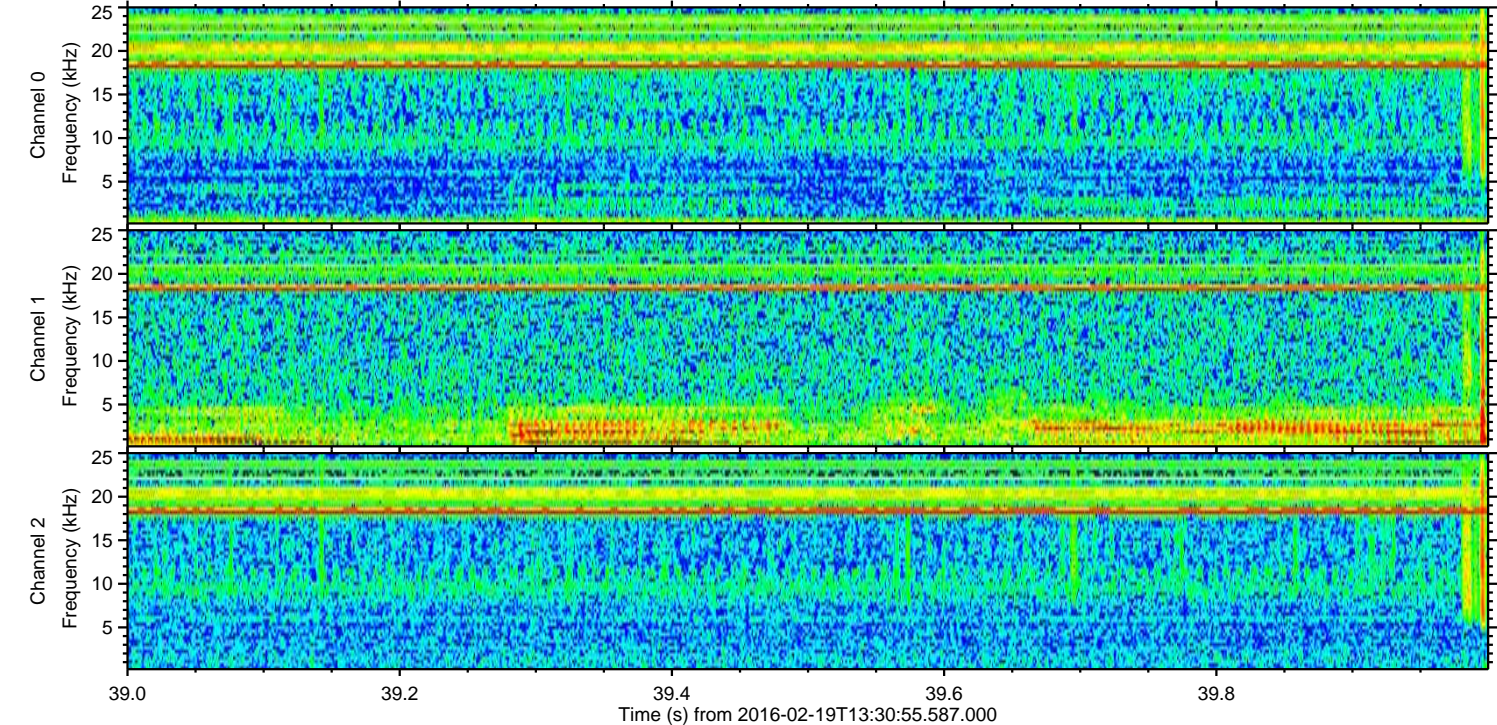
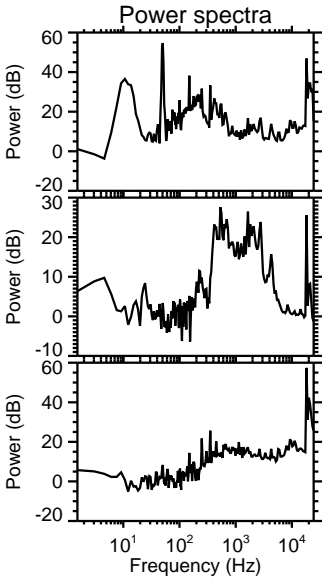
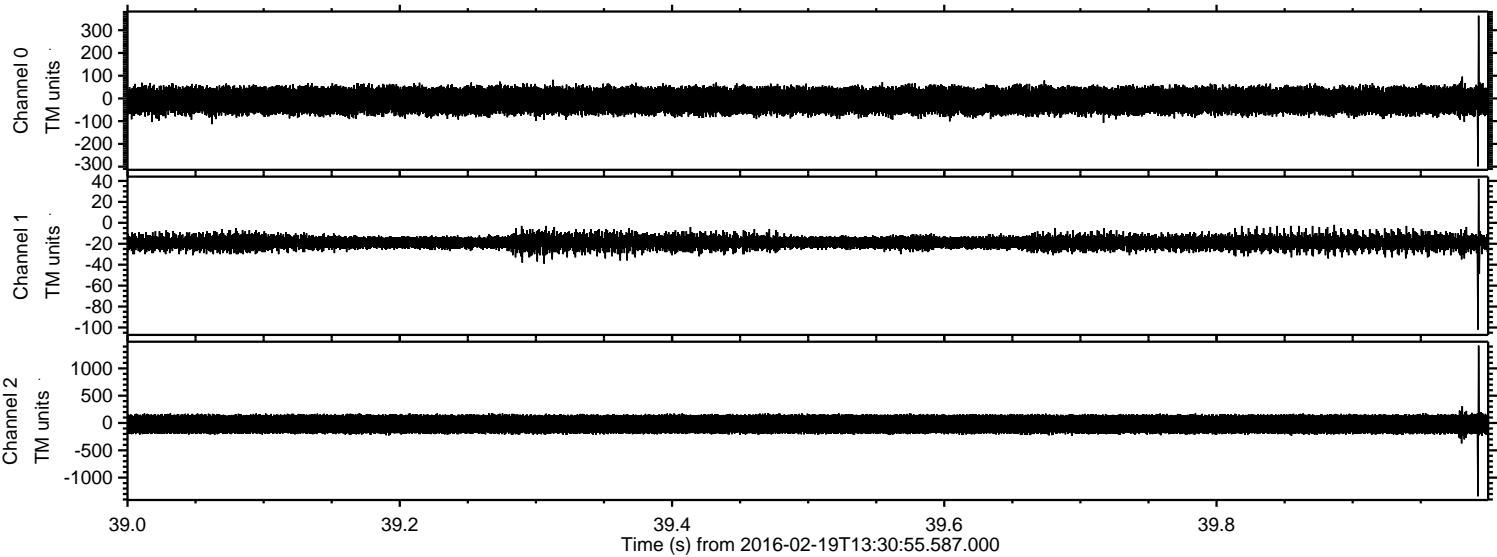
Processed Mon Apr 11 19:16:50 2016 by ELM ver.2012-10-06 from 001__elm20160219_133054__dat00.bin



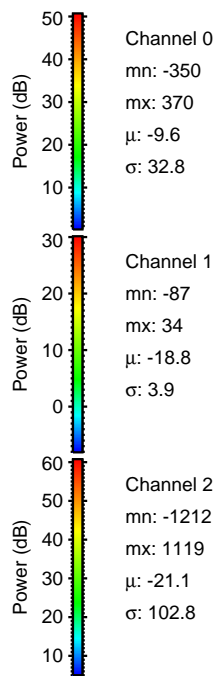
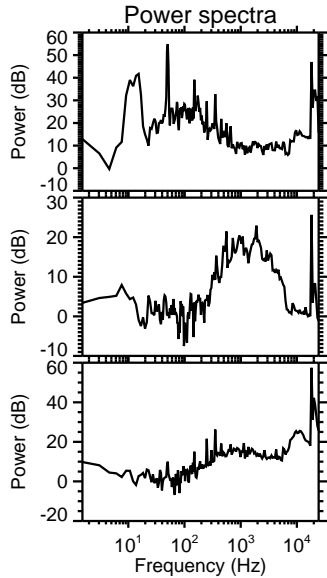
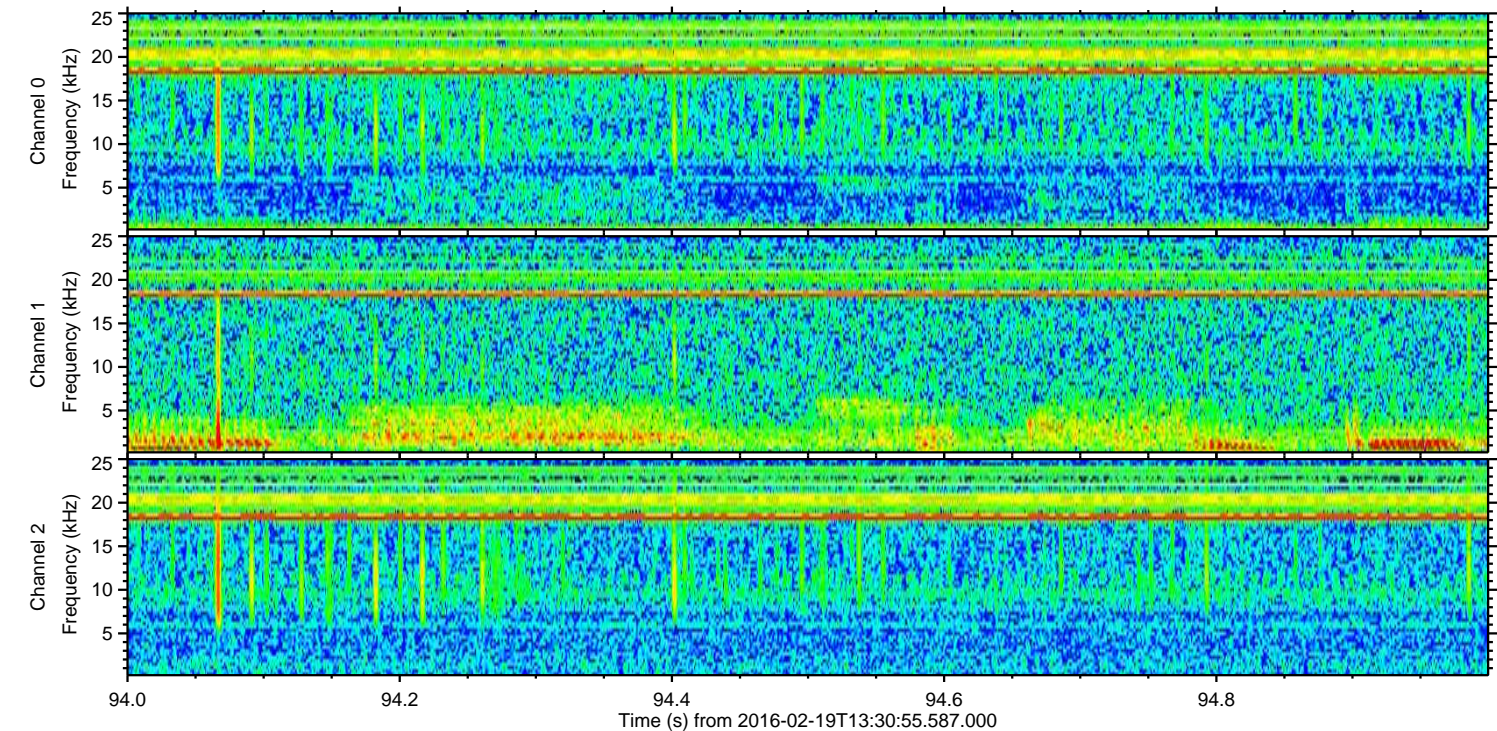
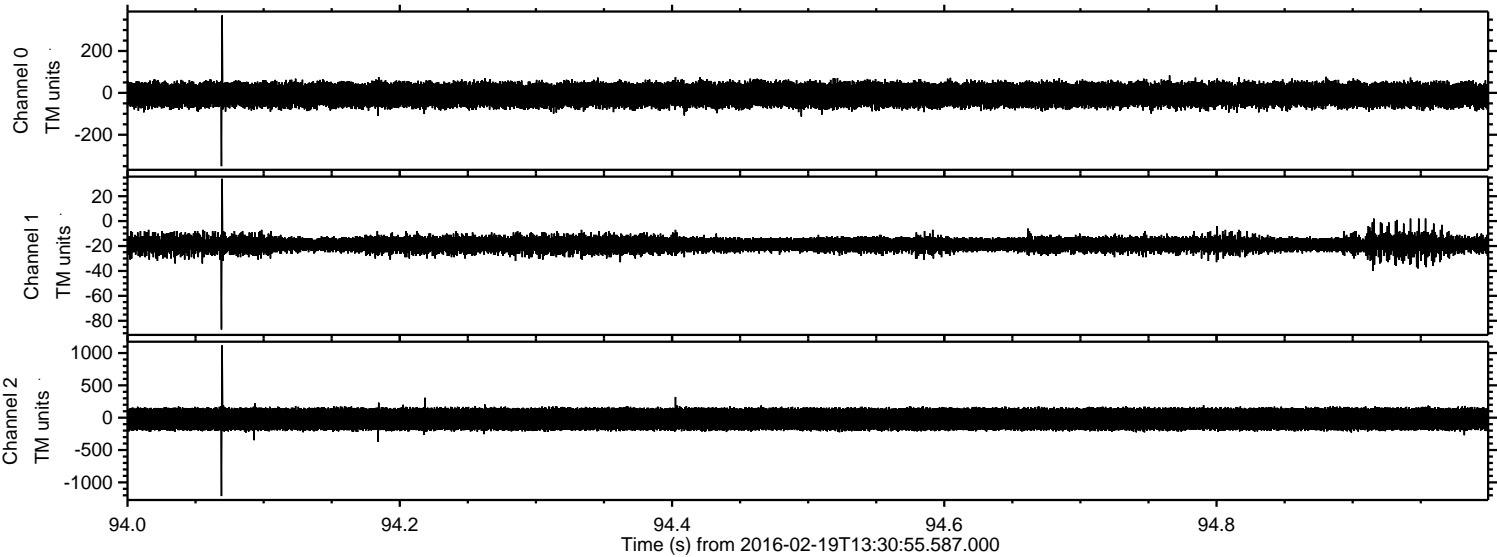
Processed Mon Apr 11 19:17:02 2016 by ELM ver.2012-10-06 from 001__elm20160219_133054__dat00.bin



Processed Mon Apr 11 19:17:03 2016 by ELM ver.2012-10-06 from 001__elm20160219_133054__dat00.bin

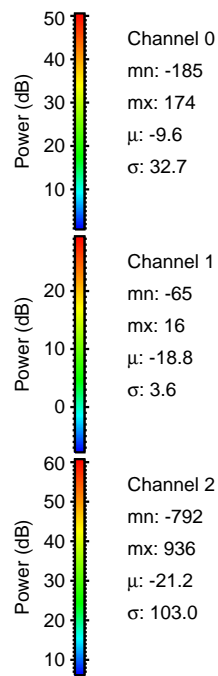
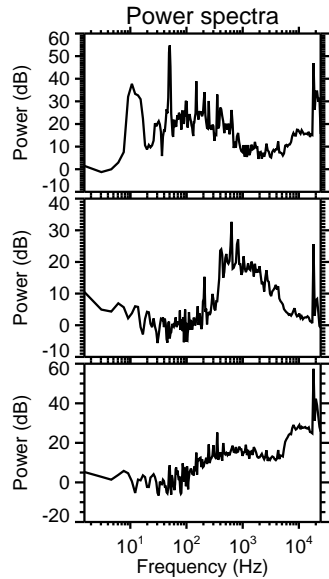
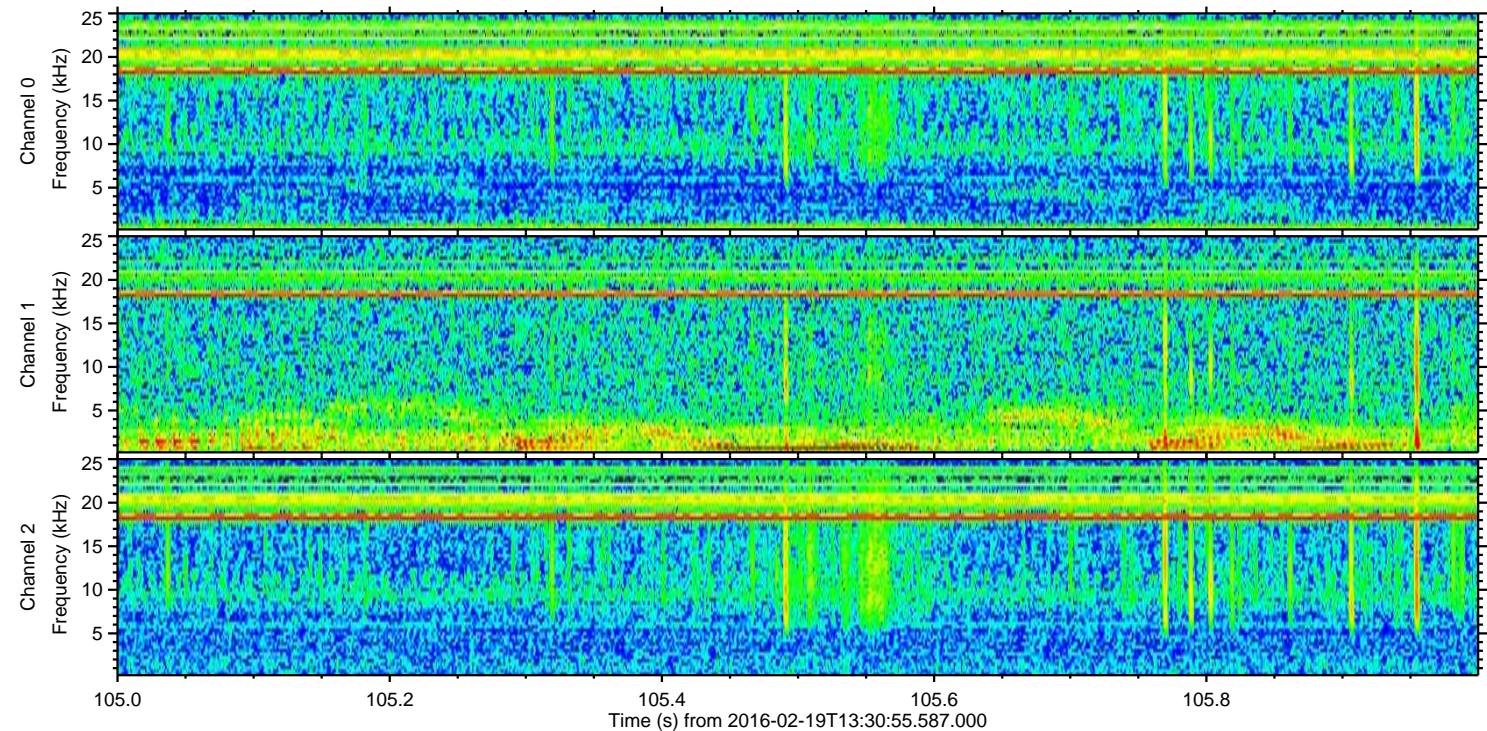
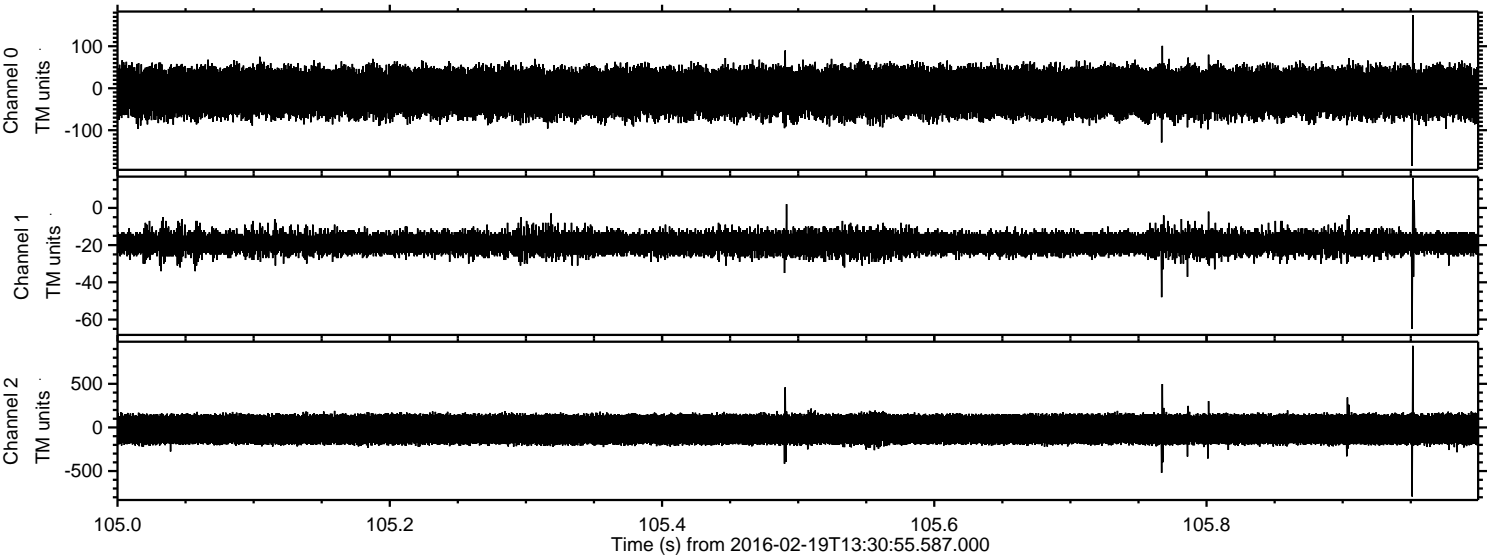


Processed Mon Apr 11 19:17:04 2016 by ELM ver.2012-10-06 from 001__elm20160219_133054__dat00.bin

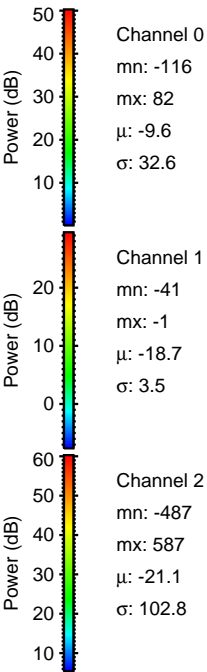
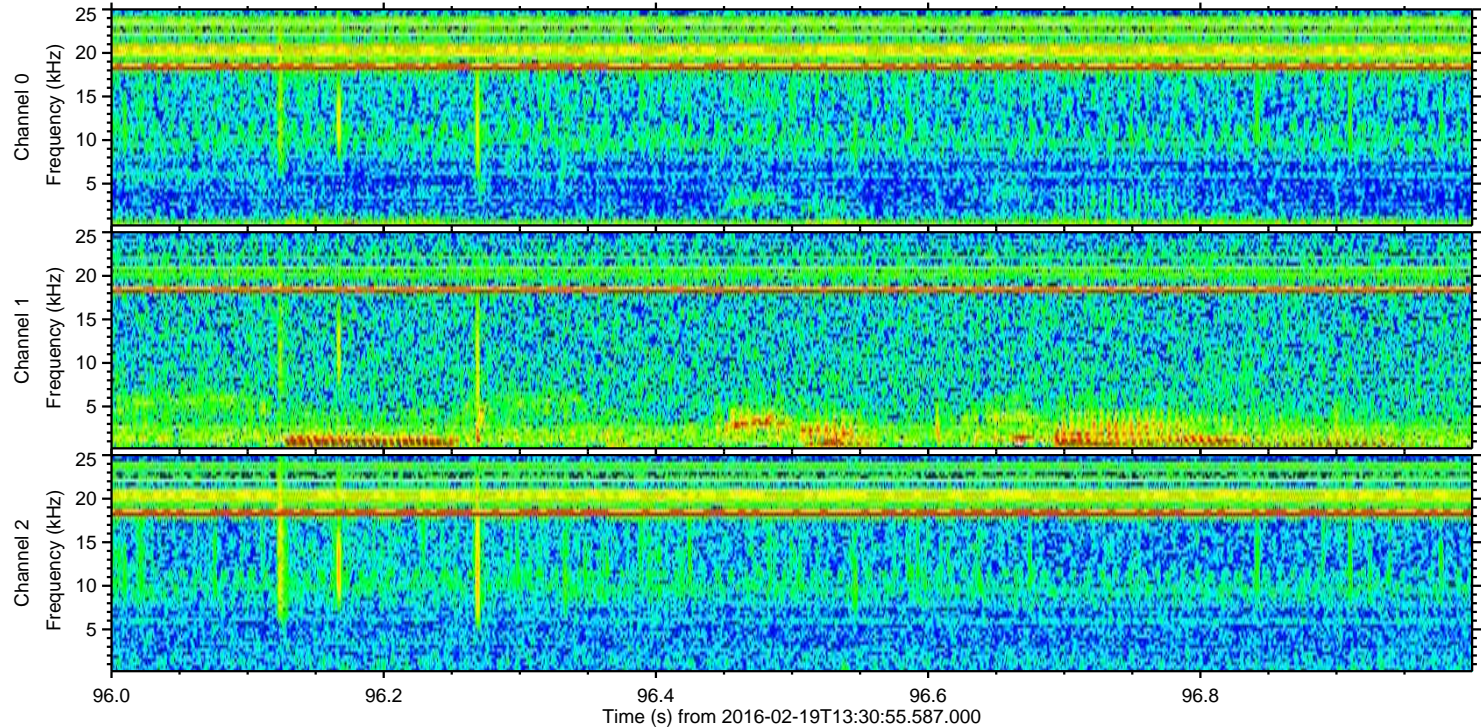
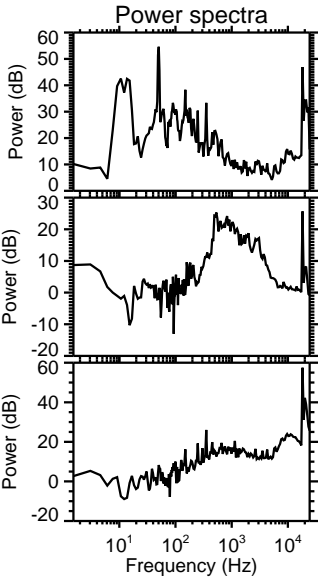
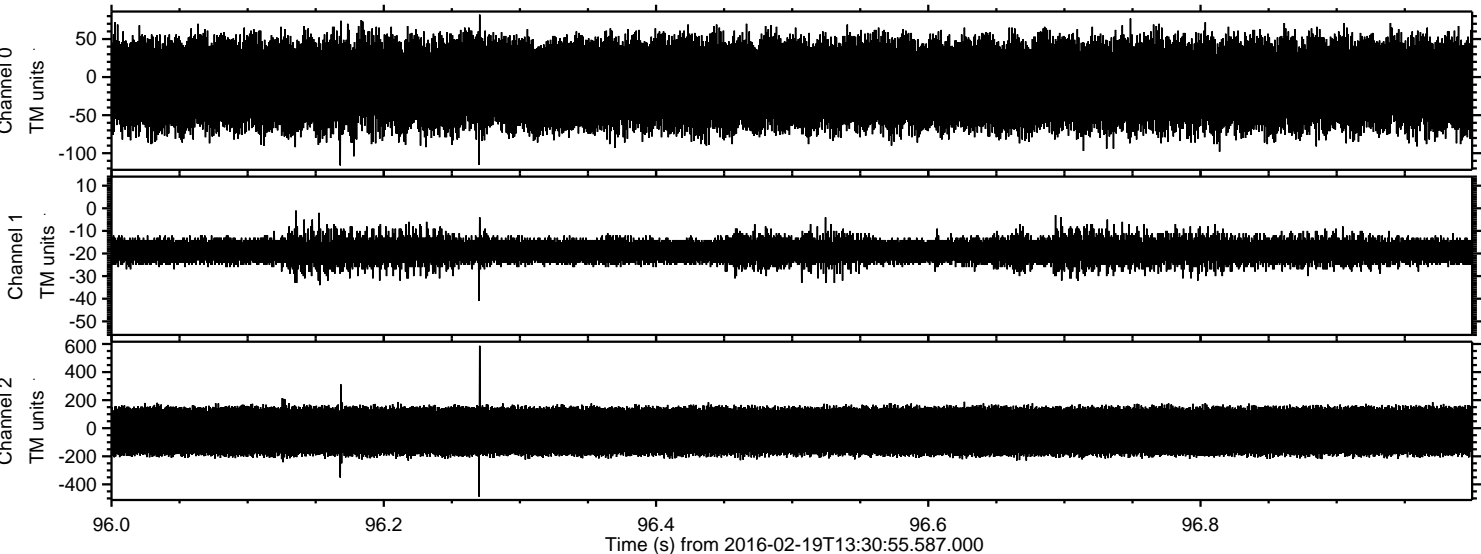


ELMAVAN 3D WAVEFORMS (Measured data sampled at 50 kHz) 51000 packets of 144 samples from 2016-02-19T13:30:55.587.000. Part 106/147

Processed Mon Apr 11 19:17:05 2016 by ELM ver.2012-10-06 from 001__elm20160219_133054__dat00.bin

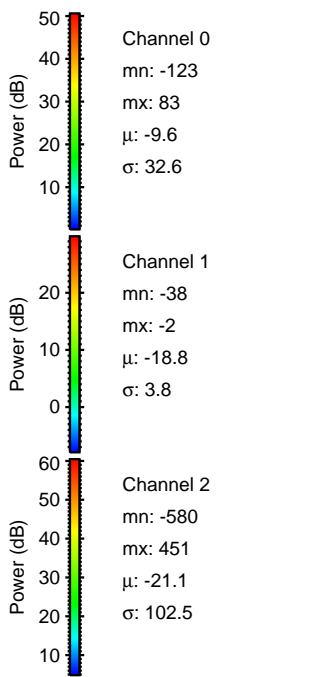
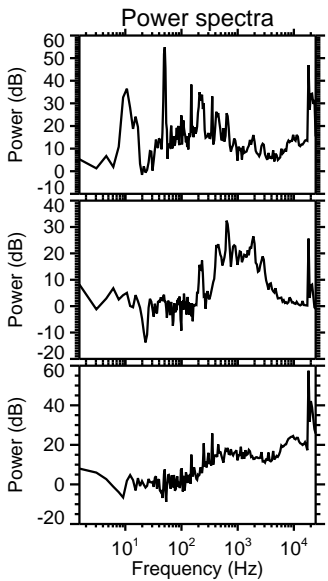
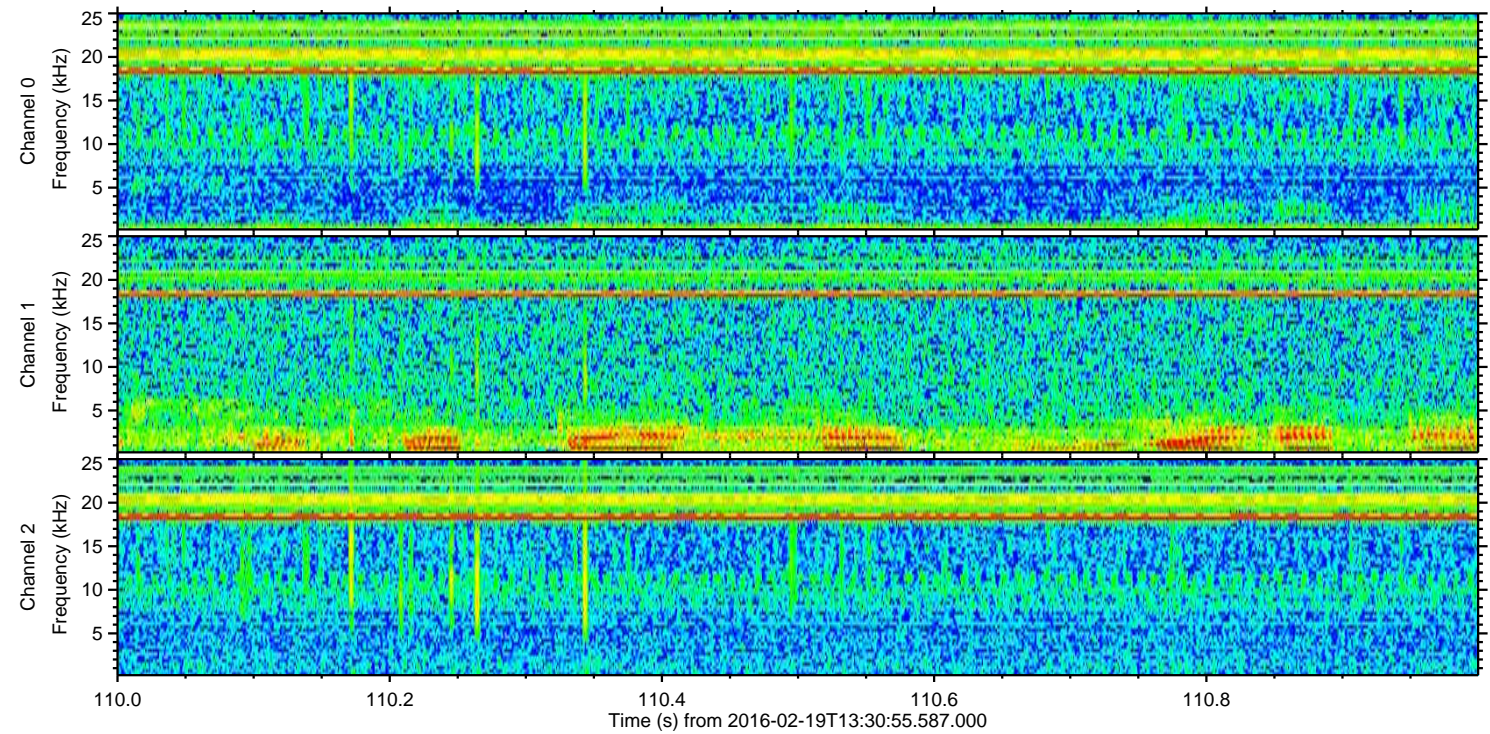
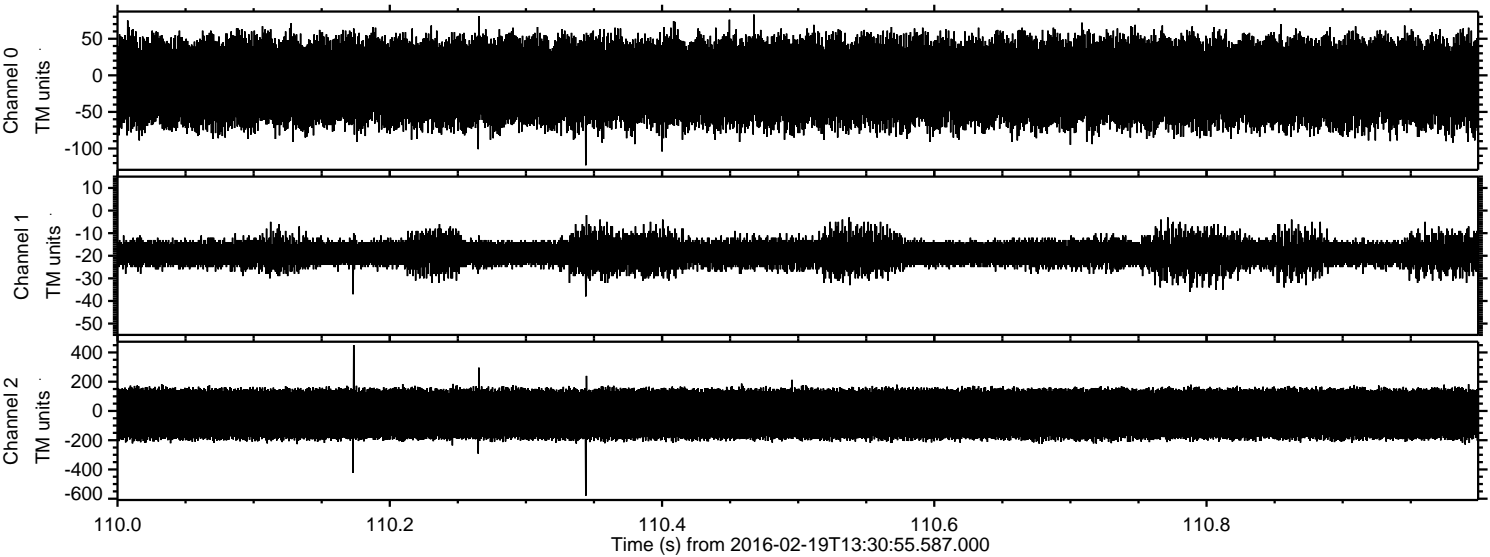


Processed Mon Apr 11 19:17:06 2016 by ELM ver.2012-10-06 from 001__elm20160219_133054__dat00.bin



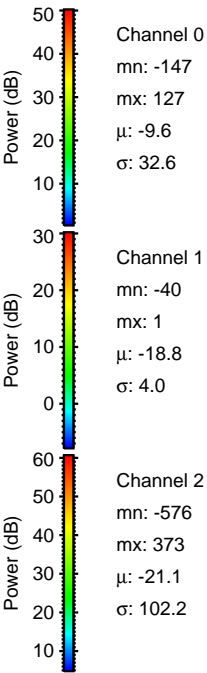
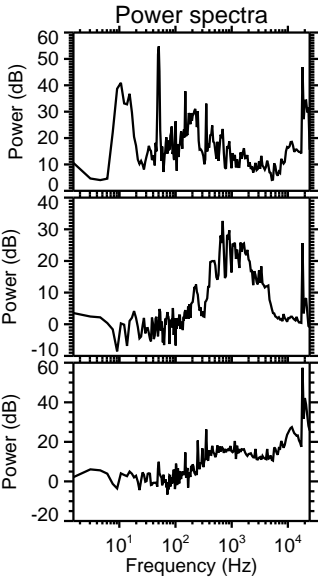
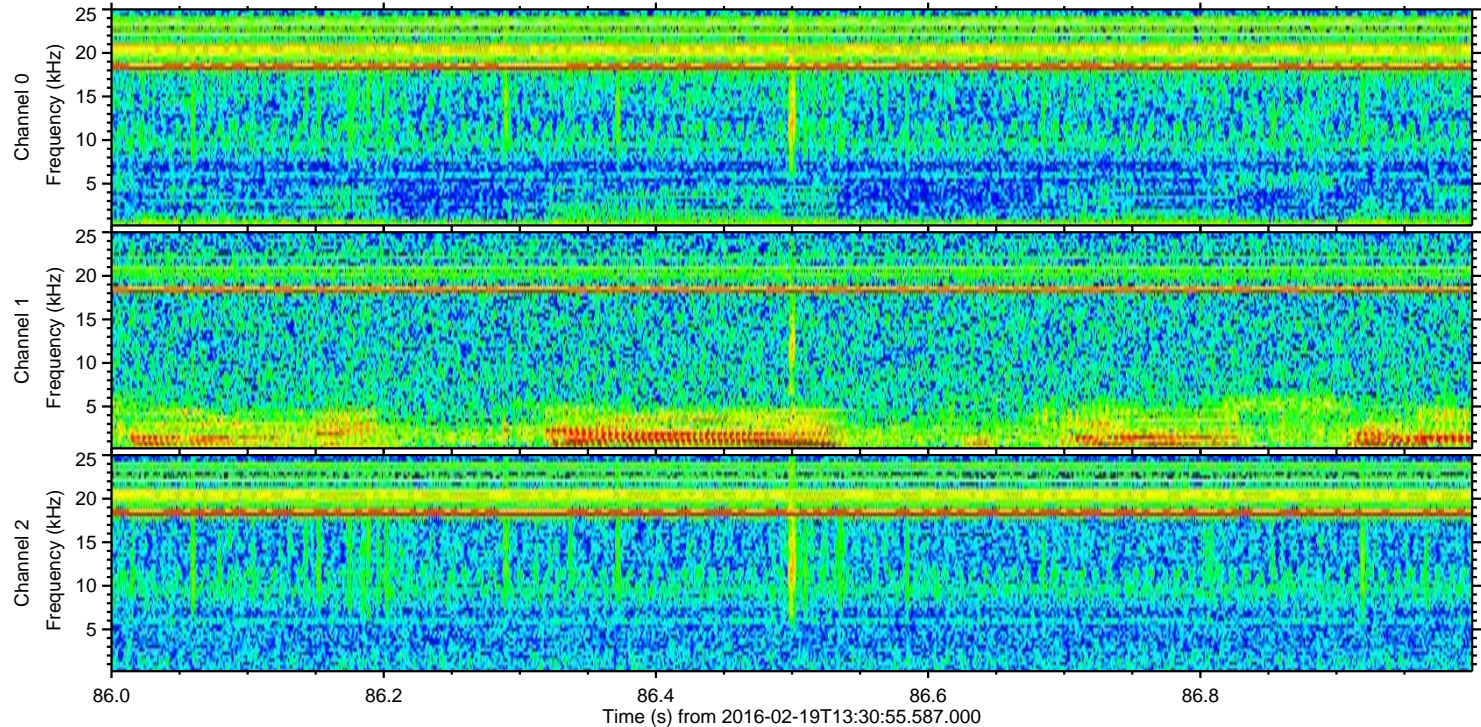
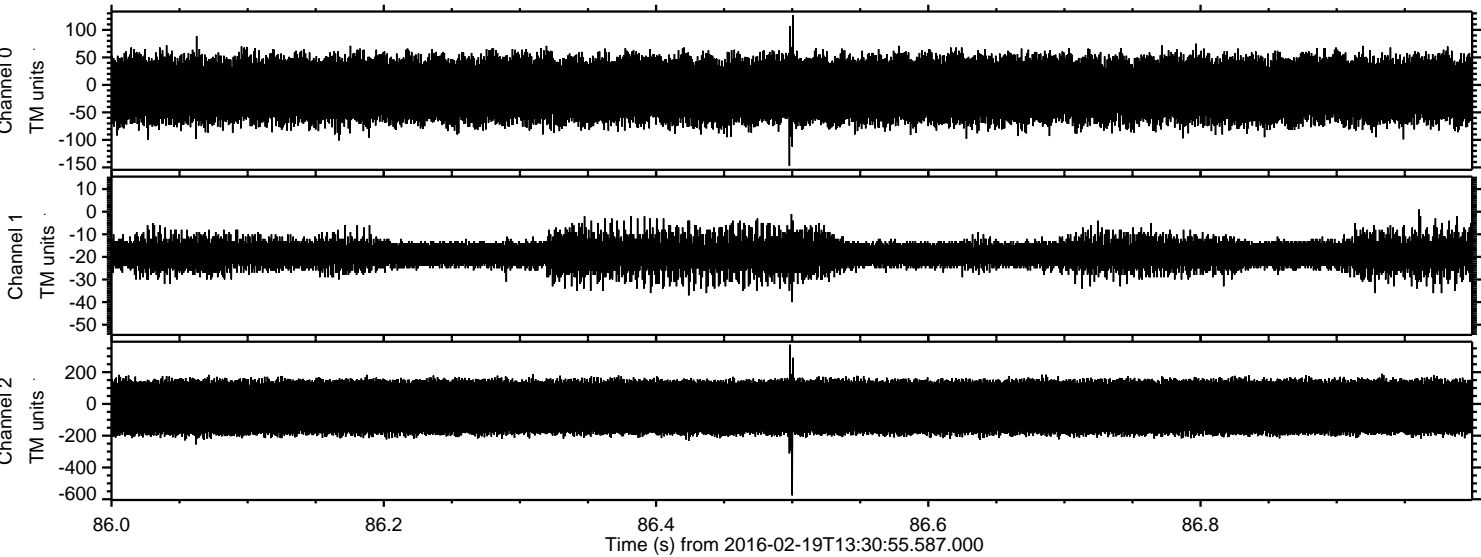
ELMAVAN 3D WAVEFORMS (Measured data sampled at 50 kHz) 51000 packets of 144 samples from 2016-02-19T13:30:55.587.000. Part 111/147

Processed Mon Apr 11 19:17:07 2016 by ELM ver.2012-10-06 from 001__elm20160219_133054__dat00.bin

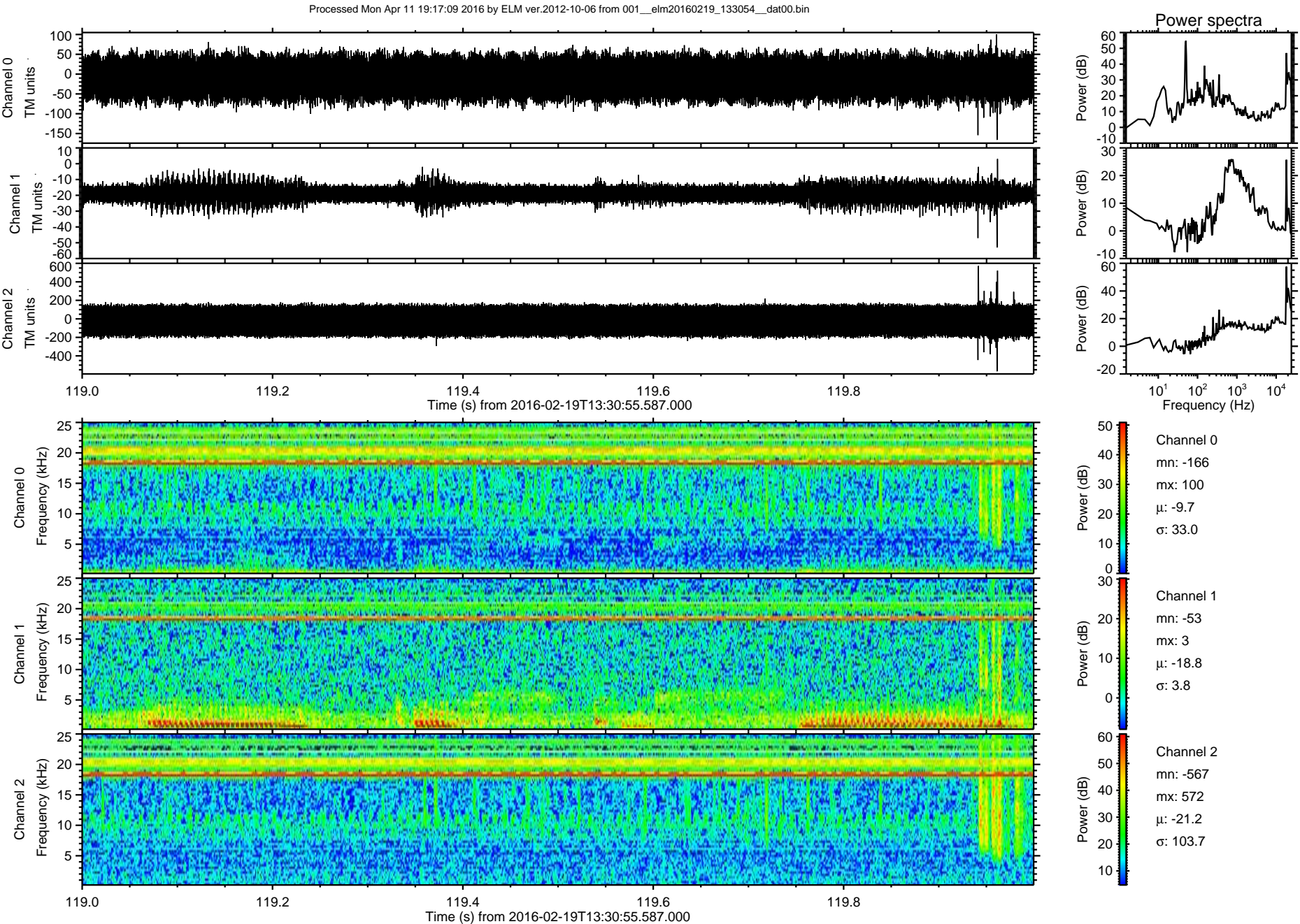


ELMAVAN 3D WAVEFORMS (Measured data sampled at 50 kHz) 51000 packets of 144 samples from 2016-02-19T13:30:55.587.000. Part 87/147

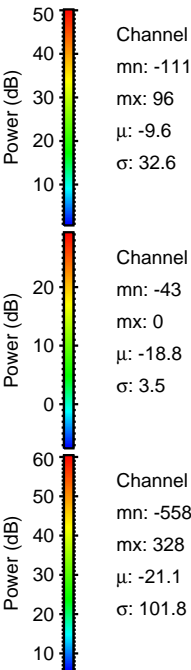
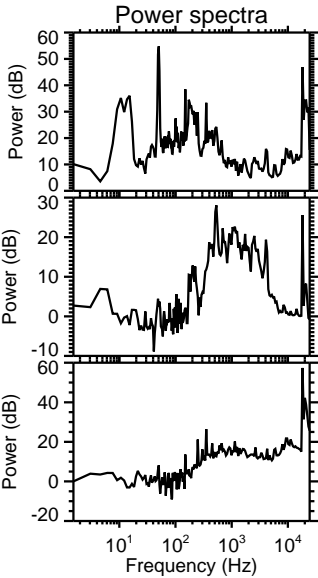
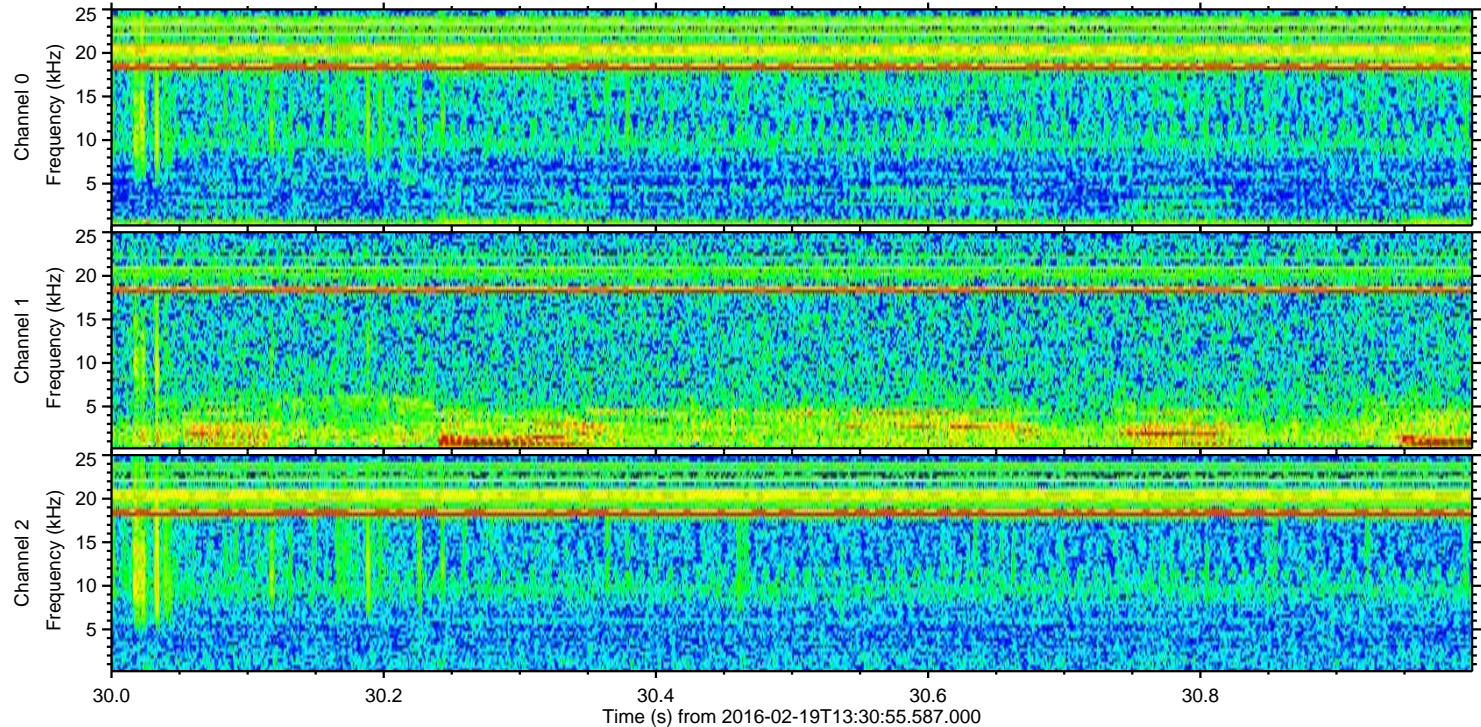
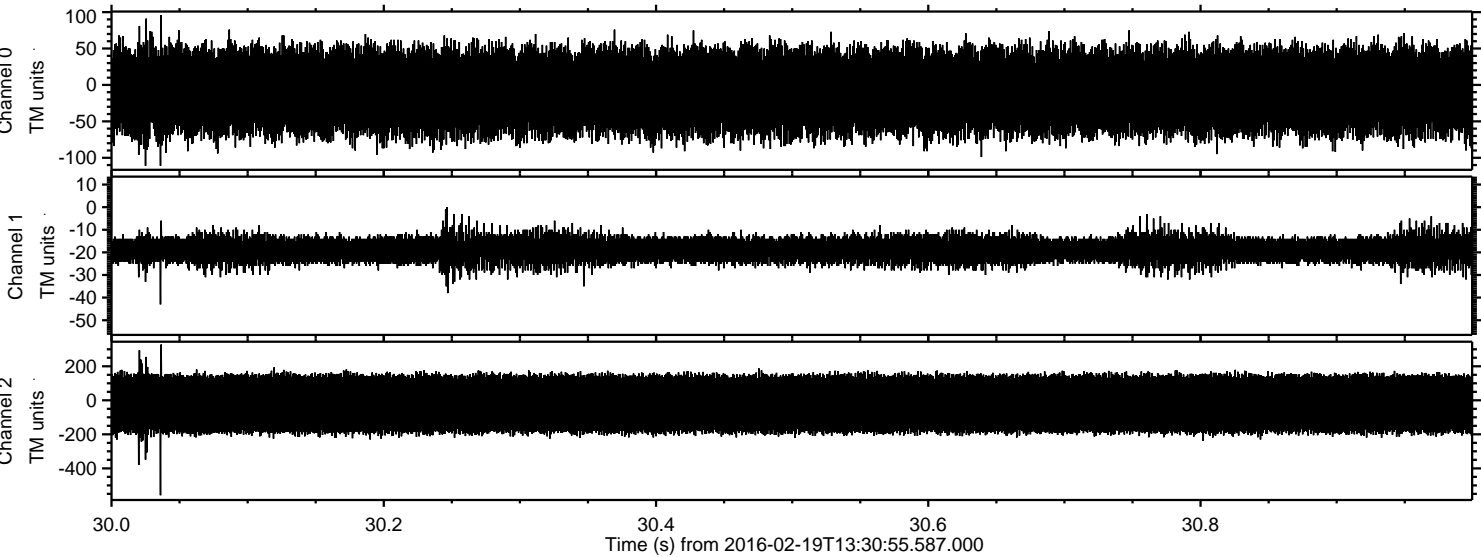
Processed Mon Apr 11 19:17:08 2016 by ELM ver.2012-10-06 from 001__elm20160219_133054__dat00.bin



ELMAVAN 3D WAVEFORMS (Measured data sampled at 50 kHz) 51000 packets of 144 samples from 2016-02-19T13:30:55.587.000. Part 120/147



Processed Mon Apr 11 19:17:10 2016 by ELM ver.2012-10-06 from 001__elm20160219_133054__dat00.bin



Channel 0
mn: -111
mx: 96
 μ : -9.6
 σ : 32.6

Channel 1
mn: -43
mx: 0
 μ : -18.8
 σ : 3.5

Channel 2
mn: -558
mx: 328
 μ : -21.1
 σ : 101.8

Processed Mon Apr 11 19:17:11 2016 by ELM ver.2012-10-06 from 001__elm20160219_133054__dat00.bin

