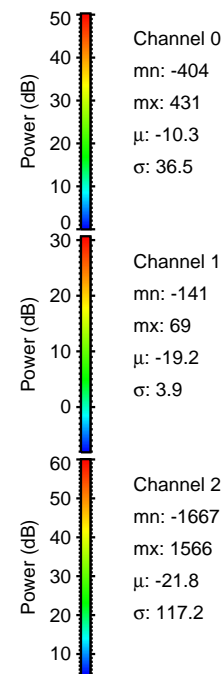
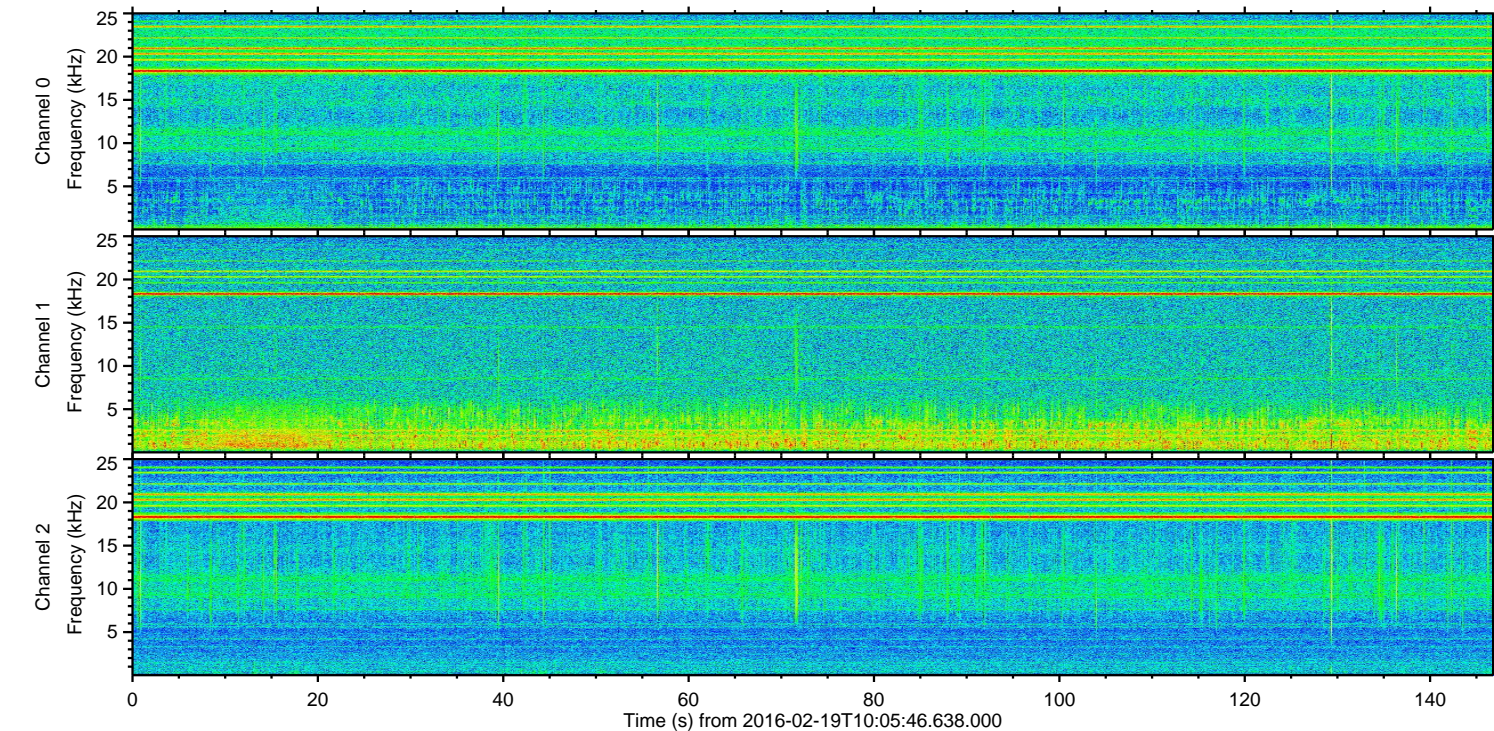
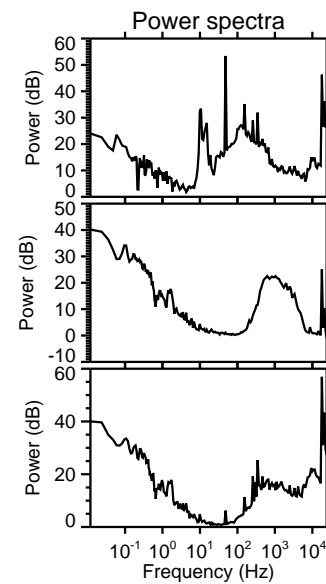
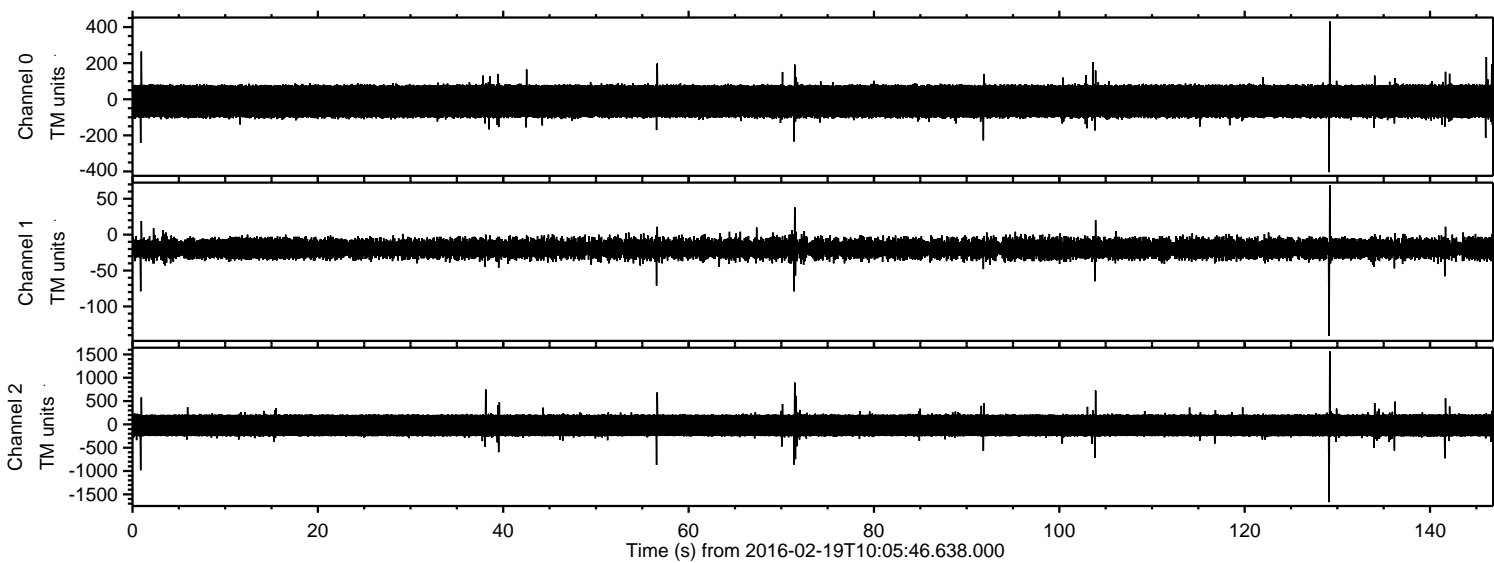


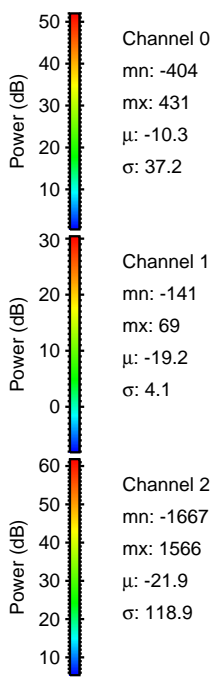
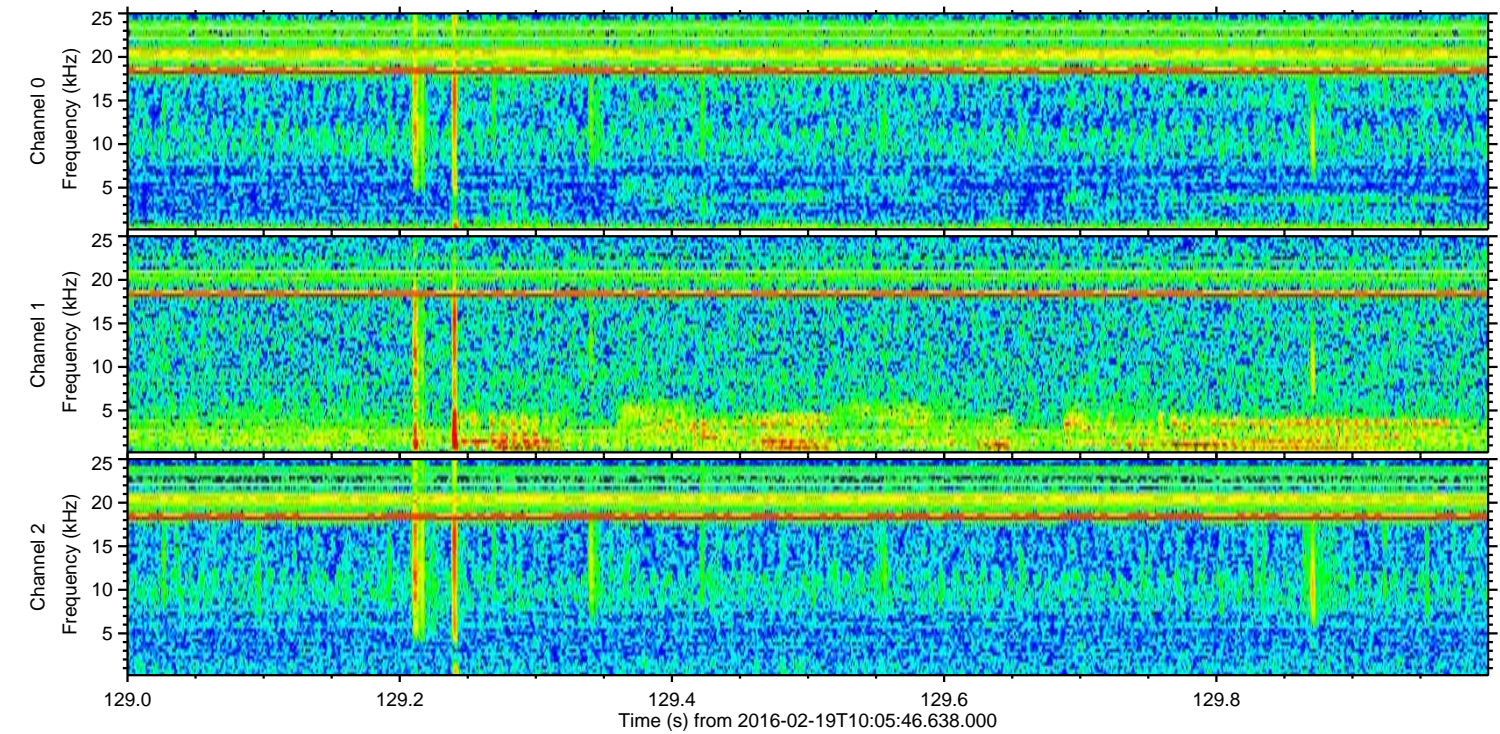
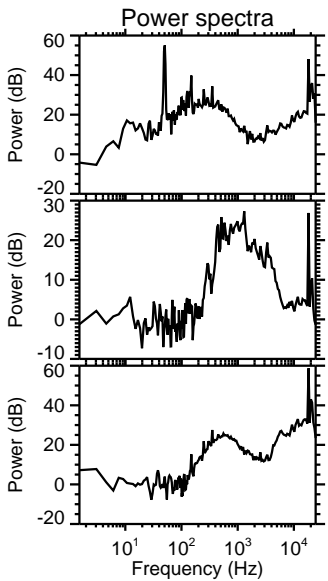
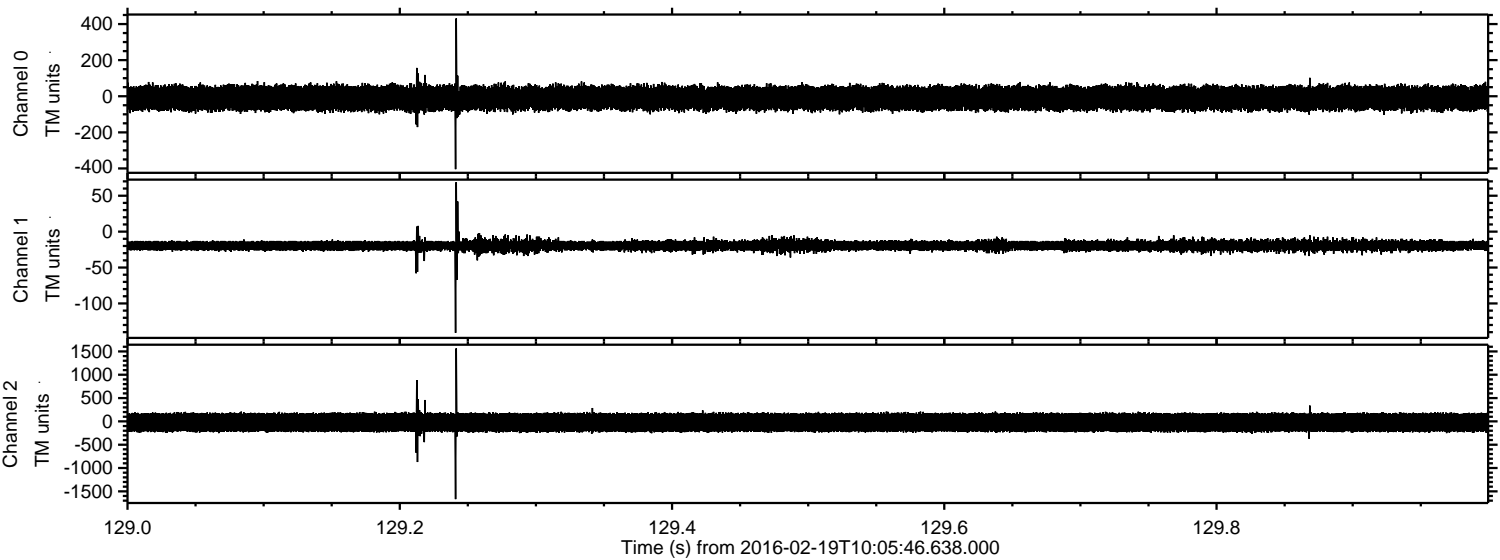
ELMAVAN 3D WAVEFORMS (Measured data sampled at 50 kHz) 51000 packets of 144 samples from 2016-02-19T10:05:46.638.000.

Processed Mon Apr 11 18:35:29 2016 by ELM ver.2012-10-06 from 001__elm20160219_100545__dat00.bin

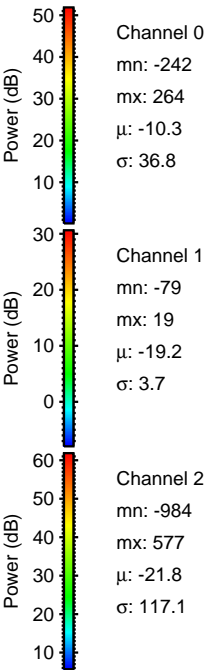
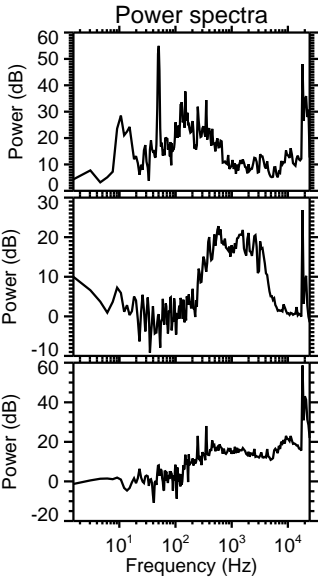
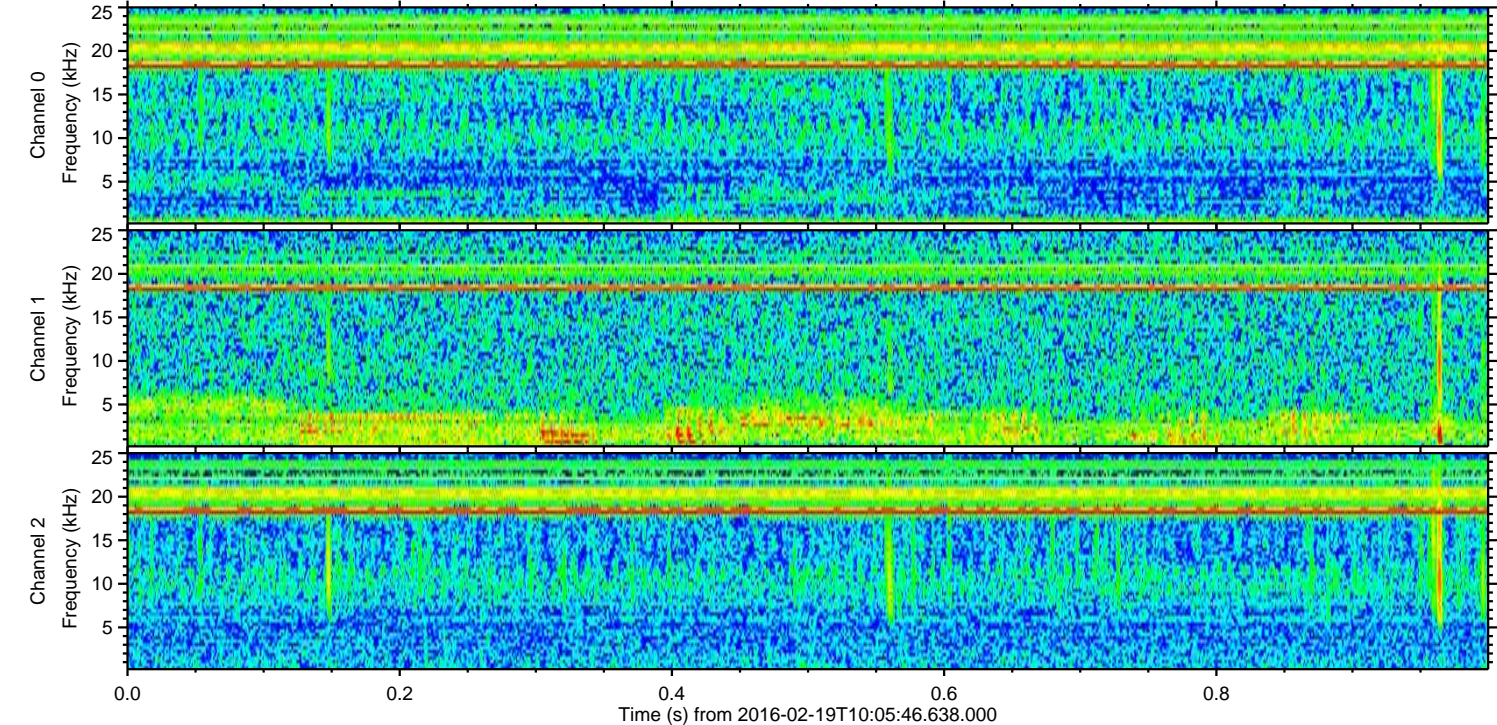
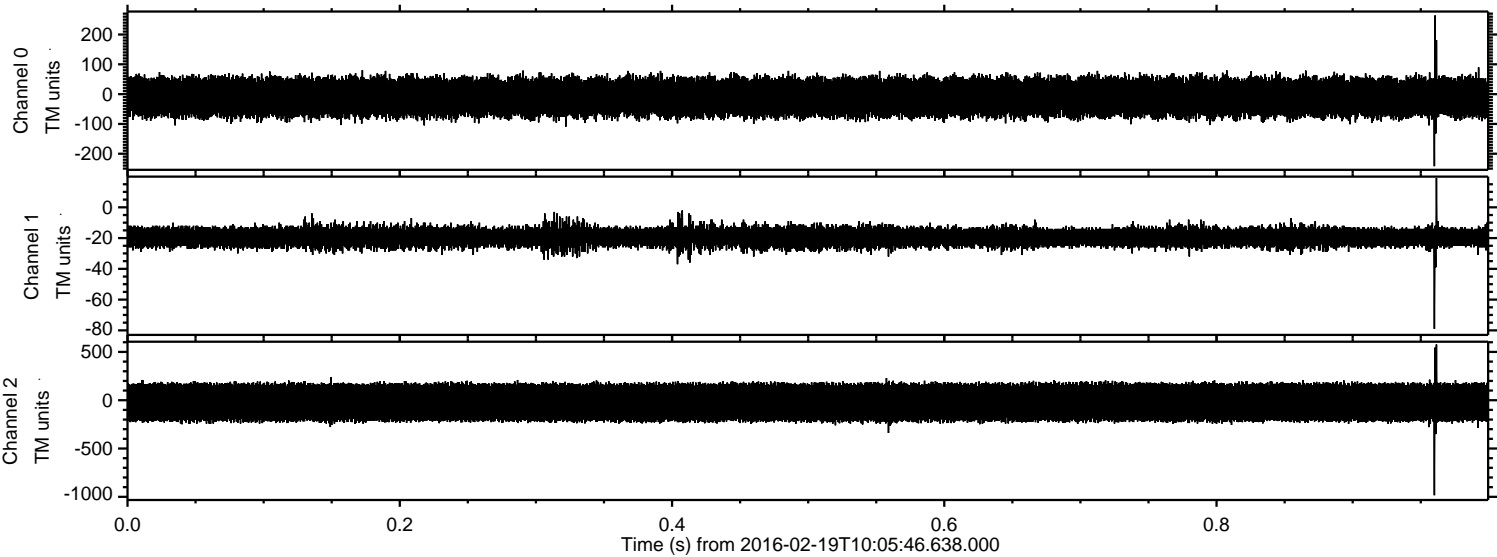


ELMAVAN 3D WAVEFORMS (Measured data sampled at 50 kHz) 51000 packets of 144 samples from 2016-02-19T10:05:46.638.000. Part 130/147

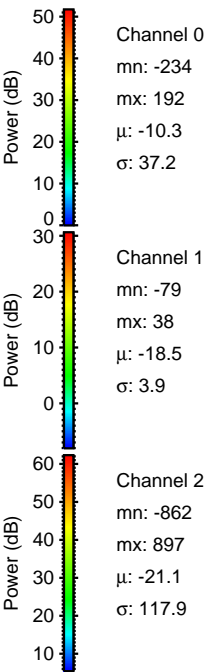
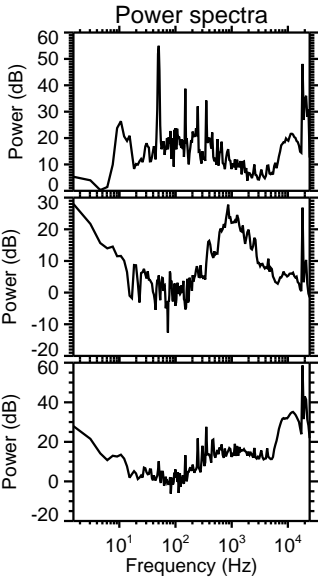
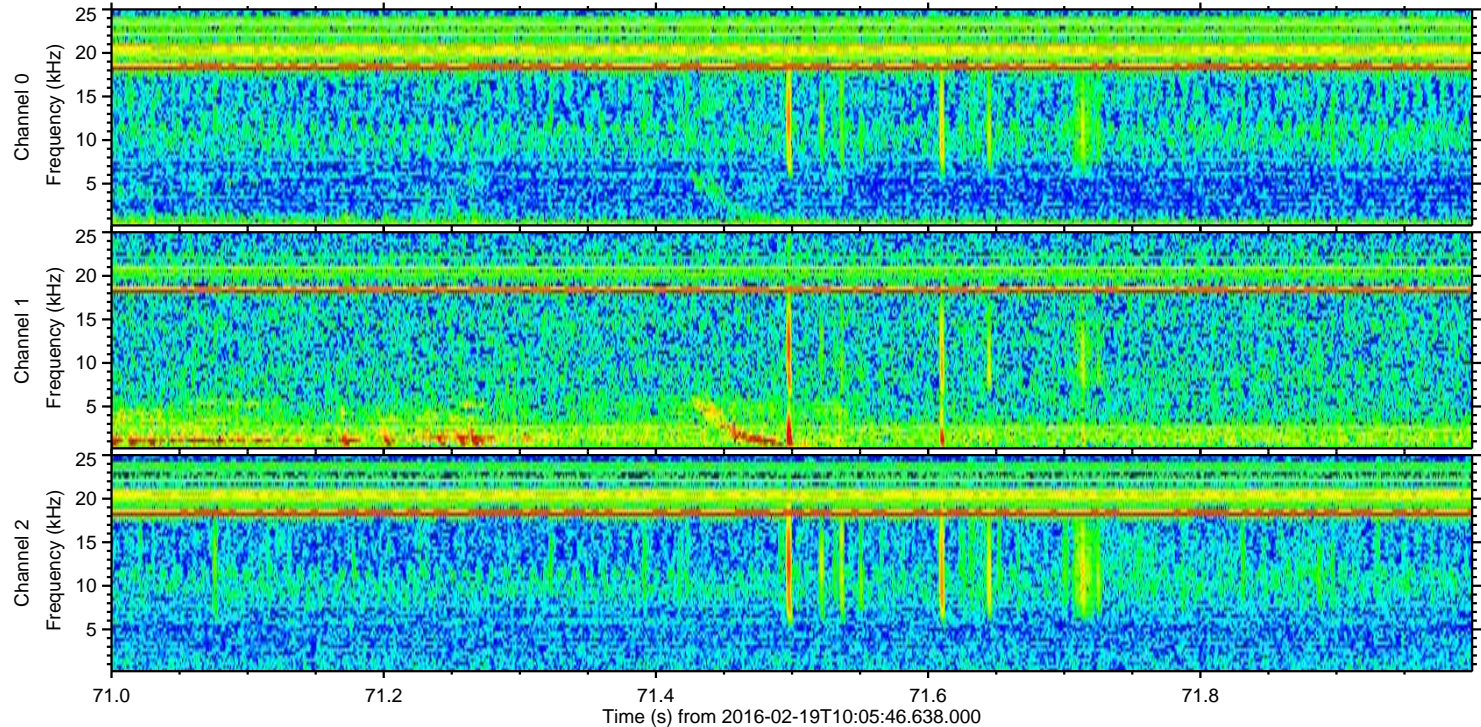
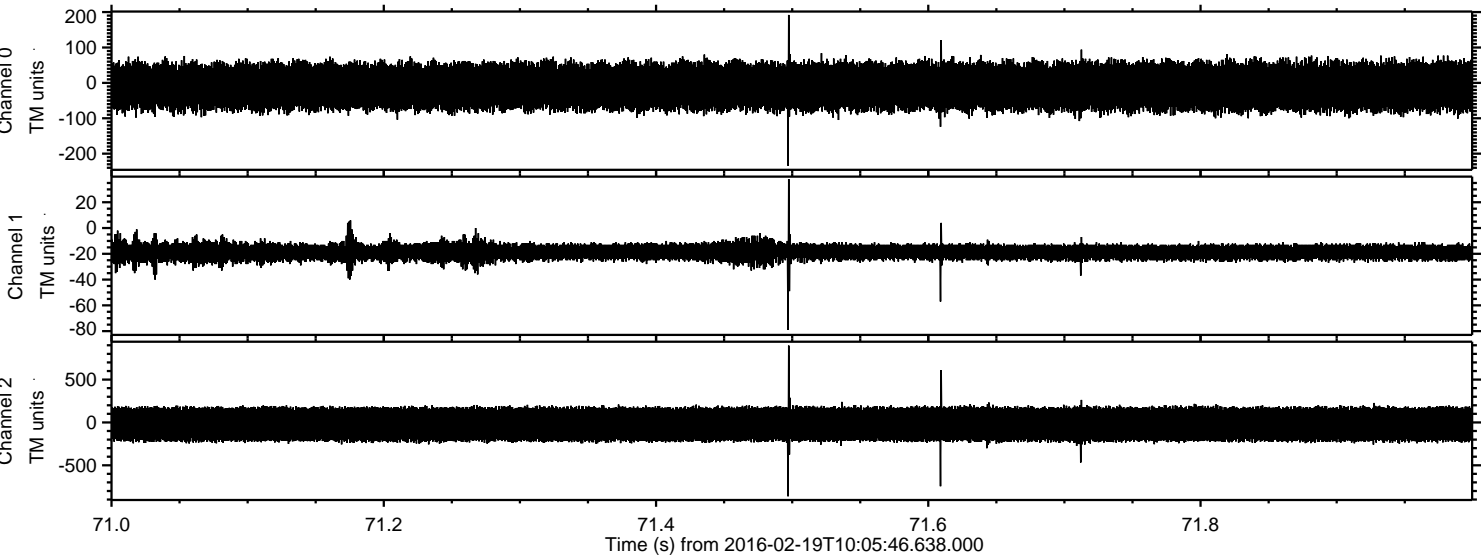
Processed Mon Apr 11 18:35:41 2016 by ELM ver.2012-10-06 from 001__elm20160219_100545__dat00.bin



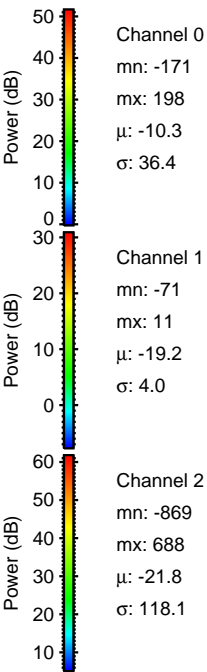
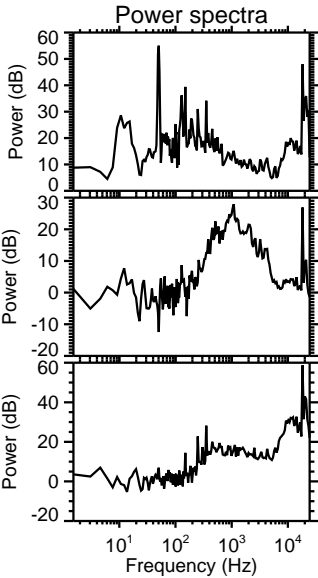
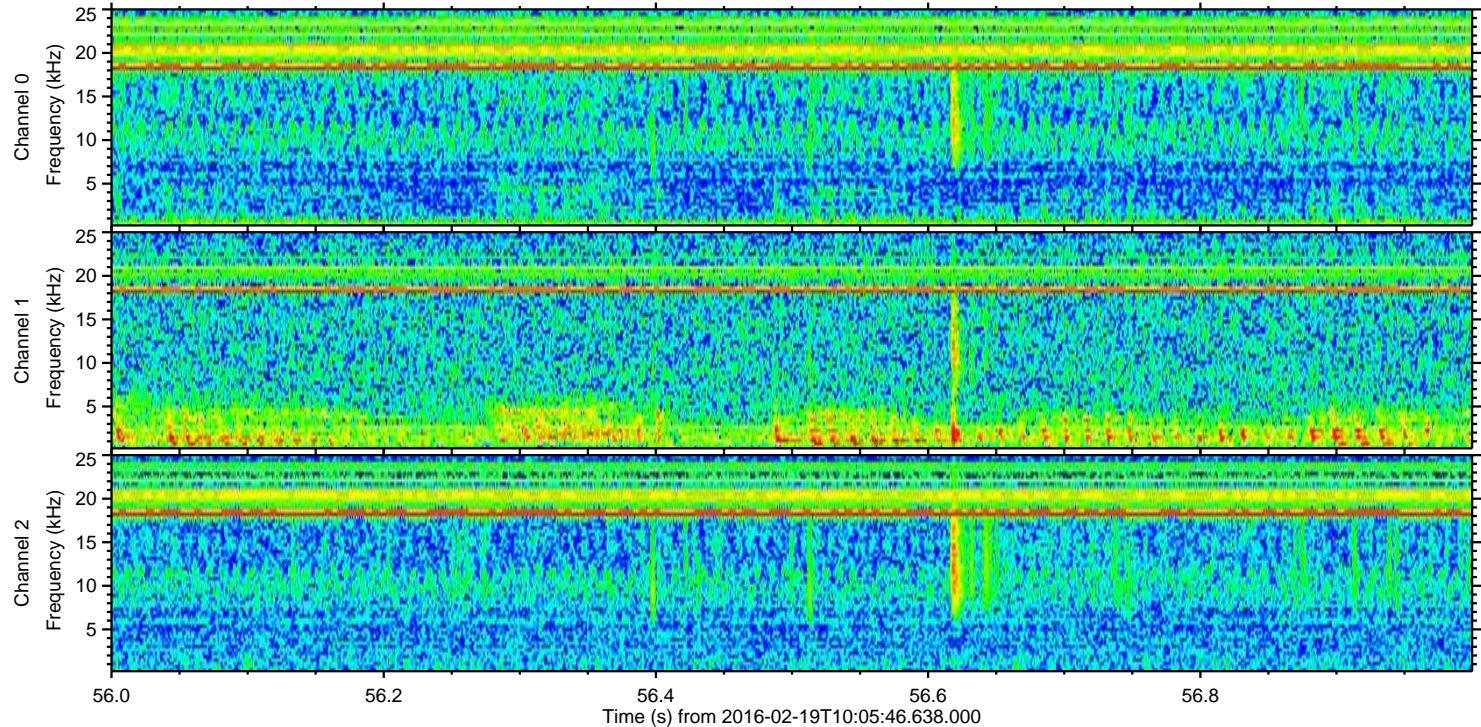
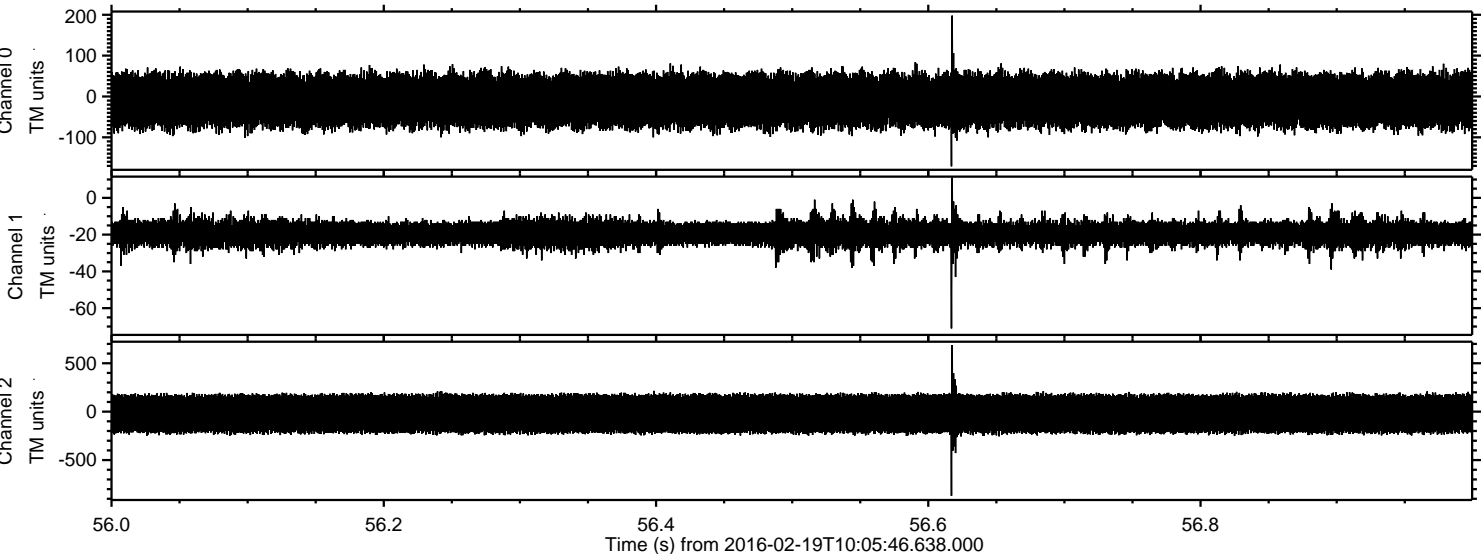
Processed Mon Apr 11 18:35:42 2016 by ELM ver.2012-10-06 from 001__elm20160219_100545__dat00.bin



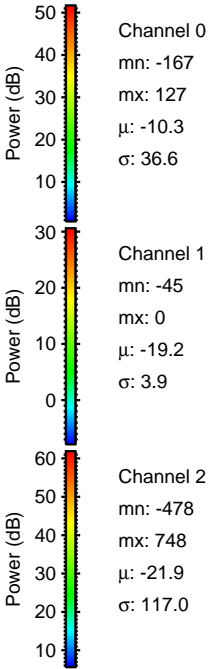
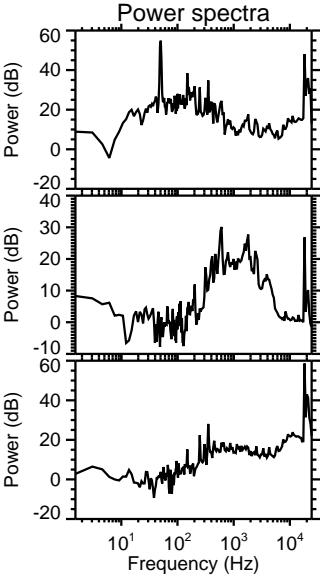
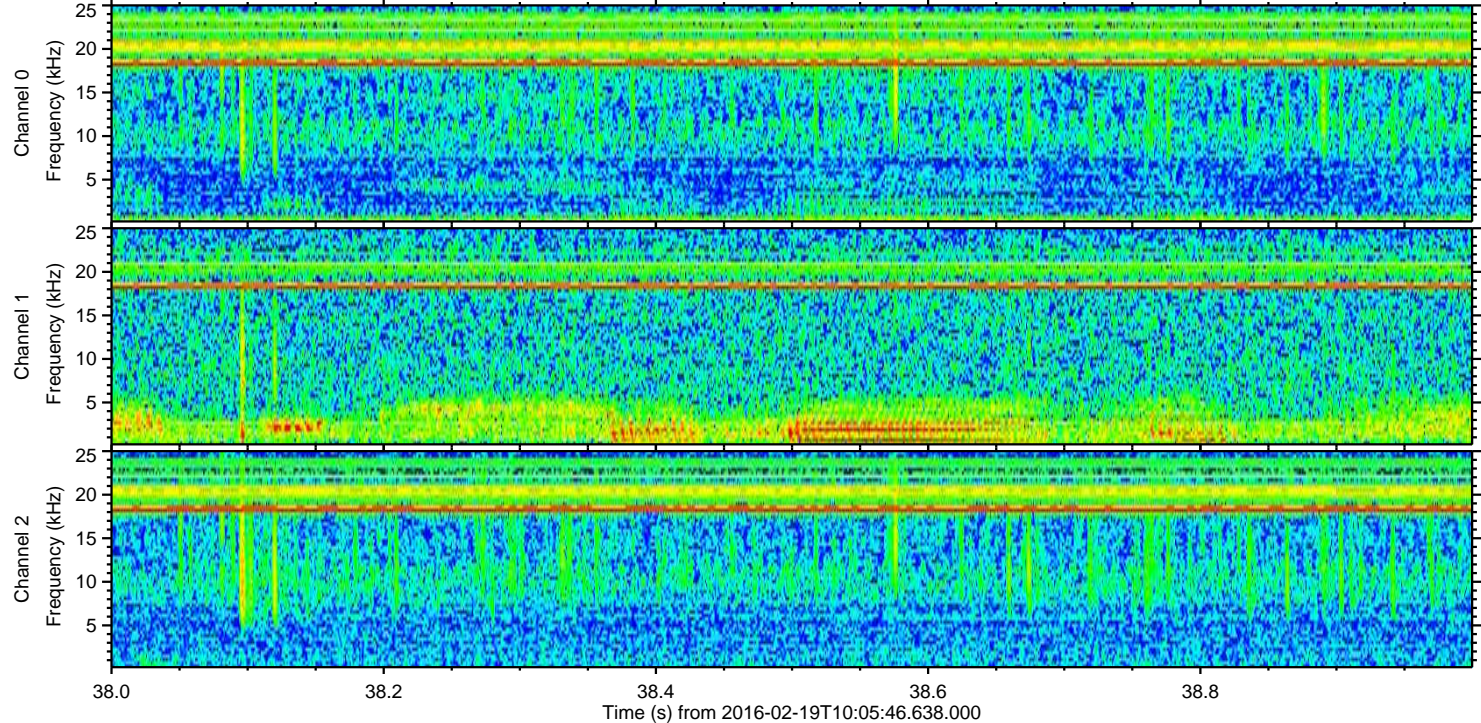
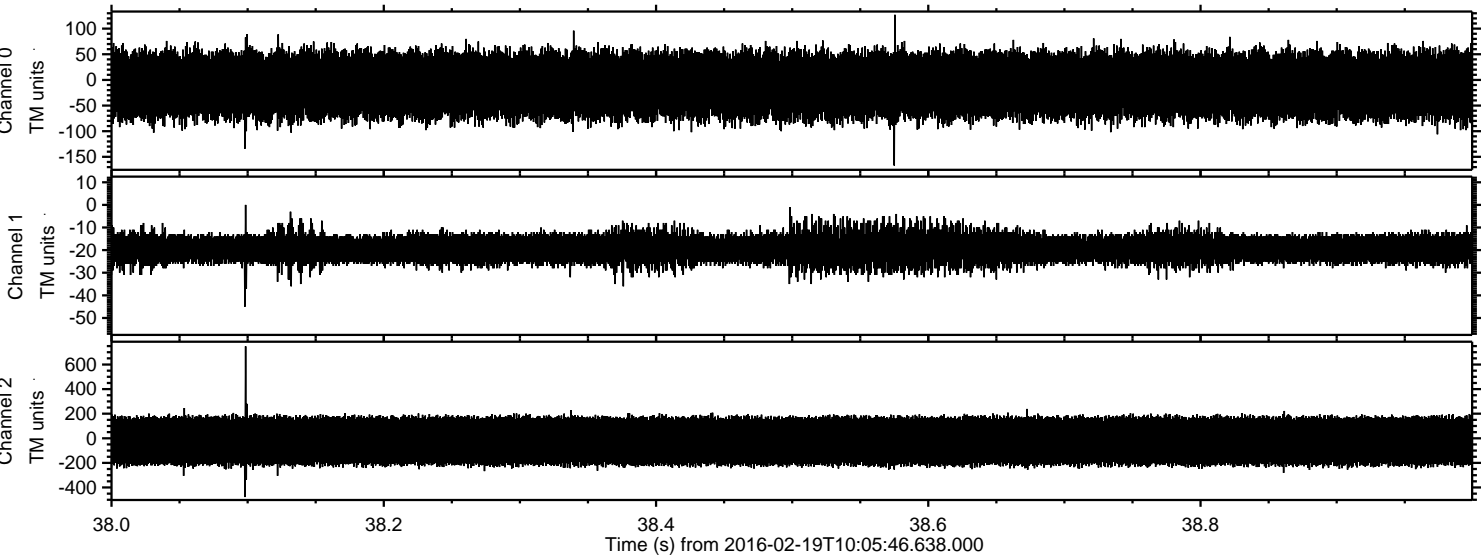
Processed Mon Apr 11 18:35:43 2016 by ELM ver.2012-10-06 from 001__elm20160219_100545__dat00.bin



Processed Mon Apr 11 18:35:44 2016 by ELM ver.2012-10-06 from 001__elm20160219_100545__dat00.bin



Processed Mon Apr 11 18:35:44 2016 by ELM ver.2012-10-06 from 001__elm20160219_100545__dat00.bin

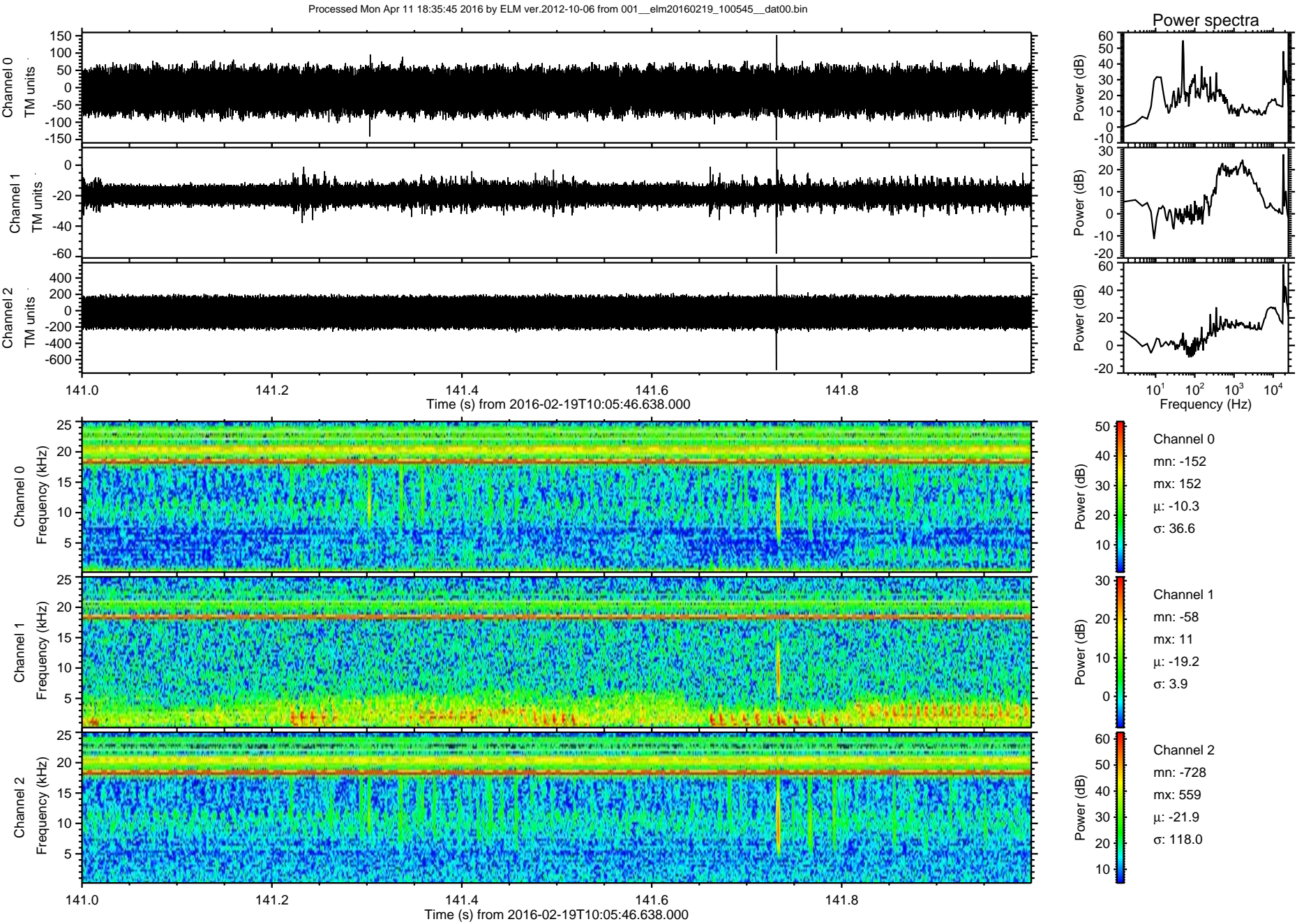


Channel 0
mn: -167
mx: 127
 μ : -10.3
 σ : 36.6

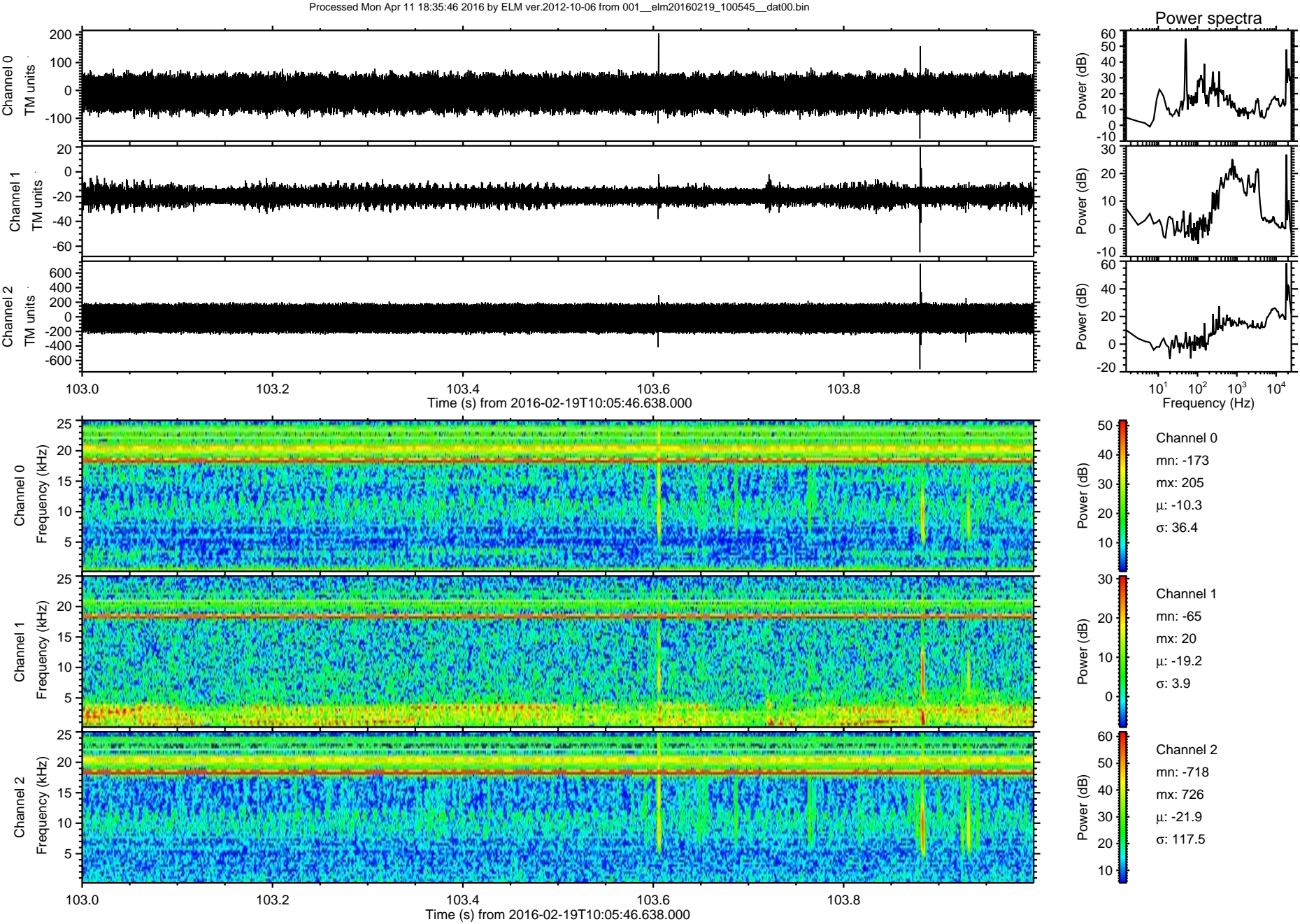
Channel 1
mn: -45
mx: 0
 μ : -19.2
 σ : 3.9

Channel 2
mn: -478
mx: 748
 μ : -21.9
 σ : 117.0

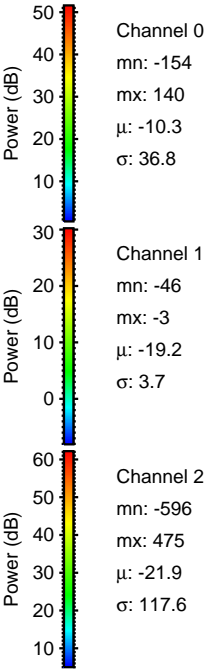
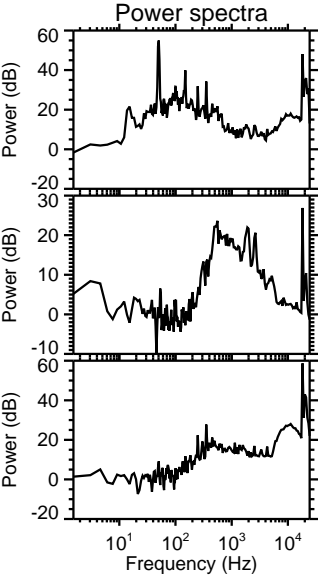
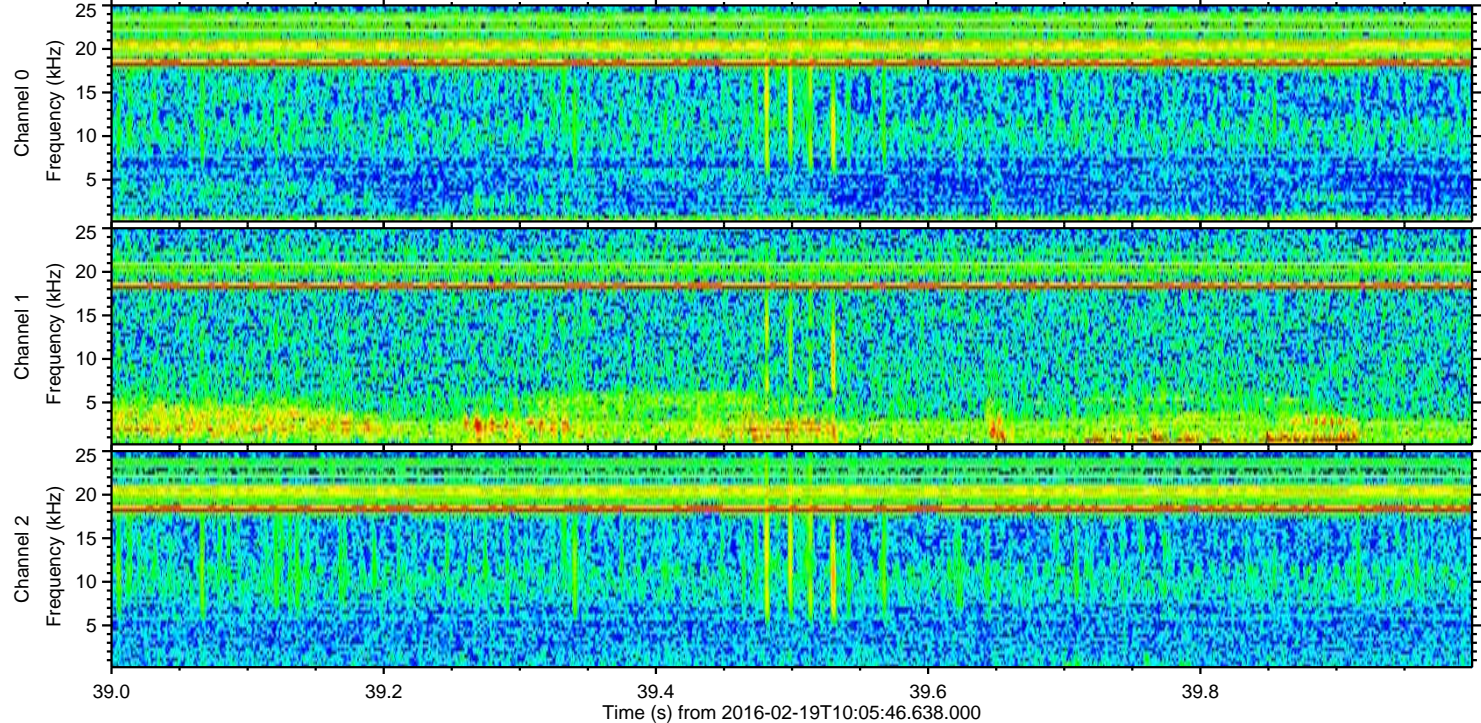
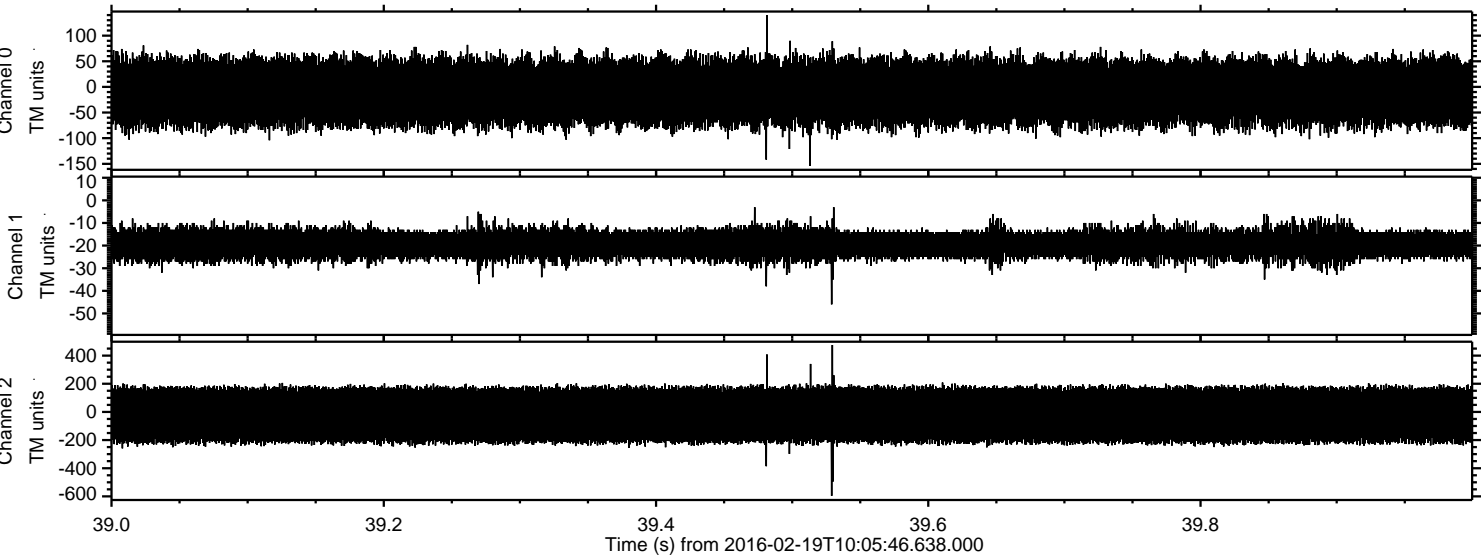
ELMAVAN 3D WAVEFORMS (Measured data sampled at 50 kHz) 51000 packets of 144 samples from 2016-02-19T10:05:46.638.000. Part 142/147



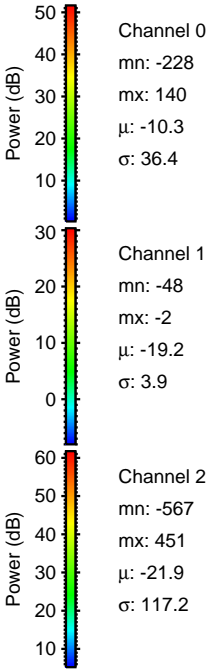
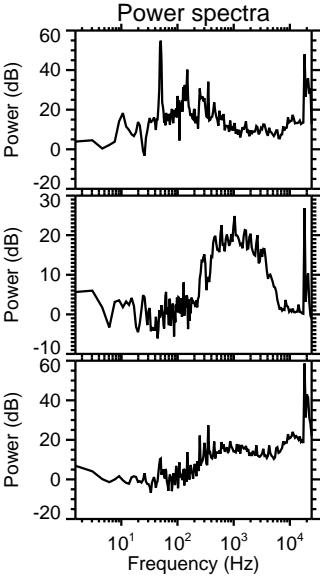
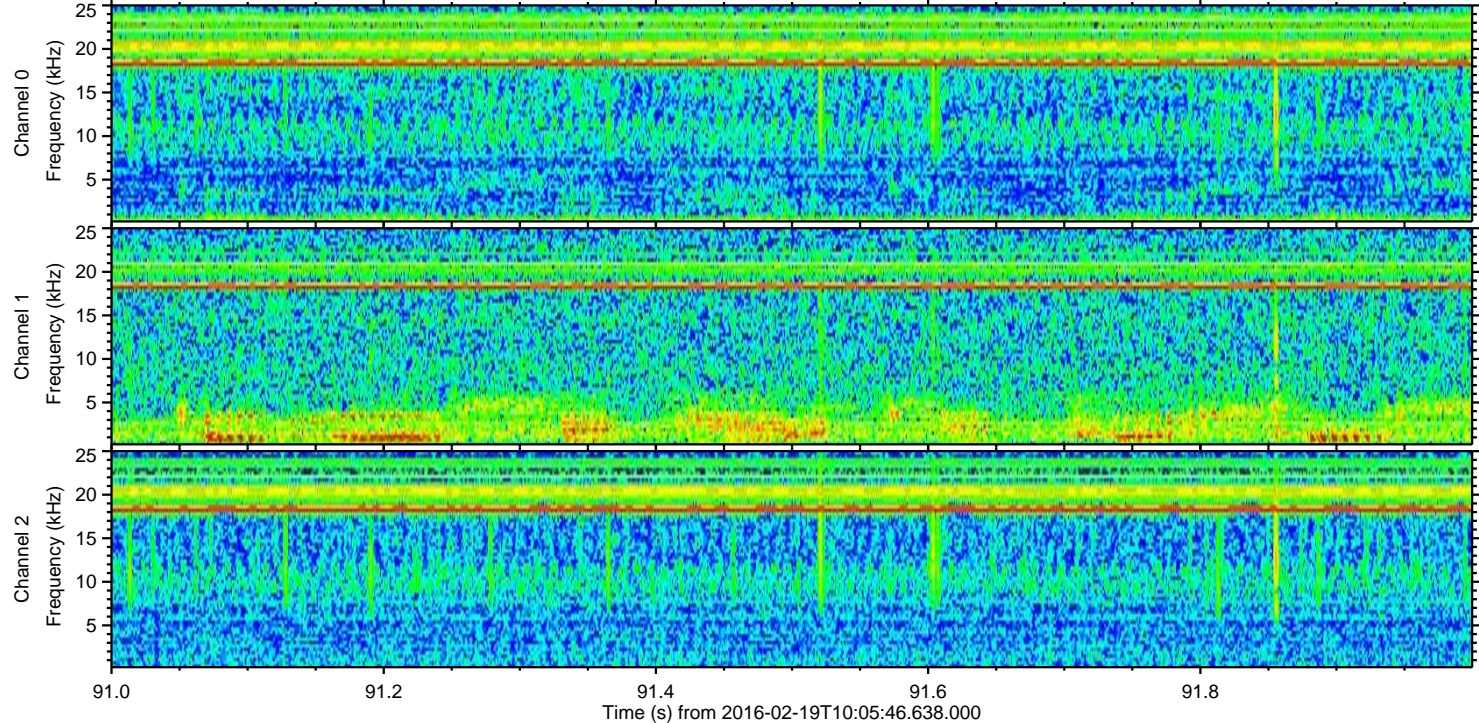
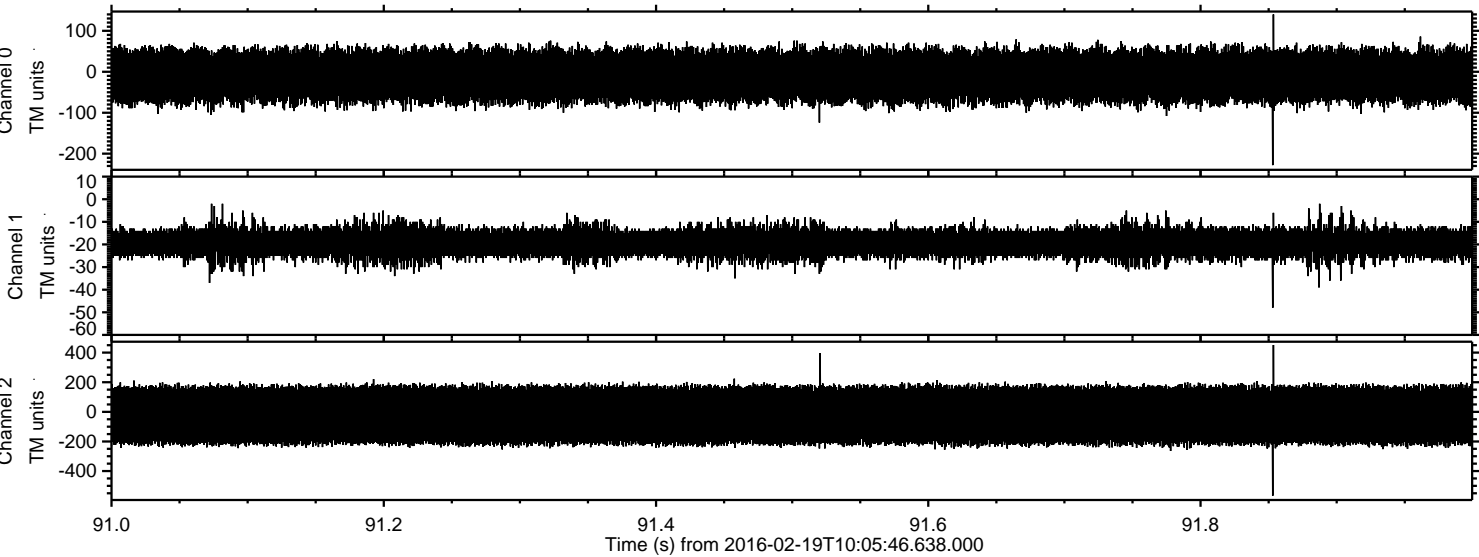
ELMAVAN 3D WAVEFORMS (Measured data sampled at 50 kHz) 51000 packets of 144 samples from 2016-02-19T10:05:46.638.000. Part 104/147



Processed Mon Apr 11 18:35:47 2016 by ELM ver.2012-10-06 from 001__elm20160219_100545__dat00.bin



Processed Mon Apr 11 18:35:48 2016 by ELM ver.2012-10-06 from 001__elm20160219_100545__dat00.bin



Power spectra

Channel 0
mn: -228
mx: 140
 μ : -10.3
 σ : 36.4

Channel 1
mn: -48
mx: -2
 μ : -19.2
 σ : 3.9

Channel 2
mn: -567
mx: 451
 μ : -21.9
 σ : 117.2

Processed Mon Apr 11 18:35:49 2016 by ELM ver.2012-10-06 from 001__elm20160219_100545__dat00.bin

