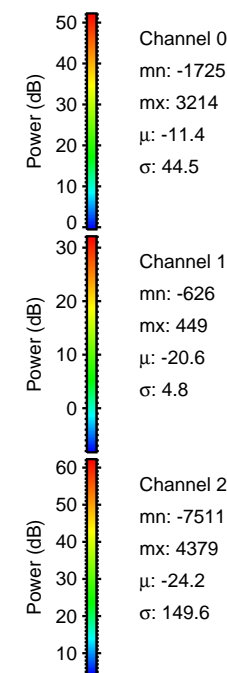
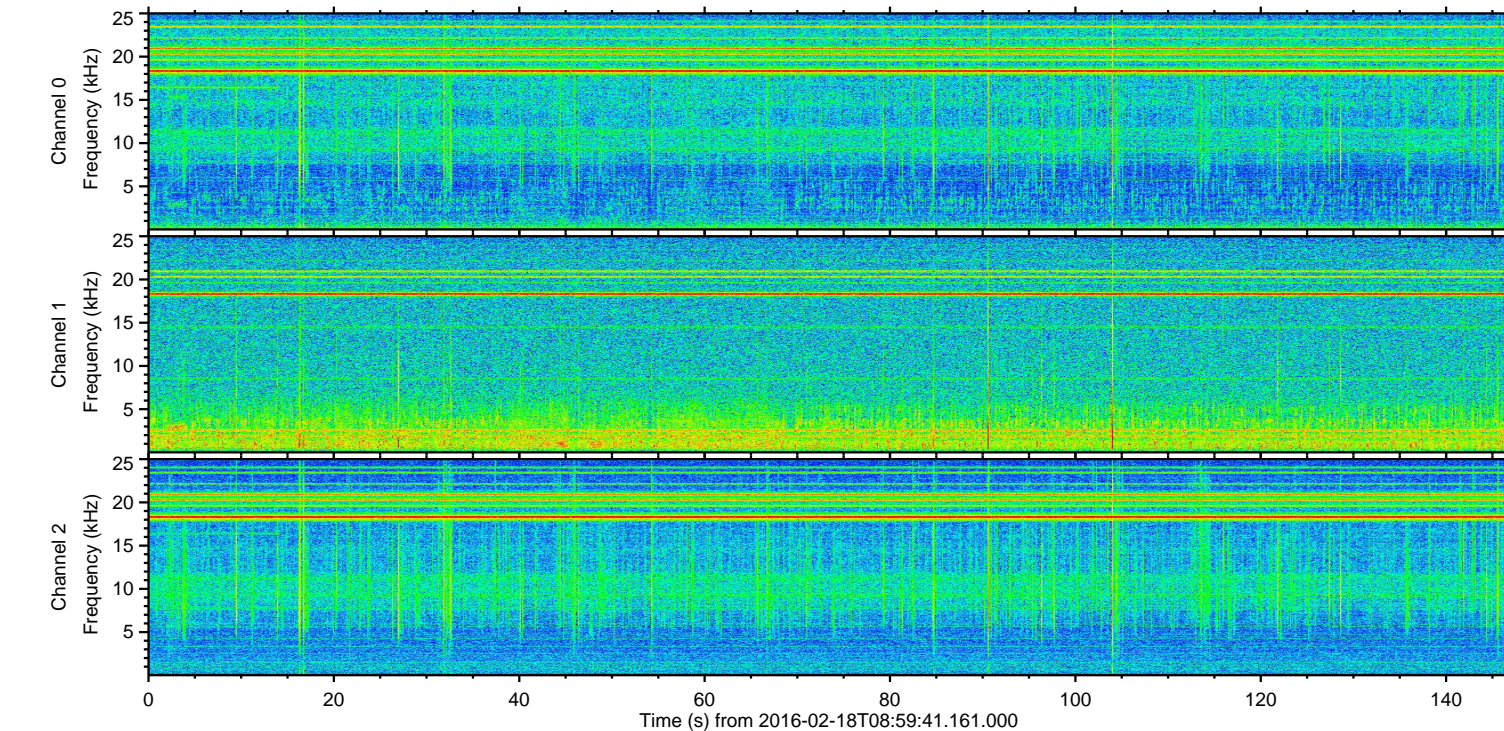
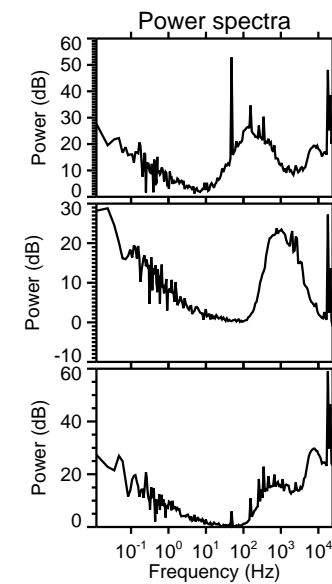
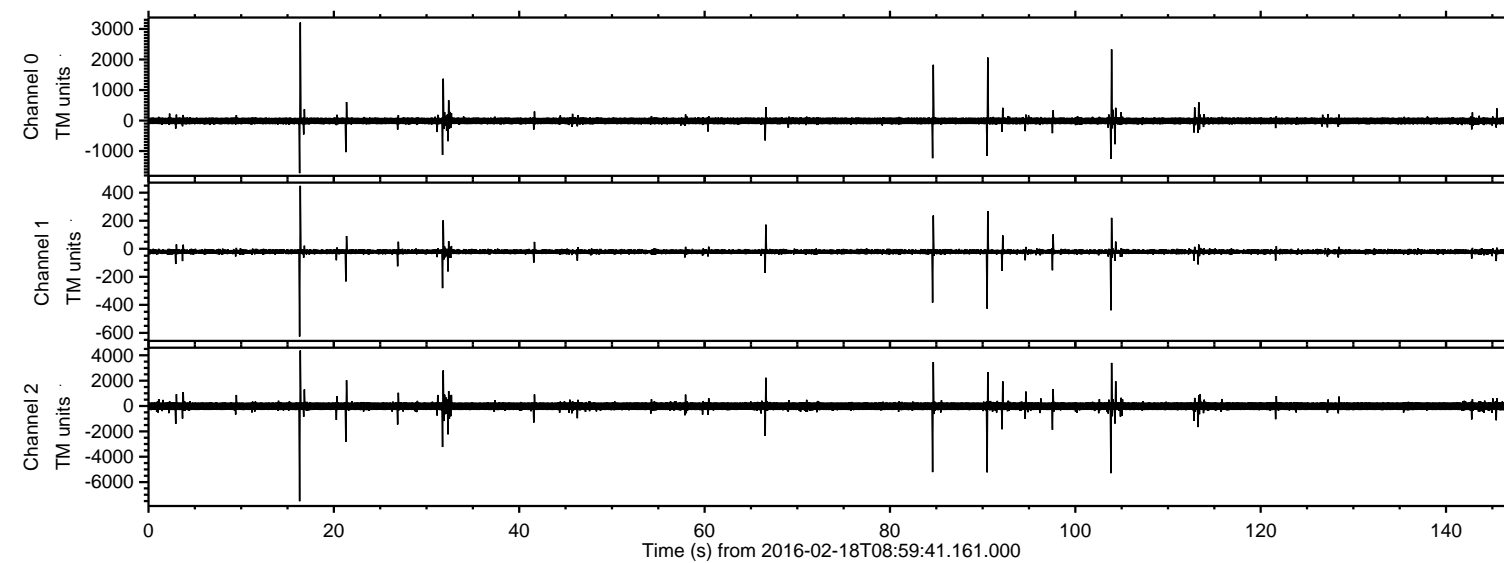


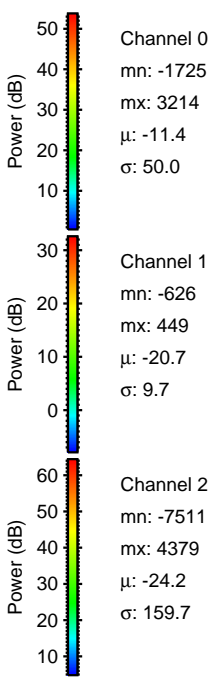
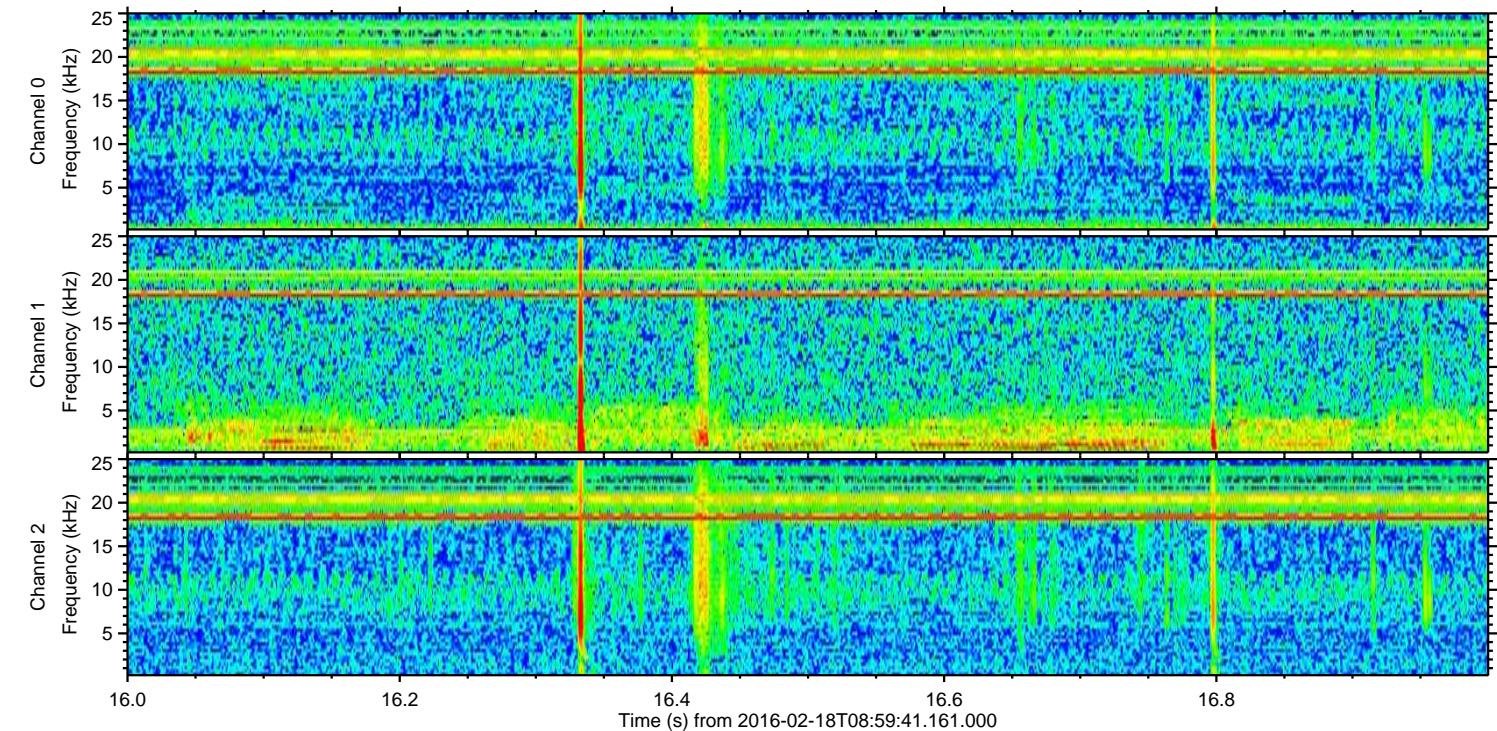
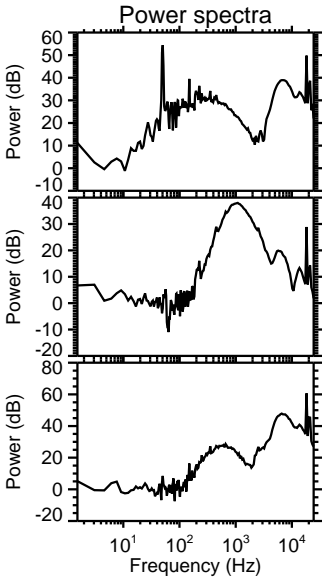
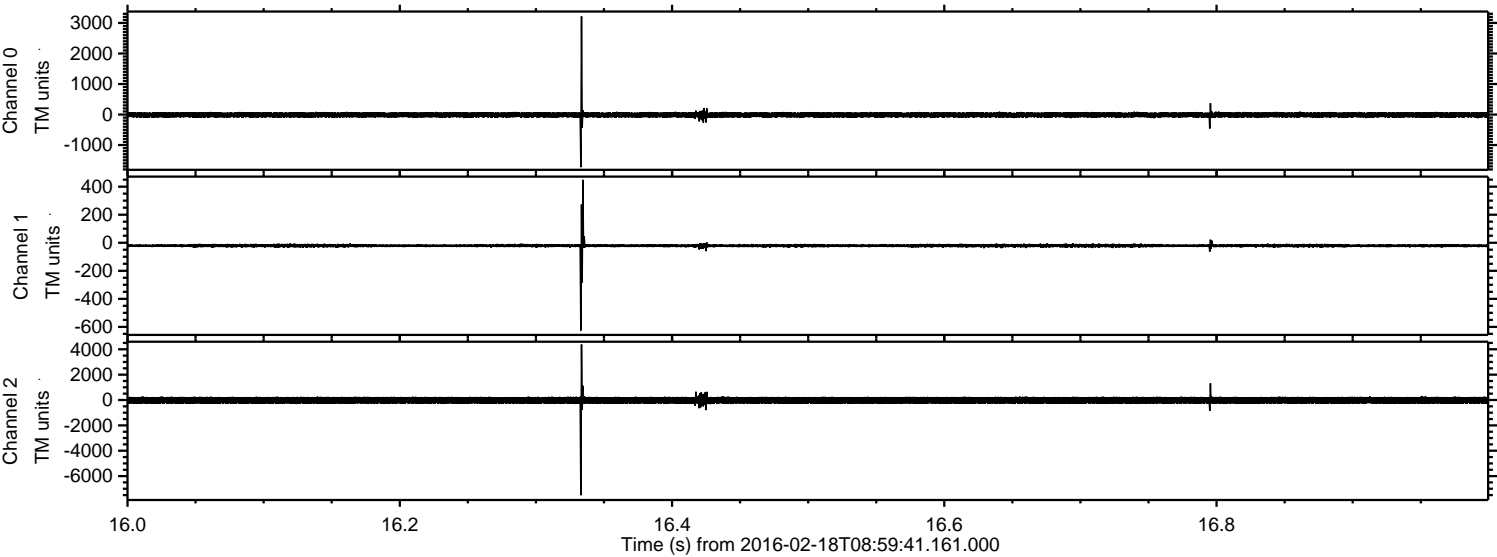
ELMAVAN 3D WAVEFORMS (Measured data sampled at 50 kHz) 51000 packets of 144 samples from 2016-02-18T08:59:41.161.000.

Processed Mon Apr 11 13:26:58 2016 by ELM ver.2012-10-06 from 001__elm20160218_085940__dat00.bin



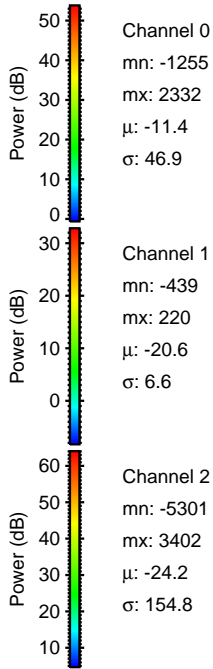
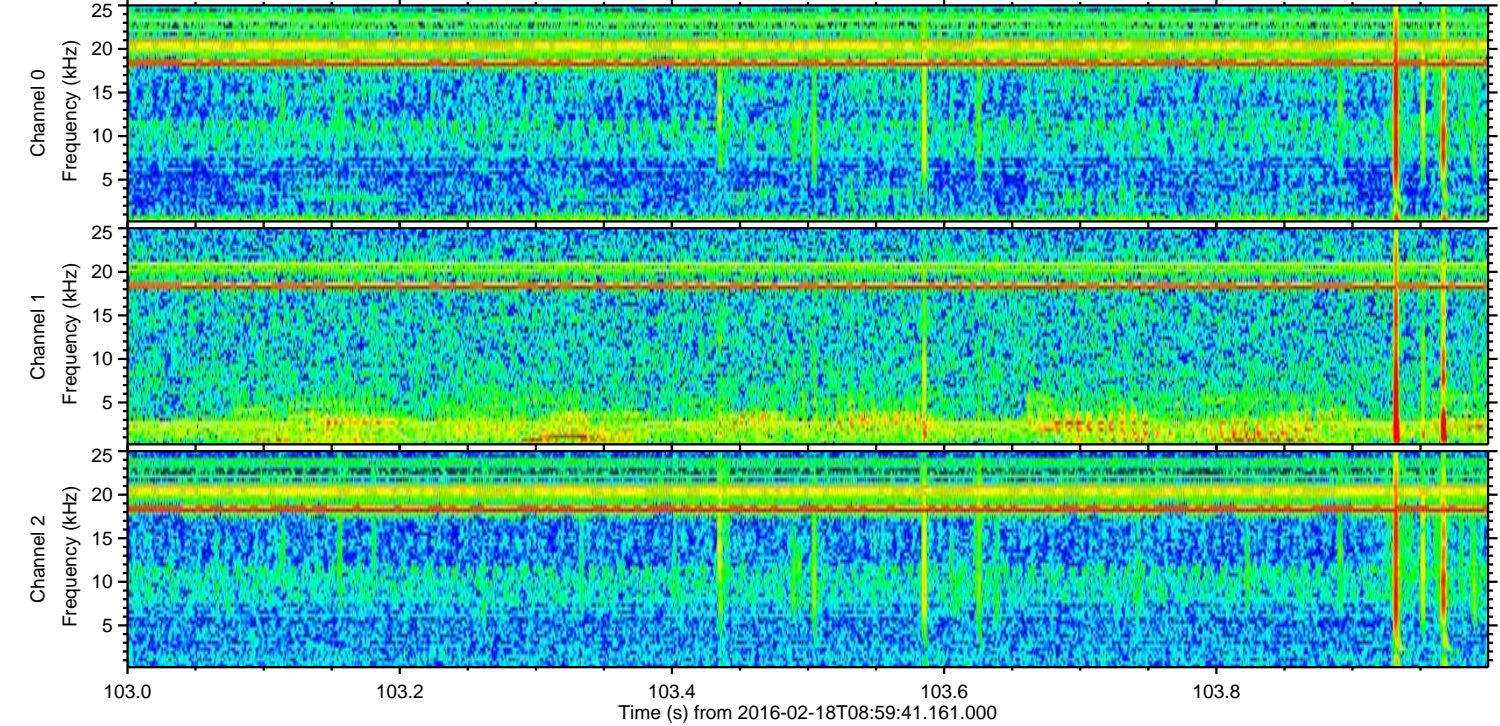
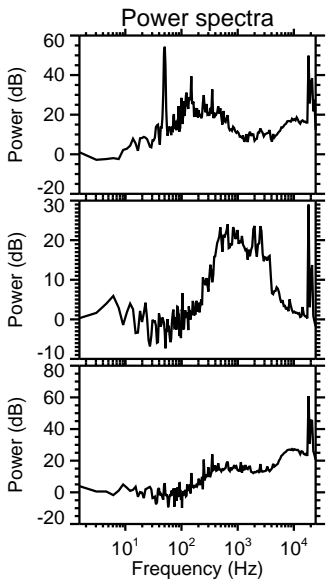
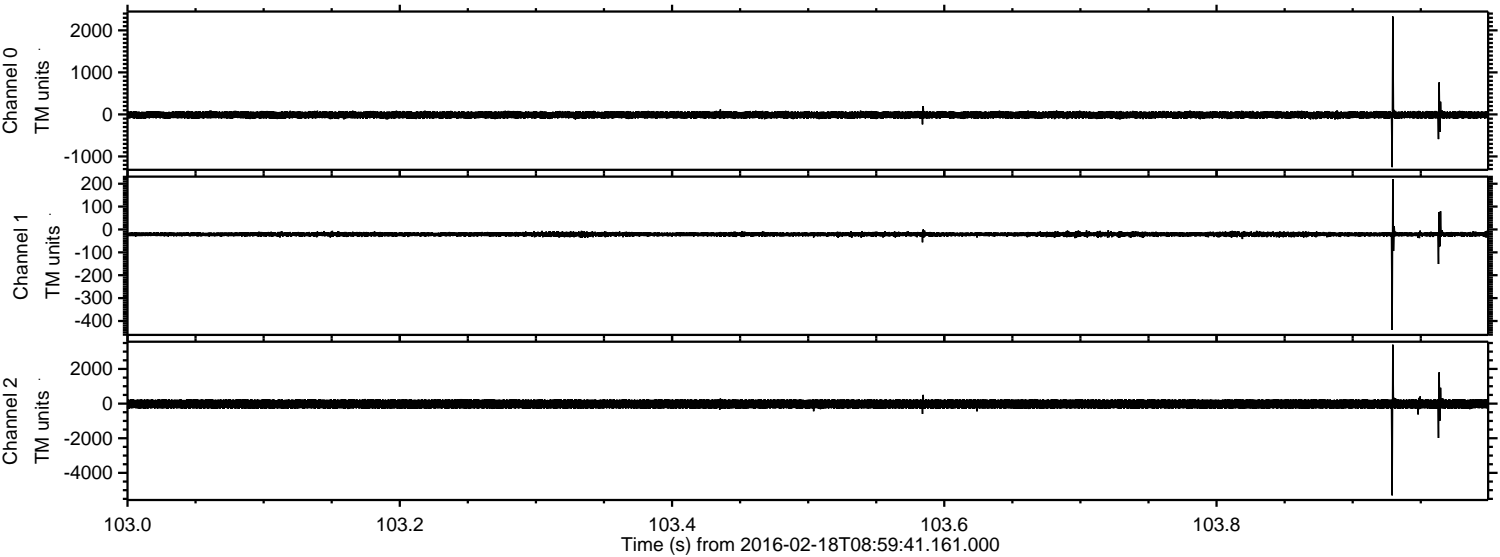
ELMAVAN 3D WAVEFORMS (Measured data sampled at 50 kHz) 51000 packets of 144 samples from 2016-02-18T08:59:41.161.000. Part 17/147

Processed Mon Apr 11 13:27:11 2016 by ELM ver.2012-10-06 from 001__elm20160218_085940__dat00.bin



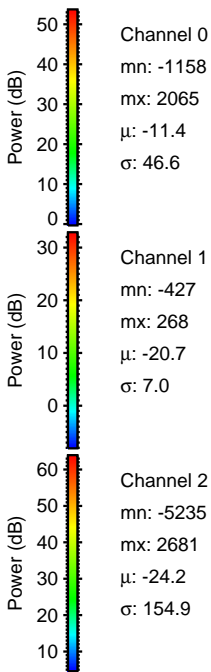
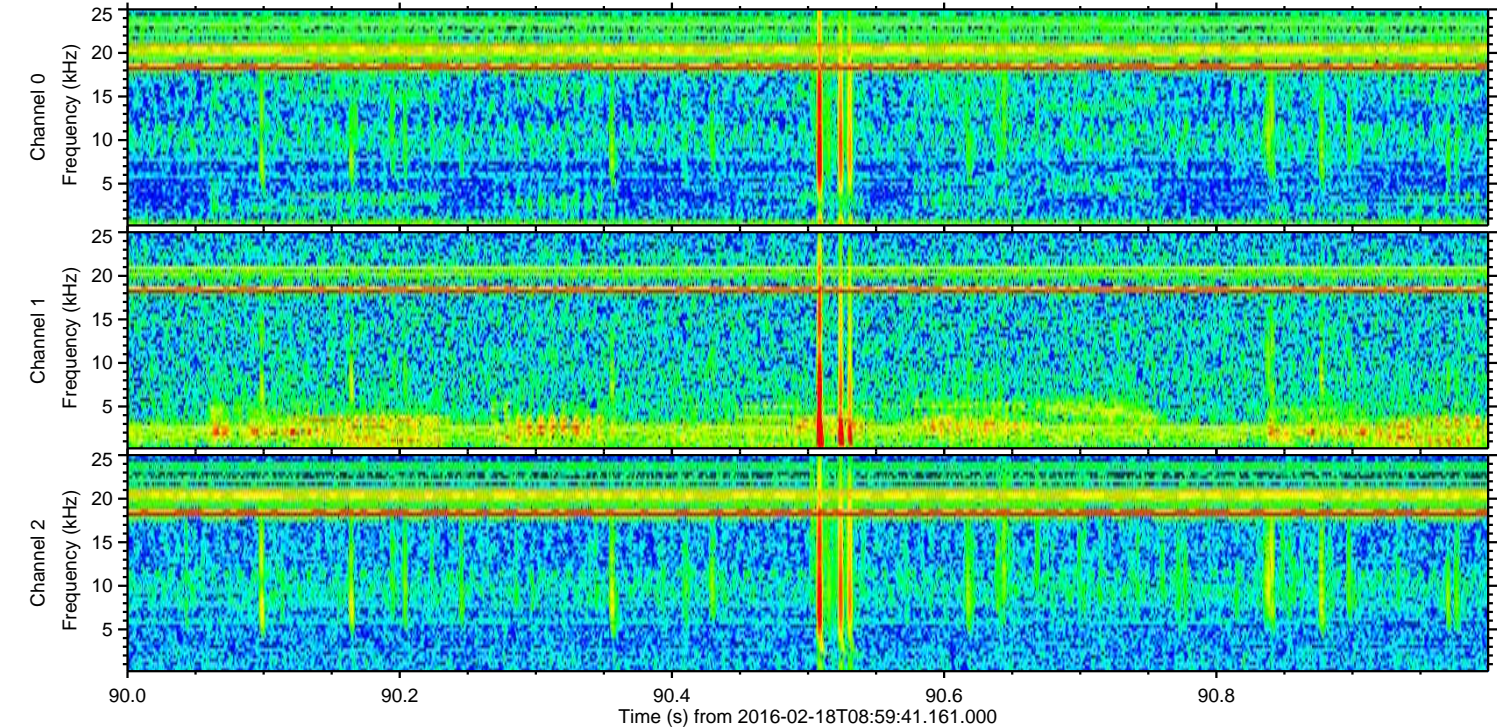
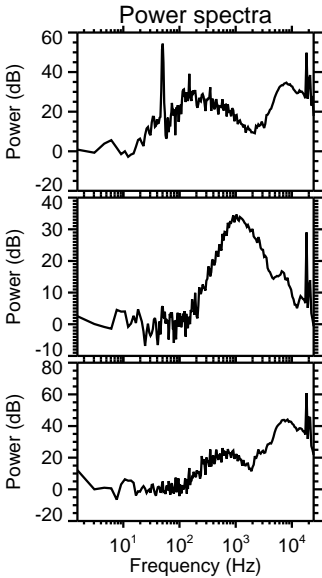
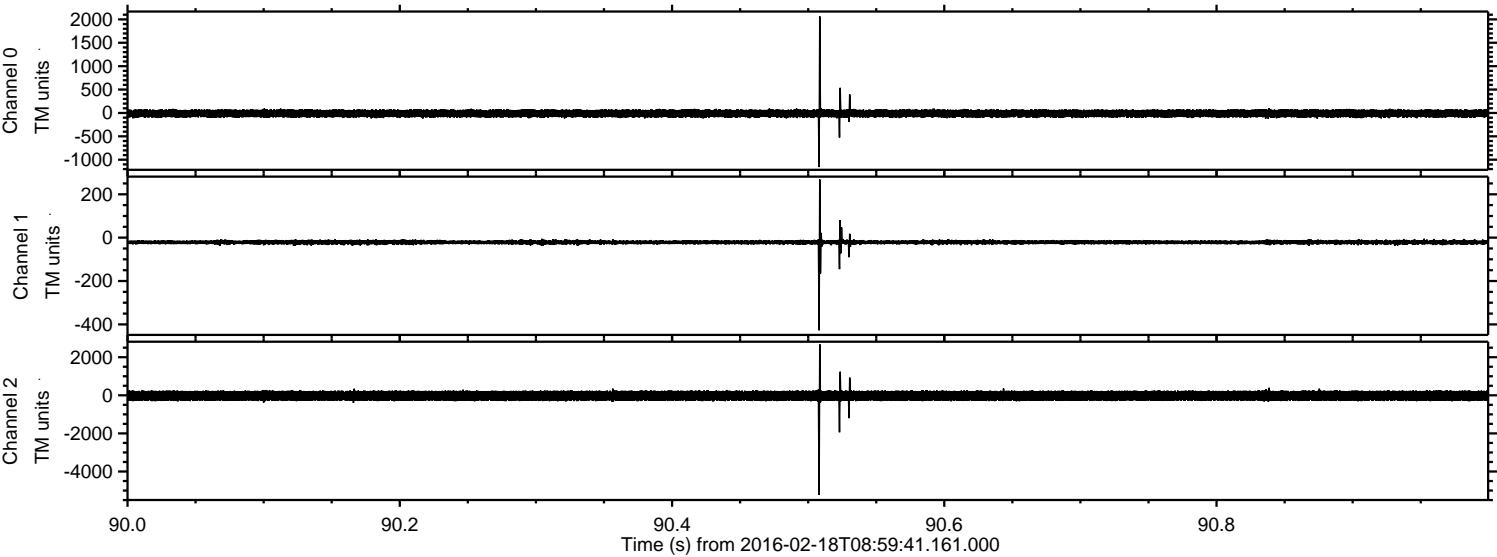
ELMAVAN 3D WAVEFORMS (Measured data sampled at 50 kHz) 51000 packets of 144 samples from 2016-02-18T08:59:41.161.000. Part 104/147

Processed Mon Apr 11 13:27:11 2016 by ELM ver.2012-10-06 from 001__elm20160218_085940__dat00.bin

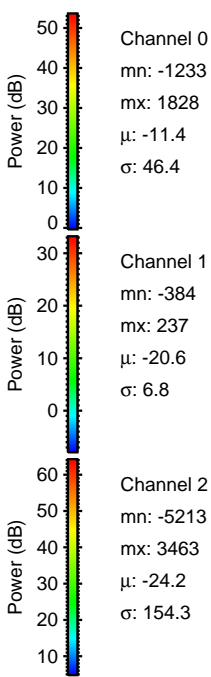
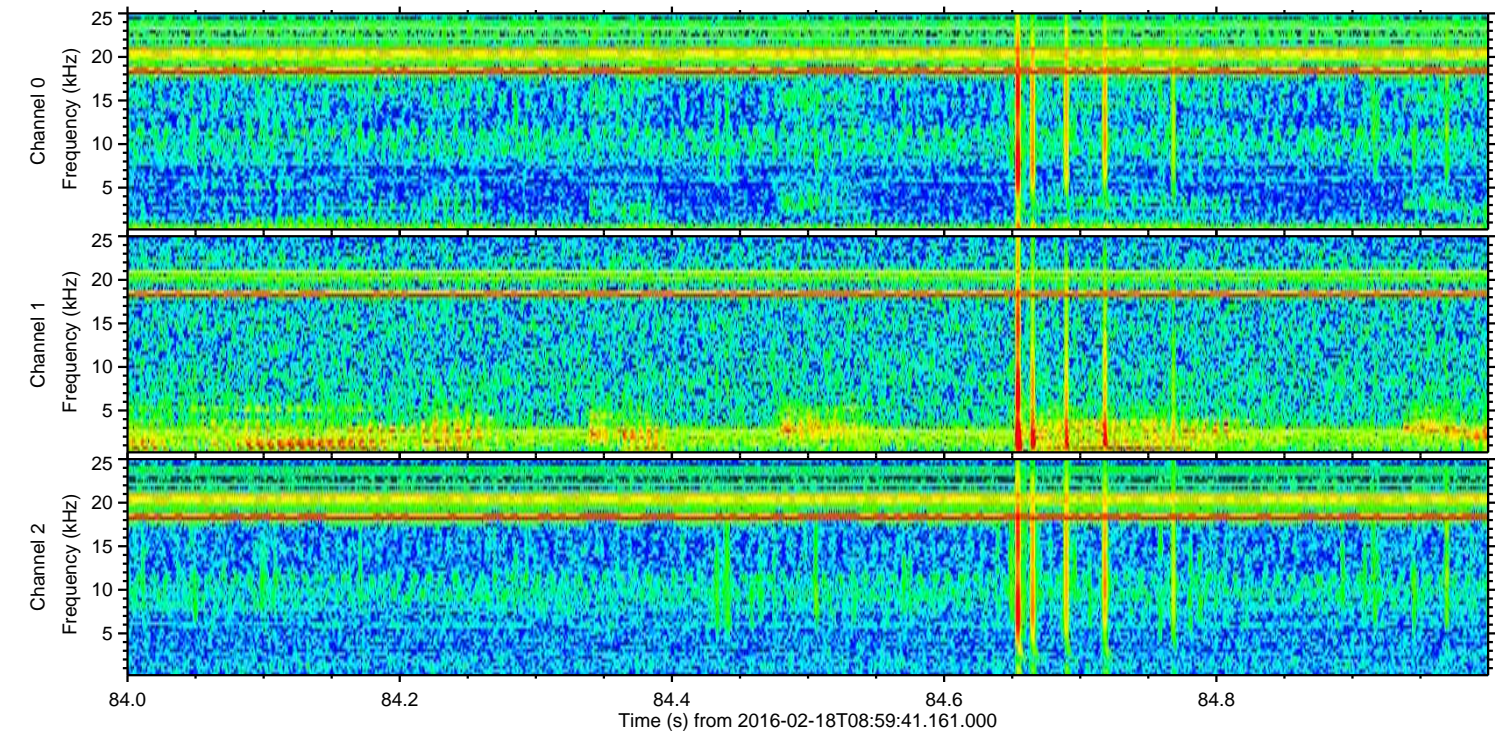
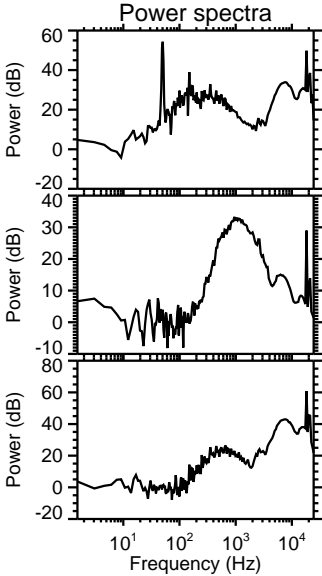
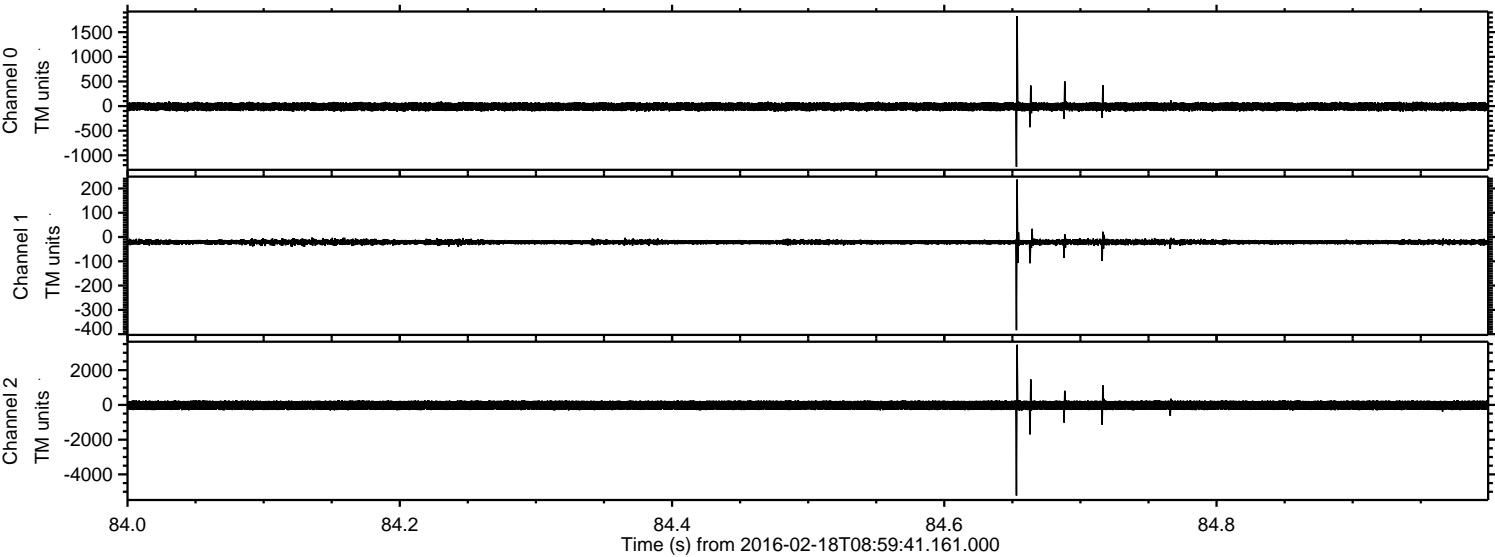


ELMAVAN 3D WAVEFORMS (Measured data sampled at 50 kHz) 51000 packets of 144 samples from 2016-02-18T08:59:41.161.000. Part 91/147

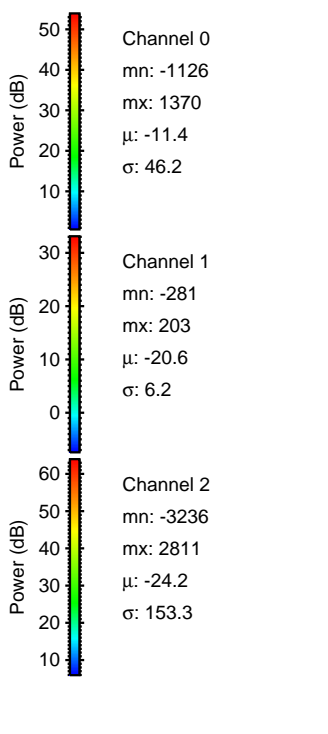
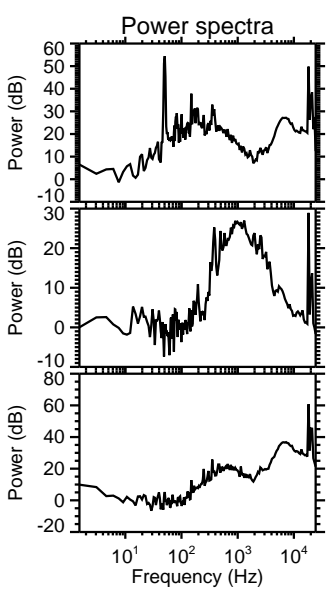
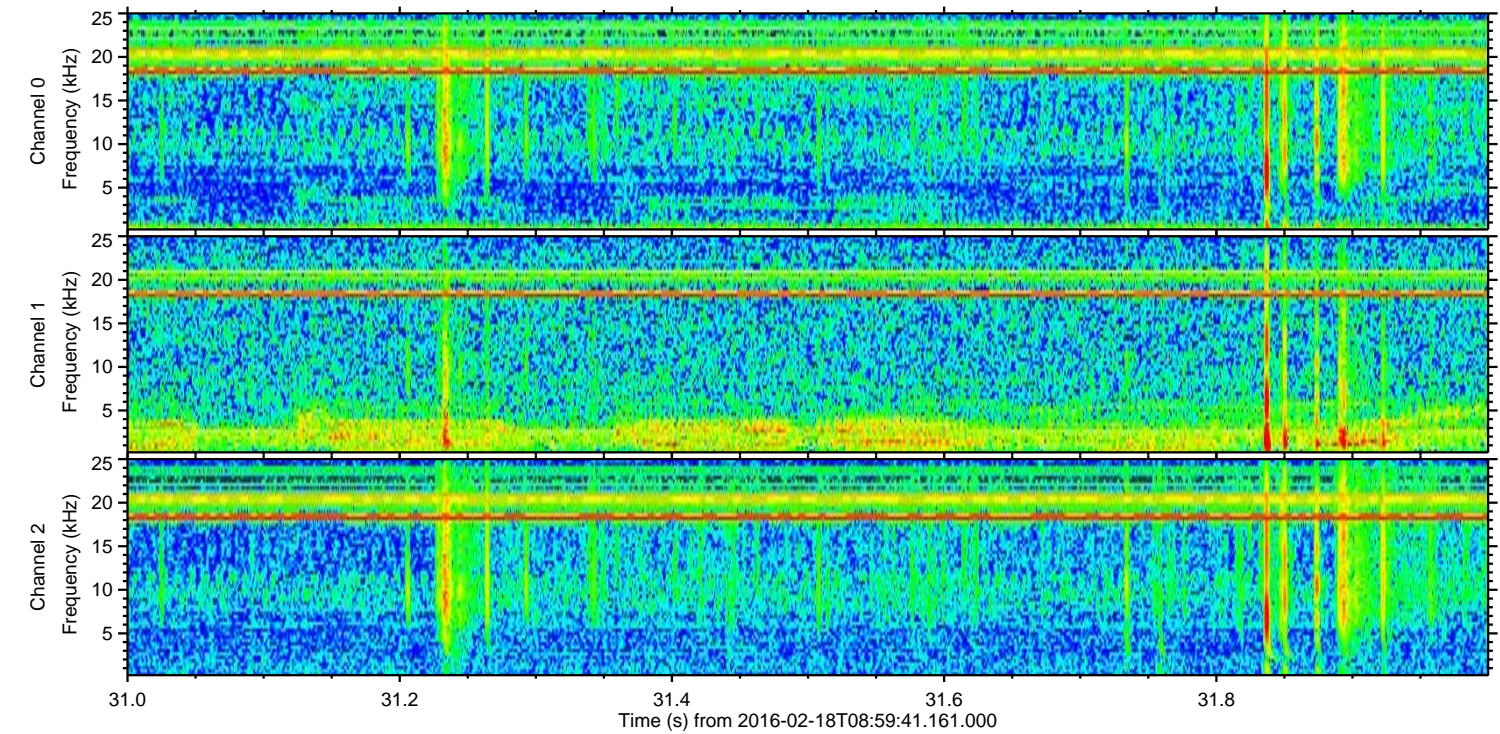
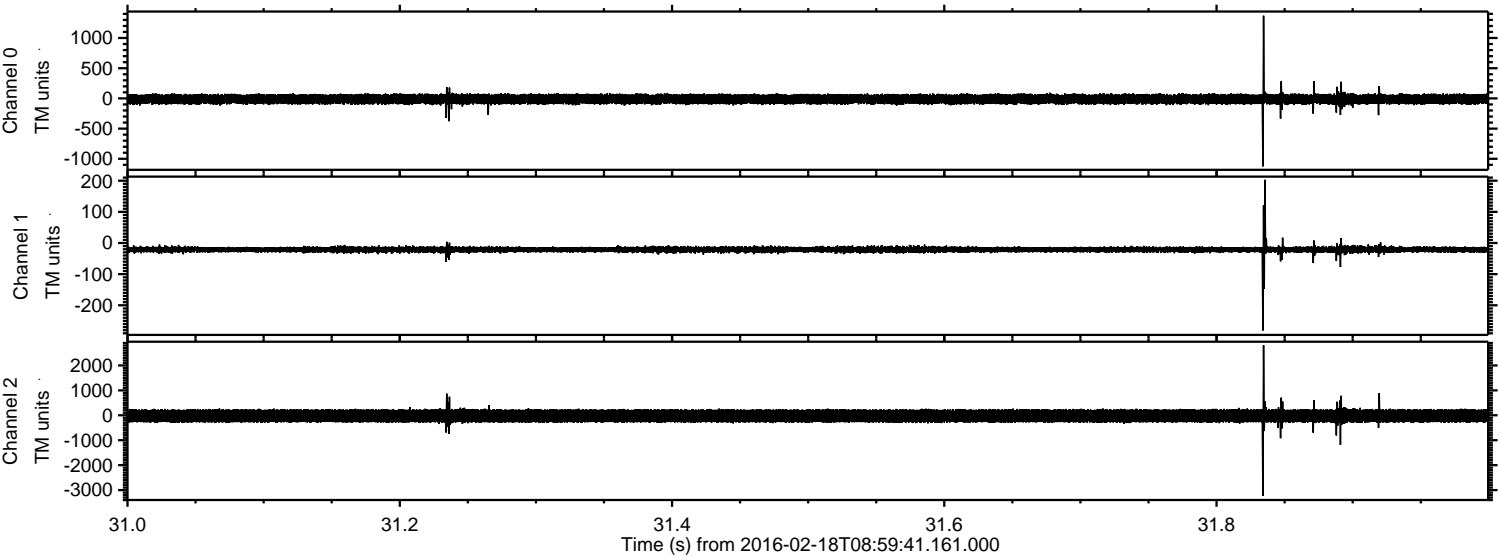
Processed Mon Apr 11 13:27:12 2016 by ELM ver.2012-10-06 from 001__elm20160218_085940__dat00.bin



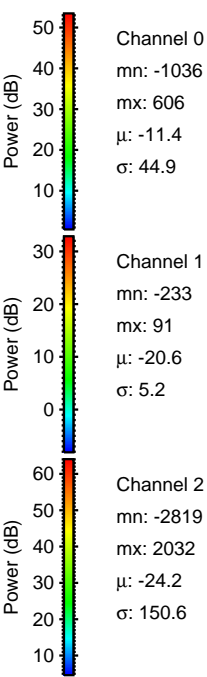
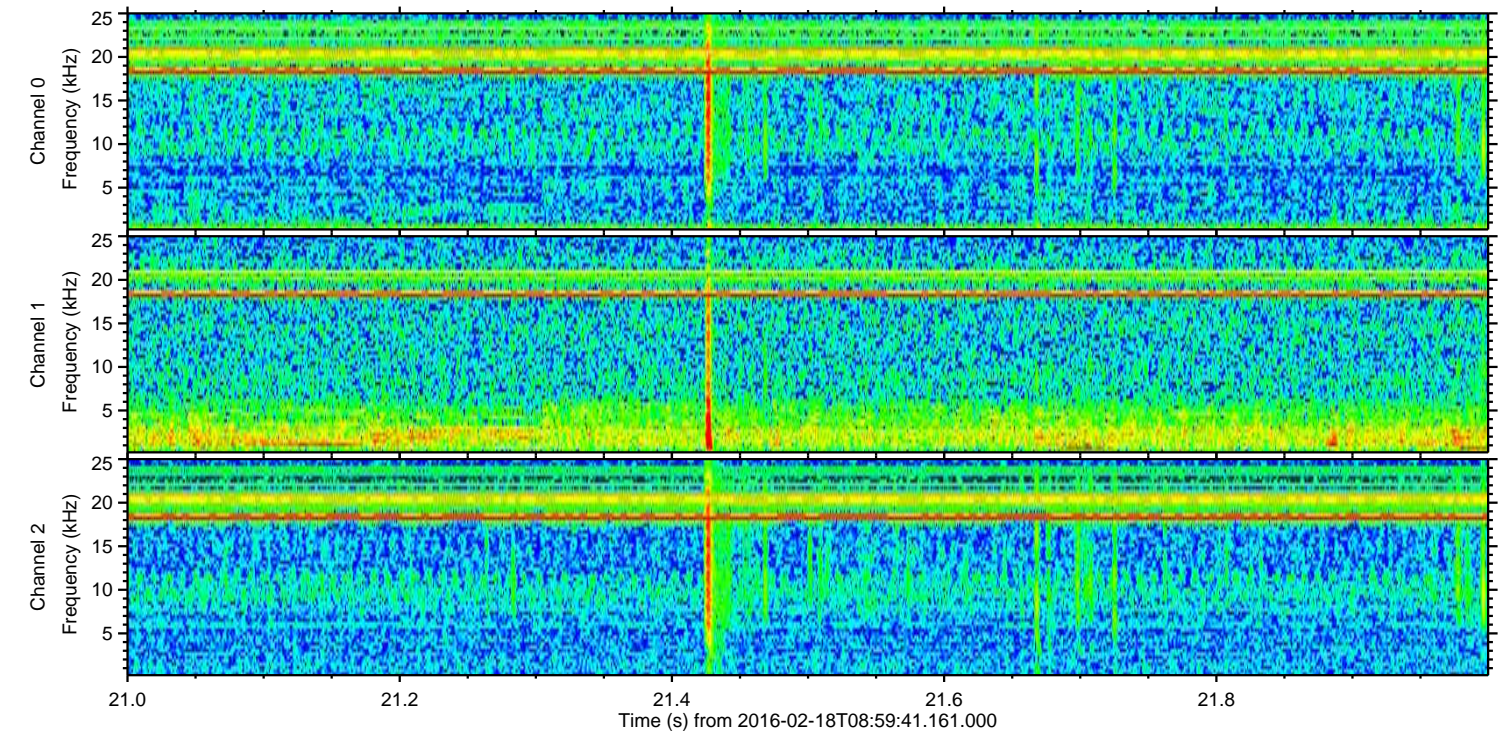
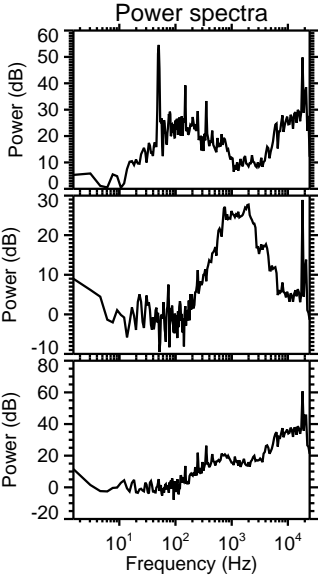
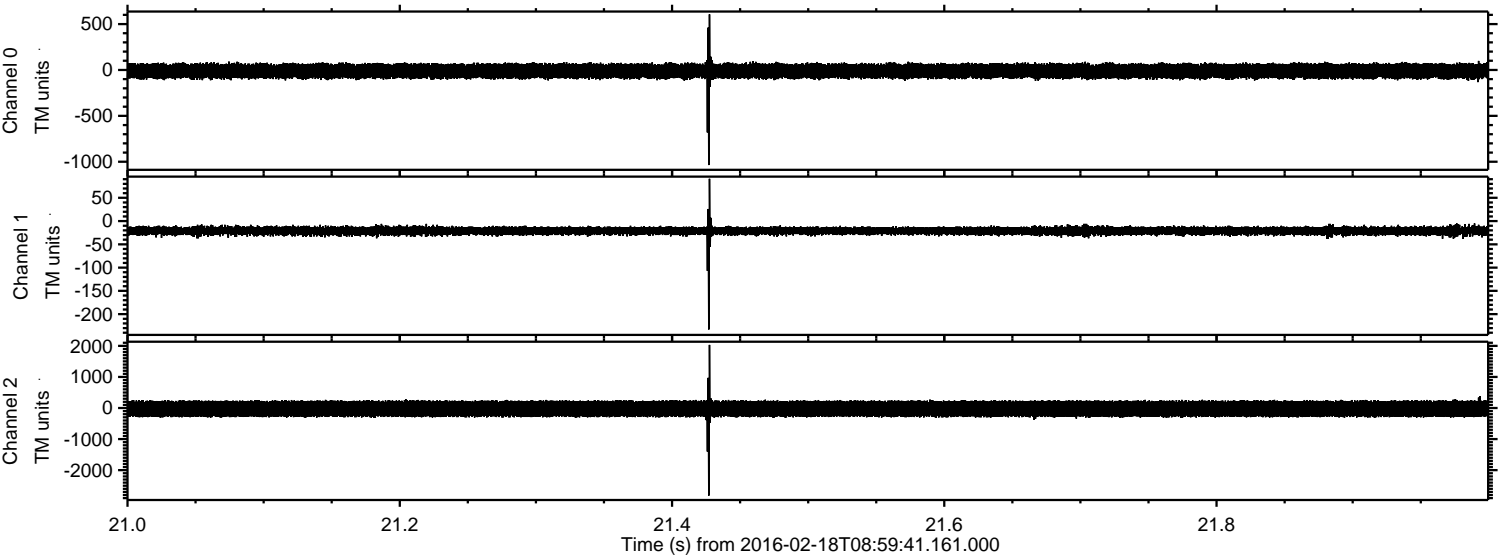
Processed Mon Apr 11 13:27:13 2016 by ELM ver.2012-10-06 from 001__elm20160218_085940__dat00.bin



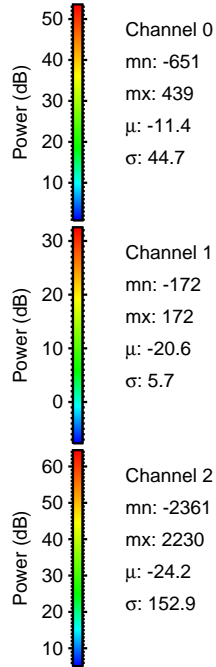
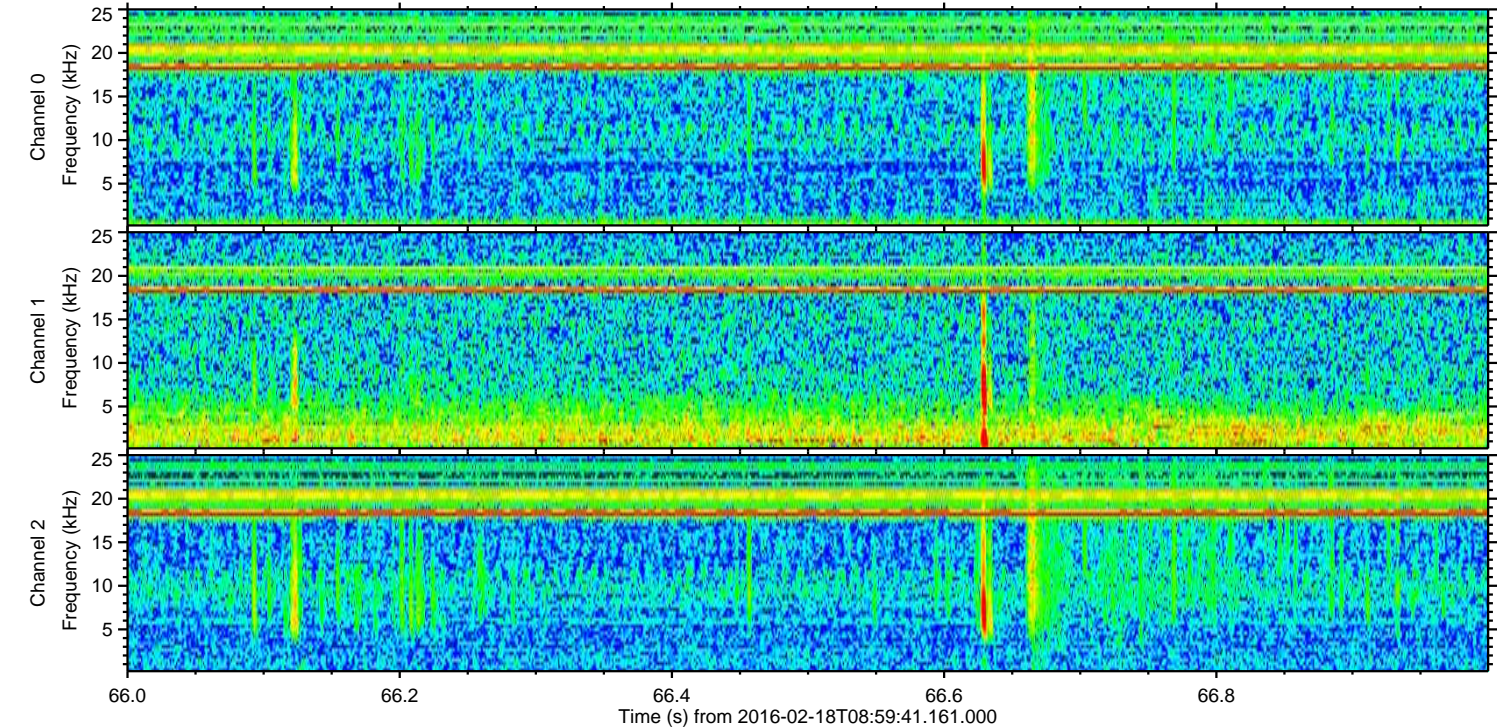
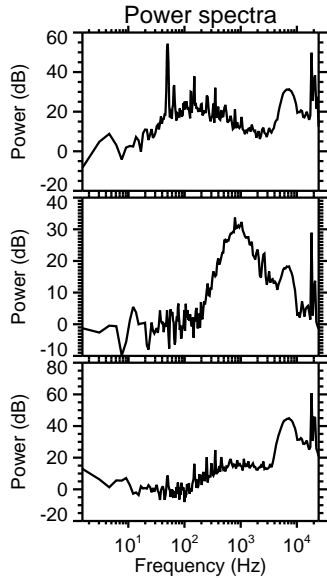
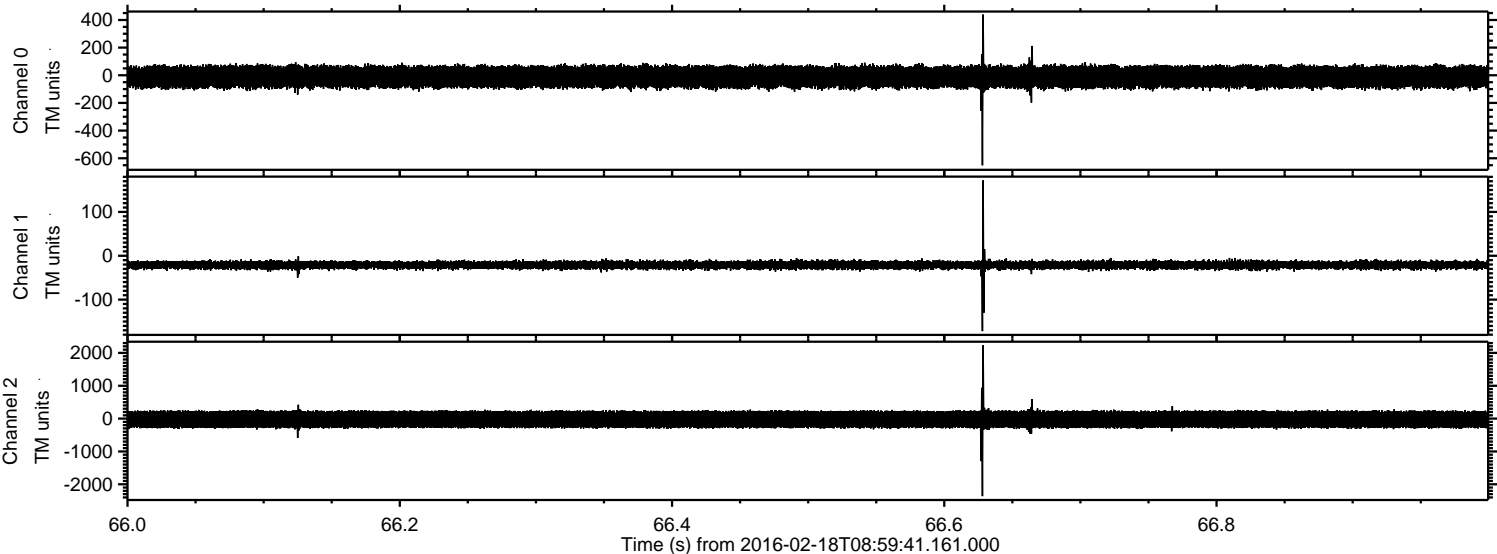
Processed Mon Apr 11 13:27:14 2016 by ELM ver.2012-10-06 from 001__elm20160218_085940__dat00.bin



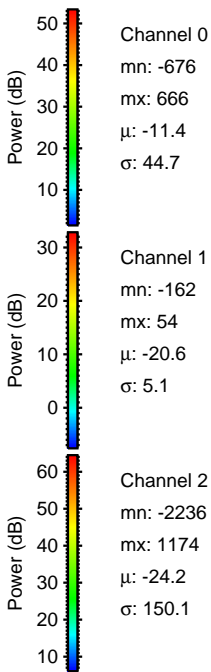
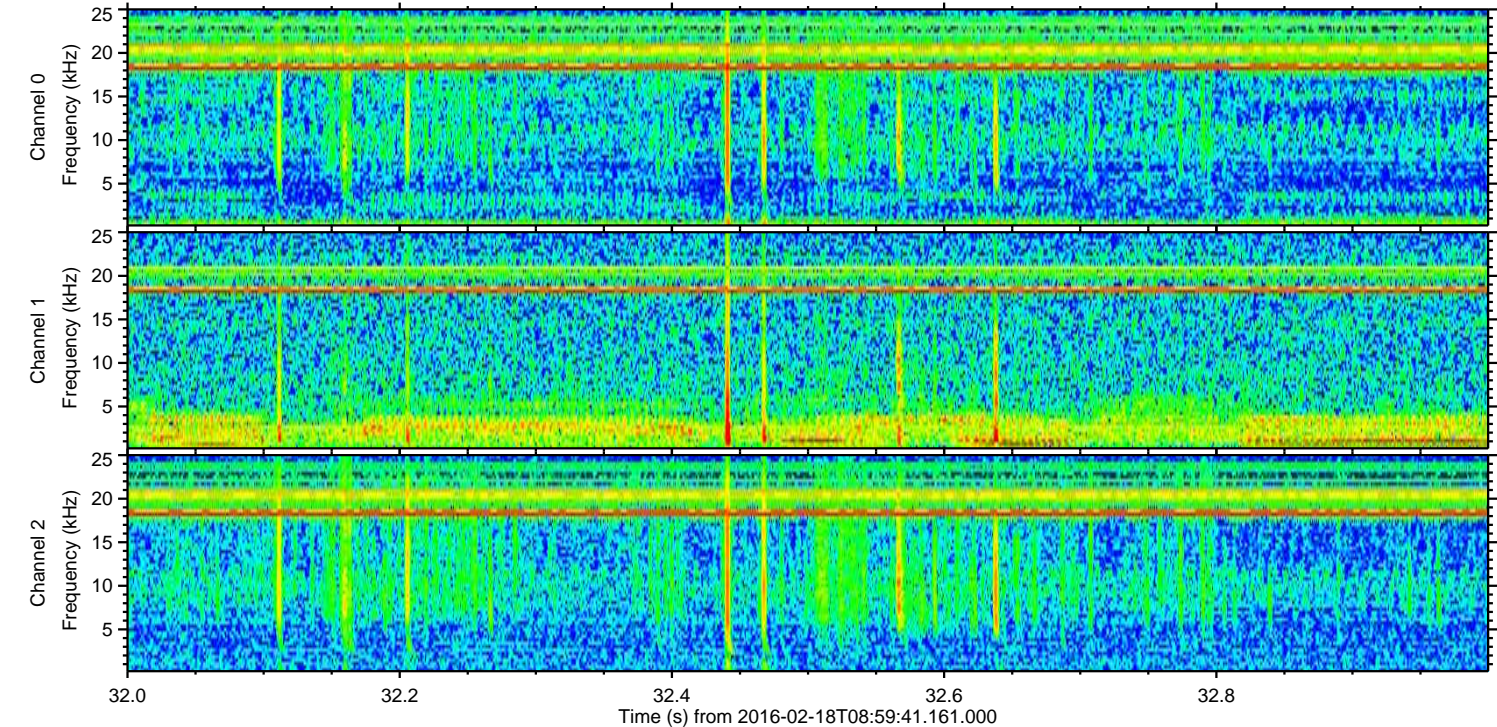
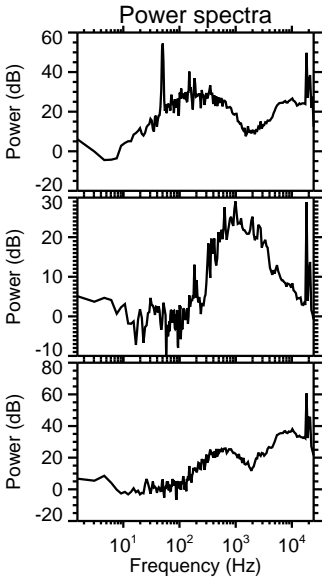
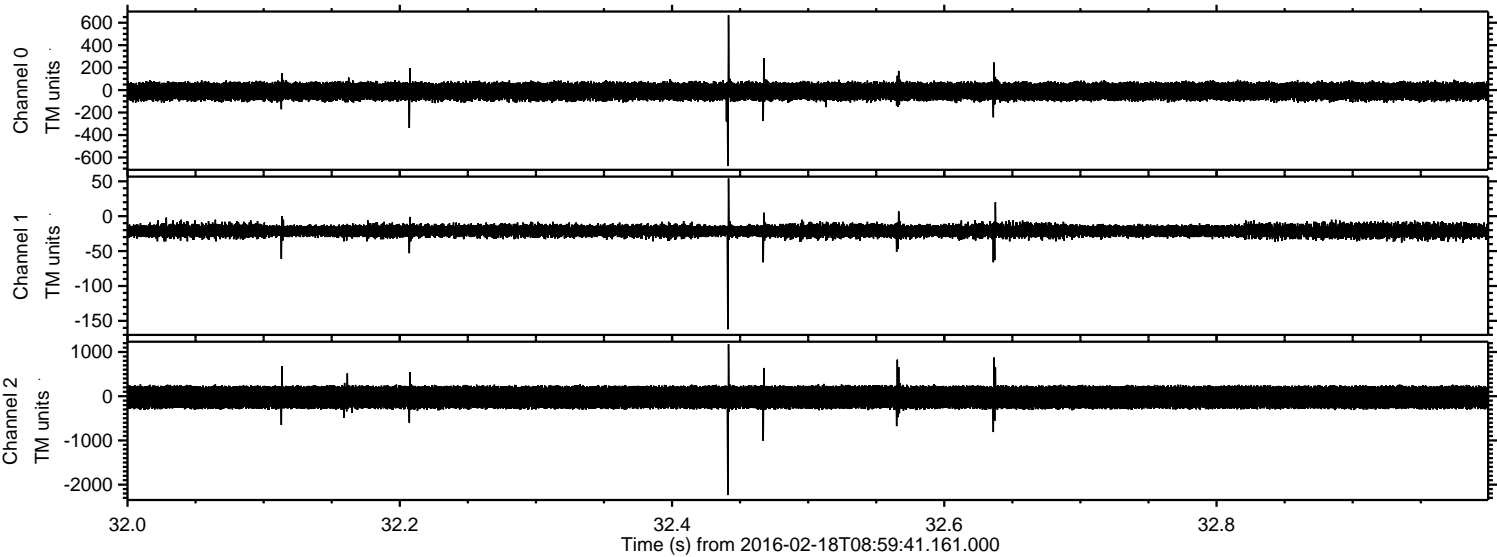
Processed Mon Apr 11 13:27:15 2016 by ELM ver.2012-10-06 from 001__elm20160218_085940__dat00.bin



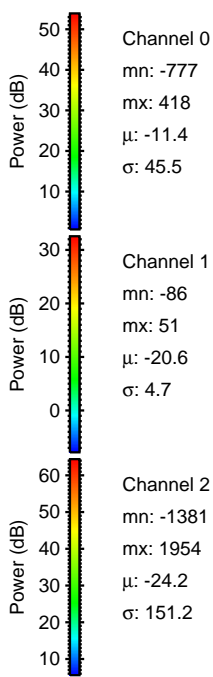
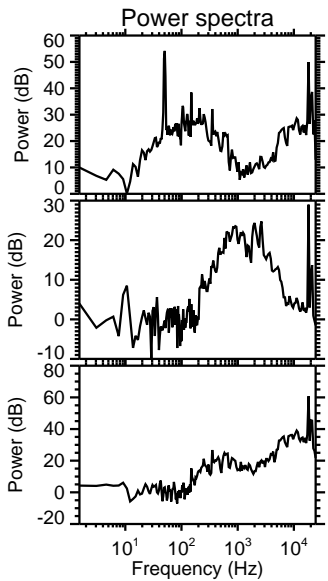
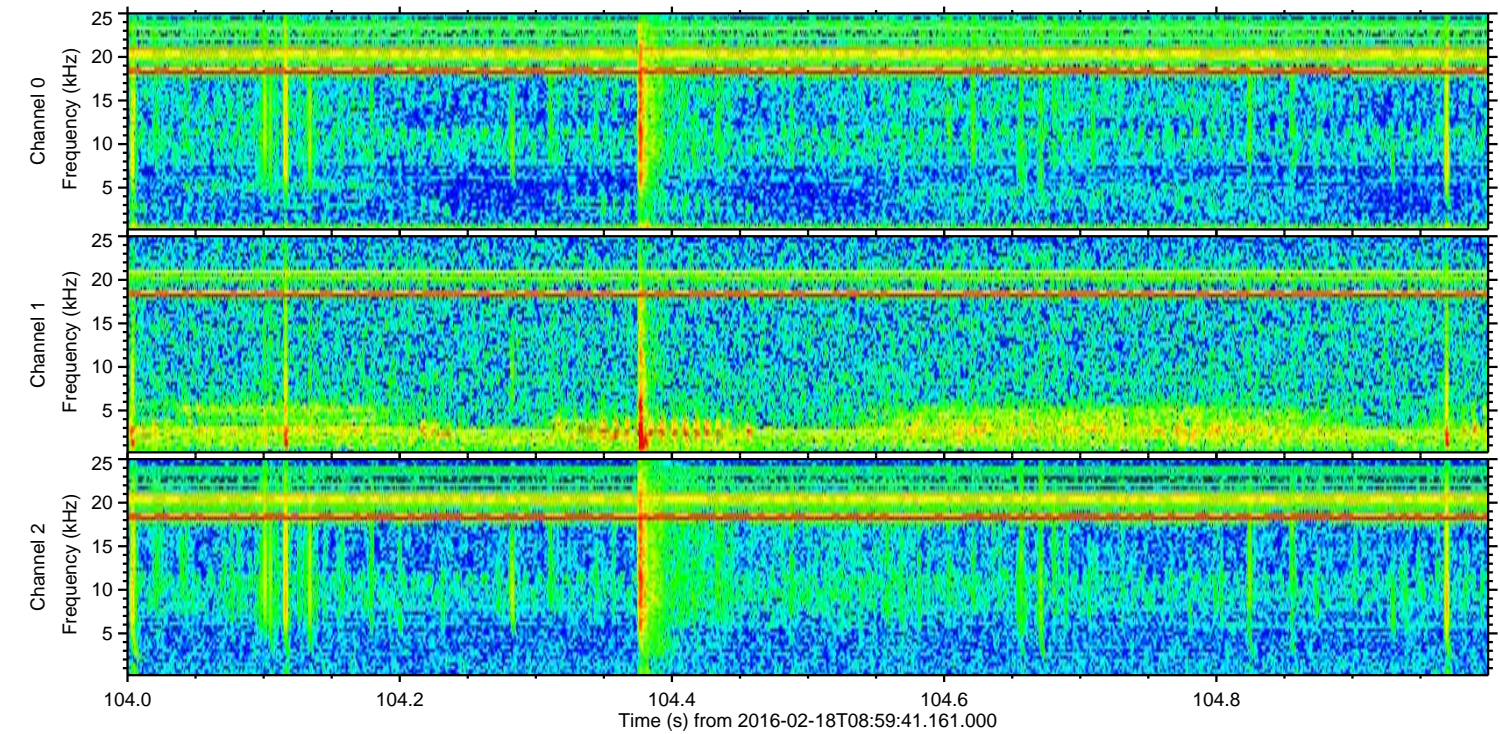
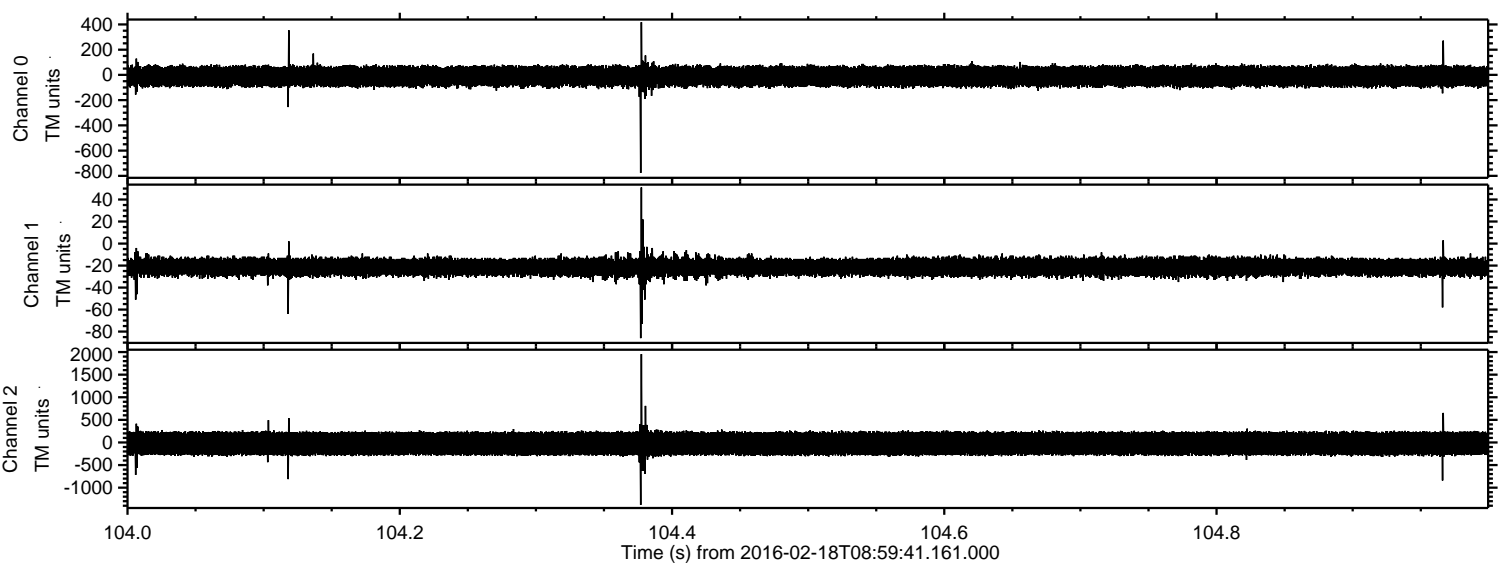
Processed Mon Apr 11 13:27:16 2016 by ELM ver.2012-10-06 from 001__elm20160218_085940__dat00.bin



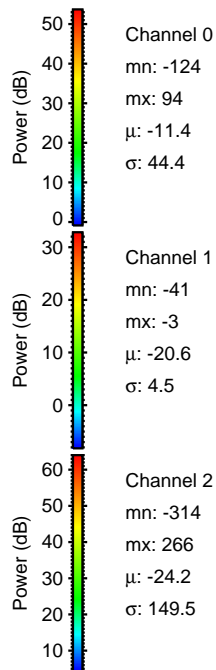
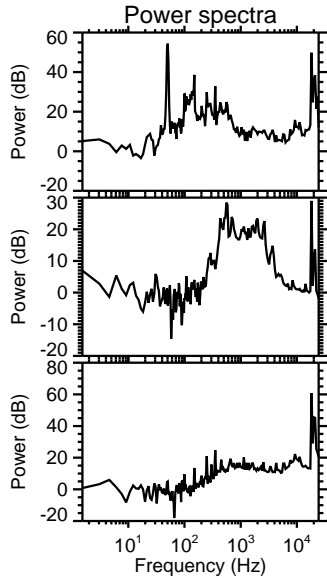
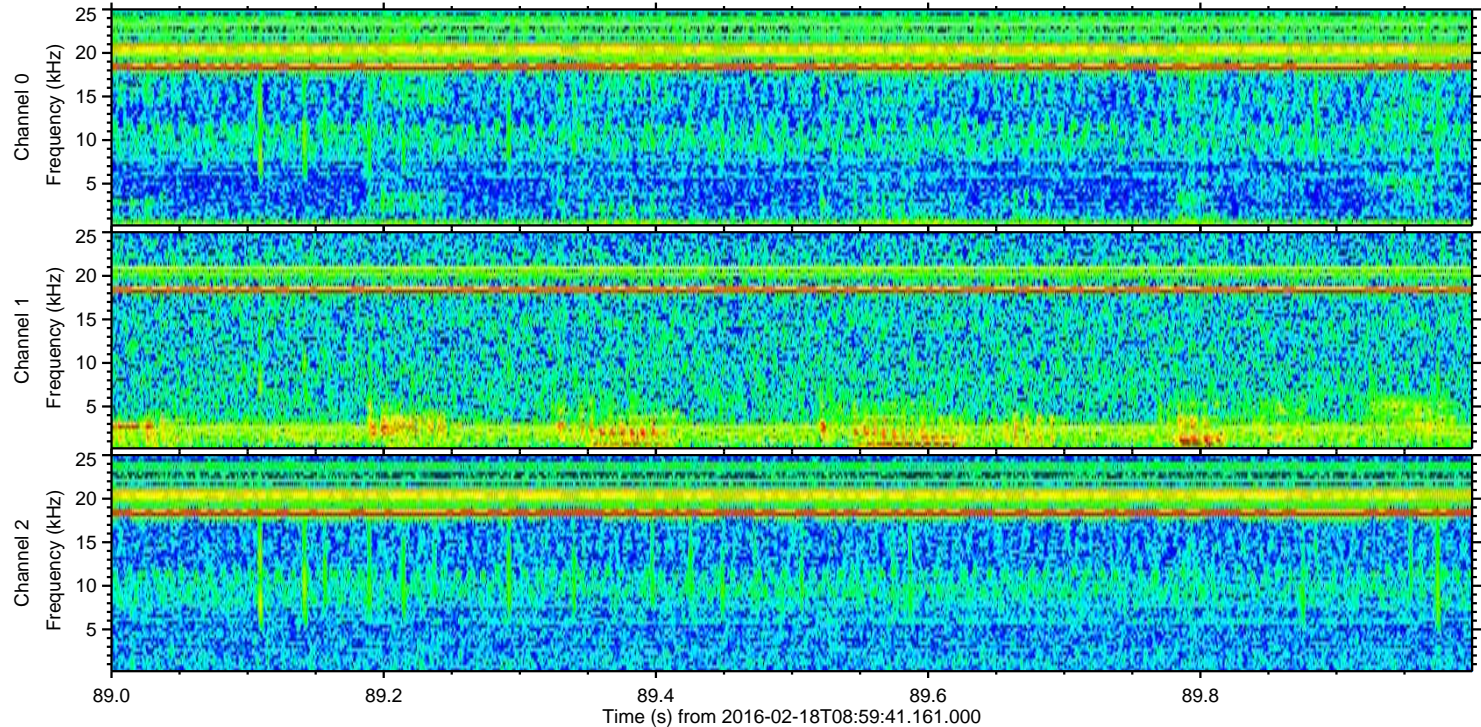
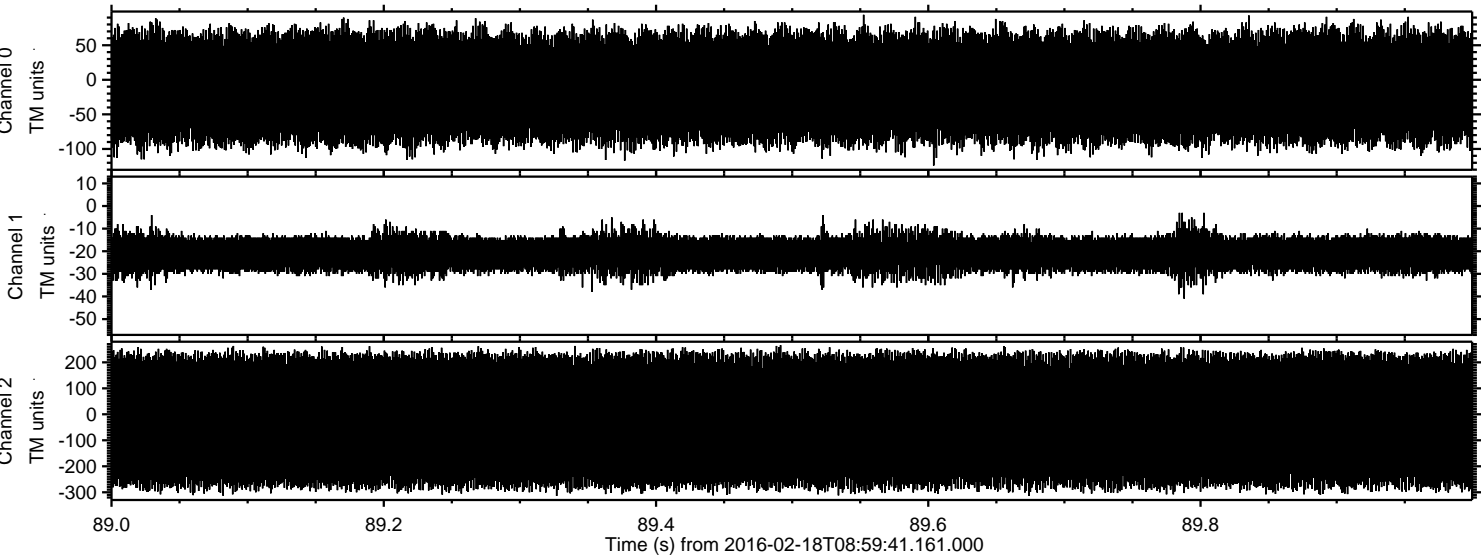
Processed Mon Apr 11 13:27:17 2016 by ELM ver.2012-10-06 from 001__elm20160218_085940__dat00.bin



Processed Mon Apr 11 13:27:18 2016 by ELM ver.2012-10-06 from 001__elm20160218_085940__dat00.bin



Processed Mon Apr 11 13:27:19 2016 by ELM ver.2012-10-06 from 001__elm20160218_085940__dat00.bin



Power spectra

Channel 0
mn: -124
mx: 94
 μ : -11.4
 σ : 44.4

Channel 1
mn: -41
mx: -3
 μ : -20.6
 σ : 4.5

Channel 2
mn: -314
mx: 266
 μ : -24.2
 σ : 149.5