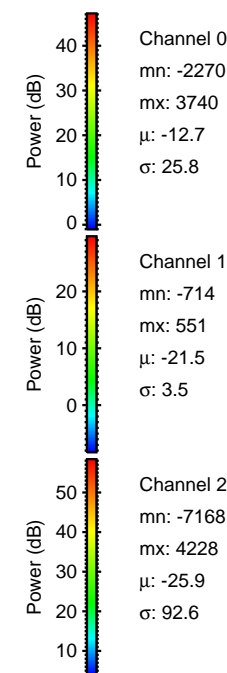
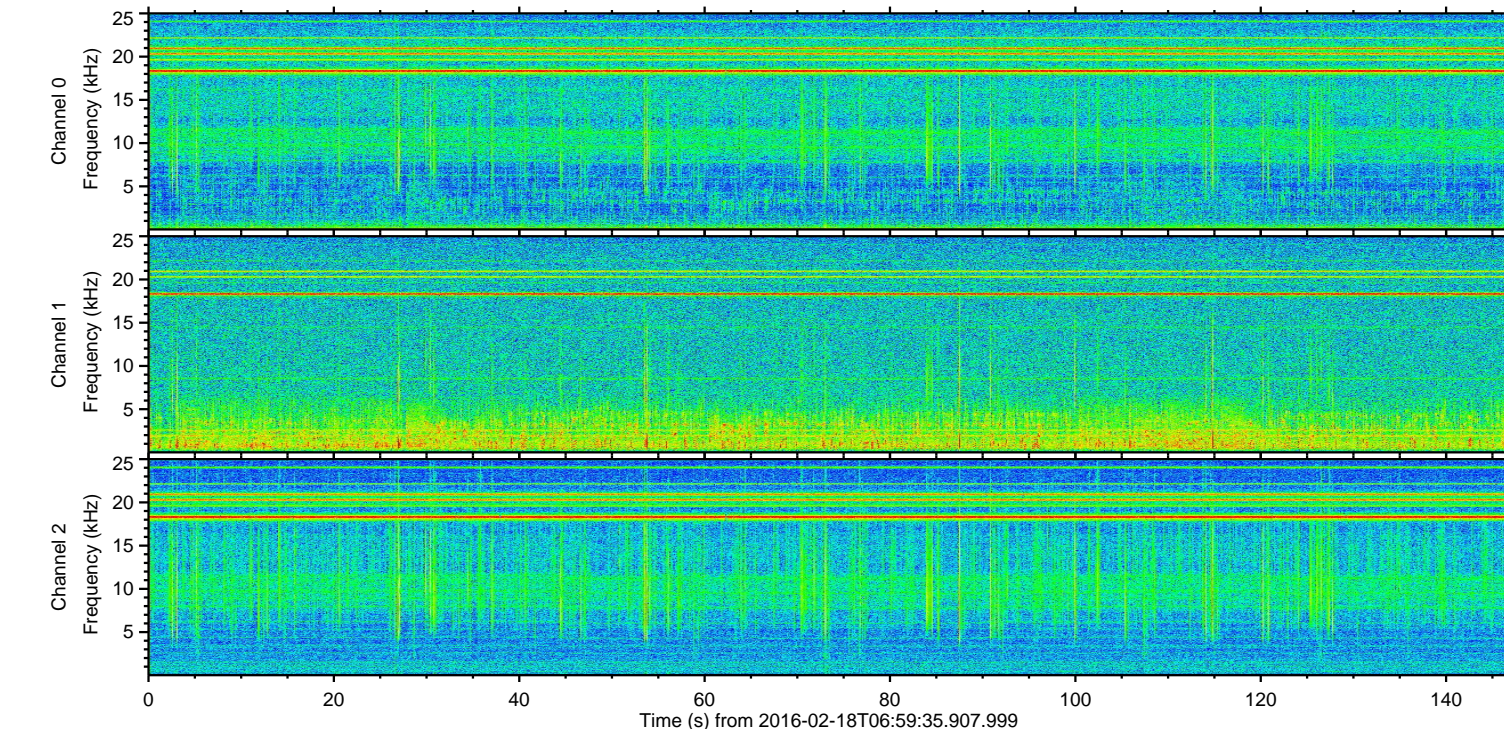
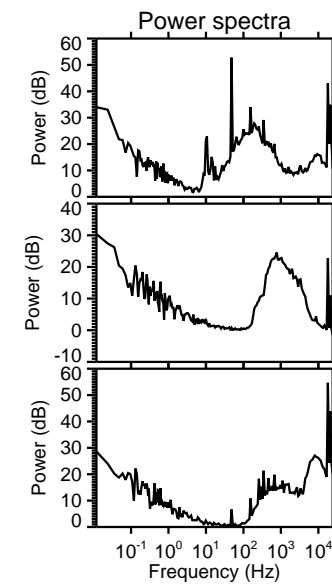
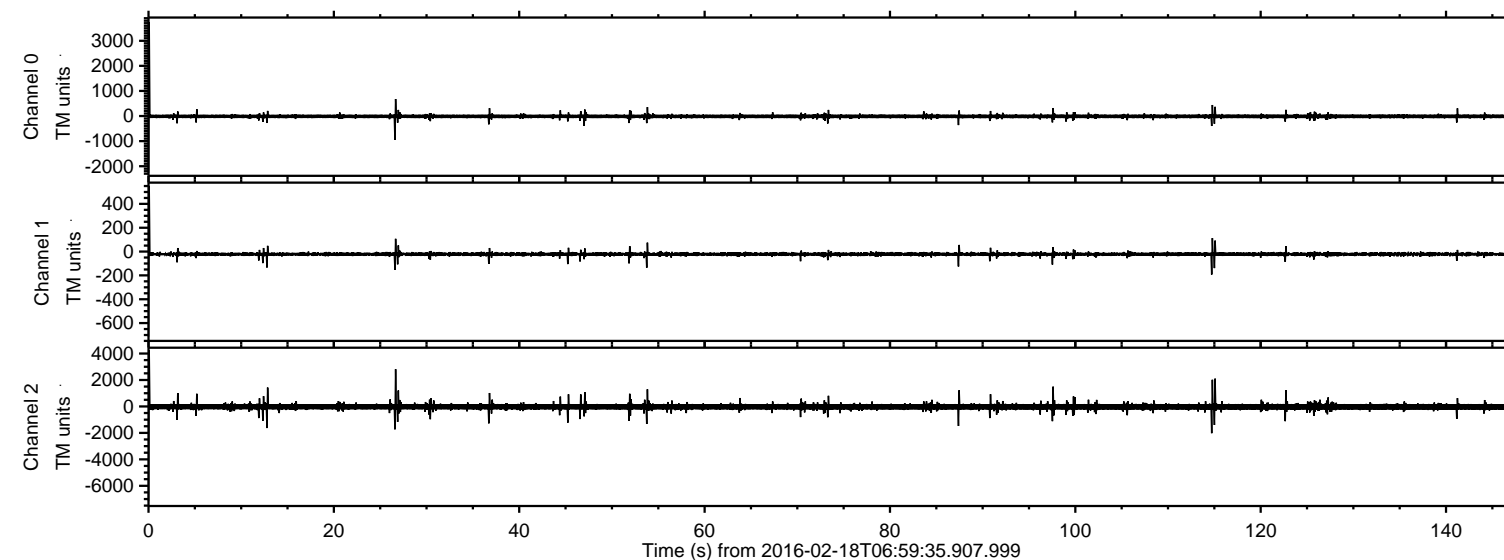


# ELMAVAN 3D WAVEFORMS (Measured data sampled at 50 kHz) 51000 packets of 144 samples from 2016-02-18T06:59:35.907.999.

Processed Mon Apr 11 13:02:09 2016 by ELM ver.2012-10-06 from 001\_\_elm20160218\_065934\_\_dat00.bin



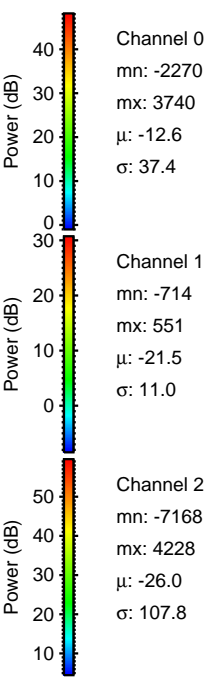
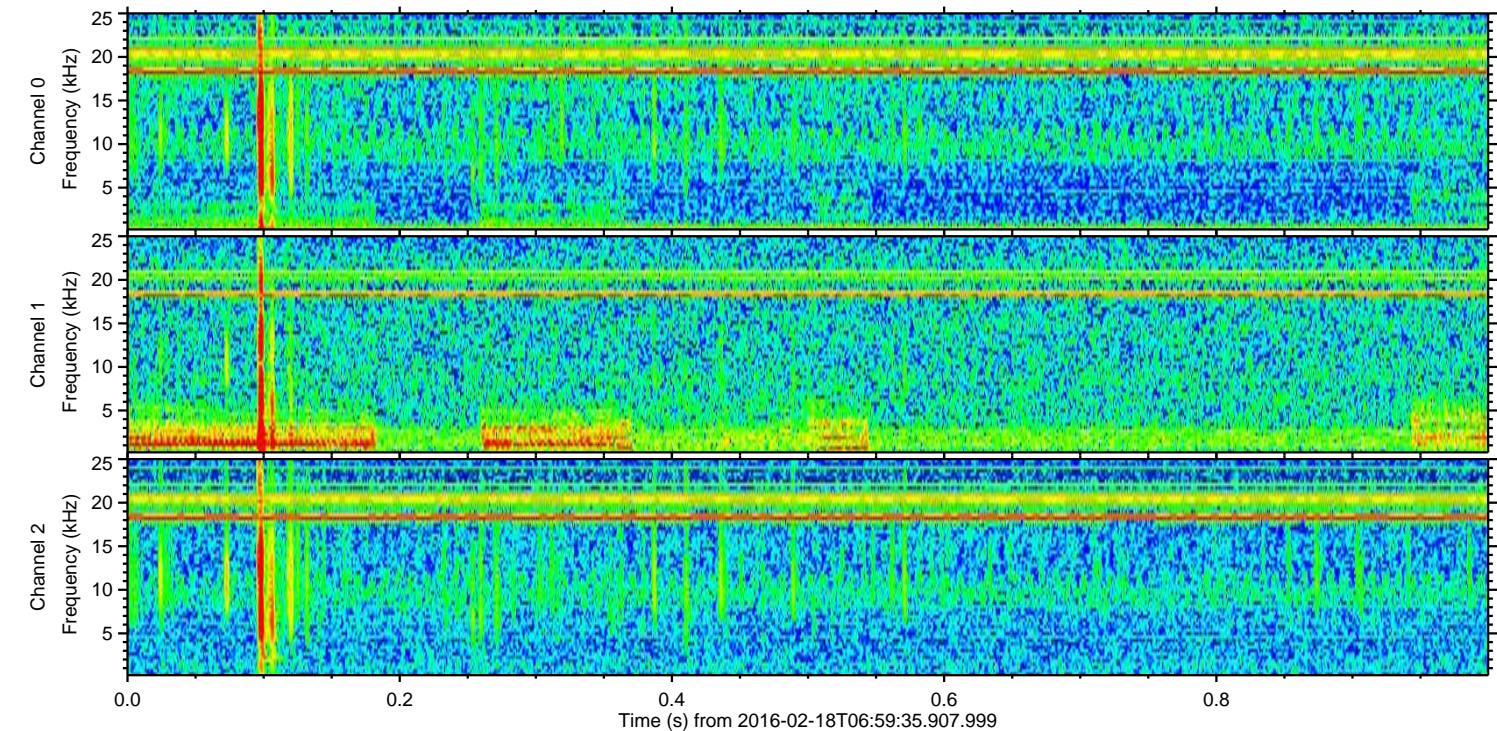
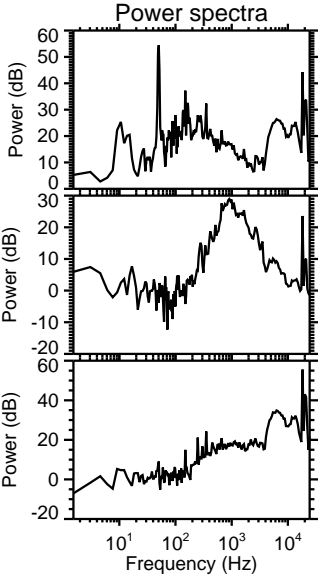
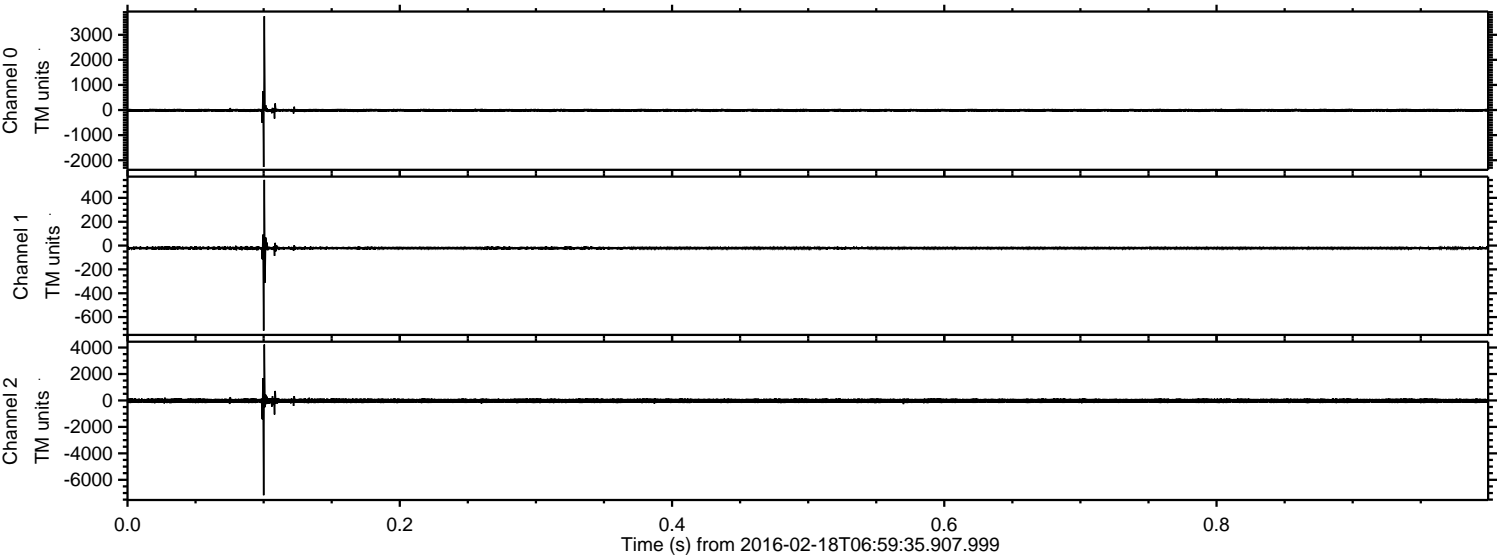
Channel 0  
mn: -2270  
mx: 3740  
 $\mu$ : -12.7  
 $\sigma$ : 25.8

Channel 1  
mn: -714  
mx: 551  
 $\mu$ : -21.5  
 $\sigma$ : 3.5

Channel 2  
mn: -7168  
mx: 4228  
 $\mu$ : -25.9  
 $\sigma$ : 92.6

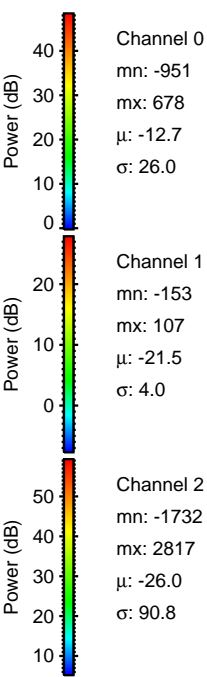
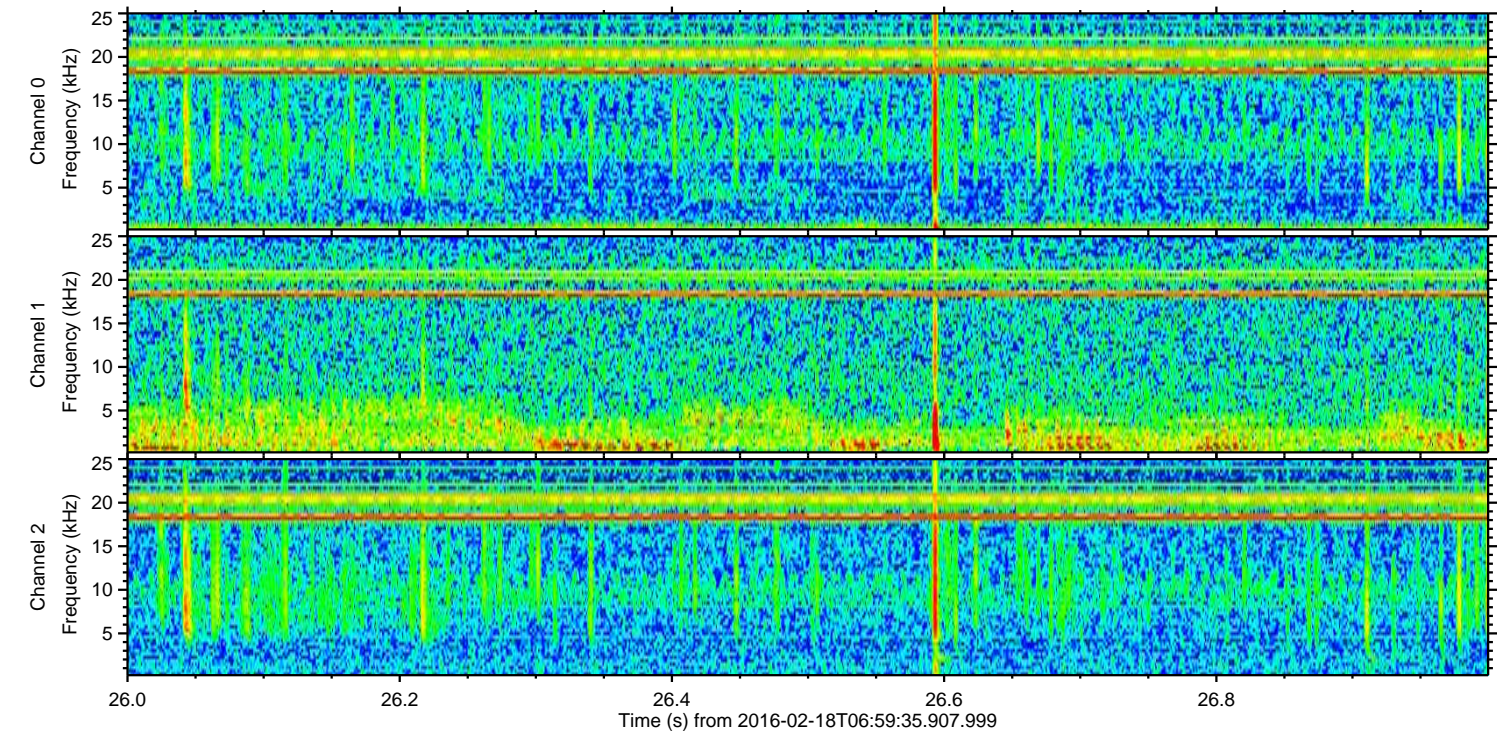
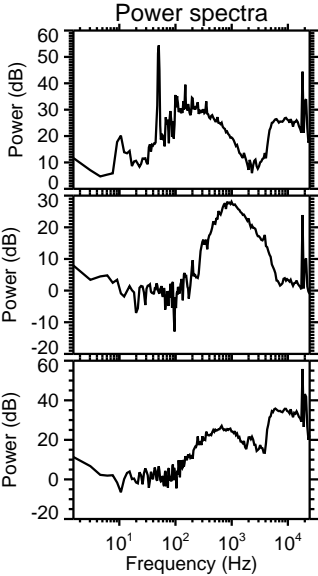
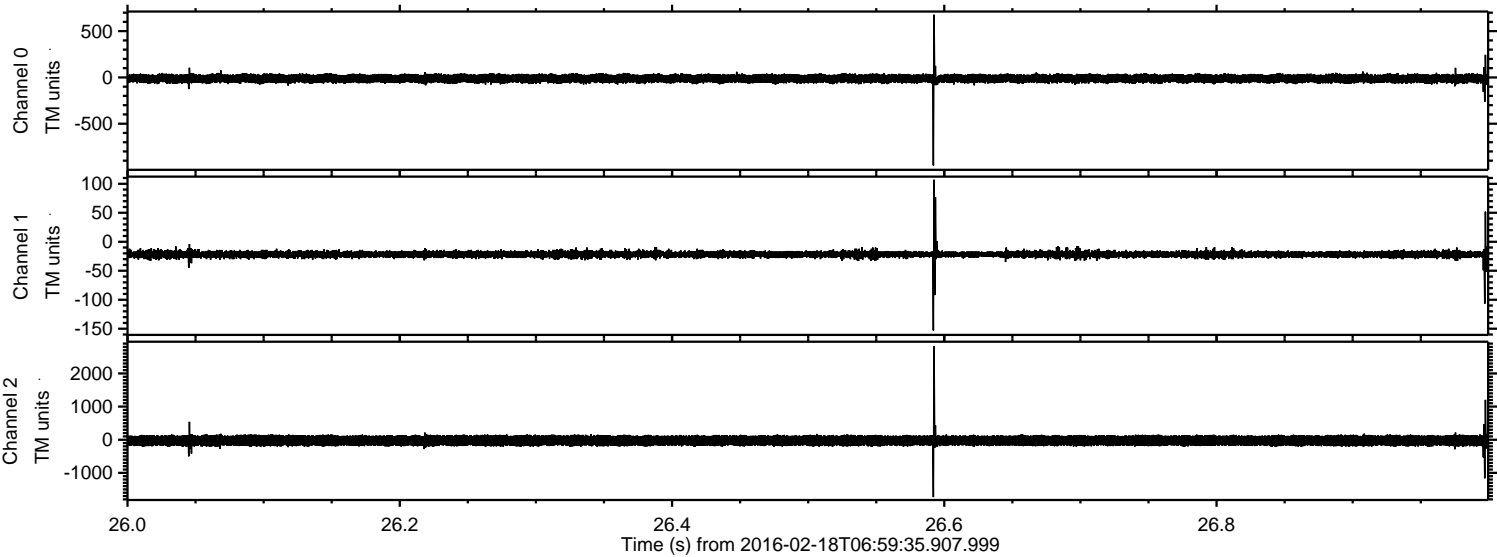


Processed Mon Apr 11 13:02:21 2016 by ELM ver.2012-10-06 from 001\_\_elm20160218\_065934\_\_dat00.bin





Processed Mon Apr 11 13:02:22 2016 by ELM ver.2012-10-06 from 001\_\_elm20160218\_065934\_\_dat00.bin



Channel 0  
mn: -951  
mx: 678  
 $\mu$ : -12.7  
 $\sigma$ : 26.0

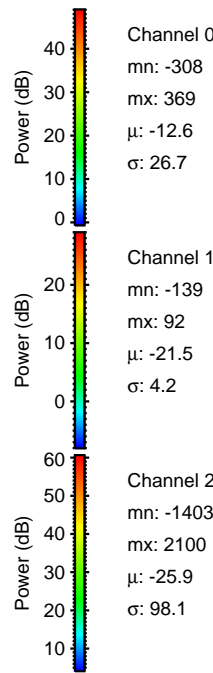
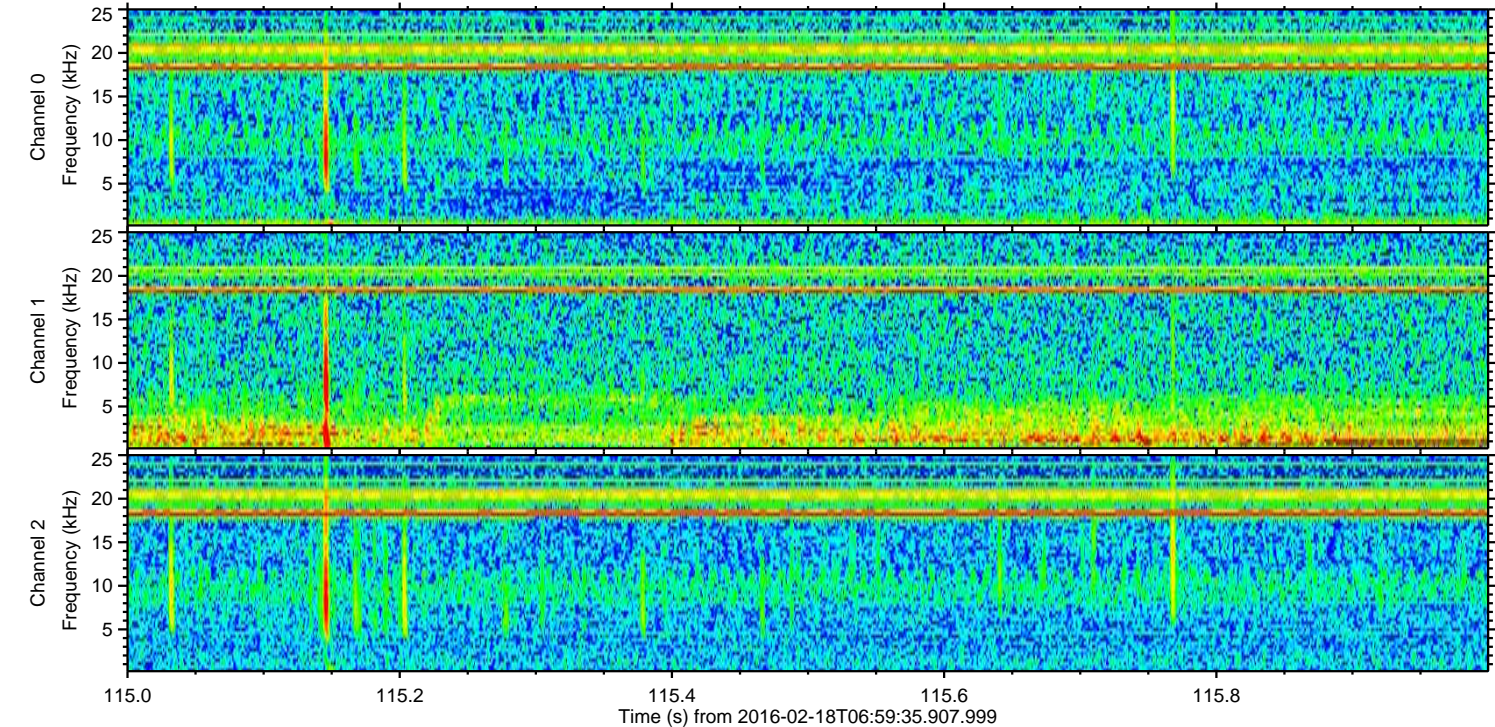
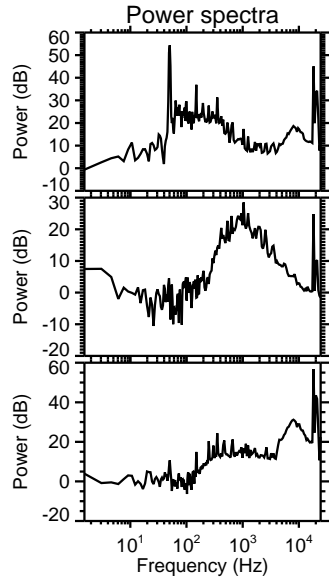
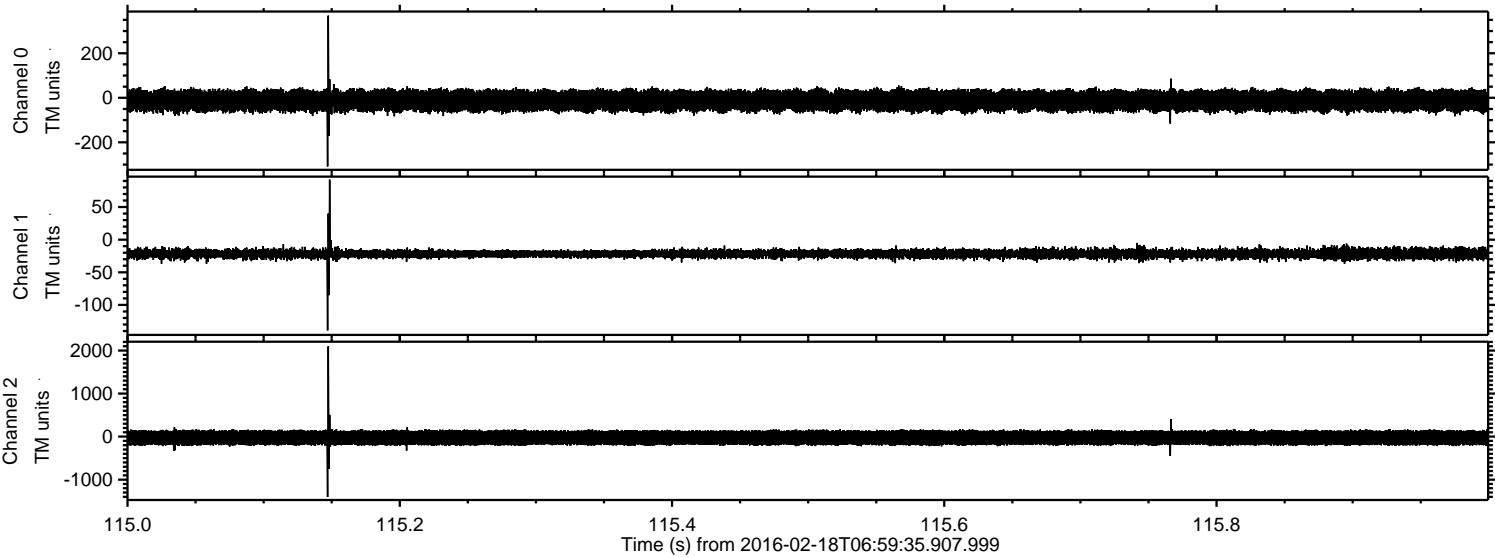
Channel 1  
mn: -153  
mx: 107  
 $\mu$ : -21.5  
 $\sigma$ : 4.0

Channel 2  
mn: -1732  
mx: 2817  
 $\mu$ : -26.0  
 $\sigma$ : 90.8



ELMAVAN 3D WAVEFORMS (Measured data sampled at 50 kHz) 51000 packets of 144 samples from 2016-02-18T06:59:35.907.999. Part 116/147

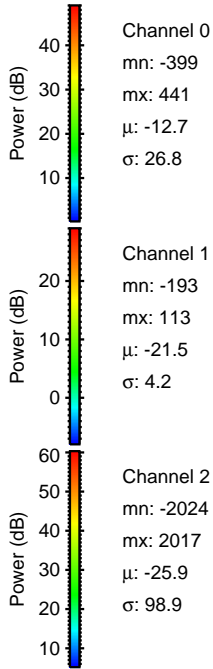
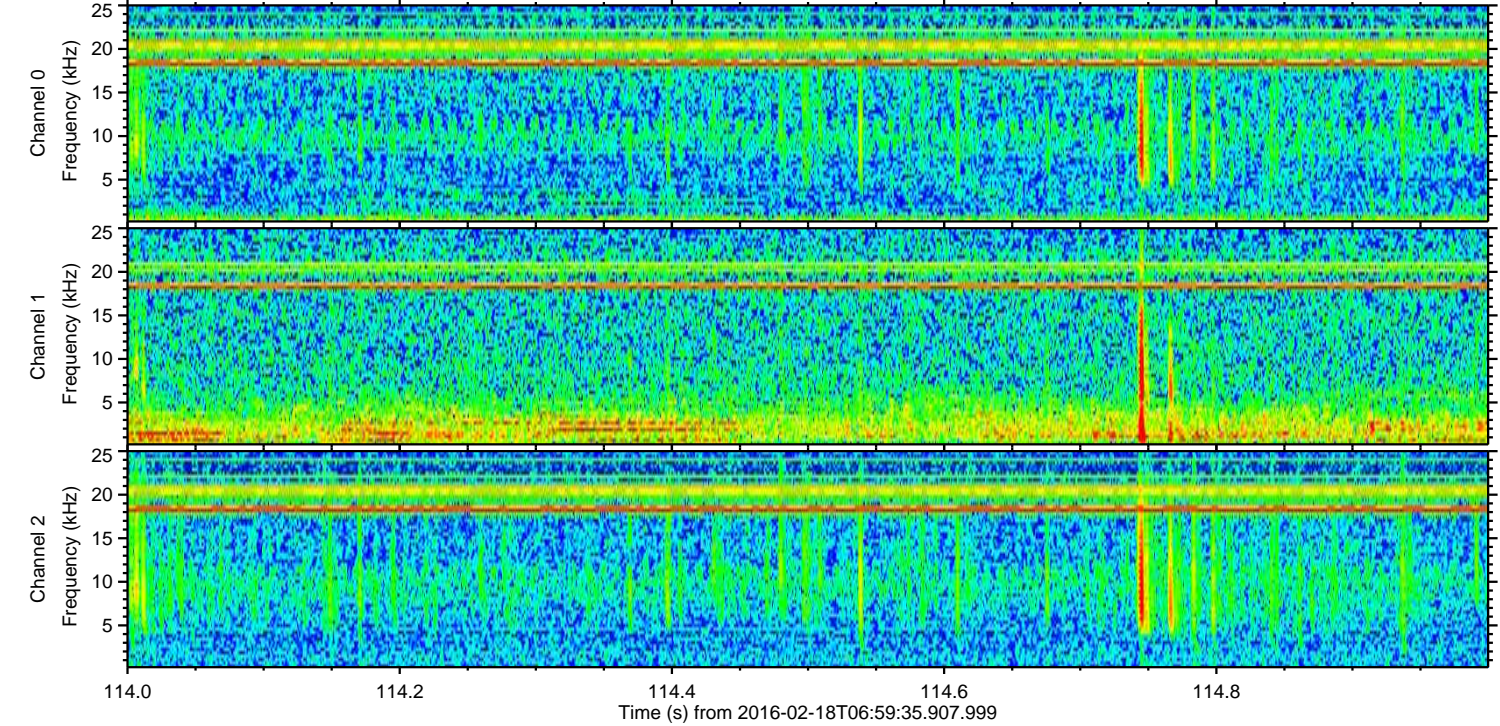
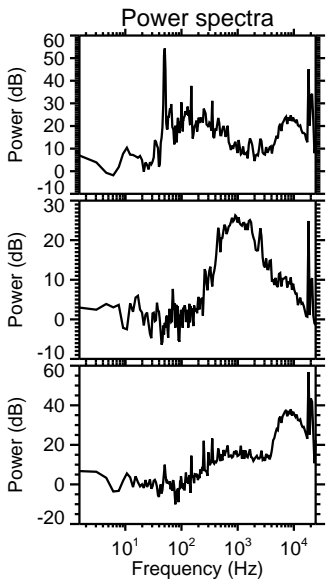
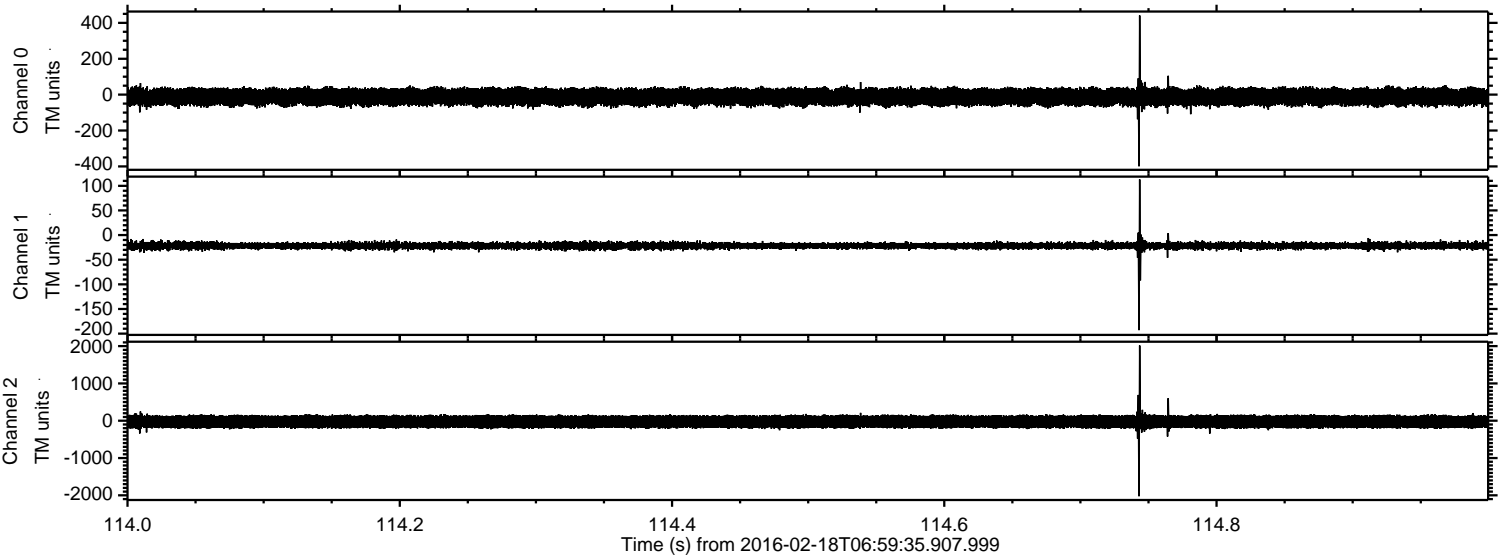
Processed Mon Apr 11 13:02:23 2016 by ELM ver.2012-10-06 from 001\_\_elm20160218\_065934\_\_dat00.bin





ELMAVAN 3D WAVEFORMS (Measured data sampled at 50 kHz) 51000 packets of 144 samples from 2016-02-18T06:59:35.907.999. Part 115/147

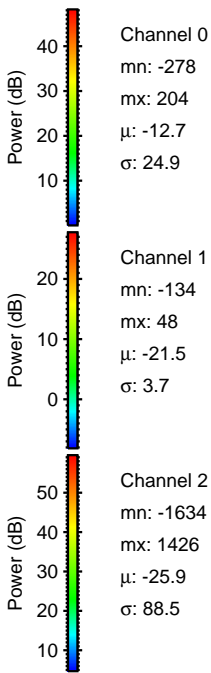
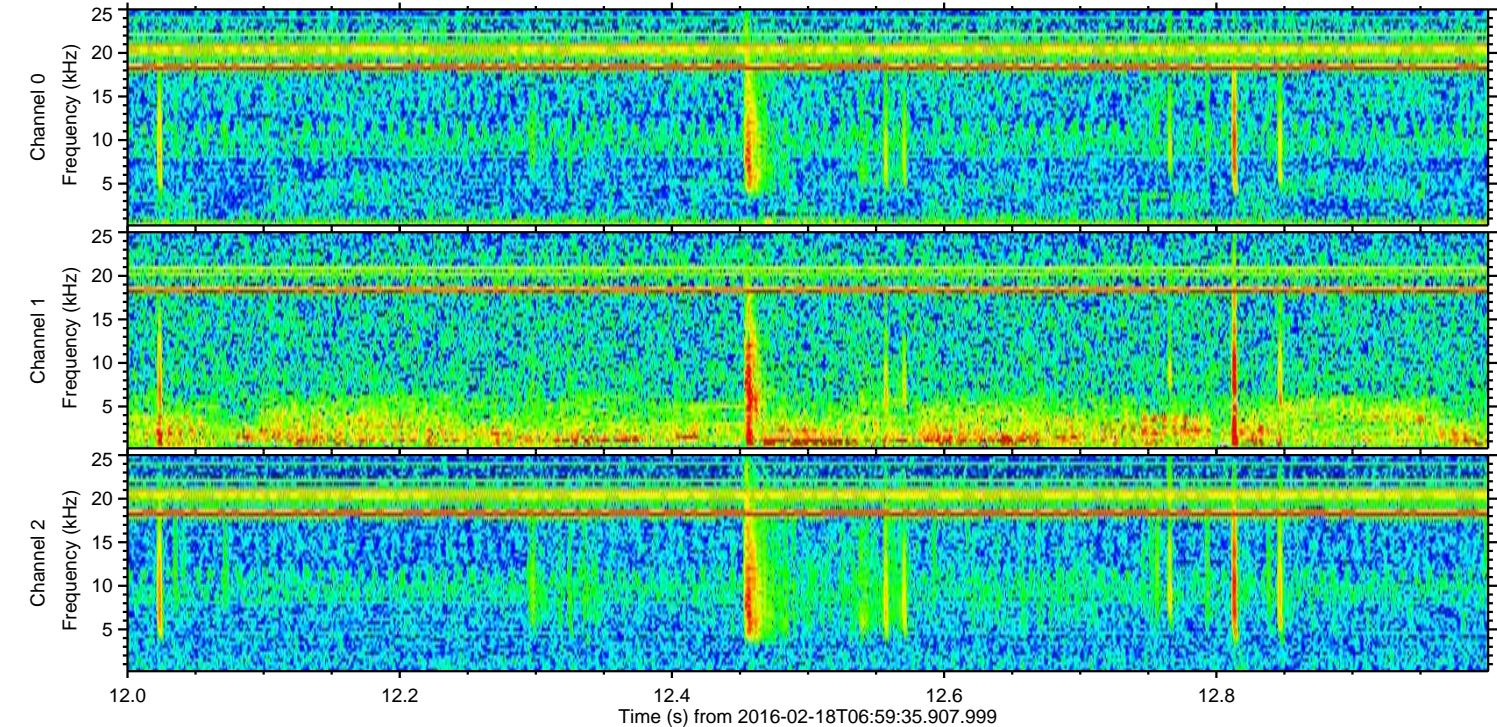
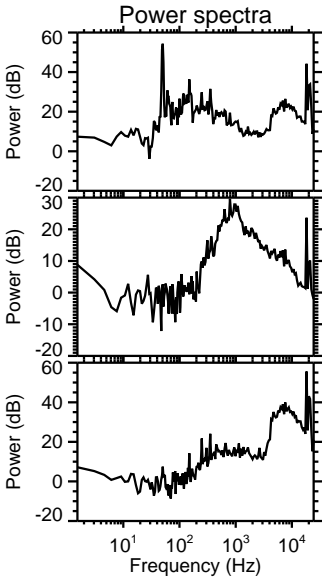
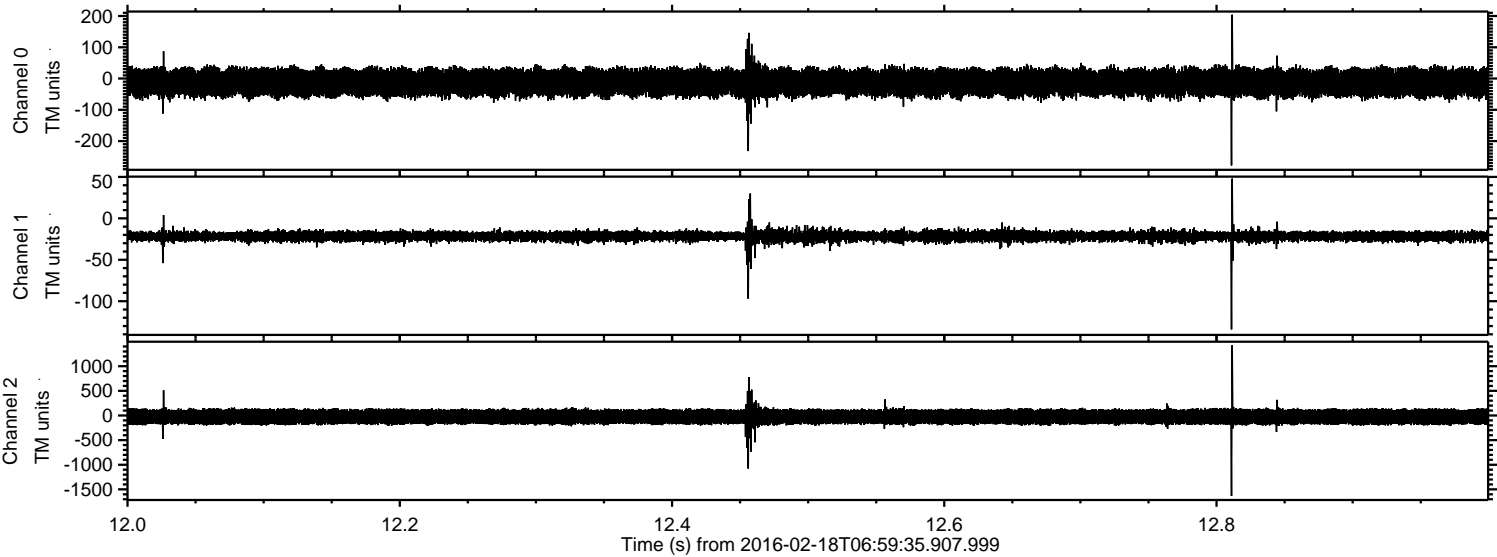
Processed Mon Apr 11 13:02:24 2016 by ELM ver.2012-10-06 from 001\_\_elm20160218\_065934\_\_dat00.bin





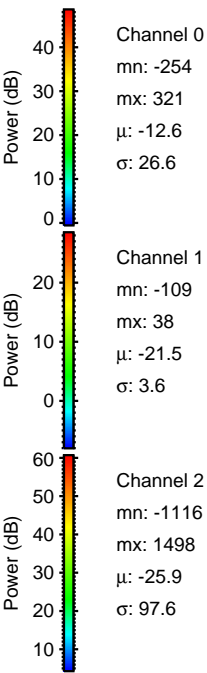
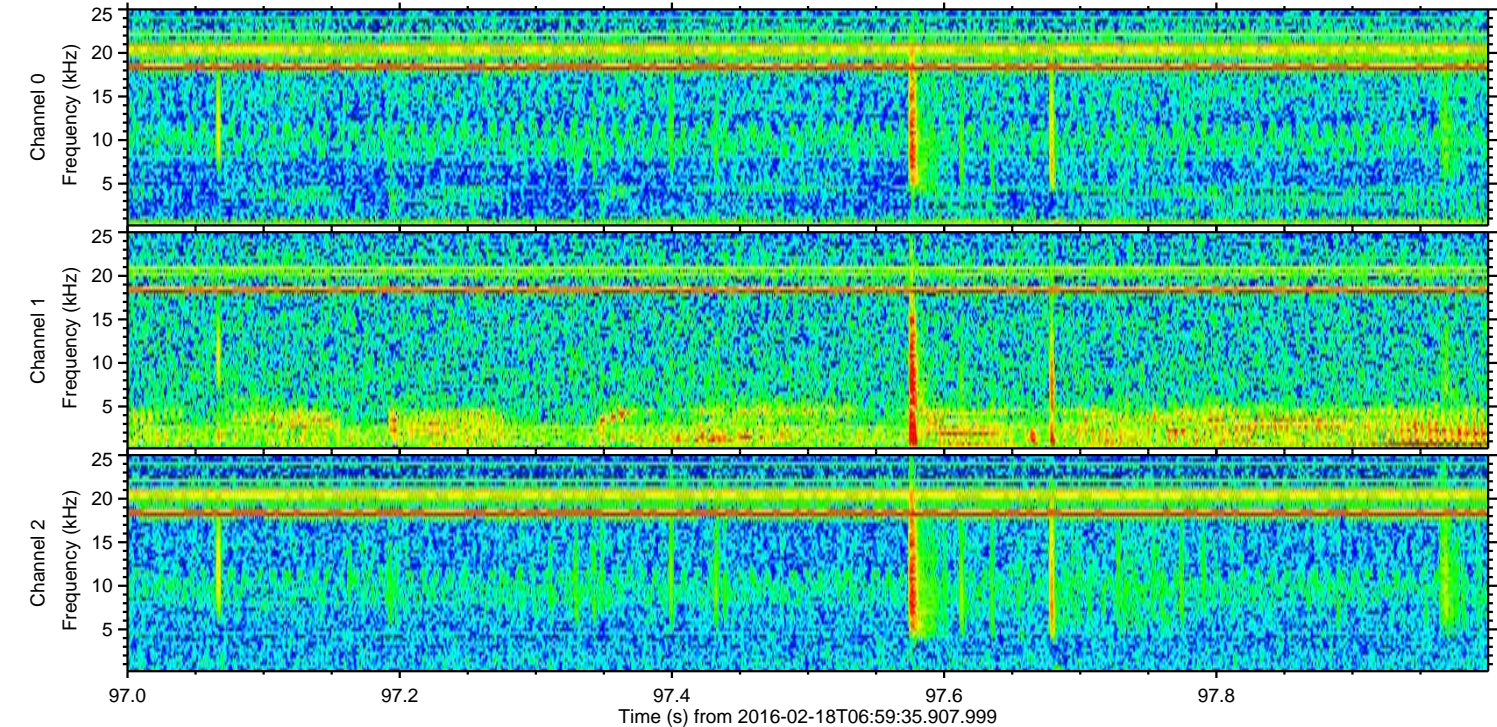
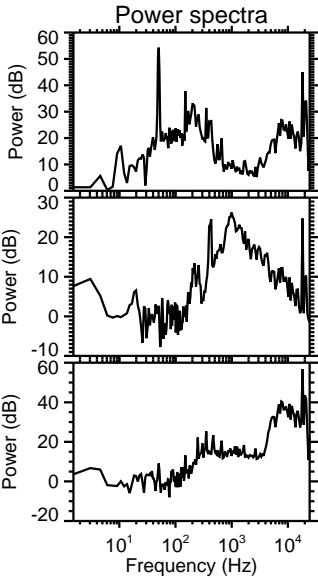
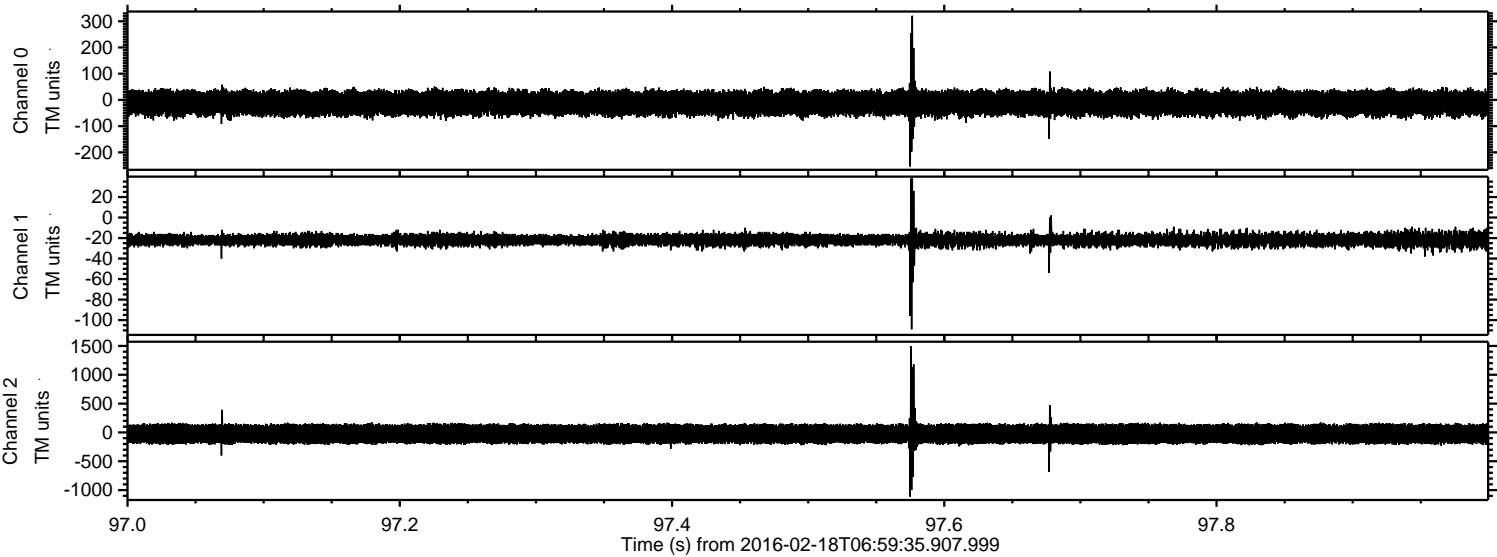
ELMAVAN 3D WAVEFORMS (Measured data sampled at 50 kHz) 51000 packets of 144 samples from 2016-02-18T06:59:35.907.999. Part 13/147

Processed Mon Apr 11 13:02:25 2016 by ELM ver.2012-10-06 from 001\_\_elm20160218\_065934\_\_dat00.bin



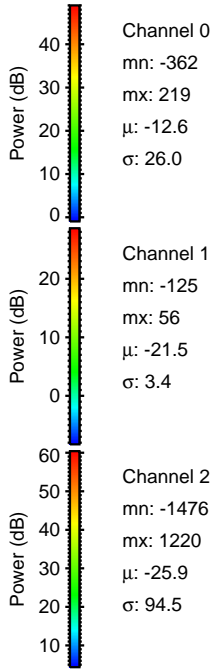
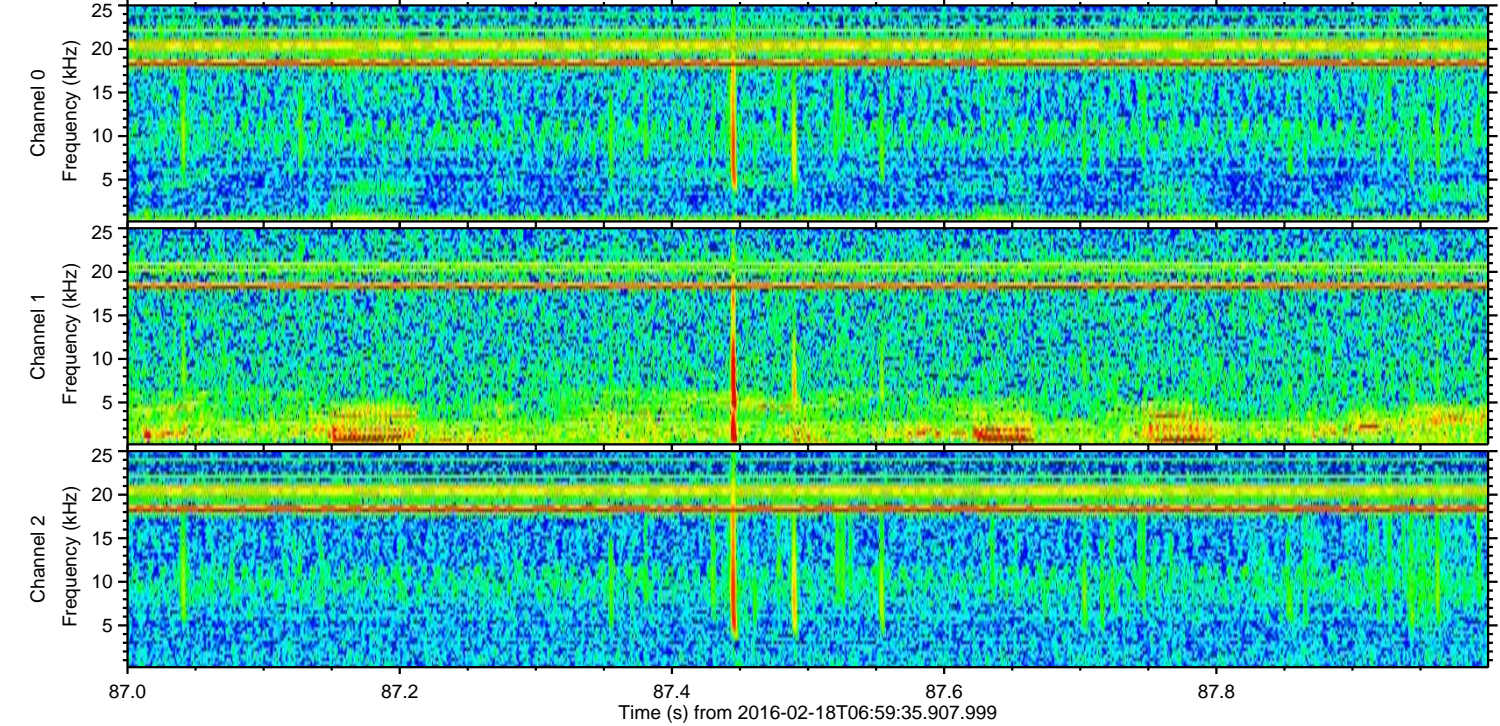
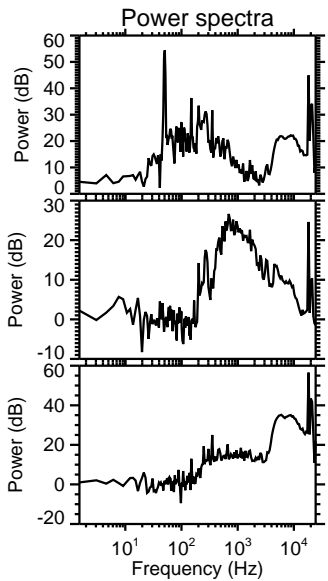
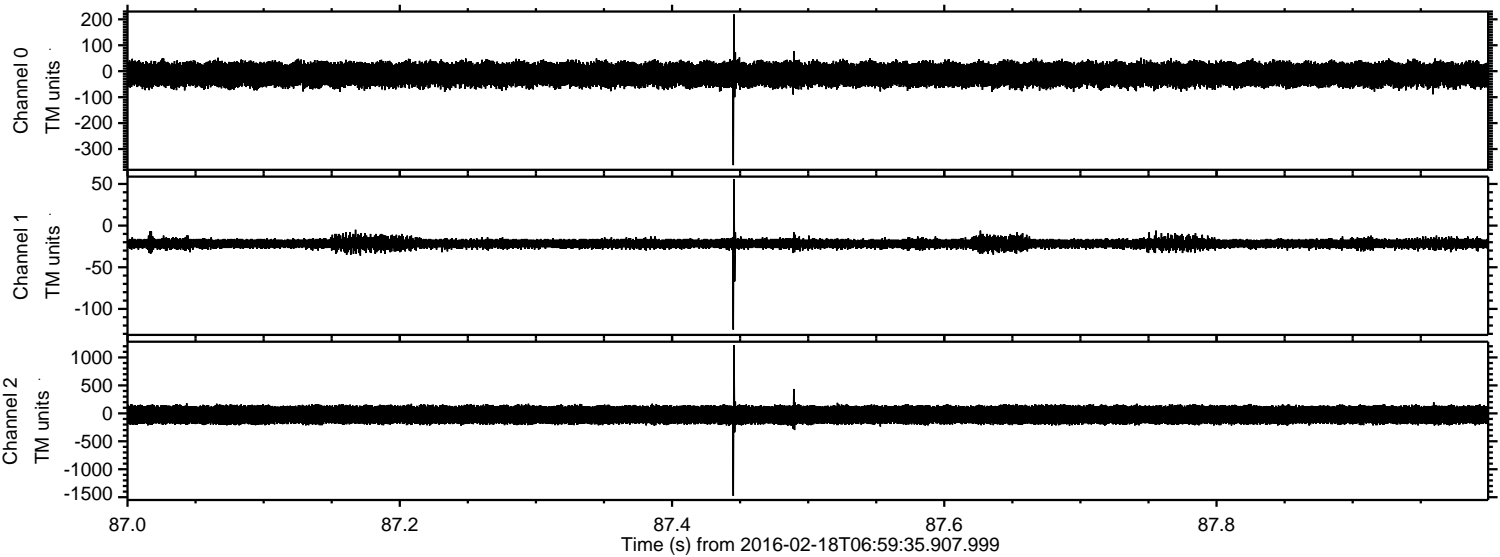


Processed Mon Apr 11 13:02:26 2016 by ELM ver.2012-10-06 from 001\_\_elm20160218\_065934\_\_dat00.bin



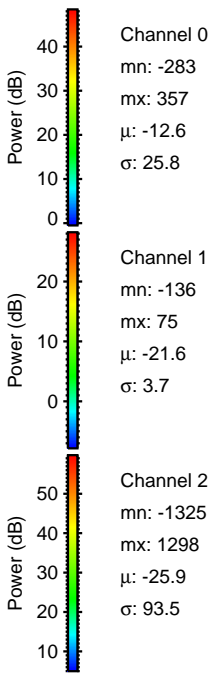
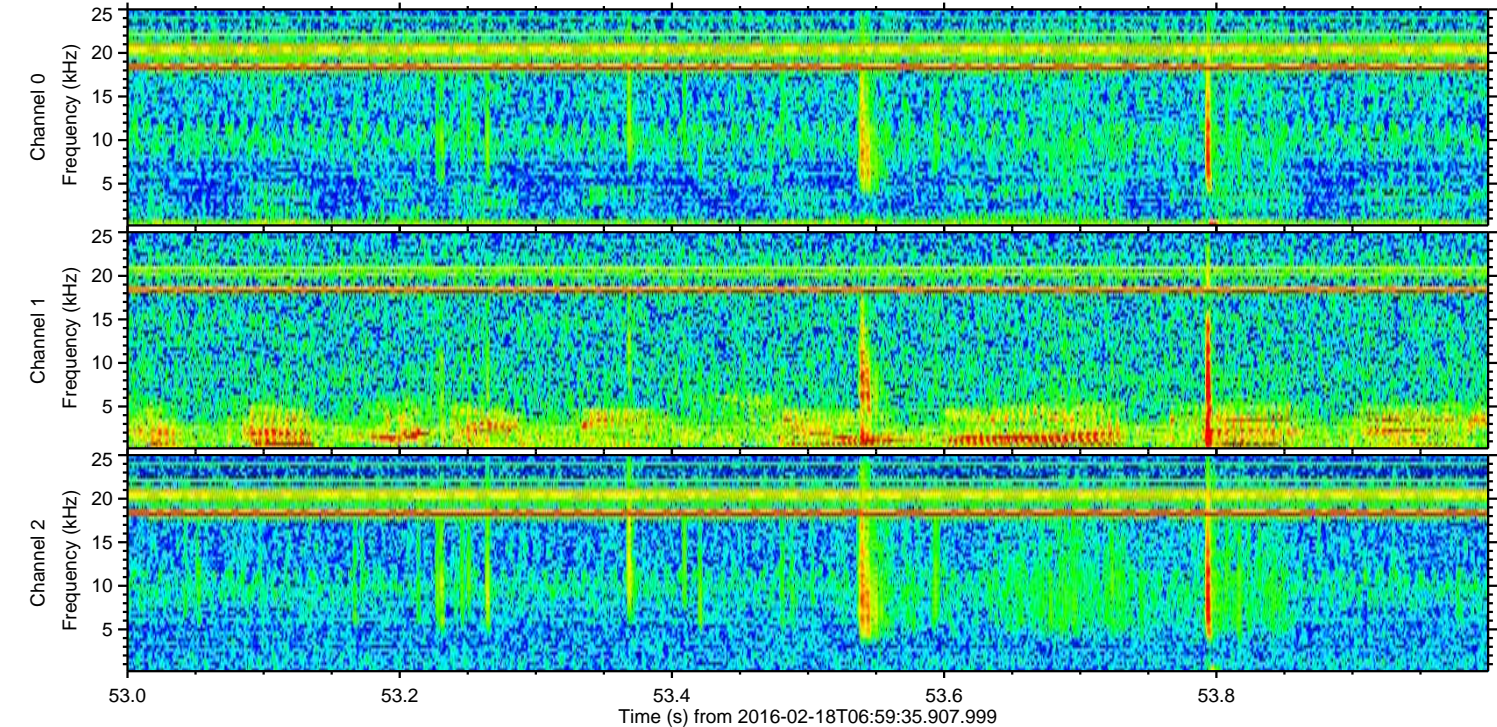
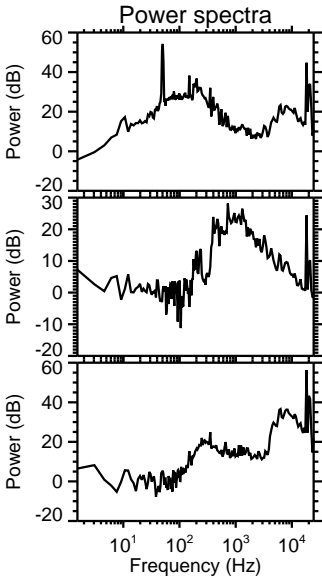
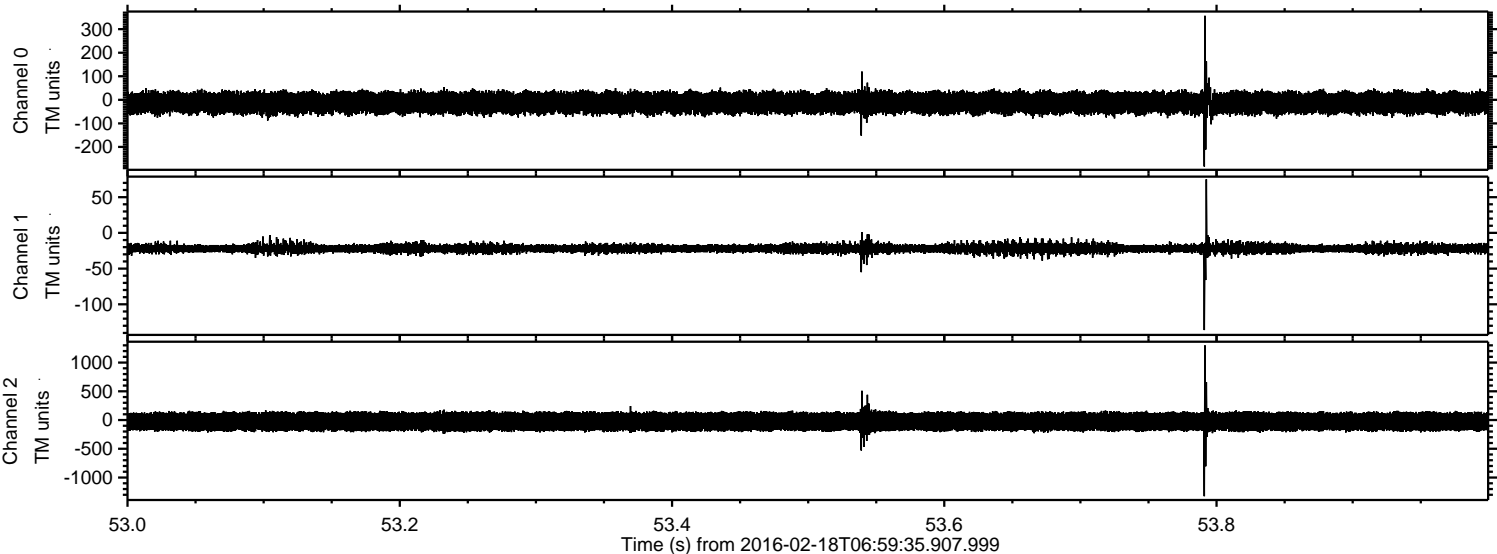


Processed Mon Apr 11 13:02:27 2016 by ELM ver.2012-10-06 from 001\_\_elm20160218\_065934\_\_dat00.bin



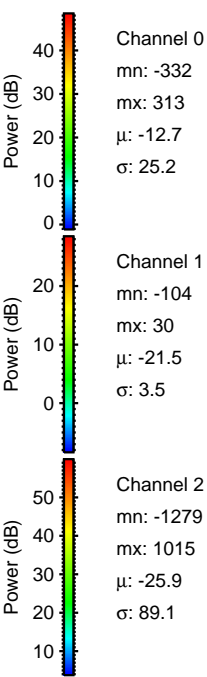
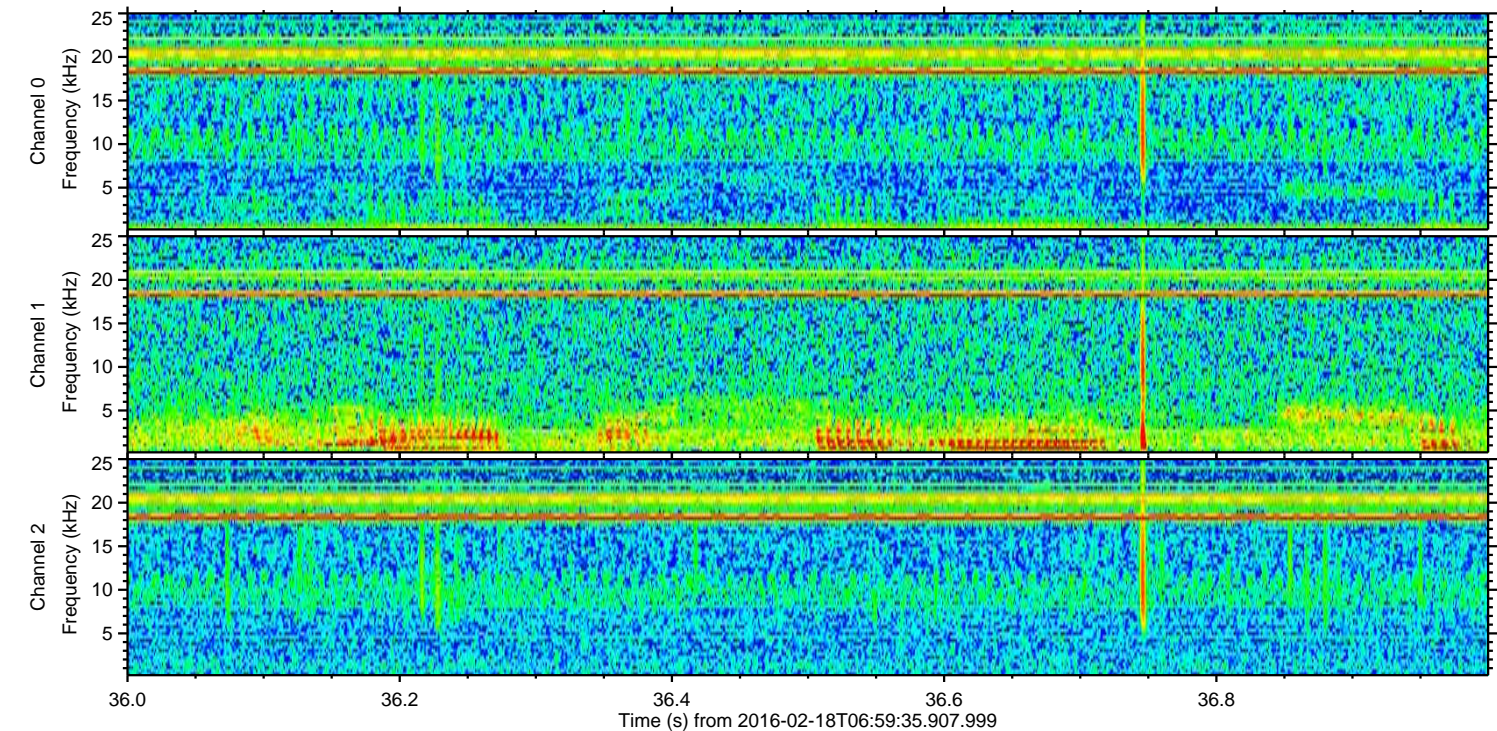
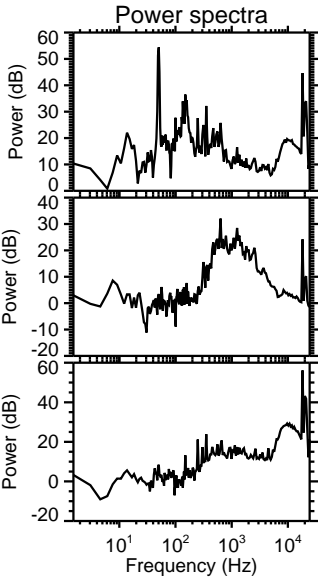
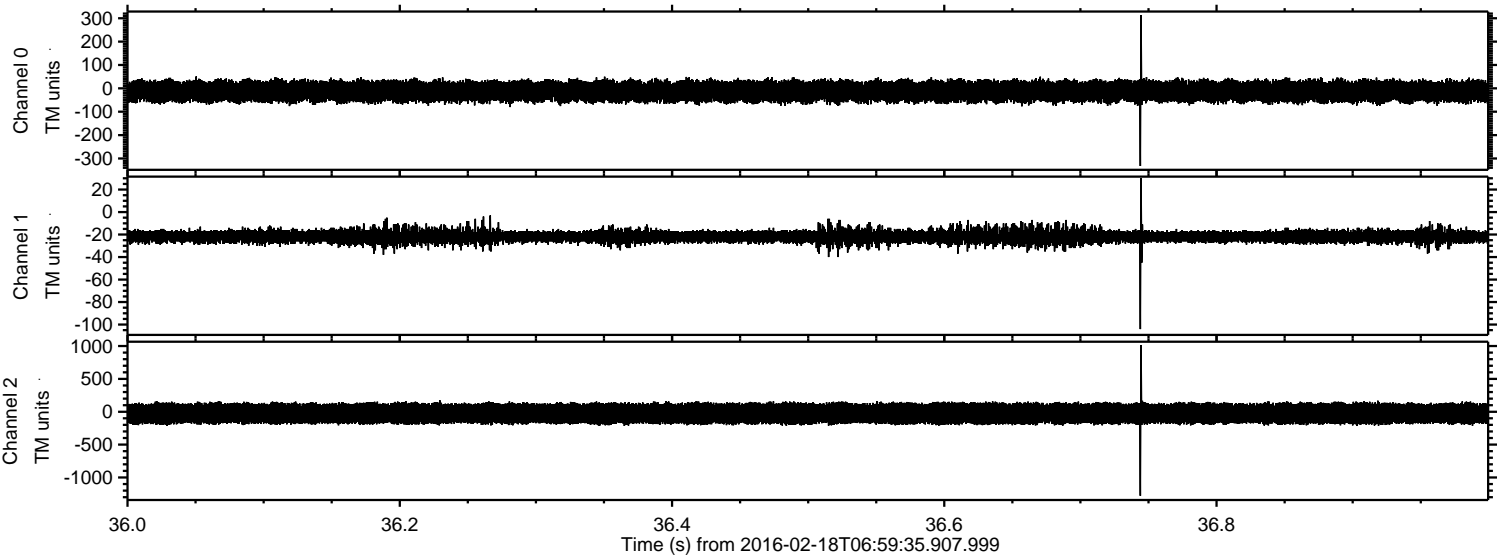


Processed Mon Apr 11 13:02:28 2016 by ELM ver.2012-10-06 from 001\_\_elm20160218\_065934\_\_dat00.bin





Processed Mon Apr 11 13:02:29 2016 by ELM ver.2012-10-06 from 001\_\_elm20160218\_065934\_\_dat00.bin





Processed Mon Apr 11 13:02:29 2016 by ELM ver.2012-10-06 from 001\_\_elm20160218\_065934\_\_dat00.bin

