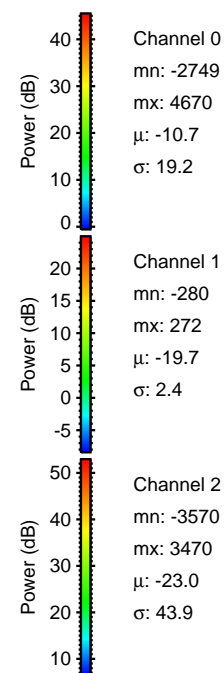
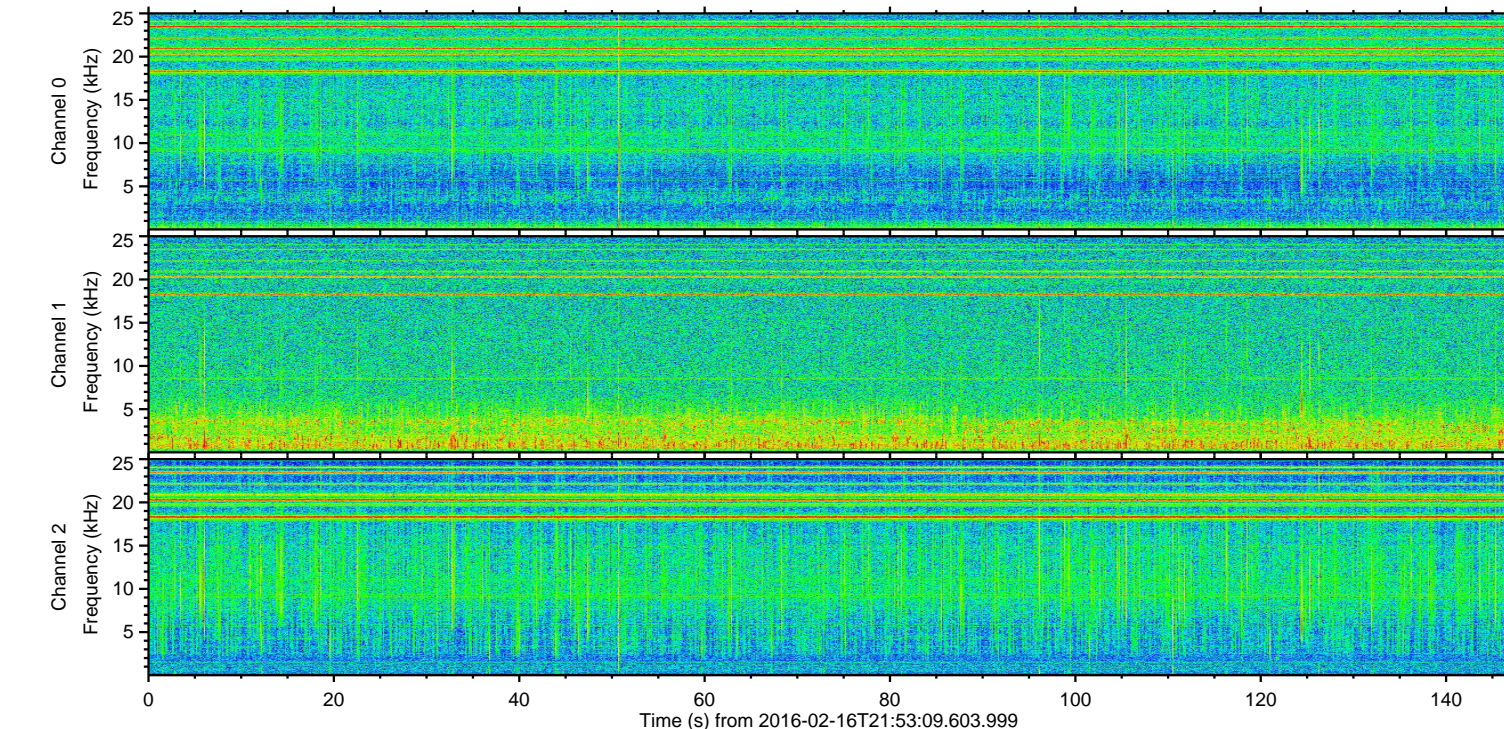
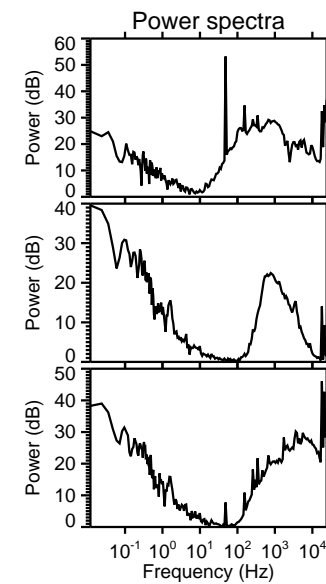
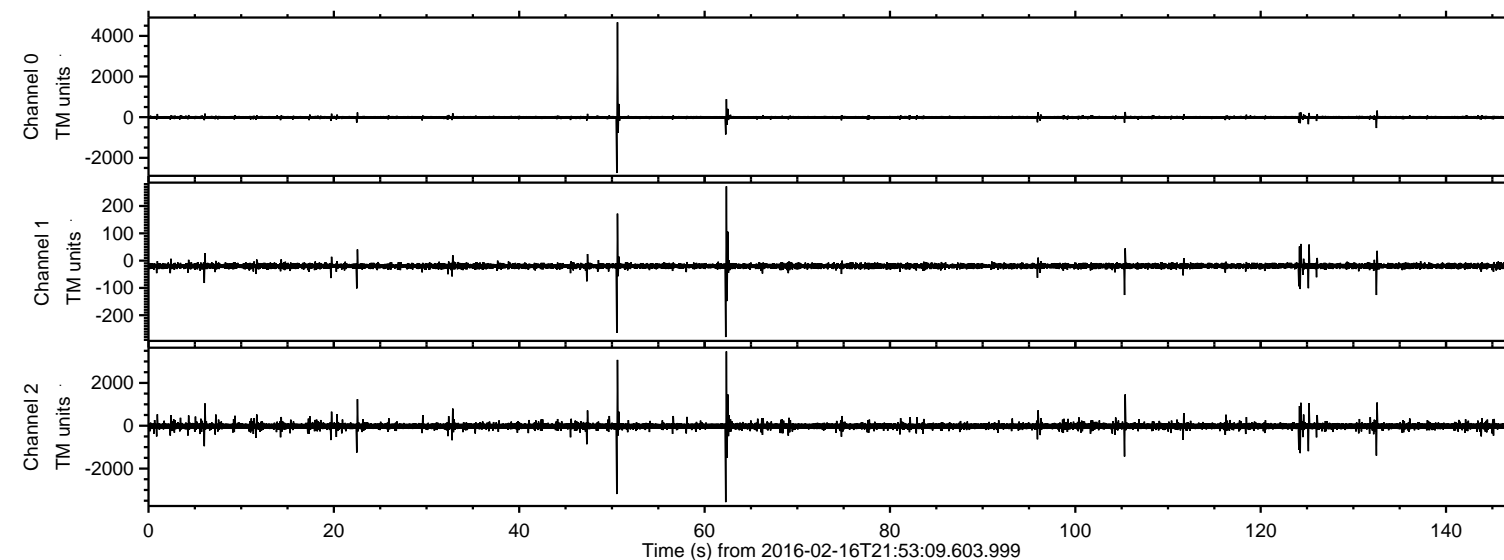


# ELMAVAN 3D WAVEFORMS (Measured data sampled at 50 kHz) 51000 packets of 144 samples from 2016-02-16T21:53:09.603.999.

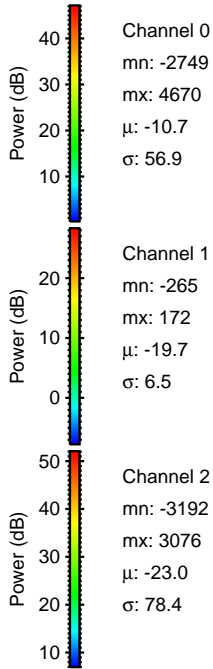
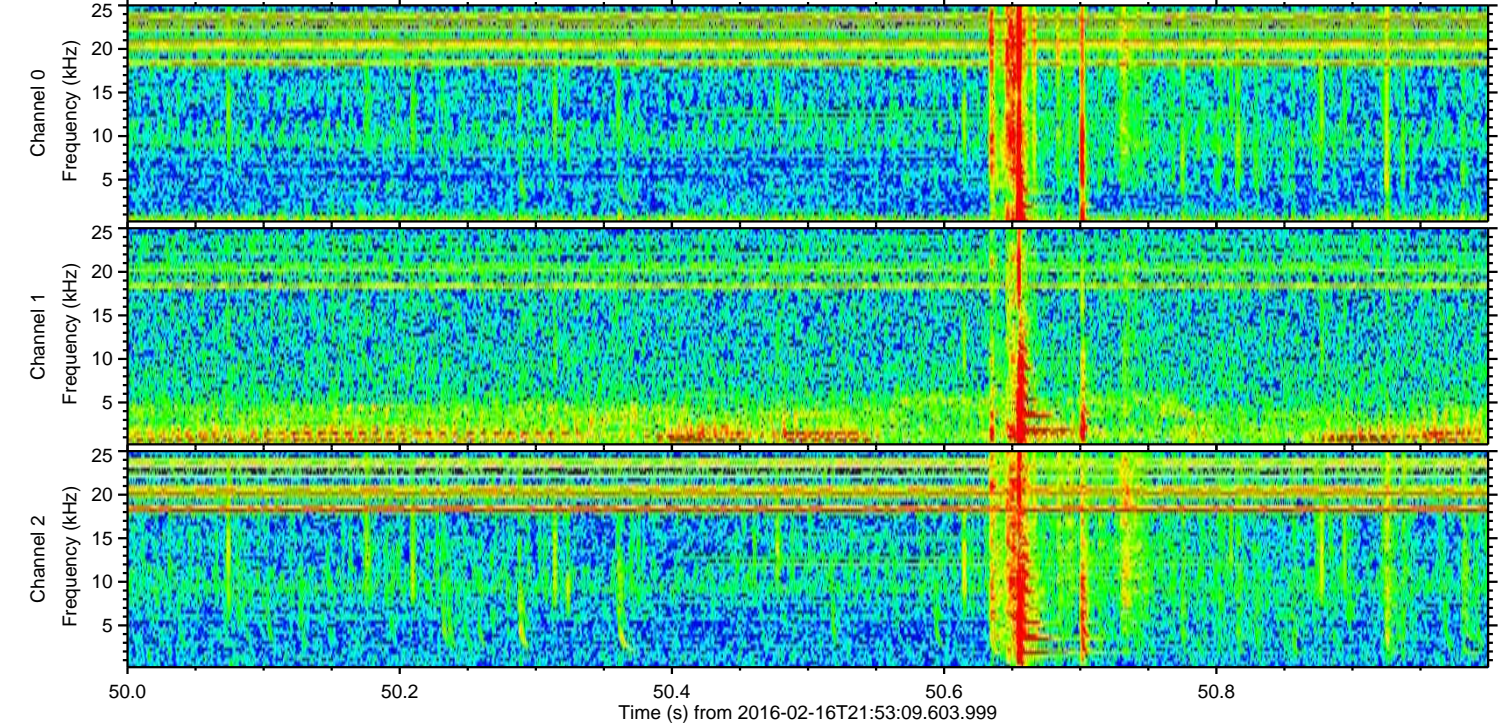
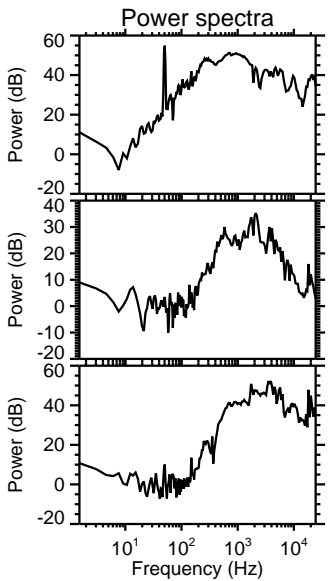
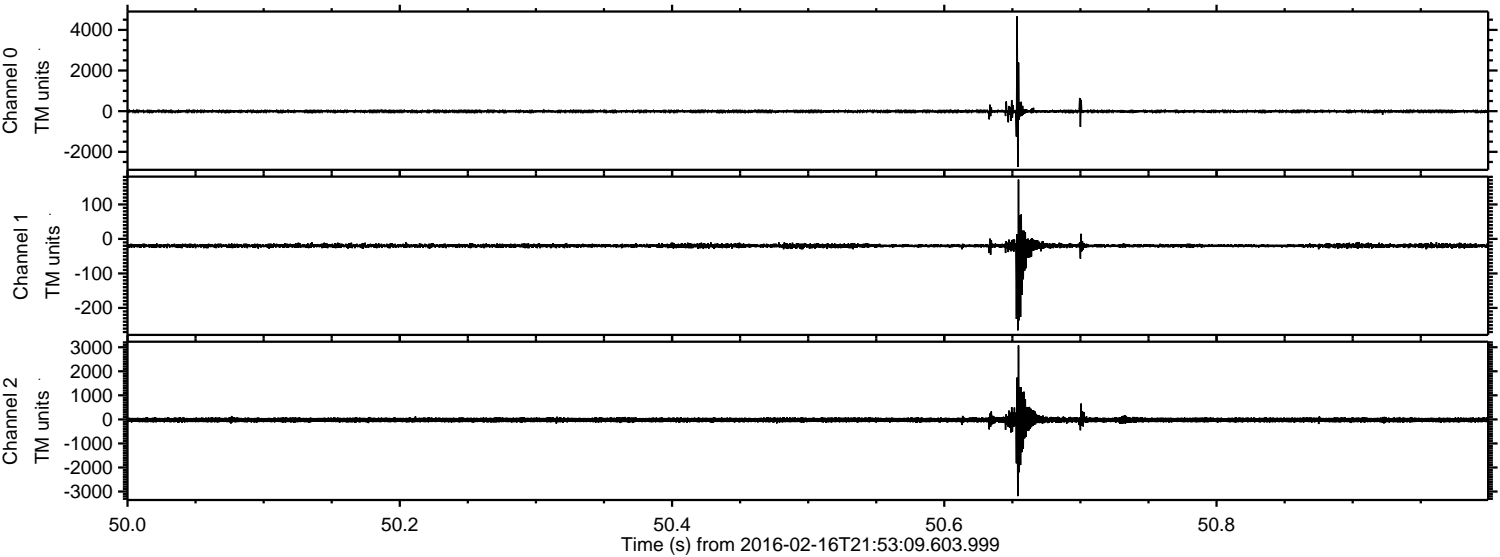
Processed Mon Apr 11 06:16:30 2016 by ELM ver.2012-10-06 from 001\_\_elm20160216\_215308\_\_dat00.bin





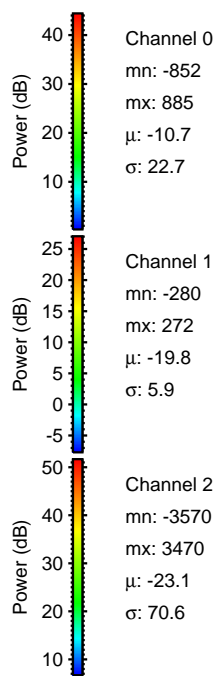
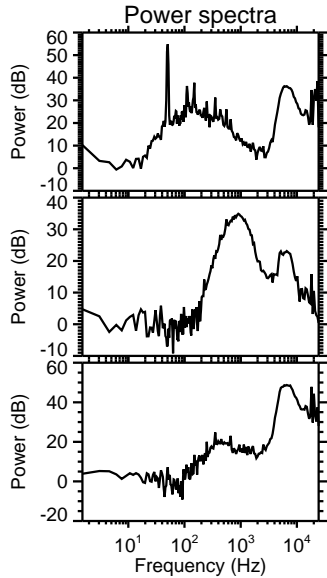
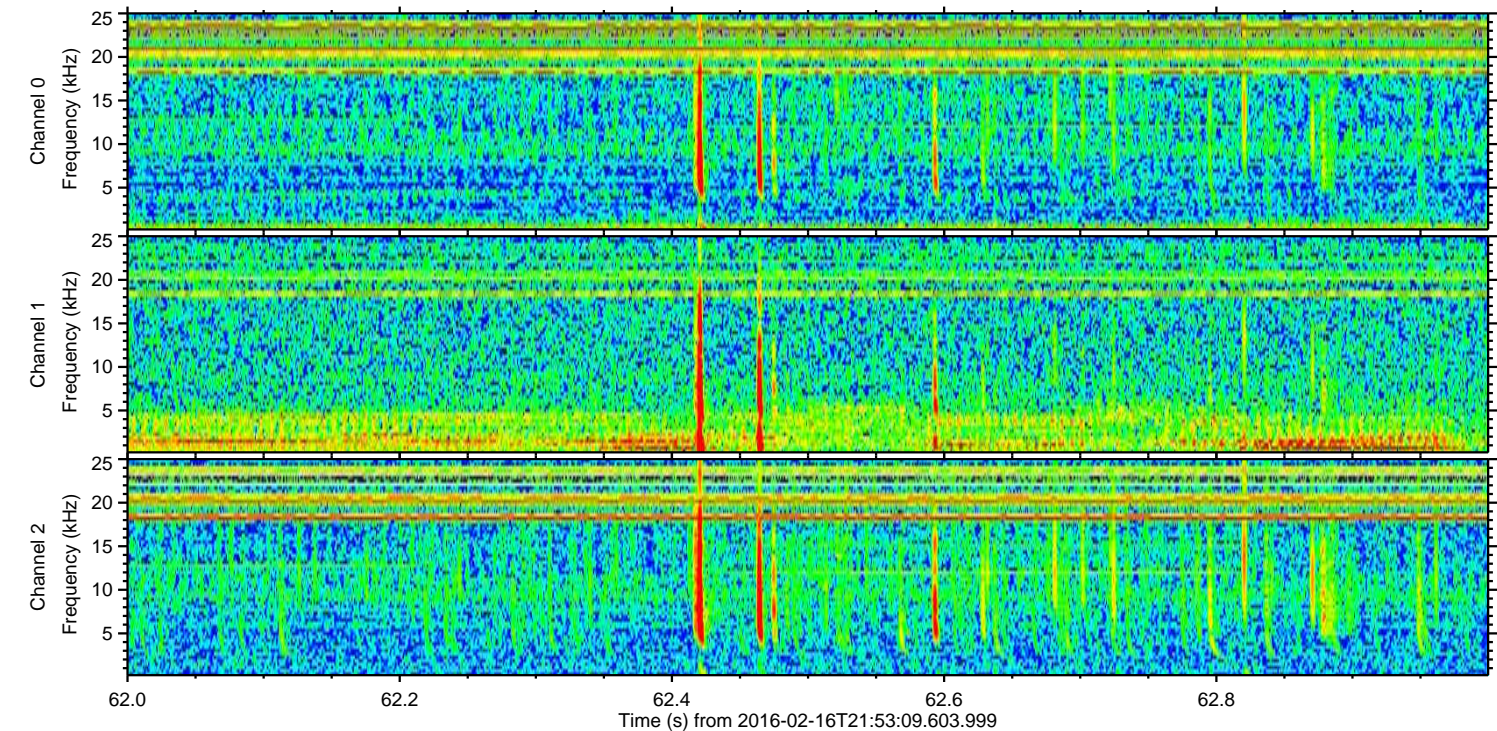
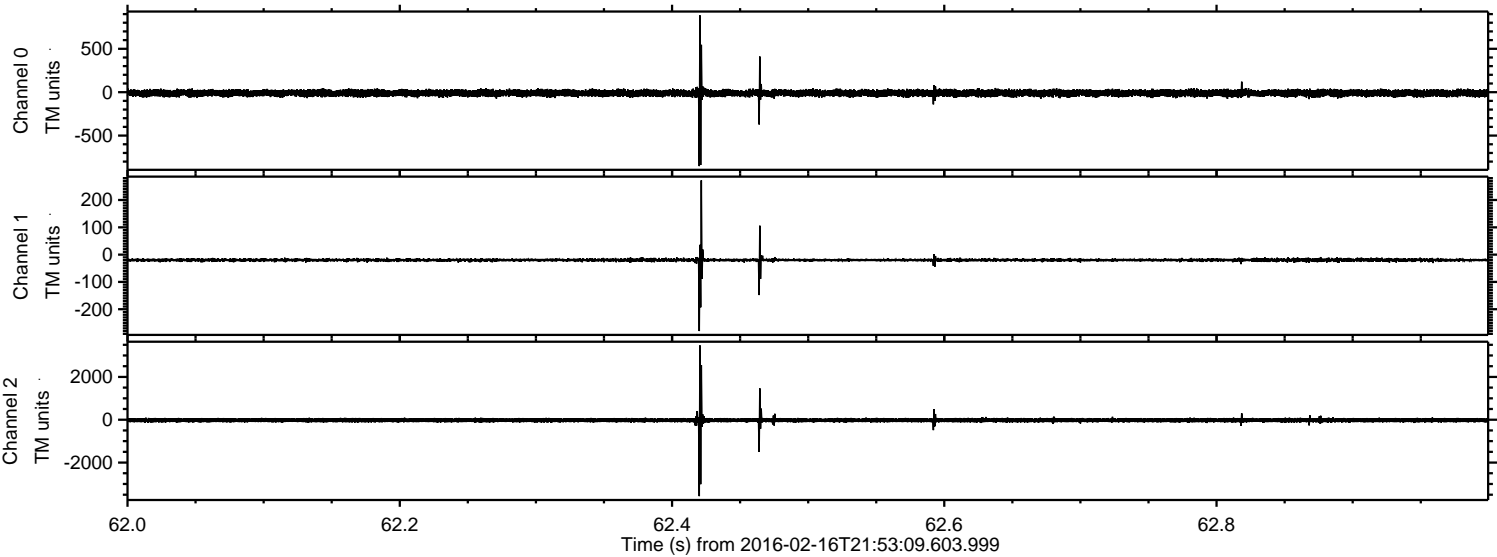
ELMAVAN 3D WAVEFORMS (Measured data sampled at 50 kHz) 51000 packets of 144 samples from 2016-02-16T21:53:09.603.999. Part 51/147

Processed Mon Apr 11 06:16:42 2016 by ELM ver.2012-10-06 from 001\_\_elm20160216\_215308\_\_dat00.bin





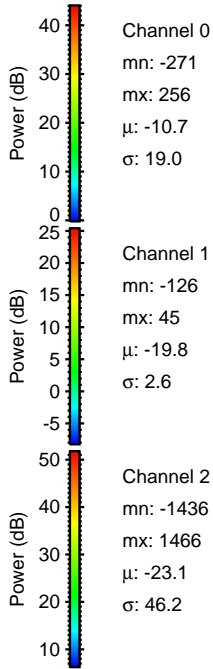
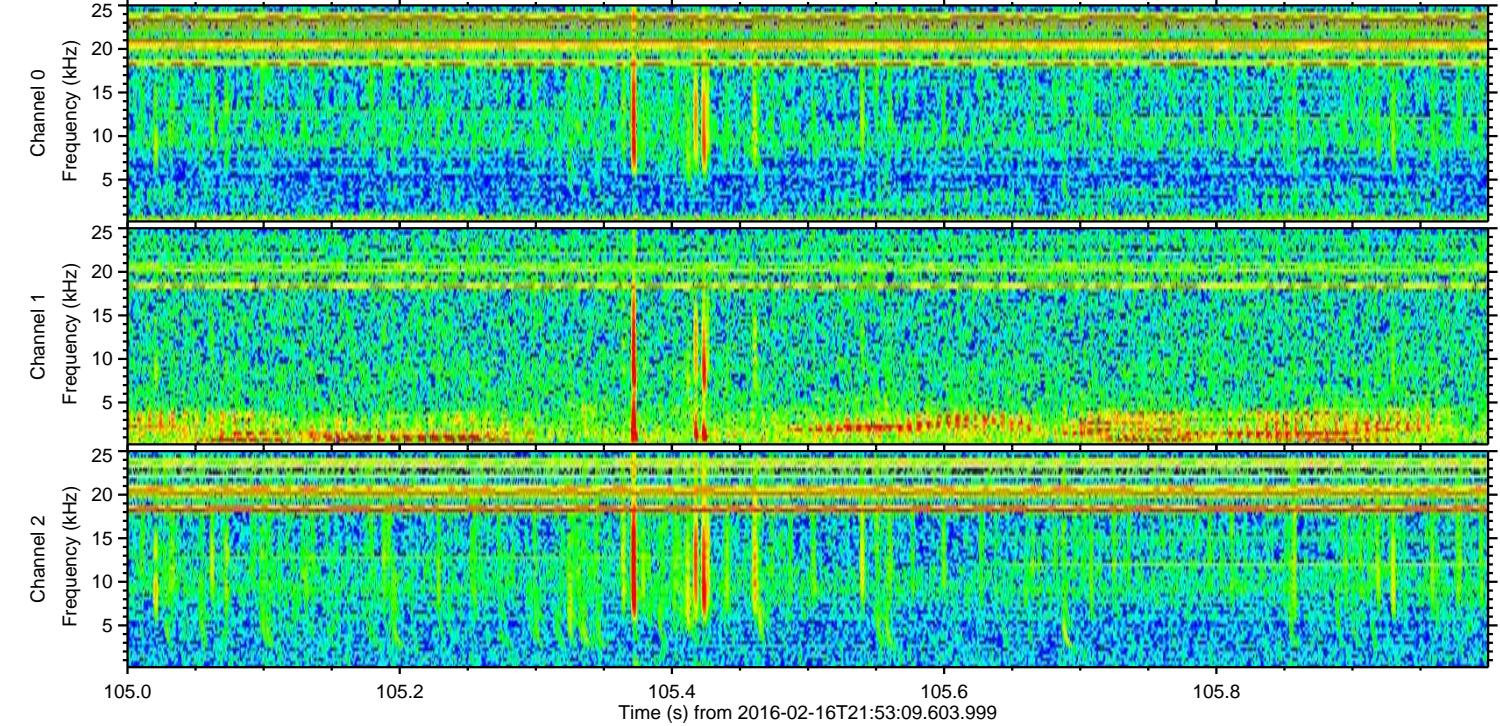
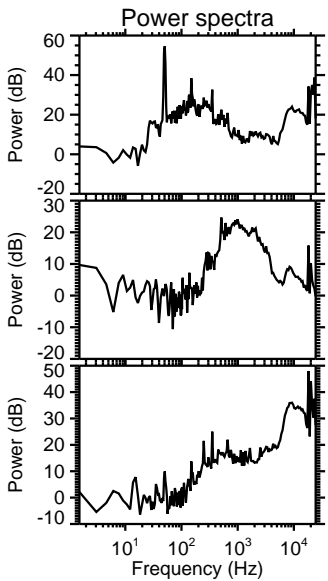
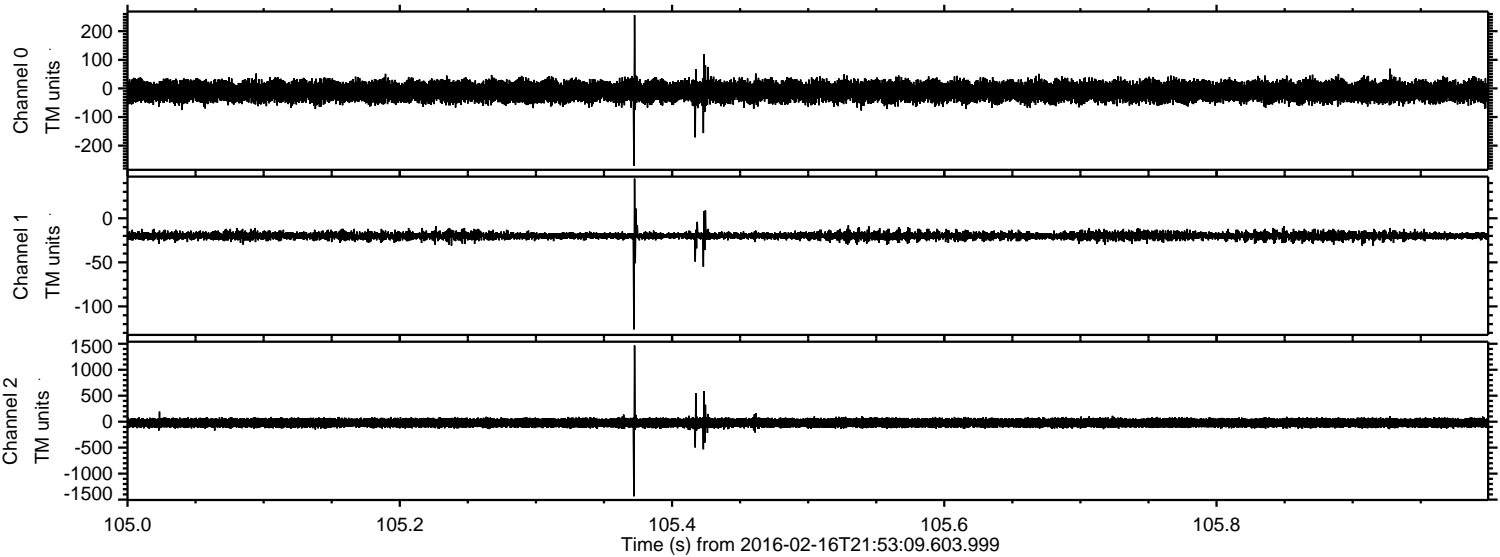
Processed Mon Apr 11 06:16:43 2016 by ELM ver.2012-10-06 from 001\_\_elm20160216\_215308\_\_dat00.bin





ELMAVAN 3D WAVEFORMS (Measured data sampled at 50 kHz) 51000 packets of 144 samples from 2016-02-16T21:53:09.603.999. Part 106/147

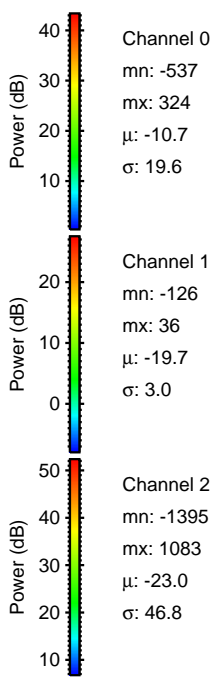
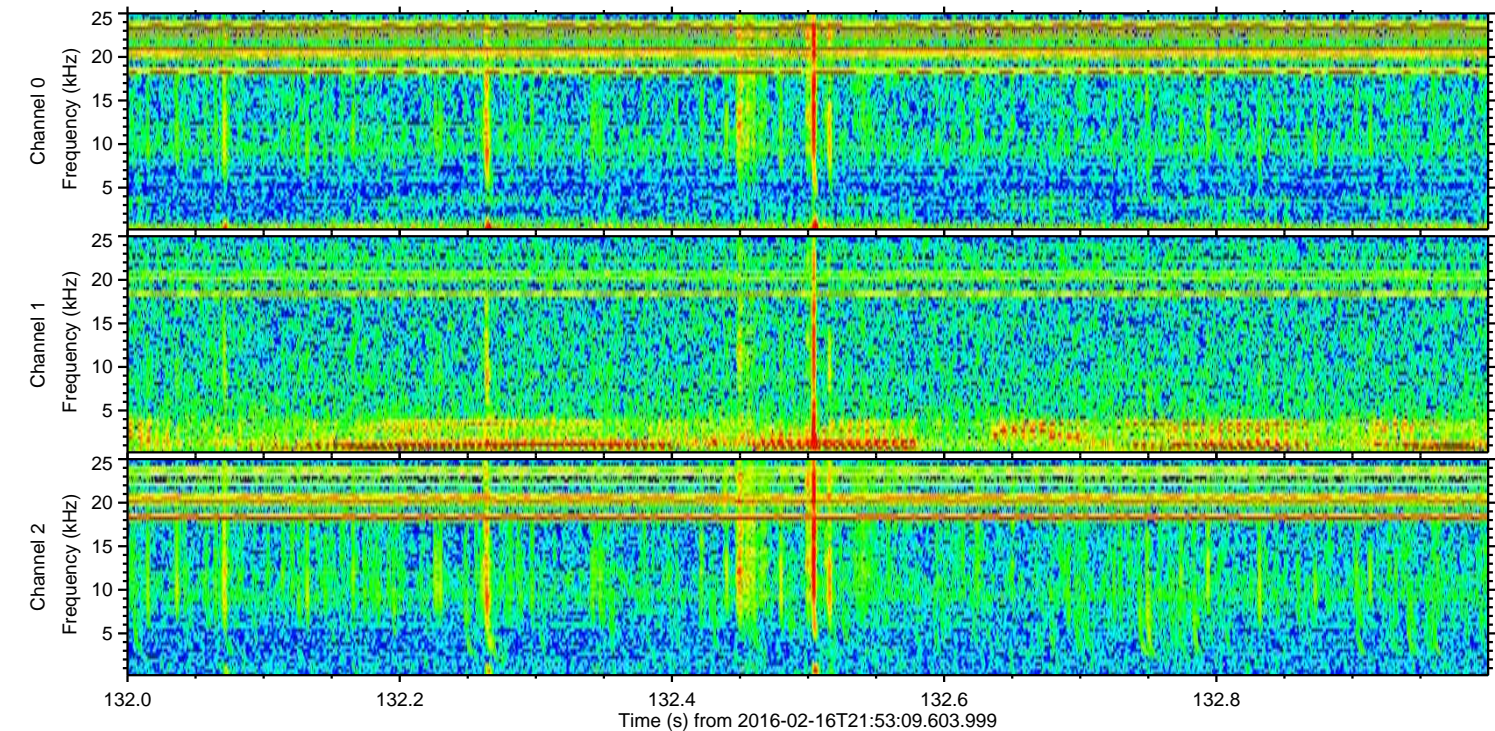
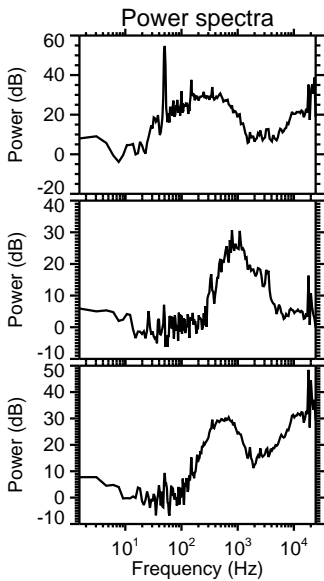
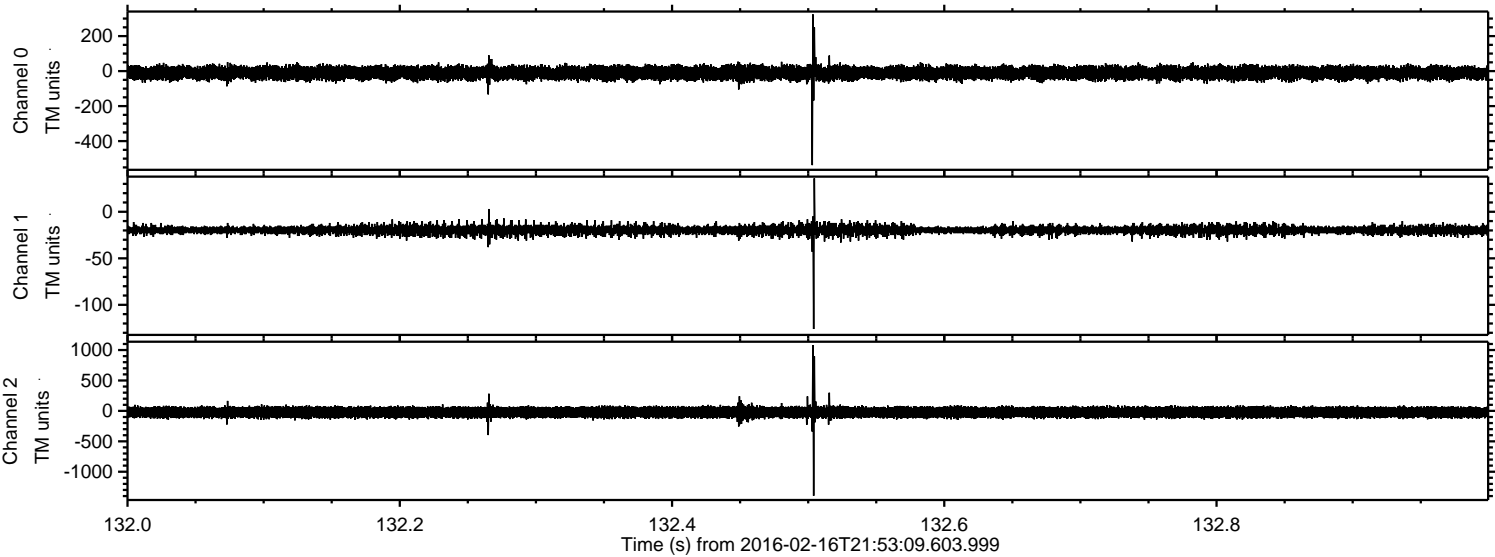
Processed Mon Apr 11 06:16:44 2016 by ELM ver.2012-10-06 from 001\_\_elm20160216\_215308\_\_dat00.bin





ELMAVAN 3D WAVEFORMS (Measured data sampled at 50 kHz) 51000 packets of 144 samples from 2016-02-16T21:53:09.603.999. Part 133/147

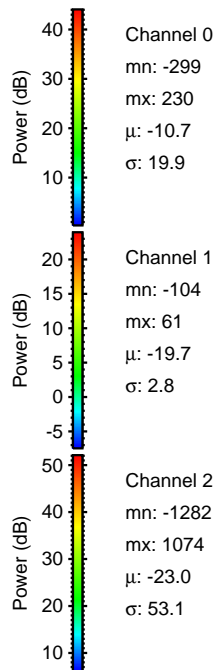
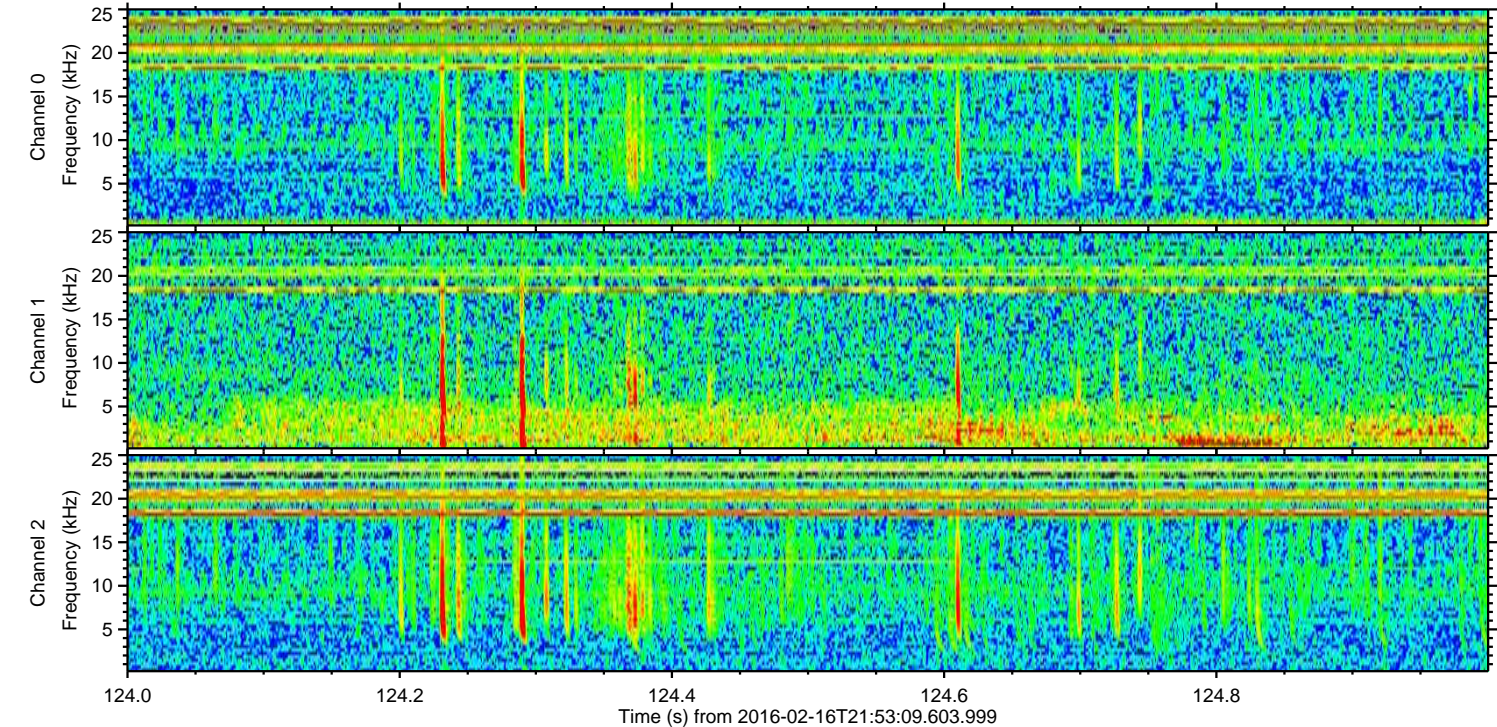
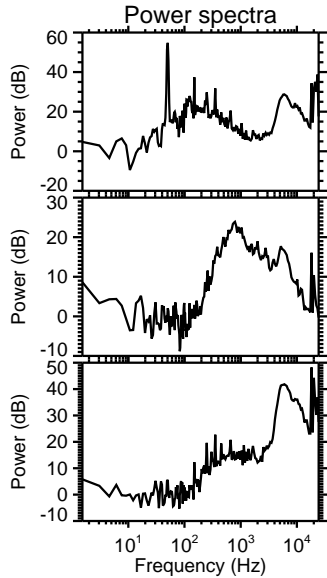
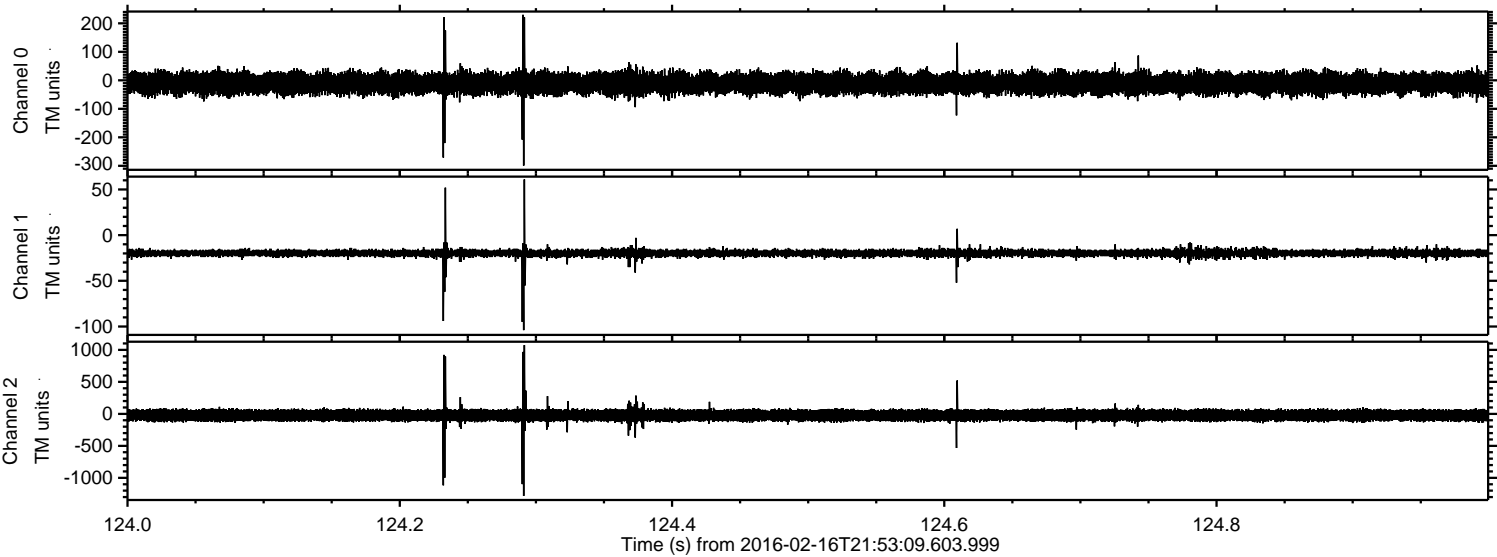
Processed Mon Apr 11 06:16:45 2016 by ELM ver.2012-10-06 from 001\_\_elm20160216\_215308\_\_dat00.bin





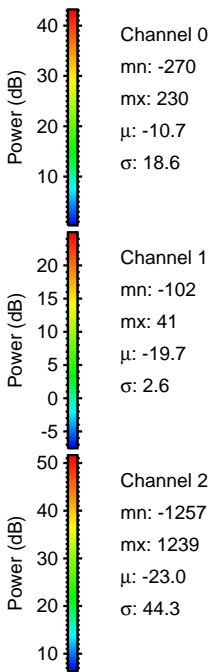
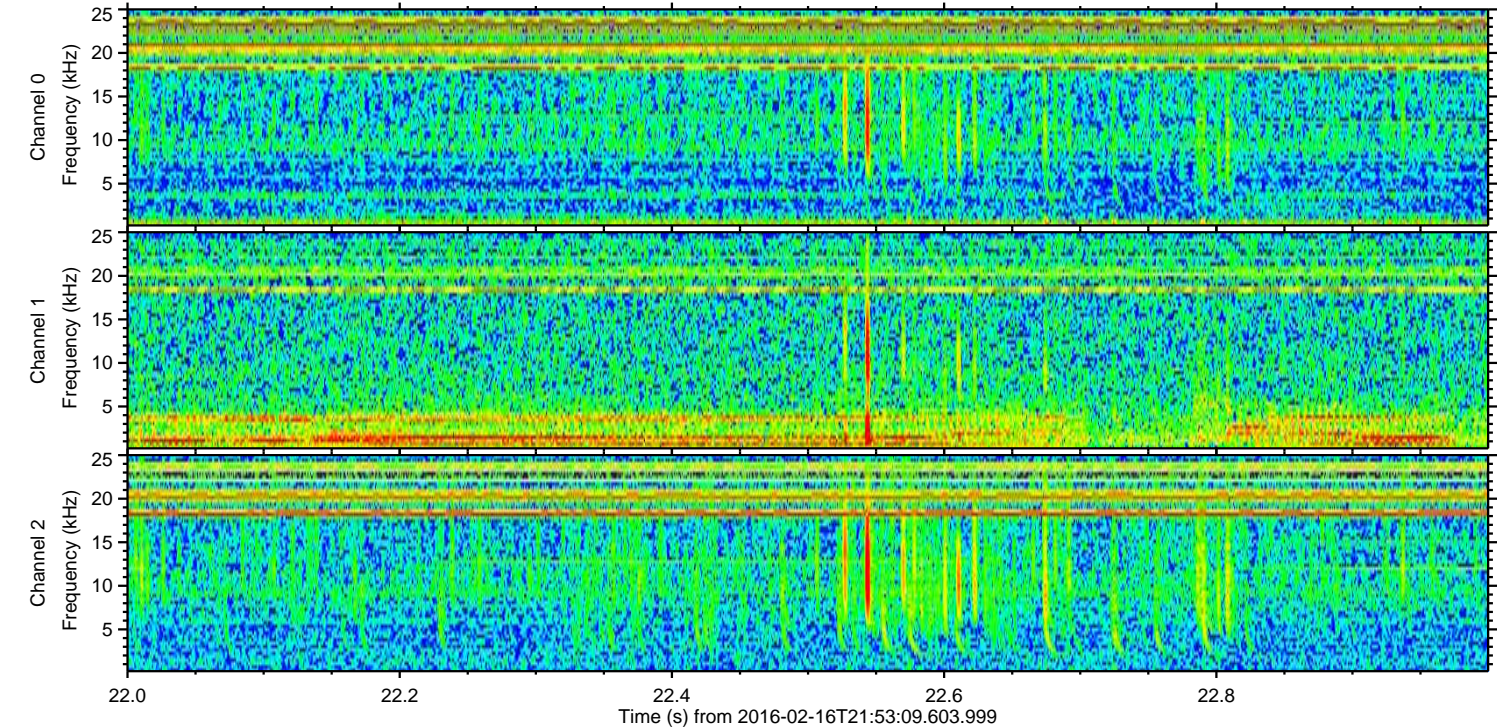
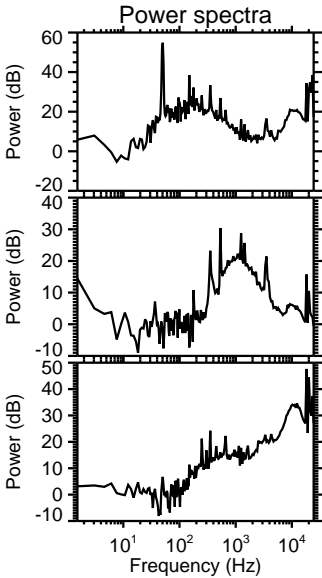
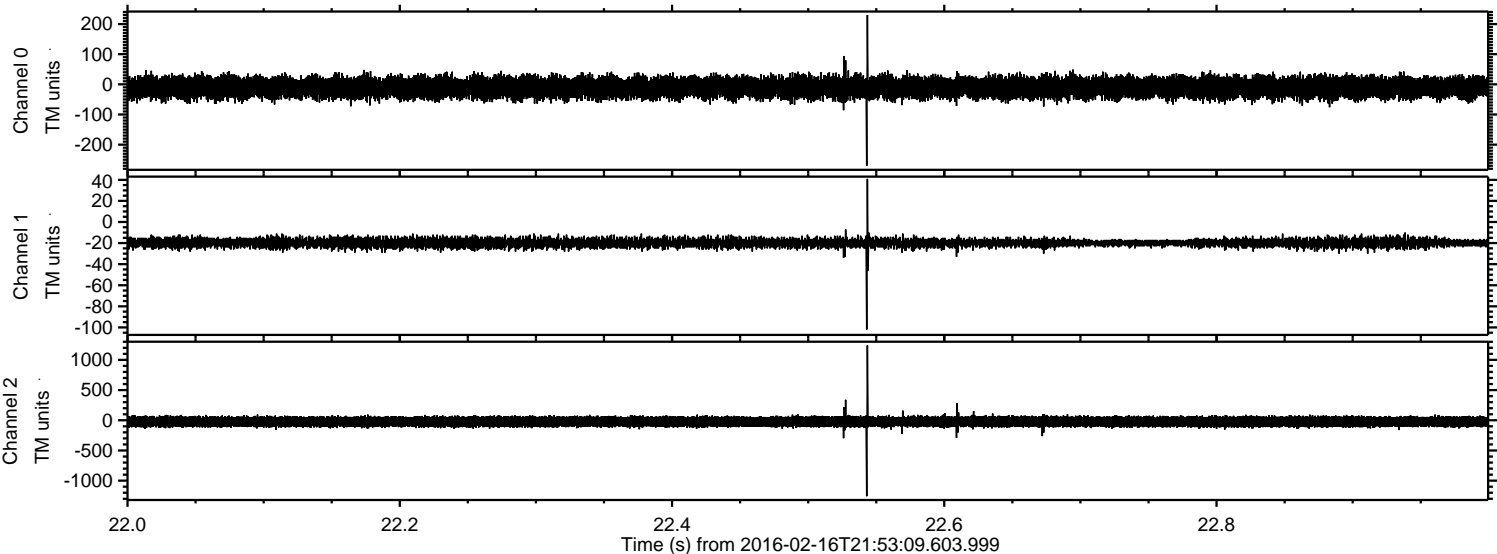
ELMAVAN 3D WAVEFORMS (Measured data sampled at 50 kHz) 51000 packets of 144 samples from 2016-02-16T21:53:09.603.999. Part 125/147

Processed Mon Apr 11 06:16:46 2016 by ELM ver.2012-10-06 from 001\_\_elm20160216\_215308\_\_dat00.bin





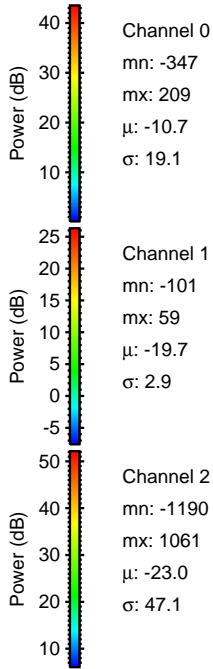
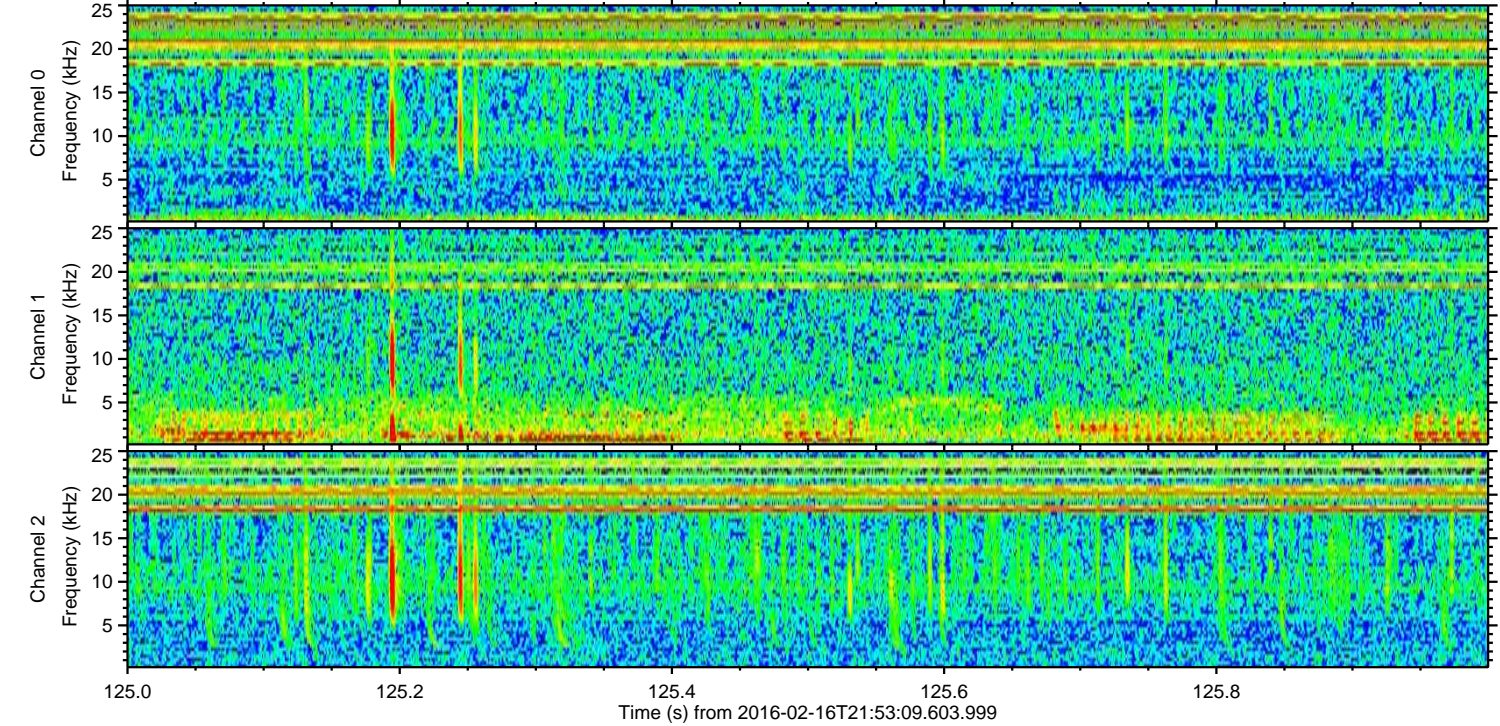
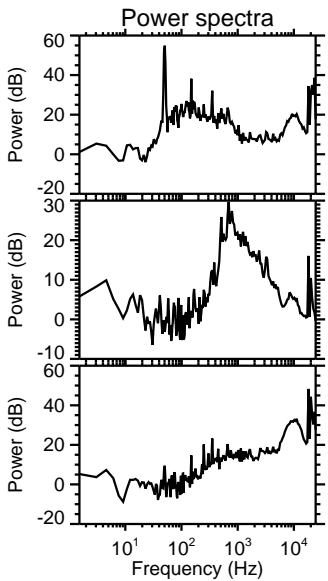
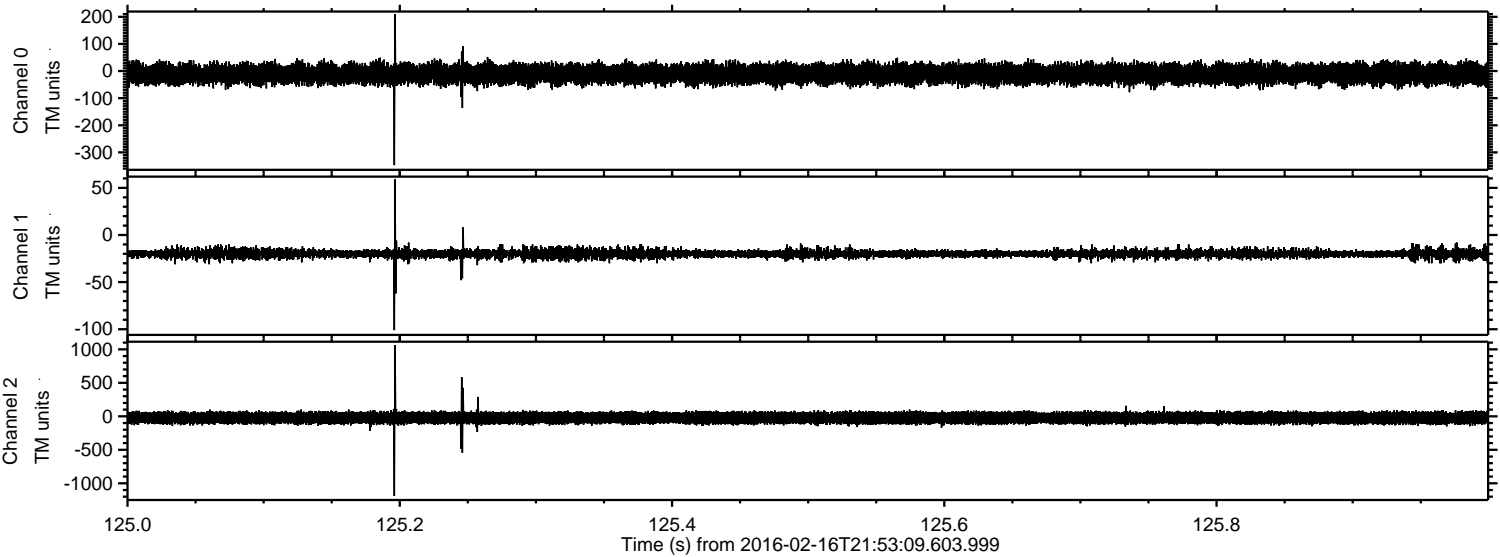
Processed Mon Apr 11 06:16:46 2016 by ELM ver.2012-10-06 from 001\_\_elm20160216\_215308\_\_dat00.bin





ELMAVAN 3D WAVEFORMS (Measured data sampled at 50 kHz) 51000 packets of 144 samples from 2016-02-16T21:53:09.603.999. Part 126/147

Processed Mon Apr 11 06:16:47 2016 by ELM ver.2012-10-06 from 001\_\_elm20160216\_215308\_\_dat00.bin



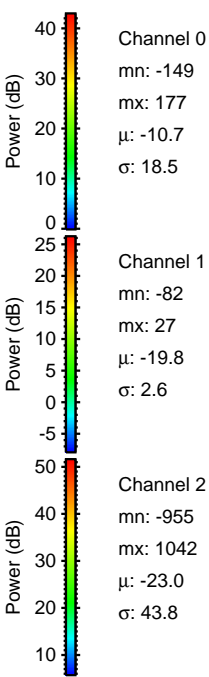
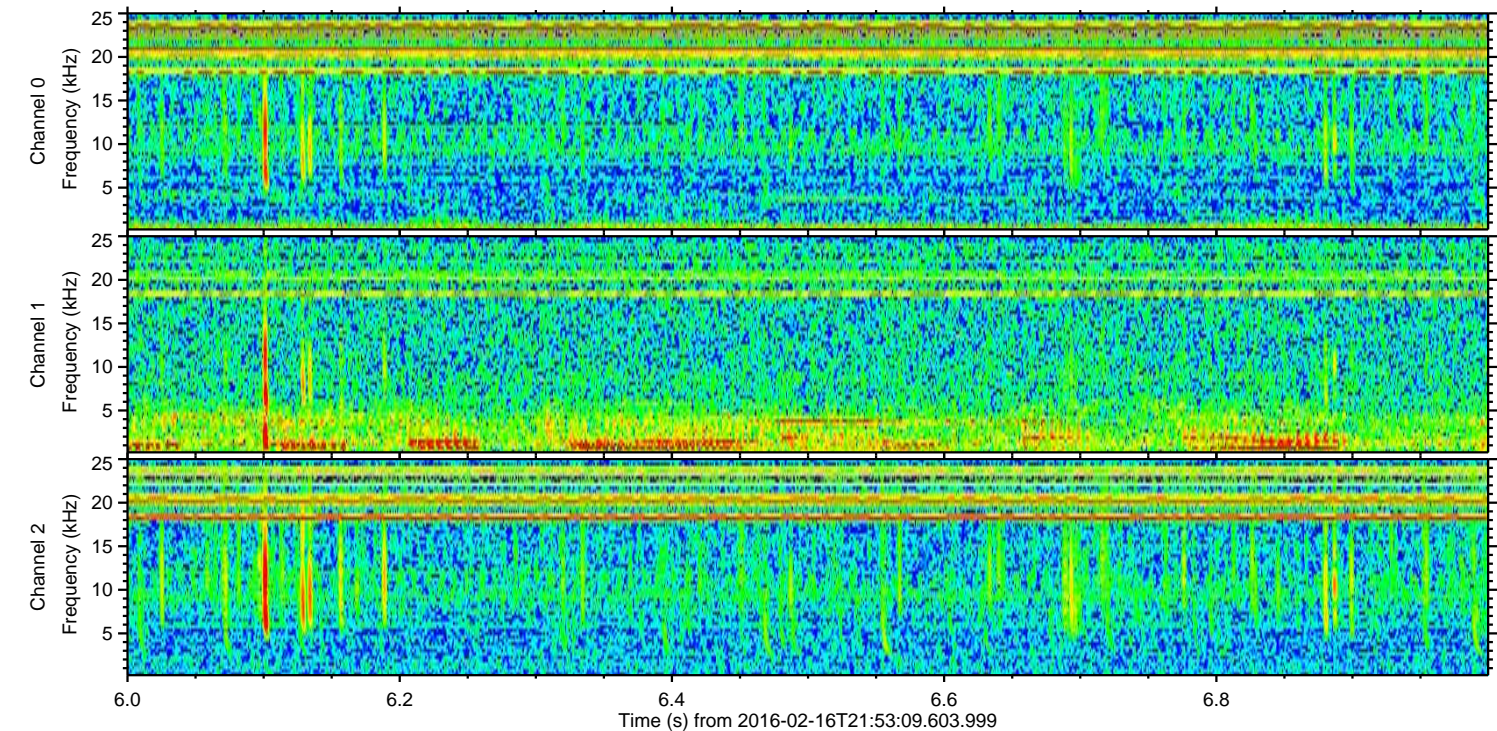
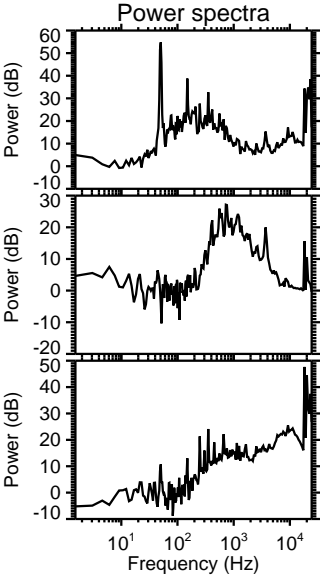
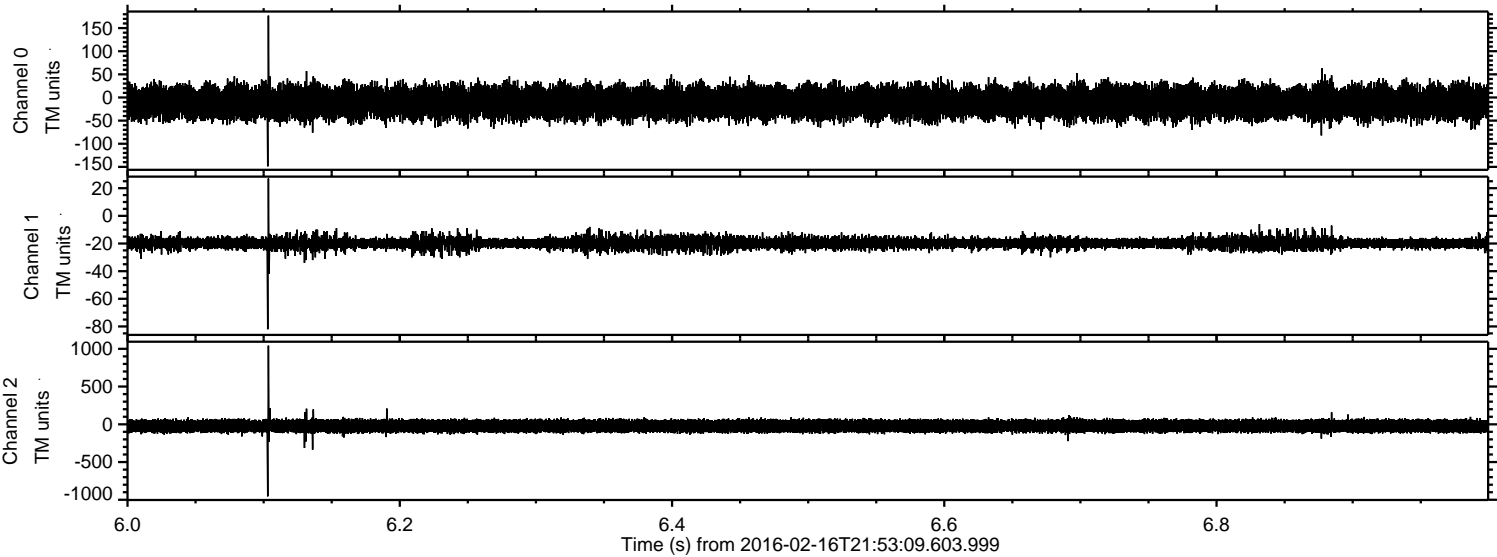
Channel 0  
mn: -347  
mx: 209  
 $\mu$ : -10.7  
 $\sigma$ : 19.1

Channel 1  
mn: -101  
mx: 59  
 $\mu$ : -19.7  
 $\sigma$ : 2.9

Channel 2  
mn: -1190  
mx: 1061  
 $\mu$ : -23.0  
 $\sigma$ : 47.1

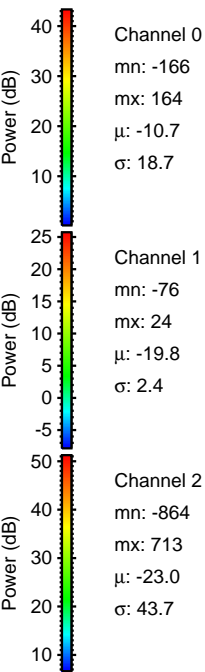
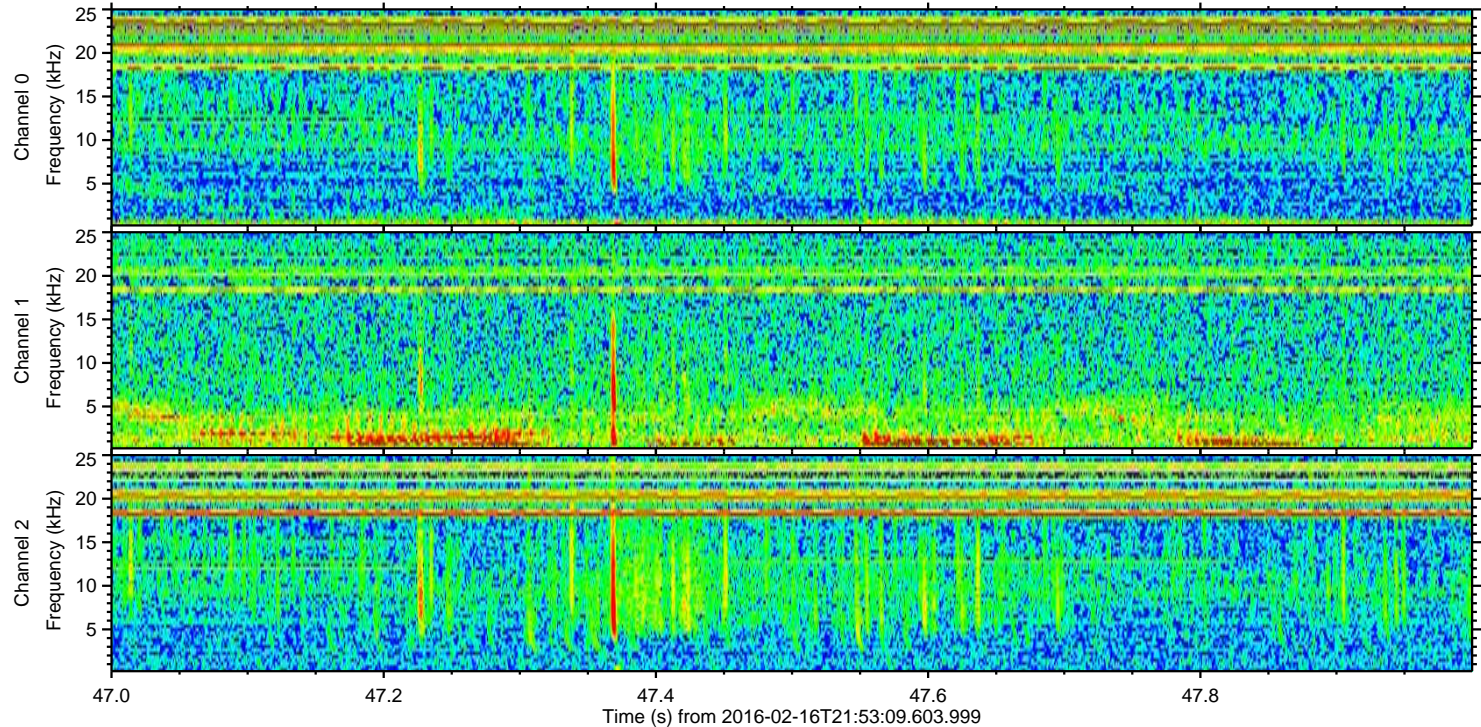
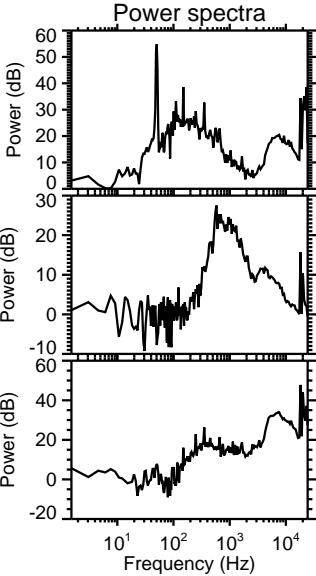
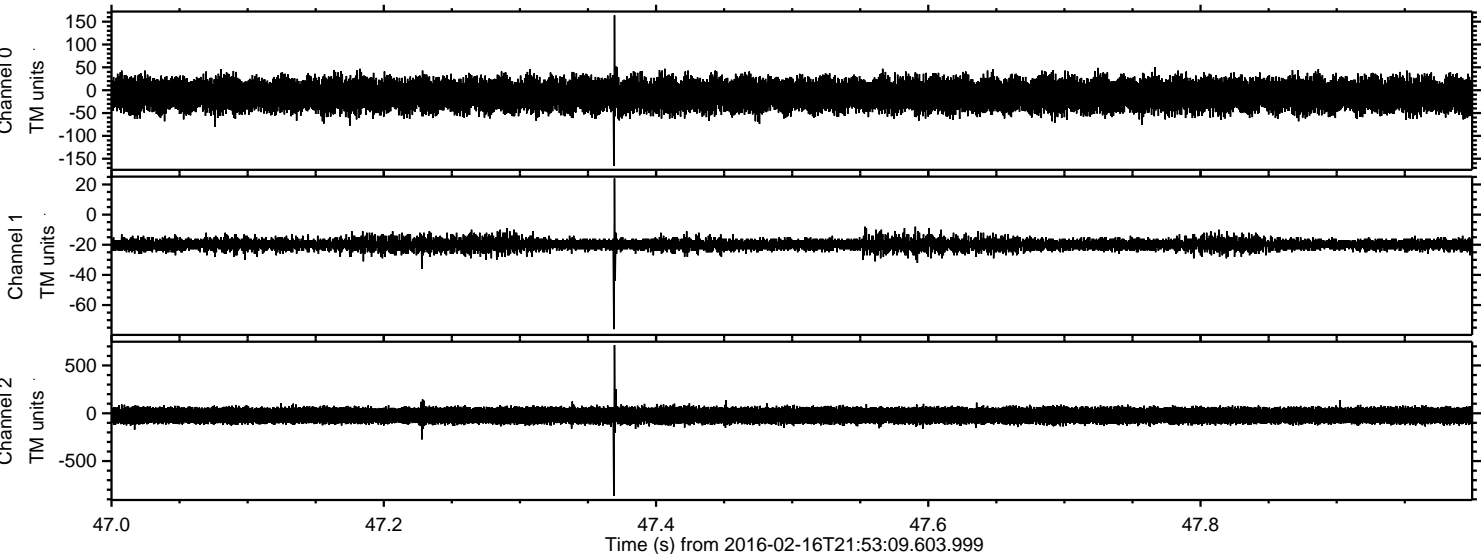


Processed Mon Apr 11 06:16:48 2016 by ELM ver.2012-10-06 from 001\_\_elm20160216\_215308\_\_dat00.bin





Processed Mon Apr 11 06:16:49 2016 by ELM ver.2012-10-06 from 001\_\_elm20160216\_215308\_\_dat00.bin





Processed Mon Apr 11 06:16:50 2016 by ELM ver.2012-10-06 from 001\_\_elm20160216\_215308\_\_dat00.bin

