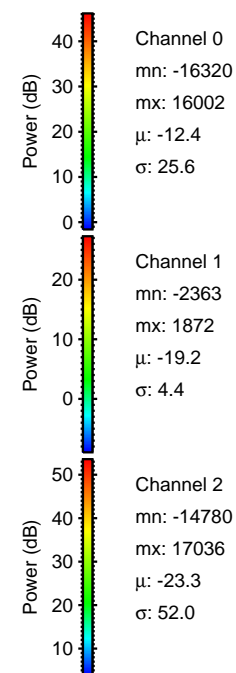
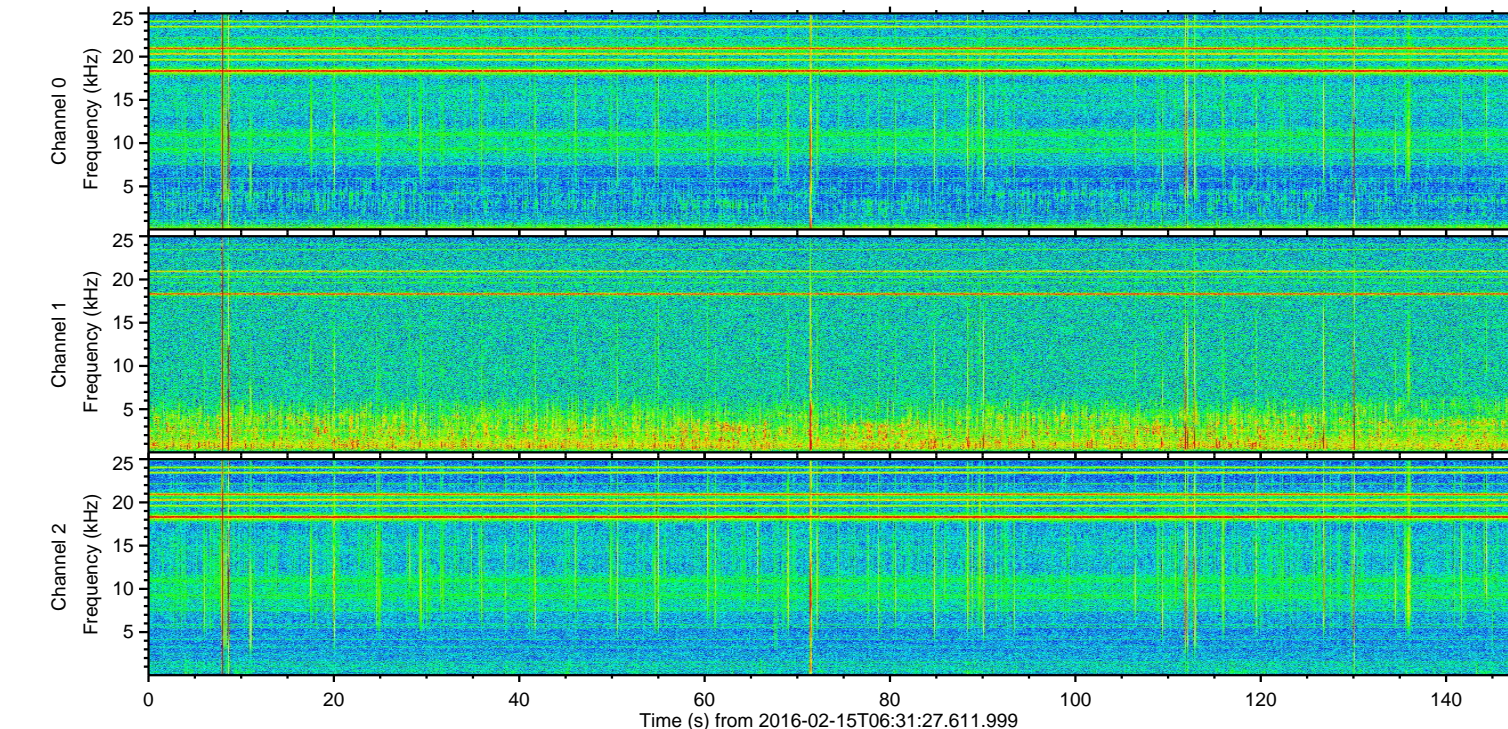
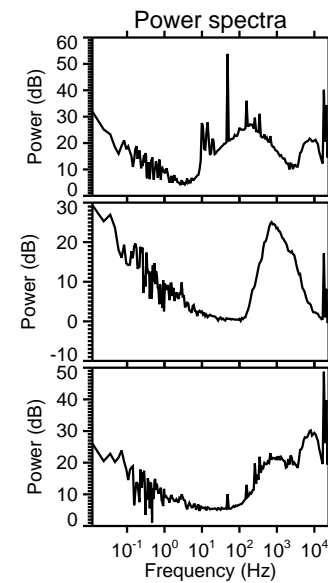
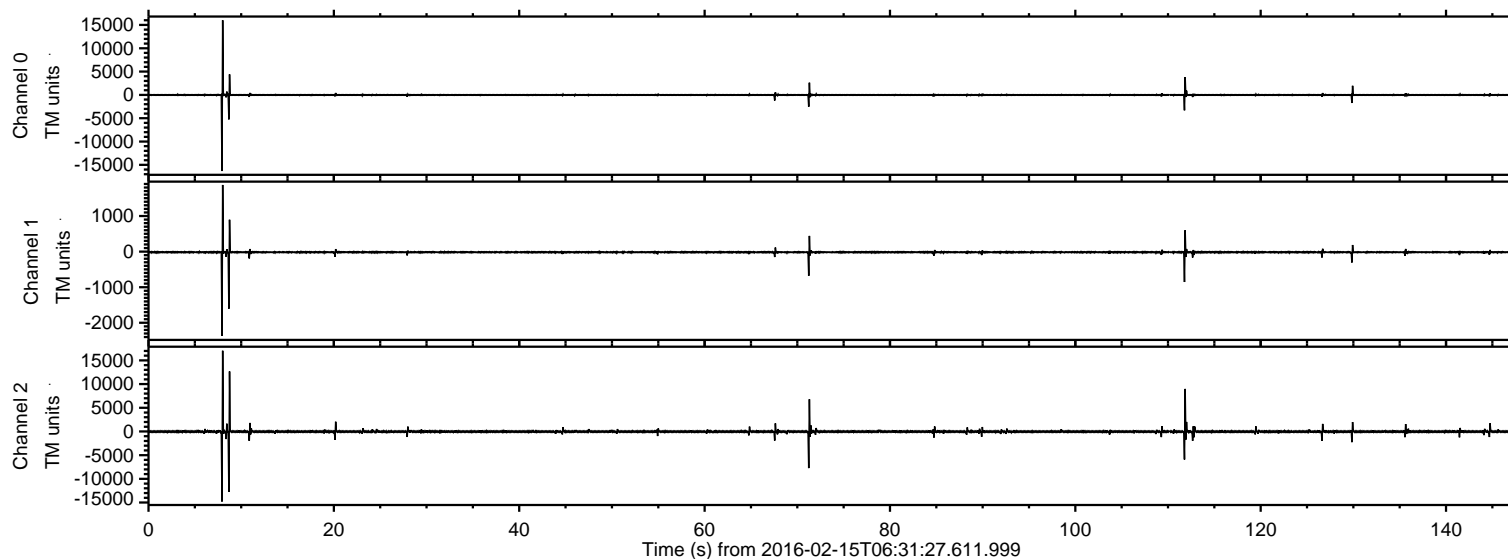
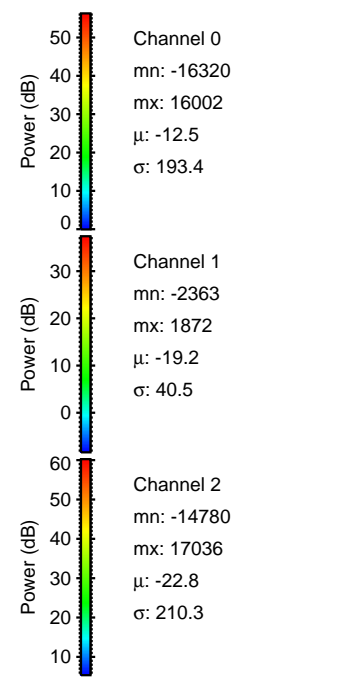
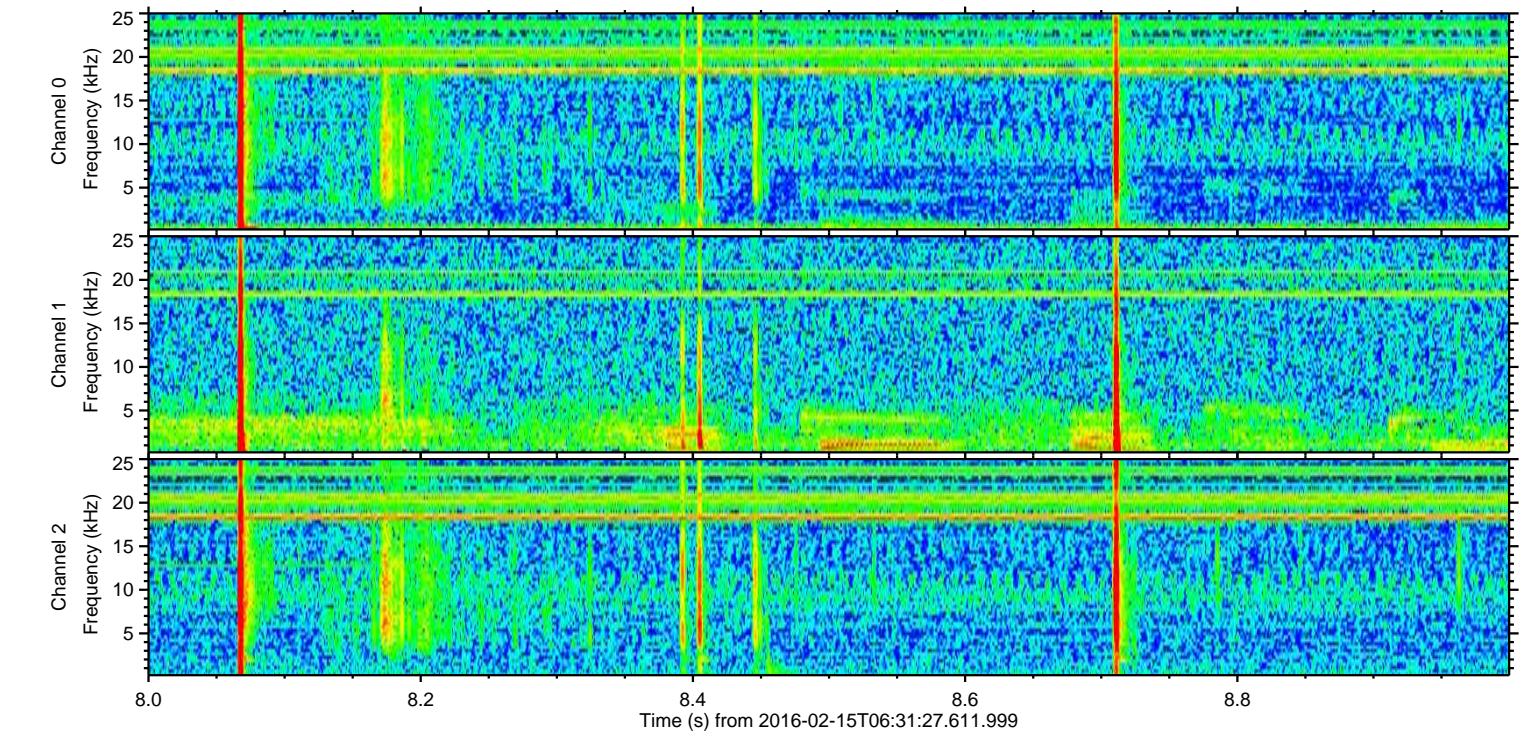
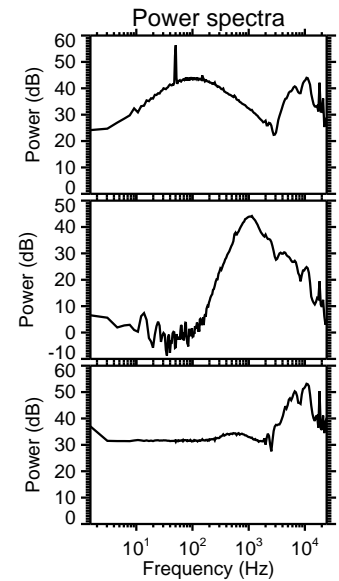
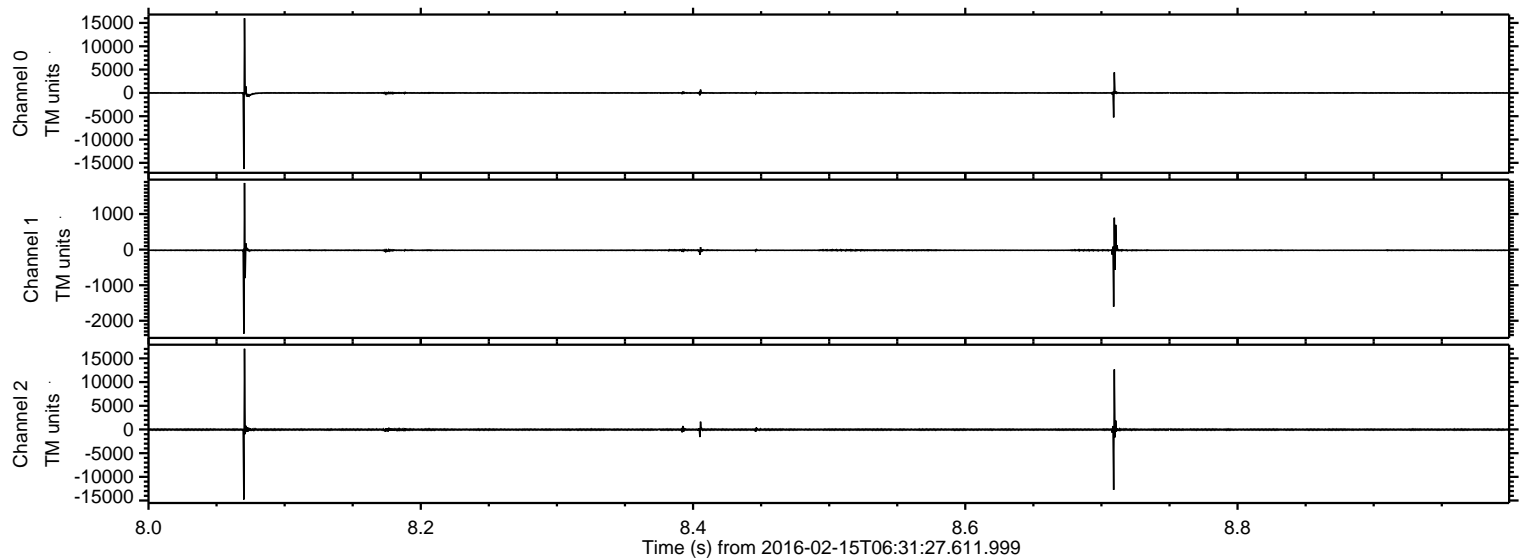


ELMAVAN 3D WAVEFORMS (Measured data sampled at 50 kHz) 51000 packets of 144 samples from 2016-02-15T06:31:27.611.999.

Processed Sun Apr 10 22:19:06 2016 by ELM ver.2012-10-06 from 001__elm20160215_063126__dat00.bin

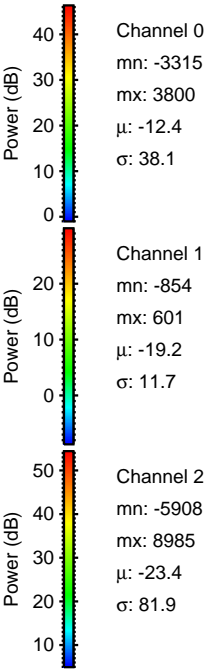
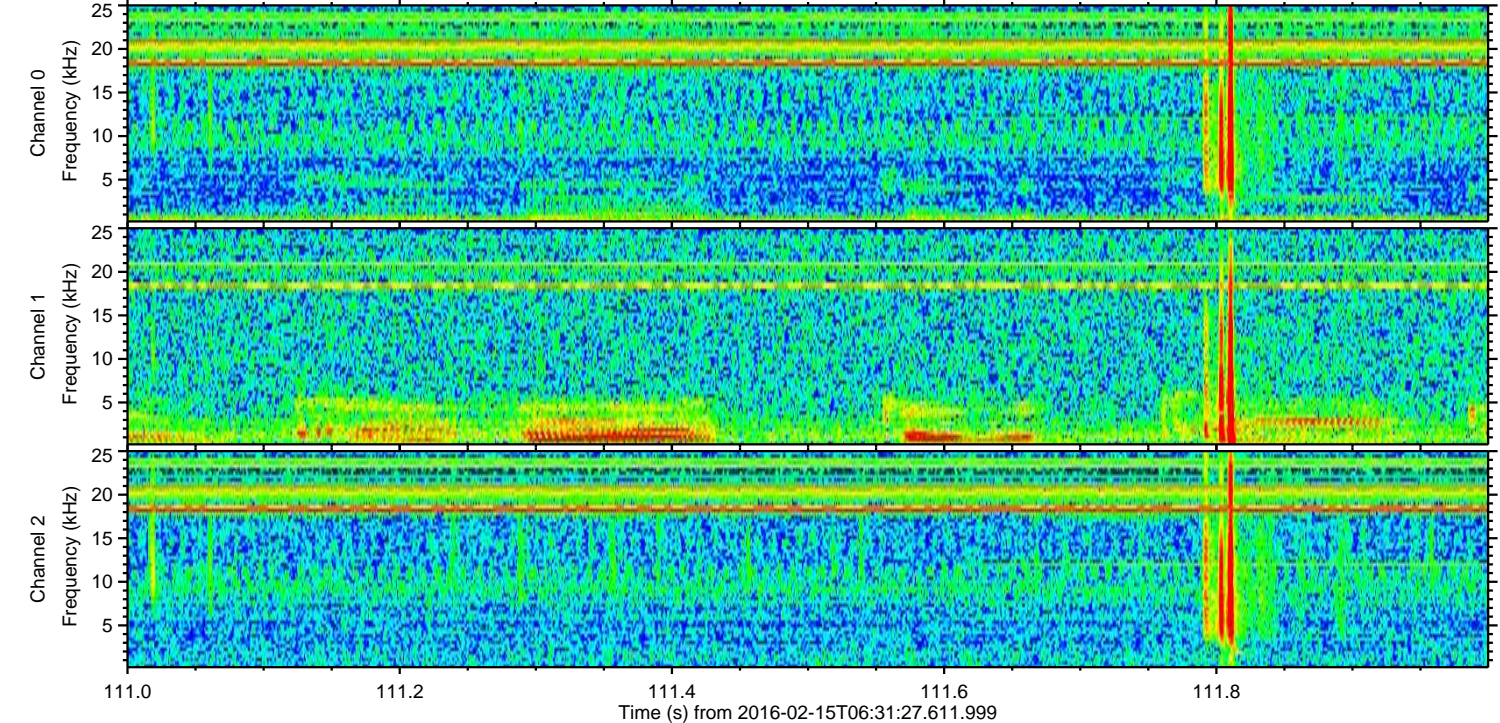
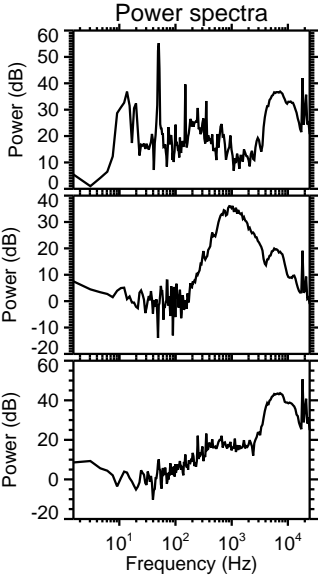
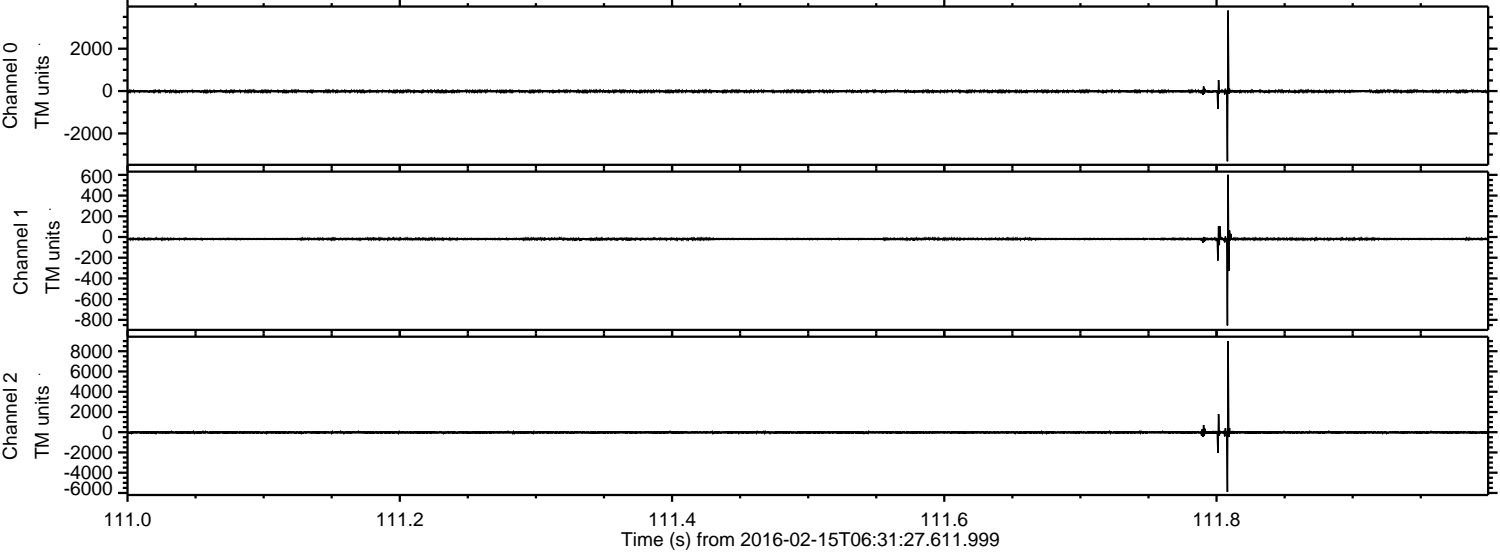


Processed Sun Apr 10 22:19:17 2016 by ELM ver.2012-10-06 from 001__elm20160215_063126__dat00.bin



ELMAVAN 3D WAVEFORMS (Measured data sampled at 50 kHz) 51000 packets of 144 samples from 2016-02-15T06:31:27.611.999. Part 112/147

Processed Sun Apr 10 22:19:18 2016 by ELM ver.2012-10-06 from 001__elm20160215_063126__dat00.bin

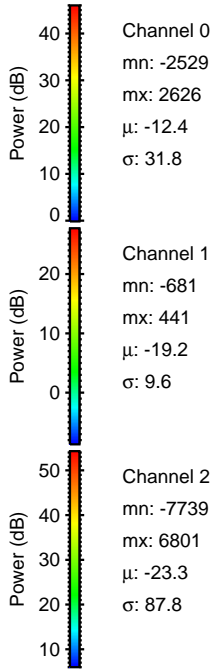
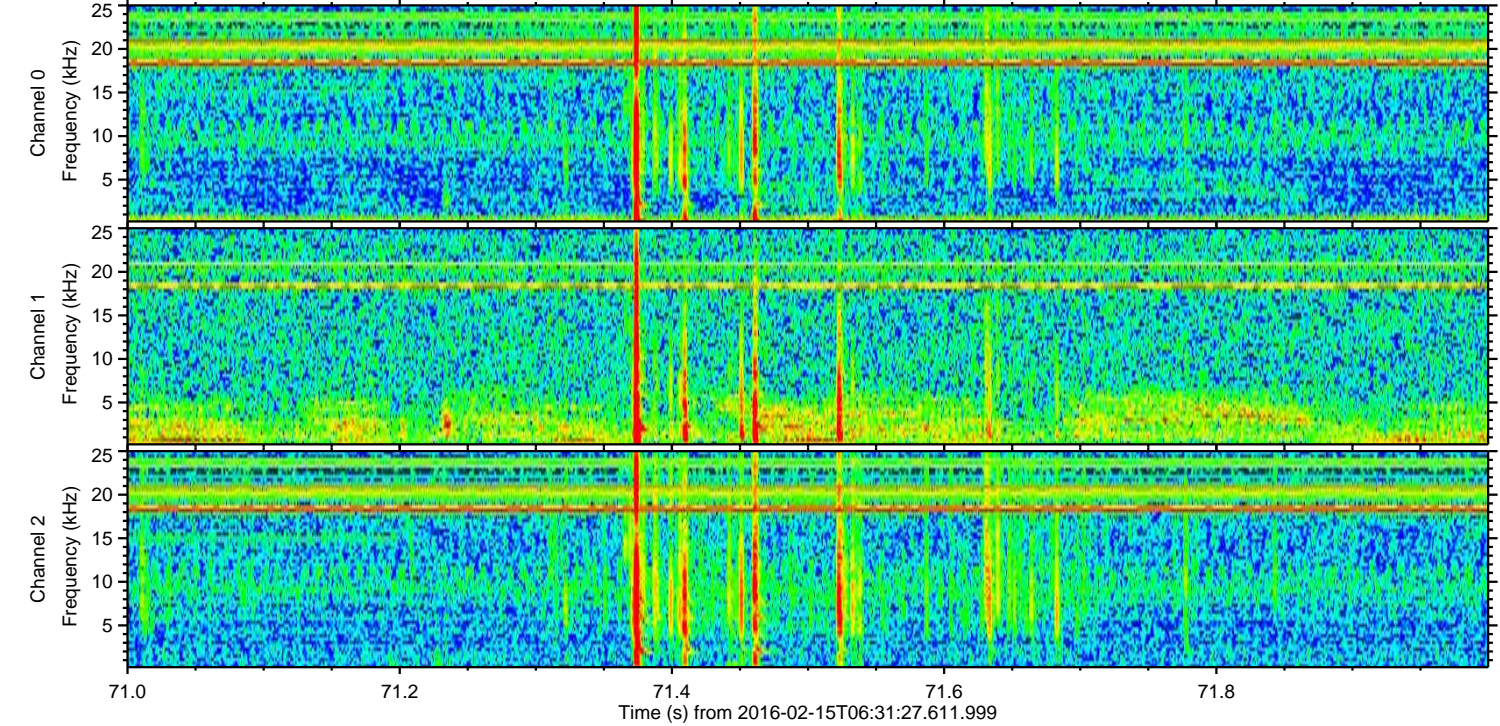
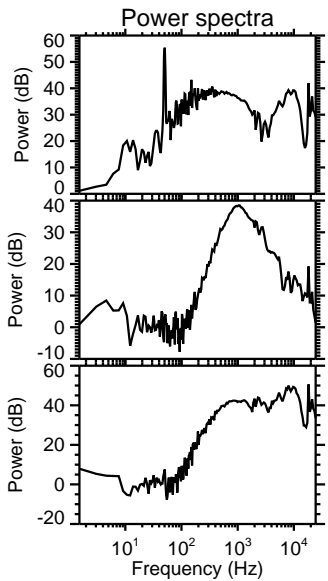
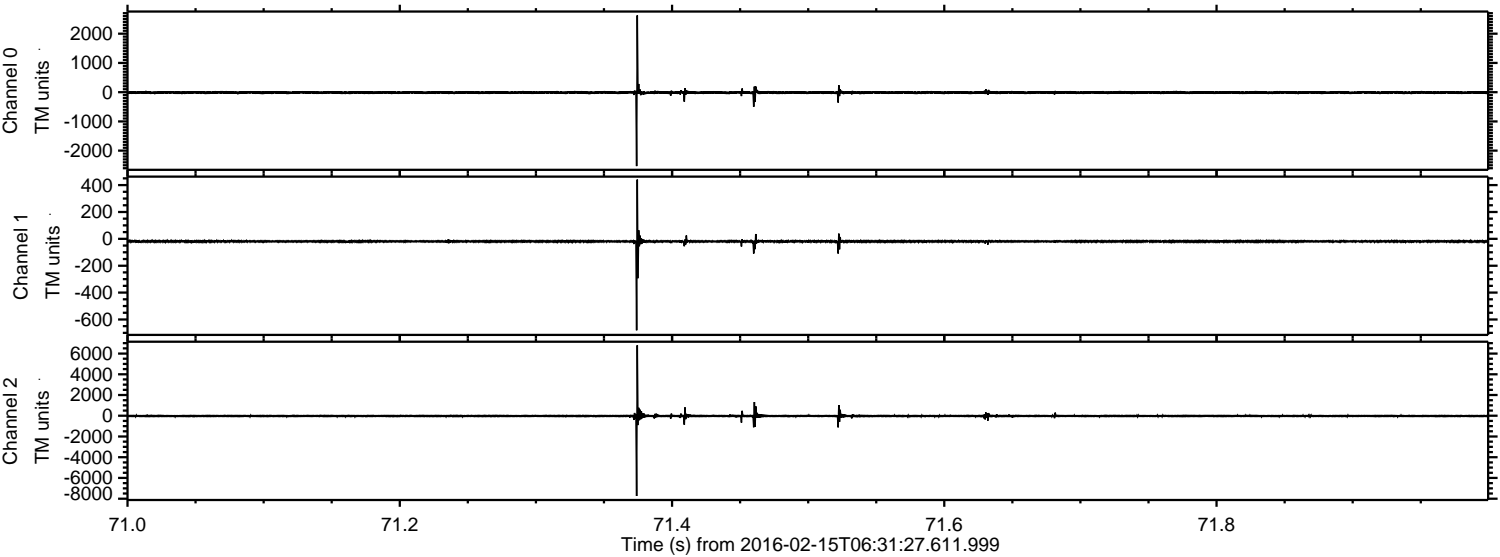


Channel 0
mn: -3315
mx: 3800
 μ : -12.4
 σ : 38.1

Channel 1
mn: -854
mx: 601
 μ : -19.2
 σ : 11.7

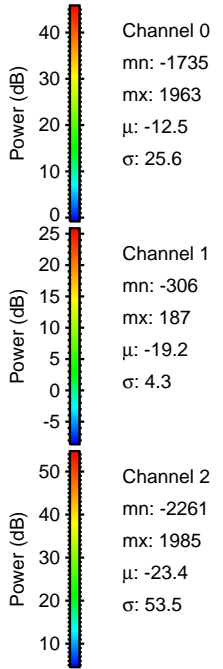
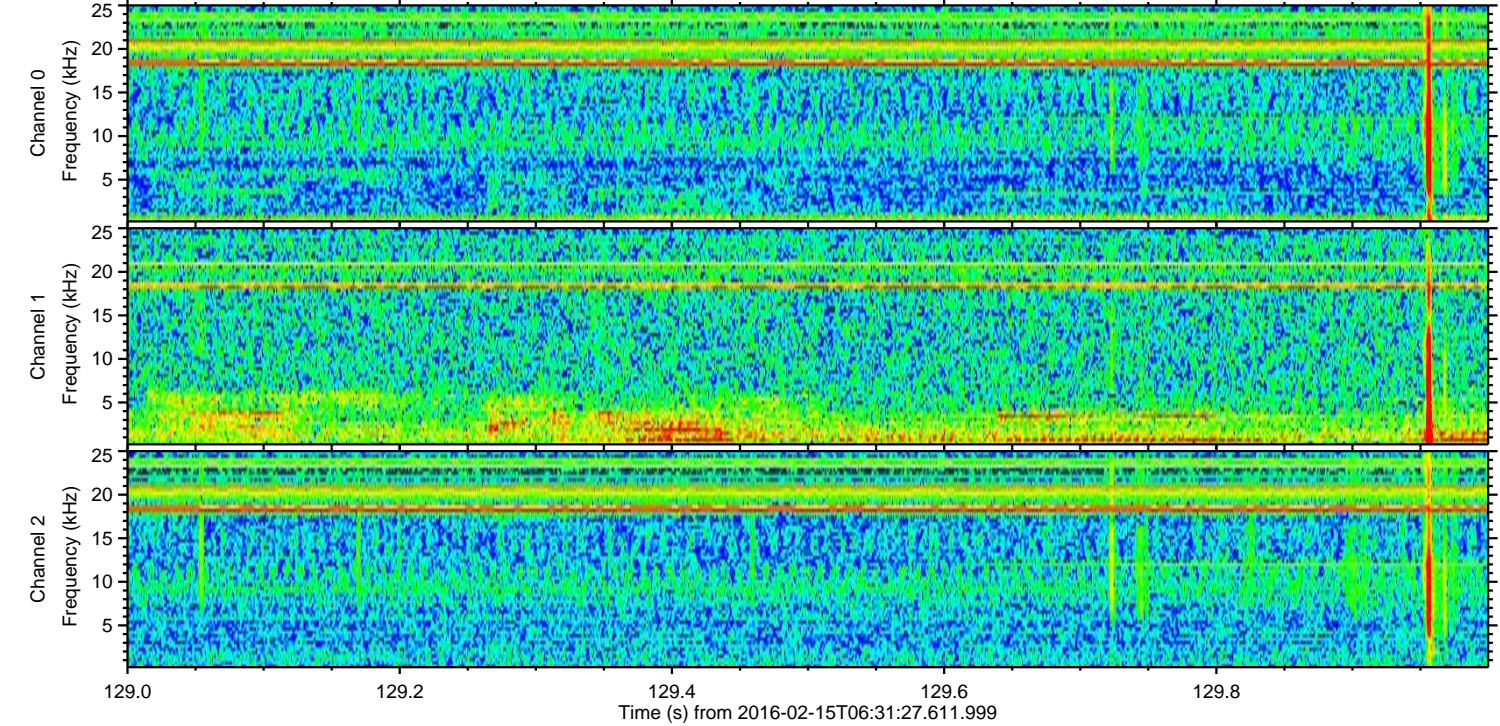
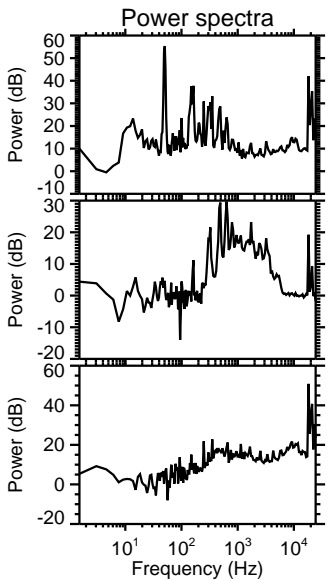
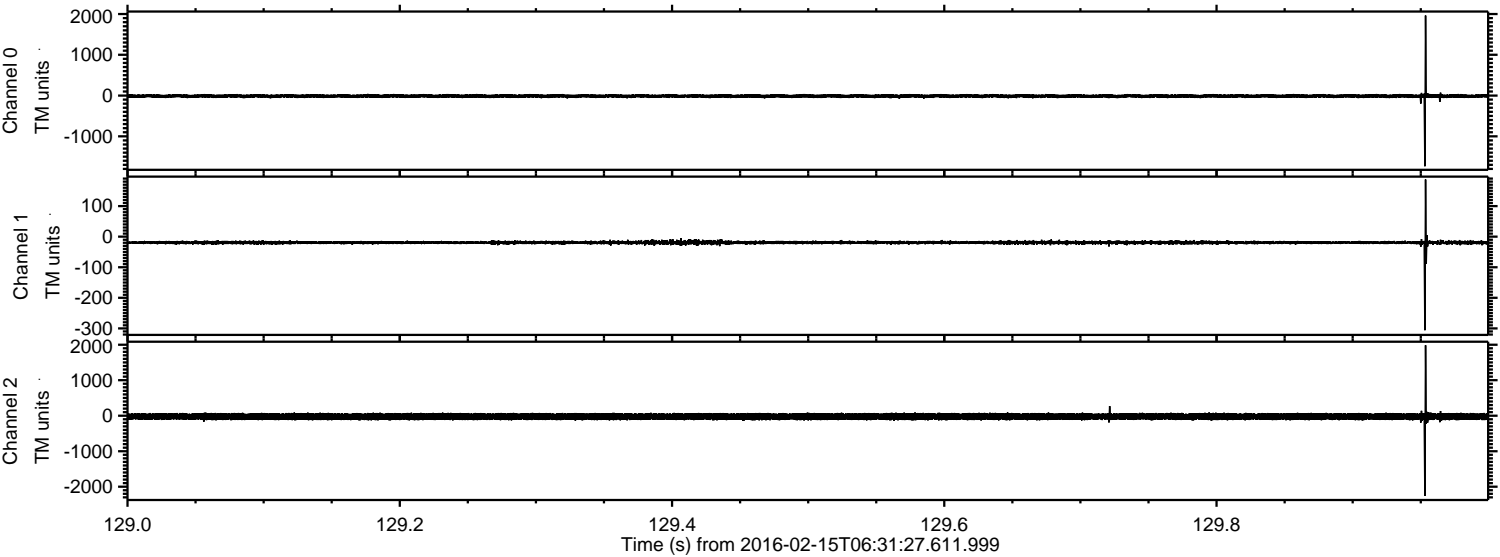
Channel 2
mn: -5908
mx: 8985
 μ : -23.4
 σ : 81.9

Processed Sun Apr 10 22:19:19 2016 by ELM ver.2012-10-06 from 001__elm20160215_063126__dat00.bin

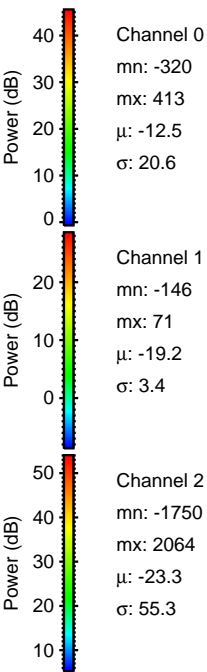
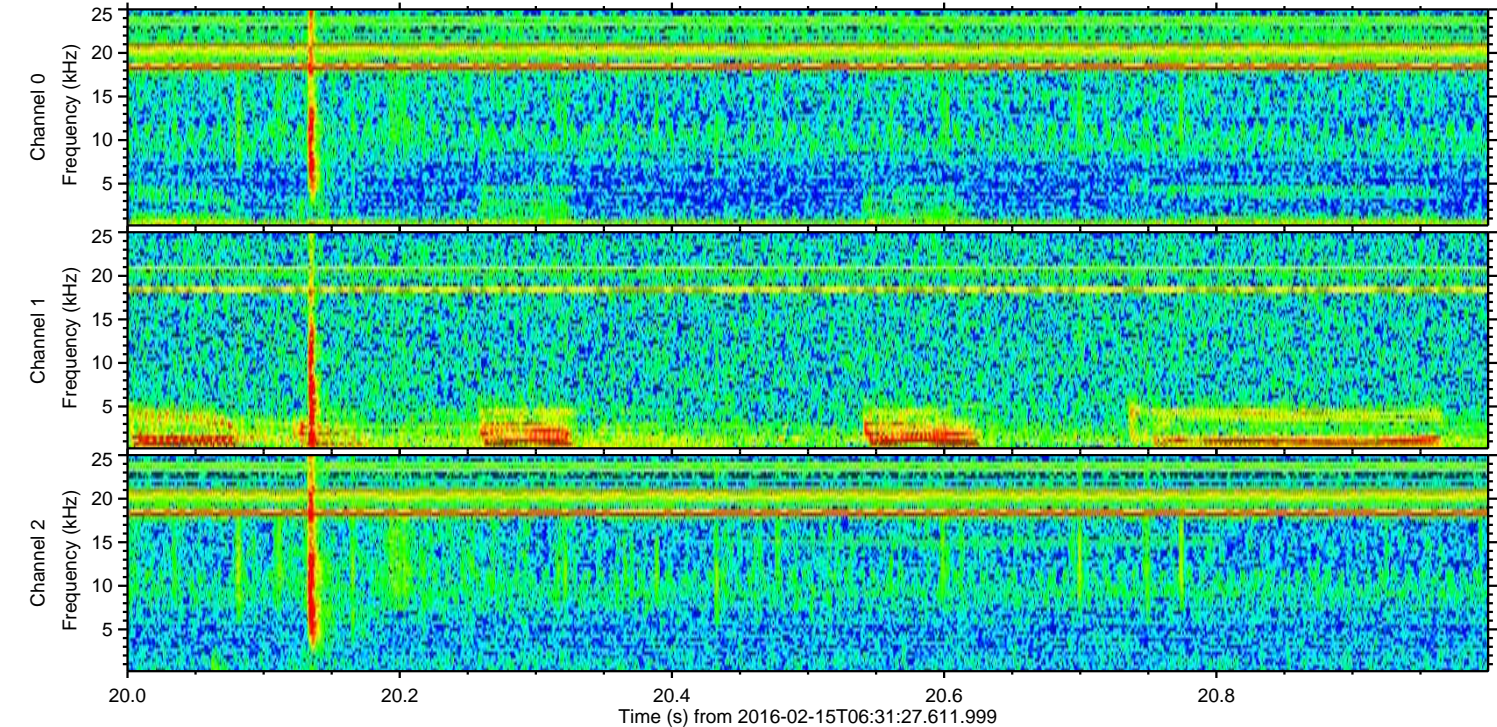
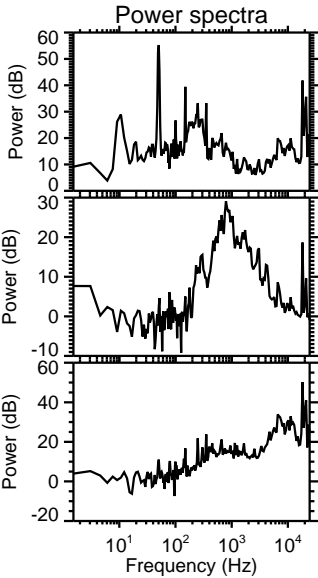
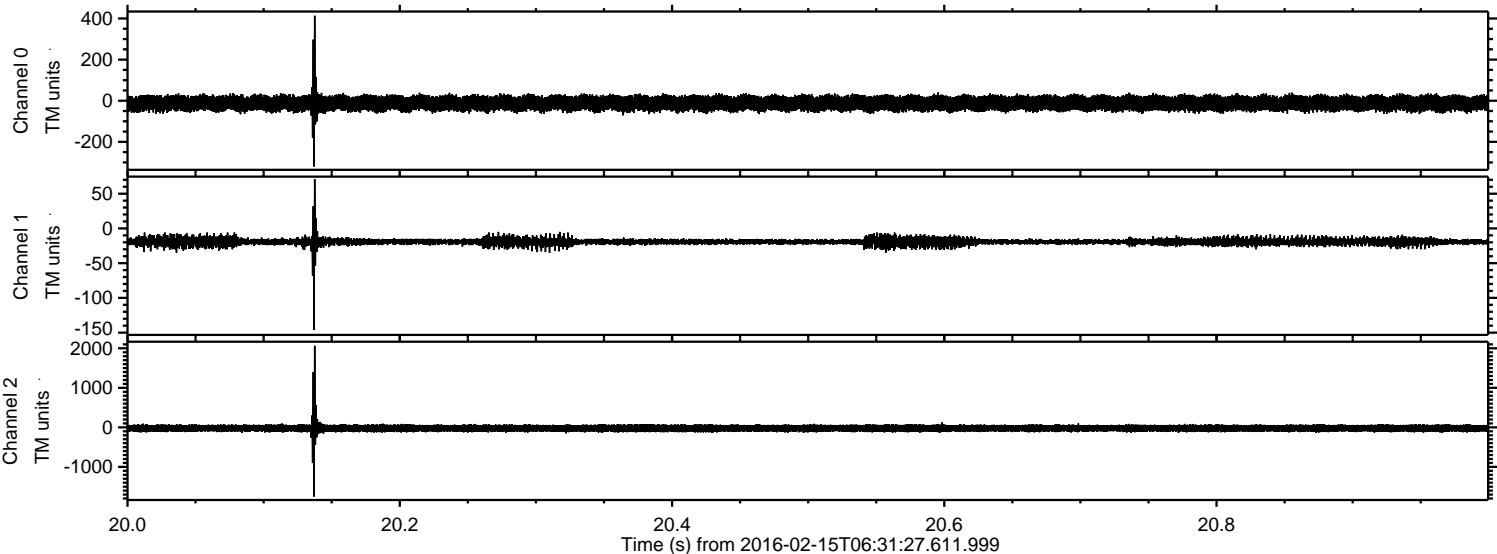


ELMAVAN 3D WAVEFORMS (Measured data sampled at 50 kHz) 51000 packets of 144 samples from 2016-02-15T06:31:27.611.999. Part 130/147

Processed Sun Apr 10 22:19:20 2016 by ELM ver.2012-10-06 from 001__elm20160215_063126__dat00.bin

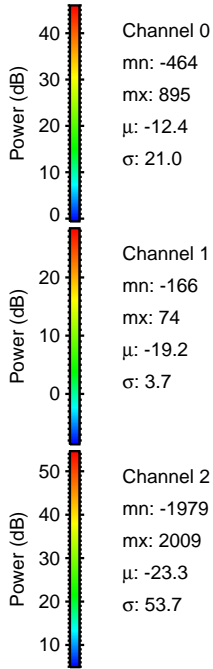
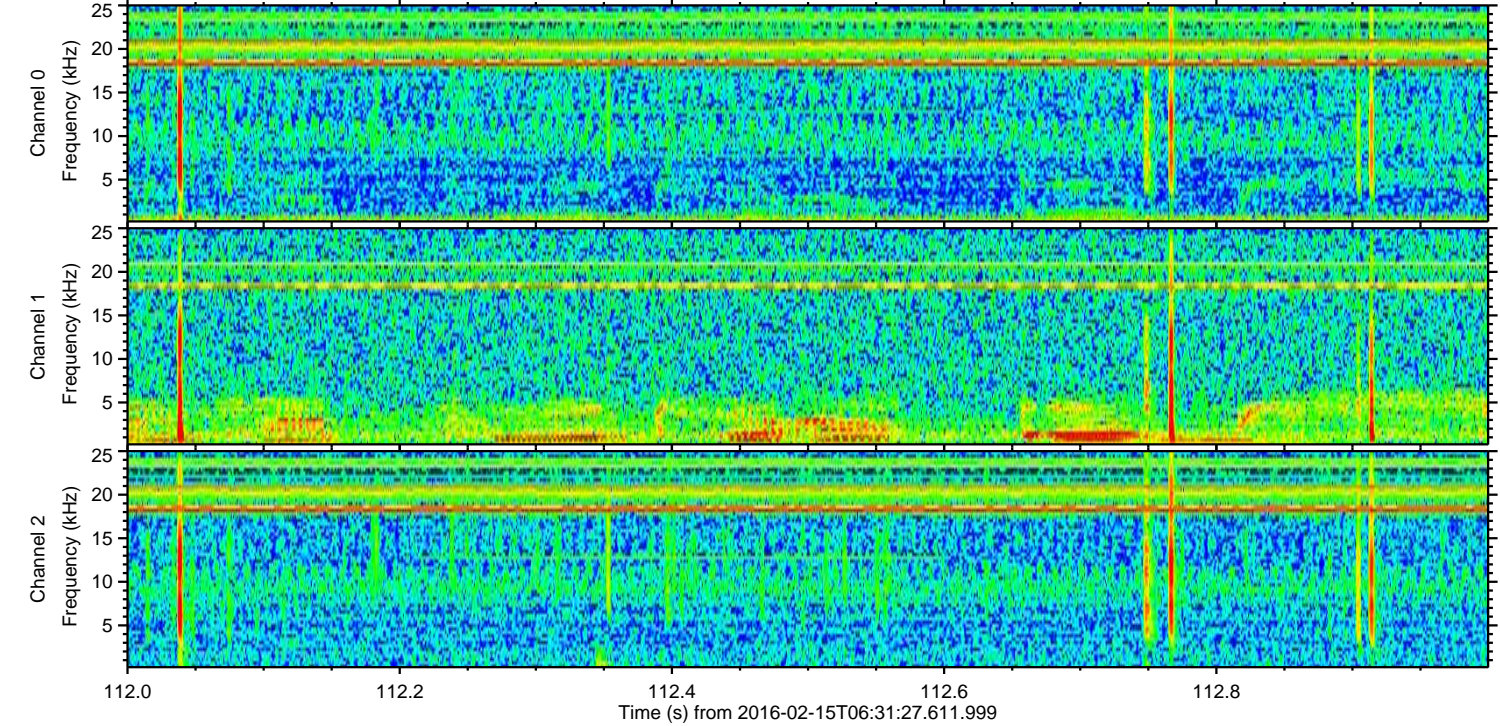
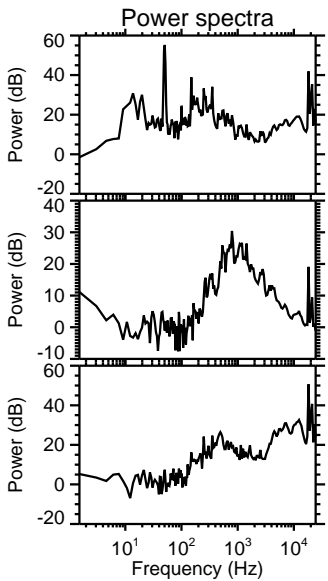
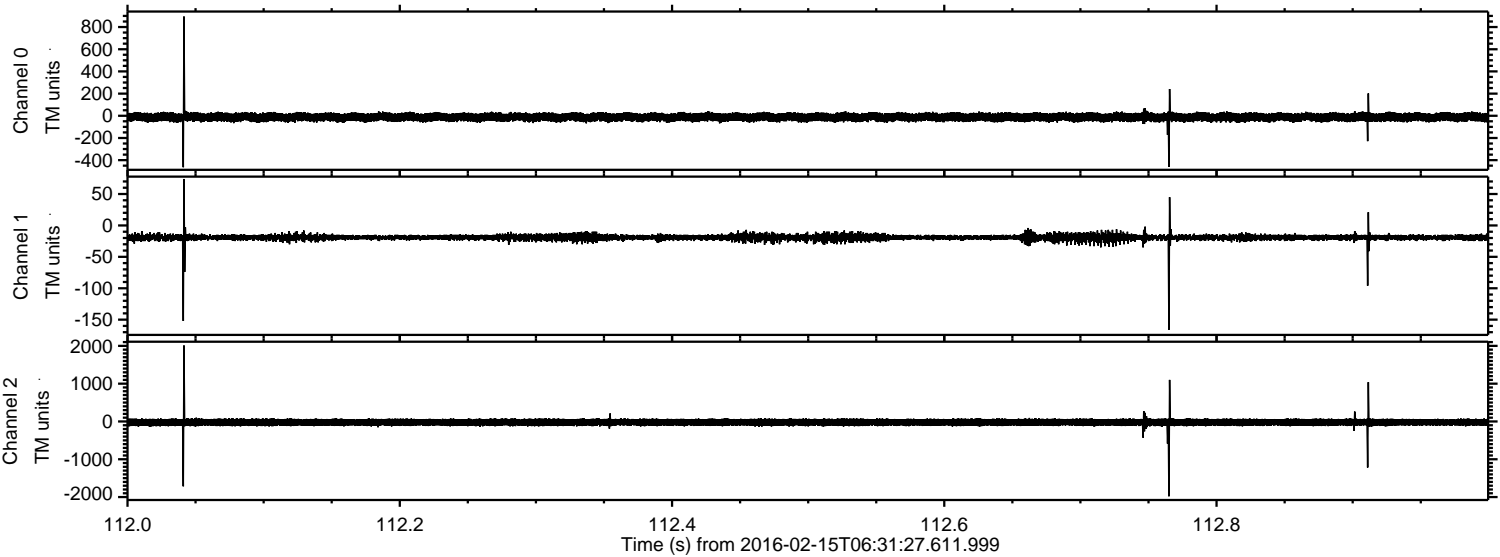


Processed Sun Apr 10 22:19:21 2016 by ELM ver.2012-10-06 from 001__elm20160215_063126__dat00.bin



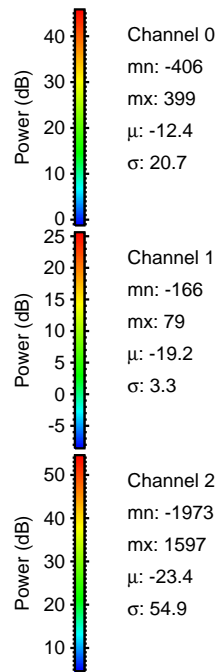
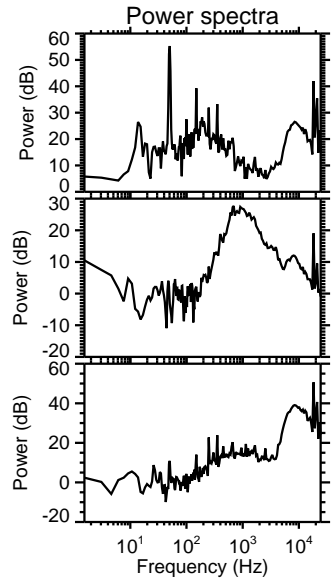
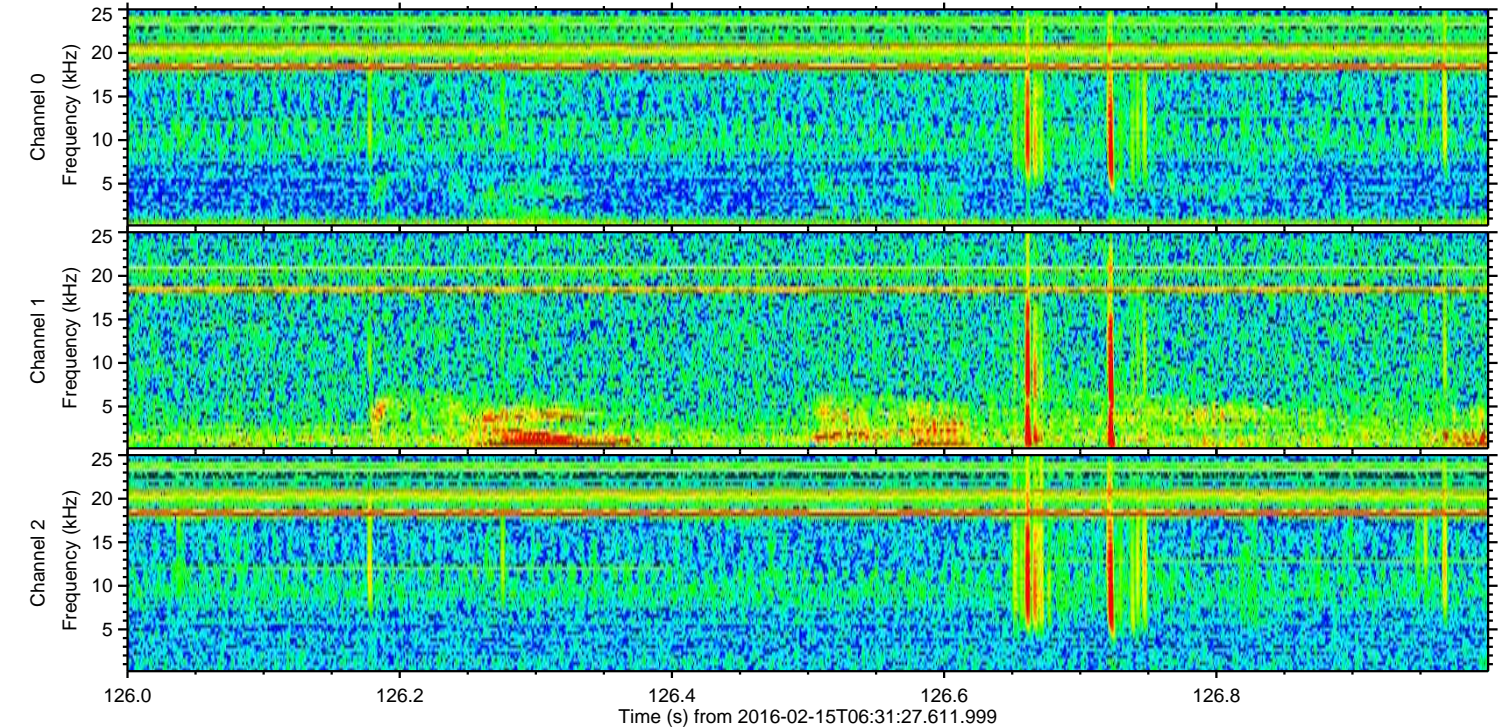
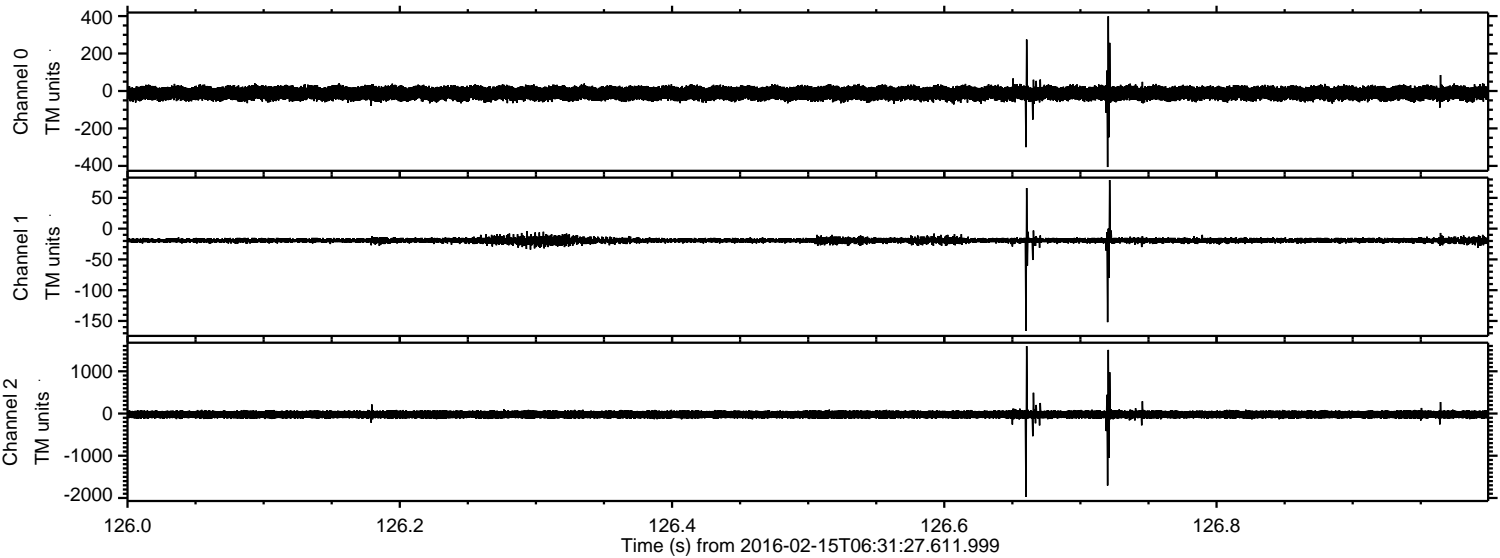
ELMAVAN 3D WAVEFORMS (Measured data sampled at 50 kHz) 51000 packets of 144 samples from 2016-02-15T06:31:27.611.999. Part 113/147

Processed Sun Apr 10 22:19:22 2016 by ELM ver.2012-10-06 from 001__elm20160215_063126__dat00.bin

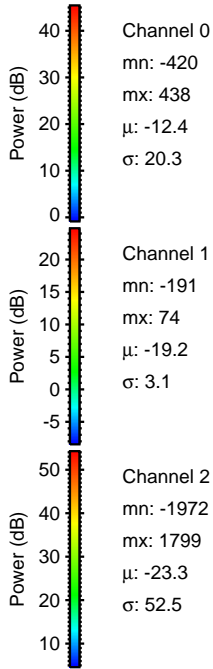
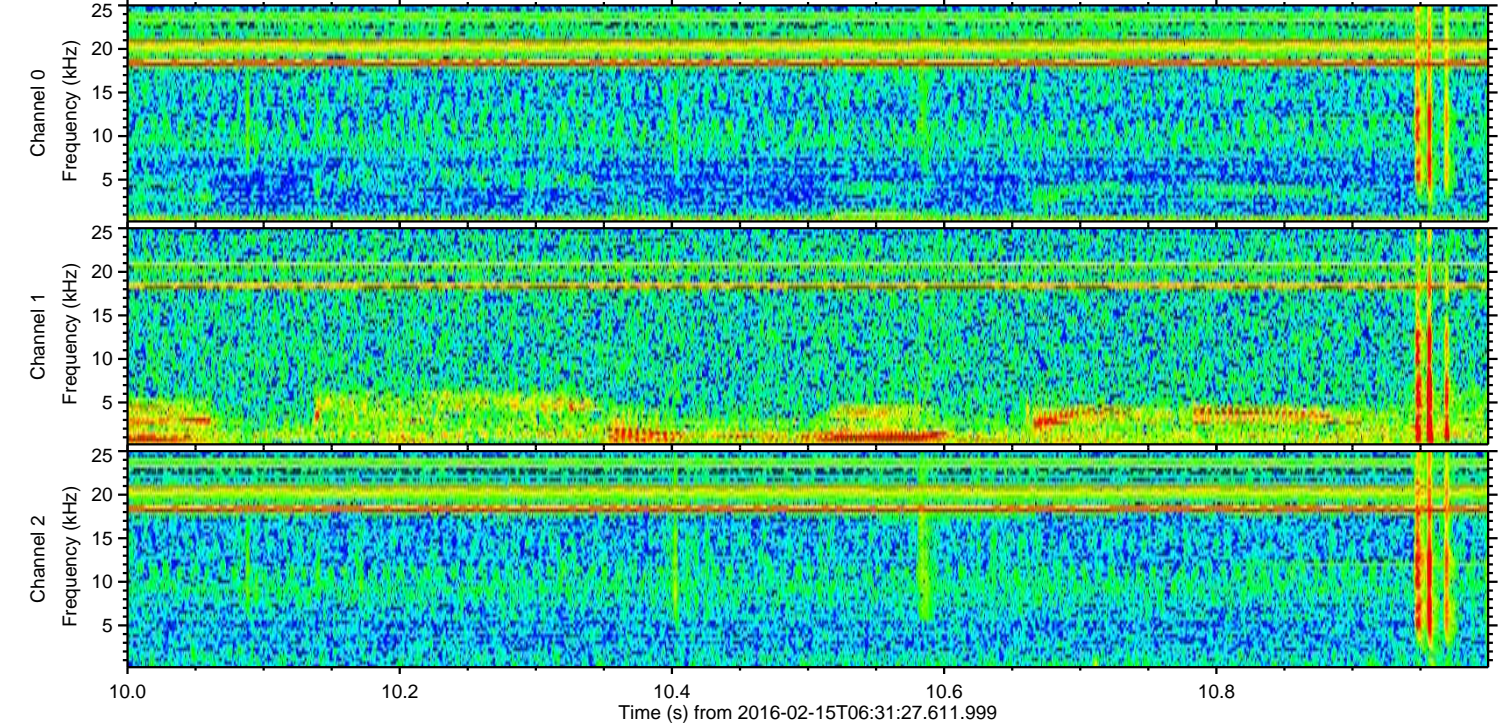
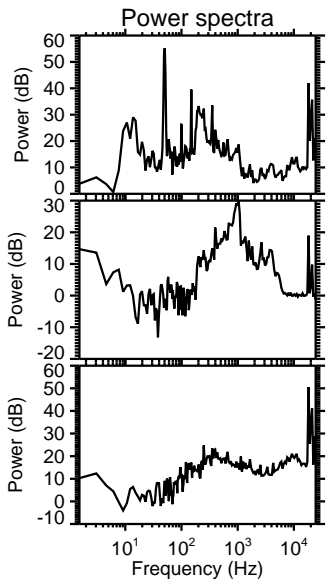
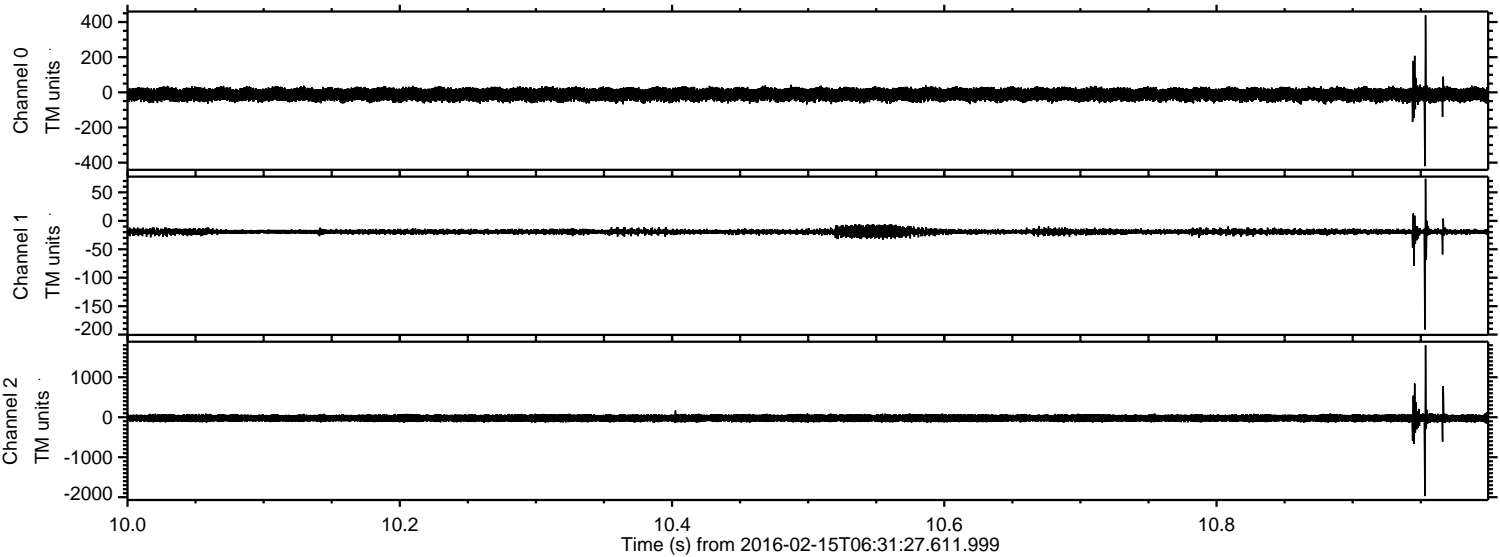


ELMAVAN 3D WAVEFORMS (Measured data sampled at 50 kHz) 51000 packets of 144 samples from 2016-02-15T06:31:27.611.999. Part 127/147

Processed Sun Apr 10 22:19:23 2016 by ELM ver.2012-10-06 from 001__elm20160215_063126__dat00.bin



Processed Sun Apr 10 22:19:24 2016 by ELM ver.2012-10-06 from 001__elm20160215_063126__dat00.bin

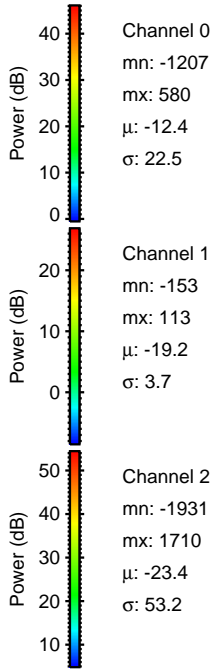
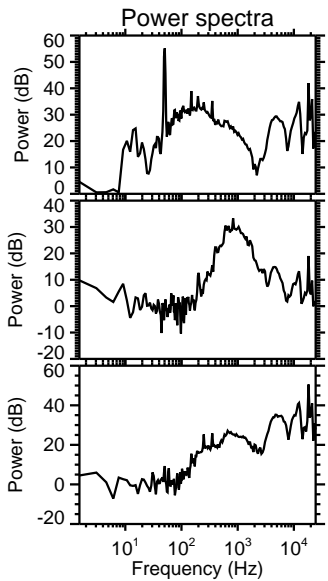
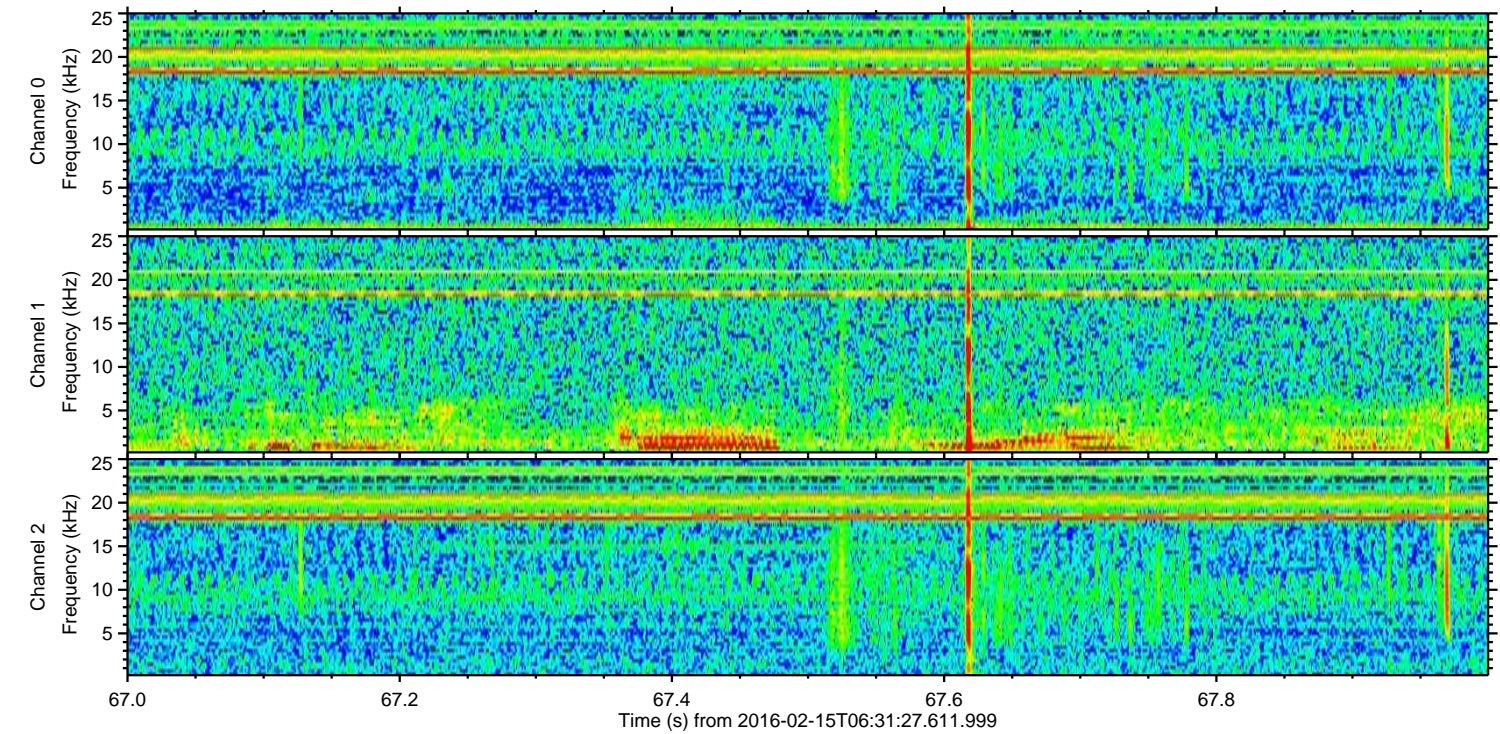
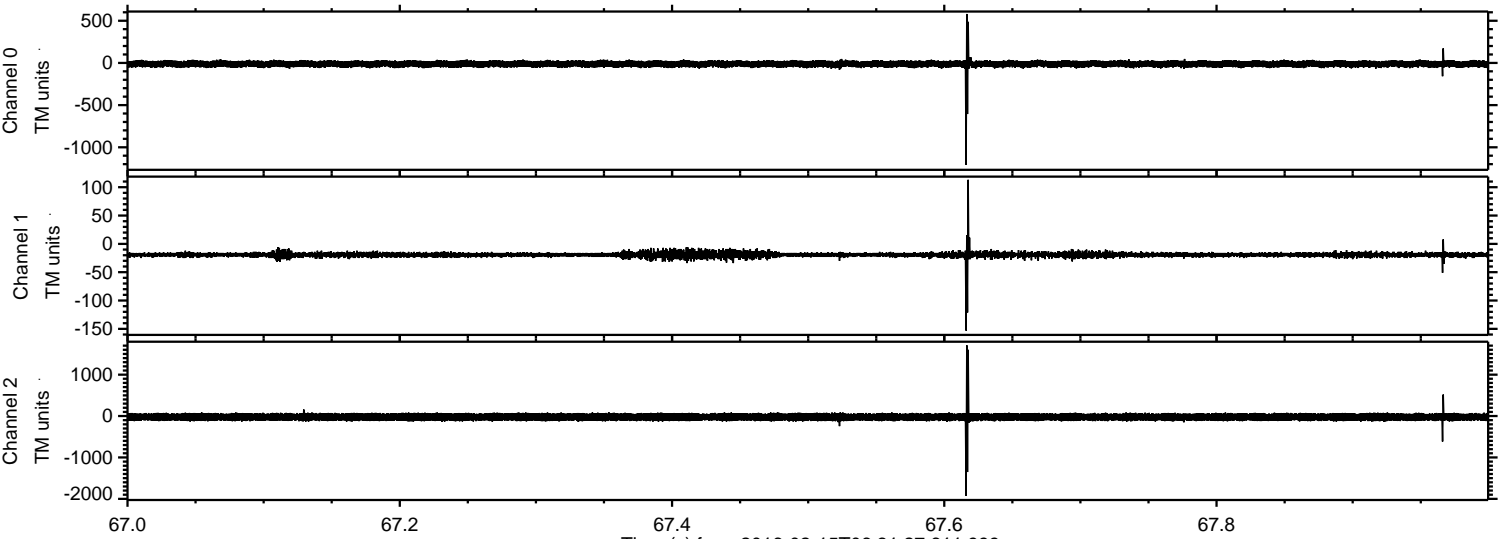


Channel 0
mn: -420
mx: 438
 μ : -12.4
 σ : 20.3

Channel 1
mn: -191
mx: 74
 μ : -19.2
 σ : 3.1

Channel 2
mn: -1972
mx: 1799
 μ : -23.3
 σ : 52.5

Processed Sun Apr 10 22:19:24 2016 by ELM ver.2012-10-06 from 001__elm20160215_063126__dat00.bin



Processed Sun Apr 10 22:19:25 2016 by ELM ver.2012-10-06 from 001__elm20160215_063126__dat00.bin

