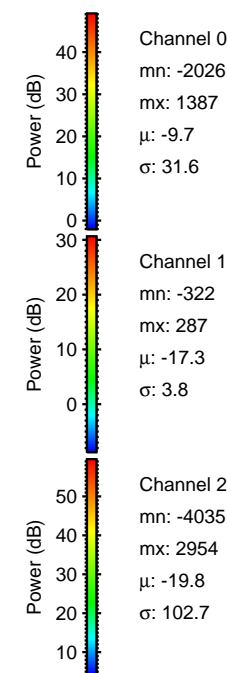
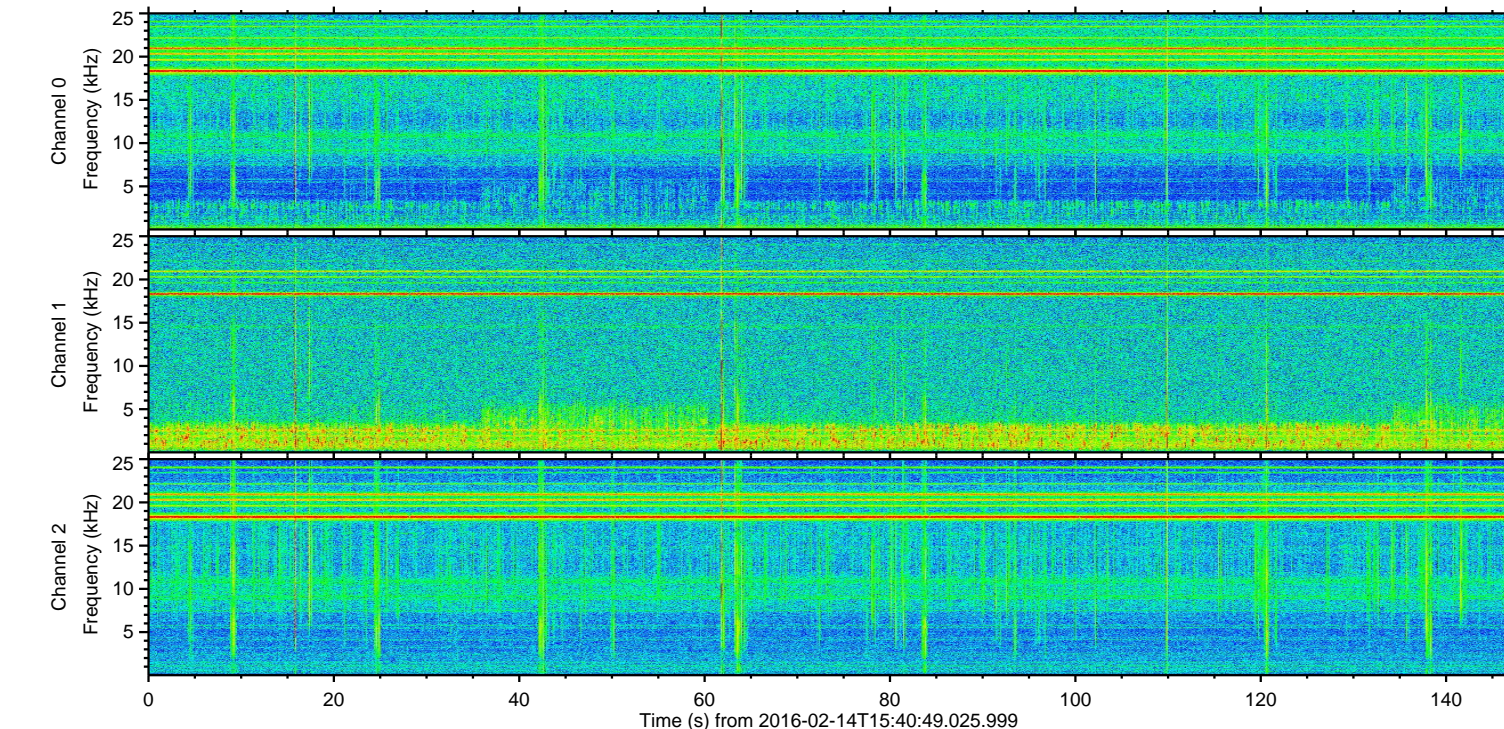
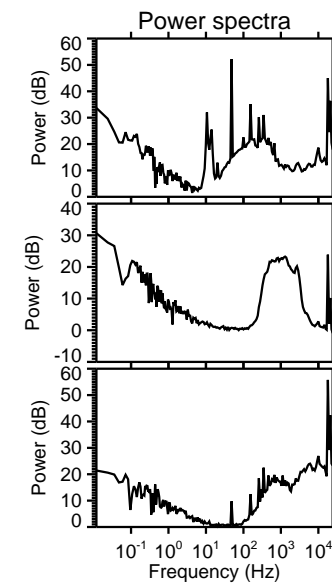
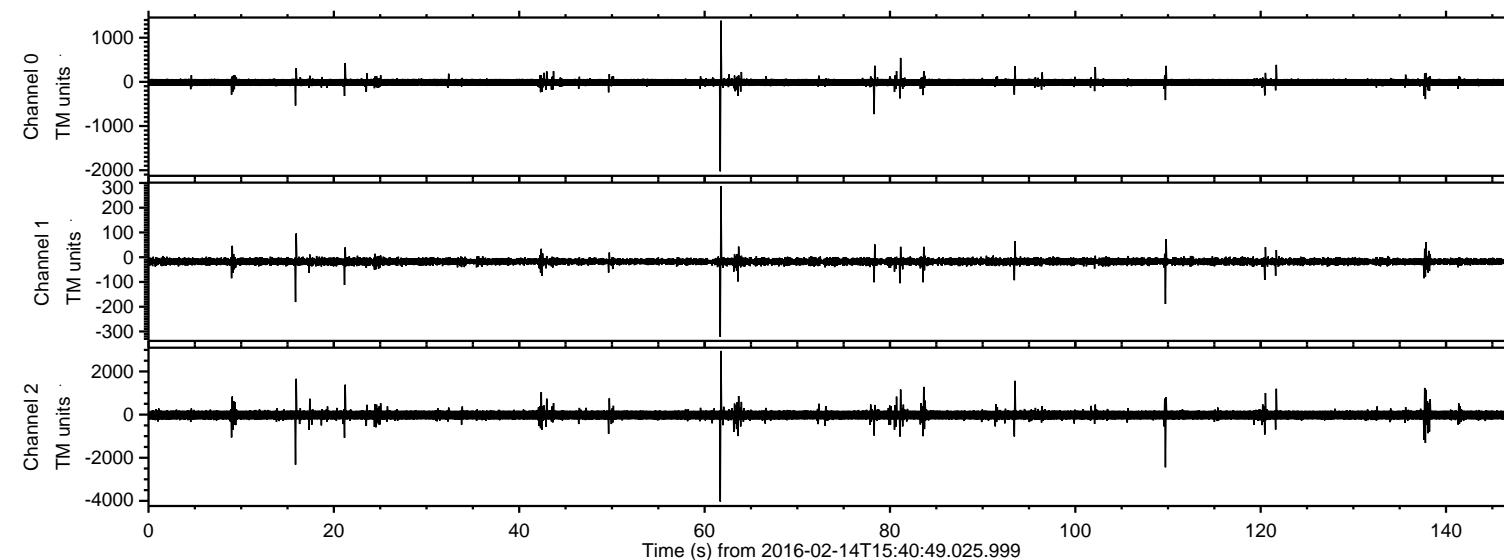
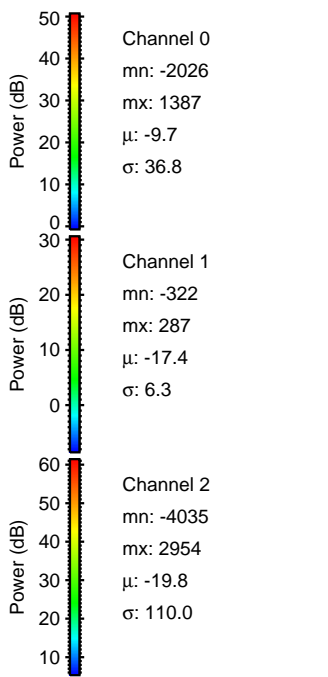
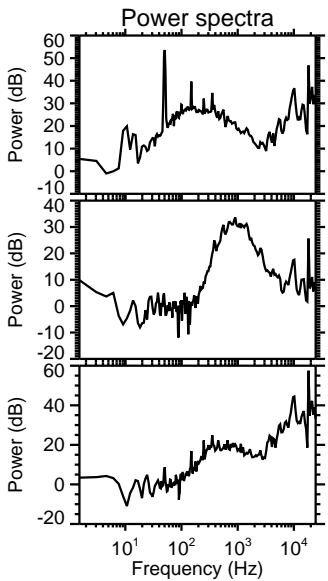
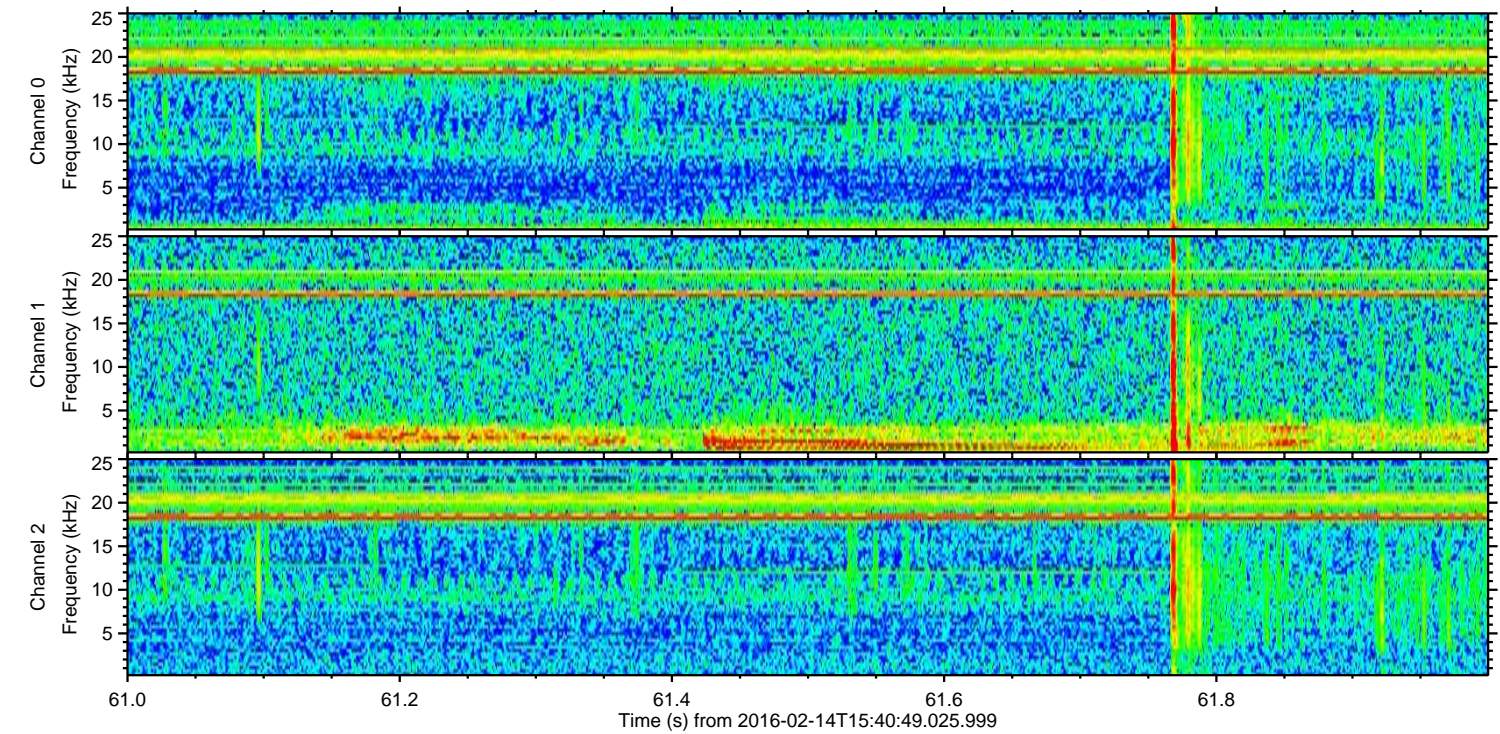
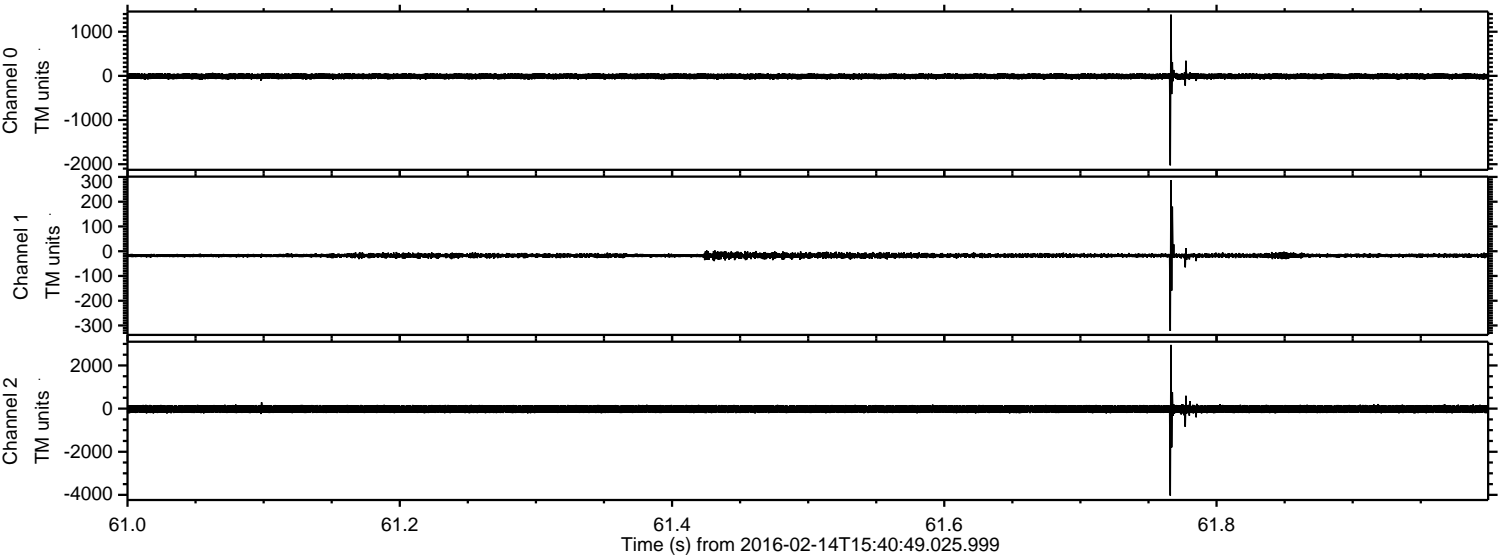


ELMAVAN 3D WAVEFORMS (Measured data sampled at 50 kHz) 51000 packets of 144 samples from 2016-02-14T15:40:49.025.999.

Processed Sun Apr 10 19:17:09 2016 by ELM ver.2012-10-06 from 001__elm20160214_154048__dat00.bin

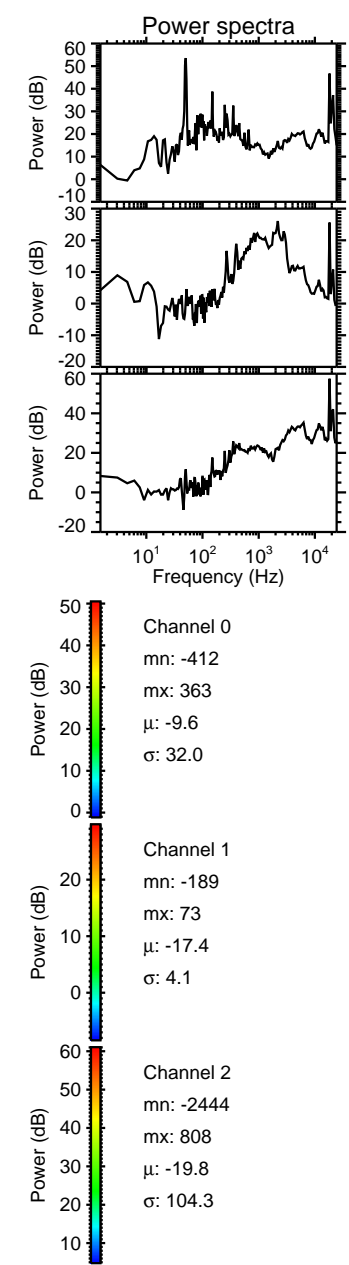
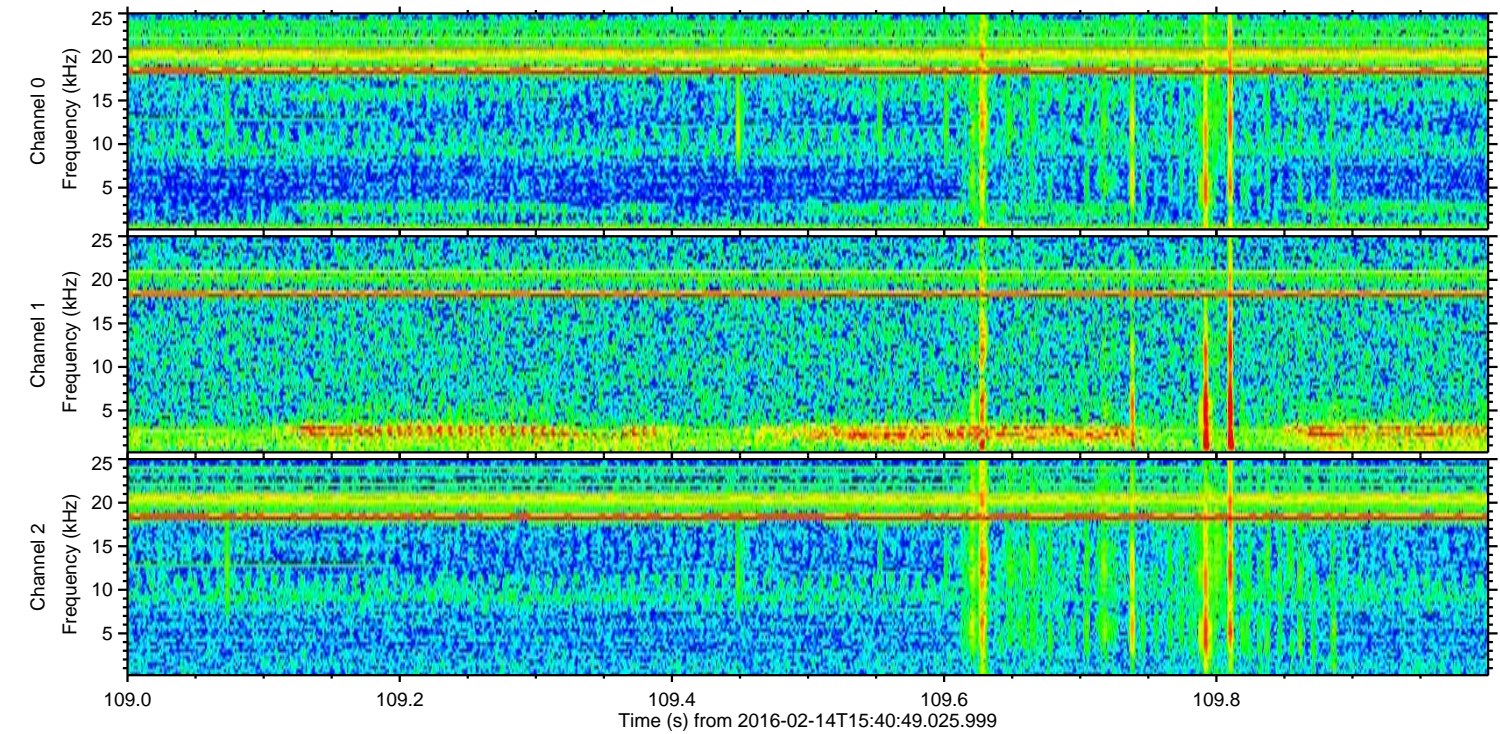
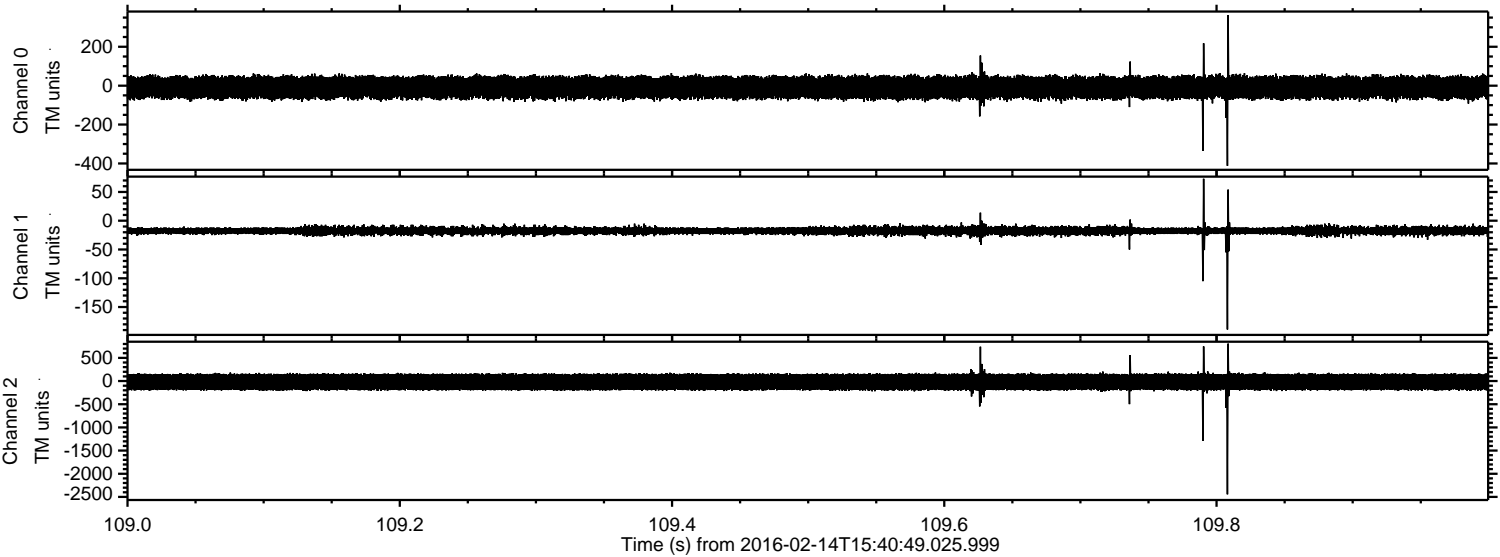


Processed Sun Apr 10 19:17:20 2016 by ELM ver.2012-10-06 from 001__elm20160214_154048__dat00.bin



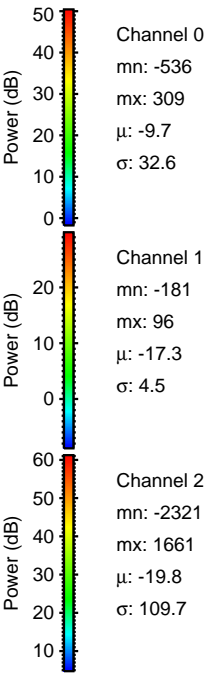
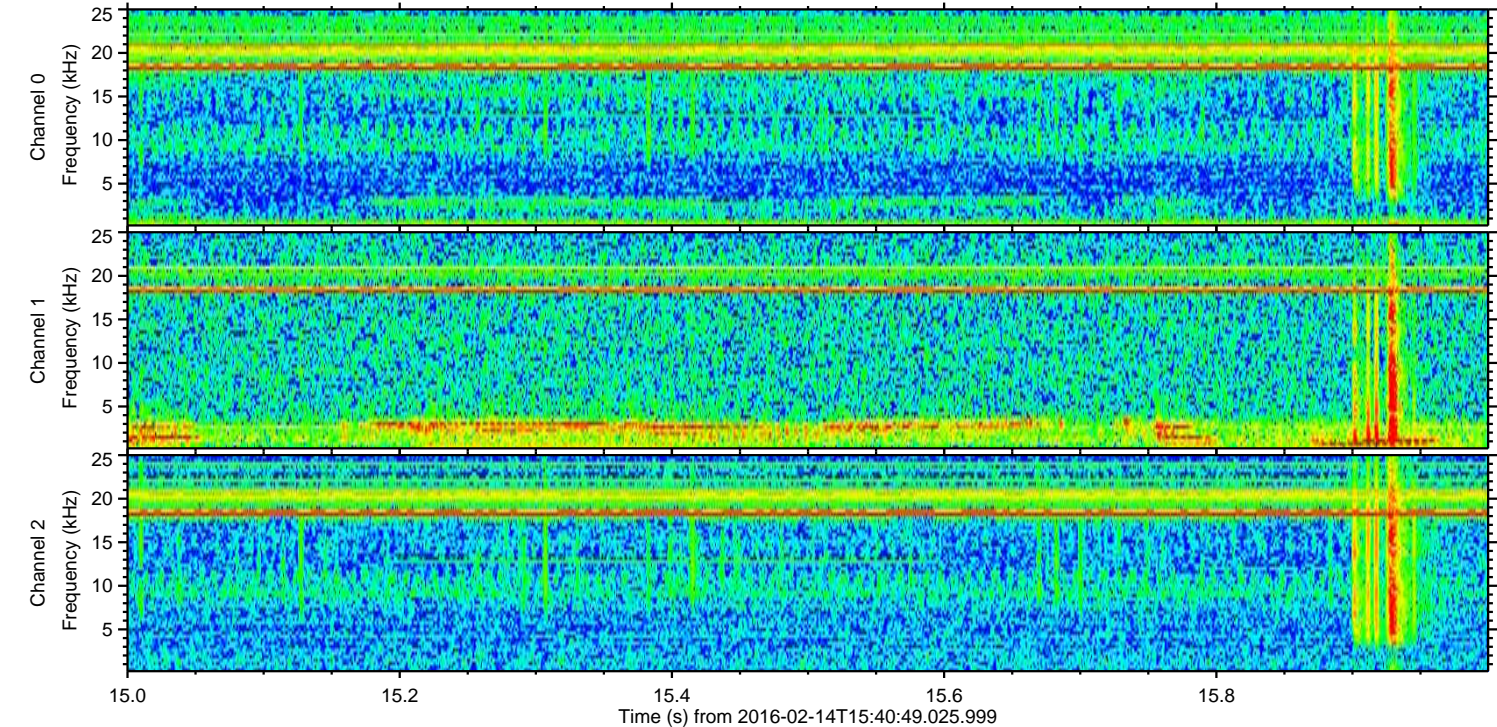
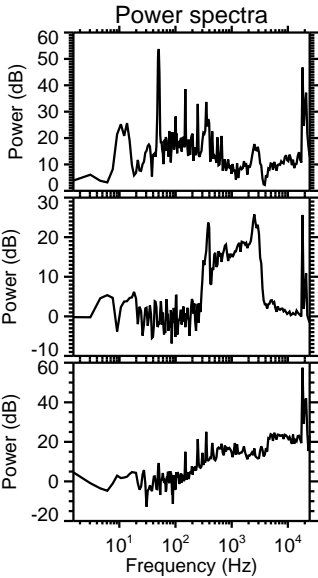
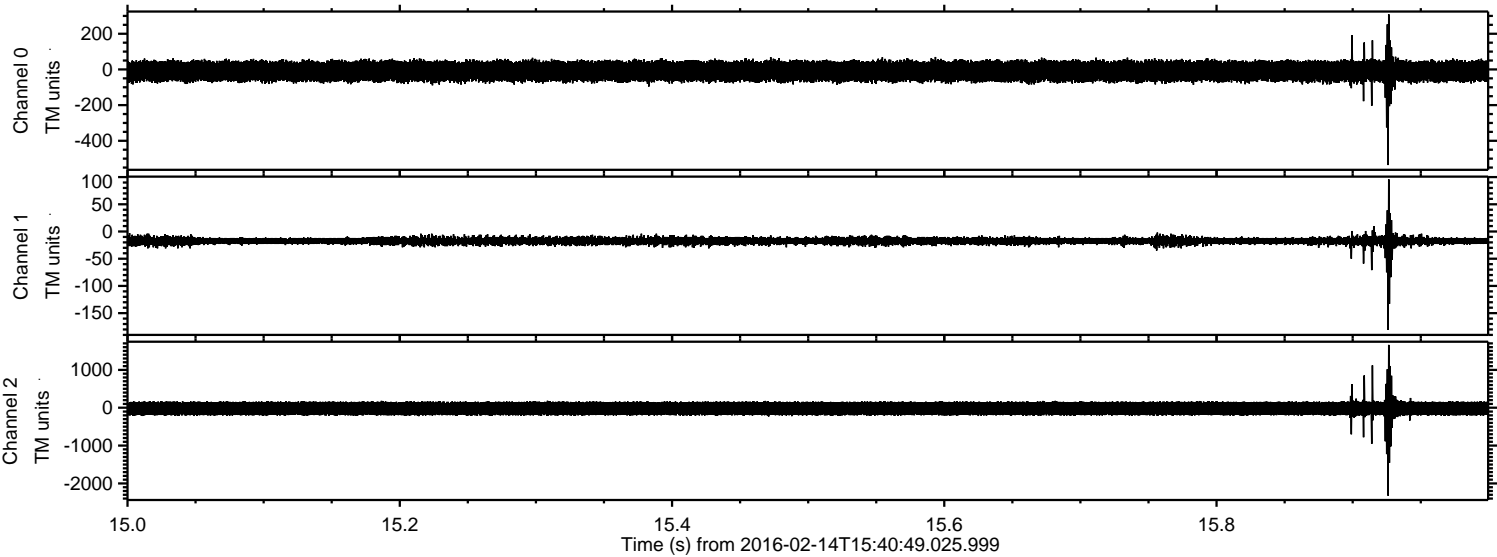
ELMAVAN 3D WAVEFORMS (Measured data sampled at 50 kHz) 51000 packets of 144 samples from 2016-02-14T15:40:49.025.999. Part 110/147

Processed Sun Apr 10 19:17:21 2016 by ELM ver.2012-10-06 from 001__elm20160214_154048__dat00.bin

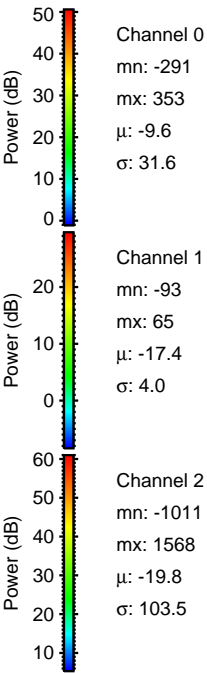
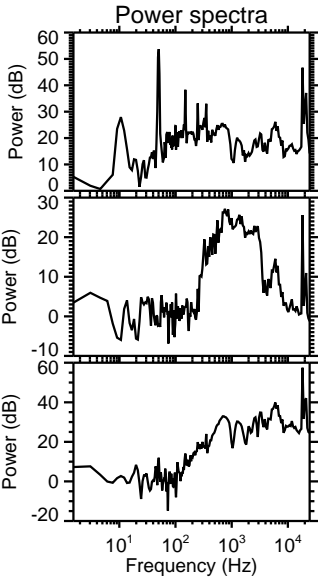
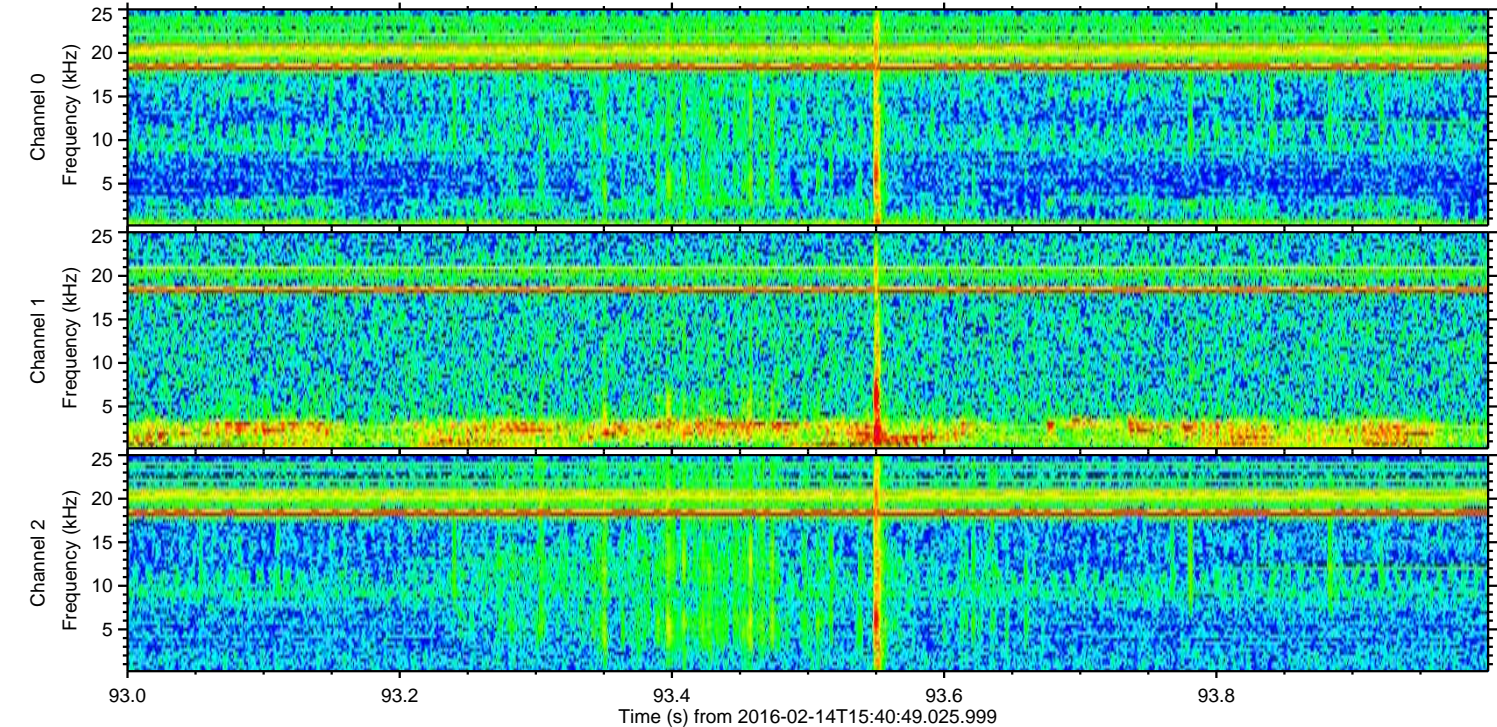
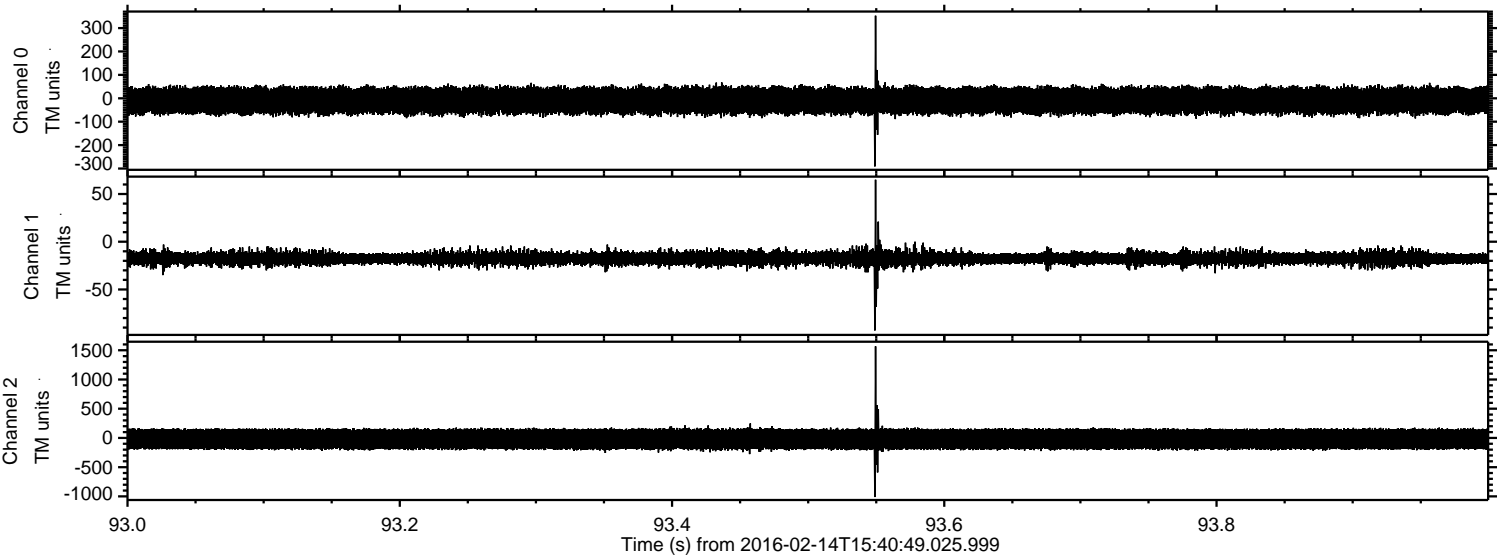


ELMAVAN 3D WAVEFORMS (Measured data sampled at 50 kHz) 51000 packets of 144 samples from 2016-02-14T15:40:49.025.999. Part 16/147

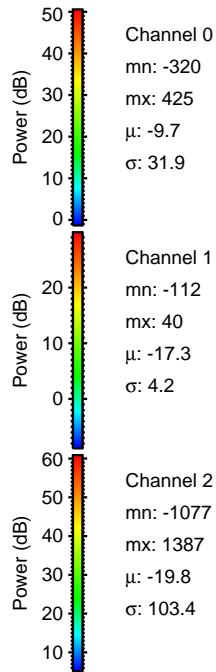
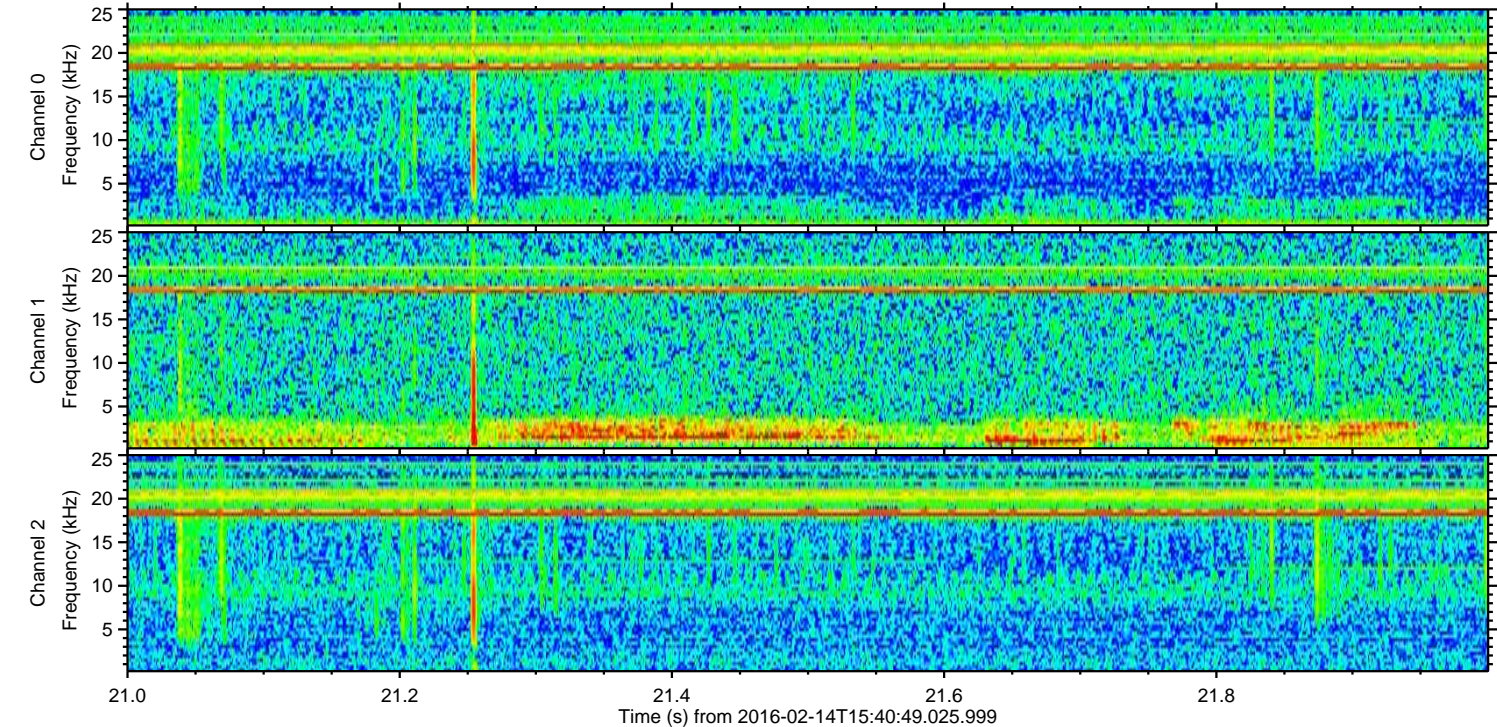
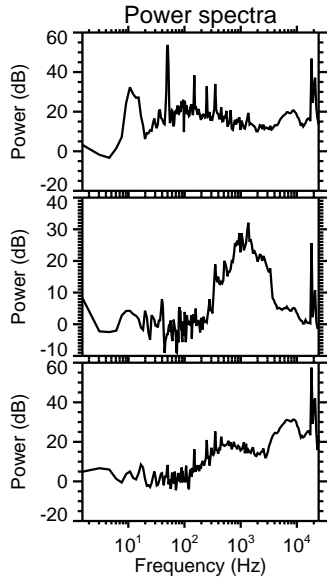
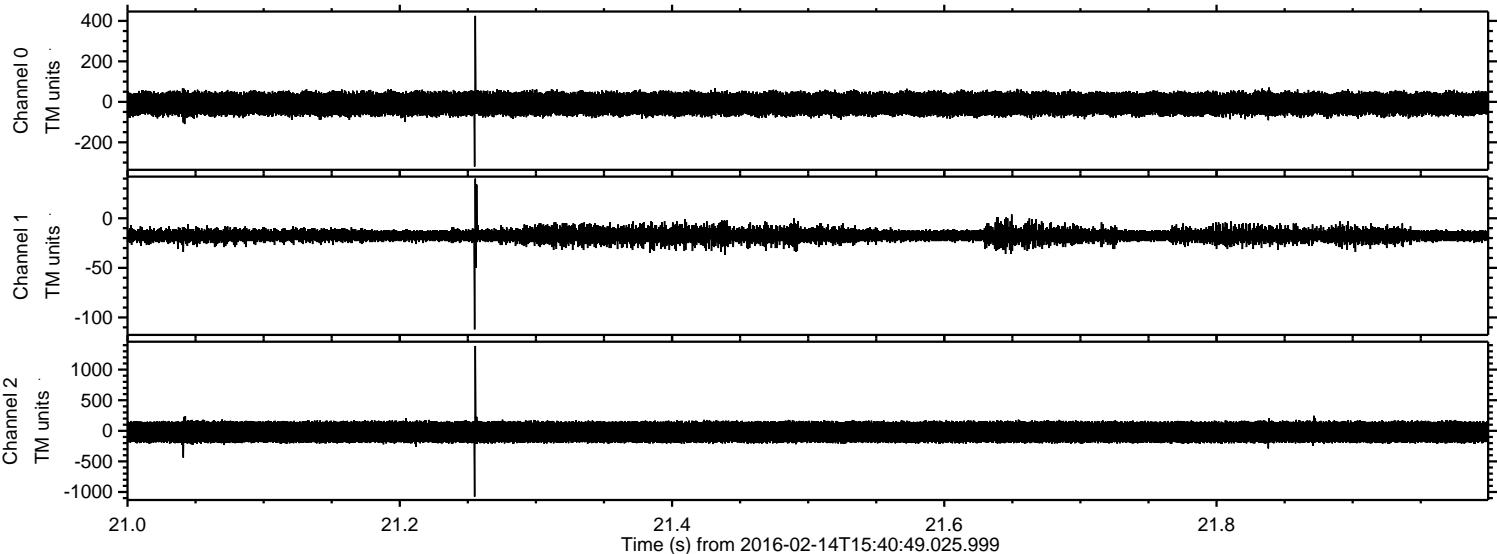
Processed Sun Apr 10 19:17:22 2016 by ELM ver.2012-10-06 from 001__elm20160214_154048__dat00.bin



Processed Sun Apr 10 19:17:23 2016 by ELM ver.2012-10-06 from 001__elm20160214_154048__dat00.bin

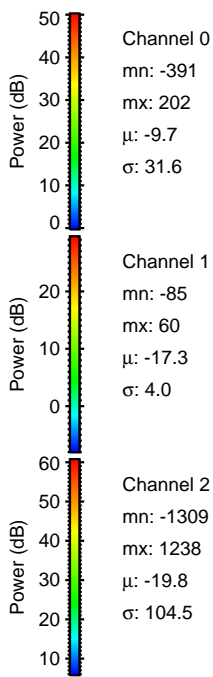
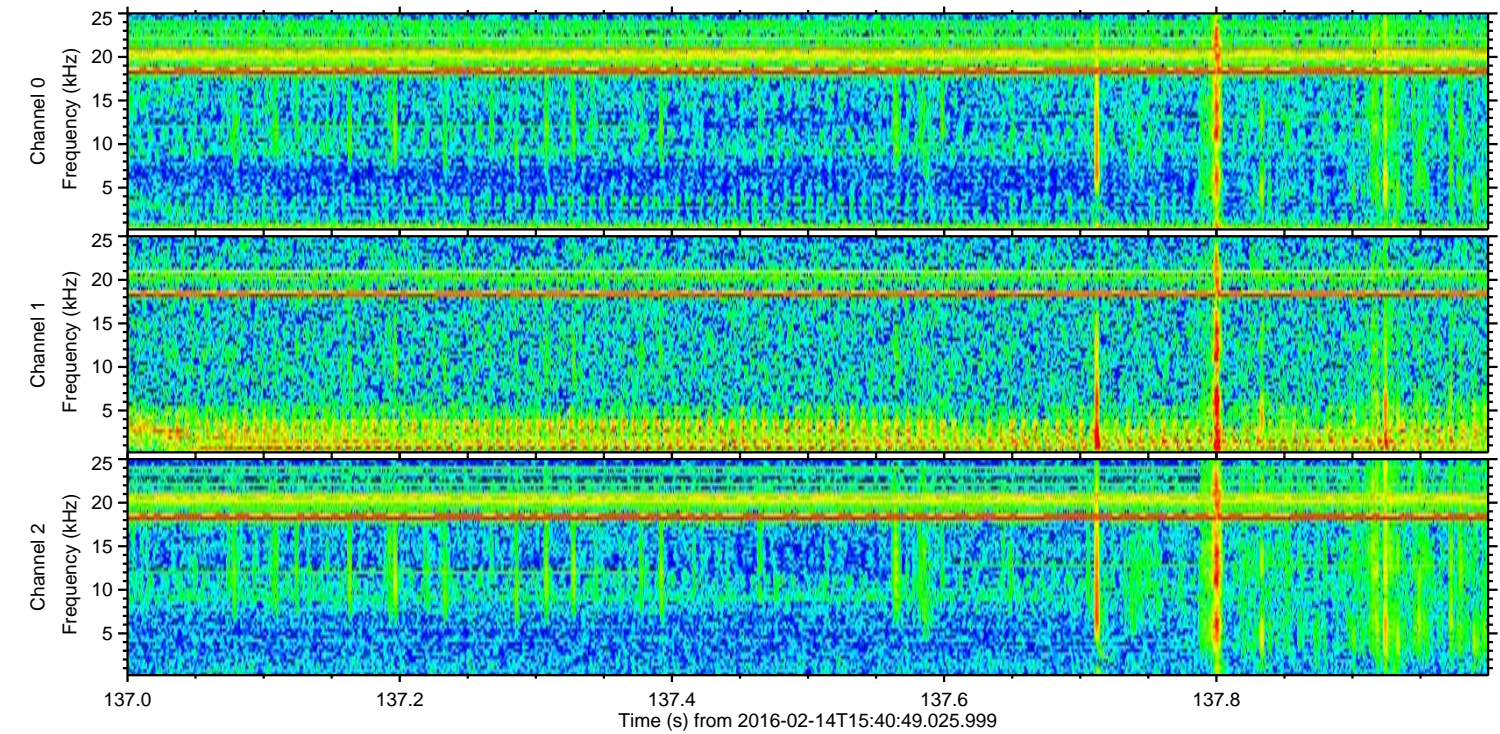
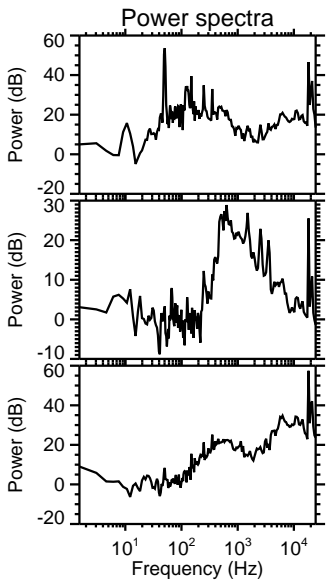
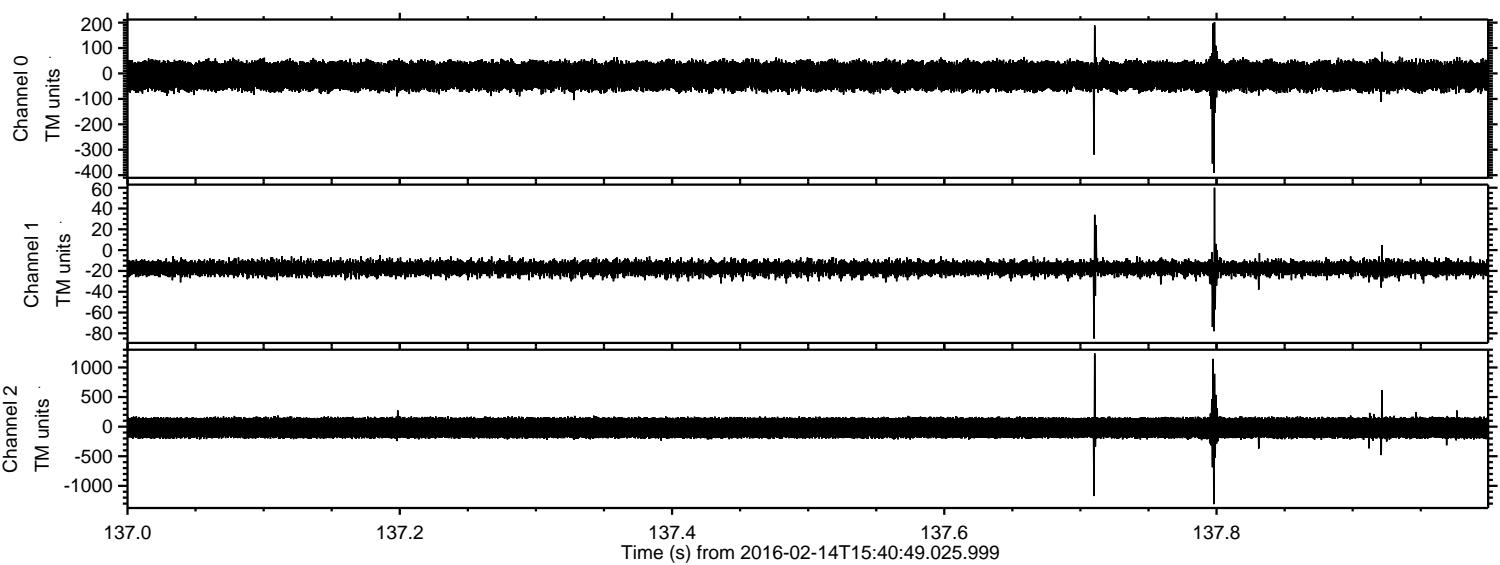


Processed Sun Apr 10 19:17:24 2016 by ELM ver.2012-10-06 from 001__elm20160214_154048__dat00.bin

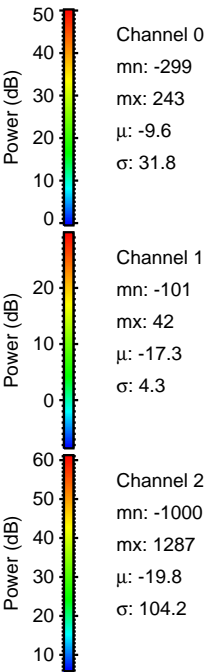
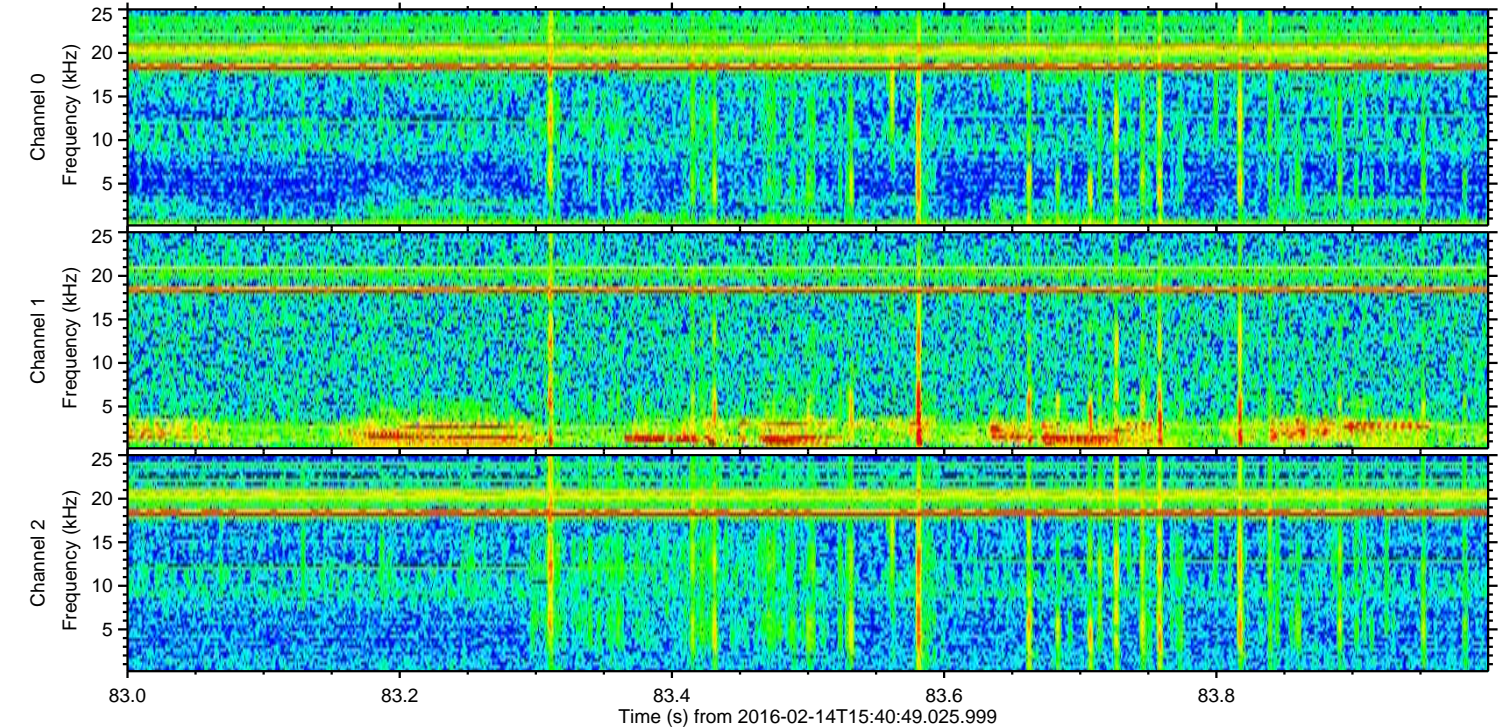
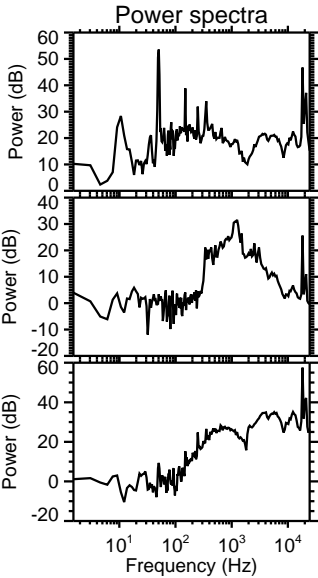
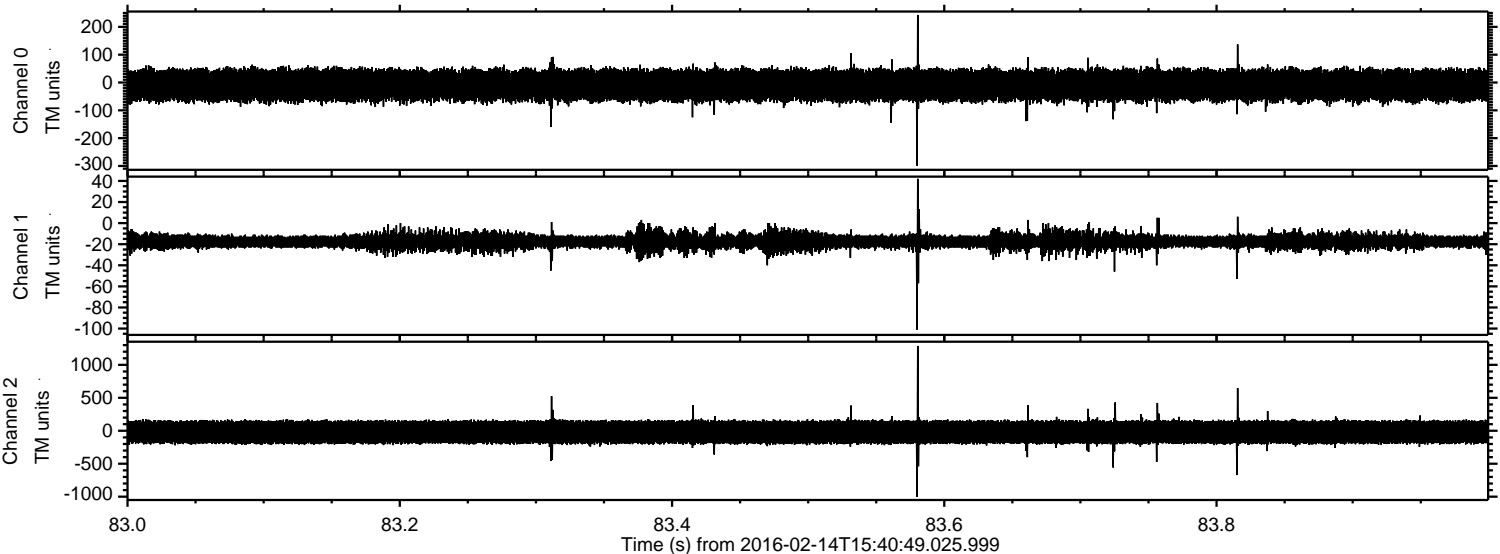


ELMAVAN 3D WAVEFORMS (Measured data sampled at 50 kHz) 51000 packets of 144 samples from 2016-02-14T15:40:49.025.999. Part 138/147

Processed Sun Apr 10 19:17:25 2016 by ELM ver.2012-10-06 from 001__elm20160214_154048__dat00.bin

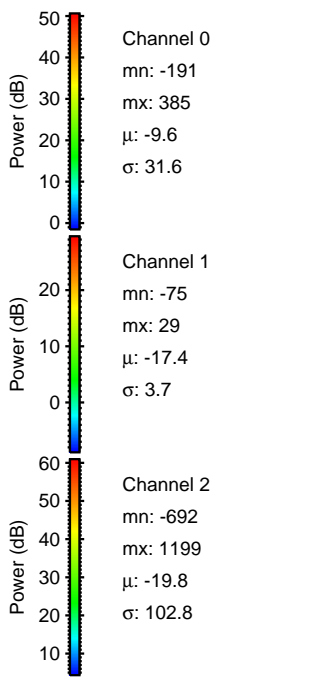
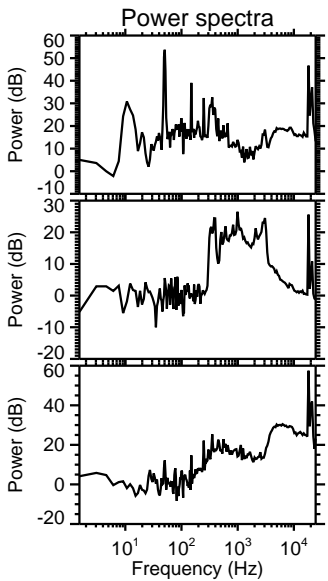
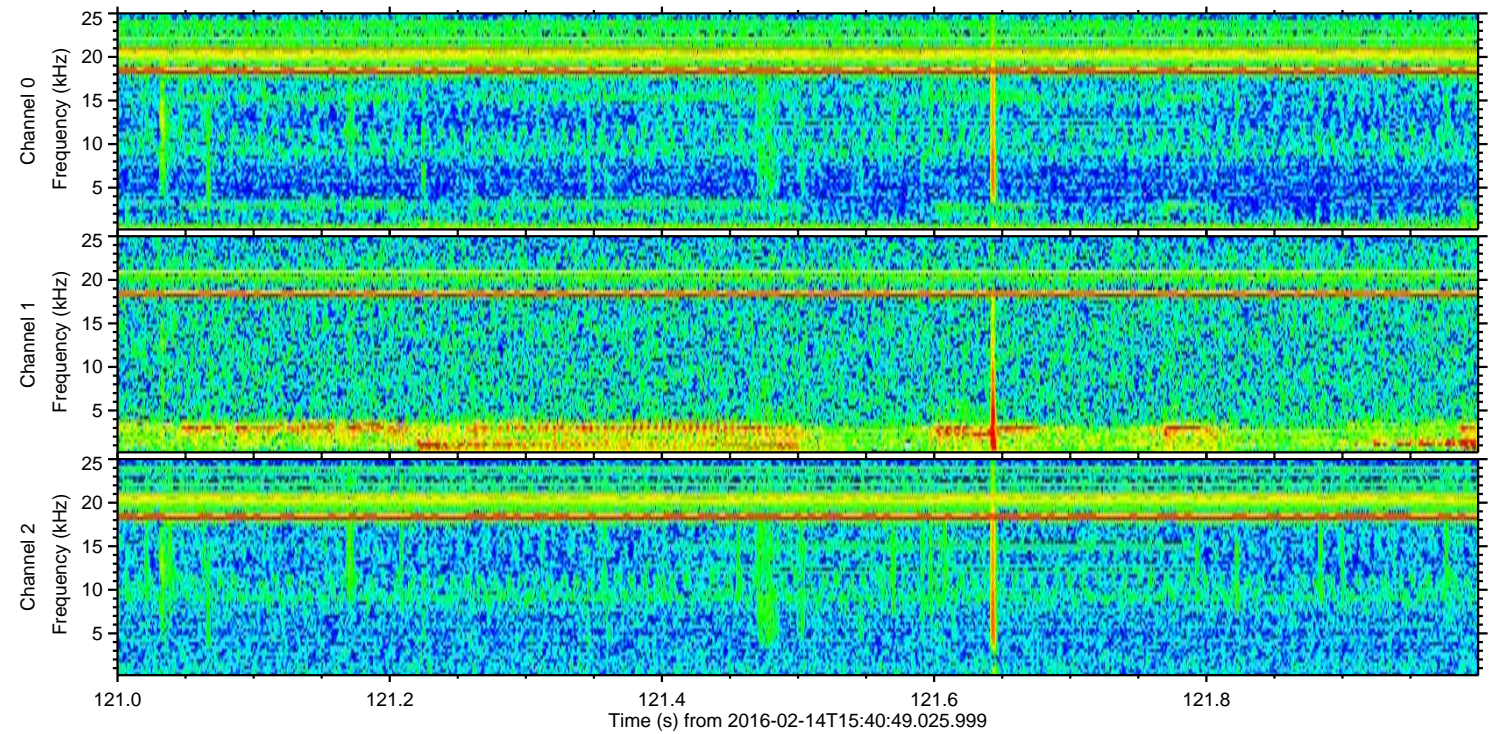
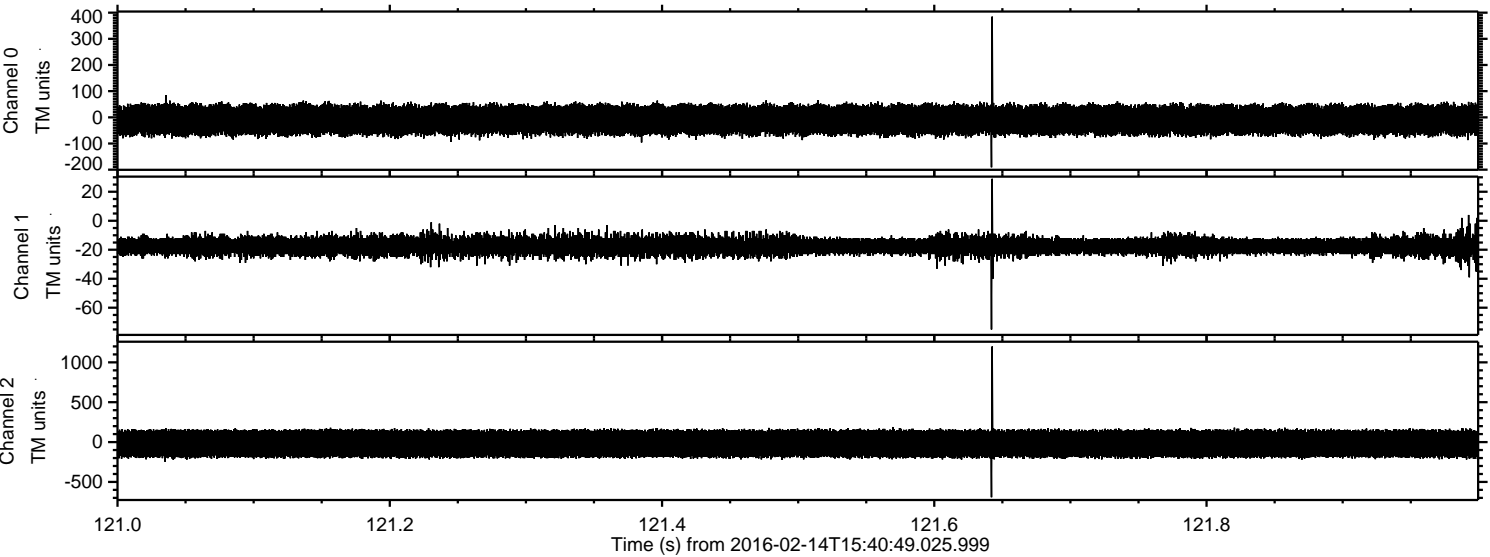


Processed Sun Apr 10 19:17:26 2016 by ELM ver.2012-10-06 from 001__elm20160214_154048__dat00.bin

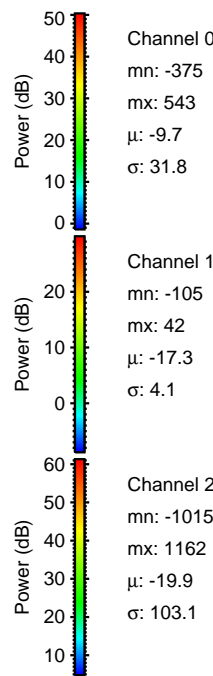
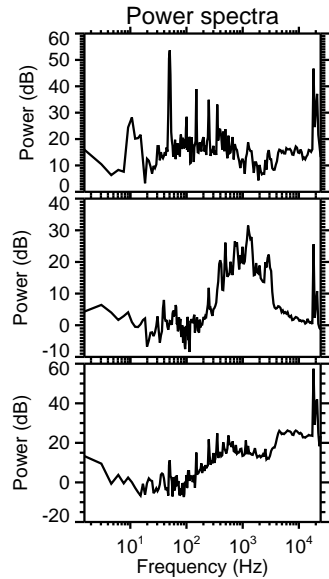
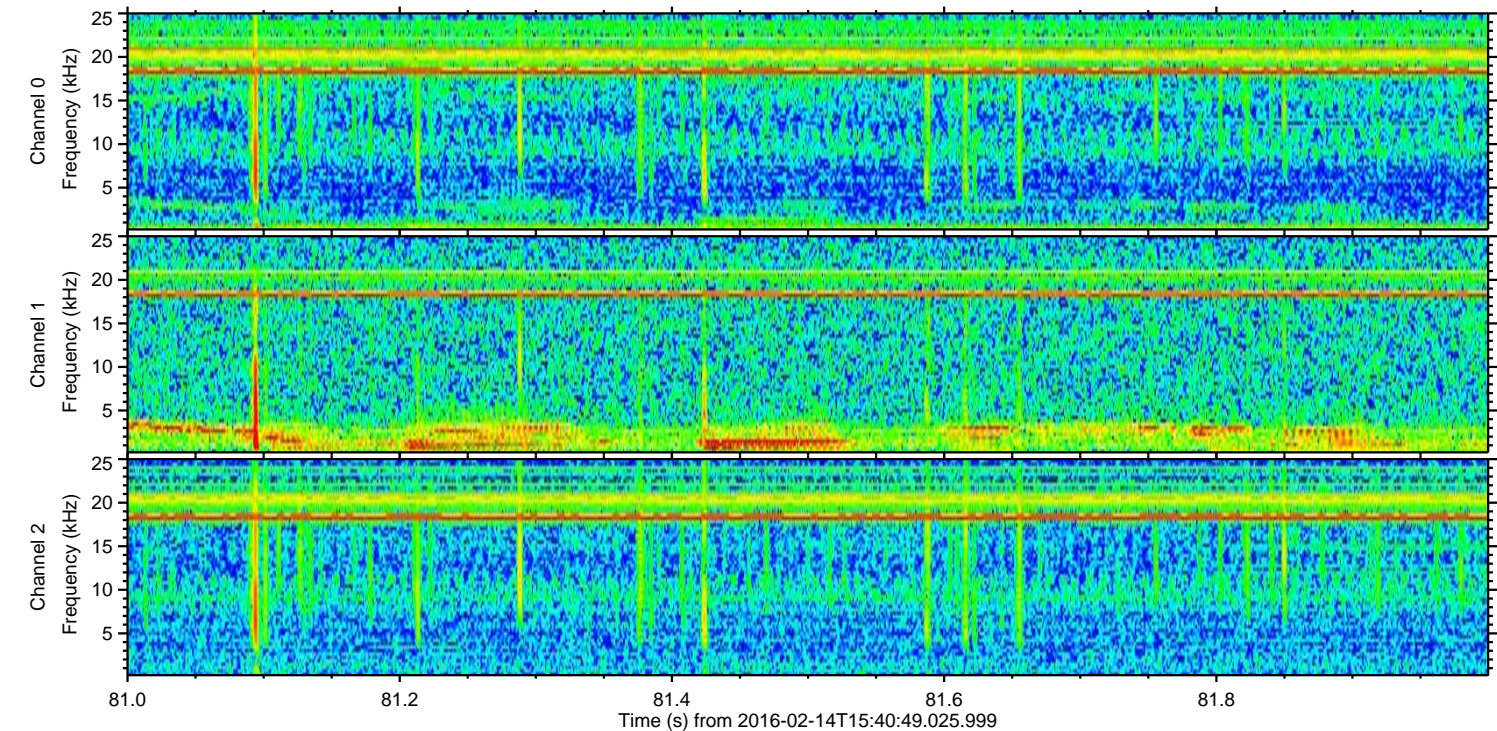
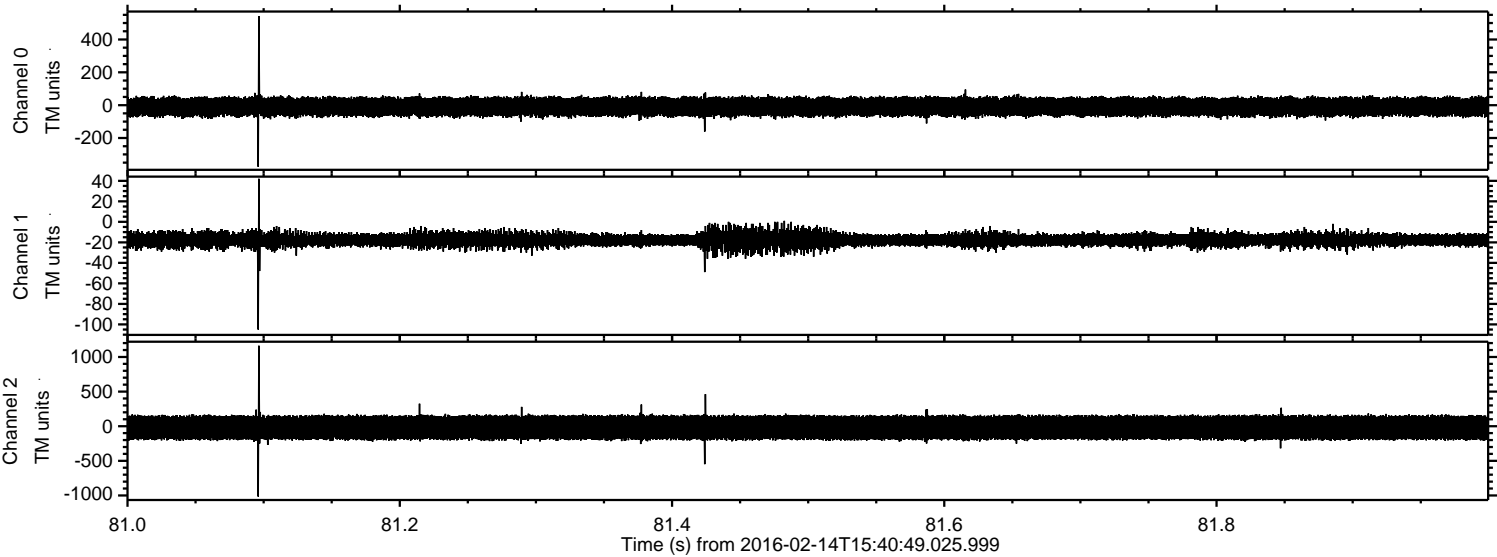


ELMAVAN 3D WAVEFORMS (Measured data sampled at 50 kHz) 51000 packets of 144 samples from 2016-02-14T15:40:49.025.999. Part 122/147

Processed Sun Apr 10 19:17:27 2016 by ELM ver.2012-10-06 from 001__elm20160214_154048__dat00.bin



Processed Sun Apr 10 19:17:28 2016 by ELM ver.2012-10-06 from 001__elm20160214_154048__dat00.bin



Channel 0
mn: -375
mx: 543
 μ : -9.7
 σ : 31.8

Channel 1
mn: -105
mx: 42
 μ : -17.3
 σ : 4.1

Channel 2
mn: -1015
mx: 1162
 μ : -19.9
 σ : 103.1

Processed Sun Apr 10 19:17:29 2016 by ELM ver.2012-10-06 from 001__elm20160214_154048__dat00.bin

