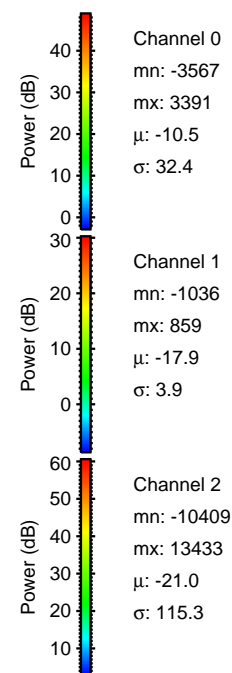
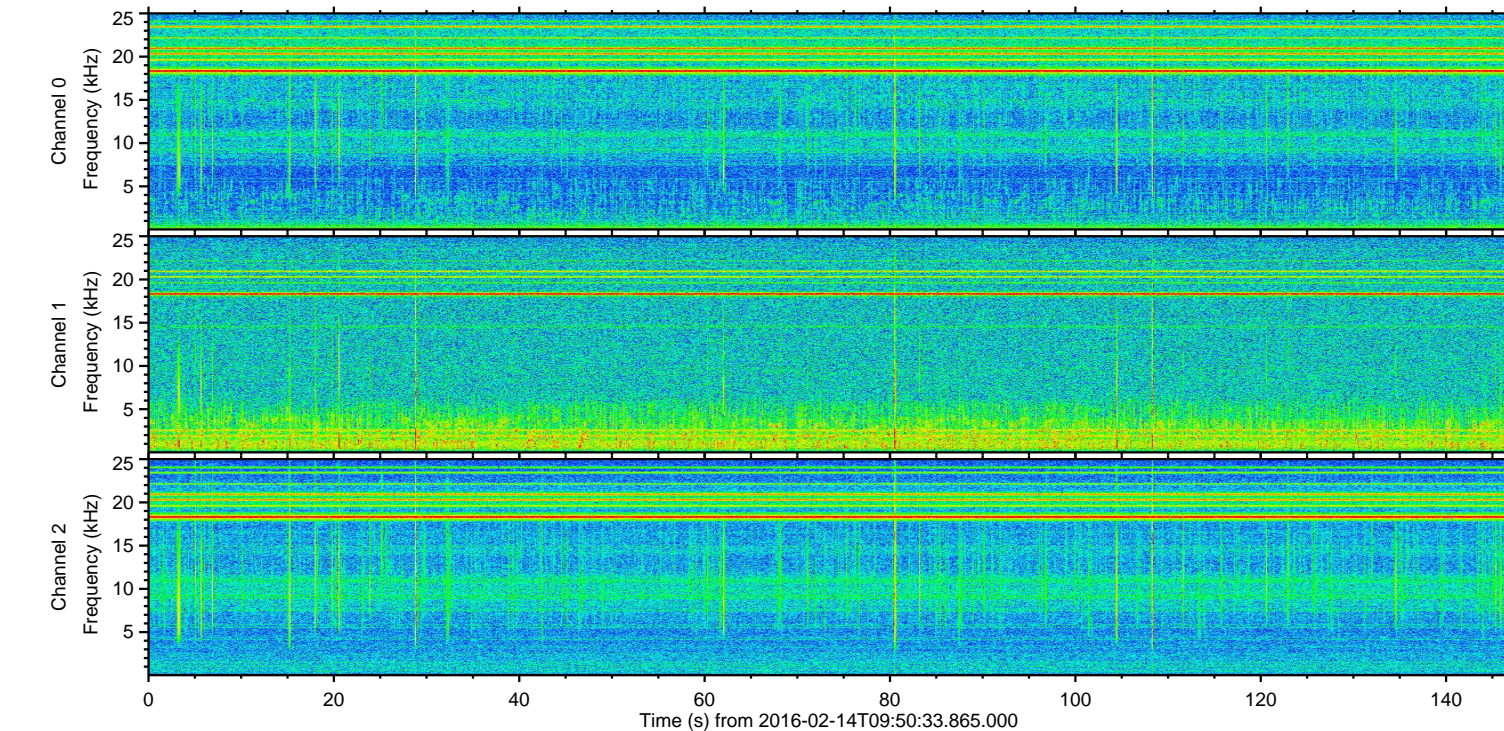
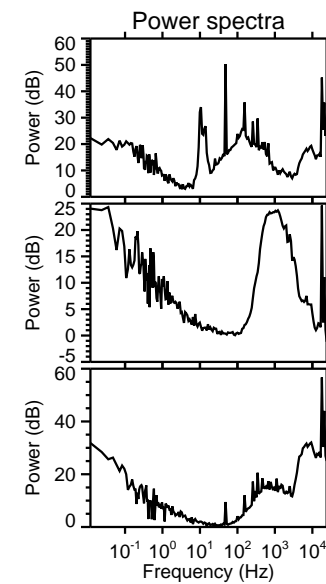
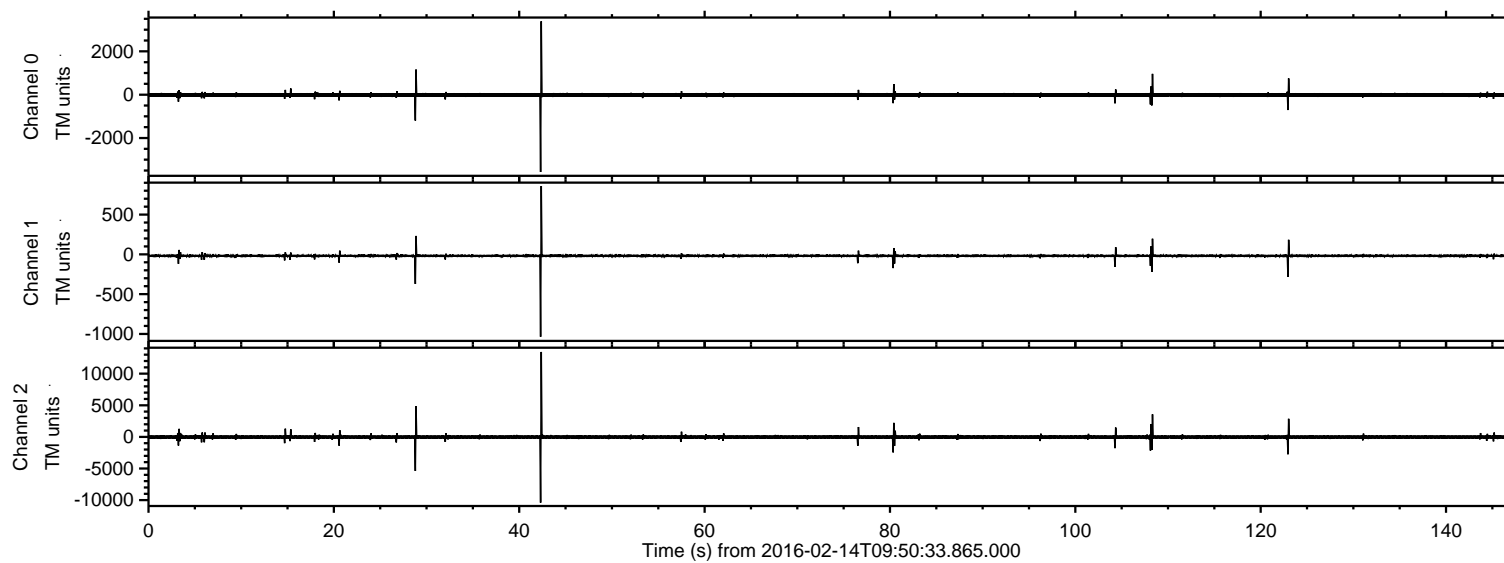
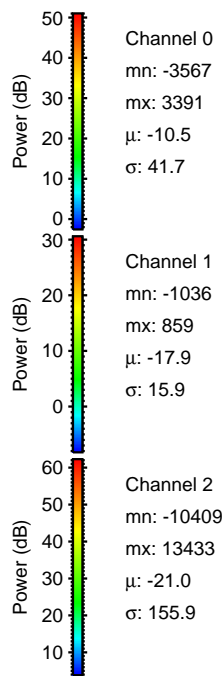
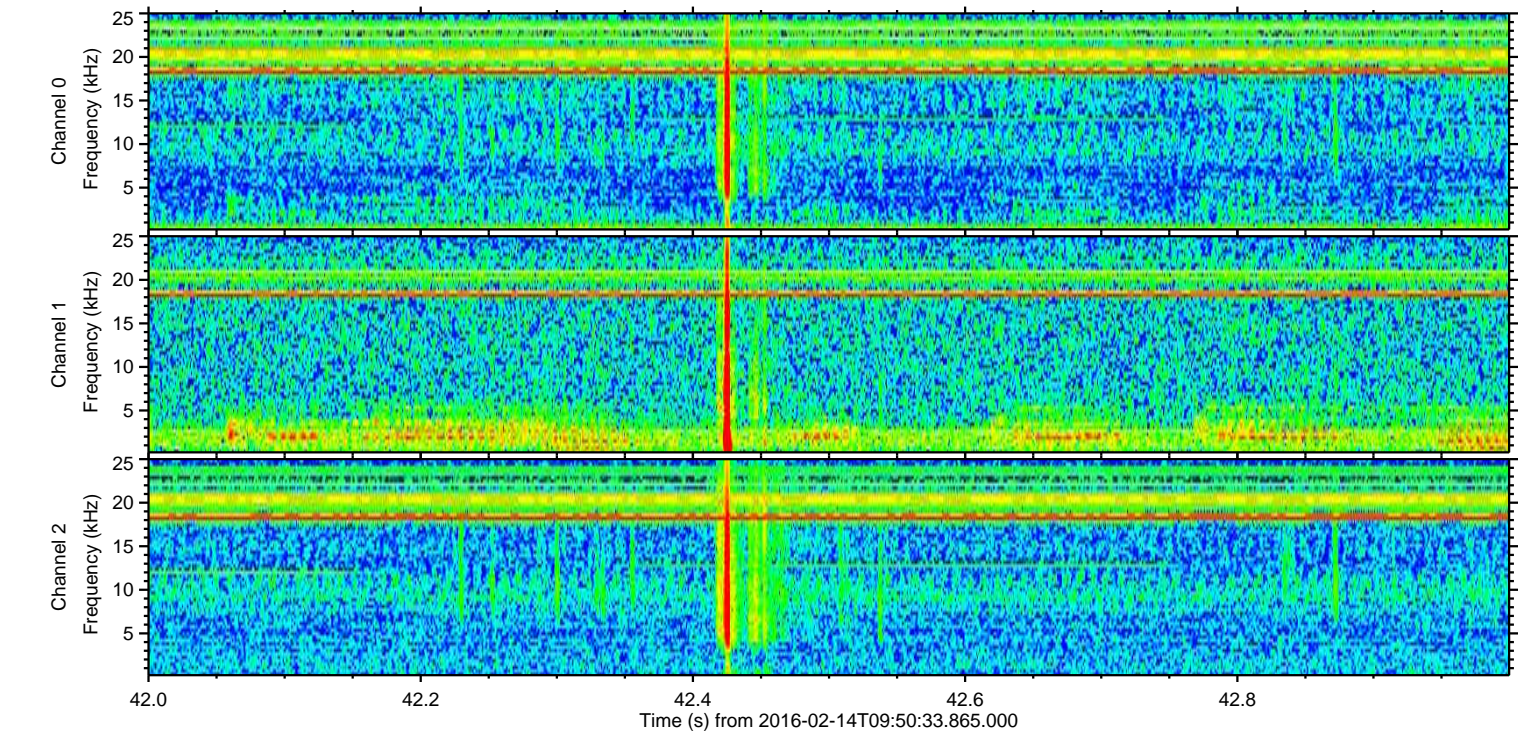
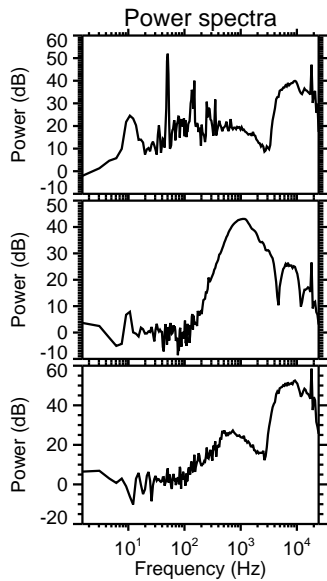
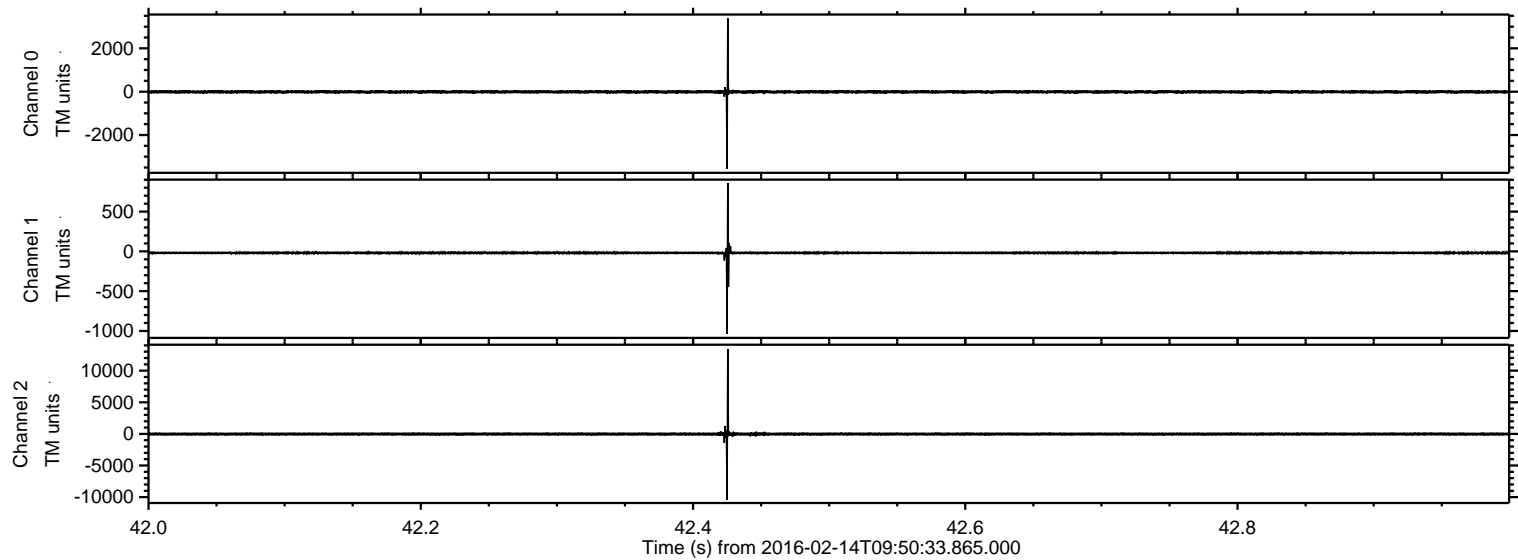


ELMAVAN 3D WAVEFORMS (Measured data sampled at 50 kHz) 51000 packets of 144 samples from 2016-02-14T09:50:33.865.000.

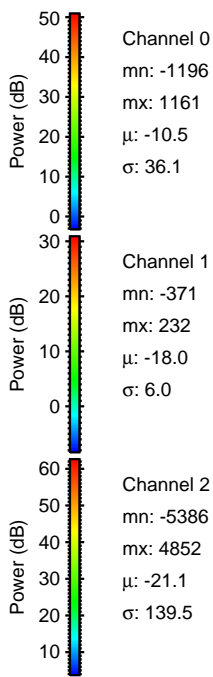
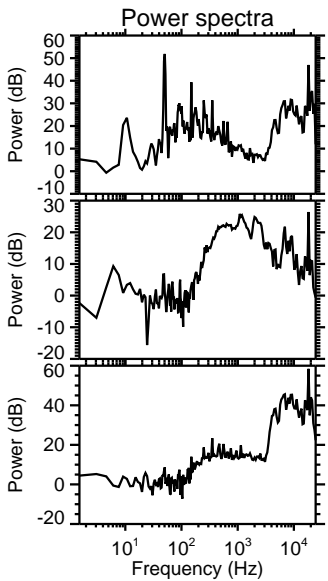
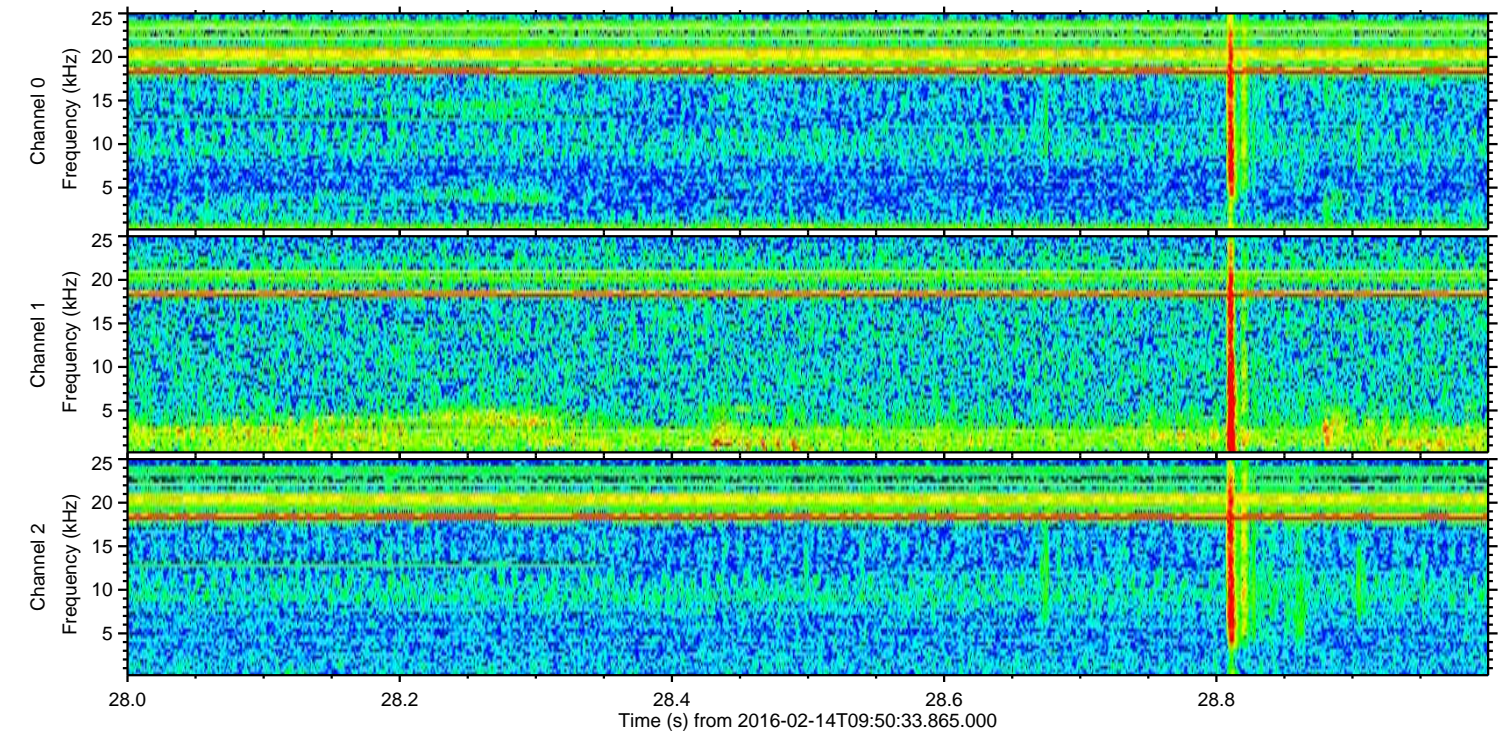
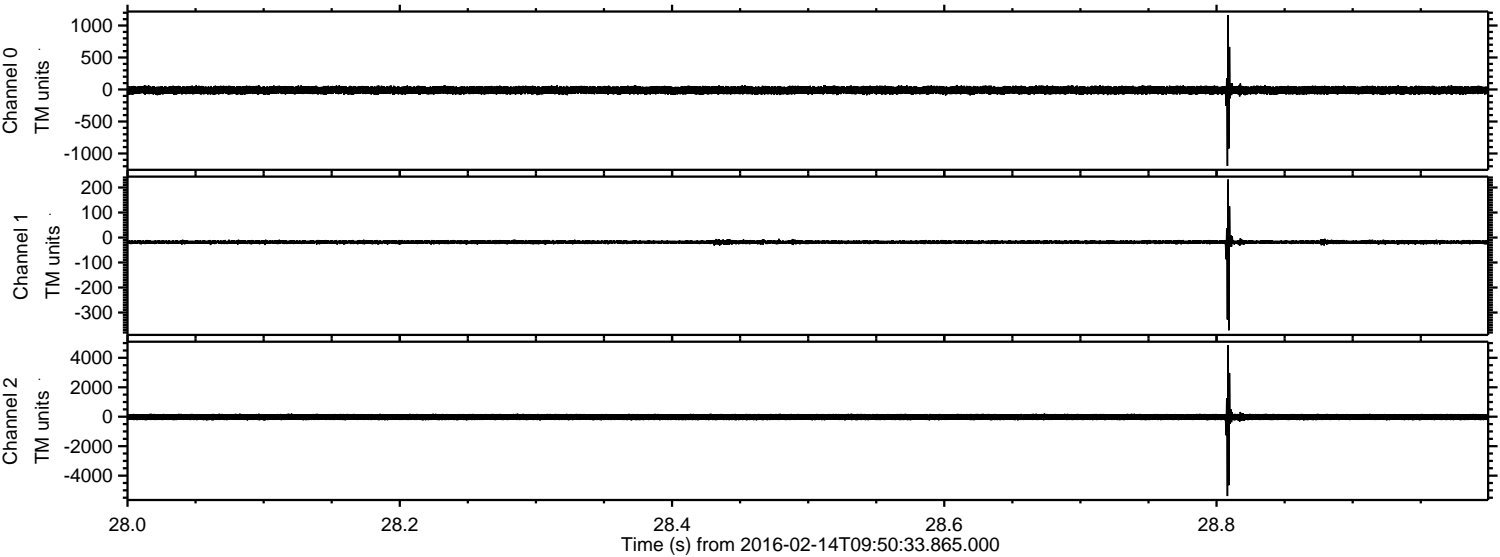
Processed Sun Apr 10 18:05:44 2016 by ELM ver.2012-10-06 from 001__elm20160214_095032__dat00.bin



Processed Sun Apr 10 18:05:56 2016 by ELM ver.2012-10-06 from 001__elm20160214_095032__dat00.bin

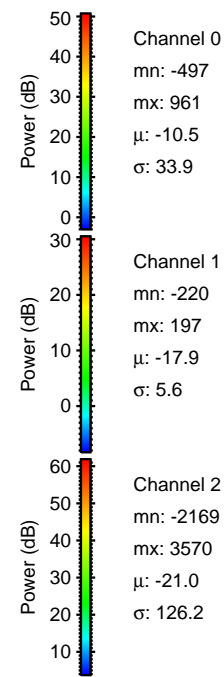
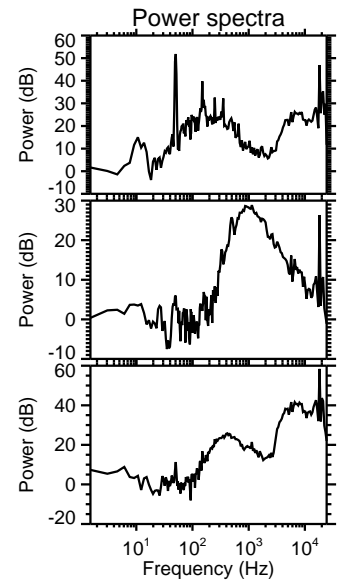
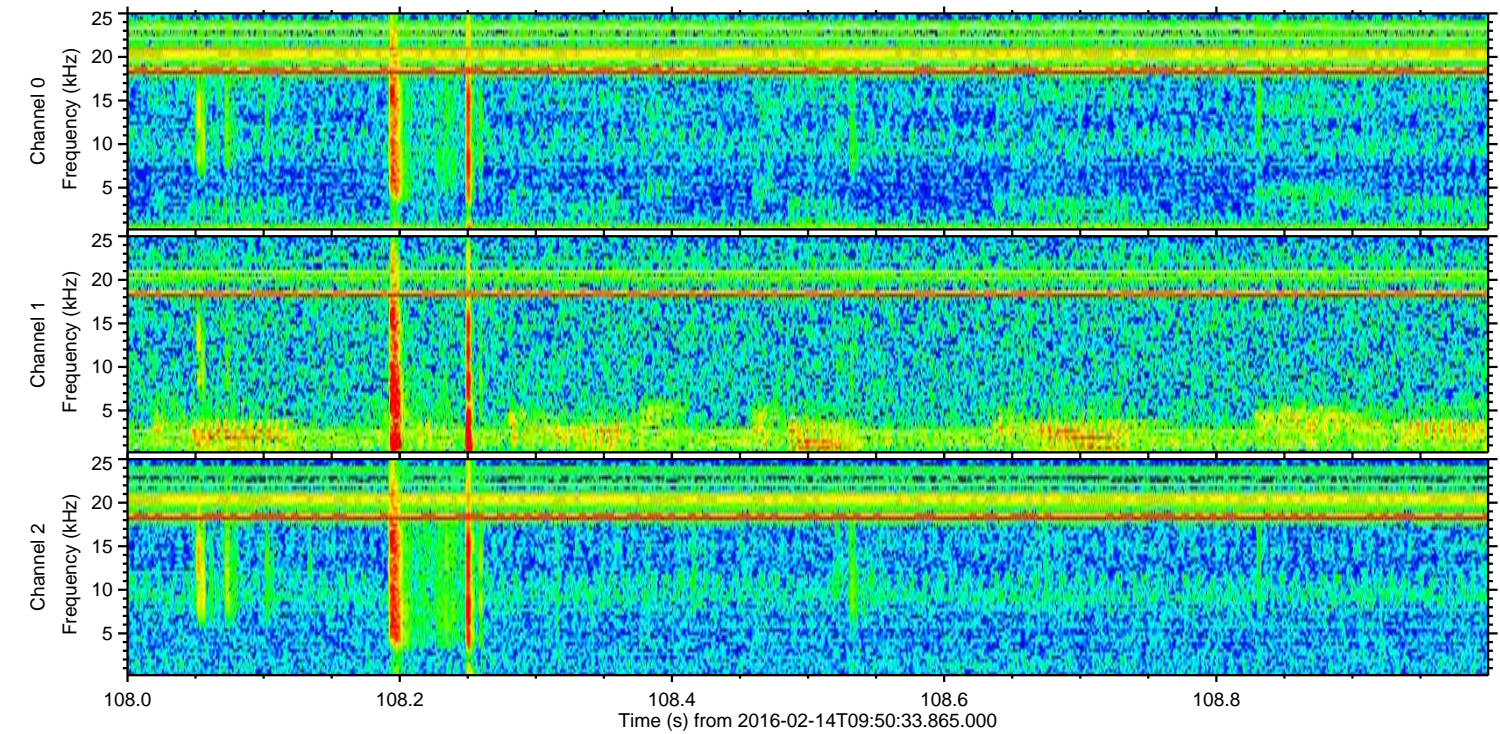
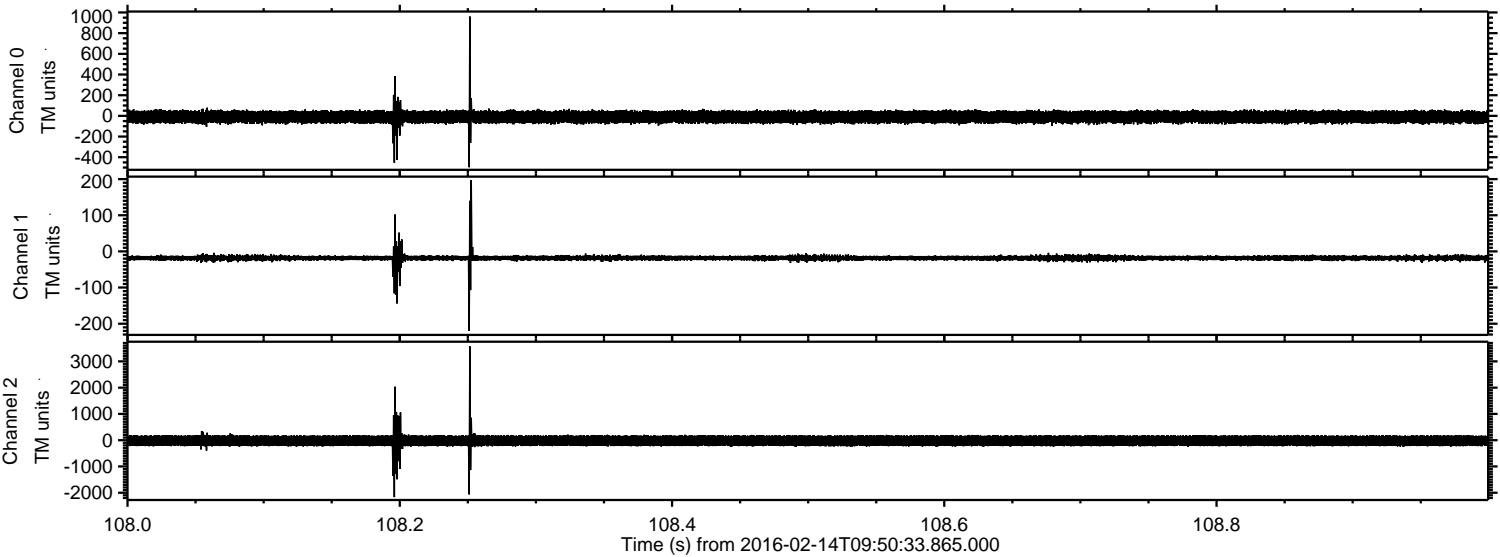


Processed Sun Apr 10 18:05:57 2016 by ELM ver.2012-10-06 from 001__elm20160214_095032__dat00.bin



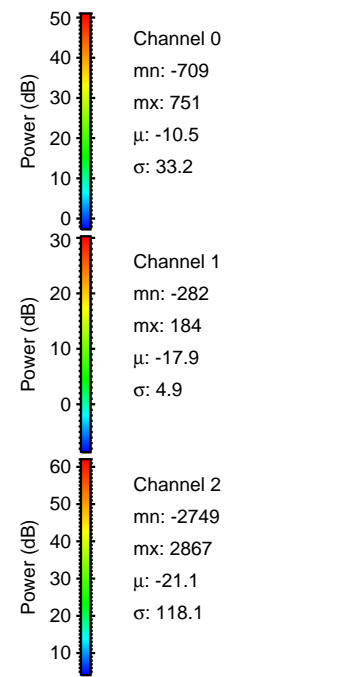
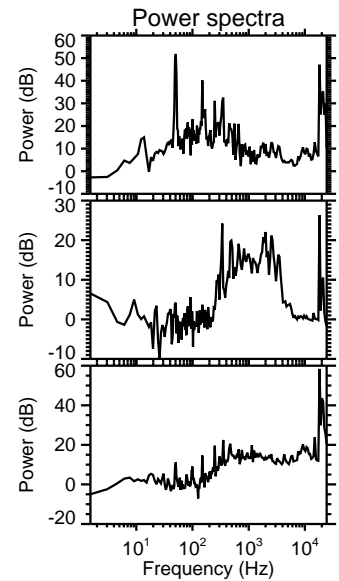
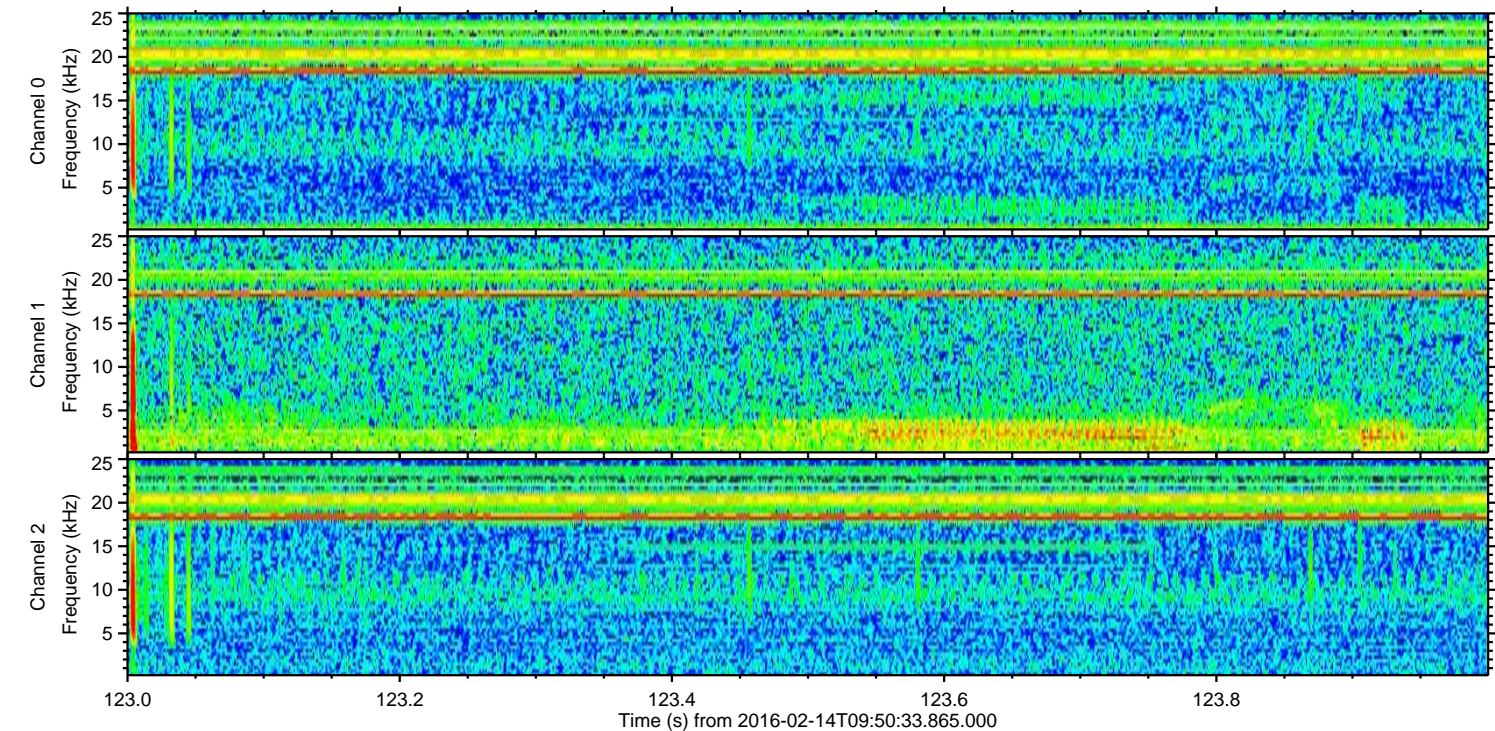
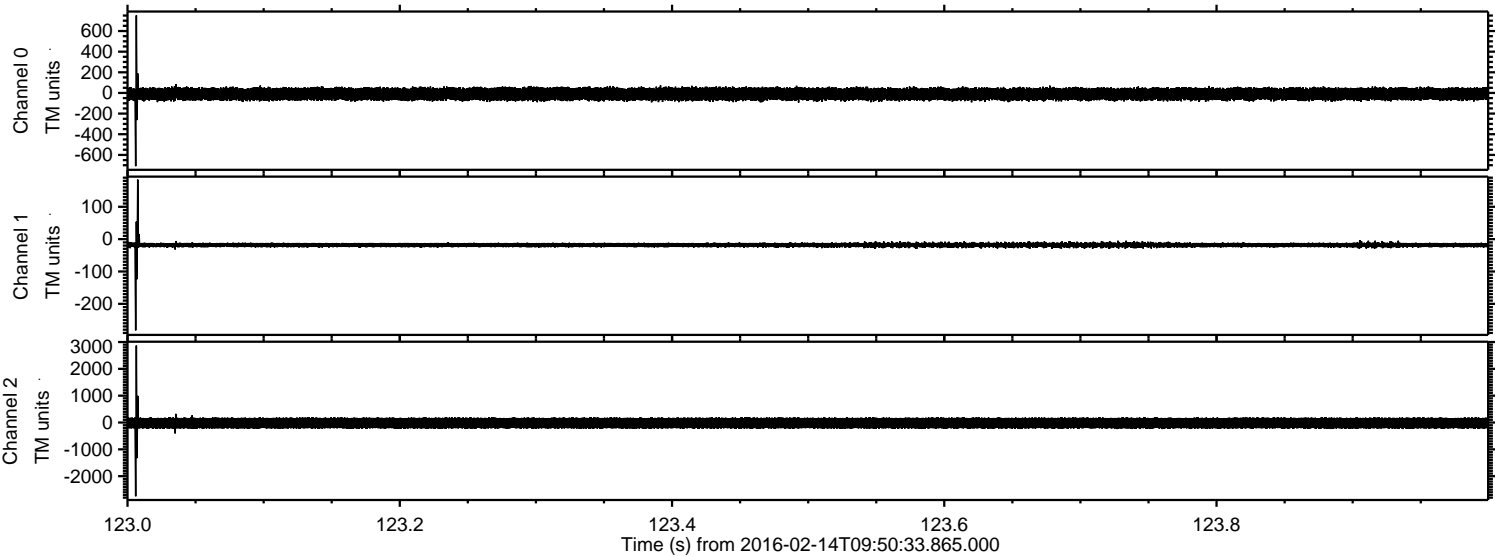
ELMAVAN 3D WAVEFORMS (Measured data sampled at 50 kHz) 51000 packets of 144 samples from 2016-02-14T09:50:33.865.000. Part 109/147

Processed Sun Apr 10 18:05:58 2016 by ELM ver.2012-10-06 from 001__elm20160214_095032__dat00.bin

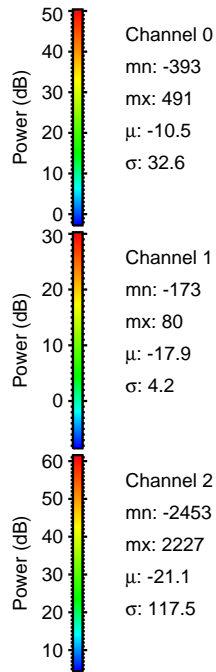
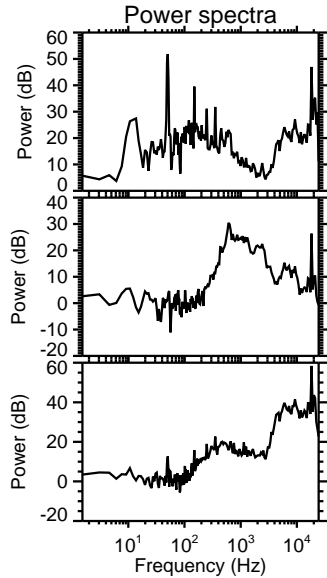
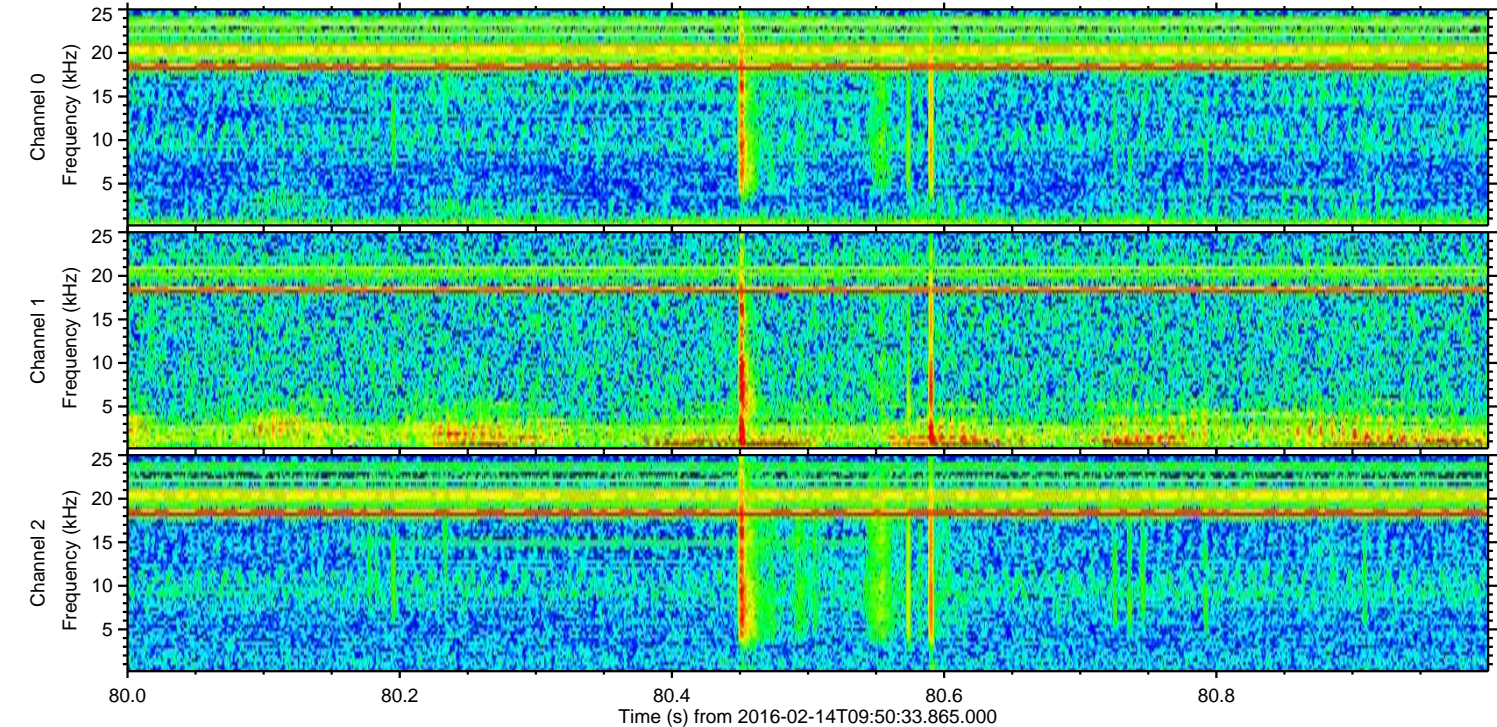
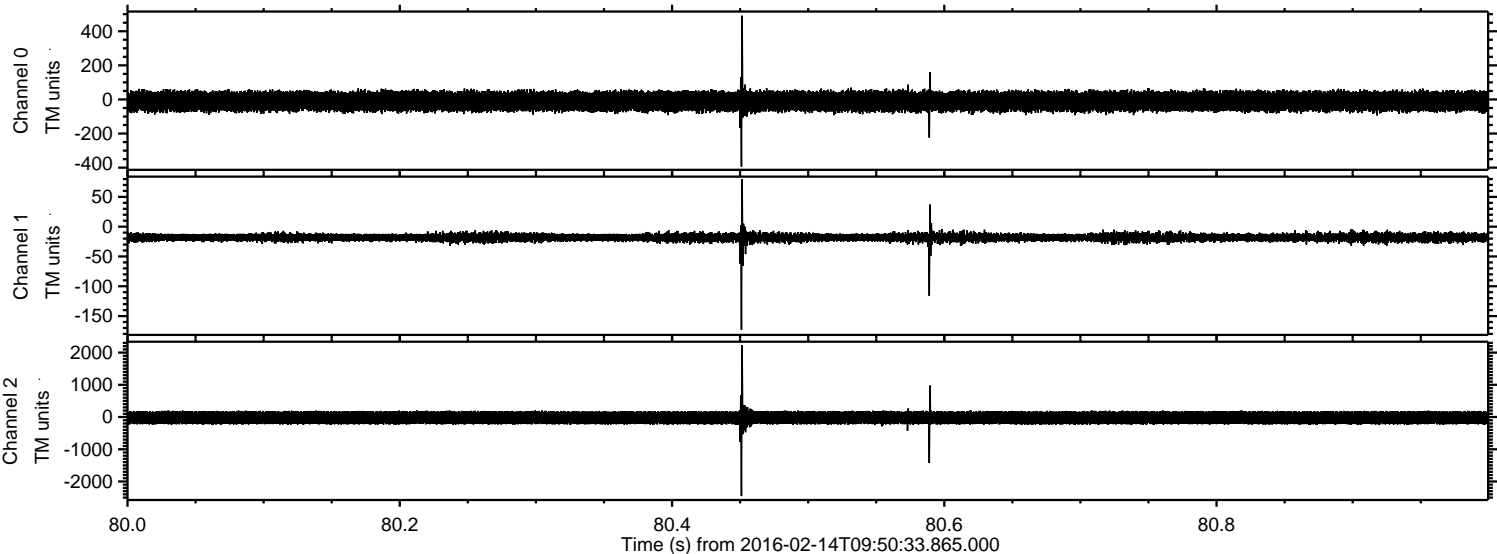


ELMAVAN 3D WAVEFORMS (Measured data sampled at 50 kHz) 51000 packets of 144 samples from 2016-02-14T09:50:33.865.000. Part 124/147

Processed Sun Apr 10 18:05:59 2016 by ELM ver.2012-10-06 from 001__elm20160214_095032__dat00.bin

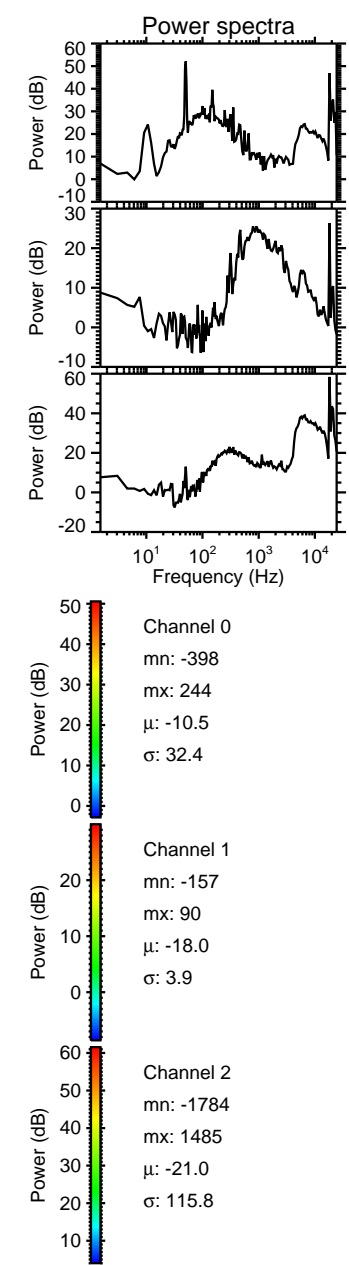
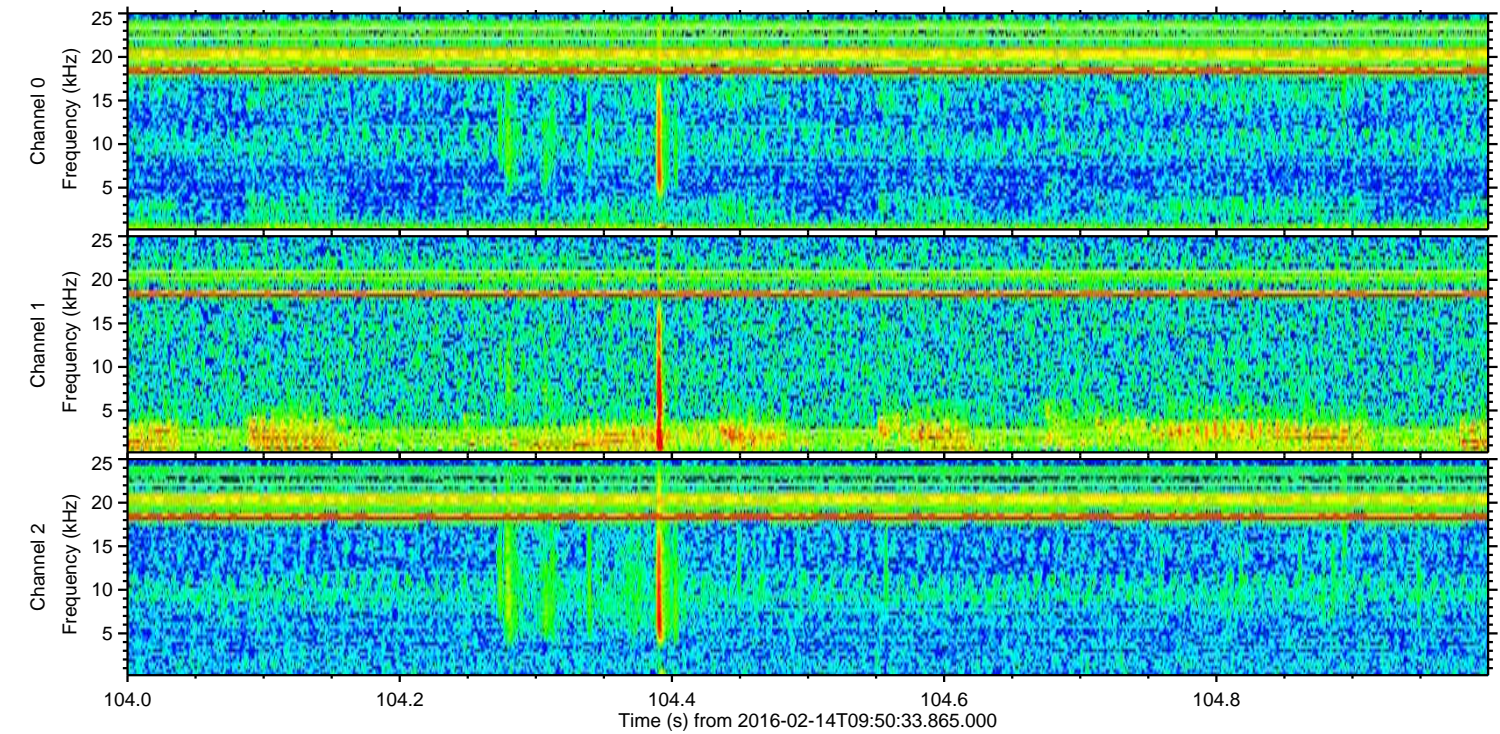
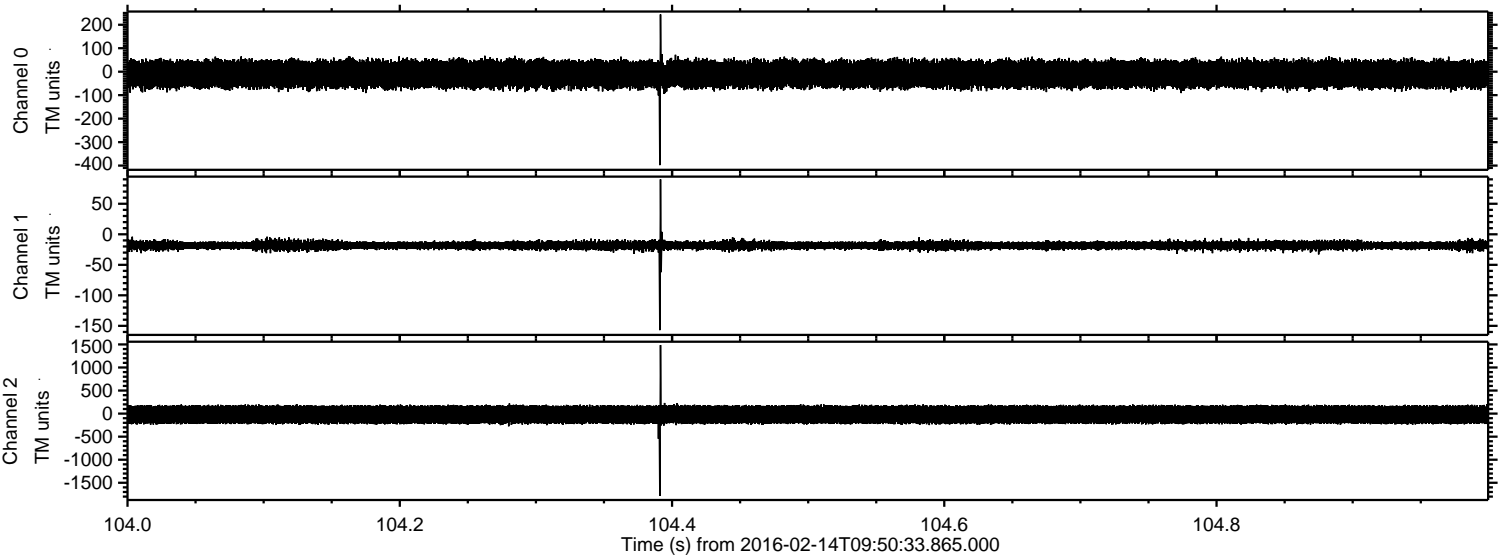


Processed Sun Apr 10 18:06:00 2016 by ELM ver.2012-10-06 from 001__elm20160214_095032__dat00.bin

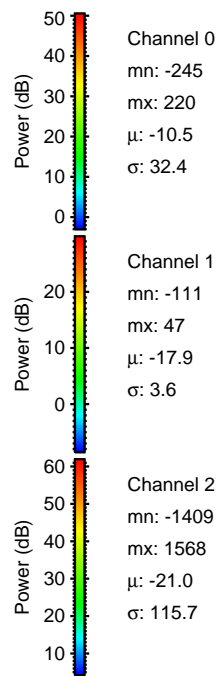
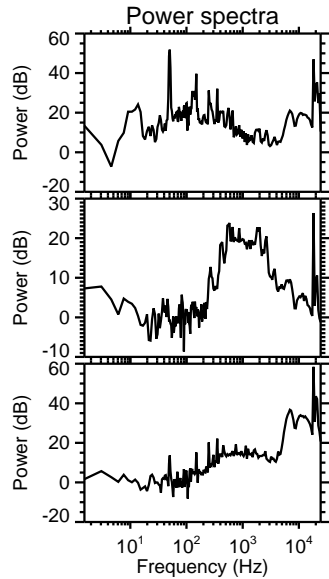
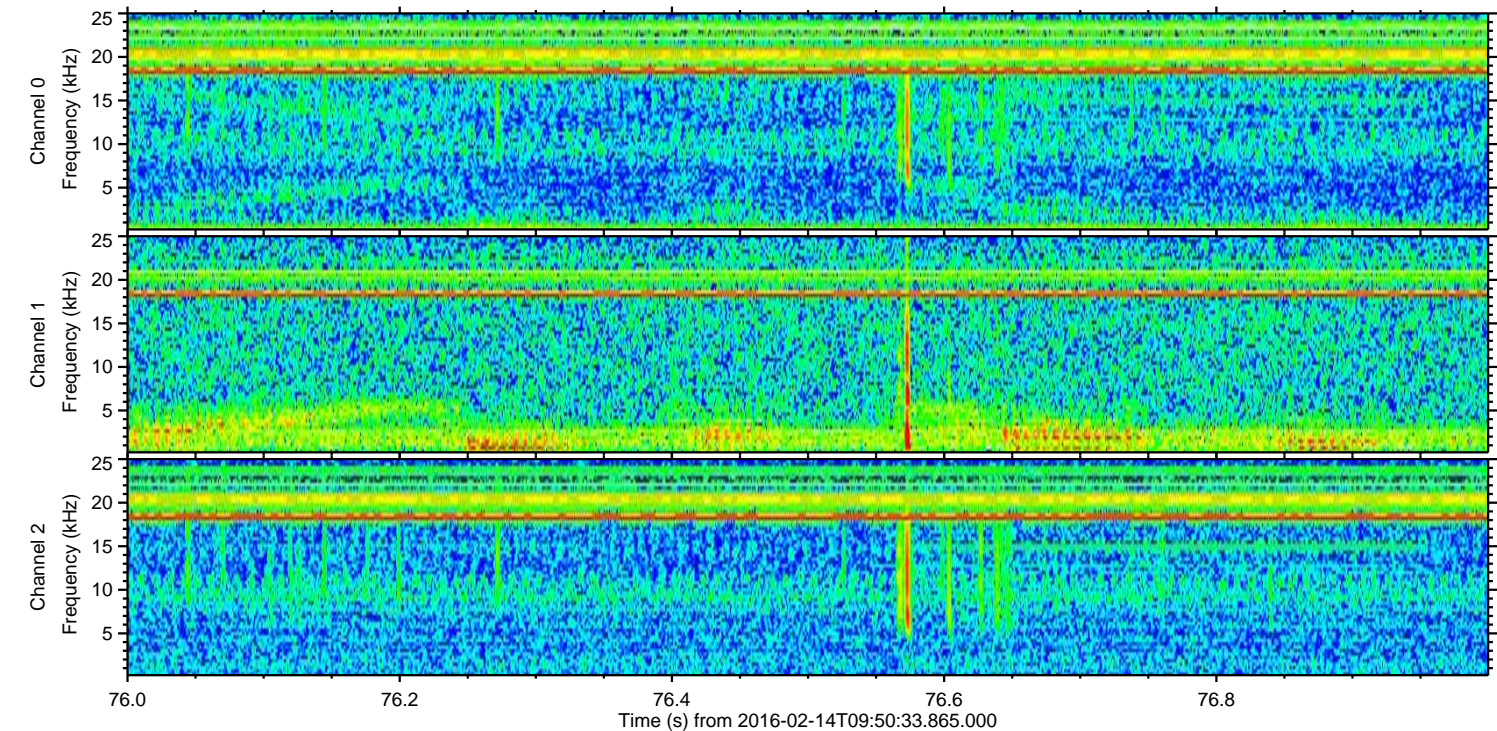
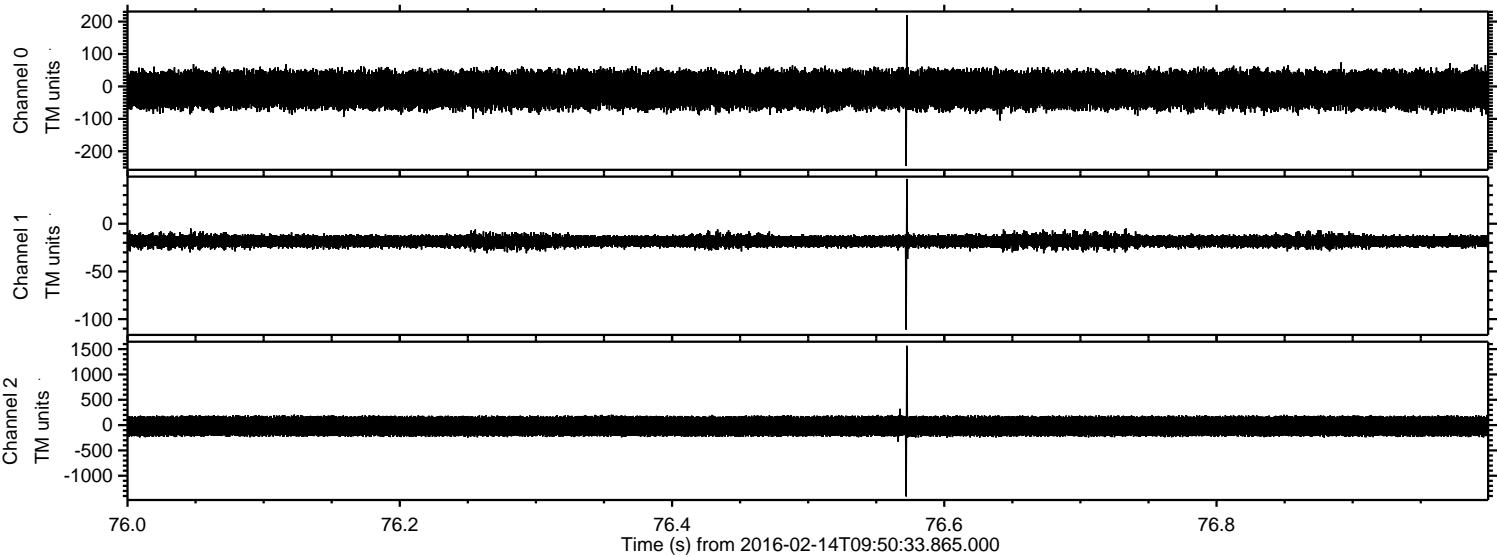


ELMAVAN 3D WAVEFORMS (Measured data sampled at 50 kHz) 51000 packets of 144 samples from 2016-02-14T09:50:33.865.000. Part 105/147

Processed Sun Apr 10 18:06:01 2016 by ELM ver.2012-10-06 from 001__elm20160214_095032__dat00.bin



Processed Sun Apr 10 18:06:02 2016 by ELM ver.2012-10-06 from 001__elm20160214_095032__dat00.bin



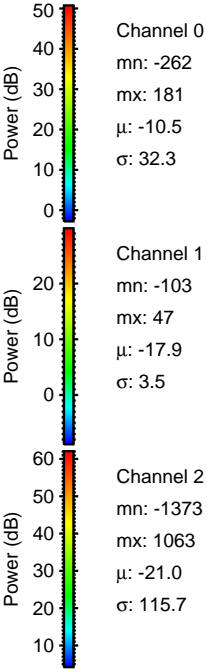
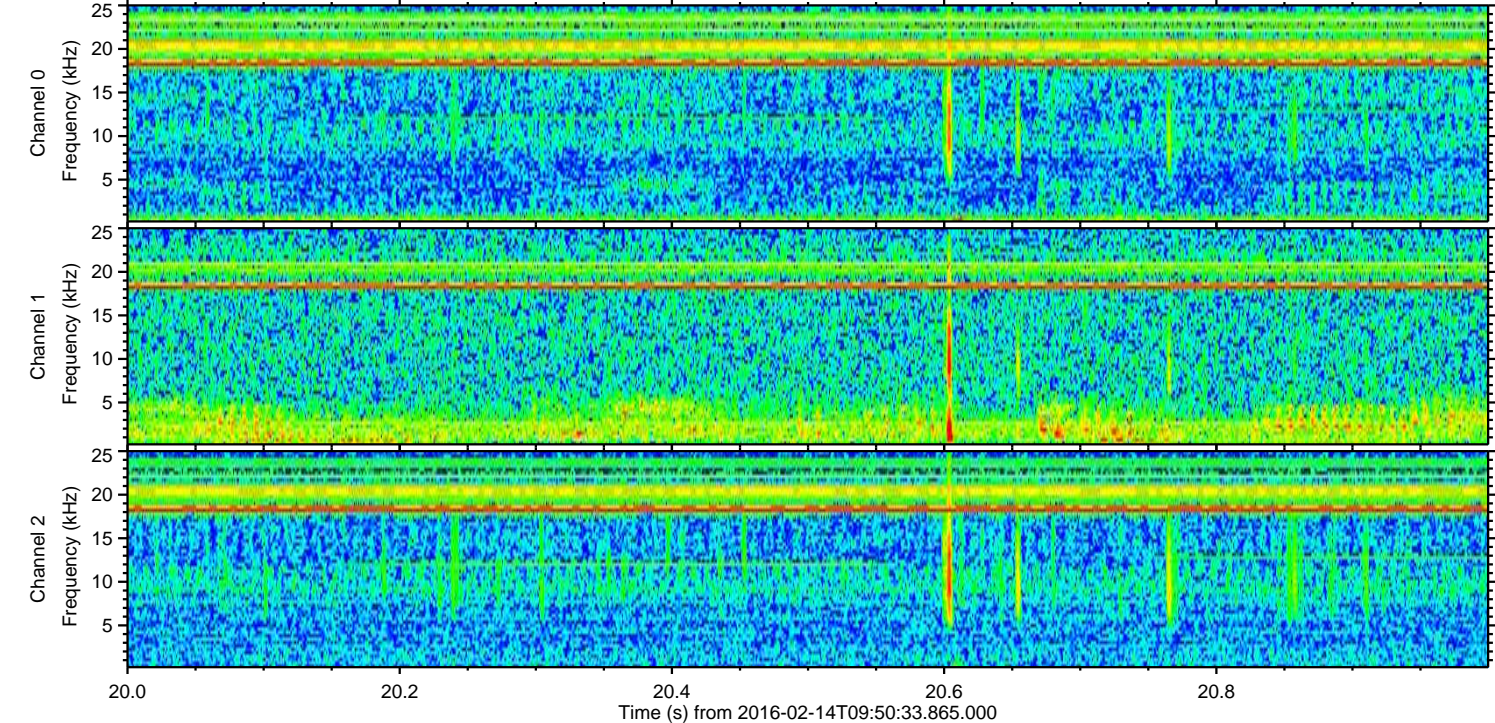
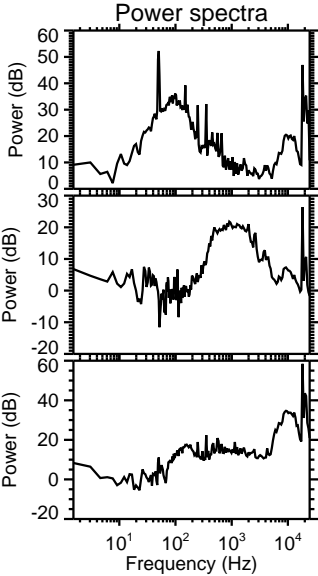
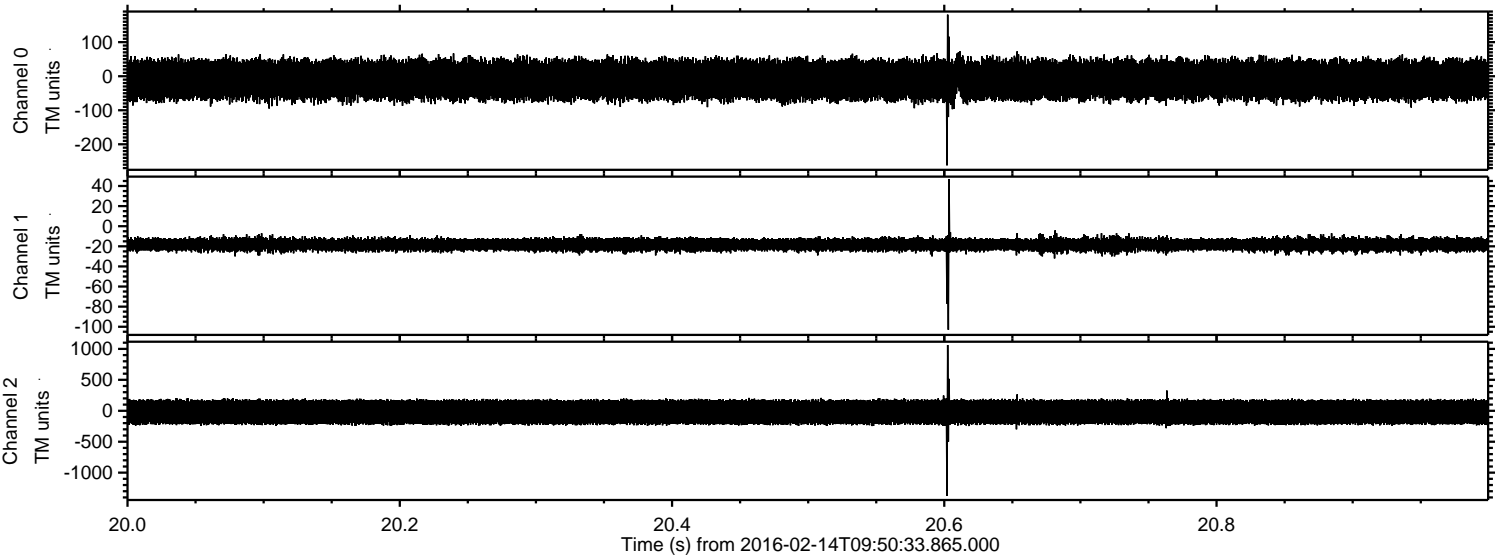
Power spectra

Channel 0
mn: -245
mx: 220
 μ : -10.5
 σ : 32.4

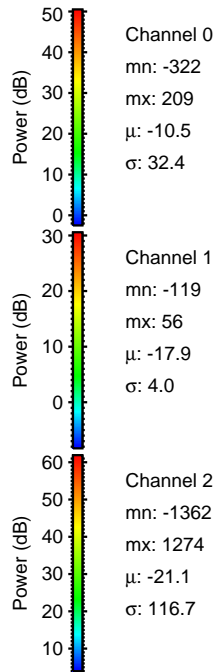
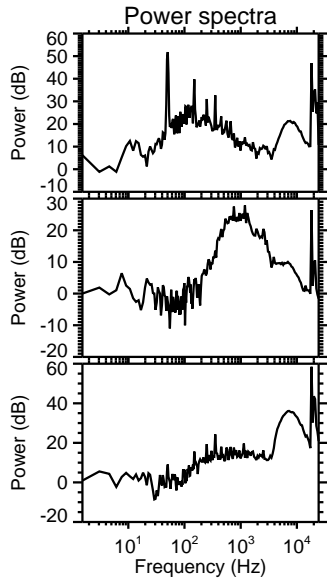
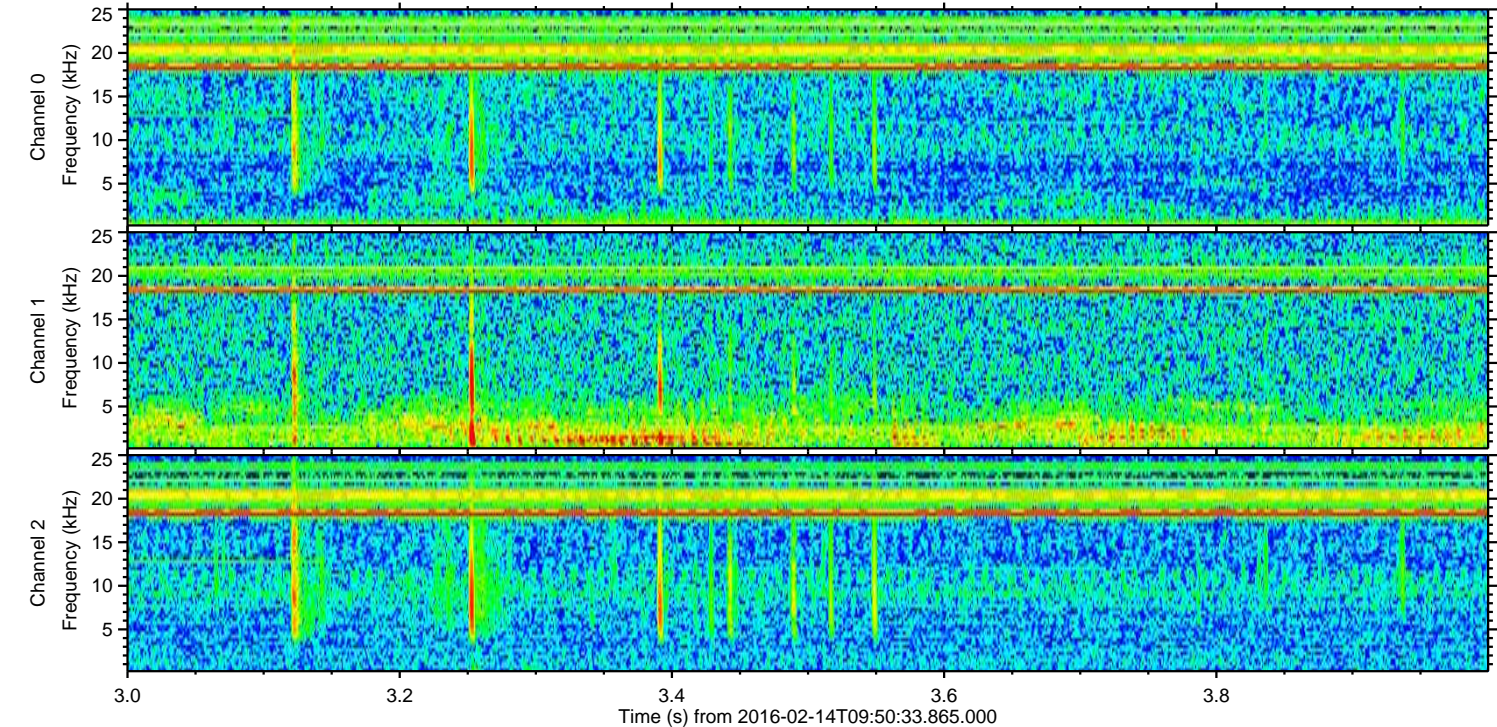
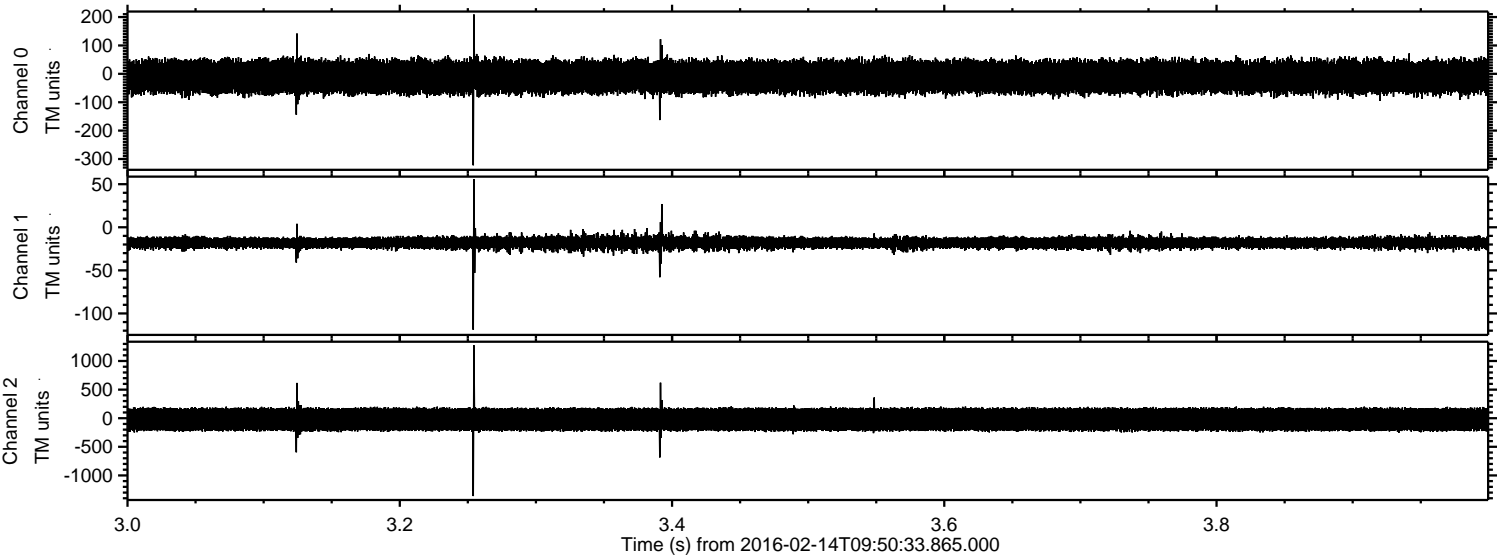
Channel 1
mn: -111
mx: 47
 μ : -17.9
 σ : 3.6

Channel 2
mn: -1409
mx: 1568
 μ : -21.0
 σ : 115.7

Processed Sun Apr 10 18:06:03 2016 by ELM ver.2012-10-06 from 001__elm20160214_095032__dat00.bin



Processed Sun Apr 10 18:06:04 2016 by ELM ver.2012-10-06 from 001__elm20160214_095032__dat00.bin



Processed Sun Apr 10 18:06:04 2016 by ELM ver.2012-10-06 from 001__elm20160214_095032__dat00.bin

