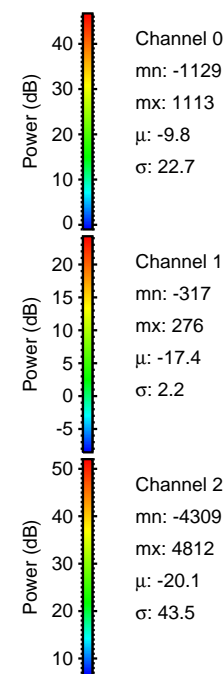
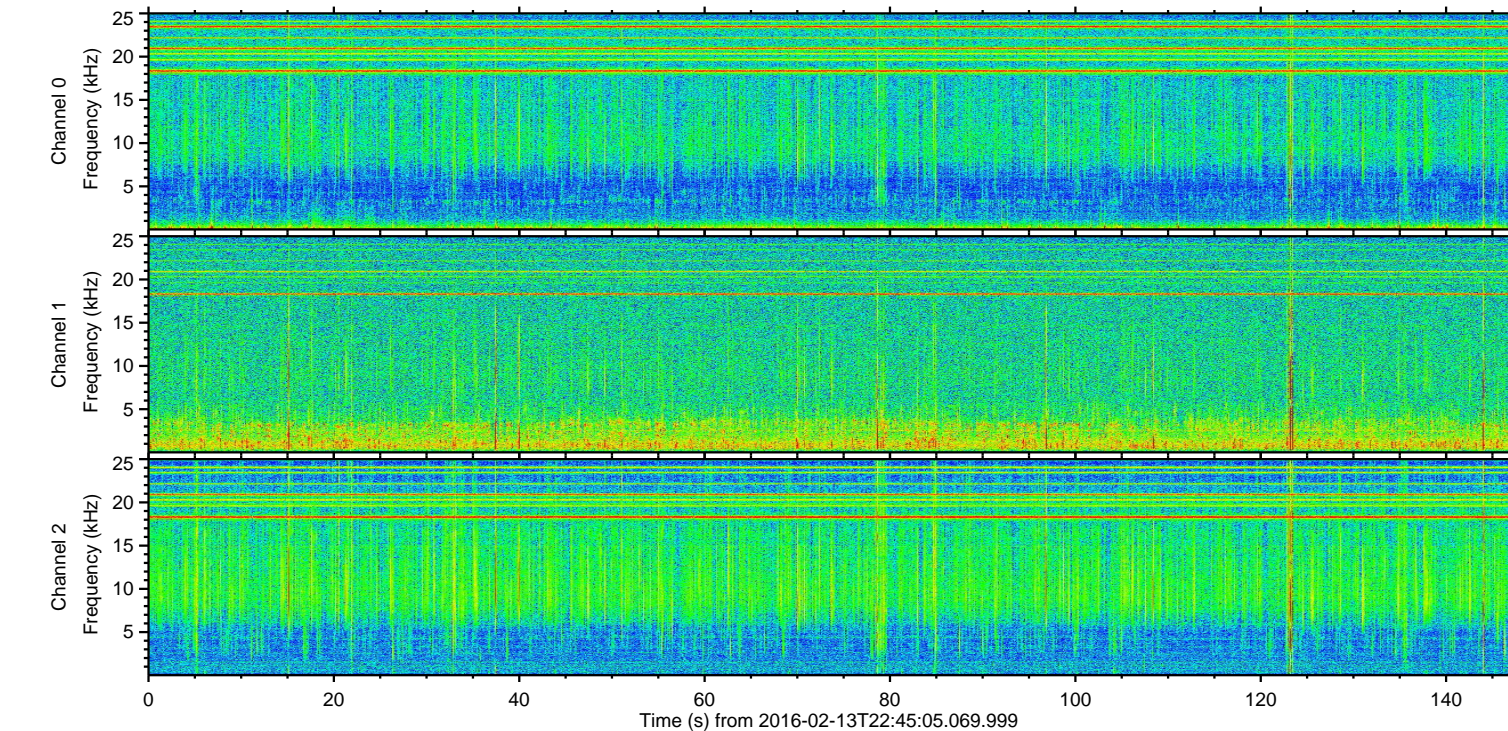
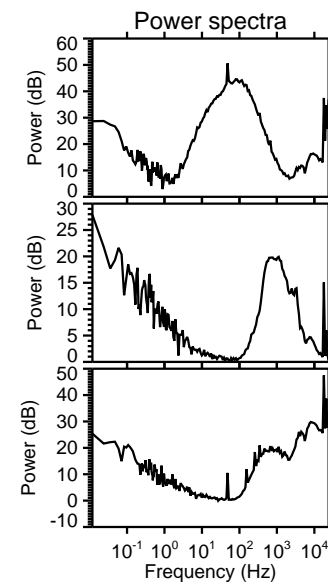
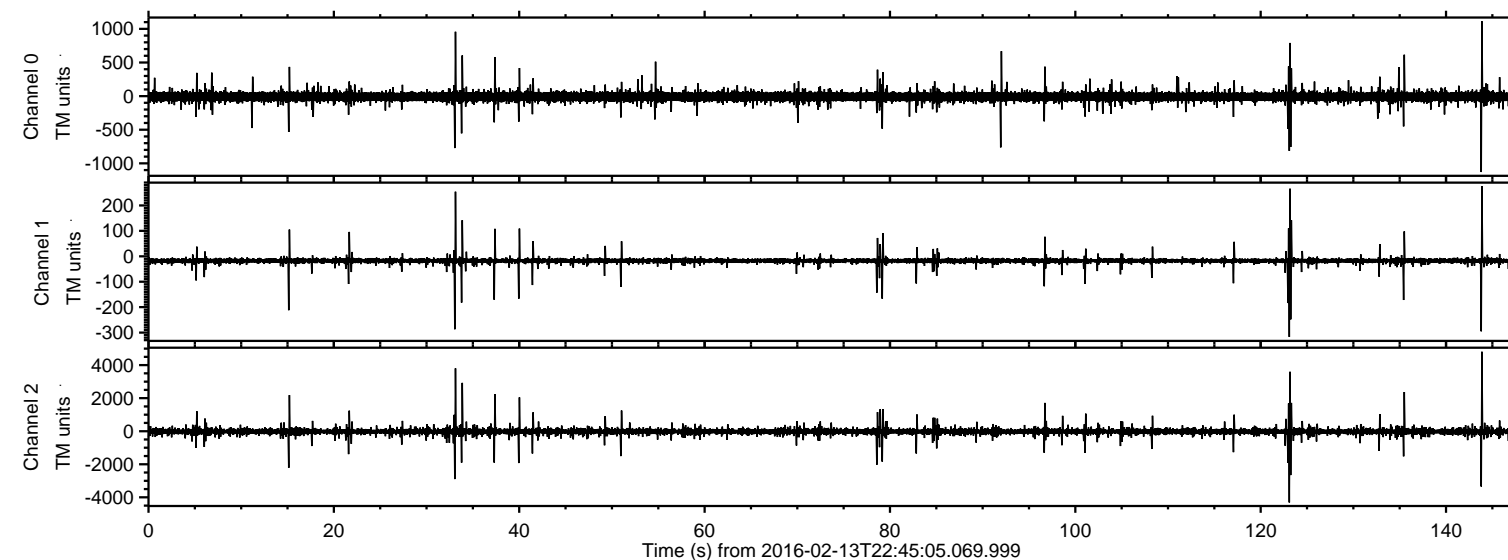


# ELMAVAN 3D WAVEFORMS (Measured data sampled at 50 kHz) 51000 packets of 144 samples from 2016-02-13T22:45:05.069.999.

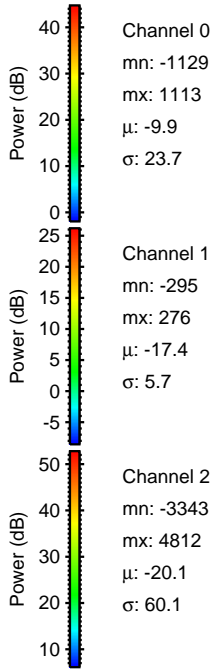
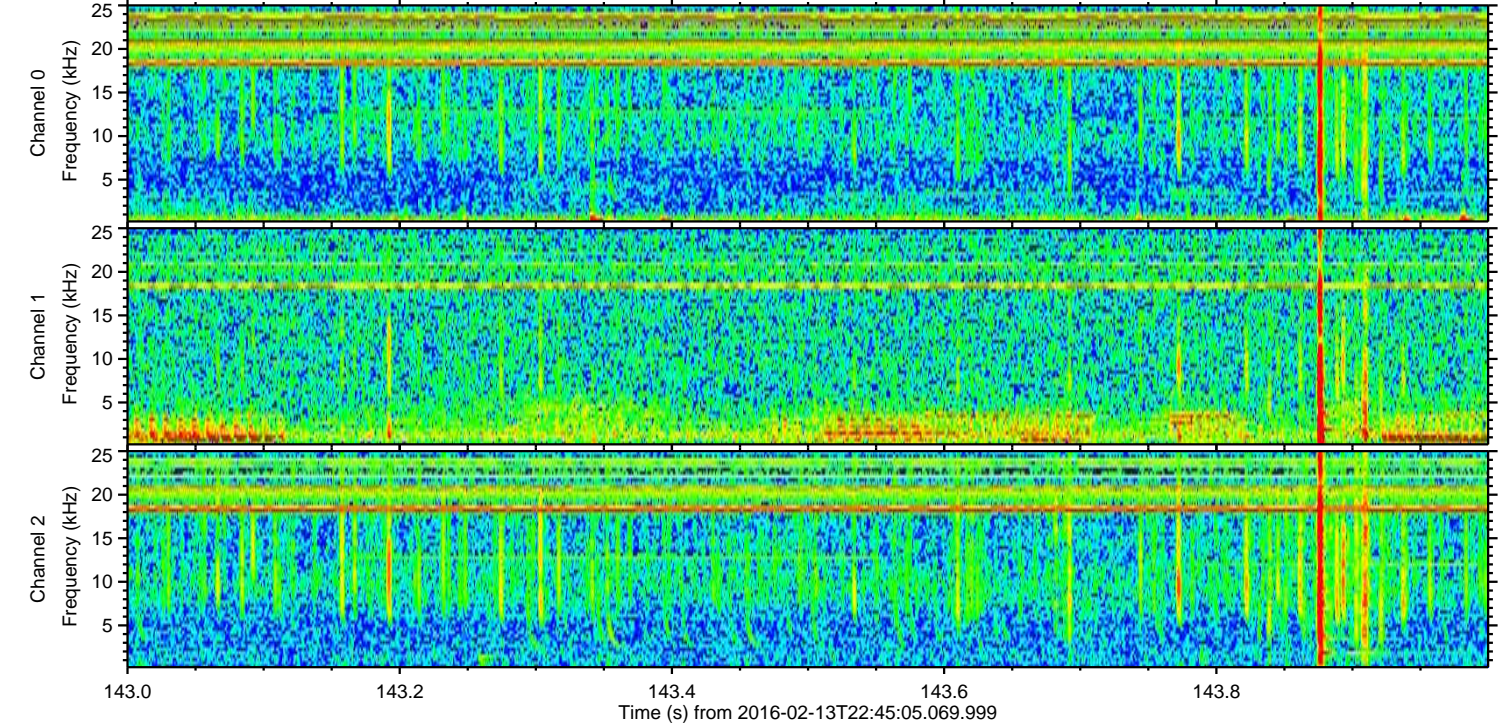
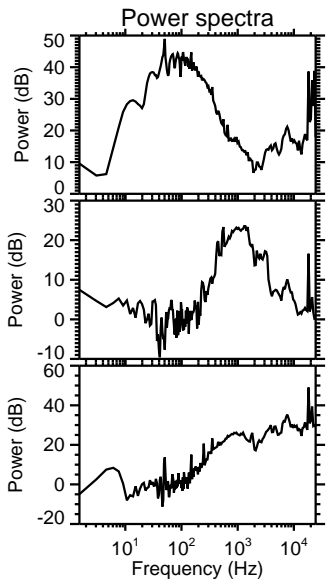
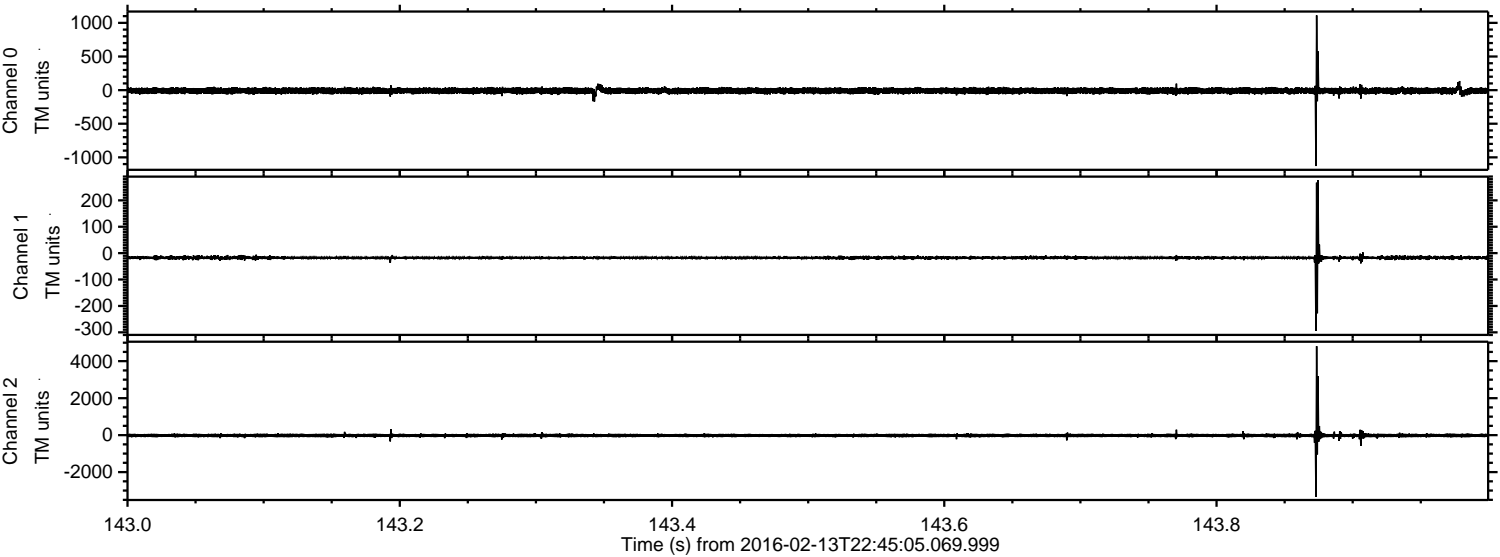
Processed Sun Apr 10 15:48:15 2016 by ELM ver.2012-10-06 from 001\_\_elm20160213\_224504\_\_dat00.bin





ELMAVAN 3D WAVEFORMS (Measured data sampled at 50 kHz) 51000 packets of 144 samples from 2016-02-13T22:45:05.069.999. Part 144/147

Processed Sun Apr 10 15:48:27 2016 by ELM ver.2012-10-06 from 001\_\_elm20160213\_224504\_\_dat00.bin



Channel 0  
mn: -1129  
mx: 1113  
 $\mu$ : -9.9  
 $\sigma$ : 23.7

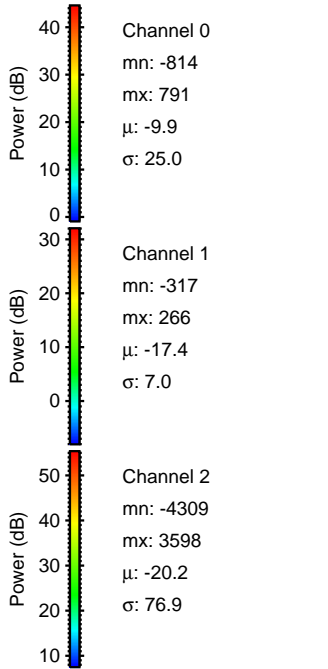
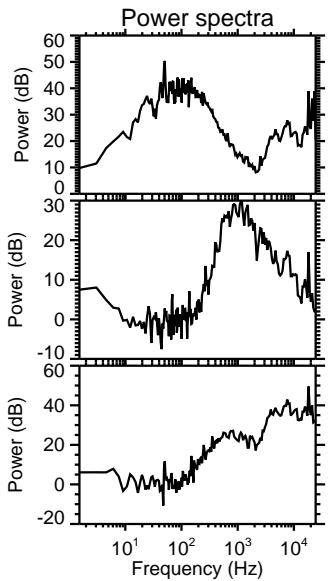
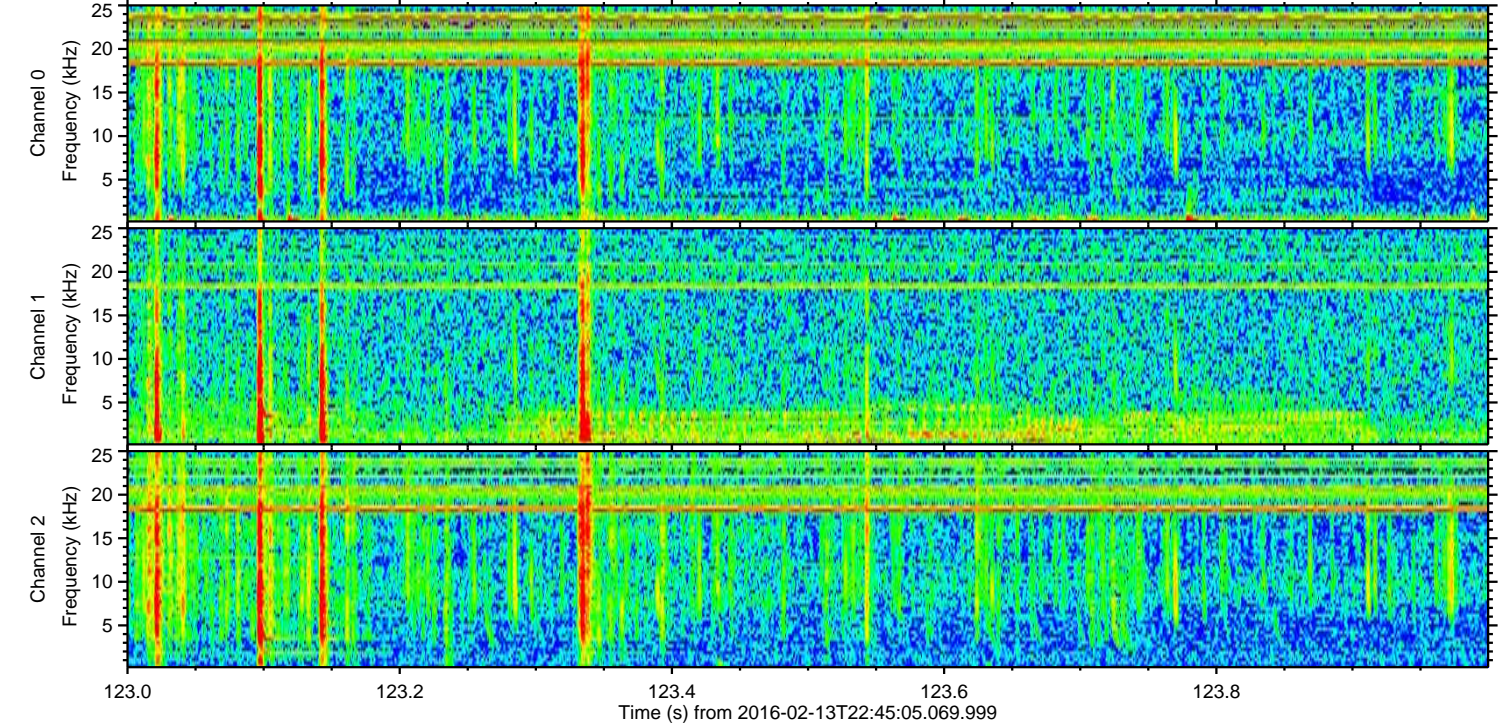
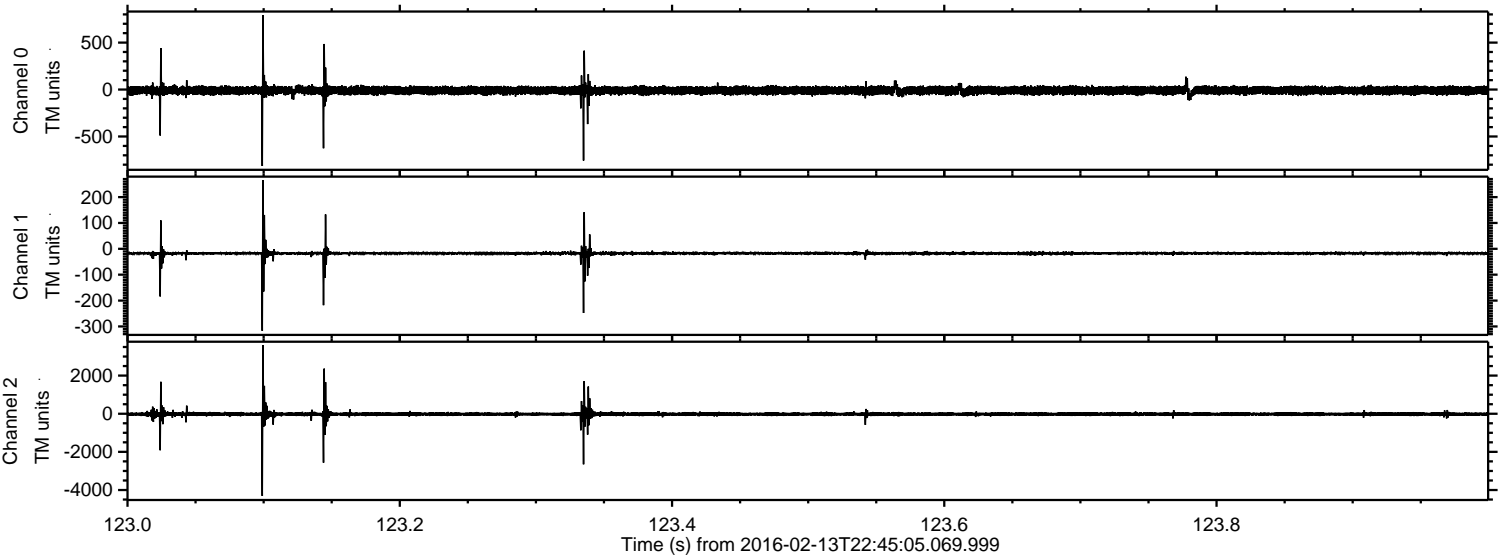
Channel 1  
mn: -295  
mx: 276  
 $\mu$ : -17.4  
 $\sigma$ : 5.7

Channel 2  
mn: -3343  
mx: 4812  
 $\mu$ : -20.1  
 $\sigma$ : 60.1



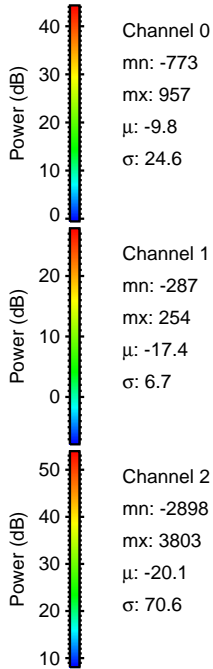
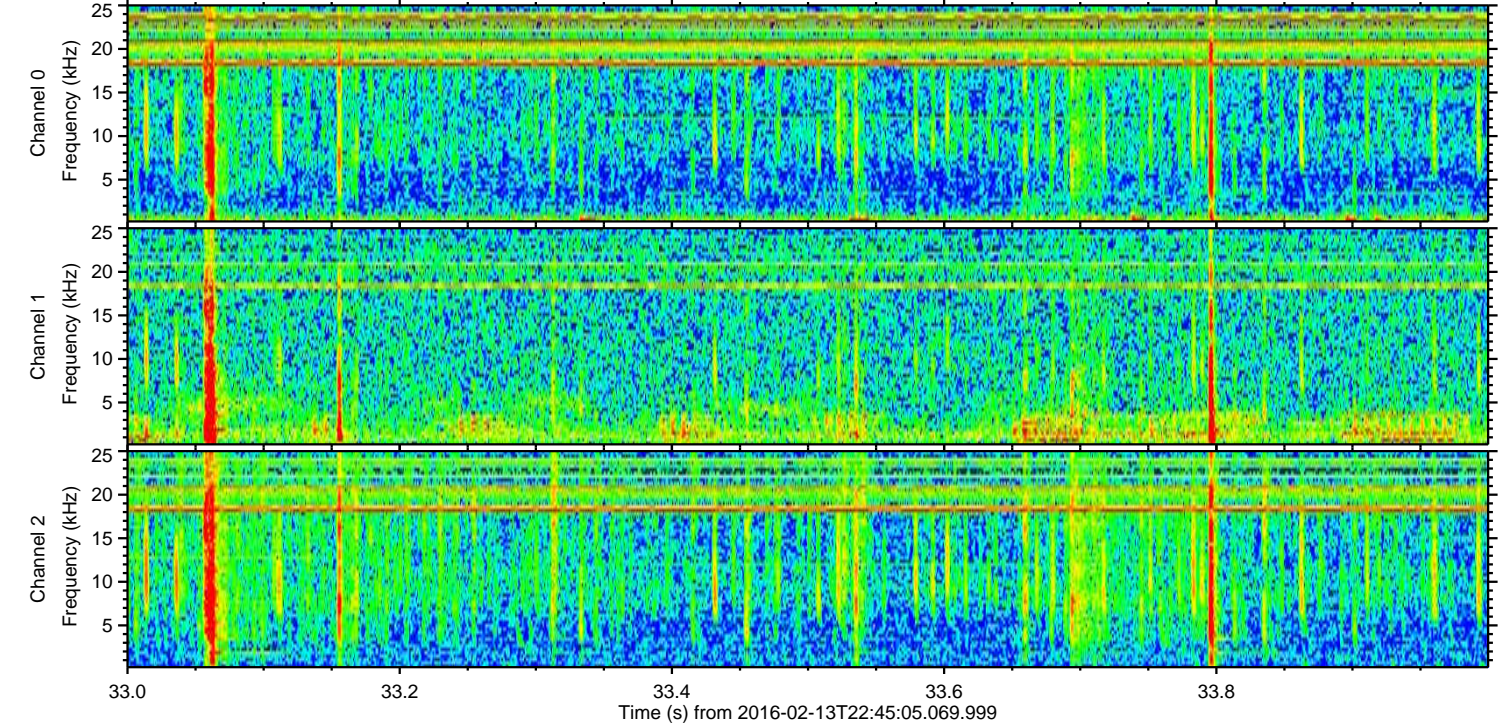
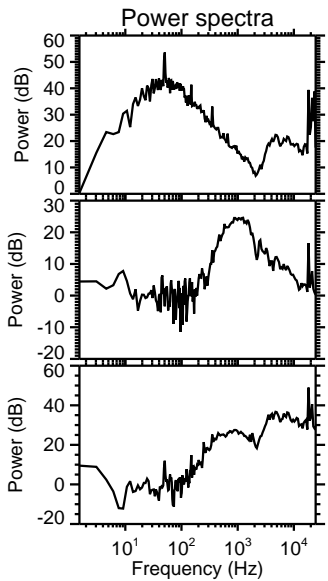
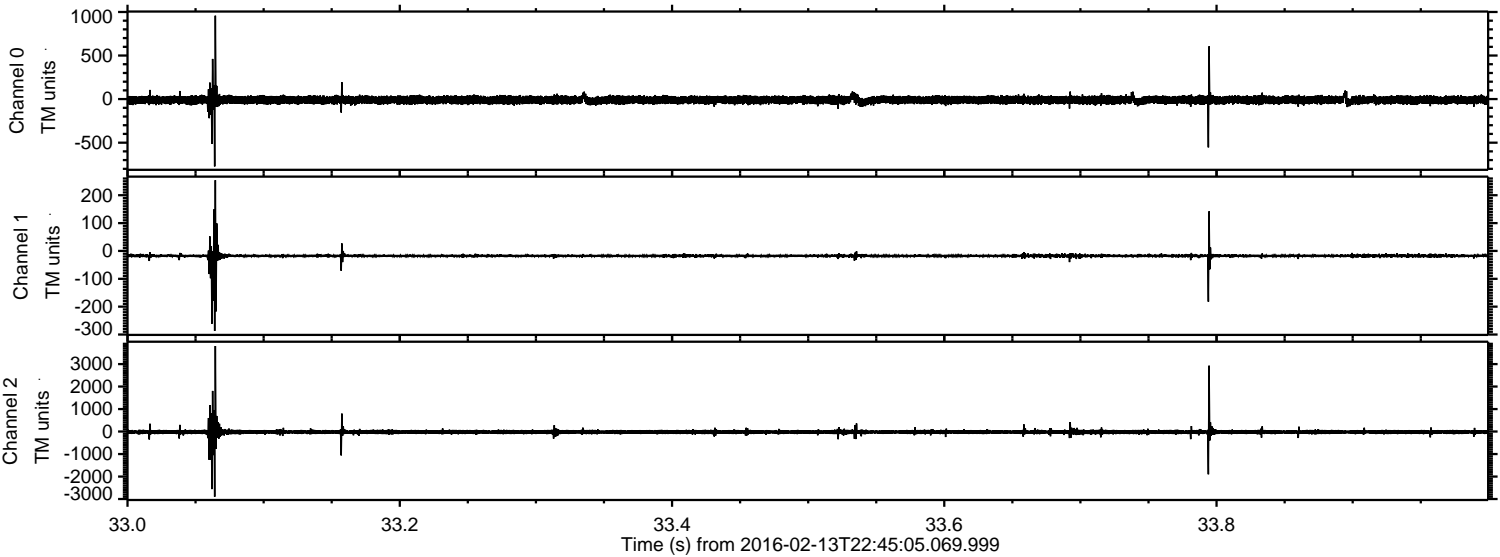
ELMAVAN 3D WAVEFORMS (Measured data sampled at 50 kHz) 51000 packets of 144 samples from 2016-02-13T22:45:05.069.999. Part 124/147

Processed Sun Apr 10 15:48:28 2016 by ELM ver.2012-10-06 from 001\_\_elm20160213\_224504\_\_dat00.bin





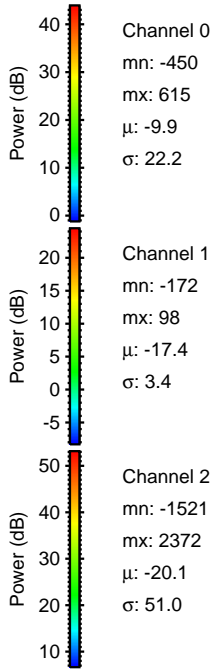
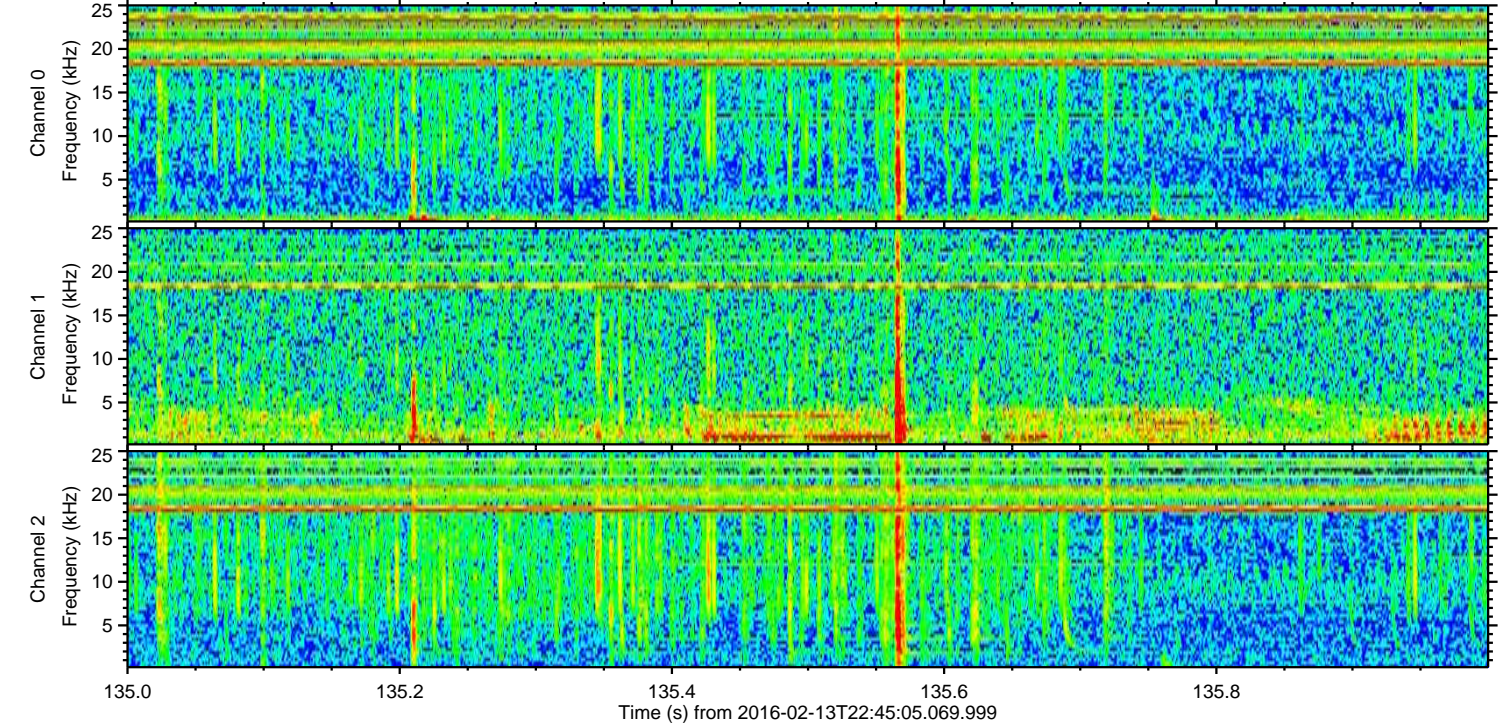
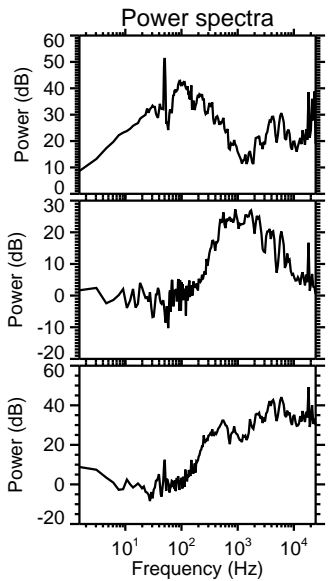
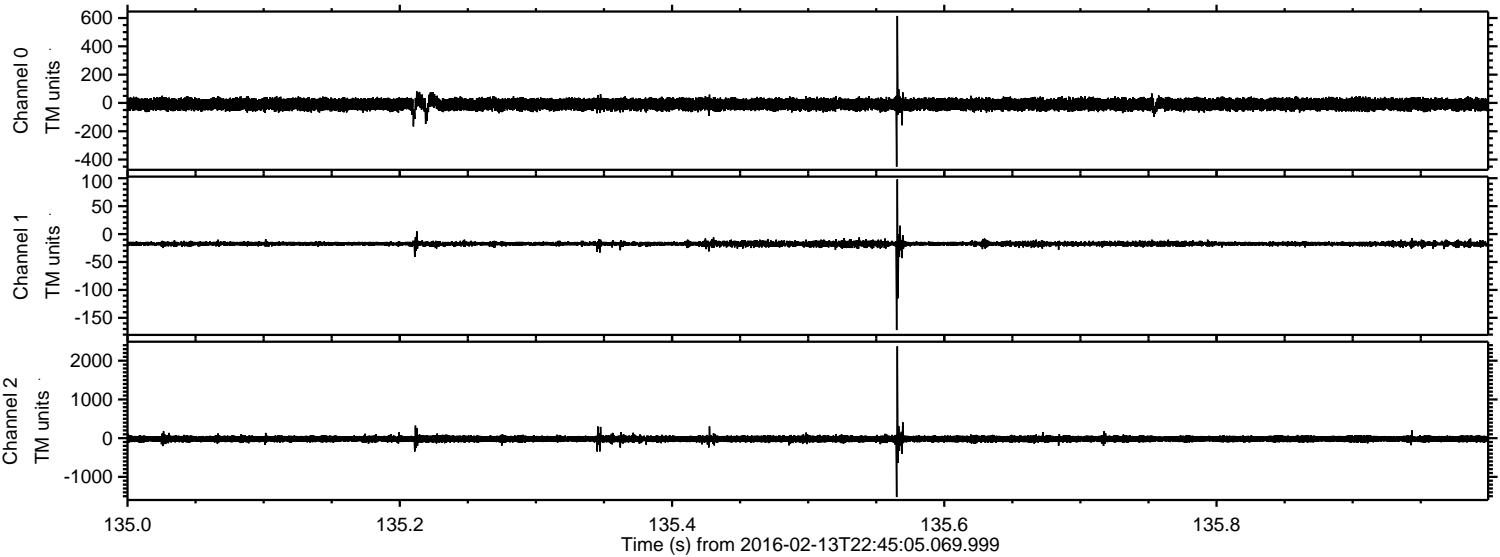
Processed Sun Apr 10 15:48:29 2016 by ELM ver.2012-10-06 from 001\_\_elm20160213\_224504\_\_dat00.bin





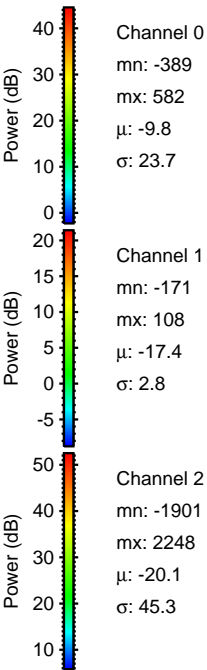
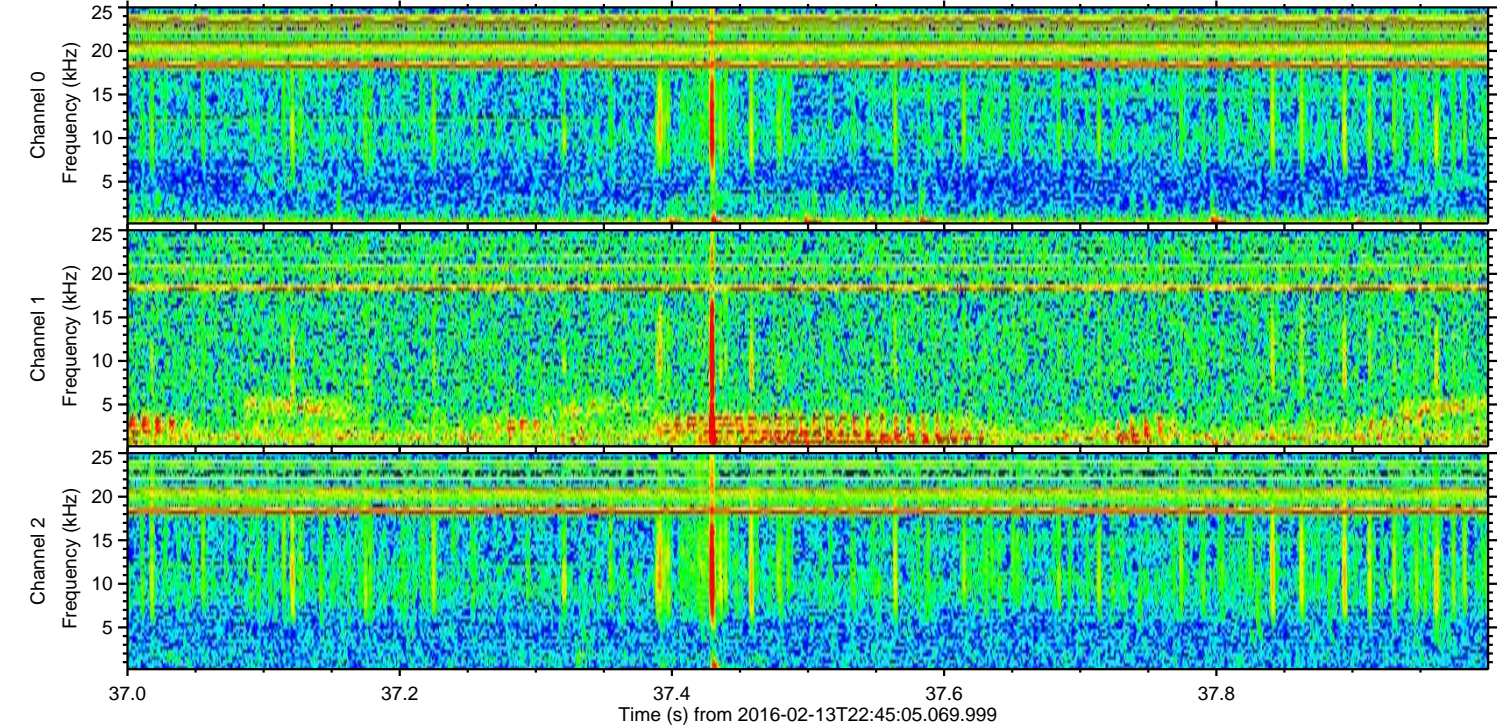
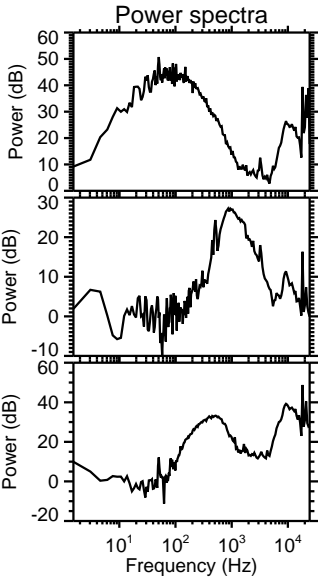
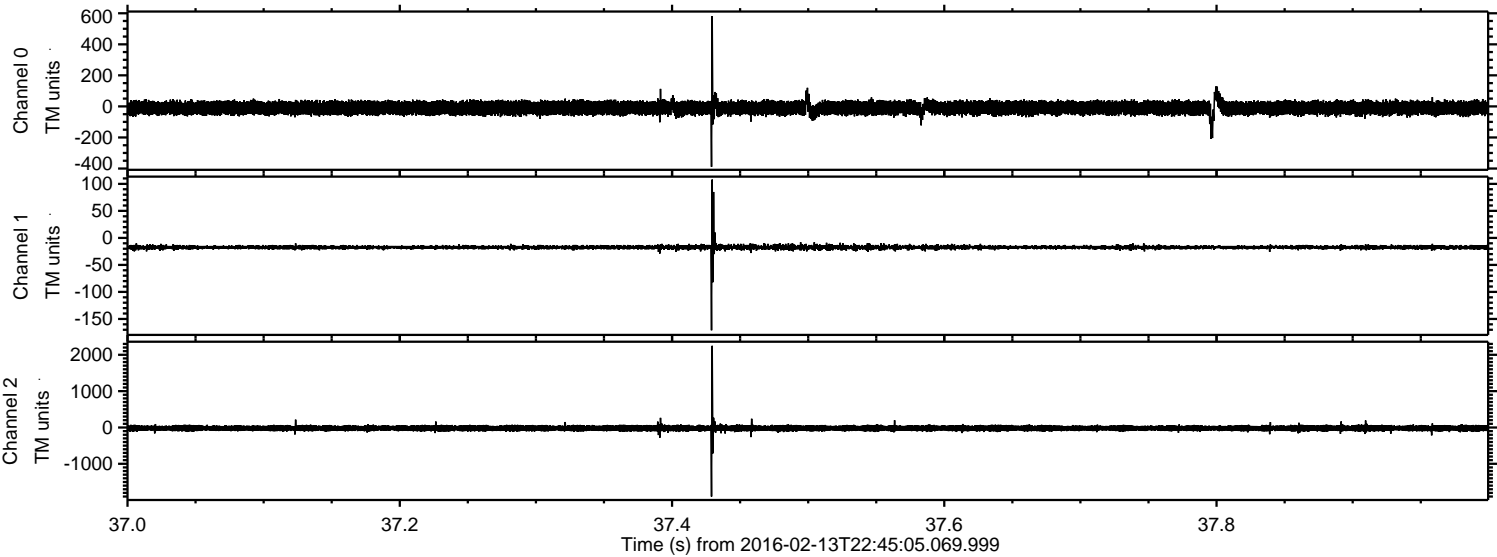
ELMAVAN 3D WAVEFORMS (Measured data sampled at 50 kHz) 51000 packets of 144 samples from 2016-02-13T22:45:05.069.999. Part 136/147

Processed Sun Apr 10 15:48:30 2016 by ELM ver.2012-10-06 from 001\_\_elm20160213\_224504\_\_dat00.bin



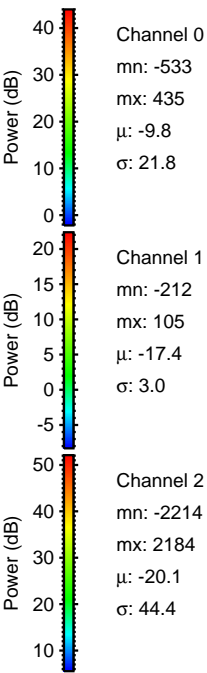
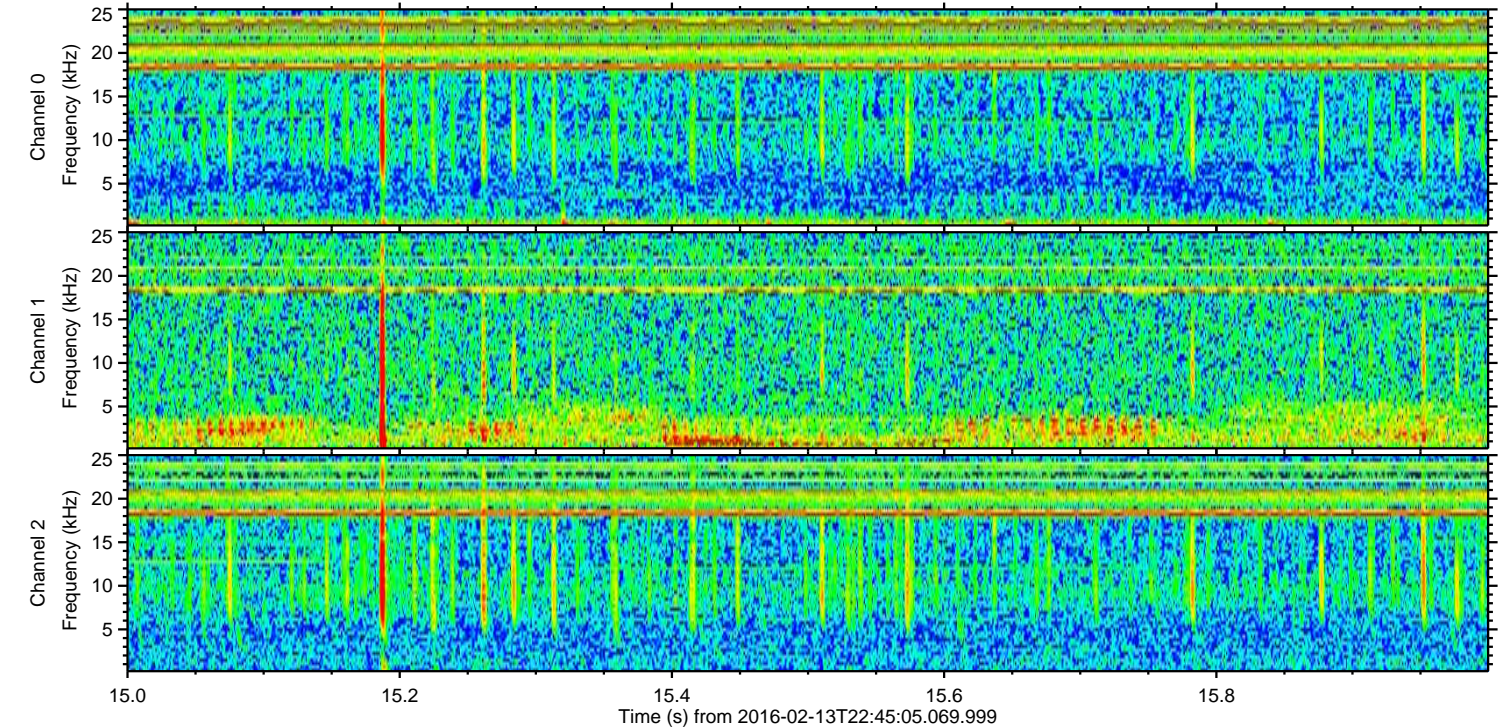
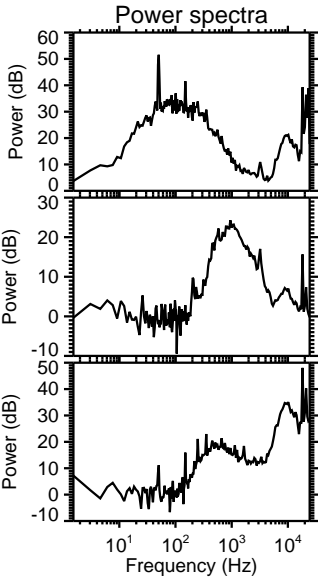
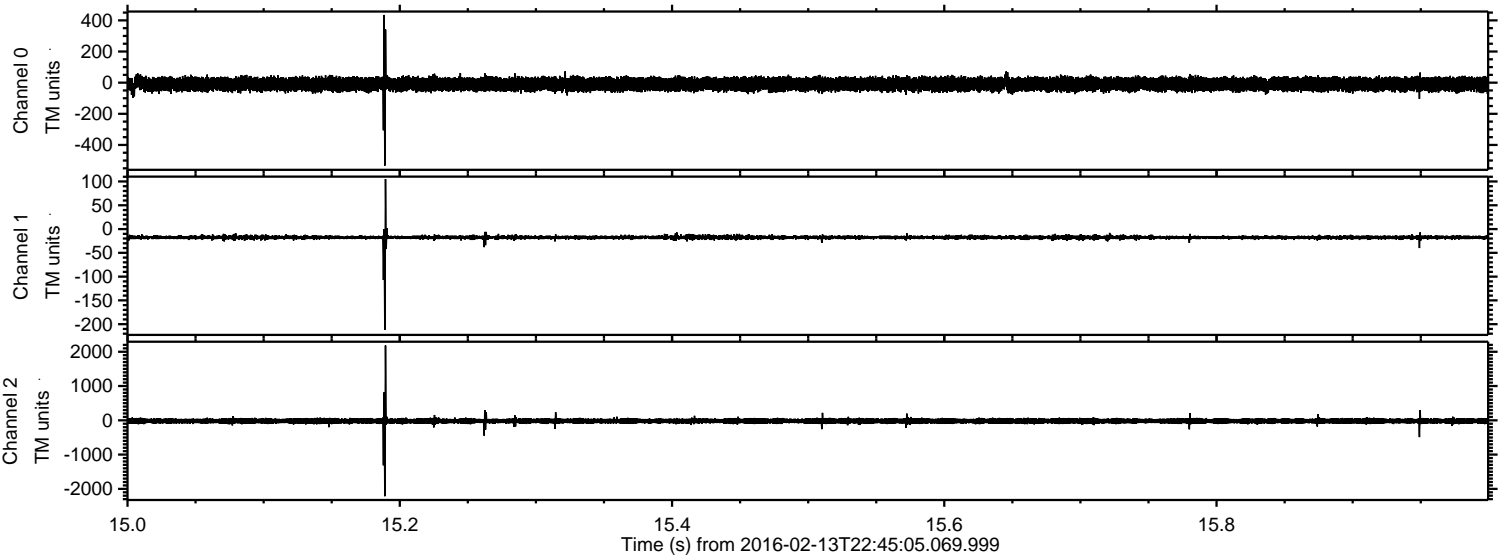


Processed Sun Apr 10 15:48:31 2016 by ELM ver.2012-10-06 from 001\_\_elm20160213\_224504\_\_dat00.bin



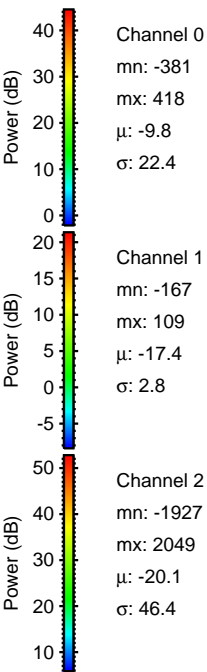
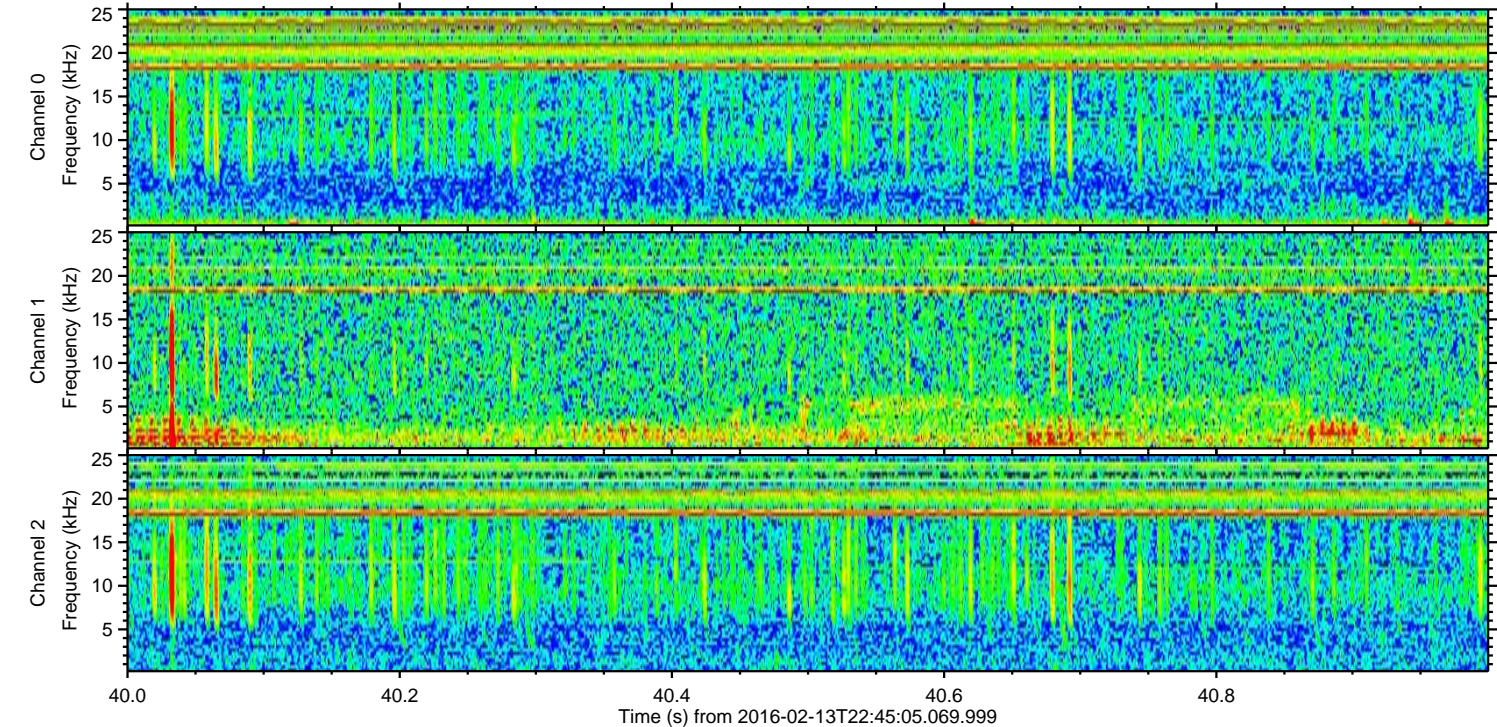
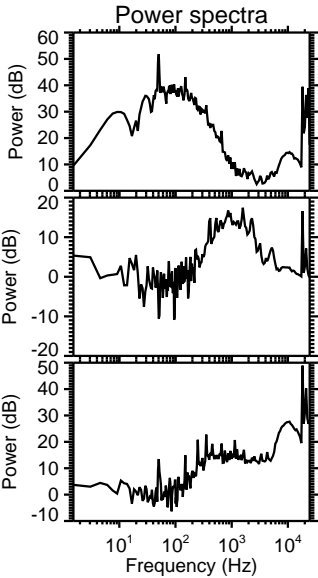
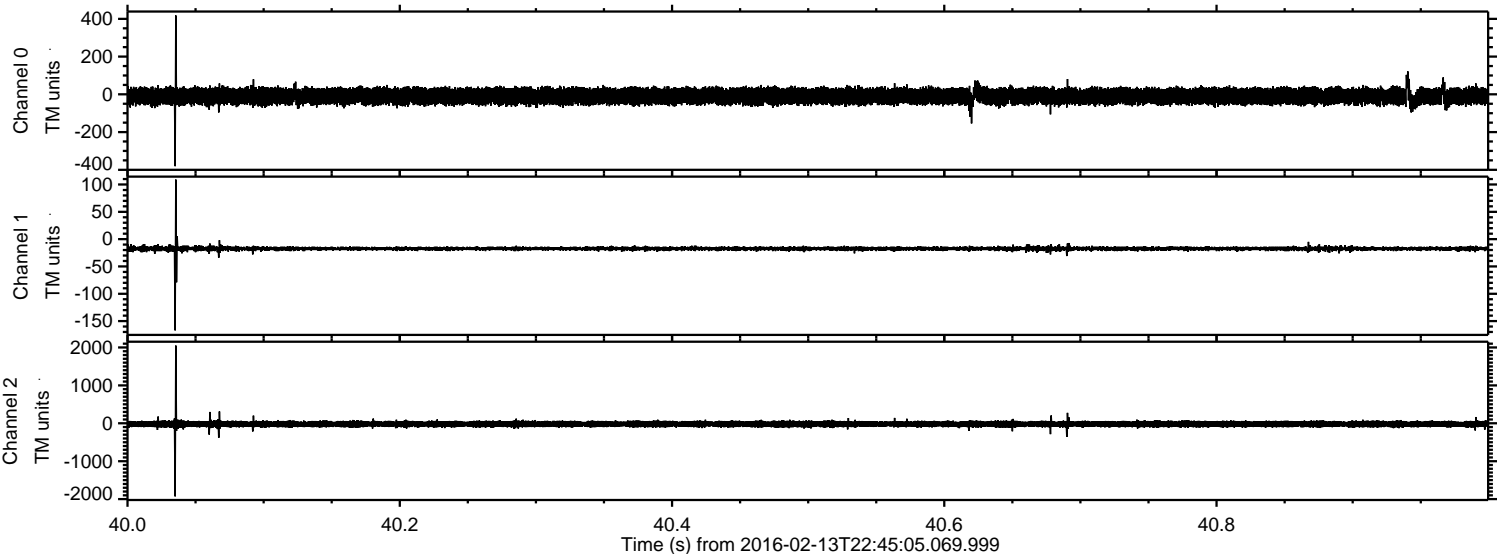


Processed Sun Apr 10 15:48:32 2016 by ELM ver.2012-10-06 from 001\_\_elm20160213\_224504\_\_dat00.bin



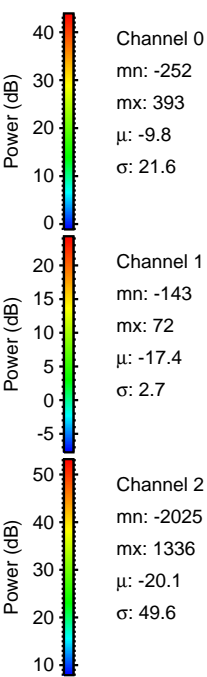
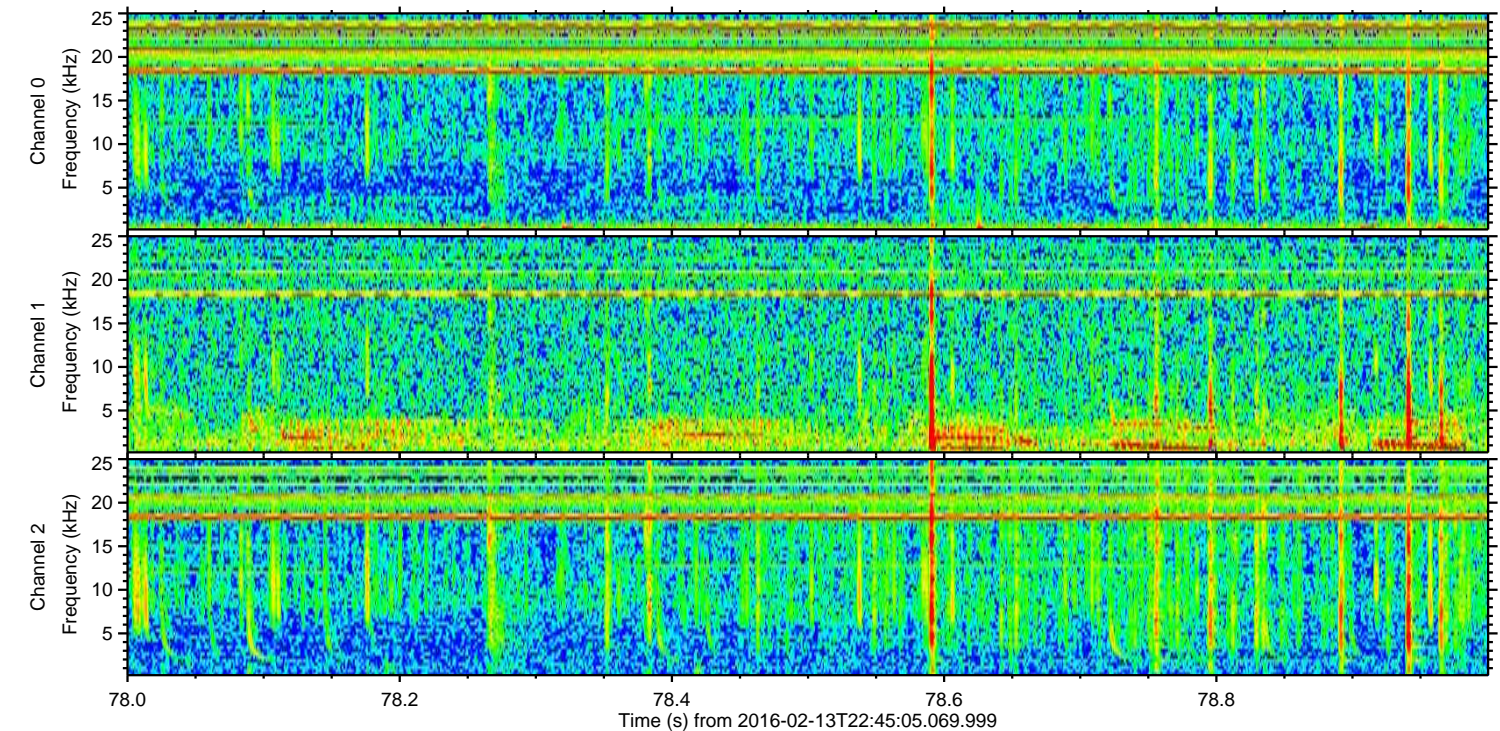
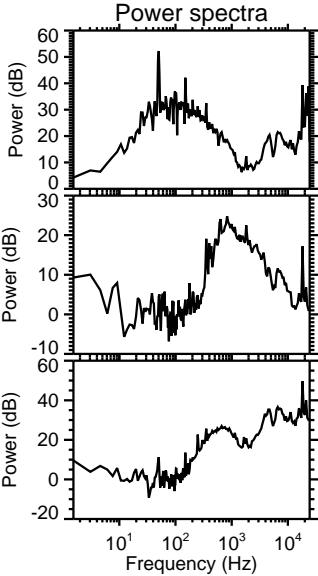
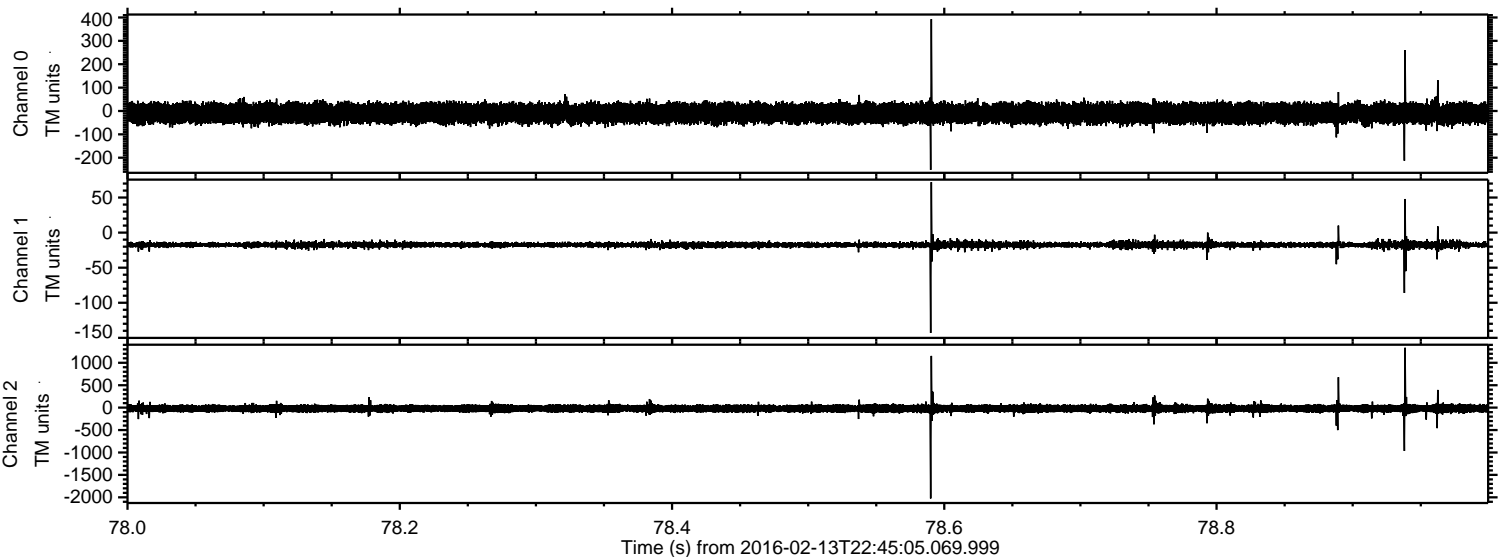


Processed Sun Apr 10 15:48:33 2016 by ELM ver.2012-10-06 from 001\_\_elm20160213\_224504\_\_dat00.bin





Processed Sun Apr 10 15:48:34 2016 by ELM ver.2012-10-06 from 001\_\_elm20160213\_224504\_\_dat00.bin



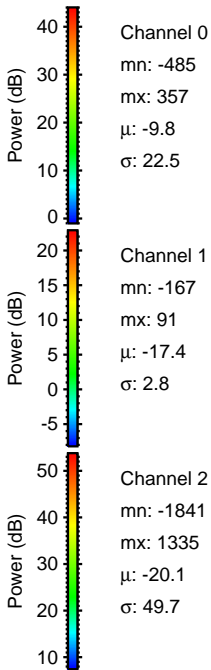
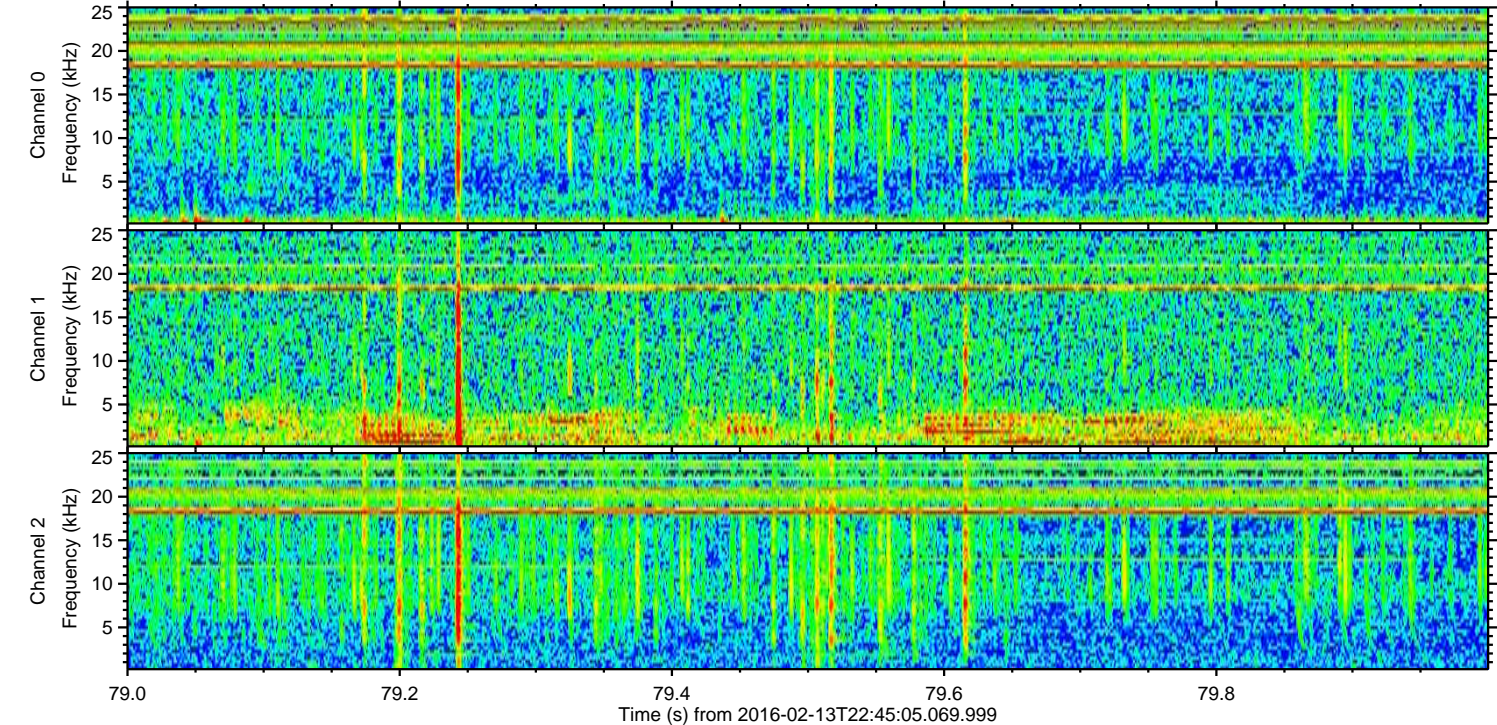
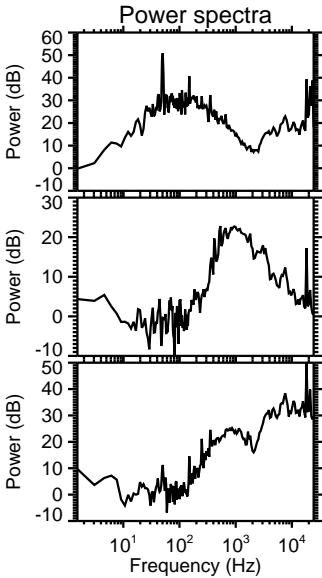
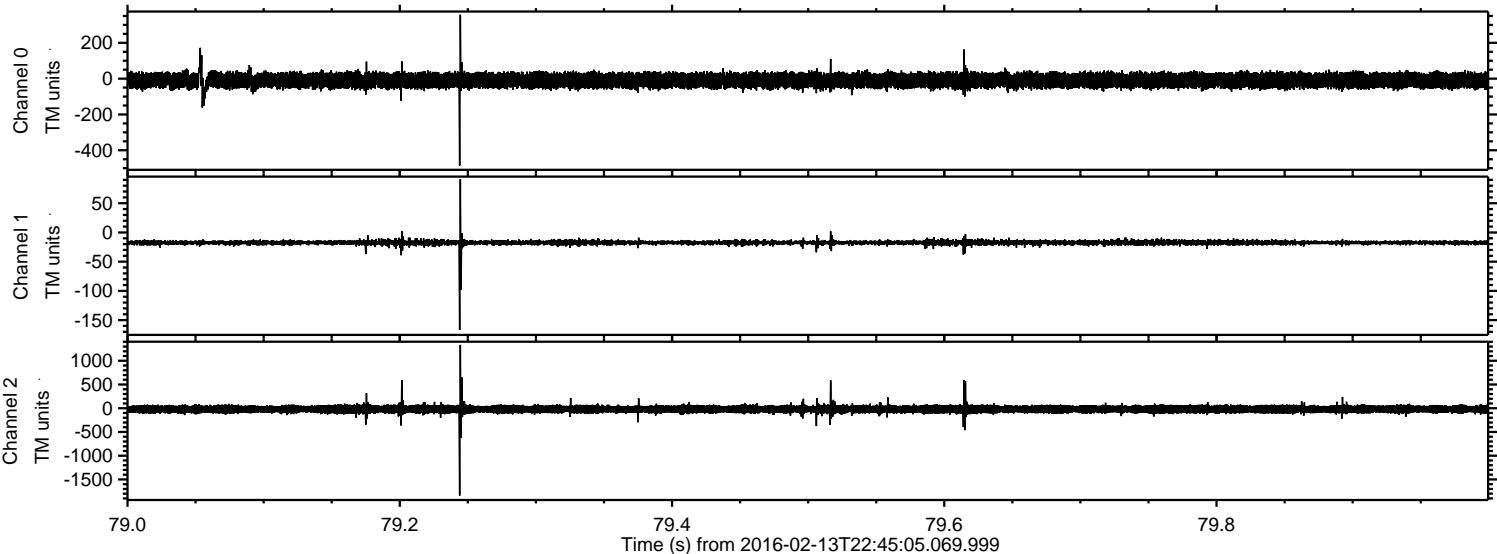
Channel 0  
mn: -252  
mx: 393  
 $\mu$ : -9.8  
 $\sigma$ : 21.6

Channel 1  
mn: -143  
mx: 72  
 $\mu$ : -17.4  
 $\sigma$ : 2.7

Channel 2  
mn: -2025  
mx: 1336  
 $\mu$ : -20.1  
 $\sigma$ : 49.6



Processed Sun Apr 10 15:48:35 2016 by ELM ver.2012-10-06 from 001\_\_elm20160213\_224504\_\_dat00.bin





Processed Sun Apr 10 15:48:36 2016 by ELM ver.2012-10-06 from 001\_\_elm20160213\_224504\_\_dat00.bin

