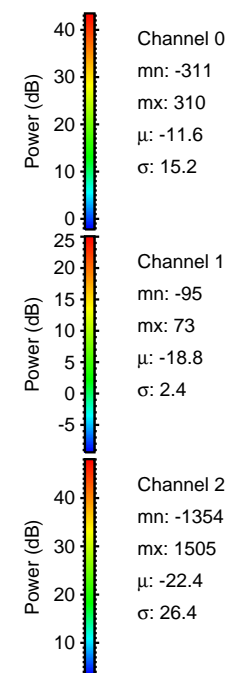
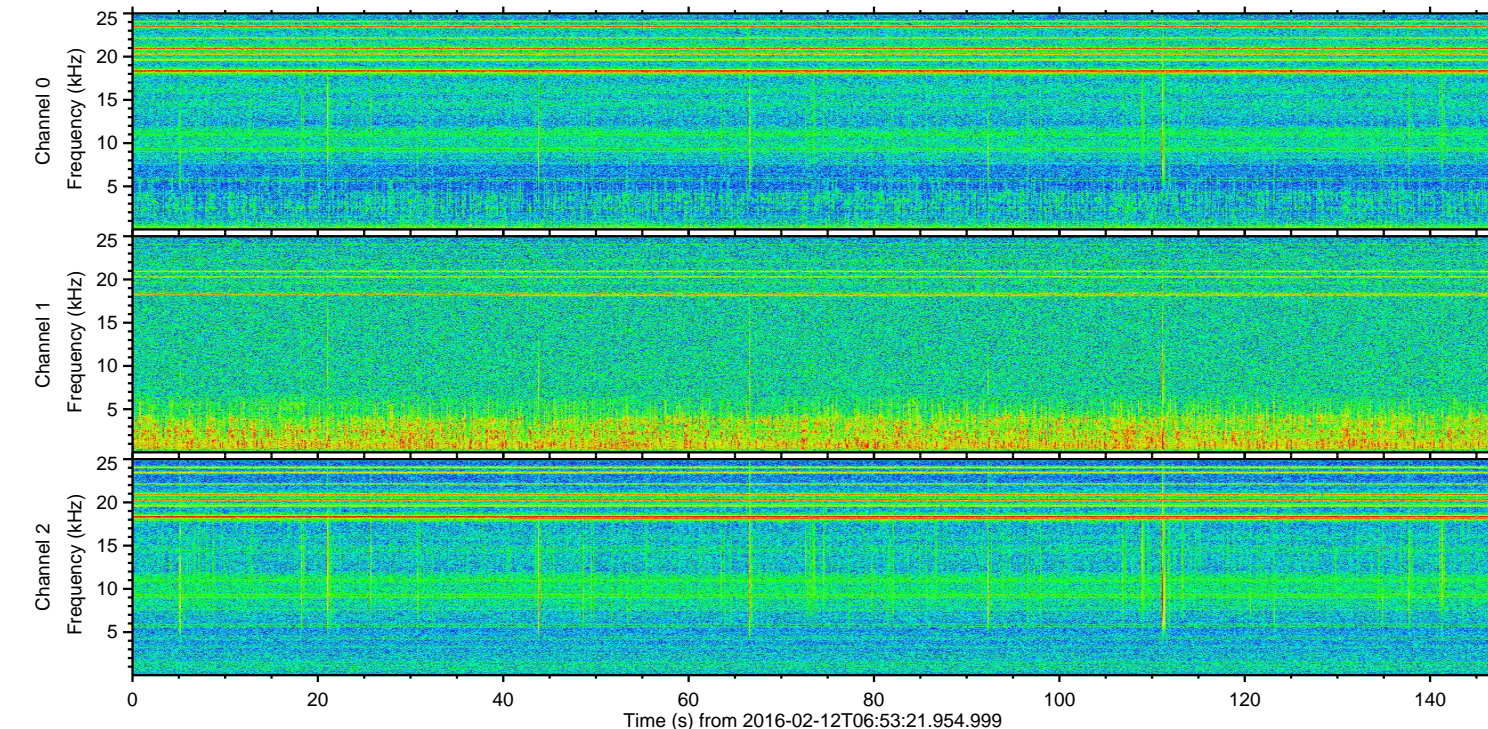
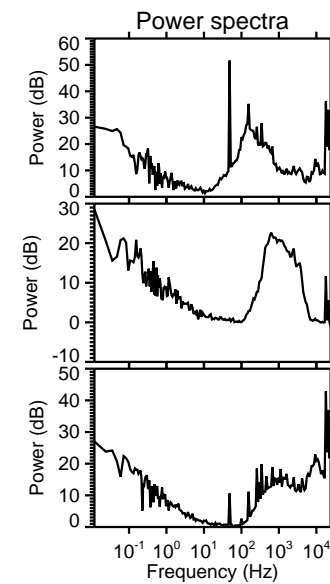
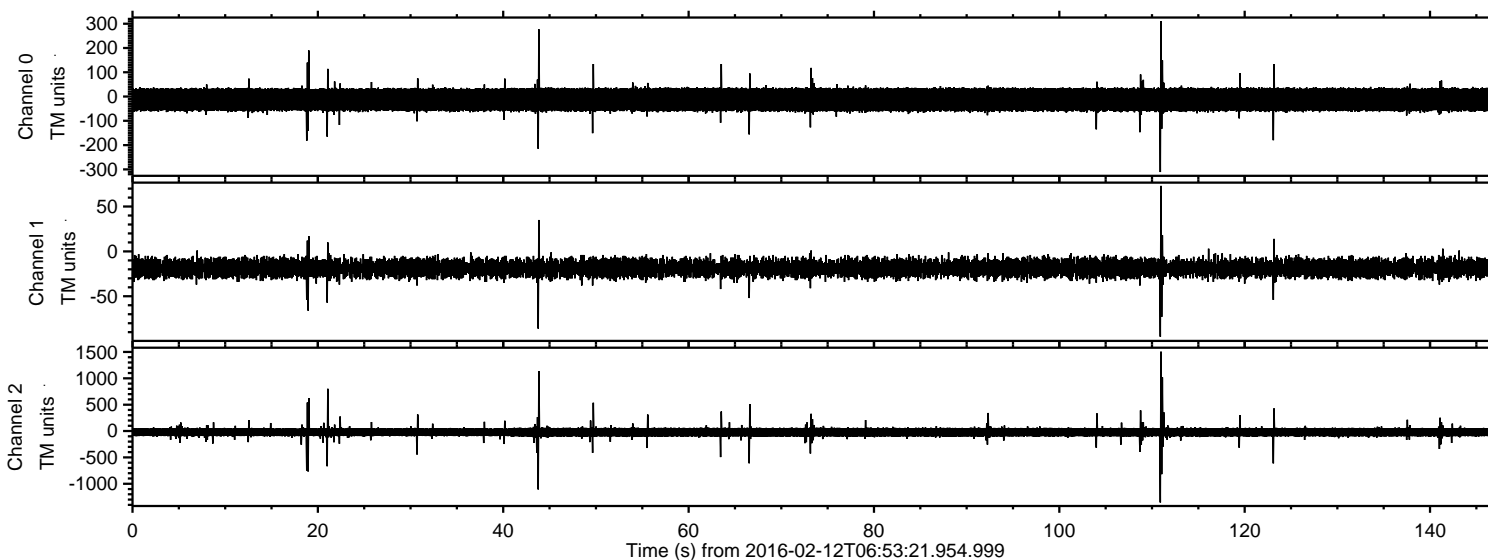


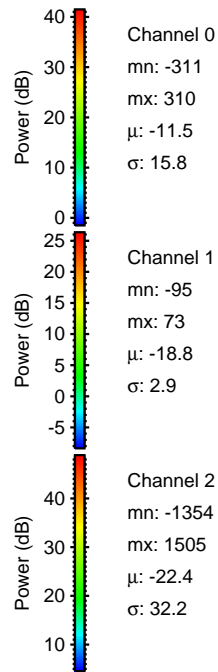
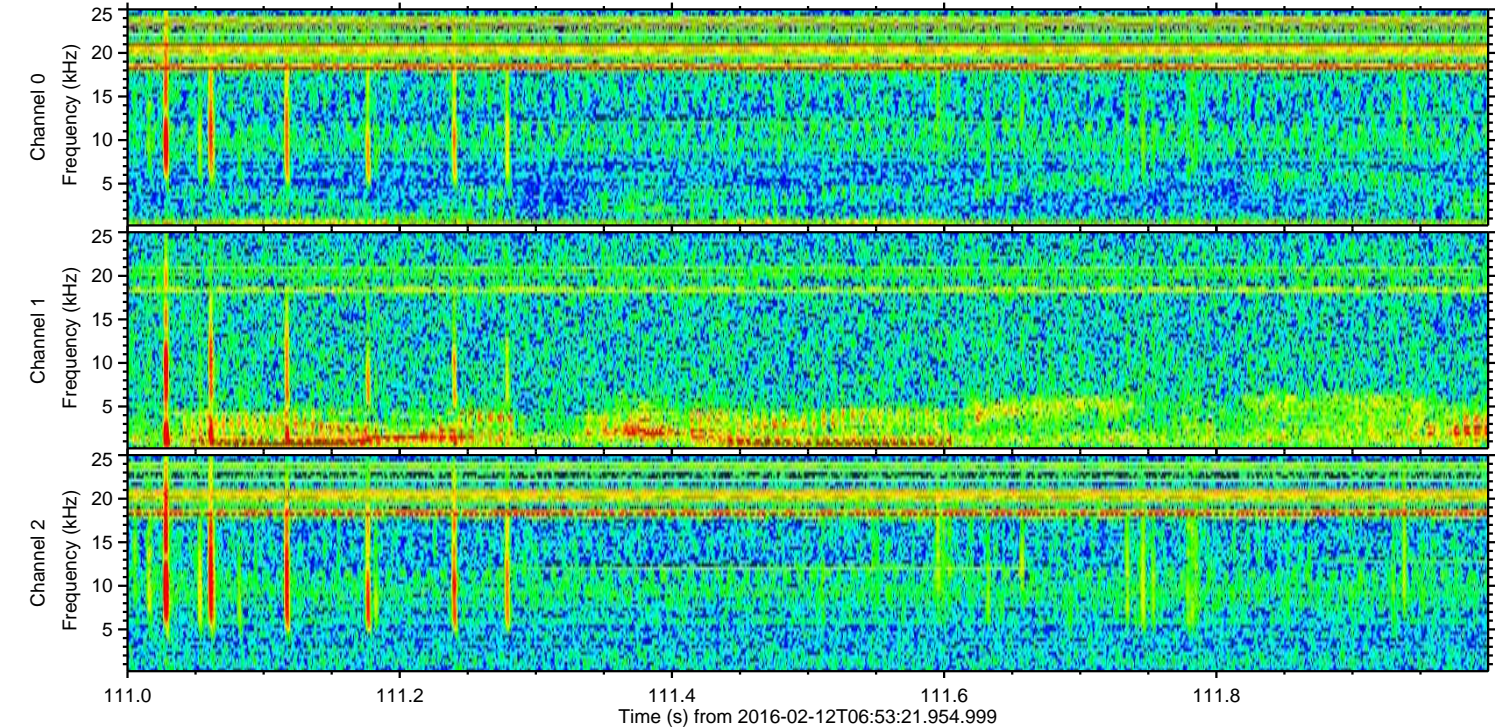
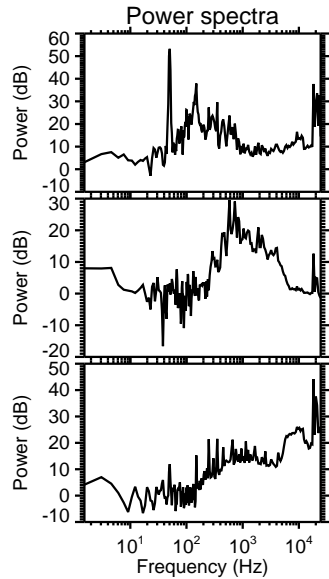
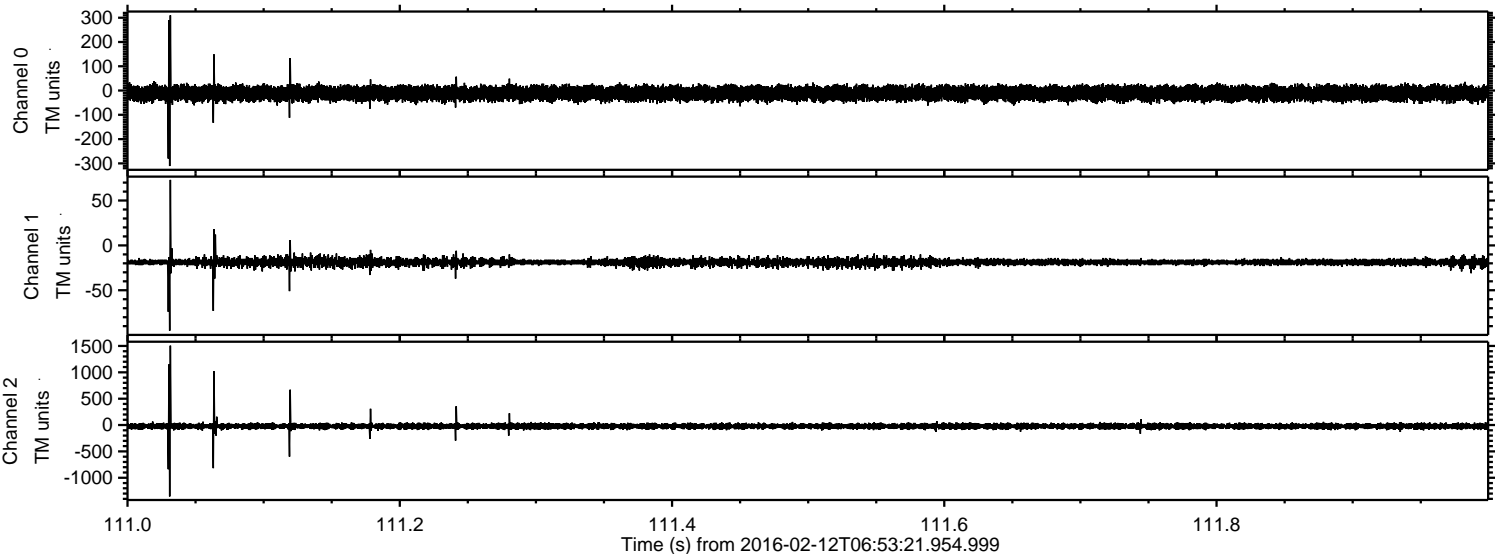
# ELMAVAN 3D WAVEFORMS (Measured data sampled at 50 kHz) 51000 packets of 144 samples from 2016-02-12T06:53:21.954.999.

Processed Sun Apr 10 07:42:48 2016 by ELM ver.2012-10-06 from 001\_\_elm20160212\_065320\_\_dat00.bin

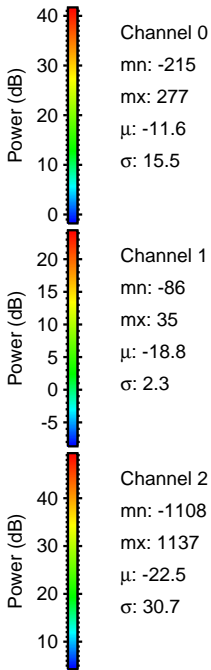
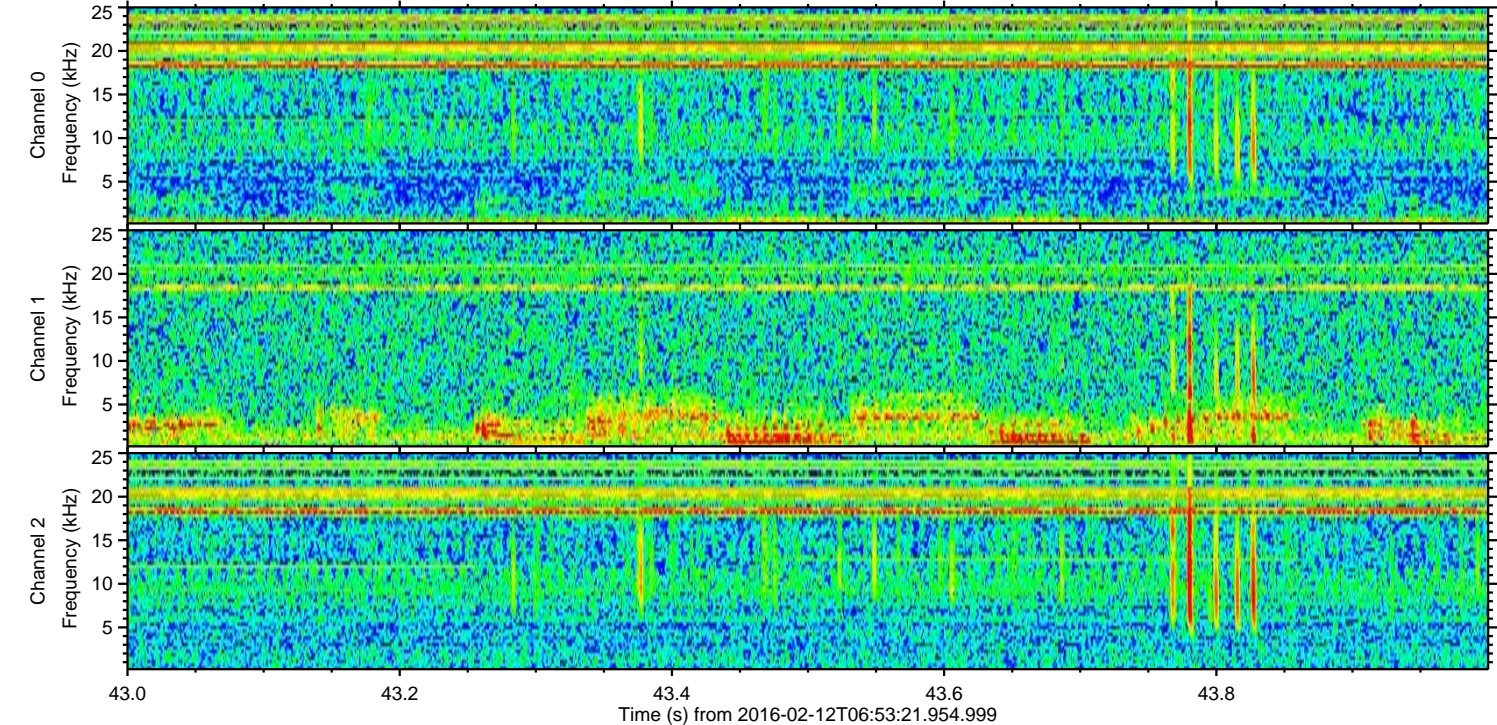
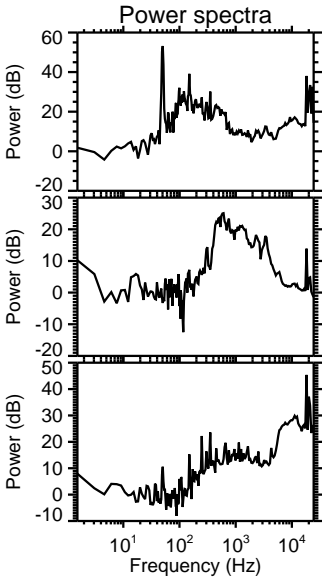
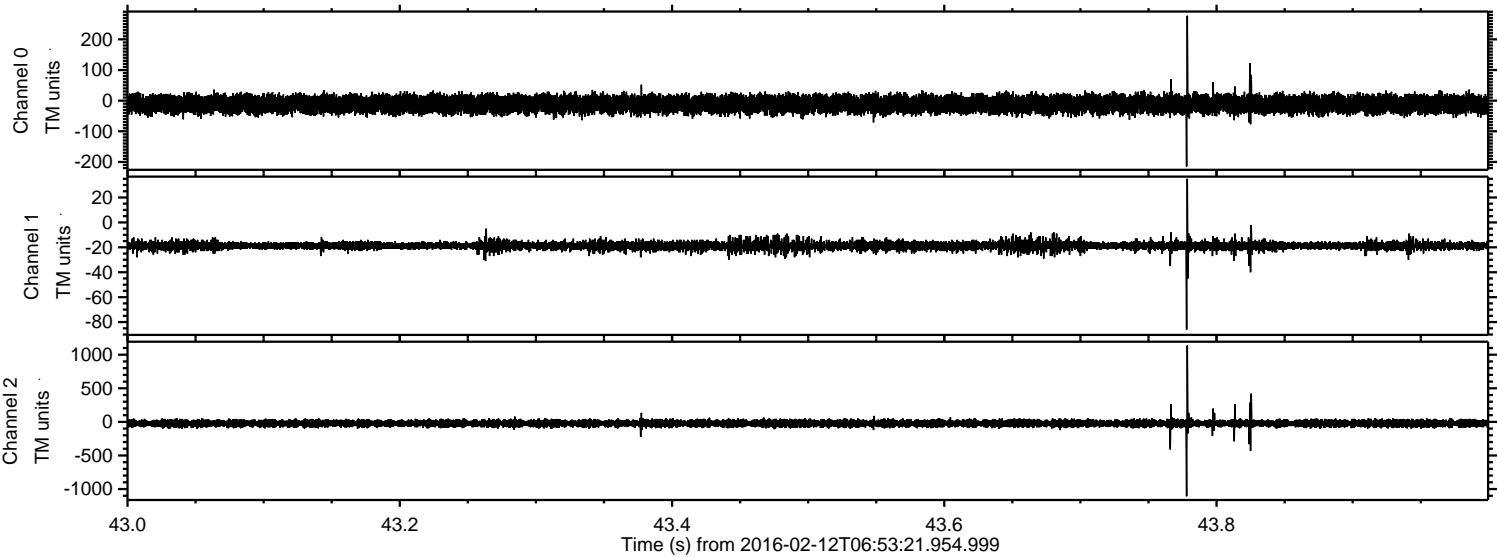


ELMAVAN 3D WAVEFORMS (Measured data sampled at 50 kHz) 51000 packets of 144 samples from 2016-02-12T06:53:21.954.999. Part 112/147

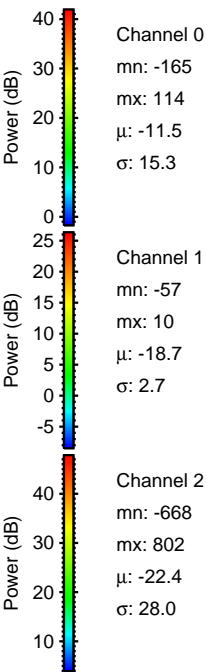
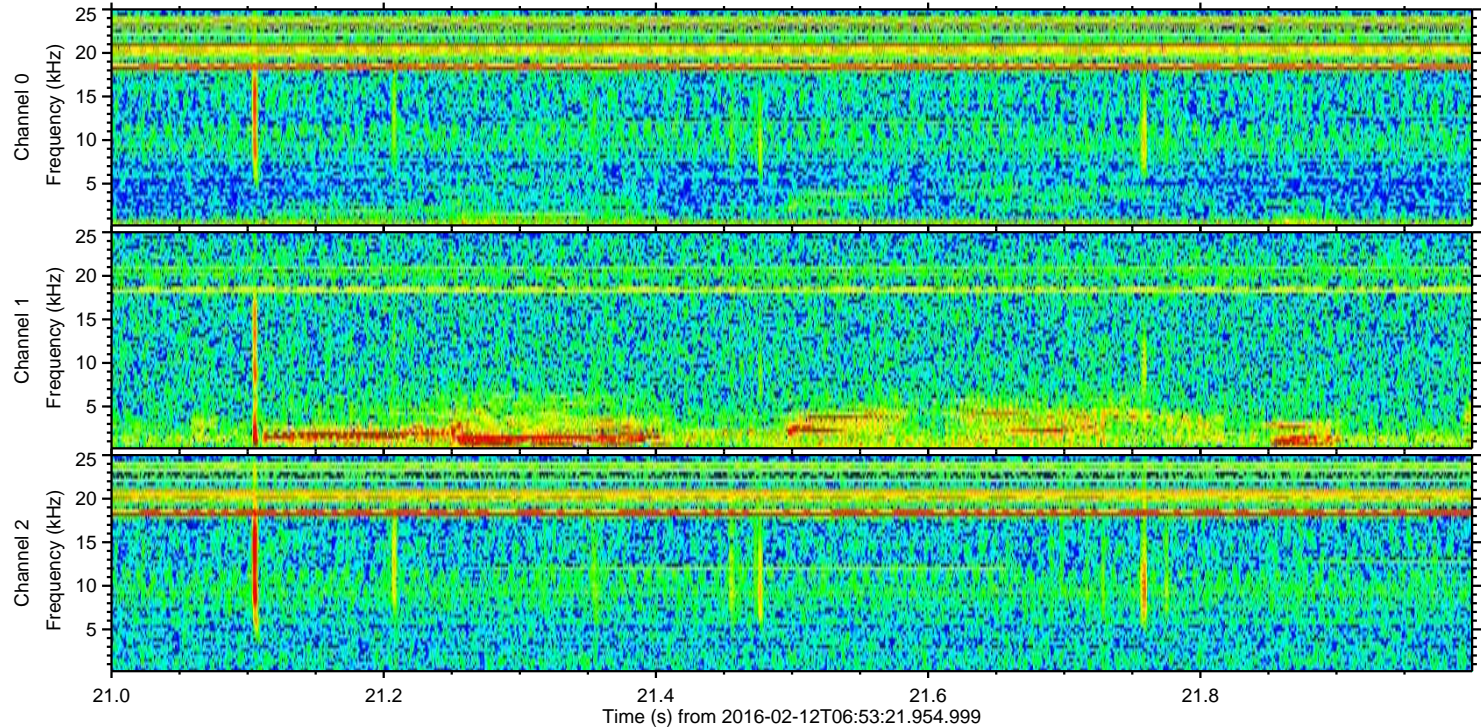
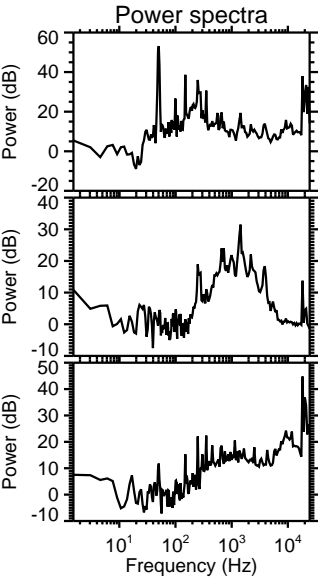
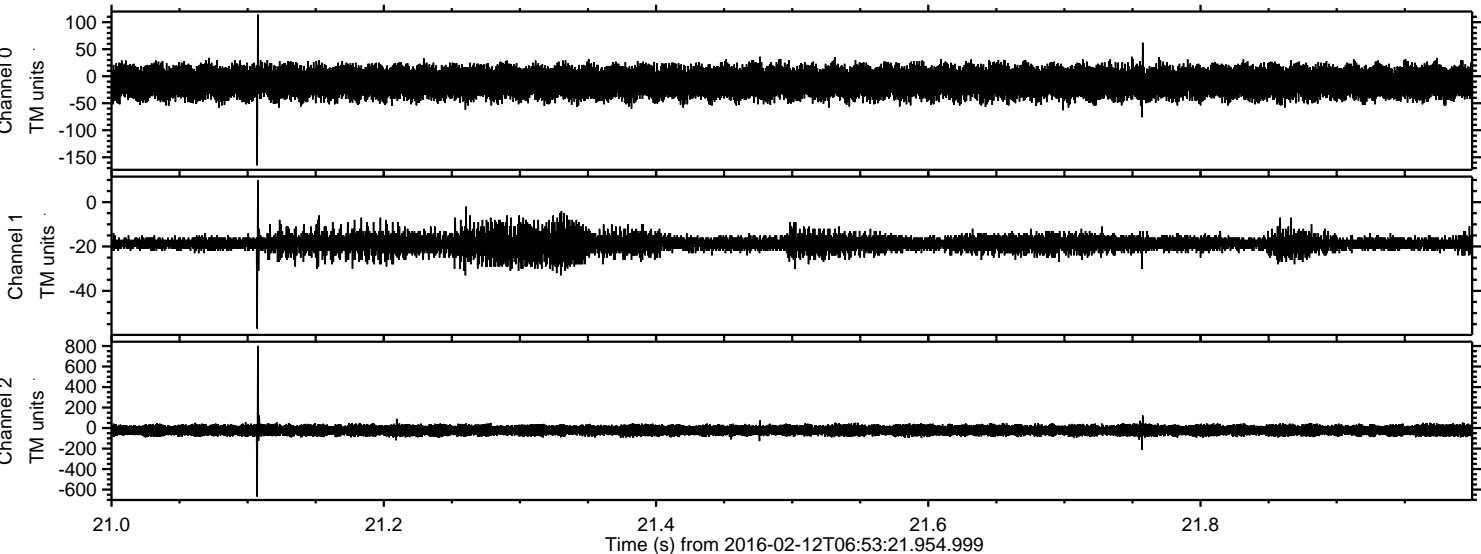
Processed Sun Apr 10 07:42:59 2016 by ELM ver.2012-10-06 from 001\_\_elm20160212\_065320\_\_dat00.bin



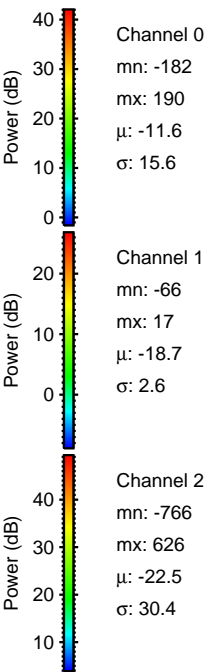
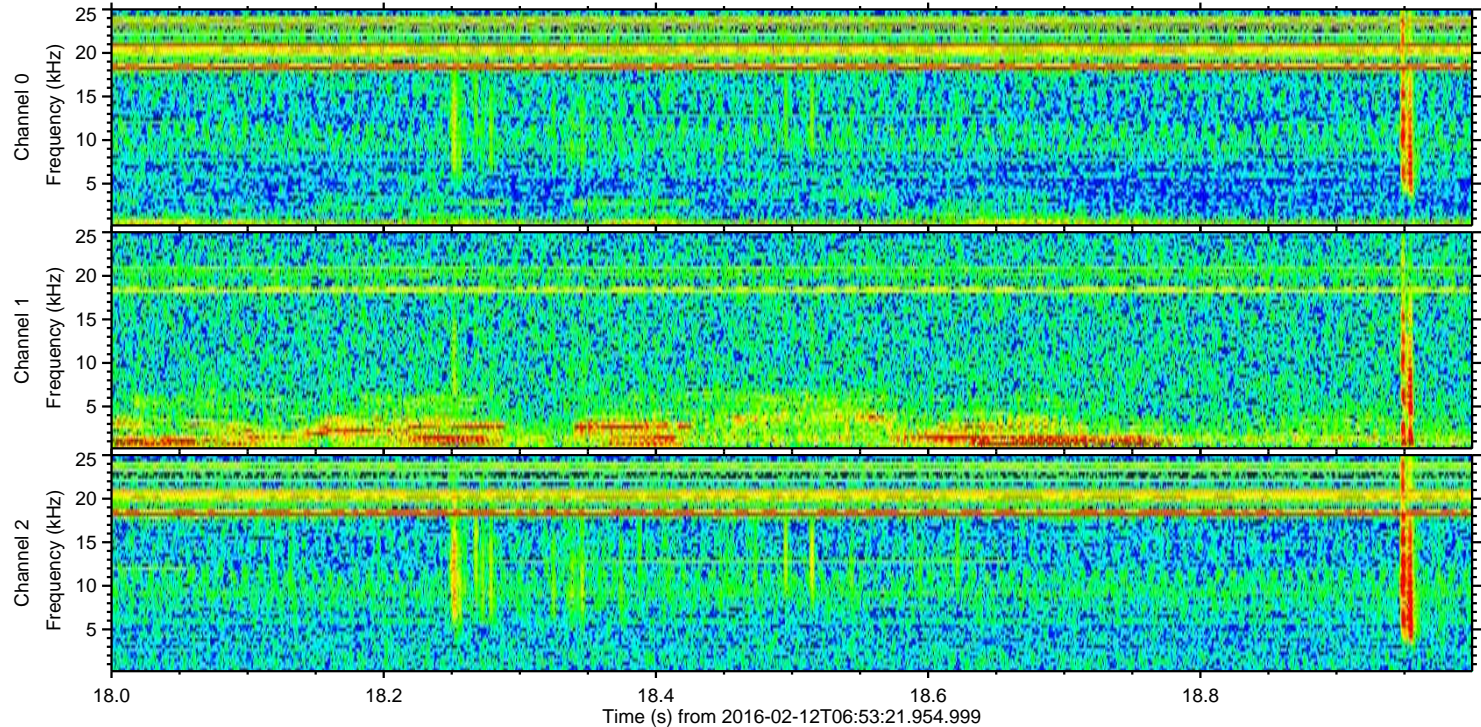
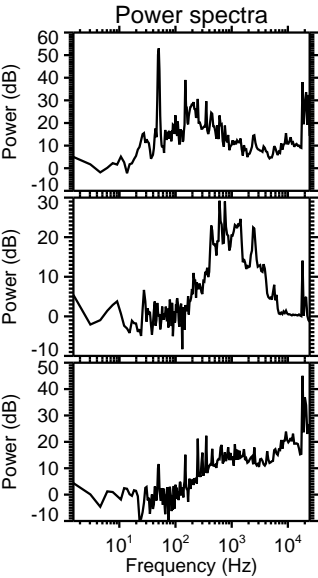
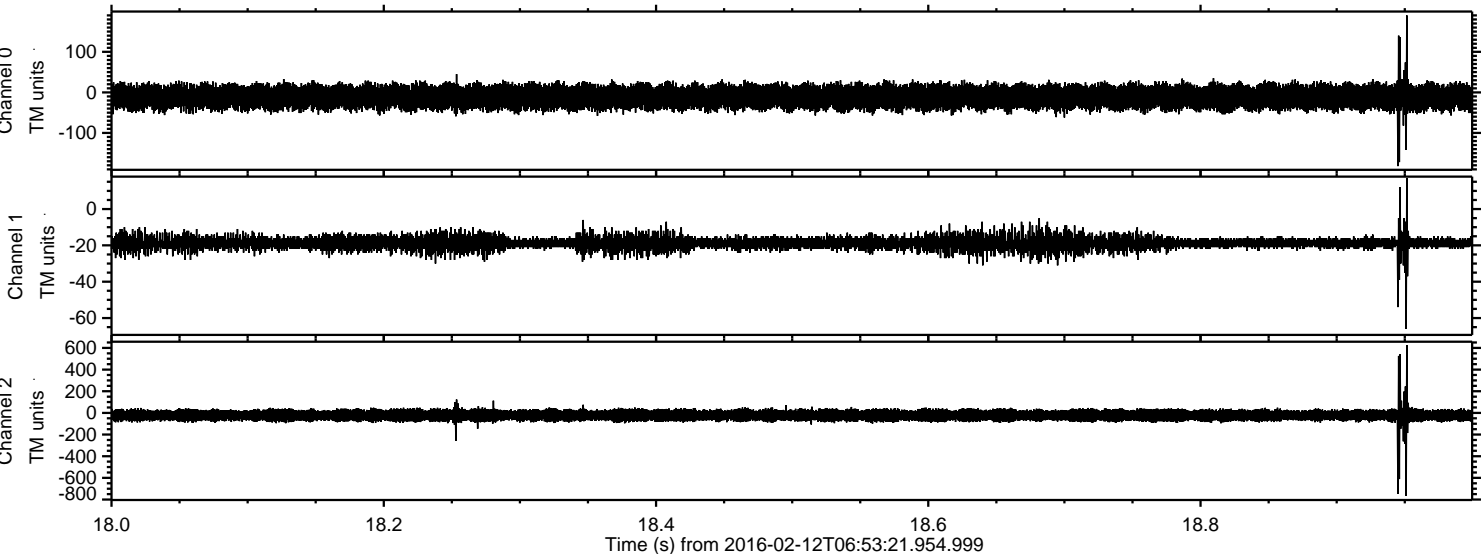
Processed Sun Apr 10 07:43:00 2016 by ELM ver.2012-10-06 from 001\_\_elm20160212\_065320\_\_dat00.bin



Processed Sun Apr 10 07:43:01 2016 by ELM ver.2012-10-06 from 001\_\_elm20160212\_065320\_\_dat00.bin

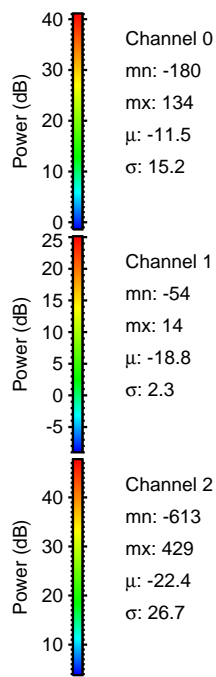
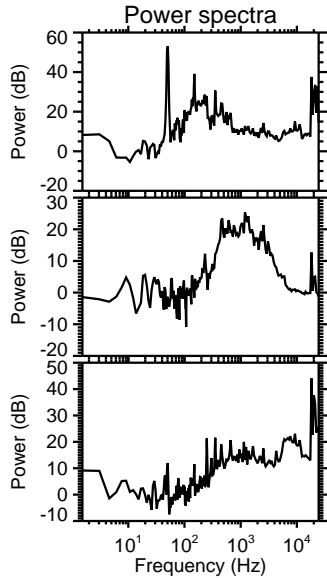
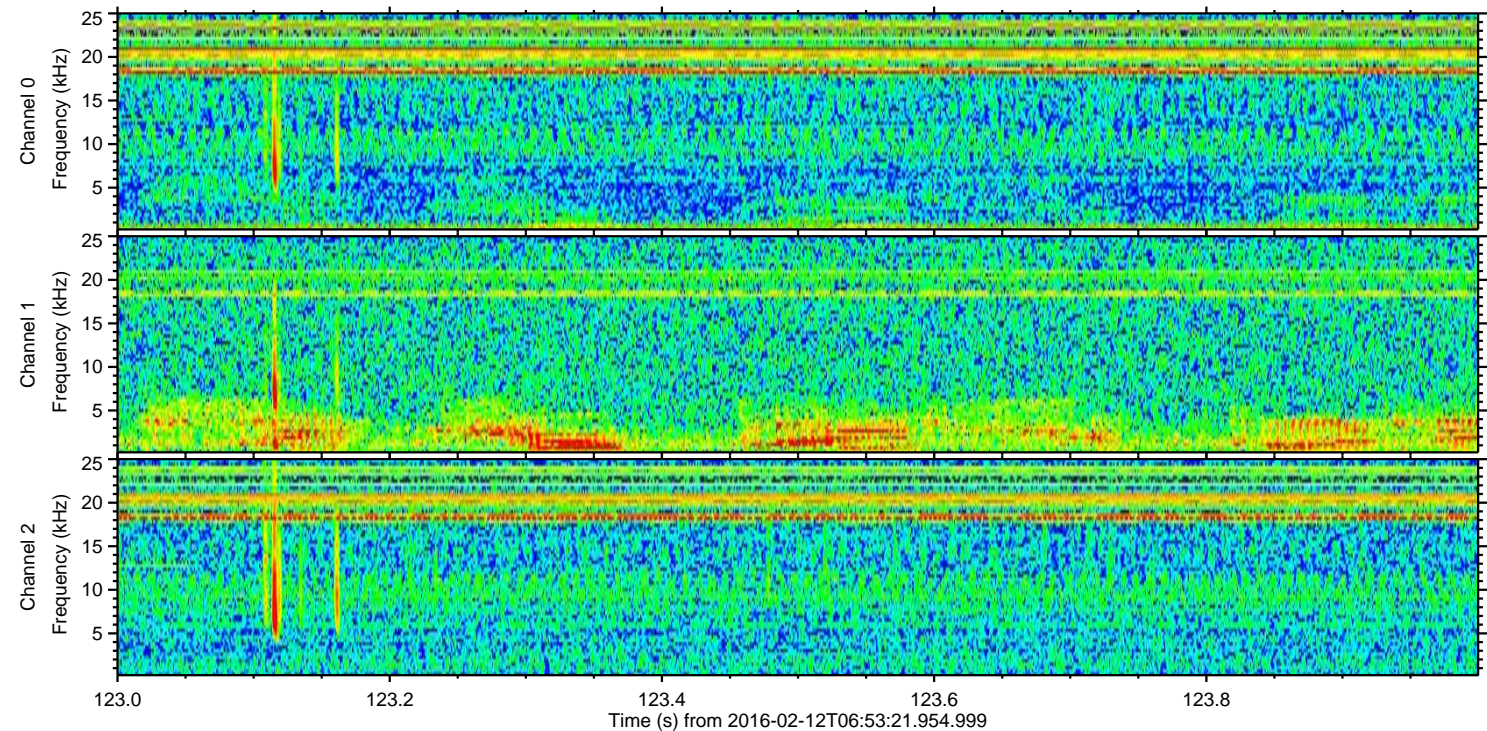
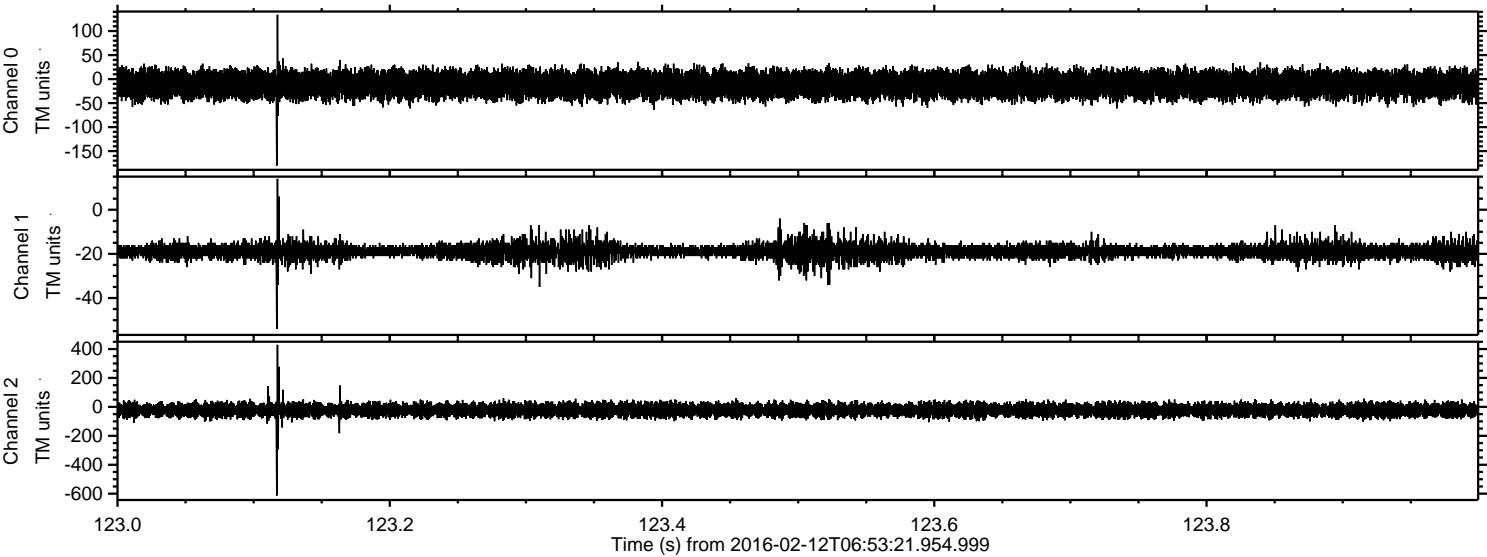


Processed Sun Apr 10 07:43:02 2016 by ELM ver.2012-10-06 from 001\_\_elm20160212\_065320\_\_dat00.bin

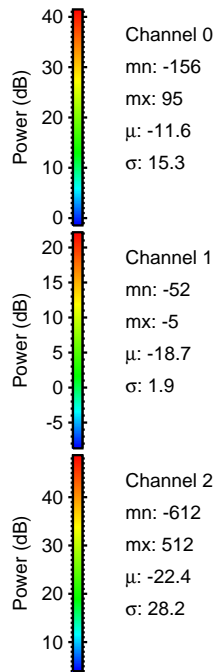
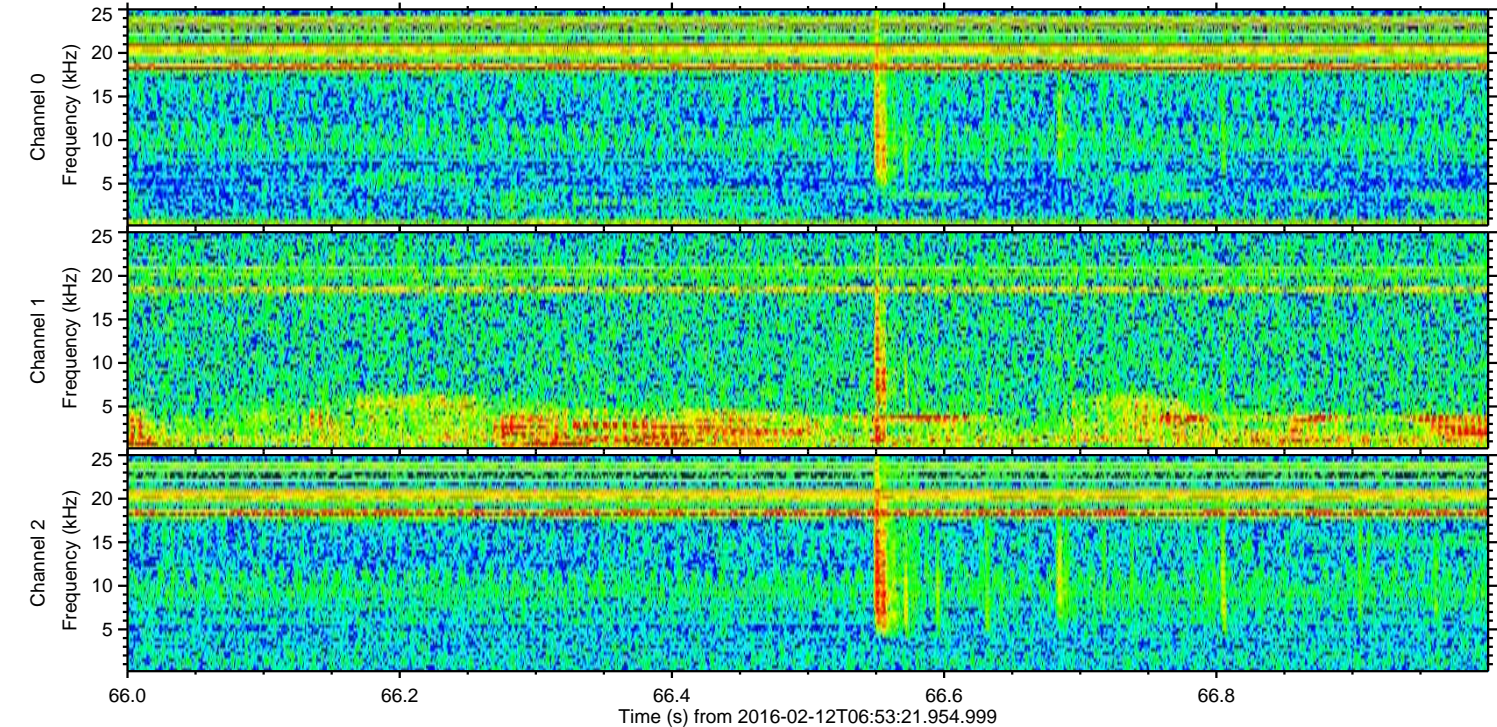
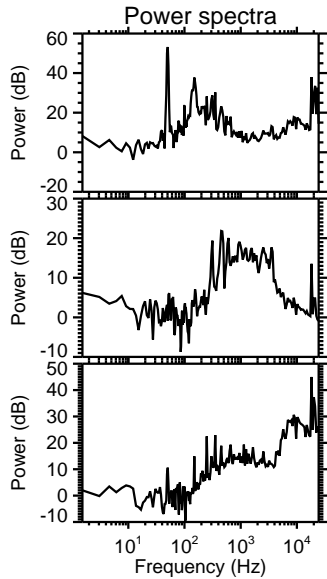
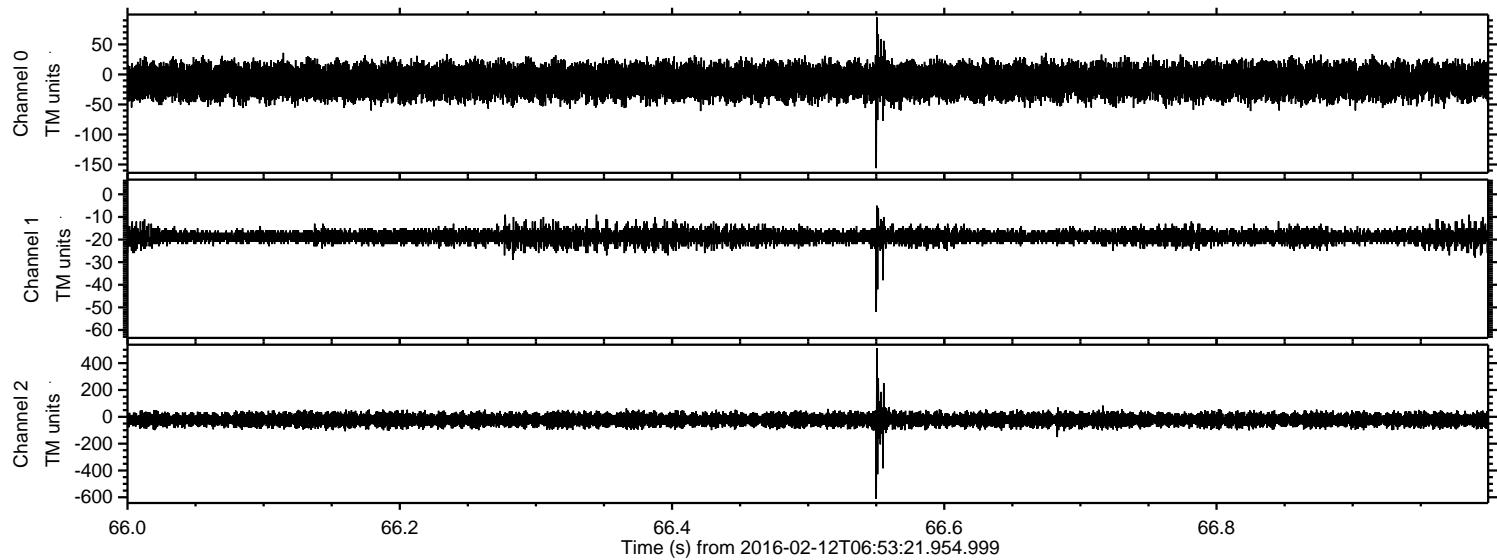


ELMAVAN 3D WAVEFORMS (Measured data sampled at 50 kHz) 51000 packets of 144 samples from 2016-02-12T06:53:21.954.999. Part 124/147

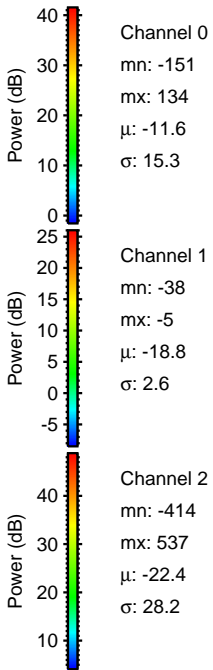
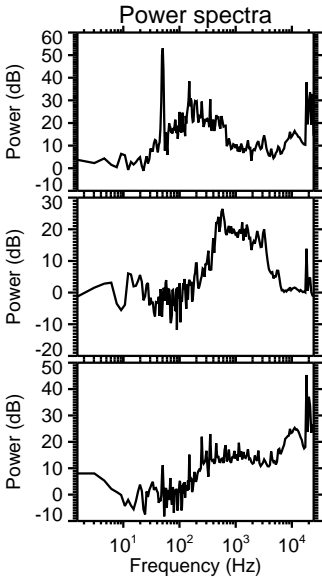
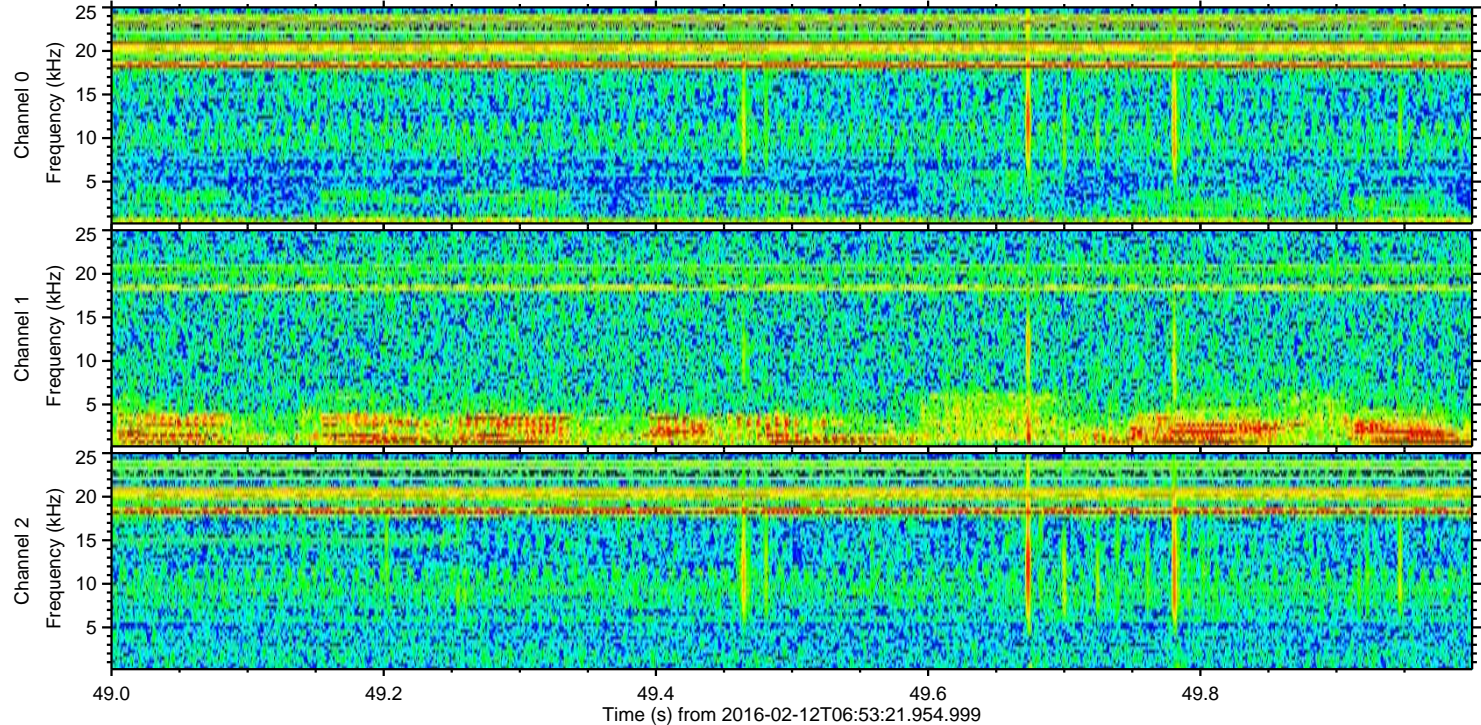
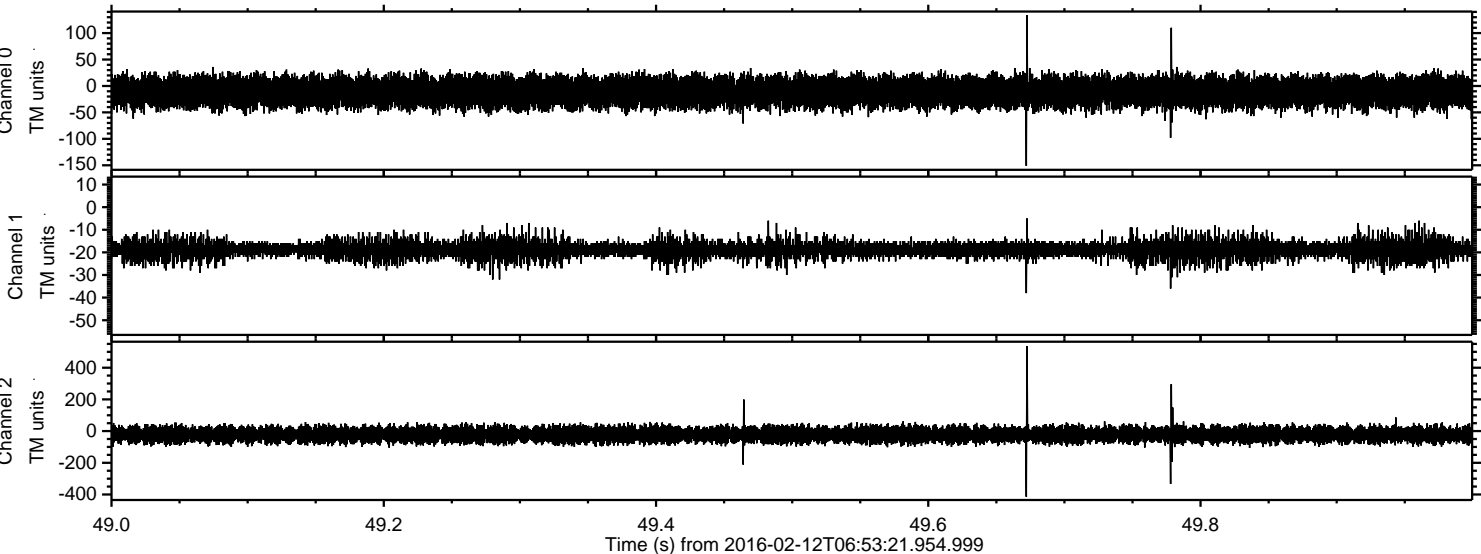
Processed Sun Apr 10 07:43:03 2016 by ELM ver.2012-10-06 from 001\_\_elm20160212\_065320\_\_dat00.bin



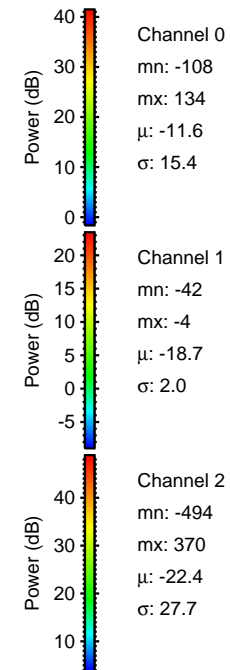
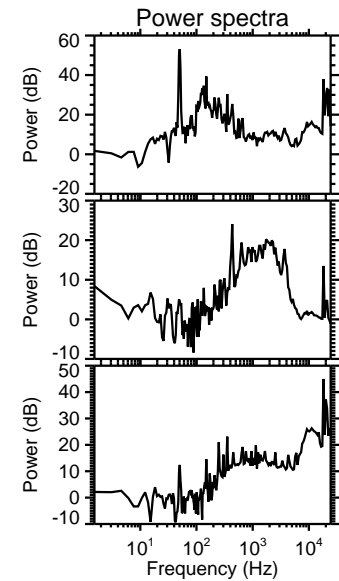
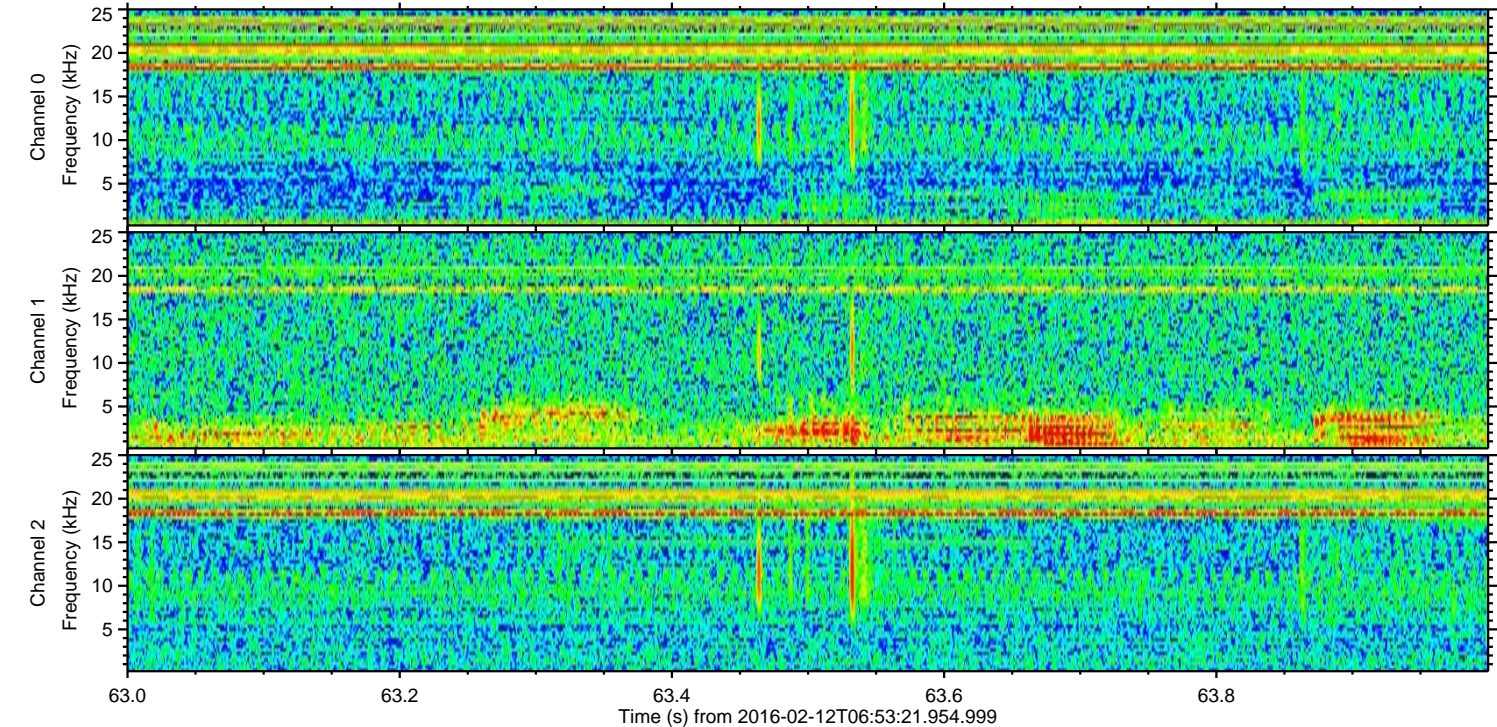
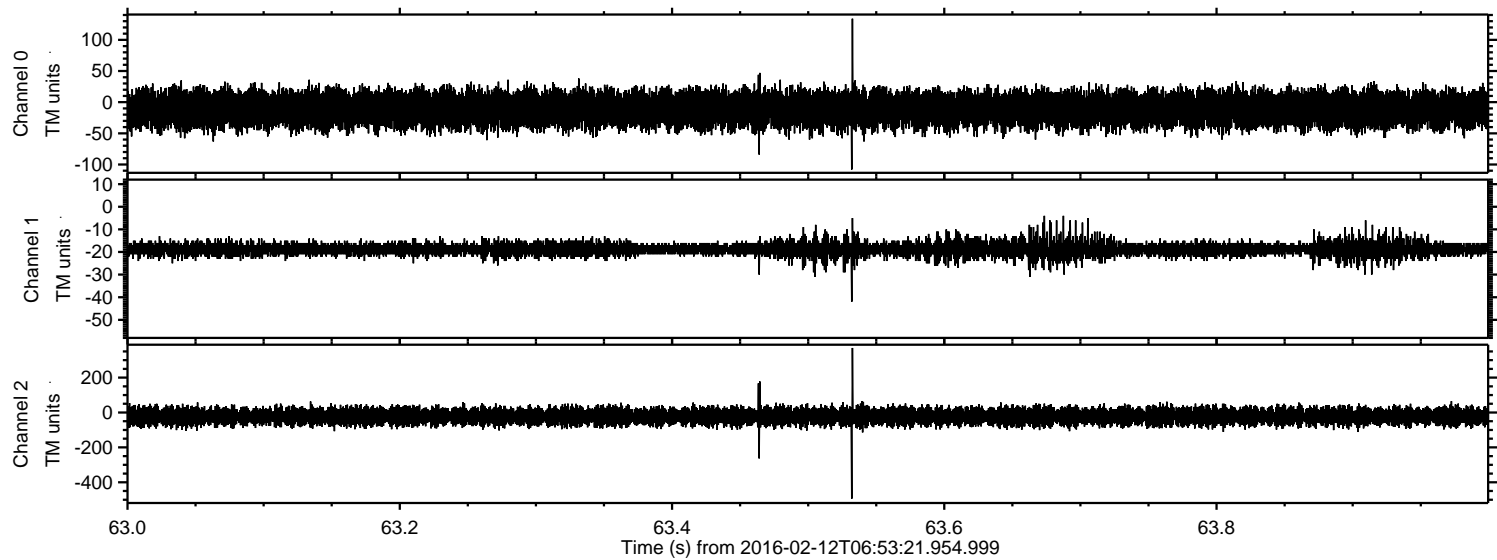
Processed Sun Apr 10 07:43:04 2016 by ELM ver.2012-10-06 from 001\_\_elm20160212\_065320\_\_dat00.bin



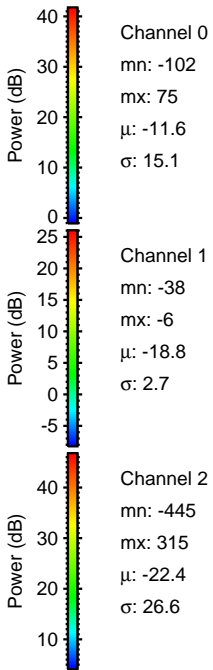
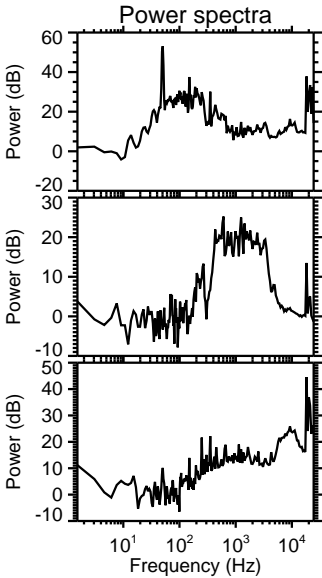
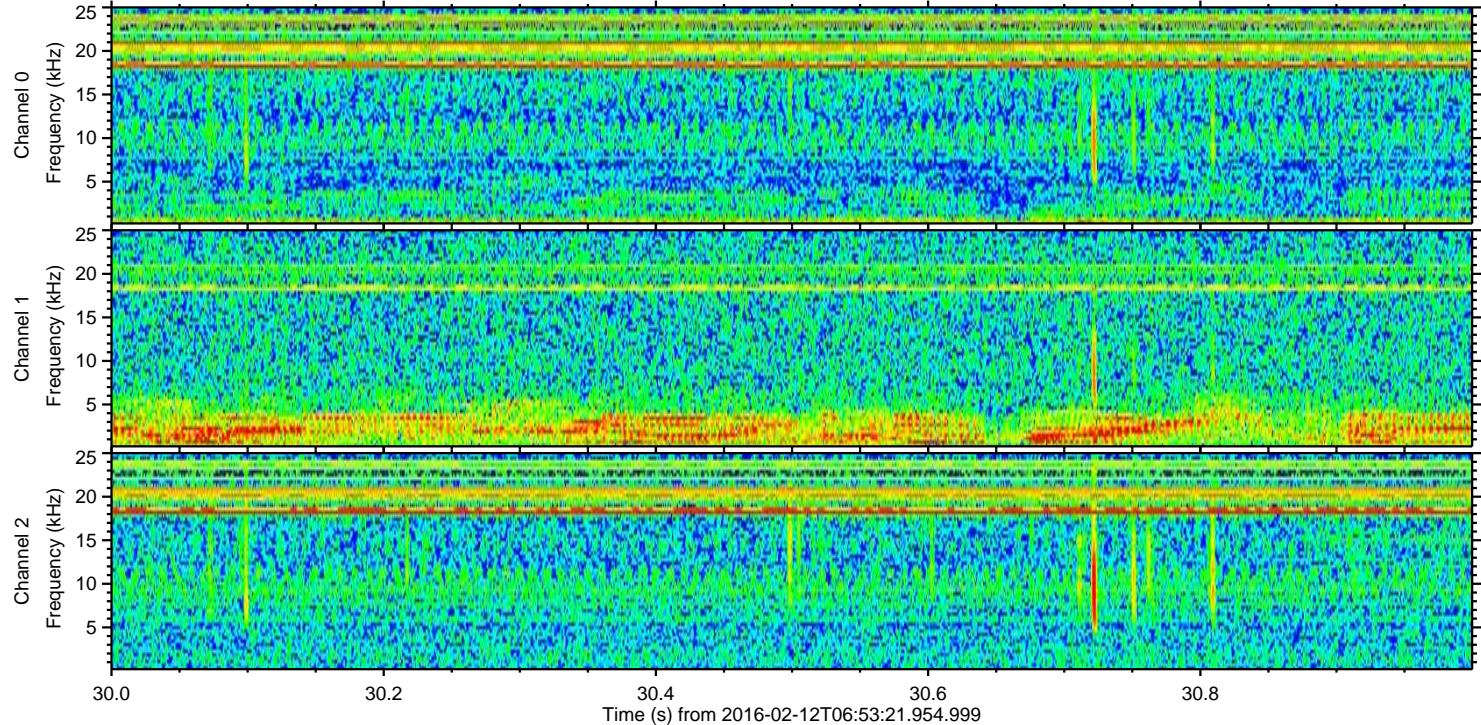
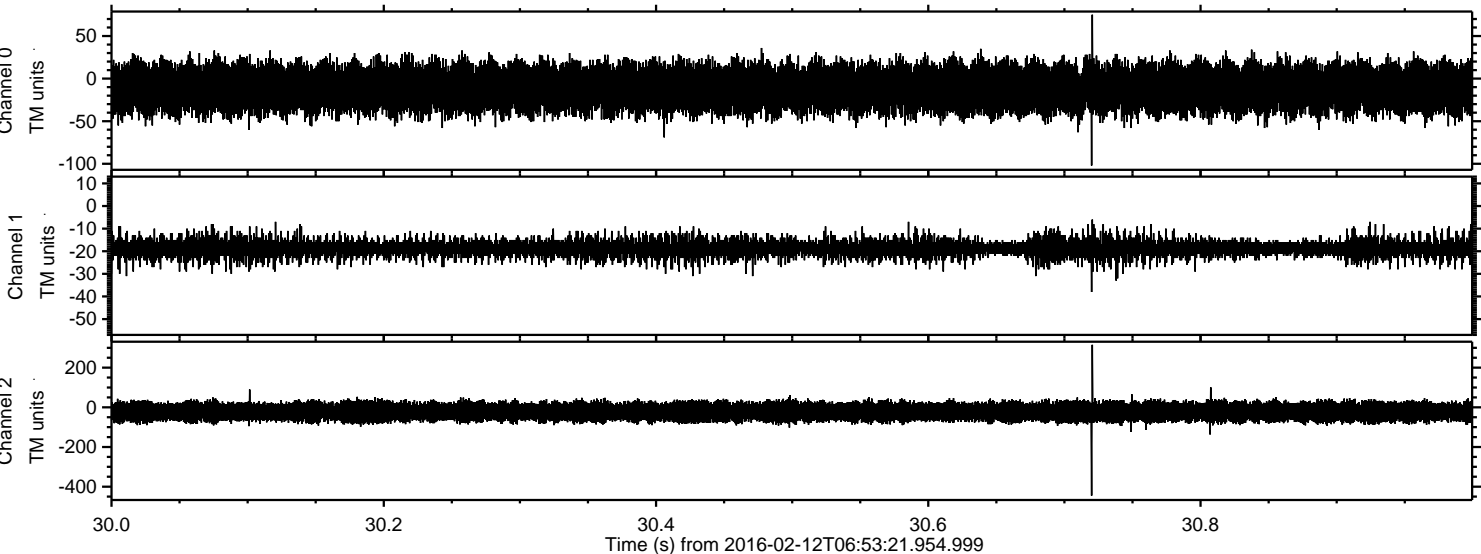
Processed Sun Apr 10 07:43:05 2016 by ELM ver.2012-10-06 from 001\_\_elm20160212\_065320\_\_dat00.bin



Processed Sun Apr 10 07:43:06 2016 by ELM ver.2012-10-06 from 001\_\_elm20160212\_065320\_\_dat00.bin



Processed Sun Apr 10 07:43:07 2016 by ELM ver.2012-10-06 from 001\_\_elm20160212\_065320\_\_dat00.bin



Channel 0  
mn: -102  
mx: 75  
 $\mu$ : -11.6  
 $\sigma$ : 15.1

Channel 1  
mn: -38  
mx: -6  
 $\mu$ : -18.8  
 $\sigma$ : 2.7

Channel 2  
mn: -445  
mx: 315  
 $\mu$ : -22.4  
 $\sigma$ : 26.6

Processed Sun Apr 10 07:43:08 2016 by ELM ver.2012-10-06 from 001\_\_elm20160212\_065320\_\_dat00.bin

