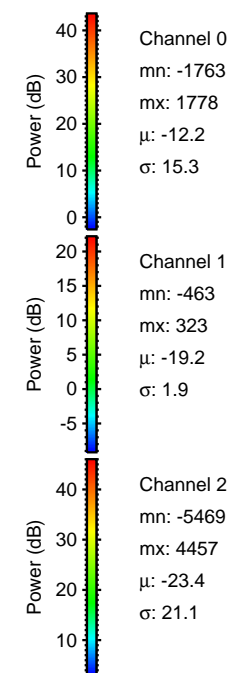
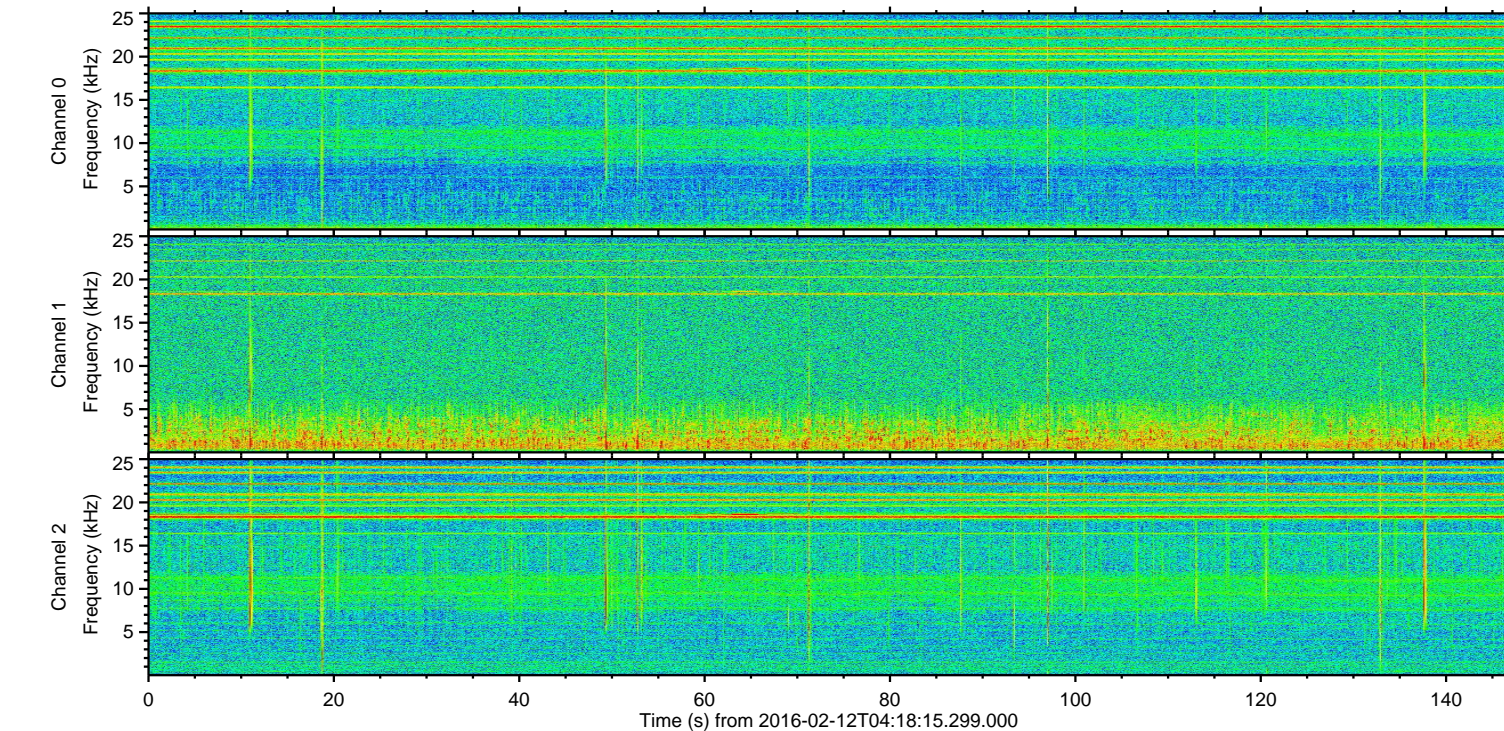
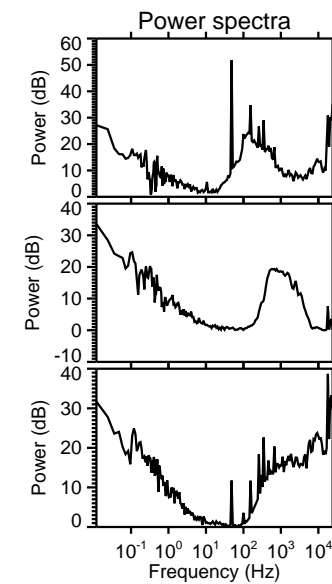
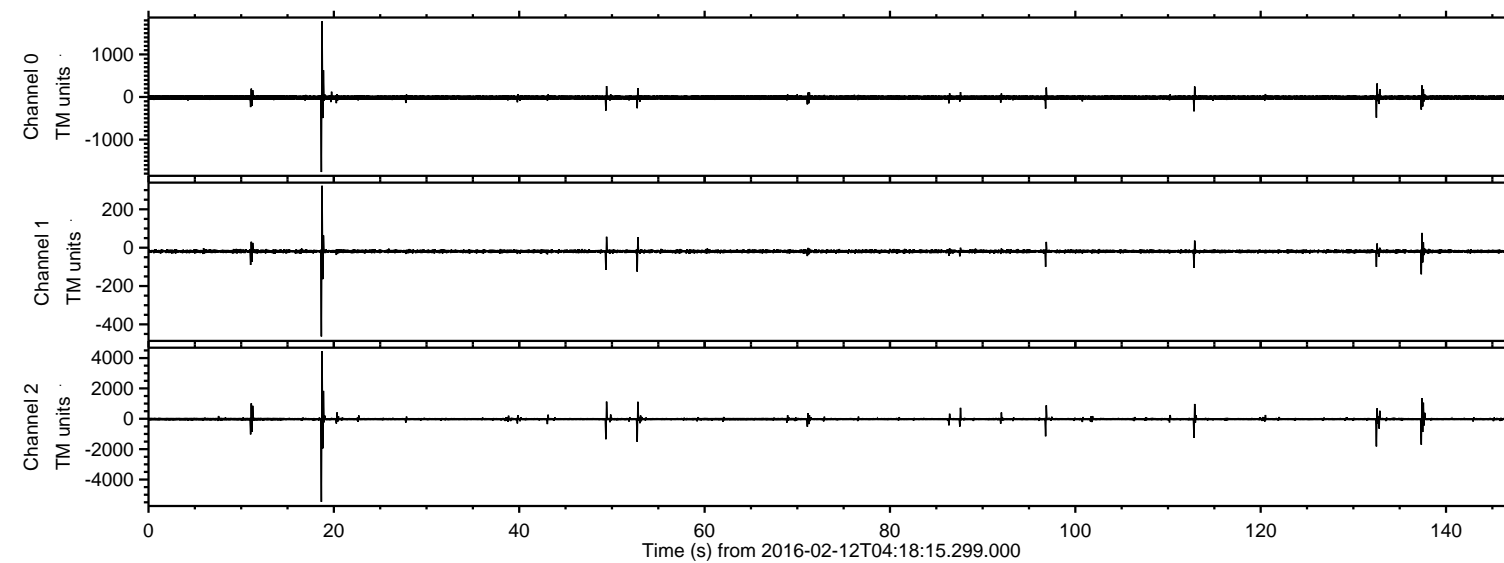


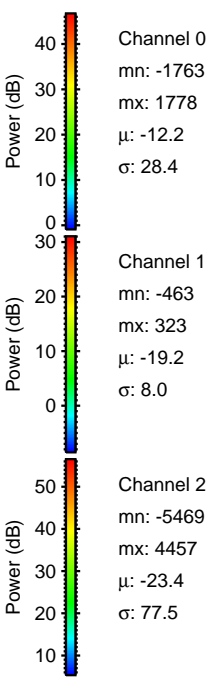
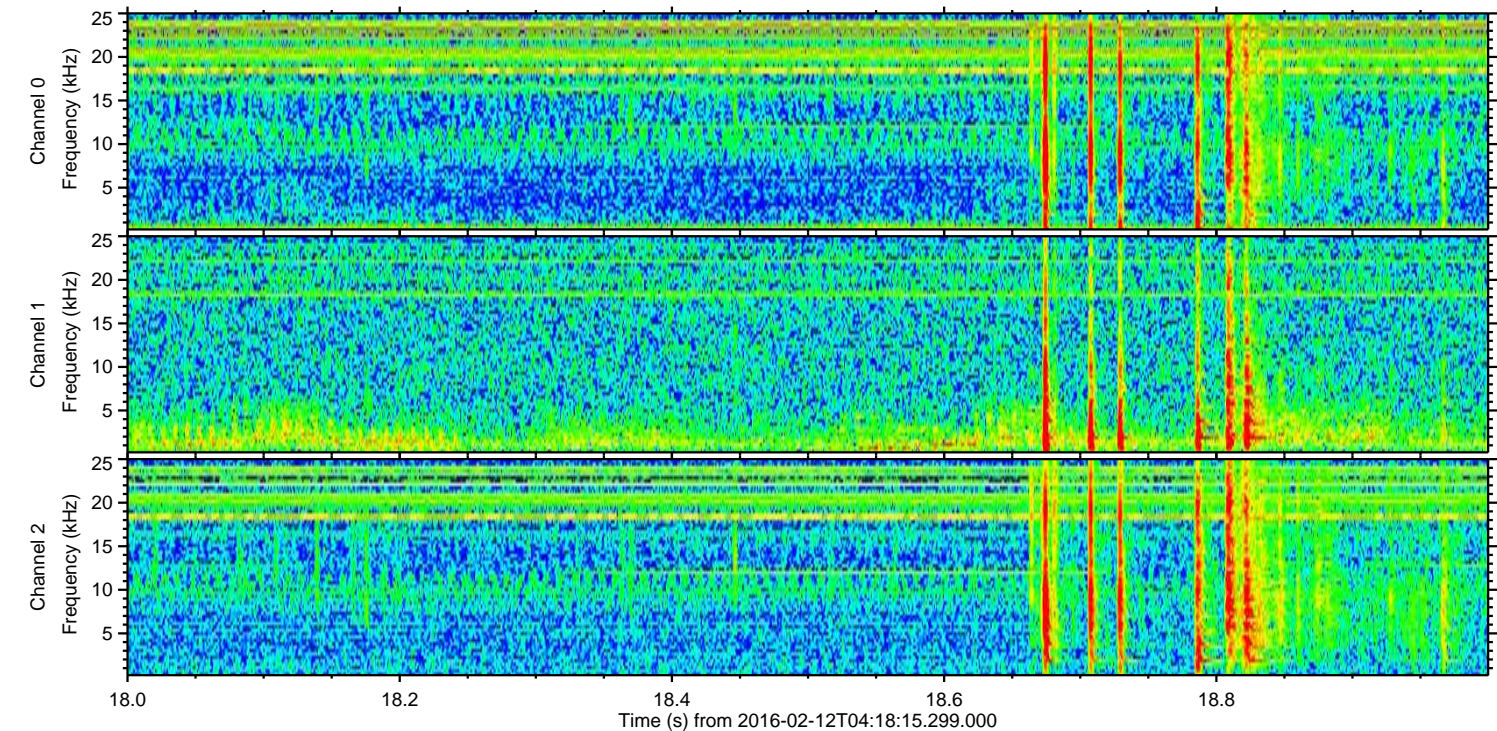
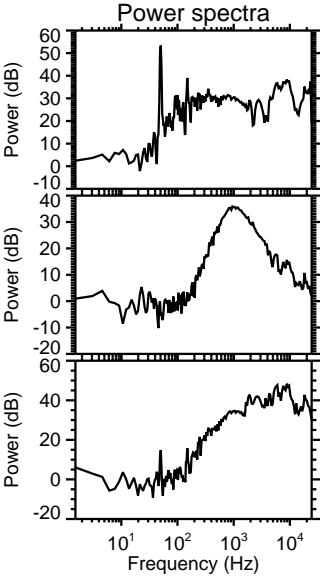
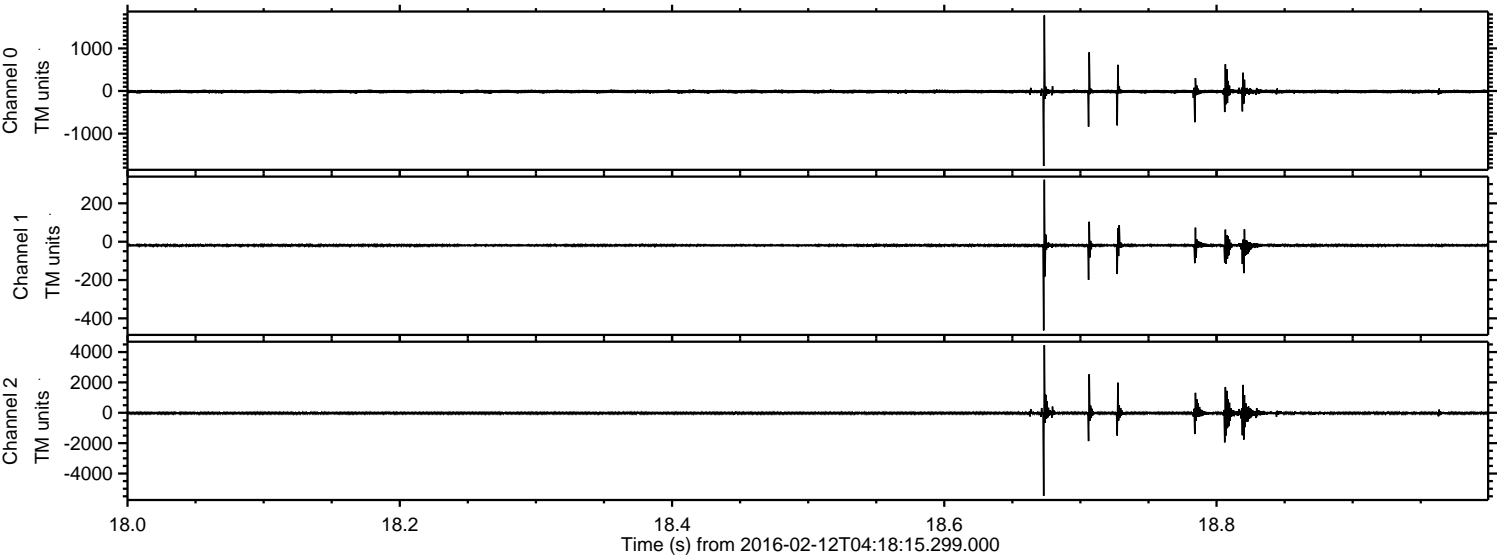
# ELMAVAN 3D WAVEFORMS (Measured data sampled at 50 kHz) 51000 packets of 144 samples from 2016-02-12T04:18:15.299.000.

Processed Sun Apr 10 07:11:25 2016 by ELM ver.2012-10-06 from 001\_\_elm20160212\_041814\_\_dat00.bin





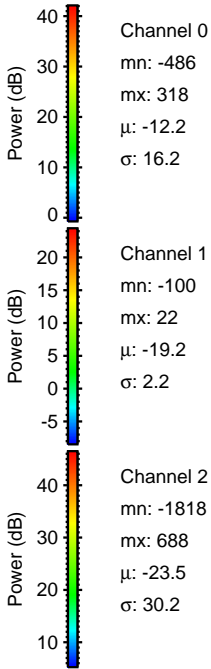
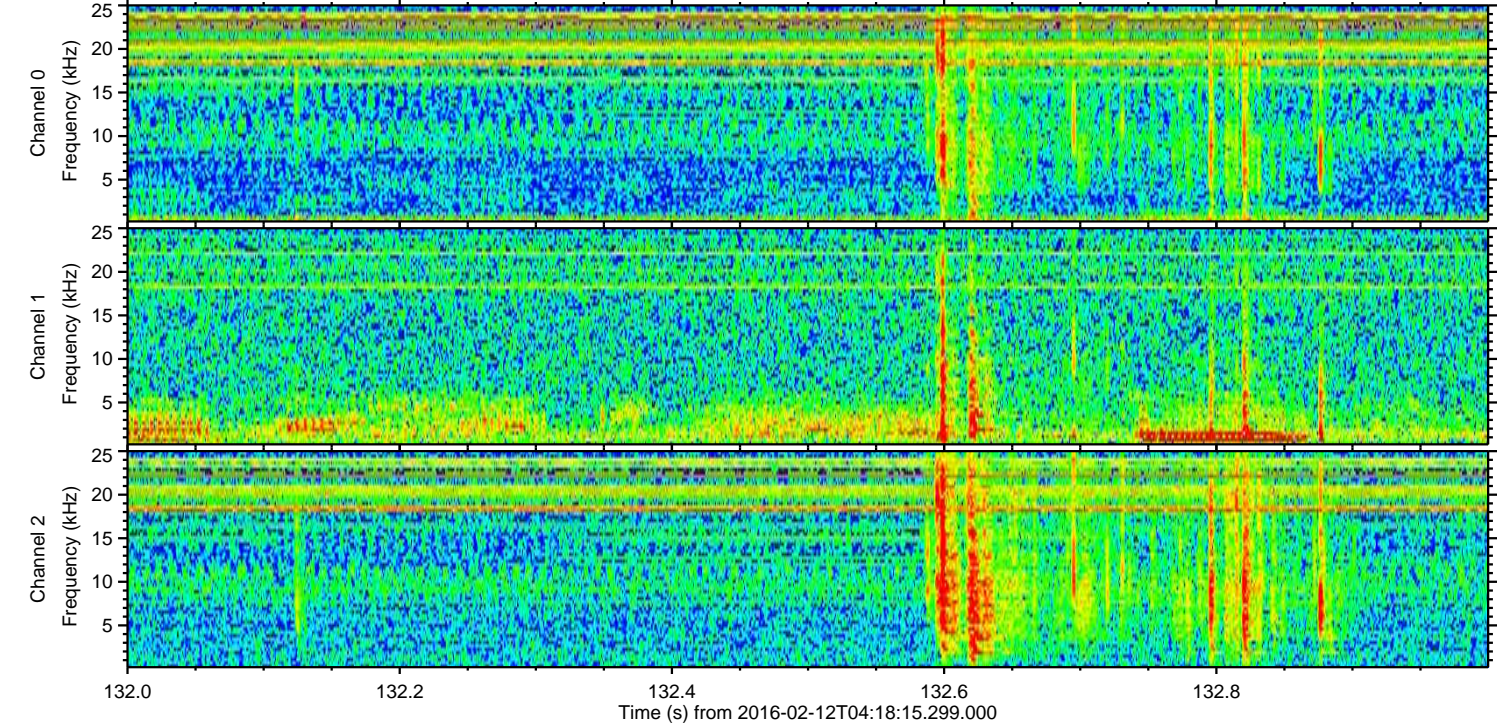
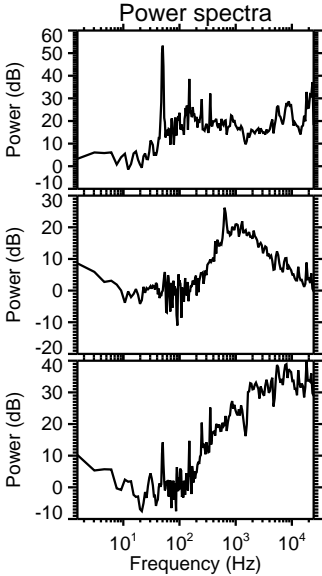
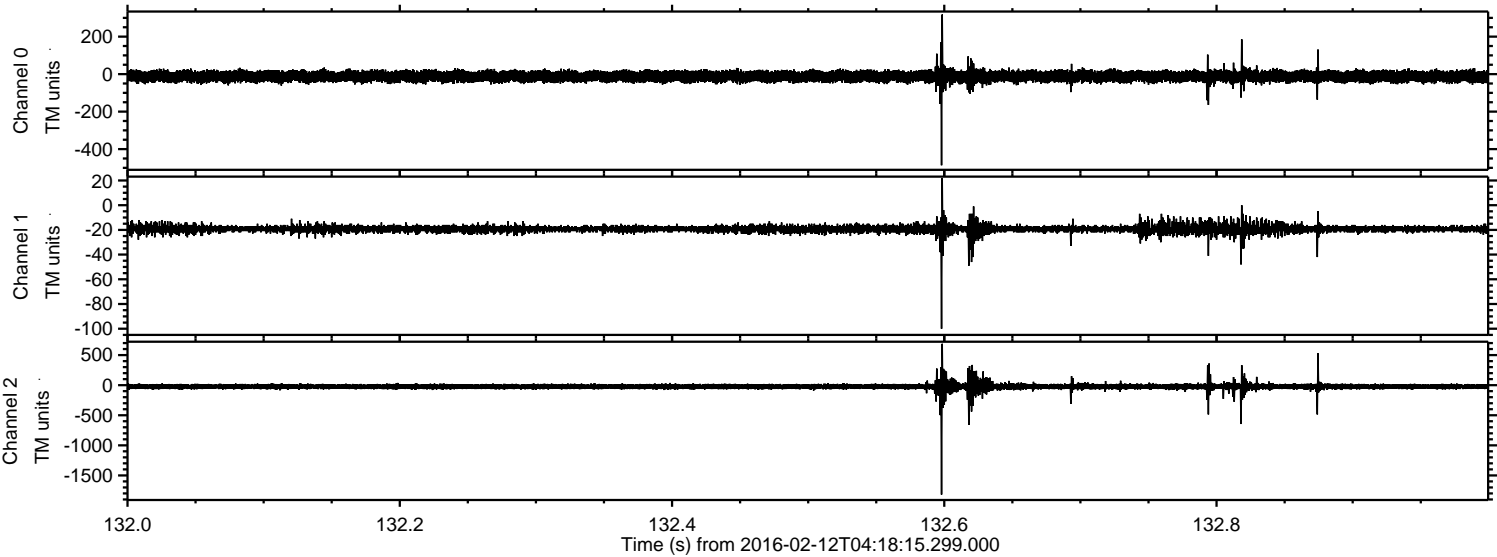
Processed Sun Apr 10 07:11:37 2016 by ELM ver.2012-10-06 from 001\_\_elm20160212\_041814\_\_dat00.bin





ELMAVAN 3D WAVEFORMS (Measured data sampled at 50 kHz) 51000 packets of 144 samples from 2016-02-12T04:18:15.299.000. Part 133/147

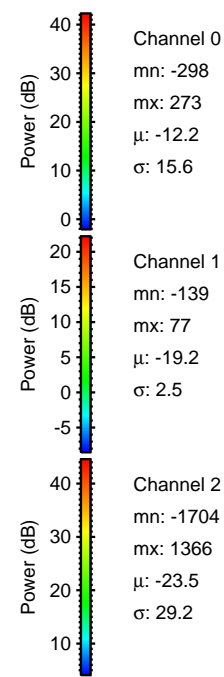
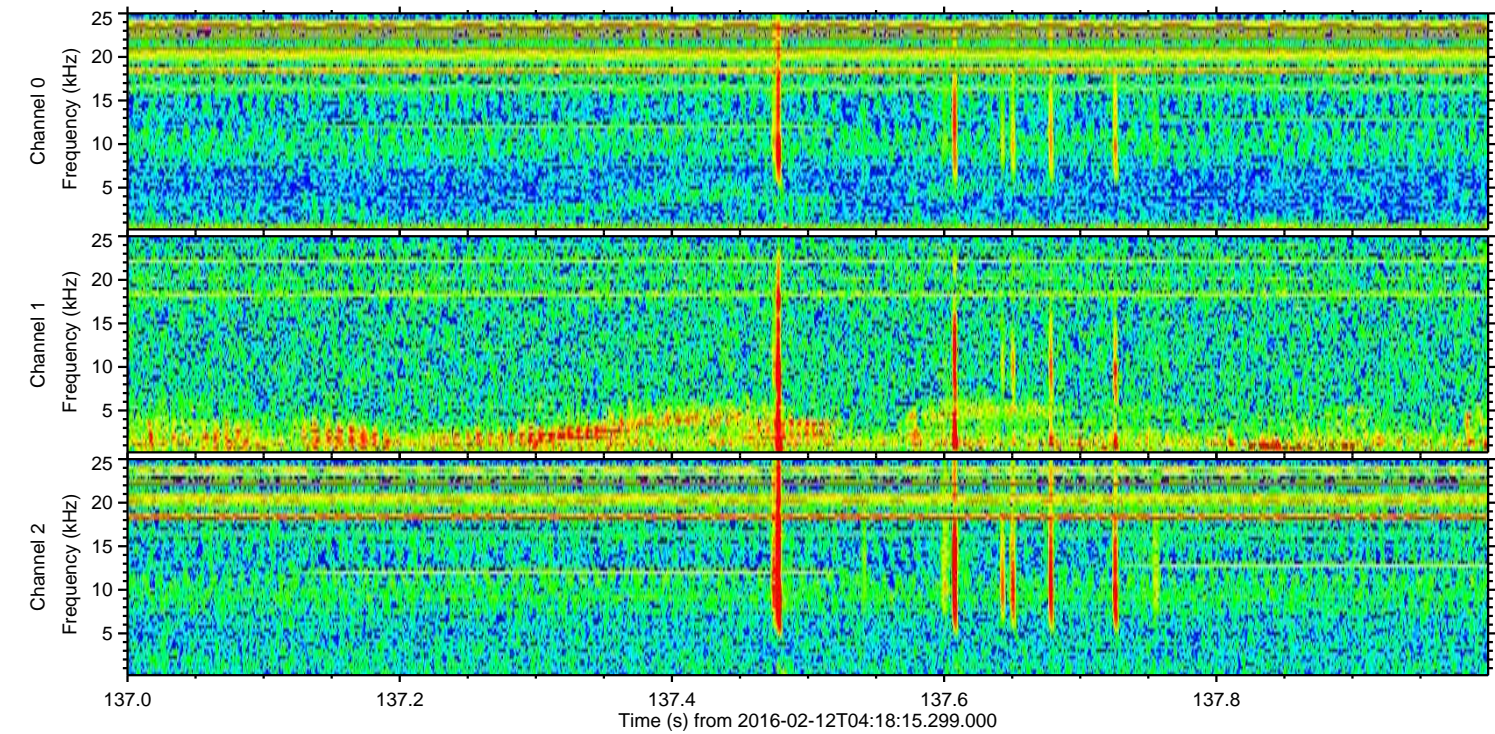
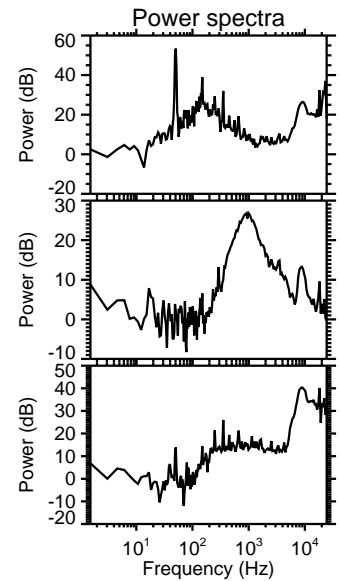
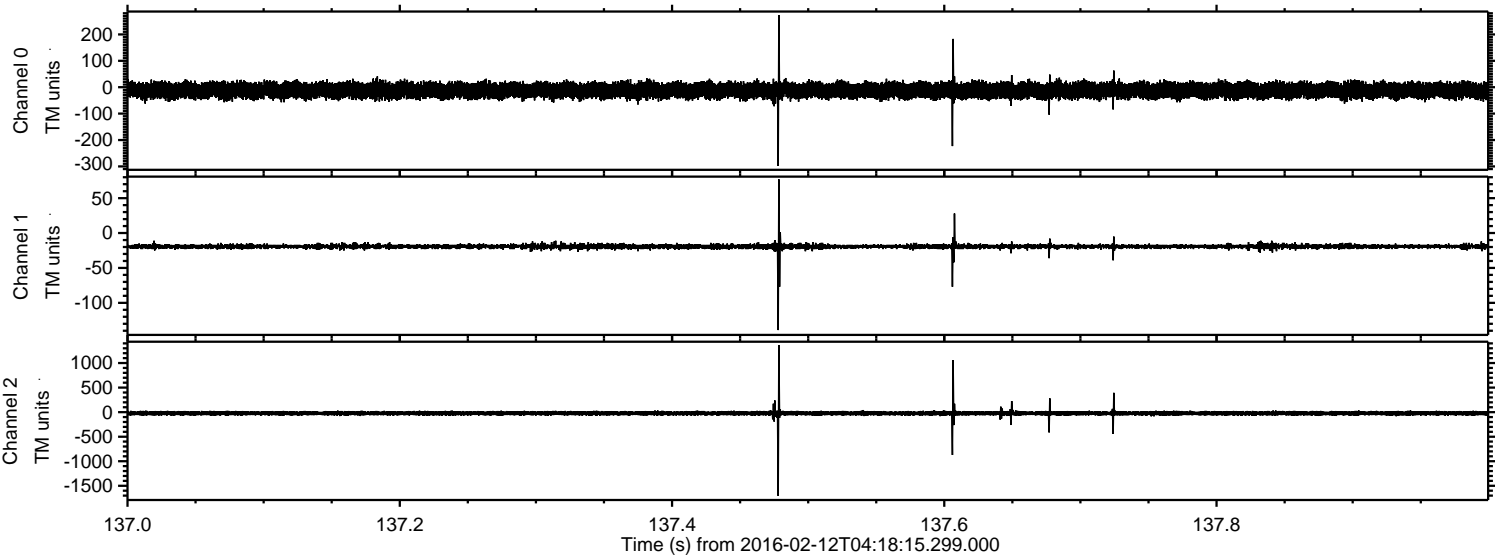
Processed Sun Apr 10 07:11:38 2016 by ELM ver.2012-10-06 from 001\_\_elm20160212\_041814\_\_dat00.bin





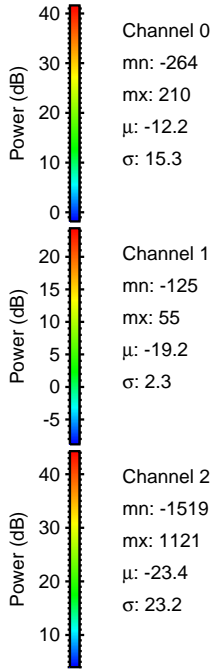
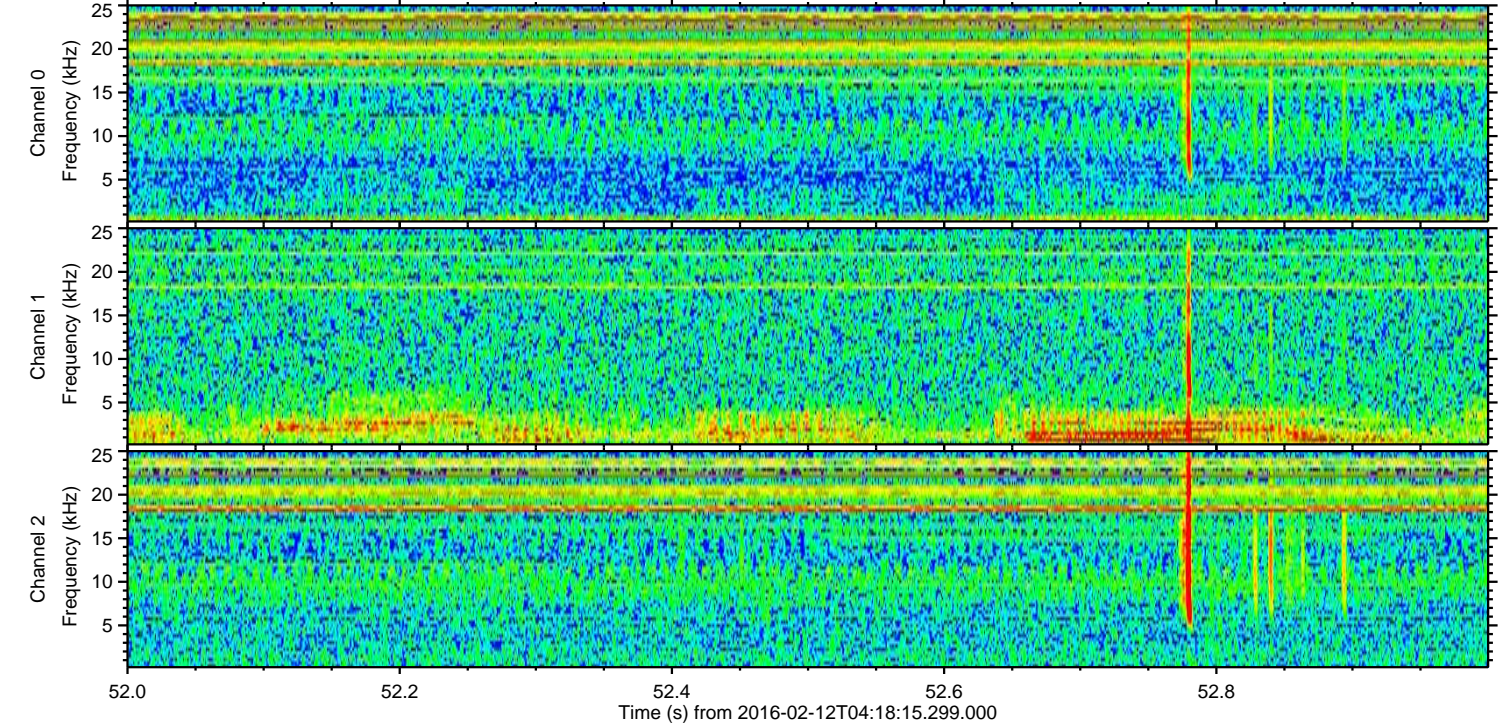
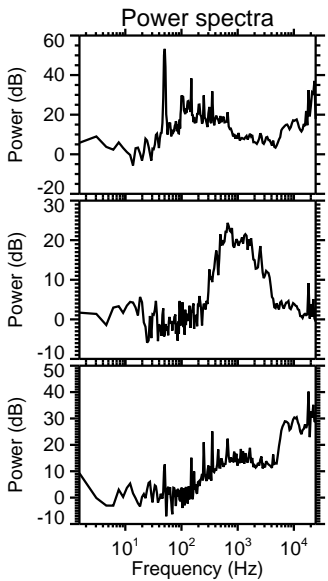
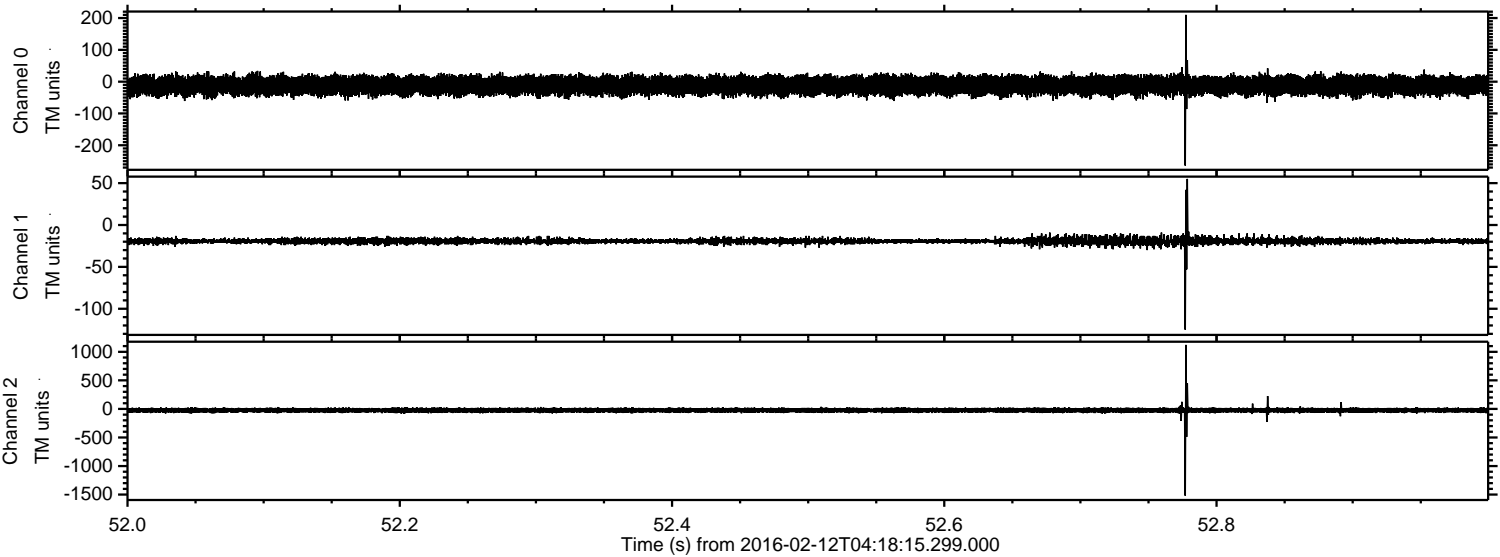
ELMAVAN 3D WAVEFORMS (Measured data sampled at 50 kHz) 51000 packets of 144 samples from 2016-02-12T04:18:15.299.000. Part 138/147

Processed Sun Apr 10 07:11:38 2016 by ELM ver.2012-10-06 from 001\_\_elm20160212\_041814\_\_dat00.bin



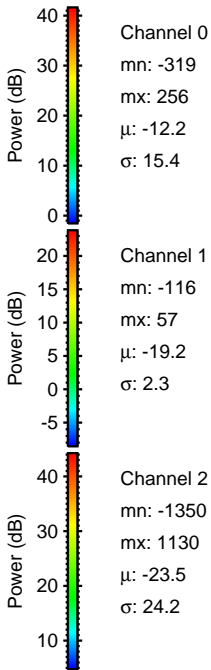
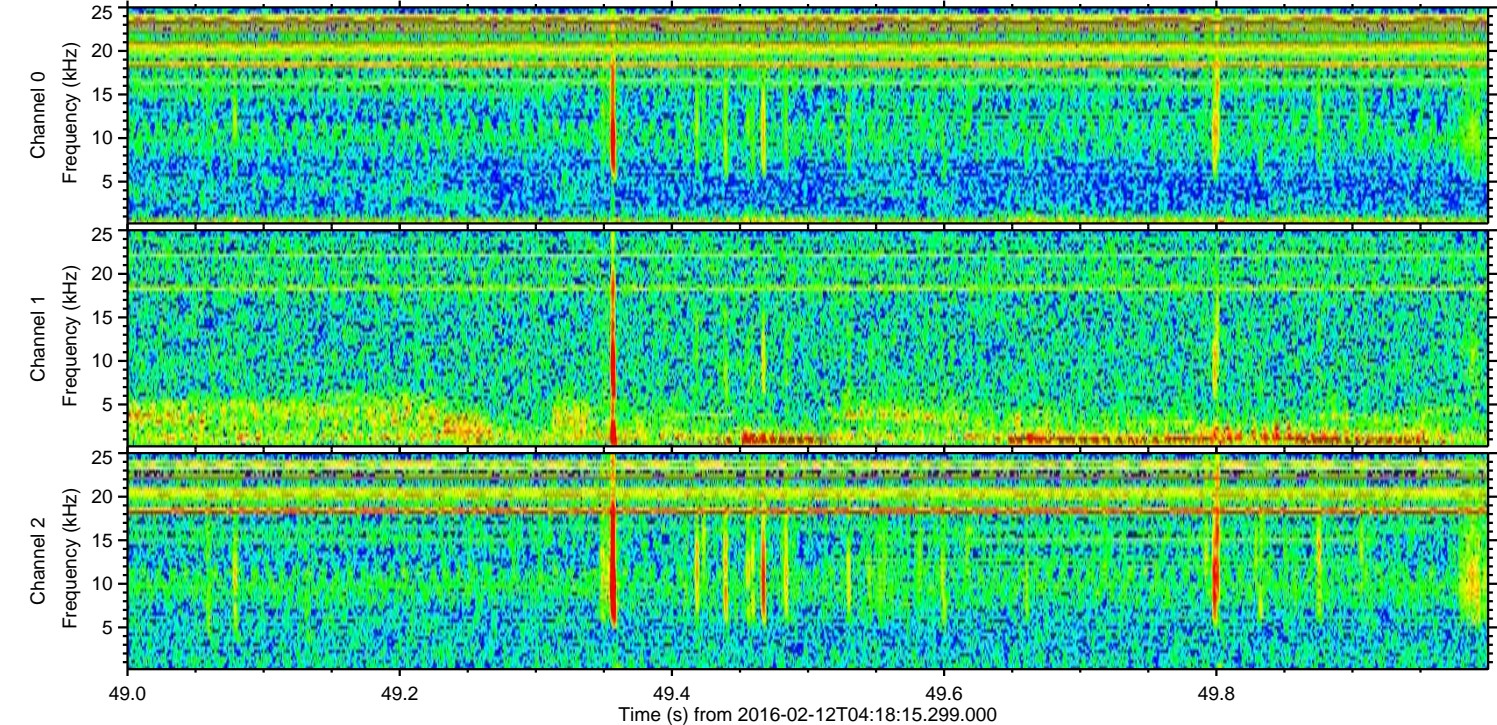
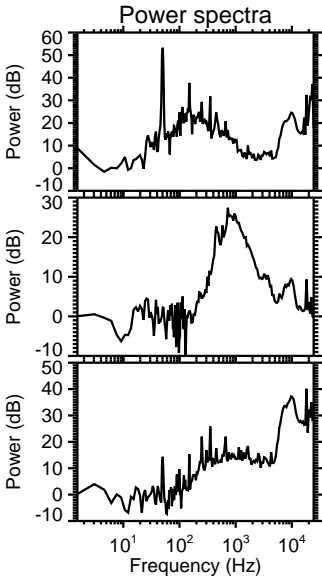
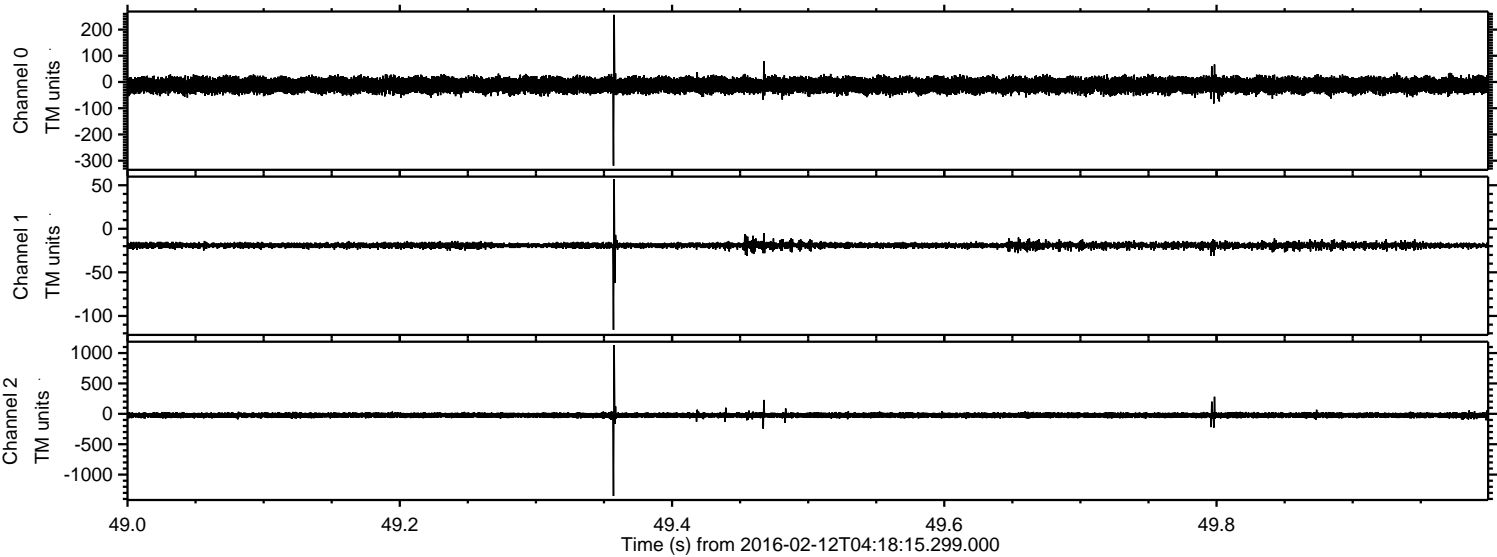


Processed Sun Apr 10 07:11:39 2016 by ELM ver.2012-10-06 from 001\_\_elm20160212\_041814\_\_dat00.bin





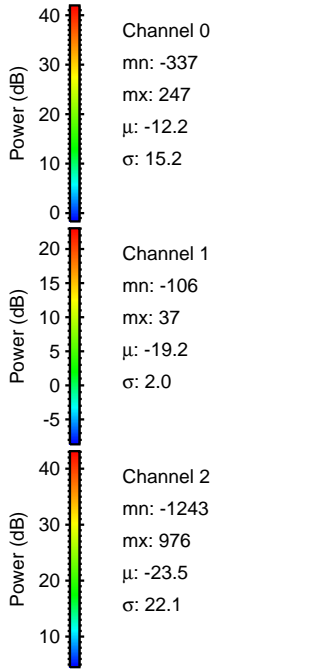
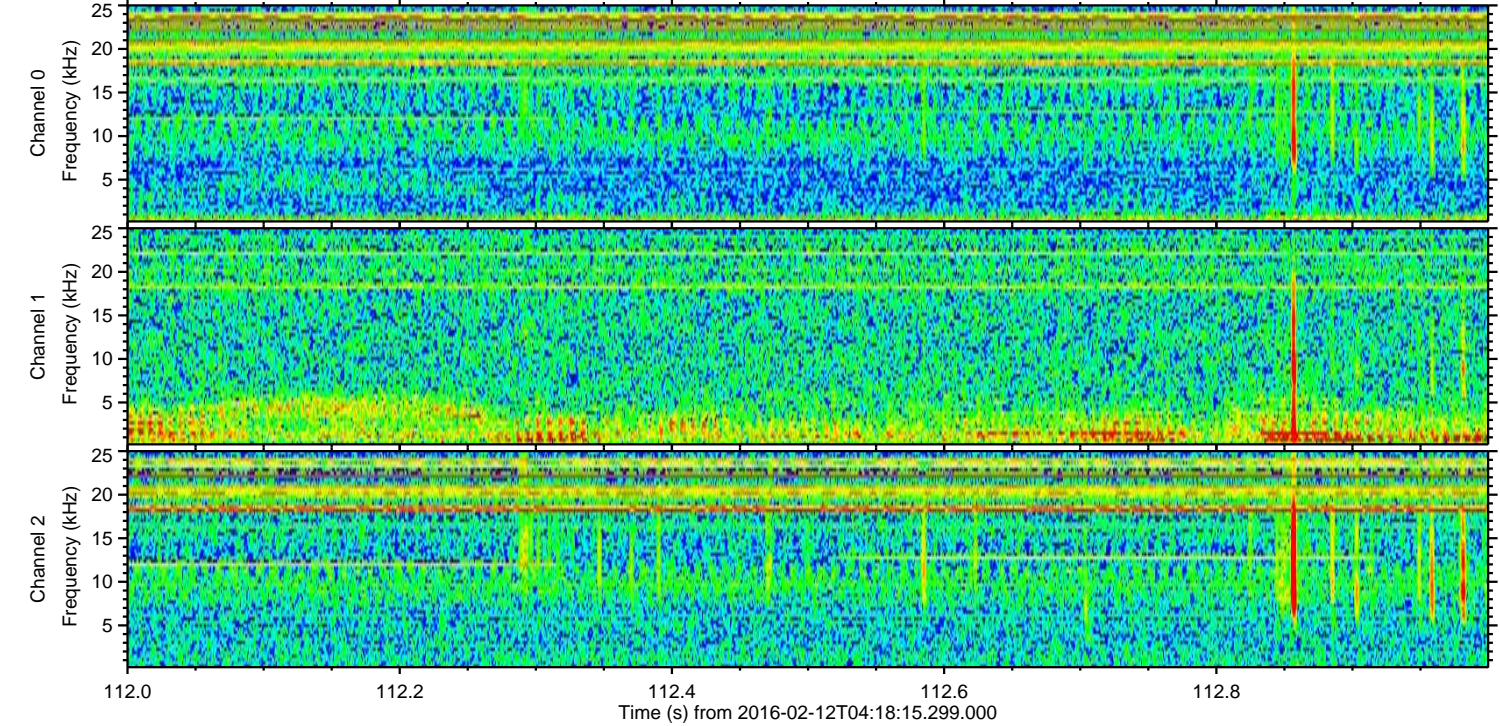
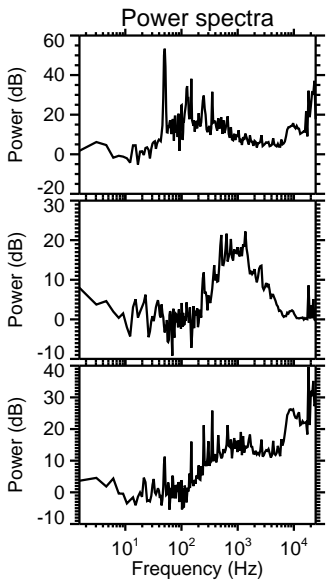
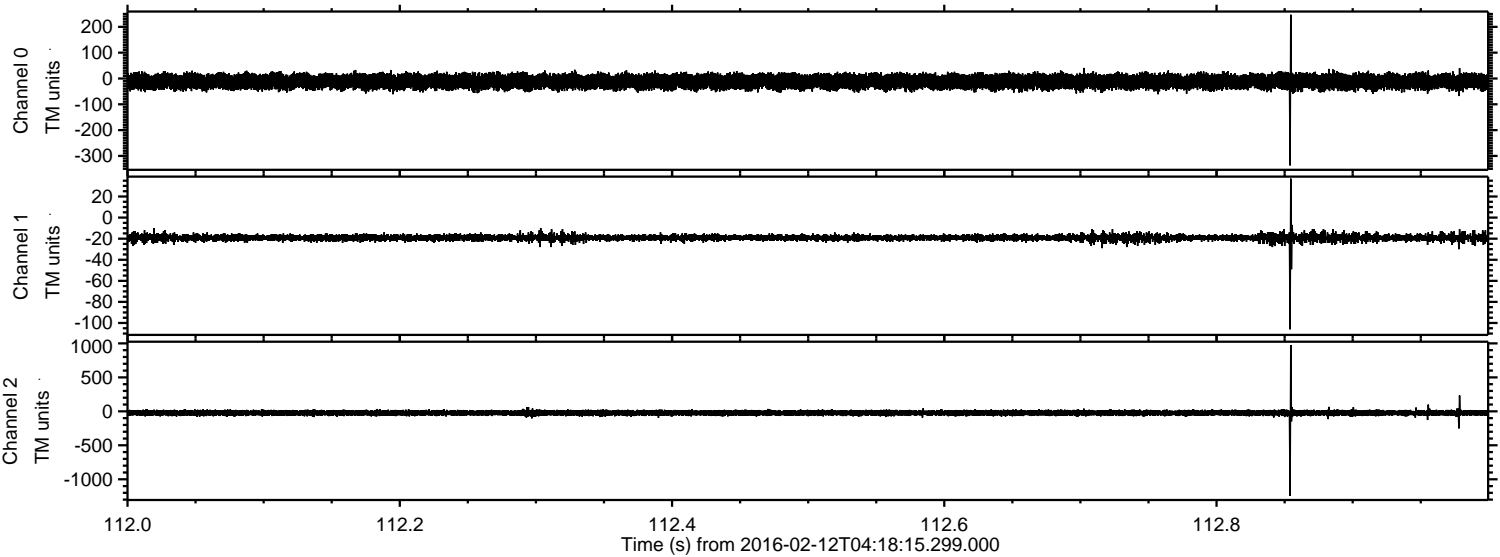
Processed Sun Apr 10 07:11:40 2016 by ELM ver.2012-10-06 from 001\_\_elm20160212\_041814\_\_dat00.bin





ELMAVAN 3D WAVEFORMS (Measured data sampled at 50 kHz) 51000 packets of 144 samples from 2016-02-12T04:18:15.299.000. Part 113/147

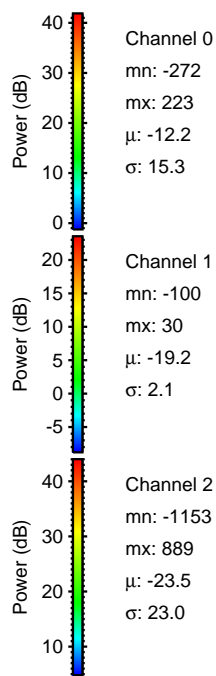
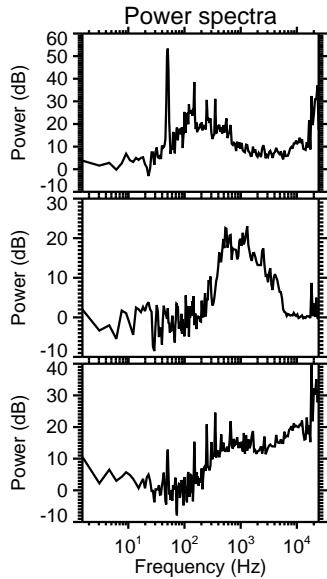
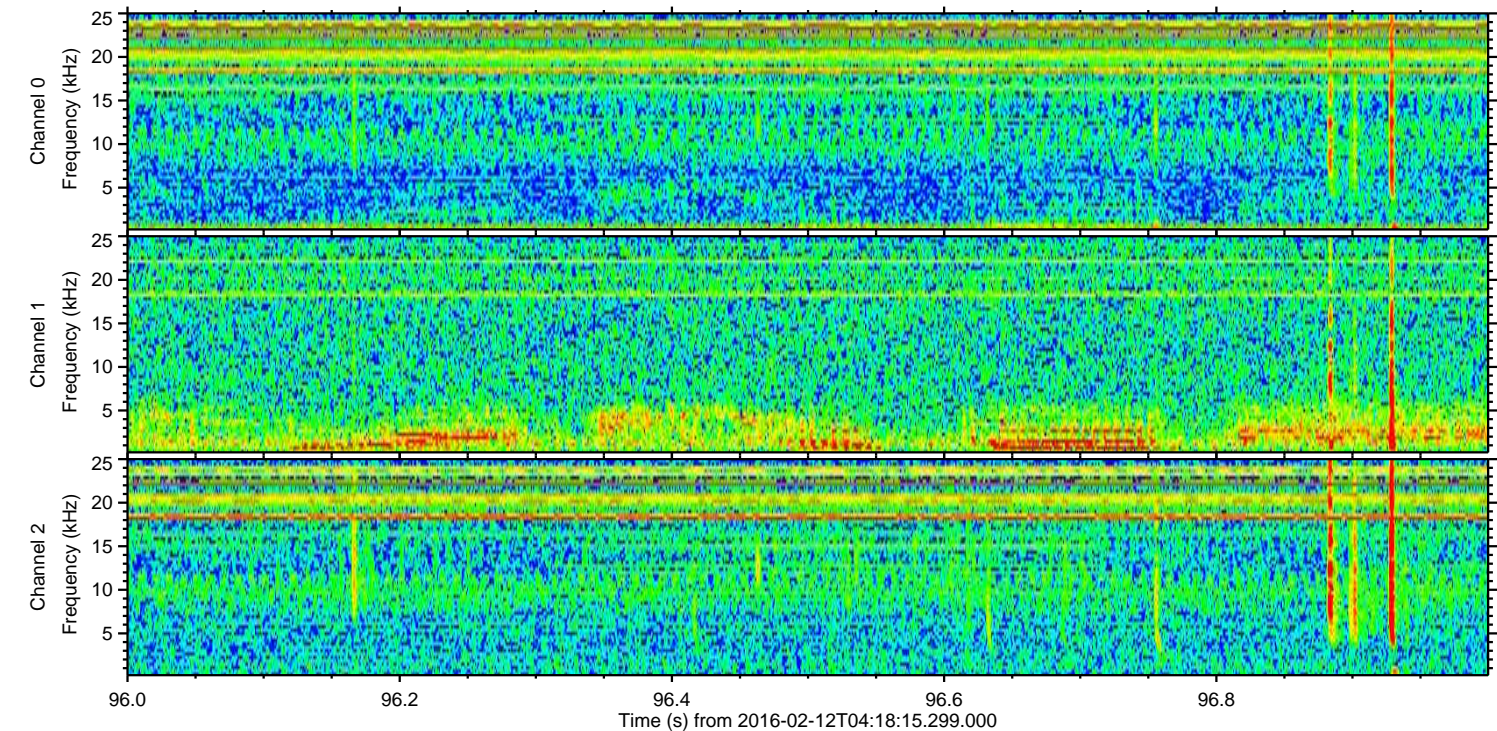
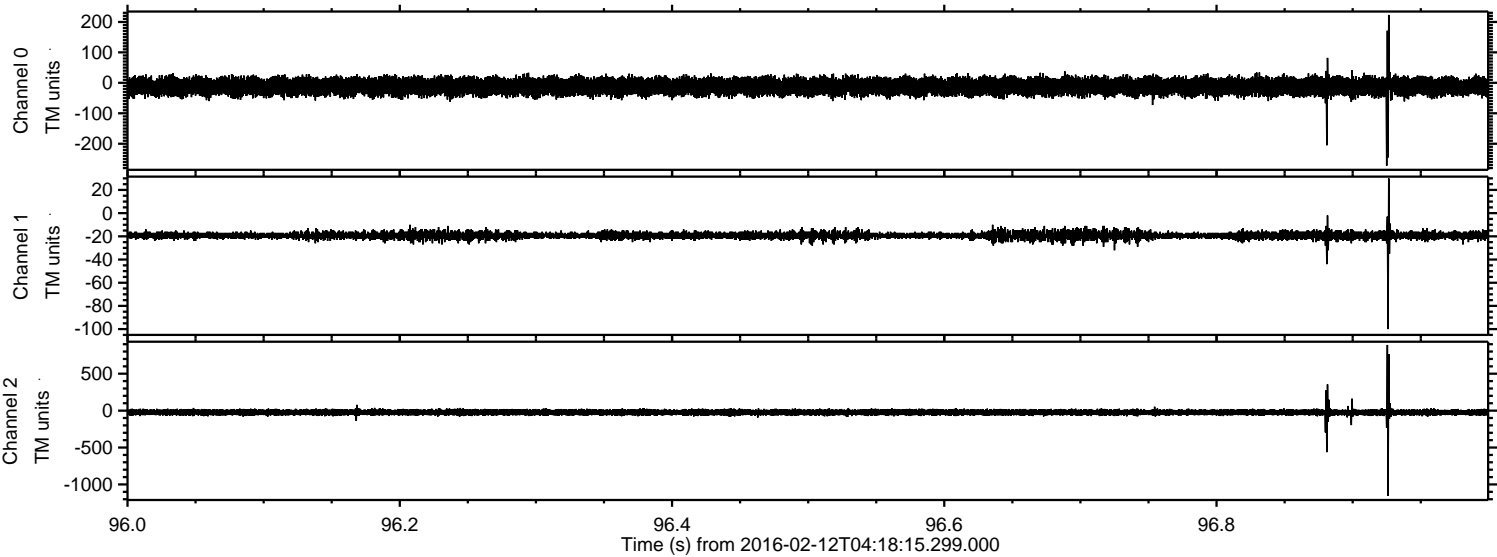
Processed Sun Apr 10 07:11:41 2016 by ELM ver.2012-10-06 from 001\_\_elm20160212\_041814\_\_dat00.bin





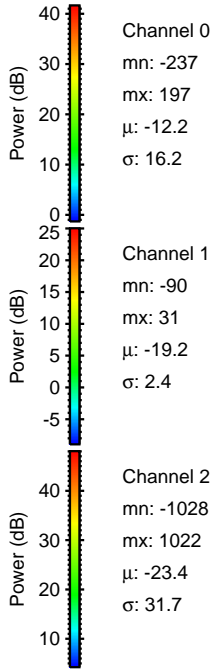
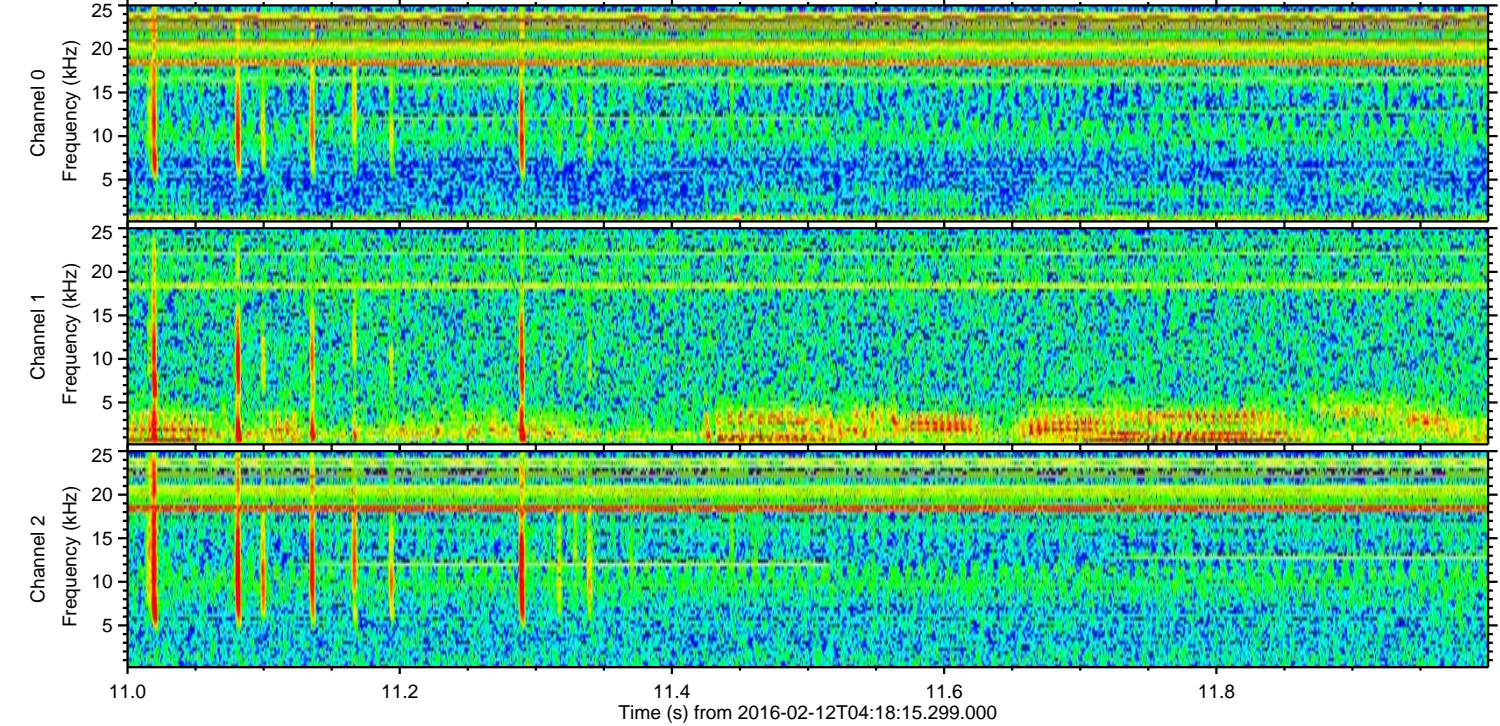
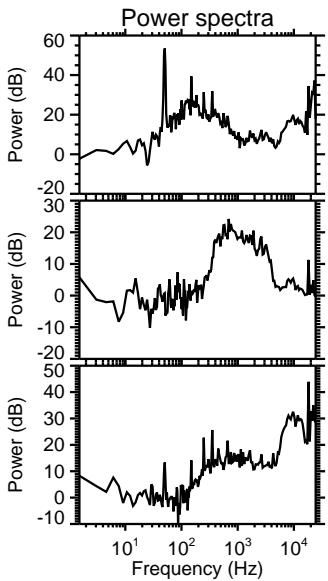
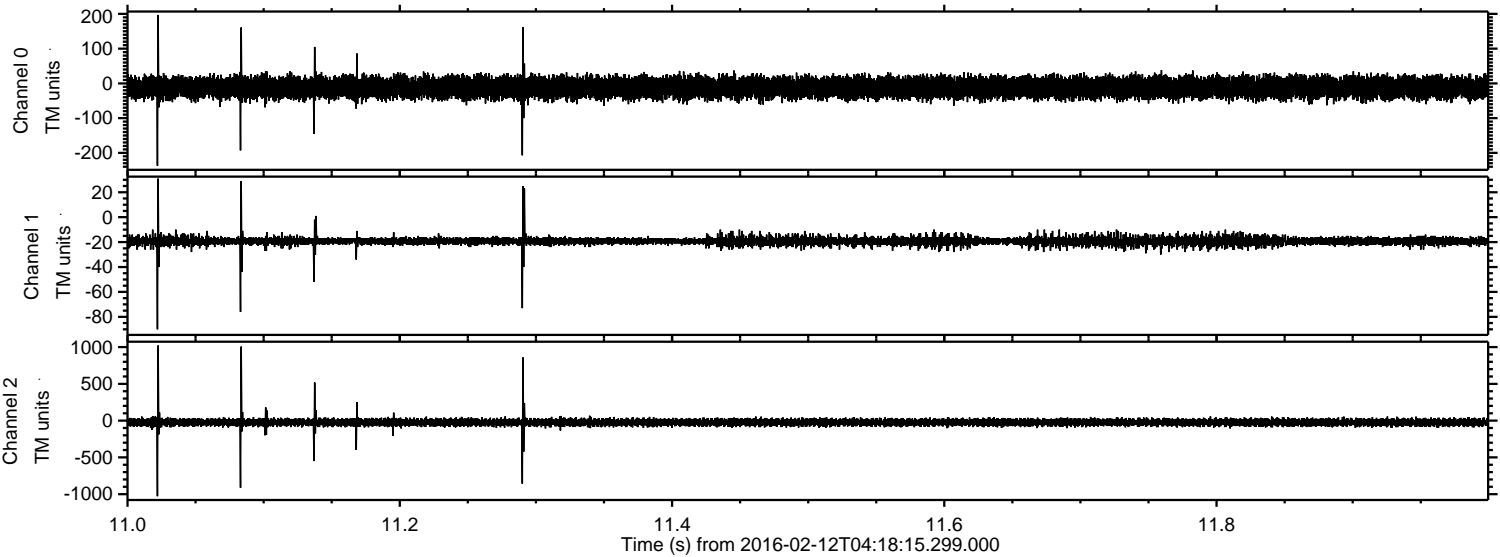
ELMAVAN 3D WAVEFORMS (Measured data sampled at 50 kHz) 51000 packets of 144 samples from 2016-02-12T04:18:15.299.000. Part 97/147

Processed Sun Apr 10 07:11:42 2016 by ELM ver.2012-10-06 from 001\_\_elm20160212\_041814\_\_dat00.bin



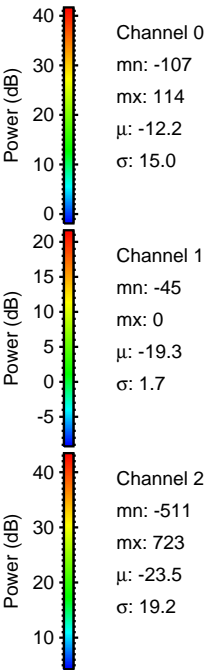
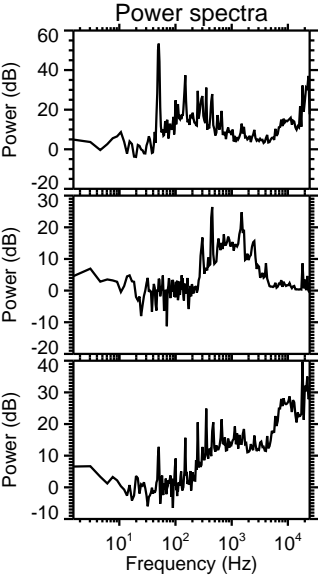
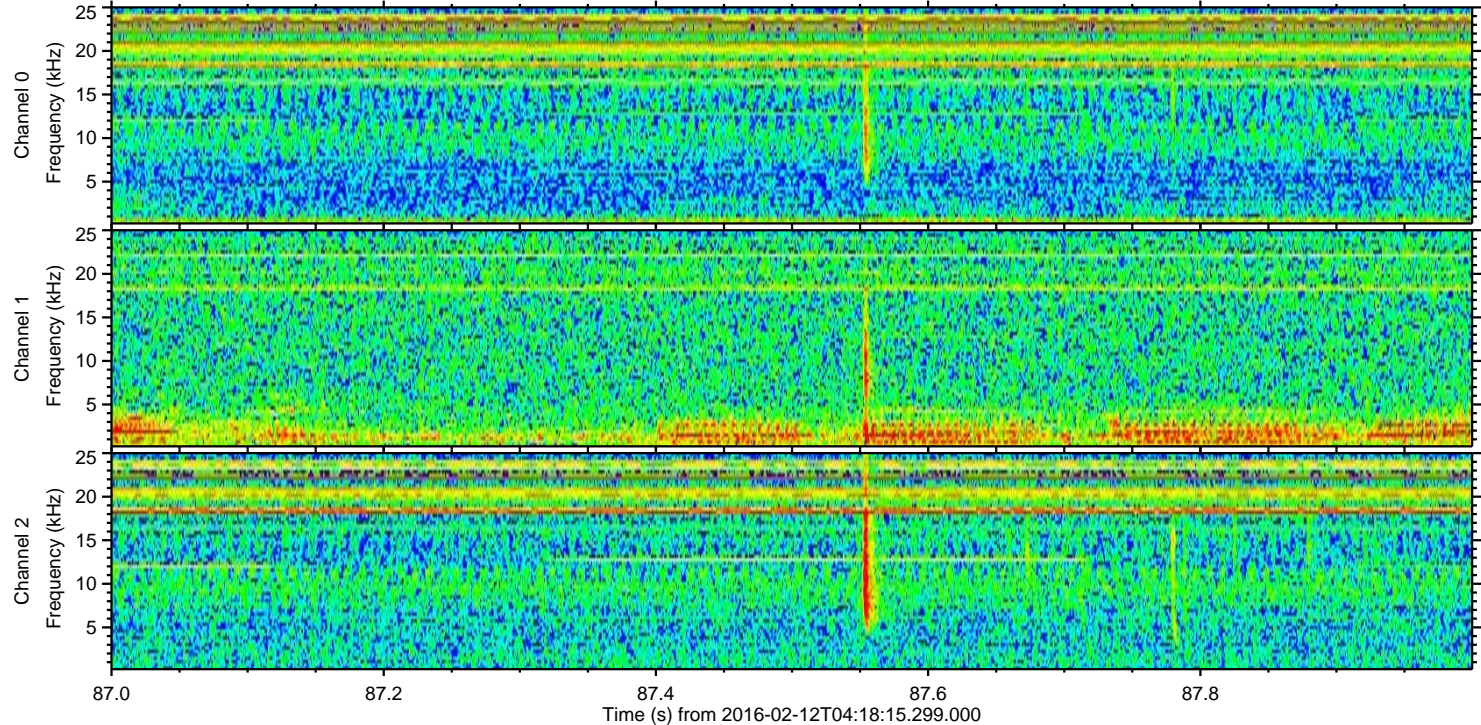
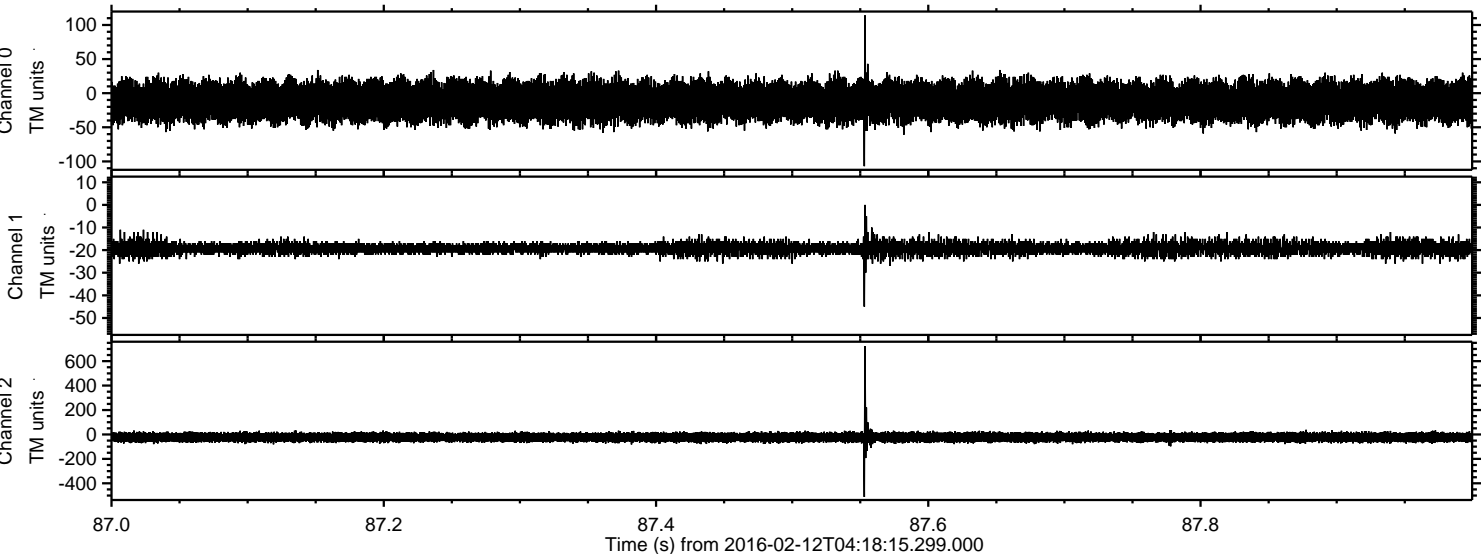


Processed Sun Apr 10 07:11:43 2016 by ELM ver.2012-10-06 from 001\_\_elm20160212\_041814\_\_dat00.bin





Processed Sun Apr 10 07:11:44 2016 by ELM ver.2012-10-06 from 001\_\_elm20160212\_041814\_\_dat00.bin





Processed Sun Apr 10 07:11:45 2016 by ELM ver.2012-10-06 from 001\_\_elm20160212\_041814\_\_dat00.bin

