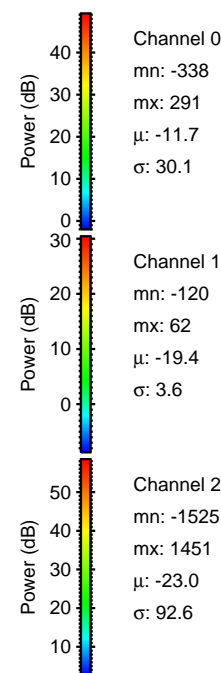
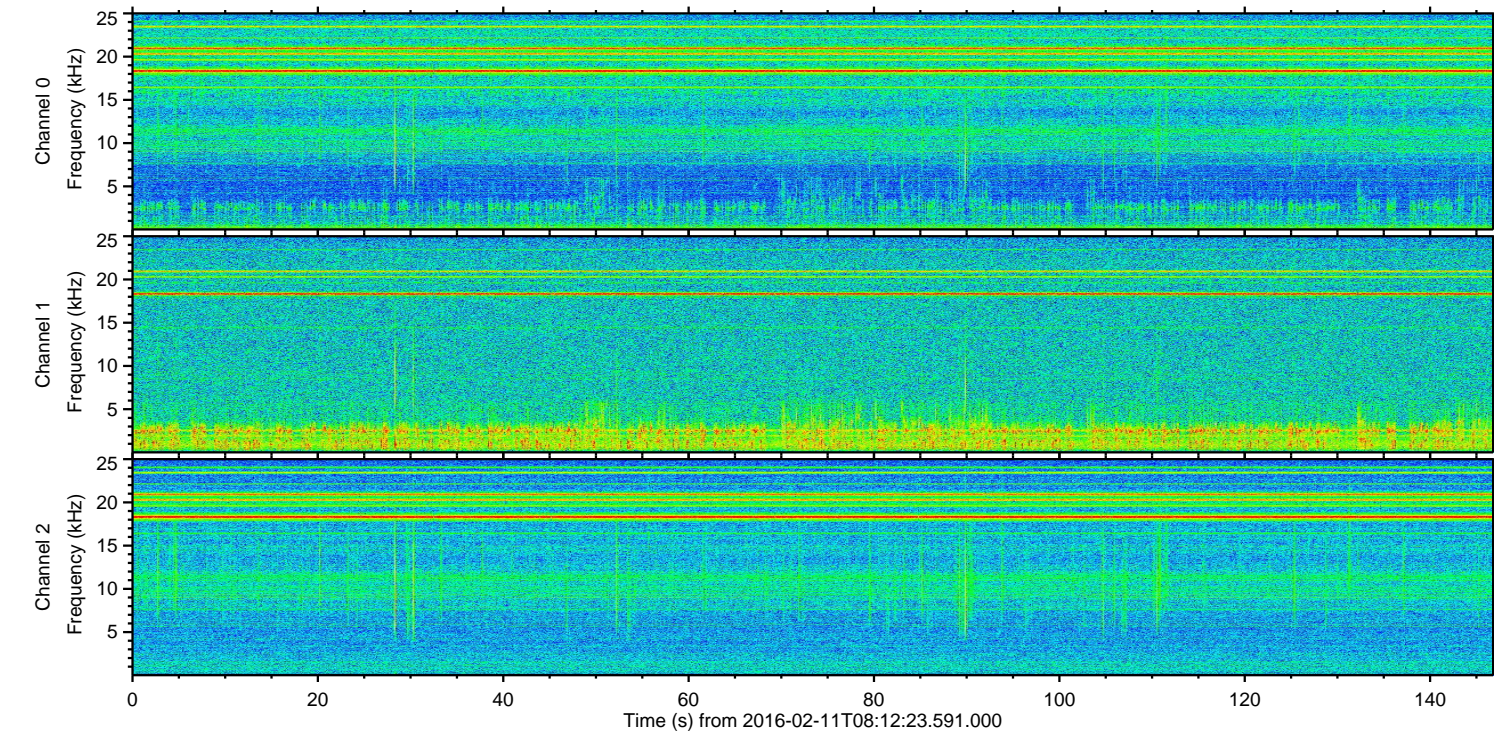
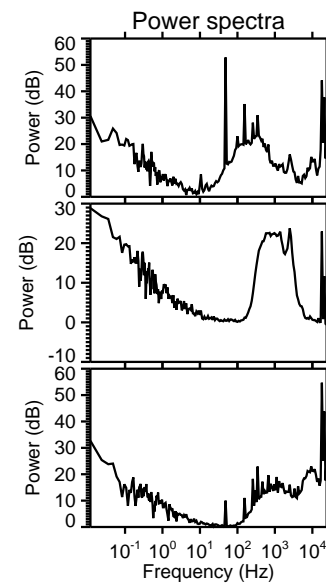
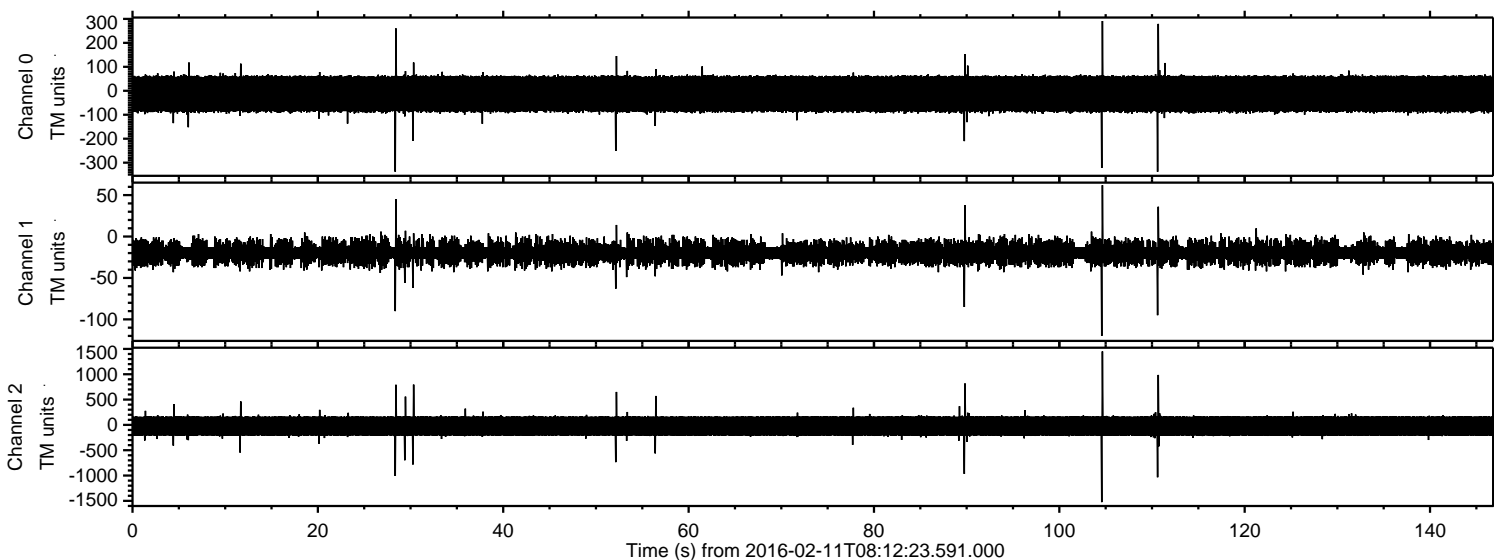


ELMAVAN 3D WAVEFORMS (Measured data sampled at 50 kHz) 51000 packets of 144 samples from 2016-02-11T08:12:23.591.000.

Processed Sun Apr 10 03:08:23 2016 by ELM ver.2012-10-06 from 001__elm20160211_081222__dat00.bin



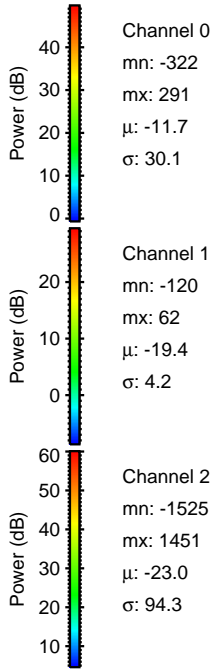
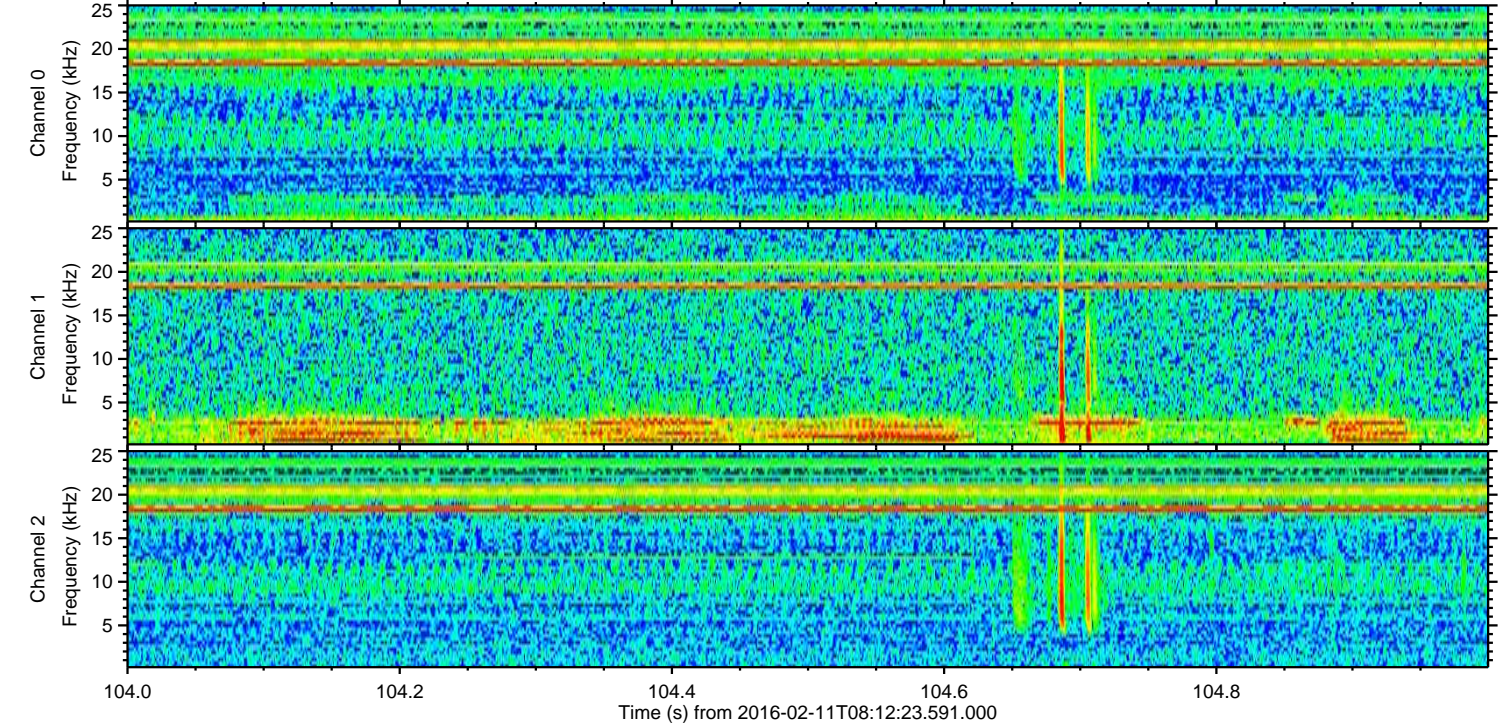
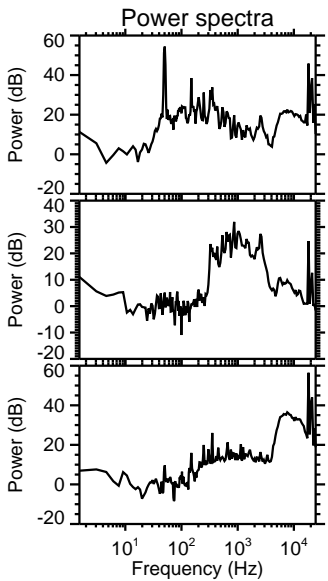
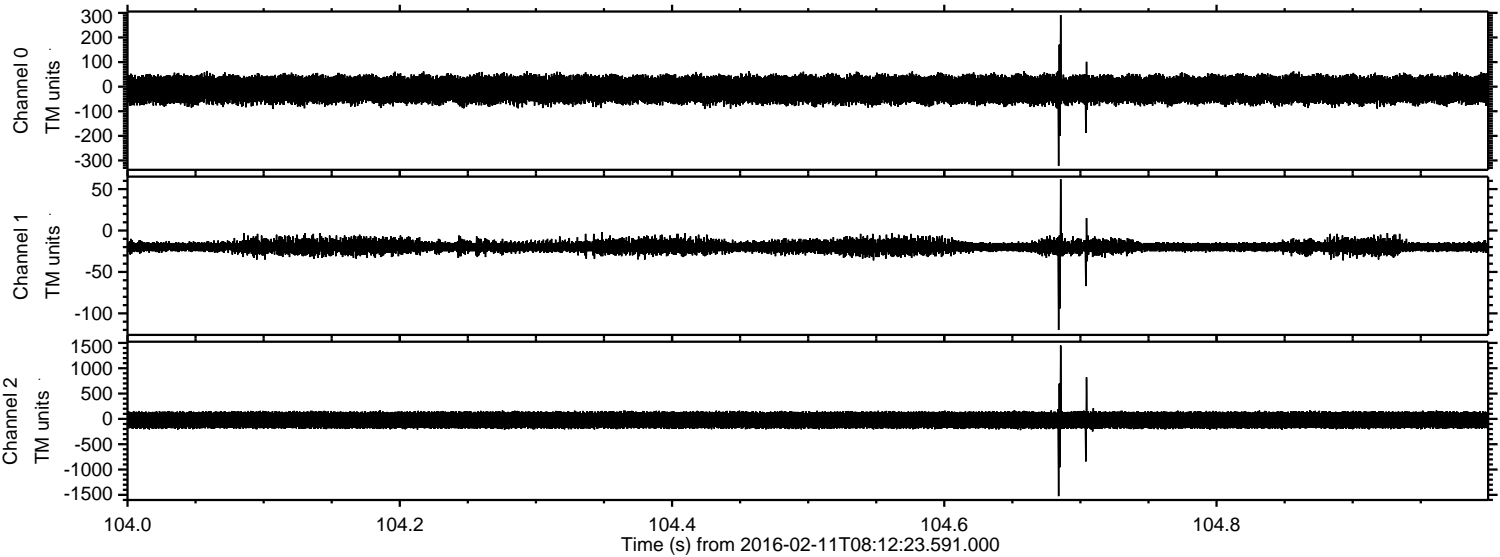
Channel 0
mn: -338
mx: 291
 μ : -11.7
 σ : 30.1

Channel 1
mn: -120
mx: 62
 μ : -19.4
 σ : 3.6

Channel 2
mn: -1525
mx: 1451
 μ : -23.0
 σ : 92.6

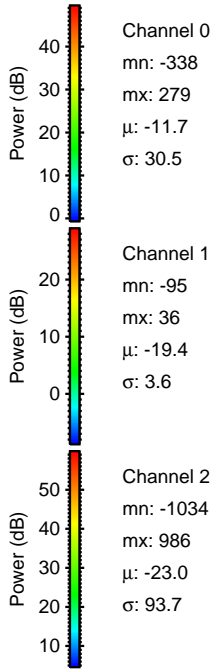
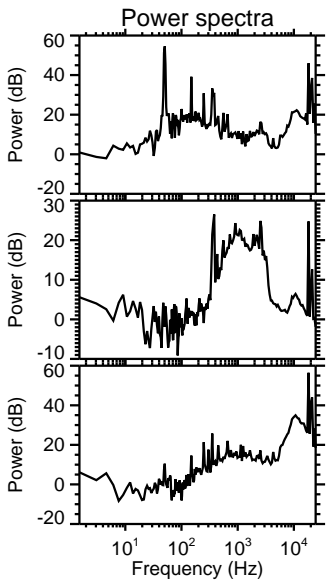
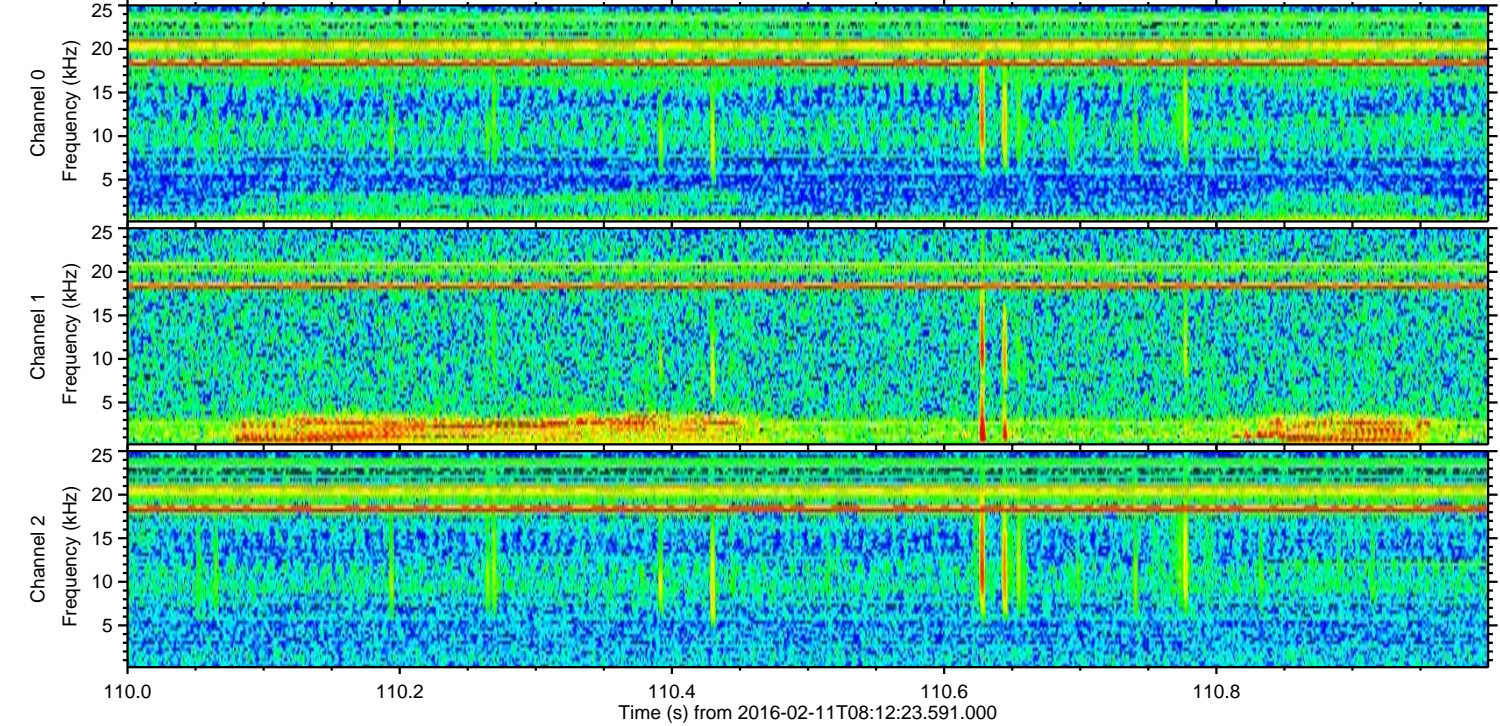
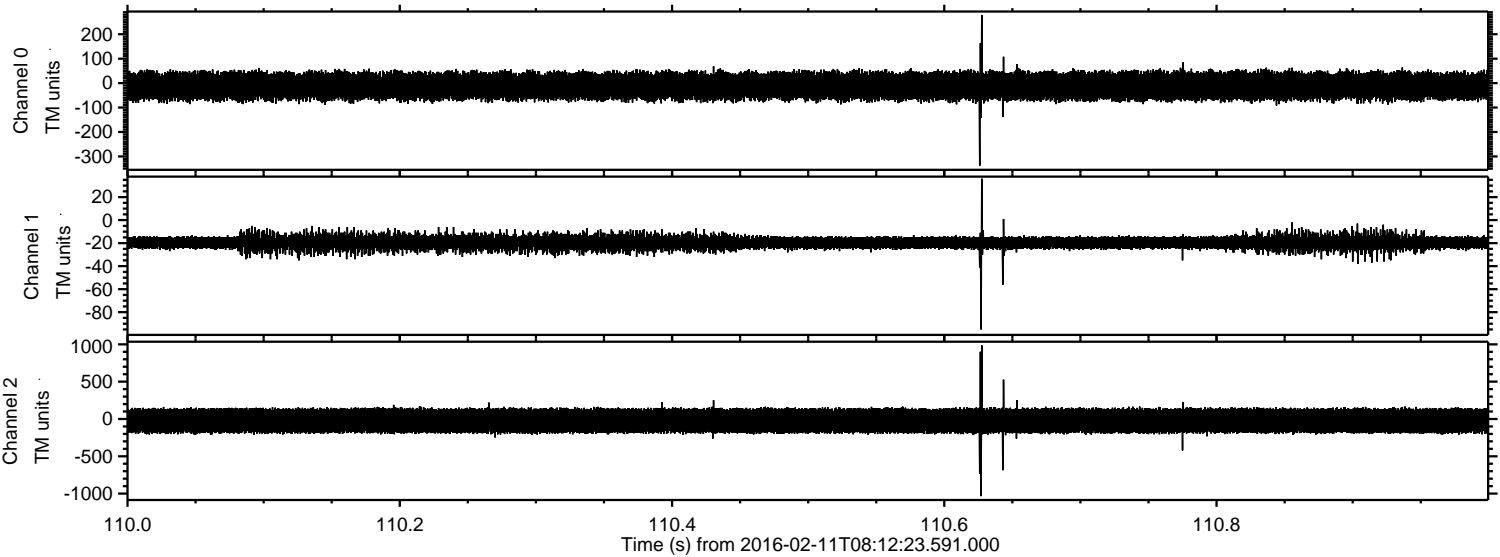
ELMAVAN 3D WAVEFORMS (Measured data sampled at 50 kHz) 51000 packets of 144 samples from 2016-02-11T08:12:23.591.000. Part 105/147

Processed Sun Apr 10 03:08:34 2016 by ELM ver.2012-10-06 from 001__elm20160211_081222__dat00.bin

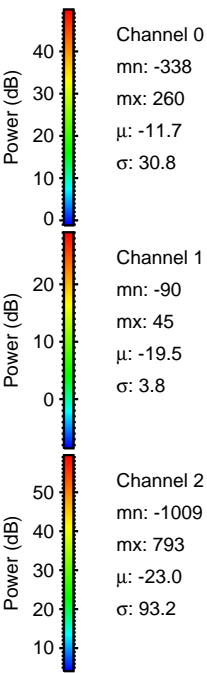
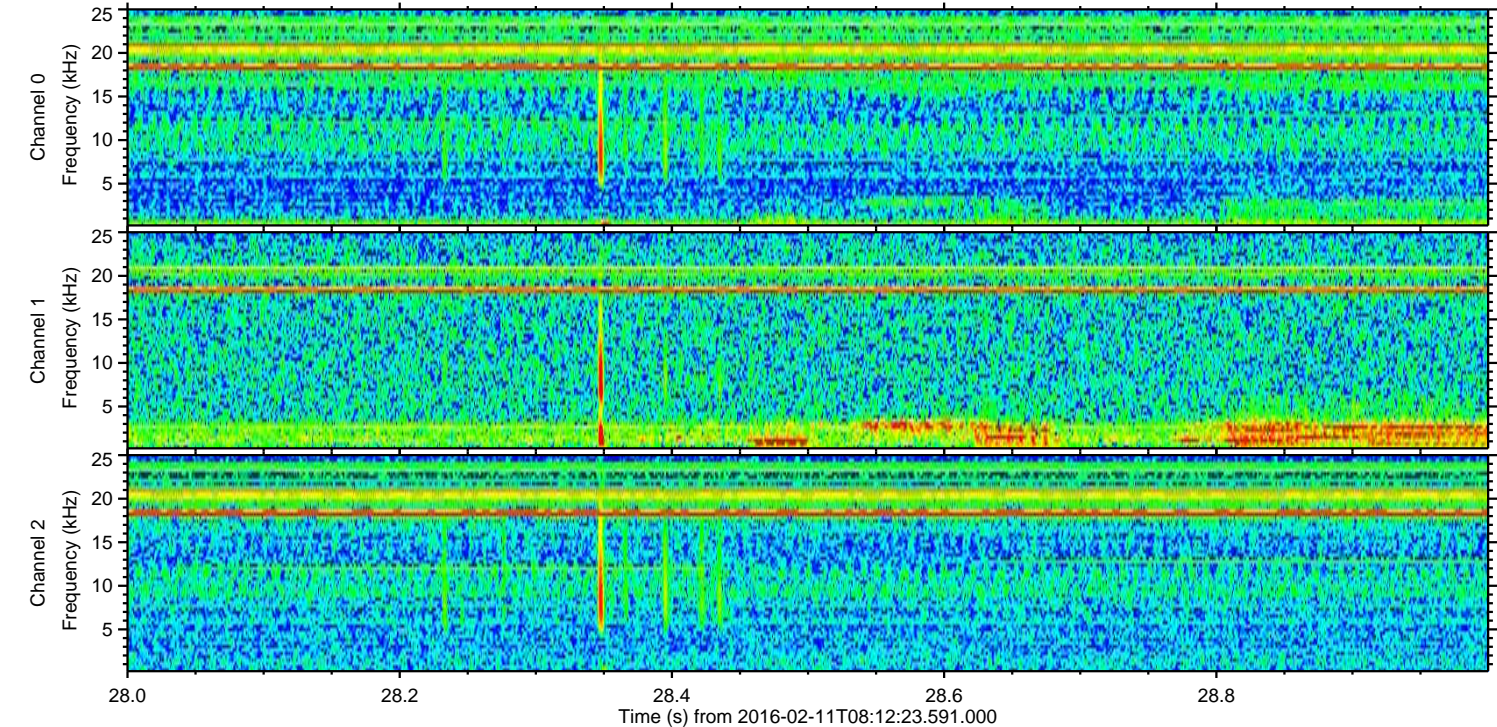
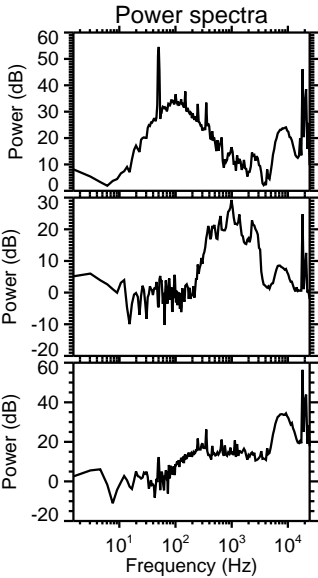
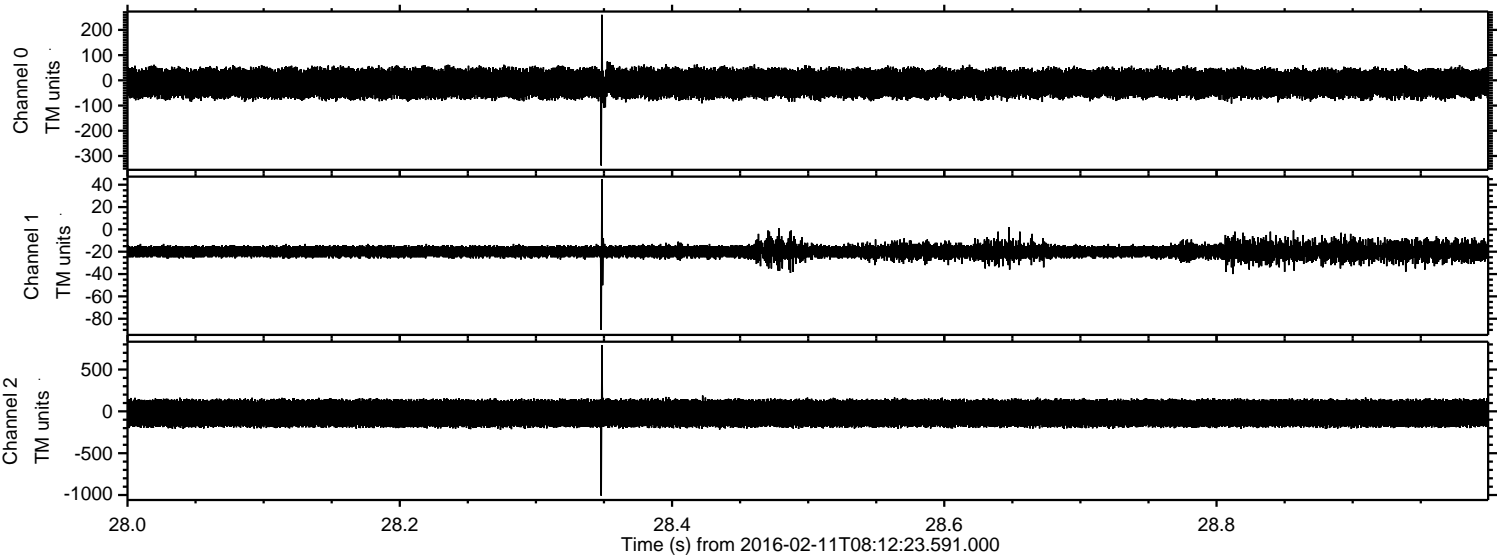


ELMAVAN 3D WAVEFORMS (Measured data sampled at 50 kHz) 51000 packets of 144 samples from 2016-02-11T08:12:23.591.000. Part 111/147

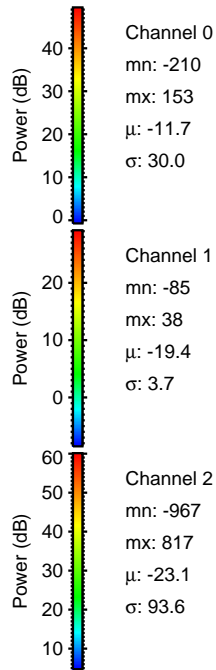
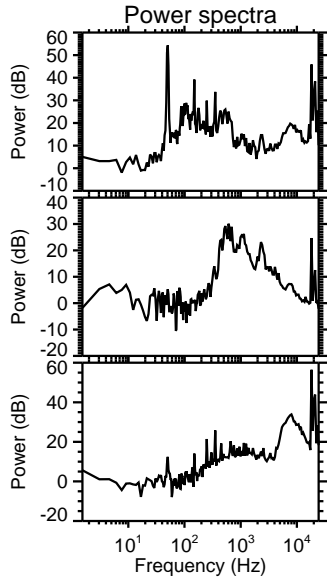
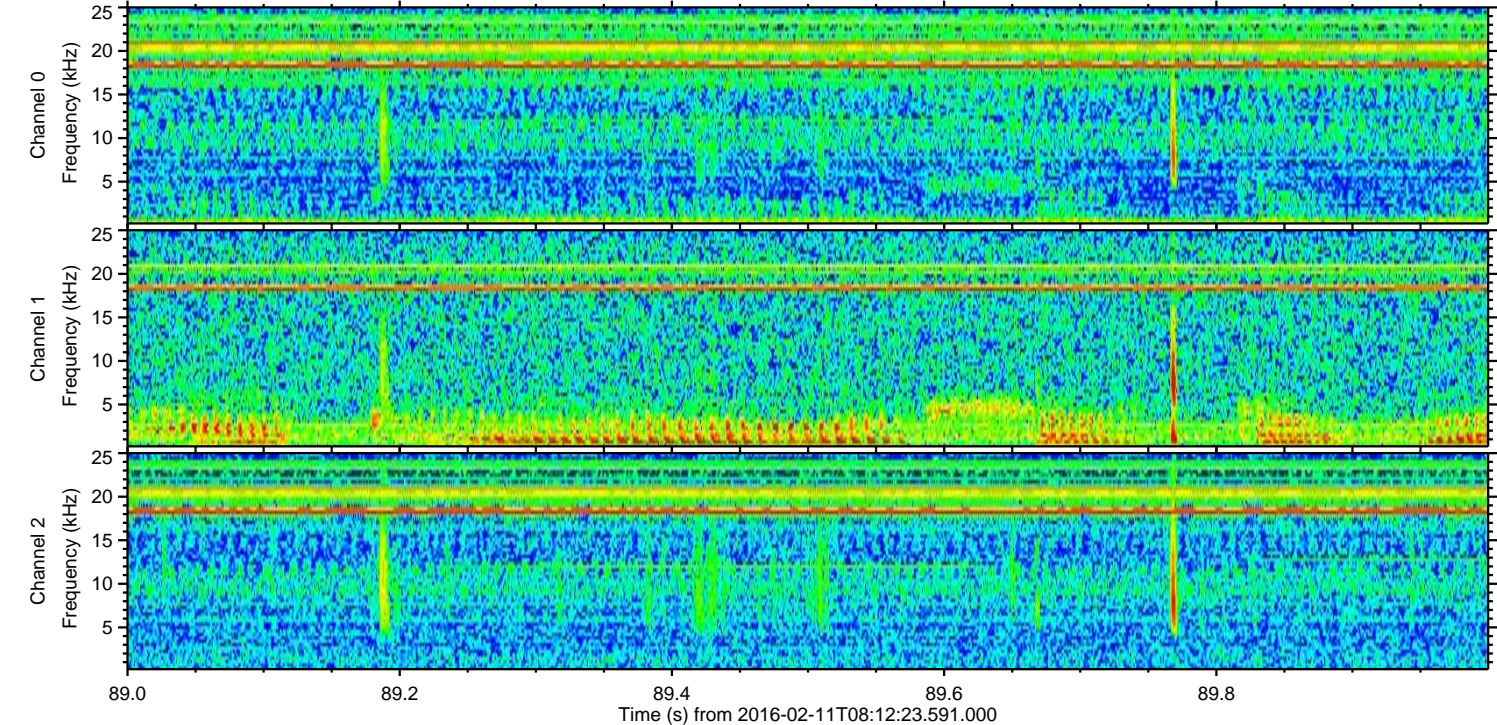
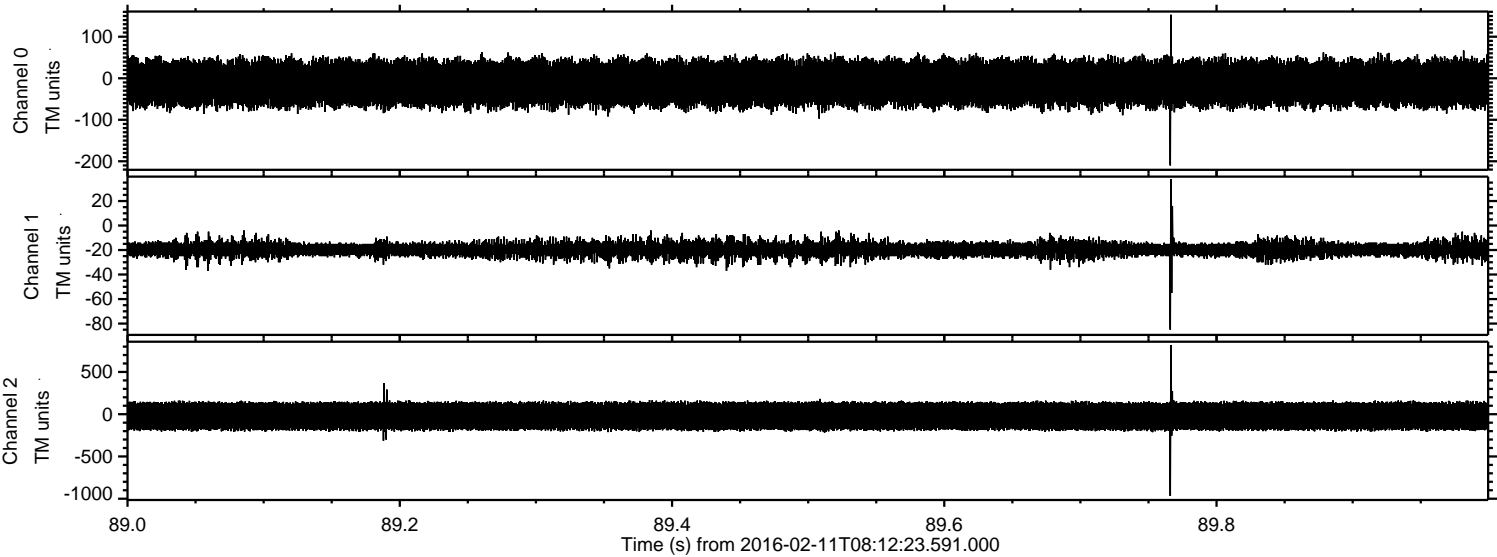
Processed Sun Apr 10 03:08:35 2016 by ELM ver.2012-10-06 from 001__elm20160211_081222__dat00.bin



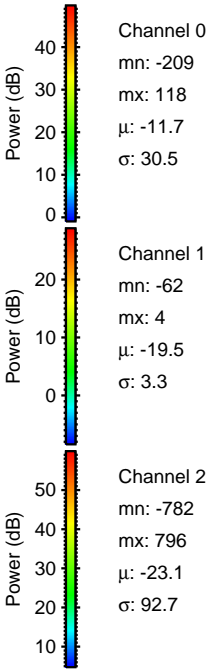
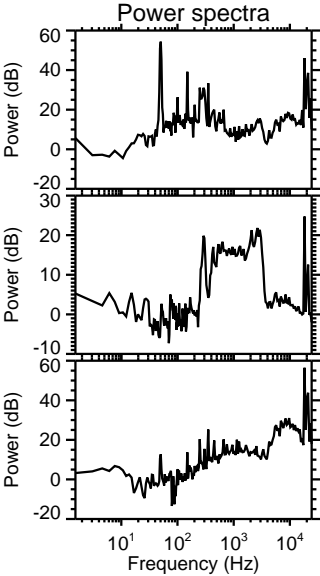
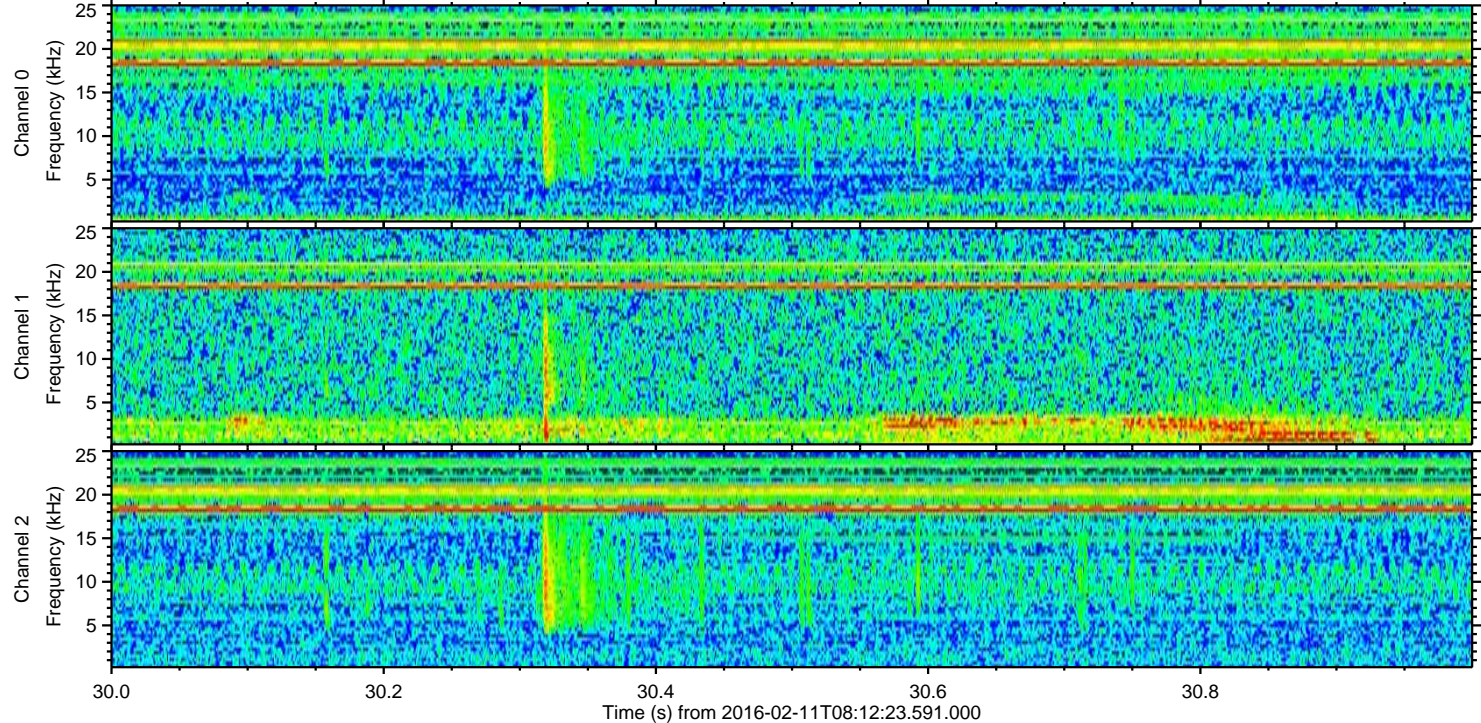
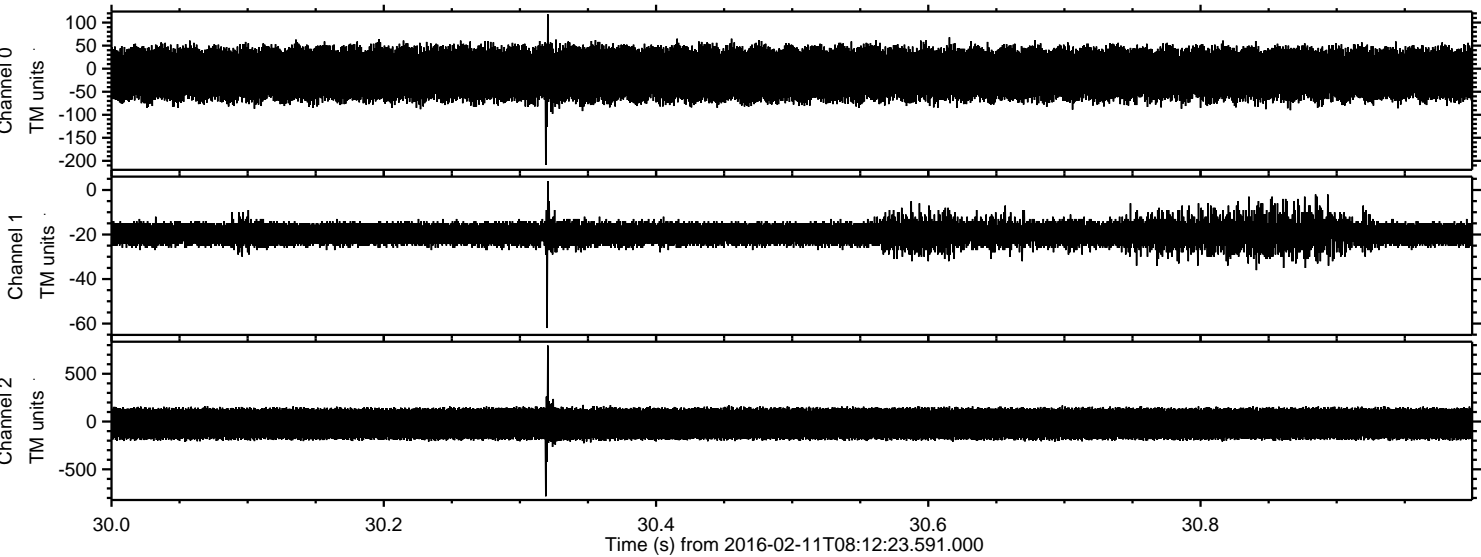
Processed Sun Apr 10 03:08:36 2016 by ELM ver.2012-10-06 from 001__elm20160211_081222__dat00.bin



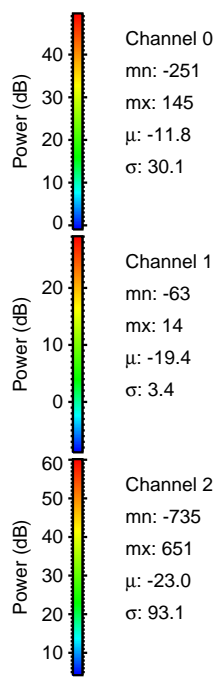
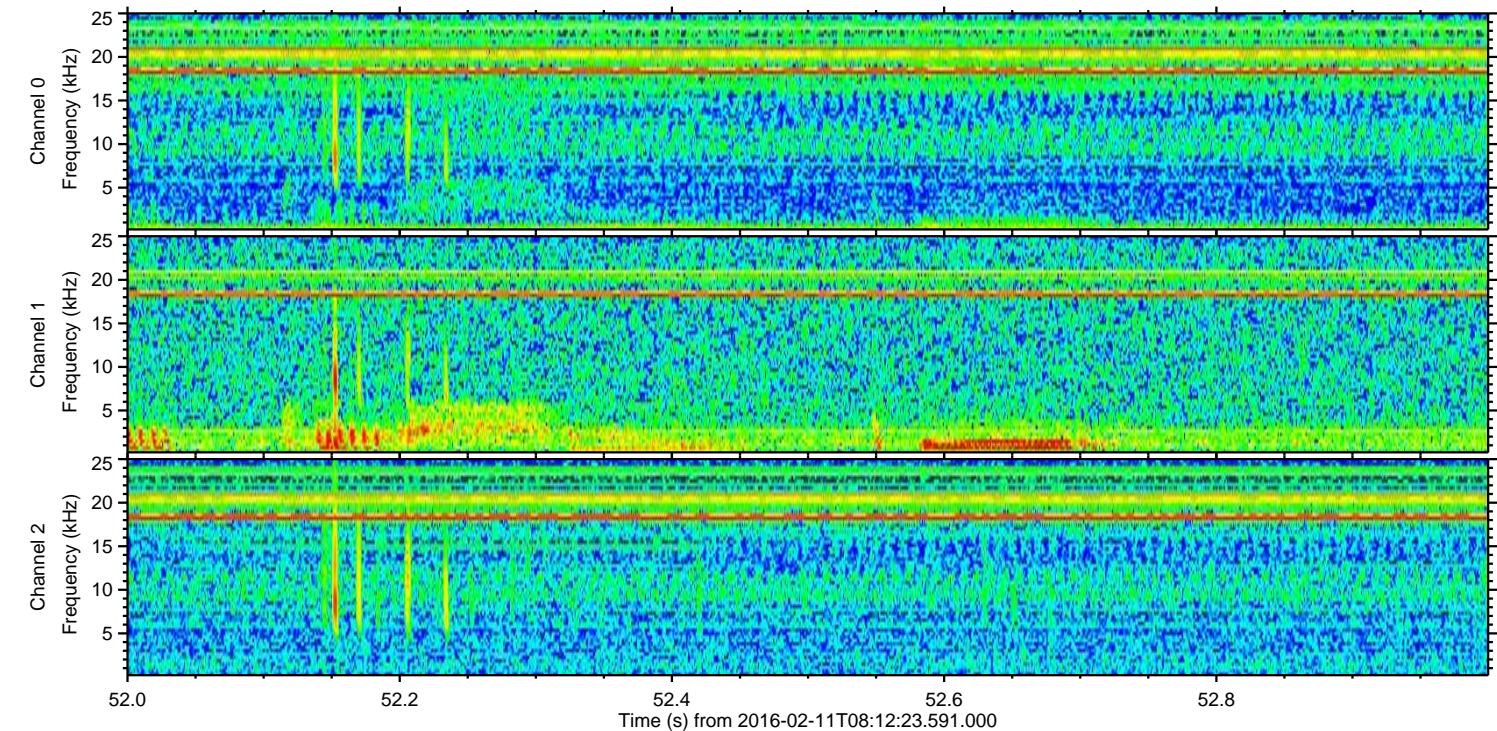
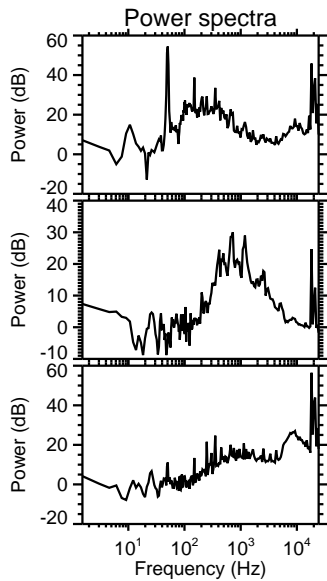
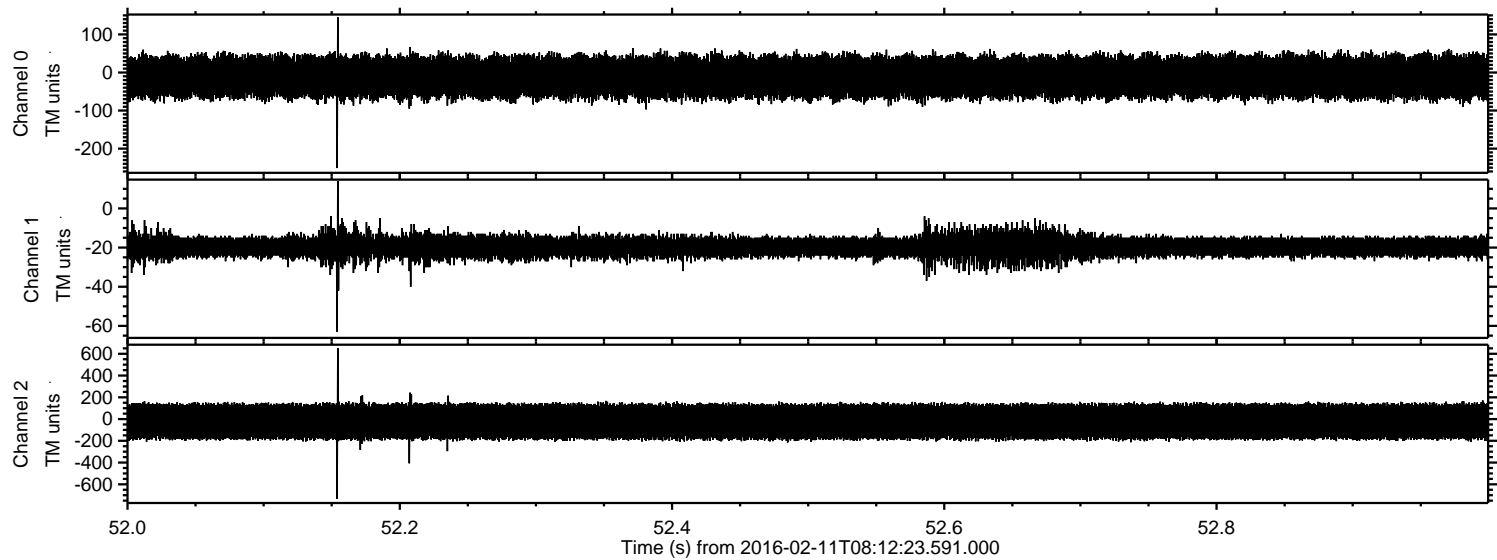
Processed Sun Apr 10 03:08:37 2016 by ELM ver.2012-10-06 from 001__elm20160211_081222__dat00.bin



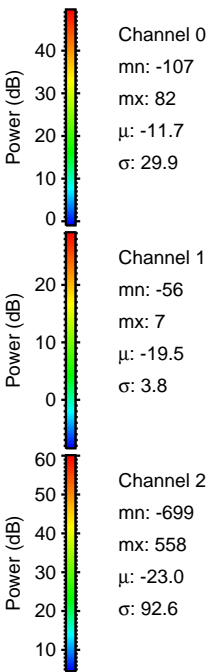
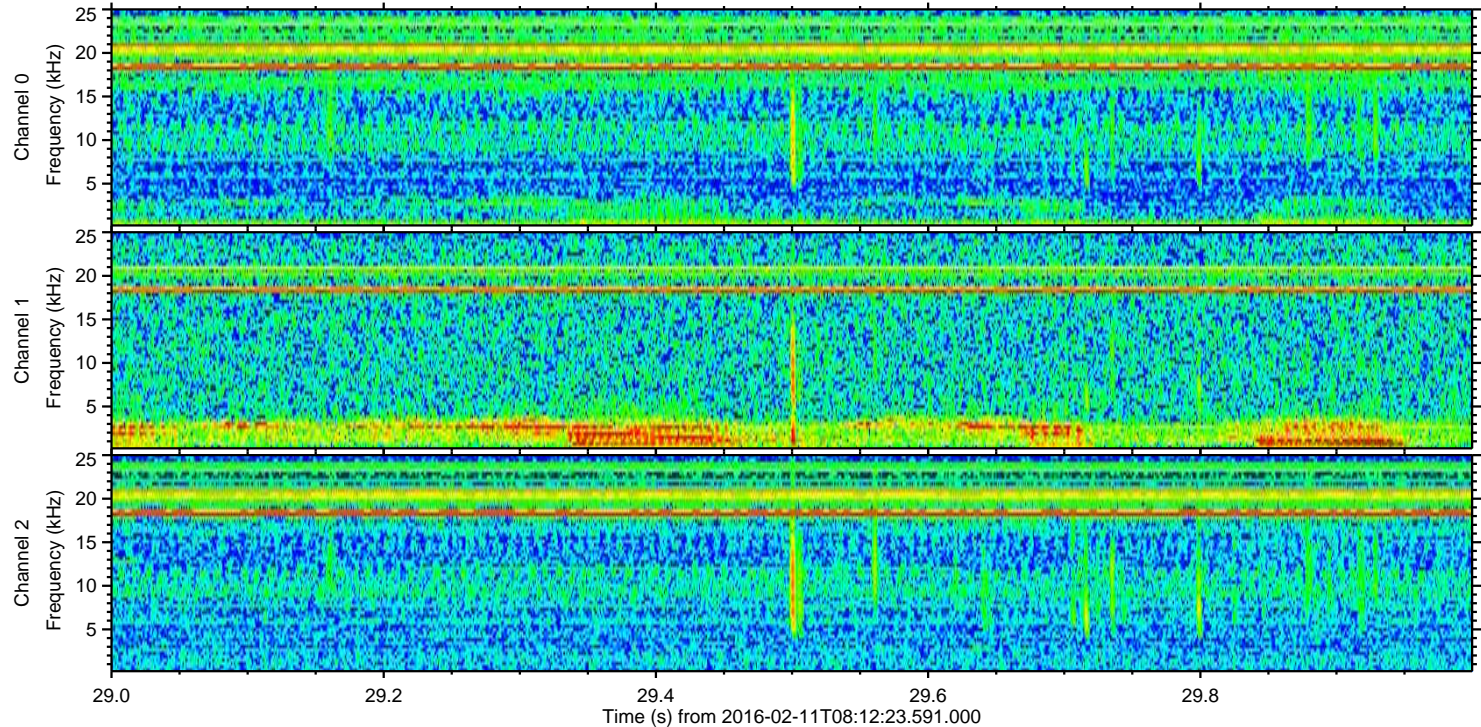
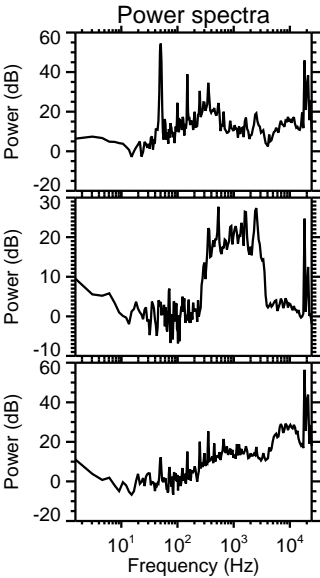
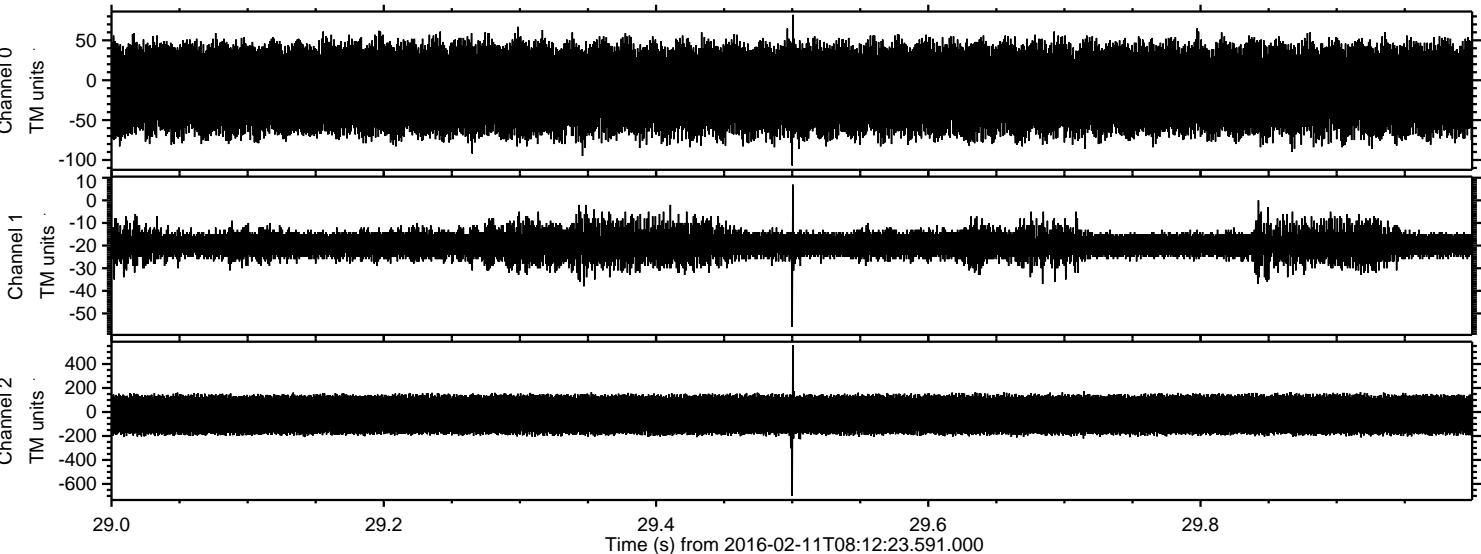
Processed Sun Apr 10 03:08:38 2016 by ELM ver.2012-10-06 from 001__elm20160211_081222__dat00.bin



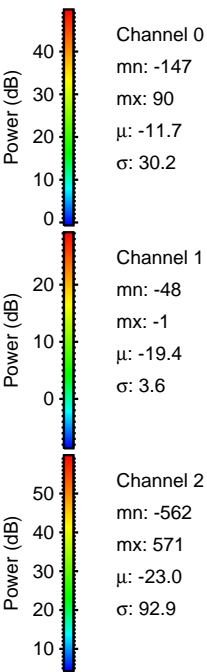
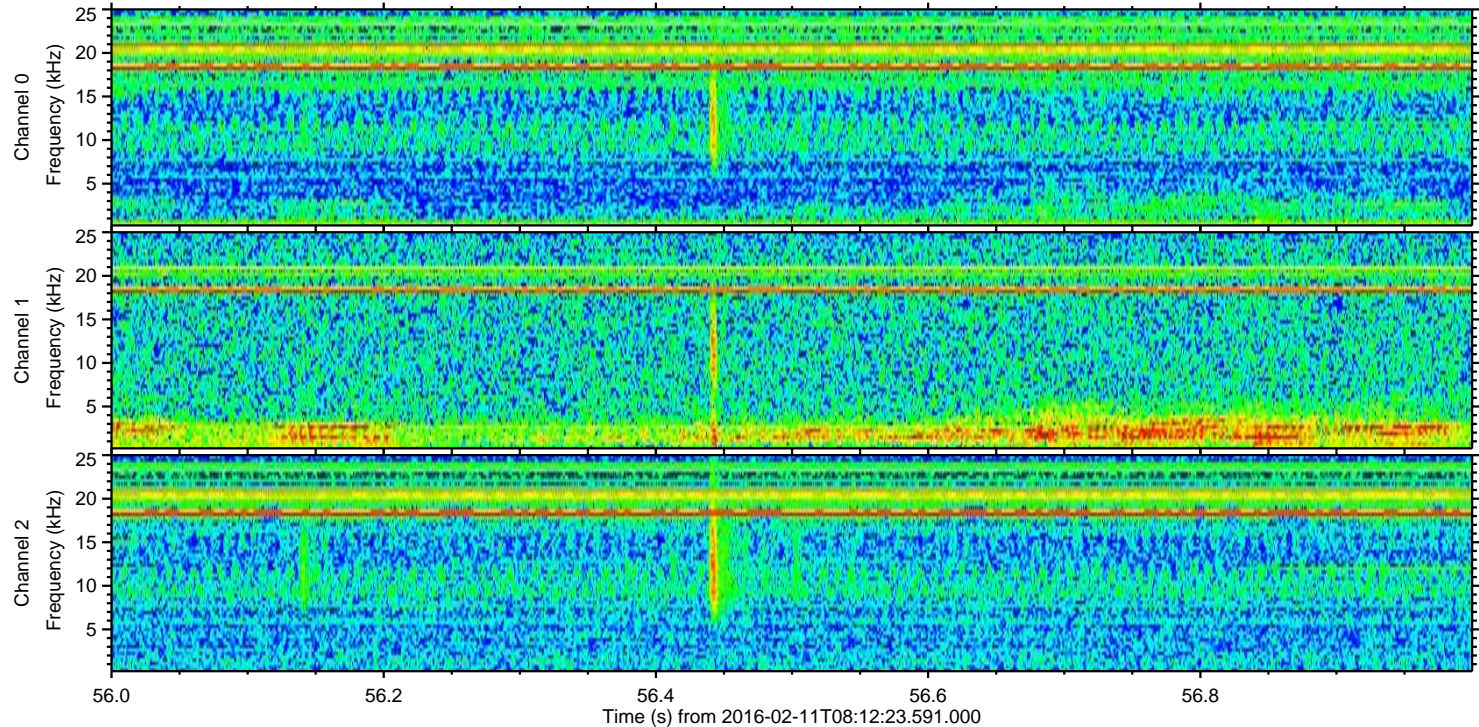
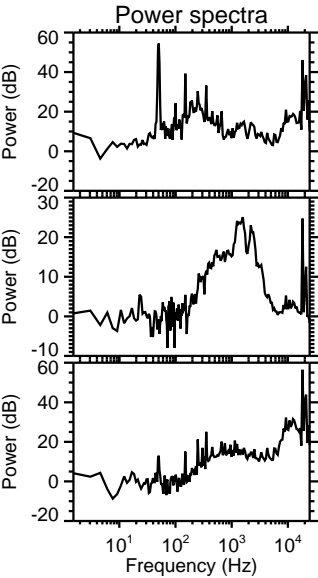
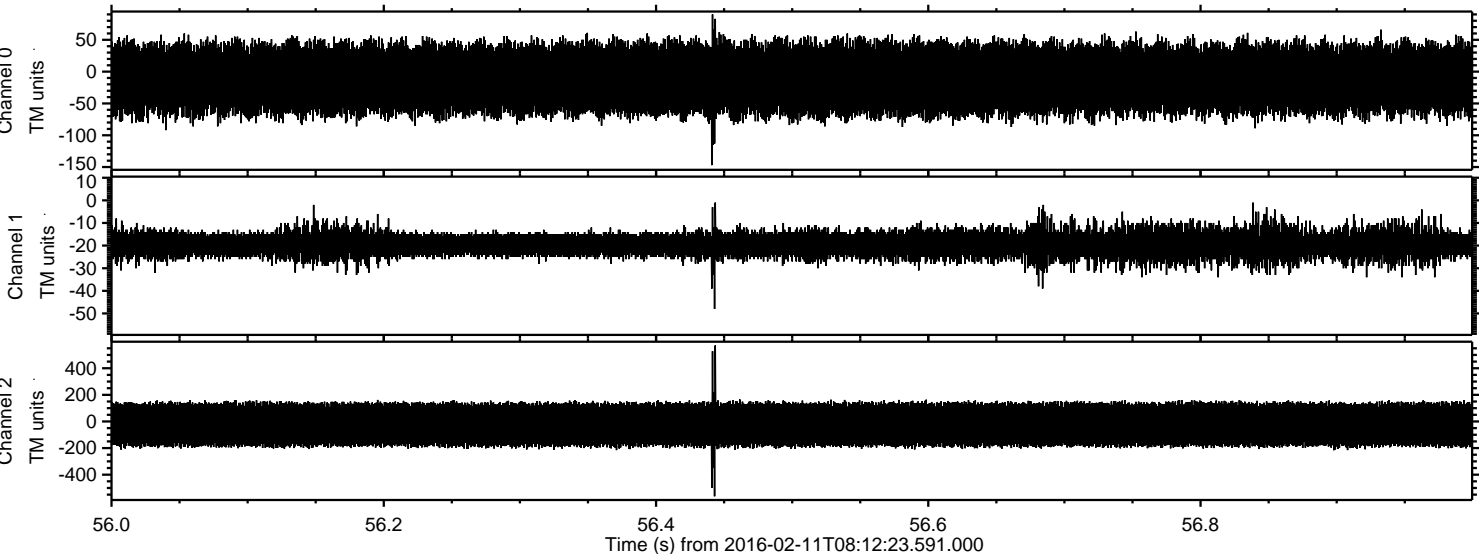
Processed Sun Apr 10 03:08:39 2016 by ELM ver.2012-10-06 from 001__elm20160211_081222__dat00.bin



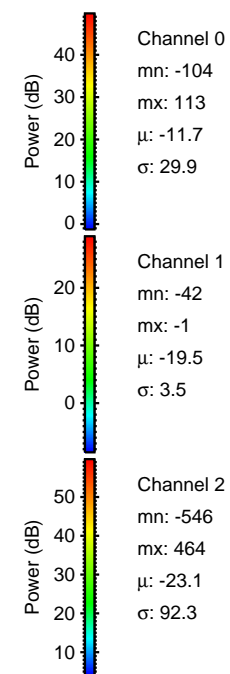
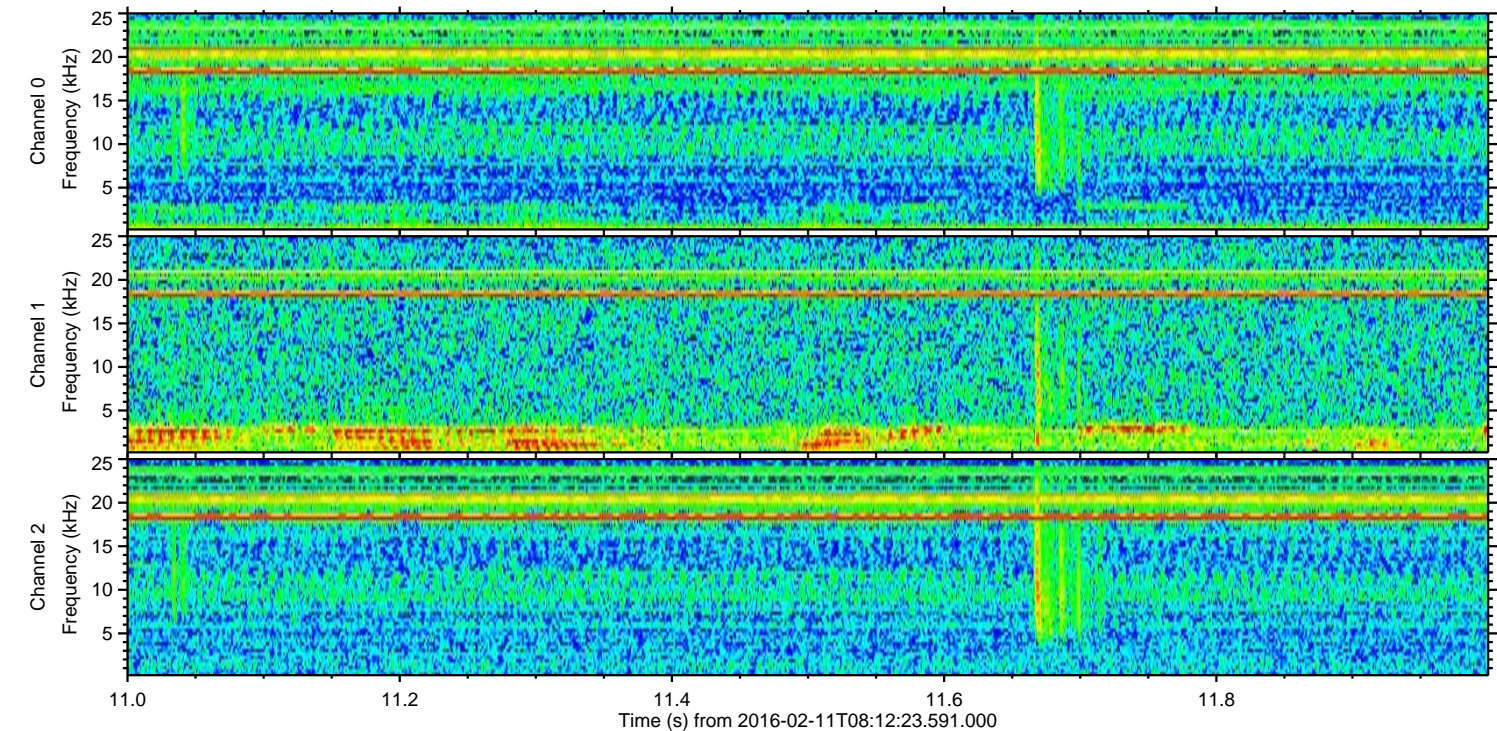
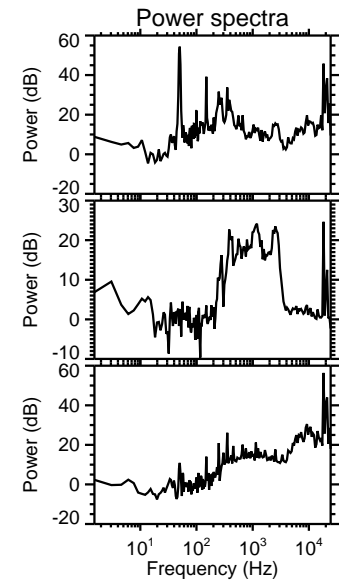
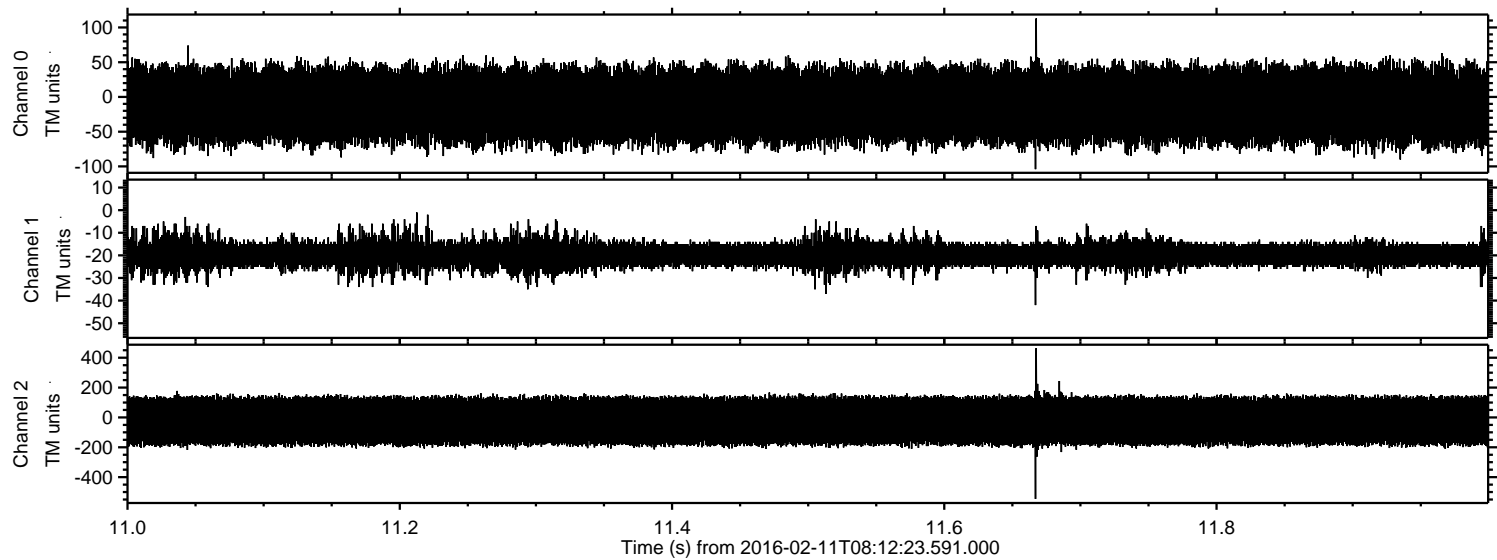
Processed Sun Apr 10 03:08:40 2016 by ELM ver.2012-10-06 from 001__elm20160211_081222__dat00.bin



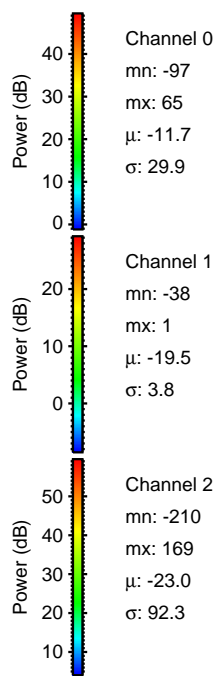
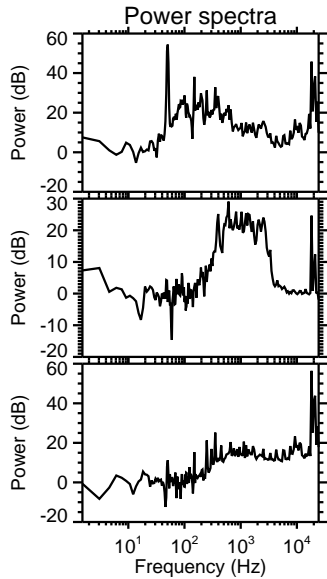
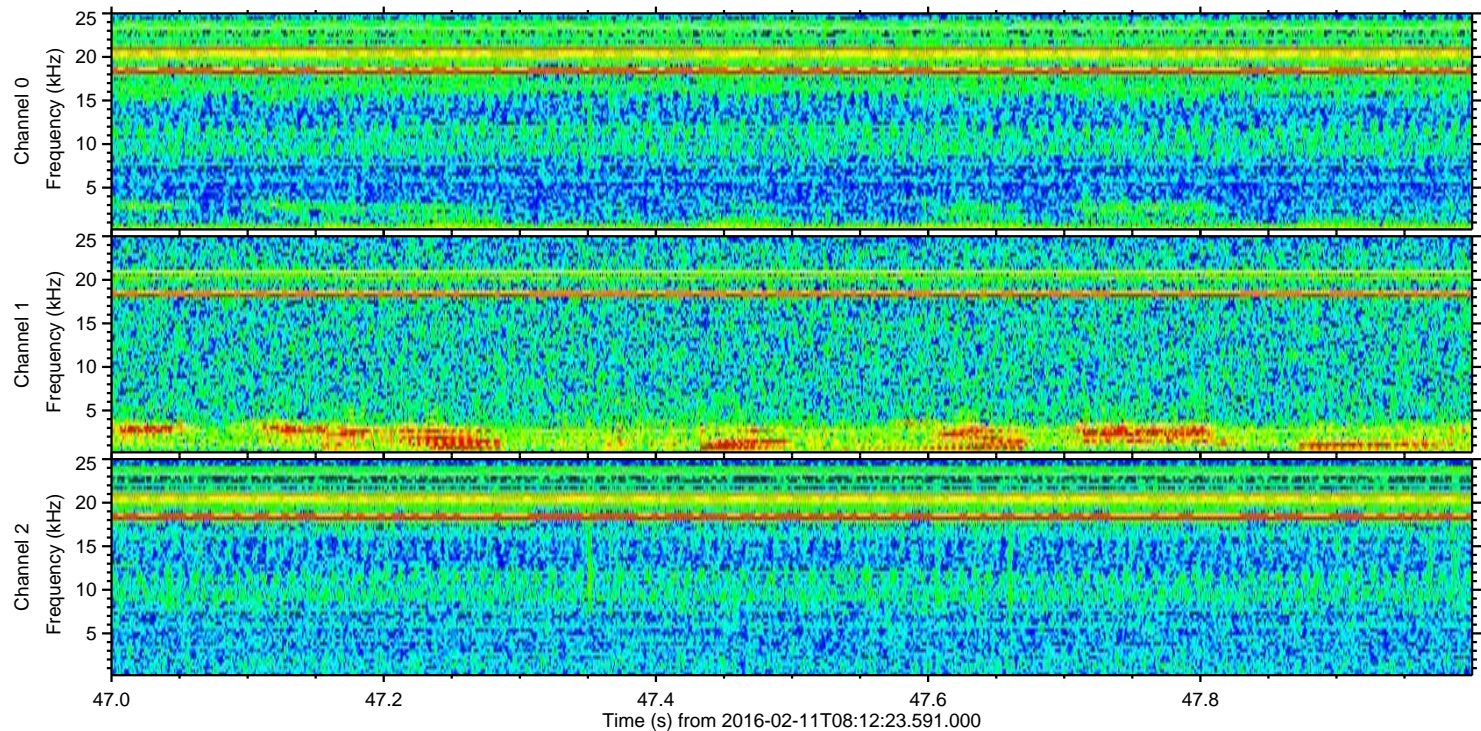
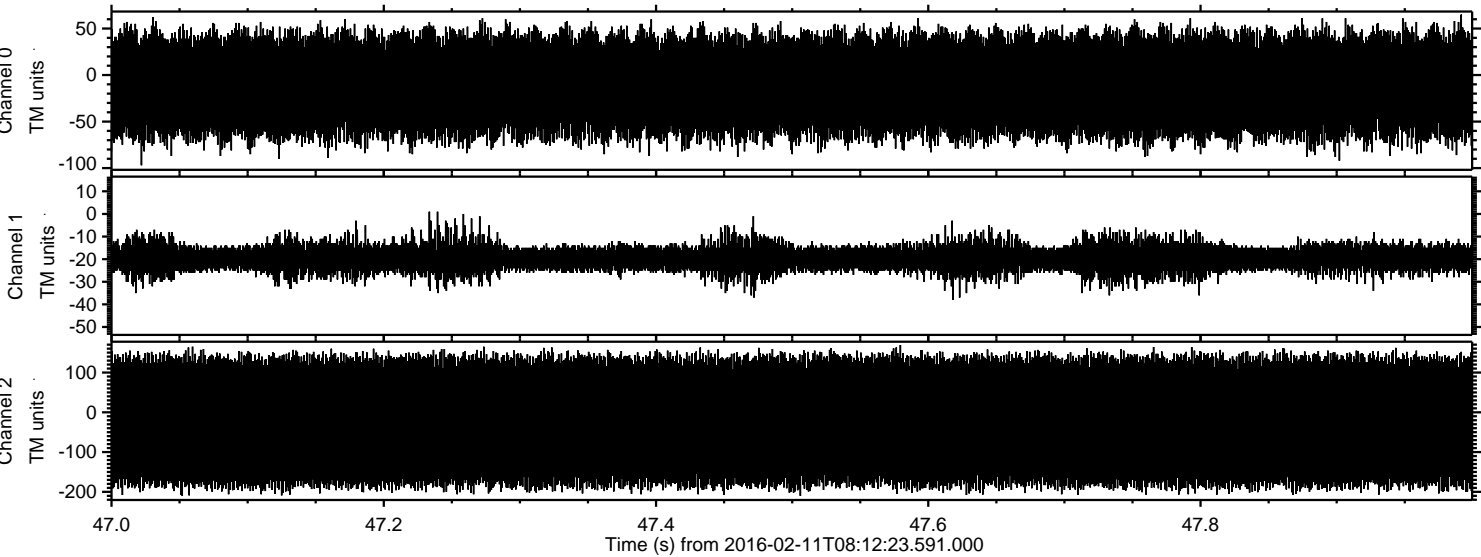
Processed Sun Apr 10 03:08:41 2016 by ELM ver.2012-10-06 from 001__elm20160211_081222__dat00.bin



Processed Sun Apr 10 03:08:42 2016 by ELM ver.2012-10-06 from 001__elm20160211_081222__dat00.bin



Processed Sun Apr 10 03:08:43 2016 by ELM ver.2012-10-06 from 001__elm20160211_081222__dat00.bin



Channel 0
mn: -97
mx: 65
 μ : -11.7
 σ : 29.9

Channel 1
mn: -38
mx: 1
 μ : -19.5
 σ : 3.8

Channel 2
mn: -210
mx: 169
 μ : -23.0
 σ : 92.3