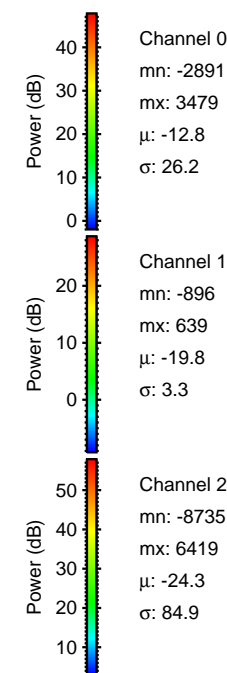
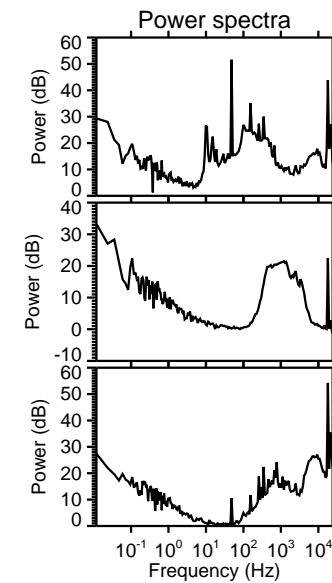
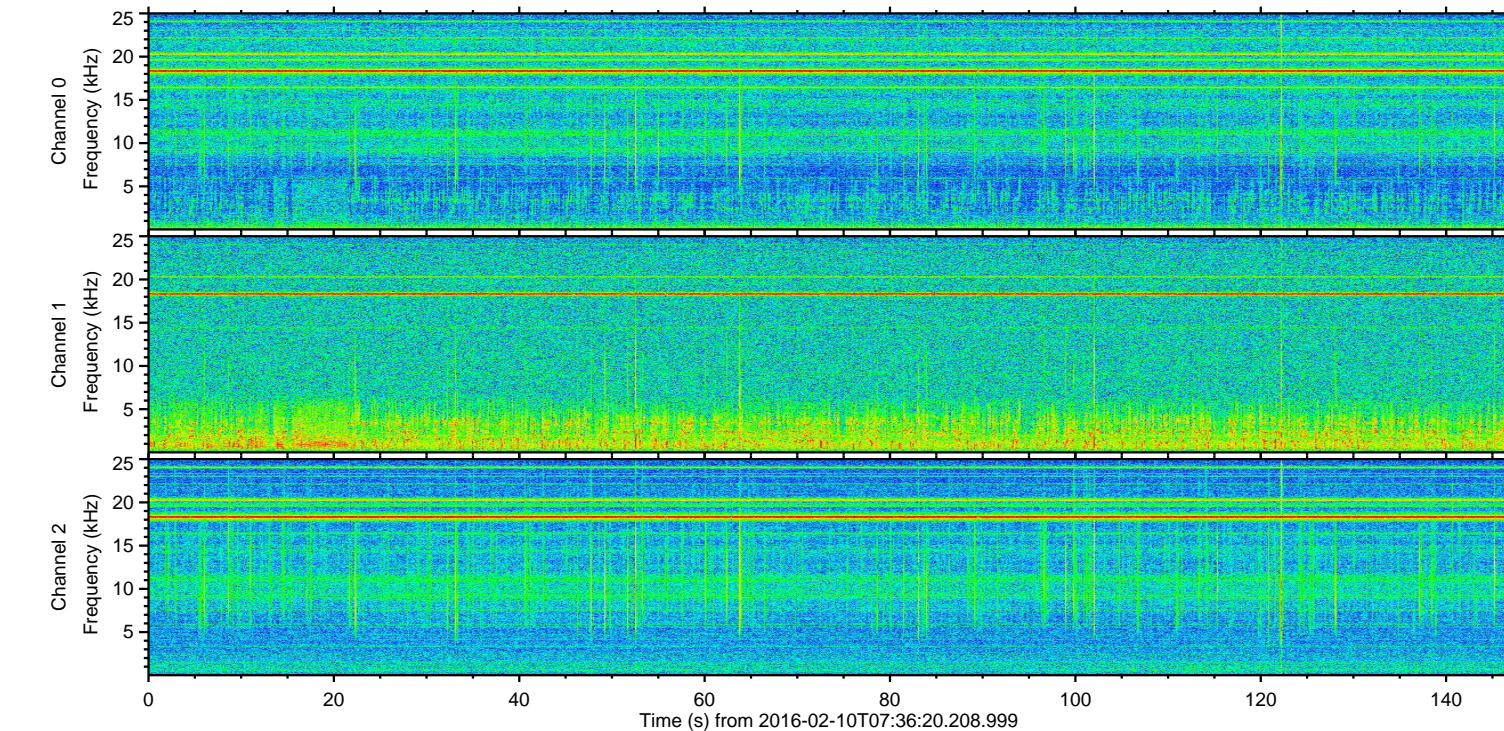
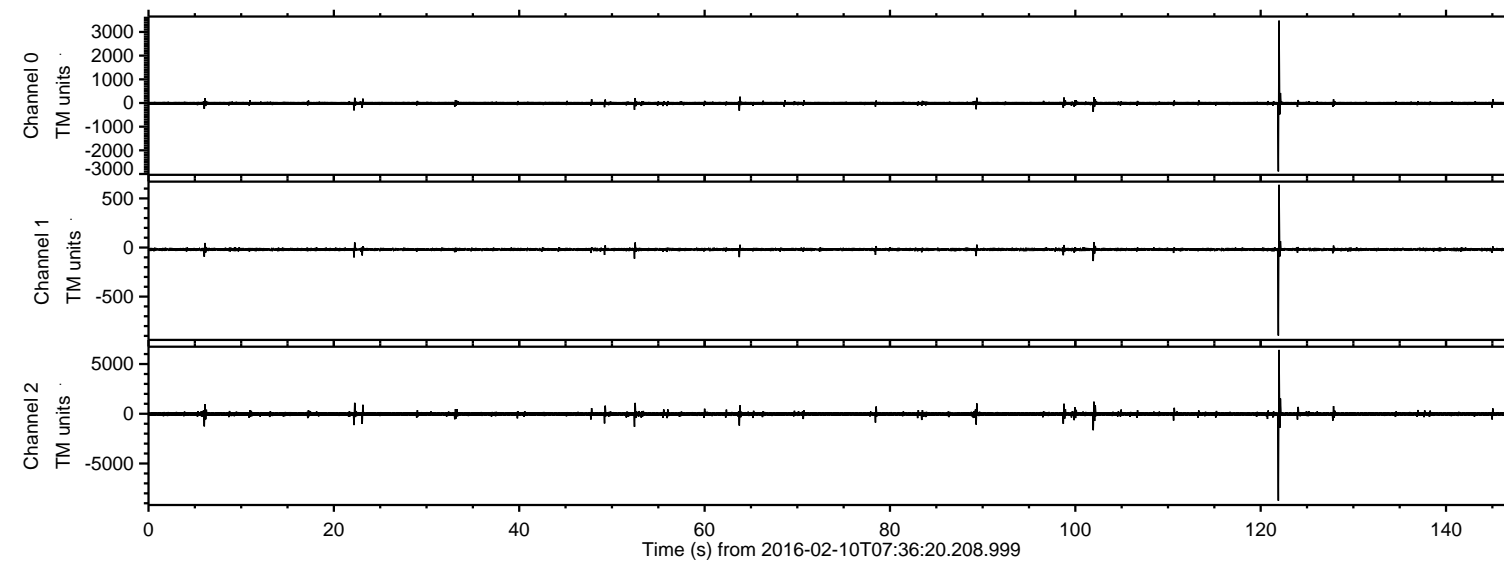


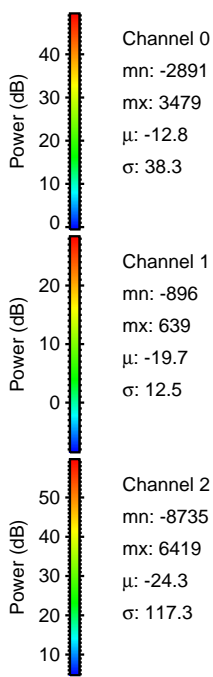
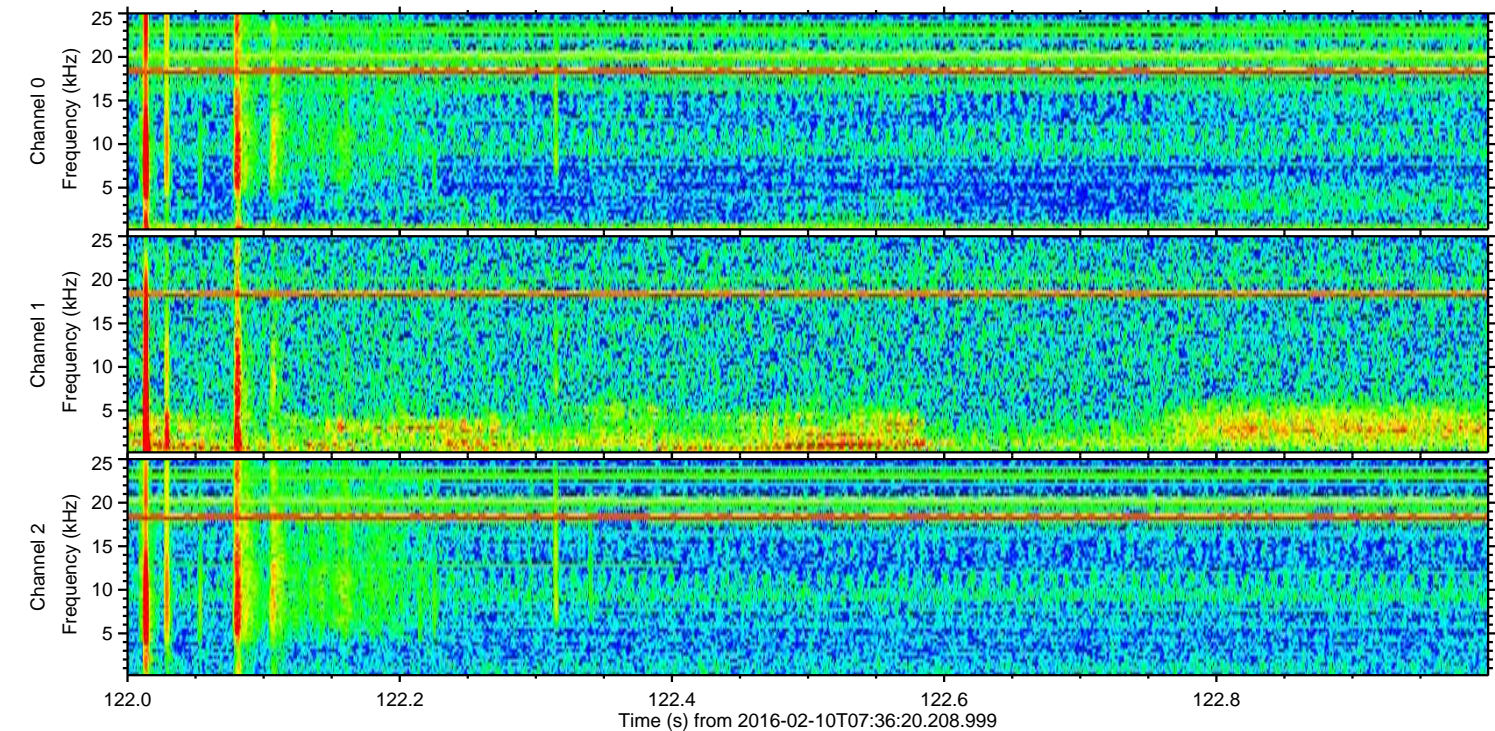
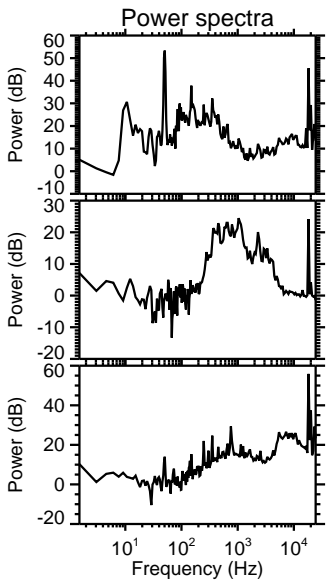
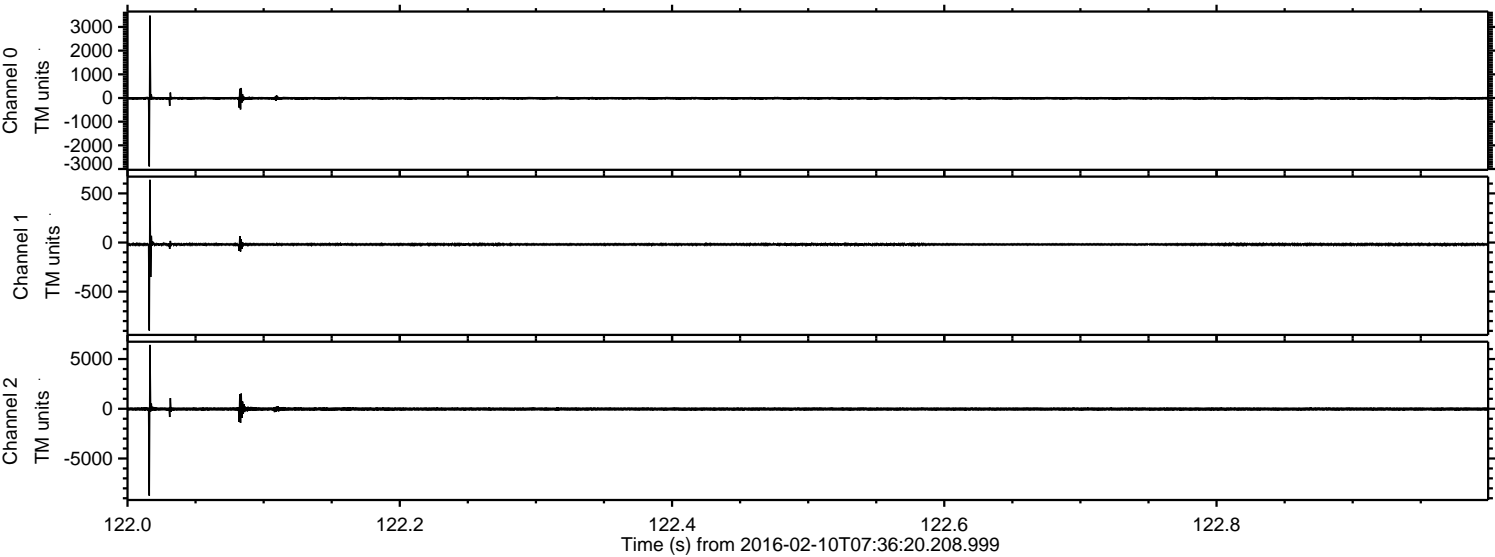
ELMAVAN 3D WAVEFORMS (Measured data sampled at 50 kHz) 51000 packets of 144 samples from 2016-02-10T07:36:20.208.999.

Processed Sat Apr 9 22:10:01 2016 by ELM ver.2012-10-06 from 001__elm20160210_073619__dat00.bin



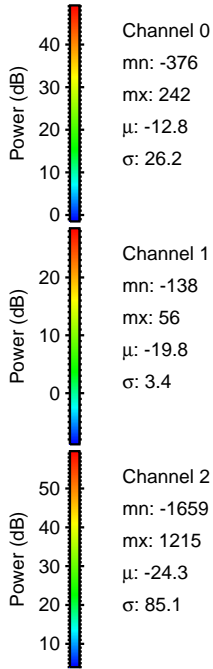
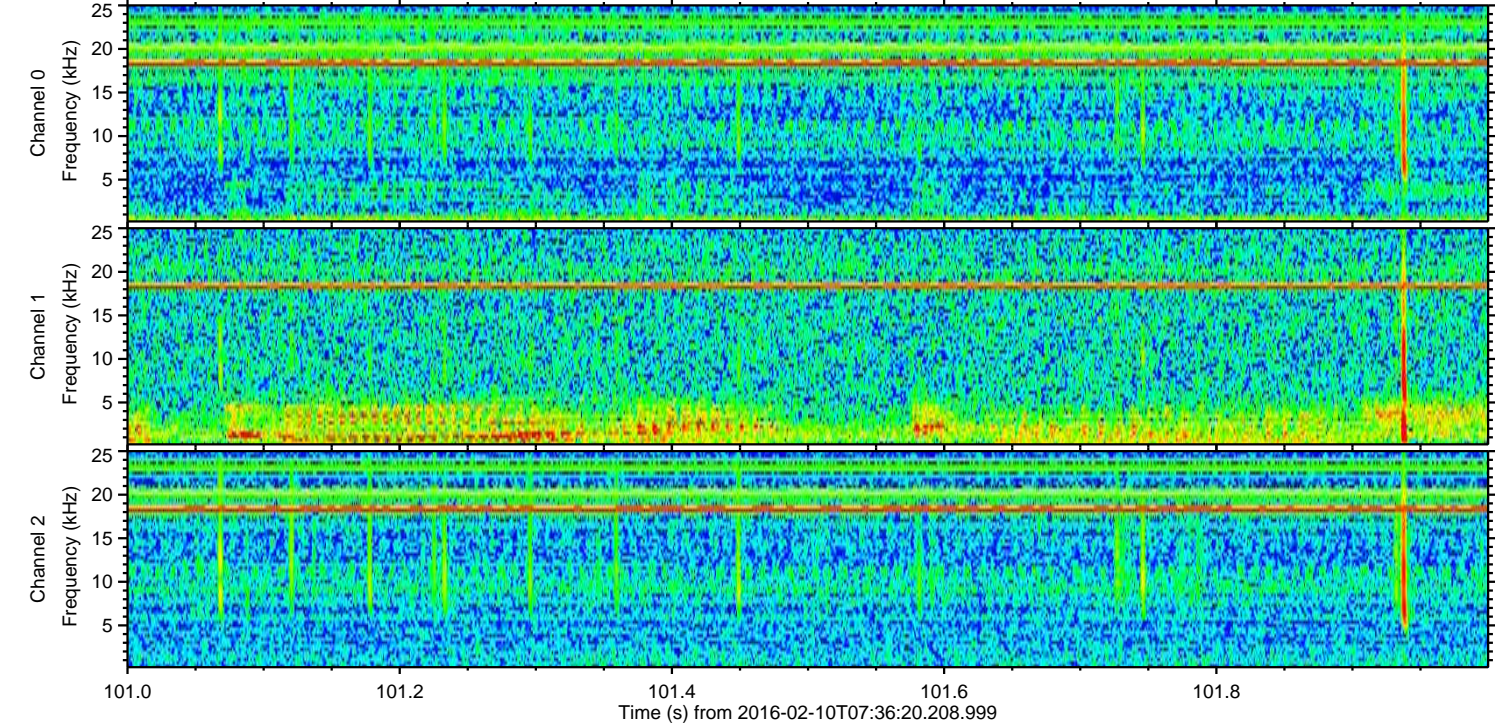
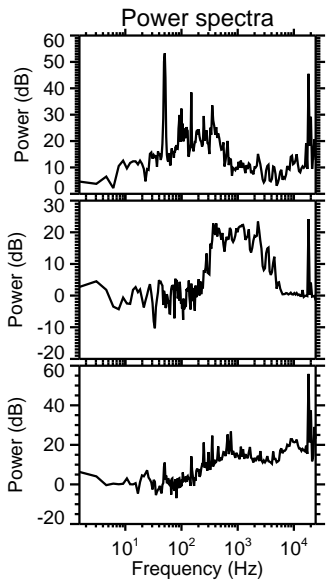
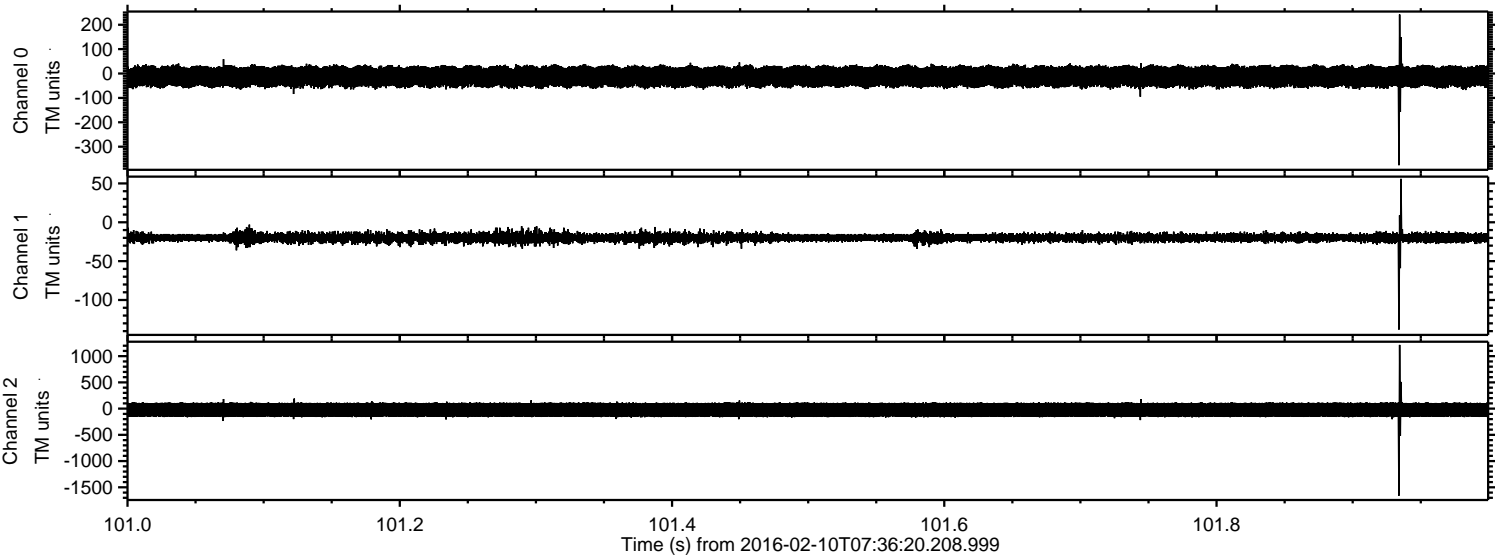
ELMAVAN 3D WAVEFORMS (Measured data sampled at 50 kHz) 51000 packets of 144 samples from 2016-02-10T07:36:20.208.999. Part 123/147

Processed Sat Apr 9 22:10:13 2016 by ELM ver.2012-10-06 from 001__elm20160210_073619__dat00.bin



ELMAVAN 3D WAVEFORMS (Measured data sampled at 50 kHz) 51000 packets of 144 samples from 2016-02-10T07:36:20.208.999. Part 102/147

Processed Sat Apr 9 22:10:14 2016 by ELM ver.2012-10-06 from 001__elm20160210_073619__dat00.bin

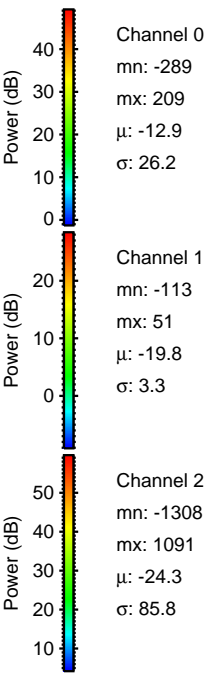
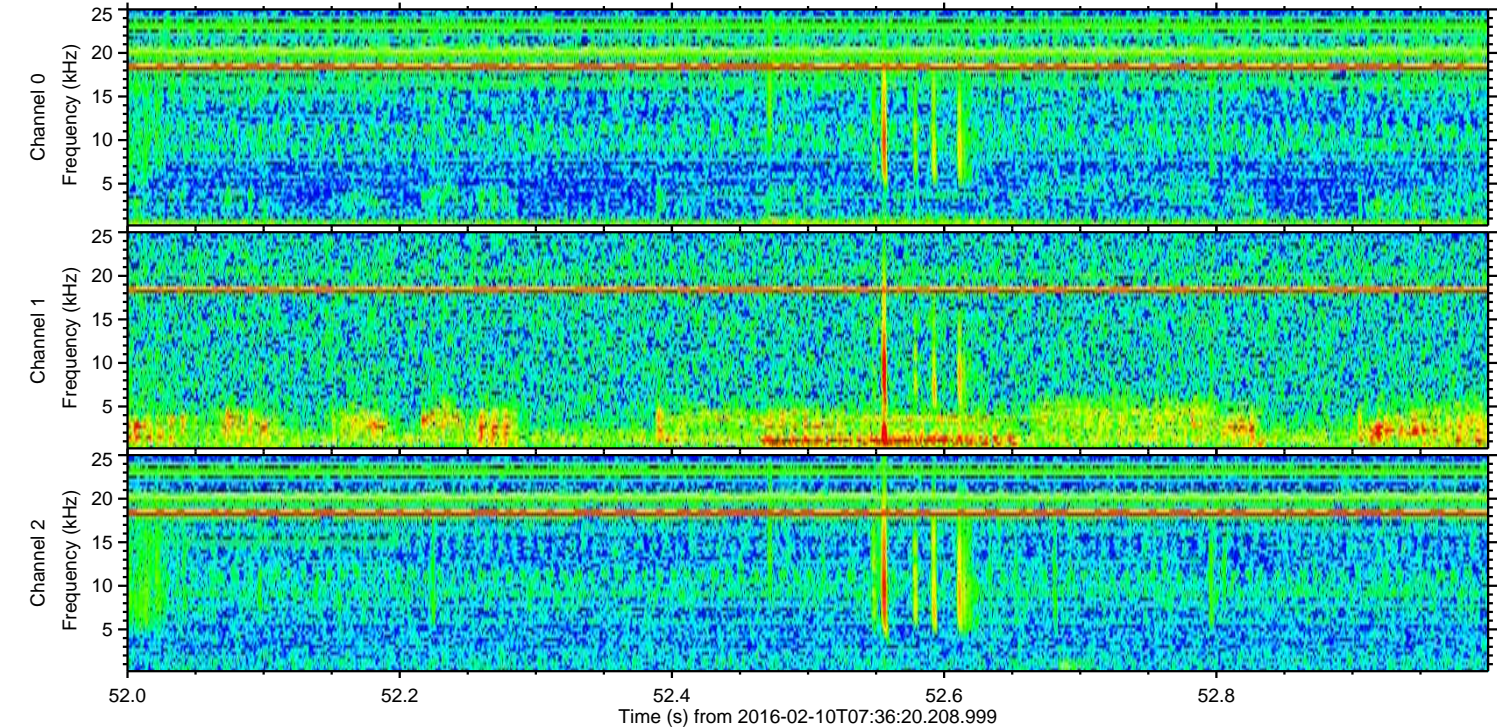
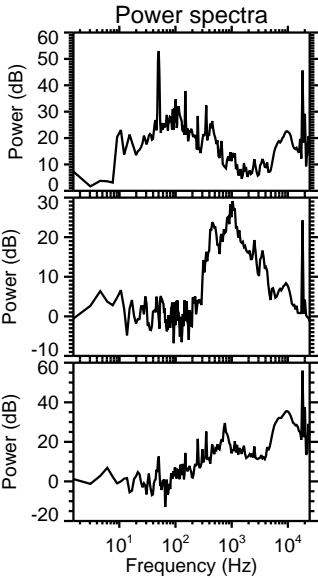
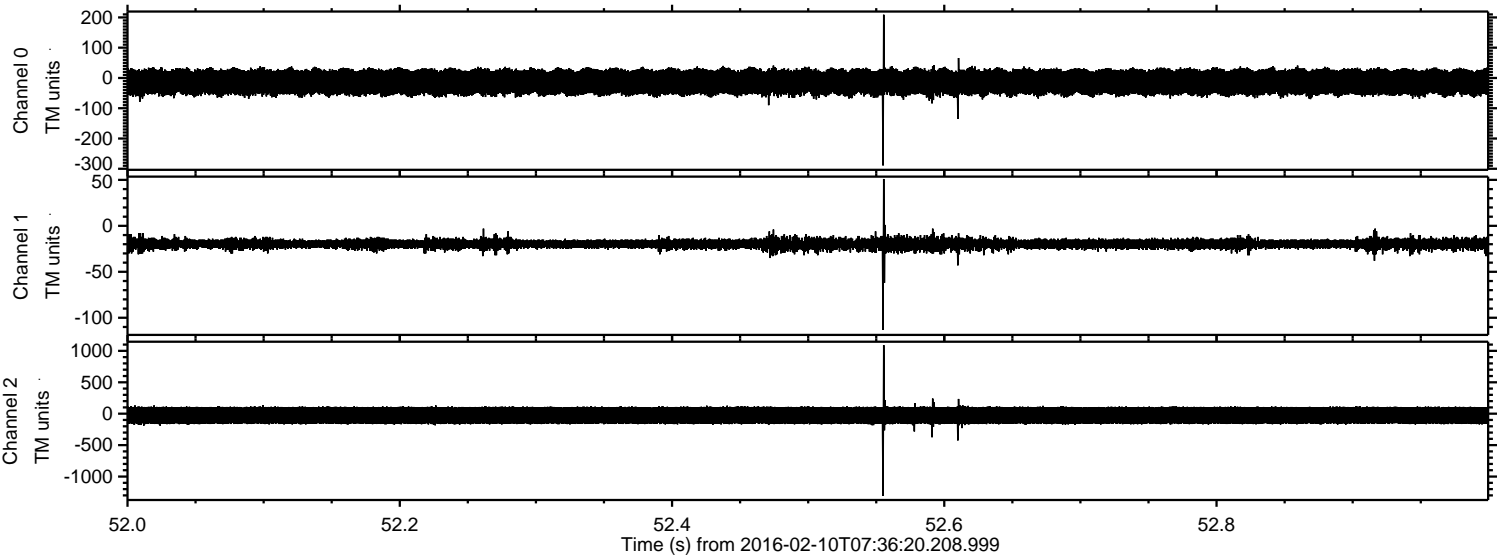


Channel 0
mn: -376
mx: 242
 μ : -12.8
 σ : 26.2

Channel 1
mn: -138
mx: 56
 μ : -19.8
 σ : 3.4

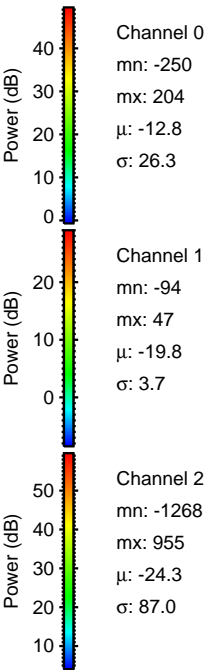
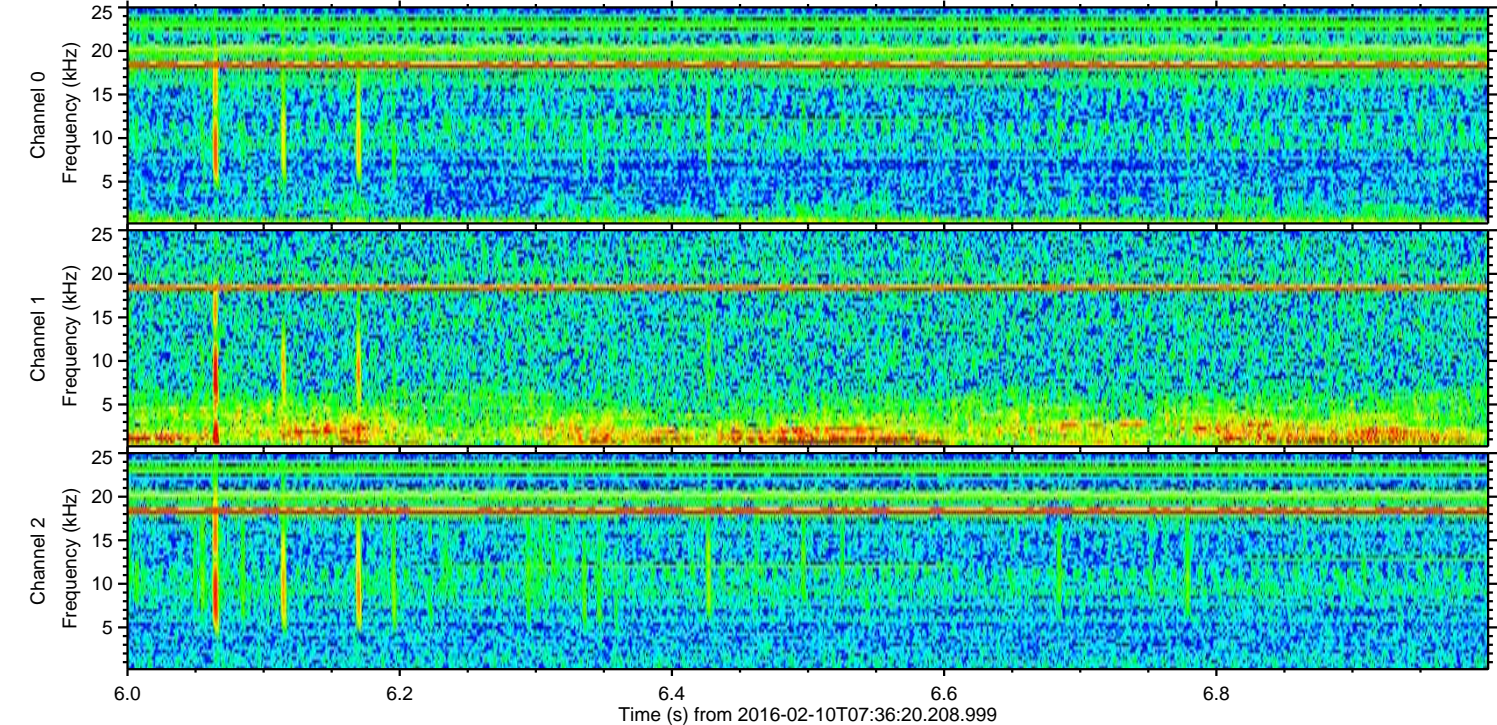
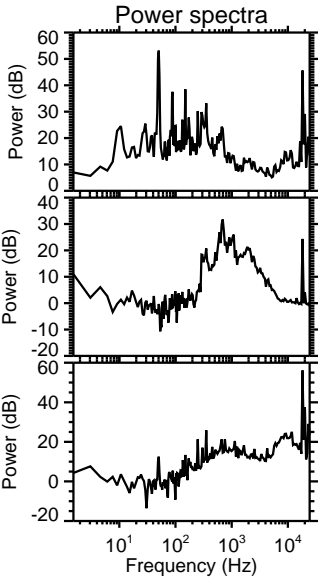
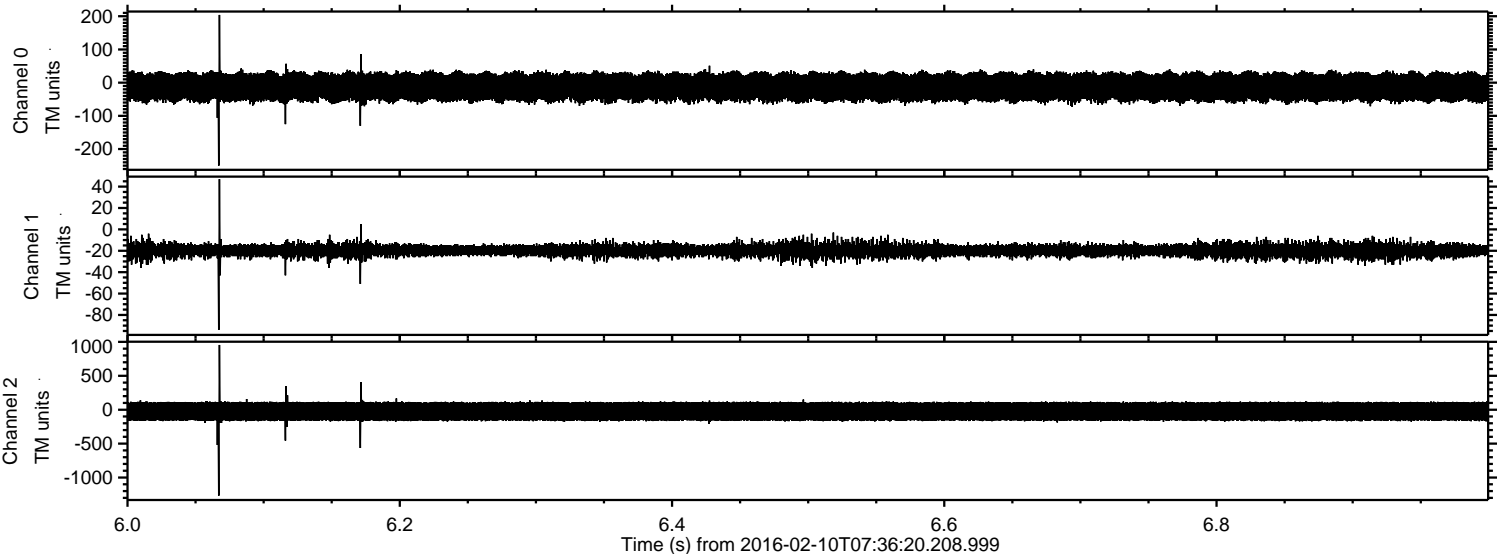
Channel 2
mn: -1659
mx: 1215
 μ : -24.3
 σ : 85.1

Processed Sat Apr 9 22:10:15 2016 by ELM ver.2012-10-06 from 001__elm20160210_073619__dat00.bin

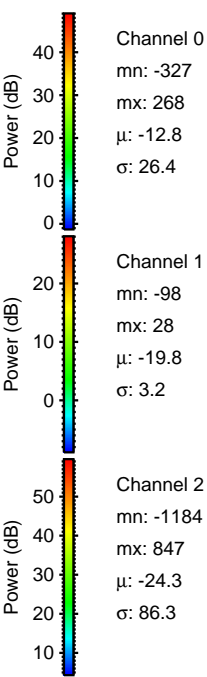
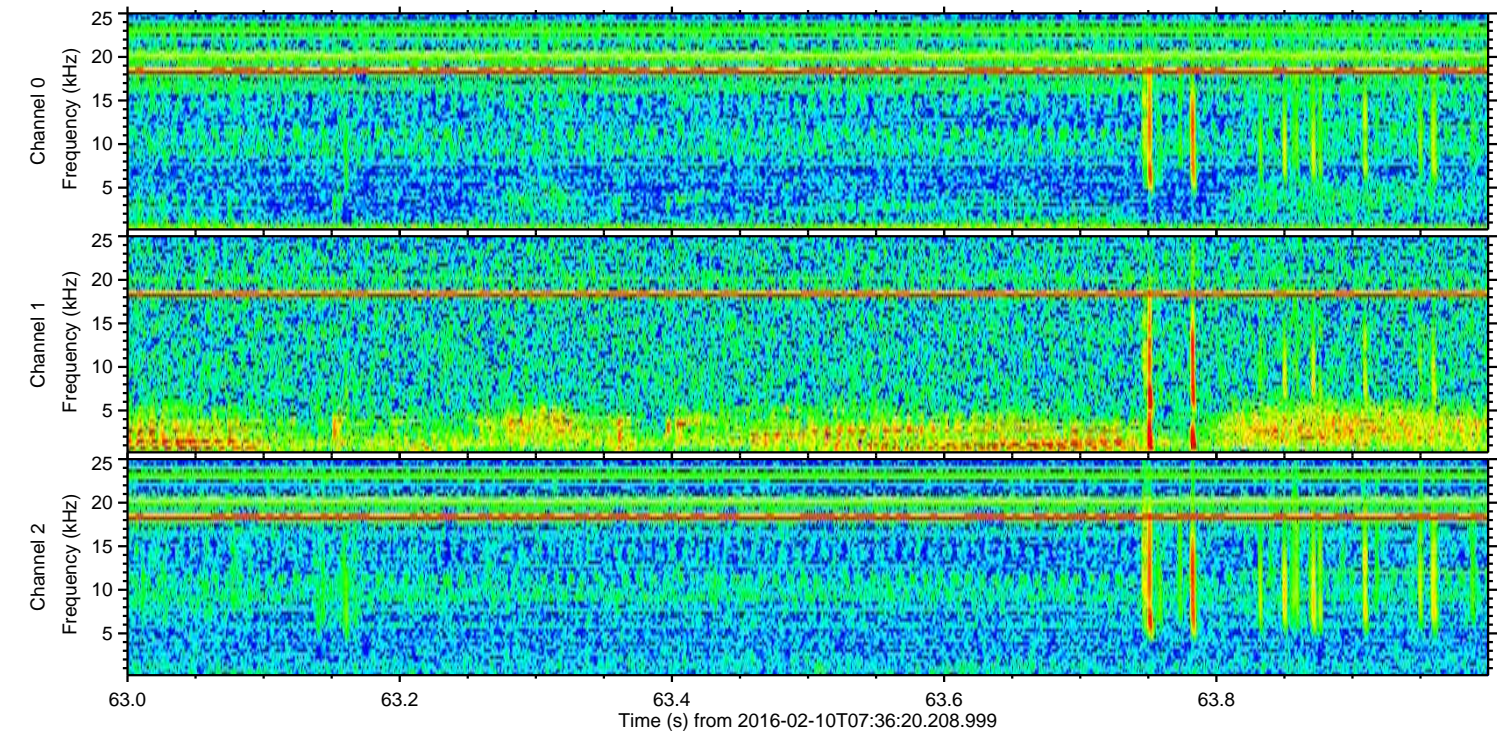
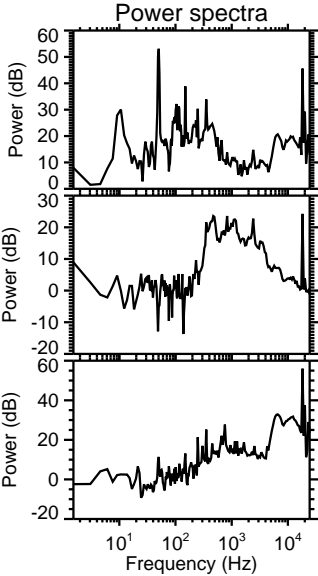
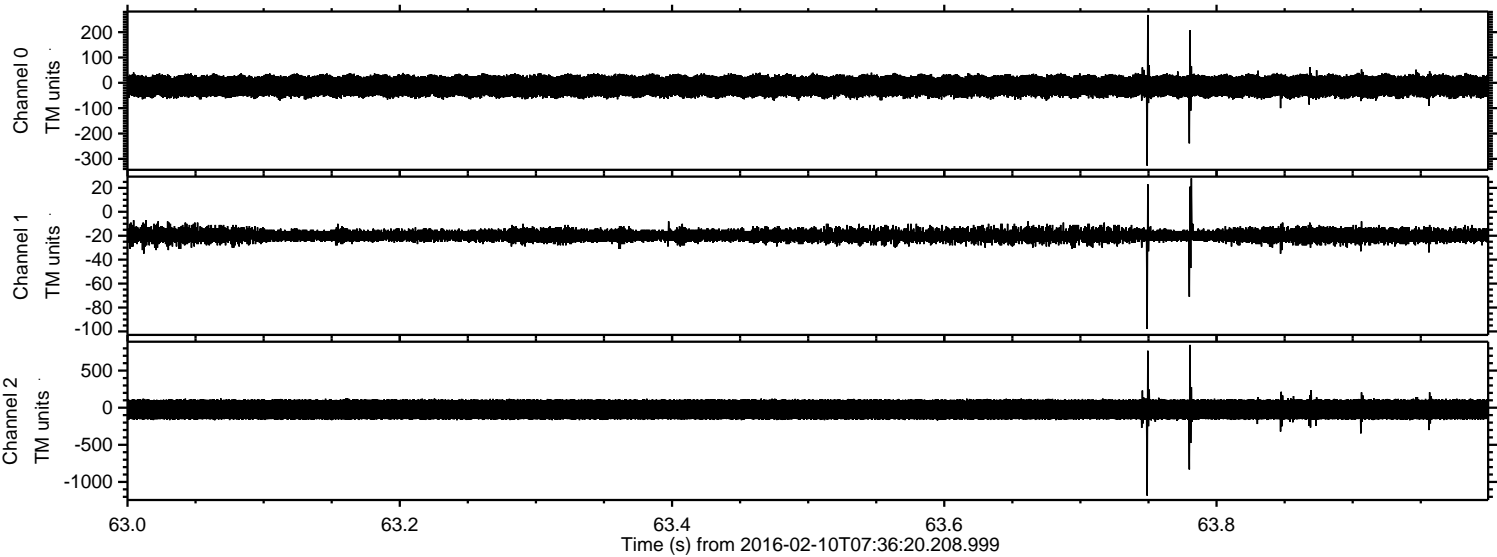


ELMAVAN 3D WAVEFORMS (Measured data sampled at 50 kHz) 51000 packets of 144 samples from 2016-02-10T07:36:20.208.999. Part 7/147

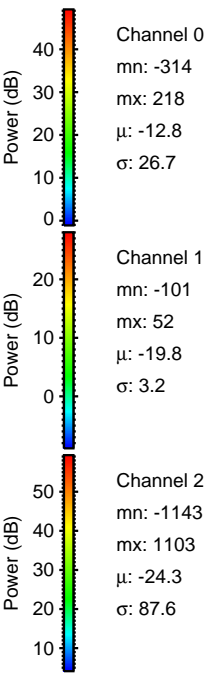
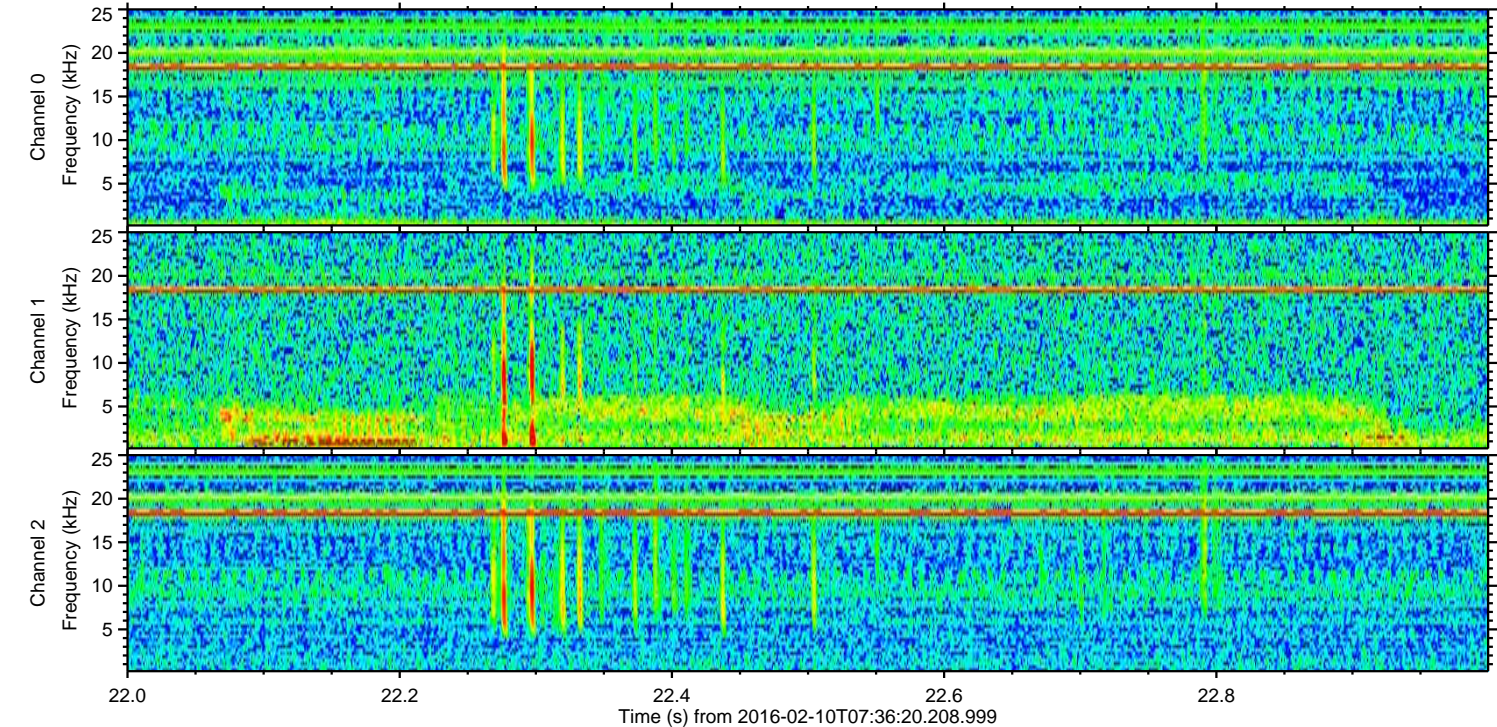
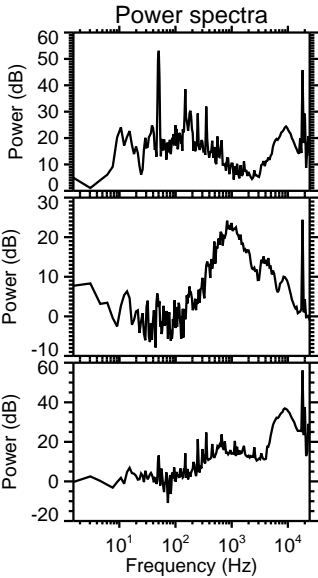
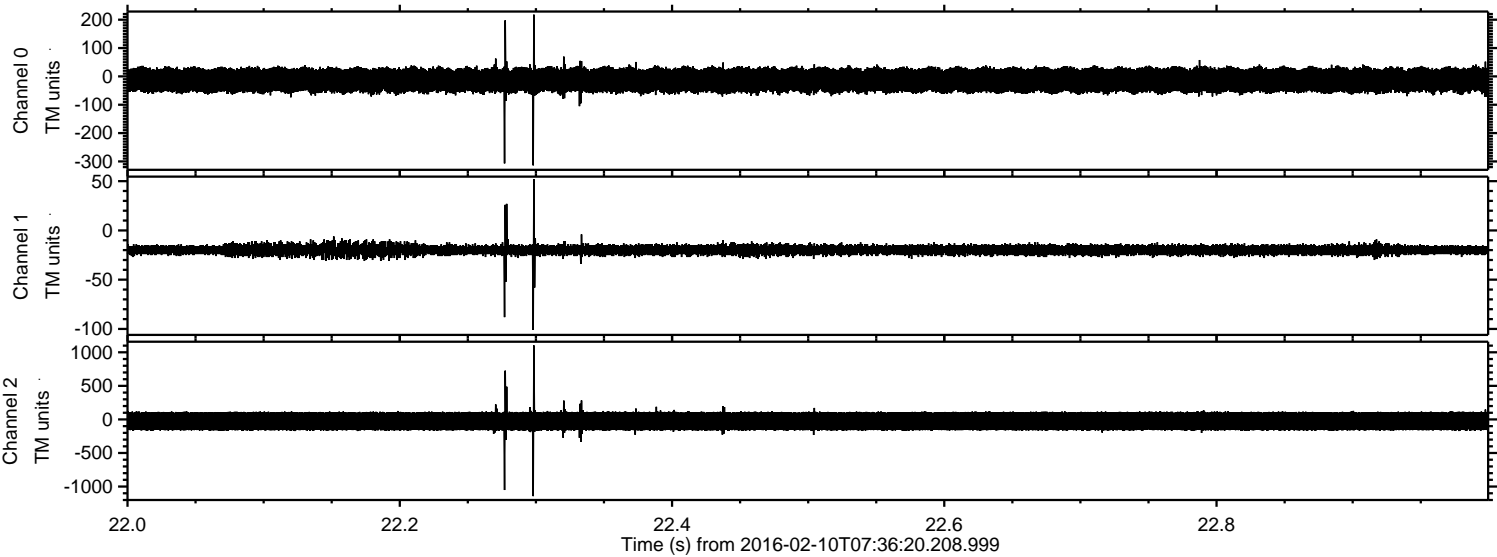
Processed Sat Apr 9 22:10:16 2016 by ELM ver.2012-10-06 from 001__elm20160210_073619__dat00.bin



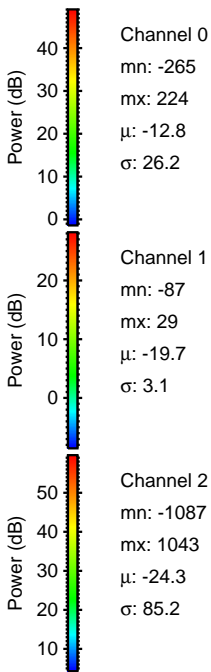
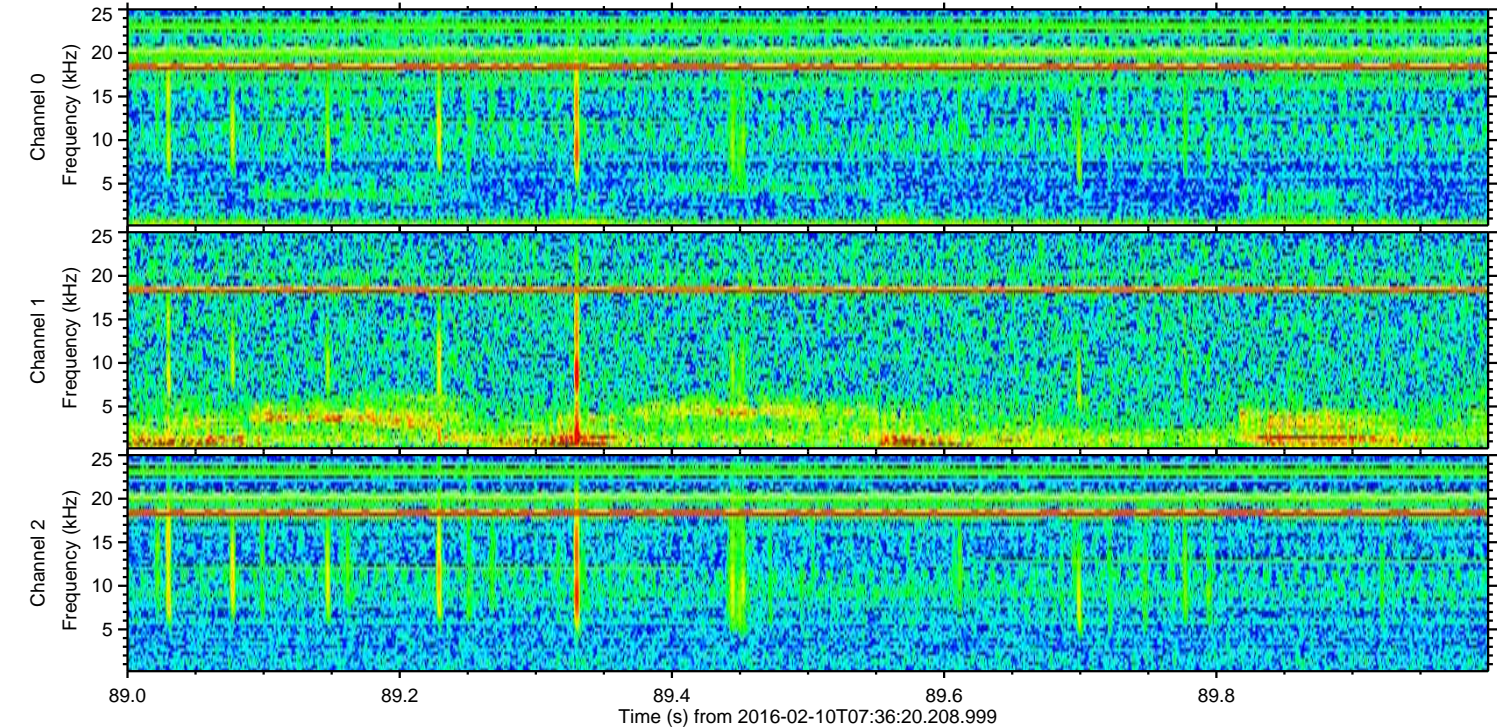
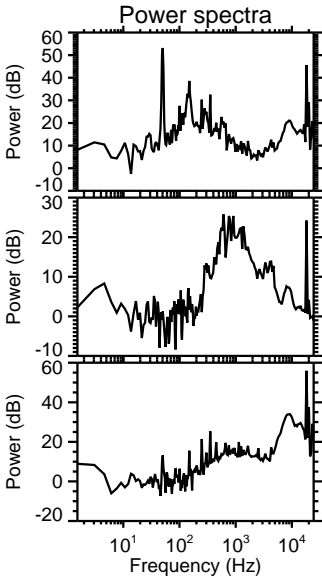
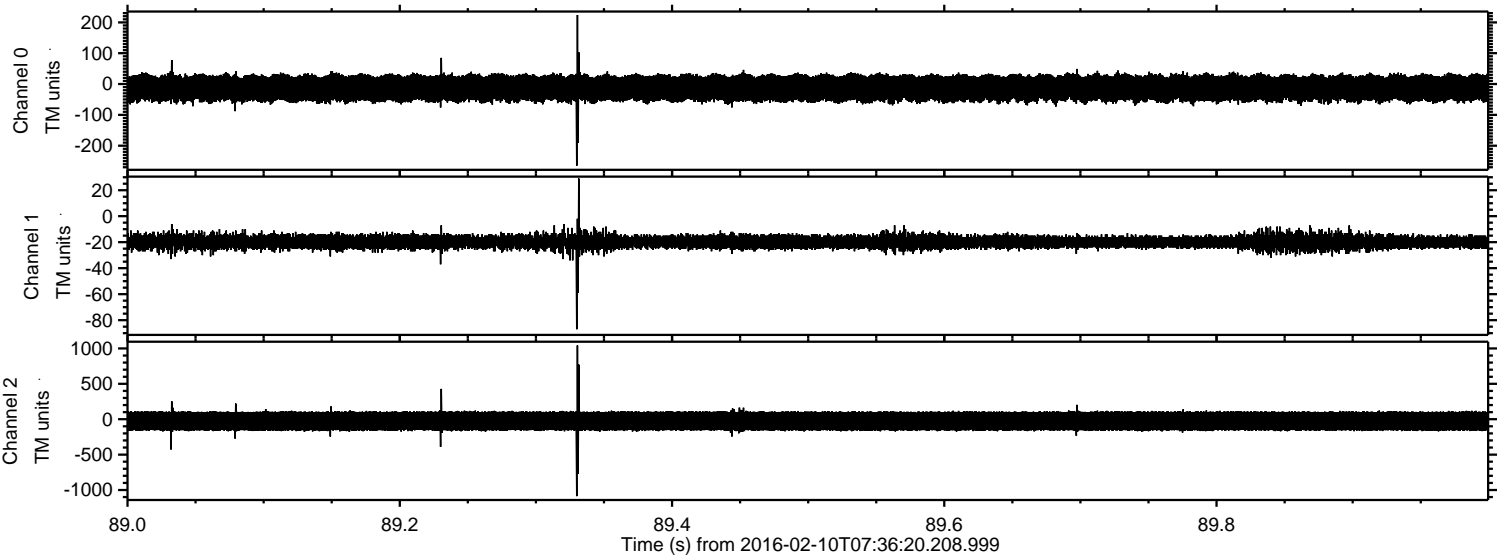
Processed Sat Apr 9 22:10:17 2016 by ELM ver.2012-10-06 from 001__elm20160210_073619__dat00.bin



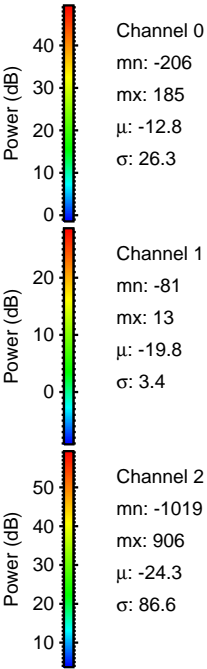
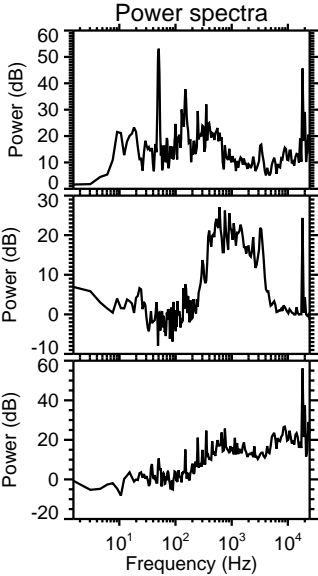
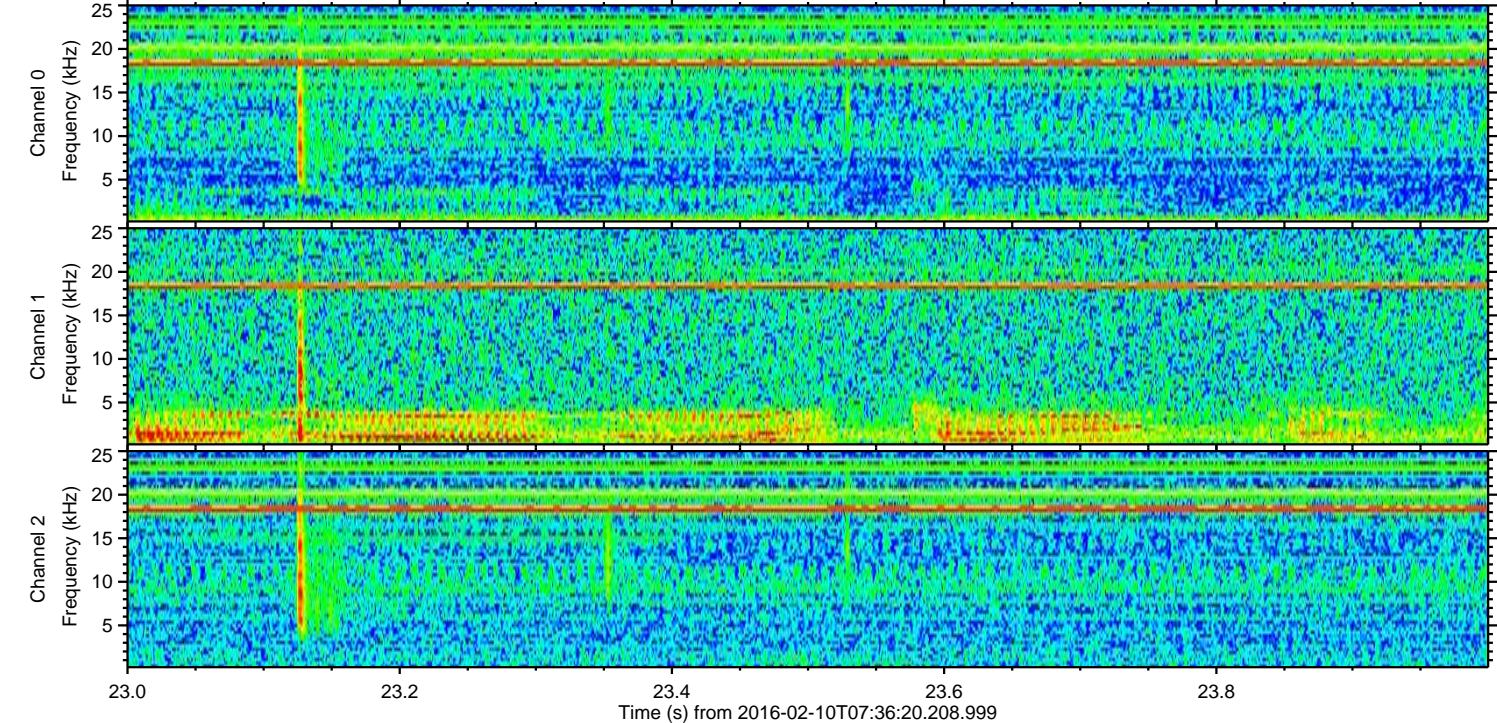
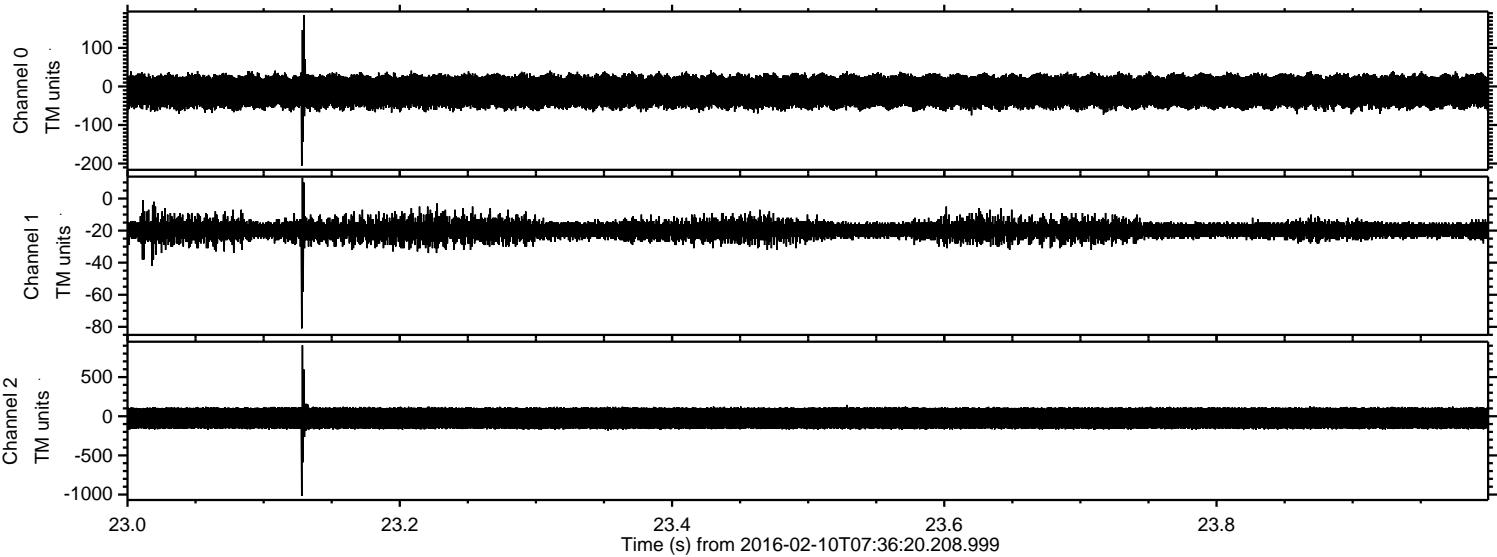
Processed Sat Apr 9 22:10:18 2016 by ELM ver.2012-10-06 from 001__elm20160210_073619__dat00.bin



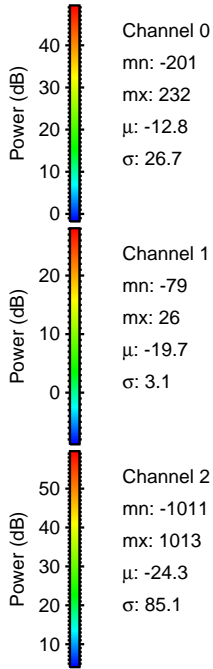
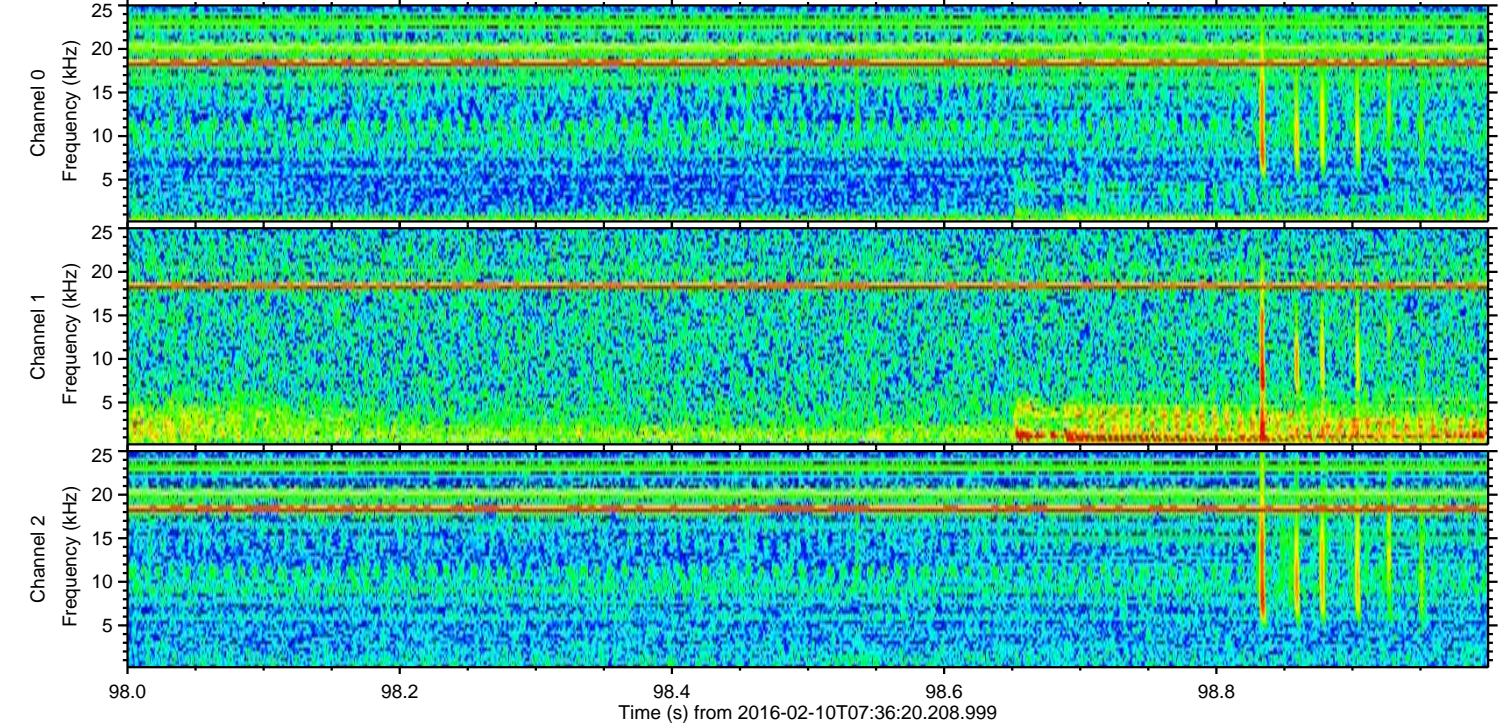
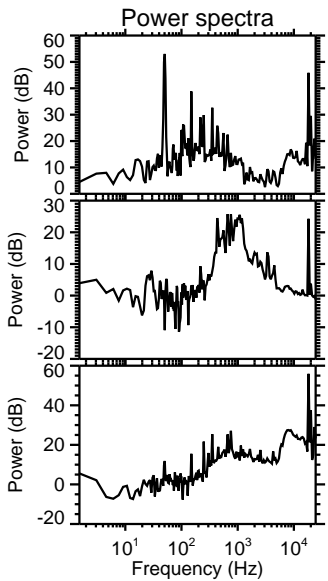
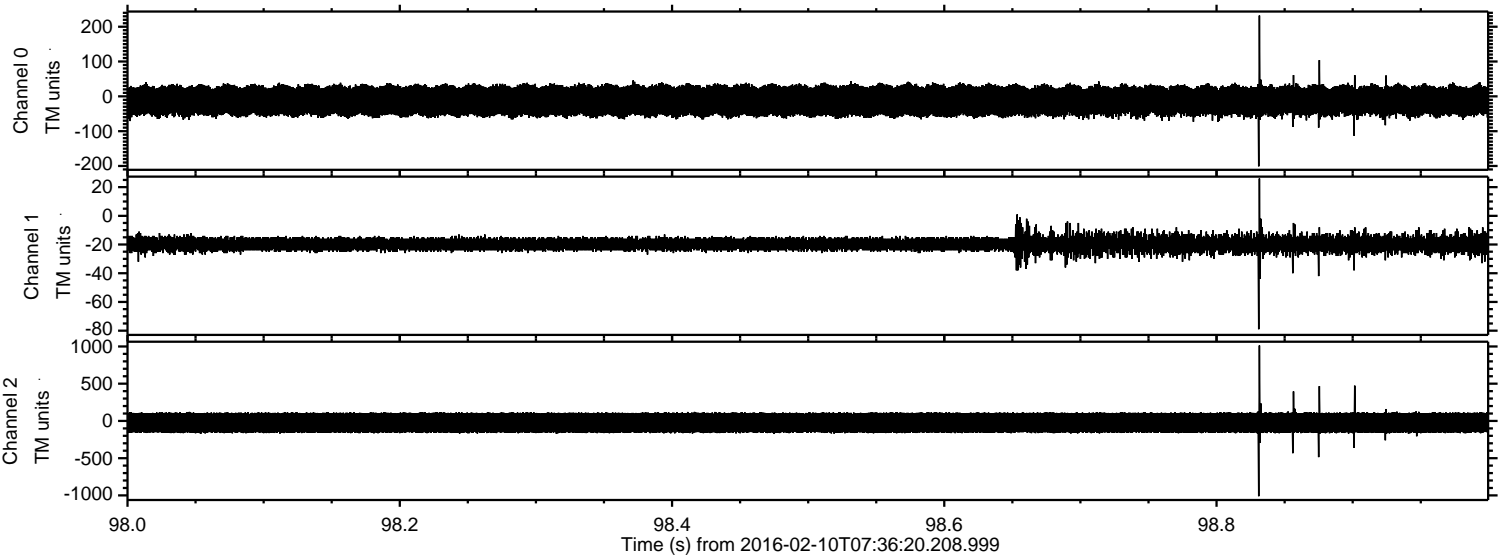
Processed Sat Apr 9 22:10:19 2016 by ELM ver.2012-10-06 from 001__elm20160210_073619__dat00.bin



Processed Sat Apr 9 22:10:19 2016 by ELM ver.2012-10-06 from 001__elm20160210_073619__dat00.bin



Processed Sat Apr 9 22:10:20 2016 by ELM ver.2012-10-06 from 001__elm20160210_073619__dat00.bin



Processed Sat Apr 9 22:10:21 2016 by ELM ver.2012-10-06 from 001__elm20160210_073619__dat00.bin

