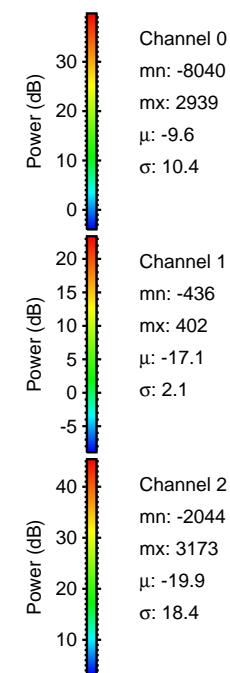
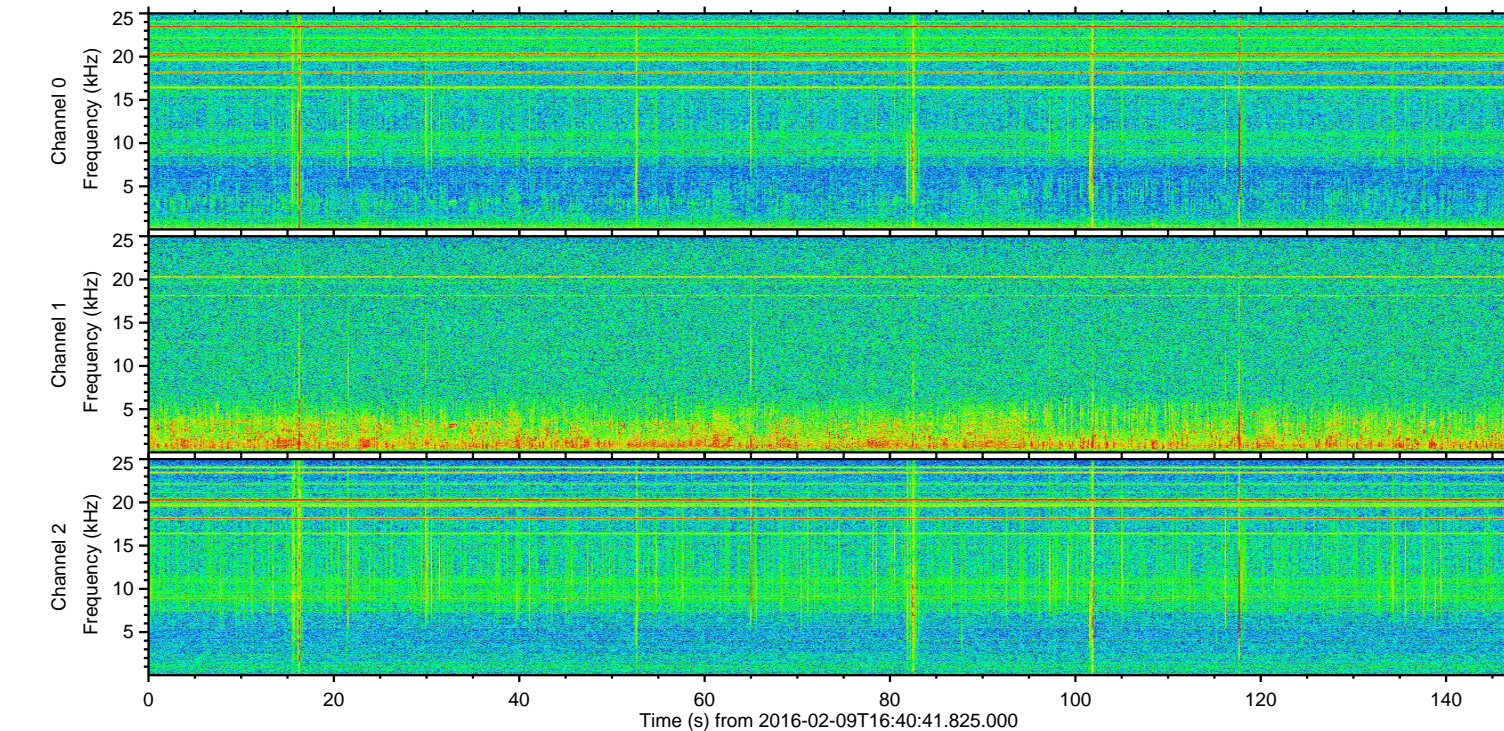
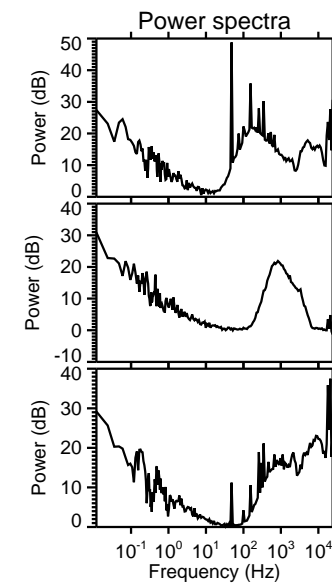
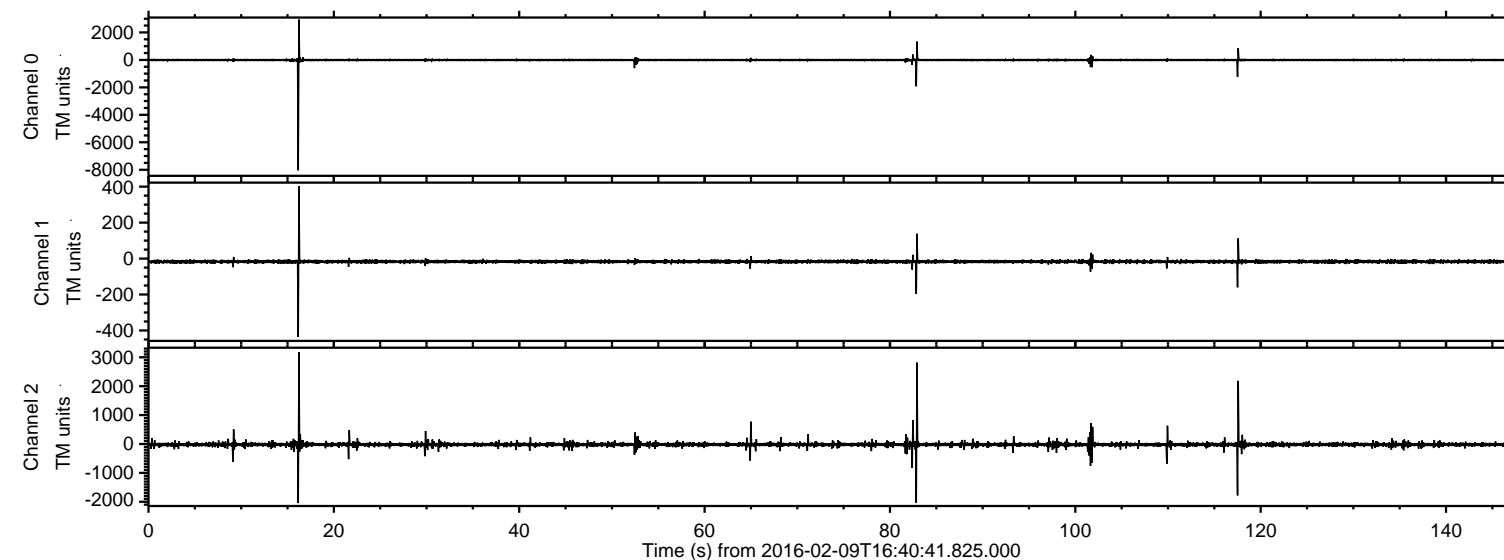


# ELMAVAN 3D WAVEFORMS (Measured data sampled at 50 kHz) 51000 packets of 144 samples from 2016-02-09T16:40:41.825.000.

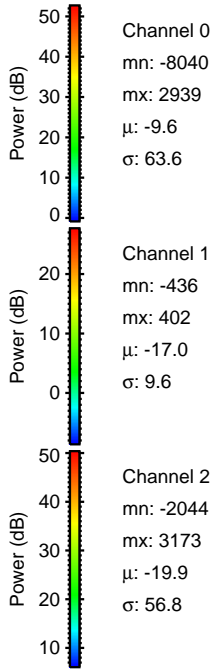
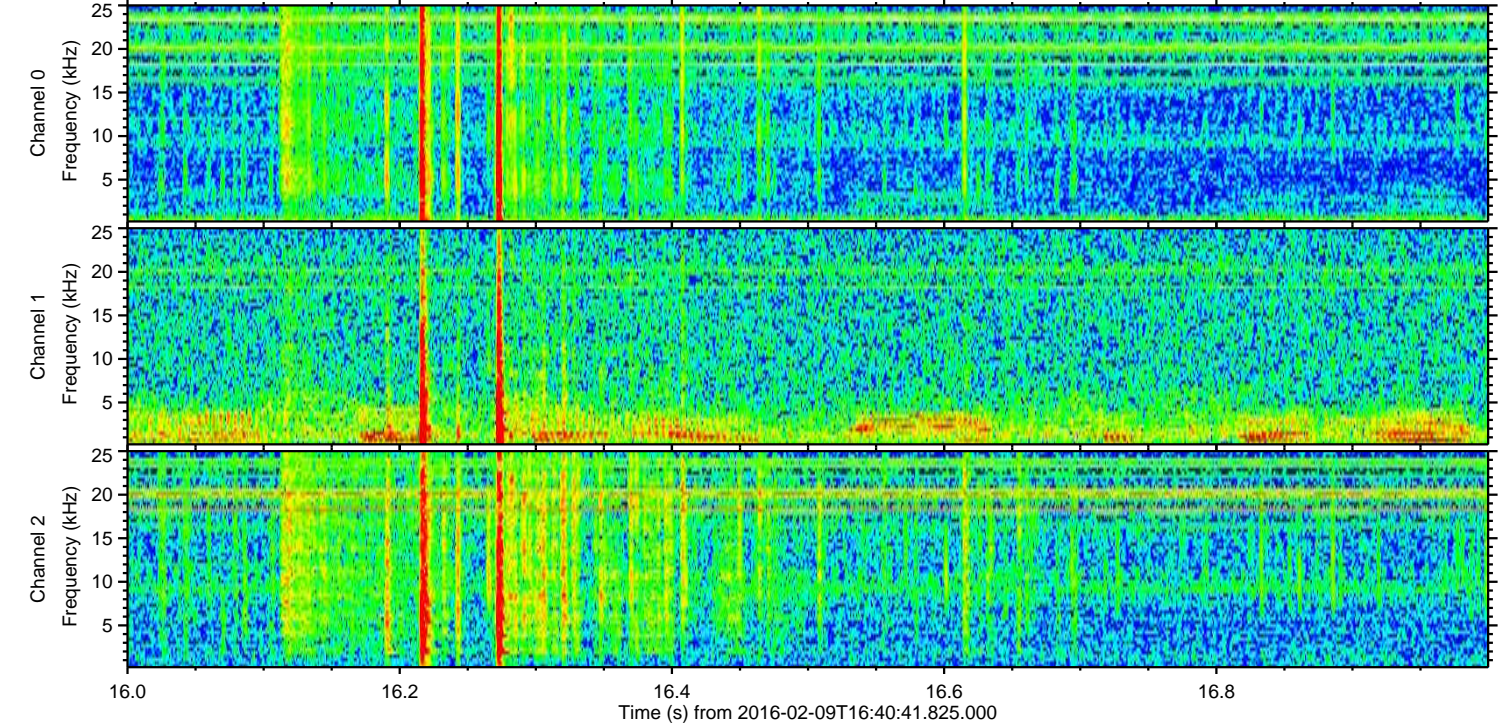
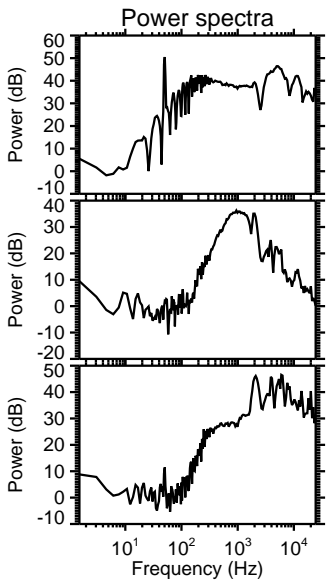
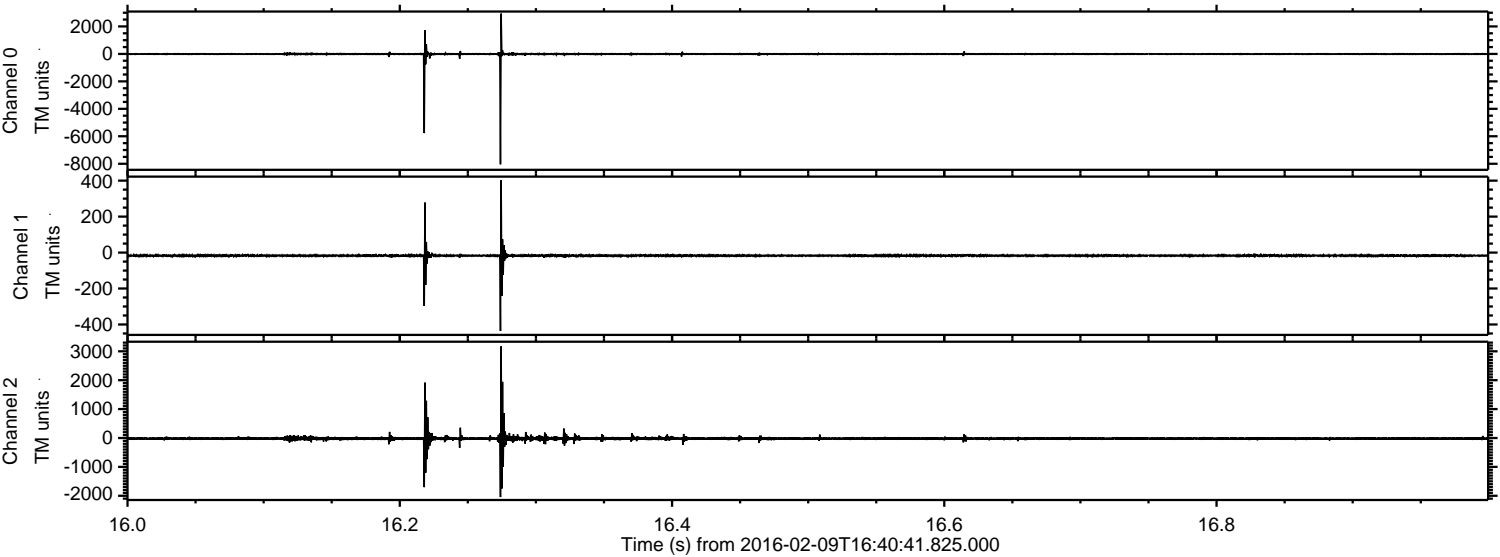
Processed Sat Apr 9 19:08:04 2016 by ELM ver.2012-10-06 from 001\_\_elm20160209\_164040\_\_dat00.bin





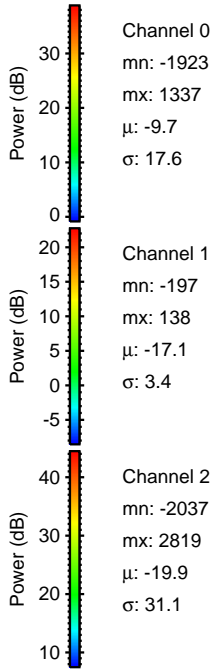
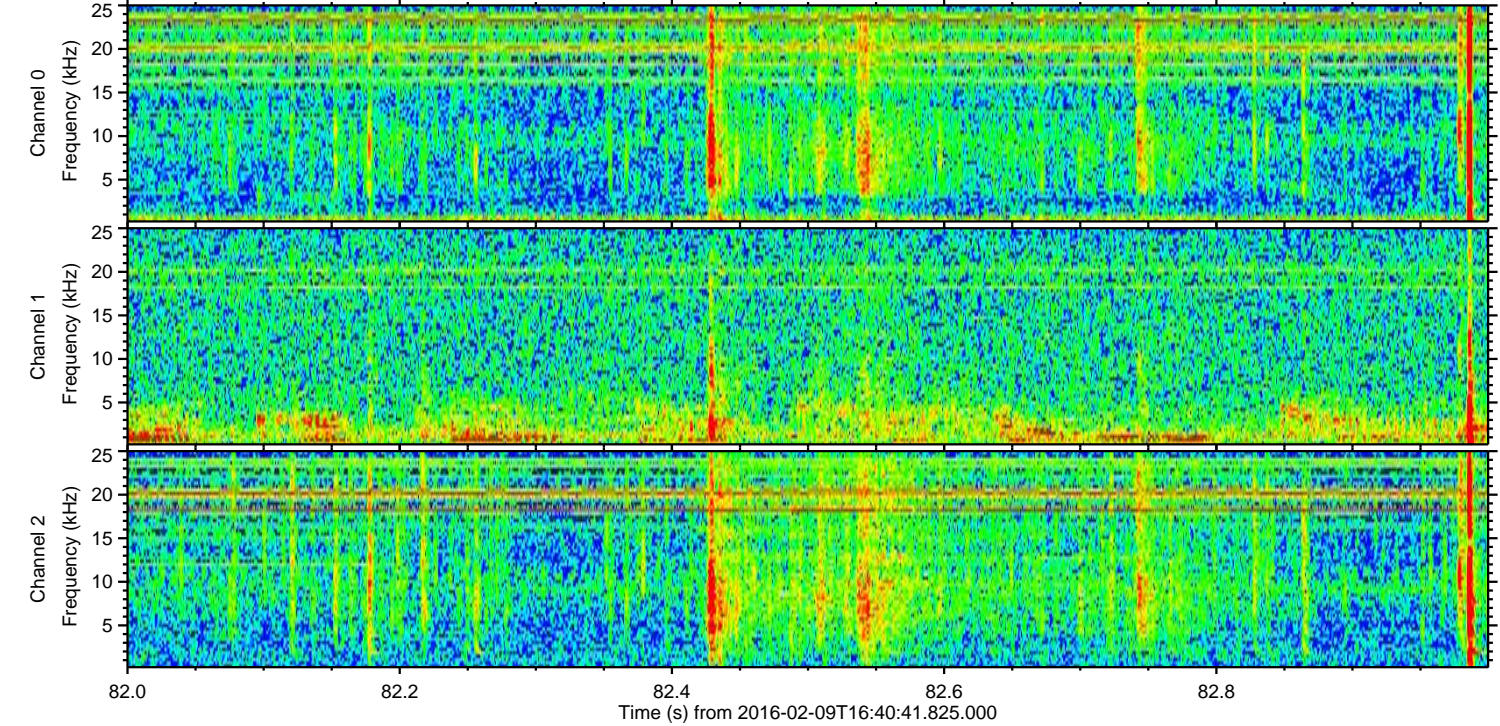
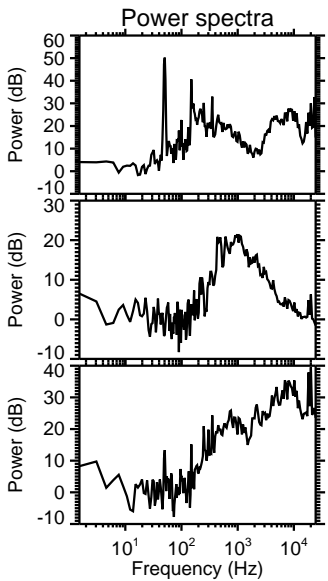
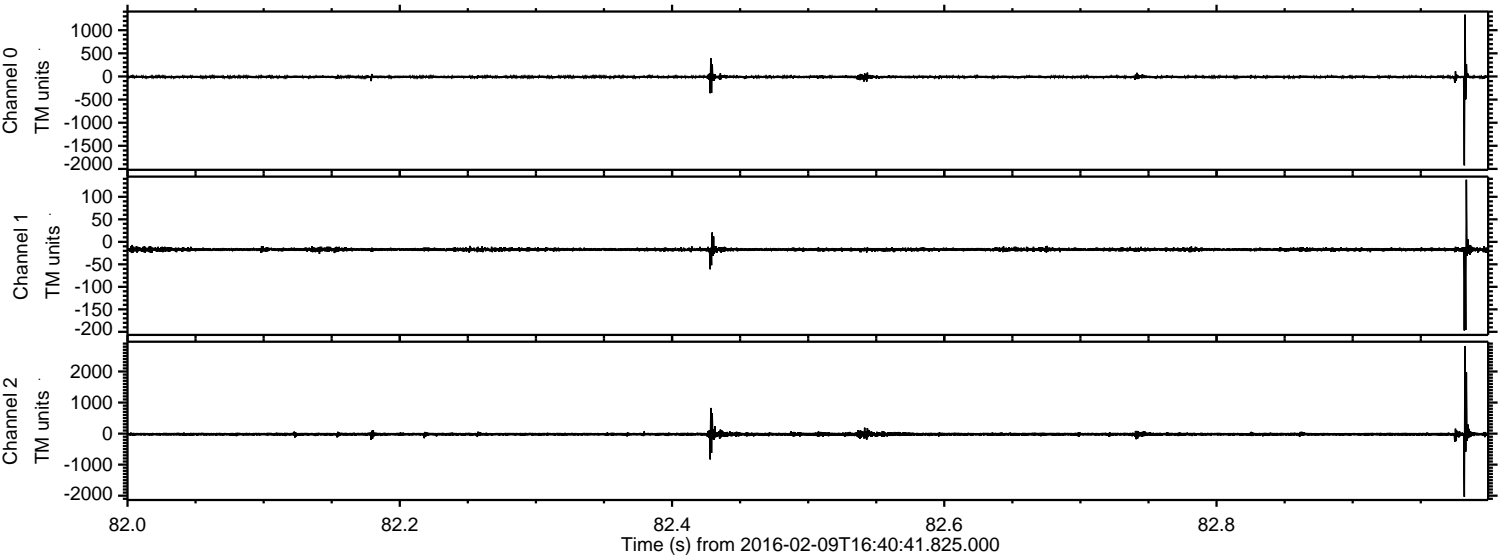
ELMAVAN 3D WAVEFORMS (Measured data sampled at 50 kHz) 51000 packets of 144 samples from 2016-02-09T16:40:41.825.000. Part 17/147

Processed Sat Apr 9 19:08:16 2016 by ELM ver.2012-10-06 from 001\_\_elm20160209\_164040\_\_dat00.bin





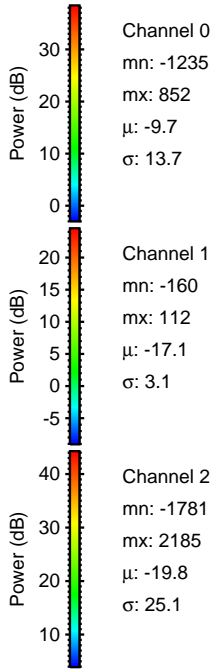
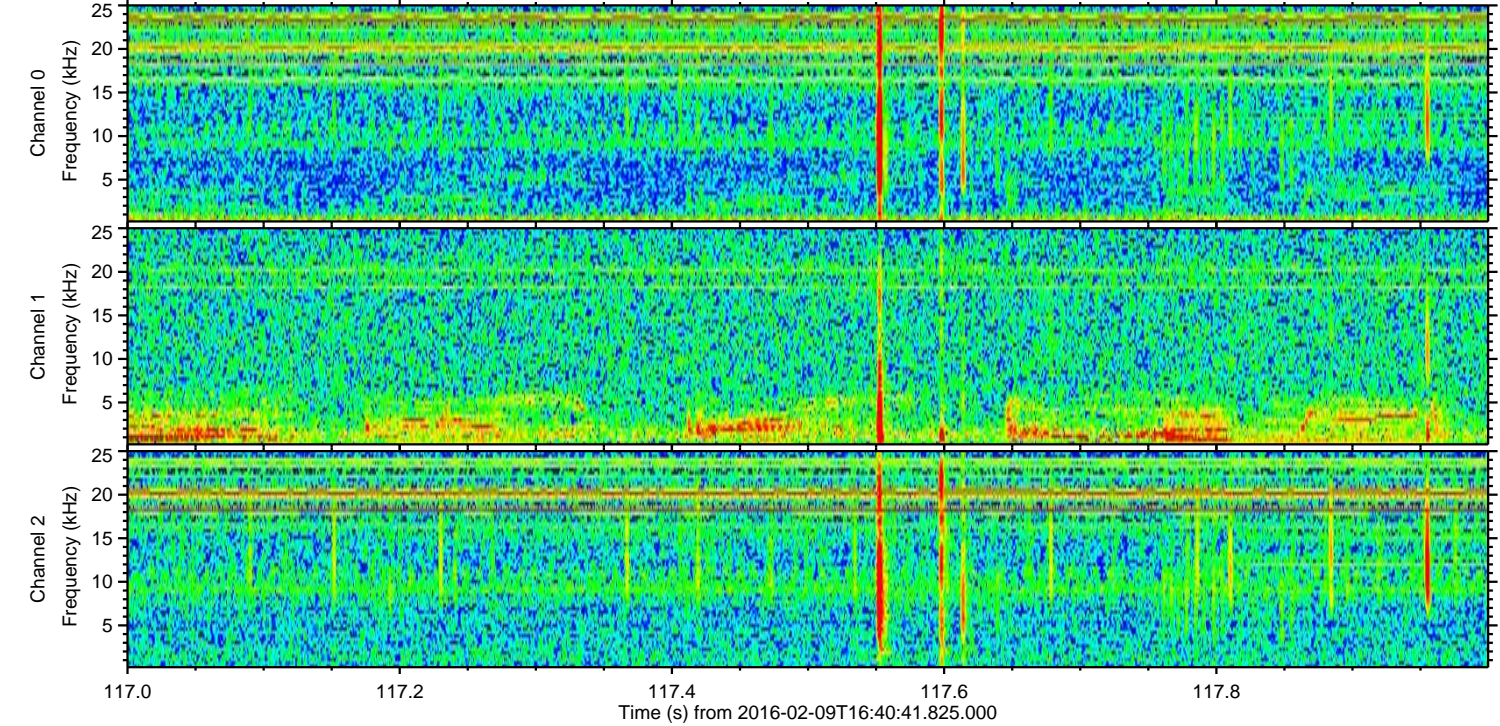
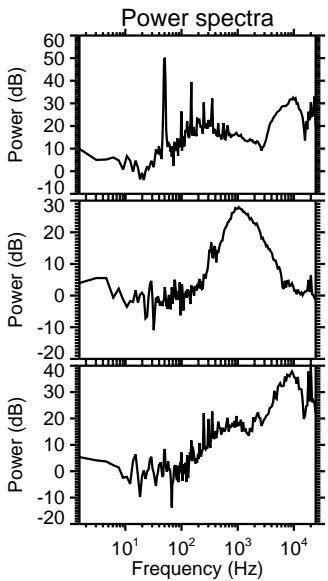
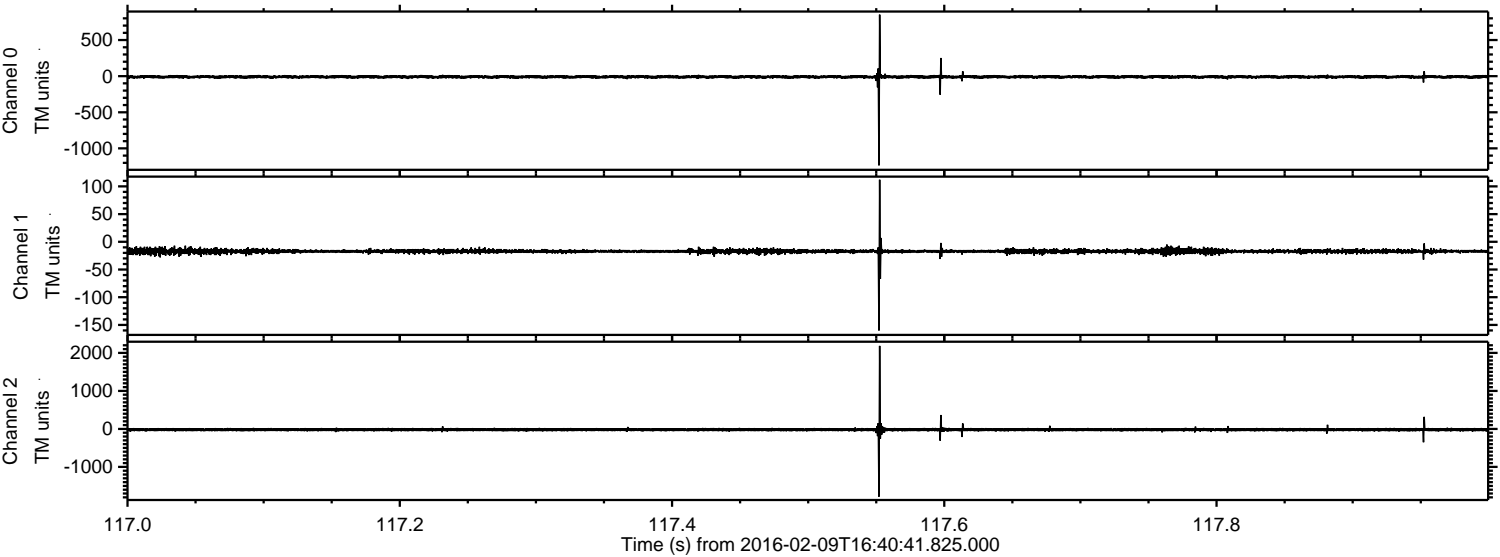
Processed Sat Apr 9 19:08:17 2016 by ELM ver.2012-10-06 from 001\_\_elm20160209\_164040\_\_dat00.bin





ELMAVAN 3D WAVEFORMS (Measured data sampled at 50 kHz) 51000 packets of 144 samples from 2016-02-09T16:40:41.825.000. Part 118/147

Processed Sat Apr 9 19:08:18 2016 by ELM ver.2012-10-06 from 001\_\_elm20160209\_164040\_\_dat00.bin



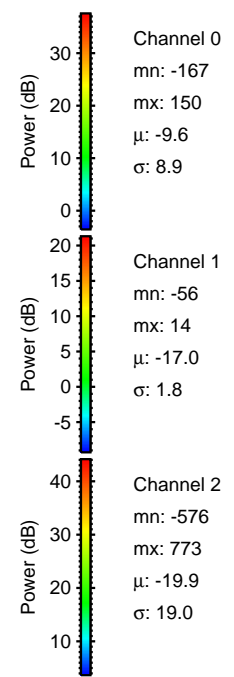
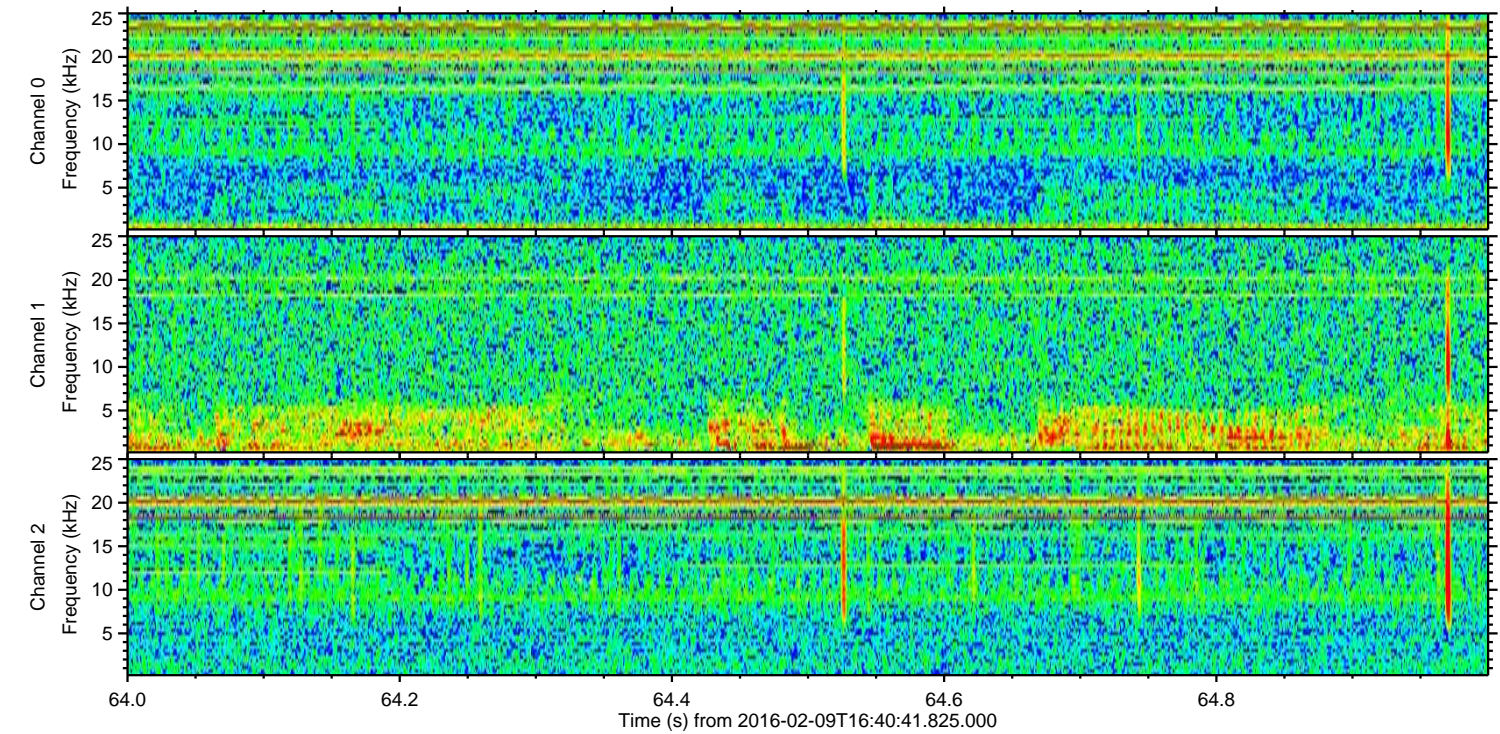
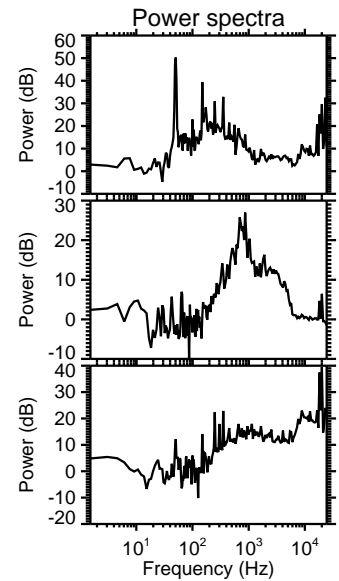
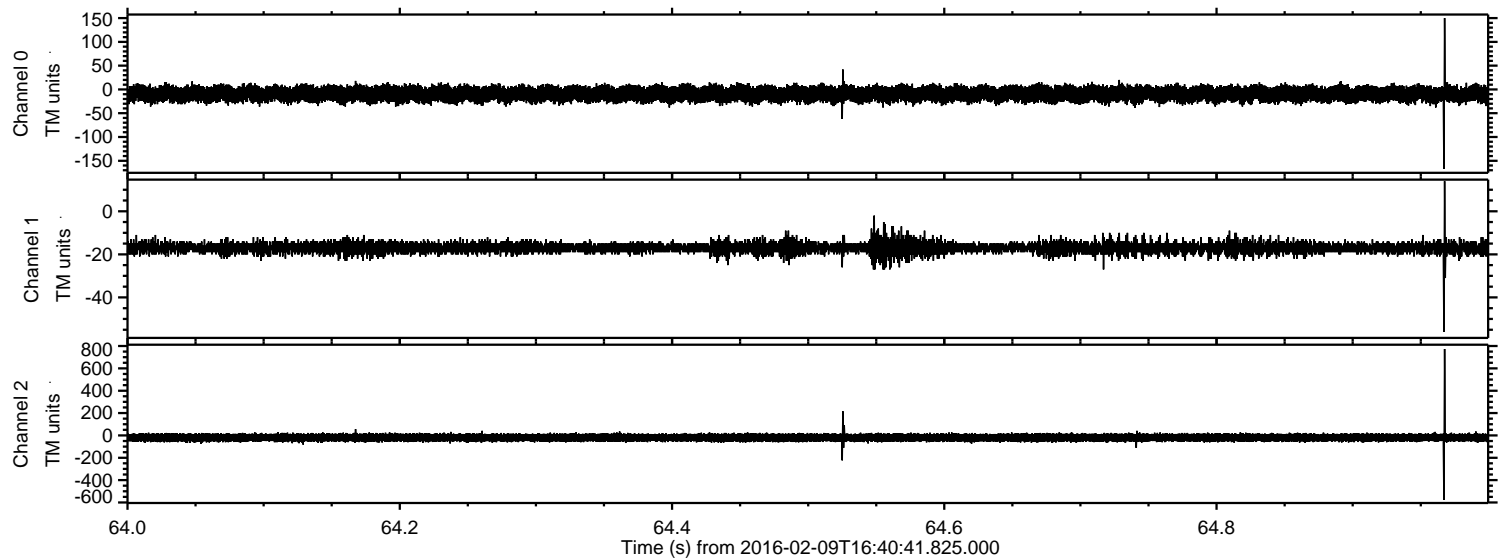
Channel 0  
mn: -1235  
mx: 852  
 $\mu$ : -9.7  
 $\sigma$ : 13.7

Channel 1  
mn: -160  
mx: 112  
 $\mu$ : -17.1  
 $\sigma$ : 3.1

Channel 2  
mn: -1781  
mx: 2185  
 $\mu$ : -19.8  
 $\sigma$ : 25.1

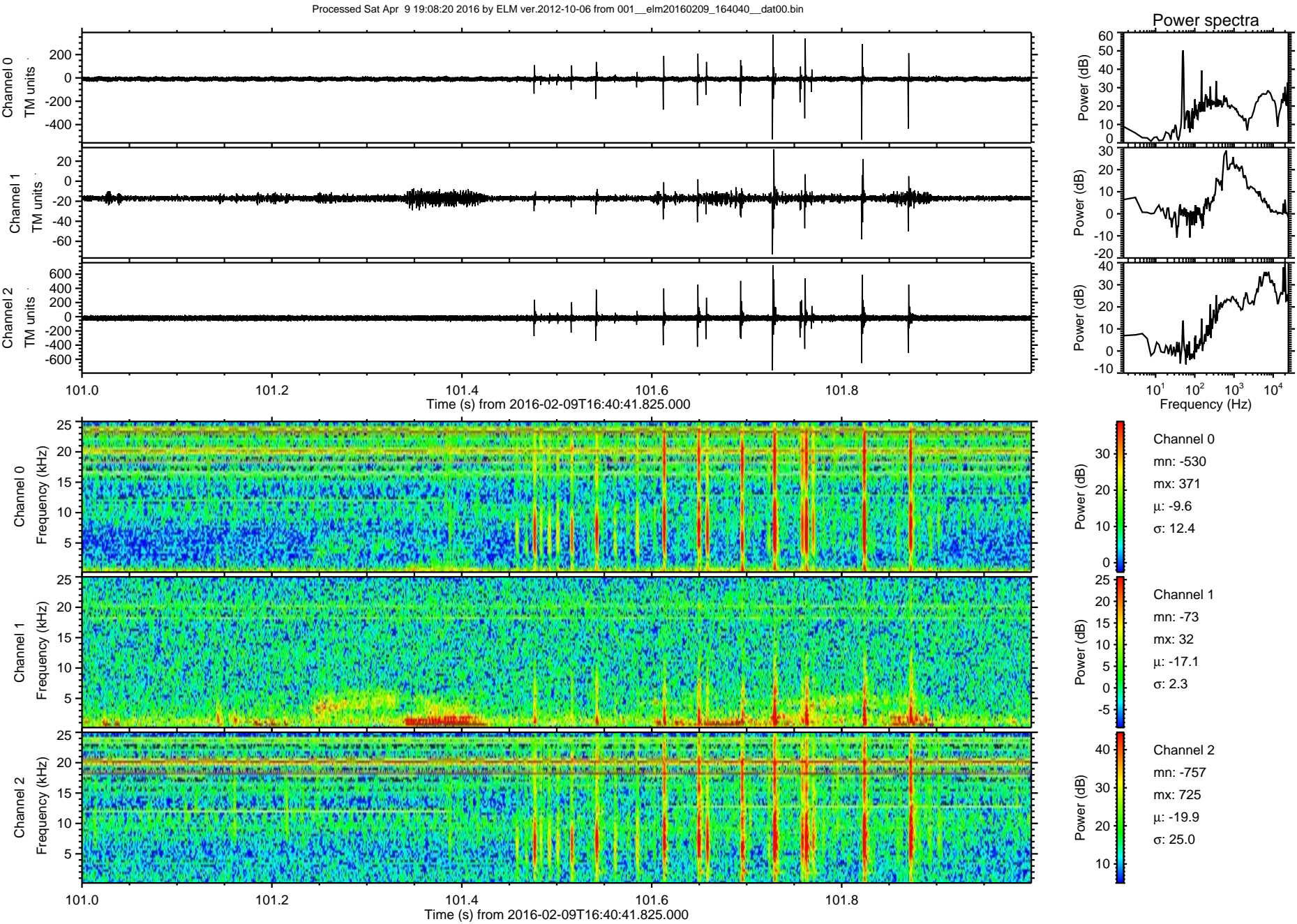


Processed Sat Apr 9 19:08:19 2016 by ELM ver.2012-10-06 from 001\_\_elm20160209\_164040\_\_dat00.bin



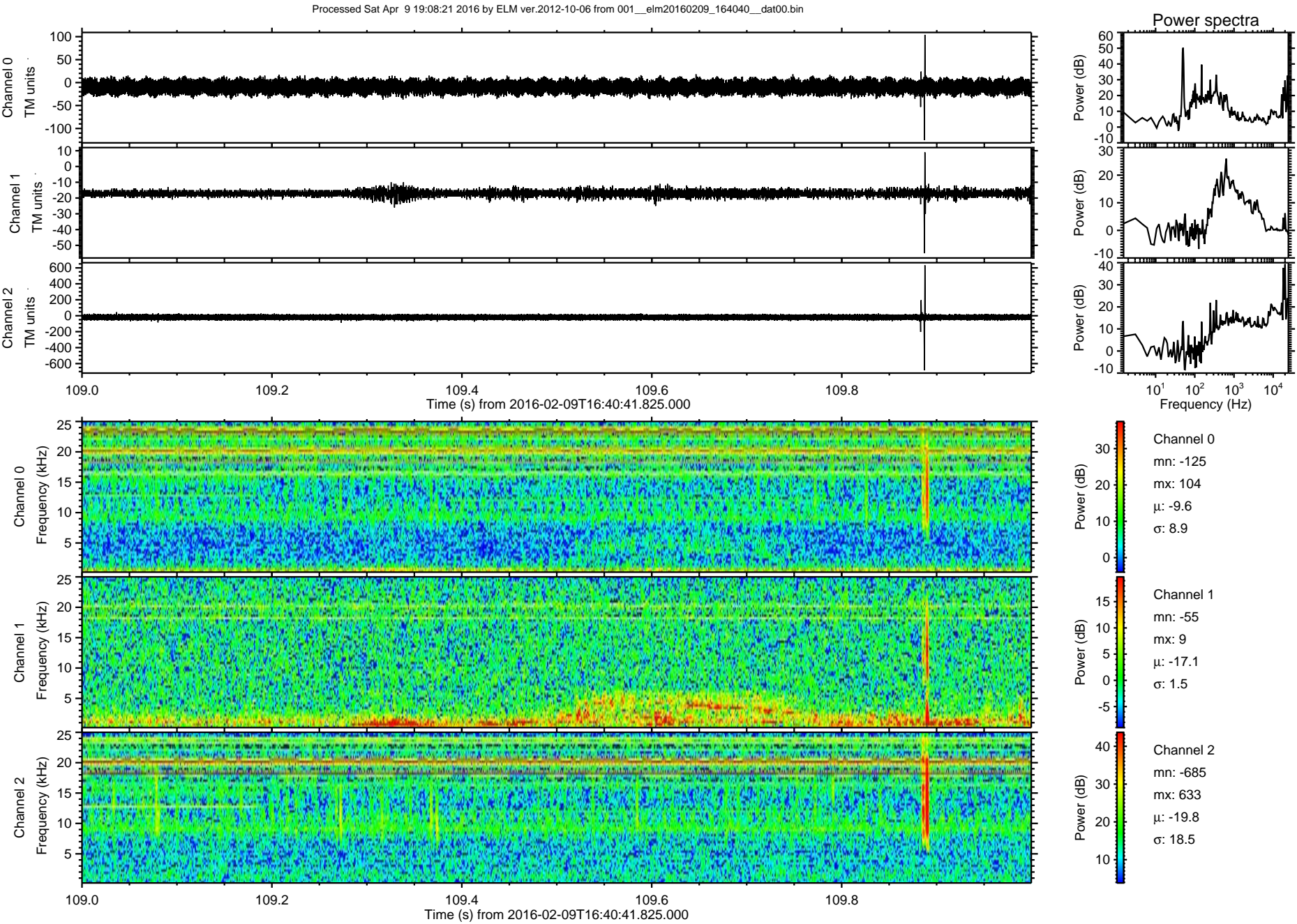


ELMAVAN 3D WAVEFORMS (Measured data sampled at 50 kHz) 51000 packets of 144 samples from 2016-02-09T16:40:41.825.000. Part 102/147

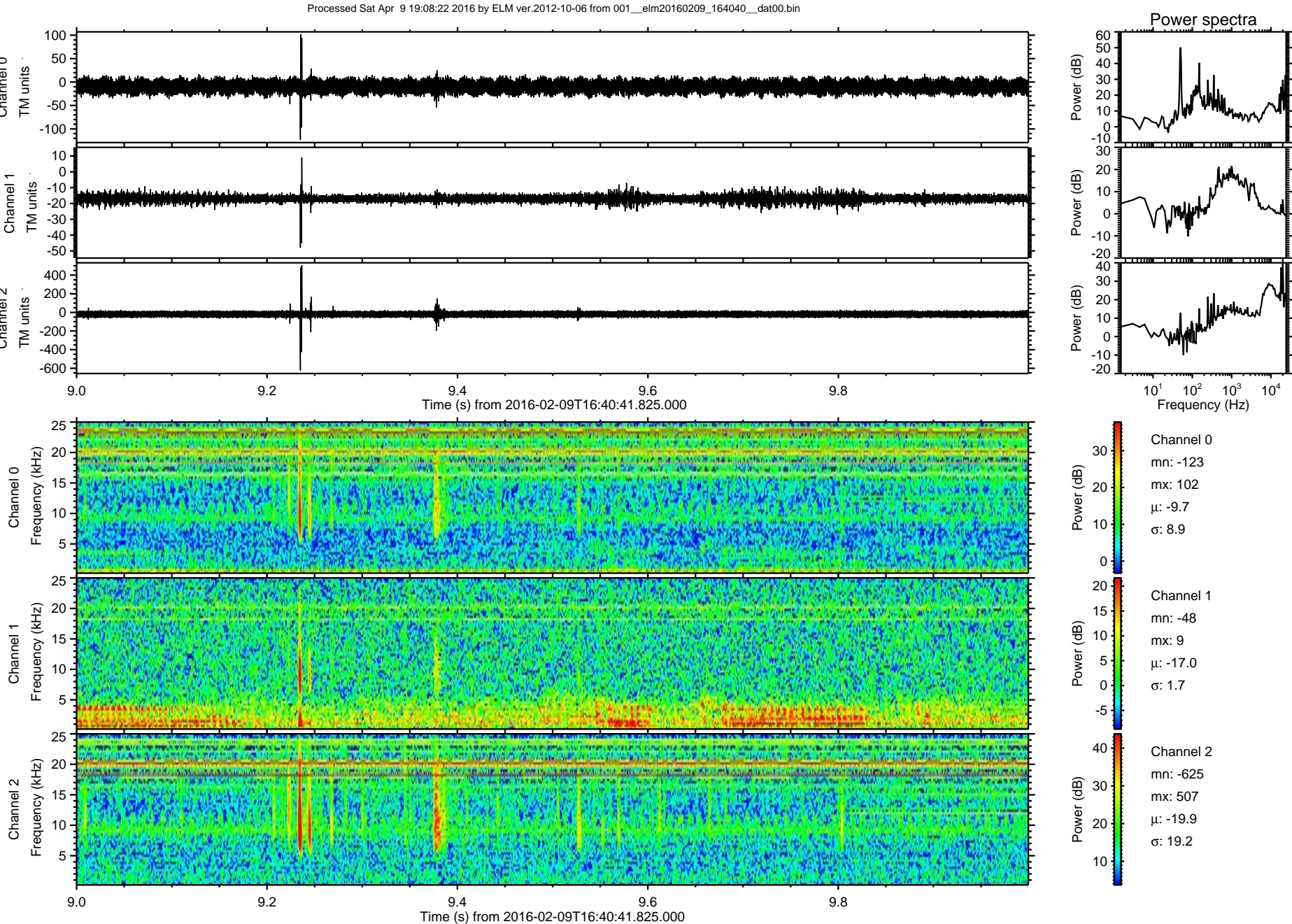




ELMAVAN 3D WAVEFORMS (Measured data sampled at 50 kHz) 51000 packets of 144 samples from 2016-02-09T16:40:41.825.000. Part 110/147

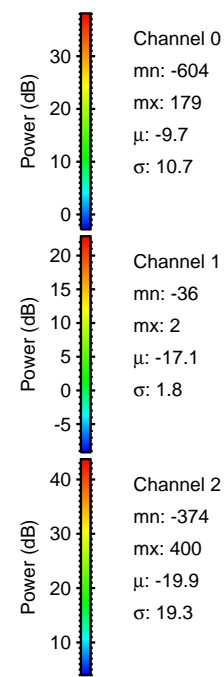
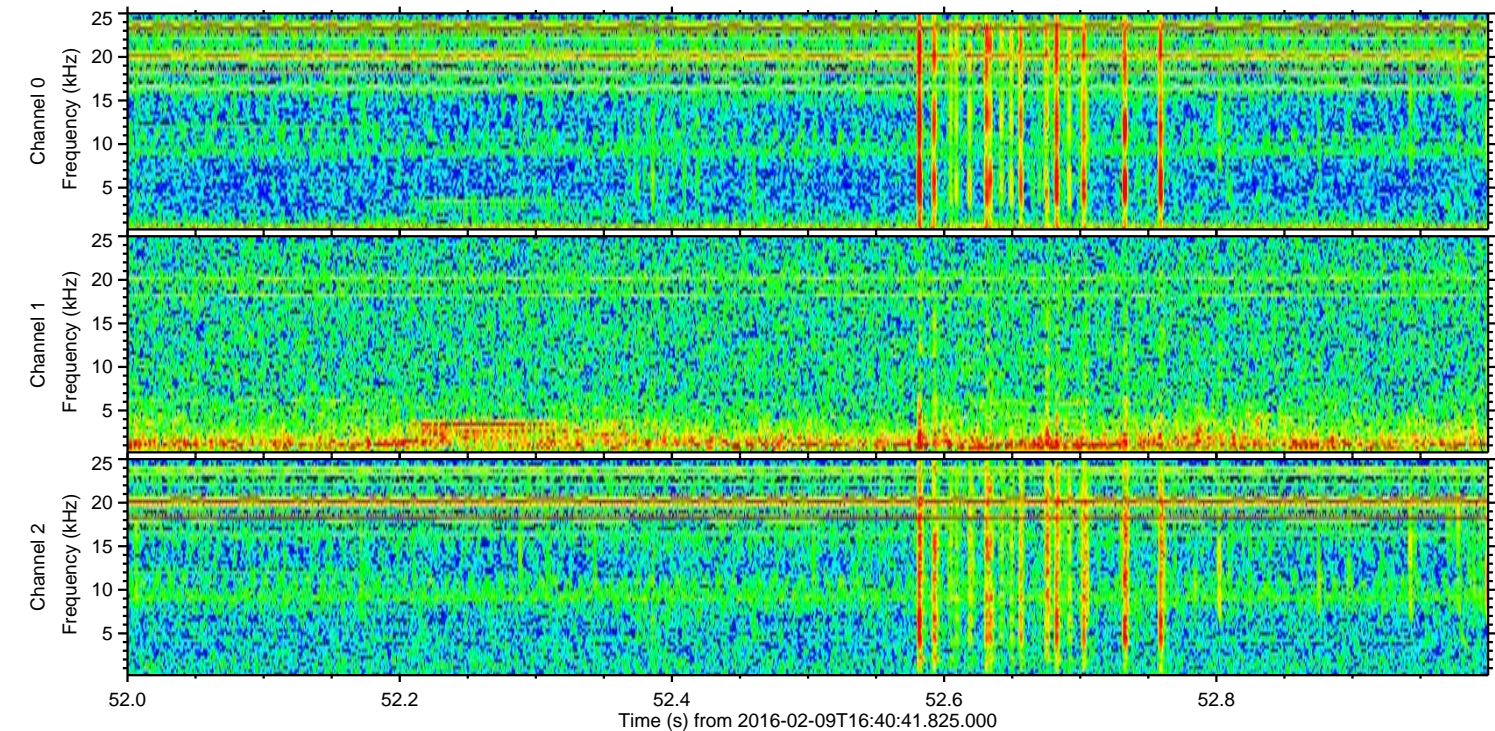
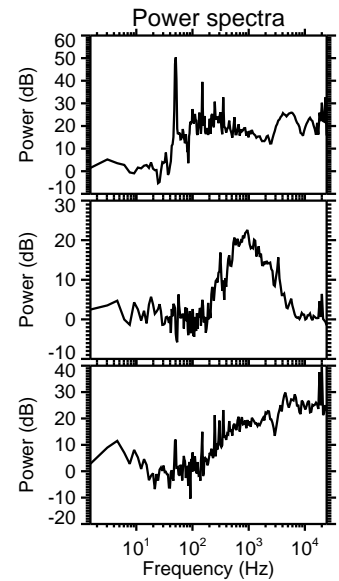
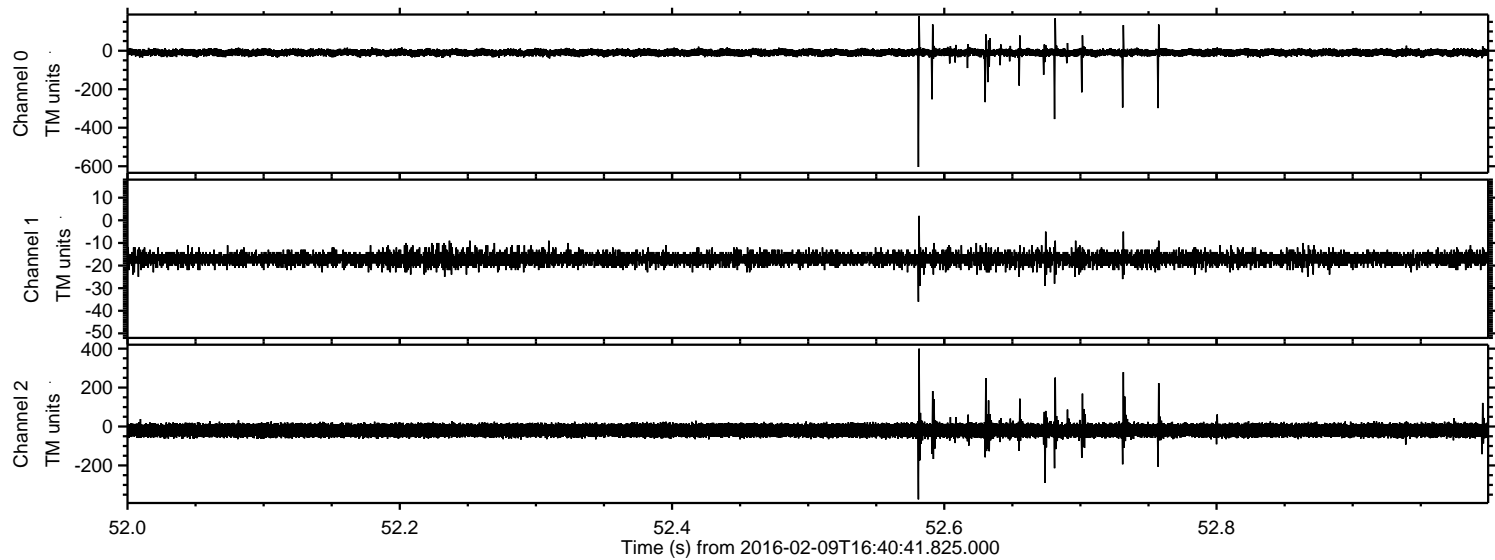








Processed Sat Apr 9 19:08:22 2016 by ELM ver.2012-10-06 from 001\_\_elm20160209\_164040\_\_dat00.bin





Processed Sat Apr 9 19:08:23 2016 by ELM ver.2012-10-06 from 001\_\_elm20160209\_164040\_\_dat00.bin

