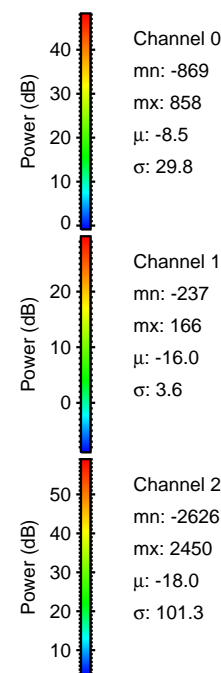
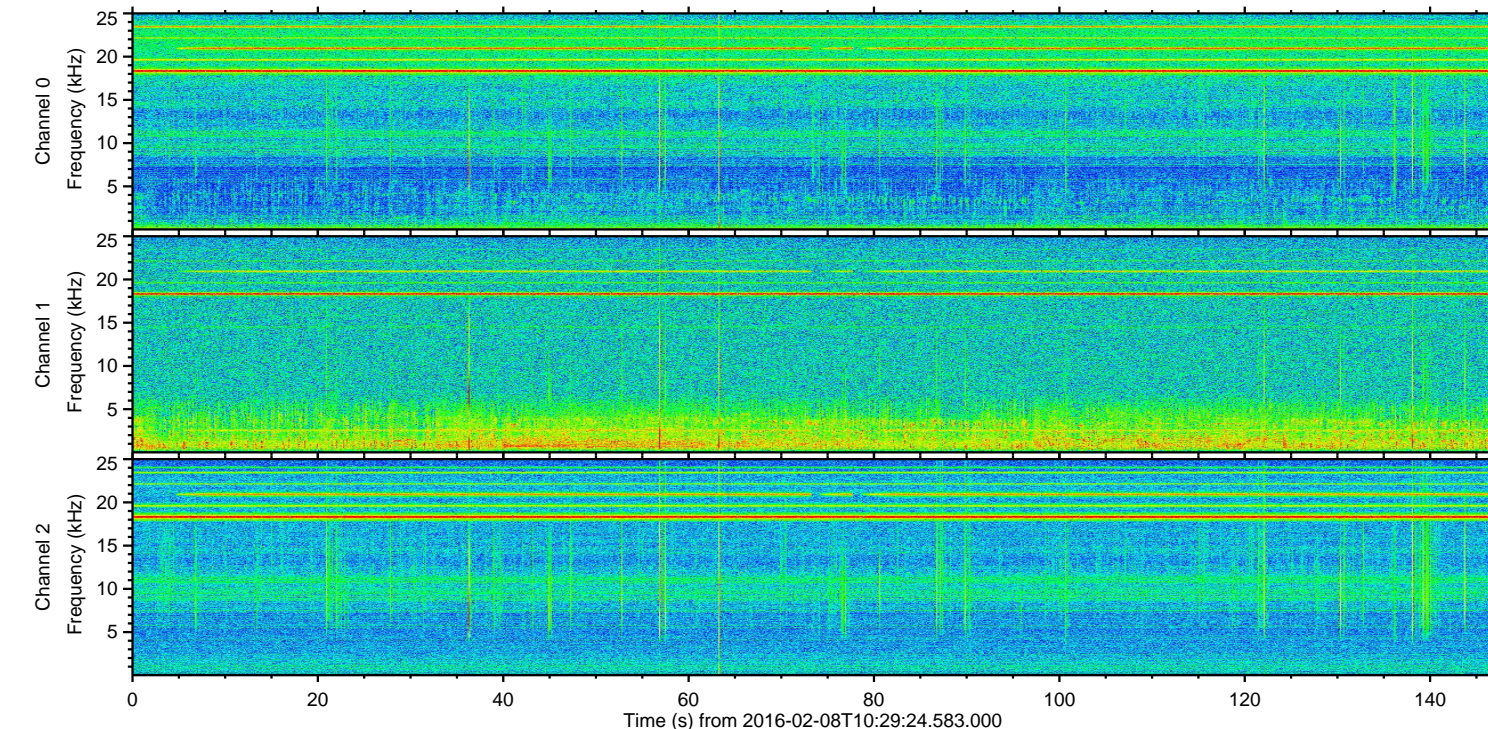
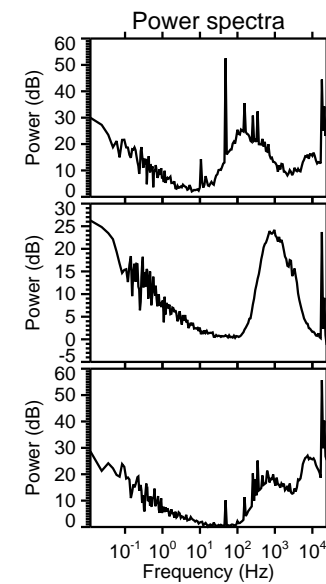
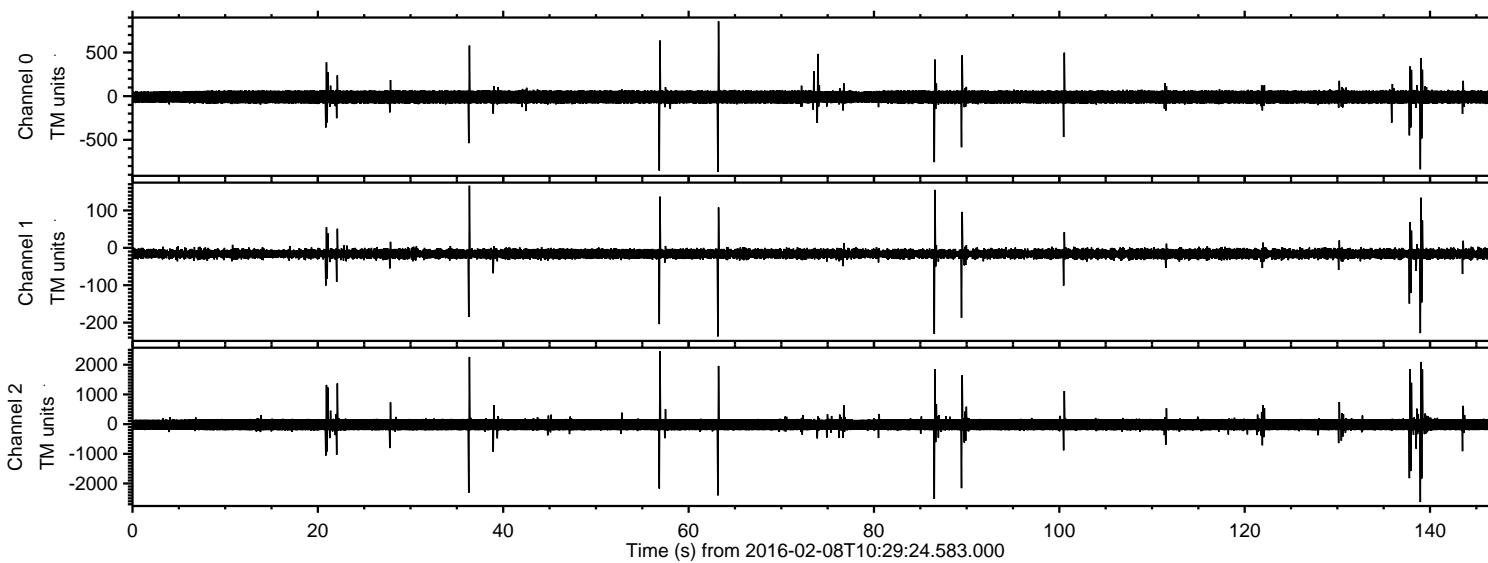


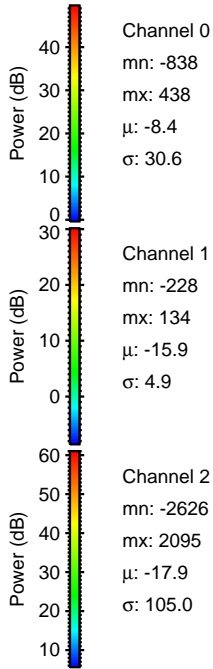
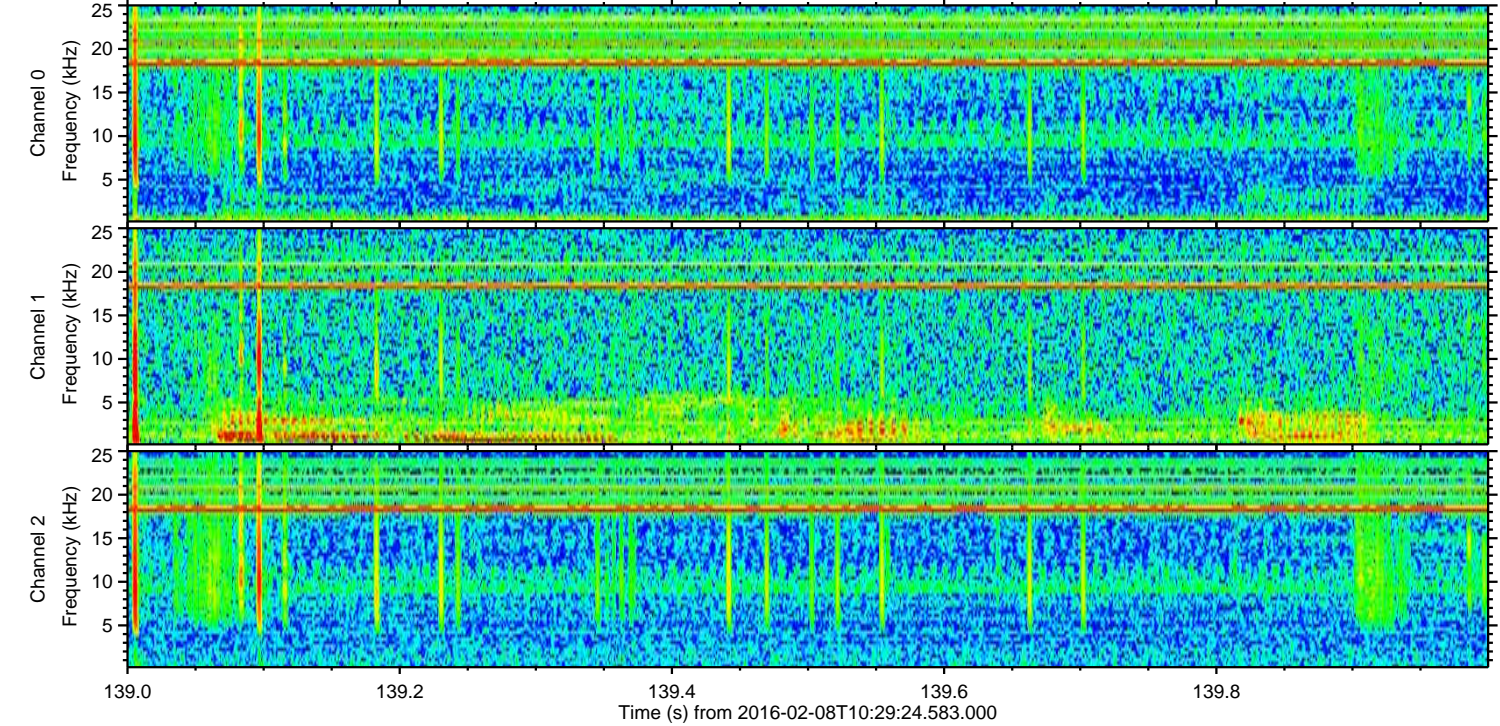
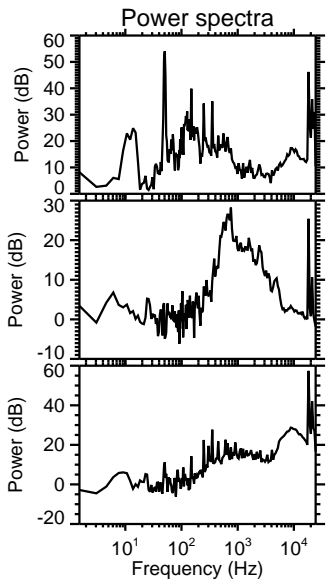
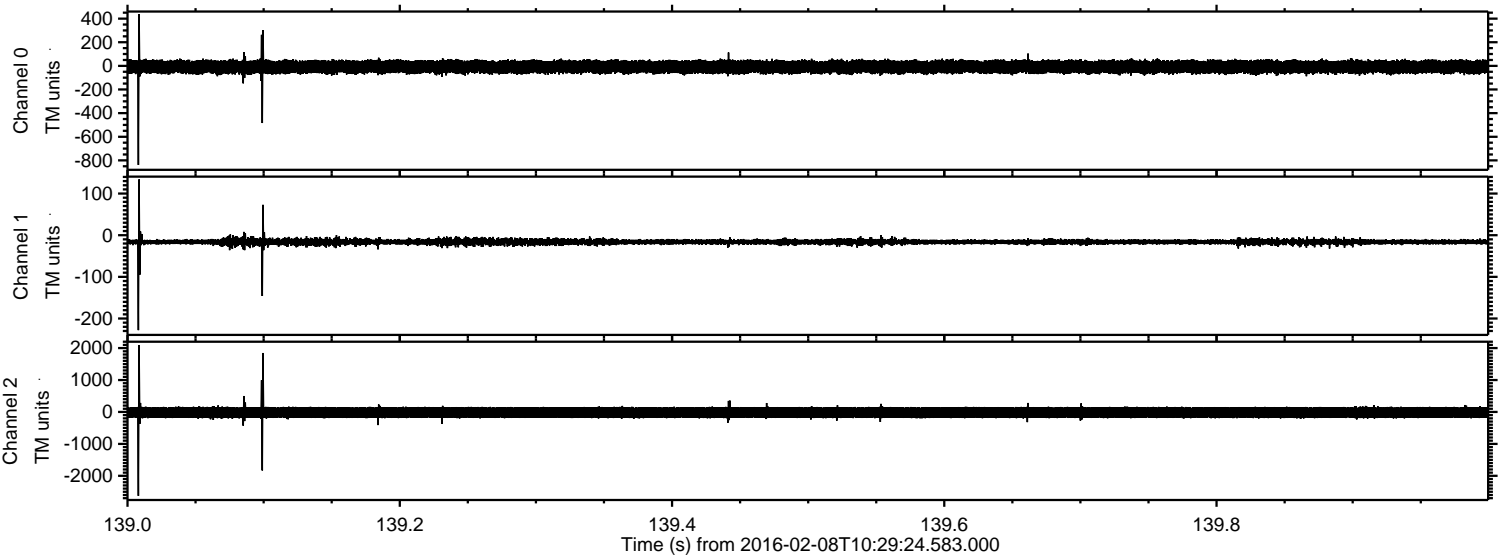
ELMAVAN 3D WAVEFORMS (Measured data sampled at 50 kHz) 51000 packets of 144 samples from 2016-02-08T10:29:24.583.000.

Processed Sat Apr 9 13:00:34 2016 by ELM ver.2012-10-06 from 001__elm20160208_102923__dat00.bin

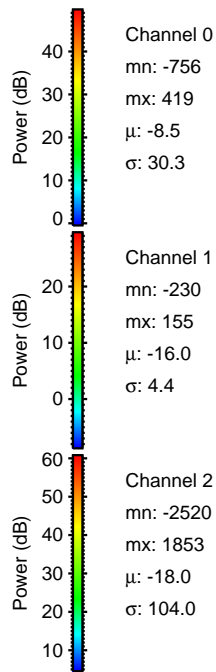
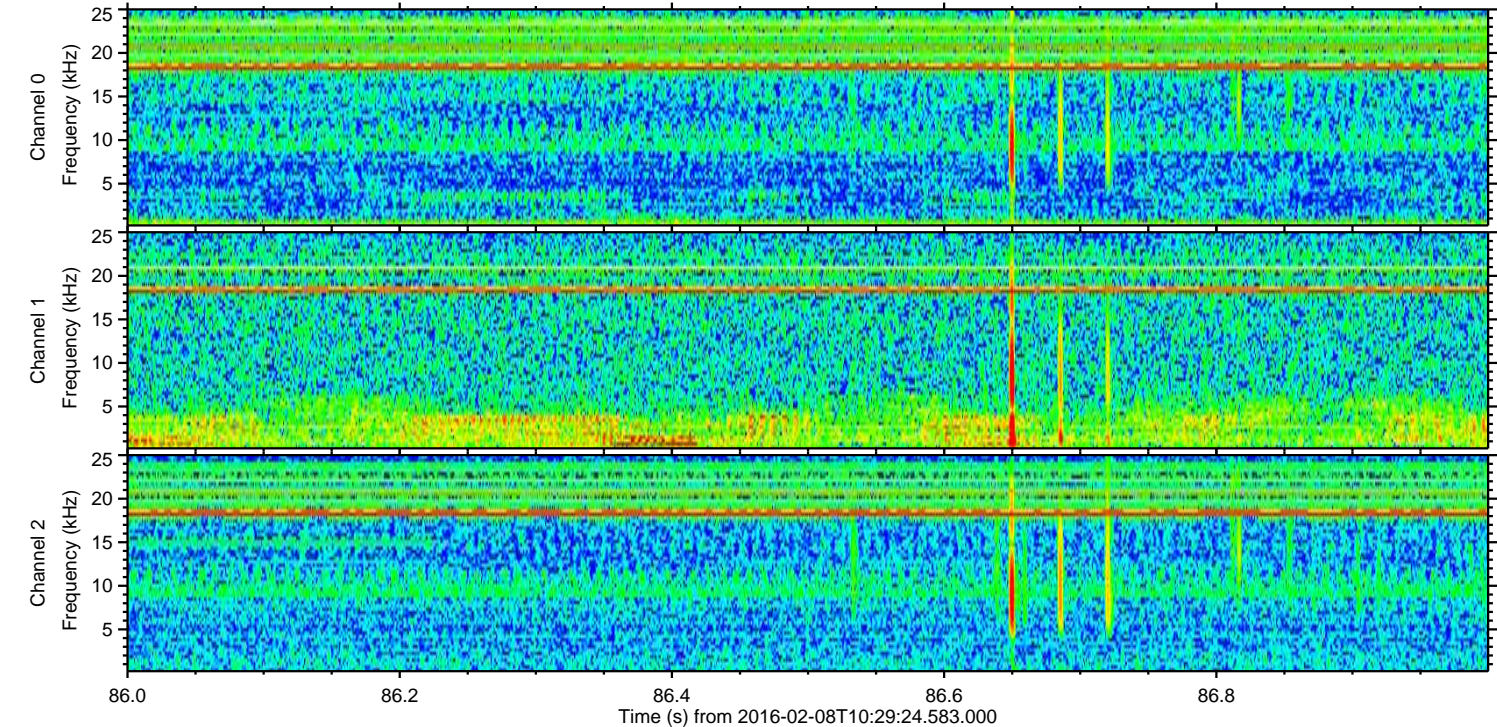
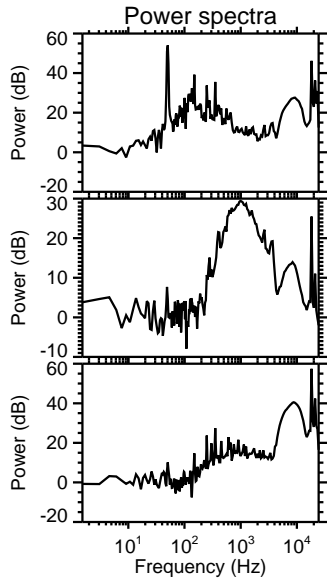
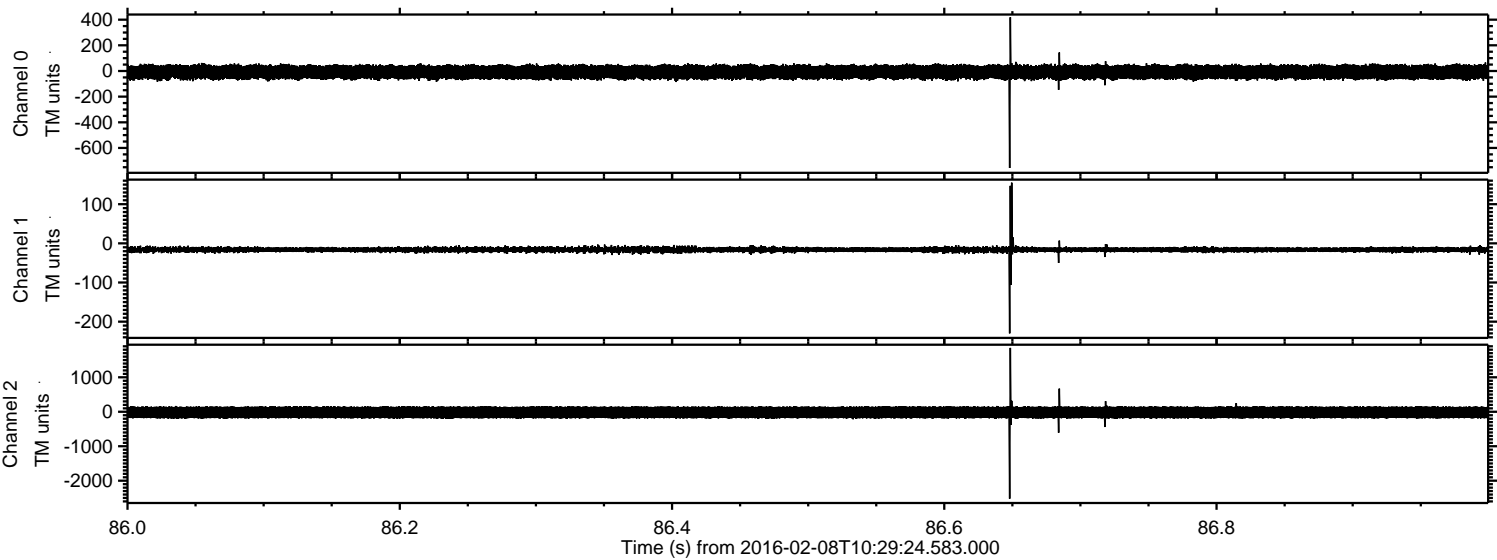


ELMAVAN 3D WAVEFORMS (Measured data sampled at 50 kHz) 51000 packets of 144 samples from 2016-02-08T10:29:24.583.000. Part 140/147

Processed Sat Apr 9 13:00:46 2016 by ELM ver.2012-10-06 from 001__elm20160208_102923__dat00.bin

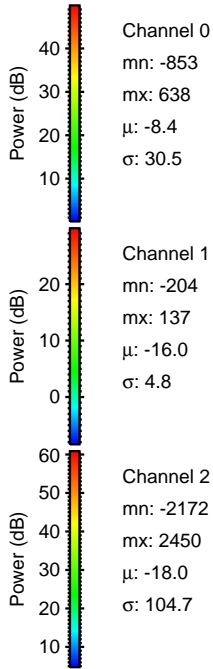
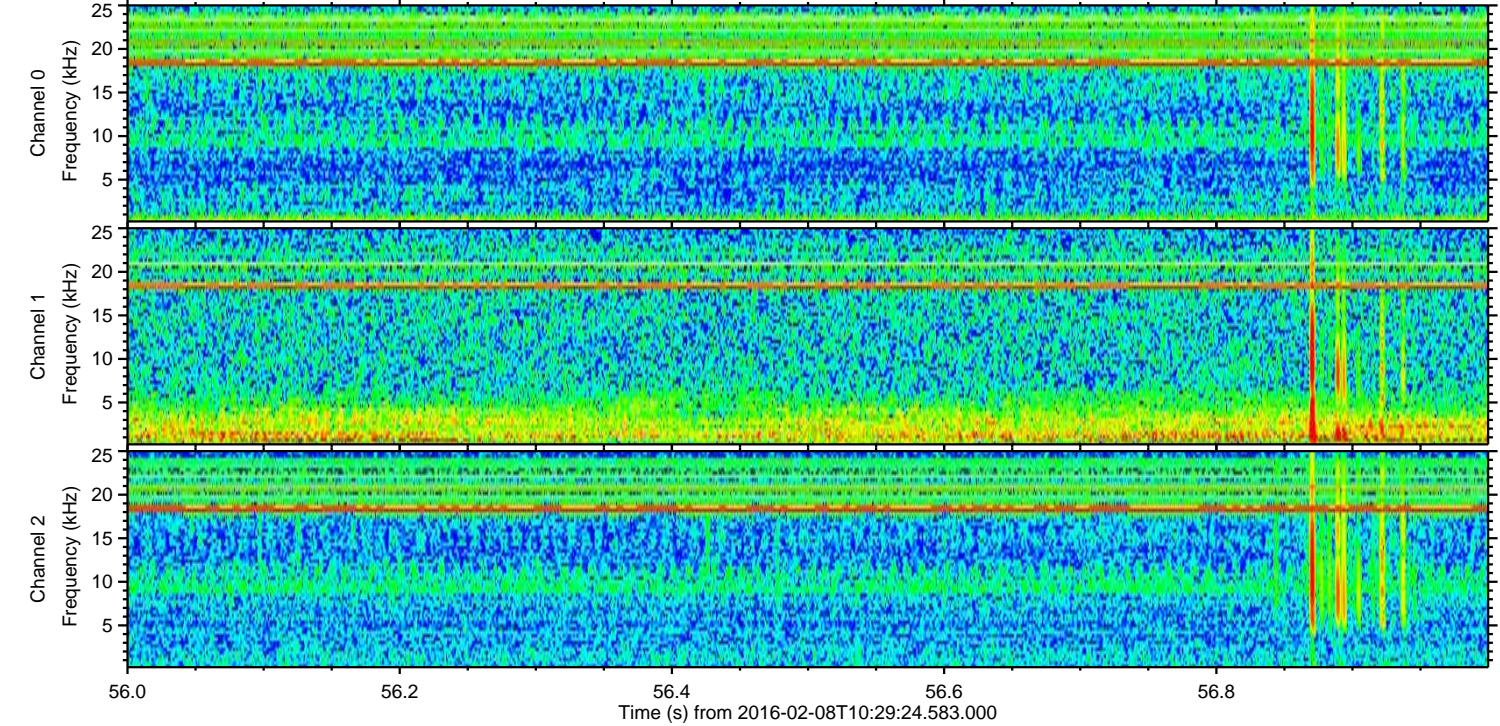
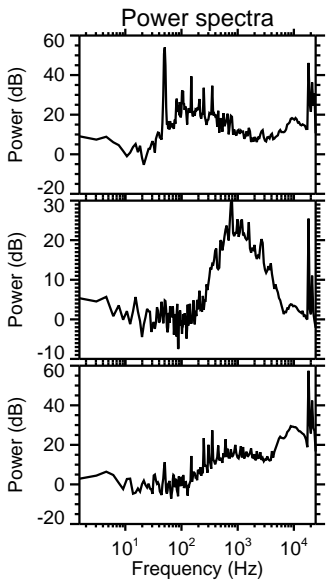
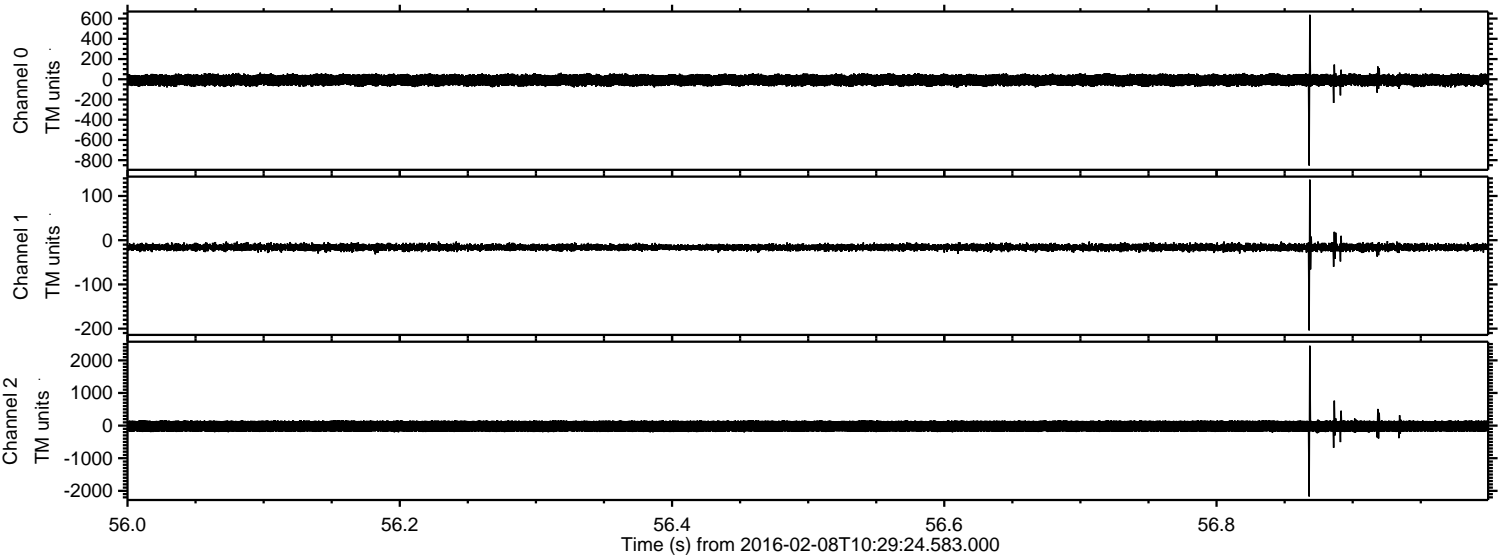


Processed Sat Apr 9 13:00:47 2016 by ELM ver.2012-10-06 from 001__elm20160208_102923__dat00.bin

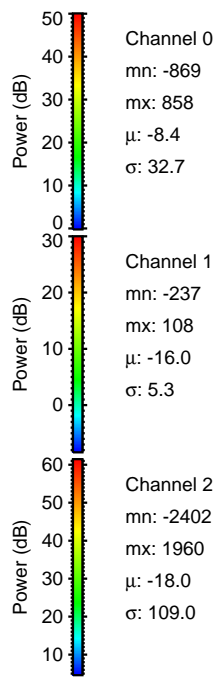
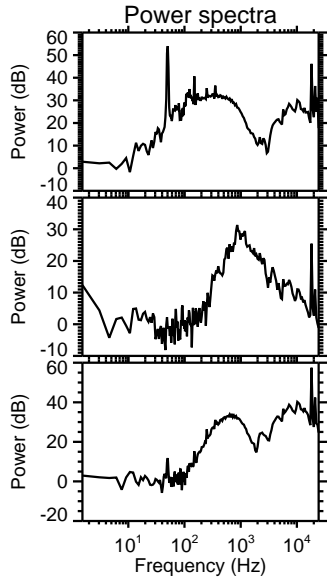
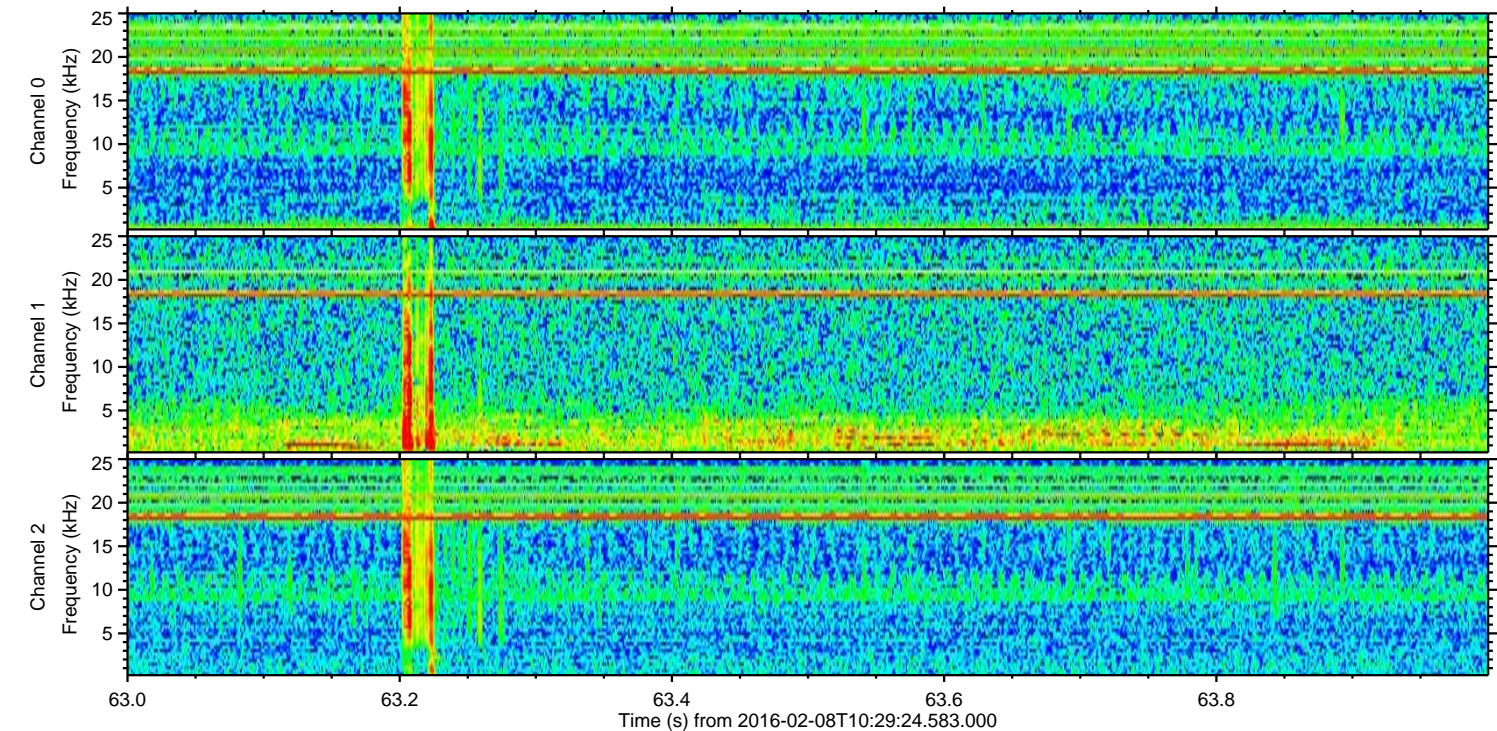
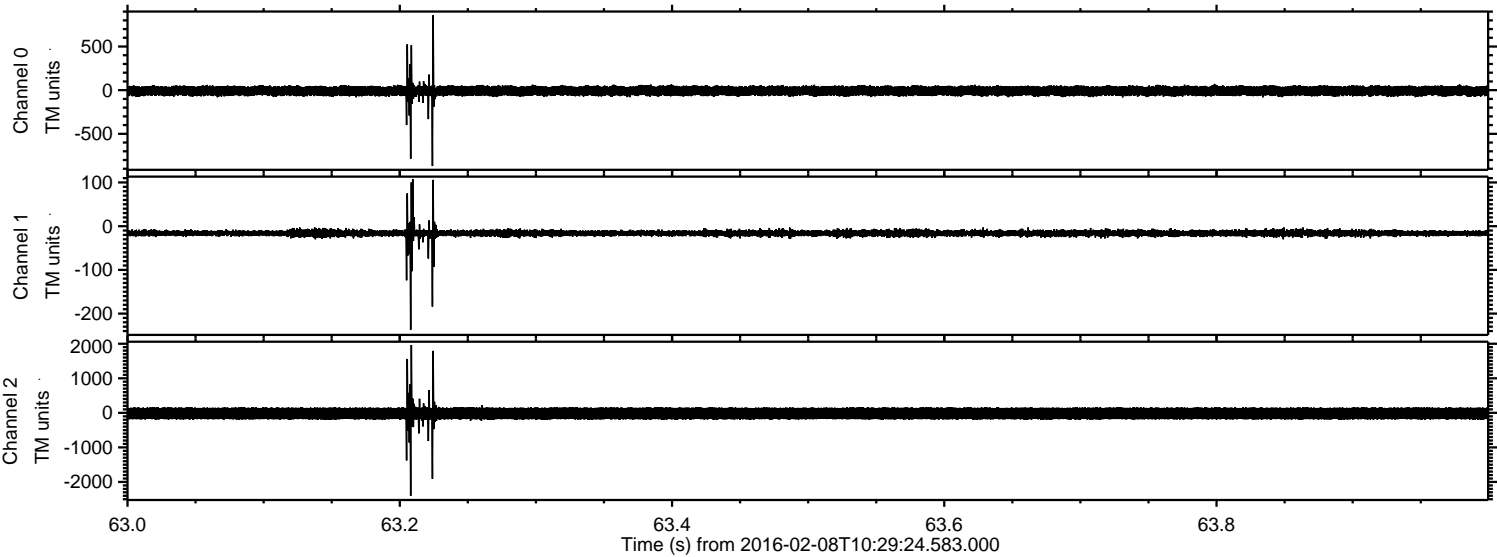


ELMAVAN 3D WAVEFORMS (Measured data sampled at 50 kHz) 51000 packets of 144 samples from 2016-02-08T10:29:24.583.000. Part 57/147

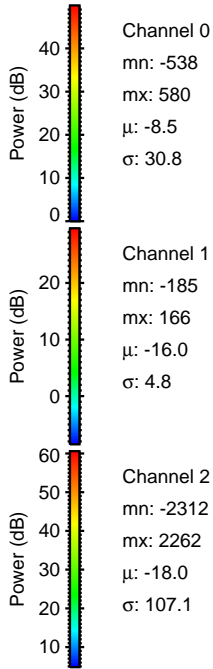
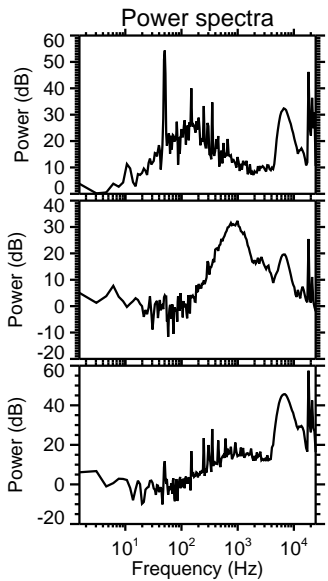
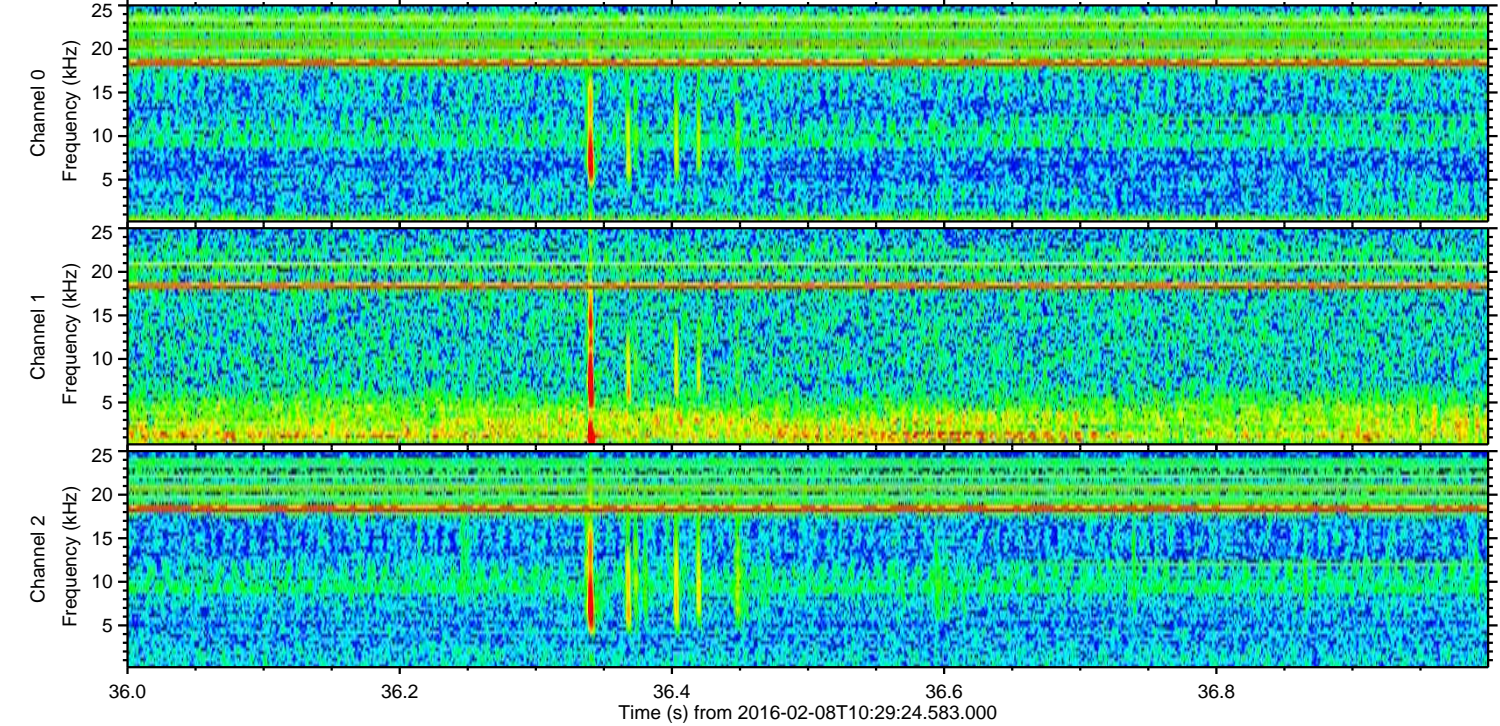
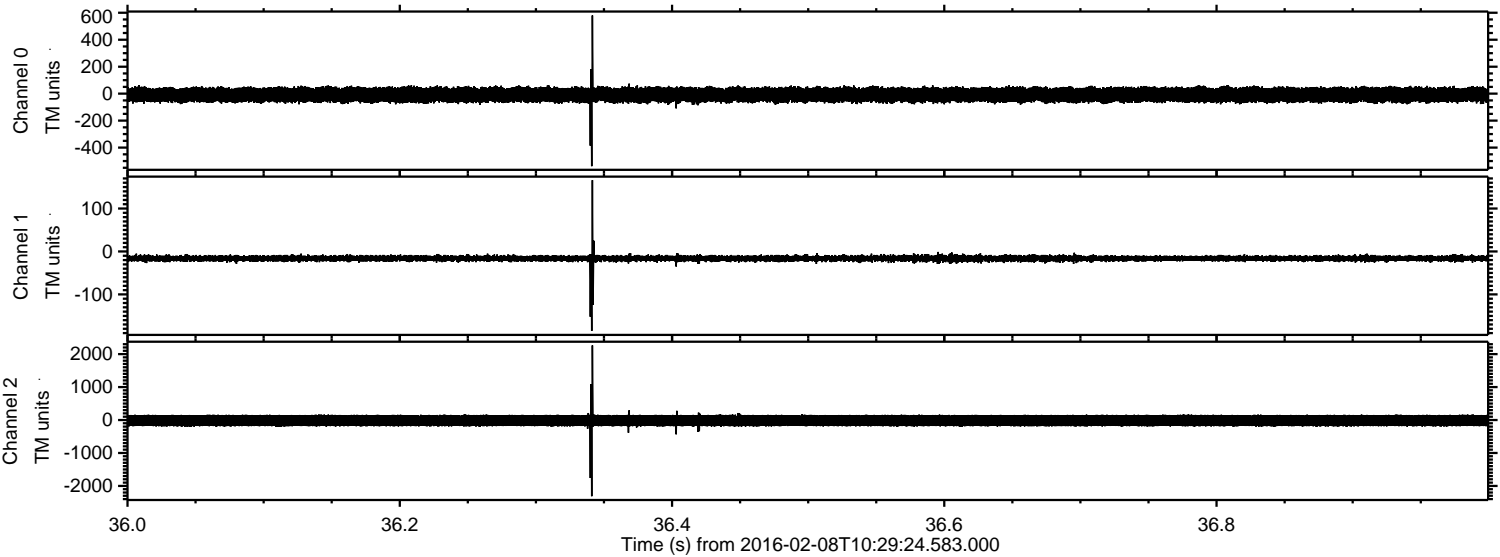
Processed Sat Apr 9 13:00:48 2016 by ELM ver.2012-10-06 from 001__elm20160208_102923__dat00.bin



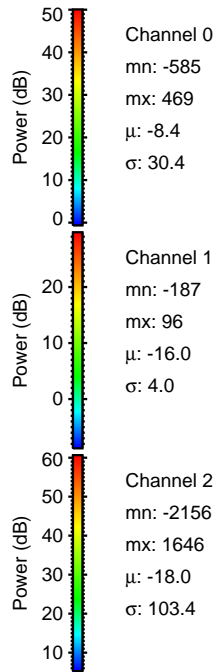
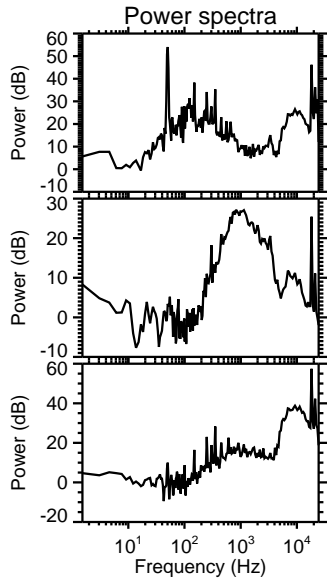
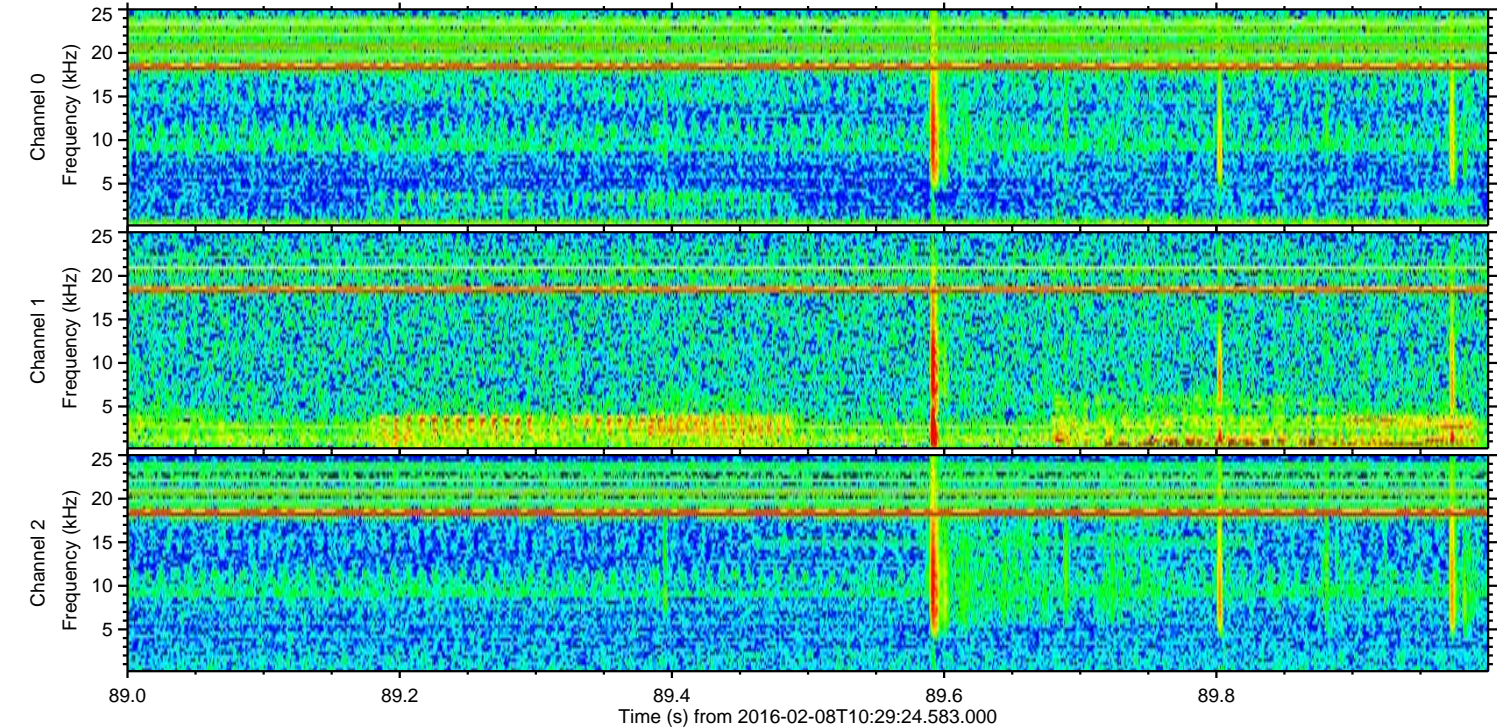
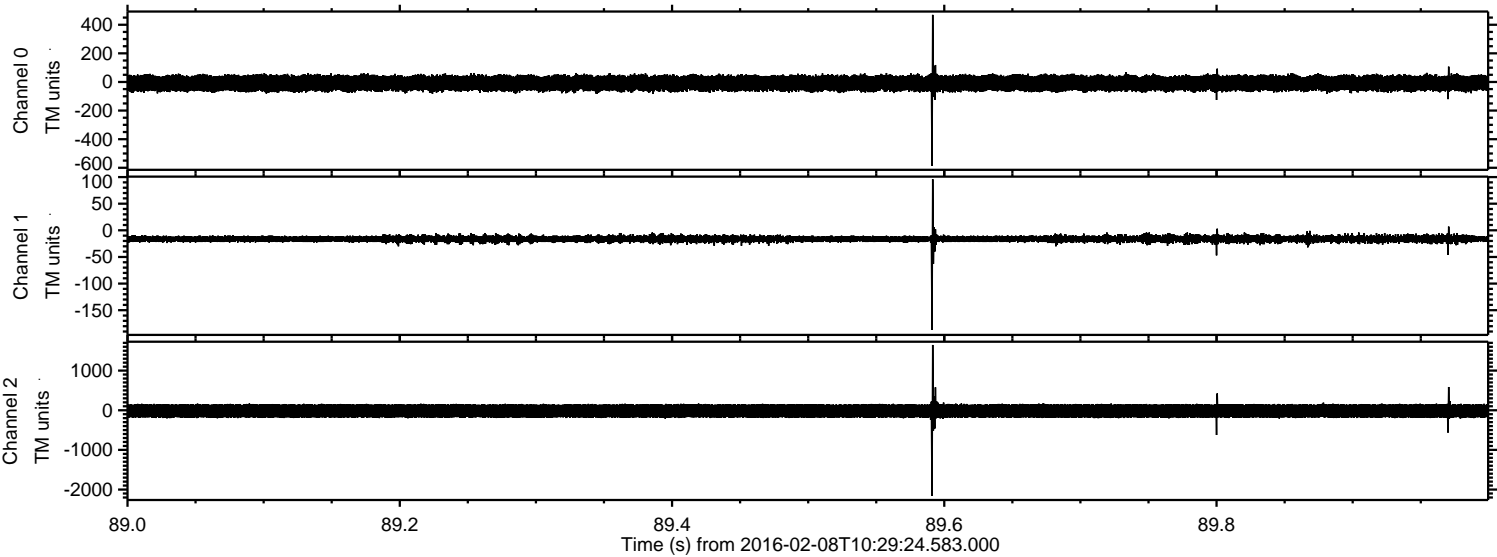
Processed Sat Apr 9 13:00:49 2016 by ELM ver.2012-10-06 from 001__elm20160208_102923__dat00.bin



Processed Sat Apr 9 13:00:49 2016 by ELM ver.2012-10-06 from 001__elm20160208_102923__dat00.bin

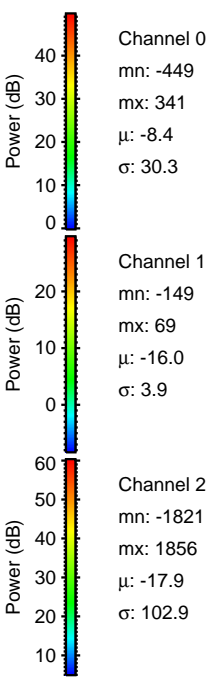
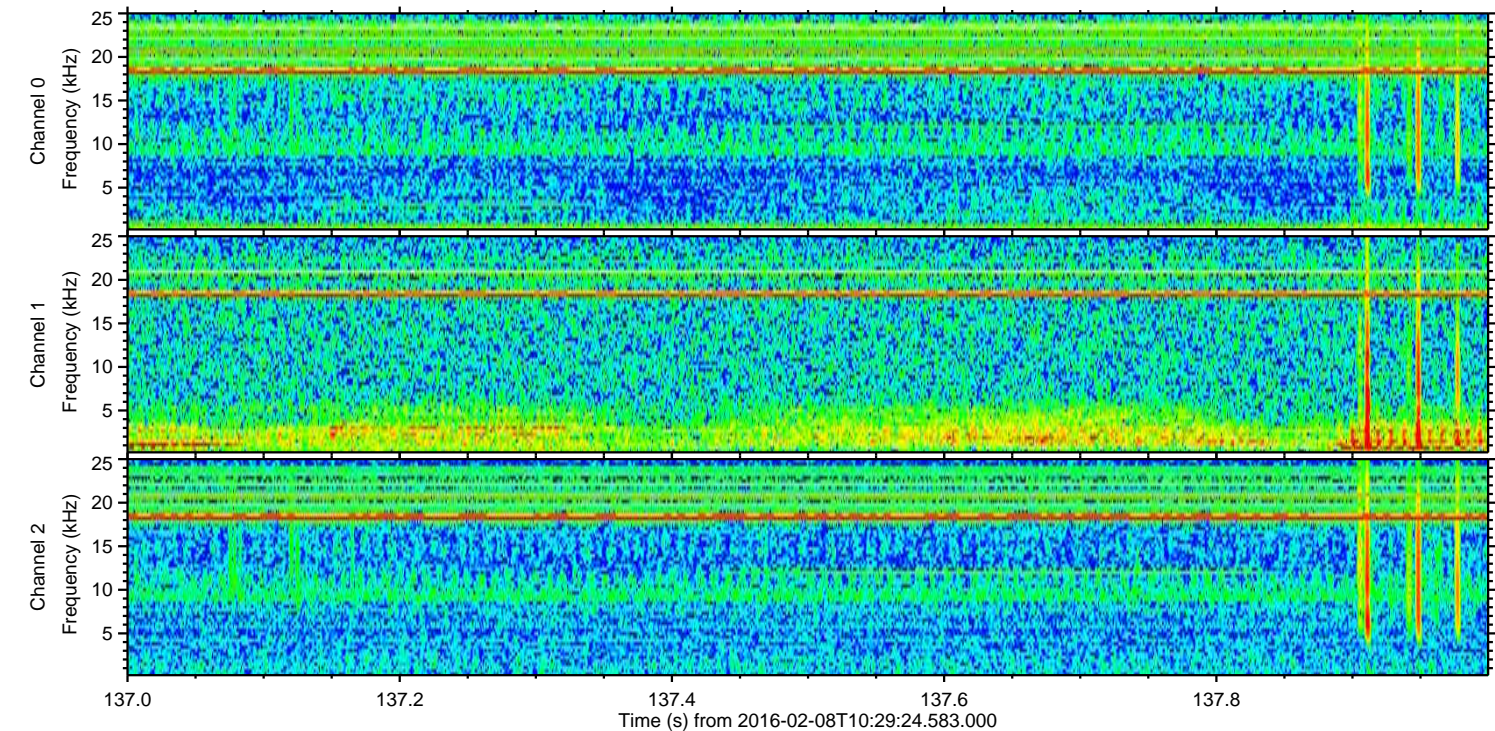
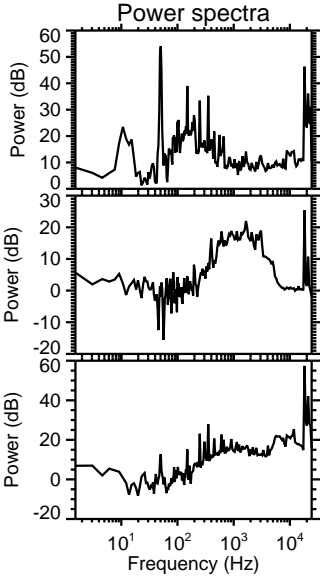
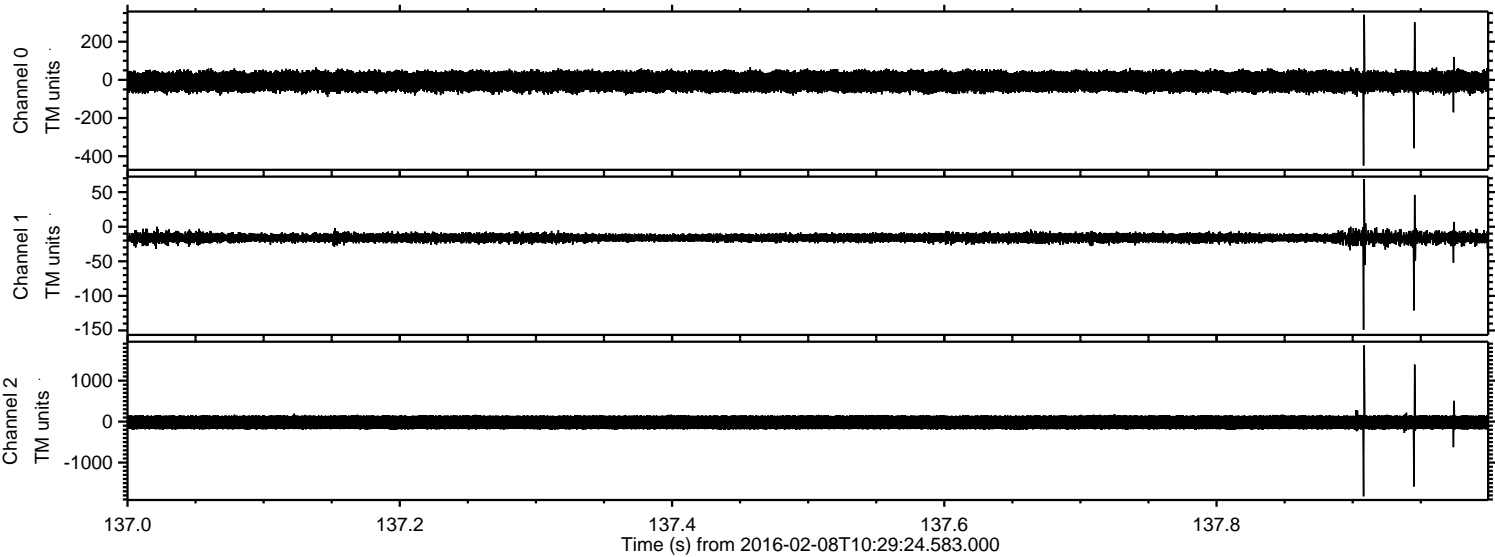


Processed Sat Apr 9 13:00:50 2016 by ELM ver.2012-10-06 from 001__elm20160208_102923__dat00.bin

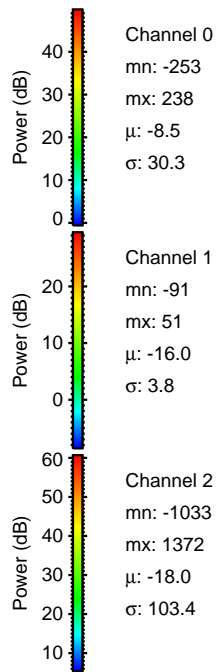
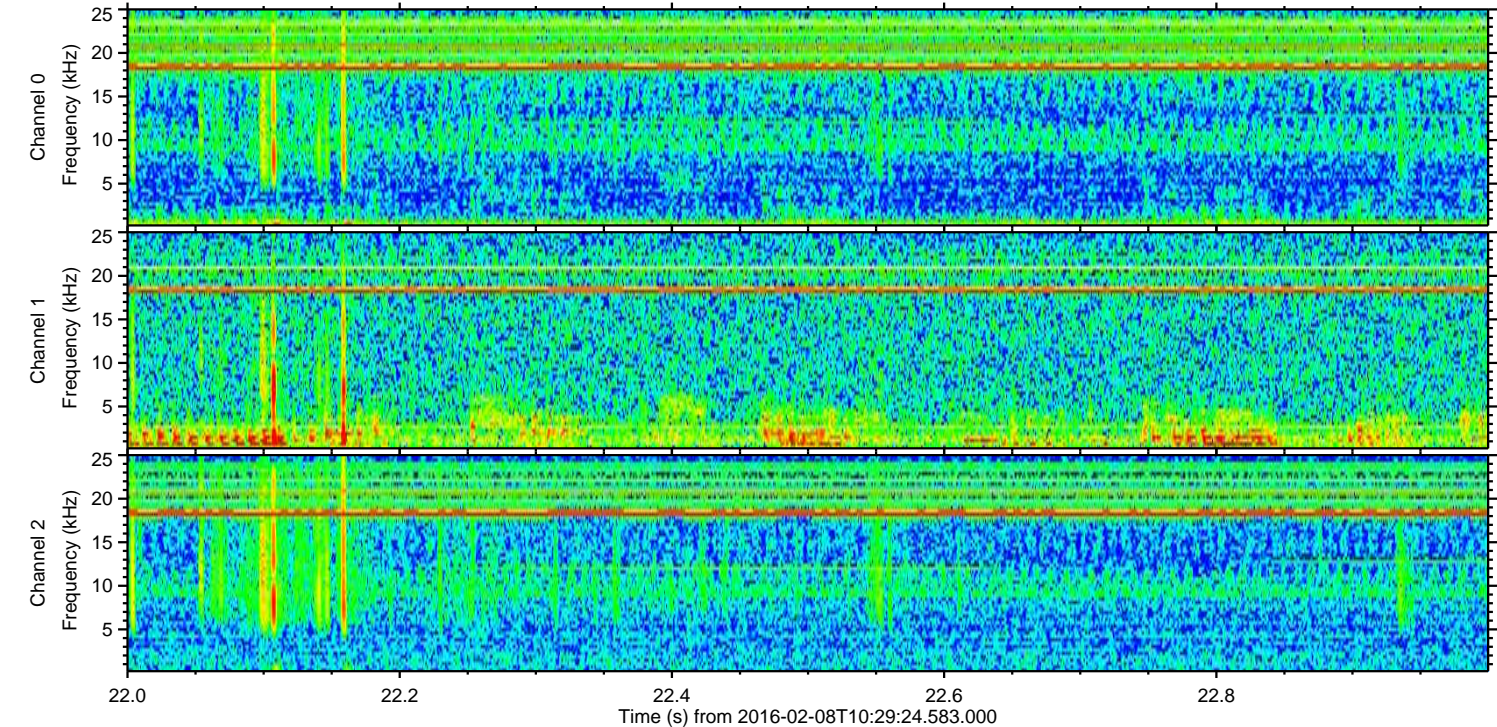
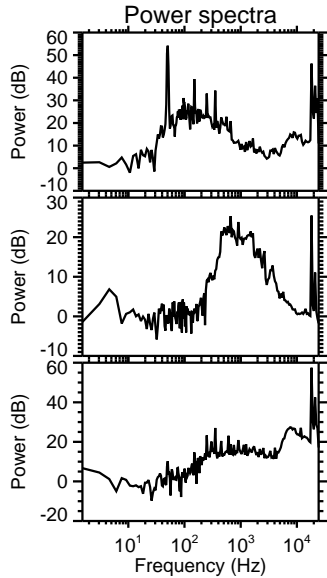
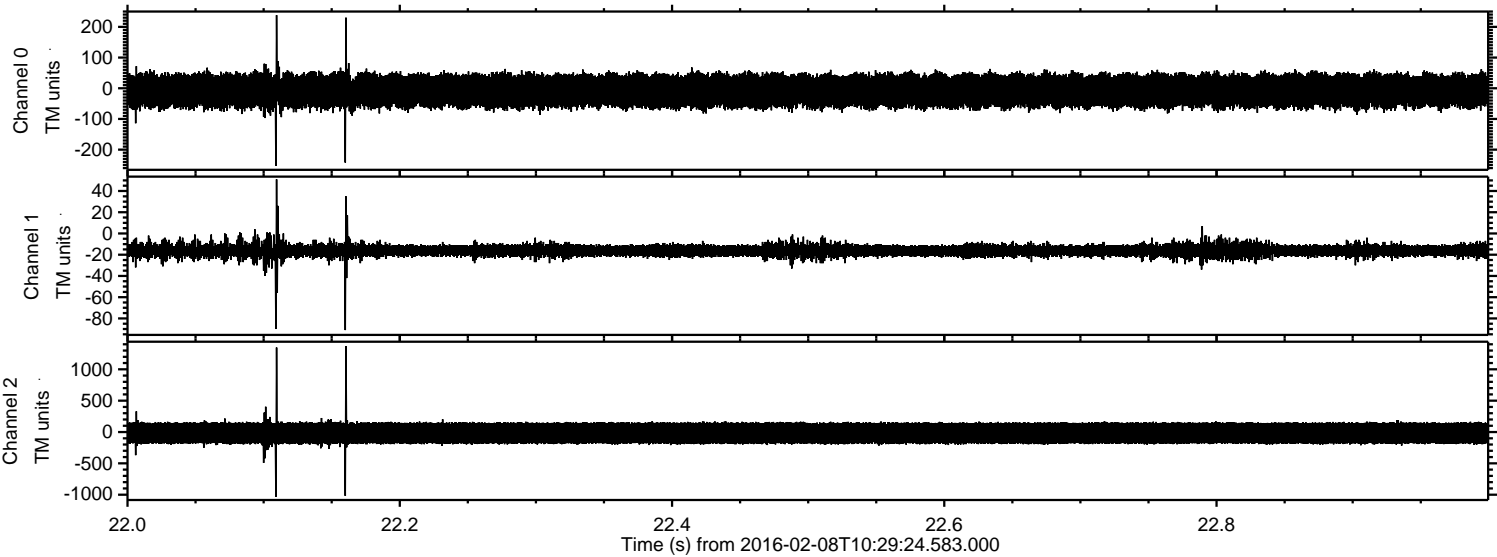


ELMAVAN 3D WAVEFORMS (Measured data sampled at 50 kHz) 51000 packets of 144 samples from 2016-02-08T10:29:24.583.000. Part 138/147

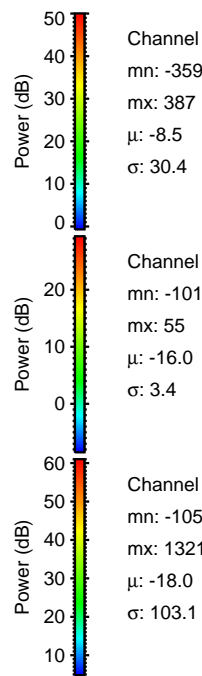
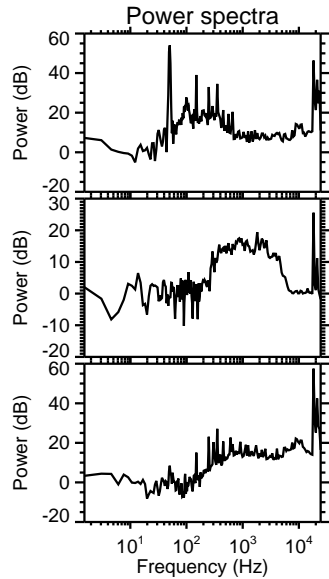
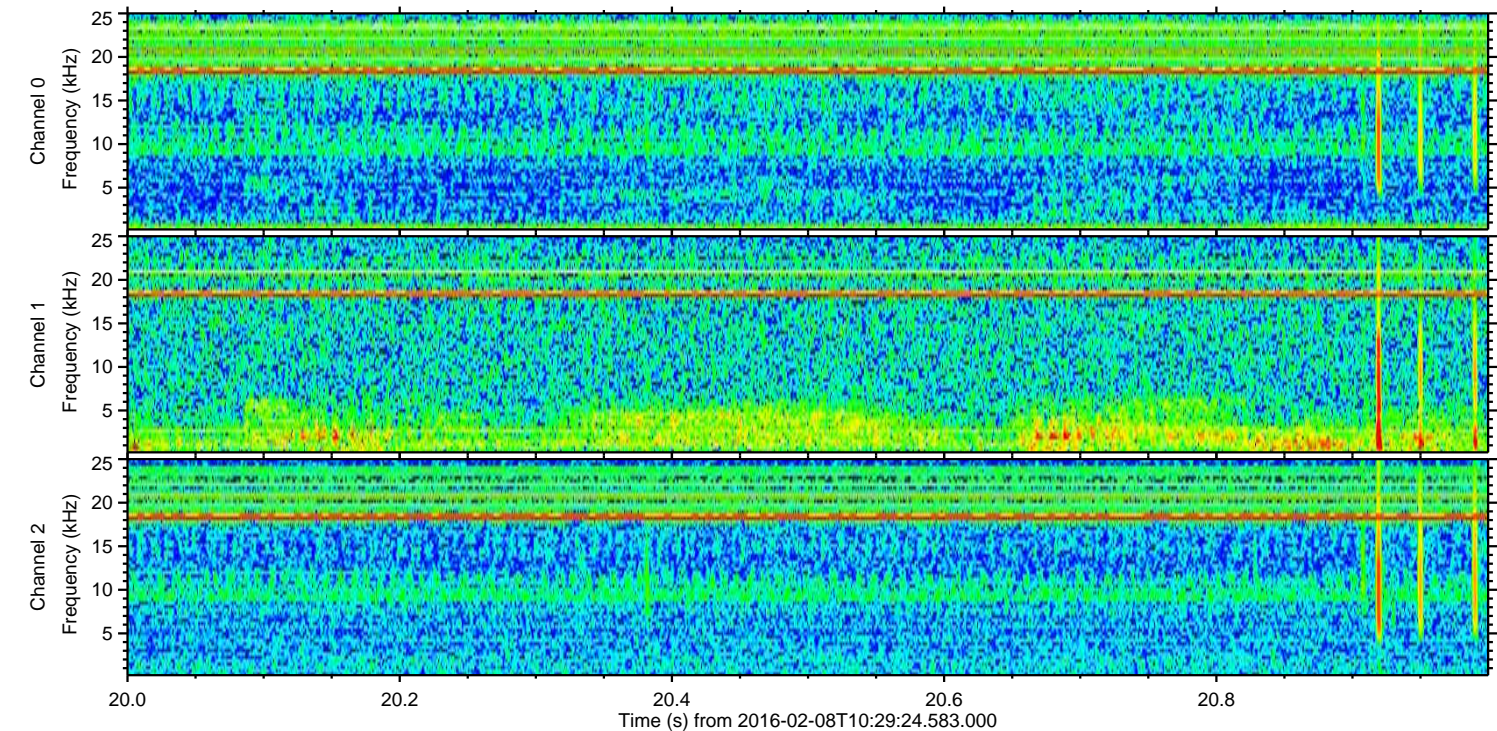
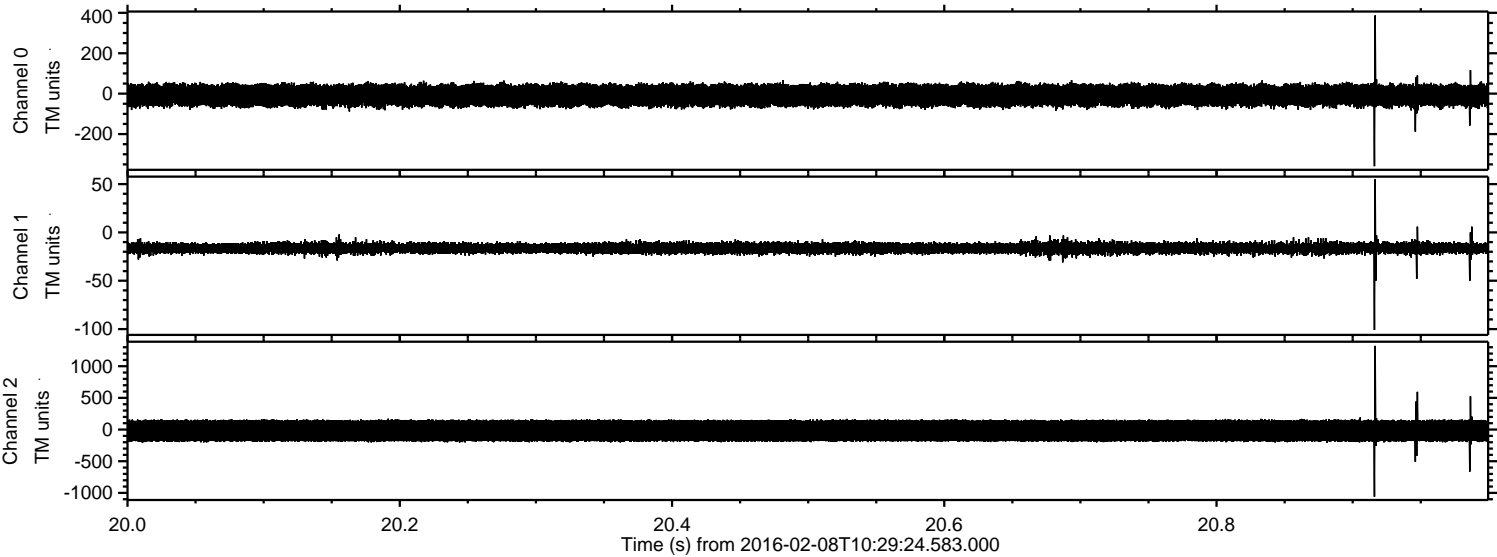
Processed Sat Apr 9 13:00:51 2016 by ELM ver.2012-10-06 from 001__elm20160208_102923__dat00.bin



Processed Sat Apr 9 13:00:52 2016 by ELM ver.2012-10-06 from 001__elm20160208_102923__dat00.bin



Processed Sat Apr 9 13:00:53 2016 by ELM ver.2012-10-06 from 001__elm20160208_102923__dat00.bin



Channel 0
mn: -359
mx: 387
 μ : -8.5
 σ : 30.4

Channel 1
mn: -101
mx: 55
 μ : -16.0
 σ : 3.4

Channel 2
mn: -1059
mx: 1321
 μ : -18.0
 σ : 103.1

Processed Sat Apr 9 13:00:54 2016 by ELM ver.2012-10-06 from 001__elm20160208_102923__dat00.bin

