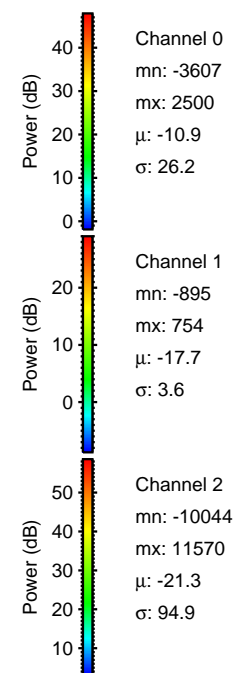
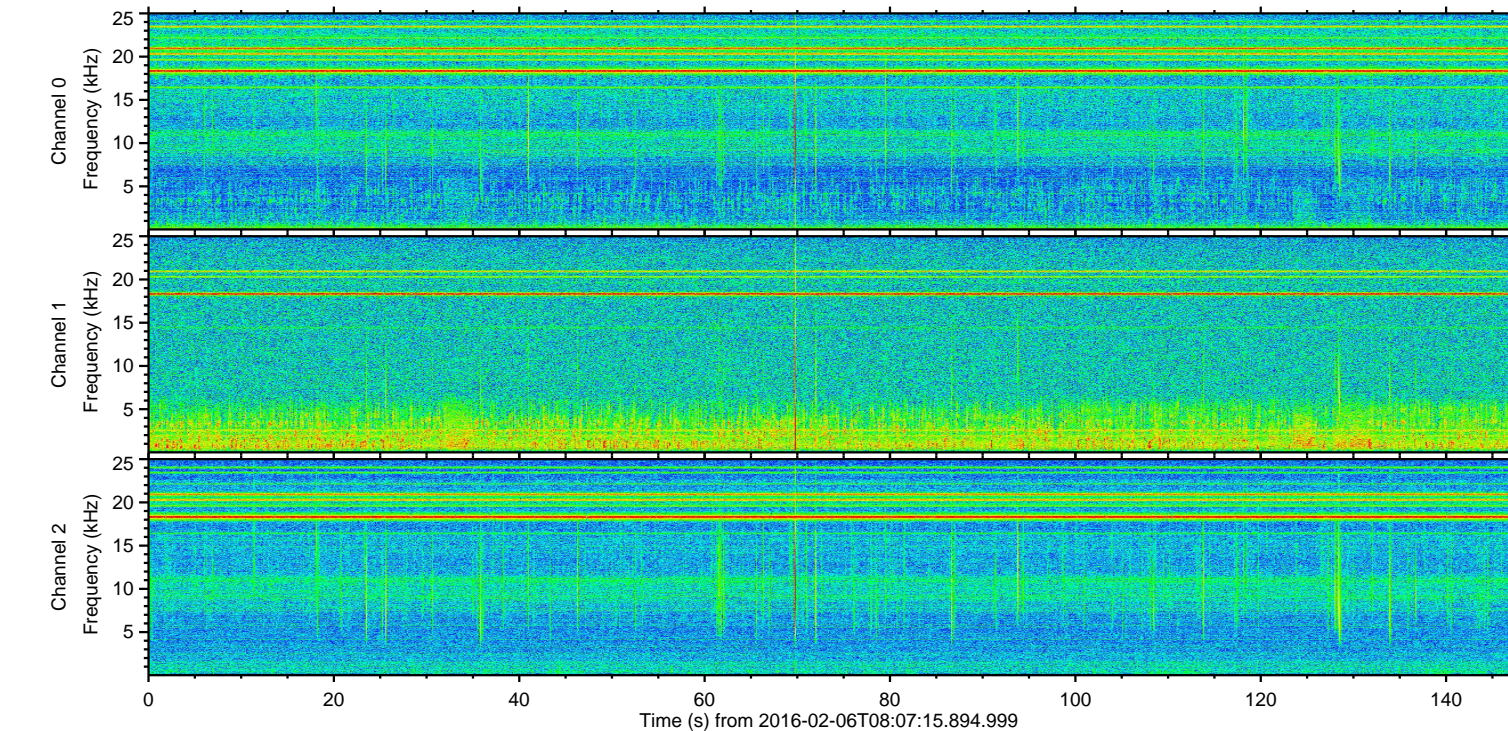
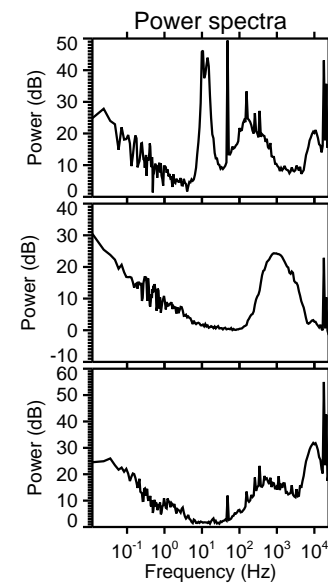
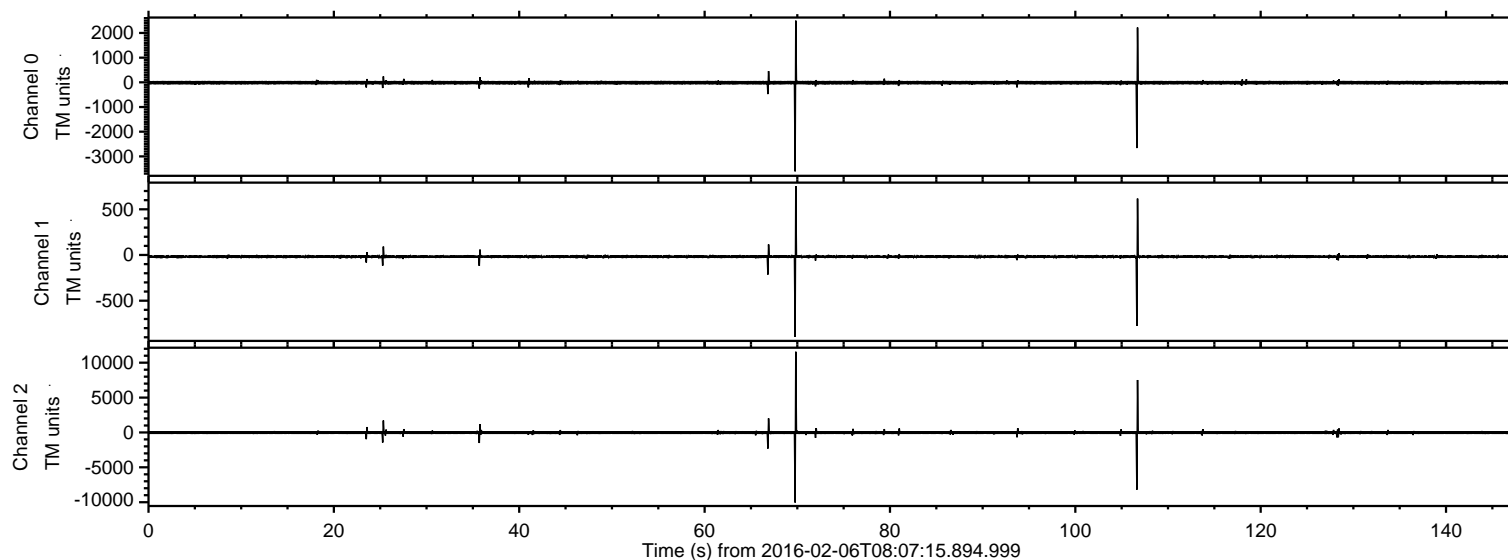
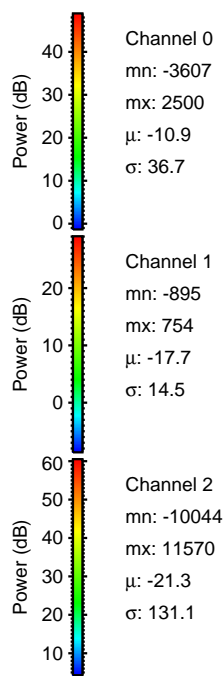
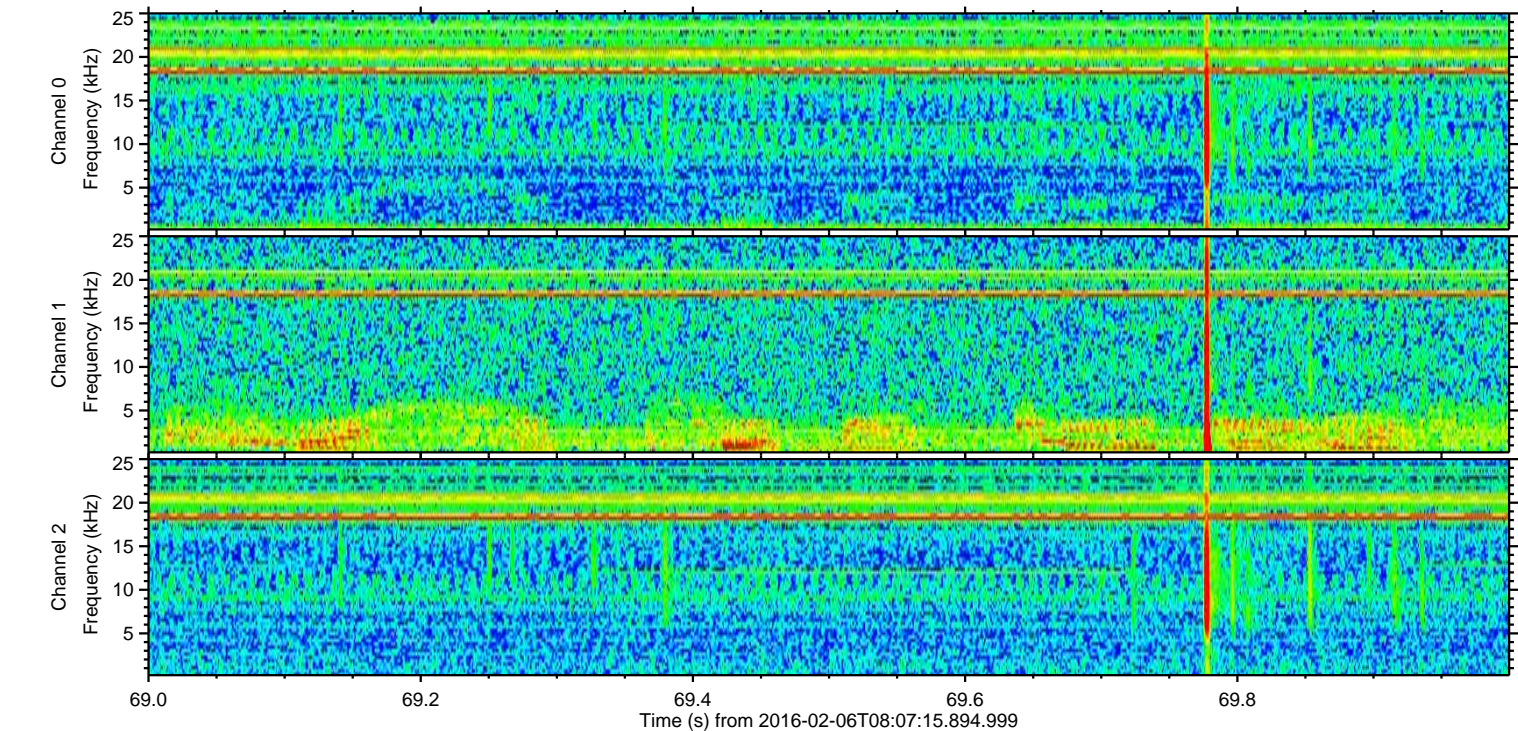
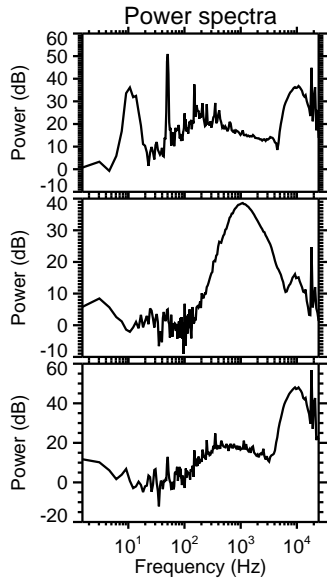
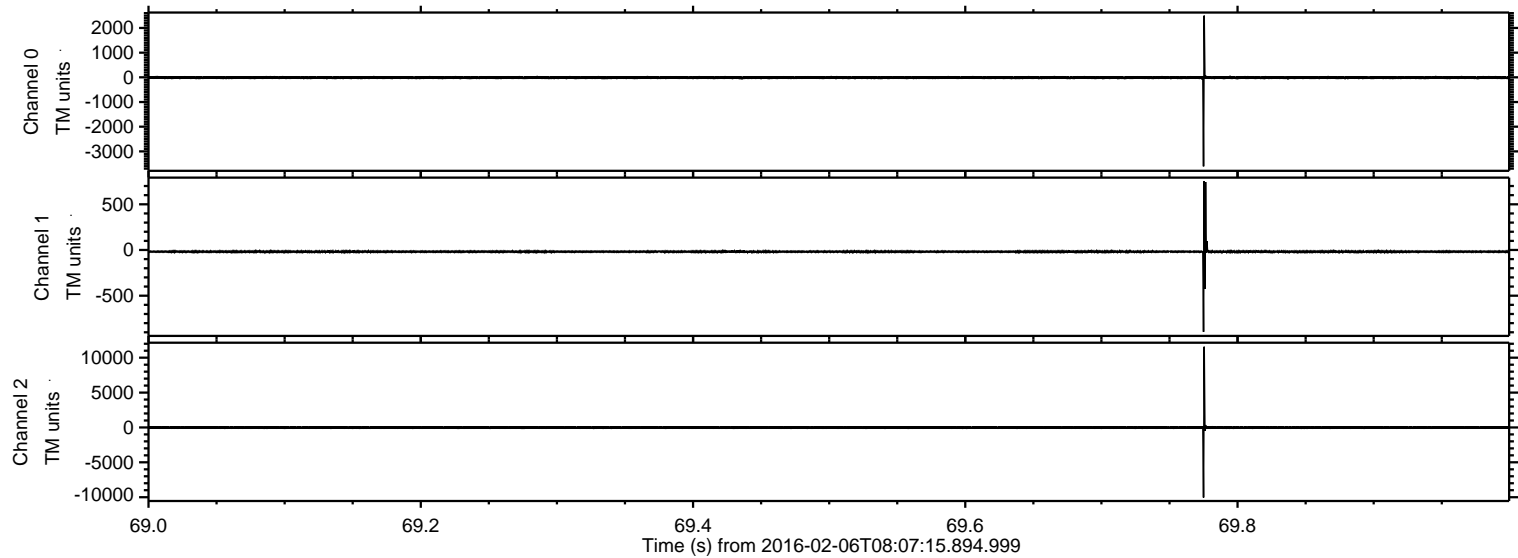


ELMAVAN 3D WAVEFORMS (Measured data sampled at 50 kHz) 51000 packets of 144 samples from 2016-02-06T08:07:15.894.999.

Processed Sat Apr 9 02:51:11 2016 by ELM ver.2012-10-06 from 001__elm20160206_080714__dat00.bin

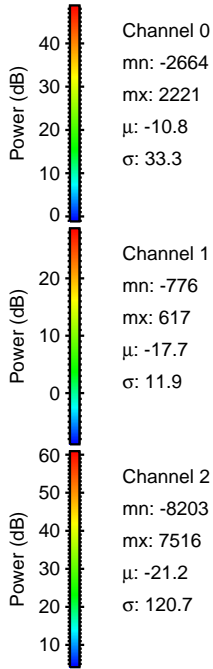
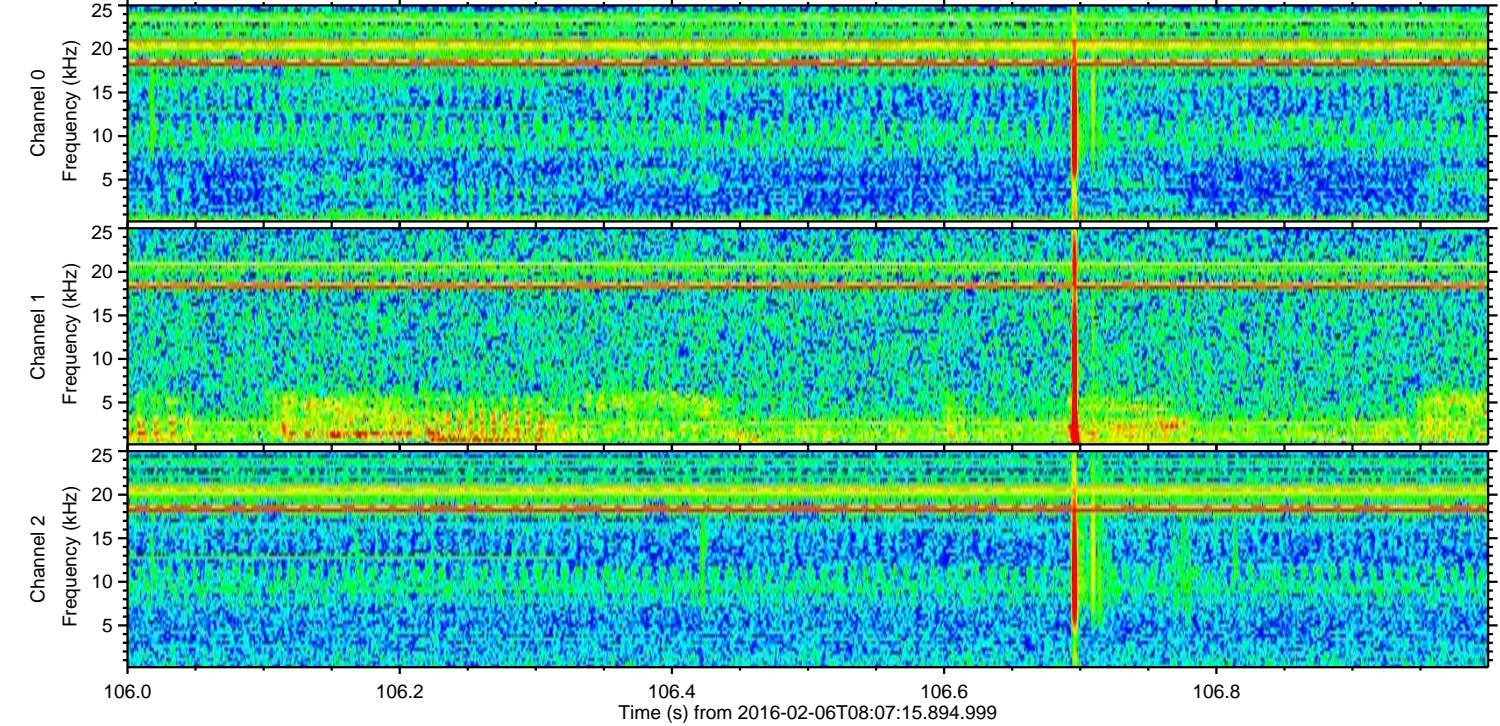
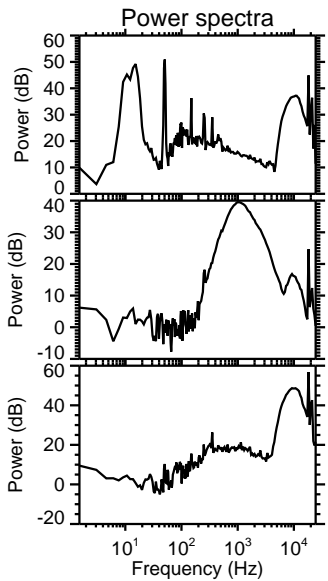
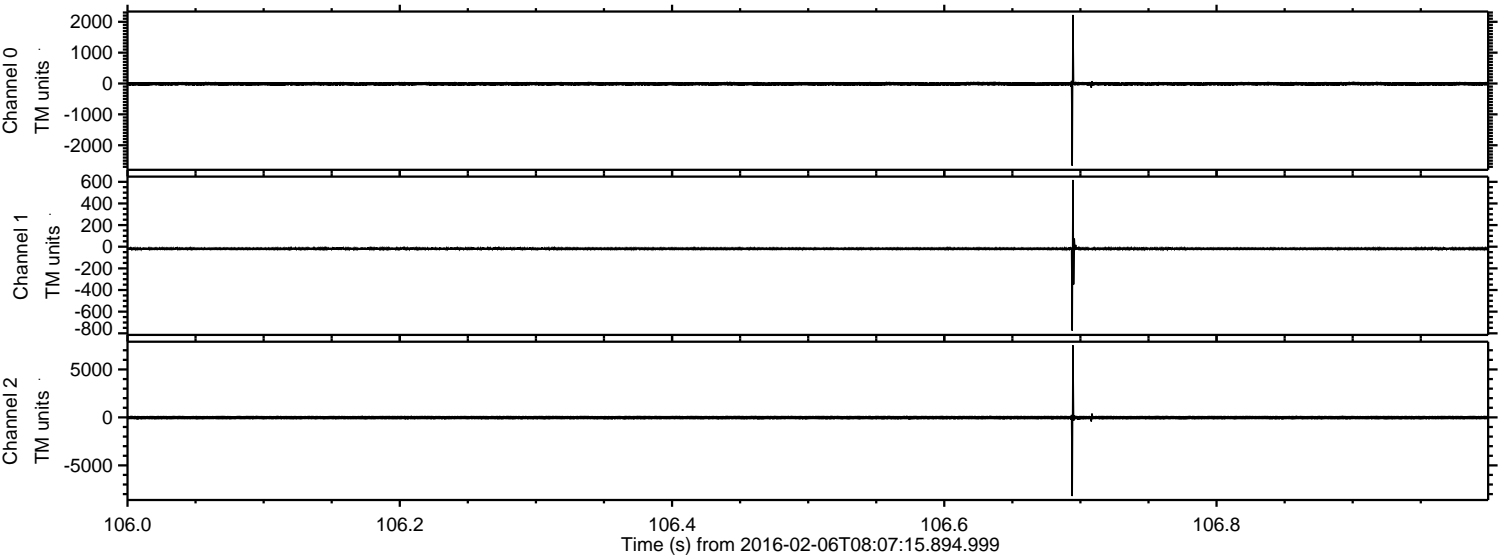


Processed Sat Apr 9 02:51:23 2016 by ELM ver.2012-10-06 from 001__elm20160206_080714__dat00.bin

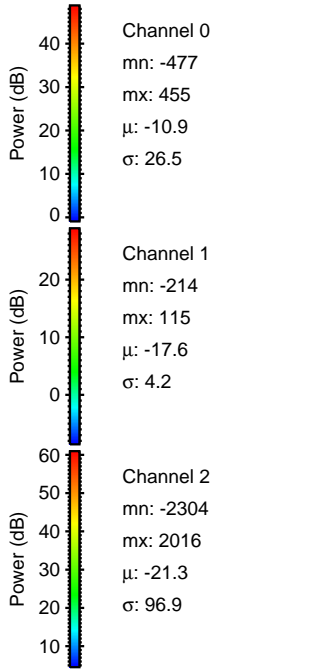
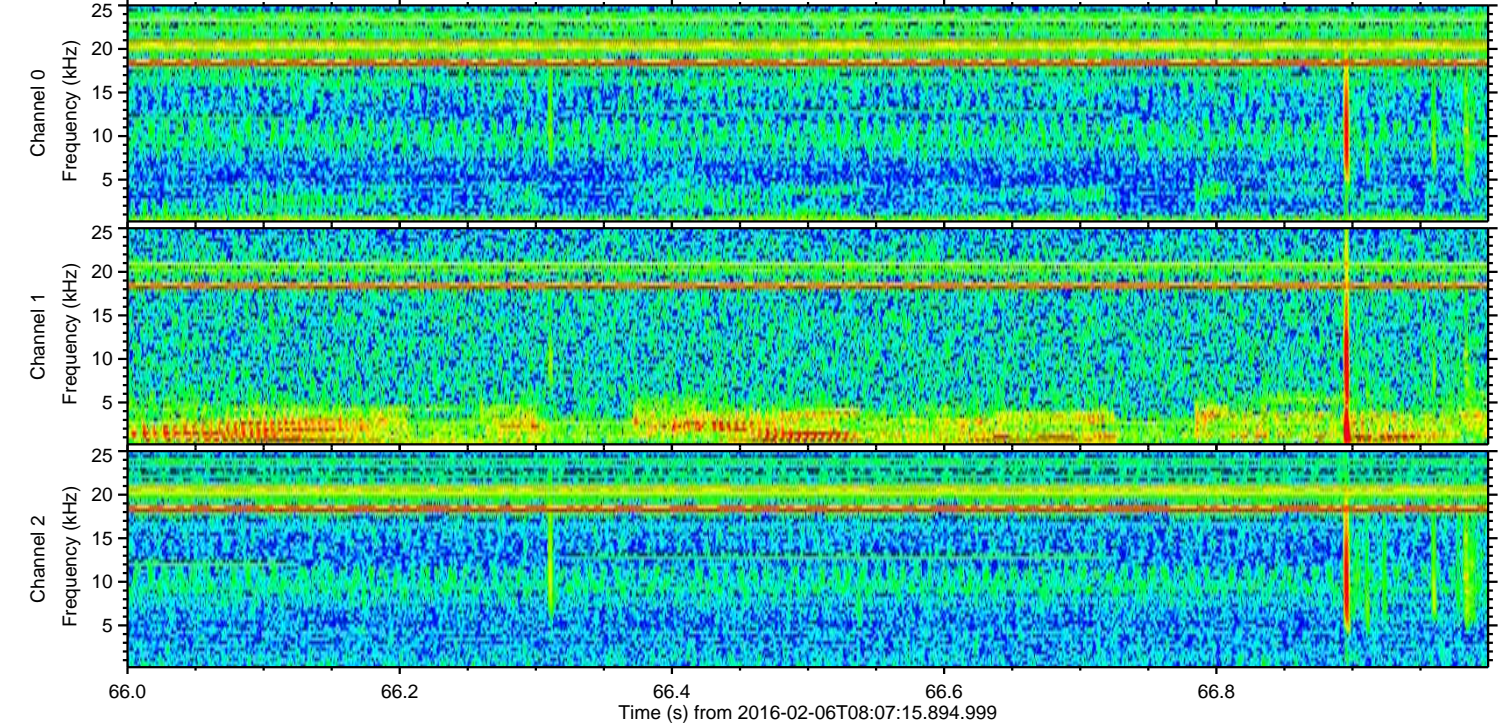
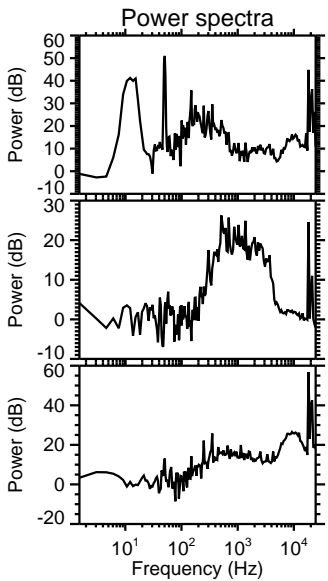
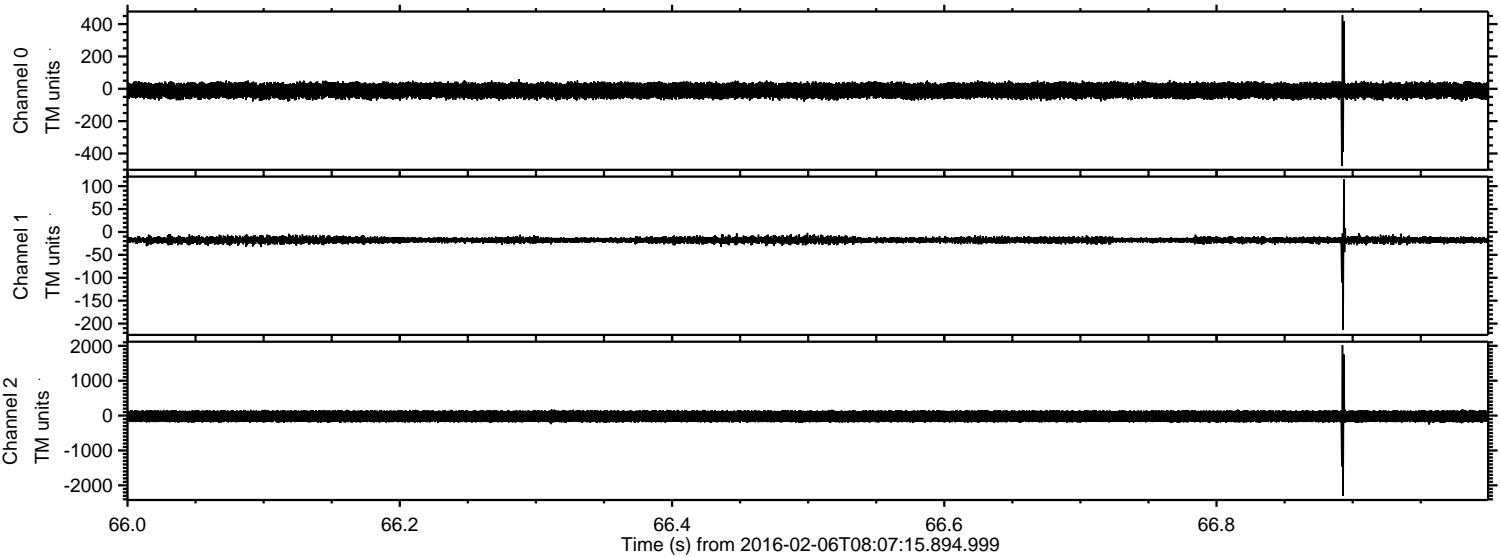


ELMAVAN 3D WAVEFORMS (Measured data sampled at 50 kHz) 51000 packets of 144 samples from 2016-02-06T08:07:15.894.999. Part 107/147

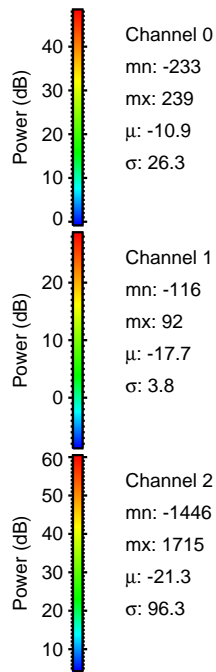
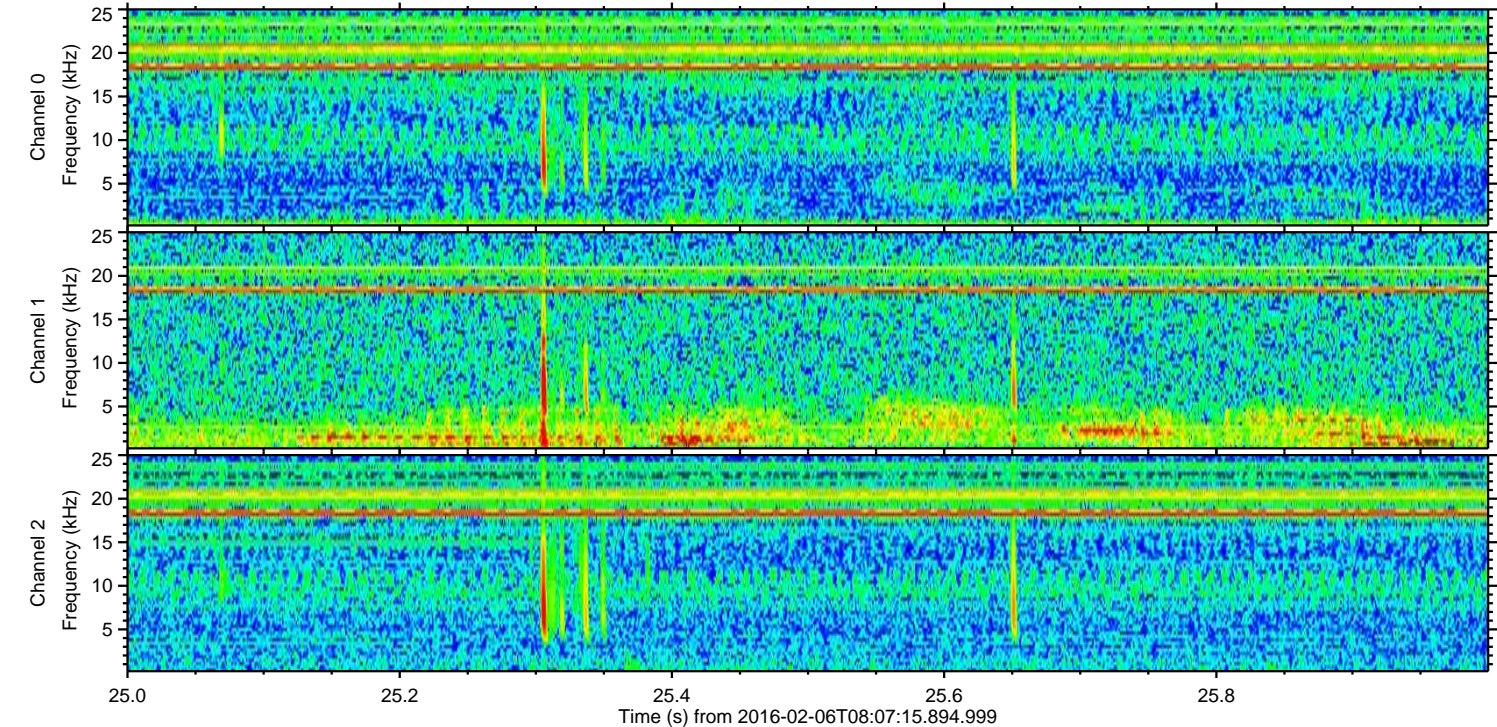
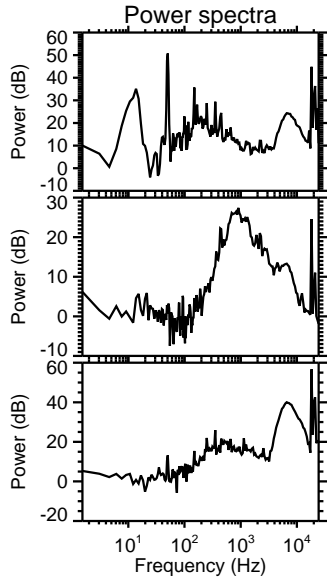
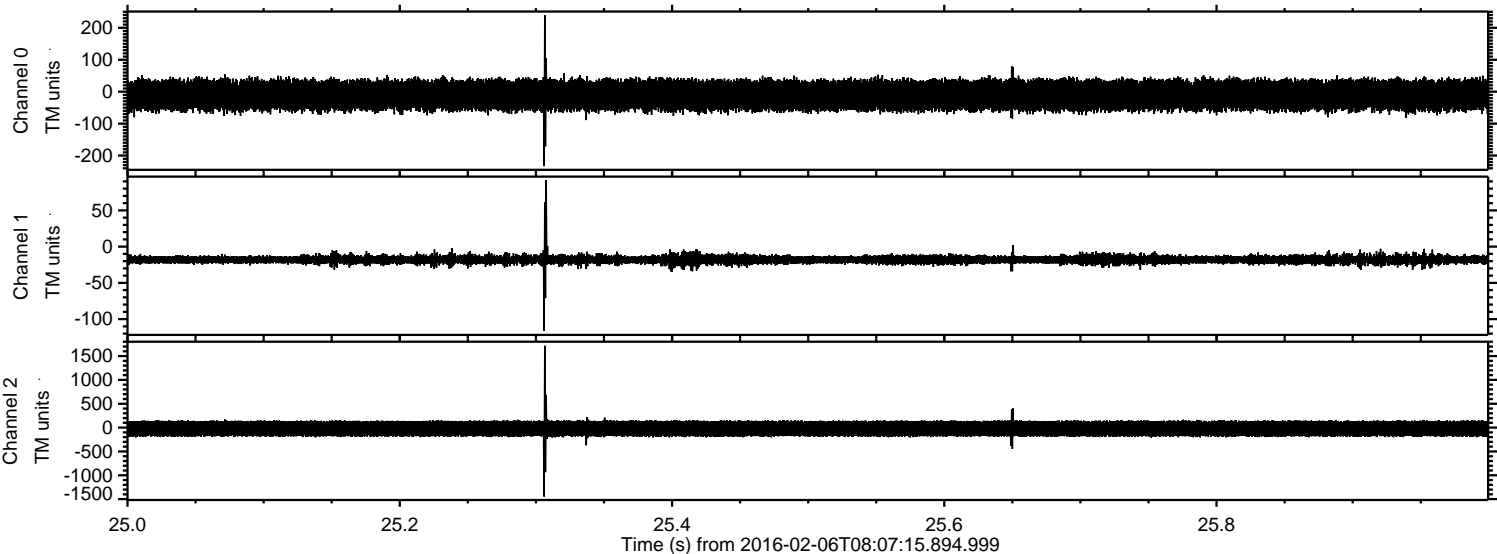
Processed Sat Apr 9 02:51:23 2016 by ELM ver.2012-10-06 from 001__elm20160206_080714__dat00.bin



Processed Sat Apr 9 02:51:24 2016 by ELM ver.2012-10-06 from 001__elm20160206_080714__dat00.bin

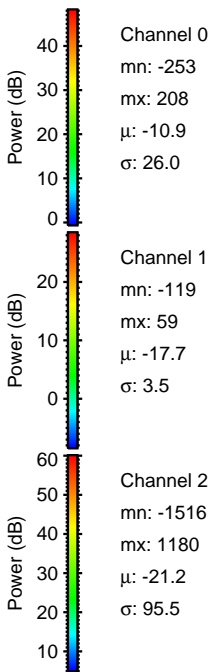
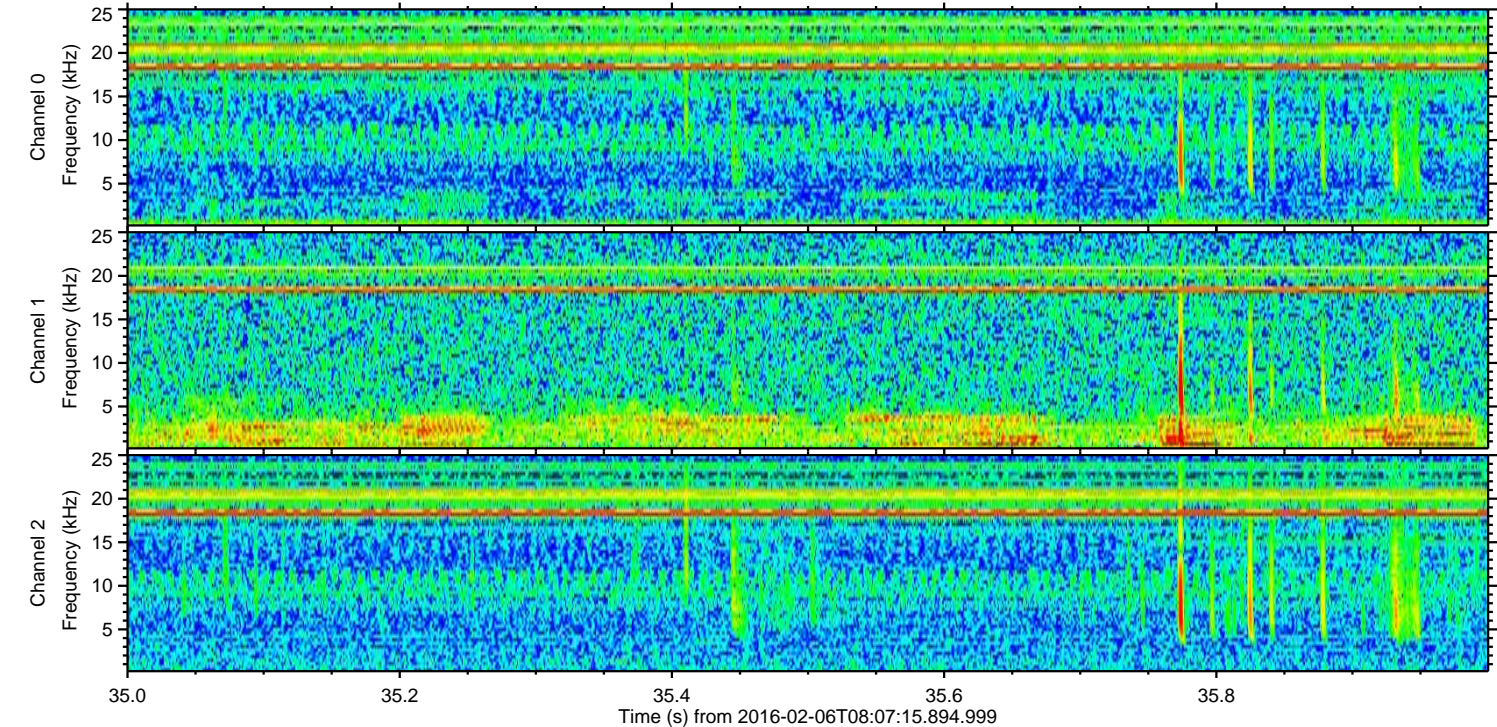
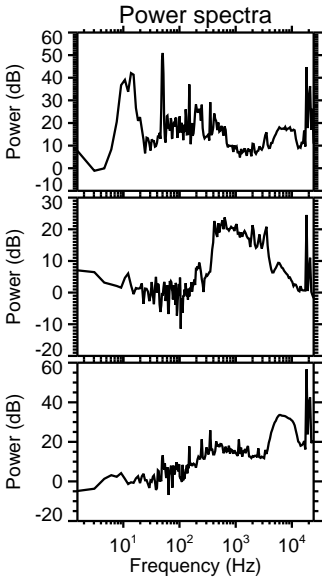
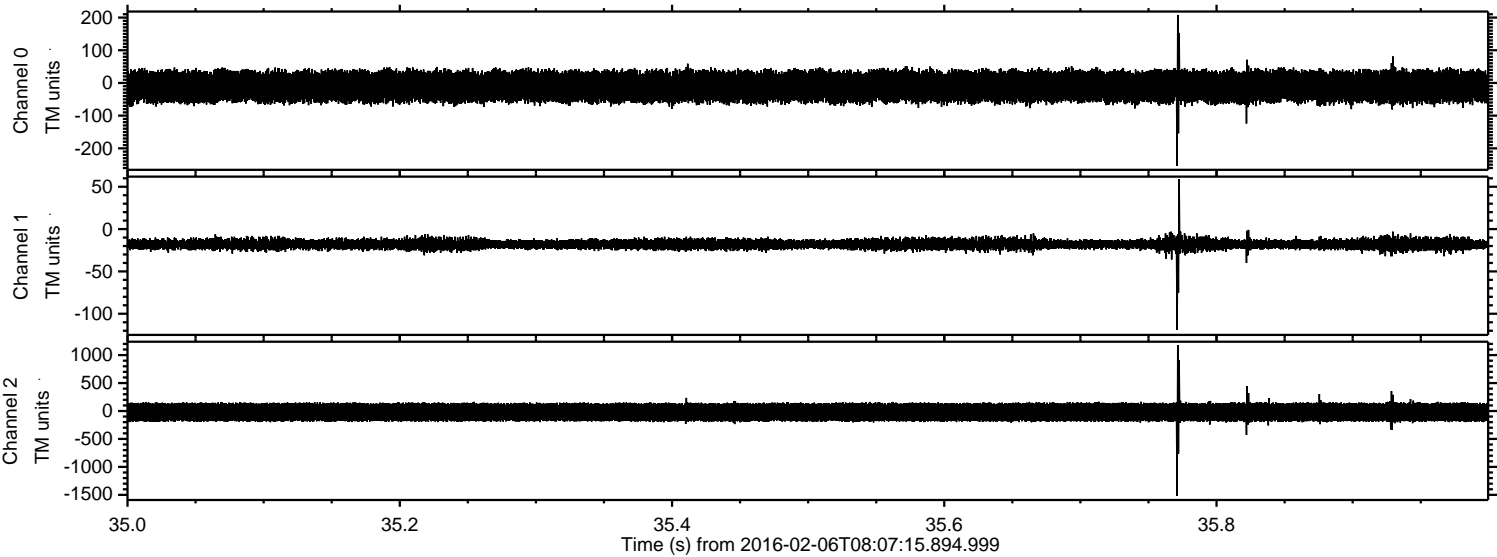


Processed Sat Apr 9 02:51:25 2016 by ELM ver.2012-10-06 from 001__elm20160206_080714__dat00.bin

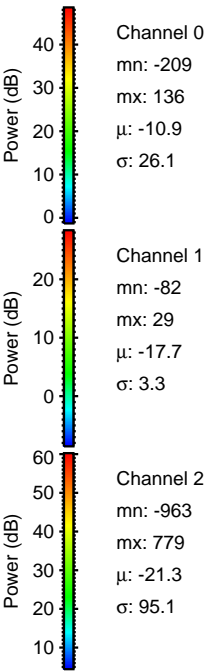
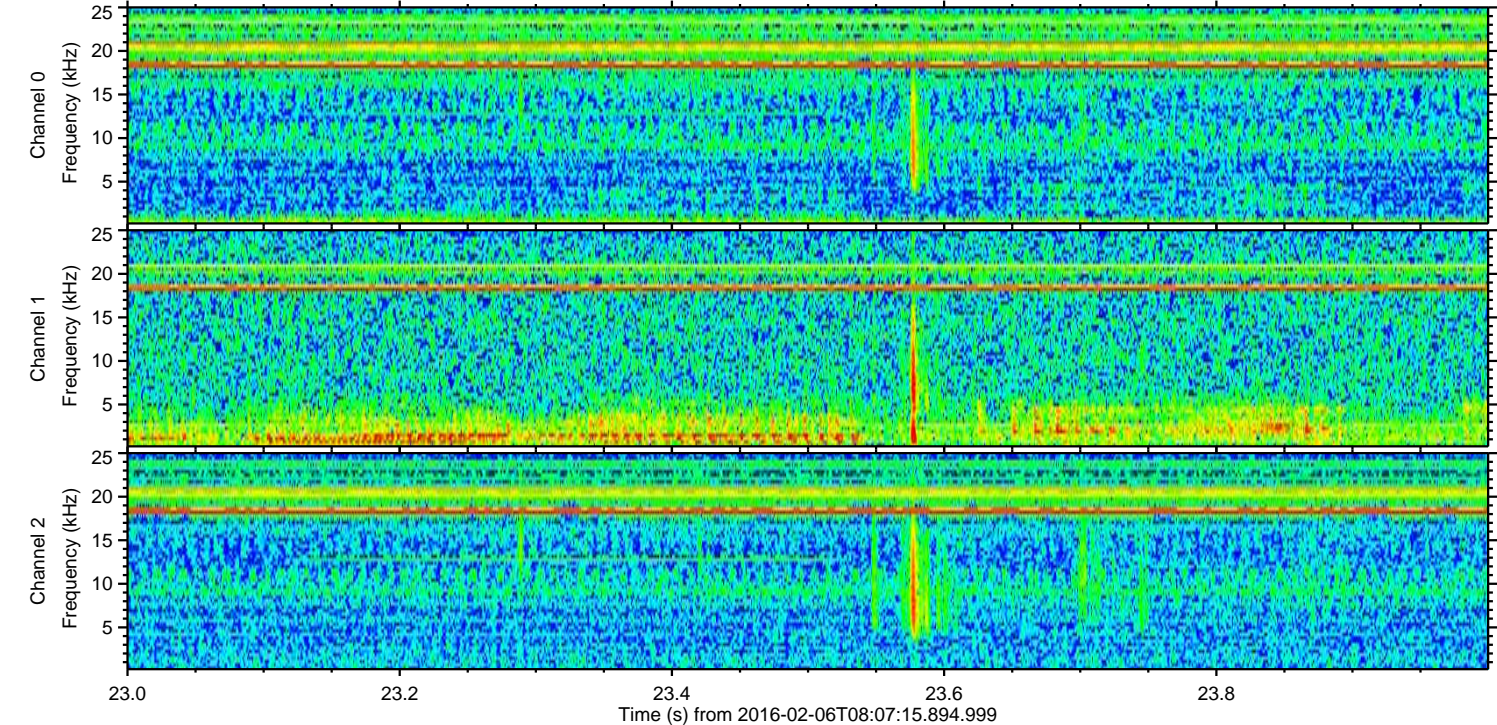
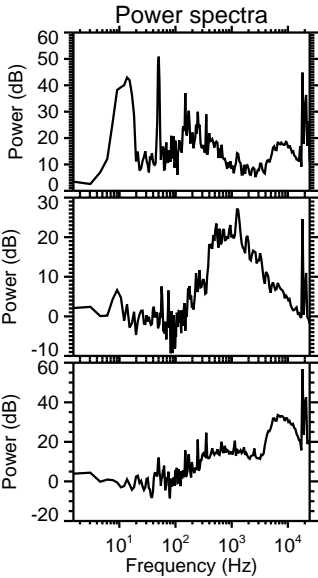
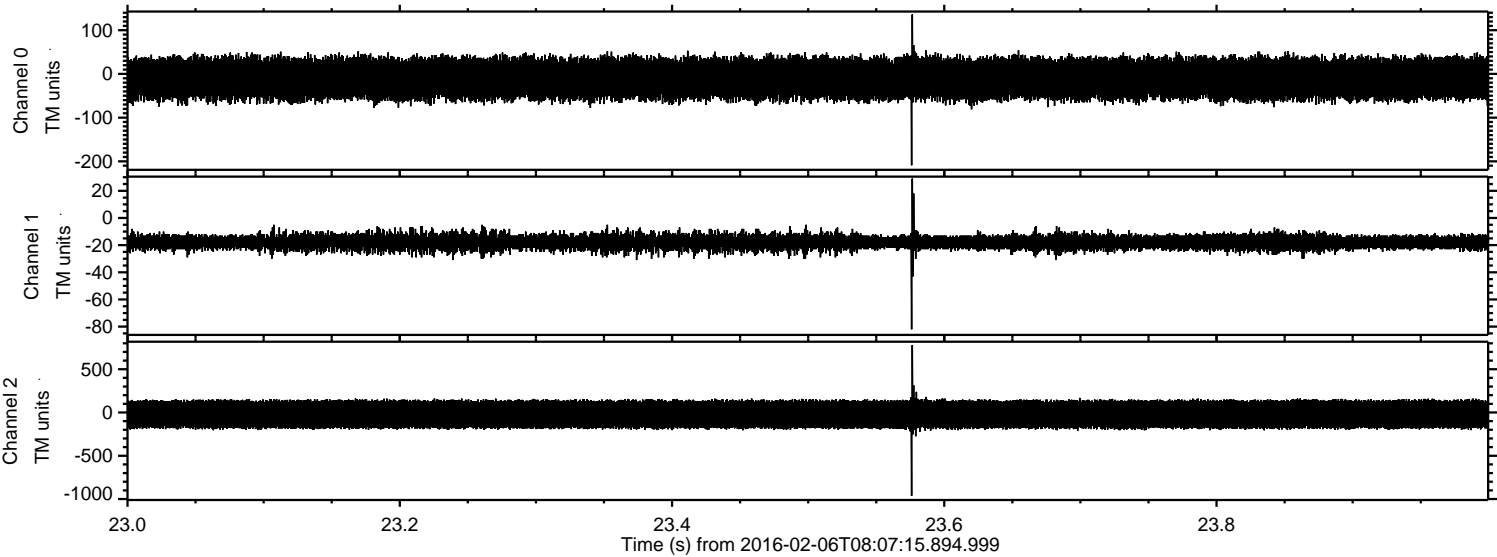


ELMAVAN 3D WAVEFORMS (Measured data sampled at 50 kHz) 51000 packets of 144 samples from 2016-02-06T08:07:15.894.999. Part 36/147

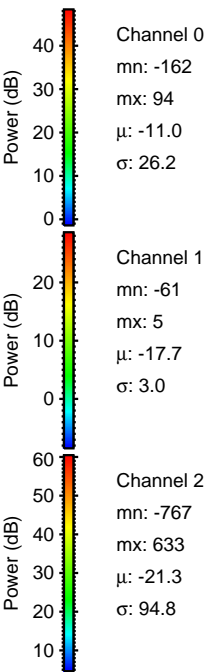
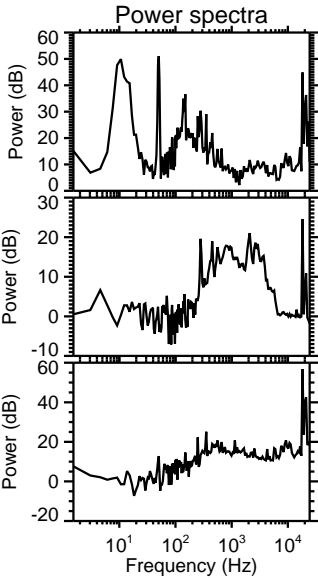
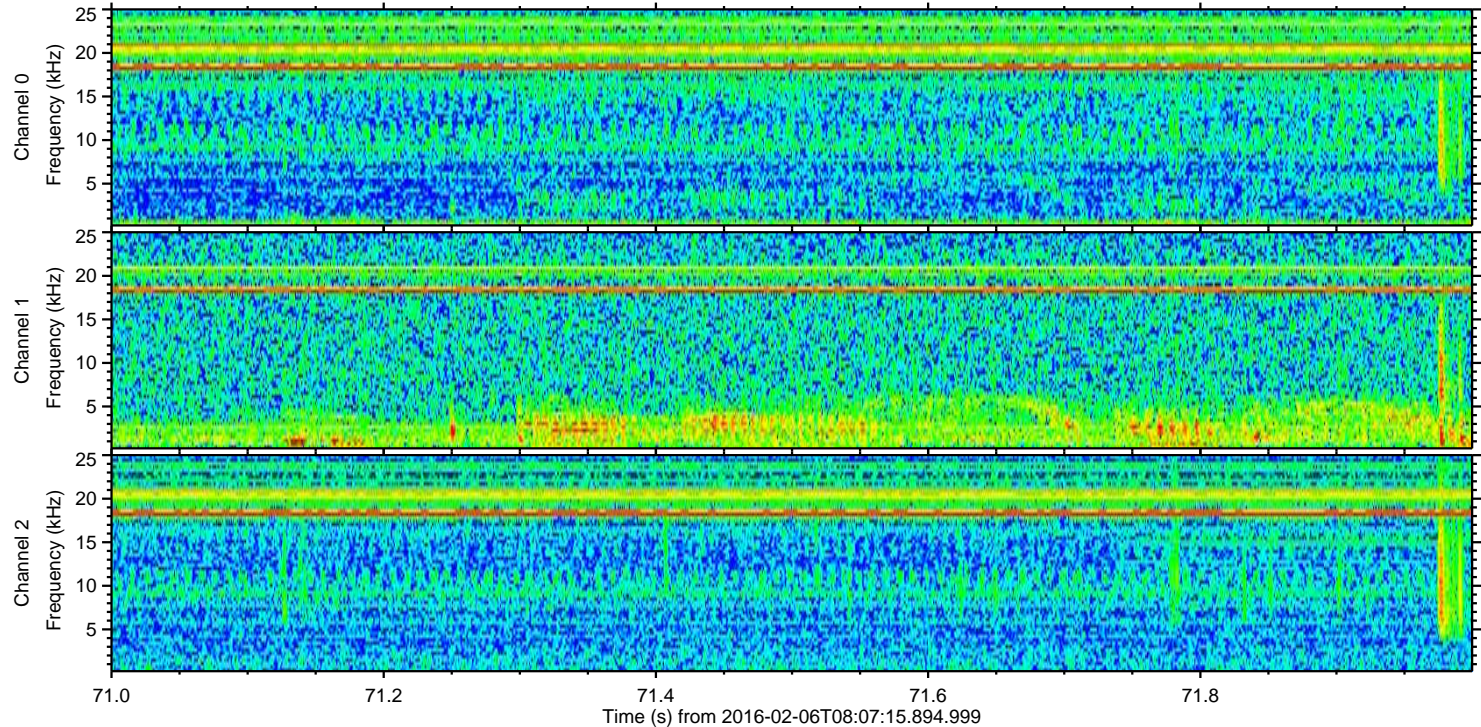
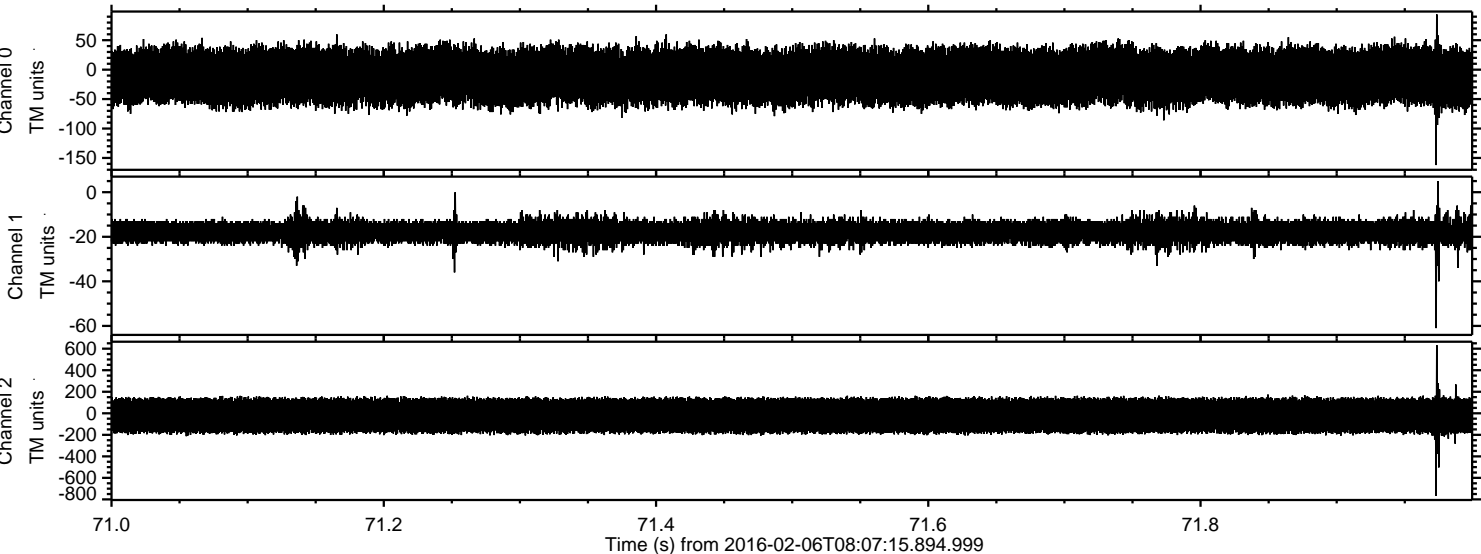
Processed Sat Apr 9 02:51:26 2016 by ELM ver.2012-10-06 from 001__elm20160206_080714__dat00.bin



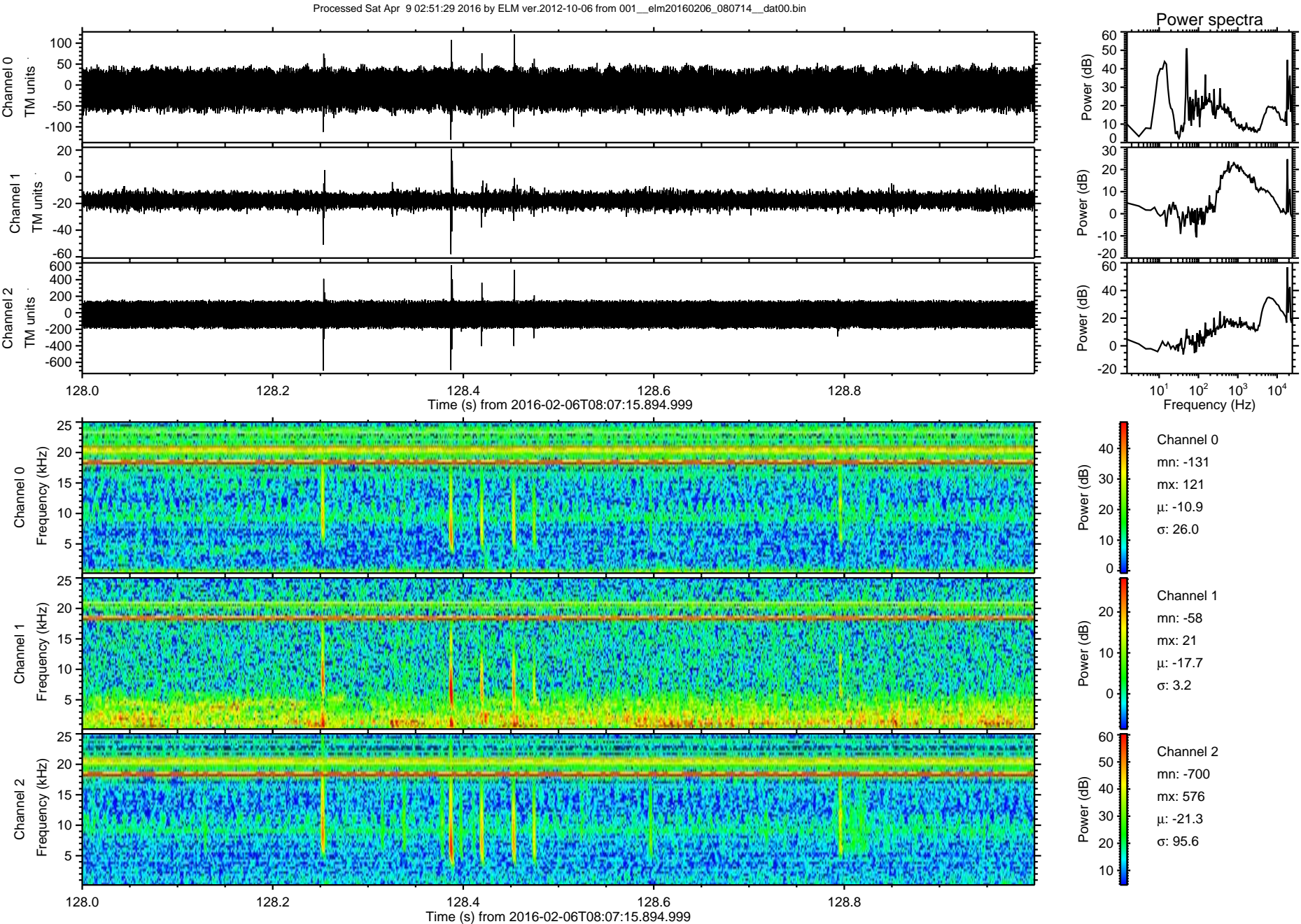
Processed Sat Apr 9 02:51:27 2016 by ELM ver.2012-10-06 from 001__elm20160206_080714__dat00.bin



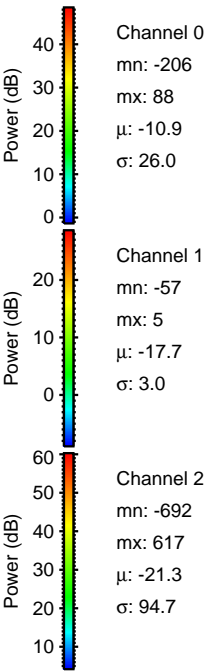
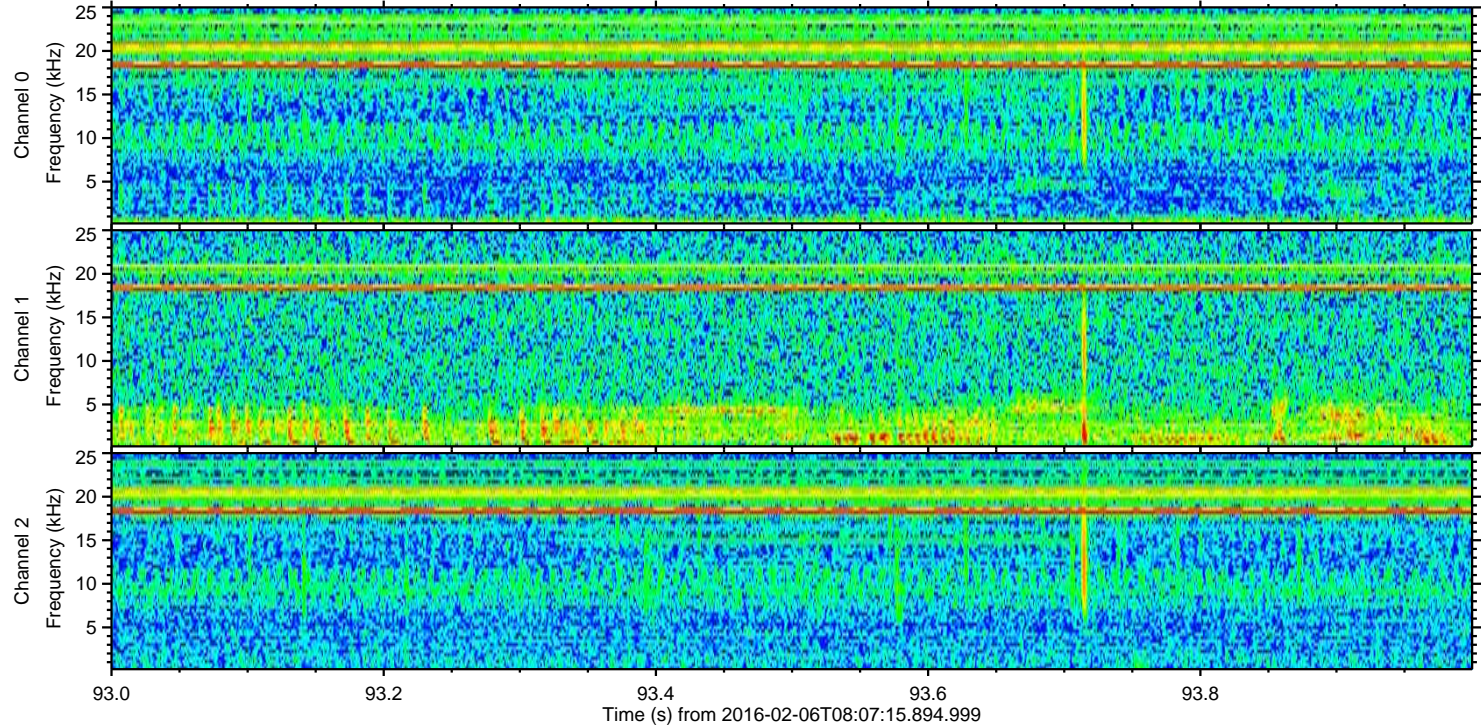
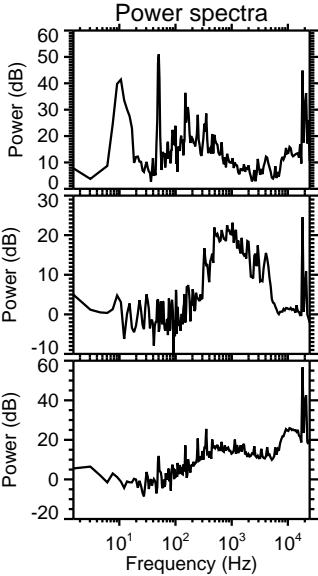
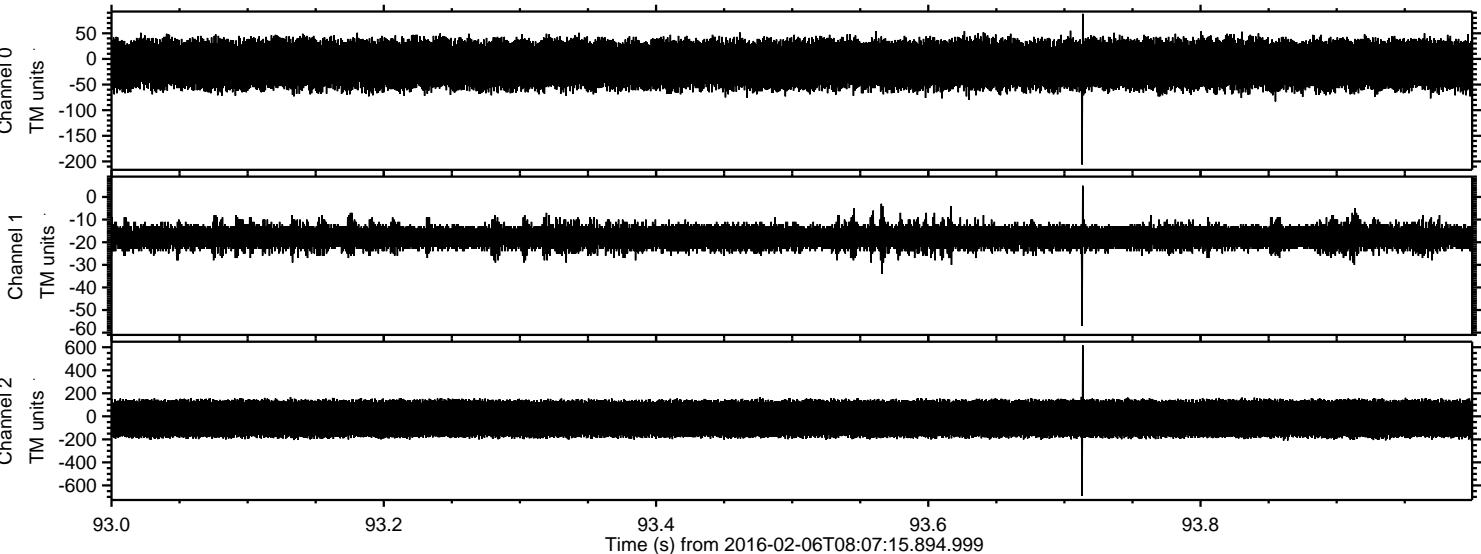
Processed Sat Apr 9 02:51:28 2016 by ELM ver.2012-10-06 from 001__elm20160206_080714__dat00.bin



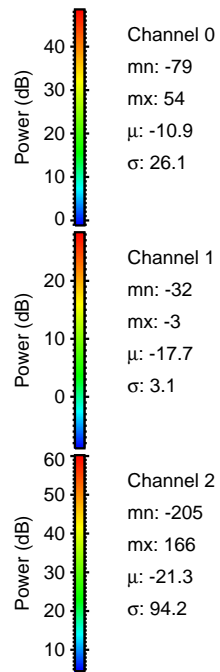
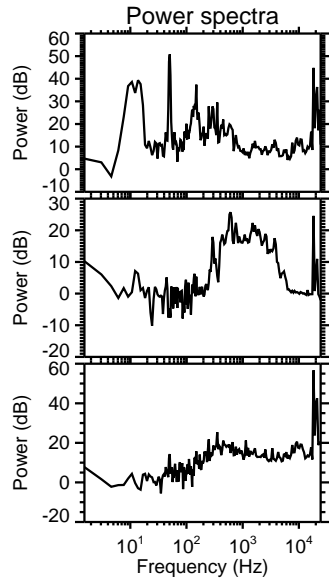
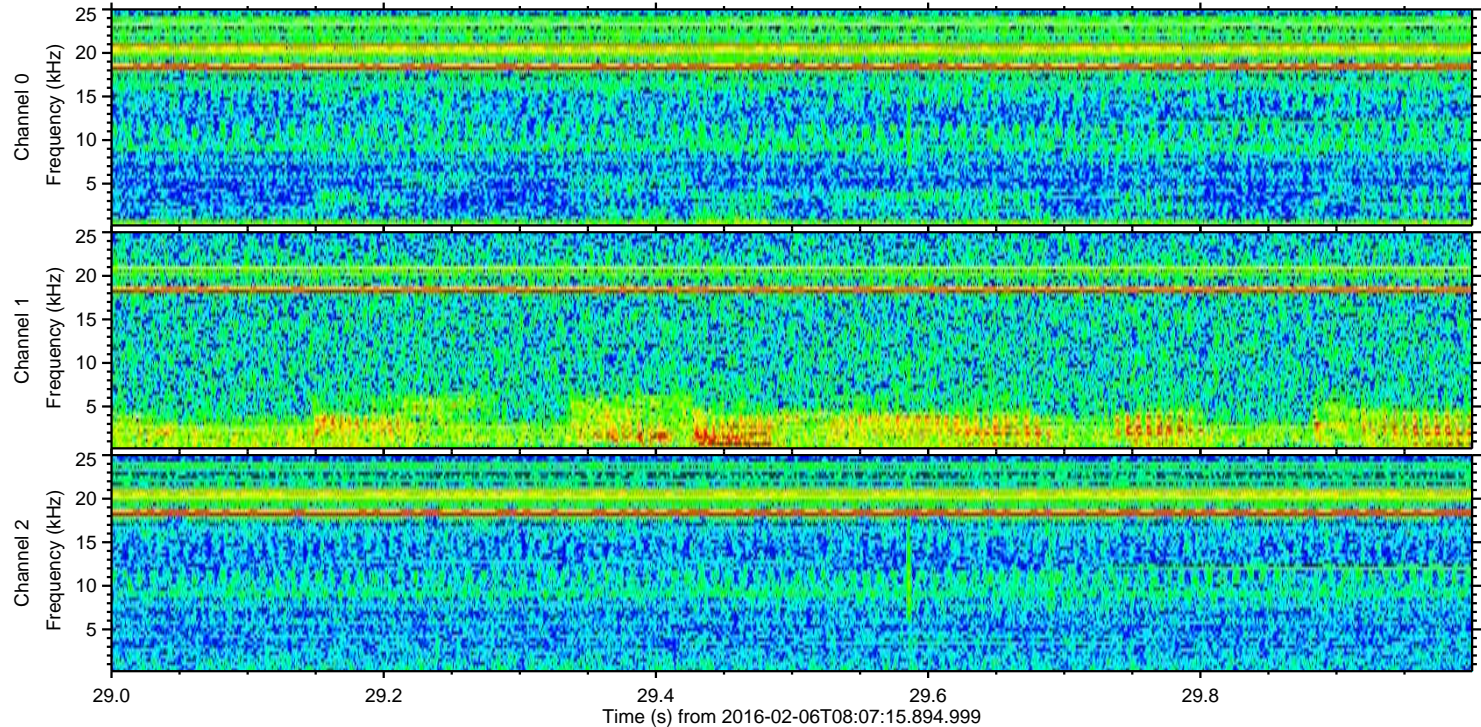
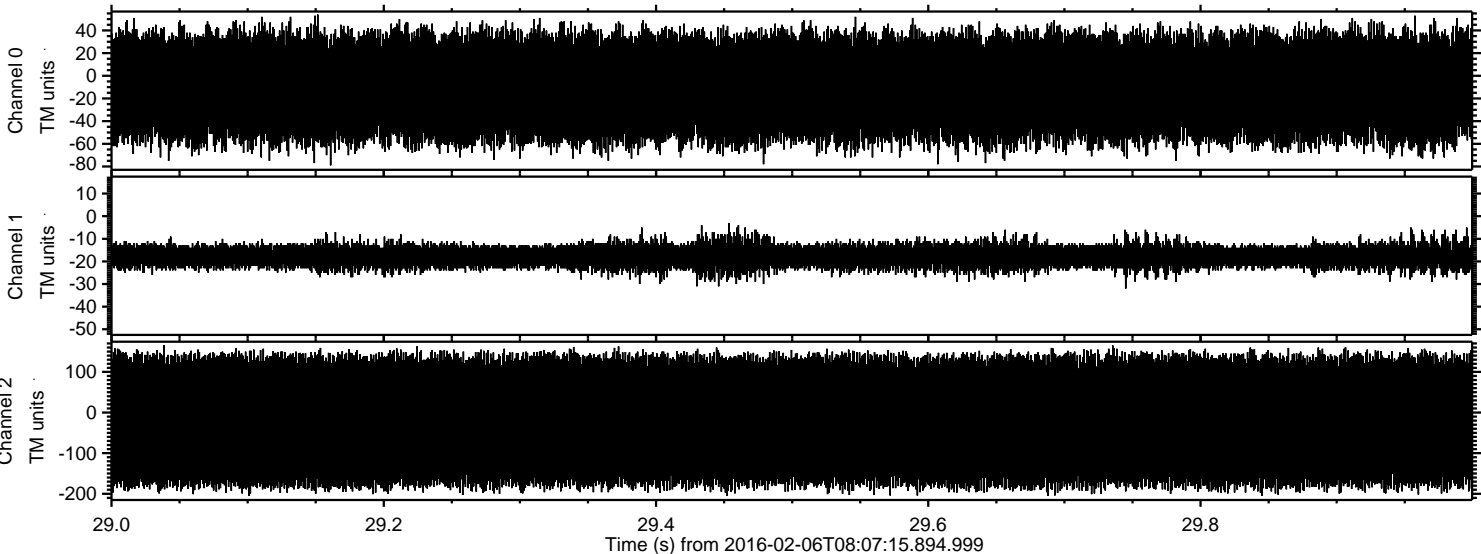
ELMAVAN 3D WAVEFORMS (Measured data sampled at 50 kHz) 51000 packets of 144 samples from 2016-02-06T08:07:15.894.999. Part 129/147



Processed Sat Apr 9 02:51:30 2016 by ELM ver.2012-10-06 from 001__elm20160206_080714__dat00.bin



Processed Sat Apr 9 02:51:31 2016 by ELM ver.2012-10-06 from 001__elm20160206_080714__dat00.bin



Channel 0
mn: -79
mx: 54
 μ : -10.9
 σ : 26.1

Channel 1
mn: -32
mx: -3
 μ : -17.7
 σ : 3.1

Channel 2
mn: -205
mx: 166
 μ : -21.3
 σ : 94.2