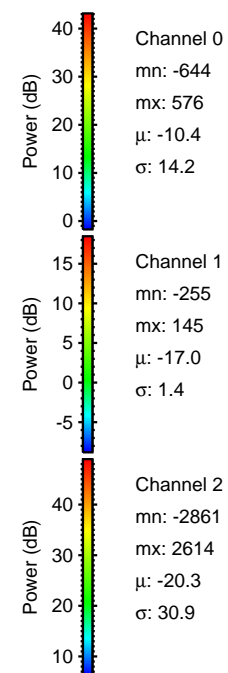
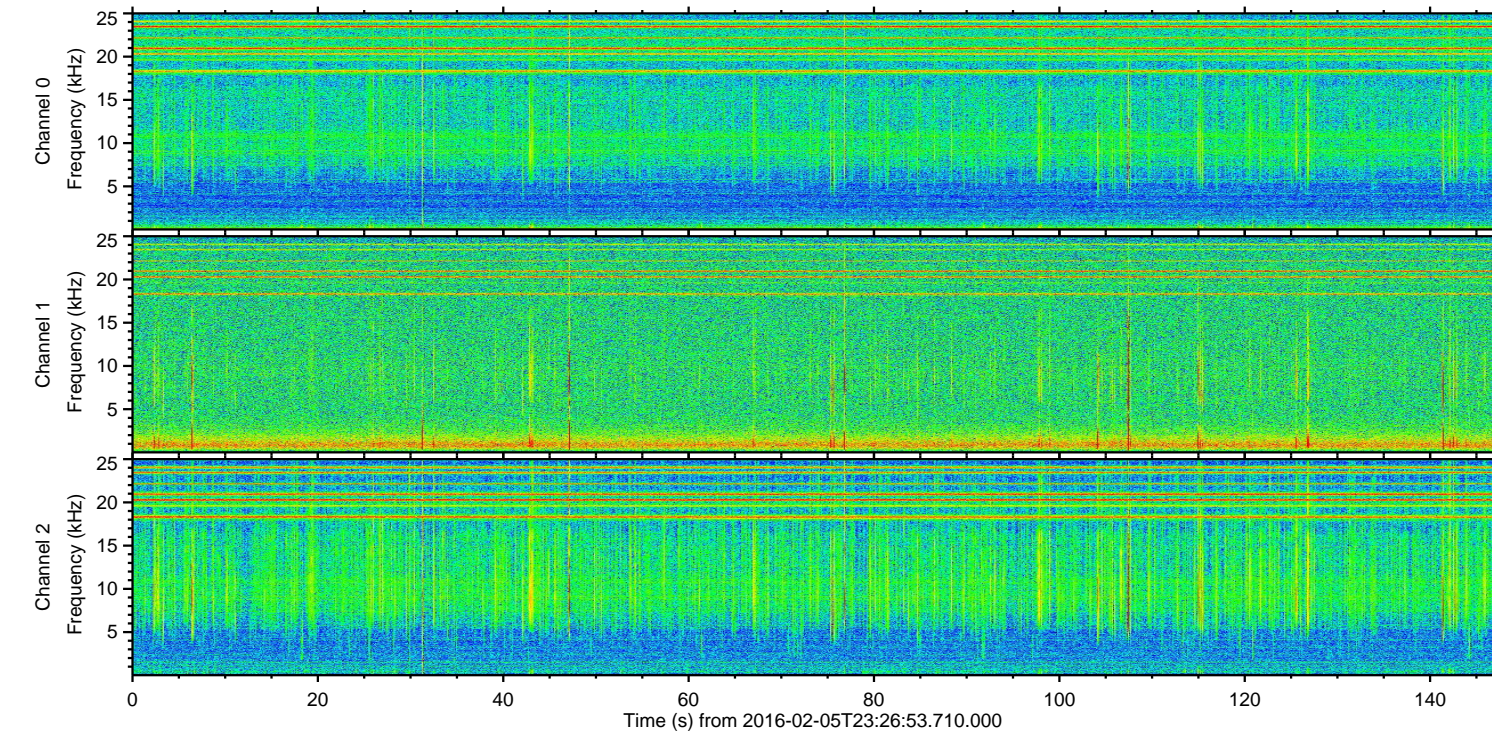
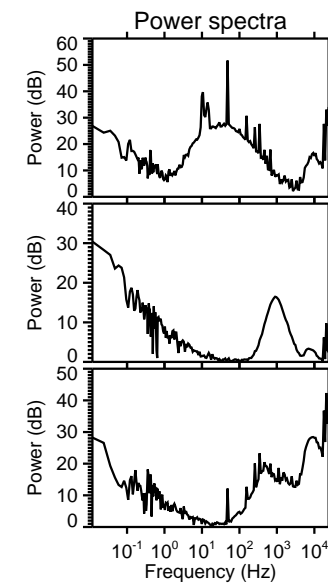
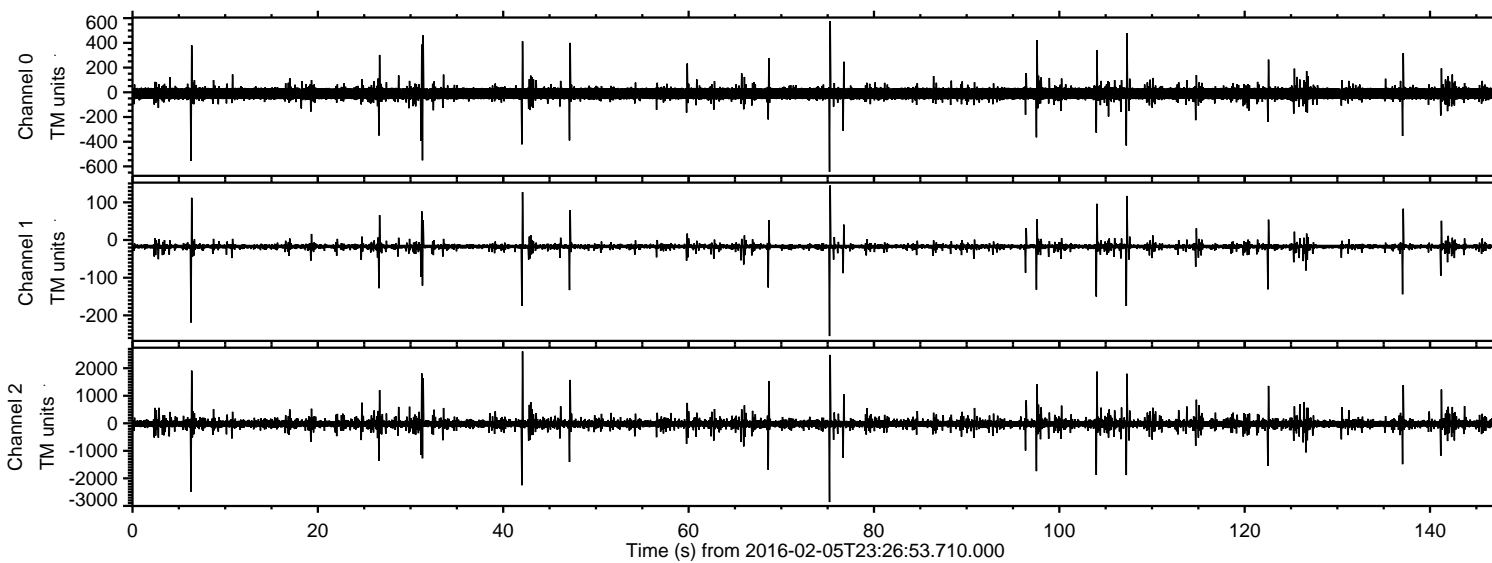


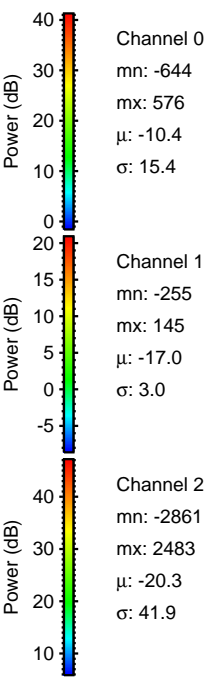
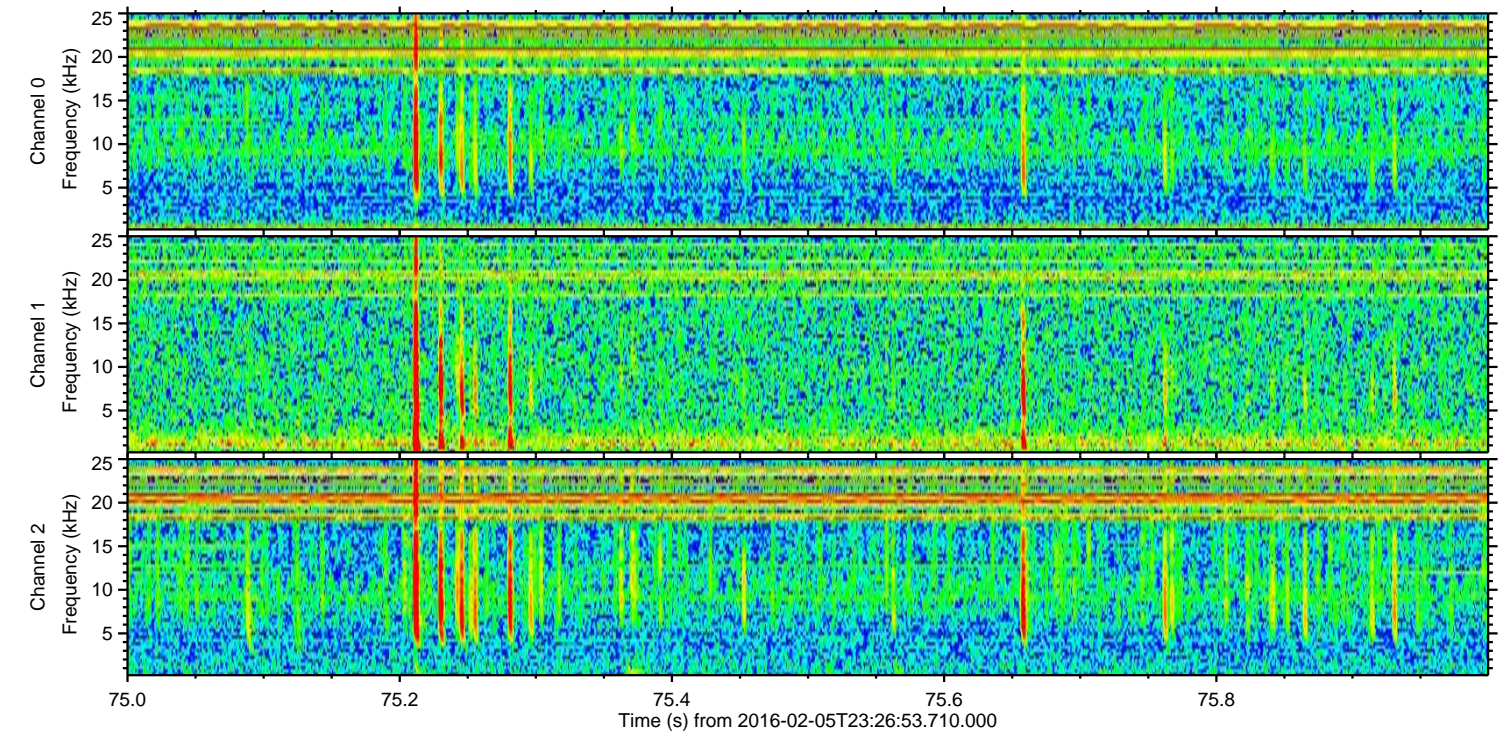
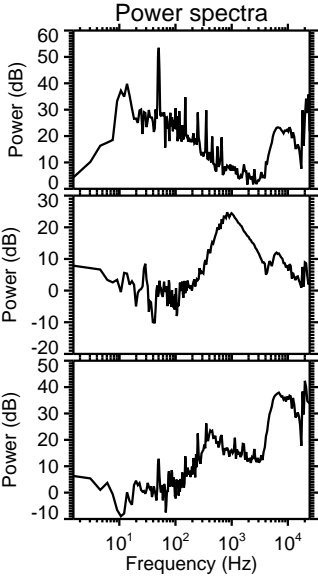
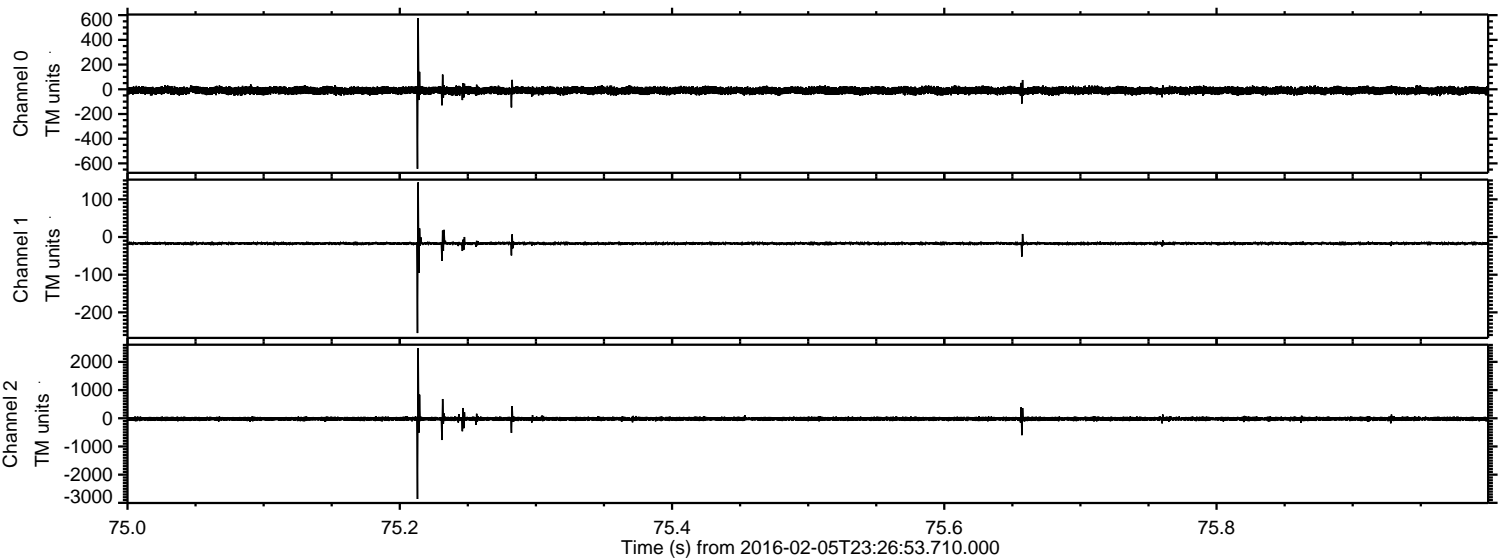
ELMAVAN 3D WAVEFORMS (Measured data sampled at 50 kHz) 51000 packets of 144 samples from 2016-02-05T23:26:53.710.000.

Processed Sat Apr 9 01:06:13 2016 by ELM ver.2012-10-06 from 001\_\_elm20160205\_232652\_\_dat00.bin



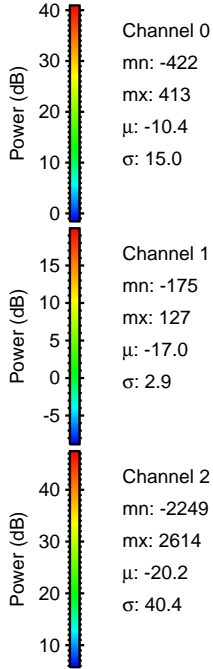
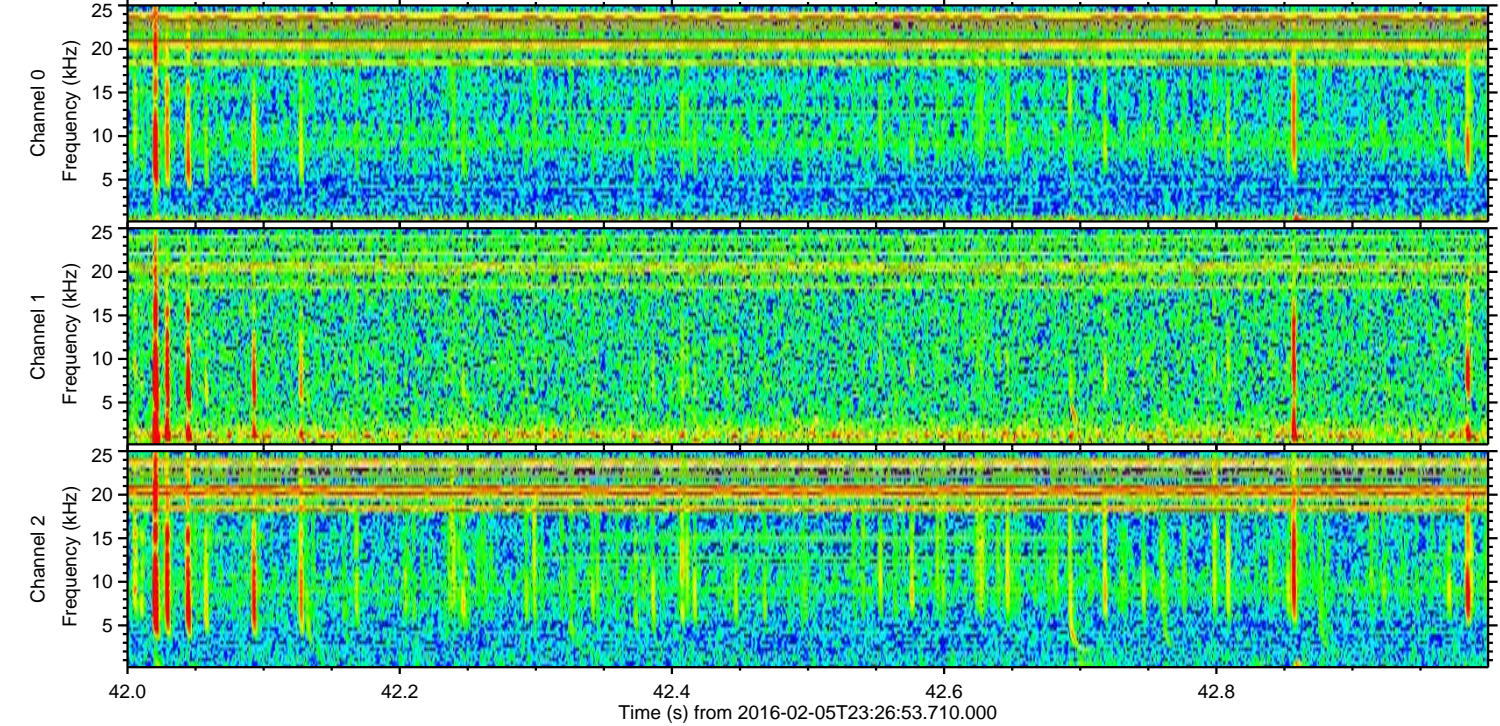
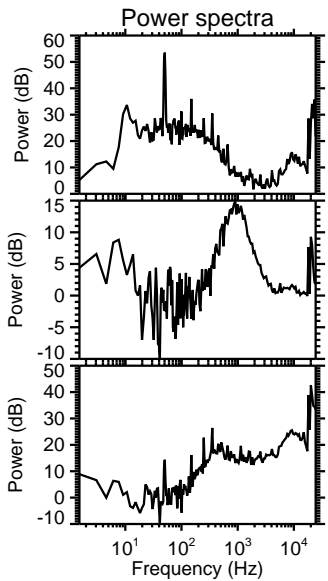
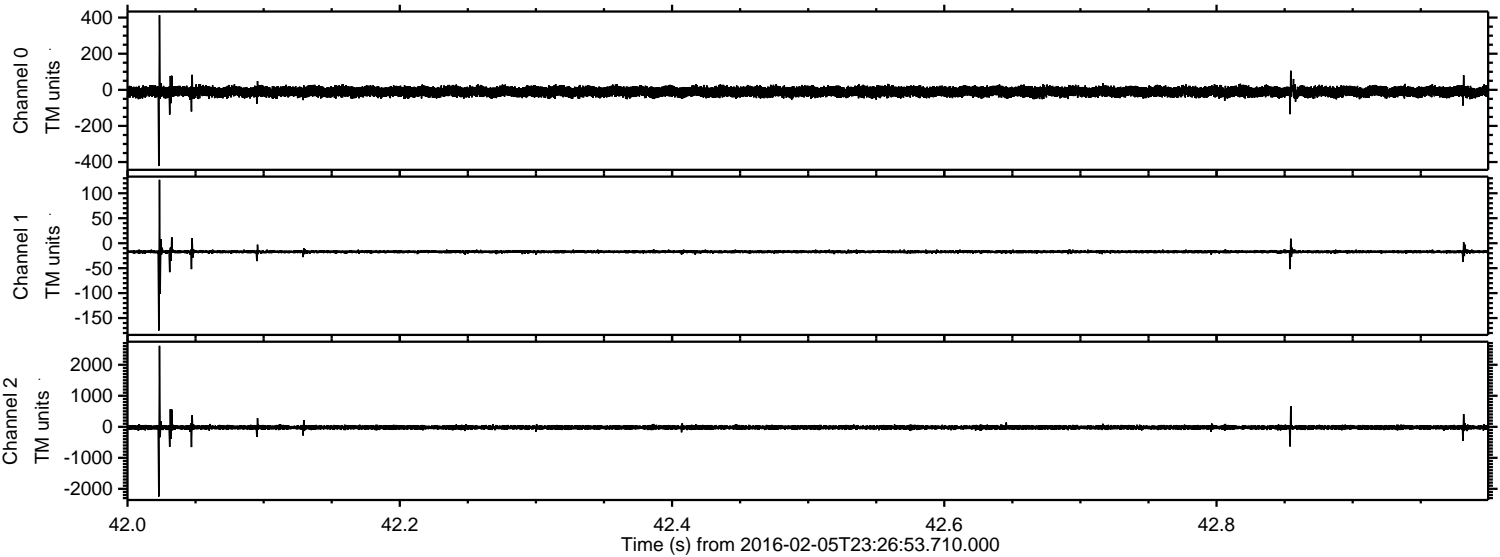


Processed Sat Apr 9 01:06:25 2016 by ELM ver.2012-10-06 from 001\_\_elm20160205\_232652\_\_dat00.bin



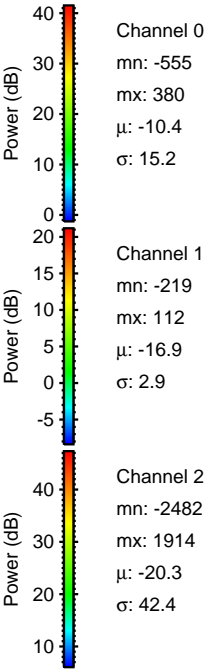
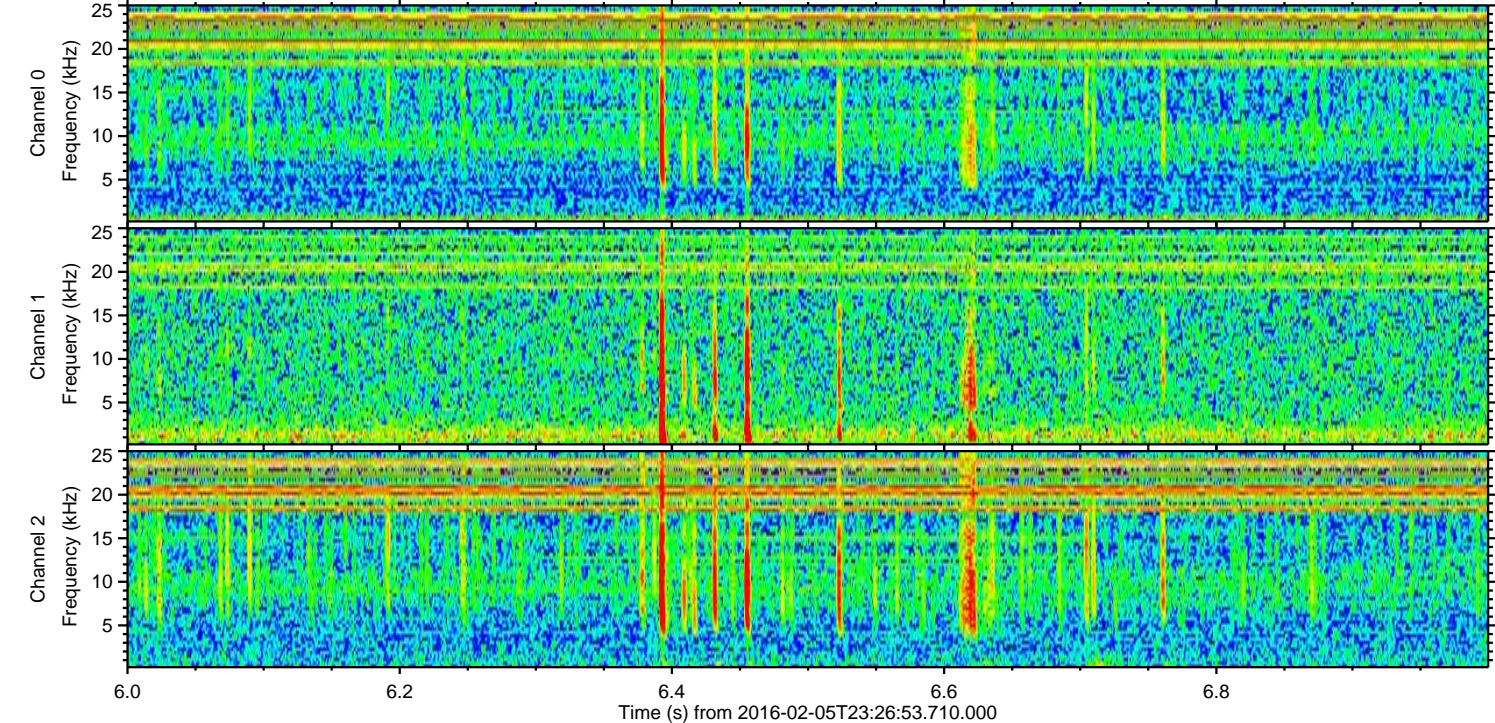
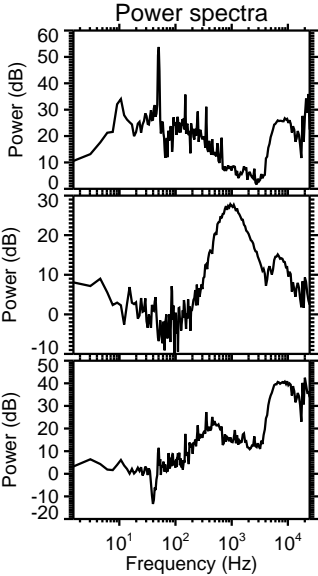
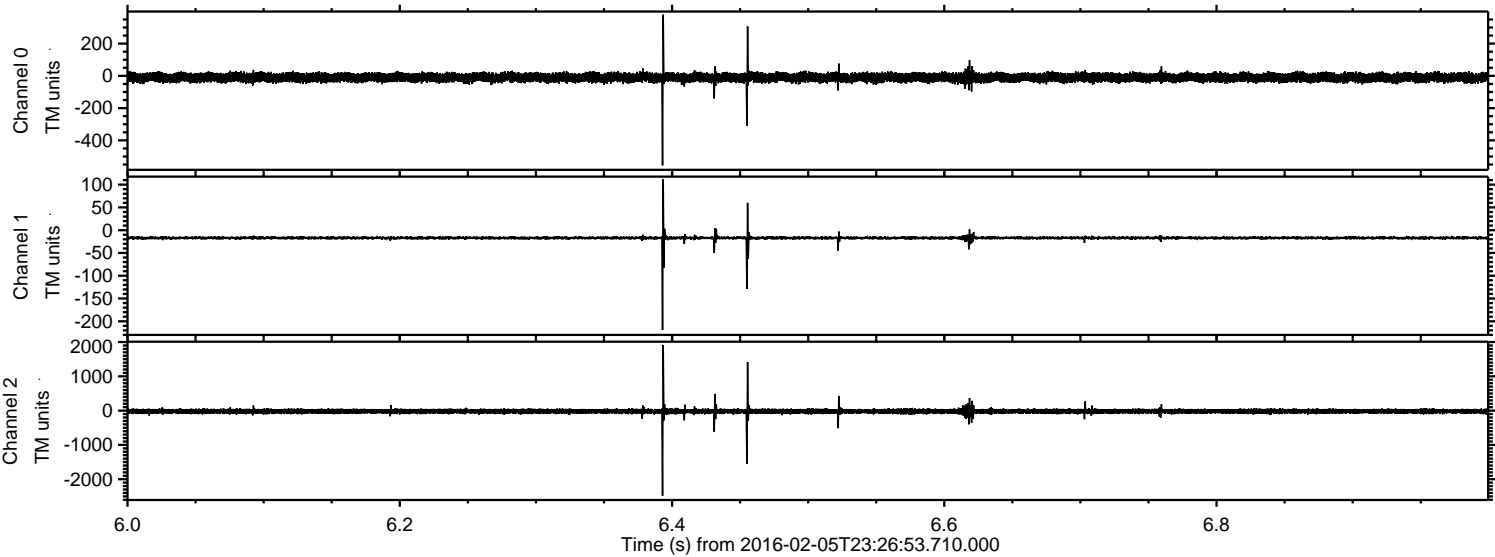


Processed Sat Apr 9 01:06:25 2016 by ELM ver.2012-10-06 from 001\_\_elm20160205\_232652\_\_dat00.bin





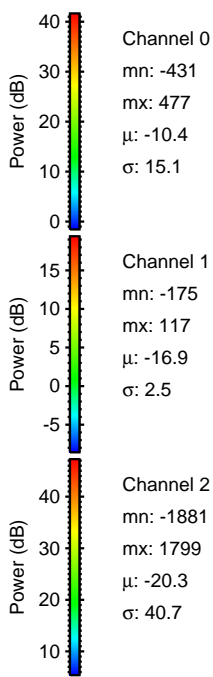
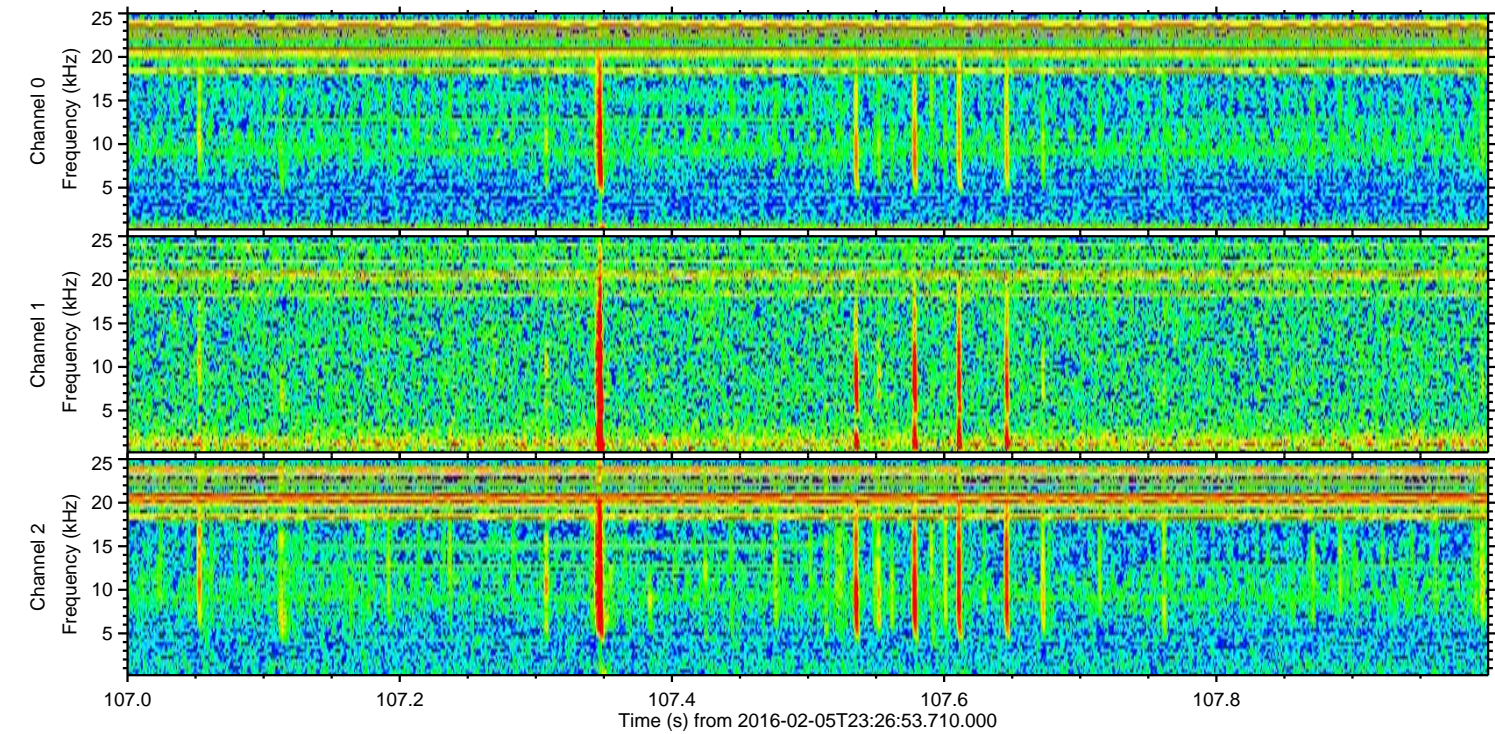
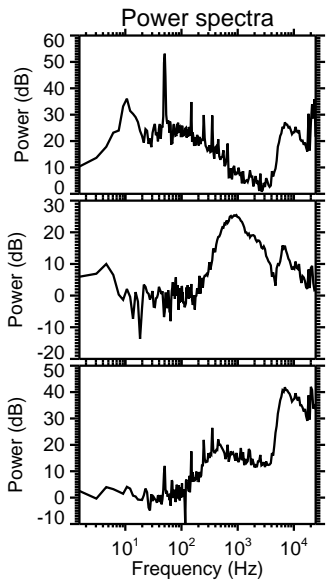
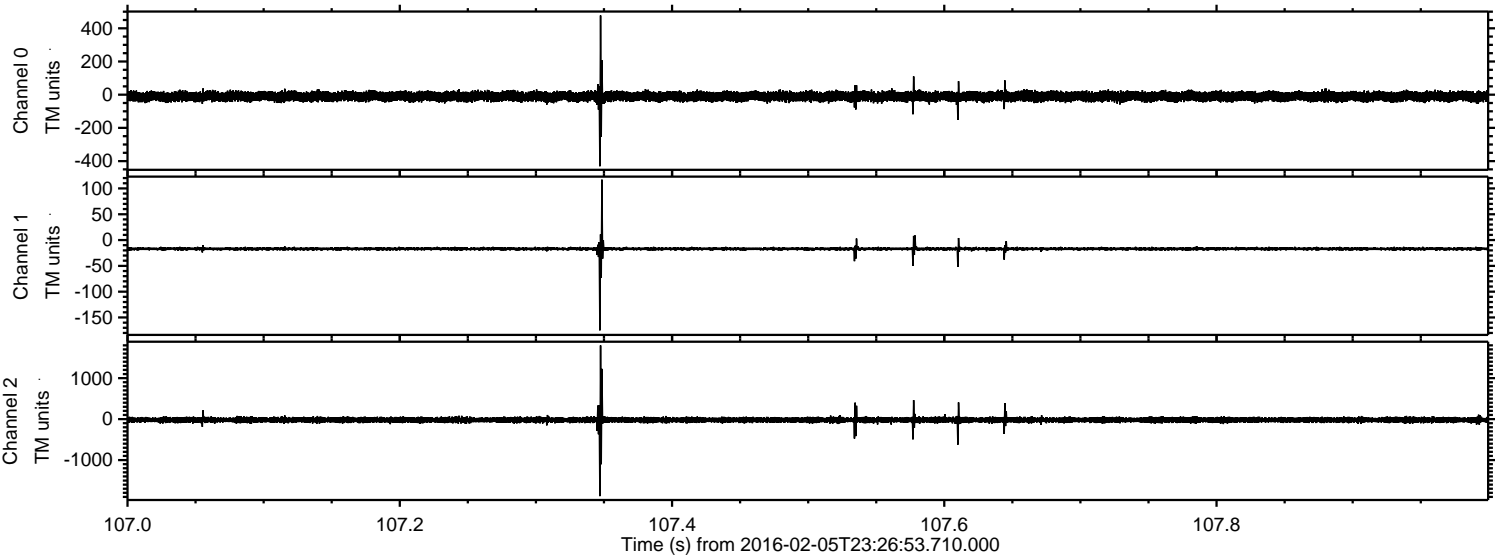
Processed Sat Apr 9 01:06:26 2016 by ELM ver.2012-10-06 from 001\_\_elm20160205\_232652\_\_dat00.bin





ELMAVAN 3D WAVEFORMS (Measured data sampled at 50 kHz) 51000 packets of 144 samples from 2016-02-05T23:26:53.710.000. Part 108/147

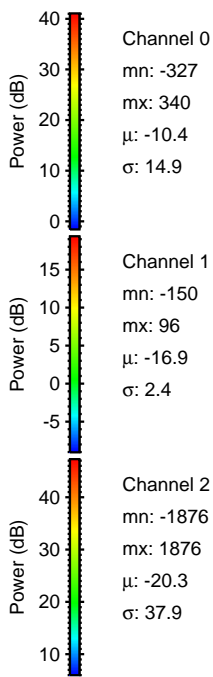
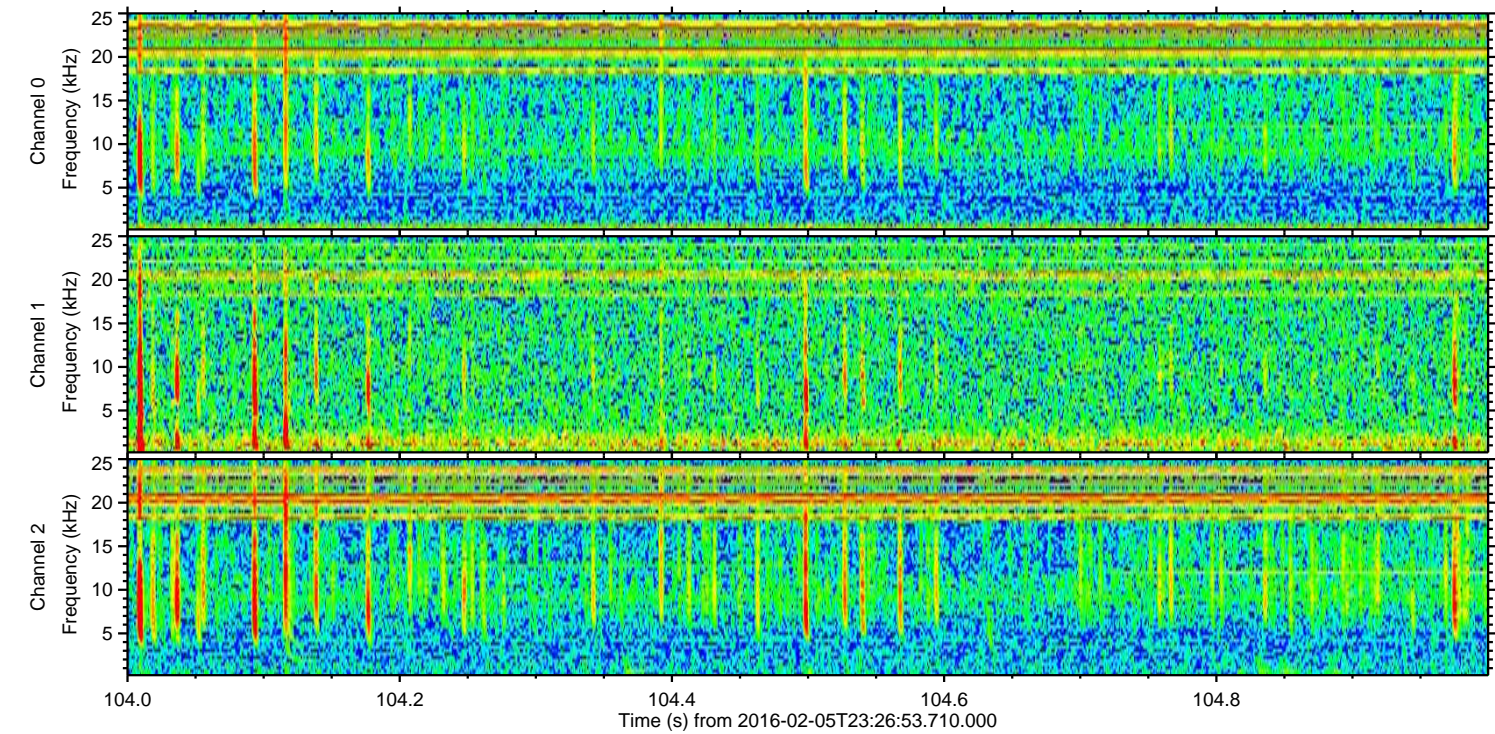
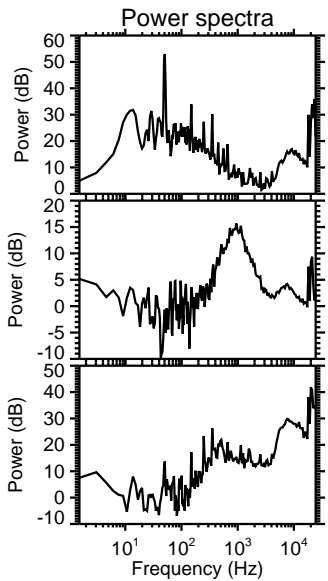
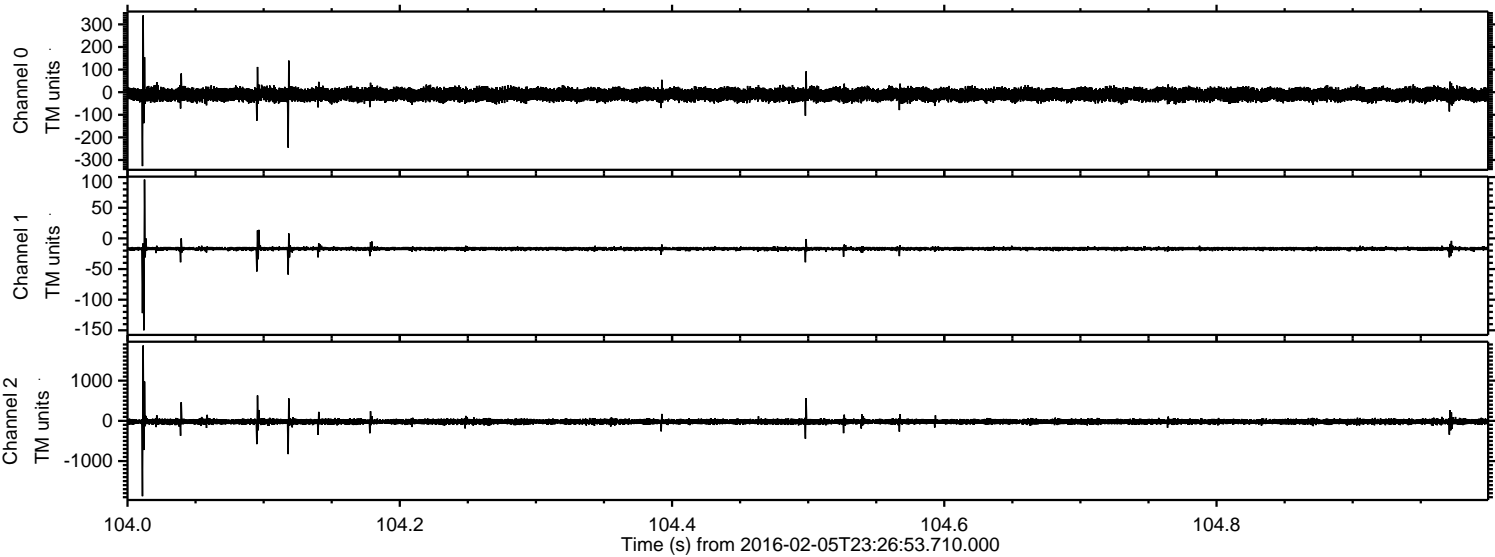
Processed Sat Apr 9 01:06:27 2016 by ELM ver.2012-10-06 from 001\_\_elm20160205\_232652\_\_dat00.bin





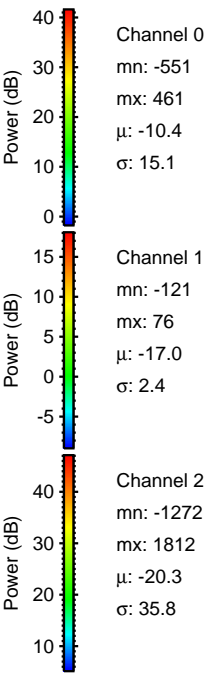
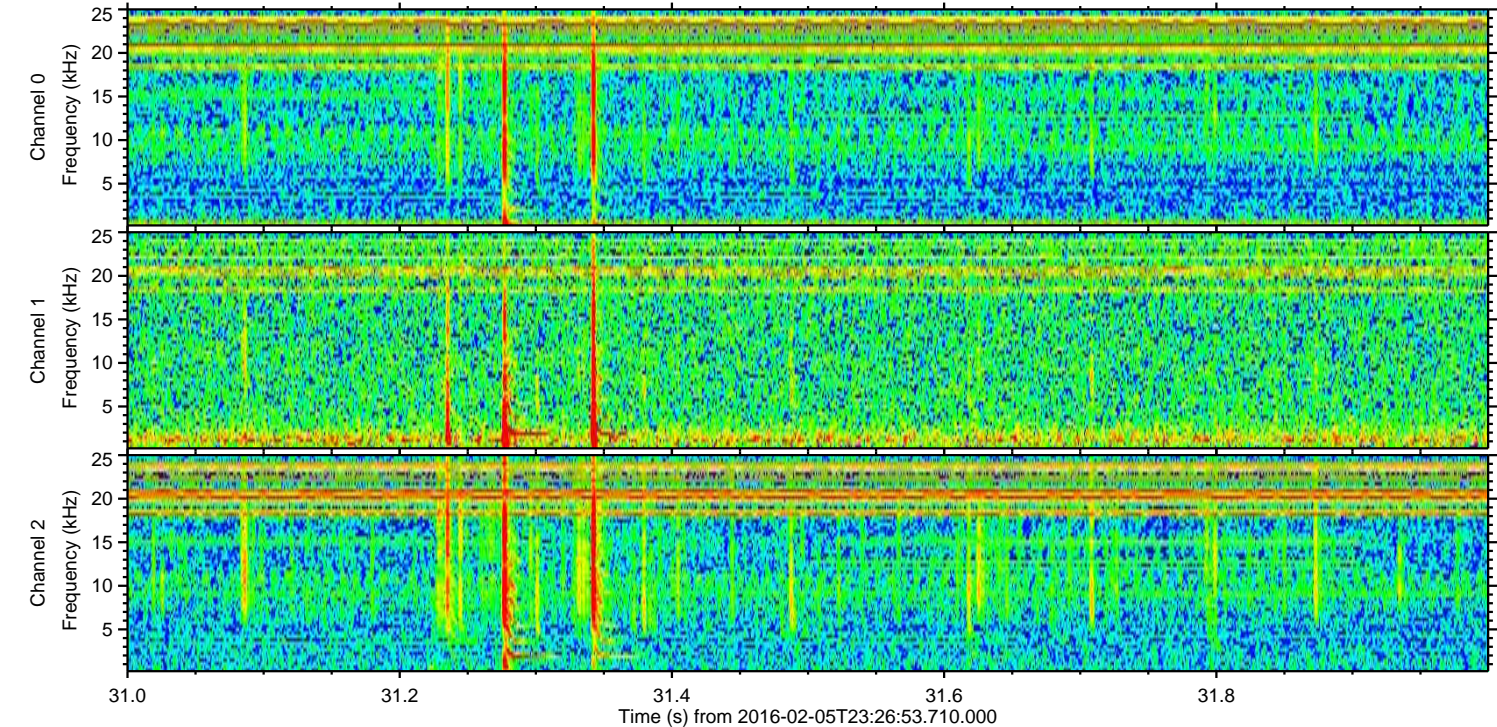
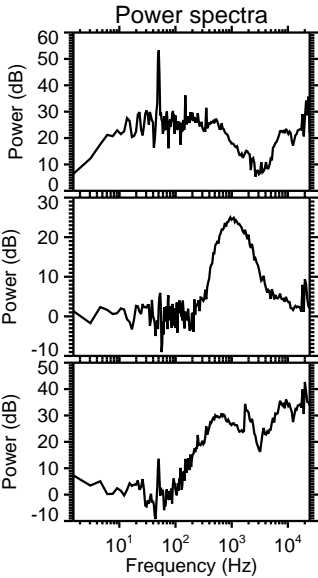
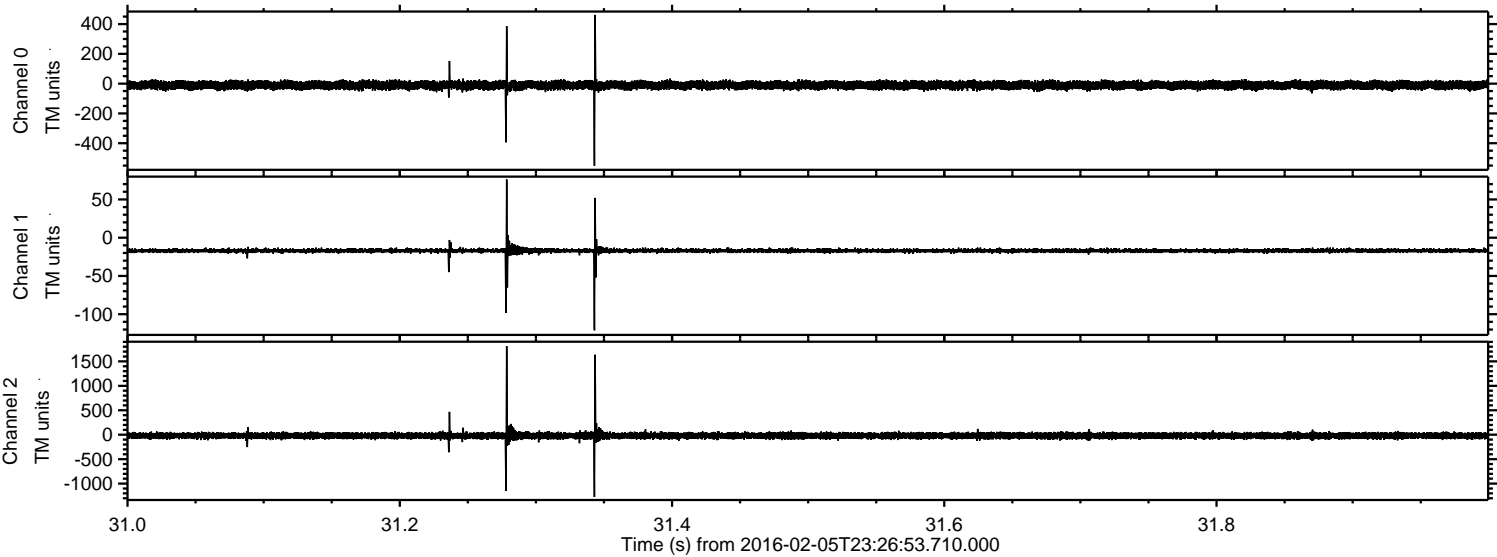
ELMAVAN 3D WAVEFORMS (Measured data sampled at 50 kHz) 51000 packets of 144 samples from 2016-02-05T23:26:53.710.000. Part 105/147

Processed Sat Apr 9 01:06:28 2016 by ELM ver.2012-10-06 from 001\_\_elm20160205\_232652\_\_dat00.bin



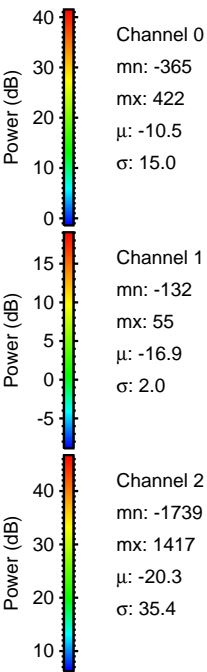
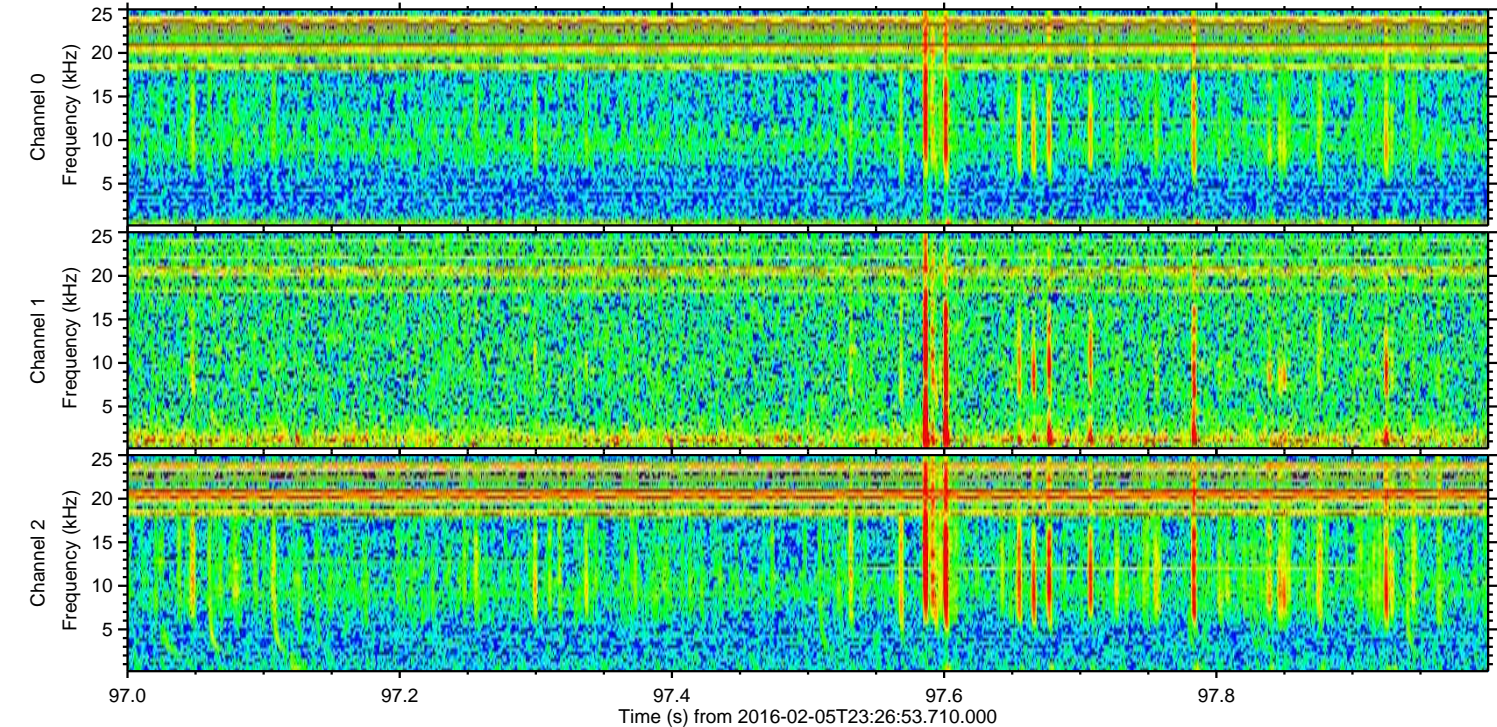
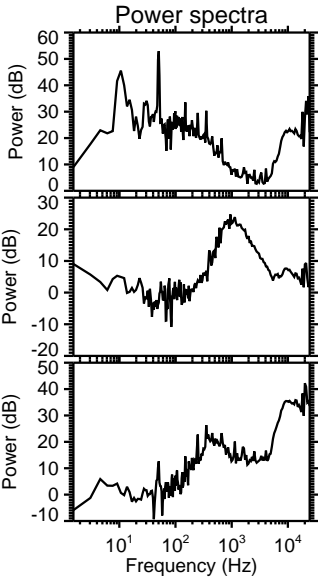
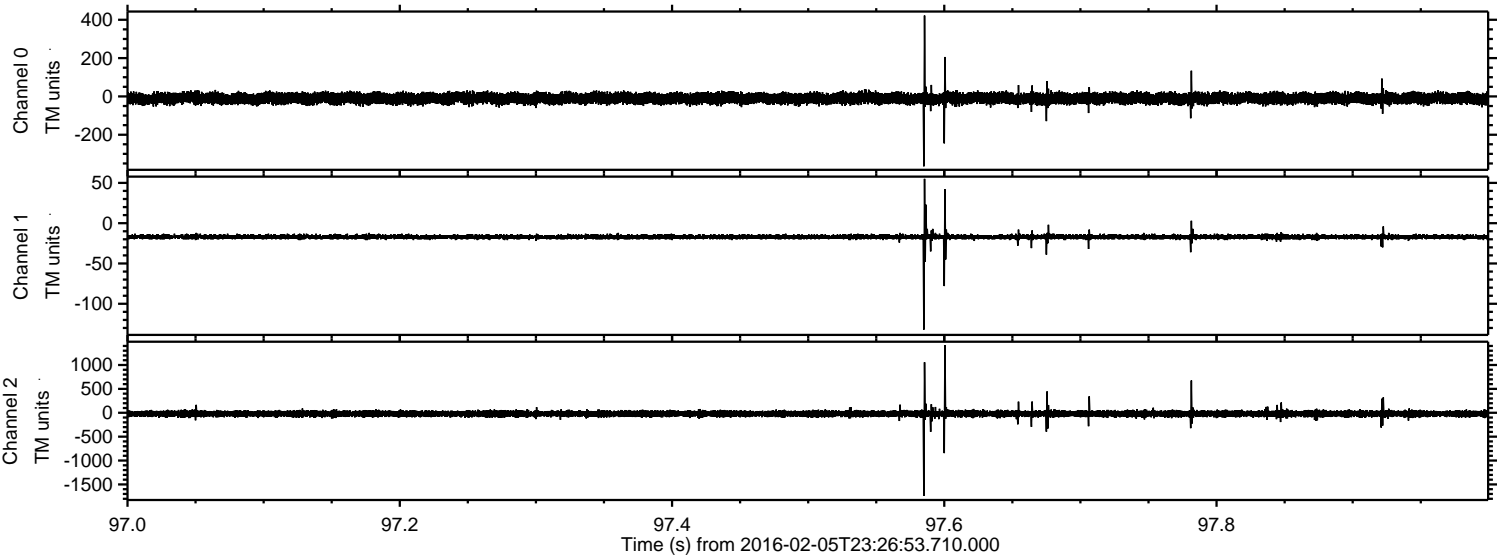


Processed Sat Apr 9 01:06:29 2016 by ELM ver.2012-10-06 from 001\_\_elm20160205\_232652\_\_dat00.bin



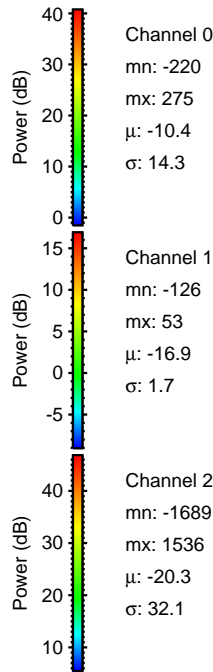
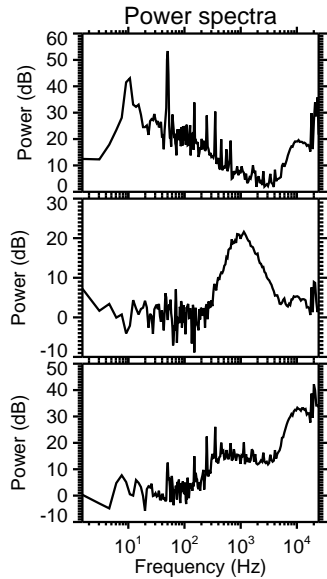
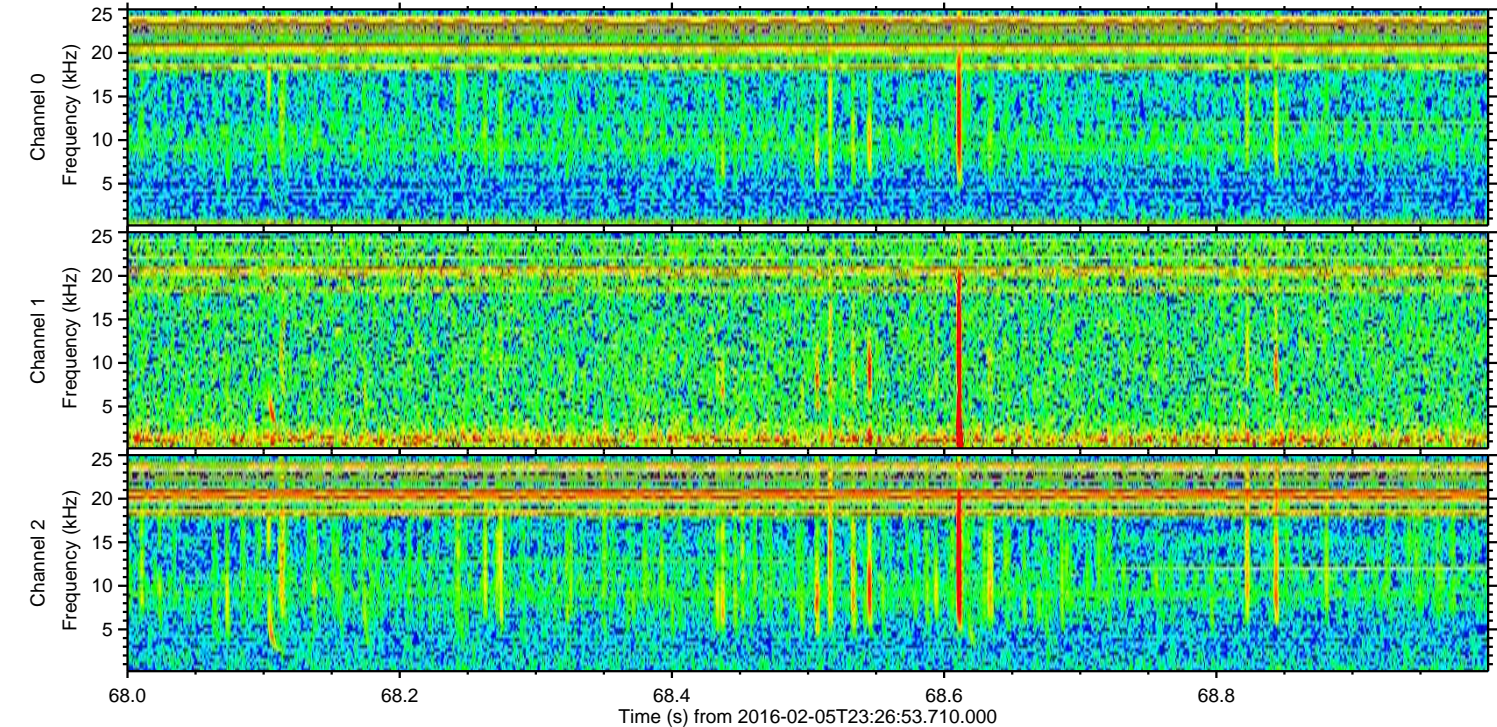
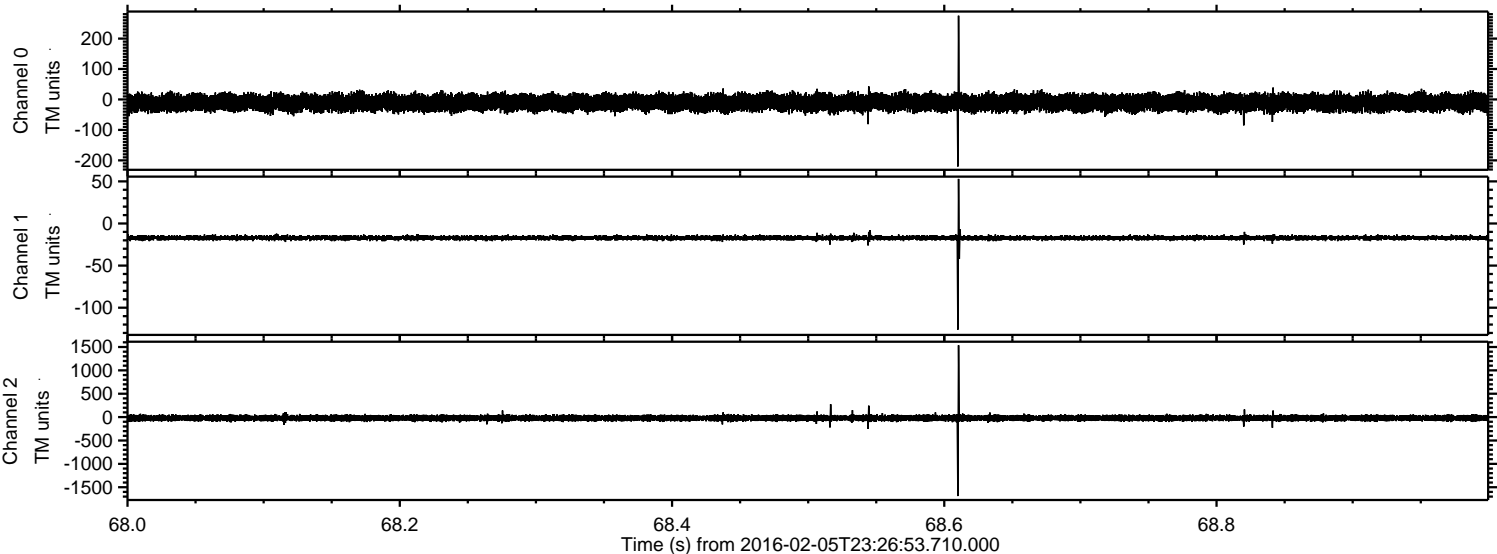


Processed Sat Apr 9 01:06:30 2016 by ELM ver.2012-10-06 from 001\_\_elm20160205\_232652\_\_dat00.bin





Processed Sat Apr 9 01:06:31 2016 by ELM ver.2012-10-06 from 001\_\_elm20160205\_232652\_\_dat00.bin





Processed Sat Apr 9 01:06:32 2016 by ELM ver.2012-10-06 from 001\_\_elm20160205\_232652\_\_dat00.bin

