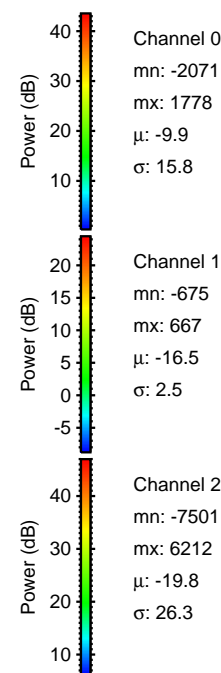
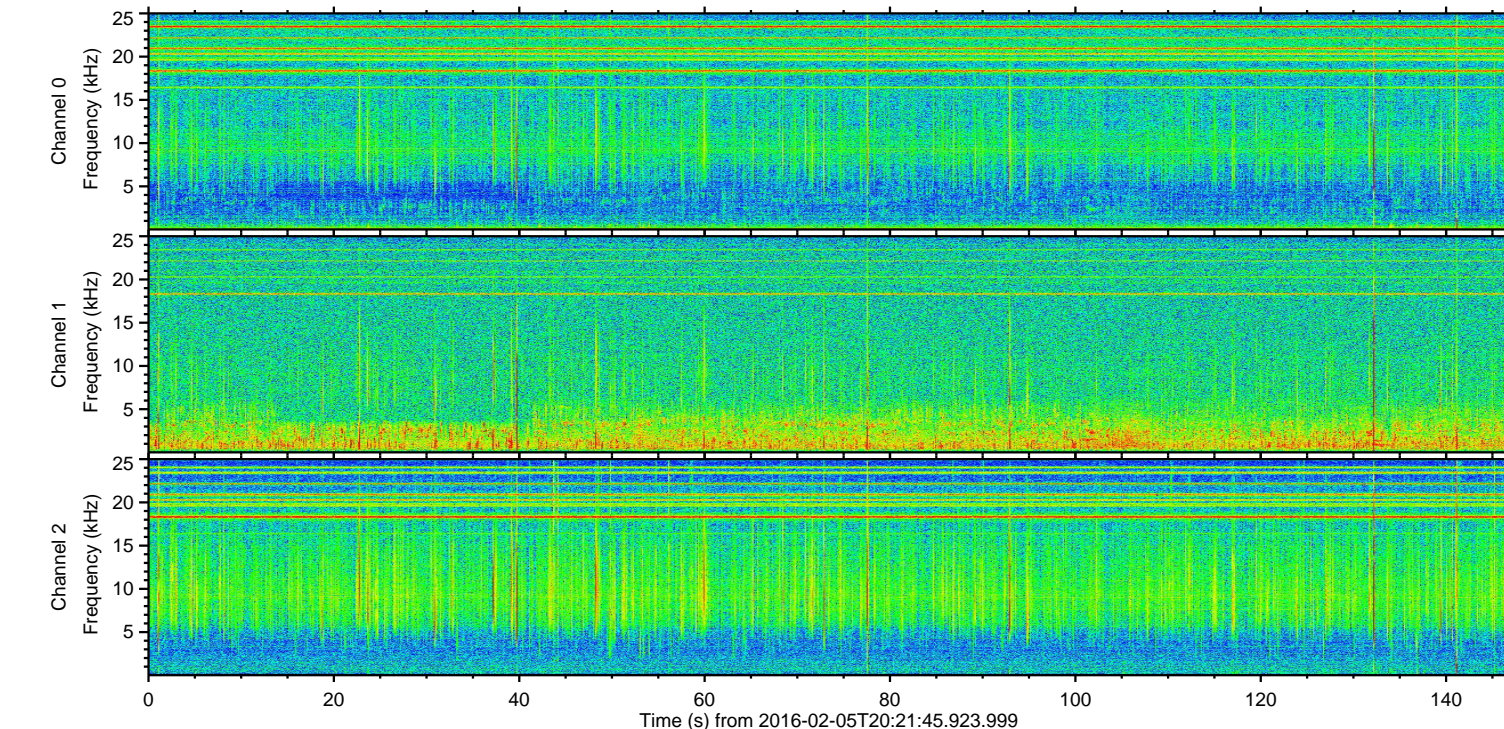
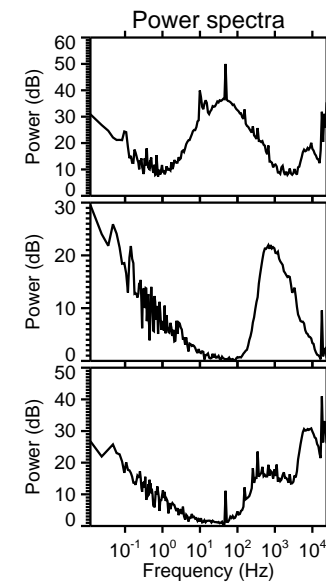
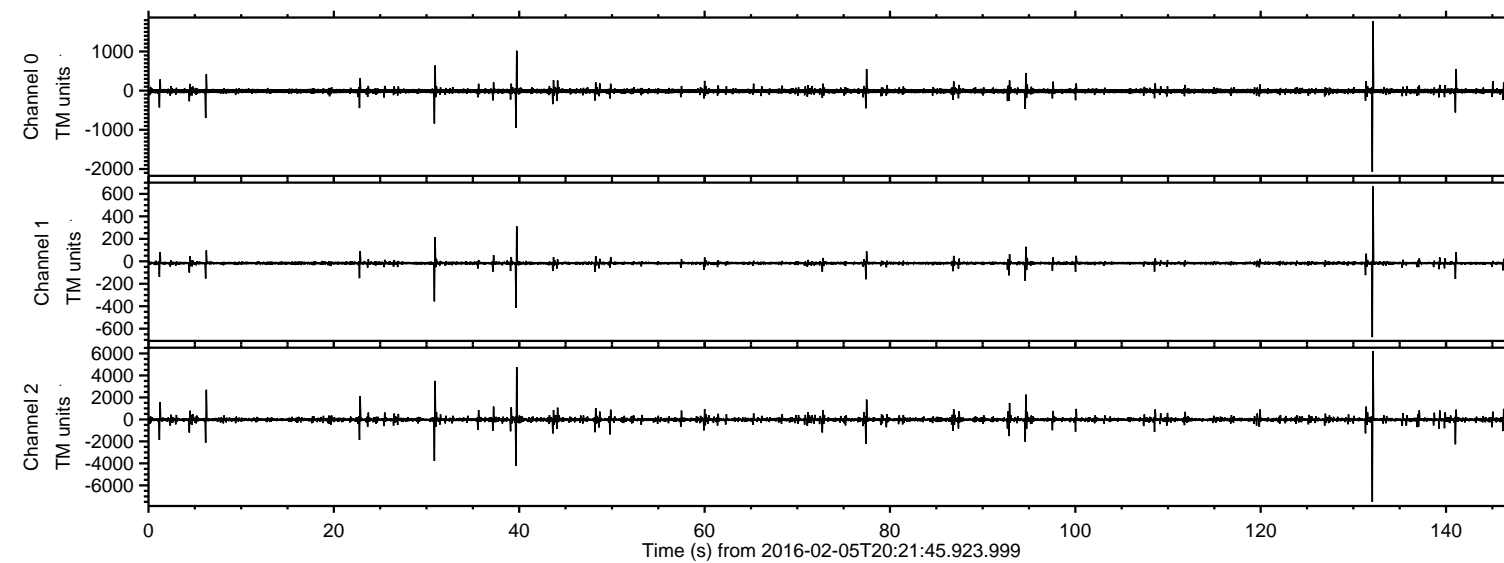


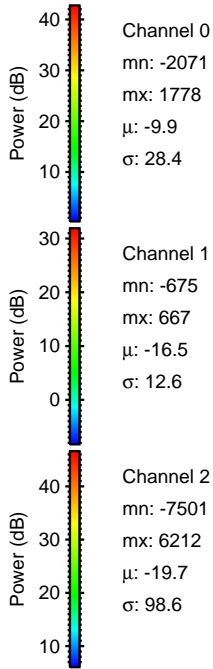
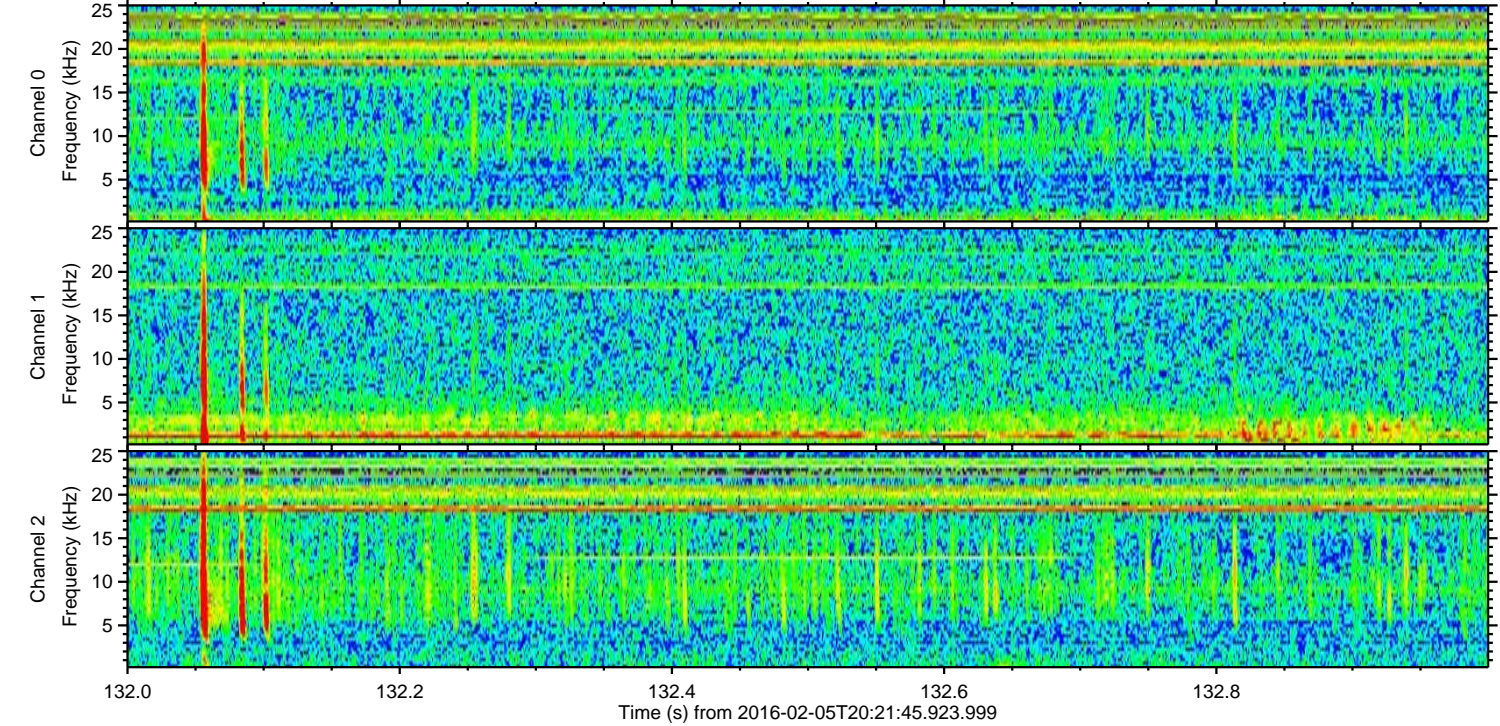
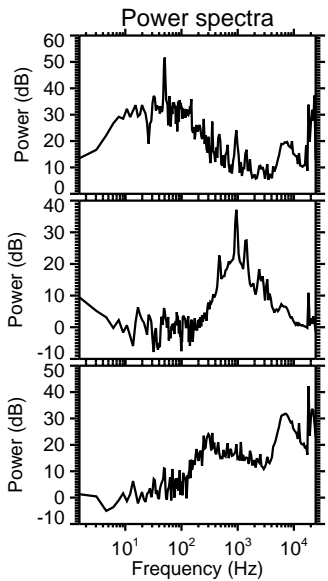
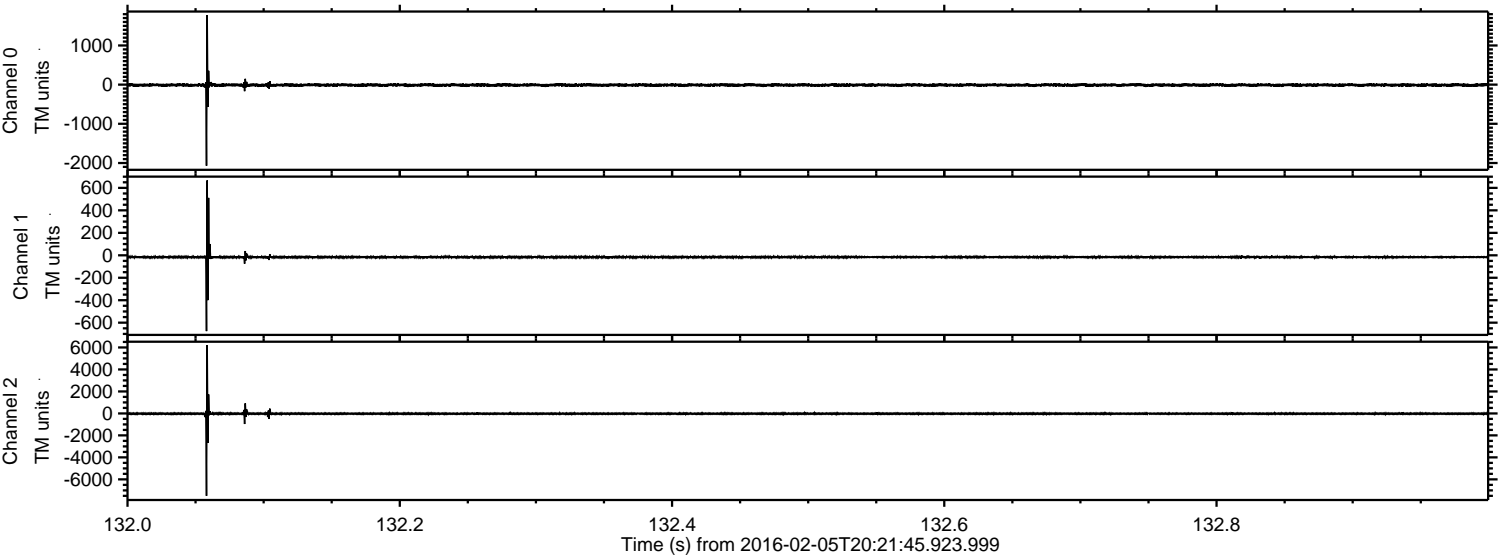
ELMAVAN 3D WAVEFORMS (Measured data sampled at 50 kHz) 51000 packets of 144 samples from 2016-02-05T20:21:45.923.999.

Processed Sat Apr 9 00:28:47 2016 by ELM ver.2012-10-06 from 001__elm20160205_202144__dat00.bin



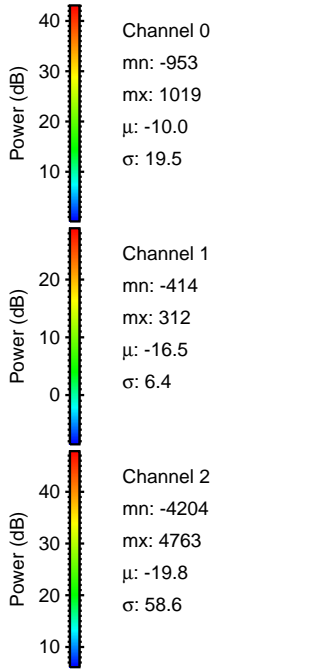
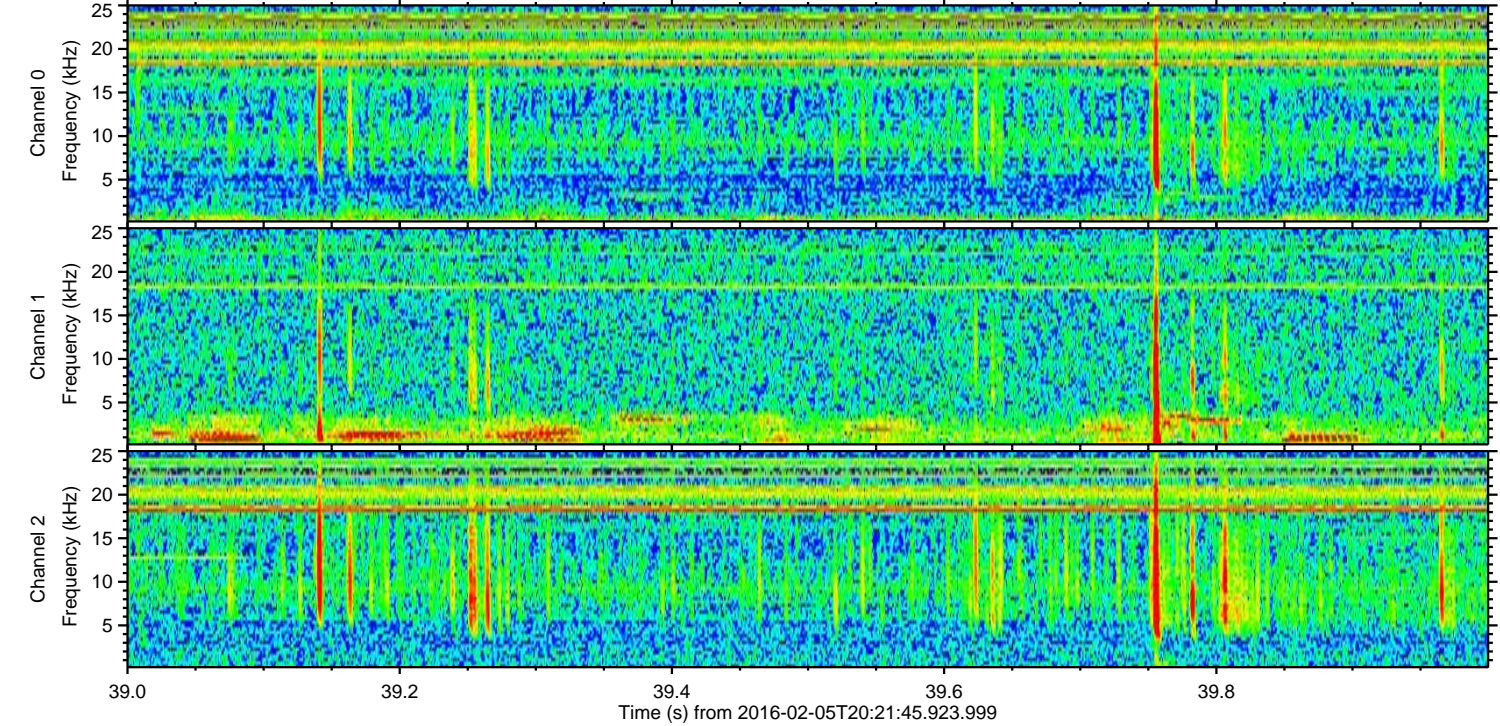
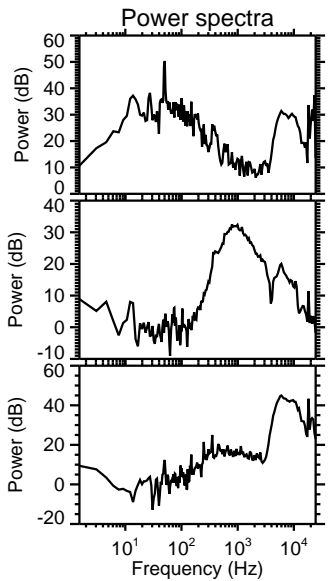
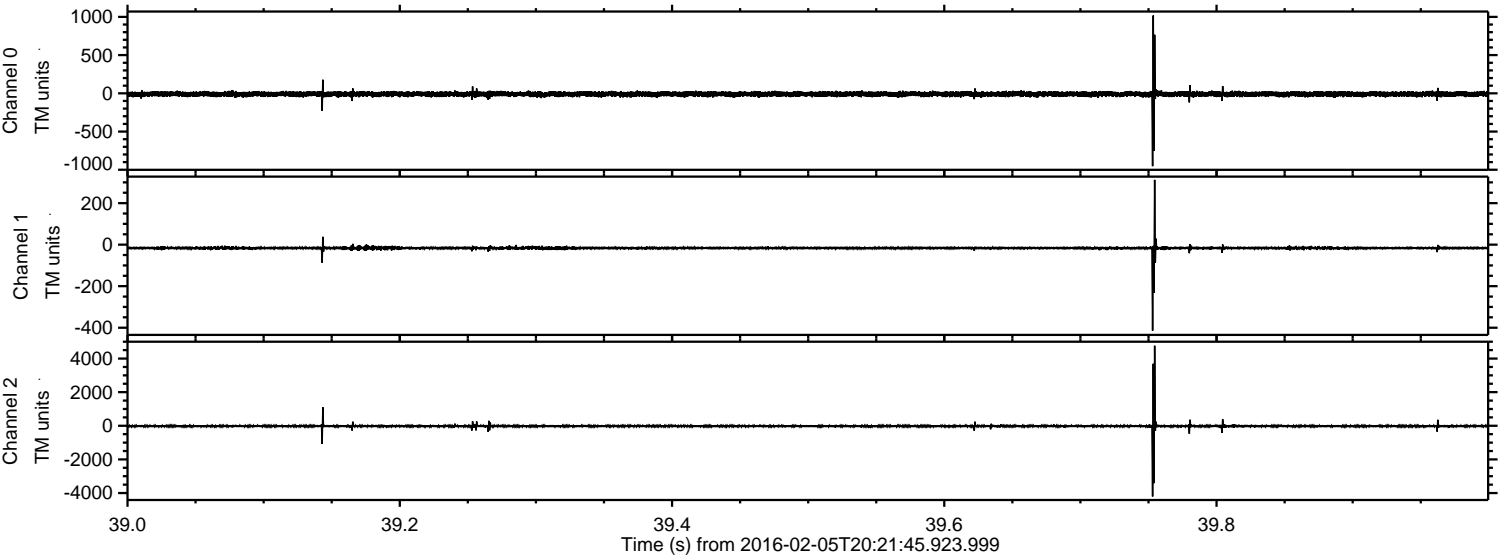
ELMAVAN 3D WAVEFORMS (Measured data sampled at 50 kHz) 51000 packets of 144 samples from 2016-02-05T20:21:45.923.999. Part 133/147

Processed Sat Apr 9 00:28:59 2016 by ELM ver.2012-10-06 from 001__elm20160205_202144__dat00.bin

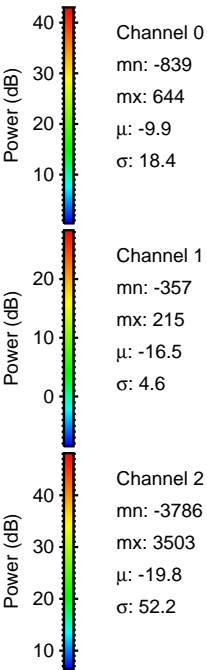
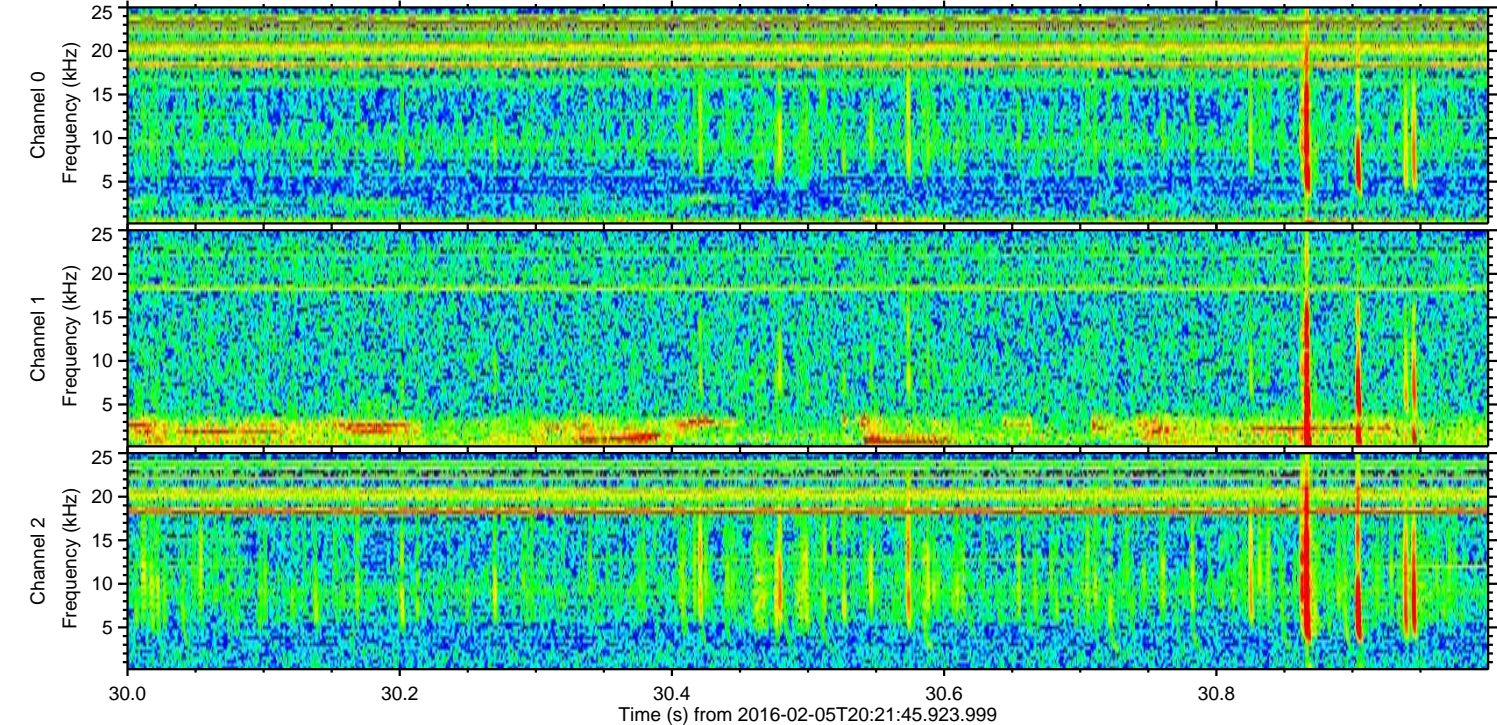
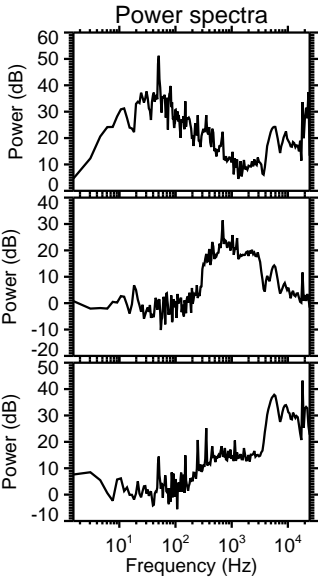
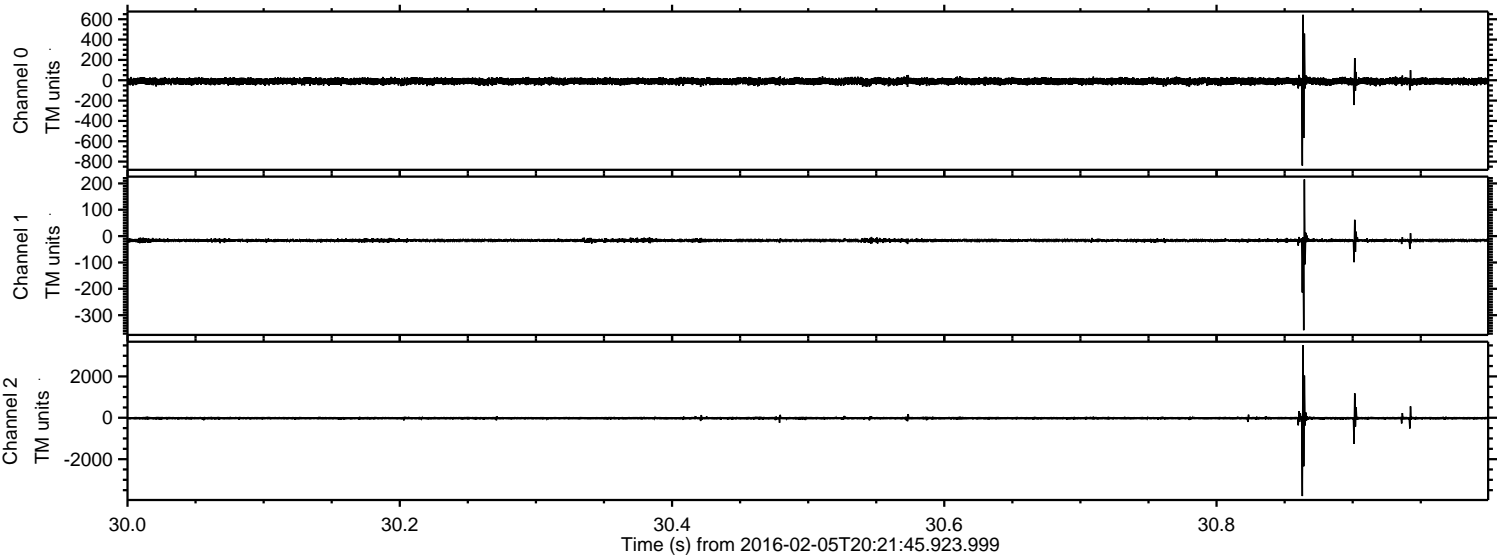


ELMAVAN 3D WAVEFORMS (Measured data sampled at 50 kHz) 51000 packets of 144 samples from 2016-02-05T20:21:45.923.999. Part 40/147

Processed Sat Apr 9 00:29:00 2016 by ELM ver.2012-10-06 from 001__elm20160205_202144__dat00.bin

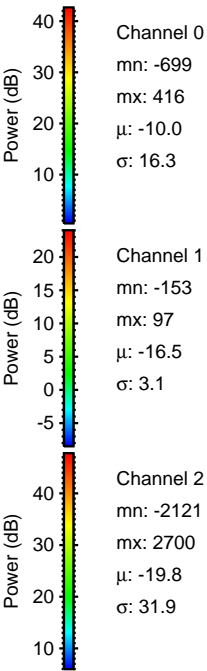
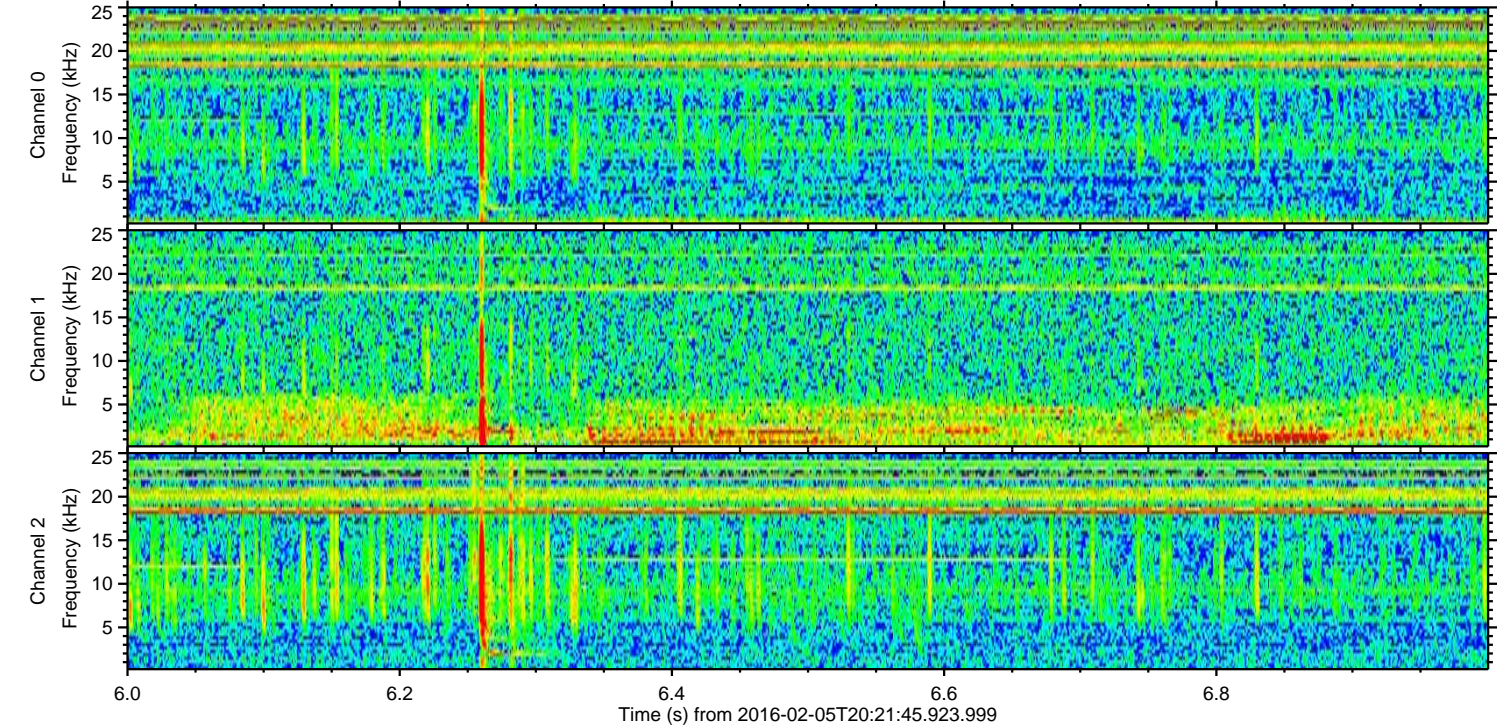
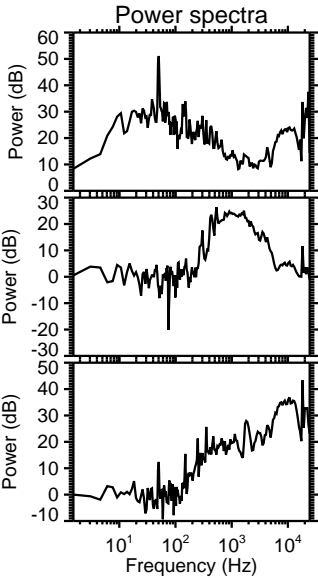
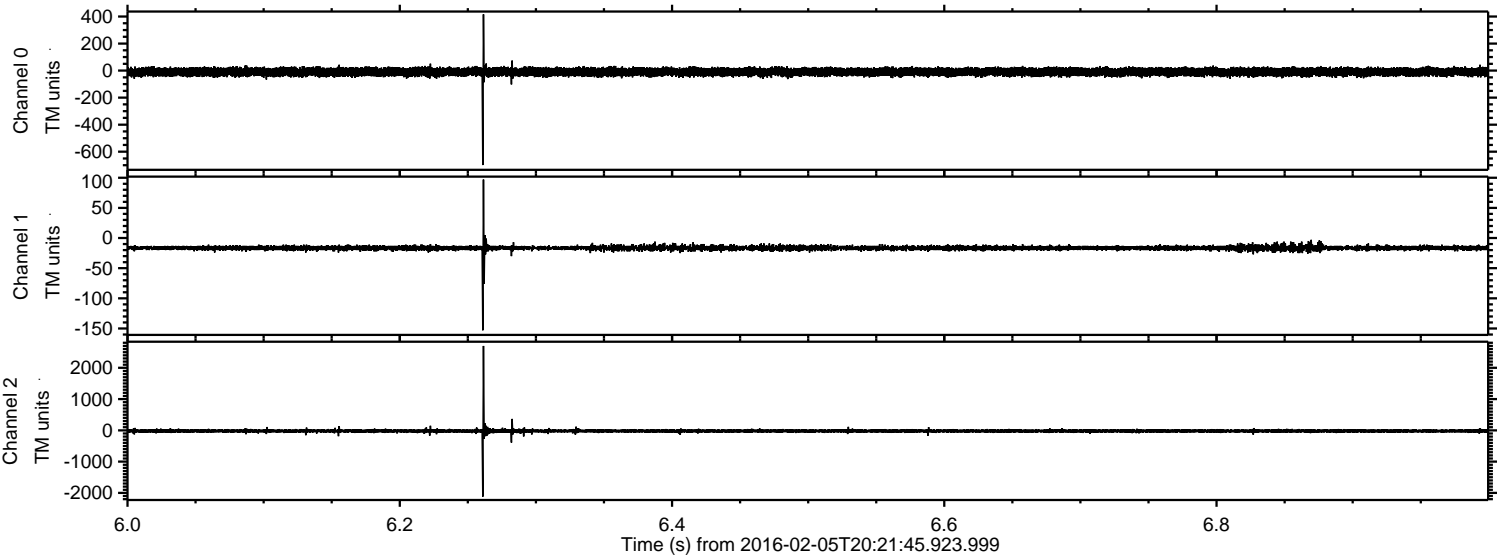


Processed Sat Apr 9 00:29:01 2016 by ELM ver.2012-10-06 from 001__elm20160205_202144__dat00.bin



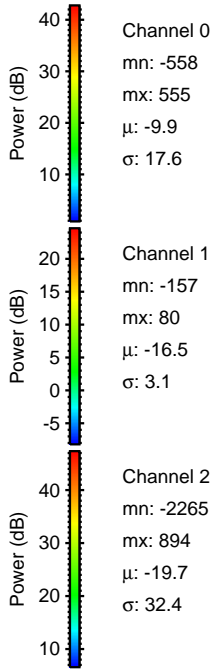
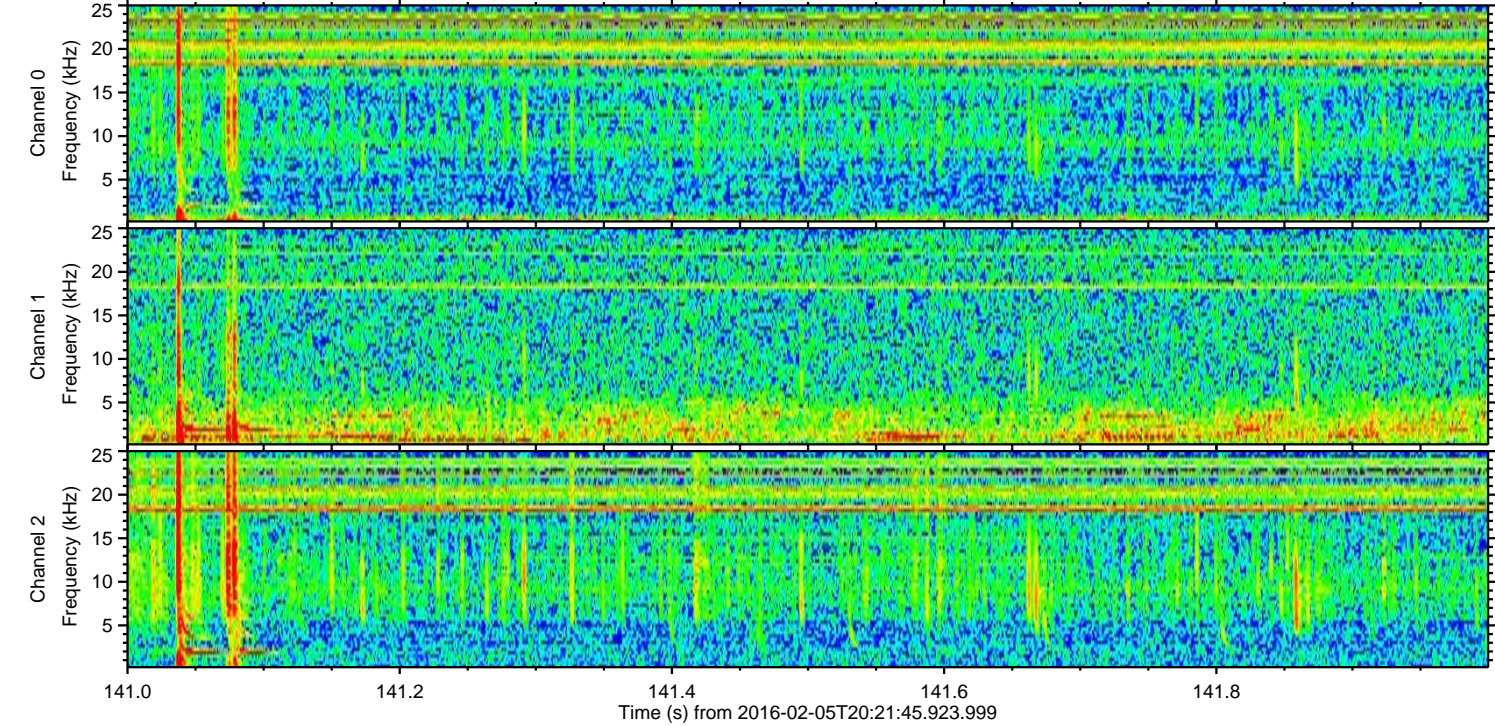
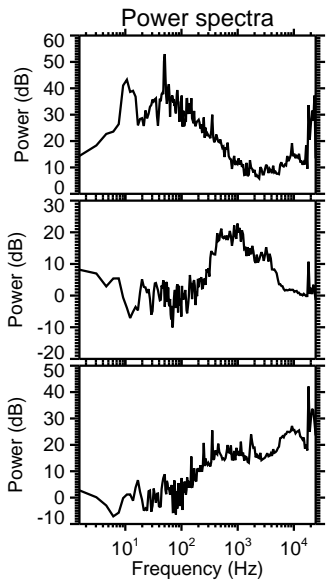
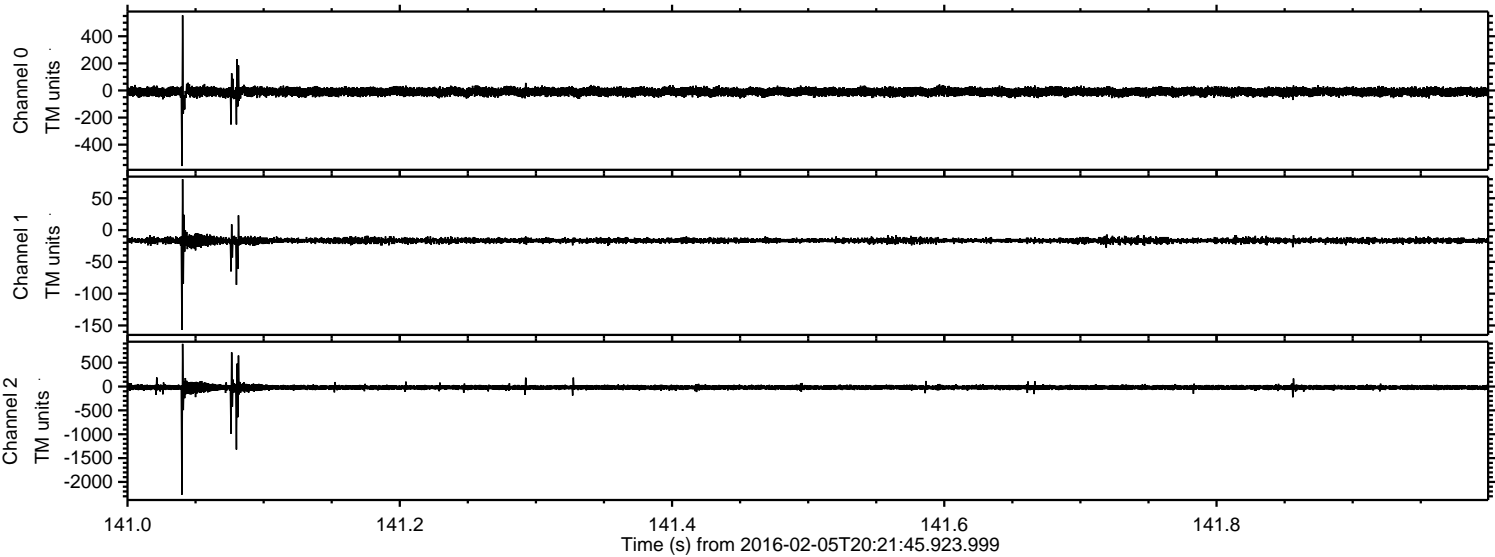
ELMAVAN 3D WAVEFORMS (Measured data sampled at 50 kHz) 51000 packets of 144 samples from 2016-02-05T20:21:45.923.999. Part 7/147

Processed Sat Apr 9 00:29:01 2016 by ELM ver.2012-10-06 from 001__elm20160205_202144__dat00.bin

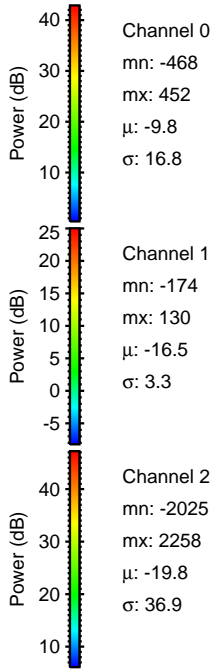
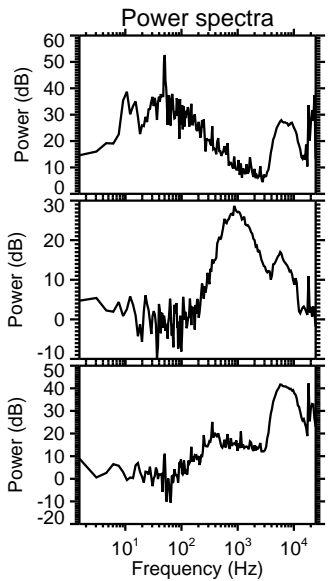
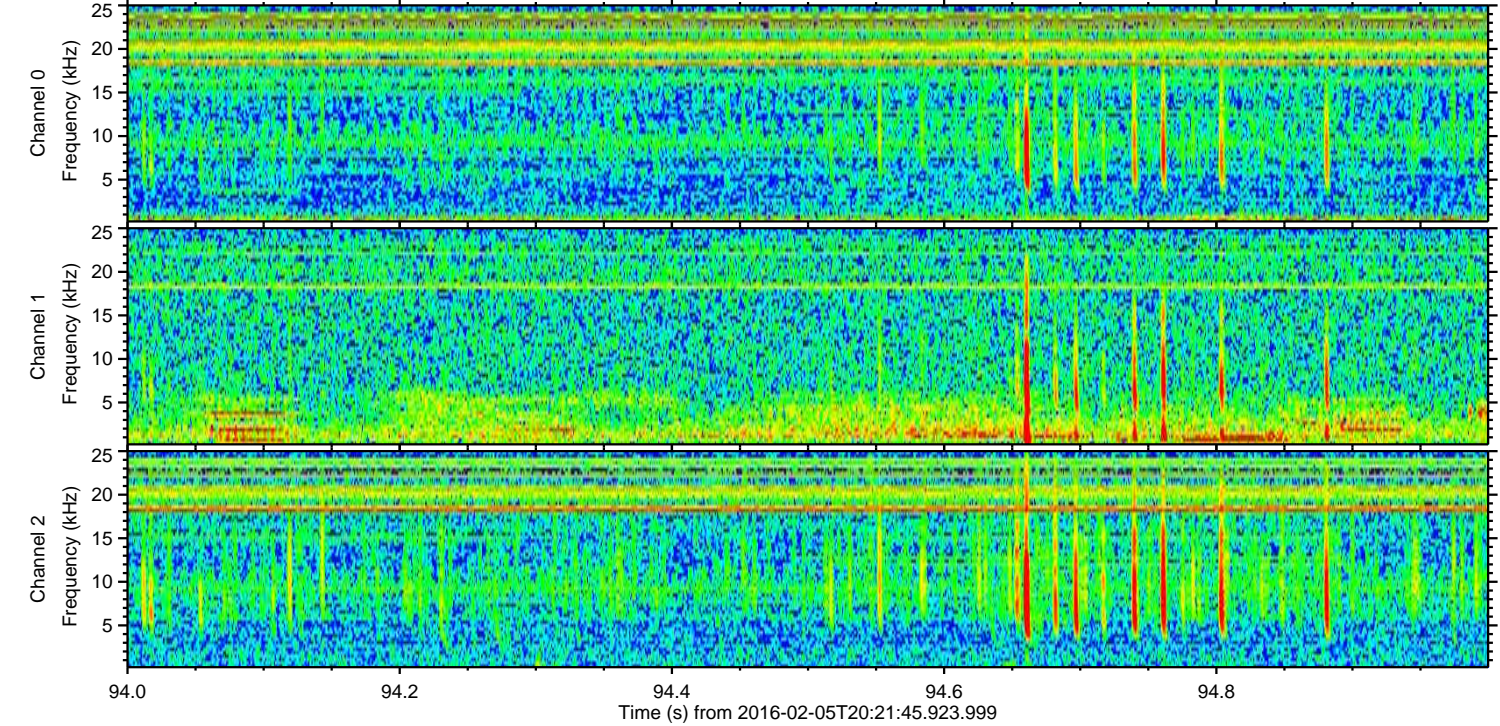
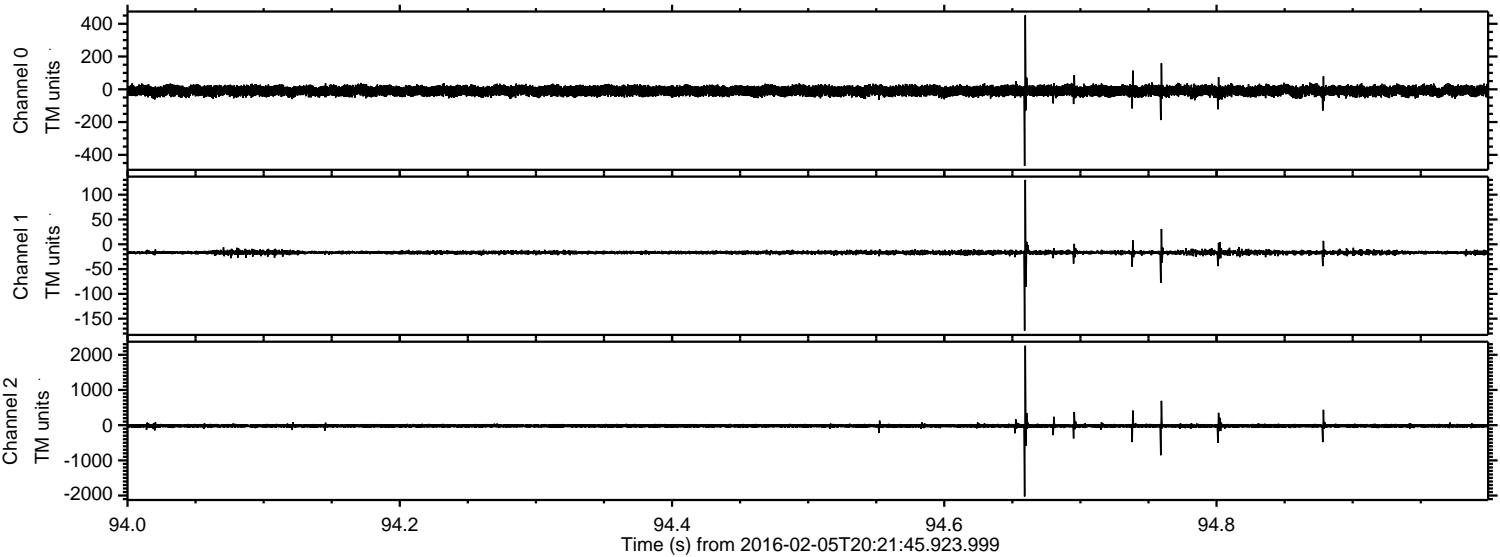


ELMAVAN 3D WAVEFORMS (Measured data sampled at 50 kHz) 51000 packets of 144 samples from 2016-02-05T20:21:45.923.999. Part 142/147

Processed Sat Apr 9 00:29:02 2016 by ELM ver.2012-10-06 from 001__elm20160205_202144__dat00.bin

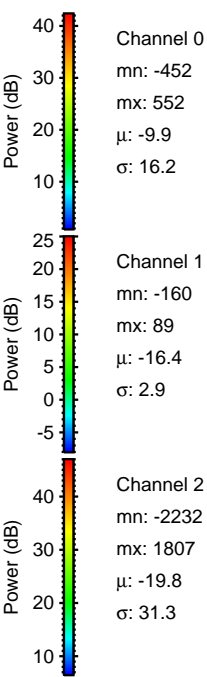
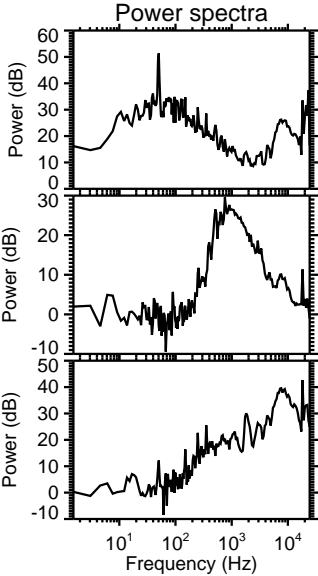
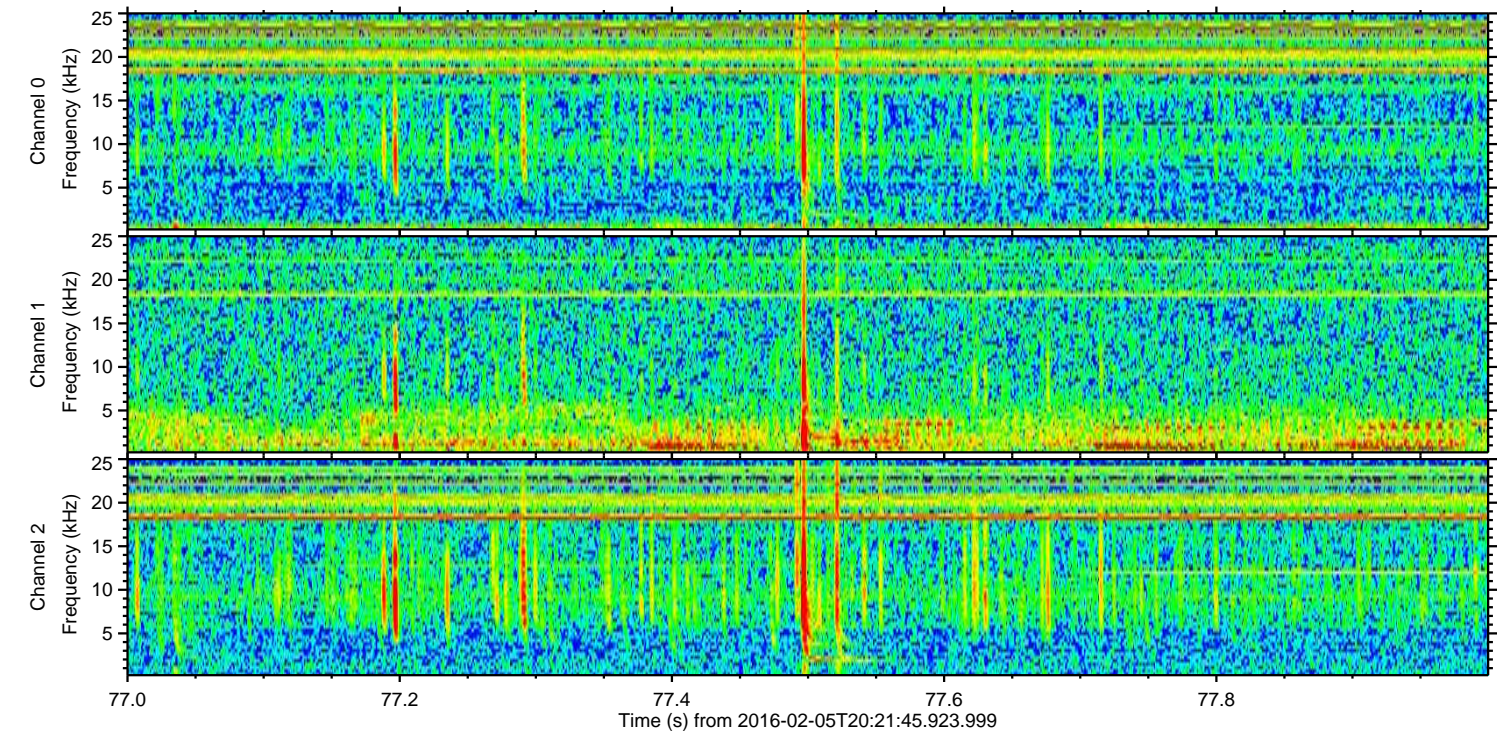
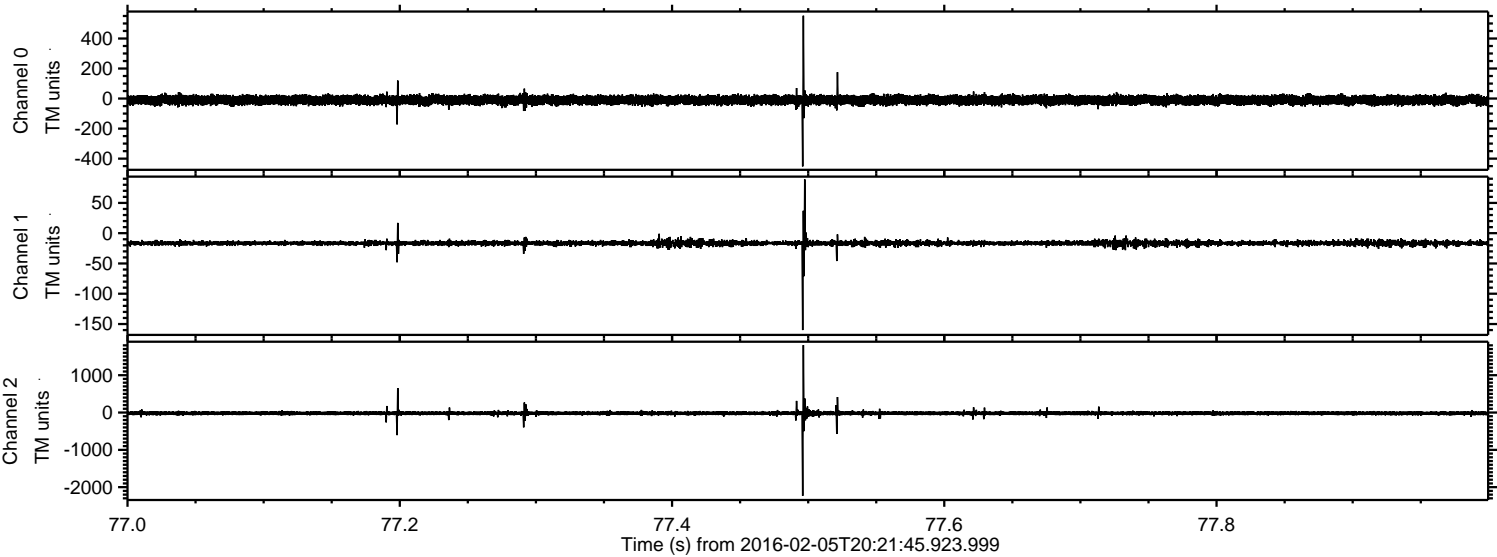


Processed Sat Apr 9 00:29:03 2016 by ELM ver.2012-10-06 from 001__elm20160205_202144__dat00.bin



ELMAVAN 3D WAVEFORMS (Measured data sampled at 50 kHz) 51000 packets of 144 samples from 2016-02-05T20:21:45.923.999. Part 78/147

Processed Sat Apr 9 00:29:04 2016 by ELM ver.2012-10-06 from 001__elm20160205_202144__dat00.bin

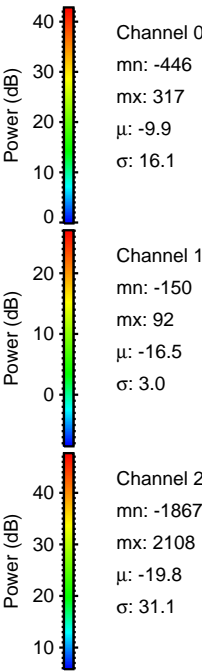
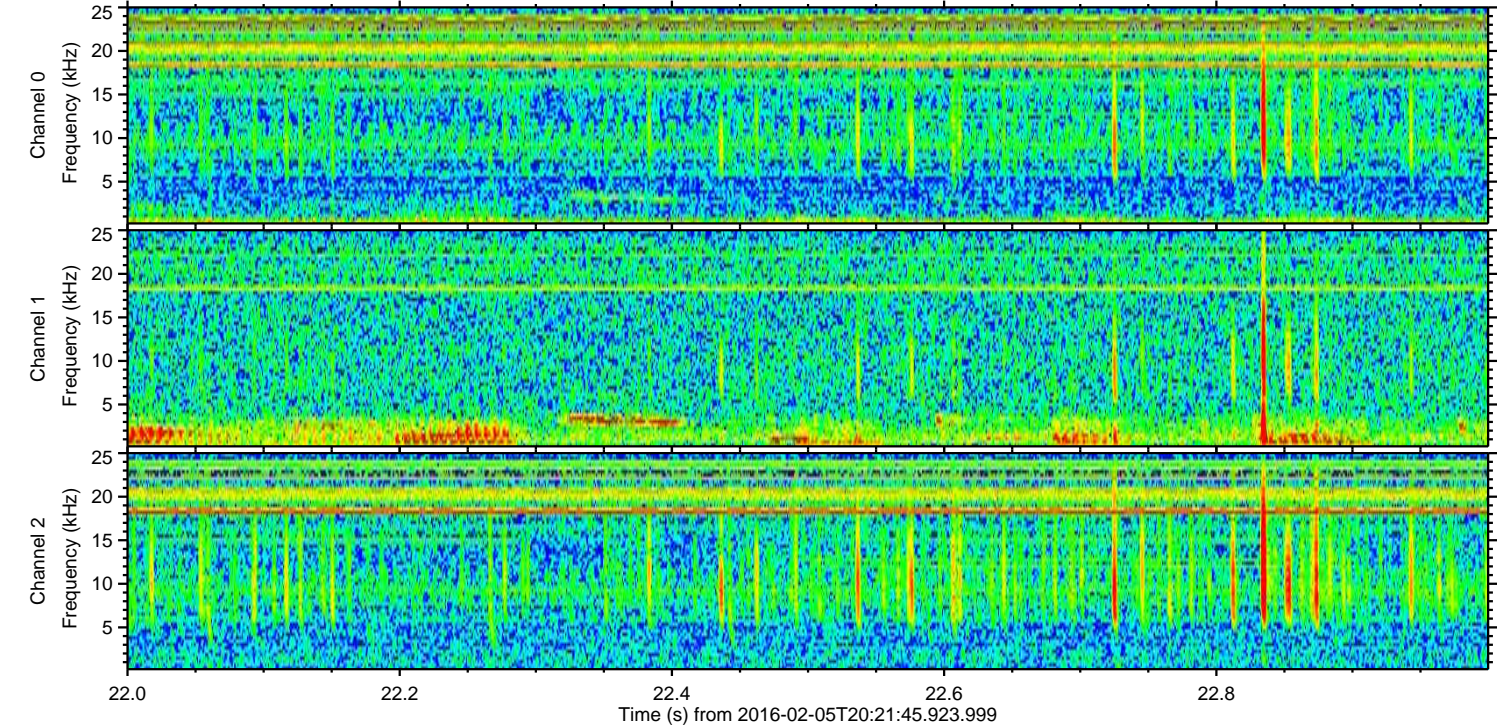
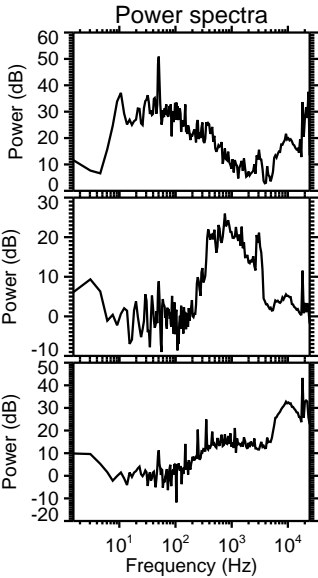
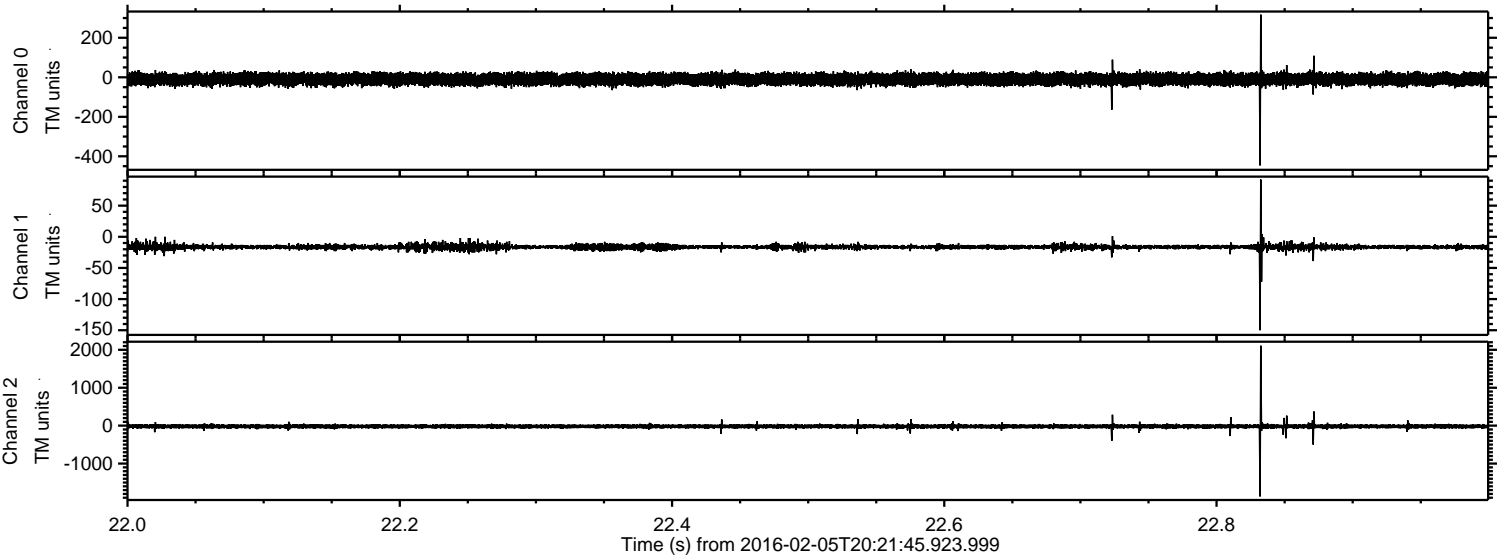


Channel 0
mn: -452
mx: 552
 μ : -9.9
 σ : 16.2

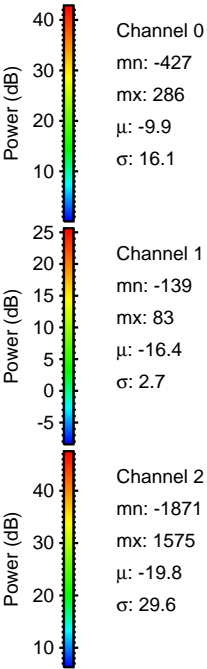
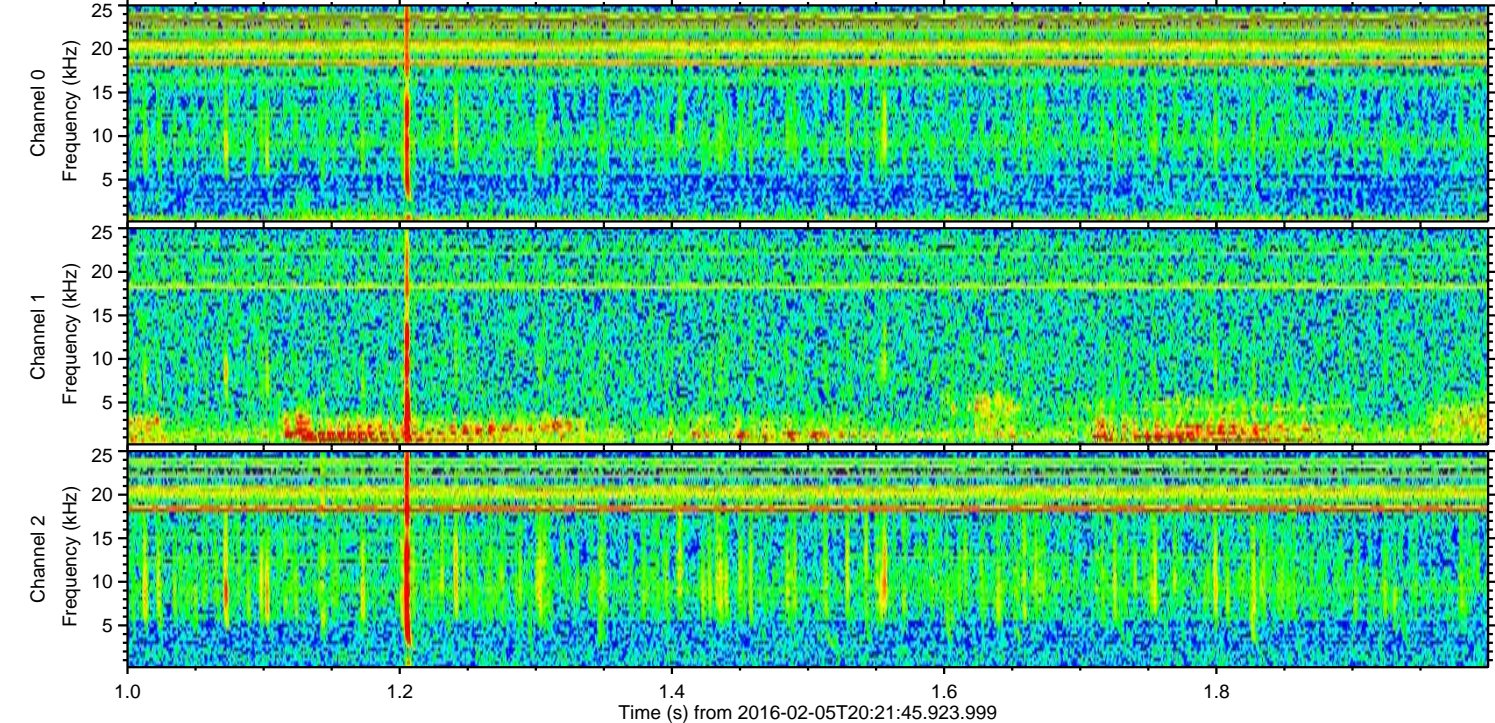
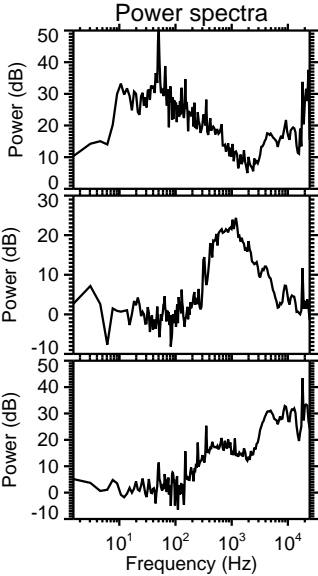
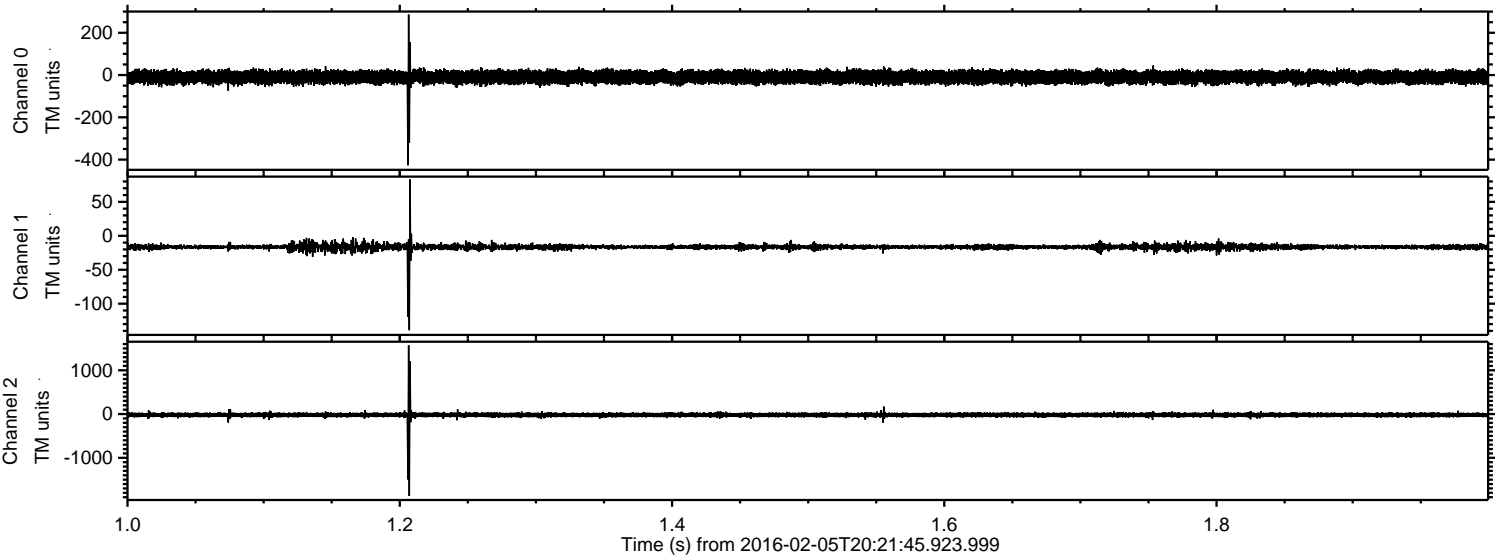
Channel 1
mn: -160
mx: 89
 μ : -16.4
 σ : 2.9

Channel 2
mn: -2232
mx: 1807
 μ : -19.8
 σ : 31.3

Processed Sat Apr 9 00:29:05 2016 by ELM ver.2012-10-06 from 001__elm20160205_202144__dat00.bin



Processed Sat Apr 9 00:29:06 2016 by ELM ver.2012-10-06 from 001__elm20160205_202144__dat00.bin



Processed Sat Apr 9 00:29:07 2016 by ELM ver.2012-10-06 from 001__elm20160205_202144__dat00.bin

