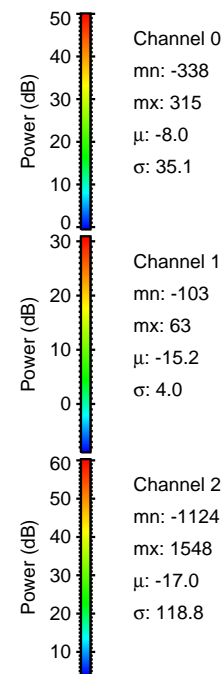
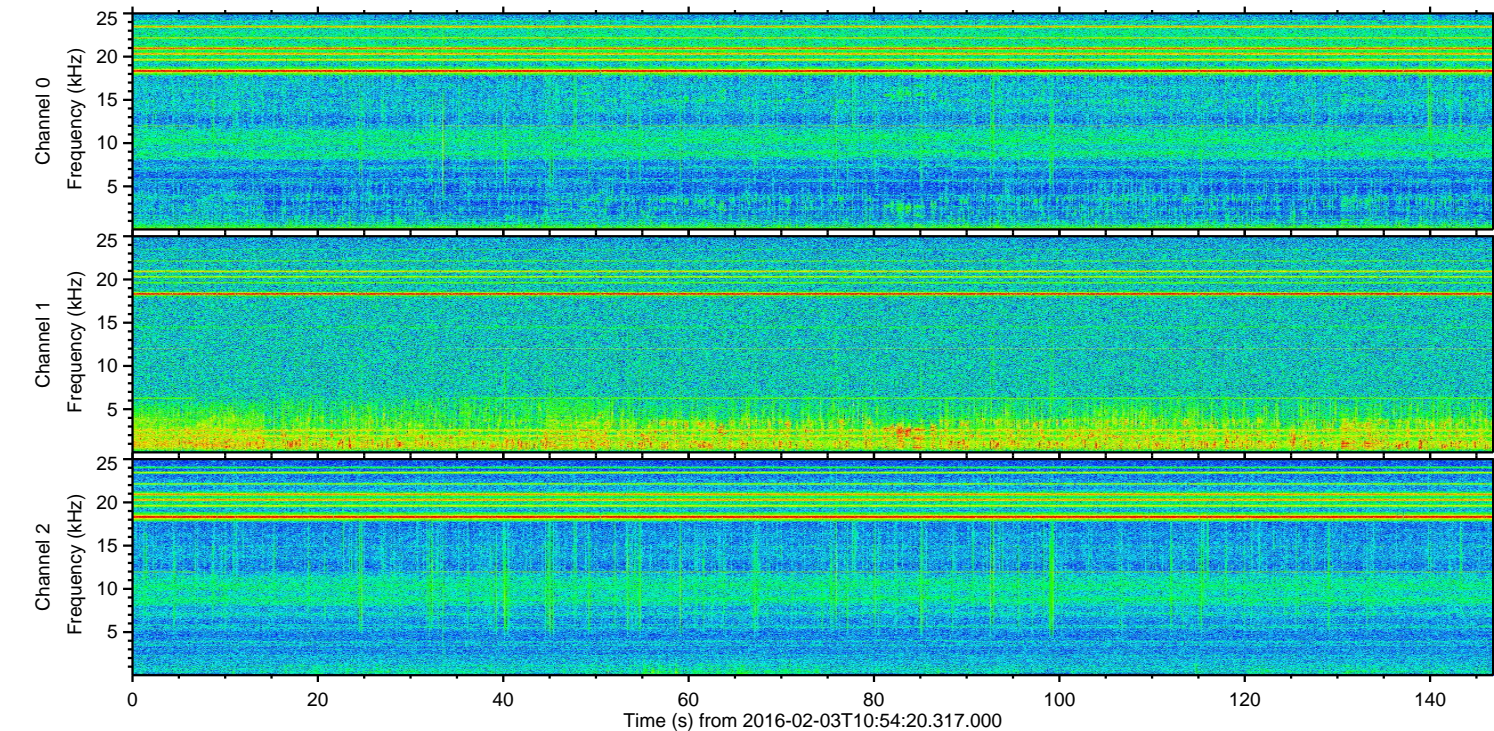
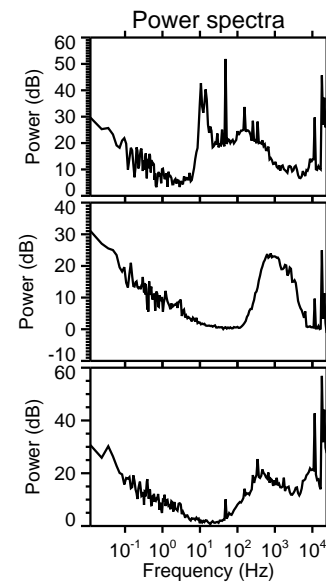
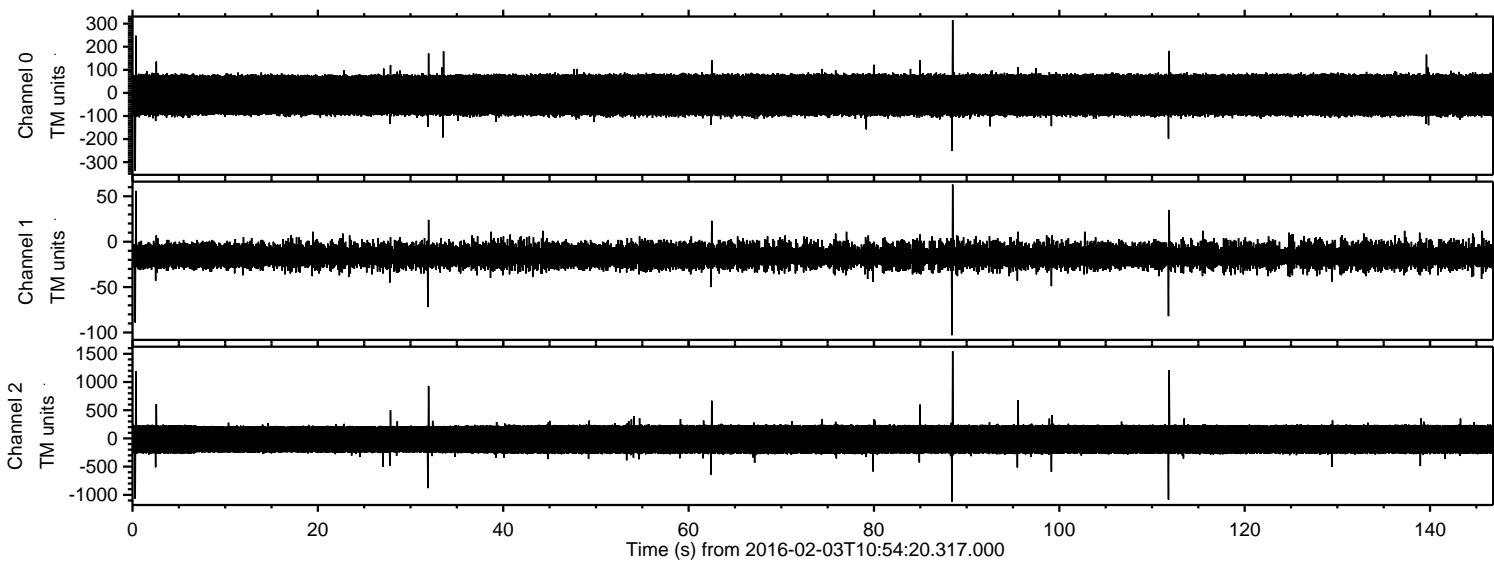


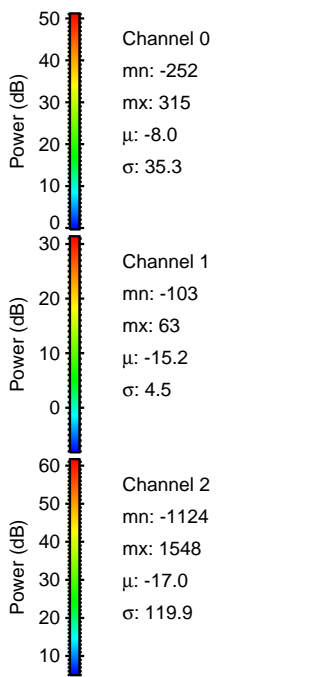
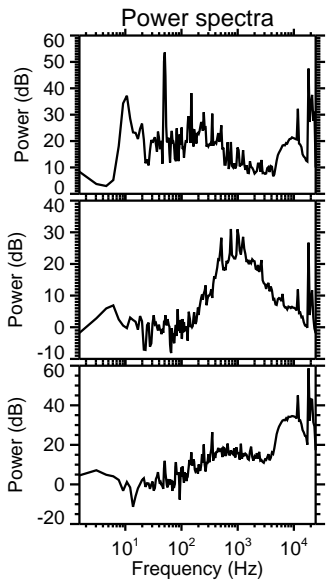
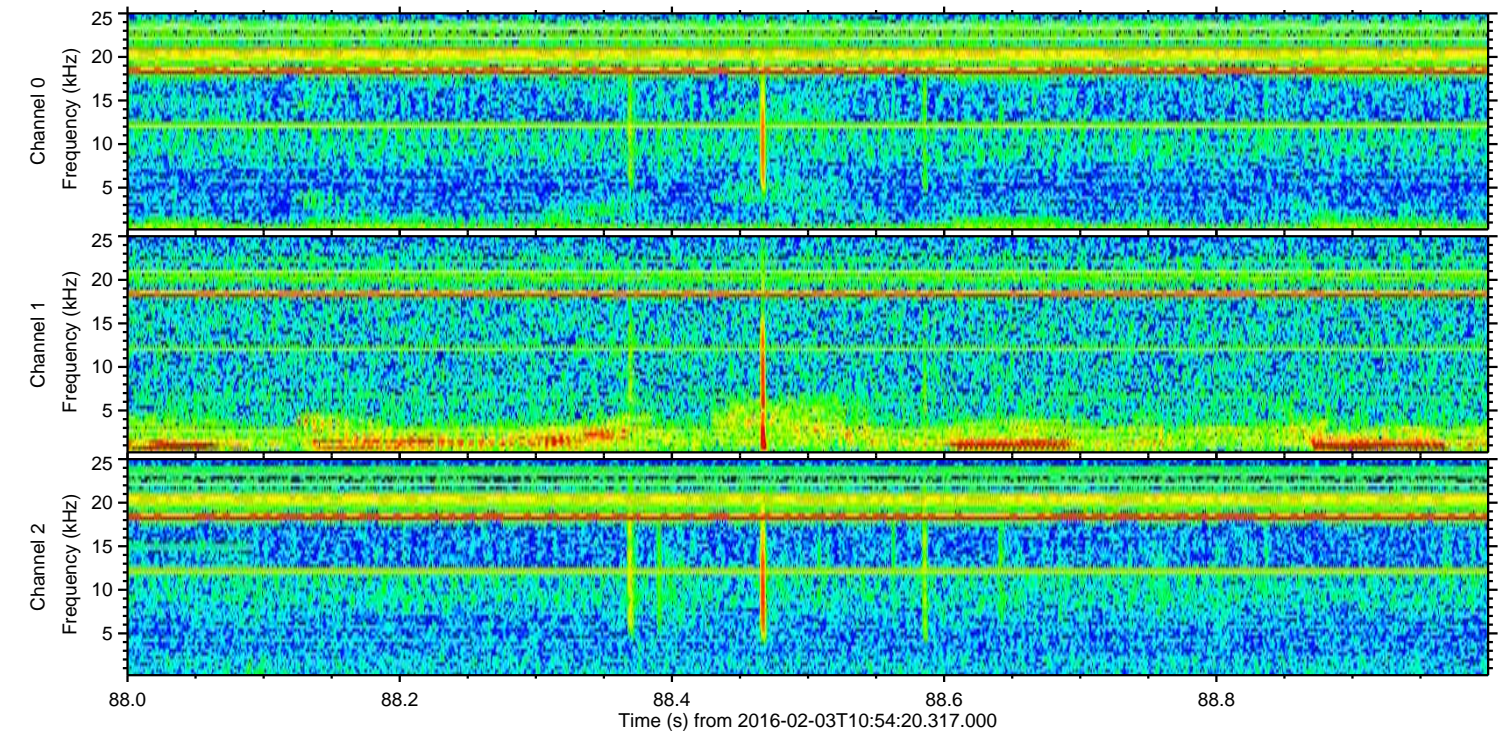
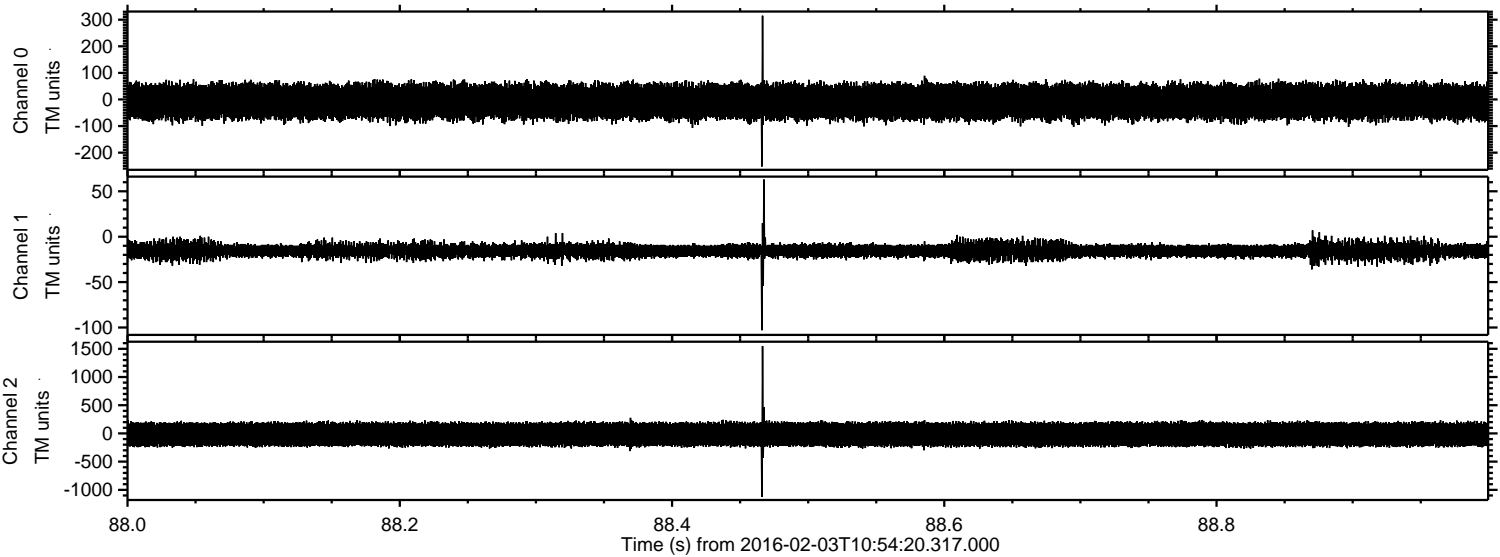
# ELMAVAN 3D WAVEFORMS (Measured data sampled at 50 kHz) 51000 packets of 144 samples from 2016-02-03T10:54:20.317.000.

Processed Fri Apr 8 12:47:37 2016 by ELM ver.2012-10-06 from 001\_\_elm20160203\_105419\_\_dat00.bin





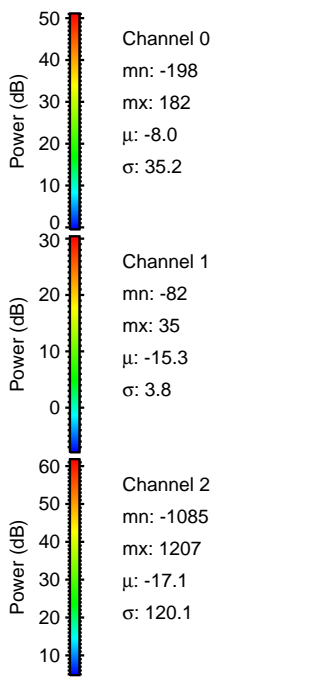
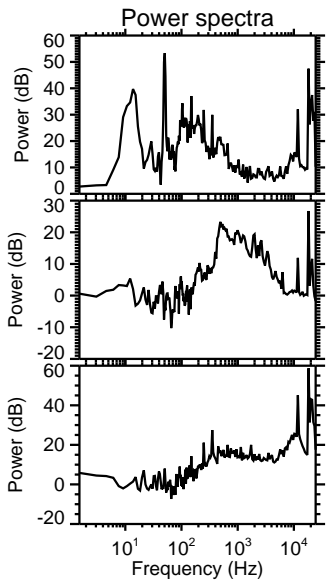
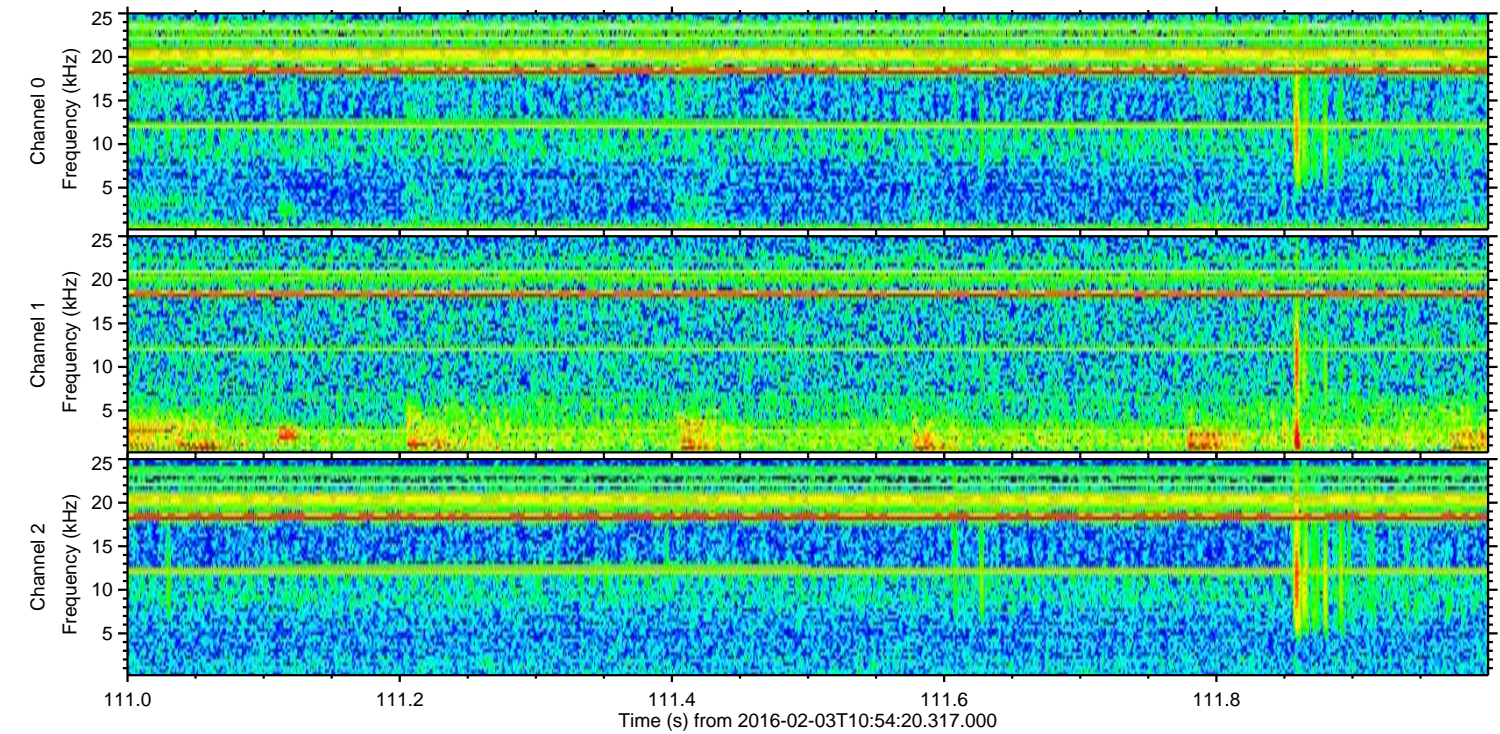
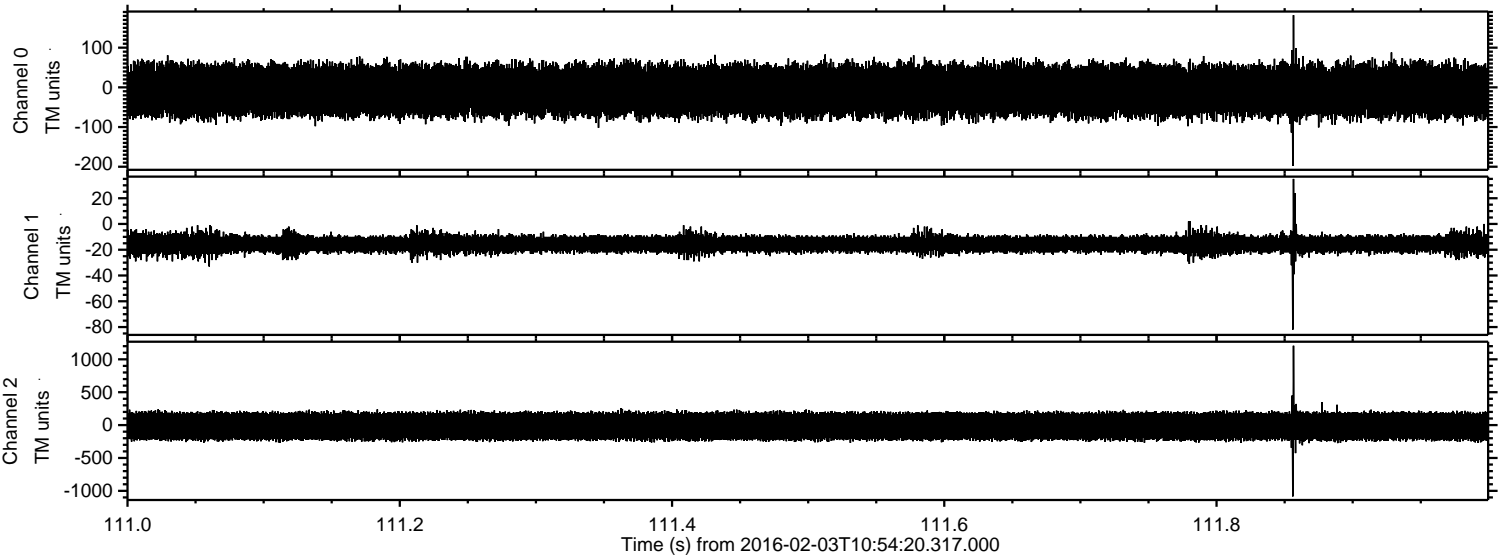
Processed Fri Apr 8 12:47:49 2016 by ELM ver.2012-10-06 from 001\_\_elm20160203\_105419\_\_dat00.bin





ELMAVAN 3D WAVEFORMS (Measured data sampled at 50 kHz) 51000 packets of 144 samples from 2016-02-03T10:54:20.317.000. Part 112/147

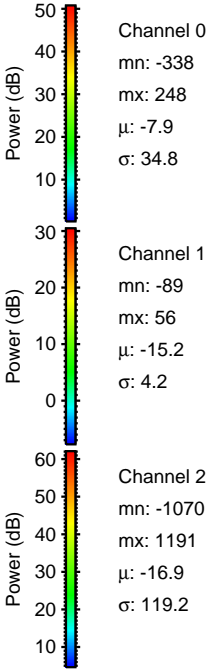
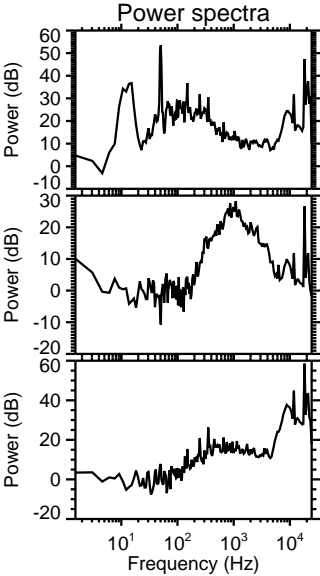
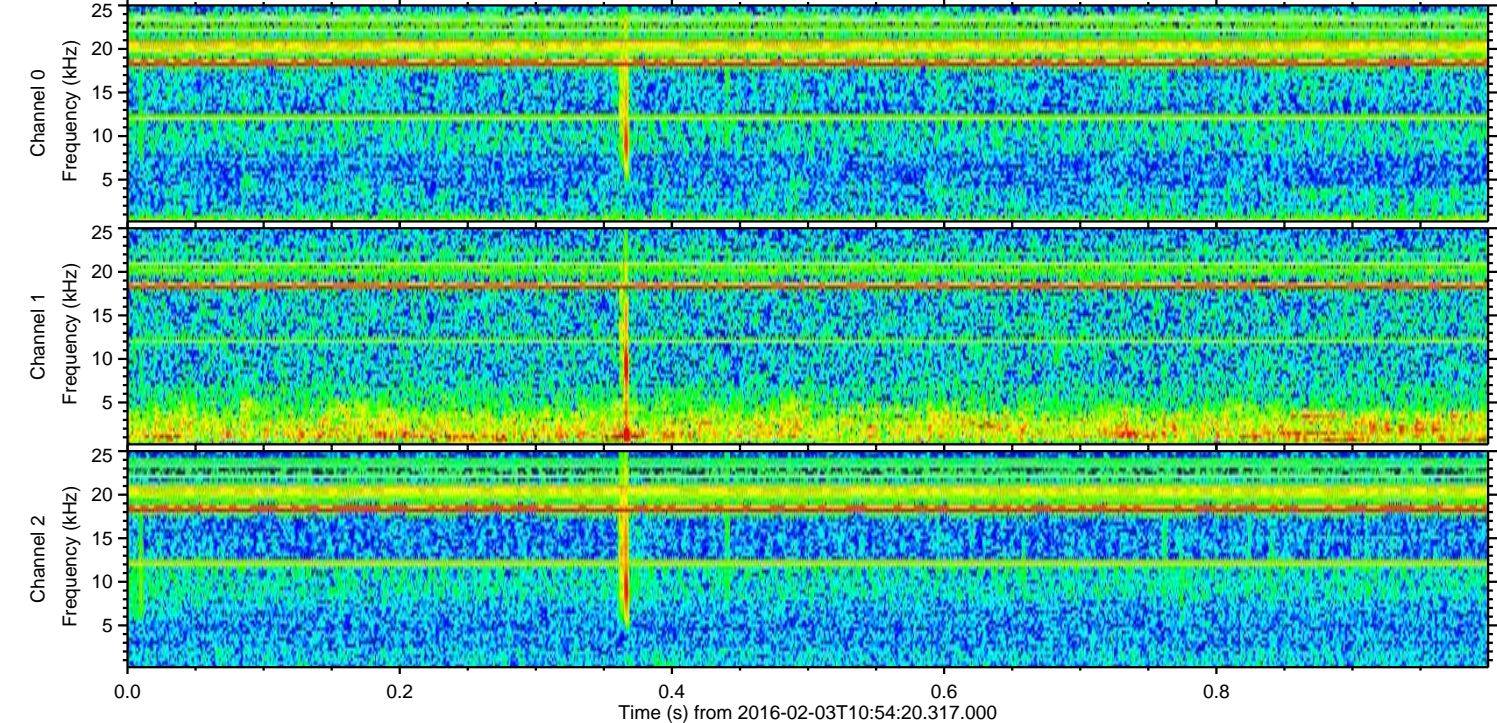
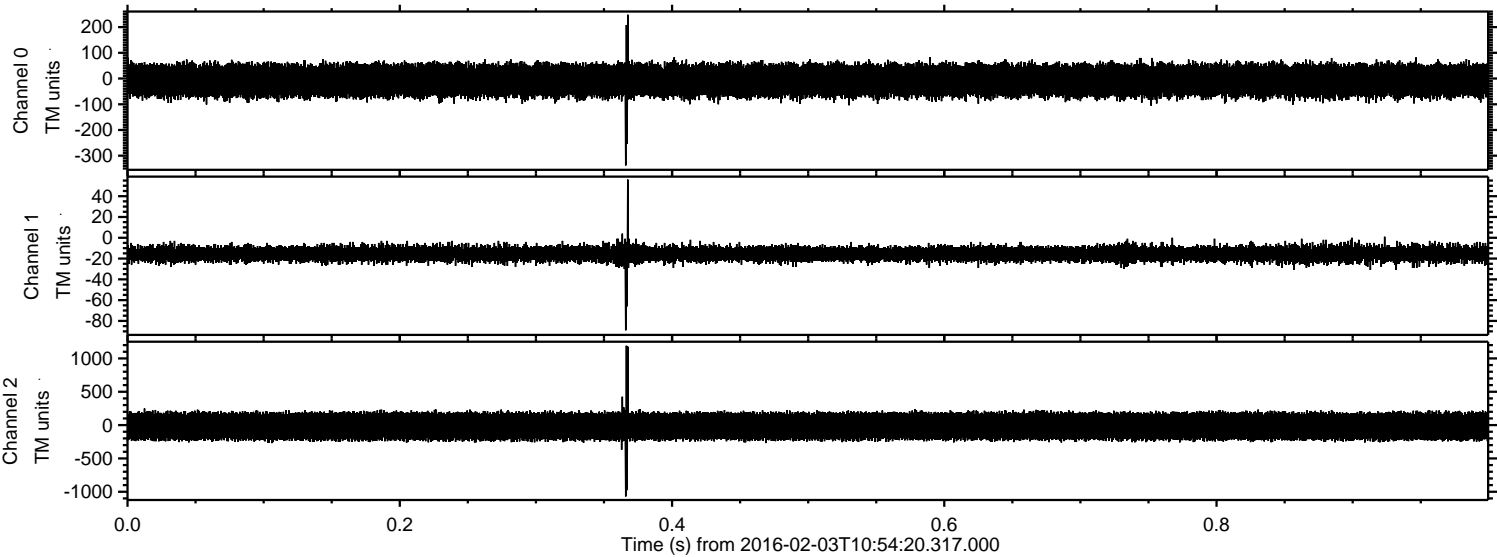
Processed Fri Apr 8 12:47:50 2016 by ELM ver.2012-10-06 from 001\_\_elm20160203\_105419\_\_dat00.bin





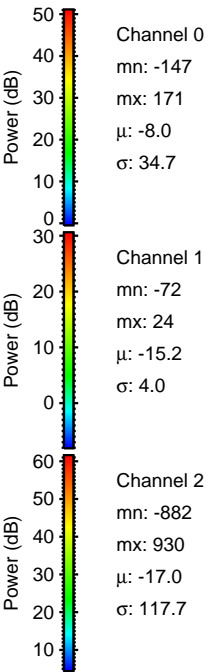
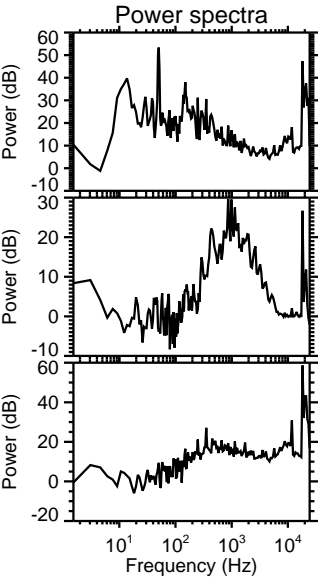
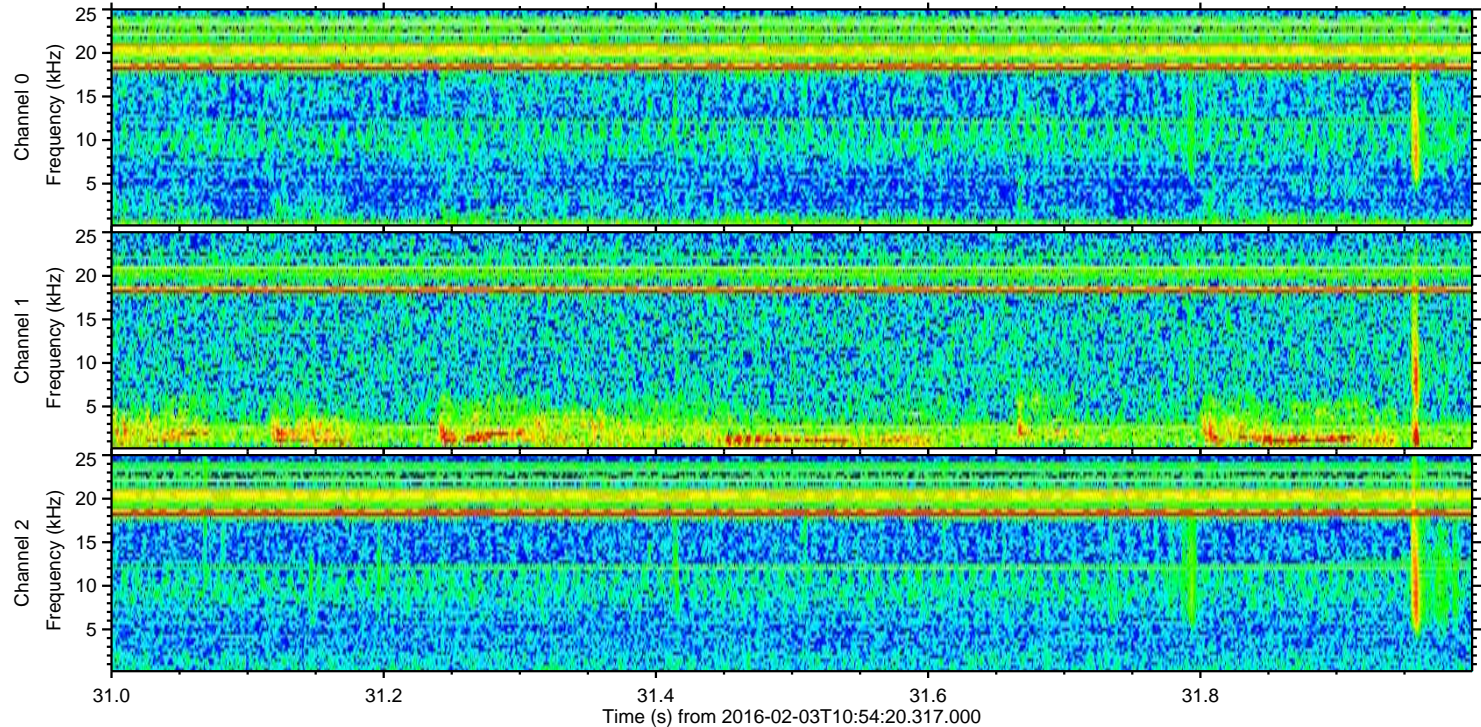
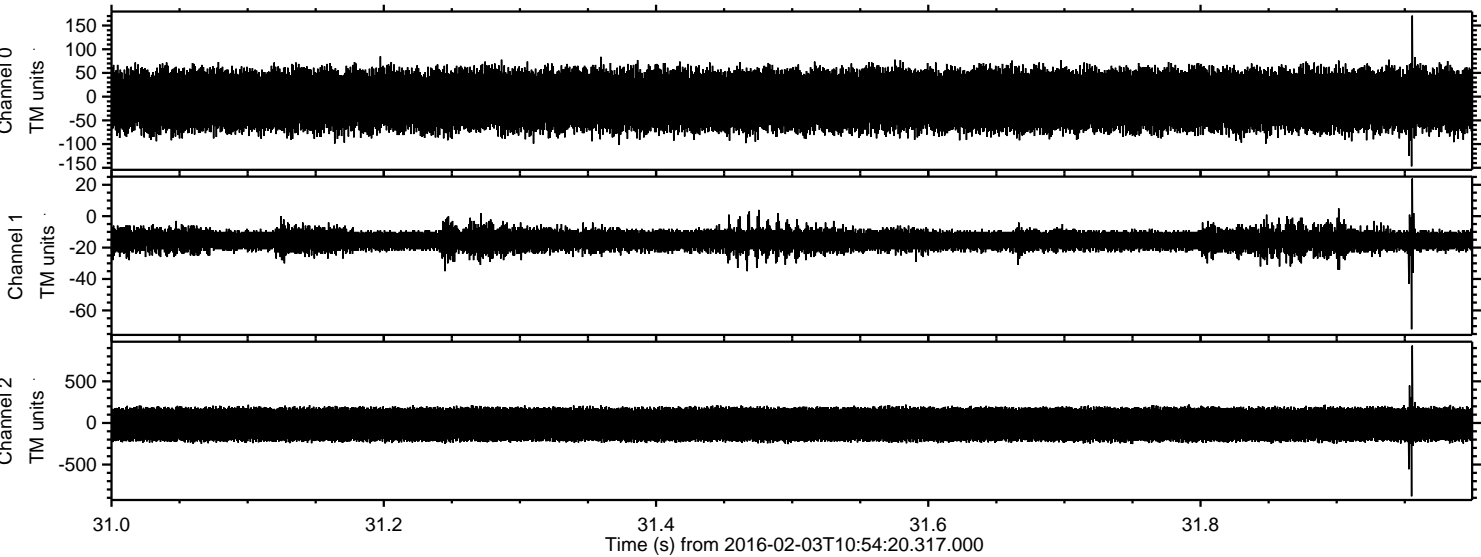
ELMAVAN 3D WAVEFORMS (Measured data sampled at 50 kHz) 51000 packets of 144 samples from 2016-02-03T10:54:20.317.000. Part 1/147

Processed Fri Apr 8 12:47:51 2016 by ELM ver.2012-10-06 from 001\_\_elm20160203\_105419\_\_dat00.bin



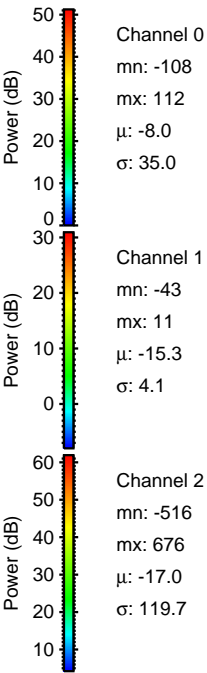
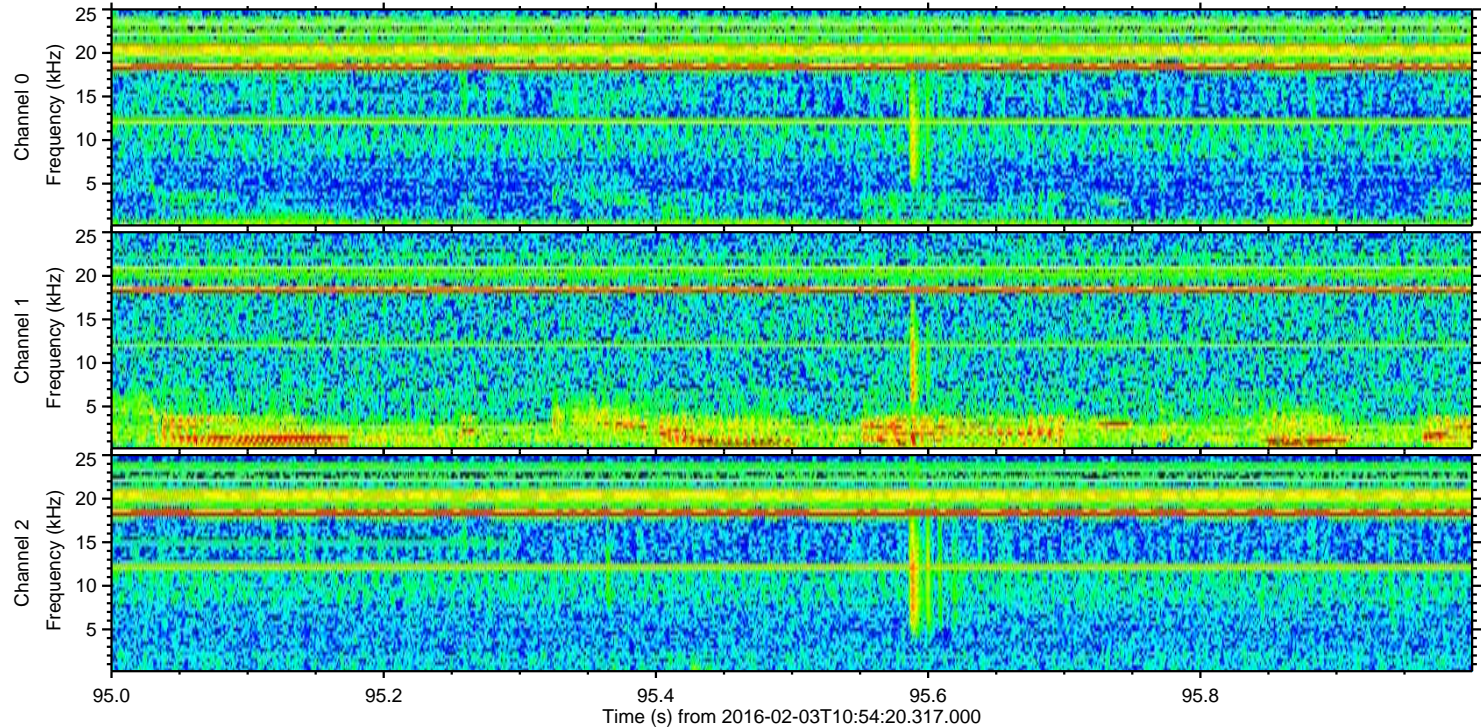
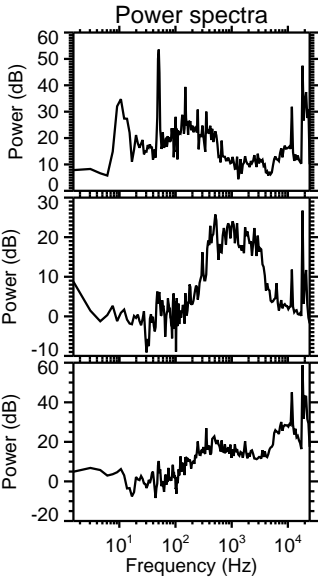
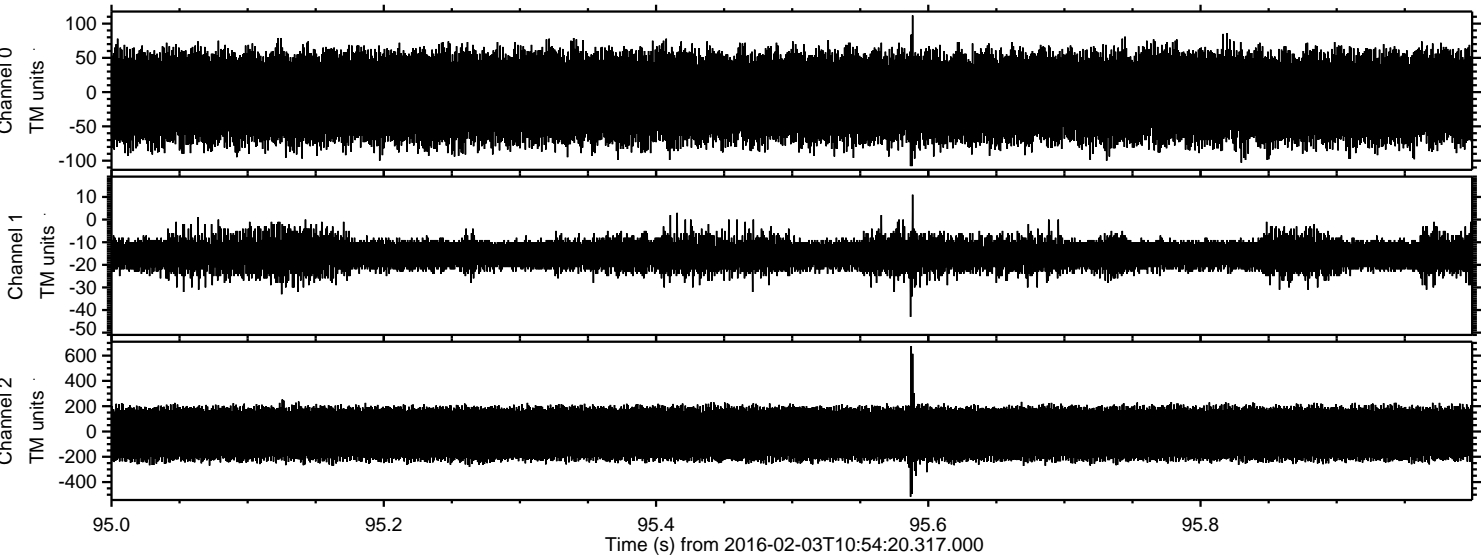


Processed Fri Apr 8 12:47:52 2016 by ELM ver.2012-10-06 from 001\_\_elm20160203\_105419\_\_dat00.bin



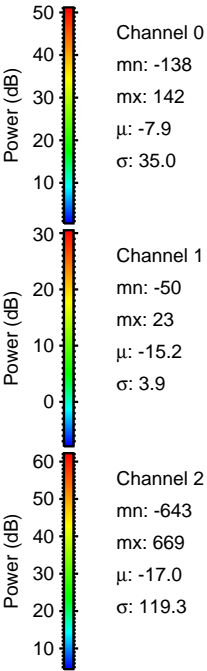
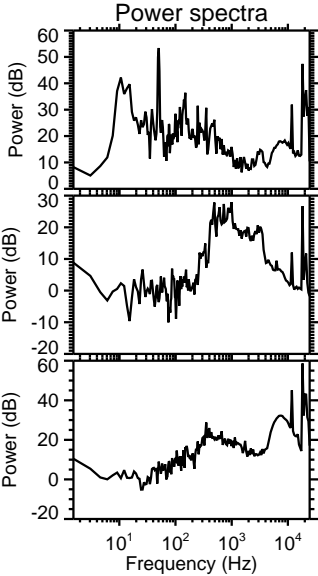
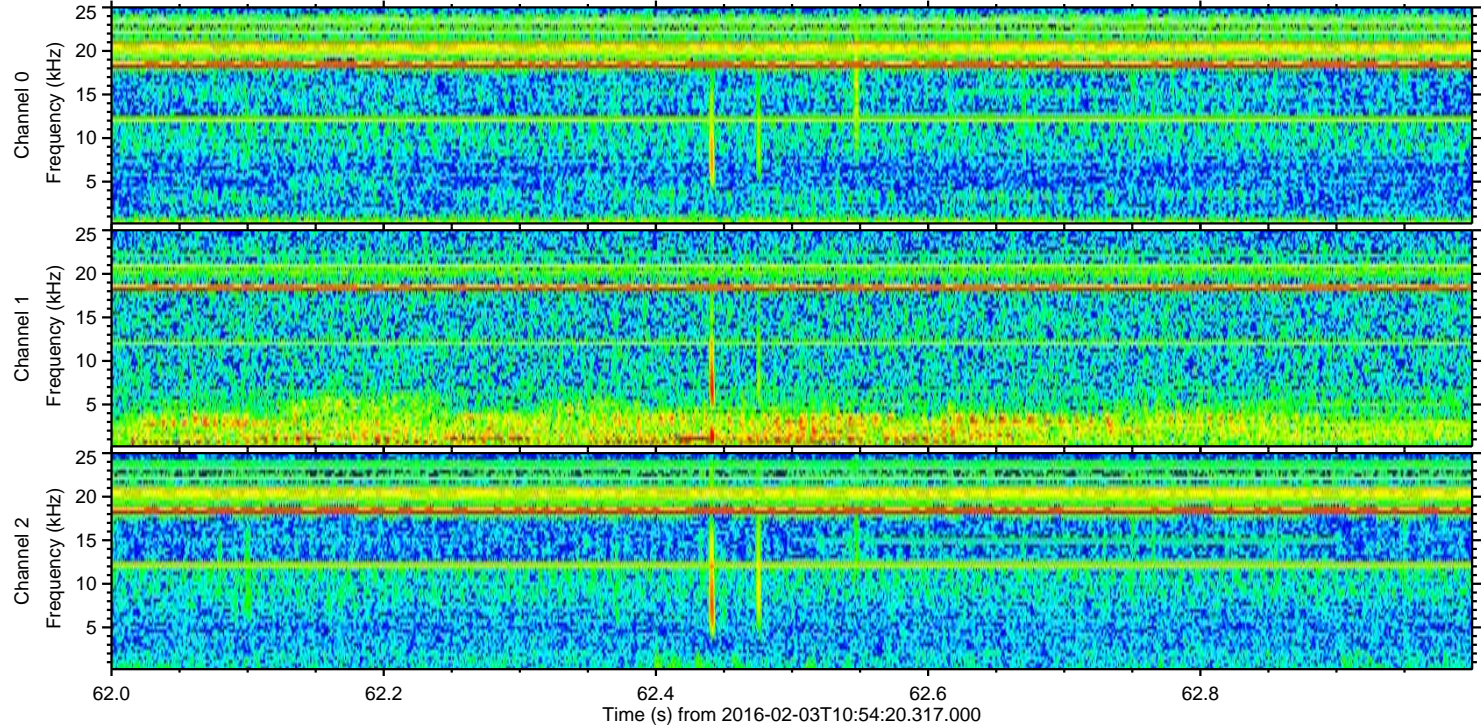
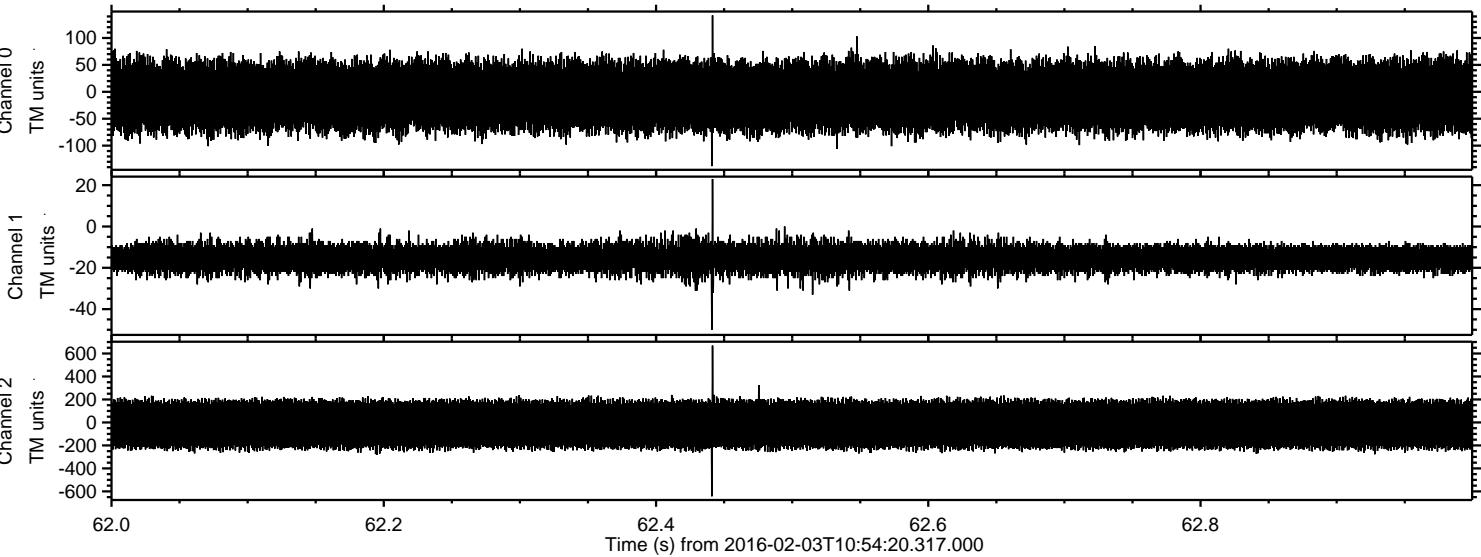


Processed Fri Apr 8 12:47:53 2016 by ELM ver.2012-10-06 from 001\_\_elm20160203\_105419\_\_dat00.bin





Processed Fri Apr 8 12:47:54 2016 by ELM ver.2012-10-06 from 001\_\_elm20160203\_105419\_\_dat00.bin



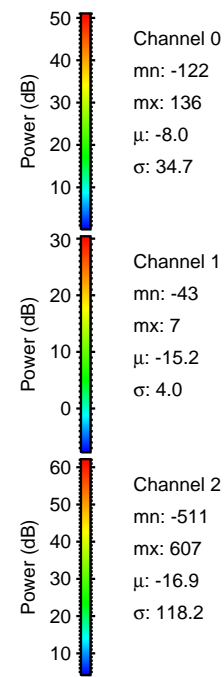
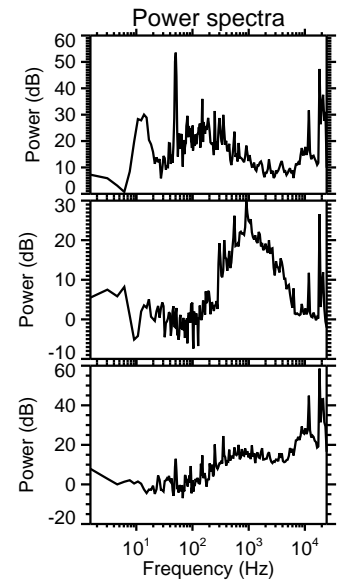
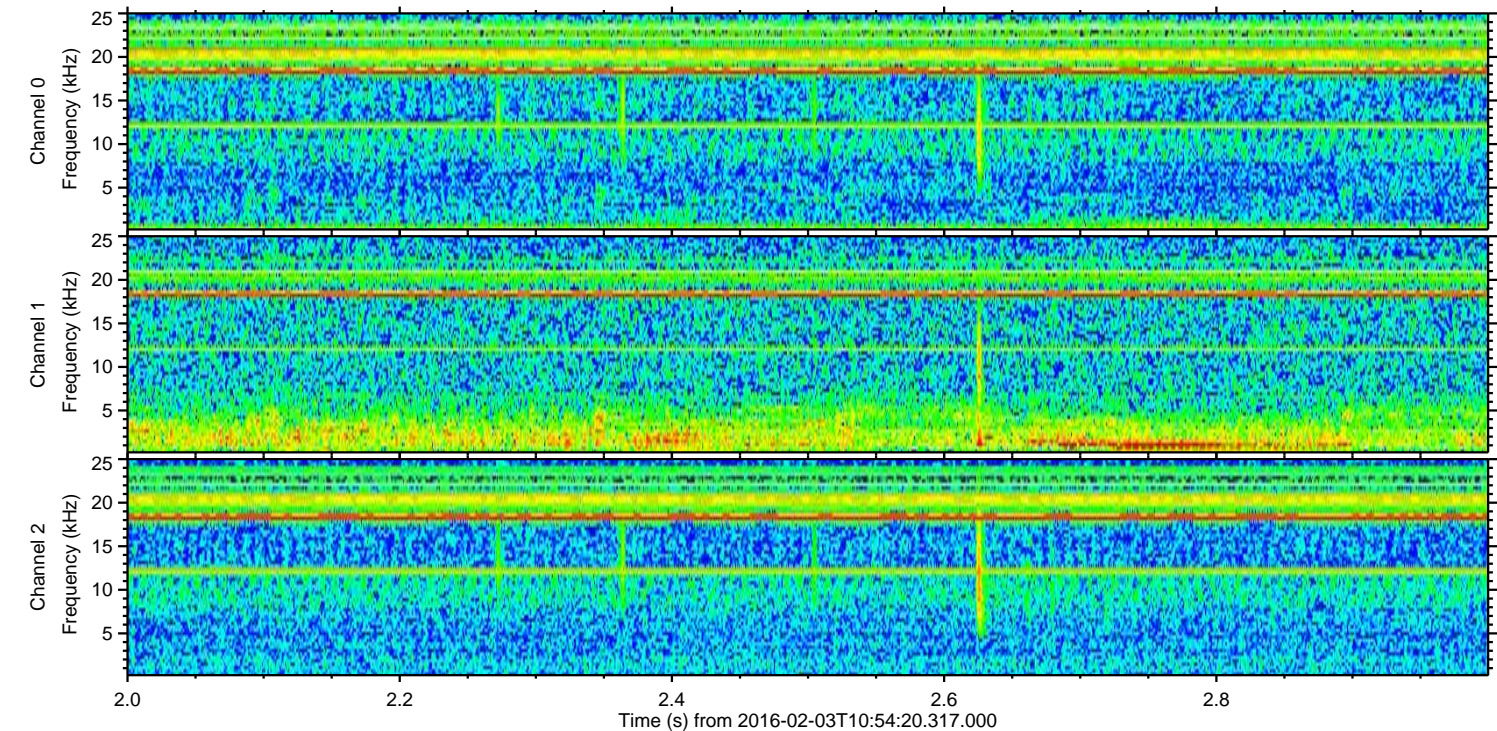
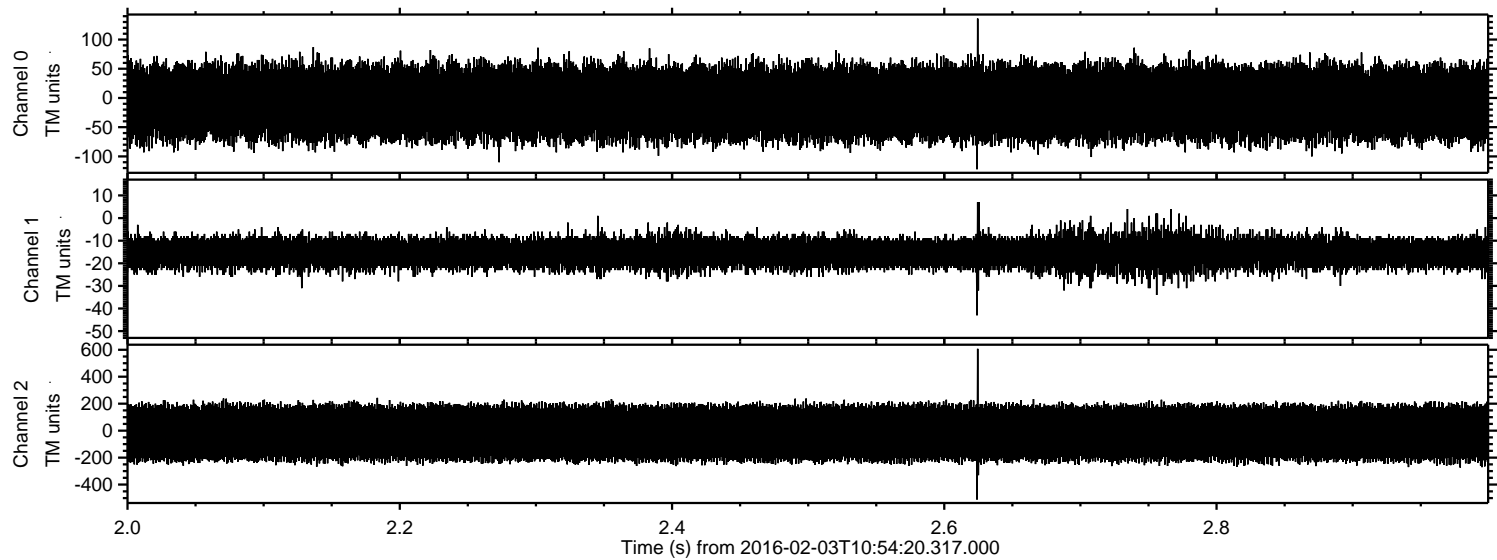
Channel 0  
mn: -138  
mx: 142  
 $\mu$ : -7.9  
 $\sigma$ : 35.0

Channel 1  
mn: -50  
mx: 23  
 $\mu$ : -15.2  
 $\sigma$ : 3.9

Channel 2  
mn: -643  
mx: 669  
 $\mu$ : -17.0  
 $\sigma$ : 119.3



Processed Fri Apr 8 12:47:55 2016 by ELM ver.2012-10-06 from 001\_\_elm20160203\_105419\_\_dat00.bin



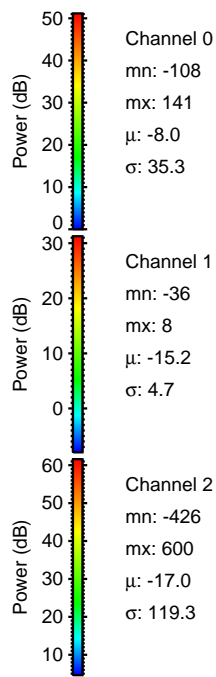
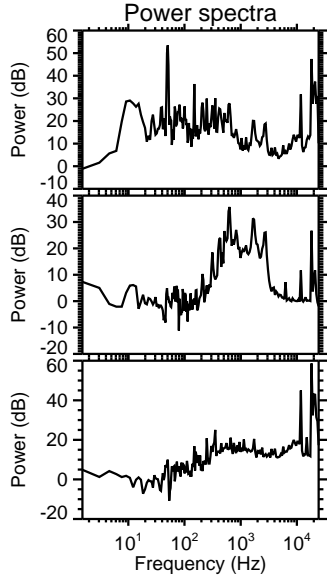
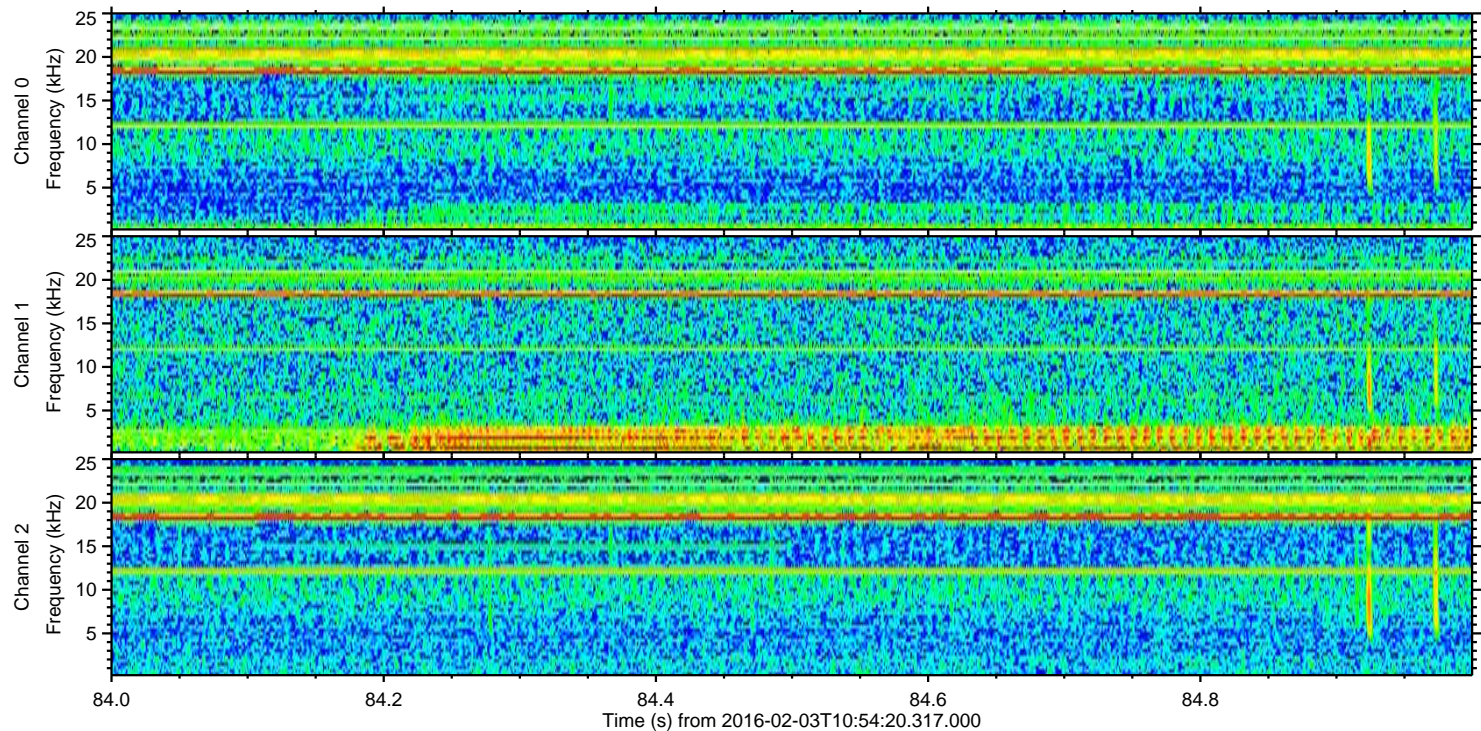
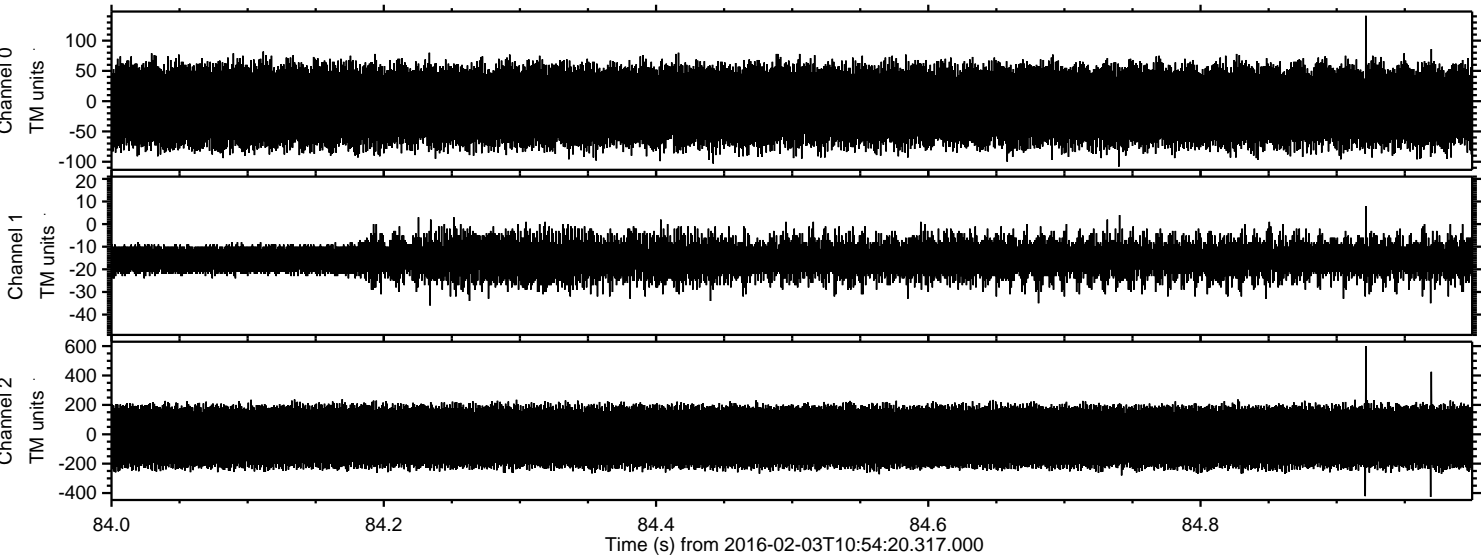
Channel 0  
mn: -122  
mx: 136  
 $\mu$ : -8.0  
 $\sigma$ : 34.7

Channel 1  
mn: -43  
mx: 7  
 $\mu$ : -15.2  
 $\sigma$ : 4.0

Channel 2  
mn: -511  
mx: 607  
 $\mu$ : -16.9  
 $\sigma$ : 118.2



Processed Fri Apr 8 12:47:56 2016 by ELM ver.2012-10-06 from 001\_\_elm20160203\_105419\_\_dat00.bin

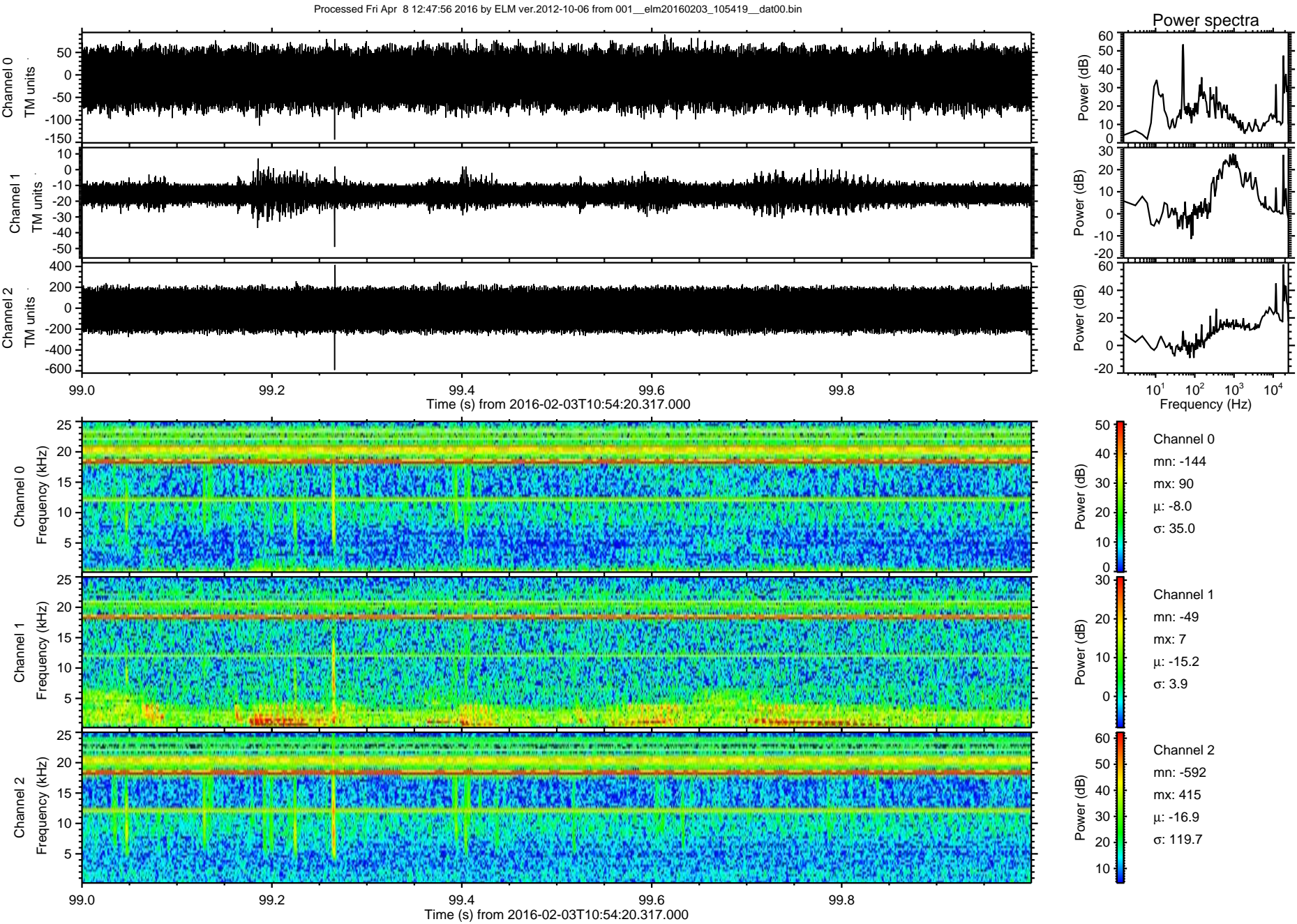


Channel 0  
mn: -108  
mx: 141  
 $\mu$ : -8.0  
 $\sigma$ : 35.3

Channel 1  
mn: -36  
mx: 8  
 $\mu$ : -15.2  
 $\sigma$ : 4.7

Channel 2  
mn: -426  
mx: 600  
 $\mu$ : -17.0  
 $\sigma$ : 119.3







Processed Fri Apr 8 12:47:57 2016 by ELM ver.2012-10-06 from 001\_\_elm20160203\_105419\_\_dat00.bin

