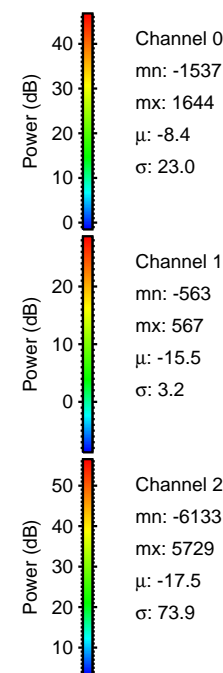
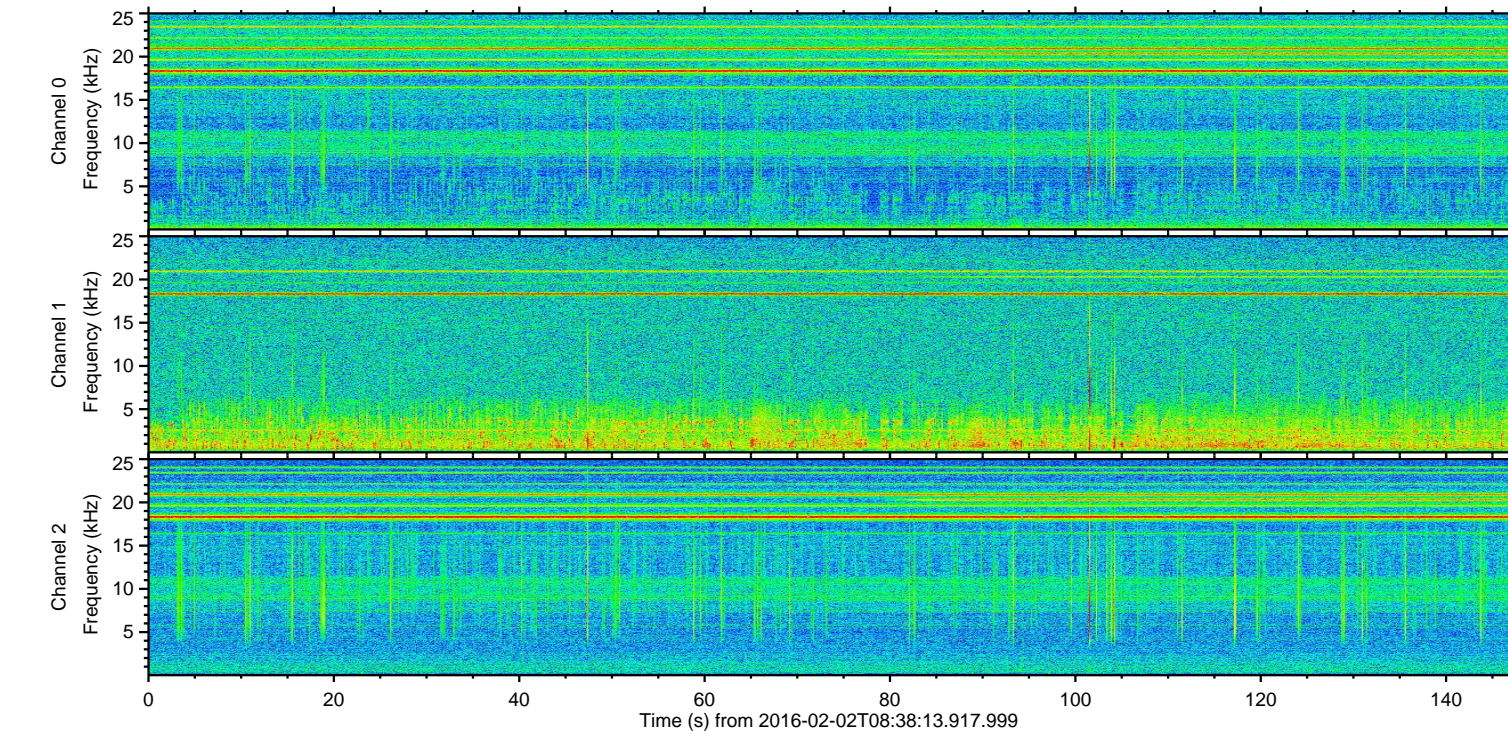
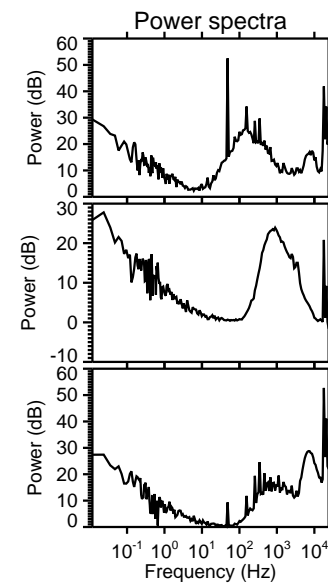
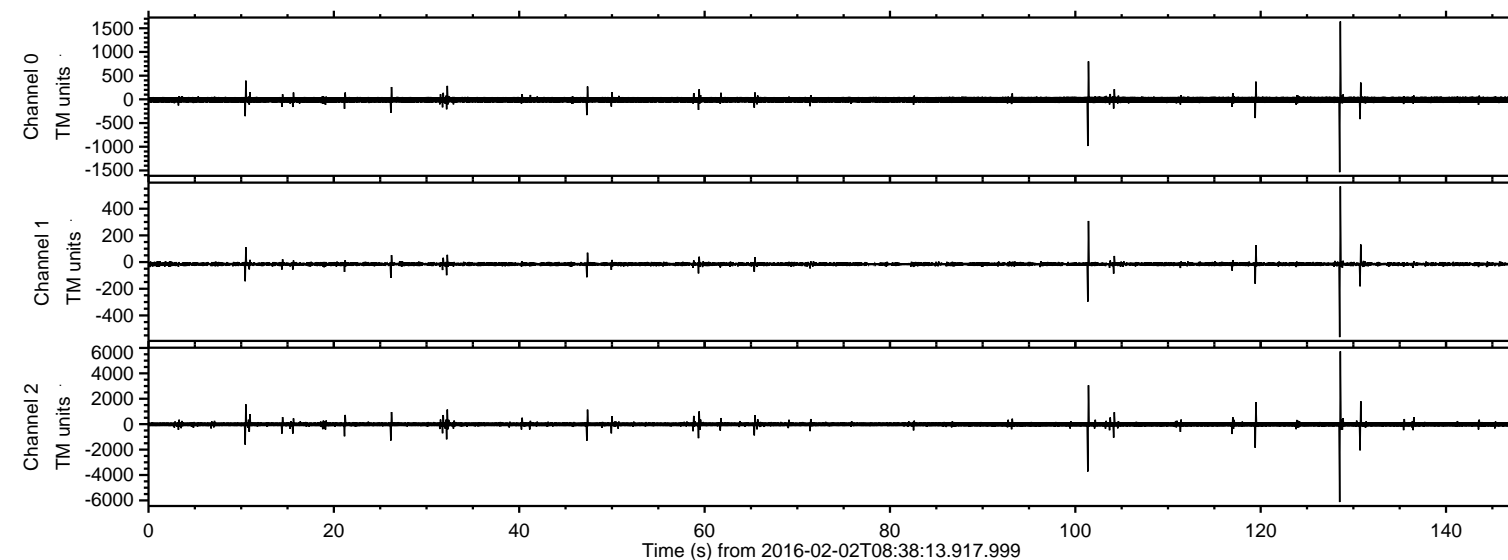


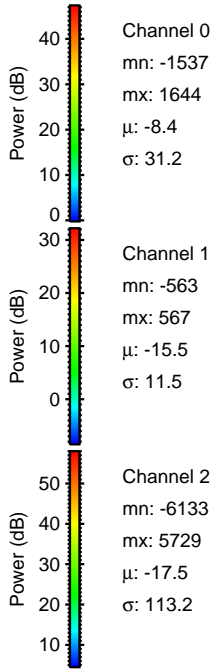
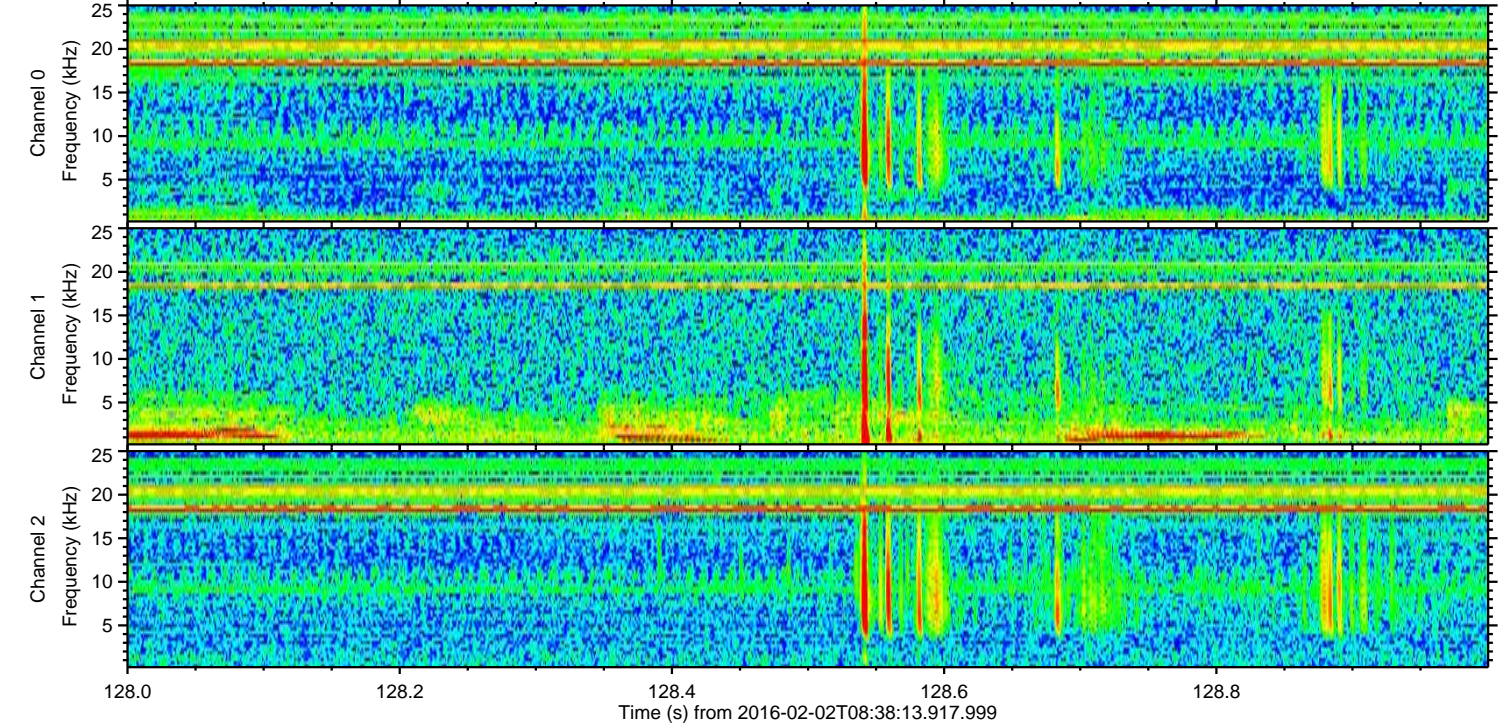
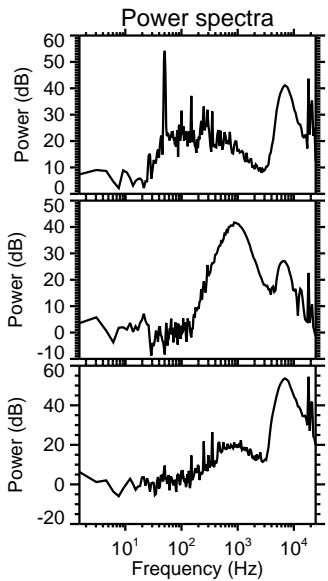
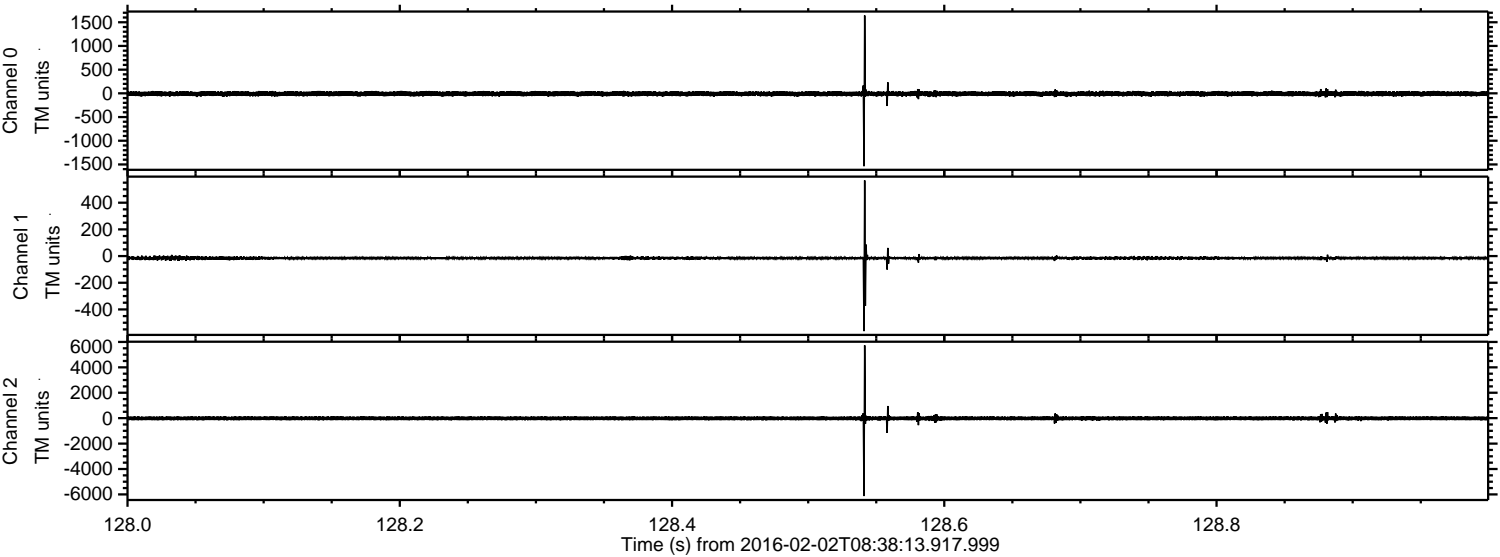
ELMAVAN 3D WAVEFORMS (Measured data sampled at 50 kHz) 51000 packets of 144 samples from 2016-02-02T08:38:13.917.999.

Processed Fri Apr 8 07:28:13 2016 by ELM ver.2012-10-06 from 001__elm20160202_083812__dat00.bin



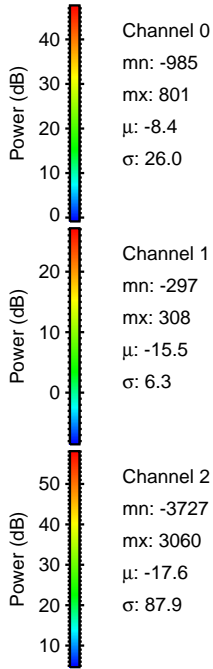
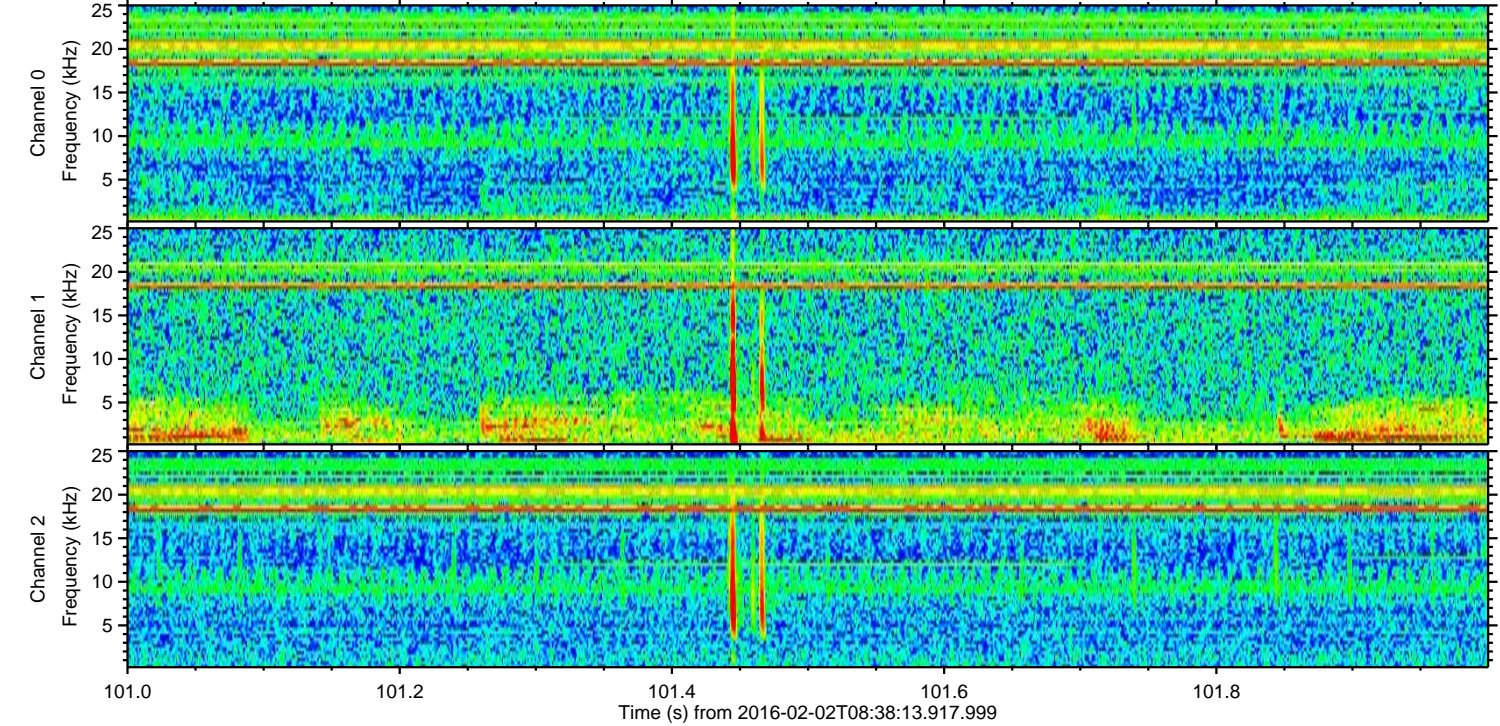
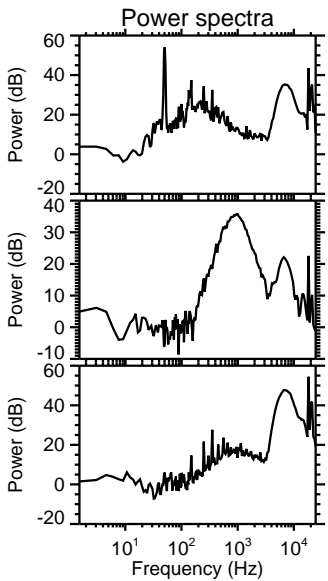
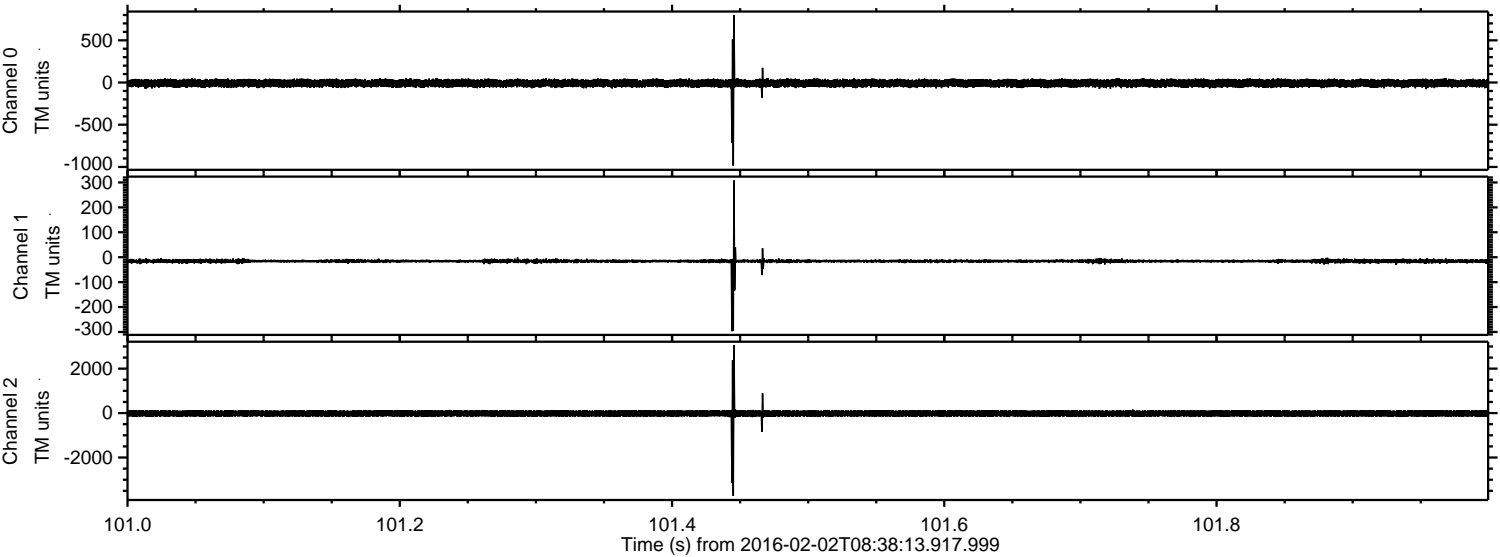
ELMAVAN 3D WAVEFORMS (Measured data sampled at 50 kHz) 51000 packets of 144 samples from 2016-02-02T08:38:13.917.999. Part 129/147

Processed Fri Apr 8 07:28:24 2016 by ELM ver.2012-10-06 from 001__elm20160202_083812__dat00.bin



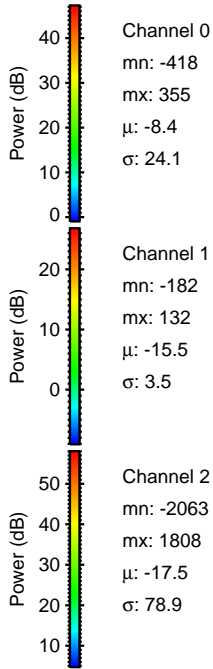
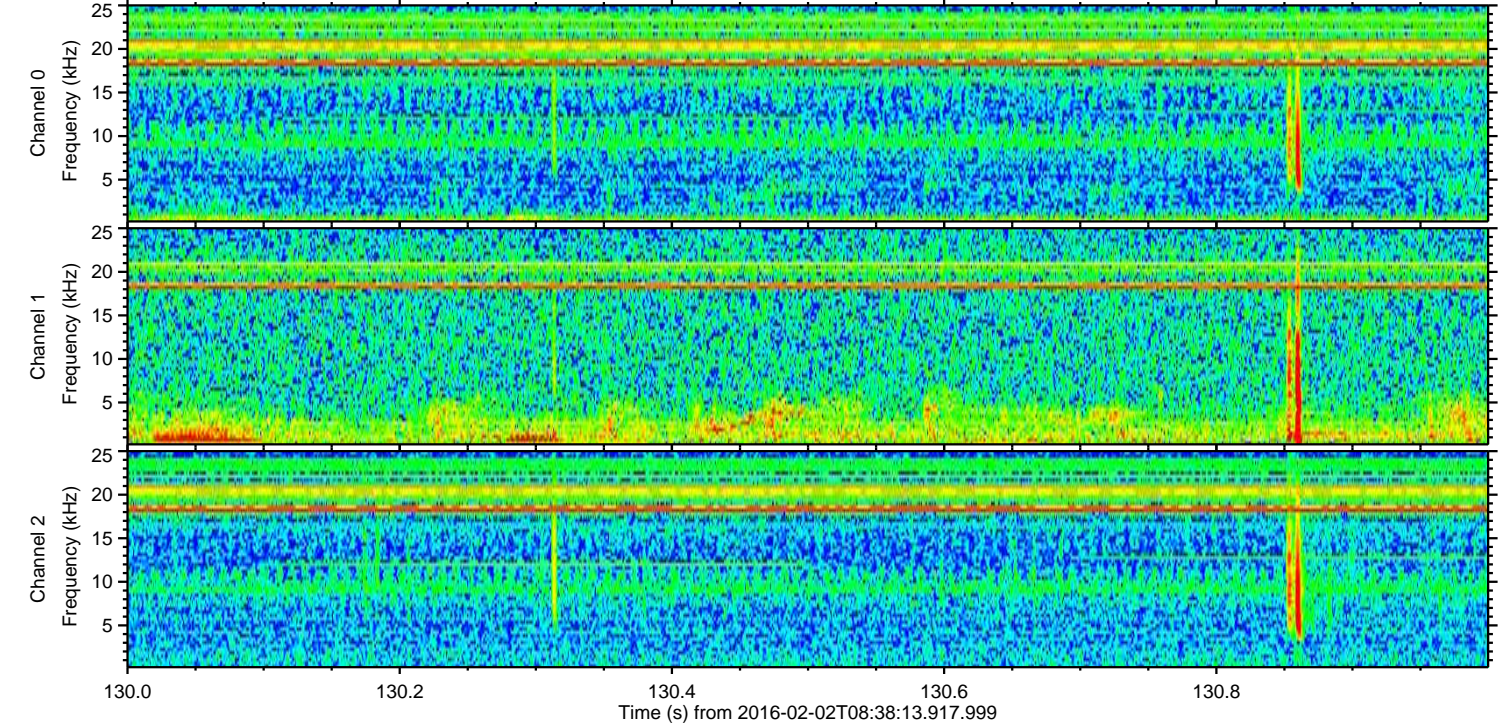
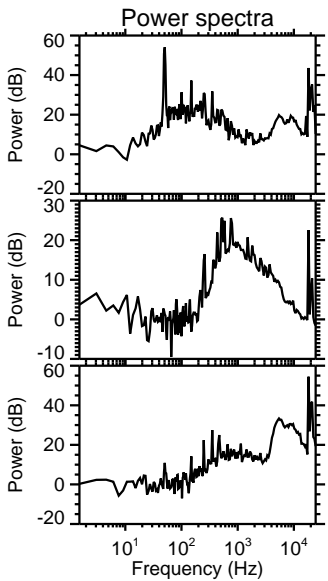
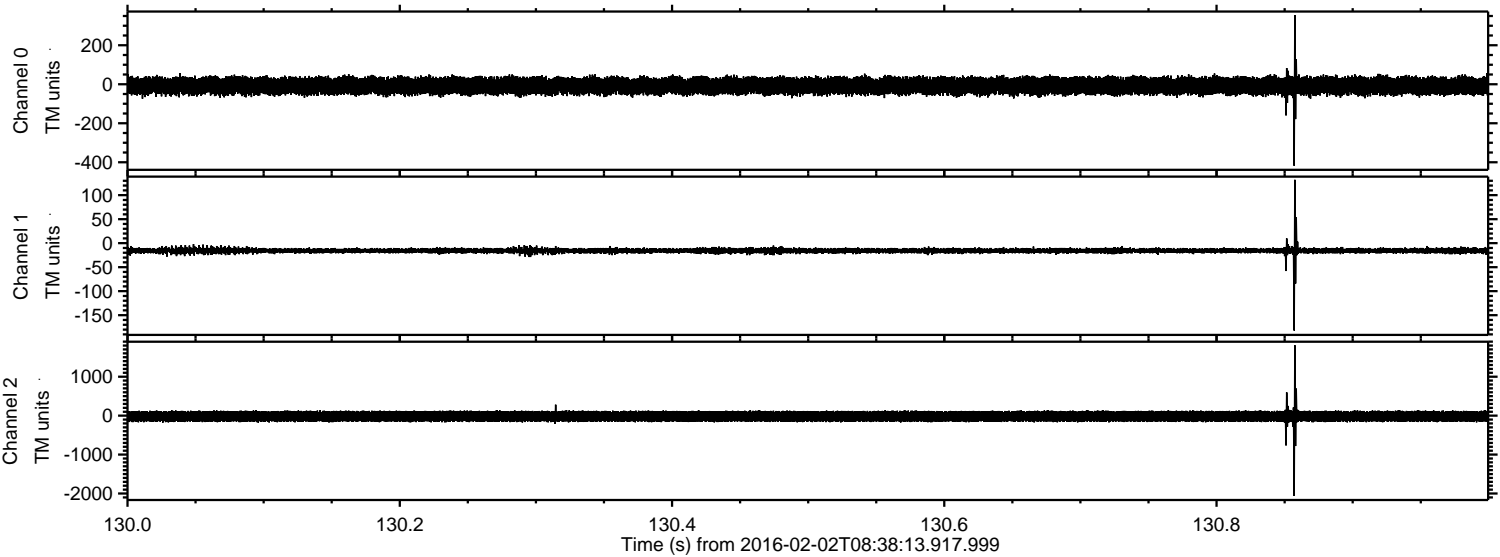
ELMAVAN 3D WAVEFORMS (Measured data sampled at 50 kHz) 51000 packets of 144 samples from 2016-02-02T08:38:13.917.999. Part 102/147

Processed Fri Apr 8 07:28:25 2016 by ELM ver.2012-10-06 from 001__elm20160202_083812__dat00.bin



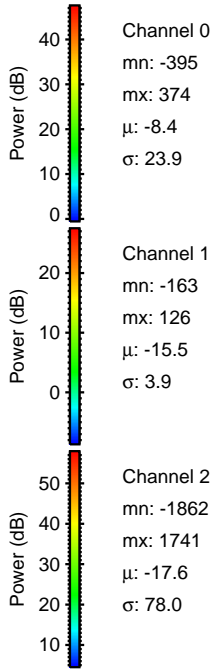
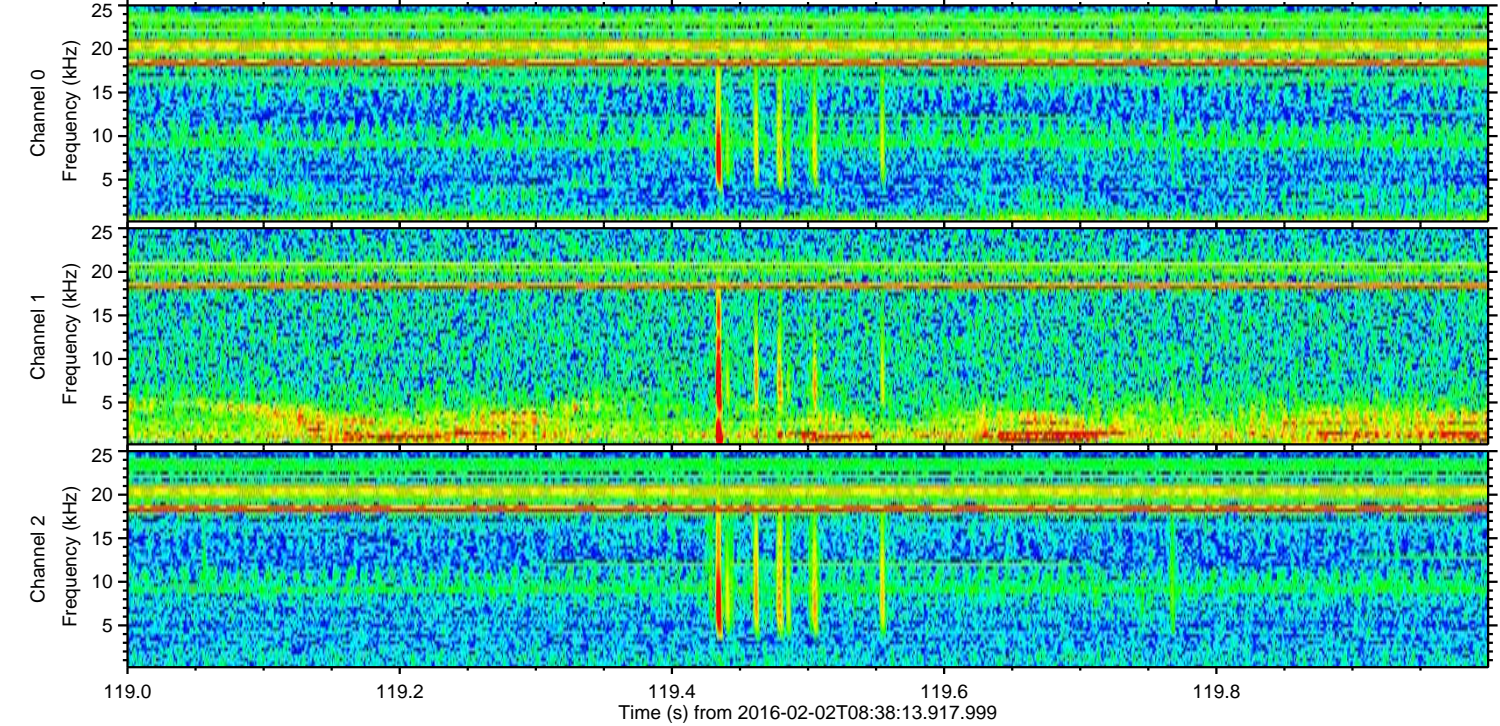
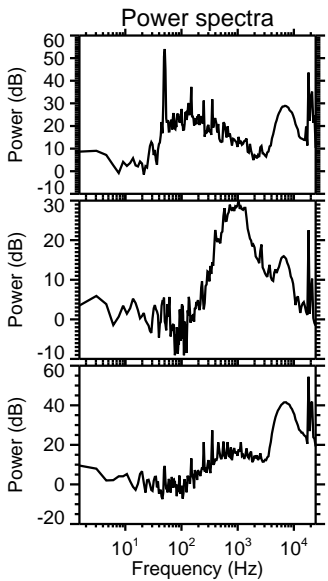
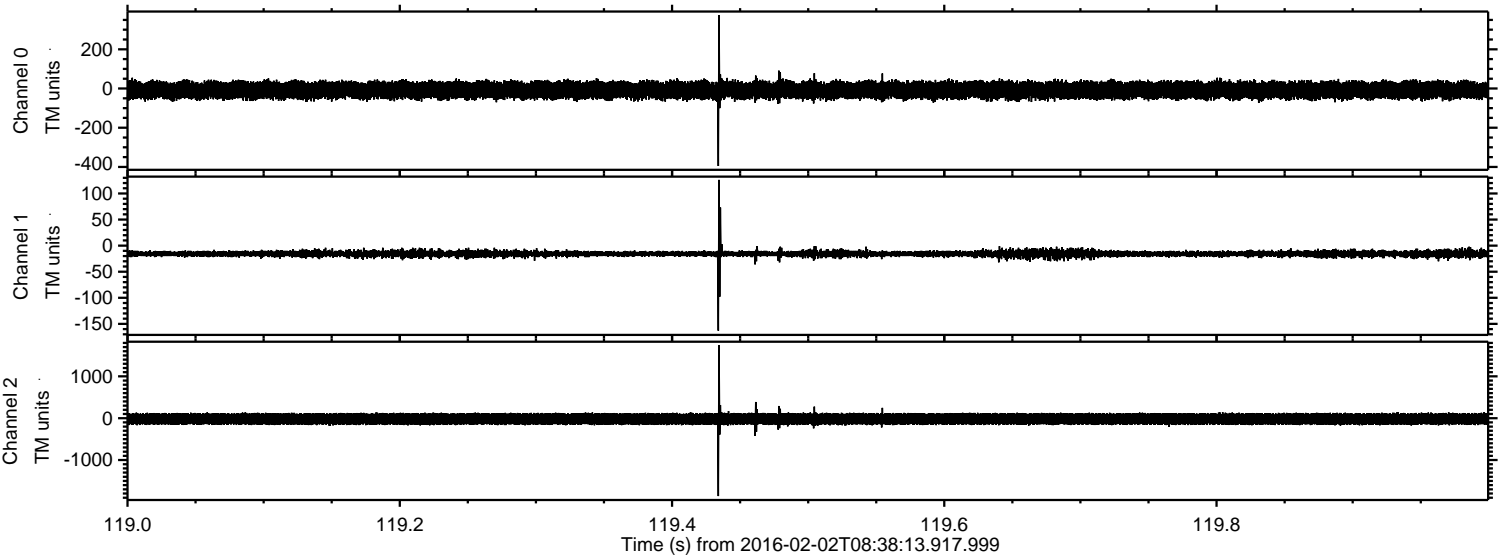
ELMAVAN 3D WAVEFORMS (Measured data sampled at 50 kHz) 51000 packets of 144 samples from 2016-02-02T08:38:13.917.999. Part 131/147

Processed Fri Apr 8 07:28:26 2016 by ELM ver.2012-10-06 from 001__elm20160202_083812__dat00.bin

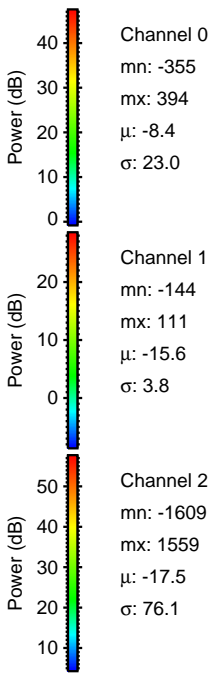
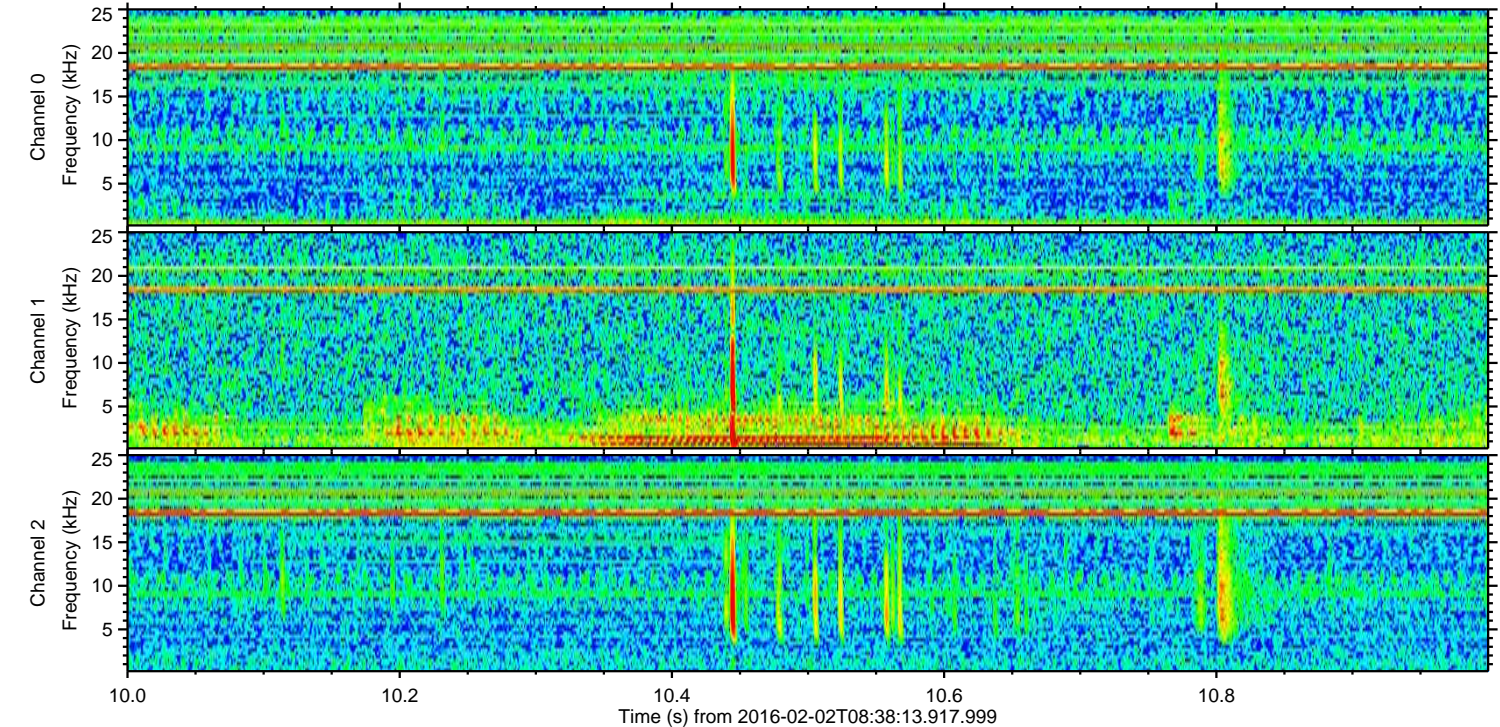
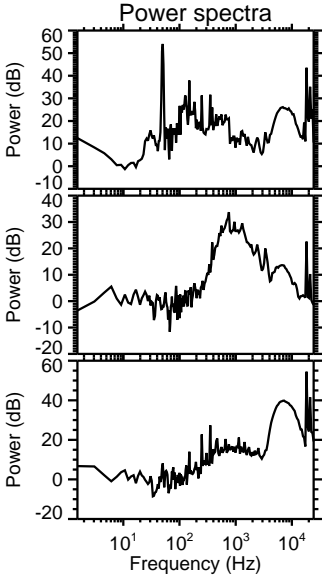
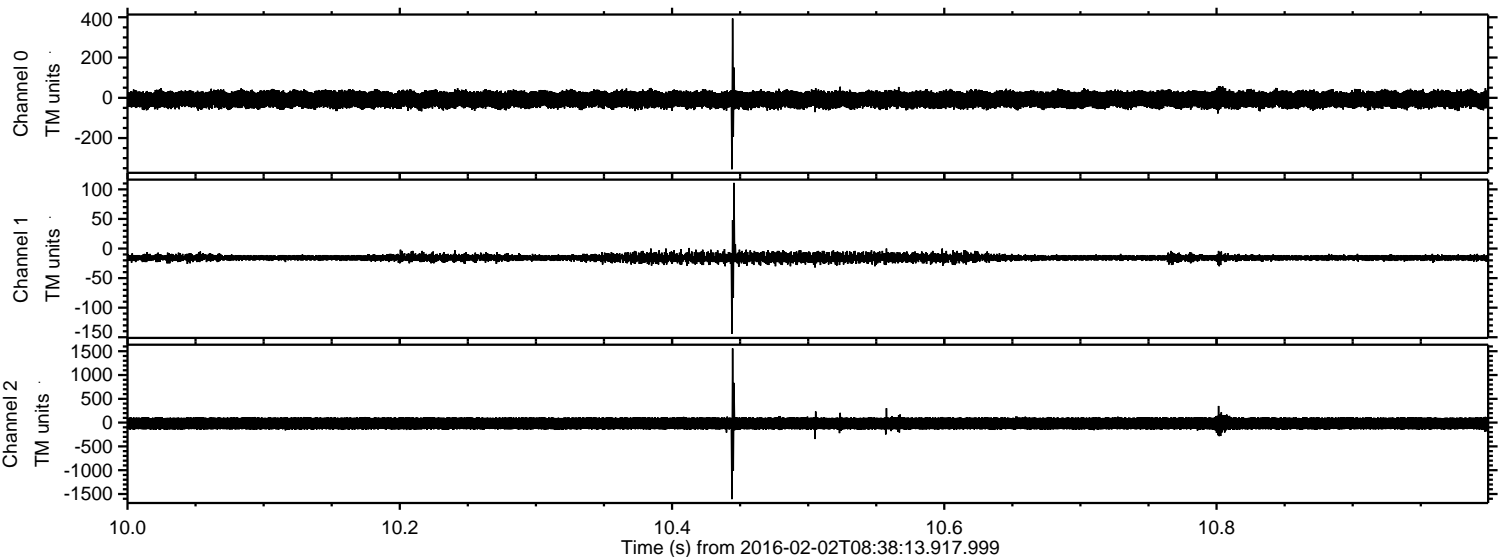


ELMAVAN 3D WAVEFORMS (Measured data sampled at 50 kHz) 51000 packets of 144 samples from 2016-02-02T08:38:13.917.999. Part 120/147

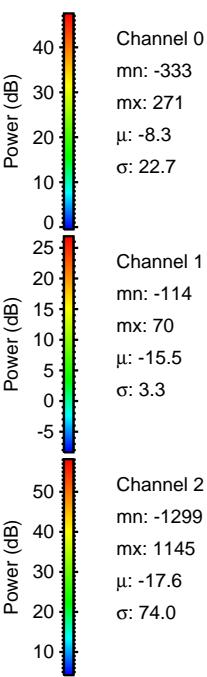
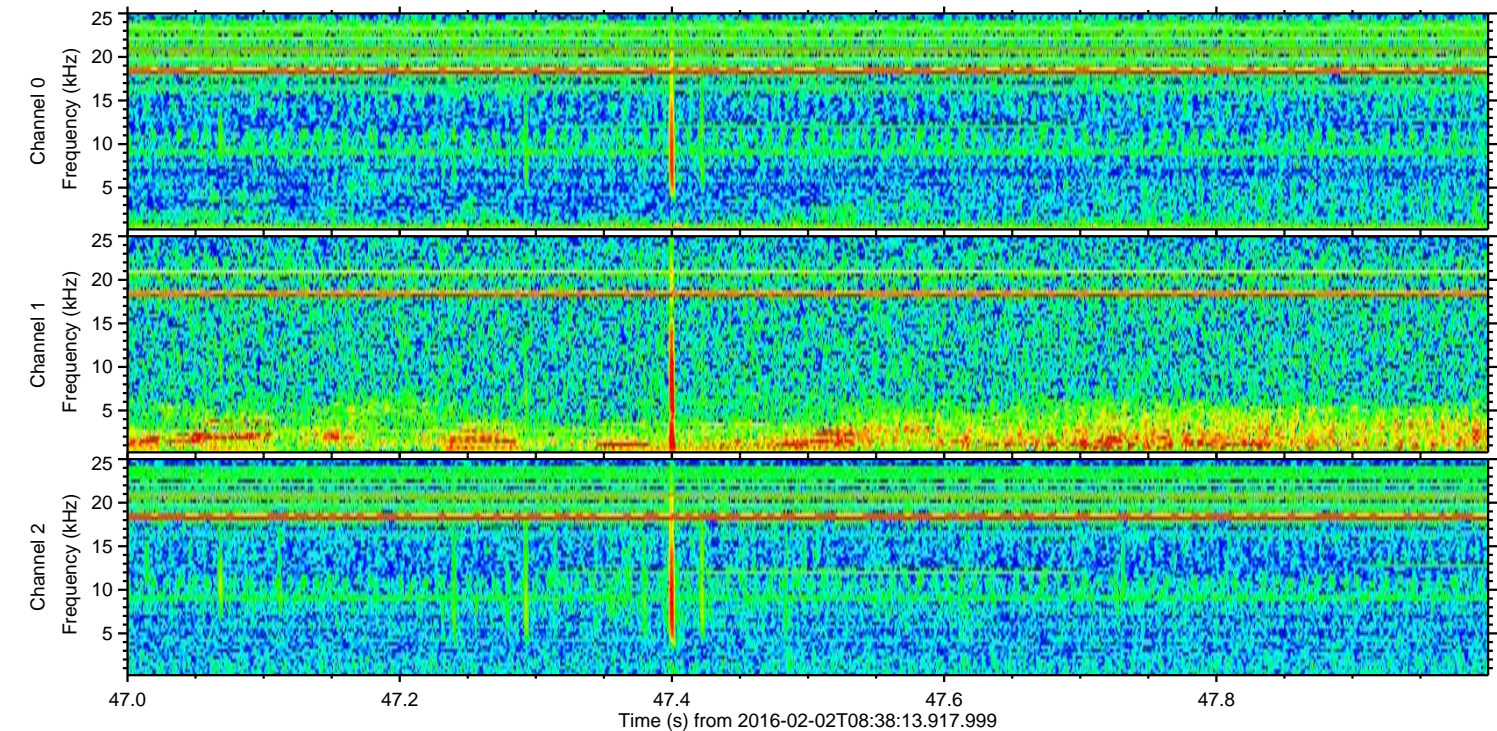
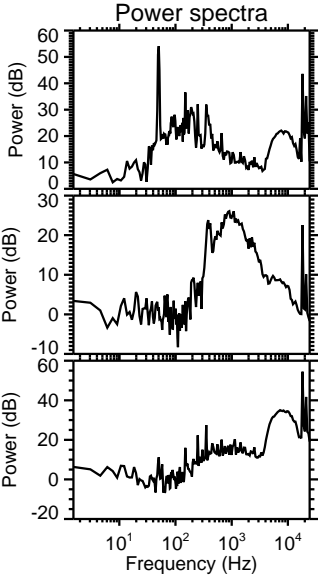
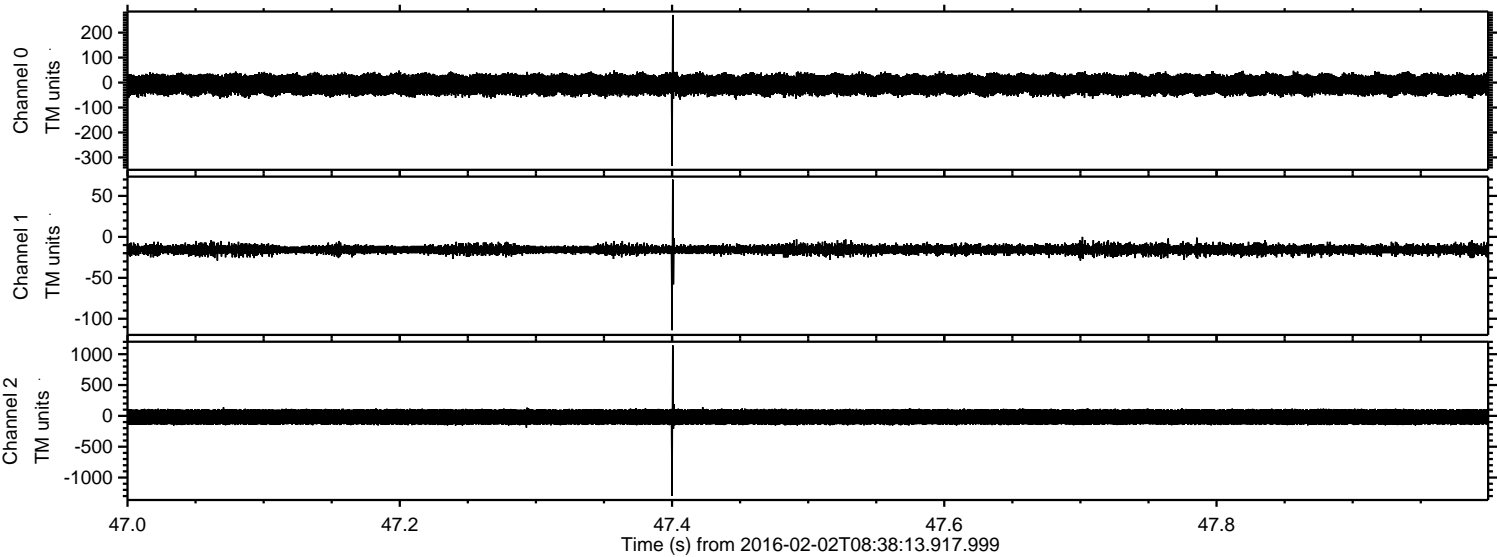
Processed Fri Apr 8 07:28:27 2016 by ELM ver.2012-10-06 from 001__elm20160202_083812__dat00.bin



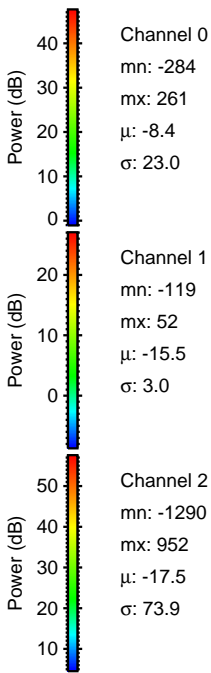
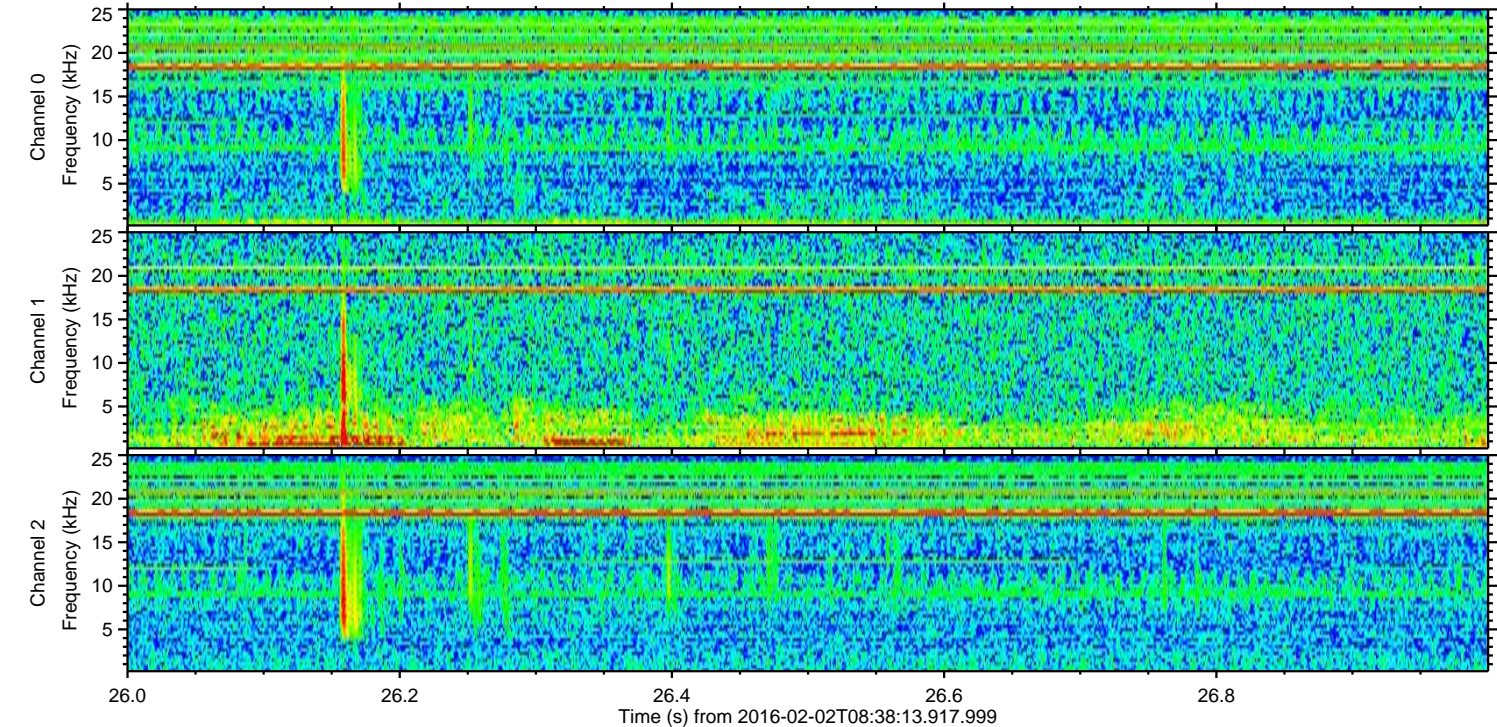
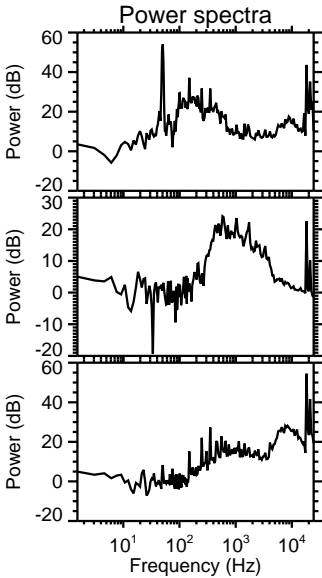
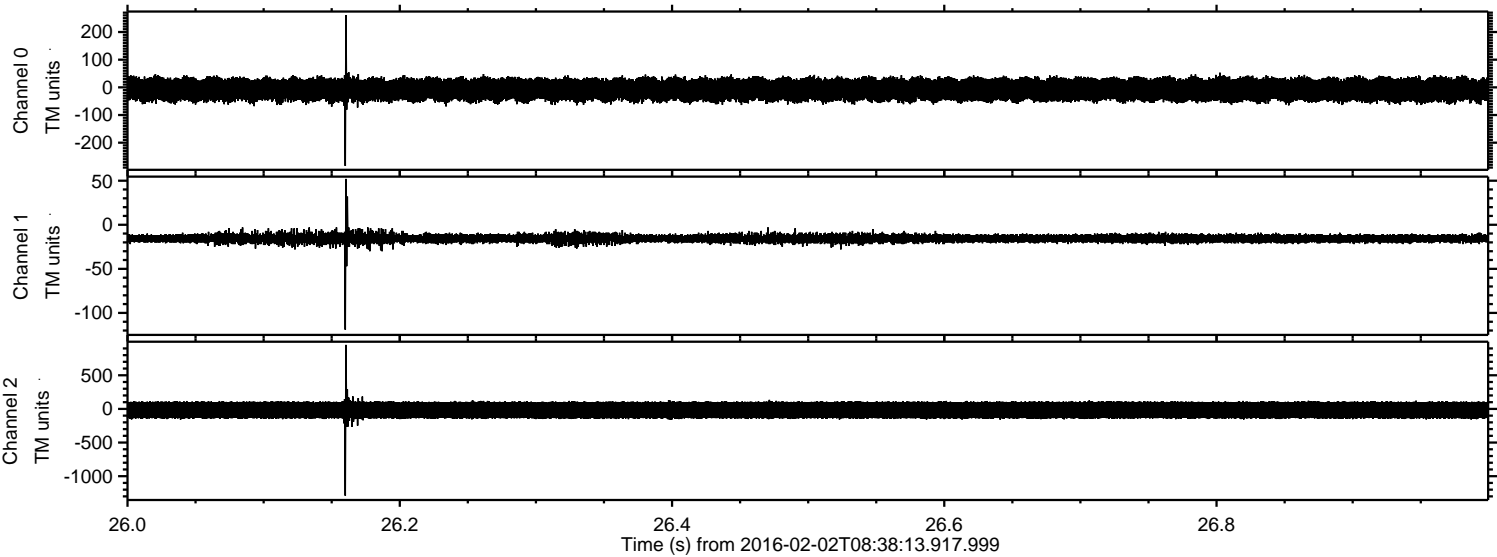
Processed Fri Apr 8 07:28:28 2016 by ELM ver.2012-10-06 from 001__elm20160202_083812__dat00.bin



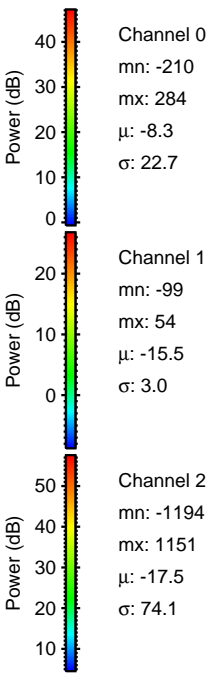
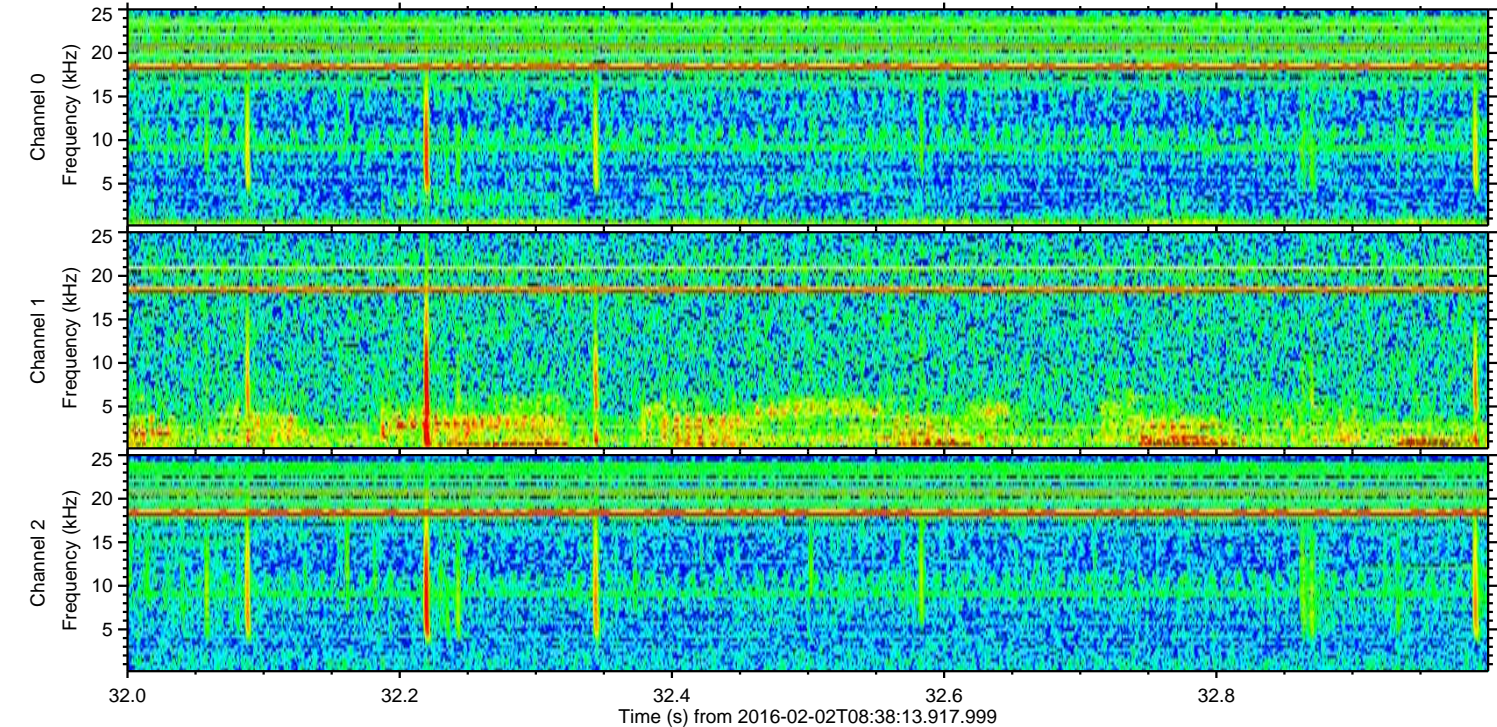
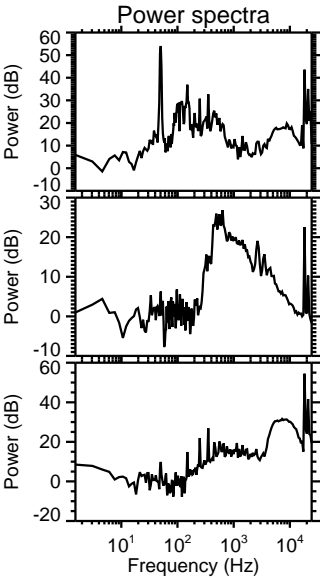
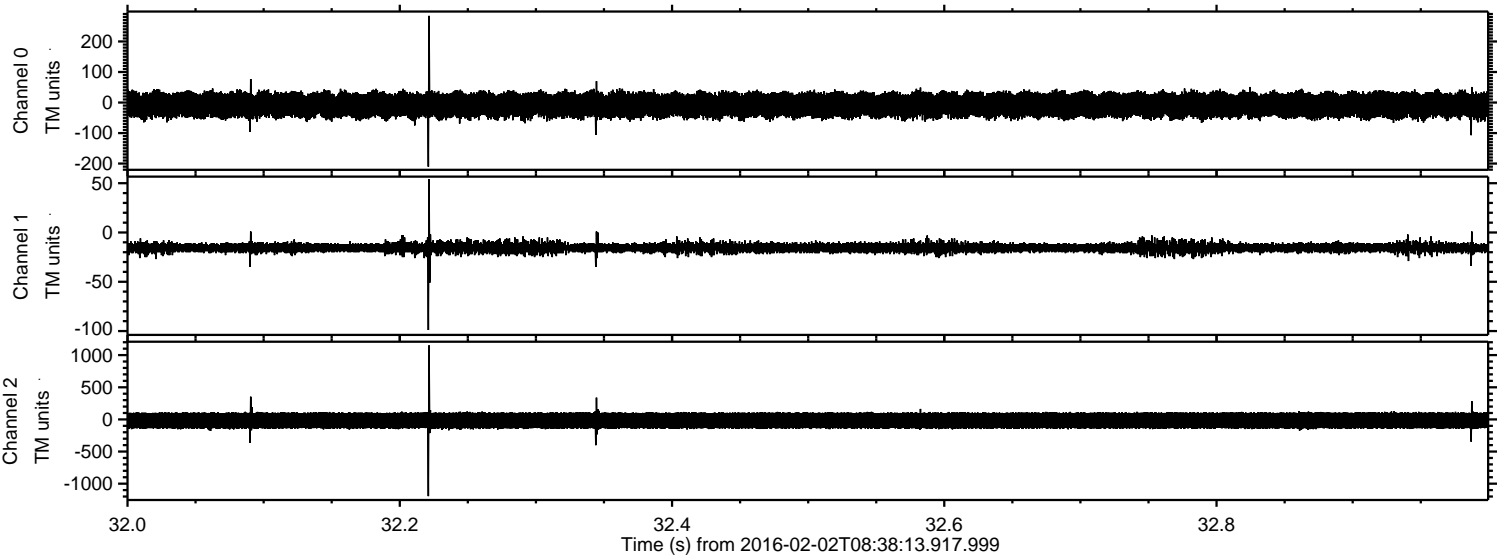
Processed Fri Apr 8 07:28:29 2016 by ELM ver.2012-10-06 from 001__elm20160202_083812__dat00.bin



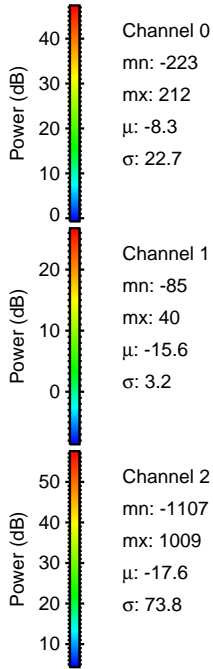
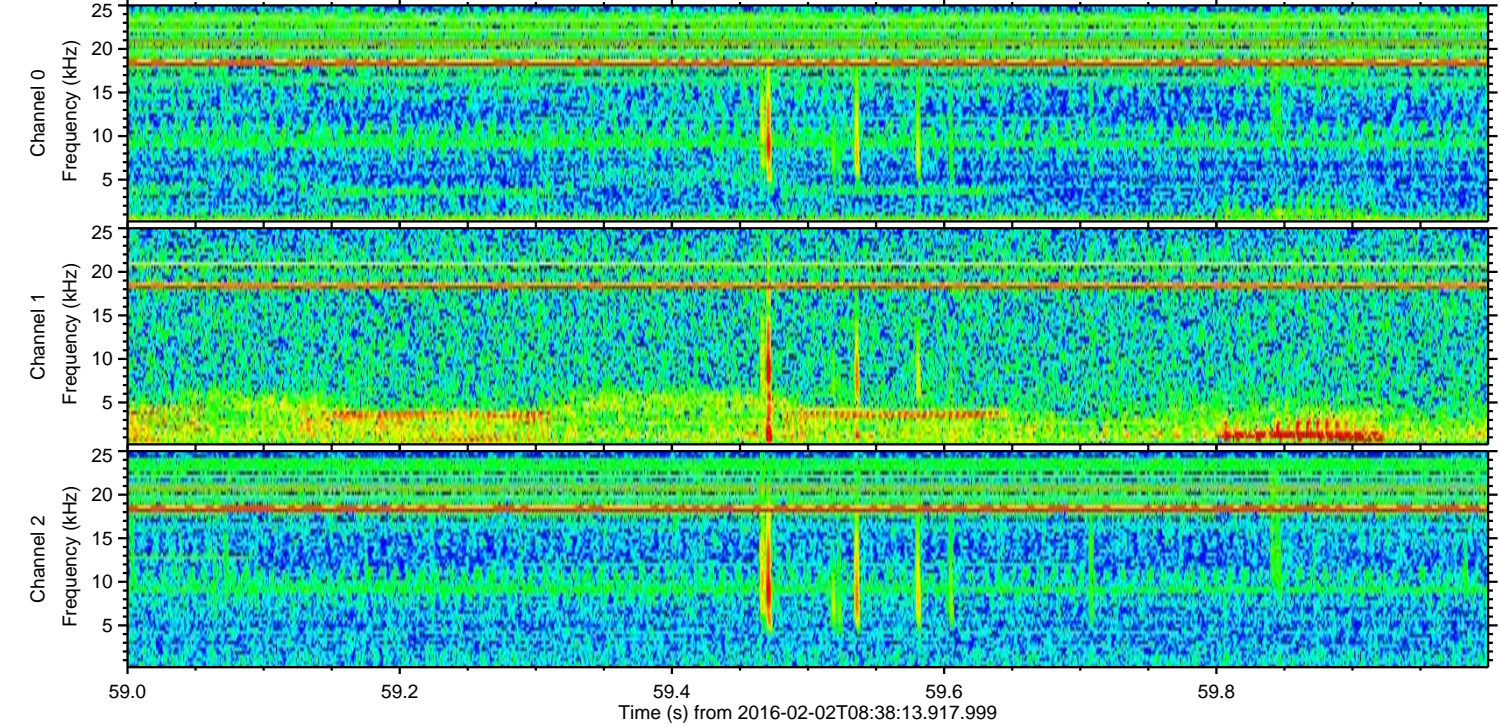
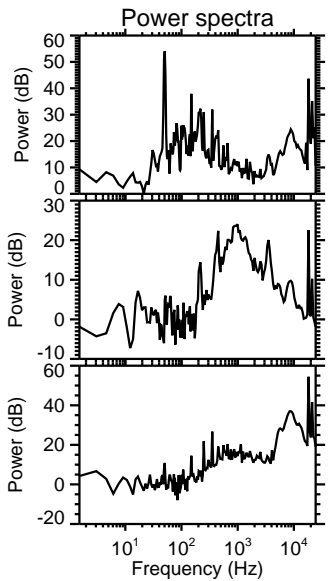
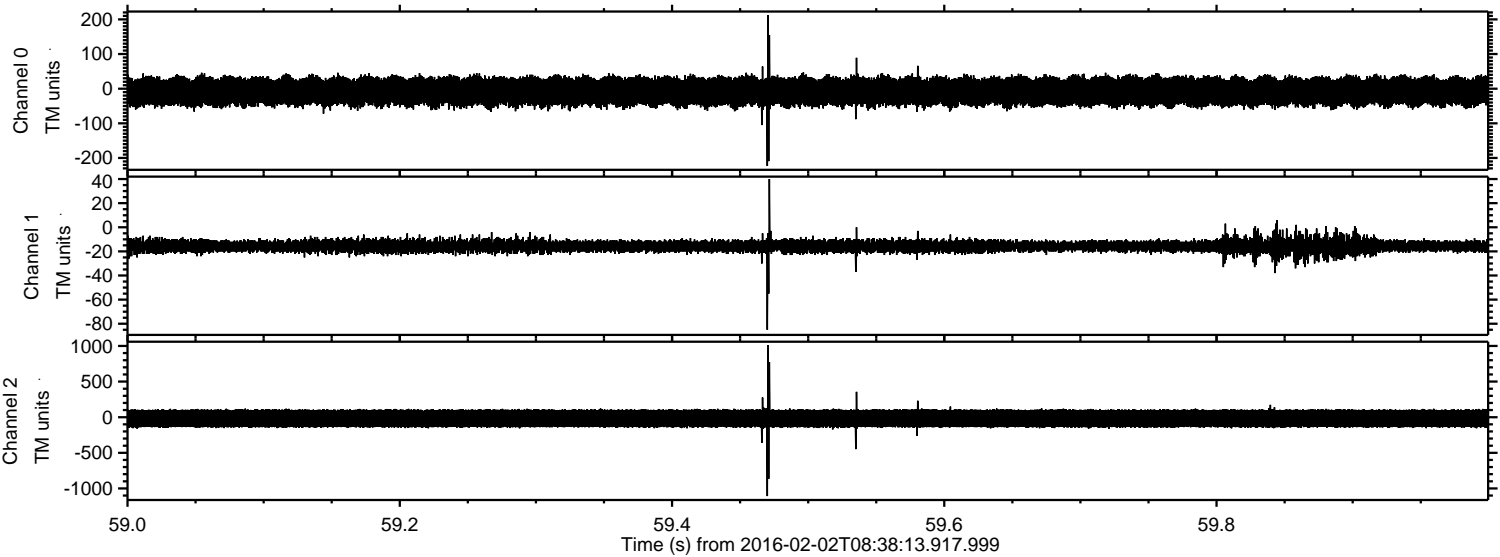
Processed Fri Apr 8 07:28:30 2016 by ELM ver.2012-10-06 from 001__elm20160202_083812__dat00.bin



Processed Fri Apr 8 07:28:31 2016 by ELM ver.2012-10-06 from 001__elm20160202_083812__dat00.bin



Processed Fri Apr 8 07:28:32 2016 by ELM ver.2012-10-06 from 001__elm20160202_083812__dat00.bin



Processed Fri Apr 8 07:28:33 2016 by ELM ver.2012-10-06 from 001__elm20160202_083812__dat00.bin

