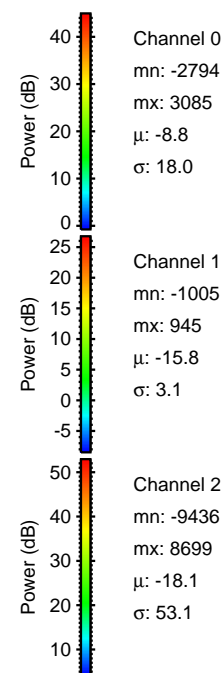
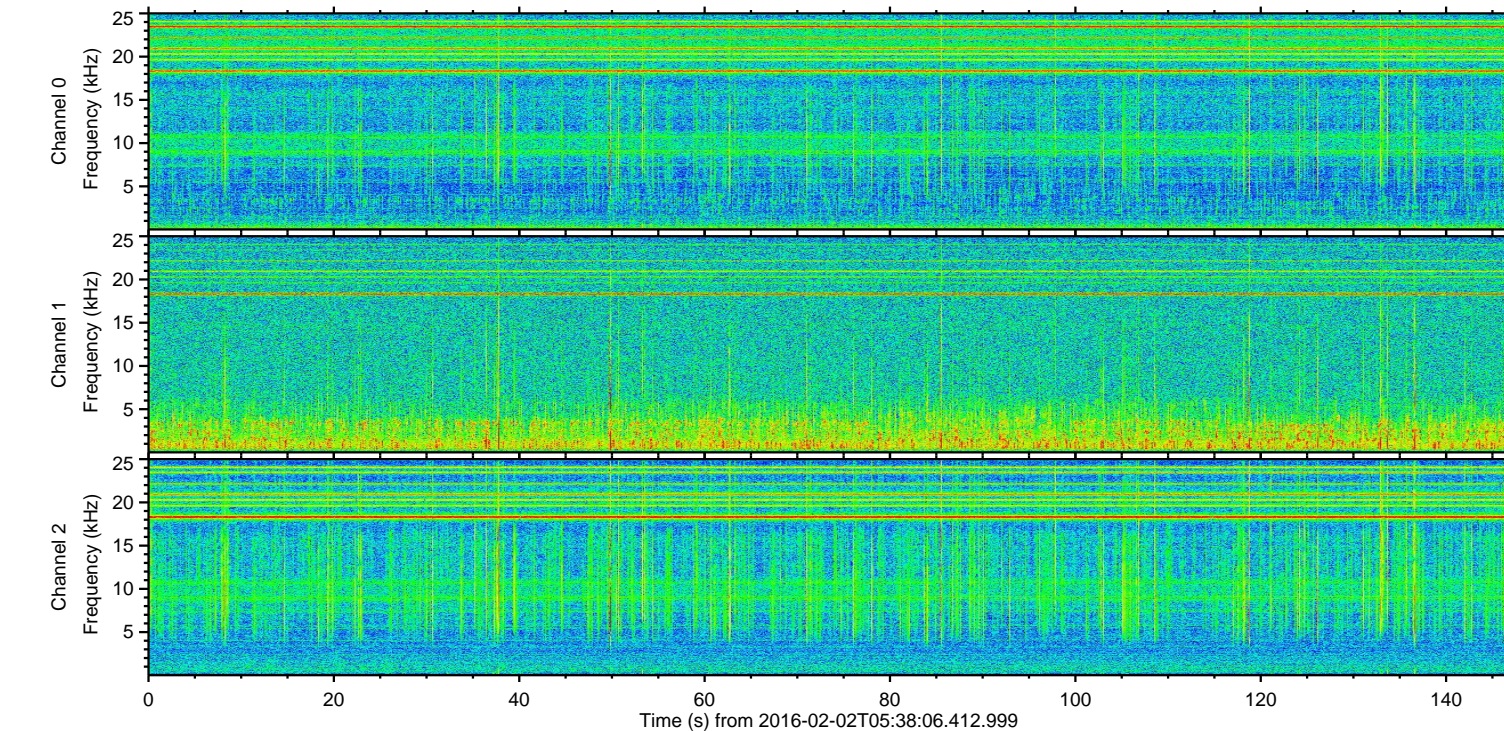
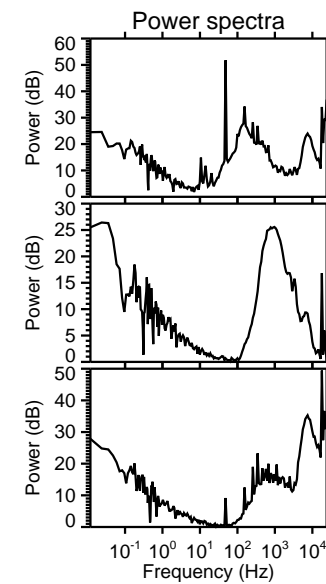
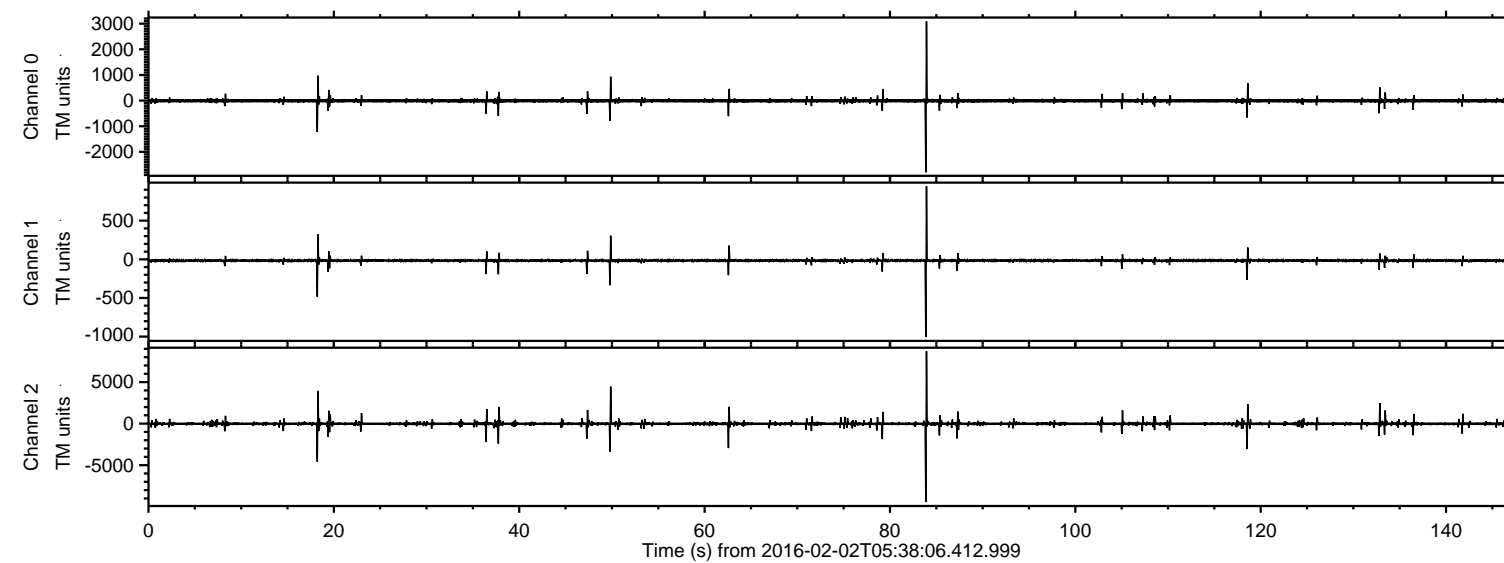


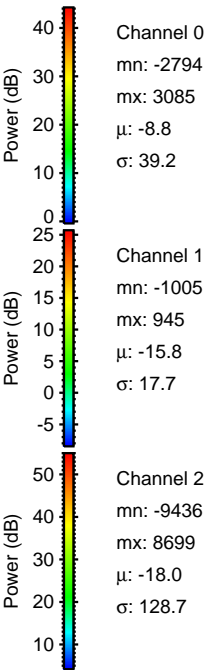
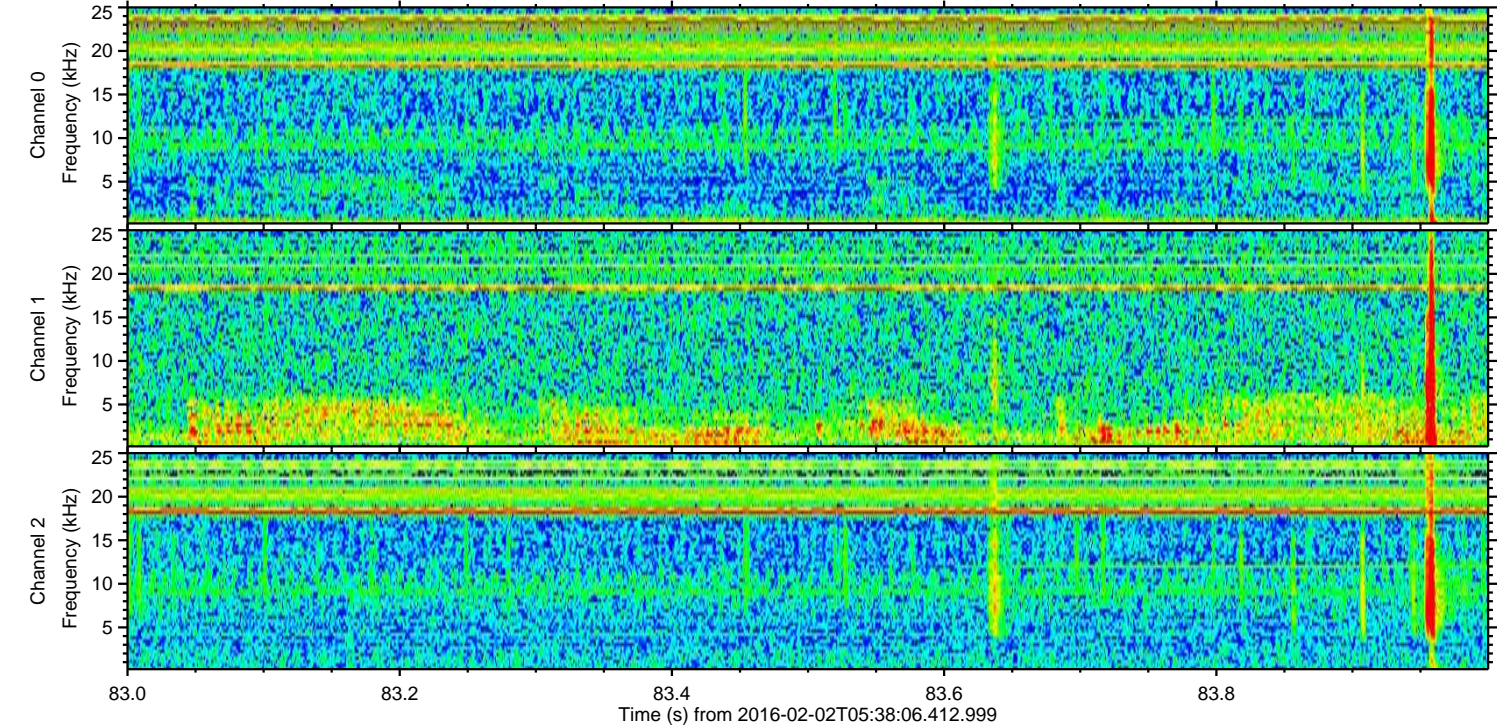
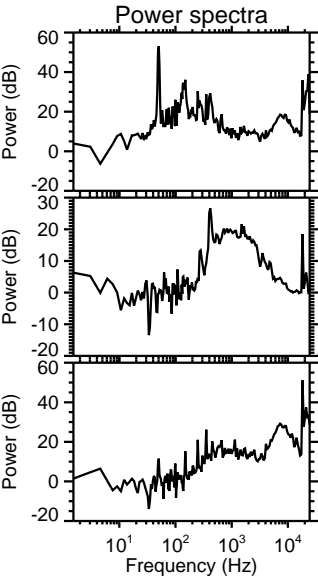
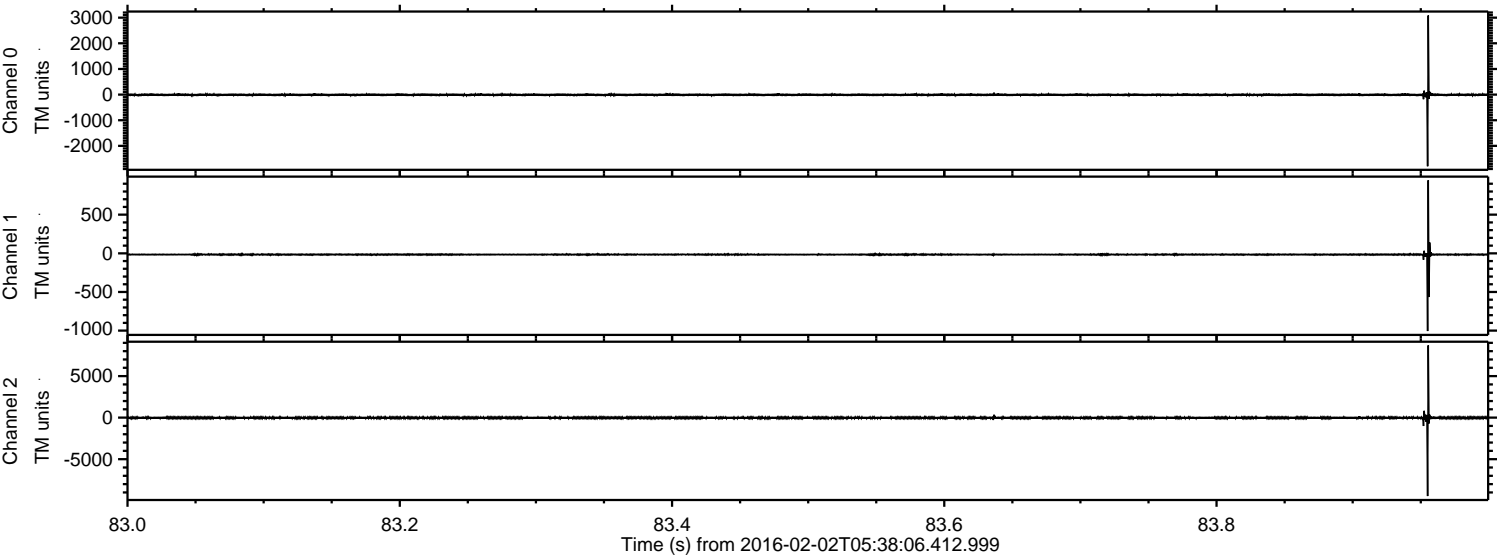
ELMAVAN 3D WAVEFORMS (Measured data sampled at 50 kHz) 51000 packets of 144 samples from 2016-02-02T05:38:06.412.999.

Processed Fri Apr 8 06:51:57 2016 by ELM ver.2012-10-06 from 001__elm20160202_053805__dat00.bin

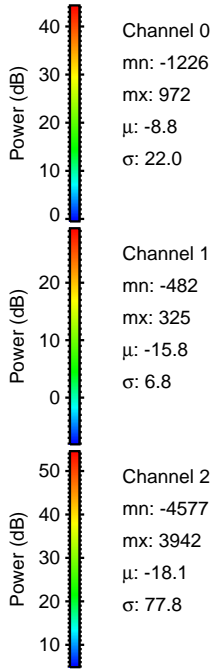
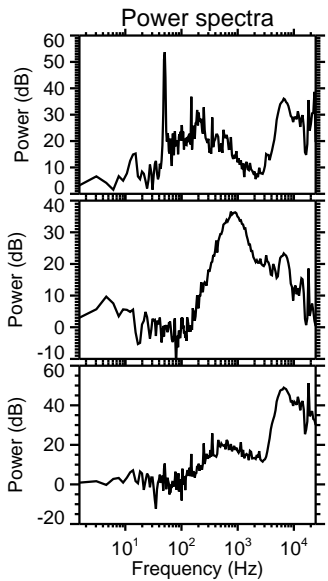
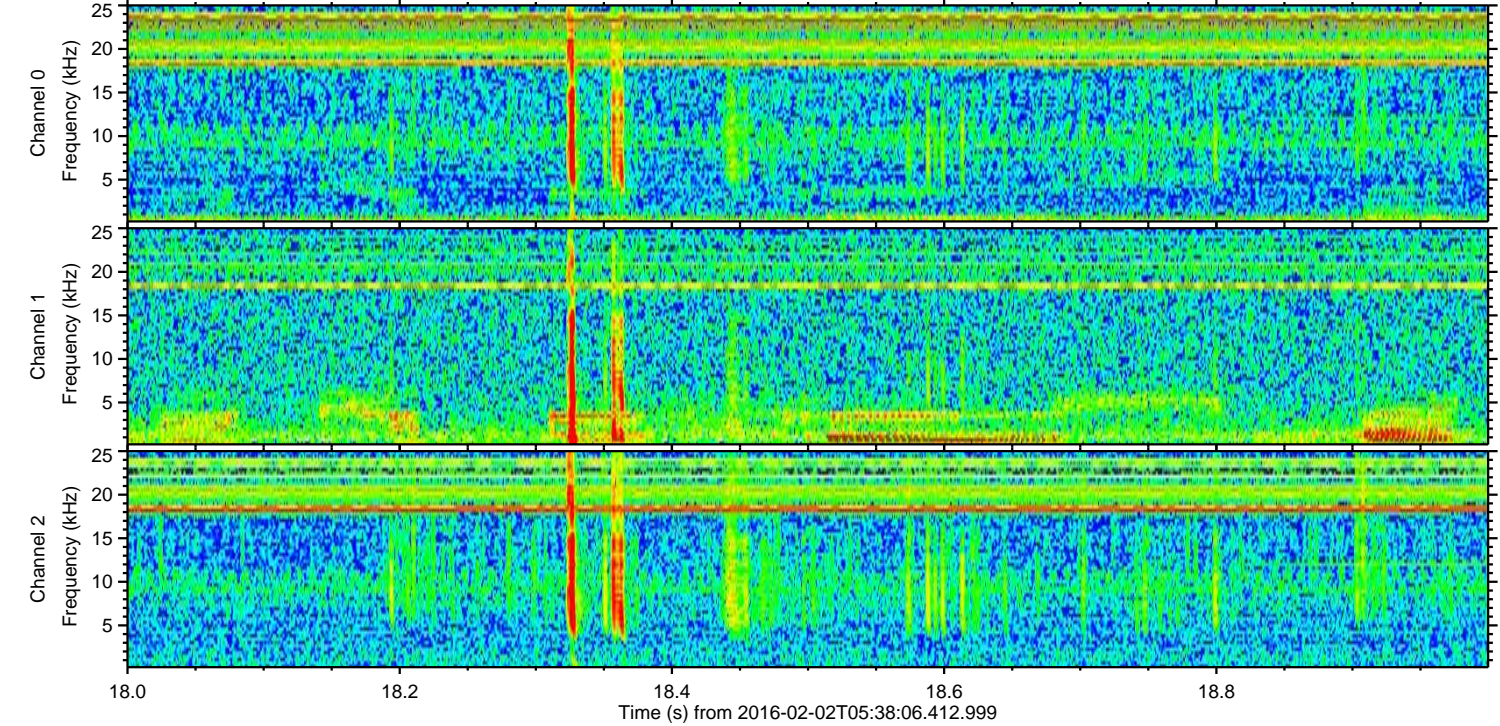
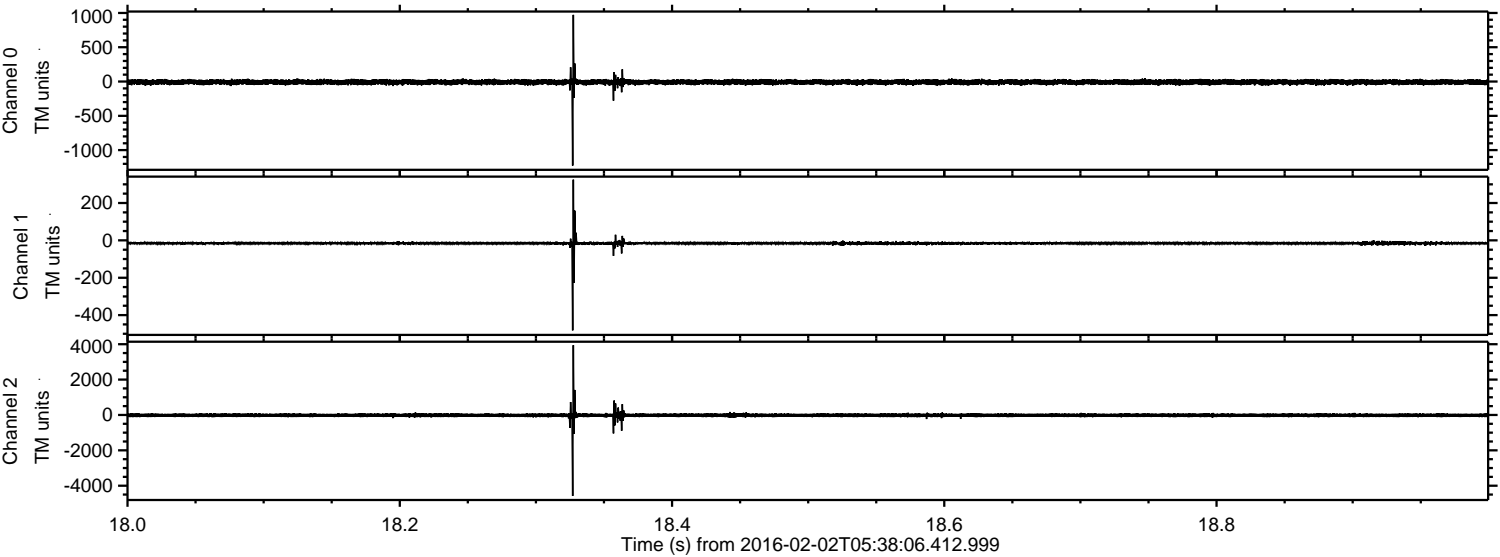


ELMAVAN 3D WAVEFORMS (Measured data sampled at 50 kHz) 51000 packets of 144 samples from 2016-02-02T05:38:06.412.999. Part 84/147

Processed Fri Apr 8 06:52:09 2016 by ELM ver.2012-10-06 from 001__elm20160202_053805__dat00.bin

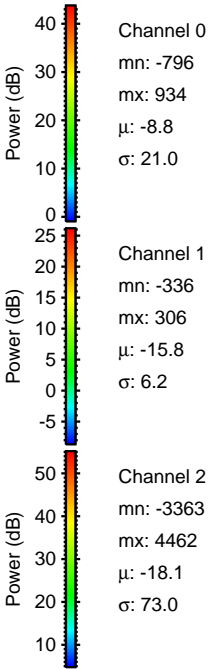
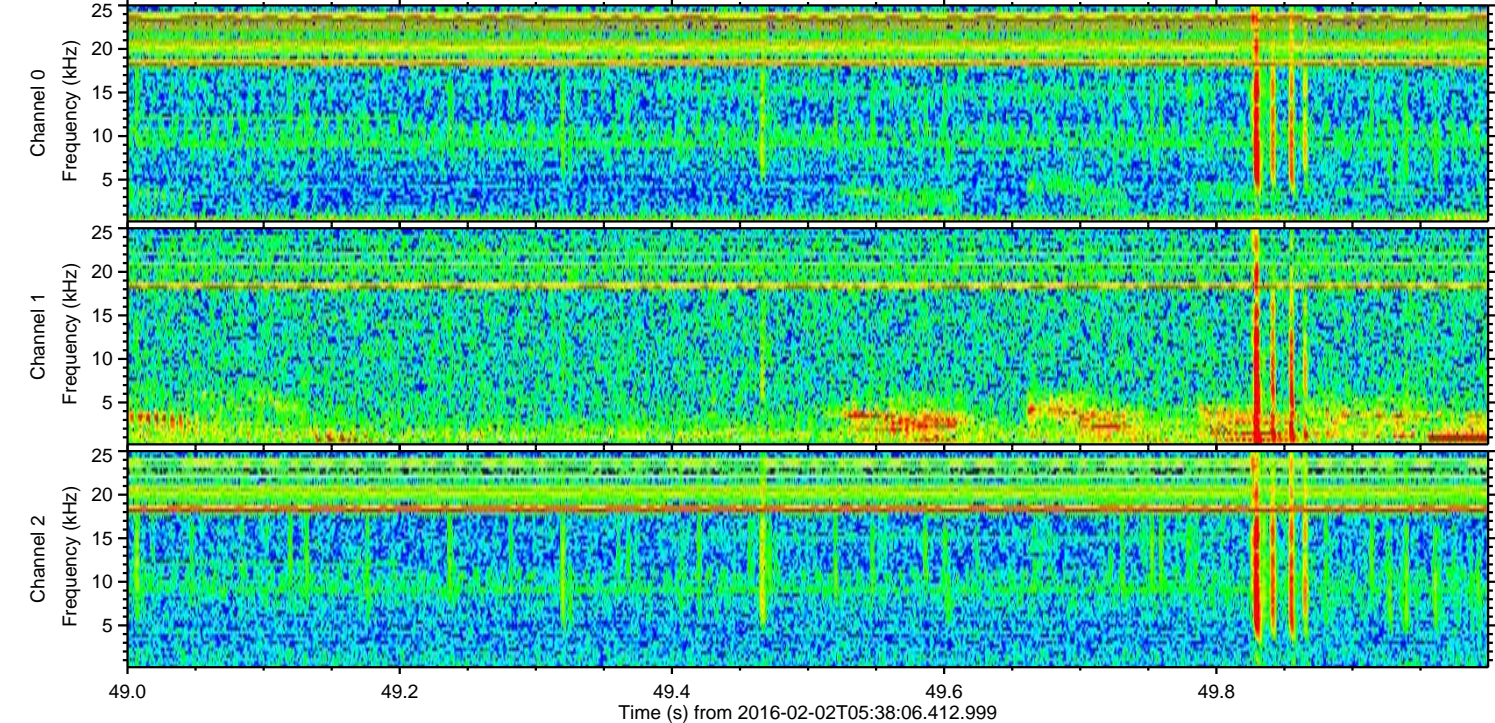
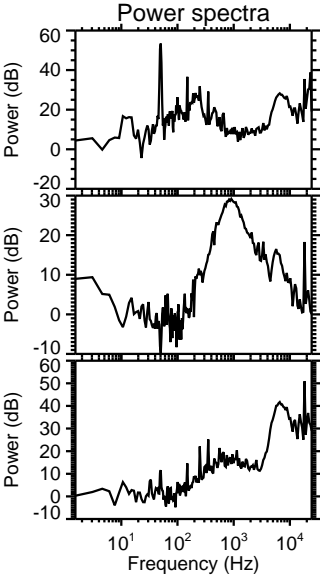
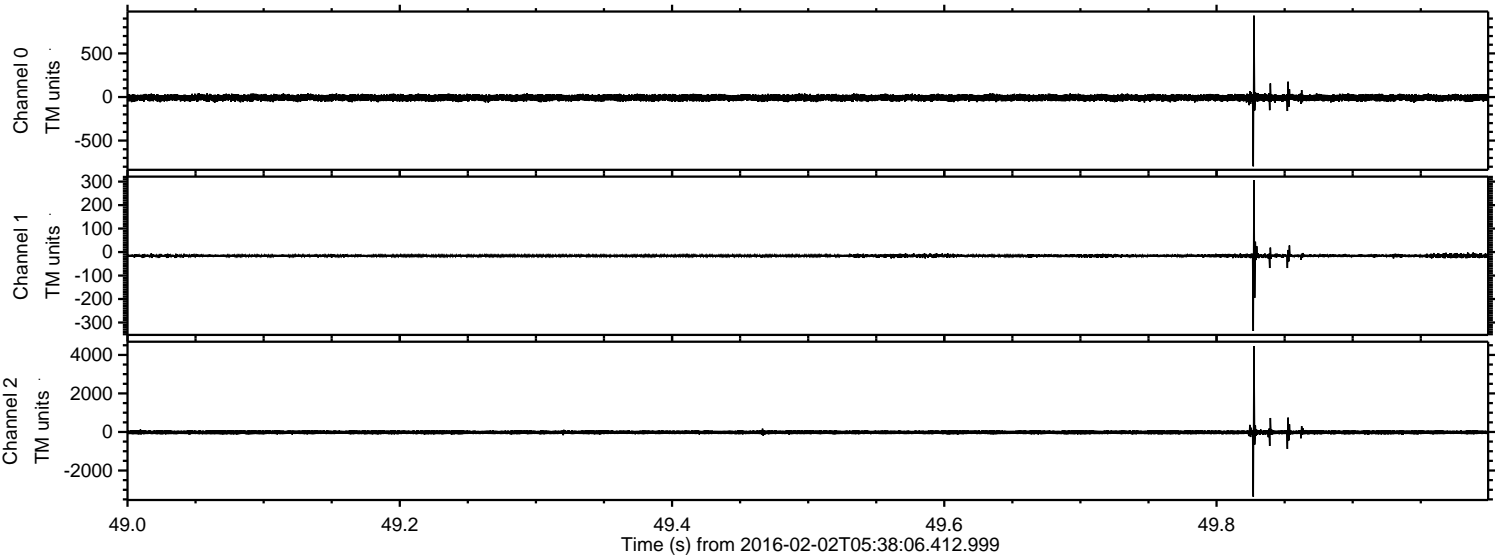


Processed Fri Apr 8 06:52:09 2016 by ELM ver.2012-10-06 from 001__elm20160202_053805__dat00.bin



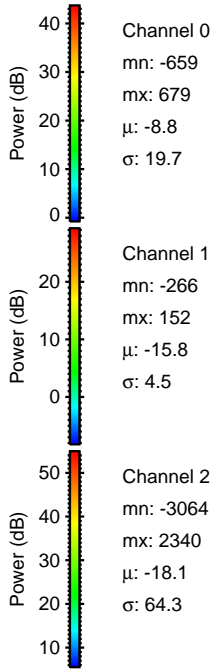
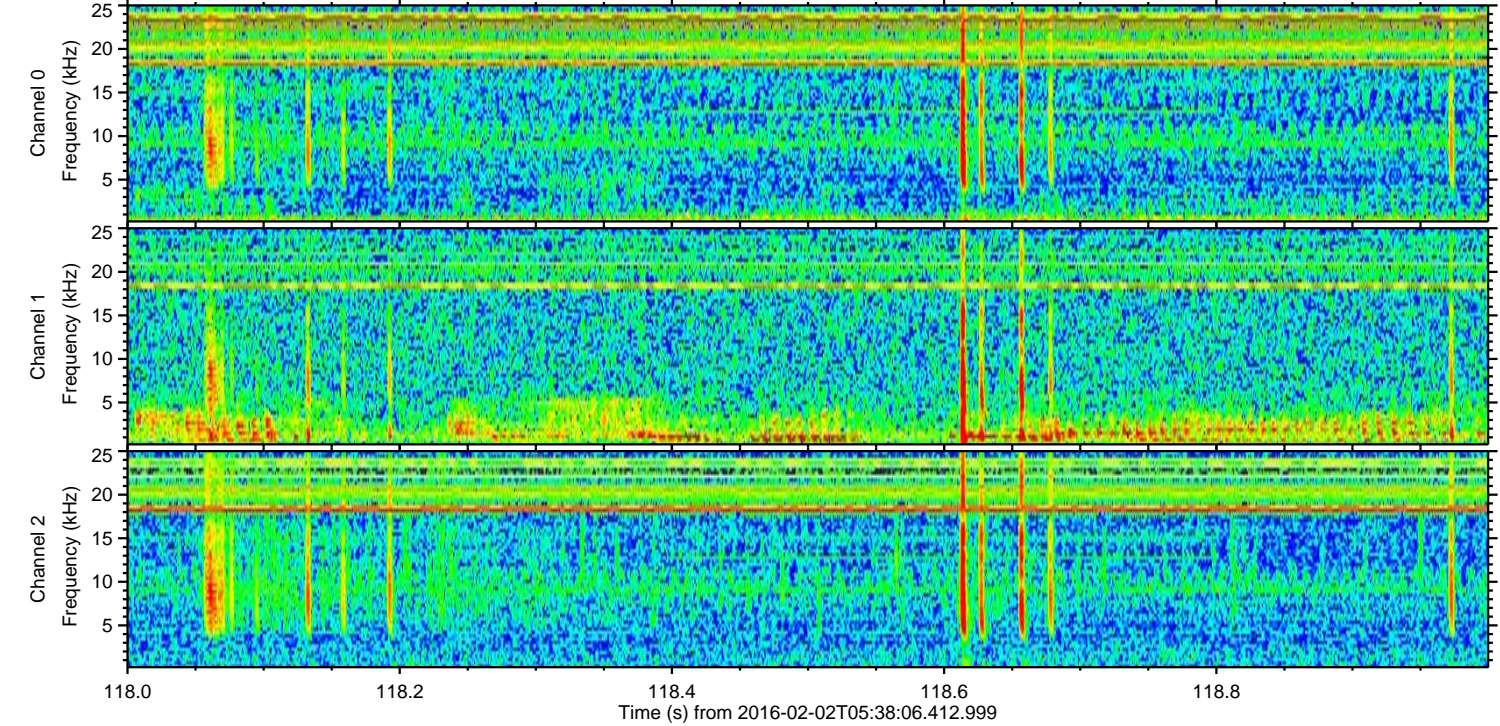
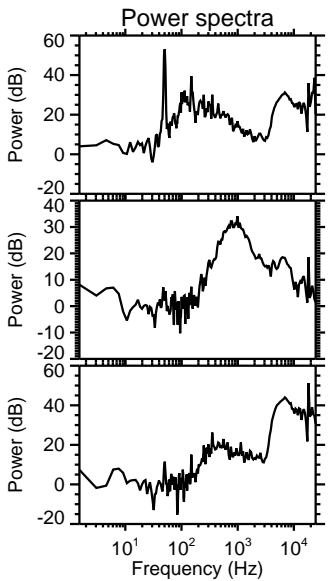
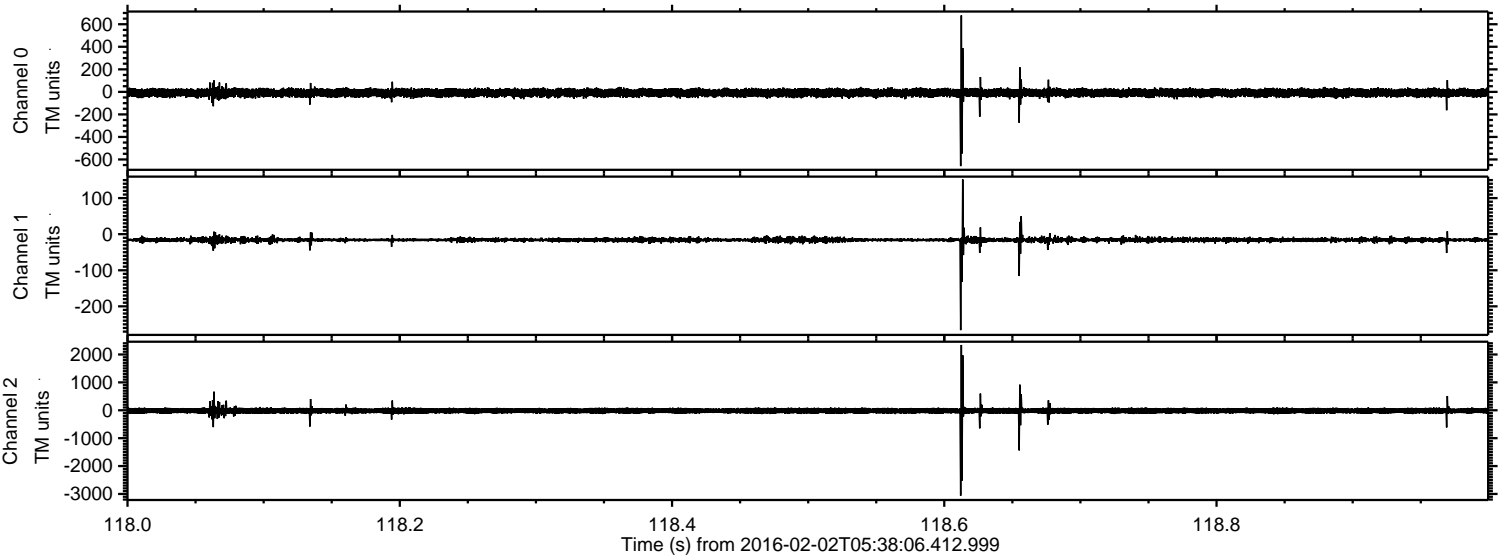
Power spectra

Processed Fri Apr 8 06:52:10 2016 by ELM ver.2012-10-06 from 001__elm20160202_053805__dat00.bin

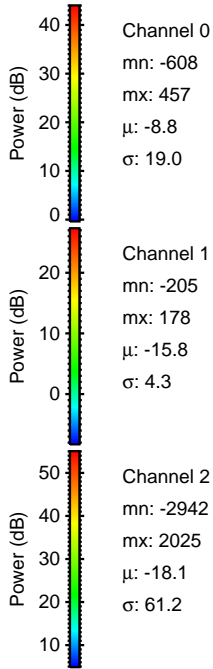
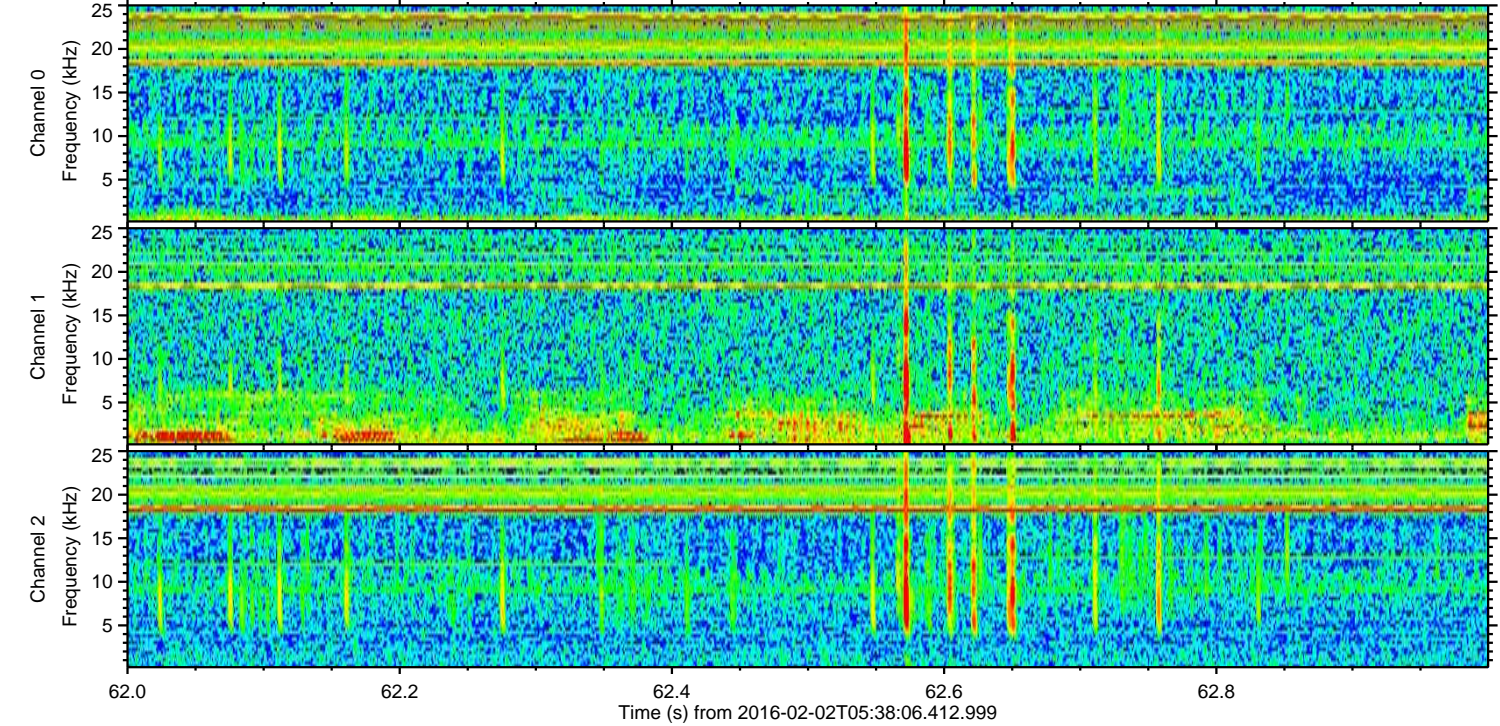
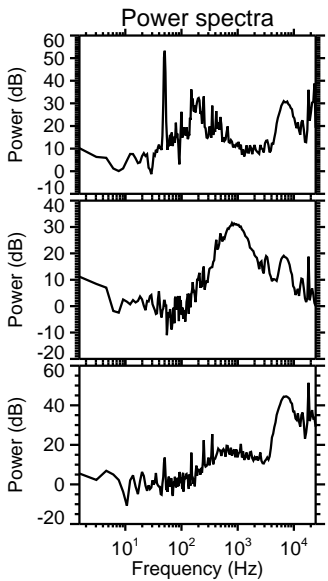
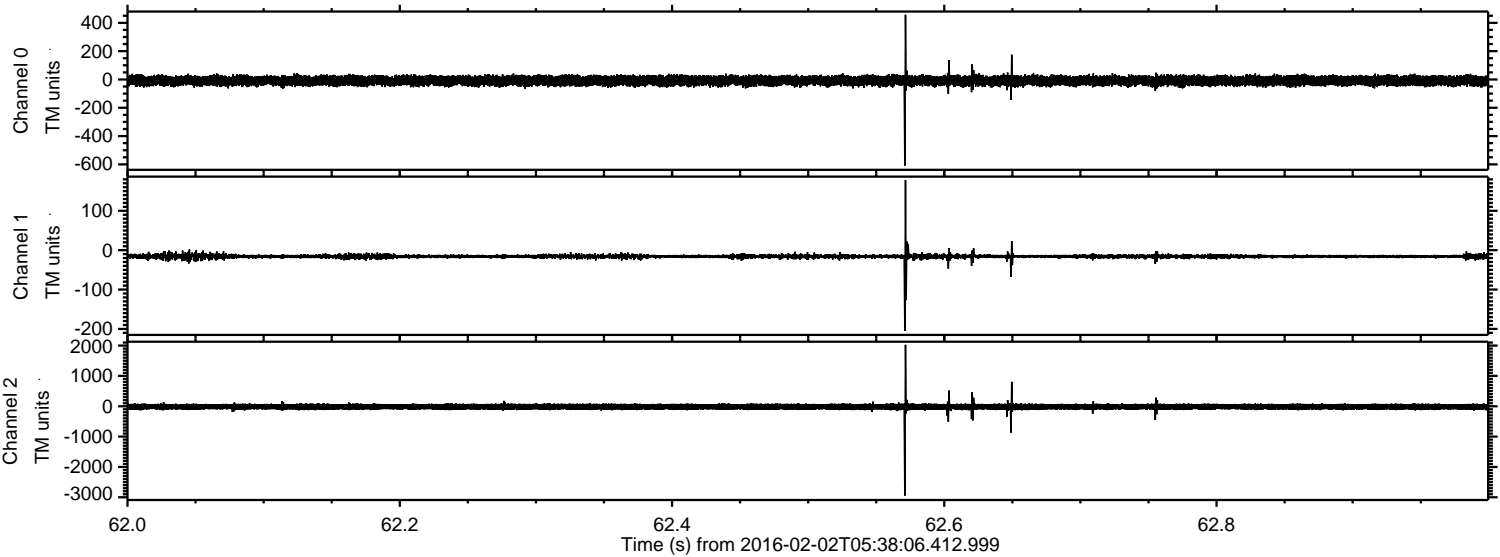


ELMAVAN 3D WAVEFORMS (Measured data sampled at 50 kHz) 51000 packets of 144 samples from 2016-02-02T05:38:06.412.999. Part 119/147

Processed Fri Apr 8 06:52:11 2016 by ELM ver.2012-10-06 from 001__elm20160202_053805__dat00.bin



Processed Fri Apr 8 06:52:12 2016 by ELM ver.2012-10-06 from 001__elm20160202_053805__dat00.bin



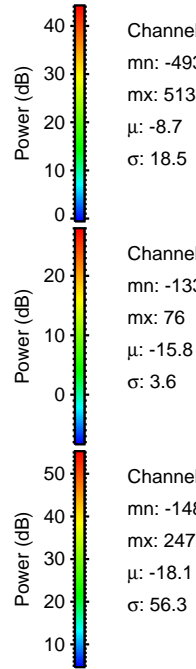
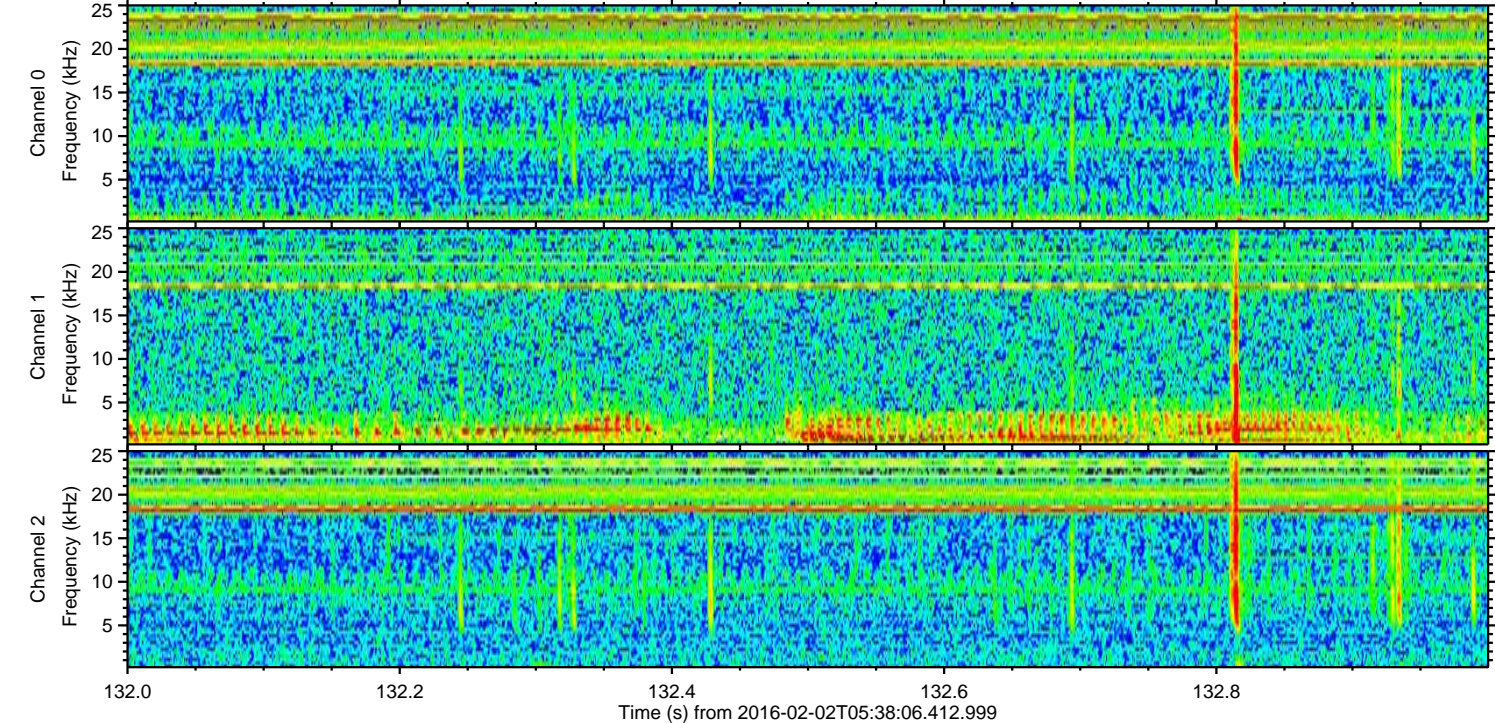
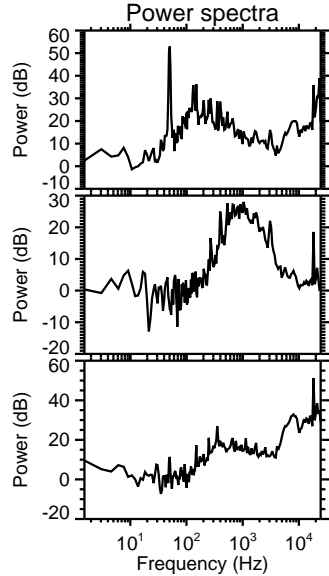
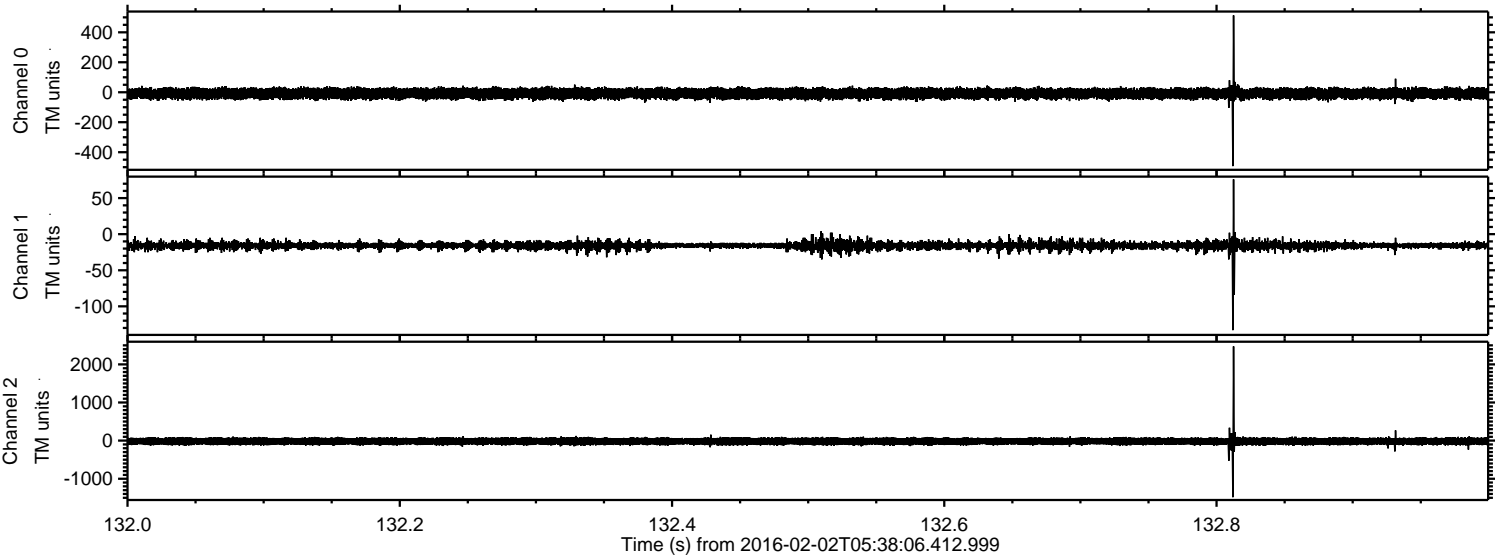
Channel 0
mn: -608
mx: 457
 μ : -8.8
 σ : 19.0

Channel 1
mn: -205
mx: 178
 μ : -15.8
 σ : 4.3

Channel 2
mn: -2942
mx: 2025
 μ : -18.1
 σ : 61.2

ELMAVAN 3D WAVEFORMS (Measured data sampled at 50 kHz) 51000 packets of 144 samples from 2016-02-02T05:38:06.412.999. Part 133/147

Processed Fri Apr 8 06:52:13 2016 by ELM ver.2012-10-06 from 001__elm20160202_053805__dat00.bin

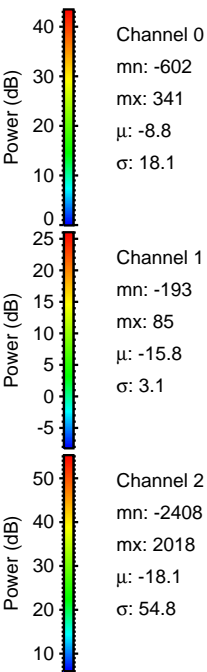
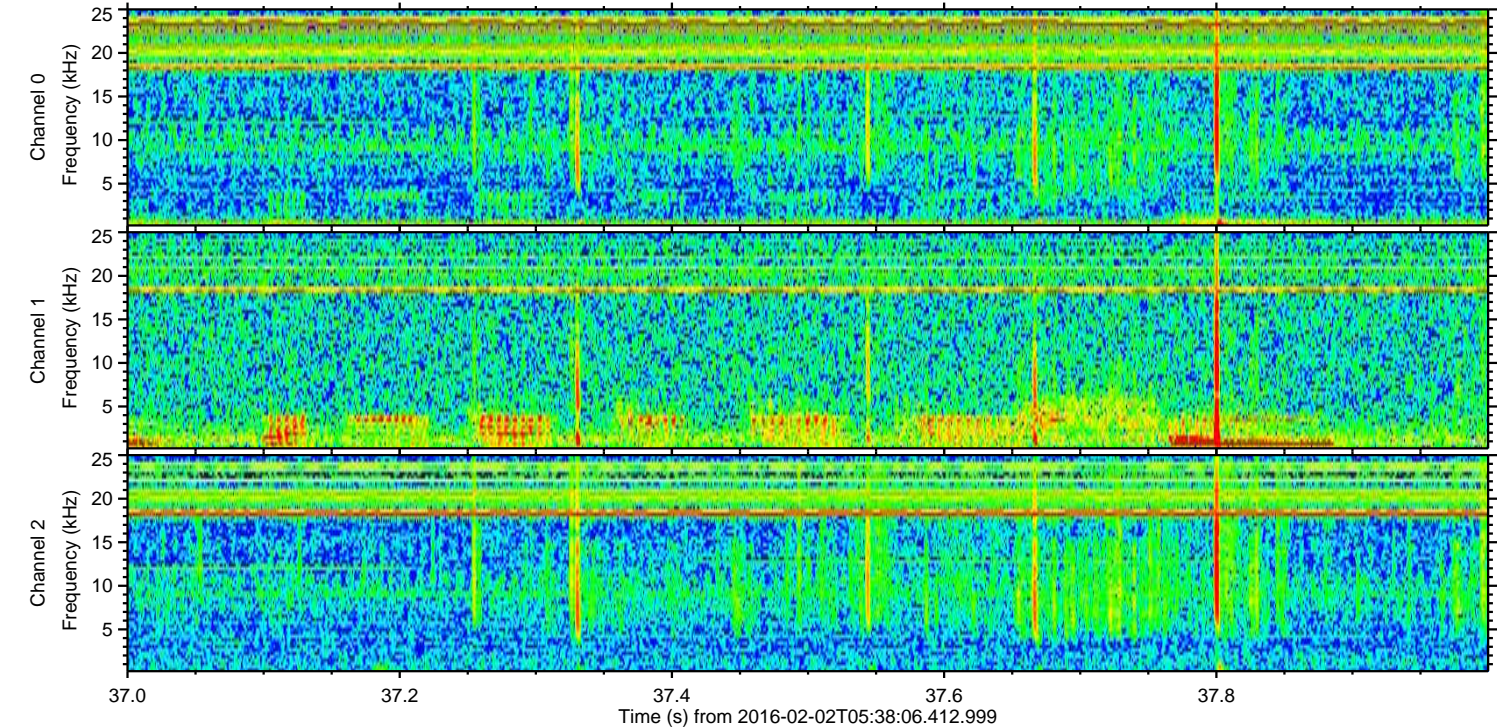
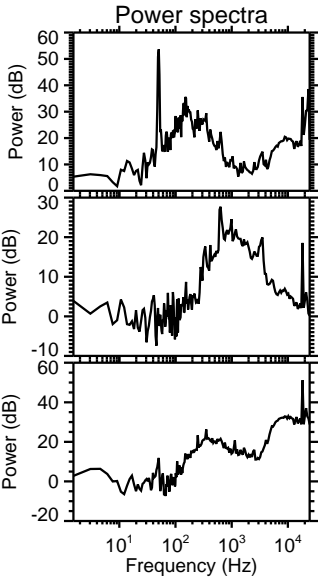
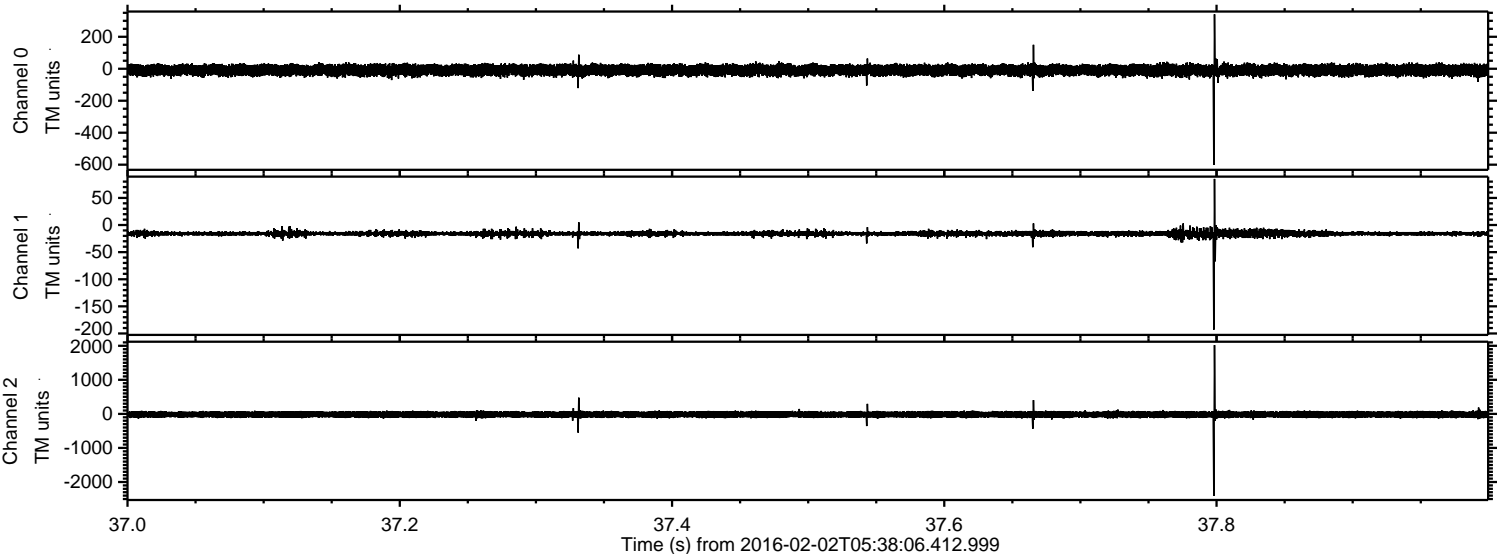


Channel 0
mn: -493
mx: 513
 μ : -8.7
 σ : 18.5

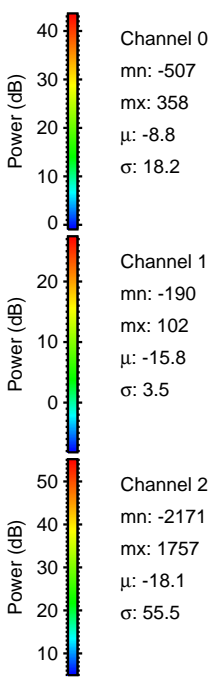
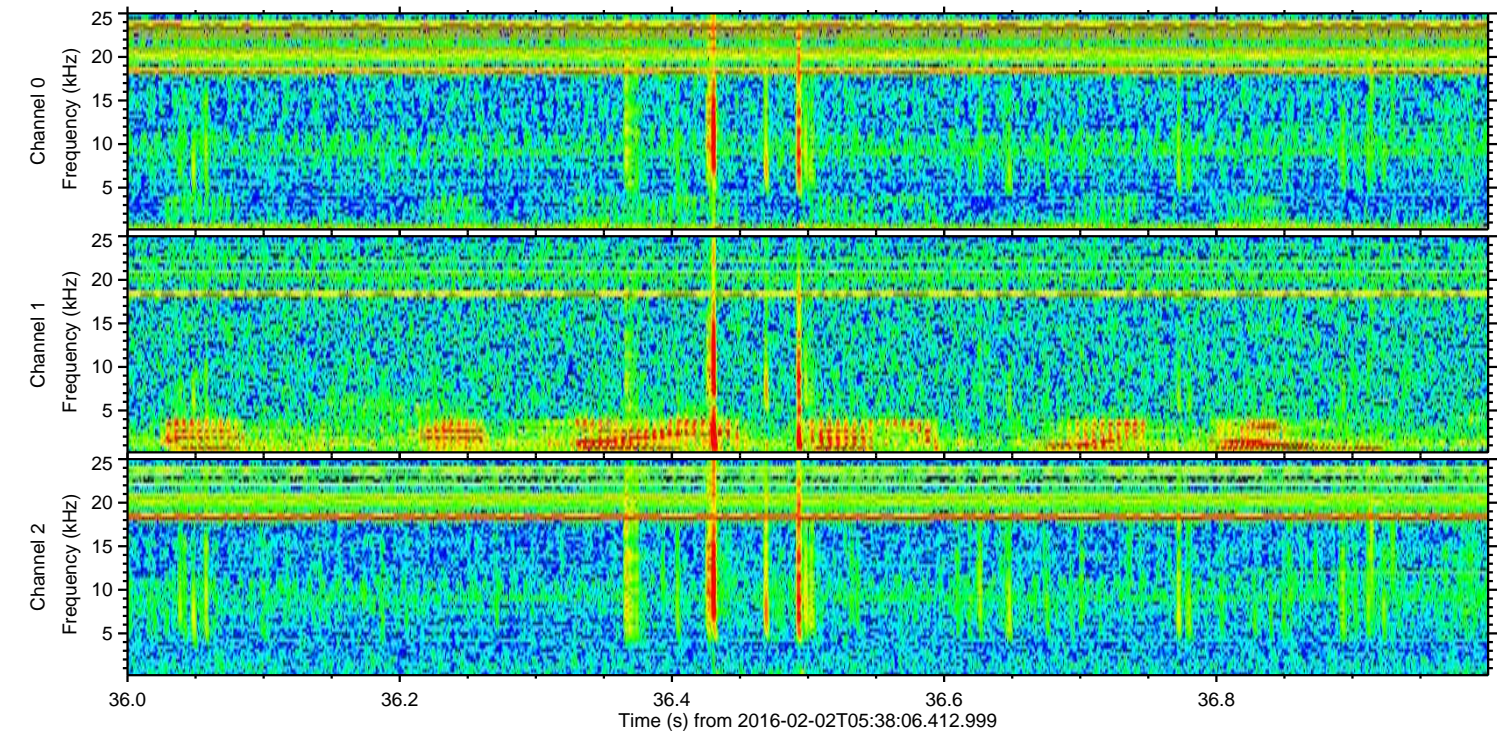
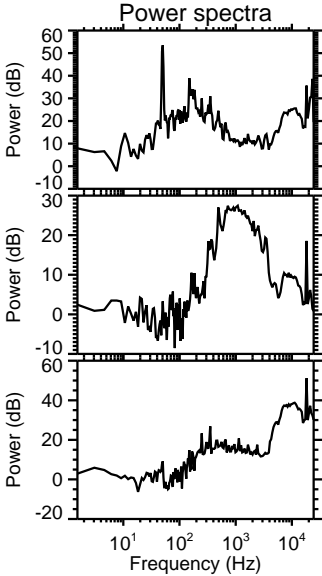
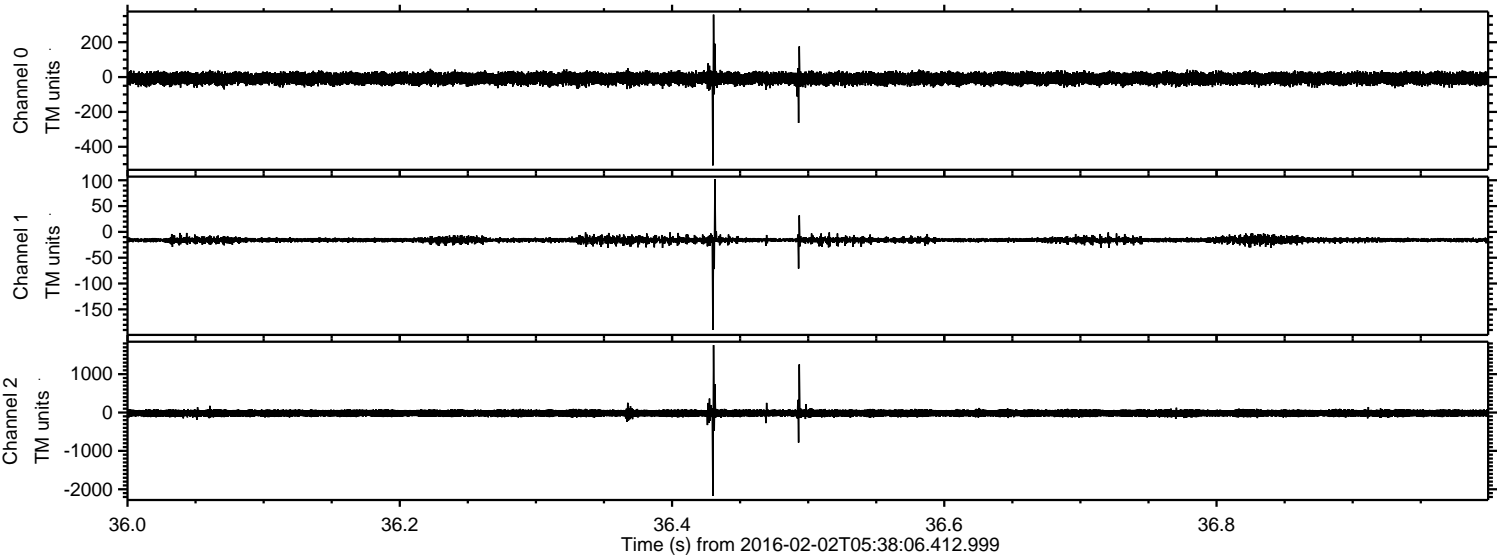
Channel 1
mn: -133
mx: 76
 μ : -15.8
 σ : 3.6

Channel 2
mn: -1484
mx: 2472
 μ : -18.1
 σ : 56.3

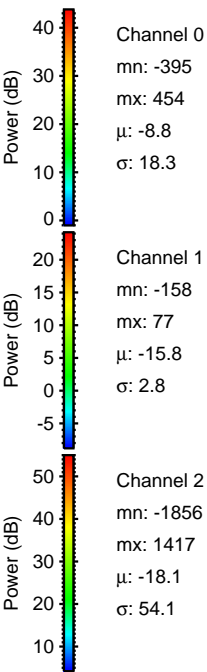
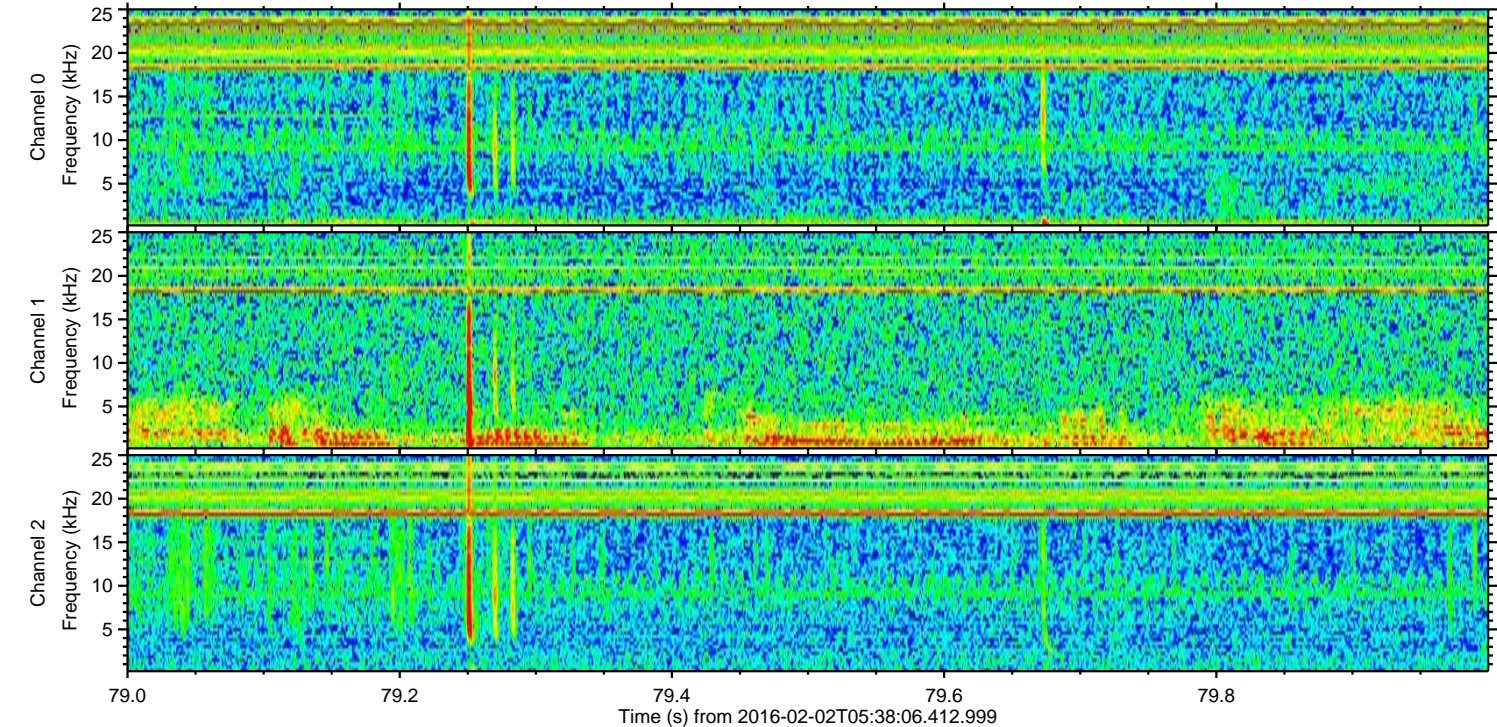
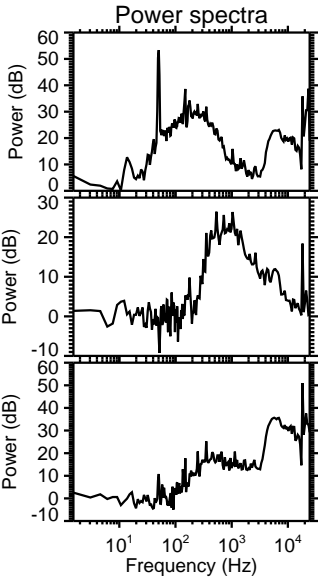
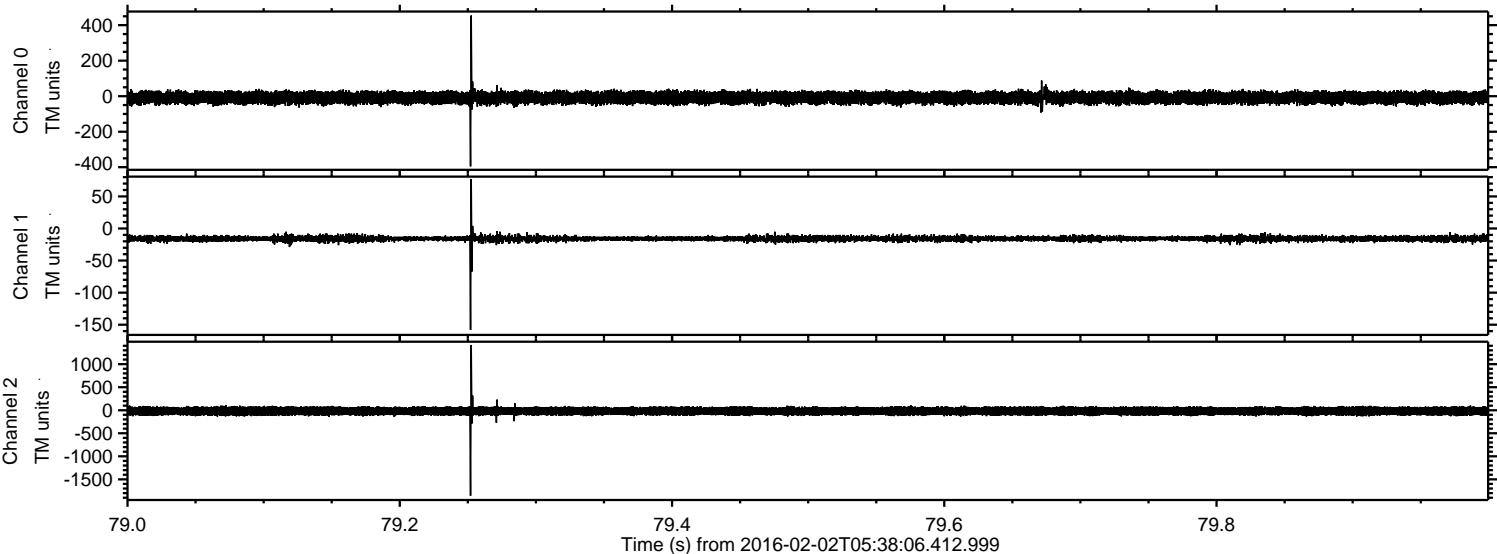
Processed Fri Apr 8 06:52:14 2016 by ELM ver.2012-10-06 from 001__elm20160202_053805__dat00.bin



Processed Fri Apr 8 06:52:15 2016 by ELM ver.2012-10-06 from 001__elm20160202_053805__dat00.bin



Processed Fri Apr 8 06:52:16 2016 by ELM ver.2012-10-06 from 001__elm20160202_053805__dat00.bin



Processed Fri Apr 8 06:52:17 2016 by ELM ver.2012-10-06 from 001__elm20160202_053805__dat00.bin

