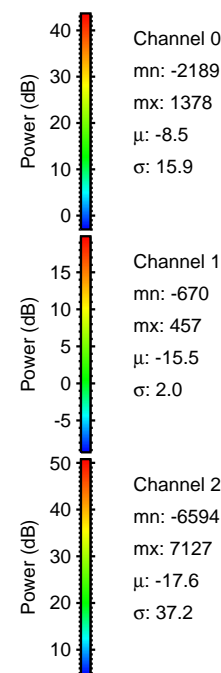
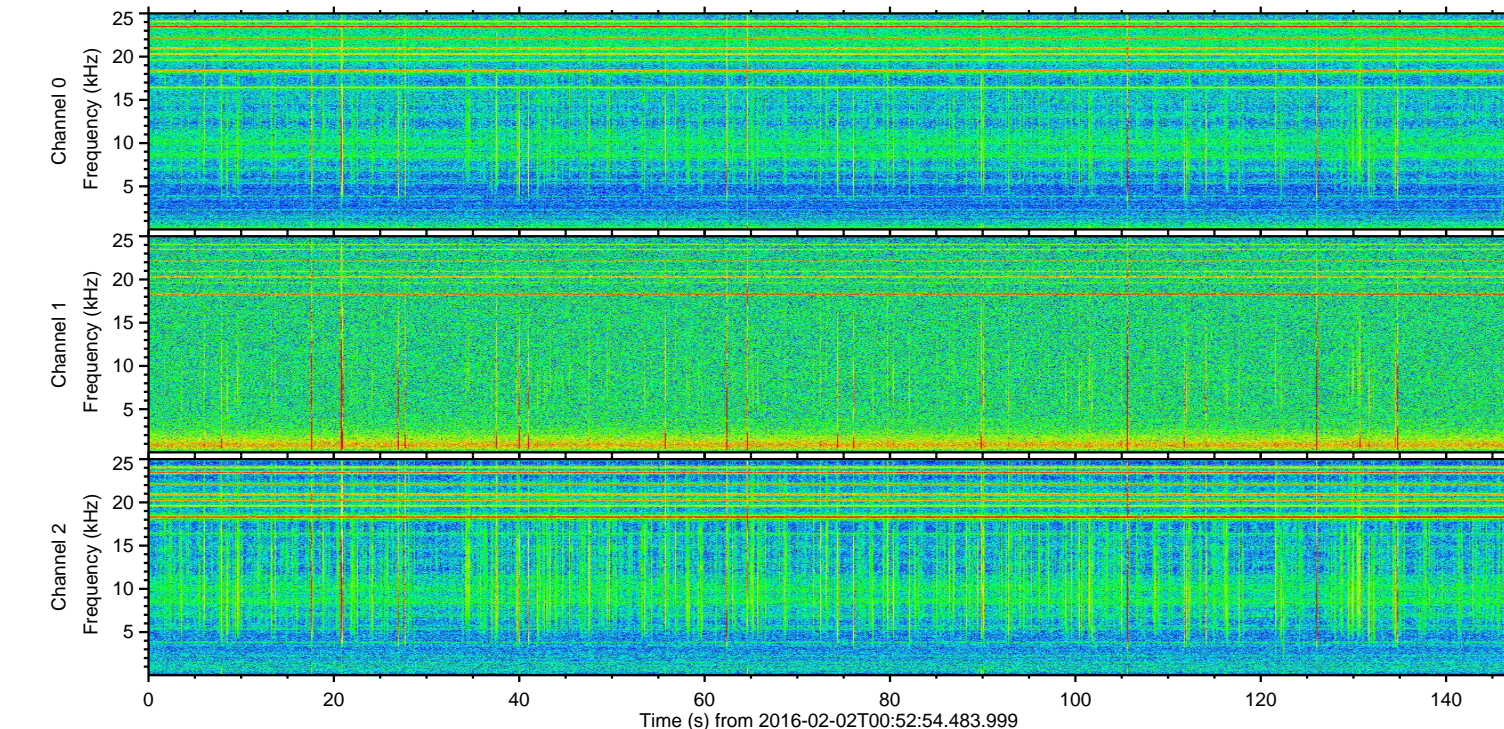
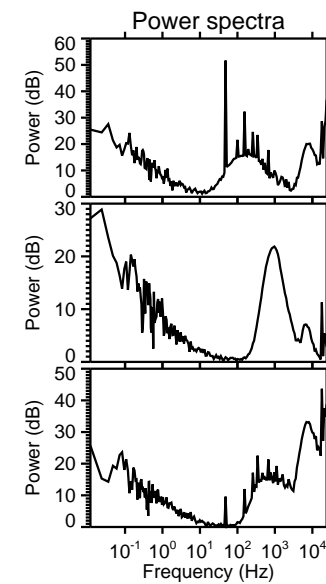
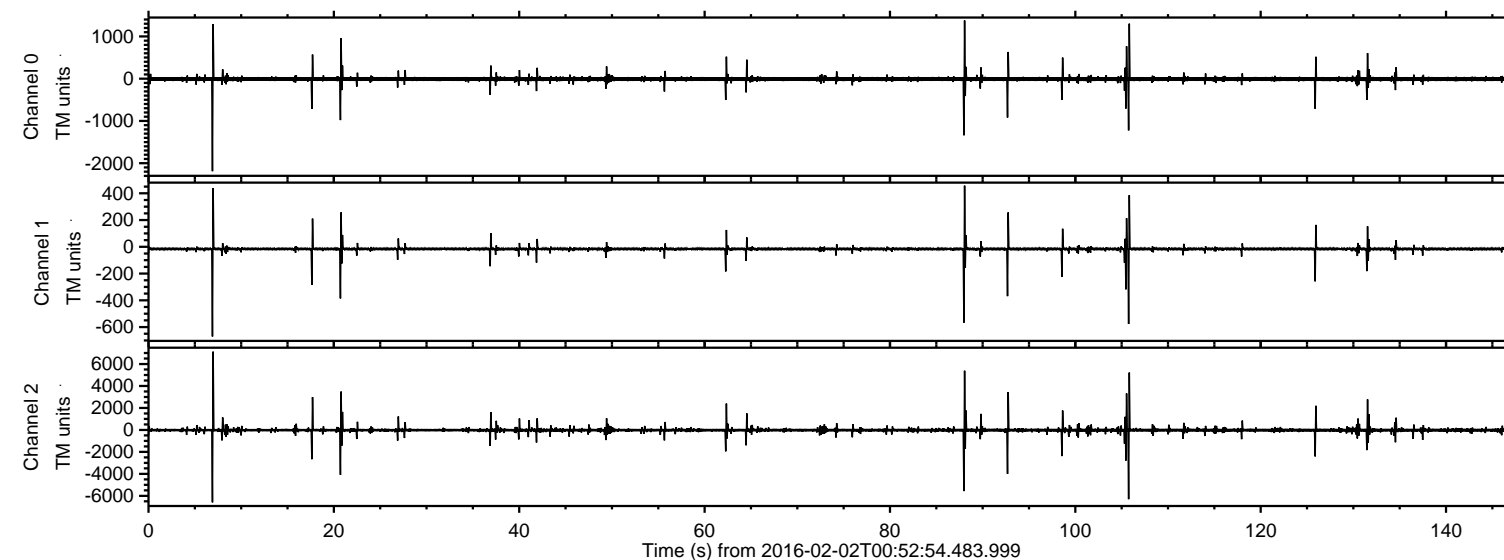
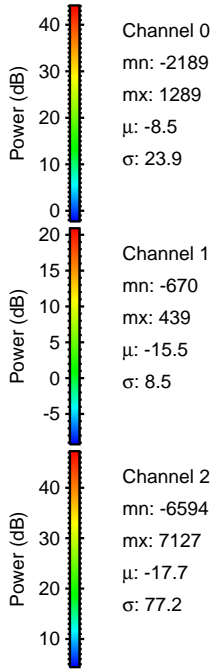
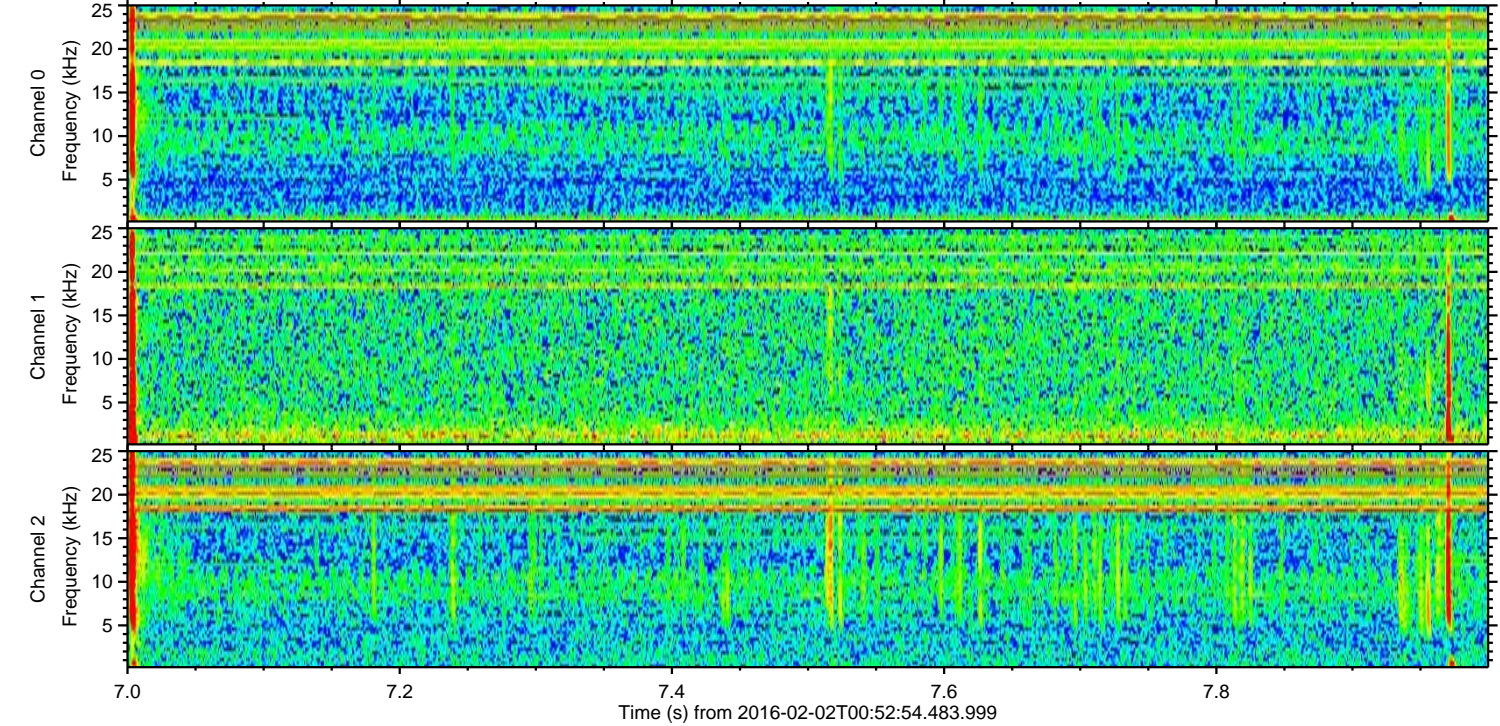
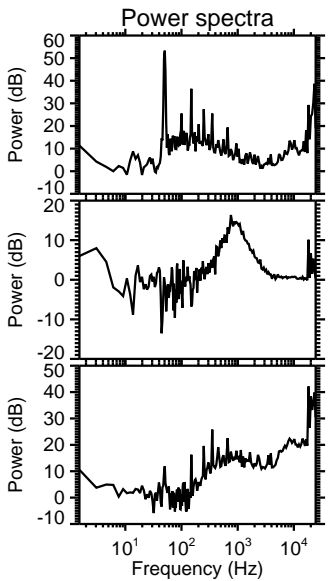
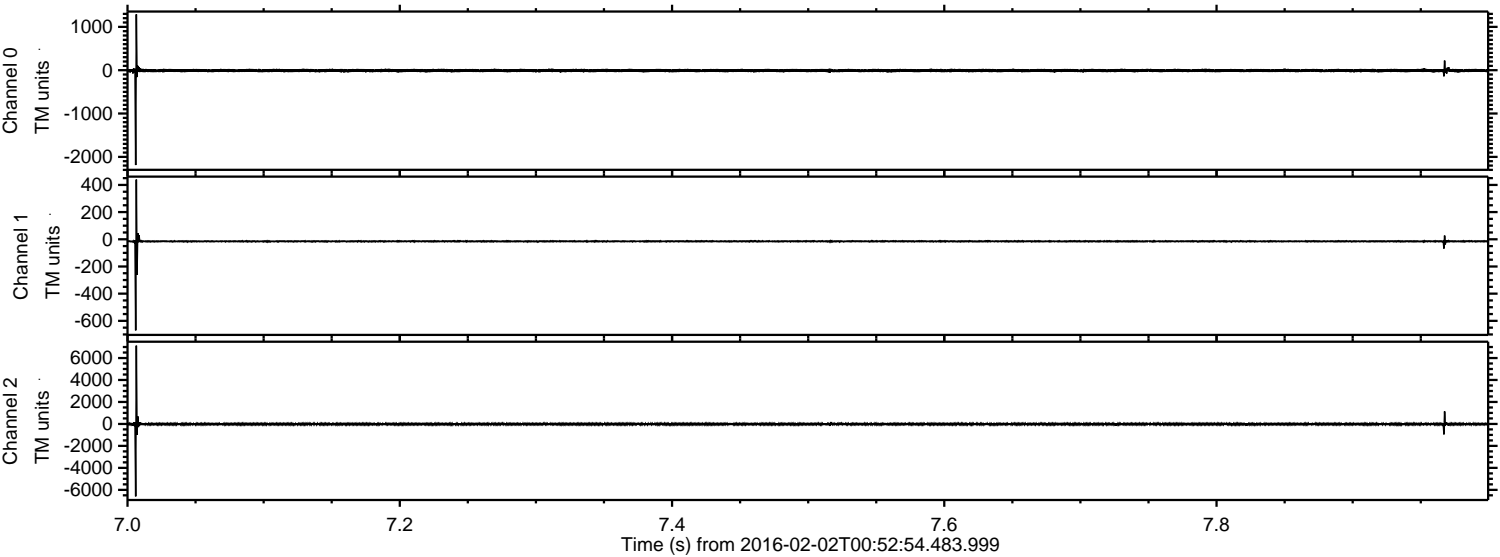


ELMAVAN 3D WAVEFORMS (Measured data sampled at 50 kHz) 51000 packets of 144 samples from 2016-02-02T00:52:54.483.999.

Processed Fri Apr 8 05:54:18 2016 by ELM ver.2012-10-06 from 001__elm20160202_005253__dat00.bin

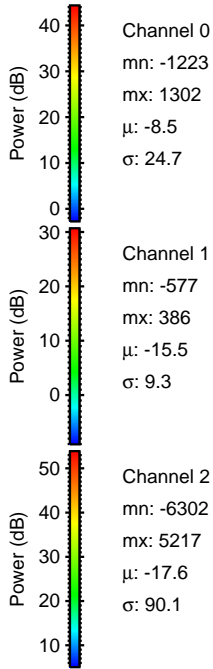
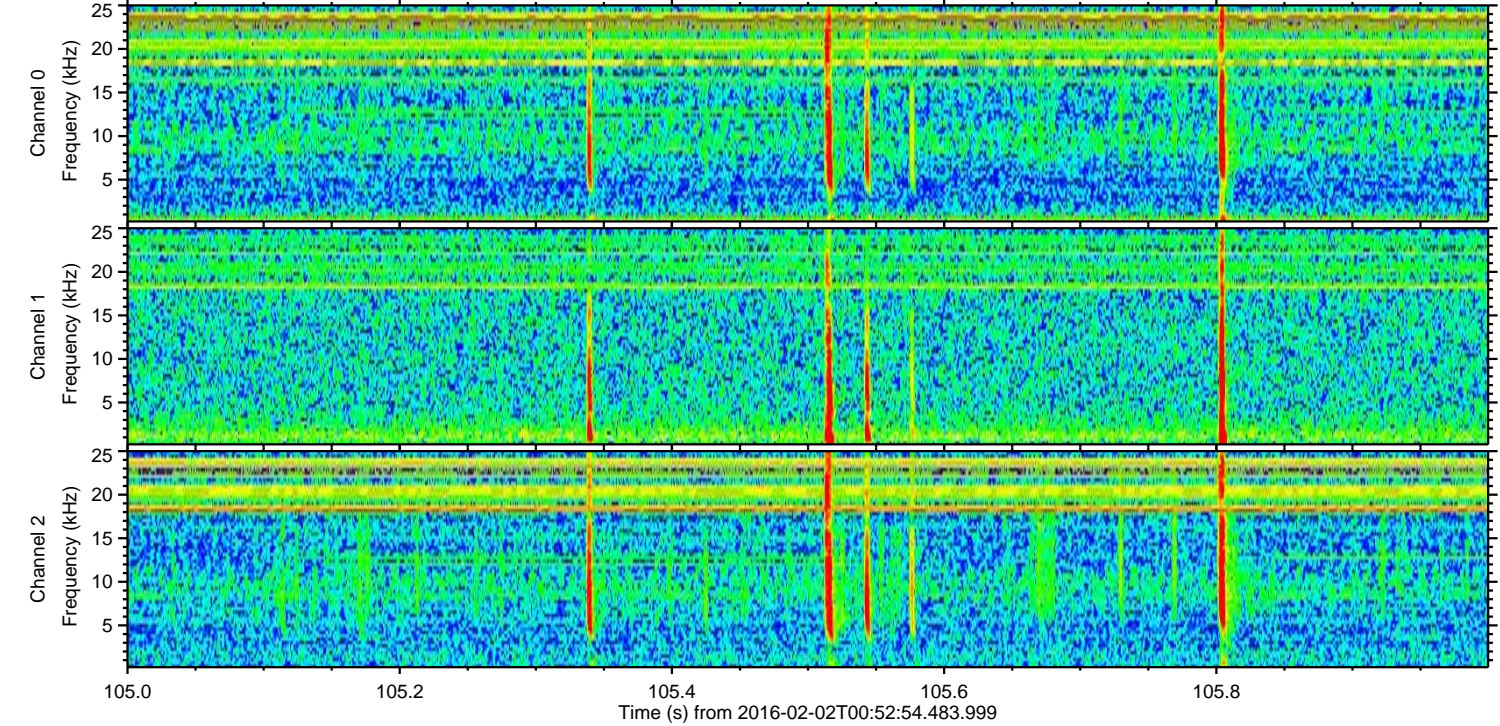
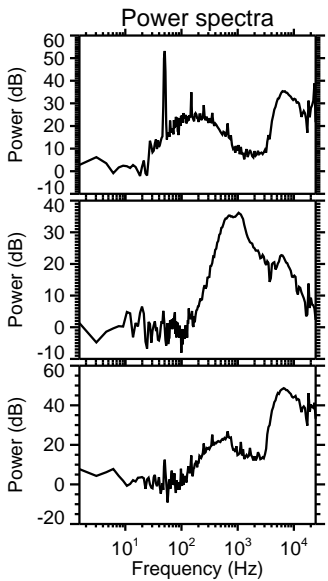
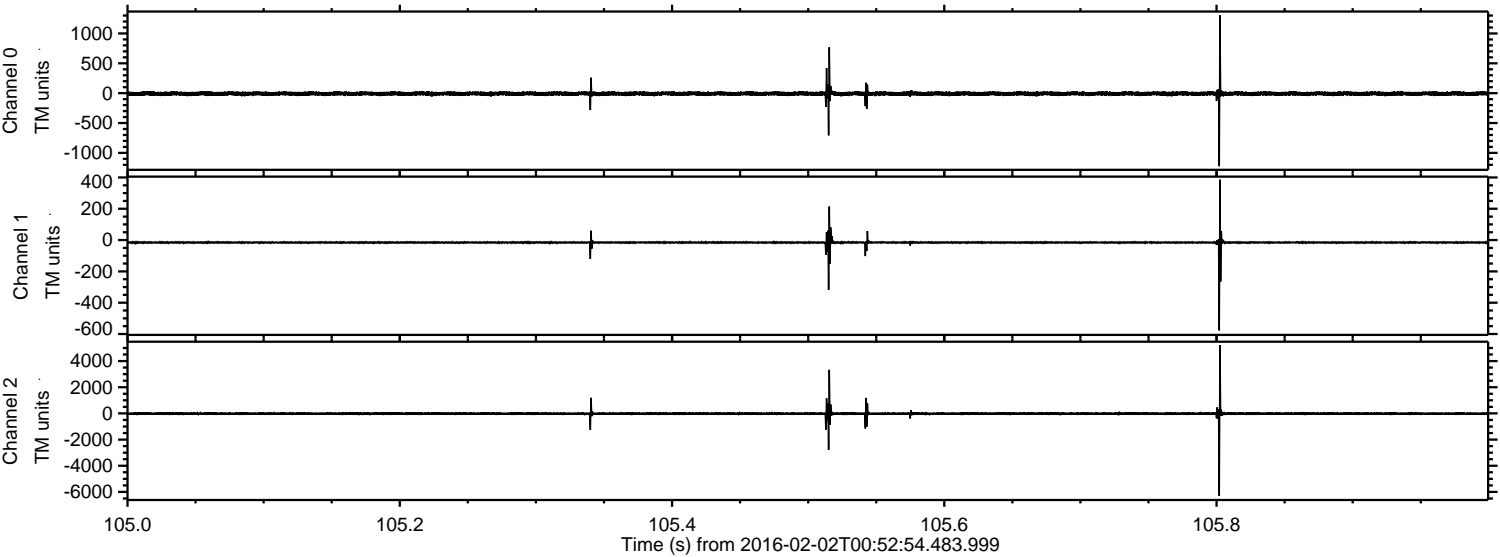


Processed Fri Apr 8 05:54:29 2016 by ELM ver.2012-10-06 from 001__elm20160202_005253__dat00.bin

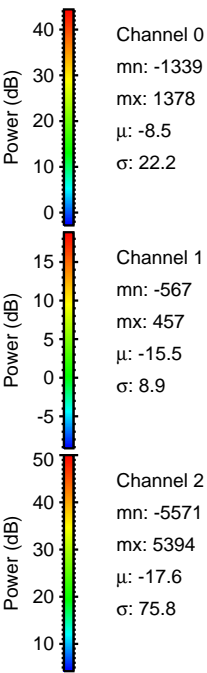
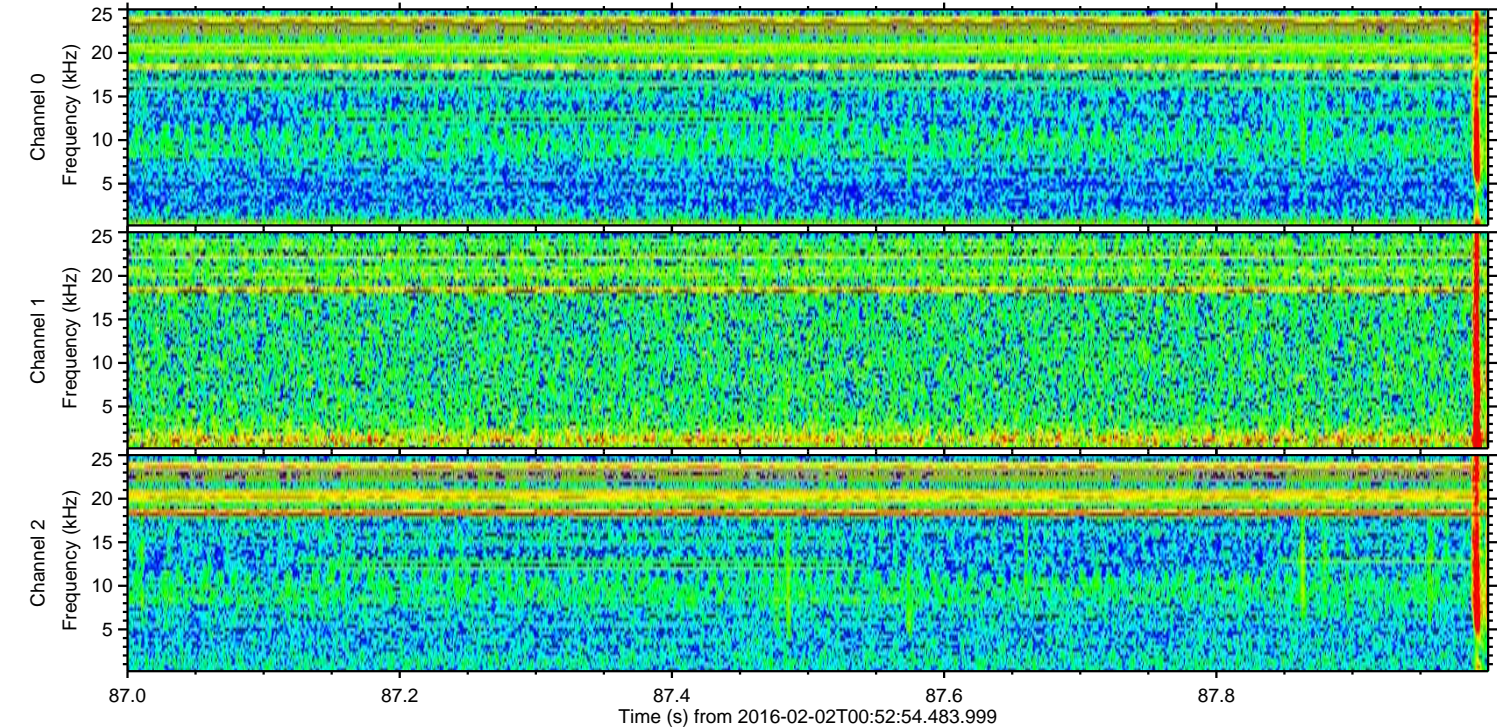
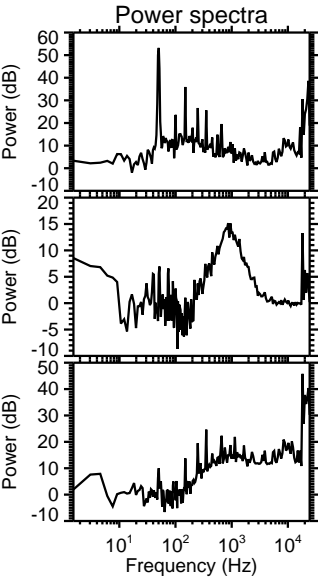
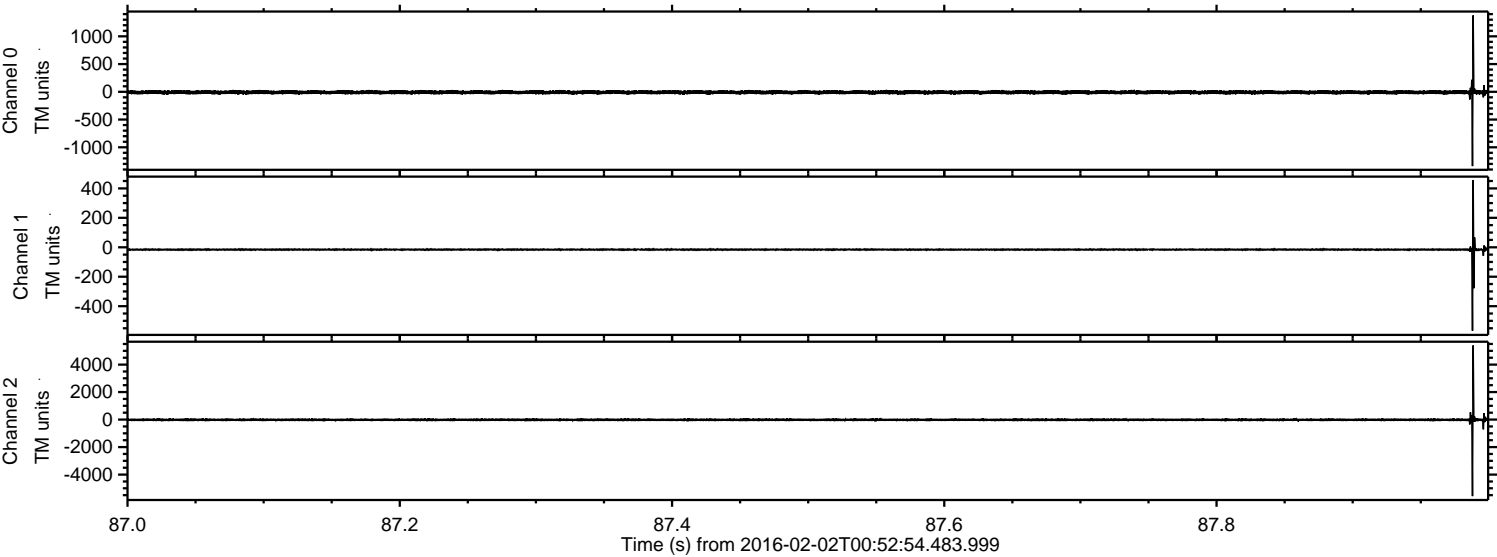


ELMAVAN 3D WAVEFORMS (Measured data sampled at 50 kHz) 51000 packets of 144 samples from 2016-02-02T00:52:54.483.999. Part 106/147

Processed Fri Apr 8 05:54:30 2016 by ELM ver.2012-10-06 from 001__elm20160202_005253__dat00.bin

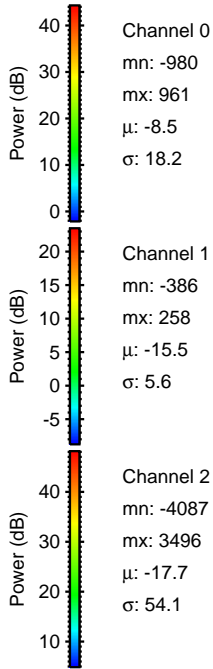
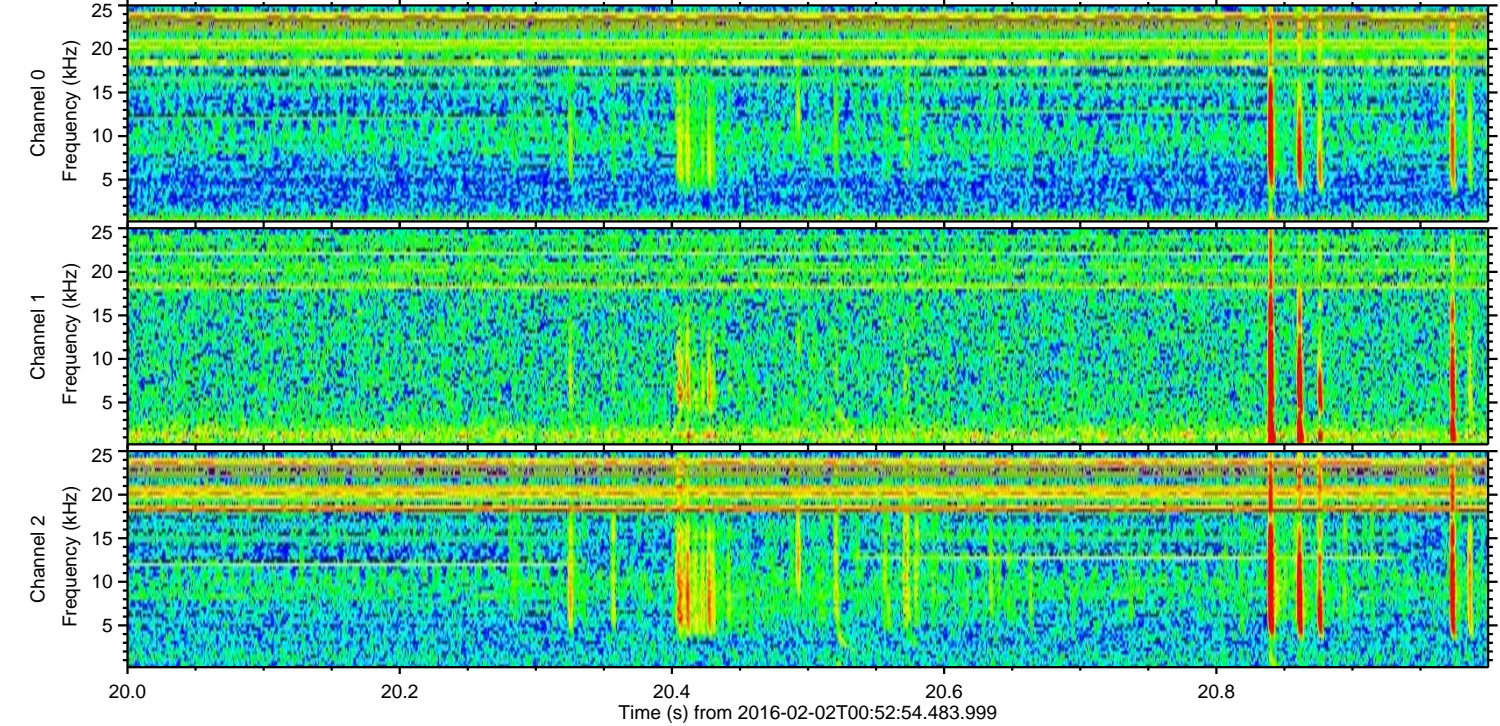
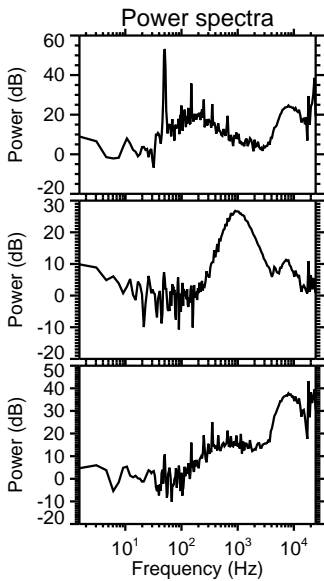
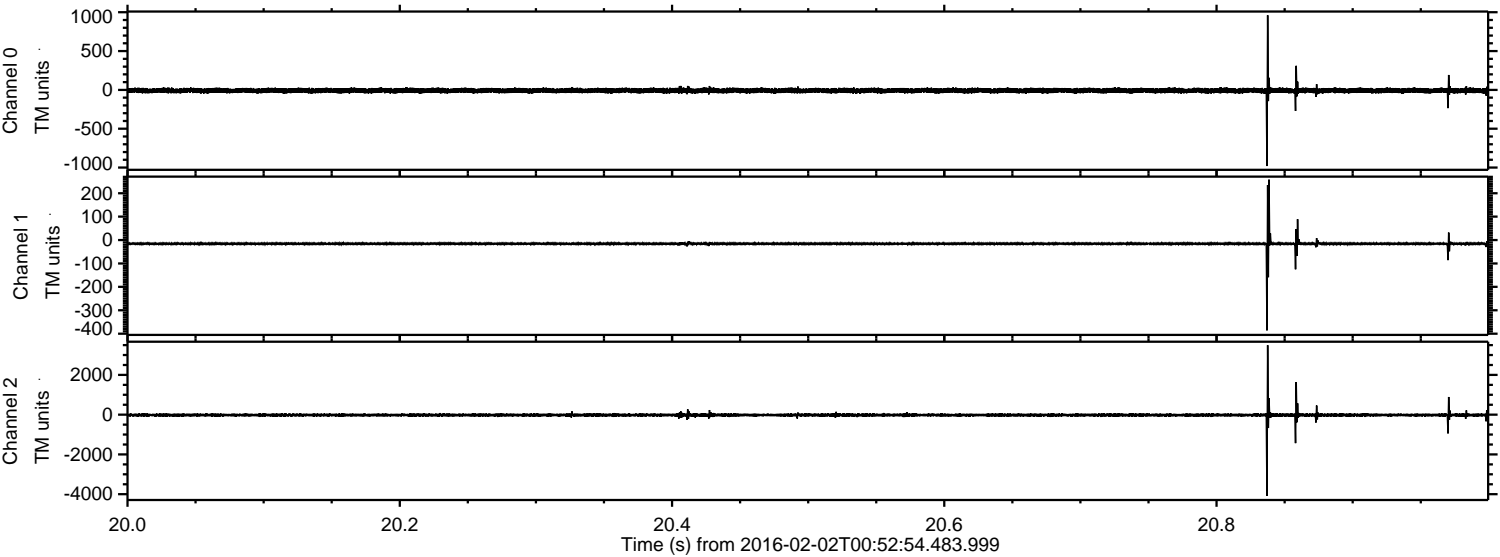


Processed Fri Apr 8 05:54:31 2016 by ELM ver.2012-10-06 from 001__elm20160202_005253__dat00.bin

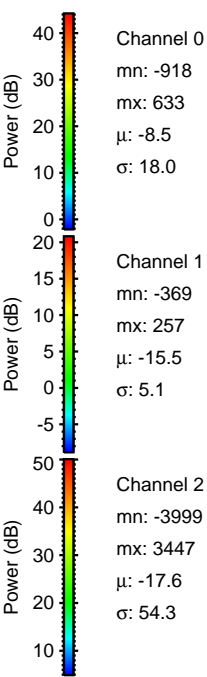
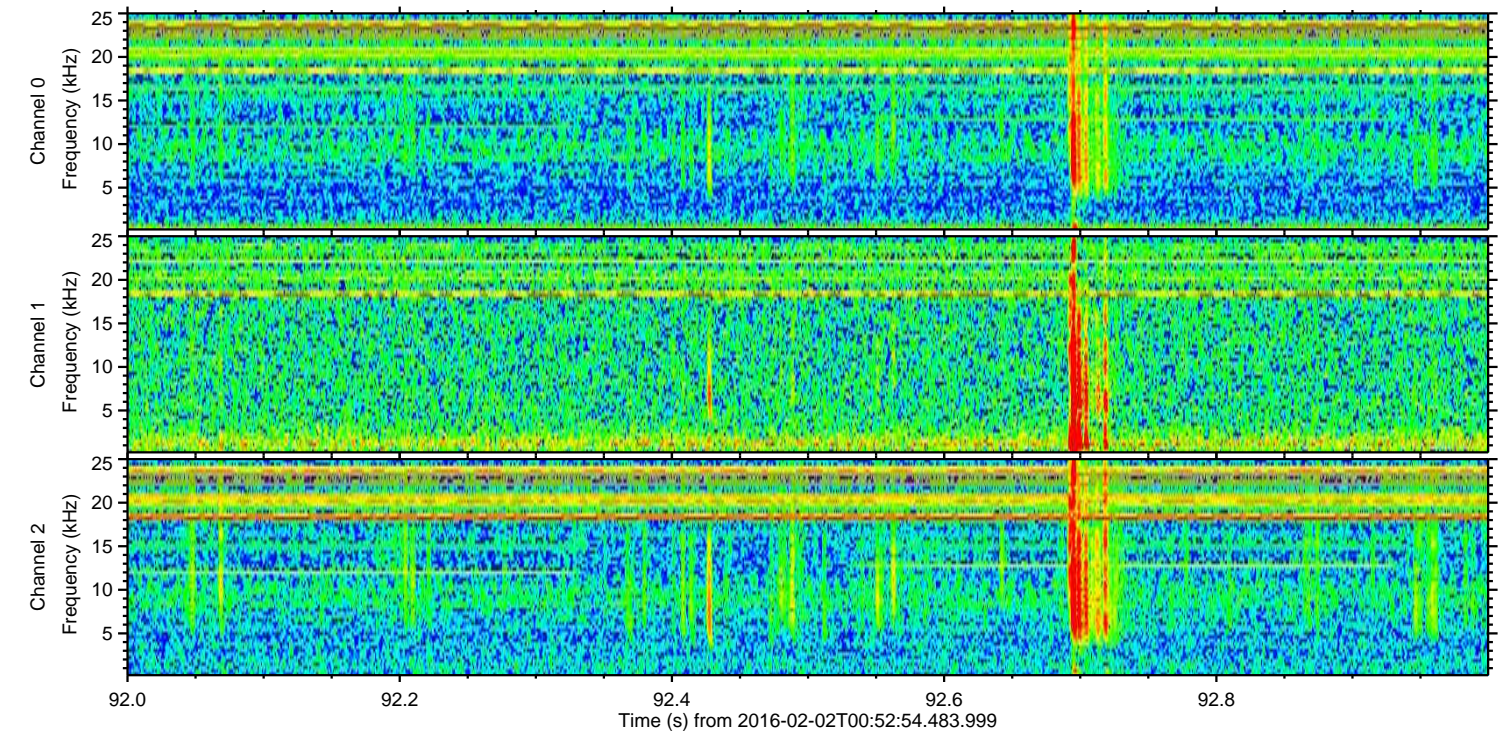
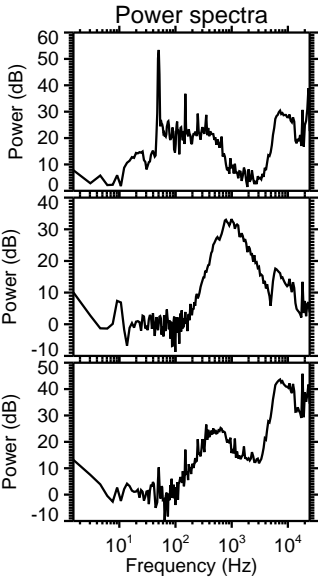
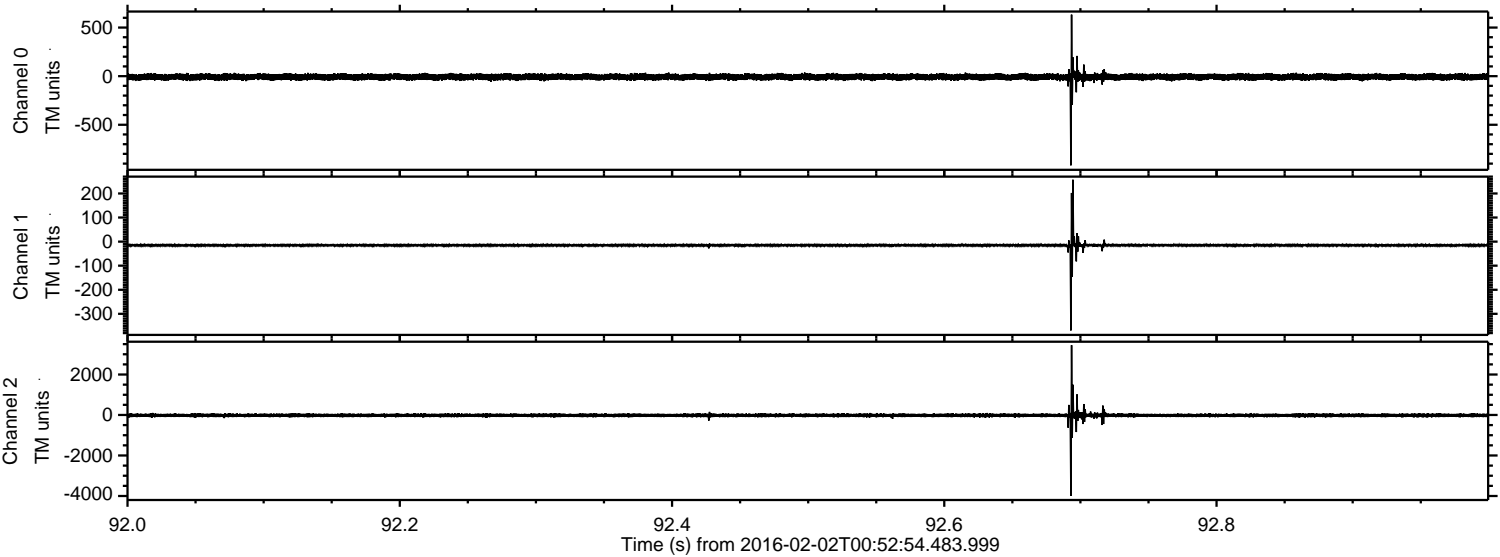


ELMAVAN 3D WAVEFORMS (Measured data sampled at 50 kHz) 51000 packets of 144 samples from 2016-02-02T00:52:54.483.999. Part 21/147

Processed Fri Apr 8 05:54:32 2016 by ELM ver.2012-10-06 from 001__elm20160202_005253__dat00.bin

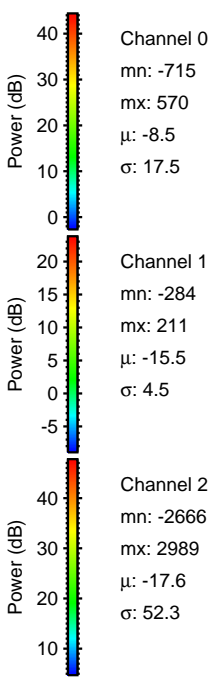
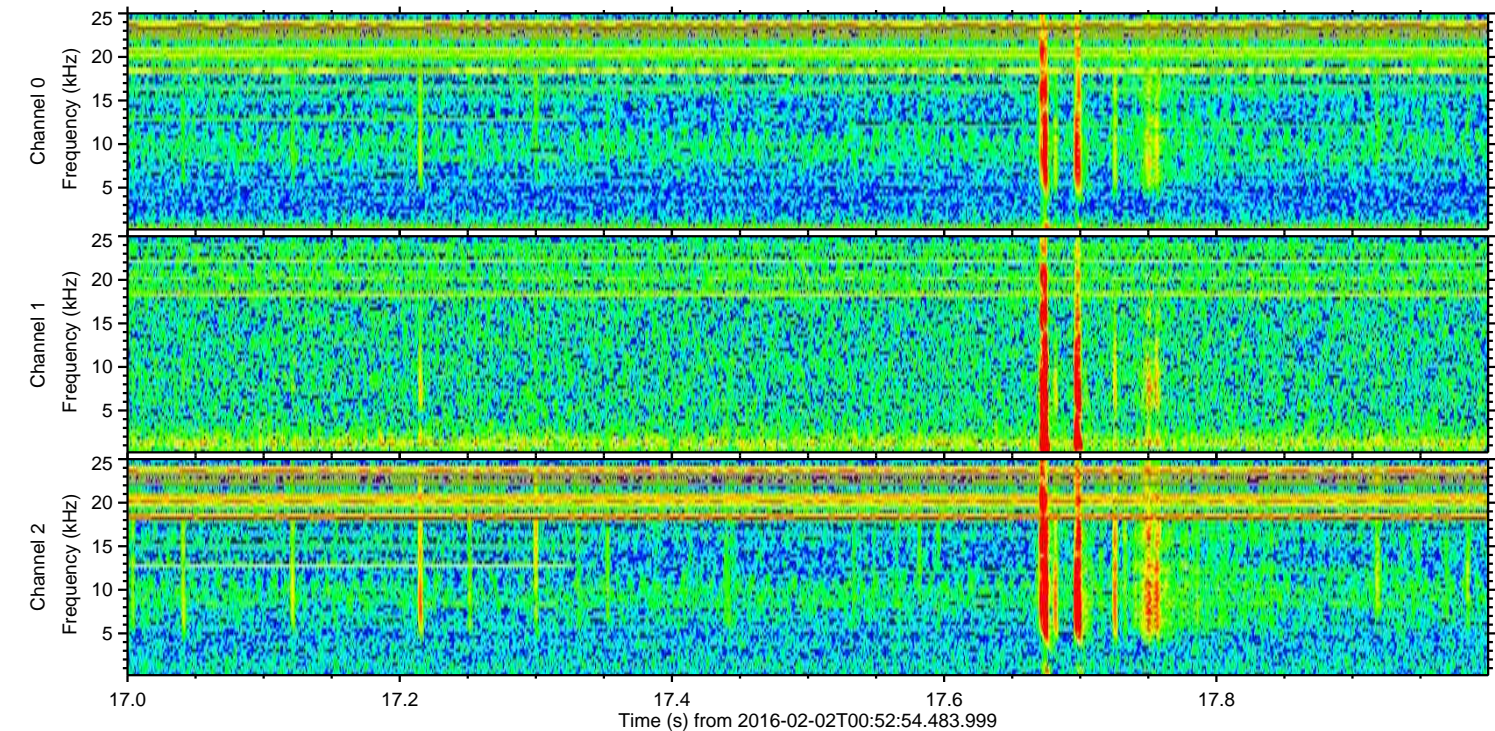
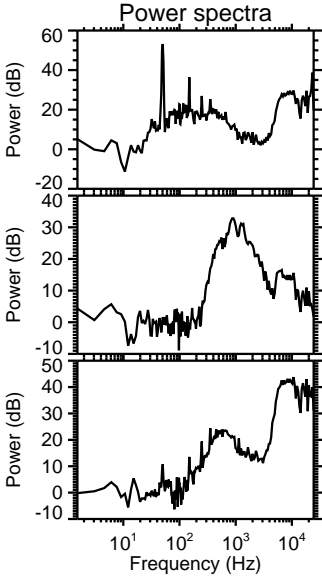
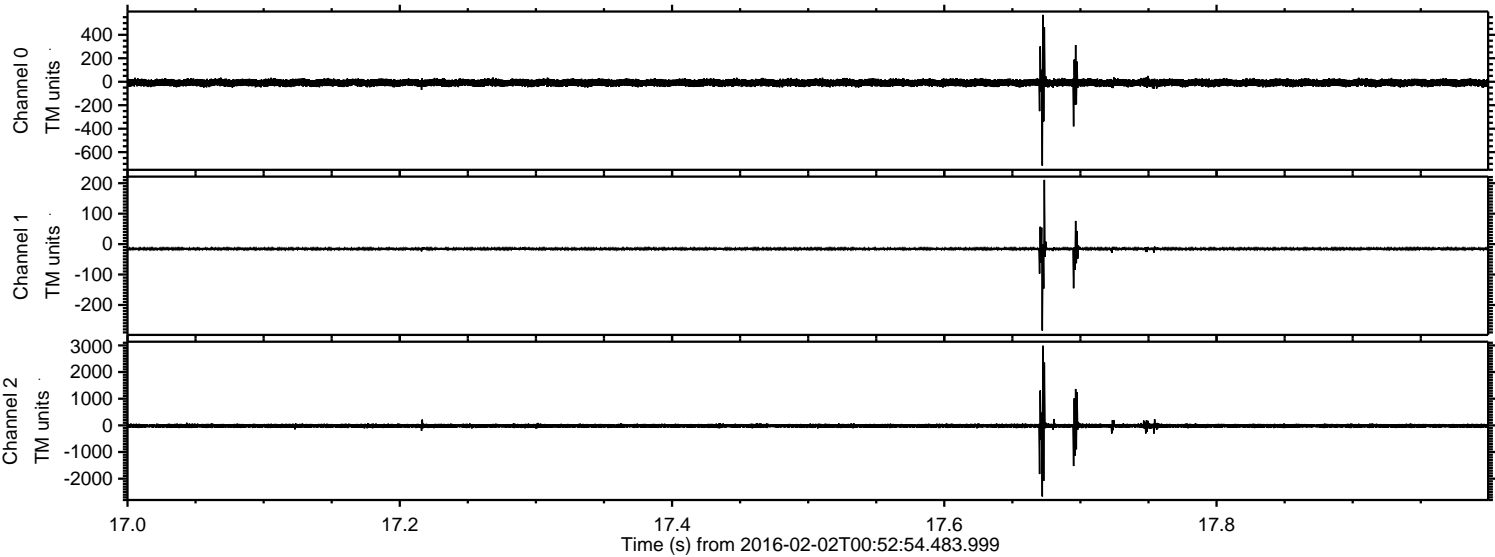


Processed Fri Apr 8 05:54:33 2016 by ELM ver.2012-10-06 from 001__elm20160202_005253__dat00.bin

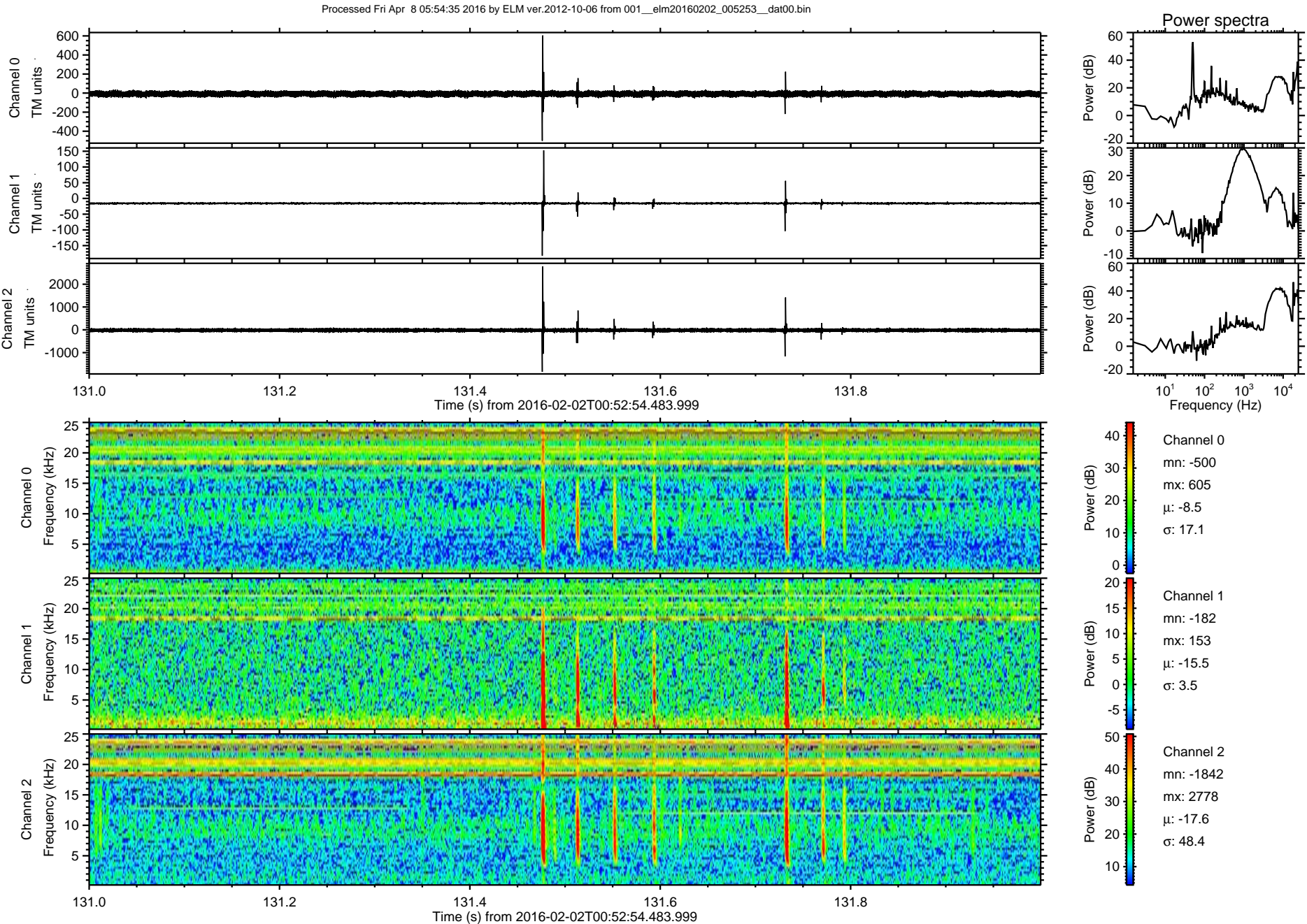


ELMAVAN 3D WAVEFORMS (Measured data sampled at 50 kHz) 51000 packets of 144 samples from 2016-02-02T00:52:54.483.999. Part 18/147

Processed Fri Apr 8 05:54:34 2016 by ELM ver.2012-10-06 from 001__elm20160202_005253__dat00.bin

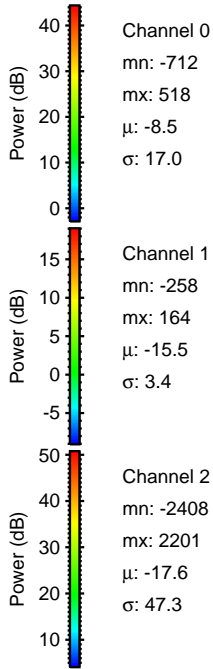
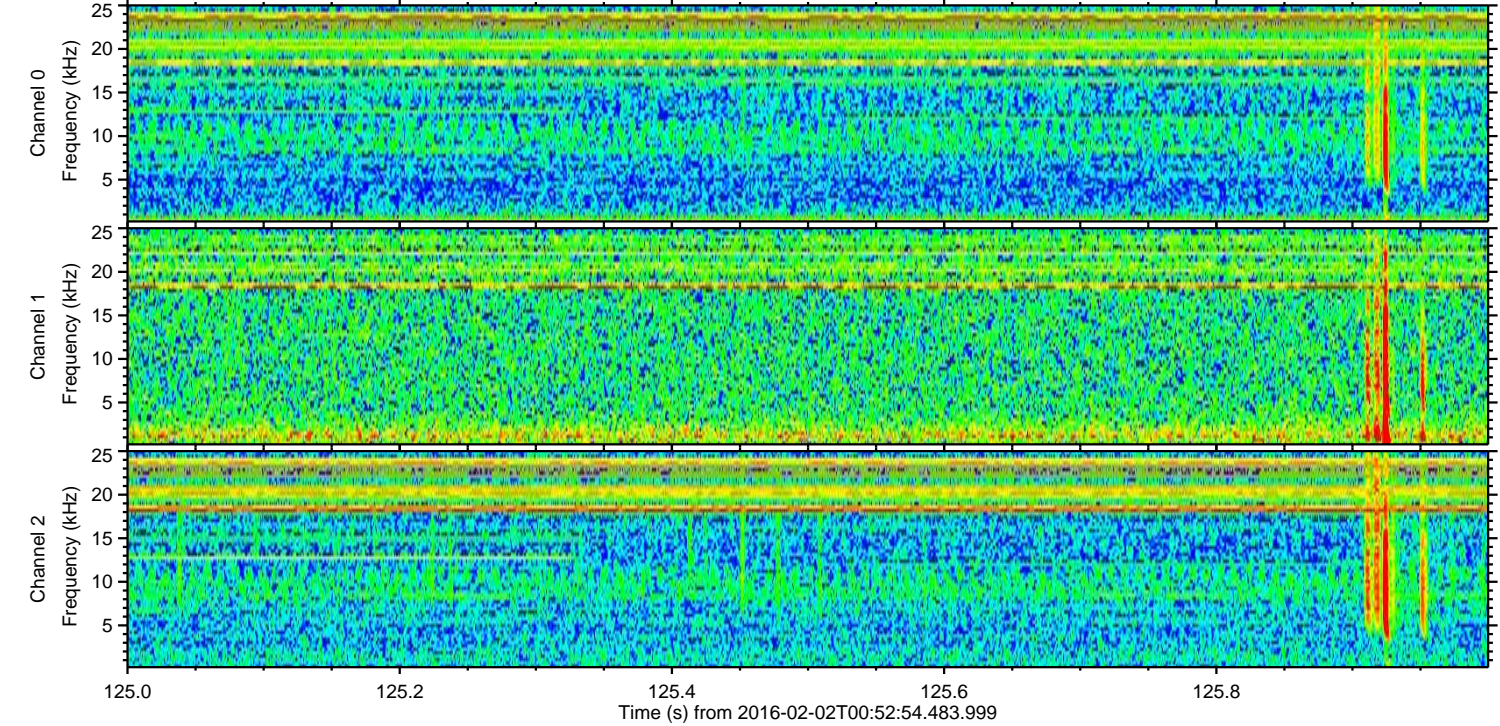
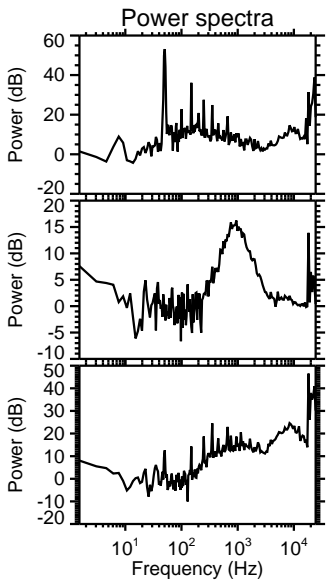
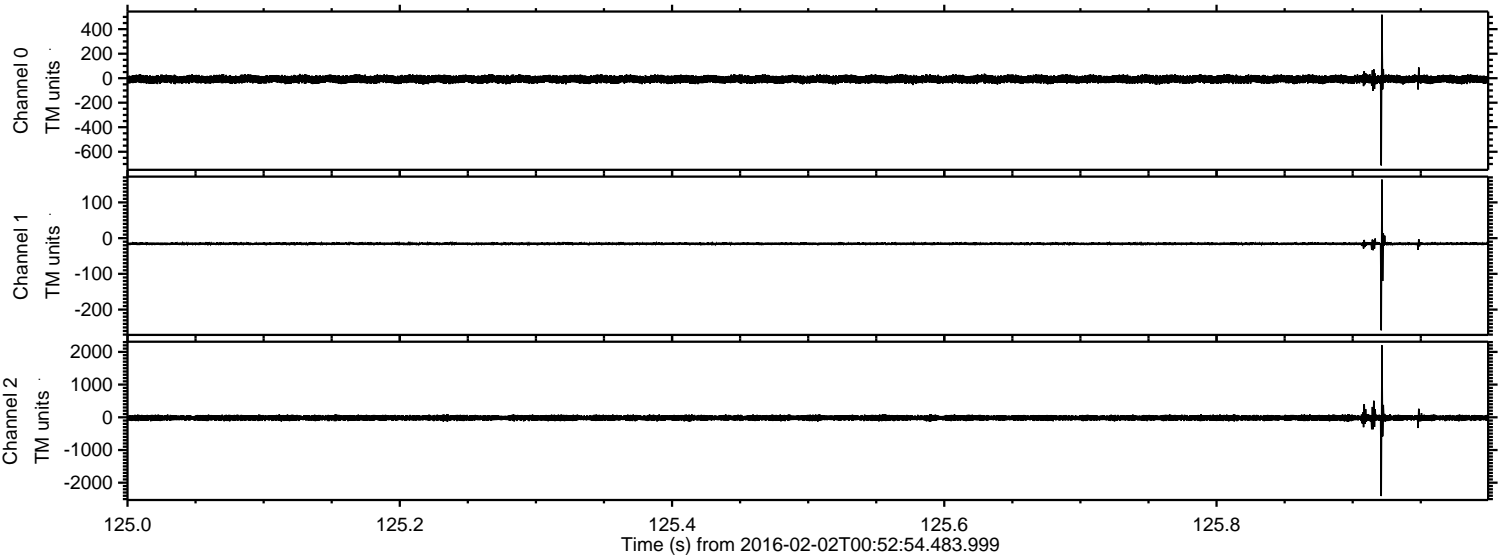


ELMAVAN 3D WAVEFORMS (Measured data sampled at 50 kHz) 51000 packets of 144 samples from 2016-02-02T00:52:54.483.999. Part 132/147

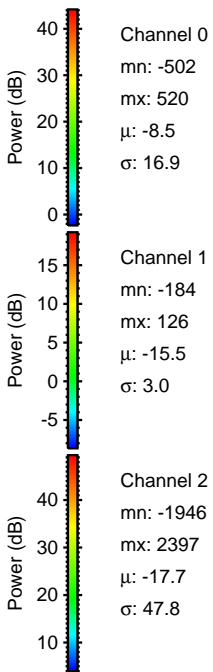
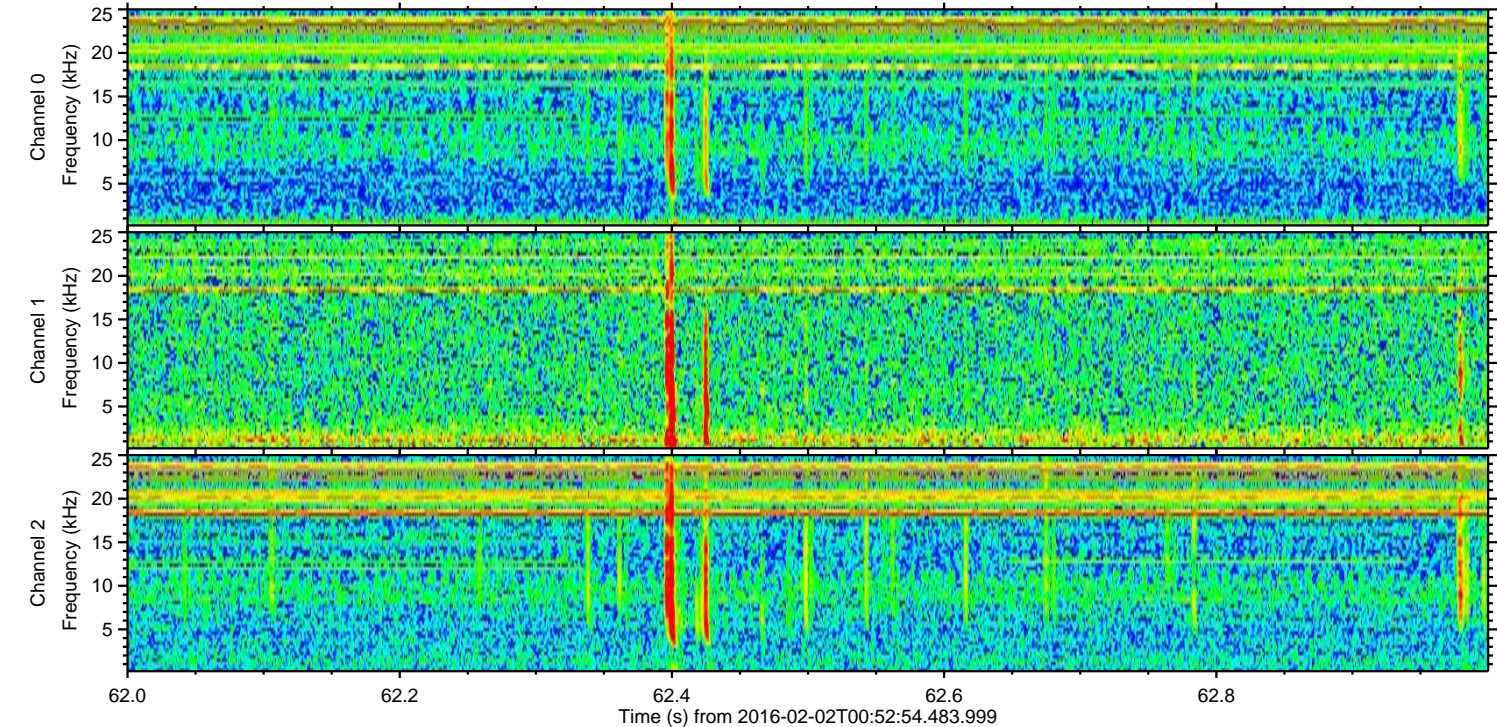
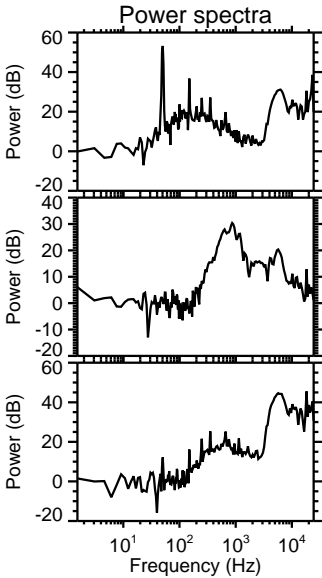
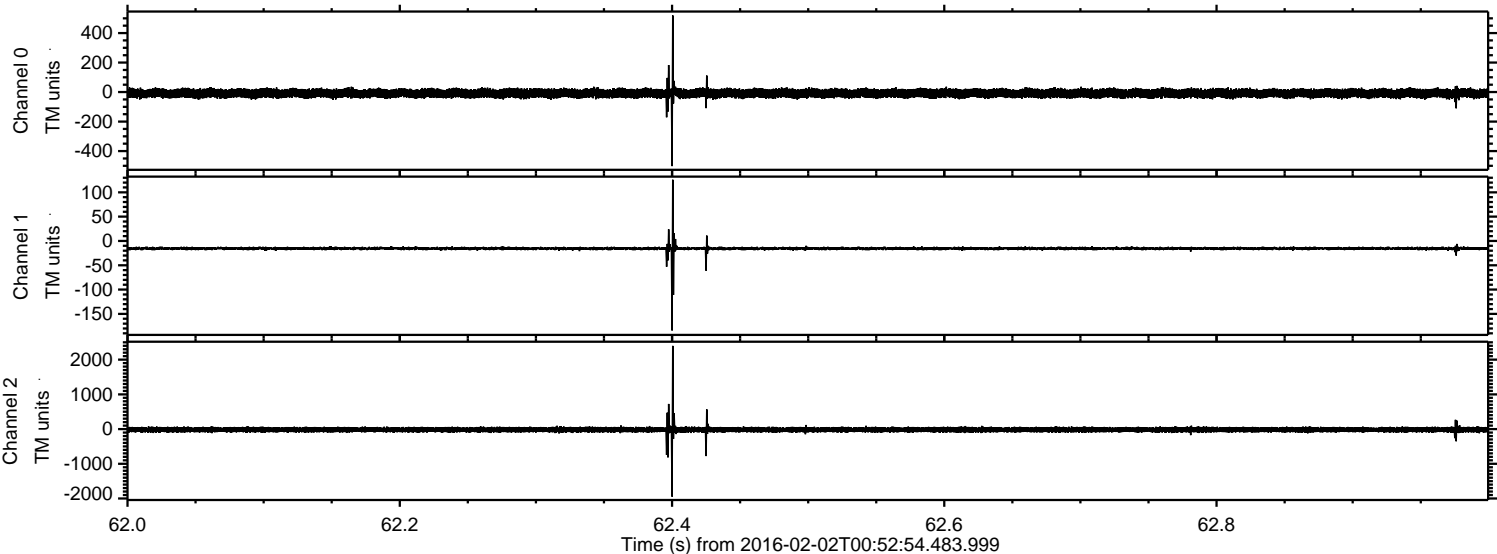


ELMAVAN 3D WAVEFORMS (Measured data sampled at 50 kHz) 51000 packets of 144 samples from 2016-02-02T00:52:54.483.999. Part 126/147

Processed Fri Apr 8 05:54:36 2016 by ELM ver.2012-10-06 from 001__elm20160202_005253__dat00.bin



Processed Fri Apr 8 05:54:37 2016 by ELM ver.2012-10-06 from 001__elm20160202_005253__dat00.bin



Processed Fri Apr 8 05:54:38 2016 by ELM ver.2012-10-06 from 001__elm20160202_005253__dat00.bin

