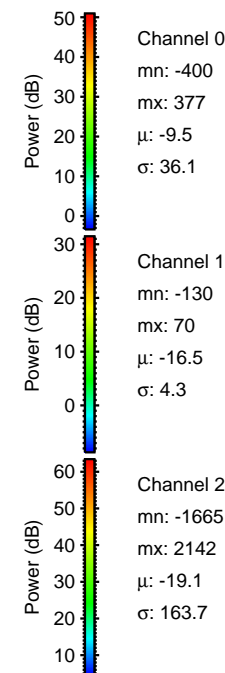
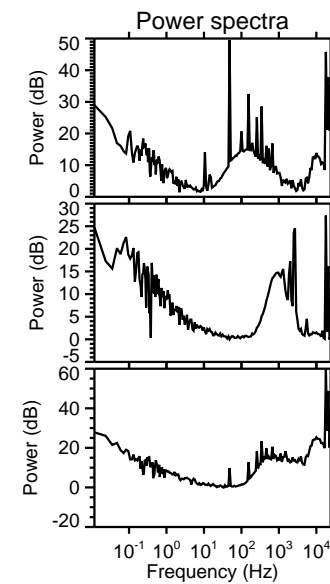
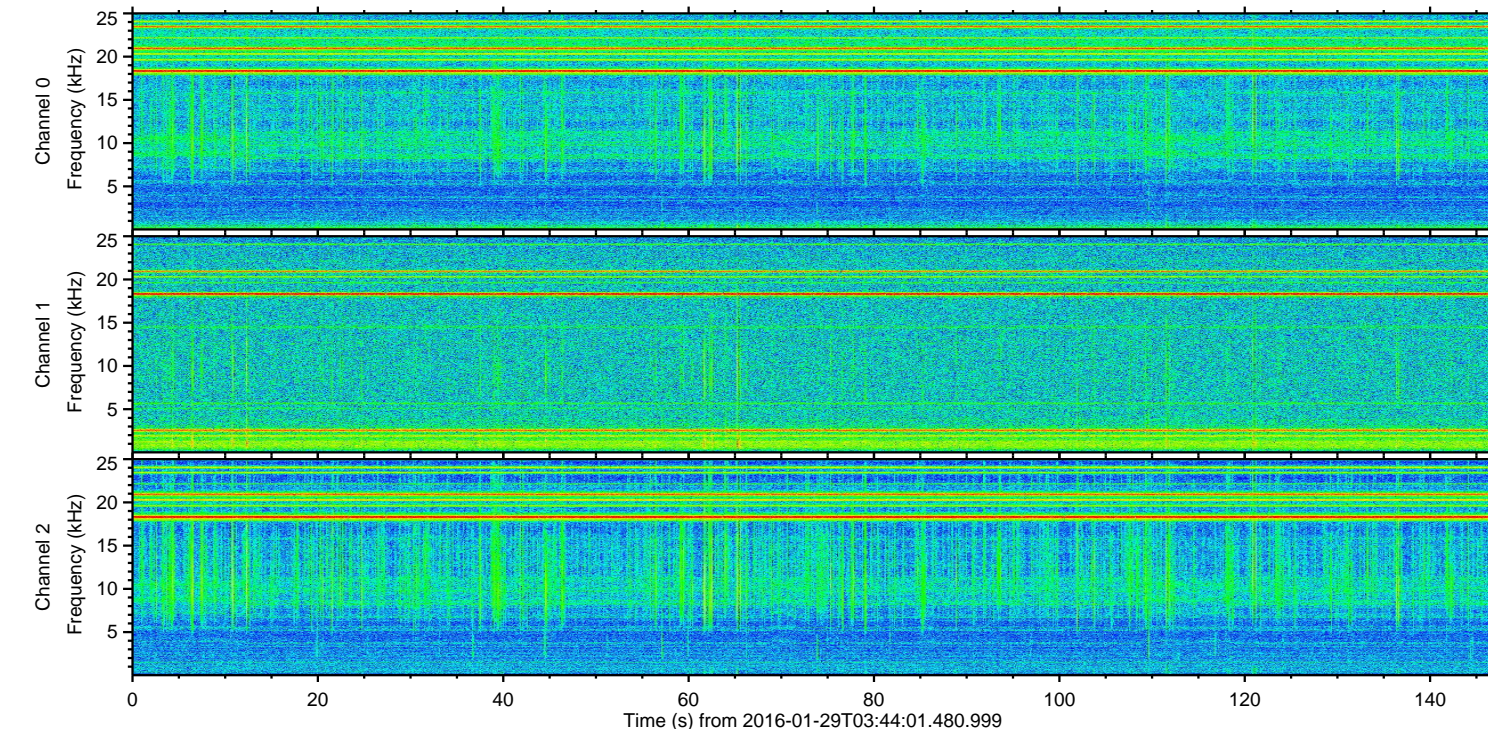
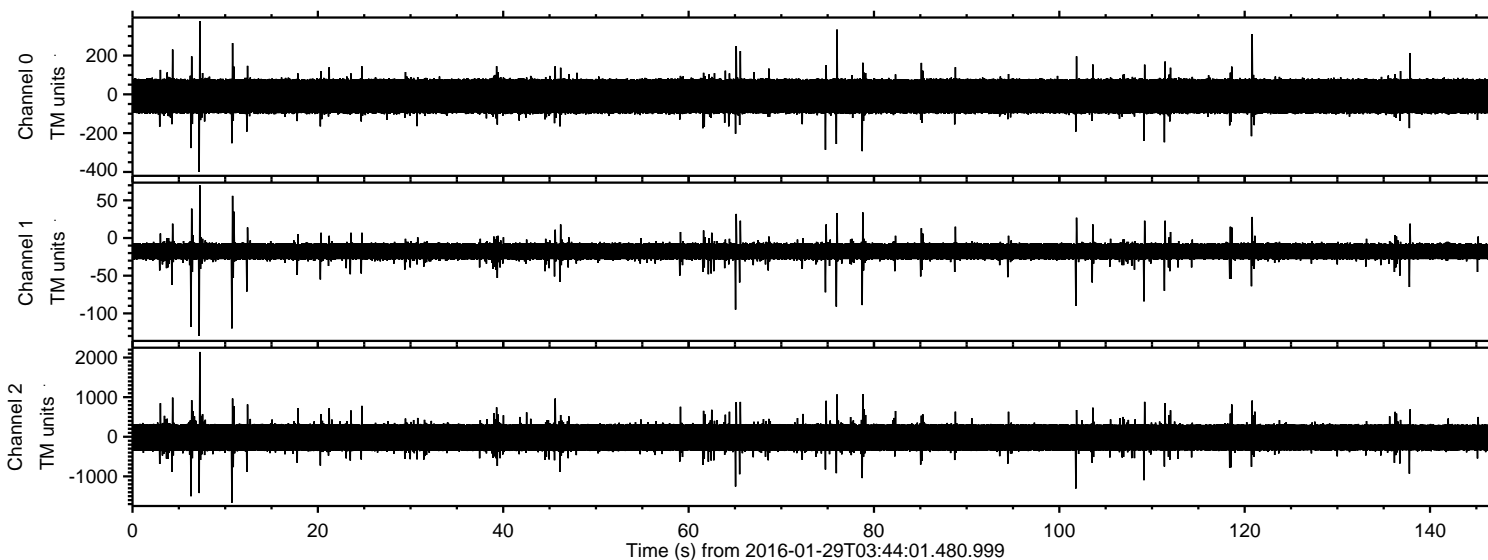
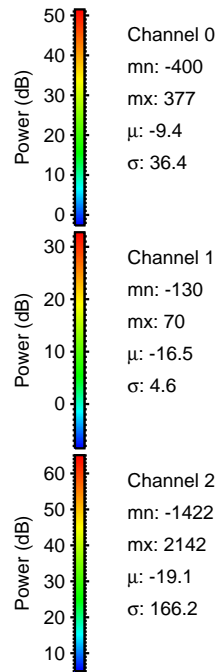
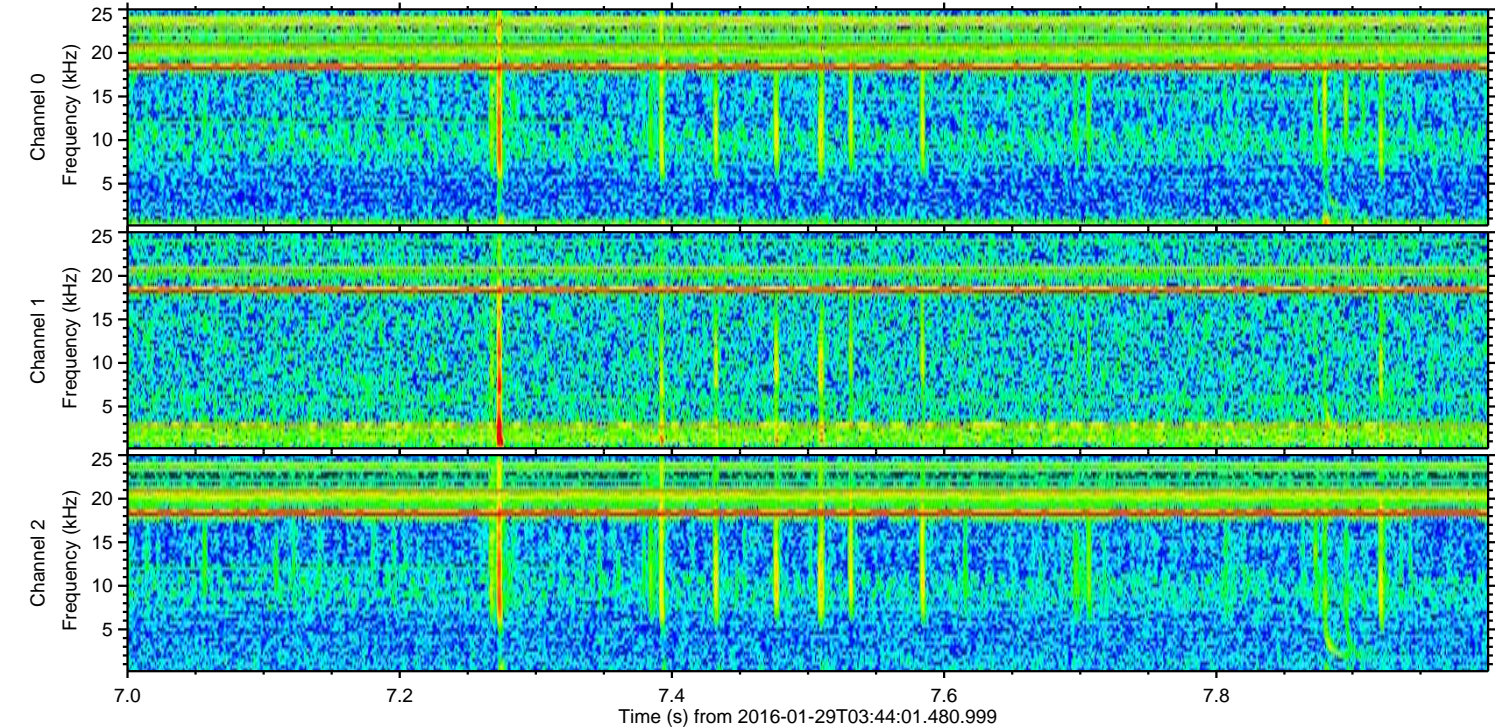
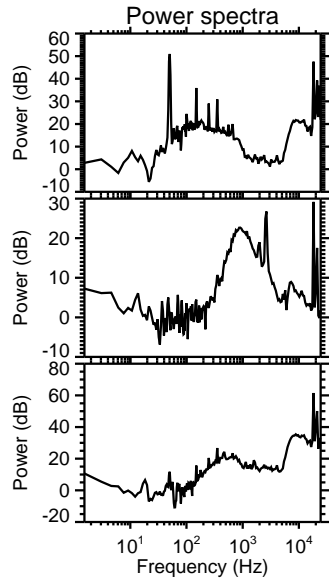
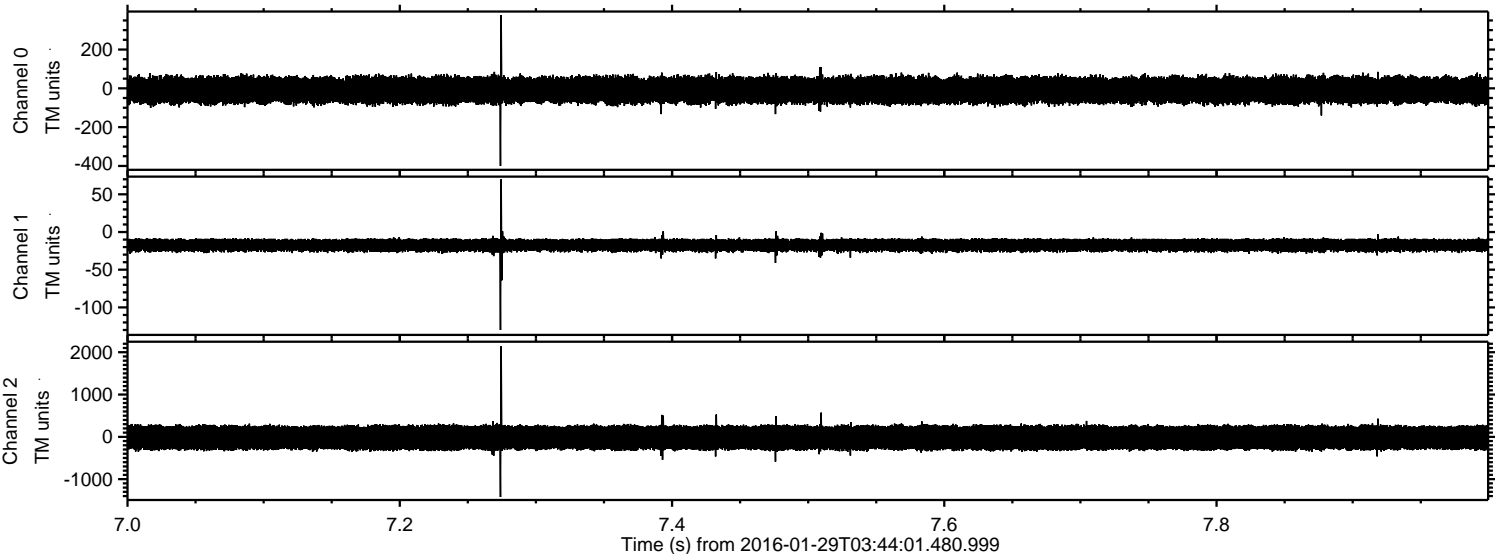


ELMAVAN 3D WAVEFORMS (Measured data sampled at 50 kHz) 51000 packets of 144 samples from 2016-01-29T03:44:01.480.999.

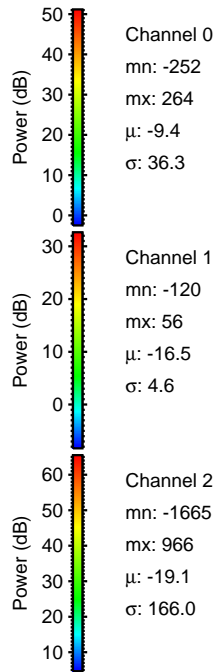
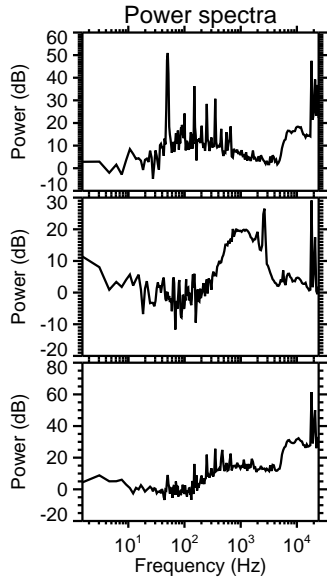
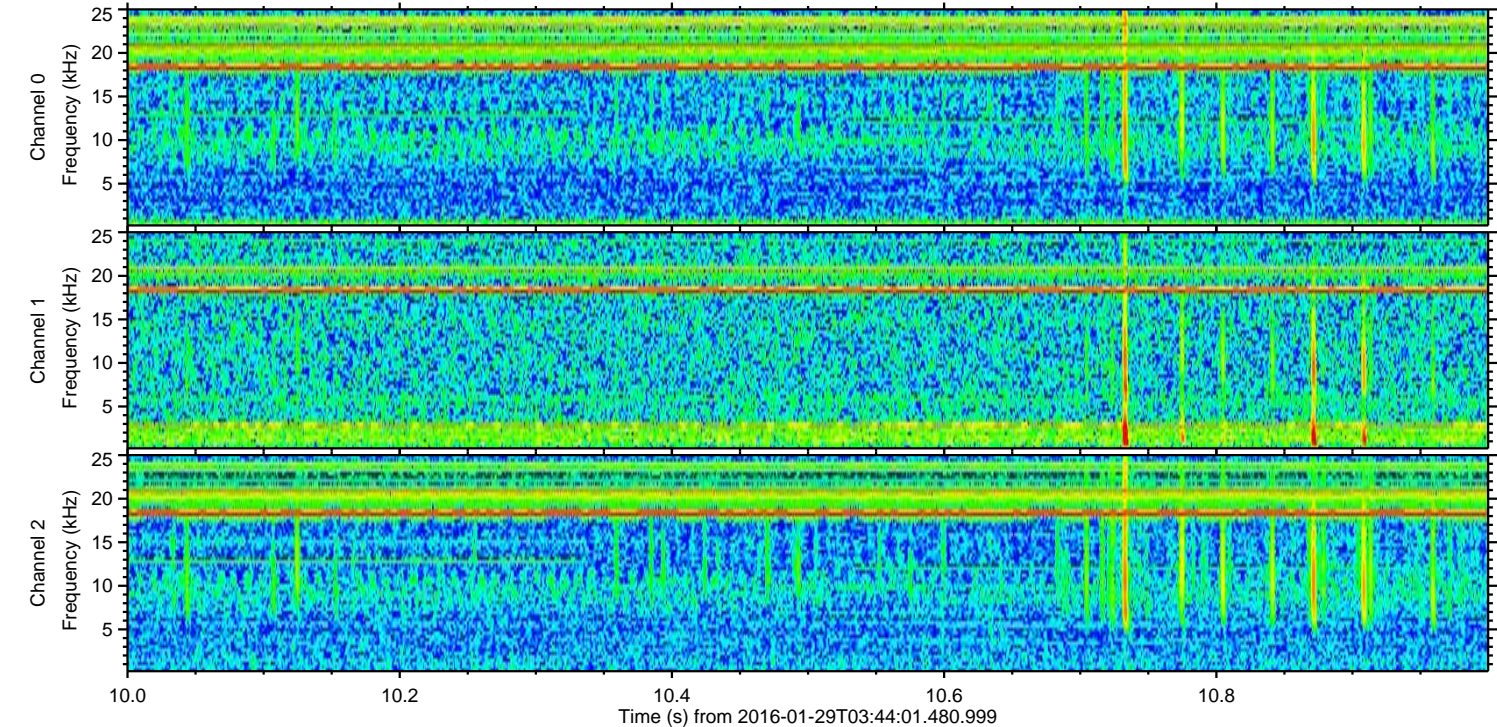
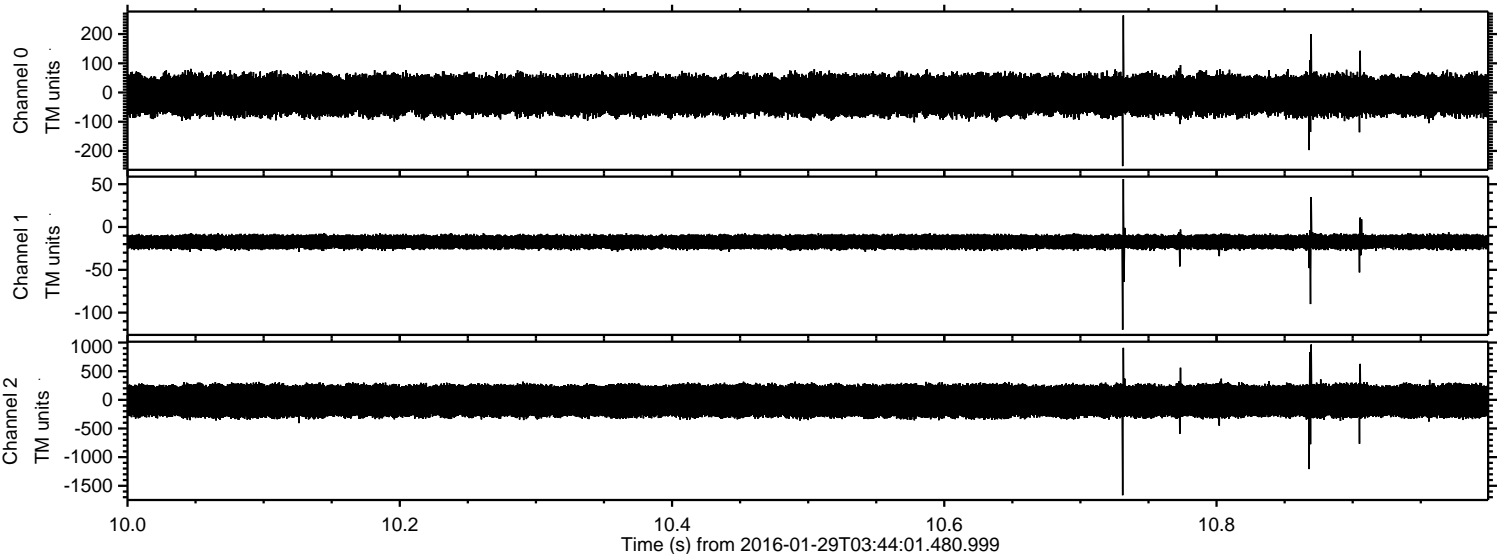
Processed Thu Apr 7 10:52:08 2016 by ELM ver.2012-10-06 from 001__elm20160129_034400__dat00.bin



Processed Thu Apr 7 10:52:21 2016 by ELM ver.2012-10-06 from 001__elm20160129_034400__dat00.bin



Processed Thu Apr 7 10:52:22 2016 by ELM ver.2012-10-06 from 001__elm20160129_034400__dat00.bin



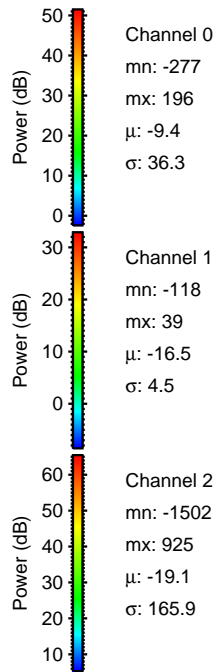
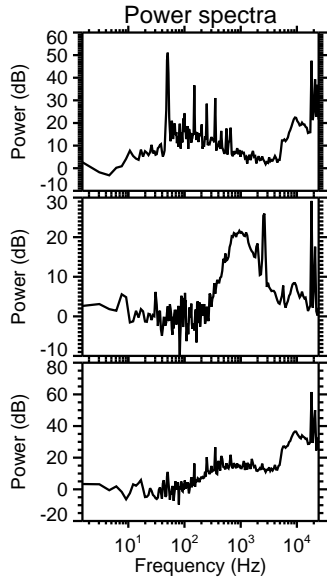
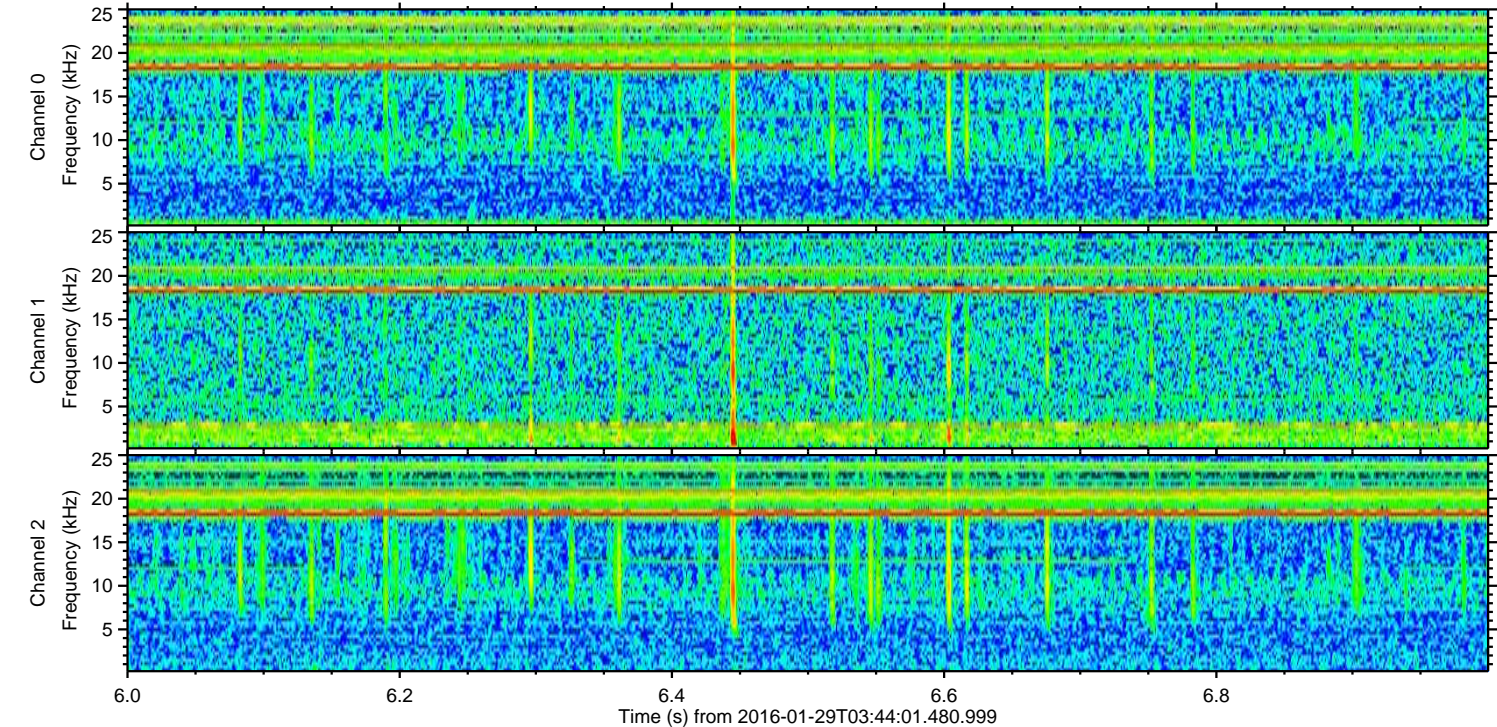
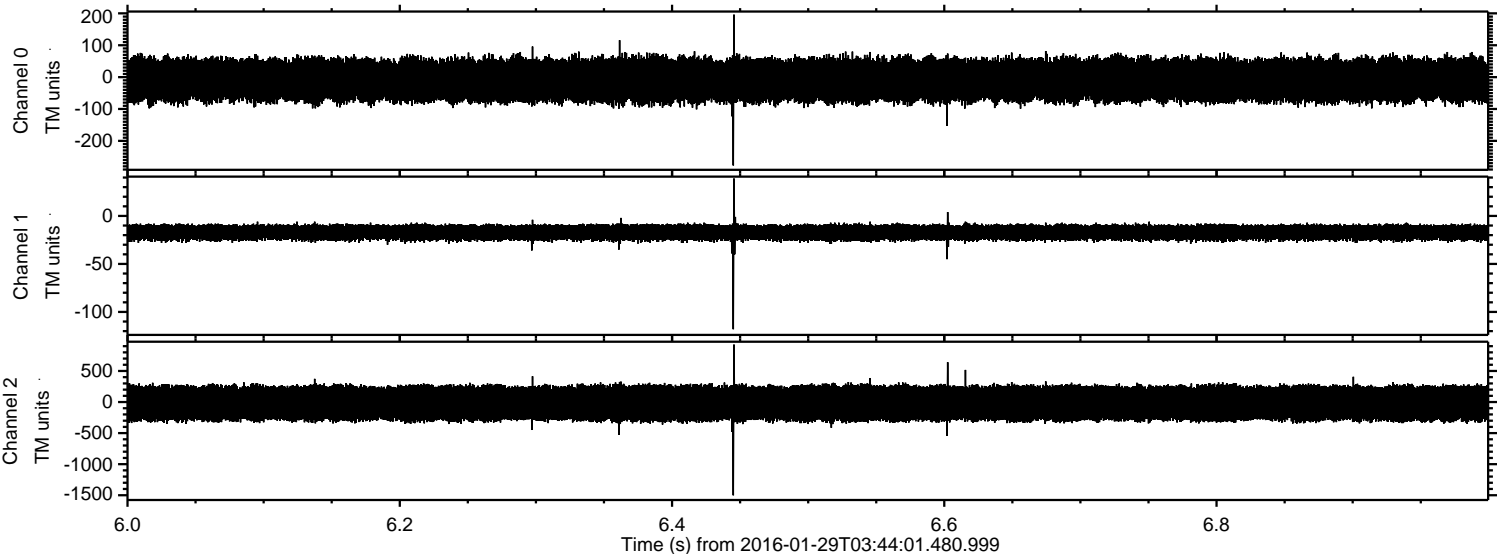
Channel 0
mn: -252
mx: 264
 μ : -9.4
 σ : 36.3

Channel 1
mn: -120
mx: 56
 μ : -16.5
 σ : 4.6

Channel 2
mn: -1665
mx: 966
 μ : -19.1
 σ : 166.0

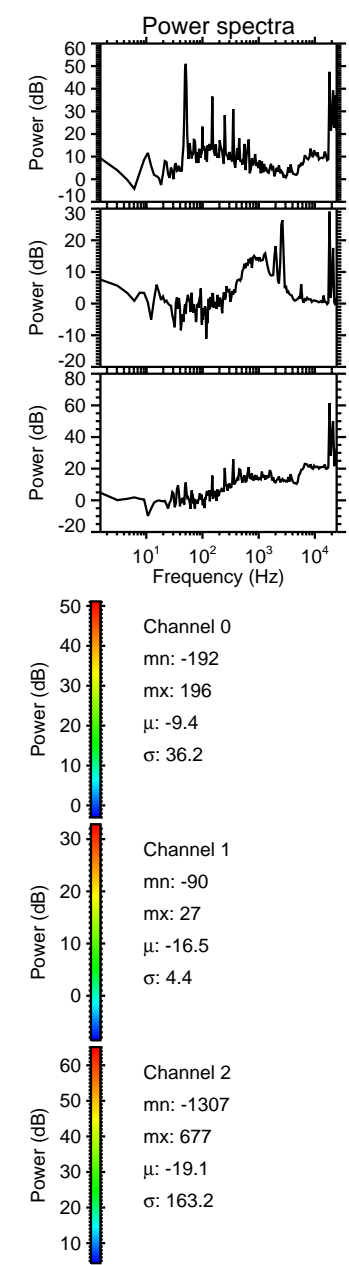
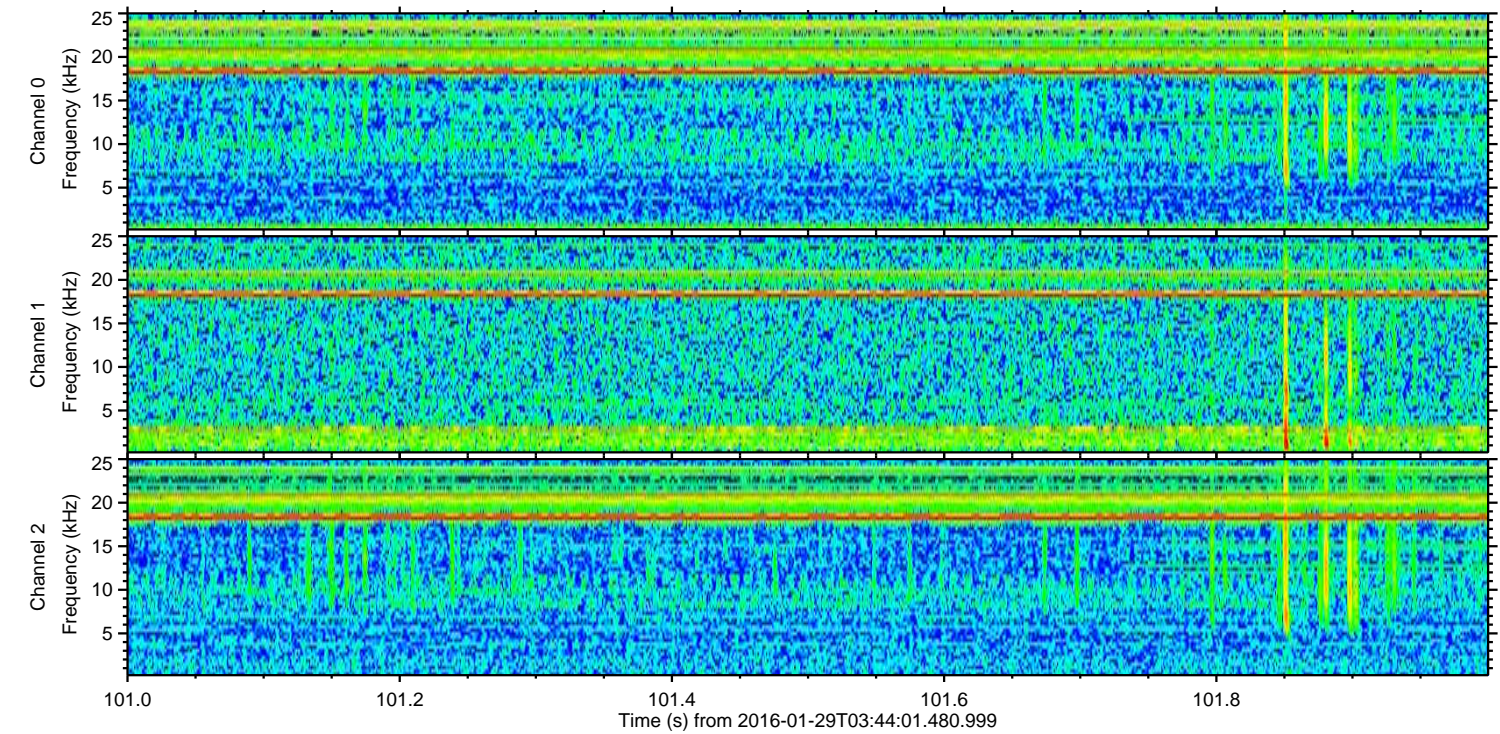
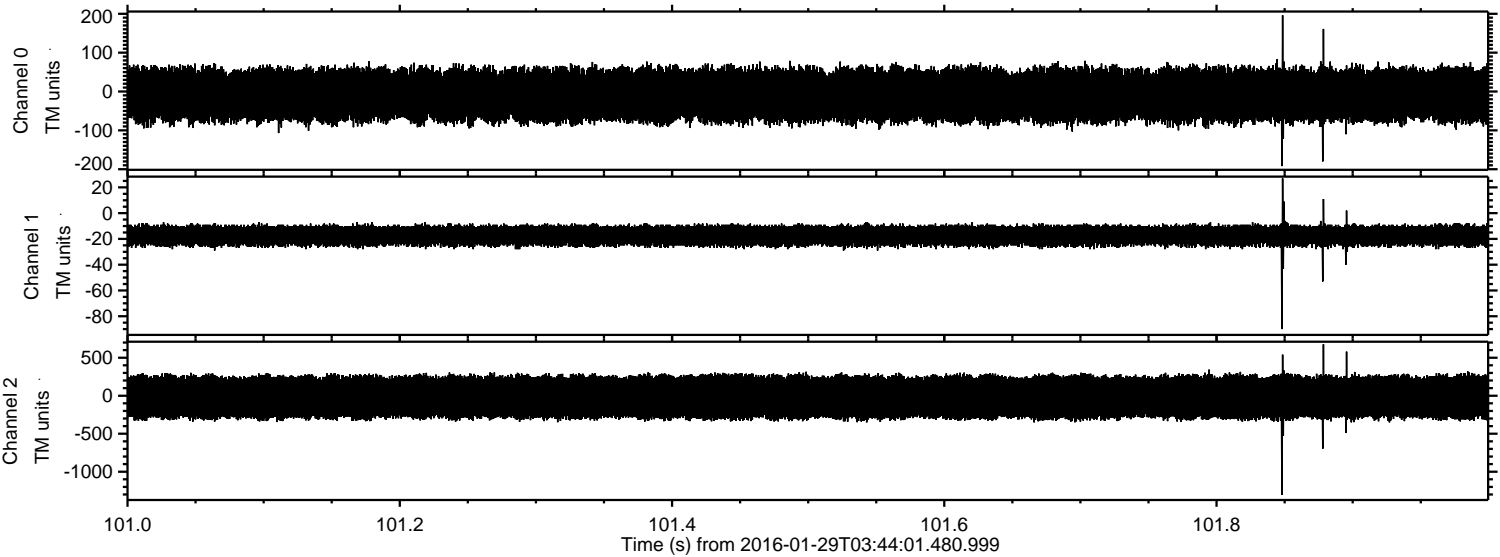
ELMAVAN 3D WAVEFORMS (Measured data sampled at 50 kHz) 51000 packets of 144 samples from 2016-01-29T03:44:01.480.999. Part 7/147

Processed Thu Apr 7 10:52:23 2016 by ELM ver.2012-10-06 from 001__elm20160129_034400__dat00.bin

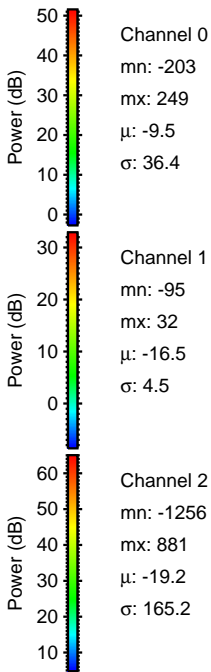
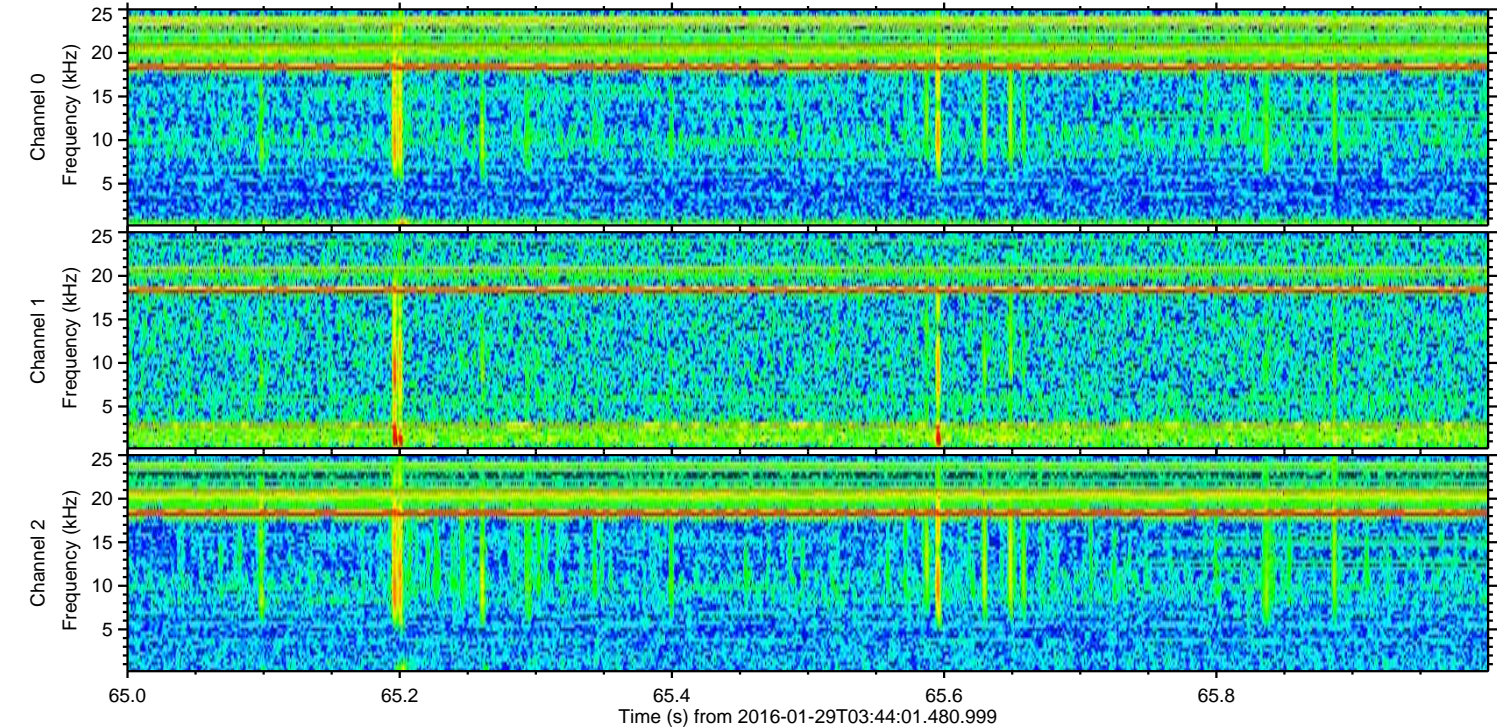
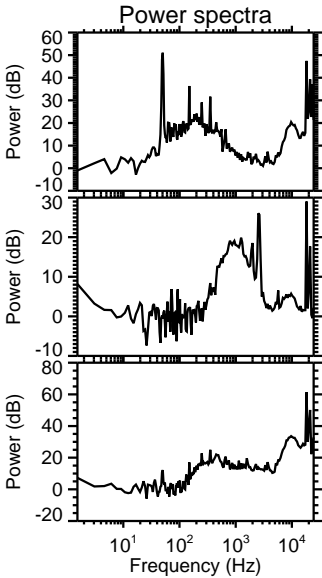
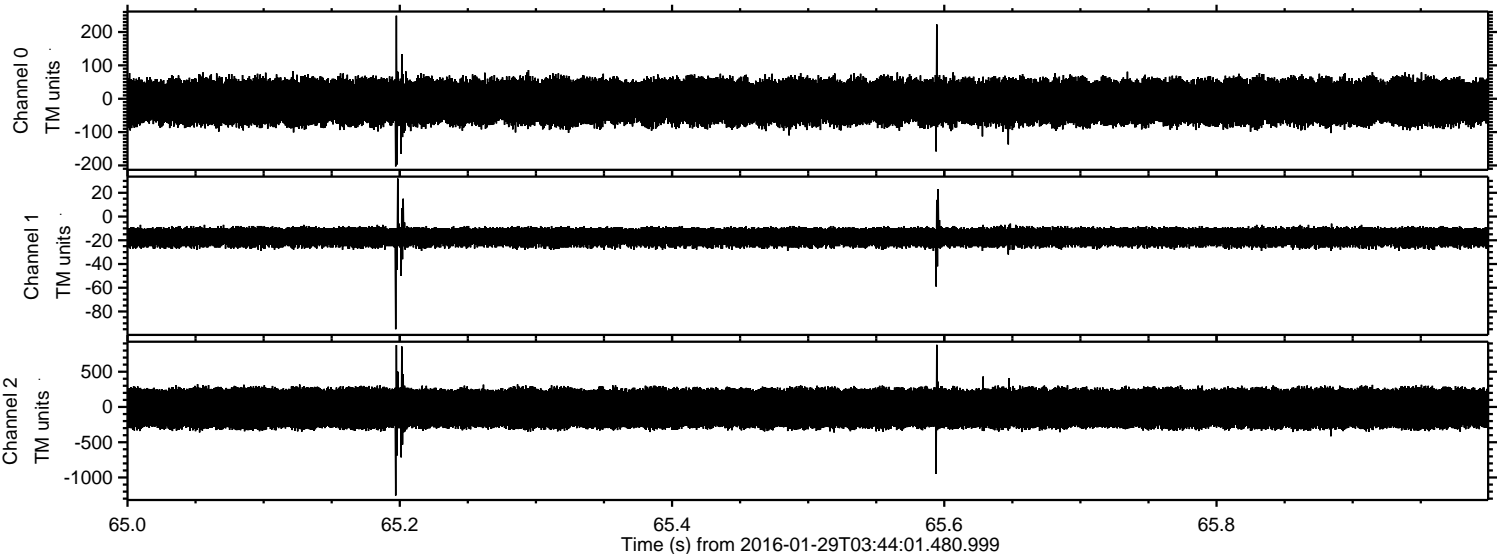


ELMAVAN 3D WAVEFORMS (Measured data sampled at 50 kHz) 51000 packets of 144 samples from 2016-01-29T03:44:01.480.999. Part 102/147

Processed Thu Apr 7 10:52:23 2016 by ELM ver.2012-10-06 from 001__elm20160129_034400__dat00.bin

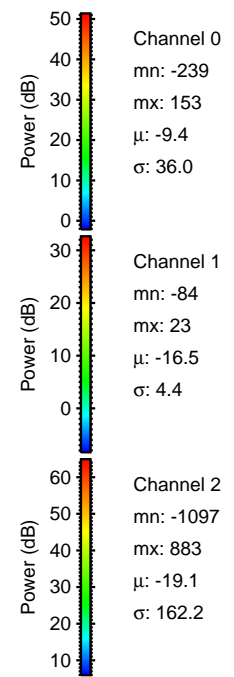
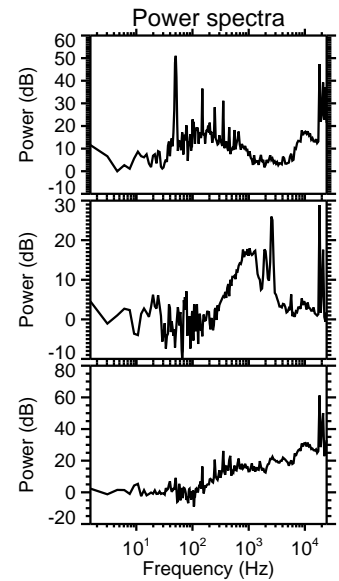
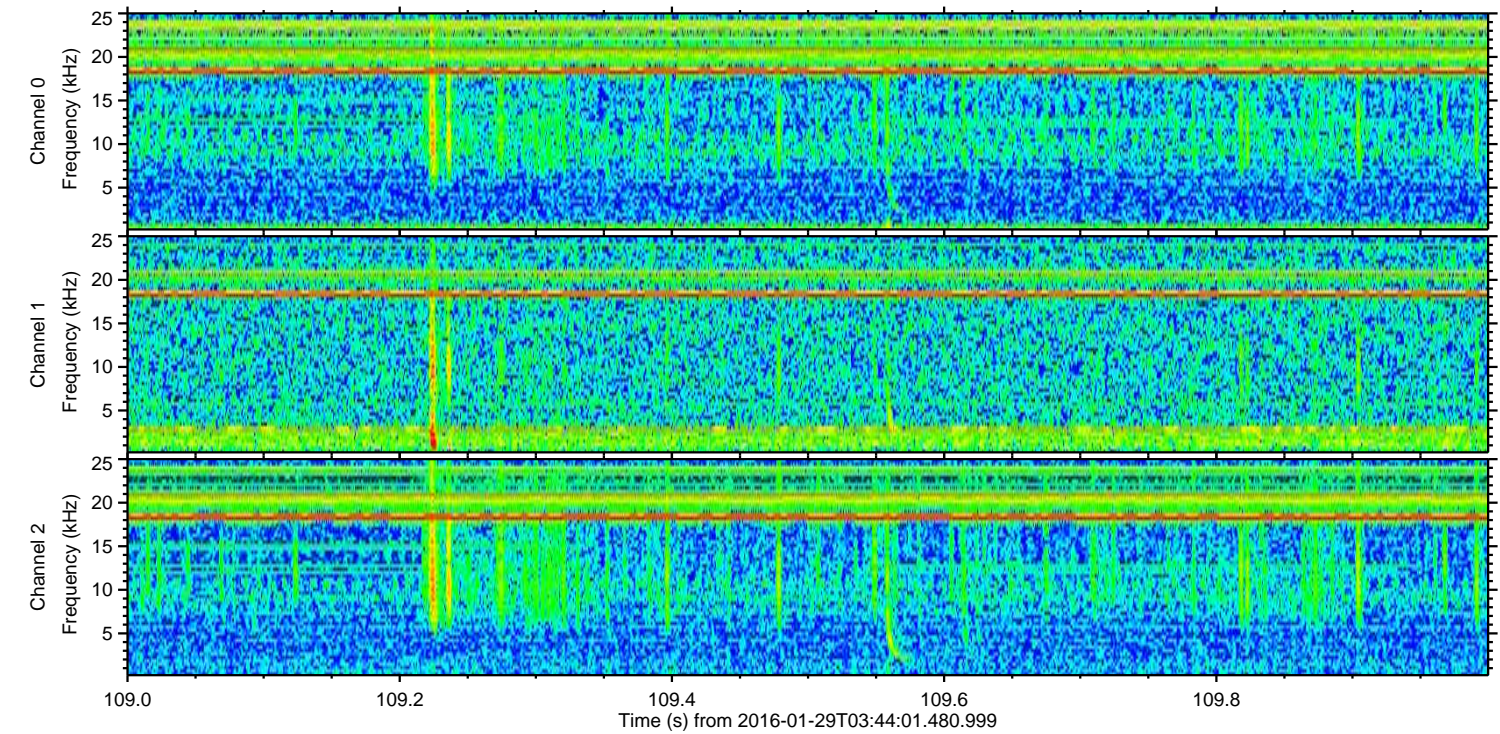
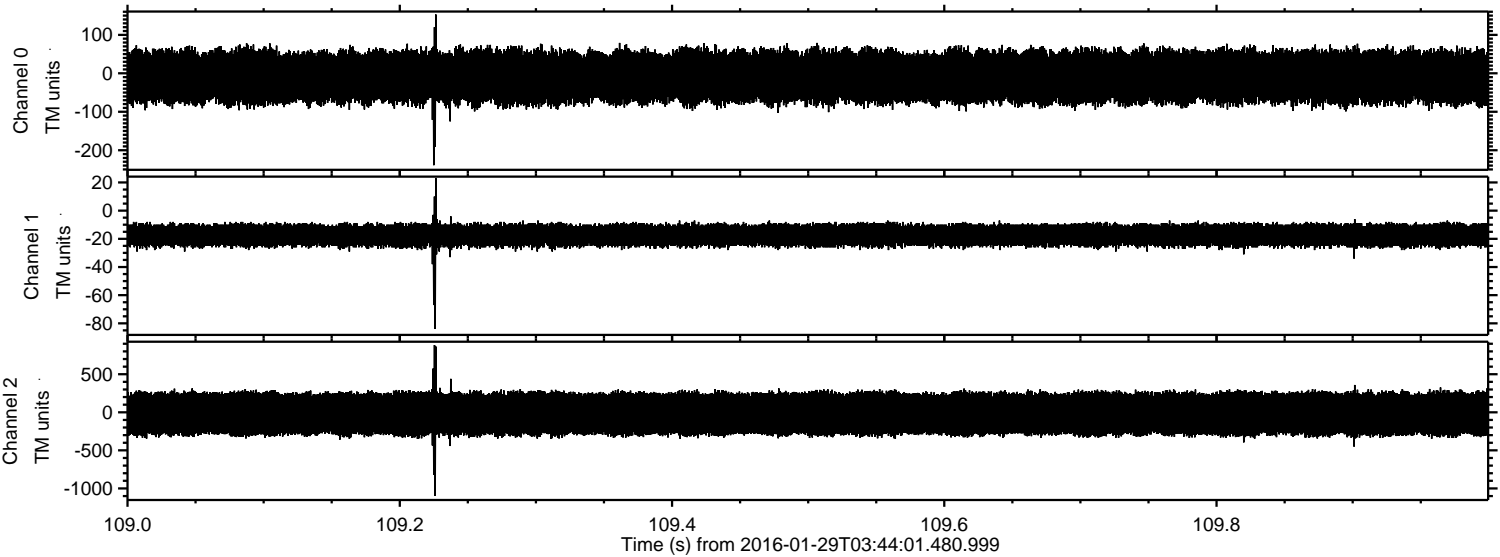


Processed Thu Apr 7 10:52:24 2016 by ELM ver.2012-10-06 from 001__elm20160129_034400__dat00.bin

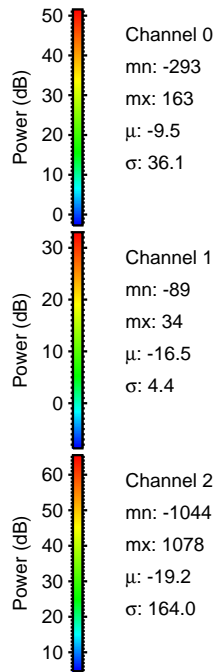
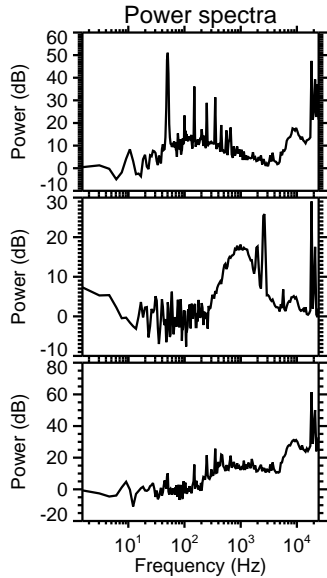
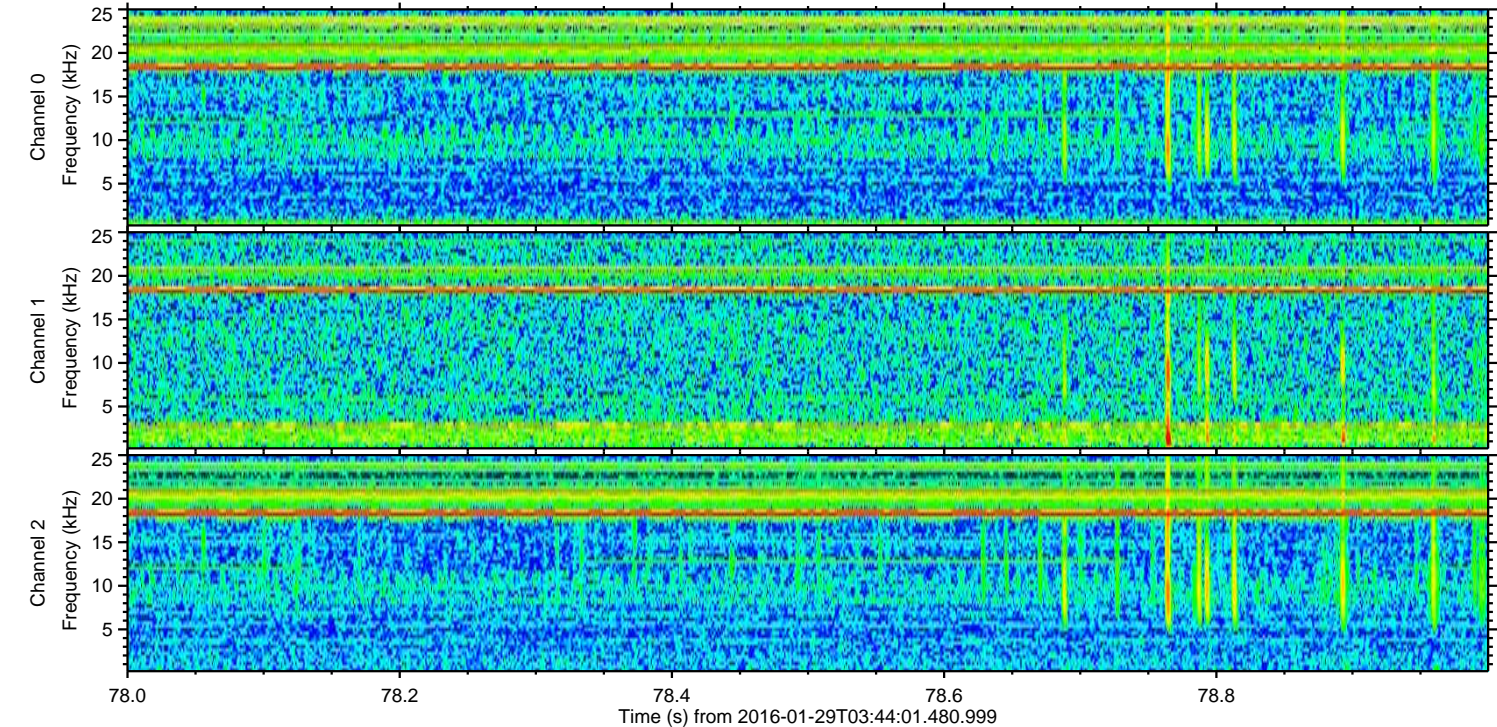
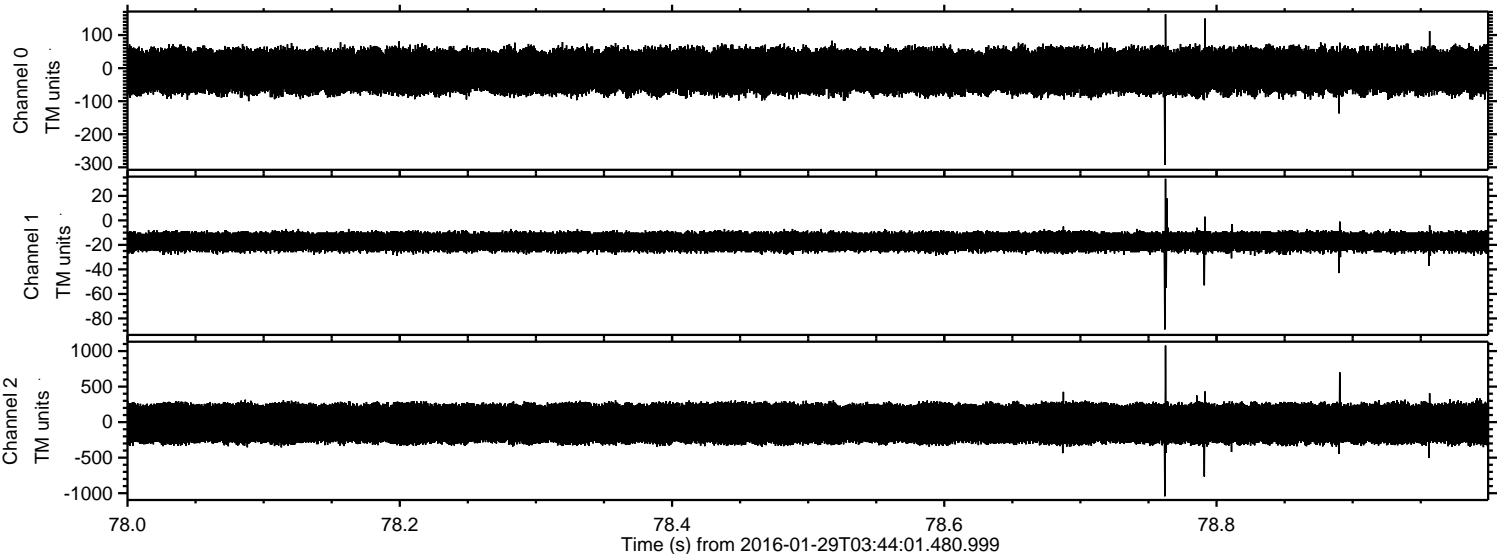


ELMAVAN 3D WAVEFORMS (Measured data sampled at 50 kHz) 51000 packets of 144 samples from 2016-01-29T03:44:01.480.999. Part 110/147

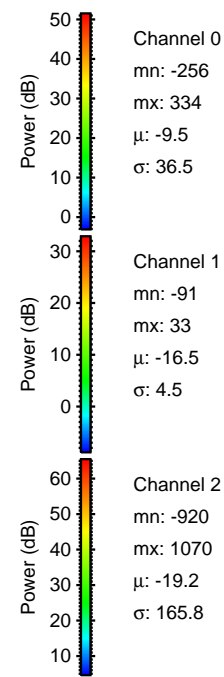
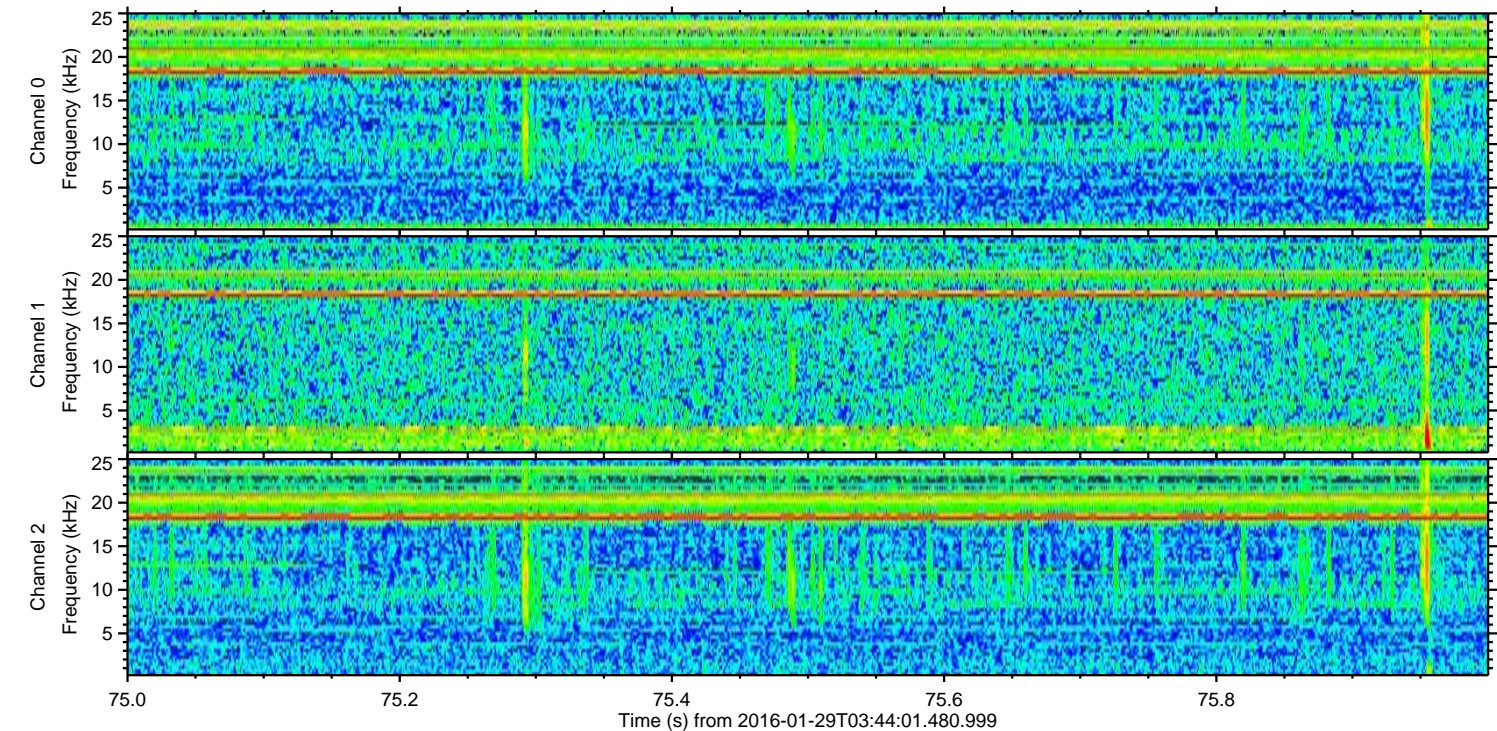
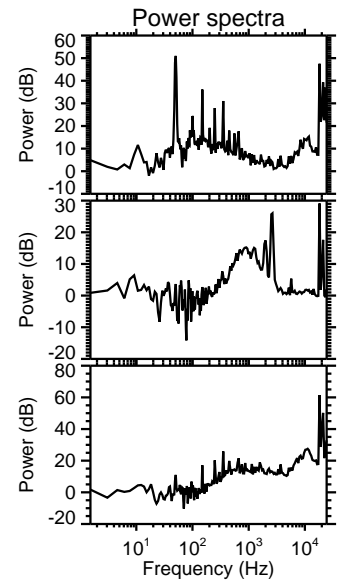
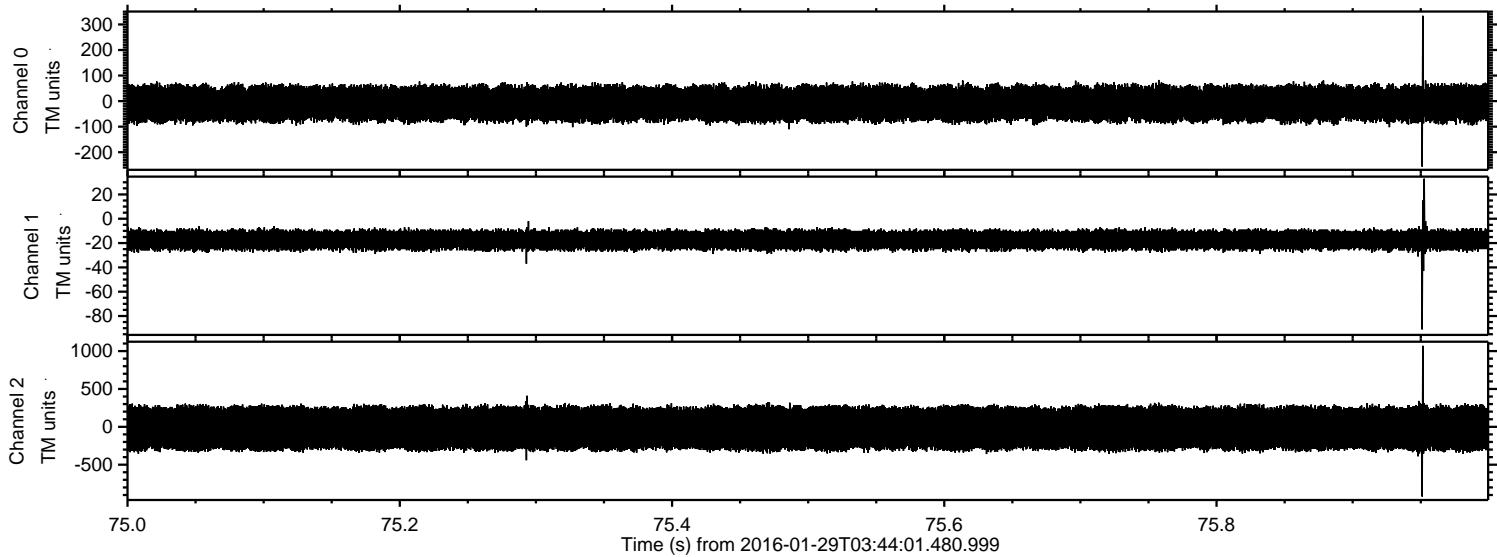
Processed Thu Apr 7 10:52:25 2016 by ELM ver.2012-10-06 from 001__elm20160129_034400__dat00.bin



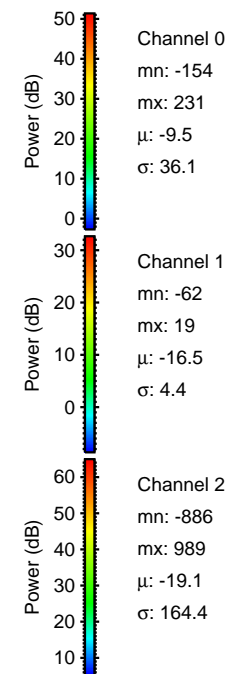
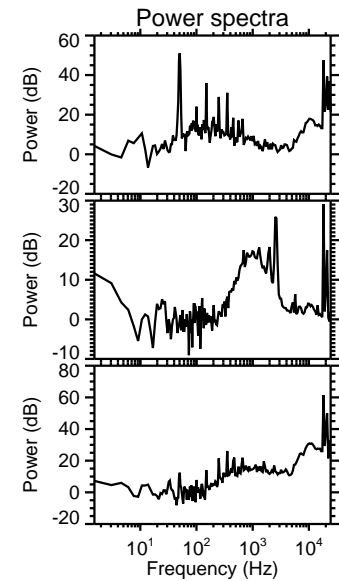
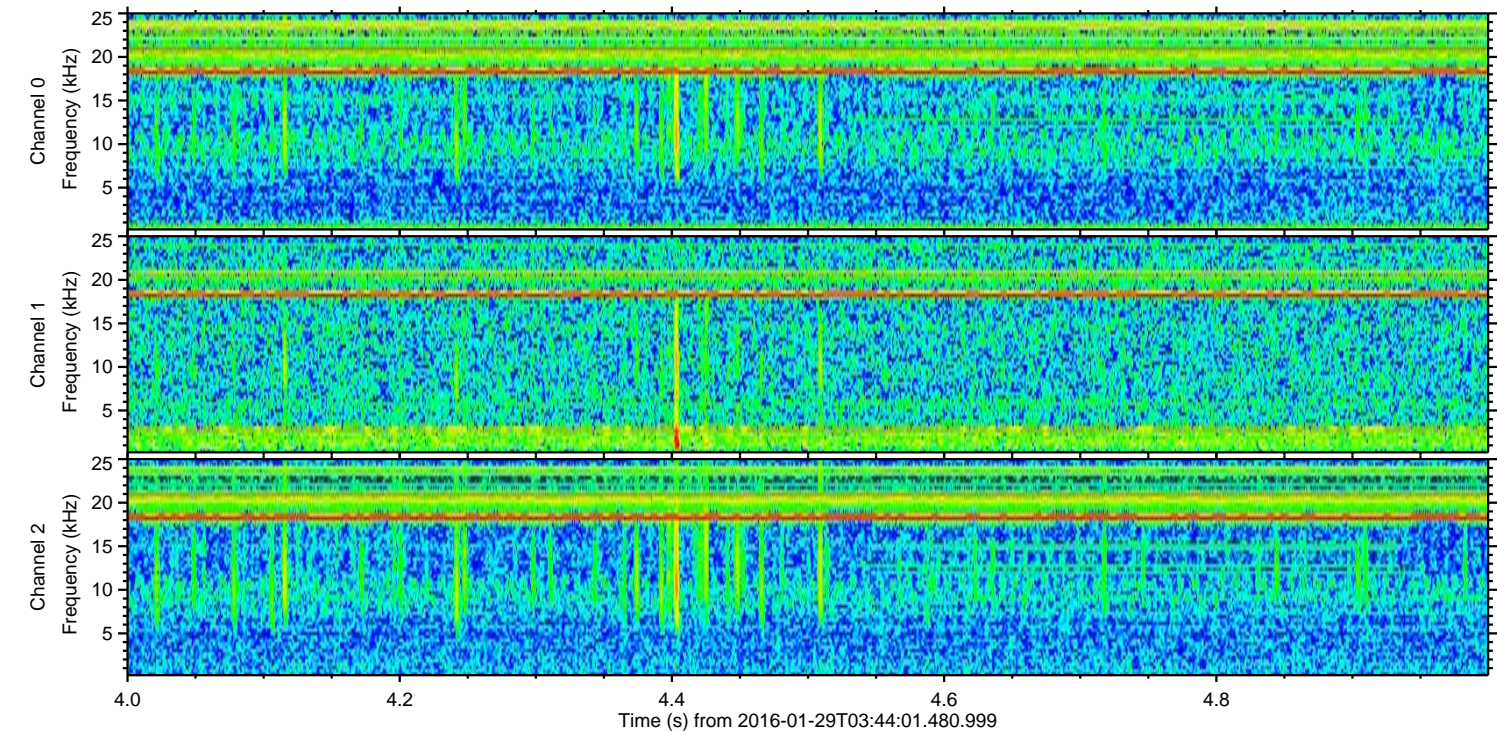
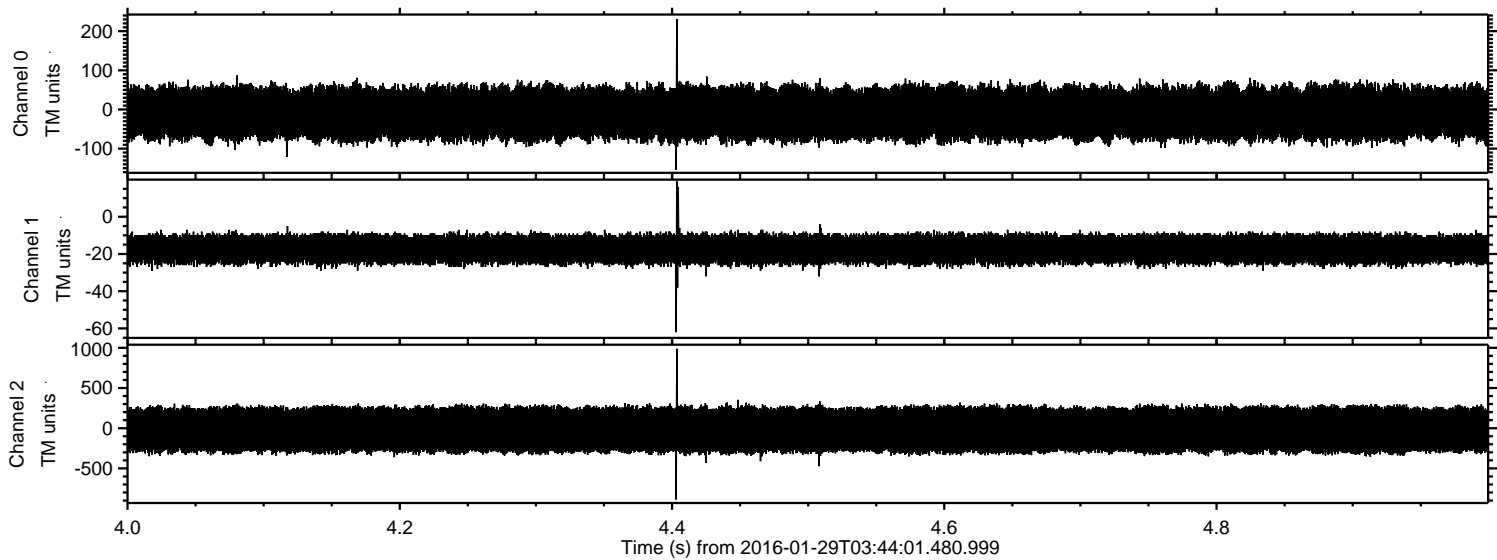
Processed Thu Apr 7 10:52:26 2016 by ELM ver.2012-10-06 from 001__elm20160129_034400__dat00.bin



Processed Thu Apr 7 10:52:27 2016 by ELM ver.2012-10-06 from 001__elm20160129_034400__dat00.bin



Processed Thu Apr 7 10:52:28 2016 by ELM ver.2012-10-06 from 001__elm20160129_034400__dat00.bin



Processed Thu Apr 7 10:52:29 2016 by ELM ver.2012-10-06 from 001__elm20160129_034400__dat00.bin

